

Callahan County Star
888-227-1708 or
254-629-1707
Fax 254-629-2092
ecn@att.net
www.e-cinc.com

Callahan County Baird Star

Newspaper
Deadline:
Tuesday by
4 p.m.

Baird, Officially Designated Antique Capital Of West Texas

25¢
31¢ By Mail

Volume 122, Number 31

©2009 Eastland/Callahan County Newspapers

Baird, Texas 79504

Thursday, July 30, 2009

Commissioners' Court Minutes

Commissioners' Court
Minutes

1100 W. 4th St.
Baird, Texas 79504
July 27, 2009

THE STATE OF TEXAS
COUNTY OF CALLAHAN
COUNTY

The Meeting of the Commissioners' Court was held at its regular meeting place in the Courthouse on July 27, 2009 A.D., with the following officers present to wit:

Roger Corn, Judge Presiding

Harold Hicks, Commissioner Precinct No. 1

Brian Farmer, Commissioner Precinct No. 2

Tom Windham, Commissioner Precinct No. 3

Cliff Kirkham, Commissioner Precinct No. 4

Dianne Gunter, County Treasurer

Donna Bell, County Clerk, and ex-Officio Clerk of the Commissioners' Court and the following items of business were transacted:

The meeting was called to order at 9:30 A.M. by Judge Corn. All Commissioners were present.

The minutes of the previous meeting were reviewed and signed.

Under Public Comment - None

Commissioner Farmer made a motion to order an election to be held on November 3, 2009 for the purpose of voting "For or Against the Legal Sale of All Alcoholic Beverages for Off-Premise Consumption Only" in the City of Baird. Commissioner Kirkham seconded the motion which then carried 5-0. Exhibit

After inspection of the flood control dams, Commissioner Farmer made a motion to accept the Grant issued by the State of Texas to pay 90% while the County is responsible for 10% of the cost of the repair to fences and cleanup of the 22 dams located in the County. Commissioner Kirkham seconded the motion and the motion passed

DPS Report

7-19-09 to 7-25-09

CASES INVESTIGATED

ED

Warnings- 51

Complaints- 18

DWI-1

Public Intoxication-1

ACCIDENTS

There were 4 accidents investigated during this time span.

5-0. Exhibit

John Windham gave the Sheriff's report for the month of June. Commissioner Hicks made a motion to accept the report and Commissioner Windham seconded the motion. The motion carried 5-0. Exhibit

After discussion with Jim Rector and Margo Vinson about the EMS contract, action on the contract was tabled until June 30th.

Commissioner Hicks made a motion to approve a Resolution addressing the Under-Valuation of Oil and Gas Properties. The motion was seconded by Commissioner Kirkham and then carried 5-0.

Commissioner Farmer made a motion to allow Judge Corn to okay payments, after approval by Engineer Johnny Tabor, on work done on roads covered by O.R.C.A. There was a second by Commissioner Kirkham and the motion carried 5-0.

Commissioner Farmer made a motion to accept the proposed effective tax rates of .32727 General Fund rate and of .11638 Road and Bridge rate for a combined rate of .44365. Commissioner Kirkham seconded the motion. The motion passed 5-0.

Members voted:
Judge Roger Corn- yes
Commissioner Harold Hicks- yes

Commissioner Bryan Farmer- yes

Commissioner Tom Windham- yes

Commissioner Cliff Kirkham- yes

Commissioner Kirkham made a motion to pay the approved bills. The motion was seconded by Judge Corn. The motion passed 5-0.

Commissioner Hicks made a motion to adjourn, Commissioner Kirkham seconded the motion, and the motion carried 5-0. The meeting adjourned at 10:44 A.M.

Roger Corn, County Judge

The foregoing minutes were read and approved this day of _____,

Donna Bell, County Clerk
Also attending: Jim Rector, EMS Contract; Margo Vinson, EMS Contract; Terry Been, Flood Dams; Sammy Wilson, Flood Dams; Joe Compton, Flood Dams; A.H. Ringhoffer, Flood Dams; Charlie Upchurch, Flood Dams; Phil Williams, Flood Dams; Jim Stapleton, Flood Dams; Tommy Morris, Group Insurance; Tammy Walker, Tax Assessor; Shane Deel County Attorney; John Windham, Sheriff

Callahan County Commissioners Court

Notice of Open Meeting

Date of Meeting: July 27, 2009, 9:30 A.M.

Location: 100 West 4th, Suite 200

Callahan County Courthouse

Baird, Texas 79504

Complete Agenda:

Call to Order

Deliberate and Consider Action on the following items:

I. Review and Sign Minutes of Previous Meetings

II. Public Comment (5 minutes per speaker) No Discussion or Action

III. Discuss - Consider - Sheriff's Monthly Report - Sheriff John Windham

IV. Discuss - Consider Resolution - Interim Study of Under Valuation of Oil and Gas Properties

V. Discuss - Consider Flood Control Reservoirs in County

VI. Discuss - Consider Calling and Ordering a Local Option Election - City of Baird

VII. Discuss - Consider Judge to Sign and Approve Payments Upon Receipt of Monies and Approval of Engineer Johnny Tabor on O.R.C.A. Contract

VIII. Discuss - Consider EMS Contract Renewal

IX. Discuss - Consider Proposed Tax Rate

X. Review & Pay Approved Bills

Adjourn

Pursuant to the authority granted under Government Code, Chap. 551, the Commissioner's Court may convene a closed session to discuss any of the above agenda items. Immediately before any closed session, the specific section or sections of Government Code, Chap. 551 which provides statutory authority will be announced.

RESOLUTION

Under-Valuation Of Oil and Gas Properties

WHEREAS, the Texas State Comptroller's severance tax based interpretation of the Texas Tax Code Sec. 23.175 (Commonly known as the market condition factor) has been applied to the estimated 2009 tax valuations of counties in the State of Texas; and

WHEREAS, many counties receive the vast majority of their tax revenues from the county's oil and gas values; and

WHEREAS, the Texas State Comptroller's under-valuation of the market condition factor favors oil and gas owners to the detriment of all other taxpayers; and

WHEREAS, these counties will be adversely and catastrophically affected by the market condition factor as interpreted by Texas Comptroller's office; and

WHEREAS, these counties will be unable to fund essential county government services under the Comptroller's current interpretation of the market condition factor;

NOW THEREFORE, BE IT RESOLVED, that Callahan County request that the Texas Legislature address the Comptroller's interpretation of the Texas Tax Code Sec. 23.175 (market condition factor) and its effect on the oil and gas values in counties in the State of Texas and make all efforts to change or repeal Texas Tax Code Sec. 23.175 to bring all Texas taxpayers into an equitable position.

SIGNED and Approved on this the 27 day of July, 2009.

Signed

Roger Corn,
County Judge

Harold Hicks
Commissioner Prec. #1
Bryan Farmer
Commissioner Prec. #2
Tom Windham
Commissioner Prec. #3
Cliff Kirkham
Commissioner Prec. #4
Attest: Donna Bell
County Clerk

Because we've been repeatedly asked:
NOW AVAILABLE
In limited numbers
1 col. x 2" Pg. 1 Box
by month, this size
Details: 254-629-1707
Multi-papers available

Baird Boy Scout Troop 222 Busy This Summer

This summer has been very productive for the young men in Baird's local troop. Davis Camacho worked as a cook staff member during the months of June and July at Camps Tonkawa and Billy Gibbons. It was a great experience working with young men and women from across the Big Country and has led to the making of many new friends. Sam Green and A.J. Camacho attended summer camp at Billy Gibbons and worked on and earned merit badges



in Wilderness Survival, Canoeing, Rowing, Shot gun, swimming, leather work, and basketry. They also spent plenty of time swimming in the creek at camp. The two young men made friends with several scouts from the surrounding area.

The local scouts also took part in a five mile hike, this past weekend that is required for advancement toward rank advancement. Their final July event has been power washing the front entrance to the Bears' Den as a service project that is also required for advancement.

Our local troop is in need of young men that want to add some adventure and character building to their lives. We are also in need of some dedicated adults to restart the Cub Scout program. Without the Cub



Scout program, the Boy Scout troop will never grow.

At this time, Troop 222 in the rebuilding stage and is need of camping and cooking equipment along with a cargo trailer to transport the equipment to the camping and high adventure events. We will be holding fund raisers in the near future and ask for community support.

WELCOME TO BAIRD, TX - "A Happening Lil' Town" USA

PATHOS

HUMOR

HISTORY

CREATIVE NON-FICTION

CALLAHAN COUNTY

STAR SPOTLIGHT

WRITERS SHOWCASE

(All submitters retain ownership)

American Life In Poetry

Column 227

BY TED KOOSER, U.S. POET LAUREATE, 2004-2006

Jane Hirshfield, a Californian and one of my favorite poets, writes beautiful image-centered poems of clarity and concision, which sometimes conclude with a sudden and surprising deepening. Here's just one example.

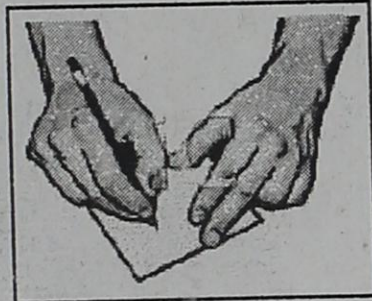
Green-Striped Melons

They lie
under stars in a field.
They lie under rain in a field.
Under sun.

Some people
are like this as well--
like a painting
hidden beneath another painting.

An unexpected weight
the sign of their ripeness.

American Life in Poetry is made possible by The Poetry Foundation (www.poetryfoundation.org), publisher of Poetry magazine. It is also supported by the Department of English at the University of Nebraska-Lincoln. Poem copyright (c)2008 by Jane Hirshfield, whose most recent book of poems is "After," Harper Collins, 2006. Poem reprinted from "Alaska Quarterly," Vol. 25, nos. 3 & 4, Fall & Winter, 2008, by permission of Jane Hirshfield and the publisher. Introduction copyright (c)2009 by The Poetry Foundation. The introduction's author, Ted Kooser, served as United States Poet Laureate Consultant in Poetry to the Library of Congress from 2004-2006. We do not accept unsolicited manuscripts.



Need: Poems, Short Stories, Poetry Related Items



The pen is mightier than the sword

Writers And Poets!

The Eastland/Callahan County Newspapers announce that the Baird Star will be publishing submitted poetry and short stories. We will also be publishing a literary journal in the near future.

1. We ask for first-time publishing rights. All other rights will remain with the author.
2. There will be no payment, but you will get your works before the general public. We will be sending sample copies to other organizations, the literary world and libraries for their archives and your notoriety.
3. Short stories should be brief. Poetry should be no longer than 24 lines.
4. Each submission should be typewritten, single spaced, with author's name and contact information in the top right hand corner. You must include a SASE for the return of the submission.
5. Please address all submissions to:

Literary Editor
Eastland/Callahan County
Newspapers
P. O. Box 29
Eastland, TX 76448
email: thebairdspotlight@att.net

Submissions sought to:

Star

P.O. Box 29
Eastland, TX 76448email: thebairdspotlight@att.net

S.A.S.E. for returns

--WANTED--

20 lines,

double spaced or less

Poetry

Fiction or Non

Each entry with brief biography notes. All must be family oriented; no smut, slander or liable material.

Sign Language

The girl set her poem on the podium
moved her hands in a bird-like motion
gestures pulled out of the air
in the miracle of communication -
a pioneer in this new dimension
of the human heart.

Our eyes listened to the structure
and deliverance of her thought.
we marveled at her ingenuity-using
the loss of her voice to lead us in silence,
through a language which forges poetry
without a word.

- Marjorie Bruhmuller
Quebec City, Canada

A Time To Learn

See now those dead, who once were people
Whose thoughts were fun and worldly gain
See how they turn, no longer gleeful
With writhing tongues of fiery pain.

Where are they now, who walked beside me
And turned their backs at time to learn
Submerged so deep eternally
In fiery lakes that ever burn.

- Weldon L. Smith
Eastland, Texas

Rhymes To Use:

Symbolist

Vocalist

Liturgist

Egoist

Pragmatist

Ballooning

Persist

Dentist

Schist

Words To Use:

Pyknic: This refers to something that is muscular, perhaps broad and short, like one of those great football running backs.

Remise: This is a rental concern, specifically relating to car rental agencies.

Sagatiat: Supposedly this word stands for nothing. It is said to have no meaning. You knew there had to be a word like that for you to use in a letter to your aunt.

Taliped: Something that is awkward or disoriented can be described with this word.

UNLOCKING THE CITY

Anne Winters acts as a poet-detective in her collection, *The Key to the City*.

By Emily Warn

Poetry Media Services

Anne Winters works Manhattan's streets in *The Key to the City*, her first book and a National Book Critics Circle finalist for poetry in 1986, using methods similar to New York City homicide cops. Her poems condense the dizzying complexity of Manhattan into miniature scale models in order to detect the unfair social conditions that can lead to crimped lives and calamitous events. In her poem-laboratories, Winters studies points in time that in complexity theory are defined as "strange attractors." The science writer James Gleick explains that these are single instants in time when the "complete state of knowledge about a dynamical system . . . collapses to a point" and so serve as a means to understand the system.

Fathoming New York is possible if she can register its forces, the energy of economic and social exchange that, though invisible, is contained within the city's physical lineaments—that which is unfixed and flowing moves through the "walledup canals." A poem's prosodic and syntactic arrangements create its structure just as differences of class and race create a social structure. The patterns that emerge over time cannot be perfectly predicted or controlled. Difference functions within poem and system as that which motivates change. When there is little external pressure and stable, long-term relationships are present, there will be little change to patterns within the system. When difference is introduced, movement becomes possible and necessary.

A coming-of-age poem, "The Street," opens with the speaker watching her sister watching herself in a "tilting compact mirror."

A round eclipse, a pool-like dot of light
on my little sister's glasses, bangs, her dome-cheeked,
solemn face
play-powdered in a tilting compact mirror.

Her sister is making herself up, inventing an adult self. The poet, on the other hand, is inventing herself as documentarian, mirroring events to understand what she sees. The playful freedom and predictable order and perspective of their childhood will soon be eclipsed by forces unleashed in the street. Out the window, where the two sisters knew "every crevice and lip of our stoopball, stickball street;" the unexpected happens: they witness the aftermath of a horrific murder of a "girl" from "the one brownstone, catty cornered across / a 'house,'" which is different than the other brownstones.

Winters records the crime with the accuracy of a crime lab technician's high-powered lenses. The violence casts a harsh light and amplifies the fixed pattern out of which it emerged, indelibly altering the speaker's perception of self and system of which she is a part. Time collapses to a point. The precipitating event in this and many other poems is often the result of crossing a class line. What had been human and orderly becomes bestial and Kafkaesque.

On the sidewalk across / a girl from the house, in
stockingfeet, dark silk suit
slit and ribboned by knife thrusts, was pulling herself
through the arcs and dribbles and splashes of her blood.

Her fingertips' carmine meshed on the concrete, her elbows
strained
over the wet, working shoulder blades (one still hooked
through her purse strap) and somehow her bluish felt

hat and hatpin, rolled to the curb, made me think she was
pinned

to the street—pinned and moving.

The bleeding victim becomes an insect in an exhibit; the severing of her connection from the human gives the poem its disturbing urgency, mirroring its lack in the scene itself:

And last thing
before we were hauled from the window seat, we saw her
raise one terrible red-nailed arm
and wave to them, sign them to come down to her.

Winters could have ended the poem here, setting herself up as witness to a failure to respond to a desperate summons. The poem would have served as reminder and prod to change the system by helping us see its injustice. She could have signed off with this ultimate of human horror—that even murder fails to help us recognize the "other" as human. But that would not be true to the facts of New York. The unexpected emerges out of it, amplifies the system as a whole, and then settles back into its pattern. In the last two stanzas, a cop cranks closed the hydrant he'd opened to wash the blood.

Much later, and late for school, when we were sent down
onto the stoop, my sister's face still reddish
lost and bereft behind her round of glasses

the opposite walk was clear if we'd had to cross there,
only a dark calligraphy beneath a sheen of water,
one lingering cop to crank the hydrant closed.

The beauty of "The Street" is in the way its perspectives shift and collide—from the "pool-like dot of light" in her sister's glasses to the "terrible red-nailed arm" waving at the two girls. These shifts also occur among poems in the book—from an overheard conversation in an all-night laundromat to the view from a plane gliding above Manhattan skyscrapers. Winters's faceted forms are comparable to the stunning images produced when mathematicians invented fractal geometry to describe the irregular regularity of shapes such as twisting coastlines or turbulent water. Before the invention of fractal geometry, the dimensions and characteristics of these forms were unknown. Similarly, in exactly rendering events, Winters abstracts essential information about New York, fathoming its unfathomable dimensions.

Emily Warn's latest collection of poetry is *Shadow Architect*. This article first appeared on www.poetryfoundation.org. Learn more about Anne Winters, and her poetry, at www.poetryfoundation.org.

Slow Aging With Blueberries

Millions of people enjoy blueberries because they taste good and are versatile enough to be part of many different menu items. Blueberries, however, are also nutrient-rich and offer a host of health benefits, one of which may be slowing down the aging process.

This isn't to say that blueberries can turn back the hands of time, but they may help slow down some of the typical side effects of aging, most notably diminished mental capacity. In a USDA Human Nutrition Research Center laboratory study, researchers fed blueberry extractions to lab mice. The extractions were the equivalent of a human eating one cup of blueberries per day. The mice were then run through a series of motor tests. The mice who were given the blueberry extractions performed better than the control group on motor functions and memory. They also showed an increase of exploratory behavior.

The antioxidant components of blueberries—that give them their vivid color help reduce oxidative stress, as observed after looking at the brains of the treated mice. Oxidative stress is damage to cell membranes and DNA from free radicals. Antioxidants are known to find and eradicate free radicals. Oxidative stress is thought to be a main culprit in many of the dysfunctions and diseases common to aging.

Because of their neurological, motor-function link, blueberries may be essential to reducing the severity of neurological diseases, such as Alzheimer's and other dementias.

Stay Healthy During Grilling Season

When it comes to warm weather parties, few ideas are more popular than a backyard barbecue. However, as enjoyable as such gatherings can be, they can cause problems as well, particularly if certain steps aren't taken when it comes to cooking and handling food.

*** Clean your hands:** Most backyard barbecues feature a host of standard fare when it comes to the menu. Burgers, steaks, hot dogs, and poultry are some of the most popular items. If you're handling raw meat and poultry, wash your hands between touching the meat and then touching the poultry.

*** Don't marinate outside:**

Any good grillmaster knows that the key to a successful barbecue is how well the food is marinated. If marinating food for an extended period of time, keep the food refrigerated while marinating. Also, be sure not to apply leftover marinade to food that's already cooked. If you're wary of wasting the marinade, boil it before applying to cooked food. The boiling will remove any bacteria left in the marinade by the raw meat or chicken.

*** Use a meat thermometer:** Many grill chefs have heard cries that their food isn't cooked well enough. Typically, this is heard after someone puts all the fixin's on their food. That can make

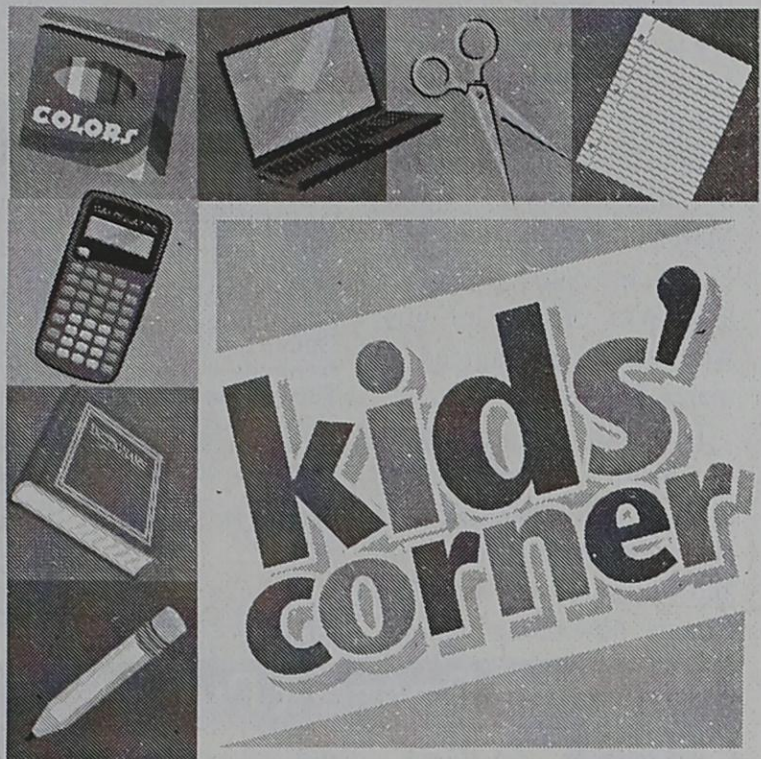
continuing to cook the food a messy ordeal. To avoid such instances, use a meat thermometer on burgers and steaks. In general, burgers should be cooked to 160 F, while meats such as steaks, roasts or london broil can be cooked to 145 F (medium rare) or 160 F (medium). Undercooked poultry can be especially dangerous, so cook to 170 F.

*** Change utensils and plates:** Once the food is cooked or if you're checking to see if it's finished, don't use the same utensils to remove or check food that you used to place it on the grill. Also, carry the uncooked food out on one plate, and present cooked

food on another plate to avoid food contamination.

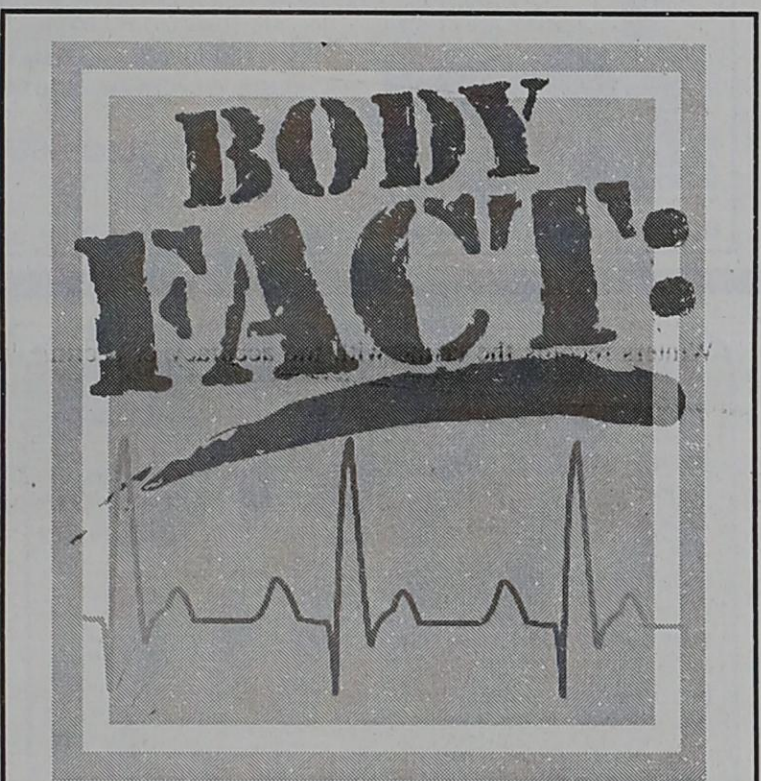
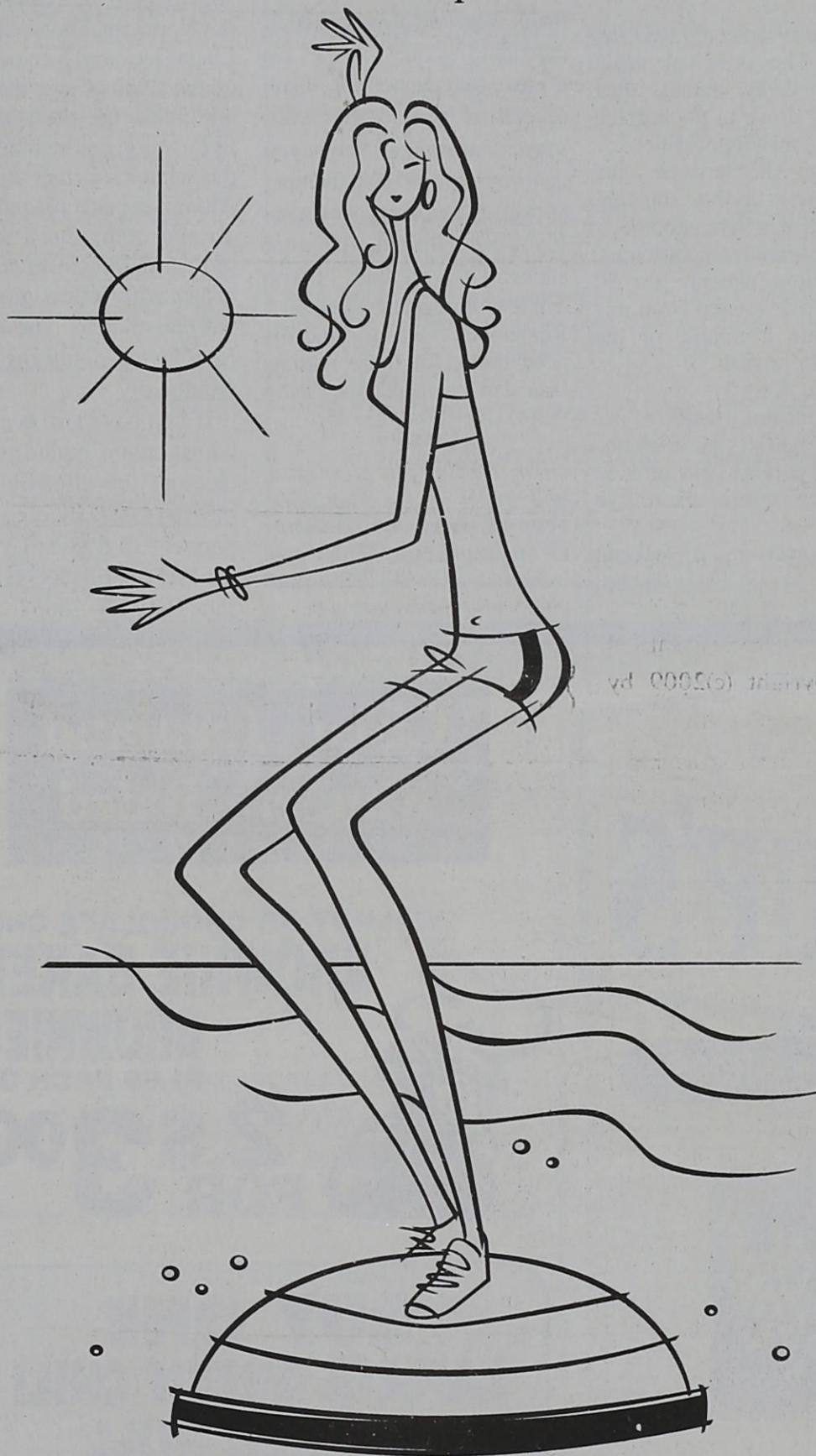
*** Heat a charcoal grill properly:** If you prefer to use a charcoal grill, make sure the coals are heated for 20 to 30 minutes before you put any food on the grill. Coals should still be black if you're about to commence cooking. Instead, they should be gray.

*** For tailgaters,** cool your food as well: Grilling out isn't confined to summertime or backyards. Sports fans across the nation often take their grills to the stadium and tailgate before the big game. In such cases, make sure you bring a food-only cooler along. Keep food separated and refrigerated in the cooler and until it's time to do some cooking.



Creative Coloring

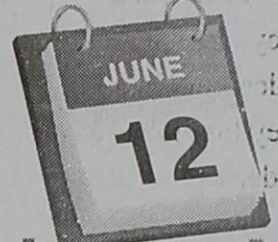
Celebrate in the sun safely.
Color in this picture to create your own masterpiece.



WHAT IS THE MOST SERIOUS TYPE OF SKIN CANCER?

ANSWER: MELANOMA

THIS DAY IN...



HISTORY

- 1880: A PERFECT GAME WAS PITCHED BY JOHN LEE RICHMOND.
- 1939: THE BASEBALL HALL OF FAME OPENED IN COOPERSTOWN, NY.
- 1942: ANNE FRANK RECEIVED A DIARY FOR HER BIRTHDAY.

New Word

CANCER

disease caused by uncontrolled division of abnormal cells

How they SAY that in...

- ENGLISH:** Skin
- SPANISH:** Piel
- ITALIAN:** Pelle
- FRENCH:** Peau
- GERMAN:** Haut

Did you know?

THE SKIN IS THE LARGEST ORGAN OF THE BODY AND NEEDS TO BE PROTECTED FROM THE SUN BY USING AN SPF PRODUCT.



GET THE PICTURE?



Can you guess what the bigger picture is?

ANSWER: SUNGLASSES



The Idle American

Commentary by Don Newbury

Certain Other Duties at the School House...

I have always firmly believed, as I do now, that when unsung heroes get their due, school personnel will warrant an ongoing chorus of thanks from the rest of us. They deserve a crescendo of sincere appreciation.

The good ones--and most of them are--log service "off the clock," working into the night, and sometimes into the next day. There are deeds we don't hear about, usually because they don't tell us. Many prefer not to risk misunderstanding, charges of grand-standing or seeking attention. In these days, our down-trodden society needs detailed information of stories that warm the heart.

I want to share a true account of utter compassion that occurred earlier this year. The parties, as well as the school, will remain nameless. If you happen to be a school employee, I extend congratulations. If folks close to you are, please support and thank them....

It was on a cold Friday afternoon last winter. The elementary school principal was churning through the final hours of a challenging week, looking forward to a dinner engagement.

The phone rang, and after a few words from the anxious fifth-grade girl placing the call, the administrator thought briefly of her contract, the last words of which pretty much say it all: "and certain other duties as may be assigned by the superintendent."

This call, though, resulted in discharging a sacred Christian obligation to help the hurting, whoever they are, wherever

they are with whatever is most needed....

The youngster spoke through tears, phrases coming out in chunks. "My mom's awful sick," she said. "Would you be able to go by to see her? She's in hospice."

Well aware of the youngster's "life story" and cognizant of what hospice care typically means, the administrator put the week's wind-up duties on hold. She knew that the youngster was being reared by a grandmother who had been granted custody several years ago. (The fifth-grader had learned just months earlier that the woman she thought to be her mom was, in fact, her grandmother.) And yes, the educator knew also that the cancer, diagnosed three years ago, was gaining the upper hand....

"Could you please come by after school?" the youngster begged.

Of course she could, and she would. The principal made calls to delay dinner, then hurriedly drove to the hospice facility in the city nearby.

When she arrived, the student was crying, standing vigil at her grandmother's bedside. Already unconscious, the precious patient, just 50 years of age, passed from this life within a minute of the principal's arrival....

The educator sat down, her arms engulfing a 10-year-old who perhaps was already wondering where she'd live next.

Yes, dinner--and a weekend "must do list"--seemed

unimportant and far away. The student needed her desperately, and she was there.

A couple of days later, the educator drove to visitation at a funeral home in an adjoining county. The youngster ran to meet her, then proudly made introductions to family and friends gathered there. She wanted everyone to know her friend who happens also to be a school principal....

Multiply this vignette by several hundred thousand, maybe millions. Know that situations just like this, or closely akin thereto, will occur multiple times in the coming school year in communities across the land. School bells will be sounding soon, and the 2009-2010 school year will begin.

A slogan coined for the Association of Texas Professional Educators rings in my memory. It says much: "Supporting your freedom to teach." I'm sure the ATPE would be tickled beyond words if the public at large assumed the same stance. For many students, educators are their only advocate.

Make a genuine effort to thank someone at your school, extending warmest wishes for a great year. Better yet, thank several of them. Offer your prayers and support. Maybe you can compose a fresh bumper sticker to support educators. If you can't, the old, well-worn sticker will work fine: "If you can read this, thank a teacher." Remember, when students need them, for more reasons than can be listed, they'll be there....

Dr. Newbury is a speaker and writer in the Metroplex. Send inquiries and comments to: newbury@speakerdoc.com. Phone: 817-447-3872. Web site: www.speakerdoc.com.

Guest Slot...by H.V.O.

"TEXAS EXTRA," title of a prize coffee-table size book, copyrighted 1999, sub-titled "A Newspaper History of the Lone Star State, 1835-1935."

WOW!

Gifted to this newspaper by Linda Boose from the personal library of her parents, the late Leonard Huckabay, and Mrs. Naomi Huckabay, the book is a treasure which contains reproductions of front pages which tell the Texas story from letters and dispatches from Stephen Austin to the aftermath of the Clyde Barrow and Bonnie Parker.

Carbon High School Reunion Web Site

A web site for the Carbon High School Reunion is under development. According to Linda (Jackson) Neeley, Chair of the 2010 event, the basic outline for the site is now on line awaiting more input from the school's former students. Alumni are encouraged to log on and complete a student profile and begin to communicate with fellow graduates and classmates. The address is www.carbonhighschoolreunion.org.

If you have any questions, Linda may be contacted through the site, by email lneeley47@yahoo.com, by phone 830-598-5613 or by mail at P. O. Box 8992, Horse-shoe Bay, TX 78657.

Notre Dame, [7-6] in 1935.)

Intresenting especially is the fact that pages from newspapers from all over the nation are copied as well as early and late Texas papers.

The Huckabays were avid readers and according to Linda, the assortment of books is vast and varied.

The first page copied is from the Hartford Connecticut Courant about the war in Texas between the Mexican government and the "revolutionists of Texas." It also contains copy of a letter signed by Samuel Houston asking for volunteers from the United States. "Our war-cry is 'Liberty or Death.'"

The Telegraph of San Felipe de Austin carries a copy of the Texas Declaration of Independence, signed March 2, 1836.

In 1840 bounty of land was offered to girls who came and agreed to marry Texans.

This book will join others of historical significance in what will some day be a Historical Printing Museum and Library in Eastland County, now being planned.

Concert Saturday In Eastland

Texas Country Music Sensation: The Josh Abbott Band and special guest, Charla Corn (best known for her powerful vocals on "Good Night for Dancing", and her latest single, "Break My Heart Tonight") will perform in Eastland, Texas at Maverick Stadium on Saturday, August 1, 2009 at 8:00 p.m. All proceeds will benefit the Eastland Backpack Program. The gate will open at 7:00 p.m. and no outside food or drink will be permitted. The Eastland Band Boosters will provide concessions for the event. The concert will be held at the Marshall Complex in the event of bad weather; tickets are non refundable. Seating will be allocated on a first come, first served basis.

Tickets for this momentous event are \$15.00 and are available for purchase at the following locations: Bryan's Auto Supply, Amy's Hallmark, The Gold Lantern, The Eastland Telegram, The Eastland Chamber of Commerce, Hardin's BBQ, and online at www.eastlandchamber.com. Only local checks and cash will be accepted at these designated businesses; please make checks payable to the Backpack Program. Tickets will be sold at the gate for cash only.

This fantastic event would not be possible without the following sponsors: Motec LTD., Jeff and Vicki Bradley, Bryan's Auto Supply, AlphaGraphics, Bird Electric, First Financial Bank, Sterling Monument Industries, Inc., Eastland Memorial Hospital, Kevo Recycling, Atlas Equipment Company, La Quinta Inn & Suites, Jim Farrar, Kennedy Financial Services, The Eastland Chamber of Commerce, KATX, The Eastland Telegram, Hardin's BBQ, Jam Incentive Marketing, Eastland I.S.D., County Line, Playoff Sports, Brookshire's, Higginbotham's, and Ace Hardware. Please contact Cristal Rose at 254.629.2332 or ecofcer@txbusiness.com for additional information or questions.

Mortgage Payment Protection

Worried about losing your job? Relax! This free benefit will pay your mortgage for up to 6 mos, up to \$1,800/mo. Now 14 Sales Offices in Texas. Visit ubh.com to find one near you.

800.756.2506 @ubh.com

ALLSUP'S

Prices Good Thru 8/8/09

6 PACK DR PEPPER 2 \$5.00 FOR

2 LITER BOTTLE DR PEPPER 3 \$5.00 FOR

16 OZ. CAN RED BULL 2 \$6.00 FOR

Cisco - Eastland Ranger - Baird

WALNUT OR CHOCOLATE CHIP BROWNIE BAKER BROWNIES \$1.69 EACH OR 2 \$3.00 FOR

BUY ONE LANA'S GREEN CHILI CHICKEN ROLL GET ONE FREE

DELICIOUS CHICKEN TENDER BASKET \$1.89

FAMOUS ALLSUP'S BEEF AND BEAN BURRITO \$1.19 EACH OR 2 \$1.79 FOR

More Specials

SHURFINE DRINK MIX CHERRY, PUNCH OR GRAPE ALL FLAVORS	10 FOR \$1.00
JACK LINK'S JERKY ALL VARIETIES 3.25-3.65	2 FOR \$7.99
BLUE BUNNY TWIRLIX FUDGE POPS EACH	59¢
BLUE BUNNY JOLLY RANCHER ICE POPS EACH	59¢
LIPTON FAMILY TEA BAGS 24 CT. BOX	\$2.99
ALLSUP'S SANDWICH BREAD 24 OZ. / 79¢ OR	2 FOR \$1.29
ALLSUP'S WHEAT BREAD 24 OZ. / 99¢ OR	2 FOR \$1.49
FOLGERS COFFEE 11.3 OZ.	\$3.49

Combo Meals

1 BACON/EGG BISCUIT & 16 OZ. COFFEE	\$2.09
2 SAUSAGE/EGG BISCUIT & 16 OZ. COFFEE	\$2.09
3 BBQ SANDWICH & 32 OZ. TALLSUP	\$2.09
4 HOMESTYLE POPCORN CHICKEN & 32 OZ. TALLSUP	\$2.79
5 SPICY POPCORN CHICKEN & 32 OZ. TALLSUP	\$2.79
6 3 TAMALES, HOWLERS & 32 OZ. TALLSUP	\$2.69
7 2 HOT LINKS WITH BREAD & 32 OZ. TALLSUP	\$2.59
8 2 CORN DOGS & 32 OZ. TALLSUP	\$2.69
9 CHIMICHANGA & 32 OZ. TALLSUP	\$2.49
10 2 BEEF & BEAN BURRITOS & 32 OZ. TALLSUP	\$2.69

BUY 12 GALLONS OF FRESH ALLSUP'S MILK... GET ONE FREE!

Collect 12 Milk "Moo" Stickers Today! You Could Win \$1,000 With Your A Year!

Callahan County Riding Club 2009 Play Dates Announced

The 2009 Callahan County Riding Club at the arena on FM 603 in Eula with other dates throughout the summer. Everyone is encouraged to come out to these playdays. The schedule for the 2009 season is below. All regularly scheduled play days will begin with trainers/exhibitions at 6:30 and the events beginning at 7 p.m. Check us out on the web for updates at <http://www.callahancounty-ridingclub.com>

August Dates: Saturday, August 8th; Saturday, August 15th; Saturday, August 22nd; Saturday, August 29th. Any rain-outs or make-up days will be held on the open weekend or on Fridays or Sundays, depending on weather and options of membership. If you have questions call Sue Underwood at 325-669-9411.

Clyde HS Band Summer Rehearsal Schedule

The Clyde High School Band will begin summer rehearsals on Monday, Aug. 3rd. All students involved with the high school band should report for practices according to the following schedule:
Monday--Friday:
8 a.m. Freshmen and new marchers
9 a.m. Flute, clarinet, and trumpet music rehearsals
10 a.m. Low brass, low woodwind, horn and alto sax music rehearsals
11 a.m. Percussion section
Tuesday and Thursday only: evenings 7 p.m. until 9 p.m. full band rehearsals

All students need to report to the high school band hall at the beginning of their respective rehearsal time. It is very important that all students attend the summer practices because we have a halftime performance the first week of school. To be prepared for that performance, we must begin rehearsals early. Football players who have a rehearsal scheduled with the band at the same time as football practice should attend football practice and the band directors will get you caught up later. For any questions please call the school at 893-2161 ext. 118.

Callahan County Commissioners' Court Public Hearing

Date of Meeting: June 30, 2009, 9:30 A.M.
Location: 100 West 4th, Suite 200
Callahan County Courthouse
Baird, Texas 79504
Complete Agenda:
Call to Order
I. Discuss- Consider 2009-2010 Budget
Adjourn
Pursuant to the authority granted under Government Code, Chap. 551, the Commissioner's Court may convene a closed session to discuss any of the above agenda items. Immediately before any closed session, the specific section or sections of Government Code, Chap. 551 which provides statutory authority will be announced.

CHS Football Tickets Go On Sale August 5

Clyde High School will begin selling football tickets on Wednesday, August 5th to those who want to renew their season tickets from last year. We will not be able to hold your tickets after 3 p.m. on Wednesday, August 19th. On August 20th, we will begin to sell reserved seats to those who do not already have one. Prices for the reserved seating this year is \$6.00 per game, or \$36.00 for all 6 home games. The reserved section will have theatre seating. You will need to have a ticket to get into the reserved section. There will be a gate keeper allowing only those with tickets through. The tickets will be on sale in the High School Office from 8:30 a.m. to 3 p.m.

Ranger College Workforce Education

At Ranger College you can learn workplace skills and earn a certificate in as little as one semester! Ranger College Workforce Education offers programs in Office Technology, Computer Information Technology, and Welding varying in length from one semester certificates to two year degrees.

Office Technology

- **Level I Certificate (one semester, 18 credit hours)**
 - **Administrative Assistant Certificate (one year, 35/37 credit hours)**
 - **Accounting Office Certificate (one year, 30/31 credit hours)**
 - **Associate of Applied Science Degree (two year, 70/71 credit hours)**
- Document Formatting * Microsoft Word * Accounting * Business Correspondence * Administrative Procedures * Computerized Accounting * Business Concepts & Terminology * Personal Finance Business Math & Office Machines

Computer Information Technology

- **Entry Level Certificate (one semester, 15/16 credit hours)**
 - **Intermediate Level Certificate (one year, 29/30 credit hours)**
 - **Associate of Applied Science Degree (two year, 62/63 credit hours)**
- Web Page Development * PC Hardware * Microsoft Excel * Microsoft Word * Microsoft Access Programming Fundamentals * Microcomputer Applications * Windows Vista

Welding Technology

- **Level I Certificate (one year, 24 credit hours)**
 - **Associate of Applied Science Degree (two year, 66/67 credit hours)**
- Welding Fundamentals * Blueprint Reading * Shielded Metal Arc Welding * Layout and Fabrication * Gas Metal Arc Welding * Gas Tungsten Arc Welding * Advanced Welding

Workforce Scholarships are available up to \$625 per semester for 4 consecutive semesters! Additional financial aid (grants & work study) is available for those who qualify.

Fall Registration

Commuters - August 18 8:00 a.m. All Students - August 20-21 8:00 a.m.
Classes begin - August 24th

Both men and women are encouraged to enroll in all Workforce Education programs at Ranger College. Admissions, employment, and program policies of Ranger College are nondiscriminatory in regard to race, creed, color, sex, age, disability, and national origin.

Individual Attention * Small Classes * Dedicated Faculty
Reasonable Cost * High Quality Education

254-647-3234

www.ranger.cc.tx.us

Summer Sale!
50-75% OFF
Selected Merchandise
20% Off Jim Shore and Melissa and Doug
AMY'S CARDS AND GIFTS
939 E. Main • Eastland • 254-629-3521

THE STATION
500 W. Main • Eastland
254-629-3701
New and Used Tires, Disc Brakes
Pick Up and Delivery Service Available
Oil Change (up to 5 qts) **\$30⁰⁰** Everyday price
Car Wash & Vacuum (most vehicles) **\$25⁰⁰** Everyday price

We are presently contracting to clear mesquite, cedar FREE.
Contact us at 325-854-5952
Green, Biomass & Alternative Energies

Donald Cate, CPA
CERTIFIED PUBLIC ACCOUNTANT
935 East Main St. Phone: 254-629-8901
Eastland, TX 76448. Fax: 254-629-8785
Tax Return Preparation - Tax Planning - Payroll Processing
Monthly Accounting - Financial Statement Compilation
Business Organization Consulting
Two CPA's On Staff

encompass
HOME HEALTH
Medicare Certified Home Health Services
Skilled Nursing
Physical Therapy
Speech Therapy
Occupational Therapy
Diabetic Care
Medical Social Work
Home Health Aides
Psychiatric Nursing
1420 East Main Street, Eastland, TX 76448
866-488-8200 • 254-629-8200

MAJESTIC THEATRE
629-1322

DISNEY'S G-FORCE
Rated PG
Voiced by:
Nicholas Cage, Sam Rockwell & Penelope Cruz
Fri. Sat. Sun. Mon.
All Showings: 7:30 p.m. - \$4.50
Adults Only Balcony Ticket - \$6.00
10-Admission Card - \$40.00
5-Admission Card - \$22.50

CALLAHAN COUNTY BAIRD STAR
Publication No. (USPS 085-520)
©2009 Eastland County Newspapers, Inc.
(254) 629-1707/ 1-888-227-1708
211 Market St. Baird, TX 79504
Periodical Postage Paid at Baird, Texas
under Act of Congress in March, 1870.
Published every Thursday
Publisher.....H.V. & Gaynell O'Brien
Editor.....H.V. O'Brien
POSTMASTER: Send address changes to
Callahan County Star,
211 Market St., Baird, TX 79504
SUBSCRIPTION RATES
\$17 per year in Callahan County; \$19 per year for
Counties Adjoining Callahan \$23 Out of State of Texas

Lee Orthodontics
Orthodontics for Children and Adults
2209 S. Danville Dr., Abilene, TX
325-695-2040
www.smiletomorrow.com
Victor Lee D.M.D. M.S. "Call today for your free consultation!" Jim Morrow D.D.S. M.S.

BI-RITE AUTO 4th Block E. of Light, Hwy 36 WE FINANCE
Cross Plains 254-725-7361 325-669-0999
OPEN MON.-SAT. 9:00 - 5:30 CLOSED SUN.
AUTOMOBILES
99 Ford Taurus V6, green, runs & looks good.....SPECIAL \$2450
99 Ford Taurus, V6, looks, runs good, green.....\$2450
01 Chevy Cavalier, runs good, needs paint job, cold air.....\$1850
00 Pontiac Grand Am, 4 cyl., runs good, clean inside & out, red.....\$2895
97 Lincoln Continental, leather, looks, runs, very good, pearl white.....\$2950
01 Lincoln LS V8, fully loaded, looks, runs very good, leather, moon roof.....\$6450
02 Mercury Sable V6, nice car, white.....\$3750
02 Taurus SES Fully Loaded, power seats, etc., black.....\$4295
98 Ford Contour, V6 runs good, green.....SPECIAL \$2250
95 Mercury Cougar XR7, V6, very nice car.....\$2450
91 Mercury Cougar XR7, 4.6 V8, a good car inside & out, gold.....\$2450
99 Ford Taurus V6, looks, runs good, silver.....\$2950
93 Mercury Cougar XR7, runs very good, green.....Reduced to \$395
91 Buick LaSabre, looks, runs very good, white.....Reduced to \$1250
97 Ford T-Bird V6, looks, runs good.....Reduced to \$2195
ALL VANS - SUVs HAVE BEEN REDUCED
00 Dodge Durango SLT, 100,000 on 318 V8 w/warranty, loaded, auto, 8 pass., nice.....\$4995
00 Ford Explorer, V6, auto, 4 dr., very nice, red, SPECIAL.....\$4950
97 Ford Explorer XLT Fully loaded and nice, black.....SPECIAL \$3295
90 Ford Bronco V6, very nice inside & out, runs good.....Reduced to \$1950
98 Ford Windstar, V6, 3 seats, looks, runs good - maroon.....Reduced to \$1950
97 Ford Aerostar XLT V6, a very nice van - green.....\$1950
DIESELS
02 Ford F350 Super Duty Crew Cab, power stroke, 6 spd, nice truck.....\$6750
00 Ford XLT Diesel Crew Cab, 6 sp., power stroke, a nice truck, silver.....SPECIAL \$6250
01 Ford F350 Super Duty Power Stroke, crew cab, 6 sp.....SPECIAL \$6250
99 Ford F350 Crew Cab, Super Duty, 6 sp.....Reduced to \$5750
99 Ford F250 Super Duty, 4 dr., Super Cab, 6 sp., Power Stroke.....\$5750
97 Ford F250 Heavy Duty Super Cab, Power Stroke.....SPECIAL \$4250
94 Ford F350 Crew Cab, Turbo Diesel, a nice truck.....SPECIAL \$3950
90 Ford Turbo Diesel 4x4 Dually flatbed, a good work truck, red.....SPECIAL \$2995
94 Chevy Diesel Crew Cab, auto, runs good, paint bad.....\$1995
89 Ford F250 7.3 Diesel, auto., very clean inside & out, tan.....\$1950
89 Ford F250 XLT Super Cab, Power Stroke, runs good.....\$3250
05 Ford F350 Crew Cab, Dually, Power Stroke, Auto., nice truck, red.....\$3995
94 Chevy Diesel 4x4, auto., ext. cab, looks, runs good, tan.....\$2950
92 Ford F250 Turbo Diesel, 5 sp., runs good, red.....\$1495
GAS TRUCKS - MISC.
00 Ranger XLT Super Cab, 4 cyl., 5 sp., 84,300 miles, nice truck.....\$4995
00 Ranger Super Cab, V6, auto., runs good, white.....\$4850
99 Chevy 1 ton, 350 V8, auto., 8x12' van body.....\$2995
04 Tandem Gooseneck 2 car hauler in very good condition.....\$5250
00 Ranger XLT Super Cab, V6, auto., a very good truck, blue.....SPECIAL \$4850
02 Ford Ranger XLT Super Cab, V6, 5 sp., looks, runs good.....SPECIAL \$4995
99 Ford Ranger Super Cab, new V6 w/90 day warranty, a good buy at.....SPECIAL \$4650
98 Chevy S-10, 4 cyl., auto., looks, runs good, green.....REDUCED TO \$3595
83 Chevy 3/4 Ton 454 V8, a very clean nice pickup, white.....\$1595
85 Ford 4x4 F250, Wrecker Truck, everything works good.....\$1995
97 Ford Super Cab, F150, V8, 5 sp., looks, runs very good, tan.....\$2750
94 Ford F250 with utility box bed, a good truck and good buy.....\$1995
88 Chevy Crew Cab, Gas or propane, runs good.....\$1950

CGP Graphics
a division of Clear Guard Products, Inc.
"Drive a little, Save a lot!"
Color Copying
Laminating
Design
Brochures
Flyers
Catalogs
Envelopes & Letterheads
Logos
Newsletters
Business Cards
409 Old Highway 80, Olden Texas, 76466
1-254-653-2775
*Take orders 100 orders ahead. Turn out at 08:00. Turn out at Old Highway 80 to 410 Old Highway 80 Behind Dave's Storage

Country Wide Classifieds

Carbon, Gorman, Olden, Morton Valley, Desdemona, Kokomo

Cisco Press • Eastland Telegram • Ranger Times • Rising Star • Baird Star

Strawn, Mingus, Gordon, Putnam, Lake Leon, Flatwoods

Thursday, July 30, 2009

FHA Advertising Rule:
FHA makes it illegal "to make, print, or publish, or cause to be made, printed, or published, any notice, statement, or advertisement, with respect to the sale or rental of a dwelling, that indicates any preference, limitation, or discrimination because of race, color, religion, sex, handicap, familial status, or national origin, or an intention to make any such preference, limitation, or discrimination."

MOBILE HOMES

3 Acres w/NEW 3/2 Home \$479/month. 5.75% 30 yrs. \$500 Dn. Stove, Refer, DW Washer/Dryer & Central AC!
TrinityHomeSales.com 866-672-1499 REI34090

REAL ESTATE

Counties since 1954 and we WANT to sell yours. We solicit and appreciate your listings.

COGBURN REAL ESTATE DE LEON OFFICE (254) 893-6666 HOME 893-2642 758-2401 www.cogburnreal estate.com RS104

REAL ESTATE

Mary Youvonne McMillan

Texas Real Estate Broker

801 Conrad Hilton Cisco

www.mcmillanreal estate.net

254-442-3846

254-653-8102 Cell

CISCO

701 E. 23rd. Humbletown home, redone in '02. 3 bdrm, 1 bath, lvg. rm, dining rm, pantry, utility w/central heat & air. \$50,000

604 E. 11th St. 2 BR, 1 bath, ch/a, garage and carport. \$20,000.

1602 Ave E- 2 lots \$4,500.

114 E. 6th, MKT DEPOT approx, 2000sf \$5,000.

E104

NEW: Rising Star, operating laundromat, washers, dryers, folding tables & seating. Great investment opportunity, \$27,500.

Desdemona, 4 A m/l, 3-1 frame, well & septic, shop, stg. Bldg, beautiful location, large trees. \$59,900.

38 A M/L south Gorman: Fronts FM 679, about 10 A large Pecan Trees, nice location for pond, good fences, sandy land. \$2,200 acre. Seller Financing.

Gorman, 44A, 2-2-2 bi-level frame home, 1728 sf, central a/h, metal roof, covered upper deck, several wells, build-ings, coastal. Deer & other wildlife. \$250,000

130 A, west Carbon, app. 40 a cult, 35 a coastal, pond, elec., county water. \$2,400 acre

179 A south of Gorman. Part wood- ed, part old fields, deer & hogs. 2 nice ponds, sandy soil, elec., several water wells, cabin. \$2,350 acre

Selling Comanche, Eastland and Brown

HOUSES FOR SALE

A, rock fireplace, new appliances, open living, kitchen and dining area, sunroom with hot tub, covered porch on lakefront and a partially enclosed floating boat dock. A new aerobic septic system has recently been installed. This home has never flooded. For more information call (254) 629-3599.

E62

HOUSE FOR SALE: 1104 W. 14th, Cisco. Call 325-864-9266 after 8 p.m. or 325-453-4778 after 6 p.m.

C64

FOR RENT

2/2 Trailer in country, FM 3101, Eastland. Rent \$380 + deposit. 254-629-2862.

E62

House For Rent In Cisco: 3 Bdrm. 2 Bath, fenced back yard. Application and references required. \$575.00 per month.

C62

Taking rental applications on 2 bedroom mobile homes. No pets. Work and rental references required. Rent \$350-\$450 plus deposit. 254-629-1848.

E104

FOR LEASE

Commercial property for lease, 700 square feet, office space, brand new construction, build to suit. \$600 mth. For more information call 254-485-9159.

E104

FOR LEASE OR SALE: 2 large commercial bldgs on 2 acres fenced w/1-20 frontage- Eastland. Owner financing. Dean 623-979-6732.

E104

MOBILE HOMES

Mobile Home To Be Moved For Sale: Can be seen at the VFW Post 2 miles east of Eastland on Hwy 570. Come after 3 p.m. on Fri., Sat. or Sun. and leave written bid or call Roscoe Reeves at 254-734-2812.

E104

Repos, Repos! S/W's, D/W's, large selection, Financing available.

C67

MOBILE HOMES

\$0 down with your land.

Crown Homes 817-279-8505 RBI 35823

E64

New 32 x 60 \$59,900!

Island kitchen, lots of windows, large office space.

817-279-8505, RBI 35823

E64

\$8,000 Cash Back!

1st time Home Buyers program still available. Call for details 1-800-460-3537. RBI 35823

E64

Land/Home Financing

3 or 4 Bdrms w/ a/cerage.

Land sites in Stephenville, Granbury, Glen Rose, Dublin

Call for details 817-279-8505 RBI 35823

E64

Super Size 4 Bdrm/2 Bath \$69,900!

2 living areas, lots of storage, big closets, must see!

817-279-8505 RBI 35823

E64

APTS FOR RENT

For Rent: 2 BR, 1 BA, 1221 Oddie St., Ranger, TX. \$400 a month, \$250 deposit. 254-968-4420.

E104

Stagecoach Crossing Apartments & Town Homes 817-658-6263 Multiple Locations. New Carpet & Applications

Water & Gas Paid Units

•2 BR-2 BA \$475.00 All Bills Paid Units

•1 BR Efficiency \$400.00

•2 BR-1 BA \$625.00 Townhomes- Upscale Living!

•2 BR-1 BA All Bills Paid \$750.00

*vacancies not always available

C67

APTS FOR RENT

CEDAR RIDGE APARTMENTS

Clean Unfurnished Apartments Security Guard on grounds

Maintenance Total Electric Laundry

Central Heat/Air Near Schools/Hospital

No Pets 254-629-2805

E104

COUNTRY VILLA APARTMENTS

1-2 bedrooms, kitchen appliances, Central H/A, W/D, pool. On site security and maintenance.

(Behind Pizza Inn) 1099 Lago Vista Blvd. Eastland, Texas. Call 629-2769 or 631-9504. If no answer 629-2348.

E104

EASTLAND VILLAGE APARTMENTS

1st MONTH FREE!!! with 1 yr. signed lease

2 & 3 bedrooms Central Heat/Air On site laundry facility

FREE CABLE MUCH Cheaper Utilities

HUD Approved New Covered Patio/ Picnic/BBQ Area Now Accepting Pets

600 W. Sadosa Eastland (254) 629-2518

E104

ROYAL OAKS APARTMENTS

Unfurnished 1 and 2 Bedroom; Carpet, Drapes, & Kitchen Appliances

Furnished. Water, Trash Pickup & TV Cable Paid. Also Laundry Room at complex.

Choice neighborhood. See and compare at 1304 Royal Lane, Cisco, or call 442-3232. Vacancies not always available.

C104

GHOLSON HOTEL APTS

If you are 62 years of age or older, or 18 and older and disabled and looking for a nice quiet historic place to live, come to 215 W. Main, in Ranger or call Richard at 254-647-1513 (Income limits apply).

R104

HELP WANTED



OUTREACH HEALTH SERVICES

Home Health Care Since 1975

HIRING PCA'S

In the Cisco area. Interested applicants please contact:

Abilene CCD 1-800-669-2291 or apply online at www.outreachhealth.com

OHS is an Equal Opportunity Employer

APTS FOR RENT

www.king manorapartments.com

KING MANOR APARTMENTS

107 Blundell-Ranger (254) 647-1722

1 Bedroom Apt. \$330-\$350

2 Bedroom Apt \$390-\$425

\$200 SECURITY DEPOSIT •Range & Refrigerator

•Central Heat & Air •Laundry Facility On Site

•Equal Housing •Handicap Accessible

Conveniently Located! Call or Visit Us Today

Mon.-Thurs. 9:00 AM-11:00 AM Or Call for Appointment

R104

HELP WANTED

DRIVER NEEDED

To drive our truck Excellent pay Excellent benefits Home every day

Apply in person at Morgan Buildings in Eastland

E104

Lighthouse Hospice has a position open for a Social Worker. For information please call 325-643-5718.

E68

Cook & Housekeeper \$400 a month. Room & Board - no animals. Capable of running small equipment (Bobcat and backhoe attachment) or willing to learn. Will furnish gas. Call 254-639-2996 after 5 p.m.

E62

Hendrick Medical Supply HMS-Eastland needs a Customer Service Rep II for Service Support

Full time position Serves as a Liaison for Hendrick Medical Supply, new and existing patients, and all referral sources by, proving/researching coverage payment information and receiving and coordinating all referrals.

High School or equivalent; Minimum 1-2 years experience (experience in same industry preferred.) Experience in Microsoft Word, Excel preferred.

Days are Monday-Friday Hours: Varied Salary: \$9.75 David Frederick

R104

HELP WANTED

Hendrick Medical Center

Human Resources 325-670-2295

Fax: 325-670-4417 E-mail: dfrederick@ehendrick.org

E62

Full-Time Physical Therapist wanted for out patient therapy practice in Cisco. Comfortable & progressive working environment, excellent salary & benefits. Fax resume to 254-442-3754.

C104

Students! Workers Needed. \$14 Base/Appt. Flexible Schedules. Scholarships Possible. Customer Sales/Service. No Experience Necessary 325-646-2408

E66

Support Aide needed at Ranger Head Start in Ranger. \$7.25/hr. Deadline is August 5, 2009. Call (325) 625-4167. Accepting applications for substitutes year round, Central Texas Opportunities, Inc. is an E.O.E.

E62

Gorman Nursing Home & Rehab now accepting applications for Open Charge Nurse position, also CNA's. Call 254-734-2202 or apply in person. E.O.E.

E77

Northview Development Center located at 401 West Moss in Eastland, Texas is looking for a Full Time Licensed Vocational Nurse. Requirements include current state license. Must have a valid driver's license and pass a criminal background check. Benefits include 401K, medical, dental and paid time off. Apply with in Monday-Friday 8-5 or contact Karen West 254-629-2625.

E69

Now taking applications for all shifts. Apply in person Smokin Willie's 2009 Conrad Hilton, Cisco.

C104

Valentino's Italian Restaurant & Pizza now hiring for the following positions: Wait Staff Dishwasher Cashier

E104

Northview Development Center is now accepting applications for Full time Direct Care and

C104

NOW HIRING! LVNs/CNAs

Very competitive rates! Be sure to ask about our BENEFITS PROGRAM for full time employees! EOE

Apply in person: VALLEY VIEW Healthcare Center 700 S. Ostrom St. Eastland (254) 629-1779

Across the street from the High School track and Siebert Elementary

E61

Northview Development Center located 401 West Moss in Eastland, Texas is looking for a Qualified Mental Retardation Professional/Case Manager Requirements include bachelor's degree in human services or social work. Must have a valid driver's license and pass a criminal background check. Benefits include 401K medical, dental and paid time off. Salary based on experience. Apply with in Monday-Friday 8-5 or contact Queena Daniels 254-629-2625

E69

\$19900

Move In Special for Rent Cedar Ridge Apartments Fully Furnished Efficiency 629-2805

RED STAR TRUCK STOP



Is Now Hiring For a Cook

Apply at Red Star Truck Stop Corner of Hwy 6 & I-20 • Eastland

E69

HELP WANTED

Now Hiring For All Phases of Housing Construction
 •Starting Pay \$10.00/hr.
 •Paid Vacation & Holidays
 •Medical
 •Dental
 •Life Insurance
 •401 k with 100% match up to 6%
 •Team Profit Sharing
 •Excellent Work Environment
 Apply in person at Karsten Homes
 820 Industrial Blvd Breckenridge, TX 76424
 It's All...About You@
 Karsten Homes Division of CMH Manufacturing
 E104

BUSINESS SERVICES

UNDERWOOD LAWN SERVICE
 Commercial & Residential
 Moving & Shredding
 Free Estimates
 254-246-2969
 E67

BUCK'S GUN SCHOOL
 Concealed Handgun License Classes
 Any Day
 Call Buck at 254-647-1449
 E104

McQuain Dry Wall
 Hang, tape and bed texture
 Water Damage & Crack Repair
 Interior painting
 FREE ESTIMATES
 Call Rocky at 254-442-2382
 C64

Ranger Septic Tank Service
 Ranger, Texas 76470
 (254) 647-1125
 Call For Summer Special
 R65

We Buy Estates Large or Small
 254-629-2915
 254-631-9316
 E62

LIVESTOCK

Four year old Bull For Sale. Throws low/weight cast. Also Bull calf for sale. www.texasdonkeys.com Jim 254-631-8403.
 E67

WANTED

Wanted: Ranch for lease for grazing cattle, primarily cow/calf operation. In or around Eastland County. 817-243-4984.
 R104

GARAGE SALES

CISCO CARPORT SALE:
 1304 W. 13th St., Cisco Friday, July 31st 8 a.m.-? & Sat., August 1st 8 a.m. - 2 p.m. (Brown grocery bag) fill for \$2.50-clothes only and toys. Clothes: newborn to men's, toys, dishes, exercise equip., decor, pots & pans, too much to list. 6 Families. Lemonade & tea and hot dogs for sale also.
 C61

MULTI-FAMILY YARD SALE: 1409 Hickory Ave., Cisco. Follow East 14th till it ends. Saturday only, August 1st.
 C62

EASTLAND MULTI-FAMILY GARAGE SALE: 916 W. Moss, Eastland. 8 a.m.-4 p.m. Baby clothes, women's clothes, some furniture, lots of other stuff too.
 E61

GARAGE SALE: Saturday, August 1st from 8 a.m. - 12 noon. Furniture, clothes, misc. 2295 Shady Lane, Eastland.
 E61

ADVERTISE AND GET RESULTS

GARAGE SALES

RANGER GARAGE SALE:
 Children's clothing, toys, lots of misc. July 30, 31 & August 1st. 8 a.m.-?? 204 Blundell, Ranger.
 R61

RISING STAR GARAGE SALE:
 Saturday, Aug. 1st 3 miles N. of Rising Star on 183. Full size Sealy mattress set, chest, chairs, tires, drill, pressure cooker, clothes, bedding, misc.
 RS61

LOST COW

Lost: Cow with orange ear tag #25, area of Pleasant Valley CR 190-192, 254-643-1122 or 325-518-9455.
 E62

PETS

Wolf Hybrid pups born April 22, current on shots. \$150 For more information call 254-559-6913 after 5:00 p.m.
 E61

AUTOS FOR SALE

For Sale: Special 2005 Cadillac Escalade ESV Platinum - Loaded navigation system, OnStar system, beautiful pearl color with cream leather interior. AM/FM 6 CD Player, sunroof, heated/cooled seats and cupholders, 4 captain chairs, 3rd row bench seat, lots of storage, and low package. Excellent condition \$24,000. 629-2413.
 E104

FOR SALE

For Sale: 6' x 20' Gooseneck cattle trailer. Middle gate, swinging/slide rear gate, electric brakes and lights. 254-629-5229.
 E63

For Sale: 3-piece antique bedroom set. 218 W. 8th, Cisco.
 C62

Small Business Opportunity. Passive resistant exercise tables. Bus. 325-659-7016, 10 a.m. - 6 p.m. Cell 325-650-0208 after 5 p.m.
 E65

BUSINESS SERVICES

SPECIAL SERVICES AVAILABLE: CONSUMER PLUMBING CONSULTANT:
 50+ years experience all kinds Eastland area installation and maintenance qualifies **MAS-TER PLUMBER ROY LEE SMITH** to fairly and economically advise residential and commercial customers about their plumbing needs and problems. Call 254-629-2995 for HELP today! You'll be glad you did.

FOR SALE

Steel Building pkg. 18x21 door and anchor bolt incl, reg. \$8,481. Now \$4,987 + code adj. Other sizes. www.utilityking.com Source #1B0. Phone 866-609-4321.
 E61

TREE SALE: Buy 1 get 2 free, select trees only. All other trees 25% off. Call ahead for directions and office hours. (254) 734-5055, Snider Nursery. Prices effective until August 15th or while supplies last. www.snidernurserylandscapes.com
 E61

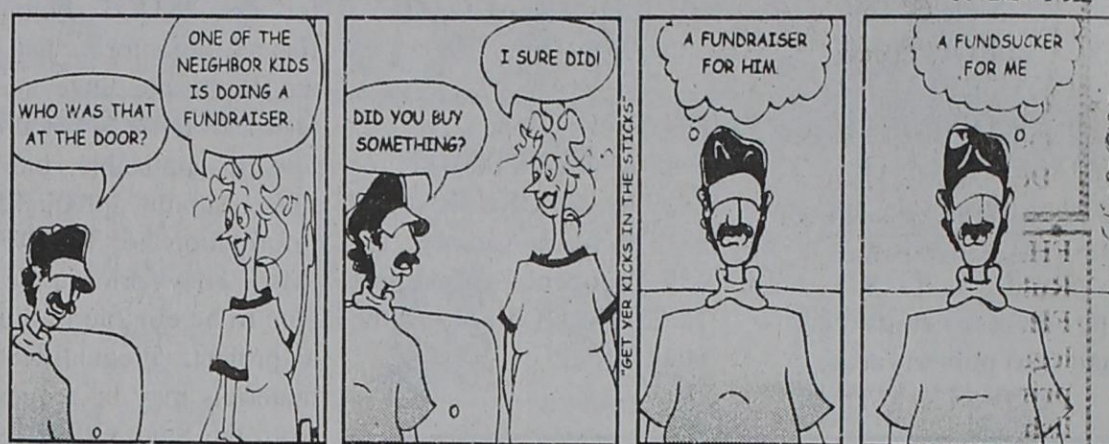
Sale: Bulk Organic Compost, based top soil, copost cow manure for garden & flower beds. Brandt's Plants & Trees 1503 Conrad Hilton 254-442-4000.
 C70

Discounted Steel Buildings. Big and small. Get the deal of deals! Placement to site. www.scg.grp.com Source #0Q7 Phone 254-230-0059.
 E61

\$225 KING PILLOW-TOP MATTRESS SET. BRAND new. Still in plastic. 325-428-9172.
 E63

All new queen pillow-top mattress set with factory warranty. Will take \$119 325-428-9172.
 E63

OUTZKIRTS By: David & Doreen Dotson



FOR SALE

FULL mattress set! New in plastic. Only \$109. 325-428-9172.

Must sell brand new memory foam mattress set. Never used. \$349. 325-428-9172.

All NEW leather couch & loveseat, 3-pc table set still in original box for only \$550. 325-428-9172.

\$450 couch/loveseat microfiber plus 3-pc table set, still Boxed Lifetime warranty 325-428-9172.
 E61

CANDLE PARTY

Scentsy wick-less candle party Wednesday, July 29 at 306 W. 12th in Cisco. Come and go 4 to 6 p.m.
 C61

NOTICE

I will not be responsible for any debts other than my own.
 Anita Baker
 E61

ADVERTISE IN THE CLASSIFIEDS AND GET RESULTS

CLASSIFIED AD RATES:
 \$10.00 1 TIME
 \$5.00 EACH TIME AFTER THE 1ST TIME
 (25 WORDS OR LESS)
 CLASSIFIEDS RUN IN ALL 5 NEWSPAPERS CISCO, EASTLAND, RANGER, RISING STAR AND BAIRD STAR

BUSINESS SERVICES

Call 254-629-1707 to advertise in this section

Wind & Water Tight Rodent Proof Used Containers

 Larry Singley 104
 Toll Free 800-992-9122 or 817-992-9122
 We Solve Storage Problems

Advertise in the Business Services section call 629-1707

Master Electrician
 All Types of Work
 254-639-2964
 254-433-1782
 State Licensed 104

A-QUALITY WELDING & STEEL SUPPLY
 METAL BUILDINGS • STRUCTURAL STEEL FABRICATION • BUILDING COMPONENTS • WELDING SUPPLIES & GASES
 Metal Bldg. Clearance Sale Call Now
 700 East I-20 Cisco, TX
 (254) 442-3036
 Check out our prices updated daily www.aqualitysteel.com

Announcing
 A New Service Now Available At The Eastland County Newspapers.
 Offering...
 • Flyers
 • Brochures
 • Business Cards
 • Booklets
 and More
 Offering...
 Small/Large Print Jobs
 Fast Turn-A-Round
 Inexpensive Pricing
Joe's Quick Print
 215 S. Seaman St. - Eastland
 (254) 629-1707

ATTENTION: ALL ADVERTISERS
 This newspaper is not responsible for errors or omissions printed in error, except to correct them in the next edition. It is the responsibility of the advertiser to notify this newspaper after the first appearance.
 Our established and recorded policy on newspaper advertising placement provides that: **TRANSFER OF OWNERSHIP OF AN ADVERTISED BUSINESS AND/OR SERVICE DOES NOT ELIMINATE THE RESPONSIBILITY FOR PAYMENT BY THE PERSON OR FIRM THAT ORIGINALLY ORDERED THE ADVERTISEMENT.**
 A one and one half (1 1/2) percent interest will be added monthly to bills after 30 days in arrears.
 Eastland County Newspapers, Inc.,
 215 S. Seaman St.
 Eastland, TX 76448

Alcoholics Anonymous
 302 N. College
 Eastland, TX 76448

MONDAY 6:00 p.m. (Closed- Alcoholics Only)
TUESDAY 8:00 p.m. (Open)
THURSDAY 6:00 p.m. (Open)
Big Book Study
SATURDAY 8:00 p.m. (Open)

 442-4462 or 254-433-3340
 For questions or info. call 254-631-0271
 Parole/Probationers Welcome
 Please No Correctional Papers

House Leveling & Foundation Repair
 By David Lee & Co.
 Professional Work Since 1967
 Free Estimates
 No Payments Until Work Is Satisfactorily Completed
 • Solid Slab • Pier & Beam • Concrete Piers • Block & Pad • Floor Bracing • Steel Pier - To Bedrock
 Work Guaranteed Insurance Claims Licensed & Bonded
 254-629-2267 1-888-486-8588
 254-965-5635 915-675-6369
 www.dleeandco.com

Narcotics Anonymous
 500 Ave. E (Ex-GI Bldg.)
 Cisco, TX 76437
Monday 8:00 p.m.
Open Meetings
Wednesday 12:00 noon
Friday 6:00 p.m.
Book Study
 For more information contact 254-442-4462

Grandpaw's Tool Shed Rental, Inc.
 1304 E. Main,
 Eastland, TX 76448
 254-629-3363
 Tired of all the same entertainment at your parties?
 We have the solution: Rent our New "Dunking Booth". A lot of fun for the whole family.
 Also we have Temporary Storage Containers 8 x 20 at your location for rent.

NOW
 SUBSCRIBE, RENEW SUBSCRIPTIONS, ORDER GIFT SUBSCRIPTIONS, OR ORDER TEXAS MESSENGERS, PAY FOR ADVERTISING Over the Phone with Credit Cards:

 254-629-1707
 1-888-277-1708
 Fax 629-2092

Legal Notice

NOTICE TO CONTRACTORS PROPOSED TEXAS DEPARTMENT OF TRANSPORTATION (TxDOT) CONTRACTS Sealed proposals for contracts listed below will be received by TxDOT until the date(s) shown below, and then publicly read.

CONSTRUCTION/ MAINTENANCE/ BUILDING FACILITIES CONTRACT(S)

Dist/Div: Abilene Contract 0908-00-074 for INSTALL CURB RAMPS in TAYLOR County, etc will be opened on August 12, 2009 at 1:00 pm at the State Office.

Plans and specifications are available for inspection, along with bidding proposals, and applications for the TxDOT Prequalified Contractor's list, at the applicable State and/or Dist/Div Offices listed below. If applicable, bidders must submit prequalified information to TxDOT at least 10 days prior to the bid date to be eligible to bid on a project. Prequalification materials may be requested from the State Office listed below. Plans for the above contract(s) are available from TxDOT's website at www.txdot.gov and from reproduction companies at the expense of the contractor.

NPO: 30174
State Office

Constr./Maint. Division
200 E. Riverside Dr.
Austin, Texas 78704
Phone: 512-416-2540
Dist/Div Office(s)

Abilene District
District Engineer
4250 N. Clack
Abilene, Texas 79604-0150
Phone: 325-676-6800

Minimum wage rates are set out in bidding documents and the rates will be part of the contract. TXDOT ensures that bidders will not be discriminated against on the grounds of race, color, sex, or national origin.
(7-23, 7-30-09)

Scranton Musical Is Saturday

The Scranton monthly musical will be held Saturday, August 1 at the community center. The kitchen will open at 5:30 and the music begins at 6:00. All proceeds from the kitchen go toward the operation of the center. Mark Ray is the emcee. All area musicians are invited to play. You may call 325-692-2057 to reserve a time for your group. We hope to see you to enjoy a good meal and music and lots of visiting.

2009-2010 4-H Sheep & Goat Tag Orders

2009-2010 Sheep and Goat Tag orders are due to the Extension office by August 24th. If you plan on showing Market Lambs or Market Meat goats at the local, county or major shows you must call in your tag order no later than August 24th. Major show tags are \$7.00/tag and County tags are only \$3.00/tag.

All tag orders must be paid for by August 31st.

Contact the Extension Office to place your tag orders 325-854-5835.

Texas Department of State Health Services Immunization Clinics in Callahan County
Monday, August 10th
Baird Cafetorium 400 W. 7th
Time 10-12
Cross Plains Housing Authority
233 N. Main
Time: 2-4
Wednesday, August 12th
Clyde First Baptist Church
216 Austin
Time: 10-12 & 1:30-3
Please bring child's Immunization Records
If child has Medicaid or CHIP, please bring card
For more information call 325/754-4945

NOTICE
Opinions expressed in articles and letters submitted by others do not necessarily reflect the opinions or beliefs of the Owners, Managers, and Staff of Eastland County Newspapers, Inc.

Letters to the Editor: All letters must be signed with name and phone number on the letter. If it is requested "name withheld" when someone asks we will give out the name of the person who wrote the letter, so they must be signed or the letter will not be printed.

Errors and omissions will be corrected to the extent of the specific error or omission in the next edition when called to the attention of the newspaper or publisher.

Attention: All Advertisers
This newspaper is not responsible for errors or omissions printed in error, except to correct them in the next edition. It is the responsibility of the advertiser to notify this newspaper after the first appearance. Transfer of ownership of an advertised business and/or service does not alleviate the responsibility for payments of this obligation. A one and one half (1 & 1/2) percent interest will be added monthly to bills after 30 days in arrears.

Responsibility and Liability: The Eastland County Newspapers assumes no obligation, responsibility or liability for subject matter contained in copy placed by advertisers or their agents. The advertiser agrees that all materials and copy will comply with applicable state and federal laws and regulations. It is also understood the advertiser and/or his agents jointly and separately agree to indemnify the publisher and the newspaper against all expenses, loss or damage incurred or sustained by reason of printing such copy. All advertising copy submitted is subject to approval, revision or rejection by the publisher. To be binding upon the Eastland County Newspapers all instructions relative to the advertisement must be in written form. The Eastland County Newspapers is not bound by any terms or conditions, printed or otherwise, appearing on order blanks, advertising forms, or copy instructions, when the same is in conflict with terms and conditions of the newspapers rate card or policies. The publisher reserves the right to edit or reject advertisements deemed objectionable, illegal or of poor reproduction quality, or because of conditions beyond the newspaper's control. All advertising must be on behalf of the advertiser's business or service exclusively. The Eastland County Newspapers reserves the right to insert the word Advertisement above all ads, including all copy ads which might be mistaken for news articles.

Public-Legal Notice Advertising: Rates for any public or legal notice or advertisement required by federal, state or local law or court order are in accordance with Texas Revised Statutes. Rates are based upon a 11.5 point typeset lines on a column width of 11.5 picas. Rate: 15¢ per word, per paper, per time.

SUDOKU

	4		8					
			7		5	1		
	6		2					4
	9			8				
				9		1		
1						3	8	
			7				4	
2	1				5			
			3			7		

Here's How It Works:
Sudoku puzzles are formatted as a 9x9 grid, broken down into nine 3x3 boxes. To solve a sudoku, the numbers 1 through 9 must fill each row, column and box. Each number can appear only once in each row, column and box. You can figure out the order in which the numbers will appear by using the numeric clues already provided in the boxes. The more numbers you name, the easier it gets to solve the puzzle!

We Clean The Most Neglected, Unsanitary Part Of Your Home:
YOUR AIR DUCT SYSTEM!
J & J Air Conditioning, Inc.
 106 Pogue Eastland, TX
 254-629-2251 TACL B00200C 800-585-2251

Send us any news, meetings, photos you would like to be printed.
Send to: Callahan/Eastland County Newspapers P.O. Box 29 Eastland, TX 76448 or email ecn@att.net or fax 254-629-2092

PLEXUS HEALTHCARE CENTER

Chiropractic - Medical - Physical Therapy
 General & Family Practice - Digital X-Ray

254-442-4878 1510 State Hwy 206
 Cisco, Texas 76437

Benefit Ranch Rodeo August 1 For Falyn Rabb

Benefit Ranch Rodeo for Falyn Rabb, Saturday, August 1, 2009 Ranger Rodeo Arena 7:30 p.m.

First 10 teams can enter, 5 men per team, \$500 per team. Will pay back 1st, 2nd, 3rd deadline to enter was July 26th

There will also be a silent auction!

If you would like to donate an item to the silent auction, sponsor a team for \$250 or for more information Contact Jake Saunders at 254-631-7506 or Shawna at 254-433-0918.

SIGN UP FOR A FREE SCOOTER

One Scooter Given Away Each Month

Toll Free **800-606-9860**

Med Care MEDICAL SUPPLY
 www.medcaremedicalsupply.com

Crossword Answers

EVIL	SPIN	CLIFF
BEER	LELS	AHOLD
SRNA	CASH	LABIA
GOBLET	OFF	FIRE
INDY	EAT	
OSAGE	MESSED	
ORAN	CHASE	MAM
HESSE	REM	SPAYE
WAS	NDOLA	LIED
DIADIC	HEALS	
BUS	DEBT	
MARCH	MADNESS	
HARTE	MING	LABS
AGNES	ONCE	EGIS
HAAS	TED	TACT

Advertise in the Classifieds

TEXAS STATEWIDE CLASSIFIED ADVERTISING NETWORK

TexSCAN

TexSCAN Week of July 26, 2009

ADOPTIONS
PREGNANT? CONSIDERING ADOPTION? We can help you! Housing, financial, medical assistance available. Choose adoptive family. Be involved in plans. Call 24/7. Forever Blessed Adoptions, 1-800-568-4594.

BUSINESS OPPORTUNITIES
ALL CASH VENDING! Do you earn \$800 in a day? Your own local candy route. 25 machines and candy. All for \$9,995. 1-888-625-8481. Multi Vend, LLC.

DRIVERS
CDE DRIVERS NEEDED to deliver brand new semi-trailers and buses from locations in southern Texas and Oklahoma to points across the U.S. Net \$45,000/year and set your own schedule. Sign on bonuses available. Contact us at www.qualitydriveway.com or 1-866-794-1211.

RV DELIVERY DRIVERS needed. Deliver RVs, boats and trailers for pay. Deliveries to all states and CN. For details call 1-800-844-6258 ext. 7024.

EQUIPMENT FOR SALE
SAWMILLS FROM ONLY \$2,990.00. Convert your logs to valuable lumber with your own Norwood portable band sawmill. Log skidders also available. Norwood-sawmills.com/300n. Free information: 1-800-578-1363. Ext.1300-N.

HELP WANTED
CAN YOU DIG IT? Heavy equipment 3 week training program. Backhoes, bulldozers, trackhoes. Local job placement assistance. Could qualify for GI/VA benefits. 1-866-362-6497.

HOMES FOR SALE
4 BED 4 BATH only \$305/month or \$22,700! Must sell this home! 4% down, 30 years at 8% APR! Fee: Call 1-800-544-6258 ext. 5850.

7 BEDROOM 4 BATH HUD \$19,812! 3 bedroom 2 bath only \$10,000! 4 bedroom 4 bath only \$10,674. Foreclosures & Bank Reps. These homes will sell! Fee for local BNI listings call 1-800-544-6258 ext. 9847.

AFFORDABLE FORECLOSURES! \$288 month for 2 bedroom, 2 bath \$388 month for 4 bedroom, 4 bath \$299 month for 3 bedroom, 2 bath 5% down, 20% down \$900 (0.91%*) 30 days REPO SALE! TRAVEL trailers, same as cash. Guaranteed financing. Call 1-866-337-3228.

FORECLOSURES AND BANK REPOS! 5 bedroom, 4 bath \$17,675 RV/motor home/house, pier, boat or \$255/month! 4 bedroom, 2 bath ramp, pool, clubhouse, gated \$10,100 or \$199/month! (5% down, entry, on Lake Fort, \$690 down 30 years, buy at 8%) These homes (\$6900/10.91%/7yr) Guaranteed won't last! For listings, Fee, 1-800-613-7609, Ext. 5851.

ABSOLUTELY THE BEST VIEW
 Lake Medina/Bandera 1/4 acre tract, central WSE, RV/motor home/house, to choose from. Huge discounts OK, only \$830 down \$235 month plus \$8,000 Tax credit. Owner financing available with low down payment. Won't last long at these prices! 1-877-617-5756

MISCELLANEOUS
AIRLINES ARE HIRING. Train for high paying aviation maintenance career. FAA approved program. Financial aid if qualified. Housing available. Call Aviation Institute of Maintenance, 1-888-349-5387.

ATTEND COLLEGE ONLINE
 from home. Medical, Business, Paralegal, Accounting, Criminal Justice. Job placement assistance. Computer available. Financial aid if qualified. Call 1-866-858-2121, 24hrs. 1 acre with lake access on 3rd largest lake in Texas for only \$19,900! Owner finance. Won't last! Call now 1-888-316-5253

REAL ESTATE
1106 MONTH BUYS land for RV, MH or cabin. Gated entry, \$690.

RVS FOR SALE
REPO SALE! TRAVEL trailers, same as cash. Guaranteed financing. Call 1-866-337-3228.

Ann Williams Real Estate WILLIAMS RANCH PROPERTIES

601 Conrad Hilton Cisco 254-442-1880 www.annwilliamsrealestate.com

ACREAGE
31.32 Acres - Eastland Co. wooded mostly with oak trees, several large hills with views down to canyons & a creek, paved road frontage, very nice property, deer, turkey, hogs, dove, duck, quail \$77,000.
32 Acres - Eastland Co. small pecan orchard, mostly open with some scattered trees, rolling hill with view, close to water line, excellent home site, deer, turkey, dove, quail \$2,225 per acre.
33 Acres - Eastland Co. Adjoining Lake Cisco, wooded mostly with live oak trees, very large hill with view perfect for home site, water well, deer, turkey, hogs, dove, quail, \$99,900.
45.75 Acres - Eastland Co. mobile home, water well, mostly wooded with oaks, one field ideal for wildlife, small tractor, shredder, blinds & feeders, deer, turkey, hogs, dove, & quail \$114,000.
48+/- Acres - Eastland Co. mostly wooded with oaks, small field ideal for wildlife, great recreation or home site, paved road frontage, deer, turkey, hogs, dove, & quail, \$105,360.
60 Acres - Eastland Co. Wooded & open with fields, large hill with view, pond, electricity, joins large ranches, wildlife includes deer, turkey, hogs, dove, duck, quail \$1,900 per acre.
65.43 Acres - Eastland Co. wooded with oaks, large hill with great view, paved road frontage, deer, turkey, hogs, dove, quail \$148,000.
65.498 Acres - Eastland Co. mobile home, wooded with oaks, two large hills, water well, paved road frontage, deer, turkey, hogs, dove, quail \$156,000.
66+/- Acres - Eastland Co. mostly wooded with oaks, small field ideal for wildlife, pond, water well, rolling hill with view, home site potential, paved road frontage, deer, turkey, hogs, dove, & quail, \$144,870.
75 Acres - Eastland Co. Mixed wooded with oaks & various fields, metal barn, 3 ponds, water line, livestock pens, lots of cross fencing, deer, turkey, hogs, dove, duck, quail \$156,000.
91 Acres - Eastland Co. mostly wooded with oaks trees, large hills, creek, deer, turkey, hogs, dove, duck, quail \$198,000.
114 Acres - Eastland Co. mostly wooded with mature oak trees, several smaller fields, hill down to creek bottom, water well, pond, paved road frontage, wildlife includes deer, turkey, hogs, dove, duck, quail, \$250,000.
116 Acres on Sabana River - Eastland Co. mostly wooded with oak & elm trees, Sabana River runs through the property, pond, 2 fields, camper, deer, turkey, hogs, dove, duck, & quail, \$244,000.
148 Acres - Eastland Co. wooded mostly with oak trees, very large hill with view, pond, electricity, deer, turkey, hogs, dove, duck, quail, \$2,175 per acre.
155 Acres - Callahan Co. - mostly wooded with oaks & mesquites, three large hills, large hills & canyons, paved road frontage, wildlife includes deer, turkey, hogs, dove, duck, quail, \$279,000.
150 Acres - Eastland Co. very large hills and canyons, mostly wooded with red oak & live oak trees, creek, 1-large pond 1-averaged pond, 1-field, great views for miles, deer, turkey, hogs, dove, duck, & quail \$344,000.
164 Acres - Callahan Co. mostly wooded with live oak & mesquite trees, several hills with views, creek, 2 ponds remote & joins large ranches, deer, turkey, hogs, dove, duck, & quail \$1,890 per acre.
208 Acres - Eastland Co. wooded & open oak & mesquite trees, two ponds, food plots county road frontage, wildlife includes deer, turkey, dove, duck & quail, \$1,870 per acre.
241 Acres - wooded with very large hills, post oak, live oak, 2 creeks, 2 ponds, pond, view & loaded with wildlife \$524,000.

344 Acres on Leon River - Eastland Co. mostly wooded with a large portion of big pecan tree bottoms, live oak & post oak trees too, several very large hills with great views, 4 different creeks & the Leon River runs through the property, 1 lake, 3 ponds, various wetland areas, lots of water, barn, water well, good fishing & lot of wildlife including deer, turkey, hogs, dove, duck, quail, \$2,500 per acre.
445 Acres High Fence on Leon River, 200+ genetics, nice 3 BR 2 bath home, garage, large shop, 5-years under high fence deer management, water well, exotics, large hills & canyons, mostly wooded with live oak & post oak, creek, 1 lake, 7 ponds, food plots, protein feeders, stands, corn feeders, observatory tower, Eastland Co. \$1,595,000.
640 Acres - Callahan Co. completely wooded with several very large hill ridges & canyons with views for miles, 7 ponds with several being very large, mostly live oak & mesquite, creeks, 140 feet of elevation change, good road frontage, close to Eastland Co. line, wildlife includes deer, turkey, hogs, dove, duck, & quail \$2,100 per acre.

HOMES
3 BR, 1 bath, home with CH/A, within last year carpet and ceramic floor tile was installed. Garage, carport, corner property, backyard fenced, \$49,500.
3 BR, 1 3/4 bath brick home with CH, woodburning fireplace, gameroom, fenced backyard. Reduced to \$52,000.
3BR, 2 bath home with CH/A, some wood floors, double carport, work shop, \$52,000.
3 BR, 2 bath home with CH/A, large den, dining, kitchen combination, separate LR, large master BR with 2 closets, carport replaced, double garage, 2 lots, \$68,500.
3 BR, 1 3/4 bath brick home with CH/A, kitchen built in, attached 2 vehicle garage with lot of storage, CH/A, ch, storage building, fenced backyard, \$79,500.
3 BR, 1 bath home, some wood floors, detached 2 vehicle garage, shop, storage bldg., barn on approx. 18 acres, \$87,000.
4 BR, 1 3/4 bath brick home, CH/A, large LR, separate DR, storm windows, storm cellar, covered patio, large storage bldg., 2 vehicle carport, fenced backyard, \$89,500.
RECENTLY BUILT 3BR, 2 bath home with CH/A, double pane windows, workshop, double carport, approx. 2 acres, \$90,000.
On 2 acres, fenced and crossfenced, 3 BR, 1 1/2 bath home, CH/A, DR plus breakfast room, \$95,000.
3 BR, 1 1/2 bath brick home with CH/A, replaced in 2007, WBFP nice carpet, laminate, \$95,000.
Garage or shop, corner property \$115,000.
Great View of Lake and Golf Course from balcony, 3 BR, 2 bath home with 2 family rooms, central air and heat, WBFP covered balcony, drive thru 2 vehicle carport, storage bldgs, patio, many large oak trees on approx. 12 acres.
15.76 Acres with large 2 BR, 1 3/4 bath home, CH/A, eating bar between kitchen and LR, sunroom and deck off kitchen, large gameroom could be used for 3rd BR patio, double carport, storage bldg., large shop. Home built around 1999, 2 beam framing.
Lots of Character - Wonderful 5 BR, 2 1/2 3/4 bath and 2 lots, 2 story home with DR, LR, breakfast room, den with WBFP, large kitchen utility room, balcony, 2 CH/A units, 2 vehicle garage, storage building, 3 lots, fenced backyard.

COMMERCIAL
Commercial property that fronts on Interstate 20, shop, small office building, 2 large carports, previously used for inventory sales, \$72,500. Call for details.

Broker Ann J. Williams, LLC
 Jimmy Williams

Extend your advertising reach with TexSCAN, your Statewide Classified Ad Network.

Eastland's SHADY OAKS HAS IT ALL!

Yes!
There really is a
HEALTH FOOD STORE
in Eastland!
629-2020

PLAYOFF SPORTS
254-629-3673
800-588-4263
Under Armour Shoes
Coming Mid-July

WELLNESS CHIROPRACTIC CENTER
Dr. Kasey Kunkel Sarah Lahren, LMT
961 E. Main St.
254-629-1771

"for they shall be comforted"
LIGHTHOUSE HOSPICE
957 E. Main St.
254-629-8017
Fax: 254-629-8012

DISCOUNTS
See me today and get the discounts and service you deserve.

Clint Coffey CHFC CLU, Agent
254-629-1222
LIKE A GOOD NEIGHBOR, STATE FARM IS THERE.
statefarm.com

Serving neighbors like you for more than 60 years
HENDRICK MEDICAL SUPPLY
1-800-588-8338 • 969 East Main • Eastland
www.hendrickmedicalsupply.com

Obituaries

Laura Grey Hejl Packer

ABILENE-Laura Grey Hejl Packer, 56, of Abilene died July 20, 2009 in Abilene. Funeral service was held at 10 a.m. Friday, July 24, 2009 at Hillcrest Church of Christ in Abilene, with Dalvin Hampton, of Waxahachie, Tx, officiated. Burial was in Elmwood Memorial Park directed by The Hamil Family Funeral Home. Laura was born in Austin, TX, to J.C. and Betty Hejl on September 4, 1952. She went to elementary school in Tyler,

and secondary schools in Corpus Christi and Conroe. She married Randy Packer on August 5, 1972 in the home of her parents in Abilene. She graduated from Abilene Christian College after studying art and office administration. She initially worked for Abilene Christian College, local banks, accounting firms and oil and gas concerns before leaving the job market to have a family. She often said she had found her purpose in life raising

her children. She was an active school volunteer and served as PTA president. She served as president of the Abilene Quilter's Guild and was an accomplished quilter, having won best in show each time she entered a quilt at the West Texas Fair. She learned tatting directly from her grandmother, designed and created numerous quilts for family and friends, and created custom quilts for the public until carpal tunnel syndrome restricted that activity.

She was an avid "birder" and was currently serving as president of the Big Country Audubon Society. She traveled in a number of countries and clearly informed her fellow travelers that "every trip is a birding trip". At Dyess Air Force Base, she created and maintained the base avian checklist which is posted on the Department of Defense Partners In Flight website with links to pictures, most of which she took. Laura assisted with spring and fall quail counts and helped the base golf course maintain its Audubon International Wildlife Sanctuary status. She was awarded a special medallion by Dyess Air Force Base for her services as a contractor and tireless volunteer. She served as a host mom and mentor for international students, several of which she taught to drive using her own car. Survivors are her husband, Randy; son, Jay; daughter-in-law, Amy; daughter, Melissa; brother, Jerry Hejl; sister-in-law, Angie; brother, Lee Hejl; father and mother, J.C. and Betty Hejl; father-in-law and mother-in-law, C.E. and Virginia Packer; and many other family and friends from around the world who thought of her as a true sister or mother. Pallbearers were Kim Walton of Clyde, Wyatt

Christine Boyd Short

ABILENE-Christine Boyd Short, 98, a former longtime resident of Abilene, died Sunday, July 26, 2009, at Gateway Gardens Assisted Living facility in Marble Falls, Texas. A graveside service was held at 1 p.m. Wednesday, July 29, 2009 at Ross Cemetery in Baird, with Rev. David Leyerle officiating, directed by Elliott-Hamil Funeral Home. Mrs. Short was born in Clyde on January 15, 1911, the daughter of Lorenzo Dow and Effie Stuart Boyd.

She was Valdictorian of her class at Clyde High School and attended McMurry College. In 1932, she married D. Gaines Short. They moved to Abilene in 1933 and became members of the First Baptist Church in 1945. She worked at Abilene High School from 1953 until 1967, where she served as Attendance Clerk and then Registrar. She loved gardening, planting over 100 varieties of hybrid irises and 100 varieties of daylilies and was a member of the National Hemerocallis Society. She moved to Marble Falls in June of 2004. She was preceded in death by her parents, her husband, and her brother, L.D. Boyd. Survivors are a son and daughter-in-law, David G. and Ingrid Short of Dallas; a daughter and son-in-law, Barbara Autrey and William B. Autrey of Granite Shoals; five grandchildren, 10 great-grandchildren; and special friend, Wanda Sumner. Memorials may be made to the American Heart Association, the First Baptist Church of Abilene, or Seton Highland Lakes Hospice, P.O. Box 1219, Burnet, TX 78611.

Comet
1 HR. CLEANING & LAUNDRY
Our low prices and daily specials keep you looking great.
254-629-3233
953 East Main St.

2009 County 4-H Awards Program

The 2009 Awards Program will be tentatively held Saturday, August 15th. Each family is once again asked to bring two covered dishes, a main dish and a vegetable, or dessert. If you plan to attend, you need to call the County Extension Office by August 1st and let us know which project completion certificates you are eligible for. If you cannot attend the Awards Program and want your project completion certificate, please call us and we will make sure you receive your certificate. Remember to RSVP by August 1st. Hope to see you at the Program.

Nimrod Baptist Church VBS

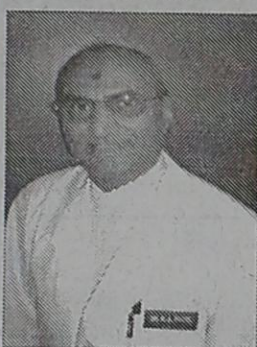
G'Day Mate! The Nimrod Baptist Church would like to invite all kidaroos (children that is) ages 3 through 6th grade to climb aboard the Boomerang Express for a day of fun and adventure in the land Down Under, Saturday, August 8th. We will have a great day of exciting Bible stories, crafts, recreation and snacks. Registration begins at 8:45 a.m. Dismissal 3 p.m. For more information call Sharron McCulloch 254-442-2176, Glenda Shawver 254-725-6561 or Wanda Blackwell 254-725-6395.

Sudoku Answer

5	7	4	9	8	1	2	3	6
9	3	2	6	7	4	5	1	8
8	6	1	5	2	3	9	7	4
7	9	5	1	3	8	4	6	2
4	8	3	2	9	6	1	5	7
1	2	6	4	5	7	3	8	9
3	5	9	7	6	2	8	4	1
2	1	7	8	4	5	6	9	3
6	4	8	3	1	9	7	2	5

Eastland Community Health Center

404 West Commerce Street
254-629-8889



Eastland Community Health Center proudly welcomes Narendra Patel, MD to our staff. Dr. Patel comes to us with extensive training and a diverse medical background. Most recently a Disabilities Consultant to the State of Texas and a private practice physician, Dr. Patel began practicing medicine in 1974, and has since studied and served all over the world. His specialties include Oncology and Internal Medicine, and his primary focus at the Eastland Community Health Center will be Adult, Geriatric, and Oncology Services. Dr. Patel is already making a name for providing highly conscientious care and welcomes seeing you as a patient.

Getting to know our new Doctor...

Family: wife, Jyoti, and two grown children
Hobbies: watercraft, jet skiing, and international travel
Hometown: Dallas, Texas
Favorite Sport: football, basketball, and cricket
Favorite Color: blue
Favorite Food: pizza and all vegetarian dishes
Dream Vacation: Tahiti
Best Attribute: always giving, helping both medically and socially.
What drew him to Eastland County: Dr. Patel always wanted to serve in a community health clinic setting.

Avi T. Deshmukh, M.D., F.A.C.S.
Board Certified in Urology

Frank V. Terrell, M.D.
General Ophthalmology & Ophthalmic Surgery
Eastland Memorial Hospital
For Appointment Call
(254) 629-2601

Leon River Cowboy Church

"Just Good Folks Trying To Live For The Lord"

Pastor Paul Howie
254-653-2840

One mile east of the Texas Cattle Exchange

Children's Stories

9:30 a.m. Adult, Youth, & Children's Bible Study
10:30 a.m. Coffee/Donuts
11:00 a.m. Worship

LOOK WHO'S COMING TO BRECKENRIDGE FOR BIG COUNTRY'S 2ND ANNUAL **GOSPEL MUSIC FESTIVAL**

"Earley Praises"
2009 Winners of 4 Awards
check out their website
www.earleypraises.com

"Faithful Touch"
'Trio of the year Award' nominees
check out their website
www.faithfultouch.com

Plus five other featured groups
Watch for our newspaper ad next week
5 Hours of Live Gospel Music
Held at Bethany Baptist Church
West Walker, Breckenridge TX. (Hwy 180)
August 8, 1:30 PM
FREE ADMISSION ALWAYS
"Earley Praises" will be at Eastland's Bethel Baptist Church Sunday morning service Aug 9th
A Meadowgreen Ministries production "Praise The Lord!"

CUSTOM HOME BUILDERS SINCE 1980

Let Us Build Your New Home or Room Addition
If You Can Dream It, We Can Build It!

T. J. CLARK CONSTRUCTION CO., INC.
(254) 734-2755
P. O. Box 176 111 E. Roberts St.
Gorman, TX 76454

General Building Contractors - All Work Guaranteed
Custom Homes - Remodeling - Commercial - Industrial - Farm
Financing - Free Estimates - Design, Engineering & Plan Services

July Cattle On Feed Down 6 Percent From Last Year

Austin- Cattle and calves on feed for slaughter market in Texas feedlots with capacity of 1,000 head or more totaled 2.49 million head on July 1, down 6 percent from a year ago. According to the monthly report released by the Texas Field Office, the estimate was down 5 percent from the June 1 level. Producers placed 380,000 head in commercial feedlots during June, down 17 percent from a year ago, and down 16 percent from the May 2009 total.

Texas commercial feeders marketed 490,000 head during June, up 2 percent from last year down 4 percent from last month.

On July 1, there were 2.10 million head of cattle and calves on feed in the Northern High Plains, 84 percent of the state's total. The number on feed across the area was down 6 percent from last year and down 4 percent from the June total.

June placements in the Northern High Plains totaled 332,000 head, down 17 percent from the May total. Marketing were down 4 percent from last month to 415,000 head.

Cattle and calves on feed for slaughter market in the United States in feedlots with a capacity of 1,000 head or more totaled 9.8 million head on July 1, 2009. This inventory was 5 percent below July 1, 2008.

Placements in feedlots during June totaled 1.39 million head, 8 percent below June 2008. June placements of cattle and calves weighing less than 600 pounds totaled 315,000 head; 600-699 pounds totaled 290,000 head; 700-799 pounds totaled 371,000 head; 800 pounds and greater totaled 415,000 head. Marketings of fed cattle during June totaled 1.99 million head, 1 percent above 2008.

in the northern part of the state while conditions continued to decline in the southern part of the state and were in need of moisture. Top soil moisture was mostly very short to short across the state.

Small Grains: Wheat field preparation took place in the Northern Plains. Oat condition was mostly very poor to fair statewide.

Cotton: In the Northern High Plains, cotton progressed well due to the recent rainfall and warm temperatures. Irrigated cotton was blooming in the Southern High Plains. Cotton progressed well in the Northern Low Plains while insect and weed spraying continued. Cotton was in need of moisture to supplement fertilizer applications in the Southern Low Plains. In the Trans-Pecos, cotton squaring continued and Southwestern Cotton Rust was treated. In the Edwards Plateau and South Texas, cotton progressed well under heavy irrigation. Cotton condition was mostly fair to good statewide.

Corn: Corn progressed well in the High Plains due to cooler temperatures. Corn is in the dough stage in the Southern High Plains. Drought conditions in South East Texas and the Upper Coast has caused the corn crop to suffer. Corn condition was mostly fair to good statewide.

Sorghum: In the Northern High Plains, grain sorghum headed out and irrigation was active. Head worms caused stress on sorghum in the Southern High Plains. Grain sorghum heads were turning in the Blacklands. In parts of South Central Texas, recent rainfall improved harvest conditions. Sorghum condition was mostly fair to good.

Peanuts: The crop progressed well in the Southern Low Plains. Pegging was active in the Northern Low Plains and South Texas. Peanut condition was mostly fair to good statewide.

Rice: Rice condition was mostly fair to good statewide.

Soybeans: Soybean condition was mostly fair to good statewide.

Fruit, Vegetable and Specialty Crop Report: Sunflowers were in full bloom in the Northern High Plains. Chilies were in full bloom in the Trans-Pecos.

Pecan: Pecans progressed well in the Northern Low Plains and the Blacklands. Pecan nut development continued in the Trans-Pecos.

Livestock, Range and Pasture Report:

Supplemental feeding of livestock continued in localized parts of the state. Stock tank levels were very low in the southern part of the state and in need of rain. Livestock herd liquidation continued across the state. Recent rainfall improved range and pasture conditions in the northern part of the state while conditions continued to decline in the southern part of the state and were in need of moisture. Range and pasture condition was mostly very poor to fair statewide.

Callahan County Star Deadlines
Tuesdays by 4 p.m.
 ecn@att.net
Call 254-629-1707 Fax: 254-629-2092

**CUTTERS
 LAWN SERVICE**
Any Size \$50
Cindy & Renee
254-488-0912 940-782-3780



USDA Texas Crop Weather

Agricultural Summary: The southern part of the state received little to no rainfall while scattered showers brought up to 3 inches of rainfall across the rest of the state. In the Northern High Plains, wheat field preparation took place, grain sorghum headed out, and sunflowers were in full bloom. Irrigated cotton was blooming and corn matured in the Southern High Plains. Grain sorghum heads were turning color in the Blacklands. In the

Trans-Pecos, cotton squaring continued, chilies were in full bloom, and pecan nut development continued. Drought conditions in South East Texas and the Upper Coast has caused the corn crop to suffer. Peanut pegging was active in the Northern Low Plains and South Texas. Supplemental feeding of livestock continued in localized parts of the state. Recent rainfall improved range and pasture conditions



More than 70,000,000 Americans enjoy recreational boating each year. Boating-related fatalities have decreased, due in part to increased use of life jackets, or personal flotation devices (PFD).

- Tips for Preventing Boat Injuries and Deaths**
- Wear Your Life Jacket While Boating**
Life jacket use by all boat occupants can reduce drownings. Coast Guard-approved life jackets are now more attractive in appearance and comfortable to wear. When properly fitted, a life jacket or PFD can help to prevent a tragedy.
 - Avoid Alcoholic Beverages While Boating**
Alcohol use affects judgment, vision, balance, and coordination. Reports suggest that alcohol was a contributing factor in about one in five boating fatalities.
 - Complete a Boating Education Course**
Most reported incidents in 2006 involved operator-controllable factors. The primary causes of incidents were carelessness or recklessness, operator inattention, operator inexperience, and unsafe speeds.
- Boating education courses teach the regulatory and statutory rules ("Rules of the Road") for the safe operation and navigation of recreational boats. In 2006, 70% of all boating fatalities occurred on boats where the boat operator had not attended a boating safety education course.

For more information visit the following websites:
 Centers for Disease Control
www.cdc.gov
 Texas Parks and Wildlife
www.tpwd.state.tx.us/fishboat/boat/laws/

**EASTLAND MEMORIAL HOSPITAL
 TRAUMA SERVICES**
 304 S. Daugherty • www.eastlandmemorial.com • 254-629-2601

CROSSWORD PUZZLE

1	2	3	4	5	6	7	8	9	10	11
12				13		14		15		
16				17				18		
	19		20			21				
		22				23				
	24	25				26		27	28	
29				30	31			32	33	
34			35		36			37	38	
39			40	41				42		
	43	44				45	46			
		47				48				
	49			50	51			52	53	
54	55			56				57	58	
59				60				61		
62					63			64		

- CLUES ACROSS**
- | | |
|---------------------------------------|-------------------------------|
| 1. Ancient Syrian city | 36. Radioactivity unit |
| 5. A fashionable hotel | 37. Sudden flood |
| 8. Symbol indicating pitch | 39. More (Spanish) |
| 12. Brewed beverage | 40. City in N. Zambia |
| 13. Soft-finned fishes | 42. Informed wrongly |
| 15. Get a grip or grab | 43. About two |
| 16. Soluble ribonucleic acid | 45. Cures |
| 17. Ready money | 47. Greyhound or tour |
| 18. Lips | 48. Something that is owed |
| 19. Harry Potter #4 | 49. Annual hoop frenzy |
| 22. 500, car race | 54. "The Californian" author |
| 23. Take in solid food | 56. Chinese dynasty |
| 24. A tributary of the Missouri River | 57. Research workplaces |
| 26. Made disorderly | 59. Dancer De Mille |
| 29. Algerian port | 60. At some prior time |
| 30. Run after | 61. Breastplate |
| 32. bo: Latin dance | 62. "Time and Materials" poet |
| 34. Siddhartha author | 63. CNN's founder |
| | 64. Considerateness |

- CLUES DOWN**
- | | |
|---|--|
| 1. Point that is one point S. of due E. | 29. Resistance unit |
| 2. Floating ice mountain | 30. African gator |
| 3. Tonight's host | 31. Norse goddess of the dead |
| 4. Saddle horses | 33. student, learns healing |
| 5. A way to split up | 35. Bears patiently |
| 6. Pertaining to bog fuel | 38. Thrombocyte |
| 7. In addition | 41. Record |
| 8. Maps out | 44. Lets up |
| 9. Rounded subdivision of an organ | 45. Enclosed by a row of shrubs |
| 10. Lilly, drug company | 46. Point that is one point N. of due E. |
| 11. Licenses drugs | 48. Trip the light fantastic |
| 14. Superhigh frequency | 49. Messenger ribonucleic acid |
| 15. False names | 50. Type of health coverage |
| 20. Liquefied natural gas | 51. Coin factory |
| 21. Fixed charges | 52. Heroic tale |
| 24. Greek mountain nymph | 53. Invests in little enterprises |
| 25. Saucy | 54. Expresses surprise |
| 26. Female parent | 55. Honorable title (Turkish) |
| 27. Electronic communication | 58. The Concorde was one (abbr.) |
| 28. Palm fruits | |

This puzzle sponsored by

 P. O. Box 877 Eastland, TX 76448

ecn@
att.net

"Go With The Best"
 ★ ★ TRI-STAR ★ ★
HOME CARE
"Gives Quality Care"

★ Home Health Care
 ★ Primary Care
 ★ C.B.A.

Cisco, TX 76437
 Telephone (254) 442-4996

**A-QUALITY WELDING
 & STEEL SUPPLY**

METAL BUILDINGS • STRUCTURAL STEEL
 FABRICATION • BUILDING COMPONENTS
 WELDING SUPPLIES & GASES
 Metal Bldg. Clearance Sale Call Now
 700 East I-20 Cisco, TX
 (254) 442-3036

Check out our prices updated daily www.aqualitysteel.net

I-20 Motors Used Cars
 "Serving Cisco Since 1979"
 800 West Interstate 20 • Cisco, Texas
 (254) 442-4262 • (817)-999-5272

1997 Ford F-250 Super Cab auto, air, flat bed	\$2950
2001 Buick Century 4 dr, auto, air, V-6, nice	\$2950
2002 Saturn 4 dr, 57k, fully loaded, extra nice	\$5500
2004 Ford Ranger, V6, auto, air	\$3950
2005 Ford Taurus: 4 dr, loaded, 72k	\$4950
2005 Chevy Aveo LT 4-dr, auto, air, 39k	\$6350
2006 Ford F350 16 ft. moving van, loaded	\$8950
2006 Chrysler Sebring, fully loaded, 4 dr, 69,000 miles	\$5950
2006 Chrysler PT Cruiser, loaded, 62k	\$6950
2007 Kawasaki Vulcan Motorcycle, 1470 miles	\$3250
U.S. GOVT. CARS	
2004 Ford F150, short bed, 6 cyl, 5 sp, air	\$4550
2006 Dodge Stratus V6, fully loaded	

More Cars To Choose From