

The Clarendon Press

Dedicated To Fair And Impartial Representation

USPS 947840

Serving Hedley, Clarendon and Howardwick

Thursday, February 28, 1985

26c

Number 9

Ashtola Volleyball Tournament begins Feb. 28

The Ashtola Community Center is once again having their annual volleyball tournament. The tournament will begin Thursday, February 28, with the men playing that night. Games will start at 6:00. Teams entered for Thursday's games from Clarendon are Lawmen, Clarendon Men, from Hedley, Front Line, from McLean, Odds and Ends, Salty Dogs, from Flomot, Flomot Men, Six Pac, and from Matador, the Matador Men.

The women will play Friday night. Their games will begin at 5:30. Teams entered from Clarendon are True Grit Girls, The Country Girls, from Hedley, Espree, Lelia Lake, Shields, McLean, Rotating Parts and Thomas Nursing Center, from Flomot, Sandies, and from Matador, The Sniglets. Play-offs for the teams will begin at 5:00 Saturday.

They will have a super concession stand this year. They have added hamburgers, cheeseburgers, hot ham and cheese, grilled cheese and cold sandwiches to their menu, plus nachos, popcorn, milk, juices, soft drinks, and lots of other goodies at a very reasonable price.

The Ashtola Community wishes to express their appreciation of your support the past two tournaments. They have really enjoyed putting the tournaments on and have met a lot of super people.

There isn't any school this week, so come on up to the old school gym and help cheer a team to victory. There is no charge for admission. It will be an entertaining and fun way to fill the evening, and maybe the team you choose to support will win a trophy Saturday night. "See all of you there."

Senior Citizens Complex Nearing Completion

Construction is nearing completion on a 4 unit senior citizen rental housing complex for Hedley Community Development Corporation according to Phillip C. Madeley, Assistant District Director of the Farmers Home Administration, Amarillo, Texas, which is providing financing.

The project located on Main Street in Hedley is designed to provide equal housing opportunity at reasonable cost for low income senior citizens.

The project consists of four 1 bedroom units with paved parking area and landscaping.

Sue Weatherly of Hedley is manager of the units.

PTA to meet March 5

The Clarendon Parent Teacher Association will meet Tuesday, March 5 at 7:00 p.m. in the Clarendon High School Cafeteria.

Guest speaker for the evening will be Mrs. Mary Jane Reeves of Canyon. She is a teacher in the College of Education at West Texas State University and the director of the Institute for the Gifted and Talented.

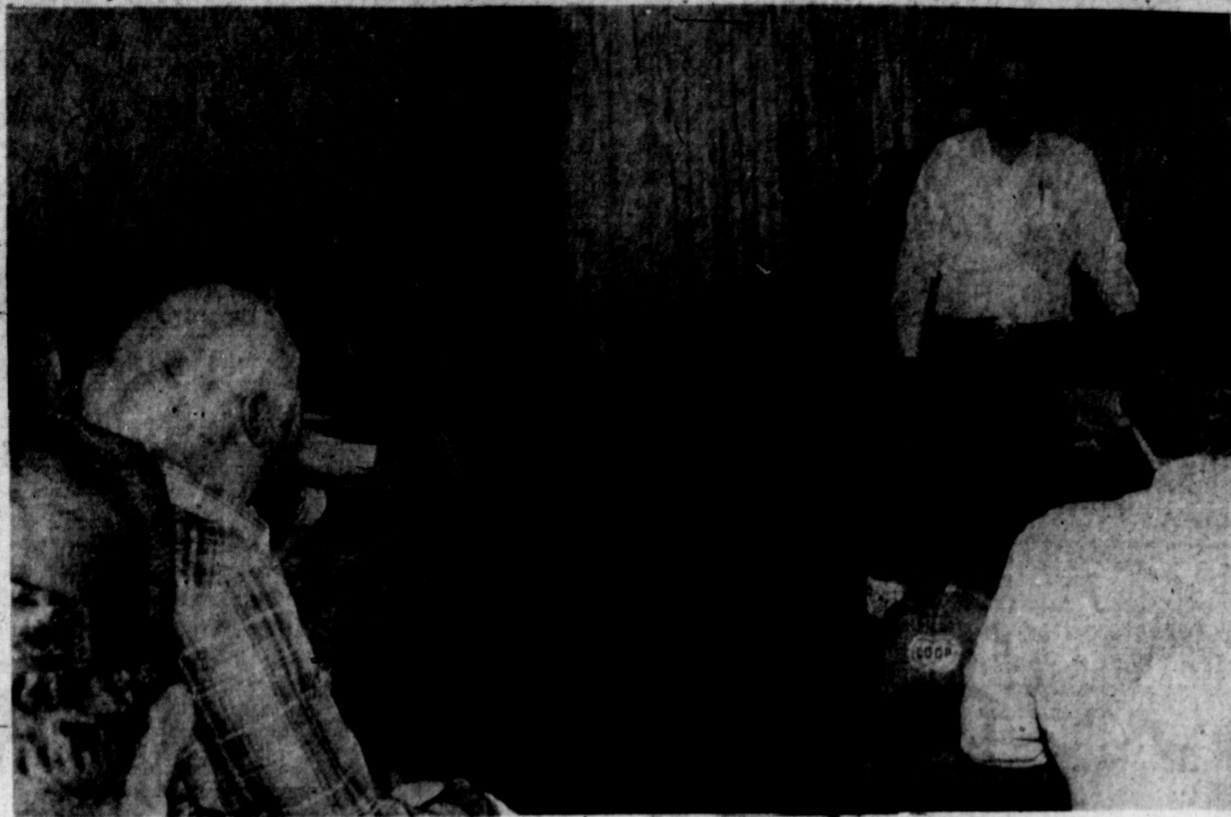
Mrs. Reeves will represent a program on the recent research on the right and left hemisphere organization of the brain and its implications for educating all of our youth. She will also discuss the Gifted and Talented Institute and how we might get involved in that program.

All who are interested are invited to attend.

Continued by Tommie Sore

Cooperative Observer for National Weather Service, Clarendon.

Day	Date	Hi	Low	Presip.
Tuesday	12	49	21	
Wednesday	13	60	25	
Thursday	14	57	32	
Friday	15	58	22	
Saturday	16	69	23	
Sunday	17	64	27	
Monday	18	56	28	
Total Precip. for Month				.14
Total Precip. for Year				.68



MARION GARLAND of the American Agriculture Movement speaks to Donley County farmers at Mary's Country Kitchen.

Filing deadline approaches

March 6th will be the deadline for signing up for Clarendon, Hedley and Howardwick city offices, Hedley and Clarendon School Trustees and for Donley County Hospital Board. Positions up for election in the City of Hedley are held by W.B. Wiggins, Otis Holland and Murrell Whitaker.

Conservation Tillage Conference March 5

High Plains farmers who are interested in learning more about cutting operating expenses, increasing profits, and reducing soil and water erosion are invited to attend a Conservation Tillage Conference at Hereford, Texas, March 5, 1985.

David Webster, district conservationist for the USDA Soil Conservation Service at Hereford, said the meeting will be held at the Bull Barn in Hereford starting at 9:00 a.m. Attendance is free.

"The meeting will feature farmers who are using conservation tillage farming systems," Webster said. "Several kinds of conservation tillage equipment will also be on display."

The meeting is sponsored by the Tierra Blanca Soil and Water Conservation District, The Golden Spread Chapter of Soil Conservation Society of America, the Agricultural Research Service, and the Soil Conservation Service.

Notice

Chamberlain Community Center
Chamberlain Community Center will have their covered dish supper Friday, March 1 at 6:30 p.m. Host and hostesses will be Opal Darnell and Frank and Vivian Corder.

Fun After 50 Club

Fun After 50 Club will meet March 2, 1985 at 10:00 a.m. at the Senior Citizens Center with a covered dish luncheon. Come enjoy the fellowship.

Volleyball Tournament March 21-23 in Memphis

Cyclone Mothers Club is sponsoring a volleyball tournament March 21, 22, 23. For information, call Nelwyn Ward 806-259-3001, after 5:00 259-3397 or Oma Jean Parr 806-259-3330. Entry deadline is March 15.

React Organization formed in Donley County

Can and will you REACT? Donley County now has a REACT Team. The newly formed Donley County React Team will hold its first regular business session at 7:00 p.m. Thursday, March 14, in the Howardwick City Hall meeting room.

Come see what your DCR Team will mean to you if and when you need help at home or on the road.

The mayor's position in the City of Clarendon held by James Kuhn, and Aldermen Richard Bell and James Sharrar are also up for election.

In the City of Howardwick race, there will be the mayor and three councilmen positions have expired. The terms of Mayor H.L. Tipton and councilmen Lawrence Whitehead and Elbert Derr will be up for election along with a seat which is vacant at this time. There will be a councilmen's meeting Saturday, March 2 at 8:30 a.m. held in the city hall.

In the Hedley School, two trustee

positions will expire. They are Billy Clubb and Cheryl Wiggins. In the

Clarendon ISD, the terms of Ted Shaller and Susie Shields will expire.

There are three places on the Donley County Hospital District. They are positions now held by E.W. Barbee, place 1; L.L. Whitehead, place 2; and Mrs. J.F. Howell, Jr., place 3.

Anyone interested in filing for any of these positions must do so before March 6th deadline. You may file by going by the cities, schools and hospital administration offices.

Men's softball league needs help

The members of the Clarendon Men's Softball League are in need of men. So far, an excellent effort has been made by Johnny Floyd and his brothers to see that the field at the rodeo grounds is finished before the spring tournaments begin.

HOWEVER! They are in need of man power and financial support in order to complete the playing field in time for the season. This is an opportunity for Clarendon to help an organization which not only will give the men an activity for the summer but will also give local businesses an opportunity to increase profits through the additional SPENDERS this sport will bring to town.

Let's not wait for this opportunity to slip through our fingers! If you're the type of person who craves hard work, or you have some extra cash laying around somewhere that you absolutely have to spend on some worthwhile cause, then please contact Mrs. Bobbie Floyd, Johnny

Floyd, Paul Drager, Lynn Floyd, or Mike Spier and I am sure these people can find a place for either your time or your cash. If we all get these oars in the water at the same time, I am sure come softball time, we will have a field we can be proud to invite other teams to play on and a community for them to spend their money in.

Mark T. Winsor
President,
Clarendon Area
Chamber of Commerce

Sheriff cautions local citizens

The Sheriff's office once again would like to caution Donley County citizens to beware of salesmen trying to sell them merchandise, do repairs, advising them on investments or whatever.

The Sheriff's office in another city notified Sheriff Jimmy Thompson that two salesmen approached a single elderly lady and sold her lightning rods for her house. They spent approximately 5 minutes in the back yard and charged the victim \$2,415.06. They tried to cash the check at her bank, but the bank refused to cash the check.

If you are approached by someone unknown to you, call the Sheriff's Office and have them checked out. If they are legitimate salespeople, they won't mind your checking.

Sheriff Thompson urged citizens to call his with any calls or offers which you think might not be legitimate.

Public School Week March 4-8

The week of March 4-8, 1985 has been designated as Texas Public Schools Week.

The Clarendon Public Schools would like to invite parents to visit the school and their children's teachers.

Tuesday night, March 5, 1985, the PTA will meet at 7:00 in the high school cafeteria. All parents and interested citizens are invited to attend.

Schwertner, Mooring to represent Donley AAM in Washington

Two county farmers, Bruno Schwertner and David Mooring, will leave for Washington March 2 to take the plight of the farmers to their Congressmen. They will be representing the American Agriculture Movement, Inc. They will be asking Senators and Representatives to pass an agriculture bill which includes:

Production Controls: establish a mandatory program through referendum by farm operators with quantity controls (bushels, bales, pounds, etc.) in addition to a 10% acreage reduction. Production levels should be established according to inventory stocks.

Loan Rates: Loan rates set at not less than 70% of parity (the average cost of production) on all storable agriculture commodities including milk. Minimum non recourse loan term shall be 36 months with loan rates increasing 2% annually throughout 1996 and remain at 90% parity thereafter; storage rates for on-farm storage and commercial storage shall be the same.

Farm Tax Loopholes: There should be a maximum write-off of \$20,000 for non-farm income through tax-loss farming.

Soil Conservation: The existing soil conservation program shall be continued and expanded in problem areas.

Farm Credit (FmHA): Reschedule farm debt on a case-by-case basis to allow the operation to meet cash-flow requirements necessary to continue operation. Terms of the loan (20 year maximum) shall be established by a county committee. The county committee shall be elected by farm operators in a county referendum and shall be a functioning loan committee of no fewer than five people! Three of which must be farm operators, elected by their peers which will in turn appoint two others, one from the financial community, and one holding a public office. New applications must be accepted for consideration and any economic emergency (EE), emergency disaster (EM), or operating (OL) loans not acted upon within 60 days must be automatically approved.

ASCS: County ASCS committees shall make all decisions relating to soil and water conservation practices, including cover crops, haying and grazing dates, etc. The ASCS community committee must be continued with no fewer committees than in place in 1980.

RESOLUTIONS

Original Five Points:

1. 100% parity for all domestic and foreign used and/or consumed agriculture products.
2. All agriculture products produced for national or international food reserve shall be contracted at 100% parity.
3. Creation of an entity or structure composed of agriculture producers to devise and approve policies that effect agriculture.
4. Imports of all agriculture products which are domestically produced must be stopped until 100% parity is reached, thereafter imports must be limited to the amount that the American producers cannot supply.
5. All announcements pertaining to any agriculture producing cycle shall be made far enough in advance that the producer will have adequate time to make needed adjustments in his operation.

Credit Farm Credit Lenders: No family farm shall be forced to liquidate or have repossessed their equipment or farm land by government agencies as long as those producers are forced by government actions to produce at below the cost of production; the Administration shall appoint a by-partisan task force made up of representatives of farmers, FmHA, OMB, and the Congressional ag committees to study ag financing and report back recommendations.

Inheritance: AAM supports abolishment of inheritance tax laws and amend federal estate and gift tax to exempt farmland passed to another generation actively engaged in farming.

These are just a few things farmers will be seeking in the 1985 farm bill. The AAM ask that farmers contact their Congressmen in Washington D.C. by phone, telegram or writing because it is important that you contact them.

Locally, they have raised approximately half of the money needed to send these AAM representatives to Washington. Anyone wishing to donate, may do so at the First Bank & Trust, Donley County State Bank, or Security State Bank at Hedley.



AMY RUTH HANCOCK

Amy Hancock presented as Symphony Belle

Miss Amy Ruth Hancock, daughter of Mrs. Ruth Hancock, was presented as a Symphony Belle at the Symphony Ball in Amarillo on Saturday night, February 23rd. Amy was presented by Mr. T.M. Caldwell and was one of thirty-eight belles. The Ball, titled "An Evening in Central Park," was held in the Century Aircraft Corporation hangar. Those attending the Ball from Clarendon were Mr. and Mrs. T.M. Caldwell, Jr., Mr. and Mrs. B.F. McNabb, Jr., Mr. and Mrs. R.W. Boston, Jr., Mrs. Ruth Hancock, Miss Amy Hancock, and Mr. Ken Dorris.

4-H Sewing Project Class

The beginners class for the 4-H Sewing Project will be held Tuesday at 4 p.m. at the First Baptist Fellowship Hall. Instructors for this class will be Celia Drager, Avilene

Leathers and Dana Chambliss. The advance class will meet at the same place and time on Friday with Janice Barbee as their instructor.

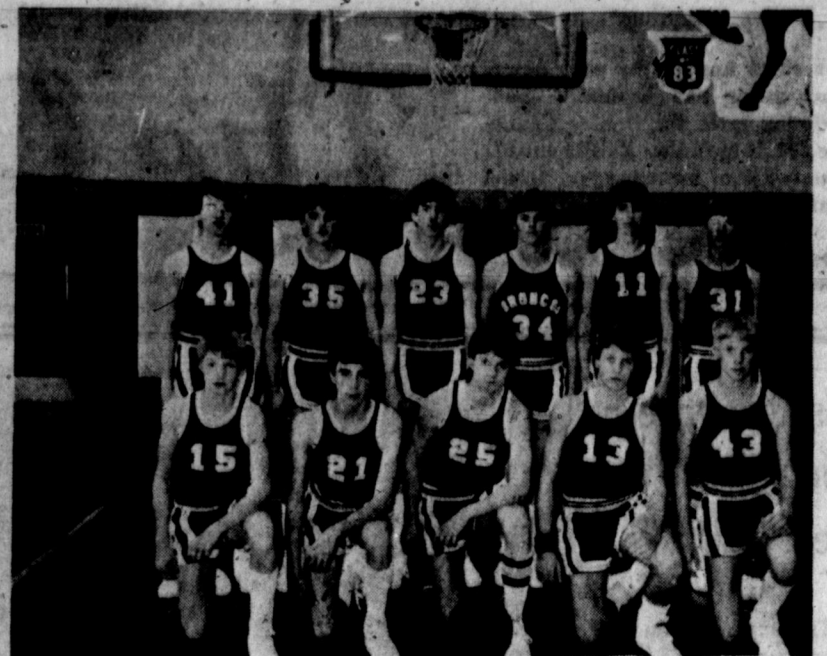
School Menu

March 4-7

- Monday-Beef pot pie with vegetables, cream potatoes, tossed salad, cheese wedge, peaches, milk.
- Tuesday-Turkey Teterizine, cream English peas, carrot sticks, lime Jello, milk.
- Wednesday-Beef taco with cheese, buttered corn, tossed salad, pineapple cake, milk.
- Thursday-Spaghetti with meat sauce, tossed salad, corn on the cob, hot rolls, cake, peaches, milk.
- Friday-Barbeque on bun, potato salad, tossed salad, peach cobbler, milk.



Girls Varsity Basketball Team



Boys JV Basketball Team



Girls JV Basketball Team



The average life expectancy in 1900 was only 47 in the U.S. Today it is over 70.

Napoleon played solitaire constantly while in exile on St. Helena.

you and the LAW

PRESENTED BY THE STATE BAR OF TEXAS

Q: I saw an advertisement by a woman who was not a lawyer who said she could do an uncontested divorce for \$75. Is that legal?

A: No one but a member of the State Bar of Texas or an attorney separately admitted for a particular proceeding may render legal services to a person in Texas. The offer to practice law without a license exposes the advertiser to prosecution. Your county bar association should immediately be notified of this ad.

Q: As an employer, can I legally avoid hiring a qualified job applicant who smokes cigarettes?

A: At present, there are no state or

federal laws prohibiting discrimination in employment on the basis of whether a person is a smoker or non-smoker. As a general rule, an employer may not treat an employee or applicant adversely based on that employee's race, sex, religion, national origin, age, condition of pregnancy or union preference. However, if you refuse to hire a smoker, the rule should be applied across the board to all persons regardless of race, sex, religion, or national origin.

Q: I have a sister who supports herself and her daughter on social security. She is facing a five-year prison term for forgery. Will her Social Security payments cease while she is in the Texas Department of Corrections?

A: It depends on the type of benefit she is receiving. Disability benefits stop if one is in jail, but retirement or widow's benefits

probably will not stop. Also, that portion of the benefit payable to minor children will not stop.

Consult the Social Security Administration office in your sister's hometown to learn what type of benefits she is receiving. You will need to supply her claim number.

Q: Can an employer be forced to withhold wages of an employee who is behind in his court ordered child support payments?

A: Yes, under an amendment to the Constitution passed in 1983, the employer can be ordered to withhold a certain amount, usually consisting of required support plus some arrearages. The employer can impose a \$5 service charge on this deduction each pay pe-

riod, but the employer may not fire the employee or discriminate in any way as a result of the court order.

This compulsory withholding is available when the payor is behind in support. Optional withholding for child support is available to any person who wants to set up this system with his employer.

Send your questions to "You and the Law," State Bar of Texas, P.O. Box 12487, Austin, 78711. Answers may appear in columns in hypothetical terms; personal answers not possible.

The Biblical

King Solomon had 700 wives.

Let's compare

Maybe I can save you some money on insurance:

Allstate
You're in good hands.

Life · Homeowners · Auto/
Boat/RV · Business · Health

EMMETT Q. SIMMONS
Insurance

See or phone
JEM SIMMONS
874-3596

ALLSUP'S

CONVENIENCE STORES

PRICES EFFECTIVE
FEB. 28-MARCH 2, 1985

BROKERIES-ICE- MILK- CHIPS & DIPS-
SOFT DRINKS- SNACKS- HOT COOKED
FOODS- SELF SERVE GAS-MONEY ORDERS-
WHILE SUPPLIES LAST

COOKED FOOD SPECIAL AS FEATURED ON TV

REGULAR HOT DOGS 3 FOR \$1

ALLSUP'S MONEY ORDERS

WE HAVE MONEY ORDERS FAST AND CONVENIENT UP TO \$299.99

19¢ EACH

BORDEN'S

CHOC. MILK 69¢

QT. CTL.

PEPSI FREE, PEPSI LIGHT, DIET, OR

PEPSI-COLA \$2.19

6 pack cans

TWIN POPS, FUDGE BARS, BORDEN'S DRUMSTICKS ICE CREAM SANDWICHES AND MORE

FROZEN NOVELTIES 4 FOR \$1

SINGLES

One Rack Misc. Items Half Price

Hill's Brothers

Coffee \$1.99

All grinds 1 Lb. can

Banquet

Pot Pies 3 for \$1.00

Turkey, Beef, or Chicken

Try our Texas Bar B Q Brisket

By the pound \$4.99
By the sandwich \$1.99



Boys Varsity Basketball Team

Chamber News

When the list of Chamber members were printed a couple of weeks ago, the Press left off F.J. Hommel's name. Mr. Hommel has been a member of the Chamber for many years. Mark Winsor, president of the Chamber of Commerce, would like to see some changes in the by-laws. According to the charter, it takes a 30 day notice and a vote of the general membership to have them changed. A meeting will be held in April of the Chamber members. A time and place will be announced later.

The Clarendon Press is published every Thursday at 106 S. Kearney and entered as Second Class Mail at the post office at Clarendon, Texas. J.C. and Helen Woody, publishers and editors.

Subscription rates: \$13.67 a year outside Donley County and \$10.51 a year in Donley County. Any erroneous reflection upon the character of any person or firm appearing in these columns will be gladly and promptly corrected upon being brought to the attention of the management.

You are invited to attend the

Honeria Helm Retirement Reception

Friday, March 1st from 1:30 to 4:30 p.m.

Federal Land Bank Assn. of Childress

Honeria is retiring after 32 years service at Federal Land Bank.

Hwy. 83 South



STUDENTS from the Calvary Baptist Academy tour jail facilities.



TONY COLBURN



MR. AND MRS. TONY COLBURN AND LINDSAY

Tony Colburn joins Calvary Baptist Church as Youth Director

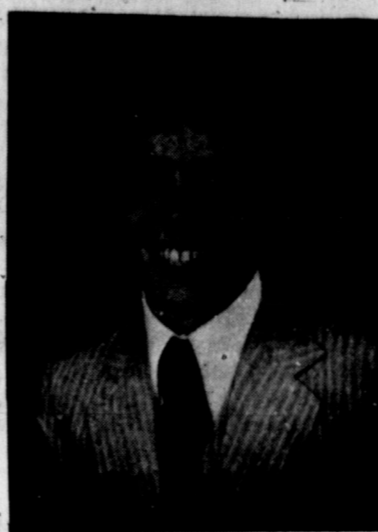
The two pictures above are the same young man, Tony Colburn. The first one, in which he has long hair, was a teenager on alcohol and drugs. The second, Tony can testify how his life changed when he met Jesus Christ.

Tony stated, "I was tired of being drunk, strung out on drugs, and wrecking cars. I asked my neighbor what would be a good church to attend. My neighbor attended the Hillcrest Bible Baptist Church where Gary Pinion was the Youth Director and Associate Pastor." The next Sunday, Tony attended church. He said, "then and there, I gave my life to my Lord and Savior Jesus Christ. With Rev. Pinion's help, I not only got off of drugs and alcohol, but I

attended and graduated from Baptist Bible College, Springfield, Mo. with a BS degree." Tony, who graduated from high school in Arkansas City, Kansas, stated, "I am concerned about the youth of today and would like to invite anyone who is having a drinking or drug problem or for that matter any kind of problem to call

me. I would like to invite the Clarendon youths, who does not have a church home to come to the Calvary Baptist Church and get involved in our youth programs."

Tony, his wife Teresa and 1 1/2 year old daughter Lindsay moved to Clarendon from Newton, Iowa to be Youth Director and Associate Pastor at the Calvary Baptist Church.



TONY COLBURN

Home Economic student gives talk

Kim Sharrar informed the Clarendon EMS Association members about the home economic programs that are being taught at the Clarendon High School.

Kim is a sophomore and Mrs. Butts is her teacher.

Kim told the group what different programs the course has to offer. These programs consist of relationships, housing and home furnishing, clothing, food and nutrition, and child development.

The EMS thanks Kim for her program.



The first electric sign was built by W.J. Hammer, an English sign maker in 1882. The sign was a message cut out of wood and illuminated from behind with electric light bulbs.



Ammonia that causes diaper rash on wet diapers can be neutralized by rinsing them in vinegar after washing.



A fruit fly's eye has many tiny lenses. Each lens sees only what is directly in front of it.

Donley County Livestock Sale brings \$13,920

The Donley County Livestock Association wishes to express their appreciation to all the many people who helped make their stock show in January such a big success.

There were 16 lambs, 38 pigs, 26 steers and 9 heifers in this years show.

Twenty-six pigs, 9 lambs and 20 steers were sold at the third annual sale and brought in \$13,920.00.

The Young Homemakers Club, Lakers Club, Late Edition Club,

Early Bird Club, Bud and Pearl Hermesmeyer and parents of each of the exhibitors donated food for the concession stand. The barbeque for the buyers supper was donated by Doyle and Dan Hall, Fed McAnear and Mary's Country Kitchen.

Trophies for this years show were furnished by The Clarendon Press for the swines, Evans Fertilizer, Lambs and Knorpp Insurance, cattle, and Jiggs and Evelyn Mann furnished trophies for the showmanship.

Jack Moreman acted as auctioneer while Jerry Gage, and Doyle Hall were ringmen. This years judge was Herman Boone, Extension Agent from Miami, Texas. Doyle Hall and Curtis Schaffer were superintendents for the pigs, Don Robinson and Jerry Gage, lambs and Jack Moreman and Jerry Gage for the cattle.

The following is a list of the buyers: Donley County Coop Gin, White's Evergreen Feed, First Bank & Trust, Mr. and Mrs. Bright Newhouse, Memphis Compress, Simmons Insurance, Clarendon Lions Club, Jiggs and Evelyn Mann, Doyle and Dan Hall, Fed McAnear, Don Thornberry, The Clarendon Press, Evans Fertilizer, Knorpp Insurance, Lewis Ranch, Frank Derrick, PCA, Childress, Paymaster Gin, Earl and Susie Shields, Amarillo Livestock, Shields Fertilizer, Tex Coast Cotton, Ronnie McAnear, Dr. Gilkey, Welders Supply, Childress, Chamber of Commerce, Jay Gould, Porter Cattle Co., Donley County Feed Yard, Germania Insurance, Kidds Texaco, Lucille Burnett, Eddie Taylor, Western Skies Motel, Castel Fire Protection, Bobby Boston, Wallace Monument, Carroll Duncan, Busters Exxon, Clarendon Manufacturing, Austin Manufacturing, Amarillo, Mike's Pharmacy, Donley County State Bank, West Texas Gas, Alderson Chevrolet, Freddy Moreman, McKinney Motor, Don Bilbrey, Curtis Schaffer, Dale Robinson, Center Plains, Mike Smith, Joe Robinson, Bill Craft, Jim Hayes, Bivens Oil, Donley County Shorthorn Association, Lucky 13 Shorthorn, Brown and McMurtry, Silverton, Shakey's Pizza, Amarillo, Mr. Van Henson, Amarillo, Chamberlain Motor Company, Security State Bank, Whitner Farms, Lubbock, Riggs Farm Supply, Lowe and Courtney, Jenks Boston, Deyhle's Vet Clinic, Family Recreation Center, Horace McClellan, Jerrel Martin, Al Morrah Shine Club, Pat and Linda Roberson, Ike O'Neal, Marvin and Jo Crabtree, Jerry Gage, Clovis McCary, Hagy Ranch, Jerry Hawkins, Greenbelt Shorthorn, Acco Feed, Hall's Bookkeeping, Lester Petty, James McAnear Jr., James McAnear Sr., Ronald Gooch, David McAnear, Ray Burch, Bud and Pearl Hermesmeyer, Mary's Country Kitchen, Young Homemakers, Lakers Club, Late Edition Club, Early Bird Club, Hedley Feedlot, Dr. R.G. Patterson.

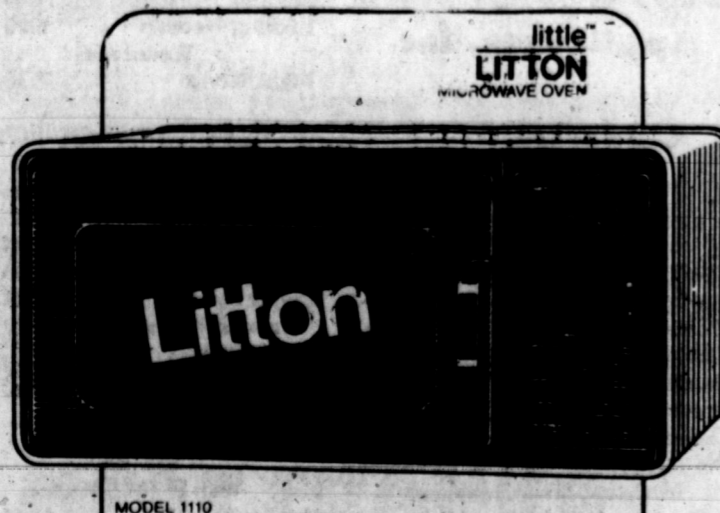
NEW! Little Litton Microwave Cooking in Less Space



Cooks so many foods so well!

- .5 cubic foot oven easily holds a 2 1/2 quart casserole.
- 500 watts of microwave cooking power.
- Save counterspace... mount Little Litton on a wall or under a kitchen cabinet with optional mounting kit.
- Easy to use 25 minute dial timer plus variable microwave power control with 6 power settings.
- Lightweight, only 33 lbs., and compact. Exterior size, 9 1/2" high X 18 3/4" wide X 13" deep

219⁰⁰



Cooks so many foods so well!

- .5 cubic foot oven holds a 2 1/2 quart casserole.
- 500 watts of microwave cooking power.
- Save counterspace... mount Little Litton on a wall or under a kitchen cabinet with optional mounting kit.
- Easy to use 15 minute dial timer with easy to read cooking guide.
- Lightweight, only 33 lbs., and compact. Exterior size, 9 1/2" high X 18 3/4" wide X 13" deep.

\$189

You get 2 years parts & labor warranty on appliances

OSBURN

Furniture & Appliances, Inc. Clarendon



"Robinson Crusoe" was based on the life of a real sailor, Alexander Selkirk, who lived alone on a desert island for more than four years.



The U.S. and Italy are the chief producers of lemons.



Kumquats are rich in vitamin A.



Twenty thousand workmen worked 15 years to build the Taj Mahal. It is made of white plaster.

SEPTEMBER							1
2	3	4	5	6	7	8	
9	10	11	12	13	14	15	
16	17	18	19	20	21	22	
23	24	25	26	27	28	29	
30							

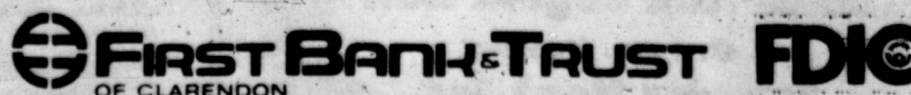
NOW YOU CAN SELECT THE MATURITY DATE FOR YOUR C.D.

The choice is yours. Select two weeks from the date of deposit, or up to five years. New legislation pertaining to banks now allows you to select the exact date of maturity on Certificates of Deposit.

Minimum requirements are 14 days for deposits of \$100,000 or more and 32 days or longer on smaller deposits. (Penalty for early withdrawal.)

Obtain Money Market rates on CD's with a minimum deposit of \$1,000.

All deposits insured to \$100,000 by the FDIC and your money stays in Clarendon.



Chamber of Commerce needs you

During WWII, there was a poster with a picture of Uncle Sam with his finger pointing at you with a caption which read, "I Want You." The Chamber of Commerce not only wants you but needs you.

There are 16 directors on the Chamber Board. Every business has been listed and all of the individuals have been divided among the 16 directors. Each director has been assigned a specific job, and the director will ask the people in their zone to help them complete that project.

When a director calls on you, please help. It will take everyone working together for the Chamber to complete these projects.

The *beside business names notes that these businesses DO NOT belong to the Chamber. All of the individuals listed are members of the Chamber. If you have not been contacted and would like to join the Chamber, please call 874-2421 which is the Chamber phone, and ask to be signed up.

Directors, their project and zone members are:

Zone 1, Helen Woody, Publicity. *Bailey Estes and Son, Pete Riley Station, Donley County Farmers Coop, Braddock Garage, *Yankies, *Center Plains Grain, Chamberlain Motor Company, North American Supply, Clarendon Veterinary Service, *Price Super Save, Fred Clifford, Reynolds Machine and Supply, Judy's Saw and Sew, Katherine's Katering.

Zone 2, Jim Sharrar, Decorations. R.J.'s Cafe, Hill's Petroleum, West Texas Gas, Dr. Gilkey, White's Feed and Seed, *Steve Richerson, Sandi's Shear Elegance, *Terry's Conoco, Evan's Fertilizer, Bill Hodges, *John Garner Real Estate, *Tillie's Art Studio.

Zone 3, Betty Muse, Banquets. Mack's Garage, J&W Lumber, Wallace Monument, Harlan's Flowers, Petty's Texaco, Alexander Used Cars, Donley County State Bank, *Jerry Lohoefer Apartments, *Riggs Farm and Ranch Supply, Don Stone Signs, Ladies Health Hangout.

Zone 4, Bronnie McNabb, Industrial. First Bank & Trust, Mike Sanders, Cable TV, The Clarendon Press, Judy's Hair Design, Germania Insurance, Clarendon Office Supply, Mulkey Theatre, *James Owens Boot Shop, Clarendon Auto Supply, The Grocery Store, *McKinney's Beauty Shop, Sue Howard, Jimmy Garland Real Estate.

Zone 5, Darrell Leffew, Trash - Clean up. Bivens Pharmacy, Knopp Insurance, Clarendon Manufacturing, Richard Maxey, Luttrell Welding, Eddie Floyd's Shop, Floyd's Automotive Supply, Wichita Coke Company, Mary's Country Kitchen, Buster's Exxon, Art Studio, Dr. Bentley.

Zone 6, David Davidson, Softball. Kidd's Texaco, Cornell Shell, Cornell Real Estate, Mays 66, It'll Do Motel, Coronado Motel, *Handy Hut, Gibson's Discount Center, Robert's Meat Market, Mike's Pharmacy, Trailways Bus Agency-Western Union, Dr. Howell.

New Arrivals

Melissa Ann McAnear

Mike and Becky McAnear are proud to announce the birth of their daughter Melissa Ann, born January 23, 1985 in Northwest Texas Hospital, Amarillo. The young lady weighed 8 pounds and was 21 inches long.

Proud grandparents are Fed and Jean McAnear.

Brandon Junior Putman

Terry and Cindy Putman are more than happy to announce the arrival of Brandon Junior Putman, born February 21 at 6:28 a.m. Brandon weighed 8 pounds 3 ounces and was 20 1/2 inches tall. Brandon was born on Okinawa Japan.

Proud grandparents are Norma and Junior Putman of Clarendon and James and Helen Shock of Albuquerque, N.M.

Deirdre Danielle Campbell

Mike and Deanna Campbell, of Claude are the proud parents of a little baby girl, Deirdra Danielle. She was born in Memphis, Texas at Hall County Hospital on Tuesday, January 29, 1985 at 6:53 p.m. She weighed 5 pounds 15 1/2 ounces and was 19 inches long. Deirdre was welcomed home by her proud big brother, Micah McCray who is 4 1/2 years old.

Grandparents are Max and Betty Baird of Goodnight and Luther and Dorothy Brown of Claude. Great-grandmothers are Vista Baird and Annie Browne of Amarillo and Suvania Sanders of Claude.

Letter to the Editor

City Mayor and City Aldermen:
In regard to keeping our city clean, we home owners on Hwy 70 South have a problem and I think a solution we catch all refuse that falls off vehicles going to the city dump. My solution: Pass a ruling all trash be tarped or bagged. Drive slowly, watch load if any falls pick it up.

Thanks,
Marie McCracken

Letter to the Editor

In the early 1900s a Thomas Mansfield Little moved to Clarendon and Donley County. According to information that I have, his mother, Amanda C. Taylor, died in Clarendon 27 June 1916.

I wonder if there is some one or an organization in Donley County that could tell me something about this family.

I will appreciate any help or information you can give me about the availability of information about the history of that area. Thomas Mansfield was born in Rusk County in 1859.

Thank you for your help.

Yours truly,
William A. Little
1215 Frances Drive
Rosenberg, Texas 77471



Playwright George Bernard Shaw was a vegetarian for "aesthetic and hygienic reasons." He never weighed more than 128 pounds.

Zone 7, Shirley Clifford, Shop in Clarendon. Clark's Restaurant, McKinney's Auto, *Kerr-McGee, *Allsup's *Shelby Bell Real Estate, Farm Bureau, *Greenbelt Motel, Western Skies Motel, Dairy Queen, J.F. Hommel, *Frank's Barber Shop, *Bright's Auto Service.

Zone 8, Owen Johnson, Decorations. Mr. Burger, Billy Ray Johnston, *Barney's Marine, Syd Blues Discount Liquors, Nuggett Too, *Johnson's Oasis, Jack and Genella Eads, Mooring Bait and Tackle, Patton's Landing, *The Canteen, Southland Properties, Greenbelt Water Authority, Doll Douthit.

Zone 9, Jemi Simmons, Welcome Wagon. Robertson Funeral Directors, *Pat Robertson Funeral Director, Alderson Chevrolet, Floyd's Muffler Shop, Butch and Debbie Blackburn, Doug and Rosie Wright, Jimmy Thompson, IGA Foodliner, Lowe and Courtney, Bob Bell Insurance - Donley County Abstract, Clyde Price Real Estate, GTE, Charles SoRelle, Billie Christal, P.C. Messer, W.W. Lovelady, Hall's Bookkeeping.

Zone 10, Jimmy McElroy, Banners. James F. Hayes, Greene Dry Goods, Osborn Furniture, Stavenhagen Furniture, *Phelps Barber Shop, The Nook, Salem II, Sandra's Custom Draperies, Simmons Insurance, Morris Bookkeeping, Guys and Dolls, *Gary's Saddle Shop, Newhouse Insurance, Slavin Law Firm (Clyde), Treasure Chest, and West Texas Utilities.

Zone 11, Larry Mabry, Recognition. Bob and Pat McCombs, Ronald Gooch, *Steve's Auto, Clarendon Hatchery, Lone Star Gas, Clarendon Cleaners, *Ray's Appliance, Henson's, Saye's, Family Recreation Center.

Zone 12, Ron McDaniel, Junior chamber/Street Signs. *Ashcraft Repair, Davis Body Shop, Circle C, Mobile Park, *Clarendon Glass, Texas Saddlery, Clarendon Milk Company, *Fred's Electric, *Morrow Redi Mix, *Junior Putman, *Jack Owens, *Bud Hermesmyer, *Sanders Real Estate, *David Lane, Estlack Electric, H&S Construction, Stay and Play Nursery, Ariola Catfish Farm, Bill and Patty Craft.

Zone 13, Jerry Chambliss, Jobs for Youth. Mae Pearl Fabrics, *Phillips Plumbing, Denise's Cloth Shop, *S&K Hobby Shop, Libba's Beauty Shop, Janie's Beauty Shop, *Pro Shop, Barry Phillips Construction, *Carroll Cole, *Fed McAnear, *Don Smith Bookkeeping, Hochheim Prairie Farm Insurance, *Dale Robinson, Mary Kay Cosmetics - Loyette Quesenberry, Jerry Hawkins, Kenneth Vaughan, Virginia James, Tex Selvidge, Jeff Walker, Joe and Jeanne Mondragon.

Zone 14, Billie Schaffer, Zell SoRelle, R.E. Drennan, Mary Hazel VanZandt, James Gould, Bill and Nova Mooring, Eureka Mays, Robbie Hill, Billy Goodman, A.J. and Minnie Belle Hicks, Sherman and Barbara Cosper.

Zone 15, Patsy Leffew. Don and Carol Hinton, Bobby and Betty Boston, Frieda Gray, Sandra Eads, Betty Phillips, Rick and Fuzz Mooring, Tommy Noble, Alan and Pam Fletcher, Irene Gerner, David and Diane Mooring.

Zone 16, Ricci Tunnell, Holiday Sales. Pat and Steve Allen, Stacy Mooring, Paulette Kidd, Ethie Utegrove, Mable Dean Porter, Bob and Paula Hayworth, Shirley Wise, Ray and Kitty Proctor, Mike and Rhonda Newhouse, Betty Veach, Firebelles.

The following are members of the Chamber of Commerce but have not been assigned to a zone: Ed Hammond Construction, Greenbelt Electric, Watson Electric, Phebe Ann Buntin, Leona Henson, Mrs. Frank Phelps, Jean Baten, Richard and Lana Bell, Keith and Trish Floyd, Horace Green, Ernie and Beth Johnston, Brack and Choella LaGrone, Mike Spier, and Bob Trout.

The Lion's Tale

by Gene Alderson

The Clarendon Lions Club held its regular meeting at noon on Tuesday at the Lions Hall. Twenty-five members, one new member and five guests were present. Following the regular opening ceremony, Liontamer Messer introduced former Boss Lion Dennis Rattan of Mabank, Texas, guest of Lion Rick Rattan, Keith Williams, a warehouseman from Amarillo, guest of Lion Allen Estlack, Wayne Chambliss, guest of Lion Jerry Chambliss, and Marty Hammond, guest of Lion Ed Hammond. Boss Lion Lovelady presented a membership application from Gary Skinner of Skinner Enterprises, Inc. Homer Estlack was the sponsoring Lion. The application was unanimously approved. Welcome Gary! Following several announcements by the Boss Lion, Program Chairman Don Smith introduced Clarendon College basketball player Toby Tischler of Dimmitt and Glynis Whitfield of Bessemer, Alabama. They informed us that the girls basketball team boasts a record of 19 wins and 6 losses. They have already earned a spot on the regional tournament and that their final home game will be this Thursday night at the Clarendon College gym at 6:00 p.m. The community is urged to be there to lend their support and encouragement. As for Lions Club members, it is rumored that the Tail Twister may be inquiring at our next meeting as to which Lions were not in attendance at the game.

New Cars

Purchased from Chamberlain Motor Company
1985 GMC PU by Barbara Dowdell, Amarillo.
1985 Olds by Lorene Collard, Amarillo.

1985 Buick by Jack D. Jones, Amarillo.
1985 Olds by Ella Mae Daberry, Shamrock.

1985 Cadillac by Corine Trimble, McLean.
1985 GMC PU by H.D. Lowrey, Groom.

1985 Buick by Phyllis Meeks, Pampa.
1985 Buick by Stan Goldstein, Amarillo.

1984 Pontiac by Geline Porter, Clarendon.
1985 Buick by Max Caraway, Pampa.

Purchased from Alderson Chevrolet
1985 Chevrolet pickup by David A. Davidson, Clarendon.
1985 Chevrolet pickup by Zoy Gunter, Jr., Pampa.

Ashtola Martin News

by NAOMI GREEN

Frank Cannon, formerly of Martin community, lost his wife, Mary, daughter of Hawley Harrison of the Chamberlain community in a car accident near Austin this week. Their daughter was injured in the same accident. Services will be at Martin Baptist Church at 2:00 Thursday. The family will be served lunch at 12:00 at the Church on Thursday. Graveside services will be at Citizen Cemetery in Clarendon. Services will be held at Navasota Wednesday. Our sympathy is extended to the Harrison and Cannon families.

Mayon Johnston of Las Cruces, New Mexico and his sister Melba Risley and a cousin V.W. Byrd of Santa Fe helped the Shadle families celebrate all of the January and February birthdays Sunday at the Tom Shadle home. Cheryl, Caressa and Jeremy Hand of Canyon were here. Jeremy was one of the honorees with a January birthday. Lucille Koeninger and Ray Pittman of Amarillo celebrated February birthdays. Louise Shadle and Che Shadle of Clarendon were other February honorees. Others present were LaRue Pittman of Amarillo, Jim, Susie, and Tracy Shadle and the host Tom Shadle.

Patricia, Jerome, Elena and Jennifer Doerrie came from Booker Saturday afternoon to the H.A. Green home. Katherine, David, Clint, Lindsay and Christel, Mary and Jerry Green joined them for an early supper. Ellen Patterson, Stephanie and Tiffany were also on hand to enjoy visiting with those from far and near.

Mr. and Mrs. J.D. Wooten from Lelia Lake and Mr. and Mrs. Bill Bennett enjoyed Sunday evening supper at the home of Robert and Aline Partain.

H.A. Green and Kenneth Mathews attended the Board of Directors meeting of the Greenbelt Electric at Wellington Thursday afternoon. They were in attendance of the meeting Saturday when the new manager was selected.

Shirley and Larry Green of Canadian joined Beth and Charlotte Payne of Fritch and Lindsay for lunch at the H.A. Green home Sunday. Larry and Shirley went on to visit Shields at Goodnight that afternoon. Beth, Charlotte and Lindsay con-

ferred with Katherine and visited the children. Katherine is helping them plan the upcoming wedding March 16 at the Methodist Church at Clarendon.

Vici, Richard and Erin Naylor of Amarillo brought Duane Naylor from Thalia to meet Jonna Naylor of Amarillo at the H.A. Green home Sunday evening. Duane spent the night with Royce and Thelma Hall and took his mother home to seek medical attention. Alma Hall of Amarillo is staying with Royce. She gives a good report on the nurses helping with his care. We are all grateful to have these dedicated and skilled personnel in our community.

H.A. Green visited his father Joe Green at Canyon Sunday morning. Billy Jack of Umbarger joined them for business and visiting.

Ashtola benefit volleyball tournament is Thursday, Friday and Saturday beginning at 5 p.m. EVERYBODY COME.

Kathy and Danny Holland are the proud parents (or something) of three baby kittens. All three are grey and bobtail.

Thursday, Melba Risley attended quilting at the Ann Bunyan home. Mr. and Mrs. Lloyd Risley visited the Don Matherson's at Claude Friday night.

Ann Bunyan and Mrs. Tipton visited Naomi Green Thursday. They brought a Friendship Quilt to be given to Larry and Shirley who lost their home in a fire. They also brought a tacked comfort made by the Senior Citizens for Larry and Shirley.



The first flying trapeze act was performed by Jules Leotard at the Cirque Napoleon in Paris in 1859. He was immortalized as "That Daring Young Man On His Flying Trapeze."



Lard is the most caloric food - over 900 calories per 100 grams.



The earth travels around the sun at the speed of 1,100 miles a minute.

CROSS "S" EQUIPMENT

Road Building, Brush Clearing,
Conservation & Terracing
and Oil Field Locations

Kyle McWilliams, Pres.

Office 806-455-1421

MARTIN BAPTIST CHURCH
John Truitt, Pastor
Sunday School 10:00 a.m.
Church Service 11:00 a.m.
Evening Service 6:00 p.m.
Night Service Wednesday 7:00 p.m.

UNITED PENTECOSTAL CHURCH
Rev. Jerome A. Campbell
Montgomery & Baker St.
Sunday School 10:00 a.m.
Evening Worship 6:00 p.m.
Night Service Wednesday 7:30 p.m.

FIRST BAPTIST CHURCH
Dugbee & Third Streets
874-3833
Paul Hoff, Pastor
Sunday School 9:45 a.m.
Morning Worship 11:00 a.m.
Training Union 6:00 p.m.
Evening Worship 7:00 p.m.

FIRST BAPTIST CHURCH
Howardick
SBC
Bro. James Martindale
Sunday School 10:00 a.m.
Worship Service 11:00 a.m.
Evening Service 6:00 p.m.
Night Service Wednesday 7:30 p.m.

CHURCH OF CHRIST
4th & Carhart
Stan Quesenberry, Minister
Sunday School 9:30 a.m.
Morning Worship 10:30 a.m.
Evening Worship 6:00 p.m.
Night Service Wednesday 7:30 p.m.

ST. MARY'S CATHOLIC CHURCH
McClelland & Montgomery
Rev. J. Arnold Carlson
Sunday Morning Mass 9:30 a.m.

Eddie Floyd Shop

Osburn Furniture & Appliances, Inc.

Alderson Chevrolet Inc.

FIRST CHRISTIAN CHURCH
Sunday School 9:30
Worship 10:40
Children's Worship 10:40
Evening Study 6:00
Youth 6:00
Correspondence course available
[No charge].
Minister: Bruce Hoffmann
874-3218

PRESBYTERIAN CHURCH
4th & Parks
Dr. E.L. Manning, Pastor
Sunday School 10:00 a.m.
Morning Worship 11:00 a.m.
Youth Program 6:00 p.m.
Evening Worship 7:00 p.m.
Bible Study Tuesday 2:30 p.m.

CALVARY BAPTIST CHURCH
Hwy 287 & Jackson
874-3479
Gary L. Platon, Pastor
Sunday School 10:00 a.m.
Sunday Worship 11:00 a.m.
Bible Study 6:30 p.m.
Evening Worship 7:00 p.m.
Night Service Wednesday 7:30 p.m.

CHURCH OF THE NAZARENE
3rd & Hawley
874-2321
Bill Hodges, Pastor
Sunday School 9:45 a.m.
Morning Worship 11:00 a.m.
Evening Worship 6:00 p.m.
Night Service Wednesday 7:30 p.m.

ST. MARK BAPTIST CHURCH
Jefferson & Martindale
Albert Yarrowborough, Pastor
Sunday School 9:45 a.m.
Frothing 11:00 a.m.
Night Service 8:30 p.m.
Prayer Service 7:30 p.m.
Woman's Ministry 8:00 p.m.

FIRST UNITED METHODIST CHURCH
5th & Jefferson
874-3667
Wm. H. [Bill] Watson
Sunday School 9:45 a.m.
Morning Worship 11:00 a.m.
Evening Worship 6:00 p.m.
Youth Program 7:00 p.m.

ASSEMBLY OF GOD
5th & McClelland
Jude Strickland, Pastor
Sunday School 9:45 a.m.
Sunday Worship 11:00 a.m.
Evening Worship 6:30 p.m.
Bible Study Tuesday 2:30 p.m.
Women's Ministry 1:00 p.m.
Night Service Wednesday 7:30 p.m.

ST. JOHN THE BAPTIST EPISCOPAL CHURCH
Sunday School 9:45 a.m.
Holy Communion 11:00 a.m.

SHOW STARTS AT 7:00

MARCH 1985

MULKEY Theatre
CLARENDON, TEXAS
PHONE 874-2241

Friday-March 1-2
Saturday-March 3

DOUBLE FEATURE
on Friday and Saturday

STARMAN
JEFF ALLEN
JIMMY BROWN

Bottom Dollar Furniture & Variety

Highway 287 Claude, Texas

Proudly Presents

The Shiloh Creek Band

American Legion Hall
Groom, Texas
Saturday March 2nd.
8:00 - 12:00 P.M.


GIBSON'S
DISCOUNT CENTER
 Sunday 9 A.M. - 6 P.M.
 Monday - Saturday
 8:00 A.M. - 6:30 P.M.
 Clarendon, Texas

DOUBLE COUPON DAY

2 DAYS ONLY Thursday and Friday

All manufacturer's coupons 99¢ and under excluding tobacco and free coupons will be redeemed for **DOUBLE VALUE** Thursday and Friday only (Double value of coupon cannot exceed the value of the item) - One coupon per item please
 Double coupons not good on sale or ad items

Regular or Diet
PEPSI
\$1.67
 6 Pack Can



CRISCO
\$2.39
 3 Lbs




CRISCO OIL **\$1.69**
 32 Oz



Head **CAULIFLOWER** **69¢**
 S.K. Navel **ORANGES** **33¢** Lb
 Bunch **BROCCOLI** **59¢**
POTATOES
 No. 1 Russet **\$1.29** 10 lb Bag
 Yellow **ONIONS** Lb **15¢**



LETTUCE
37¢
 Head



Dairy Products

Borden's 12 Oz **COTTAGE CHEESE** **63¢**
 Borden's Qt. **ORANGE JUICE** **95¢**
 Borden's Round Ctn **ICE CREAM** 1/2 Gallon **\$1.55**
 TV Buttermilk 5 Ct [Limit] **BISCUITS** **10¢**



Extra Large **EGGS** Dozen **59¢**
 Gibson Low Fat Gal **MILK** **\$1.93**
 Borden's 8 Oz **DIPS** Asst. Flavor **2/\$1.00**



Frozen Foods

TV 12 Oz **ORANGE JUICE** **\$1.19**
 King's Hawaiian 12 Oz **ROLLS** **79¢**
 King's Hawaiian 16 Oz **BREAD** **\$1.29**
 Viasic Bread & Butter **PICKLES** 24 Oz **\$1.09**
 Del Monte Pitted **PRUNES** 12 Oz **97¢**
 Zesta 16 Oz Box **CRACKERS** **\$1.09**
PORK & BEANS 15 1/2 Oz **3/99¢**



Ruffle's Plain 7 1/2 Oz Bag Plain **POTATO CHIPS** **87¢**
 Kern 12 Oz **APRICOT NECTAR** **39¢**
 Velveeta Shell & **CHEESE DINNER** 12 Oz **\$1.17**
 38 Oz **WESSON OIL** **\$2.09**
 Galante 16 Oz **PICANTE SAUCE** **87¢**
 TV 17 Oz **APRICOT HALVES** **69¢**
 TV Sliced 16 oz **SLICED BEETS** **3/99¢**
 Carnation Non Dairy Creamer **COFFEE MATE** 16 Oz **\$1.87**



Armour's **TREET** Luncheon Meat **\$1.19** 12 Oz
PORK & BEANS 15 1/2 Oz **3/99¢**



AJAX Detergent 49 Oz **99¢**
 TV Bathroom **TISSUE** 4 Roll **87¢**
 Detergent **FRESH START** 20 Oz **\$1.19**
 Red & White Soft **LIGHT BULBS** 4 Pack **99¢**
 Bathroom Tissue **WHITE CLOUD** 4 Roll **\$1.23**



Lean and Meaty **SHORT RIBS** **\$1.08** Lb
 TV Brand **MEAT FRANKS** 12 Oz **78¢**
 Wilson's Beef or Regular **SMOKED SAUSAGE** **\$1.98** Lb

Swift **SIZZLEAN** 12 Oz **\$1.48**
CHICKEN STRIPS Tyson Boneless **\$12.00** 3 Lb Box

Combination **PORK CHOPS**
 2 Loin Ends, 2 Rib ends,
 -8 Center Cuts
\$1.48 Lb



USDA Choice Beef **RIB STEAK** **\$1.98** Lb
 Boston Butt **PORK ROAST** **\$1.38** Lb
 Center Cut **PORK CHOPS** **\$1.98** Lb

Detergent **TIDE**
\$1.97
 49 Oz



Watt's Happening in Hedley

By FEGGY WATT

At approximately 3:00 p.m. last Monday my grandmother, Mrs. Dovie Reynolds, died in Wellington General Hospital. Had she lived until April 18th, she would have been 91 years old. Married at 12, she raised several children and grandchildren. After having lived in and around Wellington for more than 50 years, she was known as 'Grannie' by everyone who knew her. She didn't have much formal education but was well read and kept up with current events until her eyesight failed. She read the bible extensively and had committed vast portions of it to memory and could quote almost any text. She could take almost nothing and prepare a banquet out of it. She enjoyed cooking cookies and cakes for her neighbors. She couldn't read crochet directions but could look at a picture and copy it and

make beautiful pieces of fancy work. I am fortunate enough to have been the recipient of several pieces of her work. Although she was almost blind and suffered from most of the ailments of the aged, she was always cheerful and loving whenever I visited her. I shall miss her. We've been getting some very welcome rain during the last few days. I'm looking forward to the time when the grass will be turning green. It's been warm, and if it remains so, the wild rye and winter weeds will start growing. It's also about time to order baby chickens. We got our order blank for them a few days ago. I enjoy baby chickens, but don't get acquainted with them because I know they're for the deep freeze and there's no way I'm going to eat anything I know personally. My men folks tend to the chickens at our house.

Todd Bailey has a new pickup. I asked him if he ever loaned it, and he told me he'd let me borrow it, he guessed. He's a good boy. I don't worry about my boys when they're with him. The thought entered my mind that it's a good thing he is like his mother, JoAnn, instead of his father. If you're familiar with what happened in Hedley about 20 or 25 years ago. You remember Terry!!! In last week's 'What's Happening' I stated that James and Carolyn Kirkland would celebrate their 13th wedding anniversary. That was wrong. It will be 30 years. I'm still trying to teach my typewriter to write English. Anyway, thirty is much nicer than 13. Congratulations Carolyn and James.

Giles is happy to welcome Edwin and Ethel Favor. They moved their mobile home onto the land formerly owned by C.H. Mullins. I understand they lived at Masterson before. Mrs. Favor is the sister of Bob Roland. I haven't met them, but if they're as nice as Bob and Jessie, I look forward to knowing them. Fred and I enjoyed an evening of dominoes with Red and Dean Hill recently. I might have mentioned this before, but the best neighbors in the world live at Giles.

I talked to Nookie Wiggins a few days ago and he told me that the ginning was done for the season. He said they ginned 2,684 bales during the season. 'That isn't very many, but it's more than was made last season. The early freeze that we had in September ruined a lot of cotton.

The immature boles were killed and those that were mature were damaged.

I just talked to Mrs. Sue Weatherly and she told me that the new units of the Housing Project would be ready for occupancy about the first of March and that three applications had been made for the apartments. They look nice and will really be pretty when the landscaping is finished.

Margaret Holland and Nancy Stephens recently returned from a trip to California where they visited with Margaret's sisters. They were met in San Diego by Mrs. Lorene Ferguson and drove up to Ventura where they attended a surprise birthday party for Mrs. Ruth Curtis. It was Mrs. Curtis' 75th birthday. I didn't ask who was the oldest, Mrs. Ferguson or Mrs. Curtis. I knew that they were both much older than Margaret.

Mrs. Evelyn Messer has been on the sick list. I talked to Doyle this morning and he said that she'd gone back to the doctor this morning. I know that her students miss her at school. One of my boys told me that they enjoyed Mrs. Shawna Monroe though.

O'Neill Weatherly told me that the City of Hedley will elect three councilmen in the April election. The incumbents are W.B. Wiggins, Otis Holland, and Murrell Whitaker. Deadline for filing is March 6th, so if you want to be on the ballot you'd better remember that date. Bill and Jo Bridges and Mary

Jefferies came down for awhile Sunday night. Fred and I had taken a young visitor home and missed them. I'm not even sure it was Mary with Bill and Jo. The boys were all home and they didn't remember what she looked like, but one of them mentioned a pretty lady and she's the only one I can think of that it could be.

Paula Clendennen and Nancy Burr of McLean visited with Opal and Tom Clendennen last week. Paula brought Opal some medicine for her hand and arm. She has an allergy.

Several Hedley folks paid their respect to the Taylor family by attending memorial services for Mr. Clifford Taylor. Among those I saw there were Mrs. Della Linville, Virgil and Opal McPherson, Raymond and Nora Hopper, and Dorothy Johnson.

Buford and Gerrie Holland treated Calvin Holland and Keith Watt to Saturday night's regional basketball games at Levelland. They got to watch the Nazareth girl's game. I appreciate the Hollands' interest in my boy. I offered to send his clothes to Darrell and Clara, but they said they thought five of their own was enough. Clara said he made a good guest, but that she thought she'd just let me keep him.

My Memphis kids treated mother and me to lunch at R.J.'s Monday. I visited with a very old friend there. I've known Alice Lancer since we were children and didn't know she's moved to Clarendon. She told me she'd lived here since August. Just goes to show how up to date I am about local things! Sometimes I think Helen should have called this column 'Watt Happened in Hedley'. I'm always the last person to know anything.

Pick and Laqueta Cox visited his father Paul Cox in the hospital in Paducah Sunday.

Jane Long visited in the Memphis Nursing Home Saturday. Hedley has several people living there!

School will be out for a spring break from March 4th through 8th. Classes will resume at 8:15 a.m. March 11th.

The Seniors will leave on their trip Friday. They will go to Corpus Christi where they might paraglide and deep sea fishing then back to San Antonio where they have tickets to see the San Antonio Spurs and 76'ers play basketball, eat on the river, tour the Alamo, tour and Lone Star brewery. NO SAMPLES! They'll be home on the 6th and be ready for classes on Monday, March 11th. Mrs. Mary Clubb and Mrs. Margaret Phelps will accompany the 1985 Seniors. The Seniors and Miss Springer want to express their appreciation to everyone for their help and support.

The Elementary classes are working getting ready for the UIL events at Clarendon on March 16th. Mrs. Wade, Mrs. Reynolds and Mrs. Woodard are working with the teachers. Those trying to win a place on a team are Kevin Johnson, Jennifer Hill and Danny Mullins-Music Memory; Chad Gilbert, Brannon Stephens, Steven Carson, and Amanda Ward-Picture Memory; Jennifer Hill, Tylene Bright, and Dean McCrary-Oral Reading; Curtis Neeley, Neal Taylor, Wade Gillespie, Bobo Wiggins-Number Sense; Tanya Holland, Marisol Andaverdi and April Bramblett-Spelling.

The cast for the one act play was picked by Mrs. Messer and Miss Springer. They will present "The Valiant" by Holworthy Holland and Robert Middleman, published by Baker's Plays. The cast is Father Dailey-Ben Clifford, Warden-Carl Cox, James Dyke-Thunder, Girl-Michelle Davis, Attendant and Jailer-Terry Moore. Competition will begin March 21 and 22 at CJC.

The Junior High will have several students entered in their events. Their names and events will be listed later. High School students entered are poetry interpretation-Ben Clifford, prose interpretation-Thunder Denton, spelling and plain writing-Karon Harmon and Debbie Clubb, typewriting-Kelley Harmon, Amy Shields and Stephanie Holland.

Students making the 4th six weeks honor roll are: High School A honor roll-Bobby Asher, Carl Cox, Thunder Denton, Karon Harmon, Craig Kennedy, Tonya Moore, Stephanie Holland, Gaylee Osborne, Ricky Springer, Carol Glover, Schell Holland, Anthony Carson, B Honor Roll-Ben Clifford, Debbie Clubb, Brent Hall, David Phelps, Shane White, Michelle Davis, Kelly Harmon, Calvin Holland, Terry Moore, Amy Shields, Gina Smith, Cindy Kirkpatrick, Steve Mullins, Amy Osborne, Tammy Osborne, Susan Phelps, John Shields, Tina Shields, Billy Clubb, Larissa Floyd.

Elementary A honor roll-David Neeley, Curtis Neeley, Rachel Woodard, Nancy Andaverdi, David Ward, Kari Glenn, Mandi White, Jana Hill, Amanda Ward, Shawna McCrary, Shanna McCrary and

Stephen Carson, B honor roll-Charlotte Holt, Shawn Johnson, Michelle Clubb, Jennifer Chapman, Jason Gilbert, Shannon Johnson, Tiffany Wilkinson, Isabel Ramirez, Brannon Stephens, Kevin Johnson, Chad Gilbert, Jennifer Hill, Tanya Holland, Wade Gillespie, Dean McCrary, Danny Mullins, Neal Taylor, Marisol Andaverdi, Susan Lee, April Bramblett, Christina Schwerter, Jason White, Dana Monroe, Rachel Chapman, and Isabel Andaverdi.

HEDLEY SCHOOL MENU

February 28-March 1
Thursday-Meat loaf, baked beans, new potatoes, hot rolls, peaches, milk.

Friday-Chili dogs, french fries, pickle relish and onions, cookies, milk.

I stopped by the Senior Citizens Center and Ruby Bardwell was getting ready to put a quilt in the frames. The ladies will do your quilting for you. They also make quilts and sell them. You can contact the Center at 856-3571.

HEDLEY SENIOR CITIZENS MENU

February 28-March 6

Thursday-Pork chops, green peas, macaroni-tomatoes, carrot-cabbage slaw, corn muffin, butter, pineapple cake, milk, juice, coffee, tea.

Friday-Steak with gravy, blackeyed peas; corn, lettuce-tomato salad, roll, wheat bread, butter, peach cobbler, milk, juice, coffee, tea.

Monday-ground beef with noodles, steamed cabbage, buttered carrots, pickled beet slices, corn muffin, butter, strawberry cake, milk, juice coffee, tea.

Tuesday-Roast beef with gravy, macaroni-cheese, spinach, green vegetable salad, corn muffin, butter, peach cobbler, milk, juice, coffee, tea.

Wednesday-Fried chicken, mashed potatoes, asparagus, carrot-raisin salad, roll, butter, chocolate cake, milk, juice, coffee, tea.

CARD OF THANKS

There aren't words enough to adequately express our gratitude for all the kindnesses shown to us during the death and funeral of our mother and grandmother, Mrs. Dovie Reynolds. We can only say thank you and may God's richest blessings be with every one of you.

Mrs. Lola Brown
T. and Nancy Mullins and boys
Fred and Peggy Watt and boys

1926 Book Club

1926 Book Club met Tuesday, February 19, at the Patching Club House. Hostesses were Hazel Monroe and Viola Bones. They served pecan pie, angel food cake with strawberries and whipped cream, candies and coffee.

After a brief business session, Oressa Delaney gave a book review. Her book was "Flying Free" by Dan True. It was most interesting. Members attending were Glenda Hawkins; Dorothy White, Dikki Howell, Rachel Butler, Mary Hazel VanZandt, Mary Thornberry, Jessie Adams, Oressa Delaney, Viola Bones, Hazel Monroe, Mary Beth Nelson, Frieda Tucker. Guests were Dee Dee Delaney, Dorothy Whitaker, and Murlie Butts.

\$100,000

Affordable Life Insurance:
Yearly Term - Guaranteed.
Renewable to age 80
Based on male - non smoker
AGE - FIRST YEAR COST

35 - 121.
40 - 150.
45 - 174.
50 - 237.
55 - 347.
60 - 570.

WESTERN NATIONAL
LIFE INSURANCE CO.
Maurice Raley, Agent
874-2284

Policy easily assigned to cover life requirements on loans.

MARY KAY COSMETICS

Loyette Quisenberry
874-2495

JoDee Mincey
874-3864


Cathie Jewett
874-2137

Kay Mabry
874-2659

Judy Cole
874-3470

Thomas Pump Service
Domestic and Irrigation
Clarendon, Texas 806-874-3814

HOLD ON TO YOUR HATS.



Be prepared for the unexpected. Secure your future with an IRA from Vernon Savings. An Individual Retirement Account will give you a tax-break now, and the taxes are deferred. Best of all, the rates that Vernon Savings pays prove that Vernon Savings does more than talk through their hats when it comes to serving you.

IRA Hotline
1-800-772-0877
OR
259-3577

10.75%
One Year Fixed Rate
Compounded Daily
Additions Allowed Without Extending Maturity

IRA

11.51%
Effective Yield

Minimum Opening Deposit \$100
Maximum Yearly Deposit \$2,000
(\$2250 with non-working spouse.)

Option: 18 month variable rate IRA
10.25%

All accounts insured to \$100,000 by FSLIC.
Penalty for early withdrawal. Rates subject to change.

VERNON SAVINGS & LOAN
MEMBER FSLIC

119 South 6th Street Memphis, Tx. 79245 (806) 259-3577
OTHER OFFICES
Vernon, Tx., Dallas, Tx., Childress, Tx., Paducah, Tx., Frederick, Ok.

YOUR BEST DEFENSE AGAINST DEPRECIATION AND INFLATION

When it comes to insurance protection for your personal possessions, Replacement Cost Coverage from USF&G Insurance is your best defense against depreciation and inflation.

Unlike your standard homeowners policy, USF&G Replacement Cost Coverage pays to replace your possessions with new ones if they're stolen, damaged or lost in a fire—without the usual deductions for depreciation, and at current market prices. And that can save you a lot of money. Call us or stop by to find out more.

15% Discount on Autos

35% Discount on Homeowners



NORPP Insurance Agency, Inc.
Clarendon, Texas

Bible Trivia Quiz

Who did the angel say would be a donkey of a man when born, whose hand would be against everyone?

Ether was queen over what land?

Fill in the blank in Jesus' sentence with one word: "For if you believed _____, you would believe me; for he wrote of me."

Who was the wife of Nabal, and later of David?

In the hierarchy of the Roman Catholic Church, which office is immediately above that of archbishop?

Which book contains the passage sometimes called the High Priestly Prayer?

Fill in the blank of Proverbs 13:12 with two words: "_____ maketh the heart sick; but when the desire cometh, it is a tree of life."

Last Weeks Answers

Coins [Ezra 6:29]
Sea of Galilee [Matt 14:22-34]
2 Thessalonians 2 [2 Thess 2:3]
Peter [Acts 10]
None
Jesus died [Matt 27:51]

The Great Commission
Compliments of
Osburn Furniture
Answers will appear in next weeks paper.

Lynn Cherry named Acting General Chairman

Appointed Acting General Chairman is Lynn Cherry, 55, who has served the System Board as senior vice general chairman since May 1971.

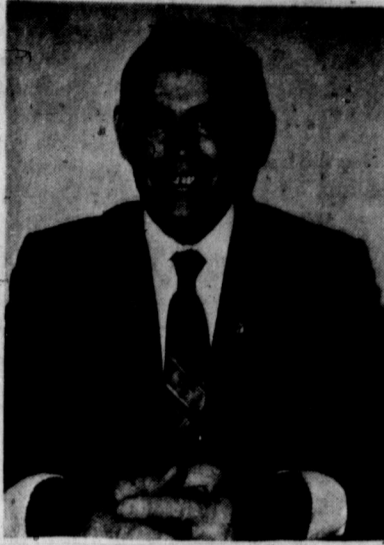
Beginning his rail career in 1948 at Amarillo, Texas, where he hired out with the Santa Fe, Brother Cherry joined Sy Land Lodge 396. Two years later, he interrupted his rail career with four years of duty in the U.S. Navy. Returning to the Santa Fe in 1954, he held a variety of jobs from clerk to warehouseman.

After serving Sy Land lodge as president, he was elected local

chairman in 1960 and then division chairman in 1961. After four years in that post, he was appointed an assistant to the vice general chairman in 1967.

Long active in the Lions Club, he served most recently as District Governor of Lions International and directed the activities of more than 70 local groups. He is also a board member of the E.B.A. Memorial Hospital in Topeka, Kansas.

Brother Cherry and his wife, Gennielee, have two children and five grandchildren.



LYNN CHERRY

FOOD IDEAS for all seasons

CONVENIENT CANNED SALMON

Salmon and Vegetable Stir-Fry is a quick, delicious entrée that's easy to prepare with canned salmon from Alaska. Cherry tomatoes, chunks of salmon and asparagus or broccoli make this a colorful dish with lively flavor.

Versatile canned salmon can be creatively added to souffles, casseroles and hearty main dish sandwiches. Easy to have on hand, canned salmon is a nutritious addition to meals.

SALMON AND VEGETABLE STIR-FRY

- 1 can (7-1/2 or 7-3/4 oz.) salmon
 - 1 cup fresh or frozen, thawed asparagus, cut into 1-inch pieces*
 - 1/2 cup green pepper, cut into 3/4-inch squares
 - 1/4 cup each sliced mushrooms and water chestnuts
 - 1 clove garlic, minced
 - 1 tablespoon oil
 - 3/4 cup chicken broth
 - 1 tablespoon cornstarch
 - 6 cherry tomatoes, halved
 - Hot cooked rice
- Drain salmon, reserving liquid; break into large chunks. Stir-fry asparagus, green pepper, mushrooms, water chestnuts and garlic in oil 1 minute. Combine reserved salmon liquid and chicken broth; gradually blend into cornstarch. Stir broth mixture into vegetables; cook and stir until thickened. Gently stir in salmon; cover and simmer 3 minutes or until thoroughly heated. Stir in tomatoes. Serve over rice. Makes 3 or 4 servings.
- *One cup fresh or frozen, thawed broccoli can be substituted.



The first person to swim the English Channel was Capt. Matthew Webb, an Englishman, who completed the feat in 21 3/4 hours.



The first Gideon bibles appeared in hotel rooms in November 1908.

Denise's Cloth Shop

Open

9:00 A.M. - 5:00 P.M.

Closed Sun. & Tues.

Just came back from market. Come by and browse.

874-2846

418 S. Goodnight

From The PEN of PASTOR PINION



To determine whether a church is sound in doctrine and practice, I would like to suggest several questions that should be asked to the pastor and/or the leaders of the church (Sunday school teachers, etc.).

Are ALL of the Words in the Bible God's Words? Is the Bible totally and completely true and without any errors or mistakes? (See II Timothy 3:16, 17).

Did God make the world and everything in it including man in six actual days--resting on the seventh? (See Genesis 1:23.)

Was Jesus Christ miraculously conceived by the Holy Spirit and actually born of a virgin? (See Matthew 1:18-25 and Luke 1:26-38.)

Is Jesus Christ God? (See John 1:1, 14; 10:30; and 14:7-9.)

Was it necessary for the Lord Jesus to die on the cross and shed His blood to pay for man's sin? (See Hebrews 9:22.)

Did the Lord Jesus actually arise from the dead, coming out of the tomb BODILY on the third day (not just in Spirit)? (See Luke 24:36-45)

Are Heaven and Hell real places with Heaven having streets of gold and Hell being a place of torment with real flames which will burn forever? (See Revelation 20: 10-15 and 21:21)

If a person dies without being born again by believing and receiving Christ as Saviour, will he burn forever in Hell? (See John 14:6; Revelation 20:10-15 and Mark 9:42-48)

Can a person be saved by faith in Jesus Christ ALONE without adding baptism, good works, church membership, etc. to his faith? (See Ephesians 2:8,9; Titus 3:5; and John 14:6)

Even though a person can be saved without these things should he be baptized, join a church, and do good works once he is saved? (See Matthew 28:18-20; Hebrews 10:2;25 and Ephesians 2:10)

Once a person has been saved by trusting Jesus Christ is he saved forever even though he may sin and fall sometimes? (See John 6:37 and 10:27-29)

Will Jesus Christ take all of His saved people out of the world before the seven year time of great trouble when the Anti-Christ will rule over the world? (See I Thessalonians 4:13-18 and II Thessalonians 2:1-12)

Do you believe that after this seven years, the Lord Jesus will come back to earth with His people, put down all wickedness and rule and reign over the earth for 1000 years? (See Revelation 20:1-6)

If there is agreement with all of these truths, do all of the denominations, associations, fellowships or conventions the church is affiliated with hold to them, teach them in their schools, etc? (See Amos 3:3)

If a church is sound doctrinally, all of these questions will be answered with a strong "YES". There are a few other questions which should be answered with a definite "NO" and we will cover these next week.

Mardi Gras coming March 23

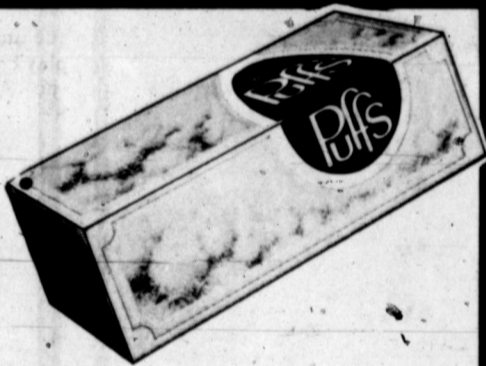


2 Liter bottles
Cokes
\$ **1** 09



Tampax
40's
\$ **3** 59

Puffs



175 count
\$ **77** ¢

Slathers in Shell

Sunflower Seeds

\$ **3** for **1** 00

Faberge Organics

Shampoo

\$ **1** 59

Salads N Such Special

Monday Spaghetti w/meat sauce Small Salad Garlic Bread \$2.99	Thursday Pork Chops w/corn on the cob Salad Bar \$2.99
Tuesday Baked Stuffed Potato Salad Bar \$2.49	Friday Chili \$2.99
Wednesday Baked Chicken w/rice Salad Bar \$2.99	Daily 2 Enchiladas \$2.00 \$2.19

FREE

WHEN YOU BUY TWO SPECIALLY MARKED

LIQUID IVORY SOAP 9 OZ.

Crest 8.2oz.



\$ **4** 49

BIVENS PHARMACY

Elmonette and Paul Bivens

Two Registered Pharmacists To Serve You



Free Delivery

Drive-Up Window

Taxing Unit 1984	Tax Value	Tax Levy	Tax Rate/\$100
ARMSTRONG CAD			
Claude ISD	74,306,070	440,946	.610
City of Claude	19,428,160	94,460	.4862
Armstrong County	83,888,780	228,580	.2733
Panhandle Water Dist.	825,860	35	.0043
Hi Plains Water Dist.	5,399,320	388	.0072
BRISCOE CAD			
Silverton ISD	61,578,668	449,352	.74
City of Quitaque	9,510,446	16,548+	.174 (83)
City of Silverton	16,461,207	33,087+	.201 (83)
Briscoe County	90,677,697	326,440	.36
MacKenzie Water Auth.	16,461,207	41,129	.25
CARSON CAD			
Groom ISD	62,496,981	750,055	1.22
Panhandle ISD	376,354,539	2,142,822	.57
White Deer ISD	441,797,740	2,559,963	.58
City of Groom	10,477,057	83,816+	.80 (83)
City of Panhandle	40,195,021	213,033+	.53 (83)
City of Skellytown	6,681,650	13,530+	.45 (83)
City of White Deer	21,999,086		
Carson County	843,942,590	1,469,304	.1741
Water Cons. #3	615,280,699	26,457	.0043
CHILDRESS CAD			
Childress ISD	93,719,195	724,380	.80
City of Childress	64,909,708	324,549	.50
Childress County	120,151,801	468,592	.39
Childress Gen. Hosp.	117,104,341	117,104	.10
COLLINGSWORTH CAD			
Hedley ISD	3,209,135	21,918	.683
Samnorwood ISD	44,303,242	376,319	.85
Wellington ISD	61,283,204	630,321	1.06
City of Dodson	1,620,180		
City of Wellington	27,633,410	69,084	.25
Collingsworth Co.	120,191,256	550,786	.46
Collingsworth Hosp.	124,366,214	298,478	.24
COTTLE CAL.			
Paducah ISD	89,323,190	863,160	.97
City of Paducah	29,177,276	72,943+	.25 (83)
Cottle County	98,867,331	583,317	.59
GRAY CAD			
Alanreed ISD	36,121,546	213,053	.59
Lefors ISD	146,158,699	873,794	.60
McLean ISD	78,813,050	763,367	.98
Pampa ISD	857,777,744	5,909,799	.70
City of McLean	12,430,134	32,940+	.265 (83)
City of Pampa	329,814,035	2,018,462+	.612 (83)
City of Lefors	7,440,685		
Grandview-Hopkins ISD	160,545,675	281,372	.17526
Gray County	1,338,192,169	2,967,163	.222
HALL CAD			
Estelline ISD	13,511,462	116,763	.87
Lakeview ISD	15,824,111	120,274	.767
Memphis ISD	57,480,000	535,322	.95
Turkey-Quitaque ISD	32,913,034	274,333	.85
City of Estelline	1,676,280		
City of Lakeview	2,309,266		
City of Memphis	49,525,563	222,865	.45
City of Turkey	7,328,601		
Hall County	117,390,881	539,998	.46
MOTLEY CAD			
Motley County ISD	46,243,830	259,566	.561
City of Matador	6,880,480		
City Roaring Springs	1,897,130		
Motley County	49,515,084	287,187	.58
Motley Co. Hosp. Dist.	47,523,794	47,524	.10
WHEELER CAD			
Briscoe ISD	381,609,475	763,103	.20
Allison ISD	289,650,892	615,457	.2125
Kelton ISD	140,202,990	655,321	.4676
Lela ISD	19,095,590	150,617	.79
Mobeetie ISD	68,359,920	491,666	.72
Shamrock ISD	167,949,134	1,331,188	.80
Wheeler ISD	199,265,240	1,106,091	.5562
Town of Mobeetie	2,062,681	13,407	.65
City of Shamrock	34,448,065	192,913	.56
City of Wheeler	26,360,873	131,803	.50
Wheeler County	1,028,145,706	1,516,514	.1475
DONLEY CAD			
Clarendon ISD	83,690,100	459,395	.56299
Hedley ISD	15,347,520	103,270	.683
City of Clarendon	33,769,890	137,930	.40844
City of Hedley	4,159,940	8,590	.2065
Donley County	107,134,200	348,925	.32569
Donley Co. Hosp.	105,536,090	174,135	.165
Clarendon College	105,536,090	178,345	.16899

THEN NOW!

The fuel efficient passenger cars of the 1980s owe much, say experts, to automotive advances of the racing world of the 1920's and 1930's.



Then: Fifty years ago, it was not uncommon for an average motorist to use a quart of oil for every five or ten gallons of fuel—passenger cars just leaked oil. Racing cars were even worse—cars in the Indianapolis 500 in the mid 1930's used as much as six gallons of oil during the course of the race. The racers soon developed better systems of oil sealing and the benefits were quickly shared with the motoring public. Other racing-based improvements took many years before they were adopted for passenger car use. For example, methanol as a motor fuel has been popular with racers for nearly 60 years. A car

builder named Leon Duray experimented with methanol blends in the 1920s. Methanol came to be considered the best racing fuel—it delivers high



octane and engines can run cooler.

Now: Today, all Indy cars burn pure methanol and a growing number of American motorists are fueling their cars with methanol blend. One blend, produced by ARCO Chemical Company, was selected to power the Pontiac Fiero pace car at the 1984 Indianapolis 500. Called OXINOL[®] octane enhancer, it's a mixture of equal parts of methanol and cosolvent, gasoline-grade tertiary butyl alcohol. It's been found to perform well under all conditions. It's now available to motorists in Pennsylvania and New York.

Chamberlain MOTOR COMPANY

HIGHWAY 287 CLARENDON, TEXAS
BUICK • OLDSMOBILE
PONTIAC • CADILLAC • GMC TRUCKS

DARELL HARPER
Home 874-3687
Clarendon, Texas

Clarendon (806) 874-3527
Amarillo 376-9041
Texas (800) 692-4088

Mary's Country Kitchen
Fresh Water Catfish with
Fries, Salad, & Hushpuppies
Friday Night **\$5.55** After 6:00 P.M.
Seconds Available

**WANTED
1 HOME
TO APPLY
STEEL SIDING
SOFFIT & FACIA
MADE BY
Alside Corporation
FOR ADVERTISING PURPOSES.
FULLY WARRANTED**

Hurry And Send Coupon Below For Details
You Will Never Paint Again
Complete Insulation Included

★ NO GIMMICS ★
CUT AND MAIL COUPON TODAY - NO OBLIGATION.

JEFF'S CONSTRUCTION
1129 Sandalwood
Pampa, Texas

Call Collect (806) 665-4893
Pampa, Texas
8 Years Experience
Financing Available

ATTENTION: Jeff McCormick
GENTLEMEN: UNDER NO OBLIGATION PLEASE CONTACT

NAME _____
ADDRESS _____
CITY _____ STATE _____
BEST TIME TO CONTACT _____ A.M. _____ P.M.
OTHER _____ PHONE _____
MAIL COUPON TODAY

Ever-Popular Peanut Butter Featured In Kid-Pleasing Snack

If after-school snacks become predictable and unexciting, then plan to serve a guaranteed kid-pleaser—Peanutty Jumbos. This easy-to-make, frosted treat features a peanut butter-graham cracker filling surrounded by a tender, flaky biscuit. Served with a glass of milk, Peanutty Jumbos make a great change-of-pace snack for active youngsters.

PEANUTTY JUMBOS

- 3/4 cup powdered sugar
- 1/2 cup graham cracker crumbs
- 1/4 cup peanut butter
- 2 tablespoons margarine or butter, melted
- 1 tablespoon milk
- 2 (10-oz.) cans Hungry Jack refrigerated flaky biscuits

FROSTING

- 1 cup powdered sugar
- 4 teaspoons peanut butter
- 4 teaspoons margarine or butter, softened
- 3 to 4 teaspoons milk
- 2 tablespoons finely chopped peanuts

Heat oven to 375°F. Lightly grease 2 cookie sheets. In small bowl, combine powdered sugar, graham cracker crumbs, peanut butter, margarine and milk; blend well. Separate dough into 20 biscuits. On prepared cookie sheets, press or roll 10 biscuits to 4-inch circles. Gently pat 1 rounded tablespoonful of graham cracker mixture over center of each circle. Press or roll remaining 10 biscuits to 4-inch circles. Place each over filling. Press edges with fork to seal.

Bake at 375°F. for 11 to 18 minutes or until golden brown. Remove from cookie sheets; cool. In small bowl, blend all frosting ingredients except peanuts until smooth. Spread over rolls; sprinkle with peanuts. 10 rolls.

All remaining Fall and Winter
MERCHANDISE MUST GO!

Men's reduced **50% to 60%**
Women's reduced **60% to 75%**

THE NOOK



MRS. JOEL HODGES

Kari Allen and Joel Hodges exchange Nuptial Vows

In a service held Friday evening, February 1, 1985 at the First United Methodist Church, Clarendon, Texas, Miss Kari D'Lea Allen, daughter of Mrs. Donna Allen of Clarendon and Mr. Jerry Allen of McAllen, Texas became the bride of Mr. Joel Don Hodges, son of Rev. and Mrs. Bill Hodges of Clarendon. The double-ring ceremony was read by Rev. Hodges, pastor of the Church of the Nazarene.

Vows were exchanged against a background of blue Cathedral candles in wrought iron candelabra accented by blue bows and Boston fern. Tapers were lighted by Miss Kim Hodges, sister of the groom and Roger Estlack, cousin of the bride. Miss Kim Sharrar presided at the registrar.

Mrs. Patrick Robertson, organist, played a nuptial prelude and accompanied Miss Sheri Chamberlain as she sang "This Is Love." The traditional wedding marches were used.

The bride was escorted to the altar and given in marriage by her grandfather, Mr. Homer Estlack of Clarendon. She wore a gown of ivory silk organza over cloud mist taffeta. The fitted bodice featured a scalloped neckline of Alencon lace accented by butterfly sequins and seed pearls. The full skirt was fashioned with a front panel outlined by applique lace, sequins, and pearls and flowed into a chapel train. Her fingertip veil of silk illusion fell

from a Juliet cap of lace highlighted by seed pearls. She carried a colonial bouquet of baby blue French carnations with stephanotis and English ivy. Streamers were of ivory lace and satin ribbon.

Attending the bride were Miss Kyndle Logan, maid of honor; Miss Gwen Bohanon and Miss Kadee Hodges, sister of the groom, bridesmaids. Their ivory colored dresses were identically styled and featured a boat-shaped neckline and full capped short sleeves. The slim skirt was accented by a double ruffle draped at the waistline. Pearl buttons ornamented the shoulder and sleeves. Each attendant carried a blue, long stemmed carnation with ivory ribbon and bow.

Attending the groom as best man was Jake LaGrone. Groomsmen were Marcus Smith and Kyle Allen, brother of the bride. Ushers were Steven Weaver and Kelly Teal of Amarillo, cousins of the groom.

Flower girl was Mary Elizabeth Hodges, sister of the groom. Ring bearer was Russell Estlack, cousin of the bride.

Immediately following the ceremony, the bridal couple was honored at a reception in Fellowship Hall.

The serving table was laid with an ivory linen cloth and was centered with the bride's bouquet surrounded by brass candelabra. Appointments were crystal. The tiered wedding cake was topped with blue wedding bells and accented by blue roses.

Miss Debra Sava of Canyon served the cake while Miss Chamberlain and Miss Sharrar dispensed punch. Members of the houseparty were Mesdames Bob Bell, Otis Bohanon, Will Chamberlain, and Allen Estlack, aunt of the bride.

The couple will be at home in Clarendon where the bride and groom are attending Clarendon High School.

Out-of-town guests attending the wedding included Mr. and Mrs. W.R. Teal, Mr. and Mrs. Bill Teal and family; Mr. and Mrs. Wayne Weaver and family, Mr. and Mrs. Darrell Dewey and family, and Tim Foster, all of Amarillo, Mr. and Mrs. Wamon Foster of Hart, and Debra Sava of Canyon.

Rev. and Mrs. Bill Hodges, parents of the groom, hosted the rehearsal dinner at Church of the Nazarene Fellowship Hall Thursday evening, January 31. Tables were laid with white cloths and accented by blue and apricot floral arrangements. Approximately twenty-five attended.

CREATIVE MAIN DISHES FOR CLOCK WATCHERS

Mexicali Beef and Vegetable Soup
1 pound ground beef
1 medium onion, chopped
4 cups water
1 can (16 ounces) whole tomatoes, broken up
1 package Hamburger Helper mix for chili tomato
1 teaspoon chili powder
1/2 teaspoon ground cumin

2 dashes red pepper sauce, if desired
1 medium zucchini, thinly sliced and slices cut into halves
Gently shape ground beef into 16 meatballs. Cook and stir meatballs and onion in Dutch oven until brown; drain. Stir in water, tomatoes (with liquid), Sauce Mix, chili powder, cumin and pepper sauce. Heat to boiling, stirring constantly. Reduce heat; cover and simmer, stirring occasionally, 10 minutes. Stir in Macaroni and zucchini. Cover and cook 10 minutes longer. 4 servings.

High Altitude Directions (3500 to 6500 feet): Stir in Macaroni with the Sauce Mix.

Spinach Lasagne
1 package (10 ounces) frozen chopped spinach
1 pound ground beef
1 small clove garlic, finely chopped, or 1/4 teaspoon garlic powder, if desired
1 package Hamburger Helper mix for lasagne
3 cups hot water
1 cup shredded mozzarella cheese (4 ounces)

1/2 cup creamed cottage cheese (small curd)
1/4 cup grated Parmesan cheese

Heat oven to 375°. Rinse frozen spinach under running cold water to separate; drain thoroughly. Cook and stir ground beef and garlic in 10-inch skillet until beef is light brown; drain. Mix beef mixture, spinach, Noodles, Sauce Mix and water in ungreased 2-quart casserole or rectangular baking dish, 12x7 1/2 x2 inches. Mix cheeses; sprinkle over top. Bake uncovered until top is golden brown and sauce is bubbly, 40 to 50 minutes. 6 servings.

High Altitude Directions (3500 to 6500 feet): Increase water to 3 1/2 cups. Mix beef mixture, spinach, Noodles, Sauce Mix and water in ungreased 2-quart casserole or rectangular baking dish, 12x7 1/2 x2 inches. Cover and bake 30 minutes; sprinkle with cheese mixture. Bake uncovered until top is golden brown and sauce is bubbly; about 20 minutes longer.



It has been estimated that about 2.5 billion copies of the Bible have been sold in the world since 1816.



The small metal hoop on a lamp that supports the shade is called a harp.



During a lifetime, the average human heart beats 2.5 billion times.

MIKE'S



PHARMACY

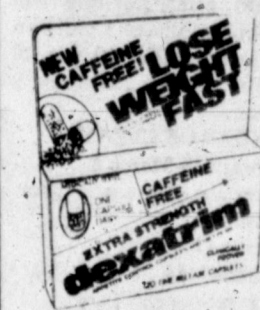
874-3554

Mail Orders Receive Prompt Service

Senior Citizens Receive 15% Discount on Prescriptions

Extra Strength

Dexatrim



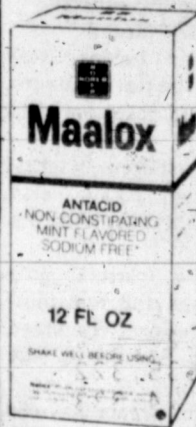
30's
\$2.99

Correctol



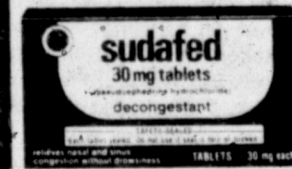
30's
\$1.77

Maalox



12 oz.
\$1.88

Sudafed



24's
\$1.66

Theragran M



100-30
\$6.77

Nuprin

30's
\$2.97

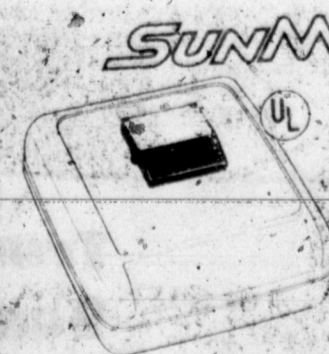
Slim Fast

16 oz.

\$4.99

Sunmark Cool Spray

Humidifier



1 Gallon

\$8.88

Model 660

Mike Wants

To Be Your

Pharmacist



Mike Butts

Guess Who's



40
Today

Roy Electric & Plumbing

Bonded & Lic.

874-2269

Clarendon, Texas

FOR YOUR INSURANCE NEEDS

Contact

Ted Shaller

874-2471 Clarendon

AUTO - 15% Discount
HOMEOWNERS - 35% Discount

- ★ Mobil Homes ★ Life Insurance
- ★ Hospitalization ★ Cancer Policies
- ★ Medicare Supplements
- ★ Liability Policies

BOY SCOUTS OF AMERICA

CELEBRATING OUR 75TH ANNIVERSARY • 1910-1985



We are proud to pay tribute to this inspirational group of young men

Cable TV

Wallace Monument

Clarendon Auto Supply

Alderson Chevrolet

Clark's Resturant

Robertson Funeral Directors

Mike's Gibsons Pharmacy

IGA Foodliner

Henson's

Mary's Country Kitchen

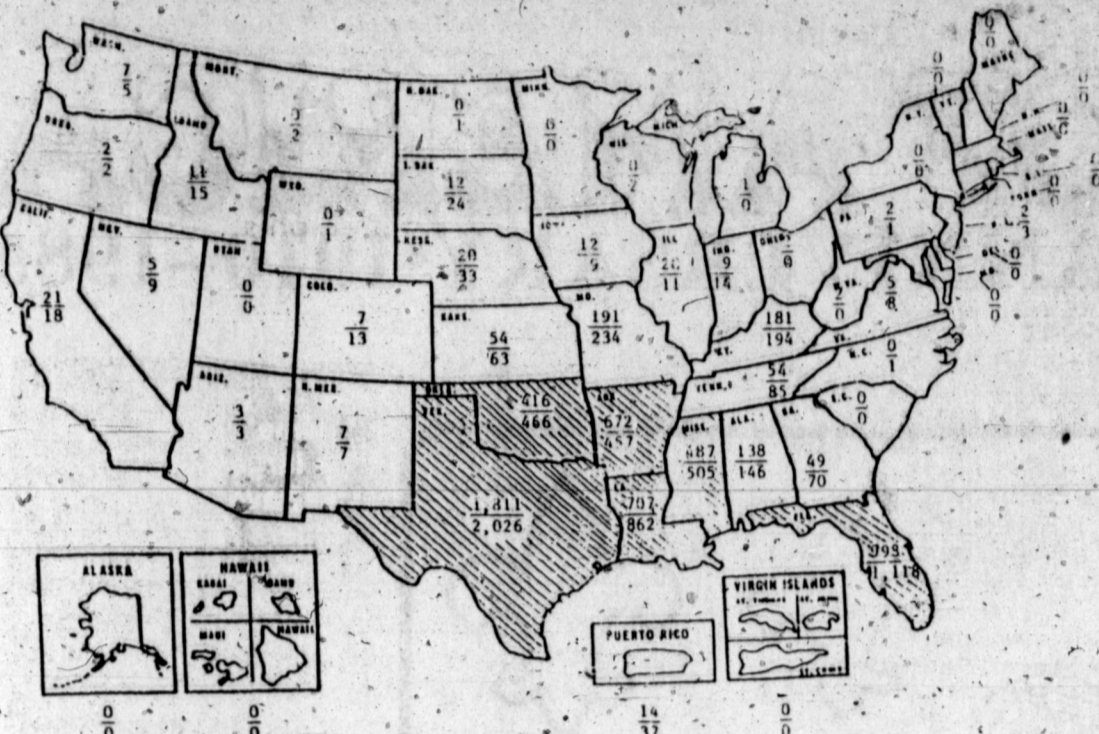
J & W Lumber



Reynolds Machine & Supply

Osburn Furniture & Appliances, Inc.

Quarantined Herds Because of Brucellosis



AS OF OCTOBER 31, 1984 - 5,922
AS OF OCTOBER 31, 1983 - 6,445

HIGH INFECTED RATE/1000



Some people used to believe that anyone whose eye brows met must be a werewolf, vampire or witch.



Emeralds were supposed to be effective against snakebite.

CONTEST News & Notes

SCRABBLE® OPEN
A few "crossed" words may mean \$50,000 for some fortunate folk. That's what the winners of the first North American Scrabble® Open will compete for, with the grand prize being \$10,000 in cash plus a trip for two to Hawaii.



With an estimated 33 million Scrabble® Brand Crossword Game players in the U.S. and Canada, thousands are expected to enter the contest, sponsored by Selchow & Righter Company, the manufacturers of Scrabble® and Trivial Pursuit®. For more information on how you can sign up, write to: North American Scrabble® Open, P.O. Box 1985, Ridgely, Maryland 21881.

The Open is for players of all ages and skill levels, and consists of three tiers:

1. One-Day-Entry-Levels in over 60 major metropolitan centers, four rounds of play, to take place in March;
2. Two-Day Regional Semi-Finals at 30 selected Sheraton Hotel sites during nine rounds of play to take place in April; and
3. The Four-Day Finals, 23 rounds, at the Boston Sheraton Hotel, Massachusetts, in July.

The deadline for registration is February 18, 1985. Contestants can pick up registration forms at participating Arby's restaurants where there are posters, placemats and counter cards about the contest.

you and the LAW

PRESENTED BY THE STATE BAR OF TEXAS



Some people used to think hedgehogs carry fruit on their spines.



Some people have believed that geraniums could drive away snakes.

Q: I lost my \$32,000 a year job and now have one paying only \$12,000. My child support payments to my former wife are \$600 a month, which of course, I can't afford. Can I go to court to get the payments adjusted?

A: In order to reduce the support, you must file a Motion to Modify in the court which granted the divorce. You will have to show that there has been a substantial and material change of circumstances since the time the court ordered the \$600 per month. The loss of nearly two-thirds of your income should be a sufficient change in circumstances to obtain a reduction.

Q: If a man and a woman continue to live together after a divorce has been granted, would this then constitute a common law marriage?

A: Not necessarily. A common law marriage is created in Texas only if a man and a woman agree to be married and then after reaching this agreement, live together as if they were married, and if they represent to others that they are, in fact, married.

In the situation you describe, one of the partners might indeed claim there was a common-law marriage, but to prove it, all three elements described must be present.

Q: I would like to know, if by law, an employer is required to give its employees a lunch break?

A: There are no state or federal laws requiring that an employer provide a lunch break for its employees. However, under the federal wage and hour laws, the overtime provisions for hourly employees come into effect after the employee has worked 40 hours during any workweek. For example, a regular 8-to-5 workday, if it does not include a one hour lunch, may require overtime for all hours worked above 40.

Coffee breaks do not count as meal periods, but as rest periods, and a break of about 5 to 20 minutes must be counted as hours worked.

Q: My daughter was recently arrested for shoplifting and since she is a minor, was taken to a juvenile detention center. The authorities have assured me that since it was a first offense, there will be a record of the arrest and that after a period of time, her files will be sealed. How do I go about getting the files "sealed"?

A: In order to have records of a juvenile arrest sealed, your daughter may petition the juvenile court in your county. Before the court is required to seal them it must find that:

1. Two years have passed since your daughter's release;
2. Since her release, she has not been convicted of certain crimes or has not been found to have engaged in certain delinquent conduct; and
3. It is unlikely your daughter will engage in further delinquent conduct.

Once the records are sealed your daughter may not be required to admit her juvenile record in any proceeding of application for employment, information or licensing.

Send your questions to "You and the Law," State Bar of Texas, P.O. Box 12487, Austin, 78712. Answers may appear in columns in hypothetical terms; personal answers not possible.

DID YOU KNOW?

Sticking to the subject has paid off for one inventor in an unusual way.

About a decade ago a scientist named Arthur L. Fry had a bright idea. A member of his church choir, he was in the habit of marking hymn selections for Sunday service with a scrap of paper. Often, the paper would disappear.



Some years earlier, a colleague of Fry's at 3M, Dr. Spencer Silver had developed an oddball adhesive. It was just strong enough to stick to things but it came off easily. Fry tried it on his paperscrap bookmarks, and a new product was born.

Now, these Post-it brand Notes have become a top selling item across the country. They come in several sizes, colors and formats.

It all goes to prove that if you come up with a good idea, it pays to stick to it.

BELL INSURANCE AGENCY
'Serving You First'
Box 6 Clarendon, Texas
874-2576

Watson Electric
Commercial or Residential
Bonded and Licensed
Phone 874-3770 Box 1045
Clarendon

Cary Don & Pamela Neeley
Income Tax Preparation
Individual Returns
Farmers & Small Business Returns
Computerized Bookkeeping Service
447-5893 P.O. Box 98 Quail, Texas

March 1st through March 9th
\$400,000
Stock Reduction Sale
30% to 60% OFF

50% OFF LOOSE DIAMONDS
Diamond Stud Earrings and Pendants
Lapis Rings and Necklaces
Wedding Bands

60% OFF Semi- and Rope Chains
Gold Chains and Bracelets
Pearl Necklaces
Rubies, Sapphires and Emeralds

30% OFF Gemstone Watches
Gold Mountings
Diamond Necklaces

35% 50% OFF

RELCHER'S JEWELRY

LAWN & GARDEN ALMANAC

WATERING THE LAWN

By Jack Chapman, Agronomist

For most of us in the Southwest there are times in the year that we must irrigate a lawn if we are going to have a good looking green lawn to compliment the house.

Several considerations must be taken into account if we are to achieve the desired results from the water we apply and to conserve our water supply. Conservation of water is becoming more important as more and more water distribution systems experience periods of water shortages.

The rate at which water penetrates the soil determines how fast we can apply it. When we put on more than can soak in over a given period of time the excess will run off causing water loss and erosion. When more water is applied than can be held in the pore space and on the soil particle in the root zone, then you are overwatering. Overwatering results in wasted run off water and will weaken the turf due to the water logged condition of the soil. Two things influence the penetration rate, the degree of slope on the surface and the soil texture. Sandy soils have a high rate of infiltration and the clay soils have the lowest.

On the established lawn a thorough soaking is preferred over a light sprinkling. Frequent light watering will encourage a shallow (surface) root system. This also causes a high moisture condition at the surface which will favor the development of the fungus diseases.

The following is a simple way to check the depth of water penetration. Use a straight stiff wire (a wire coat hanger can be cut and straightened) push it into the soil. It will push quite easily in moist soil and will meet with noticeably more resistance when it reaches dry soil. This is an easy way to know the depth of moisture penetration.

It is a good idea to know the quality of the water you are using on a lawn. Some waters contain large amounts of calcium, magnesium and/or sodium. Excess amounts of these elements can cause growing problems and some species of grasses have a greater tolerance to high levels of these elements than others. Knowing what elements your water contains can influence the kind of grass you use in your lawn.

Lawn & Garden Almanac is presented as a service to home gardeners by the professionals at Center Plains Industries, Inc., a Southwestern General Company. Center Plains has served the Southwest as a producer and marketer of diversified agri-business products since 1968. The company is headquartered in Amarillo, Texas.

Buddy Ford
Commercial Building
and Concrete Work
of all types
874-9975
Clarendon

ELANCO ID 5555
Concentrated Formula
Herbicide
Treflan 5
Easy to Mix
Fewer Containers
MINI-BULK
MINIMUM SAVINGS
\$176.00
110 Gal. Bulk Treflan 5
Compared to 110 Gal. 4EC
in 5 Gal. containers
Mini-Bulk Treflan 5
\$26.00 Per Gallon
Treflan 5 is 20% Stronger Than Treflan 4EC so 4 gals. equals 5 gals of 4EC
in Mini-Bulk Treflan 5 is \$26.00/gal. or \$104.00 per 4 gals.
5 gals. of 4EC is \$112.05 Wholesale
FREE 110 Gal. Polyolefin tank and pump with
110 gal. purchase of Treflan 5
\$25.50 per gal. on refills of Treflan 5
Call for information 800-250-2335
Hall Co. Farm Supply
Don Ferrell, Owner Robert Hodges, Mgr.
P. O. Box 57 Memphis, Tx. 79245

Classified ads must be paid in advance unless other arrangements have been made.

**BUY
SELL
AND
TRADE
WITH...**

**NEW - USED
CARS &
PICKUPS**



All late model cars fully warranted 30 days. Bank rate financing.

"We are small enough to appreciate you - big enough to service you."

**McKinneys
Motor Co.**
874-3457

FOR SALE
Houses in Clarendon and Hedley
Call us, we need listings 874-2533.
SANDERS REAL ESTATE
720 S. McClelland
874-2533

CABLE TV
There's more to see on Cable TV.
We have 2, 3, 4, 5, 6, 7, 9, 10, 13. Call
874-2522.

**STEVE'S AUTOMOTIVE &
INDUSTRIAL ENGINES**
For tune-ups, muffler or a major
overhaul, on the farm service calls.
874-3446

**LOYD'S BACKHOE &
DITCHING SERVICE**
Install septic tanks and install and
repair all kinds of water lines.
Phone 874-2287

**MEMPHIS SINGER
SEWING MACHINE
SALES SERVICE**
For contacts call
Stovengen Furniture
I am in Clarendon every two
weeks on Thursday

**DONNA'S ALL BREED
DOG GROOMING**
248-3691 GROOM, TEXAS

**LAMPS, LAMP PARTS,
all light bulbs,
HOUSE OF SHADES
and
LAMP REPAIR**
Wolfin Village
Wolfin Avenue
Amarillo, Tex. 79109
Call your local used cow
dealer for
dead stock removal
1-800-692-4043
toll free
Hereford Bi-Products

COMMERCIAL PRINTING
Business and Personal
Stationery & Cards
Business Forms
and Statements
Window Cards

Whatever your printing
needs, check with us.
**CLARENDON OFFICE
SUPPLY & PRINTING**
Mr. & Mrs. G.W. Estlack
Phone 874-2043
Clarendon, TX 79226

**MAGIC WAND CARPET
CLEANING CO.**
Since 1971

Professional steam cleaners. We do
commercial and residential. We are
licensed Scotch-Guard applicators.
For a free estimate call 874-2416.

OWN YOUR OWN jean-sportswear,
ladies apparel, childrens, large size,
combination, western store, acces-
sories. Jordache, Chic, Lee, Levi,
Easy Street, Izod, Esprit, Tomboy,
Calvin Klein, Sergio Valente, Eyan
Picone, Liz Claiborne, Members
Only, Organically Grown, Healthtex,
over 1000 others. \$7,900 to \$24,900
inventory, training, fixtures, grand
opening etc. Can open 15 days.
Mr. Keenan (305) 678-3639.

OFFICE SUPPLY
Bookkeeping supplies, storage
boxes, office machine ribbons, office
furniture. Clarendon Office Supply
and Printing, G.W. Estlack, Claren-
don, Texas 79226.

Clarendon
Lodge 700 AF/AM
Stated Meeting:
Second, Monday, 7:31 p.m.
each month.
Practices 1st & 4th Mondays
Charles DeMoss, W.M.
Billy Ray Johnston, Sec.
Refreshments after we meet.

Real Estate

THREE BEDROOM HOUSE, partly
furnished, zoned for business. Also
2 beautiful lots at Greenbelt Lake.
\$40,000. 874-2303.

FOR SALE: Three bedroom house,
two baths, carpeted throughout,
central air-conditioning, double
garage, sprinkling system in yard.
Call 874-2468 or 874-3826.

LOT FOR SALE: Lot #357 Nocona
Hills. L.F. Drake, Canyon, Texas.
655-0502.

FOR SALE: 3 bedroom house, base-
ment, large kitchen, and dining area,
utility room, 100 ft. front, good
location. This house can be seen at
416 South 4th (the Mrs. D.T. Small-
wood home). 874-2485 or 874-3669.

TEXAS VETERANS, 40 acres,
Donley County, paved frontage, Joe
Lovell, nights, 806-226-3801, days,
806-874-3556.

FOR SALE: 3 BR house, large L.R.,
D.R., utility room. Must sell.
Call 874-3498 after 5:30.

FOR SALE: Nice 1972 2 bedroom
Winsor mobile home 12X65. Would
make great lake home \$7,000.00.
779-3258, McLean.

FOR SALE: 2 1/2 acres with well in
Carroll Creek Acres. Phone 874-3932
Clarendon or 373-1441 Amarillo.

FOR SALE: Trampoline; 1974 Shasta
travel trailer, self contained, easy
load hitch, 806-874-3689; Clarendon,
TX.

FOR SALE: Bjuheeler, female, 2
months old. 874-3556 8-4, 874-3455.

FOR SALE: Complete kitchen
cabinet without sink, good shape,
bargain at \$350. John Garner,
874-2330.

FOR SALE: Wheat hay \$2.50 per
bale, 874-2471.

BEEF FOR SALE by halves. U.S.
inspected, cut and wrapped. \$1.25
per pound, hanging weight. 806-
856-2311.

HAY FOR SALE: Cane hay, large
round bales @ 60 pound square bales.
806-995-3687.

WE NOW HAVE insulating blow-
ing machine at J&W Lumber.

BORDEN DISTRIBUTORSHIP for
sale. Clarendon and Memphis
established accounts. 874-2882 after
6 p.m.

FOR SALE: Boys Jr. High Gradu-
ation suit. Size 14 or 16. Call 3651
before noon.

FOR SALE: king size bed complete
with head board, mattress, box
springs, frame and rollers, \$75.00.
Have 2 games and joysticks for Atari
400-800, new, never used. Gave
\$60.00 will take \$30.00. Call 856-
4311.

W.W. Spar
High Production w/low rainfall
T.J. FARMS
Producers of Old World -
Bluestem Seed
Ph. 405-698-2587
FARGO, OKLA. 73840

**FOR SALE -
DRESSED BEEF**
Grain fed half or whole, farm fed
with no food additives. Butchered at
Green.
\$1.10 per pound
Don Robinson
806-874-3652

**RAY'S
APPLIANCE
SERVICE**
Franchise for Kitchenaid
Dishwashers
Sales and Service
General Electric Franchise Dealer
Heating and Air Conditioning
We service all makes of
air conditioners
Freezer & Refrigeration Service &
Repairs
Clarendon, TX 79226
874-3801

2 HOUSES FOR RENT. 1-1 bedroom
and 1-3 bedroom. Call 874-2737 or
874-2345.

FOR RENT: 2 bedroom, 2 bath
trailer, Howardwick. See Bill Britten
at Syd Blue's Liquor.

FOR RENT: 4 bedroom, 2 1/2 bath, 2
story unfurnished house. \$400.00
plus bills. 874-3332.

TO GIVE AWAY: 1 load lumber for
firewood, 5 trees to cut down.
Call 874-2737 or 874-2345.

HELP WANTED
CENTER DIRECTOR MSW (certi-
fied) with community mental health
experience, working with chronically
mentally ill to work as an adminis-
trator and clinician in Clarendon Family
Services Center responsible for
mental health services, including
intake psychotherapy, screening,
referral and emergency, after care,
consultation and program develop-
ment in Armstrong, Callingsworth,
Donley and Hall Counties. Contact
Personnel, Amarillo MHRM Regio-
nal Center, Box 3250, Amarillo, TX
79116 or 806-353-7235. EEO/Affir-
mative Action employer.

PART-TIME RN OR LVN needed to
complete health histories for insur-
ance companies. Call 806-747-3223.

**Shelby Bell
Real Estate**

Real Estate is our business not a
side-line. We sell Real Estate
large or small. Farms, Ranches,
Residential and Commercial
Properties. List your property
with the people who have the
experience. We have nice homes
and farms for sale.

Shelby C. Bell
Real Estate
P.O. Box 57
Clarendon, Texas
Ph. 806-874-2476

**THE DONLEY COUNTY
ABSTRACT COMPANY**
Box 673 Clarendon, Texas
874-2324
Abstracts and Title Insurance

DONLEY COUNTY FARMS:

43 Acres just east of Medical Center - Good VA
prospect.

50 Acres - Excellent, flat farm, 6" well incl.
pump and motor - 7 mi. SE of Clarendon

159 Acres - just north of Clarendon - Irr. well -
Barn - Possible owner financing for qualified
buyer.

160 Acres - 90 Cultivation - 70 pasture -
windmill - approx. 7 mi. SE of Clarendon just
off 1260.

320 Acres - 282 Cultivation - 38 pasture - new
fence on 3 sides - windmill - Hwy 70 frontage
approx. 3 mi. S. of Clarendon.

CHOICE GREENBELT

CHOICE GREENBELT - Sherwood Shores
Lake Properties - Summer, Weekend or
Lifetime Homes - Priced from \$30,000 to
\$75,000. Many offer Owner Financing to
Qualified Buyer.

EXCELLENT RESIDENTIAL

CHOICE RESIDENTIAL PROPERTIES - The
Best and Most Extensive Listings in and around
Clarendon including the least expensive, older
homes to quality newer homes.

We can always use new listings and look
forward to working for you! Call owners
Exclusive Agents:

Carol Hinton Box 405, 874-3649 or 874-3148

Jim Donaho 874-2898

Dude Cornell - Broker 874-3320 874-3377

**C.W. "Dude" Cornell
Real Estate**

Home Repairs
Carpentry, Painting
Inside and Out
Sheetrock Repairs
Spray Acoustic
Also light hauling
874-2503

**TELEVISION & APPLIANCE
SERVICE**
John Naylor
874-2660

Dozer Service
Terrace Building
Ditching Work
MADDOX DIRT WORK
ESTELLINE, TX

We repair any make or model
vacuum cleaner. Pick up, delivery
and loaner-available.
Call
McVicker Kirby Service
806-874-3403

GOVT SURPLUS CARS & TRUCKS
under \$100. Now available in your
area. Call 1-(619)-569-0242.

COOKWARE: Heavy home demon-
stration kind. Stainless steel water-
less. Normally \$695. Selling \$295.
Call anytime 1-(915) 334-8722.

**GENERAL SHELTERS
Of Texas, Inc.**

The fastest growing manu-
facturers of portable buildings is
seeking a dealer in the area for
retail sales of portable buildings.
Lot and small investment
required. Excellent opportunity
to expand existing business with
low risk.

Contact Mike Wolf
General Manager
817-422-4547

THANK YOU
Thank you for your prayers, phone
calls, food, flowers and other ex-
pressions of sympathy.
May God Bless and Keep You
The Family of Emma Ashcraft

Gable Furniture
7th. & Brice Memphis, Texas

19th Anniversary Sale in progress now.
Terrific savings on name brand home
furnishings. We have the largest selection of
La-Z-Boy recliners that we have ever had with
prices as low as \$249. Others recliners sale
priced at \$149. We also have a large selection
of sofas and sofa sleepers in twin, full and
queen sizes by Mayo, Kenline, Mastercraft
and others with prices as low as \$229. Five
piece sectional in beige nylon velvet \$649
regular price now only \$579. See our nice
selection of dining rooms in solid oak by
Bassett and Broyhill complete with china and
hutches. Big savings on wall mirrors, end
tables and lamps. Shop now while selection is
good.

SALE ENDS MARCH 30

**REYNOLDS
MACHINE AND SUPPLY**

Head and Block Surfacing
Special - 350 Chevy Re-ring kit
as low as \$59.95
Auto Parts and Machine Shop
Drum and Rotors turned

Lella Lake 874-3614

Chamberlain MOTOR COMPANY

HIGHWAY 287 CLARENDON, TEXAS
- BUICK - OLDSMOBILE
PONTIAC - CADILLAC - GMC TRUCKS

FRED CLIFFORD
Home Phone
(806) 874-2415

Clarendon (806) 874-3527
Amarillo 376-9041
Texas WATS (800) 692-4088

ALLEN ESTLACK
Electrical and Appliance Repair
Call 874-3683 - Box 596
Bonded & Licensed

Brown-McMurtry Implement

PHONE 806-823-2441
BOX 777
SILVERTON, TEXAS 79257

DON BROWN
Home Ph. 823-2292

SALES & SERVICE
CLARENCE WARD
Home Ph. 823-2083

TERMITE PROBLEMS

Call for the best termite control
Over 20 years experience
Call Collect 383-7075

3608 N. E. 23rd
Amarillo, Texas 79107
State Lic. No. 1177

LEO RUSSELL

BAILEY ESTES AND SON
Welding Fabricating

Barns
Custom Portable Buildings
Enamelled Steel Buildings

BUYERS AND SELLERS

All
Kinds of Grain
Clarendon Grain
Elevators, Inc.

J.R. Gill

P. O. Box 805
Clarendon, Tex 79226
874-3172

HOT BUYS FOR COLD WEATHER

WE NOW HAVE SEED POTATOES AND ONION SETS

CRISCO

3 Lb Can Shortening **\$2³⁹**



Shurfine All Purpose **FLOUR**
5 Lb Bag **79^c**

Shurfine Evaporated MILK



2 Tall Cans **89^c**

Win You Cherry **Pie Filling** 21 Oz Jar **\$1¹⁹**

Shurfine Yellow Cling Sliced or Halves 303 Cans **69^c**



Ranch Style **Chili** No Beans 15 Oz Can **98^c**

Shurfine Bartlett **Pears** 303 Cans **69^c**

Shurfine Cream Style or Whole Kernel **Sweet Corn** 303 Cans **2/79^c**

Red Baron **Pizza** Ass't Flavors **\$2⁷⁹** Each

Shurfine Grape Jam Or **Jelly** 16 Oz Tumbler **89^c**

Shurfine **Pork & Beans** 300 Cans **3/\$1⁰⁰**



Shurfine Early Harvest 303 Cans **Sweet Peas** **2/89^c**

Shurfine Smooth or Crunchy 18 Oz Jar **Peanut Butter** **\$1³⁹**

Shurfine Frozen Orange Juice

12 Oz Can **98^c**



Super Suds
Laundry Detergent
Giant Size

98

Shurfine **Fruit Cocktail** 303 Can **69^c**



Shurfine **Tomato Juice** 48 Oz Can **89^c**

Shurfine **SUGAR** 5 Lb Bag **\$1³⁹**



Shurfine **COFFEE** 1 Lb Can **\$2¹⁹**



Delta Paper Jumbo Roll **Towels** **59^c**

Facial Tissues **Kleenex** 175 Ct Box **69^c**

Liquid Detergent **Dove** 22 Oz Bottle **99^c**

Page Bathroom **Tissue** 4 Roll Pkg **79^c**

Field Trial 50 Lbs Bag **Dog Food** **\$8⁹⁵**

Cleanser **Comet** 3/\$1⁰⁰

Colorado White Russett **POTATOES** 10 Lb Bag **\$1¹⁹**

California Sunkist Navel **Oranges** 39^c Lb

Washington Red Delicious **Apples** 49^c Lb

Mexico Full or Flavor **Cantaloupe** 49^c Lb

California **Carrots** 2.59^c Pkg

Family Pack **Pork Chops** **\$1⁴⁹** Lb

Center Cut **PORKCHOPS** **\$1⁹⁷** Lb

Shurfresh USDA Grade "A" **Eggs** Medium **59^c**

Wrights Sliced Slab **Bacon** **\$1²⁹** Lb

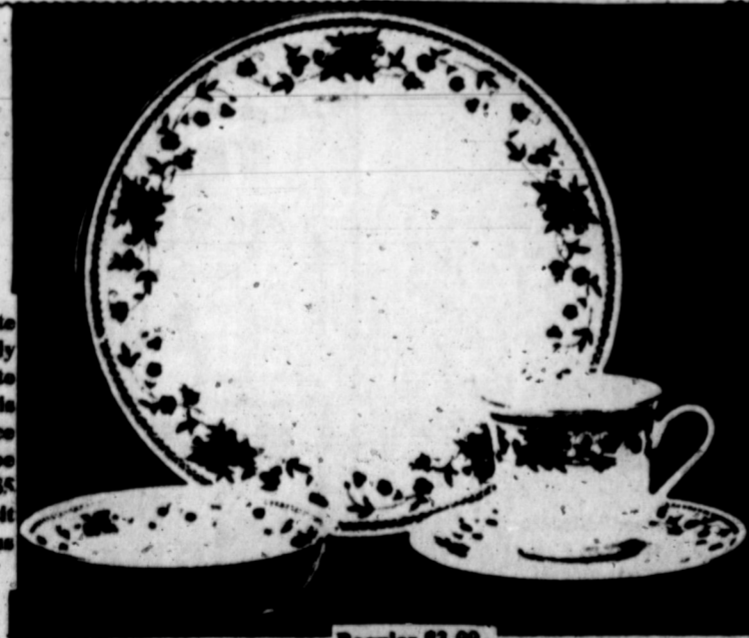
Boneless Beef Cry-Vac Bag **Beef Brisket** 7-9 Lb Avg. **\$1¹⁹**

Armour Chicken Fried Bee' **Steak Fingers** **\$1⁵⁹** Lb

Fresh Extra Lean **Ground Chuck** **\$1⁴⁹** Lb

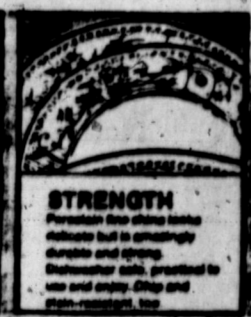
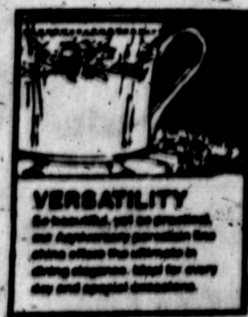
Sheffield Elegant Porcelain Fine China

Sheffield fine porcelain china in the exquisite floral design, Anniversary is breathtakingly beautiful! Every piece from the delicate cup to the gracefully contoured completer pieces is expensively detailed. Each week a place setting piece of this lovely dinnerware will be featured at a very special 88c with each \$5 purchase. Add to your set with every store visit and take advantage of these tremendous savings!



This week's special **DESSERT DISH** **88^c** With each \$5 purchase

20-Pc Service For 4 Only \$17⁰⁰



FOLLOW THIS SCHEDULE AND SAVE!

1,6&11 Dinner Plate	89c	\$3.99
2,7&12 Bread & Butter Plate	89c	\$1.99
3,8&13 Coffee Cup	89c	\$2.99
4,9&14 Saucer	89c	\$1.99
5,10&15 Dessert Dish	89c	\$1.99

ACCESSORY PIECES ALSO AVAILABLE AT SPECIAL PRICES THROUGHOUT THE PROGRAM

THE GROCERY STORE

HOME OWNED AND OPERATED

CLARENDON, TX

JACK CLIFFORD