

If a check appears by your name, your paper has expired. Subscription rates for Donley County are \$10.00 and outside county \$13.00. Mail to Box 1110, Clarendon, Texas 79226.

The Clarendon Press

Dedicated To Fair And Impartial Representation

The Clarendon Press, Thurs., July 26, 1984

USPS 947040

Number 30

Serving, Hedley, Howardwick and Clarendon

Thursday, July 26, 1984

Volume XIII

25c



THIS PICTURE was found in the courthouse and the calendar shows the year 1938. If you can identify this picture contact The Clarendon Press.

Allsup's work for Jerry's Kids

Allsup's Convenience Stores will again join the fight for the Muscular Dystrophy Association in 1984. Through Labor Day, Allsup's will display collection canisters for "Jerry's Kids" in all 271 stores in New Mexico, Texas and Oklahoma. According to Jack Crow, Director of Public Relations, "The Muscular Dystrophy Association is seeking causes and cures for forty crippling neuromuscular related disorders.

They depend almost entirely on contributions from private contributions and corporations, and the

proceeds from the Labor Day Telethon, so the canister collections play a very important part of the fund-raising activities. We, at Allsup's, are proud to be a part of such a worthwhile endeavor."

In addition to the canisters, Allsup's "Door Bell Brigade" will be marching again this year! All area youngsters who would like to help MDA and "Jerry's kids", are encouraged to pick up the Brigade packets at your local Allsup's store on Saturday and Sunday, August 25th and 26th. After collecting door-to-door and returning the col-

lections to the store, each youngster will receive a free fountain drink of their choice.

From Jack Crow, "We're looking forward to working with area youngsters in the campaign against Muscular Dystrophy. Thanks to all our friends and customers for your generosity, because your nickels and dimes add up to millions of dollars for research and treatment. So, look for the MDA coin collection canisters and give to "Jerry's Kids". Your pocket change can be the key to the cure."

Government provides headstones for Veterans at death

Many families of veterans are not familiar with the fact that the Federal government provides a headstone or grave marker for a veteran's grave when he is buried in a private cemetery. According to Jack A. Moreman, Veterans Service Officer for Donley County, family members will choose and pay for a grave marker when one could be furnished free of charge by the Veterans Administration.

Even though last year the Veterans Administration provided more than 210,000 free grave markers for graves of veterans, many people still do not know that the VA does not pay for the installation of the marker at the grave site. The marker itself is provided free of any charge, and all shipping charges to its destination are paid by the government, but the cost of installing the marker at the grave site must be borne by the family member or members who authorized the burial. The charge for such installation is generally rather small, approximately \$50 or less.

The VA can also pay a burial allowance of \$300 if the veteran, at the time of his death, was in receipt of disability compensation or pension benefits. An additional \$150 can also be paid in most instances as a pot or grave space allowance. The burial allowance and plot payment are applicable only if the veteran served during a period of wartime.

If a veteran's death is shown to have been caused by disabilities which were incurred during his or

her military service, the VA can pay as much as \$1,000 toward the costs of the burial. Application for the burial allowance must be filed with the Veterans Administration regional office serving the area where the veteran is buried. In most cases, the funeral directors will file

the claim with the VA, and deduct from the total bill the amount that is paid by the VA.

Additional information on the VA burial allowance and the grave marker may be obtained from your local Veterans County Service Officer.

Tri State Fair entertainment planned

The 1984 Amarillo Tri State Fair will again provide fairgoers with an exciting bill of free entertainment each day during the 8 day event, September 1-8. To be back for a second year will be Russ Burgess, master of hypnotism and E.S.P. who has entertained audiences at fairs throughout the country. An exciting new act on the outdoor stage this year will be Gloria Gilbert and Homer, singer and ventriloquist. Russ Burgess will appear at 7:30 p.m. and 9:30 p.m. daily, and Gloria Gilbert at 6:30 p.m. and 8:30 p.m. daily during the first five days

of the fair. The R.J. Reynolds Tobacco Company will provide a musical act at the same times daily during the last three days of the fair. Also appearing three times each day will be a thrilling new high wire act, featuring King Arthur the

Lion and Goldie. The Dean Short Marionette Show will perform four times daily and is designed especially for the young folks. The Animal Fantasy Petting Zoo will be back this year and will be open daily for the youngsters and will feature over fifty animals and birds.

GI Bill 40th anniversary

President Franklin Roosevelt signed the World War II GI Bill on June 22, 1944. There was little realization, then, of the impact this legislation would have on life in America. According to Stephen Lemons, Director at the Waco Regional Office, "This single act is believed to have had more impact on the American way of life than any other law passed since the Homestead Act of 1862."

Since June 22, 1944, America has had the greatest veterans program in history. No other country approaches America's generosity to its veterans in quality health care, education, job-training opportunities and a chance for a decent home. More than 18 million persons have received some form of training under the GI Bill. This includes 8 million World War II veterans, 2

and one-half million Korean Conflict veterans, and 8 million Post-Korean and Vietnam Era veterans and active-duty service personnel.

Proportionally, Vietnam Era veterans have been the greatest participants in GI Bill training. More than 70 percent of those eligible have received training—compared with 50 percent for World War II and 43 percent for Korean veterans.

Amended and extended, the GI Bill changed the national concept of adult education. It also started the greatest home construction boom in history. The GI Bill transformed something as ephemeral as an American dream into something as solid as a house on a plot of land with a mortgage. By backing loans of \$224 billion for homes and businesses, the GI Bill has been a

National Junior Shorthorn Show and Youth Conference

by LELAND HOWELL

On July 12, nineteen Shorthorn heifers from Texas accompanied by ten exhibitors and four sponsors, travelled to Louisville, Kentucky to participate in the National Junior Shorthorn Heifer Show and Youth Conference held July 14-18. This year's national show held on the 17th and 18th was considered by many as the best quality junior show every held. Judges Dr. George Ellis from Columbus, Montana and Rex Tribett from Linden, Indiana chose HS Desert Playmate, exhibited by Sheri Rose of Logansport, Indiana, as Grand Champion heifer and the Reserve Grand Champion was Greenridge Covergirl ET exhibited by Sarah Schilling of Lake Fork, Illinois. The Texas exhibitors were very successful at the show. Robert Masterson of Guthrie, Texas exhibited Sutherland Becky 439 as the Reserve Calf Champion and David Bishop of McKinney, Texas won Reserve Senior Champion with 3F Miss Queen 3Jx. The Texas Juniors had 10 heifers stand 4th or better in the fourteen classes of heifers shown.

The National Shorthorn Youth Conference was held on July 16. Delegates from each state association were present to vote on new board members and officers for the American Junior Shorthorn Association. The delegates also competed in a motto contest, showmanship, and a speech contest. The delegates representing Texas were Todd Boren and Billy White both from Duncanville. They placed first with their commercial motto and third with their purebred motto. Todd Boren placed second with his speech. Texas placed first with their stall display and was second only to Indiana to the herdsman award.

Gip Gafford from Garden City, Texas was elected president of the American Junior Shorthorn Association. Gafford also serves on the Junior National Board of

Band calendars are here

The band calendars are in. Please pick them up Saturday morning between 9:30 and 10:30 a.m. at the band building parking lot. The calendars start with the month of August so they need to be delivered.

The Band Boosters want to thank the merchants of Clarendon for purchasing the ads, the citizens for purchasing the calendars and the students for selling them. They also want to thank the parents that helped in getting the calendars together.

Please also remember that the first band meeting of the year is August 6th at 7:30 in the band room. They need all of the band boosters there as possible. If you have a child in band, you are considered a band booster. The bands and director really do need your support. Thank you.

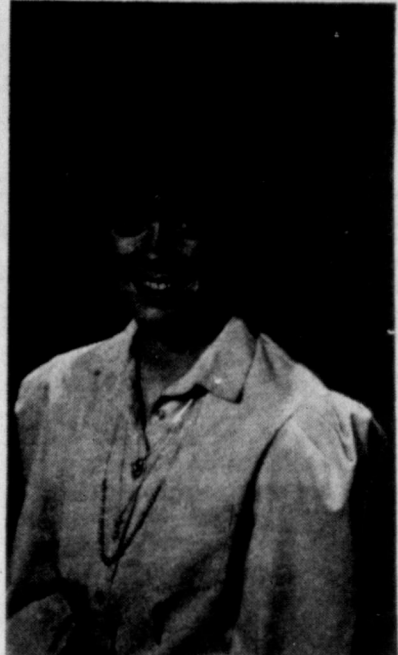
way of American life for more than 11 million veterans. For millions more, it promises to be a way to secure dreams in the future. "Unlike many VA benefits," Lemons stated "there is no expiration date for use of the home loan entitlement." Veterans who have already used it once may have their entitlement restored and be able to obtain a new VA guaranteed home loan. Widows of veterans who died of service-connected causes are eligible. So are the wives of men who are prisoners of war, or missing in action.

The GI Bill has had a tremendously positive impact on veterans—just as it has had a powerful effect on all America. The GI Bill has been good for veterans and good for America.

Director. Rodney McAnear of Clarendon, Texas was elected public relations officer. McAnear is also on the National Board and has held the office of vice-president of the Texas Junior Shorthorn Association. Gip will attend Texas A&M and Rodney will be at Tarleton State this fall semester. Christie and Laura McAnear and

Leland Howell of Clarendon took a total of five heifers to Louisville. Christie placed second with her February heifer 7M Pirate May Sedge and eighth with her July 7M Explosion Cher. Laura placed sixth with her June PH Miss Secret and fourteenth with her November 7M Seamus Sara. Leland placed fifth with his March DLH Jana Ann.

Anderson completes Hair Design School



STEPHANIE ANDERSON

Stephanie Ann Anderson, daughter of Peggy Anderson of Amarillo, has completed her studies at Jessie Lee's Hair Design School in Lubbock, Texas.

Stephanie received a special artistry award in Hair Styling. She earned this award by having a 92 grade point average for her studies. One other student also received this award.

She wrote her state test in Austin and is now associated with Salon 2900 - 3710 Olson St., Amarillo, TX.

IRS suggests guidelines for investors

Careful tax planners are thinking about next April's tax bill right now. It pays to be wise to the strict new penalties dealing with abusive tax shelters and avoid the promise of tremendous tax write-off ratios as the sole reason to invest.

The Tax Equity and Fiscal Responsibility Act of 1982 (TEFRA) makes participation in the abusive tax shelters more hazardous than ever, with penalties and interest approaching 50% when IRS disallows the claims.

IRS defines abusive tax shelters as marketing schemes that involve artificial transactions with little or no economic reality, frequently making use of unrealistic allocations, inflated appraisals, or losses in connection with nonrecourse loans.

Investing in an abusive tax shelter may be an expensive proposition when all the consequences are considered, IRS noted. For example, the promoter generally charges a substantial fee. If the return is examined by the IRS and a tax deficiency is determined, the taxpayer will then be faced with payment of the tax, interest in the underpayment, plus the possible application of severe penalties for negligence or civil fraud. And, in the most aggravated situations, IRS may decide to prosecute the case for criminal tax violations.

Since there are many abusive tax shelters and more are developed daily by promoters, it is not possible to list all the factors a taxpayer should consider in determining whether an offering is an abusive tax shelter. However, one should ask the following questions, which might provide a clue to the abusive nature of the plan:

1. Do the promised tax benefits far outweigh the economic benefits?
2. Is this a transaction you would seriously consider, apart from the tax benefits, if you hoped to make a profit?
3. Do shelter assets really exist and are they insured for less than their purchase price?
4. Is there a nontax justification for the way profits and losses are allocated to partners?
5. Do the facts and supporting documents make economic sense? In that connection, are there sales and resales of the tax shelter property at ever increasing prices?
6. Does the investment plan involve a gimmick, device, or sham to hide the economic reality of the transaction?
7. Does the promoter offer to backdate documents after the close of the year and are you instructed to backdate checks covering your investment?

— Is your debt a real debt or are you assured by the promoter that you will never have to pay it?

The watchword when evaluating investment prospectuses is that, if something sounds too good to be true, it probably is.

Martin reunion plan for Aug. 11th

Anyone who ever lived at Martin, attended or taught school there or had any interest in the Martin community is invited to attend the reunion Saturday, August 11 at Lion's Club Hall in Clarendon. Bring a covered dish and stay all day starting at 10 a.m. We'll stay as long as there is anyone to visit with. Plates and drinks are furnished. Out-of-town people will receive reminders by mail. For those with Clarendon addresses - this is your reminder.

We'll expect to see you Saturday, August 11 in Clarendon. If you have a question contact Roberta Pittman, Alta Adkins, or Helen Land.

The Press changes from 8 columns to 6

The American Newspaper Publishers Association developed a new system of modular advertising units called the Standard Advertising Unit. It uses the six-column style newspaper to standardize newspaper columns across the United States.

The Clarendon Press has converted its 8 column paper into the standardized 6 column paper. Therefore, the width of the columns has increased causing the prices of its ads to change. We have done our best to match the price of the ad size as close to the old style as possible.

If you have any questions please contact Helen Woody at The Clarendon Press.

NOTICE

Lelia Lake will have a covered dish supper Saturday, July 28 at 7 p.m. at the Community Center.

Compiled by Tomie Sayer - Cooperative Observer For National Weather Service, Clarendon.

Day	Date	Hi	Low	Perc
Monday	76	101	70	
Tuesday	17	92	68	.31
Wednesday	18	91	62	.90
Thursday	19	89	62	
Friday	20	93	64	
Saturday	21	97	64	
Sunday	21	97	64	
Total Precip. for Month				1.47
Total Precip. for Year				9.08

Obituaries

Mr. Allen Oliver Corbell
Funeral services for Mr. Allen Oliver Corbell, age 59, were held at 10:00 a.m. on Wednesday, July 25, 1984, in Robertson Chapel of Memories, with Rev. Raymond Stone, of White Deer, officiating.

Interment was in the Goodnight Cemetery with the arrangements under the direction of Robertson Funeral Directors.

Mr. Corbell died at 5:09 p.m. on Sunday, July 22, 1984, in Country Club Manor Home in Amarillo. He was born on January 27, 1925 at Lawton, Oklahoma. He was married to the late Rosalie Raines and has lived in Amarillo for the past two years, moving there from Howardwick, where he had lived for

about one year. He was a farmer and a member of the Baptist Church.

Survivors include a son, Dennis Watson of Amarillo; a sister, Miss Martha Corbell of Amarillo; a brother, Lynn Corbell of Malta, Montana; and three grandchildren.

Casket bearers were George Stone, Vernon Stone, Clenton Stone, Tim Bowland, George Pierce, and Lawrence Stone.

phis.
1984 Olds by Leslie F. Clary, Plainview.

1984 Olds by W.H. Hays, Amarillo.

1984 Cadillac by Billy Lowrance, Sayre, Oklahoma.

1984 Buick by Cordye Hood, Estelline.

1984 Olds by William P. Snodgrass, Amarillo.

1984 Olds by Aline Winegeart, McLean.

1984 Buick by Michael K. Martin, Clarendon.

1984 Buick by Glen Waldo, Shamrock.

1984 Olds by Dean Smith, Canadian.

1984 Olds by Vernon C. Middleton, Amarillo.

1984 Olds by Tressie E. Gibson, Amarillo.

Purchased from Chamberlain Motor Co.

1984 Olds by Dick Wiggins, Amarillo.

1985 Olds H.R. Stevenson, Memphis.

1984 Olds by Alma Bruce, Memphis.

Purchased from Alderson Chevrolet

1984 Chevrolet by T.E. Jones, Lela B. Jones, Pampa.

The Clarendon Press is published every Thursday, at 106 S. Kearney and entered as Second Class Mail at the post office at Clarendon, Texas.

J.C. and Helen Woody, publishers and editors.

Subscription rates: \$13.00 a year outside Donley County and \$10.00 a year in Donley County.

Any erroneous reflection upon the character of any person or firm appearing in these columns will be gladly and promptly corrected upon being brought to the attention of the management.

New Car List

Purchased from Chamberlain Motor Co.

1984 Olds by Dick Wiggins, Amarillo.

1985 Olds H.R. Stevenson, Memphis.

1984 Olds by Alma Bruce, Memphis.

Trap Shoot

August 29

1:00 p.m.

5 1/2 miles west of

Clarendon South

of Hwy 287

Public invited

The Lions Tale

By Gene Alderson

The Clarendon Lions Club held its regular meeting at noon on Tuesday at the Lions Hall. Twenty-one members, Lion Sweetheart Jessie Adams and six guests were present. Following the regular opening ceremony Liohtamer Messer introduced Past District Governor Ed Thomes of Amarillo, Chester A. Fagerlund with the Donley County State Bank, guest of Lion Homer Estlack, Spencer Hayes guest of Lion Jim Hayes, Marty Hammond guest of Lion Ed Ham-

mond and Roger Estlack and Mike Strawn guests of Lion Allen Estlack Boss Lion Lovelady made several announcements and then called on Lion Thomes who informed us that a Texas Lion, Mike Butler, had been elected as a director of Lions International at the San Francisco Convention. Lion Thomes also presented a letter of congratulations from the Lions Crippled Children's Camp to our club for being a 100% club in donating \$470.00 (\$10.00 for each of our 47 members) to the camp this year.

unit of the American Cancer Society.

She explained, "Most skin cancer is caused by excessive exposure to the sun. People whose occupation places their work outdoors—for example a lifeguard or construction worker—should be very careful. So should fair-skinned, fair-haired people. Senior citizens form another group advised to take care in the sun."

Since skin cancer occurs more frequently than any other type of cancer, it is important to know its early warning signals: a sore that does not heal; change in size or color of a wart or mole. "If a symptom appears, the person should not try to wish it away or 'doctor' it himself," Mrs. Caldwell stated. "See your physician as soon as possible. Skin cancer is highly curable if detected and treated in time."

"That's why it is so tragic that about 7,000 people are expected to die of skin cancer this year," Mrs. Caldwell added, "They will be victims of a disease that is largely preventable and highly curable if detected in time."

"That's why it is so tragic that The American Cancer Society has available skin cancer leaflets and an educational film entitled, "Sense in the Sun." For further information contact the ACS office at 353-4306

in Amarillo.

Genevieve said "At this time of year the ACS advises people in Donley County to: Take sunshine in small doses; wear a broad-rimmed hat and long-sleeved shirt; use a beach umbrella; apply a screening lotion or cream.



There are fifty thousand rooms, or cells, in the average honeybee hive.

FOR SALE BY OWNER

Newly remodeled home, 3 bedrooms, 1 1/2 baths, living room and den. Central air and heat, dishwasher, free standing base oven, eye level oven and cook top. Finished basement could be 4th bedroom, partially covered patio, 2 car detached garage, and large playhouse/storage building. Two blocks from high school. Call 874-3554 or after 5 p.m. 874-3829.

Let's compare

Maybe I can save you some money on insurance:

Allstate
You're in good hands.

Allstate Insurance Company
Allstate Life Insurance Co., Northbrook, IL

Life Homeowners Auto/
Boat/RV Business Health

EMMETT O. SIMMONS
Insurance

See or phone

JEM SIMMONS
874-3506

ALLSUP'S
CONVENIENCE STORES

PRICES EFFECTIVE
JULY 26-28, 1984
OPEN 24 HOURS EVERYDAY

WHILE SUPPLIES LAST

THERE'S ONE NEAR YOU

NEW! 32 OZ. FOUNTAIN DRINK

TRY A REFRESHING
DR. PEPPER

TALLSUP

BIG ENOUGH TO QUENCH ANY THIRST

59¢



ALLSUP'S
HOT LINKS

HOT OR MILD
FLAVORS

2 99¢
FOR

FRITO-LAY REG. OR EX. CRISPY
DORITOS ASSORTED
FLAVORS **\$1 19**

REG. \$1.49
BAG

YOUR CHOICE
FRITO-LAY MIX OR MATCH PEANUTS OR
SNACK CRACKERS **3 \$1**

FOR

BORDEN'S ASSORTED FLAVORS
FRUIT DRINKS

GAL. **99¢**

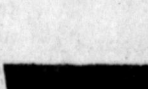


ALL MEAT
RATH
WIENERS 12 OZ. PKG. **\$1 09**

\$1 29

FRESH
RATH
SAUSAGE 1 LB. ROLL **89¢**

79¢



Ice Cream
Sandwiches

BORDEN'S ICE CREAM
SANDWICHES

\$1 09
6 PACK BOX

DR PEPPER

\$2 19

6 pack cans

ASSORTED WHILE SUPPLIES LAST

HAND TOOLS

VALUES TO \$4.99

\$1 00
EACH

Your week for great appliance values

WHIRLPOOL WEEK!

Your store for quality home appliances

Our Very Best Deals
On These Fine
Appliances!

Whirlpool ROOM AIR CONDITIONER

Model ACP492XM
5,000 BTU/Hr. cooling capacity, weighs only 65 lbs., plugs into standard household outlet for easy installation. Carry it home today!

COOLING POWER AT A COOL PRICE!

Whirlpool TRASH MASHER COMPACTOR

Model TF5000Q
Compacts a week's worth of trash for an average family of four into a single, portable, disposable bag. Safe and easy to operate. Sound insulated for quiet operation.

SOLVES YOUR MESSY TRASH PROBLEMS!

All Whirlpool appliances have earned this seal



LE 5300
\$399⁰⁰
end of cycle signal, hamper door and more!

LA 5800
\$459⁰⁰

See the latest
Toast and Platinum
Appliance Colors!

Whirlpool NO-FROST REFRIGERATOR

Model EHT 171
16.3 cu. ft. model, no-fingerprint textured steel doors, porcelain-enamelled interior, provision for optional automatic ice maker, meat pan with temperature control.

LOOK, MA, NO FINGERPRINTS!

Whirlpool
HOME APPLIANCES

Making your world a little easier.

TWO YEARS FREE SERVICE ON ALL APPLIANCES

OSBURN FURNITURE & APPLIANCES, INC

EMS Activity Report

07-15-84 Terra Putman, 83 of Clarendon no transport from a Clarendon residence. Trauma.
 07-17-84 Jane Bownds, 72 of Clarendon from residence to High Plains Baptist Hospital, Amarillo.

Medical.
 07-17-84 Evelyn Wooten, 76 of Clarendon from St. Anthony's Hospital, Amarillo to Memphis Convalescent Center, Memphis. Trauma.
 07-17-84 Vera Casteel, 72 of Clarendon from residence to Coronado Community Hospital, Pampa. Medical.
 07-18-84 Sarah Cline, 70 of Clarendon from Medical Center Nursing Home, Clarendon to High Plains Baptist Hospital, Amarillo.

Medical.
 The following donations have been received: Mr. and Mrs. Bill Thornberry in memory of Bill Blasingame & Harvey Shaw; Irene McLacklan, Jane Hillman, and Margaret Hillman in memory of Harvey Shaw.
Jaws of Life Donations
 Mr. and Mrs. Truett Behrens in memory of Bill Blasingame.
 Mr. and Mrs. Bill Weatherly in memory of Joe McMurtry, Robbie Grady, Paul Hancock, Molly Ritter,

and Hubert Rhoades.
 Dr. and Mrs. Charles Deyhle Sr. and Dr. and Mrs. Charles Deyhle Jr. in memory of Harvey Shaw.

Who's New

Cory Keith Mills
 Rita and Charles Mills of Vernon would like to announce the arrival of a new baby boy, Cory Keith, born July 1 at Wilbarger Hospital in Vernon. The young man weighed 8 pounds and 5 ounces and was 19 1/2 inches long. He joins an older brother, Jonathon, at home.
 Grandparents are Betty and Lloyd Molder and Doris and Wesley Mills all of Clarendon. Great-grandparents are Mrs. Cena Armstrong of Irving and Mr. and Mrs. L.A. Watson of Clarendon. Great-great-grandparents are Mr. and Mrs. C.I. Casteel of Clarendon.



BACK ROW-Chris McKinney, Strickland, Clinton Payne, Jeremy Kevin Annis, Casey and Stacy Grady; Front Row-Todd Lindley, Alexander, Jeff Hatley, Chad Reagan Allen

FIRST BAPTIST CHURCH

Clarendon, Texas



August 10, 11 & 12

Paul Bellington

Paul Bellington is dedicated to helping build marriages that glorify God and seeing them strengthened and equipped with God's principles. He received his B.A. degree from William Jewell College, the B.D. degree in Preaching and Pastoral Ministries from Southwestern Baptist Theological Seminary, and did graduate work in Education and Counseling at

Southern Methodist University. Paul Bellington has ministered extensively coast to coast speaking at numerous conventions, evangelism conferences, revivals, camps and retreats. He has produced over 500 syndicated T.V. programs seen by countless thousands in the United States and Brazil. His radio ministry and writings have ministered to people of all ages.



A Life-Changing weekend
ENCOUNTER FOR SUCCESSFUL LIVING IS COMING TO YOUR CHURCH SOON!
 Is there still hope for the family? In a day when divorce is taken for granted, child abuse runs rampant and the home is literally coming apart at the seams, can the family survive?
 Paul & Patsy Bellington say YES. Through experience, they have discovered that by applying the biblical principles given in God's Word for successful family living, any family member can be all the Lord intended it to be-filled with love and unity, purpose and peace.

To each LovePlus Encounter Weekend, he brings a background rich in ministry to the needs of families and individuals--both as a pastor in the United States and as a missionary to Brazil. In that time, Paul has counseled hundreds of people, gaining understanding and a high degree of experience needed to effectively identify with and minister to the often complex needs of today's families.

Is your closet ready for school? If not I am doing custom sewing or if you are interested in sewing, short cut sewing or pattern alteration classes I am now setting up times.
 I will also be giving needle craft classes.
 For more information call 874-2575

JANICE BARBEE

WE ARE PLEASED TO ANNOUNCE
 Dr. Mark Sherrod, D.C., has joined Haydon Chiropractic Clinic at
 28th and Perryton Parkway, Pampa
 Office hours Monday thru Friday 8:30 to 5:30 and special appointments
 Tuesday & Thursday Evenings 6:00 to 8:00 P.M.
 Saturday Mornings 8:30 to 12:00 Noon
 Now Accepting Appointments
 665-7261

STATEMENT OF CONDITION

Consolidated Report of Condition of FIRST BANK AND TRUST
 of CLARENDON, TEXAS And Foreign and Domestic Subsidiaries, at the close of business
 June 30, 1984 a state banking institution organized and operating under the banking laws of this state and a member of the Federal Reserve System. Published in accordance with a call made by the State Banking Authority and by the Federal Reserve Bank of this District.

		Dollar Amounts in Thousands	Mill Thou
ASSETS			
1. Cash and balances due from depository institutions:			
a. Noninterest-bearing balances and currency and coin		1,596	
b. Interest-bearing balances		NONE	
2. Securities (from Schedule RC-B)		12,070	
3. Federal funds sold and securities purchased under agreements to resell		2,600	
4. Loans and lease financing receivables:			
a. Loans and leases, net of unearned income (from Schedule RC-C)	18,172		
b. LESS: Allowance for loan and lease losses	1,820		
c. LESS: Allocated transfer risk reserve	NONE		
d. Loans and leases, net of unearned income, allowance, and reserve (item 4.a minus 4.b and 4.c)		18,090	
5. Assets held in trading accounts		NONE	
6. Premises and fixed assets (including capitalized leases)		118	
7. Other real estate owned		NONE	
8. Investments in unconsolidated subsidiaries and associated companies		NONE	
9. Customers' liability to this bank on acceptances outstanding		NONE	
10. Intangible assets		NONE	
11. Other assets (from Schedule RC-F)		997	
12. Total assets (sum of items 1 through 11)		35,461	
LIABILITIES			
13. Deposits:			
a. In domestic offices (sum of totals of columns A and C from Schedule RC-E)		4,664	
(1) Noninterest-bearing		27,063	
(2) Interest-bearing			
b. In foreign offices, Edge and Agreement subsidiaries, and IBFs			
(1) Noninterest-bearing			
(2) Interest-bearing			
14. Federal funds purchased and securities sold under agreements to repurchase		NONE	
15. Demand notes issued to the U.S. Treasury		NONE	
16. Other borrowed money		NONE	
17. Mortgage indebtedness and obligations under capitalized leases		NONE	
18. Bank's liability on acceptances executed and outstanding		NONE	
19. Notes and debentures subordinated to deposits		NONE	
20. Other liabilities (from Schedule RC-G)		576	
21. Total liabilities (sum of items 13 through 20)		32,263	
22. Limited-life preferred stock		NONE	
EQUITY CAPITAL			
23. Perpetual preferred stock		NONE	
24. Common stock		230	
25. Surplus		1,250	
26. Undivided profits and capital reserves		1,698	
27. Cumulative foreign currency translation adjustments			
28. Total equity capital (sum of items 23 through 27)		3,198	
29. Total liabilities, limited-life preferred stock, and equity capital (sum of items 21, 22, and 28)		35,461	

Phyllis Ford, Cashier of the above-named bank do hereby declare that this Report of Condition has been prepared in conformance with the instructions issued by the Board of Governors of the Federal Reserve System and the State Banking Authority and is true to the best of my knowledge and belief.
 We, the undersigned directors, attest to the correctness of this Report of Condition and declare that it has been examined by us and to the best of our knowledge and belief has been prepared in conformance with the instructions issued by the Board of Governors of the Federal Reserve System and the State Banking Authority and is true and correct.

Phyllis Ford
 Signature of officer authorized to sign report
 Bronnie F. McNabb, Jr.
 Director
 Anna Moores Simmons
 Director
 Frank White, Jr.
 Director

A WINNING PAIR

for walls and trim.



DEEPLY RICH BEAUTY
 Easy to apply finish dries in minutes to a soft looking flat finish which is really tough and scrubable. Hundreds of colors without extra cost.

WIPE CLEAN FINISH

A satin enamel that goes on easily for a smooth beautiful finish. Dries in minutes while tools wash in water. Colors to match flat wall paint. Use on walls or trim.



RIGGS FARM & RANCH SUPPLIES

FIRST BANK & TRUST
 OF CLARENDON



COST-CUTTING

FOOD PRICES!



Kraft Cheese
VELVEETA \$2.98
2 lb. box

Skinned and devalined
Sliced Beef
LIVER 68¢
lb.

Wilson Certified
FRANKS 88¢
12 oz. meat or beef



Whole
SMOKED PICNICS 78¢
lb.

Sliced
SMOKED PICNICS 88¢
lb.

Wilson Certified
BOLOGNA \$1.28
1 lb. pkg. meat or beef



Detergent
King **FAB** \$2.49
84 oz.

All Fabric Bleach
BIZ \$2.89
45 oz.

Detergent
FRESH START \$1.59
20 oz.

5 oz. Bar
DIAL 2/89¢

Lg. Roll Towels
BOUNTY 68¢

Borden's
FRUIT DRINK 89¢
Gal.

Purina
DOG CHOW \$7.39
bag



Bathroom Tissue
WHITE CLOUD 1.67
6 ct. pkg.



Borden's Low Fat
CHOCOLATE MILK 1.99
gal.

Borden's Blue Ctn.
SKIM MILK 99¢
1/2 gal

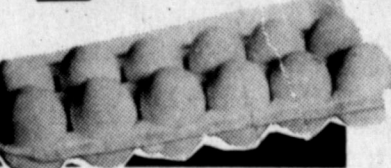
King Size
COKE \$1.79
8 pack



Country Hearth
BREAD 69¢



Extra Large
EGGS 79¢
dozen



Hunt's Tomato
SAUCE 4/97¢
8 oz.

Contadina Tomato
SAUCE 2/97¢
15 oz.



Pillsbury
MILK BREAK BARS \$1.09
box

Instant
NESTEA \$1.99
3 oz.



MIRACLE WHIP 1.37
32 oz.



Kraft
SANDWICH SPREAD \$1.47
24 oz.

Kraft
MAYONNAISE \$1.09
16 oz.

Kraft Cole Slaw
DRESSING 8 oz. 73¢

Kraft Dressing
1000 ISLAND 8 oz. 73¢

2 lb. Kraft
GRAPE JAM \$1.09

Kraft
GRAPE JELLY 18 oz. 73¢

48 oz.
Crisco Oil \$2.59



DOUBLE COUPON DAY

2 DAYS ONLY Thursday and Friday ONLY

All manufacturer's coupons 99¢ and under excluding tobacco and free coupons will be redeemed for double value Wednesday thru Sunday. (Double value of coupon cannot exceed the value of the item)

- One coupon per item please -



CANTALOUPE 25¢
lb.

California
PEACHES 33¢
lb.

LIMES 29¢
lb.

Red
ONIONS 25¢
lb.



California
LETTUCE 33¢
head

33



SHIRLEY OSBURN'S wildlife painting that took 1st place in July 4th Art Show.

INSURANCE CAN BE AFFORDABLE

YOU MAY BE ELIGIBLE FOR A BETTER PRICE OR BROADER COVERAGE THAN YOU ARE GETTING.

CALL US TODAY AND COMPARE YOUR POLICY COVERAGE AND PRICE WITH OURS.

WE STRIVE FOR QUICK, EFFICIENT, FRIENDLY SERVICE — AT THE LOWEST POSSIBLE PRICE.

15% Discount on Autos

35% Discount on Homeowners



NORPP

Insurance Agency, Inc.



Howardwick News

By ALICE HOOD

Saturday, July 14th, Leon and Mable May attended her family reunion in Childress. Approximately 40 persons were there including three brothers, one sister and their daughter, Kathy Baker and children, Keri and Renay of Plainview. Butch and Nell Derr went to Pampa Wednesday to see their great-granddaughter, Jennifer Derr, who is very ill, with a virus. Lee Roy Jackson lost an uncle in Fort Collins, Colorado. Dewey and Edna Hood (brother of Floyd Hood) of Midwest City, Oklahoma, visited a few days with the Floyd Hoods. The two couples

had lunch at Senior Citizens Thursday before they left for home. Margie and David Springs of Amarillo also visited the Hoods Thursday afternoon. The Friendship Club was pleased to have the Backwoods Band back again Friday evening. Everyone enjoyed music and singing by Jerry and Dana Chambliss and son, Wayne, and daughter, Michelle, Jim Adams and Bud White. Wonderful group. We're always happy to have them out. Thank all of you, you're great! Nice to have Henry and Lucille Merrick out too. Hope to see you more.

Panhandle
Guaranteed Work **TUB 'N' TILE REGLAZING** Free Estimates
537-3564
Countertops Appliances Bath Tubs Colors Tile Sinks

Don't Replace **REGLAZE**

1/2 PRICE SALE

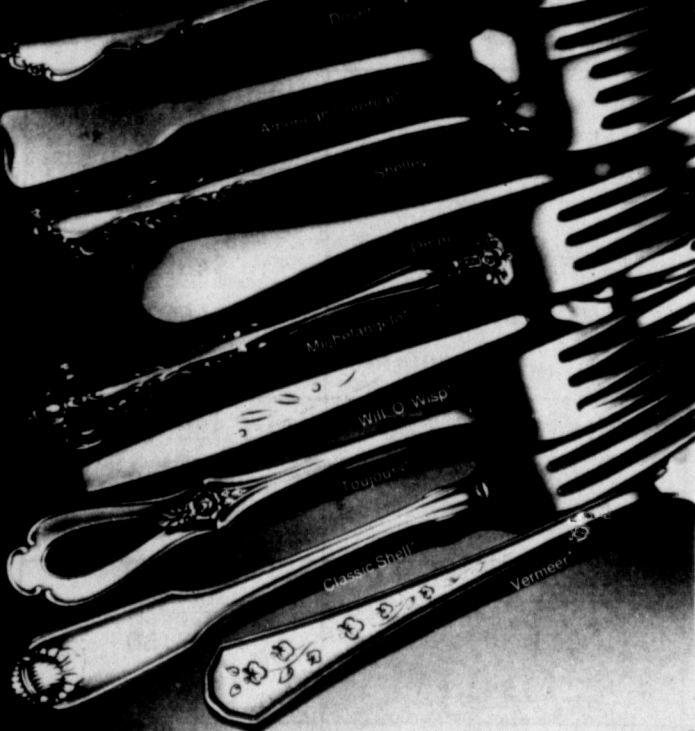
SUMMER CLOTHING TWISTER BEADS
SNOOPY PLUSH ANIMALS AND CLOTHES

RAINBOWS & LOLLIPOPS

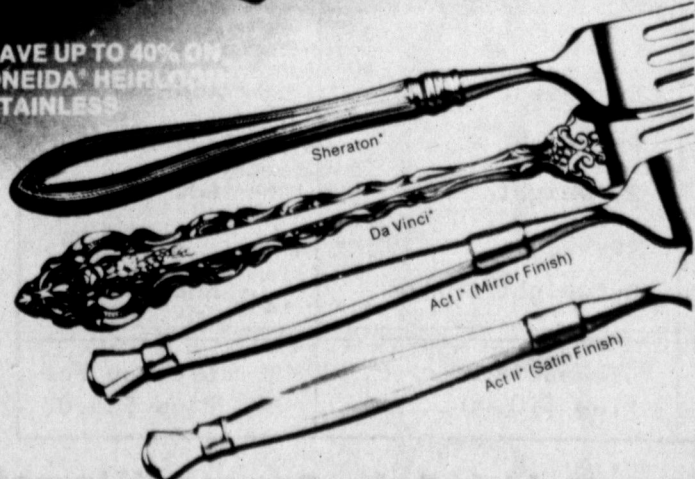


North side of the Square Memphis

SAVE UP TO 40% ON ONEIDA HEIRLOOM STAINLESS



SAVE UP TO 40% ON ONEIDA HEIRLOOM STAINLESS



HENSONS Jewelry Dept. Clarendon

Affix the address label in this space.

CALL NO. 148 11 06-30-84
CERT: 11183 13 48-3620
SECURITY STATE BANK
P.O. BOX 128
HEDLEY, TX 79237

Bank's Transit Number 11131616

Consolidated Report of Condition for All Insured Commercial Banks for June 30, 1984

All schedules are to be reported in thousands of dollars. Unless otherwise indicated, report the amount outstanding as of the last business day of the quarter.

Schedule RC—Balance Sheet

ASSETS

	Dollar Amounts in Thousands		
	Mill	Thou	
1. Cash and balances due from depository institutions:			
a. Noninterest-bearing balances and currency and coin		154	1.a.
b. Interest-bearing balances		None	1.b.
2. Securities (from Schedule RC-B)		1,587	2.
3. Federal funds sold and securities purchased under agreements to resell		450	3.
4. Loans and lease financing receivables:			
a. Loans and leases, net of unearned income (from Schedule RC-C)	2543		4.a.
b. LESS: Allowance for loan and lease losses	19		4.b.
c. LESS: Allocated transfer risk reserve	None		4.c.
d. Loans and leases, net of unearned income, allowance, and reserve (item 4.a. minus 4.b. and 4.c.)		2,524	4.d.
5. Assets held in trading accounts		None	5.
6. Premises and fixed assets (including capitalized leases)		92	6.
7. Other real estate owned		None	7.
8. Investments in unconsolidated subsidiaries and associated companies		None	8.
9. Customers' liability to this bank on acceptances outstanding		None	9.
10. Intangible assets		None	10.
11. Other assets (from Schedule RC-F)		119	11.
12. Total assets (sum of items 1 through 11)		4,956	12.

LIABILITIES

	Dollar Amounts in Thousands		
	Mill	Thou	
13. Deposits:			
a. In domestic offices (sum of totals of columns A and C from Schedule RC-E)		4,462	13.a.
(1) Noninterest-bearing	993		13.a.(1)
(2) Interest-bearing	3,469		13.a.(2)
b. In foreign offices, Edge and Agreement subsidiaries, and IBFs			
(1) Noninterest-bearing			
(2) Interest-bearing			
14. Federal funds purchased and securities sold under agreements to repurchase		None	14.
15. Demand notes issued to the U.S. Treasury		None	15.
16. Other borrowed money		None	16.
17. Mortgage indebtedness and obligations under capitalized leases		None	17.
18. Bank's liability on acceptances executed and outstanding		None	18.
19. Notes and debentures subordinated to deposits		81	19.
20. Other liabilities (from Schedule RC-G)		4,513	20.
21. Total liabilities (sum of items 13 through 20)		4,513	21.
22. Limited-life preferred stock		None	22.
EQUITY CAPITAL			
23. Perpetual preferred stock		None	23.
24. Common stock		150	24.
25. Surplus		200	25.
26. Undivided profits and capital reserves		63	26.
27. Cumulative foreign currency translation adjustments			
28. Total equity capital (sum of items 23 through 27)		413	28.
29. Total liabilities, limited-life preferred stock, and equity capital (sum of items 21, 22, and 28)		4,956	29.

NOTE: The Reports of Condition and Income must be signed by an authorized officer and the Report of Condition must be attested to by not less than two directors for State nonmember banks and three directors for State member and National banks.

1. Sue Weatherly, Vice President

Name and Title of Officer Authorized to Sign Report of the named bank do hereby declare that these Reports of Condition and Income (including the supporting schedules) have been prepared in conformance with the instructions issued by the appropriate Federal regulatory authority and are true to the best of my knowledge and belief.

Sue Weatherly
Signature of Officer Authorized to Sign Report
July 12, 1984
Date of Signature

We, the undersigned directors, attest to the correctness of this Report of Condition (including the supporting schedules) and declare that it has been examined by us and to the best of our knowledge and belief has been prepared in conformance with the instructions issued by the appropriate Federal regulatory authority and is true and correct.

Don Springer
Director
Raymond Stovall
Director
Carl Wheatly
Director

Senior Citizens News

We are having our usual hot and dry July days. Everyone is trying to stay cool. Late evenings are great for working the gardens, which are producing quite well. We have had green beans and okra, friends have brought us squash, cucumbers and cantaloupes. Thanks we have really enjoyed them.

Had a good crowd at the dance on July 17th at the Lions Hall. Been having good turnouts for Monday night practice too. Been missing our live music and looking forward to having them again when the gardening season is over.

Thirty came out to play games on Thursday, July 19th. Come on down and enjoy these evenings with us every Thursday from 6-10 p.m. Tuesday, July 31st, is Birthday/

Anniversary Salad Supper. Those with birthday or anniversaries come and enjoy your day. Everyone else come and bring a salad. If we don't have our music makers, we will play games and visit -- so be sure to come.

Other events: Dance Practice on Monday night 7-9 p.m.; Games on Thursday night 6-10 p.m.; Arts & Crafts on Friday afternoon 1 p.m.; Exercise every day at 11 a.m.

Menu
July 26-August 1
Thursday-Fish patties, whole potatoes, spinach, cole slaw, cornbread, peach cobbler, milk, tea, coffee.
Friday-Roast beef, cream potatoes, buttered broccoli, toss salad, dinner rolls, pear halves, milk, tea, coffee.
Monday-Beef patties in brown gravy, potato salad, green beans, plums, rolls, milk, tea, coffee.
Tuesday-Baked ham with raisin sauce, buttered sweet potatoes, fried squash, lime Jello on lettuce, peaches, bread, milk, tea, coffee.
Wednesday-Swiss steak, corn on cob, green beans, toss salad, rice

Pen of Pastor Pinion



With all the pomp and excitement that will be taking place the next few months in our political arena, I thought this poem may be of interest to our readers:

POLITICIAN'S CREED

Tax his cow, Tax his goat.
 Tax his pants, Tax his coat.
 Tax his work, Tax his dirt.
 Tax his chew, Tax his smoke.
 Teach him taxes are no joke.
 Tax his car, Tax his gas.
 Tax the road he must pass,
 Tax his land, Tax his wage.
 Tax the bed in which he lays.

Tax his tractor, Tax his mule.
 Teach him taxes are the rule.
 Tax his bath, Tax his sink.
 Tax him if he tries to think.
 Tax his booze, Tax his beers.
 If he cries, Tax his tears.
 Tax his ill, Tax his trash.
 Tax his notes, Tax his cash.
 Tax him good, don't let him know
 After taxes there's no dough.

If he hollers, Tax him more.
 Tax him till he's good and sore.
 Tax his coffin, Tax his grave.
 Tax the sod in which he lays.
 Put these words upon his tomb,
 "Taxes drove him to his doom."
 When he's gone we won't relax
 We'll still be after inheritance tax!

City Minutes

The Board of Aldermen of the City of Clarendon met in regular session on July 10, 1984 in the Board Room, City Hall at 7:00 p.m.

Members present were Mayor James L. Kuhn, Aldermen Richard Bell, Lloyd McCord, and James Sharrar.

Members absent were Aldermen Gene White and Steve Smith.

*Minutes of the June 26, 1984 meeting were read and approved.

*Motion carried to increase the monthly salary of the regular full-time City employees \$50.00 effective October 1, 1984.

*The Board of Aldermen asked City Secretary Donna Edwards to write the Cable TV Company in Granite, Oklahoma, advising them that we have been receiving complaints from some residents who have been waiting up to two years to get connected to cable service.

*Bills incurred by the City in the month of June, 1984, were presented and ordered paid.

*There being no other City business at this time motion carried to adjourn.



The parking meter was invented in Oklahoma City by Carl Magee.

MORE FRUIT/LESS SUGAR IN NEW PECTIN RECIPES

Before you begin the 1984 jam and jelly making season, look for a new powdered fruit pectin on the market this year. Novice and expert alike know that it's the pectin that helps assure a good "set." For those consumers who prefer a less sweet jam or jelly, new Sure-Jell Light fruit pectin is ideal because it requires 1/3 less sugar than conventional powdered pectins. There are no artificial sweeteners or preservatives in the new pectin product. The specially developed recipes provided in package leaflets use more fruit and less sugar than called for in traditional recipes. New Sure-Jell Light and regular Sure-Jell fruit pectin (the latter on the market since 1934), are side by side on market shelves, but they are not interchangeable in recipes. Both fruit pectins are equally successful in only those recipes developed for that specific pectin. With a bevy of seasonal fruits on the horizon, this new fruit pectin for jams and jellies with less sugar promises to inspire current and new jam and jelly makers.

FRESH STRAWBERRY JAM

6 cups prepared fruit (about 2-1/4 qt. fully ripe strawberries)
 4-1/2 cups (2 lb.) sugar
 1 box Sure-Jell Light fruit pectin

First prepare the fruit. Stem and thoroughly crush, one layer at a time, about 2-1/4 quarts strawberries. Measure 6 cups into 6- or 8-quart saucepot.

Then make the jam. Measure sugar. Mix 1/4 cup of the sugar with fruit pectin; then stir into fruit in saucepot. Place over high heat and stir until mixture comes to a full boil. Immediately add remaining sugar and stir. Bring to a full rolling boil and boil hard 1 minute, stirring constantly. Remove from heat and skim off foam with metal spoon. Ladle quickly into hot jars, filling to within 1/4 inch of top. Cover and process in boiling water bath for 10 minutes. Makes about 8 (8 fl. oz.) jars.

Ashtola-Martin News

By Naomi Green

Thelma's niece and her husband, Mr. and Mrs. Bill Smith of Jefferson, Kansas, came by to visit the Royce Hall enroute to Dallas to see her younger sister who is recovering from carpal tunnel syndrome surgery.

The former Nancy Miller who is now Matthews and lives in Amarillo looked up some Ashtola friends Monday. She visited Lily Knox and Adderline Mahaffey.

LaRue Pitman of Amarillo spent Saturday night with her parents, the Tom Shadles. They all went to Lloyd Risley's birthday party Sunday afternoon.

Orvil, Karen, Arron and Denise Bennett of Abilene visited with Steve and Dorothy Reynolds over the weekend.

Christel Green returned Saturday from established Girl Scout Camp at Camp Cibola.

Mae Naylor of Thalis had tea and visited the H.A. Greens the 23 of July enroute to Amarillo to be with her daughter-in-law, Vici Naylor, who had surgery the 24 of July.

It was a complete surprise to Lloyd Risley when his children decided that a 70th birthday was occasion enough for a party. Sunday afternoon, July 22, Martha Jo, Chris and Connie Schollenbarger, Leane, Richard, Patricia and Seth

Thornberry of Memphis, Jim, Linda, Amy and Alison Risley of Denver City and Lloyd Virgil and Teresa Risley of Amarillo gathered to welcome other relatives and friends in the Risley home.

Former Ashtola resident Rev. Russell Morris reports a new addition to the family. Jessica Lane Morris was born July 22 at 4:30 p.m. at the All Saints Hospital in Fort Worth. She weighed in at 8 lbs and 5 1/2 ounces, was 21 inches long and has dark hair and devoted parents, Lewie and Peggy. Grandparents Russell and Betty Lane Morris are preparing for their return to mission in Africa. Russell plans to be in Clarendon the weekend of the 5th of August.

Dane and Edna Perdue went to Amarillo to help with Tyler while Steve was at work Saturday and Sunday. Kathryn was down with a virus.

Mr. and Mrs. John Wood of Amarillo visited Sunday evening with Dane and Edna Perdue.

Mrs. Kay Green of Stinnett spent Thursday with her sister, Eileen Brown.

Sunday, Marcia, Carrie Sue and Chris Ann came to the Skeet Browns for a wading afternoon.

Roslie Lockwood of Claude spent Monday with Eileen Brown.

MIKE'S



PHARMACY

874-3554

Mail Orders Receive Prompt Service

Senior Citizens Receive
 15% Discount on Prescriptions

PRESSURE MEDICINES

Medicines that reduce high blood pressure exert their effort by acting on the heart, blood vessels, nervous system, or kidneys. Most antihypertensives [high blood pressure medicines] work best when combined with salt restriction, weight control, moderate exercise, and relaxation.

Forty percent of people with hypertension obtain adequate pressure reduction by taking only diuretic ("water" or "fluid" pill). Diuretics have been the mainstay of hypertension treatment for about 20 years.

The antidiuretics act in the brain to cause

blood vessels to relax. Vessel relaxation allows blood to flow more easily, and a lowering of blood pressure thus results. Included among the antidiuretics are reserpine, methyldopa, clonidine, and the beta-blockers of which propranolol is a popular example.

Vasodilators such as hydralazine and prazosin appear to work directly on the blood vessels to produce a similar relaxation.

And most recently available are the calcium channel blockers such as verapamil and nifedipine. These relatively new medicines uniquely protect the heart from excessive stimulation. Blood pressure may be reduced as a result of such protection.

Mike Wants

To Be Your

Pharmacist!



Mike Butts

MARTIN BAPTIST CHURCH John Truitt, Pastor Sunday School 10:00 a.m. Church Service 11:00 a.m. Evening Service 6:00 p.m. Wednesday Night Service 7:00 p.m.	CLARENDON LUTHERAN MISSION Clarendon Lutherans now attend services at Zion Lutheran Church in Pampa, Texas. Rev. Charles Paulson INFORMATION Mrs. Drager 874-2067	CHURCH OF THE NAZARENE 3rd & Hawley 874-2321 Bill Hodges, Pastor Sunday School 9:45 a.m. Morning Worship 11:00 a.m. Evening Worship 6:00 p.m. Wednesday Night Service 7:30 p.m.
UNITED PENTECOSTAL CHURCH Rev. Jerome A. Campbell Montgomery & Fakar St. Sunday School 10:00 a.m. Evening Worship 6:00 p.m. Wednesday Night Service 7:30 p.m.	CHURCH OF JESUS CHRIST OF LATTER DAY SAINTS Call Katie Dvorak at 874-3104.	ST. MARK BAPTIST CHURCH Jefferson & Martindale Albert Yarbrough, Pastor Sunday School 9:45 a.m. Preaching 11:00 a.m. Night Service 8:30 p.m. Prayer Service 7:30 p.m. Woman's Mission 8:00 p.m.
FIRST BAPTIST CHURCH Bugbee & Third Streets 874-3833 Paul Hell, Pastor Sunday School 9:45 a.m. Morning Worship 11:00 a.m. Training Union 6:00 p.m. Evening Worship 7:00 p.m.	FIRST CHRISTIAN CHURCH Sunday School 9:30 Worship 10:40 Children's Worship 10:40 Evening Study 6:00 Youth 6:00 Correspondence course available [No charge]. Minister: Bruce Hofmann 874-3218	FIRST UNITED METHODIST CHURCH 5th & Jefferson 874-3667 Wm. H. [Bill] Watson Sunday School 9:45 a.m. Morning Worship 11:00 a.m. Evening Worship 6:00 p.m. Youth Program 7:00 p.m.
FIRST BAPTIST CHURCH Howardwick SBC Bro. O. C. Edwards Sunday School 10:00 a.m. Worship Service 11:00 a.m. Evening Service 6:00 p.m. Wednesday Prayer Meeting 6:00 p.m.	PRESBYTERIAN CHURCH 4th & Parks Dr. E. L. Manning, Pastor Sunday School 10:00 a.m. Morning Worship 11:00 a.m. Youth Program 6:00 p.m. Evening Worship 7:00 p.m. Tuesday Bible Study 2:30 p.m.	ASSEMBLY OF GOD 5th & McClelland Roger Gray, Pastor Sunday School 9:45 a.m. Sunday Worship 11:00 a.m. Evening Worship 6:30 p.m. Tuesday Women's Missionary 1:00 p.m. Wednesday Night Service 7:30 p.m.
CHURCH OF CHRIST 4th & Carhart Stan Quisenberry, Minister Sunday School 9:30 a.m. Morning Worship 10:30 a.m. Evening Worship 6:00 p.m. Wednesday Night Service 7:30 p.m.	CALVARY BAPTIST CHURCH Hwy 287 & Jackson 874-3479 Gary L. Pinlon, Pastor Sunday School 10 a.m. Sunday Worship 11:00 a.m. Bible Study 6:30 p.m. Evening Worship 7:00 p.m. Wednesday Night Service 7:30 p.m.	ST. JOHN THE BAPTIST EPISCOPAL CHURCH Sunday School 9:45 a.m. Holy Communion 11:00 a.m.
ST. MARY'S CATHOLIC CHURCH McClelland & Montgomery Rev. J. Arnold Carlson Sunday Morning Mass 9:30 a.m.		

NOTICE TO VEHICLE OWNERS EFFECT OF NEW TEXAS TAX LAW ON LICENSE PLATE FEES EFFECTIVE AUGUST 1, 1984

If your car's year model is:	And your license plate fee used to cost:	Your NEW fee is:
1982 - 1984 (3 years old)	\$15.80	\$46.30
	\$25.80	\$46.30
	\$33.80	\$46.30
1979 - 1981 (4-6 years old)	\$15.80	\$38.30
	\$25.80	\$38.30
	\$33.80	\$38.30
1978 or older (Older than 6 yrs)	\$15.80	\$28.30
	\$25.80	\$28.30
	\$33.80	\$28.30
Other:		
Cars over 6,000 lbs.	By weight	Add \$12.50
Pickups	By weight	Add \$12.50
Boat Trailers	By weight	Add \$12.50
Motorcycles	\$6.05	\$18.55
Commercial Trucks	By weight	Add \$12.50
Personalized Plates	License Fee Plus \$10.00	License Fee Plus \$25.00

ADDITIONAL NOTE: Motor Vehicle Sales Taxes will increase from 4% to 5% on August 1, 1984.
Wanda Smith, Tax Assessor-Collector, Donley County

DRUNK DRIVERS: WHAT YOU CAN DO

Drinks Consumed in 2 Hours
1 1/2 ozs. 86° Liquor. 12 ozs. Beer. 6 ozs. Wine

Person's Weight	Drinks Consumed in 2 Hours											
	1	2	3	4	5	6	7	8	9	10	11	12
100	1	2	3	4	5	6	7	8	9	10	11	12
120	1	2	3	4	5	6	7	8	9	10	11	12
140	1	2	3	4	5	6	7	8	9	10	11	12
160	1	2	3	4	5	6	7	8	9	10	11	12
180	1	2	3	4	5	6	7	8	9	10	11	12
200	1	2	3	4	5	6	7	8	9	10	11	12
220	1	2	3	4	5	6	7	8	9	10	11	12
240	1	2	3	4	5	6	7	8	9	10	11	12
	DRIVE CAREFUL BAC TO .05%				DRIVING IMPAIRED .05%-.09%				DO NOT DRIVE .10% & UP			

Source: National Highway Traffic Safety Administration
How much you weigh has an important impact on the rate at which your blood alcohol concentration rises.

Some 25,000 lives can be saved every year. They are lost in crashes involving alcohol. Five thousand of those victims will be teenagers. More and more Americans these days are taking action against the drunk driving problem and what they're doing could help remove many drunk drivers from our nation's highways.

More than two million motor vehicle crashes each year involve alcohol. In fact, one out of every two Americans will be involved in an alcohol-related vehicle crash in his or her lifetime.

What many people don't realize is that what you drink doesn't make any difference when it comes to drunk driving. A six-ounce glass of wine, a 12-ounce beer or one and one-half ounces of 86-proof liquor have about the same

amount of alcohol. The extent of driver impairment is determined by the blood alcohol concentration (BAC) level. Studies indicate that driving ability is reduced significantly between .05 percent and .10 percent BAC. With a BAC of just .05 percent, the chances of being in an accident are twice as great as when sober.

On the average, two to three drinks in a one-hour period will result in a .05 BAC level. Factors such as age—younger people become impaired sooner—weight and metabolism have an important impact.

Here are some things you can do, according to the Motor Vehicle Manufacturers Association (MVMA), to protect yourself and others from drunk drivers.

1. Wear safety belts at all times. The use of restraints

could cut highway casualties in half.

2. Minimize nighttime driving. About 80% of drunk driving crashes occur between 8 pm and 8 am.

3. Report to police any suspicious driving behavior you see.

4. Go easy when serving alcoholic beverages to guests. If a guest has had too much to drink, drive him or her home or call a taxi.

5. Join or form an anti-drunk driving group. Tell government officials you support strict enforcement of laws to reduce drinking and driving. Action groups are working with police, judges, educators and concerned citizens of all ages in communities across the country.

FREE BROCHURE

For more information, write MVMA, 300 New Center Building, Detroit, MI 48202, for a copy of "It's Your Problem!", a pamphlet on drinking-driving. Single copies are available without charge to readers who send a stamped, self-addressed envelope. Multiple copies for meetings and classes can be obtained by writing the same address.



To make a one-pound comb of honey, bees must collect nectar from about two million flowers.

FANCY THAT!

A single slow drip can waste 15 or 20 gallons of water a day. Experts at the American Water Works Association suggest you check every faucet for leaks at least twice a year.

A single lawn sprinkler spraying only five gallons per minute uses 50 percent more in just one hour than a combination of ten toilet flushes, two five-minute showers, two dishwasher loads and a full load of clothes!

ALL ART SUPPLIES And FRAMES 20% off THRU JULY ART STUDIO
311 Carhart, Clarendon
Open Tues.-Thurs. 8:30-11:30 and 1:00-4:00 p.m.
874-2855

Pre-Kindergarten Class

If you are interested in having your child attend Pre-Kindergarten, this fall, Call the First Baptist Church 874-3833 and enroll your child. Classes are available for three and four year olds.

FIRST BAPTIST CHURCH

Rates Ratings

12% Compound Annual Yield 12.94%

One Year Certificate
\$500 Minimum Deposit

10.75%

Cash Manager Accounts
\$2,500 Minimum Deposit

9.50%

Super Now Account
\$2,500 Minimum Deposit

11.25%

91 Day Certificates
\$2,500 Minimum Deposit

11.50%

6 Month Money Market Certificates
\$2,500 Minimum Deposit

12.25% Compound Annual Yield 13.22%

18 Month Money Market Certificates
\$500 Minimum Deposit

12.50% Compound Annual Yield 13.51%

30 Month Money Market Certificates
\$500 Minimum Deposit

12% Compound Annual Yield 12.94%

IRA Accounts
Variable Rate

Inquire about our Mini Jumbo (\$50,000 minimum) and Jumbo Rates (\$100,000 minimum)

Federal Regulations require a penalty for early withdrawal - Insured to \$100,000 by FSLIC

VERNON SAVINGS

1725 Wilbarger Street Vernon, Texas 76384 (817) 553-3362

113 No. Main Frederick OK 73542 (405) 335-5549
10th and Easy St. Paducah, TX 79248 (806) 492-3687
119 So. 6th St. Memphis, TX 79245 (806) 259-3384
423 N. Main Childress, TX 79201 (817) 937-8686
14850 Montfort Rd. Dallas, TX 75240 (214) 392-2154



Consolidated Reports of Condition and Income for A Bank With Domestic Offices Only and Total Assets of Less Than \$100 Million - FFIEC 034

Report at the close of business June 30, 1984

This report is required by law: 12 U.S.C. § 1817 (State member banks); 12 U.S.C. § 1817 (State nonmember banks); and 12 U.S.C. § 161 (National banks).

This report form is to be filed by banks with domestic offices only. Banks with branches and consolidated subsidiaries in U.S. territories and possessions, Edge or Agreement subsidiaries, foreign branches, consolidated foreign subsidiaries, or International Banking facilities must file FFIEC 033.

NOTE: The Reports of Condition and Income must be signed by an authorized officer and the Report of Condition must be attested to by not less than two directors for State member banks and three directors for State nonmember and National banks.

We, the undersigned director, attest to the correctness of this Report of Condition (including the supporting schedules) and declare that it has been examined by us and to the best of our knowledge and belief has been prepared in conformance with the instructions issued by the appropriate Federal regulatory authority and is true and correct.

Chester A. Fagerlund, Vice President
Name and Title of Officer Authorized to Sign Report
of the named bank do hereby declare that these Reports of Condition and Income (including the supporting schedules) have been prepared in conformance with the instructions issued by the appropriate Federal regulatory authority and are true to the best of my knowledge and belief.

Walt Whitman
Director
Walter Whitman
Director
Walter Whitman
Director

Chester A. Fagerlund
Signature of Officer Authorized to Sign Report
July 19, 1984
Date

State Member Banks: Return the original and one copy to the appropriate Federal Reserve District Bank.
State Nonmember Banks: Return the original only to the Federal Reserve Analysis and Processing Unit, 550 17th Street, N.W., Washington, D.C. 20429

National Banks: Return the original to the FDIC, Reports Analysis and Processing Unit, 550 17th Street, N.W., Washington, D.C. 20429. Also send one copy to the appropriate District Office, Comptroller and to the appropriate Federal Reserve District Bank.

Bank's Transit Number 1113 0434 CALL NO. 148 11 06-30-84
CERT: 11091 13 48-1460
THE DOWNEY COUNTY STATE BANK
P.O. BOX 967
CLARENDON, TX 79226

Board of Governors of the Federal Reserve System, Federal Deposit Insurance Corporation, Office of the Comptroller of the Currency

Consolidated Report of Condition for All Insured Commercial Banks for June 30, 1984

All schedules are to be reported in thousands of dollars, unless otherwise indicated, report the amount outstanding as of the last business day of the quarter.

Schedule RC—Balance Sheet

ASSETS	Dollar Amounts in Thousands		C-100 Mil. Thou.
	1984	1983	
1. Cash and balances due from depository institutions:			
a. Noninterest-bearing balances and currency and coin	102.8	102.8	1.0
b. Interest-bearing balances	0.0	0.0	0.0
2. Securities (from Schedule RC-B)	52.0	52.0	0.5
3. Federal funds sold and securities purchased under agreements to resell	0.0	0.0	0.0
4. Loans and leases financing (receivables):			
a. Loans and leases, net of unearned income (from Schedule RC-C)	91.7	91.7	0.9
b. LESS: Allowance for loan and lease losses	5.6	5.6	0.0
c. LESS: Allocated transfer risk reserve	0.0	0.0	0.0
d. Loans and leases, net of unearned income, allowance, and reserve (Item 4.a minus 4.b and 4.c)	86.1	86.1	0.9
5. Assets held in trading accounts	2.9	2.9	0.0
6. Premises and fixed assets (including capitalized leases)	0.0	0.0	0.0
7. Other real estate owned	0.0	0.0	0.0
8. Investments in unconsolidated subsidiaries and associated companies	0.0	0.0	0.0
9. Customers' liability to this bank on accounts outstanding	0.0	0.0	0.0
10. Intangible assets	0.0	0.0	0.0
11. Other assets (from Schedule RC-F)	35.4	35.4	0.3
12. Total assets (sum of items 1 through 11)	179.32	179.32	1.7

LIABILITIES	Dollar Amounts in Thousands		C-100 Mil. Thou.
	1984	1983	
13. Deposits:			
a. In domestic offices (sum of totals of columns A and C from Schedule RC-E)	137.0	137.0	1.3
(1) Noninterest-bearing	40.1	40.1	0.4
(2) Interest-bearing	96.9	96.9	0.9
b. In foreign offices, Edge and Agreement subsidiaries	0.0	0.0	0.0
(1) Noninterest-bearing	0.0	0.0	0.0
(2) Interest-bearing	0.0	0.0	0.0
14. Federal funds purchased and securities sold under agreements to repurchase	0.0	0.0	0.0
15. Demand notes issued to the U.S. Treasury	0.0	0.0	0.0
16. Other borrowed money	0.0	0.0	0.0
17. Mortgage indebtedness and obligations under capitalized leases	0.0	0.0	0.0
18. Bank's liability on acceptances extended and outstanding	0.0	0.0	0.0
19. Notes and debentures subordinate to deposits	0.0	0.0	0.0
20. Other liabilities (from Schedule RC-G)	20.9	20.9	0.2
21. Total liabilities (sum of items 13 through 20)	157.9	157.9	1.5
22. Limited-life preferred stock	0.0	0.0	0.0
EQUITY CAPITAL			
23. Perpetual preferred stock	2.9	2.9	0.0
24. Common stock	4.00	4.00	0.0
25. Surplus	10.00	10.00	0.1
26. Undivided profits and capital reserves	55.3	55.3	0.5
27. Cumulative foreign currency translation adjustments	0.0	0.0	0.0
28. Total equity capital (sum of items 23 through 27)	72.2	72.2	0.7
29. Total liabilities, limited-life preferred stock, and equity capital (sum of items 21, 22, and 28)	179.32	179.32	1.7

Edwards Family Reunion

The annual Edwards reunion was held Friday through Sunday, July 13, 14, 15 at Greenbelt Lake with 10 of the 11 living children of Mrs. Carrie Edwards attending. As head of the family she is 87 years of age.

Entertainment included fishing, swimming, taking pictures, reminiscing, boating, games and camping out at night.

Some of the relatives came in house trailers, campers and motor homes, while others pitched their tents at the lakeside.

On Sunday, the reunion dinner was hosted by Jewell and P.C. Judd and was held at the Clarendon community building. Afterward some of the group went horseback riding.

Saturday night entertainment included roasting hot dogs and marshmallows over a big bonfire.

Approximately 90 attended.

Joining Mrs. Edwards were these children and their families:

Lenord and Ruby Edwards of Shamrock.

Mauro urges Veterans to take advantage of Low Loan Rate

Texas Land Commissioner Garry Mauro reminded Texas veterans today that the interest rate charged to veterans participating in the Veterans Land Program will rise from 8.5 to 9.25 percent on August 1.

"I want to urge anyone considering participating in the Veterans Land Program to get their completed applications in to us by July 31," Mauro said.

Mauro, who serves as Chairman of the Veterans Land Board, stressed that "there is still plenty of money available at the old rate" and that all applications that are currently being processed and all completed applications received by the Veterans Land Board post-marked by July 31 will receive the 8.5 percent rate.

Mauro said a new "Fast-Tract" subdivision program implemented by the Veterans Land Board has been successful in "providing Texas veterans with a greater selection of high quality land to choose from."

Mauro said the new "Fast-Tract" program is based on subdivision developers joining the Veterans Land Board "in a cooperative effort to help veterans find and purchase land suitable to their needs."

"As a result of the success of this new program, we now have prime acreage available for Texas veterans near Austin, Waco, Corsicana, Amarillo, and San Antonio," Mauro said.

The Veterans Land Program offers \$20,000 low-interest fixed-rate loans to eligible veterans to purchase a minimum of ten acres of land.

Mauro added that any developer or Texas veteran who wants information on the new subdivision program should contact the loan processing division of the Veterans Land Board by calling toll free 1-800-252-VETS or 475-2823 in Austin.

THEN/NOW!

When it comes to cleaning up the air in your home, top technology has produced a fresh solution to the problem.



THEN: In the past there was the standard furnace filter to remove dirty air particles that cause damage to walls, ceilings, drapes, furniture—and your health. But most dirty air particles passed right through it.



NOW: Today, a properly designed and quality Media Air Filter, such as Honeywell's F66A, will remove up to 35 percent of dirty air particles. And the F50 Electronic Air Cleaner acts like an electronic dust magnet, electrically charging and removing up to 95 percent of dirty air particles.

Ruby Alexander of Shamrock, with Dwayne and Mary Alexander and Lonnie and Mellisia of San Diego.

Luther and Irene Edwards and family, Eldrue, Cathy, Wesley, Kari, Weldon, Pam, Tiffany Danille Edwards, all of Amarillo.

Myrtle and Troy Stallings of Wellington and their family; Cleland Stallings, Benny and Kathy Stallings, of Amarillo; Kenny and Chell Stallings with Amanda of Pampa; Debbie Stallings and Keith Walls of Ft. Worth; Mark and Brenda and Bow of Amarillo.

Presley and Donella Edwards with Arlin, Annesa, Rebecca, all of Amarillo, and JDian and Gene Whitten and children Jerry, Kimberly and Gene, all of Erick, Okla.

Jewell and P.C. Judd of Clarendon with Lee and Gail Jones, and Ronda Jones Akin and baby, Courtney Nicole, all of Amarillo.

Ralph and Nell Edwards of Hale Center and her niece, Nancy and Randall Patterson with Heather and Roth of Groom.

Ellie Miller with David, LaHonda Steve, all of Grand Prairie.

Betty Kizer with Linda McDonald and son, Robert and Johnny Mann, all of McLean.

Inez and Homer Lee Vorse and children, J.E. Vorse, Eldon and Linda Vorse with Aicha, Branchon Vorse, Dale and Peggy Vorse with Gail and Kathy; Gary and Sharon Vorse with Sherry, all of Pasadena.

Elwand Taylor, a daughter, did not attend.



Caprice Classic Sedan

Factory Savings of \$298 to \$730

on some specially equipped models

Full Sized Chevrolet Cars and Pickups Here Now

Chevy City, U.S.A in Clarendon Is



ALDERSON CHEVROLET

Member of West Texas Dealer Association

Remodeling SALE

WE'RE BRINGING IN 100'S of NEW ITEMS THE OLD MUST GO!

CHARMIN
\$1.09

ROBOT WATCH
NEW ITEM \$8.99

10's Regular Super or Super Plus

TAMPAX

99¢

Solo CUPS 16 oz.

20 PACK

79¢



NEW BORN BABY

DOLL \$1.99



HAIR CURLERS ACCESSORIES AND SOME COVER GIRL

Over 100 New TOYS!! 20% OFF

can **COKES**

\$1.59 limit 4

6 pack



Some **MAX FACTOR and REVLON**

25-50% OFF

BIVENS PHARMACY
ELMONETTE and PAUL BIVENS
Two Registered Pharmacists To Serve You

Classified Ads

FOR SALE: Storm windows, complete window units. **CLARENDON GLASS CO.** 874-3826.

CABLE TV
"There's more to see on Cable TV." We have 2, 3, 4, 5, 6, 7, 9, 10, 13. Call 874-2522.
WE SELL AND SERVICE inground and above ground swimming pools, hot tubs, spas and saunas, storm cellars. 1312 North Hobart, Pampa 806-665-4218. 24-tfc

LOYD'S BACKHOE & DITCHING SERVICE
Install septic tanks and install and repair all kinds of water lines. Phone 874-2287 10-27tp

....when you care enough to **OWN THE VERY BEST!**

3 Bedroom - Lovely Kitchen - Living/Dining Combo - huge bath w/w/d - owner ready to sell-----\$35,000.00.
2 Bedroom - Basement - completely furnished - \$33,000.00 - owner will consider financing to qualified buyer. Will Negotiate unfurnished.
***New Listing - Lovely 3 bedroom, 1 1/2 baths, large living room w/fireplace - all built-in kitchen - utility - double car garage --- cellar/basement - many other nice features - \$58,900.00.**
***New Listing - A Doll House - Newly redecorated interior - 2 bedroom - Bath-Utility Comb - Priced to sell-----Good financing available to qualified buyer--- \$28,200.00.**
***New Listing - 2 or possible 3 bedroom, good storage - fenced backyard - has assumable FHA Loan at 12.81% for qualified buyer-----\$39,650.00.**
Lake Homes:
2 story 3 bedroom, 2 baths, beautiful view of Lake Greenbelt \$55,000.00
2 story - 3 bedroom, 2 bath, good location \$42,000.00.
2 story weekend retreat - 2 bedroom, 1 1/2 baths, living - Dining - Kitchen Comb - Deck. \$40,000.00
3 bedroom, 1 1/2 baths - needs some TLC but has some outstanding features---a beautiful view \$32,200.
----many more good listings when you care enough to own the very best.

James F. Hayes & Co.
RESIDENTIAL - COMMERCIAL PROPERTIES
CLARENDON, TEXAS 79226

Office: 874-3546
Residence 874-3649

Carol Bryant Hinton

KOZY KORNER BARGAIN STORE
Furniture, what nots, clothing for adults and children, dishes, pots and pans. Open 9:30 until 5:00. Moved to old bus station, block west of red light.

MEMPHIS SINGER SEWING MACHINE SALES SERVICE
For contacts call **Stavhagen Furniture** I am in Clarendon every two weeks on Thursday

SMITH MACHINE SAW FILING, carpentry, cabinets, and concrete. 874-2829, corner of Barcus and Hartzel.

LAMPS, LAMP PARTS, all light bulbs HOUSE OF SHADES and LAMP REPAIR Wolfin Village Wolfin Avenue Amarillo, Tex. 79109

STEVE'S AUTOMOTIVE & INDUSTRIAL ENGINES
For tune-ups, muffler or a major overhaul, on the farm service calls. 874-3446

Call your local used cow dealer for dead stock removal 1-800-692-4043 toll free Hereford Bi-Products 28-tfc

COMMERCIAL PRINTING Business and Personal Stationery & Cards Business Forms and Statements Window Cards Whatever your printing needs, check with us. **CLARENDON OFFICE SUPPLY & PRINTING** Mr. & Mrs. G.W. Estlack Phone 874-2043 Clarendon, TX 79226

OFFICE SUPPLY Bookkeeping supplies, storage boxes, office machine ribbons, office furniture. Clarendon Office Supply and Printing, G. W. Estlack, Clarendon, Tex 79226

Clarendon Lodge 700 AF/AM Stated Meeting: Second, Monday, 8:00 p.m. each Month. Practice: 1st & 4th Mondays **Charlie DeMoss, W.M.** **Billy Ray Johnston, Sec.** Refreshments at 7:00.

VACUUM CLEANER SERVICE Any brand - Anytime **KIRBY'S OUR SPECIALTY** New or rebuilds for sale. For a "no obligation" demonstration call **McVicker Kirby Service (806) 874-3403.** 19-tfc

DONNA'S ALL BREED DOG GROOMING 248-3691 GROOM, TEXAS 49-TFC

FOR SALE Houses in Clarendon and Hedley Call us, we need listings 874-2533. **SANDERS REAL ESTATE** 720 S. McClelland 874-2533

Real Estate

FOR SALE: 3 bedroom house, basement, large kitchen, and dining area, utility room, 100 ft. front, good location. This house can be seen at 416 South 4th (the Mrs. D.T. Smallwood home). 874-2485 or 874-3669. 18-tfc

FOR SALE: 3 bedroom house on 6+ acres, 4 large out buildings/barns, stock pens, 4 acres cultivation/new fence, large garden plot/orchard, new well, new septic tank, 1/2 mile east of Clarendon. Call 874-3829 or 874-3354. 18TFC

4 BEDROOM HOUSE!!! Large lot, good location, big remodeled kitchen and living area combination, built in basement, priced to sell. See at 5th and Bugbee. Call for appointment 874-2659. 24-tfc

FOR SALE: Just outside city limits, 4 bedroom, 2 1/2 baths, fireplace, cellar, 1 1/2 acres or more, part down payment, owner carry rest, low interest, 874-3355. 14-tfc

LAKE LOTS FOR SALE: 3 lots on Lake Greenbelt by owners \$1,000.00 each. Phone 405-688-9281. 19-12tc

FOR SALE: 2 bedroom, 1 and 1/2 baths, brick home, utility room and lots of storage space. Attached garage. Priced reasonably. Call 874-2200 or 874-3827. 32-tfc

GOOD INVESTMENT Very pretty 3 bedroom, 2 bath home on 7 acres. Also welding and machine shop located in Lelia Lake. Call Palo Duro Realtors for further details 358-8141. 28tfc

BARGAIN 2 bedroom stucco home on 2 lots in Hedley, owner will carry with low down payment. Call Palo Duro Realtors in Amarillo, 358-8141. 28-tfc

FOR SALE: 2 acres of land, fenced with chain link fence, water, septic tank and electricity, ready for house or trailer, Carroll Creek Acres, owner will finance 874-3463. 30-1tp

30 ACRES 8 miles from Clarendon, south of Lelia Lake on pavement, 3 bedroom house, 1 1/2 baths, shop with hay or implement shed. Call Scott & Co., Amarillo 355-9856, nights Harrell 374-3644. 30-1tc 32-1tc

WILL CONSIDER TRADE - 3 bedroom home with acreage near Clarendon/Greenbelt Lake for Amarillo property or will finance 359-7400. 30-2tc

Misc. ?

FOR SALE: 2 year old Hereford bulls. Also polled bulls, 874-2780. 28-3tc

PIANO FOR SALE Wanted: Responsible party to assume small monthly payments on spinet/Console piano. Can be seen locally. Write: (include phone number) Credit Manager, P.O. Box 478 Lockhart, TX 78644-0478. 28-3tc

JOHN MORROW'S CUSTOM HAY HAULING Water tight open stacks/We stack in barns, lofts, and sheds/load semi-trucks/deliveries/reasonable rates/1500 bales per day. 874-2704 19-12tc

FOR SALE: peas, okra and cucumbers now ready and corn next week. Ben Burrow 874-2005. 29-2tc

1975 DeVille \$1750, 1953 Plymouth Cranbrook, 4 door \$750; 1958 6 cylinder Chevrolet pickup \$1750. Don Blanch 856-4461. 30-1tp

FOR SALE: 1981 Centurion mobile home, 14 X 80, 3 bedroom, 2 bath. See Ken at Rhema Ranch Country Store. 30-2tp

FOR SALE: 15 foot Del Magic Deluxe Boat, 85 HP Mercury outboard, trailer, skis, lifejackets, Skiddiddle, extra fuel tank. Been shedded. Excellent condition. \$4,000. 806-874-2158 Lelia Lake. 30-2tp

FOR SALE: 50 inch walnut coffee table, \$100; 1 twin bed with frame, \$40; rocker recliner, \$50; 3 cushion sofa, \$90; full size wicker headboard, \$40. Call 874-3829, ask Maurine. 28-3tc

HEDLEY PEACHES - Oakes Orchard, your pick or already picked, 10 miles east of Clarendon on Highway 287. Also blackeyed peas for sale. 30-2tc

FOR SALE OR TRADE: 1979 250 CC Bultaco dirt bike, 4 X 4 flat bed trailer, 16 gauge pump shot gun, 75 cynder blocks, water cooled air conditioner, good clean girls clothes and shoes Sizes 12-14 874-3689. 30-1tc

FOR SALE: Reasonable girls fall clothes, good condition, size 4 through 6 874-2183 Doris Braddock. 30-1tp

BEAUTIFUL GOLDEN OLK ESTY pump organ, old cupboard, typewriter, dolls one or collection and more. Sneeds Antique 320 Jefferson in Clarendon. 30-1tp

1976 Davis backhoe and trencher, gooseneck trailer. First Bank & Trust 874-3556. Contact Jim Garland. 30-1tc

FOR SALE: 1972 Dodge pickup, 3/4 ton, \$600 or best off. 874-3379. 30-1tc

FOR SALE: Repossessed dining room suite by DeSota - China Table and 4 chairs, \$800.00 or 12 payments of \$73.33. Call 874-2452 between 8:30 a.m. and 5:30 p.m. 28-TFC

FOR SALE: Repossessed living room suite - sofa, love seat, chair and ottoman, 3 tables, \$900.00 or 12 payments of \$82.50. Call 874-2452 between 8:30 a.m. and 5:30 p.m. 28-TFC

FOR SALE: Repossessed Chromcraft dining room suite, table and 4 chairs, \$395.04 - 12 payments of \$32.92. Call 874-2452 between 8:30 a.m. and 5:30 p.m. 28-TFC

FOR SALE: Repossessed Twin Oaks bedroom suite, queen size bed, chest, night stand and triple dresser with hutch mirror, \$1,500 cash or 12 payments of \$137.50. Call 874-2452 between 8:30 a.m. and 5:30 p.m. 28-tfc

ALL CLASSIFIED ads must be paid for in advance or be subject to a \$1.00 additional charge for mailing and handling.

NEOMA RIPPETOE CERAMICS Open every day except Sunday Call for appointment 874-2345 **We sell Mayco Paint and Greenware** Will give lessons if desired *Sells gifts 10-tfc


JEROME CUSTOM UPHOLSTERY Automotive and Household **Free Estimates 874-3856** North Kearney

MARY KAY COSMETICS Loyette Quesenberry 874-2495 Complimentary Facial

JULY CLEARANCE SALE IN PROGRESS Big savings on name brand furniture such as La-Z-Boy, Mastercraft, Clayton Marcus, Bassett, Broyhill and others. La-Z-Boy recliners start at \$248.00. Other recliners priced at \$165.00 - 2 only. Sofa sleepers by Mastercraft and Mayo, twin, full and queen sizes starting at \$339.00. Nice dining rooms by Bassett, Broyhill and SK with chinas and hutches 7 piece sets starting \$499. Swivel rockers starting at \$188.00. All Clayton Marcus sofas, love seats, chairs 50% off retail price. 50% off retail price on most end tables. Sale ends July 31st. **GABLE FURNITURE** 7th & Brice Streets Memphis, Texas Closed Saturday afternoons 28-3tc

RAY'S APPLIANCE SERVICE Franchise for Kitchenaid Dishwashers Sales and Service **General Electric Franchise Dealer** Heating and Air Conditioning We service all makes of air conditioners **Freezer & Refrigeration Service & Repairs** P.O. Box 805 Clarendon, TX 79226 874-3172

BACKHOE SERVICE * Septic Tanks * Dirt Hauling * Ditches * Ground Tanks **Tree Removal** **Ricky Rattan 874-2522** **Tex Naylor 874-2561**

THANK YOU Clarendon and all of Donley County for supporting Borden's and their fine Dairy Products **BILLIE AND DANNY DUNN** Clarendon 

BAILEY ESTES AND SON Welding Fabricating  Barns Custom Portable Buildings Enameled Steel Buildings

Brown-McMurtry Implement PHONE 806-823-2441 BOX 777 SILVERTON, TEXAS 79257 **SALES AND SERVICE** **CLARENCE WARD** Home Ph. 823-2083

HILL PETROLEUM CO. **LP GAS** **874-3942** Nights call collect 856-3331 **DIESEL DIESEL DIESEL DIESEL**

ALLEN ESTLACK Electrical and Appliance Repair Call 874-3683 Box 596 Bonded & Licensed

TERMITE PROBLEMS Call for the best termite control Over 20 years experience Call Collect 383-7075 3608 N. E. 23rd Amarillo, Texas 79107 State Lic. No. 117R **LEO RUSSELL**

MORROW'S REDI-MIX * Ready Mixed Concrete * Backhoe * Storm Cellars * Cash on Delivery **ALL TYPES CONCRETE WORK** **EARL MORROW - OWNER 874-2571**

We've got your muffler * Exhausts our specialty * Custom Duars * Stock mufflers and tailpipes installed **Floyd's Automotive Supply & Muffler Shop**

BUYERS AND SELLERS All Kinds of Grain **Clarendon Grain Elevators, Inc.** **J.R. Gill** P. O. Box 805 Clarendon, Tex 79226 874-3172

LaGrone Monument Co. 376-8011 **JANIE HILL** 874-2473 *Builders of Fine Memorials* 901 E. 27th Amarillo, Texas 79105

HELP WANTED

FULL TIME OR PART TIME
Professional Farmers of American needs a representative in your area. Ideal candidate has an agricultural background and desire to improve agricultural marketing techniques. Our clients consistently sell in the top 1/4 of market range. Our commodity price charts are considered number one by a consensus of the brokerage community. If interested call Parks and Associates, 1-800-792-3353.

PART-TIME RN OR LVN needed to complete health histories for insurance companies. Call 806-747-3223.

EXCELLENT INCOME for part time home assembly work. For info. call 504-641-8003 Ext. 8779.

HELP WANTED: Need responsible person able to work with people, good pay and enjoyable work. Apply at Groom KOA, 1-40 and 70 South. Call 248-5631 for appointment.

HELP WANTED at Ruby Bromley's Dining Room.

WANTED: News stringer for KLSR Radio in Memphis. Call 259-3511.

GROUND FLOOR OPPORTUNITY DISTRIBUTORS WANTED
National manufacturer of steel frame homes is seeking representatives for selected areas to market the hottest idea in homebuilding. Low cost, energy efficient, single and multi-family designs and a complete line of metal buildings. Proven concept, dealer training and support. \$3,950 refundable investment required. For complete information call Mr. Bruce at 817-566-1386.

OWN YOUR OWN Jean-Sportswear, Ladies Apparel, Combination, Accessories, Large Size store. National brands: Jordache, Chic, Lee, Levi, Vanderbilt, Izod, Esprit, Brittanica, Calvin Klein, Sergio Valente, Evan Picone, Claiborne, Members Only, Organically Grown, Healthtex, 700 others. \$7,900 to \$24,900, inventory, airfare, training, fixtures, grand opening, etc. Can open 15 days. Mr. Loughlin (612) 888-6555.

Rentals

TRAILER SPACE FOR RENT on paving. Call 874-2576.

FOR RENT: 5 bedroom house, double garage, 874-2889.

APARTMENT FOR RENT: Nice two bedroom loft, furnished, new carpet, paint, panelling, air conditioned, adults only. No pets \$175.00 monthly plus electricity and 1/4 total gas bill. Water paid, \$50.00 deposit, 874-3379.

GRAIN CLEANING: Cotton Country Seed and Delinting, Hwy 256 West, Memphis. 806-259-2222.

GARAGE SALE: Saturday, July 28 only at 1111 W. 3rd, 8 a.m. to 5 p.m.

GARAGE SALE: Saturday 8 a.m.-5 p.m. Turn south of 287 go 8 blocks on Park St. then 2 blocks west.

GARAGE SALE: Open by appointment. Call 874-3403. Clothes, dishes, vacuum cleaners, electric appliances, toys and other items, 119 Walleye, Howardwick.

GARAGE SALE: Infant clothes and shoes, women's coats, women's clothes 10-14, paperbacks, lots of misc, 815 S. Faker, Saturday only 9-6.

THANK YOU
The family of Bill Blasingame acknowledges with grateful appreciation the many kind expressions of sympathy. May God bless you.

Sincerely,
Bobbi Sue, Tiffany & Ike
Mr. and Mrs. Tommy Blasingame
Kay Patterson
Millie Kendrick
Sherry Frost
Mr. and Mrs. Roy Crutchfield

THANK YOU
We would like to express our appreciation to the people of Ash- tola for the help they gave us on the death of our Mother, Mrs. Thelma Wilson.

The Family of Thelma Wilson

THANK YOU
We wish to thank each and every one of you for the thoughtful food, flowers, and prayers we received during the loss of our loved one.
The Family of Harvey Shaw Sr.

THANK YOU
We want to thank all of you for your cards, phone calls and most important your prayers while Greg was in the hospital and home recovering.
We are so thankful for so many warm and loving friends and family. May God richly bless you and yours.
Greg, Roger & Debbie Hollan

NOTICE OF BID
The Board of Directors of the Donley County Hospital District will be accepting bids for a 23X24 metal building, insulated, 4" slab, 1 double door, metal & frame. Bids may be mailed to: Donley County Hospital District, P.O. Box 1007, Clarendon, Texas 79226 or brought by the administrators office at Medical Center, Highway 70 North, Clarendon, Texas. The Board of Directors reserves the right to refuse any and all bids submitted. If further information is needed contact the administrator Billy Ray Johnston at 806/874-3760. The sealed bids will be opened at the next regular meeting of the Board of Directors, August 14th, 1984.

July 12, 1984
Billy Ray Johnston, Administrator

BID NOTICE
Clarendon College is accepting sealed bids on 2-15 passenger vans no later than 5:00 p.m. August 10, 1984. Specifications are available in the office of the President. Clarendon College reserves the right to reject any and all bids.

30-2tc

THANK YOU
I would like to say thank you for all of you who have been so kind and good to us since my illness. Thank you for the cards, flowers, and food sent to the house after I came home from the hospital and especially the prayers.
May God bless each of you as you all have blessed us.
W.B. Wiggins

NOW OPEN
SIMPSON UPHOLSTERY
Furniture, Boats, Autos
Free Estimates
Pick-up & Delivery
421 S. Jefferson
874-3477

FOR SALE
Beautiful Lake home & income property in Howardwick. For information call Joe Lovell 874-3556 or Lometa Hampton 874-3276

WATTERS-SMITH DOZER WORK
JERRY W. SMITH
806/623-2057
BOX 735 SILVERTON, TEXAS 79257

Dora Crandall, M.D.
General Practice
7th and Alexander Sts. Turkey, Tx. 79261
Mon-Fri. 9:00 - 5:10
806-423-1411
Closed Thursday afternoon
Saturday 10:00-12:00
Affiliated American Academy of Family Physicians

HOMER WELDING & TRAILER REPAIR
★ Reasonable Rates
★ Satisfaction guaranteed
BILL HOMER has 10 years experiences
248-2601 days
248-3121 nights
Groom, Texas



SPECIAL Monday-Thursday 5:00 p.m. till closing
3 Single Burgers \$2.78
MR. BURGER



PEPSI COLA 6 Pk \$1.49 120 Oz Cans

DORITOS \$1.69 Tortilla Chips 12 oz pkg ass't flavors reg. \$2.09

Pork & Beans 3/\$1.00 Van Camps #300 cans

Peanut Butter \$1.39 Shippy 18 oz jar

Prune Juice 99¢ Sunsweet Quart Bottle

Dill Pickles \$1.09 Vlasic Hamburger Sliced quart jar

TUNA 69¢ Starkist Chunk Light 6 1/2 oz can

Vanilla Wafers 2/99¢ Sunbeam 10 oz pkg

Crackers 59¢ 1 lb box Wortz Tenderest Saltine

KLEENEX 69¢ Facial Tissues 175 cnt pkg

CHARMIN \$1.19 Bathroom Tissue 4 roll pkg

Tomatoes 2/99¢ Contadina whole peeled #300 cans

Fruit Cocktail 69¢ Del Monte #303 can

Tomato Sauce 5/\$1.00 Hunts 8 oz cans

TEA 89¢ 48 cnt pkg 100 cnt pkg Shurfine

BACON \$1.29 Wright's Sliced Slab

Round Steak \$1.79 USDA Choice

Pikes Peak Roast \$1.59 USDA Choice

PLUMS 3 Lb \$1.00 FOR

Cantaloupe 29¢ lb Texas Vine Ripened

Avacados 5 FOR \$1.00 California

Cucumbers 25¢ lb Texas Long Green Slicers

Squash 49¢ lb Home Grown Yellow

Peaches & Nectarines 39¢ lb California

Shampoo & Conditioner \$1.98 New! New! New! Ivory 15 oz Bottle

Disposable Razors 89¢ Good News Pivot Head 3 cnt pkg

Deodorant \$2.98 Right Guard 10 oz Aero Can

DOWNEY \$2.19 Fabric Softener 64 oz Jug

Bleach 79¢ Purex gallon jug

FAB \$1.69 Laundry Detergent with Fabric Softener

LUX 99¢ Dishwashing Detergent 22 oz bottle

Ground Beef 99¢ lb Fresh - Lean All Meat

Bologna 99¢ Shurfresh All Meat 12 oz pkg

FLOUR 89¢ All Purpose Gladiola 5 Lb Bag

Dog Food 79¢ Gravy Train 2 lb box

THE GROCERY STORE
VONNA TUNNELL HOME OWNED AND OPERATED 874-2425 JACK CLIFFORD