

Centennial Countdown - Donley County - First 100 years

County Tax Rate remains at 74'

Taken from The Clarendon news Sept. 6, 1937.

Commissioner's Court to pass on budget at their next regular meeting.

In an interview with Mr. Sam Lowe, County Judge, Wednesday, Judge Lowe stated the County tax rate of 74c for the past year will remain the same for the coming year.

The Donley County valuation for 1933 was \$5,899,540, and for 1934 was \$5,919,085, an increase of \$19,545.00. The intangible asset valuation for the county will be increased for 1935 by approximately \$87,840.00 because of the State Tax Board decreasing the valuations of the

two railroad properties \$50,000.00 and increasing the valuations on the three pipe line companies properties \$137,840.00. The increase on the valuations of the pipe line properties are as follows: Gulf Pipe Line Co., \$30,890.00; Texas Pipe Line Co., \$24,510.00 and the

Humble Pipe Line Co. \$82,440.00. In the interview Judge Lowe said, "for the first time in the history of Donley County the valuations of the intangible assets were fixed by the State Tax Board, instead of by the County officials. This time the Coun-

ty officials had nothing to do with the preparing those valuations." Judge Lowe stated that the County Budget had been prepared but not passed on by the County Commissioners, and therefore the budget figures for 1935 in comparison to the expenditures for 1934 were unobtainable, but will be given in an early issue of the News.



The Clarendon Press

Dedicated To Fair And Impartial Representation

25c

Volume XI

Thursday, Jan. 7, 1961

Number 1

If a red check appears by your name your paper has expired. Subscription rates for Donley County \$9.00 outside of County \$12.00. Mail Box 1110, Clarendon, Texas 79226.

Busy Needle new business in Hedley

Stuck watching TV night after night? Have you thought of having your TV and a hobby too? Why not consider taking up crocheting, knitting, embroidery, needlepoint or cross stitching?

If you should consider doing one or several of these beautifully creative and expressive hobbies, you must go to Hedley first. Next to the Texaco station on 287 on the south side of the road is a little building called "Busy Needle". You go into three rooms filled with color and warmth, imagination and charm.

Along the walls are 115-3 gallon buckets filled no longer with colorful, flavorful ice cream, but loaded with over 30 colors of yarns of every weight in high quality Unger yarns. There are 50 titles for knitting and crocheting patterns. There are 75 different titles for counted cross stitching books. There are frames, hoops, needles for all sorts of occasions, hooks, patterns, materials, blanks, kits and 120 colors of Persian yarn for needlepoint. There are pre-worked needlepoint patterns, and if you don't see it, the two lovely and competent ladies will order it or try to find out how to get it for you.

"A man stopped here for gas and came around the corner with a long list his wife had given him to go into Amarillo and find all sorts of things like needles and yarns. He asked if we had any or all of the items and we had nearly everything on the list, so he didn't have to go to Amarillo and happily went back to Childress," Sharon Wheatly said.

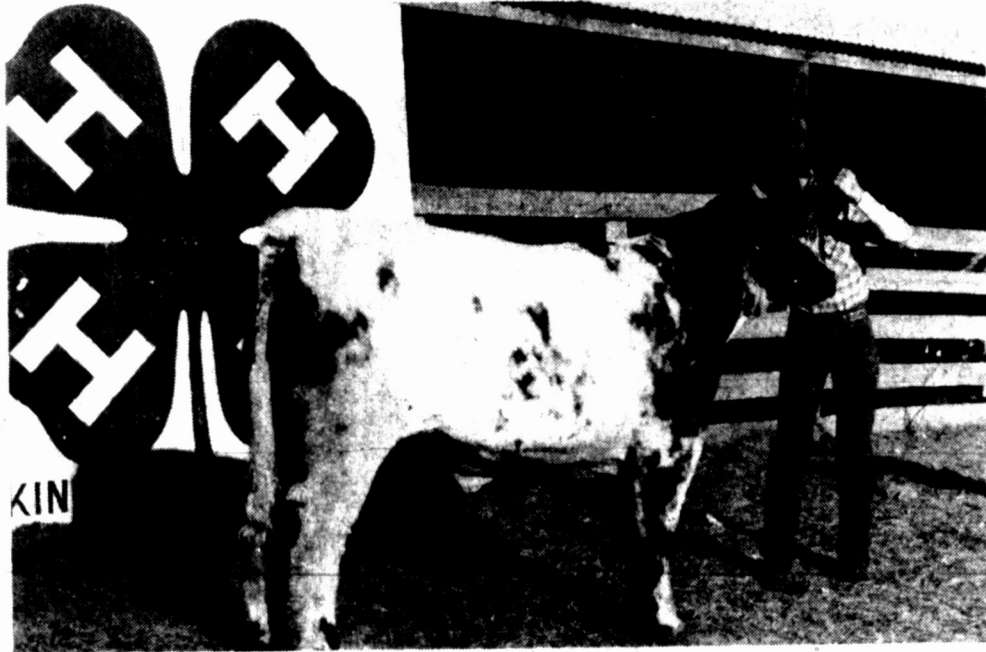
Sharon has always had a dream to open a yarn or needlepoint shop. "So one day I just did it," she said. And she has done it up right!

Diane Chamberlain will come over January 18 to start needlepoint classes. One will be from 7 until 9 and the other class will run from 4 until 6 for six classes. She will teach 16 different stitches. There will only be 6 people in each class, so you must call ahead early. Call 856-4251 or 874-2393.

Debbie Sursa, another Hedley resident, works in the shop from 9 until 4 when Sharon returns from her full time job as Education Diagnostician for Clarendon, Hedley, Lakeview and Estelina schools. Sharon is in the shop from then until 5:30 on weekdays. On weekends, someone is on hand from 9 until 4. Debbie has always liked doing things with her hands and especially enjoys working with needlepoint

and count cross stitching. Sharon has developed a novel idea that is a real boon to users of needlepoint yarn. Each bundle of yarn has a tag bearing it's number so when the craftsman runs out, they can match the color by number rather than by trying to guess at the shade.

Stop by for a cup of coffee, a chat, instructions, help or to pick up a new and delightful pattern book in centrally located, easy to find Hedley. Sharon or Debbie will be glad to help you in any way. Start your next year's Christmas early and avoid that last minute crunch that is so nerve wracking. Watch TV and not feel guilty about wasting time, take up the hobby of needlework and you too can have a "Busy Needle".



LORI ROBINSON WINS Reserve Champion



LACRECIA PETTY 1st Champion Class V and Grand Champion.

Lacreacia Petty's Shorthorn Steer wins Grand Champion

Donley County 4-H and FFA Beef Cattle Show was held Saturday, January 2 at the county barn east of Clarendon at 1 p.m. Don Reeves, Collingsworth County Agent from Wellington was the judge.

Winner of the Showmanship award was Rodney McAnear and Grand Champion animal of the show went to Lacreacia Petty with a Shorthorn steer weighing 1185 pounds. Lori Robinson took the Reserve Champion with her Shorthorn steer weighing 1100 pounds.

Entries, animals and owners are listed below: Hereford Heifers; first place went to Melody Moreman. Shorthorn Heifers Class I: First and second place went to Rodney McAnear. Shorthorn Heifers Class II: Christie McAnear received first place while Rodney McAnear took second place. Steers Class I, Light 780-900: Doug Hawkins took first place with his Shorthorn steer weighing 865 pounds; Melody Moreman took home the second place ribbon with her 875 pound Hereford; Lori Robinson, 3rd with her 895 Red Angus; Matt Mann, 4th place; Susan Mann 5th place; Gina Smith, 6th place.

Hawkins 1050 Hereford took first; Leland Howell, 1020 Shorthorn 2nd; a 1030 pound Hereford shown by Rodney McAnear took 3rd; Lee Smith, 4th; Matt Mann, 5th. Steers Class V, Heavy 1055-1165: Shorthorn weighing 1185 took first place owned by Lacreacia Petty; Lori Robinson's Shorthorn weighing 1100 took 2nd; and Matt Mann with his 1160 pound Shorthorn took 3rd; Rodney McAnear, 4th; Christie McAnear, 6th and Lori Robinson, 7th place.

Seven County officials term will expire

Legally the first date a candidates may file for election was January 2, but since that was on a Saturday, the first date that candidates could file was Monday, January 4th.

The deadline for filing is Monday, February 1, at 6 p.m. according to Mary Cooke, Donley County Democratic Chairman.

Jerry Courtney Donley County Republican Chairman stated Monday afternoon that no candidates had filed.

Cooke reported that two filings had been made by Monday afternoon. William Chamberlain for Commissioner Precinct 4 and C.W. (Dude) Cornell for Commissioner Precinct 2.

Seven county officials will be among those whose terms will expire this year. These include: County Judge, County Treasurer, County Clerk, County Commissioners for Precincts 2 and 4, Justices of Precinct 2 and 3.

County Judge Billie Christian indicated that he would seek re-election, as did Freida Gray, County Treasurer and P.C. Messer, County Clerk. Claude Moore, Commissioner for Precinct 2 told the Press Saturday, that he did not think he would seek re-election this term. Tunny Kent, Justice of the Peace for Precinct 2, also indicated that he would not seek another term. Justice of the Peace M.O. Weatherly of Hedley had not been contacted for a statement as of Press time.

Candidates wishing to file may obtain the necessary forms from the chairman of their respective parties.

Along with the county elections this year, there will be twelve, city, school, college, and hospital officials whose terms will expire. There will be three city aldermen positions, three regent post for Clarendon College, four members from the Medical Center Hospital Board and two from the school boards. These positions can not be filed on until later as this election will be held the first Saturday in April.

Voters must approve Bingo for non-profit groups

State Comptroller Bob Bullock said Thursday that voters in at least 12 Texas counties and five cities will decide January 16 whether non-profit groups can legally operate bingo games in their communities.

"This is going to end the confusion about bingo in Texas. From now on, Bingo is going to be approved by the voters and licensed by the state or it's going to be illegal," Bullock said.

Cities, counties and justice precincts that approve bingo can also levy a 2 percent gross receipts tax on the games. The Comptroller's office will handle licensing of the games, collect the tax and return it to the communities where the games

are held. Where voters approve bingo, non-profit groups must get licenses from the Comptroller's Bingo regulation Division and can't legally operate games until 10 days after the local option election, according to Division Director George Garland.

"We are urging non-profit groups in these counties and cities to apply in advance for their licenses by contacting us right away," Garland said.

Organizations should contact the division by writing to 111 E. 17th, Austin, Texas 78774 or calling 1-800-252-555.

According to the new Bingo law, cities, counties and

justice precincts that don't vote to approve bingo in January must wait until the next constitutional election date of April 3.

Howardwick will be having their election January 16 to see if they may legally play bingo.

To call a bingo election, a local governing body must receive a petition with the signatures of 10 percent of the number of voters who casts ballots in the last governor's election.

The Comptroller's first enforcement priority following the January voting will be to protect those groups who have obtained licenses.

"Especially where the local government has levied the 2 percent tax," Garland said, "we will be checking to make sure every bingo game is licensed. Those that don't have licenses will be urged to get them. If they don't become licensed and keep playing bingo, we will file complaints with local authorities and the Attorney General."

Sexuality and Christian study for teenagers

Sexuality is a fundamental aspect of being human. It is much more profound than a casual activity. Our sexuality, whether we are male or female, affects and conditions the way we respond to all interpersonal relationships. The Cooperative Youth Group of Clarendon is, therefore, sponsoring a six-week study of human sexuality from the perspective of Christian faith, beginning January 10, at 7:00 p.m. in the Mission Hall of St. John the Baptist Episcopal Church.

This study is open to all teenagers from 9th-12th grades and their parents. We will have a different speaker each week addressing the issue from their perspective of their expertise. The areas

covered will be medical, psychological, legal, family planning, Biblical, and ethical.

The Cooperative Youth Group cordially invites you to take advantage of this opportunity to explore, in an open and honest faith atmosphere, this crucial subject. Because we firmly believe that the family is the proper context for these discussions, we are encouraging parents to attend with their teenagers. If this is not possible, we ask that parents send a signed statement of approval for your teens to attend. Please plan to attend all six sessions, as they will build upon another. For further information contact the Rev. J. Scott Turner, 874-2231 or Susie Shadle, 874-2441.

SCHEDULE

- Jan. 10 Anatomy, Conception, and Sexual Response- Richard L. Gilkey, M.D.
- Jan. 17 Psychological Aspects of Sexuality- Mark Englander, Ph.D.
- Jan. 24 Family Planning- Jerry Courtney, Attorney at Law
- Jan. 31 Family Planning- Eureda Mays Planned Parenthood
- Feb. 7 Family and Sexuality in the Bible- Rev. Bill Watson First United Methodist Church
- Feb. 14 "How do I decide what's right for me?"- Rev. J. Scott Turner St. John the Baptist Episcopal Church

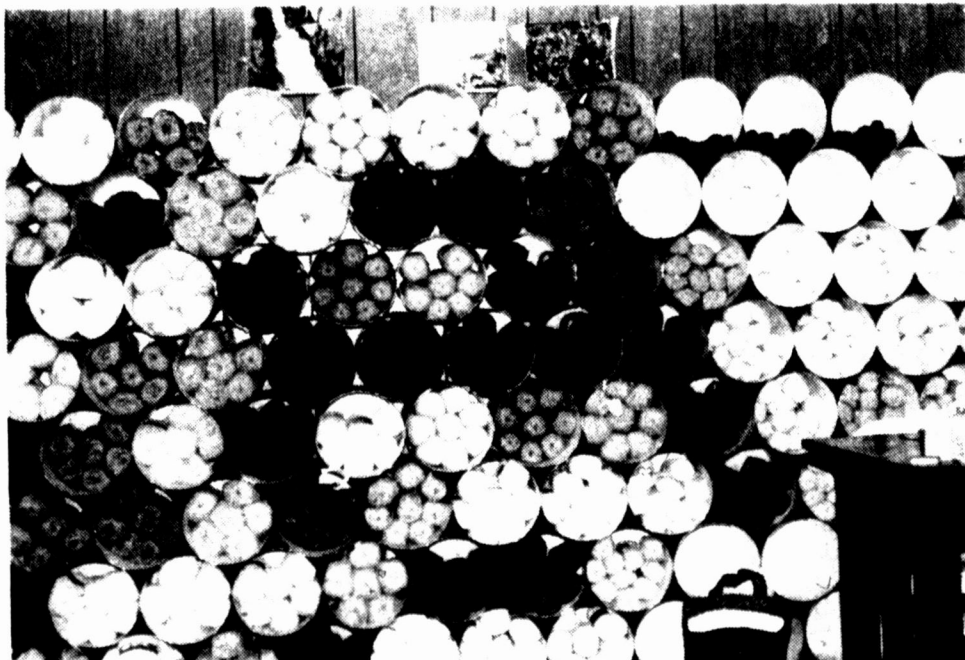
Bill Hill new agent for Cantrell LP Gas

Ronnie Hill, manager of Cantrell LP Gas of Hedley has announced that Bill C. Hill will be the new representative for Clarendon and surrounding areas for LP Gas, diesel, sales & service. They also sale propane tanks and have a complete line of service for their produces. Hill will be replacing Harold Neal, and the new telephone number to call will be 874-3942.

Don't let the cold weather catch you unprepared with empty propane tanks.

Calendar

- Fri., Jan. 8 6:30-7:00 Birthday-Anniversary Salad Supper.
 - Every Mon. Dance Practice at 7:00.
 - Tues., Jan. 12. Game night Bingo 7:30
 - Every Fri. Crafts starting at 1:00
 - Mond.-Wed. Exercise class starting at 2:15
 - Sun.-Fri. Meals served
- Lelia Lake**
- The Lelia Lake Community Center will have their regular meeting Saturday, January 9 at 6:30 p.m.



115-3 GALLON BUCKETS filled with 30 colors of yarn

Compiled by Tommie Saye-Cooperative Observer for National Weather Service, Clarendon.

DAY	DATE	HIGH	LOW	PERCIP
Tuesday	29	41	15	
Wednesday	30	44	23	
Thursday	31	59	26	
Friday	1	46	23	
Saturday	2	48	21	
Sunday	3	61	24	
Monday	4	50	17	
Tuesday	5	57	23	

Total for Month .00
Total for Year .00

"Texas! Live the Legend"

ANNOUNCING
FOR RE-ELECTION FOR
COUNTY TREASURER
FREIDA GRAY

Get the swampy Big Thicket and sunny Big Bend. Get the wide sky of the Panhandle and the palm-fringed sky of Port Isabel. Get up-to-the-minute details about thousands of fun spots throughout Texas.

Best of all, it won't cost you a thing! That's right - nada, zilch, free!...except for a 20-cent stamp.

The gift is a book, the highway department's newly released tourist guide called "Texas! Live the Legend." Throughout 176 lavishly colorful pages, the book capsules what there is to see and do in this vast land.

Like rides, for example. Ride a horse at a Bandera dude ranch; O.K., everybody knows that. But how about a simulated elevator ride thousands of feet deep to oil-producing strata at the East Texas Oil Museum in Kilgore? Or a genuine clikety-clack ride through the Piney Woods on a 19th Century railroad at Rusk and Palestine? Or touchdown in the Lunar Lander on the eerie surface of the Moon, with

movies taken by Texas astronauts who've been there.

Hunting and fishing, state parks, national forests, even some tips on visiting Mexico - it's all there to tantalize your travel buds for a whole year.

For your free copy, write TEXAS, Dept. DHT., P.O. Box 5064, Austin 78763, and ask for a "legends" book.

Sheriff's Report

ARRESTS

On 12-22-81, 1 arrested for DWI

On 12-22-81, 1 arrested for Drunk

12-23-81, 2 arrested for Burglary

On 12-26-81, 1 arrested for Disorderly conduct

12-28-81, 1 arrested for Burglary of a vehicle

On 1-2-82, 1 arrested for Public intoxication

On 1-2-82, 1 arrested for contributing to delinquency of a minor

On 1-2-82, 1 arrested for contributing to delinquency of a minor

On 1-4-82, 1 arrested for no DL

On 1-4-82, 1 arrested for improper start and no DL

On 1-4-82, 1 arrested for no DL

On 1-4-82, 1 arrested for indecency with a child

OFFENSES

On 12-23-81 there was a report of a burglary of meat locker in Clarendon - cleared by arrest.

On 12-27-81 a report of a subject that stolen a rifle from a vehicle out of Hedley, TX - cleared by arrest.

On 12-24-81 report of a dog stolen out of backyard in Clarendon.

On 12-24-81 a report of assault of a subject - cleared by arrest.

One report of an indecency with a child - cleared by arrest.

Calendar of Events

Sat., Jan. 9, Work day at Community Center.

Sat., Jan. 9 at 6:30 Lelia Lake Community Center meeting.

Sun., Jan. 10 Sexuality meeting 7:00 in the Mission Hall of St. John the Baptist Episcopal Church.

Mon., Jan. 11 at 7:00 Cub Scout Father-Son Cake Auction at Methodist Fellowship Hall.

Mon., Jan. 11 at 7:30 p.m. Clarendon Lodge 700 AF/AM will have meeting and Past Master's Night.

Tues., Jan. 12 Boy Scouts Troop 433 will meet at 6:30 p.m. at First Christian Church.

Onions will stay firm longer and keep from sprouting if you wrap them individually in aluminum foil.



BILLY RAY JOHNSTON PRESENTING CHECKS FROM THE Board of Directors of The Associated Ambulance Authority to Phil Vargus and Pat Robertson as a token of their appreciation for the job being done in operating the ambulance.

Donations to Community Building Fund

Saturday, Jan. 9th will be a work day at the Community Center, according to James Owens. They are trying to get the building ready for the Queen of Hearts Charity Ball. Everyone is urged to come out and help. Regardless of what your skills may be, they can be utilized.

Anyone wishing to make a cash donation to the Community Fund building may do so, by making a deposit in the Donley County State Bank or by contacting James Owens, at his boot shop.

The following is a list of

- Alpha Upsilon \$1,000.
- Epsilon
- Queen of Hearts Charity Ball \$1,850.
- Beta Sigma Phi \$1,479.31
- Donley County State Bank \$100.
- Mrs. W. J. Lewis Jr. \$1,000.
- Frank Derrick \$250.
- Irene Gerner \$25.
- Eddie Floyd Family \$100.
- Mr. and Mrs. James Owens \$100.
- Clarendon Autp Supply \$25.
- Clarendon Chamber of Commerce \$250.
- Deyhle's Veterinary Services Inc. \$100.

- Bill Weatherly \$20.
- Mr. and Mrs. Flip Breedlove \$50.
- Mr. and Mrs. Loyd Littlefield \$100.
- Mr. and Mrs. Buddy Ford \$20.

Annual Telethon for WTRC January 9

Rehab '82, the twelfth annual telethon benefitting the West Texas Rehabilitation Center, will begin at 7 p.m. Saturday, Jan. 9.

The seven-hour broadcast will originate live from the Abilene Civic Center and be seen on 14 television stations in Texas and Oklahoma.

Featured stars include Rex Allen, Shari Lewis, Rex Allen Jr., Ray Price Grandpa Jones and Family, Tommy Overstreet, Slim Pickens, James Drury, Helen O'Connell, Rosemary Clooney, Arthur Duncan, Anacani, Joey Schmidt, the Otwell Twins and many more.

Viewers will see Bob Hope, Glen Campbell, Tanya Tucker, Jeanie C. Riley and Spanky McFarland in special videotaped appearances.

Included in the Rehab '82 television network station will be KAMR-TV, Amarillo.

The telethon will again feature an auction board with donated items open to telephone bids during the show. Among the items to be sold include a Rolex watch valued at \$5,000; a pair of crocodile boots valued at \$2500; diamonds valued at \$17,000; horse and farm trailers; Tony Lama boots; and Bailey felt hats.

Handmade quilts have also been donated to be auctioned.

The Colonial Rehab Ranger program, a cooperative program between the Texas Rangers Baseball Team and Colonia Convenience Stores, is another featured event of the telethon, raising money for the West Texas Rehabilitation Center.

The Rehab '82 telethon marks the beginning of the West Texas Rehabilitation Center's year-long funding program. The 1982 budget will be near the \$4 million mark in order to provide

CLARENDON PRESS and The Donley County Leader, published every Thursday at Clarendon, Texas, 79226, Box 1110, at Highway 287 and Jefferson Street and entered as Second Class Mail at the post office at Clarendon, Texas.

J.C. and Helen Woody publishers and Katie Dvorak, Editor.

Subscription rates: \$12.00 a year outside Donley County \$9.00 a year in Donley County.

Any erroneous reflection upon the character of any person or firm appearing in these columns will be gladly and promptly corrected upon being brought to the attention of the management.

NOBODY WANTS TO SEE AN INSURANCE AGENT... UNTIL THERE'S TROUBLE.

THAT'S WHEN YOU NEED OUR FOLLOW-THROUGH CREW.

When you buy insurance you hope you'll never need to collect on your policy. But should a claim arise, it's good to know that you are working with people who are ready to help, like the Simmons Agency. You may not have much experience in filing claims... or in evaluating the fairness of the settlement. But we have - and we follow through for you.

As independent agents we represent several fine insurers. That means we can help you select the precise coverage you need at the best available price. And we'll be right here to help if you ever need to file a claim.

SIMMONS INSURANCE AGENCY
310 S. Kearney Clarendon 874-3506
WE'RE THE "FOLLOW-THROUGH CREW"

ALLSUP'S COFFEE
HOT, FRESH
LARGE 12 OZ. CUP
25¢

ALLSUP'S CONVENIENCE STORES
"THERE'S ONE NEAR YOU"

Parkay Margarine
2/\$1.00 1 lb box

BORDEN'S NUTTY BUDDYS 6 CT. PKG. **99¢**

Wolf Brand Chili 15 oz can **99¢**

Shurfine Catsup 32 oz bottle **89¢**

DELICIOUS BORDEN'S BUTTERMILK 1/2 GAL. CTN. **\$1.09**

Shurfine Soda 2 Liter bottle **89¢**

Spam Luncheon Meat 12 oz can **\$1.59**

Libby's Vienna Sausage 5 oz can **2/\$1.00**

Maryland Club Coffee 3 lb can **\$4.59**

BORDEN'S ICE CREAM SANDWICHES 6 CT. PKG. **99¢**

PRICES EFFECTIVE JANUARY 7-9, 1982 WHILE SUPPLIES LAST

SAVE BIG on all '81 MODELS at GREENBELT FORD, Clarendon

FORD COURIERS (3) \$100.00 Below Invoice

F-100 FORD PICKUP (1) Invoice Plus 2%

FORD FAIRMONTS (2) Invoice plus 2%

See Cohn, Greg or Neal

THREE GOOD REASONS FOR BUYING AT GREENBELT FORD

- (1) We Deal Fairly and Honestly!
- (2) We Believe That "After-Delivery Service" is as important as the Sale!
- (3) We Need Your Business!

★★★★★★★★★★
See Our Quality Used Cars & Trucks
★★★★★★★★★★
JANUARY SPECIAL
Hand Wash & Detail **\$15.00**
(Regular \$20.00)
Add "Super Gloss" for a Glass-like finish that gives lasting protection to your paint & chrome **\$45.00**

Lelia Lake news

By LAURA HARBERT
 Everyone I talked to was looking back at some special holiday memories. It is special to get a chance to see your family and have a meal together, isn't it? Especially so, if they happen to live far enough away that one does not get to see them often.
 The Harbert's enjoyed Christmas day in Amarillo at my brother's home, the Daryl Plank family was host to my family, our mother Neoma Plank of Canyon and Gary's mother Mary Lea Harbert of Dumas. Also, getting to join us was our Aunt, Ester Plank of Amarillo.
 Gary's mother gave our children an Atari set, you know, one of those things that plug into your television set with games for two children to play. Another words even less communication with your family; they are really glued now! I do have to admit they really are enjoying it and it's much better than most of the programs available.
 Lovely memories for us! Ronald and Mary Castner reported that they have really been on the go these last two weeks. They enjoyed an early Christmas in Gallup, New Mexico with their daughter Judy and her family, the Gary Longan's.
 Then, their daughter Carolyn Courtney and her family from Slaton spent Christmas week here. A lovely time!
 After all that, they could not set still, so off to Sherman, then Kidore visiting relatives.
 Mary did admit she was glad to get back in her routine. It will be nice to see her bright, shiny, face in her palce, right?
 Leroy, Allene Leathers and girls were talking about a trip to Pennsylvania for Christmas with Leroy's daughter Dorothy and her family. Well, Old Man Winter changed those plans and they reported a lovely Christmas at home. This last week Allene, Christina and Katrina took a few days and went to Littlefield to enjoy a visit with Allene's parents, Mr. and Mrs. Lige Griffith.
 Bruce and Roxanne Sheilds family had their friends Mr. and Mrs. Mike Bellah from Amarillo. Their children Michael and Nicole also spent time with the Gary Harberts. A happy new year for all.
 Andrew and Avos Henderson had their son Jim and grandchildren Andy and Clay

from San Antonio for the holidays.
 Ely and Joberta Helms and daughter Lindy spent the Christmas holidays with the C.B. Welty's in Amarillo. Visiting here with the Helms on the 26th were Ellis and Melody Baker for Lewisville, Mary Taylor, Joberta's grandmother, from Stanford and cousins Mr. and Mrs. Jeff Welty from Canyon.
 The Wiley Reynolds had five couples in for New Years Eve. A pleasant evening for all involved.
 The Brownings had visiting with them the Sam Brownings, Bill Brownings, Patty Browning and Tippy Browning, joining them were Sue and Marvin Thompson and family for a busy holiday.
 The R. O. Nelsons had their daughter Jean Pelty visiting with her sons Kevin and Dennis.
 Happy New Year Lakers.

Hedley News

Hobart Moffett and Eve Hansard visited Mrs. Willie Johnson Sunday evening.
 Ruby Beekler left Sunday to join Lola Jewell at Hereford where they joined a bus tour to California. They will be gone two weeks.
 Jack Moreman was painfully and seriously injured when charged by a bull. We hope for a speedy recovery.
 Mrs. Carl Reed and Lois Beach was among the Christmas visitors at the nursing home in Memphis last week.
 A Christmas party was held at the Memphis Nursing home on Tuesday. Hedley guests were Eloise Spalding and Martha Jo among others. All of the residents received a gift. Music was given by the Pounds family. Ice Cream, punch and cake were furnished by different churches and clubs.
 Wishing everyone a good year 1982.
 Preston Gilbreth was taken to the Memphis Hospital this week with a heart attack. He is reported doing quite well. W. P., his son, is here from Panhandle. Richard, another son, will be here the latter part of the week. We wish him a speedy recovery.
 Mrs. Lavern Tims and Phillip and Dustin Bond are here visiting from Chickasha, Okla. He's in Annie Mae Sims home who is he aunt. Annie Mae will return home with them for the holidays.
 Mrs. Jack Reid of Hedley

went to see Dr. Clark Monday in Memphis.
 Old Santa was in Hedley with goodies and fruit for all the kids and older folks.
 The Baptist Church had Family night for Christmas. Everyone brought something good to eat. Then they had a surprise pounding for Brother Knowles and his wife Pat. Bro. Knowles is the new pastor of the First Baptist Church at Hedley.
 The families and friends of Bunny Blands gave her a big Christmas and birthday dinner Sunday. I believe they said it was at Lions Club.
 Slim Hunsucker visited in the Preston Gilbreth home Friday.

Fun After Fifty Club meets

Fun After Fifty Club met January 2, at the Lion's Club Hall.
 Election of officers was held: Louise Argo, pres., Frankie McAnear, sec., & treas., Mary Cooke chairman, phoning committee, Woody Argo, custodian. Kitchen committee, Ruby Keitt, Quata Phillips and Gertrude Reid.
 After prayer by Frank Reid everyone enjoyed the covered dish luncheon.
 Make your plans to be with us at our next meeting which will be February 6.

Local
 Those to enjoy Christmas dinner with Boots, Bernice and John N'Neal were Wes, Pat, Tommy of Electra; Greg, Tracy, Sumer Roy of Vernon; Boots, Nelda, and Lauri O'Neal of Vernon; Clyde and Beverly Shepherd of Amistod, N.Mex.; Linda and Dennis Preston of Gruver; Shad, Cindy and Lacy Gregory of Booker; Mike, Becki Miller of Gate, Okla.; Dale, Mary K. Mills and boys, Carson, Connie Bowling and girls all of Clarendon; and June Topper visited in the afternoon.

Chamberlain News

By MRS. HAWLEY HARRISON

Chamberlain Community Center will have their next meeting Friday, January 16th-82. Come if you can and enjoy the good times together.
 Mr. and Mrs. Frank Cannon took Huldo Cannon to Amarillo last Monday to take a plane back to San Diego. We loved her visit.
 Mr. and Mrs. W.R. Chaney had supper Wednesday night with Mr. and Mrs. Wiley Chaney of Amarillo.
 Gary and Kathleen Duncan of Odessa and Tanya Duncan of A.C.U., Abilene and Lance Shipp of De Sota were New Years weekend guest of Mr. and Mrs. Frank Thomason.
 Mr. and Mrs. Frank Cannon and Lisa took Blake Cannon to Amarillo Wednesday to take a plane home

Estimated Federal Tax due

The fourth, and final, installment of estimated federal tax payments on 1981 individual income is due by January 15, 1982, the Internal Revenue Service says.
 This installment should be paid using declaration voucher No. 4 found in the Form 1040-ES package, "Declaration of Estimated Tax for Individuals."
 Taxpayers whose anticipated income changed during 1981 may have to file an amended declaration. Space is provided in the estimated tax package to compute an amended estimate.
 For more detailed information, the IRS publication 505, "Tax Withholding and Estimated Tax," is available free by calling the IRS forms/tax information number in the local telephone directory.

Amy and Nathan Koontz spent Thursday with Mr. and Mrs. D.R. Koontz.
 Mrs. Florence Harp spent the holidays in Lubbock with Sidney and Doris Harp and returned home Saturday.
 Mrs. Lila Lowe went to High Plains Baptist Hospital December 30th. We hope she is doing ok!
 Those enjoying New Years Eve dinner in the home of Mr. and Mrs. Hawley Harrison were: Mrs. Richard Cannon, Frank and Mary Cannon and Lisa and her friend Jan Risley and Dennis, Loretta and Anna Harrison.
 Carmen Wright and Bessie Broome visited in Memphis Thursday.
 Teresa Risley spent the holidays with Mr. and Mrs. Charles Blackburn and Mrs. Blackburn took her home to Amarillo Sunday.
 Mr. and Mrs. Frank Cannon and Lisa visited Mr. and Mrs. Maurice Risley and Jan Wednesday afternoon.
 Mr. and Mrs. Jerry Hicks, Shelly and Tina spent New Years Eve, and New Years Day with Mr. and Mrs. Olace Hicks.
 Mrs. Clara Mae Carter had New Years Dinner with Mrs. Rosa Mears.

Mr. and Mrs. Frank Cannon and Lisa spent New Years Eve and New Years Day with his father Mr. and Mrs. Cannon of Crowell en route home to Navasota.
 Mr. and Mrs. Henry Mann visited Hal and Callie Riley Sunday afternoon.
 Charles Bogard and son Shales visited Mrs. Genoah Lowe Saturday.
 Mr. and Mrs. W.R. Chaney visited Mr. and Mrs. Olace Hicks Saturday night Mrs. Pauline Koontz visited Mrs. Callie Riley Saturday afternoon.
 Marion and Roberta Bolinger and Denny of Stratford had dinner Sunday with Mr. and Mrs. Dennis Lindley.
 Mr. and Mrs. Roy Taylor and Mr. and Mrs. Robert Taylor of Dallas visited Mr. and Mrs. W.R. Chaney, Sunday.
 John and Joy Naylor and family and Dennis and Loretta Harrison and Anna attended a movie Saturday night.
 Charlie and Velma Hearn were luncheon guests of Olace and Billie Hicks, Sunday.
 Mr. and Mrs. Henry Mann visited Mrs. Alta Adkins Sunday evening.
 Mrs. Clara Mae Carter visited Ruth and Nell Corbin

Sunday afternoon.
 J.D. and Nelda Jones returned home December 21st from their second trip to California where J.D. attended schools at Harris Farion Electric in San Carlos, Ca., and the classes were on Microwave radio and related equipment. After classes were over they went into San Francisco on a tour bus and

saw Fisherman's Wharf, China Town, the Presidio, the Cable Car Museum and Barn, where the cars are powered by cables on huge pulleys and repairs are made. Across the Golden Gate Bridge and back to the Cliff House and Seal Rocks, to Golden Gate Park and back to their Motel in Red Wood City.

NEEDLEPOINT LESSONS

at THE BUSY NEEDLE, Hedley
 Classes will begin Jan. 18
 Morning-Afternoon-Evening Classes available
 Call
856-4251
874-2393
 Diane Chamberlain, Instructor

THE BUSY NEEDLE

SUPPLIES FOR:
 *Needlepoint
 *Counted Cross Stitch
 *Knitting & Crocheting
 Needle Point Classes Will Start Jan. 18
 Call For Information
 Highway 287 Hedley
 South of Caution Light
 856-4251
 Monday thru Friday 9-5:30
 Saturday 9-4

CHARLIE'S GROCERY & MARKET

MEALSTRETCHERS FOR '82

FIESTA
 AFFILIATED FOODS JANUARY SAVINGS

GREEN GIANT Niblets & Corn 2 89¢
 12 OZ. CANS

GREEN GIANT KIT. SLI Green Beans 2 89¢
 16 OZ. CANS

GREEN GIANT MEDIUM Sweet Peas 2 89¢
 17 OZ. CANS

TOMATOES 49¢
 CALIFORNIA VINE RIPENED
 PRODUCE SPECIALS
 CALIFORNIA BUNKIST Oranges 3 LBS. \$1.00
 All Purpose Russet Potatoes 10 lbs. \$1.19
 CALIFORNIA GOLDEN Carrots 1 LB. PKG. 35¢
 PURPLE TOP Turnips 1 LB. 29¢

HORMEL'S SUPER SELECT QUARTER PORK LOINS OR FAMILY PAK 8-11 ASSTD. CHOPS
Pork Chops \$1.29
 LB.
MEAT SPECIALS
 SUPER SELECT CENTER CUT RIB Pork Chops LB. \$1.79
 SUPER SELECT CENTER CUT LOIN Pork Chops LB. \$1.89
 COUNTRY STYLE LOTS OF MEAT Pork Ribs LB. \$1.39
 SUPER SELECT LEAN TRIM FRESH Pork Steak LB. \$1.49
 SUPER SELECT LEAN TRIM FRESH BUTT Pork Roast LB. \$1.39
HILLSHIRE FARM SMOKED Sausage \$1.68
 LB.
LOUIS RICH Turkey Franks 12 OZ. PKG. 79¢
LOUIS RICH SLI. TURKEY Bologna 1 LB. PKG. \$1.19
CHEF'S PANTRY CHICKEN FRIED Beef Patties LB. \$1.39

SHURFINE PURE VEGETABLE Shortening \$1.59
 48 OZ. CAN

MARYLAND CLUB ALL GRINDS Coffee \$1.99
 1 LB. CAN

GROCERY SPECIALS
 GREEN DRAGON Sliced JALAPENO Peppers 12 OZ. JAR 79¢
 RANCH STYLE Plain Chili 19 OZ. CAN 99¢
 CASEROLE DRY Pinto Beans 2 LB. BAG 69¢
 SHURFINE YELLOW CLING SLIMLY Peaches 16 OZ. CAN 59¢

SHELF SPECIALS
 MRS. BUTTERWORTH Pancake Syrup 24 OZ. STL. \$1.79
 SHURFINE Pancake Mix 32 OZ. BOX 79¢
 KRAFT REAL Mayonnaise 32 OZ. JAR \$1.59
 KAL KAN ASSTD. FLAVOR Dog Food 2 14 OZ. CANS 69¢
 BATHROOM TISSUE Nice 'N Soft \$1.59

PAPER ASSTD./DECORATOR Scott Towels 69¢
 JUMBO ROLL

Maryland Club Coffee \$5.39
 All Grinds 3 lb. can

Cokes Tab Sprite 32 oz. 6 pak \$2.09

LEARN—Dallas Freeze, Western 4 corners, Waltz, Western 2 step, Cotton Eye Joe, Scotchotish
WESTERN DANCE LESSONS
 AT: Clarendon Country Club
 TIME: 7:30 p.m.- 9:00 p.m.
 BEGIN: January 21st, Thursday
 COST: \$25.00 a couple for 6 wks
 \$30.00 single
 \$5.00 a class
 CALL
Mickey Fowler 874-2226

ANNE'S BUFFET
 287 at Carhart Open 6 a.m. til 8 p.m.
BREAKFAST SPECIAL
 Virginia Ham w/ Grits & Redeye Gravy & Biscuits \$2.50
 2 Hot Cakes, Sausage & One Egg \$2.25
LUNCH SPECIAL
 Meat, Potato Salad, Vegetable and Dessert \$2.25
DINNER SPECIAL
 Top Sirloin Steak & Shrimp Potato Salad \$5.35
 Hamburger Steak, French Fried Onion Rings, Potato Salad \$3.25

FABRIC SOFTENER Bounce \$1.19
 20 CT. BOX

Liquid Cleaner Mr. Clean \$1.79
 28 oz. btl.

LIQUID DETERGENT Dawn \$1.99
 32 OZ. BTL.

Bath Bar Camay Soap 49¢ each

DAIRY & FROZEN FOODS
 SHURFINE FROZEN Orange Juice 12 OZ. CAN 79¢
 Large Eggs Doz. 79¢
 SHURFRESH HALF MOON/CHEDDAR Colby Cheese 10 OZ. PKG. \$1.39
 SHURFRESH QUARTERS Margarine 2 LB. BOXES 99¢

Double S&H Green Stamps With \$2.50 Purchase. Wednesday

Venture FOODS
 the price fighter
 We're proud to give you more!
 WE ACCEPT FOOD STAMPS WE ACCEPT MANUFACTURER'S COUPONS

Farm & Ranch News



FACTS for YOU

Soviet Economic Sanctions
The President of the United States announced on Dec. 29, 1981, the following seven economic sanctions for their responsibility for the repression in Poland:

- 1) Ban Soviet airline flights to the U.S.
- 2) Curb Soviet ships' use of American ports.
- 3) Postpone grain-sales talks.
- 4) Curtail exports of high-technology.
- 5) Curtail exports of energy equipment.
- 6) Cancel scientific exchanges.
- 7) Close a Soviet buying office in New York.

There are several provisions in the new farm bill (U.S. Senate Bill, 884) directing the action of the administration in case of embargoes of agricultural commodities.

Last fiscal years corn and wheat to Russia does exclude the 3% provided in the law (wheat 8.74% and

corn 8.33% for year ending on 9-30-81).

Estate Taxes
The U.S. Congress has provided massive changes in the Federal Gift and Estate Tax process, effective on January 1, 1982. It is estimated now that 95% or more of all estates in the U.S. will pass tax-free when the phase in is completed in 1987. It will be necessary for each individual to apply the law to the best of his ability. In other words, the changes are not automatic. Careful planning is necessary to reap the benefits.

Interest Rates
USDA has announced that, beginning January 1, 1982, the interest rates on Commodity Credit Corporation loans will be set at a rate charged CCC by the U.S. Treasury during the month the loan was issued.

Loans disbursed since April 1, 1981, and which have interest rates subject to change, will have their interest rates adjusted January 1, 1982.

Interest rates paid by CCC have declined from a peak of 16.75% in October 1981 to 13.625% in December 1981.

The first television panel game show was a six-sided Spelling Bee, presented by the BBC May 31, 1938

Conference on Profitable Decision-Making to be held

To help farmers and ranchers cope with the continuing cost-price squeeze which has many of them reeling, and to make them aware of strategies that can lessen the risk in the new year, a conference on "Profitable Decision-Making '82" will be held in Amarillo January 27.

The conference at the Texas A&M University Research and Extension Center, 6500 Amarillo Blvd. West, will be conducted by the Texas Agricultural Extension Service with support of the Panhandle Economic Program. It is one of eight such meetings being held throughout the state.

The Panhandle meeting will feature outlook information on wheat, grain sorghum and corn, said Dr. Ray Sammons, Extension economist-farm management. It will begin at 9:30 a.m. and conclude at 3:45 p.m.

Conference speakers will discuss policy and marketing trends, explain implications of the new farm bill on Panhandle producers, com-

pare marketing options for risk and return, and evaluate risk positions, credit stretching, crop insurance and selection of the best crop for 1982.

"The coming year will be crucial for many area farmers and ranchers," Sammons said. "This program is designed to help them better understand risk and the alternatives in managing it."

He said the program will provide specific evaluations and discussions of the local situation and provide opportunities for questions and answers.

Con. Hightower inspect Cotton Classing Office in Altus, Okla.

Congressman Jack Hightower of Texas and Congressman Dave McCurdy of Oklahoma inspected the Altus, Oklahoma Cotton Classing Office of the Department of Agriculture and questioned officials there about problems in grading that have been experienced this year by cotton farmers. In the meeting in Altus Tuesday, both Congressmen expressed concern over the number of complaints over low grades and that comparisons by private graders have been averaging twenty dollars a bale higher.

The director of the Altus cotton classing office, Wiley Cain, said that officials out of the Memphis, Tennessee office had complained that grades out of Altus were higher than they should be compared to cotton classed in other parts of the country.

Congressman Hightower stated, "The grading problem is compounded this year by the low, low prices for cotton. We both want farmers to receive a fair grade on their cotton. Farmers are at the mercy of the government graders. A difference of twenty dollars a bale could mean the difference between staying in business or going under. I have met already with officials of the Department of Agriculture in Washington, D.C. and I plan to visit the Memphis, Tennessee office to go over the problem as soon as possible."

Cotton from the rolling plains area of Texas is being classed in Altus, Oklahoma this year because the Department of Agriculture closed seasonal classing offices in Memphis and Munday, Texas.

Congressman Hightower is on the Agriculture, Rural Development and Related Agencies subcommittee of the House Committee on Appropriations.

Cattle susceptible to lice during cold weather

Ronald Gooch Donley County Agent warn cattlemen that, if uncontrolled, lice can quickly infest an entire herd, because cattle tend to bunch up in cold weather, which can permit lice to move from one animal to another.

Heavy hair coats also afford protection for these parasites, Gooch said.

Lice begin to reproduce rapidly with the onset of cool weather and reach a peak

populations in late winter and early spring.

"It's just one of those economical steps cattlemen should take, but sometimes just overlook."

"These parasites can pull a cow down. They can take part of the nutrients an animal needs," Gooch stated.

According to Gooch, there are two types of lice which infest cattle herds - blood-sucking lice and biting lice.

Sucking lice pierce the animal's skin and suck blood while biting lice feed on particles of hair, scale, scab and skin discharges.

Bloodsucking lice are of particular concern to cattlemen. However, biting lice have chewing mouthparts and cause irritation and itching which cattle attempt to relieve by rubbing and scratching on fences or whatever is available. This can produce denuded areas, such as ulcers and lacerations.

The development of both types of lice is similar. They attach eggs (nits) to hairs and the young lice (nymphs) appear about one to three weeks later.

Heavily infested animals will have an unthrifty appearance and can suffer weight loss, decreased milk production, anemia or even death.

Lice infested animals also

may be susceptible to respiratory diseases such as pneumonia, and heavy infestations often stunt calves.

There are several effective control methods, and information on the various control methods may be obtained by contacting your county extension agriculture agent.

Foster Whaley seeks third term

State Representative Foster Whaley of Pampa officially announced today that he would seek a third term as State Representative for the 84th Legislative House District - - created by the State Redistricting Board. The newly created District adds Crosby and Dickens Counties and the north portion of Lubbock County to Whaley's old 66th Legislative District. Whaley lost Wheeler County to the District now served by J. W. Buchanan in the Northern Panhandle.

Foster Whaley is a 1949 graduate of Texas A & M; is a former County Extension Agent; has farming and ranching interests in Gray, Carson and Armstrong Counties. He is a founding member of the Texas Cattle Feeder's Association and is credited with hedging the first pen of cattle in Texas south of the Canadian River, on the live Beef Cattle Futures Market. He has served as a panelist member on Merrill Lynch hedging seminars.

Whaley, with the help of his wife Lois, serve on a full time basis as State Representative. Their farming and ranching interest is leased out to others. They log over 50,000 miles annually serving their present ten County District.

Foster Whaley does not accept down state Political Action Committee money for his campaign fund. An Austin publication stated that fewer than six legislators are in this category.

Whaley serves as a member of the powerful House Appropriations Committee and is vice chairman of the Constitutional Amendments Committee.

The Whaley's have three children: Christie, a 1977 graduate of Texas A & M, now living in Dallas; Wayne, a 1979 graduate of Texas A & M, living in Houston; and Karlette, a senior student at Texas A & M.

The agriculture income from the newly created 84th Legislative District averaged over 550 million dollars in 1979-80, according to a recent report published by the Texas Department of Agriculture.

Lubbock County averaged \$125 million. However, not all of Lubbock County is included in the 84th District. Floyd County averaged \$96 million and Crosby County was third with an average of \$66 million agriculture income. Gray County thought of as an oil county had the fourth highest agriculture income with \$51 million.

Q. I have just retired after 20 years in the Navy. Do I still have 10 years from my date of discharge to use my GI Bill education benefits?

A. No, under the present GI Bill, education benefits for all veterans expire on Dec. 31, 1989. The last veterans who had the full 10 year period are those who are separated from active duty prior to Jan. 1, 1980.

Annual High Plains Irrigation Conference to be held

Growers, engineers and irrigation specialists will put their heads together here Jan. 12 during the annual High Plains Irrigation Conference, looking for more efficient, cost-saving ways to irrigate crops.

The day long conference at the Texas A&M University Agricultural Research and Extension Center, 6500 Amarillo Blvd. West, will begin at 9:40 a.m. and conclude at 3:30 p.m. Fuel costs for operating irrigation systems will be one of the major topics at this year's conference, and Leon New, agricultural engineer and irrigation specialist.

Revised electric rates for irrigation will go into effect, probably in the 1983 season, New said. Discussing these changing rates and their effect upon High Plains farmers will be James Hull of the Deaf Smith Electric Cooperative.

An economic comparison of costs for the various fuels available for irrigating will be provided by Dr. Ray Sammons, Extension agricultural economist-farm management.

Reducing pumping costs by repairing and maintaining pumping plants will be another key topic. New will report on several years of testing by the Extension Service and changes in efficiency after repairs are made. Some innovative approaches to pump repair will be presented by Don McElroy of Irrigation pump and Power Co., Muleshoe.

The use of furrow diking in conjunction with irrigation will be explained by Dr. Reggie Jones, research soil scientist at the USDA Conservation and Utilization Laboratory at Bushland.

A popular feature of the irrigation conference each year, a growers' panel, will conclude the program. Panelists who will share their experiences will be Roman Friemel of Carson County, Layton Sawyer of Sherman County, Charles Schlabs of Deaf Smith County and Jack Thompson of Hartley County.

The conference is sponsored by the Texas Agricultural Extension Service with support of the Panhandle Economic Program.

Q. I'm a service-connected disabled veteran and need to know the maximum amount VA will pay towards the purchase of an automobile.

A. If you qualify for the automobile grant, the maximum amount is \$4,400, effective Oct. 1, 1981. You should contact the nearest VA office to find out if you're eligible.

Q. What is the maximum amount of Servicemen's Group Life Insurance that may be purchased?
A. Effective Dec. 1, 1981, the amount is \$35,000 worth of insurance.

LESSONS BEGIN JAN. 19TH

BALLET: \$20.00 a month
TWIRLING: \$20.00 a month
BOTH: \$30.00 a month

Ballet begins Jan. 19th AT: Clarendon's
Twirling begins Jan. 22nd Old Gym

Call Mickey Fowler 874-2226

This dependable energy saving Frigidaire Laundry Pair can handle big family-size loads—up to a full 18 pounds.



See a Demonstration TODAY!

Washer offers dependable cleaning power — even lets you conserve hot water and detergent

- No need to waste hot water. This Frigidaire Washer features a Water Level selector that lets you match the amount of water to the size of your washload.
- Depend on Frigidaire to keep lint from settling back on your clothes with the Lint Filter which snaps in and out for easy cleaning.
- New horizontal cleaning action passes clothes under the recirculating filter 8 to 14 times each cycle. The new system is equally effective for small, average or large loads.

Dryer puts big drying capacity within easy reach

- For easy loading and unloading, the big oversize door opening — one of the largest in the industry — is positioned a comfortable 18 inches off the floor.
- For efficient drying, without hot spots that can damage fabrics, Frigidaire gently pulls air through your clothes.
- For big-family wash loads this Frigidaire dryer provides gentle fabric care for up to 18 pounds of laundry.

WEST TEXAS UTILITIES COMPANY



Qualified Factory-Trained Servicemen Offer You The Finest In Appliance Service

DON'T FORGET

FRIDAY NIGHT

PEANUTS RESTAURANT

MEXICAN DINNERS

BUY ONE AND GET ONE 1/2 PRICE

DONLEY COUNTY STATE BANK

Will hold their
annual stockholders meeting

January 12th at

4 p.m.

in the

Directors Room.



ALPHA UPSILON EPSILON Pledges (l to r) Judy Bland, Rhonda Owens, Chris Cummins and Brenda Ward.

Alpha Upsilon Epsilon news

January 4, 1982, Pres. Terry Floyd called Alpha Upsilon Epsilon's first meeting of the new year to order in the home of Fuzz Mooring and all members repeated the Opening Ritual. Jeanne Mondragon called the role and 11 members were present. Official communication

was received from the International Office concerning the upcoming Beta Sigma Phi convention to be held in Dallas.

Treasurer, Pat White, reported that we had made \$52.00 from the sale of baked goods and hot drinks on late Christmas sale night down-

town. We decided to hold the money until more could be added for a larger donation to the Community Center. We wish to thank Salem's II for allowing us to set up our Goodie Stand in their store. Also discussed and voted on were plans for the Annual Sweetheart Ball in February.

Alpha Upsilon Epsilon Pledges

New pledges to the Alpha Upsilon Epsilon Chapter of Beta Sigma Phi are Judy Bland, Rhonda Owens, Chris Cummins and Brenda Ward. The chapter had the

Pledge Ritual in the home of Terri Floyd. The table was decorated in the traditional black candles and yellow roses. Each new pledge repeated vows and learned more about Beta Sigma Phi with Pres., Terry Floyd reciting the story of Diotima, The Wise Woman of Mantinea. New pledges with the help of Vice-Pres. Wanda Hill, are completing their Pledge Training and will soon be ready for the Ritual of Jewels.

Alpha Upsilon Epsilon welcomes their new pledges and are very grateful for all the dedication, love and interest they have already given to our Chapter. We are proud to say that our chapter has grown to a strong 14 members at present.

Warranty Deeds

John T. Houston and wife, Dorothy R. Houston sold to John D. McVicker or Lois I. McVicker all of lot #120 in Cherokee Sect. of Sherwood Shores IX.

C. O. Kemp sold to Ruby Mae Bardwell a parcel of land more fully described in Deed Records Vol. 171 p. 599.

Jim Slaughter sold to John Slaughter, Jr. all of lots #1, 2, 3, 4, 5, 6, and 7 of Blk. #82 of the West End Addition to the Town of Clarendon.

O.W. Malone and wife, Lillie Malone sold to Stephen Dayne Johnson and Melvin Douglas Johnson all of lot #103 in Apache Section of Sherwood Shores IX.

Don M. Wimberly and wife, Edith O. Wimberly sold to James R. Hausen and David Lee Jenkins all of lots #677, 678 and 679 in Red Feather Section of Sherwood Shores IX.

Annie L. Durham and husband Joe Durham sold to Louis W. Haydon and wife, Edna L. Haydon all of lot #178 in Navajo Section of Sherwood Shores IX.

C. I. Casteel and wife, Vera Casteel sold to Taylor W. Watson and wife Nancy C. Watson all of lots #7 and 8 in Blk. #12 of Clarendon Heights Addition to the Town of Clarendon.

James Clarence Reed sold to T. E. Bland all of lots #9, 10 and 11 in Blk. #9 of the Original Town of Hedley.

Callon Petroleum Company sold to Dudley Vernon Miller and wife, Velda Anderson Miller all sections more fully described in Deed Records, Vol. 171 pp. 705 and 706.

Lajana, Inc. sold to Callon Petroleum Co. all sections more fully described in Deed Records, Vol. 171 pp. 707 and 708.

Greenbelt Inc. sold to Marvin A. Byars and Opal Byars all of lots 293 and 294 in Country Club North Section of Sherwood Shores IX.

Marvin A. Byars and wife, Opal Byars sold to Thomas W. Kendrick all of lots #203 and 294 in Country Club North Section of Sherwood Shores IX.

Mary E. Pyeatt sold to Foster M. White and wife Eunice H. White all of lots #4, 5 and 6 in Blk. #141 in the Original Town of Clarendon.

Foster M. White and wife, Eunice H. White sold to Mary Ellen Banister all of lots #4, 5 and 6 in Blk. #141 in the Original Town of Clarendon.

Allea M. Altman sold to J. E. Gilchrist Jr. and Betty Morgan Gilchrist a parcel of land more fully described in Deed Records Vol. 171 p. 722.

Edna Hudson sold to Willard O. Hudson all of lots #9, 10, 11 and 12 in Blk. #42 in the Original Town of Clarendon.

Larry W. Helms and wife, Lura Dell Helms sold to Robert H. White and wife, Patricia J. White a parcel of land more fully described in Vol. 171 Deed Records p. 727 and 728.

Duane Edward Nash and wife, Georgia Ann Nash sold to Lonnie Willis and wife, Delores Willis all of lot #97 in Cherokee Section of Sherwood Shores IX.

J. L. Harris and wife Estelle Harris sold to Frank P. Dickson and wife, Virginia D. Dickson all acres described in Vol. 171 Deed Records p. 784.



THE HENSON FAMILY has been hard at work this past week remodeling their Gift Dept. Stop by and see the difference.

**I am announcing
my candidacy for
Commissioner Precinct No. 2**

**Your Support will be
grately appreciated**

C. W. (Dude) Cornell

Pd Pol Adv. Paid by C. W.
(Dude) Cornell, Clarendon.

It's The Law!

The Texas Legislature has enacted a law that requires you and all other Texas motorists to carry automobile liability insurance beginning January 1, 1982.

Bodily injury coverage of at least \$10,000 per person and \$20,000 for two or more persons per accident must be in force at all times. Property damage coverage must be at least \$5,000 per accident.

Failure to maintain the coverages required by this law will result in a fine of at least \$75.00 for the first offense and a minimum of at least \$200 for any subsequent offense. If you are convicted you may lose your drivers license and motor vehicle registration as well.

After January 1, 1982 law enforcement officers in Texas will ask to see proof of your insurance coverage when investigating a traffic accident or violation. The Department of Public Safety has advised that the following are acceptable forms of this proof:

- Your automobile insurance policy.
- A photocopy of the declarations page of the policy which contains the policy number, limits of liability, term of the policy, etc.
- A special identification card that some insurance companies may provide.

Even though many more Texas motorists will purchase and maintain liability insurance coverage as the law requires, hundreds of thousands of motorists will intentionally violate the law and remain uninsured.

For this reason we urge you to continue to carry uninsured/underinsured motorist coverage on your own policy. This important coverage will give you added protection should you be involved in an accident with an uninsured or underinsured driver.

KNORPP
Insurance Agency, Inc.

806-874-3521 Drawer A

Clarendo, Texas 79226

NUMB ARMS, LEGS Danger Signals

There may be misalignment of vertebrae in the spine causing pressure on nerves, yet the patient experiences no pain in the back. Instead, a variety of sensations may be felt in other parts of the body. These include tingling, tightness, hot spots, cold spots, crawling sensations, electric shock sensations, stinging, burning, and others.

Here are nine critical symptoms involving back pain or strange sensations which are usually the forerunners of more serious conditions. Any one of these usually spells back trouble.

- (1) Paresthesias (see above) (2) Headaches
- (3) Painful joints (4) Numbness in the arms or hands (5) Loss of sleep (6) Stiffness in the neck (7) Pain between the shoulders (8) Stiffness or pain in lower back (9) Numbness or pain in the legs.

These signals indicate that your body is being robbed of normal nerve function. Until this function is restored, you will, in some degree, be incapacitated. The longer you wait to seek help, the worse the condition will be. Don't wait! Should you experience any of these danger signals... call for in depth consultation in Layman's terms.

Haydon Chiropractic Office
103 East 28th Street & Perryton
PAMPA, TEXAS 79065

Start Working for Spring EXERCISE TO MUSIC

WHEN: Tuesday and Fridays 7:30-9:00 p.m.
BEGIN: January 19th
COST: \$25.00 6 wks
\$5.00 a class

CALL:

Mickey Fowler 874-2226

CANTRELL LP GAS DIESEL DIESEL DIESEL

Bill C. Hill 874-3942
Chuck Hill 874-237

Sales & Complete Service
New Propane Tanks

Doing MORE...With LESS! THE MOTHER EARTH NEWS



HOME CURES FOR COLDS AND FLU

Sooner or later, no matter how hard we may try to fight it, most everyone comes down with colds. With that problem in mind, we've collected a few home-remedy suggestions that are every bit as good as the myriad of anti-cold drugs mentioned on TV and radio... but don't strain either your pocketbook or your body's natural defense system.

First of all, a reader (who claims he hasn't had "the bug" in the 16 years since he discovered his cure) sent along the following personally tested instructions for a remedy for colds and flu. Willard Olney got the brainstorm for his treatment after reading an article which pointed out that a fever will naturally halt the course of a pesky cold or flu virus. (That's why you feel better after a fever breaks.) Olney concluded that he could head off many illnesses if he simply raised his own body temperature before the virus settled in.

At the first symptoms of a cold or flu (headache, scratchy throat, sore muscles, fatigue... you know all the miserable signs), Olney goes home in the evening and soaks—for as long as he can stand it—in a very hot bath. (For safety's sake, be sure the water doesn't exceed 105°F if you try it!)

Then, when his body temperature registers about 102°F, Willard gets out of the tub. (It's a good idea to get help when standing up... hot water baths can make you dizzy!) Next, he climbs into bed—under plenty of extra blankets—to roast, shucking off the covers a layer at a time as the night wears on.

And, come the following morning, a regenerated Willard Olney sallies forth to greet the day! So, next time you start feeling poorly, you might consider taking Olney's advice: Just draw yourself a hot bath and save the money you might have spent on worthless "miracle" medicines.

However, if it's too late—and you've already let a virus get the best of you, another reader, Marj Watkins, has a few suggestions on how to handle a fever.

If your temperature is under 102°F, Ms. Watkins suggests you eat chilled custard, jello, applesauce, and small amounts of lean beef. Drink apricot juice, lemonade, fresh or reconstituted frozen orange juice, or chilled rose-hip or mint tea—along with 1,000 milligrams of vitamin C—every two hours. Keep warm and out of drafts.

For a fever of over 102°F, Marj adds, you should sip cool liquids reinforced with about 1/2 teaspoon of powdered ascorbic acid (the same substance that's sprinkled on fresh fruit to prevent browning) or dissolved vitamin C tablets (1,000 milligrams per cupful). Stay in bed. Lightly wash your face, hands, arms, and neck with a cool, wet cloth, continually cooled in a basin of cold water. (Do consult a doctor if sore throat, vomiting, abdominal pain, or chest congestion are also present... or if home remedies fail to bring you relief.)

The lady also recommends that a person recovering from a fever stay indoors—and preferably in bed—until the temperature has been normal for a full 12 hours, or the fever may return.

For FREE additional information on home cures or on THE MOTHER EARTH NEWS' magazine, send your name and address and ask for Reprint No. 1182 "Medical Self-Care." Mail to Doing MORE... With LESS!, P.O. Box 70, Hendersonville, N.C. 28791, or care of this paper.

SALE

No Lay-a-ways please

STOREWIDE
CLEARANCE

Men and Women
ALL
FALL AND
WINTER
CLOTHING

25 to 50%

All Exchanges will be at regular prices

THE
NOOK

WE ARE AN OLD FRIEND WITH

A NEW NAME

FIRST

BANK

&

TRUST

OF

CLARENDON



Effective January 1, 1982

The bank address, account and other identification numbers will remain unchanged. It will not be necessary for bank customers to order new checks or refrain from using the counter checks bearing the present bank name. Checks bearing the new bank name may be ordered when the present supply is exhausted. All checks, drafts, deposit slips, credit cards, loan documents and other instruments bearing the name "The Farmers State Bank and Trust Company of Clarendon, Clarendon, Texas" will remain valid after January 1, 1982. There has been no change in bank management or ownership.

**THE FARMERS STATE
BANK & TRUST CO.
OF CLARENDON**

Established 1912



A series of Public Meetings of DOE in Texas Panhandle

Jeff Neff, Program Manager, U.S. Department of Energy has announced that the DOE will hold a series of public meetings in the Texas Panhandle, beginning in mid-January, to provide information on DOE's National Waste Terminal Storage program. DOE announced the public meetings at briefing for Swisher and Deaf Smith County officials in Tulsa and Hereford December 17 and 18.

The public meetings are to provide information on the national program, discuss the status of studies in the Palo Duro Basin, and describe the plans for future studies. There will be opportunity for questions and discussion at the meetings.

The evaluation of deep geologic formations, begun in 1958, has reached the stage of detailed studies of specific locations in five areas of the country. They include bedded salt in the Palo Duro Basin of the Texas Panhandle and in southeastern Utah, salt domes in the Gulf Coast region, and in volcanic rock formations at two federal nuclear reservations in Washington and Nevada.

Regional literature studies are also being conducted in 17 additional states where crystalline rocks potentially suitable for a repository site are known to exist.

By 1983, the DOE plans to identify sites for construction of the first three exploratory shafts, one in salt (either bedded or domed), one in basalt at the Hanford Reservation in Washington, and one in tuff at the Nevada Test Site. Construction of exploratory shafts will provide information at repository depths. No waste will be emplaced in these shafts in this phase of the activities.

One of the three sites with exploratory shafts may be selected as the site for the Test and Evaluation Facility (TEF). Studies at the TEF will provide experience and information needed for the design, construction and operation of the first permanent repository. It is anticipated that the first repository site will be recommended to the Nuclear Regulatory Commission in 1988 from among the sites with the three exploratory shafts. Actual placement of nuclear waste in the repository would not occur until approximately 1997.

Representatives at the January public meetings will include DOE, the Office of Nuclear Waste Isolation (ONWI) at Battelle Memorial Institute, the Texas Bureau of Economic Geology (TBE), and the Texas Energy and Natural Resources Advisory Council (TENRAC). ONWI is the primary contractor for DOE; as such it coordinates the salt program and makes recommendations to DOE. The Texas Bureau of Economic Geology is a DOE geotechnical contractor. The Bureau has been involved in the NWTs program since 1977, conducting studies of erosion and denudation, salt dissolution, surface and subsurface hydrology, remote sensing, structure, and stratigraphy. TENRAC is an advisory council to the state of Texas and has been designated by

Governor William P. Clements as the lead agency to coordinate and communicate with DOE on high-level nuclear waste issues.

Regional characterization of the entire Permian Basin was completed in 1976. A total area of 14,000 square miles, the five-county Dalhart subbasin north of Amarillo and the 18-county Palo Duro subbasin south of Amarillo, was screened for thickness and depth of salt, the presence of faults, seismicity, and salt dissolution.

The 1976 study also examined resources such as oil and gas, land uses, population density and distribution, and other issues potentially affecting a decision whether or not to site a facility in the study area.

Currently, under contract to ONWI, Stone and Webster Engineering Corporation is investigating the basin geology by drilling hydrologic test holes and core drilling, logging geophysical boreholes, and assessing geologic structures and stratigraphy. ONWI plans to publish the results of this study in the report, "Permian Basin Area Characterization Report", ONWI-292. Boreholes were cored in Randall and Swisher counties in 1978-79 and in Donley and Oldham counties in 1981. Additional stratigraphic and hydrologic test wells are scheduled to be completed by mid-1982.

Additionally, NUS Corporation is studying environmental and regulatory aspects in the Palo Duro Basin for ONWI. These include ecology, meteorology, socioeconomics, land use, surface water, cultural and natural resources, archaeology, and background radiation. The results of this study will be reported in "Permian Basin Area Environmental Characterization Report", ONWI-102. These reports will be delivered to state officials for review when they are completed.

Recommendations for further studies will be included in the report, "Permian Basin Area Summary and Location Recommendation Report", ONWI-288, a draft of which will be provided to state officials in early 1982. TENRAC coordinates all state document reviews. DOE will evaluate the ONWI studies and state recommendations, and after further consultation with state agencies, will determine whether or not to proceed with specific location studies in the Palo Duro Basin.

EMS Activity Report

12-30-81 Lilac Lowe, 89 of Clarendon from Medical Center Nursing Home, Clarendon to High Plains Baptist Hospital, Amarillo, Medical.

12-30-81 George McManus, 24 of Clarendon from Co-op Gin, Clarendon to Amarillo Emergency Receiving Center, Amarillo. Trauma.

1-1-82 Bob Perkins, 85 of Clarendon from residence, to Hall County Hospital, Memphis, Trauma.

241 responses handled in 1981.

1 response handled in 1982 to date.

Visiting with the G.W. Faust's over the holidays were her dad, Mr. Jess Wood of Memphis, her sister, Lee Caskey of Clarendon, her niece and family of Amarillo, Donna, Claude, and Bryan Hendricks.



By KATIE DVORAK

Let's dump out all of the turkey, chicken and ham and eat something new.

LONE STAR SHORT RIBS

- 3 to 4 lbs. beef short ribs
- 2 tsp salt
- 1/4 tsp pepper
- 1 can (8 oz) tomato sauce
- 1/2 C catsup
- 1/2 C brown-sugar
- 1/2 C vinegar
- 2 TBS prepared mustard
- 1/2 C chopped onion
- 1 clove garlic, minced
- 1 TBS chili powder

Place short ribs in covered frying pan on grill and cook on low to moderate 1 1/2 hours, turning occasionally. Pour off drippings. Season with salt and pepper add 1/2 C water, cook covered for 30 minutes or until tender.

Combine tomato sauce, and other ingredients in small saucepan and simmer 5 minutes stirring to blend.

Remove each short rib from pan, dip in sauce to coat and place on grill. Cook at moderate temperature 15 to 20 minutes or until done, brushing with sauce and turning.

QUICK FALAFEL PATTIES

- 1 C cooked blackeyed peas
- 1 egg
- 1/4 tsp dry mustard

Local

Those having dinner with Irene Winchester Christmas Eve night were: Mr. and Mrs. Leon Riley and Vickie Brandt of Amarillo, Mr. and Mrs. J. D. Riley of Memphis, Mr. and Mrs. Gerald Womack, Jimmy, Bobby, Billy and Mrs. Laney Lamberson, Jerry and Amanda Jean all of Erick, Okla.

"Most people judge men only by success or by fortune." La Rochefoucauld

HEATS ON

- 1/4 tsp garlic powder
- dash of sea salt
- 2 TBS minced fresh onion
- 1/2 C sesame or sunflower seeds, ground
- 2 TBS wheat germ
- 1 TBS bran
- 2 TBS soy nuts, ground
- 1 TBS yeast
- 1/2 C whole wheat bread

- crumbs
- 1 TBS oil
- 4 small pita bread pockets
- shredded lettuce
- Mayonaise or yogurt sauce.
- Puree chick peas in blender with egg. Remove mix to bowl stir in seasonings and next five ingredients to bread crumbs. Place bread crumbs

in shallow bowl. Divide batter into 8 patties 2 1/4 to 2 1/2 inches in diameter. Roll each patty in crumbs. Heat oil in skillet and brown patties about 3 min. each side over medium heat. Serve 2 patties in each of four pita bread pockets with shredded lettuce and sauce.

PEANUTS RESTAURANT

NEW HOURS

Monday - Saturday

10 a.m. Thru 8 p.m.

CLOSED SUNDAY



NOON LUNCHES

\$2.75

MEXICAN FOOD

(Home Cooked)

Enchiladas - Tacos - Rellenos Chalupas - Burritos

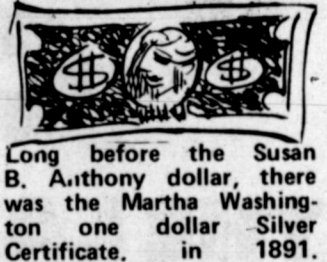
DR. JACK L. ROSE

OPTOMETRIST

Contact Lenses

Closed Saturdays

220 S. 10th Phone 259-2216

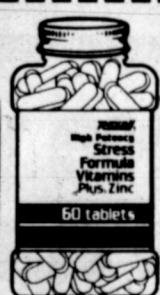


Long before the Susan B. Anthony dollar, there was the Martha Washington one dollar Silver Certificate, in 1891.

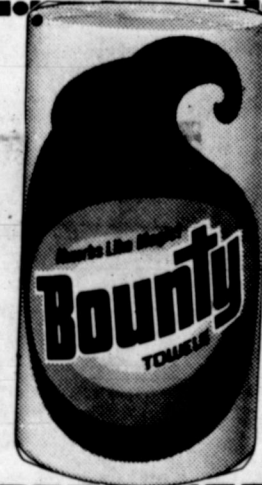
Rexall's VITAMIN COUPON



SALE!



(STORE COUPON)
Rexall
STRESS FORMULA VITAMIN TABLETS with ZINC 60's \$3.79
(GOOD DURING THIS SALE ONLY)



BOUNTY

Jumbo Roll **79¢**



(STORE COUPON)
Rexall **CHILDREN'S CHEWABLE MULTIVITAMIN PLUS IRON TABLETS** 100's \$2.29
(GOOD DURING THIS SALE ONLY)



(STORE COUPON)
Rexall **VITAMIN C TABLETS** 500 mg., 100's \$1.69
(GOOD DURING THIS SALE ONLY)



Mens or Womens
GLOVES
\$2.99



(STORE COUPON)
Rexall **ONE TABLET DAILY MULTIVITAMIN TABLETS** 100's \$1.69
(GOOD DURING THIS SALE ONLY)

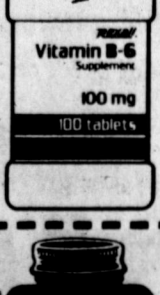


(STORE COUPON)
Rexall **VITAMIN B-COMPLEX WITH VITAMIN C CAPSULES** 100's \$3.39
(GOOD DURING THIS SALE ONLY)

TV Time
POP CORN
2 for \$1.00



(STORE COUPON)
Rexall **VITAMIN E CAPSULES (d-Alpha) Natural** 60's \$3.99
(GOOD DURING THIS SALE ONLY)



(STORE COUPON)
Rexall **VITAMIN B-6 TABLETS** 100 mg., 100's \$3.19
(GOOD DURING THIS SALE ONLY)



COKE \$1.49
6 pk



(STORE COUPON)
Rexall **NATURAL VITAMIN A CAPSULES** 10,000 I.U., 100's \$1.99
(GOOD DURING THIS SALE ONLY)



(STORE COUPON)
Rexall **ZINC TABLETS** 15 mg., 200's \$1.69
(GOOD DURING THIS SALE ONLY)

Hankcraft Hot Steam VAPORIZER

\$5.99
1 Gal



BIVENS PHARMACY

ELMONETTE and PAUL BIVENS
Two Registered Pharmacists To Serve You

BUCKLEY'S MENS STORE, INC.

(817) 937-2651

JANUARY

Clearance

SALE

Starts Monday 9:30 a.m.
January 4, 1982

NO EXCHANGES NO LAYAWAYS
NO REFUNDS NO ALTERATION
NO CHARGES

Regular	SUITS	Sale
\$175.00		\$144.95
\$195.00		\$159.95
\$200.00		\$164.95
\$250.00		\$199.95

Mens Dress **LEATHER COATS**

1/2 Price

Regular	SPORT SHIRTS	Sale
\$15.00		\$11.95
\$16.00		\$12.50
\$18.00		\$13.95
\$20.00		\$14.95
\$22.00		\$16.95
\$35.00		\$24.95

Regular	DRESS HATS	Sale
\$35.00		\$27.95
\$45.00		\$37.95

Regular	SLACKS	Sale
\$25.00		\$19.95
\$27.50		\$22.50
\$30.00		\$24.95
\$32.50		\$26.95
\$35.00		\$28.95
\$40.00		\$31.50
\$48.50		\$39.95

FLANNEL SHIRTS 1/2 Price

LEATHER JACKETS 30% Off

JACKETS
All 30% Off

DOPP KITS
30% Off

SWEATERS
50% Off

MENS GLOVES
1/2 Price

Were	SPORT COATS	Now
\$95.00		\$69.95
\$150.00		\$114.95

New Arrivals		Ladies	Ultrasuede
LADIES BLAZER	LONG COATS		
Regular Sale	Regular Special Sale Price		
\$110.00 \$89.95	\$150.00 \$99.95		

Regular	LADIES SKIRTS	LADIES SWEATER	1/2 Price
\$55.00			
	Sale		
	\$39.95		

Commissioners Court minutes

Commissioners Court for Donley County met in regular session on Dec. 14 with the following members present: W. R. Christia, Judge Presiding; J. R. Graham Commissioner Prec. 1; Claude Moore, Commissioner Prec. 2; Buford Holland, Commissioner Prec. 3; and Wm. Chamberlain, Commissioner Prec. 4.
Freida Gray, Country Treasure and P. C. Messer, County Clerk and Ex-Officio Clerk.
The following business was transacted:
*Approved minutes of last meeting.
*Amended the 1981-82 budget.
Paid bills as reflected by the Claims docket and approved by the Court.
*The County will not furnish any kind of clothing in the future for the Sheriff's Department.
*County to pay the Ambulance Board a prorata part of maintenance not to exceed \$525.00 per month, providing the City and Hospital Board will pay their prorata part.

*Appointed Mrs. Nell Barnhill to serve as Election Alternate Judge in Prec. 1, Voting box 4.
*Approved the November reports, presented by County Judge, County Clerk, County Treasurer, Tax Collector, County Agent, Justice of the peace Prec. 2 and 3.
*Paid George Howard III the balance due on painting the jail.
*Accepted the resolution balance of State to the CETA Program.
*Authorized the County Judge to pay over to the county, monies collected in Fines No. 5277, 5308, 5541 and 5590.



In the 1945 movie *To Have and Have Not* Lauren Bacall's singing voice was dubbed in by 14-year-old Andy Williams.

FANCY THAT



The oldest coin mint in the Western Hemisphere is the Casa de Moneda de Mexico, world-renowned for over four centuries for the quality and craftsmanship of their coinage. Recently, Banco de Mexico, the government's federal reserve, commissioned three new coins - the first gold bullion coins in 60 years - from the Casa de Moneda. The new coins are the Mexican one-ounce, the Mexican half-ounce and the Mexican quarter-ounce. They could make enduring and original gifts of gold.

THEN and NOW



THEN: Back in the year 1806, 23-year-old William Colgate opened a soap and candle shop. In 1877, his company introduced the first toothpaste, sold in a jar.

"Time is precious, but truth is more precious than time."
Benjamin Disraeli

Clearance

We invite you to come in and shop our

Fall and Winter **SALE**

ALL FALL AND WINTER MERCHANDISE

30 TO 60%

Off

THE LADY FAIR

Memphis, Texas



Make your money work as hard as you.

Money Market Certificates

12.532%

30 Month Certificates

14%

compounded

All Savers Certificates

10.16%

Federal Regulations require a penalty for early withdrawal - Insured to \$100,000 by FS LIC.

VERNON SAVINGS

Home Office:
1725 Wilbarger Street • Vernon, Texas 76384 • (817) 553-3362

Branch Offices:
113 N. Main Frederick, Oklahoma 73542 (405) 335-5549
10th & Easy Street Paducah, Texas 79248 (806) 492-3687
119 South 6th Street Memphis, Texas 79245 (806) 259-3384
423 North Main Childress, Texas 79201 (817) 937-8686

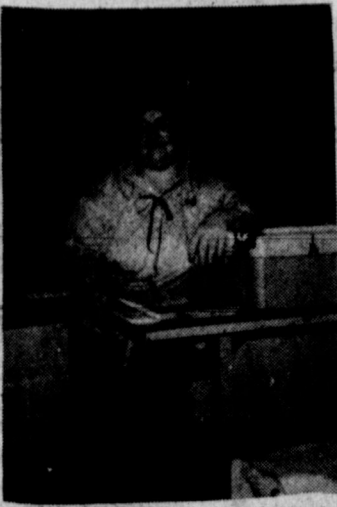




Before measuring sticky liquids like honey, pour oil into the measuring cup, then rinse with hot water.



MRS. KAY HAYES



MISS BETTY VEACH

FTA Teachers of the Month

Kay Hayes was awarded the FTA teacher of the month award on December 13, 1981. Mrs. Hayes has been teaching at CHS for 7 years. She teaches English III, Business English, Spanish I and Spanish II. She is also the senior sponsor and the Spanish Club sponsor. Congratulations Mrs. Hayes.

Miss Betty Veach was selected for Teacher of the Month for November. Miss Veach teaches Typing I & II and Bookkeeping. She sponsors F.T.A. and Annual Staff. Miss Veach also sponsored the Beauty and Brawn Contest that was presented here in Clarendon. Thank you, Miss Veach, for your devotion and congratulations.



ANNETTE WATSON



CARL WATSON

FTA'ers of the Month

Annette Watson was pronounced FTA'er of the Month for December.

Annette is 14 years old and she is a freshman at CHS.

She is also in FHA, Band, and is the 1982 District President for District XVI. Congratulations Annette.

Carl Watson, a senior at C.H.S. was selected F.T.A. er of the month for December. Carl has been F.T.A. for one year. Carl is Parliamentarian and served as a Voting Delegate at the District convention this year. Our congratulations are extended to Carl for this achieving award.

FTA News

By ANNETTE WATSON

The Future Teacher of America Club met on December 9. We discussed plans on what to do Friday, December 11 night down town. We sold sweets and were going to sell Giant Coloring books. The coloring books did not come in, but we will be selling them as soon as they get here.

We are still selling chances. They are \$1.00 donations for each chance. If you would like to buy a chance get in touch with any F.T.A. er. We are preparing to go to the State Convention and could use your support.

Clarendon School menu

January 11-15

Monday Corn dogs with mustard, cheese grits, black-eyed peas, buttered cookies and milk.

Tuesday Salisbury steak with gravy, mashed potatoes, fried okra, hot rolls, fruit and milk.

Wednesday Pizza with cheese, tossed salad, buttered corn, pudding and milk.

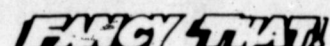
Thursday Goulash with meat sauce and mushroom, mashed potatoes, green beans, hot rolls, jello and milk.

Friday BarBQ on bun, French fries, tossed salad, fruit pie and milk.

December. All present were: Diahn Havens, Dyanne Johnston, Pat Richey, Mary Hayes, Kay Bell, Annette Watson, Wendy McCombs, Rosie Arios, and Carl Watson. Congratulations to Annette Watson and Carl Watson for being selected FTA'er of the month for November and December.



The new look for '82 as shown by some of the leading fashion houses of West Germany.



According to experts on energy, 52 percent of the energy used in transportation in America consists of fuel for our 114 million plus private automobiles, which average about 15 miles per gallon.

JANUARY CLEARANCE SALE

WOMEN'S SKIRTS

sizes 12 to 20
 \$21.50 now \$15.00
 \$16.95 now \$10.00
 \$25.00 now \$17.00
 \$19.50 now \$15.00

ONE RACK OF DRESSES

1/2 Price
 Mr. Jack and Tribute
HALF-SIZE COTTON-BLEND WASH DRESSES -- \$10.00

WOMEN'S WINTER COATS REDUCED

\$79.00 on sale for \$50.00
 \$63.00 on sale for \$45.00
 \$57.50 on sale for \$38.00
 \$95.50 on sale for \$64.00
 \$89.50 on sale for \$59.00
 \$80.00 on sale for \$55.00
 \$70.00 on sale for \$48.00

WOMEN'S SHORT PANT COATS --- 3 only

\$85.50 now only \$65.00
 \$77.50 now only \$50.00
 \$59.50 now only \$40.00

WOMEN'S THREE-QUARTER NYLON COATS

Were \$39.50 now only \$20.00

JUNIOR GIRLS' FLEECE SHORTY JACKETS

By Wrangler --- Were \$30.00 now \$20.00

WOMEN'S BLAZERS

\$42.50 now only \$30.00
 \$49.50 now only \$35.00
 \$29.50 now only \$20.00

ONE RACK LADIES' BLOUSES -- \$10.00 each

WRANGLER JUNIOR GIRLS' KNIT AND VELOUR TOPS

\$19.00 now on sale for \$12.00
 \$22.00 now on sale for \$13.00
 \$15.00 now on sale for \$10.00
 \$14.00 now on sale for \$8.00

WRANGLER JUNIOR CORDUROY JEANS

Regularly \$24.00 now for \$18.00
 \$27.00 now for \$20.00
 \$28.00 now for \$21.00

WRANGLER CORDUROY SKIRTS FOR JUNIORS

\$18.00 skirts for \$11.00
 \$28.00 skirts for \$16.00

WRANGLER PLAID PLEATED SKIRTS

Were \$27.00 now \$19.00
 Were \$25.00 now \$17.00

MEN'S HOLLOFIL VESTS

\$38.00 on sale for \$28.00
 \$35.00 on sale for \$25.00

MEN'S HOLLOFIL JACKETS

\$56.00 on sale for \$40.00
 \$89.00 on sale for \$70.00
 \$39.50 on sale for \$25.00

COWBOY-CUT 13MWZ JEANS -- ONLY

\$15.00 -- BY WRANGLER

WRANGLER PERMANENT PRESS BOOT JEAN --- ONLY \$13.00

SALE ENDS FRIDAY, JANUARY 15, 1982

SAYE'S

FOR SALE Carpenter Tools

Have several types of saws, and Misc. equipment.

Will be at shop (Next door to the bus station) all day Saturday or call 874-3703

BUD LOVELADY

P. C. Messer

Announces For Clerk

I desire to say THANK YOU, you the people of Donley County for allowing me to be your County Clerk all these years that I have been in office.

I am announcing for the office again. I believe the experience I have had will allow me to serve you people much better. There are a great number of obligations in the office, and I believe my secretary and I may well take care of these.

Your vote and influence will be greatly appreciated.

Pd Pol. Ad. Paid by P. C. Messer, Clarendon

All members of Clarendon Lodge 700 AF / AM are urged to attend Monday, Jan 11th meeting at 7:30 p.m. Bring A Covered Dish

FOOD SAVINGS

GIBSON'S DISCOUNT CENTER
 Monday - Sat. 8-7
 Sunday 9-7
 Reserve rights to limit quantity. Some items not exactly as illustrated. Some items in limited quantity.

**2 Loin Ends, 2 Rib ends
 6 Center Cuts
 Combination** **\$1.48** Lb

PORK CHOPS **\$1.48** Lb

Lean And Meaty Country Style **\$1.48** Lb
SPARERIBS

Center Cut **\$1.98** Lb
PORK CHOPS

H&N Brand Boneless 12 Oz Pkg **\$2.89**
CHICKEN STRIPS

Jimmy Dean **\$1.68** 1 Lb
SAUSAGE

Jumbo **\$3.35** 2 Lb

CELERY **39c** Steak

POTATOES **\$1.88** Russet All Purpose 20 Lb Bag

TANGERINES **25c** Lb

TURNIPS **25c** Lb

COLLARD GREENS Bunch **35c**

MUSTARD GREENS Bunch **35c**

Borden's **89c** Qt
ORANGE JUICE

Borden's 1/2 Gal **99c**
BUTTERMILK

Borden's **\$1.93** 1 Lb Box
BUTTER

Honey Boy Cham **\$1.89** 15 1/2 Oz
SALMON

Chicken of The Sea **89c** 6 1/2 Oz Water or Oil
TUNA

Instant Hills Bros. **\$1.89** 10 Oz Jar
COFFEE

Classic Hot Dog **33c** 10 Oz Jar
RELISH

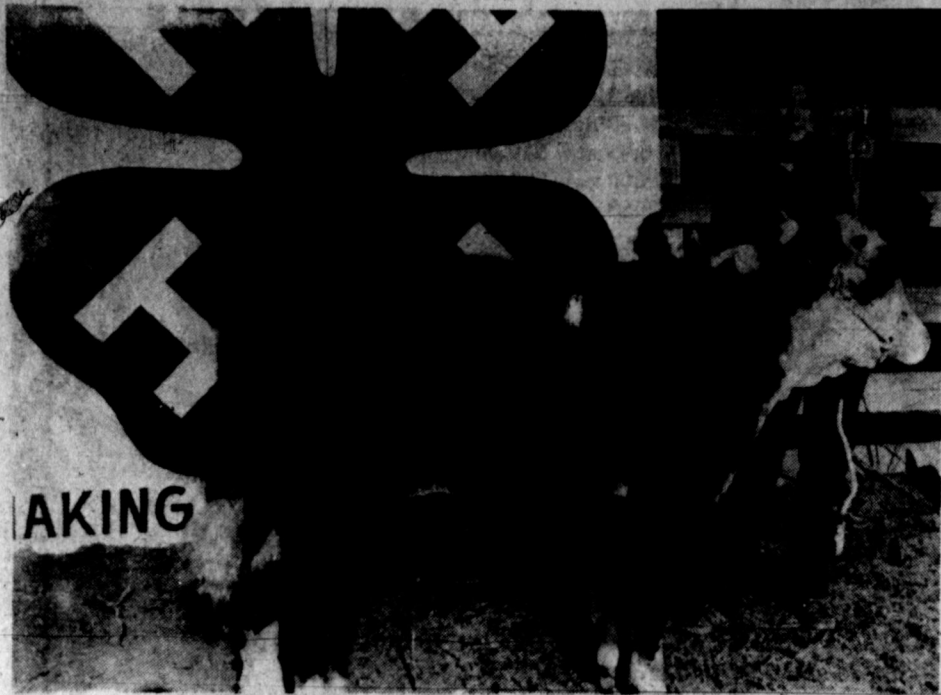
Chef Boy-Ar-Dee **2/\$1.00** 15 Oz
CHILI-MAC

Franco American w/Meat Balls **79c** 26 Oz
SPAGHETTE O's

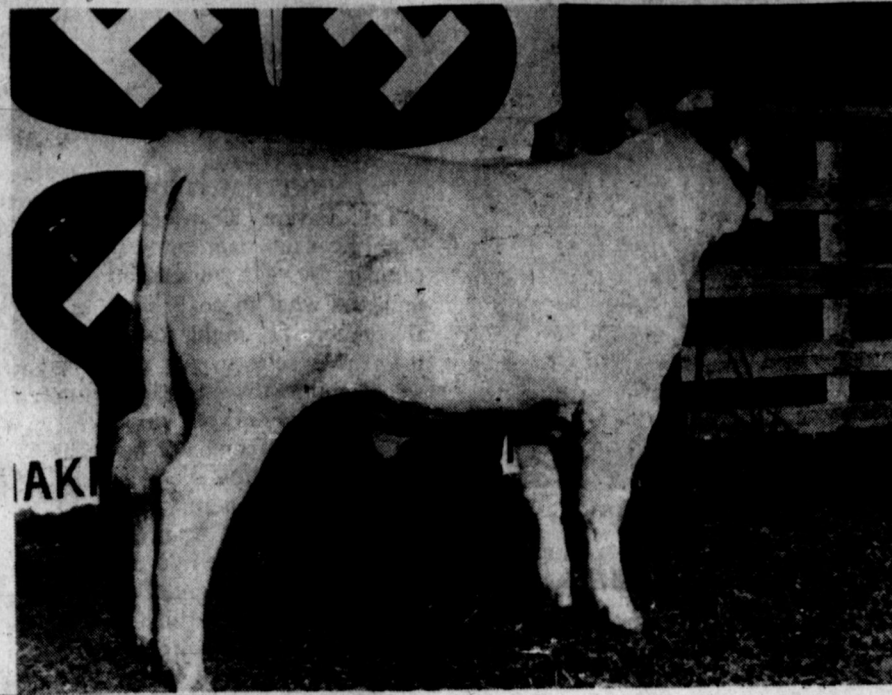
Country Kitchen 24 Oz Pancake Waffle **97c**
SYRUP

Instant Maxwell House **\$1.89** 6 Oz Jar
COFFEE

Carnation **45c** 2 Tall Cans 13 Oz
MILK



MELODY MOREMAN and Champion Hereford Heifer



DYRONE HOWELL 1st place Classall



DOUG HAWKINS 1st place Class III



RODNEY McANEAR and Rodney won Showmanship Award



DOUG HAWKINS 1st place Class IV



DOUG HAWKINS 1st place Class I

JANUARY Clearance

ALL WINTER CLOTHING



25 to 50% OFF

All Christmas Decoration 1/2 price



THE TUMBLEWEED Clarendon



Lowell Harry Ellerbrook

Mr. and Mrs. W. L. Ellerbrook and Lewis wish to announce the arrival of a new son and brother, Lowell Harry Ellerbrook born December 20, 1981. The young man weighed 8 lbs. and 10 ozs. and was 21 inches long.

On your payroll

Senator Bill Sarpallus, POB 12068, Austin, 78711 or POB 7926, Amarillo 79109 or call 512/475-3222.
Representative Foster Whaley, Texas House of Representatives, POB 2910 Austin 78769.
Representative Jack Hightower, 13th District, Rm 2348 Rayburn Bldg, Washington, D.C. 20515.
Senator Lloyd M. Bentsen, Rm 240, Russell Bldg., Washington, D.C. 20510.
Senator John Tower, Rm 142, Russell Bldg., Washington, D.C. 20510.

News from Troop 433

Boy Scouts of Troop 433 will start meeting on Tuesday January 12th at the First Christian Church. We would like to have all of their dads present to give a report on the troop building program and also plans for Merit Badges for the boys. Meeting time will be 6:30 p.m.



Some used to consider it bad luck for women to look at trumpets.

"SEEK YE FIRST THE KINGDOM OF GOD"

CLARENDON LUTHERAN MISSION
3rd & Parks
874-2087
Rev. Gale Everson
of St. Paul Lutheran Church Canyon, Texas
[Services held in St. John Baptist Episcopal]
Each Second Sunday
Holy Communion Services 2:30 p.m.

FAITH ASSEMBLY FULL GOSPEL CHURCH
Vinita Smith preacher
Rodeo Ground on Slab
Sunday School 10:00 a.m.
Preaching Service 11:00 a.m.
Sunday Night Youth & Children 6:00 p.m.
Preaching 7:00 p.m.
Prayer & Praise Wed. Night 7:30 p.m.

FIRST CHRISTIAN CHURCH
Wilbert Bernabe, Pastor
3rd & Gorst
Sunday School 9:30 a.m.
Morning Worship 10:30 a.m.
Evening Worship 6:00 p.m.
Wednesday Night Service 6:00 p.m.
Night Service 7:30 p.m.

CALVARY BAPTIST CHURCH
Hwy. 287 & Jackson
874-3479
R. W. Sullivan, Pastor
Sunday School 10:00 a.m.
Sunday Worship 11:00 a.m.
Training Union 6:30 p.m.
Evening Worship 7:30 p.m.
Wednesday Night Service 7:30 p.m.

FIRST BAPTIST CHURCH
Bugbee & Third Streets
874-3833
Paul Hell, Pastor
Sunday School 9:45 a.m.
Morning Worship 11:00 a.m.
Training Union 6:00 p.m.
Evening Worship 7:00 p.m.
Wednesday Night Service 7:00 p.m.

ST. MARK BAPTIST CHURCH
Jefferson & Martindale
Albert Yarborough, Pastor
Sunday School 9:45 a.m.
Preaching 11:00 a.m.
Prayer Service 8:30 p.m.
Prayer Service 7:30 p.m.
Woman's Mission 8:00 p.m.

THE TUMBLEWEED EDDIE FLOYD SHOP

ASSEMBLY OF GOD
5th & McClelland
Roger Gray, Pastor
Sunday School 9:45 a.m.
Sunday Worship 11:00 a.m.
Evening Worship 6:30 p.m.
Tuesday Women's Missionary 1:00 p.m.
Wednesday Night Service 7:30 p.m.

CHURCH OF THE NAZARENE
3rd & Hawley
874-2321
Bill Hodges, Pastor
Sunday School 9:45 a.m.
Morning Worship 11:00 a.m.
Evening Worship 6:00 p.m.
Wednesday Night Service 7:30 p.m.

PRESBYTERIAN CHURCH
4th & Parks
Dr. E. L. Manning, Pastor
Sunday School 10:00 a.m.
Morning Worship 11:00 a.m.
Youth Program 6:00 p.m.
Evening Worship 7:00 p.m.
Tuesday Bible Study 2:30 p.m.

CHURCH OF CHRIST
4th & Carhart
874-2495
Tom Harguess, Minister
Sunday School 9:30 a.m.
Morning Worship 10:30 a.m.
Evening Worship 6:00 p.m.
Wednesday Night Service 7:30 p.m.

UNITED PENTECOSTAL CHURCH
Norman Thompson
Montgomery & Faker St.
984-3756
Sunday School 10:00 a.m.
Morning Worship 11:00 a.m.
Evening Worship 6:30 p.m.
Wednesday Night Service 6:00 p.m.

FIRST UNITED METHODIST CHURCH
5th & Jefferson
874-3667
Wm. H. [Bill] Watson
Sunday School 9:45 a.m.
Morning Worship 11:00 a.m.
Evening Worship 6:00 p.m.
Youth Program 7:00 p.m.

DREAM DONUT BYLOW GROCERY OSBURN FURNITURE ALDERSON CHEVROLET

MARTIN BAPTIST CHURCH
Randy Daniels, Pastor
Sunday School 10:00 a.m.
Church Service 11:00 a.m.
Evening Service 6:00 p.m.
Wednesday Night Service 8:00 p.m.

FIRST BAPTIST CHURCH
Howardwick SBC
Bro. O. C. Edwards
Sunday School 10:00 a.m.
Worship Service 11:00 a.m.
Evening Service 6:00 p.m.
Wednesday Prayer Meeting 6:00 p.m.

FIRST BAPTIST CHURCH
Hedley
856-2711
Sunday School 10:00 a.m.
Worship 11:00 a.m.
Evening 6:00 p.m.
Wednesday Night Service 6:30 p.m.

UNITED METHODIST CHURCH
Hedley, Texas
Wm. H. [Bill] Watson
874-3879
Sunday School 10:30 a.m.
Morning Worship 9:30 a.m.
Wednesday Bible Study 6:00 p.m.

ST. MARY'S CATHOLIC CHURCH
McClelland & Montgomery
Rev. J. Arnold Carlson
Sunday Morning Mass 9:30 a.m.

ST. JOHN THE BAPTIST EPISCOPAL CHURCH
3rd & Parks
874-2231
Rev. J. Scott Turner, Vicar
Sunday School 9:45 a.m.
Holy Communion 11:00 a.m.

\$75.00 REWARD

For White Alaskan Husky and Buff Cocker Spaniel - Anyone having any knowledge of their whereabouts, please contact: 7475 Grouper in Howardwick or Box 571 Clarendon.

ALL FALL AND WINTER MERCHANDISE

1/2 PRICE

Shop early for best selections

RAINBOWS & LOLLIPOP

521 Main

Memphis



WE'VE GONE WHOLE HOG!



Pork Sale



SLICED 1/4 LOIN

PORK CHOPS LB. \$ **1.28**

CENTER CUT RIB

PORK CHOPS..... LB. \$ **1.69**

CENTER CUT LOIN

PORK CHOPS..... LB. \$ **1.69**

Med.

PORK RIBS..... LB. \$ **1.39**

SKINLESS & DEVEINED SLICED BEEF

LIVER..... LB. \$ **.79**

ARM ROAST \$ **1.79** lb

Grade A Whole

FRYERS **59¢** lb

WRIGHT'S TRAY PACK SLICED

SLAB BACON \$ **1.29** LB.

RANCH STYLE CHILI 15 oz **89¢**

WHITE SWAN CRACKERS 16 oz. **59¢**

CASSAROLE PINTO BEANS 2 LB. **69¢**

Maryland Club COFFEE 1 lb. \$ **1.99**

Jimmy Dean SAUSAGE
1 lb \$ **1.69** 2 lbs \$ **3.19**

White Swan Sliced American CHEESE 16 oz \$ **1.49**
White Swan Halfmoon CHEESE 10 oz \$ **1.39**

Plains BUTTERMILK 1/2 gal **99¢**
Plains COTTAGE CHEESE 12 oz **69¢**

White Swan Veg. SHORTENING 3 lbs. \$ **1.69**

Gooch German SAUSAGE 12 oz \$ **1.59**
Wilson FRANKS 12 oz **98¢**

Bordons ICE CREAM 1/2 gal \$ **1.59**

WHITE HOUSE APPLE JUICE 32 oz. **89¢**

KRAFT SALAD DRESSING
• FRENCH • CATALINA • 1000 ISLAND 16 oz. \$ **1.39**

HUNT'S KETCHUP 32 oz. \$ **1.19**

Minute Maid ORANGE JUICE 12 oz. **99¢**
MRS. P'S PARTY PIZZA'S 2 LB. **89¢**
ORE IDA FRENCH FRIES 2 LB. **89¢**
FISHERBOY FISH STICKS 8 oz. **69¢**

NICE N SOFT BATH TISSUE ASSORTED 6 ROLL \$ **1.69**

Maryland Club COFFEE 1 lb. \$ **1.99**

COCA COLA 6 pk 10 oz **89¢**

ZEE BIG ROLL TOWELS 1 CT. **79¢**

GEBHARDT'S JUMBO TAMALES 15 oz **59¢**

White Swan BISCUITS 8 oz **3/59¢**
White Swan Veg. OLEO 16 oz **2/79¢**
White Swan Corn Oil OLEO 16 oz **49¢**

Fresh Produce

JUMBO ORLANDO TANGERINES..... 3 LBS. \$ **1.00**

CALIF. GREEN SKIN AVOCADOES..... 6 FOR \$ **1.00**

Ruby Red GRAPEFRUIT 4/\$ **1.00**

EXTRA FANCY RED ROMÉ APPLES 3 lbs. **89¢**

ALL PURPOSE POTATOES 10 lbs \$ **1.19**

LOCAL PURPLE TOP TURNIPS 3 LBS. \$ **1.00**

GEBHARDT'S REFRIED BEANS 15 oz. **39¢**

LITTLE FRISKIES CAT FOOD ASSORTED FLAVORS 6 1/2 oz. **3/\$1**



- ★ CLARENDON ★ CLAUDE
- ★ MEMPHIS ★ SPUR
- ★ STRATFORD

BYLOW FOOD STORE

CLASSIFIED SECTION

874-2259

Do you pay Visa with Mastercard? Sell Avon! Set your own hours. Call collect 806-665-8507.

51-6tc

The Kirby Heritage is not just another vacuum cleaner but it's six great cleaning systems in one. Let us demonstrate it in your home at your convenience. Call now for a no obligation demonstration. 874-3403. John D. and Lois McVicker. 48-tfc

We have all types of Hospital Equipment for rent or sale, Beds, wheelchairs, walkers, commode chairs, etc. See Mike Butts at Gibson's Pharmacy. 874-3554. 1-tfc

LAMPS, LAMP PARTS, all light bulbs HOUSE OF SHADES and

LAMP REPAIR Wolfita Village Wolfita Avenue Amarillo, Tex. 79109

TV CABLE SERVICE Six Clear Channels Plus Continuous Weather Scans on Channels 9 and 13 For information and service Call 874-3570 CLARENDON CABLE TV

ALTERNATIVE Alternative to an abortion for an untimely pregnancy Call THE EDNA GLADNEY HOME TEXAS Toll-Free 1-800-433-2922. 1-tfc

COMMERCIAL PRINTING Business and Personal Stationery & Cards Business Forms & Statements

Whatever your printing needs, check with us. CLARENDON OFFICE SUPPLY & PRINTING Mr. & Mrs. G. W. Estlack Phone 874-2043 Clarendon, TX 79226

MEMPHIS SINGER SEWING MACHINE SALES SERVICE For contacts call Stavenhagen Furniture I am in Clarendon every two weeks on Thursday 1-tfc STEVE'S Automotive & Industrial Engines

For Tune-ups, muffler or a major overhaul, on the farm service call-

874-3446 TRAILER SPACE FOR RENT CORONADO MOTEL 874-2087 1-tfc

OFFICE SUPPLIES Bookkeeping Supplies Storage Boxes Office Machine Ribbons Office Furniture Clarendon Office Supply and Printing G. W. Estlack Clarendon, TX 79226

We Buy Estates Used Furniture And Appliances 874-2452 46-tfc

NOTICE OF SPECIAL ELECTION CITY OF HOWARDWICK, TEXAS

Notice is hereby given that an election for the qualified voters of the City of Howardwick, Texas will be held on the 16th day of January 1982 for the purpose of voting FOR OR AGAINST "LEGALIZING BINGO GAMES FOR CHARITABLE PURPOSES AS AUTHORIZED BY THE BINGO ENABLING ACT" in said city.

Said election will be held at the Howardwick City Hall and the polls shall remain open from 7:00 o'clock A.M. to 7:00 o'clock P.M.

The absentee voting for the above designated election shall be held at the Howardwick City Office and the said absentee voting place shall remain open during regular office hours on each day of absentee voting that is not a Saturday, Sunday or an official State holiday, beginning on the 20th day and continuing through the 4th day preceding the date of said election. Waldon E. Moore - Mayor

52-4tc

Clarendon Lodge 700 AF/AM Stated Meeting: Second Monday, 7:30 p.m. each month Practice: 1st & 4th Mondays Gary M. Hunt, W.M. Billy Ray Johnston, Sec.

WANTED TO BUY one or two lots joining, prefer a corner lot. 806-355-6937. 51-4tc

MORNING WAITRESS wanted. Call Mrs. Bromleys 874-2186 or come by. 1-tfc

PIANO LESSONS: all levels. Call 874-2025. 52-4tp

FOR SALE: Small stem red top cane hay, 60 lb. bales average. Call Ronald Ward 874-3918. 1-tfc

WANTED: Nursery worker, First Baptist Church. If interested call 874-2801 or church office. 1-tfc

FOR SALE: 1975 Buick Regal, good condition, new tires and 1964 Chevy PU, 6 cyl., 4 speed, call 874-3776. 1-1tp

WILL DO BABYSITTING in my home. Call 874-3924 Tammy Switzer. 1-2tp

HELP WANTED Meat wrapper, no experience necessary. DAVENPORT MEAT CO. 1-2tc

FOR SALE: Storm windows, complete window units CLARENDON GLASS CO. 874-3826. 35-tfc

G & L DOZER SERVICE Tree grubbing**Earth tanks Terrace building**Pipe laying Backhoe work**Trenching 6" to 18" wide, 5' deep Call COLLECT 806-888-2837. 51-4tc

JANIE'S BEAUTY SALON Corner of Browning and Hawley (Old Allison Home) 874-2682 Janie Finch Open Wed.-Thurs.-Fri.

LARRY'S 66 STATION 313 W. 2nd There's A Filling Station On Every Corner-But SERVICE Stations Are Hard To Find

RAY'S APPLIANCE SERVICE Franchise For Kitchen Aid Dishwashers Sales and Service General Electric Franchise Dealer Heating and Air Conditioning We service all makes of Air Conditioners Freezer & Refrigeration Service & Repairs

JAMES H. PERKINS AND ASSOCIATES AUCTIONEERS Call me for all your Auction needs: CAROL BENTLEY (806) 537-5095 Panhandle, Texas

TERMITE PROBLEMS Call for the best termite control Over 20 years experience Call Collect 383-7075 3608 N. E. 23rd Amarillo, Texas 79107 State Lic. No. 1178 Owner Operator

LEO RUSSELL BAILEY ESTES AND SON Welding Fabricating Enameled Steel Buildings Custom Portable Buildings Barns

CLYDE PRICE, JR. REAL ESTATE PHONE (806) 874 3896

THAT GOOD OL' COUNTRY LIVIN' ... 3 Bedroom ... large basement ... small acreage ... horse pens and trap ... Lolla Lake area ... \$40,000.

EXTRAORDINARILY lovely home ... Excellent location ... bedrooms galore ... Total Kitchen ... Many, Many more outstanding features.

4 BEDROOM...1 1/2 baths ... All electric kitchen EXCELLENT TERMS. Call Owner's Exclusive Agent. James F. Hayes & Co. CLARENDON, TEXAS

OWN YOUR OWN Jean and Sportswear Shop. Offering all the nationally known brands such as Jordache, Chic, Lee, Levi, Vanderbilt, Calvin Klein, Wrangler and over 100 other brands. \$12,500.00 includes beginning inventory, airfare for 1 to the Fashion Center, training, fixtures and Grand Opening Promotions. Call Mr. Loughlin at Mademol-selle Fashions 612-835-1304. 1-1tp

FOR RENT: Two bedroom mobile home, furnished or unfurnished, bills paid, low rent to retired couple, 7 miles west Clarendon 874-2668. 1-1tp

FOR SALE: 1978 Silverado 1/2 ton chevy pickup 43,000 actual miles, very nice with camper top, new second set of tires, loaded. Also want to buy small drag type disc. Tom Ward Howardwick 874-3332. 1-2tp

UPJOHN HEALTHCARE SERVICES RN's, LVN, Nurses Aids wanted to work in Donley County and near vicinity part time or full time. Call 2505 Lakeview Suite 208 Amarillo, Texas 79109 358-4851

4 COUNTY TRACTOR & EQPT., INC. Memphis, Texas Jerry Hester, Mgr. Bobby Ward Parts Mgr. Phone 259-3397 Dave Garrison Service Mgr. Phone 259-2183 Fee Wee Simmons Salesman Phone 259-2447 24 HOUR PARTS & SERVICE AVAILABLE Call 806/259-3514

LANE BUILDINGS MANY TYPES - MANY STYLES Buy from your local dealer Buildings 24-100 wide, any length, any height, low profile or peak, straight or slant W. Durable Steel Available in buildings 50 to 100 wide sliding doors up to 30 wide. Early order discounts PEAKED ROOF FRAMED OPENING INC. STEEL I BEAM CONSTR. Eave height of buildings may be from 6' to 24' Gray Construction Ron Smith Sales, concrete, erection or supervised. Call before you buy. Box 1213 Clarendon, Tex 79226 Phone 874-2829

FOR SALE 3 Bedroom Brick, 2 1/2 years old, 2 Baths, garage, school area. 2 Bedroom Brick, 1 bath, large basement. 3 Bedroom Stucco, 1 bath, basement, garage, school area. 2 Acres, 2 Bedroom, 1 bath, den, cellar, garage, near lake. 3 Bedroom trailer, 2 baths, corner lots. 4 Bedroom Stucco, 1 bath, school area. 2 Bedroom, 1 bath, well & well house, carport, 2 room house in large yard, school area. 2 Bedroom, 1 bath, garage, appliances go. 2 Bedroom, 1 bath, close to town. 3 Bedroom Stucco, 1 bath, basement, Hwy 287 East. 3 Bedroom Stucco, 1 bath, cellar, Hwy 287 E. Owner finance some. 3 Bedroom Stucco, 1 bath, garage, almost a block of land. IN HEDLEY 3 Bedroom Stucco, 1 bath, garage, corner lot. LAKE LOTS SANDERS REAL ESTATE 874-2533

FOR SALE Houses in Clarendon and Hedley. Call us we need listings 874-2533. SANDERS REAL ESTATE 720 S. McClelland 874-2533

I AM NOW DISTRIBUTOR for Amway Home Care Products. Come by and let me demonstrate how you save time and money the Amway way. MAE PEARL FABRICS 720 S. Allen 874-2056 Clarendon, Texas 1-tfc

CORNELL & BRADDOCK SHELL Service Comes Naturally

LLOYD'S BACKHOE & DITCHING SERVICE Septic Tanks*Water Lines*Gas Lines*Irrigation Lines 874-2287 1-4tc

DEALERSHIP AVAILABLE \$3,000. net or more per sale. New concept in steel homes Half the cost of conventional construction. Call 512-349-4084. 51-4tc

VACUUM CLEANER SERVICE We specialize in Kirby Vacuum Cleaner Sales and Service but will repair any make vacuum cleaner. We pick up and deliver as well as loan you one while we're repairing yours. Call us anytime. 874-3403

MORROW'S REDI-MIX Ready Mixed Concrete Backhoe (* Storm Cellars) All Types Concrete Work Earl Morrow - Owner 874-2571

Brown-McMurtry Implement SALES AND SERVICE PHONE 806-823-2441 BOX 777 SILVERTON, TEXAS 79257 DON BROWN HOME PH. 823-2292 CLARENCE WARD HOME PH. 823-2083

CHAMBERLAIN MOTOR COMPANY BUICK CHAMBERLAIN MOTOR CO. Come See Our New 1982 GMC AND CHAMBERLAIN MOTOR CO. ★ GMC ★ BUICKS ★ PONTIACS ★ CADILLACS ★ LIGHT TRUCKS ★ OLDSMOBILES Chamberlain MOTOR COMPANY HIGHWAY 287 CLARENDON, TEXAS FRED CLIFFORD Home 874-2415 Toll Free Texas 800-882-4088 Clarendon (806) 874-3327 Amarillo (806) 375-9041 Texas WATS (800) 692-1928

Call your local used cow dealer for dead stock removal 1-800-692-4043 toll free

STEEL BUILDINGS Give us your specifications for your Steel Buildings and we will build to suit you. QUICK AND EXPERIENCED ERECTION Compare our designs and prices with other buildings. PHILLIPS GIN SERVICE Barry Phillips 874-2236

WEDNESDAY NIGHT

7-9

HAPPY HOUR

With Taco Table



ALL BEER BOTTLE AND CAN

75¢

FRIDAY NIGHT

Fish Fry \$2⁵⁰ per person

ALL BEER BOTTLE AND CAN

75¢

No band Saturday.

Come out and play pool

and dance to the

Juke Box

JOHNSON OASIS



Ear Aches can be serious

As winter approaches with its cold air and drafts, the susceptibility to earaches naturally increases, says the Texas Medical Association.

There are various ways in which an ear ache can develop, but the most common causes are:

An infection of the middle ear -- the middle ear becomes inflamed, pus accumulates and the ear drum bulges, causing pain.

An inflammation in the ear canal -- better known as "swimmer's ear" occurs when water accumulates in the ear, flushing out the protective layer of wax. This leaves a dark warm place for bacteria to grow, and if an infection takes hold, the tissues in the ear swell, resulting in an intense earache.

Wax impactions or foreign bodies -- if wax in the ear becomes hard and presses against the ear drum, a particularly irritating ache can occur.

It is easy to recognize an earache because the pain is so intense, but other symptoms such as bleeding, inflammation, swelling, or drainage from the ear indicate that the ear is infected.

In the absence of any drainage, an individual can usually

LVN Association to have meeting

LUN Association will have their regular monthly meeting Thursday, January 8th, 7:30 p.m. at the Medical Center Nursing Home. We need all members to attend, to discuss some very important events for this year. We would like all non members to come and be our guests.

We have had a good and prosperous year of 81. We

Avoid Car Blunders

One smart way to put the brakes on car wear is to pay more attention to your car's care. Here are some common car care blunders you might want to avoid:

• Use a gasoline that has an octane rating right for your car. Using too low an octane rating will produce a "ping" which, if sustained, will damage the engine. Using one that's too high wastes money and will not produce more power or improve fuel economy.

• Keep your carburetor and air filter clean. Dirt could impede your car's performance. Mobil detergent gasoline can wash carburetor dirt away before it accumulates.

learned many things that will help in our nursing, also had a lot of fun. Many thanks to everyone who has helped make this possible.

alleviate a simple earache by placing several drops of warm mineral oil in the ear, inserting a cotton ball and lying down, with the ear pressed on a heating pad.

But if there is any drainage whatsoever, nothing should be placed in the ear until a physician can be consulted. If the ear happens to be infected, as drainage often implies, an untrained individual can easily aggravate the condition and cause the infection to spread beyond the middle ear to the brain, ultimately resulting in a hearing loss.

WTU's Carolyn Rodriguez promoted to District Auditor

Carolyn Rodriguez of Childress has been promoted to district auditor of the West Texas Utilities Company Panhandle District, effective January 4. She succeeds Bruce Evans, who transferred to Abilene to become Customer Services supervisor in the Abilene District.

The changes were announced by A.D. Green of Childress, district manager.

Mrs. Rodriguez has been a clerk in the district office at Childress since 1977. She was a cashier-bookkeeper in WTU's local office at Childress from 1972-77 and held the same position at Quanah from 1969-72.

She is a native of Siloam Springs, Arkansas, but completed all of her work in public schools at Quanah and attended Ranger Junior College. Her husband, Fred, is employed by the Burlington Northern Railway.

WTU's Panhandle District serves 11 counties, through local offices in Childress, Chillicothe, Clarendon, Crowell, Matador, Memphis, Paducah, Quanah, Quitaque, Shamrock, Turkey, Vernon, and Wellington.

Evans, a native of Abilene and a graduate of Hardin-Simmons University, joined WTU in April, 1979, at Childress as a management trainee and was promoted to district auditor in September, 1980. His wife, Kim, has been teaching social studies in Childress Junior High School.

Texas Highways Magazine A Great Travelin' Pardner

You have lots of trails to blaze in Texas, and Texas Highways scouts them all for you every month. No commercial hype, no ads—just pure Texas sights, scenery, and enjoyment. Subscribe today for \$10 a year (\$15 U.S. for foreign subscriptions). Just fill out the coupon and send to Texas Highways PSA, P.O. Box 5016, Austin, Texas 78763. Please allow 8 weeks for first issue.

Send my subscription to:

NAME

ADDRESS

CITY

STATE

ZIP CODE

Printed as a public service by this publication



Reserve rights to limit quantity. Some items not exactly as illustrated. Some items in limited quantity.



40% OFF LADIES WEAR

SKIRTS TOPS PANTS SPORTSWEAR SHIRTS

40% OFF

Fashion jeans and the tops to top them.

ENTIRE STOCK OF ALL LADIES - GIRLS WEAR AT 40% OFF

40% OFF

All winter jackets in the newest styles.