

Does Co. Judge earn his keep?

There are, (admit it!) some county and state jobs that really are a cushion job. But the office of County Judge (and secretary to the County Judge) are definitely not cushion jobs. In fact, the judge (not his secretary) is on call 24 hours a day and is often called up out of his warm bed in the wee hours of the morning or in the dead of night to issue warrants or set bail.

The County Judge is the chairman of the Commissioners Court and is the Chief Executive of the County. This means that he is the

office through which all monies, business, debts or affairs of the County must pass. CETA and Community Action programs as well as government aid are some examples of things the County Judge must be aware of and in control of.

On the Commissioners Court, the Judge sets the budget with the help of the auditor or the treasurer. This is presented to the Commission for approval. The Judge sets the agenda for discussion in the Commissioners Court as well.

The Judge presides over

Juvenile Court, Civil Court, Criminal Court, County Court and Probate Court. He must keep up on all of the laws for one small error, one slip of judgement, slip of the tongue or cut nap could result in a mistrial, in a reversible decision, in an appeal to a higher court. The Judge does not have to come equipped with a degree in law or any prior knowledge of the law. "But you need one to keep up with the law books and know how to interpret the laws," Judge Billie Christal remarked.

Aspirations to Donley

County Judge would mean hard work, long hours and as Judge Christal says, "I'm the lowest paid judge in the entire Panhandle of Texas."

Piano concert in Pampa

The winner of the 1981 Van Cibus International competition, Andre-Michel Schub, will perform at M.K. Brown Auditorium in Pampa, Monday, February 15, 8 p.m. The piano concert, a rare opportunity for Panhandle residents, is sponsored by the Pampa Fine Arts Association. Tickets of \$5, adult, and \$2, student may be purchased by mailing orders to Mrs. E.L. Henderson, Box 316, Pampa, 79065, or by phoning 669-2943.

Schub has made headlines since his win over 39 selected contestants from 17 countries and national televised performances at the Van Cibus quadrennial contest in Fort Worth. His first recording for Vox Cum Laude was released recently. His full schedule includes performances with symphony orchestras as well as solo concerts from coast to coast, Europe, and the Far East.

CLARENDON PRESS and The Donley County Leader, published every Thursday at Clarendon, Texas, 79226, Box 1110, at Highway 287 and Jefferson Street and entered as Second Class Mail at the post office at Clarendon, Texas.

J.C. and Helen Woody publishers and Katie Dvorak, Editor.

Subscription rates: \$12.00 a year outside Donley County \$9.00 a year in Donley County. Any erroneous reflection upon the character of any person or firm appearing in these columns will be gladly and promptly corrected upon being brought to the attention of the management.



ANDRE-MICHEL SCHUB

Dean's Honor roll for PSU

William Scott Thompson of Clarendon was named to the Dean's Honor Roll for the fall semester at Panhandle State University in Goodwell, Oklahoma. He was among the 140 students listed on the Dean's Honor Roll.

To be named to the Dean's Honor Roll, a student must have completed 12 credit hours during the semester, have no incomplete grades, no failing grades, and a grade point average of 3.30 or better based on a 4.00 scale.

EMS Activity Report

01-27-82 Andy Schulze, 80 of Clarendon from residence to St. Anthony's Hospital, Amarillo, Medical. 1-28-82 Pauline Bridges, 92 of Clarendon from High Plains Baptist Hospital, Amarillo to Medical Center Nursing Home, Trauma. 1-30-82 Sallie Benson, 81 of Clarendon from Medical Center Nursing Home, to Northwest Texas Hospital, Amarillo, Trauma. 1-31-82 Sallie Benson, 81 of Clarendon from Northwest Texas Hospital to Medical Center Nursing Home, Clarendon, Trauma. 14 responses handled in 1982 to date.

Senior Citizens Events

Tuesday, February 9 from 7:30 p.m. until all of the games become boring or until everyone falls asleep is game night at the senior citizens center. Bring a "Dame" to the "game" if you like.

Friday, February 12 is the Birthday and Anniversary Supper Affair. This is always an entertaining event and always plenty of wonderful food to enjoy. Come at 6:30 but it won't really get going full swing until 7 if you can't make it til then.

February 5, this Friday at the center is a very special treat. Mrs. Roy Sullivan will be teaching how to make silk roses! If you have seen how much they are in the store, and would love to be

able to make a huge bouquet, now is your chance! Everyone is welcome from 1 a.m. to 3 p.m. If you don't want to do roses, bring your favorite project but come join the fun and visiting. Watch those roses bloom! Don't miss this one.

Work up an appetite for supper by attending exercise classes, every Monday thru Wednesday starting at 2:15. Bring a friend to lunch any day except Saturday, Saturday is the Boss's day off!

Ken Slover in Pampa given an opportunity to work, can turn the economy around, leave local and state governments some money to work with, eliminate deficit spending, help the small businessman, and give people an opportunity to save some money and eventually buy a home.

Slover is employed by a promotion company based in Amarillo. He also owns Ron Slover & Company, a financial planning firm, as well as Amarillo Broker Service. He is 44 years of age and resides at 3614 Royal Road.

STOP. LOOK.. LISTEN...

We don't represent one company, but MANY of the finest INSURANCE companies in America

"YOUR PROTECTION is OUR PROFESSION"

SIMMON INSURANCE AGENCY



874-3506
310 S. Kearney

OPENED ON SATURDAY UNTIL NOON

FRESH ALLSUP'S BREAD

2 1/2 LB. LOAVES \$1.19

BORDEN'S COTTAGE CHEESE

12 OZ. CTN. 69c

BORDEN'S NUTTY BUDDY'S

6 CT. PKG. 99c

MORTON BEEF OR CHICKEN POT PIES

3 1/2 OZ. PKGS. \$1

ALLSUP'S CONVENIENCE STORES

"THERE'S ONE NEAR YOU"

PRICES EFFECTIVE FEBRUARY 4-6, 1982 WHILE SUPPLIES LAST

SCHILLING BLACK PEPPER 4 OZ. CAN \$1.39

SUNSHINE KRISPY CRACKERS 1 LB. BOX 89c

BORDEN'S ICE CREAM SANDWICHES

6 CT. PKG. 99c

BORDEN'S HI-PROTEIN MILK

1/2 GAL. CTN. \$1.09

LARGE SELECTION OF SCHRAFFT'S VALENTINE CHOCOLATES

\$1.40 TO \$2.95

Make your money work as hard as you.

Money Market Certificates

14.096%

30 Month Certificates

14.55%

All Savers Certificates

10.76%

Federal Regulations require a penalty for early withdrawal - Insured to \$100,000 by FS LIC.

VERNON SAVINGS

Home Office: 1725 Wilbarger Street • Vernon, Texas 76384 • (817) 553-3362

Branch Offices: 113 N. Main, Frederick, Oklahoma 73542 (405) 335-5549; 10th & Easy Street, Paducah, Texas 79248 (806) 492-3687; 119 South 6th Street, Memphis, Texas 79245 (806) 259-3384; 423 North Main, Childress, Texas 79201 (817) 937-8686



It would not be before I look like Tall, qui will aim a clothin proud, dignity has hi

to work,
economy
and state
money to
the deficit
the small
and give
ity to save
eventually

ved by a
based in
owns Ron
a finan-
s well as
vice. He
d resides
Road.

Daze of Our Lives

By JEAN BURCHETT

It wouldn't be fair for me not to describe Hubby to you before I tell this next tale. He looks like a professional man. Tall, quite well built, a suit will almost jump off a rack in a clothing store and do him proud. He is not ostentatious, preferring a life of dignity over crassness. He has his faults, sure, but usually he is very self-controlled.

That's why I was so stunned over what he pulled last summer on our vacation. Three years in a row we had been called home from vacation over some trivial matter that didn't amount to a hill of beans. So I persuaded him to leave home

and not tell but one trusted friend where we were going. "The family can make it for a few days," I said. "Let's not have any destination in mind, go with the wild goose. Leave a general direction-east. Period."

He wasn't comfortable with the idea, but the powers of persuasion, you know.

The third day we got lost somewhere in the piney woods of East Texas. (I still don't know where we were. We took another one of those short cuts.) When we finally did come to a little town it looked like an oasis. A bit rum-dum from being in a car that long we staggered into a restaurant half-starved and more than a little frumpy looking.

"I think we ought to call back and check," he said, as we sat down in a booth. "They could have been looking for us."

"Don't worry," I said. "If anything had gone wrong the Highway Patrol would have got us."

He worried anyway. "We've been too well hidden today for them to find us. I think we should make contact with Louie."

A newspaper flapped slightly in the booth behind Hubby. I raised my head and my eyes locked pupil to pupil with those of a distinguished looking man in horn rimmed glasses. Like the flit of a moth his eyes flew back to the paper.

Oblivious to the man, Hubby said, "Well, I'm glad to be jostled from a hot car for a few days. (The air conditioner had gone out on ours.) This looks like a nice little town to hole up in for a few days."

Flap.

There is a quirk in my nature that won't allow a ripe situation like that alone. It is comparable to seeing a dollar in the street and not bending over to pick it up. "We'll lay low for a few days," I let my voice slip into a low tone.

"There'll be the dickens to pay if anything does go wrong," Hubby continues to fret.

I slit my eyes, glance at our listener. One ear is turned in rapt attention; paper lowered slightly.

"We can serve our time when we have to go back," I grin.

"I don't like the way you look," Hubby says suspiciously.

"We have an interested party," I incline my head a bit.

"So?"

"So he knows about the Highway Patrol, the hot car and serving time."

"You dummy!" Hubby raised his voice. "Someday you're going to get us in a mess we can't get out of."

"Think what a story it will make!"

"I don't want to be in the paper!"

"If we can get to Mexico and make contact, think of the loot..."

"LISTEN MA BARKER!"

Keep your voice down", I cautioned. "We're not out of the woods yet."

I thought it was all great fun, but Hubby is forever wanting to right things, so when the man started to leave Hubby was going to show him he was really a nice guy. "Sir," he blurted out, "if you're through with your paper I'd like a quick glance at the headlines."

Heck, I didn't dream

Hubby would take the jock so seriously. He swelled up like a toad, wouldn't talk. The waitress brought our food. I nibbled at my sandwich, smoothed my hair, watched a fly crawl over the chrome napkin holder, and smiled several times at the small, gray haired lady who now occupied the next booth. "It's all in fun," I murmured for the third time.

Suddenly, as if he'd been in deep thought and had reached a momentous decision, Hubby pushed his plate back, hung an elbow over the back of the booth and in a truckdriver's throaty voice said, "Okay, doll, if you're SURE you're husband is out of town I'll spend the night at your place."

CLACK! The little old lady's teeth snapped together.

My jaw dropped. I could HEAR my eyes widen.

"Even if you are much older than I am," he went on. "Of course, how any mother of ten children could..."

CLACK!

Was that her teeth or mine?

Anyone interested in attending services is welcome. The services are held at St. John the Baptist Episcopal Church 2:30 p.m. on the second Sunday of each month.

Rev. Gale Everson of St. Paul Lutheran Church in Canyon conducts Holy Communion services.

The latest activities included a Mission Festival at Canyon. Grace Cox and Bessie Fichte attended the Festival Sunday, January 17, at St. Paul Lutheran Church. Rev. Frederick Boden showed slides on Missions in South America. Afterwards, Rev. Boden discussed the

possibility of the growth of our Mission in Clarendon. Grace and Bessie reported a very enjoyable day.

If you would like to know

more about the Clarendon Lutheran Mission, please call Mr. or Mrs. Paul Drager, Coronado Motel, 874-2087.

Affairs of Life



So you think animals can't talk? All things are possible with GOD. Read 11 Peter 2:16

Ben. B. Osburn
Furniture & Appliance, Inc.

Clarendon Lutheran Mission

The Clarendon Lutheran Mission is a group of Christians who are members of the Lutheran Church. Since there is no Lutheran Church in Clarendon, services are held once a month. A pastor from a neighboring city comes to give the services.

TOON UPS

GAS-SAVERS



Smart footwork and other easy driving techniques can help you save gas and cash:

As much as you safely can, keep an even speed. Varying 5 miles per hour can cost as much as 1.3 miles per gallon.

Use brakes instead of accelerator to hold on a hill. But use brakes sparingly, consistent with safety. Try to glide to stops.

Still, use the brakes instead of downshifting going down hills - except on long, steep grades where safety's a special factor.

Cut road friction by using radial tires. They can save 5 percent in gas mileage over bias-ply.

An Open Invitation To Everyone Who Wears A Hearing Aid

COME WHERE THE SERVICE IS. ASK FOR A FREE TUNE-UP TUNE-UP OF YOUR AID AT NO COST

We Will be at the Clarendon Senior Citizens Center the SECOND TUESDAY of each month from 9:30 a.m. until Noon. Until Further Notice

We will...

- Clean your aid and remove harmful moisture.
- Give your aid a 10-point preventive maintenance check-up.

This Service is Yours For The Asking. No Cost. No Obligation. Regardless of Make or Model.

FREE ELECTRONIC HEARING TESTS ALSO AVAILABLE

For Shut-In Service, Just Call: 352-8961



BELTONE HEARING AID Center
Amarillo, Texas



Sunday 9-7
Monday - Sat. 8-7

Reserve rights to limit quantity. Some items not exactly as illustrated. Some items in limited quantity.

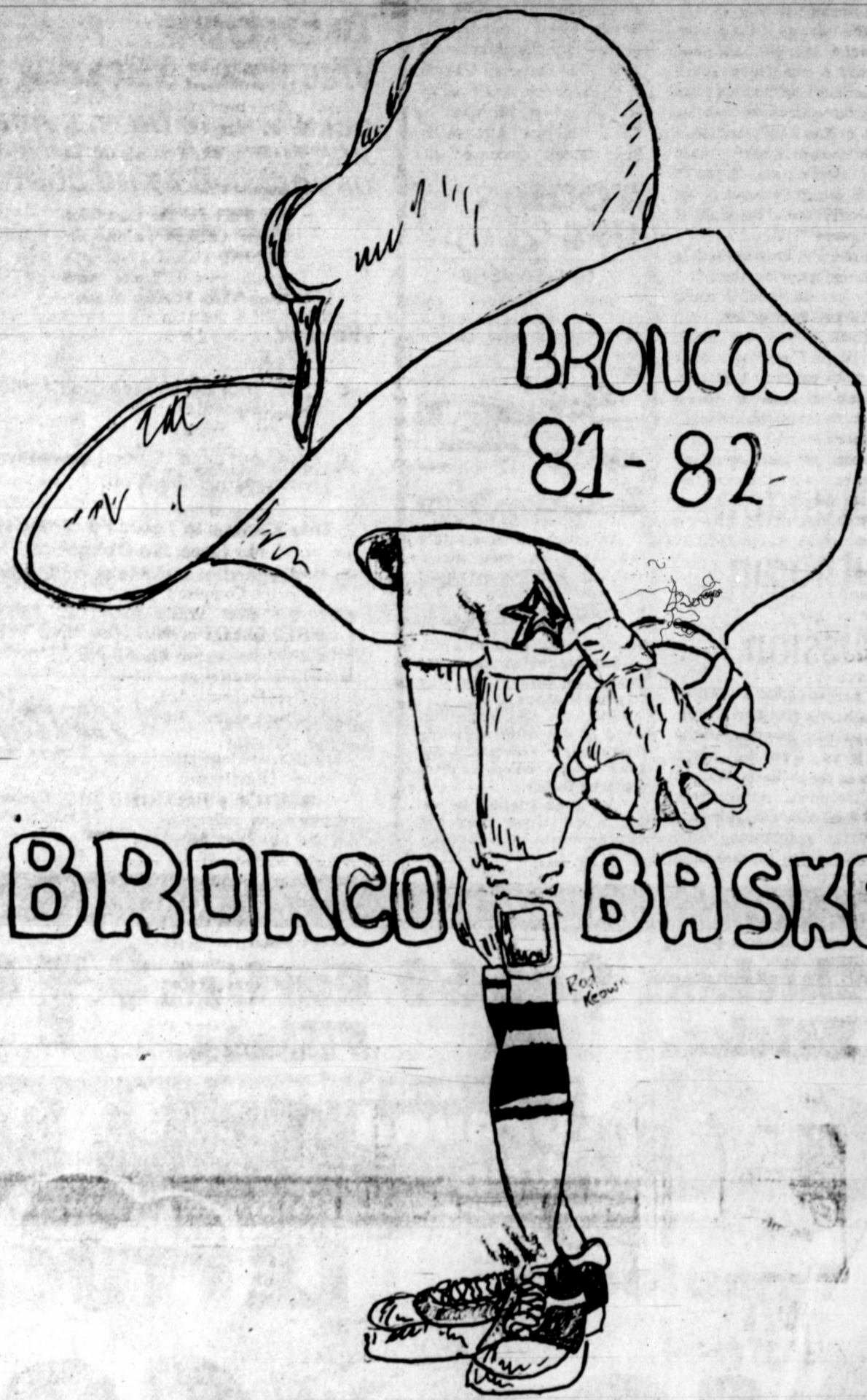
Farmland Maple River Band
Boneless Ham \$1.68
USDA Choice Beef
Chuck Steak \$1.28 Lb
Kraft Harvest Moon Sliced
Cheese Singles \$1.48 Lb

Lyon's Braided Fingers
Chicken Sticks 14 Oz \$2.69
Fresh Water
Catfish Fillets Lb \$1.69
Ground Fresh Daily Fresh
Ground Beef Lb \$1.18

POTATOES 1.39 U.S. No. 1 Russet 10 Lb Bag
Tomatoes Salad Size 49¢ Lb
LETTUCE 69¢ Head
Squash 49¢ Lb
Zucchini Squash 49¢ Lb
Cauliflower Head 59¢
Vienna Sausage Swift 5 Oz 2/79¢
Black Pepper Schilling 4 Oz 69¢

Macaroni & Cheese Kraft Dinner 7 1/2 Oz 3/\$1.00
Spaghetti 14 Oz 3/79¢
Rice Comet Long Grain 28 Oz Box 79¢
Towels Coronet 12 Roll 67¢
Rolls Kings Hawaiian 8 Oz Bag 68¢
Potato Chips Lay's 8 Oz Bag 89¢
FROZEN FOODS
Fruit Squares Pepperidge Farms 10 Oz Apple or blueberry 68¢ Each
Broccoli Spears Stillwell 8 Oz 2/\$1.00
Brussel Sprouts Stillwell 8 Oz 2/\$1.00
Cauliflower Stillwell 10 Oz 2/\$1.00
Sliced Mushrooms Stillwell 8 Oz 77¢
Mustard Greens Stillwell 10 Oz 3/\$1.00
Turnip Greens Stillwell With Turnips 10 Oz 3/\$1.00
Orange Juice White Swan 6 Oz Frozen 2/88¢
Okra Stillwell 10 Oz 2/\$1.00
Squash Stillwell 10 Oz 2/79¢
Patio Dinners Combo Mexican-Fiesta Ore-Ida 32 Oz 88¢
Hash Browns 88¢
Sweete Pies Fireside 12 Oz 3 Flavors 78¢
Pie Apples Comstock Sliced 20 Oz 78¢
Pie Filling Win-You Cherry 21 Oz \$1.08
Slender Carnation Liquid 10 Oz 2/\$1.00
Vegetables Larson Veg-All 16 Oz 2/79¢
Tarter Sauce Kraft 6 Oz 2/\$1.00
Horseradish Kraft Creamy 9 oz 59¢
Tuna Chicken of Sea 6 1/2 Oz 96¢

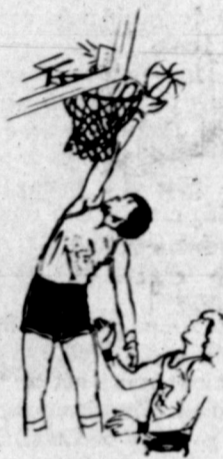
WE SUPPORT BRONCO BASKETBALL



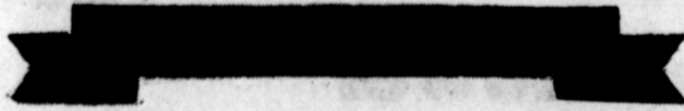
BRONCO BASKETBALL

SCHEDULE

Jan. 15 Canadian	(T)	Feb. 2 Canadian	(H)
Jan. 19 Wellington	(H)	Feb. 5 Wellington	(T)
Jan. 22 Wheeler	(H)	Feb. 9 Wheeler	(T)
Jan. 26 Shamrock	(T)	Feb. 12 Shamrock	(H)
Jan. 29 Memphis	(T)	Feb. 16 Memphis	(H)



This Page Is Sponsored By:



KNORPP

Insurance Agency, Inc.

James F. Hayes & Co.

- | | | |
|-------------------------------|---------------------------------|---------------------|
| Henson's | Dairy Queen | Mrs. Bromley |
| Eddie Floyd Shop | Bylow Food Store | |
| Wallace Monument | Alderson Chevrolet | |
| Bright Newhouse | Greenbelt Ford Inc. | |
| Automotive Supply | Recreation Center | |
| Cornell-Brodbeck Shell | Charles E. Deyhle Family | |

- Marvin Thompson Family**
- The Gene Woodman Family**
- Ronnie & Melinda McAnear**
- Charles Grocery & Market**
- Reynolds Machine & Supply**
- Greenbelt Water Authority**
- Jeff, Beth & Sherilyn Walker**
- Jerry, Alice and Emily Courtney**
- Doctor and Mrs. Richard Gilkey**
- Foxworth-Galbraith Lumber Co.**

Ben B. Osburn Furniture & Appliance Inc.



Boys Varsity team



Girls Varsity Team



Skinner Enterprises, Inc.
Mike's Gibson Pharmacy

GTE proposes rate increases again

Telephone services are one of those many things we take for granted...until the bill comes in. We wonder that we could possibly make 49 many long-distant phone calls, that our average bill could possibly be so high and how on earth can we cut down? But the cost of

providing services to customers is going up along with everything else. If GTE were an exception, we would all be blessed. However, since GTE has decided to submit another request for another rate increase to the Public Utilities Commission in Austin, we must sit back and

consider why they feel this rate increase is necessary. The increase for one party business phones will jump from \$18.30 to \$22.00 if the proposal passes. Increase for one party residence phones will go up from \$6.95 to \$8.30 for those of us in Clarendon, Hedley, Howardwick and

immediate area. We all belong to the local rate band #1 which means directory numbers for a community of between 1 and 3200 numbers. "When you take all the new equipment and facilities added statewide between Sept. 30, 1980, the average intrastate investment of \$1,031 per customer line, the average cost for each new customer line added to the network is about \$2,497," GTE President E.L. Langley said. "The difference between this figure and the \$1,031 on which we are charging rates, multiplied by over 51,000 customer lines added in Texas during the same period, results in a \$75 million investment on which we are not earning the return allowed in our last rate case."

Richard Funk, vice-president of revenue requirements for GTE explained how the company determines what rates it will seek for particular services in the rate request, taking into consideration the evolving competitive environment. "First, the company determines the level of expense and investment required to meet the customer needs and then determines the level of revenue needed to meet these needs," Funk stated. "We then know how many new dollars are required; in this case, a total of \$110 million. We then examine services, other than local basic service, to determine if the rates being charged for these are enough to cover the actual costs of providing the services. If not, we propose new rates for these particular services."

GTE is trying to increase their current long-distance charges as well as begin to charge individuals for "free" services such as directory assistance, pick-up of phones for repair, and paying for newer equipment such as electronic switching services. To avoid a charge in phone

repair, a customer may bring the phone to the service office for repair and avoid the charge of pick-up and return of the faulty phone. To avoid charges of newer equipment, however, is unavoidable and desirable if you live in an area with such equipment, and the long-distance rates go up regardless of anything you can do except stop calling long-distance.

Directory Assistance, however, is another matter. The proposed rate charge will be 35c for each time you call for a local number, available in your phone book for a number say in Clarendon if you live in Clarendon or Howardwick. If you live in Hedley, the charge would be for numbers in the Hedley prefix only. You will be allowed THREE free calls for directory assistance locally. After that, you will be

charged 35c per call for that month. If you call for directory assistance for a long-distance operator, however, you will not be charged unless you make the directory assistance call and then don't make a long-distance call. If you call for directory assistance long-distance 10 times and make 10 long-distance calls, regardless of which number you call, there will be no charge for the service. If, however, you make 10 directory assistance long-distance calls and make only 5 actual calls, you will be charged 35c for each of the 5 long-distance calls.

If you have any opinion about these charges, the best thing to do would be to call your city alderman and tell him. Each city has the opportunity to voice the city's opinion for or against each utility rate increase proposal. Do more than complain about your utilities, let your utility company know and your city alderman know how you feel.



DELMAR WIGGS

AG panel to meet in Lubbock

Texas Senate Agriculture Subcommittee Chairman Bill Sarpalius will be in Lubbock with the public hearings of the Subcommittee on water availability for crops and livestock, and transportation of agricultural commodities on Wednesday, February 10 at 9 a.m. The meeting will be held at the livestock arena on the Texas Tech campus.

"We have always invited public participation in our hearings of the Agriculture Subcommittee," Sarpalius said. "We plan to take the

information we gain from these hearings and turn it into legislation, if necessary, for the next time the legis-

lature meets," Sarpalius added. "All the members of the Senate Agriculture Sub-

committee are dedicated to trying to help solve the tremendous problems our farmers and ranchers face," Sarpalius said.

Wiggs new new splicer for GTE

Delmar Wiggs is the new cable splicer for General Telephone Company for the Clarendon area, it was announced by J.H. Davis, Memphis Division Manager. Delmar is a native of Benton, Illinois and has been employed with General Telephone for 16 years. He held the position of cable splicer in West Frantfort, Illinois before moving to Clarendon.

Delmar and his wife, Diana, have two children, Billy Gene, age 12 and Rebeckah Lynn, age 10. The Wiggs are members of the First Baptist Church and have always been active in church activities. The family enjoys sports also.

BULLOCK SAYS TEXAS CAN ACCEPT REAGANS PROPOSAL WITHOUT STATE TAX

State Comptroller Bob Bullock said Friday the Comptroller's office is fully capable of bringing in the money in 1983 and 1984 to take over costs of the food stamp and dependent children programs without new state taxes. "We in the Comptroller's office will meet President Reagan's challenge of 'New Federalism' just as we have met other challenges, by increasing efficiency, dedication and hard work," Bullock said.

For the past four sessions of the Legislature the Comptroller's office has increased tax collections to pay for new and expanded services authorized by the Legislature without deficit spending. He noted that in 1981, Texas' population increased 1.9% and that inflation was 8.9% but that state tax collections by his office increased 23.2% over 1980.

With the addition of this additional cable splicer in Clarendon, it brings our total employees for Clarendon to seven. "Let's welcome to Wiggs to Clarendon."

Hill Appointed Assistant Hospital Administrator

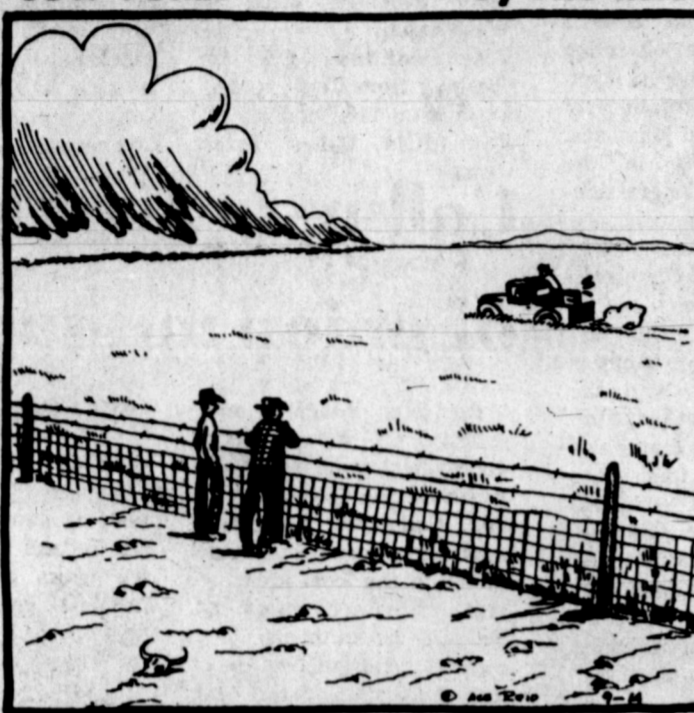
Steve Hill, son of Sue Seago Payne and Benny Boyce Hill and grandson of Gladys Seago and the late Nelson Seago and Mr. and Mrs. Orville Hill of Clarendon, has recently been appointed to the position of assistant administrator for the Mid-Jefferson county Hospital in the Houston area. His rise to that position has been a steady climb with just such a goal in sight.

Steve was born in Groom and attended first-third grades in Clarendon. Then he moved to Cedaredge, CO. He received his AA degree in business from McLennan Community College, attending this school on a golf/basketball scholarship and maintaining high enough grades to stay on the Dean's List for three semesters. He earned both his B.S. (Health/Education) and his M.S. (Administration/Health) from Baylor University.

Professionally, Steve is a member of the American Hospital Assn., the Texas Hospital Assn., and he is a nominee for the American College of Hospital Administrators.

Steve and his wife, Debbie live in Port Arthur. They are members of the United Methodist Church. Hill continues to be active in outdoor sports to relax after a hard day at the hospital.

COW POKES By Ace Reid



"If them ole boys would over graze their place like us, they wouldn't have to be fightin' grass fires all the time!"

FIRST BANK & TRUST OF CLARENDON

Federal Deposit Insurance Corporation

REVLON IN BLOOM... A collection of color that knows no season for lips, eyes, cheeks and nails.



Let Helen Help you co-ordinate All 4 for 20% Off

Lawry's



DIP MIXES
4 For \$1.00



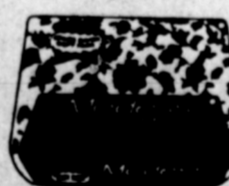
Smoked 3.6 Oz **OYSTERS**
79¢



COKE
6 Pack
\$1.49



No Non-Sense **HOSE**
Sheer To Waist
\$1.19



MODESS
14 Feminine Napkins
79¢



Remember Your Valentine

Remember your special Valentine Sunday, February 14, with a gift from Russell Stover Candies. Our beautiful Satin, Foil or delicate Gingham Hearts are filled with "Only the Finest" chocolates. Our hearts are a traditional favorite for all. Remember friends and relatives with the finest in chocolates and butter tarts. A heart shaped box of candy-something any sweetheart would love.

Russell Stover CANDIES

Words of love for Valentine's Day

Beautiful Hallmark Valentines are the very best way to tell someone special that you care. Whatever your message, there's a Hallmark Valentine for Sunday, February '14 that says exactly what you feel.



© 1982 Hallmark Cards, Inc.

Celebrate to your heart's delight!

A Valentine party is fun for everyone—even the hostess—when you use colorful Hallmark paper partyware. Decorating is easy because everything from the centerpiece to the plates matches. And clean up is a breeze, too!



© 1982 Hallmark Cards, Inc.

Re-Usable

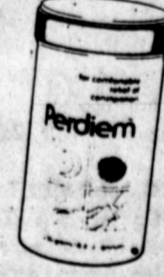
FOIL PANS

2/\$1.00

8.8 Oz

PERDIEM

\$4.39



BIVENS PHARMACY

ELMONETTE and PAUL BIVENS
Two Registered Pharmacists To Serve You

WINTER CARNIVAL

BETTY CROCKER ASSTD. SUPER MOIST



Cake Mix 18 OZ. BOX

79¢


VEGETABLE SHORTENING 20¢ OFF LABEL



Pure Crisco 3 LB. CAN

\$1.99

ENRICHED FLOUR



Gladiola 5 LB. BAG

89¢

CARNATION EVAPORATED MILK



Milk 13 OZ. CANS

2 \$1.00

TEXAS FULL OF JUICE



Oranges OR TEXAS RUBY RED

Grapefruit

\$1.29

YOUR CHOICE 5 LB. BAG

PRODUCE SPECIALS

CALIFORNIA GOLDEN Carrots	3 1 LB. PKGS.	\$1.00
CALIFORNIA PURPLE Turnips TOP	3 LBS.	\$1.00
ALL PURPOSE RUSSET Potatoes	10 LB. BAG	\$1.39

RANCH STYLE OR VAN CAMP'S PORK & BEANS



Beans 15 OZ. CANS

2 79¢

35¢ OFF LABEL DETERGENT



Cheer KING SIZE

\$2.99


RICH & THICK TOMATO



Hunt's Ketchup 32 OZ. BTL.

\$1.19

ASSTD./DECORATOR PAPER



Zee Towels JUMBO ROLL

69¢

DAIRY & FROZEN FOODS

Shurfine DeepDish

PIE Shells 2 Pak **79¢**

SHURFINE SPEARS Broccoli 10 OZ. BOX **59¢**

KRAFT SQUEEZE PARKAY Margarine 1 LB. BTL. **89¢**

MINUTE MAID FROZEN Orange Juice 12 OZ. CAN **99¢**

GROCERY SPECIALS

MAXWELL HOUSE Instant Coffee 10 OZ. JAR **\$4.19**

LEMON-LIME/ORANGE Gatorade 32 OZ. BTL. **69¢**

BETTY CROCKER READY-TO-SPREAD Frosting 1 LB. CAN **\$1.49**

ENRICHED FLOUR Gladiola 25 LB. BAG **\$4.49**

U.S.D.A. GRADE 'A' CERTIFIED FINEST QUALITY WHOLE COUNTRY PRIDE



Fryers **59¢**

LB.

U.S.D.A. GRADE 'A' FINEST QUALITY COUNTRY PRIDE FRYERS

CUT-UP PAN READY WHOLE Fryers	LB.	69¢
SPLIT FRYER Breasts	LB.	\$1.29
FRYER Thighs	LB.	99¢
FRYER Drumsticks	LB.	99¢

HEALTH & BEAUTY AIDS

ANALGESIC Anacin Tablets 30 CT. BTL. **\$1.19**

Intensive Care 10 Oz **\$1.69**

Vaseline

SHAVE PRO./MENTHOL/LIME



Edge Gel

\$1.59

7 OZ. CAN

MEAT SPECIALS

DECKER'S QUALITY SLICED Bologna 12 OZ. PKG. **99¢**

Young Fresh Beef Liver 79¢

GOOCH'S GERMAN STYLE Sausage SMOKED 12 OZ. PKG. **\$1.49**

RAMIREZ FRESH CORN LGE. Tortillas 32 OZ. PKG. **69¢**

OWEN'S COUNTRY PORK



Sausage 2 LB. PKG. **\$3.35**

1 LB. PKG. **\$1.69**

WINTER FOOD SPECIALS

DINTY MOORE Beef Stew 24 OZ. CAN **\$1.39**

CARNATION HOT Cocoa Mix 12 CT. BOX **\$1.49**

SHELF SPECIALS

TRIGGER BTL. BONUS BUY Spray & Wash 32 OZ. BTL. **\$1.59** 10 OZ. FREE!

ZEE EARTHTONE Napkins 140 CT. PKG. **89¢**

PRICE FIGHTERS

GLADIOLA CORNBREAD/Biscuit Mix 6 OZ. PKGS. **2 47¢**

SKINNER THIN Spaghetti 12 OZ. PKG. **49¢**

GREEN GIANT SPECIALS

GREEN GIANT KIT. SLI. Green Beans 2 16 OZ. CANS **89¢**

GREEN GIANT W.K./C.S. Gold Corn 2 17 OZ. CANS **89¢**

GREEN GIANT MED. Sweet Peas 2 16 OZ. CANS **89¢**

COKE'S TAB SPRITE



\$2.09

6 Pack 32 Oz Plus Deposit

the price fighter



Venture FOODS

WE ACCEPT FOOD STAMPS WE ACCEPT MANUFACTURER'S COUPONS

DOUBLE S&H GREEN STAMPS WEDNESDAY WITH \$2.50 PURCHASE.

PRICES EFFECTIVE - Feb. 3 - 6th WE RESERVE THE RIGHT TO LIMIT QUANTITIES.

CHARLIE'S GROCERY & MARKET

SMALL THREE BEDROOM HOUSE FOR RENT: \$175 month. Deposit required. You pay utilities. 874-2438 or 874-2259.

FOR SALE: Bulls J. R. Graham 874-2010. 4-4tp

FOR SALE: 5 room house in Hedley with storage and 1.9 acre 856-3872.

3 BABY QUILTS 1/2 PRICE. Designs are stamped on quilted cotton percale that's lined, bound, and padded with acetate filler.

S & K Hobby Shop
401 Collison
Clarendon, TX 5-1tp

CAN MAKE YOUR water bed sheets more reasonable than you can buy them. Call 874-2860.

4-2tp

LIKE THE CANYON? Large updated 2 story, 4 bedroom home, situated on rim of canyon on FM2889, 7 miles east of Claude, 40 miles from Borger, 40 min. from Amarillo, outbuildings on 5 acres, excellent financing and additional land available. Call Pat 358-1156. Bomar Associates Realtor 359-5416. 4-tfc

FOR RENT: two bedroom trailer. Couple only. 874-2583. 5-1tc

Fun After Fifty Club meets

Having fun after 50? Many folks do, you know. Come join the Fun After 50 Club at the Lions Club Hall at 10:30 Saturday, February 6th. Woody Argo is going to present a slide show on England. Bring a covered dish for the luncheon at noon.

The world's largest marina is Marina Del Rey, Los Angeles, California. It has 7,500 berths.

Political Calendar

County Treasurer
Freida Gray

Justice of the Peace Prec. 2
W.W. [Bud] Lovelady
Allie Mae Maxey.

Commissioner Prec. 2
C.W. [Dude] Cornell
Bob Klidd.

Commissioner Prec. 4
Will Chamberlain

County Judge
Billie Christal

County Clerk
P.C. Messer

Pd. political Ads paid by the above names, Clarendon, Texas 79226.

Measles & Rubella—Don't get them

confused

Many people confuse measles and rubella—perhaps because a popular term for rubella is "German measles". This is misleading since rubella is not measles but a different virus, says the Texas Medical Association. Rubella was first identified by doctors in Germany and this is probably why the misleading name "German measles" took hold.

The confusion wouldn't matter if it were not for the fact that both diseases can produce serious complications. Because of these complications, medical authorities urge vaccination against both, ideally at age 15 months.

Before the vaccine became available, measles was an almost inevitable disease of childhood. It lasts about 10 days. At the onset the disease is characterized by a dry scratchy cough, running nose, inflamed eyes and an irregularly elevated temperature. At the end of the first three days the temperature may peak at 104 degrees, at which point a rash will appear. Although the measles rash usually covers the entire body, itching is seldom severe. After another three or four days the rash begins to fade.

Complicating pneumonia or ear infections may require antibiotics. The most serious complication of measles is encephalitis, which can be deadly or cause severe brain damage.

Rubella is often so mild a childhood disorder that many adults may either have forgotten their childhood illness or had an illness which was not recognized as rubella. Many adults, therefore, have naturally acquired immunity against rubella.

The disease usually lasts about three days. A rash often accompanies rubella but may be so faint that it goes unnoticed. It usually causes painful swelling in the glands at the back of the neck

and behind the ears, along with slight fever.

Rubella is such a mild disease in both children and adults that there would be no cause for alarm were it not for a tragic exception—the danger of severe physical and mental damage to a pregnant woman's unborn child if she acquires the disease in the early months of pregnancy. Since boys and girls in early childhood are the most common carriers of the infection, most doctors recommend that they be immunized to reduce exposure of mothers-to-be.

Women should be immunized before becoming pregnant, and they must avoid any possibility of pregnancy for two to three months afterwards. While the risk of the vaccine to the unborn baby is not known, it should be avoided.

Young women can be tested for immunity to rubella at the time of their premarital exams or a test can be given during the prenatal examination.

4-H'ers attend workshop

Aleene and Katrenya Leathers accompanied Cheri Brown—CEA, to the Texas 4-H Center in Brownwood to attend a week-end Housing and Clothing Leader Workshop.

The agents and leaders participated in a pilot-testing of new needle-craft projects provided by the National Needlework Association. Agents attending the workshop were able to sign up for supplies to be provided in quantity to teach projects locally.

The workshopers attended sessions to learn how to make clothing accessories and various home furnishing items.

MIKE'S



PHARMACY

874-3554

Limited Rights Reserved

Mail Orders Receive Prompt Service

Senior Citizens Receive

15%

Discount on Prescriptions

HYPOTENSION

NAUSEA AND VOMITING

Nausea and vomiting can occur by themselves but usually occur together. Nausea is the feeling of the imminent desire to vomit and vomiting is the expulsion of materials of the stomach and intestine through the mouth. Most of us have experienced both nausea and vomiting at several times in our lives.

But why does nausea and vomiting occur? Medical textbooks tell us that vomiting is controlled by two areas of the brain...the **chemoreceptor trigger center** and the **vomiting center**. Together, these areas of the brain respond to materials in the blood (including many drugs) and contents of the gastrointestinal tract. When sufficiently stimulated, nausea and then vomiting occurs.

Several medicines are available to reduce or eliminate nausea and vomiting. **Antihistamines** are especially valuable in helping to control nausea and vomiting that occur with motion sickness. **Cyclizine** and **dimenhydrinate** are available without prescription. The antihistamine **hydroxyzine** is available only on prescription for oral and injectable use.

Of prescription medicines, the **barbiturates** are sometimes effective. The **phenothiazines** of which **prochlorperazine** is an example are highly effective and widely prescribed.

WE WANT YOUR PHARMACISTS!

JERRY HODGE MIKE BUTTS

GREENBELT FORD, INC.

2nd & Carhart Clarendon, Texas 874-3578
UNDER TOTAL NEW MANAGEMENT

1981 F100 New 6 cylinder	\$6462.00
1981 Courier New Bargain	\$6779.00
1981 Ford Fairmont	
Demo - Bargain	\$7448.99
1981 Ford Futura	
Cpe, Demo, Bargain	\$7841.27
1979 Chev 1/2 Ton	
Nice, Loaded	\$5000.00
1978 Chev 1/2 ton	
Sharp, Loaded	\$4750.00
1979 Ford 1/2 Ton	
Clean, less than 20,000 mi	\$3950.00
1978 Ford 1/2 ton	
F150, Nice, Low Mileage	\$5295.00



RURAL RESIDENTS

Tired of hearing about all the good T.V. programs the city folks watch? Put'em to shame with your own 50+ channels satellite receiver.

Write For Information

Slavin Satellite Systems
P.O. Box 219
Clarendon, Texas 79226

It's The Law!



The Texas Legislature has enacted a law that requires you and all other Texas motorists to carry automobile liability insurance beginning January 1, 1982. Bodily injury coverage of at least \$10,000 per person and \$20,000 for two or more persons per accident must be in force at all times. Property damage coverage must be at least \$5,000 per accident.

Failure to maintain the coverages required by this law will result in a fine of at least \$75.00 for the first offense and a minimum of at least \$200 for any subsequent offense. If you are convicted you may lose your drivers license and motor vehicle registration as well.

After January 1, 1982 law enforcement officers in Texas will ask to see proof of your insurance coverage when investigating a traffic accident or violation. The Department of Public Safety has advised that the following are acceptable forms of this proof:

- Your automobile insurance policy.
 - A photocopy of the declarations page of the policy which contains the policy number, limits of liability, term of the policy, etc.
 - A special identification card that some insurance companies may provide.
- Even though many more Texas motorists will purchase and maintain liability insurance coverage as the law requires, hundreds of thousands of motorists will intentionally violate the law and remain uninsured.

For this reason we urge you to continue to carry uninsured/underinsured motorist coverage on your own policy. This important coverage will give you added protection should you be involved in an accident with an uninsured or underinsured driver.

KNORPP

Insurance Agency, Inc.

806-874-3521

Drawer A

Clarendon, Texas 79226

NUMB ARMS, LEGS Danger Signals



There may be misalignment of vertebrae in the spine causing pressure on nerves. Yet the patient experiences no pain in the back. Instead, a variety of sensations may be felt in other parts of the body. These include tingling, tightness, hot spots, cold spots, crawling sensations, electric shock sensations, stinging, burning, and others.

Here are nine critical symptoms involving back pain or strange sensations which are usually the forerunners of more serious conditions. Any one of these usually spells back trouble.

- (1) Paresthesias (see above)
- (2) Headaches
- (3) Painful joints
- (4) Numbness in the arms or hands
- (5) Loss of sleep
- (6) Stiffness in the neck
- (7) Pain between the shoulders
- (8) Stiffness or pain in lower back
- (9) Numbness or pain in the legs.

These signals indicate that your body is being robbed of normal nerve function. Until this function is restored, you will, in some degree, be incapacitated. The longer you wait to seek help, the worse the condition will become. Don't wait! Should you experience any of these danger signals... call for in depth consultation in Layman's terms.

Haydon Chiropractic Office
103 East 28th Street & Perryton

PAMPA, TEXAS 79005

TELEPHONE 806-643-7884

★ CLARENDON ★ CLAUDE
★ MEMPHIS ★ SPUR
★ STRATFORD ★ SUNRAY

PRICES GOOD FEB. 1ST THRU FEB. 6TH



BYLOW FOOD STORE

FARMLAND MAPLE RIVER BRAND
BONELESS

WHOLE HAM
LB. \$1.69

WHITE SWAN GUEST QUALITY
VAC-PAC

SLICED BACON
1 LB. PKG. \$1.39

Chuck Roast

\$1.69
LB

Bologna 16 Oz. \$1.49

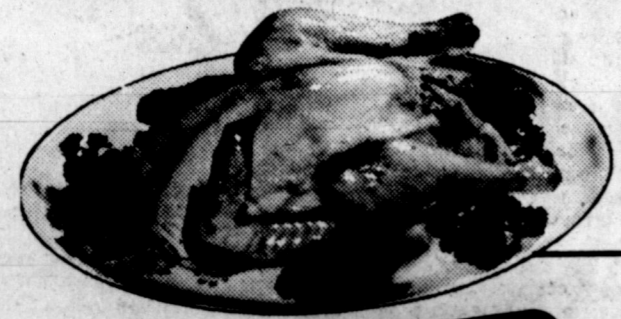
Franks 12 Oz. 89¢

Ground Beef

\$1.18
LB

HALF HAM LB. \$1.79

WHITE SWAN PIMENTO
CHEESE SPREAD..... 14 OZ. \$1.49
7 1/2 OZ. 89¢



Fryers - Whole 59¢
LB

DEL MONTE PINEAPPLE
PACKED IN ITS OWN JUICE
• TIDBITS • SLICED • CRUSHED
59¢
15 1/2 OZ.

DEL MONTE CATSUP
32 OZ.
\$1.19

The Makings of Success



DEL MONTE CUT GREEN BEANS
16 OZ. **2/89¢**

White Swan Biscuits
8 Oz. **5/\$1.00**

Nice 'n Soft BATH TISSUE..... 4 ROLL **99¢**

DEL MONTE CORN
17 OZ. .. **2/89¢**
• CREAM STYLE
• WHOLE KERNEL

COKE
2 Liter **\$1.19**

White Swan INSTANT TEA 3 Oz. **\$1.69**

White Swan All Veg SHORTENING
\$1.69
3 Lbs

DEL MONTE EARLY GARDEN SWEET PEAS
17 OZ. **2/89¢**

Plains 1/2 Gal BUTTERMILK 99¢

POST TOASTIES 18 Oz. **99¢**

Contadina TOMATO SAUCE
8 OZ. **4/\$1**

DEL MONTE CHOPPED SPINACH
15 OZ. **2/89¢**

Plains COTTAGE CHEESE 12 Oz. **69¢**

Palmolive Dishwashing Liquid 22 OZ. **\$1.19**

Borden's ICE CREAM
1/2 Gal **\$1.59**

Ajax Cleanser 14 OZ. **39¢**

Frozen Foods
PATIO 12 1/2 OZ. • MEXICAN • BEEF ENCH. **DINNERS** **89¢**
• FIESTA • CHEESE ENCH.
MORTON'S 14 Oz • GLAZED **DONUTS** **\$1.19**
WHITE SWAN **CRINKLE CUTS**..... 32 OZ. **89¢**

Frozen Foods
Banquet 20 Oz Apple or peach **Banquet Pies** **79**
Fisher Boy 16 Oz **Fish Sticks** **\$1.19**
Pepperidge Farms 10 Oz **Fruit Squares** **79**

LEMON FRESHENED BORAX Fab **Laundry Detergent** 49 OZ. **\$1.99**

Fresh Produce
CALIF. MINNEOLA **TANGERINES**..... LB. **49¢**
SALAD SIZE **TOMATOES**..... LB. **59¢**
FRESH GRN. BUNCHES **BROCCOLI**..... LB. **69¢**
TEXAS RUBY RED **GRAPEFRUIT** **3/89¢**
YELLOW OR ZUCCHINI **SQUASH** LB. **59¢**
SNOW WHITE HEADS **CAULIFLOWER** EACH **79¢**

GUNN BROS STAMP BOOKLET
Double Barreled Special
Jimmy Dean 1 Lb **SAUSAGE** **\$1.29**
With 1 Booklet

PARKAY OLEO 1 Lb Pkg
With 1 Booklet **1¢**
White Swan SALTINES
White Swan 16 Oz Box **CRACKERS** With 1 Booklet

GUNN BROS STAMP BOOKLET
Double Barreled Special



One Dish Casserole Cooks In 15 Minutes



Casseroles cooked and served in one dish can be prepared in just 15 minutes in a microwave oven.

This recipe for Spaghetti Supper is heated covered to speed the cooking time. The meaty sauce is based on Campbell's Chunky Sirloin Burger Soup.

SPAGHETTI SUPPER
1/2 c. chopped onion
1 small clove garlic, minced
1 tsp. oregano leaves, crushed
1 tbsp. butter or margarine
1 can (19 oz.) Campbell's Chunky Sirloin Burger Soup
2 c. cooked spaghetti
1/2 c. drained chopped canned tomatoes
Grated Parmesan cheese

In 1 1/2-quart round glass casserole, combine onion, garlic, oregano and butter. Microwave on HIGH 3 to 4 minutes or until just tender. Stir in soup, spaghetti and tomatoes. Cover with glass lid. Microwave on HIGH 7 to 9 minutes or until hot, stirring once. Let stand, covered, 2 minutes. Serve with cheese. Makes about 4 cups, 3 servings.

These recipes and more are included in a Texas Hors d'oeuvres booklet available through TDA. For more recipes write: Texas Department of Agriculture, Reagan V. Brown, Commissioner, P. O. Box 12847, Austin, Texas 78711.

DEVILICIOUS EGGS

6 hard-cooked eggs
1/4 C. mayonnaise
1/2 C. chopped pecans
1 tsp. grated onion
1 tsp. vinegar
1/2 tsp. dry mustard
1/2 tsp. salt
1/2 tsp. minced parsley
Fresh parsley sprigs (optional)

Slice eggs in half lengthwise; carefully remove yolks, reserving whites. Mash yolks with a fork. Add next 7 ingredients, mixing well. Spoon pecan mixture into egg whites. Garnish with parsley sprigs, if desired. Serves 6.

LONE STAR CAVIAR

1 lb. black-eyed peas
2 C. Italian salad dressing
2 C. diced green pepper
1 1/2 C. diced onion
1 C. finely chopped green onion
1/2 C. finely chopped jalapeno peppers
1 (2 oz.) drained jar diced pimiento
1 T. finely chopped garlic
Salt to taste
Hot pepper sauce to taste

Soak black-eyed peas in enough water to cover for 6 hours or overnight. Drain well. Transfer peas to a saucepan, add enough water to cover and bring to a boil over high heat. Let boil until tender (about 40 minutes); do not overcook. Drain well. Transfer to a large bowl, blend in dressing and let cool. Add remaining ingredients and mix well. Makes about 7 1/2 cups.

TAMALE BALLS

2 C. crumbled cornbread
1 (10 oz.) can mild enchilada sauce (divided)
1/2 tsp. salt
1 1/2 lb. ground beef
1 (8 oz.) can tomato sauce
1/2 C. (2 oz.) shredded Monterey Jack cheese

Combine cornbread crumbs, 1/2 cup enchilada sauce and salt. Add ground beef; mix well. Shape into 1-inch balls. Place in a shallow baking pan. Bake, uncovered, at 350 degrees F. for 18-20 minutes or until done. Meanwhile, in a small saucepan, heat together remaining enchilada sauce and tomato sauce. Place cooked meatballs in a chafing dish, pour sauce over and top with shredded cheese. Keep warm over low heat. Serve with wooden picks. Makes about 90 Tamale Balls.

calories is a nutritive sweetener," Graham said. It makes no difference whether the sugar occurs naturally in fruits or is added by the processor in the form of refined sugar or as juices from other fruits, he said.

The Del Monte research scientist explained that nutritive sweeteners such as refined sugar, syrups, juices of fruits, juice concentrates, molasses, and honey all provide the same number of calories, gram for gram.

"So what becomes important is not the kind or the source of sugar, but how much sugar is consumed," Graham said.

Dr. Graham advised consumers

to read the label and plan a balanced and varied diet, taking into account the nutrient contribution made by each food.

"A balanced meal today is not only the right selection of food but also the right content of the foods selected," he said.

The Del Monte research scientist said today's grocery stores carry many products that make a significant cutback on sugar without sacrificing taste.

"These products preserve the fruit flavor by using an extra-light sugar syrup that complements the fresh taste of the fruit," he said. "In these products, about 75 percent of the total sugar in the can comes from the fruit itself."

Dr. Graham said sugar is an important nutrient and an inexpensive source of calories.

"While sweeteners, fats and alcohol usually are restricted in a weight-control program, an adequate supply of calories is essential for health and work," he said. "When the body receives too few carbohydrates and fats to meet its energy needs, it is forced to use protein from the diet for energy instead of for body maintenance."

VEGETARIAN EGG ROLLS

Makes 16 egg rolls
Planters Peanut Oil
2 cups sliced celery
1 cup shredded cabbage
1 cup chopped onion
2 cans (8 oz. each) bamboo shoots, drained
1/2 pound fresh bean sprouts
1 cup grated carrots
2/3 cup chopped mushrooms
1/2 cup chopped green onions
3 tablespoons soy sauce
1 tablespoon finely minced ginger root
1 teaspoon sugar
1 teaspoon crushed

fresh garlic
16 egg roll skins
1 egg, beaten

Heat 3 tablespoons peanut oil in a wok or large skillet over high heat. Add celery, cabbage and onion; stir-fry 1 1/2 minutes. Add bamboo shoots, bean sprouts, carrots, mushrooms and green onions. Continue to stir-fry until all vegetables are tender, about 2 minutes. Stir in soy sauce, ginger root, sugar and garlic. Stir-fry an additional minute, or until soy sauce has evaporated. Remove from heat and cool.

Position each egg roll skin so that corners are at the top, bottom, left and right. Place 1/3 cup filling

on the lower section of the skin. Tuck bottom corner around filling and roll firmly about 1/2 way up skin. Moisten the remaining 3 corners with beaten egg. Fold the left and right corners toward the center and complete rolling.

Heat a 1 1/2 inch depth of peanut oil in an electric skillet or fry pan to 375°F. Fry egg rolls, a few at a time, for 2 to 3 minutes, turning once, until golden brown. Drain on paper towels. Serve hot.



CABBAGE SEASON is here and the Texas Department of Agriculture food specialists have created a tasty and decorative salad combining Texas cabbage, oranges and pecans.

Citrus Cabbage Salad

1 hd. red cabbage
1 sm. hd. green cabbage
2 grapefruits
2 oranges
1 apple
1 C. diced celery
1 C. pecans
1/2 C. sour cream
1/2 C. mayonnaise

With a small sharp knife, cut leaves around core of red cabbage. Starting from the top, loosen large outer leaves and remove as many as needed to line a salad plate or bowl. Soak leaves in ice water for about an hour so they can be easily shaped. While leaves are soaking, slice cabbage very thinly. Section or dice grapefruit and oranges. Slice unpeeled apple in thin wedges. In a large mixing bowl, toss together grapefruit, oranges, apple, celery, and pecans. In a separate bowl, mix sour cream and mayonnaise. Add only enough sour cream-mayonnaise dressing to salad to moisten. Spoon salad into 'bowl' of red cabbage. Serve immediately. Serves 8.

For additional recipes, write: Commissioner Reagan V. Brown, Texas Department of Agriculture, P.O. Box 12847, Austin, Texas 78711.

Truett Behrens

Candidate for County Judge, Donley County.

If elected will do my best to perform my duties of that office to the best of my ability.

I have served in the law enforcement for a total of 26 years accumulative service.

I have lived in Donley County for 63 years.

Your vote will be appreciated.

Pd Pol Ad. Pd by Truett Behrens

How much sugar, not what kind, is important

Nutrition-conscious consumers of canned fruits should realize that "sugar is sugar," and that the amount consumed—not the form of sugar—is what is important, according to a food industry research scientist.

"Consumers should buy foods that give them the nutritional value and taste they want, with no more sugar than needed or desired," said Dr. Dee M. Graham, director of central research for Del Monte Corporation.

"Any sweetener that provides

SHOW STARTS AT 7:30

Clip and Save



Clip And Save

Thursday-Friday Saturday-Sunday

FEB. 4-5-6-7

Advertisement for 'D.B. COOPER' featuring a man in a suit and hat. Text includes 'In 1971 "D. B. Cooper" leaped from a 727 with \$200,000 and vanished without a trace. Why he did it no one knows. But you can bet he was laughing all the way to the bank.' Cast: ROBERT DUVALL, TREAT WILLIAMS, KATHRYN HARROLD. Rating: PG.

Thursday-Friday Saturday-Sunday

11-12-13-14

Advertisement for 'RAIDERS OF THE LOST ARK' featuring Harrison Ford and Karen Allen. Text includes 'The ultimate hero in the ultimate adventure.' Rating: PG.

Thursday-Friday Saturday-Sunday

18-19-20-21

Advertisement for 'NEIGHBORS' featuring John Belushi and Dan Aykroyd. Text includes 'Lock the doors... here come the NEIGHBORS.' Rating: R.

Thursday-Friday Saturday-Sunday

25-26-27-28

Advertisement for 'SOUTHERN COMFORT' featuring Keith Carradine, Fowers Boothe, Fred Ward, T.K. Carter, and Franklin Scales. Text includes 'It's the land of hospitality... unless you don't belong there.' Rating: R.

Thursday-Friday Saturday-Sunday

MAR. 4-5-6-7

Advertisement for 'ROLLOVER' featuring Jane Fonda and Kris Kristofferson. Text includes 'The most erotic thing in their world was money.' Rating: R.

Borden Is Celebrating It's 125th Year



It's nice when people know your name.

For forty years, people have associated Elsie with Borden quality. She represents the flavor, freshness and value we've built our name on. And we're proud of the fact that she's so well-known. If it's Borden, it's got to be good.

DANNY & BILLIE DUNN

Your local Independent Distributor pledges to the people of Donley County to uphold the tradition that has prevailed for 125 years.

QUALITY AND SERVICE

QUESTIONS about TAX renditions, residence homestead exemptions, agricultural productive value ???

There will be future meetings to assist and inform. Discussion of the legislative requirements and assistance in filling out the forms will be the purpose of these meetings.

Tuesday evening, 7:00 p.m., March 2 at Clarendon College Cafeteria will specialize in General Renditions and Homestead Exemptions.

Tuesday evening, 7:00 p.m., March 16 at Clarendon College Cafeteria will specialize in Farm-Ranch renditions and agricultural productive value applications.

Forms will not be mailed to property owners until after these meetings but are available at the Donley Appraisal District Office in the Court House Annex.

