

Burton Memorial Library  
Box 713  
Clarendon TX 79020

If a check appears by your name, your paper has expired. Subscription rates for Donley County are \$11.56 including tax and outside county \$14.72 including tax. Out of state residents subscription is \$14.00 mail to Box 1110, Clarendon, TX 79226

# The Clarendon Press

Dedicated To Fair And Impartial Representation



1836-1986

USPS 947040

Serving Hedley, Clarendon and Howardwick

Thursday, July 24, 1986

30c

Number 30



KELLI HARDIN

## WTU customers may receive refund

West Texas Utilities Company's retail customers will receive another fuel cost refund and a significant decrease in their future electric bills if a request filed Tuesday in Austin is approved by the Public Utility Commission of Texas.

WTU is asking permission to refund a total of \$5.7 million in retail revenues collected in excess of actual fuel costs, and to lower its fuel charge rate for the months of September, October and November. The total refund includes \$5,425,372 in actual fuel cost savings which have accumulated from March through June, plus \$306,511 in interest.

This would be the third time for WTU to make a refund and to lower its fuel cost factor since its last rate increase in November 1984. Over \$17.6 million was refunded in August 1985, and \$9.3 million was refunded in May 1986.

"This is not an actual rate case filing," WTU President Glen Churchill explained. "It is an adjustment possible because the price of our boiler fuel has been declining. Any savings we can make on fuel cost is passed on to our customer as soon as permitted."

The due amounts on customer bills include both fuel costs and base rates. Utility companies are not allowed to make money on fuel. WTU has had no change in its base rates since 1984.

If a reduction in fuel rates, technically known as the Interim Quarterly Fixed Fuel Factors, is approved, WTU officials estimate the fuel cost charges to its customers will drop by 24 percent, or \$7.9 million, during the three-month period beginning in September.

After the state's Public Utility Regulatory Act was amended in 1983 the PUC ordered the use of the fixed fuel factors and their use was recently re-adopted in an emergency fuel rule. Previously, an automatic fuel adjustment matched fuel billings to fuel expense each month. These immediate adjustments prevented over-recoveries of fuel costs and made refunds unnecessary.

Under WTU's proposal, all existing retail customers would receive refunds through one-time credits to their bills in the billing month of September. A typical residential customer would receive about \$11.

Natural gas is the principal fuel for all of WTU's eight major power generating stations. In recent years, fuel costs have amounted to more than half of the Company's total operating costs, but have dropped from all-time high of \$3.18 per million BTU in 1983 to \$1.88 in June 1986.

## WTSU's Hardin receives Scholarship

West Texas State University graduate and four-year Lady Buff Kelli Hardin has been selected recipient of the Kitty McGree Graduate Study Scholarship.

The Texas Foundation for Intercollegiate Athletics for Women selects recipients for the award, which recognizes outstanding women athletes/scholars.

Hardin played for the Lady Buffs from 1982-86, maintaining career averages of 7.4 points and 3.7 rebounds while playing in 92 games. The Clarendon native's year-by-year averages are 11.2 points and 6.4 rebounds, 1983-84; 7.2 points and 2.9 rebounds, 1984-85; 4.1 points and 1.9 rebounds, 1985-86. Hardin's senior season was shortened by a knee injury six games into the year.

She is listed in West Texas State's record books in a number of categories, including games played (third, 92) career scoring (eighth, 683 points); career scoring average (10th, 7.4 points per game); career field goals (seventh, 310); career field-goal attempts (fifth, 665); career field-goal percentage (10th, .466) career free-throw percentage (ninth, .655); career rebounds (seventh, .338); career assists (sixth, 195); career steals (eighth, 91) and career blocks (tied for sixth, 42).

"I'm just thrilled to death," Lady Buffs coach Bob Schneider said of Hardin's award. "She did a great job for us. She was team captain until her injury last season. I know of no one who deserves the Kitty McGree Scholarship more than Kelli."

"The Texas Foundation for Intercollegiate Athletics for Women is pleased to recognize such an outstanding woman athlete/scholar," added Lannie Tucker, president of the organization.

Hardin graduated from West Texas State University on May 17, 1986, with a Bachelor of Science

## Filing for Social Security benefits

People in the Clarendon area who wish to file for any of the various benefits offered by the Social Security Administration may do so by telephone, according to Jim Talbot, District Manager for the Social Security Administration in Amarillo.

"This special service is being offered to the public to provide a more efficient, confidential means of filing a claim for benefits. There are several advantages for the public. Persons who file by telephone can do so from the privacy of their home, without waiting in long lines at the courthouse or making the long drive to Amarillo," said Talbot.

"Filing a claim for Social Security or Supplemental Security Income benefits by phone is easy," Talbot said. "Simply call the Amarillo Social Security Office at 806-376-2241 and tell the employee that you wish to file a claim. Our appointment clerk will set up an appointment for a representative to call you back. The application will be completed by phone and mailed to you for review

and signature. Any required documents can be returned by mail to be certified and placed in your file. Your original documents will be returned to you by mail."

If you have any questions about filing a claim for benefits, please call the Amarillo Social Security Office at the number shown above. We will be glad to answer any question you may have.

Land Commissioner Garry Mauro said that Texas is losing millions of dollars annually because of current laws that deny the state access to almost 60 percent of its own land.

"Over 500,000 acres, or 58 percent, of our surface acreage is land-locked and our ability to lease, sell or trade this land at market value is preempted," Mauro said during Friday's hearing. "As oil and gas revenues decline and the state fiscal situation worsens, it is simply irresponsible to continue to ignore the resources denied to us by access problems."

Mauro explained that the inability of the Land Office to gain access to 500,000 acres of its 900,000 surface acres has also cost the state significant amounts of revenue during the current fiscal crisis.

"Our appraisers have estimated that gaining access to these lands would increase their market value by as much as 50 percent," Mauro said. "It would mean hundreds of thousands of dollars in revenue in the short run and could mean millions of dollars in the long run."

In addition to access problems on 500,000 acres of state-owned surface land, Mauro also explained that the Land Office also was stymied by access problems to valuable hard and soft minerals on another 6.6 million acres of Relinquishment Act Land.

That's because, although the state owns the minerals under the Relinquishment Act, the surface is owned by others who are not required by law to provide the state



DRUM MAJORS representing high schools from across the state of Oklahoma, Texas and Kansas participated in the annual Southwestern Oklahoma State University Corps Drum Major Camp, held on South-

western's Weatherford campus July 7-11. Included in the group were [from left] Sherri Chamberlain, Clarendon, Texas; Michelle Amen, Plains, Kansas.

## Without access to 60 percent of its land state loses millions

"On hard minerals alone, conservative estimates based on geological data are that the state is losing as much as \$20 million annually because we are denied access to known mineralized

tracts," Mauro said. Mauro pledged to work with the House Energy Committee, as he did last session, to find an equitable solution to the access problem.

"The bottom line is that access is a revenue issue," Mauro said.

## Irrigation wells will be checked July 30

On Wednesday, July 30, Leon New, Extension Irrigation Specialist, and Ronald Gooch, County Extension Agent, will be checking irrigation wells for efficiency. Research and demonstrations indicate that the "average" irrigation pumping plant uses 40 percent more energy than would be used if the pumping plant

operated at a performance level which can be obtained if the pump and power plant were matched to the pumping conditions and were in good mechanical conditions.

Producers that have irrigation wells that they want checked for efficiency should contact Gooch at the County Extension Office.

## Wellington to sponsor tennis tournament

The 1986 Wellington Open Tennis Tournament will be held July 31, August 1, 2, 3. Divisions for this tournament will be Jr. High, July 31, singles 8:00 a.m., doubles 11:00 a.m.; High School August 1, singles 8 a.m., doubles 11 a.m.; Open August 2, singles 8 a.m., doubles 11 a.m., open mixed doubles, August 3, 12 noon, 30 and over mixed doubles, August 3, 12 noon. The tournament

will be held on the newly resurfaced courts in the shade of Wellington's city park. Entry fee is \$5.00 per event per person. Make checks payable to Wellington Tennis Tournament. Mail entry to Barbara Bartlett, 1600 Corsicana, Wellington, TX 79095 or Frances Schmidt, Rt. 2 Box 107A, Wellington, TX 79095.

Trophies will be awarded to all 1st and 2nd places.

## Phillip E. Shirley named Dean of Instruction

At the July meeting of the Board of Regents of Clarendon College, Phillip E. Shirley was named to fill the position of Dean of Instruction.

Dr. Shirley comes to Clarendon College from Waxahachie, Texas where he was Director of Admissions and Records for six years at Southwestern Jr. College. His educational background includes a Masters

degree in Counseling/Psychology from North Texas State University, a second Masters in Religious Education from Southwestern Baptist Theological Seminary, and a Doctorate in Higher Education Administration/Vocational from NTSU.

Clarendon College is very proud to welcome Dr. Shirley to its administrative staff and to the community.

## K-9 Korp to compete at state show

By ELIZABETH McANEAR  
Everyone is working hard for the 4-H State Dog Show in Snyder, Texas on August 30th. We have all set our goal to win!!

Again this year the K-9 Korp worked in the concession stand at the Little League baseball field to earn money to go to the State Dog Show. We would like to say thank you to the following people who helped us with the concession stand: Richard

Maxey, Larry Mabry, Bud Hermes-meyer, Allsup's, The Texas Highway Department, the Dairy Queen, Mr. Burger, Ronald and Bonnie Gooch, Terry Floyd, Tiny Alderson, Dr. Chuck Deyhle and Dr. Charlie Deyhle, and all the parents and K-9 Korp members who helped us.

And a special thank you to Judy McCully, our Dog Project Leader. Without her hard work and help, our success in the K-9 Korp would not be possible. Thanks!

## Allen named to TTU dean's list

More than 1,900 Texas Tech University students qualified for the academic honors lists at the end of the 1986 spring semester.

Students on the President's Honor List earned a perfect 4.0 (A) grade-point average while enrolled in 12 or more semester hours of classwork. Students finishing 12 or more hours with a grade-point average of 3.5-3.9 qualified for the Dean's Honor List.

Students making the honor rolls included William Allen of Clarendon, dean's list.

## Car Wash planned for July 26

There will be a car wash Saturday, July 26 at the Gibson's parking lot. We will be there from 10 a.m. to 5 p.m. It will be \$5.00 a car and \$6.50 for vans. The proceeds will go toward the Nazarene Youth fund for summer camp.

## Documentary to be shown on TEXAS

On Sunday, July 27th, KAMR-TV (Channel 4) in Amarillo will air a special 30 minute documentary on "TEXAS," produced and edited by Bill Garrison of the Texas Parks and Wildlife Department. The program will begin at 10:30 p.m.

"TEXAS" is better than ever so see it soon, especially if you have not seen the show this year or saw it early in the season. The new surprises are a thrilling average audiences of 1523 a night!



Tommye Saye  
Cooperative Observer  
for National Weather  
Service, Clarendon

Day	Date	HI	Low	Precip.
Monday	14	92	61	
Tuesday	15	94	62	
Wednesday	16	95	65	
Thursday	17	96	70	
Friday	18	98	66	
Saturday	19	101	67	
Sunday	20	96	65	.04
Total Precip. for Month				.62
Total Precip. for Year				12.57



GUEST SPEAKER, Mr. Edwin Campbell, speaks to ninety Texas Reading Club members at Burton

Memorial Library about the workings of a windmill. Pictured with him are Diane Chamberlain and her class of

fourth through eighth grade students.

## Congressman Beau Boulter Reports from Washington



### A PROCESS THAT WAS FLAWED FROM THE START

On May 28th of this year, Secretary of Energy John S. Herrington announced that the Department of Energy will begin site characterization of Deaf Smith County, Texas as a potential location for nuclear waste storage. As you have no doubt read, the Deaf Smith site, along with one in Washington state and one in Nevada, is being considered as a possible site for the storage of an estimated 70,000 metric tons of this nation's high-level nuclear waste.

This decision on the Department of Energy's part, along with decisions and announcements the Department has made since, lends support to the belief that politics rather than science and safety are driving this nation's search for a high-level nuclear waste repository.

A national policy for the storage of nuclear waste is essential, but the federal government must real-

ize that any decision made on this issue can have repercussions for over 10,000 years. That's the length of time that the waste to be stored will remain active. Any choices made are ones that future generations will have to live with, so we must do our best to ensure that the disposal method and site chosen are the best and safest available.

The three sites DOE has chosen, however, may not be the best and safest available. A July 8th article in the *Seattle Times* alleges that the Department of Energy's own records indicate that the best site considered thus far was located, not in Texas, Nevada, or Washington State, but in Mississippi. The Mississippi site, however, was not included in site characterization as were the three finalists.

In a similar vein, an investigation is underway by two Members of the House of Representatives into charges that DOE discarded

documents from an earlier stage of the site selection process. These documents allegedly indicate that the three sites chosen are, in fact, not the safest alternatives.

Finally, the news of Deaf Smith's selection for site characterization included an announcement by the Secretary of Energy that the selection of a second disposal site in the Eastern U.S. was being postponed. The selection of this second site is required by law. But by postponing consideration of the Eastern U.S., the Department of Energy has failed to include all areas and geologies in its deliberations. This means that the site finally chosen for the storage facility can't possibly be the result of the best selection process the U.S. government can offer.

I believe that the problems with site selection began when Congress gave authority over the process to the Department of Energy. Responsibility for a decision of this magnitude is too much for any one governmental agency.

One can only remember that prior to the Space Shuttle Challenger disaster, many in this country felt NASA to be the model of efficiency for governmental bureaucracies. Events have shown, however, that the Challenger disaster was linked to mismanagement that had long been hidden under the rug of NASA's fine reputation.

The Department of Energy, however, has never had the fine reputation that NASA once did. On the contrary, this Department has often, and justifiably, been criti-

cized for its lack of efficiency. Are we prepared then to trust the future of hundreds of generations of Americans to the political whims of a single bureaucracy in Washington, one that has never had a particularly good reputation to begin with? I don't think we should.

To alleviate some of these concerns, and place a restraint on the Department of Energy, Congresswoman Barbara Vucanovich of Nevada and I have introduced legislation which would force Congress to reconsider the process whereby sites for the disposal of nuclear waste are chosen. If passed, this law would ensure that the Department of Energy does not cut corners in making decisions that could affect our descendants for thousands of years to come.

## State attempts to broaden tax base

State Comptroller Bob Bullock said his staff is drafting a plan to broaden the state's sales tax base to make it fairer and at the same time raise additional revenue at lower rates.

"We are looking at taxing all goods and services, except food, medicine and medical services," Bullock said.

Bullock said that by removing exemptions and broadening the tax base, hopefully the present sales tax rate of 4.125 percent can be reduced.

"We are not only seeking ways to raise revenue for state government, but we are seeking to make the sales tax more equitable."

Bullock said that the service sector of the Texas economy accounts for nearly 20 percent of the state's non-farm employment and is virtually untaxed.

"We haven't put the final pencil to

it, but I think we can lower the present rate, make it fairer and less regressive and still keep an income tax off the backs of Texans."

Bullock said his plan to broaden the sales tax would be ready for the Legislature, if they meet in August.

"I'm going to try to give the Legislature the broadest possible range of options we can possibly put together. It will be their prerogative to add to or take away from this blueprint."

He said the budget deficit isn't something that you can put under your pillow and hope the tooth fairy will take care of it.

"If the Legislature addresses only budget cuts in a special session, that's just fine. With our plan at least they will have something to study when and if they decide to bite the bullet."

### AROUND TEXAS . . .



By: Madison (Mac) McCutchen

The sorrowful old song of the sixties pointedly asked: "When will they ever learn?" "When will they ever learn?" This came to mind recently while reading a press release from a man who was running for Congress, Sam Paradise, of Vidor. In an address to a group in East Texas he said that the U.S. should abolish all foreign aid programs and use the funds to help the American farmer and others who are in dire need of help from whatever source. Billions of American dollars are being distributed to nations around the world, many of those who fly the red banner, at a time when thousands of farmers, and

small businesses, are being forced out of business. The candidate said that he had learned from the Congressional Research Service that in the years between 1946 and 1980 some 196 countries had received aid from the U.S. in the amount of 2 trillion, 304 billion, 257 million, 900 thousand dollars. If our memory serves us, that is about the sum of our staggering national debt.

He pointed out that several hundred billions went to such countries as, and this may surprise you, the Soviet Union, Rumania, Poland, Hungary and Czechoslovakia. He charged that as late as 1981 the president approved for the Export Import Bank to loan \$120,742,500 to Rumania, a socialist republic, to purchase two nuclear steam turbine generators from an American company. On the other hand, he said, the Farmers Home Administration has been closed on over ten thousand U.S. farms in the past 15 months.

He said that not only should we stop such give-away programs, but that government agencies that ad-

minister such programs should be closed down and our attention should be turned to helping those in financial trouble at home. But it seems now that individuals are not the only ones in dire straits these days. Here in Texas just about every level of government has overspent and now faces the task of finding new ways of raising funds for future operations. We have focused our attention in recent times on problems of the federal government, overspending, a growing budget deficit, a growing national debt. All the while, and to some extent unnoticed, local and state governments have adopted the bad habits of the federal bureaucrats and are now facing the same problems.

We are certain that in the future should our problems, economic or political, deepen to the point that we feel we can't handle them alone, those 196 grateful nations will come rushing to our aid. If you were a betting person, how much would you bet? "When will we ever learn?"

**ALLSUP'S**  
CONVENIENCE STORES

PRICES EFFECTIVE JULY 24-25-26, 1986

**on the GO!**

BORDEN'S ASSORTED YOGURT  
BUY ONE GET ONE  
**FREE!**  
8 OZ. CTN.

BORDEN'S ICE CREAM  
**\$1.69**  
1/2 GAL. ROUND

WHILE SUPPLIES LAST

**\$1.09**  
LARGE BAG  
MADE WITH 99% PURIFIED WATER

NEW FROM FRITO LAY®

**RUMBLES, STUFFERS OR TOPPELS**

**\$1.19**  
BAG

SHURFINE FLOUR  
**69¢**  
5 LB. BAG

LIPTON FAMILY SIZE TEA BAGS  
**\$1.79**  
24 CT. PKG.

BEEF & SALSA BURRITO  
**\$1.49**  
EACH MORE THAN A MEAL!

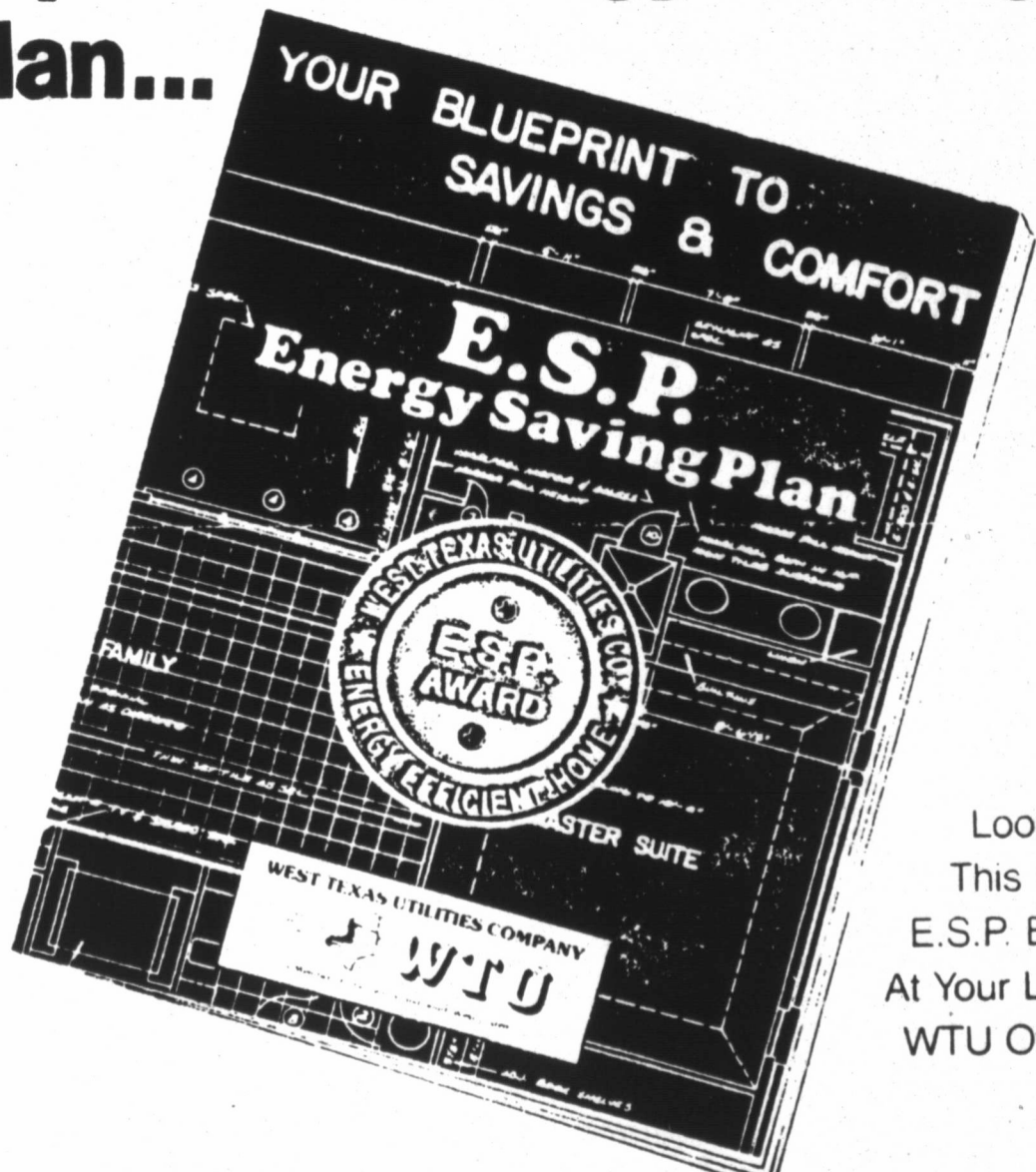
SUNNYFRESH GRADE A EXTRA LARGE EGGS  
**89¢**  
18 CT. CTN.

ALLSUP'S 30 YEAR COMMEMORATIVE MUG  
**99¢**  
FILLED WITH YOUR FAVORITE FOUNTAIN DRINK ONLY REFILLS ONLY 49¢

MOVIE & VCR RENTALS  
The Very Best in Home Video Entertainment!  
**ALL YOU NEED IS YOUR TV!**

**6 pak cans PEPSI-COLA**  
**\$2.19**

## WTU's New And Improved Energy Saving Plan...



Look for This New E.S.P. Book At Your Local WTU Office.

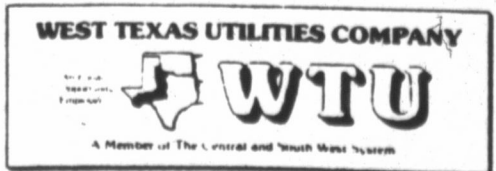
### WTU's New & Improved E.S.P. Program Will Pay\* You Larger Cash Allowances for Installing:

- Electric Heat Pumps
- Energy-Efficient Air Conditioners
- Heat Recovery Units

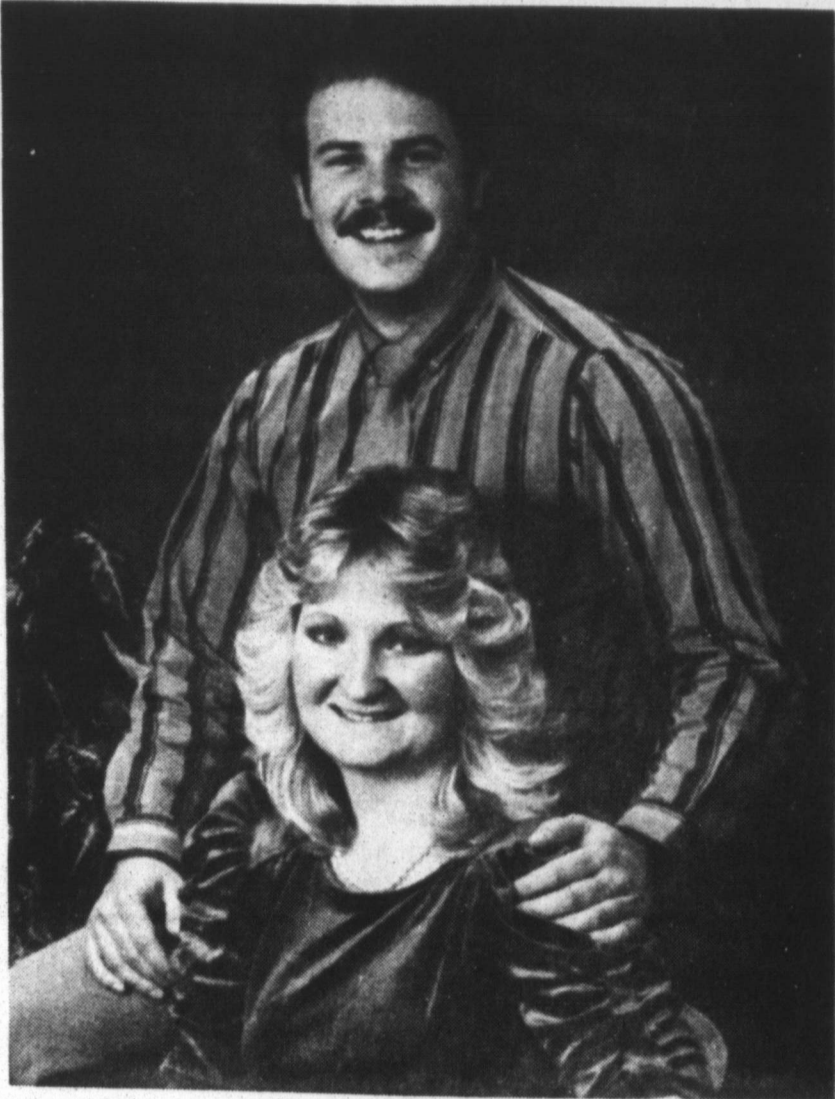
#### Cash Allowances Available for:

- Single-family Homes (New & Existing)
- E.S.P.-Approved Apartments to Owners
- New & Existing Small Commercial Businesses.

\*To Quality, You Must Meet The E.S.P. Requirements & Be Served By WTU.



For More Information on the New E.S.P. Program, Call your Local WTU Office or Come by and Pick up Your FREE Copy of The New E.S.P. Book.



DEBBIE SUE KIRKLAND and DENNIS LYNN TRENT

## Cornell-Malone vows exchanged

Cara Marie Cornell and H.J. "Buck" Malone were united in marriage on Saturday, July 19, 1986 at 7:00 in the evening at the First Baptist Church in Clarendon. The ceremony was conducted by Rev. Mike Whelan, B.S.U. Director at West Texas State University in Canyon.

The bride is the daughter of Mr. and Mrs. C.W. Cornell of Clarendon. She is a summer graduate of West Texas State University with a degree in secondary education. She is employed as an English and drill team instructor at Crowley High School.

The groom is the son of Mr. and Mrs. Harvey J. Malone of Pampa. In 1985, he received a Bachelors of Business Administration degree at West Texas State University. He is attending Southwestern Baptist Theological Seminary and working for Crowley Independent School

District.

Given in marriage by her father, the bride was dressed in a victorian style wedding gown made of satin. It featured a Queen Anne neckline and a long cathedral train. The gown was garnished with pearls, lace, and ruffled teardrops. Complementing the dress, the bride wore an ankle length veil with scattered pearls. The veil was highlighted by a halo of silk roses and pearls. She also wore her late grandmother Cornell's 80 year old wedding band to fulfill the traditional "something old."

Maid of honor Gail Phillips of Jacksboro, bridesmaids Kim Uptergrove of Lubbock, and Terri Todd of Sunray wore mauve rose dresses with Queen Anne necklines. Guests were registered by Dorothy Braddock of Clarendon. Harvey J. Malone, father of the groom, served as best man. Groomsmen were Kenny Maple of Pampa and Bill Cornell, brother of the bride, of Houston.



MRS. H.J. "BUCK" MALONE

## Kirkland-Trent engagement announced

Mr. and Mrs. James L. Kirkland of Clarendon and Amarillo announce the engagement of their daughter Debbie Sue to Dennis Lynn Trent.

Trent is the son of Mr. and Mrs. Lewis E. McCluer and James C. Trent II, all of Little Rock, Arkansas.

The couple plan to be wed August 3rd at Bell Avenue Baptist Church in Amarillo.

The bride elect attended West

Texas State University and is a member of Beta Sigma Phi sorority. She is employed by Southwestern Bell Telephone Company.

The prospective groom served in the U.S. Navy and attended the University of Arkansas. He also served as an aide in the 1981 Presidential Inauguration, and is employed by Owens-Corning Fiberglass Corporation.

## From the Pen of Pastor Pinion

### PERFECT TRUST

*I may not always know the way  
Wherein God leads my feet;  
But this I know, that 'round my path  
His love and wisdom meet;  
And so I rest content to know  
He guides my feet where'er I go.*

*I may not always understand  
Just why He sends to me  
Some bitter grief, some heavy loss;  
But, though I cannot see,  
I kneel, and whisper through my tears  
A prayer for help, and know He cares.*

*My cherished plans and hopes may fail,  
My idols turn to dust;  
But this I know, my Father's love  
Is always safe to trust.  
These things are dear to me, but still  
Above them all I hear His will.*

*Oh, precious peace within my heart!  
Oh, blessed rest to know  
A Father's love keeps constant watch  
Amid life's ebb and flow.  
I ask no more than this; I rest  
Content, and know His way is best.*

—Selected

The flower girl was Jade Waldrop of Quitaque. Ring bearer was Derrick Brunson also of Quitaque. Guests were seated by Steve Critzer of Arlington, and Dave Mann of Canyon. Special music was provided by Rev. John Pearce of Stephenville and Karen Skinner of Odessa. The piano was played by Dalyn Croslin of Clarendon.

Festivities honoring the couple included a lingerie shower in the Canyon home of Terri Todd, a

miscellaneous shower in the home of Mrs. Frank Phelan Sr. in Clarendon, a miscellaneous shower at the Central Baptist Church parlor in Pampa, a rehearsal dinner at the First Baptist Church Fellowship Hall, and a reception also in the First Baptist Fellowship Hall with Terri Leffew, Annette Watson, and Lucretia Mann serving.

After their honeymoon, the couple will reside at 311 Briar Circle East in Crowley, Texas.

806-874-3770 PHONE 806-874-2178

FAYLON WATSON and LARRY WATSON  
CUSTOM FARMING  
HAY BALING

Route 1 Clarendon, Texas 79226

**Dr. Gilkey's Clinic will be  
closed July 25 - August 10.**

## INSURANCE FOR EVERYONE



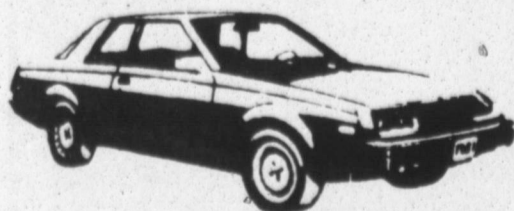
Get complete coverage for life, health, auto, home at better rates.

Check out your present insurance, see if it measures up to our protection offer.

### Discounts

Knorrpps Insurance 25%  
Brand X 0 - 15%

Call us anytime for complete coverage information.



**NORPP**  
Insurance Agency, Inc.

Clarendon, Texas

874-3521

## STATEMENT OF CONDITION

PUBLICATION COPY  
CONSOLIDATED REPORT OF CONDITION (Including Domestic and Foreign Subsidiaries)  
(Dollar Amounts in Thousands)

LEGAL TITLE OF BANK First Bank & Trust of Clarendon Box 947 Clarendon, Texas 79226	CITY Clarendon	COUNTY Donley	STATE Texas	ZIP CODE 79226	FEDERAL RESERVE DISTRICT NO. 11 13 14504	STATE BANK NO. 819-26	CLOSE OF BUSINESS DATE June 30, 1986	Dollar Amounts in Thousands		
								Bl	Mil	Thou
<b>ASSETS</b>										
1. Cash and balances due from depository institutions										
a. Noninterest-bearing balances and currency and coin									1443	1 a
b. Interest-bearing balances									2500	1 b
2. Securities									9188	2
3. Federal funds sold and securities purchased under agreements to resell in domestic offices of the bank and of its Edge and Agreement subsidiaries, and in IBFs									5550	3
4. Loans and lease financing receivables:										
a. Loans and leases, net of unearned income								17576		4 a
b. LESS: Allowance for loan and lease losses								252		4 b
c. LESS: Allocated transfer risk reserve								None		4 c
d. Loans and leases, net of unearned income, allowance, and reserve (item 4 a minus 4 b and 4 c)									17324	4 d
5. Assets held in trading accounts									None	5
6. Premises and fixed assets (including capitalized leases)									160	6
7. Other real estate owned									88	7
8. Investments in unconsolidated subsidiaries and associated companies									None	8
9. Customers' liability to this bank on acceptances outstanding									None	9
10. Intangible assets									None	10
11. Other assets									841	11
12. Total assets (sum of items 1 through 11)									37094	12
<b>LIABILITIES</b>										
13. Deposits:										
a. In domestic offices									33064	13 a
(1) Noninterest-bearing								3982		13 a (1)
(2) Interest-bearing								29082		13 a (2)
b. In foreign offices, Edge and Agreement subsidiaries, and IBFs									None	13 b
(1) Noninterest-bearing								None		13 b (1)
(2) Interest-bearing								None		13 b (2)
14. Federal funds purchased and securities sold under agreement to repurchase in domestic offices of the bank and of its Edge and Agreement subsidiaries, and in IBFs									None	14
15. Demand notes issued to the U.S. Treasury									None	15
16. Other borrowed money									None	16
17. Mortgage indebtedness and obligations under capitalized leases									None	17
18. Bank's liability on acceptances executed and outstanding									None	18
19. Notes and debentures subordinated to deposits									None	19
20. Other liabilities									358	20
21. Total liabilities (sum of items 13 through 20)									33622	21
22. Limited-life preferred stock									None	22
<b>EQUITY CAPITAL</b>										
23. Perpetual preferred stock (No. of shares outstanding)								None		23
24. Common stock (No. of shares: a. Authorized)								2500		24
b. Outstanding								2500		24
25. Surplus									1250	25
26. Undivided profits and capital reserves									1572	26
27. Cumulative foreign currency translation adjustments										27
28. Total equity capital (sum of items 23 through 27)									3422	28
29. Total liabilities, limited-life preferred stock, and equity capital (sum of items 21, 22, and 28)									37094	29
<b>MEMORANDA</b> Amounts outstanding as of Report Date										
1 a Standby letters of credit, Total									None	1 a
1 b Amount of Standby letters of credit in memo 1 a conveyed to others through participations									None	1 b

NOTE: This report must be signed by an authorized officer(s) and attested by not less than three directors other than the officer(s) signing the report. If/We, the undersigned officer(s), do hereby declare that this Report of Condition has been prepared in conformance with official instructions and is true to the best of my knowledge and belief.

SIGNATURE OF OFFICER(S) AUTHORIZED TO SIGN REPORT DATE SIGNED

NAME AND TITLE OF OFFICER(S) AUTHORIZED TO SIGN REPORT AREA CODE/PHONE NO.  
Phyllis Shelton, Cashier (806) 874-3556

We, the undersigned directors, attest the correctness of this Report of Condition and declare that it has been examined by us and to the best of our knowledge and belief has been prepared in conformance with official instructions and is true and correct.

SIGNATURE OF DIRECTOR SIGNATURE OF DIRECTOR SIGNATURE OF DIRECTOR  
Bronnie F. McNabb, Jr. JEM Simmons Frank White, Jr.

(MAKE MARK FOR NOTARY'S SEAL) Sworn to and subscribed before me this day of 19 My commission expires Signature Notary Public

**FIRST BANK & TRUST**  
OF CLARENDON

# Willie Nelson in Clarendon?

By BOB WILLIAMS

The Friends of the Library now have tickets available for the poolside party. Donors of \$15 or more get a ticket which entitles them to entertainment and food at the Country Club beginning at 8:00 on the evening of August 9th.

The nature of the entertainment has not been widely disseminated, so rumors have run rampant in Clarendon. One such rumor reports that Diane Chamberlain and Willie Nelson will sing selections from Puccini's Madam Butterfly. That report had not been confirmed at presstime.

The Summer Reading Program attracted a large percentage of Clarendon's youngsters, who are participating with considerable gusto. More than 90 children listened intently as Edwin Campbell talked about windmills on July 15th. Other volunteers will present

programs each Tuesday morning at 10:00 for the duration of the program.

Children do actually read as a result of the program. Shane Judd has earned over 1,000 points. He read between 300 and 400 books at last report. Several other children have read nearly as many.

To help cope with the summer workload, the library hired Miss Regina Havens as a workstudy librarian. Regina plans to attend Clarendon College this coming fall. (And for those young gentlemen who have been looking for an excuse to give Miss Havens a trinket, here is a hint: Guess who celebrated her 18th birthday on Monday, July 21st!)

Helen Estlack recently installed a new exhibit in the library display case. Mrs. Estlack, an ardent rockhound, provided numerous rock and mineral specimens. Some are native crystals, some are rough samples and some are polished. A surprising number of semi-precious stones originated in the Donley County area.

Berkeley Neece, Boo Lowe and Pat Thornberry put together a collection for the other exhibit area in the library. They assembled numerous toys of varied antiquity, and arranged them in an eye-catching manner. Older patrons may view the

display with some nostalgia. Youngsters' comments have been less reserved however: "Woe, cool! Can you imagine playing with that? That's awesome!"

Now if we can just devise some method to improve their rhetoric as much as their reading skills...

## The Lion's Tale

By GENE ALDERSON

The Clarendon Lions Club held its regular meeting at noon on Tuesday at the Lions Hall. Thirty members and guests were present. Following the regular opening ceremony, Lion-

tamer Messer introduced Chet Cal-cote with Estate Plan Life Sales in Amarillo who was the guest of Lion Todd Knorpp. He also introduced several local guests. Boss Lion Simmons made some announcements and Program chairman Smith introduced Annis Stavenhagen who brought our program on the Gabe Betts Burton Memorial Library. Our library is a member of the Texas Panhandle Library System which serves 27 libraries in the top 25 counties of Texas. This membership enables the library to offer its users many valuable services which would otherwise be unavailable. Mrs. Stavenhagen also reported a very good response to the childrens summer reading program with 163 enrolled.

## Senior Citizen News

### CALENDAR OF EVENTS July 24-30

**Thursday**-Exercise 11 a.m., game night 6 p.m.

**Friday**-Exercise 11 a.m., musical jam session 7 p.m.

**Monday**-Exercise 11 a.m., dance practice 7-9 p.m.

**Tuesday**-Exercise 11 a.m., birthday/anniversary salad supper 6 p.m.

**Wednesday**-Exercise 11 a.m., arts & crafts 1 p.m.

### SENIOR CITIZEN MENU July 24-30

**Thursday**-Oven fried chicken with gravy, cream potatoes, steamed cabbage, carrot and raisin salad, butter-scotch pudding with nuts, hot rolls, milk, tea, coffee.

**Friday**-Baked ham with cherry sauce, yam patties, peas, Jello with fruit salad, coconut cream pie, dinner rolls, milk, tea, coffee.

**Monday**-Swiss steak, scalloped potatoes, green beans, tossed salad, cherry cobbler, hot rolls, milk, tea, coffee.

**Tuesday**-Beef tips on noodles, breaded squash, peach marshmallow mold salad, carrot cake, bread, milk, tea, coffee.

**Wednesday**-Fried fish, oven fried tater tots, blackeye peas, coleslaw, purple plums, hushpuppies, milk, tea, coffee.

### Spider Mites tiny pests cause big problems

Spider mites are tiny but they can cause big problems in home gardens.

These pests prefer tomatoes, beans and peas and do most of their damage in hot, dry weather, points out Ronald Gooch, county Extension Agent.

Spider mites, also called red spiders, are only 1/60 inch in length and vary in color from white to green to red.

The tiny pests can build up quickly and completely engulf plants. They lay eggs on the underside of leaves, which hatch in four to five days. A complete life cycle takes three weeks, and as many as 20 overlapping generations can occur in a single year.

Mites spin a thin web which often can be seen on the underside of an infested leaf. They feed by inserting their mouth-parts into the tissue and sucking juice from the plant. While feeding, they inject toxic substances into the plant, Gooch explains.

Infestations of spider mites can be identified by tiny white spots on the underside of a leaf. Heavy infestations cause bleaching or yellowing, first along the main leaf veins and then throughout the plant. The plant may also shed buds and small fruit. Spider mites can completely defoliate a plant if not controlled, Gooch says.

Control of spider mites is often difficult and requires from two to four applications of insecticide at five-day intervals. Plans should be checked frequently for spider mites since the pests can build up rapidly.

Insecticides registered for controlling spider mites in gardens are diazinon, kelthane, malathion, ethion and sulfur. However, avoid using sulphur on vine plants as severe plant change could occur.

As always, read and follow label directions on all insecticides, cautions Gooch.

### Lelia Lake Community to Have chicken BBQ July 26

Lelia Lake Community Center will have a chicken barbeque Saturday, July 26. Chicken halves must be at Community Center by 2 p.m. Bring a vegetable and salad or dessert. They will eat at 7 p.m.

## CARES Childress General Hospital CARES

Strategic Location  
U.S. Hwy 83 - U.S. 287 - U.S. 62

Accredited  
Joint Commission Accreditation of Hospitals

Offering Professional Health Care in...

- Family Practice
- General Surgery
- Specialized Surgery
- Ophthalmology
- Pediatrics
- Geriatrics
- Obstetrics

Through Our Professional Team of...

- Nine Licensed Physicians

Utilizing These Services...

- Medical & Surgical Nursing Care
- Extended Care Unit
- Skilled Nursing Unit
- Radiology
- Ultra Sound
- Laboratory Services - 1 day service
- Physical Therapy
- Hospital Based Home Health Care
- Nuclear Medicine
- Dietary Department
- Emergency Room
- Respiratory Therapy
- Paramedic Ambulance Service

Childress, Texas

817-937-6371

## New Cars

Purchased from Chamberlain Motor Company

1986 Olds by Lorene Rose, Hereford.

1986 GMC PU by Tom Lewis, Childress.

1986 Cadillac by Jack H. Haley, Amarillo.

1986 Pontiac by R.J. Butts, Iowa Park.

1986 Pontiac by Leora Sparks, Clarendon.

1986 Buick by Norman Stone, Pampa.

1986 Olds by Loyce M. Noel, McLean.

1986 GMC PU by John Scamahorn, Amarillo.

1986 Buick by Pat Ashford, Groom.

1986 Cadillac by Lorene Jenkins, Wellington.

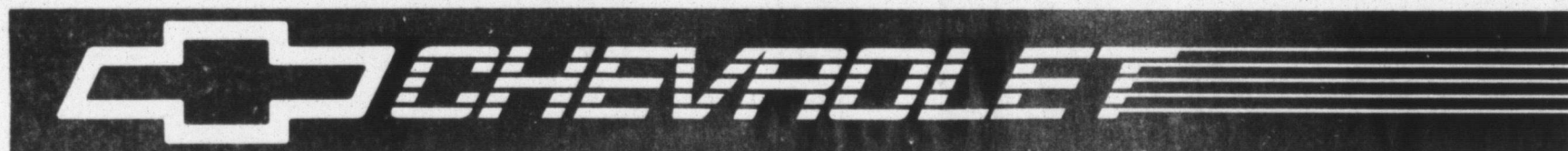
1986 GMC PU by Billy Joe Skipper, Jr., Sonora.



In the early days of the petroleum industry, during the late 1800, kerosene ranked as the leading product of refineries. Gasoline was considered a useless byproduct.

Where were the musicians? That's the question the 20 that came to listen were asking Friday, July 18th at Musical Jam Session. Fred Fortenberry played a couple of tunes on the harp while Woody played the tub. After that we just visited till about 8:30 and said, see you next Friday.

Tuesday, July 29th is Birthday/Anniversary salad supper night. Fix a goody and come in to enjoy the evening with us.



FOR A LIMITED TIME!

\* **5.9%** 30 month GMAC Financing on Chevrolet Celebrities — 3 in stock

\* **6.9%** 36 month GMAC Financing on all new cars & most light duty trucks

48 month financing available at slightly higher rates. Dealer contribution to the finance rate may affect the final negotiated price.

\* **ALL NEW "BUYER'S CHOICE FINANCING"**  
Logical alternative to conventional financing or leasing

\* **AVAILABLE ONLY at ALDERSON CHEVROLET**  
AND OTHER CHEVROLET DEALERS WHO CHOOSE TO PARTICIPATE AS OF JULY 1st.

**ALDERSON CHEVROLET, INC.**

3rd & Sully

Clarendon, Texas

Phone 874-3511



Items Not As Illustrated  
No Sale To Dealers Or Retailers  
Reserve The Right To Limit Quantities

Reserve the right to limit quantity. Some items not exactly as illustrated.

**SUPER COUPON DUYS**

**3 Days** DOUBLE YOUR FOOD SAVINGS  
**Monday, Tuesday, & Wednesday**

All manufacturer's coupons 99¢ and under excluding tobacco and first coupons will be redeemed for **DOUBLE VALUE** Monday, Tuesday and Wednesday Only (Double value of coupon cannot exceed the value of the item) - One coupon per item please. Double coupons not good on sale or ad items.

Sunsweet Pitted  
**PRUNES** 12 Oz Bag **89¢**

Ranch Style 15 Oz  
**BEANS** **3/\$1.00**

Armour's Luncheon Meat  
**TREET** 12 Oz Can **\$1.29**

Tropicana Grapefruit, Orange, Apple  
**FRUIT JUICE** 64 Oz Btl **\$1.69**

Post 16 Oz Box  
**40% BRAN FLAKES** **\$1.39**

Wishbone Italian  
**SALAD DRESSING** 16 oz. **\$1.39**

McIlhenny  
**TABASCO SAUCE** 2 Oz Btl **63¢**

6 3/4 oz.  
**FIDDLE FADDLE SNAK** **59¢**

M. Wage  
**ICE CREAM MIX** 8 Oz **59¢**

Yellow **SQUASH** **38¢**  
Red **ONIONS** **29¢**

**LETTUCE**  
**39¢** Head

**NECTARINES** **48¢**

Borden's Homo  
**MILK** 1/2 Gallon **99¢**

Borden's  
**HALF & HALF** Pint **59¢**

T.V.  
**BUTTERMILK** 1/2 Gal. **99¢**

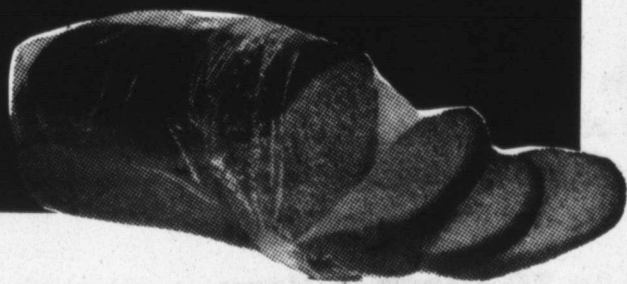
Borden's  
**ORANGE JUICE** Qt. **89¢**

Van Camp  
**PORK & BEANS** 16 Oz **3/\$1.00**

Roman Meal Split Top

**BREAD**

**79¢**



**DR. PEPPER**

**\$1.59**

6 Pack Cans



Hills Bros.  
**COFFEE**

16 Oz

**\$2.99**

(Limit)



Facial Tissue 175 ct  
**PUFFS** **89¢**

Detergent 42 Oz  
**SURF** **\$1.39**

Detergent  
**AJAX** 42 Oz **\$1.07**

Solo 16 Oz  
**CUPS** 20 Ct **89¢**

Hefty Foam 50 Ct. 8 7/8 In.  
**PLATES** **\$1.17**

**PLATE** **\$1.27**

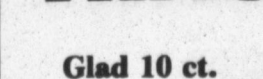
Bounty Towels  
**TOWELS** Large Roll **77¢**

White Cloude Bathroom  
**TISSUE** 4 Roll Pkg **99¢**

Glad 10 Ct. - 30 Gal  
**TRASH BAGS** **\$1.07**

Glad 10 ct.  
**LAWN BAGS** **\$1.57**

4 3/4 oz. Lotion Mild  
**JERGENS** Bath Soap Bar **25¢**



Lady Dianne Plastic  
**FLATWARE** Asst. Pkg **67¢**

For Dishes  
**PALMOLIVE** 32 Oz **\$1.19**

Deterent  
**FRESH START** 67 Oz **\$4.99**

Glad 20 ct. - 13 Gal.  
**HANDLE-TIE** **\$1.37**

Huggies Disposable 48Ct. Med or 66 Ct. Newborn  
**DIAPERS** **\$8.00** Each

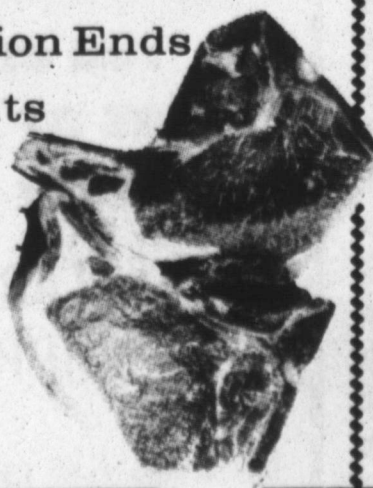


Combination Pack

**PORK CHOPS**

2 Rib Ends, 2 Lion Ends  
6 Center Cuts

**\$1.57** Lb



Center Cuts

**PORK CHOPS**

Excellent for Chicken Frys

**CUBED STEAK**

Quick and Easy To Fix

**STEAK FINGERS**

Hormel Breakfast Links

**LITTLE SIZZLERS**

T.V. Brand Halfmoon 8 Oz

**LONGHORN CHEESE**

**\$2.27** Lb

**\$1.97** Lb

**\$2.47** Lb

**\$1.17**

**\$1.17**

Beef Skirt

**FAJITAS**

**\$1.97** Lb

# Watt's Happening in Hedley

by Peggy Watt

Opal McPherson and her daughter Kathy Richardson of Lawton, Oklahoma have just returned from a trip to Jamaica. They stayed on Montego Bay and enjoyed the scenery, beautiful beaches, and shopping in the straw market. Opal enjoyed the canoe trip up the great river, the 90 mile train ride to Mandeville where they saw the farming. Kathy enjoyed

the water falls at Dumas River. Opal said the only thing she didn't enjoy was the poverty that was evident everywhere. There is widespread unemployment and there are a lot of beggars. She also said that there were enormous taxes for everything. When she got home Virgil surprised her with new carpet on three of her rooms and in her

living room there was a lovely new lounge chair. She also had new tires on her car. Sounds like he missed her!

Su-San and I visited the Channing Eastern Star Chapter last week. Gail Johnson usually goes with us, but she's working for T. Mullins now, and he's such a taskmaker that she was too tired to go with us. She did attend Chapter at Clarendon Chapter #6 Thursday evening.

Barbara Owens of Tulsa, Oklahoma came early last week to visit her parents Ed and Ethel Favor at Giles. Her husband, Lynn and children Mike, Timothy, and Michelle came later. Bill and Alice Paschal of Amarillo joined them Sunday. Ed is very generous with the produce from the garden. He gave us a large sack of peas and some tomatoes. Our garden is always late, so we will enjoy the fruits of his garden.

Paula Clendennen of McLean visited her parents, Tom and Opal, Sunday.

Elmo Kennedy is home from Hall County Hospital where he spent almost a week receiving medical treatment. His daughter, Dorothy Fancher of Amarillo is with them for a few days. Mrs. Kennedy received word last week that her brother-in-law, Stanley Hoelouec of Dallas had died. He was passed 99 years old.

Marty and Sis Martin, Matt and Kendra attended the rodeo at Childress Thursday and Saturday nights. They spent Thursday night with Sis' grandmother, Mrs. Vivian Jones and Saturday night with Marty's mother, Mrs. Nellie Martin. I haven't had a chance to talk to Matt, but I'm sure he had a good time. He gave me a demonstration on how to ride a bull a few days ago. He has the technique down pat, but the practical part lacks a little finishing. His spring bull threw him and he turned a complete summersault and landed flat on his back.

Leroy and Opal Hartwell of Amarillo stopped by and visited with his mother, Mrs. Nora Hartwell for a while Friday. They were enroute to Dallas for a family reunion. They returned Monday. James and Nonie

Hartwell came Sunday and visited with Mrs. Hartwell and Mrs. Lora Chate of Plainview. Mrs. Choate is visiting Mrs. Hartwell for a few more days. They are busy canning and freezing the garden produce that is just getting ready.

Johnny and Mary Kathryn Hoggatt, John, James, and Mary of Amarillo spent Sunday with his parents, Bud and Betty Hoggatt. Johnny attended evening worship services at the First Baptist Church.

Leon, Linda, and Langly accompanied Guy, Fred and I to Amarillo Thursday. We attended the 58th convention of the Texas Association of Future Farmers of America. There were approximately 5,000 people in the convention center auditorium and I'm sure many of them were proud Mamas and Daddies watching watching their sons and daughters receive the Lone Star Farmer Degree, but I'm certain there were none of them who were prouder than Fred and I were as we watched our son Keith receive this prestigious award. We also visited Hubert Green in High Plains Baptist Hospital. Hubert's wife, Paulen is Fred's cousin. Hubert isn't doing very well.

Jim Parsons, his son Jason, and Jason's friend, Chuck of Birmingham, Alabama are visiting here. They hunted prairie dogs in our pasture Saturday. Jim is the son-in-law of Governor George Wallace of Alabama.

T. Mullins took our mother, Mrs. Lola Brown to the doctor in Wellington last week. She's feeling better now than she did for several days.

Pat Knowles is in Beaver, Oklahoma with her mother, Mrs. Elmina Holleman who had major surgery there recently. Pat will stay with her for several weeks as she undergoes cobalt treatments. If anyone would like to send Pat or her mother a card, they will receive it at Box 604, Beaver, Oklahoma.

Mary Ruth White and Charlene Wells of Amarillo visited with Mrs. Jack Reid last week. Mrs. Reid told me they were almost like her own children. I know how she feels.

There are a lot of young people who are almost like my own. Not quite, though. There aren't any anywhere in the world like mine. Thank goodness!

Bob and Jessie Roland spent the weekend in Amarillo with their children, Bobby and Pat Roland. I guess Jessie decided to take a day off from her canning and freezing. She's been busy since her garden started producing.

Jimmie Don and Cherry Waddell, Tammie and Greg of Amarillo visited their parents, Manford and Wilma Snelson and Bill and Juanita Waddell Sunday. When I talked to Wilma she told me that Manford had a hen setting that is supposed to hatch July 29. I think he's going to have some baby bantams.

Joe Wayne Wood of Panhandle visited his mother, Mrs. Flossie Wood and Jane during the weekend. Flossie's granddaughter, Suzy Mills and Jordan of Childress also visited. They might be intending to stay for a few days.

Our son, Thunder spent the night with us Monday night. He lives in Amarillo and works at High Plains Baptist Hospital. He has not been home since Easter, and I told him he was going to wish he'd come sooner if he's wasted much more time. I've decided that in my next reincarnation I'm not going to be a mother. You go to all the trouble of having kids and the worry and work of raising them, and as soon as they get old enough, and sometimes before they're old enough, they leave home. I don't know if they're worth the trouble and worry they cost. Actually, I'm very thankful that my kids can leave home. I know we're lucky that all our kids are normal and healthy and good looking and smart. J.C. Woody took Guy to Colorado for a few days and Keith went to Corpus Christi with James Edward and TimberLee Potts to strip cotton. They will be gone until about Labor Day. I tried to get Linda to let me keep Langly, but she wouldn't. For the first time in more than 18 years Fred and I have no kids at home. It's kind of nice.

The Hedley Young Homemakers have had a busy year. They sponsored a volleyball tournament.

With the proceeds, they bought a torso for the science department of the school, bought new chairs for the school cafeteria, built a footbridge across the ditch at the school and bought some firefighting equipment for the fire department. They have also bought a new coffeemaker for the school and put new lockers in the gym. They have established a scholarship for a girl and sponsored 2 girls to the state FHA convention.

The Hedley Young Homemakers sponsor an Easter Egg Hunt for the children of the town.

They are making plans for several activities for the children and have several projects planned for the coming year.

The president of the Hedley Young Homemakers is Nancy Stephens, vice president is Janie Hill, secretary-reporter is Cheryl Martin, and treasurer is Tammy Brinson. Members are Barbara Collins, Becky Hill, Wanda Hill, Kathy Holland, Vicki Knowles, Cheryl Pickard, TimberLee Potts, Kay Talley, Cheryl Wiggins, Twanna Hall. The Hedley Homemakers enjoyed a family picnic at Lake Creek recently.

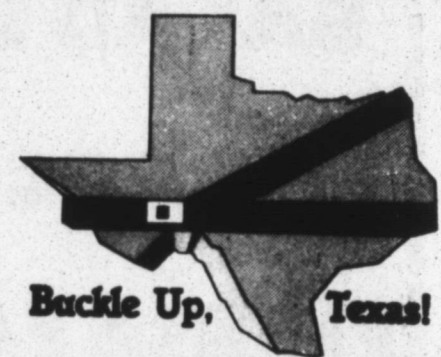
**HEDLEY SENIOR CITIZENS MENU**  
July 28-31

Monday-Roast beef, spinach, macaroni and cheese, green vegetable salad, roll, oleo, fruit cup, milk, tea, coffee.

Tuesday-Pork cutlet, green peas, summer squash, carrot cabbage slaw, corn muffin, oleo, strawberry short cake, milk, tea, coffee.

Wednesday-Meat loaf, buttered potatoes, fried okra, pineapple Jello salad, roll, oleo, bread pudding, milk, tea, coffee.

Thursday-Oven fried chicken, broccoli, au gratin potatoes, roll, oleo, apple cobbler, milk, tea, coffee.



**HOMESTYLE**

## "Full Meal Deal"

only **\$2.59**

July 21 thru August 24, 1986

The sweetest deal in town is the Dairy Queen Full Meal Deal. With a juicy quarter-pound Homestyle Hungry-buster. Golden french fries. Your favorite ice-cold soft drink. And a creamy 5-ounce Dairy Queen sundae with your choice of topping. The \$2.59 Full Meal Deal. It's a steal.

**Dairy Queen**

## Briscoe County's 94th Birthday

# Rodeo Celebration

## August 14-15-16

Wood Memorial Arena      Silverton, Texas

Briscoe County Team Roping, Wednesday, August 13, 8:00 p.m.  
 Briscoe County Kids Playday; County Roping Finals, August 14, 8:00 p.m.  
 Rodeo - Two Performances - Friday & Saturday, August 15-16, 8:00 p.m.  
 Dances - Thursday, Friday, Saturday, 9:00 p.m. - 1:00 a.m., County Show Barn  
 Silverton School Homecoming, August 16, 9:00 a.m. - 12:00 noon, High School  
 Western Parade; Bicycle Parade, August 16, 1:30 p.m., Downtown Silverton  
 Sesquicentennial Program, August 16, 3:00 p.m., Courthouse Square  
 Barbecue, August 16, 5:00 p.m., Courthouse Square  
 Rodeo Queen Presented August 16, 8:00 p.m., Rodeo Arena  
 Open Roping, Open - Novice, Sunday, August 17, 2:00 p.m.



### RODEO EVENTS AND ENTRY FEES

Tie Down Calf Roping, \$50; Heading & Heeling (enter twice only), \$60; Ladies Barrel Race, \$40; Bareback Bronc Riding, \$50; Bull Riding, \$50; Saddle Bronc Riding, \$50; Bull Dogging, \$50; Ladies Break-Away Roping, \$45; Kids Calf Scramble (11 and under).

Rodeo Sponsored By Silverton Young Farmers

Admission—Adults \$3.00, Children, \$2.00

Stock Furnished By C-T, Lubbock, Texas

## DANCE

THURSDAY - ROUGH RIDERS  
 FRIDAY - CAPROCK COUNTRY  
 SATURDAY - CAPROCK COUNTRY

Dance Sponsored by Silverton Fire Dept. & Young Farmers

**SATURDAY NIGHT:**

Fire Dept. Giving Away Half Beef  
 Young Farmers Giving Away Oliver Bros. Saddle

Phone 806 794-2317 - Books Open August 12  
 12:00 noon to 6:00 p.m.

**1/2 Price**  
on all  
Spring &  
Summer Merchandise.

**Rainbows & Lollipops**  
North Side of the Square  
Memphis, Texas

**VAN'S PRIME SEAFOOD**

Fresh Shrimp and Seafood... by Air!  
From Boston, Portland, Seattle,  
New Orleans, Texas coast  
and elsewhere.

Over 70 Fresh & Frozen Items!

Gibson's Parking Lot  
Highway 287 West  
Sunday July 27 5:30-7p.m.

Clean Inspected Mobile Unit  
Amarillo Market: 1709 West 6th (806)376-5777

**WE OFFER**  
**OUR CUSTOMERS**  
**THE BEST**  
IN PRINTING & OFFICE SUPPLIES  
Regular & Select Quality Paper  
Above All-Experienced Workmanship

**THE MOST COMPLETE**  
**LINE OF OFFICE SUPPLIES**  
**IN THIS AREA**

**CLARENDON OFFICE**  
**SUPPLY & PRINTING**

Mr. & Mrs. G.W. Estlack      Ph. 874-2043



MINDE HOLLAR, top four, District Fashion Show, Intermediate Specialty Wear.

## Donley County 4-Her's place in top 4

Fashion knowledge and skill won four area 4-H club members the opportunity to represent the Panhandle Extension District in the State 4-H Fashion Show in Austin, July 13-14.

They were: Angie Kile, Ochiltree County, active sports and specialty wear; Stacie McDonald, Gray County, non-trailed daywear; Janice Detton, Potter County, traileddaywear; and Ann Marie Jarvis, Hansford County, evening wear.

The four took top honors in the senior division of the district show at West Texas State University on Tuesday, July 1. A total of 156 boys and girls from 19 counties competed in three age divisions and four clothing categories. Each had won their county contest. Only seniors advance beyond district competition.

The 4-H Fashion Shows culminate a year-long 4-H learning program, explained Barbara Fowler, Randall County Extension Agent for home economics, who was chairman of the district show. The clothing project teaches skills in decision making, style and fashion, clothing selection, consumer choices, planning and clothing construction, use of accessories, and poise. Participants make the clothing they model in their county and district shows. Four-H is the youth development program of the Texas Agricultural Extension Service, an agency of the Texas A&M University System.

Ribbons and prizes at the district show were presented by State Reps. Foster Whaley of Pampa and John Smithee of Amarillo. In addition to awards in each clothing category, special awards were given for the best cotton garment, best wool garment and top model in each age division.

Local 4-H'er placing in the top four in her division was Minde Hollar. Her category was intermediate specialty wear.



Mammoths, prehistoric ancestors of the elephant, died out about 10,000 years ago. Pictures of them drawn by cave dwellers can still be seen on cave walls in southern France.

### Protecting Your Health

**Seat Belts: Do you know the difference between fact and fiction?**



Public Service Information From The American College of Surgeons

George F. Sheldon, MD, FACS, Professor and Chairman of the Department of Surgery at the University of North Carolina, Chapel Hill, and a member of the Board of Regents of the American College of Surgeons, discusses the use of seat belts as a health and safety measure for the occupants of automobiles.

Although modern medicine has made significant advances in the treatment and prevention of diseases that kill, the best preventative available against motor vehicle deaths is one that's not administered by a physician at all—using a seat belt. Because many people persist in riding unrestrained in autos, physicians have become increasingly concerned about America's unbelted travelers. Inevitably, countless victims of over 50,000 auto accidents per year who chose not to wear seat belts require emergency life-saving surgery. Some are left with permanent disabilities and will require

medical attention for the rest of their lives.

Despite these facts, many people still refuse to use safety restraints. Some look for, and find, excuses not to wear them, and others are simply indifferent to understanding the benefits and safety advantage that the use of the seat belt affords them. Because so many erroneous assumptions and fictitious hazards have been created about this necessary safety system—despite proof that it significantly reduces injuries and saves lives—it's important to separate facts from fiction with regard to automobile safety belts.

**Fiction:** It's more dangerous to be restrained by a seat belt during a collision because the force of the belt against the body will damage internal organs.

**Fact:** When worn properly, there is little chance of a seat belt damaging internal or-



Dr. Sheldon

gans. Safety experts recommend that the shoulder belt be worn so that there is as little slack as possible across the front of the body. Lap belts should be fastened snugly and ride as low upon the hip bones as possible. When worn improperly above the hip bones, the belts present the risk of internal organ damage. Upon impact, a properly worn shoulder/lap belt will distribute the force from the collision across the bones of the hips and the torso of the restrained occupant. Injuries that have occurred from seat belts are cuts, abrasions, and contusions. But these are minor problems, compared with the debilitating injuries such as paraplegia and quadriplegia that have been sustained by unbelted occupants who were severely disabled in automobile accidents.

**Fiction:** Seat belts contribute to head and neck injuries. They are effective only in keeping the occupant from being ejected during a crash.

**Fact:** The first seat belt in automobiles was introduced in 1964 and was a single strap worn across the lap. Its primary effectiveness was in restraining the occupant during a crash; although it kept the individual from being thrown from the car, it did little to guard against head and neck

injuries that could occur when the body was thrown forward upon impact. Beginning in 1968, however, autos were manufactured with a combination lap and shoulder harness belt system that not only protected the occupant against ejection, but that was also designed to restrain the upper body and safeguard the user against injury upon collision. The combination shoulder/lap belt system found in today's cars provides freedom of movement during normal driving but automatically locks into place to restrain the occupant during an emergency. And while there have been reported incidents of restrained occupants hitting their heads and faces against the steering wheel or dashboard in high-speed collisions, their injuries were considerably less severe than those sustained by unrestrained occupants.

**Fiction:** It's more important for drivers and front seat passengers to wear seat belts than for rear seat passengers to use them.

For answers to questions about seat belt usage or surgical care, write to the American College of Surgeons, Office of Public Information, Department 286, 55 East Erie Street, Chicago, IL 60611.

"Don't take a gilded sword to cut a radish."  
Japanese proverb

## FACTS & FIGURES

The American people want a strong defense and a humane society. To meet these goals, the government can expect to expend almost 25 percent of our Gross National Product in 1986.



Under current tax laws, however, the government will collect only about 19 percent of our Gross National Product in taxes.

In that gap lies the crisis in deficit spending that threatens all Americans, particularly the elderly and the small businessperson today, as well as those who will inherit our deficit tomorrow: today's children. That five and a half percent gap amounts to \$200 billion.

Government spending for defense, entitlements and interest alone exceeds total federal revenues. In recent years defense has been the fastest growing program in the federal budget. Entitlement programs account for almost

half of our federal budget.

The experts at the Committee For A Responsible Federal Budget believe the answer to our present and future budget problems lies in both increased taxes and reduced spending. It recommends restraint on entitlements, a slowdown in the growth of defense spending, eliminating low priority domestic programs and a tax increase.

For a free leaflet on the deficit and what can be done about it, you can write to the Committee For A Responsible Federal Budget, 220 1/2 E Street, N.E., Washington, D.C. 20002.



Paper money in the U.S. in the size we know it was first issued in July, 1929.

With Back Straps  
**THONGS**

**1/2 Price**

All Tube For Kids  
**THONGS**

**1/2 Price**



All Childrens  
**Thongs**

**1/2 Price**

Skin Cream

**Country Dairy Collection**

Reg. \$4.00

**\$2.99**

4 GE  
**Standard Bulbs**

**\$1.59**



**SUMMER CLEARANCE**

**Sale**



**Alcohol**

Reg. 59¢

**3 / \$1.00**

**CHARMIN**

**\$1.19**



No Limit

**JELLIES**

**1/2**

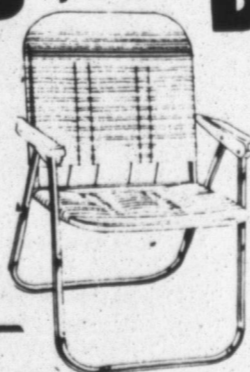


**SNORKLES**

**1/2 Price**

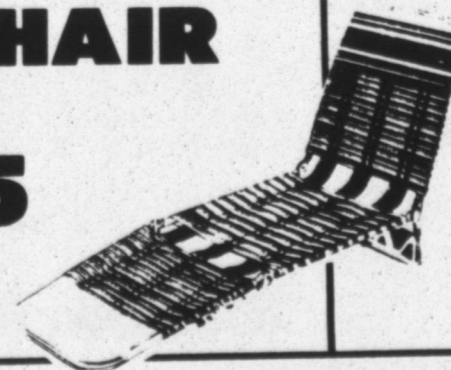
**DELUXE CHAIR**

**\$9.95**



Close Out Of  
**LOUNGER**

**\$7.99**



**SURE & NATURAL**

30's

**\$3.59**



**BIVENS PHARMACY**

Paul and Emonette Bivens Two Registered Pharmacists To Serve You



FREE DELIVERY

**A THOUGHT IN PASSING**  
My children, God has sent his servant before you in His house in Clarendon, Texas to bring to you a message of encouragement of life and love. But you have neglected to be there in your place. A place you made a vow to Him and His spokesman to be in His house each Sunday, yet you have decided to go your own way and be absent.

The food that God has for you this Sunday and other Sundays you have missed.

Like a man who goes without food for the body long enough, he will waste away and die. Miss assembly yourself long enough, you shall die spiritually also.

Jesus said in John 12:32, "If I be lifted up I will draw all men to me." You cannot do any lifting if you lose the vision he gave you. When you were saved don't lose that which he has given you. A home that he promised you if faithful you will be. He never goes back on His Word.  
Amen

By Don Altman



AIRCRAFT CARRIER USS John F. Kennedy crew member Ramon Sanchez participated in the International Naval Review in New York Harbor in commemoration of the Statue of Liberty centennial. The 25-year-old petty officer third class, son of Ramon and Faye Sanchez of Lella Lake, is an aviation ordnance man aboard the ship. The John F. Kennedy, one of 300 vessels from around the world that took part in the Fourth of July festivities in New York City, was visited by President Reagan. [U.S. Navy photo]

### Medical Center News

By VERA JOHNSON

A meeting to honor all volunteers at the Medical Center Nursing Home was held Tuesday, July 15, at 3 p.m. Frank Reid, auxiliary president, called the meeting to order. Fred Fortenberry led in the singing of "Help Somebody Today." The Rev. Lester Blackerby led in an opening prayer.

It was voted to meet on the first Wednesday of every quarter at 2 p.m. for auxiliary business, then continue with singing at 3 p.m. for the residents. Vera Johnson, activity director, presented each volunteer present with a name tag and pin in appreciation of their special work. Many different groups work together, as the pastors from all churches come on their assigned Sunday and bring singers and musicians for a worship service. Also on Sunday morning, a teacher comes to lead a Sunday school class for those who are able to attend. These services are very special for the residents.

Another group comes on the first Saturday of each month for "fun time" - including different games, many of which can be played in wheel chairs.

Some volunteers carry trays at mealtime, help to feed disabled residents, assist with special parties and programs, visit one to one, read mail and entertain. Would you believe that we quite often have piano dinner music?

**ACTIVITY CALENDAR**  
 Sunday - Sunday School and worship services.  
 Monday - Music Therapy.  
 Tuesday - Homemade ice cream in summer months and one day for all birthdays of the month.  
 Wednesday - 1st and 3rd - singing group, 2nd and 4th - arts and crafts.  
 Thursday - Mid week Bible study.  
 Friday - movies and popcorn.  
 Saturday - 1st - "Fun Time" with games.  
 Sue Leeper, Director of Nurses, expressed her sincere thanks to all

the volunteers for the help they give the residents.

The serving table was covered with a white linen cloth with a blue lace overlay. Spring flowers decorated the table with a streamer bearing the words "Volunteer Care." The Dietary Department provided cake and punch for all present. Rev. John Truett, pastor of Martin Baptist Church, dismissed with prayer. With God's help we will all try to serve.

Last month there were 109 volunteers with over 400 hours of service. Volunteers make things much better for our residents, and they all say, "Thank You."

**LEGAL NOTICE**  
 The Clarendon Consolidated Independent School District is accepting sealed bids on the following property: Lots 8 and 9, Block 108, Original Town, Clarendon, Donley County, Texas.

Bids will be opened August 14, 1986, at 7:30 p.m., at the Administration Office in Clarendon, Texas 79226. The School Board reserves the right to refuse any or all bids on the said property. The successful bidder will be responsible for all legal or other costs in transferring the title of the property.

30-2tc

**SIMPSON'S UPHOLSTRY**  
 Furniture, Boats, Autos  
 Pick-up and Delivery  
 874-3477

**Free Estimates**  
**Reasonable Rates**

**QUESTIONS & ANSWERS**  
**Refrigerators**

Q. Are there some things I should do to the refrigerator before going on a short vacation?

A. According to home economists from Whirlpool Corporation, there is no need to shut off the refrigerator if you will be away for less than four weeks. Be sure to use up perishables and freeze other items. If you have an ice-maker, turn it off and shut off the water supply. Empty the ice bin and make sure that all ice cubes are dispensed out of the mechanism.

**HARGRAVE'S**  
 LAUNDRY & DRY CLEANING OF CHILDRESS  
 ANNOUNCES A PICK UP STATION AT THE NOOK  
 PICK UP & DELIVERY MONDAY AND THURSDAY  
 SANITONE DRY CLEANING  
 FULL SERVICE LAUNDRY  
 SHIRTS, PANTS, FLATWORK AND FLUFF DRY  
 PROFESSIONAL ALTERATIONS DEPT.  
 No charge for minor repairs.

**ADAMS DAY CARE**  
 819 Gorst  
 874-3227 Business Hours  
 874-3283 Nights & Weekends

**NEW OPENING HOURS**  
 6:30 a.m. - 6:00 p.m.  
 Monday - Friday  
 18 Months & Up  
 Pre-School Classes

Special Summer Programs For School Age Children  
 DROP-INS WELCOME

**TRIPLE C CHRISTIAN COMMUNITY CENTER**

HOURS: 9 a.m.-5 p.m. Mon. through Fri.  
 SPECIAL ADULT COFFEE HOUR 10 a.m.  
 SPECIAL KID'S KLUB HOUR: 4-5 p.m. [ages 6-12]

**OPEN NIGHTS** **YOUTH WELCOME**  
 Mon., Tues., Thurs., Fri.: 6 p.m.-11 p.m.  
 Sat.: 2 p.m.-12 midnight

**CLOSED WEDNESDAY NIGHTS AND SUNDAYS**

**COME IN AND SEE US !!!**  
 101 E. 4th between K&T Garage and Senior Citizens.

**BOOKSTORE** **YOUTH HANGOUT** **COFFEE HOUSE**  
**VIDEO GAMES** **FOOS BALL** **POOL**

A special message to the adults of this community: If you are interested in aiding the youth of our community you may be able to help -- Phone 874-2315.

**GRAND OPENING: July 28, 1986 2-5 p.m.**  
 come by for free coffee and tea

**GENERAL TELEPHONE ANNOUNCES**  
**RELOCATION OF LOCAL SERVICE AGENCY**  
 Effective August 1, the GTE Local Service Agency will be located at Delores Crump's Art Studio in Clarendon, Texas

**Business Hours will be**  
**9 a.m. to 12 noon**  
**and**  
**1 to 4:30 p.m.**  
**Monday through Friday**

**GTE**

**Excellence in World-Wide Communications**

**STATEMENT OF CONDITION**  
 CONSOLIDATED REPORT OF CONDITION (Including Domestic and Foreign Subsidiaries)  
 (Dollar Amounts in Thousands)

LEGAL TITLE OF BANK Security State Bank Box 128 Hedley, Texas 79237	CITY Hedley	COUNTY Donley	STATE Texas	ZIP CODE 79237	STATE BANK NO 953-36	FEDERAL RESERVE DISTRICT NO 11 13 16162	CLOSE OF BUSINESS DATE June 30, 1986
--	----------------	------------------	----------------	-------------------	-------------------------	--	---

ASSETS	Bil	Mil	Thou
1. Cash and balances due from depository institutions			208
a. Noninterest-bearing balances and currency and coin			None
b. Interest-bearing balances			1,475
2. Securities			175
3. Federal funds sold and securities purchased under agreements to resell in domestic offices of the bank and of its Edge and Agreement Subsidiaries, and in IBFs			None
4. Loans and lease financing receivables			2,802
a. Loans and leases, net of unearned income			85
b. LESS: Allowance for loan and lease losses			None
c. LESS: Allocated transfer risk reserve			None
d. Loans and leases, net of unearned income, allowance, and reserve (item 4.a minus 4.b and 4.c)			2,717
5. Assets held in trading accounts			None
6. Premises and fixed assets (including capitalized leases)			68
7. Other real estate owned			None
8. Investments in unconsolidated subsidiaries and associated companies			None
9. Customers' liability to this bank on acceptances outstanding			None
10. Intangible assets			None
11. Other assets			120
12. Total assets (sum of items 1 through 11)			4,763
LIABILITIES			
13. Deposits			4,307
a. In domestic offices			1,095
(1) Noninterest-bearing			3,208
(2) Interest-bearing			None
b. In foreign offices, Edge and Agreement Subsidiaries, and IBFs			None
(1) Noninterest-bearing			None
(2) Interest-bearing			None
14. Federal funds purchased and securities sold under agreement to repurchase in domestic offices of the bank and of its Edge and Agreement Subsidiaries, and in IBFs			None
15. Demand notes issued to the U.S. Treasury			None
16. Other borrowed money			None
17. Mortgage indebtedness and obligations under capitalized leases			None
18. Bank's liability on acceptances executed and outstanding			None
19. Notes and debentures subordinated to deposits			None
20. Other liabilities			61
21. Total liabilities (sum of items 13 through 20)			4,368
22. Limited-life preferred stock			None
EQUITY CAPITAL			
23. Perpetual preferred stock (No. of shares outstanding)			None
24. Common stock (No. of shares: a. Authorized)			300,000
b. Outstanding			150
25. Surplus			200
26. Undivided profits and capital reserves			45
27. Cumulative foreign currency translation adjustments			None
28. Total equity capital (sum of items 23 through 27)			395
29. Total liabilities, limited-life preferred stock, and equity capital (sum of items 21, 22, and 28)			4,763

MEMO  
 1. Amounts outstanding as of Report Date  
 1 a. Standby letters of credit: Total  
 1 b. Amount of Standby letters of credit in memo 1 a conveyed to others through participations

NOTE: This report must be signed by an authorized officer(s) and attested by not less than three directors other than the officer(s) signing the report.

We, the undersigned officer(s), do hereby declare that this Report of Condition has been prepared in conformance with official instructions and is true to the best of my knowledge and belief.

SIGNATURE OF OFFICER(S) AUTHORIZED TO SIGN REPORT  
 Sue Weatherly, President

DATE SIGNED  
 July 9, 1986

SIGNATURE OF DIRECTOR AUTHORIZED TO SIGN REPORT  
 Sue Weatherly, President

AREA CODE/PHONE NO  
 806-856-2411

We, the undersigned directors, attest the correctness of this Report of Condition and declare that it has been examined by us and to the best of our knowledge and belief has been prepared in conformance with official instructions and is true and correct.

SIGNATURE OF DIRECTOR  
 Raymond J. Cisher

SIGNATURE OF DIRECTOR  
 Harold White

SIGNATURE OF DIRECTOR  
 Carl Weatherly

(MARK STAR FOR NOTARY'S SEAL) Sworn to and subscribed before me this 9th day of July, 1986 and I hereby certify that I am not an officer or director of this bank and my commission expires Jan. 21, 1989

Signature Notary Public  
 Raymond J. Cisher

**Security STATE BANK**  
 HEDLEY, TEXAS 79237



T.V. Assorted  
**Cookies**  
16 Oz  
**79¢**

T.V. 7 1/2 Oz  
**Potato Chips**  
**69¢**

Rainbow  
**Flour**  
5 Lb  
**69¢**

IGA In|Oil|or|Water  
**Tuna**  
6 1/2 Oz  
**59¢**

Mr. P's  
**PIZZA**  
9 1/2 Oz  
**69¢**

IGA  
**SUGAR**  
5 Lb Bag  
**\$1.39**

Folgers  
**COFFEE**  
All Grinds  
**\$2.99**

**CRISCO**  
3 Lbs  
**\$2.29**

YOU SAVE IGA 4 Roll  
**BATH TISSUE**  
**89¢**

YOU SAVE IGA 8 Oz  
**5 For BISCUITS**  
**\$1.00**

YOU SAVE All Flavors  
6 Pk Cans  
**COKE**  
**\$1.69**

YOU SAVE 32 Oz  
**MIRACLE WHIP**  
**1.59**

Kleen Kan tall  
30 ct. **KITCHEN BAGS**  
YOU SAVE **89¢**

**LAZY DAYS OF SUMMER AT IGA FOODLINER**  
Clarendon  
Claude  
Memphis

YOU SAVE Hormel 5 Oz  
**VIENNA SAUSAGE**  
2 For **99¢**

YOU SAVE Kleen Kan 20 ct.  
**TRASH BAGS**  
**89¢**

YOU SAVE Rich & Ready  
**ORANGE Or PUNCH DRINK**  
1 Gal **\$1.19**

IGA Jumbo roll  
**PAPER TOWELS**  
2 For **99¢**

T.V. 1/2 Gal  
**ICE CREAM**  
**\$1.39**



T.V. 12 Oz  
**FRANKS**  
**89¢**

Hormel Black Label  
**BACON**  
1 Lb  
**\$1.79**



**LETTUCE**  
2 Heads For **\$1.00**

Boneless  
**CHUCK ROAST**  
**98¢** Lb

T.V. 12 Oz **BOLOGNA** **98¢**  
T.V. **SINGLES CHEESE** 12 Oz **\$1.39**  
T.V. 1/2 Moon **MILD CHEDDAR** 8 Oz **\$1.09**

**ARM ROAST** **\$1.39** Lb  
Boneless **STEW MEAT** **\$1.69** Lb  
Extra Lean **GROUND MEAT** **\$1.39** Lb

Jalapeno **PEPPERS** Lb **69¢**  
**NECTARINES** Lb **59¢**  
**SQUASH** Yellow or Zucchini **39¢** Lb  
**GRAPES** White **99¢** Lb.  
**ONION** Yellow **5 Lbs For \$1.00**  
**BROCCOLI** **2 Lbs For \$1.00**



**FOODLINER**  
Clarendon

# CLASSIFIED



**BEST INVENTION  
SINCE  
THE WHEEL!**

Classified ad rates are \$3.50 for 15 words or less, 10 cents per word over 15 words. Card of thanks, average length, is \$4.00. Subscription rate in Donley County is \$11.00 plus 56c tax yearly. Subscriptions for out of Donley County is \$14.00 plus 72c tax yearly. Out of state subscriptions are \$14.00 yearly. Six month subscriptions are \$6.50 plus 33c tax. Three month subscriptions are \$5.00 plus 26c tax. Display ads on request. A \$1 charge will be added if statements are sent on classified ads. If you want your classified ad blocked, there will be an additional \$1 charge on the first ad.

**FOR SALE:** Shopsmith Mark V, like new, with band saw, lathe, drill press, and table saw. Call 874-3110 after 6:00 p.m.

**MAGIC WAND CARPET CLEANING COMPANY**  
Since 1971  
Professional steam cleaners. We do commercial and residential. We are licensed Scotch-Guard applicators. For a free estimate call 874-2416.

**CADILLACS, Mercedes, Porsche, etc. direct from Government. Seized in drug raids. Available your area. Save thousands.** 216-453-3000, Ext. A3302.

**CUSTOM SWATHING & HAY BALING**

Contact Don or Ricky Springer 856-3141.

**FOR SALE:** Extra nice 1978 Chevrolet pickup, Michelin tires, loaded. Contact Don Springer 856-3141.

**HOUSE FOR SALE:** Two-story brick house, newly remodeled with 4 bedrooms, 2 baths. Furnished garage apartment. Good location! For appointment call Darlene Spier 874-2383 after 5:00 p.m. or J.H. Spier 874-3336.

**LET ME DO YOUR baking for you.** Call Nancy 874-2118.

**AIRLINE JOBS** \$17,800 to \$68,500/year, now hiring. Call Job Line 3535 Ext. A-6612 For info. 24 hours.

**WANTED:** Mature, dependable woman to care for 3 children. Must have own transportation and good references. Call 874-2771 after 6 p.m.

**FOR RENT OR SALE:** Lot 21 block 20 on main street. Contact Claude Moore, 874-3812.

**FOR SALE:** Vegetables are beginning to be picked at Ben Burrows 874-2005.

**HOUSE FOR SALE:** 1981 mobile home, 2 bedroom, 2 bath, excellent condition. Call Mark Bivens in Groom. 248-5581, 248-2771.

**LET'S DO DOLLS!**  
Classes starting soon to make ceramic dolls. Call 874-5006 or 874-5104.

**FOR SALE:** 1971 Ford Galaxy 500, excellent condition, new tires, new battery \$1250. See at Mays 66. 874-3202.

**McLEAN FEED**  
779-3217  
Owners  
Bill Breck W.W. Sarsa  
779-3215 856-3171

**Owners**  
Call Collect  
Crown Quality Feed & Seed  
20 percent Breeder Cubes  
[Korn Kake]  
NP \$158.00 per ton in 22 ton lots del.

**PIANO FOR SALE**  
Wanted: Responsible party to assume small monthly payments on piano. See locally. Call credit manager 1-800-447-4266.

**FOR SALE:** 2 houses on 1 lot, 1-2 bedroom, other can be 3 or 4 bedroom, 2 bath, central heat, and air, fenced yard, high board fenced. Call Lou 874-3524, 874-2697.

**WANT YOUR HOME CLEANED.**  
Call me before 5 p.m. 874-3129.

**FOR SALE:** LTD Tudor, excellent condition. Bargain. 874-2407.

**HELP WANTED**  
I have nice home for lady 30 years of age or older that can drive a car, help with house work and cooking, must live in, furnish private room, pay all bills, buy all groceries, and pay salary. If interested, call collect Pampa 665-5448.

**TAKE UP PAYMENTS**  
on a 2 and 3 bedroom home. Qualify by phone. Call collect 806-381-1352.  
**ALLIANCE HOMES INC.**

**FOR RENT:** 2 bedroom mobile home, furnished or unfurnished, in Howardwick, to responsible family. Deposit required. Call 874-3934 after 4:00 p.m. weekdays anytime Saturday or Sunday.

**FOR SALE:** 1 complete windmill, 12 foot, aermotor wheel, steel tower, 2 inch pipe, few iron sucker rods. Call 806-874-2382 or 874-3607.

**FOR RENT:** 3 bedroom home, unfurnished, newly remodeled inside. Large living room. Call 874-3272 or 874-2777 after 7 p.m.

**FOR SALE:** 66 Pontiac, lady's clothing 8-10, golf clubs, pressure cooker. Call 874-3795.

**NEED AN AMBITIOUS person** interested in making a career in insurance. Excellent opportunity. Guaranteed salary offered. EOE. Call 806-259-5066.

**KENMORE built-in dishwasher** for sale or trade for portable dishwasher, used 6 months, for sale 18,000 BTU refrigerated air conditioner, works good, \$200, bathroom vanity - oak/marble basin \$100, antique bathtub, end table with storage \$20, modern pedestal sink bone or white \$75, antique oak mantle \$200. Call 874-3111 after 5:00.

**FOR SALE:** 2 brand new, never been used 12 volt batteries, size 5 1/2-9 inches \$35.00 each. Call 874-3493.

**FOR RENT:** Two bedroom furnished house. 259-2575.

**THANK YOU**  
Special thanks to the firemen and citizens of Donley County who helped fight fire west of town on Frank J. Hommel pasture.

**HELP WANTED**  
Ladies to sell custom fitted, pre-polished artificial nails. Call after 6 p.m. 826-5970.

**THANK YOU**  
I would like to thank everyone for the cards, calls and visits I had while I was in the hospital. They were deeply appreciated. May God bless each of you.  
Trula Moore

**ROOFING & GENERAL CONTRACTING**  
Milton David. All types shingles. Free estimates. 856-2181.

**FOR RENT:** 2 bedroom furnished house. 259-2575.

**HOUSE FOR SALE BY OWNER**  
4 bedroom, built-ins, good location, neat, newly painted, basement. Priced reasonable, 1600 sq. ft. Call 874-2659.

**FAST, DEPENDABLE REPAIR SERVICE**  
TV'S — RADIOS — STEREOS  
**TEX'S TV SERVICE**  
TEX NAYLOR, OWNER  
1413 West 5th Street Ph. 806 874-2561  
ROUTE 1 CLARENDON, TEXAS 79226

**Bailey Estes & Son**  
Welding Fabricating & Steel Buildings  
-also self storage units for  
RENT \$25.00 month

**TERMITE PROBLEMS**  
Call for best termite control  
Over 20 years experience  
Call collect 383-7075  
3608 N.E. 23rd  
Amarillo, Texas 79107  
State Lic. No. 1178  
**LEO RUSSELL**

**ALLEN ESTLACK**  
Electrical and Appliance Repair  
Call 874-3683 Box 596  
Bonded & Licensed

**Brown-McMurtry Implement**  
PHONE 806-823-2441  
BOX 777 SILVERTON, TEXAS 79257  
SALES & SERVICE  
DON BROWN Home Ph. 823-2292  
CLARENCE WARD Home Ph. 823-2083

**GARAGE SALE**  
**Several Families**  
**Friday & Saturday 9 til ???**  
Lots of miscellaneous  
Come see  
Bain Building  
One mans trash is another mans treasure

**DONLEY COUNTY FARM WITH HOUSE**  
317 Acres more or less, located 3 miles west of Clarendon on farm to market pavement. 137 acres of cropland and 180 acres of grass. Three bedroom house, barn and garage. EXCELLENT LAND QUALITY AND LOCATION.  
Call Owners Exclusive Agent  
David Davidson  
JAMES F. HAYES & CO.  
P. O. Box 1004  
Clarendon, Texas 79226  
Office (806)874-3546  
home (806) 874-3242

**Chamberlain MOTOR COMPANY**  
HIGHWAY 287 CLARENDON, TEXAS  
BUICK • OLDSMOBILE  
PONTIAC • CADILLAC • GMC TRUCKS  
FRED CLIFFORD Home Phone (806) 874-2415  
Clarendon (806) 874-3527  
Amarillo 376-9041  
Texas WATS (800) 692-4088

**SHIELDS REFRIGERATION & HEATING**  
Small Commercial refrigeration  
**DAVID W. SHIELDS 874-2559**

**Chamberlain MOTOR COMPANY**  
HIGHWAY 287 CLARENDON, TEXAS  
BUICK • OLDSMOBILE  
PONTIAC • CADILLAC • GMC TRUCKS  
DARELL HARPER 874-3687  
Clarendon (806) 874-3527  
Amarillo 376-9041  
Texas WATS (800) 692-4088

**VISION CARE SPECIALIST**  
**DR. COWAN**  
Optometrist  
MONDAYS 874-3740

**BUYERS AND SELLERS**  
All  
Kinds of Grain  
70 Ft. Scales  
Clarendon Grain  
Elevators, Inc.  
**J.R. Gill**  
P.O. Box 805  
Clarendon, Tex. 79226  
874-3172

**RICKY RATTAN**  
Owner/Service Tech. SALES & SERVICE  
**Rattan T.V. Service**  
AFTER THE SALE, IT'S SERVICE THAT COUNTS  
FM - 2 WAY COMMUNICATIONS CABLE TV  
Satellite Service & Sales  
OFFICE - HOME (806) 874-2522  
BOX 912 CLARENDON, TEXAS 79226



# City Ordinance

The Board of Aldermen of the City of Clarendon met in regular session on July 8, 1986, in the Board Room, City Hall, at 7:00 p.m.

Members present were Mayor James Kuhn, Aldermen B.L. Graham, Lloyd McCord, James Sharrar, and Gene White. Alderman Steve Smith was absent. Also present was City Secretary Donna Edwards.

\*Minutes of the June 24, 1986, meeting were read and approved.

Motion was made to pass an ordinance for Flood Damage Prevention.

## FLOOD DAMAGE PREVENTION ORDINANCE # 258

Statutory Authorization, Findings of Fact, Purpose and Methods

Section A. Statutory Authorization

The Legislature of the State of Texas has in Sections 16.311-16.319 of the Texas Water Code delegated the responsibility to local governmental units to adopt regulations designed to minimize flood losses. Therefore, the City Council of the City of Clarendon, Texas, does ordain as follows:

Section B. Findings of Fact

(1) The flood hazard areas of Clarendon, Texas, are subject to periodic inundation which results in loss of life and property, health and safety hazards, disruption of commerce and governmental services, and extraordinary public expenditures for flood protection and relief, all of which adversely affect the public health, safety and general welfare.

(2) These flood losses are created by the cumulative effect of obstructions in floodplains which cause an increase in flood heights and velocities, and by the occupancy of flood hazards areas by uses vulnerable to floods and hazardous to other lands because they are inadequately elevated, floodproofed or otherwise protected from flood damage.

Section C. Statement of Purpose

It is the purpose of this ordinance to promote the public health, safety and general welfare and to minimize public and private losses due to flood conditions in specific areas by provisions designed to:

- (1) Protect human life and health;
- (2) Minimize expenditure of public money for costly flood control projects;
- (3) Minimize the need for rescue and relief efforts associated with flooding and generally undertaken at the expense of the general public;
- (4) Minimize prolonged business interruptions;
- (5) Minimize damage to public facilities and utilities such as water and gas mains, electric, telephone and sewer lines, streets and bridges located in floodplains;
- (6) Help maintain a stable tax base by providing for the sound use and development of flood-prone areas in such a manner as to minimize future flood blight areas; and
- (7) Insure that potential buyers are notified that property is in a flood area.

Section D. Methods of Reducing Flood Losses

In order to accomplish its purposes, this ordinance uses the following methods:

- (1) Restrict or prohibit uses that are dangerous to health, safety or property in times of flood, or cause excessive increases in flood heights or velocities;
- (2) Require that uses vulnerable to floods, including facilities which are such uses, be protected against the time of initial

construction;

(3) Control the alteration of natural floodplains, stream channels and natural protective barriers, which are involved in the accommodation of flood waters;

(4) Control filling, grading, dredging and other development which may increase flood damage;

(5) Prevent or regulate the construction of flood barriers which will unnaturally divert flood waters or which may increase flood hazards to other lands.

## ARTICLE 2 DEFINITIONS

Unless specifically defined below, words or phrases used in this ordinance shall be interpreted to give them the meaning they have in common usage and to give this ordinance its most reasonable application.

Appeal - means a request for a review of the Flood Plain Administrator's interpretation of any provision of this ordinance or a request for a variance.

Area of Shallow Flooding - means a designated AO, AH or VO zone on a community's Flood Insurance Rate Map (FIRM) with a one percent chance or greater annual chance of flooding to an average depth of one to three feet where a clearly defined channel does not exist, where the path of flooding is unpredictable and where velocity flow may be evident. Such flooding is characterized by ponding or sheet flow.

Area of Special Flood Hazard - is the land in the floodplain within a community subject to a one percent or greater chance of flooding in any given year. The area may be designated as Zone A on the Flood Hazard Boundary Map (FHBM). After detailed ratemaking has been completed in preparation for publication of the FIRM, Zone A usually is refined into Zones A, AH, AO, AI-99, VO, or VI-30.

Base Flood - means the flood having a one percent chance of being equalled or exceeded in any given year.

Development - means any man-made change in improved real estate, including but not limited to buildings or other structures, mining, dredging, filling, grading, paving, excavation or drilling operations.

Existing Mobile Home Park or Mobile Home Subdivision - means a parcel (or contiguous parcels) of land divided into two or more mobile home lots for rent or sale for which the construction of facilities for servicing the lot on which the mobile home is to be affixed (including, at a minimum, the installation of utilities either final site grading or the pouring of concrete pads, and the construction of streets) is completed before the effective date of the adoption of floodplain management regulations.

Expansion to an Existing Mobile Home Park or Mobile Home Subdivision - means the preparation of additional sites by the construction of facilities for servicing the lots on which the mobile homes are to be affixed (including the installation of utilities either final site grading or the pouring of concrete pads, and the construction of streets) is completed before the effective date of the adoption of floodplain management regulations.

Expansion to an Existing Mobile Home Park or Mobile Home Subdivision - means the preparation of additional sites by the construction of facilities for servicing the lots on

which the mobile homes are to be affixed (including the installation of utilities, either final site grading or pouring of concrete pads, or the construction of streets).

Flood or Flooding - means a general and temporary condition of partial or complete inundation of normally dry land areas from:

(1) the overflow of inland or tidal waters.

(2) the unusual and rapid accumulation or runoff of surface waters from any source.

Flood Hazard Boundary Map (FHBM) - means an official map of a community on which the Federal Emergency Management Agency has delineated the boundaries of the flood, mudslide (i.e., mudflow) related erosion areas having special hazards have been designated as Zone A, M, and/or E.

Flood Insurance Rate Map (FIRM) - means an official map of a community, on which the Federal Emergency Management Agency has delineated both the areas of special flood hazards and the risk premium zones applicable to the community.

Flood Insurance Study - is the official report provided by the Federal Emergency Management Agency. The report contains flood profiles, water surface elevation of the base flood, as well as the Flood Boundary-Floodway Map.

Floodplain or Flood-Prone Area - means any land area susceptible to being inundated by water from any source (see definition of flooding).

Floodway (Regulatory Floodway) - means the channel of a river or other watercourse and the adjacent land areas that must be reserved in order to discharge the base flood without cumulatively increasing the water surface elevation more than a designated height.

Habitable Floor - means any floor usable for living purposes, which includes working, sleeping, eating, cooking or recreation, or a combination thereof. A floor used for storage purposes only is not a "habitable floor."

Highest Adjacent Grade - means the highest natural elevation of the ground surface prior to construction next to the proposed walls of the structure.

Lowest Floor - means the lowest floor of the lowest enclosed area (including basement).

Mean Sea Level - means the lowest floor of the lowest enclosed area (including basement).

Mobile Home - means a structure, transportable in one or more sections which is built on a permanent chassis and designed to be used with or without a permanent foundation when connected to the required utilities. It does not include recreational vehicles or travel trailers.

New Mobile Home Park or Mobile Home Subdivision - means a parcel (or contiguous parcels) of land divided into two or more mobile home lots for rent or sale for which the construction of facilities for servicing the lot on which the mobile home is to be affixed (including, at a minimum, the installation of utilities, either final site grading or the pouring of concrete pads, and the construction of streets) is completed on or after the effective date of this ordinance.

Start of Construction - means the first placement of permanent construction of a structure (other than a mobile home) on a site, such as the pouring of slabs or footings or any work beyond the stage of excavation. Permanent construction does not include land preparation, such as clearing, grading and filling; nor does it include the installation of streets and/or walkways; nor does it include excavation for a basement,

footings, piers or foundations or the erection of temporary forms; nor does it include the installation of the property of accessory buildings, such as garages or sheds not occupied as dwelling units or not as part of the main structure. For a structure (other than a mobile home) without a basement or poured footings, the "start of construction" includes the first permanent framing or assembly of the structure or any part thereof on its piling or foundation. For mobile homes not within a mobile home park or mobile home subdivision, "start of construction" means the affixing of the mobile home to its mobile home subdivision, "start of construction" is the date on which the construction of facilities for servicing the site on which the mobile home is to be affixed (including, at a minimum, the construction of streets, either final site grading or the pouring of concrete pads, the installation of utilities) is completed.

Structure - means a walled and roofed building, including a gas or liquid storage tank, that is principally above ground, as well as a mobile home.

Substantial Improvement - means any repair, reconstruction or improvement of a structure the cost of which equals or exceeds 50 percent of the market value of the structure either, (1) before the improvement or repair is started, or (2) if the structure has been damaged and is being restored before the damage occurred. For the purpose of this definition "substantial improvement" is considered to occur when the first alteration of any wall, ceiling, floor, or other structural part of the building commences, whether or not that alteration affects the external dimensions of the structure. The term does not, however, include either (1) any project for improvement of a structure to comply with existing state or local health, sanitary or safety code specifications which are solely necessary to assure safe living conditions, or (2) any alteration of a structure listed on the National Register of Historic Places or a State Inventory of Historic Places.

Variance - is a grant of relief to a person from the requirements of this ordinance when specific enforcement would result in unnecessary hardship. A variance, therefore, permits construction or development in a manner otherwise prohibited by this ordinance.

## ARTICLE 3

### GENERAL PROVISIONS

Section A. Lands to which this ordinance applies

The ordinance shall apply to all areas of special flood hazard with the jurisdiction of the City of Clarendon.

Section B. Basis for Establishing the Areas of Special Flood Hazard

The areas of special flood hazard identified by the Federal Emergency Management Agency in a scientific and engineering report entitled, "The Flood Insurance Study for Clarendon, Texas," dated August 19, 1986, with accompanying Flood Insurance Rate Maps and Flood Boundary-Floodway Maps (FIRM and FBFM) and any revisions thereto are hereby adopted by reference and declared to be a part of this Section C. Establishment of Development Permit

A Development Permit shall be required to ensure conformance with the provisions of this ordinance.

Section D. Compliance

No structure or land shall hereafter be located, altered, or have its use changed without full compliance with the terms of this ordinance plicable regulations.

Section E. Abrogation and Greater Restrictions

This ordinance is not intended to repeal, abrogate, or impair any existing easements, covenants, or

deed restrictions. However, where this ordinance and another conflict or overlap, whichever imposes the more stringent restrictions shall prevail.

Section F. Interpretation

In the interpretation and application of this ordinance, all provisions shall be: (1) considered as minimum requirements; (2) liberally construed in favor of the governing body; and (3) deemed neither to limit nor repeal any other powers granted under State statutes.

Section G. Warning and Disclaimer or Liability

The degree of flood protection required by this ordinance is considered reasonable for regulatory purposes and is based on scientific and engineering considerations. On rare occasions greater floods can and will occur and flood heights may be increased by man-made or natural causes. This ordinance does not imply that land outside the areas will be free from flooding or flood damages. This ordinance shall not create liability on the part of the community or any official or employee thereof for any flood damages that result from reliance on this ordinance or any administrative decision lawfully made thereunder.

## ARTICLE 4

### ADMINISTRATION

Section A. Designation of the Floodplain Administrator

The Water Superintendent is hereby appointed the Floodplain Administrator to administer and implement the provisions of this ordinance.

Section B. Duties and Responsibilities of the Floodplain Administrator

Duties and responsibilities of the Floodplain Administrator shall include, but not be limited to, the following:

(1) Maintain and hold open for public inspection all records pertaining to the provisions of this ordinance.

(2) Review, approve or deny all applications for development permits required by adoption of this ordinance.

(3) Review permits for proposed development to assure that all necessary permits have been obtained from those Federal, State or local governmental agencies (including Section 404 of the Federal Water Pollution Control Act Amendments of 1972, 33 U.S.C. 1334) from which prior approval is required.

(4) Where interpretation is needed as to the exact location of the boundaries of the areas of special flood hazards (for example, where there appears to be a conflict between a mapped boundary and actual field conditions) the Floodplain Administrator shall make the necessary interpretation.

(5) Notify, in riverine situations, adjacent communities and the State Coordinating Agency which is Texas Water Commission, prior to any alteration or relocation of a watercourse, and submit evidence to such notification to the Federal Emergency Management Agency.

(6) Assure that the flood carrying capacity within the altered or relocated portion of any watercourse is maintained.

(7) When base flood elevation data has not been provided in accordance with Article 3, Section B, the Floodplain Administrator shall obtain, review and reasonably utilize any base flood elevation data available from Federal, State or other source, in order to administer the provisions of Article 5.

Section C. Permit Procedures

(1) Application for a Development Permit shall be presented to the Floodplain Administrator on forms furnished by him/her and may include, but not be limited to, plans in duplicate drawn to scale showing

the location, dimensions, and elevation of proposed landscape alterations, existing and proposed structures, and the location of the foregoing in relation to areas of special flood hazard. Additionally, the following information is required:

a. Elevation in relation to mean sea level, of the lowest floor (including basement) of all proposed structures;

b. Elevation in relation to mean sea level to which any nonresidential structure shall be floodproofed;

c. A certificate from a registered professional engineer or architect that the nonresidential floodproofed structure shall meet the floodproofing criteria of Article 5, Section B(2);

d. Description of the extent to which any watercourse or natural drainage will be altered or relocated as a result of proposed development.

(2) Approval or denial of a Development Permit by the Floodplain Administrator shall be based on all of the provisions of this ordinance and the following relevant factors:

a. The danger to life and property due to flooding or erosion damage;

b. The susceptibility of the proposed facility and its contents to flood damage and the effect of such damage on the individual owner;

c. The danger that materials may be swept onto other lands to the injury of others;

d. The compatibility of the proposed use with existing and anticipated development;

e. The safety of access to the property in times of flood for ordinary and emergency vehicles;

f. The costs of providing governmental services during and after flood conditions including maintenance and repair of streets and bridges, and public utilities and facilities such as sewer, gas, electrical and water systems;

g. The expected heights, velocity, duration, rate of rise and sediment transport of the flood waters and the effects of wave action, if applicable, expected at the site;

h. The necessity to the facility of a waterfront location, where applicable;

i. The availability of alternative locations, not subject to flooding or erosion damage, for the proposed use;

j. The relationship of the proposed use to the comprehensive plan for that area.

Section D. Variance Procedures

(1) The Appeal Board as established by the community shall hear and render judgement on requests for variances from the requirements of this ordinance.

(2) The Appeal Board shall hear and render judgement on an appeal only when it is alleged there is an error in any requirement, decision, or determination made by the Floodplain Administrator in the enforcement or administration of this ordinance.

(3) Any person or persons aggrieved by the decision of the Appeal Board may appeal such decision in the courts of competent jurisdiction.

(4) The Floodplain Administrator shall maintain a record of all actions involving an appeal and shall report variances to the Federal Emergency Management Agency upon request.

(5) Variances may be issued for the reconstruction, rehabilitation or restoration of structures listed on the National Register of Historic Places or the State Inventory of Historic Places, without regard to the procedures set forth in the remainder of this ordinance.

(6) Generally, variances may be issued for new construction and substantial improvements to be erected on a lot of one-half acre or less in size contiguous to and surrounded by lots with existing structures constructed

below the base flood level, providing the relevant factors in Section C(2) of this Article have been fully considered. As the lot size increases beyond the one-half acre, the technical justification required for issuing the variance increases.

(7) Upon consideration of the factors noted above and the intent of this ordinance, the Appeal Board may attach such conditions to the granting of variances as it deems necessary to further the purpose and objectives of this ordinance (Article 1, Section C).

(8) Variances shall not be issued within any designated floodway if any increase in flood levels during the base flood discharge would result.

(9) Prerequisites for granting variances:

a. Variances shall only be issued upon a determination that the variance is the minimum necessary, considering the flood hazard, to afford relief.

b. Variances shall only be issued upon, (i) showing a good and sufficient cause; (ii) a determination that failure to grant the variance would result in exceptional hardship to the applicant, and (iii) a determination that the granting of a variance will not result in increased flood heights, additional threats to public safety, extraordinary public expense, create nuisances, cause fraud on or victimization of the public, or conflict with existing local laws or ordinances.

c. Any application to whom a variance is granted shall be given written notice that the structure will be permitted to be built with the lowest floor elevation below the base flood elevation, and that the cost of flood insurance will be commensurate with the increased risk resulting from the reduced lowest floor elevation.

ARTICLE 5

PROVISIONS FOR FLOOD HAZARD REDUCTION

Section A. General Standards

In all areas of special flood hazards the following provisions are required:

(1) All new construction or substantial improvements shall be anchored to prevent flotation, collapse or lateral movement of the structure;

(2) All new construction or substantial improvements shall be constructed by methods and practices that minimize flood damage;

(3) All new construction or substantial improvements shall be constructed with materials and utility equipment resistant to flood damage;

(4) All new and replacement water supply systems shall be designed to minimize or eliminate infiltration of flood waters into the system;

(5) New and replacement sanitary sewage systems shall be designed to minimize or eliminate infiltration of flood waters into the system and discharge from the systems into flood waters; and,

(6) On-site waste disposal systems shall be located to avoid impairment to them or contamination from them during flooding.

Section B. Specific Standards

In all areas of special flood hazards where base flood elevation data has been provided as set forth in (i) Article 3, Section B (ii) Article 4, Section B(7), or (iii) Article 5, Section C(3), the following provisions are required:

(1) Residential Construction - new construction and substantial improvement of any residential structure shall have the lowest floor, including basement, elevated to or above the base flood elevation. A registered professional engineer, architect, or land surveyor shall submit a certification to the Floodplain Administrator that the standard of this subsection as proposed in Article 4, Section C(1)a., is satisfied.

(2) Nonresidential Construction - new construction and substantial improvements of any commercial, industrial or other nonresidential structure shall either have the lowest floor, including basement elevated to or above the level of the base flood elevation or, together with attendant utility and sanitary facilities, be floodproofed so that below the base flood level the structure is

watertight with walls substantially impermeable to the passage of water and with structural components having the capability of resisting hydrostatic and hydrodynamic loads and effects of buoyancy. A registered professional engineer or architect shall develop and/or review structural design, specifications, and plans for the construction, and shall certify that the design and methods of construction are in accordance with accepted standards of practice as outlined in this subsection. A record of such certification which includes the specific elevation (in relation to mean sea level) to which such structures are floodproofed shall be maintained by the Floodplain Administrator.

(3) Mobile Homes -

a. Require that all mobile homes to be placed within Zone A shall be installed using methods and practices which minimize flood damage. For the purpose of this requirement, mobile homes must be elevated and anchored to resist flotation, collapse, or lateral movement. Methods of anchoring may include, but are not limited to, use of over-the-top or frame ties to ground anchors. This requirement is in addition to applicable State and local anchoring requirements for resisting wind forces.

b. Require that an evacuation plan indicating alternate vehicular access and escape routes be fled with appropriate Disaster Preparedness Authorities for mobile home parks and mobile home subdivisions located within Zone A.

c. All mobile homes shall be in compliance with Article 5, Section B (1).

d. Require within Zones A1-30 and AE for new mobile home parks and mobile home subdivisions, in expansions to existing mobile home parks and mobile home subdivisions where the repair, reconstruction or improvement of streets, utilities and pads equals or exceeds 50 percent of the value of the streets, utilities and pads before the repair, reconstruction or improvements has commenced, have the lowest floor of the mobile home elevated to or above the base flood level.

e. Require that all mobile homes to be placed within Zone A1-30 and AE, which are not to be placed into a mobile home park or mobile home subdivision, have the lowest floor of the mobile home elevated to or above the base flood level.

Section C. Standards for Subdivision Proposals

(1) All subdivision proposals shall be consistent with Article 1, Sections B, C, and D of this ordinance.

(2) All proposals for the development of Article 3, Section c; Article 4, Section C; and the provisions of Article 5 of this ordinance.

(3) Base flood elevation data shall be generated for subdivision proposals and other proposed development which is greater than 50 lots or 5 acres, whichever is lesser, if not otherwise provided pursuant to Article 3, Section B or Article 4, Section B (7) of this ordinance.

(4) All subdivision proposals shall have adequate drainage provided to reduce exposure to flood hazards.

(5) All subdivision proposals shall have public utilities and facilities such as sewer, gas, electrical and water systems located and constructed to minimize flood damage.

Section D. Standards for Areas of Shallow Flooding (AO/AH Zones) Located within the areas of special flood hazard established in Article 3, Section B, are areas designated as shallow flooding. These areas have special flood hazards associated with base flood depths of 1 to 3 feet where a clearly defined channel does not exist and where the path of flooding is unpredictable and where velocity flow may be evident. Such flooding is characterized by ponding or sheet flow; therefore, the following provisions apply:

(1) All new construction and substantial improvements of residential structures have the lowest floor (including basement) elevated above the highest adjacent grade at least as high as the depth number specified in feet on the community's FIRM (at least two feet if no depth number is specified).

(2) All new construction and substantial improvements of nonresidential structures; (i) have the lowest floor (including basement) elevated above the highest adjacent grade at least as high as the depth number specified in feet on the community's FIRM (at least two feet if no depth number is specified),

(ii) together with attendant utility and sanitary facilities be designed so that below the base flood level the structure is watertight with walls substantially impermeable to the passage of water and with structural components having the capability of resisting hydrostatic and hydrodynamic loads of effects of buoyancy.

(3) A registered professional engineer or architect shall submit a certification to the Floodplain Administrator that the standards of this Section, as proposed in Article 4, Section C (1)a., are satisfied.

(4) Require within Zones AH or AO adequate drainage paths around structures on slopes, to guide flood

waters around and away from proposed structures.

Section E. Floodways

Floodways - located within areas of special flood hazard established in Article 3, Section B, are areas designated as floodways. Since the floodway is an extremely hazardous area due to the velocity of flood waters which carry debris, potential projectiles and erosion potential, the following provisions shall apply;

(1) Encroachments are prohibited, including fill, new construction, substantial improvements and other development unless certification by a professional registered engineer or architect is provided demonstrating that encroachments shall not result in any increase in flood levels within the community during the occurrence of the base flood discharge.

(2) If Article 5, Section E (1) above is satisfied, all new construction and substantial improvements shall comply with all applicable flood hazard reduction provisions of Article 5.

(3) Prohibit the placement of any mobile home, except in an existing mobile home park or subdivision.

CERTIFICATION

It is hereby found and declared by the City of Clarendon that severe flooding has occurred in the past within its jurisdiction and will certainly occur within the future; that flooding is likely to result in substantial injury or death, and is likely to result in substantial injury or destruction of property within its jurisdiction; in order to effectively comply with minimum standards for coverage under the National Flood Insurance Program; and in order to effectively remedy the situation described herein, it is necessary that this ordinance become effective immediately.

Therefore, an emergency is hereby declared to exist, and this ordinance, being necessary for the immediate preservation of the public peace, health and safety, shall be in full force and effect from and after its passage and approval.

Approved: James L. Kuhn  
Passed: July 8, 1986

CERTIFICATE

I, the undersigned, Donna Edwards, do hereby certify that the above is a true and correct copy of an ordinance duly adopted by the City of Clarendon, at a regular meeting duly convened on July 8, 1986.

Donna Edwards  
City Secretary

This ordinance passed by the vote all yeas and no noes.

Donna Edwards was asked to contact Greenbelt Electric Co-op to see what would be involved in putting individual meters at the airport.

\*Billie Taylor had requested that the Board consider putting a street light on the pole in front of her house. Motion carried to put a street light there.

\*Bills for the months of June 1986 were ordered paid.

An ordinance was presented authorizing the execution of a supplemental contact with Greenbelt Water Authority.

H

CERTIFICATE FOR ORDINANCE THE STATE OF TEXAS COUNTY OF DONLEY CITY OF CLARENDON

We, the undersigned officers of said City, hereby certify as follows:

1. The City Council of said City convened in regular meeting on the 8 day of July 1986, at the City Hall, and the roll was called of the duly constituted officers and members of said City Council, to-wit: James Kuhn, Mayor, Donna Edwards, City Secretary, Lloyd McCord, James Sharrar, Gene White, Steve Smith, B.L. Graham, and all of said persons were present except the following absentee: Steve Smith, thus constituting a quorum. Whereupon, among other business, the following was transacted at said meeting: a written Ordinance authorizing execution of a supplemental contract was duly introduced for the consideration of said City Council and read in full. It was then duly moved and seconded that said Ordinance be adopted; and, after due discussion, said motion carrying with it the adoption of said Ordinance, prevailed and carried by the following vote: Ayes: All members of said City Council shown present above voted "aye."; Noes: None.

2. That a true, full and correct copy of the aforesaid Ordinance adopted at the meeting described in the above and foregoing paragraph is attached to and follows this Certificate; that said Ordinance has been duly recorded in said City Council's minutes of said meeting; that the above and foregoing paragraph is a true, full and correct excerpt from said City Council's minutes of said meeting pertaining to the adoption of said Ordinance; that the persons named in the above and foregoing paragraph are the duly chosen, qualified and acting officers and members of said City Council as indicated therein; that each of the officers and members of said City Council was duly and sufficiently notified of, focally and personally, in advance, of the time, place and purpose of the

aforesaid meeting, and that said ordinance would be introduced and considered for adoption at said meeting, and each of said officers and members consented, in advance, to the holding of said meeting for such purpose, and that said meeting was: open to the public and public notice of the time, place and purpose of said meeting was given, all as required by Vernon's Ann. Civ. St. Article 6252-17.

3. That the Mayor of the City has approved and hereby approves the aforesaid Ordinance; that the Mayor and the City Secretary of said City have duly signed said Ordinance; and that the Mayor and the City Secretary of said City hereby declare that their signing of this Certificate shall constitute the signing of the attached and following copy of said Ordinance for all purposes.

Signed and Sealed the 8 day of July 1986.

James L. Kuhn  
Mayor

Donna Edwards  
City Secretary

ORDINANCE #259

Authorizing the Execution of a Supplemental Contract The State of Texas County of Donley City of Clarendon

Whereas, said City has entered into a water purchase contract with the Greenbelt Municipal and Industrial Water Authority; and

Whereas, it is deemed advisable for the City to enter into a supplemental contract to the water purchase contract with the Authority; and

Whereas, it is hereby officially found and determined that a case of emergency or urgent public necessity exists which required the holding of the meeting at which this Ordinance is adopted, such emergency or urgent public necessity being that the proposed supplemental contract is required as soon as possible and without delay to insure said City's water supply; and that said meeting was open to the public, and that public notice of the time, place and purpose of said meeting was given, all as required by Vernon's Ann. Civ. St. Article 6252-17.

Be it ordained by the City Council of the City of Clarendon, Texas

1. That the City Council does hereby approve the supplemental contract attached hereto as "Exhibit A," and does hereby authorize the execution of this supplemental contract between said City and the Greenbelt Municipal and Industrial Water Authority in substantially the form as set forth in "Exhibit A."

2. That this Ordinance shall become effective upon its passage.

WATER PURCHASE CONTRACT SUPPLEMENTAL CONTRACT The State of Texas

Know All Men by These Presents County of Donley

Whereas, the Greenbelt Municipal and Industrial Water Authority, (hereinafter called "Authority") is a conservation and reclamation district created by Vernon's Annotated 8280-160, as amended, V.A.T.C.S., pursuant to Art. 16, Section 59 of the Texas Constitution and the City of Clarendon, a municipal corporation in Donley County, Texas, (hereinafter called "City"); and

Whereas, the Authority has previously issued its Greenbelt Municipal and Industrial Water Authority First Lien Revenue Bonds, Series 1975, dated July 10, 1975, in the aggregate principal amount of \$10,150,000 and Greenbelt Municipal and Industrial Water Authority First Lien Revenue Bonds, Series 1983, dated March 10, 1983, in the principal amount of \$220,000, (hereinafter called "Outstanding Bonds"); and

Whereas, the Authority and the City entered into a water purchase Contract, dated as of July 10, 1985, (hereinafter called "Contract"), together with the contracts with the other Contracting Parties, which secures the payment of the Outstanding Bonds and the definitions of such Contract are hereby adopted as being applicable to this Supplemental Contract; and

Whereas, the Authority will issue its Greenbelt Municipal and Industrial Water Authority First Lien Revenue Bonds Series 1986, dated July 10, 1986, in the aggregate principal amount of \$200,000 (hereinafter called "Series 1986 Bonds"), as Additional Bonds for improvements in accordance with Sections 19 and 20 of the Bond Resolution that authorized the Outstanding Bonds; and

Whereas, the Contract provides in Section 4 thereof, that a supplemental contract shall be entered into between the Authority and the contracting parties to pay for additional operation and maintenance expenses and to provide amounts required for special or reserve funds and for the payment of bonds that may be authorized by the Authority;

Now therefore, in consideration of the mutual covenants and agreements herein contained the Authority agrees to sell water to the City and City agrees to pay the Authority for water supplied upon the terms and conditions as follows:

Section 1. That it is hereby agreed that the Series 1986 Bonds are "Improvement Bonds" under the "Definition of Terms" in the

Contract, and the Series 1986 Bonds shall be considered as a part of the Definition of Bonds" as found in Section 1A of the Contract, which shall hereafter include the Outstanding Bonds and the Series 1986 bonds.

Section 2. That the agreements, covenants and provisions of the Contract shall be applicable to the Series 1986 Bonds to the same extent as if they had been originally a part of the Contract and that the City agrees to pay for additional operation and maintenance expenses and to provide amounts required for special or reserve funds and for the payment of the principal and interest of the series 1986 Bonds, all as provided under Section 3 of the Contract for the "Demand Charge and Consumption Charge".

Section 3. That it is hereby further found and agreed that this agreement is a supplemental contract pursuant to Section 4 of the Contract and that the provisions of the Contract are hereby readopted and reaffirmed by the Authority and the City.

In Witness Whereof, the parties hereto acting under authority of their respective governing bodies have caused this agreement to be duly which shall constitute an agreement, all as of July 10, 1986.

The ordinance passed by the vote all yeas and no noes.

Visit the Historic S. W. Lowe House 507 West Fifth Open Saturday and Sunday 2 p.m.-6 p.m. Adults: \$3.50 Children \$2.00

Denise's Cloth Shop Open Will be closed July 4th 9:00 a.m.- 5:30p.m. Closed Sun. & Tues. 418 S. Goodnight

STATEMENT OF CONDITIONS

PUBLICATION COPY CONSOLIDATED REPORT OF CONDITION (Including Domestic and Foreign Subsidiaries) (Dollar Amounts in Thousands)

Table with columns for Assets and Liabilities, including Cash and balances due from depository institutions, Loans and leases, Total assets, and Total liabilities. Includes sub-totals for Equity Capital and Surplus.

MEMORANDA: Amounts outstanding as of Report Date. Includes a note about the report being prepared in conformity with instructions and is true and correct.

SIGNATURE OF OFFICERS AUTHORIZED TO SIGN REPORT. Includes signatures of Chester A. Fagerlund, Vice President & Cashier, and Notary Public.



# Sizzling Summer Bargains

**Folgers Brick Bag Coffee** 1 lb. pkg. **\$3<sup>29</sup>**

**Ranch Style Beans** #300 cans **2/79<sup>c</sup>**

**Shurfine Sugar** 5 lb. bag **\$1<sup>49</sup>**

**Duncan Hines Soft Cookies** ass't pkg. **99<sup>c</sup>**

**O'Grady's Reg. \$1.39 Value Potato Chips** **99<sup>c</sup>**

**Cattlemans 18 oz. Bottle Barbecue Sauce** **99<sup>c</sup>**

**Kraft Assorted 8 Oz Bottle Salad Dressings** **79<sup>c</sup>**

**Vlasic Bread and Butter Pickles** 24 oz. jar **\$1<sup>19</sup>**

**Kraft Macaroni and Cheese Dinners** 7 1/4 oz. pkgs. **2/99<sup>c</sup>**

**Kraft Grape Jelly** 2 lb. jar **\$1<sup>29</sup>**

**Contadina 8 oz. cans Tomato Sauce** **5/89<sup>c</sup>**

**Shurfine Instant Tea** 3 oz. jar **\$1<sup>89</sup>**

**Texsun 46 oz. can Grapefruit Juice** **\$1<sup>19</sup>**

**Armours Vienna Sausage** 2 1/2 cans **2/89<sup>c</sup>**

**Breakfast Drink Tang** 26.4 oz. jar **\$2<sup>98</sup>**

**Lipton Tea Bags** 100 cnt. pkg. **\$2<sup>89</sup>**

**Starkist Chunk Style Tuna** Oil or Water Pack 6 1/2 oz. can **69<sup>c</sup>**

**Gladiola Flour** All Purpose 5 lb. bag **89<sup>c</sup>**

**Price Saver Napkins** 300 cnt pkg. **\$1<sup>29</sup>**

**Kal Kan 13 oz. cans Cat Food** **2/99<sup>c</sup>**

**Fabric Softener Downey** 1/2 gallon **\$2<sup>49</sup>**

**Cleanser Ajax** 14 oz. cans **3/\$1<sup>00</sup>**

**Delsey Bathroom Tissue** 4 roll pkg. **99<sup>c</sup>**

**Facial Tissues Family Pack 250 cnt pkg. Kleenex** **99<sup>c</sup>**

**Price Saver 100 cnt pkg. Paper Plates** **99<sup>c</sup>**

**NEW Pepsi Cola** 12 pk. 12 oz. cans **\$2<sup>98</sup>**

**NEW Surf** Laundry Detergent Giant Size **\$1<sup>49</sup>**

## Pick O' The Crop

**Washington Red Delicious Apples** **59<sup>c</sup> lb.**

**California Iceberg Lettuce** Large Firm Heads **59<sup>c</sup> each**

**Texas Cabbage** **19<sup>c</sup> lb.**

**California Carrots** 2 1/2 pkgs. **2/49<sup>c</sup>**

**California Vine Ripe Tomatoes** **59<sup>c</sup> lb.**

**Home Grown Yellow Squash** **29<sup>c</sup> lb.**

## SIZZLIN' FOOD VALUES

**Boneless Top Sirloin Steak** **\$2<sup>29</sup> lb.**

**Boneless Beef Briskets** 7-9# avg. **99<sup>c</sup> lb.**

**Pork Spare Ribs** 3-5# avg. **\$1<sup>59</sup> lb.**

**Wrights Sliced Slab Bacon** **\$1<sup>69</sup> lb.**

**Baby Beef Liver** **69<sup>c</sup> lb.**

**Fryer Legs or Thighs** **49<sup>c</sup> lb.**

**Planters Shelled Pecans** 6 oz. pkg. **\$1<sup>29</sup>**

**Shurfresh Pure Vegetable Oleo** 1# pkg. **2/79<sup>c</sup>**

# THE GROCERY STORE

Home Owned and Operated Jack & Shirley Clifford 874-2425 Clarendon, Texas

**Open Mon. - Sat. 7 A.M. - 7 P.M. Closed Sunday**  
 Specials good Wed. - Sat.