



40¢

Clarendon: Oldest THRU

Sub. Exp. 117e
Clarendon School Library
Box 0610
Clarendon TX 79226

dle!

The Clarendon News

Dedicated to Fair and Impartial Reporting

USPS 947040 ISSN 1048-8170

Thursday, November 21, 1991

Volume 2, Number 47

What's Coming?

Holiday Season To Begin

On November 25th, at 6 p.m., the various organizations will light the Christmas tree on the courthouse lawn, in conjunction with the newly formed Merchants Association turning on their lights on main street. Everyone is invited to come to the ceremony as carolers will go down main street after the lighting of the tree.

Participating merchants will remain open on Thursday night throughout the Holiday season.

Stavenshagen Video will be giving free coffee and candy, Bivens Pharmacy will be giving away free cokes and candy, and The Grocery Store will have free Sloppy Joes from 6 p.m. to 7:00 p.m., November 25th. Participating merchants will stay open late in celebration of the lighting of the town for Christmas. This event will be televised on TV, in celebration of the first lighting of the town, by the various organization and merchants. Everyone is invited to come out and join in this joyous occasion.

Alzheimer's Support Group Forms

The public is invited to attend the kick-off meeting of the Alzheimer's support group which is being held Friday, November 22, at 7:30 p.m. at the Bairfield Activity Center at Clarendon College. The support group will provide an opportunity to share with others who are going through similar experiences. Guest speaker will be Collene Carpenter of the Panhandle Chapter Alzheimer's Disease. For more information you may contact Peggy Cockerham at 874-3760 or 874-2886.

Broncos Begin Basketball Season

The Clarendon Broncos will begin their 1991-1992 Basketball season by traveling to Valley, November 19th, and to Memphis, November 22nd. On November 26th, the Broncos will play Claude in the local gym.

Supper Set

The Lelia Lake Community Center covered dish supper is set for Saturday, November 23, at 7:00 p.m.

Bring vegetable or salad and a dessert to go with turkey and dressing.

Holiday Event Set

Girl Scouts and their families are reminded to attend the Service Unit Holiday Event November 25 from 5 p.m. to 6 p.m. at the Rebekkah Lodge on Main Street. To be followed by participation in Community carolling at the Courthouse at 6 p.m.

Chili Supper Set

The Clarendon PTA will be having their annual Chili Supper on Tuesday, November 26 from 5:00 - 7:00 p.m. in the school cafeteria. The cost is \$3.00 for adults and \$2.00 for children.

This is the evening of the Claude VS Clarendon basketball game so come out and support our team and the PTA.

Bake Sale Scheduled

Senior parents will have a Bake Sale Wednesday November 27 at Thriftway.

Lions Club To Give Away Groceries on Thanksgiving Day

The Clarendon Lions Club will be drawing on Thanksgiving Day for \$150.00 worth of Groceries, with the proceeds from the drawing to be used for their annual Christmas Basket Program for the needy.

Tickets are available at B & R Thriftway, Henson's and from any member of The Clarendon Lions Club.

Girl Scout Calendars Available

Girl Scout Troop 45 still has calendars for sale, you may purchase them from any girl scout in this troop, Debbie Hollan or Denise Bertrand.

Cont'd on p. 2.



CLARENDON'S getting ready for Christmas! Harlan Flowers has decorated this tree in a patriotic theme for their open house this weekend. Clarendon merchants will turn on the lights on Monday evening, November 25, and the Amarillo TV stations are all expected to cover the event.

SMOKEOUT
November 21

Alzheimer's Support Group Forms

Clarendon College will be the site for monthly support group meetings on Alzheimer's disease.

These meetings are designed for people touched by the disease to come together in a non-judgmental, safe environment to vent frustrations, to share coping techniques, to learn more about Alzheimer's and discover what resources are available to them.

Alzheimer's is a progressive, degenerative neurological disorder that results in severe mental deterioration and eventual physical decline. There is no cure.

The disease has a gradual onset. Symptoms include difficulty with memory and loss of intellectual abilities severe enough to interfere with routine work or social activities. The Alzheimer's patient also may experience confusion, language problems, poor or decreased judgment, disorientation in place and time, and changes in behavior or personality.

Alzheimer's can strike people in their 40s or 50s but most

victims are older. Four million Americans have the disease and it is the most common form of irreversible dementia, a group of symptoms that characterize certain diseases and conditions.

Alzheimer's also affects the family of the patient. The emotional, social, and financial costs of caring for an Alzheimer's patient are high. Family members also often risk their own health to care for the patient at home.

Annual Smokeout Set

The Great American Smokeout, sponsored annually by the American Cancer Society, will be observed in Donley County and nationwide on Thursday, November 21. Every year, millions of people quit smoking for that one day and as a result, many "kick the habit" for good.

The national GASO committee has identified three target audiences for 1991 - youth, the underserved, and hardcore smokers. Cancer deaths related to, and as a result of, smoking number in the thousands each year in the United States.

This year's GASO chairman for the Donley County Unit is Carroll Duncan, Jr. High science and health teacher. Assisting him will be Kay Hayes, Darlene Spier and Murrell Whitaker.

Everyone in Donley County is urged to join the Great American Smokeout for 1991.

Art Exhibit Scheduled

Clarendon College will present two Art Exhibitions at the Chamber of Commerce November 18 through December 9.

An exhibition of adult students will be displayed November 18 through November 2. The communities represented in the exhibition are Clarendon, Memphis, Shamrock, and Pampa.

On December 2 through the 9th, an exhibition of public school students will be shown at the Chamber of Commerce. Clarendon College offered this semester, a \$1.00 tuition fee for these students to study Oil Painting. The communities represented by these students are Clarendon, Memphis and Pampa.

Many thanks goes to San Thompson for providing this space and schedule for the exhibition. Clarendon College is proud of the communities it serves.

The first meeting will be held at the Bairfield Activity Center at Clarendon College and guest speaker will be Collene Carpenter of the Panhandle Chapter of Alzheimer's Disease. The meeting will begin at 7:30 p.m. on November 22.

Peggy Cockerham RN, assistant director of nurses at Medical Center Nursing Home will be the group facilitator for these sessions. "The support group will provide an opportunity to share with others who are going through similar experiences. It is very important for caregivers and others touched by

Cont'd on p. 5.



THESE DUCKS have found a new winter home in some new ponds several miles north of Lake Greenbelt. The new habitat is the result between the landowner and several agencies, coordinated by the local Soil Conservation Service. The ponds are expected to increase the number of ducks reproducing in this area.



ART EXHIBITIONS TO OPEN, Clarendon College opened two art exhibits at the Chamber of Commerce on November 18. The exhibit will run through December 9.

Coming Events
Cont'd from page 1.

E.M.T. Classes Scheduled

The Associated Ambulance and Volunteer Fire Depart-

ment are sponsoring and E.M.T. class starting December 3rd thru February 27, 1992.

The approximate cost for book and tuition will be \$145.00. Classes are limited to 15 people.

Notify Phil Vargas at the firestation for more details.

Benefit Party To Be Held

The best party of the year will take place at the Community Center Saturday evening December 14. First will be the Museum Reception with refreshments at the Museum at 7:00 p.m. followed by the dance at 8:30 p.m. Each fifty dollar ticket admits two persons to both the reception and dance. Drawings for five thousand dollars will be made throughout the evening until the lucky ones call a halt. This is one party you don't want to miss. Its gonna be fun for all. Buy your tickets from a board member or at Hensons.

"Lights, Camera, Action ..."

The community organizations consisting of girl scouts, boy scouts, cub scouts, Methodist Youth Group, 4-H, Pentecostal Church, and the Young Homemakers Extension Club, will light the courthouse square at 6 p.m., November 25th.

Jim Sharrar, Mayor, and County Judge Billie Christal, will give welcoming speeches and turn on the lights at 6 p.m. At this time, the president of the Ministerial Alliance, Terry Tamplen, will open the Christmas season with a prayer. Dan Hall will lead the singing and caroling down main street.

In conjunction with the caroling, the Clarendon Merchants Association will light up main street for the holiday season. Participating merchants will remain open late Monday for the event.

F.H.A. Sponsors Workshop

Arts of the Panhandle is to be the subject of a childrens workshop sponsored by the F.H.A. Children ages 5 to 9 are invited to participate in cultural activities from 11:00 a.m. to 1 p.m. on December 7 and December 14, and each Saturday in January.

The enrollment fee will be \$24 per child. Children who would like to attend are asked to pre-enroll by contacting Maurine Butts at 874-3829 after 6:00 p.m. Only the first twenty children to enroll will be accepted.

Each Saturday, the children will learn about an aspect of Southwestern Art, make a craft, and have a snack. Themes vary from cowboys and Indians to rocks and musucems. If the weather holds the final day will consist of hayrides and games at the Bar-H Dude Ranch.

Look Who's New

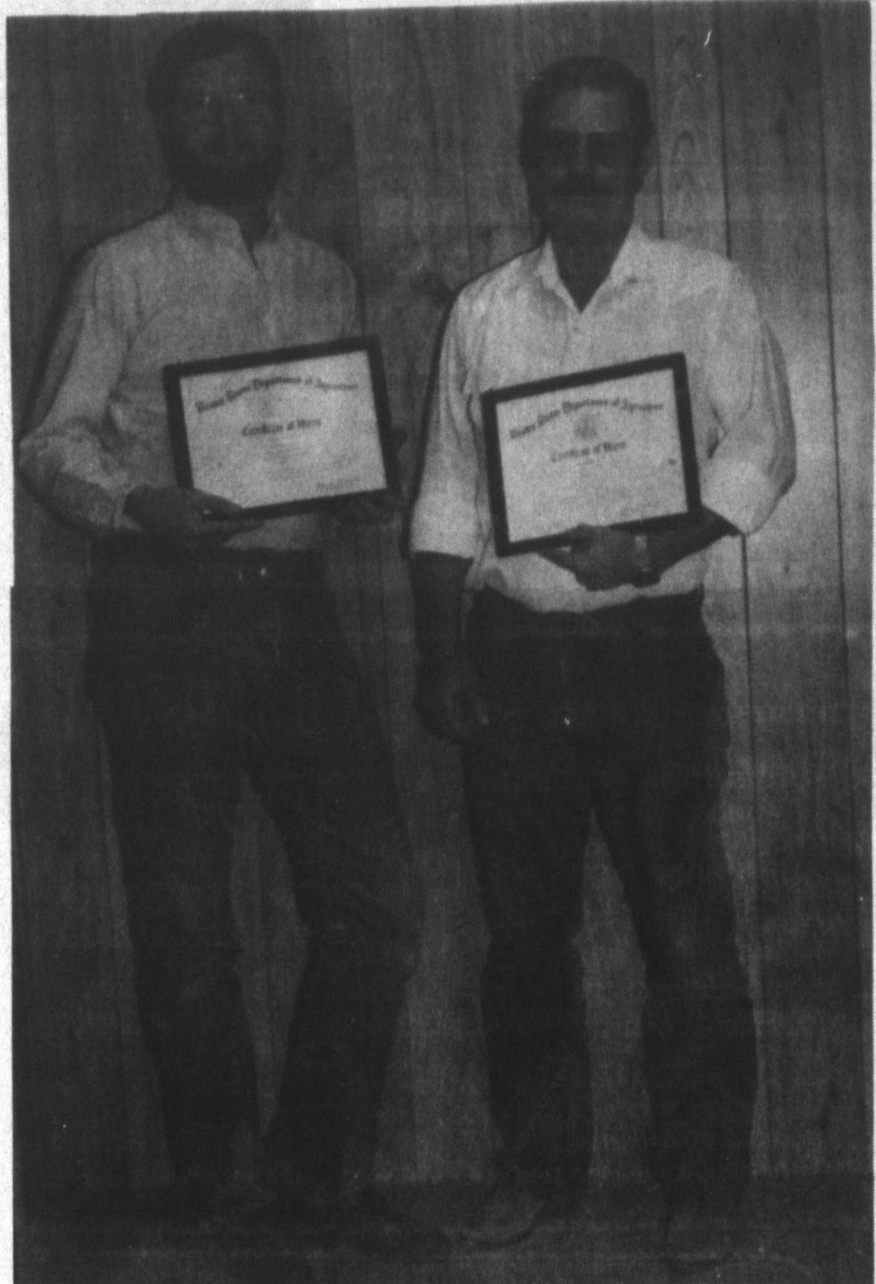
Steve and Trisha Pope happily announce the birth of their daughter, Megan Elizabeth Pope.

Megan was born on November 9th at 10:11 a.m. in the 96th Strategic Hospital, Dyess Air Force Base. She weighed 7 lbs. 7 oz. and was 20 1/4 inches long.

Megan and her parents reside in Abilene. Her grandparents are Fred and Connie Clifford of Clarendon and David and Maureen Pope of Columbus, Indiana.

Awards Dinner Held

Twenty-nine employees were honored Monday, November 18, for service to West Texas Utilities Co. and its customers during the company's annual service and safety awards dinner held at the K-Bob's Restaurant in



WELDON SEARS [l] AND JIM DONAHO [r], of the Soil Conservation Service in Donley County, display awards from the United States Department of Agriculture for outstanding performance on the job. Many area farmers and ranchers are already aware of the outstanding job the office does.

The Weather

Tommye Saye, Cooperative Weather Observer for National Weather Service, Clarendon. Day, Nov. Hi Lo Prec.

Mon.	11	46	38
Tue.	12	46	36
Wed.	13	61	36
Thur.	14	61	50
Fri.	15	65	43
Sat.	16	49	39 1.05
Sun.	17	50	35 .42

Total/Mo. 1.47
Total/Yr. 1.11
Yr to Date 24.01
1 Yr. Ago 25.89

Childress.

This is one of six dinners the electric utility will hold throughout its 52,000 square mile service area. Attending the event were employees and spouses from WTU's Northern Division.

Glen Churchill, president and chief executive officer of the electric utility, made the presentations to the honorees.

Those from Clarendon honored were: 15 years Leon Ward, service and safety; 10 years Lesa Schaefer, service.

The Coyote Den
Used Book Exchange
Arts & Crafts
New Books And Advanced Book Ordering
Now Available Watkin Products
Clarendon 402 E. 2nd (Hwy 287 E.) 874-2357

I want to be your agent for Life.
JEM & KAREN Simmons
Emmett O. Simmons Insurance Agency
(806) 874-3506 OR (800) 999-6145
310 S. Kearney Clarendon, Texas
Allstate
You're in good hands.

A dog may be man's best friend...
...but your clothes' best friend is your drycleaner. Regular drycleaning not only keeps clothes looking and fitting like new but can truly help increase the life and wear of your fine clothes.
Greenbelt Cleaners
874-5024
A member of the International Fabricare Institute, the association of professional drycleaners and laundriers.

Kenny's Barber Shop
(next to Owens Boots)
We appreciate your business
110 S. Kearney
Clarendon, TX. 79226

The Clarendon News
ISSN: 1048-8170
The Clarendon News (USPS 947040) is published weekly for \$15.50 per year in Donley County and \$18.50 per year out-of-county, by Bob Williams, dba The Clarendon Press, 103 S. Kearney, Clarendon, Texas 79226. Second-class postage paid at Clarendon, Texas 79226-1110.
POSTMASTER: send address changes to The Clarendon News, P.O. Box 1110, Clarendon, Texas 79226-1110.

Classified ads are \$4.25 for the first 15 words and 10 cents per word for each additional word. Boxes or special typography are extra. Standard display rates are \$3.00 per SAU column inch. Engagement, wedding, and anniversary pictures are \$5.00 each. Pictures submitted for publication should be picked up within 10 days of publication. Deadlines for news and articles are normally Monday at 5:00 p.m. Pictures must be taken by Friday at 5:00 p.m. The deadline may be altered for holidays. Any erroneous reflection upon the character of any person or firm appearing in these columns will be gladly and promptly corrected upon being brought to the paper's attention.

TA MEMBER 1991
TEXAS PRESS ASSOCIATION

The Nook
208 S. Kearney

Watch our window for our special-of-the-week, from now until Christmas!

Cambridge & Lapps
20 % Off
THIS WEEK ONLY!

ALLSUP'S
HWY 287 WEST CLARENDON, TEXAS 874-3906
PRICES EFFECTIVE NOVEMBER 17-23, 1991

SAUSAGE, EGG & BISCUIT EACH 89¢

DELICIOUS APPLES \$1.29
3 LB. BAG

COOKED FRESH 24 HRS. A DAY	HOT FOODS MENU	AVAILABLE AT ALL ALLSUP'S LOCATIONS
BARBECUE BEEF SANDWICH	99¢	9 PIECE BOX CHICKEN \$4.99
BARBECUE PORK RIBS (LB.)	\$3.99	BEF & CHEESE CHIMICHANGA \$1.19
BARBECUE WHOLE CHICKEN	\$3.99	(MEAD) CORN DOG 69¢
ALLSUP'S BURRITO	79¢	DELICIOUS HAMBURGER 59¢
BREAKFAST BURRITO	99¢	WILSON HOT LINKS 99¢
BURRITO BEEF & SALSA	\$1.19	SAUSAGE ON A STICK \$1.59
DELICIOUS CHEESEBURGER	79¢	SAUSAGE & BISCUIT 79¢
CHICKEN FRIED STEAK	\$1.59	SAUSAGE, EGG & BISCUIT \$1.09
3 COUNT CHICKEN STRIPS	\$1.49	SAUTEYA SAUSAGE \$1.09
W/POTATO WEDGES/CHICKEN (2 PCS) BISCUIT	\$1.99	4 COUNT STEAK FINGERS \$1.00

CALL-IN ORDERS WELCOME CHECK OUR WEEKLY SPECIALS

Texsun Pink Grapefruit Juice \$.74
48 oz. Can

Cranapple Cranberry Drink \$2.39
48 oz. Jar

PEPSI
ALL TYPES PEPSI-COLA
6 Pk. Can \$1.99

YOUNG HENS SHURFINE TURKEY 59¢
10 TO 14 LB.

FRITO-LAY CHEETOS 89¢
REG. 99¢

HORMEL LITTLE SIZZLERS 89¢
12 OZ. PKG.

DECKER CHOPPED HAM \$1.39
10 OZ. ZIPLOCK PKG.

Folgers 13 oz. Can Coffee \$1.99

Mello-Crisp Sliced Bacon \$.99
1 LB.

Campbells Tomato Soup 2/\$.45
10 3/4 oz. Can

Page Bathroom Tissue \$.59
4 Roll

ALLSUP'S BEEF & CHEDDAR, PEPPERONI, HAM & CHEESE

HOT POCKETS 99¢
4 OZ. PKG.

DPS Report

One of the most heavily travelled periods we encounter is during the Thanksgiving holidays. This increased traffic has area and statewide law enforcement officials pondering what can be done to raise traffic safety awareness during this critical driving period.

Major V.J. Cawthon, Regional Commander for the Texas Department of Public Safety stated, "We know that the potential for injury and loss of life is greater during holiday periods, especially a high volume holiday like Thanksgiving. We are asking people to drive defensively."

Many motorists have heard the term "defensive driving", how-

ever, it seems few know what it involves. "Most of the art of defensive driving comes from common sense and your own instinct. Training and knowledge of the proper procedures make these senses more effective," Cawthon explained.

Defensive driving can and should become a way of life for all drivers regardless of age or experience according to safety experts. Don't assume the other drivers will make the right move. Be prepared for anything. Defensive drivers are in tune with their minds and bodies as well as the road. They are ready for any situation that the road may hand them.

But, some drivers are out of tune. They give in to distractions; daydreams, fatigue, anger, stress, frustration or perhaps alcohol. They are not prepared to react when a dangerous situation arises.

Defensive drivers also make fewer mistakes. Drivers on the average make one error for every two miles they travel. While not every mistake leads to an accident, about 85% of all collisions are the result of driver error. "The most common mistake is speeding. Most people don't match an appropriate speed with driving conditions", Major Cawthon added.

Once, again, all available Troopers will be on the highways this holiday as they have the past to try to make the roads as safe as possible for all of us. This holiday give safety a second thought.

Hayes Awarded Appraiser Accreditation

Jim Hayes, owner of James F. Hayes & Co., Clarendon and Muleshoe, Texas has been named an Accredited Rural Appraiser (ARA) by the American Society of Farm Managers and Rural Appraisers (ASFMR) at its annual meeting in Phoenix, Arizona held November 8 - 10, 1991.

Hayes earned his ARA designation by meeting stringent education and experience requirements, and passing rigorous oral and written examinations. He joins a select 20 percent of ASFMR members who have received accreditation status.

"We are pleased with Hayes' commitment to professional excellence, and his dedication to providing superior rural appraisal services," stated Dale E. Aupperle, AFM, ARA, the society's national president from Illinois.

Accredited Rural Appraisers specialize in the complex process of estimating the value of rural real estate. Aupperle said the 'ARA' accreditation signals a level of professional excellence similar to the accounting professions' 'CPA' designation.

ASFMR is a 62 year-old professional society dedicated to maintaining sound principles and ethical standards and providing education programs for farm management and rural appraisal professionals. Its headquarters are located in Denver.

Hayes is also authorized to use the title "State Certified General Real Estate Appraiser" after having provided satisfactory evidence of the qualifications required by the Texas Appraiser Licensing and Certification Act (CH 663, Acts of the 72nd Legislature, regular session, 1991) and of Chapters 151, 153, and 155 of the rules of the Texas Appraiser Licensing and Certification Board.

Delegation Received

State Rep. Warren Chisum of Pampa, Stan McClendon of Wellington and Pat Kaiser of Amarillo met with officials of several state agencies in Austin recently to acquaint them with the proposed Thunder Junction Western heritage park to be built near Greenbelt Lake.

"The people in Austin were quite impressed with the potential for this project," Chisum said. "From a tourism standpoint, we have something to offer that other areas don't—our Texas history and Western heritage."

After visiting with the Texas Department of Commerce and their tourism people, he added, "Thunder Junction looks like a doable deal. It's a great opportunity for Clarendon and our entire area for economic development, and the area needs to get involved in helping bring it about."

Chisum set up most of the appointments, which also included the Department of Agriculture and Texas Historical Commission. McClendon, general manager for Greenbelt Electric Cooperative and vice-president of the Thunder Junction Board of Directors, made a number of other arrangements for the October 23-25 trip.

Kaiser, Yesterday's Children president and Thunder Junction board member, said the Panhandle delegation told agency officials about plans for Thunder Junction and how it could provide a supplemental funding source for senior citizens programs in the Panhandle and also benefit the area's economy. In turn, they became better informed about funding possibilities and processes.

College Presents Play

The Clarendon College Theater Department will be presenting its fall theater production, November 23, 24, 25 at the Clarendon College Harned Sisters Theater. The production will be a Japanese Childrens play, entitled "Shining Princess of The Slender Bamboo." Production will be under the direction of Miss Leslie Schnauffer, theater director.

The production dates are as follows: Saturday at 2:00 p.m.; Sunday at 2:00 p.m.; and Monday at 7:00 p.m. All tickets will be \$2.00, pre-school free.

The fall production is a dramatization of one of Japan's best-known and most loved fairy tales.

The story is about moonbeam, who is hidden as a tiny babe in the Bamboo Forest and is discovered by a childless woodcutter.

The plot involves the comedy and adventure of Moonbeam's growing up and the suitors vying for her attention. And the startling revelation of her true identity and fate.

The production is a combination of magic and humor that is appealing to elementary age children. Several area children will be dancing and performing in the production.

The cast includes: from Clarendon - Jessica Rogers, Creed Stephens, Melissa Campbell, Robert Babcock, and Carrie Simpson. Other cast members are: Magan Whittington from Quitaque; Jill McLain, Hart; Missy Detwiler, Childress; Kara Tate, McLean; Del Marshall, Memphis; Mandy Sanders, Follett; Kent Kyle, Wichita Falls; Shawn Jeter, Artesia, New Mexico; Jimmy Cummings, Guy Barnes, both of Paducah; Todd Baker, Crockett; Billy Lefevre, Roaring Springs; Chris Leach, Early; Doc Watson, San Antonio; Jo Bonney Lecompte, Tucumcari; Ed Tice, White Deer; and Mykala Hall of Shamrock as Moonbeam. Special effects and set: Trey Cumming. Choreography for dance numbers was done by Mykala Hall of Shamrock.

Hunt Program Held

Mr. Gary Hunt, Game Warden for Texas Parks and Wildlife Department, presented a gun safety program to interested

third grade students on November 12, 1991, in the Community Room of the First Bank & Trust of Clarendon. Eleven students and seven parents were in attendance.

Mr. Hunt discussed the ten rules of firearm safety with the students. He advised every student to treat every firearm or bow with the same respect you would show a loaded gun or arrow. Mr. Hunt demonstrated several ways for the students to hold their firearms and encourage them to always point the muzzle in a safe direction.

Both students and parents enjoyed the presentation. Students were presented new ideas concerning firearm safety while the parents' knowledge of gun safety was refreshed.

Those attending the meeting were: Travis Davis, David Hall, Dale Askew, Elizabeth Simmons, Madison McNabb, Jared Hartman, Aaron Kidd, Lindsey Shelton, Jamie Sawyer, Jamie Cox, Nathan Floyd, Karen Simmons, Jamie Simmons, JEM Simmons, Jack Hall, Danny Askew, Jim Shelton, Bronnie McNabb and Johnny Floyd.



He's still smarty,
even at forty!
Sometimes he gets stuck
in a bright yellow truck.
But in our book,
he's a pretty good cook!

IT'S CHRISTMAS AT SAYE'S!
Where quality is a tradition.

★

This year give her what she really wants - a pair of Rockys

Main Street Clarendon, TX Downtown 874-3844

Pharmacy & Your Health

MIKE'S PHARMACY

HWY 287
874-3554

Congestive Heart Failure Treatment

According to recent statistics published in the *American Heart Journal*, more than 2 million Americans have congestive heart failure. Almost a million Americans are hospitalized each year as a result of this condition. Congestive heart failure occurs when the heart can no longer pump the proper amount of blood needed by the body. With heart failure comes a build up of fluid in the lungs, legs, and in other parts of the body.

There are several causes of heart failure including high blood pressure, previous heart attacks, blockage of the vessels of the heart that supply oxygen to the blood, infection or damage to heart valves, and birth-related defects of the heart. Risk factors related to these causes include smoking, obesity, and a high blood cholesterol level.

The treatment and/or prevention of heart failure should be directed to the causes when causes are known. For example, if there is blockage of the heart vessels, surgical correction of the blockage will lessen problems associated with heart failure. Lifestyle modification, such as weight loss and smoking cessation is recommended for everyone with a history of heart disease. Specific therapies for heart failure include diuretics to help reduce water retention, digitalis-type medicines to strengthen the heart beat, and vasodilator medicines to open blood vessels and allow blood to flow more freely.

MIKE WANTS TO BE YOUR PHARMACIST

Bairfield Estate Donates To Home

Friends and relatives of the Bairfield family were formally recognized on Friday, November 8 during the regular meeting of the Methodist Home Board of Directors.

Cont'd on p. 8

Millions of Turkeys Will Be Killed This Thanksgiving

How Many Motorists?

A message from this newspaper and the Troopers of the Texas Department of Public Safety

We Have What You Need!

De-Icer
Snow Shovels
House Numbers 8
Weatherizing Supplies
Don't get Caught In the Draft...
INSULATE

J&W Lumber Company
301 E. 2nd St

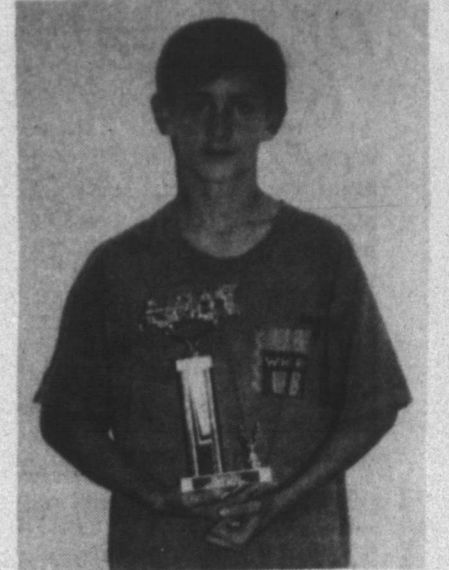
Doing Business With People You Trust...

It is always good to do business with people you know and trust... people who are interested in you, and willing to give you personal attention.

We think that is pretty much the story of our bank. A story of local people who own and operate our bank, right here at home with the interest of our community at heart.

Our people live right here in Clarendon and our bank serves the specific needs of our community.

FIRST BANK & TRUST OF CLARENDON
FDIC



Fire Poster Winners

1991 FIRE PREVENTION POSTER WINNERS Division 1: 1st-Brittney Bennett; 2nd-Lacey Anderburg; 3rd Larry Wilson. Division 2: 1st-Aaron Mays; 2nd-Dec Thompson; 3rd-Matthew Hamilton. Division 3: 1st-Christa Moore; 2nd-Scott Bivens; 3rd-Brandon Allen.

Coupon Close-Outs

Left Overs From The Sale That Need To Go Or Things That Always Sell But Didn't

HOLIDAY SAVINGS

Prestone Anti-Freeze
ADVANCED FORMULA.
GALLON JUG.
SALE PRICE \$4.99
LESS MAIL-IN REBATE -1.50
FINAL COST AFTER REBATE
379

NO COUPON NECESSARY FOR THIS ITEM.
DETAILS IN STORE.

HOLIDAY SAVINGS

Thermos Travel Mug
12 OUNCE. 4.99 VALUE.
299

NO COUPON NECESSARY FOR THIS ITEM.

COUPON

Reynolds Aluminum Foil
25 SQ. FT. ROLL.
2/\$1

NO COUPON NECESSARY FOR THIS ITEM.
COUPON GOOD WHILE QUANTITIES LAST.

COUPON

Lorus Sport Watches
QUARTZ. ASST. STYLES.
39.95 VALUES.
2499

NO COUPON NECESSARY FOR THIS ITEM.
COUPON GOOD WHILE QUANTITIES LAST.

COUPON

Brach's Holiday Candies
ASSORTED TYPES.
8 OZ. TO 16 OZ. BAGS.
89¢

NO COUPON NECESSARY FOR THIS ITEM.
COUPON GOOD WHILE QUANTITIES LAST.

COUPON

Ajax Cleanser
14 OZ.
37¢

NO COUPON NECESSARY FOR THIS ITEM.
COUPON GOOD WHILE QUANTITIES LAST.

HOLIDAY SAVINGS

Tek Angler Toothbrushes
ASSORTED TYPES.
1.19 VALUE.
3/\$1

NO COUPON NECESSARY FOR THIS ITEM.

COUPON

Thermos Super Quart
36 OZ. 11.99 VALUE.
699

NO COUPON NECESSARY FOR THIS ITEM.
COUPON GOOD WHILE QUANTITIES LAST.

Free Cokes and Candy At Bivens Pharmacy November 25th After Lights Are Turned On

HOLIDAY SAVINGS

Chinet Plates
10-3/8" DINNER PLATES (REG. OR WITH COMPARTMENTS)-12 CT. OR 8-3/4" LUNCH PLATES-20 CT.
109

NO COUPON NECESSARY FOR THIS ITEM.

COUPON

Vlasic Pickles
32 OUNCE JAR.
KOSHER OR POLISH.
139

NO COUPON NECESSARY FOR THIS ITEM.
COUPON GOOD WHILE QUANTITIES LAST.

HOLIDAY SAVINGS

M & M's Candy Bars
6 PACK
3.00 VALUE.
189

NO COUPON NECESSARY FOR THIS ITEM.

COUPON

Bakers Secret Baking Pans Muffin Tins
BY ECKO. ASSORTED TYPES & SIZES. \$3.00
4.99 VALUE.
249

NO COUPON NECESSARY FOR THIS ITEM.
COUPON GOOD WHILE QUANTITIES LAST.

COUPON

Arm & Hammer Baking Soda
16 OZ. 89¢ VALUE.
37¢

NO COUPON NECESSARY FOR THIS ITEM.
COUPON GOOD WHILE QUANTITIES LAST.

COUPON

Clairol Set-To-Go Rollers
90 SECOND QUICK HEAT.
1699

NO COUPON NECESSARY FOR THIS ITEM.
COUPON GOOD WHILE QUANTITIES LAST.

HOLIDAY SAVINGS

Clear Plastic Cold Cups Tumblers
16 OZ. TUMBLERS-18 CT.
1.49 VALUE.
79¢

NO COUPON NECESSARY FOR THIS ITEM.

HOLIDAY SAVINGS

Maxwell House Master Blend Coffee
34-1/2 OZ. CAN. ASSORTED TYPES.
SALE PRICE \$3.99
LESS MAIL-IN REBATE -1.00
FINAL COST AFTER REBATE
269

NO COUPON NECESSARY FOR THIS ITEM.
DETAILS IN STORE.

HOLIDAY SAVINGS

Christmas Gift Wrap
30 SQ. FT. ROLL.
1.79 VALUE.
77¢

NO COUPON NECESSARY FOR THIS ITEM.

COUPON

Christmas Gift Wrap
6 SHEET PACKAGE. 25 SQ. FT.
1.99 VALUE.
2/\$1

NO COUPON NECESSARY FOR THIS ITEM.

COUPON

Thermos Coffee Carafe
35 OZ. WHITE OR FOREST GREEN.
879

NO COUPON NECESSARY FOR THIS ITEM.
COUPON GOOD WHILE QUANTITIES LAST.

COUPON

WEST BEND Party Perk
12 TO 22 CUPS. 34.00 VALUE.
1897

NO COUPON NECESSARY FOR THIS ITEM.
COUPON GOOD WHILE QUANTITIES LAST.

COUPON

Fruit-of-the-Loom Girls Tights
3 PAIR PACK ASSORTED SIZES.
249

NO COUPON NECESSARY FOR THIS ITEM.
COUPON GOOD WHILE QUANTITIES LAST.

HOLIDAY SAVINGS

Keebler Cookies
10 OZ. ASSORTED TYPES.
139

NO COUPON NECESSARY FOR THIS ITEM.

COUPON

Pyrex Measuring Cup Pie Plate
CUP-16 OZ. PLATE-9 INCH. BY CORNING.
239 Each

NO COUPON NECESSARY FOR THIS ITEM.
COUPON GOOD WHILE QUANTITIES LAST.

COUPON

Ladies Plush Scuff Slippers
ASST. COLORS & SIZES. 4.99 VALUE.
249

NO COUPON NECESSARY FOR THIS ITEM.
COUPON GOOD WHILE QUANTITIES LAST.

BIVENS PHARMACY

HEALTH MART PHARMACY

200 SOUTH KEARNEY
CLARENDON, TEXAS 79226
874-3740

We Accept:
PCS

HEALTH MART HEALTH SMART

Are you aware of the possible side effects of your prescription? Talk to your Health Mart Pharmacist before you get your next prescription filled.

Open Weekdays 8 a.m. to 6 p.m.
Saturdays 9 a.m. to 5 p.m.
Pharmacy Open Sat 9 to 2 p.m.

Senior Citizen News

The highlight of last week was the excellent turn-out for the annual election held here at the center to select four new board members to serve a two year term effective January 1, 1992. Those who were chosen are: Doug Burgess, Elmo Fortenberry, Helen Catoe. Due to a tie vote cast for candidates, Darrell Harper and Elvis White, a run off will be held on Monday November 18th and 19th, for the fourth member. I will announce the results next week. I want to commend everyone for their participation in this important event as it displays your interest and concern for our center. To the directors whose terms expire December 31, 1991, Thelma Rudder, Sue Shields and Tennie Smith, I express my appreciation and gratitude for their dedication in serving on the board and it has been a delight to work with them. I encourage you all to Thank them also.

A special thanks goes to the four volunteers who helped with the director's elections were: Verdine Tipton, Carmen Wright, Ellie Wilkinson and Celia Sisson. They served two days registering voter and embarks upon the task of tallying the ballots.

The Senior Citizens Tuesday night dance enjoyed a big crowd and great weather to go along with as they danced to the music of Paul & the Country Boys from Pampa. Why not come to the center on Monday evenings for dance practice from 7 til 9 p.m. and stay ready for the next dance on Tuesday night, December 10th at the Community Building with music by the Pampa Band.

On Monday, November 11 I made a trip to Amarillo Food Bank for another load of groceries and was delighted to have volunteer, Celia Sisson, along with me to help mark the invoices as food was loaded.

Wednesday, November 13th I attended the Area Agency on Aging's Advisory Council meeting in Amarillo. The agenda was a full one with Mike McQueen, Exe. Director of AAA, giving a briefing on the proposed reorganization of the State's Health & Human Services agencies, specifically Texas Department on aging. The TDoA has been mandated by Texas Legislature to prepare a six year strategic plan on what should be done, to meet the needs of the elderly now and in the future. We were instructed on how to look at goals, strategies and tactics for the input necessary to assist TDoA to make their recommendation to the Legislature. This is quite a responsibility for anyone working with the elderly programs as it will have great affect upon the future of the Senior Program. The deadline for all this information is November 30th.

Please note: In order to dispel any misunderstandings Yes, we still do "Home Delivery Meals" for anyone who meets the eligibility requirements to receive a home-delivered meals as set forth in the Title 3 Nutrition Standards and procedures. If you have any questions about the eligibility requirements, please feel free to contact me the Center.



Senior Citizens Menu

Nov. 21 - Nov. 27
Thursday: Turkey & Dressing W/Giblet Gravy, Candied Yams, Green Beans, Fruit Salad, Pumpkin Brownies, Bread, Coffee, Tea, Milk

Friday: Chicken Fried Steak W/Gravy, Hash Browns, Blackeyed Peas, Apricots, Pastries, Dinner Roll, Coffee, Tea, Milk

Monday: Sloppy Joe on Bun, Steak Fries, Pickles and Onions, Mixed Fruit, Frozen Pie, Coffee, Tea, Milk

Tuesday: Baked Catfish Fillets, Macaroni and Cheese, Turnip Greens, Jello Cubes, Banana Pudding, Corn Nuggets, Coffee, Tea, Milk

Wednesday: Chicken Tacos w/Cheese, Spanish Rice, Garden Salad, Pears, Tortilla Chips, Coffee, Tea, Milk

Calendar of Events
Thursday: Exercise 11 a.m., Lunch 11:30 a.m., Games 12:30-3 p.m., Hearing Aid Clinic 10-12 noon, Thanksgiving Dinner;
Friday: Exercise 11 a.m., Lunch 11:30 a.m., Games 12:30-3 p.m.; **Monday:** Exercise 11 a.m., Lunch 11:30 a.m., Games 12:30-3 p.m.; **Dance Practice** 7-9 p.m.; **Tuesday:** Exercise 11 a.m., Lunch 11:30 a.m., Games 12:30-3 p.m., Birthday/Anniversary Supper 6:00 p.m.; **Wednesday:** Exercise 11 a.m., Lunch 11:30 a.m., Games 12:30-3 p.m., Arts & Crafts 1 p.m.

Lefors and Mary Leek of Hedley; five grandchildren; and four great grandchildren.

William Jennings Bryan Waggoner

Funeral services for William Jennings Bryan Waggoner, age 84, were held at 11:00 a.m. on Monday, November 18, 1991 in the First Baptist Church in Claude with Rev. Jim Brown, Pastor, officiating. Interment was in Claude Cemetery with arrangements under the direction of Robertson Funeral Directors.

Mr. Waggoner died at 8:15 a.m. on Friday, November 15, 1991 in Palo Duro Convalescent Center in Claude following a lengthy illness. He was born April 1, 1907 in Indian Territory - Texola, Oklahoma. He had been a resident of Armstrong County since 1914 and was married to Lorene Whelchel on April 28, 1928 in Potter County. She preceded him in death on November 13, 1974. He served in the US Army during World War II and was a barber for the front-line soldiers. After the service, he and his wife owned and operated the Wagg-Inn Restaurant for 13 years. He and his brother leased the Claude News from their father, Thomas T. Waggoner in 1946 and purchased the paper after his death in 1948. He served as editor until his retirement in 1981. He was ordained in the 1940's as a deacon in the First Baptist Church where he was a member. He was also a member of the Claude Lions Club, Harold Gist Post of the American Legion, and the Claude Alumni Association.

Survivors include one daughter, Lynda Robinson of Claude; one sister, Mrs. Leo Oles of Claude; one brother, Thomas Waggoner of Vernon; two granddaughters, Renea Robinson of Claude, a student at Clarendon College, Tammy Hefner of Clarendon; and a great granddaughter, Katie Hefner of Clarendon.

Casket bearers were Sam Stewart, Gerald Wood, Jimmie McFarland, Henry Fields, Tom Christian, Albert Formway, Fred Robinson, and Eugene Robinson. Honorary bearers were Nile

Patterson, Jake Driskill, Glenn Butler, Johnny Brown, and Frank Dunn.

Cleo Austin Noles

Funeral services for Cleo Austin Noles, age 77, were held at 2:00 p.m. on Thursday, November 14, 1991 in the First Baptist Church in Rotan with Rev. Joe Vernon, Pastor and Bright Newhouse, Church of Christ Minister and Son-In-Law of Mr. Noles, officiating. Interment was in Belvieu Cemetery in Rotan with arrangements under the direction of Weathersbee Funeral Home in Rotan. Local arrangements were by Robertson Funeral Directors.

Mr. Noles died at 12:30 p.m. on Tuesday, November 12, 1991 in Medical Center Nursing Home in Clarendon following a lengthy illness. He was born October 12, 1914 in Rotan, Fisher County, Texas and had lived in Aransas Pass for several years and in Rotan for 8 months before moving to Clarendon in 1984. He married Bessie Lou Eaton on January 24, 1935 in Fisher County. She preceded him in death on June 23, 1979. He had been a farmer most of his life and was a member of the First Baptist Church in Rotan.

Survivors include one daughter, Cloc'Ann Newhouse of Clarendon; one son, Ralph Noles of Tulsa, Oklahoma; four sisters, Vada Edwards of Corpus Christi, Gladys Riggs of Lubbock, Velma Upshaw of Colorado City, Valley Frondilig of Rockport; two brothers, George Noles of Marble Falls, Elex Noles of Rotan; four grandchildren; and eight great grandchildren.

Casket bearers were Bubba Newhouse, Mike Newhouse, Chris Boehm, Wayland Clark, Billy Noles, and Garland Upshaw.

The family requests that memorials be to Medical Center Nursing Home; P.O. Drawer 1007; Clarendon, Texas 79226-1007.

4-H News

By Cheryl Pickard, CEA

Monday, November 25, 1991, at 6:00 p.m., there will be a Community Lighting Ceremony on the courthouse lawn. Several groups from around town are decorating the courthouse and lawn area with lights and bows. All the lights will be turned on at the same time on Monday evening. The group will sing Christmas carols on the lawn, and then carol downtown to see the downtown merchants Christmas lights. Everyone is invited to attend.

CIGARETTES AND OTHER CANCERS
 Although it is now common knowledge that smoking may cause lung cancer, the American Cancer Society reveals that smoking may also be a risk factor in bladder cancer. Warning signs for this form of cancer include blood in the urine and increased frequency of urination.

The Hair Connection

Family Hair Care

Phone 806-874-3887

JUNE HINOJOSA
 Manager - Operator

204 S. Koogle
 Clarendon, Texas 79226

Prairie Cottage Candy Co.

106 S. Sully, Clarendon, TX 79226 Ph. 874-2772

Now taking orders for
Christmas Baskets
 filled with peanut patties, peanut brittle, pralines, fudge and crispy treat. Let us ship it for you!

Obituaries

Gerald Ambrose Bland

Gerald Ambrose Bland, 69, of Hedley, died Saturday, November 16, 1991.

Services were held at 2 p.m. Tuesday in the First United Methodist Church with the Rev. Bryan Knowles, retired pastor from Clarendon, officiating. Burial was in Rowe Cemetery by Spicer Funeral Home of Memphis.

Mr. Bland was a lifetime resident of Hedley. He married Frankie Marie Spruil in 1946 at Hedley. He was a member of First United Methodist Church. He was a U.S. Army veteran during World War II. He was a retired employee of the city of Hedley.

Survivors include his wife; a son, Frankie Joe Moore of Amarillo; a brother, Travis Bland of Hedley; two sisters, Beatrice Hill of

Save **20% to 50%***
 Sportshirts
 Sweaters
 Ties
 Jackets

BRENT & CO.
 Wolflin Village
 *Off original prices. Selected merchandise only.
 352-3600 Amarillo

Frontier Bar-B-Q
 Smoked Turkeys & Hams
 Prepared by Frontier Bar-B-Q
 are a great way to enjoy your
 Thanksgiving Dinner. Place an
 order with us from now until
 Nov. 25th and let us do the cook-
 ing for a Happy and delicious
 Thanksgiving Dinner.

Steve & Pam Lewis
 874-3700

Tonight, Homer
 accidentally creates
 the hottest drink
 sensation in
 America.

THE SIMPSONS

Special Guests:
AEROSMITH

7:00PM

TM & © 1991 Twentieth Century Fox Film Corporation
 All Rights Reserved.

She wants him.
 She needs him.
 And she'll stop
 at nothing to
 get him back.

FOX

14

90210

8:00PM

CABLE CH.
 13 CLARENDON

WANTED

INITIAL SUBSCRIBERS
 &
 LOCAL INVESTORS

CAPROCK

MOBILE PHONE

Clarendon Communication System is on the
 air. Get a piece of the action! New technology
 GE equipment local telephone service. Also,
 two way radio service. Private. Long range.
 Service available throughout several states.
 Need local investors and subscribers.

1-800-336-3607

REWARD

1991-1992 Bronco Basketball Schedule

Nov. 19	Valley	There	4:00	JVGB, VGB
Nov. 22	Memphis	There	6:30	VGB
Nov. 21, 22 & 23	Clarendon JV Tournament			JVGB
Nov. 26	Claude	Here	4:00	JVGB, VGB
Dec. 3	Claude	There	4:00	JVGB, VGB
Dec. 5, 6 & 7	Miami Tournament			VGB
Dec. 10	Motley County	There	4:00	JVGB, VGB
Dec. 12, 13 & 14	River Road JV Tournament			JVGB
Dec. 12, 13 & 14	Highland Park V Tournament			VGB
Dec. 17	Valley	Here	4:00	JVGB, VGB
Jan. 3	Motley County	Here	4:00	JVGB, VGB
Jan. 7	Sanford-Fritch	Here	4:00	JVGB, VGB
Jan. 10	Memphis	Here	4:00	JVGB, VGB
District				
Jan. 14	Panhandle	There	5:00	JVGB, VGB
Jan. 17	Canadian	Here	4:00	JVGB, VGB
Jan. 21	Highland Park	There	5:00	JVGB, VGB
Jan. 24	White Deer	Here	4:00	JVGB, VGB
Jan. 28	Wellington	There	4:00	JVGB, VGB
Jan. 31	Panhandle	Here	4:00	JVGB, VGB
Feb. 4	Canadian	There	5:00	JVGB, VGB
Feb. 7	Highland Park	Here	4:00	JVGB, VGB
Feb. 11	White Deer	There	5:00	JVGB, VGB
Feb. 14	Wellington	Here	4:00	JVGB, VGB

Ground-Water Resources Studied

The Texas Water Development Board has initiated a detailed study of the ground-water resources of the North Central Plains of Texas which focuses on the North Texas Alluviums and Paleozoic Formations.

The study area includes all or parts of the following counties: Archer, Armstrong, Baylor, Briscoe, Callahan, Childress, Clay, Collingsworth, Cottle, Crosby, Dickens, Donley, Eastland, Erath, Fisher, Floyd, Foard, Garza, Hall, Hardeman, Haskell, Jack, Jones, Kent, King, Knox, Montague, Motley, Nolan, Palo Pinto, Parker, Randall, Scurry, Shackelford, Stephens, Stonewall, Swisher, Taylor, Throckmorton, Wheeler, Wichita, Wilbarger, Wise, and Young.

The study is in response to the 1985 passage of H.B.2 by the Sixty-ninth Texas Legislature which called for the identification of critical ground-water areas in the State. A critical ground-water area is one that is either currently experiencing critical ground-water problems or that is expected to experience critical problems within the next 20 years.

Major topics to be addressed in the study include the occurrence and availability of ground water, identification of present and potential water resource problems, and estimation of future demands that will be placed on those resources. Of special interest will be the determination of the occurrence of water quality deterioration, its extent, and the natural or man-induced cause of the change.

At the conclusion of the study, a report containing the Board's findings will be submitted to the Texas Water Commission. The report will be used by the Commission in its consideration of the creation of an underground water conservation district for the area. Such districts provide locally-controlled management of the ground-water resources of the area.

Information about this study or other ground-water related

topics is available by writing the Texas Water Development Board,

P.O. Box 13221, Austin, Texas 78711-3231.

U.S. Cattle Producers Take Bull By The Horns

Much like a municipality choosing to better its community through self-taxation, U.S. cattle producers have opted to invest a portion of their proceeds in long-term industry development programs. Instituted in 1986, the beef checkoff program has paid off handsomely in foreign markets.

Managed by the U.S. Meat Export Federation (USMEF) on behalf of the Cattlemen's Beef Promotion and Research Board, checkoff dollars stimulate demand by funding numerous U.S. beef and veal promotions throughout the world.



U.S. cattle producers are taking the bull by the horns by investing beef checkoff dollars in foreign market development programs.

Promotional programs depend on the market and thus vary greatly from one country to the next. Examples include holding cooking classes in Japan to increase home consumption of beef, educating Korean retailers on the superior quality of U.S. beef and addressing food safety issues in Europe.

"Ten cents worth of every dollar transacted in the sale of cattle in this country is exported. High-quality beef exports alone account for nearly five percent of our beef and veal production and this percentage is growing," said Philip Seng, CEO-USMEF. "We must export if the industry is to continue to grow."

The prospect of a free trade accord with Mexico, the elimination of U.S. beef quotas in Japan and an agreement with South Korean officials to open their borders to beef imports by 1997, are recent developments that create new opportunities for U.S. producers.

The U.S. industry's willingness to use checkoff dollars to invest in foreign promotional programs is leveraged by the United States Department of Agriculture (USDA) funding of additional overseas promotions. While USDA funds increased from less than \$2 million in 1986 to an annual average of more than \$10 million in 1987-91, checkoff dollars for foreign market development have increased from \$1.1 million in 1988 to \$4.7 million in 1991.

Since 1986, U.S. beef and veal exports have risen a striking 109 percent, from \$907 million in 1986 to nearly \$1.9 billion in 1990.

"Increasingly freer trade policies and growing personal incomes dramatically increase the potential for growth of U.S. beef exports, but these factors also present opportunities to our competitors. Thus, aggressive, well-targeted marketing and promotional programs are vital if we are to capitalize on these expanded opportunities," said Seng.

Japan is the largest foreign consumer of U.S. beef, purchasing 54 percent of all U.S. beef and veal exports by volume. Other major markets include Mexico, Canada, South Korea, The Caribbean and Taiwan.



Co-Existing With Wal-Mart
by Don Taylor

"My sales are down 20 percent since Wal-Mart opened," complained an auto parts storeowner recently. "I may be able to stay open another year," lamented a dress shop owner after Wal-Mart located a new store on the next block. "I spent nearly 15 minutes showing a customer how to pick a good electric drill," a hardware storeowner related. "I explained about ratings and demonstrated all of the features. I found out later that the customer purchased a drill at Wal-Mart because it was two bucks cheaper. He wasted 15 minutes of my time and drove clear across town to save two bucks."

Plain-Pocket Jeans

Factory Seconds

\$10⁰⁰

First Quality

Regularly \$21⁹⁵

On Sale Now \$15⁹⁵

(Monograms extra)



BK Jeans Originals
1878

P.O. Box 714, Clarendon, Texas 79226

Texas Cotton, Texas Woven and Made in Clarendon

874-3697

Also available at Greene Dry Goods and other fine stores.

School Menu

Nov. 25 - Nov. 29

Monday: Meat Bean Burritos, Buttered Corn, Tossed Salad, Jello w/Whip Cream, Milk

Tuesday: Taco w/Meat & Cheese, Hot Sauce, Ranch Style Beans, Tossed Salad, Apple Juice, Milk

Wednesday: Chip O Pie W/Cheese, Buttered Corn, Tossed Salad, Cookies, Milk

Thursday: Thanksgiving Holidays

Friday: Thanksgiving Holidays



Door Prizes, Refreshments,

Select group Christmas Ornaments

1/2 Off

Harlan's Flowers'

Christmas Open House

Friday, November 22, 9:00 a.m. to 7:00 p.m. and Saturday
November 23, 9:00 a.m. to 5:00 p.m. Highway 287 East



Junior High Basketball Schedule

November 18	Claude	Here	4:00
November 25	Panhandle	There	4:00
December 2	Canadian	Here	4:00
December 9	Highland Park	There	4:00
Dec. 12, 13, 14	Childress Tournament 7 & 8 Girls & Boys		
December 16	White Deer	Here	4:00
Jan. 2, 3, 4	Claude Tournament 7 & 8 Girls & Boys		
January 6	Wellington	There	4:00
January 13	Panhandle	Here	4:00
January 20	Canadian	There	4:00
January 27	Highland Park	Here	4:00
February 3	White Deer	There	4:00
February 10	Wellington	Here	4:00



OASIS SALOON
PRESENTS

7 Days A Week
Monday - Thursday 3 p.m. - 2 a.m.
Fri. - Sat. - Sun. 2 p.m. - 2 a.m.

7.7 MI North of 287 on Hwy 70
10 MI South of I-40 on Hwy 70
Up Coming Events

CD Dance Friday Night
\$3 per person or \$5 per couple

"Texas Rebel Band"

Saturday Nov. 9th
\$5.00 per person \$7.00 per couple

Sunday's
"LADIES" Double Elimination Pool Tournament following the ladies we will have an open "PARTNER" tournament, mixed, men or women.

Oct. 13th, 20th, 27th, Nov. 3rd, 10th, 17th, Dec. 1st, 8th.

An 8 week build up to a special Tournament but you must enter and win one of the above tournaments in order to qualify for the biggie!

\$ 5.00 entry fee - Starts at 7:30
Awards and Prizes and lots of fun!

Don't miss Weekend and Monday night football at the O
Special Football weekend Prices & hours
OPEN Sat & Sun. at Noon

College Night every Tuesday Ladies Night every Thursday
8:00 to 12:00 3:00 to 9:00
Dance to the CD's - Draw Special's Draw Special's
\$ 2.00 per person at the door - Ladies get in free

All Special's range from 2 bits - 4 bits - 6 bits - a dollar at the top of every hour at a time YOU PICK-EM
Slip On Down
Phone 874-3162

Savings and Comfort for all Seasons:

A heat pump is one complete system that keeps you toasty warm in the winter, and cool and comfy in the heat of the summer.

Plus you'll save money because a heat pump delivers about twice the energy it uses.

So when you're building, buying or just replacing your present system, consider the all-in-one system — the electric heat pump.

The Electric Heat Pump

WEST TEXAS UTILITIES COMPANY

An Equal Opportunity Employer



A Member of The Central and South West System

For more information on the electric heat pump, contact your heating and cooling contractor or West Texas Utilities.

Clarendon College Women's Basketball Schedule

DATE	OPPONENT	TIME
OCT. 4	SCRIMMAGE-SOUTHWESTERN	T 12:30 PM
19	SCRIMMAGE-MIDWESTERN	T 10:30 AM
24	SCRIMMAGE-ARNETT OK	T 4:00 PM
NOV 4-5	WESTERN OK CLASSIC	T TBA
7-9	BARTON CO CLASSIC	T TBA
11	SOUTH NAZ JV	H 5:30 PM
14-15	SEWARD CO CLASSIC	T TBA
18	ST MARY'S PLAINS JV	H 7:00 PM
DEC 2	OTERO	H 6:00 PM
5	SOUTH PLAINS	H 6:00 PM
7	HOWARD	H 6:00 PM
JAN 9	ST MARY'S OF THE PLAINS	T 6:00 PM
13	ODESSA	H 6:00 PM
16	NMJC	T 6:00 MST
20	FRANK PHILLIPS	T 6:00 PM
24	SOUTHERN NAZERENE	T 6:00 PM
27	WESTERN TEXAS	H 6:00 PM
30	SOUTH PLAINS	T 6:00 PM
FEB 3	HOWARD	T 6:00 PM
10	OTERO	T 6:00 PM
13	ODESSA	T 6:00 PM
17	NMJC	H 6:00 MST
20	FRANK PHILLIPS	H 6:00 PM
27	WESTERN TEXAS	T 6:00 PM

HEAD COACH: JOEL ZEHR
ATHLETIC DIRECTOR: JOE MONDRAGON
PRESIDENT: JERRY STOCKTON
COLORS: GREEN AND WHITE
MASCOT: LADY BULLDOGS

Clarendon College Men's Basketball Schedule

DATE	PLACE	TIME
NOV 4-5	WESTERN OK CLASSIC	TBA
11	SOUTHERN NAZERENE	7:30
18	OTERO COLLEGE	7:30
22-23	BULLDOG CLASSIC	8:00
29-30	PARIS CLASSIC	TBA
DEC 2	OTERO COLLEGE	8:00
5 *	SOUTH PLAINS COLLEGE	8:00
7 *	HOWARD COLLEGE	8:00
JAN 9 *	NMI	7:30
11 *	MIDLAND COLLEGE	8:00
13 *	ODESSA COLLEGE	8:00
16 *	NMJC	8:00
20 *	FRANK PHILLIPS COLLEGE	8:00
24	SOUTHERN NAZERENE	7:30
27 *	WESTERN TEXAS COLLEGE	8:00
30 *	SOUTH PLAINS COLLEGE	8:00
FEB 3 *	HOWARD COLLEGE	8:00
6 *	NMI	8:00
10 *	MIDLAND COLLEGE	7:30
13 *	ODESSA COLLEGE	8:00
17 *	NMJC	8:00
20 *	FRANK PHILLIPS COLLEGE	8:00
27 *	WESTERN TEXAS COLLEGE	8:00

HEAD COACH: JOE MONDRAGON
MANAGER: RODERICK EVANS
PRESIDENT: Dr. JERRY STOCKTON
SPORTS INFORMATION DIRECTOR: DARLENE SPIER
COLORS: GREEN, WHITE, BLACK
MASCOT: BULLDOGS



Hedley Senior Citizens

Nov. 21 - Nov. 27
Thursday: Beef Stew w/Potatoes, Peas, Carrots, Onions, Tomatoes, & Celery, Sliced Peaches, Peanutbutter Cookies, Corn Muffin, Milk, Tea, Coffee
Friday: Steak & Gravy, Mashed Potatoes, Green Beans, Carrot/Raisin Salad, Baked Apple, Roll, Milk, Tea, Coffee
Monday: Bar-B-Q Pork Pats, Baked Beans, Harvard Beets, Potato Salad, Pineapple Whip, Roll, Milk, Tea, Coffee
Tuesday: Steak & Gravy, Mashed Potatoes, Spinach, Jelled Veg. Salad, Peaches & Bananas, Roll, Milk, Tea, Coffee
Wednesday: Chili & Beans, Onion Rings, Toss Salad, Plum Cobbler, Corn Muffins, Milk, Tea, Coffee
Calendar of Events
Thursday: Bloodpressure 1 p.m., Games 1-3 p.m., Birthday Supper 7 p.m.; Friday: Exercise 10 a.m., Games 1-3 p.m., Games 7 p.m.; Saturday: Musical 7 p.m.; Monday: Exercise 10 a.m., Games 1-3 p.m., Musical 1-3 p.m.; Tuesday: Games 1-3 p.m., Games 7 p.m.; Wednesday: Exercise 10 a.m., Games 1-3 p.m.

Should you just go ahead and close your small retail store now? Is there a way to keep some market share?

In the next two columns, we'll tell you how to compete. First, we will share the findings of Dr. Kenneth Stone, The first researcher to study the influence of Wal-Mart on small communities. Next, we will pass along tips from Dr. Stone, our own "experience" and merchants who are competing successfully.

Hedley Cafe
Now Open
7 am to 8 pm Monday thru Thursday
7 am to 9 pm Friday . 7 am to 2 pm Saturday

Special Catfish Buffet Friday Nights
Senior Citizen Discounts **\$6.95**

Fundraiser Scheduled

A fundraising campaign by Yesterday's Children to further the progress of Thunder Junction, the proposed Western heritage park that will benefit senior citizens of the Panhandle, kicks off this month with the sale of a silver commemorative coin.

The Donley County Senior Citizens will handle sales of the specially minted, one-ounce coins here and will receive 10% of the funds it collects.

Other proceeds will go to support the operations of Yesterday's Children and to develop architectural, engineering and design plans for Thunder Junction. Plans are underway to build the park at Greenbelt Lake north of Clarendon.

The 999% fine silver coins, featuring the award-winning logos of Yesterday's Children on one side and Thunder Junction on the other, will sell for \$35.00 each or \$33 each for three or more.

"It's an outstanding design—should be a winner!" said Edward C. Rochette of Colorado Springs, former chief executive officer of the American Numismatic Association and author of a nationally syndicated column "Coin Roundup," who will serve as contractor for the coin.

Area residents interested in ordering the coins may call the Senior Citizens office at 874-2665 starting today. Prepaid orders for 300 more coins are needed before Thanksgiving to get them minted in time for Christmas giving.

Purchasers or owners of the first 5,000 commemorative medallions sold will be entitled to one day's free admission to Thunder Junction every year after the park is built, said Pat Kaiser, resource developer for Yesterday's Children and Thunder Junction board member.

"This is one way the people of Donley County can help build Thunder Junction," she added. "As an entertainment park based on the exciting history of the Old West, it should be a wonderful tourist attraction and boost the Panhandle economy."

Why are farmers and ranchers across the nation hurrying to join our health insurance program?



It works

The AIA UNIVERSAL PLAN FOR HEALTH is the first health plan in the United States that builds CASH VALUE* (Subject to a surrender charge). This plan is made available through The Texas Wheat Producers Association.

An AIA agent representing the TWPA will be in Donley County calling on farmers and ranchers from December 1 through December 30. To take advantage of special rates during the TWPA enrollment period, speak to an agent and ask to view our brief video presentation.

For more information, call: **1-800-635-1519**

AIA INSURANCE

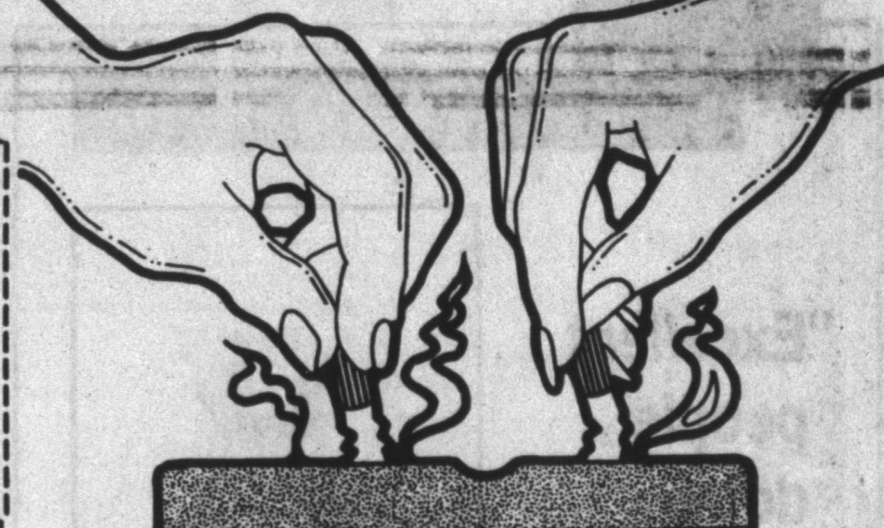
Inured by: The Universal Life Insurance Co. For information about other farm and ranch plans, contact: Don Graybill, Old Library Gallery, 439 4th Ave., Hays, MT 59601

GREAT AMERICAN Smoke Out
November 21, 1991

Attention non-smokers: Form a partnership and make it through the Smokeout together. Don't kid yourself. It won't be easy getting through a day without cigarettes, not even for the non-smoker, but the Smokeout works when you make it work together.

I agree to suffer through a day without cigarettes and, if sorely tempted, to report to my partner before I light up.
SIGNED _____

I agree to provide the above-signed with treats and encouragement and to be understanding if he/she becomes short-tempered.
SIGNED _____



I have heard hundreds of similar complaints and stories during the past few years. There is a good reason. The national discount stores are capturing an ever-increasing share of the general merchandise market, and Sam Walton's company leads the way.

Wal-Mart, the nation's No. 1 retailer, now boasts more than 1,600 stores in 35 states. The chain's annual sales skyrocketed from \$1.2 billion in 1980 to more than \$25 billion in fiscal year 1990. No wonder local merchants look at the chain with some apprehension.

A recent *Wall Street Journal* article referred to Wal-Mart as the "merchant of death." Hundreds of former downtown business owners credit their demise to the "Walton Gang," claiming wholesale robbery in a retail market.

Dozens of chamber of commerce executives constantly wrestle with a two-headed dilemma. Do they try to attract a Wal-Mart to their town, or do they simply sit by and watch local residents flock to the nearest town with one? **The Truth About Wal-Mart**

The truth is, Wal-Mart is neither a "merchant of death" nor a "cutthroat gang." The company is a very tough competitor. It delivers what customers want, when they want it. No one does it better.

Sam Walton represents capitalism at its finest hour. His chain has consistently outperformed all other retailers.

Wal-Mart manages costs better than anyone else in the retail arena. For example, *Discount Store News* recently estimated that Wal-Mart's distribution costs amount to only 1.3 percent of sales. Compare that to 3.5 percent for K-Mart and 5.0 percent for Sears. Lower distribution costs translates to lower prices and higher profits.

A recent *Advertising Age* article pointed out that Wal-Mart spends only 0.5 percent of every sales dollar on advertising. The No. 2 (K-Mart) and No. 3 (Sears) retailers spend 2.5 percent and 3.8 percent, respectively. Wal-Mart is generating nearly \$200 in sales for each dollar they invest in advertising.

Wal-Mart stores excel in good retail marketing. They have positioned themselves as stores with "everyday low prices" on brand name merchandise. The other top retailers have weekly sales and percentage-off promo-

tions.

Last month I examined the advertising circulars produced for the traditional "Fourth of July Sale." While the competitors pushed 25 to 50 percent off sales, Wal-Mart stressed "everyday" low prices. Wal-Mart's circular was a four-color beauty with "Old Glory" as the backdrop. In contrasting letters across the bottom was the message: "We're proud to say everything in this ad is Made in the USA." That is first class marketing.

How to Compete
Is Wal-Mart unstoppable?

DQ BASKET VALUES!
ON SALE AT DAIRY QUEEN NOV. 11 - 24, 1991

COUNTRY BASKET* \$1.99
Four beef steak fingers, country gravy, fries, Texas toast

CHICKEN FILLET BASKET \$2.99
Four chicken fillet strips, country gravy, fries, Texas toast

DQ IS VALUE COUNTRY
At participating Dairy Queen stores.
© Reg. U.S. Pat. & Tm. Off. Am. D.Q. Corp. *TM Reg. U.S. Pat. & Tm. Tx. D.Q. Co. Coun. © Tx. D.Q. Co. Coun.

TIPS ON STAYING SAFE AND SOUND WITH NATURAL GAS.

For more than 80 years, Lone Star Gas has been providing safe, dependable energy to its customers. By following a few simple rules, you can help make sure you and your family stay safe and sound with natural gas:

- Always have qualified service people install, regularly check and maintain all gas heaters and appliances, following the manufacturer's instructions for installation, ventilation, and operation.
- Always use a gas appliance only for its intended purpose. An oven, for example, should not be used to heat a room.
- Always keep flammable materials and substances away from gas heaters and appliances. Remember, a pilot light is constantly burning.
- If you smell gas in your home, or know you have a gas leak, follow these rules:
 - Everyone should leave the house immediately, leaving the doors open for ventilation.
 - Do not switch anything electrical on or off.
 - Do not use your telephone (telephones use small amounts of electricity).

- Do not strike a match or do anything else that might cause a spark.
- Go to the nearest telephone and call Lone Star Gas Company. Wait until we have found the cause of the gas leak before returning to your home.

- Since gas lines run underground, you should take precautions against disrupting these lines, particularly if you plan to:
 - Put in a new fence.
 - Install an underground sprinkler system.
 - Perform any major landscape renovation.
 - Before you dig, call your local Lone Star Gas Office, and we'll help you avoid any potential problems.
 - If you smell gas while you're outside, contact Lone Star Gas immediately.
- At Lone Star Gas Company the safety of our customers is important. Please follow these simple guidelines and enjoy the benefits of natural gas.

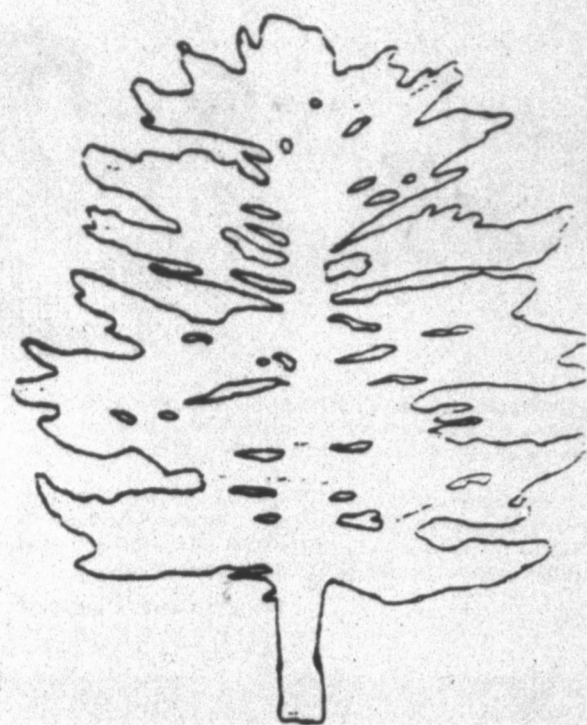


LONE STAR GAS

TREES

Established for Windbreaks

Please Order Now



DONLEY COUNTY SOIL CONSERVATION SERVICE
Phone 874-3576
CLARENDON, TEXAS 79226

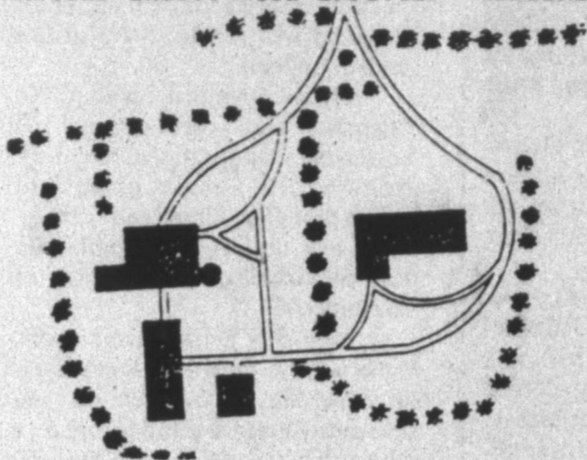
Windbreak Design

Windbreaks are most effective when placed at right angles to prevailing winds. It should be planted 100 feet from the nearest structure. The most effective windbreak should contain at least 3 rows of trees, 2 of which should contain evergreens. Evergreens are the backbone of any planting because they retain their foliage year around. Hardwood trees generally are faster growing than evergreens and provide a windbreak effect at an earlier age. If a windbreak contains only 1 row, then only evergreens should be used. Since evergreens have a similar growth form and growth rate, they should be spaced at least 15' apart within a row.

Hardwoods may be spaced at 20' intervals in a row. Mixing hardwood species within a row is not recommended because crown sizes vary.

If you have any questions concerning how to design your windbreak, please call the Donley County Soil Conservation office.

TYPICAL FARMSTEAD LAYOUT WITH EFFICIENT WINDBREAK PLACEMENT



BAIRFIELD-from p. 3

This year, gifts to the Homes include the estates of the late Charles E. and Thelma Bairfield of Clarendon, Texas; R. Dewey Hayes of DeKalb, Texas; and C.C. Reinhardt of Dallas, Texas. Their generous gifts are but a few of the remembrances received by the Home every year.

Plaques will soon be placed in the Memorial Heritage Garden on the Methodist Home's Waco, Texas campus in recognition of three Estate gifts received.

The Methodist Home Board of Directors is comprised of 49 clergy members and lay people who serve as the Home's governing body. Board members represent the seven annual conferences of the United Methodist Church, which

owns and operates the Home. Some 380 children and teens in Texas and New Mexico are served by the Home daily through basic residential care, foster care, the Boys Ranch, the Family Services and Counseling Center and various college and vocational scholarships.

Agriculture News

By Tim Trimble

Tough Year For Donley County Farmers

This year has been another tough year for many Donley County farmers. Insect problems, disease problems, weather and market prices will likely decrease Donley County farm income by thousands of dollars this year.

Weather again has played a

major roll in yield reduction and related problems in both cotton which delayed planting of much of the cotton in Donley County.

Though this year will not be like the disaster that 1989 was, many farmers will be struggling to make ends meet. There will be some that will come out of this year in good shape, but all in all, farm income will be down.

1991 Crop And Livestock Reports

The Texas Agricultural Statistics Service will begin contacting farmers and ranchers across the state in late November for final 1991 acreage, yield and production totals and end-of-year livestock and poultry inventories.

"The surveys will be very important this year because they will show the final outturn of our 1991 crops and, coupled with the livestock inventories, will serve as the basis for production and marketing decisions as we enter 1992," state statistician Dennis Findley and peanut. Delayed planting of cotton plus the cool weather in September and the extremely cold weather in early November will likely cause ten to 40 percent yield reduction in many fields not to mention quality reduction. Recent rains will also affect quality of cotton fiber. If this weren't enough, cotton prices have declined slightly from a year ago and cotton seed prices are down 50% from last year. Generally, cotton seed price will offset ginning cost, but this year cotton farmers will be paying more out of the lint yield to cover ginning cost.

There will be a bright spot for some farmers that got planted on time because we did get some very timely rains during the growing season. In some areas of the county dryland cotton could yield one bale or better.

Peanuts have also been affected by the weather, but mostly by the recent weather changes. With approximately sixty percent of the peanuts harvested, the extreme cold blast in November sent more than chills down the backs of many peanut producer. Temperatures in the low teens caused freeze damage to some of the peanuts, plus the continued cold, wet conditions have caused problems with harvesting and drying of peanuts. This continues to reduce peanut quality and is causing many peanuts to be graded seg 2's, which significantly reduces prices per ton for the farmer. Prior to the cold weather, peanut quality and yield was above average and looked very promising. Most peanut contract prices were down this year and farmers won't likely see any premiums at harvest.

Cotton insect problems also were more severe this year than in the past several. Trips, fleahoppers and bollworms made their presence known this year with bollworms causing the most damage. Bollworm infestations were higher than they have been in the past several years. Many farmers sprayed their fields to control bollworms at a cost of approximately \$10.00 per acre. The fields that had the most problems were those that were late planted, again an indirect cause of weather

reported. Weather conditions certainly affected Texas agriculture this year. Dry weather in the High Plains delayed spring planting in some areas, but timely showers in the Blackland and Central Texas have produced bumper hay crops for some producers.

"This end-of-year survey will help us summarize the effects of the wide range of weather conditions on 1991 crops," Findley added.

"Sound production and marketing decisions require good, reliable information and some advanced planning, and our reports provide Texas producers with solid facts and figures they can incorporate into their plans," Findley reported.

Individual reports from the sample survey will be combined to set state, district and county estimates. In a random sample survey, one producer represents several other operations of the same type and size.

"It is very important for producers to participate in this survey when contacted, since our estimates are only as good as the numbers producers provide," Findley added.



Estlack Shows Chickens

Russell Estlack has had a busy fall show season. His birds have been entered in four major shows since starting at the Tri State Fair in Amarillo. The next week saw him in Lubbock for the South Plains Fair. Russ showed Black Breasted Red Old English 1st Cock 2nd & 3rd pullet, 1st and 3rd Hen. The 1st Hen was picked Reserve of Variety. His Sebrights were Silver 2nd Cockerel, 1st Cock, and 1st Hen. The 1st Hen was Best of Variety and Champion Sebright. The Gold pullet placed 2nd. The two Black Bearded Silkies were 1st and 2nd - Best and Reserve of Variety. The White Bearded Silkies were 1st Cock, 1st Pullet, 1st Cockerel, 1st and 3rd Hen. The first place Hen was Best of Variety and Best of Breed. The Cochins were placed White pullet 1st - Black Cock 1st and Hens 1st, 2nd and 3rd. - The 1st and 2nd Hens were Best and Reserve Variety, Best and Reserve of Breed. The 1st Hen went on to be Reserve Champion Feather Leg Bird of the Show.

The next show was Abilene and a big conflict. This show was the same day as the band marching contest in Borger. Russell washed, fitted and crated up the birds and sent mother and dad off to Abilene, while he stayed to play with the band.

Ask Helen what she thinks of cleaning up birds for three hours just before a show. This was her first experience, and she did a good job.

This Show was the Texas State Meet for Sebright and Old English Bantams. Maybe you would be interested in a few of the terms used in describing the awards. The Best of Variety is the best bird of that particular color. The Reserve Variety is the 2nd best. Some Shows place Best of Variety and Best Opposite. If a hen or pullet is Best Bird, the opposite would then be a Male Bird. In the Old English there are 46 varieties listed in the Bantam Standard. The next highest award is Best of Breed and Reserve of Breed. In the case

of Old English, the best of each of the varieties shown are judged to select the Best of Breed. These birds then compete for class champion and reserve - then on to Champion and Reserve of the show. In the Black Breasted Red Old English, Russell's 2 Cock birds didn't place, his 2 Hens were 2nd and 4th and his pullet was first place. They only placed the top 5 birds in each class, and some classes had as many as 35 birds. His Golden Sebrights placed 5th Cock and 5th Cockerel. The Silver Sebright Hen laid a egg just as the judge walked up, and she was in no mood to show for anyone. His Silver Cockerel placed 1st. The Black Bearded Silkie Hens were 1st & 2nd and Best and Reserve of Variety. The White Bearded Silkies were 1st pullet, 2nd cockerel, and 4th Hen. The Black Cochins were 1st Cock, 1st & 2nd Hen. The 1st Hen was Reserve of Variety while the Cock bird was Best of Variety, Best of Breed and Reserve Champion Feather Leg Bird of the Show.

The fourth show this fall was the Comanche Classic put on by the six major poultry clubs in West Texas. Russell's Black Cochins were 1st Cock, 1st & 2nd Hen. The 1st Hen was Reserve of Variety while the Cock again was Best of Variety, Best of Breed and Reserve Feather Leg Bantam of the Show. His Golden Sebrights were 1st Cock and 2nd Cockerel. The Silver Sebrights were 1st Cock, 2nd, & 3rd Cockerel, and 1st Hen. The Cock was Reserve of Variety and the Hen was Best of Variety, Best of Breed and Reserve Rose Comb Clean Leg Bantam of the Show. The Black Bearded Silkie Hens were 1st & 2nd, Best and Reserve of Variety. The White Bearded Silkies were 1st Cockerel, 1st Pullet, 1st Cock, 1st & 3rd Hen, the 1st Hen was Best of Variety and Best of Breed. The Black Breasted Red Old English were 1st Pullet, 1st and 3rd Hen, 3rd Cockerel and 1st Cock. The Cock Bird was Best of Variety, Best of Breed and selected Reserve Grand Champion of the Show.

The 9th of November was time for Amarillo Bantam Club Winter Show. The Silver Sebright Hen was 1st and Best of Variety. The Golden Sebright were 1st and Reserve of Variety, & Reserve Bred Cockerel and 1st, Best of Variety, Best of Breed and Champion Rose Comb Clean Leg Bantam of the Show. The Black Bearded Silkie Hens were 1st & 2nd, Best and Reserve of Variety. The White Bearded Silkie was 1st Cock, 1st Cockerel, 1st Pullet, 1st & 3rd Hen. The 1st Hen was Best of Variety and Best of Breed. The Black Breasted Red Old English were 2nd Cock, 1st hen, 3rd Cockerel and 1st Pullet. The 1st Pullet was Best of Variety, Best of Breed and Reserve Champion Old English of the Show. The Black Cochins were 1st Cock, 1st & 2nd Hen, Best and Reserve Variety on Hens, Best and Reserve Breed, Champion Feather Leg Bantam of the Show. The Black Cochins Hen was also selected Grand Champion of the Show.



Thank You

We acknowledge with grateful appreciation the kind expression of your sympathy, whether it was done in open or secret for my dad or our family this past week or over the time he was in the Medical Center, we thank you. To the staff and employees of the medical Center, I especially say "Thanks". Your untiring effort to help him in all the ways that was necessary was a comfort to him and his family. You are such a blessing to this community.

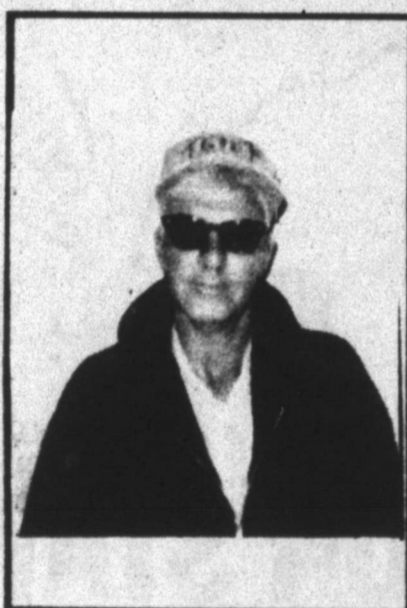
Family of Cleo Noles
Bright & Cloe Ann Newhouse
Mike & Rhonda & family
Bubba & Nancy & family
Kim Maxey & family

Thank You

Our families join us in expressing our thanks to those who offered their love and sympathy during the loss of our mother, Mrs. Oma Minyard. A very special appreciation to the staff at the Medical Center Nursing Home. We thank you for the loving care you gave to mom during her stay at the Medical Center, and especially during her illness. How fortunate we are to have such caring and dedicated personnel there. May God bless each of you!
Opal & Floyd Ramsey
Joe & Lea Minyard
Ernie & Ruth Minyard

CLEAR

"Excellent people, doing excellent work!"



Delmar Wiggs
Cable Splicer

At GTE, our residential repair service is so good, we're willing to guarantee it.

From now on, if we don't have your phone line fixed by the time we promise, we'll give you credit for one full month's local service charges.* Even if we're only one minute late.

In order to make a guarantee this good GTE has invested millions not only in state of the art telecommunications, but also in our people. And we think both are the best in the business. So if for some reason, our repair service doesn't measure up, please tell us.

Any of our GTE employees would be more than happy to honor this guarantee.

It only takes about a minute.



THE POWER IS ON

ECHO CHAIN SAWS

POWER TO PERFORM INTO THE 21ST CENTURY

When you want a chain saw that lasts, turn to ECHO first. Our rugged chain saws feature unparalleled engineering and uncompromising quality.

Back that up with the industry's strongest limited warranty and you've got a chain saw that you can count on all the way into the 21st century. It's no wonder that ECHO is the choice of professionals nationwide.



Model CS-280

WAS \$199.99
NOW \$169.99



White's Feed & Seed

Hwy 287 East - Clarendon, Texas

874-3371

Shoe Shine

by Tim Hall

Located at

Kenny's Barber Shop

Main Street

Clarendon, Texas

Tues. - Friday

3:30 - 5:30 p.m.

Sat. 8 a.m. to 1 p.m.

Classified:

Classified ad rates are \$4.25 for 15 words or less, 10 cents per word for each additional word. Special type or boxes are extra. Thank You notes of average length are \$4.75. There will be an additional \$1.00 billing charge if it is necessary to send out a statement. Subscription rate in Donley County is \$15.50 per year; out-of-county are \$18.50.

Meetings

CLARENDON LODGE #700AF/AM
 Stated Meeting: 2nd Monday each month 7:30 p.m.
 Practice Sessions: 4th Monday Gary Barnhill W.M.
 Vignard Skelton Secretary
 Refreshments served at 6:30 p.m.

Real Estate

FOR SALE: 2 Bedroom, FIX-UP Special on two 3/4 lots in Hedley with garage and barn \$1500.00 cash. Buyer pays transfer and title fees. Call 874-2670. 29-tfc

For Sale: 3 Bedroom House, needs repair, on 10 acres in Hedley. 856-5272.31-tfc.

HOUSE FOR SALE: \$6,000. Cash or terms. 806-381-9911. 46-1tp

VFW POST 7782
 8 pm - First Tuesday
 Aux
 7:30 pm - First Thursday
 Joint Meeting
 3rd - Thursday

- 160 Acres, 2 Story, 3 BR, 2 B, LR, DR, Cellar, 2 Domestic Wells, 4 in Irrigation Well, 50 Acres CRP, Outbuildings
- 2 Story, 3BR, 1-1/2 BATH, LR, DR, Cellar, Totally Remodeled, Good Shape
- 17 Acres, 3 BR, 1 1/2 BATH, LR, DR, Immaculate Shape, Fruit Trees, Sprinkler System, Out Building
- 4 BR, 3B, LR, DR, FP Utility Room, 10 Acres or 70 Acres, Very Modern.
- 3 BR, 1 1/2 BATH, LR, DR, Cellar, Brick, Good Location

LAKE LOTS
Phil Fletcher
 874-2324 874-3118
 Representing Joe Lovell Real Estate

FOR SALE
 3 Bdrm - on corner lot - cellar, Storage Bldg.
 320 Acres, 2 Bdrm. House, Good Well, 278.4 CRP, 5 more Years.
 Large Bldg - Downtown
 Trailer House, Storage Shed at Howardwick

2 Bedroom, 1 1/2 Baths, Den, 1 Car Garage, Storage Building - Reduced Price
 2 Older Houses on 3 acres, 3 Bedrooms, 1 Bath, 2 Bedrooms.
 2 Bedroom - Fenced Yard with Fruit Trees.
 Nice 2 Story House 116 E. 6th St. Garage - Large Lot.

3 Bdrm house - Shop Bldg - 1 Car Garage, Large Lot
 3 Bdrm, on 1 acre, 2 Garages & Barn. Good Water Well, Fruit Trees, Cellar
 Detail Shop Bldg 75' Lot, Hwy 287

2 Story House Near School - Reduced Price.
Oneta Sanders
 Real Estate
 720 S. McClelland
 Clarendon 874-2533

Help Wanted

Kimberly Quality Care is accepting applications for RN's and LVN's to work in your area. Call 874-3524; ask for June Davis.

Kimberly Quality Care
 117 East 4th
 Clarendon, TX 79226

HELP WANTED: Position open for a Chemistry Instructor at Clarendon College. Duties: teaching freshman and sophomore chemistry courses. Qualifications: Master's Degree with 18 graduate hours in chemistry. Salary: Commensurate with established salary schedule. Deadline: December 19, 1991. Contact: Kelvin Sharp, Dean of Instruction, Clarendon College, P.O. Box 968, Clarendon, Texas 79226. (806)874-3571.

HELP WANTED: New position open for an Off Campus Coordinator/Instructor for Clarendon College at Childress. Duties: Teach (1/2 time) and coordinate academic, adult vocational, and community service classes in the eastern part of Clarendon College's service area. Qualifications: Master's degree with 18 graduate hours in teaching area. Salary: Commensurate with educational qualifications and experience. Deadline: December 9, 1991. Contact: Kevin Sharp, Dean of Instruction, Clarendon College, P.O. Box 968, Clarendon, Texas 79226. (806)874-3571.

ADDRESSERS WANTED immediately! No experience necessary. Process FHA mortgage refunds. Work at home. Call 1-405-321-3064. 47-4tp

Donley Co.

Brick, 3 Bdrm, 1-3/4 Bath, Built Ins, 2 Car Garage, 1 Car Garage with work shop & Office, Central H/A, Sprinkler System, Brick & Wood Fence, Corner Lot, \$87,000.00

Nice 3 bed, one Bath, fireplace, Beautiful kitchen, fenced back yard with covered patio. Two Car port.

Brick, 3,2 & 1/2, 2, C/H & A, Basement, 10 acs. \$69,000.00

Brick, 4,3,2,C/H&A, Cellar, 5acs, 70acs, or 230acs, excellent fences, wells, corrals.

Lake Houses

3 Bdrm, 2 Bath, Central H/A, Woodburner, Boat Storage, Garden, ORchard, Storage Building. Approx. 2200 Sq. Ft. \$69,500.00 With terms.

Hall Co.
 280 Acres - Windmill, All M² SOLD, Excellent Grass, Aunting \$125 with Terms.

320 acres grass with one windmill, dry creek with seep holes. All minerals included. Gravel pit with 2 wells, large stock pile sand & gravel. Excellent grass. Excellent hunting, Quail, Deer, Dove & turkey. \$175.00 with terms if needed.

1200 Acres grass, (160 acres CRP, 6 years balance Hwy Frontage, Two windmills, One Fishing Tank, Two Box Cars, one fixed for living quarters. Two sets of nice corrals. \$185.00 Per Acre with lock, stock & Barrel. Excellent hunting & fishing. Terms if needed.

Jimmy Garland Real Estate
 874-3757

Misc.

FOR SALE: 60 Months, Heavy-Duty Continental Battery, \$35.95 Exchange, Henson's 221 S. Kearney, Clarendon, Texas. 20-1tc

FOR SALE: Genuine Wood Burning Cook Stove (Semmons) Brand - 6 burner top. Excellent Condition. \$150.00. Arlis & Sandra Mooring 806-874-3493. 46-1tc

Bybee Batteries Continental
 Used Golf Car & Trojan T 105, 1213 Wilkes, Hwy 60 West Pampa, Texas (806)665-7255 or 1-800-274-7912.

WANTED: 501 Levi Jeans or Lee Jeans, Levi Jackes, Buttons Only - Top Prices - Call after 5 p.m. (806)259-2448. 46-2tc

- LET ME DO YOUR HOLIDAY BAKING!
- GERMAN CHOCOLATE AND ITALIAN CREAM CAKES. CALL MISSY KIDD AT 874-2467. 47-1TC

Alpha Upsilon Epsilon will be holding a BAKE SALE on November 23rd from 9:00 a.m. to 3:00 p.m. at B & R Thriftway. All items are Homemade. 47-1tc

WANTED TO BUY! Good Porta-Crib 874-3493. 47-1tc

FAX SERVICE
 Now Available At
RADIO SHACK
 in Clarendon
 220 S. Kearney
 874-5081

Fred Day Painting Contractor
 Free Estimates
 874-3890

FORD
STAN GARLAND
 1-800-749-7471
 Amarillo - 355-7471
 Home - 358-2856
 "Smart Cars" Available
JEEP/EAGLE

Glidden Repair Storm Doors Glass & Screens Glidden
\$14.99 **\$15.99**
 Everyday! **Everyday!**
J & W Lumber
 874-2000

214-238-7180 806-358-2106
 Dallas, Texas Amarillo, Texas
Tanner Webber Assoc.
 Estate Liquidations Senior Consultants
 25 Highland Park Village
 #174
 Dallas, Texas 75205

Chamberlain MOTOR COMPANY
 HIGHWAY 287 CLARENDON, TEXAS
 BUICK-OLDSMOBILE-PONTIAC-CADILLAC-GMC TRUCKS
FRED CLIFFORD Clarendon (806)874-3527
 Home Phone Amarillo 376-9041
 (806)874-2415 Texas WATS (800)692-4088

Thank You

Thank You

We would like to say "Thank You" to everyone who helped us have another successful Fire Prevention Poster Contest and Open House.

Thank you to our children for their great art work. To Mr. Word and the teachers for handing out the posters. To the Print Shoppe for cutting posters and printing the rules. To the First Bank & Trust, Donley County State Bank and Simon Insurance for the Savings Bonds. And a "Special" thank you to our judges Francis Deyhle and Derlene Graham for a job well done.

Everyone's help and support is greatly appreciated.
 Thank You
 The Clarendon Firebells
 The Clarendon Fire Department

Jobs Wanted

CARPENTER SERVICES
 Repairs, remodels, additions, complete home maintenance and repairs. Call 874-5051, Larry Christopher. 16-2pd-TFC

WANTED CRAFT PERSONS: Booths available at \$10. Tables & chairs provided. Holiday Bazaar, St. Mary's Catholic Hall, Saturday, Nov. 23rd .. 9:30 a.m. - 2:00 p.m. Contact Doris, Box 550, Groom 79039, or call 248-7492. 44-3tp

For Rent

FOR RENT: 1 Bedroom Garage Apartment. Hud Approved 715 S. Jackson. 874-3436 daytime, after 5 p.m. call 874-3361. 45-1tc

FOR RENT: One Bedroom House. Corner 8th & Koogle. \$250.00 a month. Call 874-3905 after 6 p.m. 40-tfc

FOR RENT: Apt. Hud Approved. 806-874-2857

Without Advertising a terrible thing happens....

nothing

Positive Feed Inc.
 28% Protein
Ron Munson
 (After 7 p.m.) 874-3116

JOHN MORROW DRILLING & SERVICE
 GRAVEL PACKED WELLS
 TURN KEY SYSTEMS
GRUNDFOS
 Authorized Sales & Service
 AEROMOTOR WINDMILLS
 806-874-2704
 Hwy 287 W. • CLARENDON

Gene Messer Ford
 2330 S. GEORGIA
 AMARILLO, TEXAS 79109

DR. JACK L. ROSE
 Optometrist

220 S. 10th 259-2216 Memphis

ESTLACK ELECTRIC
ALLEN ESTLACK PH 874-3863
 ELECTRICAL CONTRACTING
 APPLIANCES, HEATING & COOLING
 AMANA, PAYNE, CARRIER, TRANE
 BONDED & LICENSED
 BOX 596, CLARENDON, TEXAS

TERMITE PROBLEMS

Call For Best Termite Control 3608 N.E. 23rd
 Over 20 years experience Amarillo, TX 79107
 Call collect 383-7075 State Lic. #1178

LEO RUSSELL

Bailey Estes & Son
 Welding Fabricating &
 Steel Buildings - Also Sell
 Storage Units For Rent
 \$25.00 month

Carlton's Radiator Shop

Open Evenings & Weekends
 Brass Radiators and Plastic
 & Aluminum Radiators

Hwy 287 - Lelia Lake, Texas Call 874-3394
 Carlton Turvaille - Owner

It's Party Time!

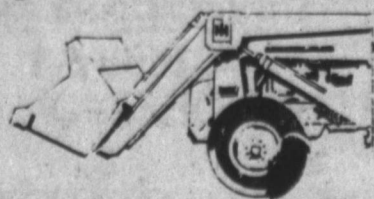
Let Us Hold Your Holiday Parties,
 Prepared the Way You Like It.
 Make Your Reservations Soon!

Saints' Roost
 Restaurant & Steakhouse

Hwy 287 East 874-2095

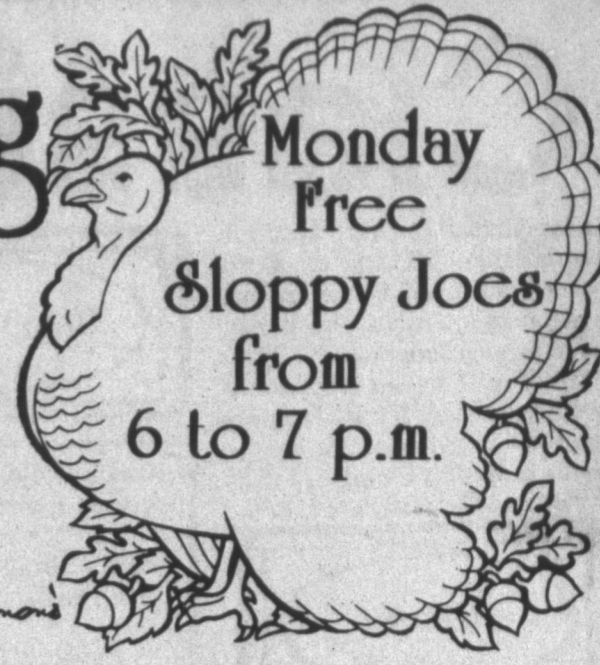
Loyd's Backhoe & Ditching Service
 Install Gas & Water Lines
 Government Approved Septic Tank Systems.
 State Certified

Loyd Ford
 Owner 874-2287





Happy Thanksgiving To Your Family From Ours



Monday
Free
Sloppy Joes
from
6 to 7 p.m.

Boston Cut
Pork Roast \$1.29 lb

Table Trimmed
Pork Steak \$1.49 lb

Boneless Packer Trimmed
Beef Brisket 7-9# Avg. \$1.39 lb.

Shurfine
Whole Hog Sausage 1# \$1.69 2# \$3.37

Brawny
Paper Towels Jumbo Roll \$79¢

Shurfine
Pumpkin #303 Can \$49¢

Shurfine Yellow Cling
Peaches Sliced or Halves #303 Can \$69¢

Shurfine
Cranberry Sauce #300 Can \$59¢

Shurfine
Sweet Pea 2#303 Can \$99¢

Shurfine Cream Style or Whole Kernel
Sweet Corn 2#303 Cans \$79¢

Shurfine
Green Beans 2#303 Cans \$79¢

Shurfine
Sugar 4 lb. Bag \$1.39

Contadina
Tomato Sauce 5/\$1 8 oz. Cans

Shurfine
Flake Coconut 99¢ 14 oz. Pkg

Shurfine
Tuna Chunk Light 6 1/2 oz. Can \$59¢

Shurfine
Coffee 13 oz. Can \$1.39

Shurfine
Fruit Cocktail #303 Can \$69¢

Gold Medal
Flour All Purpose 5 lb. Bag \$69¢

Assorted
Jello 3 oz. Pkgs \$2.89

Shurfine Grade "A"
Turkeys Self Basting \$59¢ lb.

Corn King
Boneless Hams 6-8# Whole \$1.79 lb. 3-4# Halves \$1.89 lb.

We Will Have Plenty of
Turkeys - Hams - Baking Hens
Of All Sizes at Competitive Prices.
Please Place Orders For Cooking
By Monday Afternoon.

California Pascal
Celery Large Crisp Stalk \$39¢ Each

US#1
Sweet Potatoes \$39¢ lb

Colorado White Russett
Potatoes 10 lb Bag \$99¢

Spanish Sweet
Yellow Onions \$19¢ lb.

Washington Jonathan
Apples \$49¢ lb.

California
Carrots 2# Pkg \$59¢

2 liter
Coca Cola \$89¢

O'Boisies Reg. \$1.59 Value
Potato Chips \$89¢

Crisco Shortening 3 lb. Can \$1.99

Texsun
Grapefruit Juice 46 oz. Can \$89¢

Win You Cherry
Pie Filling \$1.29

Betty Crocker Layer
Cake Mixes Assorted \$69¢ Dkg.

Fresh
Ground Beef \$1.29 lb

Hormel
Sliced Bacon 1# Dkg \$1.79

Hormel Little Sizzler
Link Sausage 12 oz pk \$99¢

Shurfine
Oleo Pure Vegetable 2 lbs \$89¢

Birdseye
Cool Whip 8 oz. Tub \$99¢

Interstate Crinkle Cut
French Fries 5 lb. Bag \$1.59

Birdseye Frozen
Corn on The Cob 4 Ear Dkg \$1.49

Rhodes Frozen White, Wheat or Texas
Dinner Rolls \$1.69

Sara Lee Homestyle
Pumpkin Pie \$2.49

Frozen Whole Blue Lake
Green Beans 2# Bag \$2.29

Breaded
Chicken Strips 3# Box \$10.49

Come in & Look
over our selection of
Frozen Shrimp!

Fresh Valley
Homo Milk 1/2 Gallon \$99¢

Plains
Sour Cream & Dips 8 oz. Dkg \$49¢

Egg Nog Quart \$1.19

THE GROCERY STORE

Ad Good
Nov. 20 - 30
OPEN MON. - SAT. 7 AM - 7 PM

HOME OWNED AND OPERATED BY
JACK & SHIRLEY CLIFFORD
BRIT & VIRGINIA PATTEN

DOUBLE COUPONS
ON WEDNESDAY & SATURDAYS ONLY!
EXCLUDING CIGARETTE & TOBACCO COUPONS
EXCLUDING FREE COUPONS
DOUBLE COUPONS NOT TO EXCEED ITEMS VALUE
DOUBLE COUPONS NOT TO EXCEED \$1.00
ONLY 1 DOUBLE COUPON HONORED ON MULTIPLE ITEMS

874-2425
Clarendon, Texas