

# Bailey County Journal

"The Community of Opportunity — Where Water Makes the Difference"  
Published every Sunday at Muleshoe, Bailey County, Texas — 79347

VOL. 6 NO. 39

14 PAGES

NEWS STAND PRICE 10¢

SUNDAY, SEPTEMBER 29, 1968

## Tuesday Kickoff for Clean-Up, Paint-Up, Fix-Up

### Powerhouse Lazbuddie 20, Bovina 12

#### Class B 'Horns Down Undefeated Bovina

Coach Pat Casey's Powerhouse Longhorns maintained their first place rating Friday night when they met the high-rated Bovina Mustangs on the Lazbuddie field.

Bovina, a surprise team in Class A, has been undefeated this year as has the Class B Lazbuddie team. Bovina's Mustangs had already proven their strength this season with victories over Amherst, 26-16, and Happy, 6-0. Beginning the season with games that matched their output for the entire 1967 season when they finished 2-8 in District 3-A.

Coach Roy Stone sent seven starters into the game from his 1967 team. They included Bobby Bedden, who was an all-district guard and quarterback. Stuart McMeans, a junior who started in 1967 as a defensive halfback.

McMeans snuck over from a yard out for Bovina's only score in the victory over Happy last week.

Troy Steinbock sparks the action, on page 2, col. 8

The First Methodist Church of Muleshoe is starting an all-out campaign to get its members to become active and enthusiastic about their church.

M.D. Gunstream, General Chairman of the Crusade, said "It's a proven fact that the more time, energy, thought and money a person puts into the church, the more they get out of it."

"Maybe one person can teach Sunday School, but can't contribute much money. Another may call on the sick, others can gather clothing for the less fortunate, and there are still others who cannot do these things but can afford to give money," Gunstream said.

"An attempt will be made to contact every member and give him or her a chance to become really involved in the work of the church. Mrs. Bernard Phelps, Chairman of the Prayer Committee, said "If you don't feel close to your God and your church as you formerly did, make no mistake about who has moved."

Mrs. Pat Bobo, Chairman of the Clerical Committee, said "We have one of the most active members in the church."

Con't. on page 2, col. 2



TOMATO HARVEST IN FULL SWING--Boxes are lined up on the W.G. Casey farm, six miles north of town where the tomato harvest is in full swing. Although spotted damage was received in some areas last week during a hail and windstorm, most tomato farmers report little or no damage. Shown displaying boxes of tomatoes are (l. to r.) Auturo Costillo, Candelaria Gonzalez and Jesse Hernandez, all of Muleshoe, who are helping harvest the abundant crop.

### Richard M. Nixon Developing Farm Policy

NEW YORK, Special--Creation of an 18-man Nixon-Agnew Advisory Committee on Agriculture headed by U. S. Sen. Karl E. Mundt of South Dakota and U. S. Rep. Page Belcher of Oklahoma was announced Monday by John N. Mitchell, national campaign manager.

Simultaneously Sen. Mundt and Congressman Belcher held a news conference in the Capitol to outline the objectives of the committee and to attack the farm policies of the Johnson-Humphrey Administration.

Four other U. S. Senators who will serve on the committee are Clifford P. Hansen of Wyoming, Roman L. Hruska of Nebraska, Jack R. Miller of Iowa and Milton R. Young of North Dakota.

Other members of the House of Representatives on the committee are James F. Battin of Montana, Olin Loggans of Minnesota, Delbert L. Latta of Ohio and Ancher Nelsen of Minnesota.

The academic community will be represented by Prof. Don Paarlberg of Purdue University and Eric Thor, agricultural economist from the University of California at Berkeley.

Representing the agricultural business sector on the committee are Thomas Hitch of Thompson Station, Tenn., former president of the Tennessee Farm Bureau and a member of President Eisenhower's National Agricultural Advisory Committee.

Also Ralph Harvey of New Castle, Ind., a farmer and former Congressman; Robert J. Kleberg of Kingsville, Tex., a cattleman; Clifford Hope of Garden City, Kan., and a former Congressman.

Other members of the committee are Hollis Roberts of McFarland, Calif., and R. R. Spitzer of Murphy Products Co., Burlington, Wis.

Alan Greenspan of New York, who is in charge of domestic policy research at Nixon-Agnew Headquarters, will serve as staff coordinator for the committee.

Greenspan said the committee has the depth of experience to advise Nixon on the "extraordinarily complex" problems involving the production and marketing of more than 250 crops and commodities.

He said because of the wide experience which will be brought to bear on many important agricultural issues, it is anticipated the committee will recommend far-reaching and innovative solutions for assisting American farmers in matching productivity with lagging financial returns.

up their fast action in the air and on the ground. Muleshoe set up their only score of the game, following a recovered fumble on a punt return, by fullback Bobby Burge. Working their way downfield to the Olton 10, Muleshoe quarterback Ronnie Barrett passed to Prentice Griffith in the end zone, just a few seconds after the second quarter began. John Elliott, making a rare appearance, put the skin right between the goalposts and made

Con't. on page 2, col. 1

#### around muleshoe

with the journal staff

Olen Burrows, Roger Albertson, Bert Mathis, Owen Jones, Alex Williams, Harmon Elliott and John Miller have returned from a fishing trip to Granite Shoals. The group caught 75 good keepers, most croppie with a few bass. They said the fish were biting real good.

A spokesman for the group said not one fell into the lake on this trip.

Mrs. C.L. Bailey and grandson, Terry Bull of Rugby, Tex. are visiting her daughter, Mrs. Carroll Rogers.

Don't forget to vote on the poll which is currently running in the Journals.

Tuesday noon is the deadline to have your vote in the Journal poll box.

### Olton Mustangs Kick Mules

Olton's Mustangs stamped Friday night in Olton Memorial stadium and when the dust had settled a couple of hours later, the Mules were out in the cold, 49-7.

Olton drew first blood with 8:59 on the scoreboard clock,

when quarterback Johnny Lewis faked a handoff and passed to halfback Charles McClain for the first TD of the game. The educated toe of Eddie Hooper put the first of seven kicks right between the goal posts to have the scoreboard lit up with Olton

7, Muleshoe 0. Although they had not played impressively in the air before Friday, the Mustangs reversed their field and played a good air game. The passes from Johnny Lewis kept the Mules' digging, attempting to break



RUN, CHARLE, RUN--Charles Beamon, No. 40, is attempting to make his way downfield carrying the pigskin in Friday night's game with the Olton Mustangs. Roger Swint, No. 31, is on the ground, holding onto a Mustang he has tackled and Olton's Mickey Crowder, No. 80, is trying to get through to bring down Beamon.

### Republicans To Meet Monday Night

Clarence Mason Bailey County Republican chairman, last week announced that a very important meeting will be held this Monday night at the First National Bank at 8 p.m.

Mason said that Bailey County Republicans, as well as other people interested in a change of government, would be vitally interested in this meeting. Such matters as Republican state and national policy, as well as chairmen for various important local posts, will be discussed.

Mason, who recently attended a state wide Republican convention in Fort Worth, has reported to local committeemen that the interest in Nixon-Agnew and gubernatorial candidate Paul Eggers has definitely been increasing throughout the state.

### Bi-District FHA Meeting In Amarillo

A bi-district meeting of the Farmers Home Administration was held in Amarillo on September 24 and 25, according to County Supervisor John C. Kennedy.

Information obtained at a regional meeting held in St. Louis on how to check the flow of rural people into urban areas was discussed by the state office staff.

The local Farmers Home Administration office was closed Tuesday and Wednesday due to the meeting. Those attending from Muleshoe were John C. Kennedy, County Supervisor, and Dorothy Scott, County Office clerk.

Kennedy said that through 138 county offices, the Farmers Home Administration in Texas will loan about \$130 million to rural families and communities this fiscal year.

Last year, about \$60 million was loaned for operating expenses. Over 4,100 rural Texans received loans to improve or construct homes. More than 600 farmers became land owners through the FHA Farm

Con't. on page 2, col. 8

### Muleshoe Contender Blue Ribbon Award

Mrs. and Mrs. Muleshoe... the finger of progress is pointing to you!

Tuesday morning at 9:30 a.m. will be the kickoff of the city-wide "Clean-up, Paint-up and Fix-up" campaign. Muleshoe is a contender for the West Texas Chamber of Commerce award to Blue Ribbon Cities. Initial inspection of Muleshoe for the award has already been made and in order to become a Blue Ribbon City, much work is needed to be done in overall clean-up, paint-up and fix-up.

Mrs. J. Pat Wagon, chairman of the campaign has said, "It is a part of the beautification requirement we have to fulfill to earn the Blue Ribbon City Award."

She went on to say that the city of Muleshoe has been divided into eight subdivisions and each division will have two chairmen to coordinate the work in their own subdivision. These are Original Town, Morrison, Richland Hills, Lenau, Warren, Harvey, Pool and the Country Club Additions.

Mrs. Wagon said, "This is directed to the individual resident and businessman, for anyone who resides in or makes their home in Muleshoe. They should show the same pride to their outside surroundings of their home as the interior. This should be done by clearing away junk, debris, overgrown grass, weeds and repair work to the home."

Mrs. Wagon continued, "To all businessmen, but especially those located along our highways, step out and look at your business and the grounds - what in your own mind do you see that the traveler sees in the City of Muleshoe as he is entering or leaving our city. The first week in October, this committee working on the clean-up, paint-up, and fix-up campaign plans to present a "Most Beautiful Lawn" Award to someone in Muleshoe to be

Con't. on page 2, col. 3

### Enrollment 1,965

Muleshoe school enrollment shows little difference on September 27 to that of September 29, 1967.

This year, 529 students are enrolled in Muleshoe High School and on the same date last year, they had 534 students enrolled. This shows a loss of five students. However, Junior High has 534 students enrolled, a gain of 13 over the 521 enrolled at this time last year.

Both elementary schools have lost a few students. Mary DeShazo shows the greatest loss, with eighteen less students than in 1967. September 27 this year, they have 469 students enrolled as compared to 487 at the same time last year. Richland Hills shows a loss of seven students, with 433 enrolled this year and 440 on the same date last year.

Total enrollment for Muleshoe schools stood at 1965 on September 27 as compared to 1982 on September 29, 1967. This is an overall drop of 17 in the number of students attending Muleshoe schools.



CLEAN-UP, PAINT-UP, FIX-UP--Mayor Pro-tem Irvin St. Clair, center, is shown as he signs a proclamation for "Clean-Up, Paint-Up and Fix-Up." Looking on as St. Clair signs the document are Robert Alford and Mrs. J. Pat Wagon, both of whom are working on committees in the beautification campaign which will get underway Tuesday morning at 9:30 a.m. when businessmen will go into the street in their business block and sweep the street.

### Young Drivers' Rules Eased

School Superintendent Neal Dillman has received information from the U.S. Department of Labor easing rules for young drivers.

Under the modifications, young workers who hold appropriate State driver licenses and have completed State-approved driver education courses may drive automobiles or trucks not exceeding 6,000 pounds gross vehicle weight during daylight hours.

Con't. on page 2, col. 7

### THE MULESHOE JOURNAL'S PRESS PRESIDENTIAL PREFERENCE POLL

If the 1968 Presidential election were held today, my choice would be:

- Hubert Humphrey
- Richard Nixon
- George Wallace
- Undecided

- Male
- Female
- Under 25
- 25-35
- 35-50
- Over 50

Tuesday Noon Deadline  
(Bring this ballot to the Journal office or mail to Box 449, Muleshoe, Texas)



# All - New Ford Highlights Performance - Models

Ford Division passenger cars for 1969 are highlighted by all-new Ford and Mustang lines, new performance-oriented Mach 1 and Cobra models, a luxury Mustang Grande, new engines and more comfort and convenience across the board.

"Our 1969 Ford is all new car from the completely redesigned body to the interior 'Better Idea' of a Flight Cockpit instrument panel," said John Naughton, Ford Motor Company vice president and Ford Division general manager.

Mustang for 1969 introduces two new models—the hot performance Mach 1 and the luxury car with sports car handling, the Grande.

"Economy, high performance and luxury are available in the Fairlane lineup which introduces a new series, the performance-oriented Cobra," Mr. Naughton said.

"A new grille and a new taillamp design highlight the 1969 front- to - rear Thunderbird modifications.

"The Falcon, Ford's economical family, includes an optional 220-horsepower engine," he said.

## FORD

Ford's 21 models, with lower and longer exteriors and a wider stance for better handling, also feature a new instrument panel, an energy-absorbing frame and new engine options.

XL and LTD models feature a new front end highlighted by a classic, die-cast hidden headlamp grille.

Hardtops and convertibles have ventless side glass and the station wagon's Magic Door-gate, an original Ford "Better Idea," can now be opened like a door with the window up.

The LTD and the Country Squire station wagon come with 302-cubic - inch-displacement, 220-horsepower V-8 as standard equipment. All other models feature a standard 249-c.i.d., 150-h.p. six cylinder engine. The 429-c.i.d., V-8 engine, introduced on the 1968 Thunderbird, is an added performance option.

## MUSTANG

Almost four inches longer and about half an inch lower and wider, Mustang's three veteran models are joined by two exciting new additions for 1969.

The Mach 1, a fastback design SportsRoof performance model, is available with an optional 335-h.p. 428-c.i.d. Cobra Jet Ram-Air engine. The Grande is a super luxury model with custom car touches inside and out.

Outside, Mustang features a new grille constructed in a cellular design with a low-gloss black finish. Inside, Mustang has a four-pod instrument cluster set directly in front of the driver.

The car also contains more hip, shoulder and rear legroom as well as more room to enter the rear seat passenger compartment.

New Mustang engines include a new 4.1-litre (250-c.i.d.) six - cylinder, new 351-c.i.d., V-8's with two and four barrel carburetors, and the 428-c.i.d. four-barrel V-8 with and without Ram-Air induction.

## Sgt. Nesbitt Is Decorated

LUBBOCK--Master Sergeant William J. Nesbitt, whose wife, Doris, is the daughter of Walter Belknap of Dimmitt, Tex., has received the U.S. Air Force Commendation Medal at Reese AFB, Tex.

Sergeant Nesbitt was decorated for meritorious service while assigned to the 3320th Technical School, Amarillo AFB, Tex. He was cited for his outstanding professional skill and knowledge.

He is now at Reese as an aircraft maintenance technician with the Air Training Command. The sergeant, who served during the Korean War is a graduate of Spaulding High School, Rochester, N.Y., and attended Amarillo (Tex.) College.

## FAIRLANE

Fairlane's 16 models for 1969 include the Fairlane, Fairlane 500, Torino, Torino GT and the hot new one - the Cobra.

All models have new grille and taillamp design.

The Cobra, available in hard-top and SportsRoof models, displays youthful lines and has extra handling characteristics and a hot 428-c.i.d. engine.

## THUNDERBIRD

Still more luxury and more distinctive features unite with major ornamentation changes and engineering improvements in Thunderbird's three 1969 models.

Two-door Landau models

provide a more formal appearance and more privacy for back seat passengers by eliminating rear quarter windows and adding wider rear roof pillars.

Thunderbird also offers a new grille and taillamp design and an improved braking system.

New options include an electrically-powered sun roof, an electrically-heated back window and a "headlights on" warning light.

## FALCON

Seven Falcon models add up to a complete line of smart, roomy and economical family cars. Highlights for 1969 include an optional 220-h.p. 302-

c.i.d., V-8, a new safety steering wheel and new side-marker lights.

The Falcon line continues to feature clean, distinctive styling and offers more hip and shoulder room than many competitive models.

## Navy Re-Opens Seabee Program

The Navy Recruiting Office in Clovis today announced the re-opening of its "Direct Procurement" Seabee program. They have received openings to enlist qualified construction men into the Seebees with advanced stripes of petty officer third class all the way up to chief petty officer.

The direct procurement program provides an outstanding opportunity for skilled men to fulfill their military obligation while gaining increased experience in their trade. Qualified volunteer civilian workers or ex-servicemen who served in the construction fields, regardless of race, creed or national origin, can join the Seebees with advanced rates.

The current drive for skilled construction volunteers is the result of the build up of Seabee forces in Southeast Asia. In Vietnam, the famed Seebees are playing a critical role in support of the combat Marines. Seabee accomplishments are becoming legendary as they lay "instant" airstrips, build roads, drill wells, construct buildings and waterfront facilities, and operate and maintain complex construction and transportation equipment.

Any man who has been a civilian constructionman or apprentice for 24 months or has 24 months experience can enlist into the Seebees as petty officer third class. For 48 months, a man will normally be qualified for petty officer third class and workers with over 7 years are considered for first class or chief petty officer.

Interested personnel under the age of 40 should contact the Navy Recruiting Office located in the Post Office building, room 243, or call 763-6622 immediately.

\*\*\*\*\*

Why is it women suspect their husbands of finding other ladies attractive, which of course they do?

## Kern Tips Memorial Award Announced

Fall is in the air, footballs are flying, and this week the Southwest Conference will launch its 54th season with the Texas Longhorns meeting Texas Tech at Lubbock. But this year -- as last -- something will be missing, the voice of Kern Tips bringing his crisp play-by-play accounts of the games.

As a tribute to the Texas sports-caster, who died in August 1967, Humble Oil & Refining Company today announced the establishment of the Kern Tips Memorial Trophy to be given each year to an outstanding senior Southwest Conference gridiron athlete.

Each member school will nominate one senior for the award on the basis of academic standing, high morals, sportsmanship, and athletic ability. A panel of judges, consisting of Southwest Conference executive staff, university officials, Humble Oil & Refining Company announcers, and leading sports writers, will select the winner.

The presentation will be made at the conclusion of each football season, with the winning athlete and his school receiving a Steuben Glass trophy.

Tips broadcast Southwest Conference football games for 32 consecutive years for Humble Oil & Refining Company and was known as the voice of Southwest football. His clipped, rapid-fire, and colorful descriptions of game action endeared him to millions of fans.

He was a native Houstonian, former sports editor of the Houston Chronicle, and general manager of radio station KPRC in Houston. He left KPRC to join the advertising agency of Wilkinson, Schwetz, and Tips which later merged with McCann-Erickson, Inc. At the time of his death he was a vice president of McCann-Erickson. During his broadcasting career, Tips received many honors. In 1963, he was voted -- for the fifth straight year -- Texas' Outstanding Sports-caster by the National Sports-casters and Sports-writers Association.

Howard Grubbs, executive secretary of the Southwest Conference, called the award a fitting tribute to one of the legendary figures of Southwest football.

# The Marquis - Newest Car In Lincoln-Mercury Line

A distinctive new line of cars -- the Marquis -- is offered by Lincoln-Mercury Division in 1969 to compete in the premium segment of the middle-priced market.

Built on a 124-inch wheelbase, the Marquis provides unusual roominess and passenger comfort and sets a whole new standard of luxury. It is 224.3 inches long.

The Marquis has a dignified simplicity of design that gives it a striking resemblance to the Lincoln Continental. The hood is long, its lines are crisp and clean. Its Continental kinship is emphasized further by its broad, forward-thrusting power dome hood, with dual concealed headlamps set at each side.

Eight models are offered in two series, the Marquis and the more luxurious Marquis Brougham. Both offer two-door and four-door hardtops, and a four-door sedan. The Marquis also has a convertible with a new design top mechanism that fits completely behind the rear seat to provide a full width seat that holds three adults comfortably.

One of the most striking values in the line-up for the two series is the four-door sedan, which features a four-door hardtop roof (lower than a conventional sedan roof), and side glass which is frameless and ventless (like a hardtop).

Thus the Marquis and Marquis Brougham offer hardtop styling at sedan prices for 1969. All models except the Colony Park have ventless side windows.

A new high-revving 429-cubic-inch displacement, V-8 with advanced design breathing characteristics is teamed with Select-Shift automatic transmission to provide the Marquis cars with a lively yet sturdy standard, powertrain combination. This new big bore engine is a descendant in design concept of the famous Ford Motor Company small-bore series

that has proven itself in competition from Indianapolis to LeMans. Besides the standard two-barrel engine rated at 320 horsepower, an optional four barrel version with higher 10.5:1 compression ratio and 360 horsepower is available. Standard powertrain in the station wagon is a 390 V-8 with three-speed manual transmission. Both 429 CID engines are optional in the wagon.

The Marquis line shares in Ford Motor Company's advances in safety design and equipment. The Marquis frame is road-tuned and tailored to the car. Four torque boxes, one under each corner of the passenger compartment, allow the ladder-type perimeter design frame to flex and twist slightly to keep road shocks and vibration from the body. Front side members are curved outward in front in an "S" shape to localize initial collapse and provide greater energy absorption in that area in the event of a serious front end collision, thus protecting the passenger compartment.

Passenger entertainment systems include combination 1-freq. radio/ stereo-sonic tape system, AM/FM stereo radio brake system, energy-absorbing steering column, ton controls.

Two Comfort Longe front seats with individual center armrests are standard on Brougham models, and the rear seat has a wide center armrest. Marquis models have a wide center armrest on the front bench seat, with Twin Comfort Lounge seats optional. A reclining feature is optional for the front passenger seats. Durable 100 per cent nylon loop carpeting color-keyed to the interior trim is standard.

Door trim panels have vinyl simulation of body cloth, bright mylar trim and carpet-covered lower section. Marquis models have simulated woodgrain above the armrests.

A dual-level instrument panel with woodgrain insert has all instruments and controls directly in front of the driver. Fresh air cowl ventilation permits full circulation of fresh air throughout the passenger compartment.

Other Ford Motor Company systems include combination 1-freq. radio/ stereo-sonic tape system, AM/FM stereo radio brake system, energy-absorbing steering column, ton controls.

## Football Schedules

MULESHOE	
MULESHOE MULES --	October 4 - Denver City T 8 p.m.
FRESHMEN --	October 3 - Blue Pups (Plainview) H 6 p.m.
8th GRADE --	October 1 - Estacado-Blue (Plainview) T 5 p.m.
7th GRADE --	October 1 - Intra-Squad games 5 and 6:30 p.m.
LAZBUDDIE	
LONGHORNS --	October 4 - Whiteface (Homecoming) H 8 p.m.
BULA	
BULLDOGS --	October 4 - Southland T 7:30 p.m.
THREE WAY	
EAGLES --	October 4 - Open night
SPRINGLAKE-EARTH	
WOLVERINES --	October 4 - Amherst H

# Announcing

## NEW LOCATION...

The James Glaze Co. Is Proud To Announce They Have Moved Into Their Beautiful New Business Quarters.

**218 SOUTH FIRST  
MULESHOE, TEXAS**





See The James Glaze Co. For Up-To-Date Coverage. They Are Professionally Qualified To Plan All Types Of Car, Home, And Business Insurance.

Phone 272-4549

\* INSURANCE                      \* REAL ESTATE

\* FARM & RANCH LOANS

"FRIENDLY SERVICE YOU CAN ALWAYS DEPEND UPON"

# James Glaze Co.



## Progress HD Club Holds Program on Mexican Foods

The Progress Home Demonstration Club met Tuesday, September 24, in the home of Lena Kelso in Lariat with seven visitors present.

"Sharing" was the poem chosen by the hostess for the opening exercise given by her daughter, Lawanna Lee of Dallas.

Lauree Smallwood told of her trip to the state convention in McAllen last week.

Roll call was answered with "My Favorite Mexican Food."

Home Demonstration Agent Robin Taylor presented the program on Mexican Foods. She showed how to properly prepare sopapillas, which were served with honey, tacos, enchiladas, salsa (a relish) and buñuelos (a large frosted cookie).

She served the foods she had prepared withiced tea and coffee. The members reported they all enjoyed the tasty dishes.

Guests present were Lawanna Lee and Billie Enzor, both daughters of Mrs. Kelso; Carolyn Fyburn, Juanita White, Myrtle Ashley, Lillis Garner and Mary Roy.

Members who attended the meeting were Veta Sell, Ada Murrah, Eunice Crume, Elzada Gulley, Myrtle Wells, Jauree Smallwood, Fern Davis, Judy Roming, Agent Robin Taylor and hostess, Lena Kelso.

Next meeting of the Progress Home Demonstration Club will be held October 1 in the home of Elzada Gulley, with the program to be on "Foot Gripes."

## WSCS Circles Meet Together

The Women's Society of Christian Service, Dorcas and Esther Circles, combined to meet in the home of Mrs. David Anderson Tuesday morning in regular session.

Mrs. J.M. McVickers presided at the business meeting and Mrs. Harold Allison discussed plans for the upcoming Charter Day program. Mrs. Ben Cookrell asked that all pledges for the year be in by Charter Day.

Mrs. Anderson led the morning devotional, after which Mrs. M.C. Street directed the group in the study taken from the Gospel of John asking each member what they thought the purpose of the Gospel was.

Next meeting will be a general meeting of all circles at the Methodist church on Tuesday, October 1, which will be Charter Day for the United Methodist Women's Society of Christian Service.

## Executive Meeting Wesleyan Guild And WSCS Slated

An executive and general meeting of the Woman's Society of Christian Service and the Wesleyan Guild will be held in the Chapel of the First Methodist Church Tuesday, October 1.

One p.m. is the time set for the executive meeting and the general meeting will be held at 2 p.m.

The groups extend an invitation to all members to attend this meeting. October is charter month and a special program has been planned.

All members of the WSCS and WSG will become charter members of the new United Methodist Church.

Guest panelists will discuss different types of missions.

Refreshments of carrot cake, cookies and coffee were served.

Drug to be tested as aid to learning.

# Chevrolets to Feature New Hydra-Matic Transmission

DETROIT -- The widest choice of engines and transmissions in automotive history head a parade of exclusive Chevrolet features for 1969, E.M. Estes, general manager, said today.

"This unparalleled opportunity for the 1969 buyer to custom tailor his car's performance and economy typifies the variety and value with which Chevrolet expects to increase its industry leadership," Estes said.

"Other exclusive Chevrolet features are computer-selected springs for improved ride, jet stream headlight washers for better illumination in bad weather, wider wheels to improve vehicle handling and a 'liquid tire chain' system to increase rear tire traction on icy streets."

Estes said 35 new Chevrolet models in seven distinctive car lines for 1969 go on sale nationally on Thursday, September 26th.

"The industry's top seller--the big Chevrolet--is all new in 1969 and has the largest base V-8 engine in its class," Estes said. "It is a 327 cubic inch V-8, increased from a base 307 engine in 1968."

"Two new 350 cubic inch V-8's are also introduced, one using regular fuel as does the base V-8. The big Chevrolet also offers a high torque, regular fuel 396 cubic inch engine, largest regular fuel engine in its field."

Other quality improvements listed for the new big Chevrolet are full door glass styling with improved Astro Ventilation on all models, variable-ratio power steering for more responsive maneuverability, an electrically-heated rear window defroster and a one-of-a-kind roofline for the Caprice Coupe and Impala Custom Coupe.

Chevrolet introduces in 1969 a new Turbo Hydra-Matic three speed automatic transmission specially designed for six cylinder engines and V-8 engines up through 350 cubic inches. Teamed with the regular Turbo Hydra-Matic offered on larger displacement V-8's, this gives virtual across-the-board availability of this highly advanced transmission, Estes said.

Chevrolet also introduces a new heavy duty, three-speed fully synchronized manual transmission. Others in the wide transmission selection are the standard three-speed, Powerglide two-speed automatic and Chevrolet's pace setting Torque - Drive "clutchless" transmission for four and six cylinder equipped Chevy Novas and the six cylinder Camaro.

Safety and security advances on the 1969 Chevrolets range from an improved energy-absorbing steering column, contoured windshield headers and front seat head restraints to an anti-theft ignition, steering and transmission lock mounted on the steering column. (See full list.)

Estes said there is also an all-new outside and inside look for Chevrolet's sporty Camaro in 1969, plus exterior and interior styling improvements in Chevelle, Nova and Corvete and continued Corvete individuality.

Use of computer selection to get the best spring combination for each individual car increases Chevrolet vehicle carry H. Each customer order is analyzed with high speed data processing equipment to determine the front and rear weight of all equipment and the proper springs to carry it. The result is carefully tailored, more consistent trim heights which insure a good ride as well as correct appearance.

Other quality improvements include stronger V-8 engine construction for greater durability, smoother, quieter engine drivelines to help reduce noise and vibration, a new air cleaner snorkel design that makes six cylinder engines quieter and new accessory drive systems of V-8 engines which give improved durability and quieter operation. Frame and sound insulation improvements give better ride.

Advanced, power-assisted front wheel disc brakes are available for any Chevrolet, Chevelle, Nova or Camaro and are standard on SS-equipped models. Finned front wheel drum brakes and heavier duty linings at all four wheels are standard on all regular models

in Chevelle, Nova and Camaro lines.

Chevrolet station wagons in 1969 are regrouped into a single line on two wheelbases for easier customer choice. A new rear design makes them "walk-in-wagons." Using Chevrolet's new dual-action tailgate with a step built into the bumper, a passenger can step easily in an upright position into the passenger compartment, turn and sit in Chevrolet's rear-facing third seat. The dual-action gate is offered on all wagons.

There is sporty SS equipment for every coupe and convertible model of the big Chevrolet, Chevelle, Nova and Camaro. Besides a big V-8 engine and power disc brakes, special identification and suspension are included.

SS cars in Chevelle, Nova and Camaro lines also have a special hood and wide oval tires on seven-inch wide wheels--one inch wider than in 1968. White lettered tires are included on Chevelle and Camaro SS cars.

An exclusive headlight washing system is among the newest of Chevrolet's more than 400 options and accessories for 1969. It is standard on Corvettes, included on Caprice and Camaro models with concealed headlights, and optional on nearly all other models.

When the wiper-washer control is held depressed by the driver, the headlights (outer lights only on four headlight systems) are washed by jets

of windshield washer fluid. This removes accumulations of road dirt, giving improved illumination.

Chevrolet's exclusive "liquid tire chain" dispensing system gives increased rear traction on ice-surfaced roads. Activated by a button on the instrument panel, dispensers mounted at the top of rear wheel housings spray the chemical against tires. The four-ounce dispenser cans are replaced when empty through the trunk compartment.

Chevrolet air conditioning is improved for 1969 with greater air-flow through larger ducts and added passenger compartment outlets. An AM-FM stereo radio combination has all controls mounted on the radio.

Power door locking is offered in 1969 on Chevelle models as well as on the big Chevrolet. Chevrolet's exclusive light monitoring system that tells when front and rear lights and signals are operating is again offered on Chevrolet, Chevelle and Camaro and is standard on Corvete.

Chevrolet offers 15 exterior colors for 1969, nearly all new. There are up to six two-tone combinations, five vinyl top colors and three convertible top colors.

Good Reason He "Since I met you, I can't eat, I can't sleep, I can't drink." She (coyly) "Why not?" He "I'm broke."



NOVEMBER WEDDING PLANS--Mr. and Mrs. H.G. Morgan, Route 2, Muleshoe, announce the engagement and approaching marriage of their daughter, Charlotte, to Steve Schultz, son of Mr. and Mrs. Edward Shultz, Lubbock. The wedding vows will be read November 16, at 8 p.m., at the Trinity Baptist Church. The bride-elect is a 1965 graduate of Muleshoe High School, attended South Plains Junior College and is presently employed as a secretary for the Medical Arts Clinic, Lubbock. The prospective bridegroom is a 1966 graduate of Texas Technological College, Lubbock, and is employed as a counselor for the Texas Education Agency, Lubbock.

## Y-L 4-H Play Day Is Termed Big Success

The Y-L Saddle tramps sponsored a Play Day Saturday, September 21, and the 4-H members termed it a galloping success.

Eighty-six boys and girls participated in the Play Day and around 230 ribbons were awarded the contestants. The trophy winners are as follows: Club Trophy, Morton 4-H Club; All-Around Cowgirl, Glenda Calhoun; All-Around Cowboy, Jimmy Jones.

High point trophies included; Pee Wee Girl, Vickie Cooper; Pee Wee Boy, Tommy Wheeler; Young Junior Girl, Julia Cooper; Young Junior Boy, Jimmy Henderson; Junior Girl, Linda Whittenburg; Junior Boy, Bobby Henderson; Senior Girl, Glenda Calhoun and Senior Boy, Jimmy Jones.

The 4-H members wish to thank all the participating merchants who donated the money used to buy trophies. They included: Poyner's White Auto, Gordon Wilson Appliance, Western '66', Gulf Farm Center, Muleshoe Co-op Gin, Muleshoe Co-op Elevator, Smallwood Real Estate, Strahan Garage, Paymaster Gin, Farm Bureau, Muleshoe State Bank, Pioneer Natural Gas, Allen Harris, Texas Sesame, South-west Irrigation, Muleshoe Electric.

and Red Barn Chemical. A "thank you" is also extended to KMUL for the loan of records and to Bailey County Electric for taping the music and the use of their P.A. system.

The Y-L 4-H club says, "We appreciate all the persons who worked so hard to make our Play Day the big success it was."

Members of the Y-L 4-H Horse Club are: Debbie Newman; Rex Black, Janice, Linda, Susan and David Head; Kirk Lewis, Ricky Wilcox, Rusty and Beth Whitt, Bobby Dodd; Kevin Tucker; Toby Tucker; Nicky Bamert; Gary Hooten; Tommy St. Clair; Tommy Black, Larry, Danny and Ronnie Davis; Bruce Petterson; Vowery, Danita and Belinda Throckmorton; Glenda Calhoun and Debbie Reed; Bobby Newman is adult leader.

Last More Lasting Peggy-It's so romantic to be a man's first love. Patricia-Yes, but it's safer to be his last. Variety "How on earth do you keep a maid so long?" "Well, we move the furniture around so often that she feels it's a new place every week."

First Federal's Dividend Rate Structure

**5.25%** (PER ANNUM) Compounded Quarterly

ON SAVINGS CERTIFICATE ACCOUNTS in amounts of \$15,000.00 up.

**5%** (PER ANNUM) Compounded Quarterly

ON SAVINGS CERTIFICATE ACCOUNTS in amounts of \$10,000.00 but less than \$15,000.00.

**4.75%** (PER ANNUM) Compounded Quarterly

ON REGULAR SAVINGS ACCOUNTS

Second Largest and One of the Oldest Federally Chartered Savings and Loans in New Mexico

All accounts opened by the 10th will earn from the 1st.

**FIRST FEDERAL**

SAVINGS & LOAN ASSOCIATION OF CLOVIS

HOME OFFICE: 801 Pile St. CLOVIS, N. MEX.

BRANCH OFFICE: 2nd and Abilene St. PORTALES, N. MEX.

THESE SPECIALS GOOD THROUGH WEDNESDAY NIGHT

"WHERE YOU ALWAYS BUY THE BEST FOR LESS"

**GIBSON'S DISCOUNT CENTER**

MULESHOE, TEXAS OPEN 9 a.m. to 8 p.m. WEEKDAYS

SHICK-SUPER STAINLESS BLADES 10's 97¢

SHICK KRONA-CHROME DOUBLE EDGE 4's 49¢

"PRUF" Spray Starch 22 oz. Size 39¢

HEALTH and BEAUTY AIDS

Ultra Brite \$1.05 Val. Family Size TOOTHPASTE..... 59¢

100 Tablet Size \$1.39 Value ANACIN..... 93¢

Just Wonderful 16 Oz. Size HAIR SPRAY..... 53¢

Head And Shoulders Lotion Large Size \$1.55 Value SHAMPOO..... 93¢

Dep for Men 1 Lb. Jar HAIR STYLING GEL..... 71¢

Mennen 4 Oz. Med. Size 77¢ Value SKIN BRACER..... 46¢

Arrid Creme Large Size DEODORANT..... 49¢

3 Oz. Size \$1.49 Value MINIT-RUB..... 93¢

Destin 4.25 Oz. Tube OINTMENT..... 92¢

Clearsil Cream \$1.19 Value MEDICATION..... 69¢

Mix & Match Co-ordinated SPORTSWEAR

CHOOSE FROM A WIDE SELECTION OF POPULAR STYLES

BONDED JERSEY OR INTERLOCKED COTTON

Blouses-Pants-Jackets Pant Suits-Pant Tops-Shirts

Our Reg. 2.87 NOW 2.37

Our Reg. 3.67 NOW 3.17

Our Reg. 4.67 NOW 3.99

Our Reg. 4.99 NOW 4.37

Our Reg. 5.67 NOW 4.99

Our Reg. 6.87 NOW 5.77

Our Reg. 7.87 NOW 6.67

Our Reg. 8.87 NOW 7.47

By Mr. Marty of California

Pillsbury's Funny Face Imitation DRINK MIX 10¢ Value 6¢

PLEDGE 7 oz. 57¢

MEN'S BLANKET LINED JUMPER .Blue Denim Only .Our Reg. 6.57 \$5.17

Holiday Pint Size THERMOS .1.98 Val. \$1.13 .No. 2233

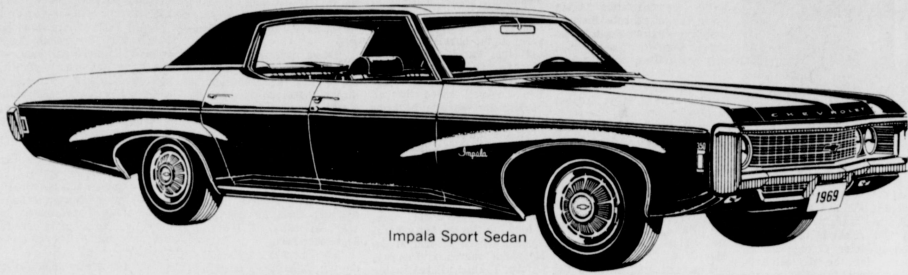
Nesco Roast Rytte ROASTER #N-105 29.95 Val. \$17.97 GIBSON'S LOW PRICE ONLY

AJAX DETERGENT • King Size Gibsons Price 97¢

Dawn Sayelle KNITTING YARN 4 Oz. Skein 100% Orlon 1.29 Value 89¢

HELLO, FALL!

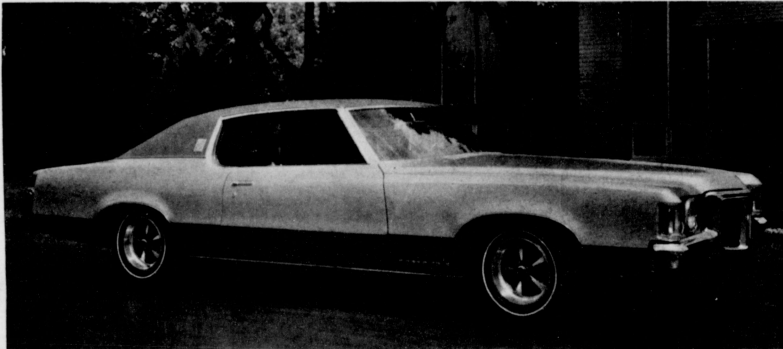
HELLO, '68



Impala Sport Sedan

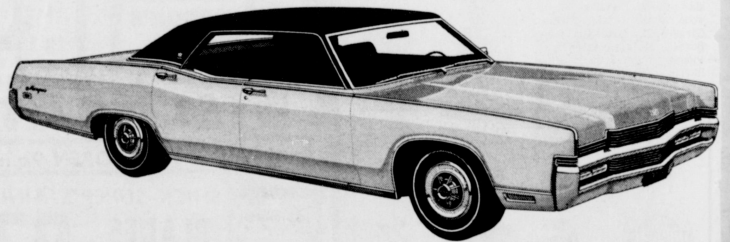
IMPALA SPORT SEDAN...There aren't many cars around that can move with the smoothness and authority of Impala, no matter what you're willing to pay. Result: more people choose Impalas than any other car. Just look around wherever you're driving. Basically, there are five ways to go Impala--Custom Coupe, Sport Coupe, Sport Sedan, Convertible and 4-door Sedan. And with three of these models--Custom Coupe, Sport Coupe and Convertible--you can increase the excitement by adding SS 427 equipment. Basic power is either a 235-hp V8 or a 155-hp Six. But when you get into it you find you can get five other V8's, plus two manual transmissions plus two automatics. That ought to start you thinking.

CROW CHEVROLET CO.



GRAND PRIX...Pontiac Motor Division's 1969 Grand Prix attains new goals in precision engineering and trend-setting styling to establish it as America's most distinguished automobile. This new generation Grand Prix, available in the hardtop coupe, incorporates many new features including 118-inch wheelbase, an electrically heated rear window defogger and a concealed radio antenna.

LADD PONTIAC



NEW MARQUIS...The most dramatically styled car since the Continental Mark III. You won't see a medium-priced car like this any other showroom. Marquis has a dramatic elegance, a majestic beauty that only the creators of the Continental Mark III could make. With this styling and the surprising price, you have no excuse to settle for a dull little car.

MULESHOE MOTOR CO.

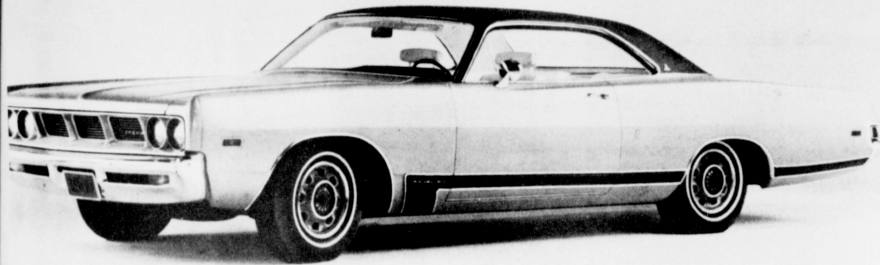


LUXURIOUS LTD BY FORD...The new LTD interior feature plush fabrics, flawlessly fitted, and lavish touches like wood-tone accents on instrument panel and doors. You can order even more sumptuous Brougham trim, individually adjustable Twin-Comfort Lounge Seats and a passenger seat that reclines. LTD luxury speaks clarion-clear outside. Crisp, sculptured styling. Classic long hood, compact deck proportions. More rakish roofline. Hardtops have smart new ventless door glass which virtually banishes wind noise. An impressive new die-cast grille, crafted like fine jewelry, has retractable headlamp doors. Never has Ford done so much to bring you such distinction in driving.

MULESHOE MOTOR CO.



# AUTO SHOW!



**DODGE POLARA...LUXURY-PLUS** but with a price range that is medium-minus. The 1969 Dodge Polara 500 two-door hardtop is on display now at BMG Motors, New exteriors, high-styled interiors, which accent driver and passenger comfort, distinguish the Polara/Monaco models.

**BMG MOTORS, INC.**



**NEW YORKER 2-DOOR HARDTOP...**Your next car can be a member of the most elegant Chrysler series. Whether your next car is the New Yorker 2-door hardtop, or one of 14 other Chryslers, it will have the concept of the fuselage. A body and frame that are one, molded into a smooth, continuous line that curves up around you. Just close the curved side windows and the arc is complete. From under the entry sill to overhead, inside each New Yorker, you can expect certain appointments as a matter of course. Up to 14 miniature lighting devices are positioned throughout the cockpit, including an ignition switch light activated by simply opening either front door.

**BMG MOTORS, INC.**



**OLDSMOBILE "98" LUXURY HARDTOP SEDAN...**The all-new "98" Luxury Hardtop Sedan, companion model to the "98" Luxury Sedan, will incorporate the new 127-inch wheelbase which is standard on all 1969 "98's." An optional feature is the divided front bench seat with independent controls for driver and passenger positioning.

**BROCK MOTOR CO., INC.**



**BUICK WILDCAT FOR 1969...**with a longer hood and shortened rear deck—reaches a new high in performance and styling. The body is all new with a wheelbase shortened from 126 to 123 inches. A refined swoopline enhances the side appearance of the Wildcat, which also features a new grille and dual air intakes in the front bumper. Instant Wildcat identification is provided by the six vertical chevrons behind the front wheel opening. Side window vents have been eliminated on all models in Buick's upper series cars.

**BROCK MOTOR CO., INC.**



# Chrysler - Car of Tomorrow Elegant Style, Easy Price

Your next car is as much of tomorrow as it is of today. Your next car can surround you with a fuselage and the concept of the outward curve. Your next car can have a cockpit instead of just a seat and a dashboard. Your next car can create a controlled environment that blots away the murmur of

road and wind, leaving an enclosure of quiet luxury. A place where miniature memory systems complement your every driving habit. Your next car can be any of 15 choices. But only one shape. And your next car is one you can comfortably afford. Your next car: one of the great new Chryslers.

Your next car can be a member of the most elegant Chrysler series. Whether your next car is the New Yorker 4-door hardtop or one of 14 other Chryslers, it will have the concept of the fuselage. A body and frame that are one; molded into a smooth, continuous line that curves up

around you. Just close the curved side windows and the arc is complete. From under the entry sill to overhead. Inside each New Yorker, you can expect certain appointments as a matter of course. Up to 14 miniature lighting devices are positioned throughout the cockpit. Including an

ignition switch light activated by simply opening either front door. The perimeter of the cockpit is fitted with simulated deep-rubbed walnut-grained trim to complement interior upholstery materials of Jacquard-weave nylon, Coachman-grain vinyl, or optional natural-toned leather. Your next car can isolate you from road shock, heat, wind, water, and noise. Its curved, soundproofed cockpit brushes away the strains of outside elements. Carpeting underfoot and the door panels muffle sound. A torsion-bar front suspension system and nearly 1000 feet of spring wire deep

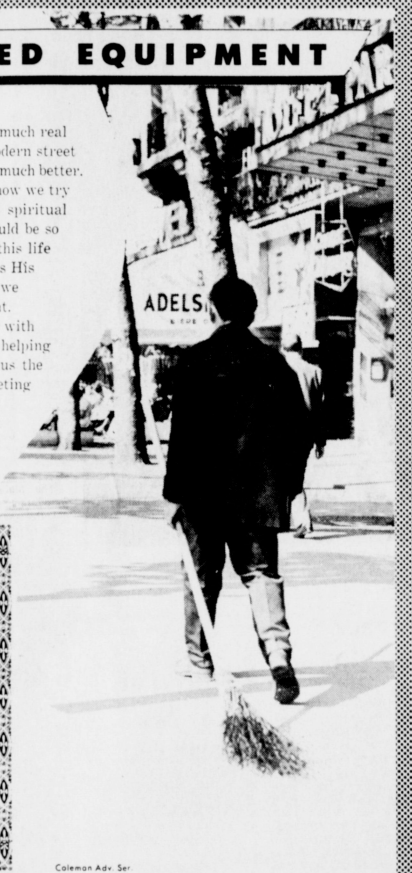
inside New Yorker seats transform the bumpiest road into a tranquil experience. Optional automatically controlled air conditioning assures a constant flow of cool, filtered air at the same temperature-mile upon mile. A unique optional system of "stereo hear" envelops each passenger with a precisely measured quantity of filtered warm air through a network of outlets in both front and rear passenger areas. And your next car can have an optional Driver Awareness Package that monitors your driving habits, reminds you: "FASTEN BELTS," "LOCK DOORS," "HEADLIGHTS ON." Your next car: a quiet, constant place where machine relates to man—never vice versa.

Under you, New Yorker's luxuriant 5-foot-wide seat, sheathed in fine-weave upholstery and vinyl, and padded with two layers of thick foam. To your right, the support of a 9-inch-wide center armrest. To your left, the outward curve of the fuselage completes the radius of the cockpit and gives you more freedom of movement; extra inches of body width inside the curve, eye level, the instantly-read gauges. A trip odometer. The quadrant of the New Yorker's standard TorqueFlite automatic transmission. And through it, the pulse of a 440 cubic-inch V-8. The reflex of improved power steering, made smoother, more effortless, by the use of sintered metallic components. And the security of floating-caliper, power-as-


sisted front disc brakes. Our option list isn't as long as some other cars'. It doesn't have to be. Many so-called options on other cars are standard on Chryslers. And several of the options are Chrysler's alone. The ultimate example; an optional 3-in-1 front seat for 4-door New Yorkers. In an upright position, two halves join to make a 60-inch-wide seat for three. Or, simply lower center armrests for each half, and the 3-in-1 becomes a pair of individually adjustable lounge chairs. And, if your passenger wishes, the right half reclines back 45 degrees. The 3-in-1 is available in 6 different color and fabric combinations. The most luxurious is optional natural-toned leather upholstery.

- ★ MULESHOE ASSEMBLY OF CHURCHES  
517 S First  
H. D. Hunter, Pastor
- ★ FIRST BAPTIST CHURCH  
220W. Ave. E.  
Douglas DuBose, Pastor
- ★ PRIMITIVE BAPTIST CHURCH  
621 S. First  
Alton Richards, Elder
- ★ TRINITY BAPTIST CHURCH  
314 E. Ave. B.  
ST. MATTHEW BAPTIST CHURCH  
W. Third  
Rev. E. McFrazier, Pastor
- ★ SPANISH ASSEMBLY OF GOD  
East 6th and Ave. F.  
Rev. Hipolito Pecina
- ★ CALVARY BAPTIST CHURCH  
1733 W. Ave. C.  
Rev. Billy D. Swope
- ★ RICHLAND HILLS BAPTIST CHURCH  
17th & West Ave. D.  
Rev. Leland K. Callaway
- ★ SPANISH BAPTIST MISSION  
439 E. Ave. F.  
Larry Henry-Pastor
- ★ PROGRESS BAPTIST CHURCH  
Progress, Texas  
Sam Sowder, Pastor

## OUTMODED EQUIPMENT



This young man certainly won't get much real cleaning done with this broom. A modern street cleaning machine would do the job so much better. His straw broom makes us think of how we try to get along without God, without spiritual values, without church. Our life would be so much better if we would exchange this life for one that knows God and practices His precepts. Without church and God we have little or no spiritual equipment. Hearing God's word preached, being with his people, working in His church, helping others through the church all give us the spiritual equipment we need for meeting life. We invite you to attend this week and make a habit of coming to God's house.



The Church is God's appointed agency in this world for spreading the knowledge of His love for man and of His demand for man to respond to that love by loving his neighbor. Without this grounding in the love of God, no government or society or way of life will long persevere and the freedoms which we hold so dear will inevitably perish. Therefore, even from a selfish point of view, one should support the Church for the sake of the welfare of himself and his family. Beyond that, however, every person should uphold and participate in the Church because it tells the truth about man's life, death and destiny; the truth which alone will set him free to live as a child of God.

Coleman Adv. Ser.

### Go To Church Every Sunday

## Market Introduced To Swinger Dodge

Dodge's compact champion, the Dart, has introduced a new model concept, the Swinger, along with its trim models and series for 1969, according to BMG Motor Co.

The Dart, which will hit the million sales mark in 1969 has proved to be the most durable car of the luxury compact field.

The new "Swinger" model will be aimed directly at the youth market. The Swinger is a low-price, two-door hardtop, and will be available with a wide variety of power plants. The 340-cubic-inch engine of 1968 will be featured in the "Swinger 340." In addition to the 340 engine, Dodge's four-speed floor shift transmission, dual exhaust, heavy duty rally suspension, and 170 wide tread tires will be featured.

A special bright red color will be another exclusive for the Dart Swinger 340. Establishing a unique identity, will be a performance hood, a "340" nameplate, and its own wide bumble bee stripe.

Six Engines, from the economy winner 170 cubic-inch Slant Six, to the big 383 cubic-inch Magnum will be available.

Other engines offered are the 225 cubic-inch Slant Six; 273 cubic-inch V8; the 318 cubic-inch V8 and the previously mentioned 340 CID with four barrel carburetion.

All Dodge Darts will have a new grille, tail light, exterior and interior ornamentation.

A sleek and sporty fourth generation Dodge Coronet series was introduced to the public September 19.

The biggest seller of Dodge's automobile line, Coronet will again be offered in the widest variety of body styles and power train options.

Classified as an "intermediate size car," the 1969 Coronet will boast of being the largest of its class in the industry.

The five series will have a total of 17 choices in body style. Safety foremost has brought new innovations to the automatic brake adjusting system, improved disc brakes; wide tread tires, as well as a new fiber glass belted tire that provides not only additional safety, but tread life. Improvements in power steering pumps, a new design in Sure-Grip differentials, automatic speed control, changes in transmissions, all contribute to making the Coronet a tailor-made or buyer's choice vehicle.

The summary of the 1969 Dodge Coronet will be a family size car that is still not too big for urban traffic problems and versatile enough to fit any new car buyer's pocket book.

A distinctive new grille and tail lights complement the flowing styling of the Coronet series.

Emphasis by Dodge stylists and engineers on driver-passenger comfort and convenience will be highlighted by an optional manually operated driver bucket seats which will offer a choice of 60 different positions: Tilt, fore, aft, up and down. On two door models, door locks are repositioned for easier access. Power operated tailgate windows will be standard equipment. Eleven different colors of vinyl, or vinyl and cloth, trim will grace the interiors of the 1969 Dodge Coronet.

Following buyer trends, the 1969 Coronet will have more vinyl roofs, interior wood-grain combinations, air conditioning, AM-FM radios, AM radio and stereo-tape combinations, and rear radio speaker.

The most improved contenders in the traditional standard and medium priced segments of the automobile market receive brand new starts in 1969.

The Dodge Polara and Monaco get everything changed but the wheel-base for the coming year, including the cargo distance between the wheel housings on station wagons.

There is "integrated total form," "moulded air spoilers," a "tuck under" sill, "hidden windshield wipers," "ventless windows," and "super-lite" to package Dodge's new concept in medium priced luxury.

The Dodge Monaco has been making steady progress in the medium priced market and the Polara in the standard priced segment. They were on the plus side of the sales chart in a declining auto sales market during 1967 and they continued their momentum through the 1968 model to show the greatest improvement of any car in their field.

For the 1969 model year the Dodge Polara and Monaco have been redone completely. New exteriors, high styled interiors, and new options enhance and im-

**The Following Business Firms Urge You To Attend the Church of Your Choice This Sunday and Every Sunday**

- First National Bank**  
1st & Ave. B
- St. Clair's**
- Fry & Cox**  
401 S. 1st
- Mulshoe State Bank**  
304 Main
- Bratcher Motor Supply**
- Mulshoe Motor**  
106 S. 1st
- Cobb's**
- L & H Gro.**  
14 W. American Blvd.
- Western Drug**  
114 Main
- The Fashion Shop**  
OF MAKEUP
- Mulshoe Publishing Co.**
- Mulshoe Co-Op**  
Gins  
Mulshoe
- Cashway Gro.**  
402 Main
- Cox Drive-In**  
Theatre, Friona Hwy
- Charles Lenaw Lumber Co.**  
202 E. Ash
- Western Auto Store**  
228 Main
- Dari Delite**  
210 N. First
- Pool Insurance Agency**  
114 E. Ave. C
- Brock Motor Co.**

**SINGLETON FUNERAL HOME**

24 HOUR AMBULANCE SERVICE

PHONE 772-4574

MULESHOE

## REVIVAL

### First Assembly of God Church

517 S First  
Beginning  
Monday, September 30  
Through October 6.

Monday through Friday,  
7:30 P.M. Sunday, 7:00 P.M.

EVANGELIST  
Rev. Thurman Fountain  
From Sequin, Texas



**THE PUBLIC IS INVITED**  
H. D. Hunter, Pastor





# Oldsmobile Toronado Longer and Sleeker

The '69 Oldsmobile has completely restyled its 88's and 98's. A longer and sleeker Toronado with major changes to area fols.

Not only will the styling of the all new '69 Oldsmobile take the customers attention but the safety-related features will be noted.

These include side impact bars inside the doors of 88's and 98's a more uniform rate of energy absorption in all Oldsmobile steering columns, head restraints as standard equipment, largest rear view mirrors, and a sloping interior header bar from roof to windshield to reduce the likelihood of head injury in case of accident.

4-door pillar version, Oldsmobile in '69 is offering a companion car, the 98 Luxury Hard top Sedan.

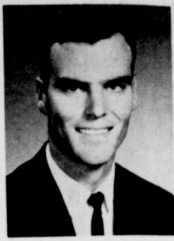
The 1969 Toronado, lengthened 3 1/2 inches, displays a dramatically redesigned rear end, clean-tailored and involving a new deck and rear quarters.

The easy to use but very efficient cruise control system introduced on the F85 in 1967 is now planned for all Oldsmobiles. In this optional system, the engage button is located in the end of the turn signal lever and operates with simplicity and greater convenience.

A swing tailgate, hinged to open either as a door or as a loading platform is optional on 1969 Oldsmobile Vista Cruisers and Cutlass station wagons. A deep well luggage compartment is a standard feature in all 1969 Oldsmobile wagons. Fuel tank capacity in all wagons has been increased to 23 gallons for greater cruising range.

tem, the engage button is located in the end of the turn signal lever and operates with simplicity and greater convenience.

A swing tailgate, hinged to open either as a door or as a loading platform is optional on 1969 Oldsmobile Vista Cruisers and Cutlass station wagons. A deep well luggage compartment is a standard feature in all 1969 Oldsmobile wagons. Fuel tank capacity in all wagons has been increased to 23 gallons for greater cruising range.



Keith Stephens

## Keith Stephens Sales Manager In Oklahoma

Keith Stephens has been named district sales manager for western Oklahoma according to an announcement by the DeKalb Agricultural Association, Inc.

A native of the Southwest, Stephens will coordinate all DeKalb seed sales efforts in 20 counties. He will be working closely with DeKalb's dealers and customers in these counties.

Stephens joined DeKalb in 1967 following his graduation from Texas Tech College where he had earned a B.S. degree in agricultural economics. Prior to assuming his present position, Stephens has served as an assistant district manager in west Texas.

Stephens, his wife Jane, and son, Brent, reside in Elk City. He is the son of County Commissioner and Mrs. Loyd Stephens.

# New and Fresh Styling, But Buick Theme Same

Buick Motor Division today introduced its 1969 line of cars with completely new styling for LeSabre, Wildcat and Electra models and featuring such mechanical innovations as a revolutionary new suspension, a new three-speed automatic transmission and variable ratio power steering.

The new line, which has a total of 36 models, will go on display in dealer showrooms September 26.

"While the styling of our 1969 models is new and fresh, we still have maintained the traditional Buick theme which makes our cars instantly identifiable," said Robert L. Kessler, general manager of Buick and vice president of General Motors. "The sculptured sweepline down the side has been restyled with an exclusive design for the Electra 225 which distinguishes it from LeSabre and Wildcat models."

One of the most notable changes in the 1969 Buicks is the elimination of the window vents on all models in the upper series cars and on all two-door hard-tops and convertibles in the Skylark and G models. This improves visibility and reduces wind noise.

Engineering changes include an anti-theft ignition lock located on the steering column, which locks the steering and transmission lever as well as the ignition. "60-40" front seats in some Electra models and a new dual action tailgate are standard on Sport Wagons.

The "60-40" front seat which is standard on the Electra Limited and optional on the Electra Custom, consists of a split seat with 40 per cent allocated to the driver and 60 per cent to the front seat passengers. Each section is adjustable.

The new dual action tailgate, which has a built-in bumper step for easy entrance to the cargo area, also is offered as an option on Special Deluxe station wagons.

Variable ratio power steering is standard on all Electra and Riviera models and optional on the Wildcat. This makes possible faster steering for parking maneuvers and tight city corners without compromising the smoothness of steering response on the open road.

Another innovation for 1969 is the introduction of the electric fuel pump on the Riviera. This new pump is integral with the fuel gage in the gas tank and supplies fuel to the carburetor in liquid form to better performance during hot weather operation.

Buick's famed sculptured sweepline, which has proven so popular the last two years, has been retained for 1969 with new styling that distinguishes the Electra from the other series.

The new sweepline on Electra models curves up over the front wheel housing and then slopes gently to the rear bumper in a straight, unbroken line, giving the car a longer look.

## Sudan News

By Evelyn M. Scott

Mr. and Mrs. Charles Hefington and Brad of Littlefield visited Sunday afternoon in the home of her parents, Mr. and Mrs. R.E. Scott.

A Leadership Conference for Auxiliary Workers of the First Baptist Church was held in Muleshoe, September 19.

Leaders of Sunbeams, G.A.'s and Y.W.A.'s attended. Each brought a sack lunch, with drinks provided by the host church.

Mr. and Mrs. Joe Salem and Mrs. W.V. Terry visited Sunday with Mrs. C.M. Furneaux and Mrs. Hewitt who are both confined to a hospital in Littlefield. They also visited Mrs. Newt Harkey.

Among those attending the Tech-Cincinnati game in Lubbock Saturday evening were Vess Terry, Guy Walden, Charles Douglas of Amarillo, and Pete Peterson of Tucuman.

Mrs. E.E. Crow has been confined to the St. Mary's Hospital in Lubbock.

A W.M.S. Leadership Conference of First Baptist Church was held at the Lazbuddie church, Friday September 27 from 9:30 to 3 p.m.

The conference was led by Mrs. Leona Harris. Those attending brought sack lunches and drinks were provided by the host church.

F.A. Lance recently underwent surgery at a Littlefield Hospital.

Mrs. R.E. Lowery has been confined to the hospital in Amherst.

Mr. and Mrs. Charles Hefington and Brad of Littlefield visited Sunday afternoon in the home of her parents, Mr. and Mrs. R.E. Scott.

A Leadership Conference for Auxiliary Workers of the First Baptist Church was held in Muleshoe, September 19.

Leaders of Sunbeams, G.A.'s and Y.W.A.'s attended. Each brought a sack lunch, with drinks provided by the host church.

Mr. and Mrs. Joe Salem and Mrs. W.V. Terry visited Sunday with Mrs. C.M. Furneaux and Mrs. Hewitt who are both confined to a hospital in Littlefield. They also visited Mrs. Newt Harkey.

Among those attending the Tech-Cincinnati game in Lubbock Saturday evening were Vess Terry, Guy Walden, Charles Douglas of Amarillo, and Pete Peterson of Tucuman.

Mrs. E.E. Crow has been confined to the St. Mary's Hospital in Lubbock.

A W.M.S. Leadership Conference of First Baptist Church was held at the Lazbuddie church, Friday September 27 from 9:30 to 3 p.m.

The conference was led by Mrs. Leona Harris. Those attending brought sack lunches and drinks were provided by the host church.

F.A. Lance recently underwent surgery at a Littlefield Hospital.

Mrs. R.E. Lowery has been confined to the hospital in Amherst.

## Assembly of God Sets Revival

Muleshoe First Assembly of God Church will hold a revival in their church beginning Monday, September 30, and ending Sunday, October 6. Services will be at 7:30 p.m. Monday through Friday and at 7 p.m. on Sunday.

Rev. Thurman Fountain from Seguin will conduct the revival. Rev. Fountain attended school in Columbus, Ga., and has served the First Assembly, Sumter, S.C.; First Assembly, Columbus, Miss., and Central Assembly, Seguin, Tex.

He has spent eight years as an evangelist and serves in Seguin community affairs in the following capacities: President of County Safety Association; President of County Ministers Association; President of City Council P-T-A; Member district Board of Managers P-T-A and is listed in Who's Who in Texas, 1967-68.

## Appreciation Dinner Set For Rep. Clayton

A gala event honoring State Representative Bill Clayton is being planned for October 14, 1968, by Democratic Party members from the 72nd Legislative District.

More than 1,000 residents of the District, as well as from various points over the state, are expected to attend the Clayton Appreciation Banquet slated for the Junior High School Gymnasium in Littlefield.

Tickets are already being sold, at \$10.00 per person, and the Delta 88 Royal. The latter car has a distinctive backlight, chromed front fender side louvers, identifying hood ornaments and a vinyl top as standard equipment.

The new 98's also have been completely restyled and are longer looking cars with long-hood, longer rear deck, and greater luggage capacity. The popular 98 Luxury Sedan has been expanded to two models. Previously available only in a

of ticket sales in Muleshoe. General chairman of the banquet is Bill Armstrong of Littlefield. Representative Randy Pendleton of Andrews is working with Plainview's Rep. Ralph Wayne coordinating the attendance by most of the top personalities in the state wide Democratic Party organization.

Pendleton anticipates "at least three commercial plane loads" to come to the event honoring Clayton.

The Andrews representative said Clayton is one of the most popular delegates in Austin, among his constituents. "He is known to all of us as the recognized authority on water needs and legislation," Pendleton said.

In addition to Bass and Young assisting with the organizational portion of the appreciation dinner are Ralph Beasley, Enoch, Jimmy Cannon, Bula, Jack Ferguson, Maple and Goodland; Delbert Watson, Needmore and Goodland; C.G. Damron, Circleback, Joe Costen, West Camp and Kenneth Powell, Y.L. Community.

Mrs. Pat Bobo will serve on the greeting and registration committee.

At Last a woman had a lump on her forehead removed by a new mass age treatment. She can now be described as level-headed.

## JOIN THE TEAM!

For strong law enforcement, call or write or come by our headquarters: 610 Nueces St. Austin, Texas 78757. Telephone: (512) 477-5824.

## RE-ELECT FOR A SECOND TERM



## CRAWFORD MARTIN ATTORNEY GENERAL

Pd. Pol. Ad. Crawford Martin for Attorney General, Searcy Bracewell, State Chrm.

## TMLRA To Hold Fall Matches

Members of the Texas Muzzle Loading Rifle Association from the Muleshoe area will be attending their annual fall matches at the TMLRA range at Brady, Texas October 4-6.

Rudolph Wiedebush, Muleshoe is a past president of TMLRA. He is expected to be in attendance as well as Mr. and Mrs. Ray Clayton, who both plan to compete in the events.

A shooting schedule featuring 30 hunting-type matches has been issued by the match committee. The schedule actually is a repeat of last year's with few changes. Shotgun matches have been expanded and two Ladies matches and a junior match have been added to the ones listed last year.

The Santa Fe Trail Match and the Tejas Running Match, both primitive type matches, have been retained because of their popularity when instituted for the first time last year.

In the first of the matches contestants shoot at the flame of a candle, diagonally crossed strings, an Indian target and clay pigeons, some with muzzle loaders and others with a tomahawk. A Mad Scramble match will be to see who fires the most shots with the highest score in five minutes.

Merchandise prizes for first place will again be given this year as well as medals for the first three places in each match. Again this year a Kenneth Hammett hand carved powder horn will be the prize in the only aggregate consisting of four matches.

All relays will be normal 45 minute relays except Sunday relays which will be 30 minutes. The last relay will be that which ends closest to noon on Sunday, October 6. Registration fee will be \$2, and each match will cost \$1. No registration fee is charged for juniors. A package deal is

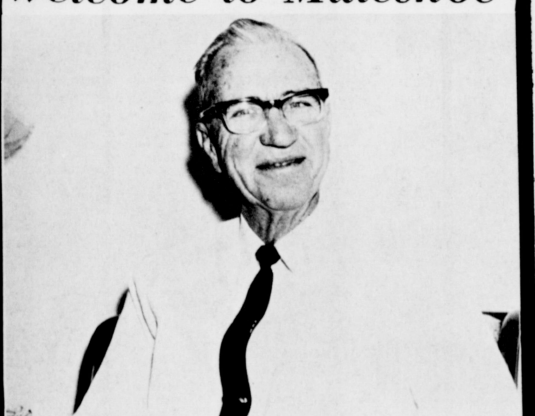
offered again this year whereby a shooter may pay \$15, and shoot all matches he is eligible to shoot. This includes the registration fee. A junior package deal for juniors who wish to shoot other than junior matches is offered at \$7.50. The package deals do not include matches 21 and 22 on the schedule.

Telling Her Size He walked timidly into the store and announced he wished to buy a present for a young lady.

The saleslady showed him some silk coats but when she asked him the size, he was baffled. He gazed about helplessly for a minute or so and then, spotting a dummy figure, a smile stole over his face. Waking up to it, he encircled it with his arm.

"About this size will do," he said, happily.

## Welcome to Muleshoe



Bruce Harris

A warm welcome to the Bruce Harris family, newcomers to Muleshoe. They are: Bruce, retired farmer and rancher, Mrs. Harris (Imogene) and a son, Roy, of the home. Another son, Troy, lives at Lovington, N.M. The Harris' live at 1810 D street and attend the Methodist Church. They formerly lived in Artesia, N.M. Harris is part owner of Shafer Fin Co., Baileyboro.

The following firms extend a cordial welcome to the Harris'

**CASHWAY GROCERY**  
402 MAIN Ph. 272-4244

**DAMRON DRUG CO.**  
308 MAIN Ph. 272-4210  
REXALL

**JAMES GLAZE CO.**  
INSURANCE  
REAL ESTATE  
LOANS

**MULESHOE STATE BANK**  
MEMBER FDIC

**Beginning Monday, Sept. 30, 1968**  
**RADIO STATION KMUL**  
Will Sign On at 6 A.M.  
Central Daylight Time  
Set your clock radio to...  
**KMUL - 1380 kc**  
Listen to KMUL-AM & KMUL-FM For the Best Sports Coverage In This Area:

**KMUL-FM: Muleshoe Mules Football, Live play by play on Friday nights. West Texas State Buffaloes, Live play by play on Saturdays.**

**KMUL-AM: Lazbuddie Longhorns Football, delayed broadcast at 8:15 Saturday. Three Way Eagles Football, delayed broadcast at 1:30 Saturday. Lazbuddie coaches interview, delayed broadcast at 7:50 Friday. Pigskin Roundup, S.W. Conference interviews, 11:00 Saturday.**

**KMUL**

\*\*\*\*\*  
"Muleshoe Mules"  
\*\*\*\*\*  
**PLAYER OF THE WEEK**  
\*\*\*\*\*  
MULESHOE VS. ABERNATHY  
\*\*\*\*\*  
**MULES 31**  
\*\*\*\*\*  
Roger Swint  
Chosen by the coaches in last week's game, as "PLAYER OF THE WEEK" was Roger Swint, 180 pound senior. He is a fullback and wears No. 31. Swint played a good defensive game, making 17 tackles.  
THIS RECOGNITION COURTESY OF:  
**MULESHOE STATE BANK**  
Member FDIC  
\*\*\*\*\*

# TRADE CLASSIFIED BUY ADS LEASE

**WANT ADS PH. 272-4536**

**CLASSIFIED RATES**

**OPEN RATES**

First insertion, per word - 6¢  
 Second and additional insertions - 4¢

**NATIONAL RATES**  
 First insertion per word - 8¢  
 Second and additional insertion - 5¢  
 Minimum charge - 65¢  
 Card of Thanks - \$1.00 Double rate for blind ads  
 Classified Display - 85¢ per col inch  
 95¢ col. inch for reverses

**DEADLINE FOR INSERTION**

Thursday's Muleshoe Journal - Noon Tuesday  
 Sunday's Bailey County Journal - Noon Friday

The Journals reserve the right to classify, revise or reject any classified ad.

Check advertisement and report any error immediately. Journals are not responsible for error after ad has already run once.

**1. PERSONALS**

meets every Tuesday at 12:00  
**FELLOWSHIP HALL**  
 Methodist Church

**Muleshoe Rotary Club**  
 John Shelton, Pres.

**Jaycees**  
 meets every Monday, 12 Noon  
 L. B.'s CAFE  
 Clarence Christian, Pres.

**Lions Club**  
 meets each Wednesday, 12 Noon  
**FELLOWSHIP HALL**  
 Methodist Church  
 W. E. Young, Pres.

**BRAS & GIRDLES BY PENNYRICH AT MAIN STREET BEAUTY SALON**  
 1-195-tfc

FOR SALE: Full blood cattle puppies. Female, 501 Ave B, 1-375-5tp

FOR RENT: 15 and 16 foot campers. By week, Call 272-3163, 1-355-tfc

Reduce safe, simple and fast with CoBest tablets. Only 98¢. Danron Drug, 1-395-4tc

I am in need of a small Garage to rent. With electricity. Phone 4382, 1-381-tfc

FOR SALE: Two Dachshund puppies. Call after 4 p.m. Phone 272-3615, 1-391-tfc

**3. HELP WANTED**

Sewing, ironing and babysitting. Sue Wood, 319 W. Ave E, 3-385-3tp

IRONING \$1 a dozen. 304 Reno St, Jo Nell Manasco, 3-391-4tp

WANTED AT ONCE: Dealer to supply Raleigh household necessities to consumers. Full or part time. Write Raleigh TX1-270-271 Memphis, Tenn. 38102 3-391-3tp

WANTED: Beautician, M. Street Beauty Salon, Phone 272-3448, 3-255-tfc

HELP WANTED: Experienced mechanic Crow Chev, Muleshoe, Texas, 3-351-tfc

WANTED: Dishwasher. Apply in person. Corral Drive-In Restaurant, 3-361-tfc

WANTED: A reliable couple or family to take over coffee shop, Maple, Texas. For more information see or call L.F. Smith, 927-3302, 3-395-2tc

**4. HOUSES FOR RENT**

FOR RENT: 2 and 3 bedroom brick houses. Furnished 1 bedroom apartment. Call D. L. Morrison Jr., 272-3421 or 272-3697, 4-211-tfc

FOR RENT: 3 bedroom house, 715 Ave. G, Clovis 763-5701, 4-365-tfc

FOR RENT: 3 bedroom house, redecorated, garage and fenced, 113 E. Fir. Phone 4168, 4-395-tfc

HOUSE FOR RENT: Call 946-2688, 4-271-tfc

FOR RENT: two bedroom unfurnished house for \$45. Good trailer space. Ph. 272-3181, 4-381-tfc

**5. APTS. FOR RENT**

FOR RENT: furnished apartment. 719 W. Ave. G. ph. clovis 763-5701 5-381-tfc

FOR RENT: Four room furnished apartment. See at 1412 W. Ave. C, 5-395-tfc

Furnished apts., large or small. Nice trailer space. Ph. 272-3465, 5-241-tfc

FOR RENT: Unfurnished 2 bedroom apartment. Carpeted and draped with built-in range. Ph. 4209, 5-365-tfc

For a good buy on all types of real estate, 2 and 3 bedroom homes, some V. A. repossessions, see Pool Insurance, 8-225-tfc

FOR SALE: three bedroom house, central heating, good location. Small down payment and takeover 5 3/4 % GI Loan, taxes, insurance included. 1620 Ave. C, Phone 3914, 8-391-tfc

"Real Buys in 3 bedroom homes also 2 bedroom homes."  
 "Small tracts 80' located on pavement and others. Listings appreciated."  
**HOLLAND REAL ESTATE**  
 121 American Blvd.  
 Ph. 272-4531  
 Day and Night  
 8-385-6tc

Good stock farm for sale. Well equipped, close in, 1/2 minerals, underground water line, power sprinkler, 8" irrigation well. Will run lots of cattle, has black switch grass. See Lee Pool or call 272-4531, 8-385-tfc

FOR QUICK SALE: a two bedroom house with garage, den and kitchen combination, and brick veneer. Good loan available. See Lee Pool or call 272-4531, 8-385-tfc

FOR QUICK SALE: 2 bedroom house with garage, den and kitchen combination, and brick veneer. Good loan available. See Lee Pool or call 272-4531, 8-385-tfc

FOR QUICK SALE: a two bedroom house with garage, den and kitchen combination, and brick veneer. Good loan available. See Lee Pool or call 272-4531, 8-385-tfc

FOR QUICK SALE: a two bedroom house with garage, den and kitchen combination, and brick veneer. Good loan available. See Lee Pool or call 272-4531, 8-385-tfc

FOR SALE: 3 bedroom house, carpeted, 2 baths, paneled den and kitchen, double garage. Call D.L. Morrison Jr., 272-3421 or 272-3697, 8-211-tfc

**NEW 1968 PICKUP LADD PONTIAC**

FOR SALE: 33 acres with house and well. Two miles South of Muleshoe, Contact Lewis Blaylock, 946-2688, 9-391-tfc

Sharp 1967 Chevy. See at 921 Hickory after 5 p.m. \$1450, 8-381-tfc

1966 Super Sport, 396 engine, three speed, automatic transmission. \$1955. Gene Bates, Phone 946-2416 9-375-tfc

**KREBB'S REAL ESTATE**  
 Phone 3191  
 8-325-tfc

FOR QUICK SALE: 1/2 block city property. See Pool Insurance Agency, 8-391-tfc

FOR SALE: One two bedroom, modern furnished house, Call 4080, 8-395-tfc

Thirty thousand well secured first lein note. Also 5,000 acurity 3 bedroom, den, 1900 square foot house. Trade for land. Prefer clear or near clear. Phone 806 762-2895, 8-395-tfc

FOR SALE: Early Harvest Cotton Separator and basket combination. See or call Leldon Phillips, 925-3510, 10-371-tfc

FOR SALE: International 22 stripper, Wagon Hand, Stripped less than 100 bales. Fits 40-10 \$1,000, Located near Earle, Call Dale Harper, Lubbock SW-5-4044, 10-391-tfc

FOR SALE: 1 Hesston cotton stripper. Has pulled about 150 bales. Make offer. See at Brock Motor Co. Phone 272-4588, 10-371-tfc

**12. HOUSEHOLD GOODS**

MILLIONS of rugs have been cleaned with Blue Lustr. It's America's finest. Rent electric shampooer, \$1. Higginbotham Bartlett, 12-395-tfc

**15. MISCELLANEOUS**

WANTED person with good credit to take over payments on 1968 model Singer sewing machine. Equity buy-backable \$23.75 or 5 payments at \$5.00. Write Lubbock Sewing Center, 114 19th Street, Lubbock, Texas, 15-361-tfc

European growth may spur U.S. exports.

WANTED person with good credit to assume balance on late model Dial-and-Sew sewing machine. Full automatic bobbin winder, buttonhold, fancy pattern selector. No attachments, 20 year guarantee. One-half paid out, free home demonstration. Write Lubbock Sewing Center, 114 19th Street, Lubbock, Texas, 15-361-tfc

FOR SALE: New and used tires, almost all sizes, Finn's L.P. Gas, phone 272-4678, 15-391-tfc

FOR SALE: Cushman Motor Scooter, 1966, Excellent condition. See Red Wright, Phone 272-4014 - \$275, 15-395-tfc

FOR RENT: Small office space or place suitable for storage. See C.E. Layne at Layne apts, or call 4496, -315-tfc

**17. SEED AND FEED**

HYBRID SORGHUM-SUDAN-GRASS SEED wanted in quantity, combine run. State cross and quantities available. Box 449 Journal, 17-311-tfc

SEED WANTED: Bulk seed, combine run or cleaned for Red Top Cane, African Millet, Hegari, Weeping Lovegrass, Ermelo Lovegrass, El Reno Sideoats Gramma, Chinese Red Peas, Bratham Peas, New Era Peas. CONLEE SEED CO., INC., Box 7247, Waco, Tex. 76710, or call AC 817/772-5660, 17-381-3tc

**Out of Orbit**

WHAT MAKES YOU THINK WE ARE NEAR A POLARIS? FIRMING RANGE?

**Bookmobile Schedule**

Wednesday October 2	
Circleback	8:45 - 9:45
Bula #1	10:15 - 11:15
Bula #11	12:00 - 1:00
Thursday October 3	
Amherst #1	9:15 - 9:45
Amherst #11	9:45 - 10:15
Springlake #1	11:00 - 11:45
Springlake #11	12:00 - 1:00
Earth	1:15 - 3:45
Friday October 4	
Pleasant Valley	10:00 - 11:00
Sudan #1	12:00 - 1:00
Sudan #11	1:00 - 4:00
Saturday October 5	
Morton	9:30 - 12:00

An unsuccessful organizer is one unable to get other people to do all the work.

**TELEVISION SCHEDULE FOR THE MULESHOE AREA**

STATION	PROGRAM	STATION	PROGRAM	STATION	PROGRAM	STATION	PROGRAM	STATION	PROGRAM
KGNC-TV (4)	AMARILLO Muleshoe Cable 4	KVII-TV (7)	AMARILLO Muleshoe Cable 5	KFDA-TV (10)	AMARILLO Muleshoe Cable 6	KCBQ-TV (11)	LUBBOCK Muleshoe Cable 2	KLBB-TV (13)	LUBBOCK Muleshoe Cable 3
DAYTIME	7:00-Today Show 7:25-News 7:30-Today Show 9:25-News 9:30-Concen. 10:00-Personality 11:30-Holly Sq. 11:30-Jopardy 11:55-Eye Guess 12:00-News	DAYTIME	6:30-Cartoons 6:40-Weather 6:45-Farm & R 7:00-Cartoons 9:00-One Life 9:30-Cavett S. 11:00-Bewitched 11:30-Treasure Is. 12:00-N/W/F&R 12:30-Ruth Brent 1:00-Newlyweds 1:30-Dating Game 1:45-G. Light 12:00-N/W 2:00-Password 3:00-Run 4:00-Dark S. 4:30-Tugue 5:00-Flingstones 5:30-Gilligan	DAYTIME	7:00-Farm/Ranch 7:35-CBS News 8:00-Capt. Kang. 9:00-Romper R. 9:30-Hillbillies 10:00-Andy G. 10:30-Coffee Time 11:00-Love of Life 11:25-News 11:45-G. Light 12:00-N/W 12:30-Farm/Ranch 1:00-Love Is 1:30-House Party 2:00-Tell Truth 2:25-News 2:30-E. of Night 3:00-S. Storm 3:30-L. VanDyke 4:00-M. Minikin 5:00-Mr. Ed 5:30-CBS News 6:00-N/W/S	DAYTIME	7:00-Headlines 7:05-Farm/Ranch 7:25-Weather 7:30-Today 8:25-Report 8:30-Today 9:00-Snap Judge 9:30-Concen. 10:00-Personality 10:30-Holly, Sq. 11:00-Jopardy 11:30-Eye Guess 11:55-News 12:00-News 12:15-Community 12:30-Make Deal 1:00-Days of Live 1:30-Doctors 2:00-Another W. 3:00-Don't Say 3:00-Match Game 3:25-News 3:30-Dating Game 4:00-Beaver 4:30-Bewitched 5:00-Wells Fargo 6:00-N/W/S	DAYTIME	6:00-Sun, Sem. 6:30-Cartoons 6:45-F & R News 7:30-Morn. Show 8:00-Capt. Kang. 9:00-Can. Cam. 9:30-Hillbillies 10:00-Andy G. 10:30-Van Dyke 11:00-Love of Life 11:25-News 11:45-G. Light 12:00-News 12:30-World Turns 1:00-Love Is 1:30-House Party 2:00-Gen. Hos. 2:30-E. of Night 3:00-S. Storm 3:30-D. Shadows 4:00-Newlyweds
MONDAY EVENING	6:30-Jeannie 7:00-Laugh-In 8:00-Movie 10:00-News 10:15-Weather 10:25-Sports 10:30-Tonight S. 12:00-Sign Off	MONDAY EVENING	6:30-Avengers 7:30-Peyton P. 8:00-Outcasts 8:30-Peyton Place 9:30-Big Valley 10:00-N/W 10:20-Comment 11:00-J. Bishop 12:00-Untouchables	MONDAY EVENING	6:30-Gunsmoke 7:30-Lucy 8:00-Andy G. 8:30-Fam. Affair 9:00-Carol Burnett 10:00-Scene 10:45-Joe Kerbel 11:15-News 12:00-Movie	MONDAY EVENING	6:30-Jerry Lewis 7:30-Julia 8:00-Movie 8:00-Report 10:15-Weather 10:25-Sports 10:30-Tonight	MONDAY EVENING	4:30-Cartoons 5:00-George 5:30-CBS News 6:00-N/W/S 6:30-Gunsmoke 7:00-News 8:00-Andy G. 8:30-Fam. Affair 9:00-Big Valley 10:00-N/W 10:30-De Luse 11:30-Peter Gunn
TUESDAY EVENING	6:30-Wagon Train 8:00-Movie 10:00-News 10:15-Weather 10:25-Sports 10:30-Tonight S. 12:00-Sign C Y	TUESDAY EVENING	6:30-Mod Squad 8:00-Thief 9:00-That's Life 10:00-News 10:30-Joe Bishop 11:00-J. Bishop 12:00-Untouchable	TUESDAY EVENING	6:30-Lancer 7:30-Red Skelton 8:00-Thief 9:00-Doris Day 9:00-CBS News 10:00-Scene 10:45-S. W. Con. 11:15-News 12:00-Movie	TUESDAY EVENING	6:30-Jerry Lewis 7:30-Julia 8:00-Movie 8:00-Report 10:15-Weather 10:25-Sports 10:30-Tonight	TUESDAY EVENING	4:30-King Kong 5:00-Beales 5:30-News 6:00-News 6:30-Daktari 7:30-Showtime 8:30-Flying Nun 9:00-B. Graham 10:00-News 10:15-Weather 10:25-Sports 10:30-Tonight
WEDNESDAY EVENING	6:30-Virginian 8:00-Special 9:00-The Outsider 10:00-News 10:15-Weather 10:25-Sports 10:30-Tonight S. 12:00-Sign Off	WEDNESDAY EVENING	6:30-Brides 7:30-Peyton P. 8:00-Movie 10:00-News 10:20-Comment 11:00-J. Bishop 12:00-Untouchables	WEDNESDAY EVENING	6:30-Daktari 7:30-Good Guys 8:00-Bev. Hillb. 8:30-Green Acres 9:00-J. Winters 10:00-Scene 10:45-Medic 11:15-News 11:20-Movie	WEDNESDAY EVENING	6:30-Jerry Lewis 7:30-Julia 8:00-Movie 8:00-Report 10:15-Weather 10:25-Sports 10:30-Tonight	WEDNESDAY EVENING	4:30-King Kong 5:00-Beales 5:30-News 6:00-News 6:30-Daktari 7:30-Showtime 8:30-Flying Nun 9:00-B. Graham 10:00-News 10:15-Weather 10:25-Sports 10:30-Tonight

**MISS YOUR PAPER?**  
 CALL CIRCULATION DEPARTMENT: Phone 272-4536

**BATTERIES—USED TIRES—FAST, EFFICIENT SERVICE**

**GOOD YEAR**

**VULCANIZING FLATS—ANY SIZE NEW TIRES**

**Johnson-Pool Tire Co.** MULESHOE Ph. 272-4594

**BUSINESS SERVICES DIRECTORY**

**Shop With These Firms Who Solicit Your Business**

**PROTECTION IS OUR BUSINESS**

I'M WISER THAN I LOOK. OFFICER. I NOT ONLY HAVE MY DRIVERS LICENSE BUT I HAVE AUTO INSURANCE FROM POOL INSURANCE

**Pool Insurance Agency**  
 114 E. Ave. C.  
 Ph. 272-4531

**EXPERT T.V. REPAIR and ANTENNA INSTALLATION**

**Gordon Wilson Appliance**

ZENITH  
 MAYTAG  
 TAPPAN  
 KELVINATOR

202 Main Ph. 272-3138

**Of All White's Dealer Stores... Texas' LARGEST Tire & Battery Dealer!**

**Poynor's White Stores Inc.**  
 Muleshoe

**W. Q. Casey**

GENERAL INSURANCE

Let Our Complete Coverage Take Care of All Your Insurance Problems

Muleshoe State Bank Bldg. Ph. 272-4571

**Save Money On Auto Parts!**

**BRATCHER MOTOR SUPPLY**  
 107 E. Ave. B — Dial 272-4288  
**CHARLES BRATCHER, Owner**

**SEPTIC TANKS & CESSPOOLS**

DRILLED, REPAIRED, INSTALLED

Cesspools - Pier Holes  
 Boot Pits - Storm Cellars  
 Concrete Covers & Turnkey Jobs Available  
 Pump Bases & Spillways

**WILSON DRILLING CO.**  
 Dial 272-4180  
 CLOVIS HWY. MULESHOE

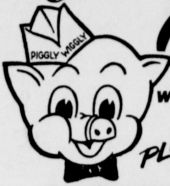
**BERRY ELECTRIC CO.**

ELECTRIC WIRING and REPAIRS  
 REFRIGERATION SERVICE

104 E. AVE. B  
 Phone 272-3375

It's new and Exclusive at Piggly Wiggly...

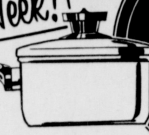
# Revere Town 'n Country Cookware



with Perma-Loc, the "locked-on" teflon  
PLUS 100 FREE S & H GREEN STAMPS

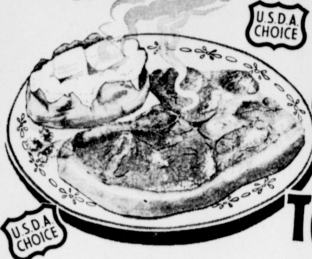
A NEW PIECE  
Each Week!

Town 'n Country  
designer inspired  
to produce  
avoided green



this week  
1 Qt. COVERED  
SAUCEPAN  
\$3.49  
only

WITH PURCHASE OF EACH PIECE!



## FOOD IS A BARGAIN at Piggly Wiggly

Valu-Trimmed, U.S.D.A. Choice Beef

**SIRLOIN STEAK** Pound **98¢**

Boneless Steak, U.S.D.A. Choice, Valu-Trimmed Beef  
**TOP ROUND STEAK** Pound **\$1.09**

Perfect for Stewing or Braising  
**Short Ribs** Pound **39¢**  
Dated to Assure Freshness, Extra Lean  
**Ground Chuck** Pound **59¢**

Fresh Sliced  
**Pork Liver** Pound **29¢**  
Farmer Jones, All Meat  
**Franks** 12-Oz. Package **49¢**

Lean Cubes of U.S.D.A. Choice Beef, Boneless  
**Beef Cubes** Pound **88¢**  
U.S.D.A. Valu-Trimmed Beef, Bottom Round  
**Cube Steaks** Pound **98¢**

Lean Shoulder Cuts U.S.D.A. Choice Beef  
**FAMILY STEAK** Pound **58¢**  
Boneless Steaks, Individual Size, U.S.D.A. Choice Beef  
**RIB STEAK** Pound **\$1.09**

More outstanding values!

- Cloverlake All Flavors  
**ICE CREAM** 1/2 Gal. **69¢**
- Reg. or King  
**COCA-COLA or Dr PEPPER** 6 Bottle Ctn **39¢**
- Qt. Jar  
**MIRACLE WHIP** **59¢**
- Bonne Giant Size  
**DETERGENT** **59¢**
- By Parker  
**DALLAS COWBOY PENS** Each **28¢**

Hi-C, Assorted Flavors  
**DRINKS**  
**4** \$1  
46-Oz. Cans  
or 25¢ Each  
Stokely's, Fruit Drinks  
46-Oz. Can 23¢

Golden, Stokely's  
**CORN**  
**6** \$1  
No. 303 Cans  
or 17¢ Each  
Kounty Kist, Golden Corn  
12-Oz. Cans 17¢

Sweet, Stokely's  
**PEAS**  
**6** \$1  
No. 303 Cans  
or 17¢ Each  
Mission Sweet Peas  
No. 303 Can 15¢

Pure Vegetable Shortening  
**CRISCO**  
**3** 59¢  
Pound Can  
Bakerite, Shortening  
3-Pound Can 49¢

C & H, Holly or Imperial  
**SUGAR**  
**5** 47¢  
Pound Bag  
Sweet 10, Liquid Sweetener  
6-Oz. Bottle 79¢

- Chef's Pride, Great Northern  
**BEANS** 2-Pound Bag **37¢**  
3-Minute, Yellow  
**POPCORN** 1-Pound Bag **19¢**  
Corny's, Plain or Iodized  
**TABLE SALT** 26-Oz. Box **11¢**

- Assorted Flavors, Popups  
**TOASTEMS** 10-Oz. Box **47¢**  
Hunt's  
**FRUIT COCKTAIL** No. 300 Can **26¢**  
Santa Rosa, Crushed  
**PINEAPPLE** No. 300 Can **23¢**

- Steele, Cut  
**GREEN BEANS** No. 303 Can **14¢**  
Same, Apricot  
**PRESERVES** 2-Pound Jar **79¢**  
Coffee Creamer  
**COFFEE-MATE** 18-Oz. Jar **\$1.09**

Health and Beauty Buy of the Week!  
**MOUTHWASH**  
Micrin, Regular  
\$1.15 Retail **79¢**  
12-Oz. Bottle

**COLD MEDICINE**  
Nyquil, New —  
By Vicks Regular **99¢**  
\$1.49 6-Oz. Bottle

**COFFEE** Maxwell House All Grinds Pound Can **65¢**  
Fresh Frozen Foods for Your Freezer!

**MEAT PIES**  
**6** \$1  
Morton's Chicken, Beef, Turkey, Tuna 8-Oz. Pkqs.  
OR 17¢ EACH

- Green Giant in Buttersauce  
**Mixed Vegetables** Green Beans, Sweet Peas and Niblets Corn 10-Oz. Pkg. **39¢**  
**Waffles** Aunt Jemima Frozen Country 9-Oz. Pkg. **45¢**

**FRENCH FRIES**  
**10¢**  
Cal-Ida 9-Oz. Package



**DOUBLE S & H GREEN STAMPS WEDNESDAY**  
WITH A \$2.50 PURCHASE OR MORE



- GRAPES**  
Tokay, Flame Red Pound **14¢**  
Large, Crisp Stalks  
**Celery** Pound **19¢**  
California, Full-O-Sunshine  
**Oranges** Pound **29¢**  
**POTATOES** Sweet, Delicious Candied Pound **12 1/2¢**

**FREE** YOUR 1st SECTION  
SECTION 2,3,4 NOW ON SALE...  
99¢  
INTRODUCTORY OFFER WITH COUPON BELOW  
Sections 2 through 12...only 99¢ each  
One piece Cash Order...only \$1.99  
THIS COUPON GOOD FOR  
**FREE** SECTION #1  
Random House American Dictionary and Family Reference Library  
99¢ Value

- Fine for Baking, Rome Beauty  
**Apples** Pound **23¢**  
Crisp, Large Bunches  
**Green Onions** 2 For **25¢**