

# Happy Thanksgiving

## The Clarendon Press

Dedicated To Fair And Impartial Representation

If a check appears by your name, your paper has expired. Subscription rates for Donley County are \$10.51 including tax and outside county \$13.67 including tax. Out of state residents subscription is \$13.00. There is no tax. Mail to Box 1110, Clarendon, TX 79226.

USPS 967040

Serving Hedley, Clarendon and Howard

Thursday, November 28, 1985

Number 48

### Community Christmas tree lighting December 1

By DENISE BERTRAND

Children large and small  
Come one, Come All

On Sunday Night  
The tree will alight

On the Courthouse square  
In the crisp night air

Carolers will sing  
and Bells will ring

Santa giving candy  
Will be just dandy

Children large and small  
Come one, Come all



[Refreshment stands and drawings furnished by local businesses and organizations]

Kicking off the Christmas season will be the lighting of the community Christmas tree Sunday, December 1 on the courthouse lawn from 7 until 9. The Chamber of Commerce has lots of activities planned to make this Christmas season ring with a little more cheer and spirit. Refreshment stands will be serving free hot coffee, hot tea, hot cider, hot chocolate, and

lots of other goodies to keep you warm inside. Santa Claus will be on hand to talk with the children and hear what they are wanting for Christmas. Santa and his helpers will have candy for the kids. You will sign up for door prizes which have been donated by area businesses to be given away among those present. Area churches will have a combined

choir entertaining with all your favorite Christmas carols. Debbie Roberts will direct the choir.

The Chamber of Commerce would like to see clubs and organizations as well as businesses and individuals get involved in this worthwhile project.

If you have a skit or program, we will be glad to include you in this community service affair.

### County businesses to have decoration contest

In the coming weeks, the Donley County business community will be decorating their stores and window displays for the Christmas season. The Donley County-Clarendon Chamber of Commerce will be sponsoring a contest for the best decorated business.

The contest will be judged in three categories, Most Beautiful, Most Original, and Best Religious Scene. In addition to these three awards, there will be an additional award to be called "The People's Choice."

There will be judges from out of town for the first three, but the People's Choice award will be voted on by the people. Voting boxes will be placed in businesses and you may vote for your choice by dropping your ballot into any of the voting boxes.

Any business wishing to participate should fill out an entry form and return to the Chamber of Commerce or if you need information call Chamber manager Patsy Leflew at 874-2421.

All entries must be returned by December 10th and the judging will be December 12th. Let's all help make this a very special holiday season for our community.

### FmHA issues loan assistance regulations

The Farmers Home Administration (FmHA) has issued new regulations which spell out, in detail, the various loan servicing alternatives which may be available to farmers who are having economic difficulty, according to Texas FmHA state director J. Lynn Futch.

"All borrowers are expected to pay back their loans according to a planned repayment schedule," Futch said. "However, when that is impossible, we want borrowers to be aware of what kind of assistance may be available and under what conditions."

The servicing alternatives available to eligible borrowers include a deferral of a portion of payments for five years, reamortizing payments over a longer period of time, restructuring the debt, or subordinating FmHA's lien position on security to another lender.

The regulations spell out how FmHA determines eligibility for various loan servicing alternatives and under what circumstances FmHA would propose to take steps to resolve delinquency or other problems.

Borrower's appeal rights are detailed as well as FmHA's agreement to continue the release of sales proceeds until final loan servicing has been determined.

The new procedures were developed to give FmHA borrowers with delinquent and problem loans clear, consistent and predictable guidelines on how their accounts will be serviced by the agency," Futch said.

### Lighting needed for Community Christmas Tree

Lighting is needed for the Community Christmas Tree. Lights are being obtained on a donation basis. If you have outdoor lights which you would like to donate, please bring them by West Texas Utilities before noon Friday, November 29th. If you are unable to bring your lights please call the Chamber office 874-2421 and we will come and pick them up.

**NOTICE**  
The Clarendon Press will be closed Tuesday, Wednesday, Thursday and Friday. Have a happy and safe Thanksgiving.

### Late night shopping begins Dec. 5

For your shopping convenience, the downtown merchants will have late night shopping the first three Thursdays in December. The dates are December 5, 12, and 19.

Area merchants have planned several activities for their customers during these shopping evenings. Thursday, December 5th will be "Value Night" with the participating downtown merchants. Each merchant will have a value box placed in their store. When you make a purchase in a participating business you will be able to draw a "value coupon" to be applied to your purchase. These values may be in the form of dollar amounts off the purchase a percentage discount off or additional green stamps. Stores will be offering up to 50% off so come on down and look around. Check to see what the local merchants have to offer. Don't miss out on these values.

Your area businesses are good people serving good neighbors. That's what community shopping is all about. Shop your local stores where you find a variety of merchandise and services and where the Christmas feelings are alive year 'round.

Participating merchants for value night are Bivens Pharmacy, Greene Dry Goods, Osburn Furniture, Treasure Chest, Stavenhagen Furniture, Video Review, and Henson's. Saye's and Salem II will stay open late but will not have discount boxes.

If you have any questions concerning late night shopping please feel free to contact Patsy Leflew at the Chamber of Commerce office 874-2421 or 874-3159.

### Diabetes clinic

Diabetes test clinic will be held Tuesday, December 3, 1985 from 10 a.m. to 3 p.m. at the Senior Citizens Center, 103 East 4th Street. Rita Anderson, Public Health Nurse of the Texas Department of Health will conduct the clinic. This service is scheduled every six months, so if you were checked in January that is good, but you should be checked again. Many times these regular visits will catch a problem in the early stage and prevent it from becoming a serious problem. There is no charge and the general public is invited and encouraged to come by.



DONLEY COUNTY GOLD STAR recipients - Monte Hollar and Lisa Burch

### Hedley Banquet Reunion

The Hedley High School Ex-student committee announces the annual reunion banquet.

A buffet dinner will begin at 7 p.m. on November 30th, 1985 at the high school.

The class of 55 will host the event and invites you to fellowship with them in the afternoon from 2 to 4 just

prior to the banquet.

Further information may be obtained from Mickey Witt 806-935-4006.

### Panhandle Community Service Board needs members

Panhandle Community Services (formerly Community Action) is accepting nominations for representatives to serve on their area Board of Representatives.

Such a primary election will take place at the local Panhandle Community Services, 300 S. Sully, during the first two weeks of December. Anyone who comes by is eligible to nominate a person to serve on this board.

Nominees will be voted on December 19 and 20 during Commodity Distribution.

Judge W.R. Christal is serving on the board as an elected official at this time.

**Tommie Saye**  
Cooperative Observer  
for National Weather  
Service, Clarendon.

Day	Date	HI	Low	Precip
Monday				.01
Tuesday				
Wednesday				.25
Thursday				.02
Friday				
Saturday				
Sunday				

Total Precip. for Month .69  
Total Precip. for Year 31.84



MARIA LUJAN  
Clarendon College  
Student dies  
in accident

The students, faculty, and administration of Clarendon College are saddened by the loss of a very special young woman. Marla Lujan, a sophomore student from Santa Rosa, New Mexico, died Thursday afternoon in Northwest Texas Hospital after a riding accident Tuesday. Her parents are Mr. and Mrs. Leonard Lujan. During her freshman year, Marla was a vocalist with the Cowboy Band and a nominee for Clarendon College Cowgirl of 1985. This year she was the only girl in the Ranch and Feedlot Operations Program. Marla will be greatly missed by her many friends at Clarendon College.

### Ministerial Alliance to hold Joint Thanksgiving Service

A joint Thanksgiving Service will be held Wednesday at 7 p.m. in the First United Methodist Church with the Rev. James Carter as the speaker. The service will be a joint service by the Clarendon Ministerial Alliance and a joint choir under the direction of Debbie Roberts will be singing. The public is invited.

### Saint's Roost Saga returns Clarendon

This is the story of the settlement of L.H. Carhart's Christian colony on Carroll Creek that grew to be Clarendon, Texas. Virginia Browder penned the lines for the extravaganza staged on the Clarendon High School football field in 1967. With her blessing the story remains grand, but the production has been scaled down and brought indoors for the Texas Sesquicentennial and Celebrate Clarendon!! observation. If you were a part of the original production of the Saint's Roost Saga, you will love this nostalgic rerun. If you missed the first one, this may be your last chance for another 18 years. For one night only, Tuesday, December 3, at 7 p.m. in the College Auditorium, watch local history come alive.

**Letter to Editor**

Dear Editor:

Sometimes incorrect information is repeated so often that the inaccuracies obscure the facts.

Recent letters to the editor have repeated several supposed "quotes" in an effort to prove some point. These writers have been seriously misled by a mass-distributed mimeographed sheet of paper which purports to contain "documented facts."

For example, many letter writers have cited the Planned Parenthood News, Summer edition from 1953. Checking the original document, we find:

1. There is no Dr. Lena Leure as quoted by these letter writers. There is however a Dr. Lena Levine.

2. Dr. Levine is not quoted on page 10 or anywhere else in the paper. She is mentioned twice on page 10, both times in reference to conducting seminars on sexuality and marriage.

Nowhere in the paper did anyone say anything about "promoting satisfactory sex before marriage." That also is a figment of someone's fertile imagination.

3. The Planned Parenthood News, Summer, 1953, was published as a report on the events of the 33rd annual meeting of the Federation. Articles included in this issue deal with trends about population, family size, and the family as the basic unit of society and how to support it.

4. Planned Parenthood does not advocate abortion as a means of birth control. They are in the business of preventing the need. Prevention is the key through Planned Parenthood's programs of education and medical services.

5. Planned Parenthood does not receive 15 percent of its income from abortions.

After finding these points to be incorrect, I did not waste my time checking the rest of the information in the letters.

It seems only logical to me that opponents of any point of view could look at a historical figure such as Margaret Sanger and find any quote

which could be taken out of its historical context or blown out of proportion to suit their purposes.

If you are going to judge an agency or spend so much energy being against something, the least you could do is find out the truth. A lot of people want to believe the worst so they are easy prey for those who distribute material without researching its origins.

I realize most of those who have written are good, honest people who want to do right by others, but I would caution them to check out the facts before they go "public" and run the risk of misleading others.

Sincerely,  
Richard

**School Menu**

December 2-6

**Monday**-Barbeque smokies, cole slaw, Ranch Style beans, hot rolls, peanut butter, milk.

**Tuesday**-Pizza with cheese, buttered corn, tossed salad, butter cookies, milk.

**Wednesday**-Hot dog with chili, baked beans, french fries, Jello, milk.

**Thursday**-Chip O Pie with cheese, buttered corn, tossed salad, Ranch Style beans, fruit juice, milk.

**Friday**-Chili burger on bun, french fries, tossed salad, apple cobbler, milk.

**Louise White Jeffers family to have reunion**

Louise White Jeffers and family will be having a reunion at the Lelia Lake Community Center Saturday, November 30. They would like to invite all friends to come and visit.

**Fines begin Dec. 1 for safety belt law**

What is the new safety belt law? It's an idea whose time has come.

Public officials and citizens in Texas have discovered that we can't afford not to buckle up. We can't afford the loss of life and we can't afford the economic burdens of unnecessary deaths and injuries and lost productivity.

Few people will argue with the effectiveness of safety belts in saving lives.

But what about personal freedom? Is it anybody else's business if I don't buckle up?

Economically, yes. It is our fellow taxpayer's business and our employer's business.

In the deadly seconds of a crash, a driver's choice not to buckle up becomes a problem for his passengers and those traveling in vehicles around him. The unbelted driver has little chance of taking constructive action to lessen the effects of a crash situation.

And with the State Board of Insurance's decision to grant a reduction in automobile rates based on an assumed 65 percent belt usage rate, buckling up becomes everybody's economic business. It's everybody's economic business because the rate reduction will not be maintained if the projected belt usage does not occur.

When our legislators passed the belt law in Texas and when the State Board of Insurance granted the rate reduction, they were signaling that public officials will share the responsibility for yet another step toward stopping unnecessary loss of life and the high financial burdens of traffic accidents.

The law is on the books. Fines begin December 1. Fines and the insurance reduction are extra economic incentives to buckle up.

With lives and money hanging in the balance, the few seconds required to buckle up seems like a good investment with a significant return.



MR. AND MRS. JOHN McVICKER

**The John McVicker's celebrate their 50th**

Mr. and Mrs. John McVicker are celebrating their 50th wedding anniversary with a reception at the Fifth Season Inn East, Amarillo, on Friday, November 29, at 7 p.m. The event is being hosted by their children and grandchildren and great grandchildren.

John D. McVicker married the former Lois I. Weightman on December 7th, 1935 at Hollis, Oklahoma. The couple previously resided

in Dumas and Amarillo. They have lived in Howardwick for 14 years. McVicker is retired and self-employed. The couple belongs to the First Baptist Church of Howardwick.

Children of the couple are Daria Keeney, Pella, Iowa; Bonita Corbin, Dumas; Dawn Gay, Amarillo; Mike McVickers, Amarillo; and a deceased son Buddy McVicker. The couple has 15 grandchildren and seven great grandchildren.

**Holiday Safety tips offered**

Everyone looks forward to the holiday season. Unfortunately, accidents never take a holiday and can quickly turn joy into sorrow.

So make safety part and parcel of all holiday activities, says Dr. Gary Nelson, safety engineer with the Texas Agricultural Extension Service, The Texas A&M University System.

He offers these safety tips: Clear walks and steps of ice, snow or objects to make coming and going safer for guests (and your family). Shoveling snow is hard work and overexertion by older, out-of-condition or health-impaired people could lead to collapse.

Turn on outdoor lights when you expect company or a car drives up.

Always drive with special caution when traffic is heavy or road conditions are abnormal. Since many holiday drivers are impaired by alcohol, be alert for their driving errors.

Before company comes, put away things that could injure small children - matches, pesticides, medicines, sharp knives, cleaning products, firearms and power tools.

Help older folks, too, by removing tripping hazards and providing ample light.

If you partake of "holiday cheer," let another drive or limit drinks to one an hour.

Since the kitchen is usually a busy place during holidays, make sure there are no dangling small appliance cords or protruding pot handles for children to grab. Handle sharp knives with care and put them away after use.



The annual per capita consumption of soap in the United States is about forty pounds.



America's first extensive hard-surface road was built in Pennsylvania. Completed in 1795, it was known as the Lancaster Turnpike and ran 62 miles.

**Library News**

**NEW BOOKS**

Dancing in the Light; by Shirley MacLaine.

Last Wish; by Betty Rollin.

Elvis and Me; by Priscilla Presley.

Road to Paradise Island; by Victoria Holt.

Hunt for the Red October; by Tom Clancy.

**DONATIONS RECEIVED**

Ms. Virginia Browder in memory of Nick McCauley.

Mr. and Mrs. Bill Thornberry in memory of Bill Greene Jr.

First Bank & Trust in memory of Annette Hardin.

Mr. and Mrs. Glyndol Holland in memory of Nick McCauley.

Emmett Simmons Insurance in memory of Nancy Selvidge.

Mr. and Mrs. Jerry Courtney in memory of Bill Greene Jr.

Mr. and Mrs. Jiggs Mann in memory of Annette Hardin.

**Hedley School**

**Performance**

**Report**

The Hedley Independent School District announced that the Annual Performance Report on the 1984-85 school year is now available at the Principal's office at Hedley.

The report is informative concerning aspects of public education of Hedley from students performance, program offerings, staff quality and faculty adequacy, financial conditions, curriculum requirements and measurements of educational achievement by listing the various TABS and SRA achievement testing programs, and charts of pupil-teacher ratios, programs, attendance ratio and basic skills test results during the past four years.

The purpose of the report is to provide the Hedley district with the opportunity to present to the local community a comprehensive review of the activities of the Hedley School.

This report is required by law and open to public inspection.

The Clarendon Press is published every Thursday at 106 S. Kearney and entered as Second Class Mail at the post office at Clarendon, Texas, J.C. and Helen Woody, publishers and editors.

Subscription rates: \$13.67 per year outside Dundy County and \$10.51 per year in Dundy County.

Any erroneous reflection upon the character of any person or firm appearing in these columns will be gladly and promptly corrected upon being brought to the attention of the management.

**Going to Amarillo? Visit The Christmas Spot!**

**UNIQUE**

- ORNAMENTS
- DECORATIONS
- STOCKING STUFFERS
- FURSKINS BEARS
- LIFE LIKE TREES
- STOCKINGS
- GIFT IDEAS
- WREATHS

at the **Patio Shop**  
2225 S. GEORGIA

355-0991  
**AMARILLO**  
VISA-Mastercard

**HAVE A HAPPY THANKSGIVING**  
OPEN ALL DAY THANKSGIVING

<b>FRITOS CORN CHIPS</b> 3 GAL. \$1.49	<b>DORITOS BUTTER-MILK</b> 1/2 GAL. CTN. 99¢
<b>CONOCO ANTI-FREEZE</b> GAL. 2.99	<b>FRESH &amp; CREAMY HOT CHOCOLATE</b> CUP 30¢
<b>ALLSUP'S TALLSUP</b> 1/2 GAL. 49¢	<b>ALLSUP'S SAUSAGE ON A STICK</b> EACH 99¢
<b>ALLSUP'S ICE CREAM</b> 1/2 GAL. CTN. \$1.59	<b>SUPPORT SPECIAL OLYMPICS BY BUYING DECKER PRODUCTS AT ALLSUP'S</b> 8 OZ. COOKED HAM \$1.49 OR <b>CHOPPED HAM</b> DECKER GOLD 8 OZ. PKG. \$1.19

**ALL SIZES-GREAT SELECTION OF FRESH CHRISTMAS TREES AS LOW AS \$8.99**

**FALL WAREHOUSE SALE**

<b>PET EVAPORATED MILK</b> 13 OZ. CANS 2.99¢	<b>ALL BRANDS COFFEE FOLGER'S OR HILLS BROS.</b> 1 LB. CAN OR PKG. \$1.99	<b>PHILADELPHIA CREAM CHEESE</b> 8 OZ. PKG. 73¢
----------------------------------------------	---------------------------------------------------------------------------	-------------------------------------------------

**MOVIE & VCR RENTALS**  
The Very Best in Home Video Entertainment!  
**ALL YOU NEED IS YOUR TV!**

**6 Pkg Cans \$2.19**

**ALLSUP'S CONVENIENCE STORES**  
WHILE SUPPLIES LAST

PRICES EFFECTIVE NOV. 28-30, 1985

**OPEN THANKSGIVING DAY**  
ICE-MILK-BREAD-FRESH PRODUCE-SNACKS-SHOWS & SERVE HULLS-CHIPS & DIPS-FILM & FLASH-NOV COOKED FOODS-SELF SERVE 8&S

*Shopping j. Winston*

**Far from Shopping**  
December 4, 5, and 6

**Let's compare**  
Maybe I can save you some money on insurance:

**Allstate**  
You're in good hands.  
Allstate Insurance Company  
Allstate Life Insurance Co., Northbrook, IL

**Life Homeowners Auto/ Boat RV Business Health**

**EMMETT O. SIMMONS Insurance**  
See or Phone  
**JEM SIMMONS**  
874-3506

**Obituaries**

**Charles M. Bell**

Services for Charles M. Bell, 85, were at 11 a.m. Thursday in Ed Brown & Sons Funeral Directors Chapel of the Fountains with the Rev. Paul Taylor, pastor of the First Baptist Church, officiating. Grave-side services were at 2:30 p.m. Thursday at Citizens Cemetery in Clarendon. Mr. Bell died Monday.

Survivors include a son, a daughter, a brother, a sister, six grandchildren and 16 great-grandchildren.

**Olen Ferrell Messer**

Funeral services for Olen Ferrell (Pete) Messer, long time Hedley resident, were held at 2:30 Thursday, November 21 in the Church of Christ in Hedley with Minister Don Stone and Minister Travis Gilliland officiating.

Burial was in Rowe Cemetery in Hedley under the direction of Spicer Funeral Home.

Mr. Messer passed away Tuesday, November 19 in Hall County Hospital. He was born June 28, 1903 in Bell County.

A retired farmer, he has lived in Hedley since 1913. He was married to Lillie Ruth Hickerson October 6, 1921 in Memphis. He was a member of the Church of Christ.

Survivors include his wife of the home; one son, Doyle Messer of Hedley; a daughter, Mrs. Nelda May Hudson of Amarillo; one sister, Lillian Walker of Hedley; four brothers, C.V. of Wellington, L.D. and Carol of Hedley and P.C. of Clarendon; 5 grandchildren and two great-grandchildren.

Pallbearers were Connie DeBord, Jimmy Taylor, Harold White, Bob Roland, Billie Cobb and Wendell Sursa.

Honorary pallbearers were M.C. DeBord, Alford Johnson, Hoyce Kennedy, Woodrow Farris, Cullen Taylor and O'Neal Weatherly.

**Mrs. Mary Kay Riley**

Funeral services for Mrs. Mary Kay Riley, age 57, were held at 2:00 p.m. on Tuesday, November 26, 1985 in Robertson Chapel of Memories with Elder Doyle Thomas, Baptist Minister from Sequin, Texas, officiating. Interment was in Citizens Cemetery with arrangements under the direction of Robertson Funeral Directors.

Mrs. Riley died at 2:30 a.m. on Sunday, November 24, 1985 in High Plains Baptist Hospital in Amarillo following a lengthy illness. She was born March 24, 1928 in Comanche, Texas and moved to Clarendon in 1940. She was married to H.L. Riley on January 28, 1946 at Amarillo, Texas. She had worked as a beautician in Clarendon several years ago. She was a member of Beta Sigma Phi and the Sardis Missionary Baptist Church in Clarendon.

Survivors include her husband, H.L. Riley of Clarendon; and one sister, Mrs. Twain Nickelson of Amarillo.

Casket bearers were Mike Graham, Don Robinson, Gary Hunt, Roy Monroe, John Grady and Snooks Sparks.

The family requests that memorials be to the American Cancer Society.

**Selective Service nonregistrants denied federal employment**

Under a new law signed by President Reagan, appointment to Federal jobs will be denied to men who have not registered with Selective Service. The new law, effective immediately, applies to students seeking temporary summer employment, as well as men searching for permanent employment with a Federal agency or department.

Commenting on this new requirement, Selective Service Director, Thomas K. Turnage stated, "I am pleased and very reassured by the continuing Congressional support of the registration requirement. Not only does this law encourage compliance with the law among eligible young men, it also increases public awareness of the requirement. As always, our primary intent is to register men not to prosecute them."

Offered by Senator Strom Thurmond (R-SC), and known as the Thurmond Amendment to the Defense Authorization Bill, the amendment was co-sponsored by Senators Mattingly, Nickles, Denton, East, Gramm, Helms, Humphrey, Warner, Johnson, Wilson, Hollings, Symms and Murkowski. Rep. Sonny Montgomery (D-MS) had introduced similar language in the House of Representatives.

Men of Registration age must be registered to receive Federal student aid and job training benefits. Additionally, registration is a requirement in some states for various employment opportunities, such as law enforcement agencies and permission to practice law.

Men born in 1960 and later years are required to register with Selective Service within 30 days of their 18th birthday. Registration takes only five minutes at any post office. Failure to register is a felony, punishable by a fine of up to \$250,000 and/or up to 5 years imprisonment.



MR. AND MRS. LLOYD RISLEY

**Mr. & Mrs. Lloyd Risley celebrate 50th anniversary**

The following article appeared in the November 28, 1935 issue of the Clarendon News:

Miss Melba Johnston and Mr. Lloyd Risley were quietly married at the home of Rev. J. Perry King at 3:30 o'clock Tuesday afternoon, November 26. Miss Clara Harris was the only attendant at the wedding. Immediately after the ceremony Mr. and Mrs. Risley left on a wedding trip to El Paso and Old Mexico. They are expected back in Clarendon Sunday, returning by way of San Antonio.

Both Mr. and Mrs. Risley are well known in Clarendon and have many friends here to wish them every happiness. The bride is the daughter of Mr. and Mrs. V.P. Johnston of the Chamberlain Community. She is a graduate of Clarendon Junior College and has been attending the State Teachers College at Canyon. Mr. Risley is the son of Mr. and Mrs. A.F. Risley, pioneer residents of Clarendon.

The young couple will be at home in Clarendon upon their return.

The young couple has been at home in Clarendon for the past fifty years. Lloyd has been engaged in farming and various farm businesses. Melba has been a homemaker and a member of the First Baptist Church. Their four children Lloyd Virgil, Martha Jo, Leane, and Jim have all attended the Clarendon schools. Observation of the couple's fifty years of marriage will be held Saturday, November 30, 3-5 p.m. in the Patching Club House. All of their friends are invited to share this celebration with them.

**MAKING LIFE MORE FUN**

Today's changing life styles and role relationships raise some questions about greeting card etiquette, from actual card selection to the addressing of envelopes.

Here are some helpful tips from the experts at American Greetings:



Christmas cards today range from traditional greetings to those bearing tidings "from our cat to yours."

- When addressing a card to a widow, use her husband's first name: Mrs. John A. Jones. If she has children, and they are still living with her, you can address the card: Mrs. John A. Jones and children.

- In addressing a card to friends living together, one solution is to address the card with their full names, one on each line. Or, you might want to send a separate card to each friend.

- When sending a card to a divorced woman, you may retain the "Mrs.," but you should follow it with her first name: Mrs. Jennie Black. It would also be correct to dispense with the Mrs. and address the card to "Jennie Black." In deciding whether or not to use "Ms.," you might want to consider the preferences of the recipient.

**Lelia Lake Friendship Club met**

Lelia Lake Friendship Club met at the home of Wanda Wilson in an all day meeting. They quilted a quilt for Jane Stevens. This was their Thanksgiving meeting. Also a lovely dinner was served. Those present were Mary Lee Noble, Yvonne Belle McDaniel, Irene Jones, Vada Morrison, Louise Aten, Thelma Rudder, Annie Thomason, Florene Bennett, Edna Dishman, Lucille Luttrell, and hostess Wanda Wilson, and Jane Stevens. Guests were Ola Stone, Dixie Ward, Sada Shields.

They will have their Christmas party at Yvonne Belle McDaniel's home December 11th at 2:00. Bring a gift valued at \$5.00.

"Nothing helps scenery like ham and eggs." Mark Twain

Christmas is coming... Christmas is coming...

*Shopping*  
J. Winston

2701 PARAMOUNT - AMARILLO

VISA (806) 358-2457

**MATERNALLY YOURS**

A Unique Store Combining The Best Of New & Pre-Owned Maternity Wear

WE BUY PRE-OWNED CLOTHING

Open: Mon.-Sat. 10-5:30 • Sun. 12-5

358-2275

2903-A S. WESTERN AMARILLO



WE INVITE YOU OUR VALUED CUSTOMERS TO SHARE IN OUR RUBY 40th ANNIVERSARY CELEBRATION SUNDAY, DECEMBER 1, 1985 1:00 P.M. TO 6:00 P.M. REGISTER FOR \$1000 DIAMOND-RUBY RING 25% DISCOUNT ON ALL REGULAR PRICE MERCHANDISE HENSON'S 221 SOUTH KEARNEY CLARENDON, TEXAS 79226

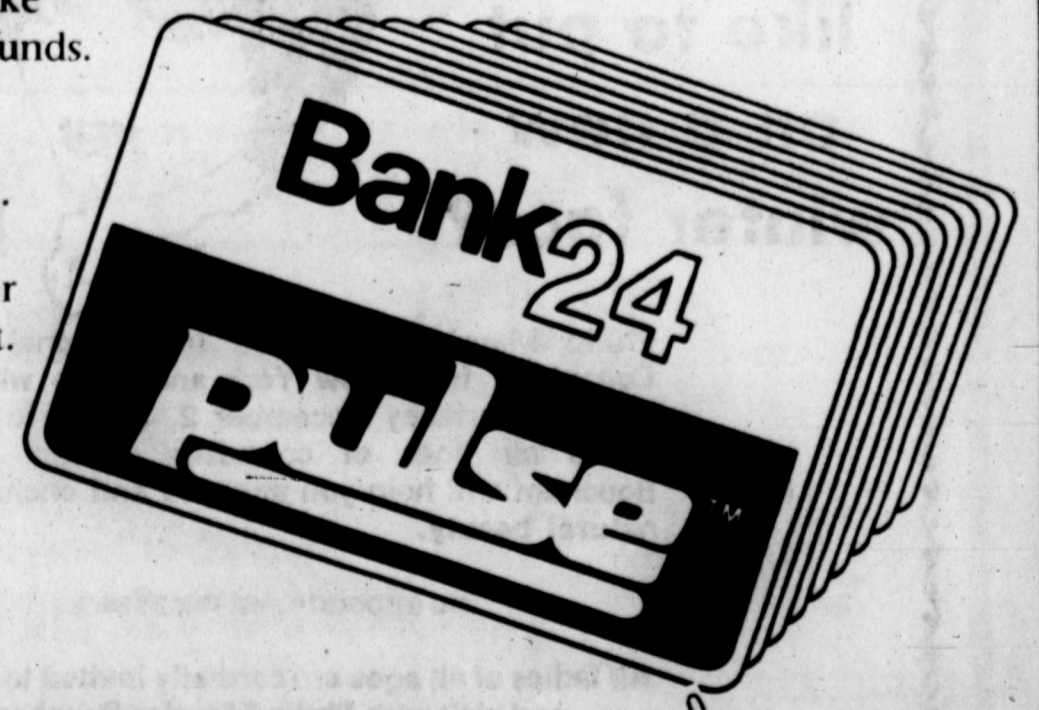
REFRESHMENTS

DOOR PRIZES



**Out of Town and Out of Cash?**

With your Bank 24 card you can have cash instantly. As a service for our customers Bank 24 cards are available this month from First Bank and Trust. Bank 24 is your link with First Bank and Trust when you're outside Clarendon. Make withdrawals from your checking or savings account. Transfer funds. Or check your balance at any of the eleven Bank 24 locations in Amarillo or the 1,800 Pulse automated teller locations in Texas, Oklahoma and Louisiana. All with the press of a button. Now you'll never be out of town and out of cash again. For more information talk with your banker at First Bank and Trust.



**FIRST BANK & TRUST**  
OF CLARENDON

123 S. Kearney

Phone 874-3556

### EMS Activity

## Clarendon EMS members attend AIDS seminar

11-16-85 Beverly Burrow, 27 of Clarendon no transport from residence. Medical.

11-17-85 LaNell Lovelady, 66 of Clarendon from St. Anthony's Hospital, Amarillo to residence. Medical.

11-17-85 Ora Aten, 84 of Clarendon from residence to St. Anthony's Hospital, Amarillo. Medical.

11-17-85 Mary Kay Riley, 57 of Clarendon from residence to High Plains Baptist Hospital, Amarillo. Medical.

11-18-85 Robert Tucker, 40 of Clarendon from residence to Veteran's Administration Medical Center, Amarillo. Medical.

11-18-85 Ruby Parker, 90 of Clarendon from residence to Gilkey Clinic, Clarendon. Trauma.

11-19-85 Maria Lujan, 19 Clarendon College student of Santa Rosa, New Mexico from Clarendon College Arena, Clarendon to Amarillo Emergency Receiving Center, Amarillo. Trauma.

11-22-85 Ernest C. Wood, 91 of Clarendon from residence to Veteran's Administration Medical Center, Amarillo. Medical.

245 responses handled in 1985 to date.

Donations received: Mr. and Mrs. Lee Shaller in memory of Nancy Selvidge; Mr. and Mrs. Stanley McKee in memory of Frank Brown Sr.

"Discussion: a method of confirming others in their errors." Ambrose Bierce

Probably no disease has caused more public concern nor received more publicity than AIDS (Acquired Immune Deficiency Syndrome). Especially concerned are those persons who, through their roles as health care providers, must come into contact with strangers on a daily basis. It is for this reason that five members of the Clarendon Emergency Medical Services team recently attended a seminar on the dreaded disease.

The seminar, sponsored by the West Texas State University School of Nursing, was presented at several sites throughout the Panhandle. On Thursday, November 21, 1985 from 7 to 9 p.m. it was held at the Farm Bureau building in Wellington. Attending from Clarendon EMS were Steve Smith, EMT, Jim Sharrar, EMT, Mike Spier, EMT, Donny Garmaa, EMT, and Phillip Vargas, paramedic. They reported that the seminar was well attended by providers from all areas of the

medical community and the program was extremely well presented and very informative and that they received the most recently released information regarding the disease. They were also told how to handle patients with whom they come in contact and when it is suspected or unknown whether or not they have AIDS. The EMS personnel reported that the seminar did much to relieve their concerns about handling possible AIDS patients. They will be sharing the information they received at the seminar with other members of the local EMS team.

EMS team members are constantly striving to increase their knowledge in all areas of patient care so that they can better serve area citizens and those people who pass through our area by attending classes such as this one. If anyone would like more information on AIDS or on the seminary, please feel free to contact one of the EMS team members previously mentioned, and they will be glad to discuss it with you.



### 4-H activities

The Donley County 4-H Club held its monthly meeting Monday, November 18, at 7 p.m., at the Clarendon Community Center.

President Lesia Fuston called the meeting to order. Stephen Davis gave the American pledge and Oleta Lane gave the 4-H pledge and motto.

An interesting program entitled "Community Involvement" was

given by Mark Winsor, president of the Chamber of Commerce and the Lion's Club. Mark stressed the importance of 4-H'ers becoming involved in the community.

After the program, 4-H'ers turned in pecan money and bean supper ticket money.

Ronald Gooch reminded 4-H'ers of upcoming livestock show dates. There will be a 4-H stock show meeting December 9 in the Vo-Ag building at 7 p.m. The 1986 Donley County Livestock Show will be held January 17 and 18, 1986. Also discussed was a 4-H rifle project meeting, which will be held Thursday, December 12, 1985, 5 p.m., in the classroom building at Clarendon College.

Judy McCully, 4-H K-9 Korp project leader, reported that a new class has just begun and will continue taking new members until completion of the next meeting. The K-9 Korp project meetings are every Wednesday at the Clarendon Community Center at 6:30 p.m.

Terry Floyd urged all 4-H'ers, parents, and leaders to attend the Donley County Extension Homemakers Christmas in November Bazaar, Saturday, November 23, from 9-4, at the Clarendon Community Center. The following 4-H'ers volunteered to sell pecans at the bazaar: Johnny Mangum, David Lane, Lesia Fuston, Chris Leathers, Katrina Leathers, Bridget Bland, and Rachel Torres.

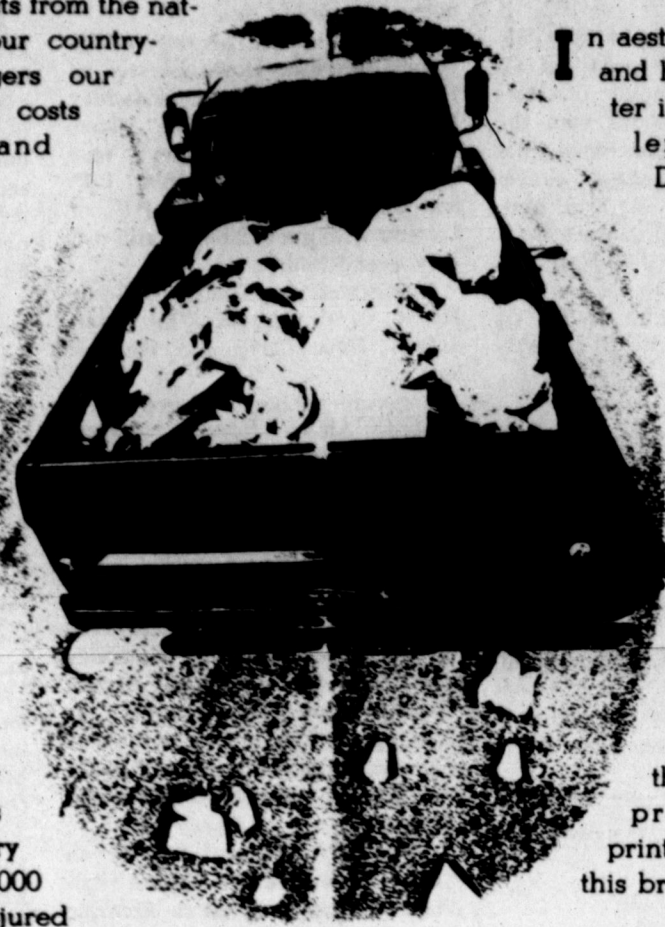
The next 4-H meeting will be December 16, 1985, at 7 p.m. It will be our annual Christmas party. All 4-H'ers, parents and leaders are invited to attend.

## On the Road to Ruin

Castaway trash on Texas highways — the flotsam and jetsam of the thoughtless, the careless, and the lazy. Litter detracts from the natural beauty of our countryside; it endangers our environment; it costs money, time, and even lives.

to avoid trash on the road. One thousand of these people will die.

Virtually every mile of highway in our state bears the ugly evidence of trash-tossers. Destructive fires are started by still-burning cigarettes, or by the sun shining through discarded glass bottles. And every year, over 100,000 Americans are injured in accidents caused by cars swerving



In aesthetic, financial, and human terms, litter is a critical problem. The State Department of Highways and Public Transportation is working to eradicate our litter problem — providing trash bins in convenient locations, supporting anti-litter ordinances, and creating public awareness through publicity programs and printed materials like this brochure.

### Anna Merchant group met

The Anna Merchant Group of the First United Methodist Church met in the lovely home of Edith Carter Wednesday afternoon, November 20, at 3:00 for a Thanksgiving program.

An inspiring devotion "Peace" was given by Gladys Sawyer. Members gave silent prayers for peace followed by a prayer by Clara Gilliam.

A business meeting was called by the president Lela Whitehead. Minutes were read by secretary Helen Cook and roll was called with nineteen members and three guests were present.

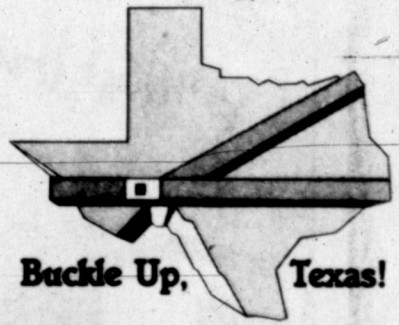
A very impressive program "Thankfulness In A Basket" was given by Margaret Wells with Clara Gilliam, Verdie Herrington, Mary Bray, and Juanita Carter giving a part on the program. Several Thanksgiving hymns were sung by the group with Margaret playing the organ and Helen Cook leading the singing. At the close of the program several baskets of different things were presented to a guest Sandy Sliger for her and her family who had the misfortune of losing their home in a fire.

Delicious refreshments of pumpkin squares, party nuts and party mints and cinnamon tea were served to members Thelma Bairfield, Mary Bray, Imogene Brumley, Rachael Butler, Clara Gilliam, Blanche Gray, Verdie Herrington, Helen Cook, Gladys Sawyer, Yvonne Belle McDaniel, Mary Lee Noble, Naomi Phelan, Gladys Hommel, Mary Hazel VanZandt, Margaret Wells, Lela Whitehead, Bradis Ballew, Juanita Carter, the hostess Edythe Carter

and guests Carolyn Hamilton, Madelyn Jones and Sandy Sliger.

Members enjoyed seeing all the beautiful things Edythe has made. She is an artist in her own right.

The next meeting will be December 4. A Christmas program at the church at 2:30 in the afternoon. Program leader is Clara Gilliam and Naomi Phelan and Juanita Carter, hostesses.



Buckle Up, Texas!

Fines begin December 1, 1985

### KATHERINE'S FINE JEWELRY

Let me bring Christmas to you!

It's much easier to shop in the privacy of your own home.

Private showings or group showings.

Ask about the benefits of a home show. . . Special hostess bonuses offered

All types of jewelry available . . . 14K gold, Sterling Silver - Diamonds - Pearls - Add-a-Bead Etc. - Mother's Rings.

I invite you to compare my prices before you buy.

Contact:

Katherine Arlola

867-2094

## GIRLS AND LADIES!!

Would you like to put on a new winter face?



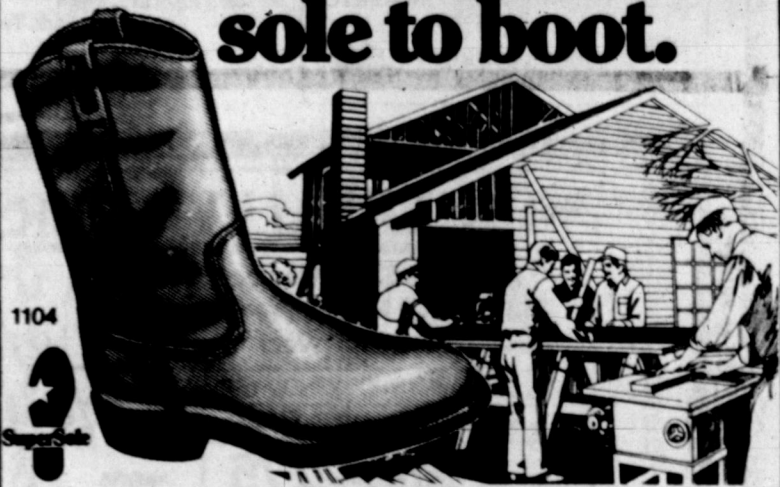
Phillip Maurice Bouchant, International Beauty Consultant from New York and Paris will be at Bivens Pharmacy December 2, 3, 4th to demonstrate all lines of cosmetics. Phillip Maurice Bouchant will help you enhance and enchant your natural beauty.

No appointment necessary.

All ladies of all ages are cordially invited to come in and visit with Phillip Maurice Bouchant. 9:00 A.M. - 7:00 P.M.

## BIVENS PHARMACY

## A heel-huggin' fit with a long-wearing sole to boot.



- Full-grain, water-repellent leather
- Cushion-soft insole
- Waterproofed heel-molded counter for a heel-huggin' fit
- Red Wing's exclusive, long-wearing SuperSole

SIZES: 6-14/A, B, C, D, E, EEE (Narrow-Extra Wide) Sizes/widths vary by style.

JAMES OWENS

Red Wings

"The crisis of yesterday is the joke of tomorrow." H.G. Wells

## Chamberlain MOTOR COMPANY

Clarendon, Texas

INVITES YOU TO VISIT

WITH THEM AND SEE

THEIR

Butch

Oldsmobile

Pontiac

Cadillac

GMC Pickups



# 100 SPEED

135 X 36 Exp.  
**\$3.67**

# 400 SPEED



135 x 24 Exp.  
**\$3.67**



HS144-10  
TRIMPRINT SINGLE  
**\$8.47**

# 1000 SPEED



135 x 12 exp DISC  
**\$2.87**

# 200 SPEED



110 x 24 Exp. **\$2.67**

126 x 12 Exp. **\$2.07**

135 x 36 Exp. **\$3.97**

# KODAK FILM



DISC DOUBLE  
**\$4.97**

PR10 DOUBLE  
**\$16.97**



KMA 464 KODACHROME 40  
MOVIE FILM  
**\$5.47**



EG464 TYPE G  
EKTACHROME  
160 MOVIE FILM  
**\$7.37**

## CELERY

**29¢** Stalk

Red Delicious  
**APPLES**

**59¢** Lb



AD GOOD WEDNESDAY - SATURDAY

## FRESH PRODUCE



FRESH  
**CRANBERRIES**

**79¢** Bag

**YELLOW ONIONS**

**10¢** Lb

## BANANAS

**25¢** Lb



## LETTUCE

**49¢**



## DAIRY PRODUCTS



Borden's 8 Oz  
**SOUR CREAM** 2/\$1.00

Borden's Hi-Pro  
**MILK** Gal **99¢**



Gibson Low Fat  
**MILK**

Borden's Creamery Quarters  
**BUTTER** 16 Oz **\$2.09**

**1.89** Gallon

Extra Large  
**EGGS** Dozen **79¢**

Bluebonnet  
**OLEO** 16 Oz Sticks **59¢**

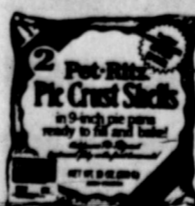
TV Soft 16 Oz Tubs  
**OLEO** 2/\$1.00

Borden's 1/2 Pint  
**WHIPPING CREAM** 2/79¢

## FROZEN FOODS

24 Oz  
**PARKERHOUSE ROLLS** **89¢**

Pet-Ritz 10 Oz Pkg  
**PIE SHELLS** **69¢** Pkg



Mrs. Smith's  
**PUMPKIN PIE** 26 Oz **\$1.57**





THANKSGIVING

# Food Specials!

FOR BIG SAVINGS...



AD IN EFFECT NOV. 20th THRU NOV. 30th

TV  
**SUGAR**  
**147**  
5 Lb

TV  
**FLOUR** 5 Lbs **69¢**

TV 16 Oz  
**SWEET PEAS** **2/89¢**

TV Mandarin  
**ORANGES** 11 Oz **2/79¢**

TV 16 Oz Cut or Sliced  
**GREEN BEANS** **3/\$1.00**

TV  
**CORN** 16 Oz Cream or Whole **3/\$1.00**



Eagle Brand  
**MILK**

**1.29**  
14 Oz Can

Carnation

**MILK**

**2/\$1.00**  
12 Oz Tall Cans



Holsum Medium Pitted Ripe

**OLIVES**

**97¢**  
6 Oz

Holsum Stuffed

**OLIVES**

**\$1.09**  
5 Oz

Baker's Angel Flake

**COCONUT**

**\$1.17**  
14 Oz



Holsum Plain Red

**CHERRIES**

10 Oz **97¢**

Topping

**DREAM WHIP** 5.6 Oz Box **\$1.29**



Stove Top Cornbread or Chicken Only

**STUFFING MIX**

6 Oz **87¢** Box

Blackburn's Crystal White

**SYRUP**

**79¢**  
32 Oz

**CRISCO**

Regular 3 Lb Can

**\$2.29**



OPEN  
Thanksgiving

Swanson

**CHICKEN BROTH**

13 3/4 Oz

**2/79¢**

Hershey Milk

**CHOCOLATE CHIPS**

11 1/2 Oz

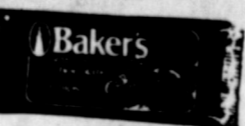
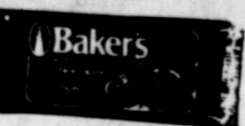
**\$1.47**

Hershey

**CHOCOLATE CHIPS**

12 Oz

**\$1.47**



Aunt Jemima White or Yellow

**CORNBREAD MIX**

6 Oz Pouches

**4/\$1.00**



**CHOCOLATE CHIPS**

12 Oz

**97¢**

Kraft White Mini

**MARSHMALLOWS**

6 1/4 Oz Bag

**35¢**



Sugar Cut Sam

**YAMS**

23 Oz

**69¢**



Kraft 7 Oz

**MARSHMALLOW CREME**

**59¢**

48 Oz Btl

**CRISCO OIL**

**\$1.97**



Freshe Brown & Serve

**ROLLS**

**2/79¢**

Freshe 1 1/2 Lbs

**BREAD 2/\$1.00**



Ocean Spray Whole or Jell

**CRANBERRY SAUCE**

16 Oz (Limit)

**25¢**



Libby

**PUMPKIN**

16 Oz (Limit)

**25¢**



DOUBLE YOUR FOOD SAVINGS

# COUPONS

3 Days

Monday, Tuesday, & Wednesday

All manufacturer's coupons 99¢ and under excluding tobacco and free coupons will be redeemed for DOUBLE VALUE Monday, Tuesday and Wednesday Only (Double value of coupon cannot exceed the value of the item) - One coupon per item please

Double coupons not good on sale or ad items



AD IN EFFECT NOV. 20/30th

TV Brand Whole

**HAMS**

**\$1.68**  
Lb  
Boneless

TV Brand Self Basting

**TURKEYS**

18 to 22 Lbs 8 Oz

TV Brand

**CREAM CHEESE**

Karo Clear

**SYRUP**

16 Oz

**87¢**

Schilling

**BLACK PEPPER**

4 Oz

**\$1.39**

Schilling

**GROUND CINNAMON**

1.13 Oz

**69¢**

Schilling

**NUTMEG**

1.38 Oz

**\$1.09**

Schilling

**POULTRY SEASON**

.75 Oz

**89¢**

Schilling

**GROUND SAGE**

.86 Oz

**\$1.09**

Schilling

**RUBBED SAGE**

.44 Oz

**79¢**

Schilling

**VANILLA EXTRACT**

2 Oz

**\$1.59**

Sunshine

**PECAN HALVES**

10 Oz

**\$1.99**

Sunshine

**PECAN PIECES**

10 Oz

**\$1.99**

Tonic - Club - Ginger Ale 1 Liter No Return Btis

**SCHWEPPE'S MIXER**

**69¢**

Sunshine Dry Roast

**PEANUTS**

24 Oz

**\$2.19**

Sunshine With Peanuts

**MIXED NUTS**

12 Oz

**\$1.49**

Vlasic Sweet Gherkins

**PICKLES**

16 Oz

**\$1.09**

Classic or Diet

**COKES**

**\$1.29**  
Each

6 Pak Cans

Classic or Diet

**COKES**

**99¢**  
Each

2 Liter Btl.

Towels

**BOUNTY**

**79¢**

**WHITE CLOUD**

**\$1.19**

Bathroom Tissue 4 Roll Pk

Microwave 100 Sq Ft.

**GLAD WRAP**

**\$1.37**

Glad Plain 200 Sq Ft.

**CLING WRAP**

**\$1.37**

Imperial

**SUGAR**

2 Lb Bag Brown

**89¢**

2 Lb Bag Powdered

**89¢**

# SHOP NOW...

## For Your Holiday Table

Some Items In Limited Quantity Reserve Right To Limit Quantity

Tasty Bird

**CHICKEN LIVERS**

16 Oz

**49¢**

Tasty Bird 16 Oz

**CHICKEN GIZZARDS**

**59¢**

TV Brand

**BAKING HENS**

Lb

**79¢**

TV Brand Halfmoon 8 Oz

**LONGHORN CHEESE**

**\$1.09**

Longmont Boneless

**TURKEY HAMS**

**\$1.59**  
Lb

Swift Butterball

**TURKEY BREAST**

**\$2.29**  
Lb

**78¢**  
Lb

**69¢**

TV **BACON**

Sliced Slab

**\$1.49**

Whole Smoked

**PICNICS**

Lb

**89¢**

Swift

**BUTTERBALL Turkeys**

**99¢**  
Lb

18 to 22 Lbs

Hills Bros. **COFFEE**

**1.79**  
16 Oz

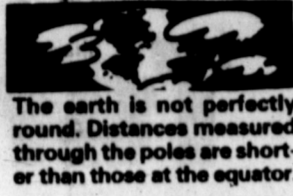


### Vinson receives employee of the month honors

Irene Vinson, an employee of Medical Center for the past ten years, was selected as "Dietary Employee of the Month" for the month of November. Irene has met all the criteria to receive this honor. Two years of the ten she has been with Medical Center was spent in the nursing department. She has been in the dietary department for the past eight years as a cook and assistant to the food service supervisor. Our congratulations are extended to you Irene, for having achieved this honor. Thank you for a job well done. Receiving this honor will enable Irene to compete for the employee of the year in the dietary department. This balloting will occur the first Monday in December and all persons receiving the dietary employee of the month will be in competition for employee of the year of the dietary department.



IRENE VINSON



### PSYCHOLOGY



Holiday entertaining can be jollier than you may think. You don't have to worry about providing soft drinks for youngsters and non-drinkers, stronger stuff for others if you turn to tea. Tea can be an excellent base for punch because it combines so well with fruit juices and other flavorings. It can make for some fascinating combinations and is easy to prepare whatever the quantity you need. That way you can sip away with family and friends while you relax and enjoy the holiday spirit: tea.

## Congressman Beau Boulter Reports from Washington



### SHORTCHANGING AMERICA

You're trying to balance your family budget. It is way out of whack and you know some tough measures will have to be taken. But wait. First, you exempt over 62% of that budget from any cuts.

Where does that leave you? With little hope of actually coming up with a budget plan that works, or that you can live on.

Unfortunately, that is exactly what is happening in the House of Representatives. The Senate, led by Texas Senator Phil Gramm, has come up with a plan that would balance our nation's budget by 1991. It entails some tough decisions on where, how, and when to cut back on our out of control federal spending. This plan has been approved by the Senate twice, by large bipartisan margins.

The House of Representatives, on the other hand, has now twice rejected the Gramm/Rudman Emergency Deficit Reduction Plan and instead has passed a budget plan that is about as practical as china plates in a kindergarten class. The House plan, known as the Democrat alternative, was passed on an almost strictly partisan basis. The House Democrat plan sounds good, but it won't work, mainly because it exempts 62% of spending from deficit reduction.

In effect what is happening is this: Tip O'Neill and the House Democrat leadership are going around to their members, asking them which special interest program or

group they wish to have protected. The result, of course, is an almost blanket exemption for all social programs and special interest perks.

So, if we can't cut here, and we can't cut there, and we can only cut

a little bit everywhere else—what's left? Well, the House majority will readily tell you to cut defense. Certainly, defense should fully participate in deficit reduction with domestic social programs. But these social programs are consuming 46% of the budget now, while Defense is taking only 24%. Therefore, I do not believe that Defense should be gutted by cuts while the social programs and special interest groups are fully protected and continue to flourish.

My goal is a balanced budget which will allow for economic growth and opportunity by encouraging low interest rates, low inflation, and readily available capital for investment and expansion. To achieve this goal, we as a nation are going to have to reduce programs—terminating some—and look realistically at the role we want the federal government to play.

As I have said before, in attempting to be everything to everyone, we wind up shortchanging most Americans.

There is still hope for the Emergency Deficit Reduction Plan. It is a sensible approach to a serious problem. In each fiscal year between 1986 and 1991, the deficit would be reduced by \$36 billion.

If Congress doesn't pass a budget that meets that goal the President is required to... across-the-board cuts according to a predetermined percentage of Social Security. I should add, is exempted from cuts under all circumstances.)

While this plan will not be easy, it will be fair. Congress has been on a spending spree of staggering proportions for years, and it is past time to pay our bills and get the budget back into line.

### Senior Citizens News

#### CALENDAR OF EVENTS

November 28-December 4  
 Thursday-Closed  
 Friday-Closed  
 Monday-Exercise 11 a.m., dance practice 7-9 p.m.  
 Tuesday-Blood pressure clinic 9 a.m.-1 p.m., diabetes clinic 10 a.m.-3 p.m., exercise 11 a.m.  
 Wednesday-Exercise 11 a.m., arts & crafts 1 p.m.

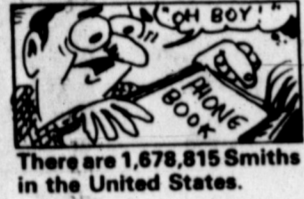
#### SENIOR CITIZENS MENU

November 28-December 4  
 Thursday-Closed  
 Friday-Closed  
 Monday-Chicken fried steak, mashed potatoes with gravy, harvard beets, pea salad, applesauce cake, hot rolls, milk, tea, coffee.  
 Tuesday-Beef stew with carrots, onions, potatoes, tomatoes, peas, and celery, sliced tomatoes on lettuce, peach cobbler, cornbread/crackers, milk, tea, coffee.  
 Wednesday-Baked ham with cherry sauce, sweet potatoes, fried okra, ambrosia salad, chocolate pudding, dinner rolls, milk, tea, coffee.

"He who does not know the force of words cannot know men." Confucius



Many small rodents live out their entire existence without ever straying more than 20 feet from the place of their birth.

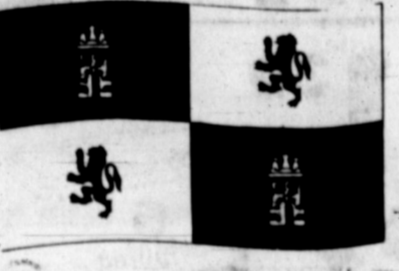


There are 1,678,815 Smiths in the United States.

**-DON'T BE FOOLED IN AMARILLO-**  
 A Legitimate Storewide Sale  
**25% Off**  
 MANY ITEMS UP TO 50%  
 SKI APPAREL --- ATHLETIC SHOES  
 --- WARM-UPS ---  
**BUCK'S**  
 SPORTING GOODS  
 4324 S.W. 45th and Western Plaza Amarillo 355-8946  
 \*SINCE 1953\*

*Home Interiors and Gifts.*  
 EXCITING DECORATING IDEAS  
 AND GIFT ITEMS  
 Faye Naylor  
 Independent Contractor/Displayer  
 NAYLOR ROUTE - BOX 30  
 CLARENDON, TEXAS 79226  
 May Be Reached  
 (806) 856-2733

**NEOMA CAFE**  
 Buffet & Salad Bar Everyday - except Saturday  
 - Saturday Salad Bar Only. Friday 5 - 8 p.m.  
 T-Bone or Club Steak for two \$7.00  
 OPEN Thanksgiving Day -  
 Serving all the trimmings



Spain was the first European nation to claim what is now Texas, beginning in 1519 when Cortez was establishing Spanish presence in Mexico, and Alonso Alvarez de Pineda mapped the Texas coastline. A few shipwrecked Spaniards like Alvar Nuñez Cabeza de Vaca, and explorers such as Coronado, occasionally probed the vast wilderness, but more than 160 years passed before Spain planted its first settlement in Texas: Isleta Mission in present El Paso, established in 1681. Gradually expanding from Mexico, other Spanish missions, forts, and civil settlements followed for nearly a century and a half until Mexico threw off European rule and became independent in 1821. The red, gold, and white Spanish flag of this historic period depicts the lions of León and the castles of Castile.

**FREE** Rear Blade With Purchase of a Tractor

**YEAR END CLEARANCE SALE**  
 Plus 9 Months FREE Interest

**SAVE \$\$\$\$**

TRACTOR	PRICE	DOWN PAYMENT	MONTHLY PAYMENT
John Deere 650 2WD, 17 H.P.	\$5,895	\$209	\$104
John Deere 650 4WD, 17 H.P.	\$6,198	\$220	\$110
John Deere 750 2WD, 20 H.P.	\$6,398	\$227	\$113
John Deere 750 4WD, 20 H.P.	\$6,998	\$248	\$124
John Deere 1050 2WD, 37 H.P.	\$9,589	\$340	\$170
John Deere 1250 2WD, 44 H.P.	\$12,999	\$461	\$230
John Deere 1450 4WD, 55 H.P.	\$18,490	\$657	\$328
John Deere 1650 2WD, 67 H.P.	\$16,690	\$593	\$296

**TEXAS TRACTOR & EQUIPMENT CO.**  
 7530 South Washington, Amarillo, Texas Open Mon.-Fri. 8-5, Sat. 8-12 Phone 376-6344

**Basketball season**

**Norma Andiverdi 42**

Stephanie Holland 12      Scheli Holland 14  
 Carol Glover 32          Tina Shields 20

Stephanie Holland 12      Scheli Holland 14  
 Carol Glover 32          Tina Shields 20

Susan Phelps 22  
 Cheryl Glover 30

Shawn Bright 12  
 Chad Wiggins 14  
 Terry Moore 20  
 Kelly Harmon 22  
 Billy Clubb 30  
 Ricky Springer 24  
 Keith Watt 10  
 Steve Mullins 40  
 Joel Layton 44  
 Tony Monroe 32  
 Walter Bramblett 42  
 Eugene Schwertner 34

**GO OWLS WE ARE BEHIND YOU ALL THE WAY**

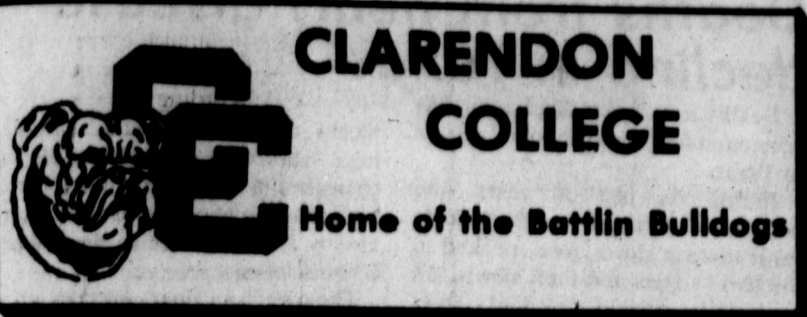
Buford & Jerry Holland      Bill & Becky Hill      Lyndon Messer  
 Darrell & Clara Holland      Nookie & Geraldine Wiggins      Bob & Pat White  
 T & Nancy Mullins      Fred & Peggy Watt      Bill & Mary Kay Clubb  
 Bob & Cheryl Wiggins      Harold & Mary Ruth White      Ben & Paula Carson  
 Henry & Nancy Stephens      Danny & Shauna Monroe      Cary Don & Pam Neeley

**HEDLEY HIGH SCHOOL**  
 1985-86 Basketball Schedule

Nov. 19	Clarendon	H 6:00
Nov. 22	McLean	T 6:30
Nov. 25	Briscoe	H 6:30
Dec. 3	Highland Park	H 6:30
Dec. 5, 6, 7	Mobeetie Tourney	
Dec. 12, 13, 14	Samnorwood Tourney	
Dec. 17	McLean	H 6:30
Dec. 20	Lefors	T 6:30
Dec. 30	Higgins	T 6:30
Jan. 2, 3, 4	Briscoe Tourney	
Jan. 7	Highland Park	T 6:00
Jan. 17	Lakeview	H 6:30
Jan. 21	Silverton	T 6:30
Jan. 24	Valley	H 6:30
Jan. 28	Lakeview	T 6:30
Jan. 31	Silverton	H 6:30
Feb. 4	Valley	T 6:30

\*District Games





## Bulldogs split games with Western Oklahoma State

The Clarendon College Bulldog teams traveled to Altus Monday, November 18, to do battle once again against the Western Oklahoma State teams. A reversal of their first encounter occurred.

In an exciting to the last second game, the Bulldogs stayed tough. Timothy Lee Moore sprained an ankle early in the game but refused to give in to it, doing a great job on defense. At halftime the Bulldogs were down by 4 points, 37-41. Virgil Reagins with a healthy 29 points and Vincent Mason with 19 led the scoring, but Roderick Davis' net popper the last seconds of the game provided the drama and the winning points. Final score was 91 Clarendon College and 89 Western Oklahoma State. The men play in the Dodge City, Kansas Tourney over the

Thanksgiving holidays.

The Lady Bulldogs had defeated the Altus team twice this season by 7 points each time, but that was not to be repeated. The Altus girls were determined as shown by their 10 point lead, 31-21, at halftime and the final score of 65 Western Oklahoma State and 60 Clarendon College. Leading scorers for the ladies were Tia Stewart, forward post with 15; Victoria Peacock, forward post with 14; and Angela Tate, post with 11. The Ladies' next game is a double-header against New Mexico Junior College at 6 p.m. in the Clarendon College gym December 2. Make an effort to be there and you will be rewarded by top notch ballgames played by a couple of classy Bulldog teams.



SUSAN TULL and STEVEN NEW-HAUS as Mollie and Charles Good-night

### College Menu

December 2-7  
**Monday:** Lunch-ham and beans, hot beef sandwich, mashed potatoes; dinner-veal in mushroom sauce, enchiladas and refried beans, mashed potatoes.  
**Tuesday:** Lunch-ravioli, B.L.T.'s, asst. chips; dinner-ham roulades, meatloaf, rice pilaf.  
**Wednesday:** Lunch-Spaghetti, polish sausage and kraut; dinner-BBQ ribs, beef burgandy, buttered noodles.  
**Thursday:** Lunch-creamed chicken, chili dogs, toast points; dinner-pizza, pot roast beef.  
**Friday:** Lunch-fish and chips, BBQ ham sandwich, asst. chips; dinner-fried chicken, baked cod, tater tots.  
**Saturday:** Lunch-hot turkey sandwich, mashed potatoes; dinner-mock filets.  
 Meals are served with salads, vegetables, and dessert. Lunch is served weekdays 11:30-1:00, Saturday 12:00-1:00, \$3.25. Dinner is served weekdays 5:15-6:15, Saturday 5:00-6:00, \$3.50.



During the construction of the Hoover Dam, concrete had to be poured continually for two years.



There are many underground streams in the Sahara Desert where, by digging through the sand, a desert angler can obtain fresh water fish.



### LATE NIGHT SHOPPING

Yes folks, it's Christmas time again. Seems like each year it comes around faster than the year before. The Chamber of Commerce has lots of activities planned to make this Christmas season ring with a little more spirit and brush away the baugh-humbugs from your mind.

### COMMUNITY CHRISTMAS TREE DECEMBER 1

Kicking off the Christmas season will be the lighting of the Community Christmas Tree on the courthouse lawn. Lighting is being obtained on a donation basis. If you have any outdoor lights you would like to donate please bring them to West Texas Utilities. If you have any questions contact Jim Sharrar 874-2666 or Jerry Chambliss 874-3564.

### COMBINED

**CHOIR** The area churches will have a combined choir entertaining with all your favorite Christmas carols. Anyone needing further information should contact Bill Hodges 874-2321 or Paul Heil 874-3833.

**DOOR PRIZES** There will be a drawing for door prizes which are being donated by area businesses. You will sign up that evening and must be present to win. Anyone wishing to make a door prize donation should contact Helen Woody at 874-2259. Door prizes will need to be wrapped and the business identified on the inside.

### REFRESHMENT STANDS

There will be refreshment stands set up serving free hot chocolate, hot coffee, hot cider, popcorn, baked goods and lots of other good stuff to keep you warm inside. Any club or organization wishing to participate by setting up one of these booths should contact Stacy Mooring at 874-3142.

### SANTA

Santa Claus will be on hand with lots of things for the children. Alpha Upsilon Epsilon will be furnishing Santa and his helpers for this evening. Anyone wishing to help with the Santa should contact Judy Bland at 874-2445.

The late night shopping will be on the first three Thursdays in December. The dates are December 5, 12, and 19. The area businesses are in the process of lining up the activities for these evenings. Businesses having ideas or suggestions should contact Jim or Kathy McElroy 874-3443.

### CHRISTMAS DECORATION CONTEST

This year there are a couple of new things we have incorporated into our Christmas kickoff. There will be a contest for the best decorated businesses. There will be three plaques awarded to this category. The judging will be done during late night shoppers evening December 12. Entry forms are available by contacting the Chamber office 874-2421. There will also be a contest for the best decorated houses. This will be judged Tuesday evening, December 17. There will be three prizes for this category. Entry forms are available by contacting the Chamber of Commerce office 874-2421. Let's all get a big dose of Christmas spirit and get out the ladders and the lights and decorate our houses and yards. Get out and drive around and pick out your favorites.

### COMMUNITY SERVICE AFFAIR

If you have anything you would like to do for this festive evening please contact Patsy Leffew at 874-2421. We would like to see the clubs and organizations as well as businesses and individuals get involved in this worthwhile project. If you have a skit or program we will be glad to include you in this community service affair.

### SHOP LOCALLY

Keep in mind this season that your area businesses are good people serving good neighbors, that's what community shopping is all about. Shop your local stores where you find a variety of merchandise and services and where the Christmas feelings are alive year 'round.

### FRUIT TREES

PEACHES ALL VARIETIES Complete Service Setting Pruning 49 years experience in orchard business Call for prices - Reasonable W.P. (Red) Doherty Hodley, Texas 856-2011

## CAPTURE THE FEELING!



Your merchants have built their reputation on good will, personal service and great values that don't end when the mistletoe is taken down. For your shopping needs now and year 'round, come to where it all began.

### CHAMBER OF COMMERCE

## CLOSED THANKSGIVING DAY



FIRST BANK-TRUST OF CLARENDON

Security STATE BANK HOULEY, TEXAS 79237

The County State Bank CLARENDON, TEXAS

# MIKE'S



## PHARMACY

874-3554

Mail Orders Receive Prompt Service

Senior Citizens Receive 15 % Discount on Prescriptions

### ANTIBIOTICS AND THE ELDERLY

In 1977, about half of all deaths attributed to pneumonia and influenza occurred in the 65 and older age group. Other infections such as tuberculosis tend to occur most commonly in older persons. Young adults seem to overcome infections easier than older adults.

Because infection is common in the elderly, infection-fighting antibiotics are frequently prescribed and used. Yet, antibiotics must be administered more cautiously with advancing age. The dose of an antibiotic must often be decreased because of the slowing body

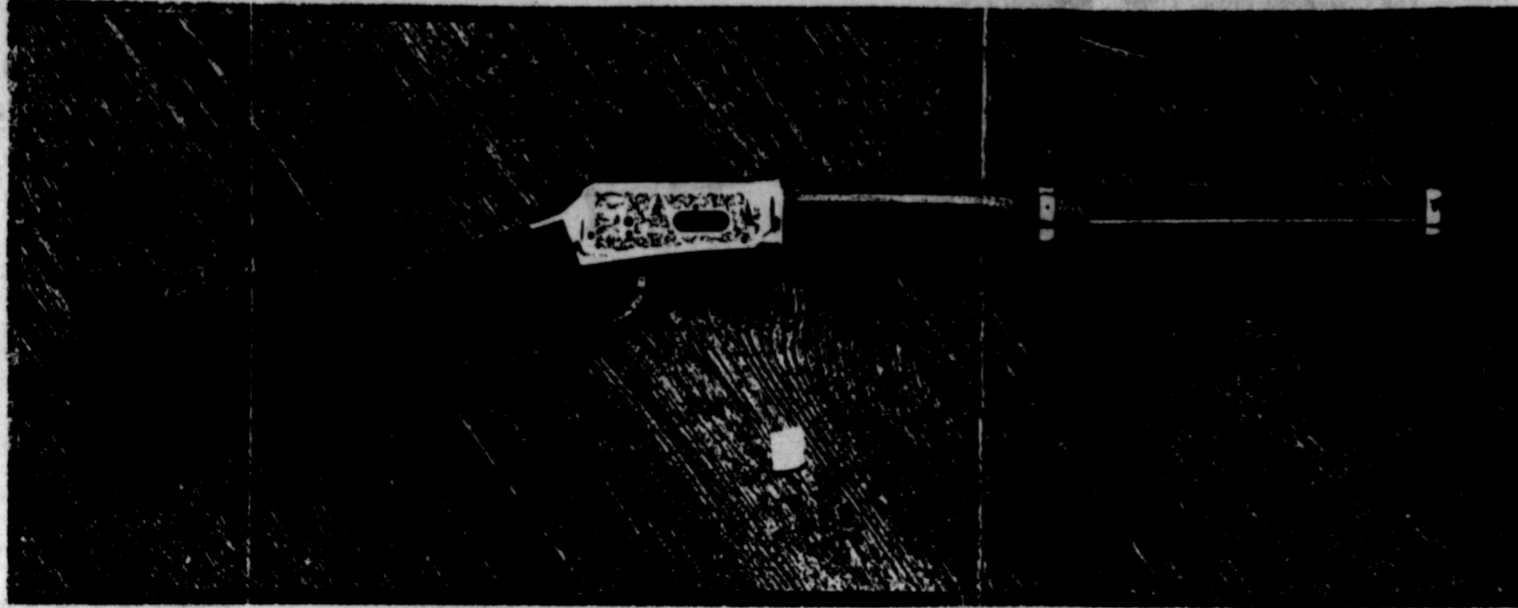
processes - less ability to metabolize drugs. Declining kidney function means that some antibiotics will not be as quickly removed from the bloodstream as during younger years. Doses must therefore be decreased to obtain the same effect. And older individuals are often more sensitive to toxic drug effects to the kidney, ear, and nervous system.

Modern antibiotics are often life-saving in the elderly as well as other age groups. These medicines must, however, be prescribed with care and used exactly as directed.

Mike Wants To Be Your Pharmacist



Mike Butts



The Clarendon-Donley County Chamber of Commerce will be taking \$1.00 donations on this Texas Sesquicentennial Winchester Commemorative Carbine. The carbine is to be given away May 22, 1986 when the Wagon Train arrives. You do not have to be present to win. To purchase a donation ticket contact the Chamber of Commerce office 874-2421 or the Clarendon Press 874-2259.

This Model 94 Winchester Carbine in 38-55 caliber has an 18 1/2" barrel with gold plated barrel bands and receiver. The receiver is roll engraved with scenes from Texas history and from the present with

original engraving done by Genovelli of Italy, master engraver known worldwide for his unique skill. The rear-sight is partridge and the front sight is post. The Carbine style stock and fore-end are satin finished select walnut checkered with a unique spade pattern.

This Texas Sesquicentennial Winchester Commemorative Carbine is the first ever made in this caliber and barrel length even though the 38-55 was one of the original 94 calibers. The gold plated medallion embedded in the butt-stock shows the Winchester Wagon being pulled four-up by mules and has 1936-TEXAS-1986 and SESQUICENTENNIAL outlines

along with the Texas Sesquicentennial and The Texas Wagon Train logos.

Etched in gold on the barrel near the receiver is "1936-TEXAS-1986" adding to the collectability and value of this rifle.

The Texas Sesquicentennial Winchester Commemorative Carbine comes packaged in an art "sleeve" surrounding protective styrofoam. The art "sleeve" is reproduced from an original oil painting by Mr. B. Herd of Dallas, Texas and depicts events from Texas rich history and heritage.

Serial Numbers of the Texas Sesquicentennial Carbine are TEX-1

through TEX-15,000. A number of this issue have been reserved for presentation to various mayors, museums, and public officials as part of the Texas Sesquicentennial Celebration.

Production is strictly limited to figures stated and no more will ever be produced.



## Deaths from heart disease decline in Texas

Deaths from heart disease in 1984 accounted for 44 percent of all deaths in Texas.

During the last 30 years, the percent of all deaths attributable to heart disease slowly rose, peaked in the early sixties and then slowly fell again to its current new low. Over half of all deaths were caused by heart disease as recently as 1966.

The American Heart Association credits this dramatic turnaround to improvement in lifestyle and related cardiovascular risk factor levels, increased efforts in prevention, and innovations in diagnosis and treatment. However, it is not possible to determine whether the declines in heart death reflect a reduction in the frequency of attacks, an improvement in life expectancy after an attack, or both.

American Heart Association computations using Texas Department of Health vital statistics show that 51,329 people died of heart and blood vessel diseases in 1984.

Of those deaths, diseases of the heart accounted for 39,782 deaths; hypertension caused 346 deaths; cerebrovascular disease caused 8,974 deaths; and atherosclerosis 1,164 deaths. Other diseases of the arteries, arterioles and capillaries caused 1,063 deaths.

Just over 10,919 (26.9 percent) of all deaths from cardiovascular diseases in Texas occurred in individuals under age 65. The American Heart Association defines death prior to age 65 as premature.

Despite the common misconception of heart diseases striking mostly men, 25,993 victims were male and 25,336 were female.

Heart disease affected over 44 million people in the United States this past year, and is expected to cost our economy over \$72 billion in 1986. Cardiovascular disease is a serious and significant health problem in need of attention and action.

The American Heart Association believes that heart disease is largely preventable, and states its mission as "the prevention of premature death and disability from cardiovascular disease and stroke."

The major underlying cause of heart disease is atherosclerosis -- a build-up of fatty deposits inside the blood vessels that restricts and

blocks the flow of blood. Studies have shown that high levels of cholesterol in the blood, smoking and high blood pressure all contribute greatly to the chance of developing atherosclerosis.

The American Heart Association is highly successful at saving lives. Its goals are accomplished at the community level where public contributions to support its cause are received. Through extensive research, community service and public education, the American Heart Association continues to take a leadership role in the prevention of heart and blood vessel disease.

### Look Who's New

Johnathan Levi Hall

John and Susan Hall proudly announce the arrival of Johnathan Levi at Childress General Hospital at 7:30 a.m. on Wednesday, November 20. Weighing 7 pounds 10 1/2 ounces, the young man was 19 inches long. Grandparents are Mrs. Marie Johnson and truet and Fern Hall of Clarendon and great grandparents are D.K. and Beulah Hall of Hedley.



These facts are brought to you by Speed Stick® Deodorant and Anti-Perspirant by Mennen.



On October 14, 1947, Brigadier General (USAF Ret.) Charles E. (Chuck) Yeager became the first man to fly faster than the speed of sound.

## Unadvertised specials bring big savings

For the past several weeks, merchants have been giving Clarendon consumers a head start on their Christmas shopping by having In Store Specials. These specials are not advertised any place except inside each of the participating stores. If you have not been asking these merchants on Friday or Saturday about their specials you have missed such bargains as these:

Harlan's Flowers has had all their green plants and Christmas ornaments one half price Fridays and until noon on Saturday. The past two weeks Osburn Furniture and Appliance has had a colored console TV \$80.00 off and a living room suite with a \$200 discount. The Print Shoppe has had on their Friday special Shaffer and Paper Mate pen and pencil sets at 20% off. One Friday they gave a 20% discount on everything purchased that day. The Nook's Saturday special in the past few weeks have been 20% off on mens jackets, all dresses, PBJ and Redeye line. They had 25% off on womens pants and a third off on separates. Greene Dry Goods Co. has been giving such specials as 99 cent yarn, \$12.00 ladies sweaters, Nike tennis shoes at one third off, roper boots at \$10.00 off, ladies robes for \$10.00 and down coats at \$25.00 off regular price.

Henson's had their oriental style jackets on for \$25.00 and lamps for 25% off. Charlie's BBQ and Beanery has had their combo dinner on special for \$3.50. Bivens Pharmacy has had such specials as Timex watches for 20% off, Hi & Dri paper towels for 40 cents, Sure and Natural pads for \$1.00 off and note pads two for \$1.00. Gibson's discount store has been having 20% off toys and appliances and 25% off all clothing and electronics. Video Review has been giving tapes three for the price of two and five for \$1.75. Treasure Chest specials have been People Feeder, Scents and Simmers, picture frames for % price. Salem II has had so many items on from 20 to 50% off to mention them all. Stavenhagen Furniture had for some of their specials Kitchenaid trash compactor on for \$327. Their regular price was \$569.00. They also had microwaves as low as \$179.00, Lane cedar chests, regular prize \$419 and sale priced on Saturdays past was \$349, Sylvania Remote Control 25" TV on sale for \$599, down from \$719.00, Sylvania

VCR for \$349, regularly \$379, assorted table lamps for a two for one price and their La-Z-Boy recliners have been on sale for \$349 down from their regular \$449. This is just some of the in store specials participating merchants have been offering the Friday and Saturday shoppers.

All you need to do is go into these stores and ask them to see their indoor specials. As you can see from the above list, these have been excellent bargains for your every day and Christmas shopping.

Shop our Clarendon merchants first...

### The Pioneer spirit is still alive

Hazel Bowen - a true legend in her own time. Hazel is the epitome of the pioneer spirit which built this great state.

Her tanned, deeply lined skin and her western dress are evidence of her days spent out of doors under the warm Texas sun. And beneath her small frame lies 78 years of pure wisdom and knowledge - and true grit.

She grew up in Fruitland, Texas where she lived with her daddy and mother and four sisters and three brothers. Hazel's daddy was a farmer and they grew everything they ate, going into town only a couple of times a year.

She married at age 19 and moved 40 miles away to Antelope, Texas, where she still lives.

Hazel's great love for horses was instilled in her from the time she was a small child - her daddy taught her to drive a team before she reached her teen years. Her lifetime dream was to hitch a team of horses and cut her way across the mountains, roughing it like her pioneer grandparents did.

In 1976, Hazel Bowen got to fulfill that lifelong dream as she joined the Bicentennial Wagon Train Pilgrimage to Valley Forge as the Official Teamster for Texas. At 68 years old, she said goodbye to her husband, two daughters and one son and, with their blessings, hitched up her team, Button and Dan, "the boys," and off she went.

It was a dream come true, alright. Six months of real living, and when asked what made the pioneer trip so wonderful, Hazel's answer was the people helping each other standing on their own, getting to know each other - this country started out that way.

It's 1985 - ten years later and in less than 60 days, Hazel Bowen will relive her lifelong dream as she hitches another team and takes the reins of the Bicentennial Texas Wagon. Beginning January 2nd in Sulphur Springs, the Texas Wagon Train makes its 6-month, 3,028-mile journey around Hazel's homeland to Fort Worth, July 3rd, in celebration of Texas' first 150 years. And she can't wait!

This time she'll leave "the boys" behind and make the journey with a younger team. The Bicentennial Wagon has had a face-lift and body refurbishing job.

Hazel, at 78, is fit as a fiddle and rarin' to go. With a smile and heart as big as Texas, a unique charm and gentle spirit, she is a remarkable lady with True Grit.

**It's A Wide Wide World**  
These wide trivia facts are brought to you by Speed Stick® Deodorant and Anti-Perspirant, by Mennen.

The world's widest burger (made of beef) on record is one of 3,591 pounds, 16 feet in diameter and 2 1/2 inches thick, made by the Community Club of Rutland, North Dakota in 1982!

The widest balloon ever was built by Winzen Research Inc. of Minnesota, having an inflatable volume of 70 million cubic feet!

The widest windows are those in the Palace of Industry and Technology at Rondpoint de la Defense, Paris. They are 164 feet tall and have an extreme width of 715.2 feet!

The first bowling tournament for women was held in St. Louis, Missouri in 1917.

**Eva's Shoe Salon**

**THANKSGIVING SALE**

Ladies Designer SHOES

SELECTED GROUP

**1/3 OFF**

AMARILLO  
2636 Wolffin  
WOLFIN  
SQUARE

**OSBURN FURNITURE AND APPLIANCE AND THEIR EMPLOYEES ARE**

*Wishing You a Happy Thanksgiving!*

Enjoy this Thanksgiving holiday with friends and family. May all experience bountiful blessings, good feasting and the warmth and love that Thanksgiving inspires.

**FORD'S QUICK STOP**

Hwy 287 874-9991

Open 6 a.m. - 10 p.m.

7-Days Week

**BINGO**

First, Third and Fifth

Saturday Nights

**CLARENDON LION'S CLUB**

**HEALTH PEOPLE NEED GOOD HEALTH INSURANCE TOO**

- 1.) Are you paying high premiums and subsidizing sick people?
- 2.) Are you tired of no local service?
- 3.) If your answer was yes to any of the above

**WE OFFER AN EXCELLENT HEALTH PRODUCT WITH A \$2,000,000 MAX BENEFIT!**

Call **NORPP** Insurance Agency, Inc.

806-874-3521

For Further Details or Come By Our Office





GRAND OFFICERS: Grand Examiner Faye Murphy, DDGM Frankie Henson, Deputy Grand Matron Polly

Sarich, WGM Elsie Paladino, and WGP Arnold H. Paul



WORTHY GRAND PATRON Arnold H. Paul and his wife Bobbie



DDGM FRANKIE HENSON, GE Faye Murphy, DGM Polly Sarich

## Order of the Eastern Star school of instruction and Fraternal Visit

The Seven Chapters of District II, Section 5 participated in the School of Instruction held on November 19, 1985 at the Masonic Hall in Clarendon. Grand Officers participating were Worthy Grand Matron Mrs. Elsie Paladino, Worth Grand Patron, Mr. Arnold H. Paul, Grand Examiner, Mrs. Faye Murphy, District Deputy Grand Matron, Mrs. Frankie Henson and Deputy Grand Matron, Mrs. Polly Sarich.

A welcome coffee hour was hosted by Clarendon Chapter #6 serving donuts, sausage and cheese rolls, orange juice, coffee and tea. Musical selections were played by Mrs. Rachel Butler at the piano.

Pages escorting the Grand Officers were Mrs. Jane Ann Roby, Mrs. Betty Kiker, Mrs. Irby Scott, Mrs. Hartense Spicer, Mrs. Tammy Taylor, Mrs. Peggy Watt, Mrs. Betty Cravey, Mrs. Mildred Hagins, Mrs. Hazel Brandon, and Mrs. Pauline Lowrie.

The school was opened by Deputy Grand Matron, Mrs. Polly Sarich. The invocation was given by Mr. Charles Blackburn. Small guardian angels fashioned by Tena Powell and Polly Sarich were presented to our Worthy Grand Matron Elsie Paladino and Worthy Grand Patron Arnold H. Paul.

Instructions were given by DDGM, Mrs. Frankie Henson and WGM Mrs. Elsie Paladino. These were very informative and appreciated.

A "Sharing Our Love" luncheon of stew, cornbread, cakes, tea, and coffee was hosted by Spur Chapter #164, Paducah Chapter #506 and Wellington Chapter #238. A year book collection was presented to the WGM by WM, Lela Whitehead.

The school was reopened at 1:00 p.m. W.M. Mrs. Betty Lehew from Spur presented each Grand Officer with Honorary Certificates from each of the seven chapters.

A formal banquet "The Golden Chain of Love" was served by Mr. Kriss Harris of D-M Premier Mgt serving Clarendon Jr. College. The food was proclaimed "Top Notch" by the members. The tables were decorated with many beautiful shells collected from around the world and a dozen pink roses graced the Head Table.

Master of Ceremonies Mr. Bob McCombs was both dignified and humorous in the way he conducted the meeting, which made an atmosphere of joy and good fellowship and love among everyone there. Mr. Rick Leslie of Paducah gave the invocation.

The welcome by Past Grand Patron Charles E. Bairfield and the response by Mr. Milton Skipper, Grand Sentinel, Grand Chapter of Texas were both very impressive.

Introductions by Mr. Redell Henson included a 6 ft. golden chain exemplifying the dedication, brotherly love and good fellowship of our Order around the world.

A songfest was enjoyed by all the members with Mrs. Dorothy Bagwell at the piano. Gifts were presented to the Grand Officers by W.M. Mrs. Christine Williams on behalf of the seven participating chapters. The benediction was given by Mr. John Sarich.

Preceding the fraternal visit Mrs. Doris Allen gave a most interesting talk on humanitarian work that the chapters are involved in. Next Childress Chapter #101 performed the "Our Love Glows" drill to the music of the Glow Worm March. This drill was performed in the dark with flashlights being passed from hand to hand and was a very striking exhibition.

Beautiful piano music was played by Mrs. Frances Richards of Paducah before and during the fraternal visit.

Worthy Matron Mrs. Lela Whitehead and Worthy Patron Mr. Lawrence Whitehead presided at the fraternal visit. A program entitled "A Different Kind of Rose" by Mrs. Dorothy Bagwell at the piano was enjoyed by all.

There were 21 chapters represented: Spur #164, Lubbock #898, Wellington #238, Paducah #506, Hedley #413, Childress #101, Hearne #722, Clute City #1011, Canton #667, Amarillo #787, Bonita #184, Abilene #833, Abernathy #877, El Paso #701, Wichita Falls #713, Pampa #65, Channing #1078, Clarendon #6, Perryton #161, Matador #66.

The "That's The Story Of," "That's The Glory Of" reception was hosted by Childress Chapter #101, Hedley Chapter #413 and Matador Chapter #66.

Mrs. Peggy Watt representing the Clarendon Press was the photographer during the banquet and following the close of the meeting.



WORTHY GRAND MATRON ELSIE PALADINO

We are grateful for this service and appreciate the Clarendon Press in Clarendon.

The support of all the Eastern Star members from the seven participating chapters was more than appreciated - Spur Chapter #164, Childress #101, Paducah #506, Matador #66, Wellington #238, Hedley #413, and Clarendon #6.

Those who gave their time and talents - Mrs. Tena Powell, co-chair of the school; registers Mrs. Opal James and Mrs. Pauline Morris; ticket chairman Mrs. Ruth Hancock; school secretaries, Gladys Blackburn, Mrs. Grace Campbell, and Mrs. Ruth Hancock; transportation, Mr. Redell Henson; all the pages and the hostesses, examining team headed by Grand Examiner, Mrs. Faye Murphy, and Mrs. Doris Allen for the humanitarian program, and the music by Mrs. Frances Richards and Mrs. Dorothy Anne Bagwell.

"The more you love  
The more you'll find  
That life is good  
And friends are kind."  
Polly Sarich, Deputy Grand Matron

### Why is it?

A man wakes up in the morning after sleeping on an advertised mattress, under an advertised blanket, in advertised pajamas.

He will bathe in an advertised tub, wash with advertised soap, shave with an advertised razor, drink advertised coffee after his advertised juice, put on advertised clothes and advertised hat. He will ride to work in an advertised car, sit at an advertised desk, smoke advertised cigarettes and write with an advertised pen.

Yet this man hesitates to advertise, saying that advertising does not pay, finally when his unadvertised business goes under, he will then advertise it for sale.

- source unknown

<p><b>MARTIN BAPTIST CHURCH</b> John Truitt, Pastor Sunday School 10:00 a.m. Church Service 11:00 a.m. Evening Service 6:00 p.m. Wednesday Night Service 7:00 p.m.</p>	<p><b>Eddie Floyd Shop</b></p>	<p><b>CHURCH OF THE NAZARENE</b> 3rd &amp; Hawley 874-2321 Bill Hodges, Pastor Sunday School 9:45 a.m. Morning Worship 11:00 a.m. Evening Worship 6:00 p.m. Wednesday Night Service 7:30 p.m.</p>
<p><b>UNITED PENTECOSTAL CHURCH</b> Rev. Jerome A. Campbell Montgomery &amp; Faker St. Sunday School 10:00 a.m. Evening Worship 6:00 p.m. Wednesday Night Service 7:30 p.m.</p>	<p><b>Osborn Furniture &amp; Appliances, Inc.</b></p>	<p><b>ST. MARK BAPTIST CHURCH</b> Jefferson &amp; Martindale Albert Yarbrough, Pastor Sunday School 9:45 a.m. Frothing 11:00 a.m. Night Service 8:30 p.m. Prayer Service 7:30 p.m. Woman's Mission 8:00 p.m.</p>
<p><b>FIRST BAPTIST CHURCH</b> Bugbee &amp; Third Streets 874-3833 Paul Hill, Pastor Sunday School 9:45 a.m. Morning Worship 11:00 a.m. Training Union 6:00 p.m. Evening Worship 7:00 p.m.</p>	<p><b>Alderson Chevrolet Inc.</b></p>	<p><b>FIRST UNITED METHODIST CHURCH</b> 5th &amp; Jefferson 874-3667 Rev. James Carter Sunday School 9:45 a.m. Morning Worship 11:00 a.m. Youth Program</p>
<p><b>FIRST BAPTIST CHURCH</b> Howardwick Bro. James Martindale Sunday School 10:00 a.m. Worship Service 11:00 a.m. Evening Service 6:00 p.m. Wednesday Prayer Meeting 6:00 p.m.</p>	<p><b>FIRST CHRISTIAN CHURCH</b> Sunday School 9:30 Worship 10:40 Children's Worship 10:40 Evening Study 6:00 Youth 6:00 Minister: Wilbert Bernabe</p>	<p><b>ASSEMBLY OF GOD</b> 5th &amp; McClalland Rev. J.W. Brown Pastor Sunday School 9:45 a.m. Sunday Worship 11:00 a.m. Evening Worship 6:30 p.m. Tuesday Women's Missionary 1:00 p.m. Wednesday Night Service 7:30 p.m.</p>
<p><b>CHURCH OF CHRIST</b> 4th &amp; Carhart Stan Queenberry, Minister Sunday School 9:30 a.m. Morning Worship 10:30 a.m. Evening Worship 6:00 p.m. Wednesday Night Service 7:30 p.m.</p>	<p><b>PRESBYTERIAN CHURCH</b> 4th &amp; Parks Dr. E.L. Manning, Pastor Sunday School 10:00 a.m. Morning Worship 11:00 a.m. Youth Program 6:00 p.m. Evening Worship 7:00 p.m. Tuesday Bible Study 2:30 p.m.</p>	<p><b>ST. JOHN THE BAPTIST EPISCOPAL CHURCH</b> Sunday School 9:45 a.m. Holy Communion 11:00 a.m.</p>
<p><b>ST. MARY'S CATHOLIC CHURCH</b> McClelland &amp; Montgomery Rev. J. Arnold Carlson Sunday Morning Mass 9:30 a.m.</p>	<p><b>CALVARY BAPTIST CHURCH</b> Hwy 287 &amp; Jackson 874-3479 Gary L. Platon, Pastor Sunday School 10 a.m. Sunday Worship 11:00 a.m. Bible Study 6:30 p.m. Evening Worship 7:00 p.m. Wednesday Night Service 7:30 p.m.</p>	

**A DELICIOUS TREAT!**  
BUY ONE BAR-B-Q MEAL  
AND GET 2nd ONE FOR 1/2 PRICE!  
(OF EQUAL COST OR LESS)  
Not Good With Any Other Special

**DYER'S BAR-B-QUE**

WELLINGTON SQUARE  
1-40 at GEORGIA - 358-7104  
AMARILLO

ONE COUPON PER CUSTOMER  
OFFER GOOD THRU DEC. 7, 1985

Clarendon-Donley County Chamber of Commerce

**CHRISTMAS DECORATION CONTEST**

Name \_\_\_\_\_

Street Address \_\_\_\_\_

Business \_\_\_\_\_ Residential \_\_\_\_\_

For more information contact Patsy Loffew 874-2421

Return form to chamber office

Band Boosters regular meeting all band parents attend Dec. 2 in the Band Hall at 7:30 p.m.



**SHOP THE FOLLOWING  
LOCAL MERCHANTS FOR  
IN-STORE  
UNADVERTISED  
SPECIALS  
EVERY FRIDAY**



(and until noon on Saturday)

**Osburns Furniture  
and Appliance**

**The Print Shoppe**

**Harlan's Flowers**

**EVERY SATURDAY**

**Charlies BBQ & Beanery**

**Bivens Pharmacy**

**Stavenhagen Furniture**



**Salem II**

**Video Review**

**Treasure Chest**

**Greene Dry Goods**

**The Nook**

**Henson's**

**BUY SELL AND TRADE WITH... Classified Ads**



The first record of the use of spices dates from the age of the pyramids of Egypt—approximately 4,800 years ago—when onions and garlic were fed to 100,000 laborers.



Americans consume about 40 billion pounds of meat a year.

**DONNA'S ALL BREED DOG GROOMING**  
248-3691 GROOM, TEXAS

**STEVE'S AUTOMOTIVE INDUSTRIAL ENGINES**  
For tune-ups, muffler or a major overhaul, on the farm service call 874-3446

**CALL YOUR LOCAL USED COW DEALER**  
For Dead Stock Removal  
1-800-692-4043  
Toll Free

**HEREFORD BI-PRODUCTS**

**MEMPHIS SINGER SEWING MACHINE SALES & SERVICE**  
For contacts call Stavenhagen Furniture  
I am in Clarendon every two weeks on Thursday.

**WE NOW HAVE insulating blowing machine at J&W Lumber.**

**CLARENDON**  
Lodge 700 AF/AM  
Stated Meeting:  
Second Monday, 7:00 p.m. each month. Practice: 1st & 4th Mondays.  
Ernie Johnston W.M.  
Billy Ray Johnston, Sec.  
Refreshments after we meet.

**FOR SALE**  
Houses in Clarendon, Hedley and Howardwick. Call us, we need listings 874-2533.

**SANDERS REAL ESTATE**  
720 S. McClelland  
874-2533

**THE HAIR HOUSE**  
Men's and Boys Clipper Cuts \$5.00  
Late and Saturday appointments available  
Linda White  
874-3138 874-2031

40 ACRES GRASS, paved frontage. Veterans or owner financed. Joe Lovell, nights. 806-777-3801, days 806-874-3556.

**JEROME'S CUSTOM UPHOLSTERY**  
Car \* Truck \* Boat \* Furniture  
Fabric  
Jerome Campbell, Owner  
Free Delivery  
Free Estimates  
(806) 874-3856  
Clarendon, TX 79226

**IDEALER REPOS!**  
Finance company must sell several 2 and 3 bedroom mobile homes immediately. Example 3 bedrooms, wood siding, storm windows, etc. Assume payments \$242.75 with approved credit, includes delivery and insurance. Several 16 ft. wides available. WE TAKE TRADES - WE ANYTHING OF VALUE! First Quality Homes, 6325 Canyon Drive, Amarillo, Texas 806-358-8934.

**FOR SALE:** Custom made portable buildings. 8X12, \$795.00. Call 874-3969.

**J.W. CESS POOLS & SEPTIC TANK PUMPING**  
Hedley, Texas  
1-806-856-4711

**HOUSE FOR SALE:** Three bedrooms, two baths, double garage, central air conditioning, sprinkling system in yard. 655-9579, 874-3826.

**HOUSE FOR SALE:** 604 E. 4th. 2 bedroom and den or 3 bedrooms. New carpet and mini blinds throughout, snack bar, dishwasher, large utility room, central heat, cellar, paved driveway, on four lots. Owner will finance to qualified buyer. 874-3167.

**VIDEO TAPING FOR ALL OCCASIONS**  
Weddings, reunions, sporting events, birthday parties, and private parties.  
**VIDEO REVIEW**  
874-3272

**OAK FIREWOOD FOR SALE,** \$85 a cord. Call 874-2465.

**FLEA MARKET NOW OPEN.** Stalls for rent. J.B. Godwin, 300 S. Kearney. Phone 874-2830.

**PART TIME LVN, RN, EMT** to take health history for insurance companies in Clarendon. Call Portamedic 806-747-3223.

**FOR RENT:** 3 bedroom house, ¼ bath, 1 1/8 mile from paymaster gin on pavement. Call Zella Powell, 359-4860.

**FOR SALE:** Upright piano, excellent practice piano, 874-2118.

**MESQUITE FIREWOOD**  
20" diameter trees, split  
Delivered, Stacked  
Donley County only, \$100  
per cord. 874-2542  
Ask for Richard

\$60.00 PER HUNDRED PAID for processing mail at home! Information, send self-addressed, stamped envelope. Associates, Box 95, Roselle, New Jersey 07203.

**FOR RENT:** 3 bedroom house, fenced backyard, clean, 710 Goodnight. Call 874-3756.

**A numismatist is one who collects coins or medals.**

It is 261 degrees Fahrenheit below zero on the planet Saturn.

**EAR PIERCING SPECIAL**  
\$5.00 till Christmas  
The Hair House  
109 S. Kearney  
874-3138  
Reg. \$9.00 earrings included

**Denise's Cloth Shop**  
Open  
9:00 a.m. - 5:30 p.m.  
Closed Sun. & Tues.  
418 S. Goodnight

**WATSON ELECTRIC**  
Residential & Commercial  
We Also Install  
Insulation & Do Heating Repair  
874-3770 874-2090

**Kelly's Jewelry**  
Custom Jewelry & Watch Repair  
David C. Kelly Box 235  
806-874-3226 Clarendon, Texas  
423 S. Gorst  
Corner of 5th & Gorst  
IN REAR  
OPEN 10:00 A.M. - 6:00 P.M. Tues. - Sat.

**Bailey Estes & Son**  
Welding Fabricating & Steel Buildings  
-also self storage units for  
RENT \$25.00 month

**RESPONSIBLE PERSON**  
Wanted to own and operate candy vending route. Pleasant business with high profit items. Can start part time. Cash investment of \$3996 to \$12,996. Call 1-800-328-0723.

**SMITHERS PLUMBING**  
874-3849  
24 hour service  
7 days a week  
All types of Plumbing

**DOG GROOMING**  
Poodles, Schnauzers, Small Breeds  
Judy Cole 874-3470

**FOR SALE:** Whirlpool refrigerator with ice maker. Used less than 6 months. Paid \$800, bought local, asking \$500. Come to trailer house east of Gibson's lot between 2:30 p.m. and 6:00 p.m.

**CLARENDON CABLE 1.**  
"There's More to See on Cable TV"  
Phone 874-2522  
2 WGN - Movies, Sports  
3 WTBS - Movies, Sports  
4 NBC - Amarillo Network  
5 ESPN - Sports  
6 PTL - Religious  
7 KFDA - Amarillo Network  
8 ACTS - Baptist Network  
9 CNN - News  
10 CBS - Amarillo Network  
11 CBN - Movies and Religion  
12 PBS - Oklahoma  
13 Weather

**AMWAY® PRODUCTS COME TO YOU**  
For your home care, personal care, housewares, and multi-vitamin/mineral supplement needs. Call your local Amway distributor.  
Cells and Paul Drager  
Call or come by day or evening  
Coronado Motel 874-2087

**McVICAR KIRBY SERVICE**  
We repair, recondition or rebuild any make or model vacuum cleaner. We pick up and deliver. A loaner is usually available.  
CALL  
John & Lois McVickers

**RAY'S APPLIANCE SERVICE**  
Franchise for Kitchenaid Dishwashers  
Sales and Service  
General Electric Franchise Dealer  
Heating and Air Conditioning  
We service all makes of air conditioners  
Freezer & Refrigeration Service & Repairs  
Clarendon, TX 79226  
874-3801

**John Morrow Drilling and Well Service**  
submersible pump & windmill service  
PVC & Steel casing  
874-2704

**Brown-McMurtry Implement SALES & SERVICE**  
PHONE 806-823-2441  
BOX 777 SILVERTON, TEXAS 79257  
DON BROWN Home Ph. 823-2292  
CLARENCE WARD Home Ph. 823-2083

**TERMITE PROBLEMS**  
Call for best termite control  
Over 20 years experience  
Call collect 383-7075  
3608 N.E. 23rd  
Amarillo, Texas 79107  
State Lic. No. 1178  
**LEO RUSSELL**

**ALLEN ESTLACK**  
Electrical and Appliance Repair  
Call 874-3683 Box 596  
Bonded & Licensed

**SHIELDS REFRIGERATION & HEATING**  
Small Commercial refrigeration  
DAVID W. SHIELDS 874-2559

**Chamberlain MOTOR COMPANY**  
HIGHWAY 287 CLARENDON, TEXAS  
BUICK • OLDSMOBILE  
PONTIAC • CADILLAC • GMC TRUCKS  
FRED CLIFFORD Home Phone (806) 874-2415  
Clarendon (806) 874-3527  
Amarillo 376-9041  
Texas WATS (800) 692-4088

**Bell Insurance Agency**  
FIRE - CASUALTY - AUTO - LIFE  
307 S. SULLY STREET  
CLARENDON, TEXAS 79226  
BOB BELL PHONE 806-874-2576  
CAM BELL P. O. BOX 6

**Mary's Country Kitchen**  
Fresh Water Catfish Friday Night  
With Fries, Salad & Hushpuppies \$5.55 After 6 p.m.

**BUYERS AND SELLERS**  
All Kinds of Grain  
Clarendon Grain Elevators, Inc.  
J.R. Gill  
P.O. Box 805  
Clarendon, Tex. 79226  
874-3172

**HICKS CONSTRUCTION**  
Specializing in residential housing.  
New-Additions-Remodeling  
Custom designing to meet your needs.  
For free estimate call:  
Larry Hicks - 874-3108

**DONLEY COUNTY ABSTRACT COMPANY**  
ABSTRACTS - TITLE INSURANCE  
307 S. SULLY STREET  
CLARENDON, TEXAS 79226  
BOB BELL, MANAGER 806-874-2324

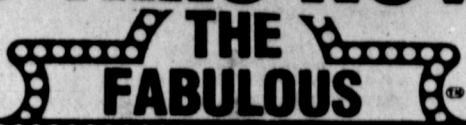
**Chamberlain MOTOR COMPANY**  
HIGHWAY 287 CLARENDON, TEXAS  
BUICK • OLDSMOBILE  
PONTIAC • CADILLAC • GMC TRUCKS  
DARELL HARPER Clarendon (806) 874-3527  
874-3687 Amarillo 376-9041  
Texas WATS (800) 692-4088

**PRINTING & OFFICE SUPPLIES ARE OUR BUSINESS**  
Our Customers Deserve THE BEST  
Quality - Service - Experience and a Job you will be proud of  
All done at home  
**Clarendon Office Supply & Printing**  
Mr. & Mrs. G.W. Estlack Ph. 874-2043

**Estlack**  
Roger received the Boy Scout banquet Saturday at the Clarendon... The two boys of Eagle, achieved a Boy Scout dedicated boy on who who achieved standing, able you seeing a... Over two members Scouts, Clarendon attended presentation who had earned Awards that welcome them to their rank. Jem St 1969, was The open conducted Ashcraft, of the Fr Institution Troop 33, The meeting by Kris College American blue streamer were done the use of banquets On the win large repli through w/ Eagle. Follow the lettering a emblems lack, assist Russell. A table was a badge embl lack. Spencer gave the e now attention, gradu School as He started of the Cub Boy Scouts activities, touts, summ Brown, the Badge sen Alamos, N concession ceremonies Scout to ea



**GOOD THRU NOV. 30th**



**WHEEL OF FORTUNE**

**CASH & GROCERIES GIVE-A-WAY**

**3 BIG WINNERS EACH WEEK**

**WINNERS EACH WEEK**

No purchase is required.

Must be at least 18 years of age to participate



\* Odds are determined by number of participants \*

Aunt Jemima White or Yellow  
**Cornbread Mix 4/\$1.00**

TreeTop  
**Apple Juice Quart 99c**

Aunt Jemima White or Yellow  
**Corn Meal 5 Lb. Bag \$1.19**

Shurfine  
**Sugar 5 Lb. Bag \$1.49**

Gladiola  
**Flour All Purpose 5 Lb. Bag 98c**

Duncan Hines Layer Ass't.  
**Cake Mixes 89c**

Lucky Leaf Cherry  
**Pie Filling 20 oz. Can \$1.19**

Mrs. Smith's  
**Pumpkin Pies \$1.89 Each**

Libby's  
**Pumpkin No. 303 Can 69c**

Stove Top  
**Stuffing Ass't. 99c**



**We have a full line of Smoked Turkeys, Turkey Breasts, Smoked & Boneless Hams, Baking Hens, etc. Come in and make your selection.**

**Wesson Oil 1/2 Gallon \$2.89**

**Crisco Shortening 3 Lb. Can \$2.39**

Swanson's No. 300 Cans  
**Chicken Broth 2/79c**

Blackburn's  
**Syrup Crystal White Quart Decantor 98c**

Shurfine Whole Peeled No. 303 Cans  
**Tomatoes 2/99c**

Shurfine Quart Decantor  
**Tomato Catsup 98c**

Folger's All Grinds  
**Coffee 1 Lb. Can \$2.29**

Shurfine 7 oz. Jar  
**Marshmallow Cream 59c**

Shurfine Cut No. 303 Cans  
**Green Beans 3/\$1.00**

Shurfine Angel Flake  
**Coconut 14 oz. Pkg. \$1.19**

Shurfine No. 303 Cans  
**Apple Sauce 2/99c**

Shurfine  
**Mandarin Oranges 11 oz. Can 59c**

Shurfine Yellow Cling  
**Peaches Sliced or Halves No. 303 Can 69c**

Shurfine Red Sour Pitted  
**Pie Cherries No. 303 89c**

Shurfine Cream Style or Whole Kernel No. 303 Cans  
**Sweet Corn 3/\$1.00**

Shurfine Whole Large 23 oz. Can  
**Sweet Potatoes 79c**

Portales  
**Sweet Potatoes 25c Lb.**

Ocean Spray 12 oz. Pkg.  
**Cranberries 69c**

California Navel  
**Oranges 33c Lb.**

New Mexico Red Delicious  
**Apples 29c Lb.**

California  
**Broccoli 59c Lb.**

Colorado White Russett  
**Potatoes 10 Lb. Bag 89c**

Wright's Sliced Slab  
**Bacon \$1.29 Lb.**

Fresh Pork  
**Spare Ribs \$1.59 Lb.**

Fresh Boston Butt  
**Pork Roast \$1.29 Lb.**

Fresh  
**Pork Steak \$1.49 Lb.**



Scott Family  
**Napkins 300 Cnt. Pkg. \$1.29**

Kleenex Facial  
**Tissue 175 Cnt. Pkg. 69c**

**THE GROCERY STORE**

Home Owned and Operated Jack Clifford 874-2425 Clarendon, Texas

**Open Mon. - Sat. 7 A.M. - 7 P.M. Closed Sundays**

Specials good Wed. - Sat.



# SUPER S FOODS

701 W. COMMERCE • BRADY, TEXAS  
OPEN 7 AM—10 PM - 7 DAYS A WEEK

**OPEN  
7 DAYS  
A WEEK**

## Super Hot Savings...

 **Appliances - Save up to 60%**  
See Store Display For Details.

U.S.D.A.  
Heavy Beef



**Chuck Roast**

**\$1.09**

lb.

 Washington  
Extra Fancy

Red or Golden  
Delicious



**Apples**

**49¢**

lb.

In Oil or Water  
Chicken Of  
The Sea



**Tuna**

**59¢**

6 1/2 Oz. Can

Limit 2 Please

Reach for the Stars  
With Del Monte...



Del Monte  
**Tomato Sauce**

**6 \$1.00**

8 oz. can

Regular or Light  
**Budweiser Beer**



**\$4.99**

12 Pack 12 oz. Cans

"Reach for the Stars"  
Del Monte  
Regular or No Salt



**Sweet Peas**

**2 89¢**

303 Can

2 Liter



**Pepsi**

**89¢**

All Varieties

**Pepsi \$1.49**

6 Pack 12 oz. Cans

Prices Effective  
Nov. 29-Dec. 3.

We Cash  
Payroll Checks



We Reserve The  
Right To Limit  
Quantities.

We Sell  
American Express  
Money Orders.

# SUPER S FOODS

"Reach for the Stars"  
Del Monte  
Whole Kernel  
or Cream Style  
**Corn**  
2 **89**  
303 Cans

Del Monte Reg. or Lite  
**Peaches** Halves or Slices 303 Can **69**<sup>c</sup>

"Reach for the Stars"  
Del Monte  
Reg. or No Salt Cut or French  
**Green Beans**  
2 **89**<sup>c</sup>  
303 Cans

Del Monte  
**Pears** Reg. or Lite 303 Can Halves or Slices **79**<sup>c</sup>

"Reach for the Stars"  
Del Monte  
Regular or No Salt  
**Sweet Peas**  
2 **89**<sup>c</sup>  
303 Cans

Del Monte  
**Catsup** 32 oz. Bil. **\$1**<sup>09</sup>

Chicken of the Sea  
**Tuna** • Oil • Water  
6 1/2 oz. Can **59**<sup>c</sup> Limit 2 Please

American Beauty  
**Noodles** Fine • Enriched Wide • Lasagna 8 oz. Pks. **\$1**<sup>00</sup>

Light Crust  
**Flour**  
5 lb. bag **79**<sup>c</sup>

25 lb. Bag  
**Light Crust Flour** **\$3**<sup>99</sup>

Rinso  
**Laundry Detergent**  
Giant Size **99**<sup>c</sup>

**Lux Dish Liquid** 22 oz. **99**<sup>c</sup>

Martha White Gladiola  
**Pouch Mixes**  
• Pancake • Cornbread  
• White or • Biscuit  
• Yellow • Corn-Muffin  
4 For **\$1**<sup>00</sup>

Martha White Gladiola  
Mexican  
**Cornbread Mix**  
2 **89**<sup>c</sup>  
6 oz. Pkgs.

Martha White Gladiola  
Complete Yellow  
**Cornbread Mix**  
3 **\$1**<sup>00</sup>  
6 oz. Pkg.

Light Crust  
**Tortilla Mix**  
**\$1**<sup>09</sup>  
4 lb. Bag

We Pass Our Savings On To You

**SUPER BUYS**

Hi-C **Drinks** Asst. 3 Pack **85**<sup>c</sup>

Libby's **Vienna Sausage** 5 oz. Cans **2 \$1**<sup>00</sup>

Libby's **Potted Meat** 3 oz. Cans **3 \$1**<sup>00</sup>

Merico **Cookies** Chocolate Chip 27 oz. **\$1**<sup>19</sup>

Wagner **Drinks** Grape Orange Trop. Punch 32 oz. **69**<sup>c</sup>

Patio **Dinners** each **\$1**<sup>39</sup>

Planter's **Cheez Balls** 5 oz. **99**<sup>c</sup>

Heinz **Ketchup** 44 oz. **\$1**<sup>95</sup>

Lone Star **Cat Food** 4 lb. Bag **\$1**<sup>19</sup>

Lone Star 24% Protein **Hi Pro Dog Food** 25 lb. Bag **\$4**<sup>69</sup>

Hi Dri **Towels** Jumbo Roll **63**<sup>c</sup>

Crystal White **Dish Liquid** 48 oz. **\$1**<sup>39</sup>

Glad Handle Tie **Trash Bags** 10 ct. **\$1**<sup>39</sup>

Puffs **Facial Tissue** 175 ct. **99**<sup>c</sup>

Light Crust  
**Tortilla Mix**  
**\$2**<sup>69</sup>  
10 lb. Bag

**Shasta**  
Regular or Diet  
Asst. 2 Liter **99**<sup>c</sup>

Trappey's  
**Dulcito Peppers**  
12 oz. Jar **89**<sup>c</sup>

Ranch Style  
**Beans**  
**45**<sup>c</sup>  
15 oz. Can

Top Ramen  
**Noodles**  
4 **\$1**<sup>00</sup>  
3 oz. Pkgs.

Quick 'N Tender  
**Noodles**  
Assorted Varieties 2 4 1/2 oz. Pkgs. **\$1**<sup>00</sup>

**Handi-Wrap**  
100 Feet **89**<sup>c</sup>

Facial Tissue  
**Softique**  
150 Ct. box **89**<sup>c</sup> 100 ct. box **79**<sup>c</sup>

Glad  
**Sandwich Bags**  
150 ct. **89**<sup>c</sup>

**Alpo Beef Flavored Dry Dog Food** 5 lb. Bag **\$2**<sup>19</sup>

Beef Beef & Cheese **Bites** **79**<sup>c</sup>

**Treats** 4 1/2 oz.

**Purina Mainstay**  
**\$5**<sup>49</sup>  
20 lb. Bag



# SUPER 5 FOODS

## Clip and Save Cash!! Valuable Coupons...

**COUPON**  
Kraft  
**Miracle Whip**  
**50¢ Off** 32 oz. Jar  
Limit 1 with coupon per customer at Super 5 Foods Nov. 29-Dec.4  
**SAVE! SAVE!**

**COUPON**  
Texsun  
**Pink Grapefruit Juice**  
**20¢ Off** 46 oz. Can  
Limit 1 with coupon per customer at Super 5 Foods Nov. 29-Dec.4  
**SAVE! SAVE!**

**COUPON**  
**Bounty Towels**  
**20¢ Off** Jumbo Roll  
Limit 1 with coupon per customer at Super 5 Foods Nov. 29-Dec.4  
**SAVE! SAVE!**

**COUPON**  
**New Red Soda**  
**20¢ Off** 2 Liter Btl.  
Limit 1 with coupon per customer at Super 5 Foods Nov. 29-Dec.4  
**SAVE! SAVE!**

**COUPON**  
Velvet 42 oz.  
**Shortening**  
**30¢ Off**  
Limit 1 with coupon per customer at Super 5 Foods Nov. 29-Dec.4  
**SAVE! SAVE!**

**COUPON**  
**Pepto Bismol**  
**50¢ Off** 12 oz. Btl.  
Limit 1 with coupon per customer at Super 5 Foods Nov. 29-Dec.4  
**SAVE! SAVE!**

**COUPON**  
**Bar-S Tasty Dogs**  
**20¢ Off** 12 oz. Pkg.  
Limit 1 with coupon per customer at Super 5 Foods Nov. 29-Dec.4  
**SAVE! SAVE!**

**COUPON**  
**Listerine**  
**50¢ Off** 12 oz. Btl.  
Limit 1 With Coupon at Super 5 Nov. 29-Dec. 4  
**SAVE! SAVE!**

**COUPON**  
**Lunch Meats**  
**20¢ Off**  
• Bologna  
• Salami  
• Spiced Luncheon Meat  
Limit 1 with coupon per customer at Super 5 Foods Nov. 29-Dec.4  
**SAVE! SAVE!**

**COUPON**  
**Jergens's Lotion**  
**35¢ Off** 10 oz. Btl.  
Limit 1 with coupon per customer at Super 5 Foods Nov. 29-Dec. 4  
**SAVE! SAVE!**

**COUPON**  
**Lettuce**  
**25¢ Off** U.S. #1 California Large Crisp Heads.  
Limit 1 with coupon per customer at Super 5 Foods Nov. 29-Dec. 4  
**SAVE! SAVE!**

**COUPON**  
Decorated  
**Mums**  
**\$1.00 Off** each  
Limit 1 with coupon per customer at Super 5 Foods Nov. 29-Dec. 4  
**SAVE! SAVE!**

# SUPER 5 FOODS



## CHRISTMAS SALE

### Porcelain Mugs

Save 33%  
Asst.  
Each




Compare at \$5<sup>99</sup>

**Comet  
Non-Stick  
Fry Pan**

**\$3<sup>99</sup>**

Each  
10 inch



2733 V3

16" x 20" Wood  
Collection Wall Frames  
by Intercraft

**Intercraft  
Collection  
Frame**

**\$8<sup>99</sup>**

Each



Foley

#609-10

**Cookie Sheet**

**\$2<sup>49</sup>**

Each



Adjustable

**Newell Shower  
Curtain Rod**

**\$7<sup>99</sup>**

Each

Aladdin

**Wide Mouth  
Vacuum  
Bottle**

**\$6<sup>99</sup>**

Pt.  
Btl.




Foley

#628-10

**Bake 'n Roast**

**\$2<sup>99</sup>**

Each

**DURABEAM** LIGHTING PRODUCTS

FROM DURACELL

Regular

\$25.99



LANTERN  
with battery

**\$14<sup>99</sup>**

Each



Mirro

- Super-sized
- Heavy Gauge Aluminum
- Heatproof knob

**Stock Pot**

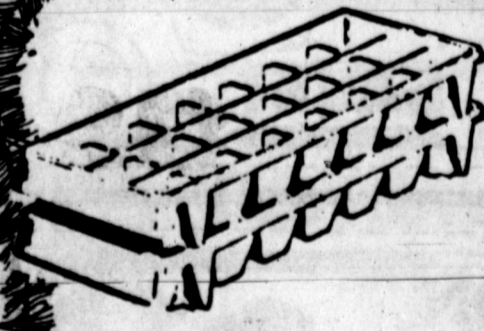
**\$9<sup>99</sup>**

Each

**Bug Kill  
Shelf  
Paper**

**\$1<sup>39</sup>**

Each

Tucker

**Ice Cube  
Trays**

**\$1<sup>00</sup>**

2 ct.  
Pkg.



Lock Together Handle

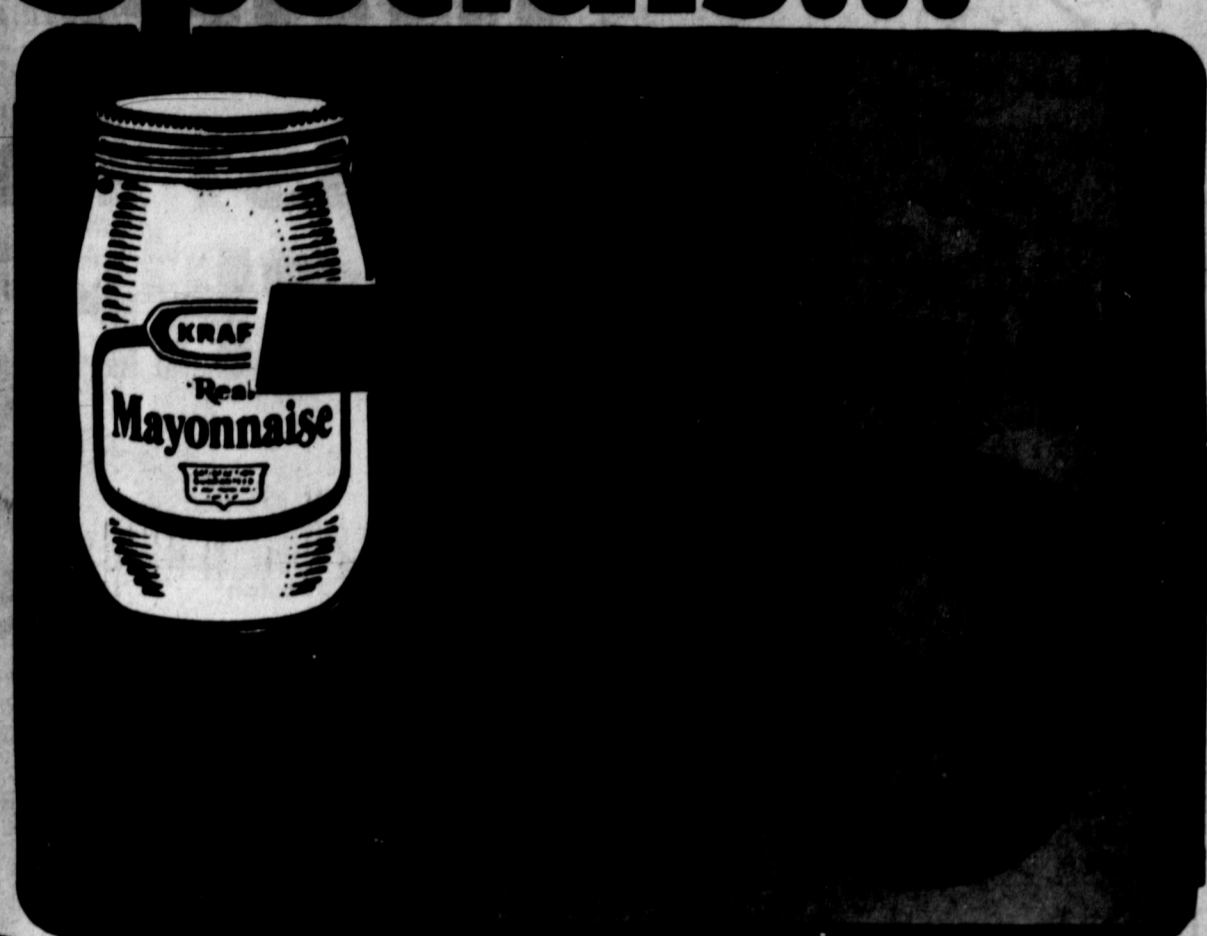
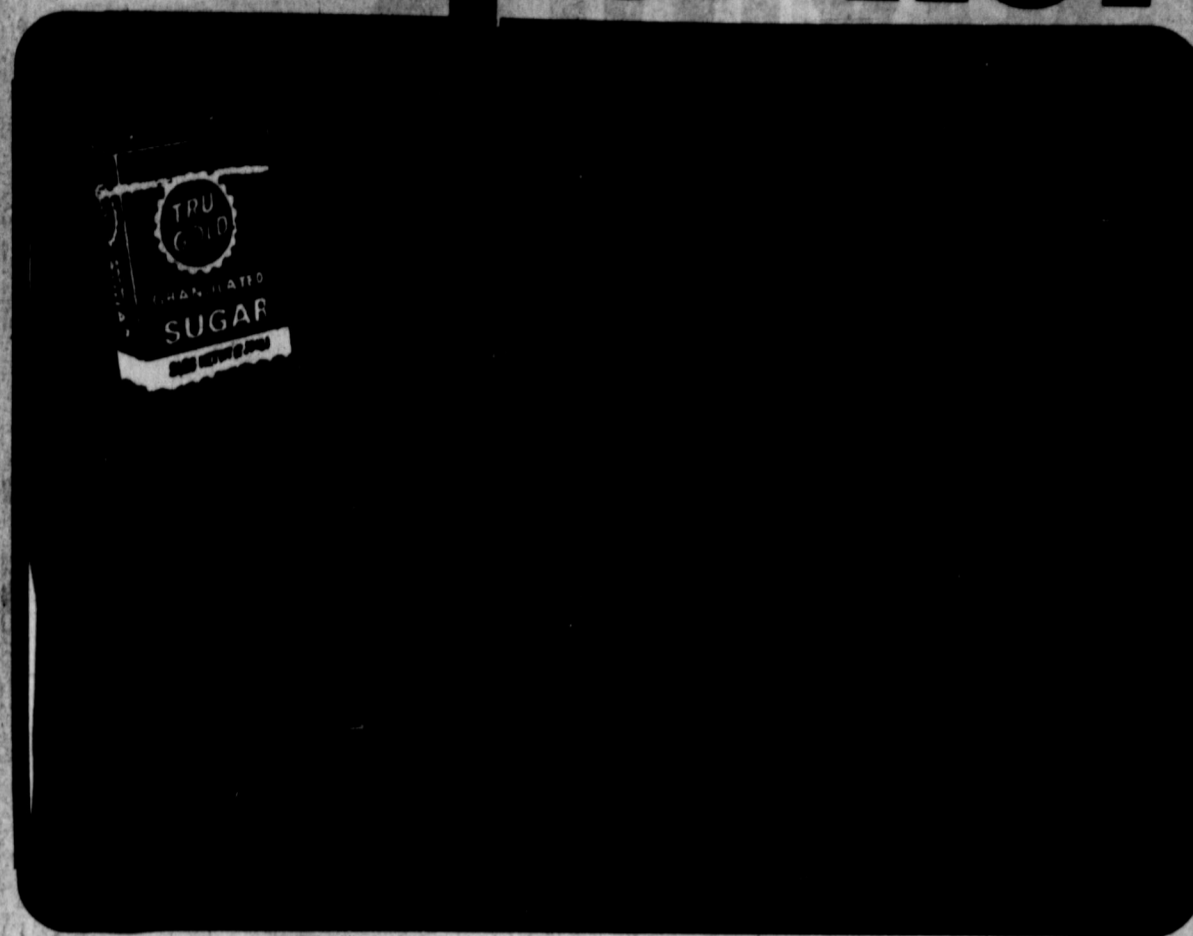
**Dust Pan  
& Brush**

**\$1<sup>99</sup>**

Each

# SUPER \$ FOODS

## Super Hot Specials!!!



**Kraft**  
**Parkay**  
**Margarine**



**39¢**

1 lb. qtrs. Limit 2 Please

**Duncan Hines**  
**Layer**  
**Cake Mixes**



**79¢**

each

**100% Beef**  
**Ground**  
**Beef**



**79¢**

Family Pack 3 lbs. or More

Lb.

**Fryer**  
**Leg**  
**Quarters**



**49¢**

10 lb. bag

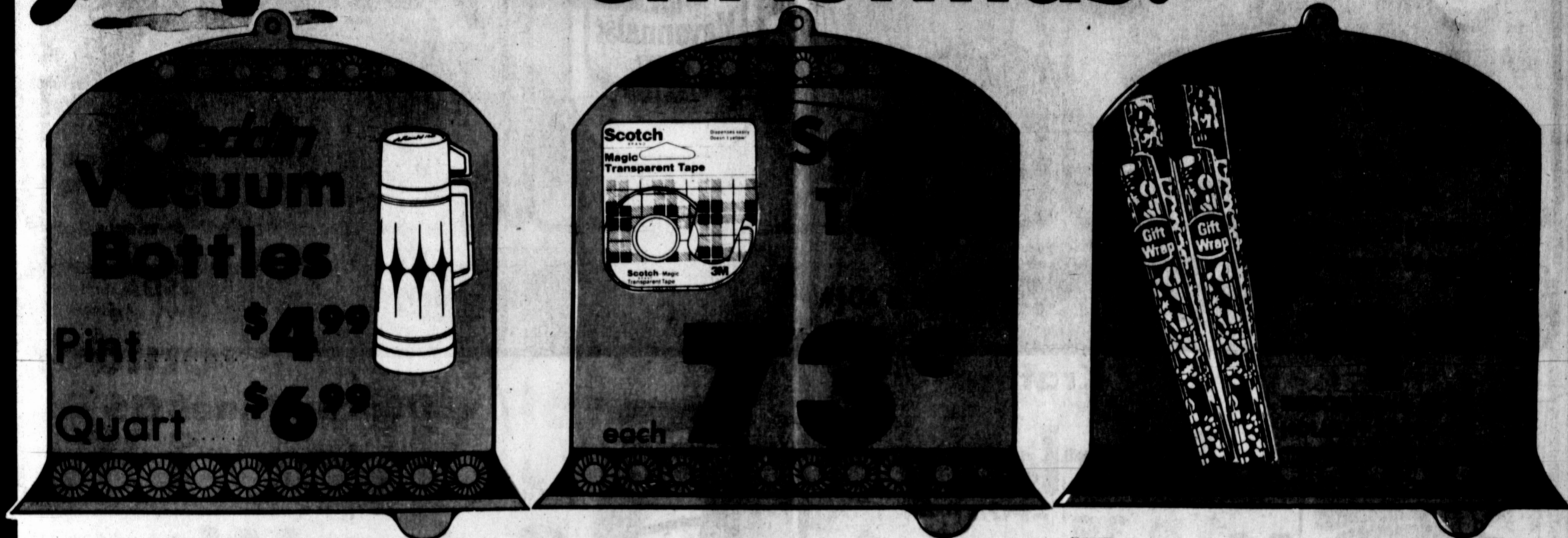
lb.



# SUPER S FOODS



## Super Savings Just in Time For Christmas!



**EZ FOIL™**

**ALUMINUM FOILWARE**  
No. 820 Loaf Pan  
No. 821 Sq. Cake Pan  
No. 818 Pie Pan  
No. 834 Deep Pie Pan

**88¢** pk.

Save Up To 36%

**HEAVY GAUGE SILVERSTONE COOKWARE**

Choose From  
2 Qt. Sauce Pan  
10" Open Fry Pan  
10" Saute Skillet  
Your Choice

**\$6.99** Ea.

Polished Aluminum Exterior

**BUY 2, GET 1 FREE**  
Free pair inside specially marked packages of No nonsense Control Top

**\$4.49**

**BUY 2, GET 1 FREE**  
Free pair inside specially marked packages of No nonsense Knee Highs

**\$1.49**

**Double your MEMOREX™ AUDIO CASSETTES MUSIC MONEY Rebate!**

Save up to \$1.00 on MEMOREX dB Series 90-minute cassettes in 2-packs

**NEW! CUTEX NAIL COLOR PEN**

**\$2.49**

A Great Stocking Stuffer!

Open Card-Music Plays Carols

**MUSICAL CHRISTMAS CARDS**

8 Ft. Extension Cord **\$1.39**

10 pk. Miniature Replacement Bulbs **59¢**

4 pk. Replacement Bulbs **79¢**

**BONUS REBATE COUPON**

This bonus rebate coupon doubles the value of the MEMOREX Music Money Rebate when attached to the official rebate form found at this retail outlet.

Regular Price	\$2.99
Rebate by Mail (coupon available at store)	.50
Bonus Rebate (by mail)	.50
<b>Your cost after rebate</b>	<b>\$1.99</b>

**DURACELL™**

Choose From AA, C or D Sizes  
**4 PACK**

**\$2.99**

Stock Up Now!

**SANTA DOOR PANEL**

**99¢** EA

Bring Santa's Charm To Your House.

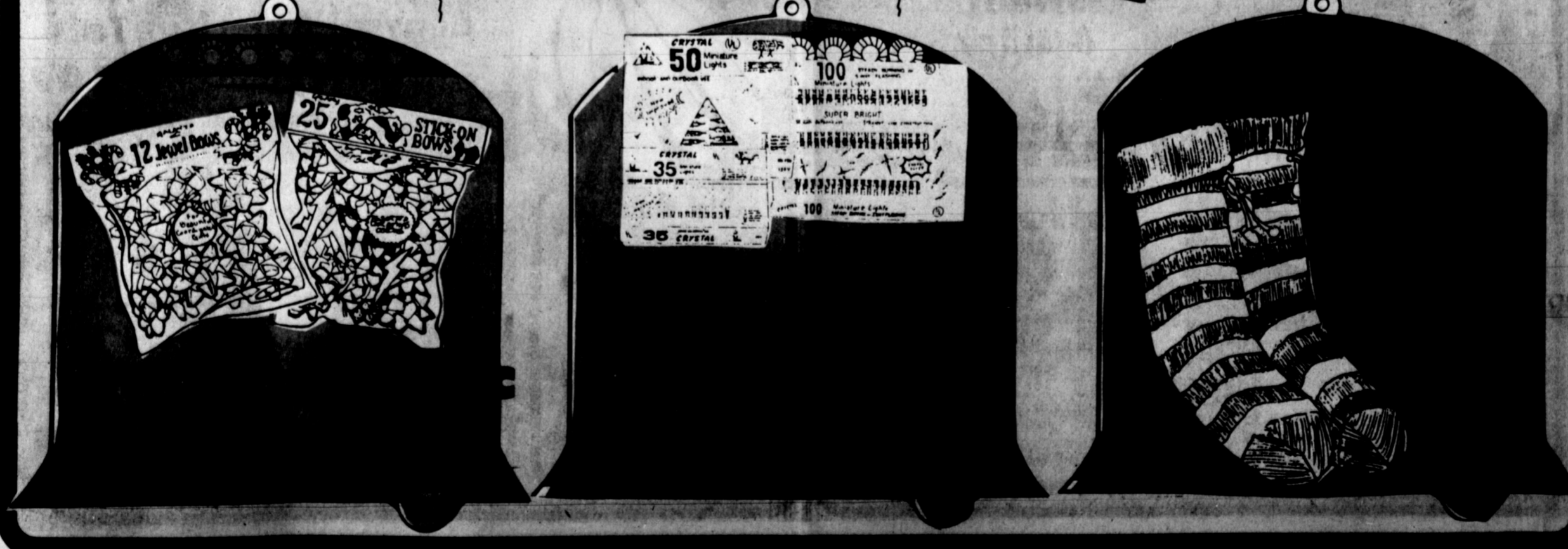
**HOLIDAY SAVINGS!**

WHILE THEY LAST!

**HAND PAINTED WOOD CHIP CHRISTMAS CONTAINERS**

3 Nesting Sizes Hold Homemade Goodies

**SMALL \$1.59**  
**MEDIUM \$1.99**  
**LARGE \$2.49**



# SUPER 5 FOODS



U.S.D.A.  
Heavy Beef

## Chuck Roast

# \$1.09

lb.



U.S.D.A.  
Heavy Beef

## Chuck Steak

# \$1.29

lb.



Boston Butt

## Pork Roast

# 89¢

lb.

### More Super Savings On Meat!

Hog Heads ..... lb. **49¢** Whole Rib Eye ..... Cry O Vac Heavy Beef lb. **\$3.29**

Fryer Breasts ..... Pilgrim's Pride lb. **\$1.39** Fryer Thighs or Drumsticks ..... Pilgrim's Pride Jumbo Pkg. lb. **98¢**

Pork Trimmings For Deer Sausage ..... 50-50 lb. **49¢**

Beef Short Ribs ..... lb. **\$1.39** Beef Liver ..... lb. **89¢**

Pork Steak ..... lb. **\$1.39** Beef Tongue ..... lb. **\$1.29**

Extra Lean Boneless Stew Meat ..... lb. **\$1.98** Roegelein Bacon Sliced ..... 1 lb. **\$1.39**

Lamb Shoulder Chops ..... lb. **89¢** Ground Beef Patties ..... 3 lbs. **\$3.98**

Beef Tripe or Pigs Feet ..... lb. **39¢** Roegelein Smokets ..... 12 oz. Pkg. **\$1.59**



USDA Heavy Beef

## Shoulder Roast

# \$1.39

Lb.



## Beef Cube Steak

# \$2.29

lb.




U.S.D.A. Heavy Beef

## Shoulder Steak

# \$1.59

lb.


### Fresh Dairy Delights!

	Leadway Homestyle	Farmfield Dips ..... Asst. 8 oz. <b>69¢</b>	Tropicano Orange Juice ..... 1/2 Gal. <b>\$2.29</b>
<b>5</b>	8 oz. Cans <b>\$1.00</b>	Oak Farms Cottage Cheese ..... 24 oz. <b>\$1.79</b>	Weight Watchers ..... 2 ct. - 8 oz. ctns. <b>89¢</b>
		Oak Farms Chocolate Milk ..... Qt. <b>79¢</b>	Margarine ..... <b>89¢</b>

### Frozen Foods...



FOX DELUXE® Pizza  
Hamburger Sausage Pepperoni 10 oz. **79¢**



Tropicana Orange Juice  
12 oz. Can **\$1.19**

	Sunny Delight		Ore Ida Tator Tots
<b>69¢</b>	12 oz. Can	<b>\$1.49</b>	Regular Bacon Onion 2 lb. Bag


	Sausage Combo Pepperoni 4 oz. <b>89¢</b>		Chun King Egg Roll <b>\$1.09</b>
---------------------------------------------------------------------------------------	------------------------------------------	---------------------------------------------------------------------------------------	----------------------------------

	Night Hawk Top Chop't Dinner <b>\$1.99</b>		Gorton's Crunchy Fish Fillet or Sticks 12 oz. <b>\$1.99</b>
---------------------------------------------------------------------------------------	--------------------------------------------	---------------------------------------------------------------------------------------	-------------------------------------------------------------

### Bakery

	Honey Wheat Bread <b>\$1.15</b>		Butterflake Rolls ..... 12 ct. <b>85¢</b>
	1 1/2 lb. Loaf		Pound Cake ..... 18 oz. <b>\$1.39</b>
			Honey Buns • Dunkers Chocolate & Vanilla Cups 3 For <b>99¢</b>

### Hills Bros. Coffees



1 lb. Can.....	<b>\$2.19</b>
High Yield Coffee ..... 13 oz.	<b>\$2.59</b>
Decaffeinated ..... 13 oz.	<b>\$3.69</b>
Instant Decaffeinated ..... 4 oz. Jar	<b>\$3.13</b>
Instant Coffee ..... 4 oz. Jar	<b>\$2.53</b>
Sugar Free Flavored Coffee ..... 6 oz.	<b>\$1.99</b>

### Old El Paso Nachips



7 1/2 oz. Box	<b>\$1.09</b>
15 oz. with sausage	<b>89¢</b>
Refried Beans	<b>89¢</b>
15 1/4 oz. Med. Hot Chunky Salsa	<b>\$1.49</b>

# SUPER \$ FOODS

Washington Ex-Fancy Red or Golden Delicious



**Apples**

**49¢**

lb.

California Fancy Seedless Navel



**Oranges**

**49¢**

lb.

California Fancy Ruby Red




**Grapefruit**

**49¢**

lb.


U.S.#1 California Red Ripe

**Salad Size Tomatoes** ..... lb. **59¢**



Texas Fresh Bunches

**Green Onions** ..... 4 For **\$1.00**



California Creamy Zutano


**Avocados** 70 Size 4 For **\$1.00**

Washington U.S.#1

**D'Anjou Pears** ..... lb. **59¢**

**Holiday Nuts** Not Available at all Locations

Mixed Nuts	lb. pkg.	1 <sup>59</sup>	lb.	\$1 <sup>39</sup>
Almonds	lb. pkg.	1 <sup>59</sup>	lb.	\$1 <sup>29</sup>
Brazil Nuts	lb. pkg.	1 <sup>59</sup>	lb.	\$1 <sup>39</sup>
Walnuts	lb. pkg.	1 <sup>49</sup>	lb.	\$1 <sup>29</sup>
Peanuts	lb. pkg.	1 <sup>69</sup>	lb.	99¢
Pecans	lb.			\$1 <sup>79</sup>
Filberts	lb. pkg.			\$1 <sup>59</sup>



U.S.#1 Large Juicy

**Green Limes** ..... 12 For **\$1.00**

U.S.#1 Texas

**Crisp Carrots** ..... 4 1 lb. Bags **\$1.00**

**Beautiful Mums** ..... 6 in. Pots **\$6.98**

Decorated **\$9.98**



**Tamale Fixin's**

Hog Heads	lb.	49¢
Corn Shucks	6 oz. Pkg.	68¢
Bulk White Garlic	Large Pods	\$1.00
Red Chili Pods	5 For	\$1.00
Green Jalapeno Peppers	lb.	69¢
Fiesta Brand Fresh Garlic	2 oz. Pkg.	49¢

## Health and Beauty Aid Savings



**Atune Shampoo or Conditioner**

**\$1.89**

Each 7 oz. Btl.



**Alka Seltzer**

**\$1.69**

26 ct. Pkg.



**Actifed 12-Hour**

**\$2.29**

10 Capsules




Autune

**Hair Spray**

**\$2.09**

Aerosol 7 oz.



**Mitchum Deodorant**


Roll-On	1.5 oz.	\$1.99
Solid	2 oz.	\$2.39
Aerosol	4 oz.	\$2.09

Regular or Unscented




**Baby Magic**

Bath	9 oz.	\$1.69
Lotion	9 oz.	\$1.89



**Murine Ear System** 1/2 oz. **\$4.09**

**Plus or Plastic** 1/2 oz. **\$1.19**




**Dulcolax Tablets** ..... 25 ct. **\$1.99**

• Reg. • Lemon, 3.5 oz. • Dry Skin, 3.9 oz.

**Pond's Cold Cream** ..... 34 oz. **\$2.29**

**Dentagard** ..... 4 1/2 oz. Pump **\$1.59**



All Varieties **Lady Speed Stick** ... 1 1/2 oz. **\$1.49**

All Varieties **Mennen Speed Stick** 2 1/2 oz. **\$1.59**

**Q-Tips** ..... 300's **\$1.69**

**\$100 CASH REFUND OFFER**

To receive your \$100 cash refund, purchase a product from the list below and mail it to the address below and mail it to PAPER MATE REFUND P.O. BOX 10860 GRAND RAPIDS, MN 55745. Please send me \$1.00 cash refund to:

NAME \_\_\_\_\_

ADDRESS \_\_\_\_\_

CITY \_\_\_\_\_

STATE \_\_\_\_\_ ZIP \_\_\_\_\_

Other expires December 31, 1988. Void where prohibited. This coupon may not be substituted for other offers. Limit one refund per name. Offer good in U.S. only. © 1988 Paper Mate.

Stoneware Stacking

**Porcelain Mugs** ..... ea. **59¢**

**Dressmaker Shears** 8 1/2" **\$4.99**

**Sewing Shears** ..... 8 1/2" **\$3.99**

Angle Stainless



**Driving Gloves**

Leather Pr. **\$6.99**

**Large Baskets** **\$1.00**

Tucker's ea.

**First Years Baby Sale**

Squeeze Toy	99¢
First Charms	69¢
Stackm's	\$1.00
Bottle	\$1.00
Pot 'n Spoon	\$2.00
Piggy Bank	\$1.00
Toilet Training Book	\$1.00