

THE CLARENDON Enterprise

08.17.2006

SERIES 3, VOL. XVII, NO. 35

Established 1878.

THE CLARENDON NEWS & THE DONLEY COUNTY LEADER

www.ClarendonOnline.com

Single Copy Price: 75¢

The Texas Panhandle's Oldest Newspaper.

THIS WEEK

- 2 What's better for the Internet - neutrality or freedom?
- 5 A program to help low-income Texans with utility bills is restored.
- 6 The Twilight Hatters take a road trip to see a great performance.
- 8 And the Broncos get ready for their first scrimmage of the season.

All this and much more as The Enterprise reports in this week's popular edition.

Amarillo man drowns at Greenbelt Sunday

An Amarillo man lost his life at Lake Greenbelt Sunday afternoon while swimming near Sandy Beach.

Donley County Sheriff Butch Blackburn's office reported that friends of Phillip Salazar, age 24, said the man was having leg cramps when the accident happened. They tried to save him but could not, and his friends also could not find him after he went under.

Deputy Mike Spier was called about 5:15 p.m. by Greenbelt Lake Patrol Ray Burch, and emergency crews were dispatched to the lake. The Clarendon Volunteer Fire Department Dive Team recovered Salazar's body about 5:50 p.m. in 22 to 25 feet of water about 15 feet from the north shore of Sandy Beach.

Justice of the Peace Jimmy Johnson declared Salazar dead at 6:07 p.m., and the body was transported to Lubbock for autopsy to be done Tuesday morning.

Friendship Club will hold firefighters night

The Howardwick Friendship Club will hold Firefighters' Night when it meets this Friday at the Howardwick City Hall at 6:30.

Borger Fire Chief Gaylen Darnell will be the guest speaker on "What It Means to be a Fireman," and entertainment will be provided by Wyley Chaney. There will also be a video of the March wildfires.

The public is invited to bring a dish and join the fun for pot luck.

Fund established for Mincey medical bills

The Clarendon Firebells have set up an account for the benefit of Jim and Jo Dee Mincey as they face more medical problems and expenses again. If any one would like to make a donation, the account is set up at Herring Bank.

United Christian Men to meet August 17

United Christian Men will meet Thursday, August 17, at 7 a.m. for breakfast at the Methodist Church Fellowship Church. Monte Hysinger, superintendent of Clarendon Public Schools, will bring the program. Ladies are invited to attend. We will finish in time for folks to get to work.

Breast cancer screens to be given next week

The Don and Sybil Harrington Cancer Center Comprehensive Breast Center will conduct a screening clinic at the Associated Ambulance Authority Building in Clarendon on August 21, 2006.

Funding is available through the Texas Department of Health for those who qualify. All exams are done by appointment only. Call (806) 356-1905.

'Concerned Citizens' petition Clarendon ISD

The Concerned Citizens of Donley County continued their quest to abolish the personal property tax by going before the Clarendon Independent School District during the board's regular meeting last Thursday.

Representatives from both groups said they thought the meeting was cordial and informative, and the citizens had kind words for the efforts of CISD Trustees in improving local schools.

"If they were the only ones collecting the personal property tax, we wouldn't have even been there," Concerned Citizens spokesman Brad Dalton said afterward. "We don't want to take anything away from the school."

The taxpayers' group presented a petition to the school board calling for the abolition of the personal property tax. Dalton said his group understood CISD needed the money and would be willing for the district to raise taxes on real property to make up the difference.

But CISD Superintendent Monty Hysinger said recent activity by the state legislature would prevent the district from making up the difference in its real ad valorem rate should the personal property tax be abolished; and getting rid of the tax on cars, boats, planes, and other personal property would cost the district more than just local tax revenue.

Using current budget projections, Hysinger said CISD will col-

lect approximately \$180,000 from the personal property tax in the next fiscal year, which is about 11.64 percent of the school's local tax income. But local taxes are a determinant of state funding, and the funds raised by the personal property tax generate an additional \$270,000 in state funding.

"You're looking at losing about \$450,000 in school funds if you abolish the personal property tax," Hysinger said this week.

But the school board did have some good news for the Concerned Citizens. A new mandatory tax rate reduction from the state means CISD's tax rate will drop by 11.5 cents per \$100 valuation this coming fiscal year, and another mandatory reduction is expected next year.

CISD Trustees took no action on the citizens' petition.

Dalton told the ENTERPRISE this week that the Concerned Citizens are chiefly upset with the way the personal property tax is collected and not the fact that it is collected.

"We just feel like it is an unfair tax because not everyone is paying it," he said. "Lot's of people here have cars registered out of county and even out of state to avoid the tax."

Dalton said the taxpayers' group will next take their case to the boards of the Hedley Public School, Clarendon College, the City of Clarendon, and the Panhandle Groundwater Conservation District.

In other school business, trustees approved two change orders to the

renovation project totaling \$9,700 and accepted a bid from Merlin J. and Eva M. Fish for tax delinquent property. A motion was also approved to accept the transportation fuel proposal for the 2006-2007 school year from West Texas Gas, Inc.

The board toured the renovation project and discussed facility needs. They also discussed the budget and the impact of the changes in state funding. The board also concluded that much more information would be needed before changing the personal property tax could be considered.

Trustees voted to set Monday, August 28, 2006, at 7:00 p.m. as the date and time to hold a budget hearing and adopt the tax rate for the coming year.



Coming through!

Clarendon High School Coach Brad Elam gives some pointers to members of the Bronco football team during a workout Monday afternoon. Fans can meet the players this Thursday evening during "Meet the Broncos" at 7 p.m. in the stadium, and the Broncos will scrimmage in Vega this Saturday morning.

Enterprise Photo / Ashlee Estlack

City okays Sonic tax abatement

The Clarendon Board of Aldermen approved a five-year graduated tax abatement for the new Sonic Drive-In being constructed on US 287 during their regular meeting last Tuesday.

The 2-1 vote by the aldermen overrode a June 26 recommendation by the Clarendon Economic Development Board, which had voted 4-3 against an abatement for the property.

CEDC President Will Thompson, who favored the abatement, said his board's vote was the closest in years and came only after lengthy debate on the question. He said the CEDC was split on the issue between wanting to attract new businesses and trying to protect existing businesses.

"We went back and forth several times, and, at any point during the debate, the vote could have gone either way," Thompson said.

Thorne Stallings represented Sonic's franchisee during Tuesday's meeting and expressed regret for missing the earlier CEDC meeting.

"I understand the hesitation of giving an abatement to people who are new, but Sonic is a different type of restaurant," Stallings said. "People who want to sit down together don't

come to Sonic. From what we've seen, we don't have an impact on the mom and pop restaurants."

Stallings said the Sonic represents a \$1.1 million investment in the community that will create 50 full time jobs, including one manager and three assistants, and the restaurant anticipates its annual sales will exceed \$1 million.

Aldermen Michael Tibbets and Bobbie Kidd voted in favor of the abatement, which exempts 100 percent of the improvements on the property for two years, 75 percent the third year, 50 percent the fourth year, and 25 percent the fifth year.

Alderman Tommy Hill opposed the measure, and Alderman Janice Knorpp was absent.

In other city business, the board approved an ordinance prohibiting disturbing the peace and setting the maximum fine at \$2,000, and a motion was approved to engage Foster and Lambert to perform the audit for the 2005-2006 fiscal year.

Aldermen also discussed the taxation of personal property in the city. Currently, the tax on cars, boats, planes, and other personal property brings in 23 percent of the city's total ad valorem tax revenue.

Clarendon sales tax receipts drop

AUSTIN - Texas Comptroller Carole Keeton Strayhorn said Friday the state collected \$1.6 billion in sales tax revenue in July, up 10.2 percent compared to July 2005.

Hedley and Howardwick sales tax revenues were up for the month, but Clarendon's total dipped for the first time since last August.

The City of Hedley received a sales tax allocation of \$1,072,311, an increase of 80.47 percent over the same time one year ago. The July figure pushed that city's year-to-date total to \$6,373,131, an increase of 78.3 percent.

Howardwick was up 57.99 percent to \$1,675.50 with a year-to-date total 6.45 percent ahead at \$7,633.36.

Clarendon dropped 1.92 percent to \$27,649.19 for the month, but the city's allocations are still 7.85 percent ahead for the year with total allocations of \$193,626.38 so far.

July state sales tax revenue and August allocations to local governments represent sales taxes collected in June by businesses that report taxes monthly, and sales taxes collected in April, May and June by quarterly filers.

Texas drought losses estimated at \$4.1 billion

COLLEGE STATION - Estimated drought losses for Texas have reached \$4.1 billion, eclipsing the \$2.1 billion mark set in 1998, Texas Cooperative Extension economists reported Friday.

Crop losses are estimated at \$2.5 billion and livestock \$1.6 billion, according to the report. The current drought equals the multi-year dry period of the 1950s and could go down as the worst ever without substantial rainfall by the end of the year, according to Extension officials.

"The financial impact will be a major setback because of rising input costs, especially energy prices (to agricultural producers)," said Dr. Carl Anderson, professor emeritus and Extension economist. "Irrigation costs have

soared and will cut cash flow from irrigated crop production substantially."

"Most of North Texas, East Texas, and the Coastal Bend were in various stages of drought since May of last year, and hay supplies were depleted maintaining livestock over the summer and winter," said Dr. Travis Miller, Extension agronomist. "Much of the corn and soybean crop has been harvested for silage or hay; pastures are bare and hay barns are empty. Much of the hay being fed is from out-of-state or along the upper coast, which has received favorable rains. Livestock water supplies are disappearing, and ranchers are unable to sustain herds with purchased hay and dry tanks."

Rural areas are being hardest hit, Anderson said, with projected economic losses at \$8 bil-

lion when the agribusiness impact is included. This includes businesses that provide equipment and services to farmers and ranchers, including machinery sales, supplies, and other production needs, Anderson said.

The driest regions of the state are the Panhandle, Southern High and Rolling Plains, Northeast Texas, and the Lower Rio Grande Valley.

"If it rained now, it would be too late for the main crops," Anderson said.

Statewide, cotton, corn sorghum and soybeans have been rated 48 percent to 58 percent in poor to very poor condition for several months.

"That's very indicative of production levels around half a crop," Anderson said. "Much of

the corn in Central Texas has been made into silage or hay, and most of Northeast Texas soybean crop has been cut for hay to supply dairy operations in desperate need of forages. The irrigated peanut and rice crops are the only crops rated mostly in good to fair condition."

More than \$1 billion of the current losses come from cotton, Texas' No. 1 cash crop, Anderson said.

"Because of dry soil, much of the cottonseed planted failed to germinate," he said. "The 2006 winter wheat crop fell to 35 million bushels, the lowest level since 1971 and two-thirds below 2005 production."

Only 1.4 million acres of wheat were harvested, the smallest acreage since 1925.

See 'Drought' on page 3.

guest commentary

'Neutrality' no substitute for freedom

By Alex Epstein

America's leading Internet service providers (ISPs) have spent many years and billions upgrading their transcontinental networks, which constitute the backbone of the Internet. Now they are eager to profit by offering new, compelling services.

One proposed plan is to give certain Web sites high priority on their data, so as to guarantee "quality of service" – the speed, frequency, and reliability with which data is delivered. This would enable content providers to offer high-quality live TV and videoconferencing or advanced remote medical monitoring, without the delays and unreliability that plague the Internet today.

Unfortunately, data prioritization is fiercely opposed by advocates of "Net Neutrality," who claim paradoxically that freedom and innovation demand that companies not be free to make this innovation.

Net neutrality is the idea that ISPs should not be able to favor some types of data over others; their networks must be "neutral" among all the data they carry. Net-neutrality supporters claim that if ISPs are free to give preferential treatment to certain websites' data, they might drastically slow down un-favored or less-wealthy websites, diminishing their ability to offer content and make innovations. A prominent net-neutrality coalition cautions: "If you are an aspiring entrepreneur, you may be impeded from providing the 'next big thing' on the Internet."

But such scenarios are nonsensical. For any of the nation's competing ISPs to offer customers slow, patchy, let alone nonexistent access to the websites they seek to visit, would be commercial suicide. As for innovation, websites are free to continue using standard, non-prioritized Internet service.

The fact that this would be slower than premium service does not mean that it would be slow, just as UPS's decision to offer overnight delivery did not lead them to suddenly degrade their Ground shipping. Premium Internet services would enable, not stifle, innovation by giving websites creative options they did not have before.

The specter of ISPs offering glacial access to certain websites is a smokescreen, designed to obscure the net-neutrality movement's goal: preventing anyone from having superior, unequal access to customers. In the minds of net-neutrality advocates, the Internet is a collectively owned entity, to which all websites have an equal claim and are entitled "equal access." As the title of a leading net-neutrality group proclaims: "It's our Net."

But it isn't.

The Internet is not a collectivist commune; it is a free, voluntary, and private association of individuals and corporations harmoniously pursuing their individual goals. (While it began as a government-funded project, the Internet's ultra-advanced state today is the achievement of private network builders, hardware companies, content providers, and customers.) Because the Internet is based on voluntary association, no one can properly compel others for their ad space, bandwidth, publicity – or data prioritization.

Those who create these values have the right to use and profit from them as they see fit. Google has no more right to demand that Verizon be "neutral" with its network than Verizon has a right to demand that Google be "neutral" with its own coveted advertising space.

The only thing equal about the participants on the Internet is that all have equal freedom to deal with others voluntarily. This means they are equally free to compete for the bandwidth, dollars, and talents of others – but not entitled to an unearned, equal portion of them.

It is the freedom of participants on the Internet to offer and profit from whatever products, services, or content they choose that has made it such a phenomenal source of content and innovation. Net neutrality would deny ISPs that freedom. It would deny their right to engage in creative, innovative, and profitable activity with those networks – in the name of those who demand their bandwidth, but are unable or unwilling to earn it in a free market.

The widespread support for net neutrality among successful Internet companies – including Google, Microsoft, Yahoo, eBay, and Amazon – is short-sighted and contemptible. These companies, which have benefited greatly from the unimpeded freedom of the Internet, are now trying to deny the same freedom to innovative ISPs and ambitious competitors under the egalitarian banner of "equal access." This is an invitation for any clever moocher to demand "equal access" to their hard-earned resources; indeed, Google is already being sued because its proprietary search engine allegedly gives "unfair" rankings to certain companies.

The Internet is one of the great bastions of freedom and innovation in our civilization. Let us keep it that way by rejecting "net neutrality."

Alex Epstein is a junior fellow at the Ayn Rand Institute (www.AynRand.org) in Irvine, CA. The Institute promotes Objectivism, the philosophy of Ayn Rand – author of *Atlas Shrugged* and *The Fountainhead*.

Tap oil supplies while protecting coast

By US Sen. John Cornyn

Gasoline prices are again hitting an historic high this summer. The combination of a strong economy, high worldwide energy demand, conflict in the Middle East, and a basic shortfall in supply directly translates into a real problem for all of us.

Earlier this month, corrosion in an aging Alaska feeder pipeline that carries about eight percent of U.S. oil production forced British Petroleum to shut it down temporarily. This new setback caused another spike in world crude oil prices and threatened to send the cost of a gallon of gas even higher.

What is Congress doing about the problem? We're pushing ahead in developing alternative sources of clean energy from solar and wind power. We're researching new ways to make coal, gas and nuclear energy safer and environmentally friendly.

But in the near-term, it's obvious America must concentrate on increasing its own supply of traditional fuels. Congress can do many things, but it can't repeal the law of supply and demand. As we expand our domestic energy supplies, we have to ensure that the quality of life, in Texas and elsewhere, is fully protected.

We took a major step forward on all counts recently when the Senate, in a strong show of bipartisanship, approved a measure to allow increased energy production on offshore federal lands in the Gulf.

The Gulf of Mexico Energy Security Act of 2006 will allow the energy industry access to more than 8.3 million acres in a region south of the Alabama-Florida state line in the eastern and central Gulf waters.

It will make available more than 1.25 billion barrels of oil and 5.8 trillion cubic feet of natural gas.

That is more than the proven oil reserves of Wyoming and Oklahoma combined. The natural gas supply would be enough to heat and cool nearly six million homes for 15 years.

The House of Representatives has passed an even more expansive version of the bill. It appears most members of Congress agree that America must expand production of its domestic reserves. The two versions will be reconciled in a conference committee in September.

One significant provision in the Senate bill divides 37.5 percent of royalties from new production among four Gulf states – Texas, Louisiana, Mississippi, and Alabama – to fund coastal protections and safeguards. This is a huge increase over current state offshore royalty sharing, which averages around two percent.

An additional 12.5 percent of those federal royalties will be directed to the Land and Water Conservation Fund, which provides conservation grants to all states. The sum total will mean hundreds of millions of additional dollars for environmental protection.

The bill calls for Gulf states to use the royalties to support increased efforts to conserve critical coastal habitats and wetlands and to shore up infrastructure and public service needs along their coasts. It complements a provision in the 2005 federal energy bill, the Coastal Impact Assistance Program, which includes funding for a comprehensive strategy to protect marine species, coastal wildlife and conservation efforts.

The Texas General Land Office (GLO) will lead the effort to direct use of the federal royalties in Texas. Its roadmap is the "Coastal 2020" plan, a thoughtful blueprint for addressing the impact of many activities – natural and manmade – on our Texas coastline.

One ongoing problem to be addressed with the new funds will be coastal erosion, caused by numerous factors including sediment loss, changes in freshwater inflows, ship wakes, and storms, to name a few. Unless dealt with, erosion can cause the loss of homes and even roads, such as the 26 miles of State Highway 87, which once connected Galveston to the Sabine Pass. Erosion also exposes key economic assets, including our massive refining facilities, to storm-surge damage.

One-fourth of our entire state population lives along the Texas coast. Tourists spend more than \$7.5 billion annually visiting that area. Three of the top 10 ports in America are on the Texas coast, with more than 66 million short tons of cargo moving along the Texas coast each year.

The Texas coast is vital to the economy of both the state and the nation. It must be protected. I'm confident that these increased federal energy royalties can help finance permanent safeguards against natural and man-made threats to our coastal environment.

Energy is fundamental to our quality of life and economy in Texas and America. So, too, is the preservation of our cherished coastal lands and habitats. Through responsible stewardship, we can fulfill our responsibility in both areas – increasing domestic energy supplies without harming our glorious Texas coastline.

BRACKINS RICHMOND TIMES DISPATCH



"I THINK I WANT A DIVORCE, JOE... I DON'T FIND YOU ATTRACTIVE ANYMORE..."

Medicare bringing new drug benefits

It is crucial that every Texan understands how best to take advantage of Medicare and, in particular, the new prescription drug coverage known as Medicare Part D. I have long fought for more comprehensive coverage for seniors in Texas, and Medicare now provides more benefits that allow people to lead healthier, longer lives without having to make difficult financial choices for health care.

Since January 1, 2006, Medicare beneficiaries have enjoyed access to prescription drug coverage. Before this change, Medicare paid for costly operations and potential complications but did not pay for preventive medicine. Increasingly, illness can be treated with medication instead of invasive surgeries, and the Medicare Prescription Drug benefit provides seniors affordable access to those drugs.

Over 38 million people are already using the new prescription drug plan, including 2.5 million Texans. More than 90 percent of Texas Medicare beneficiaries now have prescription drug coverage. According to a recent survey by the Centers for Medicare and Medicaid Services, people who have looked into the available plans are generally satisfied with their plans by a seven-to-one margin and want to stay with them.

Actual costs for Medicare Part D have been well below the estimates. Competition from private plans has reduced the projected cost to taxpayers by \$11 billion over the next five years, while the average premium for beneficiaries in 2006 is less than \$24 a month. These unexpected sav-

ings are the result of price negotiation, low-cost coverage for generic drugs and discounted brand-name drugs.

Medicare Part D has another window for signing up or changing plans this year.

From November 15 to December 31, Medicare beneficiaries can sign up for the prescription drug benefit or change their plan according to their current needs. Everyone with Medicare is eligible for this coverage, regardless of income and resources, health status, or current prescription expenses. These plans cover both brand-name and generic drugs.

As with other insurance, seniors pay a yearly deductible and a monthly premium, which varies by plan. Seniors also pay a portion of the cost of prescriptions. The amount varies depending on which drug plan they choose. Some plans may offer gap coverage and additional drugs for a higher monthly premium. Currently, there are 47 different prescription drug plans available for Texans. If a senior has limited income and resources, he or she may qualify for extra help.

I recently met with Dr. Mark McClellan, the administrator for Centers for Medicare and Medicaid Services. A native Texan and graduate of the University of Texas, Dr. McClellan cares deeply about educating Texans on how to best take



capitol comment
by sen. kay bailey hutchison

advantage of Medicare Part D. He and his staff offer a variety of ways for seniors or family members to learn more about which option works best to meet their needs.

A wealth of information is available by calling 1-800-MEDICARE, including customer service representatives who can offer personalized information. The website www.medicare.gov offers comprehensive information, including detailed coverage of each drug plan and a special new feature to help visitors customize the site to cater to their specific needs. And this fall, Medicare representatives will be visiting communities across Texas to help educate the public as the next sign-up date approaches. Counselors will be available at these events to assist citizens in choosing an appropriate plan.

The most important consideration in choosing a plan is determining how comprehensive it needs to be. When meeting with a counselor, the beneficiary should have a complete list of the medications he or she is currently taking. Medicare staff can also assist seniors in finding generic drugs that provide cheaper alternatives to brand-name drugs. These generic drugs have similar benefits at a lower cost, reducing the senior's co-payment.

I am working with my colleagues in Washington, D.C., to continue to improve the Medicare program for all seniors and, most importantly, educating them on how to utilize the benefits it offers. I urge all Medicare beneficiaries in Texas to be mindful of their health care needs by taking full advantage of Medicare.

The Clarendon Enterprise (USPS 947040, ISSN 1088-9698) is published each Thursday by Roger A. Estlack at 105 S. Kramsey Street, Clarendon, Texas 79226-1110. Periodicals postage paid at Clarendon, Texas 79226-1110. Copyright © 2006. All rights reserved.

This paper's first duty is to print all the news that is fit to print, honestly and fairly to all, unbiased by any consideration even its own editorial opinion.

Any erroneous reflection upon the character, standing, or reputation of any person, firm, or corporation which may occur in the columns of The Clarendon Enterprise will be gladly corrected upon being brought to the attention of the management.

ENTERPRISE STAFF

Publisher & Editor | Roger A. Estlack
Office Director | Ashlee Estlack
Copy Editor | Helen Estlack
Distribution | Anndria Kidd
Past Distribution | Allen H. Estlack

CORRESPONDENTS

Howardwick | Peggy Cockerham
Clarendon Sports | Sandy Anderberg
Hedley Sports | Tangelia Copelin
Hedley Photos | Kari Lindsey
Outdoor Sports | Gary Dziedzic

COLUMNISTS

Life's Lessons | Carrie Helms

CONTACT US

Phone

806.874.2259

Fax

806.874.2423

E-Mail

news@clarendononline.com

INTERNET EDITION

www.ClarendonOnline.com

ADVERTISING

Open Display rates are \$4.50 per SAU column inch. Classified Ads are \$7 for the first 15 words and 12¢ per word for each additional word (Boxes or special typography are extra). Thank You Notes are \$9 for the first 40 words and 12¢ per word for each additional word. Basic engagement, wedding, anniversary, and birth announcements are \$10 each. Expanded wedding announcements are \$20. A one-column announcement picture is \$5, and a two-column announcement picture is \$10. Pictures submitted for publication should be picked up within ten days after publication.

DEADLINES

News articles and pictures are due by Monday at noon. Advertising should be submitted by five o'clock Monday afternoon. Deadlines may be altered for holidays or special issues.

SUBSCRIPTIONS

Annual subscriptions are available for \$20 for zip codes inside Donley County, \$30 elsewhere in Texas, \$35 out of state, and \$45 in Canada. POSTMASTER: Send all address changes to: The Clarendon Enterprise, PO Box 1110, Clarendon, TX 79226-1110. Digital Subscriptions are \$9.95 per year.

LETTERS

Letters to the editor are always welcome. Views expressed in letters are those of the writers and do not necessarily reflect the views of the editor or staff of The Clarendon Enterprise. Submission of a letter does not guarantee publication of that letter. Letters may be edited for grammar, style, or length. All letters must be signed and must include an address and telephone number for verification purposes. To improve your chances for publication, type and double space your letter, stick to one main topic, and keep it brief. No letters will be accepted from candidates for local political offices. Letters submitted to this newspaper become the property of The Enterprise and cannot be returned.

The Texas Panhandle's First Newspaper

The CLARENDON NEWS, established June 1, 1878 with which have merged: The Clarendon Traveler, February 1889; The Clarendon Journal, November 1891; The Banner-Stockman, October 1893; The Agitator, February 1899; The Clarendon Times, May 1908; The Donley County Leader, March 12, 1929; The Clarendon Press, May 18, 1972; and The Clarendon Enterprise, March 14, 1996.

Member 2006



National Newspaper Association



Texas Press Association



West Texas Press Association



Panhandle Press Association



You are reading The Clarendon Enterprise – hailed as an "Award Winner" by the Texas Better Newspaper Contest for nine consecutive years.

Drought: Cattlemen face tough times

Continued from page one.

Cattle producers are facing some of the toughest times ever, Anderson said, due to lack of hay and available forage on pastures.

"Three-fourths of the land in range and pasture is too dry to produce much grazing or hay that is harvestable," he said. "Without rain soon, livestock herds will face further liquidation."

At biggest risk are the state's cow herds, Anderson said. Rising hay and supplemental feed costs are forcing many ranchers to liquidate herds, and lack of water has forced some to sell out completely.

"Cattle sales are up sharply from a year ago," Anderson said. "The reduction in herd size will curtail beef supplies for several years. Also, the lack of adequate nutrition for cows means a smaller calf crop next year."

However, land values continue to increase mainly due to purchases for recreational and hunting purposes, Anderson said. But the drought will "stress wildlife sources and reduce the amount and quality of wild ani-

mals and birds," he said.

"Wildlife management programs are critical to maintaining the recreational value of land used for outdoor recreation during drought years," Anderson said.

Agricultural lenders are reporting fewer loan repayments and greater demand for loan renewals and extensions from a year ago, according to the Second Quarter 2006 Survey of Agricultural Credit Conditions by the Federal Reserve Bank. Producers are collecting insurance based on individual coverage on dryland crops, and many cow-calf operators have taken out larger loans because of higher feed costs.

"Others have sold their herds due to limited water and forage," Anderson said.

"High energy prices have substantially increased production costs to further stress an already depressed production environment. Some crop and cow-calf operators can't financially withstand more losses and will be forced to seek other jobs or business alternatives."



the lion's tale
by roger estlack

The Clarendon Lions Club held their regular Tuesday noon meeting August 15, 2006, with Boss Lion Jim Shelton in charge.

We had 19 members and one guest - Ashlee Estlack, guest of Lion Roger Estlack.

Lion Jimmy Johnson gave the invocation, and the club congratulated our guest and Lion Leonard Haynes on graduating from West Texas A&M University last Friday night. Lion Haynes received his Master's Degree.

The club voted to hold its first dove hunt on September 8 and 9. The cost will be \$25 per gun per day, and those interested should contact Lion Mark C. White at Community Bank.

The club also discussed the catering of meals and voted to make a change and increase the dues effective September 1.

Mr. Fix It
Kyle Hill
Minor repairs, odd jobs, and more.
672-8908 or 874-2283 Evenings

Knowles
Carpet Cleaning Service
Emergency Water Extraction • Upholstery Cleaning
SPRING CLEANING SPECIAL
10% OFF
Free Estimate • 806-856-5246

weather report

Day	Date	High	Low	Prec.
Mon	7	102°	70°	-
Tues	8	101°	65°	0.03"
Wed	9	100°	67°	-
Thur	10	100°	75°	-
Fri	11	105°	71°	-
Sat	12	99°	71°	-
Sun	13	102°	73°	-

Total precipitation this month: 0.32"
Total precipitation to date: 6.24"
Total precipitation in August last year: 4.30"
Total YTD last year: 14.32"

weekend forecast

	Friday, August 18 Partly Cloudy 94°/65°
	Saturday, August 19 Partly Cloudy 94°/65°
	Sunday, August 20 Partly Cloudy 95°/66°

Information provided by: Karmie C. Saxe
50 yr. Cooperative Observer, National Weather Service



Hedley Class of 2007

"Life's a Garden. Dig It!" is the motto of Hedley High Class of 2007. They celebrated the end of summer with a back to school bash Sunday night at the Bar H Dude Ranch. The seniors and their sponsor, Lon Adams were joined by a few guests at the event. Seniors pictured are Betty Cruz, Jaci Copelin, Brayden Bennett, Dustin Thomas, Shawna Barker, Katie Gregory, Ruth Howard, Charlie Widener, Will Verstuyft, Justin Kellas, Jon Giffin, Seth Koetting, Erica Brown, Lesley Centeno, and Daniel Allen. Not pictured: Jose Eguia.

Photo by Karl Lindsey

AUGUST Sale

- Magnavox 13" TV+DVD Combo.....\$109.98
- Durabrand 13" Color TV.....\$59.98
- Magnavox DVD Player and VCR.....\$79.98
- APEX DVD Player.....\$34.98
- Durabrand CD Player.....\$34.98
- Memorex CD, AM/FM Stereo, Alarm Clock.....\$39.99
- AM/FM Sports Radio.....\$7.98
- AM/FM Stereo Cassette Player.....\$9.98
- 35mm Zoom Shot Sports Camera.....\$17.99
- Kodak 35mm Camera w/ Autowind.....\$39.00
- Digital Concepts Digital Camera.....\$34.88
- Sentry Clock Radio.....\$6.49
- Playstation 2.....\$129.98
- XBOX 360.....\$399.98
- XBOX Original.....\$159.98



Airborne

Effervescent Health Formula

FOR USE IN:

- Airplanes
- Offices
- Schools
- Restaurants
- Health Clubs
- Theaters

AIRBORNE was developed by a school teacher who was sick of getting sick in the classroom. It can be taken 2 ways: at the first sign of a cold symptom, or before entering crowded environments, like airplanes and offices. Airborne's unique natural formula contains 17 herbs and nutrients, including ginger for nausea.

Outpost Deli

Call it in at 874-5203

Open Mon-Sat, 6:30 a.m. to 8:00 p.m. and Sunday, 8:00 a.m. to 8:00 p.m.

Breakfast Croissant
Ham, Bacon, or Sausage
\$2.79

8 piece Chicken Box
Mixed
\$8.49

Ad good August 16 - August 22, 2006

The Clarendon OUTPOST

STORE HOURS: 6 A.M. to 10 P.M. EVERYDAY

PHARMACY: 874-5202 • DELI: 874-5203
619 W. 2nd St. Clarendon, Texas

Satisfaction Guaranteed! • Ask about our Senior Citizens Discount!

JEWELRY

For your Jewelry and Jewelry Repair Needs

Branigan's Jewelry

NOW SELLING WIRELESS

From ALLTELL Wireless Service

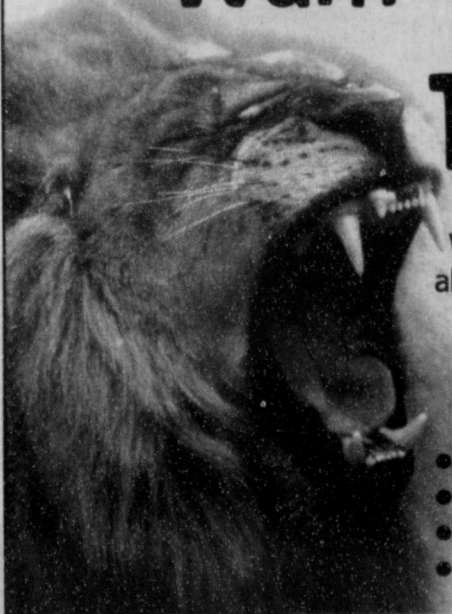
Contact Steve Jaramillo for more information, 874-5201.

We are a Medicare Participating Provider for Medicare Supplies
Diabetic Strips • Inhalation Medications • Most Other Medicare Supplies

Always on. Always reliable.
High-speed Internet for home or office.

AMA-TECHTEL™
Call 874-2259 for details.

Want Whiter Teeth?



Why mess around with all those home products when we can give you a whiter smile in just one visit?

- Teeth whitening
- General Dentistry
- Cosmetic Dentistry
- Dentures

Call 874-5628 For Your Appointment Today

Richard Sheppard, DDS

Family Dentistry • Orthodontics • Implants • Bleaching
Located in the Community Services Building, Medical Center Campus in Clarendon

¿Qué Pasa?

Your guide to "what's happening" around Donley County.

August 17
United Christian Men's Breakfast • Methodist Fellowship Hall • 7 a.m.

August 18
Friendship Club "Firefighters Night" • Howardwick City Hall • 6:30 p.m.

August 21
Clarendon Public School Classes Begin

Breast Cancer Screening • Associated Ambulance Building • Call 356-1905

August 28 - 29
Clarendon College Fall Registration

September 8 - 9
Clarendon Lions Club Dove Hunt • Details TBA

September 10
St. Mary's Day • St. Mary's Catholic Church

September 16
Clarendon Masonic Lodge Chicken BBQ

September 23
Col. Charles Goodnight Chuckwagon Cookoff • Saints' Roost Museum

October 20
Clarendon Lions Club Pancake Supper • Clarendon ISD Cafeteria

October 24
Clarendon Lions Club Ladies Night

Community Menus

August 21 - 25

Donley County Senior Citizens
Mon: Philly Steak Sandwich, Veggie Sticks, Apple Rings, Blond Brownies, Coffee, Tea, Lowfat Milk
Tue: Pork Loin/Brown Gravy, Mashed Potatoes, Squash Casserole, Sawdust Salad, Peach Cobbler, Coffee, Tea, Lowfat Milk
Wed: Hot Steak Sandwich/Gravy, French Fries, Green Peas, Carrot Copper Pennies, Red Velvet Cake, Toast, Coffee, Tea, Lowfat Milk
Thu: BBQ Sausage, Broccoli & Cauliflower w/cheese, Fried Okra, Pineapple/Cottage Cheese, Butterscotch Pudding, Corn Muffins, Coffee, Tea, Lowfat Milk
Fri: Turkey & Dressing, Yam Patties, Green Beans, Cranberry Saiad, Ambrosia Cake, Rolls, Coffee, Tea, Lowfat Milk

Hedley Senior Citizens
Mon: Ham & Butter Beans, Potato Wedges, Pickled Beets, Apricot Halves, Corn Bread
Tue: Steak & Gravy, Mashed Potatoes, Mixed Greens, Tossed Salad, Brownie, Roll
Wed: Chicken Salad Sandwich, Fried Squash, Sliced Tomatoes, Jell-O & Fruit, Sliced Bread
Thu: Roast Beef & Gravy, Mashed Potatoes, Fried Squash, Cantaloupe, Pudding, Roll
Fri: Cheeseburgers, Chips, Lettuce, Tomatoes, Onions, Pickles, Ice Cream, Bun

Clarendon School Lunch
Mon: Chicken nuggets, fries, salad, fruit mix, milk
Tue: Taco salads (meat, cheese, lettuce, tomato), beans, rice, peaches, milk
Wed: Chicken fried steak, mashed potatoes, green beans, pears, rolls, milk
Thu: Smokies, corn, coleslaw, apricots, roll, milk
Fri: Ham/cheese sandwich, chips, lettuce, tomatoe, apples, milk

FBC to hold pre-school registration this month

First Baptist Church Pre Kindergarten registration days are August 29 and 30 from 8:00-11:55 a.m. in the classroom. Parents, please get registration forms from the church office to have ready. Also bring shot records and birth certificates. Students, parents, and teachers get acquainted and also sign up to volunteer throughout the school year. For more information, call the church office at 874-3833 or Allene Leathers at 874-3735.

School supplies were simpler back when

School starts next week, and I think shopping for school supplies is still an exciting part of life. I remember Mother taking us to Parker's Five & Dime, buying the school satchel made of canvas with leather straps in your choice of colors - black or brown - and the supplies. First grade used a Big Chief tablet, a fat pencil, a box of eight Crayolas, and a quarter for a year's supply of *Weekly Reader*. Third grade required a package of theme (notebook) paper and a yellow pencil. Those two items were the mainstay of your education; and to be truthful, some kids were lucky to have that.

Speaking as a great-grandmother, have you looked at the supply list for Clarendon Elementary and Junior High printed in the ENTERPRISE July 27? What a list! Kindergarten asks each child to bring 16 items to school, including Zip-Lock bags - gallon size for boys and quart size

for girls. Does this mean the girls are getting short-changed and their projects are smaller than the boys? They use brand names like Fiskar's scissors and Elmer's glue. What would happen if they brought a strange brand to school? All kindergarten children are told to bring a pull-top water bottle. Oh, my! I can see the line at the water fountain while these five-year-olds line up to open, pour out, then refill the water bottle. Each class wants each child to bring a box of yellow, #2, eight sided, standard, sharpened pencils. I suppose all go into a big box, and as you lose your pencil, another is given to you. Maybe they are taken up at school, and you have to supply your own at home. I raised four children, and I am very thankful we had to buy only one box of pencils and the extras were waiting at home.

They still have *Weekly Reader*, but the price has gone up to \$6.00

a year. I don't know what an AR folder is but it must be pretty important. Each child is to bring \$1.50 to pay for it.

The thing that astounds me is Kleenex. There must be an extra storage room built on to keep all that tissue because each child in K-1 is to bring one box, 2-5 two boxes each, and junior high are to bring one box for each class, about six. If noses are that runny, maybe the child should stay home.

Some classes want wide-ruled notebook paper, some regular ruled. One list asked for 12" wooden ruler, the next list wanted 6" ruler, one list asked for a pink eraser, and another list wanted two erasers - I guess

green or art-gum were ok for that teacher.

Find a copy of the supply list; and grandmothers, think about slipping your daughter an extra dollar or two. If she has school children, she needs it. Teachers, think about paring that list down next year.

Remember Friendship Club is this Friday night honoring the firefighters with guest speaker Gaylan Darnell and entertainment by Wyley Chaney and his gospel band. They will show a video of some Panhandle wildfires and promise a few surprises. Bring a dish of choice at 6:30 and enjoy the night.

The Beautification Club meets Monday, August 21, at noon at City Hall.

School starts Monday. Watch for our most precious commodity, our children in the big yellow bus.



'wick picks
by peggy cockerham
Howardwick • 874-2886

Anniversary, Birthday party back at DCSC

The Senior Citizens Anniversary and Birthday Pot Luck Meal and Entertainment is back by popular demand.

Gather at the Senior Citizens Center on 4th Street in Clarendon on Tuesday, August 29, at 6:00 p.m.

Right of entry is a casserole, or fresh fruit, or fruit salad dish, deviled eggs, or fresh veggies, or a vegetable salad dish, or cornbread, or bread, or delectable pie, or cake, or cookies, or pudding.

Use your imagination and surprise us. As long as it is edible, we will accept it.

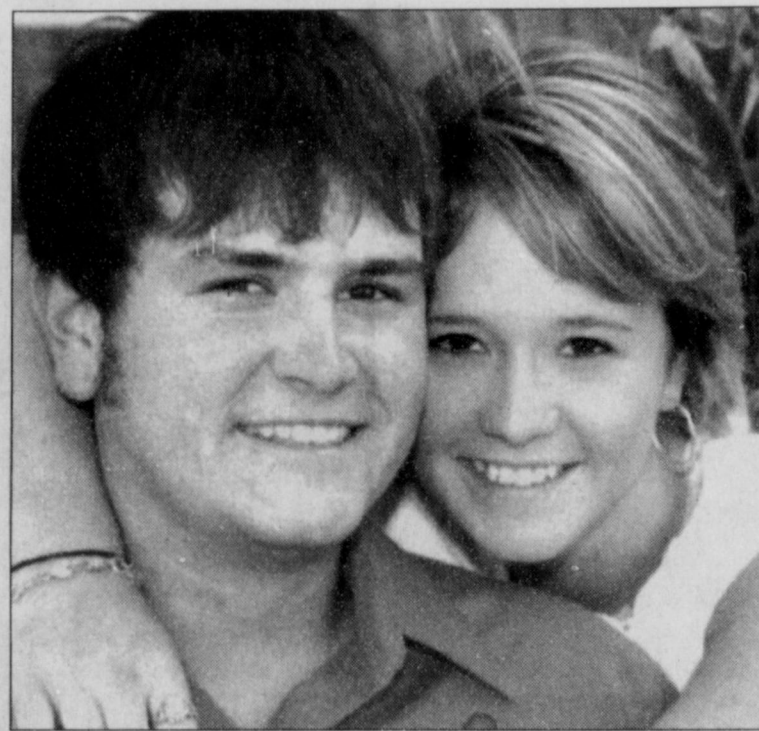
Entertainment will be Marvin and Flo Goodall and friends. They will be performing Gospel and Country/Western music.

Come kick up your heels and help us add "heat" to the end of August with our celebrating.

Area children need new foster parents

When abuse and neglect occurs, and children are no longer able to safely remain in their own homes, we are fortunate enough to have individuals willing to provide care and support to them in licensed foster homes. Foster care provides a temporary safe haven for children as Child Protective Service (CPS) caseworkers and foster parents work toward uniting children with their families. These children, through no fault of their own, were placed in abusive or neglectful situations by their biological parents. In some situations, they are not able to return home and deserve a chance for a new life with adoptive parents who can teach them that family can be a safe place.

There is an urgent need for more families to open their hearts and homes by becoming foster and adoptive parents. To learn more about fostering and adoption, attend an informational meeting the second Tuesday of each month at 7:00 p.m. Meetings are held at the CPS office located at 6200 I-40 West, in Amarillo.



Tyler Howard and Elizabeth Foster

Foster, Howard plan October wedding

Elizabeth Foster of Clarendon and Tyler Howard of Amarillo plan to wed October 21st, 2006, at the Church of Christ in Clarendon.

The bride-elect is the daughter of Tim Foster of Oklahoma City, Okla., and Karen Williams of Clarendon. She graduated from Clarendon High

School in 2004 and is employed by BSA Hospital in Amarillo.

The future groom is the son of Ben and Reba Howard of Pampa. He graduated from Pampa High School in 2003 and attended West Texas A&M. He is employed by CMC Construction Services of Amarillo.

CISD to hold speech, screening next week

Do you want to know how your three- or four-year old child is doing academically and how his speech and language skills are developing?

If so, call the Clarendon Elementary office at 874-3855 to schedule an appointment to have your child screened by a speech therapist and qualified education personnel. The screening is free and will be held on Tuesday, August 22. The child must be at least three years old on or before August 22, 2006.

Qualifying children will be eligible to attend a half-day session of preschool. Children attending Clarendon Elementary's preschool will participate in greeting time, planning time, work time, recall time, snack time, circle time, small-group time, and outdoor time. All activities are planned and age appropriate.

Sign-up underway for High Plains Fastpitch

High Plains Fastpitch Softball is now taking signups for the Fall season for ages 8U through 18U. The season will run September 9 through October 21.

The cost is \$40 per player. Call 683-5150 for information or sign up directly on www.highplainsfastpitch.com.

West Texas residents helping with Tech Alzheimer's study

LUBBOCK - How common is Alzheimer's disease in rural West Texas? How does this disease present and progress in a rural setting? These are questions that remain largely unanswered, despite the exponential growth in information regarding Alzheimer's disease and related dementia syndromes in urban areas.

Researchers from the Department of Neuropsychiatry, the School of Nursing, and the Garrison Institute on Aging at the Texas Tech University Health Sciences Center are studying cognitive decline, Alzheimer's disease, and other dementia syndromes in rural West Texas.

Sid O'Bryant, Ph.D., professor in the Department of Neuropsychiatry at the Health Sciences Center, said past research has often neglected rural areas and traditionally underserved ethnic minority populations such as Mexican Americans.

Recently the researchers received funding from the Carl B. & Florence E. King Foundation for the Cochran County Aging Study, a study designed to look at all individuals ages 55 and older who reside in Cochran County, Texas.

"What does aging look like in rural America? Despite the large numbers of elders living in rural communities as well as the increasing proportion of Hispanics and Latinos residing within these communities, this question remains largely unanswered," O'Bryant said. "It is important to research specific populations in order to clarify the risks and contributory factors for these diseases among these populations."

The Cochran County Aging Study is unique in that it is one of the first of its kind to examine the aging process in a rural community that is ethnically diverse. O'Bryant said this makes the Cochran County Aging Study unique to have such a detailed focus of research.

O'Bryant said researchers hope to follow Cochran County citizens for more than 10 years in order to investigate the influence of rural community residence as well as Hispanic heritage on the development of Alzheimer's disease. Results from the current study will be published in peer reviewed national journals and presented at national conferences on aging.

Read all about first ladies at Burton Library

For readers fascinated by lives of U.S. Presidents' wives, but do not have time to read their complete biographies, Burton Memorial Library offers an excellent book providing First Ladies' portraits from Martha Washington to Nancy Reagan. Surprising facts and unexpected events supply background, marriage, ambitions, and accomplishments (or non-accomplishments) of these remarkably diverse women.

In her book, *First Ladies*, author, Betty Boyd Caroli relates "an intimate look at how 36 women handled what may be the most demanding, unpaid, unelected job in America". She conveys the story of "evolution of the First Lady's role from ceremonial backdrop to substantive world figure."

As Martha Washington stepped ashore in Manhattan that May morning in 1789 with her husband, uncertainly still surrounded the new government's activity. The ritual, ceremonial aspects of the presidency marked the presidential spouse's first public role.

George was the one who hired the household staff and selected guest lists for social functions. Martha, content to play the hostess role, was never requested to do more. However, she resolved to return visits, within three days, of women who left

calling cards, a required custom of gracious ladies. Her characteristic of meekness never allowed involvement in political debates of the day.

Martha's successor, Abigail Adams, with sharp tongue and strong views, was quite opposite. Accused of playing politics, she stepped beyond proper bounds for women. Her husband, John, discussed many important problems with her. When those who favored opinionated women desired the President's approval, they occasionally went to his wife first.

Even though a few of the First Ladies were outspoken through the early nineteenth century, most lived a domestic role. Some of them made themselves almost invisible in Washington, pleading poor health and often sending substitutes to preside over social gatherings. But not lovely, popular Washington hostess, Dolley Madison, who exerted an unusual influence. During her husband's two terms, she demonstrated "an uncanny ability to use social occasions to his political advantage." She helped the widowed Thomas Jefferson entertain during his presidential term and, unofficially, tutored young White House hostesses. Incidentally, during a White House social function, she introduced ice cream in America. (Aren't we glad?) Around

1861, Mary Lincoln, Sarah Polk, and Julia Grant instigated a turning point when they willingly obliged reporters and photographers with information and pictures.

During twentieth century beginning, evidence revealed gradual change in the First Lady's job. Separate staffs were hired; participation in public policy and reform movements began.

After Woodrow Wilson's stroke during his 1915-1921 administration, his wife, Edith, controlled flow of communication between him and everyone else. She was criticized for exercising a "petticoat government".

Eleanor Roosevelt and Bess Truman were named among the most powerful people in Washington. Until well into the twentieth century, women's campaigning was considered inappropriate, but Rosalyn Carter went off on her own in a quest for Jimmy's vote's fourteen months before the 1976 nomination.

Early First Lady hairstyles never made the "Colonial Gazette". However, some readers might remember the dominant influence of Mamie



check it out
by mary beth nelson

Eisenhower's "bangs" in beauty salons during Ike's administration during 1950's.

According to the author, John Kennedy recognized what a great asset his internationally popular wife, Jackie, could be. "Ideas for promoting her glamour and sophistication as part of the administration's glitter originated with the President himself".

Each wife, several superior to their husbands socially and economically, left her own mark in the administration. In 1986, Nancy Reagan was credited with elevating the First Lady's job to a kind of "Associate Presidency". While appearing before U.S. Congress at the 1985 Geneva Summit Conference, President Ronald Reagan acclaimed Nancy's prestigious position, and thanked her for being "an outstanding ambassador of good will for us all."

Which First Lady broke precedent by inviting noticeably pregnant women to stand with her in receiving lines? Who engineered her husband's rise for the presidency despite his own reluctance? Whose prominence resulted in cartoons calling for HER impeachment? Who prayed her husband would lose the election? Unexpected answers to these and other interesting questions are in the book. Why not check it out?

BUY IT **SELL IT** **FIND IT** **IN THE CLASSIFIEDS**

Get results with the Big-E Classifieds.

Enterprise Deadlines
NEWS & PHOTOS
Monday @ Noon
ADS & CLASSIFIEDS
Monday @ 5 p.m.

Perry restores PUC utility bill program

AUSTIN – Gov. Rick Perry has directed the Public Utilities Commission (PUC) to include in its legislative budget request the restoration of a program that helps low-income Texans pay utility bills.

"As governor, I remain committed to funding the low-income discount program with the System Benefit Fund," Perry wrote in a letter to the PUC.

"I included funding for low-income customers in the 2005 state budget that I submitted to the legislature," Perry wrote.

"Because the System Benefit Fund is financed through a non-bypassable charge on the bill of each affected customer, the money is specifically dedicated to helping low-income customers. As you know, the electric rate discount program was not funded by the legislature during the current biennium."

Perry said the PUC should include restoration of the System Benefit Fund (SBF) at the 10 percent level as an "exceptional item" in its legislative appropriations request.

Funding at the 10 percent level means qualifying Texans will receive a 10 percent discount on their electric bills.

It will cost an estimated \$76 million in fiscal year 2008 and \$82 million in fiscal year 2009 to restore the SBF at the 10 percent level.

"Today, electric prices are higher than they were in 2002 due to the higher cost of natural gas, and although retail competition has resulted in benefit to customers, the low income discount needs to remain a part of the competitive package, or the charge should be removed from customers' bills," Perry added.

"It is unconscionable for the money to be collected and not go to the citizens it was designed to help," the governor said.

The SBF was created in 1999 as part of the state's deregulation of electric rates. It is funded through a charge on the bill of each electric customer in the electric choice area. The amount is set by the PUC and is currently 65 cents per megawatt-hour. Therefore, the "average customer" who uses 1,000 kwhs per month pays 65 cents into the fund each month.



Junior Cheerleaders

The Bronco Cheerleaders held the annual Little Miss Cheerleader Camp last week at the Bronco Gym. Twenty-nine first through sixth graders attended the three-day camp, which focused on cheers, chants, jumps, dances, and team building. Awards were given daily for the girl who was the Most Coachable, Most Spirited, Best Jumper, Dance Diva, and Most Improved. The Little Miss Cheerleaders will perform at the September 8 pep rally with the Bronco Cheerleaders.

Photo by Jamie Ward

Free Big-E Classified with every subscription.

Clinic for Family Wellness

Carole Ward, F.N.P.C.

Health care close to home for the entire family. Lab work, Texas Health Steps Check Ups, Management of Acute and Chronic Illness. Now accepting most insurances, including Blue Cross, First Care, TML, United Health Care, Chips, Medicare, and Medicaid.

Located at 1645 N. 18th St. in Memphis • 259-1058

RURAL AREA SENIOR HEALTH FAIR

DONLEY COUNTY SENIOR CITIZENS CENTER
115 N. 4TH - CLARENDON

August 17 • 10 am – 2 pm

EXHIBITORS INCLUDE:
NWNTH SENIOR ADVANTAGE PROGRAM
(Balance Testing)

PANHANDLE EYE INSTITUTE

CLARENDON OUTPOST PHARMACY
(Medical Equipment & Diabetic Supplies)

ADVANCED HEARING TECHNOLOGIES
(FREE Telephone Information)

Fair sponsored by and Glucose Testing & Blood Pressure by:

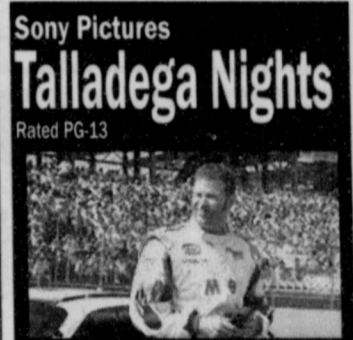


Roadrunner HomeCare
"We Run the Roads to Bring Quality Care to You"

DRAWINGS FOR DOOR PRIZES

"Support Your Local Senior Citizens"

Sandell Drive-In



Show starts at dusk
Gates open 1 hour before dusk.
Come early for burgers and drinks at the concession stand.
FRIDAY AND SATURDAY
Adults \$5.00 • Kids & Seniors \$4.00

Sign up Today for Enterprise-D.
Only \$9.95. Call 874-2259.

Come in and check out our sale racks

Kids jeans and pajamas - \$5 rack
Clothes for all seasons - \$10 rack



Every Nook and Cranny

Downtown Clarendon • 874-3335 • Open Mon-Sat

Helping Babies and Toddlers Grow!

Early Childhood Intervention
If you have concerns regarding your child's (birth - 3 yrs) development come to a FREE screening at the Clarendon Library August 25, 2006 1:00pm-3:00pm Contact Amber Ford for further information (806)259-1384

NOTICE OF PUBLIC MEETING To Discuss Budget And Proposed Tax Rate For Clarendon Consolidated Independent School District

The CLARENDON CONSOLIDATED INDEPENDENT SCHOOL DISTRICT will hold a public meeting at 7:00 PM, August 28, 2006 in the Clarendon CISD Functional Living Center, located at the corner of Fourth & Patrick Streets, Clarendon, Texas. The purpose of this meeting is to discuss the school district's budget that will determine the tax rate that will be adopted. Public participation in the discussion is invited.

The tax rate that is ultimately adopted at this meeting or at a separate meeting at a later date may not exceed the proposed rate shown below unless the district publishes a revised notice containing the same information and comparisons set out below and holds another public meeting to discuss the revised notice.

Maintenance Tax	\$1.258325/\$100 (Proposed rate for maintenance and operations)
School Debt Service Tax	\$0.000000/\$100 (Proposed rate to pay bonded indebtedness)
Approved by Local Voters	

Comparison of Proposed Budget with Last Year's Budget

The applicable percentage increase or decrease (or difference) in the amount budgeted in the preceding fiscal year and the amount budgeted for the fiscal year that begins during the current tax year is indicated for each of the following expenditure categories.

Maintenance and operations	6.59% increase
Debt service	0.00% increase
Total expenditures	6.59% increase

Total Appraised Value and Total Taxable Value (as calculated under Section 26.04, Tax Code)		
	Preceding Tax Year	Current Tax Year
Total appraised value* of all property	\$252,769,456	\$257,734,713
Total appraised value* of new property**	\$650,921	\$2,322,905
Total taxable value*** of all property	\$127,512,399	\$131,398,774
Total taxable value*** of new property**	\$650,921	\$2,322,905

* "Appraised value" is the amount shown on the appraisal roll and defined by Section 1.04(8), Tax Code.
** "New property" is defined by Section 26.01(2)(17), Tax Code.
*** "Taxable value" is defined by Section 1.04(10), Tax Code.

Bonded Indebtedness

Total amount of outstanding and unpaid bonded indebtedness* \$0

* Outstanding principal.

Comparison of Proposed Rates with Last Year's Rates

	Maintenance & Operations	Interest & Sinking Fund*	Total	Local Revenue Per Student	State Revenue Per Student
Last Year's Rate	\$1.374000	\$0.000000	\$1.374000	\$3,430	\$5,326
Rate to Maintain Same Level of Maintenance & Operations Revenue & Pay Debt Service	\$1.218326	\$0.000000	\$1.218326	\$3,264	\$5,678
Proposed Rate	\$1.258325	\$0.000000	\$1.258325	\$3,366	\$5,987

* The Interest & Sinking Fund tax revenue is used to pay for bonded indebtedness on construction, equipment, or both. The bonds, and the tax rate necessary to pay those bonds, were approved by the voters of this district.

Comparison of Proposed Levy with Last Year's Levy on Average Residence

	Last Year	This Year
Average Market Value of Residences	\$30,824	\$30,787
Average Taxable Value of Residences	\$15,824	\$15,787
Last Year's Rate Versus Proposed Rate per \$100 Value	\$1.374000	\$1.258325
Taxes Due on Average Residence	\$217.42	\$198.65
Increase (Decrease) in Taxes		\$(18.77)

Under state law, the dollar amount of school taxes imposed on the residence homestead of a person 65 years of age or older or of the surviving spouse of such a person, if the surviving spouse was 55 years of age or older when the person died, may not be increased above the amount paid in the first year after the person turned 65, regardless of changes in tax rate or property value.

Notice of Rollback Rate: The highest tax rate the district can adopt before requiring voter approval at an election is \$1.258325. This election will be automatically held if the district adopts a rate in excess of the rollback rate of \$1.258325.

Fund Balances

The following estimated balances will remain at the end of the current fiscal year and are not encumbered with or by a corresponding debt obligation, less estimated funds necessary for operating the district before receipt of the first state aid payment:	
Maintenance and Operations Fund Balance(s)	\$987,000
Interest & Sinking Fund Balance(s)	\$0

Kenny's Barber Shop and Clarendon Auto Sales

204 S. Koogle, Clarendon
874-9308
We appreciate your business!

LOOK UP

Be Smart, Plan Ahead, and Stay Away from all electrical wires.

AEP MUTUAL ENERGY SPP
A unit of American Electric Power
www.MESPP.com

Red Hatters attend TEXAS

TEXAS our TEXAS! What a wonderful place to call home.

Saturday night, August 12, thirteen Twilight Red Hatters, Topsy Roby, Wanda Beddingfield, Nancy Davis, Peggy Cockerham, Vida O'Neal, Ruby Jewel Hardin, Sue Leeper, Willeen Judd, Josey Burgess, Dortha Reynolds, Mary Ferris, Thelma Shields and Elvie Shields, and five escorts, Charles Davis, Jimmie Cockerham, Cecil Hook, Wayne Reynolds and Steve Reynolds, attended the play TEXAS in Palo Duro Canyon.

The play was great, and one could tell a lot of hard work went into the production.

The most impressive was when the spotlight came up on two men horseback, one carrying the United States Flag and one carrying the Texas Flag.

Oh, what a glorious site! The crowd of over 1000 erupted in a great roar in support of these two flags.

Patriotism is still alive and well in our state and country.



Among those attending "TEXAS" with the Twilight Hatters were (top) Charles and Nancy Davis, Sue Leeper, Elvie Shields, Thelma Shields, and Dortha Reynolds.

Enterprise Photo / Roger Estlack

Red River Quail Symposium set for October in Wichita Falls

WICHITA FALLS — Texas Cooperative Extension will co-host the "Red River Quail Symposium" Oct. 11-13 at Wichita Falls.

Dr. Dale Rollins, Extension wildlife specialist at San Angelo, said the symposium's theme will be "Habitat Management and Hunting in Transition."

"Those transitions include the importance of hunting leases versus grazing as income for landowners, management strategies for smaller tracts, and new technologies shaping quail habitat," Rollins said. "If you're a quail hunter or a landowner who caters to quail hunters, there should be several items of interest to you at this program."

Bobwhite populations have historically been strong in the Red River Basin, and especially so west of Interstate 35, he said. However populations have dropped significantly over much of this range in the

past 20 years. "The desire for good quail hunting has driven up real estate prices in this region," he said. "Thus we have a growing number of people who want their land management to benefit quail first and livestock second. But we still have lots of ranchers whose priority is cattle first and quail second."

"We'll feature several presentations on how grazing can be employed to improve quail habitat."

Extension has conducted several "Quail Appreciation Days" and "West Texas Quail Study Groups" in recent years, but this symposium will be the first to be co-hosted by the Bollenbach Quail Management program at Oklahoma State University, Rollins said.

For more information, contact Rollins at 325-653-4576; or for registration and lodging information, go to <http://teamquail.tamu.edu>.

Prints of Enterprise Digital Photos available
www.ClarendonOnline.com/gallery

RED RAIDER FOOTBALL

Live on KLSR
105.3 FM
this season

Drugs in the News

Flu Vaccine For 2006-07 Approved

The flu vaccine for the upcoming flu season (2006-07) has been approved by the US Food & Drug Administration (FDA). According to news reports, there will be approximately 100 million doses of the vaccine available this year from the 4 licensed and approved vaccine manufacturers. Each of the vaccines will contain influenza strains that the FDA and the Centers for Disease Control believe are likely to affect persons living in North America. The FDA indicates that the 2006-07 vaccines contain one strain of influenza virus that was in last year's vaccines and two new strains. Since influenza viruses change (mutate) almost every year, scientists who assist in the development of the current year's formulation experiment with different flu strains and then make recommendations as to which strains they think will most likely occur in the US during the following flu season.

Those who keep health statistics indicate that somewhere between 5 and 20 percent of the population gets the flu each year. Those at greatest risk are the very young, the elderly, and adults with certain chronic illnesses.

Mike's PHARMACY
Call 874-3554 or Toll Free 800-766-2089
Hwy 287 West • Clarendon, Texas

Advanced Hearing Technologies

Now Accepting
Medicaid MQMB Coverage

Call 806-355-9957 Today to schedule an appointment in our office or in your home

We will be at the Donley County Senior Citizens Health Fair doing hearing evaluations Thursday, Aug. 17 • 10 a.m. - 2 p.m.

Sign-up for a **FREE** Amplified Phone provided by the State of Texas

THE ANSWER TO YOUR PRAYERS

Are you tired of old news or simply no news due to slow or no delivery from the post office?

Now Only \$9.95

Get all the news delivered to your inbox each week with a subscription to

Enterprise D

Sign up today at www.ClarendonOnline.com/subscribe

Free Big-E Classified with every subscription.

FAITH FENCING

Cedar • Spruce • Chain-link
Wood • Metal Post

Installation Repairs

Home 874-2211 Kelly Hill Clarendon, TX Mobile 672-0414

Diesel Service

Larry Bennett - Technician
806.205.0560

Field or Shop Service
Truck and Construction Repair
Certified on CAT Engines
Detroit, Cummings, and Mack Engines

2006 Property Tax Rates in Donley County

This notice concerns 2006 property tax rates for DONLEY COUNTY. It presents information about three tax rates. Last year's tax rate is the actual rate the taxing unit used to determine property taxes last year. This year's effective tax rate would impose the same total taxes as last year if you compare properties taxed in both years. This year's rollback tax rate is the highest tax rate the taxing unit can set before taxpayers can start tax rollback procedures. In each case these rates are found by dividing the total amount of taxes by the tax base (the total value of taxable property) with adjustments as required by state law. The rates are given per \$100 of property value.

Last year's tax rate:	General Fund	Farm to Market/ Flood Control Fund
Last year's operating taxes	\$ 542,461	\$ 149,542
Last year's debt taxes	\$ 150,311	\$ 0
Last year's total taxes	\$ 692,772	\$ 149,542
Last year's tax base	\$ 171,479,916	\$ 168,498,028
Last year's total tax rate	0.403996 /\$100	0.088750 /\$100
This year's effective tax rate:		
Last year's adjusted taxes (after subtracting taxes on lost property)	\$ 692,577	\$ 149,317
+ This year's adjusted tax base (after subtracting value of new property)	\$ 173,655,703	\$ 170,664,213
= This year's effective tax rate for each fund	0.398821 /\$100	0.087491 /\$100
Total effective tax rate	0.486312 /\$100	
<i>(Maximum rate unless unit publishes notices and holds hearings.)</i>		
This year's rollback tax rate:		
Last year's adjusted operating taxes (after subtracting taxes on lost property and adjusting for any transferred function, tax increment financing, state criminal justice mandate, and/or enhanced indigent health care expenditures)	\$ 542,309	\$ 149,317
+ This year's effective operating rate	0.312290 /\$100	0.087491 /\$100
x 1.08 = This year's maximum operating rate	0.337273 /\$100	0.094490 /\$100
+ This year's debt rate	0.083392 /\$100	0.000000 /\$100
= This year's rollback rate for each fund	0.420665 /\$100	0.094490 /\$100
This year's total rollback rate	0.515155 /\$100	

Statement of Increase/Decrease
If DONLEY COUNTY adopts a 2006 tax rate equal to the effective tax rate of \$0.486312 per \$100 of value, taxes would increase compared to 2005 taxes by \$11,171.

Schedule A: General Fund - Unencumbered Fund Balances
The following estimated balances will be left in the units property tax accounts at the end of the fiscal year. These balances are not encumbered by a corresponding debt obligation.

Type of Property Tax Fund	Balance
General Fund	\$0
Interest & Sinking	\$0

Schedule B: General Fund - 2006 Debt Service
The unit plans to pay the following amounts for long-term debts that are secured by property taxes. These amounts will be paid from property tax revenues (or additional sales tax revenues, if applicable).

Description of Debt	Principal or Contract Payment to be Paid from Property Taxes	Interest to be Paid from Property Taxes	Other Amounts to be Paid	Total Payment
Courthouse Note	\$87,106	\$15,094	\$0	\$102,200
Sheriff's Cars	\$0	\$0	\$33,227	\$33,227
Computer Software	\$0	\$0	\$9,908	\$9,908
Total Required for 2006 Debt Service				\$145,335
- Amount (if any) paid from funds listed in Schedule A				\$0
- Amount (if any) paid from other resources				\$0
- Excess collections last year				\$0
= Total to be paid from taxes in 2006				\$145,335
+ Amount added in anticipation that the unit will collect only 99.00% of its taxes in 2006				\$1,468
= Total Debt Levy				\$146,803

Schedule A: Farm to Market/Flood Control Fund - Unencumbered Fund Balances
The following estimated balances will be left in the units property tax accounts at the end of the fiscal year. These balances are not encumbered by a corresponding debt obligation.

Type of Property Tax Fund	Balance
Road & Bridge	\$0

Schedule D - State Criminal Justice Mandate
The DONLEY COUNTY Auditor certifies that DONLEY COUNTY has spent \$69,906 in the previous 12 months beginning October 1, 2005, for the maintenance and operations cost of keeping inmates sentenced to the Texas Department of Criminal Justice. DONLEY COUNTY Sheriff has provided information on these costs, minus the state revenues received for reimbursement of such costs.

This notice contains a summary of actual effective and rollback tax rate calculations. You can inspect a copy of the full calculations at Appraisal District Office at 307 S Sully Clarendon Texas.

Name of person preparing this notice: Paula Lowrie
Title: Chief Appraiser
Date Prepared: August 7, 2006

Panhandle wind power could light rest of Texas

ETTER — State Rep. David Swinford said he has a powerful proposal that could prove profitable for one area and shed some light in others.

Wind machines are gaining attention as a renewable energy source because they don't use water or oil, Swinford said. He was guest speaker at the North Plains Research Field 2006 Ag Day near Etter, hosted by Texas Agricultural Experiment Station and Texas Cooperative Extension.

A major problem hindering use of Texas' wind power is lack of transmission lines, he said.

The Texas Panhandle, served by the Southwest Power Pool, has the highest wind factors for the state, but the lowest population, he said. The rest of Texas, served by the Electric Reliability Council of Texas, has the people, but not enough electricity for projected needs. Transmission lines between Southwest Power Pool and ERCOT, as it is commonly called, cannot exist, because they are set up on two different grids, Swinford said.

But that doesn't mean power generated by Panhandle winds can't be used in the Dallas metroplex or Austin and San Antonio homes, he said.

In Carson and Moore counties in the center of the Panhandle, the wind factor is 44, Swinford said. The wind factor is determined by the percentage of time the wind is expected to be able to make electricity. The state average wind factor is 35.

"All of our wind is in the 42 to 44 percent range," he said. "The area near Perryton could generate 11,000 megawatts per hour if they had transmission lines. The White Deer farm is the No. 1 wind energy place in the state.

"We have more wind capacity in the Panhandle than they have in the rest of the state put together," Swinford said.

So why aren't there more wind machines churning out the power? For supply reasons, a power company doesn't want more than 12 percent of the power being generated by wind, Swinford said. While it seems the wind blows constantly, it doesn't, so coal or natural gas is needed for stability of supply.

Xcel Energy, the power company serving the Texas Panhandle, is

the No. 1 power company using wind in the nation, Swinford said. When all the planned wind farms are built in the Xcel service area, it will have reached its maximum 12 percent for the transmission lines here.

"So we have to get some way to hook our wind to a line out of the Panhandle, because we're done," he said. "We don't have the people to justify more production up here."

His proposal is to build transmission lines from the ERCOT region near Vernon to the Panhandle and then back south to near Big Spring. This would allow many different parts of the Panhandle to build wind farms and tie into the transmission lines. That power could be sent to different parts of downstate Texas, Swinford said.

Building the transmission network would cost of about \$1 billion, which would have to be paid for by ERCOT customers, he said. A company such as American Electric Power could build the transmission line and then amortize it over the next 40 years.

"But because wind has no fuel costs or power costs, it cheapens the overall electricity to the customer," Swinford said.

He explained that ERCOT customers may see a \$2 or \$3 per month reduction in their bills, even though they have to pay for the transmission line, because the electricity is cheaper. ERCOT's natural gas fuel cost used to generate electricity was \$4.5 billion in 1999 and has risen to \$12 billion in 2005.

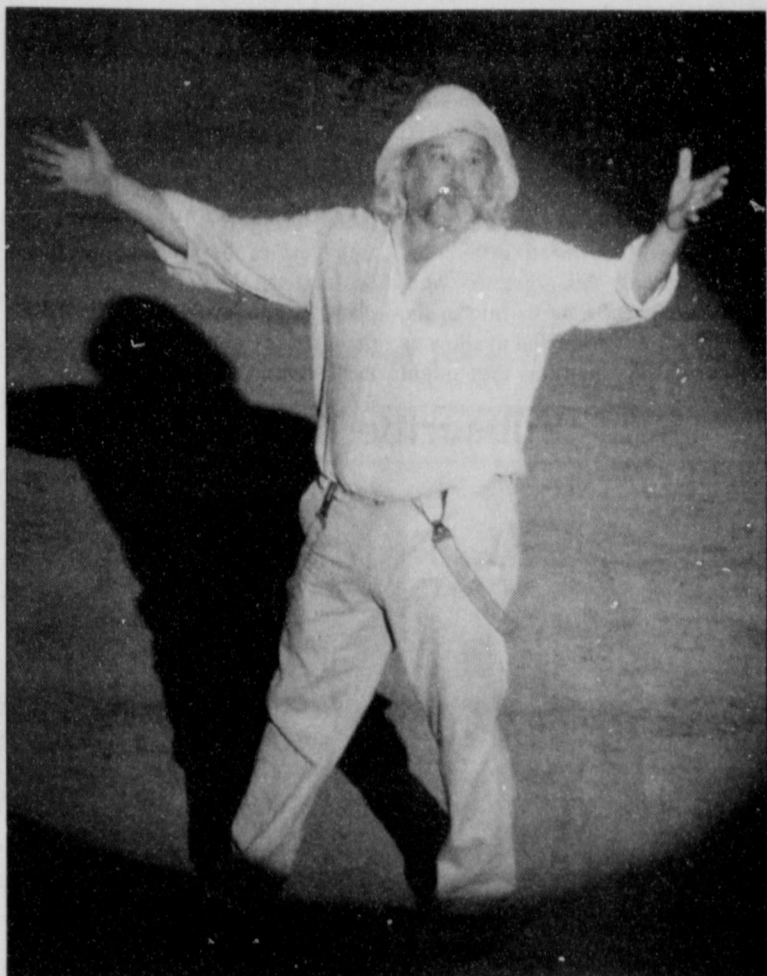
"Transmission costs last for a lifetime and don't reoccur, while gas costs are burned up every year," Swinford said.

A study of statewide electricity needs through 2015 indicates 38,000 megawatts of additional electricity will be needed, he said.

"Some of that can come from wind energy."

And benefits can be found on both ends, Swinford said. For landowners, a profitable wind farm can net \$50,000 to \$60,000 per section per year. It requires no use of valuable water and has no added fuel costs.

If the wind energy industry was allowed to develop to its full potential in the Panhandle, he said, estimates put its economic impact at \$14 billion over a 10-year period.



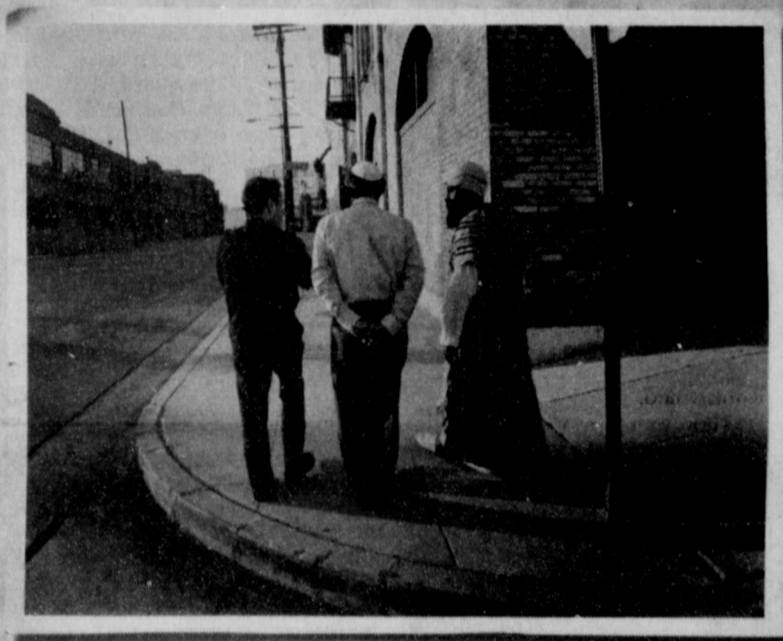
And starring...

Clarendon's Dennis McMenamy steals the show in the Palo Duro Canyon Pioneer Amphitheater as Tucker Yelldell in "TEXAS," which also features Clarendon High School senior Dakota Hill as Quanah Parker. The show closes for the season this Saturday.

Enterprise Photo / Roger Estlack

Back to School
 Look Good with a new hair cut and style from
Brandie's
 Mane Place
 We support the Broncos, Bulldogs, and Owls.
 874-0443 • Downtown Clarendon

For The Latest Look, See
Lindsey Howell
 at Salon 306
 For Ladies, Gentlemen, & Children
 Cuts • Color • Waxing
 Monday - Saturday
 Or for an appointment that better fits your schedule
874-0928 or 205-0314
 Walk-ins Welcome



A PRIEST, a RABBI and an IMAM ARE WALKING DOWN THE STREET.


(There's no punch line.)

What do you get when you mix Christianity, Judaism and Islam? In many parts of the world, it's a recipe for disaster. Yet in America, it's a formula that has peacefully endured for over 200 years. In fact, not only has it endured, it's flourished.

The pundits may say that the ability for different faiths to coexist here comes from a lack of intensity and passion for any religion in America. But nothing could be further from the truth. Because we are free to choose which religion, if any, we'd like to

follow, it enables us to have a deeper, more personal relationship with our faith than would otherwise be possible.

And because no one religion needs to feel threatened by another, we can look to the similarities that unite us, instead of focusing on the differences. Two hundred million Christians, Jews, Muslims, Buddhists and Hindus agree. To learn more about freedom of religion, visit rememberfreedom.org. Or, feel free to ask the spiritual leader of your choice.

 FREEDOM. APPRECIATE IT. CHERISH IT. PROTECT IT.

GLASSTECH
 Windshield Repair
Under New Management
 Larry & Donna Hicks
 Call Donna at
806-874-3108
806-206-7253

Before After

SEAL THAT CHIP BEFORE IT SPLITS!



COMMUNITY FELLOWSHIP CHURCH
 12148 FM 2162 • Clarendon, Texas

Welcome to our new pastor
Roger Smith
 along with his wife Jana and son Braden

You are cordially invited to worship with us.
 Sunday School: 10 a.m.
 Sunday Service: 11 a.m.
 Sunday Evening: 6 p.m.

Broncos to scrimmage Vega this Saturday morning

By Sandy Anderberg

The Broncos are hitting it hard and will test their skills Saturday, August 19, against Vega beginning at 10:00 a.m.

According to Head Coach Gary Jack, the Broncos have been working hard during two-a-days and are eager to get the season started. As of now, there are about 36 players suited up.

"Practice is going well," Jack said. "We are fairly young this year, but we are encouraged by their hard work." The Broncos will play their first regular season game September 1 at home against Boys Ranch beginning at 7:30 p.m.

Jack also announced that the annual "Meet the Broncos" night is scheduled for Thursday, August 17,

at 7:00 p.m. at the Bronco Stadium. This is a great time to be introduced to the 2006-2007 Bronco football team in addition to the cross-country runners and the varsity cheerleaders.

"We will be meeting with the parents during this time, as well. It is the perfect time to inform the parents of our season and to allow us to answer any questions they might

have. We encourage all high school parents as well as junior high parents to join us for this meeting."

The Bronco Parents will also meet during the evening to begin their year as they support the Broncos and the Lady Broncos. Make plans to get involved in supporting the Broncos and Lady Broncos for the upcoming season.

Subscribe Today.

Twenty-three teams compete in Jack and Jill Tournament

By Sandy Anderberg

The Clarendon Country Club hosted a 36-hole Jack and Jill tournament August 12-13 with 46 men and women competing for the top spot.

R.L. Pond and Heather Basford bested the field with a 118 for the two days. Second in the championship flight went to Ross and Melissa Donahue with a 122. The first flight winners were Tommy and Carolyn Baker with a 130, and second went to Redell and Sherol Johnston at one stroke behind with a 131.

Jamie and Suzanne Esch won the second flight with a 136. Second place went to Steve and Ruth Jackson after winning the play off on the card with Donald and Judy Bland. The Jacksons turned in a 136.

George and Gail Leathers took the third flight with a 140, and Larry Maxwell and Debra Kincaid won second place with a 141 after winning a play off on the card with PJ and Jana Lemons. George Leathers was closest to the pin on number 15 at 8', and Dean Nazworth had the

longest putt from 13'1 1/2" on number nine.

The team of Bruce Ferguson, Jerry Gage, Maxine McLaughlin, Bob Kelly, and Bobbie Conrad won the Friday night nine-hole scramble at six under par. That win came on a putt-off after a tie with another team.

Slick Johnston (78) shot his age again this week with a gross score of 77. His net score of 67 was good enough to earn first in the men's game, and Charlie Davis shot a 69 for second. Bobby Dodson finished third with a 70, and Jesse Lincycumb was fourth with a 71. Maxine McLaughlin turned in a 65 for first in the women's game, and Sherol Johnston, Bonnie Crofford, and Wanda Nazworth shot a 67 to tie for second.

The Friday night nine-hole scrambles begin at 6:00 each Friday evening; and entries are due in the Pro Shop by 5:30 p.m. The CCC is offering free green fees each Friday with the paid price of a cart. You may call the Pro Shop at 874-2166 for more information.



Wrap up

Junior Brandon Montgomery and senior Jon Giffin practice during the Hedley Owls' Midnight Madness last week.

Enterprise Photo / Kari Lindsey

Beef short course addresses drought, management issues

COLLEGE STATION - From drought to high fuel and fertilizer prices, beef producers learned more about maintaining profitability at the 52nd Texas A&M Beef Cattle Short Course, said Dr. Jason Cleere, conference coordinator.

The short course, sponsored by Texas Cooperative Extension, attracted 1,500 beef producers and more than 100 trade show exhibitors. Attendees came from as far away as Guatemala, and throughout the U.S., including Arkansas, Louisiana, Maryland and Oklahoma, Cleere said.

"We're experiencing a time when we have both drought conditions and increased feed costs," Cleere said.

"These are critical issues affecting everyone's bottom line. We hope producers came away from the conference with information that they can plug right into their operation when they return home."

Even with drought and high fuel and fertilizer prices, the beef market continues to fetch high prices. Randy Blach, executive vice president of Cattle-Fax, gave a market outlook during Monday's general session. He attributed the high prices to increased consumer demand and lower cattle inventory.

Next year's short course is scheduled for Aug. 6-8, 2007. For more information, visit <http://animalscience.tamu.edu>.

2006 Bronco Football Schedule

Date	Opponent	Time	Place
September 1	Boys Ranch	7:30	Home
September 8	Bovina	7:30	Home
September 15	White Deer	7:30	Away
September 22	Gruver**	7:30	Home
September 29	Sunray	7:30	Away
October 6	Open		
October 13	Memphis*	7:30	Away
October 20	Wheeler*	7:30	Home
October 27	Wellington*	7:30	Away
November 3	Shamrock*	7:30	Away
November 10	Quanah*	7:30	Home

**Homecoming
*District Game

big E classifieds

LEGAL NOTICE

NOTICE TO BIDDERS

802-7-33338 Grazing Lease at Taylor Lakes Unit, Playa Lakes Wildlife Management Area Notice is hereby given that Texas Parks and Wildlife Department is accepting bids for a livestock-grazing lease on the Taylor Lakes Unit of the Playa Lakes Wildlife Management Area, seven miles southeast of Clarendon on the south side of Highway 287 near Lelia Lake, Donley County, Texas. Lease acreage is approximately 465 acres. Term of the lease is October 1, 2006, through August 31, 2009, with options for additional time. Grazing period is October 1 through March 31 each year. The lease is cattle-grazing operation only. Optimum stocking rate is 20 Animal Units (AU). Stocker animals weighing less than 500 pounds are 1/2 AU, cows with calf are 1 AU. Necessary bid forms and a listing of lease terms and conditions may be obtained by writing the AR Div/Contracting Section, Texas Parks and Wildlife Department, 4200 Smith School Road, Austin, Texas, 78744, or by contacting Logan Brown at (512) 389-4527 [email:logan.brown@tpws.state.tx.us]. Documents may also be downloaded from here: http://www.tpws.state.tx.us/business/bidops/current_bid_opportunities/services Bids are due 2:00 p.m., September 12, 2006 at the address above. 34-3tp

NOTICE OF SHERIFF SALE

THE STATE OF TEXAS COUNTY OF DONLEY By virtue of Orders of Sale issued out of the Judicial District Court of DONLEY County in the following cases on the 8th day of August, 2006, and to me, as Sheriff, directed and delivered, I will proceed to sell at 10:00 A.M. on the 5TH DAY OF SEPTEMBER, 2006, which is the first Tuesday of said month, at the OFFICIAL door of the Courthouse of said DONLEY County, in the City of CLARENDON, Texas, the following described property located in DONLEY County, to wit:
CAUSE NO. 6033 CLARENDON ISD AND/OR CED #25 FOR CLARENDON ISD VS ANSLEY WILSON
TRACT 1: Lots 293 and 294, Cherokee Section, Sherwood Shores IX, Donley County, Texas
TRACT 2: All of Lot No. 295, Cherokee Section of Sherwood Shores IX, situated in Donley County, Texas
CAUSE NO. 5845 CLARENDON ISD AND/OR CED #25 FOR CLARENDON ISD VS ARKON CHARLES
All of Lots Number One Hundred Seventy-two (172) and One Hundred Seventy-three and the East Twenty-five feet (E 25') of Lot Number One Hundred Seventy-four (174) of the Cherokee Section of Sherwood Shores IX, situated in Donley County, Texas
CAUSE NO. 5484 CITY OF HOWARDWICK VS BLEDSOE SUE ET AL
All of Lots Nos. 233, 234, 235 and 236, Arrowhead Section of Sherwood Shores IX, Donley County, Texas
CAUSE NO. 5399 CLARENDON ISD AND/OR CED #25 FOR CLARENDON ISD VS BRIT-

LEGAL NOTICES

TEN CHRISTOPHER L

All of Lot 346 of Nocona Hills, an Addition to the City of Howardwick, Donley County, Texas
CAUSE NO. 5229 DONLEY COUNTY VS FORTNER NICK
TRACT 1: All of Lot No. 80, Apache Section, of Sherwood Shores IX, situated in Donley County, Texas
TRACT 2: All of Lot No. 1, Peyton Place Section of Sherwood Shores IX, situated in Donley County, Texas
CAUSE NO. 5853 CLARENDON ISD AND/OR CED #25 FOR CLARENDON ISD VS HALL BRYLE GENE
All of Lots No. 599 and 600 of the Red Feather Addition to the Town of Howardwick, situated in Donley County, Texas
CAUSE NO. 5317 CITY OF CLARENDON VS HELTON GENE W
TRACT 1: All of Lot No. 51, Nocona Hills, an Addition to the Town of Howardwick, situated in Donley County, Texas
TRACT 2: All of Lot 59, Nocona Hills, an Addition to the Town of Howardwick, situated in Donley County, Texas
TRACT 3: All of Lot No. 65, Nocona Hills, an Addition to the Town of Howardwick, situated in Donley County, Texas
TRACT 4: All of Lot No. 67, Nocona Hills, an Addition to the Town of Howardwick, situated in Donley County, Texas
TRACT 5: All of Lot No. 82, Nocona Hills, an Addition to the Town of Howardwick, situated in Donley County, Texas
TRACT 6: All of Lot No. 296, Nocona Hills, an Addition to the Town of Howardwick, situated in Donley County, Texas
TRACT 7: All of Lots 93 and 94 Arrowhead Section, of Sherwood Shores IX, situated in Donley County, Texas
TRACT 8: All of Lot No. 44, Nocona Hills, an Addition to the Town of Howardwick, situated in Donley County, Texas
TRACT 9: All of Lots Numbered 540 and 541 of Seminole Addition of Sherwood Shores No. IX, in Donley County, Texas
TRACT 10: Lot 185, Huron Section, of Sherwood Shores IX, situated in Donley County, Texas
CAUSE NO. 6046 CLARENDON ISD AND/OR CED #25 FOR CLARENDON ISD VS HOWARD MARY A
All of Lot No. 6 and the West twelve and one-half feet (12-1/2') of Lot No. 5, in Block No. 144, of the Original Town of Clarendon, Donley County, Texas
CAUSE NO. 5862 CLARENDON ISD AND/OR CED #25 FOR CLARENDON ISD VS MILLER BRIAN K
All of Lots Nos. 77 and 78, Carroll Creek Acres, of Sherwood Shores IX, situated in Donley County, Texas
CAUSE NO. 5876 CLARENDON ISD AND/OR CED #25 FOR CLARENDON ISD VS SMITH PHILIP
All of Lots Nos. 49 and 50, Country Club North, Sherwood Shores IX, Donley County, Texas
CAUSE NO. 5390 DONLEY COUNTY VS STEPHENS BILLY F

LEGAL NOTICES

All of Lot 22 of Pueblo Section, of Sherwood Shores IX, situated in Donley County, Texas
CAUSE NO. 6133 CLARENDON ISD AND/OR CED #25 FOR CLARENDON ISD VS TARRANT OIL CO
Lots 13, 14, 15 and 16 in Block No. 53 in the Original Town of Clarendon, Donley County, Texas
Levied on the 8th day of August, 2006, as the property of said Defendants to satisfy the judgments rendered in the above styled and numbered causes, plus all taxes, penalties, interest, and attorney fees accrued to the date of sale and all costs recoverable by law in favor of CITY OF CLARENDON, DONLEY COUNTY, CLARENDON INDEPENDENT SCHOOL DISTRICT AND/OR CED #25 FOR CLARENDON ISD, DONLEY COUNTY HOSPITAL, CLARENDON JUNIOR COLLEGE, PANHANDLE WATER DISTRICT, CITY OF HOWARDWICK.
ALL BIDDERS MUST REGISTER WITH THE TAX OFFICE PRIOR TO SHERIFF'S SALE. GIVEN UNDER MY HAND THIS 8th DAY OF August, 2006.
Charles E. Blackburn, Jr.
Sheriff, DONLEY County, Texas
By Randy Bond
Deputy

NOTICE

The City of Clarendon is accepting Depository Bids for a two-year period, (October 1, 2006, through September 30, 2008). Bids need to be in City Hall by 5:00 p.m. Tuesday, September 12. Bids will be reviewed at the regular Council meeting, beginning at 7:00 p.m. this same evening. If you are interested and would like more information, call City Hall at 874-3438. The Council reserves the right to accept or reject any and all bids. 34-2tc

NOTICE

The City of Clarendon is accepting Bids for Health Insurance to cover employees from November 1, 2006 - October 31, 2007. Bids will be accepted until 5:00 p.m. September 12, 2006. If you are interested in placing a bid and would like more information, call City Hall at 874-3438. The Council reserves the right to accept or reject any and all bids. 34-2tc

THE CITY OF CLARENDON

NOTICE TO BIDDERS

In accordance with State bidding requirements, the City of Clarendon is seeking sealed bids for Worker's Compensation, General Liability, Errors Omissions, Automobile Liability, Auto Physical Damage, Real & Personal Property and Mobile Equipment coverage. Anyone interested in obtaining copies of the specifications for insurance bids should contact the City Secretary at City Hall at 874-3438. Qualified bidders shall be insurance companies rated "A" or better by A.M. Best, licensed to do business in the State of Texas, or a self-insurance pool in the State of Texas. Sealed bids will be accepted at City Hall until 5:00 p.m. September 8, 2006, at which time

LEGAL NOTICES

they will be opened and tabulated. Bids will be awarded at the next regularly scheduled council meeting, September 12, 2006. 34-2tc

PRIVATE CLUB ALCOHOLIC BEVERAGE PERMIT

The Country Club of Clarendon, Inc., 108 Country Club Plaza, Howardwick, Texas 79226, Donley County, Texas, has applied for renewal of their Private Club Alcoholic Beverage Permit. Officers of the club are Al Ramsey, President; Tom Stauder, Vice President; and Sherol Johnston, Secretary/Treasurer. 35-2tc

NOTICE TO CONTRACTORS OF PROPOSED TEXAS DEPARTMENT OF TRANSPORTATION (TXDOT) CONTRACTS

Sealed proposals for contracts listed below will be received by TxDOT until the date(s) shown below, and then publicly read. CONSTRUCTION/MAINTENANCE/BUILDING FACILITIES CONTRACT(S)
Dist/Div: Childress
Contract 0925-00-054 for DISTRICTWIDE CURB RAMP PROJECT in CHILDRESS County, etc will be opened on September 08, 2006 at 1:00 pm at the State Office. Plans and specifications are available for inspection, along with bidding proposals, and applications for the TxDOT Prequalified Contractor's list, at the applicable State and/or Dist/Div Offices listed below. If applicable, bidders must submit prequalification information to TxDOT at least 10 days prior to the bid date to be eligible to bid on a project. Prequalification materials may be requested from the State Office listed below. Plans for the above contract(s) are available from TxDOT's website at www.dot.state.tx.us and from reproduction companies at the expense of the contractor.
NPO: 20911
State Office, Constr./Maint. Division, 200 E. Riverside Dr., Austin, Texas 78704, Phone: 512-416-2540
Dist/Div Office(s), Childress District, District Engineer, 7599 U.S. 287, Childress, Texas 79201-9705, Phone: 940-937-2571
Minimum wage rates are set out in bidding documents and the rates will be part of the contract. TxDOT ensures that bidders will not be discriminated against on the grounds of race, color, sex, or national origin. 25-2tc

REQUEST FOR PROPOSAL # 9950:

Clarendon College is Soliciting Proposals For: Automobile Liability & Physical Damage Insurance for fiscal year 2006-07 on Eight (8) 15 Passenger Vans: Full information, specifications, and proposal documents may be obtained from Dr. Myles Shelton, Clarendon College, 1122 College Drive, P.O. Box 968, Clarendon, TX 79226 or by phoning (806) 874-3571, ext 101. Proposals are to be received by 10:00 a.m. on Friday, August 25, 2006, the "Due Date". Clarendon College reserves the right to negotiate with any/all proposers at any time, before or after submission of a proposal. Clarendon College reserves the right to reject any or all proposals and to waive technicalities. 25-2tp

Look what America NOTICED!

- School district budgets
- Property auctions
- Public hearings
- Local tax changes
- Adoptions

Find out about these and more in your local paper!

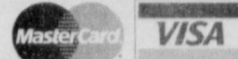
Participate in Democracy.
Read your Public Notices.



Big E classifieds

874-2259

Deadline: Monday @ 5 p.m.
Prepayment required on all classifieds.



MEETINGS

Clarendon Lodge #700 AF&AM Stated meeting: Second Monday each month, 8:00 p.m. Refreshments served at 7:00 p.m. Practice sessions: Fourth Monday, 7 p.m. Jim Owens - W.M. Grett Betts - Secretary 2 B 1, ASK 1

Clarendon Order of the Eastern Star #6 Stated meetings: First Thursdays, 8:00 pm; Refreshments served at 7:00 pm Clarissa Dallas - W.M. Naomi Green - Secretary

Clarendon Lions Club Regular meeting each Tuesday at noon. Jim Shelton, Boss Lion. Russell Estlack, Secretary

Overeaters Anonymous - Thursdays, 5:30 p.m., at the First Christian Church basement in Clarendon. No fees, no dues.

ANNOUNCEMENTS

Saints' Roost Museum
610 East Harrington
Hours
By Appointment Only
Please call 874-2546.

REAL ESTATE

NEW HOUSE FOR SALE: Three bedroom, two bath, large master bedroom, stone fireplace, central heat and air, cathedral ceilings in den, dining room, and kitchen. West Clarendon at 512 Leroy. Call 874-1762 or 654-0599.

HOUSE FOR SALE - Howardwick. 3 BR, 1 Bath, Cellar, nice deck, sun porch, central heat & air, recently remodeled. Call (806) 874-2531. 85-4tp

NICE, UPDATED HOME ON 4 LOTS in Hedley. 2 bedroom, 1 bath with 1 bedroom, 1 bath attached apartment. Covered patio with bar and pond. New metal roof. Large carport. Workshop. Storm cellar. \$32,900 OBO. 856-5260. 35-2tc

FOR SALE OR RENT - May finance. 509 West 6th, 4BR, fenced yard, large shop. 359-1199. 30-ctc

OWNERS, WE NEED YOUR LISTINGS on ranches and farms of any size in Texas, Oklahoma, and New Mexico (especially ranches off the caprock in Texas or Oklahoma and large or small ranches in New Mexico). Please call us to set up a time to visit about or see your property. **CAPROCK AREA RANCH** - 2 1/3 sections, 3 homes, barns, pens, 3 creeks, 16-acre lake, great hunting, 1/2 minerals. **BRISCOE CO.** - 1/3 section, creek, small lake. **DONLEY CO.** - 200 acres farmland and CRP. **CHECK OUR WEBSITE** for details on other ranches from 558 to 118,000 acres in Texas and New Mexico, good irrigated farms, feedyards, and acreages with homes. www.scottlandcompany.com
Ben G. Scott, Broker - 800-833-9688
Gerald M. Smith, Agent - 806-292-0197

FOR RENT

APARTMENT FOR RENT - 1 bedroom, 1 bath. 403 N. Daniels, Hedley. Call (806) 856-0056 or (806) 205-0495. 35-ctc

FOR RENT - 311 E. Browning. Deposit required. Call 359-9395. 25-ctc

SERVICES

IF YOU KNOW AN elderly or disabled person who needs help with daily care needs but is not ready for an institutional setting, Rhinehart Assisted Living/Eldercare provides a homelike environment with all help for meals, medication, baths, etc. We are in our fifteenth year of eldercare, with many excellent references. We are state licensed and approved for long-term care insurance or Medicaid (CBA program) \$1,750 monthly private pay. Pleasant atmosphere, guest accommodations available. 874-5000. SL115717, 4-ctc

PUBLISHER'S NOTICE: All real estate advertising in this newspaper is subject to the Fair Housing Act which makes it illegal to advertise any preference, limitation, or discrimination based on race, color, religion, sex, handicap, familial status, or national origin, or an intention to make any such preference, limitation, or discrimination. Familial status includes children under the age of 18 living with parents or legal custodians, pregnant women, and people securing custody of children under 18. This newspaper will not knowingly accept any advertising for real estate which is in violation of the law. Our readers are hereby informed that all dwellings advertised in this newspaper are available on an equal opportunity basis. To complain of discrimination, call HUD toll-free at 1-800-669-9777. The toll-free telephone number of the hearing impaired is 1-800-927-9275. **CLASSIFIED AD RATES** are \$7.00 for the first 15 words and 12¢ for each additional word. Special typefaces or boxes are extra. **THANK YOU NOTES** are \$9.00 for the first 40 words and 12¢ for each additional word. **DEADLINES** are 5:00 p.m. each Monday, subject to change for special editions and holidays. **PREPAYMENT IS REQUIRED** on all ads except for customers with established accounts. Visa and MasterCard accepted. **ERRORS:** Check your ad on its first printing. Errors not corrected within ten days of the first printing are the responsibility of the advertiser.

HELP WANTED

AMARILLO ROAD COMPANY, heavy highway contractor, has employment opportunities in the Clarendon area. Openings for motorgrader operator, CDL driver, and laborers. Please call Archie Maxfield at 806-681-0528 for application and interview. Amarillo Road Company is an EOE employer and does not discriminate based on race, color, sex, age, national origin, religion, or disability. 52-ctc

GREAT WESTERN DINING is taking applications for kitchen help, cooks, servers, salad prep, dining room attendant. 10a.m.-5 p.m. (806) 874-2282. 35-2tc

HELP WANTED - Dietary department: cooks & aides; Housekeeping department: 2 housekeeping aides, CNAs, all shifts. Call McLean Care Center, 806-779-2469. 31-ctc

SCOOTERS - Full-time help needed. \$7/hr. Apply inside. 34-2tc

OUTREACH HEALTH SERVICES is hiring providers in the Clarendon area for 29 hrs. Mon-Fri, possible weekends. Must be at least 18 years of age with a Texas Drivers License. Please call Shonda or Cathy at (800) 800-0697 or (806) 373-0986. EOE. 35-3tc

HELP WANTED

NEED DISHWASHER: Call Palo Duro Nursing Home. Claude. 226-5121. 33-ctc

RESIDUAL INCOME - Create residual income in a prestigious industry. Earn bonus and commissions plus a potential car incentive program. Call (806) 206-6767. 35-1tc

WANTED

McLEAN FEEDYARD is buying hay grazer and alfalfa hay for grinding. Please call Laphe at 806-779-2405. 20-ctc

GARAGE SALES

LARGE GARAGE SALE at St. Mary's Church, corner of Montgomery and McClellan. Saturday, August 19 from 7 a.m. to 5 p.m. 35-1tc

REWARD

REWARD for information leading to arrest and conviction of person or persons vandalizing Sandell Drive-In. Call Donley County Sheriff's Office. 35-1tc

FOR SALE

FOR SALE - '03 Yamaha YZ 250 dirt bike. Excellent condition. Call (806) 663-0937. 32-ctc

FOR SALE - '05 Raptor 660 Special Edition. FMF exhaust. DG skid plates and nerf bars. (806) 663-0937. 32-ctc

FOR SALE - 2001 Ford F250 XLT Supercrew. (806) 874-9589 or (806) 679-8848. 32-ctc

FOR SALE - 2000 Extended Cab Chevy leather, electric, CD/cassette, etc... (806) 346-7414, (806) 341-8269. 35-1tp

FOR SALE - 1979 Grand Prix, 53,000 miles, one owner, mechanically sound - \$795. Great classic for restoring or first car for student. Call Eddy or Holly Eads at 874-2354 after 5:00 p.m. 35-1tp

FOR SALE - Knives, Rifles, Shotguns, Collections. Schrade Waldon, KA, Bar, Old Timer, Winchester, Uncle Henry, Case, Remington, German Eye. Beautiful Lady's Gold Rings, 3 Men's Diamond Rings \$300 each. Antique clocks. Cash Only. Thursday and Friday, August 17 and 18, only. 602 S. 8th St. Memphis, TX. 35-1tp

SERVICES

Come See
Henson's
for your
Fine Jewelry • Fine Gifts • Hardware
QUALITY: Service & Repairs, New & Used Tires
Hydraulic hoses made while you wait.
Downtown Clarendon

SERVICES

A PROUD PAST WITH A SOLID FUTURE

JOEY & BRENDA LEE
PO Box 189
Clarendon, TX 79226-0189
806/874-2130

GERMANIA
SINCE 1896

FARM MUTUAL INSURANCE ASSOCIATION

SERVICES

Morrow Drilling & Service
Hwy. 287 West, Clarendon
Gravel Packed Wells • Windmills • Irrigation Wells
Grundfos Stainless Steel Pumps
"Serving the area since 1981."
John E. Morrow (806) 874-2704

REAL ESTATE

FOR SALE
CLARENDON - HOUSE

ON THE "OLD COLLEGE BLVD." AND IN IMMACULATE CONDITION - 2 bedroom (optional 3rd bedroom or den) - 1 bath - modern kitchen with built in appliances and plentiful cabinets/dining/living - utility - central h/a, plus fans - NEW 832 sq. ft. garage/shop with openers - concrete cellar with electricity - large fenced back yard with trees and metal yard building - nice landscaping - choice location @ 520 W. 5th St. for \$84,500.

7.14 ACRES & FULLY REMODELED HOUSE - including new plumbing and new wiring - with 3 bedrooms - 1 & 1/2 baths - large living room - dining - modern kitchen with breakfast nook and built in appliances & plentiful cabinet space - utility - central heat & refrigerated air - good metal barn - city water - just inside the extreme West City Limits with frontage on paved FM 2162 - all for \$82,500.

RECENTLY REMODELED 2 BEDROOM, 1 BATH - Living, kitchen, utility, unfinished basement, refrigerated air window units, fans in all rooms, metal siding and metal roof, 2 car port with metal framework for shop building, wiring and plumbing have been replaced, fenced front yard. Convenient location at 710 S. Allen for \$35,000.

JUST RIGHT FOR A SINGLE OR A COUPLE - 2 bedroom, 1 bath, living room, kitchen/dining, built-in, range, dishwasher, garbage disposer, microwave, fans, central heat, oversized one-car port, large insulated metal building in back yard storage building, fenced back yard, well located @ 609 W. 8th St. for \$32,500.

PARTIALLY REMODELED - including the addition of a nice den with wood burning stove - 2 bedrooms - 1 & 1/2 baths - living room - kitchen - utility - unattached 2 car garage / shop - fenced back yard with small town atmosphere and good schools @ 303 Short Street for only \$39,500.

8.23 ACRES & HOUSE ON OUTSKIRTS OF TOWN - 3 bedroom - 1 bath - kitchen/breakfast nook - living/dining - utility - central heat and ref. air - fans - storage building - on city water & sewer system @ 103 SE 6th St. for \$35,000.

COMMERCIAL

IT'LL DO MOTEL - OWNER MUST SELL DUE TO FAILING HEALTH - A nice "Mom and Pop" business with 8 rental units plus 2 rental apartments in addition to living quarters for owner/operator and a choice location at intersection of US Hwy. 287 and Parks St. for \$1,250,000. **REDUCED TO \$110,000.**

ASSEMBLY OF GOD CHURCH BUILDING - suitable for use as/is for groups or organizations. Excellent location for DAY CARE FACILITY and building could be easily converted for that use. Also easily converted to residential property. Central heat & ref. air already in parts of the building. Lots of square footage, located at 511 E. 5th St. for \$39,900.

GREENBELT

NEAR COUNTRY CLUB - WITH VIEW OF LAKE - 3 bedroom, 2 bath, kitchen with built-ins/dining, den, utility, covered porch, fish pond, large new barn, storage building, paved parking area, all on 4 choice lots - a great buy at \$59,500. **REDUCED TO \$57,000.**

FARM/RANCH

BEAUTIFUL AND WELL SECLUDED SMALL RANCH - 125 acres of native grass with hundreds of black walnut, cotton wood and other native trees bordering White Fish Creek surrounded by big ranch country about 7 1/2 miles S/E of Alanreed. A large seep pond (with fish) and live water from the creek provide abundant water for the deer, turkey and numerous varieties of wild game and birds that frequent the premises. Some financing negotiable. SEE WEBSITE FOR PICTURES. Show by appointment.

640 ACRES - 150 acres of native grass, one windmill. Conveniently located about halfway between Clarendon and Alanreed with one mile frontage on paved FM 1151 plus one mile frontage on Armstrong County Road 22.

Joe T. Lovell Real Estate
Office 874-9318
www.joetlovellorealestate.com

It Pays to Advertise!
Call today to find out how. 874-2259

REAL ESTATE

CLARENDON
7.14 ACRES & FULLY REMODELED HOUSE - including new plumbing & news wiring - with 3 bedrooms - 1 & 1/2 baths - large living room - dining - modern kitchen with breakfast nook and built in appliances & plentiful cabinet space - utility - central heat & refrigerated air - good metal barn - city water - just inside the extreme West City Limits with frontage on paved FM 2162 - all for \$82,500.
ON THE "OLD COLLEGE BLVD." AND IN IMMACULATE CONDITION - 2 bedroom (optional 3rd bedroom or den) - 1bath - modern kitchen with built-in appliances and plentiful cabinets - dining - living - utility - central h/a, plus fans - NEW 832 sq. ft. garage/shop with openers - concrete cellar with electricity - large fenced back yard with trees and metal yard building - nice landscaping - choice location at 520 W. 5th St. for \$84,500.
JUST RIGHT FOR A SINGLE OR A COUPLE - 2 bedroom, 1 bath, living room, kitchen/dining, built-in oven, range, dishwasher, garbage disposer, microwave, fans, central heat, oversized one-car port, large insulated metal building in back yard plus additional yard storage building, fenced back yard, well located @ 609 W. 8th St. for \$32,500.

HEDLEY
PARTIALLY REMODELED - including the addition of a nice den with wood burning stove - 2 bedrooms - 1 & 1/2 baths - living room - kitchen - utility - unattached 2 car garage/shop - fenced backyard with small town atmosphere and good schools @ 303 Short Street for only \$39,500.

8.23 ACRES & HOUSE ON OUTSKIRTS OF TOWN - 3 bedroom - 1 bath - kitchen/breakfast nook - living/dining - utility - central heat & ref. air - fans - stucco with metal roof - barn - storage building - on city water & sewer system @ 103 SE 6th St. for \$35,000.

GREENBELT

NEAR COUNTRY CLUB - WITH VIEW OF LAKE - 3 bedroom, 2 bath, kitchen with built-ins/dining, den, utility, covered porch, fish pond, large new barn, storage building, paved parking area, all on 4 choice lots - a great buy at \$59,500. **REDUCED TO \$57,000.**

Fred Clifford
Texas Licensed Real Estate Agent
License #0472918
Home: 806/874-2415
1005 W. 7th Street
Clarendon, TX 79226
Office: 806/874-9318
202 W. 3rd Street
Mobile: 662-7888
Representing Joe T. Lovell Real Estate

REAL ESTATE

Jim Garland Real Estate **MLS**
874-3757

CLARENDON
• 1022 E. 3rd St. Two lots, two bedroom, one full bath with shower, CH/A, new carpet, new parquet floors, nice and clean. Large two car garage and shop area. Lots of storage in the attic. Vinyl siding, soffit, and fascia. ~~\$60,000~~ \$55,000
• 605 W. 7th. Two lots, stucco, two story with metal roof, 4-5 bedrooms, 2 baths, 2 car port, 1 car port, old storage building. ~~\$50,000~~ \$46,000
• 512 S. McLean St. 3 bedroom, 1 bath, CH/A, fresh paint inside and out. \$59,500.

• 305 E. White St. Full block. Completely remodeled stucco, two bed, two bath home. **SOLD** electrical, CH/A, wood stove, great bunk house, very quiet location, other out buildings. \$65,000. Immediate possession.
• 620 W. 6th St. Brick, 3-4 bedroom, 2 1/2 baths, CH/A, nice basement, fresh paint inside & out. Excellent kitchen remodel, electrical update, beautiful double face fireplace. New shingles. Two car garage. \$79,000. Ready to move into. Appointment please.

LAKE GREENBELT
• Lot 3 - 3 bedroom, 1 bath, CH/A, fully furnished, sprinkler system, 2 car port, furnished. ~~\$95,000~~ \$85,000

• 328 Angel St. - 2 bedroom, 1 1/2 bath, basement, storage building with carport attached. ~~\$43,000.00~~ **PRICE REDUCED TO \$38,000.**
• 477 Nocona Dr. - 3 bedroom, 2 bath double wide with fire place and central heat. 12x40 single wide storage building. Sitting on approx. 1/2 acre. ~~\$48,000.00~~ \$45,000
• 125 Lubbock Ln. 2 bed, 2 bath mobile home. New carport, C/H. Partially furnished storage building-full of equipment. Fenced. \$18,000.

• Lots 11-13 - 4 bedroom, 2 1/2 bath, CH/A, 3 levels, 2 car garage. \$85,000.

COUNTRY PROPERTIES

• 82 acs. West of city limits. Excellent home site. City water and electricity available. **PRICE REDUCED TO \$116,600.**
• 320 acs. North of Hedley, one well with pipeline. Quail, deer.
• 80+ acs. in Hall Co. - **SOLD** quail, turkeys, large trees.

• Hall Co. 1,700+/- acs. Borders Little Red River & Prairie Dog Fork of the Red River. Lots of Game. \$595 per acre.
• Childress Co. 412 acs. Two dirt tanks and **SOLD**. Some CRP. Both very gamey.

POSITIONS AVAILABLE IMMEDIATELY

• LVN - Full-time 6 a.m. - 6 p.m. Every other weekend off.

Please apply at
Medical Center Nursing Home
Hwy. 70 North, Clarendon

CLARENDON COLLEGE



Clarendon College invites applications for the following positions:

Housekeeper/Custodian
Average agility and good physical condition. Must be able to lift 50 pounds. Work requires lifting, stooping, bending, stretching, walking, standing, climbing, pushing, pulling, crawling, and other physical exertion. Knowledge of housekeeping and custodial needs related to the upkeep of the physical plant is required.

Groundskeeper
Groundskeeper includes mowing, edging, spraying chemicals, trimming, watering, fertilizing, picking up trash & litter, planting, digging, driving and hauling and operating tractors and equipment. Screening of applicants will begin immediately and continue until the position is filled. Send letter of application, resume, and the names, addresses, and telephone numbers of three references to: Darlene Spier, Assistant to the President, Clarendon College, Box 968, Clarendon, Tx 79226. Clarendon College is an equal opportunity employer.



New faculty and staff at Clarendon ISD this year are Tammi Lewis, Debbie Thompson, Tammie Hargrove, Cheryl Johnson, Colby Waldrop, and Alton Gaines. Enterprise Photo / Roger Estlack

New faces appear at Clarendon ISD

Tammi Lewis
 Spouse's Name: Gary Lewis
 Children's Name & Age: Tyler-19, Haleigh-15, Deidre-14
 Subject/grade you will be teaching: High School Biology, A&P, and Environmental Science
 College graduated from: West Texas A&M
 Number of years teaching: 9
 Last school taught for: Clarendon Jr. High
 Goals for the next school year: Increase students' knowledge in Biology, A&P, and Environmental Science.

Debbie Thompson
 Spouse's Name: Michael Thompson
 Children's Name & Age: Greg Collins-7, Tiffanie Word-3, Maci Collins-6, and Gavin Hollan-5
 Subject/grade you will be teaching: Nurse
 College graduated from: Clarendon College
 Number of years nursing: 9

Tammie Hargrove
 Children's Name & Age: Brittany-12, Rance-9, Jett-5
 Subject/grade you will be teaching: Accelerated Math/Grades 1-5
 College graduated from: West Texas A&M, master in Education Counseling West Texas A&M
 Number of years teaching: 10
 Last school taught for: Memphis
 Goals for the next school year: To assist all students in achieving their goals.

Cheryl Johnson
 Spouse's Name: Kevin Johnson
 Children's Name & Age: Trajen-11, Marshal-7, Emily-5
 Subject/grade you will be teaching: Secretary to Superintendent
 Goals for the next school year: To do the best job I can for the district.

Colby Waldrop
 Spouse's Name: Crystal Waldrop
 Children's Name & Age: Grayson-3, Kennady-4 months
 Subject/grade you will be teaching: Algebra I
 College graduated from: Texas Tech University
 Number of years teaching: 11
 Last school taught for: Sanos CISD
 Goals for the next school year: All my math students to excel in their math TAKS test. Win district in basketball.

Alton Gaines
 Spouse's Name: Gina Gaines
 Children's Name & Age: Alton-15, Taylor-10, Johnnie-13
 Subject/grade you will be teaching: Coaching/maintenance
 Goals for the next year: Become better at all I do.

POSITIVE FEED SALES

USE Pasture Values Multiplied = PVM
 Provides essential nutrients needed daily to accelerate growth and weight gains.
Brangus Bulls & Heifers For Sale
DANNY ASKEW
 874-5001 or 874-3844

Sign up Today for
Enterprise D
 The All-Digital Newspaper for the 21st Century.
 Only \$9.95. Call 874-2259.

Shop At Home
 Support the merchants who support your town.

PANHANDLE PEST CONTROL
 SPECIALIZING IN THE CONTROL OF SPIDERS & SCORPIONS
 Now Under New Management of Keith Christopher
 Licensed & Insured • TPCL #12392
 806.584.6848 or 806.584.5330
 SERVING A 60-MILE RADIUS OF CLARENDON

NOTICE OF PUBLIC MEETING To Discuss Budget And Proposed Tax Rate For The Hedley Independent School District

The HEDLEY SCHOOL DISTRICT will hold a public meeting at 7:00 PM, August 28, 2006 in the SUPERINTENDENT'S OFFICE OF HEDLEY SCHOOL, 301 JONES ST, HEDLEY TX. The purpose of this meeting is to discuss the school district's budget that will determine the tax rate that will be adopted. Public participation in the discussion is invited.

The tax rate that is ultimately adopted at this meeting or at a separate meeting at a later date may not exceed the proposed rate shown below unless the district publishes a revised notice containing the same information and comparisons set out below and holds another public meeting to discuss the revised notice.

Maintenance Tax	\$1,246,000/\$100 (Proposed rate for maintenance and operations)
School Debt Service Tax	\$0.060000/\$100 (Proposed rate to pay bonded indebtedness)
Approved by Local Voters	

Comparison of Proposed Budget with Last Year's Budget	
The applicable percentage increase or decrease (or difference) in the amount budgeted in the preceding fiscal year and the amount budgeted for the fiscal year that begins during the current tax year is indicated for each of the following expenditure categories:	
Maintenance and operations	12.51% increase
Debt service	3.03% increase
Total expenditures	12.11% increase

Total Appraised Value and Total Taxable Value (as calculated under Section 26.04, Tax Code)		
	Preceding Tax Year	Current Tax Year
Total appraised value* of all property	\$82,291,689	\$87,796,671
Total appraised value** of new property**	\$1,360,516	\$155,228
Total taxable value*** of all property	\$33,296,578	\$36,444,091
Total taxable value*** of new property**	\$1,360,516	\$155,228

* "Appraised value" is the amount shown on the appraisal roll and defined by Section 1.04(8), Tax Code.
 ** "New property" is defined by Section 26.01(2)(17), Tax Code.
 *** "Taxable value" is defined by Section 1.04(10), Tax Code.

Bonded Indebtedness	
Total amount of outstanding and unpaid bonded indebtedness* \$735,000	

* Outstanding principal.

Comparison of Proposed Rates with Last Year's Rates					
	Maintenance & Operations	Interest & Sinking Fund*	Total	Local Revenue Per Student	State Revenue Per Student
Last Year's Rate	\$1.360000	\$0.050000	\$1.410000	\$2.574	\$4.334
Rate to Maintain Same Level of Maintenance & Operations Revenue & Pay Debt Service	\$1.205912	\$0.060676	\$1.266588	\$2.506	\$5.811
Proposed Rate	\$1.246000	\$0.060000	\$1.306000	\$2.583	\$5.009

* The Interest & Sinking Fund tax revenue is used to pay for bonded indebtedness on construction, equipment, or both. The bonds, and the tax rate necessary to pay those bonds, were approved by the voters of this district.

Comparison of Proposed Levy with Last Year's Levy on Average Residence		
	Last Year	This Year
Average Market Value of Residences	\$20,853	\$20,263
Average Taxable Value of Residences	\$5,053	\$5,263
Last Year's Rate Versus Proposed Rate per \$100 Value	\$1.410000	\$1.306000
Taxes Due on Average Residence	\$71.50	\$68.73
Increase (Decrease) in Taxes		(\$2.77)

Under state law, the dollar amount of school taxes imposed on the residence homestead of a person 65 years of age or older or of the surviving spouse of such a person, if the surviving spouse was 55 years of age or older when the person died, may not be increased above the amount paid in the first year after the person turned 65, regardless of changes in tax rate or property value.

Notice of Rollback Rate: The highest tax rate the district can adopt before requiring voter approval at an election is \$1.245912. This election will be automatically held if the district adopts a rate in excess of the rollback rate of \$1.245912.

Fund Balances	
The following estimated balances will remain at the end of the current fiscal year and are not encumbered with or by a corresponding debt obligation, less estimated funds necessary for operating the district before receipt of the first state aid payment:	
Maintenance and Operations Fund Balance(s)	\$225,000
Interest & Sinking Fund Balance(s)	\$5,090

OSBURN APPLIANCE AND SERVICE
 We service all makes of appliances
 Rebuilt Used Appliances For Sale With 1-Year Warranty
 "We also buy used appliances."
 874-3632 319 S. Kearney



Save a Tree and Go Digital Today.
 Call us at 874-2259 and we'll change your print subscription to Enterprise-D for FREE!

Enterprise D
 The All-Digital Newspaper for the 21st Century.