

## Time to start recycling



Paul Fleitman pitches outdated church books into Muenster's new recycling bin located on West 2nd Street. The bin is for recyclable items only. No garbage or other trash, as in past dumpings, will be allowed. If the bins are abused, the City will have them removed. Do your part to help Keep Muenster Beautiful.

Janie Hartman photos

## Cooke County launches ban on outdoor burning

**By Janet Felderhoff**  
Cooke County Commissioners Court took a proactive measure in preventing the possible loss of lives and property due to wildfires at the Monday, Nov. 24 meeting. A ban on outdoor burning in Cooke County was put in place by the Court for 90 days unless it is rescinded earlier by the Court or the Texas Forest Service.

"We have had fires, especially on days like today is going to be," commented Emergency Management Coordinator Ray Fletcher. "The humidity this morning was 80%. Now we are near 30% and most likely we'll be in the low 20s or teens with the winds gusting over 20 m.p.h., which is prime condition with the current fuels we have."

According to Fletcher, the County's KBDI (Keetch Byram Draught Index) is 633 in the high areas with 2/3 of the County in the 500 range and a third to a quarter in the 400 range. The overall mean is 539. Six hundred is used as a kick off to consider the burn ban. A county must be in a drought condition to instate a burn ban.

Cooke County has 2/3 of its area in the moderate drought area.

Precinct #3 Commissioner Al Smith reported having numerous request from the County's volunteer firemen to put on a burn ban. County Judge Bill Freeman said individual citizens also requested the ban. He said

a violation is a Class C misdemeanor with a fine not to exceed \$500.

Welding is still permitted. Judge Freeman cautioned those doing welding to take all extra precautions. If there are fires caused by welding, he said he would most likely declare a disaster which includes a ban on outdoor welding. Fletcher said the area should be clear of debris and sprayable water on hand when welding.

The water leakage problems at Cooke County Library were again discussed. Commissioners Court heard a report by Michael Bates of Bates Architecture who gave

a summary of his findings and possible solutions to the roof and brick problems. Repairs could cost \$60,000 or more. That amount is available from the Permanent Improvement Fund this year should it be decided to go ahead with some type of repair work.

Commissioner Steve Key said that the building has a multiplicity of problems. Judge Freeman noted that one problem is that it was built in a hole.

Bates was asked to figure the cost of a gabled roof (the flat roof is already figured) and to figure some type of

See COUNTY pg. 3

*Don't forget Muenster's Annual Christmas Parade and the Christkindmarkt celebration. Come have a good time and support your local merchants. Please see ad on page 5.*

## MMH Board moves forward with plans for its aging facility

**By Janet Felderhoff**  
With an eye to the future, the Muenster Memorial Hospital Board voted unanimously to authorize Administrator Lynn Heller to have the architects develop phase three of the Hospital master plan. This vote came at the regular monthly meeting on Tuesday, Nov. 18. The plan was to be developed to a point that it could be put out to bid. The Board will approve the plan before it actually goes out to bid.

Another action taken after the executive session was to authorize a total expenditure not to exceed \$16,800 for employee Christmas bonuses. That amount was based on a lower swing bed census during the fiscal year, and the operating losses that resulted from it.

Discussion was held on the pros and cons of sponsoring legislation to allow hospitals to employ physicians. Texas is one of only a few states that doesn't allow hospitals to employ physicians. No decisions were made.

Financial statistics for October showed a net revenue of \$413,583 and operating expenses of \$547,964 to make an operating revenue of a negative \$134,381. Factoring other revenue during October of \$32,307 and valorem taxes collected and \$2,921 lease on St. Richard's Villa, the excess of revenue

over expenses for October was a negative \$99,154.

During October there were 191 combined patient days, 104 emergency room visits, 450 outpatient visits, nine observation room days, 476 Clinic visits, and 853 Home Health visits.

Administrator Heller, "The census was trending down. It's coming back up. Right now, we've got three or four swing bed admissions in the last week or so. It is trending back up." He explained that there is an ongoing education process with physicians from area hospitals to make them aware of the rehab available at Muenster through the swing bed program. This allows patients to receive therapy treatment while in the hospital who wouldn't be able to receive it as a regular hospital patient and have Medicare coverage.

In other business, the Board:

- Approved Bad Debt Write Offs totaling \$5,942.62.
- Heard report from Quality Assurance Chairman Dr. Walter Knight on their monthly meeting. An unusually large number of transfers out were made during the past month. Dr. Jones is scheduled to cover the Emergency Room during the last weekend in November and most of December's weekends.
- Heard report that an additional \$150,000 to \$175,000 might be recovered for 2006 and 2007 cost reports. Representatives from the firm doing the study would be back to do additional reviews.

## A dream begins to come true...



Cooke County has been without a "show barn" since a wind storm destroyed the building on April 28, 2006. The Cooke County Fair Association is building a multi purpose center with phase I, a 200'x200' building, now going up. The next stage of construction will be electricity and water, followed by restrooms and bleachers. The recent tractor benefit raised \$20,000. A quilt raffle will begin this weekend at the Muenster Christkindmarkt Quilt Show held in Hess Furniture.

Janie Hartman photo

## Courthouse offices moving for future improvements



Cooke County's Courthouse has many empty offices and few visitors these days. The hustle and bustle of routine County business no longer takes place in the Courthouse. Most offices with their county officials and employees have already moved to their temporary locations. They will remain outside of the Courthouse until the facility is restored to historically correct state. The restoration is being partially funded through grant money received to restore Texas courthouses to their original condition.

Janet Felderhoff photos

As the County prepares for the interior restoration of the Cooke County Courthouse, County offices have had to be relocated. A list of the new or soon to be locations follows as provided by Cooke County Judge Bill Freeman and Commissioners Court:

- Now:**  
County Commissioners - 206 W. Main  
County Clerk - 216 W. Pecan  
County Auditor - 100 E. California Suite # 212  
Human Resources - 100 E. California Suite # 212  
County Judge - 100 E. California Suite # 216  
County Attorney - 106 W. Main

**To move in December:**  
County Tax Assessor/Collector - 212 E. California

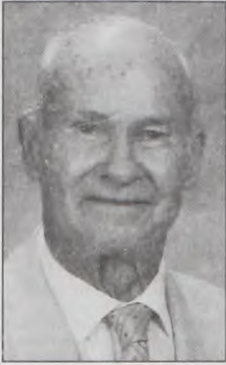
**Future Commissioners Court - When courthouse is empty will be 100 E. California Suite # 214.**

**Future Sites when Dixon Street Annex is complete**  
112 S. Dixon Street and will include the following offices: District Court, County Court at Law, District Clerk, Criminal County Clerk, District Attorney, Compliance Officer, Law Library.



# Obituaries

## Paul Fetsch 1918 - 2008



Paul Fetsch

Paul Joseph Fetsch of Muenster died at the age of 90 on Nov. 17, 2008 in Presbyterian Hospital of Dallas. Resurrection Mass was held at 10 a.m. on Thursday, Nov. 20 at Sacred Heart Church in Muenster with Fr. Ken Robinson officiating. Burial followed in Sacred Heart Catholic Cemetery in Muenster, where the Knights of Columbus gave the 4th degree salute. After the cemetery closing prayers, TAPS was played to honor Paul's years of service in the military. Services were under the direction of McCoy Funeral Home.

Mr. Fetsch was born March 23, 1918 in Rhineland, Texas to Ferdinand and Hedwig (Hanning) Fetsch. He served in the U.S. Army Air Corps as a co-pilot of B-25 bombers during World War II. He married Marcella Flusche on April 10, 1944 in Muenster.

After World War II, they moved first to Rhineland, and then to Muenster in June 1948 where he farmed until age 86. Mr. Fetsch farmed in Muenster and Lindsay from 1948 until the late 1990s. He was a dairy farmer in Cooke County in the 1960s and 1970s. He served as a member of the Knights of Columbus since 1946, a member of the St. Joseph Society, and as a director of the Muenster Memorial Hospital Board. He was a Germania Farm Mutual Insurance agent for over 25 years.

Preceding him in death were his wife, son John; his parents; brothers Albert, Leo, Fick, and John; and sisters Angie, Rose, Annie, and Rita.

Survivors include his five children and their spouses Garry and Susan Fetsch of Muenster, Joan Fetsch Campbell and Lee Campbell of Tyler, Monica Fetsch Noyes and Robert Noyes of Dallas, Evelyn Fetsch Melvin and Kenneth Melvin of Allen, and Robert Fetsch and Louise Benke of LaPorte, Colorado; 10 grandchildren and 11 great-grandchildren; brother Fidelis of Rhineland; and sister Mary Fetsch Albus of Baytown.

Assisting during the funeral Mass, were altar servers Sylvan Walterscheid, Butch Fisher, and Alvin Hartman. The First and Second Readings were given by Janet Fetsch. Prayers of the Faithful were by Traci Mc-

Connell. Paul's great-grandchildren brought up the Offertory Gifts. Eucharistic ministers were Ken Melvin, Robert Fetsch, and Bob and Monica Noyes.

Music ministers were Isaac Davis, pianist, and vocalists Kelly Fetsch, Madakae Fetsch, Jennifer Finnigan, Christine Fetsch, and Lisa Noyes, granddaughters, and Phillip Flusche, nephew. Sacred music included "On Eagles' Wings," "All I Ask of You," "You Are Mine," "Healing River of the Spirit," and "Amazing Grace."

The eulogy was given by Robert Fetsch. He said, in part, "... Like many men and women who grew up in the Great Depression, he experienced hunger, poverty, and a lot of hard work. He learned to sacrifice and to be frugal..."

"Dad loved cards and dominoes and playing tricks on people... Dad had a sharp mind and used it to his advantage when playing dominoes and cards... He was very intelligent..."

"Dad valued his Catholic faith. He insisted that all five of us have a Catholic education. I don't think he ever missed Sunday Mass as long as he was able... Who was Paul Joseph Fetsch? He was our dad, husband to Marcella Theresa Flusche Fetsch, and a Catholic farmer..."

A Rosary and Vigil Service was held at McCoy Funeral Home at 6 p.m. on Wednesday led by Fr. Ken.

In lieu of flowers, memorial contributions can be made to Sacred Heart School Trust Fund or Sacred Heart Parish, Muenster, Texas.



Charles Sherrill

## Charles Sherrill 1930 - 2008

Funeral service for Charles Allen "Hoppy" Sherrill, age 78 of Myra, was held at 2 p.m. on Tuesday, Nov. 25 at Myra Baptist Church. Burial was in Reed Cemetery in Myra directly following the service. Services were officiated by Rev. Eddie Ramsey. Visitation was held from 6-8 p.m. on Monday, Nov. 24 at McCoy Funeral Home in Muenster. Charles died at 6:10 a.m. on Saturday, Nov. 22, 2008 at Denton Regional Medical Center in Denton.

Charles was born Jan. 1, 1930 to Roy Sherrill and Wilma Wilson Sherrill in Era and completed 9th grade at Era High School. He served in the Army during the Korean War where he received a bronze star. After the war, he

married Marilyn Benninger on June 30, 1954. He spent many years to retirement as a truck driver for AMPLI. He had an affinity towards John Deere Tractors.

Survivors include daughters and sons-in-law Mary Ann and Hans Huston and Sally and Charlie Switzer, all of Myra; six grandchildren and four great-grandchildren; and brother Winford Sherrill of Gainesville.

He was preceded in death by his parents; his wife; and sisters Clara Miller and Dorothy DeLara.

Pallbearers were Henry Knabe, Mark Miller, Ronnie Andrews, Jr., David Miller. Honorary Pallbearers were Charles Samek and Ronnie Andrews.

And in His will is our peace. Dante

## DAYS GONE BY.....

### 65 YEARS AGO Nov. 26, 1943

Petition for school tax at Muenster Public School is presented; asks for election to vote maintenance tax for school bus system. Draft Board starts calling fathers. Joe Sturms honored on 30th wedding anniversary. Wedding: Charlene Wilson and James Hunt. New Arrivals: Patricia to the Starling Lawsons; Veronica to Al and Antonia Hess.

### 50 YEARS AGO Nov. 28, 1958

City Council buys modern fire truck; due here in four months. Mrs. Walter Morrison, the former Lorine Knabe dies in car accident enroute to Muenster from Borger. Obituaries: Gerald, day old son of Randy and Marilyn Bayer; John, six week old son of Airman and Mrs. John Caughey. Loree Bruns hosts Friendly Neighbors Club meeting. Tony and Clara Otto honored on 45th anniversary. Leo J. Haverkamp is sporting the first 1959 Chevrolet sold in Muenster. Students from Lindsay High School plan to publish a school newspaper, the first school publication in Lindsay's 67 year history.

### 25 YEARS AGO Nov. 25, 1983

United Way goal topped by \$700. Weddings: Terrye Flusche and Mark Felderhoff; Carla Haverkamp and

Keith Rayborn. New Arrival: Kristin to Alan and Brenda Zimmerman. R.N. Fette to serve as the 1983 Christmas Parade Marshall. Obituary: Anna Prescher, 95.

**MUENSTER ENTERPRISE**  
SUBSCRIPTION RATES:  
In Cooke County -  
1 year-\$37; 2 years-\$69  
Outside of Cooke County -  
1 year-\$42; 2 years-\$79  
Phone (940) 759-4311  
THE MUENSTER ENTERPRISE  
(USPS 367660) is published weekly  
by The Muenster Enterprise, Inc.  
Post Office Box 190,  
Muenster, Texas 76252-0190  
Periodicals postage paid at Muenster, Texas  
POSTMASTER: Send address changes to:  
THE MUENSTER ENTERPRISE,  
P.O. Box 190, Muenster, Texas 76252  
ISSN:0883-2544

The Staff of the Muenster Enterprise wishes your family a Happy Thanksgiving Day and weekend. We appreciate your patronage and loyalty!

The Greatest Hits of the 60's and 70's  
**KNTX**  
AM1410  
Listen at work, in your car, at home or online at [www.kntxradio.com](http://www.kntxradio.com)  
• TRADE FAIR • Buy, Swap & Sell with Wendy Hill  
9-10am, Mon-Fri  
**940-872-2288**  
It's Hometown Radio at its Best!

## Joseph Streng 1941 - 2008



Joseph Streng

Joseph Henry Streng died on Thursday, Nov. 20, 2008 after suffering a stroke on Saturday. His Celebration of Life was held on Saturday, Nov. 22 at 1 p.m. at the home of his son Brandon Streng. Services were under the direction of Mayfield Kiser Funeral Home in Fort Worth.

Joe was born Dec. 10, 1941. He grew up in Muenster and graduated from Sacred Heart School in 1960. He worked for over 20 years in industrial catering. Joe was a loving father and grandfather.

Survivors include his daughter Kristi Marmon and her husband Ernie; son Brandon Streng and his wife Anne; grandchildren Cameron Marmon and Taylor Streng; and countless family and friends. He was looking forward to the birth of his new granddaughter in the spring of 2009.

Cards and condolences can be sent to Brandon Streng, 3904 Black Butte Dr., Denton, TX 76210.

**EDD G. ADVINCUA, M.D., F.A.C.P.**  
BOARD CERTIFIED  
INTERNAL MEDICINE

**HENRY HEWES, D.O., F.I.C.S.**  
BOARD CERTIFIED  
GENERAL SURGEON

**MELISSA TRUBENBACH, FNP-C**  
BOARD CERTIFIED  
FAMILY NURSE PRACTITIONER

**YVONNE AMBROSE, FNP-C, ACNP-C**  
BOARD CERTIFIED  
FAMILY NURSE PRACTITIONER

**MMH FAMILY HEALTH CLINIC**  
PROVIDING QUALITY HEALTH CARE TO PATIENTS OF ALL AGES  
**Clinic Hours**  
MONDAY - FRIDAY, 8AM - 5PM  
FLU SHOTS AVAILABLE NOW  
8:30 - NOON; MONDAY - FRIDAY - \$20  
We Welcome New Patients  
MEDICARE, MEDICAID, AND MOST INSURANCES ACCEPTED

509 NORTH MAPLE • MUENSTER • (940) 759-2226

## 2-WEEK EVENTS CALENDAR To list your event, call 759-4311 BEFORE NOON WEDNESDAY!

Sunday, Nov. 30, 2008	Monday, Dec. 1, 2008	Tuesday, Dec. 2, 2008	Wednesday, Dec. 3, 2008	Thursday, Dec. 4, 2008	Friday, Dec. 5, 2008	Saturday, Dec. 6, 2008
M'ster Museum Open 1-4p.m.	MMH Aux. decorating for Christmas Mig.	Muenster Public Library open 10 a.m. - 6:30 p.m.	Muenster Public Library open 1:30 - 5:30 p.m. Religious Ed. Class, 7 p.m. C of C Board Mtg. 5:30 p.m. TDH Immunization Clinic, Cooke County Electric 9-11 a.m.	M'ster Museum Open 1-4p.m. M'ster Public Library open 10a.m. - 6:30 p.m. Muenster Jr. H., UIL District Meet @ Muenster MISD early dismissal - 12:30	M'ster Museum Open 1-4p.m. SHCS Annual Bake Sale 7a.m.-1p.m. Community Ctr. AARP Board Mtg. 10a.m. Sanford House Muenster Elem., UIL District Meet @ Era	Muenster Public Library open 10:30 a.m. - 2:30 p.m.
Sunday, Dec. 7, 2008	Monday, Dec. 8, 2008	Tuesday, Dec. 9, 2008	Wednesday, Dec. 10, 2008	Thursday, Dec. 11, 2008	Friday, Dec. 12, 2008	Saturday, Dec. 13, 2008
M'ster Museum Open 1-4p.m.	VFW & Ladies Aux. covered dish, 7:30p.m. City Council mtg. 7:30p.m.	Muenster Public Library open 10 a.m. - 6:30 p.m. VFW Aux In Lieu of Christmas Cards deadline	Muenster Public Library open 1:30 - 5:30 p.m. Religious Ed. Class, 7 p.m. MISD Board mtg 7:30p.m. SH Alumni & Supporters Mtg, 7:30 pm, SNAP Room	M'ster Museum Open 1-4p.m. M'ster Public Library open 10a.m. - 6:30 p.m. Historical Com. mtg. 8a.m. Rohmer's C of C mtg., noon Rohmer's KMB Mtg. 6:45 pm, Library	Muenster Museum Open 1-4p.m. AARP membership lunch mtg. 11:30a.m. Sanford House	Muenster Public Library open 10:30 a.m. - 2:30 p.m. Museum Bake Sale, 8a.m. Fischer's

Sponsored by **COOKE COUNTY ELECTRIC COOPERATIVE**  
940-759-2211

**Best of Ed Cler**

June 18, 1993  
In a previous story, I mentioned a teamster named Shorty, who was accused of poisoning his competitor's draft horses. Whether or not the man was guilty, I will never know; but from my own observation of the man as he worked with his horses, it would be hard for me to believe he did. As a kid of 13 or 14, I had the good fortune to watch him work four of the best kept and trained horses I have ever seen. The man had a contract to build a levee around two 500 bbl. oil tanks that had been assembled in the lower part of the pasture, just east of the Charles Cler home. When he first laid out and plowed the outlines of the levee, he drove the team, using the lines. After that part was completed, the lines were put up and the team was controlled entirely by word of mouth, by Shorty. The man and team seemed to work with one mind. Shorty handled the plow and earth-moving equipment and the horses responded to his soft-spoken commands. I watched as, at times, the scraper would hang up on a rock, the team would stop, and Shorty would move the scraper handle one way or another in an attempt to loosen the stone, occasionally directing one horse or another to "cup just a little, Bugger, that's good, now you, Nig," and the horses seemed to know just what he wanted them to do. Now and then he rested the team for a few minutes and, at these times, he busied himself going from one horse to another, patting them and pulling their manes from under the collars, looking to their comfort. After watching a man work with animals he apparently loved and cared so much for, I simply can't believe he would be capable of causing one or more of them to go through the agony of dying from the effects of being poisoned.

# COUNTY

.....cont. from pg. 1

drainage system to carry water away from the north and east sides of the building. He will bring his additional findings back to the Court so that they can make a decision.

Texas Association of Counties (TAC) sent a letter in regard to the Health and Wellness benefit program it is starting, to try to improve the health of county employees. The County was asked to appoint a county wellness coordinator and a county executive sponsor for the program. The wellness coordinator will coordinate the wellness programs in the County for employees and the sponsor is a member of the Court. Judge Freeman volunteered to be the executive sponsor and the Human Resource Director Jennifer Eberle was appointed as the coordinator.

When considering future agenda items, Commissioners Court agreed with Commissioners Klement and Smith to place a discussion of what Cooke County is doing in regard to a Groundwater Conservation District.

After attending a meeting in Whitesboro about passing legislation on groundwater districts, Klement had some concerns. He noted that the State rep from Sherman was there. There were two people from Cooke County there, but not all interests from Cooke County were represented.

"As this thing progressed, it was very interesting from the stand point of how we're going to do this and how we're going to pass it and what we're going to put in the legislation," said Klement. He admitted he was just coming into the Groundwater situation and wasn't sure of all the details and what had been done already. Cooke County has a Groundwater Committee with representatives from each water provider and one representative for all rural farmers and ranchers.

Klement said, "I had the distinct feeling that somebody is trying to come at this from their own direction. They were having a discussion about how they were going to set the rules and how much they were going to charge per thousand. I think we need to have a discussion over here. I don't want it to get out of hand."

Commissioner Smith commented, "A lot of people in the County remember the problems of Dallas taking all of our surface water rights. We are living with that legacy today. We had an opportunity one time to set the boundary of the Groundwater Conservation District and then that boundary is not going to be changed. There are those who want to make sure that we set the boundary so that local control like the legislation is in effect for us. I think it is a super important issue that the people in the County need to get educated to speak on and let their wishes be known so that we can do what the people want."

Judge Freeman added that the people will eventually have the opportunity to vote on the Groundwater District.

In other business, Commissioners Court:

- Heard an unqualified or clean report from Tom Schalk of Schalk and Smith on the FY 2007 Annual Financial Audit.
- Approved out of state travel for County Library Director Jennifer Johnson-Spence to attend the PLA Spring Symposium April 2-4 in Nashville, Tennessee.
- Approved annual contract with Muesnter Public Library. This year the Library will receive \$8,000 from the County.
- Approved contract with Texas Department of Family and Protective Services concerning certification re-

garding federal lobbying.

- Approved cell phone allowance for IT Director Tommy Glover.
- Heard report from Precinct #4 Commissioner Klement that interior construction of maintenance barn is proceeding swiftly. An open house will be announced at a later date.
- Work continues to determine the most economical way to enlarge parking space for the public at the Cooke County Justice Center.
- Approved indigent burial of Lloyd Dale Boaz.
- Approved bond for Leon Klement, commissioner Precinct #4.
- Approved monetary donation of \$25 from DDS Partnership to the Cooke County Library.
- Approved donation of \$1,000 from the Wal-Mart Foundation to the Cooke County Library.
- Approved contract with Nortex Communications for the installation of fiber optic cables in six locations in Precinct #2.
- Approved contract with Woodbine Water for the installation of a water line on CR 223 in Precinct #2.
- Approved a scale variance to 1"= 50' for the subdivision of lots 599, 600, and 601 of Lake Kiowa in Precinct #2.

## PROJECTS

.....cont. from pg. 1

- will be dismissed at 12:30.
- Technology - Four new copy machines were connected to the network to allow teachers to print and scan from their classroom computers. The bell-intercom system is now working throughout the campus. Also, 41 tech assistance requests were completed during the month of November.
- Jim Robertson reported \$891.09 ad valorem property taxes paid to MISD for October.



**JOHN CORNYN**  
UNITED STATES SENATOR, TEXAS

TEXAS ★ TIMES

## Giving Thanks in Texas

At Thanks-Giving Square in downtown Dallas, in houses of worship, and in community kitchens and family tables across the state, Texans heartily observe our national holiday and express gratitude for the gifts of "life, liberty, and the pursuit of happiness."

Many say thanks every day of the year, but Thanksgiving Day is when Americans join together to express gratitude throughout the nation. These annual get-togethers bring family and friends together, and renew our focus on the great American tradition of giving thanks for our blessings.

This year, about 46 million turkeys will be served during Thanksgiving in America. Across Texas, tables will be filled with rich foods produced in our state, easily found in stores by looking for the "Go Texan" label. Farmers, ranchers, and other agricultural producers, processors, and workers provide much of the harvest that Texans depend on throughout the year.

In addition to Thanksgiving dinner, people fill the holiday with all kinds of relaxation. We like football games, hunting, parades, and "Turkey Trot" fun runs, to name a few.

But in the midst of giving thanks, Texans also take time to focus on those who need our thoughts, prayers, and support - especially those away from their homes because of military service or public service jobs that keep them on duty during the holidays. We are thankful for our soldiers and veterans, health care workers, law enforcement officers and

first responders. The safety and security they provide put them high on our thank-you lists.

Texas also is blessed by the volunteers who work in food banks, serve at community dinners for the less fortunate, and supply boundless energy and generous support to charitable organizations all year long.

This year will be remembered for the destructive storms that hit parts of Texas. We must continue to supply public and private aid to Texans whose homes and communities were damaged or devastated by Hurricanes Ike and Dolly, and other natural disasters. Many Texans suffered greatly. Their pain continues, and we need to be as vigilant today in helping them get back on their feet as we were in the days following the storms.

It is not unusual to see hearts open their widest when times are toughest. We have to find the best ways to uplift those seeking the American dream or hoping to hold on to it - those needing jobs and those impacted by the state of the economy.

Thanks-Giving Square in Dallas includes the interfaith Chapel of Thanksgiving, which opened during America's bicentennial year, 1976. It serves as "the Home of American Thanksgiving" and "The Center of World

Thanksgiving." The Thanks-Giving Foundation, which spearheads programs to "promote the value and spirit of thanksgiving," describes the tradition well. "Of all the profound gestures of the human heart, thanksgiving is the most communal and the most basic. Its presence creates a universal bond that transcends differences throughout the world."

By expressing gratitude, we acknowledge that our lives depend on the work, contributions and kindness of others. While self-reliance is a cherished virtue in America, it is equally important that we recognize our interdependence and reach out to help each other, at home and abroad.

In "America the Beautiful," we sing about "amber waves of grain" and the "fruited plain." As we count our blessings, let's seek ways to share them with others. That puts words into action. It's the Texas spirit at work, the heart of what makes us Texans.

*Sen. Cornyn serves on the Armed Services, Judiciary, and Budget Committees. In addition, he is vice chairman of the Senate Select Committee on Ethics. He serves as the top Republican on the Judiciary Committee's Immigration, Border Security, and Refugees subcommittee and the Armed Services Committee's Airland subcommittee.*

## RRC production statistics and allowables for Nov.

The Texas average rig count as of Oct. 17 was 918, representing about 49% of all active land rigs in the United States. In the last 12 months, total Texas reported production was 342 million barrels of oil and 7 trillion cubic feet of natural gas. Texas natural gas production represents approximately 29% of total U.S. natural gas demand.

The Commission's estimated final production for August 2008 is 29,233,080 barrels of crude oil and 579,488,249 Mcf (thousand cubic feet) of gas well gas.

The Commission derives final production numbers by multiplying the preliminary August 2008 production totals of 27,400,019 barrels of crude oil and 473,825,224 Mcf of gas well gas by a production adjustment factor of 1.0669 for crude oil and 1.2230 for gas well gas. (These production totals do

not include casinghead gas or condensate.)

Texas natural gas reported by the Commission for September 2008 is 291,204,471 Mcf compared to 362,515,895 in September 2007. The October 2008 gas storage estimate is 308,632,020.

The Texas Railroad Commission's Oil and Gas Division set initial November 2008 natural gas production allowables for prorated fields in the state to meet market demand of 18,171,242 Mcf (thousand cubic feet).

In setting the initial November 2008 allowables, the Commission used historical production figures from previous months, producers' demand forecasts for the coming month, and adjusted the figures based on well capability. These initial allowables will be adjusted after actual production for November 2008 is reported.

**Saint Jo Medical Clinic**

Serving Cooke and Montague Counties since 1995

Located on the east side of the historic square in Saint Jo

940-995-2410

**FARM BUREAU INSURANCE**

Auto • Home • Life

Wouldn't life be easier with ONE AGENT to handle your insurance needs?

Whether you have a claim, need to change coverage or just have a question, Farm Bureau Insurance is really convenient. You always call the same office and receive prompt, professional service from your own personal agent. Plus, with our competitive rates, you may even save money.

Helping You is what we do best.

Muenster (940) 759-4052

Gainesville (940) 665-1763

sfbl.com • txfb-ins.com

You are invited to join the fun at

The Bird Nest & Muenster Antique Mall

on the evening of

Dec. 4th

5-8 pm

Storewide Sales for your "One of a Kind" Holiday Purchases

Door Prizes, Games, Refreshments.

A prize with every purchase!

**EMUESTER ENTERPRISE**

Send us your news - births, baptisms, achievements and celebrations!

759-4311

December New Releases at Kountry Korner 759-2546

 Narnia Prince Caspian 12/2/08	 Wanted 12/2/08	 The Dark Knight 12/9/08	 Horton Hears a Who 12/9/08	 Mamma Mia 12/16/08
--------------------------------------	-----------------------	--------------------------------	-----------------------------------	---------------------------

**GLENN POLK AutoPlex**

CHRYSLER Ford Jeep

**HAPPY HOUR**

\$21.95 Oil Change Any Make

FREE TIRE ROTATION w/Oil Change

5-7 (M-F) 1-3 (SAT)

Expires November 30, 2008

# LIFESTYLE



Kimberly Walterscheid of Lindsay and Bert and Delanne Walterscheid of Muenster announce the engagement and approaching marriage of their daughter Emily Walterscheid of Lindsay to Daniel Fuhrmann of Lindsay. Daniel is the son of James and Judy Fuhrmann of Lindsay. Saturday, Jan. 3, 2009 is the date the couple have chosen to be married. The wedding will be held in St. Peter's Church in Lindsay. Miss Walterscheid is a 2004 graduate of Lindsay High School and is attending North Central Texas College. The future groom is a 2004 graduate of Lindsay High School and is employed by Superior Machining in Muenster. They plan to reside in Muenster after their marriage.

## Thanksgiving travelers reminded to drive safely

When you're packing the car for your annual Thanksgiving trip, be sure to pack your patience and drive safely by obeying all traffic laws.

"We want you to get to your destination safely," said Col. Stan Clark, interim director of the DPS. "Be patient. There will be a lot of other families traveling, and traffic is likely to be congested. Leave yourself plenty of time to get where you're going, and drive friendly. Slow down, buckle up, and drive sober."

Many travelers are expected to hit the road for Thanksgiving, so all available DPS troopers will be patrolling Texas highways looking for speeders, drunk drivers, and those not properly secured by safety restraints.

During the Wednesday through Sunday Thanksgiving period last year, DPS troopers wrote 10,426 citations for speeding and made 400 arrests for driving while intoxicated. They also arrested 34 minors for driving under the influence of alcohol. They wrote 1,026 citations for seatbelt violations and 358 for child restraint violations. DPS has a no-warnings policy for seat belt and child restraint violations.

Troopers are participating in Operation CARE—Combined Accident Reduction Effort—a nationwide effort by police agencies to reduce fatalities on major interstate highways during holiday weekends.

DPS expects a large number of travelers on the road and encourages drivers to leave themselves plenty of time to get where they're going. Avoid bad driving habits that lead to road rage, such as:

- Not using turn signals,
- Driving in the passing lane,
- Tailgating, flashing lights, or honking,
- Using high beams in traffic,
- Not allowing adequate time for a given trip.

When confronted with ag-

## Kind of fruity

Tangelo - a hybrid of grapefruits and tangerines. Juicy, mildly sweet, and high in fiber and vitamin C.

Ugli fruit - juicy citrus fruit that is also high in vitamin C and fiber.

Valencia orange - good for juicing or eating. Not as popular as the thicker rinded navel orange.

Watermelon - the small seedless type, about the size of a cantaloupe, is especially juicy, flavorful, and provides about 25% of your daily value of vitamin C. There are only 80 calories in a two cup serving.

## Bake Sale proceeds to buy books for SHCS students

The annual bake sale sponsored by the Sacred Heart Alumni and Friends is scheduled for Friday, Dec. 5 from 7 a.m. - 1 p.m. in the foyer of the Community Center.

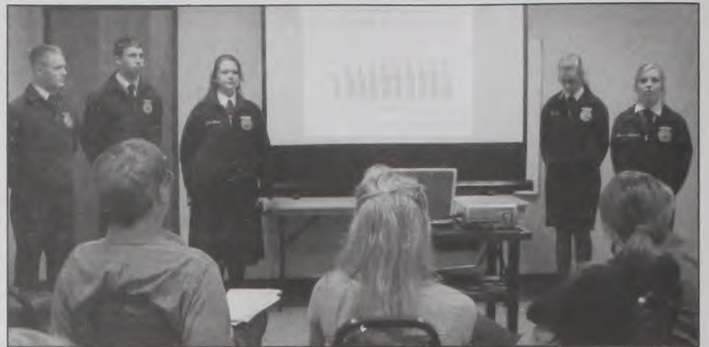
There will be items such as cookies, cakes, strudels, cinnamon rolls, pies, brownies, etc. Proceeds from the bake sale will go toward buying books for the students at Sacred Heart School.

## North Texas cold waves

**January 1912**  
Destructive cold waves Jan. 6 and 11. Cold wave of Jan. 11 moved very rapidly. All unprotected vegetation killed.

**January 1918**  
Destructive cold waves Jan. 10-12 and Jan. 21-22 with snow.

**January 1930**  
Severe cold wave Jan. 17-18 comparable to February 1899 except for rapid movement. Sleet storms general over state 7th-10th; northeast and central 11th-13th; extensive 16th-18th; occasional east and central 21st-22nd. At Dallas, freezing rain and sleet the 7th-11th caused ice two inches thick on trees and utility lines; caused many traffic accidents, and killed barley and wheat. At Fort Worth, ice seven inches thick at Lake Worth. Freezing rain the 19th-21st caused more property damage.



Muenster FFA students presented a debate on biofuels at the November meeting of Keep Muenster Beautiful. Pictured are, from left, Paul Crabtree, Garrett Walterscheid, Jodi Abner, Brandy Dangelmayr, and Jordanne Hellman. KMB photo

## Windthorst sets annual German Sausage Meal

The Windthorst Knights of Columbus #1824 is sponsoring their annual German Sausage Meal on Sunday, Dec. 7 from 11 a.m. to 2:30 p.m. It will be held at St. Mary's Parish Hall, located at the corners of Highways 281, 25, and 174 in Windthorst.

The menu will include 100% homemade pork sausage, spare ribs, and sauerkraut with all the trimmings, with dessert and drink. The cost of the "all you can eat" meal is \$10 for adults and \$5 for children under 12 years of age. Raw sausage will also be available for purchase to take home.

Home baked goods will be made available by the Catholic Daughters of the Americas.

For more information, call Jerry Horn at 940-423-6444.

## KMB meets to work on busy fall agenda

Keep Muenster Beautiful (KMB) met on Nov. 13 to discuss the many projects which they have in the works.

The MISD FFA students started the meeting with a short debate on the use of biofuels.

It was decided that the Fall Flower Sale was a huge success. All residents of Muenster had the opportunity to purchase flowers locally to beautify their garden areas while supporting KMB.

Final preparations were made for the ONE BAG AT A TIME project held at Fischer's Meat Market on Saturday, Nov. 15. KMB would like to see everyone use the bag when shopping locally to reduce the use of plastic bags in Muenster!

Soon everyone will see the new Yard Of The Month sign, which has changed due to past vandalism. The signs will be similar to the type you see around town during election time. These signs can be easily reused and if vandalism occurs replacement is not as costly.

Joining in the town's Christmas spirit, KMB will

host a float in the Muenster Christmas Parade. The float will be decorated with all recycled materials which is definitely on our "Christmas Wish List" for everyone in Muenster to continue doing!

KMB would like to remind everyone that Stick Lamar has once again donated his services on Jan. 3 from 9-11 a.m. at the old Klement Ford lot for your Christmas tree shredding. Mark your calendars now so you don't forget. Of great news to KMB was that our small town was selected by Keep America Beautiful Beautification as the Second Place Winner. We will have more details next month on this prestigious award.

KMB would like to welcome everyone to the next meeting Dec. 11 at 6:45 p.m.

*The steps of a man are established by the Lord, and He delimits in his way.*

Psalm 37:23

**Weinhof Winery LLC**  
16678 FM 455 • Forestburg, TX 76239  
(940) 964-2552

**Pear, Sweet Peach, Apple, & Sweet Plum Now Available.**

**Tasting Room and Gift Shop**  
**Open Saturdays 12-8 PM & Sundays 1-5 PM**  
**STOP BY AND ENJOY A GLASS OF TEXAS WINES!**  
Visit our Web Site at [www.WeinhofWinery.com](http://www.WeinhofWinery.com).

**NEW YORK LIFE**  
The Company You Keep  
[www.newyorklife.com](http://www.newyorklife.com)



New York Life Insurance Company, N.Y., N.Y.  
Life Insurance, Long-Term Care Insurance, and Annuities

To learn more about New York Life Insurance products and services, call:

**Denise R. Bayer**  
Agent, New York Life Insurance Company  
1002 Pecan St.  
Lindsay, Texas 76250  
940-665-5863

**BYRON R. BERRY**  
Attorney At Law - C.P.A.

**Family Law And Estate Planning**

**FREE INITIAL CONSULTATION**

**940.668.6171**

[www.HBWVLLAW.com](http://www.HBWVLLAW.com)  
209 W. California  
Gainesville, TX 76240

Main Office 512 W. Hickory, Ste. 100 • Denton, TX 76210  
\*Not Certified by The Texas Board of Legal Specialization

**Hayes, Berry, White & Vanzant, LLP**

**Join Catholic Guadalupe radio show host David Rodriguez 's presentation / overview of the apostolic letter of Pope Benedict in Muenster on December 7 at 3pm at the Center Restaurant.**



**AN INTRODUCTION TO THE EXTRAORDINARY RITE THE TRADITIONAL LATIN MASS**

In his September 2007 Motu Proprio, Summorum Pontificum, our Holy Father Pope Benedict XVI once again made the Tridentine or Traditional Latin Mass available to all of the faithful that desire it. This beautiful and sublime treasure of the Church, the Mass of countless saints and martyrs, has been called "the most beautiful thing this side of heaven". While still a mystery to many Catholics either too young to have experienced it, or lost for years to those who knew it in their youth, the Latin Mass is rich in catechesis, steeped in reverence, and firmly grounded in the timeless teachings of Holy Mother Church.

The Tridentine Mass has been available only at 5:30 P.M. each Sunday in the Diocese of Fort Worth at St. Mary of the Assumption Church near downtown Fort Worth. There is a growing body of Catholic faithful in far North Texas that are interested in having the Traditional Mass available in this area. The following is an introduction and informational starting point to assist in this effort.

Pope Benedict's instruction, which continues and completes the work begun by Pope John Paul II, has clarified that the Tridentine Mass was never officially abrogated by the church and remains a valid form of the Latin Rite. The new Mass or Novus Ordo remains the primary Mass of the faithful. The following article one from the Holy Father's instruction explains it quite clearly:

"Art 1. The Roman Missal promulgated by Paul VI is the ordinary expression of the 'Lex orandi' (Law of prayer) of the Catholic Church of the Latin rite. Nonetheless, the Roman Missal promulgated by St. Pius V and reissued by Bl. John XXIII is to be considered as an extraordinary expression of that same 'Lex orandi,' and must be given due honour for its venerable and ancient usage. These two expressions of the Church's Lex orandi will in no way lead to a division in the Church's 'Lex credendi' (Law of belief). They are, in fact two usages of the one Roman Rite."

A copy of Summorum Pontificum and an instructional letter from the Holy Father to all of the Bishops of the world can be found at the EWTN site. It is highly recommended for those new to Tradition. [www.ewtn.com/library/PAPALDOC/b16SPindex.htm](http://www.ewtn.com/library/PAPALDOC/b16SPindex.htm)

Many have characterized the Latin Mass as the Mass of the old or for those with some nostalgic attraction for tradition. It is in fact the young that are discovering the reverence, beauty, and majesty of this Mass. In the end it is the power of the Mass itself that penetrates the hearts of those who attend and has the ability to change ones spiritual life in a very short time. The most powerful prayer of the Church for many centuries, its focus is on Christ's saving sacrifice and it redirects ones attention to God for praise, adoration, thanksgiving, and asking for the many graces we require for our salvation.

Many of those interested in the Latin Mass have apprehensions about going because of a perceived difficulty of not being fluent in Latin. This is easily overcome by missals that have the Latin and English side by side. There are a number of internet resources available to introduce, educate, and assist with all things Tridentine. One of the best is [www.sanctamissa.org](http://www.sanctamissa.org) which provides very detailed instructions for priests and laity, answers common questions, and even provides video and audio instruction on the Mass. One does not need to be a Latin scholar or student to follow and participate in the Mass.

On a practical level, the Diocese is dealing with a shortage of priests and has none currently trained or available to offer this Tridentine Mass. Support for it will most likely need to be found through one of the Traditional orders founded to offer the Latin Mass exclusively, the Priestly Fraternity of St. Peter (FSSP) or The Institute of Christ The King Sovereign Priest. Both organizations are growing rapidly and have seminaries full to capacity. It is the FSSP that currently supports the Latin Mass apostolate in Dallas and Ft. Worth. Both groups are doing all they can to help train diocesan priests to learn and offer the Tridentine Mass with weekend courses, seminars, and "bootcamps". To find out more about the FSSP or the Institute of Christ The King please refer to their web sites. ([www.institute-christ-king.org/home/](http://www.institute-christ-king.org/home/) and [www.fssp.org/en/index.htm](http://www.fssp.org/en/index.htm))

We must first make a humble appeal to our Bishop and make him aware of our legitimate desires for the Mass and Sacraments of the Extraordinary Rite. It will take time, patience, and prayer to overcome the logistical issues. Those that are familiar with the Tridentine Mass can assist and help educate those just learning or coming back after many years. The faithful are encouraged to attend a Latin Mass in Fort Worth or Dallas and experience this beautiful and ancient expression of our faith. Please visit [dallas.traditionalmass.net](http://dallas.traditionalmass.net) or <http://www.fortworthlatinmass.com/> for more information on the Mass times.

# Muenster Christmas Parade

## "A Christmas Wish List"

Saturday, November 29th

At 1:00 p.m.

Down Town Muenster



### Christkindmarkt!

- |                               |                     |
|-------------------------------|---------------------|
| Quilt Show                    | Jewelry Crafting    |
| Christmas Crafts              | German Style Nuts   |
| Kettle Korn                   | Bavarian Chocolates |
| Homemade Salsa                | Homemade Divinity   |
| Leather Tooling Demonstration |                     |



Muenster Businesses will be offering in store specials during Christkindmarkt

**Santa Visits!**  
Southside of Hess Furniture after Parade

**DRAWING!**  
For Muenster Marks Good at Any Muenster Business Register at the Businesses

**ENTERTAINMENT!**  
Strolling accordianists  
The Happy Wanders

**ATTENTION!**  
Muenster Museum will be open on Saturday, Nov. 29th from 1pm-3pm For viewing of the Creche Display

# Welcome to Christkindmarkt!



# Saturday



## Happy Holidays

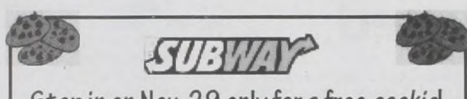
from



## Gehrig Hardware

212 N. Main Street, Muenster

759-4112



Stop in on Nov. 29 only for a free cookie!

759-2350  
203 East Division  
Muenster, TX



759.2252

211 East Division  
Muenster, TX



## CHRISTI'S Jewelry & Gifts

In Thanksgiving for our customers during our 15th Christmas season, merchandise **STOREWIDE** will be reduced **20% Friday (Nov. 28 and Saturday (Nov. 29) Only.**  
*As always, complimentary gift wrapping included.*  
Stop by and register for the drawing.

212 N. Main Street  
Muenster, TX. 76252

940-759-2994

## First State Bank

www.F-S-B.com

Member FDIC

## "Your Hometown Furniture Store"

202 N. Main Muenster Phone 940-759-4455 hessfurniture@yahoo.com  
Owner: Shana Haverkamp

Check out the great savings during Christkindmarkt!

223 N. Main • 759-4343

## Sisters

Hours: Mon-Fri 9:30 - 5:30  
Sat. 9:30 - 5:00

Toys  
Antiques  
Jewelry  
Gifts

Too Good Gourmet Cookies and Wine-A-Rita Peach Bellini

35% OFF Spode Dishes  
25% OFF River City Cuckoo Clocks  
15% OFF Murval Luggage Sets

220 North Main • Muenster, TX (940) 759-5090

Willkommen zu Christkindmarkt!

## Muenster State Bank

201 N. Main Street Muenster 940-759-2257  
1601 W. Hwy. 82 Gainesville 940-665-7900

Open Thurs. till 7pm thru Christmas!

## 15% OFF Storewide

Fri. 28 & Sat. 29

Fisher of Men Bracelets  
"Down Under" Pots

WOOD BARN NATIVITY CRIBS WOOD CRUSSES Handcrafted by CLAUDE BAYER

## Walterscheid Meat Co.

605 N. MESQUITE MUENSTER, TEXAS  
PHONE: 940-759-2744 FAX 940-759-5015

## Kountry Korner

PHONE: 940-759-2546

German Sausages  
Custom Processing (We'll Cut It Your Way)

Old World Meat Products  
30 Varieties of Sausage • Cheeses  
Custom Cut Meats  
State & Federal Inspected Processing • Feed Mill • Feed Lot

## Fisher's Meat Market

WHOLESALE • RETAIL

Party Trays • Hams • Turkeys • Specialty Items  
Gift Boxes & Baskets • Smoked Sausage & Cheese

- Since 1927 -  
P.O. Box 156 • 304 N. Main • Muenster  
www.fischersmeatmarket.com  
Open 7 Days a Week  
(800) 259-7248 • (940) 759-4211

## KLEMENT FORD

OF MUENSTER SINCE 1946

Give Thanks

Hwy. 82 in Muenster, TX. 76252  
940-759-2244 • 800-215-4605  
www.muensterford.com

Now Open!

## Muenster Personal Gym

**\$35 a month\***  
\* 3 month minimum

Call 759-2006 to schedule a free tour or stop by and have a look-see!

208 N. Walnut in Muenster across from Nortex.

## Community Lumber Company, Inc.

Your Complete Building & Hardware Center

Wishing you and yours a wonderful Thanksgiving.

200 E. Hwy. 82, Muenster 940-759-2248

## VFW Ladies Auxiliary plans for holidays

On Monday, Nov. 17, members of the Ladies VFW Post #6205 met for their regular monthly meeting. Frances Bayer presided. Chaplain Hilda Sicking pro tem, Conductress Pro Tem Billye Huchton, and Patriotic Instructor Eleanor Felderhoff led the opening ritual. Secretary Ida Bindel called the roll and Agnes Hesse gave the treasurer's report.

Members voted to purchase several sweatsuits to be delivered to the Bonham VA. They also decided to give a donation to the Home Hospice tree at Gehrig's Hard-

ware in memory of deceased members, and to pick an angel from the Angel Tree for Christmas.

Cards were signed to be sent to those serving in the military.

In Lieu of Christmas cards will be a project again this year. The deadline to have your name placed on the Christmas greetings ad is Dec. 9. Call Frances Bayer or Juanita Knabe to place greeting.

Frances Bayer reported on the Veterans Day service at the cemetery. Assisting her with placement of flags on

graves of servicemen were Ian Barnhill, Kevin Kulle, Joseph Robertson, Linda Knabe, and Janet Barnhill. They also helped get the VFW Hall ready for the Veterans Day Program given by Sacred Heart School 2nd through 5th grade students. The program was directed by music teacher Clint Kelley on Monday, Nov. 10.

Armella Cler served refreshments to nine members.

The next meeting will be a covered dish meal on Dec. 8 at 7:30 p.m. to be shared with the VFW members.



## Cub Scout Turkey Shoot

Muenster City Park was the site of a Turkey Shoot for area Cub Scouts. At right, Drew Springer applies camo paint to a participant. Above, Brad Felderhoff assists with a shooting competition. Watch next week for full story and more photos of this KMB sponsored event.

KMB photos



Montague Historians were honored recently. Pictured are from left, front - Janis Sneed, Glenna Wilson, Ray Ashley, Cecelia Ashley, Frances McCarty; back - Danny Russell, Norma Morby, Paulette Fenoglio, Johnell Thompson, Tobie Thompson, Barbara Sims, Max Brown, Phyllis Berry, LaAnna Wagonseiler, Rebecca Sikes. Courtesy photo

## Four Montague County historians are honored

Memories of days gone by enriched the lives and warmed the hearts of those who gathered to celebrate the accomplishments of four remarkable Montague County historians honored by the Montague County Historical Commission Reception at Saint Jo recently.

Janis Sneed and Ray Ashley were nominated by Montague County citizens and selected as active recipients for this 5th Annual Historic Honors program. Posthumous honors, long overdue and selected in the same fashion, were rendered to Guy Renfro Donnell and Glenn O. Wilson.

Each of these honorees has made tangible contributions to the preservation of area history and significant contributions to the development of Montague County and the world. Janis and Ray both spring from Montague County roots, pursued careers "in other lives," and returned to live in the land they loved.

Guy Donnell, of Saint Jo and Glenn Wilson of Necona were natives who pursued different courses. Guy began his career as an educator and historian going on to serve as a Political Science Professor at Oklahoma State University. Two of his

Mountain View students, Lloyd Lough, Denton, and Quinton Conyers, Saint Jo, spoke to his status as a person and teacher.

Glenn was an educator who became a lawyer with a passion for history. He lived his life and reared his family here. He was a leader in the Montague County Centennial Celebration and the first chairman of the Montague County Historical Commission. It is fitting that this Sesquicentennial Year should bring this honor to his efforts. His daughter, Glenna Odom of Fort Worth, accepted his award.

## Preparing your home for winter weather

The first day of winter is not until Dec. 21, but many homeowners may be taken by surprise by dropping temperatures. "The time to winterize your home is before the cold weather really sets in," according to Ray Palermo, director of public relations for Response Insurance. He said that taking a few simple steps now could save time, money, and a lot of stress later on, adding that "prevention is the key in maintaining a warm, safe environment, and in minimizing the risk of winter damage."

### Indoors

- Chimneys used for wood burning stoves and fireplaces should be checked for creosote build up. This tarlike substance can lead to a chimney fire if not cleaned off.
- Have a professional

check your home heating system both for energy efficiency and carbon monoxide. Buy a carbon monoxide detector for any nearby living spaces and affix it near the ceiling.

- Never use a kerosene heater. If a space heater is needed, use only an enclosed heating element product with an approval label from an independent testing organization, such as Underwriters Laboratories.
- Nearly half of a home's heat loss is through the roof. Make sure your attic has insulation with an R-value of at least 45.
- Weather strip windows and doors to maximize your heating efficiency.

### Outdoors

- Clean gutters of debris and fall leaves to prevent ice build up that can back up under the roof line.

- Swimming pools should be drained to the manufacturers recommended water level and winterized with the recommended pH level and chlorine. Drain skimmer, heater filter, pump, and piping. Disconnect and store any water slides or diving boards and secure the fence and gate around the pool.
- Be sure to close the interior shut-off valve of any exterior water faucets and then drain any remaining water from the exterior faucet itself. Disconnect any hoses and drain out any remaining water. Insulate exterior faucets and pipes to help prevent freezing.

Additional information related to fireplaces, pool care, ice dams, preventing frozen pipes, and other homeowner tips are available at their website: [www.response.com/safety](http://www.response.com/safety).

Remember the Christmas Parade on Saturday at 1 p.m.

## Save with Fiber to the Home LightSpeed package now available from Nortex Communications.



### LightSpeed package

For only \$106.85\* per month, you get:

- Telephone  
One voice line/with choice or all of 7 calling features, plus 100 LD minutes
- High Speed Internet Service  
LightSpeed 3.0 broadband
- Basic Cable TV  
68 channels

Plus optional services available: Digital, HD & DVR



759-2251 [www.nortex.com](http://www.nortex.com)

\*Some restrictions apply. Fiber available in most of Muenster and Valley View telephone service area. Higher speeds available for an additional charge. Call for eligibility. Per month rate does not include applicable taxes and surcharges. Long Distance service is provided by Nortex Communications.

## Celebrate the holiday with a balanced budget

Long before the sweltering summer humidity dissipated, before the leaves changed into vibrant reds, oranges, and yellows, and before football games and halftime shows were the weekend entertainment, Americans were planning ahead for the upcoming holiday expenses.

In the Western Union Money Mindset Survey taken in August, 43% of consumers were already planning cuts on all holiday gift purchases. The survey was conducted

by Javelin Research.

However, less green in your wallet doesn't have to equal pre-holiday blues. Western Union Payment Services offers some simple ways to curb spending and still preserve holiday happiness.

- Decide how much money you can spend on gifts and make sure to stick to this budget.
- Be a savvy shopper and watch for sales, special promotional discounts, or buy-one, get-one free offers.

- Discuss setting a budget limit on gift-giving with family and friends.
- Go online to [www.Overstock.com](http://www.Overstock.com) or [www.half.com](http://www.half.com) to find good deals.
- Research flexible payment plan options to maximize your cash flow for the holidays; ask your bank or creditor if they offer these customized bill payment plans.
- Give the gift of cash this holiday season -- a modest cash gift can help a friend or relative pay for basic necessities and living expenses. Visit [www.westernunion.com](http://www.westernunion.com) for more information.
- Read personal finance articles for the latest ways to tighten your budget on sites such as [www.smartmoney.com](http://www.smartmoney.com), [www.ivillage.com](http://www.ivillage.com) or [www.kiplinger.com](http://www.kiplinger.com).

**Paint & Body Shop For All Your Needs**

3 miles north of Hwy. 82 on FM 1200  
665-1112

**Doc's Bar & Grill**

Come Enjoy Happy Hour At Doc's

**Bands**  
Tony K., Michael V. & John F. 11/28  
John Fredrick Band 11/29

**Big Screen Entertainment**  
Texas vs. Texas A&M - Thurs  
Open Wednesday (26th) & Thursday (27th)- 6:30 p.m.

Now booking Christmas & other parties

113 N. Main St. • 759-2031  
[www.docsbarendgrill.com](http://www.docsbarendgrill.com)

## Muenster Memorial Hospital Rehabilitation Program



Cassie Kuykendall

Our Swing Bed Program provides Skilled Nursing Care and Rehabilitation Therapy that may benefit patients in the following areas:

- Post - Acute IV Therapy
- Post - Surgery Therapy for patients with an orthopedic surgical procedure requiring physical or occupational therapy
- Post - Stroke Therapy
- Pneumonia Recuperation
- Heart Problems

Therapists provide Occupational Therapy, Physical Therapy, and Speech Therapy  
Contact Adelia Wilson (940) 759-6162



Muenster Elementary Student Council members observe as Cassie Dangelmayr, at right, presents a check to Red Cross representative Sharon Watson. It benefits victims of Hurricane Ike. MISD photo

## MESC raises money for hurricane victims

Late in September, the Muenster Elementary Student Council held a coin drive to raise money for the Red Cross to help those affected by Hurricane Ike. Each grade level was challenged to raise the most money and in return would win a pizza party.

The sixth graders won the

challenge by bringing in over \$400. In total, \$1,000 was raised by students at Muenster Elementary. A check was presented by MESC President Kassie Dangelmayr to Ms. Sharon Watson of the Cooke County Red Cross during the 2nd Six Weeks' Elementary Awards Assembly.

## Pre-holiday Preparation

Prepare the guestroom: Wash the bedding, clean up pet hair to avoid allergic reactions, and dust drawers and closets in the guestroom.

Make room for guest coats and shoes: Place extra hangers in the hall closet and make room if necessary to accommodate guests' bulky jackets. Also, add a welcome mat to help stop dirt and water from entering the home.

## Cheering for the S.H. Tigers



Young cheerleaders performing at halftime at the Tigers game last Friday night included, clockwise, starting above left - Rachel Hesse and Mary Fisher; Madeline Fisher; Lauren Miller; Makenan Aldridge and Anna Riley; and Alana Endres and Anna Hudson. Janie Hartman photos



## Muenster ISD honorees



October teachers and students of the Month at Muenster ISD were, from left - Lou Heers, Molly Sicking, Dylan Huchton, Garrett Walterscheid, Erin Hess, Brandon Peavey, and Kim Budish. MISD photo

## Lunch Menus

### WEEK OF DEC. 1 - 5 MUENSTER ISD

Mon. - Hot dog w/chili and cheese, French fries, pinto beans, peaches, muffins.  
Tues. - Chicken nuggets, creamed potatoes w/gravy, corn, pears, hot rolls.  
Wed. - Ravioli, lettuce salad w/dressing, green beans, pineapple, hot rolls.  
Thurs. - Chicken patty sandwich, lettuce, tomatoes, macaroni and cheese, pork and beans, oranges, cookies.  
Fri. - Ham and cheese sandwich, chips and salsa, lettuce, tomatoes, Goldfish crackers, applesauce, carrots, ice cream.

### SACRED HEART

Mon. - Tacos w/trimmings, ranch style beans, pineapple tidbits.  
Tues. - Barbecue sandwich, chips, carrot sticks, peach cups.  
Wed. - Oven fried chicken, potatoes, gravy, green peas, apricots, bread.  
Thurs. - Ham, black-eyed peas, green salad, pears, wheat rolls.  
Fri. - Hamburgers w/trimmings, French fries, oranges.

### LINDSAY ISD

Mon. - Frito chili pie w/cheese, ranch style beans, fresh fruit.  
Tues. - Chili dogs w/cheese, corn on the cob, pears.  
Wed. - Steak fingers, mashed potatoes, gravy, green beans, pineapple, bread.  
Thurs. - Chicken noodle soup, lettuce salad, peaches, crackers.  
Fri. - Hamburger w/trimmings, oven fries, ice cream.  
ERA ISD  
Mon. - Chicken sandwich, trimmings, chips, fruit mix, pickle spears.  
Tues. - Salisbury steak, mashed potatoes, brown gravy, hot roll, strawberry applesauce.  
Wed. - Pepperoni or cheese pizza, corn, pears, rice krispy treats.  
Thurs. - Soft tacos, pinto beans, shredded cheese, pineapple, trimmings, chocolate chip cookie.  
Fri. - Staff Development. UIL Meet.

## Looking for that special gift?

**Purchase a brick from the Muenster Public Library in honor or memory of your loved one.**

For more information, contact the Library (759-4291) or Nancy Walter (759-2712)

## MUENSTER PHARMACY



For ALL your pharmacy needs.

"Our goal is to provide the best, most personable service of any pharmacy in the area. We work hard to earn your business."

Locally owned and operated with FREE delivery to local areas and all major insurances accepted.

Conveniently located at 511 North Maple, between Muenster Family Health Clinic and Muenster Memorial Hospital

**940-759-2833**

**Business Hours are 8:30am to 5:30pm - Mon thru Fri  
Lunch 12:30pm to 1:30pm**

With A Bounty Of Best Wishes  
At Thanksgiving



Muenster State Bank

Good neighbor treatment every time!

1601 W. Highway 82  
Gainesville, TX 76240  
940-665-7900

201 N. Main  
Muenster, TX 76252  
940-759-2257



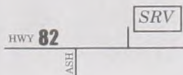
- Competitive rates and flexible terms
- Quick turnaround
- Friendly, personalized service

Whether you think you can or think you can't - you are right.  
Henry Ford

SAINT RICHARDS VILLA      SAINT RICHARDS VILLA      SAINT RICHARDS VILLA

Come see our newly remodeled home!

- Both private and semi-private rooms currently available!
- Fresh new look throughout the entire facility and all of the resident rooms.



- Call now and speak with our caring staff about how we can meet the needs of you and your family.

## SAINT RICHARD'S VILLA

15336 West Highway 82 • Muenster, Texas 76252  
**940-759-2219**





PRICES EFFECTIVE DECEMBER 1 - 7, 2008

QUANTITY RIGHTS RESERVED  
**AT AFFILIATED FOODS INC.**  
 MEMBER STORE

ALL ITEMS NOT AVAILABLE AT ALL AFFILIATED STORES

# Fischer's Meat Market

1 (800) 259-7248 or 759-4211

SENIOR CITIZENS: No Amount of Purchase Necessary on Limited Sale Items!

NOT RESPONSIBLE FOR PICTORIAL OR TYPOGRAPHICAL ERRORS

Since 1927  
 We Wouldn't be 80  
 Without You!



## Fresh Produce

<p>WASHINGTON EXTRA FANCY                  Red or Golden Delicious Apples  <b>79¢</b>                  LB.</p>	<p>FRESH Tropical Kiwifruit  <b>3\$1</b>                  FOR</p>
<p>FRESH Juicy Limes  <b>10\$1</b>                  FOR</p>	<p>BUNCH Fresh Cilantro  <b>3\$1</b>                  FOR</p>

## Grocery Savings

<p>SELECTED VARIETIES Premium Chocolates                  10-12 OZ. PKG.  <b>2\$5</b>                  FOR</p>	<p>SHURLINE Imitation Vanilla                  8 OZ. BTL.  <b>89¢</b></p>	<p>PLAIN OR IODIZED Shurline Salt                  28 OZ. CARTON  <b>3\$1</b>                  FOR</p>	<p>SELECTED VARIETIES Shurline Cooking Spray                  8 OZ. CAN  <b>2\$3</b>                  FOR</p>	<p>CLASSIC FUDGE OR CHERRY Shurline Brownie Mix                  10.5-21.5 OZ. BOX  <b>2\$3</b>                  FOR</p>	<p>SHURLINE 9 INCH Graham Pie Crust                  8 OZ. CAN  <b>5\$5</b>                  FOR</p>		
<p>WESTERN FAMILY CHOCOLATE OR VANILLA FLAVORED Almond Bark                  24 OZ. PKG.  <b>2\$5</b>                  FOR</p>	<p>SHURLINE Baking Cocoa                  10 OZ. CAN  <b>2\$3</b>                  FOR</p>	<p>REGULAR OR MINI Shurline Marshmallows                  10-15 OZ. PKG.  <b>89¢</b></p>	<p>ASSORTED FLAVORS ORIGINAL OR COCOA FREE Shurline Gelatin Dessert                  4.4-3 OZ. PKG.  <b>3\$1</b>                  FOR</p>	<p>SHURLINE ASSORTED FLAVORS ORIGINAL OR SUGAR FREE Instant Pudding                  1.34-3.0 OZ. PKG.  <b>3\$1</b>                  FOR</p>	<p>KNOX OR RANCH Shurline Dip Mix                  1-1.34 OZ. PKG.  <b>3\$1</b>                  FOR</p>		
<p>TEXAS RED Grapefruit  <b>2\$1</b>                  FOR</p>	<p>FRESH Jumbo Garlic  <b>5\$1</b>                  FOR</p>	<p>SHURLINE ASSORTED VARIETIES Salad Dressing                  16 OZ. BTL.  <b>2\$4</b>                  FOR</p>	<p>SHURLINE Seafood Cocktail Sauce                  12 OZ. BTL.  <b>4\$5</b>                  FOR</p>	<p>SELECTED VARIETIES MILK OR BREAD &amp; BUTTER Shurline Pickles                  12 OZ. JAR  <b>2\$4</b>                  FOR</p>	<p>OLD FASHIONED OR QUICK COOKING Shurline Oats                  18 OZ. CARTON  <b>4\$5</b>                  FOR</p>	<p>SELECTED VARIETIES Shurline Cereal                  11.5-17 OZ. BOX  <b>2\$4</b>                  FOR</p>	<p>SHURLINE ORIGINAL Table Syrup                  36 OZ. BTL.  <b>2\$99</b></p>
<p>FRESH CRUNCHY Green Cabbage                  8 OZ. PKG.  <b>3\$1</b>                  FOR</p>	<p>FRESH Grape Tomatoes                  8 OZ. PKG.  <b>2\$4</b>                  FOR</p>	<p>SHURLINE ORIGINAL OR BUTTERFLICK COMPLETE Pancake &amp; Waffle Mix                  32 OZ. BOX  <b>2\$3</b>                  FOR</p>	<p>SHURLINE Family Size Tea Bags                  24 CT. BOX  <b>4\$5</b>                  FOR</p>	<p>SHURLINE PEACH, CHERRY, OR LITE CHERRY Pie Filling                  20-21 OZ. CAN  <b>2\$4</b>                  FOR</p>	<p>CASHEW NUTS OR PIECES OR MIXED NUTS WITH PEANUTS Shurline Canned Nuts                  8.5-11.5 OZ. CAN  <b>3\$99</b></p>	<p>SELECTED VARIETIES Shurline Pineapple                  20 OZ. CAN  <b>4\$5</b>                  FOR</p>	<p>SHURLINE Apple Pie Filling                  21 OZ. CAN  <b>2\$3</b>                  FOR</p>

## Frozen Foods & Dairy

<p>ASSORTED FLAVORS Shurline Ice Cream                  56 OZ. SQUARES  <b>2\$4</b>                  FOR</p>	<p>SHURLINE ON NATURAL DIRECTIONS SELECTED VARIETIES Frozen Fruit                  12-24 OZ. PKG.  <b>2\$6</b>                  FOR</p>	<p>SHURLINE ON NATURAL DIRECTIONS ASSORTED VARIETIES Frozen Vegetables                  12-16 OZ. PKG.  <b>4\$5</b>                  FOR</p>
--	---	--

<p>SHURLINE SELECTED VARIETIES Cranberry Juice Cocktail                  64 OZ. BTL.  <b>2\$5</b>                  FOR</p>	<p>AN OATMEAL OR SCALLOPED Shurline Potato Sides                  5.25 OZ. BOX  <b>5\$5</b>                  FOR</p>	<p>SHURLINE ASPIC PACK Chicken Broth                  32 OZ. BOX  <b>2\$3</b>                  FOR</p>	<p>SHURLINE ASSORTED VARIETIES Instant Rice Mixes                  6.2-6.5 OZ. BOX  <b>5\$5</b>                  FOR</p>	<p>KNOX OR RED OR MILD GREEN Shurline Enchilada Sauce                  10 OZ. CAN  <b>5\$5</b>                  FOR</p>
--	--	--	--	---

## Pets & Non-Food Savings

<p>SHURLINE ASSORTED VARIETIES Frozen Orange Juice                  12 OZ. CAN  <b>2\$3</b>                  FOR</p>	<p>SHURLINE SELECTED VARIETIES Jumbos Biscuits                  8 CT. CAN  <b>4\$5</b>                  FOR</p>	<p>SHURLINE ASSORTED ROLL OR MUGEN BRAND Cookie Dough                  16-16.5 OZ. PKG.  <b>2\$4</b>                  FOR</p>	<p>PRE-PRICED SALAD ASSORTED FLAVORS Shurline Dry Cat Food                  14 LB. BAG  <b>5\$99</b></p>	<p>LARGE OR MINI-FLAVOR Shurline Dog Biscuits                  25 OZ. PKG.  <b>2\$3</b>                  FOR</p>	<p>12 OZ. BOWL, 6 7/8 INCH PLATES, OR 10 INCH COMPARTMENT PLATES Shurline Foamware                  24-50 CT. PKG.  <b>2\$3</b>                  FOR</p>	<p>WESTERN FAMILY SELECTED VARIETIES Rectangular Sponges                  1-4 CT. PKG.  <b>\$1.19</b></p>	<p>WESTERN FAMILY FOODSAVERS OR SERVABLES CONTAINERS                  2-4.8 QUART OR 6 PIECE SET  <b>2\$7</b>                  FOR</p>	<p>WESTERN FAMILY SMALL, MEDIUM, OR LARGE Household Gloves                  PAIR  <b>\$1.19</b></p>
<p>SHURLINE ORANGE DANISH OR CINNAMON ROLLS Sweet Rolls                  8 OZ. CAN  <b>2\$3</b>                  FOR</p>	<p>SHURLINE Margarine Quarters                  16 OZ. PKG.  <b>5\$5</b>                  FOR</p>	<p>ORIGINAL OR ASSORTED SOFT Shurline Cream Cheese                  8 OZ. TUB  <b>2\$3</b>                  FOR</p>	<p>GALLON OR QUART, FREEZER OR STORAGE Shurline ZipGlide Storage Bags                  10-20 CT. BOX  <b>2\$4</b>                  FOR</p>	<p>DENTYL ULTRA SOFT Western Family Facial Tissue                  230 CT. BOX  <b>2\$3</b>                  FOR</p>	<p>WESTERN FAMILY All Natural Firelogs                  5 LB. LOG  <b>2\$99</b>                  8 CT. CASE PRICE \$14.99</p>	<p>WESTERN FAMILY SmartFlash Camera                  27 EXP.  <b>4\$99</b></p>	<p>WESTERN FAMILY 6.75 OR 100 WRIST Double Life Light Bulbs                  4 CT. PKG.  <b>2\$3</b>                  FOR</p>	



# SPORTS

## Tigers advance to State Semi-Finals

The Sacred Heart Tigers traveled to Rice, Texas to take on the Warriors of Woodlands Christian Academy in the Quarter-Final round of the TAPPS Division 4 State playoff game. The Woodlands team couldn't catch the Tigers, as Sacred Heart ripped the Warriors for 598 all purpose yards towards a 49-13 playoff victory, but found the turf unfriendly as the refs flagged Sacred Heart for 150 yards.

"This was our best game running the ball," noted Tiger Coach Dale Schilling. "I have to compliment the offensive line for an outstanding job and Nate (Berend) for controlling the game." Schilling added that the Tiger defense executed the game, taking away the Warriors "bread and butter." "Their quarterback was dangerous, but we found a way to stop him."

Schilling challenged the senior class members of the team at halftime and said they responded in a very positive way.

After holding Woodlands on the first drive of the game, a short kick put the Tigers on their 45 yard line. Sparkman ran all over the Warrior defense thanks to the solid work of the Sacred Heart offensive line, taking four runs, scoring from the 6. The PAT failed for a 6-0 score with 9:24 on the clock.

The Warriors got in a long run getting to the Tiger 25. An attempted field goal failed, returning the ball to Sacred Heart. Six plays later, Woodlands intercepted a Tiger pass, but the Sacred Heart defense gave up no ground and got the ball on their 38 after a punt.

Sparkman gained 31 yards in two runs, with Nathan Berend adding 14 to the Warrior 16 yard line. Two more Sparkman runs and a John Krawietz extra kick and the Tigers were up 13-0 with 1:56 remaining in the 1st quarter.

Tackles by Mark Bartush, Mitch Hesse, Zach Zanchetta, Chad Walterscheid, and Berend forced a Warrior punt to start the 2nd period.

Flags forced Sacred Heart

to punt, with Woodlands getting to midfield before running out of downs.

The Tigers' next drive started on their 25. Runs by Sparkman, Berend, and Krawietz took the ball to the 8. Sparkman found the end zone, but a flag took the ball back to the 25. Two plays later, Sparkman scored on a 20 yard run with 1:41 on the clock. The PAT was blocked for a 19-0 score.

A flag and long pass play set up the Warriors' first touchdown, a 19 yard run. The PAT put 7 points on the board for Woodlands with 49 seconds on the clock.

A fumble on the kick return gave Woodlands the ball on the Tiger 32. A penalty moved the ball to the 25. The Warriors crossed the goal line, but a flag on them called the play back. Incomplete passes and an interception by Berend stopped the scoring threat as the 1st half soon came to a close.

Sacred Heart started the 3rd quarter on their 15 yard line. Working around penalties, the Tigers soon scored on a 2 yard run by Sparkman. Sparkman ran in the PAT for a 27-7 score with 9:36 on the clock.

A flag gave the Warriors their only gain, punting on 4th and 10. From the Tiger 35, Krawietz moved the ball into Warrior territory. Four runs by Sparkman, and a Berend to Krawietz pass placed the ball on the 5 yard line. A quarterback keeper by Berend crossed the goal line at 5:33. A Berend to Sparkman pass gave Sacred Heart a 35-7 lead.

The Warriors put together a seven play scoring drive, finding the end zone with 3 minutes on the clock. The PAT failed for a 35-13 score.

The teams exchanged punts as action continued into the 4th quarter. Sacred Heart scored again after a mix of six runs by Sparkman, Berend, and Krawietz took the ball to the 4 yard line. Sparkman crossed over the line with 6:19 remaining in the game. Krawietz added the extra point for a 42-13 score.

The Tigers got the ball

back two plays later when Dylan Flusche caused a fumble that Nick Popovich covered on the Sacred Heart 39 yard line. Berend and Josh Biffle soon took the Tigers to the 4 yard line. With 1:50 on the clock, Biffle scored. Krawietz added the kick and the Tigers were up 49-13, the game's final score.

SH	13	6	16	14	49
WC	0	7	6	0	13

Team Stats		WC	
SH	32	1st downs	13
61/565	Rushes/yds	27/164	
33	Passing yds	121	
1/6/1	Comp/att/int	8/20/1	
2/38	Punts/avg	6/25	
2/1	Fumbles/lost	3/1	
13/150	Penalties/yds	3/15.5	

**Individual Stats**  
**TACKLES:** Matt Hesse 8, Dylan Flusche 5, Mark Bartush 5. **TURNOVERS:** Interception - Nathan Berend; Fumble Recovery - Nick Popovich. **RUSHERS:** Sam Sparkman, 35/301; John Krawietz, 6/110; Nathan Berend, 15/103; Josh Biffle, 5/50. **RECEIVER:** John Krawietz, 1/33.

**Next Action**  
 The Tigers advance to the TAPPS Semi-Final round of the playoffs facing the Richardson Canyon Creek Cougars this Friday. The game will be closer to home, being played at Argyle Liberty Christian.

The Cougars are coming off a big 55-12 victory over the Hallettsville Sacred Heart Indians. With only one loss this season, Canyon Creek will be a tough challenge for the Tigers.

"They're an option team. They run the ball to perfection," said Coach Schilling. "They are the fastest, most explosive team we've seen in a long time. They don't make mistakes."

Along with the Tigers and Canyon Creek, Frisco Legacy and Rockwall Christian will be fighting it out for a chance to play in the championship game.

The Tiger game this Friday begins at 7 p.m. Sacred Heart fans will fill the visitors bleachers. No pre-sale tickets are available due to the holiday break.



The Muenster Hornet defense, including Eric Hellman (88) and Dillon Bayer (54), wrap up a Panther ball carrier. Also pictured are Paul Crabtree (25) and Taylor McGrew (55). MISD yearbook photo

## Hornets end football as Area finalist

The difference in a win or a loss for the Muenster Hornets may have been in the bounce of the ball. Unfortunately for the Hornets, the bounce was in favor of the Gorman Panthers.

Muenster traveled to Bursleson for the contest and dominated the clock, 31 minutes to 17, out-ran their opponent (184 to 141 yards), out-passed (208 to 126 yards), and out-played (79 to 41 offensive plays), but could not out-score the Gorman team, falling 27-19 at the area playoff game last Friday night.

"Looking at the game, it was a good tough match-up," commented Hornet Coach Allen Cross. "In the end, we didn't finish as well as we thought we would."

Action began when Taylor McGrew booted a 44 yard kickoff. Five plays later, Garrett Walterscheid intercepted a Panther pass on the Hornet 25 yard line.

Quarterback Levi Trubench gained 6, followed by a pass to Tanner Herr for 9. Paul Crabtree picked up 4, with a Trubench pass to Walterscheid pass play taking the ball to midfield. Crabtree's 17 yard run was followed by losses to the 45. A Trubench to Walterscheid pass was completed for a touchdown. Herr added the PAT for a 7-0 score at the 6:32 mark in the 1st quarter.

After six plays, the Panthers swarmed furiously, working 17 plays and moving into the 2nd quarter, but came up short on 4th down. Three plays later, Gorman scored on a 60 yard pass play and

tied the game 7-7 with 6:37 on the clock.

After the kick, Muenster was determined to extinguish the Panthers' spark and proceeded to get in 15 plays. A 4th and 5 Trubench to Walterscheid pass moved the sticks as the Hornets continued to march down field, scoring on a 1 yard quarterback keeper with 1:24 remaining in the 1st half for a 13-7 Hornet lead.

Gorman got in five plays and Muenster three before the time ticked off the clock.

The teams exchanged punts as time passed by the 3rd quarter. Muenster's next two drives ended in turnovers, the second setting up Gorman's next score. With 45 seconds remaining in the 3rd period, Gorman tied the game 13-13.

Muenster's offense continued to struggle, punting the ball back to the Panthers. Gorman soon took the lead on a 63 yard pass play. With 10:40 on the clock, the Panthers led 20-13.

The teams now exchanged fumbles, with McGrew covering for the Hornets.

Muenster's drive was soon ended with an interception. Four plays later, Gorman scored on a 61 yard run and took a 27-13 lead with 2:36 on the game clock.

The Hornets mixed runs by Trubench and Crabtree, and passes to Crabtree and Herr to get to the 5 yard line. Another completed pass to Herr was good for 6 points. The PAT failed for a 27-19 score with only 30 seconds on the clock.

An onside kick was covered by the Panthers who

worked all but 6 seconds off the clock. Muenster's last play of the game fell incomplete for the final 27-19 loss.

M	7	6	0	6	19
G	0	7	6	14	27

Team Stats		G	
M	24	1st downs	9
38/184	Rushes/yds	30/141	
208	Passing yds	126	
21/41/2	Comp/att/int	3/11/1	
2/23	Punts/avg	4/35	
2/2	Fumbles/lost	1/1	
5/44	Penalties/yds	4/30	

**Individual Stats**

**TURNOVERS:** Fumble Recovery - Taylor McGrew; Interception - Garrett Walterscheid. **RUSHERS:** Levi Trubench, 18/92; Paul Crabtree, 20/92. **RECEIVER:** Garrett Walterscheid, 5/98.

The Hornets finished the 2008 season with a 6 - 6 Area finalist record. Muenster was only 8 points short of being District Champions, entering the playoffs as the 3rd place finisher in the District.

Gorman will face Albany in the Regional game. The Lions beat Windthorst last week 20-16 and Rotan 70-13 in Bi-District.

"I was very pleased with the season, but displeased in the last game. It was an exciting year. Every game we were competitive. All but one game. We were in it till the end," commented Coach Cross. "I couldn't have had a better team to work with during my transition to head coach."

Cross noted that he is looking forward to next year with seven offensive and eight defensive starters returning. "We're losing size, so we'll have to scrappy."



The Tiger offensive line opens a big hole for Sam Sparkman (20). Sparkman ran for over 300 yards in Sacred Heart's playoff victory over Woodlands Christian. Courtesy photo

## Tigerettes win Bethesda Classic

The Sacred Heart Tigerettes won all their games this weekend and brought home the tournament Championship trophy from the Fort Worth Bethesda Christian Tip-off Classic.

"This was a nice tournament win for us," noted Tigerette Coach Jon LeBrasseur. "We did not play well Thursday or Friday, but we had a great game on Saturday. Anytime you step up and defeat a AAAA, you must be doing some good things."

In game one, Sacred Heart took a 55-25 win from Pantego Christian Academy. Kristin LeBrasseur led the team with 20 points, 6 rebounds, and 4 steals. Samantha Wimmer and Raynee Hogan each added 8. Taylor Reiter scored 6, Karli Anderle 5, Rebekah Hesse 4, Kalyssa Pollard 3, and Lisa Miller 1.

SH	16	18	10	11	55
C	9	14	7	4	34
P	6	7	6	6	25

Friday, the Tigerettes defeated Fort Worth Calvary 56-34. LeBrasseur, Wimmer, and Hogan led the scoring with 17, 11, and 10 points. Pollard dropped in 4, Hoedebeck 3, Reiter 2, Anderle 2, and Miller 1. Wimmer also had 6 assists and 8 steals. Reiter was the leading rebounder with 8.

SH 16 18 10 11 55  
 C 9 14 7 4 34

In Saturday's Championship game, Sacred Heart defeated Arlington Grace Prep 55-33 with a strong 2nd half finish.

Wimmer burned the boards with 26 points. LeBrasseur added 14, Hogan 5, and 2 apiece by Hesse, Reiter, and Pollard. Wimmer also had 8 steals and 8 assists, and Pollard 6 rebounds.

SH	12	9	14	20	55
GP	10	7	6	10	33

The Tigerettes had four members earn a place on the All-Tournament Team. Samantha Wimmer was MVP. Raynee Hogan, Kristin LeBrasseur, and Sydney Hoedebeck also made the team.

The 7-0 Tigerettes will be off until Dec. 2, when they will travel to Valley View.

## Lady Hornets take second place at Saint Jo Tournament

The Muenster Lady Hornets varsity basketball team competed in a tournament at Saint Jo last week, winning two of three contests and settling for 2nd place.

On Thursday, Muenster stomped the Lady Horns of Forestburg 79-20. Shaina Felderhoff and Samantha Endres were top scorers with 14 and 11 points. Leah Smith and Lia Heers each scored 9, with Jenni Luke and Amanda Dangelmayr adding 8 apiece. Taylor Klement put in 5 points, with Jackie Klement, Lana Heers, and Allison Pagel all getting 4, and Delana Sicking 3.

Friday, the Lady Hornets got another big win, a 57-19 victory over Paradise. Fel-

derhoff, Luke, and Endres were leading scorers with 16, 12, and 11 points. T. Klement and Sicking each added 5, J. Klement 4, Lana Heers 2, and 1 each from Lia Heers and Pagel.

In Saturday's final Championship game, Muenster was challenged by the Gunter Lady Tigers, who handed the Lady Hornets a 53-41 loss.

Endres and T. Klement led the scoring with 15 and 12 points. Felderhoff added 7, J. Klement 3, and 2 each by Lia Heers and Pagel.

Monday night, Muenster hosted the Lady Indians of Nocona in a tough 62-47 loss for the Lady Hornets. Muenster's scores were spread out

among nine players, led by Taylor Klement's 10 points. Sam Endres added 9, Shaina Felderhoff 8, Jenni Luke 6, Allison Pagel 5, Lia Heers 4, Jackie Klement and Lana Heers 2 apiece, and Leah Smith 1.

## Lady Knights named to All-State team

Two members of the Lindsay Lady Knights Volleyball team were named to the Texas Girls Coaches Association All-State Volleyball Team, juniors Kristin Martin and

Kaylee Murphree. Lindsay ended the season after claiming the District 11A Championship with a win over Savoy in a 3-team single elimination tournament, followed by an Area victory over Gorman, before falling to #1 ranked Albany at the Regional Quarter-Final match.

When you have an argument with your spouse, the first one who says, "I'm sorry I hurt your feelings; please forgive me," is the winner.

**BOIS D'ARC BASH  
&  
TOY DRIVE '08**

Saturday, Dec. 13th 7 p.m.  
Historic Lindsay Gun Club  
Downtown Lindsay, TX

with  
**THE BOIS D'ARCS**

Tom McElvain  
Scotty Thurman &  
Perfect Trouble  
Only in Texas  
Simonguitarfunkle

\$10 or an unwrapped toy  
Arrive by 9:00 p.m. to be eligible for  
special drawings

**HOPE TO SEE YOU THERE !!!**

WWW.THEBOISDARCS.COM

# GOOD LUCK TIGERS BEAT CANYON CREEK

## Junior High Basketball

**Lindsay**  
The junior high girls lost two, won one against Era on Nov. 20.

The Grey team defeated Era 13-6. "The girls did a good job for this early in the season," commented Coach Don Neu. Madison Green, Sara Clark, and Maisoun Hweidi each scored 4 points. Philicia Vogel added 1.

The White team came up short 25-10. The game was close until the 4th quarter when Era hit some quick shots to extend their lead. Lauren Gibbs was Lindsay's high scorer with 5. Elizabeth Wallace added 3 and Briley Fleitman 2.

The Black team lost their game in overtime 19-15. "The girls played very hard and showed a lot of improvement," said Coach Neu.

Megan Schumacher led the team on the scoreboard with 8 points. Makaylie Ward added 3, with Brienne Sandmann and Cassidy Gum each scoring 2.

**Muenster/Lindsay**  
Lindsay's 7th grade defeated the Muenster Lady Stingers "B" team 10-6 Monday night. Scoring for Lindsay were Elizabeth Wallace

4, Maisoun Hweidi 2, and Elizabeth Zwinggi 2. Muenster point makers were Britany Pagel and Adrien Rohmer.

The Lady Stingers "A" team took a 56-4 one-sided victory over the Lindsay 8th grade. Brienne Sandmann, Megan Schumacher, and Makaylie Ward scored for Lindsay.

Scoring for Muenster were Paige Herr 20, Amber Walterscheid 12, Sydney Huchton 8, Payton Sanders 6, and 4 each by Hannah Bayer and Lauren Rohmer.

**Sacred Heart**  
On Nov. 20, Sacred Heart hosted Tioga on the court. The "B" Team Cubs took a 30-24 win with a strong 2nd quarter. Isac Walterscheid led the Cubs with 9 points. Brady Endres added 7, Tavi Saldana 6, Alec Hudson 4, and 2 apiece by Hayden Schilling and Jason Knabe.

The "A" Cubs also were victorious with a 39-26 final over Tioga. Andy Flusche led all scorers with 16 points. John Popovich added 8, Clay Hogan 6, John Hesse 5, and Austin Aldridge 4.

On Monday, the "B" Cubs out-scored Sivells Bend 37-12. Walterscheid led Sacred Heart with 12 points. Endres added 9, Schilling 8, Hudson 6, and Saldana 2.

SH 12 6 10 11 39  
T 3 12 4 7 26  
SB 3 7 2 0 12

**Lindsay**  
The JV Lady Knights took another loss on the chin last Saturday when they traveled to Howe. The Lady Bulldogs defeated Lindsay 40-26.

Leading scorer for the Lady Knights was Allison Metzler with 10 points and 8 rebounds. Megan Caillier added 6, Lucinda Krahl 4,

and 3 apiece by Emily Conaway and Taylor Atkins.

**BOWIE TOURNAMENT**  
**Muenster JVI**  
Muenster's JVI team started tournament action with a 50-25 win over Valley View. Demi Koelzer and Andi Felderhoff were leading scorers with 20 and 17 points. Shelby Dangelmayr

added 5, with Michelle Henschel and Paige Hennigan each getting 4.

In game 2, the JVI Lady Hornets came up short, 35-31 against Bridgeport. Koelzer scored 10, Henschel and Hennigan 7 each, Emily Hellman 5, and Felderhoff 2.

Muenster struggled in game 3 falling to Weatherford 31-26. Koelzer put in 14 points, Hellman 7, with Dangelmayr and Hennigan 2 apiece, and Chloe Schneider 1.

In the final tournament game, the Lady Hornets were victorious over Pilot Point 51-45. Koelzer burned the boards with 35 points. Dangelmayr scored 6, with Felderhoff and Hennigan each adding 5.

**Muenster JVII**  
The JVII Lady Hornets also competed in the Bowie Tournament. In the opening game, Muenster defeated Pilot Point 27-15. Delana Rohmer led the scoring with 13 points. Andi Hess added 5, Kalyen Dangelmayr 4, Bianca Velasquez 3, and Olivia Haverkamp 2.

Muenster added another win to their early record with a 37-27 victory over Bridgeport in 2nd round action. Rohmer and Dangelmayr led the scoring with 13 and 10 points. Hess and Velasquez each added 6 and Mita Mehdi-por 2.

The final game, the Lady

Hornets came up short 28-20 against Sanger. Rohmer and Haverkamp scored 7 and 6 for Muenster. Hess added 3, with Dangelmayr and Velasquez each scoring 2.

**Lindsay**  
The JV Lady Knights beat the Lady Falcons of Turner, Oklahoma 46-6 Monday. Lucinda Krahl and Jordan Fleitman were high scorers with 13 and 10 points. Megan Caillier added 8, Taylor Atkins 7, and 4 each from Allison Metzler and Emily Conaway.

**Muenster - Lindsay**  
On Monday, the JVII Lady Hornets defeated Lindsay's JVII 32-13. Kalyen Dangelmayr led Muenster with 12 points. Chloe Schneider added 8, with Mita Mehdi-por and Andi Hess each scoring 4, and Olivia Haverkamp and Bianca Velasquez 2 apiece.

Leading Lindsay on the scoreboard was Taylor Pelzel with 6 points. Katie Arendt added 4, and Mandy Hess 2.

**Muenster**  
Nocona came to Muenster on Monday night and handed the JVI Lady Hornets a 42-38 loss in double overtime. Demi Koelzer was high scorer for Muenster with 17 points. Shelby Dangelmayr added 10, Michelle Henschel 5, and Paige Hennigan 4.

## Hunting vital to Oklahoma management of deer

It is about population control, protecting farmers from agricultural crop damage, controlling tick infestations, and providing necessary funding for the Oklahoma Department of Wildlife Conservation (ODWC). It is deer season in Oklahoma.

"We essentially lost our species back when we didn't have seasons," said Jim Shaw, a professor of natural resource ecology. "White-tailed deer in Oklahoma were virtually extinct in about 1914."

Great strides have been taken since the mid-1950s to restore the population of white-tailed deer in Oklahoma. Now, with a booming population estimated at more than a half million, deer hunting season in Oklahoma is a vital part of wildlife conservation efforts to manage the deer population.

"There are a lot of places in Oklahoma and the rest of the country that have too many deer," Shaw said. "Deer begin to be a pest once they get past a certain population number."

"A number of people are killed every year and a lot of damage is done to vehicles from collisions with deer," Shaw said. "It even affects insurance rates in some states."

The negative effects are not limited to personal and professional economics.

"You're also getting an increase in Lyme disease and a bigger tick population," Shaw said. "There are all kinds of different effects of having too many deer. It's not a healthy situation."

Even with the recently extended rifle season in Oklahoma, the deer population has continued to rise.

Since the 1930s, a manufacturer's excise tax has been placed on sporting arms and ammunition at 10% of the cost. This somewhat hidden tax has been passed on to the consumer and collected by the U.S. Fish and Wildlife Service.

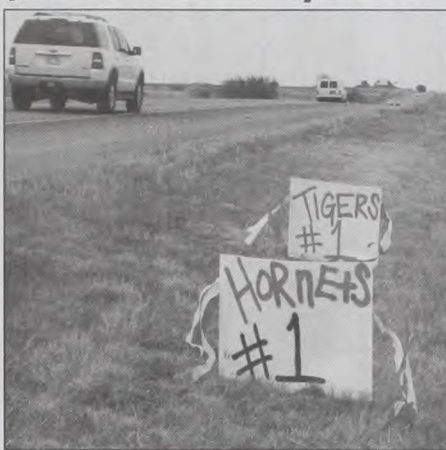
After a 3:1 match from the federal tax, the ODWC receives millions of dollars in funding, which is only available for use in wildlife management. Shaw said that about a third of the ODWC's budget comes from this federal aid.

"Between the license sales and the federal aid money, you've got big revenue sources," he said. "It's a self-funding system and has wide public support. Despite it being sort of a hidden tax, people don't really give it a second thought. It's a beautifully conceived system."

Archery season in Oklahoma has been open since Oct. 1 and runs through Jan. 15, 2009, while muzzle-loading season and youth deer gun season have concluded. However, the bulk of the harvest will come during the first weekend of gun season, which opens the Saturday before Thanksgiving and runs for 16 days.

## Sub-varsity basketball action

### Joint community effort

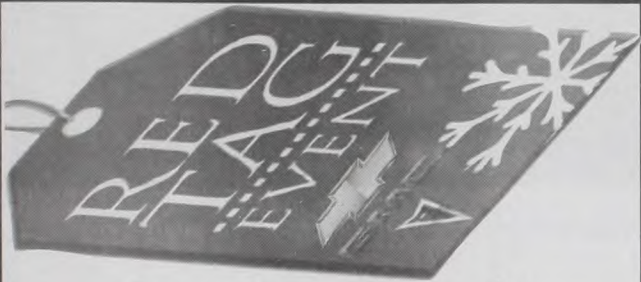


Signs supporting the Muenster Hornets and Sacred Heart Tigers could be seen along East Highway 82 Friday, showing players and fans leaving town for the games that they had the support of the community. Janie Hartman photo


### Just a thought


Education, experience, and memories are three things no one can take away from you.


Simple things are often the most satisfying.




**See Some Red.  
Save Some Green.  
The Price On The Tag  
Is The Price You Pay!**

**NEW 08 CHEVY EQUINOX SPORT**  
  
**\$23,925**  
**UP TO \$12,000 OFF MSRP**

**NEW 08 CHEVY AVALANCHE LTZ**  
  
**\$37,571**

**NEW 08 BUICK LUCERNE CXS**  
  
**UP TO \$10,000 OFF MSRP**

**NEW 08 GMC 3/4 TON CREW CAB 4WD SLE 2**  
  
**\$44,297**

**NEW 08 PONTIAC TORRENT**  
  
**OVER \$4,500 OFF MSRP**

**BROWN MOTOR COMPANY**  
**A NAME YOU CAN TRUST**  
**1608 W. Hwy 82 - Gainesville**  
**888-235-1690**  
[www.brownmotorco.com](http://www.brownmotorco.com)  
 PONTIAC BUICK GMC

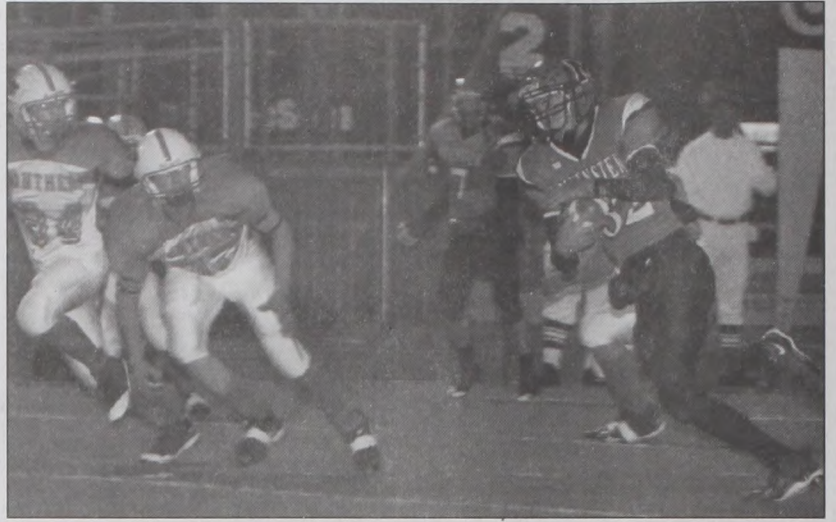
**GM Certified USED VEHICLES**

<b>04 Chevy Impala LS</b> Stk# 130379 52K Miles <b>\$8,995</b>	<b>04 Chevy Silverado 1500</b> Stk# 112978 37K Miles <b>\$9,857</b>	<b>08 Chevy 1500 R/C V8</b> Stk# 161476 12K Miles <b>\$12,772</b>
<b>08 Chevy HHR LS</b> Stk# 527525 23K Miles <b>\$13,525</b>	<b>08 Pontiac Torrent</b> Stk# 021216 17K Miles <b>\$14,798</b>	<b>08 Chevy Cobalt LT</b> Stk# 123428 21K Miles <b>\$14,856</b>
<b>08 Buick Lucerne CX</b> Stk# 214828 48K Miles <b>\$15,457</b>	<b>08 Chevy Impala LT</b> Stk# 145792 27K Miles <b>\$15,725</b>	<b>08 Buick Lacrosse CX</b> Stk# 187287 12K Miles <b>\$16,568</b>
<b>08 Chevy Impala LTZ</b> Stk# 150566 30K Miles <b>\$17,128</b>	<b>08 GMC Yukon SLT</b> Stk# 108937 45K Miles <b>\$17,433</b>	<b>08 Chevy Malibu LTZ</b> Stk# 265606 16K Miles <b>\$17,998</b>
<b>07 GMC Yukon SLE</b> Stk# 118685 45K Miles <b>\$22,857</b>	<b>08 Chevy Suburban LT</b> Stk# 106959 19K Miles <b>\$24,727</b>	

**MORE SUPER DEALS!**

<b>06 FORD F150</b> Stk# 22K Miles 18959 <b>\$18,970</b>	<b>02 TOYOTA 4 RUNNER</b> Stk# 585 SPORT 320096 <b>\$11,725</b>	<b>03 CHEVY SUBURBAN LT</b> Stk# 131K Miles 320096 <b>\$3,990</b>	<b>02 FORD ESCORT</b> Stk# 80K Miles 190487 <b>\$4,724</b>	<b>07 MAZDA 6I SPORT</b> Stk# 39K Miles MS4776 <b>\$15,988</b>	<b>06 HONDA CRUX</b> Stk# 36K Miles 544023 <b>\$10,578</b>	<b>08 DODGE GRAND CARAVAN</b> Stk# 21K Miles 601494 <b>\$13,828</b>	<b>04 JEEP WRANGLER</b> Stk# 64K Miles 79441 <b>\$14,967</b>
<b>08 KIA RONDO</b> Stk# 18K Miles 128532 <b>\$11,297</b>	<b>06 LAND ROVER RANGE ROVER</b> Stk# SPORT 28K Miles 88402 <b>\$42,297</b>	<b>06 FORD ESCAPE XLS</b> Stk# 45K Miles 886940 <b>\$12,991</b>	<b>07 DODGE MAGNUM</b> Stk# 20K Miles 886120 <b>\$12,235</b>	<b>07 HONDA GRAND MAZDA LS</b> Stk# 25K Miles 824271 <b>\$15,725</b>	<b>08 NISSAN ROGUE</b> Stk# 12K Miles 100728 <b>\$17,857</b>	<b>09 CHEVY SUBURBAN LS</b> Stk# 88K Miles 961064 <b>\$7,457</b>	<b>04 BUICK REGAL LS</b> Stk# 77K Miles 349958 <b>\$8,987</b>
<b>07 DODGE GRAND CARAVAN</b> Stk# 37K Miles 241494 <b>\$11,988</b>	<b>04 SATURN ION</b> Stk# 06K Miles 100808 <b>\$6,988</b>	<b>04 OLDS ALERO</b> Stk# 63K Miles 232121 <b>\$7,908</b>	<b>08 JEEP COMMANDER</b> Stk# 27K Miles 232633 <b>\$14,897</b>	<b>03 VW PASSAT GLS</b> Stk# 100K Miles 229770 <b>\$8,982</b>	<b>07 BMW 750I</b> Stk# 11K Miles T09129 <b>\$51,792</b>	<b>06 VW BEETLE CP</b> Stk# 21K Miles 400570 <b>\$16,888</b>	<b>08 CADILLAC DEVILLE</b> Stk# 40K Miles 240806 <b>\$15,910</b>
<b>07 CHEVY 2500</b> Stk# 04K Miles 110828 <b>\$21,786</b>	<b>07 CHRYSLER 300C</b> Stk# 25K Miles 889229 <b>\$21,209</b>	<b>05 DODGE NEON</b> Stk# 52K Miles 253611 <b>\$8,294</b>	<b>03 CADILLAC DEVILLE DTS</b> Stk# 10K Miles 107103 <b>\$14,802</b>	<b>03 CHEVY SILVERADO LS</b> Stk# 07K Miles 372979 <b>\$9,958</b>	<b>04 JEEP GRAND CHEROKEE</b> Stk# 88K Miles 373817 <b>\$11,840</b>	<b>04 TOYOTA SEQUOIA LTD</b> Stk# 04K Miles 328890 <b>\$13,222</b>	<b>07 DODGE RAM 1500</b> Stk# 17K Miles 365718 <b>\$10,458</b>
<b>07 DODGE RAM 1500</b> Stk# 18K Miles 234580 <b>\$14,046</b>	<b>06 FORD F250</b> Stk# 04K Miles 091406 <b>\$23,987</b>	<b>06 MERCEDES ESS</b> Stk# 31K Miles 903255 <b>\$44,966</b>	<b>04 VW TOURAN</b> Stk# 05K Miles 034736 <b>\$16,247</b>	<b>06 DODGE STRATUS</b> Stk# 39K Miles 288224 <b>\$7,877</b>	<b>03 DODGE DURANGO SKY</b> Stk# 07K Miles 881147 <b>\$7,356</b>	<b>01 LEXUS LX470</b> Stk# 70K Miles 900890 <b>\$19,995</b>	<b>05 DODGE STRATUS</b> Stk# 72K Miles 582149 <b>\$5,891</b>





*2008 Muenster Hornets  
Area Playoff Finalist*



*Action from the Area playoff game with Gorman*



*Game photos  
courtesy of the  
Muenster ISD  
Yearbook  
Staff.  
A special  
Thanks!*



**First  
State Bank**  
Go Hornets!  
Member FDIC Equal Housing Lender  
www.F-S-B.com

When you think of winners - think of these sponsors - they have the spirit!

**NORTEX**  
*Communications*  
Muenster  
940-759-2251  
www.nortex.com

Good luck teams!  
  
**Turtle Hill**  
759-4896


**BROWN MOTOR  
CO., INC.**  
Chevrolet • Buick  
Pontiac • GMC  
1608 W. Hwy. 82  
Gainesville 665-5591

**F M W**  
INSURANCE AGENCY  
*All the Way!!*  
Gary Fisher  
Paula Kerr  
940-759-4644

**Muenster  
Memorial  
Hospital**  
MMH Family Health Clinic  
MMH Home Health  
**GO TEAMS!**

**Cooke  
County  
Electric  
Coop**  
759-2211

**Walterscheid  
Oil Co.**  
**Good Luck**  
Garrett & Natalie

  
Good Luck!  
940-759-5090

  
**CHRISTI'S Jewelry & Gifts**  
Go Hornets  
& Tigers  
Christi & Leon Klement

GOOD LUCK!  
**Glenn's**  
*Auto Body*  
Collision Specialists  
Muenster, TX

**NEIL'S  
Subway**  
759-2350 Hwy. 82 Muenster  
Go Sydney!  
Neil & Peachie

**Hennigan  
Auto Parts, Inc.**  
759-2291  
Muenster   
AUTO PARTS

**Knabe Tire  
and Battery**  
759-4141  
116 W. Second Street

**Walterscheid  
Appliance**  
801 E. Division St.  
Muenster, Texas  
759-4411

John S.  
Bartush  
759-4052   
Go Tigers  
& Hornets!  
Let's go to the playoffs!

**Lora's Flowers**  
HAMRIC'S  
TUXEDOS   
GOOD LUCK BOYS

**Robert Hermes  
Insurance**  
  
Home, Auto, Life  
759-2540

**Chuck Bartush,  
Jr., P.C.**  
Have some Fun!  
Tigers & Hornets



2008  
Sacred Heart  
Tigers  
Semi-State  
qualifiers

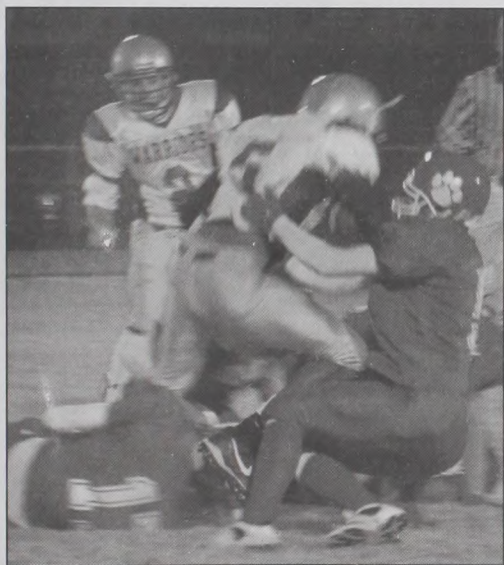


*Go Tigers!  
Beat the Canyon Creek Panthers*

*Courtesy photos*



*Action from the Sacred Heart Tiger victory  
over Woodlands Christian Academy*



**First State Bank**  
Go Tigers!  
www.F-S-B.com

**MUENSTER ENTERPRISE**  
NEW SPORTS PHOTO  
COVERAGE EVERY  
WEEK!  
**759-4311**

**DI ONE STOP**  
759-4512 759-2536  
**SYLVIA'S CREATIONS**  
940-759-4911

**GO HORNETS & TIGERS**  
**MUENSTER FARM MUTUAL FIRE INSURANCE**  
759-4770  
**GO DYLAN #52**

**WAW**  
PRODUCTION COMPANY, INC.  
204 N. Walnut Street, Muenster, TX 76252  
Phone 759-4001  
Glenn Walterscheid, Tim Felderhoff and Mel Waterscheid  
**Good Luck!**

**KLEMENT**  
**Ford**  
of Muenster  
Have a GREAT year  
Tigers & Hornets

**Muenster Natural Wellness**  
759-2005  
Dr. Allan J. Rosenbaum

**Good Luck!**  
759-2822

**Flying C Cattle**

**HESS FURNITURE CO.**  
Go Hornets & Tigers

**Fischer's Meat Market**  
- Since 1927 -  
All the way teams!  
304 N. Main  
P.O. Box 156 • (940) 759-4211  
Muenster, TX 76252-0156

**M S B**  
**Muenster State Bank**  
201 N. Main, Muenster, 940-759-2257

**Schilling Oil Co.**  
HAVE A GREAT SEASON!  
**FINA**

**F.E.I.**  
Flusche Enterprises, Inc.

**MDC**  
MUENSTER DRILLING COMPANY, INC.

**TONY'S SEED & FEED**  
**GOOD LUCK!**

**M & W Oil Field Supply**  
759-2234

**Jimmy Jack Biffle**

**True Value**  
COMMUNITY LUMBER COMPANY  
759-2248 Muenster

**Walterscheid Meat Co.**  
940-759-2744  
**Kountry Korner**  
940-759-2546



**759-4311**  
 FAX 759-4110  
 EMAIL:  
 ADVERTISING@NTIN.NET  
**DEADLINE**  
**TUESDAY 5PM**

# Muenster ENTERPRISE CLASSIFIEDS

WHEN YOU NEED TO BUY, SELL, HIRE ...

**CLASSIFIED RATES**  
**First 20 words**  
**\$5.00**  
**25¢ per word**  
**after that**  
**Card of Thanks**  
**\$8.00**

**FOR RENT**

**Storage Units For Rent**  
 308 North Mesquite,  
 Vickie or Douglas  
 Fleitman  
 736-1041 or 736-5434

**Mini Storage**  
  
 Schilling  
 Fina  
 759-2522 or 759-2836

**For Sale or Rent:**  
 40 Ft. Storage Container.  
 Call Paul or Gary Hess,  
 665-7601.

**FOR SALE**

**AVON:**  
 To buy or sell Avon,  
 call Evelyn Sicking,  
 759-4388.

**Tupperware Open House Sale**  
 Thursday November 20  
 thru  
 Sunday November 30  
 From  
 10:00 AM to 5:00 PM  
 Cash and Carry

Ella Mae Rohmer  
 302 N Sycamore St.  
 Muenster, TX 76252  
 940-759-4399  
 940-736-3778 Cell

**HELP WANTED**

Looking for a team member in the HIM Department at  
**MUESTER MEMORIAL HOSPITAL**

Understanding of ICD-9 coding, medical terminology, transcription skills and use of computers required. Someone with work experience as a coder or a strong training background in coding preferred. Reimbursement knowledge a plus.  
 Contact Sheri Hutchins at 940.759.6181

**The Center Restaurant**  
 Hiring all Positions  
 Days and Evenings  
 Please apply in person.



**FORESTBURG BAPTIST CHURCH**

Be a part of our Christ centered worship...

We are seeking  
 Part-time Music minister  
 & Pianist/Accompanist

Needed for Sunday worship services, mid-week choir practice & occasional special events. We also need fill-in for the above until permanent personnel are hired.

Please call our church office at 940-964-2470



**REAL ESTATE**

**Muenster State Bank**

Competitive Rate & Low Closing Cost  
 Construction Loans, Home Loans & Home Equity Loans  
 WE ALSO MAKE Long-term Fixed-Rate Mortgages  
**940-759-2257**

**Carroll Real Estate Co.**

Owner Financed  
 60 +/- acres for sale • Gainesville, Texas  
 Ponds, Timber Creek • US Hwy 82 frontage  
**903-868-3154**

**Warehouse for Rent/Sale**

5,000 Sq. Ft. • 5 offices • 2 breakrooms  
 Storage Closets & restrooms  
 Central Heat and Air  
 Good Location  
 502 N. Mesquite St, Muenster, TX  
**940-736-4100**

**SERVICES**

FEDERALLY INSPECTED  
 Meat processing plant.  
 Bring in your animal  
 Tues. or Thurs.  
 Fischer's Meat Market,  
 759-4211.

For Septic Systems  
**ROEBIC K-37**  
 Septic Tank  
 Liquefier  
 A single treatment  
 of this product  
 prevents clogging  
 of a septic tank  
 and is guaranteed  
 effective for one whole year

Community Lumber Co.  
 300 E. Division - Muenster-759-2248

**OTTO DOZER SERVICE**  
 Mike Otto  
**665-2258**  
 Mobile **736-5333**

**Painting**  
 Inside & Outside  
 Light Carpentry Work  
 Dependable, Danny Silmon  
 759-2759 or  
 634-2771

Have a Great Week

**HESSE-SCHNIEDERJAN**  
 HEATING AND AIR CONDITIONING  
  
 We service all makes  
 and models  
 100% customer satisfaction  
**759-2787** TACLA-010802C www.hstrane.com

**H & H**  
 VACUUM SERVICE • SEPTIC TANK CLEANING  
**PRESTIGE PORTABLES**  
 PORTABLE TOILET RENTALS  
**940-668-7268 • 940-736-3448**

**B.P.R.S. ELECTRICAL**  
 Residential - Commercial - Remodel  
 New Construction - Industrial  
 24 Hour Emergency Service  
 Licensed & Insured  
**940-759-2486 • Cell: 940-393-5473**

**Nortex Communications**  
 Local Telephone  
 Cable TV  
 Long Distance  
 Internet  
 Wireless Service  
 205 N. Walnut Street, Muenster  
 759-2251

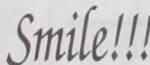
Mobile (940) 736-4073 Home (940) 759-4350  
**MONDAY'S BACKHOE**  
 Sand • Gravel • Dirt • Septic Systems  
 Roy Monday - Owner/Operator Muenster, Texas

**Bob's Auto Service**  
 • Automatic Transmission  
 Service & Overhaul  
 • General Auto Repair  
 • Alternator and Starter  
 Repair  
**R.D. Walterscheid**  
 323 N. Main, Muenster  
**759-4474 or 759-2713**

Have your next party  
 or meeting in our newly  
 remodeled gathering room  
 at the Weinhof Winery  
 Call Brenda, 964-2552

Harry's Game Processing: Many  
 years of butcher and meat cutting  
 experience. Offering clean and  
 friendly service. 3172 Sandusky  
 Road, 903-523-5133, 903-267-  
 9773

**AGRICULTURAL**  
 PAUL J. HESS - NO. 1  
 Kansas Alfalfa hay for  
 sale. Any amount.  
 665-7601 or 665-9228.



**HEALTH**

Department of State Health Services  
 Parent Must Be Present! • Sliding Fee Scale  
 Bring Shot Record!

Date: Dec. 3, 2008 (WEDNESDAY)  
 Time: 9:00 A.M. to 11:00 A.M.  
 Location: Cooke Co. Elec. Co-op,  
 E. Hwy. 82, Muenster, TX 940-665-6397 (TDH)  
 Public Service Announcement by Muenster Enterprise

Think advertising  
 doesn't work?  
**It Just did!**

**PUBLIC NOTICES**

CLERK OF THE COURT  
 PAT PAYNE  
 2ND FLOOR, COOKE CO. COURTHOUSE  
 GAINESVILLE, TX 76240

PETITIONER'S ATTORNEY  
 W.M. B. SULLIVANT  
 P.O. BOX 1517  
 GAINESVILLE, TX 76241

NOTICE TO DEFENDANT: YOU HAVE BEEN SUED. YOU MAY EMPLOY AN ATTORNEY. IF YOU OR YOUR ATTORNEY DO NOT FILE A WRITTEN ANSWER WITH THE CLERK WHO ISSUED THIS CITATION BY 10:00 A.M. ON THE MONDAY NEXT FOLLOWING THE EXPIRATION OF FORTY-TWO DAYS AFTER THE DATE OF ISSUANCE OF THIS CITATION AND PETITION, A DEFAULT JUDGMENT MAYBE TAKEN AGAINST YOU.

TO: DEBORAH WISHARD (whose last name and address is unknown) and ANY UNKNOWN HEIRS OF DAVID LEE WISHARD Defendant.

You are hereby commanded to appear by filing a written answer to the Plaintiffs SUPPLEMENTAL ORIGINAL PETITION at or before ten o'clock A.M. of the Monday next after the expiration of forty-two days after the date of issuance of this citation, the same being Monday the 29th day of December, A.D., 2008, before the Honorable 235th District Court of Cooke County, Texas. Said Plaintiffs Supplemental Original Petition was filed in said Court on the 14th day of November, A.D., 2008, in this case, numbered 08-00494 on the docket of said Court, and styled,

**BARBARA WISHARD Plaintiff VS DAVID WAYNE WISHARD, JAMES BENTON WISHARD, DEBORAH LEE WISHARD, DEBORAH WISHARD (LAST NAME UNKNOWN) AND VANDERBILT MORTGAGE AND FINANCE, INC., AND ANY UNKNOWN HEIRS OF DAVID LEE WISHARD Defendant**

A brief statement of the nature of this suit is as follows, to-wit: Upon final hearing, The Court enter its ex parte order appointing a receiver, directing sale of the property and ordering the proceeds deposited into the registry of the Court, That Defendants be cited to appear and answer, and that upon final hearing the Court enter its decree determining the respective interest of the parties; described as:

The tract and home located at 807 CR 136, in Cooke County, Texas, including the Liberty model manufactured home, serial number CW2010501TXA and CW2010501TXB, manufactured by C.M.H.

The officer executing this writ shall promptly serve the same according to requirements of law, and the mandates thereof, and make due return as the law directs.

Issued and given under my hand and the Seal of said Court, at office in Gainesville, Texas, this the 17th day of November, A.D., 2008.

Attest:  
 PAT PAYNE, DISTRICT CLERK  
 COOKE COUNTY, TEXAS  
 /s/ BY: Joy Huddleston, Deputy:

STATE OF TEXAS COUNTY OF COOKE  
 235TH JUDICIAL DISTRICT  
**CITATION BY PUBLICATION**  
 CV08-00494

TO: DEBORAH WISHARD (LAST NAME UNKNOWN) AND ANY UNKNOWN HEIRS OF DAVID LEE WISHARD

NOTICE TO DEFENDANT: YOU HAVE BEEN SUED. YOU MAY EMPLOY AN ATTORNEY. IF YOU OR YOUR ATTORNEY DO NOT FILE A WRITTEN ANSWER WITH THE CLERK WHO ISSUED THIS CITATION BY 10:00 A.M. ON THE MONDAY NEXT FOLLOWING THE EXPIRATION OF TWENTY DAYS AFTER YOU WERE SERVED THIS CITATION AND PETITION, A DEFAULT JUDGMENT MAY BE TAKEN AGAINST YOU.

You are hereby commanded to appear by filing a written answer to the petition of plaintiff at or before 10:00 clock a. m. of the Monday next after the expiration of forty-two days after the date of service of this citation before the Honorable 235TH JUDICIAL DISTRICT, COOKE County, Texas, at the courthouse in the city of GAINESVILLE, Texas.

Said petition was filed in said court, on the 3rd day of November, 2008 in cause number CV08-00494 on the docket of said court and styled:

BARBARA WISHARD vs.

DAVID WISHARD, JAMES BENTON WISHARD, DEBORAH LEE WISHARD, DEBORAH WISHARD (LAST NAME UNKNOWN) AND BANDERBILT MORTGAGE AND FINANCE, INC AND ANY UNKNOWN HEIRS OF DAVID LEE WISHARD

The nature of this cause is APPOINTING A RECEIVER.

The officer executing this citation shall promptly serve the same according to requirements of law, and mandates thereof, and make due return as the law directs.

Issued and given under my hand and seal of said court at GAINESVILLE, COOKE County, Texas this the 03rd day November, 2008.

ATTORNEY FOR PLAINTIFF:

WILLIAM B. SULLIVANT ATTORNEY AT LAW  
 P.O. BOX 1517  
 GAINESVILLE, TX 76240

PAT PAYNE, Clerk  
 COOKE COUNTY COURTHOUSE  
 100 S. DIXON  
 GAINESVILLE, TX 76240

By:  
 /s/ Susan Hughes  
 Deputy



**North Texas Properties**  
 940-995-2987

New 2704- AND 135 AC.  
 3 mi. W. of Saint Jo. Wooded  
 Hills, creek, ponds, some Pasture  
 VERY Unique.

3 miles S. of Muenster  
 10.44 Ac. AND 14.81 Ac.  
 Surveyed, Platted, Deed  
 Restricted, 1/4 mile off paved  
 road.

Lots in Muenster  
 We have several building  
 Lots in the City of Muenster  
 Starting at only \$16,500.

Acreage  
 We have several other large  
 acreage properties available in  
 the Muenster area.

For more info call  
 or visit  
 northtexasproperties.com

For Sale  
 Beautiful setting 2-story  
 4/2 5/2 on 10 acres with  
 timbers, creek and pasture.  
 4 miles from town.  
 Call 759-4059 or 736-1697  
 for more information

MUESTER MOBILE HOMES  
 Rent Properties Available.  
 Call 759-2248

2/1 frame in Whitesboro:  
 Close to town and City  
 Park. \$39,500. Consider  
 partial trade. Possible  
 owner finance. 940-727-  
 8955

Why pay marked up prices  
 when you can buy factory  
 direct? Come see us at  
 Clayton Factory Outlet in  
 Gainesville, TX. Exit 500  
 I-35 CMH Homes DBA  
 Clayton Homes rbi33731  
 1-800-810-3330



NOW ACCEPTING BIDS ON

**FARM HOUSE  
 AND RANCH**

Approximately 3000 sq. ft. home  
 with paved entrance.  
 4 Bedrooms, 2 Bath, 1 Car Garage  
 Additional Detached 2 Car Garage & Tool  
 Shed.

Approximately 200 acres of Land  
 - 70 acres Crop Land  
 Three Large Barns, Corrals, Two Ponds,  
 and Sheds

PROPERTY IS LOCATED 1 MILE NORTH  
 OF MUESTER ON CR 428, COOKE COUNTY.

Submit all sealed bids to:  
 P.O. Box 188, Muenster, TX 76252

Deadline:  
 December 31, 2008

For more info or to view property by appointment:  
 Call Mary Hess (940) 759-4893  
 or Peggy Grewing (940) 759-4119

SELLER RESERVES THE RIGHT TO REJECT  
 ANY AND ALL BIDS

**HAVE A  
 GREAT WEEK!!!**

**Need your printing done?**

**We can do it!!!**

- Business Cards • Letterhead
- Forms • Checks
- Brochures • Programs
- Flyers • Folding
- Invitations

*Commercial Printing is our Specialty*

**MUESTER  
 ENTERPRISE  
 759-4311**

# Farm and Ranch

## Turkey Day food higher this year

Shoppers looking to outfit their Thanksgiving table with the traditional holiday trimmings will find themselves spending a bit more at the grocer this year, Farm Bureau's 23rd annual Thanksgiving Day price survey shows.

The informal survey, conducted by 179 volunteer shoppers in 38 states, showed that the costs of a Thanksgiving Day feast for 10 would ring in at about \$44.61—a \$2.35 increase from last year's nationwide average of \$42.26.

Menu items for a classic Thanksgiving dinner include turkey, stuffing, cranberries, pumpkin pie, and all the basic trimmings.

"Oil and commodity prices reached record highs earlier this year," said Texas Farm Bureau President Kenneth Dierschke. "They have since taken a steep dive and are half of what they were. While I'm sure we've all felt the welcome relief offered at the gas pumps lately, most of us are still waiting for similar relief in our grocery bills."

Unfortunately, increased grocery bills have not meant greater returns for farmers, Dierschke said. In fact, current market prices for many staple commodities have actually fallen to less than farmers earned for the same products last year.

Despite the slight cost increases, however, Dierschke noted that the price of food is still unbelievably affordable

here in America.

"Even with these higher prices, I'm willing to bet you couldn't buy a decent deli sandwich for what these costs break down to on a per person basis," Dierschke said.

The cost of a 16-pound turkey, at \$19.09 or roughly \$1.19 per pound, reflects an increase of 9 cents per pound, or a total of \$1.46 per turkey compared to 2007. This is the largest contributor to the overall increase in the cost of the 2008 Thanksgiving dinner.

The 6% increase in national average cost reported this year by Farm Bureau for a classic Thanksgiving dinner tracks closely with the organization's quarterly marketbasket food surveys.

## Wildfire concerns in Texas heat up as another drought lingers

California won't be the only state with wildfire issues if drought conditions persist or worsen across Texas, according to Texas AgriLife Extension Service specialists.

Preparation and prevention are much better than mitigation and recovery, said Dr. Wayne Hanselka, AgriLife Extension range specialist in Corpus Christi.

"Parts of Texas are experiencing continuing drought, and those areas with grass that grew as a result of earlier rains are now experiencing wildfire dangers."

In preparation for the wildfire season, county courts are beginning to consider imposing burn bans again. The Texas Forest Service has an updated list of counties enacting burn bans at: <http://tfsfrp.tamu.edu/wildfires/decban.png>.

"Texans have to be aware of fire dangers and the need to be vigilant," Hanselka said. "Protecting property through installation of fire guards, removal of excess fuel from around homes, barns, facilities, and butane tanks are all precautionary moves."

Even if moisture comes in the next week or two, "an inch of rain won't last. We would need good soaking moisture to minimize the danger, and even then between the rains the fuel will remain dry," he explained.

A forecast for November through February issued by the National Interagency Fire Center indicates that the drought conditions in Central Texas are expected to expand across portions of Texas into Oklahoma throughout the winter.

AgriLife Extension's Wildfire Incident Response Team is emphasizing preparedness.

Dr. Ted McCollum, AgriLife Extension beef cattle specialist in Amarillo, reminded landowners that now would be a good time to visit with hunters, gas/oil production employees and others who have permission to visit their properties about safety and fire prevention measures.

"Also, even if there are no burn bans in a county, the conditions are still conducive to fires," McCollum said. "So check the weather forecasts for wind conditions before burning, welding, etc. And make certain there is a means of suppressing a fire that might start as a result

of these types of activities."

In communities where four or five acres surround houses, homeowners need to secure their homesteads and facilities against a wildfire, Hanselka said. Make sure all water hoses and firefighting tools work; make sure sprayers have water in them. "Having the facilities and tools there, properly placed, can make a difference."

Larger landowners may need to be thinking about installing firebreaks and fuel management, Hanselka said. Fuel management—shred it, graze it, burn it down—allows a landowner to avoid a situation where fire can do significant damage.

"As a tool in fuel management, removing that fuel is important," he said. "Whether it's a welding spark, thrown cigarette, or hot box on a railroad, if the fuel is not there, it's not going to go."

Hanselka said there are tools that landowners can use to lower the risk. Winter is a peak season to do prescribed burning, and under the right conditions it can be effective in mitigating the dangers.

But he also warned that going through the procedure of making sure a prescribed burn is out completely is also important.

"No cow patty left smoldering," he said.

Laws and other prescribed burn information can be found at <http://www.tamu.edu/tice/prevention.htm> and more information about protecting against and preventing wildfires can be found at: <http://texashelp.tamu.edu/>.

ing behind if you are in the livestock business," he said. "But if you are integrating wildlife, you may need from 50 to 60% coverage. Remember, wildlife need some open spaces also."

The brush concerns may vary from cedar or red-berry junipers in areas with canyons, to cholla cactus in the western Panhandle, sand sagebrush and sand shinoak on the sandier soils of the eastern Panhandle and Rolling Plains, and mesquite and prickly pear all over.

The timing of treatment will depend on the method planned and maintenance program, Cadenhead said.

Burning is typically done in late winter or early spring, he said. Ranchers need to plan in advance for the cutting of fire guards during the off season, and make sure arrangements are made for the cattle.

Cattle should be taken off the land for almost a whole growing season before burning to allow enough grass fuel to grow, Cadenhead said. And then the land has to be deferred after the burn from early spring until the grass gets six to eight inches tall, which could take until mid-summer, depending on the moisture.

Chemical work and mechanical cutting and spraying are primarily done in the summer when plants are in mature growth, he said. The mechanical brush work, such as grubbing, can be done in the winter with good soil moisture conditions.

Depending on the severity of the brush cover, Cadenhead said it might be necessary to use mechanical or chemical operations to open up a pasture enough to let grass grow and build the fuel base needed for a good prescribed burn.

"Individual plant treatment, once the brushy areas are opened up and/or burned, can then be used for maintenance," he said. "You can't go in there and burn every year."

Cadenhead said the cover layer must be allowed to recover to protect the soil from erosion and to provide adequate time for microbial degradation of the plant matter on top of the soil that will help in nutrient cycling.

"You may not want to burn any closer than five or six years apart," he said.

## TDA market recap

For the week ending Nov. 22, 2008, feeder cattle prices at Texas auctions were down sharply from last week with most locations lower by \$2 to \$10 per hundredweight. Fed cattle prices were almost \$6 lower.

Grain sorghum, wheat, and corn were sharply lower. Ongoing concerns about the general economy and the resulting lower demand for agricultural commodities remain the primary factors affecting markets.

Very little rainfall was recorded across the state during the week. Winter wheat and pastures could use moisture in most areas.

## Cattle imports expected to decline in 2008 and 2009

Cattle imports into the United States from all sources are expected to decline 12% from last year to 2.2 million head. Cattle from Mexico are still well behind historical levels. Weekly AMS reports show imports from Mexico are 43% below 2007 levels through Nov. 1, year-to-date. Mexico received ample rainfall through September, leaving pasture conditions very good, even with less rainfall in October.

Imports of Canadian cattle have not been as high as they were in the fall of 2007 according to AMS reports. One of the major factors in last year's influx of imports was the strong Canadian dollar, which discouraged exports of Canadian beef. With a stronger U.S. dollar, Canadian beef exporters reap higher profits. U.S. imports of Canadian steers and heifers for immediate slaughter

have not increased seasonally as much as usual over the past few weeks, according to AMS reports. Imports of Canadian feeder cattle have also been below 2007 levels over the past weeks. Canadian cows sent for immediate slaughter have begun to increase as they begin to be culled from herds as winter begins. Cattle older than 30 months were not able to be imported into the United States from Canada until November of last year. Since then, Canadian cows and bulls have contributed to the increase in U.S. cow and bull slaughter this year.

In 2009, 2.1 million head of cattle are expected to be imported into the United States. Exchange rates and relative profit margins of U.S. and Canadian cattle feeders and packers will affect demand for live animals.

## AgriLife Extension specialists: Brush control a must even in tough economic times

Brush management may seem like a place to cut corners in tough economic times, but Texas AgriLife Extension Service specialists say doing so will cost ranchers more in the long run.

"The cost of doing nothing is very expensive," said Stan Bevers, AgriLife Extension economist.

Ranchers typically budget some for brush control, generally about \$1 per acre per year, so it adds up substantially, Bevers said.

"With the rising cost of running cattle on ranches, managers are asking where managing brush fits," he said. "It is going to be increasingly more difficult to find dollars for brush control. But it is a situation where brush doesn't know or care that there is a financial crisis going on. It's going to keep growing."

Brush control requires a long-range plan, but it also has to fit into a rancher's cash-flow plan, Bevers said.

"We know we can't just be out there telling people this is what they need to do without realizing the financial situation they are in right now," he said. "But if they aren't spending that much, they may be falling behind."

More brush equates to lower productivity, he said. A lot of brush growth happens slowly.

"We think we're okay for a number of years and then start noticing the weights aren't there on the calves and the conception rates on the females drop," Bevers

said. "It all has to do with the stocking rates being higher than the carrying capacity for the ranch."

When females are not staying in a healthy condition and are not able to reproduce as expected, either the stocking rate is too high or the brush has become a problem, he said.

Determining the most economical method of brush control may be a more difficult decision, Bevers said. Fire is still the cheapest route for brush control, but after several seasons of wildfires, it makes many people nervous.

"Fire has always been a part of the ecosystem and controlling brush," he said. "The other methods tend to be more expensive. A lot of it comes back to how much a ranch has budgeted for brush control and do they have a continuous plan."

"What is needed is different for every ranch," Bevers said. "But as you see productivity fall, you know something is going on there."

J.F. Cadenhead, AgriLife Extension range specialist, said an integration of mechanical, burning, and spraying will most likely be needed to get good control of the brush.

"First, you have to determine what the goals are for the ranch—will it be used primarily for cattle grazing, a mixture of cattle and wildlife, or primarily wildlife," Cadenhead said.

"If you are getting over 50% brush cover, you are get-

ting behind if you are in the livestock business," he said. "But if you are integrating wildlife, you may need from 50 to 60% coverage. Remember, wildlife need some open spaces also."

The brush concerns may vary from cedar or red-berry junipers in areas with canyons, to cholla cactus in the western Panhandle, sand sagebrush and sand shinoak on the sandier soils of the eastern Panhandle and Rolling Plains, and mesquite and prickly pear all over.

The timing of treatment will depend on the method planned and maintenance program, Cadenhead said.

Burning is typically done in late winter or early spring, he said. Ranchers need to plan in advance for the cutting of fire guards during the off season, and make sure arrangements are made for the cattle.

Cattle should be taken off the land for almost a whole growing season before burning to allow enough grass fuel to grow, Cadenhead said. And then the land has to be deferred after the burn from early spring until the grass gets six to eight inches tall, which could take until mid-summer, depending on the moisture.

Chemical work and mechanical cutting and spraying are primarily done in the summer when plants are in mature growth, he said. The mechanical brush work, such as grubbing, can be done in the winter with good soil moisture conditions.

Depending on the severity of the brush cover, Cadenhead said it might be necessary to use mechanical or chemical operations to open up a pasture enough to let grass grow and build the fuel base needed for a good prescribed burn.

"Individual plant treatment, once the brushy areas are opened up and/or burned, can then be used for maintenance," he said. "You can't go in there and burn every year."

Cadenhead said the cover layer must be allowed to recover to protect the soil from erosion and to provide adequate time for microbial degradation of the plant matter on top of the soil that will help in nutrient cycling.

"You may not want to burn any closer than five or six years apart," he said.

**MÜNSTER LIVESTOCK COMMISSION**

15560 Hwy 82, West  
940-759-2201

Visit our website at:  
[www.muensterlivestock.com](http://www.muensterlivestock.com)

**CATTLE AUCTION MEDIA REPORT**

Sale Date: Oct. 30, 2008

See us for all your cattle needs.

Thank you for your business.

**STEERS**

300-400 lb.: \$115 to \$130;  
400-500 lb.: \$105 to \$110;  
500-600 lb.: \$95 to \$100;  
600-700 lb.: \$90 to \$95;  
700-800 lb.: \$85 to \$90.

**HEIFERS**

300-400 lb.: \$110 to \$120;  
400-500 lb.: \$95 to \$100;  
500-600 lb.: \$90 to \$95;  
600-700 lb.: \$82 to \$88;  
700-800 lb.: \$78 to \$80.

**PACKER COWS**

Utility Boning: \$40 to \$46;  
Canner/Cutter: \$34 to \$40;  
Bulls: \$47 to \$62.

**BRED COWS**

Choice: \$700 to \$900;  
Medium-Good: \$600 to \$800;  
Medium-Poor: \$400 to \$600.

**COW-CALF PAIRS**

Choice: \$900 to \$1000;  
Medium-Good: \$600 to \$800;  
Medium-Poor: \$400 to \$650.



Give the gift you know they'll want, and the color is always right.

Texas Scratch Pads from FSB:  
New, crisp \$1 bills bound in \$10 or \$25 books.  
Perfect for any occasion.

Muenster  
519 E. Division St.

Saint Jo  
108 E. Howell St.

[www.F-S-B.com](http://www.F-S-B.com)

**First State Bank**

Member FDIC

**THE NEW GAINESVILLE LIVESTOCK AUCTION, LLC.**  
[www.gainesvillelivestock.info](http://www.gainesvillelivestock.info)

Light Weight Steers—\$2 to \$3 LOWER. Light Weight & Heifers—\$3 to \$5 LOWER. Feeder Steers & Heifers—\$3 to \$4 LOWER. Packer Cows & Bulls—\$2 to \$3 LOWER. Pairs and Bred Cows—STEADY. Sold at Friday's sale NOVEMBER 21 were 2820, compared to 1782 the previous week. Sold at Tuesday's sale NOVEMBER 11 were 457 Goats, 96 Sheep, and 314 Hogs. The numbers from last week were 445 Goats, 101 Sheep, and 205 Hogs. Results follow:

<b>Feeder Steers (per lb.)</b> 200-300 lbs.: No. 1, 1.17; Nos. 2 & 3, 1.00-1.17; 400-500 lbs.: No. 1, 1.04; 1.32; Nos. 2 & 3, .95-1.08; 500-600 lbs.: No. 1, .97-1.11; Nos. 2 & 3, .90-.97; 500-600 lbs.: No. 1, .88-1.06; Nos. 2 & 3, .75-.88; 600-700 lbs.: No. 1, .85-.90; Nos. 2 & 3, .70-.85; 700-800 lbs.: No. 1, .80-.87; Nos. 2 & 3, .70-.80.	<b>Stocker Cows (per head)</b> Pregnancy-tested, 3 to 9-year-olds—Large Frame: \$700-\$900; Medium Frame: \$500-\$700; Cow/Calf Pairs weaners under 250 lbs.—Large Frame: \$350-\$400; Medium Frame: \$250-\$300; Baby Calves: Holstein/NT Cross Breds: \$130-\$215.	<b>Ewes (per lb.)</b> Stocker: 30-45; Thin: 10-25; Fat: 20-35; Bucks (per lb.) Thin NT; Fat: NT; Barbados (per head) Lamb: \$25-\$45; Ewes: \$30-\$55; Bucks: \$40-\$65; Goats (per head) Kids: 20-35 lbs.: \$20-\$40; 36-55 lbs.: \$30-\$60; 55-75 lbs.: \$45-\$70; Yearlings (per head) 75-120 lbs.: \$70-\$110; Nannies (per head) Stocker: \$40-\$60; Milk Type: \$30-\$55; Slaughter: \$45-\$75; Thin: \$15-\$35; Billets (per head) 120 lbs up Breeders: \$95-\$110; Slaughter: \$60-\$100;
---	---	--

**Feeder Heifers (per lb.)**  
200-300 lbs.: No. 1, .99-1.05;  
Nos. 2 & 3, .80-.99; 300-400 lbs.: No. 1, .90-1.00; Nos. 2 & 3, .80-.90; 400-500 lbs.: No. 1, .82-.95; Nos. 2 & 3, .70-.82; 500-600 lbs.: No. 1, .78-.86; Nos. 2 & 3, .70-.78; 600-700 lbs.: No. 1, .76-.85; Nos. 2 & 3, .65-.76; 700-800 lbs.: No. 1, .70-.78; Nos. 2 & 3, .50-.70.

**Sows (per lb.)**  
Feeder, 400 or less: 20-42;  
Light wt.: 400-500: 30-37;  
100-175 lbs.: \$40-\$90;  
25-90 lbs.: \$10-\$50

**Boars (per lb.)**  
300 lb. up: .05-.16; 200-300 lbs.: .10-.15; Light wt.: 20-30

**Slaughter Cattle (per lb.)**  
Slaughter Bulls: Yield Grade #1-2, 1.200-2.050 lbs.: \$2-.625; Slaughter Cows: #1-3, 40-47; Cutter: 27-39

**Sheep (per head)**  
Feeder lambs: 40-60 lbs.: \$90-\$105; Light lambs: 60-90 lbs.: \$85-\$99; Fat lambs: 90-120 lbs.: \$80-\$95

**Boer Goats (per head)**  
1/2 Nanny: NT, 3/4 Nanny: NT, Full Nanny: NT, Full Billy: NT, 3/4 Billy: NT, Full Billy: NT

**(940) 665-4367**  
1920 Refinery Road  
Gainesville, TX

**Just a thought**

The person who says something can't be done is often interrupted by someone doing it.

It takes a long time to become the person you want to be.