

INSIDE

Chamber news 2
Engagements 4,5
Sports 6,7
Want Ads 11
Obituary 12

The Hansford County
Reporter-Statesman

Serving All of Hansford County

12 pages

WEATHER			
Day	Hi	Lo	Precip
Thu	66	38	.00
Fri	76	39	.00
Sat	77	33	.00
Sun	76	41	.00
Mon	80	41	.00
Tue	71	44	.57
Wed	--	42	.00
1992 Precip			1.72

VOL. 84, NO. 19

213 Main

Spearman, Hansford County, Texas

25¢

THURSDAY, MARCH 5, 1992

Residence determines polling place, choices

Two questions may face Hansford County voters on Tuesday: "Where do I vote?" and "What are my choices?"

The answer to these two questions depend on where a voter lives and which party primary he or she is voting in on Tuesday, March 10. These two factors will work together to not only determine voting location but also to influence

the choices a voter has in the local primaries.

To help answer these questions the Reporter-Statesman is providing a sample ballot from each of the two party primaries, along with maps of the county and the city of Spearman, showing the voting precinct boundaries. Below the maps is a list of the polling locations for each precinct.

The county is split into nine voting precincts. With the exception of precinct number 8, they are laid out so that each has approximately the same number of possible voters. Precinct 8 is designated as the early voting precinct. With the exception of the Republicans in precincts 2, 3 and 7, each precinct has its own polling place.

The ballots at each of these poll-

ing locations will have the same Federal and State primary candidates listed, but the County Commissioner primary candidates will be different depending on which County Commissioner precinct the voter's voting precinct is in. The county is split into four County Commissioner precincts, so all but Commissioner Precinct 1 represent more than one voting precinct.

Commissioner Precinct 1 and voting precinct 1 are the same. Commissioner Precinct 2 represents voting precincts 2 and 6. Commissioner Precinct 3 represents voting precincts 3, 5 and 7. Commissioner Precinct 4 represents voting precincts 4 and 9.

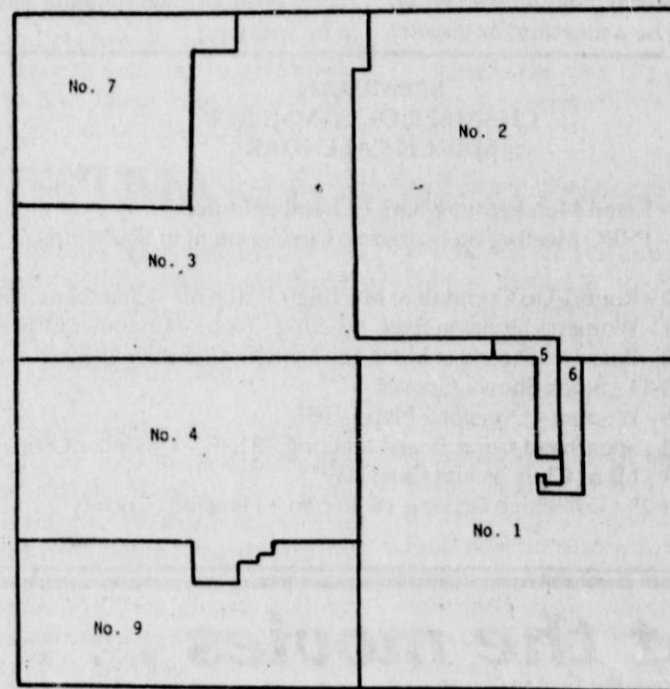
Since county commissioners in Commissioner Precincts 2 and 4 are not up for election this year, voters in those voting precincts will have all the same ballots, with no commissioner candidates listed. But voters in Commissioner Precincts 1 and 3 will have different ballots depending on which Commissioner Precinct their voting precinct is in.

The Democratic County Commissioner Precinct 1 race has six candidates. They are Roscoe Nelson, Dick Gillaspie, Mike Garnett, Vance Snider, Kathy Patterson and Ernie Vanderburg. The County Commissioner Precinct 3 Democratic race has two candidates, Richard Sasser and B.J. Renner.

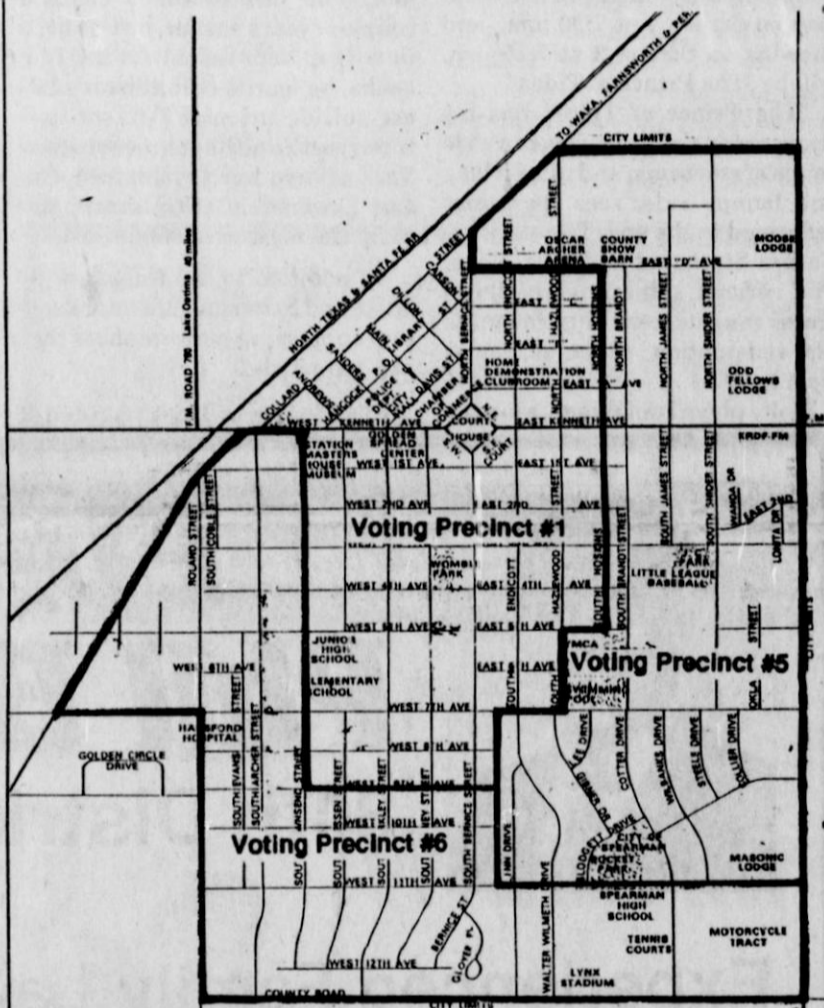
The Republicans have Jerry Pat Davis and Worley Smith running for County Commissioner Precinct 1. Kent Guthrie is unopposed in

See residence page 12

Hansford County Voting Precincts



Spearman Voting Precincts



Polling locations for Tuesday, March 10 Primaries are:

- Democratic Voters**
- Voting Precinct 1 - Spearman ISD Varsity Gym, Junior High-Elementary Campus. Voters are requested to park in the lot off 5th street north of the gym.
 - Voting Precinct 2 - Renner Ranch
 - Voting Precinct 3 - Community Bible Church, Gruver
 - Voting Precinct 4 - Hansford County Barn, Gruver
 - Voting Precinct 5 - Hansford County Barn, Spearman
 - Voting Precinct 6 - Spearman ISD High School
 - Voting Precinct 7 - Oslo Lutheran Church, Oslo
 - Voting Precinct 9 - Morse Community Building, Morse
- Republican Voters**
- Voting Precinct 1 - Same as Democrats
 - Voting Precincts 2, 3 & 7 - Community Bible Church, Gruver
 - Voting Precinct 4 - Same as Democrats
 - Voting Precinct 5 - Same as Democrats
 - Voting Precinct 6 - Same as Democrats
 - Voting Precinct 9 - Pringle-Morse School

Filing slow for city, school offices...

Candidates scarce for some races

With the filing deadline of Mar. 18 less than two weeks away, city and school offices report candidate sign-up for open positions on the their boards is going slow.

City secretaries, Marilyn Been of Gruver and Cheryl Gibson of Spearman, report that no candidates have signed up to run for their commissioner positions. The three school districts report that only incumbents have signed up as candidates for their boards.

Allen Alford, Spearman School District business manager, reports

that Carolyn Gressett is the only person to register for one of the three seats up for election on the SISD board. She is the incumbent candidate for one of those seats. The other two seats on the board up for election are the ones occupied by Tom Latta and current board president Charles Shieldknight.

Gruver ISD business office secretary Margaret Fry indicated that only incumbents have signed up as candidates for their boards.

are unfiled for. They are the one year and three year term seats held by Kevin Holt and Buddy Lowe. Candidates filing for these seats must declare which seat they are filing for when they register.

Paige Speck at the Morse school district reports that incumbent Alan Leach, of Hansford County, has filed for their one school board seat up for election.

They are three seats on the Spearman City Council up for elec-

See candidates page 12

All-District players selected

Spearman varsity basketball teams captured eight places on the two All-District 1-2A teams. The Lynxettes placed five and the Lynx placed three - including Cody Pipkin, who was selected as co-winner of the district's Most Valuable Player award.

According to Lynxette coach Jim Kirkland, the five Lynxettes var-

sity basketball players who were named to the All-District team are senior starters Joy Gafford, Tamri Townsen and Mendy Lasater. They were joined by junior starters Jill Lusby and Laura Pearson on the All-District list.

Wendell Neff, Lynx basketball coach, reported that three Lynx players were selected to the All-

District team and two received honorable mention. Senior Lynx guard Brian Beck and juniors Russell Shaver and Pipkin were named to the All-District team. Seniors Khris Kelp and Darian Hawkins received honorable mention.

Pipkin was one of two players selected as District MVP. He will

See players page 6

Parking lot paving 'free' to taxpayers

by JoAnn Morton
Editor

Paving a parking lot at Palo Duro Lake's east boat ramp will be essentially "free to the taxpayers," according to Palo Duro River Authority General Manager Johnnie C. Lee.

Lee explained that a contract for paving the boat ramp parking lot was awarded to Ed Baker, paving contractors from Borger, at the

PDR board's Feb. 26 meeting. The total cost of the parking lot is estimated at approximately \$151,000, Lee said, with the state paying 75 percent of the cost.

"And the remaining 25 percent will be paid with interest money, not with taxpayers' money," commented Lee.

Paving will begin as soon as the paperwork is all in place, said Lee, and the project is scheduled to take about 30 days to complete.



Cody Pipkin



Joy Gafford

Girl Scouts to celebrate 80th anniversary

by Carolyn Cummings

During the week of March 8-13, Girl Scouts across the nation will join in celebration of the 80th anniversary of Girl Scouting in the United States.

Each troop and council through-

out the nation will celebrate in their own way beginning with Girl Scout Sunday, March 8, when girls will attend church services in uniform, as troop units. Throughout the week different troop levels will demonstrate to their community

the five "worlds" of Scouting - The World of the Out-of-Doors, The World of the Arts, The World of Well-being, The World of People, and The World of Today and Tomorrow.

Each Service Unit or Neighbor-

hood will plan a special celebration of their own for March 12, which is the actual anniversary date, including both past and present Girl Scouts.

Spearman Girl Scouts invite all present Scouts, past Scouts and past leaders to join them on the Hansford County Courthouse lawn Thursday, March 12 at 4:15 p.m. for the local celebration. The local celebration is scheduled to coincide with ceremonies being held across the Yucca Council, which is headquartered in Guyton, Okla.

Since Yucca Council is a multi-state council, Scouts will be traveling to Oklahoma City from their hometowns, representing the council in "Girl Scouts Are Great In Government." Scouts will interact with elected officials and participate in those jobs where possible.

Last fall, troops participated in a poster contest entitled "Girl Scouts Care For The Earth." Dawn Loomis' poster was chosen as the best from her Spearman Junior Girl Scout Troop 126. Each council was asked to provide posters for display in the Oklahoma State Capitol since the local council's headquarters is in Guyton, and Dawn's poster was one of those chosen to represent Yucca Council. Dawn is the daughter of Mr. and

See Scouts page 12



Spearman Daisy Girl Scouts gather around Spearman Mayor Burl Buchanan as he reads the proclamation he signed, declaring March 8-13 as Girl Scout Week in Spearman. The Daisy Girl Scouts are (l-r) Heather Scroggs, Amy Powers, Dana Sharp, Emily Longoria and Courtney Partney.

Reporter-Statesman per-copy price goes up

The per-copy price of the Hansford County Reporter-Statesman purchased from merchants in Spearman and Gruver will increase to 50 cents with the Thursday, March 12 issue.

This price increase affects only the newspapers bought from the racks. The cost of a subscription, a want ad, or a display ad will not be increased at this time.

Since the two Spearman papers and the Gruver paper were combined in April 1990, management has hesitated to raise the per-copy price, but because of increases in production costs it has become necessary. Because we waited so long to enact the price increase, it is necessary to increase it twofold.

When the publications were combined, income from the second Spearman paper was lost. It was hoped that combining the papers and increasing the size and circulation would make the publication more attractive to local advertisers, leading to more revenue to make up for the loss in paper sale revenue. This did not happen.

With this additional revenue the Reporter-Statesman hopes to be able to continue to record the history of Hansford County.

Chamber Chatter

by Cindy Blackman
Chamber Manager

Monday, March 9 at 7 p.m., the Spearman Chamber of Commerce and the Gruver Chamber of Commerce will sponsor a meeting with the Panhandle Regional Planning Commission. The meeting is for residents of Hansford County who are interested in developing a support group who want economic development in our county.

The meeting will be held at the First State Bank Hospitality Room. Members of the PRPC will conduct the meeting.

On Tuesday night, March 10, there will be a meeting for anyone

interested in the Spearman Round-Up. This will be at 7:30 p.m. in the Chamber office.

March 8-14 is Girl Scout Week in Spearman. Be sure and support our Girl Scouts.

I got a letter from A.I.D. Associates, Inc. and our new city maps and lake brochures will go to press within the next 15 days.

Congratulations to the Spearman Lynx and Lynettes basketball teams. They both played really good and we consider them to be winners!

SPEARMAN CHAMBER OF COMMERCE MARCH CALENDAR

- March 4 - Retail Merchants - 8 a.m. - Chamber Office
- March 9 - PRPC Meeting on Economic Development in Hansford County
- March 10 - Round-Up Committee Meeting - 7:30 p.m. - Chamber Office
- March 11 - Women's Division Exec. Meeting - Noon - Chamber Office
- March 12 - Board of Directors Meeting - Lunch - Chamber Office
- March 13-14 - Stock Show - Gruver
- March 18 - Women's Division - Noon - FSB
- March 19 - Spearhead Corp. Board Meeting - 8 a.m. - Chamber Office
- March 21 - Lions Club "White Cane Day"
- March 24-25 - Defensive Driving - 6-10 p.m. - Hansford County Library

At the movies . . .

Beginning Friday, March 6 and running through Tuesday, March 10 at the Lyric Theatre in Spearman will be "Beauty and the Beast," held over on Screen 1 at 7:30 p.m., and showing on Screen 2 at 7:15 p.m. will be "The Prince of Tides."

"The Prince of Tides" has big stars, serious subjects, covers a wide range of emotions, and after a long and bumpy ride, sees its heroes redeemed in the end. The stars are Barbra Streisand and Nick Nolte. The serious subject is childhood abuse and its resulting insanity. The redemption, of course, comes from love.

Nolte plays Tom Wingo, a former

high school football coach from South Carolina whose life is at loose ends. His marriage is on the rocks and, since his brother's death a couple of years earlier, he has been in a deep depression. As the film opens, he learns of his sister's latest suicide attempt (she's a tortured poet), and he ventures to New York to help her psychiatrist, Susan Lowenstein (Streisand), unravel the mysteries of her past.

In addition to the fine work by Nolte and Streisand, there are several supporting performances that are top-notch.

"The Prince of Tides" is rated R

Police Files

Spearman Police

The Spearman Police Department logged a total of 41 calls for service during the week of Feb. 24 through March 1.

Officers recorded one report each of burglary, theft, liquor law violation, traffic law violation, lost property, found property, motorist assist and suspicious 911 call.

Police investigated three reports of vandalism, four reports of disorderly conduct, and two reports of suspicious activity, received 10 miscellaneous calls for officers and unlocked five vehicles for residents. There were nine calls for animal control.

Included in incident reports for those calls was one investigation of a bicycle theft from the 300 block of West First. According to the report, a bicycle valued at \$150 was pushed or ridden from a residence on Feb. 24. The report was received at 4 p.m.

On Feb. 25, police received a report of vandalism to a vehicle windshield in the 900 block of South Haney. The incident is under investigation.

A car/bicycle accident was reported Feb. 28 at Fifth and Roland. According to the police incident report, the car was travelling north on Roland and the bicycle rider failed to yield to the car while crossing Fifth. No serious injuries were reported.

A vandalism at a vacant building was reported Feb. 26. Damage was estimated at \$150.

Three juveniles were questioned as a result of the investigation of a burglary report. According to the police incident report, money and BB guns were taken. The BB guns were listed as recovered.

On March 1, police received a report of threatening telephone calls from a resident in the 300 block of South Barkley.

Four windows of a residence in the 1000 block of Haney were damaged with BB guns. The incident is under investigation.

Gruver Police Department

On Monday, Feb. 24, Gruver police served three warrants on a female subject in the 600 block of Cator. Gruver Police Chief Steve Gaines explained the warrants had been outstanding since 1983. The subject had moved away and then moved back to Gruver, which gave police an opportunity to serve the warrants.

Also on Feb. 24, a Gruver resident was assisted in gaining entry to her locked residence in the 800 block of Womble.

On Thursday, Feb. 27, police were called to unlock a vehicle at Gruver High School.

Gruver police assisted the Texas Department of Public Safety in the investigation of a rollover accident north of Stinnett. Gaines said the vehicle involved in the accident was registered to a Gruver man, who walked into the police department as the Gruver police officer was receiving information about the accident from the DPS. The owner of the vehicle was transported to the scene in order for the DPS trooper to complete his investigation.

On Friday, Feb. 28, Gruver police received a report of telephone harassment from the 400 block of Front and unlocked a vehicle southwest of Gruver.

Also on Feb. 28, police responded to a report of a fire south of Gruver. Upon arrival, the fire was found to be a controlled burn.

On Sunday, March 1 police were called to unlock one vehicle in the 200 block of East 10th and another at the Gruver High School gym. Another report of telephone harassment was received March 1, this time in the 100 block of Maupin.

Gruver police issued one citation for speeding during the week.

Gruver EMS

Gruver EMS personnel responded to a call in the 200 block of Garrett on Thursday, Feb. 27. A 74 year old man was transported to Hansford Hospital.

Gruver Fire Department

Gruver Volunteer Fire Department personnel have responded to a total of 15 fires since the first of the year, according to Gruver Fire Chief Sam Gruver.

He said several reports have been received since Feb. 20, when a barn and vehicle belonging to Tim Barkley were burned. The fire apparently was caused by welding and cutting done in the barn. Gruver explained that Barkley had finished working in the barn and was driving a tractor in a field when he spotted smoke coming from his barn. Total damage to the barn and contents was estimated to be about \$17,000.

Several small grass fires have been reported since that time, according to Gruver. Included in the reports was one on Feb. 25, three miles west of Gruver.

On Feb. 28, Gruver firefighters assisted the Guymon, Okla., fire department with a grass fire in the breaks south of Guymon. Gruver said about 200 or 300 acres were burned.

On Monday, March 2, another grass fire caused by a cutting torch was reported on the John Hart place south of Gruver. No dollar loss was reported.

Gruver noted that the area is very vulnerable to grass fires now, due to windy conditions and low humidity. He urges area residents to use caution and wants everyone to be aware of the possibility of grass fires during this time of year.

Hansford Happenings

Panhandle Regional Planning Commission will conduct a meeting on economic development in Hansford County on Monday, March 9 at 7 p.m. in the Hospitality Room of the First State Bank of Spearman.

A Back In Control Parenting Workshop is scheduled for Tuesday, March 10 and Wednesday, March 11 at 7 p.m. each evening in the Extension Home-makers Building in Spearman. The Back in Control Parenting Video will be shown. John O'Nan of Perryton Family Services will be the facilitator for the workshop. He will be assisted by Karen Babitzke, Hansford County Extension agent, and Cheryl Sherrill of the Panhandle Crisis Center. Reservations can be made by calling the Hansford County Extension office at 659-2030.

Individuals who are no longer enrolled in a Texas public school and wish to register to retake the exit level TEAMS/TAAS test(s) may pick up registration packets in the counselor's office at Spearman High School. Registration forms must be completed and returned in the pre-addressed envelope and must be received in Iowa City, Iowa, no later than 5 p.m. on March 11, 1992. TEAMS tests in language arts will be administered on April 1. TEAMS tests for mathematics will be administered on April 2. TAAS tests in writing will be given on March 31. TAAS tests for reading will be administered on April 1, and TAAS tests in mathematics will be given on April 2.

Amarillo Little Theater's production of "The Taffetas," a '50s musical, will be presented Saturday, April 4 at 8 p.m. in the Spearman High School auditorium as a benefit for the Golden Spread Senior Citizens Center. Tickets are priced at \$8 for adults and \$5 for students.

Spearman High School graduating class of 1982 is planning its 10 year class reunion for Labor Day weekend, Sept. 4 and 5. Anyone who knows the whereabouts of classmates should send names and addresses to Angie Francis Graves, Rt. 2, Box 54, Perryton, TX 79070.

Gruver PTA Association meeting will be on Monday, March 9 at 7 p.m. in the Gruver High School auditorium. The program will be presented by the Junior High U.I.L. speaking contestants.

A covered dish luncheon will be followed by a program entitled "Know Your Insurance Policies," presented by James Cunningham, at the Golden Spread Center on March 16 at noon. Everyone is welcome.

Hansford Round-Up Committee will meet Tuesday, March 10 at 7:30 p.m. at the Spearman Chamber of Commerce office.

Spearman Chamber of Commerce Women's Division Executive Board will meet Wednesday, March 11 at noon at the Spearman Chamber of Commerce office.

Spearman Chamber of Commerce Board of Directors will meet for lunch at the Chamber office on Thursday, March 12.

The Hansford County Livestock Show will be conducted Friday and Saturday, March 13 and 14, at the Hansford County Barn in Gruver.

Spearman Chamber of Commerce Women's Division meeting will be Wednesday, March 18 at noon at First State Bank in Spearman.

Spearhead Corporation Board will meet Thursday, March 19 at 8 a.m. at the Spearman Chamber of Commerce office.

Saturday, March 21 has been designated as Lion's Club White Cane Day.

A defensive driving course is scheduled for Tuesday and Wednesday, March 24 and 25, from 6 to 10 p.m. each evening at the Hansford County Library.

World Day of Prayer will be observed Friday, March 6 at 9:30 a.m. at the United Methodist Church, 407 S. Haney in Spearman. Refreshments will be served from 9:30 to 10 a.m. The program will be given by women from various churches. A nursery will be provided. The public is invited to participate.

Hansford County Activity Center will conduct a fund-raiser dance Saturday, March 21 from 9 p.m. to 1 a.m. The Vera Brothers Band will provide entertainment. Tickets are priced at \$15 per couple and \$10 per single. Tickets are available from any Activity Center board member or may be purchased at the Activity Center Monday, Wednesday or Friday between the hours of 6 and 10 p.m. Tickets will also be available at the door for \$20 per couple, \$15 per single.

Hansford County Activity Center has expanded its hours. New hours are Monday, Wednesday and Friday from 6 to 10 p.m. for racquetball, weightlifting and sauna room. Racquetball sign-up can also be done during these hours.

Letter to the editor

Dear Editor,
Do you realize that April 1st, 1992, your basic cable rate will increase \$2.00? Do you know why? Why do they need the money? Future improvements, past debts, or just because they know they can raise the rates and get away with it. No regulation means consumers are held hostage by their cable co. Call Mission Cable today and ask why they are raising the basic rate.
Barbara Jessup

UT M. D. Anderson Hospital
Cancer Information Service
1-800-4-CANCER

REPORTER-STATESMAN CLASSIFIEDS WORK!

The Hansford County Reporter-Statesman
"Serving All Of Hansford County"

USPS 509660
213 Main, Box 458, 659-3434
Spearman, TX 79081
Published Weekly at 213 Main, Spearman, Texas
Owned and Operated by:
Texas Independent Newspapers, Inc.
15915 Alsace
San Antonio, TX 78232
(512) 545-1739

Second Class postage paid at Spearman, Texas 79081.

Any erroneous reflection upon the character of any person or firm appearing in these pages will be gladly and promptly corrected upon being brought to the attention of the management.

Publisher - Robert M. Hulett
Editor - JoAnn Morton
Bookkeeper - Sheila LaRochele

Subscription Rate: Hansford County, \$19.95; out of county, \$24.95 annually.

Postmaster: Send address changes to Hansford County Reporter-Statesman, Box 458, Spearman, TX 79081.

The publisher reserves the right to revise or reject at its option any advertisement which it deems objectionable, either in subject or phraseology, or which it may deem detrimental to its business.

Advertising and Story Deadlines:
Tuesday, 12:00 p.m.

TA MEMBER
TEXAS PRESS ASSOCIATION



Elect Phil Black 84th District Judge

Experienced Family Law Attorney

Experienced Civil Trial Attorney

The ONLY Candidate With
Felony Criminal Trial Experience



Seldan, Phil, Joel, Rose and Zane

You Deserve A Fully Qualified Judge

A Firm Hand — A Just Hand

Pol Adv. Pd. By Committee To Elect Phil Black, Tom Snider, Treas., Box 3335, Borger, TX

At The Lyric Theatre . . .

Friday, March 6 - Tuesday, March 10

Bargain nights Mon. & Tue. All Seats \$3

Closed Wednesday & Thursday

Screen 1 - 7:30 p.m.

screen 2 - 7:15 p.m.



113 Main, Spearman

HCHD explains need for building project

by Anne Snow
Business manager

Last week, we began a series of articles to assist the citizens of Hansford County in making an informed decision regarding the upcoming hospital district bond election. With that in mind, we will try to answer this question:

"Why is the Board of Directors of Hansford County Hospital District proposing the \$4.7 million building project?"

The Long Range Plan for the District

During the summer of 1990, a joint board-community committee was appointed by the board of directors to study the future and present healthcare needs of Hansford County and to make recommendations to the board for a long range strategic plan. One of the committee's recommendations was that the nursing home be expanded and the hospital be renovated.

In accordance with the Long Range Planning Committee's recommendations, the board hired an architectural firm to do a feasibility study. As a result of the architectural and engineering study, the board decided to present the project to the voters. They set four major goals for the building project. They are:

1. To add between 30-40 beds to the nursing home to take care of the increasing number of aged in this area.
2. To bring the current hospital building up to modern fire safety standards.
3. To renovate deteriorating and inefficient mechanical systems in the current hospital building.
4. To improve space allocations in the hospital - fewer hospital beds are needed, while more area for outpatient services are required.

Nursing Home Addition

The architects, Cox/Croslin and Associates, concluded that the least expensive route was to remodel the existing building for nursing home beds, and to build a new space for the hospital, locating outpatient services in an area convenient to both the manor and the hospital. The nursing home addition was planned with the following conditions in mind:

1. The nursing home has been 95% full for over a year. Hansford County residents have been turned away because there was no room for them (by law, the manor cannot discriminate on any basis).
2. There will continue to be more Hansford County residents turned away, unless the nursing home is expanded. The latest census shows the following population distributions:

1172 Gruver residents, 3197 Spearman residents, 1479 other residents, for a total Hansford County population of 5848.

Population of Hansford County over the age of 65: 84 people age 85 and over, 252 people aged 75 to 84, 415 people aged 65 to 74, for a total of 751 over age 65.

Of these 751, 77 reside at Hansford Manor; this leaves 674 who are not in the manor.

If only 10% were to come to the manor in later years, where would you put those 67.4 people? It is recognized that a number of current residents will expire, but there will continue to be a lot of in-migration from surrounding areas, due to the quality of care Hansford Manor

gives.

3. If you are 65, the lifetime likelihood of entering a nursing home is 52% for women and 30% for men. Add to this the fact that our population is aging: Those over age 85 represent the fastest-growing segment of the U.S. population. One national expert in long term care has said that 100 nursing home beds would need to be built every day until the year 2000 to accommodate the needs of the population by that time.

4. Hansford Manor currently has 29 residents who originated from outside Hansford County. They bring \$640,000 in out-of-town income to Hansford County every year.

5. A larger nursing home is inherently more efficient. Labor is the highest expense, and the costs of the most highly paid professionals can be spread out over more residents.

6. Bond interest rates are at their lowest point in 20 years; construction will never be less expensive.

The Hospital Renovation

The needed renovations in the old building cannot be done without vacating the building. Modern fire safety codes require the following:

1. Wider corridors - this necessitates moving walls.
 2. The walls and roof structures need to be changed for fire containment.
 3. The ventilation system allows contaminated air to return to patient rooms, so a new ventilation system is needed.
 4. A sprinkler system must be installed for fire suppression.
- Also, the heating, air conditioning, and plumbing systems have deteriorated, are inefficient, and must be replaced within the near future.

By moving the hospital operations to a new site, patient care will continue without disruption. Inpatient care areas can be downsized to 12 to 16 beds (from the current 28). In addition, outpatient services can be arranged more efficiently, with the right amount of space needed. Currently, physical therapy, home health, hospice, respiratory therapy, and offices are occupying unused patient rooms. These patient rooms are ill suited to those uses, and very inefficient from a staffing point of view.

The old building is also very expensive to heat and air condition. It costs \$20 more square foot than the nursing home. Over 20 years, an energy savings of \$88,000 would be realized, at today's prices - at the minimum. Being able to shut off heat and air conditioning to empty rooms would mean additional savings, as would energy-efficient lighting.

In summary, the district board of directors has assessed the healthcare needs of Hansford County, and prepared a building plan to meet those needs, both now and in the future.

Health care lacking in the Philippines

by Charles H. Ridge, M.D.

Imelda Marcos had almost free rein in using Philippine treasury funds for special projects. One of her favorites was the construction of a Chest Hospital in Manila.

It became one of the best of its kind in the Orient. The hospital has many first-rate specialists and an excellent education program for doctors-in-training. The only problem is that it is so expensive that only the very rich can afford it. As a result, it was seldom half occupied.

On the other hand, more than 90% of the population has never had any kind of vaccination. Diseases seldom seen here are rampant there. These include such ailments as Malaria, Dengue Fever, intestinal parasites, venomous snake bites, and Rabies. Over 40% of their people have, or have had, Tuberculosis.

In my first year at Clark Air base, I went on a tour of the Infec-

tious Disease Hospital in Manila. It was like going through a rural hospital in Ethiopia. The wards were divided by disease category. There was an Encephalitis ward, a Tetanus ward, a Polio ward, a Malaria ward, a Diphtheria ward, etc.

Their biggest ward was the Tuberculosis section. The hospital director told us that over 90% of the TB in the country is resistant to the relatively inexpensive drug INH. However, he informed us, no other anti-tuberculosis drug could be obtained because there was not enough money in the budget.

I was particularly appalled by one of the children's wards which was full of cribs. Each one would have from one to three children in each family. The mother would have to curl up on the floor of the crib to sleep with her children.

Meanwhile, for the very wealthy, the best care in the world was available in the Manila Chest Hospital.

Conditions favorable for planned burning

"For the first time in several years, favorable soil moisture conditions exist to carry out prescribed burning on Conservation Reserve Program (CRP) fields," stated Monnie Edwards, district conservationist with the USDA Soil Conservation Service in Spearman. Edwards works through the local Hansford Soil & Water Conservation District to provide technical assistance to landusers in Hansford County.

Managing vegetation with fire can be beneficial to CRP grass stands by suppressing early weeds such as kochia, jointgrass and cheatgrass. The grass will also benefit by removing several years of accumulated deadgrass growth litter which should also reduce the wildfire hazard.

As with most anything in life, there are also risks associated with the benefits. Producers who carry out planned fires on their land can be held liable for damages as well as costs incurred in controlling the fire if it escapes from the planned burn area.

Therefore, producers should conduct their burns under certain planned conditions. Some of the conditions to consider include air temperature, wind speed and direction, relative humidity, position of the burn area in relation to structures, populated areas and highways. A 10 foot bladed fireguard should be constructed around the entire perimeter of the planned burn area from which a 100 foot "blackedout" firebreak can be burned on the downwind side(s).

Optimum conditions for a CRP management burn would include a March 15 to April 15 burn date, 8-10 mph wind speed, 50-60% relative humidity and 50-70 degree air

Spiritually Speaking

by Todd Dyess

First United Methodist Church

Whoever does not accept the reign of God like a little child shall not take part in it. Mark 10:15

What is so special about a little child? The little child has nothing to prove, nothing to show, nothing to be proud of. All the little child is asked to do is to receive the love that is offered.

Jesus wants us to receive the love he offers. He wants nothing more than that we allow him to love us and enjoy that love. This is so hard because we always feel that we have to deserve the love offered to us. But Jesus wants to offer that love to us not because we have

earned it, but because he has decided to love us independent of our efforts. Our love for each other should flow from that "first love."

The great temptation is to use our many failures to convince ourselves that we are really not worth being loved. We must resist that temptation. The many failures in our lives open that place in us where we have nothing to brag about but everything to be loved for. It is becoming a child again, a child who is loved simply for being, simply for reaching out.

This is the way to spiritual maturity - to receive love as a pure and free gift.

NWTMA sets spring meeting

The Don Harrington Discovery Center will be hosting the Northwest Texas Museum Association Spring Meeting on Friday, March 20. Registration begins at 9:30 a.m.

Evelyn Solonyinka, Grants Coordinator for the Amarillo Area Foundation/Don & Sybil Harrington Foundation, will address NWTMA on "Policies and Procedures for Grant Applications."

The NWTMA Board of Directors will meet at 10:00 a.m. Other members will be shown several programs offered by the Discovery Center. The semi-annual business meeting will be held at noon in conjunction with the meal catered by The Cattle Call of Amarillo. Solonyinka's address will follow.

The NWTMA membership includes the Amarillo Art Center, Don Harrington Discovery Center, Childress County Heritage Mu-

seum, Carson County Square House Museum in Panhandle, Firehall Museum in Crowell, Deaf Smith County Historical Museum in Hereford, Hutchinson County Museum in Borger, Museum of the Plains in Perryton, Devil's Rope Museum in McLean, Old Mobeetie Association, Texas Aviation Historical Society, Inc. in Amarillo, Ralls Historical Museum, Sherman County Depot Museum in Stratford, Slaton Museum Association, Station Master's House Museum in Spearman, Swisher County Archives & Museum Association in Tulia, Roberts County Museum in Miami, Alanreed-McLean Area Museum, White Deer Land Museum, National Cowgirl Hall of Fame and Western Heritage Center in Hereford, Ranching Heritage Association in Lubbock, River Valley Museum in Canadian and the Floyd County Museum in Floydada.

HENSON CHIROPRACTIC

410 S. Davis • Spearman, TX

Call for Appointment • 659-5603

Office Hours: Mon, Wed, Fri - 9:00 to 5:00
Tue, Thu - 9:00 to 11:30

ELECT

REPUBLICAN



Sam-9, Bill, Kaye, Liz-13

WILLIAM
D.
"BILL"

SMITH

84th DISTRICT JUDGE

+ A Proven, Conservative
Prosecutor Who Has Consis-
tently Stood Against Crime.

He's on Our Side!!

"A + FOR THE COURT,
THE RIGHT MAN FOR THE JOB."



VOTE
ERNIE
VANDERBURG

DEMOCRAT CANDIDATE

FOR COMMISSIONER PRECINCT 1

Pol. Adv. Paid for by Ernie Vanderburg, HCR 2, Box 2-A, Spearman, TX 79081

Pd. Pol. Adv. by Bill Smith Campaign, Mark Dill, Treas., 515 Austin, Borger, TX 79007

Among the Neighbors

by Helen Fisher

Monica Blackman knew many more enjoyable activities for the spring school break than spending it with foot surgery. The early part of the week she had the surgery at Northwest Texas Hospital and used the rest of the week in recuperation. She was able to return to school on Monday. Putting her best foot forward might be a motto for Monica.

That sharp, sprightly Esther Stewart for once found herself at a loss for words last Tuesday when she arrived at the Golden Spread Center. Esther modestly had anticipated the group might sing "Happy Birthday" to celebrate her 90th birthday. She found that they had prepared a wonderful birthday dinner, complete with birthday cake and candles, well, maybe not the entire 90 candles.

But the shock came when she realized members of her family were there. Her daughter, Virginia and Clark Dancer, of Borger, and Betty Leonard of Plano. Also a granddaughter, Mary Penny, of Amarillo, two great-granddaughters from Borger with two of their children, and Esther's sister, Ruth Keller from Sayre, Okla.

Mrs. Keller remained for several days visit.

All the neighbors wish for Esther continued good health and many more birthdays.

Two new young ladies are now settled in Spearman and are getting acquainted. Kenna and Jennifer are making their home with their mother, JoAnn Morton.

The girls are from Guymon. Kenna is in the 8th grade and likes track and swimming. Jennifer is in the 5th grade and enjoys basketball and swimming.

JoAnn, editor of the Reporter-Statesman, has already initiated them into the newspaper environment by putting them to work at the office during spring break.

Kenna and Jennifer, you are welcome in Spearman and it is hoped that you will enjoy living here.

Wynona Faye Beck, 56, of Ama-

rillo, was interred at Hansford Cemetery Tuesday afternoon after services in Amarillo Tuesday morning.

She was the wife of Don Beck, formerly of Spearman. Don is a brother of Juanita Tucker.

Wanda Stewart and twin sons flew to Greenville to spend the spring break with husband and father Dwayne Stewart. Dwayne works in an airplane factory at Greenville.

Adalyn Barnes is reported to be recovering from knee surgery at St. Anthony's Hospital in Amarillo. The surgery was performed on Friday morning and it is expected she will be hospitalized for more than a week.

Although the recovery procedure is slow and painful, the neighbors are confident Adalyn will again be "dancing and prancing."

Her room number is #542.

Twenty young people of the First Baptist Church used part of their spring break for a Youth Ski Retreat in Keystone, Colo. They were accompanied by David Furlow, Youth Director, and Russ Gibbs, Pastor; also Craig and Beverly Vinson.

They left early Wednesday morning and returned late Saturday evening. Each morning, early, right after morning devotions, they took to the slopes and spent the entire days, returning late but in time for evening devotions. The weather was perfect and the skiing ideal. There was a touch of sadness, however, as it would be the last trip they would share with their Pastor, Russ Gibbs. The Gibbs left Monday for his new ministry at Abilene.

Ray and Helen Gibson with daughter Cheryl as chauffeur drove to Vernon on Sunday. They returned late Monday after attending the funeral of Ray's sister Monday afternoon. She was Mrs. Vera Phillips, age 94.

Mrs. Jake (Ellen) Vernon is currently in St. Anthony's Hospital where she is recovering from an



Vonda Kal Benson and Kevin Aaron Munson announce their approaching marriage on Saturday, March 21 at Sublette Southern Baptist Church in Sublette, Kan. The bride-to-be is the daughter of Mr. and Mrs. Frank Benson of Sterling, Colo. She is a 1990 graduate of Spearman High School and is presently attending Northeastern Junior College in Sterling, majoring in business administration. The prospective groom is the son of Mr. and Mrs. Kenneth Munson of Sublette. He is a 1990 graduate of Sublette High School and is presently attending Northeastern Junior College, majoring in pre-optometry.

'Back In Control' theme of parenting workshop

A "Back In Control" parenting workshop is scheduled for Tuesday, March 10 and Wednesday, March 11 at 7 p.m. at the Extension

Homemakers building in Spearman.

The Back In Control Parenting Video by Gregory Bodenhamer, which will be shown has helped thousands of families restore love and discipline to their homes.

John O'Nan of Perryton Family Services will be the facilitator for the workshop. He will be assisted by Karen Babitzke, Hansford County Extension agent, and Cheri Sherrill of the Panhandle Crisis Center.

Reservations can be made by calling the Hansford County Extension office at 659-2030.



Rho Rho sorority recently donated a collection of stuffed animals to the Spearman Volunteer Fire Department and H & S EMS. The stuffed animals will be made available to children in times of crisis. Donating the toys on behalf of Rho Rho is Tiki Farrar (center) and accepting the donation are Kevin Russell, H & S EMS paramedic (left) and Randall Sauer of the Spearman Volunteer Fire Department (right).

THANK YOU

Sometimes the word "Thanks" seems so inadequate. If we think on it a while, we realize that the Love that flowed from you to us can only be equalled by the Love and Appreciation that comes from us to you by our

"Thank You"

for all your prayers, calls, flowers, food, and cards in the loss of our Mother.

The Grace Bruner Family
Rich and Helen Melton
Joyce and Harold Frost
W.A. and Faye Bruner
Bettye and Harold Stephens



Dr. and Mrs. Earl E. Novak of Spearman are pleased to announce the engagement of their daughter, Cinda, to G. James Haruch. Cinda is a graduate of Spearman High School and Brigham Young University. She is currently employed with WordPerfect Corporation as a marketing coordinator. Haruch, son of Mr. and Mrs. John Haruch of Cincinnati, Ohio, is also a graduate of Brigham Young University. He is employed as an interface designer for WordPerfect Corporation. The couple plans to reside in Orem, Utah, following their May wedding.

Strong family bonds prevent drug abuse

AUSTIN - Peer pressure to try alcohol and other drugs can begin as early as the fourth grade, and by the sixth grade more than 40 percent of children have used alcohol. But children who have strong bonds with their family and school are far less likely to try alcohol or other drugs. When parents work with their children, the school, and the community in a prevention program, the use of alcohol and other drugs by young people declines sharply.

Texas PTA has joined the National PTA's celebration of National PTA Alcohol and Other Drug Awareness Week, March 1-7, by informing parents of their vital role in combatting their children's involvement with alcohol and other drugs.

According to a survey by the National Institute on Drug Abuse, the high-risk years for children's first use of illegal drugs begin at age 12. And approximately 100,000 10- and 11-year-olds reported getting drunk once a week.

World Day of Prayer to be observed

World Day of Prayer will be observed in Spearman on Friday, March 6 at 9:30 a.m. at the United Methodist Church, 407 S. Haney in Spearman.

Refreshments will be served from 9:30 to 10 a.m.

A program will be given by women representing the churches of Spearman. A nursery will be provided.

The public is invited to participate.

THANK YOU

The family of Rosa Lee Hill would like to express our most sincere thanks to everyone who came by, brought food, the ladies of the First Baptist Church for a wonderful lunch, Rev. Russ Gibbs for being there in our time of need.

Thanks so very much to those who sent flowers or donations. Your kind thoughts and prayers were greatly appreciated.

Bill & Rheta Hill
Janet, Randall & Scott Sauer
Jodie, Chad & Cole Robinett

THANK YOU

We extend our thanks for the prayers and phone calls during L.D.'s illness. He continues to recover and would enjoy cards & letters.

Address to:

David Peters
Laureate Hospital
Wells II Hall
6655 S. Yale
Tulsa, OK 74136

Thank you,
Norm, Cindy, Jeff
and Shorty Peters



You are invited to a
Baby Shower
honoring

Missie Sumner
Sunday, March 8th
from 2:00 to 3:30 p.m.

First State Bank
Hospitality Room

Given by hostesses



You are invited to a
Bridal Shower
honoring

Stephanie McCravey Cook
bride of Bob Cook
on Saturday, March 7, 1992
3:00 to 4:30 p.m.

At the home of Mrs. Dennis Nelson
West of Spearman

Given by Hostesses
Selections at ChaLor's & Celebrate

On The Go With Joy
by Joy Henderson

Since Christmas, a lot of us have been in full swing with our quilting projects and with the classes being offered in Hansford County, there is no excuse for learning some of the strip piecing, no template method of cutting our patches. While it used to take hours of cutting little individual diamond shape pieces, hours of coordinating colors and then sewing all those pieces into a quilt top called the Lone Star, now it can be done, ready to quilt in a matter of a few hours. Quite an improvement over the "good old days" of Grandma.

With all the new modern tools and equipment, we are kind of losing out on the togetherness of the "quilting bees" and social life of getting a prized possession ready for a hope chest or new baby. So, there has been some talk of forming a quilting guild here in our county. We have been offered a location, but we are now in the process of obtaining information on how to go about organizing and establishing guidelines, etc. If any of you have any ideas or show an interest in this sort of thing, let me know and I'll pass it on so that the fun can begin.

One thing I've learned, there are several around that are of the younger generation and are showing an interest in quilting. I think it would be neat to mix the younger with us older and "oldies" to share ideas and get back to some basic art. As I have said before, there is a common bond between us. We could have a fabric "swap meet" as we all tend to buy and store up fabric for future quilts and most of our husbands have a few caustic remarks about "who in the world would go buy big pieces of fabric so we could take it home to cut up into little pieces and mix up the colors, then sew up the little pieces into big pieces, add some more fabric for lining, batting to go in the middle layer and call it a quilt. All you really need to do is go buy a blanket at the store. Then you could save all your money, time, and energy on something important like cleaning up this messy house." Well, there is no explaining our madness to men or anyone else who doesn't understand quilting fever.

It is kind of like those who are hooked on fishing, hunting, golf, etc., who hold out (or up) their arms to measure a prize catch, us quilters are holding our arms out (or up) to

Miller receives certificate

Alan Luke Miller, a student at Gruver High School, is among the academic top 2 percent of graduating seniors who will receive certificates of achievement in the Tandy Technology Scholars program.

Each participating school in the program may nominate a senior who is outstanding in mathematics, science or computer science. These students will receive a certificate recognizing them as Tandy Technology Scholars. In addition, they are eligible for one of the 100 scholarship of \$1,000, awarded annually.

brag on our stack of fabric. So there! Spring break is over but the excitement of Hound Roundball lingers on. After a few days rest the boys will again go into action on their way to State. The girls lost a heart-breaker last week-end, but as the old saying goes, "Just wait 'til next year."

The Danny Carthels have returned from their first year's experience at the Houston Stock Show. I figured Harletta needed a guide to help find the hot spots and I tried to hitch a ride, but I couldn't get packed quick enough. I really didn't want to go just to see the livestock, I go to make umpteen trips back and forth to the commercial exhibits and crafts, but on my next to the lats trip to Houston, I got caught trying to buy a picture and sneak it home in my suitcase. M.H. followed me every time I disappeared so on the very last trip to Houston, I confessed that the only reason I was going was to buy something special and I didn't want no hassel or flap. So, I accomplished my purchase and have never been back.

Anyhow, it's a great life if you don't weaken - but we weakened. Others who took advantage of school being dismissed was Glenda Renner, who took her mother Vivian Green and visited Joel and Adeline Wheeler in Albuquerque, N.M. Adeline is Glenda's sister.

Bob and Connie Burgoon also going west into New Mexico to visit newlyweds John and Amy Duncan and Connie's sister and husband. Paula and David Tarbet will be returning the visit when he will be conducting a gospel meeting here in Gruver for the Church of Christ. After the Burgoons returned to Texas to visit kids and grandkids, they caught the flu bug or something and were feeling puny.

I don't know the details, but overheard that Dave and Dixie Karlin went to Okie City and I also overheard Brenda Dahl's name. Just make up your own story and maybe it will be correct.

Visitors in Gruver were Velma Renner, from Amarillo, Kathy Nelson from Lubbock, Jody Holland, Mary Kathryn Moore from Vernon.

Good news that Mike and Angela Grotogut announce the arrival of a son who weighed 8 1/2 lbs. Congratulations.

Those who enjoyed ski trips recently were a group from the UMY. Sponsors were Peggy Barkley, Mindy Davis, Steve Gaines and Debbie Odom. UMY members were Max Davis, Cody Barkley, Rex Ralston, Kenton Odom, Hart Derington, Chad Brown, Bailey Barkley, Wylee Maupin, Heath Tolleson, Scott Stedje, Jason Ward, Amber Murrell, Lexy Spivey, Joni Hart, Kristin Evans, Kaysha Cluck, Mary Dawn Henson, Grant Odom, John Holland, Tucker Henson and Heath Gaines, who suffered a hurt knee after taking a bad fall. We are thankful that nothing worse happened.

Our son Dennis also went skiing and the only thing bad was lack of sleep while traveling.

Those known in the hospital include Linda Walters in Spearman, who continues to be plagued with various undiagnosed illnesses.

Elementary lists perfect attendance

Gruver Elementary School has announced its perfect attendance list for the fourth six weeks grading period in kindergarten through fourth grade.

Students with perfect attendance in Mrs. Henson's kindergarten class were Liliana Chavez, Kalee Crawford, Salvador Luciano, Dora Mendoza and Troy TeBeest.

Perfect attendance in Mrs. Hobbs' kindergarten class was recorded by Christopher Clawson, Dimna Cruz, Jenny Hart, Christopher Hillenbrand, Ramon Magallanes, Garrett Miner, Cassie Myatt, Mario Ortiz, David Puebla, T. Jay Sherrill and Juan Hernandez.

First graders in Mrs. Cooper's class who had perfect attendance included Noemi Borunda, Kristina Christian, Katie Jones, Christie McDowell, Misael Rosales, Rodrigo Tarango, April TeBeest, Joshua Manning and Sage Gray.

First graders in Mrs. Haight's class who went to school each and every day were Alicia Alvarez, Hunter Beville, Kasey Cazares, Lisa Johnson, Bryn Lowe, Brodie Steffenson, Carrie Stewart, Lori Swink, Dan Villegas, Colby Weldon and Francisco Gonzalez.

Perfect attendance in Mrs. Miller's first grade class was recorded by Lee Bridwell, Brandon Casdorff, Sergio Favela, Veronica Favela, Samantha Johnson, Chris Perez and Ricardo Hernandez.

Those with perfect attendance in Mrs. Karlin's third grade class included Clayton Acker, Casie

Bridwell, Tara Chisum, Oralia Cruz, Julie Dahl, Cecilia Favela, Holly Hart, Shea Lowe, Chase Stapleton, Seth TeBeest, Taos Weldon and Aaron Weller.

Students with perfect attendance in Mrs. Maupin's third grade class included Kimberly Boyd, Kallie Cluck, Monalisa Garcia, Chase Lamb, Manuel Luciano, Jesus Magallanes, Richard Stewart and Jeremy Tunnell.

In Mrs. Williams' third grade class, students who attended school every day were Rozann Carter, Johnny Lopez, Gisela Soto, Sammie Stavlo, Chad TeBeest, David Villegas, Tessa Yanke and Laura Gonzalez.

Fourth graders in Mrs. Mayhew's class with perfect attendance included Ricky Arreola, Randi Atwood, Kyler Barkley, Candace Barrera, Britt Carter, Jared Christian, Krystle Deeds, Dusty Eckhardt, Jinda Gamble, Dallas Henson and Mary Puebla.

Perfect attendance in Mrs. Overbey's fourth grade class was recorded by Bray Armes, Josh Blount, Aurora Favela, Daniel Hernandez, Chelsie Hicks, Colby Hunt, Leah Shults and Rosa Gonzales.

Mr. Roberts' fourth graders with perfect attendance were Lee (Nunez) Blevins, Esmeralda Bravo, Darren Duran, Trevor Ferguson, Amanda Griffin, Derik Grotogut, Donovan Karlin, Annie Mayhew, Dan Odom, Lacie Osbourne, Nicole Shearer, Lindy Tolleson, Sandra Villa and Kenneth Manning.

Elementary students Jump Rope for Heart

Fifty-seven Gruver Elementary School students in grades kindergarten through fourth participated in the "Jump Rope for Heart" program Thursday, Feb. 20.

"Jump Rope for Heart" coordinator Gail Etheredge said that the fund-raiser was conducted in the Gruver Elementary School gym, and that \$2,343.15 was collected for the American Heart Association.

background check required by state law.

"Interested businesses should call our toll-free number to find out who must be fingerprinted," Sharp said. "Then they should contact their local sheriff or police department to arrange to get printed."

Licensed retailers also must make arrangements with their financial institutions for their accounts to be accessible to electronic funds transfer transactions. The Lottery and licensed retailers will then be able to handle the required financial transactions automatically.

Applications for lottery ticket sales licensing due March 31

AUSTIN - Texas retailers who want to sell lottery tickets when the games begin this summer need to submit their license applications by Tuesday, March 31, State Comptroller John Sharp has announced.

"We will guarantee businesses that meet the deadline - and have clean records - will be able to sell tickets when the Texas Lottery picks its first winners," Sharp said. "Experience in other states shows that the first day of sales is one of the busiest, and we want as many Texas merchants as possible to join in the fun and profits from the beginning."

The Lottery expects to license as many as 15,000 retailers in time for the anticipated July 1 sales of the first instant-winner, scratch-off tickets.

"We've tried to make it as easy as possible for any interested Texas business to join the Lottery," Sharp said. "All it takes is a \$125 fee and a clean record - and an application postmarked by March 31."

To help Texas businesses with the application process, the Comptroller's office has conducted retailer assistance seminars across the state and established a toll-free hotline. That retailers-only number is 1-800-37-LOTTO.

The completed application packet must include the fingerprint card, which is part of the criminal

by Virginia DeWitt
SSA branch manager

PAMPA - Here is an important reminder for parents who do not have Social Security Numbers for their children: this year when you file your 1991 federal income tax return, you must have a number assigned to each child age 1 or over in order to claim him or her as a dependent. Previously, federal law required a Social Security number for any dependent age 2 or older.

Parents will be pleased to know how convenient it is to get a Social

Security number for their children. Simply call the toll-free number 1-800-772-1213, any weekday from 7 a.m. to 7 p.m. The Social Security Administration will send you an application form and instructions, or you can pick up the application (SS-5) at any Social Security office.

You can either mail or bring the completed form to any Social Security office. A pre-addressed envelope is provided for your convenience. The documents will be returned promptly, and a Social Security card usually is issued within

- A large statewide advertising campaign promoting the Lottery kickoff;
- A 5-percent commission on all sales;
- Increased sales from customers redeeming winning tickets; and
- Increased sales from customers visiting the stores to buy tickets.

Even 1-year-olds need Social Security numbers for tax forms

Security number for their children. Simply call the toll-free number 1-800-772-1213, any weekday from 7 a.m. to 7 p.m. The Social Security Administration will send you an application form and instructions, or you can pick up the application (SS-5) at any Social Security office. You can either mail or bring the completed form to any Social Security office. A pre-addressed envelope is provided for your convenience. The documents will be returned promptly, and a Social Security card usually is issued within

two weeks. The application and card are provided free of charge by Social Security, and they also provide free help in completing the form for those who need it.

Parents are urged to get SSNs for their children early so they will have them when they are ready to file their tax returns.

The local Social Security office is located at 125 S. Gillespie in Pampa. Office hours are 9 a.m. until 4 p.m., Monday through Friday, except on national holidays.

THANK YOU

I would like to thank the people of Hansford County for allowing me to visit with you in your homes and businesses.

Through my visits with you I have gained an insight into what you think the important issues are.

With your continued support we can work together to keep Hansford County a good place to live.

Phil Black

Political Advertisement Paid For By Phil Black

Classes for March

Saturday, March 7 • 10:00 A.M.
Landscape Painting with Bryon Test

Monday, March 16 • 6:00 P.M.
Sweatshirt Painting with Mary Cornelson

Friday, Mar. 20 • 9:00 A.M. (Continues Sat., Mar. 21, 10 A.M.)
Wildlife Painting with Bryon Test

Monday, March 23 • 6:00 P.M. (Continues Mon., March 30)
Wood & Wicker Easter Rabbit with Mary Cornelson

Thursday, March 26 • 6:00 P.M.
Bob Ross Painting with Mary Lou Crier

Friday, March 27 • 1:00 P.M. (6 Sessions)
Cake Decorating with Wilton Products

Saturday, March 28 • 9:00 A.M.
Quick Strip Machine Quilt Piecing with Cheryl Ashpaugh

Classes are limited • Enroll soon!

Your ARTS and CRAFTS Supply Store

hobbiekrafts

1934 HWY 64 North
Northridge Shopping Center
Guymon, OK • 405-338-2710

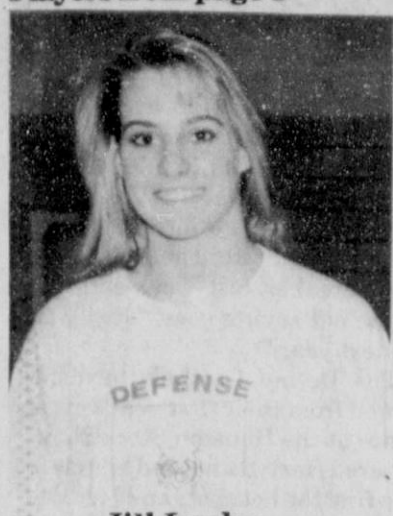
Hansford County Activity Center

501 S. Hazelwood • Spearman

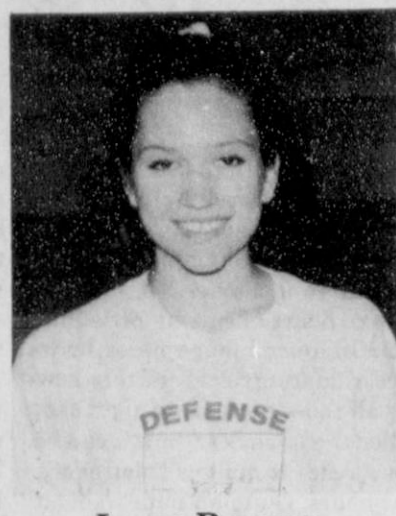
HAS NEW HOURS!!

Mon., Wed., & Fri.
6:00 PM - 10:00 PM

Racquetball, Sauna, Weight Room, Basketball Facilities



Jill Lusby



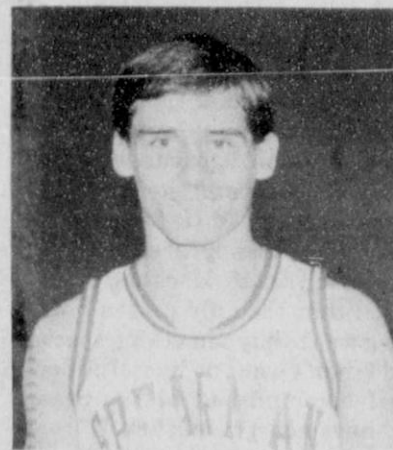
Laura Pearson



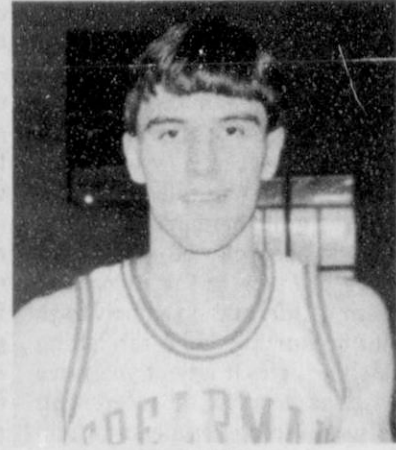
Tamri Townsen



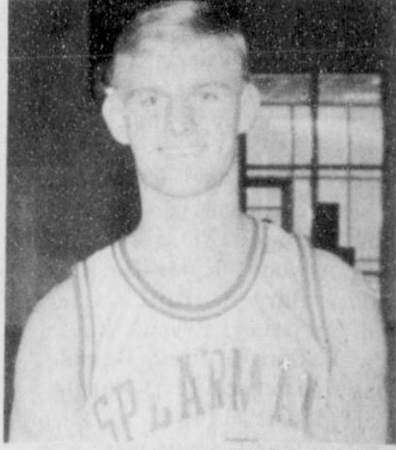
Mendy Lasater



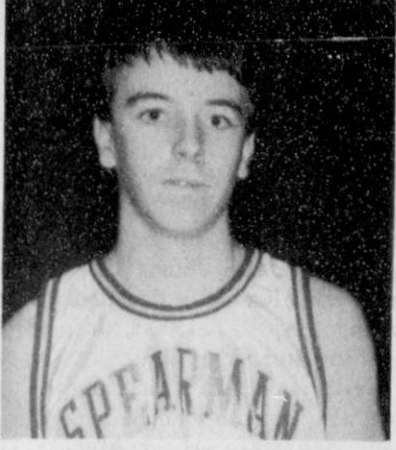
Brian Beck



Russell Shaver



Khris Kelp



Darian Hawkins

share that honor with Craig Doughton of West Texas High School. The All-District MVP honors for the girls went to Cheri Monden of Stinnett and Kenda Chisum of Sunray.

The Lynxette starters led the Lynxettes to a 27-3 record for the 1991-1992 season. This record included an undefeated district cham-

ionship and a bi-district win over Highland Park.

The Lynx starters led their team to a 17-15 season. The team got off to a slow start because the starters were involved in the football play-offs. The team finished second in district.

The All-District team is selected

by a vote of the coaches in the district. According to Kirkland, each coach nominates his starters. The coaches vote for their selections for

the All-District team and for the district Most Valuable Player. Coaches are prohibited from voting for their own players.

Spring sports set to begin this weekend

Hansford County schools begin their spring sports seasons this weekend, with both Gruver and Spearman track teams going to Stratford and the Spearman tennis team traveling to Borger for a tournament. Both golf teams begin competition on Tuesday, March 9.

Both Gruver and Spearman track teams are running in Stratford this Friday and Saturday. The meet will include both junior high and high school competition. The two varsity teams will run against each other again at the Fritch meet on March 27 and 28. The junior highs will meet again at Fritch and at the Spearman meet.

The Spearman tennis team will open its season Saturday, March 7 by playing in the Borger Quad tournament. It is scheduled to start at 9 a.m.

The Gruver tennis team will start its season with two possible dual matches on March 3 and March 10. The team's first tournament will be March 20 and 21 in Plainview.

The Spearman team will be competing in Plainview as well. The two teams will compete together on

one other occasion this season. That will be at the Amarillo Relays on April 10-11.

The golf teams both start their seasons on March 9. The Spearman girls and boys teams start their district tournaments. The team that acquires the most points from this series of tournaments will be the district champions. The Gruver golf teams will start a series of dual matches to prepare for their district tournament on April 6 (boys) and April 13 (girls).

Complete schedules for the teams are listed elsewhere.

Spearman Tennis Schedule
 March 7 - Borger Quad Tourney - 9 a.m.
 March 13-14 - Hereford Tourn. or WTSU Tourn. - TBA
 March 20-21 - Plainview Tourn. Fri. 4 p.m. & Sat. 8:30 a.m.
 March 27-28 - Lubbock Tourn. Fri. & Sat. 8:30 a.m.
 April 3-4 - Perryton Tourn.
 April 10-11 - Amarillo Relays Fri. & Sat. 8:30 a.m.
 April 13-16 - Spearman - Dist.
 April 30-May 1 - Abilene Regional Tournament
 May 15-16 - Austin State Tournament

Gruver Tennis Schedule
 March 3 - possible dual match
 March 10 - possible dual match
 March 20-21 - Plainview
 March 27 - Gruver Team Tourn.
 April 3 - Perryton Team Tourn.

Lynx' basketball season ends at Fritch

Through almost three quarters of their bi-district game at Fritch on Thursday, Feb. 27, the Spearman Lynx basketball team stayed ahead of Highland Park by forcing turnovers and getting easy baskets. But in the end it was their own turnovers that allowed Highland Park to catch up and win the game, 76-68.

With both teams pressing and trapping on defense and the Lynx trying to get the ball up the floor and into the basket before Highland Park could set up their defense, the game moved at a fast pace. Which, according to Lynx coach Wendell Neff, is the kind of game the Lynx wanted. The two guards for the Lynx, Brian Beck and Khris Kelp, took advantage of the quick pace to lead all scorers. Beck had 27 points on the night and Kelp had 19. Each had three 3-point baskets.

The offensive and defensive play of Beck and Kelp kept the Lynx ahead of the Highland Park team till the last 1:47 of the third period. Three turnovers in a row, followed by three easy Highland Park baskets, erased the five point lead the Lynx had built up during the first part of the period and put Highland Park up by one point, 49-50.

By the end of the third period Highland Park had built their own five point lead, to make the score 52-57 at the start of the fourth

period. As the period progressed, the Lynx closed the gap on the Highland Park lead and tied them with 4:32 left in the game, at 60 points each. The Lynx took the lead when Beck and Kelp double-teamed the Highland Park guard at the half court line. Kelp stole the ball and drove to the basket for an uncontested layup. That put the Lynx in the lead, 62-60.

But again, turn overs would hurt the Lynx' efforts. A turnover and a missed shot would lead to two Highland Park baskets and the lead. The Lynx would tie the game at 64 with 2:47 left in the game, but they would not be able to keep Highland Park from scoring. In the end it was 6 for 8 free throw shooting by Highland Park that made the difference.

Game Summary

Spearman 68 - HP 76

Cody Pipkin-7, Brian Beck-27(3-3pt.), Russell Shaver-4, Khris Kelp-19(3-3pt.), Brady Reed-7(1-3pt.), Mark Eakin-2, Darian Hawkins-2.

Practice Games Summary vs. Groom, 2-22

Spr. 62 - Gro. 66

Pipkin-7, Beck-10, Shaver-24(2-3pt.), Kelp-15(2-3pt.), Reed-6, Eakin-2, Hawkins-2.

vs. Briscoe, 2-8

Spr. 66 - Bri. 57

Troy Law-2, Pipkin-16, Beck-17(1-3pt.), Shaver-13, Kelp-3(1-3pt.), Reed-6, Eakin-2, Hawkins-7.



After taking a lob pass from Spearman wing player Khris Kelp (32), Cody Pipkin (22) "skys" above the Highland Park defenders for a lay-up basket.

April 10-11 - Amarillo Relays
 April 14-15 - District - Memphis
 May 1-2 - Regional
 May 15-16 - State

Spearman Track Schedule
 March 6-7 - Stratford All teams
 March 13-14 - Canadian All teams
 March 17 - Guymon High school only
 March 20-21 - West Texas

All teams
 March 27-28 - Fritch All teams
 April 3-4 - Spearman All teams
 April 10-11 - Dalhart High school teams
 April 10-11 - Sunray Jr. High Dist.
 April 16-17 - Sunray High School Dist.

Gruver Track Schedule
 March 6-7 - Stratford Var. Boys & Girls, JV Boys, 7-8 Boys and Girls
 March 13-14 - Sunray Var. Boys & Girls, JV Boys
 March 20-21 - Friona Var. Boys & Girls
 March 20-21 - Groom JV Boys & Girls, Jr. Hi Boys & Girls
 March 27-28 - Fritch Var. Boys & Girls, JV Boys, 7-8 Boys & Girls
 April 3-4 - Wheeler Var. Boys & Girls
 April 3-4 - Spearman 7-8 Boys & Girls
 April 10-11 - Dalhart Var. boys & Girls, JV Boys, 7-8 Boys & Girls
 April 16-17 - District - Wheeler Var. Boys & Girls, JV Boys & Girls, 7-8 Boys & Girls
 April 24 - Regional Qualifiers Gruver Var. Boys & Girls

See sports page 7



VOTE FOR J.P. DAVIS

As a candidate for the Republican County Commissioner Precinct 1, I would appreciate your vote on March 10. As a lifelong resident of Spearman, I know what our needs are. I will be available for your comments, and open to your input. Please consider me as you vote, but most of all please vote.

Paid for by J.P. Davis Box 53 Spearman, Texas 79081

Presentation by Hansford County Hospital District

On Proposed \$4.7 Million
 Bond Issue for Nursing Home
 and Hospital Improvements

7:00 P.M.
 March 17 and 24
 First State Bank
 Hospitality Room

Have the Facts to
 Make an Informed Decision

DANCE TO THE VERA BROTHERS

Hansford County
 Activity Center
 Fund Raiser
 March 21, 1992
 9:00 P.M. - 1:00 A.M.
 \$15.00/Couple
 \$10.00./Single
 Tickets on Sale at Center
 or from any Board Member

For All Your Beauty Care Needs

Leann Gillaspie
 Beauty Consultant
 659-3889



Mary Kay COSMETICS

OUT-OF-TOWN MAIL ORDERS WELCOME

Lady Hounds' season ends at regional

by Bob Bort

Any loss is still a loss, and is disappointing. The Gruver Lady Hounds suffered a 51-43 loss to the Lady Hornets from Sudan Friday, Feb. 28, in the first round of the Class A Regional Tournament at the Texas Dome on the campus of South Plains College in Levelland.

But for the Lady Hounds this year, nothing could quite dampen the overall success of the season, which broke a 28-year playoff-win dry spell, and the Lady Hounds went out in style against Sudan, fighting till the very end.

"I was more proud of this team than any team I've ever coached," said Gruver coach Steve Myatt after the game. "I feel great about the season - I'm very proud of the team. Late in the year, I think we developed a good personality on the court, and I really began to think that no one could beat us."

Myatt went on, "Sudan was quick, but we shot 38%, way off what we had been shooting, and that was the difference. But we never quit, we never gave up. We just didn't have a good shooting ball game."

Sudan went on to lose to Happy in overtime. The eventual tournament champion, with a berth in Austin this week, is the Claude Mustangs.

Mika McLain, if for nothing else (unlikely!), will always be known as the Gruver girl who best starts a basketball game. She came out hot again, with five jumpers and 10 points in the first quarter alone. McLain's two jumpers on her first two shots put Gruver up 4-0, and it looked like the Gruver ladies were on their way to victory. But Sudan scored seven unanswered points to lead 7-4, the first of two streaks that would be the Lady Hounds' downfall.

Anissa Ryan hit a jumper with 7:54 left in the half, and it was 16-16, and this one had the makings of one that would go down to the wire. But then the Lady Hounds went

cold, and they would not hit again from the field for the entire second quarter. Meanwhile, Sudan scored nine straight points for a 25-16 lead, and the game was out of control for the Lady Hounds.

Holly Venneman came alive in the third quarter with the first 11 points of the quarter for Gruver, but it was not enough. The Gruver ladies didn't seem to be able to make a dent in the Sudan lead of 9-11 points.

In the fourth quarter, Sudan ballooned out to a 13-point, 46-33 lead. It was then that Gruver decided they wouldn't quit and they would make a game of it. Wynn Maupin hit under the basket with 5:59 left, Venneman a free throw at 5:37, Maupin a free throw at 5:04, and it was back down to a nine-point lead, 46-37. Then when Traci Crawford came in and bombed home a three-pointer, it was 46-40 and Gruver fans were hoping for a miracle comeback with 2:42 left. But Sudan hung on, thanks in large part to senior Michelle Tamplin, who scored 18 points, and freshman Muffin Davis, who scored 11.

Next year, Gruver will be in AA competition and won't have to worry about returning to Levelland to face these same teams - they will instead be looking at the Regional Tournament in Abilene, and AA competition like Abernathy and Panhandle and Spearman. It will be hard to top this year in excitement and accomplishment, but they probably will, returning the whole team save for Stacey Williams, who will graduate this year.

S (28-6) 16 27 40 51
G (22-11) 14 18 31 43
3-point shots: Traci Crawford, Amy Adams, Danielle Martin.

S-Michelle Tamplin-18, Danielle Martin-12, Muffin Davis-11, Teresa Williams-4, Amy Adams-3, Rosemary Salinas-2, Candy Weaver-1.

G-Holly Venneman-16, Mika McLain-10, Wynn Maupin-8, Anissa Ryan-4, Traci Crawford-3, Julie Meyer-2.



Gruver defenders pressured the ball full court in both their bi-district win and their area loss. In this photo, Kevin Spivey (left) and Chad Brown try to stop the inbounds pass.



Matthew Hoel tries to shoot a little jump shot over a Claude defender. Fighting for rebounding position are Marty McCloy (10) and Chad Brown (behind McCloy).

Greyhounds come up short in area tilt

by Bob Bort

The Gruver Greyhounds played one of their finest games of the year Tuesday, March 3, at the Caprock High School Activity Center in Amarillo, but came out on the short end of an extremely hard-fought 54-51 victory for the Petersburg Battlin' Buffs. Petersburg thus wins the Area Championship and is bound for Levelland and the Regional Tournament this weekend.

No, Gruver did not shoot well, hitting only 32% (18-56), but they played defense well and hustled well. In the end, Matthew Hoel had a chance at the buzzer to tie the game with a 3-pointer, and it looked good, but it was just a fraction off and rimmed.

Petersburg took a 5-2 lead, but Gruver came back as Trent Seagler hit from under the basket, and led 6-5 with 3:33 left in the first quarter. Seagler played a super ball game, with 4-4 from the field and 4-6 from the foul line. If he hadn't have had to leave the ballgame for brief spells to take a breather, the Hounds might have won.

It was Kevin Spivey and his 3-pointers who kept the Hounds close to the Buffaloes in the first half. Spivey hit three 3-pointers, and Gruver trailed only 26-24 at the intermission. The score had been 26-19, so combined with an 8-0 run at the start of the third quarter, the Hounds outscored the Buffs 13-0, and really had them on the run and stampeded.

Spivey hit his fourth 3-pointer with 7:35 left in the third quarter for a 27-26 Hound lead. Then Hoel hit a jumper, and then a 3-pointer, and with 6:32 left in the third the

Hounds led 32-26. They looked to be on the way to the upset victory over the states fourth-ranked team.

But the Buffs came back and the game went down to the wire. With 3:18 left, Shannon Pool hit from under the basket to tie it at 49-49. Pool then stole the ball under the Buffs' basket and Seagler was fouled. He hit both ends of the free throws for a 51-49 Hounds lead.

But with 1:27 left the Buffs tied it 51-51, and with 0:47 left Joe Adams hit the second of two free throws for a 52-51 Buffs lead. Gruver took the ball down the court, but a travelling violation occurred when Marty McCloy got the ball caught under his right arm while dribbling.

The Buffaloes scored again with 10 seconds left for the 54-51 lead. Hoel's shot at the end could have tied it, but it was not to be on this night.

For the seniors - Marty McCloy, Shannon Pool, Matthew Hoel, Trent Seagler, Rex Ralston, Luke Miller, Ryan Mathews, and Chad Brown - it was the last ball game, and they will probably always wonder, "What if Matthew Hoel's shot had gone in..."

G (26-7) 10 24 38 51
P (25-4) 13 26 43 54
3-point shots: Kevin Spivey - 5, Brady Pool, Matthew Hoel.

G-Kevin Spivey-15, Trent Seagler-12, Matthew Hoel - 10, Shannon Pool-8, Brady Pool-5, Marty McCloy-2, Carey Kauffman-1.

P-Tim Fox-17, Joe Adams-16, Bryan Stephens-10, Jerry Fillingim-6, Doug Porter-2, Brannon Rodgers-2, Poncho Ramirez-1.

Health briefs

Osteoporosis May Begin Early - Osteoporosis, a crippling bone disease, may begin in childhood.

Dr. Steve Abrams, a researcher at the USDA's Children's Nutrition Research Center of Baylor College of Medicine in Houston, is

studying calcium absorption and skeletal development in 100 female volunteers aged 5 to 15.

"Most of an adult's skeleton is built and enlarged during adolescence," Abrams said. "Being short-changed on calcium at this stage of life could be especially damaging."

Greyhounds defeat Mustangs to take bi-district title

by Bob Bort

Thursday, Feb. 27, the Hounds survived an off shooting night and used their aggressive defense to methodically defeat the Claude Mustangs by 17, 55-38, at the Tex Hanna Fieldhouse in Borger.

The Hounds shot only 26% (16-61), but with their defense it was enough to dismantle a game, but overmatched, Claude team. The Mustangs' highly touted 6-11 Chris Skiles rarely saw the ball, and scored only eight points. Claude shot only 36% as a team.

"I every bit expected it to be as tough a game as it was," said Coach Tim Garland after the game, "pri-

Sports from page 6

Gruver Golf Schedule
March 9 - Shamrock - Girls
March 10 - Shamrock - Boys
March 17 - Booker - Boys
March 19 - Booker - Girls
March 26 - Memphis - Girls
March 27 - Memphis - Boys
March 30 - Canadian - Boys
April 6 - Borger Boys District
April 13 - Borger Girls District
Spearman Golf Schedule
March 9 - Borger

marily because of their height, which did give us trouble." But he continued, "I was especially proud because our defense took them out of their offensive sync - they were never able to capitalize while we were struggling."

Gruver did what they had to do on offense. It was a hard-fought victory. They had two streaks of note, which put the game away. With Claude leading 14-12 and three and a half minutes left in the second quarter, the Hounds went on a 11-0 streak to lead 23-14, and they were never headed after that.

Claude made motions to come back, and trailed only 32-26 mid-

way through the third quarter, when Gruver went on a 14-2 run to put the game away, with a 46-28 lead. Gruver's largest lead was 19 points. They outscored the Mustangs in every quarter, 11-8, 15-10, 18-10, and 11-10.

Brady Pool played an outstanding ballgame, with a three-pointer, and 6-6 from the foul line, for nine points. On defense he was magnificent, on offense he and Marty McCloy directed the Hounds well.

Kevin Spivey led the Hounds with 12 points, Shannon Pool had 11, and Trent Seagler had 10. All the Hounds played well on defense.

All 14 Hounds who suited up

saw action in this game, three of them for the first time this year. Cody Barkley, Matt Etheredge and Jeffrey Price made their varsity debut, and they each played well.

G (26-6) 11 26 44 55
C (26-7) 08 18 28 38

3-point shots: Kevin Spivey-3, Marty McCloy, Brady Pool, Nathan Robason.

G-Kevin Spivey-12, Shannon Pool-11, Trent Seagler-10, Brady Pool-9, Marty McCloy-7, Matthew Hoel-5, Luke Miller-1.

C-Mike Campbell-11, Chris Eaton-8, Chris Skiles-8, Nathan Robason-5, Matt Minkley-4, Beau Brown-2.



Boys 9 a.m., Girls 1 p.m.
March 16 - Spearman Boys 1 p.m., Girls 9 a.m.
March 23 - Stratford Boys 9 a.m., Girls 1 p.m.
March 30 - Canadian "A" Girls 9:30 a.m.
March 31 - Canadian "A" Boys 9:30 a.m.
April 6 - Dumas Boys 1 p.m., Girls 9 a.m.
April 30-May 1 - Abilene Regional Tournament



**VOTE
ERNIE
VANDERBURG**

DEMOCRAT CANDIDATE

FOR COMMISSIONER PRECINCT 1

Pol. Adv. Paid for by Ernie Vanderburg, HCR 2, Box 2-A, Spearman, TX 79081

Playing Cards.

All day, every day, it's nothing but work, work, work. So, to maximize your leisure time with family and friends, you've really got to play your cards right -- with Dobson Cellular Systems phone service.

By helping you work more efficiently, a convenient, hard-working cellular phone and service from Dobson can actually put **more** hours of leisure into your leisure hours.

Take advantage of the king-size convenience and affordability of Dobson Cellular, and give your family the best gift of all...more of YOU!

For You, Dobson Cellular is Definitely in the Cards.

DOBSON
CELLULAR SYSTEMS

1-800-882-4154



Authorized Dobson Cellular Dealers
Cellular Communication
659-3762

Letter to the editor

Dear Editor,
When politicians and the media continue the "great winds of obfuscation" which blow over the American electorate or woo and confuse, it is time to sort them out on the major issue facing this republic.

Elections are about power over people. Two main vehicles of power, international political control and international banking, can get over looked when they should have the bright light of exposure as they become more and more involved in the lives of Americans.

The President keeps his New World Order on the front burner without explaining what it will mean to America. "The Persian Gulf crisis is a rare opportunity to forge new bonds with old enemies (i.e., the Soviet Union)...a unique extraordinary moment...Out of these troubled times a New World Order can emerge, under a United Nation that performs as envisioned by its founders". - George Bush, 9-11-90

The New World Order intentions were and continue to be internationalist control of political in-

stitutions and economics of the USA and the world. The innumerable 20th Century wars of destruction by the "peace-loving" socialist dictators who are members of the U.N. have blown out the lamp of peace forever. Only a simpleton can believe that the United Nations offers anything except tyranny and slavery as it grasps more power over every person on earth.

President Bush seems obsessed with destroying the U.S. Constitution and the Bill of Rights, the economic collapse of the U.S. government and people, and the political and economic merger with socialist governments in the United Nation. He has become a master at confusing the main issue of power transfer to international socialist bureaucrats.

Sort out the voices of confusion, and true personal responsible lib-

erty is still most desired by citizens and most ignored by politicians. Has anyone ever heard George Bush define individual liberty and make even feeble attempt to protect it? This administration issued 63,000 executive orders in 1990 which regulate private property and businesses. The estimates for 1991 executive orders may be as high as 90,000. The road to tyranny is thus paved.

Just think how many regulations Americans can anticipate under the Bush United Nations/New World Order. As the winds of "political obfuscation" blow, demand that the main issues be discussed. Protect personal liberty of the U.S. Constitution and oppose the slavery from the Bush UN/New World Order.

Sincerely,
MacDonald Hays
Amarillo



In this photo, a class of Spearman elementary students practice D.E.A.R., which stands for Drop Everything And Read. The whole school did this on Tuesday, March 24. Behind these students is another reading skills building activity, the Jog America Readathon. Students advance their tokens back and forth across the United States map, based on how many books they read.

Texas Lottery logo contest announced

AUSTIN - "The Texas Lottery needs a uniquely Texas logo, and we're asking Texans to give us their ideas - with the chance of winning \$1,000," State Comptroller John Sharp said, announcing a contest to design a lottery logo.

"Every advertising company that wants our business must submit three logo designs, but we think everyday Texans have some great ideas as well," Sharp said in laying out the rules for the contest. "The first place finisher wins a \$1,000 cash prize and a chance to compete against the professionals."

"You can use longhorns or lone stars, blue skies or bluebonnets, or any other uniquely Texas symbols that capture this state's mystique," Sharp said. "The only other rule is that the logo must communicate the fun of playing - and winning - the Texas Lottery."

All entries must be submitted on a standard, letter-sized piece of

paper, postmarked no later than March 16. The winners will be announced in late March.

The contest is open to all Texans other than employees of the Comptroller's office and their immediate families and anyone doing business with the Texas Lottery or proposing to do business with the Lottery.

Along with the \$1,000 grand prize, the lottery will pay \$600, \$400, \$250 and \$100 to the second, third, fourth and fifth-place winners as well.

"Remember, you don't have to be Leonardo da Vinci painting the Mona Lisa to win," Sharp said. "Entries will be judged on originality, simplicity of design and appropriateness of their concept rather than their artistic execution."

Each entry becomes the property of the Texas Lottery, and the Lottery reserves the right to use all or part of any entry as it sees fit.

The grand prize entry will compete directly against the advertising companies' proposed designs for the chance to become the Lottery's official logo.

Under terms of the contest, there

can be only one entry per Texan. Accompanying each entry should be the contestant's name, address and daytime telephone number.

Entries should be mailed to:
Comptroller of Public Accounts

Lottery Logo Contest
Austin, TX 78774

For more information about the logo contest, contact Frank Coniglio at the Texas Lottery at 512/404-3700.

Ten free trees available

Ten free Colorado blue spruce trees will be given to each person who joins The National Arbor Day Foundation during March 1992. The free trees are part of the non-profit Foundation's Trees for America Campaign.

"Colorado blue spruces were selected for this campaign because of their many uses in the home landscape," John Rosenow, the Foundation's executive director, said. "They lend beauty to their surroundings with their silver blue-green color and compact conical

shape. They can be used as individual ornamentals, an energy-saving windbreak, a privacy screen, or as living Christmas trees."

The trees will be shipped post-paid at the right time for planting between April 1 and May 31 with enclosed planting instructions. The six to twelve inch trees are guaran-

teed to grow, or they will be replaced free of charge.

To become a member of the Foundation and to receive the free trees, send a \$10 membership contribution to TEN BLUE SPRUCES, National Arbor Day Foundation, 100 Arbor Avenue, Nebraska City, NE 68410, by March 31, 1992.

School menu

GRUVER ISD
MARCH 9-12
LUNCH

Monday - cheese sandwich, tater tots, fruit, cookies, milk

Tuesday - soft shell tacos, cheese, lettuce, fruit, milk

Wednesday - fish sticks, tartar sauce, macaroni & cheese, green beans, cobbler, corn bread, milk

Thursday - corn dogs, beans, fruit, milk

Friday - no school. Weather day. Salad bar Monday and Wednesday only.

BREAKFAST

Monday - oatmeal, cinnamon bread, juice, milk

Tuesday - toast, peanut butter & jelly, fruit, milk

Wednesday - biscuits & sau-

sage, fruit, milk

Thursday - cinnamon rolls, fruit, milk

Menu subject to change due to deliveries.

PRINGLE-MORSE CISD
MARCH 9-13
BREAKFAST

Monday - cereal, toast, apple juice, milk

Tuesday - pancakes, sausage, grape juice, milk

Wednesday - oatmeal, cinnamon toast, orange juice, milk

Thursday - donuts, cheese toast, apple juice, milk

Friday - biscuits, sausage, orange juice, milk

LUNCH

Monday - corn dogs, nachos, salad, fruit, milk

Tuesday - chicken strip, potatoes, gravy, corn, salad, fruit, milk

Wednesday - frito pie, veg. tray, fruit, milk

Thursday - turkey, dressing, potatoes, gravy, salad, green beans, rolls, milk

Friday - pizza, salad, fruit, ice cream, milk

SPEARMAN ISD
MARCH 9-12
LUNCH

Monday - pizza, tossed salad, dill spears, apple cobbler, milk

Tuesday - grilled cheese sandwich, beef stew, fruit, plain Jello, milk

Wednesday - hot turkey sandwich, mashed potatoes, green beans, Coke, milk

Thursday - chili cheese burger, tater tots, fruit, cinnamon rolls, milk

Friday - no school

LOOK UP

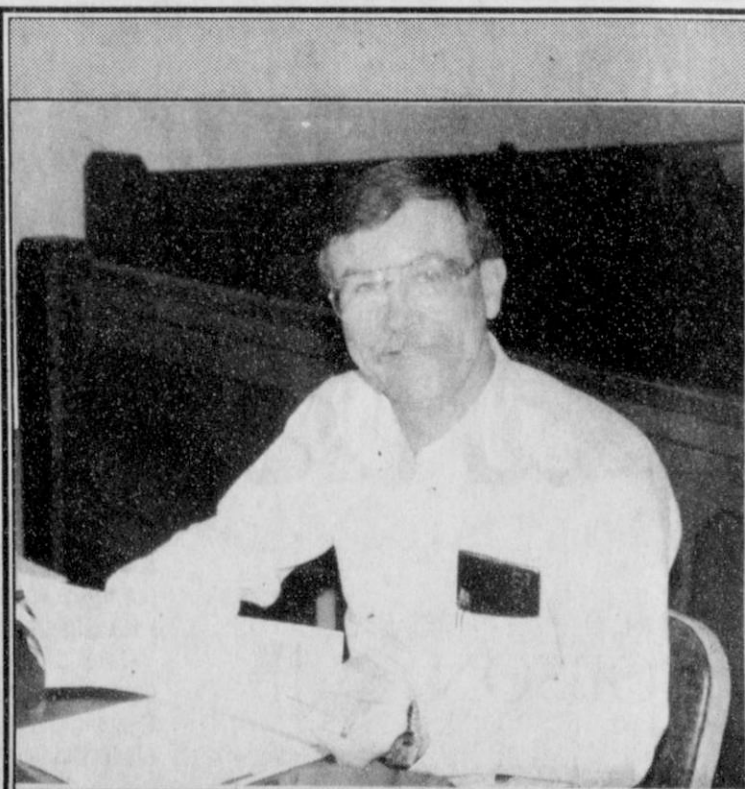
Before you cut down

You can prevent an accident by making sure there are no power lines nearby before you cut down or prune trees.

Pruning tools, saws or branches contacting a line could turn you into a conductor of electricity and cause serious injury.

If you have branches that are close to power lines, call your local TNP office to report the problem.

If the branches are too close, we'll trim them away from the line for you.



Dick Gillaspie

Working hard to serve Hansford County as
Precinct #1 County Commissioner

Trabajando para servir a la Gente de Condada Hansford.

VOTE
IN THE DEMOCRATIC
PRIMARY TO KEEP
DICK GILLASPIE
precinct #1 County Commissioner

EXPERIENCE ON THE COURT
SUCCESSFUL BUSINESS MANAGER
EXPERIENCE IN PUBLIC SERVICE
FAMILY MAN

Political Advertising Paid For by Dick Gillaspie

99 TIME!

AT DAIRY QUEEN!

99¢ EACH

HUNGR-BUSTER JR.

THIS IS THE COUNTRY

SEASONED CURLY FRIES

16-OZ. SHAKE

TWO TACOS

ALL FOR 99¢
ON SALE MARCH 2-22, 1992
At Participating Dairy Queen Stores

Dairy Queen

© Reg. U.S. Pat. & Tm. Off. All R.O. Corp. TM Reg. U.S. Pat. & Tm. Off. © 1992 Dairy Queen

BB ASGROW

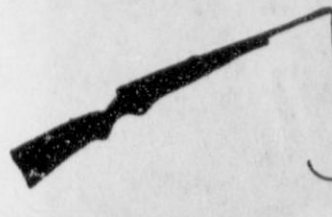
A504 NATIONAL YIELD CHAMPION
NON-IRRIGATED GRAIN SORGHUM

- MEDIUM MATURITY
- YIELD PROVEN
- STRESS TOLERANT
- GOOD EMERGENCE
- WHITE GRAIN COLOR
- GOOD HEAD EXERTION

PLANT THE BEST IN '92!

B & B FARM INDUSTRIES, INC.
SPEARMAN, TEXAS
659-5597

**SOUTHWEST
OUTDOORS**



Mel Phillips

Congratulations to KEITH FROST of Plainview for his victory over 35 of the most dedicated big bass anglers in this part of Texas during February's Lake Baylor Big Bass Tournament. "Crankbait" Keith fished deeper than the other anglers and found schools of small male bass with an occasional quality big female. He caught 25 bass and eventually won with a healthy 5.95 pounder. Total winnings for his day-at-the-lake were almost \$1,000.

Second place and \$250 went to KEITH TAYLOR of Pampa who is making a habit of finishing second at this kind of tournament. Keith also found some deep water bass that would hit a crawdad colored crankbait. Third place and \$150 went to Lake Greenbelt expert JACKIE IVY of Southwestern Public Service. The \$50 Luck of the draw was won by MIKE NAPLES, from the Amarillo post office.

The really big bass should be cruising the shallow water during March, and serious fishermen know that the biggest bass of the year are normally caught then. March is not the time for a wimpy rod and light line. It's trophy time.

Next Lake Baylor Big Bass Tournament is scheduled for Saturday, March 14th. This fishing contest is open to the public. Early entry fee is \$50 if paid before March 9th,

when the price increases to \$60. Polygraph will be given. Both Lake Baylor and Childress are OFF-LIMITS on Friday and either may be fished during the tournament.

For rules and entry forms call 806-353-3654, or stop by Anchor Marine, Billy's Boat Ramp, or Camper Roundup in Amarillo. Forms are also available from Roy Rapavi at the concession at Lake Baylor. The field is limited to the first 100 anglers and fishing hours will be from 10 a.m. until 5 p.m.!

The next boat show is scheduled for the Sugarland Mall in HEREFORD on Friday and Saturday, March 6th and 7th. This show is free. Bring the kids. With interest rates at a 10-year low, Panhandle Pete predicts a banner year for local boat and RV dealers.

1992 is a strange year. The lack of cold winter weather means the normal winter kill of shad has not happened. A huge supply of these baitfish should provide extra food for the gamefish.

The Texas Parks and Wildlife Dept. is at a crossroads. Do they follow the lead of the free-loading radical environmentalists or do they listen to the hunters and anglers who are paying the bills? If you want better hunting and fishing in Texas, make your voice heard by writing them at 4200 Smith School Road, Austin, Texas 78744.



(photo courtesy Shella Watley)
Marsha Pipkin's fifth and sixth grade junior league girls basketball team includes (front row, l-r) Leah Torrez, Leah Mackle, Crosbie Lair, (back row, l-r) Jennifer Neff, Dawn Loomis, Holly Pipkin, Jennifer Laxson and Cami Winegarner.



(photo courtesy Shella Watley)
Karen Thompson and Jan Williamson's team of third and fourth grade junior league basketball players includes (front row, l-r) Catrina Brooks, Nicole Lozano, Maranda Fight, (back row, l-r) Sally Pittman, Hallee Beasley, Adrienne Simpson, Jenny Longoria and Robin McClure.



(photo courtesy Shella Watley)
Craig Schumann's third and fourth grade girls junior league basketball team includes (front row, l-r) Kayla Taylor, Amber Ramon, Isela Huerta, Tashi Schumann, (back row, l-r) Leslie Widner, Brooke Lesly, Jern Schnell, Kristi Wall and Natasha Burch.



(photo courtesy Shella Watley)
Andy Watley and Bobby Smith's third and fourth grade girls junior league basketball team includes (front row) Jamie Kunselman, (second row, l-r) Lacy Miesner, Irene Vaquera, (back row, l-r) Chelsea Nollner, Janae Watley, Camille Smith and Natasha Kirby.

Junior Girls Basketball Standings

- 5th & 6th Grade**
 1st - Trantham
 2nd - Beedy
 3rd - Keith Martin
 4th - Terry Butt
 5th - Marsha Pipkin
3rd & 4th Grade
 1st - Andy & Bobby
 2nd - Karen Thompson
 3rd - Craig Schumann

**RICK KEFFLER
FOR JUDGE
7TH COURT OF APPEALS**

I want to go to work for you as Judge on the 7th Court of Appeals. If elected I will work hard and be open minded, fair and impartial to all parties in the appeal.

I will support changes in the legal system which will reduce costs and delays such as:

- 1) Mandatory arbitration before filing suit,
- 2) Losing party pays winner's attorney fees,
- 3) Expand authority of Justice of the Peace.

I graduated from Texas Tech in 1975 and from SMU Law School in 1978. I passed the Texas and Florida Bar Exams in 1978. I was an Assistant D.A. for 2 years. I graduated from Emory Law School in 1981 with a Master's of Law in Taxation. I have been a Trial Lawyer for 13 years and I am Board Certified in Criminal Law and in Personal Injury Trial Law.

DEMOCRATIC PRIMARY

POLITICAL AD. PAID BY KEFFLER CAMPAIGN COMMITTEE,
DR. R. A. KEFFLER TREAS., 400 W. 15TH, AMARILLO, TX 79101

**What Everyone Should Know
About The Movie Rating System.**

GENERAL AUDIENCES

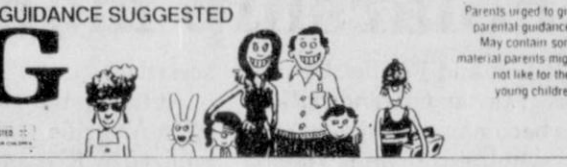
G



Nothing that would offend parents for viewing by children.

PARENTAL GUIDANCE SUGGESTED

PG



Parents urged to give parental guidance. May contain some material parents might not like for their young children.

PARENTS STRONGLY CAUTIONED

PG-13



Parents are urged to be cautious. Some material may be inappropriate for pre-teenagers.

RESTRICTED

R



Contains some adult material. Parents are urged to learn more about the film before taking their young children with them.

NO CHILDREN UNDER 17 ADMITTED

NC-17



Finitely adult. Children are not admitted.

**IT'S NEVER TOO LATE TO QUIT.
OR TOO EARLY.**
 Need help to quit smoking? Call your local American Lung Association.
 AMERICAN LUNG ASSOCIATION*
 800-252-LUNG



The earliest known mention of tea appeared in Chinese literature of about A.D. 350.

**Earn more %
with your \$**

With The *Pass Through*™ Annuity

8.05 % guaranteed first year yield*

Call: Shieldknight, Stopper & Assoc., Inc at 659-3880

Offered by: Regan Holding Corporation

*Early distributions and certain partial withdrawals may be subject to contractual penalties. All withdrawals are subject to income taxes and applicable tax penalties (if any).

In the Democratic Primary March 10



**Please
Vote
For**

VANCE SNIDER

**Hansford County
Commissioner
PRECINCT # 1**

Political Advertisement Paid For by Vance Snider

Possessions may be sold to qualify for SSI

by Virginia DeWitt
SSA branch manager
PAMPA - Elderly people, people with disabilities, and those who are blind who have limited income should know that they may still qualify for monthly benefits under the Supplemental Security Income (SSI) program even if their assets are over the SSI limits, if they agree to sell those assets within a specified time. The rule permits some people to qualify immediately for much needed help from SSI, according to the Social Security Administration.

Under the SSI rules, single persons may have assets valued up to \$2,000 and a couple up to \$3,000 without affecting their SSI payment. And some assets are excluded in figuring SSI eligibility. These may include a home and adjacent land; personal effects and household goods with a total equity value of \$2,000 or less; a car; life insurance policies with a face value totaling \$1,500 or less per person; property used in a trade or business; burial plots or spaces regardless of value, if intended for use by a person or his or her immediate

family; or burial funds set aside for an individual and his or her spouse, up to \$1,500 each.

The applicant must agree to sell the assets that exceed the limits above within a specified time (nine months for real property, three months for personal property). SSI payments received pending the sale of the assets have to be repaid out of the proceeds of the sale.

Another rule excludes any real property that cannot be sold because it is jointly owned and its sale would cause the other owners un-

due hardship due to the loss of housing; or its sale is barred for legal reasons; or the owner's reasonable efforts to sell have been unsuccessful.

People who need SSI should check with any Social Security office to find out if they qualify. The toll-free telephone number is 1-800-772-1213.

The local Social Security office is located at 125 S. Gillespie in Pampa. Office hours are 9 a.m. to 4 p.m., Monday through Friday except on national holidays.



State Senator Teel Bivins (right) accepts the Texas Chamber of Commerce's Legislative Leadership Award for 1991 from Art Roberts, vice president of the Texas Chamber. The award is presented for outstanding service to a select group of key lawmakers who distinguished themselves during the regular and special sessions of the legislature during the past year. Criteria used as the basis for selecting the recipients of the award include sponsorship of business-oriented legislation, leadership in key business issues, and the member's overall voting record. The Texas Chamber of Commerce represents a network of over 4,000 individual businesses and over 350 local chambers of commerce with a combined membership of an additional 200,000 businesses.

Medicare Part B available again

by Virginia DeWitt
SSA branch manager
PAMPA - The old adage that "Opportunity never knocks twice" is certainly not true when it comes to Medicare.

Anyone who didn't sign up for Part B Medicare medical insurance during the initial enrollment period - or anyone who dropped Part B coverage - now has the opportunity to enroll during the annual general enrollment period that runs from Jan. 1 through March 31.

Part B medical insurance helps pay for doctor bills, outpatient hospital services, durable medical equipment, and certain other medical items and services not covered by Medicare's Part A hospital insurance.

Medical insurance protection will begin on July for new enrollees, regardless of whether they sign up in January, February or March. The basic monthly premium this year is \$31.80. And there is a 10 percent increase in the premium for every year a person could have been enrolled in Part B but wasn't.

If you have questions about the open enrollment for Part B medical insurance, you can call Social Security's toll-free number, 1-800-772-1213. If you want to sign up for the coverage, contact your local Social Security office. The phone number is 806-669-1019. The office is located at 125 S. Gillespie and office hours are 9 a.m. to 4 p.m., Monday through Friday except on national holidays.

Social Security Q&A

Q: My neighbor told me she applied for food stamps at the Social Security office. But when I went to apply, they told me I had to go to the food stamp office. How come?

A: Social Security takes food stamp applications only from people who live in a household where everyone is either receiving or has applied Supplemental Security Income (SSI) payments. However, the people at Social Security does not decide if someone should get food stamps. Food stamp eligibility can be determined only by the state in which you reside.

Q: My 15-year-old sister has been blind since birth. I think she should apply for Supplemental Security Income, but my parents thing that because she is a minor, they are responsible for her and she won't

qualify. Is that right?

A: Not entirely. To qualify for SSI, you must meet certain income and resource limits. Some of your parents' income and resources will be counted as your sister's in deciding if she meets the limits. Your parents should check at any Social Security office to see if your sister will qualify.

Q: How do I apply for a Social Security number for my child?

A: You can call the toll-free number, 1-800-772-1213, from 7 a.m. to 7 p.m. any weekday to request an application for a Social Security card. The application lists the evidence required to obtain numbers for children or other dependents. Complete and return the application and required documents in the pre-addressed envelope which will be mailed to you. Cards will be issued for your dependents within two weeks. (Anyone who is 18 or older and who has never had a Social Security number must apply in person.)

Q: I am over 65 and get Social Security, but it just is not enough for me to live on after I pay my medical bills. A friend said I would be able to get help with my bills under some other program.

A: Your friend is probably talking about the Qualified Medicare Beneficiary (QMB) program. Generally, an applicant for the program qualifies if he or she has Medicare, and his or her income and resources are limited. The rules vary a little from state to state and local medical assistance (Medicaid) agency, social service or welfare office.

Q: I didn't get Medicare medical insurance when it was offered to me last year. Is it still possible to enroll?

A: There is an annual general period for Medicare medical insurance that starts on Jan. 1 and runs through March 31. Whether you sign up in January, February or March, your insurance will begin on July 1 of that year. There is a 10-percent premium increase for each 12-month period you could have been enrolled but weren't. The premium increase may not apply if you have employer group health coverage. Contact Social Security and they will help sign you up.

Q: I'm confused... I am disabled and was wondering just how much money I can earn while I try going back to work without losing benefits. Is it \$200 or \$500?

A: There is no limit to how much you can earn during the trial work period - your checks during this period will not be affected. Earnings must amount to at least \$200 for the month to be considered a trial work month. After nine months of trial work (not necessarily consecutive, but within a five-year period) your work record is reviewed.

Q: After I got married, I got a letter from a company that said they would take care of all my Social Security paperwork for \$7. Is this a good deal?

A: No, it is not. The Social Security Administration (SSA) will take care of your "paperwork" for free and do it faster than the company that wrote to you. Contact SSA directly to get your new Social Security card.

PLA gives college scholarship money

The Ranch and Feedlot Operations program at Clarendon College has been named recipient of a \$5,292 scholarship endowment from the Panhandle Livestock As-

sociation. At its annual meeting held Feb. 22 in Amarillo, a silent auction organized by Kris and Walt Lasley of Stratford, provided the bulk of the funding for the endowment. The first scholarship will be awarded during the 1992-93 college year.

Over 200 persons attended the association's 77th anniversary gathering. The group, which is emphasizing the importance of the young rancher, added 29 new members to its ranks. Officers re-elected for the coming year are: President, Nancy McIntyre, Spearman; Vice President, Earl Wheatley, Hedley; and Secretary-Treasurer, Stacy Stephenson, Amarillo.

Contributions and memorials to the Clarendon College Ranch and Feedlot Operations scholarship fund may be sent to: Panhandle Livestock Association Scholarship Fund, Box 1553, Amarillo, Texas 79105-1553. For additional information, contact Nancy McIntyre, Spearman, (806) 659-2083.

SPECIALS GOOD WHILE SUPPLIES LAST. PRICES EFFECTIVE MARCH 5-11, 1992

ALLSUP'S
305 W. KENNETH, SPEARMAN
101 MAIN, GRUVER

WE ACCEPT FOOD STAMPS AND MANUFACTURERS' COUPONS

DECKER OR DUBUQUE SLICED BOLOGNA 12 OZ. PKG. **79¢**

ALLSUP'S SANDWICH BREAD 1 1/2 LB. LOAF **2 \$1** FOR OR 69¢ EACH

SAUSAGE & BISCUIT EACH **69¢**

ALL FLAVORS TOM'S FRIES REG. \$1.29 **99¢**

BRAWNY PAPER TOWELS JUMBO ROLL **79¢**

LAY'S POTATO CHIPS REG. \$1.49 **99¢**

ALLSUP'S MONEY ORDERS UP TO \$299.00 EACH ONLY **29¢**

BEEF, CHEESE AND GREEN CHILI ALLSUP'S CHIMICHANGA EACH **89¢**

ALL TYPES PEPSI-COLA 12 PACK-12 OZ. CANS **\$3.59**

COOKED FRESH 24 HRS. A DAY	HOT FOODS MENU	AVAILABLE AT ALL ALLSUP'S LOCATIONS
BARBECUE BEEF SANDWICH	99¢	3 PIECE BOX CHICKEN \$5.99
BARBECUE PORK RIBS (LB.)	\$3.99	BEEF & CHEESE CHIMICHANGA \$1.19
BARBECUE WHOLE CHICKEN	\$3.99	(MEAD) CORN DOG 69¢
ALLSUP'S BURRITO	79¢	DELICIOUS HAMBURGER 59¢
BREAKFAST BURRITO	99¢	WILSON HOT LINKS 99¢
BURRITO BEEF & SALSA	\$1.19	SAUSAGE ON A STICK \$1.39
DELICIOUS CHEESEBURGER	79¢	SAUSAGE & BISCUIT 79¢
CHICKEN FRIED STEAK	\$1.59	SAUSAGE, EGG & BISCUIT \$1.09
3 COUNT CHICKEN STRIPS	\$1.49	SAUTEEDA SAUSAGE 99¢
W/POTATO WEDGES/ CHICKEN (2 PCS) BISCUIT	\$1.99	4 COUNT STEAK FINGERS \$1.00

CALL-IN ORDERS WELCOME CHECK OUR WEEKLY SPECIALS

SPECIAL VALUES PRICED UNDER \$1!

BAR S BOLOGNA 12 OZ. PKG. 79¢	U.S. #1 POTATOES 10 LB. BAG 79¢	CORN KING BACON 12 OZ. PKG. 79¢	CARNATION HOT COCOA MIX 10-CT. BOX 99¢
NICE & SOFT BATHROOM TISSUE 4 ROLL PKG. 99¢	SHURFINE FLOUR 5 LBS. 79¢	BARBARA DEE SANDWICH COOKIES 16 OZ. PKG. 79¢	

REGIONAL EYE CENTER

GEORGE R. WALTERS, M.D., P.A.
Is Pleased To Announce The Association Of
MARK F. HOLLINGSWORTH, M.D.

In The Practice Of General Ophthalmology
Diseases And Surgery Of The Eye

107 W. 30th Street
1-806-665-0051
Out Of Town Patients 1-800-322-3931

MIKE GARNETT
For County Commissioner Pct. 1

- * **Lifetime Hansford County Resident**
- * **27 Years Service to Hansford County through Boards & Committees**
- * **Concerned about:**
 - * Quality of Facilities & Services
 - * Prudent Use of Tax Dollars
 - * Maintaining Local Control of County Government

"I am eager and willing to represent you and your concerns."

Pd. Pol. Ad. Mike Garnett, candidate for County Commissioner Pct. 1. Paid for by Mike Garnett, treas. P.O. Box 1, Spearman, Texas 79081

REPUBLICAN PARTY PRIMARY ELECTION
(ELECCION PRIMARIA DEL PARTIDO REPUBLICANO)
(CONDADO DE) HANSFORD COUNTY, TEXAS
MARCH 10, 1992 (10 DE MARZO 1992)
OFFICIAL BALLOT (BOLETA OFICIAL)

INSTRUCTION NOTE: (NOTA DE INSTRUCCION):
Vote for the candidate of your choice in each race by placing an "X" in the square beside the candidate's name. (Vote por el candidato de su preferencia en cada carrera marcando con una "X" el cuadro al lado del nombre del candidato.)

Preference for Presidential Nominee
(Preferencia para un Candidato Nominado para Presidente)

You may vote for one presidential candidate whose name appears on the ballot by placing an "X" in the square beside the candidate's name. (Usted puede votar por un candidato para presidente cuyo nombre aparece en la boleta por marcar con una "X" el cuadro al lado del nombre del candidato.)

Justice, 1st Civil Appellate District
(Juez, Corte de Apelaciones, Distrito Num. 1)

JIMMIE DOWELL
 PHIL BLACK
 WILLIAM D. (BILL) SMITH

Justice, 2nd Civil Appellate District
(Juez, Corte de Apelaciones, Distrito Num. 2)

STEPHEN F. (STEVE) CROSS
 JOHN HUTCHISON

County Commissioner, Precinct 3
(Comisionado del Condado, Precincto Num. 3)

KENT OUTHRIE
 ROY L. BULLS
 WRITE-IN (ESCRIBA)

Referendum (Plebiscito)
Instruction Note: (Nota de Instruccion):
Place an "X" in the square beside the statement indicating the way you wish to vote. (Marque con una "X" el cuadro al lado de la frase que indica la manera en que quiere votar.)

FOR (A FAVOR DE)
 AGAINST (EN CONTRA DE)

DEMOCRATIC PARTY PRIMARY ELECTION
(ELECCION PRIMARIA DEL PARTIDO DEMOCRATICO)
HANSFORD COUNTY, TEXAS (CONDADO DE HANSFORD, TEXAS)
MARCH 10, 1992 (10 DE MARZO DE 1992)
SAMPLE BALLOT
(BOLETA DE MUESTRA)

INSTRUCTION NOTE:
Vote for the candidate of your choice in each race by placing an "X" in the square beside the candidate's name. (Vote por el candidato de su preferencia en cada carrera marcando con una "X" el cuadro al lado del nombre del candidato.)

Preference for Presidential Nominee
(Preferencia para un Candidato Nominado para Presidente)

Bill Clinton
 Bob Kerry
 Tom Harkin
 George W. Bush
 Charles Woods
 Lyndon H. LaRouche, Jr.
 Tod Howard Hawk
 J. Louis McAlpine
 Rufus Higginbotham
 Paul E. Tsongas
 Edmund G. Brown, Jr.

Justice, 7th Civil Appellate District
(Juez, Corte de Apelaciones, Distrito Num. 7)

Rick Keffler
 Carlton B. Dodson

Sheriff (Sherife)
 R. L. McFarlin, Jr.

County Tax Assessor-Collector
(Asesor-Collector de Impuestos del Condado)

Helen Dry

County Commissioner, Precinct No. 1
(Comisionado del Condado, Precincto Num. 1)

Ernie Vanderburg
 Cathy Patterson
 Vance Snider
 Roscoe L. Nelson
 Mike Garnett
 Dick Gillaspie

County Chairman
(Presidente del Condado)

Oscar H. Mauzy

Precinct Chairman, Precinct No. 1
(Presidente del Precincto, Precincto Num. 1)

Rose Spector

Justice, Supreme Court, Place 2
(Juez, Corte Suprema, Lugar Num. 2)

Jack Hightower
 Paul Banner

Judge, Court of Criminal Appeals, Place 1
(Juez, Corte de Apelaciones Criminales, Lugar Num. 1)

Charles F. (Charlie) Baird
 Sam Paxson

State Representative, District 88
(Representante Estatal, Distrito Num. 88)

Warren Chisum

Business should file property renditions

AUSTIN - State Comptroller John Sharp has reminded Texas businesses that they must file property rendition forms with county appraisal districts by March 31, listing the taxable property which they owned or managed as of Jan. 1, 1992.

State law requires that anyone who owns or manages income-producing personal property on Jan. 1 must file a rendition statement with the local appraisal district.

"For example, businesses must report their inventories, furniture and fixtures, machinery and equipment and other tangible business property on a rendition. Filing this annual report is actually to their benefit because chief appraisers use the renditions to establish a property's value," Sharp said.

"When a business' personal property is not rendered, the chief appraiser can only estimate the value," Sharp also announced that businesses whose property was damaged by a storm, flood or fire last year may file a special decreased value report which could lower their final tax bills.

"Businesses which suffered damage during Christmas-New Year flooding across Texas may be able to receive a tax break to help them through the tough times ahead, but they must still file the paperwork by the March 31 deadline," Sharp said.

While business owners and operators are required by law to file renditions, any property owner - including homeowners, farmers and ranchers - may voluntarily file one, or the report of decreased value.

All property owners may also receive a 30-day extension for either form, but must still file a written request with the appraisal district by the March 31 deadline.

Sharp noted that homeowners who voluntarily file a rendition are in a better position to exercise their rights as taxpayers. First, they are ensuring that the appraisal district has their correct address so that they are notified of any scheduled hearings or actions that may affect their property or tax bills.

"If the tax collector cannot deliver a tax bill because of an incorrect address, a property owner is still responsible for paying the taxes plus the penalties that may result from late payment," Sharp said.

Also, a rendition offers an opportunity for property owners to record their opinions of their property's value.

Finally, by recording an opinion, property owners have made sure that the chief appraiser must send them a notice before placing a higher value on their property. This notice allows property owners the time to gather information to protest the appraisal if they believe the proposed value is too high.

If a property is appraised by more than one appraisal district, the property owner should file a rendition in each appraisal district office.

Rendition forms are available at local appraisal district offices. For more information, contact local appraisal district offices or the Comptroller's Property Tax Division at 1-800-252-9121.

Candidates from page 1

tion in May. They are the mayor, currently held by Burl Buchanan, and two alderman seats currently held by Don Reed and Bob Boxwell.

Gruver has one councilman seat up for election. That is the seat currently held by Buster Davis.

The filing period for these offices will remain open until the close of business on Wednesday, March 18. To sign up as a candidate for one of the board or commissioner seats up for election, a person must go the business office of the municipality or school district they live in and want to serve on, and fill out a registration form.

If a person decided to run for one of the seats after the March 18 deadline, they could still run as a write-in candidate. They would have to declare their candidacy to the school or municipality office by April 2.

Early voting by personal appearance for these elections will start April 13 and close April 28. Regular voting will take place on May 2.

Residence from page 1

the County Commissions Precinct 3 Republican race.

The other difference in the Republican ballots will be at Precinct Chairman. There is a race for Precinct Chairman of voting precinct 1, between Randy Kirk and Carla Woodington.

The Republican ballot also contains a non-binding referendum. The referendum is asking Republican voters if they favor limiting terms of office for people serving in elected Texas state offices.

Scouts from page 1

Mrs. Charles McIver of Spearman and Donnie Loomis of Mooreland, Okla. Her poster, along with the others, will be on display during the special week.

In addition to the posters Cadette and Senior Girl Scouts representing Yuca Girl Scout Council are Ruth Ann Hokit, Junior, Guymon High School, and Ivy Lark, Senior, Goodwell High School.

Local Scout troops will be working on a "clean-up-spruce-up" at the Little House. Anyone interested in helping is asked to contact Carolyn Cummings. All help would be appreciated.

Unemployment at 3.3 percent

The January unemployment rate in Hansford County was 3.3 percent, according to the Texas Employment Commission.

TEC figures show that during the month of January, Hansford County had a total civilian labor force of 3,813 persons. Of that number 3,689 were employed and 124 were jobless.

The Hansford County unemployment rate looked good compared with the statewide rate for January, which jumped to 8.3 percent from the December jobless rate of 6.7 percent.

Texas has not had an 8.3 percent rate since March of 1988, said TEC Commissioner Mary Scott Nabers. The average jobless rate in 1990, was 6.2 percent, and it jumped to 6.6 percent in 1991.

The lowest unemployment rates in metropolitan areas were Bryan-College Station's 4.7 percent, Austin's 5.8 percent, Amarillo's 6.6 percent, Lubbock's 6.8 percent and Midland's and San Angelo's 7.0 percent rates.

Metropolitan areas with the highest rates included McAllen-Edinburg-Mission at 19.7 percent, Brownsville-Harlingen at 14.6 percent, El Paso at 12.4 percent, Corpus Christi at 10.8 percent and Longview-Marshall at 10.5 percent.

Hospital Notes

ADMISSIONS
Thursday, Feb. 27 - Carter Crawford
Friday, Feb. 28 - Gordon Kirby
Saturday, Feb. 29 - Linda Sanchez
Sunday, March 1 - none
Monday, March 2 - none
Tuesday, March 3 - none

DISMISSALS
Thursday, Feb. 27 - none
Friday, Feb. 28 - none
Saturday, Feb. 29 - none
Sunday, March 1 - none
Monday, March 2 - none
Tuesday, March 3 - Carter Crawford

PATIENT CENSUS
Wednesday, March 4 - Linda Sanchez, Gordon Kirby, Ben Arthur

Hansford County Activity Center
501 S. Hazelwood • Spearman

March

Sun 1	Mon 2	Tue 3	Wed 4	Thurs 5	Fri 6	Sat 7
8:15-7 AM Aerobics 4:30-5:15 PM Gymnastics 5:30-6:30 PM Karate 5:30-7:30 OPEN 6-10 PM	8:15-7 AM Aerobics 4:30-5:15 PM Gymnastics 5:30-6:30 PM Karate 5:30-7:30 OPEN 6-10 PM	8:15-7 AM Aerobics 4:30-5:15 PM Gymnastics 5:30-6:30 PM Karate 5:30-7:30 OPEN 6-10 PM	8:15-7 AM Aerobics 4:30-5:15 PM Gymnastics 5:30-6:30 PM Karate 5:30-7:30 OPEN 6-10 PM	8:15-7 AM Aerobics 4:30-5:15 PM Gymnastics 5:30-6:30 PM Karate 5:30-7:30 OPEN 6-10 PM	8:15-7 AM Aerobics 4:30-5:15 PM Gymnastics 5:30-6:30 PM Karate 5:30-7:30 OPEN 6-10 PM	8:15-7 AM Aerobics 4:30-5:15 PM Gymnastics 5:30-6:30 PM Karate 5:30-7:30 OPEN 6-10 PM

THE MUSEUM OF THE PLAINS' SECOND ANNUAL ANTIQUES & COLLECTABLES SHOW

Saturday, March 14 9:00 a.m. - 6:00 p.m.
Sunday, March 15 11:30 a.m. - 5:00 p.m.
Ochiltree County Expo Center
Perryton, Texas

SOMETHING FOR EVERYONE!

FEATURING:
Vendors from four states and the Panhandle
Antiques - Quilts & Jewelry
Collectables - Country Items & Crafts

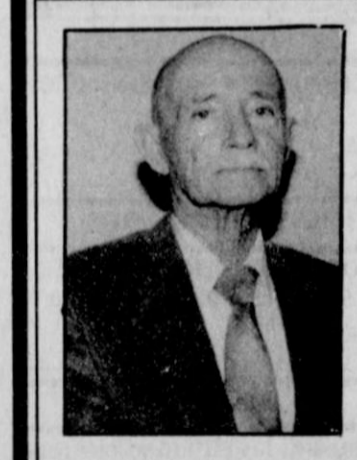
Computerized T - shirt transfers
Baseball cards
Good food & live entertainment

Obituary

Samantha Kay Ivey
Family graveside services were held Sunday, March 1 for Samantha Kay Ivey, infant daughter of Cole and Jana Ivey.

Services were presided over by the Rev. Todd Dyess and were conducted at Hansford Cemetery.

Survivors include her parents; a brother, Cody, of the home; and grandparents Bill and Ginger Pittman, Steve and Mary Lou Mathews, and Jim and Kay Ivey, all of Spearman.



VOTE FOR

Worley Smith

Republican Candidate for County Commissioner Precinct #1

Thank You for your support and your vote

Political ad. paid for by Worley Smith

ON MARCH 10 ELECT REPUBLICAN WILLIAM D. "BILL" SMITH

84th DISTRICT JUDGE

THE PROOF IS THERE. HE JUST ADDS UP. "A + FOR THE COURT" THE RIGHT MAN FOR THE JOB!

+ **PROVEN** - Prosecutor, Attorney & Administrator
+ **PROVEN** - Effective Budget Control
+ **PROVEN** - Dedicated Husband & Father
+ **PROVEN** - Decisive, Fair & Experienced
+ **PROVEN** - Active Church Leader
+ **PROVEN** - Conservative, Consistent, Hard Working

Pd. pol. Adv. by Bill Smith Campaign, Mark Dill, Treas., 515 Austin, Borger, TX 79007