



COME TO THE GAME

SPEARMAN
vs Coahoma
on 11/11
at 7:30 p.m.
in Plainview

Gruver Greyhounds vs
Memphis on 11/10
at 7 p.m.
in Pampa

CROSS COUNTRY

Gruver Greyhounds/Lady Hounds
The Gruver Cross Country Varsity Girls team, and Luis Mendoza will compete in the State Cross Country Meet in Round Rock on Monday, November 12, 2011.

Spearman Lynx/Lynxettes
The Spearman Cross Country Varsity Girls will compete in the State Cross Country Meet in Round Rock on Monday, November 12, 2011.

Weather Forecast

THURSDAY - Mostly sunny. Highs in the mid 60s. Southwest winds 10 to 15 mph.
THURSDAY NIGHT - Mostly clear. Lows in the upper 20s. Southwest winds around 10 mph.
VETERANS DAY - Mostly sunny. Highs in the upper 60s.
FRIDAY NIGHT - Mostly clear. Lows in the mid 30s.
SATURDAY - Mostly sunny. Highs in the mid 70s.
SATURDAY NIGHT - Partly cloudy. Lows in the upper 30s.
SUNDAY - Partly cloudy. Highs in the mid 70s.
SUNDAY NIGHT - Partly cloudy. Lows in the lower 40s.
MONDAY - Mostly sunny. Highs in the upper 60s.
MONDAY NIGHT - Partly cloudy. Lows in the upper 30s.
TUESDAY - Partly cloudy. Highs in the lower 60s.
Read more: <http://www.city-data.com/forecast/w-Spearman-Texas.html#ixzz1XwhiVZt8>

Weekly Update

Texas, November 7- Average retail gasoline prices in Texas have fallen 4.1 cents per gallon in the past week, averaging \$3.21/g yesterday. This compares with the national average that has fallen 2.9 cents per gallon in the last week to \$3.43/g, according to gasoline price website TexasGasPrices.com.

Including the change in gas prices in Texas during the past week, prices yesterday were 55.4 cents per gallon higher than the same day one year ago and are 1.6 cents per gallon higher than a month ago. The national average has not moved during the last month and stands 57.3 cents per gallon higher than this day one year ago.

"The national average is just one penny away from being the lowest we've seen since the start of March, even as crude oil prices have risen," said Patrick DeHaan, GasBuddy.com Senior Petroleum Analyst. "Just in the last week, wholesale prices have moved 13 cents per gallon between the high and low, so it does remain surprising that average prices have moved very little," DeHaan added.

GasBuddy operates, TexasGasPrices.com, and over 225 other local gasoline pricetracking websites that follow prices at over 125,000 gasoline stations in the United States and Canada. GasBuddy also uses Facebook (facebook.com/gasbuddy) Twitter (twitter.com/gasbuddy), and phone apps to keep motorists ahead of changing gasoline prices.

Texas Crop & Weather

The following specific livestock, crop and weather conditions were reported by Panhandle Extension directors: The region was windy with near-average temperatures but no moisture. Soil-moisture levels were mostly short to very short. Corn harvesting was winding down. The cotton harvest was ongoing. Wheat planting continued. Rangeland and pastures were mostly in poor to very poor condition. Livestock producers continued supplemental feeding. Many were still reducing herds or looking for alternative feeds or grazing.

AVAILABLE NOW!

ESUBSCRIPTION NEWS
to the
Hansford County
Reporter-Statesman
Delivered to your e-mail each
Thursday for only \$35/year.
Purchase online at
www.spearmanreporter.com
Call 806-658-3434 or e-mail reporter@spearmanreporter.com for details.

Spearman, Gruver Girls Headed to State, Cross Country Meet Again



The Spearman Lynxettes capture the Regional championship for the 4th straight year. Tylo Farrar finished in first place. (Back Row, L-R) Cynthia Mendoza, Brooke Walker, Sarah Snider, Shelby Hanna, Malory Martin, Gena Hargrove, Itzel Meza; (Front Row, L-R) Gately Garnett, Coach Starla Whiteley, Tylo Farrar.

Photo by Tami Hargrove. Pictures available at <http://spearmansports.smugmug.com>
See related article on Page 6



The Gruver Lady Hounds captured the Regional championship for the 3rd straight year. All five runners came in the top 15. (L-R) Maggie Gaspar, Macy McLennan, Daniela Luciano, Madison McLain, Taylor Felderhoff, Reagan Haynes, Bailey Stedje, Shelley Gibson, Emilynn Robinson.

See related article on Page 6



The Gruver Greyhounds took fourth place in the Regional cross country meet, with Luis Mendoza leading the team with a fourth place individual finish, qualifying him for the state meet. (L-R) Eddie Mendoza, Mason McLain, Marco Ayala, Valentin Trejo, Gerardo Monroy, Luis Mendoza, Lupe Pena, David Lopez.

See related article on Page 6

**Kristi Ramon
National Rural Teacher of the Year**



Kristi Ramon recently attended the 103rd Annual National Rural Educator Association (NREA) Convention & Research Symposium in Hilton Head Island, South Carolina to receive her award of the Monsanto Fund Rural Teacher of the Year. Present at the award ceremony were Cindy McIntee, President of NREA; Kristi Ramon, Spearman ISD; Steve Breckon, Chair of the Rural Teacher of the Year Selection Committee; and Deborah Patterson, Monsanto Fund President.

Alcohol Sale Vote Passes in Spearman

Texas Constitutional Amendment Results

A general election was held on Tuesday, November 8, 2011, for Texans to vote on 10 state constitutional propositions submitted by the 82nd Legislature.

In addition to the constitutional propositions, a local option election was held at Spearman City Hall for Precincts 1, 5 & 6 (inside city limits only). A local option election is an election to vote on the status of the sale of alcohol within a specific area, in this case, the Municipality of Spearman, Texas.

The ballot issue that this petition was for is: "The legal sale of all alcoholic beverages including mixed beverages." Beer, malt liquor and wine in a grocery or convenience store AND beer, malt liquor, wine and distilled spirits in a liquor store AND beer, malt liquor, wine and distilled spirits in a bar or restaurant.

The local option passed with voting totals of 359 for and 239 against.

The results and text from the Texas constitutional amendment referendum are listed below:

Proposition 1: "The constitutional amendment authorizing the legislature to provide for an exemption from ad valorem taxation of all or part of the market value of the residence homestead of the surviving spouse of a 100 percent or totally disabled veteran."
Yes: 82.88 percent; No: 17.11 percent

Proposition 2: "The constitutional amendment providing for the issuance of additional general obligation bonds by the Texas Water Development Board in an amount not to exceed \$6 billion at any time outstanding."
Yes: 51.52 percent; No: 48.47 percent

Proposition 3: "The constitutional amendment providing for the issuance of general obligation bonds of the State of Texas to finance educational loans to students."
Yes: 54.42 percent; No: 45.47 percent

Proposition 4: "The constitutional amendment authorizing the legislature to permit a county to issue bonds or notes to finance the development or redevelopment of an unproductive, underdeveloped, or blighted area and to pledge for repayment of the bonds or notes increases in ad valorem taxes imposed by the county on property in the area. The amendment does not provide authority for increasing ad valorem tax rates."
Yes: 40.28 percent; No: 59.71 percent

Proposition 5: "The constitutional amendment authorizing the legislature to allow cities or counties to enter into interlocal contracts with other cities or counties without the imposition of a tax or the provision of a sinking fund."
Yes: 57.77 percent; No: 42.22 percent

Proposition 6: "The constitutional amendment clarifying references to the permanent school fund, allowing the General Land Office to distribute revenue from permanent school fund land or other properties to the available school fund to provide additional funding for public education, and providing for an increase in the market value of the permanent school fund for the purpose of allowing increased distributions from the available school fund."
Yes: 51.57 percent; No: 48.42 percent

Proposition 7: "The constitutional amendment authorizing the legislature to permit conservation and reclamation districts in El Paso County to issue bonds supported by ad valorem taxes to fund the development and maintenance of parks and recreational facilities."
Yes: 48.3 percent; No: 51.69 percent

Proposition 8: "The constitutional amendment providing for the appraisal for ad valorem tax purposes of open-space land devoted to water-stewardship purposes on the basis of its productive capacity."
Yes: 47.00 percent; No: 52.99 percent

Proposition 9: "The constitutional amendment authorizing the governor to grant a pardon to a person who successfully completes a term of deferred adjudication community supervision."
Yes: 57.31 percent; No: 42.68 percent

Proposition 10: "The constitutional amendment to change the length of the unexpired term that causes the automatic resignation of certain elected county or district officeholders if they become candidates for another office."
Yes: 55.94 percent; No: 44.05 percent

Good Luck Lynx & Hounds!

Wolf Creek Heritage Museum Notes

by Virginia Scott MUSEUM HAPPENINGS & HISTORICAL MUSINGS

I am combining my sections this week because we have received another story about the Doodlebug and a great photograph.

I am pleased to inform you that our Doodlebug wall is full. Phillis Gibbs Ballew has sent us a photograph of "our" Doodlebug in its current home in California at Travel Town Museum in Los Angeles. She also researched it and provided us with its specifics: Built in 1899 by Baldwin, wheel arrangement: 2-8-0, weight: 70 tons, Length: 67'4" Driver, Diameter: 57",

Donated to museum in 1953 by the Atchison, Topeka & Santa Fe Railway.

The Doodlebug ran from Shattuck to Spearman (we have been told it went to Etter before turning around) from the 1940's thru 1950's. It cut through the Ballew west pasture and the Ballew sisters and the conductor became friends.

Phillis tells us that she has great memories of the Doodlebug and its conductor. She states, "My sister and I would put crossed pins on the track for it to run over and make it into 'scissors' and, of course, we always waved at the conductor. And sometimes he

would slow down and pick us up and take us a very short distance where we'd hop down and go back through the pasture to home. (I'm sure he would probably be in trouble for this now.) During the hard times quite a few tramps would come up from the tracks across our patch of sowed feed to the west and ask for food. Mom would usually sit them down at our little doll table in the backyard and give them a meal. That Doodlebug was almost like family to us."

A great memory. Please send in your stories. We have a blank board in our media exhibit area and I will start a "Doodlebug Memories," so send us your story.

We continue our cleaning and made good progress this week. We can actually walk in the back of the work room!

As you read this on Thursday, remember that tomorrow is Veteran's Day and attend one of the multiple school programs to honor our veterans and support our school children.

I hope everyone voted on Tuesday, which is another way to honor our Veterans who have fought and some given the ultimate gift to preserve our right to vote, and many other freedoms in this country.

We have a display of the 4-H District One Photography Contest winners. The full "must see" exhibit is now being shown at the 4-H offices in the basement of the courthouse. The display will be on exhibit for 2 weeks. This exhibit will be traveling through the county for display in County buildings. When it leaves the museum it will travel to Higgins Bank. There are 13 Blue Ribbon Award winners, and 8 Red Ribbon Award Winners. We are blessed.

Wolf Creek Heritage Museum

Museum Hours: Monday thru Friday 10 a.m. to 4 p.m., Special hours upon request.

Museum Information: 13310 Hwy 305, PO Box 5, Lipscomb TX 79056; telephone: 806-852-2123; e m a i l : wolferk@amaonline.com; website: www.wolfcreekheritagemuseum.org

Subscribe to the Reporter-Statesman. Call 659-3434 for details.



RRC adds to blast against proposed air rule

AUSTIN — All three members of the Texas Railroad Commission last week followed suit with the governor, lieutenant governor, House speaker and state attorney general in protesting a federal air pollution rule proposed in August.

The Cross-State Air Pollution Rule is meant "to reduce interstate transport of ozone and fine particle pollution from the air." If it takes effect in its present form, the rule would tighten operating methods and oversight of industries in Texas and other states generating emissions that blow into other states.

In their Oct. 25 letter to the U.S. Environmental Protection Agency, the commissioners wrote that the oil and gas industry in Texas would be significantly impacted and result in an expansion of EPA's authority to regulate and control oil and natural gas activities in Texas and other states.

"Here we go again with EPA trying to stifle one of this nation's top job creators—the oil and gas industry in Texas, which supports 2 million Texas jobs, Railroad Commission Chair Elizabeth Ames Jones said in an agency press release. "The Commission has been effectively regulating our oil and gas producers since 1919 and we do not need EPA hampering our efforts to boost this nation's domestic energy production."

Meanwhile, in energy-related news, the average rig count in Texas as of Oct. 21 was 905, representing about 46 percent of all active land rigs in the United States. In the last 12 months, Texas total reported production was 374 million barrels of oil and 7.1 trillion cubic feet of natural gas, the Railroad Commission reported.

Drought measures on ballot

Seventy-three percent of Texas is still in exceptional drought and though September was not nearly as hot and dry as the past few months, the period from April to September is the hottest and driest period since 1895.

Also, 229 counties have burn bans and 1 in 5 (941) of the state's public water supply systems have been impacted by the drought and statewide reservoir storage is declining and is at a record low of 60 percent. So said Mark Wentzel

STATE CAPITAL HIGHLIGHTS by Ed Sterling



of the Texas Water Development Board at the agency's Oct. 20 meeting. And the outlook is for the drought to persist into next year.

Two of the 10 proposition ballot would amend the Texas Constitution to address the state's chronic water deficit. Democratic State Sens. Kirk Watson of Austin, Juan "Chuy" Hinojosa of McAllen and Eddie Lucio Jr. of Brownsville said the two measures, if approved by voters, will "help protect water supplies for Texans, our children, and future generations."

The three lawmakers jointly stated on Oct. 20, "If there's any lesson from this terrible drought, it's that nothing is more important to Texas than a clean, reliable water supply. And on November 8, you'll have the chance to protect it."

Prop. 2 would allow the state to issue bonds that will provide money to partner with cities, counties and other local entities to create water, sewer and flood control projects. The total amount of bonds could not exceed \$6 billion outstanding at any time.

Prop. 8 would enact a law passed in the legislative session that ended in May, encouraging landowners to manage their property to conserve water and improve water quality.

Arson cases to be reviewed

The Texas Forensic Science Commission on Oct. 28 approved the creation of a program to review past arson cases.

Under the program, reviews are to be conducted by the State Fire Marshal's Office (part of the Texas Department of Insurance since 1997) and Innocence Project of Texas, a non-profit organization dedicated to securing the release of those wrongfully convicted of crimes in Texas.

A primary subject of review will be the controversial case of Cameron Todd Willingham, a Corsicana man convicted of the 1991 deaths of his three daughters in a fire ruled arson. Willingham was executed in 2004.

The commission's recommendations include the creation of a questionnaire for inmates convicted of arson to see if their cases are worth reviewing. The panel also recommended a review of death certificates in cases where the murder charge is listed as arson, new certification criteria for expert witnesses, adding rules and regulations to prevent the use of outdated science and improving the quality of testimony and analysis.

Words from Faith & Grace

In the twenty-second week of Pentecost, we learn of the Day of the Lord as we study Zephaniah 1: 7-18, Psalm 90: 1-8, 12, 1 Thessalonians 5: 1-11, and Matthew 25: 14-30.

Zephaniah commands that the people "Be silent before the Lord God! For the day of the Lord is at hand!" The Day of the Lord will be a day of anguish, distress, ruin! The people's wealth in silver and gold will not save them from God's judgment. The people had hoped that the Day of the Lord would be the destruction of their enemies and the dawn of a new prosperity for God's Chosen People. Zephaniah says that they are wrong. What do we learn from this? We have nothing to offer to God but ourselves, our own feelings of self-sufficiency. We can only give that which God has first given us.

The Psalmist sings of God, humanity and time. God is great and has created us and all that we have. We fade into dust, but God continues forever. So if we live seventy years or perhaps eighty or more, this is a gift of God. We must learn to count our days that we may gain a wise heart and work for God's kingdom.

Paul tells the Thessalonians that the Day of the Lord will come like a thief in the night; yet, God is our answer for despair. The return of Christ will bring destruction for some but for those who put on the breastplate of faith and love, and the helmet of the hope of salvation in our Lord Jesus Christ, they shall live with him whether we are awake or asleep. Dear Christian, if we have lived our life in Christ, we are not unprepared to enter his real presence.

Jesus tells the parable of the three servants. A man going on a journey summons his three slaves and entrusts them with his property according to their ability. One who is given five talents gathers five more; one who has two talents gathers two more; the one who has one talent, hides it, so he may return it to his master. When the master returns after a long time, he rewards the two faithful, working servants; he orders the worthless slave to be thrown into outer darkness. We learn from this that we must use all that God has given us for the sake of his kingdom. The only way to keep our gift(s) is to use it. The wise and faithful servant will be found working when the Master returns. The faithful servant visits the sick, visits the imprisoned, clothes the naked, and feeds the hungry.

May the Holy Spirit enable you to be a faithful servant so you may enter into the reward of your Master. Even so, come Lord Jesus! Maranatha!

The Hansford County Reporter-Statesman Mailing Address - 213 Main Street • Spearman TX 79081 Physical Address - 310 Barkley Street • Spearman TX 79081 Phone - (806) 659-3434 • Fax - (806) 398-9080 www.spearmanreporter.com • reporter@spearmanreporter.com Mon.-Thurs. 9 a.m.-12 p.m., Mon.-Wed. & 1-5 p.m. Closed Thurs. afternoon and all day Fri., Sat. & Sun.

Gary Smith - Publisher Catherine Smith - Editor Contributing Writers: Dorothy Hudson, Jim Detriton, Merry Sparks, Cecil Biggers, Virginia Scott, Ed Sterling, Rod Sumner Contributing Photographers: Lisa Johnson, Tami Hargrove, Tammy Batton, Bonnie Bergan, Rod Sumner

Subscription Rates In Hansford County - \$30.00 • Out of County - \$40.00 E-Mail Subscription - \$35.00

The Hansford County Reporter-Statesman (USPS 529660) is published weekly in Spearman, TX. Periodical postage paid in Spearman, TX. POSTMASTER: Send address changes to: The Hansford County Reporter-Statesman, 213 Main Street, Spearman, TX 79081.

Publication Policy The deadline to submit news and advertising to The Hansford County Reporter-Statesman is Monday at 5 p.m. Items submitted after the deadline will be published at a later date, as time and space permit. Publication of all items is at the discretion of the editor.

Advertising Open Display rates are \$4.00 per column inch. Classified Ads are \$7 for the first 20 words and 15¢ per word for each additional word. (Additional charge for boxed classifieds.) There is a \$1 charge per week if billed.

Member of Gruver Chamber of Commerce Spearman Chamber of Commerce Texas Press Association and Panhandle Press Association



WILD WEST

- ACROSS 1. Widest key on keyboard 6. Sold at the pump 9. Roman public space, pl. 13. A Hawkeye 14. Female reproductive cells 15. Los ____, CA 16. Fork tooth 17. In king and queen sizes 18. *It kept the corral closed? 19. *Gateway to the West 21. *Calamity Jane's partner 23. Old age, archaic 24. EU money 25. French lake 28. Show off, as in muscles 30. Moral principals 35. "____-steven" 37. *Chuckwagon 101: "No one ____ until Cookie calls" 39. Symbol of a clan, especially American Indians 40. ____ receiver 41. What dryer does 43. East of Java 44. Offered by Abraham as sacrifice to God in Old Testament 46. ____ pea 47. Incision 48. Kinda 50. She starred in last "Pirates of the Caribbean" 52. Affirmative response in some northern states 53. W on a light bulb 55. *Bola, e.g. 57. African quarter in which the citadel is located 60. *Oklahoma was famous for this 64. Alfred Hitchcock in his own movie, e.g. 65. Judge at Simpson trial 67. Sheep's clothing to wolf 68. Oneness 69. ____ de toilette 70. Ceremonial elegance and splendor 71. Warren Beatty's Oscar-winner 72. *Type of trader 73. They can be dangerous for boats DOWN 1. Small drinks 2. Rotterdam or Singapore, e.g. 3. Abent soldier 4. *Water carrier 5. Completely cover 6. Loads 7. "____ Maria" 8. Hindu holy man 9. "Don't give me any ____!" 10. Bismarck or Hahn, e.g. 11. "Big ____ Candy Mountain" 12. Left after fire 15. Novelist Louisa May ____ 20. Moved lazily 22. Wrath. 24. Gone the way of the dodo 25. *Meriwether 26. An advice or dispatch boat 27. Mothball substitute 29. Van Gogh started with two of these 31. Gremlins 32. Mediterranean boot 33. Similar to Cecilia 34. *Trailblazer Jedediah ____ 36. *How cowboys preferred whiskey? 38. Singe, as in ahi tuna 42. Phlegms 45. *One is harder to find to these days 49. Flight boss 51. Caustic remark 54. Rick Riordan's "The Lightning ____" 56. Derive 57. Walking helper 58. Among 59. Several of these in a tennis match 63. New Jersey's NBA team 64. Mutt 66. Greek "L"

SUDOKU PRESENTED BY VolunteerMatch.org Where volunteering begins. Grid with numbers 6, 8, 9, 2, 1, 5, 4, 7, 3, 6, 7, 8, 1, 3, 6, 2, 9, 7, 1, 3, 9, 7, 5, 8, 8, 2, 6, 1, 5, 4, 6, 9, 7, 2, 8, 6, 1, 5, 7, 2, 9

These games are brought to you by the Hansford County Reporter-Statesman CROSSWORD 1 2 3 4 5 6 7 8 9 10 11 12 13 14 15 16 17 18 19 20 21 22 23 24 25 26 27 28 29 30 31 32 33 34 35 36 37 38 39 40 41 42 43 44 45 46 47 48 49 50 51 52 53 54 55 56 57 58 59 60 61 62 63 64 65 66 67 68 69 70 71 72 73 PRESENTED BY VolunteerMatch.org Where volunteering begins.

Happy Birthday!

November 10
Birthday - Jess Rudolph, Rick Yanke, Buddy Hopper, Bernard Dossett, Carly Garza, Cynthia Arnold, Marilyn Wilson, Candace Sharpe, Guadalupe Trejo, Catherine Smith, Sam Gruver, Sylvia Borunda, Bobbi Kay Christian, Jessica Gallegos, Kolby Sumner, Diane Close

November 11
Birthday - Luke Miller, Pat Overbey, Andres Rodriguez, Nichole Shearer, Matthew Stork, Tye Womble, Charles Ross III, Harriet Hutchison, Kurtis Hergert, Goldie Tucker, Heath Hergert, Callie Barkley Borger, Samantha Cazarez, Bill Watts, Liz Hickerson, Matthew Brown, Andres Rodriguez, Lupe Moreno, Alan Tarango

Anniversary - M/M Billy Snider, M/M Monty Black
November 12
Birthday - Jennie Blankenship, Monty Cassidy, Benjamin Karlin, Bob Zimmer, Jo Nell Comegys, Cindy Avila, Sophia DeLuna, John Jackson, Helen Dry, Angie Thompson, Marolyn Scroggs, Brent Sanders, Dennis Crawford, Erica Alvarez, Buffy Adkins, Rose Isenhower, Jaime Briones, Ann Allen

November 13
Birthday - Lucy Alvarez, Angela Grotegut, Paulette Watkins, Rhonda Williams, Michelle Garnett, Andra Camille Brown, Kent Hargis, Amy Reed, Joseph Burch, Richard Nicholas, Carly Riethmayer, Hector DeSantiago, Masen Castillo

November 14
Birthday - Lisa Johnson, Luke Johnson, Missy Johnson, Ray Martin, Ricky Sharp, Carl Kunselman, Rhonda Tope, Norma Payne, Dolly McWhirter, Sandy Morris, Roy Pipkin, Mark Love, Jessica Crossland, Adela White, John Patterson, Judy Yarbrough, Luis C. Rodriguez, Sylvia Hodge, Shelby Ann Sasser, John Patterson

Anniversary - M/M Benny Bradvick, M/M Nathan Hanson, M/M Dave Barkley
November 15
Birthday - Pam Shearer, Debbie Clawson, Virginia Ortega, Rudy Zamora, Kiki Kelp Connelly, Carolyn Sadler, Jeremy Hunter, Rue Sanders, Brenda Vassar, Francis Balderama, Maria Tarango, Reese Castillo, Edna Bassel

Anniversary - M/M Richard Pipkin

November 16
Birthday - Felipe Alvarez, Charles Bell, Don Heddings, Chandler Miner, Angela Overbey, Clint Patterson, Charlotte Pearson, Karen (Kenney) Bonath, Keith Goodman, David McGuire, Ryan Quillin, Alexa Thoreson, Lindsey (Smith) Savage, Callie Smith

Anniversary - Bertha & Francisco Martinez
November 17
Birthday - Pam Cassidy, Janyth Hart, Francis Pipkin, Curtis Gross, Abby Winegarner, Bill Sparks

Anniversary - M/M Corky Kizzar, M/M Marvin Jones, Bernie & Kelly Kjos
November 18
Birthday - Bryn Lowe, Gwen Parker, Kevin Rodriguez, Arnold Stork, Amanda Taylor, Jennifer Johnson, Steven Tindell, Rose Mary Tartar, Chris Taylor, Kashey Brown, Rita Underwood, Clayton Fox, Jennifer Nelson, Freida Burgess, Mona Lisa Garcia, Steven Cummings, Gabbi Boyd, Pepe Marquez, Eva Jo Pittman, Jill Clement, Marie Beck, Casie Butt

November 19
Birthday - Cherri Sherill, David Hall, James Davis, Brian Beck, Tim Gikas, Sharon Barkley, Aaron Shawn Moore, Jeff Jackson, Kasey Harris, Jeffrey Davis

Anniversary - M/M Brice Lewis
November 20
Birthday - Scott Davis, Jr. Rodriguez, Mrs. Ray McCammond, Jerry Wayne Dunaway, Danny Close, Ron Riley, Garland Dahl, Brenda Ferguson, Freda Sheets, Tammy Batton, Carie Tidwell, Casey Villines, Jason Payne, Josh Purvines, Ole Bergan, Christina Bowers

Anniversary - M/M Phillip Turner, M/M Ramon Garcia Jr., M/M Jesse Renteria, M/M Roberto Tarango
November 21
Birthday - Kaysha Cluck, Jackie Wilson, Jim Burch, Robert Janzen, Jody Robertson, Mark Pearson, Mrs. Jake Vernon, James Owens, Angie Salgado, Margie Alford, Matt Burnam, Denise Rojas, Victor White, Haley Coomen, Dawn Loomis, Brittanee Osbourne, Jody Robertson, Richard Landrum, JoAnn Robertson

Anniversary - M/M Johnny White, M/M J.L. Griffin, Ted & Cheryl Whitefield, Jose & Sylvia Tarango

Our Sympathy

VICTOR MANUEL GRAJEDA

PERRYTON — Victor Manuel Grajeda, 51, of Perryton died Monday, Oct. 31, 2011.

Services will be at 3 p.m. today in Immaculate Conception Catholic Church with the Rev. Lupe Mayorga officiating. Burial will be in Ochiltree Cemetery. Arrangements are by Boxwell Brothers Funeral Home, Perryton.

Mr. Grajeda was born Sept. 8, 1960, in Porvenir, Chihuahua, Mexico. He married Maria Murillo December 1986 in Porvenir, Chihuahua, Mexico. He was a rig manager and a member of Immaculate Conception Catholic Church.

Survivors include his wife of Perryton; a daughter, Erika Tafoya of Perryton; three sons, Victor Manuel Grajeda Jr. of Booker, Antonio Grajeda and Rene Grajeda, both of Perryton; four sisters, Socorro Molina of Guadalupe, Mexico, Irma Fraire of Irving, Marta Guerrero of Hart and Aurora Aguirre of El Paso; six brothers, Antonio Grajeda of St. Paul, Minn., Ignacio Grajeda of Guyton, Okla., Martin Grajeda of Spearman, Osvaldo Grajeda, Felix Grajeda and Jaime Grajeda, all of Fort Hancock; and three grandchildren.

JERRY R. MCGAHA

AMARILLO - Jerry R. McGaha, 64, of Amarillo died Friday, Oct. 14, 2011.

No memorial services will be held. Cremation was by Jim's Funeral Home in Hurst.

Jerry was born June 4, 1947, in Ashdown, Ark., to Rual and Ruth McGaha. He grew up in Dumas, where he graduated from Dumas High School in 1966. He was a welder by trade and lived in the Fort Worth area several years before moving to Amarillo. Due to illness, he moved to Arlington Nursing Center in 2008, where he passed away. He was a member of First Baptist Church of Dumas.

He was preceded in death by his father and a brother, Don.

Survivors include a daughter, Sharana and husband Leo Lane of Arlington; a grandson, Leo Jr. of Arlington; his mother, Ruth; three brothers, Gregg and wife McKala of Amarillo, Bob and wife Belinda of Spearman and Bill and wife Cindy of Waxahachie; and several nieces and nephews.

MONUMENTS

Boxwell Brothers Funeral Home

519 Evans • Spearman
659-3802

Dear friends,

When you buy a monument from us we make sure it is exactly what you want at a price you can afford. If it is not right, we will make it right. And you will not have to search the countryside to find us. We are here when you have a need.

Sincerely,
Bob Boxwell

BOBBY WHITE
SHAMROCK — Bobby White, 71, of Shamrock died Wednesday, Nov. 2, 2011.

Graveside services will be at 11 a.m. today in Shamrock Cemetery in Shamrock with the Rev. Joe G. Jernigan, pastor of Calvary Christian Fellowship, officiating. Arrangements are by Robertson Funeral Directors of Shamrock.

Mr. White was born May 15, 1940, in Shamrock to Jesse and Geraldine Van Huss White. He had lived in Pampa and Garland before moving to Wichita Falls. Survivors include two brothers, J.C. White of Lela and Tommy White of Gruver, and a sister, Wanda Reynolds of Amarillo.

The family suggests memorials be to Alzheimer's Foundation, 1400 Wallace Blvd., Amarillo, TX 79106.

WAYNE LEE CALHOUN

AMARILLO - Wayne Lee Calhoun, 82, of Amarillo died Friday, Nov. 4, 2011.

As was his giving heart in life, so it extends past death as he donated his body to Texas Tech University School of Medicine. Private family services will be held at a later date in conjunction with Texas Tech. Boxwell Brothers Funeral Directors, 2800 Paramount Blvd.

Mr. Calhoun was born in Liberal, Kan., on May 21, 1929. He had just celebrated his 82nd birthday with his children, grandchildren and great-grandchildren at his bedside.

He graduated from Liberal High School in 1948. He played basketball all of his high school years. He was a captain his senior year, bringing home the state championship.

He went to work for Panhandle Eastern Pipeline Co. in 1948. He worked 37 years before retiring. To his legacy, he only took 5 sick days, 3 for delivery of his baby girls and 2 for pneumonia. He was a measurement technician in the field.

He married his beautiful bride, Helen Elizabeth Walters, on July 9, 1951. They started their married life in a camp house at Sneed Plant. They would move many times, following the gas pipeline at Liberal, Kan., Turpin, Okla., Stinnett, Gruver, and finally Guyton, Okla.

Wayne was always a hard worker. He had several side jobs along the way, mostly as a painting contractor. He made sure his 3 girls never wanted for anything.

He and Helen moved to Amarillo, where he promptly went to work for St. Anthony's Hospital. He retired there after 15 years. His last employer was Gene Messer Ford as a driver and he held that job until four years ago. He was an avid Bingo player.

He was preceded in death by his wife of 55 years, Helen; his parents, Lee and Pearl Calhoun; a sister, Maxine Bangs; and a brother, Dean Calhoun.

Survivors include three daughters, Marsha Griffin and husband Bill of Dumas, Cindy Farris and husband Jerry of Edmond, Okla., and Debbie Frasier and husband Shane of Amarillo. He is also survived by seven grandchildren, Lance Immel of Peoria, Ariz., Lynde Immel Ross of Austin, Jennifer Christian Armstrong of Borger, Connie Christian Barton of Amarillo, Ashley Griffin Simpson of Boerne, Crissie Farris Carter of Moore, Okla., and Amanda Farris Rodriguez of Norman, Okla.; 15 great-grandchildren, the delights of his heart, Sydney and Jace McCutchan, Abigail and Luke Ross, all of Austin, Tyler Immel and MiKaela Alwan of Dumas, Clay, Haley and Zachary Armstrong, all of Borger, Camryn and Ethan Barton of Amarillo, Jackson Diven and Kaylee Carter, both of Moore, Okla., Caden Simpson of Boerne and Lucy Rodriguez of Norman, Okla.; and his sister, Avis Bridenstein of Iowa.

The family suggests memorials be to North Plains Christian Church, 702 S. Birge Avenue, Dumas, TX 79029. Sign the online guest book at www.boxwellbrothers.com.

www.spearmanreporter.com

Mesothelioma

EXPERIENCE COUNTS
Lawyers with over 100 years combined expertise.

may occur 30 to 50 years after exposure to asbestos. Many workers were exposed from the 1940s through the 1970s. Industrial and construction workers, along with their families (second hand exposure) are among those at risk for mesothelioma, lung cancer or gastro cancer (throat, stomach, colon). Call us for professional insight.

Ryan A. Krebs, M.D., J.D.
Dentist-Lawyer in Full-Time Law Practice

Richard A. Dodd, L.C.
Timothy R. Cappolino, P.C.
Board Certified Personal Injury Trial Lawyer and Civil Trial Law by the Texas Board of Legal Specialization
NO FEE FOR FIRST VISIT
CAMERON, TEXAS

1-888-MESO-FIRM
(1-888-637-6347)
www.MesoFirm.com

\$19

99¢
per month
plus tax
(incl. svc. fee)

2 Room HD DVR Upgrade (1 HD DVR + 1 SD DVR)
(\$6/mo. 50¢ service fee applies)

1-800-465-9348

www.INFINITYDISH.COM

C.C. FLEET MAINTENANCE AUCTION

SATURDAY, NOVEMBER 19, 2011 - 10AM

5352 AYERS ST - CORPUS CHRISTI, TX

VIEW: FRIDAY, NOV 18, 10AM TILL 5PM; SATURDAY, 9-10AM
BACKHOES, SAMSLUNG TRACK HOE, POLICE CARS, PICKUPS, CARS, GENERATORS, HOWARD/JOHN DEERE Q-TRAK MOWERS, TRACTORS, ALUM. BED RECYCLING TRUCKS, DUMP TRUCKS, DUMP BED BRUSH TRUCKS, GARBAGE TRUCKS, (15) HAUL TRAILERS, GRADALL 5YD RT CAT LOADER, RHINO21 BATTING FLAIL MOWER (2), J.D 450G IV DOZERS, DITCH WITCH JT2321 HOR. BCING MACH. PLUS 10% BUYERS PREMIUM ON-SITE - 12% ONLINE

BID LIVE IN-PERSON OR ON-LINE LIVE

JOHN SISK AUCTIONEERS INC. TXS #7425 361-456-7771
FOR DETAILS SEE: WWW.SISKAUCTION.COM

Maximum strength analgesic for temporary relief from:

- Back pain
- Muscle pain
- Arthritis pain
- Joint pain

Go Painlessly with THERA-GESIC.

TRUCK DRIVERS WANTED THROUGHOUT TEXAS

HOME DAILY OR WEEKLY

Hiring Solo and Team Drivers in Dedicated, Intermodal, Oil Field, Tanker and Van (OTR, Regional) Divisions
Sign-on Bonus May Apply - Ask Your Recruiter!
Experienced Drivers and Recent Driving School Grads Welcome

Inexperienced? Take advantage of Schneider's Tuition Reimbursement program and get your CDL at a local driving school.

Apply at schneiderjobs.com/newjobs
Call 1-800-44-PRIDE for more information

Replenish the seed of faith through . . .

DAILY BIBLE READING, PRAYER & REGULAR CHURCH ATTENDANCE

- | | | |
|---|---|---|
| <p style="margin: 0; font-weight: bold; font-size: 0.9em;">Spearman</p> <p style="margin: 0; font-size: 0.7em;">Apostolic Faith Church
822 S. Dresden • 659-2870
Sunday School: 10 a.m.
Worship Service: 11 a.m.
Sun. Eve: 6 p.m.
Wed. Prayer Mtg: 7 p.m.
Pastor - Jack Cornell</p> <p style="margin: 0; font-size: 0.7em;">First Assembly of God
401 N. Bernice • 659-2295
Sunday School: 9:30 a.m.
Worship: 10:40 a.m.
Evening Worship: 6 p.m.
Wed. Worship: 7 p.m.
Pastor - Brad Smith</p> <p style="margin: 0; font-size: 0.7em;">First Christian Church
(Disciples of Christ)
29 S. Bernice • 659-2036
Sunday School: 9:45 a.m.
Worship: 10:50 a.m.
Minister -</p> <p style="margin: 0; font-size: 0.7em;">First Baptist Church
123 N. Bernice • 659-5557
Sunday School: 9:45 a.m.
Worship: 11 a.m.
Evening Worship: 7 p.m.
Men's Bible Study - Wed., 7 a.m.
Children's Choir - Wed, 6 p.m.
Adult Choir - Wed. 7 p.m.
Wed. Bible Study: 7 p.m.
Pastor - Jim Medley</p> <p style="margin: 0; font-size: 0.7em;">Church of Christ
121 S. Haney • 659-3244
Sunday Bible Class: 9:45 a.m.
Worship: 10:30 a.m.
Evening Worship: 6 p.m.
Bible Study Wed.: 7:30 p.m.</p> | <p style="margin: 0; font-size: 0.7em;">Sacred Heart Catholic Church
901 Roland • 659-2166
Sat. Night Mass: 5:30 p.m.
Sun. Mass: 9 a.m. - English
Sun. Mass: 11:30 a.m. - Spanish
Rev. Gregory Bunyan</p> <p style="margin: 0; font-size: 0.7em;">First United Methodist
407 S. Haney • 659-5503
Sunday School: 9:45 a.m.
Worship: 8:30 & 11 a.m.
Jr. High Youth: 5 p.m. Sunday
High School: 6 p.m. Sunday
Kids Club: 3 p.m. Wed.
Pastor - Toni Bailey</p> <p style="margin: 0; font-size: 0.7em;">Grace Presbyterian Church
(Worships with Faith Lutheran Church)
1101 Bernice • 659-2033</p> <p style="margin: 0; font-size: 0.7em;">Faith Lutheran Church (ELCA)
1101 Bernice • 659-2252
Sunday School: 9:45 a.m.
Worship: 11 a.m.
(Worships with Grace Presbyterian Church)
Pastor - Cecil Biggers, PLM</p> <p style="margin: 0; font-size: 0.7em;">Union Church
31 S. Endicott • 659-2644
Sunday School: 10:00 a.m.
Worship & Kid's Church: 11:00 a.m.
Wednesday Evening Worship and Bible Study Service: 7 p.m. Wed.
Pastor - Steve Hinshaw
www.unionchurchonline.org</p> <p style="margin: 0; font-size: 0.7em;">Fellowship Baptist
1102 S. Archer • 659-2783
Sunday School: 10 a.m.
Worship: 11 a.m.
Sun. Evening Worship: 6 p.m.
Sun. Evening Spanish Worship: 7 p.m.
Youth/Adult Service: 7:30 Wed.
Pastor - Philip Hudson</p> | <p style="margin: 0; font-size: 0.7em;">Primera Mision Bautista
502 E. 7th • 659-3991
Sunday School: 9:45 a.m.
Worship: 11 a.m.;
Evening: 6 p.m.
Wed. Prayer Meeting: 7 p.m.
Thurs. Visitation: 7 p.m.
Pastor Joe Garcia Jr.</p> <p style="margin: 0; font-size: 0.7em;">El Aposento Alto U.P.C.I.
1105 S. Roland
Domingos: Escuela-Dominical - 10 a.m.
Culto Evangelistico - 7 p.m.
Jueves: Oracion - 8 p.m.
Mier: Estudio Biblico - 7 p.m.
Pastor - A.G. Martell
(806) 659-2153</p> <p style="margin: 0; font-size: 0.7em;">Spanish Cristo Redentor Church
Hwy 15 806-659-2166
Gruver, TX
Sun. Mass: 1:30 p.m. - Spanish
Rev. Gregory Bunyan</p> <p style="margin: 0; font-weight: bold; font-size: 0.9em;">Oslo</p> <p style="margin: 0; font-size: 0.7em;">Oslo Lutheran Church (ELCA)
6 Miles West & 12 Miles North of Gruver
339-7646
Sunday School: 9:45 a.m.
Worship: 11 a.m.
Pastor - Arlen Lloyd</p> <p style="margin: 0; font-weight: bold; font-size: 0.9em;">Gruver</p> <p style="margin: 0; font-size: 0.7em;">First Baptist Church
402 E. Broadway • 733-2411
Sunday School: 9:45 a.m.
Worship: 10:50 a.m.
Disciple Training: 6 p.m. Sunday
Prayer Meeting: 7:30 p.m. Wednesday
Pastor - Scott Curry</p> <p style="margin: 0; font-size: 0.7em;">Church of Christ
209 King • 733-2760
Sunday School: 9:30 a.m.
Worship: 10:20 a.m.
Evening Worship: 6 p.m.
Wed. Worship: 7:00 p.m.
Minister - Gaylord Cook</p> <p style="margin: 0; font-size: 0.7em;">First Christian Church
510 King • 733-2960
Sunday School: 10:00 a.m.
Sunday Worship: 11 a.m.
Youth: 7:30, Sunday
Adult Bible Study: 7:30, Sun.
Wed. Bible Study: 8:30 p.m.
Pastor - Gary Gumfroy</p> |
|---|---|---|

He has showed you, O man, what is good. And what does the LORD require of you? To act justly and to love mercy and to walk humbly with your God.

Micah 6:8

This feature is made possible through the sponsorship of these civic minded businesses:

Deakin ELECTRIC

OILFIELD - RESIDENTIAL - COMMERCIAL
321 S. MAIN • SPEARMAN

1-800-999-1506 Chris Deakin
806) 659-5016 President

PRAIRIE MOTORS INC.

Hwy. 207 South • P.O. Box 430
Spearman, TX 79081 • (806) 659-2541
www.prairiemotors.com

Bartlett's Lumber & Hardware

105 W. Broadway • Gruver, TX
(806) 733-2404

MurMur's Cafe

100 Roland St
Spearman, TX.
659-3580

BERRY CLEANERS

Ann & Vernon Pipkin - Owners
Phone 659-3122 • P.O. Box 1017
207 Main St. • Spearman, TX

Hansford County Reporter-Statesman

"Proudly Serving Hansford County Since 1907"
(806) 659-3434
310 Barkley • Spearman, TX

Morse Implement & Auto Supply

"Join us in church"
Tom Dorich 733-2668
Box 89 • Morse, TX 79062

\$ INTERSTATE BANK, sssb

www.interstatebank.net
322 Main • P.O. Box 146
Spearman, TX • 659-2559

HYI

FOR YOUR INFORMATION

Bouquet Designs

Hansford County Library is selling raffle tickets for hand-painted tables, painted by Linda Combs. First place is a full-sized dining room table with a leaf. Second place is a side table or occasional table. Tickets are \$5 per ticket or 5 tickets for \$20. These tables are truly beautiful. All proceeds will benefit the library to help make up for lost Thrift Shop income. Tickets will be sold through Monday, November 14, 2011.

Spearman Food Bank 1st Thursday

If you would like to help the Spearman Food Bank, they need help unloading the truck at 11:30 each 1st Thursday of each month. Contact Cecil Biggers for more information.

Hansford Co. Library Thrift Shop Accepting Donations

The Hansford County Library Thrift Shop, now known as Alley Katz, is accepting donations of quality items. You may ask for the key to the Thrift Shop at the library desk during regular operating hours (9:30 a.m.-5 p.m., Monday-Friday). Alley Katz is open from 10 a.m.-4 p.m. each Wednesday.

Spearman Boys Basketball Fundraiser

The Spearman Boys Basketball team is selling Coffee Mugs and Coasters as a fund raiser. Forms are available at the high school and junior high offices, and may be returned there as well. This sale will end Nov. 30th! Purchase your Lynx and Lynxette Coffee Mug and Coasters Today! Great Christmas Gifts! Contact Coach White at the High School if you have any questions. Coffee Mug \$9, Travel Mug \$10, Coasters (4 per set) \$12, Trivet \$8.

Winter Landfill Hours

Due to a shortage of employees, the City of Spearman has decided to implement the winter hours at the landfill 2 weeks early. Normally it would not change until daylight savings time changes, but they implemented the winter hours beginning Tuesday, October 25, 2011. Winter Hours are: Tues-Sat, 8 a.m. - 5 p.m. Closed on Monday and Sun day. They will also begin the one garbage pickup. If you have any questions, please contact Spearman City Hall at 806-659-2524.

Veteran's Day Program

Local veterans will be honored Friday, November 11th from 9:30-10:30 a.m. in the Spearman Varsity Gym. The program will begin with a flag ceremony and the "National Anthem". Mr. James Cunningham will welcome all guests and give special recognition to veterans. Patriotic selections will be performed by the Spearman School Choirs and Band. Speaker for the program will be Mr. Rick Riggins. Rick is a native of Ochiltree county. Following his graduation from high school in 1971, he was drafted into the United States Army for service in Viet Nam. For two years, Rick was stationed in Camrhan Bay as a Machine Gunner Army Specialist 4. The Texas Extension Education Clubs of Hansford County help host the program and encourage all veterans to attend.

Thanksgiving and Praise

The Rushing Wind Emmaus Community will meet at 6 p.m. on Saturday, November 12, 2011 at the Waka Christian Center for their annual Thanksgiving Dinner. Smoked turkey and ham will be furnished. This event is sponsored by the Board of Directors of the Waka Christian Center. Please bring the trimmings of vegetables, desserts, etc. to share with the community. Families, friends and new members with their families are welcome. A nursery will be provided for all of the children. Sponsor's training will be offered for anyone wishing to sponsor a pilgrim.

Master Gardeners offer Landscaping for Landscapers workshop Nov. 14-17 in Amarillo

Potter County Master Gardeners will offer Landscaping for Landscapers from 6-8 p.m. Nov. 14-17 at the Texas AgriLife Research and Extension Center, 6500 W. Amarillo Blvd. The four-day workshop topics were chosen with the independent landscaper in mind, according to Brandon Boughen, Texas AgriLife Extension Service agriculture and natural resources agent for Potter County. "Entrepreneurs naturally want to increase their business, and we believe this series of classes will do just that," Boughen said. Professionals will be presenting information covering topics such as tree care, planting, pruning, rose care, turf, irrigation, herbicides, and installing and maintaining water features, Boughen said. Anyone interested in attending should call 806-373-0713 to reserve a seat by Nov. 10. There will be a \$40 registration fee for the entire series of classes. For more information, contact Boughen at the same number or bwboughen@ag.tamu.edu.

Overton Pesticide Applicator Trainings set 11/29 & 12/6

Pesticide applicators can earn 5.5 continuing education units toward the renewal of their licenses at trainings held on Nov. 29 and Dec. 6 at the Texas AgriLife Research and Extension Center at Overton. Both training sessions will begin with registration from 7:30-8:30 a.m. at the Overton center's classroom. The presentations will begin at 8:30 a.m. and end at about 2:15 p.m., with an hour break for lunch at noon. By state rules, participants may attend both the Nov. 29 and Dec. 6 sessions and earn 11 continuing education units, Higginbotham said. Three of the units will be in the general category, one in laws and regulations, and 1.5 in integrated pest management. Registration for either training will be \$30 per person and includes lunch and refreshments. Registration will be at the door only. To reduce costs to participants, no credit-card payments or telephone registrations will be taken, Higginbotham said. Payments may be made either by check, money order or cash. To receive continuing education units, participants will need to present either their driver's license or a copy of their applicator's license at registration. The Overton center is located 1 mile north of downtown Overton on Hwy. 3053.

Perryton Area Parkinson's Disease Support Group

The Perryton Area Parkinson's Disease Support Group will meet Friday, November 11, 2011 at the Perryton Mennonite Church, 2821 S. Ash. The program will be given by Physical Therapist Cindy Goss about exercise and its importance to Parkinson's Disease patients. Lunch will be served at the 12 noon meeting. Anyone with PD or has a family member with it, is welcome to come. Contact Bev Burger for more information, 806-435-3437 or 806-435-0579.

FUMC Chancel Choir's Community Thanksgiving Dinner

First United Methodist Church Chancel Choir will be serving The Community Thanksgiving Dinner on Thursday November 17, 2011 from 11:30 - 1:00 PM at the First United Methodist Church, 407 S. Haney, Spearman. Tickets are \$8 (under 6 yrs free). Tickets can be purchased from any choir member, the church office or at the door. For carryouts: call 659-5504 before 10 AM. Pick up carryouts at the glass double doors on West side of church. They will be serving turkey, dressing, all trimmings and a variety of wonderful desserts!!

Lunch & Learn

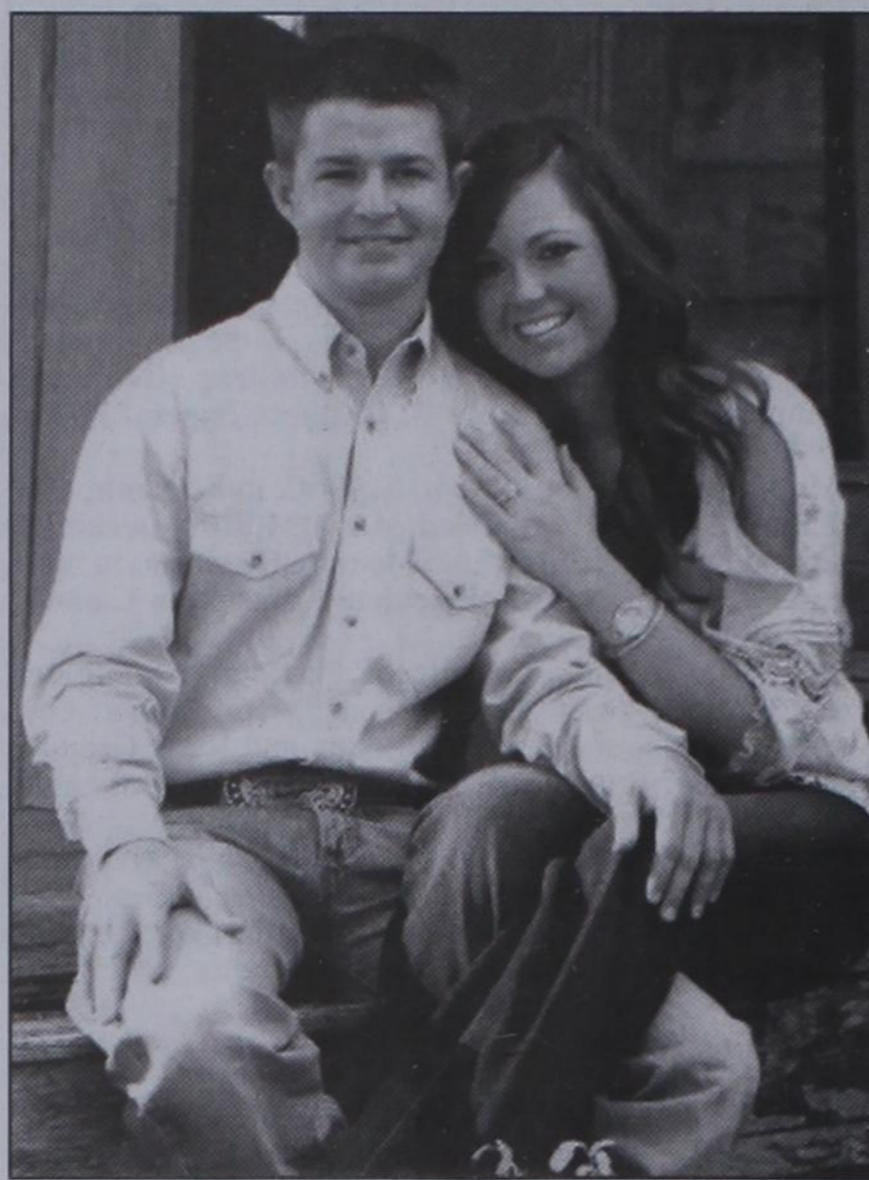
"Home for the Holidays" Lunch & Learn, Wednesday, November 16, 12:00-1:00 p.m. in the Family Life Center of First Baptist Church, Spearman. Local merchants and guests will present decorating hints for home and table, tips for tablescapes, along with gift ideas for the holiday season. Sponsored by Texas AgriLife Extension Service & Hansford Extension Education Clubs. Suggested donation for program and lunch- \$10.00. Call Peggy Winegarner, Hansford County Extension Agent, for more information (659-4130). Extension programs are open to all regardless of socioeconomic level, race, color, sex, religion, disability, or national origin.

Gruver Elementary Register Tapes for Education

Gruver Elementary is participating in the Lowe's Supermarket Register for Tapes for Education. Please help us earn free education material and equipment by collecting register tapes from Lowe's. You can deposit your register tapes in the boxes at the Elementary School Lobby, or the south entrance, Gruver City Library, City Hall, Gruver Library, Night & Day Beauty Salon and Shear Style Salon. Call Jo at 733-2247 for pickup of tapes or for more information.

Texas SNAP Benefits Assistance

Need help applying for SNAP benefits? We can help! High Plains Food Bank is providing application assistance for Texas SNAP benefits (Food Stamps) in your area. Telephone application assistance is available. If you need to apply for benefits, please call us today at 806374-8562 or 1-800-774-8564.

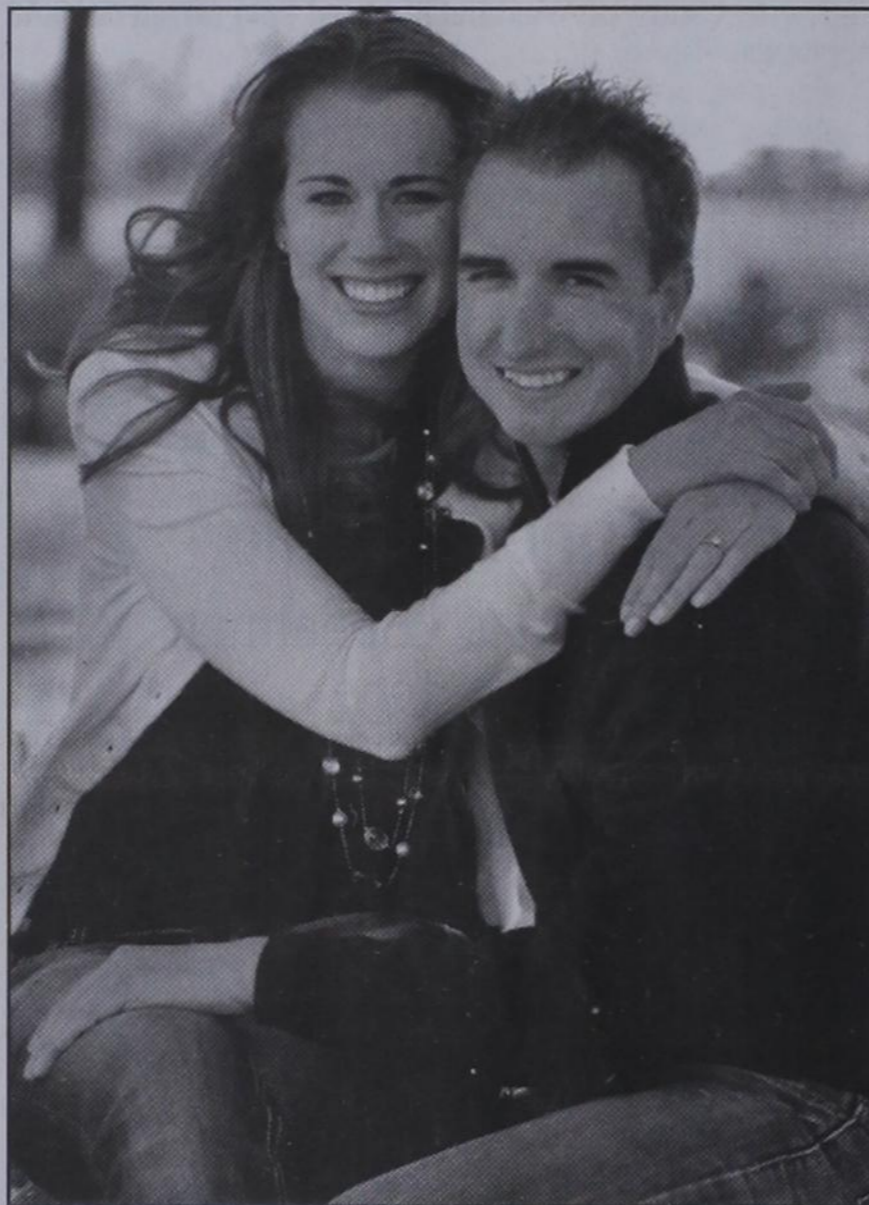


Engagement Announcement

Danny and Delinda McLaughlin are proud to announce the engagement of their daughter, Dana to Justin Hendrick of Rosenberg, Texas. Justin is the son of John and Cheri Hendrick of Rosenberg.

The wedding will be February 4, 2012, in the Spearman Church of Christ.

Dana is the granddaughter of Jo McLaughlin and the late MD McLaughlin and the late Garland and Virginia Head. Justin is the grandson of Carlos and Ruth Ann Hendrick and Linda Massey and the late Jimmy Massey of Needville, Texas.



Engagement Announcement

Neil and Penny Quinn of Arlington are pleased to announce the engagement of their daughter, Jessica Kaye Quinn, to Nathan Woods Pipkin, son of Roy Pipkin and Frances Pool.

The future bride is a 2004 graduate of Arlington High School and a 2008 graduate of The University of Texas at Arlington where she received a BA in Elementary Education. She is currently employed by the Arlington Independent School District as a 3rd grade teacher.

The prospective groom is a 1999 graduate of Spearman High School and carries a Bachelor of Business Administration from The University of Texas at Arlington. He is employed by the City of Arlington Parks & Recreation Department in the Park Operations Division.

The couple plan to marry March 10, 2012 at Grace Lutheran Church in Arlington with a reception to follow at the Rangers Ballpark in Arlington. Their registries are at Target, Macy's and Bed, Bath & Beyond.

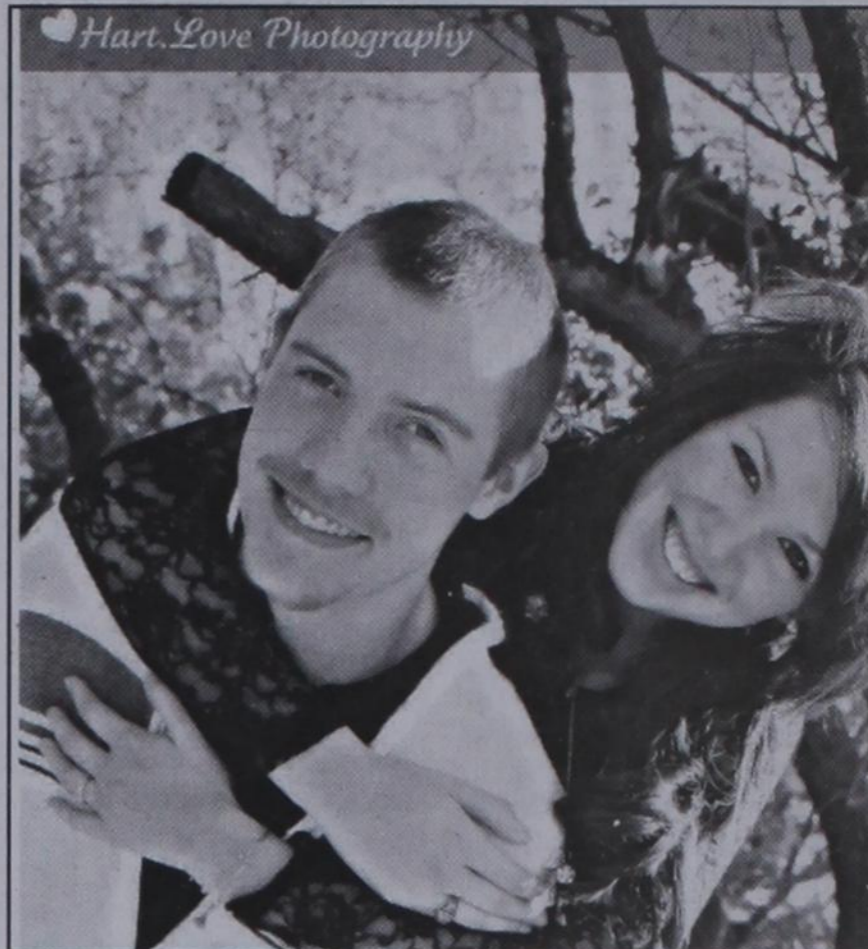
www.spearmanreporter.com

Please Join us for a 90th Birthday Celebration

honoring...
eloise renner

Saturday, November 12, 2011
3:00p to 4:30p
Phillip & Lynna's home-900 S Barkley

Your presence is your present!



Engagement Announcement

Mrs. and Mrs. Reidecel Valverde of Gruver announce the engagement of their daughter, Angelica Valverde, to Haden Hart. Hart is the son of Mr. and Mrs. Jerry Hart of Morse.

The Bride-elect is a 2011 graduate of Gruver High School and is currently enrolled in South Plains College in Levelland. The prospective groom is a 2011 graduate of Gruver High School and is attending Texas Tech University in Lubbock.

The couple plan to wed December 30th 2011 in Amarillo.

Kirk Weatherford (806) 336-2820
8125 FM 3395 Toll Free: 1-800-585-6047
Sanford, TX 79078 Email: kirk@weatherford-construction.com

You are invited to a
Wedding Shower
honoring
Brittney Bradley
(bride-elect of Rhett Renner)
Saturday, November 12, 2011
from 10:00-11:30 a.m. at the
home of Stephanie Brock
901 Barkley St Spearman TX
Selections: Gordons Drug,
Bed, Bath & Beyond and Target

WHEN YOU SEE THIS SIGN:

WARNING

NATURAL GAS

FOR THE SAFETY OF YOUR FAMILY, BUSINESS, AND COMMUNITY, BEFORE YOU EXCAVATE OR DIG NEAR A BP AMERICA PRODUCTION CO. PIPELINE OR PROPERTY, PLEASE CALL THE NUMBER LISTED. REMEMBER TO CALL BEFORE YOU DIG, (Including Agriculture), 1-800-DIG-TESS.

NATURAL GAS CAN -
... BE TRANSPORTED IN UNDERGROUND PIPELINES
... CONTAIN HIGH PRESSURE

NATURAL GAS IS -
... COLORLESS, ODORLESS, LIGHTER THAN AIR

IF A NATURAL GAS LEAK IS SUSPECTED
... WALK AWAY FROM IT
... NEVER IGNITE A FLAME
... DO NOT TURN ON A LIGHT SWITCH, MOTOR, OR ANY EQUIPMENT (AN EXPLOSION COULD RESULT)

BEFORE ANY TYPE OF EXCAVATION (Including Agriculture) OR IN AN EMERGENCY CALL COLLECT (806) 948-6167 DUMAS (24 hours)

SI LISTED VE ESTE ANUNCIO. (TUBERIA DE GAS NATURAL)

WARNING

NATURAL GAS

PARA SEGURIDAD DE SUS FAMILIA, DE SUS NEGOCIOS Y DE SU COMUNIDAD, POR FAVOR LLAME A LA COMPANIA BP AMERICA PRODUCTION COMPANY. A LOS NUMEROS INDICADOS ABAJO, EN ESTE ANUNCIO, ANTES DE ESCARBAR, DE DESMONTAR, DE ARRASAR, O DE HACER CUALQUIER TIPO DE TRABAJO CERCA DE LAS TUBERIAS DE BP AMERICA PRODUCTION COMPANY. (INCLUSO AGRICULTURA) 1-800-DIG-TESS

EL GAS NATURAL PUEDE -
... SER TRANSPORTADO EN TUBERIAS BAJO TIERRA
... CONTENER ALTA PRESION

EL GAS NATURAL -
... NO TIENE COLOR
... NO TIENE OLOR
... PESA MENOS QUE EL AIRE

SI SOSPECHA QUE HAYA FUGA DE GAS
... ALEJESE DE ALLI CAMINANDO
... NUNCA ENCIENDA UNA FLAMA
... NO PRENDA LUCES, NI MOTORES, NI MAQUINARIA ALGUNA (PUEDEN CAUSAR UNA EXPLOSION)

BEFORE ANY TYPE OF EXCAVATION (Including Agriculture) OR IN AN EMERGENCY CALL COLLECT (806)948-6167 DUMAS (24 hours)

Our Sympathy

MATTIE HICKS

MULESHOE — Mattie Hicks, 83, of Muleshoe died Tuesday, Nov. 1, 2011.

Services will be at 11 a.m. Friday in First United Methodist Church in Muleshoe with the Rev. Monty Leavell of Muleshoe officiating. Burial will be in Muleshoe Memorial Park Cemetery. Arrangements are by Ellis Funeral Home of Muleshoe.

Mrs. Hicks was born March 24, 1928, in Magnum, Okla., to Roy and Laura Velma Wright Hogan. She married Jack Hicks on Nov. 4, 1945, in Muleshoe; he preceded her in death on Feb. 28, 2002.

Mrs. Hicks had lived in Muleshoe since 1930, having moved from Mangum. She was a member of First United Methodist Church in Muleshoe. She began working as the secretary for the County Extension Agent in Bailey County. Mattie received her LVN from the Chicago School of Nursing, an associate degree from Eastern New Mexico University in Portales, N.M., and a Bachelor of Nursing from West Texas State University in 1991. She began her nursing career with Green Hospital and Clinic in Muleshoe. Mattie had worked for Dr. Sanderlin in Muleshoe and Muleshoe Area Medical Center, eventually becoming the director of nurses there.

She was an instructor for South Plains College School of Nursing LVN and RN programs. In her later years she was a public health nurse in Lovington, N.M., and worked for Muleshoe Area Medical Center as a home health nurse.

She was also preceded in death by her parents.

Survivors include a son, Jimmie Lee Hicks of Newkirk, N.M.; two daughters, Andrea Novian and husband Billy of Fountain, Colo., and Tammye Barber and husband Jack of Pampa; four sisters, Lou Dell Willhite of Fort Collins, Colo., Byrnic Callaway of Spearman, Jean Henry of Levelland and Myra Grimes of Midland; eight grandchildren; eight great-grandchildren; and a daughter-in-law, Donna Hicks of Levelland.

The family suggests memorials be to South Plains College School of Nursing, 1401 College Ave., Levelland TX 79336.

The family would like to thank Muleshoe Area Medical Center nursing staff, Lubbock/Levelland Covenant Medical Center nursing staff, Lubbock Heart Hospital Staff, BSA in patient Hospice of Amarillo, Dr. Robert Wey, Dr. Bruce Owens, and especially Dr. Bruce Purdy.

Corner Campus

FPC

Frank Phillips College

Greetings from the Northernmost Facility of Higher Education in the Great State of Texas! The fall semester is well underway; in fact, we are already at mid-term and that doesn't seem possible. The schedule of classes for the spring semester will be available after November 1st which means spring semester registration is just around the corner. We hope you will take advantage of our affordable pricing and guaranteed transfer of classes, and come take a class or two this spring from the 27th community college in the nation that was also just named as one of the top 4 colleges to work for in America.

So far this academic year, the Allen Campus has served 753 students and others from Perryton and the surrounding area. Academic classes account for 96 of these students, while Continuing Education classes have served 299 and Community Service classes and events have served an additional 358 people.

Pardon our mess! You may have noticed when your drive by the campus that there is quite a bit of construction activity. There are parking lot replacement, building repair, and class-

Allen Campus

News and Information

Start Here...
...Go Anywhere!

room renovation projects all going on at the same time. The results will be fantastic and completion of all three projects is slated for mid-November.

The Frank Phillips College Allen Campus is offering a wide variety of continuing education and community service classes. There was an opportunity this fall to become a Certified Nursing Assistant. Classes started October 31st and continue through November 16th, 2011.

On October 22nd and 23rd there was a Hunter Safety course taught by

Mike Wheat.

This fall we also held the 2nd Annual Pumpkin Decorating Contest. It began on October 24th and continued through 27th 2011. This event was open to the public and there were several age divisions an

On November 1st we hosted another Coffee Memorial Blood Center Blood Drive in the Conference Center.

Also coming this semester will be a new continuing education class; Basic Auto Mechanics. This class will begin after 6 students have registered. It will meet on

Monday and Thursday nights from 6-8 PM and the cost is \$80 (includes textbook). Learn how to change your oil, tires, transmission fluid and more!

In December there will be another Concealed Handgun Licensing course. Call the Allen campus to register before the class fills up! Also coming in December is another Fondant Cake Decorating class.

If you are interested in teaching a continuing education or community service class please contact Jaci Geheb at the Allen Campus. Classes in the works include CPR/First Aid, Intermediate Computers, Crafting, Workplace Spanish, QuickBooks, General Nutrition, Cajun Cooking, Web Page Design, and Basic Crochet. For more information on any of these classes contact the Allen campus at 806-648-1450.



The Hansford County Courthouse employees demonstrated their support for a cure for cancer by wearing pink on Fridays during the month of October. Those in the picture are (Back, L-R) Carla Woodington, Peggy Winegarner, Wanda Wagner, Judge Benny Wilson, Linda Cummings, Dorothy Nollner; (Front, L-R) Kim Vera, Laura Mackie, Maura Munoz de Briseno, Donna Farris, Cindy Scribner and Kayleen Lyons.

Thank You!

We want to say thank you to all who helped make our first day of business a big success at Alley Katz Bargain Center. Thank you to all who came for the ribbon cutting, and to all who shopped our store! A BIG thank you to all who donated items such as B&B Sales for the check-out counter, Wayne who was kind enough to deliver it and set it up, Dreamer's Salon for the display case and mat that we use behind the check-out counter, Ann Pipkin for the clothes racks and many, many hangers, Tex at the Country Market for the two vacuum cleaners to help keep the place neat and clean, Rob & Sam for hanging the lattice work from the ceiling, Dick Gillaspie and KXDJ, and to all who donated items for resale. Thank you to the EDC for making it possible to have a face lift with new paint and much needed repairs. We appreciate everything everyone has done to make Alley Katz a success!

Linda, Pat & Donna

Casino Night

The Sacred Heart Catholic Church is hosting a Casino Night with Casino Games and a Texas Hold 'Em Tournament on Saturday, November 12th at 6:30 p.m. at The O'Loughlin Center in Spearman. A Tenderloin dinner will be served. (BYOB) Proceeds will benefit the building project at Sacred Heart Catholic Church in Spearman. Prizes and a raffle will be held for a hand-made quilt by Gerry Davis. Tickets are \$25 each. For tickets or more information, contact Wanda Wagner at Hansford County Courthouse, Richard Wagner at Five Star Equipment, Lynna or Phillip Renner at 659-3587, Marty or Molly McCloy at 659-2895, Buster Davis at Gruver State Bank, or Barbara Stavlo at 733-2600.

E-SUBSCRIPTION

The Hansford County Reporter-Statesman
Delivered to your e-mail
each Thursday for only \$35/year.
Purchase online at www.spearmanreporter.com
Call 806-659-3434 or e-mail
reporter@spearmanreporter.com.

First State Bank

will be closed on Friday, November 11th
in observance of

VETERANS' DAY



One NE Court
Spearman, TX
(806) 659-5565

The Bank that has the Tradition of Strength and Service
member FDIC

We will be closed on Friday,
November 11th in observance of

VETERANS' DAY



INTERSTATE
BANK, ssb
www.interstatebankssb.com

322 Main Street * Spearman, TX
(806) 659-2559

Are You A Victim of
Domestic Violence, Sexual Abuse or
Physical, Emotional or
Sexual Assault?

Call Toll Free Hotline
1-800-753-5308

We can see individuals from Hansford County anytime upon request. Call 435-5008 or 1-800-753-5308 to set up an appointment in Hansford County. We operate a safe place for victims and their children to stay in times of crisis.

Battering Intervention & Anger Management Available

Panhandle Crisis Center
Serving Hansford, Lipscomb
& Ochiltree Counties
301 S. Ash - Perryton, TX
Memorials Accepted

Hotline for Priority Seating - 435-3945

MONEY'S

BBQ & STEAK HOUSE



Stan and Donna Zepp

New, Updated Menu
Same Great Service

Hoochy Poochy Parlor

Where Spearman Customers Get Priority!

Hoochy Poochy Parlor is happy to have Kim Reynolds as part of our grooming family.

Kim has 15 years experience as a vet tech and groomer. She knows just what to do to pamper your pooch!

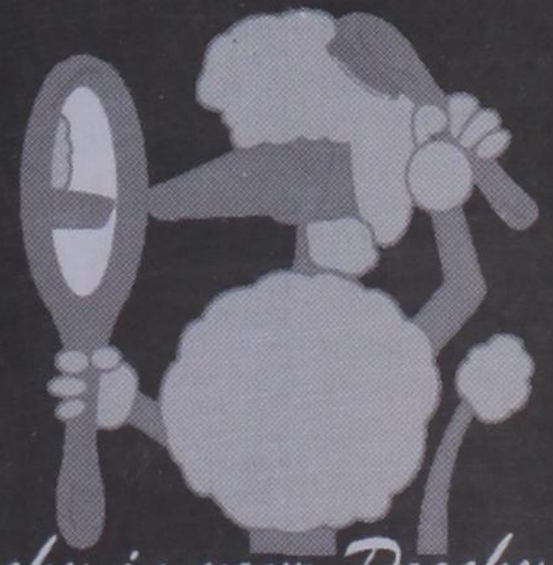
Carmon is still be pampering pets on a request only basis.

Hoochy Poochy Parlor

421 E. 10th St.
Borger, TX 79007
806-273-2724

hoochypoochy@att.net
www.hoochypoochy.net

Hours:
Mon.-Fri., 8 a.m.-5 p.m.



We put the Hoochy in your Poochy

Owned & Operated by Linda & Charles Stephens

Double XXL Steakhouse

(formerly Flying X Steakhouse)

We have expanded our seating capacity to
60! We welcome large and small groups
and parties. Reservations suggested.

Reserve your holiday party now!

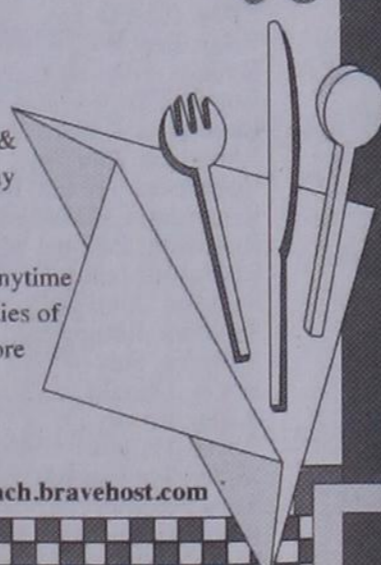
From Stinnett: Go West on Hwy. 152 17 miles -
Turn Left at Big White Sign (2 miles on Gravel Road)

From Dumas: Go East on Hwy. 152 16 miles - Turn
Right at Big White Sign (2 miles on Gravel Road)

(806) 93JESUS (935-3787) www.doublexxlfranch.bravehost.com

Open:
Friday &
Saturday
Night

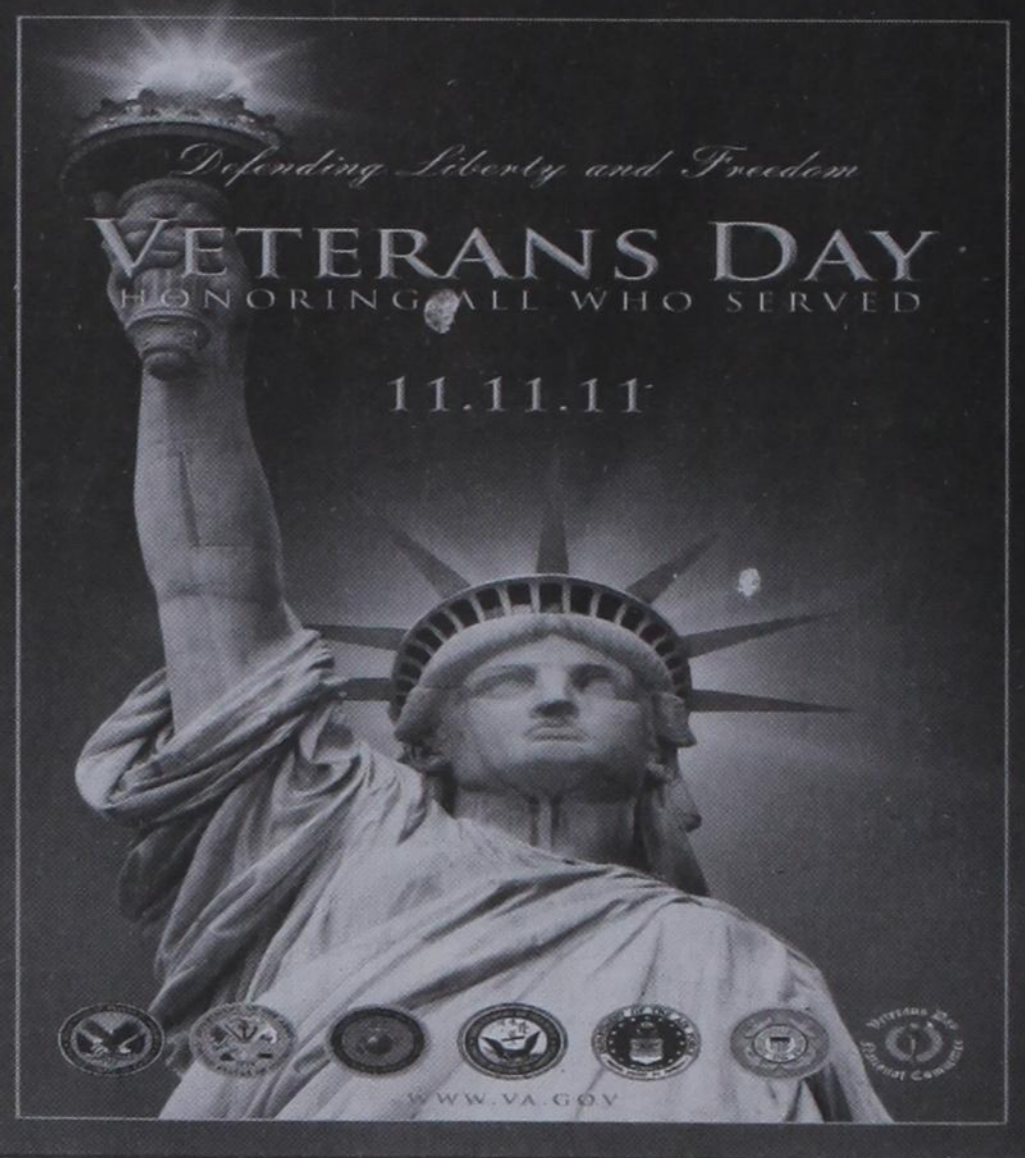
Open anytime
for parties of
8 or more



"With malice toward none, with charity for all, with firmness in the right as God gives us to see the right, let us strive on to finish the work we are in, to bind up the nation's wounds, to care for him who shall have borne the battle and for his widow, and his orphan, to do all which may achieve and cherish a just and lasting peace among ourselves and with all nations."

Honor our veterans on November 11th for their service and dedication.

Hansford County Veterans



Abston, Ab
Abston, Samuel Luther
Adair, Arthur Milton
Adair, Richard N.

Babbs, Eddie
Babbs, Larry Charles
Babbs, Michael Curtis
Babitzke, Henry
Bacon, Murl

Baldwin, Wm.
Ball, Gene
Banister, Pat Kirkman
Banks, Jason D.

Barkley, Dayton Neely
Barkley, Doyle Leland
Barkley, Howard M.

Bass, Walter
Bassel, Edna A. Buchanan
Bastion, Leland K.

Cearley, F.D. (Dick)
Chambers, Olen Newton
Chandler, Chip

Chapman, Leon Obed
Chase, Joseph F.
Chesser, J.W.
Chesser, Perry L.

Chesser, Perry L.
Christie, Billy Gene
Church, Dean LeRoy
Clark, Clifford B.

Clawson, Max Arvin
Clemont, Everett
Cline, Dennis
Cline, Luther Eugene
Cline, Morris R.

Frazier, Jim W.
French, Charles Rodney
Frizzell, Sylvester W.

Frost, Dustin
Frost, Jeremy
Fulcher, Billy "J"
Fulbright, Orville H.

Fullbright, Ralph Robert
Fullbright, Wilbur Dale
Gabel, Robert Thomas
Gather, Billy O.

Gaither, Clyde O.
Gammersfelder, L.R.
Garner, Ed
Garrett, Howard Golden
Garrett, J. Travis

Jackson, Tal
Jackson, William C.
Jacobs, Albert J.

Jacobs, Elmon J.
Jacobs, Jerry
Jacobs, Leduc
James, Herman
Jarvis, Billy

Jarvis, Brit
Jarvis, Jon
Jarvis, Richard Abner
Jeffries, Nathan C.

Jeffries, Warren
Jenkins, Joe Wesley
Johnson, Hasel
Johnson, James Elton

Jones, Merrel Travis
Jones, Curtis A.
Jones, Dennis M.
Jones, Francis C.

Jones, Guy
Jones, Joseph Clifford
Jones, Kenneth Leon
Jones, Mark D.

Jordan, Wayne
Karns, Louis H.
Karr, Frank Gerald
Keim, Glenn Walter

Keim, Jessie R.
Keith, Robert Eugene
Kell, Jesse
Kelly, Harvey L.

Kelly, Larry Desmond
Kenney, Billy Byron
Kenney, Eldred E., Jr.
Kern, Clarence Rubena, Jr.

Kerns, Dennis
Kilgore, Glenn R.
Kingham, Karl Eugene
King, Cyrus M.

Kirk, Buster
Kjos, Don
Kross, Howard Warren
Kloss, LeRoy Harold
Knight, Carl Eugene

Knight, Thomas Dale
Krusse, Charles
Kunkel, Marvin H.
Kunselman, Don
Lackey, John M.

Lair, James
Lair, Matt
Lamb, Bobbie Bruce
Langley, Doyle Rex
Langley, Harold D.

Editor's Note: We apologize for any names that were inadvertently left off of our Hansford County Veterans list. If you know of a name that is not listed, please let us know. Thanks, Catherine Smith



**SPEARMAN
LYNX &
LYNXETTES**

**GRUVER
GREYHOUNDS
& LADY HOUNDS**



CROSS COUNTRY TEAMS



**Spearman Lynxettes
2A District Champions
4th Year In-A-Row**



**Gruver Lady Hounds
1A District Champions
3rd Year In-A-Row**



**Peyton Garnett
Individual
Qualifier**



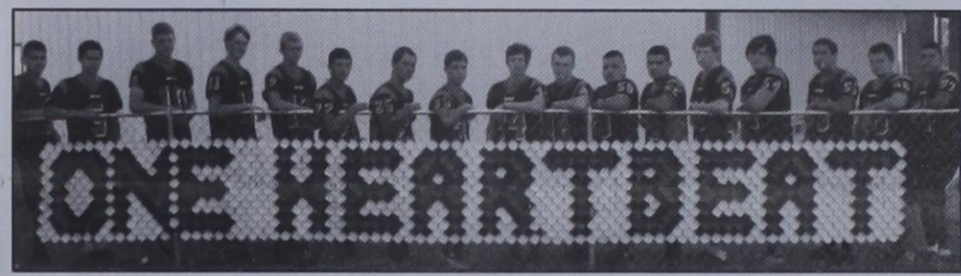
**Gruver Greyhounds
1A District Runner-Up**

& FOOTBALL TEAMS



Spearman Lynx

Coahoma vs. Spearman (8-2), 7:30 p.m. Friday, Nov. 11,
Greg Sherwood Memorial Bulldog Stadium, Plainview



Gruver Greyhounds

Gruver (4-6) vs. Memphis (5-5), 7 p.m. Thurs., Nov. 10, Pampa

WE'RE PROUD OF YOU!

Adobe Walls Gin, LP Spearman • 659-2574	Doug & Linda Cummings Good Luck!	Gordon's Drug Spearman • 659-2141	Hoochy Poochy Parlor Borger • 273-2724	North Plains Electric Coop 806-435-5482 • 800-272-5482
Aeroflight Publications Gruver • 733-2483	Jim & Mandy Detrition Congratulations & Good Luck	Gruver Ford Gruver • 733-2431	Hungry Cowboy Spearman • 659-5151	Perryton Office Supply Perryton • (806) 435-4812
AeroTan Gruver • 733-2483	Dreamers Spearman • 659-9907	Gruver State Bank Member FDIC Gruver • 733-5061	Interstate Bank, ssb Spearman • 659-2559	Pizza Hut Spearman • 659-2547
All Occasion Flowers Spearman • 659-5180	El Vaquero Restaurant Gruver • 733-2407	H&H Credit Union Stinnett • 878-2452	Kirk Insurance Agency Spearman • 659-2794	Prairie Motors Spearman • 659-2541
AMA TechTel Gruver • 806-322-5500	Equity Exchange Spearman • 659-2420	H&H Water Well Spearman • 659-5577	J&S Signs & Engraving Spearman • 736-7020	Rocking F Boot & Saddle Shop Spearman • 659-3342
B&B Sales Spearman • 659-2662	First National Bank Spearman • 659-5544 member FDIC	Hansford Abstract Co. Spearman • 659-2516	Jarvis Law Office, P.C. Spearman • 659-2554	Sergio's Body Shop Spearman • 659-5217
Bartlett's Ace Hardware Gruver • 733-2404	First State Bank Spearman • 659-5565 member FDIC	Hansford County Feeders Gruver • 733-5025	Jim's Diamond Shop Borger • (806) 274-2370	Spearman Chamber of Commerce Spearman • 659-5555
Berry Cleaners Spearman • 659-3122	Five Star Equipment Spearman • 659-3743	Hansford County Floral Co. Spearman • 644-4000	Lowe's Marketplace Spearman • 659-2522	Speartex Grain Co. Spearman • 659-3711
Bob & Cathy Davis Gruver • Spearman	Frank Phillips College Allen Campus Perryton • 648-1450	Hansford County Hospital District Spearman • 659-2534	M&D Aerial, LLC Spearman • 806-202-2360	Sunray Co-Op Gruver Branch Gruver • 733-2481
Bob & Jackie Pearson Gruver • Spearman	Frontier Feedyard Spearman • 882-4251	Hansford County Reporter-Statesman Spearman • 659-3434	Delinda McLaughlin Photo Solutions Spearman • 659-2800	Tong's Chinese Food Spearman • 644-2838
Bort Agency Gruver • 733-2404	Gigot Agri Products Spearman • 659-3121	Hansford County Vet Clinic Spearman • 659-2100	Matt, Kayla & Katy McClennan We're Proud of You!	Willis Boyd Dirt Services Spearman • 659-9848
Boxwell Brothers Funeral Home Spearman • 659-3802	Golden Spread Carpet Spearman • 659-3068	Hansford Pharmacy Spearman • 659-2226	Money's Perryton • 435-3945	Xcel Energy Responsible By Nature Perryton • 806-435-4052
The Bunkhouse Restaurant Spearman • 659-2089	Golden Spread Sales Co. Spearman • 659-3776	Hi-Plains Auto Supply, Inc. Spearman • 659-2506	Morse Implement Morse • 733-2668	Congratulations and Good Luck!
Cates Men & Boys Spearman • 659-3426			MurMur's Cafe Spearman • 659-3580	

Spearman Wins Fourth Straight Regional Cross Country Title



Spearman senior Tylo Farrar captured the Region I-2A cross country individual crown. Farrar and her teammates won the 2A team title.

by Les Passmore, Amarillo Globe-News

Those seniors who are running for the Spearman girls team have never known what it's like to not win a Region I-2A team championship.

For the fourth straight year, Spearman won the girls regional title, scoring 58 points to claim the championship. Senior Tylo Farrar won the individual title as well to pace Spearman to the team title.

"I thought coming in, if everybody was where I expected them to be, we'd be the top team," Spearman coach Starla Whiteley said. "There were some teams who usually run pretty well who didn't run as well as

we did." And no individual girl in 2A ran better than Farrar, who posted a time of 12 minutes, 8.54 seconds, edging out Tuscola Jim Ned's Savanna Day over the last 50 yards.

"I just have faith in my teammates," Farrar said. "I know if I do what I'm supposed to do, they'll go out and do their job."

Next up for Spearman is the state meet, from which the Lynxettes have taken home the last three titles.

Individual Placings: 1. Tylo Farrar, Spearman, 12:08.54; 12. Gately Garnett, Spearman, 12:45.10; 16. Malory Martin, Spearman, 13:00.74; 18. Sarah Snider, Spearman, 13:01.90; 20. Itzel Meza, Spearman, 13:02.34; 60. Shelby Hanna; 65. Gena Hargrove

Gruver Runners Three-peat in 1A

by Les Passmore, Amarillo Globe-News

The beat went on in Class 1A for the Gruver girls, who won their third straight Region I-1A team title.

Gruver scored 30 points, placing three runners in the top 10.

"We have high expectations even though we've lost two of our top three runners from injuries," Gruver coach Rod Been said. "We've had some girls step up into the fourth and fifth spots who'd been in support roles."

Gruver's leading role belonged to senior Shelley Gibson, who finished sec-

ond in the individual standings with a time of 12:23.32, less than eight seconds behind winner Abrianna Carrasco of Sanderson.

"My time was a little slower than I've run before, but it's still the best I've done in any regional meet," Gibson said.

Joining Gibson in the top 10 for Gruver were Madison McLain in seventh (12:44.90) and Taylor Felderhoff in ninth (12:48.40). Gruver will now try to win its third straight team state championship next weekend.

Panhandle schools swept the top three spots in the team standings, as Sunray scored 44 points and Clarendon had 105. All three teams will go to state.

Individual Placings: 2. Shelley Gibson, 12:23.32; 7. Madison McLain, 12:44.90; 9. Taylor Felderhoff, 12:48.40; 13. Emilyann Robinson, 12:56.67; 15. Bailey Stedje, 13:00.58.

Luis Mendoza came in fourth place in the Regional meet in the Boys 1A Division with a time of 17:00.21. His fourth place finish qualified him to compete in the State meet as an individual qualifier.

State Cross Country Meet

The 2011 UIL Cross Country State Championships will be held Saturday, November 12 at Old Settlers Park in Round Rock.

The 1A Girls will run at 11:40 a.m., followed by the

1A Boys at 12 noon. The 2A Girls will run at 12:30 p.m.

Admission is \$5 per person. Parking is \$5 per car, and is available at Dell Diamond.

Athlete of the Week Honor Roll

Posted: November 7, 2011
Luis Mendoza, Gruver cross country: Mendoza qualified for the state cross country meet with a fourth-place finish at the Class 1A Region I Cross Country meet at Lubbock.

Tylo Farrar, Spearman cross country: Farrar won the Class 2A Region I Cross Country Meet at Lubbock with a time of 12:08.54 to lead Spearman to its fourth straight team title.

Shelley Gibson, Gruver cross country: Gibson got second in the Class 1A Region I Cross Country Meet at Lubbock with a time of 12:23.32 to help Gruver win the team title.

Spearman 34, Tulia 0
 Spearman locked up sole possession of third place in District 1-2A with a dominating victory over Tulia.

Christian Fisher racked up 83 yards and three touchdowns on 15 carries for Spearman. Spearman overcame 12 penalties for 120 yards.

Scores by Quarters

Tulia	0 0 0 0	0
Spearman	14 7 7 6	34

Scorers	
S—Christian Fisher	2 run (Alfredo Rosendo kick)
S—Fisher	3 run (Rosendo kick)
S—Alex Mendoza	22 pass from Jace Lang-Swan (Rosendo kick)
S—Fisher	18 run (Rosendo kick)
S—Beau Brown	15 run (kick failed)

Statistics	
First Downs	9
Rushing Yards	61
Passing Yards	87
Total Yards	148
C-A-I	8-25-3
Punts-Avg.	2-36
Fumbles-Lost	3-2
Penalties-Yds	9-82

Spearman Jr. High	
Spearman 8th Grade	0
Tulia 26	
Spearman 7th Grade	22
Tulia 0	

Booker 27, Gruver 21
 Booker clinched the top seed out of District 1-1A Division II with a 27-21 win over Gruver.

Hunter Lyle was 11-of-23 passing for 256 yards for Booker, which ends the regular season at 9-1 overall and 2-1 in district.

Teammate Zachary Wauer had 170 yards receiving and two scores.

Gruver is the No. 2 playoff seed at 4-6, 2-1.

Jerrod Collier had 95 yards on 20 carries for Gruver.

Scores by Quarters	
Booker	7 7 7 6
Gruver	0 6 8 7

Scorers	
B—Zachary Wauer	69 pass from Hunter Lile (Wauer kick)
B—Raul Camacho	10 pass from Lile (Wauer kick)
G—Beau Blankenship	14 pass from Korbin Irwin (kick failed)
B—Wauer	76 pass from Lile (Wauer kick)
G—Diego Ortiz	7 pass from Irwin (Irwin run)
G—Blankenship	11 pass from Irwin (Lupe Pena kick)
B—Lile	1 run (kick failed)

Statistics	
First Downs	12
Rushing Yds	55
Passing Yds	256
Total Yards	311
C-A-I	11-23-2
Punts-Avg.	4-35.3
Fumbles-Lost	1-1
Penalties-Yds	5-35

Gruver Jr. High
 JH Hounds 42 - Booker 44. JH finishes the season with a 6-3 record.
 JV Hounds 48 - Vega 6.

Region I High School Football Playoff Pairings

Class 1A Division II Bidistrict
 Gruver (4-6) vs. Memphis (5-5), 7 p.m., Thursday, November 10, 2011; Pampa.

Class 2A Division II Bidistrict
 Coahoma vs. Spearman (8-2), 7:30 p.m., Friday, November 11, 2011; Greg Sherwood Memorial Bulldog Stadium, Plainview



The Spearman High School cheerleaders would like to say "Thank You" to the Spearman community and The Sport Zone for helping raise \$2,000 selling Pink Out Tshirts to support the fight against breast cancer during the month of October. Survivors were given a Pink Out Tshirt donated by Brown, Graham & Company, and were honored at the football game against Abernathy on October 14th. The money is being donated to the Susan G. Komen Greater Amarillo Area Foundation in honor of those in our community that have been affected by this disease. Cheerleaders pictured above (L-R) include: Paige Pierson, Brooke Walker, Slade Garnett, Gena Hargrove, Cassie Bowers, Morgan Ashmore, Jayme Pack, and Kyla Walker.

Palace Theatre
 MOVIE SHOW TIMES
 Friday-Thursday - 7 p.m.
 Sunday - 2 p.m.
 Closed Sunday Night

FRESH POPCORN & DRINKS!
 PARTY ROOM & ARCADE
 MOVIE RENTALS

Palace Theatre
 210 Main Street
 Canadian TX 79014
 806-323-5133
 www.palacetheatre.com

The Palace Theatre meets Lucasfilm THX specifications for site and sound quality.

High School Football Standings

District 1-2A Division II						
Team	Dist	Pts	Opp	All	Pts.	Opp.
y-Abernathy	6-0	226	89	9-1	322	153
x-Sanford-Fritch	5-1	219	95	5-5	208	209
x-Spearman	4-2	156	90	8-2	308	110
Dimmitt	3-3	138	166	6-4	247	270
Floydada	2-4	236	169	4-6	278	313
Highland Park	1-5	53	253	3-7	175	314
Tulia	0-6	69	153	1-9	112	224

Last week: Dimmitt 48, Highland Park 20; Spearman 34, Tulia 0; Abernathy 49, Floydada 25. End of regular season.

District 1-1A Division II						
Team	Dist	Pts	Opp	All	Pts.	Opp.
y-Vega	2-1	89	30	3-7	262	277
x-Gruver	2-1	75	40	4-6	211	243
x-Booker	2-1	47	68	9-1	322	177
White Deer	0-3	33	106	1-9	208	402

Last week: Vega 48, White Deer 14; Booker 27, Gruver 21. End of regular season.

Spearman Lynx & Lynxettes

<http://spearmansports.smugmug.com>

Photos available of Spearman Lynx and Lynxette athletic events.

Tong's Chinese Restaurant

(806) 644-2838
 22 Archer Street • Spearman

Daily Buffet
 Lunch Buffet 11 a.m.-2:30 p.m.
 Dinner Buffet 5:30-9 p.m.
 Open Wednesday-Monday - Closed Tuesday

Christmas Open House

at **Gordon's DRUG**

314 Main • Spearman • 806-659-2141
 Where gift-giving is effortless & FUN!

Sunday November 13th 1-7 p.m.

Specials
New Merchandise
Refreshments

REAL ESTATE

FOR RENT: 1 & 2 BR furnished apartments. All bills paid. Call 659-2247. TFN(11/03/11)B

WANTED: Want to rent 2 or 3 bedroom house. Will need by January 1st. Please call Roy or Denise Harbour. 659-3348 or 330-0297. TFN(11/10/11)

HELP WANTED

HELP WANTED: \$5,000 Sign-On Bonus! Tons of South TX work! Frac Sand hauling. Must have tractor, pneumatic trailer, blower 800-397-2338 1(10/27/11)P

HELP WANTED: Young farmer looking to expand farming operation. Locally owned and operated. Dryland, irrigated, or grass needed. call 806-570-7932 (cell) or 806-659-2051. 6(9/29/11)B

HELP WANTED: Custodian/Maintenance person. Full Time Position. Pick up Application and job description at First United Methodist Church, 407 S. Haney, Spearman, Tx. Church office open: Monday - Thurs from 9:00 a.m. to 5:00 p.m. and Fridays from 9:00 a.m. to Noon. TFN(9/29/11)

Estate Sale!

204 Townsend, Spearman, Saturday, Nov. 12th & Sunday, Nov. 13th, 8:30 a.m. - 5 p.m.: Furniture, Houseware, Medical Equipment, Appliances & Much More!
2(11/03/11)B

**KNIVES!
KNIVES! KNIVES!**

Knife Sale at Country Market Flea Market on December 2nd & 3rd. Come see our new selection of Case Knives. Huge discounts off Manufacturer Suggested Retail Prices. Special ordering available for Christmas.
2(10/27/11)B

**Blankenship Real Estate
659-3052 - 670-3774**

**LET US HELP YOU
SELL YOUR HOME.**

3BR, 2 1/2B, 2 living areas, dining area, brick, close to schools.

NEW LISTINGS WANTED!

Eulalia Blankenship - Sales
Eschol Blankenship - Broker

**Check our websites
for other properties.**

VALLEY VIEW RANCH - Lipscomb Co., TX. - 177 ac. w/extraordinary 5404 sq. ft. +/- home overlooking the property w/ beautiful views of live creek, trees, wildlife (deer, quail, & turkey), covered horse training facilities, stables, excellent cattle working facilities & pens, commercial dog pens, employee housing. We can divide (10 ac. w/main residence or 167 ac. +/- w/other improvements!)

SHERMAN CO., TX - 627 acres, choice land, four ¼ mile sprinklers, fully developed, one ¼ mile off Hwy. 287 on paved CR - CC, 3 phase electricity, new irrigation well drilled in 2010.

AMARILLO, TX. - 4 MI. N. OF LOOP 335 - development potential (wind energy, comm., res.) 4872.8 ac. +/- of beautiful ranch country, pvt. on four sides. Deer, quail & dove. 50% MINERALS!

CASTRO CO, TX. - on pvt., 1845.6 ac. +/-, sprinklers, irr. wells, employee housing, barns, cattle pens w/covered working area, hydraulic chute & truck/cattle scale.

WEST OF DUMAS on pvt. 606 ac. +/-, 17 tower sprinkler, four irr. wells, excellent location for residential or commercial development.

BUDDY CLINE ROAD - Moore Co., TX. - ½ section choice land, two wells (one new) and sprinklers.

MOORE CO., TX - 800 ac. with ½ section rigged for sprinkler plus 480 acres of CRP. 1 ½ miles out of Dumas with pvt. on two sides.

1200 SOW FARROW TO FINISH OPERATION - Moore Co., TX - New 5 yr. lease with major hog company. Two separate units, can be divided - Please contact broker for info package and price.
www.scotlandcompany.com
www.texascrp.com
Shawn Gillispie 806/922-5532
Ben G. Scott, Broker
1-800-933-9698 day/eve
TFN(9-15-11)

HELP WANTED: First State Bank, Spearman, has a full time position open for a Teller and a position in the Bookkeeping Dept. Applicant must have a high school diploma or equivalent, typing and some ten-key skills required, customer relation and telephone skills are very important. Background in accounting, word processing and spreadsheets is helpful but not required. Benefit program includes group hospitalization insurance, retirement, vacation pay, sick leave pay and holiday pay. Apply with Ginger Turner at First State Bank, PO Box 247, Spearman, Tx. 79081, telephone #(806) 659-5565. An Equal Opportunity Employer.
TFN(10/6/11)

HELP WANTED: Frank Phillips College Nursing Instructor. RN plus a minimum of 3 years of varied nursing experience required. A love of nursing and a desire to educate the nurses of tomorrow in a firm, but nurturing manner is a must. To apply: send letter of application, resume, FPC Application for Employment form, names and phone numbers of 3 professional references to: Gloria Rummel, Executive Assistant, Frank Phillips College, Box 5118, Borger, TX 79008-5118. No faxes or emails.
EOE
3(10/27/11)B

HELP WANTED: Janitorial position needed for Gruver. 2 nights per week, part-time, experience required. Call 480-415-3416.
2(11/03/11)B

HELP WANTED: Oilfield work must have drivers license, good pay and benefits. Call 806-659-3911 or come by at 1103 West 7th, Spearman. Trencor Enterprises, Inc.
TFN(11/10/11)B

FOR SALE

FOR SALE: King Size Mattress (deep pocket) and box. Denver Mattress (Madison) Plush. Only 4 years old. 806-676-3906
2(11/10/11)B

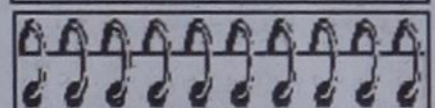
SERVICES

HOOCHY POOCHY PARLOR
Call us for all your pet's grooming and boarding needs. Call now for reservations! 806-273-2724.
TFN(11/20/11)B

TIRED OF GARAGE SALE PRICES? Let me buy your good used furniture! 2nd Chance Antiques & Furniture, Don 806-648-1480; 806-202-1391 cell.
TFN(1/20/11)B

FIREWOOD FOR SALE: Taking orders for firewood. Call 417-529-1024 or 620-856-5489. Leave message if no answer.
8(9/29/11)B

E-SUBSCRIPTION
The Hansford County Reporter-Statesman
Delivered to your e-mail each Thursday for only \$35/year.
Purchase online at www.spearmanreporter.com
Call 806-659-3434 or e-mail reporter@spearmanreporter.com.



We NEED listings!
Call us now to help YOU sell your home for top dollar!

1016 S Barkley - Spearman: 4,081 sq ft. 4 bed, 4 bath 3 lvg areas, 2 Att gar, Fireplace, Corner Lot! **REDUCED AGAIN!**

710 Front - Gruver: \$145,000 - @ 2,177 sqft, 3 bed, 2 3/4 bath, NEW Metal roof, NEW CACH, NEW Outside Stucco, and NEW Kitchen!

Shirley Howard, Broker/Owner
806-886-6536, Cell
806-648-4444, Work
Melinda McCullough, Realtor
(806) 733-5678

We would LOVE to sell your HOUSE!
CALL US!

PUBLIC NOTICE

NOTICE TO CREDITORS
Notice is hereby given that original Letters of Administration for the Estate of William J. Vinson, Deceased, were issued on September 16, 2011, in Cause No. P02642, pending in the County Court of HANSFORD COUNTY, Texas, to: Estate of William J. Vinson.
All persons having claims against this Estate which is currently being administered are required to present them to the undersigned within the time and in the manner prescribed by law.
c/o Billy Britt Jarvis
Attorney at Law
Billy Britt Jarvis, Attorney at Law
PO Box 515
Spearman, Texas 79081
DATED the 19th day of September, 2011.
Billy Britt Jarvis
Attorney for the Estate of William J. Vinson
State Bar No: 10585000
Billy Britt Jarvis, Attorney at Law
PO Box 515
Spearman TX 79081
Telephone: (806) 659-2554
Facsimile: (806) 659-3517
1(11/10/11)B

**PUBLIC NOTICE
2nd Request Formal Bid & Qualification Statement for VENDORS of Modular Patient Rooms to integrate with Hospital Renovation Construction Project**

The HANSFORD COUNTY HOSPITAL DISTRICT Board of Spearman, Texas, is publicly requesting Bid & Qualification Statements from Vendors that are entertaining the Modular Patient Room Provisions and Equipment Financing to be integrated with a separately bid hospital renovation project. Renovation will include reworking the current patient wing of the existing hospital and adding a small addition to accommodate Central Sterile Supply. Qualification Statements are required and should be submitted with the General Terms and Conditions for an Agreement. A Construction Schedule shall commence early in 2012 and shall be integrated with this procurement to allow the hospital to remain functional throughout the term of the project. The General Contractor is being separately bid at a later date and will be required to meet all plans and specification requirements. Only vendors having provided three or more licensed hospital patient rooms in separate and distinct geographic locations and having brought these projects to full licensure within the last five years will qualify as a VENDOR. The deadline for all written requests for information is November 10th, 2011 at 2:15pm (Central). All RFI are to be sent to kfredrickson@projxllc.com and copied to ichilton@projxllc.com. Entitle your email subject line: "Bid & Qualification Statement HCHD Spearman TX". All parties are to state. Contacting person's full name; Firm's full name and address; Firm's phone number; and confirm the Contacting person's Email address for correspondence within the email's content.
All site visitation shall be coordinated through the Project Architect. Contacting the Board or the Hospital directly for such visitations may result in disqualification.
Formal submissions are due on or before 2:15PM (Central) on 21 November 2011. All bids will be opened 15 minutes after the submission deadline.
From this date forward through the BID, VENDORS submitting any collateral materials to any parties affiliated with the Hospital's Administration or Board will be disqualified for consideration for this procurement. Submissions must conform with the Documents and Specifications which can be obtained from ProjX LLC. ProjX LLC phone number is 615-277-1178 or e-mail kfredrickson@projxllc.com.
1(11/10/11)B

M&D Aerial, LLC
David & Megan George
P.O. Box 520 David: (806) 202-2360
Spearman, Texas 79081 Megan: (806) 202-2358
mndaerial@yahoo.com



The holidays are just around the corner and the elves at **Acquisitions** have been busy getting ready! We have lots of great new treasures so please join us for our **Holiday Open House!** We'll celebrate with in store specials and \$50 gift card drawings everyday during the week of **Nov. 7th thru Nov. 12th from 10 a.m. to 6 p.m.** Have some cider and a cookie and check out our new products made right here in Texas! So please be sure to stop by **at the corner of Hwys 54 & 287 in Stratford, Texas** and see what's new. (Check us out on FACEBOOK...)

See us for:
AUTO • HOME • CROP HAIL • FARM & RANCH • MULTIPERIL • LIVESTOCK

INSURANCE

BORT AGENCY, INC.
510 Main St. • Gruver, TX
(806) 733-2456

S	P	A	C	E	S	P	A	C	E	S	P	A	C	E	S
I	O	W	A	N	O	V	A	A	L	T	O	S			
P	R	O	N	G	B	E	D	L	A	T	C	H			
S	T	L	O	U	I	S	H	I	C	K	O	K			
					E	L	D	E	U	R	O				
L	A	C	F	L	E	X	E	T	H	I	C	S			
E	V	E	N	E	A	T	S	T	O	T	E	M			
W	I	D	E	D	R	I	E	S	B	A	L	I			
I	S	A	A	C	S	N	A	P	S	L	I	T			
S	O	R	T	O	F	C	R	U	Z	Y	A	H			
					W	A	T	T	I	E					
C	A	S	B	A	H	L	A	N	D	R	U	N			
C	A	M	E	O	I	T	O	G	U	I	S	E			
U	N	I	T	Y	E	A	U	E	C	L	A	T			
R	E	D	S		F	U	R	R	E	E	F	S			

1	2	3	7	5	6	4	9	8
9	8	6	3	2	4	1	5	7
5	4	7	1	8	9	3	2	6
4	7	8	5	1	3	9	6	2
2	5	9	6	4	8	7	3	1
6	3	1	9	7	2	5	8	4
8	9	2	4	3	7	6	1	5
3	1	4	8	6	5	2	7	9
7	6	5	2	9	1	8	4	3

Do you take **VIAGRA** or **CIALIS**?

SAVE \$500!

Get 40 100mg/20mg pills for only \$99.00

BUY THE BLUE PILL NOW!
call 1-888-395-8456

CALL NOW AND GET 4 BONUS PILLS FREE!

SATISFACTION GUARANTEED

Trans-Atlantic Cruise & European Tour

22 Days from '1999' Departs March 17, 2012

Experience the history, culture, and beauty of the Caribbean, Madeira, Alicante and Barcelona before you discover the best of Italy on our 22 day Trans-Atlantic Cruise and Italy Tour aboard MSC's elegant Poesia.

Save up to \$800 per couple on oceanview balcony cabins!	Inside (1) \$999 \$1999
	Oceanview (5) \$2999 \$2099
	Balcony (6) \$4999 \$2299
	Supr. Balcony (9) \$6999 \$2499

*PPDQ plus \$348 tax, service, and gov't fees. Add on airfare available. CST #162141520

Call for details!
1-888-817-0454
Please mention: TN11848

TEXAS STATEWIDE CLASSIFIED ADVERTISING NETWORK

TexSCAN

**TexSCAN Week of
October 30, 2011**

ADOPTIONS
ARE YOU PREGNANT? A childless married couple seeks to adopt. Large extended family. Financial security, expenses paid. Theresa & Steve. 1-877-801-7256.

BUSINESS OPPORTUNITIES
THINK CHRISTMAS - START NOW! Own a Red Hot, Dollar, Dollar Plus, Mailbox or Discount Party Store from \$51,900 worldwide. 100% turnkey; 1-800-518-3064; www.DRSS24.com

CABLE/SATELLITE
AT&T U-VERSE for just \$29.99/month! Save when you bundle Internet+Phone+TV and get up to \$300 back! (Select plans). Limited time call now! 1-877-577-4394

GET FLEX TV de DISH LATINO with packages starting at \$19.99. Flex TV has no contracts, no credit checks and free installation. Call 1-888-515-5924 today!

DRIVERS
\$5,000 SIGN-ON Bonus! Great pay, tons of South Texas work. Frac Sand hauling. Must have tractor, pneumatic trailer and blower. 1-888-880-5918

CDL-A REGIONAL DRIVERS - Earn more! 37¢ with 1+ years experience. Top out pay 42.5¢ cpm. 4-12 months experience, paid refresher course available. 1-888-362-8608 or AVERITTcarriers.com. EOE

DRIVERS-OWNER OPERATORS and Fleet drivers Texas CDL. Hugh new sign-on bonus! \$1.28 per mile. Return to Texas every 6-8 days. Call 1-800-765-3952; www.ParkwayTransportInc.com

DRIVER-PAY RAISE just announced. Company, owner operators, solos and teams. Consistent miles, benefits, all new trucks. CDL-A and 15 months experience required. www.drivertofango.com. 1-877-826-4605

DRIVERS-57' Lanes start at 38¢ CPM with 1 year recent experience. SW regional lanes start at 36¢ CPM. Great home time! Requires CDL-A 1-800-483-5182, www.LKAM.com

DRIVERS-GET MILES and home weekends, southwest regional! Top pay/benefits. Paid orientation and training. 6 month OTR and CDL required. 1-800-545-1351; www.cypresstruck.com

DRIVERS no experience, no problem. 100% paid CDL training. Immediate benefits, 20/10 program. Trainers earn up to 49¢ per mile! CRST VAN EXPEDITED 1-800-326-2778, www.JoinCRST.com

HIRING DRIVEAWAY CDL-A&B drivers to deliver semi-trucks from either Garland or Laredo, Texas. www.qualitydriveaway.com or 1-866-764-1601

PAID CDL TRAINING! No experience needed. Stevens Transport will sponsor the cost of your CDL training. Earn up to \$40K first year and \$70K third year. Excellent benefits! EOE. 1-800-333-8595, www.bccomcadriver.com

OWNER OPERATORS New pay package. Southwest regional runs. Miles are plenty. Home time is maximized. New lease purchase program. BCB Transport, 1-877-357-9890, www.bcbtransport.com

TOP PAY on excellent runs! Regional runs, steady miles, frequent home time, new equipment. Automatic detention pay. CDL-A. 6 months experience required. EEOE/AAP; 1-866-322-4039 www.Drive4Marten.com

YOU GOT THE drive, we have the direction. OTR drivers, APU Equipped, Pre-Pass, EZ-pass, Pets / passenger policy. Newer equipment. 100% NO touch. 1-800-528-7825

REAL ESTATE

55-YEAR and up community, Kerrville, Texas. Move-in ready! Starting: \$500/month, ready for retirement. Wildlife throughout the park. Call 1-830-755-4922. RBl# 33557, www.cedarroaksretreat.com

10.1 ACRES, Duval County, Mesquite and brush. Deer, hogs, quail, private roads. Locked gate; \$29,500 owner financing or TX Vet financing. Toll-free 1-866-286-0199. www.westernexasland.com

23.23 ACRES, north of Brackettville. End of road property, valley with good cover. Native and exotic game, hogs, turkey. \$1450/acre. 1-800-876-9720; www.hillcountryranches.com

\$106 MONTH BUYS land for RV, MH or cabin. Gated entry, \$690 down, (\$6900/10.91%/7yr) 90 days same as cash. Guaranteed financing. 1-936-377-3235

676 ACRES Reeves County, 15 Miles North Pecos, river frontage. Call Jack 214-755-6224.

ABSOLUTELY THE BEST VIEW Lake Medina/Bandera 1/4 acre tract, central W/S/E. RV/motor home/house, OK only \$830 down \$235 month (12.91%/10yr). Guaranteed financing, more information call 1-830-460-8354

AFFORDABLE RESORT LIVING on Lake Fork. RV and manufactured housing OK! Guaranteed financing with 10% down. Lots starting as low as \$6900. Call Josh. 1-903-878-7265

WANTED
WANTED Pre 1975 Superhero Comic Books, sports & non sports cards, toys, original art, movie posters & pulps. Collector/Investor, CASH. Mike. 1-800-723-5572 or mikecarbo@gmail.com

The Joys of Summer Available all year!

SNOW CONE STAND

Monday-Friday
2-8 p.m.

MURMUR'S CAFE

100 S. Roland • Spearman
659-3580

Run Your Ad In TexSCAN!

Statewide Ad \$500
301 Newspapers, 942,418 Circulation

North Region Only \$230
98 Newspapers, 263,811 Circulation

South Region Only \$230
101 Newspapers, 366,726 Circulation

West Region Only \$230
102 Newspapers, 311,881 Circulation

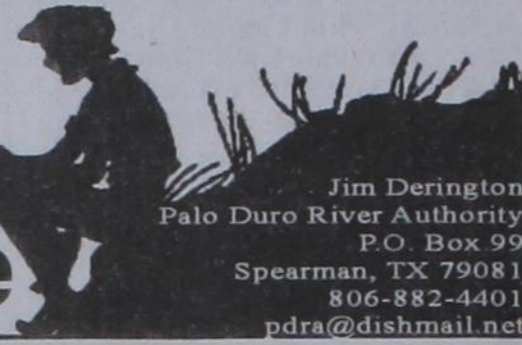
To Order: Call this Newspaper direct, or call Texas Press Service at 1-800-749-4793 Today!

NOTICE: While most advertisers are reputable, we cannot guarantee products or services advertised. We urge readers to use caution and when in doubt, contact the Texas Attorney General at 1-800-621-0508 or the Federal Trade Commission at 1-877-FTC-HELP. The FTC web site is www.ftc.gov/hotip

Extend your advertising reach with TexSCAN, your Statewide Classified Ad Network.

by Jim Derington

Out at the Lake



Jim Derington
Palo Duro River Authority
P.O. Box 99
Spearman, TX 79081
806-882-4401
pdra@dishmail.net

November 7, 2011 - Lake Palo Duro level - 32.46 feet



The picture shows the Palo Duro Creek bridge at Lake Palo Duro, before it was destroyed by the flood, in June of 2010.

Lake Palo Duro has settled down to the off season routine. There are great opportunities, this time of year, to enjoy the lake, but other interests seem to keep most people away. It is a great place for a walk, walk the dogs, jog, mountain bike, or just view the scenery and wildlife. The fishermen are catching some catfish, though not as big as they would like.

The restrooms and showers are closed for the winter, as they are not heated. There are several portable toilets available, however.

This is a great time to see the big bucks. I have not seen many yet, but they are starting to rub on the trees. November and December usually are the best picture opportunities for them. I wonder if the harsh weather conditions are not good for producing the big antlers.

The deer hunters probably know the answer to this.

The sandhill cranes are still here. A few geese are arriving. I have seen a large group of pelicans, two different times this week. Ducks are plentiful, and very visible in the open water, on the calm days. Two bald eagles are here. Mountain bluebirds have been seen each day, lately. Mandy spotted a two house finches, by the red color on their head and chest, at our bird feeder.

I have many questions about the bridge. The picture shows the bridge with five concrete sections, that washed out, in June of 2010. One end section is still standing, the other end fell down, and three sections were taken out by the force of water and debris. Two of those sections are now visible, as the water recedes.

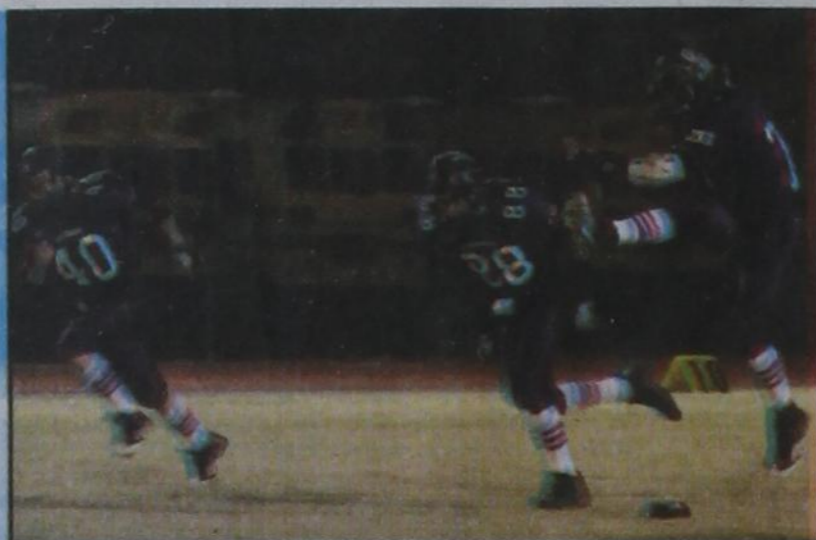
Gladiola Flower Club Home Tour

The Gladiola Flower Club Home Tour will be held on November 13, 2011 from 2-5 p.m. Homes on the tour include Mr. & Mrs. Clancy Vanderburg, 806 Wilbanks; Mr. & Mrs. Dennis Nelson, Hwy. 15 W, 130 Nelson Rd.; Mr. & Mrs. Jonathan Bailey, 906 Wilmeth; and the Hansford County Library, 123 Main Street. Tickets are \$5 each for adults and children 10 and older, and may be purchased from any Club member, or at the door.

The Hansford County Library

The Hansford County Library is celebrating their 75th year of service. The Library is located at 122 Main Street in Spearman, where it moved from their previous location at the triangle of Davis and West Kenneth in 1968. Margaret Ruttman is the current Library Director.

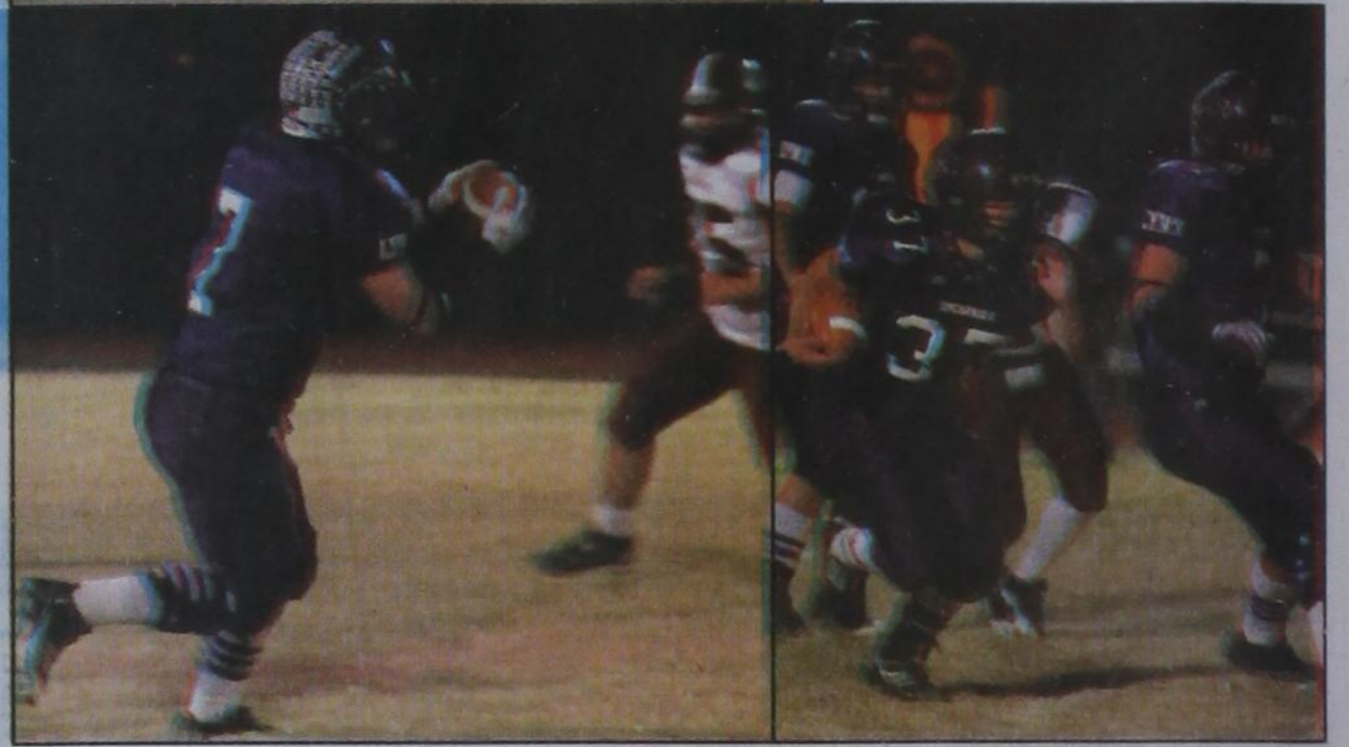
If you haven't been to the library lately, please stop by!



LEFT: #71 Jorge Caro kicks off for the Lynx. #88 Gil Molina, #40 Christian Fisher. BOTTOM LEFT: #7 Brody Hargrove pulls in a pass from Jace Lang Swan and carries it for a first down.

BOTTOM RIGHT: #37 Beau Brown heads for the endzone for a Lynx TD.

Spearman photos by Tami Hargrove. Pictures available at <http://spearmansports.smugmug.com>
See related article on Page 6



The First United Methodist Church Chancel Choir will be hosting the **Community Thanksgiving Dinner**

11:30 a.m. to 1 p.m.
Thursday, November 17, 2011
Fellowship Hall of the First United Methodist Church
4407 Honey, Spearman
\$8.00 for adults
children 6 and under free

Take-outs will be available by calling 659-5984 by 10 a.m.

Christmas Open House

Refreshments will be served. 2-6 p.m.

Sunday Nov. 17th Spearman TX

Sport Zone
www.thezportzone.net
718 W. 7th Street

Gordon's DRUG
314 Main Street

All Occasion Flowers
202 N. Berne

Hansford County Floral Company
300 Main Street

Headquarters
217 Main Street

Prairie Garden Flowers
216 Main Street

ALL STATE REALTY
806 435 SOLD (7653)

All State Realty • Sherrie E. Rima
920 S Main Perryton, Texas 79070 • 806 435-SOLD (7653)

322 S. DRESSEN - LOOKS CAN BE DECEIVING!!
Don't judge a book by its COVER or a HOUSE by its EXTERIOR!!
This little GEM is a Treasure waiting to be Discovered!!
Previously a Duplex, Cleverly remodeled into a SINGLE FAMILY HOME.
You won't believe the space you can have now inside!
2 Living spaces, 3 or 4 bedrooms, 3 baths, and the list goes ON!!!
This won't be around long so call before you miss it!!
TODAY!!!
806 435-SOLD (7653)
The Number that gets RESULTS!

MITCHELL THEATRES.COM

NORTHRIDGE 8
Guymon, Oklahoma
www.northridge8.com
580-338-3281

SOUTHGATE 6
Liberal, Kansas
www.southgate6.com
620-624-5573

SEQUOYAH 8
Garden City, Kansas
www.sequoyah8.com
620-275-2760

CHISHOLM TRAIL 8
Newton, Kansas
www.chisholmtrail8.com
316-283-0555

FRESH POPCORN EVERYDAY!
-PARTY ROOM & ARCADE-

Hurry! Before SANTA takes it ALL!

Amarillo Networks in HD
Over 150 channels
High Definition Programing
Combined billing of Telephone, Internet, and TV services

\$29.99

Incredible TV

\$29.99 mo.
For 6 months!

FREE HD
For 6 months!

FREE Install
up to 4 set-top boxes

ptci.net
721 W 7th in Spearman
800-562-2556

Some restrictions apply. See store for details. Offer good thru Dec. 30, 2011. *Requires two-year commitment.