



The Hansford County Reporter Statesman

PROUDLY SERVING HANSFORD COUNTY SINCE 1907

reporter@spearmanreporter.com

VOLUME 100 • ISSUE 33

WWW.SPEARMANREPORTER.COM

THURSDAY, AUGUST 23, 2007

Circle of Friends Membership Party

The Hansford County Circle of Friends will host a membership party in support of The Don & Sybil Harrington Cancer Center on August 30, 2007 at 7:30 p.m. The party will be held at The O'Loughlin Center, 502 S. Brandt, in Spearman. The cost is \$20 per person, or \$35 per couple.

The Circle of Friends is a non-profit organization dedicated to helping cancer patients and their families in times of need. Through its affiliation with Harrington Cancer Center, the Circle of Friends develops and implements fund raising activities to provide financial assistance and patient care and support programs for those affected by cancer. The Circle of Friends also works with Harrington Cancer Center to provide cancer educational opportunities for people throughout the region.

Examples of Circle of Friends support of Harrington Cancer Center patients includes: Two furnished apartments for out-of-town patients to use when going through treatment; Pediatric patient/family gatherings (a day at Wonderland Park, Christmas party, etc.); Supplies for weekly support groups; Materials for chemotherapy classes, new patient books; Refreshments for patients during treatment; and Assistance with patients' travel, insurance premlums, or mortgage payments, medication, nutritional supplements, utilities and breast prosthesis.

For more information on the Hansford County Circle of Friends, or if you are interested in attending and/or volunteering to help with the event, please contact Holly McLain at (806) 733-2268 or Erika Stedje at (806) 733-2509.

Meet the Lynx

Meet the Lynx and Lynxettes will be held August 23rd at the High School Football Field at 7 p.m. Everyone is invited to meet the football players, cross country runners, cheerleaders and coaches. The cheerleaders from cheer camp will also be participating.

Afterward a Community wide tailgate party will take place on the east side of the football stands. Hotdogs, chip and drinks will be provided for anyone and Booster Club will have a membership and merchandise booth set up with shirts, blankets, jackets, pullovers, stadium seats, etc. for sale.

Weather Forecast

THURSDAY NIGHT - Partly cloudy with a 20 percent chance of showers and thunderstorms. Breezy. Lows in the upper 60s. South winds 15 to 25 mph.

FRIDAY - Mostly cloudy with a 20 percent chance of showers and thunderstorms. Breezy. Highs around 90. Southwinds 15 to 25 mph.

FRIDAY NIGHT - Mostly cloudy with a 30 percent chance of showers and thunderstorms. Lows in the mid 60s.

SATURDAY - Mostly cloudy. Highs in the lower 90s.

SATURDAY NIGHT - Partly cloudy. Lows in the upper 60s.

SUNDAY - Partly cloudy. Highs in the mid 90s.

SUNDAY NIGHT - Partly cloudy. Lows in the upper 60s.

MONDAY - Partly cloudy. Highs in the lower 90s.

MONDAY NIGHT - Partly cloudy in the evening then becoming mostly cloudy. Lows in the mid 60s.

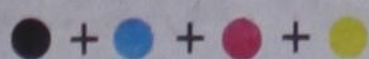
TUESDAY - Mostly cloudy. Highs in the mid 90s.

New Surprises at
www.spearmanreporter.com

Spearman Chamber of Commerce's
Yard of the Week

Beckee Baker - 304 Bernice
Norlan Winegarner - 821 Haney
Marsha Shaver - 1100 Townsend

If you have a yard you would like to nominate, please contact the Spearman Chamber of Commerce at 659-5555.



Back To School

ABC
123
1+1=2

Education is the Answer!

Our teachers and administrators want to welcome you to the beginning of a new and exciting school year.

The first day of school this year is Monday, August 27.

We hope you had a wonderful summer and are looking forward to a fun-filled and exciting school year.

The teachers and staff of:
Gruver ISD
Pringle-Morse CISD
Spearman ISD

Spearman vs Gruver Scrimmage
Aug. 18, 2007

photos by Charlie Johnson



Lullabies, Legends & Lies

by Parson Smith, the Prime Minister of Laughter

Freedom of Speech

While trying to publish this week's newspaper, I was bothered by the excessive amount of email forwards that I received.

Now I like to try and show respect to those writing me, so I tend to read my mail. Unfortunately, it is often either propaganda or rubbish.

This rubbish and propaganda is usually accompanied by a mild form of bullying like...

If you love Jesus, send this to as many people as you can.

Or...

If you love God, send this back to me.

Or...

If you love America, keep this going.

I thought to myself, "Self, does it really prove that I love Jesus or God or my country if I forward this garbage to x number of people?"

And then I thought, "Of course, it does! There is no way that I could be a good, godly, American Christian if I don't spend every waking hour forwarding this "literature" to as many people as possible."

Now one thing that I am very passionate about is the 1st Amendment to the Constitution of the United States of America... the one about "free speech."

So, if you are a good American, please buy ten subscriptions to this news-

paper for your friends. If you can't afford ten subscriptions, just buy ten copies. If you can't afford ten copies, just copy this article and give it to ten people. If you don't have a copying machine, just give this paper to your friend and tell him/her to "keep it going."

Of course, I don't really expect you to do that. Most of you are far too busy enjoying a real life than to waste your time doing something quite so foolish.

And it would probably take more energy and effort than clicking on "Forward."

Until the next time,
God bless.

State Capital

HIGHLIGHTS

AUSTIN - Texas veterans of World War II are now honored with a new monument located near the east entrance of the Texas Supreme Court Building in the northwest quadrant of the Capitol grounds. Thousands of people attended the Aug. 15 dedication, the 62nd anniversary of the victory over Japan and the official end of the war.

More than 830,000 Texans served in the armed forces in the war, and 22,000 were killed.

Donations from corporations, associations, foundations and individuals paid for the 17-foot-tall, 22-ton monument.

TxDOT delivers report on bridges

Is a bridge you've been using for years sturdy enough to deserve your confidence? Are you sure?

The Interstate 35-West bridge collapse in Minnesota on Aug. 1 made people won-

der.

Soon after the event, Lt. Gov. David Dewhurst asked the Texas Department of Transportation to produce a report on the status of Texas bridges.

TxDOT responded with a 92-page report released Aug. 16, saying 4 percent of the state's 50,000 bridges are listed as structurally deficient. However, the first line of the report says "All bridges open to traffic on Texas public roads in the State of Texas are safe."

The report, readily available at www.txdot.gov, includes a list of structurally deficient bridges.

A few points made by TxDOT:

- "Structurally deficient" is a term the Federal Highway Administration uses to classify and prioritize bridges for federal funding.

- Structurally deficient bridges receive priority for limited rehabilitation or replacement funds from the federal government.

- Bridges that are unsafe or present an imminent public danger are closed to traffic.

- Of the state's bridges classified as structurally deficient, 445 are on the state highway system and 1,579 are off-system structures.

- Some 282 bridges classified as structurally deficient are currently under contract to be fixed or replaced.

- Another 1,303 structurally deficient bridges are under development as part of the state transportation plan.

- The remaining 439 structurally deficient bridges are not scheduled for rehabilitation or replacement, and no funding has been identified for them, TxDOT said.

Progress report on schools is in

The Texas Education Agency reports 86 percent of school districts and 79 percent of schools met the

state's 2007 standards for "Adequate Yearly Progress."

The state standards tie into the federal No Child Left Behind Act of 2001.

Public schools and districts tested students in kindergarten through 12th grade. At least 60 percent of the students had to pass the reading/language test and at least 50 percent had to pass the math exam.

Attendance and graduation figures also figured into the calculations. Schools that do not meet the state's Adequate Yearly Progress standards two years in a row are placed in an improvement program.

Officials discuss vetoed funding

The Senate Higher Education Subcommittee met Aug. 14 to address Gov. Rick Perry's veto of \$154 million in community college funding.

Subcommittee chair Sen. Judith Zaffirini, D-Laredo, and Lt. Gov. Dewhurst spoke positively about prospects that funding would be restored.

Details on how to restore the funding are still to be negotiated, Zaffirini said.

Organ registry site goes online

The Department of State Health Services announced the online availability of the Glenda Dawson Donate Life - Texas Donor Registry.

People may register as organ, tissue and eye donors via www.DonateLifeTexas.org.

The site also provides information about organ donation.

The donor program pays tribute to the late State Rep. Glenda Dawson of Pearland, a donor recipient who raised public awareness about the organ donor registry in Texas.

Dawson was elected to House District 29 in 2005 and was re-elected in 2006. She died in 2006.

Why Isn't Texas in the Top 10?

By Lynsey Kluever

The University of Texas football team is gearing up for the 2007-08 season. One preliminary poll ranks the team as high as third in the nation, much to the delight of Longhorns fans across the state.

Another set of rankings, released last month, paints a much more dismal portrait of Texas-Texas kids, that is. According to the 2007 KIDS COUNT Databook, Texas ranks 37th-just 13 from the bottom-in overall child well being.

If UT were consistently ranked near or at the bottom of Division I football on offense, defense, and in the overall rankings, Texans would be up in arms. Could you imagine the outcry if football rivals Ohio, Michigan, Nebraska, and Iowa were always better than us?

In the case of children, this really is the case.

According to the KIDS COUNT report, Texas ranks last in the nation with the highest rate of children without health care. In fact, Texas has been at or near the bottom of the health care rankings since 1998. By contrast, Michigan and Nebraska are tied for No. 2 with the second highest rate of kids with health insurance. Iowa is at No. 8 and Ohio ranks No. 14. Having a high number of uninsured kids doesn't just sound bad; it is bad for the state's economy and our children's futures.

Uninsured kids often turn to high-cost emergency rooms for treatment, or delay care until medical conditions are more serious and expensive. These charges are passed on to the community through higher hospital charges, higher private health insurance premiums, and higher local taxes.

Imagine if we were as committed to ensuring the health of our youngest and most vulnerable as we are the health of our offensive and defensive lines.

Texas also ranks at the bottom on

births to teens, with the highest rate of babies born to teens (ages 15-19) in the country. Iowa ranks No. 13, Michigan is at No. 17, and Nebraska ranks No. 20. Babies born to teen mothers are more likely to live in poverty, drop out of school, have a child while in their teens, and rely on public assistance.

Imagine if we were as committed to preventing pregnancy as we are turnovers.

The report also finds that when it comes to lowest high school dropout rates, Texas ranks No. 27. Iowa and Nebraska are tied for No. 4, Ohio ranks No. 9, and Michigan is No. 16.

Dropouts cost Texas millions of dollars. According to a Center for Public Policy Priorities report, if every 16-19 year old who is not in school and does not have a high school diploma simply graduated, Texas' combined earnings could increase by \$3 billion in income in just four years. Not only that, but study after study shows that an educated workforce is the primary reason why businesses relocate to states and expand current facilities.

Dropouts also have a greater need for government assistance. According to a national study by the Bill and Melinda Gates Foundation, 40 percent of 16-24 year olds lacking a high school diploma received some type of government assistance in 2001. In addition, a dropout is more than eight times as likely to be incarcerated as a high school graduate.

Imagine if we were as committed to scoring high graduation rates as we are points per game.

Forget being No. 1; it's like we don't even make it to a bowl game when it comes to our children.

Children are 27 percent of our state but 100 percent of our future. Yet, we market our college players to win national awards and be top NFL draft picks but consistently let


a potential group of All-Americans go without medical care or a quality education.

Come on, Texas. We can do better.

Kluever is the communications director for Public Priorities in Austin.

Copyright (C) 2007 by the Texas Lone Star FORUM. The Forum is an educational organization that provides the media with the views of state experts on major public issues. Letters should be sent to the Forum, P.O. Box 161294 Austin, TX 78716-1294. (05/29/2007)

SUDOKU
PRESENTED BY



VolunteerMatch.org
Where volunteering begins.

				9	6				
8		4		6	3				
				1	7			2	
9	1				4			7	
5								3	
8	7					9	1		
6		2	3						
		3	9		2			7	
7			6						

© 2007, StatePoint Media, Inc. answer on classified page

Fill in the blank squares in the grid, making sure that every row, column and 3-by-3 box includes all digits 1 through 9.

MUSIC HITS


ACROSS

1. "___ to My Lou"
5. Yap or trap
8. "With or Without You" singer
12. Kubrick's "Eyes ___ Shut"
13. Asian food thickener
14. Furnished with oars
15. Absent in military
16. Ivan the Terrible, e.g.
17. Lieu
18. Music chart
20. Cut up
21. Island and former immigrant depot
22. Fly the coop
23. Sneak up
26. Sing-along
30. Immigration agency
31. Low on hemoglobin
34. Scarlett O'Hara's plantation
35. Adjust
37. Through-the-lens
38. Of German descent, this family left its mark on NYC
39. Dramatic part
40. Emassaries
42. Compass point between E and NE
43. Former name of Kazakhstan's largest city
45. Spoke an opinion
47. Major record label
48. Subway coin
50. Sword handle
52. Cover exactly

DOWN

1. Q-Tip, e.g.
2. Fuzzy fruit
3. Daughtry wasn't, but Clarkson was
4. Air-gun bullet
5. ___ Mara, Kenya
6. Gelling agent in foods, pl.
7. Six are in this clue, singular
8. Laying outside the tub, pl.
9. It has a white filling
10. Less than average tide
11. Lemmon and Matthau together
13. It happened to "Mona Lisa" in 1911
14. Grammy's counterpart in movie biz
19. Swell up
22. French lake
23. Women's formal top
24. First part of "indolence"

These games are brought to you by the
Hansford County Reporter-Statesman



VolunteerMatch.org
Where volunteering begins.

© 2007, StatePoint Media, Inc. answer on classified page

Fantastic Franchise Opportunities

- ✓ Liberty Tax Service is seeking franchisees in Texas!
- ✓ Entrepreneur magazine ranked Liberty Tax #17 on its Franchise 500.
- ✓ National Brand, local opportunities.
- ✓ Locations available in national retail outlets.

Call 1-888-557-4333
www.libertytaxfranchise.com



The Hansford County Reporter-Statesman

213 Main Street • Spearman, TX 79081
Phone - (806) 659-3434 • Fax - (806) 398-9080
www.spearmanreporter.com
reporter@spearmanreporter.com
cathysmith@valomet.com

Mon.-Thurs. 9 a.m.-12 p.m., Mon.-Wed. & 1-5 p.m.
Closed Thurs. afternoon and all day Fri., Sat. & Sun.

Gary Smith - Publisher Catherine Smith - Editor
Contributing Writers: Dorothy Hudson, Jim Derington, Merry Sparks, Cecil Biggers
Contributing Photographer: Charlie Johnson

Subscription Rates
In Hansford County - \$30.00 • Out of County - \$40.00

The Hansford County Reporter-Statesman (USPS 529660) is published weekly in Spearman, TX. Periodical postage paid in Spearman, TX. **POSTMASTER:** Send address changes to: The Hansford County Reporter-Statesman, 213 Main Street, Spearman, TX 79081.

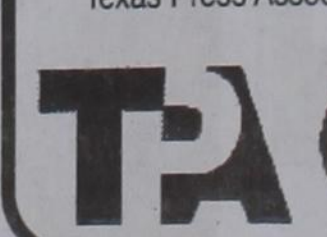
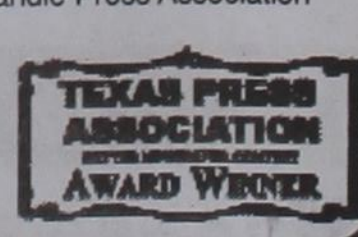
Publication Policy

The deadline to submit news and advertising to The Hansford County Reporter-Statesman is Monday at 5 p.m. Items submitted after the deadline will be published at a later date, as time and space permit. Publication of all items is at the discretion of the editor.

Advertising

Open Display rates are \$4.00 per column inch. Classified Ads are \$6 for the first 25 words and 10¢ per word for each additional word. (Additional charge for boxed copy.) There is a \$1 charge per week if billed.

Member of
Gruver Chamber of Commerce
Spearman Chamber of Commerce
Texas Press Association and Panhandle Press Association

Happy Birthday!

Editor's Note: This Happy Birthday list is run as a public service by the Hansford County Reporter-Statesman. We apologize if any names are misspelled. If you know of a name that needs to be changed, added or deleted, please call 659-3434.

Thank you, Catherine

August 23
Birthday - Ann Dorman, Reagan Baker, Eddie Reed, Donnie Mitchell, Sara Blackburn, Ralph Blodgett, Bill Jack Pittman, Kathy Lewis, Miriam Mendoza

Anniversary - M/M Billy DeArmond, M/M Chris Johnson, M/M Jimmie Vernon

August 24
Birthday - Frances Atwood, Laci Fitzgerald, Sarah Van Buskirk, Rosio Rosales, Charlie West, Claudine Clark, Melissa Kay McLain, Lila West, Marilyn Hughes, Scott Houghton, Willie Lee Wilkerson, LeRoy Farris, Clayton Wilkerson, Charlie West, Travis Boyd

Anniversary - M/M Terry Austin, M/M Dwayne Mitchell, M/M Randy Brown

August 25
Birthday - Carol Ross, Kathleen Sutton, Connie Sue Wooley, Kathy Yancey, Linda Young, Courtney Roach, Kathrine Pipkin, Gay Bowen, Michael Janzen, Katie Miesner

Anniversary - M/M Butch Lasater, M/M Roy Don Gammon

August 26
Birthday - Wayne Kruse, Debbie Davis, Chayci Dominguez, Mike Cudd, David Archer, Juanita Tucker, Mary Thompson, Kimberly Slater, Ashley Patterson

Anniversary - M/M Eddie Clemmons, M/M Vernon Morris

August 27
Birthday - Amy Grubbs, Brian Hoel, Pat Ochoa, June Jackson, Donald Rhea, Gregg Weaver, Chad Davis, Patricia Bevera, Virginio Ortega Jr., J. T. Sanders, Bertha Watts, Gabriel Moreno, Krystal Vela, Christopher Abernathy, Cassidy Odegaard, Dara Faries

Anniversary - M/M Bill Swan, Jim & Pamela Morrison, M/M Jerry Bowling

August 28
Birthday - KiKi Carthel Brabham, Amy Gillispie, Mika McLain, Linda Nunez, Kory Sheppard, Mike Pearson, Joe Bravo, Keith Burgess, Andy Jones, Mabry Sutterfield, Penny Sumner

August 29

Birthday - Rodney Clawson, Ginny Grotegut, Monica Ward, Mark Crooks, Bill Strawn, Richeardo Espinosa, Dusty Vinson, Linda Lou Lewis, Tony Cazares, Holly Brack, Katie Bynum

Anniversary - M/M Robert Blevins

August 30

Birthday - Joshua Blount, Roy Dale Karr, Van Lewis, Jeff Nicholson, Chelly Rigdon, Christa Urban

Anniversary - M/M Robert Pressley, M/M Kent Guthrie

September 1

Birthday - Sahala (McCloy) Galliard, Kathy (Nelson) Dumbold, Mrs. Don Allen, Eugene Yarborough, Irma Arjona, Pete Vera Jr., Jessica Williams, Rita Lindley, Erin Wafford, Misty Bynum, Hugo Villa, Richard Shad, Jessica Shad, Laura Bridges, Jace Lang, Ann Pipkin, Dane Harbour, Sandra Blankenship

Anniversary - M/M Johnny Lee, M/M Daniel Boyd

September 2

Birthday - Kelly Sue Jones, Melyn Johnson, Archie Smith, Felipe Lomelli, Carlos Mendoza Jr., Larry Gallimore

Anniversary - M/M Ron Antalek, M/M Everett Vanderberg

September 3

Birthday - Josh Mayhew, Isabel Martinez, Ruth Lackey, Kory Brown, Sheryl Meek, Sandy Russell, Janet Sandavol, Jessie Moore, Brandon Baker, Michelle Evens, Elena Vargas, Jason Quillin, Coy Herrington

Anniversary - M/M John Booth, George & Virginia Young

September 4

Birthday - Val Winger, Peggy Frick, Jimmy Haden, Kathy Bowen, Marty Karr, Laci Murray, Darlene Pierce, Rodney Pointer, Tina Cator, Laighton Torres, Alix Boyd, Halee Beasley, Kristi Vasquez, Jarry Francis, Jerri Lane

Anniversary - M/M Ron Fox, Don & Wanda Reed

Words from Faith & Grace

by Cecil R. Biggers, Lutheran Lay Minister

In the thirteenth week of Pentecost we study "freedom" in Isaiah 58:9-14, Psalm 103:1-8, Hebrews 12:18-29, and Luke 13:10-17. Isaiah tells the people that they are to "free" the oppressed, feed the hungry, supply the needs of the afflicted. He gives a call for social justice. Yet, the reason for this is that the best way to get one's life together is to do something for those who are without. It is impossible to maintain a close relationship with God when one ignores the basic needs of other people. The Psalmist sings of the steadfast love of God which works for the vindication of the oppressed; and, he blesses God for His acts of redemption.

The writer of Hebrews contrasts the giving of the Law of Moses to the New Covenant mediated by Jesus Christ. Under the Law, God was awesome, a terror, unapproachable by ordinary man; whereas, through Jesus Christ, we are children of God and citizens of His Kingdom. We are freed from the obligations and penalties of the Law by the blood of Jesus Christ. The writer goes on to tell us that God will "shake" all creation, earth and heaven, so that only what cannot be shaken shall remain. The things of this earth shall pass away. Our relationship with God by faith through His grace shall remain forever.

Luke shows us Jesus in a synagogue where he meets a woman who has been crippled for eighteen years. Jesus frees this woman from her infirmity and is criticized for healing on the Sabbath. Jesus responds by saying that should not a woman who has been "bound" by Satan for eighteen long years be freed on the Sabbath, God's Holy Day? We can learn from this that Jesus came to free us from all forms of bondage. Ask yourself, "Am I tied to anything which prevents me from enjoying the full freedom of belonging to Jesus Christ?" If you ask in faith, Jesus will free you.

The motto at the John F. Kennedy Special Warfare School at Ft Bragg NC is "di oppresso liber" (free the oppressed), in studying these scriptures it struck a deeper chord than when I first heard it, for this is what Jesus did for us! I am no saint, but I have found that the grace of God is the most wonderful thing in the world; therefore, I am free and grateful to God.

May the Holy Spirit free you from all that separates you from the love of Jesus Christ.

Our Sympathy

FREDDIE GENE WARD

GUSTINE - Freddie Gene Ward, 75, died Saturday, Aug. 11, 2007, in Spearman.

Services were at 10 a.m. Wednesday, August 18, 2007 in Comanche Funeral Home Chapel with the Rev. Ronnie Calcote officiating. Burial was in Baggett Creek Cemetery in Comanche County.

Mr. Ward was born Oct. 19, 1931, in Gorman to Charles W. and Lola Opai Welch Ward. He married Jenean Graham on Feb. 24, 1951, in Dallas.

Survivors include a son, Robert Ward of Gustine; a daughter, Belinda McGaha of Spearman; seven grandchildren; and six great-grandchildren.

PEGGY DILLOW

GRUVER - Peggy Dillow, 64, died Tuesday, Aug. 21, 2007. Services will be at 11 a.m. Friday, August 24, 2007 in the Gruver Church of Christ with Gaylord Cook officiating. Interment will be in Gruver Cemetery under the direction of Boxwell Brothers Funeral Home.

Ms. Dillow was born on November 4, 1942 in Hansford County.

She married Don Dillow on Jul 22, 1961 in Gruver. She was a member of the Church of Christ in Gruver. She owned and operated Peggy's Bargain Shop in Gruver from 1989-1997. She was a secretary.

Survivors include her husband, Don, of Gruver; two daughters, Margaret Schiffner of Ft. Worth, TX and Rebecca Linnebur of Seibert, CO; two sons, Don Edgar Dillow of Guymon, OK and Brian Dillow of Loveland, CO; two brothers, Charles "Pete" Cotter of Dimmitt, TX and Donald Cotter of Gruver; a sister, Mary Gruver of Cimarron, NM; and 10 grandchildren.

BLAKE OFFSHORE

Blake Offshore, an equal opportunity employer, provides offshore drilling, completion and work over services with a fleet of 4 rigs. It is privately owned and Louisiana-based, and offers excellent pay, medical/dental/life insurance, a 401(k) plan with a discretionary employer match contribution, a discretionary incentive bonus program, a uniform program, plus other position specific benefits.

The following are field based employment opportunities: Offshore Installation Manager, Captain, Mate, Engineer, Rig Manager, Night Pusher, Driller, Assistant Driller, Derrickhand, Floorhand, Crane Operator, Roustabout, Welder, Rig Maintenance Supervisor, Electrician, Mechanic, Motor-man

Resumes for all positions to join Blake Offshore's team can be faxed to (337) 367-9379, emailed to resumes@blakeoffshore.com, or apply on-line using the Blake Offshore internet advertisement at www.rigzone.com - RigZone. NO PHONE CALLS PLEASE

CEREBRAL PALSY EXPERIENCE COUNTS

Lawyers with over 85 years combined expertise.

may be caused by professional neglect during prenatal care or childbirth. Its causes may include premature birth, birth trauma, and neonatal asphyxia (lack of oxygen). Call us for professional insight.

Ryan A. Krebs, M.D., J.D.
Doctor-Lawyer in Full-time Law Practice
Richard A. Dodd, L.C.
Timothy R. Cappolino, P.C.
Board Certified Personal Injury Trial Law and Civil Trial Law for the State of Texas
NO FEE FOR FIRST VISIT
CAMERON TEXAS

1-800-460-0606
www.BirthTraumaLaw.com

Ralph Depee, D.D.S.
Member American Association of Orthodontists
Orthodontics For Children and Adults

- Free exam and estimate of cost
- Free second opinion
- Insurance filed

821 S. Amherst Perryton, Texas
1-800-521-0831
(806) 435-2320

MONUMENTS Boxwell Brothers Funeral Home

519 E. Evans • Spearman
659-3802

Dear friends,
When you buy a monument from us we make sure it is exactly what you want at a price you can afford. If it is not right, we will make it right. And you will not have to search the countryside to find us. We are here when you have a need.

Sincerely,
Bob Boxwell

PAID CDL TRAINING!

NO EXPERIENCE NEEDED!

Stevens Transport, the premier refrigerated carrier in the US, sponsors the total cost of your CDL training! In 17 short days you will earn your CDL and begin your paid on-the-job training! Earn \$40K first year and up to \$150K fifth year! Excellent benefits and 401K!

For more information, call 800-333-8595

www.becomeadrivers.com

Power Wheelchairs Available

Three Wishes makes available Power (Electric) Wheelchairs to Non-Ambulatory Senior Citizens (65 years old & up) usually at no-out-of-pocket expense if they qualify. The electric wheelchairs are provided to those who cannot walk and cannot self-propel a manual wheelchair in their home or independent living quarters and who meet the additional qualifications of the program.

CALL 1-800-660-4702 or visit our website at www.INHOMERX.COM

SIGN UP FOR A FREE SCOOTER

One Scooter Given Away Each Month

Toll Free 800-606-9860

Med Care MEDICAL SUPPLY

www.medcaremedicalsupply.com

NSF SKIN DISEASE

NSF/NFD is characterized by areas of tight and rigid skin that makes it difficult to bend joints. Some patients with kidney disease have developed NSF/NFD after having an MRI scan containing a toxic injectable contrast agent called Gadolinium. If you think you may have NSF, please call us. You may be entitled to compensation.

A. Craig Eiland Attorney at Law
1-866-433-7880

EARN \$40,000+ SAGE CDL TRAINING

PROFESSIONAL TRUCK DRIVER TRAINING SCHOOLS NATIONWIDE

TRAINEES NEEDED!

Get your CDL A&B in 5 short weeks with SAGE at St. Phillips College. ONE-ON-ONE TRAINING AT #1 RATED SCHOOL

FINANCIAL AID & EMPLOYMENT ASSISTANCE
CALL TODAY! 866-787-4454

START A HIGH PAYING CAREER IN TRUCKING NOW!
WWW.SAGESCHOOLS.COM

Replenish the seed of faith through . . . DAILY BIBLE READING, PRAYER & REGULAR CHURCH ATTENDANCE

Spearman

Apostolic Faith Church
822 S. Drexler • 659-2870
Sunday School: 10 a.m.
Worship Service: 11 a.m.
Sun. Eve.: 6 p.m.
Wed. Prayer Mtg.: 7 p.m.
Pastor - Roland Haney

First Assembly of God
401 N. Bernice • 659-2295
Sunday School: 9:30 a.m.
Worship: 10:35 a.m.
Kid's Church: 10:35 a.m.
Evening Worship: 6 p.m.
Wed. Worship: 7 p.m.
Pastor - Bob Elder

First Christian Church
(Disciples of Christ)
29 S. Bernice • 659-2036
Sunday School: 9:45 a.m.
Worship: 10:50 a.m.
Minister -

First Baptist Church
123 N. Bernice • 659-5557
Sunday School: 9:45 a.m.
Worship: 11 a.m.
Evening Worship: 7 p.m.
Men's Bible Study - Wed., 7 a.m.
Children's Choir - Wed., 7 p.m.
Adult Choir - Wed., 7 p.m.
Wed. Bible Study: 7 p.m.
Pastor - Jim Medley

Church of Christ
121 S. Haney • 659-3244
Sunday Bible Class: 9:45 a.m.
Worship: 10:30 a.m.
Evening Worship: 6 p.m.
Bible Study Wed.: 7:30 p.m.

Sacred Heart Catholic Church
901 Roland • 659-2792
Sat. Night Mass: 5:30 p.m.
Sun. Mass: 9 a.m. - English
Sun. Mass: 11:30 - Spanish
1:30 p.m. - Gruver - Christo
Renditor Mass - Spanish
Rev. Guillermo Morales

First United Methodist
407 S. Haney • 659-5503
Sunday School: 9:45 a.m.
Worship: 8:30 & 11 a.m.
Jr. High Youth: 5 p.m. Sunday
High School: 6 p.m. Sunday
Kids Club: 3 p.m. Wed.
Pastor - Neely Landrum

Grace Presbyterian Church
(Worships with Faith Lutheran Church)
1101 Bernice • 659-2033
Pastor - Beverly Cook

Faith Lutheran Church (ELCA)
1101 Bernice • 659-2252
Sunday School: 9:45 a.m.
Worship: 11 a.m.
(Worships with Grace Presbyterian Church)
Pastor - Beverly Cook

Union Church
31 S. Endicot • 659-2644
Sunday School: 9:45 a.m.
Worship: 10:45 a.m.
Evening Worship: 6 p.m.
Bible Study: 7 p.m. Wed.
Pastor - Dr. Timothy Minor

Fellowship Baptist
1102 S. Archer • 659-2783
Sunday School: 10 a.m.
Worship: 11 a.m.
Sun. Evening Worship: 6 p.m.
Youth/Adult Service: 7:30 p.m.
Pastor - James Washburn

Primera Mision Bautista
502 E. 7th • 659-3991
Sunday School: 9:45 a.m.
Worship: 11 a.m.;
Evening: 6 p.m.
Wed. Prayer Meeting: 7 p.m.
Thurs. Visitation: 7 p.m.
Pastor Joe Garcia Jr.

El Aposento Alto U.P.C.I.
1105 S. Roland
Domingos: Escuela-Domical - 10 a.m.
Culto Evangelistico - 7 p.m.
Jueves: Oracion - 8 p.m.
Mier: Estudio Biblico - 7 p.m.
Pastor - A.G. Martell
(806) 659-2153

Gruver

First Baptist Church
402 E. Broadway • 733-2411
Sunday School: 9:45 a.m.
Worship: 10:50 a.m.
Disciple Training: 6 p.m. Sunday
Prayer Meeting: 7:30 p.m. Wednesday
Pastor - Scott Curry

Church of Christ
209 King • 733-2760
Sunday School: 9:30 a.m.
Worship: 10:20 a.m.
Evening Worship: 6 p.m.
Wed. Worship: 7:00 p.m.
Minister - Gaylord Cook

First Christian Church
510 King • 733-2960
Sunday School: 10:00 a.m.
Sunday Worship: 11 a.m.
Youth: 7:30, Sunday
Adult Bible Study: 7:30, Sun.
Wed. Bible Study: 8:00 p.m.
Pastor - Gary Gumfroy

Gruver United Methodist
Broadway & Garrett
733-2651
Sunday School: 9:45 a.m.
Worship: 8:30 & 10:50 a.m.
Eve. Worship & UMY: 6 p.m.
Pastor - George Price

Spanish Cristo Redentor Church
Sunday Mass: 1:30 p.m.
Friday Evening Mass
Summer - 8:00 p.m.
Fall/Winter - 7:30 p.m.

Oslu

Oslu Lutheran Church (ELCA)
6 Miles West & 12 Miles North of Gruver
339-7646
Sunday School: 9:45 a.m.
Worship: 11 a.m.
Pastor - Arlen Lloyd

Morse

Morse Baptist Church
733-2757
Pastor - Mike Martin

He has showed you, O man, what is good. And what does the LORD require of you? To act justly and to love mercy and to walk humbly with your God. Micah 6:8

Deakin ELECTRIC
OILFIELD • RESIDENTIAL • COMMERCIAL
321 S. MAIN • SPEARMAN
1-800-999-1506 Chris Deakin
(806) 659-5016 President

Bartlett's Lumber & Hardware
105 W. Broadway • Gruver, Texas
(806) 733-2404

BERRY CLEANERS
Ann & Vernon Pipkin - Owners
Phone 659-3122 • P.O. Box 1017
207 Main St. • Spearman, TX

Morse Implement & Auto Supply
"Join us in church"
Tom Dortch 733-2668
Box 89 • Morse, TX 79062

PRAIRIE MOTORS INC.
Hwy. 207 South • P.O. Box 430
Spearman, TX 79081 • (806) 659-2541
www.prairiemotors.com

Gruver Cablevision
308 Main
Gruver, TX 79040
733-5295

Hansford County Reporter-Statesman
"Proudly Serving Hansford County Since 1907"
(806) 659-3434
310 Barkley • Spearman, TX

INTERSTATE BANK, sss
www.interstatebank.net
322 Main • P.O. Box 146
Spearman, TX • 659-2559

HYI

FOR YOUR INFORMATION

NITRO

The NITRO high school youth group will not be meeting the rest of the summer. We will resume Monday, September 17th for the Back to School Hog Roast.

Gruver Blood Drive

Coffee Memorial Blood Center is hosting a blood drive in the Gruver area on Tuesday, August 28th, from 2-7 p.m. at Gruver State Bank, 3 Main Plaza in Gruver. Every eligible donor who presents to donate will receive a T-Shirt and be entered into a drawing to win 6 months of free milk from Gandy's! To schedule an appointment, please call 1-877-574-8800. ALL BLOOD TYPES ARE CURRENTLY NEEDED!

Women's Conference

Victory Center Church, Guymon, Ok., will be holding their annual Women's Conference at 5th and Quinn, August 23-25th. The theme of this year's conference is "Treasured and Unique". Early Bird registration fee before August 15th is \$30 and \$35 after August 15th. This fee includes lunch, all sessions and fingerfoods after the evening session. To register, call Victory Center Church, 580-338-5616 or e-mail victory@pts.net.

Yello Dyno to be in Perryton Parade

HEY KIDS! YELLO DYNO will be in the Perryton Parade on Saturday, August 25th. Would you like to be in the parade with YelloDyno? If so, have your parents call Janice at the Panhandle Crisis Center, (806) 435-5008.

Perryton Activity Center - Soccer Registration

Youth Soccer Fall League will begin in September. Games will be played on Saturdays and Mondays. Ages Pre K - 6th, boys and girls are encouraged to play. Fees are \$20 for PAC members and \$50 for non PAC members. The deadline to sign up is August 24th. For more information please call Barry at 806-435-3661.

ADULT ESL CLASSES

Spearman ISD Community Resource Program and Region 16 ESC are sponsoring Adult English Second Language classes. They began Tuesday, August 14 and will continue through May, each Tuesday and Thursday nights from 7-9pm. Dana Saylor, elementary ESL teacher, will teach the class in room 112 at Spearman High School. For more info, call Cindy Blackman, Community Resource Coordinator, at 659-3233.

FREE CLASSES FOR ADULTS

FREE classes for adults who want to improve mathematics/basic reading skills or prepare for the GED (High School Equivalency) test. Classes will start Tuesday, August 28, 2007, 6:30-9:00pm. in the Video Conference Room at Spearman High School. The class is taught through distant learning and Claudine Hardy is the Spearman site facilitator. Registration will be the first night of class. For more information contact Claudine Hardy, 659-2563, ext.3001 or Cindy Blackman, 659-3233, ext.1005. Sponsored by Spearman ISD Community Resource Program and Education Service Center, Region 16.

Area Agency on Aging

A series of Lunch and Learns began August 14 at the Women's Building at 1400 Wallace from 11-1. The Senior Fall Festival (Health Fair) will be held on October 11 at the Amarillo Civic Center. For more information, contact Laura Hershey at the Area Agency on Aging in Amarillo, at (806) 331-2227 or lhershey@theprpc.org. the Website is www.theprpc.org/programs/aaa/aaa.htm.

Tuesday Night Golf Scrambles

The Spearman Golf Course holds Tuesday Night Scrambles, with a tee-time of 6 p.m. sharp. For more information, or to sign up, call 270-0157 or 659-2233.

You're Never Alone - Narcotics Anonymous Group

Each year individuals struggling with drug and alcohol addiction make the resolution to quit using drugs. For many of them it is a resolution that they cannot keep. Narcotics Anonymous can help. Open meetings are held on Monday and Thursday nights from 8-9 p.m. at the First Christian Church (29 S. Bernice in Spearman) for the "You're Never Alone" group of Narcotics Anonymous. Anyone interested is invited to attend. Drug addiction can leave you feeling helpless and out of control - we can help.

Spearhead AA Group

The Spearhead AA Group meets every Tuesday at 8 p.m. in the Pittman-Shieldknight building. Alcoholics Anonymous* is a fellowship of men and women who share their experience, strength and hope with each other to help solve their common problem and help others to recover from alcoholism. The only requirement for membership is a desire to stop drinking. There are no dues or fees for AA membership; we are self-supporting through our own contributions. Our primary purpose is to stay sober and help other alcoholics achieve sobriety. For information, call 662-1111.

Al-Anon

If you are concerned with someone else's drinking or addiction, the Al-Anon program can help you. Each Al-Anon Family Group has but one purpose - to help families and friends of alcoholics and addicts. The Spearhead Al-Anon Group meets every Tuesday night at 8 p.m. in the Pittman-Shieldknight Building, 511 SW 11th Avenue, Spearman. For more information, call 806-330-0349.

Panhandle Crisis Center Outreach Office

Panhandle Crisis Center (PCC) has an Outreach Office and Resale Store at 306 Hancock, in Spearman. In case of emergencies, please continue to call the hotline, 1-800-753-5308. To schedule an appointment with a worker in Hansford County, call 659-3391 to leave a message, or call the hotline number above. Panhandle Crisis Center serves victims of domestic violence and sexual assault. Call for more information regarding PCC's services. Hours for the Resale Store in Spearman are: Monday, Tuesday, Thursday & Friday from 10 a.m.-5 p.m.

ON THE AGENDA

- Spearman Fire Department meets every Thursday at 7 p.m. at the Spearman Volunteer Fire Department.
- Gruver Fire Department meets the 1st, 2nd and 4th Tuesday each month.
- American Legion and Auxiliary Post 254 meets the 1st Monday each month at 7 p.m. at the Senior Citizen Center in Perryton.
- Gruver Chamber of Commerce meets the 1st Tuesday each month at 12 noon at the El Vaquero.
- Hansford County Commissioners Court meets the 2nd and 4th Mondays at 10 a.m. at Hansford County Courthouse.
- Stationmaster's House Museum Board of Directors meets the 2nd Monday each month at 2 p.m. at the Stationmaster's House Museum.
- Spearman ISD Board of Trustees meets the 2nd Monday each month at 7 p.m. in the Spearman High School Library.
- Hansford Hospice meets on the 2nd Monday each month at 7 p.m.
- Palo Duro River Authority meets on the second Tuesday of each month at 2 p.m. at the P.D.R.A. office.
- Genealogy Club meets on the 2nd Tuesday each month at 7 p.m. in the home of Velma Sanders, 1015 Linn Drive, in Spearman.
- Women's Division of the Spearman Chamber of Commerce Board of Directors meets the 2nd Wednesday each month at noon.
- Gruver City Commission meets the 2nd Wednesday each month at 5 p.m. in Gruver City Hall.
- Spearman Chamber of Commerce Board of Directors meets the 2nd Thursday each month at noon.
- Pringle-Morse CISD Board of Trustees meets the 2nd Thursday each month at 7 p.m.
- Spearman City Council meets the 3rd Tuesday each month at 7 a.m. in the City Hall Chambers at City Hall.
- Women's Division of the Spearman Chamber of Commerce meets the 3rd Wednesday each month at noon.
- Gruver ISD Board of Directors meets the 4th Tuesday each month at 6 p.m. in the Board Room at Gruver High School.
- Hansford County Hospital District Board of Directors meets the 4th Wednesday each month at 6:30 p.m. in the Board Room at Hansford Hospital.
- Hansford County Historical Commission Board of Directors meets the 1st Monday of January, April, July and October at 2 p.m. in the Zulu Museum building.



Engagement Announcement

Mike and Tammy Armstrong of Las Cruces, NM and Henry and Betty Martin of San Antonio, TX wish to announce the engagement of their daughter, Judith Ann Armstrong, to Jesse James Travis. Jesse is the son of Jim and Linda Travis of Spearman.

The couple became engaged on May 5, 2007 at Becker Vineyards in Fredericksburg, TX. A wedding date of October 20, 2007 at 6 p.m. has been set at the White Museum in San Antonio.

Judith is a graduate of the University of Texas in Austin, with a Bachelors of Arts in English. She is a self-employed financial advisor.

Jesse is a graduate of New Mexico State University with a BBA in marketing. He is an associate sales director at AT&T.

The matron of honor will be Lea Simmons and the best man will be Jason "Sujit" Allen.

MONEY'S
BBQ & STEAK HOUSE

14 SE 3rd Ave
Perryton
(806) 435-3945



Stan and Donna Zepp

Under New Ownership
Same Great Service & Menu!

Gordon's



Bridal Registry

Couples Currently Registered

Camille Smith & Scott Prewett - 9/8
Vanessa Biggs & James Watkins - TBA
Laura Gomez & Richardo Plascencia
Daniele Catron & Randy Duffy
Amy Boorigie & Doran Schoenhals
Bethany Harris & Nick Peterson
Syd Woodington & Don Coddling
Nikki Stewart & Brady Hart
Misha Davis & Duane Dorsey



Baby Registry

Clint & Brandy Sasser - 8/26
Justin & Grace (Davis) Calvert - 9/8
Kenton & Jodi Odom - 10/20
Crystal Boyd & Jason Gonzales - TBA
Ashley Rivas & Nic Cenicerros
Ross & Kristi (Pearson) Renner
Heath & Miranda (Thoreson) Hill
Lucas & Jessica Biggs



659-2141
314 Main Spearman

Gladiola Flower Club News

The Gladiola Flower Club members met at the home of Lucy Pittman on July 5, 2007 to view her yard. After an enjoyable time, the group went to the home of Estelle Jackson for the regular meeting.

June Jackson, vice-president, presided over the meeting. Roll call was answered with "My Favorite High School Memory."

Discussion was held on the sale of nuts this fall. Discussion was also held on the Home Tour in December.

The next meeting will be held July 19, 2007, with Dickie Allen serving as hostess.

Present were: Dorothy Buzzard, Betty Jean Davis, Estelle Jackson, June Jackson, Norma Jean Mackie, Gwen Smith, Kathleen Sutton, Virginia Trindle and Sabrina Landrum.

The Gladiola Flower Club met at 3 p.m. at the Bunkhouse Restaurant on July 19, 2007, with Dickie Allen serving as hostess.

Chairman Muriel Boyd presided over the meeting. Roll call was answered with sharing an old family photo.

The sale of nuts was approved. The Home Tour for December was also approved.

August is our month to host Bingo at Hansford Manor on Monday nights.

The program was presented by Ann Flowers. Verna Strawn gave a fun and nostalgic reading and sang "Thank Heaven for Little Girls."

Flower Winner - Dorothy Buzzard, Arrangement

Present were: Gwen Smith, Virginia Trindle, Kathleen Sutton, Pam Schnell, Ann Flowers, Muriel Boyd, Margarete Evans, Norma Jean Mackie, Estelle Jackson and Dorothy Buzzard.

The next meeting will be at 10 a.m. on August 2nd at the home of Irene Snider, to view her yard. Muriel Boyd will serve as hostess.

The Gladiola Flower Club met at 10 a.m. at Irene Snider's home. We toured her four yards, which she landscapes and maintains herself. After enjoying the tour, we met at Muriel Boyd's home for the business meeting.

Chairman Muriel Boyd presided over the meeting. Project chairman Estelle Jackson continued sign-up for August Bingo at Hansford Manor. A report was also given on the home tour.

The annual picnic/social will be held August 16th at 6:30 p.m. at First State Bank.

Those attending were: Muriel Boyd, Betty Jean Davis, Margarete Evans, Ann Flowers, Estelle Jackson, Pam Schnell, Gwen Smith, Kathleen Sutton, Judy Yarbrough, Ann Allen and Sabrina Landrum.

Tong's Chinese Restaurant

511 S. Hwy. 207 • 659-2838 • Spearman

All-You-Can-Eat Buffet Specials

Tuesday - Steak	\$7 ⁹⁹
Thursday - BBQ Ribs	\$6 ⁵⁰
Friday - Shrimp	\$6 ⁵⁰
Saturday - Catfish	\$6 ⁵⁰
Mon., Wed. & Sat.	\$5 ⁵⁰

Buffet Hours: 11 a.m.-2:30 p.m. & 5:30-Close

Celebrate

Gifts for all your celebrations!

Bridal Registry

Shower Dates

- Courtney & Travis Ferguson - 8/26
Camille Smith & Scott Prewett - 9/8
Bethany Harris & Nicholas Peterson
Nikki Stewart & Brady Hart
Misha Davis & Duane Dorsey

Baby Registry

Jodi & Kenton Odom - 10/20
Crystal Boyd & Jason Gonzales - TBA
Misti (Hand) & Jimmy Gayton - TBA
Macy & Taos Weldon
Courtney & Tye Womble
Brandea & Mark Allen
Kristi & Ross Renner

Celebrate

203 Main St. Spearman, TX
(806) 659-3350 1-800-663-8026

Thank You!

We would like to thank H&S EMS, Dr. Garnett and the staff of Hansford Hospital, Hansford Hospice, the Hansford Hospice Volunteers, and the local churches for the expressions of care and concern in the loss of our father, Gene Ward.

Family of Gene Ward
Bob, Belinda & Kyle McGaha
Andee Powell & Family
Cody McGaha & Family
Robert Ward & Family

Thank You!

On behalf of our mom, Aurora Vela, we, her children, would like to thank everyone who came to celebrate her 70th birthday with us. Out of town guests were: Aidina Ousley and Zachary, Sanjuanita, Gisele and Kimberlee Cantu, Fidel, Amber, Maliki, and Xavier Cantu, Jose and Renee Cantu - all of Perryton; Maribel Moreno of Canyon; Reuben Olivares and Crystal Baumann of Liberal, KS; Luis and Elena Salzar of Gruver; and Sherry Franklin of Guymon, OK. There were many several guests from Spearman.

Thank you,
Barbara Rojas & Family of Spearman
Sister Conselda Vela of Los Angeles, California
Delores Moreno & Family of Spearman
Bernarda Olivarez and Family of Waka
Ciria Vela & Family of Spearman
Ted Vela & Family of Gruver
Leticia Salazar & Family of Gruver
Teresa Bennett & Family of Spearman
Maria L. Vela & Family of Spearman

by Dorothy Hudson

Out at the Lake



Cottontail nursing her young.
Photos by Frank Edwards

Lake Level--August 20, 2007--23.88 feet (-0.34)

It was rather quiet at the Lake this week. Jim did not have much news, but he did report 4 RVs behind the dam and 3 on the office side.

Frank Edwards has 2 unusual pictures for us of a nursing cottontail doe.

EASTERN COTTONTAIL RABBITS

Although we think of cottontails and jack rabbits as very similar wild creatures, their babies are very different. The little cottontails are born blind, helpless and without fur, whereas baby jack rabbits have a fur coat, open eyes, and they quickly move around.

All the meat eating species of mammals, birds, and reptiles think a meal of rabbit is a tasty treat, so it seems nature has made a point of making them a very prolific species. As many as 4 to 5 litters of one to 8 young are born in a year.

I read on the internet that if a pair of cottontails lived and produced, as well as all of the ensuing offspring, that in 5 years there would 350,000 rabbits.

Heaven's Gates & Hell's Flames

First Assembly of God Church of Spearman will present the drama "Heaven's Gates and Hell's Flames" on Sunday, Monday and Tuesday, August 26, 27 and 28, at 7 p.m.

This dramatic presentation is a joint effort between First Assembly of God Church, and an Arizona based drama group. Several pastors and lay people from other congregations are also participating.

This powerful religious drama has been presented thousands of times throughout the U.S. and Canada.

This event is free and open to the public. An optional offering will be received. A fully staffed nursery will be available at no cost.

For more information, call 659-2295 or visit <http://mze.com/heavensgates/>
The First Assembly of God Church is located at 401 North Bernice, 3 blocks north of the Spearman post office.



MITCHELL THEATRES
NORTHBRIDGE CINEMA 8

Guymon, Oklahoma
Movies beginning 8/24

- NANNY DIARIES** PG-13 -- Scarlett Johansson
- SICKO** PG-13 -- Michael Moore
- SUPERBAD** R -- Seth Rogen
- THE INVASION** PG-13 -- Nicole Kidman
- RUSH HOUR 3** PG-13 -- Jackie Chan, Chris Tucker
- THE BOURNE ULTIMATUM** PG-13 -- Matt Damon
- UNDERDOG** PG -- Jim Belushi
- I PRONOUNCE YOU CHUCK & LARRY** PG-13 -- Shia LaBeouf

FRESH POPCORN EVERYDAY!
-PARTY ROOM & ARCADE-
Call for Showtimes
580-338-3281
www.northridge8.com
Office -- 580-338-8969
CASH & CREDIT CARDS ONLY
THANK YOU!

Are You A Victim of Domestic Violence, Sexual Abuse or Physical, Emotional or Sexual Assault?

Call Toll Free Hotline 1-800-753-5308

We can see individuals from Hansford County anytime upon request. Call 435-5008 or 1-800-753-5308 to set up an appointment in Hansford County. We operate a safe place for victims and their children to stay in times of crisis.

Battering Intervention & Anger Management Available

Panhandle Crisis Center

Serving Hansford, Lipscomb & Ochiltree Counties
301 S. Ash • Perryton, TX
Memorials Accepted

2007 SUMMER CLEARANCE SALE
SALE PRICES GOOD FROM AUGUST 17-25

MEN AND BOYS SUMMER CLOTHING 30% OFF

MEN SUMMER PULLOVER AND SPORT SHIRTS COMPANY 81-CHAPS-TOMMY-IZOD-FALCON BAY 30% OFF

MEN SHORTS AND SWIMSUITS 30% OFF **MEN LEVI JEANS 550 - 560 - 501 STF \$29.95**

MEN SUMMER TALLMAN PULLOVER & SPORT SHIRTS 30% OFF

MEN AND BOYS WESTERN AND FASHION STRAW HATS 30% OFF

BOY SUMMER CLOTHING - SHIRTS - SHORTS COMPANY 81-TOMMY-LEVI-UNIONBAY 30% OFF

MEN AND BOYS ADIDAS SHOES 20% OFF **BOY CINCH SHIRTS 20% OFF**

BOY JEANS - LEVI - WRANGLER - CINCH - 20X 20% OFF

BOY FASHION JEANS \$29.95 **MEN FASHION JEANS \$39.95**

Three great reasons to shop **Canadian**

Canadian Gardens Mon. - Sat. 9-6 Sun. 1-4
302 S. 2nd St. 806-323-9300

A full service regional nursery providing superior annuals, roses, perennials, shrubs, grasses, and trees.
Create a paradise in your own back yard with colorful glazed pottery, bird baths, bird houses, and one-of-a-kind garden art.
We offer a full line of soil amendments, fertilizers, insecticides, and weed killers to keep your lawn and garden looking great throughout the year.
SUMMER PLANT SALE ON NOW!

The Store Thur. - Sat. 11-6
108 Main St. 806-323-9981

Rustic to refined, come see the charming selection of decor and furnishings sure to bring a fresh sense of style to your home.
Choose from a great collection of lamps, armoires, pewter serving pieces, unique furnishings, table art, wall hangings and silk floral arrangements.
Don't miss the warehouse store on 2nd St. where you will find bargains on wrought iron, wooden furniture, clay pots, and fun Mexican imports.

The Peppermint Tree Mon. - Fri. 10-5:00 Sat. 10-1
218 S. Third St. 806-323-5591

Featuring quality women's clothing, accessories, and distinctive gifts since 1974. Find the latest fashions selected for you by those who understand your life and lifestyle.
Beautiful, comfortable, well made clothing at affordable prices. Summer items on sale now, Fall fashions arriving daily!
Gift items for that special someone include Emily Ray jewelry, candles, home and kitchen decor and much, much more.

"Stick With The Best Food In Town"

Flying X Steakhouse
By Reservation Only

From Stinnett: Go West on Hwy. 152
17 miles - Turn Left at Big Red Cactus (About 2 miles on Gravel Road)

From Dumas: Go East on Hwy. 152
16 miles - Turn Tight at Big Red Cactus (About 2 miles on Gravel Road)

(806) 935-9427 Sheree & Eddie Burgess



MAKE THE SMART CHOICE.

HIGH-SPEED INTERNET

\$14.99 PER MONTH
FOR 12 MONTHS WITH QUALIFYING SERVICES

- NO CONTRACT REQUIRED
- 30-DAY SATISFACTION GUARANTEE
- LIMITED-TIME OFFER

THE FASTEST, MOST RELIABLE SPEED FOR THE MONEY

1.877.312.WIND | WINDSTREAM.COM

PHONE
BROADBAND
DIGITAL TV

windstream
grow places

VISIT US IN TEXAS:

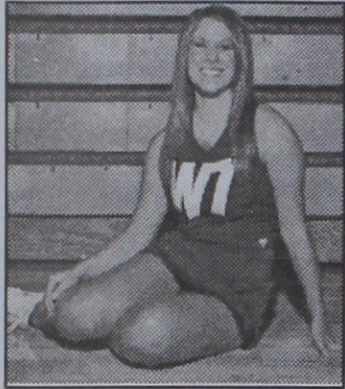
ANDREWS 112 S.W. 1st Street 432.523.3323	DALHART 310 Rock Island Avenue 806.249.1100	PERRYTON 301 S. Amherst Street 806.435.2050	SEYMOUR 400 N. Main Street 940.888.1220	SUGAR LAND 403 Highway 6 S., Suite H 281.490.9412	TEXARKANA 2315 Richmond Road, Suite 101 903.223.4688
---	--	--	--	--	--

Limited-time offer for new Windstream Broadband customers. Subject to availability. Offer Details: Price for Broadband Lite when bundled with Connect Package and Digital TV. Includes Broadband transport and internet access. \$25 activation fee applies. Speeds are distance-sensitive and availability varies by address. Windstream cannot guarantee speeds or uninterrupted, error-free service. Satisfaction Guarantee: If customer cancels within the first 30 days, first month fee will be refunded. Modem equipment purchased through Windstream must be returned upon termination. Taxes and fees are non-refundable. Additional information: Credit approval required. Taxes, fees and other charges, including Universal Service Fund, apply. Services convert to the regular tiered monthly rate (long distance converts to Windstream 30) if any bundled service is disconnected. Windstream reserves the right to alter or discontinue this plan at any time. Other conditions may apply. Subject to Windstream Terms and Conditions available at windstream.com. Windstream is a registered service mark of Windstream Corporation ©2007 Windstream Corporation



RELIABLE
SAFE • SECURE
mostreliablephone.com

Vanderburg to be Honored at WTAMU GAME ON! Banquet



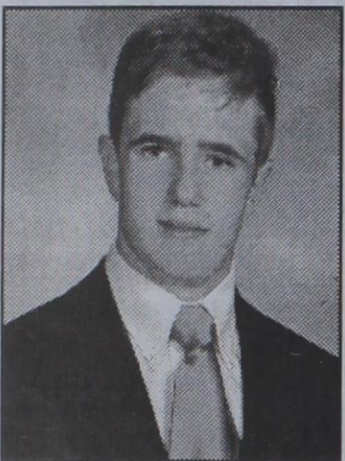
Britta Vanderburg

Britta Vanderburg of Spearman will be honored at

the West Texas A&M University 2007 GAME ON! Barbecue and Banquet at the Palo Duro Canyon Amphitheater on August 26, 2007. Britta is being honored as a scholar-athlete for WTAMU. She was on the President's Honor Roll and is a member of Phi Eta Sigma National Honor Society. Students have been chosen by maintaining high levels both in the athletic department and in the classroom. Britta was a cheerleader for the 2006-2007 West Texas A&M Buffalo teams and will be cheering again

for the Buffs and Lady Buffs for 2007-2008. She has given many campus tours for Coach Carthel's recruiting program and was in charge of decorations for the Spring Athletic Banquet. She taught many cheer camps and judged cheer tryouts last spring in the panhandle area. The new cheer squad just finished two weeks of two-a-days to get ready for the new year. Britta is the daughter of Joe and Kim Vanderburg of Spearman. She was a 2006 graduate of Spearman High School.

Thompson Awarded Scholarship

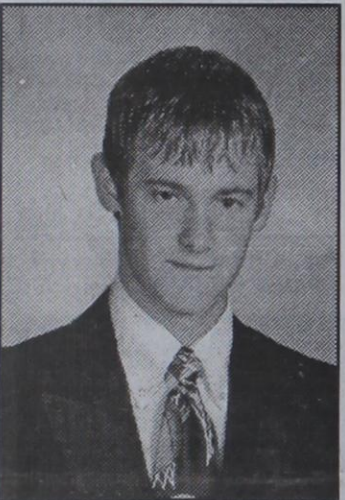


Justin Thompson

Justin Owen Thompson, a 2007 graduate of Gruver High school, has been

awarded a scholarship by the Texas Interscholastic League Foundation. Thompson received a Spalding Sports Worldwide award in the amount of \$1,000, payable \$500 each semester of the first year. The Spalding Sports award was awarded to 40 students who have participated in the University Interscholastic League Academic State Meet and who have compiled an outstanding record of academic and extracurricular achievement. This year the TILF awarded 377 new awards and will renew approximately 275 awards for a total of more than 600 scholarships or

2007-2008, with value of over \$1 million. Recipients may attend an approved college or university in Texas. Thompson competed in science at the 2006 and 2007 UIL Academic State Meets where he finished first in physics at the 2006 meet. Additionally, he qualified for state in number sense in 2006. He also participate in UIL mathematics, football and track and field throughout his high school career. He is the son of Dwayne and Shawn Thompson. Thompson plans to attend Texas A&M University in College Station and major in aerospace engineering.



Tucker Williams of Gruver is one of five recipients of a 2007 scholarship in the amount of \$200 offered by First Ag Credit, FCS of Perryton. Williams, the son of Ty and Paula Williams, plans to attend Texas Tech University in Lubbock in the fall to major in Agriculture.

Miss Vicky's Soul Food

817 SW 5th Street (Corner of 6th & Adams)
Amarillo TX • (806) 372-2247

Down Home Cooking at it's Best!

All-You-Can-Eat

Chicken, Pork Chops, Ribs,
Cheese Meat Loaf Fish, Smothered
Chicken, Chicken 'n Dumplings,
and Much More!

Vegetables, Home-Made Desserts
Kook-Ald

Hours: Monday-Tuesday, 11 a.m.-3 p.m.
Wednesday-Sunday, 11 a.m.-5 p.m.

Thank You!

Kids Kamp, a summer recreation/education program for students who are entering K-8, had a record attendance this summer. With kids from Spearman, Morse, Gruver, Tulia and even Kansas, Kids Kamp's total attendance was 614 kids!

The program had 19 activities planned June through August including reading programs, basketball, meteorology, cooking, sewing, golf, arts, movies, financial, medical, tool time, puppy kindergarten, football and cheerleading.

Kids Kamp provides summer activities and uses many resources within the community while involving as many community volunteers as possible.

Since the beginning of the program in 1997, this program continues to be a vital part of the school district and the community of Spearman.

We would like to thank those volunteers who donated their time and efforts to make this program a success. A special thank you to High Plains Observer, Reporter-Statesman, and KXDJ radio for making the Kids Kamp schedule available throughout the summer.

Coach Ashmore and staff
Gary Ellsworth
Coach Nan Cook
Lyric Theatre
Coach Todd Baird
Coach Walker
Peggy Winegarner
Karen Babitzke
Myrtle Ware
Hansford County Library
Maria Carbajal
Margaret Ruttman
Betty Pugh
Eva McCloy
Lacey Decker
Sabrina Cantu
Alec Cineceros
Steve Kersh-KVII TV
Lynx Football Staff
Hansford County Golf Course
Damen Sibley
Don Schroeder
Blaine Schroeder
Travis Wolf
Rod Sumner

Gina Gillispie
Jolene Clement
Bunkhouse Restaurant
Stephanie Crossland
First State Bank
Ginger Turner
Bret Burgin
Spearman EMS
Gruver EMS
Billy Kelly
John DeShae
Audra Thomas
Diane Boyd
Michelle Cator
Justin Boyd
Chad Knowlton
The Mutt Hutt
Chastity Thomas
Kristin Shieldknight
Spearman High School
Cheerleaders
American Red Cross
Mikal Willimon
Judy Nelson
Brian Gillispie

Notice of Vote on Tax Rate

The Hansford Hospital District
conducted public hearings on a proposal to
increase the total tax revenues of the
Hansford Hospital District
from properties on the tax roll in the preceding
year by 8.8 percent
on August 16, 2007 at 6:00 PM and August 20, 2007 at
6:00 PM.
The Hansford County Hospital District Board
is scheduled to vote on the tax rate that
will result in that tax increase at a public
meeting to be held
on August 30, 2007, at 6:00 PM
at Business Office Conference Room.

Supreme Pizza
Pepperoni, Sausage, Onion, Green Peppers and Mushrooms!

Hawaiian Pizza
Sizzling Bacon, Canadian Bacon and Cheese topped with Pineapple!

Double Decker Pizza
2X your Favorite Topping, 2X the Layers of Cheese!

Triple Cheese Pizza
Mozzarella, Cheddar, Parmesan Cheese baked in a Golden Crust!

Cheeseburger Pizza
Hamburger Beef, Onions, Pickles and Mustard with Mozzarella and Cheddar Cheese!

Veggie Pizza
Green Peppers, Onions, Jalapenos, Mushrooms, Black Olives and melted Mozzarella Cheese!

Pepperoni Pounder Pizza
80 Pepperoni Slices - ONE FULL POUND!!! Layered in thick, melted Mozzarella Cheese!

Bacon & Cheddar Pizza
Sizzling Bacon baked in a combination of Mozzarella and Cheddar Cheeses!

6 Meat Deluxe Pizza
Italian Sausage, Pepperoni, Beef, Canadian Bacon, Sausage and Bacon!

"Big 10" Pizza
Italian Sausage, Pepperoni, Beef, Canadian Bacon, Sausage, Onions, Green Peppers, Mushrooms, Black Olives and Bacon!

Bacon Chicken Ranch Pizza
Savory Chicken, Sizzling Bacon, Onion, Green Peppers all with 100% Mozzarella and Cheddar on top of our own Ranch Dressing!

Pizza Toppings

Bacon	Cheese	Onion
Beef	Green Peppers	Pepperoni
Black Olive	Italian Sausage	Pineapple
Canadian Bacon	Jalapeno	Sausage
Chicken	Mushrooms	

Calizone

Pepperoni, Sausage, Cheese and Special Sauce

The GREAT Stromboli

Ham, Bacon, Onions, Green Peppers and Special Sauce

Specialty Calizone

Supreme Calizone
Pepperoni, Sausage, Green Peppers, Onions, Mushrooms and Cheese

Cheeseburger Calizone
Hamburger, Cheese, Onions, Pickles and Mustard

3 Cheese Calizone
All 100% Natural Cheddar, Mozzarella and Parmesan Cheese

Mexican Calizone
Spicy Beef, Onions, Cheddar Cheese, Black Olives, and Jalapenos on request

Big 8 Calizone
Pepperoni, Mushrooms, Onions, Green Peppers, Black Olives, Sausage, Bacon & Italian Sausage

Breads

Garlic Stix (w/cheese) • Alpine Stix (w/cheese)
Jalapeno Stix (w/cheese) • Cinnamon Stix

Sandwiches

Ham & Cheese • Turkey
Submarine • Simple Simon's Club

Hot Wings

5 Pieces • 10 Pieces • 20 Pieces

312 Main Street
Spearman TX
(806) 659-9991

Sun. - 12 noon - 9 p.m.
Mon.-Thurs. - 11:30 a.m. - 9 p.m.
Fri. - 11:30 a.m. - 10:30 p.m.
Sat. - 12 noon - 10:30 p.m.

Come & Get It!

HAPPY HOUR

3-5 p.m., Monday-Friday

ALL FOUNTAIN DRINKS **69¢**
12 oz-32oz.

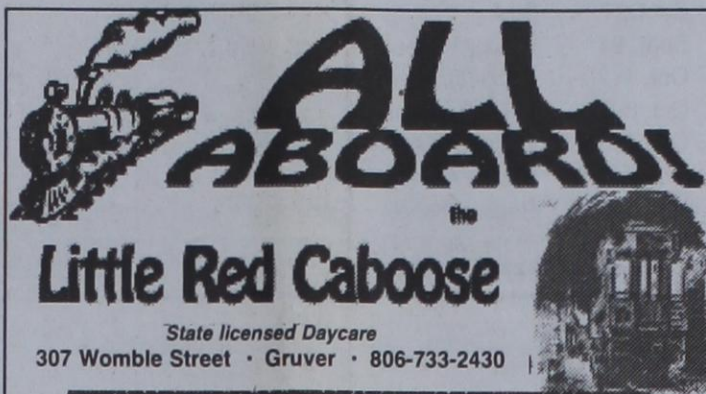
MURMUR'S CAFE

100 S. Roland • 659-3580 • Spearman

Don't forget about our Cherry Lime Aid & Frozen Cherry Lime Aid!

Reading Homework Tips for Parents

- Have your child read aloud to you every night.
- Choose a quiet place, free from distractions, for your child to do his nightly reading assignments.
- As your child reads, point out spelling and sound patterns such as cat, pat, hat.
- When your child reads aloud to you and makes a mistake, point out the words she has missed and help her to read the word correctly.
- After your child has stopped to correct a word he has read, have him go back and reread the entire sentence from the beginning to make sure he understands what the sentence is saying.
- Ask your child to tell you in her own words what happened in a story.
- To check your child's understanding of what he is reading, occasionally pause and ask your child questions about the characters and events in the story.
- Ask your child why she thinks a character acted in a certain way and ask your child to support her answer with information from the story.
- Before getting to the end of a story, ask your child what he thinks will happen next and why.



Little Red Caboose

State licensed Daycare
307 Womble Street • Gruver • 806-733-2430

Openings available at the Little Red Caboose Daycare/Preschool in Gruver
Ages 18-months to 12 years - Preschool Available
Drop-ins & After School Kids Welcome!
1/2 Block from Gruver Elementary • Licensed for 14 years
Hours of operation 8:00-5:30, Monday-Friday

Wishing the Students & Teachers of Hansford County Success in the 2007-2008 School Year!

GOLDEN SPREAD SALES CO.
Hwy. 207 S. • Spearman, TX
(806) 659-3776

LITTLE SCHOOL PRESCHOOL

Quality Time Spent With Your Child
HAVE FUN LEARNING
Kindergarten Readiness Skills
Crafts • Games • Music • Story Time
2 year-olds - once a week • 3-5 year-olds - twice a week
To enroll, or for more information, call
Donna Trantham at 659-2046
State Certified

New Surprises at
spearmanreporter.com

WARNING!

BE ON THE LOOK OUT ...

School's back in session and in the excitement of the new school year, many school-age children, especially the young ones, may forget to look both ways when crossing the street or exiting the school bus.

That leaves it up to you as a driver, to be extra careful around school-yards, neighborhood play areas, and departing school buses.

So remember . . . when you see yellow, be sure to see red - as in red alert. Let's all slow down and give our children the chance they deserve.

INTERSTATE BANK, SSB
322 Main Street • Spearman, TX
(806) 659-2559

Back to School Safety Tips



Riding the Bus

School bus transportation is safe. In fact, buses are safer than cars! Even so, last year, approximately 26 students were killed and another 9,000 were injured in incidents involving school buses. More often than not, these deaths and injuries didn't occur in a crash, but as the pupils were entering and exiting the bus. Remember these safety tips:

- Have a safe place to wait for your bus, away from traffic and the street.
- Stay away from the bus until it comes to a complete stop and the driver signals you to enter.
- When being dropped off, exit the bus and walk ten giant steps away from the bus. Keep a safe distance between you and the bus. Also, remember that the bus driver can see you best when you are back away from the bus.
- Use the handrail to enter and exit the bus.
- Stay away from the bus until the driver gives his/her signal that it's okay to approach.
- Be aware of the street traffic around you. Drivers are required to follow certain rules of the road concerning school buses, however, not all do. Protect yourself and watch out!

Walking and Biking to School

Even if you don't ride in a motor vehicle, you still have to protect yourself. Because of minimal supervision, young pedestrians face a wide variety of decisions making situations and dangers while walking to and from school. Here are a few basic safety tips to follow:

- Mind all traffic signals and/or the crossing guard -- never cross the street against a light, even if you don't see any traffic coming.
 - Walk your bike through intersections.
 - Walk with a buddy.
 - Wear reflective material...it makes you more visible to street traffic.
- The Partnership for a Walkable America has some more information on this topic.

Riding in a Car

- You might have heard before that most traffic crashes occur close to home ... they do.
- Safety belts are the best form of protection passengers have in the event of a crash. They can lower your risk of injury by 45%.
- You are four times more likely to be seriously injured or killed if ejected from the vehicle in a crash.
- Everyone needs to be buckled up properly. That means older kids in seat belts, younger kids in booster seats and little kids in child safety seats.

STOP. LOOK. LISTEN. AGAIN!

It's Back To School Time!

FSB

First State Bank
1 NE Court • Spearman, TX • (806) 659-5565

ADOBE WALLS GIN

JERRELL KEY
MANAGER
10175 SH 51
SPEARMAN, TX 79081
(806) 659-2574
(806) 659-1032 FAX
(806) 683-9651 MOBILE
awwalls@pccn.com
A•W•G

Gruver Greyhound/Lady Hound 2007 Cross Country Schedule

Date	Event	Teams
August 25	Guymon	JH/HS
September 1	Borger	JH/HS
September 8	Perryton	JH/HS
September 15	Amarillo	HS
	Follett	JV/JH
September 22	Sunray	JH/HS
September 29	Lubbock	HS
October 6	OPEN	
*October 15	District Meet, Amarillo	JH/HS
**November 3	Regional Meet, Lubbock	HS
***November 10	State Meet, Round Rock	HS

Spearman Lynx/Lynxette 2007 Cross Country Schedule

Date	Event	Teams
Aug. 27	Tascosa Rebel Meet	HS Only
Sept. 3	Borger Meet	HS & JH
Sept. 10	Perryton Meet	HS & JH
Sept. 17	TBA	TBA
Sept. 24	Lubbock Meet	HS Only
Oct. 1	Canadian Meet	HS & JH
Oct. 8	WTAMU Meet	HS & JH
Oct. 15	Canyon Meet	HS & JH
Oct. 24	District Meet - Boys Ranch	HS & JH
Nov. 5	Regional Meet - Lubbock	HS Only
Nov. 12	State Meet - Round Rock	HS Only

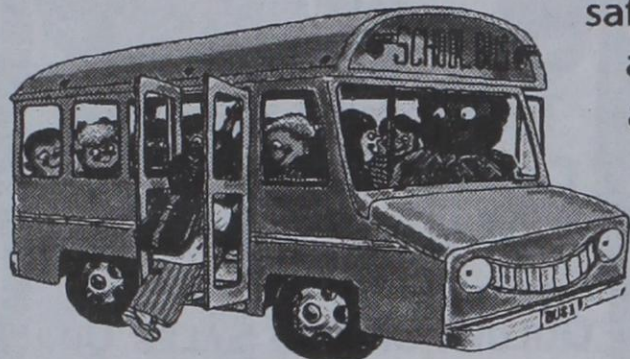
Math Tips for Parents

- Encourage your child to use a daily assignment book.
- Follow the progress your child is making in math. Check with your child daily about his homework.
- If you don't understand your child's math assignments, engage in frequent communication with his or her teacher.
- If your child is having problems in math, contact the teacher to learn whether he or she is working at grade level and what can be done at home to help improve progress.
- Request that your child's teacher schedule after-school math tutoring sessions if your child really needs help.
- Use household chores as opportunities for reinforcing math learning such as cooking and repair activities.
- Try to be aware of how your child is being taught math, and don't teach strategies and shortcuts that conflict with the approach the teacher is using. Ask the teacher about online resources that you can use with your child at home.
- At the beginning of the year, ask your child's teacher for a list of suggestions that will enable you to help your child with math homework.

Hey, Kids!

It's time to head back to school.

But before you do, check out these safety tips from a variety of sponsors. They are sure to help you and your parents have a great school year!



A

Avoid Empty Places
Don't cut through empty lots on your way to school.

B

Be Alert!
Watch what's going on around you.

C

Crossing Streets
Look both ways before crossing the street.

D

Doors
Don't answer the door when you're home alone.

E

Edit Plan
Get off the bus calmly and in single file.

F

Find A Good Backpack
Choose a backpack that fits close to your body.

G

Guard Belongings
Take care of your books, lunch and other items.

H

Hands & Arms
Keep hands, arms and head inside vehicles.

I

If You Get Lost...
Find a policeman or go to a store nearby.

J

Just Say NO!
Stay away from drugs and cigarettes.

K

Keep Away From Buses
Don't play near buses.

L

Loose-Hanging Clothing
Be careful with drawstrings, belts or clothes that drag the ground.

M

Memorize
Learn your phone number and address before you start school.

N

Never Cross
Don't cross the street between parked cars.

O

Obey Teachers & Parents
Listen to what these adults say for your safety.

P

Plan A Route
With your parents, plan the safest and quickest route to school.

Q

Quiet Time
When on the bus, talk quietly with friends.

R

Riding To/From School
Listen to your car or bus driver.

S

Strangers
Don't talk to strangers.

T

10 Steps
Take 10 steps away from the front of a stopped bus before crossing.

U

Understand Traffic Signals
Know what traffic signs, lights and signals mean.

V

Valuable Friends
Walking to school is safer and more fun with friends.

W

Walk Away
If someone tries to start a fight, walk away.

X

X Marks The Spot
Stand in the right place when waiting for the bus.

Y

Yell Out!
If a stranger bothers you, yell for help!

Z

Zero In On Safety
Follow these tips to a safer school year!

B&B Sales Co.
205 Dillon
Spearman
659-2662

Gordon's
& Photo
314 Main Street
Spearman, TX
(806) 659-2141

PTCI
Bringing Your World... Home
721 W. 7th • Spearman TX
800-562-2556

Trencor
INTERPRISES
Complete Pumping Unit Repair
Ricky White
Owner
PO Box 778 • 9103 MC. Searcy
Spearman, TX 79081
Office: (806) 659-9811
Mobile: (806) 659-3054
Fax: (806) 659-9117

LOWE'S
MARKETPLACE
Friendliest Store in The Panhandle
606 Price Shopping Center
Spearman, TX 79081 • (806) 659-4444

BROWN, GRAHAM & COMPANY
PROFESSIONAL CORPORATION
CERTIFIED PUBLIC ACCOUNTANTS
PO BOX 67 • SPEARMAN TX 79081 • 806-659-2538

Celebrate
Gifts for all your celebrations!
203 Main St. Spearman, TX
(806) 659-3350 1-800-953-8025

HANSFORD
REPLENISH CO.
"Customer satisfaction is our specialty for all areas!"
806-659-2588
806-659-2589
806-659-2590
806-659-2591
806-659-2592
806-659-2593
806-659-2594
806-659-2595
806-659-2596
806-659-2597
806-659-2598
806-659-2599
806-659-2600

Hansford County
Veterinary Hospital, Inc.
Spearman, Texas
(806) 659-2100

CASE **Zimmatic**
FIVE STAR EQUIPMENT, INC.
HIGHWAY 15 WEST • BOX 658
SPEARMAN, TEXAS 79081
PHONE # (806) 659-3743
HOME # (806) 659-3846
CELL # (806) 330-0051
800-679-2759

Mark Sheets
Truck, Inc.
(806) 659-3773
600 Cellard
Box 22
Spearman, Texas 79081

BOSS INDUSTRIES
A Total Solution Provider
Electrical Automation Millwright
Office: 806-659-9104 225 S. Main St.
1st Flr: 806-659-1306 Spearman, TX 79081
Fax: 806-659-3822

Getting a **Quick Loan** for back-to-school clothes and supplies is as easy as

ABC

Get a Loan from \$100 - \$1114
subject to our usual credit policy

Sun Loan & Tax Co.

106 S. Main • Perryton, TX • 435-7242 • Se Habla Español

Our Best Wishes to Students and Faculty for a Happy 2007-2008 School Year!

GSA

Gruver State Bank
3 Main Plaza • Gruver, Texas • (806) 733-5061
www.gruverstatebank.com • ATM Machine
Member FDIC

windstream
grow places
PHONE BROADBAND DIGITAL TV
877-312-WIND
WINDSTREAM.COM
806-435-3050

PERRYTON EQUITY
SPEARMAN EQUITY
P.O. BOX 426
SPEARMAN, TEXAS 79081
(806) 659-3241 (806) 659-2420

NAPA Hi-Plains Auto Supply, Inc.
Auto • Industrial • Oilfield Supplies
Wholesale & Retail • Irrigation Parts
Feedyard Supplies • Mobile Oil & Greases
PO Box 116 118 N. Main
Spearman TX 79081

Berry Cleaners, Inc
207 Main Street
Spearman TX 79081
(806) 659-3122

GIGOT AGRA PRODUCTS, INC.
206 Terry Hill South
P.O. Box 95
Spearman, TX 79081
Phone: 806-659-3121
Loren Kemp
President
Mobile: 806-659-4225
Home: 806-659-5802

PANHANDLE ANCHORS INC.
P.O. BOX 283
SPEARMAN, TEXAS 79081
806-659-2526
Ole Bergen
Perryton # 806-625-0280
Call 806-659-1992
Home 806-659-5529
Fax 806-659-9021

John Hutchison
Attorney at Law
305 Main Street
Spearman
659-3703

North Plains Insurance
715 W. 7th
Spearman
659-3875

Travis Wolf
C.P.A.
Mikal Willmon
C.P.A.
BROWN, GRAHAM & COMPANY
PROFESSIONAL CORPORATION
CERTIFIED PUBLIC ACCOUNTANTS
PO BOX 67 • SPEARMAN TX 79081 • 806-659-2538

Double ELECTRIC
BOSS INDUSTRIES
A Total Solution Provider
Electrical Automation Millwright
Office: 806-659-9104 225 S. Main St.
1st Flr: 806-659-1306 Spearman, TX 79081
Fax: 806-659-3822

The **Jays** of Summer
Available all year!



SNOW CONE STAND
Monday-Friday
1:30-8 p.m.
MURMUR'S CAFE
100 S. Roland • Spearman
659-3580

PROUDLY SUPPORTING
HANSFORD COUNTY SCHOOLS!

Spearman Homecoming September 14
Gruver Homecoming September 21

ALL OCCASION FLOWERS
202 N. Bernice • Spearman
(across from the Post Office)
659-5180



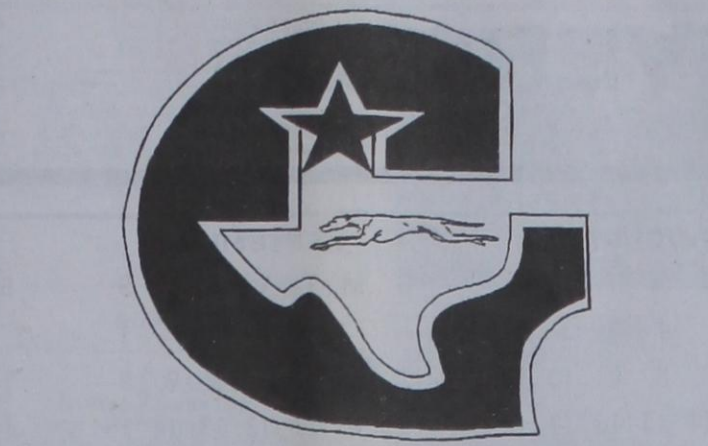
Safety After School

Many kids spend some time before or after school home alone. Whether it's just a few minutes or a few hours, there are things those kids should know.

- Have set times to call your parent(s) to make sure everything is OK.
- Organize at-home activities to keep from getting bored.
- If someone calls, never tell them you are home alone. Take a number so your parent(s) can return the call.
- Never open the door to a stranger. If you are nervous about the stranger, call a neighbor or nearby adult.
- Don't use appliances or sharp knives without permission.
- Do not enter the house if the door is open or a window is broken.
- Go to a neighbor's house and call the police or your parent(s).
- If there is a fire or you smell smoke, leave the house immediately. Go to a neighbor's house and call the fire department.

Most importantly, talk to your parent(s) about what you should do in certain situations. That way, if the power goes off or your pet gets hurt, you'll know what to do.

Boxwell Brothers
519 Evans • Spearman • 659-3802



Gruver Hounds

2007 Varsity Football Schedule

DATE	OPPONENT	SITE	TIME	SCORE
8-18	Spearman (Scr.)	Here	6:00	
8-23	Highland Prk (Scr.)	There	5:00	
8-31	Texhoma, OK	Here	7:30	
9-7	Wheeler	There	7:30	
9-14	Panhandle	There	7:30	
9-21	**Clarendon	Here	7:30	
9-28	West Texas	There	7:30	
10-5	Open			
10-12	~Boys Ranch	Here	7:30	
10-19	~White Deer	There	7:30	
10-26	~Sunray	Here	7:30	
11-2	~Vega	Here	7:30	
11-9	~Booker	There	7:30	

** Homecoming * Parent Night ~ District

2007 Junior Varsity Football Schedule

DATE	OPPONENT	SITE	TIME	SCORE
8-18	Spearman (Scr.)	Here	6:00	
8-23	Highland Prk (Scr.)	There	6:00	
9-6	Boys Ranch	Here	6:00	
9-13	White Deer	There	6:00	
9-20	Sunray	Here	6:00	
9-27	Spearman	Here	6:00	
10-11	Boys Ranch	There	6:00	
10-18	White Deer	Here	6:00	
10-25	Sunray	There	6:00	
11-8	Sunray	There	6:00	

2007 Lynx 7th & 8th Grade Football

DATE	OPPONENT	SITE	TIME	SCORE
9-13	White Deer	There	5:00	
9-20	Sunray	Here	5:00	
9-27	Vega	Here	5:00	
10-4	Booker	There	5:00	
10-11	Boys Ranch	There	5:00	
10-18	White Deer	Here	5:00	
10-25	Sunray	There	5:00	
11-8	Booker	Here	5:00	

LYNX

Spearman Lynx

2007 Varsity Football Schedule

DATE	OPPONENT	SITE	TIME	SCORE
8-18	Gruver (Scr.)	There	6:00	
8-24	Dalhart (Scr.)	Here	6:00	
8-31	Wheeler	Here	7:30	
9-7	Boys Ranch	There	7:30	
9-14	**Texhoma	Here	7:30	
9-21	Wellington	Here	7:30	
9-28	Childress	There	7:30	
10-5	Open			
10-12	~Stratford	Here	7:30	
10-19	~Canadian	There	7:30	
10-26	~West Texas	Here	7:30	
11-2	~Fritch	There	7:30	
11-9	~Panhandle	Here	7:30	

** Homecoming * Parent Night ~ District

2007 Junior Varsity Football Schedule

DATE	OPPONENT	SITE	TIME	SCORE
8-18	Gruver (Scr.)	There	6:00	
8-24	Dalhart (Scr.)	Here	6:00	
8-30	Wheeler	There	6:00	
9-6	Stratford	Here	8:00	
9-13	Canadian	There	8:00	
9-20	West Texas	Here	8:00	
9-27	Gruver	There	6:00	
10-4	Open			
10-11	Stratford	There	8:00	
10-18	Canadian	Here	8:00	
10-25	West Texas	There	8:00	
11-1	Fritch	Here	8:00	
11-8	Panhandle	There	8:00	

2007 Lynx 7th & 8th Grade Football

DATE	OPPONENT	SITE	TIME	SCORE
9-6	Stratford	Here	5, 6	
9-13	Canadian	There	5, 6	
9-20	West Texas	Here	5, 6	
9-27	Open			
10-4	Panhandle	Here	4:30, 6	
10-11	Stratford	There	5, 6	
10-18	Canadian	Here	5, 6	
10-25	West Texas	There	5, 6	
11-1	Fritch	Here	5, 6	
11-8	Panhandle	There	5, 6	



Supporting the students of Hansford County!

Spearman Homecoming
September 14th

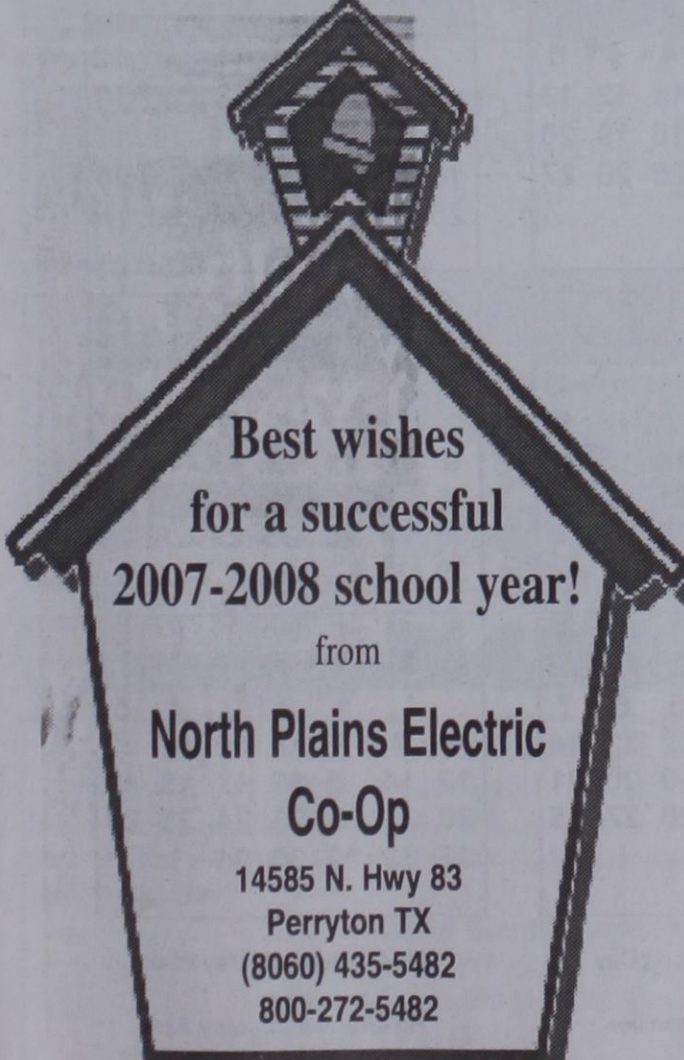
Gruver Homecoming
September 21st

Prairie Garden Flowers
209 Main St. • Spearman, TX
659-2212 • 659-3329

Any way you add it, it's a bargain!

HAPPY HOUR

All Drinks 73¢ (tax included)
Mon.-Fri., 2-5 p.m.
from
Hungry Cowboy
Hwy 207 S • Spearman • 659-5151
Tobe & JJ Shields, owners
Open Mon.-Sat.
11 a.m.-8 p.m.



Best wishes for a successful 2007-2008 school year!

from
North Plains Electric Co-Op
14585 N. Hwy 83
Perryton TX
(806) 435-5482
800-272-5482

BACK-TO-SCHOOL Safety.

Safety On & Off The School Bus

More than 23 million kids ride a school bus every day. And it's up to those kids to take some safety precautions when it comes to waiting for and riding on the bus.

Going to the bus stop...

- Whenever possible, walk with others from your school.
- Try not to walk in the street. If you have to walk in the street, walk as close to the curb as possible.
- Be alert and avoid any signs of danger.
- Obey traffic lights and signals.
- When you are crossing the street, cross only at the corner and use crosswalks where possible. Look both ways before crossing.

While you wait for the bus...

- Dress right for the weather.
- Arrive at the bus stop on time.
- Stay away from the street while you are waiting for the bus.

Boarding the school bus...

- Do not approach the bus until it stops completely, then wait for the driver's signal.
- Drawstrings, ties, straps and backpacks can get caught in bus doors, railings or aisles, so be extra careful when getting on or off the bus.
- Enter the bus in single file. Do not push.
- Use the handrail.
- Take a seat quickly and sit facing forward.

Riding the bus...

- Always obey school bus rules.
- Remain seated throughout the ride.
- Keep your arms, hands and head inside the bus.
- Help keep the bus neat and clean.

With kids heading back to school, it's a good time to think about their safety to and from school, on the bus and at home. With the help of our sponsors, we have collected information to help you and your kids take steps to have a safer school year.

Leaving the bus...

- Do not stand up until the bus comes to a complete stop.
- Use the handrail when leaving the bus.
- Never walk behind the school bus.
- If you cannot see the bus driver, the driver probably cannot see you. Take five giant steps away from the bus, and you should be able to see the driver, and the driver should be able to see you.
- Never crawl under a bus. Do not bend down near or under the bus.
- If you need to cross the street, wait for the driver to signal, then cross the street in front of the bus.
- Look both ways before crossing the street.
- Never run back to the bus, even if you have forgotten something.

Dr. Mark Garnett, DO
Michelle Davis, PA-C

hchd
Hansford County Hospital District

707 S. Roland • Spearman, TX • (806) 659-2535

Meet the Teacher
Gruver Elementary
Friday, August 24, 2007

This year's Meet the Teacher event at Gruver Elementary will begin with a meeting with Mrs. Debby Mayhew, the elementary principal, to discuss some changes and receive student class assignments.

The meeting will be offered twice as follows:

*The first meeting in the cafeteria will begin 1:00 p.m. for an English only presentation. At the finish, participants will receive class assignments and can then go to their new classrooms.

*The second meeting will begin in the cafeteria at 1:30 p.m. for both a Spanish and English presentation. At the end of this meeting, participants also receive class assignments and can then register in their new classrooms.

We look forward to seeing parents and students at this time to kick off this new year.

General Homework Tips for Parents

• **Make sure your child has a quiet, well-lit place to do homework.**

Avoid having your child do homework with the television on or in places with other distractions, such as people coming and going.

• **Make sure the materials your child needs, such as paper, pencils and a dictionary, are available.**

Ask your child if special materials will be needed for some projects and get them in advance.

• **Help your child with time management.**

Establish a set time each day for doing homework. Don't let your child leave homework until just before bedtime. Think about using a weekend morning or afternoon for working on big projects, especially if the project involves getting together with classmates.

• **Be positive about homework.**

Tell your child how important school is. The attitude you express about homework will be the attitude your child acquires.

• **When your child does homework, you do homework.**

Show your child that the skills they are learning are related to things you do as an adult. If your child is reading, you read too. If your child is doing math, balance your checkbook.

• **When your child asks for help, provide guidance, not answers.**

Giving answers means your child will not learn the material. Too much help teaches your child that when the going gets rough, someone will do the work for him or her.

• **When the teacher asks that you play a role in homework, do it.**

Cooperate with the teacher. It shows your child that the school and home are a team. Follow the directions given by the teacher.

• **If homework is meant to be done by your child alone, stay away.**

Too much parent involvement can prevent homework from having some positive effects. Homework is a great way for kids to develop independent, life-long learning skills.

• **Stay informed.**

Talk with your child's teacher. Make sure you know the purpose of homework and what your child's class rules are.

• **Help your child figure out what is hard homework and what is easy homework.**

Have your child do the hard work first. This will mean he will be most alert when facing the biggest challenges. Easy material will seem to go fast when fatigue begins to set in.

• **Watch your child for signs of failure and frustration.**

Let your child take a short break if she is having trouble keeping her mind on an assignment.

• **Reward progress in homework.**

If your child has been successful in homework completion and is working hard, celebrate that success with a special event (e.g., pizza, a walk, a trip to the park) to reinforce the positive effort.



GRUVER ISD

2007-2008



LEGEND	AUGUST	SEPTEMBER	OCTOBER	NOVEMBER
♥ Staff Day	S M T W T F S 1 2 3 4 5 6 7 8 9 10 11	S M T W T F S 1 2 ♥ 4 5 6 7 8	S M T W T F S 1 2 3 4 5 6 7 8 9 10 11 12 13	S M T W T F S 1 2 3 4 5 6 7 8 9 10
★ Weather Day	12 13 14 15 16 17 18	9 10 11 12 13 14 15	14 15 16 17 18 19 20	11 12 13 14 15 16 17
⌈ Beginning of 6 Weeks	19 20 21 22 23 24 25	16 17 18 19 20 21 22	21 22 23 24 25 26 27	18 19 20 21 22 23 24
⌋ End of 6 Weeks	26 27 28 29 30 31	23 24 25 26 27 28 29	28 29 30 31	25 26 27 28 29 30
◇ 1/2 Day		30		
● Holiday				
T TAKS Testing				

1st 6 Weeks = 28 days				
2nd 6 Weeks = 25 days				
3rd 6 Weeks = 28 days				
1st Semester = 81 days				

4th 6 Weeks = 31 days				
5th 6 Weeks = 34 days				
6th 6 Weeks = 32 days				
2nd Semester = 97 days				

Total Days for Students				
178				
Teacher Work or Compensation Days				
9				
Total Days for Faculty				

2007-2008

Pringle-Morse CISD Calendar

Revised 07-30-07

S M T W T F S	S M T W T F S	S M T W T F S	S M T W T F S
August 1 2 3 4 5 6 7 8 9 10 11 12 13 14 15 16 17 18 19 20 21 22 23 24 25 26 27 28 29 30 31	September 1 2 3 4 5 6 7 8 9 10 11 12 13 14 15 16 17 18 19 20 21 22 23 24 25 26 27 28 29 30	October 1 2 3 4 5 6 7 8 9 10 11 12 13 14 15 16 17 18 19 20 21 22 23 24 25 26 27 28 29 30 31	November 1 2 3 4 5 6 7 8 9 10 11 12 13 14 15 16 17 18 19 20 21 22 23 24 25 26 27 28 29 30
S M T W T F S	S M T W T F S	S M T W T F S	S M T W T F S
December 1 2 3 4 5 6 7 8 9 10 11 12 13 14 15 16 17 18 19 20 21 22 23 24 25 26 27 28 29 30 31	January 1 2 3 4 5 6 7 8 9 10 11 12 13 14 15 16 17 18 19 20 21 22 23 24 25 26 27 28 29 30 31	February 1 2 3 4 5 6 7 8 9 10 11 12 13 14 15 16 17 18 19 20 21 22 23 24 25 26 27 28 29	March 1 2 3 4 5 6 7 8 9 10 11 12 13 14 15 16 17 18 19 20 21 22 23 24 25 26 27 28 29 30 31
S M T W T F S	S M T W T F S	S M T W T F S	S M T W T F S
April 1 2 3 4 5 6 7 8 9 10 11 12 13 14 15 16 17 18 19 20 21 22 23 24 25 26 27 28 29 30	May 1 2 3 4 5 6 7 8 9 10 11 12 13 14 15 16 17 18 19 20 21 22 23 24 25 26 27 28 29 30 31	June 1 2 3 4 5 6 7 8 9 10 11 12 13 14 15 16 17 18 19 20 21 22 23 24 25 26 27 28 29 30	July 1 2 3 4 5 6 7 8 9 10 11 12 13 14 15 16 17 18 19 20 21 22 23 24 25 26 27 28 29 30 31

■ Staff Prep/Student Holiday
☁ Bad Weather Day
■ Comp Day/ Student Holiday
⌈ Begin six weeks
⌋ End six weeks
● School Holiday
— Report Cards Out
⚡ Early Out for Everyone
⬠ Graduation
■ TAKS Test
⚠ Staff Inservice/ Student Holiday

2007-2008 Spearman ISD Calendar

Approved by Board of Trustees-- April 16, 2007

81 First Semester 96 Second Semester 177 Instructional Days

S M T W T F S	S M T W T F S	S M T W T F S	S M T W T F S
August 1 2 3 4 5 6 7 8 9 10 11 12 13 14 15 16 17 18 19 20 21 22 23 24 25 26 27 28 29 30 31	September 1 2 3 4 5 6 7 8 9 10 11 12 13 14 15 16 17 18 19 20 21 22 23 24 25 26 27 28 29 30 31	October 1 2 3 4 5 6 7 8 9 10 11 12 13 14 15 16 17 18 19 20 21 22 23 24 25 26 27 28 29 30 31	November 1 2 3 4 5 6 7 8 9 10 11 12 13 14 15 16 17 18 19 20 21 22 23 24 25 26 27 28 29 30
S M T W T F S	S M T W T F S	S M T W T F S	S M T W T F S
December 1 2 3 4 5 6 7 8 9 10 11 12 13 14 15 16 17 18 19 20 21 22 23 24 25 26 27 28 29 30 31	January 1 2 3 4 5 6 7 8 9 10 11 12 13 14 15 16 17 18 19 20 21 22 23 24 25 26 27 28 29 30 31	February 1 2 3 4 5 6 7 8 9 10 11 12 13 14 15 16 17 18 19 20 21 22 23 24 25 26 27 28 29	March 1 2 3 4 5 6 7 8 9 10 11 12 13 14 15 16 17 18 19 20 21 22 23 24 25 26 27 28 29 30 31
S M T W T F S	S M T W T F S	S M T W T F S	S M T W T F S
April 1 2 3 4 5 6 7 8 9 10 11 12 13 14 15 16 17 18 19 20 21 22 23 24 25 26 27 28 29 30	May 1 2 3 4 5 6 7 8 9 10 11 12 13 14 15 16 17 18 19 20 21 22 23 24 25 26 27 28 29 30 31	June 1 2 3 4 5 6 7 8 9 10 11 12 13 14 15 16 17 18 19 20 21 22 23 24 25 26 27 28 29 30	July 1 2 3 4 5 6 7 8 9 10 11 12 13 14 15 16 17 18 19 20 21 22 23 24 25 26 27 28 29 30 31

■ Campus Prep/Staff Develop
☁ Bad Weather Day
■ CompDay
⚡ JH Graduation--May 22nd
⌈ Begin/End six weeks
● Holiday
* 1 p.m. Early Release for Holidays
⚡ HS Graduation--May 23rd

REAL ESTATE FOR SALE

FOR SALE Cottonwood Springs Ranch, Roberts County: 100 +/- acres with 3100 sq. ft. 2-story log home, oversized 2-car garage, 2 guest houses, ponds in front and back lawn, large multi-purpose barn w/steel cattle pens. Currently operated as Bed & Breakfast and party facility, or would be nice residence. Call Cliff Scott & Company at 663-3575, ask for Cal Ferguson. 4(8-2-07)B

FOR SALE - 904 Wilmeth, Spearman: 5,162 sq ft home with FIVE Bed, 3.5 Baths, Office, Exercise Rm, Bsmnt, CACH, & 3 Car Gar on 2 lots! It also has a lrg Utility Rm, Lrg Pantry, Granite Countertops, New Appliances, FP, and Tons of Storage. Call E-Properties, Shirley Howard-Broker/Owner, 806-886-6536. 4(8-16-07)B

FOR RENT/LEASE

OFFICE SPACE FOR RENT, SPEARMAN: Pittman-Shieldknight building - all sizes available. Call 659-5588 or 659-3399 for more information. TFN(01-27-05)B

FOR RENT: 2BR apartment, \$375.00 per month, water paid. Call Larry O'Neal at 580-772-5617. TFN(7-06-06)B

FOR RENT: 1BR efficiency apartment. Utilities paid. Call 659-2247. TFN(5-24-06)B

FOR RENT: 2BR, 1 B, large fenced yard, garage \$425 deposit, \$425/month. Call 940-631-0894. TFN(7-5-06)B

EMPLOYMENT

HELP WANTED: Experienced automotive technician wanted. Good working environment, paid holidays, paid vacation and health insurance. Chrysler experience helpful. GM & Chrysler Dealership. Call 1-800-692-4657, ask for Mike. TFN(7-26-07)B

HELP WANTED: Now accepting applications for an office manager. Apply in person, Prairie Motors, Hwy 207 South, Spearman. TFN(7-26-07)B

HELP WANTED: Hansford County Feedyard is looking to hire mature, dependable people for pen rider/cowboy and doctor positions. We would like to hire experienced people and we will consider experience towards compensation. We are also willing to train people with the right attitude and work ethic. We also offer excellent benefits and a performance bonus opportunity. Contact Matt at 806-733-5025 or 806-736-0064. 3(8-09-07)B

HELP WANTED: Now Hiring Multiple Positions at the Gruver Branch of Sunray Coop. Some will be temporary through fall harvest and some could lead to full time positions. Must be able to speak English and pass a drug test. Apply in person at 221 W. Hwy 15-Gruver. 2(8-16-07)B

HELP WANTED: Manager needed for apartment complex in Perryton. Must be honest and dependable. Fax resume to 817-732-7716 or call 817-732-1055. 4(8-16-07)B

See us for:
AUTO • HOME • CROP HAIL • FARM & RANCH • MULTIPER-IL • LIVESTOCK

INSURANCE
BORT AGENCY, INC.
510 Main St. • Gruver, TX
(806) 733-2456

Blankenship Real Estate
659-3052 - 670-3774

NEW LISTING - 3/2/1 brick home - central h/a, hardwood floors, large back yard with storage building. Low maintenance. Great location!

Crawford Addition - oversized detached 2-car garage, storm shelter

BRICK 3/1/1 - good carpet, new paint. Ready to move in! PRICE REDUCED!

BRICK UNDER CONTRACT

Eulalia Blankenship - Sales
Eschol Blankenship - Broker
NEW LISTINGS WANTED!

MARTIN & ASSOCIATES REALTY

Serving Hansford County for 14 years
Julie Martin: Broker - 659-2425

IN SPEARMAN

422 S Barkley - 3/1X - newly remodeled, extra lg. corner lot, new furnace, fixtures & more

721 Cottier Dr. - **SOLD** - facade, central air/heat

703 Collier - 3/1/1 investment property, subject to lease

11 Clover - 2/2/2 preferred location on circle drive. Call for more details. Call for more

UNDER CONTRACT

We'd Like Your Listing
FOR QUALITY & SERVICE CALL US TODAY!
Equal Housing Opportunity

HELP WANTED: Ochiltree Hospital District is accepting applications for a full-time LVN for our rural health clinic. Under the supervision of a physician and clinic manager, provides nursing care in a clinic environment. Assists with organizing a safe, clean setting for patients during their clinic visits. Utilizes appropriate equipment and resources. Must be a graduate of an accredited School of Vocational Nursing and a Licensed Vocational Nurse currently licensed by the State of Texas. Interested persons must complete an application and return to Human Resources at OGH, 3101 Garrett Drive, Perryton TX 79070. For further information, please contact Vickie at (806) 435-7224. EOE. 1(8-23-07)B

VEHICLES

FOR SALE: 97 Ford Explorer XLT White/Tan, Loaded, Leather. Good Condition. \$4200 OBO. 806-228-6885 TFN(7-26-07)B

FOR SALE: 1998 Grand Marquis LS. Loaded, leather, auto, cruise, tilt, PW/PL, power seats, coach roof, 65K - \$5995. Call 806-330-1220 or 659-3194. TFN(5-17-07)B

FOR SALE: 2002 Chevy Pickup - 4WD, 4-door, Crew Cab, electric windows/seats, shortbed, 135K miles. \$12,000 OBO. Call 659-3105, leave message. TFN(8-2-07)B

FOR SALE: Rear-engine dune buggy - Ford pinto motor, VW trans., needs work - some extra parts. Serious inquiries only - \$2000. Call 435-8862. 2(8-23-07)P

SERVICES

I'M MAD... at banks who don't give house loans because of bad credit, problems of new employment, I do. Call L.D. Kirk, Homeland Mortgages, (254) 947-4475. 1(8-23-07)P

MISC.

FOR SALE: Green sofa, over-sized chair w/Ottoman, Tables, Lamps, 3 Oak Bar Stools w/Backs. Call 659-3105, leave message. 2(8-16-07)B

SPEARMAN DAIRY - permitted for 3,600 hd. (1,400 milking), 320 acres operation, milking started as construction nears completion.

HANSFORD CO. - 315 acres, 2 pivots, cattle pens, good water, on pavement.

MOORE CO. - 1766 acres, fully developed with wells & sprinklers & really nice home on all-weather road, priced to sell!

SHERMAN CO. - permitted for 6,400 hd. (3,200 milking), 1260 acres, fully dev. with wells & sprinklers, brick home, pavement.

WILL DIVIDE. Adjoining three section are listed for sale also.

SHERMAN CO. - three choice sections, 2 homes, barn, fully dev. with wells & sprinklers, pavement. **WILL DIVIDE - ADJOINS PERMITTED 1260!**

HORSEMAN'S PLEASURE/CATTLEMAN'S DELIGHT - NW OF GRUVER - 80 acres +/-, nice 4,000 sq. ft. brick home, metal roof, fireplace, two car garage, ir.w ell 1/2 mile sprinkler, Quonset barn, pipe-rail pens, covered working area.

Choice milk processing and dairy sites available in Dallam, Hartley, Moore, Oldham, Sherman and Hutchinson Counties.

SEE OUR WEBSITE OR GIVE US A CALL!
www.scottlandcompany.com
Shawn Gillespie 806/922-5532
Ben G. Scott, Broker
1-800-333-9698 day/eve
1(8-23-07)

LOST & FOUND

LOST: Red Terrier/Miniature Collie mix female dog. Black with tan spots - one in shape of a heart, short tail, answers to Cheeky. If found, please call 806-659-2661. 2(8-16-07)NC

PUBLIC NOTICE

LEGAL NOTICE
Hansford County Commissioners' Court will receive bids until 4:00 on Friday, September 7, 2007 to install asphalt paving in the Gruver County Ag. Barn, and a separate bid to install asphalt pavement in both the Spearman and Gruver County Ag Barns. Bids should be submitted to the Hansford County Judge's office, 16 Northwest Court, Spearman, Texas 79081-2052.

Bids will be opened on Monday, September 10, 2007 during the Commissioners' Court meeting in the Law Library of the Hansford County Courthouse, Spearman, Texas. Meeting will begin at 10:00 a.m.

Hansford County reserves the right to accept or reject any or all bids.

Benny Wilson
Hansford County Judge
3(8-23-07)B

PUBLIC NOTICE

The Palo Duro River Authority of Texas will receive bids for a used dump truck, until 5:00 PM, September 7, 2007. Bids should be made with and without trade. Specifications are available at the P.D.R.A. office, 806-882-4401. The Board of Directors may accept or reject any and all bids. 2(8-23-07)B



Immediate Full-Time Openings at Hansford Hospital

Maintenance Personnel: experience a plus, but not required. Salary compensation with experience. Starting salary - \$10/hour for full-time employment.

Openings at Hansford Manor

CNA Class to begin on or around September 3, 2007.

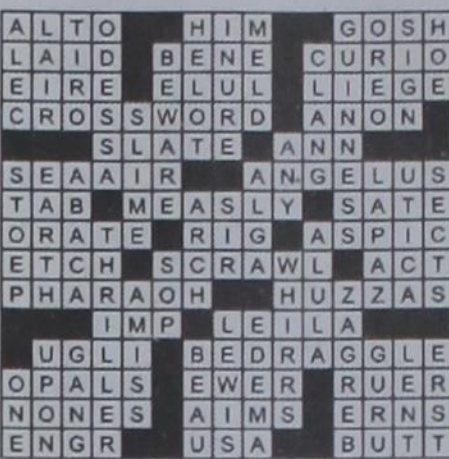
CNA's - full-time and part-time.

Housekeeping - full-time and part-time

Great working environment and staff, quality facility providing opportunities for professional growth. Great benefit package. Apply at 707 S. Roland, Spearman, TX or contact Jackie Nelson at 806-659-5841. Download application at www.hchd.net EEOE 2(8-23-07)B

Deadline Notice!

The deadline to submit news and advertising to the Hansford County Reporter-Statesman is Monday at 5 p.m. Items submitted after the deadline will be published at a later date, as time and space permit.



2	8	1	4	7	9	3	6	5
4	3	6	2	8	5	7	1	9
9	7	5	1	3	6	4	2	8
5	1	2	7	6	8	9	4	3
8	4	9	3	2	1	6	5	7
7	6	3	5	9	4	2	8	1
1	2	7	8	4	3	5	9	6
6	5	4	9	1	7	8	3	2
3	9	8	6	5	2	1	7	4

Alva Monument Co.
Formerly Liberal Monument & Memorial Company

New Location:
111 Tucker Road
Liberal, Kansas

North of the New Wal-mart

Serving Kansas, Oklahoma and Texas for 93 Years
(316) 624-4211 toll free - 888-654-9318



Operation & Maintenance Technician
Position 0700582

Northern Natural Gas Company, a subsidiary of MidAmerican Energy Holdings Company, is seeking an entry level Operation and Maintenance Technician for our Spearman, TX location. Technicians perform preventative maintenance on compressor station equipment; operate associated work equipment, power tools, hand tools and specialized instruments; comply with specifications, codes, safety standards and Northern Natural Gas operating procedures; and maintain records for required state, federal and company procedures and records.

All qualified candidates must possess a valid drivers license, high school diploma or equivalent education, strong verbal/written skills and computer knowledge utilizing Windows based programs. Candidates are subject to call-out 24/7 and possible extended workdays. Working conditions include exposure to hazardous materials, adverse weather, cramped spaces, heavy lifting and heights up to 50 ft.

We offer a competitive salary and benefits package. Visit our website at www.northernnaturalgas.com and apply online. No phone calls or personal visits, please. Northern Natural Gas is an Equal Opportunity Employer and subscribes to a drug-free/smoke-free work place.



P.O. Box 247
Spearman, TX 79081
Telephone 806-659-5565
Member FDIC

Planning to buy a home, but not sure if you can get an affordable mortgage?
Interest too high on your present mortgage?
Want to do business with a local bank?

We can help!



Come by First State Bank, Spearman.

Check out our competitive fixed and adjustable rate mortgages for terms up to 30 years.
We can work with you to find a mortgage that fits your needs and help you buy or refinance your home.
Contact Ginger Turner and find out more.

NOW HIRING IN SPEARMAN, TX!

STORE MANAGERS

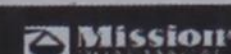
1 year mgmt. exp. in retail environment pref.

Apply at the store: Dollar General
723 W. 7th Street • Spearman, TX 79081
E-mail resume: jdavis@dollargeneral.com
Apply online: www.dollargeneral.com

DOLLAR GENERAL Jumpstart your retail career today!
Supports a Drug Free Workplace • Equal Opportunity Employer

STOP LEG CRAMPS BEFORE THEY STOP YOU.

Calcet's triple calcium formula is designed to help stop low calcium leg cramps. Just ask your pharmacist.



PERSONAL CHECKS ACCEPTED!

FREE DIRECTV 4 Room System!
FREE 4 MONTHS!
ALL 250 Channels + HBO, Cinemax & Showtime
HURRY, ASK HOW!
PKGS. STARTS \$29.99
FREE DVR / HD!
1-800-214-7110



WHEN DOES YOUR SUBSCRIPTION EXPIRE?

SCR1
06/07 EXPIRES
JOHN Q. PUBLIC
PO BOX 123
SPEARMAN TX 79081

Expiration dates are printed on the top of all mailing labels. Our readers can help keep the cost of subscriptions down by mailing in renewals in the appropriate month.

Thank you, Catherine Smith

THE HANSFORD COUNTY REPORTER-STATESMAN
213 Main Street • Spearman, TX 79081
Annual Subscription Rates
In Hansford County - \$30
Out of County - \$40

Classified Ad Rates & Deadlines

Classified ads are \$6.00 a week for 20 words or less, and 15¢ for every word over 20. The deadline to submit a classified ad is Tuesday at noon on the week of publication. Payment is expected at the time of ad placement. Classified ads will be billed monthly, with a \$1 billing fee added for each week the ad runs.

The Hansford County Reporter-Statesman
Physical Address - 310 Barkley St.; Spearman, TX 79081
Mailing Address - 213 Main St.; Spearman, TX 79081
Phone - (806) 659-3434 Fax - (806) 398-9080
reporter@spearmanreporter.com www.spearmanreporter.com



This column is being reprinted with permission from the August 16, 2007 edition of the Amarillo Globe-News. It was written by Jon Mark Beilue. Jon's column regularly appears Sunday, Wednesday and Friday in the Amarillo Globe-News. He can be reached at jon.beilue@amarillo.com or (806) 345-3318.

'In the Groove in Gruver'

Before the world of entertainment created the entourage, the public relations teams, the bodyguards, the security force with walkie-talkies, the marketers, the handlers and the accountants, there was this:

The Paramount Theater in New York City. Elvis Presley. Bayou Bob, and Rod Barkley from Gruver.

"Hey," Barkley asked. "Do you know where Elvis is?"

A janitor stopped pushing his broom long enough backstage to allow that he did. "He's right back over there," he said, and went back to sweeping the hardwood floor.

So Rod and his sidekick went to a lonely dressing room door and knocked.

"Come in," said the King, who wasn't quite the King just yet.

This was 1956, the year of "Heartbreak Hotel" and Elvis' first album. Rod Barkley had got from Gruver to Elvis' stage door by taking a chance whenever one cropped up, and being just naive enough to think about anything would work. That had been his attitude since getting back from the Korean War a few years earlier.

Rod always liked to sing, and basically taught himself the guitar on the Gruver farm. His singing act debuted at The Nat in Amarillo before Korea called. After he got back from the war, he tried farming, but as he said, "I was too footloose and fancy free."

He went to school at North Texas State, and met a songwriter named Wade Moore. He wrote for Roy Orbison, and Rod got to singing with them.



Gruver resident Rod Barkley parlayed a bit of luck into a short encounter with Elvis Presley in 1956 at the Paramount Theater in New York. Provided Photo

Orbison said there was a guy named Elvis Presley who was going to be part of the Big D Jamboree, a Dallas radio show, that they should go see.

Rod had never heard of Elvis, and some guy he met at the Jamboree had never heard of Rod. But that didn't stop him from offering him a job to work on a dude ranch in upstate New York. Why not, Rod thought.

Rod wasn't there long when he had an offer to be corral foreman. He didn't know a thing about it, but his only competition were cowboys from Long Island, so he got the job.

One of the dudes at the ranch was a TV program director from Springfield, Mass., who was impressed enough with Barkley's

singing and horse riding that he asked him to audition for a local TV show.

Before he knew it, he was the morning star of the "Rod Barkley Show," whose audience, he said, was housewives and preschool kids. Rod, the singin' Texan, was entertaining little buckaroos in Massachusetts.

It was an hour show that went into eight cities, including New York. With time to fill, he would mention various acts around the region.

That included Elvis, appearing soon at the Paramount in New York. One of the boys in the band, Bayou Bob, thought they ought to go themselves.

So they did, and the manager at the Paramount, appreciative of Rod plugging the show, gave them a pair of

tickets, which allowed them to bypass the long line out front at Broadway and 43rd. Could they meet Elvis, they asked? Can't help you there, they were told.

But what the heck, they were there early, and went backstage all the way to Elvis' door and knocked.

"I went in with the intention that I wasn't going to like Elvis - I don't know why," he said. "Maybe I thought he was just too big time. But we knocked on the door. He told us to come in. He was by himself and shook hands with us."

Elvis asked where they were from. Rod said he was from a small town in Texas, that no one knew where it was. Well, where, Elvis asked.

"I said Gruver," Barkley said. "He said, 'I know where that's at. I've done shows in Guyton and Berger.' He told us he'd driven a truck for a little while, and had been around there. Then he said that he thought that would be a good name for a song. 'In the Groove in Gruver.'"

"We talked for about 15 minutes, and then he asked us if we wanted to do something after the show. He said, 'I don't know a soul here. Y'all are my kind.' To me, he sounded lonely, like he was trapped by his fame."

The show was a scream-fest. Every time Elvis thrust a hip, or raised his hand, the 3,600 mostly females who

jammed the Paramount went nuts. The music was but a rumor.

Rod and Bayou Bob worked their way backstage after the concert, looking for Elvis so they could do up Manhattan right. But they were told that, indeed, Elvis had left the building.

Rod, too, left the Northeast about three years later to return to Gruver and the cattle business. He's 79 now and still sings. Bayou Bob is in a nursing home somewhere in Louisiana. As for Elvis Presley, no one is sure whatever became of him that night he slipped out of the Paramount.



Rod Barkley, during his days as the morning star of "The Rod Barkley Show" in the 1950s. Provided Photo

Focus On Life

Fifty years behind the lens has given Thomas a unique perspective on the world — and on how he wants to live in it. A lifetime of photographing exotic locations fed his need for freedom and purpose. That's why he'll love life at The Craig Methodist Retirement Community. Thomas travels less these days, but when he does, he knows a life of focus and fulfillment can be waiting for him.

At the Craig, he'll enjoy the security of a gated campus, prepared meals, light housekeeping, friends who share his values, and plenty of activities developed to foster his love of life.

If you're ready to sharpen life's focus — and discover the freedom The Craig can offer — call or stop by and we'll show you the picture-perfect lifestyle

352-7244
5500 W. 9th Ave. • Amarillo, Texas 79106

THE CRAIG
METHODIST RETIREMENT COMMUNITY
A member of Sears Methodist Retirement System, Inc.

Local Offices
Local People
Local Causes

\$13.5 Million invested in the Texas Panhandle since 2000
Over 100 miles of fiber buried

DEEP ROOTS

PTCI
Communication & Broadband Solutions

www.ptci.net 1-800-562-2556