

## WEATHER

Day	Hi	Lo	Precip
Thu	64	34	.00
Fri	76	37	.00
Sat	72	37	.00
Sun	71	36	.00
Mon	79	40	.00
Tue	67	50	.00
Wed	--	38	--
1992 Precip			1.72

# The Hansford County Reporter-Statesman

Serving Hansford County Since 1907

10 pages

VOL. 84, NO. 21

213 Main Spearman, Texas 50¢

THURSDAY, MARCH 19, 1992

City Lites	2
Spiritually Speaking	3
Revival	4
Reflections winners	5
Sports	6,7
Want Ads	9
Obituaries	10

145 animals bring \$122,373 . . .

## Auction ends livestock show

Two days of livestock showing and judging came to an end Saturday, March 14, with the Hansford County Junior Livestock Show Auction at the county barn in Gruver. The auction ended with 145 animals selling for \$122,373.

The auction was made up of the animals judged best out of a total of 245 steers, swine and lambs exhibited in the livestock show. The animals were displayed by the future farmers and cattlemen of Hansford County.

The young cattleman showing the Grand Champion steer was Brant Armes of Gruver. His 1,284-pound steer brought \$2,202.06 at the auction. It was purchased by Gruver Farm Supply.

Leslie Latta showed the Grand Champion lamb. She sold the lamb to Purina Mills - Gruver Ag Industries for \$1,021.20.

The Grand Champion swine was exhibited by Erin Derrington. She sold her pig for \$874.22 to Gruver State Bank.

Showmanship awards were made to the young exhibitors that showed the most poise in handling and showing their animals. The awards are split into age and animal categories. Each winner in each category received a belt buckle as a prize.

For steers Mandy Vernon was awarded the Junior Showmanship award and Ronda Renner received the Senior Showmanship award. Leah Jo Mackie received the Junior Showmanship award for sheep and Galen Slough received the Senior Showmanship award. For swine it was Amber Roberts taking the Junior Showmanship award and Sharlet Slough capturing the Senior Showmanship buckle.

Another category of animal outside the regular show was the Commercial Steer Contest. In this contest the young cattleman selects a steer and takes care of it. The steer is then taken to a processor, where the animal is weighed and then processed. The animal is judged on its weight live and after processing. The Grand Champion is de-

cidated based on the combined weight of the animal live and as a carcass.

The Grand Champion of this event was presented by Wylee Maupin. Maupin's animal was first in live weight and second to Ashley Brown's animal in carcass weight.

The Reserve Grand Champion was Brown. Her animal was third in the live weight, behind Wylee Maupin and Weslynn Maupin.

Ten teams of young farmers and cattlemen participated in a team judging contest as part of the livestock show. The Gruver FFA number 1 team finished third in the competitions. They were edged out by three points, by the first place team of Vega FFA #1 and second place team Hooker FFA. The winning score was 798 and Gruver's score was 795.

The Gruver FFA #1 team was led by Kenney Slough, who was high point individual for the contest. He scored 287 points.

Hansford County 4-H finished in sixth place in the competition. They were paced by Leah Jo Mackie. She acquired 280 individual points to finish third overall. The team was also helped by the Ronda Renner who earned 277 individual judging points to finish sixth overall.

The Spearman FFA #1 team finished ninth, followed by the Gruver FFA #2 team.

What follows is a complete listing of show exhibitors and how they finished, plus a listing of the auction animals and buyers. The show results are by category and the exhibitors are listed in order of their placing.

### HANSFORD COUNTY LIVESTOCK SHOW RESULTS

#### STEERS

Light Wt.: Bray Armes, Cody Brooks, Clayton Thompson, Briar Howell, Lana Martin, Traci Martin

Medium Light Wt.: Chris Stork, Kacey Smith, Jason Harnish, Traci Smith, Misty Pearson, Clint Sasser

Medium Wt.: Mandy Vernon, Grady Cline, Catrina Brooks, Reagan Renner, Heather Gammon, Carrie Burton

Light Heavy: Stacy Williams, Ashley Brown, Tommi Latta, Casey Smith, Kevin Williams, Cherylann Thompson

Medium Heavy: Brant Armes, Jill

Stedje, Branson Close, Randie Renner, Chad Stork, Bethany Cline

Heavy: Brad Holt, Ronda Renner, Leslie Latta, Bruce Howell, Lee Stedje, Jeremy Thomas

#### SWINE

Light Wt. Chester: Summer Riggins, Brandon Clyburn, Amanda Anderson, Britt Savage, Cinda Turner, Clay Scribner

Heavy Wt. Chester: Jami Ralston, Autumn Bateman, Melissa Baker, Camille Smith

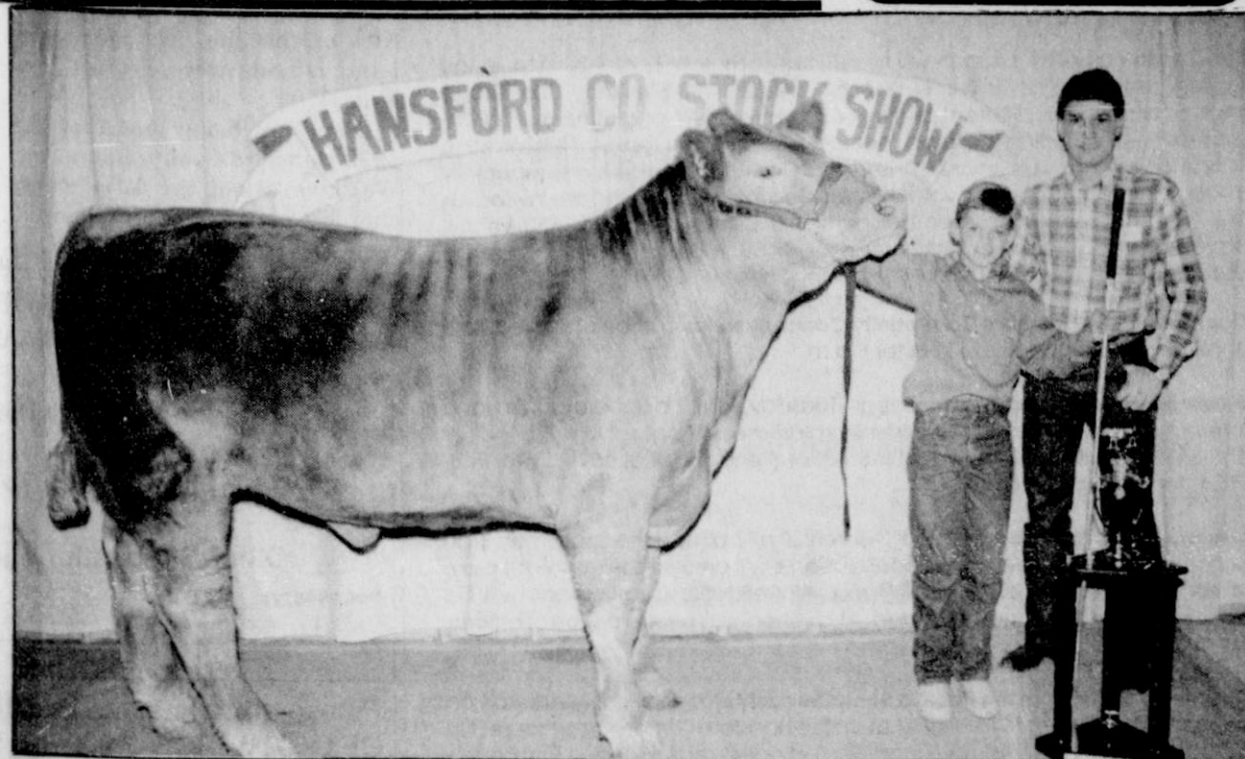
Light Wt. Duroc: Wynn Maupin, Travis Ferguson, Traci Martin, Brant Armes, Cameron Kunselman, Jenn Schnell, Krystle Deeds, Schane Schneider

Medium Wt. Duroc: Mark Eakin, Kim Venneman, Holly Venneman, Shea Lowe, Chelsea Nollner, Jeremy Mackie, Clint Bell, Wylee Maupin, Sammy Renteria

Heavy Wt. Duroc: Shanna DeArmond, Tashiana Schumann, Chad Stork, Joshua Schumann, Hart Derington, Lindsey Smith, Andy Jones, Isaias Arzate

Light Wt. Hamp: Crystal Christian, Brian Black, Kathy Slough, Rex Ralston.

See stock page 8



Brant Armes shows off his Grand Champion steer's form for buyer Mike Grotegut of Gruver Farm Supply.

## Fire truck total loss

The Spearman Volunteer Fire Department suffered the loss of one of its fire units during a CRP grass fire near Morse on Sunday, March 15.

Fire Chief Ron Antalek estimated replacement cost to be \$30,000, conservatively.

The fire was reported to Morse Fire Department at 3:15 p.m., and assistance was requested from both Spearman and Gruver fire departments. Before the fire could be controlled, additional units were requested from Stinnett and Fritch. The fire was finally extinguished shortly after 5 p.m., but only after firefighters, with the assistance of landowners with tractors and maintainers, were able to surround the wind-fanned blaze.

There were no deaths or injuries during the two-hour battle, according to Antalek.

The cause of the grass fire has not been determined. The cause of the fire truck loss was the result of grass trapped under the truck, ignited by the exhaust system, according to Antalek. The Spearman firefighters were unable to fight

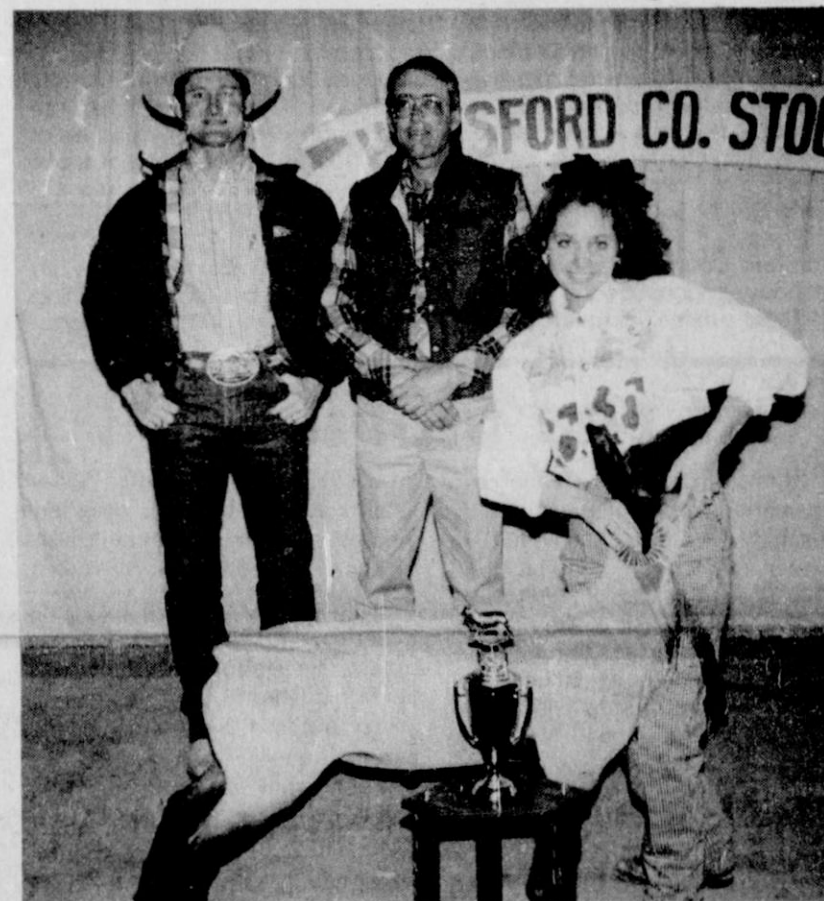
their truck fire because of failure of the pump when the rubber fuel line burned. One unit of the Gruver fire department came to the assistance of the stranded men from Spearman, but efforts to save the unit were too late.

Antalek said the Spearman unit is a complete loss for service, but some equipment may be salvaged.

The Spearman unit was not the only fire unit which caught fire because of grass trapped underneath. Two fire units from Gruver also caught fire under their chassis due to the tall grass. The Gruver fire units were able to extinguish the flames because they had not lost their pump capability, said Antalek.

The Spearman fire chief reported that fires under the chassis of the trucks is encountered quite frequently during CRP grass fires, but they are only a nuisance as long as the firefighters have a pump and water to fight the fire with. He said that provisions are being consid-

See truck page 10



Leslie Latta's Grand Champion lamb proved to be a little camera-shy. Standing behind are the lamb's buyers (l-r) Zurick Labrier and Kenneth Slough of Purina Mills - Gruver Ag Industries.

## GISD board prepares for 1992-93

by JoAnn Morton  
Editor

The Gruver Independent School District Board of Trustees spent much of its Wednesday, March 11 meeting making preparations for the 1992-93 school year.

Among agenda items for the school board were curriculum, the football program, textbooks and staff for next school year.

According to Tommy Cathey, superintendent, board members discussed possible changes in the curriculum concerning speech requirements for graduation, and driver's education. This particular agenda item was tabled, however, and no action was taken. The 1992-93 football budget was approved as submitted by head football coach Barry Haenisch.

Textbooks for next year were discussed. Cathey said that textbooks are selected by teachers, chosen from a list of five pre-approved textbooks for each subject taught. The GISD teachers make up the district's textbook committee, which recommends to the school board textbooks to be used. The committee's report was approved.

Following an executive session to discuss personnel matters, the board voted for the employment of personnel to include teachers, coaches, assistant coaches and secretaries. Recommendations for employment are given by the principal of each campus and by the superintendent.

The board also accepted one resignation, that of Todd Ward, assistant boys' basketball coach.

Traci Crawford was presented to the board by Sherry Johnson, high

school math teacher, as Gruver High School Student of the Month for March. Traci, a junior at GHS, is the daughter of Rhonda and Scott Crawford.

The board met with Pringle-

Morse Consolidated Independent School District representatives Bob Womble and Jack Weldon, concern-

ing tuition payments to GISD by

See GISD page 6

## Gruver city limits grow

by JoAnn Morton  
Editor

Following a public hearing attended by four city residents, the Gruver City Commission voted to annex Cooper Avenue and State Highway 278 into the city limits of Gruver at its Wednesday, March 11 meeting, according to city manager A.J. Ratliff.

Ratliff said the Gruver residents who attended the public hearing all expressed support for the annexation.

In other business, bids for materials to repair the city's wastewater

treatment plant were received, and the contract was awarded to A.D.S. Company of Amarillo in the amount of \$12,000. Ratliff said that repairs to the wastewater treatment plant will begin in June, with city employees doing the actual repair work.

City commission members also opened bids for sealcoating of city streets, with the bid awarded to Lewis Construction of Dumas in the amount of \$26,964.45. Ratliff said sealcoating is scheduled to be

See Gruver page 10

## Spearman man injured

by JoAnn Morton  
Editor

A Spearman man was injured in a one-vehicle accident Thursday, March 12 near Guymon, Okla., according to the Oklahoma Highway Patrol.

Scott A. Barkley, 34, of Spearman, sustained head, leg and trunk injuries as a result of the accident, which occurred at 6:10 p.m. Thursday. Location of the accident was four miles east and five miles south of Guymon on a county road in Texas County, said an OHP

spokeswoman.

According to the spokeswoman, Barkley was southbound in a 1985 Ford station wagon and apparently fell asleep. The vehicle left the roadway on the west side, traveled 790 feet and rolled end over end one time, coming to rest on its wheels.

Barkley was taken to Memorial Hospital of Texas County in Guymon, where he was listed in stable condition, said the spokeswoman.

See man page 8



Spearman Special Lynx traveled to Perryton Saturday, March 14 to participate in a local level Special Olympics track meet. The Spearman Special Lynx competed with teams from Perryton, Borger, Pampa, River Road in Amarillo, and Fritch. Each Olympian entered two events, and all came home with medals. Patrick Wyrick took second place in the softball throw, and Jeffrey Wyrick took second place in the standing long jump. In ball throw for distance competition, Sylvia Ortega and Thomas Jerman each first-place medals and Amanda Bowman brought home a second-place award. Winners in the 50 meter dash were Thomas Jerman, first place; Amanda Bowman, third place; and Joseph Sintas, third place. In the 100 meter dash, Patrick Wyrick took first place and Jeffrey Wyrick took third place. The Spearman Special Lynx are now planning to compete in the area meet, set for Friday, April 3 at West Texas State University in Canyon. Team members and their helpers include (l-r) teachers Linda Andrew and Dara Faries, Sylvia Ortega, Patrick Wyrick, Tommy Jerman, Jeffrey Wyrick, Amanda Bowman, Joseph Sintas and Kirk Frazier, manager of the Spearman ALCO store, which donated t-shirts for the Spearman Special Lynx. Cates Men & Boys Wear provided lettering for the t-shirts. Instructor Linda Andrew extended special thanks to the athletes' parents for support; to Lupe Renteria for helping to chaperone the team; to Dara Faries for patience and ideas; to Coach Smith for assistance at the field in Perryton; to Cary Fulce and Joe Jenkins for helping with preparations for the meet; and to Dr. Partney, Mr. Butler and the Spearman school board for support and transportation. The local meet in Perryton was sponsored by the Perryton Rotary Club.

## Hansford Happenings

The TAFFETAS, presented by the Amarillo Little Theatre, is scheduled for April 4 at 8 p.m. in the Spearman High School auditorium. Proceeds will benefit the Golden Spread Senior Citizens Center. Tickets are now on sale at the Golden Spread Center and are available from board members. Interested persons can call 659-3866 for delivery.

Saturday, March 21 has been designated as Lion's Club White Cane Day.

A defensive driving course is scheduled for Tuesday and Wednesday, March 24 and 25, from 6 to 10 p.m., each evening at the Hansford County Library.

Spearman La Leche League will meet Friday, March 20 at 9:30 a.m. in the nursery room of First United Methodist Church, 405 S. Haney. The Group informally discusses different phases of breastfeeding, and offers mother-to-mother help, including the latest medical research. The topic for this meeting is "Breastfeeding: Questions Mothers Ask." Expectant mothers are especially encouraged to attend. All women interested in breastfeeding are invited, as are their babies. Open membership in La Leche League is \$30 yearly, payable in four monthly installments of \$7.50. More information can be obtained by calling 659-2962.

Tickets for the upcoming Community Concerts series can be obtained from Janie Kunselman at 659-2631 after 5 p.m.

A new hospice training class will begin Tuesday, April 7 in Spearman. Anyone interested in taking the hospice training class should contact Kim Sherlock at 659-3539, Verna Lee Shirley at 659-5565, or Brenda Wall at 659-2535 or 733-2954, for more information.

Spearman PTA will meet Monday, March 23 at 7 p.m. in the Spearman High School auditorium. The high school students will present their one-act play, under the direction of Phyllis Kirkland. All Reflectors participants will be honored and their entries displayed. Also scheduled is the election of officers for next year.

A representative from the Pampa Social Security office will visit Spearman on Thursday, April 9 from 10 to 11:30 a.m. at the Hansford County Courthouse. No visits are scheduled for May or June. Social Security has a toll-free number, 1-800-772-1213, available to persons wishing to make inquiries or appointments.

Hansford County Activity Center will conduct a fund-raiser dance Saturday, March 21 from 9 p.m. to 1 a.m. The Vera Brothers Band will provide entertainment. Tickets are priced at \$15 per couple and \$10 per single. Tickets are available from any Activity Center board member or may be purchased at the Activity Center Monday, Wednesday or Friday between the hours of 6 and 10 p.m. Tickets will also be available at the door for \$20 per couple, \$15 per single.

Hansford County Activity Center has expanded its hours. New hours are Monday, Wednesday and Friday from 6 to 10 p.m. for racquetball, weightlifting and sauna room. Racquetball sign-up can also be done during these hours.

## At the movies . . .

Showing at the Lyric Theatre in Spearman from Friday, March 20 through Tuesday, March 24 on Screen 1 at 7:15 p.m. is "The Hand That Rocks The Cradle." Held over for the second week on Screen 2 at 7:30 p.m. is "Shining Through."

"The Hand That Rocks the Cradle" is a well-made example of the suspense genre, which depicts a couple with the perfect marriage, one cute kid and another on the way. Trouble, however, comes into their lives when Claire (Annabella Sciorra) is molested by her gynecologist.

Outraged, Michael (Matt McCoy) presses her to file charges, and, after several other women come forward to substantiate Claire's claims, the bad doctor kills

himself. The doctor's wife, Peyton (Rebecca De Mornay), pregnant herself, suffers a miscarriage, loses the baby and suffers a breakdown.

Claire and Michael then look for a nanny, and guess who applies (neatly concealing the identity of her late husband). Peyton is young, pretty and loves kids - she'd be the perfect nanny if she didn't have this obsession with revenge.

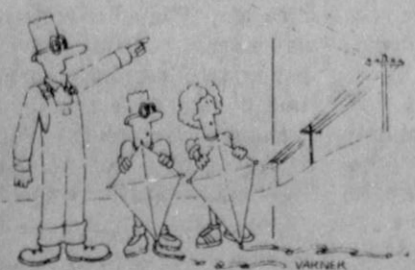
She is a woman with a one-track mind who thinks she's been wronged and is intent on destroying the life of her nemesis through a psychological and physical game of cat and mouse.

"The Hand That Rocks the Cradle" is rated R for violence, brief nudity and language.

## DANCE TO THE VERA BROTHERS

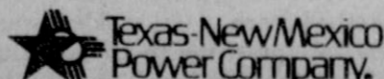
**Hansford County Activity Center Fund Raiser**  
**March 21, 1992**  
**9:00 P.M. - 1:00 A.M.**  
**\$15.00/Couple**  
**\$10.00./Single**  
 Tickets on Sale at Center or from any Board Member

### Line up the facts on power line safety



Give your children the right line on power line safety. You can help keep them safe by teaching them that it's dangerous to touch power lines with kite strings, tree limbs, ladders ... or anything. This same advice is good safety since for you too, especially if you're working in the yard with ladders, pruning tools or anything else that could come into contact with a power line.

For more information on power line safety, call or visit your local Texas-New Mexico Power Company office and ask for the free brochure, "Straight Talk about Electrical Safety."



## Chamber Chatter

by Cindy Blackman  
 Chamber Manager

The Chamber held its monthly board meeting at the chamber office on March 12. Once again we had a very good meeting.

The Chamber is going to kick-off a Clean-up campaign and we urge all residents and business owners to help us. As people drive through Spearman we want them to see a little of what the town has to offer as far as being a nice, clean place to live.

Plans are being made for the 1992 Hansford County Round Up. We have asked the local clubs, church groups and other organizations to work with us this year.

The rodeo will be May 30 & 31. We will have the Miss Hansford Pageant on June 1, and the carnival will be in town June 4 with the parade on June 6. Lots of different food booths and game booths will be set up Saturday downtown.

Mark your calendars for this week. It promises to be lots of fun with some different things being planned.

Don't forget your chamber membership dues for 1992. Remember the chamber operates on your membership investments.

There will be a Chamber of Commerce golf tournament - June 27.

### SPEARMAN CHAMBER OF COMMERCE SURVEY FOR SPEARMAN JULY 4TH CELEBRATION I would like:

- \_\_\_\_\_ Fireworks & Activities at Lake Palo Duro
- \_\_\_\_\_ Just Fireworks in Town
- \_\_\_\_\_ Other Suggestions (got down here or use another sheet if necessary)

Please complete and mail to: SPEARMAN CHAMBER OF COMMERCE, BOX 161, SPEARMAN, TX 79081, or bring by the Chamber Office at 211 MAIN, SPEARMAN

## City Lites

by Kelvin Knauf  
 Spearman City Manager

"You can pay me now, or pay me later." How often have we heard this saying when it comes time to make major repairs. The City often faces the "pay now or pay later" dilemma in maintaining our utility systems and public safety equipment. However, with the decrease in interest rates, the City has a real opportunity to take care of some major repair projects and pay for those projects now through Certificates of Obligation. Cities issue Certificates of Obligation to pay for projects that are too expensive to be included in the annual operating budget. In addition, Certificates provide money for major projects without forcing cities to use all their reserve funds.

The City of Spearman plans to issue \$1,000,000 in certificates which will be paid back, with interest, over the next fifteen years. In considering the sale of Certificates, the City Council reviewed a list of projects which need to be done over the next few years. These projects included improvements to our water and sewer system, solid waste disposal and public safety equipment.

The most significant project is the sewer plant, which is in dire need of repair. Since it was built almost twenty years ago, the plant has done an excellent job in treating sewage. Like any major mechanical operation, the plant is wearing out. Operating and maintenance costs show that we are riding on borrowed time before the plant completely breaks down. The estimated cost of repairing the sewer plant is about \$750,000. By fixing the plant now, the City will avoid any major collapse of the sewer plant and avoid a much greater cost later on.

In evaluating community needs, the City Council also considered public safety equipment. This year, one of the fire trucks will go out of certification. This means that we can no longer count that truck when it comes time to determine the key rate for the city (the key rate is determined by the State and is used by fire insurance companies to set the premiums on your house or business.) A new fire truck will cost about \$120,000. The City Council

decided that the best way to pay for the new fire truck is through certificates of obligation. This way, we can stretch out the payments for the fire truck over fifteen years rather than try to come up with the money all in one year.

Another major project is changing the way the City disposes of garbage. New environmental regulations make it impossible for us to continue operating our landfill. When the current pit is full, we will haul garbage to a regional landfill. The most economical method of hauling garbage to a regional landfill may be to build a transfer station. A transfer station is a location where garbage is stored temporarily. The garbage trucks empty their trash at the transfer station after picking it up from businesses and residents. The garbage is then transferred to a landfill for final disposal.

The construction of a transfer station is expensive and fees will increase. The need for a transfer station is directly a result of new regulations passed by the federal and state governments. The law requires that any landfill operating in September, 1993 install monitoring systems to detect underground contamination and the production of methane gas from landfills. Also, the new laws severely restrict the disposal of oil and hazardous materials. These are laws which the City cannot afford to follow. We cannot disobey the law and there is no indication that the regulations will change, so we are forced to come up with another way of garbage disposal. A transfer station is the most practical and economical alternative available. We estimate constructing a transfer station will cost more than \$150,000. The certificates of obligation will allow us to spread the construction costs over a fifteen year period rather than paying the entire cost in one year.

Another reason to issue certifi-

## Police Files

**Spearman Police Department**  
 Spearman police logged 39 calls for service March 9-15. Included in those calls was one auto theft, two reports of vandalism, one DUI, three reports of disorderly conduct, two reports of suspicious activity, one hit and run accident and two ambulance calls.

Eight miscellaneous calls for officers were received, and one traffic accident was investigated. Police were called to unlock three vehicles and provided two escorts. One follow-up investigation was logged, and animal control calls totaled 12.

On Wednesday, March 11 at 4:43 p.m., a vehicle was reported stolen from 412 Davis. The vehicle had last been seen traveling north.

Spearman, Gruver and Hansford County officials were immediately notified. Later, other Panhandle law enforcement agencies were notified.

Later in the evening, a possible suspect was identified, according to a police incident report.

The report stated that at 8:10 a.m. on Thursday, March 12, the suspect returned to Spearman with the vehicle. The complainant was contacted and checked his vehicle, finding no damage.

The suspect, a 31 year old man, was booked into jail and charged

with unauthorized use of a motorcycle.

On March 12, a 38 year old woman reported being harassed by a 44 year old man. According to the police department's incident report investigation is continuing into the report.

At approximately 7:20 a.m. on Friday, March 13, two windows or an announcers stand in the 500 block of East Third were discovered to have been broken out. Investigation is continuing, according to a police incident report.

Also on March 13, a vehicle was reported to have been damaged while parked in a parking lot. Investigation is continuing.

Investigation is also continuing into a report of a vandalism to a city owned wellhouse in the 400 block of East Eleventh Street. A gate had been forcibly opened and two windows broken out.

On Saturday, March 14 at 8:30 p.m., police were called to the scene of a minor two-vehicle accident in the Pizza Hut parking lot. Two vehicles collided while being backed up by their drivers.

Shortly after midnight on Sunday, March 15, a 45 year old man was arrested for DUI in the 300 block of South Highway 207.

## Letter to the editor

Editor:

I have lived in Hansford County for fifty nine years and Morse has been left out of most all things that go on in the county. If fact, the only time we see our county officials is at election time.

Morse Lions Club invited one county official to speak at an evening meeting and he went to Gruver, and they don't even have an evening club.

I went to a meeting in Spearman on the hospital issue and one of the speakers wasn't sure Morse was in Hansford County and Morse does not have a person on the hospital board.

I see that they have started a teen court at Spearman. No one from Morse was asked to serve on this.

I have noticed Spearman and Gruver both enjoy our quality students that go to high school at both places. As a whole, they do well in academics and sports. The business people seem to enjoy our dollars spent there. The county enjoys our tax money. Maybe we should do like Swinford wants to do with the panhandle and have our own county and keep our tax money.

Tom Dortch  
 Morse, Texas

### The Hansford County Reporter-Statesman "Serving All Of Hansford County"

USPS 509660  
 213 Main, Box 458, 659-3434  
 Spearman, TX 79081  
 Published Weekly at  
 213 Main, Spearman, Texas  
 Owned and Operated by:  
**Texas Independent Newspapers, Inc.**  
 15915 Alsace  
 San Antonio, TX 78232  
 (512) 545-1739

Second Class postage paid at Spearman, Texas 79081.

Any erroneous reflection upon the character of any person or firm appearing in these pages will be gladly and promptly corrected upon being brought to the attention of the management.

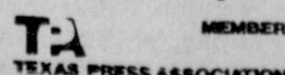
Publisher - Robert M. Hulett  
 Editor - JoAnn Morton  
 Bookkeeper - Sheila LaRochelle

Subscription Rate: Hansford County, \$19.95; out of county, \$24.95 annually.

Postmaster: Send address changes to Hansford County Reporter-Statesman, Box 458, Spearman, TX 79081.

The publisher reserves the right to revise or reject at its option any advertisement which it deems objectionable, either in subject or phraseology, or which it may deem detrimental to its business.

Advertising and Story Deadlines: Tuesday, 12:00 p.m.



## At The Lyric Theatre . . .

Friday, March 20 - Tuesday, March 24  
 Bargain Nights Mon. & Tue. All Seats \$3  
 Closed Wednesday & Thursday  
 Screen 1 - 7:30 p.m.  
 Screen 2 - 7:15 p.m.

**THE HAND THAT ROCKS THE CRADLE** R



113 Main, Spearman





The new inductees into the Spearman High School NHS.



The Spearman NHS officers for 1992-92 are Alfonso Martinez, president; Darian Hawkins, vice president; and Josie Holt, secretary-treasurer.

### Karen's Kozy Korner

by Karen Babitzke  
Extension Agent

Parents in the 1990s find themselves in a contradictory situation. More than at any time in history there is parenting information and support available to help people learn parenting skills. At the same time, evidence of poor parenting practices is all around.

The news media confronts the public daily with stories on child neglect and abuse, teen pregnancy, teen suicide, substance abuse and run-away youth. Some may wonder how parents in an educated society can be so far removed from providing healthy home environments for children.

Parents have always fallen back on the behavior of their own parents as models. It was thought that good parenting skills came with the baby - instinct, something we all came equipped with. Today's situation reminds us that this is not true. Parents must confront the reality too that their parents' behaviors were not necessarily appropriate for today's more democratic family.

Authoritarian (rigid, strict) practices that may have worked in the 1920s through the 1950s often result in rebellion, poor decision making skills and low self-esteem. Permissiveness, more often the case today, usually results in children feeling neglected, unloved, unable to accept authority in school or work, with low self-esteem.

A middle of the road democratic style, where parents set limits, give guidelines, practice flexibility within boundaries and give children choices results in more competent, capable children.

Many factors enter into any parenting style. Unconditional love is the prerequisite that could soften many inappropriate parenting behaviors. Kids are basically resilient and flexible. But parents have a responsibility to learn skills in relating to their children in positive, productive ways. Though we didn't like the negative behaviors we saw our parents practice, we tend to fall into that behavior unless we decide to change.

Ideally, before each of us becomes parents, we should receive help and support to learn important parenting skills such as understanding the growth and development of children, communicating and disciplining in a positive way, and enhancing the child's positive self-esteem.

Throughout Texas, parenting skill building classes are being planned and conducted. County Extension agents, schools, churches, health and human ser-

vice agencies are collaborating together to provide community-based programming efforts. The Partners for Parenting project now in its third year, funded by Texas Department of Health, provides parenting curricula and other resources, along with technical assistance, to encourage and support counties conducting parenting education activities. County Extension agents are working with others to provide materials, newsletters, classes, warm line information and other skill building information to parents.

Over 100,000 parents have attended parenting classes offered through county parenting coalitions in Texas over the past 3 years. Based on responses from parents who attended these educational programs

### Edna Hartman Chapter of National Honor Society...

## Spearman NHS chapter inducts new members

Induction of new members into the Edna Hartman Chapter of National Honor Society took place at 10 a.m. Wednesday, March 11 at Spearman High School.

New NHS members at Spearman High School are Elizabeth Pipkin, Alisha LaRochelle, Melissa Baker, Jami Ralston, Alma Martinez, Matt Archer, Karina Magana, Jason Swink, Carrie Pearson, Chad Gardiner, John Holt, Tim Dooley, Rosa Munoz and Sally Puentes.

NHS officers for 1991-92 are Alfonso Martinez, president; Josie Holt, secretary-treasurer; and Darian Hawkins, vice president.

Other NHS members are seniors Brian Beck, Monica Blackman, Mark Eakin, Joy Gafford, Carla Greene, Karla Kunselman, Mendy Lasater, Leslie Latta, Lori Lieb.

In 1990, a high percentage - 94 percent - attended most of the sessions offered in their programs. In any educational effort, the more classes parents attend, the more changes they will make in parenting practices. Parents who attended half or more of the classes changed three or more parenting practices. These practices included communicating and disciplining in a more positive way, providing encouragement to children and reinforcement of positive behavior.

Any parent who decides to can be a more competent parent, resulting in happier, healthier children. Classes are available. For more information, contact your local home economics county agent with the Texas Agricultural Extension Service.



Girl Scout, Brownie and Daisy troops from Spearman gathered at the Hansford County Courthouse Friday, March 13 for a flag ceremony marking the end of Girl Scout Week. This is the 80th anniversary of the beginning of the Girl Scouts of America.

James Macias, Dezi Pearson, Chad Riggins, Brandon Rex, Suzanne Sanders, Melodie Schumann, Maria Sumner, Chris Strawn and Kristi Williams.

Junior NHS members are Brad Butler, Amber Cates, Donette Cates, Mary Cook, Jennifer Covington, Wesley Dyess, Jeri Evans, Michelle Garnett, Chris Hornsby, Myrna Lopez, Holly Jarvis, Robert Needham, Laura Pearson, Cody Pipkin, Randie Renner, Sylvia Rosales, Sophia Salgado, Clint Townsen and Kimbre Townsen.

Membership into NHS is on the basis of scholarship, leadership, citizenship and service.

Each year the club sponsors a Christmas party for underprivileged families, which is funded by

the club's aluminum can-collecting project. The members also raise money through coke and candy machines at the high school and with a Valentine cookie sale. These funds provide scholarships for NHS

members, a trip to Amarillo in the fall, and a spring trip that is both educational and entertaining. This spring's trip will be to the Kirkpatrick Center and Lincoln Park Zoo in Oklahoma City, Okla.

## Spiritually Speaking

by Beverly Cook, Pastor  
Faith Lutheran Church and  
First Presbyterian Church

As a newcomer to this part of the country, I continue to be impressed by its grandeur, looking forward to every opportunity to discover more about it...the vast ocean swells of its caprock grasslands, the chiseled roughness and surprising range of color of its hidden canyons, the subtle variation of its seasonal moods.

And, as I meet you, its people, I'm finding the grandeur of the country's reflected in the magnitude and character of your souls...the vastness of your caring for each other, your rugged and creative ingenuity in dealing with tough times, the subtle richness of your personalities and interests.

This seems to me to be a place where people can grow up to and

unto and toward the grandeur of the Love of God. My spirit takes me to the 139th Psalm, and especially these excerpts from it:

Where can I go from thy Spirit?  
Or where can I flee from thy presence?

If I ascend to heaven, thou art there;

If I make my bed in Sheol, behold, thou art there.

If I take the wings of the dawn,  
If I dwell in the remotest part of the sea,

Even there thy hand will lead me,  
And thy right hand will lay hold of me.

Spiritually speaking, I'm finding Spearman, Texas, to be a wonderfully grand place to be and to live and to grow and to worship our Lord.

### Health briefs

**Surveys Of Hispanics' Health Knowledge** - Among Mexican-American children aged 4 to 8, girls are more likely than boys to know why cigarette smoking is harmful.

That is a finding of surveys seeking ways to promote good health habits in Hispanic families. The surveys of Mexican-American children and their families are being conducted by Baylor College of Medicine in Houston.

Among other findings:  
\* Girls are more likely to know the dangers of drinking alcohol.

\* Children believe drinking alcohol is more acceptable than smoking.

\* Many Hispanic mothers tend to believe their and their children's health is determined by fate.

### HENSON CHIROPRACTIC

410 S. Davis • Spearman, TX  
Call for Appointment • 659-5603

Office Hours: Mon, Wed, Fri - 9:00 to 5:00  
Tue, Thu - 9:00 to 11:30

# Whirlpool

## Cold Cash Back Sale!

Freezers

Refrigerators

Laundry

Laundry

Ranges

**Buddy FURNITURE CO.**  
723 W. 7th  
Spearman, Texas

The Whirlpool "Cold Cash Back" Sale Ends 4/1

Presentation by  
**Hansford County  
Hospital District**

**On Proposed \$4.7 Million  
Bond Issue for Nursing Home  
and Hospital Improvements**

**7:00 P.M.  
March 17 and 24  
First State Bank  
Hospitality Room**

**Have the Facts to  
Make an Informed Decision**

# Among the Neighbors

by Helen Fisher

Jerry Gibner, his daughter, Barbara, and his little granddaughter, Taylor, all of Albuquerque came the middle of last week to visit his parents, Pope and Margaret Gibner.

Jerry and Woodrow Gibner went to Amarillo on Thursday and brought Pope home from the hospital where he had been more than a week. Pope is delighted to be at home though he is not up to entering any marathons yet.

Their guests returned to Albuquerque on Saturday.

Ruth Hill enjoyed every minute of the few days that her daughter, Jean Gwen, spent with her last week. Jean still lives in Angel Fire.

The Palo Duro Players, an organization that has dispelled the myth that there is nothing to do in a small town, succeeded with another evening of fun and entertainment last Thursday evening, with the Lip Sync Contest.

Bruce Bailey, discussing the attraction on the local radio station, displayed poise and radio presence during the interview.

With "Nary" a scar or bruise, two travelers returned on Tuesday from an interesting 4000 mile trip to the northwest. Thelma Tindell and

Laura Jennings started by driving through New Mexico and Arizona. They went by the Grand Canyon which was a first for Thelma. Then through California and Oregon to Odessa, Washington which was their destination. Joyce taught there in 1945 and 1946 and was intensely flattered that many of her former students remembered and welcomed her, as did her 89 year old former landlady.

They returned by way of Idaho - in Lewiston, they visited Thelma's sister-in-law and some nieces whom she had not seen in 40 years. They came through Utah, Colorado, Kansas and Oklahoma - hold on - we missed Wyoming.

The last Sunday they drove from Rockspring, Wyoming to Byers, Colorado in very strong winds, snow, sleet, hail, rain and fog - all day and through that isolated country, there was no place to stop to wait out the weather.

Their trip was enjoyable and interesting, but they agree they saw no place they'd rather live than Spearman.

Don and Sharrol Hendricks are announcing the arrival of a daughter, Sharese Kay. She was born March 7, 1992 at Ochiltree General Hospital in Perryton, weighing 7 lbs., 7 ozs. and she was 19 inches long.

Her grandparents are Bill and Sharon Offerson, Canon City, Colorado; Rick Hendricks, Bell View, Washington, and Joyce Harvey of Houston.

Great-grandparents are Nina and Don Hendricks, Spearman and three other great-grandmothers - Daisy, Lance and Rose Moe, Canon City and Inez Lynch of Pueblo; one great-great-grandmother - Bertha Hendricks of Deming, N.M.

Don, the father of little Sharese, was unable to be on hand to welcome her as he is aboard the USS Independence enroute to the Philippines.

Her great-grandmother, Mrs. Lynch, accompanied by Beverly Trummell, came from Pueblo to greet her last week as did Jodie Hadley of Fritch.

A sad and touching article in the Amarillo newspaper March 13 and also on t.v. was that concerning Robert Lusby, deceased, of Canadian. His classmates were paying a tribute to him in a trip to Amarillo to the Cancer Clinic.

Beuna Lyon and Dorothy Lusby were grandmothers of this splendid youth.

Services were held in Canyon on March 13 for D.C. Gamble, 79. He attended school here and has often returned. Among other survivors is his sister, Elois Weber of Oregon, also formerly of Spearman.

Attending the services were Sonny, Billy and Bobby Nollner, relatives of his.

A former Spearman High School graduate, Karen Gibson Cargill, was honored recently when some of her former students submitted her name to be considered for inclusion in America's Whos Who of Teachers. They were profuse in their praise of her impact on their lives.

Karen was accepted and her qualifications are listed in the book which will be published this coming fall. She was selected as one of the top five.

Karen finished school here in 1966, received her degree from Texas Tech and began teaching first grade in Denver City and has taught there for the past 23 years.

Her husband, Ken, has an executive position with Shell Oil Company and their children, Jason and Jennifer, are active in school in Denver City.

Helen and Ray Gibson are the parents of Karen.

The more things change, the more they stay the same - for instance -

In following the radio report of the Hansford County Fat Stock Show and Sale last weekend (thanks to the local radio station) some of the notable changes since the Olden Days when your neighbor clerked the sales comes to mind.

The great increase in the variety of breeds - especially in the steer category; the better facilities; more professionals rather than all volunteers conducting it; the far more girls participating.

What hasn't changed? Well the bids are still jacked up on Grandpa; Dad's business connection is still influential in the bidding; the tension of the young people who have labored and worried and studied through the long months; their planning, dreaming, hoping, the cold early morning feeding - and definitely - the hurt of parting with the animal that has become a pet - the sorrow in the knowledge that it is headed for the butcher -

Sympathy is extended to Joyce Harper and the other family members in the loss of their husband and father, Carroll.

The Harpers have lived here 36 years and all four children graduated from school here. It was always a pleasure to visit with the jovial and congenial Carroll and he will be deeply missed.

Robert and Margaret Novak are heralds of approaching spring by

## United Methodist Church . . .

# Former pastor to preach revival

The Rev. Wesley Daniel and his wife Beth will lead the First United Methodist Church of Spearman in its annual revival Sunday, March 22 through Wednesday, March 25.

Services will be at 11 a.m. on Sunday, March 22, followed by a covered dish meal at noon and the evening service at 7 p.m. Services Monday through Wednesday will

be at noon and at 7 p.m.

Services were held in Canyon on March 13 for D.C. Gamble, 79. He attended school here and has often returned. Among other survivors is his sister, Elois Weber of Oregon, also formerly of Spearman.

Attending the services were Sonny, Billy and Bobby Nollner, relatives of his.

A former Spearman High School graduate, Karen Gibson Cargill, was honored recently when some of her former students submitted her name to be considered for inclusion in America's Whos Who of Teachers. They were profuse in their praise of her impact on their lives.

Karen was accepted and her qualifications are listed in the book which will be published this coming fall. She was selected as one of the top five.

Sara Dossett reports a pleasant three weeks she spent in the Rio Grande Valley in Harlingen and San Benito. She visited her son Buddy Dossett and his family. Her flights both ways were enjoyable and the valley was fresh, green and beautiful, but she is relaxed to be at home again.

In answer to inquiries for the address of Doris and Jack McKay after the report of the dreadful tragedy which took the lives of their son and daughter and two others - their address is 1082 Carson Road, Cherokee Shores, Mabank, Texas 75147.

The little granddaughter is still hospitalized in Arizona but is expected to survive. She will make her home with the McKays.

Virginia and John Trindle recently returned after helping their daughter Connie and Dr. Doug Steger move to Graham. The doctor moved his Optometry practice from Granbury.

They are well settled now and Abbe and Nathan, the grandchildren, have adjusted well to the change in school. Connie continues her slow improvement and is in good spirits. Their address is 1408 Preston Trail, Graham, Texas 76450.

Carla Harper has an interesting life and employment as she is associated with a well-known golf pro, Shirley Furlow. Carla, always an avid golfer, enjoys the traveling and tournaments. She lives in San Antonio.

Wasn't it exciting to watch the finals of the Southwest Conference Girls Basketball at Dallas this weekend - with all eyes following Spearman's own Krista Kirkland. She plays for Texas Tech. Among those at the tournament were her parents Phyllis and Jimmy Kirkland, Andy and Sheila Watley, Jackie and Bob Pearson with Laura.

Daniel retired from full-time preaching in May of 1990 after serving more than four decades in his Methodist ministry. A native of the

Eldest daughter Thel married James Lemons. The couple now lives in Washington, D.C., with Brett (11) and Jamie (7), where James is an Air Force Lieutenant



WESLEY AND BETH DANIEL

Texas Panhandle and himself the son of a Methodist minister, he preached his first sermon, "Killing Giants," one day after his ordination in 1946.

The pastor's training included education at McMurry State in Abilene and Southern Methodist University. It was at McMurry that he met his wife of 41 years. Over the years, the Daniels' pastorates have included Becton-Lakeview, Rankin Chapel, Union Bower, Quitaque, Lefors, Seagraves, Spearman, Littlefield and Plainview. The Daniels currently reside in Breckenridge on Lake Hubbard. Both continue to be active in local church activities and to lead area-wide revivals.

Daniel's ministry in Spearman spanned nine years, 1965-1974. Red-letter events in the local Methodist church during his pastorate included his starting the first annual missionary conference and lay witness missions. The rear of the sanctuary was remodeled and the stained glass windows added, the red hymnals and carillon bells donated, and a new choir loft and organ installed during his time here.

Wesley Daniel is perhaps best remembered for his family, however, as his wife taught in the Spearman school system and all six daughters were educated here. Three went on to marry Hansford County men.

Colonel working at the Pentagon. Lyn married Joey Woolley and has remained in Spearman. He works for Northern Natural Gas. Their children are Meg, a sixth grader, and Brady, a third grader. Bekee married Reagan Baker. The Bakers live in Spearman, where Reagan is self-employed in the fertilizer business and Bekee teaches junior high school. Their children are Khris, a senior, Kiki, a freshman, Laci, an eighth grader, and Lance, a first grader.

The Daniels' other daughters have remained in Texas. Debie Bryant works in securities in a Dallas bank. She and her husband Craig have a daughter, Carrie, who is a high school freshman. Kim Messamore and her husband Haldon live in Sudan with their children Andy and Jay. They work in farming. Dana ("Buzz") Daniel is a hair stylist in Lubbock.

The 1992 revival Wesley Daniel will lead beginning this Sunday has been described in advance as "the Best of Wes." The Methodist minister will speak on a variety of topics in his locally-famous folksy, storytelling style. Sermon titles range from "A Fresh Anointing" to "The Gospel According to Humpty Dumpty."

Beth Daniel, who has always been described as a vital part of the Daniel ministry, will speak at the Tuesday, March 14 noonday meal.

## Hospice volunteers plan training classes

The Hansford County Hospice met Monday, March 16 at Gruver State Bank. Members present included J.C. Harris, Carolyn Hicks, Eloise Renner, Garland Hopper, Edith Womble, Verna Lee Shirley, Brenda Wall, Kim Sherlock, Jack McWhirter, Dolly McWhirter, Opal Wallin, Sue Gerardy, Jo Linda Hutchison, Sandy Russell, Doris Wilde and Evi Meyer.

A business meeting was held and several items were discussed

including the new hospice training class which will begin April 7 in Spearman. Anyone who is interested in taking the hospice classes should contact Kim Sherlock (659-3539), Verna Lee Shirley (659-5565), or Brenda Wall (659-2535 or 733-2954).

The Sock-Hop will be on May 9. The next Hospice meeting will be April 20 in Spearman at the First State Bank Community room at 7:30 p.m.

You are invited to a Baby Shower honoring Vicki Meddock (Hand) Saturday, March 21st from 2:00 to 3:30 p.m. in the First State Bank Hospitality Room

### The family of Mozelle Sparks

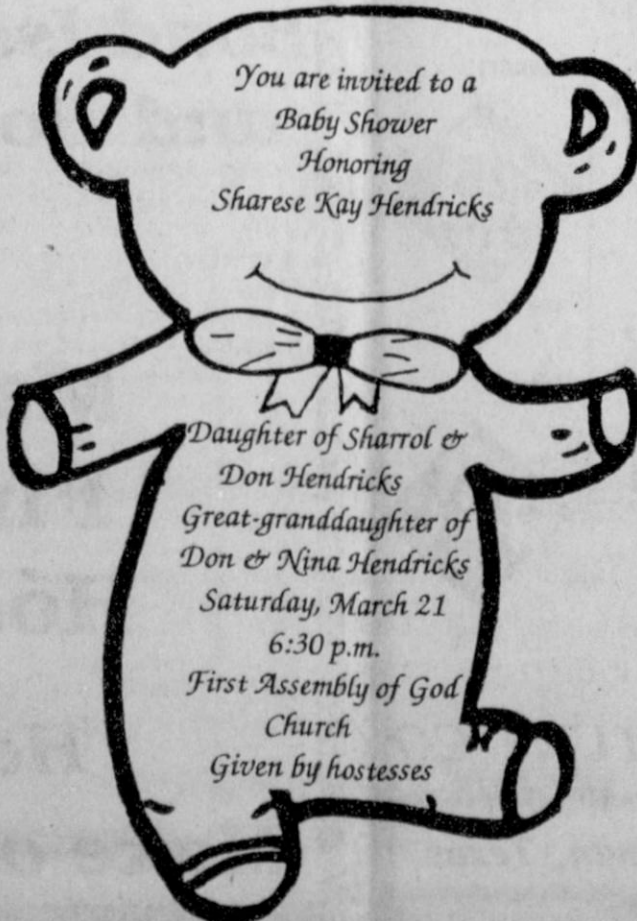


requests the honor of your presence at a Come & Go Reception in celebration of Mrs. Sparks' 80th Birthday

On Sunday, March 22, 1992 between the hours of 2:00 and 4:00 p.m. in the Fellowship Hall of the First Christian Church 29 S. Bernice, Spearman, Texas

Your presence is your gift. Gene & Beverly Sparks, Lester & Sheila Mundy, Ted Sparks

You are invited to a Bridal Shower honoring Crista Urban Saturday, March 28, 1992 2 - 3:30 p.m. First Christian Church Given by Hostesses



You are invited to a Baby Shower Honoring Sharese Kay Hendricks

Daughter of Sharrol & Don Hendricks Great-granddaughter of Don & Nina Hendricks Saturday, March 21 6:30 p.m. First Assembly of God Church Given by hostesses

Trinity Community Church of Spearman Invites you to listen to Pastor Dan Carter on CROSS WORDS a Radio Ministry Sunday Mornings, 9:05 a.m. on KRDF - FM Radio



These Gruver first place finishers in the Canadian UIL meet held in February are ready to lead the Gruver UIL competitors into the district meet next week. They are Kenny Slough, Traci Crawford, Benny McClenagan, Clay Gillispie and Anissa Ryan. Not pictured, but finishing first, was Luke Miller.

## PTA announces its District 8 winners

District 8, Texas Congress of Parents and Teachers recently announced district winners in the Reflections Contest for students. The Reflections program provides an opportunity for students to use their creative talents by expressing themselves through their own original works in the categories of literature, visual arts, photography, and music. Winners include Tom Kirk of Spearman, first place in 7-9 grade Literature; Anthony Vaberlos of Gruver, third place in 4-6 grade Visual Arts; Chad Scarborough of Spearman, second place in K-3 grade Photography; Brandon Clyburn of Spearman, second place in K-3 grade Music; Amber Ramon

of Spearman, second place in 4-6 grade Photography; Lacey Miesner of Spearman, second place in 4-6 grade Music; and Mikki Raper of Spearman, honorable mention in 10-12 grade Photography. A reception honoring these students and others who participated in the contest will be held April 6 at 7 p.m. at the Amarillo ISD Education Support Center. Students who participated in the PTA/EPA Poster Contest will also be honored. Poster contest winners will be announced at the reception. Parents, families, teachers and friends of the contest participants are invited to view the student entries at the reception.

## Disaster training set

The Ochiltree County Chapter of the American Red Cross will be hosting disaster training, with disaster coordinator Laura Blount from Amarillo as instructor. Introduction to Disaster will be conducted on April 10 from 7 p.m. to 10 p.m. and Mass Care on April 11 from 9 a.m. to 4 p.m. Both classes will be conducted at the Ochiltree County courthouse, 511 S. Main, Perryton. There is no charge for the courses. Persons from Ochiltree County and all surrounding counties are invited to attend. As a result of the Introduction to Disaster Services course, participants should know what disaster is and how it affects people and the community. The responsibility of the Red Cross and the governmental and nongovernmental agencies in alleviating the effects of a disaster. The Red Cross authority, poli-

cies, and regulations that apply to disaster relief operations. Know what assistance is available to disaster victims from the Red Cross and how the Red Cross provides it and the importance and fundamentals of chapter disaster preparedness planning. Introductions to Disaster Services is a prerequisite to any Red Cross disaster training. As a result of the Mass Care training, participants should be able to conduct a small mass feeding operations, administer a disaster shelter, use appropriate regulations and procedures, and demonstrate an understanding of Mass Care services. Participants are not required to sign up, but may do so by contacting Bonita Campbell at the Red Cross office by calling 435-8175 weekday mornings.

## Red Cross sets training

PERRYTON - The Ochiltree County Red Cross Chapter will be hosting an Instructor Candidates Training on April 3 from 1 to 5 p.m. and a Standard First Aid instructor course April 3 from 6 to 10 p.m. The Standard First Aid course will continue on April 4, from 8 a.m. to 5 p.m. The Instructor Candidates Training is a prerequisite to any of

the Red Cross instructor courses (Standard First Aid, CPR, Life-guard Training, or Water Safety) and the Standard First Aid instructor course will train a person to teach Standard First Aid as well as Adult CPR. For more information contact Bonita Campbell weekday mornings at 435-8175.

## Trail ride to benefit hospital

WHITE DEER - All Texas Panhandle residents are invited to participate in the St. Jude Children's Research Hospital Saddle Up horse trail ride, slated for April 11 at 9 a.m. at the 6666 Ranch north pasture. Pasture entrance is just south of the Borger city limits, off of Highway 207. Riders are needed for this event to raise funds for the world-famous research center in its battle against childhood cancer and other catastrophic childhood diseases. In the Saddle Up trail ride, riders ask people to sponsor them with a one-time donation to be collected before the ride date. Money must be turned in the day of the ride. A minimum of \$10 is needed to ride. Riders will receive a certificate for money collected. Those who raise \$30 or more will receive a certificate and a special St. Jude t-shirt. Those collecting \$75 or more will also receive a St. Jude tote bag. Lunch will be provided by Carson, Hutchinson and Roberts County 4-H Clubs for \$2. Proceeds from the meal will go to the 4-H clubs. For more information or to sponsor a rider, contact Sharon Williams at 883-2235.

## Gruver PTA honors Helen Shapley

The Gruver PTA held an associational meeting Monday, March 9 in the Gruver auditorium. President Tracy Bevell called the meeting to order at 7 p.m. Erik Pando and Keith Cassady conducted the presentation of colors. The devotional was presented by Jill Stedje. A plant was presented to past PTA president Helen Shapley. She had been president of the Gruver PTA during the years of 1956-58. After a short business meeting was conducted, UIL Modern Oratory Speech contestants coached by Pat Dawson performed for the audience. The contestants consisted of junior high school students Kiki Carthel, Jennifer Stevens, Kristal Blakley, Amy Gillispie and Amber Murrell.

## Club News

**GRUVER MUSIC CLUB**  
The Gruver Federated Music Club met March 10 in the Methodist Church sanctuary. President Ada Joyce Stedje called the meeting to order with club members reciting the collect for club women in unison. Vice President Trixie Holt read the minutes of the last meeting and called roll. Guests Chris Kauffman, Dana Chandler, Gloria and David Carlson and Marje Kanagy were introduced. Treasurer Delphine Etling gave the treasurer's report. Frances Murrell presented the Hymn of the Month. The program "Music in the Home" was introduced. Ada Joyce Stedje and Gloria Carlson accompanied by David

Carlson sang "It Is Well With My Soul" and "Children of the Heavenly Father." Faye Cluck and Jenny TeBeest gave recitations. Jean Zabel sang a song handed down to her by her mother, and Chris Kauffman performed "As Ever I Saw," "Is She Not Passing Fair?" "Now Sleeps the Chimson Petal" and "You'll Never Walk Alone." Frances Murrell played Scott Joplin's "A Breeze From Alabama" and "Maple Leaf Rag." Louise Etter read "Coming to Grips with Revised Body Shape" and also gave the meditation "Take Time." Refreshments were served by Marguerite Nelson and Anna Beth Woods.

## PSU alumni schedule banquet and reunion

GOODWELL, Okla. - The 1992 annual banquet and reunion of the PSU Association of Alumni and Friends will be at the Panhandle State University Student Union on the PSU campus, Saturday, April 11 at 7 p.m. Tickets are available from Lloyd Looper in Gruver, priced at \$10 per plate. Tickets will be sold in advance only, and will not be sold at the door. Class reunions for the 1942 and 1952 classes are scheduled for Saturday afternoon from 2 p.m. to banquet time in the student union cafeteria. The graduating class of 1992 will be the honored guests, and one lucky senior in attendance will be given a lifetime membership in the alumni association. Each senior may pick up a free ticket in the alumni office

in SL 207. All classes ending in "2," starting with the class of 1912 and proceeding through the class of 1992, will be recognized. Induction of Jack Begley and R. Lynn Gardner into the Alumni Ambassador Hall of Fame will be the highlight of the evening. Music will be provided by graduating senior Bobby Buhr. The No Man's Land Historical Museum will be open until 5 p.m. with a special display. Ticket orders by mail should be addressed to the Alumni Office, Panhandle State University, Box 430, Goodwell, Okla. 73939. Checks should be made payable to the Panhandle State Association. Tickets will be mailed within 24 hours of receipt of orders.

## Panhandle Crisis Center report

by Mary Frances Ellzey  
You readers familiar with us may skip this paragraph and start with the next one. The PCC offers services to men or women who are victims of domestic violence, whether verbal or physical. We give counseling, support, and information to these victims, plus a shelter to those who feel themselves to be in danger at home. These services are free of charge. If you want information only, call us at the office from 9 a.m. to 5 p.m. We are available for help at any time, 24 hours a day. Our number is 435-5008. For those of you who must call long distance, we have a toll-free number: 1-800-753-5308.

You warm hearted people out there in the community have made a splendid response to our needs! First, the Serendipity Club and the Trump Club held showers for us which provided personal care and household products. What a boon! Remember our request for benevolent parties to adopt a room at the Shelter? Well, the employees of the Senior Village Nursing Home have adopted a bedroom! Any person or any group of persons may adopt another room. If you are interested, please call Debbie Sanford at the Crisis Center. Debbie is also available for speaking to groups of teens (boys or girls) and/or adults. Recently she ad-

## On The Go With Joy

by Joy Henderson

I could tell at the beginning of this week, that I was not going to be terribly inspired to do a chit-chat column. I could also tell that on the second day, I was in trouble - big trouble. I still could not come up with a topic of conversation; basketball season was over; the livestock show was over.

So I consulted my friend Grace, otherwise known as Amazing Grace. Amazing Grace sometimes writes a joke or two and that like most all of us writers, she steals. Last time she wrote, she told me about the farmer who had two horses but couldn't tell them apart.

He lopped the tail of one but it grew out. He tried putting a bell on one horse but it fell off and he still couldn't tell them apart. Then he decided to measure the horses to see if one might be taller than the other. And sure enough - the black horse was six inches taller than the white horse.

She sent another story about two hunters arguing about tracks in a field. One reckoned as how they were deer tracks and the other figured they looked more like tracks made by buffalo. While they were standing there arguing, a train ran over them.

Well, while my brain is trying to figure that one out, I'll report on some of our visitors this past weekend. Mike and Pat Burnam were seen during our livestock show. After they left Gruver, we did not know if they had returned home to Cordell, Okla., or if they took a side trip to visit with kids and grandkids.

In addition to the visits with Paula and David and Judith Tarbet of Clovis, N.M., Bob and Connie Burgoon had as guests Bill and Susan Burgoon and their sons Reese and Riley from Borger. Now, you talk about having two good-looking grandkids, Bob and Connie are blessed. Plus another grandson Jared and granddaughter Kayla Ann, whom we are all anxious to meet.

Other grandchildren enjoying visits from grandparents were J.D., Jared, Crystal and Zac Christian. The Tweedys, from Colorado, are parents of Rhonda Christian and they came down to help cheer Crystal and Jared on as they showed some good-looking pigs at the stock

show. I imagine there were a lot of others visiting the stock show and watching relatives and their animals perform.

Guests from Amarillo and Texhoma were Velma Renner and Madeline Harland, who are visiting in the homes of B.J. and Glenda Renner and Weldon and Elene Green.

Grandmother Anna Beth Woods has enjoyed having Rebecca Echols, who is the daughter of Frances (Woods) Echols.

Also, we had Bennett Hains in the home of Del and Barbara Cluck, Pam Evans in the home of Ted and Louise Evans. Former resident of Gruver, Crystal French of Dalhart, visited her grandparents Harvey and Phyllis Atwood.

Others in the Gruver scene were Cindy Mosteller of Richardson, Texas, guest of the Ralph Mireles; and Phyllis Tolle of Broken Arrow, Okla., and Pamela Hookham of Bixby, Okla., were guests of the True Leathermans. Some of our college students had a quick visit with home folks. Included were Kristi King and Dan McCloy, who is attending school in Alva.

Robin (Karlin) Castillo with daughter Cassie Marie caught a ride to Amarillo where Dixie met them and brought them to Gruver for a few days visit. Danny and Harletta Carthel and family entertained guests this past week-end. I am presuming it was Danny's brother, etc. All I know is that a mighty cute child was with them. I always notice the cute kids.

Well, the Bobby Hicks and Stan Seagler families all shared birthdays together at Bobby and Carolyn's home. Birthday honorees were R.L. Ballard, Susan Hicks, Mitzi Moore, Trent Seagler and Melissa Ballard. That made for a big cake and probably lots of candles. Those enjoying the party were Bobby and Carolyn Hicks, Bobby Dale from Houston, Susan (Hicks) Lancaster and Amanda from Amarillo, Mr. and Mrs. Melvin Hicks of Hale Center. Others from Hale Center were Roger and Linda Mahagan, Courtney, Ashlei and friend Abbey Rambo. Those from Springfield, Colo., were Mr. and Mrs. R.L. Ballard, Wayne Ballard and Melissa, Mitzi Moore and children Cody and Phalysha. Those from Gruver were Stan and Sharon Seagler, Ty, Troy and Trent Seagler. An additional guest was Kimberly Bivins of Canadian, visiting in the Seagler home.

Good news for Jerry and Judy Virden, who would like to announce the arrival of a new grandson. Quentin Todd Virden arrived on March 12th, 1992, weighing 6 lbs. 5 oz. Proud parents are Kenny and Rhea Virden of Amarillo. Proud great-grandmother is Mary Virden of Gruver.

**COUPON**  
**BUY ONE MEAL GET ONE FREE**  
Saturday, Monday, & Tuesday Night  
Not for Large Parties  
Closed on Sunday Nights  
**CASA ALVAREZ**  
#819 Hwy. 207 South Spearman 659-3422  
GOOD THROUGH TUESDAY MARCH 31

**THANK YOU**

We would like to express our appreciation for all the food, flowers, cards and expressions of concern we have received since Tommy died. The love and support you have shown us has been overwhelming. Thanks to you all.

Carla, Kathryn,  
Garrett & Julie Gumfory  
Gary, Sandra,  
Amy & Doug Gumfory  
Carl & Peggy Archer  
Perry & Mary Dixon

\*\*\*\*\*CUSTOM UPHOLSTERY\*\*\*\*\*  
Home and Office Furniture  
Custom Made Seat Covers for Pickups, Trucks, and Tractor Seats  
Coverlay Plastic Dash Covers - Like the Original  
Coverlay Replacement Door Panels - At Half The Cost of New  
Nifty Molded Carpets and Rubber Floor Mats  
Jeep Tops and Accessories  
Plastic Marine Fittings and Ready Made Boat Covers by Bimini  
Hundreds of Fabric and Vinyl Samples to Choose From  
CALL 806-733-5235 or VISIT  
**TEBEEST UPHOLSTERY** - 304 Main (rear door), Gruver, TX

**Casa De Boutique**  
Perm Special March 10-31  
\$25.00 (with some restrictions)  
Call Francis Houghton  
733-2994  
614 Cator • Gruver, Texas

# Around the track

**Gruver Girls-Varsity Sunray meet**  
Took 5th place-50 pts.  
3200m: Cora Meyer, 2nd, 13:26.61; Brendy Brown, 5th, 13:48.69  
400m Relay: Wendy Rodriguez, Monica Ward, Shanna Jarvis, Julie Meyer, 6th, 55.41  
100m Hurdles: Janelle Haefner, 2nd, 18.07  
800m Relay: Wendy Rodriguez, Monica Ward, Julie Meyer, Janelle Haefner, 4th, 1:55.30  
1600m Run: Brendy Brown, 4th, 6:23.46  
1600m Relay: Kasey Davis, Wendy Rodriguez, Monica Ward, Julie Meyer, 4th, 4:33.25  
High Jump: Mika McLain, 1st, 5'2" (ties school record)  
Shot Put: Anissa Ryan, 7th, 29' 29" 7"

**Gruver Boys-JV Sunray meet**  
Finished 5th-34pts.  
400m Relay: Gruver, 3rd, 49.80  
400m Dash: Oliva, 6th, 59.80  
Shot Put: Oliva, 1st, 39' 10.75"  
Discus: Heath, 6th, 79'9"  
1600m Relay: Gruver, 5th, 4:09.16  
High Jump: Wright, 3rd, 5'4"

**Gruver Boys-Varsity Sunray meet**  
Finished 5th-57 pts.  
800m Run: McCloy, 1st, 2:06.66  
100m Dash: Villegas, 2nd, 11:52  
400m Relay: Gruver, 5th, 46.51  
110m Hurdles: S. Pool, 5th, 17.37  
400m Dash: Lopez, 2nd, 53.44  
Pole Vault: S. Pool, 1st, 12'0"  
1600m Relay: Gruver, 5th, 3:42.32  
Long Jump: Lopez, 6th, 17;10"  
Triple Jump: Pool, 3rd, 38'1/4"; Lopez, 5th, 36'3/4"

## School menu

**GRUVER ISD MARCH 23-27 BREAKFAST**  
Monday - oatmeal, cinnamon toast, juice, milk  
Tuesday - toast, peanut butter & jelly, fruit, milk  
Wednesday - muffins, fruit, milk  
Thursday - donuts, fruit, milk  
Friday - cinnamon rolls, fruit, milk  
Menu subject to change due to deliveries.

**LUNCH**  
Monday - chicken & gravy, noodles, vegetables, cobbler, biscuits, milk  
Tuesday - nachos with meat, beans, fruit, corn bread, milk  
Wednesday - steak fingers, mashed potatoes with gravy, vegetables, cake, hot rolls, milk  
Thursday - western burgers, corn, tossed salad, jello, milk  
Friday - chili cheese dogs, french fries, fruit, milk  
Salad bar Monday, Wednesday and Thursday only



The contemporary division of the Palo Duro Players' lip sync contest was won by the group "Good Ole Boys and a Babe," who lip-synced "Shameless" by Garth Brooks. Other top lip-syners in this category were "4th Avenue" and the "Surfin' Soviets."

Gruver's next track meet will be March 21, Friona



This duo won the "oldies" category of the Palo Duro Players' lip sync contest. They are Brandon and Texana Clyburn, who lip-synced a Sonny and Cher classic, "I Got You Babe." Other top finishers were "The Angels" and "The Parties."

**MANURE**  
CUSTOM SPREADING AT REASONABLE PRICES  
ASK FOR RICK SANDER  
SPEARMAN CATTLE FEEDERS  
659-2577

## Golfers open season

The Gruver golf teams began their tune up tournaments at Shamrock March 9 and 10 in preparation for the district tournament. The girls got off to the a fast start with Kim Boone leading her team with a first place medal finish. She shot a tournament low score of 87 to lead the team to a fourth place finish. Following Boone were Andee

Salmans with a 125, Amy Mounts with a 126 and Jana McCloy with a 129. This gave them a fourth place total of 467.

The boys did not fare as well in their Tuesday tournament. Tek Ferguson led the team with a score of 98. He was followed by Roma Tominson with a 99, Will Etheredge with a 100, Andy Jones with a 111 and Grant Odom with a 112.

Playing as singles for the Gruver boys were Kyle Deeds and Jace Dawson. Deeds shot a 101 and Dawson shot a 112.

GISD from page 1

students who reside outside district boundaries. The board had previously set a tuition figure at \$1,000 per school year. In a related move, the board had its first reading of a local board policy regarding the charging of tuition for out-of-district students.

Property insurance for the school district was renewed with Gruver Insurance Agency for a one year period.

In a review of the 1991-92 basketball season, school board members met with girls' head coach Steve Myatt and were very complimentary of the girls' season, coaches and team. The board offered congratulations to Myatt on his girls' team, which advanced to the regional tournament after winning the area title.

Cathey said that the board will meet with the boy's head basket-

ball coach at next month's meeting. Corky Chapman was appointed to be election judge for the May 2 general election, and Norma Swink was appointed alternate judge. Margaret Fry was named absentee clerk for early voting, said Cathey.

The board discussed the cafeteria collection procedure and decided to make collection of lunch money a function of the cafeteria staff for the elementary level, removing the responsibility for collection from the elementary teachers. Cathey said that up to five charges in the school cafeteria will be allowed next year. In his superintendent's report to the board, Cathey explained that accreditation visits in the future will be based on site-based decision making techniques, a subject that GISD has already begun to address.

High school principal Barry Haenisch and elementary principal Bob Burgoon are to write a technology plan for the district, involving staff development training to go along with classroom computers, said Cathey. He said if the local technology plan is accepted by the state, funding will be available to GISD to help pay for implementation of the plan. Laura Blessingame, junior high principal, is in charge of the committee which will develop the plan, said Cathey.

Gruver school board members cast ballots for two directors for Region XVI Education Service Center, said Cathey.

The board voted to authorize payment of claims totaling \$87,214.87 in its final agenda item.

SPECIALS GOOD WHILE SUPPLIES LAST. PRICES EFFECTIVE MARCH 19-25, 1992  
305 W. KENNETH, SPEARMAN 101 MAIN, GRUVER

**ALLSUP'S**  
MONEY ORDERS 29¢ WE ACCEPT FOOD STAMPS AND MANUFACTURERS' COUPONS  
FAMOUS BURRITOS BUY ONE GET ONE

**FREE**  
SAUSAGE, EGG & BISCUIT EACH 89¢

COOKED FRESH 24 HRS. A DAY	<b>HOT FOODS MENU</b>	AVAILABLE AT ALL ALLSUP'S LOCATIONS
BARBECUE BEEF SANDWICH	99¢	9 PIECE BOX CHICKEN \$5.99
BARBECUE PORK RIBS (LB.)	\$3.99	BEEF & CHEESE CHIRMICHANGA (MEAT)
BARBECUE WHOLE CHICKEN	\$3.99	CORN DOG 69¢
ALLSUP'S BURRITO	79¢	DELICIOUS HAMBURGER 59¢
BREAKFAST BURRITO	99¢	WILSON HOT LINKS 99¢
BURRITO BEEF & SALSA	\$1.19	SAUSAGE ON A STICK \$1.39
DELICIOUS CHEESEBURGER	79¢	SAUSAGE & BISCUIT 79¢
CHICKEN FRIED STEAK	\$1.59	SAUSAGE, EGG & BISCUIT \$1.09
3 COUNT CHICKEN STRIPS	\$1.49	SAUTEYEA SAUSAGE 99¢
W/POTATO WEDGES/CHICKEN (2 PCS) BISCUIT	\$1.99	4 COUNT STEAK FINGERS \$1.00

CALL-IN ORDERS WELCOME CHECK OUR WEEKLY SPECIALS

SHURFINE CHUNK STYLE OR GRAVY **DOG FOOD** 25 LB. BAG \$4.99

**CORN KING FRANKS** 12 OZ. PKG. 59¢

ALL TYPES **PEPSI-COLA** 12 PACK-12 OZ. CANS \$3.59

SHURFINE **MACARONI & CHEESE** 7.25 OZ. BOXES 5 \$1

SHURFINE **SUGAR** 4 LB. BAG \$1.49

OCEAN SPRAY JUICE COCKTAIL VARIETY OF FLAVORS 48 OZ. BOTTLE \$1.89	SHURFINE CUT GREEN BEANS OR WHOLE KERNEL CORN 16 OZ. CAN 3/99¢	KLEENEX FACIAL TISSUES 175 COUNT 2-PLY \$1.19
NICE N SOFT BATHROOM TISSUE 4 ROLL PACK 99¢	CARNATION HOT COCOA MIX 10 PACK BOX 99¢	SHURFINE 2-PLY PAPER TOWELS 1 ROLL 69¢

**Come Join Us At The S & S Tri-State High School Rodeo Sunday, March 22**  
Performances at 10 a.m., 3 & 4 p.m. At the Oscar Archer Rodeo Arena

**Boys' Events:** Calf Roping, Ribbon Roping, Saddle Broncs, Barebacks, Bull Riding, Steer Wrestling

**Girls' Events:** Barrel Racing, Pole Bending, Goat Tying, Break-Away Roping

Supporting Hansford County Youth **CAPROCK FEEDERS #2**

**OPENING SOON!**  
**Palo Duro Supper Club**  
Cafe dining 5:00a.m. - 10:00 p.m.  
Club 4:00 p.m. - 12:00 p.m.  
Annual Memberships available for Club  
Call 659 -2232 for more information  
**PALO DURO SUPPER CLUB**  
Highway 207

## SHS golf teams host tournament

The Spearman high school golf teams took advantage of great weather and home course knowledge to put themselves on track for the regional tournament as they hosted the second district tournament on Monday, March 16.

The Spearman boys A team took first place in district by winning the tournament held in Borger the previous Monday. The girls A team was in third place after that tournament.

The Spearman boys A team increased its hold on the number one spot in district by winning the tournament with a combined score of 328. The girls team took over second place in the district race with a second place finish in this tournament. Their score was 446.

The Spearman A boys team was led to victory on the Hansford County Golf Course by Justin Boyd, who shot a 78. This score was the second lowest score of the tournament.

Following Boyd for the Lynx A team was Toby Thompson with an 83. The rest of the team scored as follows: Cass Lasater (81), Darian Hawkins (86) and Chris Jenkins (92).

The Lynxettes A team took second in their home tournament and moved over Sunday by eight points to take over second place in the district race. The girls A team was led by Rainey Whittington. She shot a 102.

Following Whittington was Kara Faries with a 109. The rest of the team and their scores were as follows: Tracy Martin (118), Molly Blackman (117) and Tracy Tigrett (126).

Spearman had two B teams in the tournament as well. The B team boys consisted of Robert Needham (107), Shane Schneider (109), Jason Swink (105), Robert Womble (105) and Brady Reed (93).

The girls B team was made up of Lori Lieb (120), Sara Sanders (109), Tommi Latta (139) and Joni Lute (117).

The Spearman teams' next district tournament will be at Stratford on Monday, March 23.

### School menu

#### SPEARMAN ISD MARCH 23-27

**Monday** - lasagne, fried okra, sliced beets, fruit, cake, milk

**Tuesday** - chicken patty, mashed potatoes, gravy, green beans, hot rolls, butter, fruit, milk

**Wednesday** - beef enchiladas (high school), enchilada casserole (elementary), pinto beans, lettuce-tomato salad, Spanish rice, pineapple tidbits, milk

**Thursday** - beef stroganoff over noodles, sweet peas, yeast batter bread, butter, fruit, milk

**Friday** - cheeseburger, french fries, lettuce, tomato, pickle, onion, cookie, milk

#### PRINGLE-MORSE CISD MARCH 16-20 BREAKFAST

**Monday** - cereal, toast, apple juice, milk

**Tuesday** - muffins, toast, orange juice, milk

**Wednesday** - pancakes, sausage, grape juice, milk

**Thursday** - honeybuns, cheese toast, apple juice, milk

**Friday** - bacon & eggs, toast, orange juice, milk

#### LUNCH

**Monday** - chicken enchiladas, pinto beans, Spanish rice, salad, corn bread, no bake cookies, milk

**Tuesday** - Salisbury steak, potatoes, gravy, broccoli & cheese, salad, frozen peaches, milk

**Wednesday** - hamburger, trimmings, fries, cinnamon rolls, milk

**Thursday** - ham, macaroni & cheese, green beans, salad, rolls, fruit, milk

**Friday** - grilled cheese sandwich, stew, fruit, blond brownies, milk

16.56; Suzanne Sanders, 5th, 17.65

**400m Dash:** Mary Cook, 1st, 64.61; Shannon Holton, 4th, 70.1

**300m Hurdles:** Joy Gafford, 1st, 50.56

**4x400 Relay:** Mary Cook, Sonya Nitschke, Shannon Holton, Joy Gafford, 2nd, 4:23.9



These five Boy Scouts proudly display the canned goods they, along with 10 other Scouts, collected for the needy last week. They are (l-r) Jake Coates, Wayne McCubbin, Andrew Cummings, David Sharp and Chris Cummings. The canned goods are stored in the basement of the Hansford County Courthouse and will be distributed by Hansford County Judge Jim Brown.

## Girls doubles team wins tourney

The Spearman girls doubles team of Tamri and Kimbre Townsen remained undefeated in match play as they won all four of their matches to win the Hereford High School Tournament Friday and Saturday, March 13-14.

Also playing in the tournament were Shea Crawford and Carrie Pearson playing girls doubles, and Nikki Strawn and Kelli Butts playing girls singles.

There were two doubles teams and one singles player for Spearman in the boys draw. Clint Townsen and Mike Hagar were one doubles team and Wesley Dyess and Sherman Jones were the other. Playing singles was Chad

Wilkerson.

The girls doubles team of Townsen and Townsen did not lose a set on their way to the finals of the tournament. In the finals they lost the first set of the match to Denny and McNeese of Borger. The score was 2-6. Townsen and Townsen turned the match around, winning the next two sets 6-1, 6-3.

The girls doubles team of Crawford and Pearson started off winning their first round match against Neas and Smith of Parryton, 7-5, 6-3. They lost their second match but won the third match 6-2, 6-2. They lost their fourth match to finish sixth overall in the tournament.

The boys doubles teams both lost their first round matches. The team of Townsen and Hagar won their next three matches to win the consolation bracket and finished eighth overall in the tournament. Dyess and Jones won two out of their next three matches to finish 11th in the tournament.

In singles play Wilkerson finished 13th in the boys single's tournament. Butts finished eighth and Strawn finished 17th in the girl's singles tournament.

The tennis teams will be in action again this weekend when they travel to Plainview for a Friday and Saturday tournament.

### Around the track

#### Spearman Boys-Varsity Canadian meet

**Pole Vault:** Brian Beck, 3rd, 12'

**Triple Jump:** Radar Garcia, 5th, 39'3.5"

**High Jump:** Tim Kizziar, 4th, 6'

**Shot Put:** Brian Kidder, 1st, 45'10.5"; Landon Swan, 5th, 41'4"

**Discus:** Landon Swan, 1st, 156'; Chad Davis, 6th, 124'6"

**3200m Run:** Brad Law, 4th, 11:46.59

**400m Relay:** Josh Furlow, Chris Strawn, Jason Varnon, Tim Dooley, 5th, 46.2

**110 High Hurdles:** Brian Beck, 4th, 15.82

**300 Inter. Hurdles:** Brian Beck, 2nd, 41.13

**800m Run:** Tim Dooley, 1st, 2:04.65; Cody Pipkin, 2nd, 2:07.12

**200m Dash:** Josh Furlow, 5th, 24.95

**1600m Relay:** Brian Beck, Cody Pipkin, Chris Strawn, Tim Dooley, 1st, 3:33.62

#### Spearman Girls-Varsity Canadian meet

**100m Hurdles:** Joy Gafford, 2nd,

## Southwest Outdoors

with Mel Phillips

If the millionaires who play major league baseball are going through spring training, can good fishing be far behind? It's time to stop watching fishing on television and get your equipment ready for the lake.

If you are tired of driving out of state or downstate and have decided that 1992 will be the year that you solve the mystery of catching walleye, then this column is dedicated to you.

Walleye guide and Lake Meredith expert Melvin Stovall offers the following suggestions that should improve your walleye catching:

1. New light line - Mr. Stovall believes that the average angler misses the faint bite of walleyes because their old, thick line is coiled up like a slinky snake. Stovall strongly recommends using a premium quality line between 4 and 8 lb. The lighter the fishing line, the more fish you will hook. During the winter, Stovall uses 2 pound line!
2. Start using a spinning reel because light line and light lures require casting that simply cannot be done with a standard baitcasting reel. Buy some 1/16 oz. jigs and practice in the back yard!
3. Loosen the drag for light line, use a limber rod and get ready for finesse fishing.
4. His final and best suggestion is to start trying new methods of

fishing. Where does one learn these new methods? Mr. Stovall can't talk to every interested angler so he recommends reading some of the walleye magazines.

The In-Fisherman, a slick full color publication, is available at most book stores and is a great source of new methods of fishing for both smallmouth and walleye.

My favorite source of new fishing techniques is a great little newspaper magazine called the Walleye Insider. Mailed out in April, June, August, October and December, this publication reports how the winners on the Walleye Tournament Trail use new methods to earn prize money.

To subscribe to either magazine, call 1-800-441-1740 toll free. Cost of In-Fisherman is \$13.97 per year, and the Walleye Insider costs \$9.97.

1992 Spring Turkey Season opens on April 4. With a mild winter, the number of birds is up and hunting is expected to be excellent. Renting a good video tape can help you learn some secrets of calling up ole Ben Franklin's favorite bird. Turkey hunting is rapidly becoming big business in the eastern Panhandle.

June 6 starts the "1992 Take a Kid Fishing Week." Don't make the mistake of buying a cheap off-brand kid's fishing reel. At about \$10, Zebco's model #33 is a great low cost reel, and it will last a lifetime.

## ATTENTION HANSFORD COUNTY CATTLEMEN

Get More POUNDS/ACRE/DAY

WITH



SUPPLEMENTS

High Mag. Blocks

Wheat Pasture Supplements -w- Bovatec  
All Types of Wheat Pasture Feeds

Contact D.S. Mitchell

1(800)231-2226 Days & 1(806)826-3470 Evenings

Good Luck to all  
rodeo participants  
March 22nd!

## CARGILL INC.

Your complete grain  
facility.  
NH<sub>3</sub> liquid  
Fertilizer  
Cargill Hybrid Seeds

Hwy 15 W. 659-2549

## CHEAP LABOR



ZERO  
DOWN

OR  
FREE  
GOODS

No payments for 90 Days and  
90 Day FREE Financing  
with Polaris StarCard.

Your choice of \$200 worth  
of Polaris clothing and  
accessories.

Buy any new Polaris ATV between March 1st and May 31st and take it home with no money down. 90-day free financing and no payments for 90 days or \$200 of free goods. Your participating Polaris dealer has the details.

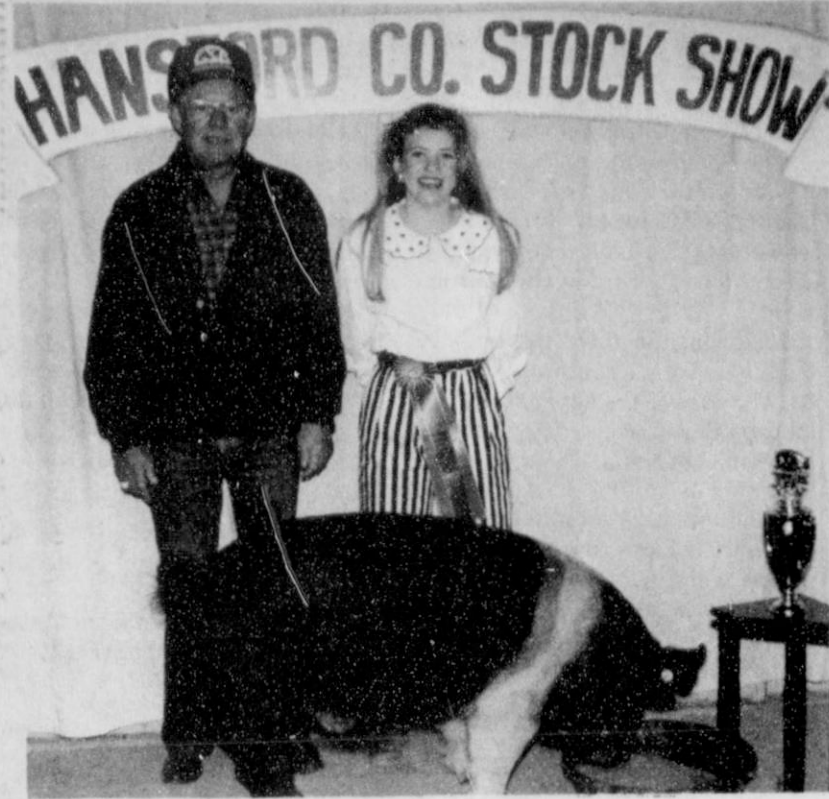
WARNING: ATV can be hazardous to operate. These are full size machines designed for adults. Use only when you are 16 years of age or older. Always wear a helmet, eye protection and protective clothing. Be particularly careful on difficult terrain. Polaris recommends that all ATV riders take a training course. For safety and training information, see your dealer or call Polaris at 1-800-543-7464.

**POLARIS**  
Believe It.

## Hansford Implement

Highway 207 South  
Spearman, Texas

659-2568 733-2088



Erin Derrington had the Grand Champion swine at the Hansford County Livestock Show. She is pictured here with her buyer, Kenneth Irwin of Gruver State Bank.

# Hansford County livestock show auction...

PLACE	NAME	PRICE	BUYER	PLACE	NAME	PRICE	BUYER
GRAND CHAMP LAMB	Leslie Latta	\$1104	Purina Mill & Gruver Agri	1ST SWINE	Jared Christian	\$582.50	Caprock Ind.
GRAND CHAMP SWINE	Erin Derrington	\$968	Gruver State Bank	4TH STEER	Traci Smith	\$1398	Guymon Livestock
GRAND CHAMP STEER	Brant Armes	\$3210	Gruver Farm Supply	3RD LAMB	Bray Armes	\$607.75	Hansford Implement
RES. CHAMP LAMB	Carla Greene	\$812.50	Cargill - Spearman	1ST SWINE	Scott Stedje	\$798	Bort Insurance Agency
RES. CHAMP SWINE	Ronda Renner	\$777	Equity	4TH STEER	Reagan Renner	\$1600	Hansford Implement
RES. CHAMP STEER	Stacy Williams	\$2156	Boots Williams	4TH LAMB	Jarrold Hoel	\$551	Paul Stavlo & Charles Bell
BREED CHAMP LAMB	Kyle Deeds	\$599.50	Spivey Farms	2ND SWINE	Brandon Clyburn	\$510.75	Dorothy Nollner
BREED CHAMP SWINE	Jami Ralston	\$1032.75	Cecil Ralston	4TH STEER	Casey Smith	\$1366.20	Caprock
1ST STEER	Bray Armes	\$1785.60	First State Bank	4TH LAMB	Greg Slough	\$354.25	Joe T. & Fanny Venneman
RES. BREED LAMB	Jason Harnish	\$371.25	First National Bank	2ND SWINE	Autumn Bateman	\$488	Venneman Sisters
BREED CHAMP SWINE	Mark Eakin	\$444.50	Dr. Latta	Randie Renner	\$1726.40	Frontier Feedyard	
1ST STEER	Chris Stork	\$1828.80	Stedje Bros.	4TH LAMB	Ashley Baker	\$330	Harlen Gerardy
1ST LAMB	Galen Slough	\$408	Larry's Welding	2ND SWINE	Travis Ferguson	\$454	Caprock
BREED CHAMP SWINE	Kyle Deeds	\$607.50	Attebury Grain	4TH STEER	Bruce Howell	\$1523.50	Latta Girls
1ST STEER	Mandy Vernon	\$1450.80	First State Bank	4TH LAMB	Jason Beck	\$396.50	Clark Bridges Spraying
1ST LAMB	Kacee Smith	\$431.25	Alton Ellsworth	2ND SWINE	Tashiana Schumann	\$739.75	Cargill - Spearman
BREED CHAMP SWINE	Misty Pearson	\$500	Cargill - Spearman	5TH STEER	Lana Martin	\$1209	Sharon Saltzman
1ST STEER	Brad Holt	\$3293.60	Pat Holt	4TH LAMB	Autumn Bateman	\$437.50	McCloy Feedlot
1ST LAMB	Tommi Latta	\$540	Caprock	Brian Black	\$378	Dr. Latta	
BREED CHAMP SWINE	Tisha Ralston	\$1192.25	Cecil Ralston	5TH STEER	Misty Pearson	\$1608.60	Pittman & Son
2ND STEER	Cody Brooks	\$1273.20	Pittman & Son	4TH LAMB	Clayton Vandenburg	\$390	Larry Irrigation
1ST LAMB	Cori Lowe	\$531.25	Billy Logsdon	2ND SWINE	Leah Jo Mackie	\$610.50	H&H Water Well
RES. BREED SWINE	Summer Riggins	\$397.25	Rick Barkley	5TH STEER	Heather Gammon	\$1530.10	Gruver Redi Mix
2ND STEER	Kacee Smith	\$1400	First National Bank	4TH LAMB	Mark Eakin	\$506.25	Frontier Feedyard
2ND LAMB	David Nash	\$325	Shields Mowing	2ND SWINE	Max Davis	\$822.50	Maude Alexander
RES. BREED SWINE	Kim Venneman	\$635	Frontier Feedyard	5TH STEER	Kevin Williams	\$1392.60	Little Tiffanies
2ND STEER	Grady Cline	\$2469.60	Ralph Blodgett	5TH LAMB	Chris Jenkins	\$324.50	Brown, Graham & Co.
2ND LAMB	Shea Lowe	\$517.50	Shirley Lowe	2ND SWINE	Bailey Barkley	\$1268.25	June Barkley
RES. BREED SWINE	Brandon Sutton	\$793	Five Star Equipment	5TH STEER	Chad Stork	\$1709.50	Bort Cattle Co.
2ND STEER	Ashley Brown	\$1636.70	Bernice Brown	5TH LAMB	Sharlet Slough	\$459	Gruver Ford
2ND LAMB	Leah Jo Mackie	\$505.75	R.E. Sanders	2ND SWINE	Catrina Brooks	\$438	Caprock
RES. BREED SWINE	Paul Renteria	\$490	Hansford Vet. Clinic	5TH STEER	Lee Stedje	\$1782.30	Gruver State Bank
2ND STEER	Jill Stedje	\$1678.30	Danny Carthel	5TH LAMB	Jacob Harbour	\$508.50	Frontier Feedyard
2ND LAMB	Brant Armes	\$522.75	Caprock	2ND SWINE	Wesley Babbs	\$780	Bort Insurance Agency
RES. BREED SWINE	Reagan Renner	\$627.50	Q Livestock	5TH LAMB	Dawn McCullough	\$732	Larrys Welding
2ND STEER	Ronda Renner	\$1638	Jim's Spraying	2ND SWINE	Justin Carthel	\$899.50	Gruver Co-Op
2ND LAMB	Kevin Williams	\$698.25	Jimmy Greene	5TH LAMB	Traci Martin	\$434	H&H Water Well
1ST SWINE	Wynn Maupin	\$582.50	Gruver Co-Op	3RD SWINE	Amanda Anderson	\$745.50	Berry Grain
3RD STEER	Clayton Thompson	\$1718.70	Cargill - Spearman	Matt Eakin	\$429	First State Bank	
2ND LAMB	Lana Martin	\$540	First State Bank	Traci Martin	\$490	Renner-Pearson	
1ST SWINE	Shanna DeArmond	\$607.50	Hi-Plains Auto	Clayton Thompson	\$590.75	Gruver Redi-Mix	
3RD STEER	Jason Harnish	\$1351.20	H&H Water Well	Holley Venneman	\$744	Caprock	
3RD LAMB	Cody Brooks	\$383.50	Jimmy Greene	Lena Harbour	\$408.75	Davin Winger	
1ST SWINE	Crystal Christian	\$537.50	Kevin Holt	Chad Stork	\$530	Gruver Lumber	
3RD STEER	Catrina Brooks	\$1468.80	Palo Duro Feedyard	Amber Roberts	\$440	Pool Chem. & Gruver Agri	
3RD LAMB	Jeremy Platt	\$303	First State Bank	Kathy Slough	\$479.25	Tri-State Chemical, Dumas	
1ST SWINE	Jeremy Thomas	\$577.50	Gilaspie Auto & Truck	Catrina Brooks	\$330	Lynna Renner	
3RD STEER	Tommi Latta	\$1539.60	H&H Water Well	Carla Greene	\$773.50	First State Bank	
3RD LAMB	Jeremy Mackie	\$476	R.E. Sanders	Clancy Vandenburg	\$375	Monty Harbour	
1ST SWINE	Jarrold Hoel	\$805	Dutch Clawson	Sharlet Slough	\$472.50	J.C. Harris	
3RD STEER	Brandon Close	\$1456.40	Vance Morris	Mandy Vernon	\$520	Hickerson Jewelry	
3RD LAMB	Kara Pipkin	\$714	John Pipkin	Stewart Riggins	\$565	Hansford Implement	
1ST SWINE	Chris Stork	\$512	Five Star Equipment	Brian Black	\$455	Archie Smith	
3RD STEER	Leslie Latta	\$2097	Vance Morris Feedlot	Brady Tidwell	\$826	Attebury Grain	
3RD LAMB	Kimberly Wagner	\$625	Bill Logsdon	Jenn Schnell	\$648	Barbara Schnell	
1ST SWINE	Cori Lowe	\$522.50	Shirley Lowe	Galen Slough	\$508	Billy Logsdon	
4TH STEER	Brian Howell	\$1380	First State Bank	Autumn Roberts	\$460	Tommy Joe Bergin	
3RD LAMB	Chad Gardiner	\$381	Caprock Ind.	David Nash	\$520	Sparks Bros. Spraying	
				Kenny Slough	\$366	Gruver Redi Mix	
				Amber Roberts	\$430	Bort Insurance Agency	
				Candice Pipkin	\$781.25	John Pipkin	
				Bray Armes	\$535.50	Bob Zimmer	
				Kristy Pittman	\$731.50	Eric Pittman	
				Kim Boone	\$576	Caprock	
				Stewart Riggins	\$448.50	First State Bank	
				Jason Harnish	\$460.25	Henderson Farms	
				Sean Baker	\$316.25	1st Natl. Bank Perryton	
				Brant Armes	\$508.50	Tommy Saltzman	
				Kathy Slough	\$386.75	Scott & Gordon Stedje	
				Shea Lowe	\$627.50	Hansford Implement	
				Joshua Schumann	\$715	Cargill Grain	
				Rex Ralston	\$1060	R.E. Sayders	
				Kelly Boone	\$464	Slough Children	
				Trevor Ferguson	\$590	Margaret Bell	
				Brad Law	\$547.50	Frontier Feedlot	
				Mandy Vernon	\$570	Phillip Renner	
				Candice Pipkin	\$996	John Pipkin	
				Dan Kunselman	\$672.50	First State Bank	
				Chelsea Nollner	\$712.25	Cargill	
				Texana Clyburn	\$585	Hi-Plains Auto	
				Dusty Eckhardt	\$945	Dutch Clawson	
				Kiki Carthel	\$852	Buck Tidwell	
				Tek Ferguson	\$632.50	Thoreson Farms	
				Jeremy Platt	\$488	Palo Duro Feedyards	
				Randie Renner	\$910.75	First State Bank	
				Kevin Williams	\$470	David Harbour	
				Janelle Haefner	\$666	Caprock	
				Greg Slough	\$572.50	Dan Ralston	
				Kyle Winter	\$976	Pat Holt	
				Kenny Slough	\$655	Gruver State Bank	
				Kimberly Wagner	\$906.50	Paul Stavlo & Texhoma Wheat Growers	

### Stock from page 1

Brandon Close, Autumn Roberts, Kasey Davis, Lee Blevins

**Medium Wt. Hamp:** Jeremy Thomas, Leah Jo Mackie, Carla Greene, Kelly Boone, Texana Clyburn, Jake McCullough, Lana Martin, Matt Eakin, Barry Eddleman, Lesli Fiel

**Heavy Wt. Hamp:** Erin Derrington, Ronda Renner, Sharlet Slough, Trevor Ferguson, Dusty Eckhardt, Kevin Williams, Wendell Ralston, Traci Smith, Eric Titus, Chad Riggins, Kyle McNett, Shane Goodson

**OPB:** Kyle Deeds, Brandon Sutton, Stuart Riggins, Ashley Brown, Tyler Barkley

**Light Wt. York:** Jarrod Hoel, Max Davis, Brady Tidwell, Roma Tomlinson, Weslyn Maupin

**Medium Wt. York:** Misty Pearson, Raul Renteria, Galen Slough, Robert Whitaker, Gina Hoel, Nancy Flores

**Heavy Wt. York:** Chris Stork, Bailey Barkley, David Nash, Clint Williams, Timmy Bynum

**Light Wt. Cross:** Cori Lowe, Katrina Brooks, Amber Roberts, Brad Law, Kiki Carthel, Janelle Haefner, Clint Schnell, Monty Herrington, Sheri Fiel, Randy Burress, Monty Eakin

**Medium Wt. Cross:** Jared Christian, Wesley Babbs, Bray Armes, Mandy Vernon, Tek Ferguson, Greg Slough, Tory Law, Brad Brown, Jeryme Hunter, Dawn McCullough, Kacee Smith, Kevin McNett

**Light Heavy Cross:** Tisha Ralston, Reagan Renner, Kim Boone, Candice Pipkin, Jeremy Platt, Kyle Winter, Kara Pipkin, Jared Brown, Juan Rojas, Shawn Moore, Cody Barkley, Kacee Smith

**Heavy Wt. Cross:** Scott Stedje, Justin Carthel, Jason Harnish, Dan Kunselman, Randie Renner, Kenny Slough, Kimberly Wagner, Ronnie Ring, Clint Davis, Josh Bynum, Eddie Herrington, Taydawn Elliott, Joel Stark, Clint Sasser

### LAMBS

**Class 1 Dorsets:** Kyle Deeds, Jason Harnish, Cody Brooks, Jarrod Hoel, Chris Jenkins, Krystle Deeds

**Class 2 Cross:** Galen Slough, Davida Nash, Jeremy Platt, Greg Slough, Sharlet Slough, Lena Harbour, Jenn Schnell, Jason Garrett, Jeremy Tunnell

**Class 3:** Kacee Smith, Shea Lowe, Jeremy Mackie, Ashley Baker, Jacabe Harbour, Amber Roberts, Autumn Roberts, Sean Baker, Clint Schnell, Dustin Beck

**Class 4:** Tommi Latta, Leah Jo Mackie, Kara Pipkin, Jason Beck, Dawn McCullough, Katrina Brooks, Kenny Slough, Summer Riggins, Kathy Slough, Cheryl Lynn Thompson

**Class 5:** Cori Lowe, Brant Armes, Kimberly Wagner, Autumn Bateman, Traci Martin, Candice Pipkin, Clancy Vandenburg, Heather Gammon, Jake McCullough

**Class 6:** Carla Greene, Kevin Williams, Chad Gardiner, Clayton Vandenburg, Matt Eakin, Mandy Vernon, Kristy Pittman, Chad Riggins

**Class 7:** Leslie Latta, Lana Martin, Bray Armes, Mark Eakin, Clayton Thompson, Brian Black, Stuart Riggins, Shannon Burke, Tim Tunnell

### COMMERCIAL STEERS

Live Placings: 1. Wylee Maupin, 2.

Weslynn Maupin, 3. Ashley Brown, 4. Lee Stedje, 5. Wynn Maupin, 6. Lena Harbour

**Carcass Placings:** 1. Ashley Brown, 2. Wylee Maupin, 3. Jacob Harbour, 4. Lee Stedje, 5. Lena Harbour, 6. Wynn Maupin

**Combination Placings:** Grand Champion Wylee Maupin, Reserve Champion Ashley Brown, 3. Lee Stedje, 4. Weslynn Maupin, 5. Jacob Harbour, 6. Wynn Maupin

75% off all napkins, paper cups, brass trays, and all gift items.

**Final Clearance!  
Final Week!**

**Perryton Office Supply**

123 Main 435 - 4812

**Sammy's  
B-B-Q**



**103 W. Jefferson  
Borger 273-9110**

Open Saturday 11 a.m. to 3 p.m.  
Weekdays 10:30 a.m. to 7:30 p.m.

Closed Sundays

### Man from page 1

Seat belts were equipped in the vehicle but were not in use at the time of the accident, according to the OHP.

The accident was investigated by Trooper Jim Siler of the Guymon detachment of the Oklahoma Highway Patrol.

*We cordially invite you to visit Pampa, Texas for a unique shopping experience!*

**Tarpley's Music Co.**

117 N. Cuyler  
Pampa, Texas

Serving the Texas Panhandle since 1927

**Robert Knowles Auto Center**

Oldsmobile, Cadillac, Dodge, Chrysler,  
Plymouth, Jeep, Eagle

Free oil & filter every 4000 miles for  
length of ownership.

Used & Program Cars

101N. Hobart 669-3233 or 800-299-6699  
Pampa, Texas

**Dorman Tire & Service Inc.**

1800 N. Hobart

669-2506

Pampa, Texas

**Texas Printing Co.**

319 Ballard 669-7941

Pampa, Texas

**Brown's**

**SHOE FIT COMPANY**

Shoes for the entire family

216-8 Cuyler Street Pampa, Texas

**Foto Time**

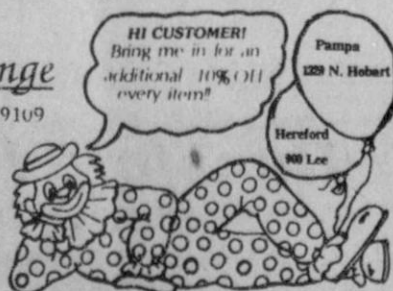
1 hour photo processing, enlarging,  
old photos, copies

107 N. Cuyler 665-8341

Pampa, Texas

**Children's Exchange**

3410 S. Western • Amarillo, TX 79109



**Coney Island Cafe**

114 W. Foster

669-9137

**Hobby Shop**

complete frames, custom molding  
mats, art & craft classes weekly

217 N. Cuyler 669-6161

Pampa, Texas





# Obituaries

**Oscar Rojas Sr.**  
Oscar Rojas Sr., 67, of Spearman, died Friday, March 13.

Mr. Rojas, born in Bishop, had lived in Spearman for 27 years. He married Rosa Bernitas in 1943 at Robstown. He was a farmer and a member of Sacred Heart Catholic Church.

Survivors include his wife; five sons, Oscar Rojas Jr., Daniel Rojas and Erasmo Rojas, all of Spearman, and Reuben Rojas and Fabriciano Rojas, both of Big Spring; three daughters, Mary Ramirez and Terry Ramirez, both of Slaton, and Evelina Luna of Big Spring; several brothers and sisters; 16 grandchildren; and seven great-grandchildren.

Rosary was recited Sunday, March 15 at Sacred Heart Catholic Church. Services were conducted Monday, March 16 in Sacred Heart Catholic Church with the Rev. Domingo Castillo officiating. Burial was in Hansford Cemetery.

**R.E. "Brad" Bradford**  
PLAINVIEW - R.E. "Brad" Bradford, 80, died Monday, March 16.

Mr. Bradford was born in Keller and raised in Fort Worth. He married Alma Corral Henshaw in 1933 at El Paso. She died in 1975. He

later married Sibble McMaster Clark in 1976 at Plainview.

He served in the U.S. Cavalry from 1927 to 1933. He lived in El Paso before moving to California where he worked in civil service. He moved to New York and trained horses for several years, then moved to Skellytown and worked for Skelly Oil Co.

He later moved to Pampa and worked for Central Baptist Church. He also worked for the Spearman First Baptist Church and operated Brad's Plumbing. In 1972 he moved to Plainview and worked for Central Plains Regional Hospital until he retired in 1981. He was a member of the Odd Fellow Lodge and College Heights Baptist Church.

Survivors include his wife; a daughter, Sue Grisham of Edmonson; and six grandchildren. Funeral services were conducted Wednesday, March 18 in College Heights Baptist Church with the Rev. Don Robertson, pastor, officiating. Graveside services were in Memory Gardens Cemetery.



Spearman junior high choir students who earned Division I ratings at the choir festival in Canyon Saturday, March 7 include Cory Butler, Jose Tarango, Carey Fulce, Brad Davis, Jennifer Fouquet, Amber LaRochelle, Amanda Lomell, Amy Schoenhals, Melanie Cook, Carol Alvarado and Tiffany Bruning.



Amber Cates and Sammy Graham (center) qualified for State Choir at the Regional Choir Festival at West Texas State University on Saturday, March 7. Surrounding them are choir students who earned Division I ratings at the festival, including (l-r) Amanda Burress, Jeri Evans, Elizabeth Pipkin and Haley Eaton. Not pictured is Josh Winegarner.

## TEXAS

It's Like A Whole Other Country.

**Tux Rentals & Weddings**  
at  
**The Bunkhouse**  
212 S. Main 659-2476

**EVERY SIMMONS® ON SALE**

**SAVE \$50 TO \$240**  
• EVERY SIZE • EVERY STYLE • EVERY FIRMNESS

**WHILE THEY LAST! FIRST COME, FIRST SERVE!**

<b>\$99</b> TWIN EA. PC.	<b>SIMMONS®</b> <i>Maxipedic</i> FULL EA. PC. \$149 QUEEN 2 PC. SET \$349
<b>\$209</b> FULL EA. PC.	<b>Beautyrest®</b> CLASSIC FULL EA. PC. \$239
QUEEN 2 PC. SET \$459 KING 3 PC. SET \$699	<b>Beautyrest®</b> ROYALTY FULL EA. PC. \$269
	QUEEN 2 PC. SET \$619 KING 3 PC. SET \$859

**TERMS (WITH CREDIT APPROVAL)**  
30-60-90-Day Accounts  
With No Finance Charge  
24-Month Bank Rate Financing  
W.F.C. Revolving Accounts  
With No Down Payment

**Store Hours: Mon. - Sat. 8:30 - 5:30**

**BURNITURE CO.**  
723 W. 7th Spearman, Texas 659-3701

### PUBLIC NOTICES

9). POLLING PLACE: Morse Community Building, Morse, Texas.  
PRESIDING JUDGE: Vicky Urban.  
ALTERNATE PRESIDING JUDGE: Susie Womble. S21-2TC

**AVISO DE ELECCION PARA BONOS DEL ESTADO DE TEXAS CONDADO DE HANSFORD DISTRITO DE HOSPITAL DEL CONDADO DE HANSFORD A LOS RESIDENTES CON DERECHO DE VOTAR DEL DISTRITO DE HOSPITAL DEL CONDADO DE HANSFORD:**

AVISO de que una eleccion tendra lugar en el Distrito de Hospital del Condado de Hansford el dia 7 de abril de 1992, de acuerdo con un decreto aprobada por la Junta Directiva la cual es parte de este Aviso para todo objeto practico y se lee como sigue:

UN DECRETO ordenando una eleccion de bonos a tener lugar dentro del Distrito de Hospital del Condado de Hansford, estableciendo medidas para dirigir la eleccion y resolviendo otros asuntos incidentes y pertinentes a dicha eleccion.

VISTO QUE, la Junta Directiva del Distrito de Hospital del Condado de Hansford, por este medio llega a saber que se debe llevar a cabo una eleccion para determinar si se debiera autorizar a dicho cuerpo gubernativo a emitir bonos de dicho Distrito por un total y con el fin identificados mas adelante, por consiguiente,

SE ORDENADO POR LA JUNTA DIRECTIVA DEL DISTRITO DE HOSPITAL DEL CONDADO DE HANSFORD:

**SECCION 1:** Una eleccion tendra lugar el dia 7 de abril de 1992 en el Distrito de Hospital del Condado de Hansford, cuya fecha sea cuarenta y cinco (45) o mas dias despues de la fecha de aprobar esto, y el llevar a cabo de la eleccion en dicha fecha en vez de la fecha regular para eleccion es por este medio decidido a ser en el interes del pueblo. En dicha eleccion, se presentara la siguiente medida:

"SE DEBERA autorizar a la Junta Directiva del Distrito de Hospital del Condado de Hansford, en Hansford, Texas, a emitir bonos de dicho Distrito por la cantidad principal de \$4,700,000 para la construccion, el reparo o la renovacion de edificios y mejorar y equipar los mismos para proposito de hospital, incluyendo ensanchando y mejorando el manor, dichos bonos a vencer en serie o de otro modo, por un periodo a no sobrepasar CUARENTA (40) anos a partir de la fecha, a ser emitidos en una o mas series al precio o precios y a devengar interes a la tasa o tasas (fija, flotante, variable o de otro modo) y no sobrepasar la tasa maxima permitida por ley a la emision de bonos) como sea determinado a voluntad de la Junta Directiva al emitir o vender los bonos; y si se deberan recaudar impuestos ad valorem a todo bien imponible en el Distrito suficiente para pagar el interes anual y para establecer fondos de amortizacion para pagar los bonos al vencer?"

**SECCION 2:** Se emplearan balotas electorales de papel en dicha eleccion y se prepararan las cuales balotas de acuerdo con elCodigo de Elecciones, V.T.C.A. de manera de permitir a los electores votar "EN PRO" o "EN CONTRA" a la antedicha medida que se presentara basicamente de la siguiente forma en la balota:

"LA EMISION DE BONOS DE OBLIGACION

del Distrito de Hospital del Condado de Hansford

### Hospital Notes

- ADMISSIONS**  
Thursday, March 12 - Pearl Shapley, Peggy Lopez  
Friday, March 13 - Francis Bostick, Myra Mitchell, Lloyd Buzzard  
Saturday, March 14 - David Wilson  
Sunday, March 15 - none  
Monday, March 16 - none  
Tuesday, March 17 - Helen Shapley
- DISMISSALS**  
Thursday, March 12 - R.T. Farr, Jimmy Bynum, Edith Womble
- Friday, March 13 - Peggy Lopez, Margarito Marquez**  
**Saturday, March 14 - Tia Conley, Myra Mitchell**  
**Sunday, March 15 - Charla Roberts**  
**Monday, March 16 - David Wilson**  
**Tuesday, March 17 - Annie Allen, Francis Bostick**
- PATIENT CENSUS**  
**Wednesday, March 18 -** Augustina Sandoval, Pearl Shapley, Helen Shapley, Lloyd Buzzard, Doris Sochtman

**nearsighted? r.k. could bring your world into focus.**

I you're nearsighted, you know how difficult it is to see without glasses. Radial Keratotomy (r.k.) is your answer for better vision... without glasses.

R.K. is a precise microsurgical procedure to correct nearsightedness and astigmatism. With state-of-the-art equipment, it is both proven and predictable... and performed on an out patient basis.

The Regional Eye Center is fully accredited and our highly trained physicians are certified by the American Board of Ophthalmology and American Board of Eye Surgery.

The Regional Eye Center is committed to giving the best and most complete eye care... and to the concept that cost will not be a barrier to protecting your precious sight.

George R. Walters, M.D.  
Mark F. Hollingsworth, M.D.

**FREE SEMINAR**  
Tuesday  
March 31, 1992  
7:00 to 8:30 P.M.  
First National Bank  
201 S. Main, Perryton, TX  
Come and find out why many people in the Texas Panhandle are choosing R.K. as their vision alternative.

Please call for reservations  
800-322-3931 or 806-665-0051

Regional Eye Center, 107 W. 30th Street, Pampa, Texas 79065  
Medicare approved facility

From page 9

GENERAL POR UN TOTAL DE \$4,700,000 PARA LA CONSTRUCCION, EL REPARO O LA RENOVACION DE EDIFICIOS Y MEJORAR Y EQUIPAR LOS MISMOS PARA PROPOSITO DE HOSPITAL, INCLUYENDO ENSANCHANDO Y MEJORANDO EL MANOR"

**SECCION 3:** Se dividira el Distrito en cuatro (4) recintos electorales para esta eleccion y los lugares para votar y las personas por este acto nombradas como juez actuante y juez actuante suplente de cada lugar para votar seran senaladas en la Exhibicion A anadida a esto e incorporada aqui dentro por referencia como parte de esto para todo objeto practico.

Cada juez actuante nombrara no menos que dos (2) ni mas que seis (6) oficiales calificados para trabajar y ayudar en llevar a cabo dicha eleccion; con tal que si el juez actuante particular aqui dentro nombrado desempeñe sus funciones, el juez actuante suplente sera uno de los oficiales. Durante el dia de eleccion, los lugares para votar estaran abiertos desde las 7:00 de la manana hasta las 7:00 de la noche.

Se nombra por este medio a Karen Lair como oficial y a Patsy Barrera como oficial menor de la primera votacion para dicha eleccion, y la Oficina del Personal De Hospital 707 South Roland, Spearman, Texas 7981, se designa por este medio como el lugar para registrar los votos de primera votacion. De acuerdo al periodo de primera votacion hecho en persona permitido por ley las horas nombradas para llevar a cabo dicha primera votacion, seran desde las 8:00 de la manana hasta las 5:00 de la tarde todos los dias con la excepcion de los sabados, domingos y los feriados oficiales del Estado.

Con el fin de revisar balotas dadas en la primera votacion, los oficiales electorales del recinto numero uno tambien, serviran como Junta para balotas en ausencia de esta eleccion.

**SECCION 4:** A todos los residentes con derecho de votar del Distrito se les permitira votar en dicha eleccion y durante el dia de eleccion, dichos electores votaran en el lugar para votar nombrado en el recinto electoral del Distrito en donde tienen su domicilio. Se dirigira y se llevara a cabo esta eleccion de acuerdo con las estipulaciones delCodigo De Elecciones de Texas, V.T.C.A., fuera de las modificaciones hechas en el capitulo 872, Actos de la Sesion De la Legislatura Regular 62, 1971; y como sea requerido por ley, se imprimira todo material y procedimiento electoral para esta eleccion tanto en ingles como en espanol.

**SECCION 5:** Una copia fidedigna de esta orden servira como aviso adecuado de dicha eleccion. Se fijara dicho aviso, incluyendo una traduccion al espanol de esto, en tres (3) lugares publicos dentro del Distrito y en las oficinas de administracion del Distrito no menos que catorce (14) dias completos antes de la fecha establecida para dicha eleccion, y se publicara el mismo dia de dos semanas sucesivas, en un periodico de circulacion general en dicho Distrito, con la primera de dichas publicaciones a ser hecha no menos que catorce (14) dias completos antes de la fecha establecida para dicha eleccion.

ACEPTADA Y APROBADA, este dia 13 de febrero de 1992.

-s- Alton R. Ellsworth  
Presidente, Junta Directiva  
Distrito de Hospital  
del Condado de Hansford

ATESTIGUA:  
-s- Rosa Lee Butt  
Secretaria, Junta Directiva  
Distrito de Hospital  
del Condado de Hansford  
(Sello del Distrito)

**EXHIBICION A**  
**RECINTO ELECTORAL DEL DISTRITO:** caja numero 1 (consiste en los recintos electorales del Condado Hansford 1, 2, 5 y 6).  
**LUGAR PARA VOTAR:** County Barn, 320 East Ave. D, Spearman, Texas.  
**JUEZ ACTUANTE:** Harry Stumpf.  
**JUEZ ACTUANTE SUPLENTE:** Charles Newcomb.

**RECINTO ELECTORAL DEL DISTRITO:** caja numero 2 (consiste en los recintos electorales del Condado Hansford numeros 3 y 4).  
**LUGAR PARA VOTAR:** County Barn, Gruver, Texas.  
**JUEZ ACTUANTE:** Faye Dahl.  
**JUEZ ACTUANTE SUPLENTE:** June Barkley.

**RECINTO ELECTORAL DEL DISTRITO:** caja numero 3 (consiste en el recinto electoral del Condado Hansford numero 7).  
**LUGAR PARA VOTAR:** Iglesia Luterana Oslo, Comunidad de Oslo.  
**JUEZ ACTUANTE:** Wayne Olson.  
**JUEZ ACTUANTE SUPLENTE:** John Dahl.

**RECINTO ELECTORAL DEL DISTRITO:** caja numero 4 (consiste en el recinto electoral del Condado Hansford numero 9).  
**LUGAR PARA VOTAR:** Edificio del Centro Social de Morse, Morse, Texas.  
**JUEZ ACTUANTE:** Vicky Urban.  
**JUEZ ACTUANTE SUPLENTE:** Susie Womble. S21-2tc

**ASGROW**

**A504 NATIONAL YIELD CHAMPION**  
NON-IRRIGATED GRAIN SORGHUM

- MEDIUM MATURITY
- YIELD PROVEN
- STRESS TOLERANT
- GOOD EMERGENCE
- WHITE GRAIN COLOR
- GOOD HEAD EXERTION

**PLANT THE BEST IN '92!**

B & B FARM INDUSTRIES, INC.  
SPEARMAN, TEXAS  
659-5567