



THURSDAY  
JANUARY 23, 2003

# REPORTER STATESMAN

COMP 1  
HANSFORD COUNTY LIBRARY  
0122 MAIN ST  
SPEARMAN TX 79081

75¢

213 MAIN ST • SPEARMAN, TX 79081

VOL. 96 • ISSUE 4

NEWS • SPORTS • PICTURES

PROUDLY SERVING HANSFORD COUNTY SINCE 1907

## Taylor County Judge To Fill Railroad Commission Post

Reprinted from the January 17, 2003 issue of the Amarillo Globe News

Gov. Rick Perry on Thursday said he will appoint Taylor County Judge Victor Carrillo to fill a vacancy on the three-member Railroad Commission, which regulates oil, gas and pipelines.

If approved by the Senate, Carrillo will succeed Tony Garza, who left the agency last year after President Bush nominated him to be U.S. ambassador to Mexico.

Carrillo, a Republican, will serve the remainder of Garza's term then decide whether to seek a full six-year term in the 2004 general election.

"While our state has certainly diversified its economy since the 1980s, and that's good, the oil and gas industry is, in my mind, still critical for the economy of the state," Carrillo said in a speech at the Capitol.

Carrillo, 38, became Taylor County judge in September 2001 after serving as an Abilene city council member.

He was an attorney in the energy section of the Texas General Land Office from 1994-1996, responsible for advising the land commissioner on oil, gas and environmental law issues. From 1988-1994, Carrillo was a petroleum geophysicist with Amoco Production Co. in Houston.

Bob Wood of Pampa was among the short list of 25 candidates. He praised Perry's decision to appoint Carrillo.

"I don't know the man personally, but I'd say that he's well-qualified," Wood said. "He certainly knows something about the oilfield. I think he'll do a great job, and I wish him well."

Wood, 73, worked for the Railroad Commission for 29 years as a well plugger until his retirement in September 1993.

The Pampan ran unsuccessfully for a Texas Railroad Commission post as a Democrat in 1967 and as a Republican in 1996.

State Rep. Warren Chisum, R-Pampa, also was on the list of 25. Chisum was traveling from Austin to Pampa on Thursday and was unavailable for comment.

Two campaigns were halted when Chisum failed to garner the post.

Another candidate for the post, Muleshoe Mayor Victor Leal, a Republican, called Carrillo an exceptionally well-qualified candidate. However, with the retirements of U.S. Sen. Phil Gramm and U.S. Rep. Larry Combest, R-Lubbock, coupled with state Rep. Pete Laney, D-Hale Center, losing his House speakership, Leal said Chisum's selection for the post would have given the Panhandle some invaluable clout recently lost.

Leal said his aborted campaign for the seat was a positive experience.

"It's been apparent we have a lot of support in the area. It's given me the opportunity to meet new people and find out what's in their hearts and on their minds," Leal said. "It's been tremendously rewarding. I've learned a lot in the process."

The other Amarillo-area candidate, Cody Cazares of Gruver, a Republican, was unavailable for comment.

Perry was satisfied he had chosen a well-qualified commissioner.

"He will bring a seasoned voice to the discussion of important energy and environmental issues," Perry said. "He's committed to a more prosperous energy economy in Texas and the protection of our precious natural resources."

Carrillo, whose wife and three daughters stood next to him at a news conference, said it would be his duty to regulate the industry fairly and evenhandedly. He said he thinks strict enforcement is appropriate for operators who willfully disregard the law.

He said he was still reviewing a proposal that would merge the Railroad Commission with the Public Utility Commission, which oversees the state's telephone and electric industries.

Comptroller Carole Keeton Strayhorn said the merger could save \$12.4 million initially and \$18.5 million annually.

The Associated Press and Globe-News Staff Writer Rick Storm contributed to this report.

## Chisum Not Appointed To Railroad Commission, Cazares Not Running



Cody Cazares (left) and Representative Warren Chisum (R-Pampa) shake hands at the opening of the 78th Session of the Texas Legislature on Tuesday, January 14, 2003.

Governor Rick Perry announced Thursday, January 18, 2003 that he will appoint Taylor County Judge Victor Carrillo to the Texas Railroad Commission. Carrillo will replace Tony Garza, who left the three-member agency last year after President George W. Bush appointed him U.S. Ambassador to Mexico.

State Representative Warren Chisum (R-Pampa) was on the Governor's short list to fill the post. Had Chisum been chosen, it would have caused a vacancy in the 88th District of the Texas House of Representatives, for which Cody J. Cazares was poised to run.

"The Governor made an

excellent choice with Judge Carrillo and I know that he will do great things for the oil and gas industry, as well as for the State of Texas. I am very pleased that Warren Chisum will continue to serve as our state for another two years," said Cazares.

The 78th Session of the Texas Legislature convened last Tuesday and Cazares was there, along with Chisum, to welcome in a new era in Texas politics as the Republicans took full control of the legislature for the first time since Reconstruction. The 150-member House also elected Tom Craddock (R-Midland) as the new Speaker of the House. The recent news left many wondering what future plans

lay in store for the 22-year-old Gruver resident.

"Fortunately, this was not my only option. I have always felt a calling to public service and am confident that there will be other opportunities to serve my fellow Texans."

"Right now, I am going to concentrate on my final year at Baylor University. I will then see what opportunities God puts in front of me. I know I am young and there is no telling what will happen," said Cazares.

Cazares has served as an aide to President George W. Bush, Personal Assistant to U.S. Congressman Bill Redmond (R-NM), and as a Staff Assistant to U.S. Senator Bob Dole (R-KS).

## Lubbock Marketing Seminar To Focus On Futures, Options

Producers and others who want to learn more about futures and options should plan to participate in an Advanced Futures and Options seminar slated in February.

This seminar is part of Texas Cooperative Extension's Advanced Topics Series in agricultural marketing: a slate of 10, two-day workshops offered this year at several locations statewide.

Advanced Futures and Options takes place from 9 a.m. to 4 p.m. February 3-4 at Texas A&M's Agricultural Research and Extension Center, just north of Lubbock. To reach the center, drive north on Interstate Highway 27 past Lubbock International Airport - take Exit 11 (Shallowater) and drive mile east on FM 1294.

"We will cover advanced hedging strategies, such as cover calls,

spreads, storage hedging, and wind-downs. We will discuss the pros and cons on each strategy and when you should consider using them," said Jackie Smith, Extension economist based at the Lubbock center. "We teach this course at a highly applied level, using a combination of lectures, small group interaction and simulation exercises."

"It's very similar to how we conduct our Master Marketer training."

Ed Usset, a grain marketing specialist for the Center for Farm Financial Management at the University of Minnesota, is the workshop's featured speaker. He teaches beginning and advanced marketing classes to producers in Minnesota, and worked as a marketing director in commodity operations for Pillsbury Company before joining the University of Minnesota.

Tuition for the Advanced Futures and Options workshop costs \$150 per person, and includes the cost of materials, breaks and lunches, Smith said. Preregistration is required. The registration deadline is January 27-28.

Registration forms are available through your local county Extension office. You can also obtain a form by calling me at the Lubbock center, at (806) 746-6101 or 746-4057," Smith said.

Partial funding for this year's Advanced Topic Series is provided by the Southern Region Risk Management Education Center. Other sponsors underwriting the series include: Master Marketer Educational System, Texas Wheat Producers Board, Texas Corn Producers Board, Texas Farm Bureau, the State Cotton Support Committee, and the Houston Livestock Show and Rodeo.

## Pasture, Livestock Management Workshop For Beginners April 1-3

A three-day intensive workshop for start-up ranchers has seven openings left.

Set April 1-3, the Pasture and Livestock Management Workshop is designed for those who have recently inherited or bought rural acreage for the first time.

"Unlike other Extension ranching programs, the focus of this program is not so much how to fine-tune an operation, but how to get started in ranching and pasture management the right way with research-based information," said Dr. Larry Redmon, forage specialist with Texas Cooperative Extension. "We will start the program with the assumption that our audience knows next to nothing about ranching except that they want to do it."

The program will be held at the Texas A&M University System Agricultural Research and Extension Center at Overton. The center is the regional headquarters for both Extension specialists and scientists with the Texas Agricultural Experiment Station. A number of Extension specialists and Experiment Station scientists will be involved in the program.

Enrollment for the program is limited to 40 people to allow close

interaction between participants and faculty.

Those attending the workshop will learn how to establish a business plan for the ranch, keep proper records, evaluate alternative agricultural enterprises, choose the appropriate forage species for East Texas, fertilize pastures, design forage systems that minimize winter feeding costs, set up pastures for cattle with correct stocking rates, choose the appropriate cattle breeds for East Texas, pick the optimum animal breeding/calving seasons, promote good animal health and market cattle.

In addition to the outdoor and hands-on activities, researchers will give tours of the various forage and grazing study sites, showing how theory is carried to actual practice. There will be demonstrations on how to move livestock with stock dogs, and how to perform implants, ear-tagging and castration. Other demonstrations will focus on how to take soil samples, and how to calibrate planters for proper seeding rates and sprayers for weed management.

Cost of registration is \$250 per person, which includes two evening meals, two lunches, break refreshments, and educational

materials. Also included in the registration fee is a limited edition - available only to workshop attendees - cap and shirt.

"This \$250 will probably be the least expensive and wisest investment landowners ever make in the cattle business," Redmon said. "The registration fee covers the meals and educational materials. The opportunity to pick the brains of eight senior researchers and Extension specialists is basically free."

He said that past participants have commented that what they learned in just one hour of instruction and interaction paid for the registration fee.

"We're giving 24 hours of information during three days of instruction designed to save them money - big money - and headaches," Redmon said.

To register, send a check or money order to "Texas Agricultural Experiment Station, Grazing School Registration, P.O. Box 200, Overton, TX 75684. Make the check or money order out to "TAES".

For more information, contact Redmon by phone, (903) 834-6191, or by email: l-redmon@tamu.edu

## Big Brothers Big Sisters Prepares For Fundraiser

Walk for Kids' Sake Slated For March 1st

Walk for Kids' Sake, the annual fundraiser for the local Big Brothers Big Sisters program, will be held Saturday, March 1st, at the Ochiltree County Expo Center.

The Wheatheart Satellite of BBBS of the Texas Panhandle serves Booker and Hansford and Ochiltree counties. The satellite office is financially independent; no funding is received from the parent agency in Amarillo or the national program. "The Walk for Kids' Sake is our only fundraiser," explained Kimberley Lopez, agency case manager.

The proceeds from this event and an allocation from United Way (\$4,000) must meet the program's financial needs for the year. Funds are needed to recruit, screen, train and supervise volunteers as well as reach out to families in our area. This year's goal is to raise \$23,000.

Big Brothers Big Sisters matches children ages 6-14 from single parent families with volunteer mentors. The match relationship provides a friendship with a committed, caring volunteer, a positive role model, the opportunity to develop and enhance the child's interests, skills and learning experiences and the framework for strengthening self-esteem. The program is provided at no cost to participants.

Studies show that children matched with a Big Brother or Big Sister are less likely to begin using alcohol or other drugs, skip school or hit someone. Their relationships with their family and friends improve and they even get slightly higher grades. "We are seeing results like these right here in our communities," added Lopez. Currently, there are eight matches in the community based program; two will celebrate their fifth anniversary this year. There are 10 children on the waiting list.

BBBS also serves local children through a school-based mentoring program, Bigs in Schools. Sixteen students in Spearman elementary and junior high schools and seven students at Williams Intermediate in Perryton have been matched with mentors through this program.

"We are serving more children than ever before," Lopez said. "It is simply amazing to witness the impact the volunteers have on the lives of these precious kids."

Individuals, groups and businesses can all be involved in Walk for Kids' Sake.

"WFKS is not a walk-a-thon so it doesn't matter how far or how fast you walk. It's more like a walking party and it's all about having fun and raising money," Lopez said.

Teams of three to six walkers will have their choice of four shifts. Each shift has a theme and features music and activities appropriate to the theme. The shift schedule follows: 9:00 Family Walk (strollers and little tykes welcome), 10:00 Fish Walk (featuring Christian music), 11:00 Party Walk I and 12:00 Party Walk II (music hits from the past and present).

Team members raise at least \$50 each through pledges or sponsorships. "It's as easy as asking ten friends, neighbors and coworkers for five dollars," said Lopez. All donations are tax deductible.

Walkers raising \$100 in pledges will receive a prize and those raising \$200 will get an additional prize. These prizes will be provided by Hallmark again this year. The three individuals who raise the most money overall will each be given a special grand prize.

Every walker receives a T-shirt printed by dsDesign and is eligible for door prizes given away during each shift. Food and drinks will be provided throughout the day.

There are several levels of business sponsorship. Corporate sponsors contribute \$500 to the event. Shift sponsors donate \$350. Businesses or groups can be Mile Markers for \$100 and Extra Mile Markers \$250. Step-Up sponsors contribute \$50. Businesses may also donate door prizes.

For more information about the event call 434-0016 or 1-877-716-3424. Advisory Committee members are recruiting team captains and sponsorships. These members are Tony Brown, Terry Danley, Belinda Jimenez, Wendell Freeman, Janet McLain, Ken Splawn, Kim Thomas, Brian Torres, Aida Ontiveros and Roger Wright in Perryton, Sue Phillips and Jim O'Banion in Booker and Don Townsen and Marsha Neely in Spearman.

# Laugh and Live

by Catherine R. Smith  
CathyRSmit@aol.com



## News From Hansford County Hospital District Patient Financial Services Certified Dietary Manager



Blenda Arbuthnot

B. Scott Beedy, CFO of Hansford County Hospital District, announced that Blenda M. Arbuthnot has been hired as Director of Patient Financial Services for the District. Blenda will be overseeing Hospital Medical Records and the Hospital/Clinic Business Office. She is responsible for the overall direction, coordination, and evaluation of these units.

Arbuthnot came to work at Hansford Hospital as an interim CFO then as a Hospital Consultant. "I enjoyed working with the staff at the hospital and clinics and decided to accept the position of Director of Patient

Financial Services. I have really enjoyed meeting people in the community." She grew up in Galax, Virginia, went to college in Wytheville, Virginia, and is a past Lt. Governor of Marketing for Toastmasters.

Ms. Arbuthnot has worked in the health care industry for over 17 years, including working for Blue Cross & Blue Shield insurance company, hospitals, and has been a healthcare consultant working with Texas Organization Rural Community Hospital for 5 years. Blenda is married to Bart W. Arbuthnot, who is a District Sales Manager for Golden Harvest Seed Company. They have two children, Jessica age 23 married and living in California, and Jeremy, 17, a Junior at Dumas High School.



Karen Devers

Hansford County Hospital District is pleased to announce that Karen Devers, Dietary Manager, recently passed the examination for Certified Dietary Manager and Certified Food Protection Professional. This is the

highest level of professional achievement available from the Dietary Managers Association.

To achieve the CDM, CFPP credentials, candidates must successfully complete a five-hour, two part written examination. This 255-question exam covers ten competency areas of dietary management with three major content areas: Nutrition, Systems Management, and Administration/Production Management, as well as five competency areas covering Food Safety and Sanitation. Continual professional development activities are essential to enable CDM, CFPPs to cope with rapidly changing conditions. They must certify every three years by documenting these continuing education activities.

Devers has been serving as Dietary Manager of HCHD for a year and a half. She supervises a staff of 16 full and part time employees, who serve over 100,000 meals each year. Devers also manages the Meals on Wheels program, which provides low-cost meals to as many as 20 people in Spearman.

"We are extremely pleased to have such a qualified professional here at Hansford County Hospital District. Karen continues to provide excellent service to all departments of the hospital district," said Steve Hartgraves, District CEO.

My dear friend Sally Desimone sent me the following article. It is composed of thoughts from Andy Rooney.

### Thoughts for the Day

∞ Andy Rooney on Vegetarians: "Vegetarian - that's an old Indian word meaning 'lousy hunter'."

∞ Andy Rooney On Prisoners: Did you know that it costs forty-thousand dollars a year to house each prisoner? Jeez, for forty-thousand bucks apiece, I'll take a few prisoners into my house. I live in Los Angeles. I already have bars on the windows. I don't think we should give free room and board to criminals. I think they should have to run twelve hours a day on a treadmill and generate electricity. And if they don't want to run, they can rest in the chair that's hooked up to the generator.

∞ Andy Rooney On Fabric Softener: My wife uses fabric softener. I never knew what that stuff was for. Then I noticed women coming up to me, sniffing, then saying under their breath, "Married!" and walking away. Fabric Softeners are how our wives mark their territory. We can take off the ring, but it's hard to get that April fresh scent out of your clothes.

∞ Andy Rooney On Morning Differences: Men and women are different in the morning. We men wake up aroused in the morning. We can't help it. We just wake up and we want you. And the women are thinking, "How can he want me the way I look in the morning?" It's because we can't see you. We have no blood anywhere near our optic nerve.

∞ Andy Rooney On Phone-In-Polls: You know those shows where people call in and vote on different issues? Did you ever notice there's always like 18% that say "I don't know." It costs 90 cents to call up and vote and they're voting "I don't know." Honey, I feel very strongly about this. Give me the phone. (Says into phone) "I DON'T KNOW!" (Hangs up looking proud.) Sometimes you have to stand up for what you believe you're not sure about. This guy probably calls up phone sex girls for \$2.95 to say, "I'm not in the mood."

∞ Andy Rooney On Cripes: My wife's from the Midwest. Very nice people there. Very wholesome. They use words like "Cripes." "For Cripe's sake." "Who would that be -- Jesus Cripe's?" "The son of 'Goshi' of the church of 'Holy Moly'?" I'm not making fun of it. You think I wanna burn in 'Heck'?

∞ Andy Rooney On Grandma: My grandmother has a bumper sticker on her car that says, "Sexy Senior Citizen." You don't want to think of your grandmother that way, do you? Out entering wet shawl contests. Makes you wonder where she got that dollar she gave you for your birthday.

∞ Andy Rooney On Answering Machines: Did you ever hear one of these corny, positive messages on someone's answering machine? "Hi, it's a great day and I'm out enjoying it right now. I hope you are too. The thought for the day is: 'Share the love.'" Beep. "Uh, yeah...this is the VD clinic calling.... Speaking of being positive, your test results are back. Stop sharing the love."

∞ Andy Rooney on Research: Because over the past few years, more money has been spent on breast implants and Viagra than is spent on Alzheimer's disease research, it is believed that by the year 2030 there will be a large number of people wandering around with huge breasts and erections... who can't remember what to do with them.

May God bless and keep you; May He make his face to shine upon you, and be gracious to you; May the Lord lift up his countenance upon you, and give you peace.

Numbers 6:24-26  
Catherine :)

### Let us replenish the seed of faith through . . . DAILY BIBLE READING, PRAYER & REGULAR CHURCH ATTENDANCE

#### Spearman

**Apostolic Faith Church**  
822 S. Dressen • 659-2870  
Sunday School: 10 a.m.  
Worship Service: 11 a.m.  
Sun. Eve. 8 p.m.  
Wed. Prayer Mtg. 7 p.m.  
Pastor - Roland Haney

**First Assembly of God**  
401 N. Bernice • 659-2295  
Sunday School: 9:30 a.m.  
Worship: 10:35 a.m.  
Kid's Church: 10:35 a.m.  
Evening Worship: 7 p.m.  
Wed. Worship: 7:30 p.m.  
Youth: 7:30 Wednesday  
Pastor - Walter Greaser, Jr.

**First Christian Church**  
(Disciples of Christ)  
29 S. Bernice • 659-2036  
Sunday School: 9:45 a.m.  
Worship: 10:50 a.m.  
Minister - Gary Smith

**First Baptist Church**  
123 N. Bernice • 659-5557  
Sunday School: 9:45 a.m.  
Worship: 11 a.m.  
Evening Worship: 7 p.m.  
Wed. Fellowship Meal: 6 p.m.  
Wed. Disc. Time: 6:30 p.m.  
Wed. Youth Mtg.: 8 p.m.  
Pastor - Patrick Six

**Church of Christ**  
121 S. Haney • 659-3244  
Sunday Bible Class: 9:45 a.m.  
Worship: 10:30 a.m.  
Evening Worship: 6 p.m.  
Bible Study Wed.: 7:30 p.m.  
KRDF Radio Program  
Living W/Christ: 7:50 a.m.  
Minister - Leonard Harper

**Sacred Heart Catholic Church**  
901 Roland • 659-2792  
Sat. Night Mass: 5:30 p.m.  
Sun. Mass: 9 a.m. - English  
(aired on KRDF-FM 98.3)  
Sun. Mass: 11:30 - Spanish  
1:30 p.m. - Gruver - Christo  
Redentor Mass - Spanish  
Rev. Guillermo Morales

**First United Methodist**  
407 S. Haney • 659-5503  
Sunday School: 9:45 a.m.  
Worship: 8:30 & 11 a.m.  
Jr. High Youth: 5 p.m. Sunday  
High School: 6 p.m. Sunday  
Kids Club: 3 p.m. Wed.  
Pastor - Ken Cole

#### Gruver

**First Presbyterian Church**  
(Worships with Lutheran)  
1021 Cotter • 659-2033  
Sunday School: 9:45 a.m.  
Worship: 11 a.m.  
(alternates monthly between Lutheran & Presbyterian Church Bldg.)  
Pastor - Beverly Cook

**Faith Lutheran Church (ELCA)**  
1101 Bernice • 659-2252  
(Worships with First Presbyterian Church)

**Union Church**  
31 S. Archer • 659-2644  
Sunday School: 9:45 a.m.  
Worship: 10:45 a.m.  
Evening Worship: 6 p.m.  
Bible Study: 7 p.m. Wed.  
Pastor - Bill Sparks

**Fellowship Baptist**  
1102 S. Archer • 659-2783  
Sunday School: 10 a.m.  
Worship: 11 a.m.  
Sun. Evening Worship: 6 p.m.  
Youth/Adult Serv.: 7:30 Wed.  
Pastor - Gene Foster

**Primera Mision Bautista**  
502 E. 7th • 659-3991  
Sunday School: 9:45 a.m.  
Worship: 11 a.m.  
Evening: 6 p.m.  
Wed. Prayer Meeting: 7 p.m.  
Thurs. Visitation: 7 p.m.

**El Aposento Alto U.P.C.I.**  
1105 S. Roland  
Domingos:  
Escuela-Dominical - 10 a.m.  
Culto Evangelistico - 7 p.m.  
Jueves: Oracion - 8 p.m.  
Mier. Estudio Biblico - 7 p.m.  
Pastor - A.G. Martell  
(806) 659-2153

#### Waka

**Waka Church of the Brethren**  
435-4598

#### Morse

**Morse Baptist Church**  
733-2757  
Pastor - Mike Martin



This feature is made possible through the sponsorship of these civic minded businesses.

Compliments of . . .  
**AGCO**  
of Spearman, Inc.  
"See you in Church"  
659-3751

**PRAIRIE MOTORS INC.**  
Hwy. 207 South • P.O. Box 430  
Spearman, TX 79081 • (806) 659-2641  
www.prairiemotors.com

**BOXWELL BROS. FUNERAL HOME**

Compliments of  
**G&G FOODLINER**  
516 Main • Gruver, TX  
733-2471

**COLUMBIA**  
Medical Center of Pampa  
One Medical Plaza  
Pampa, Texas 79065  
(806) 665-3721

**Palo Duro Supper Club**  
22 S. Archer • Spearman  
659-2232

**Bartlett's Lumber & Hardware**  
105 W. Broadway • Gruver, Texas  
(806) 733-2404

**BERRY CLEANERS**  
Ann & Vernon Pipkin - Owners  
Phone 659-3122 • P.O. Box 1017  
207 Main St. • Spearman, TX

**Morse Implement & Auto Supply**  
"Join us in church this week"  
Tom Dortch 733-2668  
P.O. Box 89 • Morse, TX 79062

**Gruver Cablevision**  
308 Main  
Gruver, TX 79040  
733-5295

**Deakin ELECTRIC**  
OILFIELD • RESIDENTIAL • COMMERCIAL  
321 S. MAIN • SPEARMAN  
1-800-999-1506 Chris Deakin  
806) 659-5016 President

**Interstate Bank, ssb**  
322 Main • P.O. Box 146  
Spearman, TX • 659-2559

**SERVICE When You Need It**

- Gasoline
- Oil Changes
- Battery Service
- Flat Tire Service
- Car Washing & Cleaning
- Tire Rotation & Balancing

**CORNER SERVICE STATION**  
101 Main Street • Spearman, Texas

(806) 659-2722  
Joe & Nita Bynum

The Hansford County Reporter-Statesman  
213 Main Street  
Spearman, TX 79081  
Phone - (806) 659-3434  
Fax - (806) 659-3368  
CathyRSmit@aol.com  
Mon.-Thurs. (Closed Fridays)  
9 a.m.-12 p.m. & 1-5 p.m.

Gary Smith - Publisher  
Catherine Smith - Editor  
Harletta Carthel - Assist. Editor  
Contrib. Writers: Helen Fisher, Jeff Beedy,  
Dorothy Hudson, Dwayne Mitchell  
Contrib. Photographer: Charlie Johnson

Subscription Rates  
In Hansford Co. - \$25.00  
Out of County - \$30.00

The Hansford County Reporter-Statesman (USPS 529660) is published weekly in Spearman, TX. Periodical postage paid in Spearman, TX. POSTMASTER: Send address changes to The Hansford County Reporter-Statesman, 213 Main Street, Spearman, TX 79081.

Publication Policy  
The deadline to submit news and advertising to The Hansford County Reporter-Statesman is Monday at 5:00 p.m. Items accepted after the deadline will be published at a later date, as time and space permit. Publication of all items is at the discretion of the editor.

Letter Policy  
The Hansford County Reporter-Statesman welcomes letters to the editor on any subject. All letters must be signed and will be published with the name of the writer. Letters must include an address and telephone number for verification. Letters should be kept at a reasonable length. The editor reserves the right to edit all letters. Any letter may be rejected for publication without reason. Letters that are libelous and/or slanderous will not be published. The deadline to submit letters is noon on Monday. Letters in support or opposition to political candidates will not be published. Persons wishing to publically support political candidates in this newspaper are invited to purchase an ad.

Advertising  
Open Display rates are \$4.00 per column inch. Classified Ads are \$5 for the first 25 words and 10¢ per word for each additional word. (Additional charge for boxed classifieds.)

Member of  
Texas Press Association and  
Panhandle Press Association

**TEXAS PRESS ASSOCIATION AWARD WINNER**





### Engagement Announcement

DaWayne and Pam McWhorter of Perryton wish to announce the engagement of their daughter, Jennifer to Dion Woods of Perryton. Dion is the son of Linda Woods.

Jennifer is the granddaughter of Frank and Judy Buzzard of Perryton. The couple plan to be married on February 14, 2003 at 7 p.m. at the First United Methodist Church of Spearman.

## Farber, Hartford Wed

Haley Michelle Farber and Allen Truman Hartford were united in marriage on Saturday, December 14, 2002 at the First Baptist Church in Plano. Dr. Leon Aduddell officiated.

The bride is the daughter of Karon Farber of Carrollton and Mr. and Mrs. Rodney Farber of Spearman, all of whom attended the wedding. Haley is also the granddaughter of the late Elsie Mathews of Spearman.

Allen is the son of Mrs. Margaret Hartford of Weslaco, TX, who attended the wedding with Allen's sister, Sarah. Allen is also the son of the late Truman Hartford.

Maid of honor was Cheryl Amabile of Kingwood, TX. Matron of honor was Kala Davis of Lewisville, TX. Bridesmaids were Haley (Eaton) Soto of Amarillo and Rosalinda Garza of Houston.

Best man was Tad Dyer of Weslaco. Groom's attendants were Michael Davis of Lewisville, TX,

Gabriel Rodriguez of Amarillo and Earle Hager of Austin.

A scripture reading was performed by Amanda Snider, cousin of the bride, and a special music selection was performed by Mr. and Mrs. Michael Handran, friends of the bride and groom.

The bride wore a candelight ivory satin gown with a sweetheart neckline and long sleeves of Schiffl lace. The front of the dress was accented with sequins and pearls in an hourglass shape, and the back featured a deep v-back and cathedral train bordered by pearls and lace.

The colors of the wedding were cobalt blue and ivory. The bride chose ivory roses, white stephanotis, and blue delphinium for the bouquets.

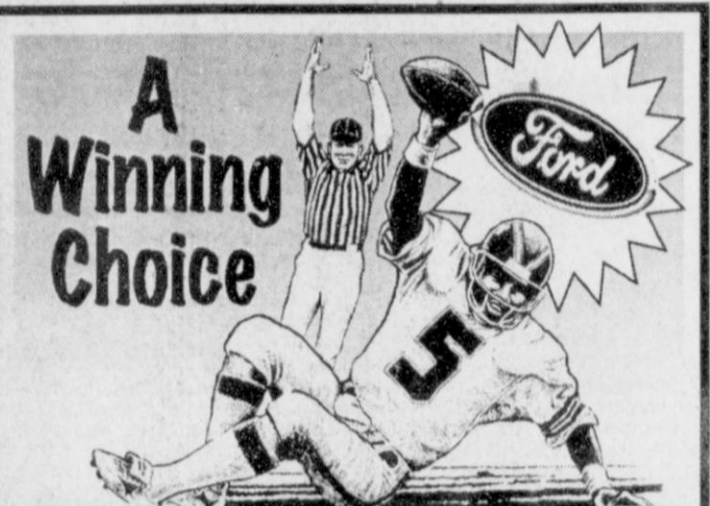
The bride was presented in marriage by her father, Rodney Farber.

The wedding reception was held at the Carpenter House of Plano.

The bride and groom will reside in Carrollton, Texas.



Haley and Allen Hartford



### Score Value & Convenience

2002 Lincoln Town Car - Signature Series Light gold, tan leather, 6-CD, loaded, only 12,000 miles, balance of 4 yr./50,000 mile warranty	\$28,900
2002 Lincoln LS Sedan - V8, pearl white, tan leather, CD, driver select, dual temp controls, moonroof, loaded, 19,000 miles, balance of 4 yr./50,000 mile warranty	\$27,900
2002 Mercury Grand Marquis LS - Silver, gray leather, dual power seats, windows, locks, 6-CD & cassette, remote entry, keypad, garage door opener, auto-temp control, alum. wheels, 17,000 miles, balance of 3 yr./36,000 mile warranty	\$18,500
2002 Mercury Sable GS - 4-door, white, gray cloth, 5 passenger seating, remote entry, power pedals, windows, locks, tilt, cruise, CD, aluminum wheels, 13,800 miles, balance of 3 yr./36,000 mile warranty	\$13,900
2002 Taurus SES - Silver, gray cloth, 6 passenger, power seats, windows, locks, remote entry, tilt, cruise, CD, 16,400 miles, balance of 3 yr./36,000 mile warranty	\$13,500
2002 Focus SE - (2) 4-door, gray, gray cloth, 4-cycle, automatic, windows, locks, cruise, tilt, CD, aluminum wheels, 13,000 miles and 18,000 miles, balance of 3 yr./36,000 mile warranty	\$11,900
2002 Focus SE - 4-door, light gold, tan cloth, 4-cycle, auto, windows, locks, cruise, tilt, CD, aluminum wheels, 13,000 miles, balance of 3 yr./36,000 mile warranty	\$11,900
2002 Escort SE - 4-door, silver, 4-cycle, automatic, air, cruise, tilt, windows, locks, keyless entry, ABS, 11,000 miles, balance of 3 yr./36,000 mile warranty	\$9,900
2002 Escort SE - 4-door, white, 4-cycle, automatic, air, cruise, tilt, windows, locks, keyless entry, ABS, 13,000 miles, balance of 3 yr./36,000 mile warranty	\$9,900
2001 Town Car Executive - Pearl, white, tan leather, keyless entry, dual power seats, 6-CD & cassette, loaded, 12,000 miles, balance of 4 yr./50,000 mile warranty	\$24,500
2001 Mustang - Mineral gray, brown cloth, bucket seats, cassette & CD, windows, locks, tilt, cruise, V6, automatic, 19,000 miles, balance of 3 yr./36,000 mile warranty	\$12,900
2001 Pontiac Montana Mini Van - Quad bucket seats, 3rd-row bench seat, V6, automatic, windows, locks, tilt, cruise, dual air, very clean with 42,450 miles	\$15,500
1999 Lincoln Continental - Red fire mist, V8, automatic, driver-select system, Alpine, memory seats, entry system, loaded, 1-owner, clean, new tires, 82,000 miles, (Doctor's car)	\$11,500
1998 Dodge Ram 1500 - Good cab, red, magnum V8, automatic, laramie SLT, windows, locks, tilt, cruise, clean truck, good tires	\$8,7500
1996 Chrysler Concord LXI - 4-door, white, tan leather interior, windows, locks, tilt, cruise, CD, 34,000 miles, very clean car	\$7,500
1996 Oldsmobile Cutlass Ciera SL - 4-door, brown, tan cloth, windows, locks, tilt, cruise, cassette, 62,000 miles	\$4,000



Darl Hergert

www.hergertford.com

Gordon Beagle

Listen to  
**KRDF-FM - 98.3**  
Hot Country Stereo 'Till Midnight

You are invited to a  
*Wedding Shower*  
honoring  
*Laura (Ontiveros) Cummings*  
on Saturday, January 25, 2003  
from 10:30 - 11:30 a.m.  
in the home of Helen Melton  
616 S. Barkley • Spearman, TX



Time Changes  
Everything -  
Happy 18th  
Birthday!

Everything's Coming Up Rosi  
Happy 30th  
Birthday!  
Your Friends(?)



**YOU WON T  
BE HUNGRY.**

**YOU WON T  
BE BORED.**

**YOU WON T  
BE THE SAME.**

Winning Points is a plan you can stick with till you reach your goal. You can eat the foods you love, stay satisfied, and still lose weight.

Now at Weight Watchers-get "In the Groove"-your cool guide to getting started, **free** when you join.

SARAH, DUCHESS OF YORK. AT WEIGHT GOAL SINCE 1997.

**JOIN MEETINGS NOW FOR ONLY \$15!**  
1 800 651 6000 WEIGHTWATCHERS.COM

WeightWatchers®  
real food. real life. real results.

Void where prohibited. Offer ends February 1, 2003. ©2003 Weight Watchers International, Inc. Member of the WEIGHT WATCHERS trademark. All rights reserved. Offer valid in participating locations only in AL, FL, GA, OK, TX, NC and SC. Fee for subsequent weeks \$11.97 depending on geography. Not valid for Corporate Solutions (i.e. 200 Meetings) or online members.

James R. "Jim" Jackson, CPA

- Income Taxes •
- Bookkeeping •
- Advisory Services •

407 S. Davis • Spearman, TX  
Office Hours: 8:30 a.m. - 5 p.m. on Tuesdays  
(806) 659-3869

## Bridal Registry

Laura Ontiveras & Christopher Cummings - Jan. 25  
Alyson Lee & Jace Dawson - Feb. 1  
Kristen Beedy & Robert Whitehead - March 22  
Korin Mercer & Derrick Burnett  
Jennifer McWhorter & Dion Woods

Celebrate  
Gifts for all your celebrations!  
203 Main St. • Spearman, TX

(806) 659-3350

1-800-663-8026

For The Bride & Groom

Come by and let us help you set up your special gift table

Couples Currently Registered

Christopher Cummings & Laura Ontiveras - Jan. 25  
Kristin Beedy & Robert Whitehead - March 22  
Hailey (Farber) & Allen Hartford

314 Main  
659-2141

Gordon's  
DRUG

Spearman,  
Texas

## Spearman Rural Leadership Program Completes First Session

The first session of the Spearman Rural Leadership Program was held on January 10th at The O'Loughlin Center, a sponsor of the program. The morning session was led by Seth Davidson, of Miami who gave a dynamic presentation on communications. Seth emphasized that we are all communicating something, either good or bad everywhere we are. "You Can" communicate was the overall principle of the message, meaning that you can become a better communicator with desire, practice, and by using some basic communication skills.

The afternoon session was led by Joe Frank Wheeler, of Borger who put the class through a group exercise on leadership styles. The class took a personality test to determine their behavior pattern classified as either a lion, fox, or a st. bernard. Who do you think was Boss Lion? The purpose of the exercise was to get the group to think about what style of leader you are, and how you react to others and what you need to work on. Joe Frank's motivational delivery combined with his experience and knowledge made the afternoon a real treat for the class. His message centered on the fact that a great leader is a person who gets their followers to achieve specific objectives willingly.

Brian Gillispie of the Spearman Economic Development Corporation wishes to thank those businesses that are allowing their employees to attend the class and for the sacrifices that each student is giving of their time. The class resumes on February 13th.

## Operas Set For WTAMU Stage

Two stories of love will be presented by the West Texas A&M University opera workshop at 8 p.m. Thursday, January 30 and February 1-2 in Northern Recital Hall on the WTAMU campus.

The first opera, Dido and Aeneas by Henry Purcell, tells the story of the ill-fated love between Dido, Queen of Carthage, and Aeneas, an Trojan prince. The second opera is titled The Old Maid and the Thief by Gian Carlo Menotti. It provides a touch of comedy when an enamored spinster and her maid try to find ways to keep a down-and-out young man in their home.

Dr. Cloyce Beard-Stradley, assistant professor of voice, will direct and conduct both operas.

Landree Woodward of Spearman will play the lead role of Dido in Dido and Aeneas. She will play the part of Miss Pinkerton in The Old Maid and the Thief. Landree is a junior performance major at WTAMU. She is the daughter of Mr. and Mrs. John Woodward of Ruidoso, NM.

The performances are free and open to the public. For more information, call 806-651-2840.

## It's A Boy!

Andy and April DeLaRosa of Spearman wish to announce the birth of their son, Keanan Nathaniel R.C. DeLaRosa. He was born on November 27, 2002 at 9:36 a.m. at Memorial Hospital of Texas County in Guymon, Oklahoma. He weighed 7 pounds and 7.4 ounces and was 20 inches long.

Proud grandparents are Gary and Betty Davis of Spearman and the late Robert and Delores DeLaRosa, also of Spearman.

## It's A Boy!

Ricky and Carrie McCann of Stephenville, Texas announce the birth of their son, Jerod Tyler McCann. He was born January 5, 2003 in Harris Methodist Erath County Hospital. He weighed 8 pounds and 3 ounces, and was 20 inches long.

He was welcomed home by a sister, Macayla McCann, age 2. Grandparents are Duval and Shirley Burton of Spearman and David and Jeannette McCann of Stephenville. Great-grandparents are Norman and Lorene Burton of Canadian and George and Betty Wilson of Carlton, Texas.

## Among The Neighbors

by Helen Fisher

Mary and Buford Baker were in Cancun, Mexico last week from Wednesday through Friday. He was representing the Five Star Equipment Company at a convention being hosted by the irrigation sprinkling system which Five Star handles.

The Bakers enjoyed other activities when the convention was not meeting. The beach was an attraction, as it always is to prairie people.

The weather was good, and their flights were smooth.

Last week's issue carried the obituary of Mickey Southerland, 56, who died on December 29, 2002. He lived in Frazier Park, CA.

He was born in Spearman and attended school here as did his brothers and sisters. Among his survivors are aunts, Marie Sutherland Sparks, Spearman, and Aldo Tompkins Mitts, now of Stratford.

Linda and Jimmy Beeson are pleased that their son, Alan, his wife Shelly, and eight-year-old son Dillion are moving back to Spearman. He is retiring from the Army on February 1st. They are looking forward to being back home.

They will be living in the house formerly owned by his aunt, Mozelle Sparks.

Yvette McCammond returned from Lubbock recently with Charlotte Ford where they had attended the funeral of Yvette's grandson, Ronnie McCammond.

Zack and Kelli McCammond of Lubbock had taken Yvette to Lubbock. He is a graduate of Spearman High and Texas Tech and is employed by All State Insurance.

Many folks enjoyed seeing a native of Spearman, Rex Linn, in a western movie on Saturday. Rex, son of Jimmy and the late Darlene of Oklahoma City, was born here and attended school here in his early years. His is a cousin of Jimmy Beeson.

The basic meaning of Christmas was emphasized at the home of Carrie and Trey Clark of Houston when Caroline Grace Clark was brought home on Christmas Eve.

She arrived at a hospital in Houston on December 21, 2002, weighing 7 pounds, 14 ounces. Her Aunt Laura Pearson was at the door of their home to welcome her.

Grandparents are Jackie and Bob Pearson of Spearman, Paige and Rich Clark of Houston, Judy and Bill Merrill of Nashville. Great-grandfather is James Tidwell of Lampasas. (The above birth announcement is appearing in this issue as one line was inadvertently omitted last week.)

Sympathy is extended with the passing of Bessie Cator Mitts. Bessie, born at Old Hansford, graduated from Spearman High in 1930. She was a sister-in-law to Grace Mitts Kirk.

Is it true that Jim Evans promised LaQuita a new fur coat for Christmas if she would feed and water the rabbits?

Weather for the week of January 13th through 7 a.m. January 20th: the high was on the 19th at 65; the low was on January 16th at 18 degrees; 1/2 inch of snow.

Although Station KRDF-FM was taking sick leave for a few days last week while a scarce replacement part was found and installed, Dwayne Smith and his weather instruments never missed a beat.

## Out At The Lake

by Dorothy Hudson

Lake Level--January 20, 2003--29.59 feet.

During this winter quiet time at the Lake, nothing much goes on as there are usually no campers, few fishermen, and smaller numbers of the lookers. Jim said some of the people that drive out may have seen the 8 eagles with 5 of them mature and 3 immature. The numbers then dropped back to the usual 4. Both Eastern and Western Bluebirds are being seen, and that is worth a trip.

Jim and Joan are both glad to be seeing the or a roadrunner again after an absence of a few months. These birds are most often seen down in canyons, but they frequently turn up in towns. Years ago one tried to build a nest on top of a jeep I had. At that time I felt I needed wheels worse than the bird needed a nest. Now I might be more patient and see if eggs were next to be put in the strange nest.

Elmon Jacobs pleased me greatly by leaving at the newspaper office a clipping from the Fredericksburg Standard-Radio Post, dated December 25, 2002, for me. The clipping had been sent to him by a stepson that lives between Kerrville and Fredericksburg. Much to our surprise, Mike Cox in his "Tales of Texas" had written his Christmas column about Bob and Jim Cator on Christmas Day in 1873 hunting in what would become Hansford County when a gentle snow turned into a dangerous blizzard.

Mike Cox, one of the better known Texas writers, put together a rather long piece, beautifully written, telling of some of the exploits of the English brothers. I enjoyed it very much, but not so much that I could ignore the mistakes. We have to face that much that has been written about the Cator family has errors. When

someone like Mike uses The Handbook of Texas as a guide, he expects their facts to be correct.

One the Texas book has is that Les Cator, when he came from England brought along his new bride, Bessie Donelson. Mike used this one. Actually Bessie Ambrosia Donaldson (sometimes spelled Donelson) was born in Pennsylvania but had come to No Man's Land as a child. She met Les when she came to work for the Stanley Tyler family before they had the big stone house. The couple was married April 18, 1894, the fourth couple to be married in the County after it was organized.

With the death this weekend of Bessie Cator Mitts, age 92, we lost the last child of Les and Bessie Ambrosia Cator.

Bessie's death was the third one in a recent chain of the deaths of the second generation of our pioneer Cator families. LaMoyné Cator was the last member of that generation of Jim Cator's family. George Cator, the last remaining child of Bert and Alvina Cator, recently lost his wife. George, born in 1910, as was Bessie, is the last living one of the American generation of Captain Bertie Cator's grandchildren.

## MARY KAY

Beauty Consultant

Leann Gillaspie

659-3889

America's best selling brand

See us for:  
 AUTO • HOME • CROP HAIL •  
 FARM & RANCH • MULTIPERIL •  
 LIVESTOCK

**INSURANCE**



**BORT AGENCY, INC.**  
 510 Main St. • Gruver, TX  
 (806) 733-2456

## ATTENTION LADIES

SAVE BIG NOW!

This Year, You'll LOVE the Superbowl!

Shop the Superbowl Sale at Dunlavy Jewelry

EVERYTHING 1/2 OFF!

Superbowl Sunday, January 26, 10 a.m.-4 p.m.

EVERYTHING 50% OFF!

Football Has Never Looked Better!

Dunlavy Jewelry



209 S. Main • Perryton • (806) 435-3136



## Hergert Ford

Perryton, Texas

## Front Alignment Special

Cars and Light Trucks

Align Front End Four Wheel Alignment

\$49<sup>95</sup>

\$79<sup>95</sup>

Parts needed for alignment are extra.

Introducing our alignment technician

Randy Ratcliff with 22 years experience.

Call for your appointment today.

(806) 435-7676

## MONEY'S

BBQ & STEAK HOUSE

14 S.E. Third in Perryton • 435-3945

(Directly behind Interstate Bank)

For that Special Person in your life, take them somewhere unique.

Money's Valentine Special - Friday, February 14th

Reservations Required - Adult Dining Only

For more information or to make reservations, call 435-3945

Remember, We R-TH-PLC-2-B!

# The Gruver Grapevine

by Harletta Carthel

## Lady Hounds Lead the Pack

The Gruver Lady Hounds finished on top of the pack with a perfect 4-0 record in the first round of district play with a 52-43 over the Sunray Lady Cats on Friday night.

While the Lady Hounds dominate the district, the runner up slot is up for grabs with Stratford's first round record at 3-2, and Sunray and Booker still in the running with 2-3 records.

The Hounds are currently tied with White Deer for the all-important number two spot in district with a 3-2 record. Gruver registered wins over Booker, Stratford, and White Deer and losses to Sunray and Vega in the first round of district play. Sunray leads the boys district with a 4-1 record.

## Gruver Schools Cited for Excellence

Six members of the Gruver School system were in Austin Tuesday, January 21 to receive instructions for their presentations to the Texas Pathfinders Collaboration next month.

The Gruver High School delegation of Mike King, Amy TeBeest, and Sylvia Borunda and the Gruver Junior High delegation of Matt Branstine, Roy Mayhew, and Pat Overbey left Monday afternoon for the meeting. The school's representatives will be presenting reports at the February 6 and 7 meeting in El Paso which seeks input on achieving excellence in the classroom.

Both Gruver Junior High and High School were observed earlier in the year by members of the Pathfinders who were seeking to discover successful instruction techniques by top-rated schools in the state.

## Gruver Students Involved in TAKS Field Test

Freshmen, sophomores, and juniors at Gruver High School took the field test in language arts and reading of the new TAKS test which is replacing the TAAS test as a means of evaluating the performance of both students and schools.

The TAKS test will be given later this year.

## Gruver Mourns Losses

The Gruver community was beset with the loss of three of its

own this past week.

Tommy Pepper, the manager of Bernstein Elevator, died at his home Tuesday, January 14.

Living in Gruver since 1994, Pepper and his wife Diana were active in the community and in their church. Agriculture was an important part of Pepper's life having served as an Ag teacher at Caprock High School, as a grain elevator manager with Attebury Grain, and as a cattle raiser.

News of the passing of Bessie Mitts was received over the weekend. A native and long-time resident of Hansford County, Mitts, at the time of her death, was living in Hereford to be near her son.

Bessie helped to raise a large number of Gruver children as a capable and loving baby sitter. She was an active supporter of Gruver basketball even in her latter years when she depended on the help of others to get to her seat in Greyhound gym.

Born in a dugout in 1910 south the South Palo Duro Creek, Bessie was a pioneer and eye witness historian of Hansford County.

Ona McClenagan, one of the grand ladies of Gruver, passed away on Sunday, January 19.

Ona was active in the First Baptist Church. Widowed early in life, Ona was noted for raising a fine family.

## Hoops A-Plenty This Weekend

With the Gruver Junior High Basketball Tournament slated for Thursday-Saturday, January 23-25, and junior varsity and varsity home games set for Friday, January 24, it will be a basketball lovers delight this weekend in Gruver.

## Lifters Compete at Meet

Gruver's new power lifting athletes competed at Highland Park over the weekend. Results of the team's first meet will be forthcoming.

## Hathaway's Son-in-Law Deployed

MK2 Matt Anderson of the US Coast Guard, the husband of Debbie (Hathaway) and the son-in-law of Garry and Francis Hathaway, has been deployed to Kuwait for a 45 day mission.

## School Board Meets

Meeting in regular session, the Gruver ISD Board of Trustees held a public hearing as required by the Texas Education Code #39.052, for the Academic Excellence Indicator System (AEIS) Report.

Motions approved by a 5-0 vote in the meeting included the 2001-2002 Audit Report presented by Mr. Howard Hammerbeck, the Power Lifting Program for high school students, and the substitute teacher list.

A 55 minute executive session was held for the discussion of school personnel.

Returning to open session, the board reviewed the discussion items of facilities, the business manager's contract, and the superintendent's report.

Including in the superintendent's report were the 2003-2004 calendar, the midwinter conference of January 26-29, 2003, the roof project, future revenue, a financial report, and the revenue and expenditures.

School board members present for the meeting were Terry Sherrill, Davin Winger, Benny Wilson, Buddy Lowe, Jr. and Jody Irwin and Superintendent David Teal.

Absent were board members Paul Stavlo, and Mike Yanke.

Visitors received were business manager Randy Reid and Howard Hammerbeck.

## Financial Aid Workshop Nears

Senior parents and students are reminded of the January 30th workshop on financial aid for college or technical schools.

The meeting will begin at 6:30 p.m. in the high school library with a \$100 scholarship to be awarded to one lucky senior. Questions on the meeting may be addressed to Wendy Branstine, Gruver Schools Counselor, 733-5111.

## District 1-1A Team Eyes Baseball, Softball

Booker, a fellow member of District 1-1A, is currently considering adding baseball and softball to their sports lineup.

In a lengthy school board meeting, proponents argued that the program will open up new avenues for students while opponents argue the \$8,000 price tag would mean cutting the budget of existing sports.

The issue will be voted on in a future school board meeting.

# GHS Basketball

After completing the first round of district play, the GHS Hounds are tied with White Deer for second place with a 3-2 record behind Sunray with a 4-1 record.

January 10  
Hounds 52, White Deer 48  
Hunter Bevil 3, Wade Stewart - 9, Aaron Boyd - 4, Cass Cooper - 1, Lance Williams - 1, Cody Mac Been - 21, Carlos Borunda 11, Ryan Winger 2.

Comments: After holding a good lead throughout the game, the Hounds win a big one over White Deer on the Bucks home court.

January 14  
Hounds 53, Stratford 39  
Hunter Bevil 6, Brock Irwin - 3, Wade Stewart - 4, Aaron Boyd - 2, Cass Cooper - 3, Lance Williams - 5, Cody Mac Been - 8, Carlos Borunda 20, Ryan Winger 2.

Comments: The Hounds showed no mercy as they defeated the Elks at Greyhound Stadium. Carlos

Borunda pours in 20 points.

January 17  
Gruver 41, Sunray 50  
Brock Irwin - 3, Wade Stewart - 1, Aaron Boyd - 9, Cass Cooper - 11, Lance Williams - 5, Cody Mac Been - 4, Carlos Borunda - 8

Comments: The Hound Express, down only one, 21-22 at halftime, hits a snag in the road as they fall in an 18 point fourth quarter scoring blitz to the Cats.

The Lady Hounds find themselves top dog in the district race with a perfect 4-0 in the first round of play.

January 14  
Lady Hounds 54, Stratford 39  
Teal Armes - 12, Christi Clift - 4, Amy Watley - 4, Brandi Griffin - 8, Lisa Johnson - 22, Cassie Myatt - 4.

Comments: The Lady Hounds and Hounds send Stratford packing by defeating their opponents in

nearly identical scoring.

January 17  
Lady Hounds 52, Sunray 43  
Teal Armes - 4, Christi Clift - 12, Amy Watley - 11, Brandi Griffin - 4, Lisa Johnson - 13, Cassie Myatt 6.

Comments: The Lady Hounds post a perfect district record with a win over the Lady Cats.

.....  
Lady Hound JV 37, Sunray 19  
Lindsey Clift - 11, Allison Reid - 4, Samantha Myatt - 2, Laci Fitzgearld - 9, Rachelle Holt - 7, Jessica Vela 2, Jessica Montgomery - 2.

.....  
Lady Hound JV 37, Stratford 25  
Lindsey Clift - 13, Allison Reid - 12, Samantha Myatt - 2, Laci Fitzgearld - 2, Katie Jones - 4, Rachelle Holt - 3, Liz Lopez 4, Jessica Vela - 6.

## TFU 101st Convention in Lubbock

On January 24-25 hundreds of Texas farm and ranch families will gather in Lubbock, Texas for Texas Farmers Union's (TFU) 101st Centennial Convention. The Convention theme this year is "A new century of commitment to family farm agriculture."

"Emergency agriculture disaster assistance, new trade agreements, farm bill implementation and competitive livestock markets, are some of the major issues that will be discussed at this convention," said Wes Sims, President of T.F.U. The convention will culminate Saturday evening with a banquet featuring National Farmers Union President "Dave Frederickson."

# No SMOKING

MurMur's would like to announce that it is now a non-smoking facility.

## MURMUR'S CAFE

100 S. Roland • 659-3580 • Spearman  
Hours: Monday-Friday, 11:00 a.m.-7:00 p.m.

# Want the option to Increase your CD rate?



## With First National Bank's new Step-Up CD you can!

When you invest \$10,000 or more for 1 year, 18 months or 2 years you will have the opportunity to change that rate one time during the CD's term to a higher rate if the interest rates increase.

Call Teresa in Spearman at (806) 659- 5544 or Rose in Dumas at (806) 934-8455 today for more information.



## A Full Service Bank

729 W. 7th  
Spearman, Texas 79081  
(806) 659-5544  
1-800-583-4196  
www.fnbspearman.com

1500 Guylane Plaza  
Dumas, Texas 79029  
(806) 934-8455  
1-866-583-4196  
Member FDIC

### SPEARMAN INDEPENDENT SCHOOL DISTRICT STATEMENT OF REVENUES, EXPENDITURES, AND CHANGES IN FUND BALANCE GOVERNMENTAL FUNDS FOR THE YEAR ENDED AUGUST 31, 2002

EXHIBIT C-3

Data Control Codes	10		Permanent Trust Fund	Other Funds	Total Governmental Funds
	General Fund	Food			
<b>REVENUES:</b>					
5700 Total Local and Intermediate Sources	\$ 3,754,492	\$	41,979	\$ 304,089	\$ 4,100,560
5800 State Program Revenues	2,807,274	-	-	119,433	2,926,712
5900 Federal Program Revenues	11,489	-	-	361,251	372,740
5020 Total Revenues	6,573,255	-	41,979	784,778	7,400,012
<b>EXPENDITURES:</b>					
Current:					
0011 Instruction	3,515,087	-	-	278,100	3,793,187
0012 Instructional Resources & Media Services	123,627	-	-	49	123,676
0013 Curriculum & Instructional Staff Development	43,710	-	-	2,004	45,714
0021 Instructional Leadership	4,462	-	-	10,369	14,831
0023 School Leadership	299,636	-	-	-	299,636
0031 Guidance, Counseling & Evaluation Services	115,812	-	-	-	115,812
0033 Health Services	54,743	-	-	-	54,743
0034 Student (Pupil) Transportation	125,504	-	-	-	125,504
0035 Food Services	6,898	-	-	323,177	330,075
0036 Cocurricular/Extracurricular Activities	290,224	-	-	-	290,224
0041 General Administration	418,082	-	-	-	418,082
0051 Plant Maintenance and Operations	680,812	-	-	-	680,812
0053 Data Processing Services	18,295	-	-	-	18,295
0061 Community Services	8,224	-	-	24,971	33,195
Debt Service:					
0071 Debt Service - Principal on long-term debt	59,998	-	-	210,000	269,998
0171 Debt Service - Interest on long-term debt	1,944	-	-	25,440	27,384
Capital Outlay:					
0081 Facilities Acquisition and Construction	247,347	-	-	-	247,347
Intergovernmental:					
0093 Payments to Fiscal Agent/Member Districts of	89,115	-	-	-	89,115
6030 Total Expenditures	6,103,520	-	-	874,170	6,977,690
1100 Excess (Deficiency) of Revenues Over (Under) Expenditures	469,735	-	41,979	(89,392)	422,322
<b>OTHER FINANCING SOURCES (USES):</b>					
7915 Transfers In	10,495	-	-	102,857	113,352
8911 Transfers Out (Use)	(102,857)	-	(10,495)	-	(113,352)
7080 Total Other Financing Sources (Uses)	(92,362)	-	(10,495)	102,857	-
1200 Net Change in Fund Balances	377,373	-	31,484	13,465	422,322
0100 Fund Balance - September 1 (Beginning)	2,988,218	-	1,411,377	14,570	4,414,165
3000 Fund Balance - August 31 (Ending)	\$ 3,365,591	\$	1,442,861	\$ 28,035	\$ 4,836,487





The above photo was taken by Maribel Martinez. It is part of the research she will present to the National American Meteorological Society in February.



Linda Winegarner received a plaque from Spearman ISD Board President Will Jarvis in honor of being selected as the Spearman ISD January Employee of the Month. Linda is the school nurse and has worked in her current position for 18 years. She is responsible for the health care needs of 750 students. January 22nd is School Nurse Appreciation Day and everyone is encouraged to express their appreciation to Linda for a job well done!

## 99 Cents

### Small Town Athletes Fill Big Shoes

by Harletta Carthel

Being a Friday night hero is a seven day a week job for small town athletes.

While Big City high school athletes may get the media coverage on Saturday morning, it's the athletes of Smallville that are in "the public's eye" seven days a week.

While Big City athletes can slip into obscurity on Saturdays and not emerge again until game time on Friday, Smallville athletes have no place to hide from their adoring crowd of fans, many of whom still use their fingers to count and send their Christmas requests to Santa. Since these athletes often share the same campus, gym, and cafeteria as their fans, they find themselves in the position of being full time heroes, whether they want to be or not.

The fat pencil crowd notices what these heroes wear, what they eat, and what they say. They not only copy their hero's free throw form or passing stance but also their actions and mannerisms.

In Smallville, heroes are on stage whether they are washing their pickup in the driveway, hanging out with their friends at the Dairy Queen, or going to church on Sunday morning. Their actions are a live video with no erase button.

The big eyed, buck teeth crowd doesn't care if their hero is a potential all state candidate or an end of the bench. If a high schooler wears a jersey on the court or field, they are a elementary icon.

While most Smallville athletes are aware of their fame (since they were once in the same little sneakers and underoos,) they often don't realize the extent of the influence they have, for good or bad.

Small fry notice if their heroes say "Yes, Sir" on a radio interview, if they are on the honor roll at school, or if they lead the Pledge of Allegiance. They also notice if they utter a profanity, dispute a referee's call, make fun of fellow classmate, or hot rod on city streets.

Being a Smallville athlete and hero can be a very daunting task. But those who step up to the plate to fill the shoes may find their batting average isn't near as important as the positive influence they may have in the life of a child

### Martinez To Present Research

Maribel Martinez will present her research entitled "Lightning Signatures in Convective Storms" at the National American Meteorological Society (AMS) conference in Long Beach, California on February 8-13, 2003.

Maribel performed her research during the summer of 2002 at the National Center for Atmospheric Research (NCAR) in Boulder, Colorado and is continuing the research Texas Tech University for Master's thesis.

Research included analysis of both in-cloud and cloud-to-ground lightning signatures during thunderstorms to better aid weather forecasters when issuing severe thunderstorm and tornado warnings.

Maribel is currently working on her Master's Degree in Atmospheric Sciences at Texas Tech University. She was a member and officer of the West Texas Student Chapter of the AMS. She is a member of both the Storm Intercept Team and Hurricane Deployment Team at Texas Tech. Maribel is the daughter of Homero and Maria Martinez of Spearman.

### Sweethearts Sought

The Hansford County Reporter Statesman is seeking to honor Hansford County couples who have been married 50 years or more in the February 13 edition.

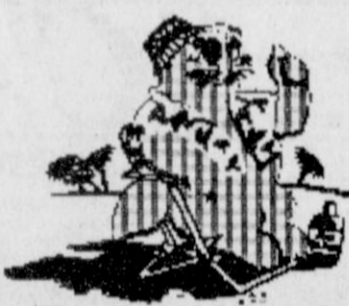
To recognize a couple who has celebrated 50 years or more of marriage, submit their names and the number of years they have been married by mail to the Hansford County Reporter Statesman, 213 Main Street, Spearman, Texas 79081, by e-mail cathyrsmit@aol.com, or by dropping the information by the newspaper office (a window drop-in slot is available for use after business hours).

Deadline for submitting names is Thursday, February 6, 2003. Names submitted after the deadline will not be published in this year's list.

**Citizen Leaders**

SCHOOL BOARD RECOGNITION MONTH JANUARY 2003

**Ground Hog Supper**  
Saturday, February 1st  
6:00-8:00 p.m.  
Waka Church of the Brethren



**Waffles  
Sausage  
Hot Syrup**

Free Will Offering

SCHOOL BOARD RECOGNITION MONTH JANUARY 2003

Your school board members are committed to public education and the continuing success of your students and schools.

Take time in January to thank your local trustees for a job well done!

Texas Association of School Boards • P.O. Box 400 • Austin, Texas 78717-0400

**HUGE 2-DAY ONLY SALE!**  
100's Of Items To Choose From

**\$10**

1,000,000 Candle Power Rechargeable Cordless Spotlight  
with Both 12 volt and 110 chargers!!

**DAD'S TOOL BOX**  
Monday & Tuesday, January 27th & 28th  
8 a.m. to 7 p.m.

1st Come, 1st Served • Dealers Welcome • Cash, Check, Major Credit Cards

**DON'T MISS THIS SALE!!!!**

Jig Saw, Finishing Sander, 3/8" Drill, 4-1/2" Electric Grinder

**\$10 EACH**

The O'Loughlin Center  
502 S. Brandt • Spearman, TX

**Panhandle Diner & Deli**

We are now accepting reservations for a Melodrama that will be presented on Saturday, February 15th, under the direction of Candy Boxwell and Francis Pipkin.

Cast Includes: Bob Davis as Wiley Slithers, Frances Pipkin as Dr. What, Carla Brown as Ima Fool, Chris Stewart as Sam Lactose, Roy Pipkin as Pa Fool, Mary Schumann as Ma Fool, Tashi Schumann as Ida, Cathy Davis as Clara, Skeeter Huffaker as Waitress, Rod Sumner as Rev. Beeks and Craig Schumann as Frank Hotsy

**Panhandle Diner & Deli**  
217 Main Street • 659-3864 • Spearman, TX  
Hours: Mon., Tues. & Wed.: 8 a.m.-2 p.m.; Thurs. & Fri.: 8 a.m.-8 p.m.; Sat.: 8 a.m.-2 p.m.; Sun.: 11 a.m.-2 p.m.

**SUPER DEALS!**

Ask Us About:  
Dr. Sharma's Chicken Pizza  
Mark's Calzone w/all Meats  
Jeannie's Stromboli w/Sausage  
Our New Roast Beef Sandwich

We Deliver!  
Please remember to tip our drivers!

Tackle great savings with these super deals—Rush in today!

**Super Bowl Special**  
Saturday & Sunday Only  
1 Large 1-Topping Pizza  
1 Regular Calzone or Stromboli  
1 Order Bread Stix (Alpine or Garlic)  
**\$18<sup>99</sup>** + tax

Come in and enjoy our dining room OR Pick up your order at our drive-up window for your convenience.

**Don't Forget About Our**  
Cinnamon & Alpine Sticks • Hot Pickets • Rigatoni  
Chicken Alfredo • Tortellini • Hot & Spicy or BBQ Wings  
**& Our Delicious Sandwiches**  
Club • Turkey • Ham & Cheese • Meatball • Sub

**HOURS:**  
Sunday-Thursday 10:30 a.m.-9 p.m.  
Friday & Saturday 10:30 a.m.-11 p.m.

**SIMON'S PIZZA**  
312 Main Street • Spearman, TX  
(806) 659-9991  
**Simply Great Pizza!**

**Want to watch a movie?**  
Call and see if it's in, and we'll deliver it with your food order.