



The Hansford County Reporter-Statesman

213 Main St • Spearman, TX 79081

THURSDAY
MAY 20, 2004

PROUDLY SERVING HANSFORD COUNTY SINCE 1907

VOL. 97 • ISSUE 20

INSIDE THIS WEEK'S PAPER

- Hansford Happenings - Pg. 2
- Birth Announcements - Pg. 3
- Engagements - Pg. 4
- Wedding Announcement - Pg. 5
- Gruver Grapevine - Pg. 5
- Local Columnists - Pg. 6
- School News - Pg. 8
- Classified Ads - Pg. 9
- School Honor Roll - Pg. 10

WEEKEND WEATHER FORECAST

THURSDAY NIGHT - Partly cloudy. Breezy. Lows in the mid 60s. South winds 15 to 25 mph.

FRIDAY - Partly cloudy. Breezy. Highs around 90. South winds 15 to 25 mph with gusts to around 40 mph.

FRIDAY NIGHT - Partly cloudy. Breezy. Lows in the lower to mid 60s.

SATURDAY - Partly cloudy. Breezy. Highs around 90.

SATURDAY NIGHT - Partly cloudy. Breezy. Lows in the upper 50s.

SUNDAY - Partly cloudy. Highs in the upper 80s.

SUNDAY NIGHT - Partly cloudy. Lows near 60.

State Announces Return of "Click It or Ticker" Campaign

State officials announced today that Texas will once again participate in the national Click It or Ticket program to get more motorists to buckle up.

The Texas Department of Transportation reports that safety belt use in Texas in the last year has increased from 81% to almost 85%, thanks in large part to the campaign's combination of extensive advertising and stepped up enforcement of the state's safety belt and child safety seat laws.

From May 24 to June 6, which includes Memorial Day weekend, the Texas Department of Public Safety and hundreds of local law enforcement agencies will participate in the statewide crackdown on drivers and passengers failing to buckle up themselves or their children.

TxDOT says pickup drivers are a major focus of this year's effort.

"Though pickup trucks are twice as likely to roll as cars, pickup drivers and their passengers are the worst offenders when it comes to not buckling up," said Carlos Lopez, director of traffic operations. "Wearing a safety belt increases your chance of surviving a pickup rollover crash by 70 percent."

Campaign supporters are counting on new television, radio and billboard advertisements to drive home the point that wearing a safety belt can save motorists from death or serious injury in a crash. The TV public service announcements feature both humor and drama. In one, state troopers and officers from law enforcement agencies statewide deliver a musical buckle up reminder; the other depicts a graphic pickup rollover crash.

Texas law requires drivers and front seat passengers to use safety belts. Children under 17 have to be buckled up in the front or back seat. Child safety seats are required for children under four years old or less than 36 inches tall. Fines for violations range from \$25 to \$200.

Since the Click It or Ticket campaign first began in 2002, Texans have responded by buckling up in record numbers. With almost nine of every ten motorists in Texas now using safety belts, TxDOT estimates that in the last two years 205 lives have been saved with nearly 5,000 fewer people injured in traffic crashes.

For more information, contact Mark Cross, TxDOT Public Information Office, (512) 463-8585.

SHS's Short, GHS's Fitzgearld Claim Tennis Bronze Medals

by Harletta Carthel

Two county sophomores took third place medals at the state tennis tournament this past week.

Spearman's Lindsey Short and Gruver's Laci Fitzgearld both won their quarterfinals games before falling in the state semifinals. Short defeated Jenifer Penny of Winnie East Chambers 6-2, 6-0, before falling to Stephanie Rodriguez of Mason 6-3, 6-4 in the semifinals.

She finished the season with 23 wins and three losses. Fitzgearld downed Samantha Jones of Wolfe City 6-1, 6-1 before her fall to Sarah Alejandro of Knippa in split sets 6-4, 3-6, 6-4.

Both players were awarded bronze medals in awards ceremonies.



Got medal? Yes, say Lindsey Short (left) the state bronze medalist in girls tennis singles and Melissa Lesly, the state silver medalist in the 400 meter dash.



Like having the world on a string, Gruver state medalists Blythe Finley (left) with a silver medal in girls pole vault, and Laci Fitzgearld with a bronze medal in girls tennis singles, display their winnings.

Finley, Lesly Win Silver; Clift, Gillaspie Place

by Harletta Carthel

Gruver junior Blythe Finley and Spearman sophomore Melissa Lesly brought home silver medals for their individual events at the state track meet held in Austin this weekend.

Finley, a pole vaulter, tied her best-ever height of 10' 3", at the state event for second place. Amanda Alley of Crosbyton took first place with a record vault 10' 12".

It was Finley's second year to compete at the state contest. Her vault was 9" better than her 9' 6" effort last year for fourth place.

Spearman sophomore Melissa Lesly was narrowly edged out of a gold medal in the 400 Meter Dash with her 57.42. Her time bettered her then personal best of the season, of 58.29. Loren Brown of Frankston took first with a 57.23.

Gruver sophomore Lindsey Clift's 5'2" tied in height for second place in girls high jump but was awarded fifth place based on numbers of misses. The 5'2" effort tied Clift's best jump of the season.

Competing in the triple jump, Clift placed seventh with her leap of 33' 5", less than her season best of over 34.

Freshman Collin Gillaspie of Spearman placed fourth in boys high jump with 6' 4", which tied his season's best leap.

County Election Results Lists Winners In Offices

Voters in the Gruver Independent School Board returned one incumbent and welcomed two newcomers to their school board.

With 308 voters casting ballots, the top three candidates were Curt Fitzgearld 235, Jeff Graves 173, and Paul Stavlo (123). Others on the ballot were Davin Winger (I) 116, Todd Williams 88, Larry Hicks 80, and Pat Harris 57. School board member Buddy Lowe did not

file for reelection.

In the Spearman School District, all three incumbents were returned to office. The top three candidates were Jarvis (I) 225, Stephanie Crossland (I) 207, and Bob Boxwell (I) 205. Other candidates were Glen Ray Mackie 174, Tony Ferguson 77, and Trace Worley 74.

In the Pringle-Morse Consolidated Independent School District race, incumbent Carolyn Shields was returned

with 44 votes along with newcomer James Lieb, receiving 42 votes. Candidate Bob B. Zimmer received 19 votes.

In Spearman City Elections, Mayor Steve Benton, who was unopposed, received 238 votes.

In the alderman race, Charles Elliott (I) with 170 votes and Jon Garnett with 137 were declared winners. Other candidates were Kathy Boyd with 109 votes and Roger Buchanan with 104.



Master quilter Gerry Davis displays her international award-winning creation.

Local 'Piecemaker' Honored At World Quilt Contest

by Harletta Carthel

Folks in Paducah, Kentucky may not know much about Gruver, Texas, but through Gerry Davis they can 'piece together' that it is the home of a very talented quilter.

Davis' "Piecemakers Times and Seasons" quilt took third place in the Group Amateur or Professional category in the 20th annual American Quilter's Society Quilt Show and Contest in Paducah, Kentucky.

Davis and her daughter Barbara Stavlo, who journeyed to Kentucky to view the quilt show and bring home Davis entry in the show, had a surprise on their arrival.

"I was really excited when I saw a ribbon on my quilt," Davis said "I felt so honored."

Davis quilt was one of 425 selected for the show which displayed quilts from 18 countries and all 50 states. Only 56 ribbons were awarded to the best of the highly select group.

Continued on Page 5



Have gun will travel. A cannon, recently donated to the Stationmaster's House Museum, was moved Monday, May 17th to the museum property where it will be displayed. Assisting in the move (left to right) are J. D. Wilbanks, Irvin Boyd, Joel Lee Lackey, Don Reed, and Spearman Police Deputy Dee Mayfield.

The 15mm Howitzer was built in 1918 and was rebuilt in 1941 in Rock Island, IL. It was donated to the City of Spearman in 1973 for display. Following the September 11th tragedy, the Army began checking on all machinery and artillery displays to make sure they meet the proper regulations for display. Since the Howitzer canon was not displayed properly, the City of Spearman asked for and received permission from the Army to donate the canon to the Stationmaster's House Museum. After a concrete pad and fencing are in place, the canon will be displayed for public viewing.

Live, Laugh & Love



by Catherine R. Smith
cathysmith@antden.com

Since school is nearly out for the summer and students are preparing for their end-of-year exams, I thought I would share the following column with you. It is the 8th-grade final exam from 1895 in Salina, KS. (My friend Bill Pittman sent it to me.) It was taken from the original document on file at the Smokey Valley Genealogical Society and Library in Salina. (I hope you do better than I did!)

8th Grade Final Exam - Salina, KS 1895

- Grammar (Time, one hour)**
1. Give nine rules for the use of capital letters.
 2. Name the parts of speech and define those that have no modifications.
 3. Define verse, stanza and paragraph.
 4. What are the principal parts of a verb? Give principal parts of "lie," "play," and "run."
 5. Define case; illustrate each case.
 6. What is punctuation? Give rules for principal marks of punctuation.
 7. Write a composition of about 150 words and show therein that you understand the practical use of the rules of grammar.

- Arithmetic (Time, 1.25 hours)**
1. Name and define the Fundamental Rules of Arithmetic.
 2. A wagon box is 2 ft. deep, 10 feet long, and 3 ft. wide. How many bushels of wheat will it hold?
 3. If a load of wheat weighs 3942 lbs., what is it worth at 50cts/bushel, deducting 1050 lbs. for tare?
 4. District No. 33 has a valuation of \$35,000. What is the necessary levy to carry on a school seven months at \$50 per month, and have \$104 for incidentals?
 5. Find the cost of 6720 lbs. coal at \$6.00 per ton.
 6. Find the interest of \$512.60 for 8 months and 18 days at 7 percent.
 7. What is the cost of 40 boards 12 inches wide and 16 ft. long at \$20 per meter?
 8. Find bank discount on \$300 for 90 days (no grace) at 10 percent.
 9. What is the cost of a square farm at \$15 per acre, the distance of which is 640 rods?
 10. Write a Bank Check, a Promissory Note, and a Receipt.

- U. S. History (Time, 45 minutes)**
1. Give the epochs into which U.S. History is divided.
 2. Give an account of the discovery of America by Columbus.
 3. Relate the causes and results of the Revolutionary War.
 4. Show the territorial growth of the United States.
 5. Tell what you can of the history of Kansas.
 6. Describe three of the most prominent battles of the Rebellion.
 7. Who were the following: Morse, Whitney, Fulton, Bell, Lincoln, Penn, and Howe?
 8. Name events connected with the following dates: 1607, 1620, 1800, 1849, 1865.

- Orthography (Time, one hour)**
1. What is meant by the following: Alphabet, phonetic, orthography, etymology, syllabication?
 2. What are elementary sounds? How classified?
 3. What are the following, and give examples of each: Trigraph, subvocals, diphthong, cognate letters, linguals
 4. Give four substitutes for caret 'u.'
 5. Give two rules for spelling words with final 'e.' Name two exceptions under each rule.
 6. Give two uses of silent letters in spelling. Illustrate each.
 7. Define the following prefixes and use in connection with a word: bi, dis, mis, pre, semi, post, non, inter, mono, sup.
 8. Mark diacritically and divide into syllables the following, and name the sign that indicates the sound: card, ball, mercy, sir, odd, cell, rise, blood, fare, last.
 9. Use the following correctly in sentences: cite, site, sight, fane, fain, feign, vane, vain, vein, raze, raise, rays.
 10. Write 10 words frequently mispronounced and indicate pronunciation by use of diacritical marks and by syllabication.

- Geography (Time, one hour)**
1. What is climate? Upon what does climate depend?
 2. How do you account for the extremes of climate in Kansas?
 3. Of what use are rivers? Of what use is the ocean?
 4. Describe the mountains of North America.
 5. Name and describe the following: Monrovia, Odessa, Denver, Manitoba, Hecla, Yukon, St. Helena, Juan Fernandez, Aspinwall and Orinoco.
 6. Name and locate the principal trade centers of the U.S.
 7. Name all the republics of Europe and give the capital of each.
 8. Why is the Atlantic Coast colder than the Pacific in the same latitude?
 9. Describe the process by which the water of the ocean returns to the sources of rivers.
 10. Describe the movements of the earth. Give the inclination of the earth.

Notice that the exam took six hours to complete. Gives the saying "he only had an 8th grade education" a whole new meaning, doesn't it?

May God bless and keep you; May He make his face to shine upon you, and be gracious to you; May the Lord lift up his countenance upon you, and give you peace.
Numbers 6:24-26
Catherine :)

Texas Observes Transportation Week May 16-22

The Texas Legislature has designated May 16-22 as Texas Transportation Week to coincide with National Transportation Week and honor accomplishments in transportation.

Transportation enhancements and projects add 47,000 jobs to the state economy for every \$1 billion in transportation dollars spent, according to the US Department of Transportation.

Here's a statistical snapshot of transportation in Texas:
Highways: TxDOT maintains more than 70,000 miles of roads carrying vehicle traffic more than 442 million miles a day. State maintained roads include interstate highways (3,233 miles), US highways (12,109 miles), state highways (16,183 miles), farm to market roads (40,990 miles) and park roads (336 miles).

Maintenance: TxDOT spent approximately 42 percent of its budget maintaining the transportation system. In 2003, nearly 27,000 land miles, or more than 14 percent of the state system, were resurfaced.

Construction: Thirty-three percent of TxDOT's \$5.9 billion budget goes to build and expand our transportation system.

Bridges: Texas has 48,720 bridges, more bridges than any other state. Last year, TxDOT rehabilitated or replaced 858 bridges and built 306 new-location bridges.

Toll Roads: Texas has 142 miles of toll roads. In 2003, the state started construction on the 65 mile, \$2.9 billion Central Texas Turnpike Project. More toll roads are being planned as a way to relieve congestion and improve mobility and safety.

Aviation: Texas has 300 general aviation airports and almost 49,000 private pilots. Airports also support business development and commercial interests such as travel, manufacturing and agricultural in and through the state.

Vehicles: More than 18.6 million vehicles are registered in Texas.
Regional Mobility Authorities: Texas has three Regional Mobility Authorities, giving local authorities the ability to accelerate needed transportation improvements.

Public Transportation: In 2003, nearly 277 million people used a TxDOT funded public transit vehicle. There are 303 transit agencies providing for the public transportation needs of Texans.

Railroads: Texas has 13.2 percent fewer fatalities at highway rail crossings in 2003.

Safety: Seat belt use increased from 81 to 85 percent in 2003. More than 50 million people a year stop at 102 safety rest areas.

Travel: The TxDOT Travel Division served 3.2 million visitors to travel information centers. The division also fulfilled more than 545,000 travel information requests by mail.

Happy Father's Day!

Hey, Kids! Tell everyone how great your dad is!
The Hansford County Reporter Statesman will publish your letter to dad in our Fathers Day Issue, June 17th.
The cost is only \$15 for 40 words or less. (Longer letters will be slightly more.)
Don't miss this opportunity for the perfect Fathers Day gift.

Sample Letter

Dear Dad,
I love you more than football. You are my best buddy. Thank you for coming to my games and fixing my boo boos. I'm glad you're my dad!
Love Andrew

HIGH PLAINS PUBLIC RADIO



89.5 KTOT

Top O' Texas @ 89.5
Spearman-Borger-Canadian-Dumas-Pampa-Perryton

Washburn, Claude, Panhandle @ 91.3

Amarillo @ 94.9

Listen on the web at www.hppr.org

npr station affiliate

For a complete program schedule contact HPPR 800.678.7444

The Hansford County Reporter-Statesman

213 Main Street • Spearman, TX 79081
Phone - (806) 659-3434 • Fax - (806) 659-3368
cathysmith@antden.com
Mon.-Thurs. (Closed Fridays) 9 a.m.-12 p.m. & 1-5 p.m.

Gary Smith - Publisher • Catherine Smith - Editor
Harletta Cartheil - Assist. Editor • Clayton Smith - Student Editor
Contributing Writers: Helen Fisher, Dorothy Hudson, Merry Sparks
Contributing Photographer: Charlie Johnson

Subscription Rates

In Hansford County - \$25.00 • Out of County - \$30.00

The Hansford County Reporter-Statesman (USPS 529660) is published weekly in Spearman, TX. Periodical postage paid in Spearman, TX. POSTMASTER: Send address changes to: The Hansford County Reporter-Statesman, 213 Main Street, Spearman, TX 79081.

Publication Policy
The deadline to submit news and advertising to The Hansford County Reporter-Statesman is Monday at 5 p.m. Items submitted after the deadline will be published at a later date, as time and space permit. Publication of all items is at the discretion of the editor.

Advertising
Open Display rates are \$4.00 per column inch. Classified Ads are \$5 for the first 25 words and 10c per word for each additional word. (Additional charge for boxed classifieds.) There is a \$1 charge per week if billed.

Member of
Gruver Chamber of Commerce
Spearman Chamber of Commerce
Texas Press Association and Panhandle Press Association



HANSFORD HAPPENINGS

Reyna Ruiz Scholarship Fund

A scholarship fund has been established for Reyna Ruiz through the Sacred Heart Catholic Church. Donations may be mailed to: Sacred Heart Catholic Church, Ruiz Scholarship Fund, PO Box 127, Spearman, TX 79081. Reyna is the daughter of Elva Ruiz and the late Gerardo Ruiz of Spearman.

Medical Fund Established for Melissa (Robinson) Vasquez

A medical fund has been established at First State Bank for Melissa (Robinson) Vasquez. Donations may be sent to First State Bank, Melissa Vasquez Fund, 1 NE Court, Spearman, TX 79081.

Project Graduation

The parents of the Senior Class of 2004 will sponsor and host a "Project Graduation Party" following commencement exercises on Friday, May 28th. To encourage the graduates to stay the entire night, door prizes are awarded throughout the evening. In addition, graduates can earn paper monies through their participation in various games so that prizes can be purchased. The graduation party will culminate with the distribution of grand prizes. Prizes, gift certificates, and cash are needed for the evening's gifts. If you, the community, who supported and encouraged these seniors these past 13 years of school, would be willing to share in this final "Class of 2004" memory, making this project "special," please call Nikki Lozano at 659-2568 or 659-3964; or Charlotte Sheets at 659-2971. Thank you, in advance, for your support!

Miss Hansford Scholarship Pageant

The Women's Division of the Spearman Chamber of Commerce will host "An Enchanted Evening" Miss Hansford Scholarship Pageant on June 8, 2004 at 7 p.m. Age divisions are: Little Miss (4-6), Jr. Miss (7-9), Preteen (10-12), Teen (13-16) and Miss Hansford (17-21). Entry forms are available at the Spearman Chamber of Commerce Office, Lady Fair, Kid's Stuff, Dreamer's and at Main Street in Gruver. The deadline for entries is May 7, 2004. For more information, contact Jodie Hight at 659-3720.

Gruver Flea Market

A flea market is slated for Saturday, May 22, in Gruver City Park, according to Lisa Salmans, Gruver Chamber of Commerce Director. Food booths, garage sale items, antiques, crafts, and fun booths such as face painting are some of the ideas Gruver Chamber members hope to incorporate in the event. Booths at the flea market will be \$10 for an 8' by 10' space. Interested individuals or groups may reserve a space by contacting Salmans, 733-2861, after 5 p.m. or director Holly McLain, 733-5040 from 10 a.m. - 6 p.m. on weekdays or 10 a.m. - 1 p.m. on Saturdays.

Memorial Day Wreaths

The Golden Spread Senior Citizens has a nice selection of Memorial Day Wreaths still available for purchase. For more information, contact Kathy Bryant at 659-3030, or stop by the Sr. Citizens Center at 502 South Brandt in Spearman. Call today, they're going fast!

Walk Across Texas!

You know you should get regular exercise but you need some motivation? Call Peggy Winegarner, County Extension Agent, at 659-4130 or 733-2901, to find out how you can **Walk Across Texas**. Walking, running, biking, aerobics, swimming, all count in the total mileage. You may participate as an individual or as a team made up of 8 people who keep track of the amount they walk for eight weeks. Immediate benefits include increased energy levels and feeling less stressed. **Walk Across Texas** began May 10th and goes through July 12th. If you would like to participate, call today!

Hansford Golf Club Hosts Tuesday Night Scrambles

The Hansford Golf Club Tuesday Night Scrambles are in full swing. Tee-off is at 6 p.m. each Tuesday. Contact Ross Donahue, Curtis Covington or Sheri Benton for more info.

Out-Of-School Examinee Registration

Individuals who are no longer enrolled in school and who have not previously met minimum expectations on all sections of the TAAS test, but have met all other graduation requirements, may retake the necessary sections. The TAAS test will be given on July 6 (writing), July 7 (math), and July 8 (reading). A student can register for the TAAS test online by accessing the web site at <http://k12testing.tx.ncpearson.com/ooos> or by completing a registration form. Registration forms may be picked up at the high school counselor's office between the hours of 8 a.m. and 4 p.m. Registration packets are due in Austin by 5 p.m. on June 4, 2004. Please contact Krista Baird at 659-2584 if you have any questions.

Breast Cancer Screening Clinic

The Don and Sybil Harrington Cancer Center Comprehensive Breast Center in cooperation with Gruver Independent School District will conduct a Breast Cancer Screening Clinic at the Gruver High School Home Economics Room, in Gruver on May 21 & 24, 2004. Breast cancer affects one in eight women. The key to winning the battle against cancer is early detection by having an annual breast exam, mammogram and performing a breast self-exam each month. Funding is available through the Texas Department of Health for Texas residents who qualify for assistance. All exams are done by appointment only. Call (806) 356-1905 or 1-800-377-4673 for more information or to schedule an appointment.

Community-Wide Singpiration Service

Anyone interested is invited to attend the Community-Wide Singpiration Service on Sunday, May 30th at 6 p.m. at the Union Church in Spearman. Testimonies of God's grace will be shared with worshipful songs presented by members of Spearman's churches. Everyone is invited to enjoy fellowship after the event with finger foods and drinks. A prayer time will begin at 5:30 p.m. If you are interested in participating, please contact pastor Bob Elder at the First Assembly of God Church in Spearman.

Alzheimer's Support Group

Coldwater Manor Nursing Home, 1111 Beaver Road, Stratford, would like to invite anyone interested to attend an Alzheimer's Support Group, held the third Wednesday of each month at 4 p.m. in the Board Room. Everyone is invited to meet and support other with families who have loved ones with Alzheimer's.

Lake Fryer Children's Fishing Tournament

The Wolf Creek Advisory Board will be hosting a Children's Fishing Tournament at Lake Fryer on June 5, 2004. Registration will begin at 9 a.m. at the Lobo Restaurant, which is located in the park. The fishing tournament will end at 2 p.m. There will be a \$1/contestant registration fee. Prizes will be awarded at 3 p.m. in three age groups: Ages 1-5, Ages 6-10 and Ages 11-14. All proceeds are used for park improvements.

Ochiltree Wheat Field Day

Texas Cooperative Extension in Ochiltree County is sponsoring a wheat field day at the Dan Krienke farm on Tuesday, May 25th beginning at 10 a.m. Producers attending the field day will have the opportunity to see dryland and irrigated variety trials and learn about their different variety characteristics. Also, a talk on wheat irrigation management will be given. Lunch will be provided by AgriPro Seed Company. For directions to the farm or to have questions answered, contact Ochiltree County Extension Agent Scott Strawn at 806-435-4501.

WHAT'S FOR DINNER?

CASSEROLES TO GO

A convenience or the busy family!
Orders must be placed at least two hours ahead, or by 10 a.m. for lunch.

MENU

- Tortilla Lasagna; Chicken, Mushroom & Spinach Lasagna; Beef & Cheese Lasagna; Chicken Spaghetti; Texas Chicken; Cheese Manicotti; Chicken Enchiladas; Beef Enchiladas; King Ranch Chicken; Ham & Cheese Potato Bake; Bierox - \$3.00 each (allow more time)

9x9 - \$14.95 • 9x11 - \$24.95

Ask about the Casserole Club!

Now selling Arbonne products
Stop by & see the new alternative to synthetic hormones!
Graduation is coming! Don't forget our unique gift selection!

GRAMMY'S GIFTS & GOODIES
659-5087 Call to reserve our room for your special event.
224 Hancock • Spearman

It's A Boy!

Rhonda (Hall) Valdez and Mark Romero of Liberal announce the birth of their son Keegan Mark Romero. The little lad was born April 24th at 12:10 p.m. at Southwest Medical Center in Liberal. He weighed 4 pounds and 10 ounces and was 18 inches long. His grandparents are Charles and Carole Hall of Spearman. His great grandfather is Elgin Garrison of Merced, California. He was welcomed by older brother Tyson Dettmann and older sister Cortney Valdez.

It's A Boy!

Chris and Gale Womble of Spearman wish to announce the birth of their son, Ogden Man Womble. Ogden was born on Tuesday, April 20, 2004 at 3:27 a.m. in Amarillo. He weighed 6 pounds, 13 1/2 ounces and was 20 3/4 inches long. Proud grandparents are Ron and Deana Womble of Amarillo and Fred and Janice Mayfield of Spearman. Great-grandparents are LaRue and the late Red Whitefield and Dora and the late Man Womble, all of Spearman, Evelyn Shaw of Indianapolis, IN, Jo Butler of Atwater, CA and Mary and Smokey Mayfield of Spearman.

HCHD Milestone Meal Honorees for April 2004



HCHD April Milestone Meal honorees (front, L-R) Kenda Boyd, Tammy Herndon, Mary Silva, Mona Sandoval, Maria Mendoza, (back, L-R) Joann Schneider, Tom Armstrong, Lisa Unruh, and Steve Hartgraves, CEO.

Each month the HCHD employees who have anniversaries of dates of hire are invited for a special lunch in the Board Room with the Chief Executive Officer, Steve Hartgraves. April honorees are Kenda Boyd, 4 yrs.; Tammy Herndon, 9 yrs.; Mary Silva, 5 yrs.; Mona Sandoval, 3 yrs.; Maria Mendoza, 1 yr.; Joann Schneider, 2 yrs.; Tom Armstrong, 4 yrs.; and Lisa Unruh, 4 yrs. Hansford County Hospital District, its Administration, Board of Directors, and staff appreciate the efforts of these people for the citizens of Hansford and the surrounding counties.

Editors Note...

Freedom of speech is one of the guarantees of the First Amendment of our Constitution, so we encourage readers to express themselves, even if we don't agree with what is said. However, freedom involves responsibility. Therefore, the only letters we will consider publishing are from individuals who are willing for their names to appear with the letter. Letters must contain the telephone number, address and a personal signature of the writer. We will not knowingly publish any letter containing libelous statements.

In the event that numerous letters are received concerning the same subject, letters can be limited to one pro and one con letter per publication. Eligible letters will be published in the order in which they were received.

"Letters To The Editor," like all materials submitted to this newspaper, are subject to editing for space and clarity. The publication of any letter or article is the decision of the Editor and Publisher. Deadline for all news, as well as "Letters To The Editor," is 5 p.m. on Monday.

The Hansford County Reporter-Statesman

Happy Birthday!

Editor's Note: This Happy Birthday list is run as a public service by the Hansford County Reporter-Statesman. We apologize if any names are misspelled. If you know of a name that needs to be changed, added or deleted, please call 659-3434. Thank you, Catherine

Mrs. J.C. Rhea, Ozzy Osbourne, Bart Baker, Waurayne Cope, Betty Uptergrove, Kara Lee, Becky Myers, Alfonso Munez, Kimberly Groves, Brandi Burch, Lynette Campbell, Lindsey Wright, Josh Reed, Dan Wheelock

May 20
Birthday - Donna Ralston, April Graham, Barbara Kenney, Ronny Smith, Cindy Scribner, Beatrice Ellsworth, Jacob Harbour, Vernon Gardner, Beatrice McCloy, Lanasa Washburn
Anniversary - Mr. & Mrs. Steve Stedje, Mr. & Mrs. Price Miller, Mr. & Mrs. Pete Stafford, Mr. & Mrs. Donnie Davis, Rich & Donna Trantham, Shawn & Dynell Moore

Anniversary - Andy & Sheila Watley, Mr. & Mrs. James Terry, Mr. & Mrs. Curtis Covington

May 21
Birthday - Steven Foster, Holly Holt Key, Jenny Hart, Brad Johnson, Charles Brillhart, Mae McLoughlin, Dennis Baker, Mike Kizzar, Carolyn McDaniel, Judy Vela, Faye Schmeier, Tracy Kirkpatrick, Veronica Gomez, Michael Quillin, Gaby Briones, James Martin
Anniversary - Mr. & Mrs. Francisco Borunda

May 26
Birthday - Garrett Gumfory, Tessa Dawn Thoreson, Roger Buchanan, Gloria Arjona, Mike Owens, Don Savage, Marc Morris, G.A. Rodriquez, Michelle Robinson, Jason Varnon, Wanda Gift, Manda Michelle Lewis
Anniversary - Don & Teresa England, Mr. & Mrs. Jesus Favela, Mr. & Mrs. Nick Holt, Mark & Margy Schoenhals

May 22
Birthday - Kaitlyn Poole, Sorrele Blevens, Geneva Eddleman, Tamra Gammon, Kathryn Gumfory, Jo Copeland, Amy Gumfory Seagler, Lacey Morris, Loye Randall, Alan Shields, James Osbourne, Joe Garza, Maria Vela, Vickie Genn, Flossie Boyd, Cassie Myatt, Carla Woodington, Detsi Vera
Anniversary - Irvin & Helen Boyd, Mr. & Mrs. Steve Reed, Mr. & Mrs. Rex Reid

May 27
Birthday - Jamie Casdorff, Rachelle Holt, Andee Salmans, Julie Stedje, Chris Tomlinson, Julie Latta, Mary Ann George, Darrell West, Debbie Cook, Cindy Hendrick, Roy Black, Jim Myers, Ronnie Thompson, Gloria Perez, Laurcen Williams, Bonnie Thompson
Anniversary - Mr. & Mrs. Allen Davis, Mr. & Mrs. James George, Mr. & Mrs. Herb Hager, Mr. & Mrs. Jerry Moore

May 23
Birthday - Stefan Dorman, Clifford George, Brad Womble, Monet Lassiter, Scott Alfred, Lloyd Poole, Bob Skinner, Gladys Mitchum, David Collins, James Ooley, Bernie Olivare, Dorothea Keys
Anniversary - Mr. & Mrs. Art Salazar, Mr. & Mrs. Otho Gamil, Mr. & Mrs. Tom Latta, Mr. & Mrs. J.P. TeBeest, Mr. & Mrs. Brent Stedje

May 28
Birthday - Randy Brown, Lee Schubert, Kevin Nelson, Ramiro Arjona Sr., Nita Barnes, Brandi Blodgett, Martin Ketrion, Barbara Sharp, Connie Gammil, Vera Dominguez, Gloria Perez, Crystal Miller, Victoria Vela
Anniversary - Mr. & Mrs. Sammy Don Jones, Jr. & Nita Barnes, Lewis & Delores Moreno, Dr. & Mrs. Scot Martin

May 24
Birthday - Roy Edwards, Steve Gross, Faye Harris, Patti Bellows, Wanda Jones, Betsy Martin, Kimberly Gross, Shirley Heffley, Manuel Ortiz, Billy Brown, Shane Sumner, Walter Goodknight, Chris Schmeier, Brittany Morris, Carson Williams, Jan Williamson
Anniversary - Earl & Trudi Goodheart, Pamela & Gary Cates, Mr. & Mrs. Dwain Weller

May 29
Birthday - Camile Miller, Mrs. Richard Holton, Dayton Edwards, Wilma Francis, Danny Dry, Wayne Groves, Jesus Espinosa, John Allen, Jana Wright, Allen Alfred, Linda Pearson, Cody Thoms, Clint Schnell, Virginia Cates
Anniversary - Mr. & Mrs. Stan Seagler, Mr. & Mrs. Kevin Holt, Mr. & Mrs. Gary Gumfory

May 25
Birthday - Brett Rudolph,

May 30
Birthday - Orvil Brumett, Sharon Cook, Patty Hudson, Lynanne Maize, Phillip Atwood, Kimberly Nelson, John Brinkley, Terri King, Ramero Arjona, Rick Holt, Bobby Lesley, Connie Ross, Marie Hernandez, Bill Swan, Richard Paschel
Anniversary - Mr. & Mrs. Matt Johnson, Mr. & Mrs. David Tomlinson

Ralph Depee, D.D.S.
Member American Association of Orthodontists
Orthodontics For Children and Adults

- Free exam and estimate of cost
- Free second opinion
- Insurance filed

821 S. Amherst Perryton, Texas
1-800-521-0831
(806) 435-2320

MONUMENTS
Boxwell Brothers Funeral Home
519 Evans • Spearman
659-3802

Dear friends,
When you buy a monument from us we make sure it is exactly what you want at a price you can afford. If it is not right, we will make it right. And you will not have to search the countryside to find us. We are here when you have a need.

Sincerely,
Bob Boxwell

hchd
Hansford County Hospital District
proudly presents the
Employee of the Month

This month HCHD had two more excellent candidates for Employee of the Month, and they both won! Frank Hopkins, Maintenance Supervisor and Mona Sandoval, Manor CNA, tied for the honor.

Frank Hopkins has been employed by HCHD since November 25, 2002. He was nominated by Annette Hopkins and the Hospital Housekeeping Staff for the following reasons:

- Frank is very loyal to his job and takes it seriously.
- Frank has a great attitude; no matter what, he always has a smile, and he enjoys making people happy.
- Regardless of everything else he has on his list of things to do, he is making sure that what he does is done just right (a perfect example is the paint job in the CT Room).
- Frank enjoys working with all the employees, and he is kind to all who are around him.
- Frank takes time to see the Residents, just to say "Hi," and give a handshake or a hug. Frank has a big heart.

Mona Sandoval has been employed by HCHD since April 9, 2001. She was nominated by Dorothy Sparks, who said the following:

- Mona is very dedicated to her job. She even gave up part of her vacation to work because the Manor was short-staffed.
- She enjoys her work and is always singing.
- Mona loves to do what she does and is very dedicated to the Manor Residents and their care.
- Mona takes time with the residents; they are the reason she is here.
- Mona participates in all District functions.

Congratulations, Frank and Mona - and keep up the good work! The Employee of the Month receives a reserved parking space for the month, one day off with pay, and a nomination for Employee of the Year.

Hansford County Hospital District
707 S. Roland • Spearman, TX
(806) 659-2535

To the men and women who died for our freedom:
We Thank You

Memorial Day Wreaths Available

Call
Prairie Garden Flowers

209 Main St. • 659-2212 • 659-3329 • Spearman, TX

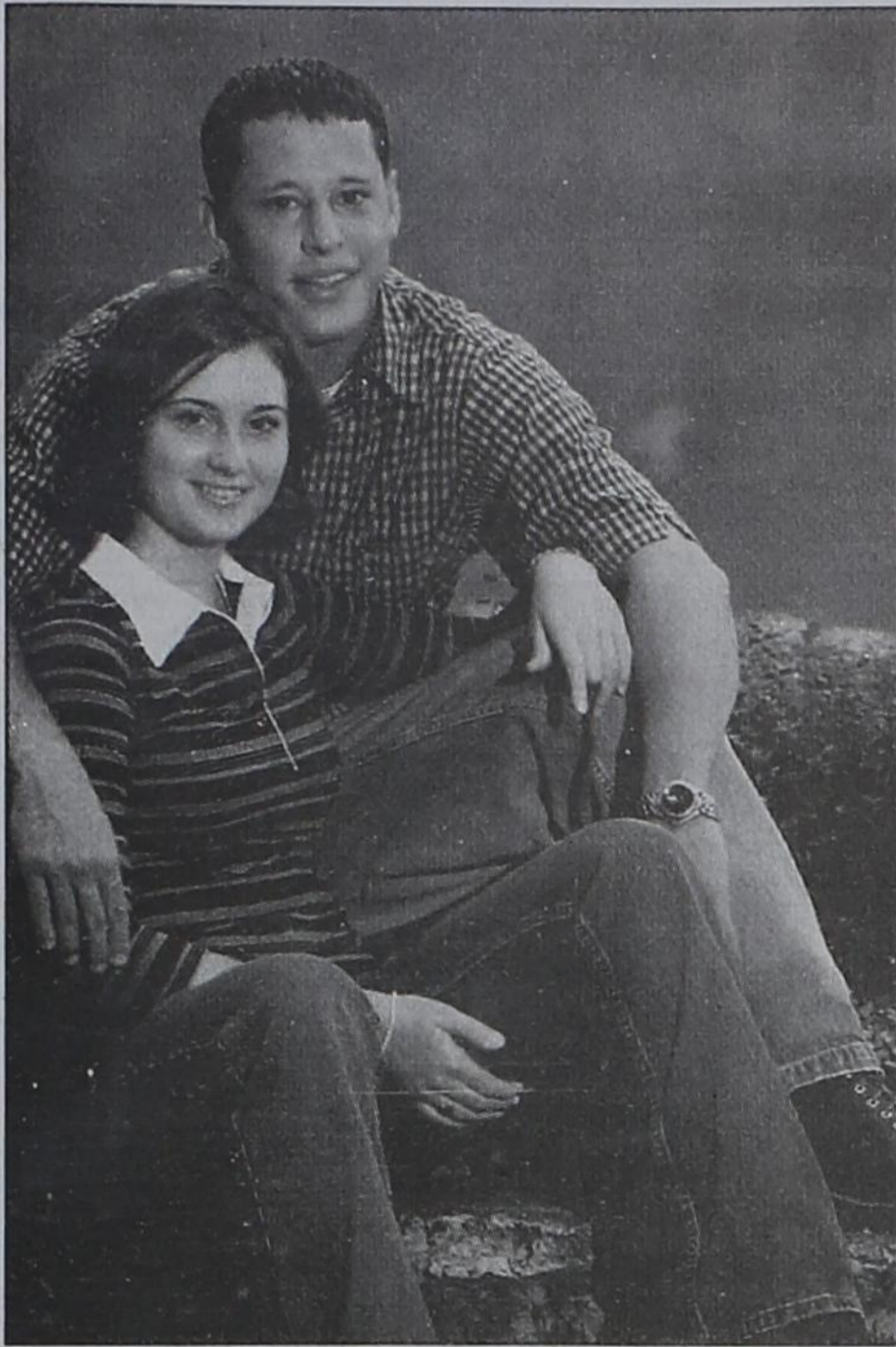
Congratulations
To All Hansford County
Scholars, Athletes & Graduates!

Replenish the seed of faith through . . .
DAILY BIBLE READING, PRAYER & REGULAR CHURCH ATTENDANCE

<p>Spearman</p> <p>Apostolic Faith Church 822 S. Dressen • 659-2870 Sunday School: 10 a.m. Worship Service: 11 a.m. Sun. Eve.: 6 p.m. Wed. Prayer Mtg.: 7 p.m. Pastor - Roland Haney</p> <p>First Assembly of God 401 N. Bernice • 659-2295 Sunday School: 9:30 a.m. Worship: 10:35 a.m. Kid's Church: 10:35 a.m. Evening Worship: 6 p.m. Wed. Worship: 7 p.m. Wed. Youth: 7 Pastor - Bob Elder</p> <p>First Christian Church (Disciples of Christ) 29 S. Bernice • 659-2036 Sunday School: 9:45 a.m. Worship: 10:50 a.m. Minister - Gary Smith</p> <p>First Baptist Church 123 N. Bernice • 659-5557 Sunday School: 9:45 a.m. Worship: 11 a.m. Evening Worship: 7 p.m. Wed. Fellowship Meal: 6 p.m. Wed. Disc. Time: 6:30 p.m. Wed. Youth Mtg.: 8 p.m. Pastor - Patrick Six</p> <p>Church of Christ 121 S. Haney • 659-3244 Sunday Bible Class: 9:45 a.m. Worship: 10:30 a.m. Evening Worship: 6 p.m. Bible Study Wed.: 7:30 p.m. KRDF Radio Program Living W/Christ: 7:50 a.m. Minister - Leonard Harper</p>	<p>Sacred Heart Catholic Church 901 Roland • 659-2792 Sat. Night Mass: 5:30 p.m. Sun. Mass: 9 a.m. - English (aired on KRDF-FM 98.3) Sun. Mass: 11:30 - Spanish 1:30 p.m. - Gruver - Christo Rendontor Mass - Spanish Rev. Guillermo Morales</p> <p>First United Methodist 407 S. Haney • 659-5503 Sunday School: 9:45 a.m. Worship: 8:30 & 11 a.m. Jr. High Youth: 5 p.m. Sunday High School: 6 p.m. Sunday Kids Club: 3 p.m. Wed. Pastor - Ken Cole</p> <p>Grace Presbyterian Church (Worships with Faith Lutheran Church) 1101 Bernice • 659-2033 Pastor - Beverly Cook</p> <p>Faith Lutheran Church (ELCA) 1101 Bernice • 659-2252 Sunday School: 9:45 a.m. Worship: 11 a.m. (Worships with Grace Presbyterian Church) Pastor - Beverly Cook</p> <p>Union Church 31 S. Endcott • 659-2644 Sunday School: 9:45 a.m. Worship: 10:45 a.m. Evening Worship: 6 p.m. Bible Study: 7 p.m. Wed. Pastor - Bill Sparks</p> <p>Fellowship Baptist 1102 S. Archer • 659-2783 Sunday School: 10 a.m. Worship: 11 a.m. Sun.-Evening Worship: 6 p.m. Youth/Adult Serv.: 7:30 Wed. Pastor - Gene Foster</p>	<p>Primera Mision Bautista 502 E. 7th • 659-3991 Sunday School: 9:45 a.m. Worship: 11 a.m. Evening: 6 p.m. Wed. Prayer Meeting: 7 p.m. Thurs. Visitation: 7 p.m. Pastor Joe Garcia Jr.</p> <p>El Aposento Alto U.P.C.I. 1105 S. Roland Domingos: Escuela-Dominical - 10 a.m. Culto Evangelistico - 7 p.m. Jueves: Oracion - 8 p.m. Mier: Estudio Biblico - 7 p.m. Pastor - A.G. Martell (806) 659-2153</p> <p>Gruver</p> <p>First Baptist Church 402 E. Broadway • 733-2411 Sunday School: 9:45 a.m. Worship: 10:50 a.m. Disciple Training: 6 p.m. Sunday Prayer Meeting: 7:30 p.m. Wednesday Pastor - Scott Curry</p> <p>Church of Christ 209 King • 733-2760 Sunday School: 9:30 a.m. Worship: 10:20 a.m. Evening Worship: 6 p.m. Wed. Worship: 7:00 p.m. Minister - Gaylord Cook</p> <p>First Christian Church 510 King • 733-2960 Sunday School: 10:00 a.m. Sunday Worship: 11 a.m. Youth: 7:30, Sunday Adult Bible Study: 7:30 p.m. Wed. Bible Study: 8:00 p.m. Pastor - Gary Gumfory</p>	<p>Gruver United Methodist Broadway & Garrett 733-2851 Sunday School: 9:45 a.m. Worship: 8:30 & 10:50 a.m. Eva. Worship & UMY: 6 p.m. Pastor - George Price</p> <p>Spanish Cristo Redentor Church Sunday Mass: 1:30 p.m. Friday Evening Mass Summer - 8:00 p.m. Fall/Winter - 7:30 p.m.</p> <p>Oslo</p> <p>Oslo Lutheran Church (ELCA) 6 Miles West & 12 Miles North of Gruver 339-7709 Sunday School: 9:45 a.m. Worship: 11 a.m. Pastor - Paul Fiske</p> <p>Waka</p> <p>Waka Church of the Brethren 435-4598</p> <p>Morse</p> <p>Morse Baptist Church 733-2757 Pastor - Mike Martin</p>
--	---	--	--

This feature is made possible through the sponsorship of these civic minded businesses.

<p>Compliments of . . . AGCO of Spearman, Inc. "See you in Church" 659-3751</p>	<p>Bartlett's Lumber & Hardware 105 W. Broadway • Gruver, Texas (806) 733-2404</p>	<p>BERRY CLEANERS Ann & Vernon Pipkin - Owners Phone 659-3122 • P.O. Box 1017 207 Main St. • Spearman, TX</p>	<p>Morse Implement & Auto Supply "Join us in church this week" Tom Dortch 733-2668 P.O. Box 89 • Morse, TX 79062</p>
<p>PRAIRIE MOTORS INC. Hwy. 207 South • P.O. Box 430 Spearman, TX 79081 • (806) 659-2541 www.prairiemotors.com</p>	<p>Gruver Cablevision 308 Main Gruver, TX 79040 733-5295</p>	<p>Hansford County Reporter-Statesman "Proudly Serving Hansford County Since 1907" (806) 659-3434 213 Main Street • Spearman, TX</p>	<p>Interstate Bank, ssb 322 Main • P.O. Box 146 Spearman, TX • 659-2559</p>



Engagement Announcement

David and Elizabeth Hudnall of Trout, LA, are pleased to announce the engagement and approaching marriage of their daughter, Rebecca Rose Hudnall, to Brian Alan Black, son of Monty and Sharon Black of Spearman, TX.

Rebecca is the granddaughter of Mrs. Hazel Hudnall and the late Sevia Hudnall of Nebo, LA and the late Jay and Rose Calvert of Caraway, AR.

Brian is the grandson of David and Mildred Burger and the late Ruth Burger of Waka, TX and the late W.H. and Ethel Black of Spearman.

Rebecca is a 2002 graduate of Jena High School and is presently attending college at Louisiana State University of Alexandria.

Brian is a 1999 graduate of Spearman High School and is currently employed with Energy Drilling out of Natchez, MS.

The couple will be married at 6:30 p.m. on Friday, May 28th at Fellowship Baptist Church in Trout, LA with Rev. Will Black officiating, and Rev. Mickey Hudnall and Rev. Randy Ray assisting with the ceremony.

A reception will follow in the fellowship hall of the church. Friends and relatives are invited to attend both the ceremony and reception.



Engagement Announcement

Mr. and Mrs. James Thomas Duniven of Wylie, TX are pleased to announce the engagement and approaching marriage of their daughter, Erin Kathleen, to Mark Stephen Mathews. Mark is the son of Mr. and Mrs. Stephen Luther Mathews of Spearman.

Erin is the granddaughter of Mr. and Mrs. Jack Callaway of Tyler, TX, Mrs. Dorothy Duniven and the late Bob Duniven of Wellington, TX.

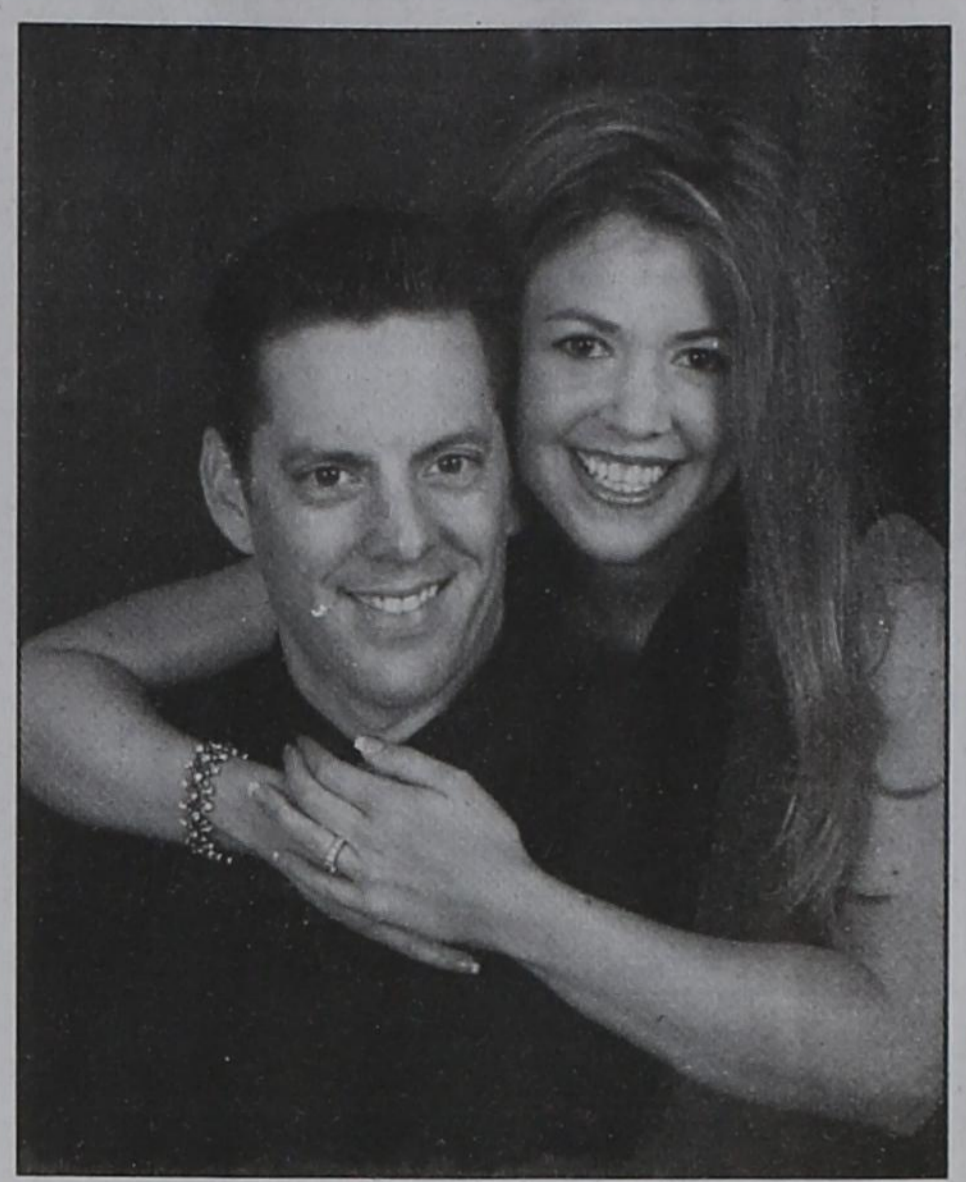
Mark is the grandson of the late Mr. and Mrs. Sam Cluck of Gruver and the late Mr. and Mrs. Virgil Mathews of Spearman.

The couple will be wed June 5, 2004 at the First United Methodist Church Chapel in Lubbock, TX.

Erin graduated from Lubbock High School in 1997 and from Texas Tech University in May 2004 with a Bachelor of Arts degree in Communication Studies.

Mark is a 2000 graduate of Spearman High School and a May 2004 graduate of Texas Tech University with a Bachelor of Science degree in Restaurant, Hotel and Institutional Management.

Following their wedding, Erin and Mark will reside in Fort Worth where Mark will be employed at Uncle Julio's.



Engagement Announcement

Mr. and Mrs. Jim Derington are proud to announce the engagement of their daughter, Erin, to Michael Dan Bickle. Mike is the son of Dan and Evanita Bickle of Arlington, TX.

Erin graduated from Gruver High School and from the University of Texas at Arlington with a Bachelor of Science degree from the School of Architecture with a degree in Interior Design. She is a sales associate for Business Interiors in Dallas.

Mike graduated from Lamar High School in Arlington, TX and from Texas Wesleyan in Fort Worth, TX with a BS degree in Social Science. He is vice-president of sales for Dickies Medical.

Mike and Erin will be married July 16, 2004 in Nassau, Bahamas.

Thank You!

I would like to thank everyone for their vote and consideration in the recent City Council Election.

Kathy Boyd

Thank You

Words cannot express the heartfelt gratitude we feel in our hearts for the love expressed to Robert and his family. We want to thank everyone for the kind words, prayers, cards, flowers and donations. We feel so lucky to live in Hansford County where caring people live.

Thank you and God bless you,
Margaret Novak & Family

Thank You

The family of Gene Cottrell would like to thank those who called, sent cards, brought food, gave memorials and donations, and especially for your love, concern and prayers after our loss of Dad. Your thoughtfulness and kindness is truly appreciated.

Sincerely,
Juanita Cottrell; Don & Alicegene Brooks;
Benny & Jackie Wilson; Rodney Sherry

Thank You

Here walked a man of God
Little is known of him
But much is known of who he served.
Who will continue to tell
The wonderful story left on his lips?
Surely you and I have that opportunity
To share in the legacy of this
Man after God's own heart.

by Rev. Bob Elder

Words cannot express our heartfelt thanks for the many acts of kindness extended to us during the loss of our love done, Jesse R. Francis. The cards, flowers, meal, visits and prayers helped comfort us and will never be forgotten.

The Family of Jesse R. Francis
Wilma Francis; Andrew & Darrie Francis & Family;
John & Angela Graves & Family;
Steven & Kim Francis & Family; Karen Read & Family

Thank You

The family of Chuck Eaton would like to thank each of you for your cards, food, donations, acts of kindness, and prayers. The support of friends helped us so much. We are eternally grateful!

Laura Eaton and Girls; Charles and Joanne Eaton;
Don and Cayla Schroeder and Boys;
Kelly and Johnnie Fuller and Children; Marguerite Nelson

You are invited to a
Wedding Shower
honoring
Kristin Holbrook
bride-elect of Quentin Shieldknight
on Saturday, May 22, 2004
from 10:00 - 11:30 a.m.
in the home of Jennifer Keim
27 Golden Circle • Spearman, TX

You are invited to a
Wedding Shower
honoring
Leslie Biesheuvel
bride-elect of Eric Varnon
on Saturday, May 22, 2004
from 2:30 - 4:00 p.m.
in the First Christian Church Fellowship Hall
29 S. Bernice • Spearman, TX

KRDF 98.3 FM
Good Time Rock & Roll
P. O. Box 307 • 605 E. Kenneth Ave.
Spearman, TX 79081 • (806) 659-2529

MEMORIAL DAY
Remember Your Loved One
On
Memorial Day
May 26th
with a Memorial Wreath from
All Occasion Flowers
202 N. Bernice • Spearman, TX
659-5180
Don't Forget Your Graduate!
Congratulations to all Hansford County
scholars, athletes & graduates!

Bridal Registry
Leslie Biesheuvel & Eric Varnon - May 22
Kristin Holbrook & Quentin Shieldknight - May 22
Cynthia Moseley & Alfonso Martinez - May 29
Erin Derington & Mike Bickle - June 12 (Gruver)
Erin Duniven & Mark Mathews - June 19
Marsha Brown & Jason Swink - Aug. 7
Krystal (McDonald) & Clay Scribner
Christina Alvarado & Aaron Huffaker
Tamara Meyer & William Bransgrove
Jennifer Laxson & Aaron Langston
Meg Woolley & Ben Walton
Sara Bass & Trevor Chisum
Monica Blackman & Bryon Pfaff
Kristi Pearson & Ross Renner
Staci Zugaro & Scott Jarvis
Kasey Dunnihoo & Mike Butts
Celebrate
Gifts for all your celebrations!
203 Main St. • Spearman, TX
(806) 659-3350 1-800-663-8026

Bridal Registry
Couples Currently Registered
Kristin Holbrook & Quentin Shieldknight - May 22
Leslie Biesheuvel & Eric Varnon - May 22
Cynthia Moseley & Alfonso Martinez - May 29
Krystal (McDonald) & Clay Scribner - June 5
Erin Derington & Mike Bickle - June 12
Marsha Brown & Jason Swink - Aug. 6
Kasey Dunnihoo & Mike Butts
Kristi Pearson & Ross Renner
Monica Blackman & Bryon Pfaff
Jess Anne (Fernandes) & Michael Lusby
Meg Woolley & Ben Walton
Jennifer Laxson & Aaron Langston
Sara Bass & Trevor Chisum
Gordon's DRUG
314 Main Spearman, Texas
659-2141

Frank Phillips College
Register for Summer I*
Classes Begin June 1st
For late registration, call (806) 274-5311, ext. 775 or 777
Courses at FPC Allen Campus in Perryton
GOVT2305 American Govt I - Federal
HIST1301 US History to 1877
MATH1314 College Algebra
Courses at FPC Borger-Interactive Broadcast
BIOL1322 Elementary Nutrition
BIOL2401 Anatomy & Physiology I
ECON2301 Principles of Macroeconomics
MATH0302 Elementary Algebra
Co-op, Video-on-Demand, and Internet Courses
BMGT1382 Co-op Business Admin. Management
BMGT1383 Co-op Business Admin. Management
BMGT2382 Co-op Business Admin. Management
BMGT2383 Co-op Business Admin. Management
ECON2301 Principles of Macroeconomics (VOD)
ENGL1302 Rhetoric & Composition (VOD)
COSCI1401 Microcomputer Applications (Internet)
PHED1322 Theory of Coaching II (Internet)
Frank Phillips College
(806) 274-5311 • www.fpc.cc.tx.us
PO Box 5118 • Borger, TX 79008
*You can also register for Summer II, Summer Long or Fall 2004!
FPC is an equal opportunity community college.

Fernandes, Lusby Wed



Mrs. Michael Lusby

Jess Anne Fernandes and Michael Lusby were united in marriage Saturday, May 15, 2004, at the Grace Baptist Church in Canyon, with Pastor Steve Holston of Wolforth officiating.

The bride is the daughter of Leeta and Cody Everett of Pyote, TX and Will and Nikki Fernandes of Wink, Texas.

The groom is the daughter of Ronnie and Donita Lusby of Spearman.

Presented in marriage by her father, Will Fernandes, the

bride's sister Ella Fernandes of Stephenville attended as Maid of Honor.

Bridesmaids were Amber Norris of Denton, friend of the bride; Geanna Baker of Midland, friend of the bride; Casie Jones of Wink, TX, friend of the bride; and Kendra Morgan of Amarillo, friends of the bride.

Flower girls were Kacie Lewis of Sonora and Taylor Varnon of Spearman.

Jim Potts of Dumas, friend of the groom served as Best Man. Groomsmen were Clancy Vanderberg of Canyon, friend of the groom; Aaron Witten of Norman, OK, friend of the groom; Albert Lusby of Temple, TX, cousin of the groom; and Clay Fernandes of Wink, brother of the bride.

Ring bearers were Tyler Lewis of Portales, Will James Fernandes of Pecos, and Bo Butler of Farnsworth, TX.

Candlelighters were Megan Reed and Kari Harr of Canyon, friends of the bride.

Ushers were Adam St. Clair, Aaron Winegarner, Quentin Shieldknight, and Rick Leach, all friends of the groom.

A reception to honor the bridal couple was held at the

Whitaker Ranch of Canyon.

The bride is a graduate of West Texas A&M University and is employed as a second grade teacher at Gus Birdwell Elementary in Spearman.

The groom is a graduate of West Texas A&M University and is employed as a dirt contractor with Lusby Cats of Spearman.

The couple will make their home in Spearman.

The Gruver Grapevine

by Harletta Carthel

Flea Market

To Highlight Weekend
Make plans to attend the First Annual Gruver Flea Market Saturday, May 22, in the city park, beginning at 10 a.m.

Food, craft, and fun booths will line the park.

It is not too late for the last minute rental of an 8x10' space. Call Lisa Salmans 733-2861 or Holly McLain 733-5040.

Community Care Concerns

Peggy Dillow underwent back surgery Tuesday at Baptist St. Anthony's in Amarillo. She is now recuperating at home.

Fifth Grader Takes

Principal's Place
Former Gruverite Gaitlin Guthrie sat in the big chair at Canyon Elementary last week, as honorary principal of the day.

The honor was awarded the fifth grader for his excelling in the Accelerated Reader program in which he amassed 453 points.

It is not known if Guthrie extended recess periods during his day's tenure.

He is the son of Carrie and Mark Guthrie.

Hindergardts Continue

To Make News

A feature sports article on Guy Paul and Scott Hindergardt written by Amarillo Globe News Writer Lance Lahnert has received first place honors in the Texas Press Association annual contest.

The feature, complete with pictures, was perhaps the longest newspaper article ever written about a Gruverite.

Former Residents Updates

Jack Rodman's Crane girls track team took the state track title in Class 2A this weekend in Austin.

Wife Melanie (Morris) Rodman is the assistant girls track coach.

Pat and Georgia Holt were in attendance at the Kentucky Derby to see Smarty Jones gallop to victory.

Daughter Beth's husband is the veterinarian at the downs and was able to secure seats for them.



North Texas Information Systems

Scott Ermis • Spearman, Texas
Call 659-2696 after 5 p.m. for appt.

Computer Sales, Service & Repair
Computer Networking
House Calls, Pick up & Delivery
References Available

• Microsoft Certified Professional •
• CompTIA Certified Professional •
Member Spearman Chamber of Commerce

Davis Honored

Continued on Page 5

In a congratulatory letter to Davis, Meredith Schroeder, President of the American Quilter's Society praised Davis' work. "Just being selected to exhibit your quilt in this prestigious show is an honor. To place in one of the 14 categories is the ultimate goal of quilters the world over. Your quilt has reached this pinnacle of success!"

Davis found herself to be a bit of celebrity in the realm of quilters.

"I had my picture taken dozens of times with people who wanted a picture of a quilter who won at the International Kentucky show."

Davis also discovered that her honor will not end with the show as she was interviewed for the Fall edition of "American Quilters" magazine.

In addition to the quilt show and contest, Davis and Stavlo were awed by the collection of heirloom quilts housed in the Paducah Quilter's Museum.

"I have seen many beautiful quilts, but I have never seen so

many of them in one place," Davis said.

Both Davis and the quilter of her winning entry, Susie Miller of Yoder, Kansas, were honored at the Paducah show.

"I would not want to leave out the expertise of Susie Miller," Davis said. "Both of us received the same awards for the quilt."

Like all artists, Davis is already planning a new undertaking for her creative spirit.

"My next project is making a quilt using the design of the stained glass windows we had put in our church this year," Davis said.

See us for:
AUTO • HOME • CROP HAIL •
FARM & RANCH • MULTIPERIL •
LIVESTOCK

INSURANCE



BORT AGENCY, INC.
510 Main St. • Gruver, TX
(806) 733-2456

Sweet Ideas for Graduation and End-of-School



Add pizzazz to your graduation gift with a mylar balloon only \$2.50

- Graduation Cake (with picture of your graduate)
- Balloon Bouquets
- Candy-Filled Mugs
- Decorated Big Cookies
- Decorated Sugar Cookies
- Graduation Cups & Banners

Jeanette's Sweet Creations

315 1/2 Main • 659-3328 • Spearman, TX



VILLAGE CANDLE

Colonial at HOME
exquisite home fragrances

ALL Candles

Jar Candles, Gift Sets, Tea Lites, Votives, Car Candle Air Fresheners

25% OFF

at

Celebrate

Gifts for all your celebrations!
203 Main St. • Spearman, TX

(806) 659-3350

1-800-663-8026

Let Us Help You Get Ready

for the

Jays of Summer



CARQUEST Quality Parts at Economical Prices

AUTO PARTS

- RV & Boat Service
- Quality Carquest Products
- Automotive Repair
- Air Conditioning Service for all makes & models
- Latest Snap-On Diagnostic for domestic and foreign transmission and engines
- Mitchell on Demand Repair Information Available
- Service Club
- Complete Welding Service
- Inspection Stickers
- Ask about our Tune-Up & Brake Specials

SERVICE you can Trust

Miguel Soria has 15 years repair experience
Toney Gill has 41 years repair and management experience

Spearman Farm & Auto Supply

313 S. Hwy. 207 • Spearman • (806) 659-2588

Store Hours: 7 a.m. - 6 p.m., Mon.-Fri.; 7 a.m. - 1 p.m., Sat.

Billy & Charlsie Baker - Owners

Se Habla Espanol

by Dorothy Hudson
Out At The Lake

Lake Level--May 17, 2004--25.11 feet (-0.44)
Jim felt the change up in reading the lake level accounted for some of the larger drop this week. The level had been dropping about 2 inches each week,

whereas this one is over 5 inches.

Last Saturday The Church of the Latter Day Saints had the Shelter rented for a Father-Son get together. Several tents were set up in Dedication Park, according to Ramon Cantu.

Jim took the weekend off, as he and Mandy were entertaining daughter Erin from Dallas and from Lubbock their son Hart with his wife Jennifer and the all important first grandchild, Grason Derington.

There were 3 RV campers on the office side and 3 or 4 behind the dam.

The cliff swallows that build their gourd-like mud homes on the bridge over the Palo Duro have arrived and started work. They arrived a week or more later than the cliff swallows on the intake tower.

Roland Harris, one of the regular fishermen, told Jim he had seen a bobcat trotting along in daylight near the Horse Creek entrance.

As far as Jim knew, no one caught any big fish this weekend, but Ramon said there were a lot of lights around the Lake on Friday night. Perhaps they were hunting a record breaking walleye.

Mel Phillips in his Amarillo Globe-News Sunday column Southwest Outdoors had three paragraphs on the 14-pound-4 ounce walleye caught by Santiago

Becerril. Phillips thought it was a shame this trophy fish wound up as fillets and gave some advice as finding certified scales in grocery stores and the process of certifying a fish. At 12:30 at night grocery scales won't help in Spearman.

In March I wrote of buffalo hair mattresses and used the one Atarah Wright had as an example. Yesterday in rereading a W. P. A. interview that she gave to Margaret Locke Kirk, I found another reference to the mattress. She told of her experience in the second tornado to wreck the courthouse at old Hansford. "She could never come to a logical and reasonable conclusion as to how their prize buffalo hair mattress was blown 20 miles down the creek."

Manor Matters

by Merry Sparks

Thank you to the Union Church for bringing church services to the Manor on Mother's Day. It is so special!

Monday was a flutter with all the usual activities first thing in the morning in addition to our Newscurrents Program. Among other news was pictures of the new nickel depicting the American Indians and American explorers. It will feature a crossed pipe and tomahawk over a pair of hands in a handshake. There was also much information on the condition of our oceans because of pollution.

Monday afternoon was spent in the living room with Janie Kunselman on the piano playing different tunes for the residents to name for Name That Tune. She played a couple that really stumped them. One was Jesus, Lover of My Soul and the other was The Entertainer. They guessed The Eyes of Texas and I've Been Working on the Railroad the fastest. That evening the 20th Century Club hosted bingo for the residents. Thank you for your time and for the dessert!

Tuesday morning we had music in the living room with great participation. The halls and walls were rocking to the rhythm of the blues.

That afternoon the horse races was pre-empted for shopping at the local greenhouses. Because of the generosity of numerous people, we had enough money in the Empty Stocking Fund to begin a significant project for the residents. We purchased a gazebo, archway, water fountain, several different plant stands, hangers, pots and plants for the courtyard outside of the activity room. This has become a staff and resident project that we will be working on throughout the summer & fall.

Thank you to Ann Whitaker for leading the Bible study on Wednesday morning. Her audience is growing and I can tell that the residents are enjoying it by observing them from afar. She has a special love to share and it is magnetic. We enjoyed

fresh donuts from Kountry Donuts with coffee during the bible study.

Wednesday afternoon was a riot!! We had the activity room filled with staff and residents potting plants that we bought at the two local greenhouses. We will have pictures of the courtyard soon with a story about the process of developing it. I was walking down the hall and another staff member was going the opposite direction & said "I smell dirt" ---I said imagine that!

We had pots, plants, dirt and fertilizer everywhere! Everyone is having a great time in the process of the new courtyard. There are many special eye catchers out in the courtyard. When you have a minute be sure to stop in and look at it. Thank you to everyone that has donated to the Empty Stocking Fund. This will be a source of enjoyment for all residents for years to come. I hope to continue to add to the courtyard as funds allow.

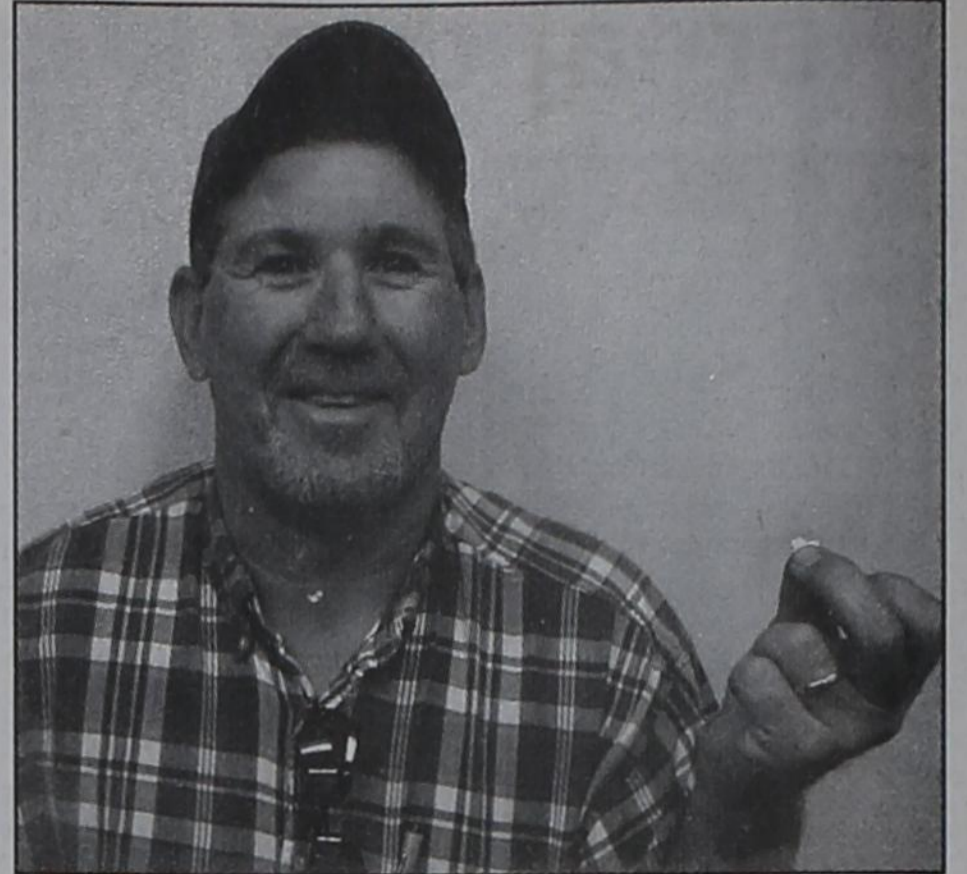
You guessed it---Thursday morning for exercise we continued working in the courtyard: planting plants, moving things around 500 times, planting the flower beds and pulling weeds.

That afternoon was spent with the auxiliary hosting bingo. It is a pleasant afternoon of fellowship, fun and ice cream. Thank you auxiliary for your faithfulness.

Friday morning we had a lively game of kickball. Many residents enjoy playing.

That afternoon was the birthday party. Janie Kunselman, Jr. Sparks, Richard Kirk, and Joel Lee Lackey provided the music for the party. Thank you to Prairie Gardens for furnishing the corsages for the birthday residents! They were a beautiful shade of peach carnations. The auxiliary brought a wonderful assortment of pies and served the residents.

After singing happy birthday to the special people with birthdays in May and eating the delicious pies, we enjoyed the music of the band for the rest of the afternoon. One resident told me she had better go home & see what the kids were doing so that she could tell them to stop. How funny!!



Kevin Hart

Hart Saves The Day

by Harletta Carthel

Kevin Hart of Gruver Schools displays the treasure he retrieved last week in a sink drain at Gruver Elementary.

The treasure, the first tooth pulled by first grader Bailey Rae Poer, was accidentally washed down the sink at the school.

Hart was cited as a Gruver Good Guy by fellow employees for his going beyond the call of duty to reclaim the tiny treasure by disconnecting the sink drain.

It was not reported if Miss Poer split her tooth fairy reward with Hart.

Don't Stop 'til you reach Knight's Nursery, Garden Center & Gift Shop
on the Southwest side of Canadian on Hwy. 60/83 for the BEST in Quality Lawn & Gardening Products
Regular Hours: Mon-Fri 8:30-6 Sat 10-5 Closed Sunday 806/323-5577
Our 16th Year in Business!
2,600 sq. ft. of Spectacular Color!
Hardy Boy Bedding Plants
• Annuals • Perennials • Vegetables • Herbs

Wide Selection of Collegiate Gifts for Grads Choose from OSU, Texas Tech, UT, OU, & Texas A&M
Laundry Bags Flags Water Globes that play school fight song and much more!
Large assortment of Teachers' Gifts including Foiled & Bowed Plants, Plant Baskets & Gift Certificates

Garden Art Statuary Fountains Birdbaths Message Garden Stones Yard Ornaments Twirlers
Hanging Baskets Foliage & Blooming Trees Shrubs Cactus Roses
JUST IN: Pond Pot Plants Georgia Jett Sweet Potato Plants

Lawn Fertilizers Weed & Insect Control Grub Control Potting Soils & Conditioners
• Back to Earth • Ortho • ferti-lome • Bayer • Organic Soil Menders • Scott's • Miracle Gro
Check our Web site often for updates & info: www.knights.hhtx.com

REMEMBER THEIR SERVICE
Memorial Day Wreaths
while supplies last
Golden Spread Senior Citizens' Center
502 South Brandt Spearman, TX
659-3030
Stop by and see our display

HOW TO BUY AN AIR CONDITIONER FOR FUN AND PROFIT.

Call us for a new air conditioner and we'll help you save money two ways. On your energy bills. And from your utility company, since they'll actually give you a rebate for using less of their power. Cool, huh? **Whatever it takes.™**

Circle E Heating & Air Conditioning
321 S. Hwy. 207 Spearman, TX 79081
806-659-3576
TACLA017716C
circlee@amaonline.com

Looking for instant gratification?

Try our instant install.
Call today by 6 p.m. and be installed the next day!

FREE First Month Basic and Expanded Cable
\$9.95 installation

- Local broadcast channels
- Local news, weather, sports
- Local service
- Free cable-related service calls
- No need to purchase expensive satellite equipment
- Free basic cable on additional TVs

You don't even need to hang around the house!
Make a fast break—Call today!
Stay ahead of the herd!
Offer ends 5.21.04!

This offer won't be around long!

1.877.4.CEBRIDGE (877.423.2743) www.cebridge.net

*One month free Basic and Expanded Basic Cable service. **If your home has previously been connected to cable television service, we can connect your Basic and Expanded Basic services and you will not be required to be home. \$0.50 installation fee must be prepaid by credit card or check by phone to be eligible. Offers valid for residential customers in Cebridge Connections' service areas. Offer expires without notice. Services may not be available in all areas. Taxes and other fees apply, with the actual amount depending on location and service ordered. Installation fees may apply for complex installation and more than one outlet. Offer subject to change. Other restrictions may apply. Any past due balance must be paid prior to install to be eligible for special offer, or CDOs accepted on a past due balance. © Copyright 2004 Cebridge Connections.

NORTH PLAINS GROUNDWATER CONSERVATION DISTRICT'S NOTICE OF PUBLIC HEARING ON REPEAL OF CURRENT RULES AND ADOPTION OF PROPOSED RULES

TO: ALL INTERESTED PERSONS.

The North Plains Groundwater Conservation District ("District") will conduct a public hearing concerning the District's intent to repeal its existing rules ("Current Rules") and its intent to adopt proposed rules ("Proposed Rules").

The purpose of the public hearing is to provide interested members of the public the opportunity to appear and provide oral or written comments to the District related to the repeal of the Current Rules and the adoption of the District's Proposed Rules.

Date, Time, and Place of Public Hearing.

The date, time and place of the public hearing is as follows:
Date: Tuesday, May 25, 2004
Time: 10:00 a.m.

Location: Moore County Community Center
16th and Maddox Streets
Dumas, Texas 79029.

Procedures for Submitting Public Comments on Proposed Rules.

A. Oral Comments: Any person may appear in person, or by authorized representative, at the public hearing on the Proposed Rules and the repeal of the Current Rules. Any person making an appearance must indicate their desire to make oral comments on the registration form provided by the District at the public hearing. A person must disclose any affiliation on the registration form and if applicable, the legal authority to speak for a person represented. Any other person attending the public hearing will be considered by the District to be an observer not desiring to make comment on the Proposed Rules or the repeal of the Current Rules. The District will not consider any comments of an observer in its rulemaking proceedings.

All persons must indicate on the registration form whether their comments are generally directed to all of the Proposed Rules or whether they are directed at specific numbered Rules. If directed at specific Rules, the number of the Proposed Rules must be identified on the registration form. If it becomes apparent during the oral comments that what were indicated to be merely general comments are, in fact, specific comments, the presiding officer may ask the person to specifically identify the Proposed Rules to which the oral comments are directed.

The presiding officer will establish the order of oral comments of persons at the hearing. As appropriate, the presiding officer may limit:

1. the number of times a person may speak;
2. the time period for oral comments;
3. cumulative, irrelevant, or unduly repetitious comments;
4. general comments that are so vague, undeveloped, or immaterial as to be impracticable for the District to ascertain the intent or purpose of the person making the general oral comments and that are otherwise unhelpful to the District in analyzing the Proposed Rules;
5. other matters that come to the attention of the presiding officer as requiring limitation.

B. Written Comments: 1. Written comments on the Proposed Rules and the repeal of the Current Rules must be filed with the District by mail or hand-delivery at the District's office at 603 East First Street, P. O. Box 795, Dumas, Texas 79029-0795. All written comments must be filed with the District and date-stamped no later than Monday, May 17, 2004 at 5:00 p.m. Central Daylight Savings Time.

2. Written comments should be filed on 8 1/2 x 11 inch paper and be typed or legibly written. Written comments must indicate whether the comments are general and directed at all of the Proposed Rules, or whether they are directed at specific Proposed Rules. If directed at specific Rules, the number of the Proposed Rules must be identified and followed by the comments on the specifically identified Proposed Rule.

C. Response to Comments: Please note that while the District Board and staff will consider both oral and written comments, the staff may not prepare written responses to these comments for review and consideration by the Board of Directors of the District when it deliberates on whether to adopt the Proposed Rules and repeal the Current Rules.

Procedure for Obtaining the Proposed Rules.

Copies of the Proposed Rules may be obtained from the District by:

1. telephoning 1 (806) 935-6401;
2. e-mailing a request to the District at artho@npwd.org
3. visiting the offices of the District at 603 East First Street, Dumas, Texas 79029-0795; or,
4. visiting the District's website at <http://www.npwd.org>.

Opportunity to Attend the Board Meeting at which the Proposed Rules May be Adopted. The meeting of the District's Board of Directors to consider the repeal of the Current Rules and the adoption of the Proposed Rules will be immediately following the public hearing.

SUMMARY OF THE PROPOSED RULES OF NORTH PLAINS GROUNDWATER CONSERVATION DISTRICT

The following Summary highlights many of the changes to the District rules. However, a person should read the actual proposed rules to gain a better understanding of the individual highlights included in this Summary.

CHAPTER 2 - Classification, Spacing Density, Production, Metering, Reporting, Transportation, Acceptable Decline Rate and Strategic Conservation Area.

Rule 2 - Classification: Wells will be subject to the following classifications and spacing based on actual production capacity of the Well. All Wells will be classified according to actual production capacity in gallons per minute (GPM) under normal operating conditions. If a proposed Well is of the same or larger classification as the nearest existing Well, or Authorized Well Site, the proposed Well shall be located according to its pumping capacity and spaced away from the nearest Well and Property line as follows: **Pumping Capacity of Classification of Minimum Distance Minimum Proposed Well (GPM) Proposed Well From Nearest Well or Distance from Authorized Well Site Property Line**

- 18 - 100 GPM A 150 Yards 75 Yards
- 101 - 400 GPM B 250 Yards 125 Yards
- 401 - 800 GPM C 400 Yards 200 Yards
- 801 GPM and above D 500 Yards 250 Yards

Rule 2 - Property Line Spacing Easement: A new Well may be spaced less than the minimum distance from the Property line if a "Property Line Spacing Easement" is filed in accordance with Rule 18.

Rule 2 - Well Density: The maximum Well density shall be no greater than:

- A. One (1) Well for each eighty (80) acres of Water Rights under common Ownership within the Property.
- B. For a Property of less than eighty (80) acres of Water Rights under separate Ownership, a single Well (other than a Domestic or Exempt Well) may be drilled.
 1. The Property shall be assigned an Allowable Production Permit.
 2. The maximum pumping capacity of the Well may be no greater than four (4) Gallons Per Minute (GPM) per acre.
 3. The Well shall be equipped with a District approved flow meter.
 4. The Owner shall report Annual production from the Property.

Rule 2 - Production Provisions:

- A. The maximum pumping capacity for a Property shall not

exceed four (4) gallons per minute (GPM) per acre.

B. After an Allowable Production Permit has been issued for a Property greater than eighty (80) acres, the Property is not limited by the four (4) gallons per minute (GPM) per acre production provisions provided that:

1. The total production for the Property is metered; and,
2. The total production for the Property is reported.

Rule 3 - Allowable Production Permits: Allowable Production Permits shall be issued based on District assigned Saturated Thickness, acres of Water Rights within the Property and the then effective Acceptable Decline Rate. Regardless of the calculation, the amount of Annual Production shall be limited as follows:

- A. The Allowable Production limit calculated for the Property, or
- B. A maximum of two (2) acre-feet per acre for the Property if the Allowable Production limit calculated is greater than two (2) acre-feet per acre, or
- C. A minimum of one (1) acre-foot per acre for the Property if the Allowable Production limit calculated is less than one (1) acre-foot per acre.

A Person's right to continue to produce a Well or Wells under this Rule is dependent upon maintaining the Ownership of contiguous Water Rights sufficient to support the Well Density for the Property, produce the volume of Groundwater specified in the Allowable Production Permit and other Rules of the District. A Conveyance of any portion of the Water Rights could result in non-compliance with Rules of the District. The District shall be notified about any Conveyance or reservation of Water Rights separate from the surface of the Property and shall be provided a copy of the recorded document of Conveyance or reservation.

Rule 3 - Well Metering: After the effective date of these Rules, Property Owners and/or Water Right Owners (Owners) are required to have an Allowable Production Permit, and will be required to install meters on all new Wells, with the exception of a Domestic Well and an Exempt Well, and report Annual Water meter readings to the District.

After January 1, 2012 all Wells are required to have meters and report production in accordance with these Rules.

Rule 3 - Meters: All new Wells drilled, and Wells drilled between October 14, 2003 and the effective date of these Rules, or existing Wells re-worked to increase production after the effective date of these Rules, will be required to install a meter approved by the District. Meters are to be installed on all other Wells on a per quarter Section Per Year basis as follows:

- A. On or before January 1, 2009 Wells located in northwest quarter Section,
- B. On or before January 1, 2010 Wells located in northeast quarter Section,
- C. On or before January 1, 2011 Wells located in southwest quarter Section, and,
- D. On or before January 1, 2012 Wells located in southeast quarter Section.

Rule 3 - Annual Production Reports: All Owners of Wells required to have meters installed after the effective date of these Rules shall report total Annual production for each Property. Well Owners who install meters in accordance with the provisions of the Rules shall report production as follows:

- A. During January 2010 report total production from Wells located in the northwest quarter of each Section;
- B. During January 2011 report total production from Wells located in the northeast quarter of each Section;
- C. During January 2012 report total production from Wells located in the northwest quarter of each Section; and,
- D. During January 2013 report total production from each Property.

Rule 4 - Acceptable Decline Rate: The Acceptable Decline Rate shall be set by the Board. The first Acceptable Decline Rate was set by the Board and became effective January 1, 1997. The Acceptable Decline Rate that will be in effect on the effective date of these Rules is one and one quarter percent (1 1/4%) Per Year. The Board may not change the Acceptable Decline Rate for a period of five (5) years after the Rate has been set, unless required to do so by certain conditions as defined in the Rules.

Rule 5 - Strategic Conservation Area: If the District staff determines by using Groundwater information collected, that an area or areas are exceeding the Acceptable Decline Rate, or the Allowable Production Rate, the staff shall so inform the Board and certain procedures may be implemented by the District as follows:

- A. Increase the Allowable Production Permits, but under no circumstance shall production exceed two (2) acre-feet per acre Per Year;
- B. Reduce Allowable Production Permits to not less than one (1) acre-foot Per Year;
- C. Limit the number of new Wells that may be drilled;
- D. Make no change whatsoever.

Rule 6 - Permit or Well Registration Required: All Wells must be registered with the District, or have a Test Hole Permit, an Allowable Production Permit and/or a Well Permit issued by the District. No Person shall hereafter drill a Well, or increase the size of a Well, or Well pump, without having first registered the Well or applied to the District and received a Permit to do so, unless the drilling and operation of the Well is exempt by law or by these Rules. A copy of an approved Domestic Well Registration, Test Hole Permit, or Well Permit shall be displayed on the drilling rig at all times during which the rig is on the Property for the purpose of drilling a Well.

Rule 9 - Time During Which a Permit Shall Remain Valid: Allowable Production Permit: An Allowable Production Permit shall remain valid from the date the Permit is approved by the Board and may be amended by request from the Owner, or will be revised if a new Acceptable Decline Rate becomes effective under Rule 4, Acceptable Decline Rate.

- A. The Acceptable Decline Rate is effective for a five (5) year period of time as provided in Rule 4.
- B. An Allowable Production Permit is valid for the five (5) year term of the Acceptable Decline Rate. An initial Allowable Production Permit will be issued for the remaining term of the then effective Acceptable Decline Rate.
- C. The Owner may request an amendment to the Acceptable Decline Rate. If justified under the circumstances, the Board may grant such amendment.

Rule 12 - Replacing, Reworking, Re-equipping a Well or Returning an Unused Well into Production: No Person shall rework, re-drill or re-equip a Well to increase the rate of production from such Well without first applying to the District and being granted the required Permits from the Board.

A. Replacement Well: A replacement Well, in order to be considered as such, must be drilled within fifty (50) yards of the old Well and not elsewhere.

B. Reworking or Re-equipping a Well: The size or actual pumping capacity of a Well shall not be changed to a larger capacity to increase the rate of production of a Well above the maximum pumping capacity for which the Well was permitted without the Owner having been granted a Permit, or an amendment to the existing Permit, and having an Allowable Production Permit from the District.

C. Returning an Unused Well into Production: If an Unused Well, as defined by these Rules, is returned to production, the

Well must be brought into compliance with the current Rules of the District, and the Owner or operator shall make application to the District for an amended Permit for the Well.

Rule 16 - Export Permit: To receive an Export Permit an Applicant shall provide information to the District required under Rule 16 on forms prescribed by the District.

Rule 16 - Export of Water from District: The amount of Water to be exported Annually shall be subject to the production limitations of Rule 3.

Rule 16 - Export Fees: A fee shall be charged for Water produced within the District and exported to an area outside of the boundaries of the District.

- A. The Annual fee shall be:
 1. A fee negotiated between the District and the Person owning the export facility, or
 2. A rate equivalent to the District's tax rate per hundred dollars of valuation multiplied by each thousand gallons of Water exported out of the District. The rate will be adjusted each year based on the adopted tax rate of the District for the previous year.

Rule 17 - Pooling: Two or more separate but contiguous parcels of real Property and/or Groundwater under common Ownership may be consolidated, combined, and pooled to form a pooled Groundwater unit. The most distant diagonal corners of the pooled unit must not be more than 15,000 feet apart and must contain no more than 1,600 acres.

Rule 18 - Property Line Spacing Easement: A Property Owner may grant permission to an adjacent Property Owner to drill and operate a Well within a distance less than the required Property line spacing distance set forth in Rule 2.

Rule 19 - Banking: A person may earn credit through underproduction of an assigned Allowable Production amount from the four preceding years or borrow from the next calendar year.

CHAPTER 7 - Notice and Hearings: The District will conduct three general types of hearings:

- A. Hearings on applications for exception to the District's Rules;
- B. Hearings involving contested matters in which the rights, duties, or privileges of a Person are determined after an opportunity for an adjudicative hearing;
- C. Rulemaking hearings involving matters of general applicability that implement, interpret, or prescribe the law, or that describe the procedure or practice requirements of the District; and,
- D. Any matter designated for hearing before the Board may be referred by the Board for hearing before a Hearings Examiner.

CHAPTER 8 - Enforcement:

Rule 29 - Enforcement of Rules: All Rules duly adopted, promulgated and published by this District shall be enforced as provided under Chapter 36, Texas Water Code as now, or hereafter amended. The District may enforce this Section and its Rules by injunction, mandatory injunction, or other appropriate remedy in a court of competent jurisdiction. The Board may set reasonable civil penalties for breach of any Rule of the District that shall not exceed the limitations set forth in Chapter 36 of the Texas Water Code.

Table of Contents of the Proposed Rules.

PREAMBLE.....	1
DISTRICT HISTORY, AUTHORITY AND STRUCTURE.....	2
Creation and Enabling Legislation.....	2
Texas Water Code.....	2
Section 36.0015 - Purpose.....	2
Section 36.002 - Ownership of Groundwater.....	3
Administration, Powers and Duties.....	3
Other Statutes.....	3
Minutes and Records of the District.....	3
Certified Copies.....	4
Board of Directors.....	4
Purpose of Board of Directors.....	4
Board Structure, Officers.....	4
Meetings.....	4
Committees.....	4
District Staff.....	4
General Manager.....	4
CONCEPTS AND PROCEDURES.....	6
Purpose of Board of Rules.....	6
Use and Effect of Rules.....	6
Dispute Resolution Policy.....	6
Amending of Rules.....	6
Severability.....	6
CHAPTER 1 - DEFINITIONS.....	7
RULE 1 - Definitions.....	7
CHAPTER 2 - CLASSIFICATION, SPACING DENSITY, PRODUCTION, METERING, REPORTING, ACCEPTABLE DECLINE RATE AND STRATEGIC CONSERVATION AREA.....	15
RULE 2 - Classification, Spacing Density and Production Provisions.....	15
RULE 3 - Allowable Production and Report of Production.....	18
RULE 4 - Acceptable Decline Rate.....	22
RULE 5 - Strategic Conservation Area.....	24
CHAPTER 3 - Permits and Registration.....	29
RULE 6 - Permit or Well Registration Required.....	29
RULE 7 - Registration of Wells.....	30
RULE 8 - Issuance of Permits.....	31
RULE 9 - Time During Which a Permit Shall Remain Valid.....	38
RULE 10 - Requirements for Drilling, Completing and Equipping Wells.....	40
RULE 11 - Location of Well.....	41
RULE 12 - Replacing, Reworking, Re-equipping a Well or Returning an Unused Well into Production.....	41
CHAPTER 4 - DEPOSITS AND FEES.....	43
RULE 13 - Test Hole and Well Permits and Export Permits.....	43
RULE 14 - Setting Amount of Deposits and Fees.....	44
CHAPTER 5 - OMNIBUS RULES.....	46
RULE 15 - County Committees.....	46
RULE 16 - Export of Water from the District.....	47
RULE 17 - Pooling.....	53
RULE 18 - Property Line Spacing Easement.....	54
RULE 19 - Banking.....	55
Chapter 6 - WATER QUALITY AND WASTE.....	59
RULE 20 - Pollution of Groundwater.....	59
RULE 21 - Required Equipment on Wells for the Protection of Groundwater Quality.....	60
RULE 22 - Covering of Wells.....	62
RULE 23 - Waste.....	64
CHAPTER 7 - NOTICE AND HEARINGS.....	66
RULE 24 - Exception to the Rules.....	66
RULE 25 - Procedures Governing Contested Matters.....	68
RULE 26 - Rulemaking Notice and Hearing Procedures.....	84
RULE 27 - General Procedures for all District Hearings.....	85
RULE 28 - Show Cause Orders.....	88
CHAPTER 8 - ENFORCEMENT.....	89
RULE 29 - Enforcement of Rules.....	89
RULE 30 - Right to Enter Land.....	89
RULE 31 - Effective Date of These Rules.....	91

Issued this 15th day of April, 2004.

Richard S. Bowers, General Manager
North Plains Groundwater Conservation District
P.O. Box 795; Dumas TX 79029; (806) 935-6401

Spearman ISD Teachers Weigh In On ATPE's Legislative Agenda

School finance, class size among concerns of state's largest educator group

Enforcing state-mandated class size limits, maintaining teacher contract laws and opposing any new school finance law that bases teachers' pay on student test scores were among dozens of legislative positions recently adopted by the Association of Texas Professional Educators (ATPE) at the groups' annual state convention.

Verlan Winegarner and Frances Pipkin met with more than 1,200 ATPE members from around Texas, April 1-3 in Austin to develop the association's agenda for the 2005 session of the Texas Legislature. Among the measures adopted by convention delegates was a position that opposes basing a portion of teachers' pay on their students' test scores.

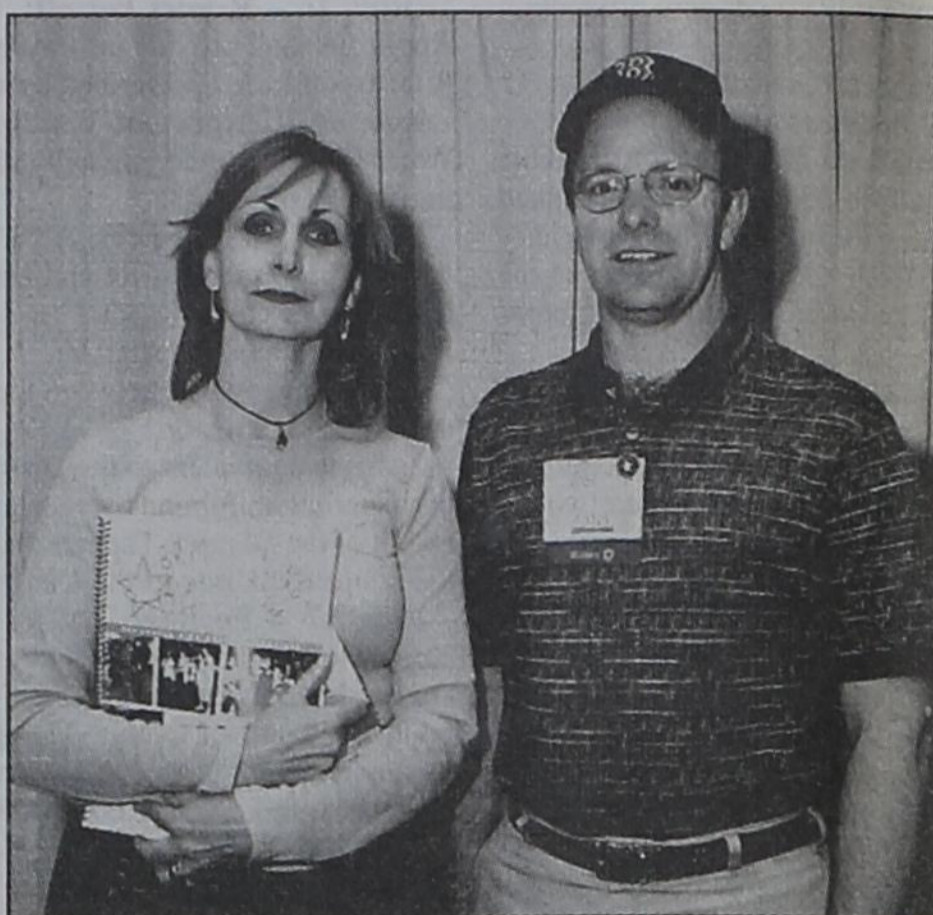
"We are opposed to such an incentive plan because it would pit teacher against teacher," said Don Cotten, ATPE state president. "We tried a similar plan about 15 years ago, and it didn't work because the state failed to fund the program. We don't want to go down that road again."

Convention delegates also adopted a position that supports extending the state-mandated 22:1 class size limit for grades K - 4 to grade 6 and a position

that opposes sweeping changes to teacher contracts, which some legislators have proposed.

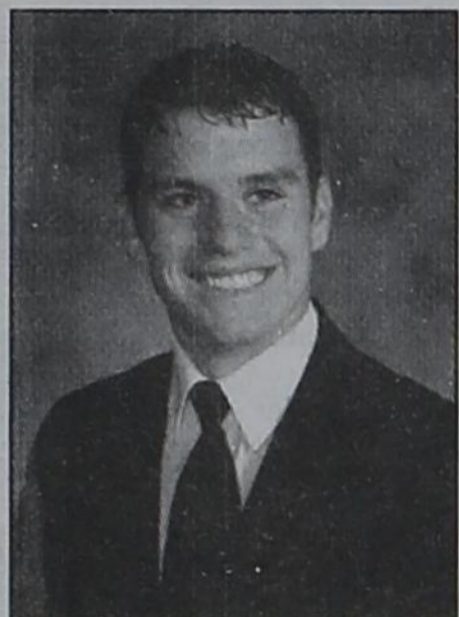
With more than 100,000 members, ATPE is the largest educators' group in Texas. Its

membership consists primarily of classroom teachers but also includes paraprofessionals, administrators, college students and retired educators.



Spearman teachers recently attended the Association of Texas Professional Educators (ATPE) state convention in Austin. ATPE members from Spearman are Frances Pipkin and Verlan Winegarner.

March Student Of The Month



T Jay Sherrill has been named the Gruver High School student of the month for March.

A senior at GHS, Sherrill been active in FFA National Honor Society, football, basketball, track, and golf.

He has served as president of

the Gruver FFA and is seeking a bid for state office at the upcoming area convention this month. An all-district honorable mention selection, he was also named top the all-district academic team in football his junior and senior years. He was a regional qualifier in track his sophomore and senior years, specializing in the pole vault.

He enjoys sports such as football, basketball, and track.

His future plans are to be happy and successful in college and in his career.

Citing nice people as the best part of Gruver, he also believes the nice teachers and students are the best part of Gruver High School.

He lists Darlene Curry, Amy TeBeest, and Jill Watson as his most influential teachers.

He is the son of Terry and Sherry Sherrill.

SALSA CONTEST

The second Annual Maria Antonio Avila Cinco de Mayo Salsa Contest was held on Saturday, May 1, 2004. This contest was sponsored by the Women's Division of the Spearman Chamber of Commerce.

Winners were named in three categories - mild, medium and hot.

Mild Salsa Winners: 1st - Karl Bynum, 2nd - Judy Yarbrough, 3rd - Missie Bates

Medium Salsa Winners: 1st - Karl Bynum, 2nd - Cheryl Salgado, 3rd - Michelle McCubbin

Hot Salsa Winners: 1st - Iva Davila, 2nd - Karl Bynum, 3rd - Missie Bates

Join us for a **RETIREMENT CELEBRATION** to honor

Ken & Roberta Cole
for their service to
our Lord and His people
on **Sunday, June 6, 2004**
at the **Palo Duro Lake Pavilion**



9:45 a.m. - Sunday School (for all ages)
11 a.m. - Worship, with Ken bringing the message
12 p.m. (approximately) - hamburgers & hot dogs
1 p.m. (approximately) - cake and ice cream reception

Join us for any or all of the planned activities.
Dress casually and bring your lawn chair.

Hope To See You There!

(In case of bad weather, we will meet at the First United Methodist Church in Spearman.)

CONGRATULATE YOUR GRADUATE

WITH AN
ADVERTISEMENT
IN THE
REPORTER-STATESMAN!

The 2004 Graduation Section will be published on May 27th. The advertising deadline will be Monday, May 24th at 5 p.m.

Call 659-3434 for details.



Hansford County

A Winning Tradition!



Thanks to the fine sponsors below, you can keep up with sports and news featuring the Lynx, Lynxettes, Hounds, Lady Hounds and Cougars in 2003-2004!

Gruver ISD	May 29-31 - State Band Solo & Ensemble Contest; Austin
May 21 - Bad Weather Day, School Holiday	
May 28 - Early Dismissal	
Gruver High School	
May 23 - Baccalaureate; 7 p.m.	
May 26 - HS Finals; 1, 5 & 6	
May 27 - HS Finals; 2, 3 & 7	
May 28 - HS Finals; 4 & 8	
May 28 - HS Graduation, 8 p.m.	
Gruver Jr. High	
May 27 - 8th Grade Graduation; 8 p.m.	
May 27 - 8th Grade Trip to Wonderland Park	
Spearman ISD	
May 24 - Called School Board Meeting; canvas election; HS Library; 7 p.m.	
May 27 - Last Day of School; 2-hour early release	
May 28 - Teacher Comp Day; Student Holiday	
May 31 - Memorial Day; Offices Closed	
Spearman High School	
May 20-21 - Senior Trip to Quartz Mountain	
May 22 - Athletic Banquet; O'Loughlin Center; 6:30 p.m.	
May 23 - Baccalaureate; HS Auditorium; 7 p.m.	
May 28 - HS Graduation; HS Auditorium; 7 p.m.	
May 28 - Project Graduation; HS Cafeteria; 10 p.m.-6 a.m.	
Spearman Jr. High	
May 21 - Mrs. Baker's Class AR Trip to Movies; Lyric Cinema	
May 27 - 8th Grade Graduation; HS Auditorium; 6:30 p.m.	
Gus Birdwell Elementary	
May 20 - 2nd Grade Field Trip to Liberal	
May 21 - Elementary AR Movie Party; 12:30 p.m.	
May 24 - 4th Grade Field Trip to Canyon	
May 25 - Kindergarten-2nd Grade Awards Assembly; Rubber Gym; 12:15 p.m.	
May 25-27 - Early Dismissal; 1 p.m.	
May 25-26 - Parent Conferences in afternoon; starting at 1 p.m.	
May 26 - 3rd-5th Grade Awards Assembly; Rubber Gym; 12:15 p.m.	
May 27 - Kindergarten Graduation; Music Room; 10 a.m.	
May 27 - 1st Grade Graduation; Music Room; 11:45 a.m.	
Pringle-Morse CISD	
May 20 - PeeWee Track Meet; 12 noon	
May 21 - Morse Days	
May 24 - Awards Assembly	
May 25 - 8th Grade Graduation	
May 26 - Last Day of School	
May 27 - Bad Weather Day	

Brought to you by these sponsors

All Occasion Flowers
202 N. Bernice • Spearman, TX
(806) 659-5180

MurMur's
100 S. Roland • Spearman, TX
659-3580

\$ Interstate Bank, ssb \$
322 Main Street • Spearman, TX 79081
Phone - (806) 659-2559 • Fax - (806) 659-3276
FDIC Insured

Celebrate
Gifts for all your celebrations!
203 Main St. • Spearman, TX
(806) 659-3350 • 1-800-663-8026

PANHANDLE DINER & DELI
217 Main Street • (806) 659-3864 • Spearman, TX
Hours: Mon.-Wed., 8 a.m.-2 p.m.; Thurs. & Fri., 8 a.m.-8 p.m.;
Saturday, 8 a.m.-2 p.m.; Sunday, 11 a.m.-2 p.m.

HANSFORD IMPLEMENT COMPANY
Mike Cudd - General Manager
Hwy. 207 S. • P.O. Box 518 • Spearman, Texas 79081
(806) 659-2568
Nothing Runs Like a Deere
1-800-753-1511
A full-service John Deere Dealership.

TEXAS PRESS ASSOCIATION AWARD WINNER
213 Main St. Spearman, TX 79081
(806) 659-3434
Publication: Thursdays

SIMPLE SIMON'S PIZZA & ANITA'S VIDEO MADNESS
312 Main St. • Spearman
(806) 659-5046 • Fax (806) 659-5196

Eat & Be Merry At

MONEY'S

BBQ & STEAK HOUSE

Hotline for Friday & Saturday Nights - 435-3945

We Are THPLC-2-B

14 SE 3rd Ave. Perryton, TX

We offer Priority Seating!
Give us a call before leaving, and we will save you a place in the seating line.
When you arrive, check in with the hostess.

New Menu (10 new items)
Wed. Night - All-You-Can-Eat Catfish

You need a place to live.
We sell houses.
It's a match made in heaven.

606 S Bernice

Price Reduction!
\$85,000

WOW! 5 Bedrooms, 3 1/2 Bathrooms and an office are featured in this 3,744 square foot home. Large country kitchen with a center island cook-top and hard wood floors. Master bathroom has ceramic tile, Jacuzzi tub and large shower. The back yard is fenced and has a covered patio and access to the oversized 2-car garage with a work area.
Call Shirley Howard at 886-6536 to see this beautiful property!

Golden Spread Realty, LLC
200 S. Main
Perryton, TX 79070
(806) 435-5444

REAL ESTATE FOR SALE

FOR SALE BY OWNER: 721 Wilbanks, Spearman - 3BR, 2B, 1940 sq. ft., fireplace, new carpet and tile, completely remodeled inside. Large backyard w/new fence. Call 659-3426 day, or 659-3830 after 6.

FOR SALE: 222 S. Hazelwood, Spearman - 3300 sq. ft. 4BR, 2 1/2B brick home with metal roof, fenced back yard, detached 1200 sq. ft. shop and carport. Call 659-3550.

FOR SALE: 504 4th St, Gruver - 2400 sq. ft. brick home - 3BR, 1 3/4B, 2CG, office and sun room. New central H/A, new insulation and ceiling fans. Lots of storage, plus storage building. Call 733-8042.

RENTAL PROPERTY FOR SALE: Spearman - Includes beauty salon, apartment, house & 2 trailers. For information, call 654-2056 or 670-6598.

FOR SALE: 808 Front Street, Gruver - Nice 1999 Fleetwood 4BR, 2B doublewide home on six city lots with horse barn and pens. Ben or Kerry Poer, (806) 733-5532 or 736-5554. 4(4-29-04)B

FOR RENT/LEASE

FOR RENT, SPEARMAN: 1BR apartment. Call 659-5519. TFN(8-8-02)B

FOR RENT, SPEARMAN: 3BR, 1B apartment - \$425/month, water paid - excellent condition. Call 659-9971. TFN(11-27-02)B

HELP WANTED

HELP WANTED: Person needed to do truck alignments. Will train. Must have mechanical ability. New shop, good pay, insurance. Guymon Tire & Service Center. Contact Javier at 580-338-2516. 2(5-20-04)B

HELP WANTED: Make up to \$3,000 in 11 days. Looking for enthusiastic adult to manage a fireworks stand outside Spearman June 24 thru July 4. No investment required. Phone 10 a.m. thru 5 p.m. for more information - (210) 622-3788 or (800) 364-0136. 5(5-13-04)B

HELP WANTED: Hansford Golf Course is looking for someone to work 25-30 hours per week. The job will include working in the clubhouse, some course maintenance and cleaning. The position is ready for immediate start and will last through the summer. Please call 659-3309. 2(5-20-04)B

AGRICULTURE

GROWERS WANTED for Seed Milo Production Economical Crop with High Returns. Call Gayland Ward, 800-299-9273. 4(4-22-04)B

OATS FOR SALE: Troy oats cleaned dual-purpose. Call Watley Seed Co. in Spearman, 659-3838 or 1-800-338-2885. TFN(2-19-04)B

FOR SALE

FOR SALE: 1975 Glasstron tri-hull boat - \$750. Call 659-3775. 3(5-20-04)B

FOR SALE: Hand-made knives by Bob Breeden. See me at Gruver's Flea Market on Saturday, May 22nd. 1(5-20-04)

New Mattress Sets For Sale

Queen mattress set, brand new, never used, with warranty - \$202

Queen pillow-top, double-sided mattress set, new, still packaged, warranty - \$236

Full pillow-top, double-sided mattress set, new, still pkgd., warranty - \$208

Full mattress set, brand new, still packaged, warranty - \$180

King pillow-top mattress set, new, in plastic, warranty - \$268

Queen Cherry Sleigh Bed, new, still boxed, lists for \$750 - \$399

7-Piece Cherry wood bedroom set w/Sleigh Bed, still boxed - \$999

7-Piece Pine wood bedroom set w/4 Poster bed, still boxed - \$999

Call 806-517-1050 5(10-30-03)

Alva Monument Co. Formerly Liberal Monument & Memorial Company

New Location: 111 Tucker Road Liberal, Kansas

North of the New Wal-mart

Serving Kansas, Oklahoma & Texas for 93 years (316) 624-4211 toll free # 888-654-9318

Are You A Victim of Domestic Violence, Sexual Abuse or Physical, Emotional or Sexual Assault?

Call Toll Free 1-800-753-5303

We can see individuals from Hansford County anytime upon request. Call 435-5008 or 1-800-753-5308 to set up an appointment in Hansford County. We operate a safe place for victims and their children to stay in times of crisis.

Panhandle Crisis Center Serving Hansford, Lipscomb & Ochiltree Counties 317 S. Main • Perryton, TX Memorials Accepted

Blankenship Real Estate 659-3052 - 670-3774

SPEARMAN Great Home - Great Location 2,500 sq. ft., 3BR, 2B, 3 living areas. Call for appointment!

Eulalia Blankenship - Sales Eschol Blankenship - Broker New Listings Wanted

SHOP SATURDAY AT THE CLOTHES OUT

Open 9 a.m. to 5 p.m. Next to Alco

Men's Sport Shoes all \$29 or less!!

Women's Clothing & Shoes for Spring & Summer Priced as low as \$5

SIDEWALK SALE weather permitting All Items \$8 or Less

New Kid's Clothing & Shoes for Spring & Summer Some as low as \$3!

All name-brand, first quality Clothing & Shoes at GARAGE SALE PRICES!

EVERY SATURDAY Shop 9 a.m. to 5 p.m.

Regional Runs Drive for the Best and stay regional at the same time! \$0 Up Front Lease Drive your own late model T-2000 without going to the pocket!

URGENT NEWS for people who have used WELDING RODS Scientists report that elevated manganese exposure from welding rod fumes has been associated with Parkinsonism (aka Parkinson's disease) and manganese. Symptoms include slowness, distorted facial expression, loss of equilibrium, decreased hand agility, difficulty walking, joint pain, loss of short term memory, slurred/slow speech, stiffness in muscles and tremors.

Mesothelioma NO FEE FOR FIRST VISIT Ryan A. Krebs, MD, JD (Doctor-Lawyer in full time Law Practice) Richard A. Dodd, L.C. Timothy R. Cappolino, P.C. Board Certified Personal Injury Trial Law & Civil Trial Law, Texas Board of Legal Specialization, Houston, Texas

VIAGRA Prescription Strength Alternative without Prescription (30 tabs) - 100mg \$79.95 (60 tabs) - 100mg \$129.95 DIET PILLS Prescription Strength Alternative without Prescription Phentrazine (60 tabs) - 37.5mg \$79.95 Xenical (120 caps) - 120mg \$99.95

AUCTION!! AUCTION!! AUCTION!! MULTI-ENTITY AUCTION - FRIDAY, MAY 21, 2004-10AM 2460 N. CROSSROADS BLVD. - SEGUIN, TX - 8% Buyers Premium CARS, TRUCKS, TV'S, BIKES, COMPUTERS, EQUIPMENT, DUMP TRKS, MOWERS, DITCH WITCH, MOWERS, LIGHT BARS, TOOLS & MORE

NO CDL NO PROBLEM! Company Sponsored CDL Training We are constantly looking for talented and motivated people who want to learn from & work for the best in the business!

BROKERAGE FRAUD If you or a loved one hold Common Stocks or Bonds purchased in a major brokerage firm or bank and lost more than \$100,000 in your portfolio Call 1-800-256-9400

DRIVERS Are you ready for a move? Average Up To \$1.02 Per Mile! \$2,000 Sign-On Bonus! Lease Program - \$0 Down! All Permits Provided!

CASH NOW FOR STRUCTURED SETTLEMENTS, ANNUITIES AND INSURANCE PAYOUTS (800) 794-7310 J.G. Wentworth means CASH NOW for Structured Settlements!

TIRED OF STARING AT THE SAME FOUR WALLS? Enjoy the freedom, respect and independence of becoming a driver at Schneider National. Owner operators welcome. Call about opportunities in your area.

Rhabdomyolysis Zocor, Crestor, Lipitor & Baycol Users Free Initial Consultation If you have been diagnosed with Rhabdomyolysis and have taken Zocor, Lipitor, Crestor, Baycol or any other cholesterol lowering drug or statin, then you may have the right to file a legal claim for monetary damages.

MARTIN & ASSOCIATES REALTY Hansford County's ONLY locally owned and operated Realty. Julie Martin, Broker - 659-2425 Kym Williams, Assoc. - 733-5163

Century 21 Golden Spread Realty 200 S. Main • Perryton, TX (806) 435-5444 SPEARMAN Residential 606 S. Bernice - 5BR, 3 1/2B, 2CG, 3,744 sq. ft., Jacuzzi tub, fenced back yard, covered patio - Nice!

Real Estate & Rental Spearman Property 611 S. Evans - 3BR, 1 1/2B, 1CG Gruver Property NEW LISTING - 505 King - 3BR, 1 1/2B, carport, newly remodeled

TEXAS STATEWIDE CLASSIFIED ADVERTISING NETWORK TexSCAN

TexSCAN Week of May 9, 2004 ADOPTION Note: Fees are to be paid for adopting beyond only at and by the expense of the adopter. PREGNANT? UNSURE? RING ADOPTERS? We can help! We specialize in matching babies with families who are ready. Toll free 1-800-456-9211. See the TexScan Express.



Dorothy Hamill (second from right) stopped to pose with Sarah Loftis, Haley Pletcher and Kayla Coutts, all of Perryton, following the "Champions on Ice" show in Amarillo on Tuesday, May 18th. Kayla is a nurse at Hansford Hospital and the daughter of Tommy and Sandy Russell of Spearman. She, her daughter Haley and Sarah received complimentary tickets to the show from the show's producer, Tom Collins. They met the producer while eating at TGI Friday's in Amarillo on Monday night.

Among The Neighbors

Misti (Hand) Gaytan sent an e-mail to Cindy Blackman asking to have her address put in the paper. She is currently stationed in Korea, where she will be until April 18, 2005. Misti said she would love to hear from all her friends in Spearman. Her address is: SPC Gaytan, Misti HHB Divarty Unit 15564 Box 97 APO AP 96257-0623 Camp Stanley Korea

Due to the increasing deterioration of my hearing, I request that you take your news articles to the Hansford County Reporter-Statesman office, 213 Main Street, Spearman, TX 79081; or you may call (806) 659-3434; fax (806) 659-3368; or e-mail to cathysmith@antden.com. It is important to others to know what is happening in your life, so I encourage you to share your news, travels, and other events with your neighbors.

"XIT Trail of Sales" Promotes Tourism, June 5

Bargain hunters will be able to drive a little to save a bundle, say organizers of the first "XIT Trail of Sales," slated for June 5. Texas Cooperative Extension and Dalhart Area Chamber of Commerce are sponsoring the event. The tour will be filled with yard sales, flea markets, food and fun, said Susie Breitling, Extension family and consumer sciences agent for Dallam and Hartley counties. "We designed activities to foster rural tourism and commerce with a tip of the hat to bygone days once filled with a trail full of cowboys and cattle herds," Breitling said.

The 75-mile sale trail meanders on a route once crisscrossed by cattle drives. The XIT ranch covered portions of ten counties which helped perpetuate the misconception that the brand meant "Ten in Texas." The XIT brand, in fact, was originated to thwart rustlers.

The string of sales will run from Channing on state Highway 385 to Hartley, then via Highway 87 to Dalhart. Textline will be the fourth and final stop. The trail is designed to bring visitors into the heart of XIT country. For visitors from New Mexico, Colorado and Oklahoma, the route will be reversed.

Selling will start by 8 a.m. and run until 6 p.m. Shoppers may start at any community involved. Locator maps will be

available at the Channing Mercantile, Caution Light in Hartley, Dalhart's Prairie Dog Junction, and the Oasis Convenience Store in Textline.

Each seller will pay a \$10 registration fee. To register, contact chairmen: Dean Rhodes in Channing at 806-235-3800; Jennifer Been in Hartley at 806-

365-0042; Kristine Olsen in Dalhart, 806-244-5646; and Amy Smith in Textline at 806-362-4651.



On Saturday, May 8th, Spearman sophomore Katie Baehler participated in the "Art in the Park" sidewalk painting contest held at Amarillo's Medi-Park. This contest was open to all middle and high school students in the Texas Panhandle and surrounding area. The concepts and creations had to be student derived.

Competing against much larger schools - Canyon, Amarillo, Palo Duro and Tascosa - Katie took the award for "Best Use of Texture" in her sidewalk chalk depiction. There were a total of 37 entries for this competition, with schools from as far away as Colorado attending. This contest was sponsored by the Texas Panhandle Art Education Association.

Rabies Clinic May 24 & 25, 2004

To the citizens of Spearman, Texas
WHEREAS, the Hansford County Veterinary Hospital in conjunction with the City of Spearman Animal Control Department will conduct a rabies/vaccinations clinic; and
WHEREAS, this clinic will be held at the Hansford County Veterinary Hospital located at 405 County Road #24, Spearman, Texas on Monday, May 24th and Tuesday, May 25th, from 9 a.m. to noon and 1-4 p.m.; and
WHEREAS, discounted fees for the vaccinations and tests for dogs and cats that will be offered is Rabies Vaccination - \$7, DHLPC (Distemper-parvo) - \$17, Feline Leukemia - \$14, FVR-CPC Rabies (Feline Rabies & Distemper) - \$17, and Feline Leukemia Test - \$20, and Kennel Cough - \$7; and
WHEREAS, a free heart worm check (valued at \$18) will be performed with the purchase of a six-month package of Revolution or a Pro-Heart 6 injection; and
WHEREAS, City tags for male and female cats and dogs will be \$10, while neutered male cats and dogs and spayed female cats and dogs will carry a \$5 tag fee.
I, STEVE BENTON, Mayor of the City of Spearman, do encourage all owners of pets to help control any outbreak of disease by having their pets vaccinated during the two-day clinic.
DATED the 10th day of May, two-thousand and four.

Mayor Steve Benton



- 2:30-4:30 Rabies Clinic at Community Building
- 4:30 Pie Contest Entries Due at Community Building (Pies in aluminum pans only, all ages, any flavor)
- Parade Entries Meet at Equity Elevators Parade
- 5:00 Gather at Park for Games
- 5:30 Lion's Club Hamburger Feed at Park
- 6:30 Pie Auction at Park
- 7:30 Entertainment at Park
- 8:00 Fireworks at Park
- 10:00 In case of bad weather, all events will be held at Community Building

WHEN DOES YOUR SUBSCRIPTION EXPIRE?

SCR1
05/04 EXPIRES
JOHN Q. PUBLIC
PO BOX 123
SPEARMAN TX 79081

Expiration dates are printed on the top of all mailing labels. Our readers can help keep the cost of subscriptions down by mailing in renewals in the appropriate month.

Thank you, Catherine Smith

THE HANSFORD COUNTY REPORTER-STATESMAN
213 Main Street • Spearman, TX 79081
Annual Subscription Rates
In Hansford County - \$25
Out of County - \$30

4th Six Weeks Honor Rolls

Spearman ISD All A's 1st Grade

Alan Biggers, Christina Campos, McKinzie Draper, Cheyenne Evans, Slade Garnett, Leo Holguin, Klara Keim, Hannah Patterson, Randy Rojas, Brock Schroeder, Brooke Walker, Daniel Avila, Tanner Baird, Beau Brown, Ruben Frayer, Jayme Pack, J.D. Reed, Nicole Rindlesbacher, Loren Temple, Brigitte Vargas, Callie Yarbrough, Anne Marie Comp, Peyton Garnett, Tyann Hight, Zane Hughes, Cayton Limbocker, Marshall Thornton, Vanessa Vela

2nd Grade

Vanessa Briseno, Rion Broome, Alec Cenicerros, Christal Coffey, Bradley Duvall, Tyler Franklin, Stephania Hernandez, Ashley Keim, Sydney McDonald, Christian Ortiz, Kim Gibson, Lalo Jurado, Alison Smith, James Sowder, Eulises Mendoza, Seth Carson, Miranda Hargus, Tristian Hughes, Katie Miesner, Kelsea Miller, Geoffrey Patrick, Carson Pearson, Ryan Schnell

3rd Grade

Crystal Cantu, Danielle Garcia, Junior Garcia, Arik Mires, Paige Pierson, Maria Pena, Allison Brown, Katy Miser, Audy Reed, Erynn Saenz, Mabry Sutterfield, Kyla Walker, Hali Mans

4th Grade

Lexi Batton, Stefan Cook, Tylo Farrar, Anna Sowder, Cassie Bowers, Gately Garnett, Samantha Hargus, Cassidy Odegaard, Malory Martin, Chandler Short, Derrick Zimmerman, Jozlynn Hagerman, Lauren Ferguson

5th Grade

Nikki Boyd, Sol Pittman, Sawyer Sutterfield, Jessica Pinon, Tori Sheets, Jose Mendoza, Blayne Schroeder, Meghan Snider

6th Grade

Preslee Baker, Tate Batton, Suttan Garnett, Whitney Maestas, Rosa Ortiz, Andi Scarborough

7th Grade

Cha'tae Avila, Ashley Close, Kegan Garnett, Bond Pittman, Tyler Schnell, Brett Winegarner, T.J. Worley

8th Grade

Blayne Baker, Brittny Bradley, Crystal Bridwell, Lizet Camacho, Mattie Davis, Kylee Howard, Clara Kern, Christy Lang, Colby Odegaard, Natalia Quintero, Kyla Reed, Kendall Schneider, Elliott Sheets

9th Grade

Sara Barnes, Jordannan Lozano, Daniel Pena

10th Grade

Tonya Hart, Maribel Moreno, Adriana Pinon, Tabatha Shields, Jordan Short, Londsey Short, Aleisha Sweat, Si Li Tang, Abby Winegarner

11th Grade

Jeff Brock, Tracy Brown, Eric Flores, Homar Flores, Jessica Freeman, Wayne Gibson, Ashley Hernandez, Dana McLaughlin, Justin Parker, Gerardo Ruiz, Brodie Savage, Cayla Smith, Mark Thomas

12th Grade

Chris Cudd, Jentry Edwards, Ashlee Flowers, Michel Huffaker, Garrett Martin, Homero Martinez, Russell Sheets, Claudia Vaquera

"A" Average

1st Grade

Gabby Brave, Trey Bridwell, Enrique Vargas, Emily Vela, Israel Hernandez, Emily Miser

2nd Grade

Kathrine Soliz, Alejandro Aguilera, Jackson Davis, Juan Garcia, Kane Pittman, Alex Salazar, Jerry Tang, Rebeca Hernandez, Merylu Ramos, Javier Rosendo, Karissa Vela, Devin Wells

3rd Grade

Itzel Meza, Alexis Mendoza, Rene Pena, Andrew Landers, Luis Vela, Cynthia Mendoza, Ruben Ponce, Alfredo Rosendo, Jeb Cantu, Adrianna Corralejo, Anthony Ochoa

4th Grade

Bryce Jarvis, Lauren Patterson, Rubi Garcia, Justin Rindlisbacher, Iris Villa

5th Grade

Edgar Castillo, Ramon Garcia, Kali Oltman, Anthony Quintero, Cody Benton, Jessica Bueno, Leslie Hernandez, Mackenzie Powell, Trent Goodheart, Seth Salgado

6th Grade

Leanna Espinoza, Zach Hughes, Jose Ibarra, Koley Pack

7th Grade

Sabrina Cantu, Courtney Chambers, Destiny Fisher, Haley Smith, Dylan Sumner, Krystal Vela

8th Grade

Austin Benton, Kim Bergan, Amy Boyd, Amy Brown, Callie Cazares, Tarryn Dixon, Wendy Gaytan, Dane Harbour, Claribel Hernandez, Miriam Mendoza, Malissa Montgomery, Jesus Moreno, Amanda Snider

All A-1B 9th Grade

Jeremy Ashby, Eduardo Chairez, Saylee Flowers, Collin Gillaspie, Cara Gwin, Karina Hernandez, Emily Hood, Stuart Martin, Britney Montgomery, Ryan Ramon

10th Grade

Katie Baehler, Jenna Cherry, Brock Town

11th Grade

Rossilyn Bulls, Macy Harbour, Daniel Kern, Lorena Lopez

12th Grade

Diana Flores, Keilee Goodheart, Selina Hernandez, K'Lee Ratzlaff, Holly Terdero, Jocelyn Whitefield

Gruver ISD Honor Roll 1st Grade

Michaela Davis, Vanessa Garcia, Mason McLain, Alex Melendez, Bailey Rae Poer, Megan Sparks, Valentin Trejo, Israel Flores, Dax Haight, Reagan Haynes, Oziel Rey, Bailey Stedje, Kelcie Swink, Carson Williams

2nd Grade

Maggie Gaspar, Ana Lora, Cesar Mendoza, Dillon Payne, Travis Stedje, Madison Teal, Madison Williams, Beau Blankenship, Zoe Cantrell, Yadira Mendoza, Efrain Santillan, Rachel Teal

3rd Grade

Maggie Key, Emma Lopez, Diego Ortiz, Damian Pierce, Dallas Reynolds, Paula Terrazas, Ashley Williams, Korbin Irwin, Alex Logsdon, Flor Soto, Callie Stedje

4th Grade

Kaysha Bass, Shelley Gibson, Madison McLain

All A's 5th Grade

Gabriela Barrera, Mariela Barrera, Justin Bass, Cambry Cooper, Mary Hart, Zach Logsdon, Brianna Mitchell, Colton Moffett, Luis Munoz, Shelby Williams*

6th Grade

Mary Barron, Katie Gibson, Parker Grotegut, Caleb Miller, Drew Mireles*, Megan Stedje, Leigh Anne Winger*, Mattie Yanke

7th Grade

Miles Messer, Lynn Vela

8th Grade

Maydeli Ortiz, Morgan Ross, Seth Thompson

9th Grade

Bonnie Frick, Justin Thompson, Tucker Williams

10th Grade

Crispin Borunda, Lindsey Cliff, Laci Fitzgearld, Rachelle Holt, Tyler Lane, Matt Messer, Samantha Myatt, Stephen Salazar, Reid Winger

11th Grade

Cody Mac Been, Gabby Rosales

12th Grade

Cynthia Briones, Kalee Crawford, Jenny Hart, Cassie Myatt

All A's, 1B 5th Grade

Noemi Bernal, Jack Karlin, Brenna Reid, Daniel Swink, Payton Thoreson

6th Grade

Cory Graves, Reagan Karlin, Gabriel Mendoza

7th Grade

Sydney Clawson, Mallory Reid, Devlin Reynolds

Congratulations to these students on their academic achievements!

THE HANSFORD COUNTY
REPORTER STATESMAN 75¢
213 MAIN
SPEARMAN, TX 79081
SERVING HANSFORD COUNTY SINCE 1907
(806) 659-3434
Gary & Catherine Smith

