



The Hansford County Reporter Statesman

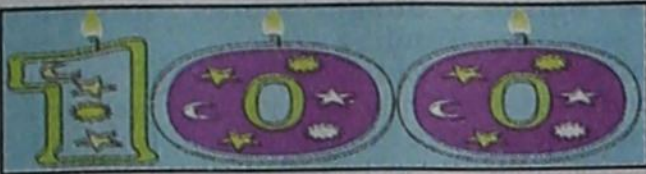
PROUDLY SERVING HANSFORD COUNTY SINCE 1907

reporter@spearmanreporter.com

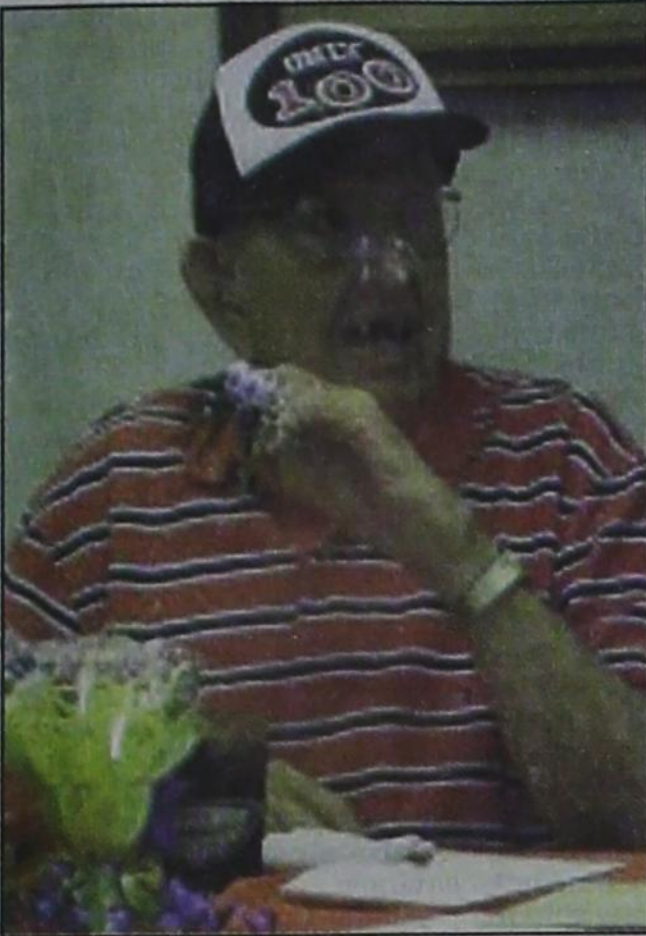
VOLUME 101 • ISSUE 34

WWW.SPEARMANREPORTER.COM

THURSDAY, AUGUST 21, 2008



Back To School



Raye Gibson celebrated his 100th birthday on July 28, 2008 with a reception at First State Bank. Approximately 90 people attended his party, and approximately 25 family members attended. He received over 200 birthday cards as well.

Education is the Answer!

Our teachers and administrators want to welcome you to the beginning of a new and exciting school year.

The first day of school this year is Monday, August 27.

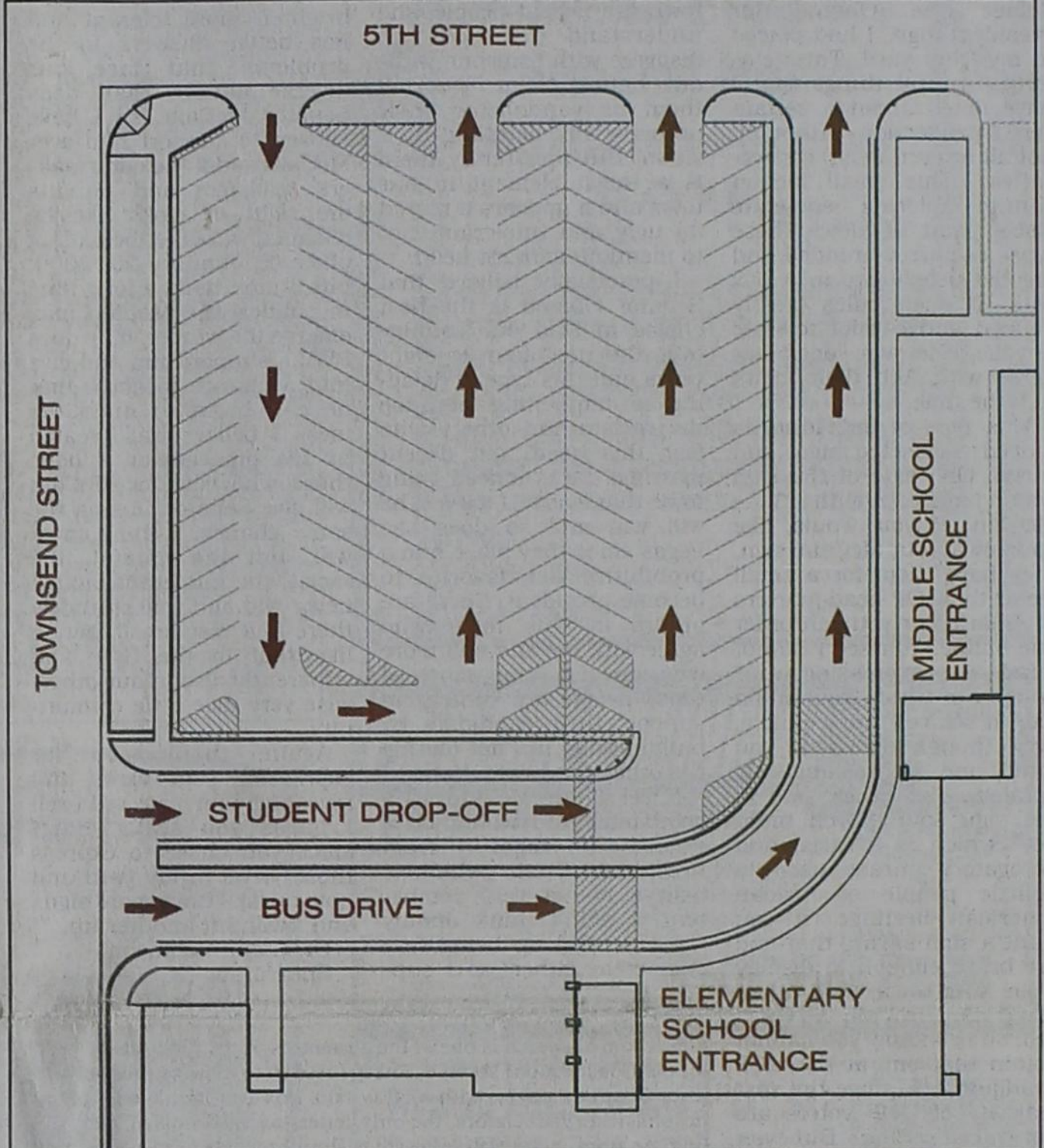
We hope you had a wonderful summer and are looking forward to a fun-filled and exciting school year.

The teachers and staff of:

Gruver ISD

Pringle-Morse CISD

Spearman ISD



The Spearman ISD 2008-2009 school year will begin on Monday, August 25th. Students will be able to use the new front entrances at Gus Birdwell Elementary and Spearman Jr. High. Pictured above is a diagram depicting the student drop-off lane and the bus lane. All parents are asked to use the student drop-off lane and not the bus lane for the safety of our students.

COME TO THE GAME

Spearman vs Gruver
Scrimmage
Aug. 21, 2007
5 p.m.

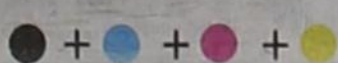
Due to the wet conditions, the Spearman vs. Gruver Football Scrimmage scheduled for Thursday, August 21, 2008 has been moved to the Spearman High School Practice Field.

Weather Forecast

THURSDAY NIGHT - Partly cloudy. Lows in the mid 60s. South winds 10 to 15 mph.
FRIDAY - Partly cloudy. Highs in the lower 90s. South winds 10 to 15 mph.
FRIDAY NIGHT - Partly cloudy. Lows in the upper 60s. Southeast winds 10 to 15 mph.
SATURDAY - Partly cloudy with a 20 percent chance of showers and thunderstorms. Highs in the lower 90s.
SATURDAY NIGHT - Partly cloudy with a 20 percent chance of showers and thunderstorms. Lows in the upper 60s.
SUNDAY - Partly cloudy with a 20 percent chance of showers and thunderstorms. Highs in the lower 90s.
SUNDAY NIGHT - Partly cloudy with a 20 percent chance of showers and thunderstorms. Lows in the mid 60s.
MONDAY - Partly cloudy. Highs in the upper 80s.
MONDAY NIGHT - Partly cloudy with a less than 20 percent chance of showers and thunderstorms. Lows in the mid 60s.
TUESDAY - Partly cloudy. Highs around 90.
TUESDAY NIGHT - Partly cloudy. Lows in the mid 60s.
WEDNESDAY - Partly cloudy. Highs in the lower 90s.

Texas Crop & Weather

The following specific livestock, crop and weather conditions were reported by Panhandle Extension directors: Most of the region received some much needed moisture, with heavy rains in some counties. The rains improved range conditions and reduced the risk of wildfires. Soil moisture varied from adequate to very short with most areas reporting short. Most corn was in the dough stage and rated mostly fair. Cotton varied from very poor to excellent with most areas reporting fair. Peanuts varied from very poor to good with most areas reporting fair. Sorghum was very poor to good with most areas reporting fair. Cattle were in good condition.



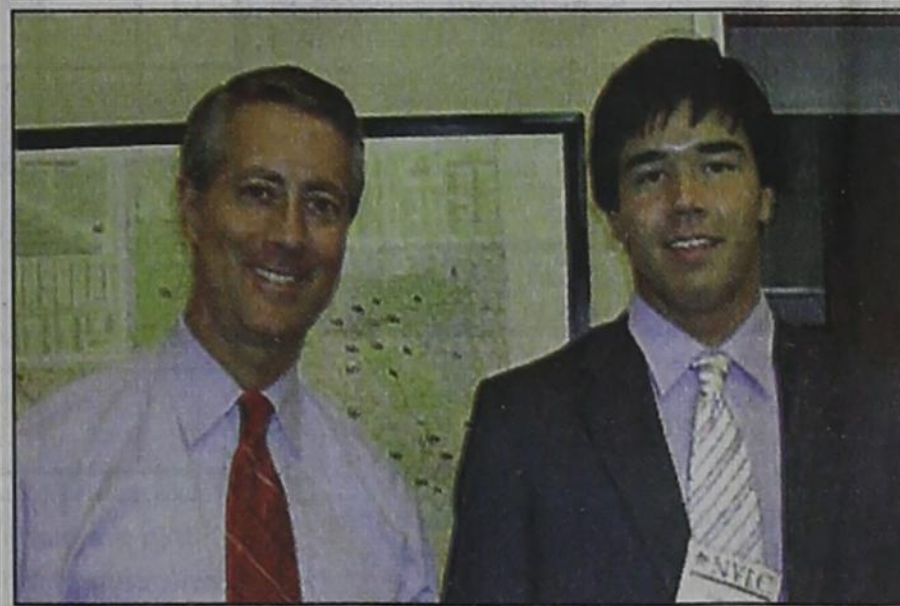
Pack Attends National Young Leadership Conference

This summer, outstanding high school students from across the United States took part in a unique leadership development conference in our nation's capital. During the 10-day program, the National Young Leaders Conference (NYLC) provided scholars with the opportunity to interact with a variety of personnel who operate within the three branches of government, the news media and the international community.

Chance Pack of Spearman was one of about 300 participants at this conference, with participants from all over the United States, one from Japan and one from South Africa.

Continued on Page 5

LEFT: Chance Pack (right) met with Congressman Mac Thornberry (left) in his office in Washington D.C. during Chance's attendance at the NYLC.



Public Input Sought on Plans for Groundwater Conservation

The North Plains Groundwater Conservation District (NPGCD) held a third Public Stakeholder Meeting in Spearman on August 19 to gather public input and comments on the setting of the Desired Future Condition (DFC) for the Ogallala aquifer within the District. The State of Texas requires Groundwater Conservation Districts to set a DFC as a guideline or plan for the groundwater resources of the District for the next fifty years. The District must also work with three other Groundwater Conservation Districts that overlie the Ogallala aquifer in Texas to come up with a common DFC for the Ogallala aquifer within Groundwater Management Area 1 (GMA 1), which means that once the District Board proposes a DFC, it must also be approved by a majority of the other Districts in GMA 1.

After a series of public meetings last Spring, and after the meetings in Dumas, Dalhart, and Spearman, the Board of Directors is currently considering several options for setting the DFC. One would be to establish two separate DFCs for two separate sub-management areas within the District. This is being considered because the environmental conditions and usage patterns for groundwater are so different from the West side of the District to the East side of the District. Under this proposal, the Western four counties of the District might have their DFC set at 40% left in 50 years (or 40/50), and the East four counties might have their DFC set at having 60% left in 50 years (or 60/50). The reasoning behind this is that the Western side of the District is much drier, and groundwater pumping is also more

intense for that area. The Board is very concerned that whatever goals they set not put people out of business, but instead allow them time to adjust to more limited amounts of groundwater while still being able to make a living. A 40/50 goal for the Western four counties would, however, mean an immediate move into cutting back the amount of groundwater that is pumped in those four counties. The Eastern four counties are much more fortunate, in that they have a greater amount of rainfall, less irrigation, and can still increase their groundwater

usage almost two-fold, while still having at least 60% of their water left for the future after a fifty year period. The East has water for development and growth, and the Board would like to protect that and still find a way to slow down the depletion of the aquifer, especially on the Western side of the Panhandle. Another option considered at the meeting would be to set a DFC of 50/50, or having 50% of the water left in the Ogallala aquifer within the District in 50 years, set for the entire District.

Continued on Page 5



Approximately 76 people, plus most of the NPGCD Board and employees, attended the third Public Stakeholder Meeting in Spearman on August 19th.

Lullabies, Legends & Lies

by Parson Smith, the Prime Minister of Laughter

In the Jan. 6, 2002 edition of Parade magazine, Kirk Douglas wrote the following that I think applies well to anybody struggling with any adversity:
My "Operator's Manual":
To help people understand and recover from a stroke, I constructed the following guidelines. Then, I had an epiphany: Dealing with a stroke---dealing with any ailment or misfortune---is no different than the way we all should live our lives.
1. WHEN THINGS GO BAD, always remember: It could be worse.

2. NEVER, NEVER GIVE UP. Keep working on your speech and your life.
3. NEVER LOSE YOUR SENSE OF HUMOR. Laugh at yourself, laugh with others.
4. STEM DEPRESSION by thinking of, reaching out to and helping others.
5. DO UNTO OTHERS as you would have them do unto you.
6. PRAY, not for God to cure you but to help you help yourself.
Words of Wisdom from Kirk Douglas.
Kirk Douglas says having a

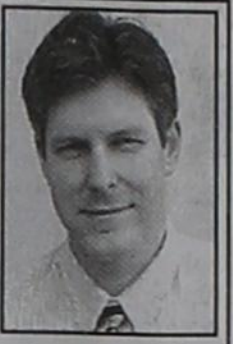
stroke made him appreciate life more. "I'm still alive," the 85-year-old actor said. "The sky is bluer, the trees are greener. People talk of heaven, but maybe this is heaven and we don't know it."
Kirk Douglas constructed his new outlook and survival upon these 4 great human values:
1. The love of his wife, Anne, and his four sons.
2. His intuitive conviction that laughter truly is the best medicine.
3. His immersion in the Bible study.
4. The gratification of reaching out and helping others..
Until the next time,
May God Bless.

State Capital HIGHLIGHTS

AUSTIN - In 2006, Texas lawmakers rolled back school tax rates for maintenance and operations by one-third over the next two years in an initiative that was to provide \$7 billion in annual property tax relief.
A study released Aug. 14 by Texas Taxpayer and Research Association shows how Texas taxpayers actually did get \$7 billion in property tax relief.
The study, Property Tax Relief: The \$7 Billion Reality, by the non-profit non-partisan association's research arm, concludes that "The average Texans' property tax bill may not be lower today than it was two years ago, but it is unmistakably much, much lower than it would have been."
The study points out that relief was made possible by a swap that included "a complete restructuring (and increase) of the state's business tax, an increase in the state's cigarette tax, and a commitment of surplus funds in the State Treasury sufficient to provide an overall net tax cut of roughly \$2.5 billion a year."
The eight-page report can be accessed at www.ttara.org.

functions of construction, design and maintenance," he said.
DPS promotes online renewal
The Texas Department of Public Safety reminds Texas residents they can renew their driver's license "without leaving the comfort of your computer" by going to the Internet site www.TexasOnline.com.
Driver's license and identification card holders are required by law to renew their license and ID card every six years. State law also requires that they change the address on their license or ID card within 30 days of moving to another residence.
The DPS has offered eligible individuals the option of renewing their license or ID card over the Internet since 2001. Individuals are eligible to renew online as long as they are 18 years of age, within one year of the license or identification card expiring and did not renew online, by mail or telephone at their last renewal.
Ineligible driver's license and ID card holders include those who have an expired, revoked, or suspended license or ID card, and individuals who possess a provisional driver's license or a commercial driver's license.
The online change of address service fee is \$11, but if a license holder chooses

es to renew at the same time as changing the address, the total charge is \$25.
Judge allows dropout funding
State District Judge Stephen Yelenosky rejected the Texas State Teachers Association's lawsuit to stop state funds from going to dropout recovery programs run by private schools.
TSTA argued that Texas Education Commissioner Robert Scott did not have authority to award grants allowing \$6 million in state funds to be awarded to private schools.
200th missing predator arrested
Texas Attorney General Greg Abbott on Aug. 14 announced his office's Fugitive Unit reached a milestone 200th Operation Missing Predator arrest on Aug. 13.
Since May 2005, the Fugitive Unit has located and arrested convicted sex offenders who fail to register with authorities. State, federal and local authorities work together to make it happen.
Estimate: \$54 million in savings
Before the annual Texas Sales Tax Holiday, Aug. 15-17, Texas Comptroller of Public Accounts Susan Combs estimated Texans would save \$54 million, taking advantage of no state sales tax on clothes, shoes and a list of other items.



by Ed Sterling

Letter to the Editor

I would like to take the time to thank the person or persons who took the time to deface the Obama for President sign; I had placed in my front yard. This reinforces several things that I have noted about a certain very small faction of (though, not all or even most) conservatives. This small faction cannot tolerate someone else's point of view. These types of narrow minded and bigoted people live in a box with all their rules clearly defined and cannot tolerate anyone else who does not agree with ALL their views ALL the time.
This type of individual is indeed a closeted bigot and racist. One side of the sign was painted with Vote McCain. If you would like your own vote McCain sign, they have them for a small fee at the GOP headquarters in Amarillo or you can order one online. You see I do not mind you expressing your opinion of whom you would like to see run our country, even though obviously you mind me expressing my opinion. The other side of the sign said "porch monkey" which is a racist and derogatory phrase used to belittle people of African American heritage. If you want a sign saying that and are brave enough to display it in your own yard, then you'll have to paint it yourself, since I know you cannot obtain that one at the GOP headquarters, since the vast majority of GOP voters are not racist either. But you really wouldn't have the courage to display that one would you?
The sign was defaced under the cover of darkness, which is the way vandals who destroy other people's property operate. I have been told it takes a certain amount of courage to display a sign in this town supporting a democrat, but I have displayed this sign for well

over a month now and no one vandalized it. The vast majority of people in this town are decent people who understand that you can disagree with someone without hating them, ignoring them or vandalizing their property and belittling their views. But apparently there is a racist element in our town and it appears it reared its ugly and intolerant, not to mention ignorant head.
I personally believe that Senator Obama is the best choice to lead our country over the next four to eight years and this type of defacing is happening because the racists and others who fear this good and decent man feel he is indeed going to be that leader. I too feel he will win and so does Las Vegas since they place him a prohibitive 2-1 favorite to become president. There are others in this town who agree with me and still more who do not, but most of those people are content to support their candidate by building him up, not tearing the other candidate down.
I feel John McCain is a good man and would be a welcome relief from President Bush whom I believe is not very competent. I didn't think Jimmy Carter ended up being very competent either, so I sup-

ported the Republican Reagan in 1980 and 1984. So as an independent, for me, it is not about Democrat or GOP, but it is about competence. I also feel Obama is brighter, more tolerant and has better answers to the problems that face our diverse nation, than does Senator McCain, so I have chosen to support him over McCain and if the odds makers, pollsters and pundits are right, it looks like he (Obama) will take the oath of office on January 20, 2009, but 3 months is a long time in politics and McCain may emerge the winner, if he does I WILL support him and give him a chance to show that he can begin to undo the mess I believe was created by his predecessor. I hope those who vote for McCain will give Senator Obama the same chance. I think most will, but the hateful, racist, the intolerant faction never will and unfortunately there is a very small faction like that in the GOP and apparently also in our otherwise very nice little community.
Again, thank you for expressing your views and revealing your true self (well I guess you really didn't since you chose to express those views in my yard and not yours). I have more signs and I will put another up.
Dr. Glenn Robinson
Spearman, TX

TXDOT signals consolidation plan
The Texas Department of Transportation says it is considering the creation of four regional centers to house support functions presently located in 25 districts across Texas.
"The consolidation of support functions could create a more efficient working environment and generate a cost savings estimated at \$35 million," said TXDOT executive director Amadeo Saenz.
Sites for the regional centers would be Fort Worth, Houston, San Antonio and Lubbock.
Each would support the district design, construction and maintenance operations, with districts aligned into the support centers based on regional proximity.
Saenz said restructuring would not result in a reduction of services at the district level.
"TXDOT would not cut services to the public. Our goal is to provide services in a way that is smarter and less expensive."
"Our local offices would continue to operate, concentrating on our core business

ported the Republican Reagan in 1980 and 1984. So as an independent, for me, it is not about Democrat or GOP, but it is about competence. I also feel Obama is brighter, more tolerant and has better answers to the problems that face our diverse nation, than does Senator McCain, so I have chosen to support him over McCain and if the odds makers, pollsters and pundits are right, it looks like he (Obama) will take the oath of office on January 20, 2009, but 3 months is a long time in politics and McCain may emerge the winner, if he does I WILL support him and give him a chance to show that he can begin to undo the mess I believe was created by his predecessor. I hope those who vote for McCain will give Senator Obama the same chance. I think most will, but the hateful, racist, the intolerant faction never will and unfortunately there is a very small faction like that in the GOP and apparently also in our otherwise very nice little community.
Again, thank you for expressing your views and revealing your true self (well I guess you really didn't since you chose to express those views in my yard and not yours). I have more signs and I will put another up.
Dr. Glenn Robinson
Spearman, TX

ported the Republican Reagan in 1980 and 1984. So as an independent, for me, it is not about Democrat or GOP, but it is about competence. I also feel Obama is brighter, more tolerant and has better answers to the problems that face our diverse nation, than does Senator McCain, so I have chosen to support him over McCain and if the odds makers, pollsters and pundits are right, it looks like he (Obama) will take the oath of office on January 20, 2009, but 3 months is a long time in politics and McCain may emerge the winner, if he does I WILL support him and give him a chance to show that he can begin to undo the mess I believe was created by his predecessor. I hope those who vote for McCain will give Senator Obama the same chance. I think most will, but the hateful, racist, the intolerant faction never will and unfortunately there is a very small faction like that in the GOP and apparently also in our otherwise very nice little community.
Again, thank you for expressing your views and revealing your true self (well I guess you really didn't since you chose to express those views in my yard and not yours). I have more signs and I will put another up.
Dr. Glenn Robinson
Spearman, TX

Editors Note...

Freedom of speech is one of the guarantees of the First Amendment of our Constitution, so we encourage readers to express themselves, even if we don't agree with what is said. However, freedom involves responsibility. Therefore, the only letters we will consider publishing are from individuals who are willing for their names to appear with the letter. Letters must contain the telephone number, address and a personal signature of the writer. We will not knowingly publish any letter containing libelous statements.
In the event that numerous letters are received concerning the same subject, letters can be limited to one pro and one con letter per publication. Eligible letters will be published in the order in which they were received.
"Letters To The Editor," like all materials submitted to this newspaper, are subject to editing for space and clarity. The publication of any letter or article is the decision of the Editor and Publisher. Deadline for all news, as well as "Letters To The Editor," is 5 p.m. on Monday.

COWBOYS

- ACROSS**
- 1. "Howdy, ___!"
 - 5. Health resort
 - 8. A little wet
 - 12. One of the hip-bones, pl.
 - 13. Oil group
 - 14. Pertaining to hair
 - 15. Grammy winner K.D.
 - 16. This and the other
 - 17. *Twirled above
 - 18. *Movie: "___ Cowboy"
 - 20. Wildly, without self-control
 - 21. Round openings
 - 22. Skater's turf
 - 23. Spiky succulent
 - 26. *Its crown is creased
 - 30. H in HMS
 - 31. Dances the bebop
 - 34. Small ladies' hand-bag
 - 35. Resort-filled island in southern Caribbean
 - 37. Water in Paris
 - 38. Greek muse of love poetry
 - 39. "In ___ of"
 - 40. Tube-nosed seabird
 - 42. Johnny ___ in Civil War
 - 43. Red on kitchen table
 - 45. What hair does on balding person
 - 47. Barbie's beau
 - 48. *Cowboy's turf
 - 50. Defender of skies
 - 52. On certain occasions
 - 56. To utter suddenly
- DOWN**
- 1. Not spicy
 - 2. Having wings
 - 3. Hokkaido (Japan) language
 - 4. Garbage lover
 - 5. Thread reel
 - 6. Bacteria dish
 - 7. Typically dull and persistent
 - 8. r times two
 - 9. In addition
 - 10. Ball accoutrement
 - 11. Plays for pay
 - 13. Between 90 and 180 degrees
 - 14. There's none like home?
 - 19. Aqua-lung
 - 22. It is
 - 23. Blackboard writer
 - 24. Bird of prey nest
 - 25. Oil or vinegar bottle
 - 26. *Horse prod
 - 27. Fixed look
 - 28. Be disclosed or revealed
 - 29. Wife of Amphion, king of Thebes
 - 32. Road alert

These games are brought to you by the Hansford County Reporter-Statesman

- 33. Quaker grain
- 36. *a.k.a. cowboy
- 38. What voters do
- 40. Play on words
- 41. Hemingway
- 44. Sizeable
- 46. Michelangelo's tool
- 48. *Where 8 seconds is the goal
- 49. Set straight
- 50. Long forearm bone
- 51. *What happened to Gene Autry's songs
- 52. Accompanies relief
- 53. A la ___
- 54. Discharge
- 55. Groups of things
- 56. Art degrees

CROSSWORD

1	2	3	4	5	6	7	8	9	10	11	
12				13				14			
15				16				17			
18				19				20			
			21					22			
23	24	25				26		27	28	29	
30				31	32	33			34		
35			36			37			38		
39				40				41		42	
43				44				45	46		
			47			48	49				
50	51					52			53	54	55
56						57			58		
59						60			61		
62						63			64		

PRESENTED BY

VolunteerMatch.org
Where volunteering begins.

© 2008, StatePoint Media, Inc. answer on classified page

SUDOKU

PRESENTED BY

VolunteerMatch.org
Where volunteering begins.

4	6	9	5					
5			1					
	7		1	5				8
2			3	1				
8								5
			5	6				4
3			7	8				4
			2					7
			7	2			8	6

© 2008, StatePoint Media, Inc. answer on classified page
Fill in the blank squares in the grid, making sure that every row, column and 3-by-3 box includes all digits 1 through 9.

The Hansford County Reporter-Statesman

213 Main Street • Spearman, TX 79081
Phone - (806) 659-3434 • Fax - (806) 398-9080
www.spearmanreporter.com
reporter@spearmanreporter.com
cathysmith@valonnet.com
Mon.-Thurs. 9 a.m.-12 p.m., Mon.-Wed. & 1-5 p.m.
Closed Thurs. afternoon and all day Fri., Sat. & Sun.

Gary Smith - Publisher Catherine Smith - Editor
Contributing Writers: Dorothy Hudson, Jim Derington, Merry Sparks, Cecil Biggers
Contributing Photographer: Charlie Johnson

Subscription Rates
In Hansford County - \$30.00 • Out of County - \$40.00

The Hansford County Reporter-Statesman (USPS 529660) is published weekly in Spearman, TX. Periodical postage paid in Spearman, TX. POSTMASTER: Send address changes to: The Hansford County Reporter-Statesman, 213 Main Street, Spearman, TX 79081.

Publication Policy
The deadline to submit news and advertising to The Hansford County Reporter-Statesman is Monday at 5 p.m. Items submitted after the deadline will be published at a later date, as time and space permit. Publication of all items is at the discretion of the editor.

Advertising
Open Display rates are \$4.00 per column inch. Classified Ads are \$6 for the first 25 words and 10¢ per word for each additional word. (Additional charge for boxed classifieds.) There is a \$1 charge per week if billed.

Member of
Gruver Chamber of Commerce
Spearman Chamber of Commerce
Texas Press Association and Panhandle Press Association

Happy Birthday!

Editor's Note: This Happy Birthday list is run as a public service by the Hansford County Reporter-Statesman. We apologize if any names are misspelled. If you know of a name that needs to be changed, added or deleted, please call 659-3434.

Thank you, Catherine

August 21
Birthday - Lou Garrett, Lauren Hoel, Michael Lane Whitefield, Linda Lawson, Carolyn Mauldin, Brandon Babitzke, Joshua Bynum, Rick Harvey, Coy H. Kelly Jr, Shane Hill
Anniversary - M/M Dwayne Marrs

August 22
Birthday - Amber Roberts, Autumn Roberts, Tony Hester, Michelle Davis, Tuesday Reed, Jonell Sheets, Roger Brown, Marge Papay, John Michael Sterling, Phil Garza, Kathrine Tope, Janie Perez, Garrett Griffin, Brian Robinson, Brett Winegarner, Janie Reza, Kay Snider
Anniversary - M/M Silva, Kenneth & Lisa Brown, M/M Pat Jackson

August 23
Birthday - Ann Dorman, Reagan Baker, Eddie Reed, Donnie Mitchell, Sara Blackburn, Ralph Blodgett, Bill Jack Pittman, Kathy Lewis, Miriam Mendoza
Anniversary - M/M Billy DeArmond, M/M Chris Johnson, M/M Jimmie Vernon

August 24
Birthday - Frances Atwood, Laci Fitzgerald, Sarah Van Buskirk, Rosio Rosales, Charlie West, Claudine Clark, Melissa Kay McLain, Lila West, Scott Houghton, Willie Lee Wilkerson, LeRoy Farris, Clayton Wilkerson, Charlie West, Travis Boyd
Anniversary - M/M Terry Austin, M/M Dwayne Mitchell, M/M Randy Brown

August 25
Birthday - Carol Ross, Kathleen Sutton, Connie Sue Wooley, Kathy Yancey, Linda Young, Courtney Roach, Kathrine Pipkin, Gay Bowen, Michael Janzen, Katie Miesner
Anniversary - M/M Butch Lasater, M/M Roy Don Gammon

August 26
Birthday - Wayne Kruse, Debbie Davis, Chayci Dominguez, Mike Odd, David Archer, Juanita Tucker, Mary Thompson, Kimberly Slater, Ashley Patterson
Anniversary - M/M Eddie Clemmons, M/M Vernon Morris

August 27
Birthday - Amy Grubbs, Brian Hoel, Pat Ochoa, June Jackson, Donald Rhea, Gregg Weaver, Chad Davis, Patricia Bevera, Virginio Ortega Jr., J. T. Sanders, Bertha Watts, Gabriel

Moreno, Krystal Vela, Christopher Abernathy, Cassidy Odegaard, Dara Faries
Anniversary - Jim & Pamela Morrison, M/M Jerry Bowling
August 28
Birthday - KiKi Carthel Brabham, Amy Gillispie, Mika McLain, Linda Nunez, Kory Sheppard, Mike Pearson, Joe Bravo, Keith Burgess, Andy Jones, Mabry Sutterfield, Penny Sumner

August 29
Birthday - Rodney Clawson, Ginny Grotgut, Monica Ward, Mark Crooks, Bill Strawn, Richeardo Espinosa, Dusty Vinson, Linda Lou Lewis, Tony Cazares, Holly Brack, Katie Bynum
Anniversary - M/M Robert Blevins

August 30
Birthday - Joshua Blount, Roy Dale Karr, Van Lewis, Jeff Nicholson, Chelly Rigdon, Christa Urban

August 31
Birthday - Jill Hoel, Roger Dean Close, Estella Arjona, Mildred Lewis, Chad Wilkerson, Justin Eslick, Lonnie Shields, Danny Herrington, Bob Boxwell, Dale Jones, Clay Neff
Anniversary - M/M Brian Pressley, M/M Kent Guthrie

September 1
Birthday - Sahala (McCloy) Galliard, Kathy (Nelson) Dumbold, Mrs. Don Allen, Eugene Yarborough, Irma Arjona, Pete Vera Jr., Jessica Williams, Rita Lindley, Erin Wafford, Misty Bynum, Hugo Villa, Richard Shad, Jessica Shad, Laura Bridges, Jace Lang, Ann Pipkin, Dane Harbour, Sandra Blankenship
Anniversary - M/M Daniel Boyd

September 2
Birthday - Kelly Sue Jones, Melyn Johnson, Archie Smith, Felipe Lomelli, Carlos Mendoza Jr., Larry Gallimore
Anniversary - M/M Ron Antalek

September 3
Birthday - Josh Mayhew, Isabel Martinez, Ruth Lackey, Kory Brown, Sheryl Meek, Sandy Russell, Janet Sandaval, Jessie Moore, Brandon Baker, Michelle Evens, Elena Vargas, Jason Quillin, Coy Herrington
Anniversary - M/M John Booth, George & Virginia Young

September 4
Birthday - Val Winger, Peggy Frick, Jimmy Haden, Kathy Bowen, Marty Karr, Laci Murray, Darlene Pierce, Rodney Pointer, Tina Cator, Lighton Torres, Alix Boyd, Halee Beasley, Kristi Vasquez, Jarry Francis, Jerri Lane
Anniversary - M/M Ron Fox, Don & Wanda Reed

Words from Faith & Grace

by Cecil R. Biggers, Lutheran Lay Minister



This week we learn something about "rocks", but we are not talking geology. We study Isaiah 51:1-11, Psalm 138, Romans 12:1-8, and Matthew 16:13-20. Isaiah calls for those who seek righteousness to look to the "rock" from which they were hewn. He uses Abraham and Sarah as examples of "rocks" of faith. Abraham's faith made him righteous, and made Sarah a mother at ninety-something. Isaiah reminds the people that God's salvation is forever, and his power of deliverance will never end. The Psalmist sings, "The Lord will fulfill his purpose for me; your steadfast love, O Lord, endures forever."

Paul writes to the Romans on doctrine and not on history. He brings his appeal to a practical level by asking the faith community to present their bodies as a living sacrifice as an act of spiritual worship. Paul uses the example of the Church being one body and each member a part of that body. Each member having different gifts/talents, but it takes all to be the Church. What Paul is telling us is that we must live our faith in our everyday lives. We cannot just be "Christian" when we attend a worship service. We must know ourselves, accept ourselves for what we are, and use our God-given gifts/talent for His glory. We are "living stones" (rocks) that make up the Church and each "stone" is important.

Jesus seeking to be alone with his disciples, remains outside of Jewish territory in the district of Caesarea Phillipi. This area was sacred to the god, Pan. Also in this area were monuments to Caesar as a god. In this pagan area, Jesus asks, "Who do people say that the Son of Man is?" The disciples answered, John the Baptist, Elijah, and others a prophet. Jesus then asks, "But who do you say that I AM?" Simon Peter answers, "You are the Messiah, the Son of the Living God". Jesus blesses Peter and tells him that only the Father could have revealed this to him. Jesus then uses two bits of word-play. The first, "I tell you, you are Peter (petros = rock), and on this rock (petra) I will build my church." Just as Isaiah used "rock" as a reference for faith, so here does Jesus use "rock" for faith. Peter was the first of the disciples to declare Jesus as Messiah, and faith in Jesus Christ is the rock on which the Church is built. Christ himself being the cornerstone. The second, "I will give you the keys of the Kingdom of heaven, and whatever you bind on earth will be bound in heaven, and whatever you loose on earth will be loosed in heaven." The terms "binding and losing" refer to "allowing" or "forbidding". Compare this with John 20:23 where Jesus says to the disciples, "Receive the Holy Spirit, if you forgive the sins of any, they are forgiven; if you retain the sins of any, they are retained." These powers were given to the Church. We believe that Peter is the first "rock" of faith and each succeeding Christian a "rock" of faith to the spiritual structure of the Church.

May the Holy Spirit create you a "rock of faith" for the Glory of His Kingdom.

Our Sympathy

FLOYD WAYNE LAXTON

PERRYTON - Floyd Wayne Laxton, 49, died on Tuesday, August 19, 2008.

Graveside services were held on Wednesday, August 20, 2008 at 3 p.m. in Ochiltree Cemetery with the Rev. Marlon Sparks officiating. Interment was under the direction of Boxwell Brothers Funeral Home of Perryton.

Floyd was born on August 1, 1959 in Perryton to Charles and Claudine Laxton. He had lived in the area his entire life. Floyd worked in the Oil Field and was a member of Victory Family Church of Perryton.

Survivors include his parents, Charles and Claudine Laxton of Spearman; two sons, Bradley Laxton and Charles Laxton, both of Perryton; a brother, Lloyd Laxton of McAllister, OK; and two grandchildren.

The family suggests memorials be to the American Heart Association, 6605 1-40, Suite A6, Amarillo TX 79106, or one's favorite charity.

MONUMENTS

Boxwell Brothers Funeral Home

519 Evans • Spearman
659-3802

Dear friends,
When you buy a monument from us we make sure it is exactly what you want at a price you can afford. If it is not right, we will make it right. And you will not have to search the countryside to find us. We are here when you have a need.
Sincerely,
Bob Boxwell

LET'S TALK COLORADO
THE ONLY THING BETTER THAN A TRIP TO COLORADO IS A FREE TRIP TO COLORADO.
Let's talk excitement. Let's talk adventure. Let's talk Colorado.
Enter today for your chance to win 1 of 5 amazing Colorado vacations at COLORADO.COM.

FREE DIRECTV 4 ROOM SYSTEM!
FREE 4 MONTHS ALL 265+ CHANNELS!
Includes HBO, Cinemax, Showtime, Starz, Sports...Everything!
FREE DVR/HD!
Pkgs. start only \$29.99!
No Start up costs!
We're Local Installers!
Toll Free 800-214-7110

SIGN UP FOR A FREE SCOOTER
One Scooter Given Away Each Month
Toll Free 800-606-9860
Med Care MEDICAL SUPPLY

Med Care MEDICAL SUPPLY
Ask us if you qualify for a POWER CHAIR at little or no cost to you.
In most cases, Medicare, Medicaid & Insurance will cover 100% of the cost for your Power Chair.
Toll Free 800-606-9860

Alva Monument Co.
Formerly Liberal Monument & Memorial Company
New Location:
111 Tucker Road
Liberal, Kansas
North of the New Wal-mart
Serving Kansas, Oklahoma & Texas for 93 years
(316) 624-4211 toll free # 888-654-9318

PAID CDL TRAINING!
NO EXPERIENCE NEEDED!
Stevens Transport, the premier refrigerated carrier in the US, sponsors the total cost of your CDL training! In 17 short days you will earn your CDL and begin your paid on-the-job training! Earn \$40K first year and up to \$150K fifth year! Excellent benefits and 401K!
For more information, call 800-333-8595
www.becomeadrivers.com

Woman High Jumps 3'11" at Local High School Track
BEXAR COUNTY - After using Thera-Gesic® on her aching thighs, 49 year old Mary Ann W. says she caught olympic fever and easily soared over the bar. When asked who witnessed the feat, she painlessly replied, "None of your dang business!"
Go painlessly with Thera-Gesic®

Replenish the seed of faith through . . . DAILY BIBLE READING, PRAYER & REGULAR CHURCH ATTENDANCE

Spearman
Apostolic Faith Church
822 S. Drensen • 659-2870
Sunday School: 10 a.m.
Worship Service: 11 a.m.
Sun. Eve.: 6 p.m.
Wed. Prayer Mtg: 7 p.m.
Pastor - Roland Haney

First Assembly of God
401 N. Bernice • 659-2295
Sunday School: 9:30 a.m.
Worship: 10:35 a.m.
Kid's Church: 10:35 a.m.
Evening Worship: 6 p.m.
Wed. Worship: 7 p.m.
Wed. Youth: 7 p.m.
Pastor - Bob Elder

First Christian Church (Disciples of Christ)
29 S. Bernice • 659-2036
Sunday School: 9:45 a.m.
Worship: 10:50 a.m.
Minister -

First Baptist Church
123 N. Bernice • 659-5557
Sunday School: 9:45 a.m.
Worship: 11 a.m.
Evening Worship: 7 p.m.
Men's Bible Study - Wed., 7 a.m.
Children's Choir - Wed, 6 p.m.
Adult Choir - Wed, 7 p.m.
Wed. Bible Study: 7 p.m.
Pastor - Jim Medley

Church of Christ
121 S. Haney • 659-3244
Sunday Bible Class: 9:45 a.m.
Worship: 10:30 a.m.
Evening Worship: 6 p.m.
Bible Study Wed.: 7:30 p.m.

Sacred Heart Catholic Church
901 Roland • 659-2792
Sat. Night Mass: 5:30 p.m.
Sun. Mass: 9 a.m. - English
Sun. Mass: 11:30 - Spanish
1:30 p.m. - Gruver - Christo
Renditor Mass - Spanish
Rev. Guillermo Morales

First United Methodist
407 S. Haney • 659-5503
Sunday School: 9:45 a.m.
Worship: 8:30 & 11 a.m.
Jr. High Youth: 5 p.m. Sunday
High School: 6 p.m. Sunday
Kids Club: 3 p.m. Wed.
Pastor - Neely Landrum

Grace Presbyterian Church (Worshippers with Faith Lutheran Church)
1101 Bernice • 659-2033
Pastor - Beverly Cook
Faith Lutheran Church (ELCA)
1101 Bernice • 659-2252
Sunday School: 9:45 a.m.
Worship: 11 a.m.
(Worshippers with Grace Presbyterian Church)
Pastor - Beverly Cook

Union Church
31 S. Endicott • 659-2644
Sunday School: 10:00 a.m.
Worship: 11:00 a.m.
Bible Study: 7 p.m. Wed.
Youth Service: 6 p.m. Wed.
Pastor -

Fellowship Baptist
1102 S. Archer • 659-2783
Sunday School: 10 a.m.
Worship: 11 a.m.
Sun. Evening Worship: 6 p.m.
Youth/Adult Service: 7:30 Wed.
Pastor - James Washburn

Primera Mision Bautista
502 E. 7th • 659-3991
Sunday School: 9:45 a.m.
Worship: 11 a.m.;
Evening: 6 p.m.
Wed. Prayer Meeting: 7 p.m.
Thurs. Visitation: 7 p.m.
Pastor Joe Garcia Jr.

El Aposento Alto U.P.C.I.
1105 S. Roland
Domingos: Escuela: Dominical - 10 a.m.
Culto Evangelistico - 7 p.m.
Jueves: Oracion - 8 p.m.
Mier. Estudio Biblico - 7 p.m.
Pastor - A.G. Martelli (806) 659-2153

Gruver United Methodist
Broadway & Garrett
733-2651
Sunday School: 9:45 a.m.
Worship: 8:30 & 10:50 a.m.
Eve. Worship & UMY: 6 p.m.
Pastor - George Price

Spanish Cristo Redentor Church
Sunday Mass: 1:30 p.m.
Friday Evening Mass
Summer - 8:00 p.m.
Fall/Winter - 7:30 p.m.

Oslo
Oslo Lutheran Church (ELCA)
6 Miles West & 12 Miles
North of Gruver
339-7646
Sunday School: 9:45 a.m.
Worship: 11 a.m.
Pastor - Arlen Lloyd

Morse
Morse Baptist Church
733-2757
Pastor - Mike Martin

This feature is made possible through the sponsorship of these civic minded businesses.

Deakin ELECTRIC
OILFIELD - RESIDENTIAL - COMMERCIAL
321 S. MAIN • SPEARMAN
1-800-999-1506 Chris Deakin
806) 659-5016 President

Bartlett's Lumber & Hardware
105 W. Broadway • Gruver, Texas
(806) 733-2404

BERRY CLEANERS
Ann & Vernon Pipkin - Owners
Phone 659-3122 • P.O. Box 1017
207 Main St. • Spearman, TX

Morse Implement & Auto Supply
"Join us in church"
Tom Dortch 733-2668
Box 89 • Morse, TX 79062

PRAIRIE MOTORS INC.
Hwy. 207 South • P.O. Box 430
Spearman, TX 79081 • (806) 659-2541
www.prairiemotors.com

MurMur's Cafe
100 Roland St
Spearman, TX.
659-3580

Hansford County Reporter-Statesman
"Proudly Serving Hansford County Since 1907"
(806) 659-3434
310 Barkley • Spearman, TX

INTERSTATE BANK, ssb
www.interstatebank.net
322 Main • P.O. Box 146
Spearman, TX • 659-2559

AgriLife Extension to Offer Beef Quality Update Amarillo Aug. 25

The Texas AgriLife Extension Service will conduct a Texas Beef Quality Producer program in Amarillo on Aug. 25 at the Texas AgriLife Research and Extension Center at 6500 W. Amarillo Blvd.

The program starts at 8:30 a.m. and will end at 2 p.m., following a catered lunch provided by the Texas Beef Council.

Program sponsors along with AgriLife Extension are the Texas and Southwestern Cattle Raisers Association and Texas Beef Council. Four beef quality credits will be available.

"The Texas Beef Quality Producer Program offers a standardized way for beef producers to document and be recognized for the quality and management they've put into their cattle," said Dr. Ted McCollum, AgriLife Extension beef cattle specialist at Amarillo.

"Beef enjoys a well-deserved reputation as a tasty and wholesome product. Nonetheless, quality and food safety remain big issues with consumers, and are driving forces in the industry here and abroad," McCollum said.

"By participating in a Beef Quality Assurance program, growers not only help keep consumer confidence strong, but also position themselves to capture some of the premium dollars which the program will undoubtedly generate along the way," he said.

The program is free, but pre-registration is requested by Aug. 22 for an accurate meal count.

For more information and to pre-register, contact Stacy Fox at the Texas and Southwestern Cattle Raisers Association at 817-332-7155 or sfox@texascattleraisers.org.

Also, information can be found by contacting Ronda Fisher at the Amarillo center at 806-677-5600 or by going to www.texasbeefquality.com.

Hansford County Library Invites Public to View Recent J. Frank Dobie Trust Purchases

The Hansford County Library staff invites the public to view and checkout the wide variety of nonfiction books purchased in recent months with funds granted through the J. Frank Dobie Trust. New books in the collection run the gamut of the Dewey Decimal System from 004. to 978 and include computer aides, legal guides, medical and health information, mechanical books, craft interests, and local and Texas history topics.

Library co-directors Maria Carbajal and Margaret Ruttman were privileged to represent the library when this prestigious award was

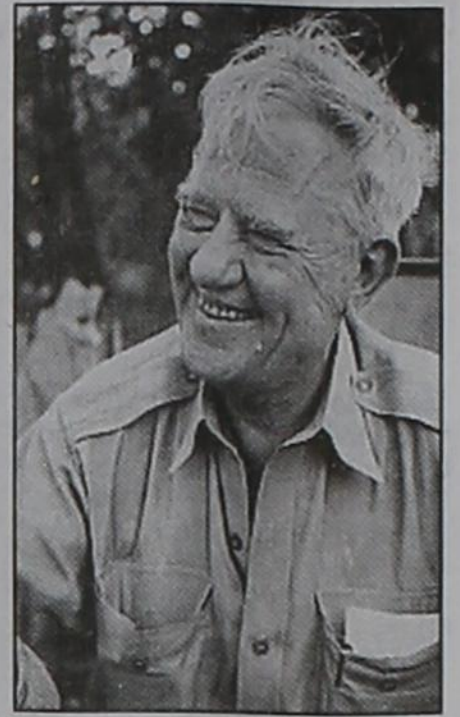
presented to only 4 libraries in the state of Texas during ceremonies at the Texas Library Association convention in Dallas in April.

Up to the end of July, the staff has been able to purchase and process 492 volumes through this grant and have plans to add more soon. "By December, we hope to have acquired 600+ books with the \$10,000 we were given in April," said Carbajal.

The only stipulations to using the funds were that nonfiction books be purchased and that the staff should have fun doing so. "It definitely has been fun

ordering, processing, and getting so many new books of interest on the shelves," added Ruttman.

For the convenience of all patrons, the new volumes will remain in one designated area throughout the fall. Please come by to browse the collection as well as to request the purchase of others that will be of area interest.



J. Frank Dobie was a spokesman of Texas and the Southwest and initiated the study of Texas literature at the University of Texas in Austin.

See us for:
AUTO • HOME • CROP HAIL • FARM & RANCH • MULTIPERIL • LIVESTOCK
INSURANCE

BORT AGENCY, INC.
 510 Main St. • Gruver, TX
 (806) 733-2456

You are invited to a
Bridal Shower
 honoring
Shanda Graham
 (bride-elect of Doug Kerr)
 on Saturday, August 23, 2008
 from 10:30 a.m.-12:00 noon
 in the home of Karen Thompson
 1104 Linn Drive Spearman

You are invited to a
Bridal Shower
 honoring
Nicole Sander
 (bride-elect of Paul Swanson)
 on Saturday, August 23, 2008
 from 2:00-3:30 p.m.
 in the Clementine Bed & Breakfast
 822 S. Evans Spearman



Women of Victory Women's Conference
 Women of Victory will celebrate their 16th annual women's conference August 21st, 22nd and 23rd at The Victory Center Church, 5th and Quinn, in Guymon, Ok. This year's theme is "Blessed & Highly Favored" with special guest speakers Rev. Nancy James of Triumph Ministries, Karen Jensen, instructor at Rhema Bible Training Center, Margaret Mendenhall, Co-Pastor Victory Center and Beth Elliott, praise and worship. Early Bird Registration fee by August 15th is \$30 and after the 15th the cost will be \$35. Free luncheon on Friday with paid registration. No nursery will be provided. To register or for more information, you may call Victory Center Church (580) 338-5616, fax (580) 338-2575, or e-mail victory@pts.net. (Attached are pictures from our flyer if you would like to use them.)

Gruver Elementary - Meet the Teacher
 Gruver Elementary will hold a Meet the Teacher event at 9:30 a.m. on Friday, August 22, 2008, in the Gruver Auditorium. We look forward to seeing parents and students at this time to kick off this new year.

Hansford County 4-H Awards Banquet
 The Hansford County 4-H Awards Banquet will be held on Sunday, August 24, 2008 at 12:30 p.m. in the Spearman Church of Christ Fellowship Hall. Those planning to attend should RSVP by Thursday, August 21st by calling 659-4130 or 733-2901.

Spearman ISD Back-to-School Night
 Spearman ISD will hold a Back-to-School Night on Tuesday, August 26th. An open house/grand opening will be held, with hot dogs, chips and lemonade being served in the Elementary Cafeteria. Elementary Open House will be from 5-6 p.m., Jr. High from 5:30-6:30, and High School from 6-7.

Meet the Lynx/Lynxettes Ice Cream Social
 The Meet the Lynx/Lynxettes Ice Cream Social will be held on August 26, 2008 at 7:30 p.m. in the East parking lot of the Spearman High School. All the High School football players, boys and girls cross country, cheerleaders will be introduced for this years falls sports. Booster Club will be selling shirts, caps, blanket, jackets and lots of other merchandise. Please come out and show your support to the great athletics of Spearman High School.

Private Applicator License Training & Test
 A Private Applicator License Training & Test will be held on August 26, 2008, beginning at 9 a.m. in the Commissioner's Courtroom at the Hansford County Courthouse in Spearman, TX. Call the Hansford County Extension office for further details 659-4130 or 733-2901. This will be held according to TDA rules. Note: If you let a license expire you have to wait 1 year before you can retest.

S.T.A.R. Presents "Back in Control" Parenting Workshop
 STAR (Services-To-At-Risk Youth & Their Families) brings you... "Back in Control" Parenting Workshop on Saturday, September 6, 2008, from 8:45 a.m.-4:00 p.m. at the TPMHMR Children's Services Building, 1500 S. Taylor Street, Amarillo, Texas 79101. Participants must pre-register! Call 359-2005 CEUs available for LPCs & MSWs; General CEUs will also be available. (Must attend full class for certificate) There is no charge to attend, and seating is limited. No childcare is provided. STAR is a TDFPS funded program of TPMHMR.

Stationmaster's House Museum Doll Show
 The Stationmasters House Museum is planning a Doll Show for late September or early October. If you have a collection or a doll you wish to display, please call Doris at 659-3008, Tuesday-Saturday, from 1-5 p.m., or Reba at 733-2786.

Thriftshop Policy
 Hansford County Library has a policy barring children under 12 from the Thriftshop and the surrounding area outside. No strollers or buggies of any type are allowed in the Thriftshop. This policy is due to overcrowding in a small area and continuing discipline problems. Shoppers are asked to be considerate of the volunteers as well as other shoppers, and leave children under 12 at home.

Celebrate

Gifts for all your celebrations!

Bridal Registry

- Shanda Graham & Doug Kerr - 8/23
- Nicole Sander & Paul Swanson - 8/23
- Sammie Stavlo & Wade Harkey - 9/6
- Nicole Ramon & Eric Neumeier - 9/13
- Jentry Edwards & Clinton Williams
- Alma Martinez & Andy McElhannon
- Jessica Adams & Kevin Black
- Racee Smith & Joshua Ivy
- Crystal Milburn & Brandon Vanderburg

Baby Registry

- Bryn (Lowe) & Aaron Weller - 9/6
- Rose & John Harper - 9/6
- Tara & Chad Gardiner - 9/13
- Radar & Betty Garcia

Celebrate

203 Main St. Spearman, TX
 (806) 659-3350 1-800-663-8026



- Couples Currently Registered**
- Crystal Milburn & Brandon Vanderburg - 8/16
 - Shanda Graham & Doug Kerr - 8/23
 - Nicole Sander & Paul Swanson - 8/23
 - Sammie Stavlo & Wade Harkey - 9/6
 - Nicole Ramon & Eric Neumeier - 9/13
 - Jennifer Ferrel & Jeff Coates
 - Brooke Bevell & Andrew McMurry
 - Audrey Winegarner & Braden Gibson
 - Jentry Edwards & Clinton Williams
 - Alma Martinez & Andy McElhannon
 - Jessica Adams & Kevin Black
 - Racee Smith & Josh Ivy
- Baby Registry**
- Aaron & Bryn (Lowe) Weller - 9/6
 - Radar & Betty Garcia
 - Dustin and Rowena May Parks
- Gordon's** 659-2141
 314 Main Spearman

Palace Theatre

MOVIE SHOW TIMES
 Friday-Thursday - 7 p.m.
 Sunday - 2 p.m.
 Closed Sunday Night

**FRESH POPCORN & DRINKS!
 PARTY ROOM & ARCADE
 MOVIE RENTALS**

Palace Theatre
 210 Main Street
 Canadian TX 79014
 806-323-5133
 www.palacetheatre.com

The Palace Theatre meets Lucasfilm THX specifications for site and sound quality.

Confident your computer is safe from viruses?

THINK again!

Get SecureIT Plus Now includes Parental Controls!
 Guaranteed computer protection

Sign up today to get 3 months FREE!

PTCI Communication & Broadband Solutions

National Statistic:
 80% of computer users are not aware they have spyware programs on their computers.

Not available in all areas. Some restrictions apply. Offer good through September 30, 2008

721 W 7th - Spearman 1-800-562-2556 www.ptci.net

Students Meet With National Leaders In Washington, D.C.

National Young Leaders Conference Provides Inroads for U. S. Future

Continued from Page 1
 "NYLC prepares students to serve our country well, whether that means as elected officials in our nation's capital, as active members within communities around the world or as intelligent, creative and responsible members of the work force," said Mike Lasday, executive director of the Congressional Youth Leadership Council (CYLC), the organization that sponsors the Conference. "Through a series of simulations, we place these young leaders in the proverbial driver's seat on a variety of issues facing our country today. Their determination, as shown within the Conference, is a good indicator of the types of leaders we will see in the future."

Past highlights of this program have included welcoming remarks by a current or former member of Congress, made from the floor of the House of Representatives—a privilege that is seldom afforded to other groups. Students also had opportunities to interact with prominent members of the Washington press corps at the National Press Club, in addition to meeting with sen-

ators and representatives or appointed staff members to discuss important issues facing the nation.

To complement the schedule of special meetings and briefings, students participated in a number of leadership skill-building activities and simulations. In one role-play activity titled If I Were President, students acted as the president and Cabinet members responding to an international crisis. Students also participated in Testing the Constitution, in which they examine actual Supreme Court cases. The Conference culminated with the Model Congress, in which scholars assumed the roles of U.S. Representatives and debated, amended and voted on proposed mock legislation.

"The DC experience was incredible," commented Pack. "I was not ready to come home and would go again in a heartbeat."

"He came home with a new understanding of our government and how it works and a significantly expanded world vision," added his grandmother, Carol Pack.

Chance was sponsored by the Spearman Lion's Club as

Spearman High School's sophomore representative to the Hugh O'Brien Youth Leadership Conference (HOBY) held at Texas Christian University last May.

Chance will be a junior at SHS this fall. He plays football, basketball, and does track. He has been on Student Council and was Secretary of FFA last year and was president on the Chapter Conducting Team that competed at area last year. He is a member of National Honor Society. He is the son of Jay Pack and the grandson of Carol & Neil Pack.

CYLC is a nonpartisan educational organization. Since 1985, the Council has inspired more than 200,000 young people to achieve their full leadership potential. To date, 366 members of the U.S. Congress have joined our commitment by serving on the CYLC Honorary Congressional Board of Advisors. In addition, more than 50 embassies participate in the Council's Honorary Board of Embassies.

For additional information, visit us at www.cylc.org.

Public Input Sought on Plans for Groundwater Conservation

Continued from Page 1
 Concerns raised at last night's meeting included whether the residents of the Eastern four counties wanted to see a separate management area developed for the Western four counties of the District. Some attendees voiced the opinion that they wanted to see a DFC of 50/50, or having 50% of the water left in the Ogallala aquifer in 50 years, set for the entire District. This would be done by averaging the amount of groundwater in storage across the District and averaging the amount of pumping between all counties to determine an allowable annual production for landowners in all eight counties. Others voiced the opinion that they did not want to have the groundwater usage averaged across the District, but rather would prefer that the sub-management areas be used to set DFCs for the two areas that would more truly require those that are pumping the most water to be the ones who must take the cuts in allowable production of groundwater. Several other possible options were suggested by the public at the meeting and will be taken under consideration by the Board before a decision is reached.

The overall theme that came out of the meetings

was that managing the groundwater resources of the North Plains Groundwater Conservation District is an extremely complicated endeavor. There are very few areas in the state where the conditions vary so much across a District, and the Board of Directors is still actively seeking input from the public on what ideas they have for managing the aquifer. The state has mandated that Groundwater Conservation Districts must place to slow the depletion of the state's groundwater resources, and that Districts must put effective management strategies into place.

What the District must accomplish is putting into place goals, and later rules, that will preserve our local groundwater resources for the future while still protect-

ing the economic health and future growth of the area. The District also wants to maintain the resident's local control of those decisions through their elected Board members and their current ability to voice their concerns and opinions directly to that locally elected Board.

There will be a fourth Public Stakeholder Meeting held in Darrouzett on Tuesday, August 26 at 7:00. The meeting will be held at the Darrouzett Senior Citizen's Center at 217 South Main in Darrouzett. The public is again encouraged to attend, listen, and make comment. Anyone who wants to comment and can't attend the meetings can also fax comments to the District at 806-935-6633, or can e-mail to Rhonda Artho at artho@npwd.org.

NORTH PLAINS GROUNDWATER CONSERVATION DISTRICT BOARD MEETING

10 a.m., Aug. 27, 2008

This meeting will be held immediately following the scheduled Tax Rate Hearing at 10:00 a.m.

AGENDA

Call Meeting to Order and Establish a Quorum.

Opening Prayer. |

1. Public Comment

2. Action Agenda

a. Consider amendments to 2007-2008 Budget.

3. Set Next Meeting Date and Time.

4. Adjournment.

At any time during the meeting and in compliance with the Texas Open Meetings Act, Chapter 551, Government Code, Vernon's Texas Codes, Annotated, the North Plains Groundwater Conservation District Board may meet in executive session for consultation concerning attorney-client matters (§551.071). Any subject discussed in executive session may be subject to action during an open meeting.

I, the undersigned authority, do hereby certify that the above Notice of Meeting of the Board of Directors of the North Plains Groundwater Conservation District, is a true and correct copy of said Notice; and that I posted a true and correct copy at a place convenient to the public at the District office, at 603 East First, Dumas, Texas, and the Notice was posted on Wednesday, August 20, 2008 at 9:30 a.m. and will remain so posted continuously for at least 72 hours immediately preceding the day of said Meeting; a true and correct copy of the Notice was furnished to each county clerk of the county or counties in which the above District is located.

Additionally, I certify that the above Notice of Meeting was furnished to the Secretary of State on 9:15 a.m. on August 20, 2008.

Dated this the 20th day of August, 2008.

North Plains Groundwater Conservation District

By Steven Walthour, General Manager

Wolf Creek Heritage Museum Notes

by Virginia Scott

As I swam to work this wonderful Monday morning, our official rainfall was a 4.52 and more coming down. It is great to have nice, slow rain that is soaking us. It has also brought the men that should be working outside today into the museum because they can't go to work. A double blessing: rain and visitors.

We had a great turnout on Saturday for our program. Over 100 people came out to visit with Gwen Ferguson, featured artist and to listen to Delbert Trew and Mike Oldham. People were coming in before we were barely in the door and still coming in when we were trying to close. Now that is a great evening. Everyone enjoyed visiting and learning new things about our history.

Our first view of our sur-

vey map was received with great enthusiasm. The information about the dugouts and trails was a great topic for discussion during the evening. We appreciate and thank everyone who came for your support of our activities and projects.

Attention, artists and crafters! We have received an invitation from Coleman County to participate in a Christmas Ornament Project in celebration of the Sesquicentennial birthday. They are asking all 254 counties in the State to send them an ornament that depicts a unique, significant, or recognizable aspect of our county. We have all the information, so if anyone would like to submit an ornament, call, write, or come by for the instructions.

It is always good for us to participate in these projects because we are always one of

the countys that people talked about with "Now where is Lipscomb County?" Great advertisement.

We will be in our work mode for these last two weeks of August, preparing for our new exhibit in September. Denny Mingus will be our featured photographer. It promises to be a great exhibit.

HISTORICAL MUSINGS

Lovella is convinced that we have a poltergeist living in our archival room that plants a new box of old newspaper when she is sure she has cataloged all of them. Well, a box of 1960's "Lipscomb County News" surfaced Wednesday and with it were some gems that I will be using in the column for the next several weeks.

The Lipscomb County News was the successor to the Higgins News, which was

established in 1897. The publisher was J.R. Foster, editor was Frank K. Foster and bookkeeper was June Foster. Subscription rate was \$3.00 a year.

The publisher had a column entitled "Jimmy Jams" with the subtitle "sense and nonsense." In his Jan 21, 1960 column, when the paper was still the Higgins News, he wrote about Ada Lorenz's bumper sticker that read "Women are Wonderful Drivers." Mr. Foster queried that the sticker failed to say driver of what? He wrote "We'll admit that women are wonderful- and some of them are truly wonderful drivers of autos. Then there are other women who drive men to distraction, and some drive men to drink; there are a few women who just drive men (period). But we like 'em; wouldn't want to get along without 'em-and we pray the Good Lord will bless every one of 'em."

Next week we will enjoy the recollection of an early Baptism in a Higgins swimming hole.

Enjoy the week.

Wolf Creek Heritage Museum

Museum Hours: Monday thru Friday 10 a.m. to 4 p.m., Sunday 2 to 4 p.m. Special hours upon request.

Museum Information: 13310 Hwy 305, Box 5, Lipscomb TX 79056; telephone: 806-852-2123; email: wolfcrk@amaonline.com; website: www.wolfcreekheritagemuseum.com

Small Taxing Unit Notice

The City of Gruver will hold a meeting at 6:00 P.M. on September 10, 2008, at City Hall; 201 E. Broadway in Gruver, Texas, to consider adopting a proposed tax rate for tax year 2008. The proposed tax rate is \$0.3521 per \$100 of value.

The proposed tax rate would increase total taxes in City of Gruver by 9.30 percent.



"Preparing the Bride of Christ for His soon return through presenting Your Bridegroom Awaits! Retreats"

2008 Retreat Schedule:

April 25th - 27th

July 18th - 20th

September 12th - 14th

Please call us at 435-5575 for more information or visit our new website to read testimonies from women who have attended the retreats @

www.hisheartdesireministries.com

Jo's This 'n That

Quitting Business Sale!!

Everything Must Go!

50% Off!

Fabric, DMC Embroidery Thread, Notions, Fixtures, Copy Machine, Cutting Tables, Desks, Filing Cabinets, Shelves, Fax Machine, Tables, Computer Desk, Wooden Boxes & Much More!

Sale Starts Tuesday, Sept. 2nd

Fabric & Notions - 50% Off

DMC Embroidery Thread - 5 for \$1.00

Everything else as marked

One of the most fun things in my life has come to a close with much regret and many tears. After 18 1/2 years it is time. I will never forget all the friends I've made through quilting and all the fun, laughter, and just plain silliness that has taken place through the years. Thank you all for the many memories. Still, if anyone would come forward and want to purchase the store, I would welcome them with open arms!

Happy Quilting, Jo

300 Main Street • Spearman • (806) 659-3999

NOTICE OF COMMUNITY SURVEY

The City of Spearman, with assistance from the Panhandle Regional Planning Commission, will be conducting a door-to-door survey in the early evening hours of the week of August 25th, 2008. The survey is necessary in order for the City to apply for a Community Development Block Grant for future water projects.

The Community Development Block Grant program is intended to serve primarily low to moderate income families in rural communities. This survey must be conducted in order to attain the information necessary to describe the population who would benefit from the City's proposed water system improvement project.

If you have any questions about this upcoming survey, please call City Hall at (806) 659-2524.

Questions to be asked on the survey include:

- 1) number of persons living in unit
- 2) number of families living in unit
- 3) income levels

You do not need to identify yourself by name on the form. Only the address is required. Representatives of PRPC will compile the results of the survey.



HANSFORD COUNTY

I.T. SPIVEY

I was born twelve miles west of Gruver in 1921. My parents named me Isaac Terrell Spivey and called me I. T. Later, when I left Hansford County, I was called Terry. My first year of school was at Lakeside in a one-teacher school. Then after a year of school at Texhoma, I attended the Gruver School. After I graduated in 1937, I spent two winter semesters at Draughon's Business College in Lubbock. Next I attended Panhandle A&M at Goodwell, Oklahoma for one year and Texas Tech in Lubbock for one semester.

In 1943, I joined the Army Air Corps, and spent my first months training on the west coast. After a period spent as an instructor of flight training at a B-24 Bomber school in Albuquerque, New Mexico, I was sent to the South Pacific in July of 1944. Much of my time was spent in the seat of a B-24 Bomber fondly named the "Red Headed Woman." I flew 50 missions in 18 months.

Our outfit in the 13th AAF, called the Bomber Barons, made history bombing such targets as Truk, Yap, Woleai, Palau, and others. Of the missions I flew, three stand out above the rest. For example, we were cited for flying a 2500 mile round

trip, the longest ever flown by B-24's, to bomb the Balikpapan oil fields in Borneo.

On another mission we were coming up on a ship we thought was a transport. I saw the ship with smoke coming up from the side and realized that it was a battleship shooting at my plane. A shell burst nearby. A piece of 1/2 inch pipe almost 4 inches long and filled with thermite tore through the plane, hit my leg, and caught my flack suit and the upholstery of the plane on fire. I still have the piece of pipe.

While stationed on a South Pacific island, my crew and I were assigned to fly one of only two B-24s over Saigon to get pictures of the oil refineries nearby. Caught completely by surprise, the Japanese offered almost no resistance, and we were able to return with our valuable photos. But when we got back, the gunner dropped the film. It rolled all the way down the hill and exposed it all. We had to go back the next day and do it all over again.

This time the Japanese were waiting. There were fighter planes everywhere. One of our guys counted 45 fighters. They would pass you and come in from 12 o'clock high so close you could see their eyeballs.

We would not have stood a chance, except that the

Japanese were flying old, poorly conditioned planes. They must have been young and inexperienced pilots because of the war's toll on their airmen. Fighter after fighter dove on us, guns blazing, while our guns were firing back. They didn't know how to shoot, and my gunners couldn't shoot any better than they could. The problem was that our gunners were not trained on how far to lead a very fast moving target. We were traveling about 200 mph and the Japanese were approaching straight on at 400 mph, making the rate of closure 600 mph. Consequently, our gunners were invariably shooting behind their target. Several Japanese pilots resorted to diving head-on into our planes out of frustration.

Our plane had a large chunk shot away, but it took us back to base.

Editor's note: For this mission I. T. was awarded the Distinguished Flying Cross, one of the highest decorations given to American aviators serving their country.

I had already returned to the States when the bombs were dropped on Hiroshima and Nagasaki and the war was soon over. I retired as a Major in the Air Force

Reserves in 1959.

Jessie Hatch and I were married in August of 1945. We started our married life in Gruver where I was High School Principal and girls' basketball coach, as well as a classroom teacher and junior high coach. In the summers of 1948 and 1949 I attended New Mexico University. Beginning in 1949 Jessie and I operated Spivey Super Market for 5 years. Then we moved to Green River, Utah before ending up in Farmington, New Mexico where we sold boats and lumber.

We have three daughters and a son. Our first son died as an infant. In August, 2008 we will celebrate 63 years of marriage.



Jessie Hatch and I.T. Spivey



I.T. Spivey

Pictures and information for this feature may be submitted to the Reporter-Statesman (310 Barkley Street), mailed to Hansford Heroes, % Reporter-Statesman, 213 Main Street, Spearman TX 79081, emailed to reporter@spearmanreporter.com, or they may be given to Dorothy Hudson, 733-2562, 806 Cluck Avenue, Gruver TX 79040, or emailed to dhudson862@gruver.net.

Texas AgriLife Extension offers online post-flood information

The Texas AgriLife Extension Service offers online information in Spanish and English on recovering from floods. Some of the materials include: "Controlling Mold Growth after the Storm," "Caring for Important Papers after a Flood," "Decontaminating Flooded Wells" and "Mosquito Problems After a Storm."

For information, search <http://agrilifebookstore.org>. Most publications can be downloaded free from that site.

For more information and Web links on recovering after a flood visit <http://texashelp.tamu.edu/004-natural/floods.php>.

For more assistance, please contact Mike Jackson, AgriLife Extension communications specialist, at 972-952-9232 or mjackson@ag.tamu.edu.



Garmon Baker and Missy "The Hoochy Poochy"

Hoochy Poochy Parlor



Professional Award Winning Stylist

Garmon Baker



and Missy

"The Hoochy Poochy"

Are you going out of town for Labor Day weekend? Make your reservations for you pets with Carmon now at the Hoochy Poochy Parlor. (It's more like camp)

Hoochy Poochy Parlor
421 E. 10th St.
Borger, TX 79007
806-273-2724
hoochypoochy@att.net
Hours:
Mon.-Fri., 8 a.m. until done
Saturday by appointment only
Please visit us for a free estimate on your pet care needs.

Miss Vicky's Soul Food

817 SW 5th Street (Corner of 6th & Adams)
Amarillo TX • (806) 372-2247

Down Home Cooking at it's Best!

All-You-Can-Eat

Chicken, Pork Chops, Ribs,
Cheese Meat Loaf Fish, Smothered
Chicken, Chicken 'n Dumplings,
and Much More!

Vegetables, Home-Made Desserts
Kook-Aid

Hours: Monday-Tuesday, 11 a.m.-3 p.m.
Wednesday-Sunday, 11 a.m.-5 p.m.

2008 Summer Clearance Sale

Sale Prices Good from August 15-23

30% OFF

Men & Boys Summer Clothing
Men Summer Pullover & Sport Shirts
(Company 81, Chaps, Tommy Hilliger, Izod, Falcon Bay)
Men Shorts & Swim Suits
Men Summer Tallman Pullover & Sport Shirts
Men & Boy Western & Fashion Straw Hats
Boy Summer Clothing - Shirts & Shorts
(Company 81, Tommy Hilliger, Levi, Union Bay)

30% OFF

Men & Boys Adidas Shoes

Boy Fashion Jeans
\$29⁹⁵

Men Fashion Jeans

20% OFF

Boy Cinch Shirts - 20X Shirts
Boy Jeans
(Levi, Wrangler, Cinch, 20X)

Men Levi Jeans (550, 560, 501 STF) - **\$29⁹⁵**

Come visit us at:
221 Main Street
Spearman, TX
(806) 659-3426

Store hours: Monday-Saturday, 9 a.m.-6 p.m.

Are You A Victim of Domestic Violence, Sexual Abuse or Physical, Emotional or Sexual Assault?

Call Toll Free Hotline
1-800-753-5308

Battering Intervention & Anger Management Available

Panhandle Crisis Center
Serving Hansford, Lipscomb & Ochiltree Counties
301 S. Ash - Perryton, TX
Memorials Accepted

Peaches Tell your friends!

Colorado Peaches from Palisade!

Straight from the grower to you! Tree ripe, juicy and bursting with flavor. From the tree to the box, we bring you the **BEST** quality available. Refrigerated, semi-truckload. \$23/18# box. Pears - \$16/box.

Cunningham Peaches - 970-314-1469
Town & Country Coop, Hwy 83 S., Perryton
Thursday, Aug. 23rd - 8 a.m.-5 p.m.
www.CunninghamPeaches.com

Hotline for Priority Seating - 435-3945

MONEY'S

BBQ & STEAK HOUSE

14 SE 3rd Ave.
Perryton, TX

Stan and Donna Zepp

Under New Ownership
Same Great Service & Menu!

2 Medium 2-Topping Pizzas \$14.99

Happy Hour Special

3 LARGE

Single Topping PIZZAS

6-8 p.m. Only

\$19⁹⁹

SMILE SIMON'S PIZZA

312 Main Street
Spearman, TX
(806) 659-9991

Mon.-Fri. - 11:30 a.m.-10 p.m.
Sat. - 12 noon - 10:00 p.m.
Sun. - 3-10 p.m.
Deliveries Available 5-9 p.m.

Due to gas prices, a minimum order of \$10 is required for delivery. Please remember to tip our drivers.

"Stick With The Best Food In Town"

Flying X Steakhouse

By Reservation Only

From Stinnett: Go West on Hwy. 152
17 miles - Turn Left at Big Red Cactus
(About 2 miles on Gravel Road)

From Dumas: Go East on Hwy. 152
16 miles - Turn Tight at Big Red Cactus
(About 2 miles on Gravel Road)

(806) 935-9427
Sheree & Eddie Burgess

The Main Event

Editor's Note: The location has changed to the Spearman High School Auditorium due to the recent rains.

The Main Event grew out of the hearts of several Christians in Spearman. This group shared their idea with the Spearman Ministerial Alliance and the project quickly grew into, literally, a main event, involving many people from the churches of Hansford County.

The Main Event is a project to present the Gospel to every man, woman, boy, and girl in the Hansford County area. The Steering Committee has been working hard to pull all the pieces together for this fantastic evangelical project.

The Main Event will kick off with a hamburger feed following the football scrimmage on Thursday, August 21. Jon Randles will be there to visit with the teams and fans.

On Friday, August 22, at 6:30, Mark Winter presents "The Almost Amazing Marko," a magician comedian and Good News Preacher bringing the gospel to children. The worship service will begin at 8 PM with Jon Randles and Jody Wilson leading.

Saturday, August 23, the youth will enjoy games with the winners awarded great prizes.

Blake Bolerjack will present a concert at 6:30 PM and worship will be at 8 p.m. Sunday, August 24, activities will start at 5:30 with free hotdogs. Boys Ranch Praise Team will perform at 6 p.m. and the Celebration service will start at 6:30 with praise, worship, and testimonies.

Come and get caught up in the atmosphere of yesteryear in the Spearman High School Auditorium, located at 403 E. 11th Avenue. (The Main Event was originally scheduled to be held under a big tent at the Walking Park on 11th Street, but is being moved to the Spearman High School Auditorium due to the recent rains.)

Jon Randles - Jon is involved in evangelism, church growth conferences and evaluations, discipleship, student ministry, and missionary endeavors world wide through speaking engagements, books, and tapes. He is also a sought after speaker for motivating collegiate athletic teams. His vision is to equip the saved, ignite the dormant Christian, and reach the lost.

Jody Wilson - Jody's voice and humor have opened doors of ministry that cross denominational, racial, and age barriers. Jody is learning that "life happens to us and we dont get to vote. Though

God may not have willed it, He will not waste it."

Blake Bolerjack - Blake is a storyteller and singer who tells stories with his songs. Struggling with deep depression and anxiety throughout his childhood and adolescence in Perryton, Texas, Blake tells that nothing is too far or too deep to escape God's salvation and redemption.

Mark Winte - The Almost Amazing Marko is a magician, comedian, and Good News Preacher all rolled into one! Who knows what Marko will bring to the show? Whatever he brings out of his bag of tricks, you'll giggle, clap, and cheer!

Thursday, August 21 - Free Hamburgers at the SHS Football Field following the football scrimmage. Come meet Jon Randles, a motivator of athletes

Friday, August 22 - Magic Show by Mark Winter at 6:30 PM at the tent at the walking park. Speaker Jon Randles at 8 PM. Music by Jody Wilson

Saturday, August 23 - 5:30 Games and Prizes for the Youth. 6:30 concert by Blake Bolerjack. 8 PM Jon Randles and Jody Wilson

Sunday, August 24 - Free hotdogs!! Celebration Service at the walking park at 5:30. Special Music and testimonies.



Summer classes have wound down but we are gearing up for the Fall Semester which begins on August 25. During the 2007-2008 academic year, the Allen Campus served 4,205 students and other residents of Perryton and the surrounding area. Academic classes account for 372 students, Continuing Education classes have served 756 students, and Community Service classes and events make up the remaining 3077 persons served.

Fall is almost here, and the Allen Campus Continuing Education and Community Service program is gearing up with new courses and repeats of previous ones.

With youth sports underway, Ronnie Watson's class in Sports Injury First Aid will be valuable to both parents and coaches. It will be on Monday and Tuesday, August 25 and 26, 6-9:30 PM. Come by to register.

There has been interest in the Introduction to Mechanics class, taught by Jerry Murphy. For more information, there is a public

Allen Campus News and Information

Start Here... Go Anywhere!

meeting on Tuesday, August 26, for 7-8 PM at the college. The 96 hour class costs \$500 and will prepare class members for apprenticeship to a mechanic, or to do work on tractors, diesel engines, and cars. At least one person is considering it in order to make informed decisions about their own car care.

Kaye Neufeld's class on Needlepoint will begin in October, but class members must sign up now so the materials can be ordered. The class is open to experienced or beginner needle pointers. Kaye is a master needle pointer and is an experienced teacher.

We are continuing to offer

the Anger Resolution Seminar the second Friday and Saturday of each month, as well as Crisis Center Employment Training to prepare people for better jobs.

We are working on ESL, GED, and Citizenship classes. Completed forms are necessary to demonstrate to Region 16 that there is sufficient need, especially for the GED class. Come by the college if you are interested!

Future classes include QuickBooks, Web Design, and Astronomy.

See our updated list at www.fpctx.edu or call the Allen Campus at 648-1450 for more information.

Hansford County Circle of Friends To Host Membership Party

The Hansford County Circle of Friends will host a membership party in support of The Don & Sybil Harrington Cancer Center on Saturday, September 13, 2008 at 7:00 p.m. The party will be held at the O'Loughlin Center at 502 South Brandt in Spearman, Texas. Come and join us for a great time for a great cause. The cost is \$20/single and \$35/couple.

This year the Hansford County Circle of Friends will also begin a new tradition as they hold the first Hansford County 5K Run/Walk to benefit the Don & Sybil Harrington Cancer Center on Saturday, August 23, 2008. The run/walk will begin in

the parking lot of the Gruver High School Stadium. If you are interested in participating and volunteering please contact Holly McLain (806) 733-2268 (hollymclain13@yahoo.com) or Erika Stedje (806) 733-2509.

The Circle of Friends is a non-profit organization dedicated to helping cancer patients and their families in times of need. Through its affiliation with Harrington Cancer Center, the Circle of Friends develops and implements fund raising activities to provide financial assistance and patient care and support programs for those affected by cancer. The Circle of Friends also works with Harrington Cancer Center to provide cancer

educational opportunities for people throughout the region. Examples of Circle of Friends support of Harrington Cancer Center patients includes:

- Two furnished apartments for out-of-town patients to use when going through treatment
- Pediatric Patient/Family Gatherings (a day at Wonderland Park, Christmas Party, etc.)
- Supplies for weekly support groups
- Materials for chemotherapy classes, new patient books
- Refreshments for patients during treatment
- Assistance with patients' travel, insurance premiums, rent or mortgage payments,

medication, nutritional supplements, utilities and breast prosthesis

We are currently looking for committee members to help with these two events. For more information on the Hansford County Circle of Friends or if you are interested in attending and/or volunteering to help with the event please contact Holly McLain (806) 733-2268 (hollymclain13@yahoo.com) or Erika Stedje (806) 733-2509.



Beckee Baker
806-659-3786
bbsparrowphoto@gmail.com
<http://www.bbsparrowphoto.com/>

i sing because i'm happy... i sing because i'm free...

- For Your Photography Needs**
- Senior Portraits
 - Weddings
 - Family Portraits
 - Anniversaries
 - Birthdays



"I sing because I'm happy... I sing because I'm free... for His eye is on the sparrow... and I know He watches me..."

These are words from one of my favorite hymns, "His Eye is on the Sparrow," written by Civilla Martin (1869-1948) and based on Matthew 10:29-31.

This new opportunity of a photography business is yet another example of how God continually watches over and takes care of me. I've always wanted to take pictures professionally, but I never dreamed it would actually happen! I would love to share my passion of taking pictures with you and your loved ones.

Come & Get It!

HAPPY HOUR

3-5 p.m., Monday-Friday

ALL FOUNTAIN DRINKS 69¢ 12 oz-32oz.

MURMUR'S CAFE

100 S. Roland • 659-3580 • Spearman

Don't forget about our Cherry Lime Aid & Frozen Cherry Lime Aid!

Start them out with priceless smile

is it time for your...

Family Dental Care Preventive Dentistry

James Pinkerton, DDS
Anna Fishburn, RDH
Insurance & Medicaid Accepted

206 Main Street • Spearman • (806) 659-3315
New Patients Welcome • Se Habla Espanol

STOP. LOOK. LISTEN. AGAIN!

It's Back To School Time!

FSB

First State Bank

1 NE Court • Spearman, TX • (806) 659-5565

WARNING!

BE ON THE LOOK OUT . . .

School's back in session and in the excitement of the new school year, many school-age children, especially the young ones, may forget to look both ways when crossing the street or exiting the school bus.

That leaves it up to you as a driver, to be extra careful around school-yards, neighborhood play areas, and departing school buses.

So remember . . . when you see yellow, be sure to see red - as in red alert. Let's all slow down and give our children the chance they deserve.

INTERSTATE BANK, SSB

322 Main Street * Spearman, TX
(806) 659-2559

Spearman Booster Club



The Spearman Lynx/Lynxette Booster Club met on Monday, August 18, 2008 at 7 p.m. in the portable building behind Spearman high school.

8 were present for the meeting, that was called to order by Don Schroeder at 7:05 p.m.

Minutes from the last meeting were highlighted.

Boys VP - Tim Cooper was not present. Don reported that there were seven different style hats left over from past years. He talked to Chad Riggins about getting the Logo on the hats to sell. They also ordered black & tan hats with the logo on front and Lynx/Lynxettes on the back.

Membership - Kellye Buchanan reported that she would be emailing the information to Danny Tuesday and bills were sent out last week for those that had not paid.

Ways and Means - Julie Pittman reported she has ordered 100 long sleeve and short sleeve shirts to sell for the upcoming sports year. All sports will be covered on the one shirt. We decided to sell the shirts at *Meet the Lynx/Lynxettes* (August 26th at 7:30 p.m.) with short-sleeve costing \$15 each and long-sleeve at \$18 each.

We are just starting out with 100 total, but can order more, with a short turnaround, if needed.

Yard signs - Kelly Garnett was not present. She received notice from a parent that a child had been on varsity track for 2 years and never received a yard sign. That will be taken care of this year.

Treasurer/Secretary - Tammy Benton reported the bank and saving account balance with bills paid to Ama Techtel, postmaster, and scholarship. All but one scholarship was picked up this year. As of Monday, August 18th - \$550 sponsorships and \$6357 memberships. Ads had been collected.

General Discussion - Mr. Sumner set the date for the Athletic Banquet at the O'Loughlin Center for May 12, 2009. The Watermelon feed will be August 28th, the night of the Guymon scrimmage. We will feed JV first then varsity, after scrimmage.

The Meet the Lynx/Lynxettes Ice Cream Social will be held on August 26th at 7:30 p.m. on east side parking lot at the high school. Cross country, cheerleaders, band and football players will be recognized.

The spirit wagon will be pulled by five different people to the games - Schroeder's, Farrar's, Buchanan's, plus two others. The trailer is covered in the school bus lot now. Rick Hargrove has the tunnel/helmet in his garage and will take it to the Farrar's. Tiki is going to check about the cost of a generator to power the blowers. Don is going to try and get a list of players parents to contact to help with some of these things.

Jon Garnett is in charge of the purchase of a trailer, which he said he had bought. The Treasurer has not seen paper work or written a check for half payment as requested. The trailer is in

Dallas and will take 4 weeks to finish. It has power plugs, A/C, black & white tile floor, one front window, 2 doors and basically is finished inside. This will be used to sell merchandise and store the helmet, which can also be moved.

Coach Cook has asked if possible to use it for the Spearman Cross Country meet here in October, but it depends on when we get it.

We talked about selling the big white paw to supporters that wanted it painted on the driveway of their home at \$10 a paw. If there is enough interest in this we will. Call Don for more information or email Tammy.

Were going to get a price for the Helmet donation sign for the football field. Don is taking care of getting a price for a sign of donors who donated for the Helmet.

Tammy gave him the list of donors.

Booster club has been contacted by several asking questions about the photos booster club sells of the kids. It was decided that all pictures taken with the Booster Club camera are Booster Clubs property. The Booster Club camera will be checked out by the person using the camera with a sheet to be filled out and signed. All photos will be left on camera when returned. The person keeping the camera will be in charge of the photos, which will be available shortly after they are returned. This may take more than one person to get it taken care of quickly.

Meeting adjourned at 8:09 p.m. and no meeting date for next meeting was set. Don will let everyone know.

Elementary PTO News

For the 2008-2009 school year, Gus Birdwell Elementary school is requiring that each student have a Gus Birdwell Elementary T-shirt. This makes it easier for the students to be recognized during special events and on field trips. The t-shirts are \$10 each, and may be ordered through the Gus Birdwell Elementary PTO.

The Gus Birdwell Elementary PTO is also selling tri-colored drawstring backpacks. (Backpacks will have Lynx and Lynxettes written on the front with a Paw Print. The backpack will be purple, black and white.) Backpacks are \$12 each.

Spearman Elementary PTO will have school backpacks and elementary T-shirts for sale before and after school on Monday August 25th, and Back-to-School Night on August 26th. All proceeds benefit elementary school extra activities.

Backpacks are being sold for the benefit of the students who have lockers. These backpacks will fit in lockers, and are very durable. They have been requested by the teachers to help with the mess in 3rd-5th grades.

For more information, please contact Liz Miser at 659-5049.

The Joys of Summer

Available all year!



SNOW CONE STAND

Monday-Friday
1:30-8 p.m.

MURMUR'S CAFE

100 S. Roland • Spearman
659-3580

Welcome


Back-to-School

from
The Bunkhouse Restaurant

Spearman's place for steak!

212 Main Street • Spearman
(806) 659-2089

Hours:
Tues-Thurs - 5-8 p.m.
Fri & Sat - 5-9 p.m.
Sun - 11 a.m.-2 p.m.
Mon - Closed



Hey, Kids!

It's time to head back to school.

But before you do, check out these safety tips from a variety of sponsors. They are sure to help you and your parents have a great school year!



A Avoid Empty Places Don't cut through empty lots on your way to school.	B Be Alert! Watch what's going on around you.	C Crossing Streets Look both ways before crossing the street.	D Doors Don't answer the door when you're home alone.
E Exit Plan Get off the bus calmly and in single file.	F Find A Good Backpack Choose a backpack that fits close to your body.	G Guard Belongings Take care of your books, lunch and other items.	H Hands & Arms Keep hands, arms and head inside vehicles.
I If You Get Lost... Find a policeman or go to a store nearby.	J Just Say NO! Stay away from drugs and cigarettes.	K Keep Away From Buses Don't play near buses.	L Loose-Hanging Clothing Be careful with drawstrings, belts or clothes that drag the ground.
M Memorize Learn your phone number and address before you start school.	N Never Cross Don't cross the street between parked cars.	O Obey Teachers & Parents Listen to what these adults say for your safety.	P Plan A Route With your parents, plan the safest and quickest route to school.
Q Quiet Time When on the bus, talk quietly with friends.	R Riding To/From School Listen to your car or bus driver.	S Strangers Don't talk to strangers.	T 10 Steps Take 10 steps away from the front of a stopped bus before crossing.
U Understand Traffic Signals Know what traffic signs, lights and signals mean.	V Valuable Friends Walking to school is safer and more fun with friends.	W Walk Away If someone tries to start a fight, walk away.	X X Marks The Spot Stand in the right place when waiting for the bus.
Y Yell Out! If a stranger bothers you, yell for help!	Z Zero In On Safety Follow these tips to a safer school year!		

Celebrate
Gifts for all your celebrations!

203 Main St. Spearman, TX
(806) 659-5350 1-800-863-8026

PERRYTON EQUITY

SPEARMAN EQUITY
P.O. BOX 426
SPEARMAN, TEXAS 79081
(806) 659-3241 (806) 659-2420

NAPA Hi-Plains Auto Supply, Inc.

Auto • Industrial • Oilfield Supplies
Wholesale & Retail • Irrigation Parts
Feedyard Supplies • Mobile Oil & Greases
PO Box 116 118 N. Main
Spearman TX 79081

Berry Cleaners, Inc

207 Main Street
Spearman TX 79081
(806) 659-3122

B&B Sales Co.

205 Dillon
Spearman
659-2662

John Hutchison
Attorney at Law
305 Main Street
Spearman
659-3703

GIGOTAGRI PRODUCTS, INC.

506 Hwy 207 South
PO Box 95
Spearman TX 79081
806-659-3121

Lance Kemp, President
Mobile: 806-898-4553
Matt Johnson, Store Manager/Sales
Mobile: 806-662-1015

CASE III Zimmatic®

FIVE STAR EQUIPMENT, INC.

HIGHWAY 15 WEST • BOX 658
SPEARMAN, TEXAS 79081
PHONE # (806) 659-3743
HOME # (806) 659-3846
CELL # (806) 330-0051
800-975-2759

A Tech 4 U

101 S Main
Perryton, TX 79070

806-435-4006

TECH SUPPORT YOUR WAY - RIGHT AWAY!
www.atech4u.com brad@atech4u.com

HANSFORD IMPLEMENT CO.

"Customer satisfaction is our specialty, just ask around"

KRAUSE, SUNFLOWER, POLARIS, ORTHMAN, UNIL, DYNAL

SALES SERVICE PARTS

http://schneider.dewen.com/hansford/ hansford@hkgd.com

806-659-2568
800-753-1511

806-935-7720
866-935-7720

806-435-4036
800-766-2094

806-665-1888
800-223-0036

PTCI
Communication & Broadband Solutions

721 W. 7th • Spearman TX
800-562-2556

LOWE'S MARKETPLACE

Friendly Store in The Panhandle
604 Plains Shopping Center
Spearman, TX 79081 • (806) 659-8888

Trencor ENTERPRISES

Complete Pumping Unit Repair

Rickey White, Owner

PO Box 773 1103 W. Seventh
Spearman TX 79081

Mobile: (806) 898-3024
Office: (806) 659-3911
Fax: (806) 659-5117

PANHANDLE ANCHORS INC.

P.O. BOX 283
SPEARMAN, TEXAS 79081
806-659-2558

Ole Bergan

Perryton # 806-435-5280
Call 806-886-1962
Home 806-659-5529
Fax 806-659-9881

Spearman 2008 Cross Country Schedule

DATE	PLACE	TEAM	TIME
Sept. 6	Wolf Creek Classic	JH/HS	9 a.m.
Sept. 13	Amarillo Invitational	HS	TBA
Sept. 13	Follett	JH	TBA
Sept. 20	Sunray	JH/HS	TBA
Sept. 27	Lubbock Invitational	HS	TBA
Sept. 27	TBA	JH/JV	TBA
Oct. 4	Canadian	JH/HS	TBA
Oct. 11	Buffalo Stampede - Canyon	HS	TBA
Oct. 11	TBA	JH	TBA
Oct. 18	Canyon Invitational	JH/HS	TBA
DISTRICT MEET HAS NOT BEEN SCHEDULED AT THIS TIME			
Nov. 8	Regional Meet	HS	TBA
Nov. 15	State Meet	HS	TBA

Gruver Hounds

2008 Varsity Football Schedule

DATE	OPPONENT	SITE	TIME	SCORE
8-16	Highland Prk (Scr.)	Home	TBA	
8-21	Spearman (Scr.)	Away	TBA	
8-29	Wheeler	Away	7:30	
9-5	Texhoma, OK	Home	7:30	
9-12	Panhandle	Home	7:30	
9-19	Clarendon	Away	7:30	
9-26	Open			
10-3	**Texico, NM	Home		
10-10	~Booker	Away	7:30	
10-17	~Sunray	Home	7:30	
10-21	~Stratford	Away	7:30	
10-31	~West Texas	Away	7:30	
11-7	~Canadian	Home	7:30	
11-14	Bi-District Playoff			
11-21	Area Playoff			
11-28	Regional Semi-Finals			
12-5	Regional Final/State Quarterfinals			
12-12	State Semi-Finals			
12-19	State Championship			

** Homecoming * Parent Night ~ District

Spearman Lynx

2008 Varsity Football Schedule

DATE	OPPONENT	SITE	TIME	SCORE
8-16	Perryton (Scr.)	There	10:00	
8-21	Gruver (Scr.)	Here	6:00	
8-28	Guymon (Scr.)	Here	6:00	
9-5	Wheeler	Here	7:30	
9-12	Stratford	There	7:30	
9-19 **	West Texas	Here	7:30	
9-26	Boys Ranch	There	7:30	
10-3	Tulia	There	7:30	
10-10 *	~Highland Park	Here	7:30	
10-17	~Bushland	Here	7:30	
10-24	~River Road	There	7:30	
10-31	~Fritch	Here	7:30	
11-9	~Panhandle	There	7:30	
11-14	Bi-District Playoff			
11-21	Area Playoff			
11-28	Regional Semi-Finals			
12-5	Regional Final/State Quarterfinals			
12-12	State Semi-Finals			
12-19	State Championship			

** Homecoming * Parent Night ~ District

Back-To-School Bargains

H&H Credit Union is now offering loans with low payments and great interest rates for back to school expenses. See us today for details!

All loans are subject to credit approval

FEDERAL CREDIT UNION
 www.myhfcu.org
 PO Box 1187 • 102 N. Main
 Stinnett • www.myhfcu.org
 (806) 878-2452 • 1-800-882-1740
 We Do Business in Accordance With the Federal Fair Housing Law and Equal Credit Opportunity Act.

2008 Junior Varsity Football Schedule

DATE	OPPONENT	SITE	TIME	SCORE
8-16	Highland Prk (Scr.)	Home	6:00	
8-21	Spearman (Scr.)	Away	6:00	
8-28	Wheeler	Home	6:00	
9-4	Open			
9-11	Sunray	Home	6:00	
9-18	Stratford	Away	6:00	
9-25	West Texas	Away	6:00	
10-2	Canadian	Home	6:00	
10-9	Open			
10-16	Sunray	Away	6:00	
10-23	Stratford	Home	6:00	
10-30	West Texas	Home	6:00	
11-6	Canadian	Away	6:00	

Jr. High games will begin at 5 p.m., the Jr. Varsity games will begin following the conclusion of the Jr. High games.

2008 Junior Varsity Football Schedule

DATE	OPPONENT	SITE	TIME	SCORE
8-16	Perryton (Scr.)	There	10:00	
8-21	Gruver (Scr.)	Here	6:00	
8-28	Guymon (Scr.)	Here	6:00	
9-4	Fritch	Here	6:00	
9-11	Panhandle	There	8:00	
9-18	Highland Park	Here	8:00	
9-25	Bushland	Here	8:00	
10-2	Tulia	Here	8:00	
10-9	Highland Park	There	8:00	
10-16	Bushland	There	8:00	
10-23	River Road	Here	8:00	
10-30	Fritch	There	8:00	
11-6	Panhandle	Here	8:00	

2008 Lynx 7th & 8th Grade Football

DATE	OPPONENT	SITE	TIME	SCORE
9-11	Sunray	Home	5:00	
9-18	Stratford	Away	5:00	
9-25	West Texas	Away	5:00	
10-2	Canadian	Home	5:00	
10-9	Booker	Home	5:00	
10-16	Sunray	Away	5:00	
10-23	Stratford	Home	5:00	
10-30	West Texas	Home	5:00	
11-6	Canadian	Away	5:00	

2008 Lynx 7th & 8th Grade Football

DATE	OPPONENT	SITE	TIME	SCORE
9-11	Panhandle	There	5:00, 6:00	
9-18	Highland Park	Here	5:00, 6:00	
9-25	Bushland	Here	5:00, 6:00	
10-2	Tulia	Here	4:30, 5:30	
10-9	Highland Park	There	5:00, 6:00	
10-16	Bushland	There	5:00, 6:00	
10-23	River Road	Here	5:00, 6:00	
10-30	Fritch	Here	5:00, 6:00	
11-6	Panhandle	Here	5:00, 6:00	

Safety After School

Many kids spend some time before or after school home alone. Whether it's just a few minutes or a few hours, there are things those kids should know.

- Have set times to call your parent(s) to make sure everything is OK.
- Organize at-home activities to keep from getting bored.
- If someone calls, never tell them you are home alone. Take a number so your parent(s) can return the call.
- Never open the door to a stranger. If you are nervous about the stranger, call a neighbor or nearby adult.
- Don't use appliances or sharp knives without permission.
- Do not enter the house if the door is open or a window is broken.
- Go to a neighbor's house and call the police or your parent(s).
- If there is a fire or you smell smoke, leave the house immediately. Go to a neighbor's house and call the fire department.
- Most importantly, talk to your parent(s) about what you should do in certain situations. That way, if the power goes off or your pet gets hurt, you'll know what to do.

Boxwell Brothers
 519 Evans • Spearman • 659-3802

Any way you add it, it's a bargain!

HAPPY HOUR

All Drinks 73¢ (tax included)
 Mon.-Fri., 2-5 p.m.
 from

Hungry Cowboy
 Hwy 207 S • Spearman • 659-5151
 Tobe & JJ Shields, owners

Open Mon.-Sat.
 11 a.m.-8 p.m.

Supporting the students of Hansford County!

Spearman Homecoming
 September 19th

Gruver Homecoming
 October 3rd

ALL OCCASION FLOWERS
 202 N. Bernice • Spearman
 (across from the Post Office)
 659-5180

Best wishes for a successful 2008-2009 school year!

from

North Plains Electric Co-Op
 14585 N. Hwy 83
 Perryton TX
 (806) 435-5482
 800-272-5482

BACK-TO-SCHOOL Safety

Safety On & Off The School Bus

More than 23 million kids ride a school bus every day. And it's up to those kids to take some safety precautions when it comes to waiting for and riding on the bus.

going to the bus stop...

- Whenever possible, walk with others from your school.
- Do not walk in the street. If you have to walk in the street, walk as close to the curb as possible.
- Be alert and avoid any signs of danger.
- Obey traffic lights and signals.
- When you are crossing the street, cross only at the corner and use crosswalks where possible. Look both ways before crossing.

While you wait for the bus...

- Dress right for the weather.
- Arrive at the bus stop on time.
- Stay away from the street while you are waiting for the bus.

Boarding the school bus...

- Do not approach the bus until it stops completely, then wait for the driver's signal.
- Backpacks, ties, straps and buckles can get caught in bus doors, railings or aisles, so be extra careful when getting on or off the bus.
- Enter the bus in single file. Do not push.
- Use the handrail.
- Take a seat quickly and sit facing forward.

with kids heading back to school, it's a good time to think about their safety to and from school, on the bus and at home. With the help of our sponsors, we have collected information to help you and your kids take steps to have a safer school year.

Riding the bus...

- Always obey school bus rules.
- Remain seated throughout the ride.
- Keep your arms, hands and head inside the bus.
- Help keep the bus neat and clean.

• Do not put belongings in the aisle. Keep them away from emergency exits.
 • Eating and drinking are not allowed on the bus.
 • Be courteous to the driver and other riders.
 • Listen to any directions the driver gives you.
 • Do not make noises or gestures to distract the driver or annoy others.

Leaving the bus...

- Do not stand up until the bus comes to a complete stop.
- Use the handrail when leaving the bus.
- Never walk behind the school bus.
- If you cannot see the bus driver, the driver probably cannot see you. Use five giant steps away from the bus, and you should be able to see the driver, and the driver should be able to see you.
- Never crawl under a bus. Do not bend down near or under the bus.
- If you need to cross the street, wait for the driver to signal, then cross the street in front of the bus.
- Look both ways before crossing the street.
- Never run back to the bus, even if you have forgotten something.

Dr. Mark Garnett
Dr. Hasham
Michelle Davis, PA-C

707 S. Roland • Spearman, TX • (806) 659-2535

hchd
 Hansford County Hospital District
 Dr. Mark Garnett, DO Michelle Davis, PA-C
 707 S. Roland • Spearman, TX
 (806) 659-2535

Personnel Management Conference Scheduled in Amarillo Sept. 9-10

A personnel management conference will be hosted Sept. 9-10 by the Texas AgriLife Extension Service at the Fifth Season Inn & Suites, 6801 W. Interstate 40 in Amarillo.

The fee for Effective Employee Management for Agribusinesses is \$125 for the first participant from a business and \$100 for each additional person if registered by Aug. 25, said Dr. Steve Amosson, AgriLife Extension economist in Amarillo. After Aug. 25, the fee will be \$150 for the first participant and \$125 for each additional person from a company.

The conference will begin at 8 a.m. both days and adjourn at 5 p.m. on Sept. 9 and 3 p.m. on Sept. 10. Co-sponsors for the event are Purina Mills LLC, Select Milk Producers, Texas Cattle Feeders Association, Texas Pork Producers Association and Southern Region Risk Management Education Center.

The two-day conference - speakers, sessions and curriculum - is designed with agricultural managers in mind as they deal with the challenges of human resources, Amosson said. Experts from around the country will speak.

"This is the third time we've been able to offer this top-flight personnel management conference for agribusinesses," he said. "In a six-month post survey, 90 percent of the previous attendees indicated they had altered one or more of their practices based on what they learned from the conference."

Some of the general session and breakout session topics are:

- Ag Enterprise Managers: Can You Manage Your Employees Like Other Industry Managers Do?
- Becoming a Better Boss.
- Conflict Management.
- Developing an Effective Organizational Culture.
- Hot Topics in Labor and Employment Law.
- Managing Cultural Differences.
- Compliance Issues with a Non-Citizen Workforce.
- Dealing with Problem Employees.

Checks and money orders should be made payable to Texas AgriLife Extension Service, Acct. #222100-60021 and mailed to Texas AgriLife Extension Conference Services, 2139 TAMU, College Station, Texas 77843-2139.

To register online, go to <http://agrillifevents.tamu.edu>. For registration questions, call AgriLife Extension Conference Services at 979-845-2604. If additional information is required, contact Margaret Freeman at 806-677-5600.

Gruver ISD

2008-2009

August							September							October							November						
S	M	T	W	T	F	S	S	M	T	W	T	F	S	S	M	T	W	T	F	S	S	M	T	W	T	F	S
					1	2	1	2	3	4	5	6			1	2	3	4							1		
3	4	5	6	7	8	9	7	8	9	10	11	12	13	5	6	7	8	9	10	11	2	3	4	5	6	7	8
10	11	12	13	14	15	16	14	15	16	17	18	19	20	12	13	14	15	16	17	18	9	10	11	12	13	14	15
17	18	19	20	21	22	23	21	22	23	24	25	26	27	19	20	21	22	23	24	25	16	17	18	19	20	21	22
24	25	26	27	28	29	30	28	29	30	26	27	28	29	30	31	23	24	25	26	27	28	29					
31																			30								

December							January							February							March						
S	M	T	W	T	F	S	S	M	T	W	T	F	S	S	M	T	W	T	F	S	S	M	T	W	T	F	S
					1	2						1	2	1	2	3	4	5	6	7	1	2	3	4	5	6	7
7	8	9	10	11	12	13	4	5	6	7	8	9	10	8	9	10	11	12	13	14	8	9	10	11	12	13	14
14	15	16	17	18	19	20	11	12	13	14	15	16	17	15	16	17	18	19	20	21	15	16	17	18	19	20	21
21	22	23	24	25	26	27	18	19	20	21	22	23	24	22	23	24	25	26	27	28	22	23	24	25	26	27	28
28	29	30	31	25	26	27	28	29	30	31								29	30	31							

April							May							June							July						
S	M	T	W	T	F	S	S	M	T	W	T	F	S	S	M	T	W	T	F	S	S	M	T	W	T	F	S
				1	2	3	4						1	2	1	2	3	4	5	6							
5	6	7	8	9	10	11	3	4	5	6	7	8	9	7	8	9	10	11	12	13	5	6	7	8	9	10	11
12	13	14	15	16	17	18	10	11	12	13	14	15	16	14	15	16	17	18	19	20	12	13	14	15	16	17	18
19	20	21	22	23	24	25	17	18	19	20	21	22	23	21	22	23	24	25	26	27	19	20	21	22	23	24	25
26	27	28	29	30	24	25	26	27	28	29	30	31	28	29	30	26	27	28	29	30	31						

1st Six Weeks = 29 Days 178 Student Days Total Legend 187 Staff Days Total 4th Six Weeks = 29 Days

2nd Six Weeks = 25 Days Staff Day 1/2 Day Holiday Weather Day 5th Six Weeks = 34 Days

3rd Six Weeks = 28 Days Beginning of 6 Weeks End of 6 Weeks TAKS Testing 6th Six Weeks = 33 Days

1st Semester = 82 Days 2nd Semester = 96 Days

2008-2009 Spearman ISD Calendar

Approved by Board of Trustees -- April 14, 2008

80 First Semester 97 Second Semester 177 Instructional Days

August							September							October							November						
S	M	T	W	T	F	S	S	M	T	W	T	F	S	S	M	T	W	T	F	S	S	M	T	W	T	F	S
					1	2	1	2	3	4	5	6			1	2	3	4							1		
3	4	5	6	7	8	9	7	8	9	10	11	12	13	5	6	7	8	9	10	11	2	3	4	5	6	7	8
10	11	12	13	14	15	16	14	15	16	17	18	19	20	12	13	14	15	16	17	18	9	10	11	12	13	14	15
17	18	19	20	21	22	23	21	22	23	24	25	26	27	19	20	21	22	23	24	25	16	17	18	19	20	21	22
24	25	26	27	28	29	30	28	29	30	26	27	28	29	30	31	23	24	25	26	27	28	29					
31																			30								

December							January							February							March						
S	M	T	W	T	F	S	S	M	T	W	T	F	S	S	M	T	W	T	F	S	S	M	T	W	T	F	S
					1	2						1	2	1	2	3	4	5	6	7	1	2	3	4	5	6	7
7	8	9	10	11	12	13	4	5	6	7	8	9	10	8	9	10	11	12	13	14	8	9	10	11	12	13	14
14	15	16	17	18	19	20	11	12	13	14	15	16	17	15	16	17	18	19	20	21	15	16	17	18	19	20	21
21	22	23	24	25	26	27	18	19	20	21	22	23	24	22	23	24	25	26	27	28	22	23	24	25	26	27	28
28	29	30	31	25	26	27	28	29	30	31								29	30	31							

April							May							June							July						
S	M	T	W	T	F	S	S	M	T	W	T	F	S	S	M	T	W	T	F	S	S	M	T	W	T	F	S
				1	2	3	4						1	2	1	2	3	4	5	6							
5	6	7	8	9	10	11	3	4	5	6	7	8	9	7	8	9	10	11	12	13	6	7	8	9	10	11	12
12	13	14	15	16	17	18	10	11	12	13	14	15	16	14	15	16	17	18	19	20	13	14	15	16	17	18	19
19	20	21	22	23	24	25	17	18	19	20	21	22	23	21	22	23	24	25	26	27	20	21	22	23	24	25	26
26	27	28	29	30	24	25	26	27	28	29	30	31	28	29	30	27	28	29	30	31							

Campus Prep/Staff Develop Comp Day Bad Weather Day JH Graduation -- May 28th
 Begin/End six weeks Holiday Early Release HS Graduation -- May 29th

Getting a QUICK LOAN for back-to-school clothes and supplies is as easy as

ABC

Get a Loan from \$100 - \$1,193

subject to our usual credit policy

Sun Loan & Tax Co.

106 S. Main • Perryton • 435-7242

Se Habla Espanol

Our Best Wishes to Students and Faculty for a Happy 2008-2009 School Year!



Gruver State Bank

3 Main Plaza • Gruver, Texas • (806) 733-5061
www.gruverstatebank.com • ATM Machine
 Member FDIC

HELP WANTED

HELP WANTED: Employment Opportunities Available at First National Bank of Spearman.

HELP WANTED: Panhandle Health Care is seeking a RN/LVN to take call on the weekend.

HELP WANTED: Panhandle Health Care is seeking a PT home health aide.

HELP WANTED: Panhandle Health Care Inc, in Spearman, is currently seeking applicants to fill the following positions: FT/PT RN and FT/PT LVN.

HELP WANTED: Winch Truck Drivers Wanted! Gin trucks, road trucks, slick boots.

HELP WANTED: Frontier Feedyard is accepting applications for a Pen Cleaning and Maintenance person.

HELP WANTED: First State Bank, Spearman, has for a full time position open in bookkeeping.

SERVICES

HOOCHEY POOCHEY PARLOR Call us for all your pet's grooming and boarding needs.

FOR SALE OR TRADE

FOR SALE: QUEEN PILLOWTOP mattress and foundation.

FOR SALE: \$130 queen orthopedic mattress and box, unused with warranty.

FOR SALE: New full size mattress set in plastic with warranty.

FOR SALE: MATTRESS \$100 TWIN SIZE set. In perfect condition.

FOR SALE: BED -\$225 - Brand Name King Pillowtop Mattress Set.

FOR SALE: Visco Memory Foam Mattress & Box. Sealed in plastic with manufacturers warranty.

FOR SALE: All Steel Buildings Priority Building on Sale! 5 sizes to choose from.

PUBLIC HEARING NOTICE CITY OF SPEARMAN TEXAS COMMUNITY DEVELOPMENT BLOCK GRANT PROGRAM

The City of Spearman will hold a public hearing at 5:00 PM on August 27, 2008, at City Hall regarding the submission of an application to the Office of Rural Community Affairs for a Texas Community Development Block Grant Program.

NOTICE OF COMMUNITY SURVEY

The City of Spearman, with assistance from the Panhandle Regional Planning Commission, will be conducting a door-to-door survey in the early evening hours of the week of August 25th, 2008.

The Community Development Block Grant program is intended to serve primarily low to moderate income families in rural communities.

This survey must be conducted in order to attain the information necessary to describe the population who would benefit from the City's proposed water system improvement project.

If you have any questions about this upcoming survey, please call City Hall at (806) 659-2524.

Questions to be asked on the survey include:

- 1) number of persons living in unit
2) number of families living in unit
3) income levels
You do not need to identify yourself by name on the form.

PUBLIC NOTICE

NOTICE TO BIDDERS

Sealed proposals for a one year contract for bulk fuel will be received by the City of Spearman, Texas, until 11:00 a.m., August 29, 2008.

The City reserves the right to reject any or all bids, to waive informalities and to accept the bid deemed to be the most advantageous to the City.

All bids shall be sealed and marked on the outer envelope "Bulk Fuel".

Specifications and bidding documents may be secured from PO Box 37, Spearman, Texas 79081.

MARTIN & ASSOCIATES REALTY. Serving Hansford County for 14 years. Julie Martin - Broker - 659-2425.

Century 21 Golden Spread Realty. 32 N. James, SPEARMAN - 2BR, 1B, 1 detached garage. Gina Deal, Broker/Owner.

Blankenship Real Estate 659-3052 - 670-3774. Beauty Salon (Spearman) - 1-3 Bays, fixtures & inventory included.

HANSFORD CO - Choice farming area, 1/2 section, one irr. well, presently farmed dryland.

hchd Hansford County Hospital District. Openings at Hansford Hospital. Maintenance Person: Performing duties for maintenance of the building, grounds, including carpentry, painting, plumbing, electrical work, air conditioning, gardening, furniture repair, welding, etc.

Shirley Howard, Broker/Owner 806-886-6536. Melinda McCullough, Realtor (806) 733-5678. We would LOVE to sell your HOUSE! Call US!

Home Health RN: Must be licensed in the State of Texas. Housekeeper: Maintaining a clean and sanitary environment for our patients.

4 1 6 8 9 3 5 7 2
5 2 8 6 4 7 1 9 3
9 7 3 2 1 5 4 6 8

MAAM SPA DAMP
ILIA OPEC PILAR
LANG BOTH LASSO
DRUGSTORE AMOK
OCULI ICE
CACTUS STETSON
HER BEBOPS ETUI
ARUBA EAU ERATO
LIEU PETREL REB
KETCHUP RECEDE
KEN RANCH
USAF SOMETIMES
BLURT IDES SOME
ANNOY GENT EDIT
SAGO HOD LETS

MITCHELL THEATRES NORTHEDGE CINEMA 8. Guymon, Oklahoma. FRESH POPCORN EVERYDAY! -PARTY ROOM & ARCADE- Call for Showtimes 580-338-3281 www.northedge8.com

Are You A Victim of Domestic Violence, Sexual Abuse or Physical, Emotional or Sexual Assault? Call Toll Free Hotline 1-800-753-5308. Battering Intervention & Anger Management Available. Panhandle Crisis Center Serving Hansford, Lipscomb & Ochiltree Counties 301 S. Ash - Perryton, TX. Memorials Accepted

HEAD OF THE CLASS! Be part of the solution! Shopping at home benefits everyone. Local merchants can provide things you can't get in the "BIG CITIES." 1 Have any "Big City" businesses ever bought tickets for local fundraisers... 10 Have they ever bought a show animal from local children... Your local small merchants provide these extras because they are your friends and neighbors and you see them everyday in your community.

TEXAS STATEWIDE CLASSIFIED ADVERTISING NETWORK TexSCAN. TexSCAN Week of August 17, 2008. BUSINESS OPPORTUNITIES: ALL CASH CANDY Route. MORTON SALT IS seeking Mechanics and Electricians in New Iberia, Louisiana. MEDICAL SUPPLIES: ABSOLUTELY NO COST to you! LIMITED offer. Power Wheelchairs & Scooters. SCOOTERS & POWER WHEELCHAIRS. MISCELLANEOUS: AIRLINES ARE HIRING Train for high paying aviation maintenance career. FRESH POPCORN EVERYDAY! -PARTY ROOM & ARCADE- Run Your Ad In TexSCAN! Statewide Ad \$450, North Region Only \$195, South Region Only \$195, West Region Only \$195.

by Jim Derington

Out at the Lake

Jim Derington
Palo Duro River Authority
P.O. Box 99
Spearman, TX 79081
806-882-4401
pdra@dishmail.net

Lake Level--August 18, 2008--17.79 feet (+.23)

We've had over 4.5 inches of rain in Gruver in the last few days, so I was expecting a big rise in the Lake level. At this point it has only risen about as much as the 2.78 inches that fell at the Lake. However, Jim said that Horse Creek was running toward the Lake and perhaps Palo Duro Creek would run, too.

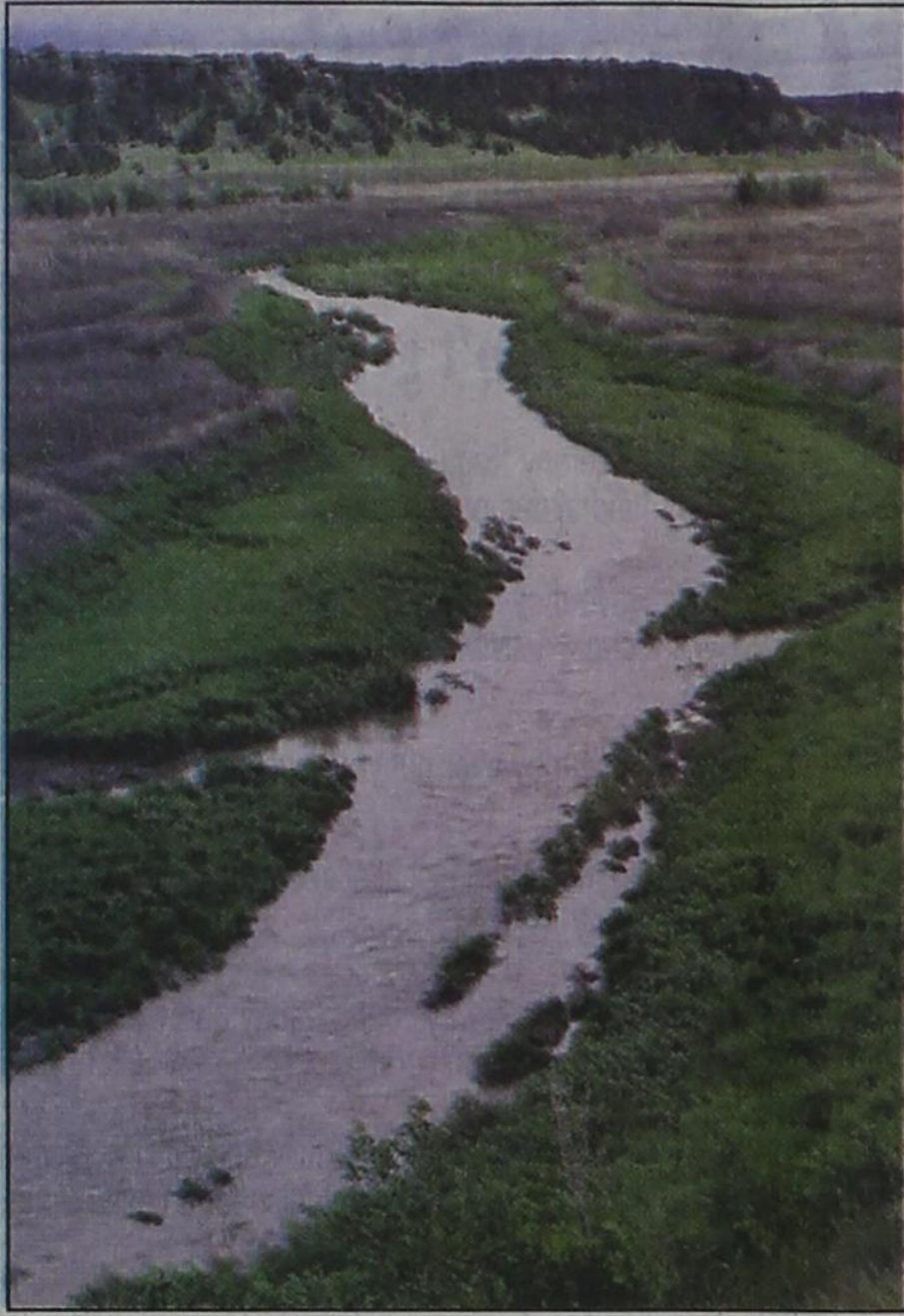
Jim didn't have any big fish to report, but he said they were catching smaller fish. There were 7 RVs behind the dam on the weekend. Cargill had the shelter for a picnic for their employees on Saturday evening. It turned out to be a very pleasant evening. Sunday, though, when the Spearman Church of Christ expected to use the shelter, they had to cancel because of the weather.

Armadillos in Dedication Park

Jim mentioned seeing a pair of armadillos in Dedication Park over the weekend. That was unusual as I have only heard people tell about seeing just one armadillo or one armadillo with her four half-grown young ones.

From the Mammals of Texas by Davis and Schmidtly I learned that armadillos are believed to only pair up for the brief breeding season. A male and a female may share a burrow during this time. Half of the females are pregnant by the end of July.

Typically born in March or



Horse Creek running into the lake on Monday, August 18. At the time the picture was taken, Lake Palo Duro was up two feet.

April, the young arrive fully formed and with their eyes open. Within a few hours they are walking and within a few weeks they are accompanying their mothers on foraging expeditions. Since

they nurse, the mothers must lie on their sides to accomplish this.

I have yet to see a picture of a mother armadillo with her babies.



Nathan Forrest teeing off in one of his golf tournaments.

Area Golfer Qualifies For State Tournament

Nathan Forrest, 13, from Morse qualified at the Regional North Texas Junior PGA Tournament in Midland, Texas on August 12-13th for the state Junior PGA Tournament scheduled in McKinney, Texas. He will be competing at the Ewing Automotive Tour Championship August 18th and 19th. He will play at the Stonebridge Ranch Country Club in McKinney. He earned this chance by first ranking 14th in the West Area. At the regional tournament he tied for 4th place to advance to the state championship tournament. Nathan is the son of Jeff and Carol Forrest. He is an 8th grader at Pringle-Morse CISD.

visit "Caught on Camera" at www.spearmanreporter.com

A HARD DAY'S WORK DOESN'T HAVE TO BE SO HARD!



- 27 HP, 2-Cylinder Air-Cooled Gasoline Engine
- Shaft Drive Mower Deck and Transmission
- Hydraulic Deck Lift

0% A.P.R. FINANCING FOR 42 MONTHS[†] ON SELECT NEW KUBOTAS!



- | | | |
|---|---|--|
| <ul style="list-style-type: none"> • 26.5 PTO HP • 3-Cylinder Indirect Injection Liquid-Cooled Diesel Engine • Choice of Transmission • Optional Grand Cab with Deluxe Features | <ul style="list-style-type: none"> • 29 PTO HP • 3-Cylinder Liquid-Cooled Diesel Engine • Integral Power Steering • Gear or HST Transmission • Category I, 3-Point Hitch • Performance-Matched Implements Available | <ul style="list-style-type: none"> • 62 PTO HP • 4-Cylinder Diesel Engine • Fully Synchronized Transmission • Hydrostatic Power Steering • Category I & II, 3-Point Hitch |
|---|---|--|

PANHANDLE IMPLEMENT CO
710 NORTH MAIN STREET • PERRYTON, TX
806-435-6508



† 0% A.P.R. financing for terms up to 42 months, subject to credit review and approval. Payment through September 30, 2008 on new Kubota BX, L, M, CE & T8 series from available inventory at participating dealers. Example: A 42 month repayment term of 0% A.P.R. requires 42 payments of \$23.81 per \$1,000 borrowed. 0% A.P.R. interest is available to customer if no dealer documentation preparation fee is charged. Only Kubota and Kubota performance-matched Land Pride equipment are eligible. Inclusion of eligible equipment may result in a higher blended A.P.R. Dealer charges for document preparation fee shall be in accordance with state law. Not available for Rural, National Accounts, or Governmental customers. Financing is available through Kubota Credit Corporation, U.S.A., subject to credit approval. Some exceptions apply. See us for details on these and other low-cost options or go to www.kubota.com for more information.



SPEARMAN ISD BACK-TO-SCHOOL NIGHT

THE SPEARMAN ISD BOARD OF DIRECTORS, FACULTY, AND ADMINISTRATORS INVITES THE

COMMUNITY TO A GRAND OPENING ON

TUESDAY, AUGUST 26TH AT 5 P.M.

AT THE ELEMENTARY CAFETERIA FOR HOT DOGS, CHIPS, AND LEMONADE

OPEN HOUSE WILL BE HELD AT THE

ELEMENTARY FROM 5-6 P.M.;

JR. HIGH FROM 5:30-6:30 P.M.,

AND HIGH SCHOOL FROM 6-7 P.M.

MEET THE LYNX WILL BE HELD AT 7:15

IN THE EAST PARKING LOT

AT SPEARMAN HIGH SCHOOL.

SUMMER CLEARANCE SALE

Sale Starts Thursday, August 14th

Just In Time for



ROOM IT UP!

Backpacks & Organization Items

25% Off!

Stop in to see all the new items and check out our sale!

Gordon's

DRUG



Where gift-giving is effortless & FUN!

314 Main • Spearman • 806-659-2141