

IN THE NEWS

Democrats defy Pelosi, elect Hoyer House leader
WASHINGTON - A week after winning back control of the U.S. Congress, divided Democrats in the House defied incoming speaker Nancy Pelosi on Thursday and elected Steny Hoyer to be majority leader, a Democratic Party aide said.

North Korea upstages trade at APEC meeting
HANOI - U.S. officials said on Thursday they wanted North Korea to come to six-party talks ready to take steps to end its nuclear programs and suggested it was not worth resuming the talks until they were.

Annan leads Darfur meeting, rebels say 50 killed
ADDIS ABABA - U.N. chief Kofi Annan led a push on Thursday for a "hybrid" force of African Union and United Nations peacekeepers to be allowed into Darfur amid reports of new violence in Sudan's war-shattered region.

Friend of 9/11 hijackers guilty of abetting murder
KARLSRUHE, Germany - A German court ruled on Thursday that a Moroccan friend of the September 11 hijackers was guilty of abetting mass murder and must return to court to receive a new, harsher prison sentence of up to 15 years.

S. Korea, in switch, backs U.N. vote on rights in North
SEOUL - South Korea said on Thursday it would vote for a United Nations resolution condemning North Korea for human rights abuses, the first time it has backed such criticism of its communist neighbor.

Four U.S. soldiers killed in Iraq
BAGHDAD - Four more U.S. soldiers have been killed in Iraq, the U.S. military said on Thursday, bringing to at least 10 the number killed over the past two days in gun battles and roadside bomb blasts around the country.

Tornado kills six in North Carolina
MIAMI - A tornado ripped through a North Carolina trailer park on Thursday, killing at least six people as it tore mobile homes off their foundations and flung bodies into the woods and cars into houses, officials said.

Wal-Mart adds 11 more states to \$4 generics plan
CHICAGO - Wal-Mart Stores Inc. said on Thursday it would begin selling certain generic prescription drugs for \$4 in 11 new states, including Massachusetts, bringing the total to 38 states.

Two dead, three wounded in Detroit shooting
DETROIT - A gunman shot five people seemingly at random in a 10-minute period on Detroit's West Side on Thursday, killing two of them, police said.

Clear Channel agrees to \$18.7 billion sale
NEW YORK - Clear Channel Communications Inc., the No. 1 U.S. radio station operator, said on Thursday it has agreed to be acquired by private equity firms Thomas H. Lee Partners and Bain Capital for nearly \$19 billion.

Consumer prices fall, industrial output soft
WASHINGTON - A big energy price drop pulled U.S. consumer prices down sharply in October while industrial output was weak, showing a cooling economy and easing worries over inflation.

Group to buy Reader's Digest for \$1.6 billion
NEW YORK - Reader's Digest Association Inc., publisher of one of the most widely-read U.S. magazines, has agreed to be acquired by an investor group for \$1.6 billion, the two sides said on Thursday.

VERSE OF THE WEEK
As God's chosen ones, holy and beloved, clothe yourselves with compassion, kindness, humility, meekness, and patience. Bear with one another and, if anyone has a complaint against another, forgive each other, just as the Lord has forgiven you, so you also must forgive. Above all, clothe yourselves with love, which binds everything together in perfect harmony.
- Colossians 3:12-14

VOICE OF THE WEEK
Do what is right not only to respectable citizens, but especially to the disreputable ones as well; be at peace not only with those who are peaceable, but especially with those who do not wish to let us live in peace.
- Dietrich Bonhoeffer



The Hansford County Reporter-Statesman

PROUDLY SERVING HANSFORD COUNTY SINCE 1907

VOLUME 99 • ISSUE 46

THURSDAY, NOVEMBER 16, 2006

Gwin to compete in Miss Texas Teen USA



Cara Gwin
Miss Hansford 2006

Cara Gwin of Spearman has been chosen by Miss Texas Teen USA to be Miss Spearman USA and participate in the 2007 pageant. This is the official preliminary to the Miss Texas pageant and Miss USA pageant. The pageant will take place on November 26, 2006 at 1 p.m. at the Hilton Houston Post Oak Hotel. Raevan Valadez, the reigning Miss Texas Teen USA 2006 will crown the winner.

The Preliminary Show and Competition will be held the prior evening, November 25th at 7:30 p.m. The swimsuit and photogenic award winners will be announced during the Preliminary Show.

Over 150 contestants from all over the state will compete in interview, swimsuit and evening gown competitions. The winner will claim the title and prize list which includes a four-year tuition scholarship to the Texas college of her choice, jewelry, travel,

wardrobe, and the honor of representing the Lone Star State in the premiere pageant for teenagers - Miss Teen USA.

Cara is the 17-year-old daughter of Dennis and Sherrie Gwin of Spearman. Cara, a senior at Spearman High School, is Miss Hansford 2006 and is involved in FFA, National Honor Society, BIGS in School, golf, and is a member of the First Baptist Church of Spearman.

Cara would like to thank everyone who sponsored her in this adventure: Spearman Chamber of Commerce, Women's Division of the Chamber of Commerce, Crop Chasers, Keith and Jodie Hight, Jennifer Salon of Perryton, S&L Feed, Hansford Implement, Brock Insurance, First National Bank of Spearman and Dr. Mark Garnett.

NPEC hosts new 1000 watt NOAA All-Hazards Radio transmitter

North Plains Electric Coop is proud to be the host of the newest transmitter for NOAA All-Hazards Radio (NWR), formerly known as the NOAA Weather Radio. The network is now used to warn of weather and non-weather hazards, warnings for wildfire, chemical, biological, radiological and terrorism related incidents can now be received. Local county emergency managers will also have the capability to prepare and transmit non-weather related alert information specific to your county on the NOAA All-Hazards Radio. NOAA Weather Radio is the lone government-operated radio system that provides direct warnings to the public for natural and man-made hazards, from floods to forest fires, to oil spills. It also is the primary trigger for activating America's Emergency Alert System on commercial radio and television stations.

According to NOAA during the May 3, 1999 tornado outbreak in Oklahoma and Kansas, a supervisor at Norland Plastics in Haysville, Kansas saved more than 80 lives by responding to official National Weather Service warnings heard on the plant's NOAA Weather Radio. Shortly after instructing employees to move to the basement, a twister devastated the entire building. No one was hurt and Norland employees credit the warnings.

The radios also broadcast current weather conditions and forecasts for the local area. The new 1000 watt transmitter should now be able to reach a 40 mile radius of NPEC. Previously, Hansford and northern Lipscomb Counties in Texas and Texas and Beaver Counties in Oklahoma were without the signal. NWR broadcasts National Weather Service (NWS) warnings, watches, forecasts and other non-weather related hazard information 24 hours a day. During an emergency, NWS forecasters interrupt routine broadcasts and send a special tone, activating local weather radios. Weather radios equipped with a special alarm tone feature sound an alert to give you immediate information about a life-threatening situation.

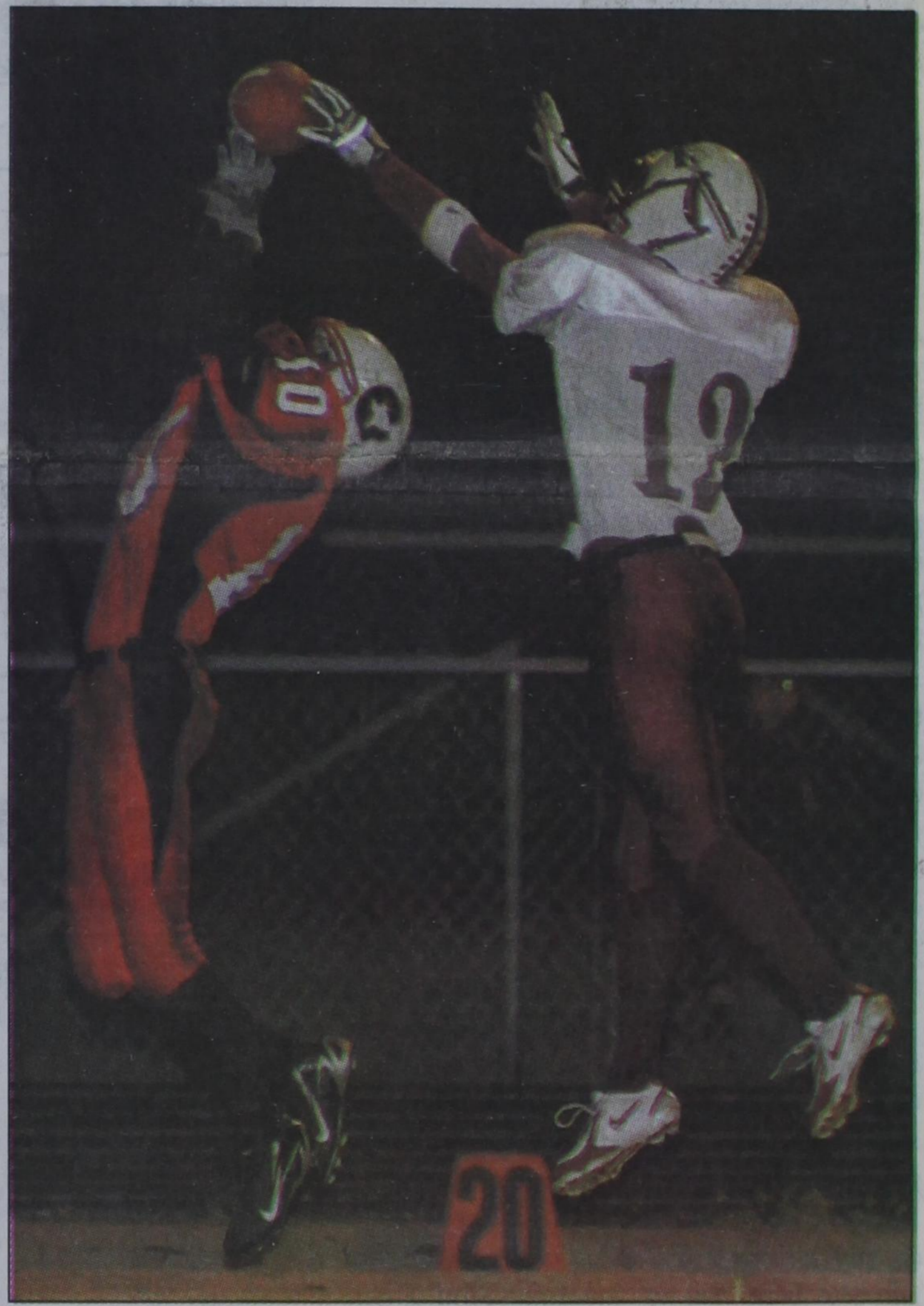
NOAA Weather Radio All Hazards transmitters broadcast on one of seven VHF frequencies from 162.400 MHz to 162.550 MHz. Perryton's station KJY88 broadcasts at 162.47 MHz. The broadcasts cannot be heard on a simple AM/FM radio receiver. However, there are many receiver options ranging from handheld portable units which receive only Weather Radio to desktop and console models which receive Weather Radio in addition to other types of broadcasts.

New NOAA All-Hazards Radios with the Public Alert trademark have SAME (Specific Area Message Encoding) technology, ports to connect external alerting devices for the hearing or visually impaired, and a connection for an external antenna. The SAME technology allows you to program the radio for the types of alerts you want to receive and for only the counties you wish to receive information about. This affordable emergency weather radio allows you to filter out distant weather alert broadcasts and centralize your reception to only local counties.

Midland WR-100 NOAA All-Hazards Radios are available at North Plains Electric Cooperative and United Supermarkets. Other radios are also available at Radio Shack, or online.

The website <http://www.weather.gov/nwr/> contains more information about the NOAA All-Hazards Radio, the locations of transmitters and radio coverage areas.

NPEC is a cooperative distributing electricity in Hansford, Hemphill, Hutchinson, Lipscomb, Ochiltree, Roberts and Wheeler counties. Formed in 1944, it serves 5396 meters and maintains 3511 miles of electrical line. It is owned and controlled by the members it serves.



Saul Hernandez goes for a reception during Gruver's game against the Booker Kiowa's on Friday night. Gruver defeated the Kiowas 25-16, for a place in the playoffs. They will play the winner of the Nazareth/Wheeler game. (Nazareth and Wheeler play at 7:30 p.m. on Friday, November 17th. Photo by Charlie Johnson)

Community Thanksgiving Service

Rev. Bob Elder of the First Assembly of God Church in Spearman will be preaching at the Community Thanksgiving Service on Sunday, November 19, 2006 at 7 p.m. at the First United Methodist Church. There will be singing and special music.

The Ministerial Alliance will give special recognition of the staff of Hansford Hospice and Hansford Manor. Those who are part of these organizations are encouraged to attend.

The offerings from the Community Thanksgiving Service go to different community causes. A report will be given about the ways this offering has been shared this year. We thank the members of our community for their generous support of the benevolence funds of the Ministerial Alliance. An opportunity will be given to support this ministry in the coming year.

Fellowship and refreshments will follow the service. Everyone is invited to attend.

LOCAL WEATHER FORECAST

THURSDAY NIGHT - Partly cloudy. Lows in the lower 30s. South winds around 10 mph shifting to the west after midnight.
FRIDAY - Mostly sunny. Highs in the lower 60s. North winds 10 to 15 mph.
FRIDAY NIGHT - Partly cloudy. Lows in the lower 30s. Light and variable winds.
SATURDAY - Mostly sunny. Highs in the upper 50s. Light and variable winds.
SATURDAY NIGHT - Mostly cloudy. Lows in the lower 30s.

SUNDAY - Mostly sunny. Highs in the upper 50s.
SUNDAY NIGHT - Partly cloudy. Lows in the lower 30s.
MONDAY - Sunny. Highs in the mid 60s.
MONDAY NIGHT - Mostly clear. Lows in the mid 30s.
TUESDAY - Sunny. Highs in the lower 70s.
TUESDAY NIGHT - Mostly clear. Lows in the upper 30s.
WEDNESDAY - Sunny. Highs in the lower 70s.

Deadline Notice

The deadline to submit news and advertising to the Hansford County Reporter-Statesman is Monday at 5 p.m. Items submitted after the deadline will be published at a later date, as time and space permit.

For more information, please contact Catherine Smith at 659-3434, or e-mail to cathysmith@antden.com.

Live,
Laugh &
Love



by Catherine R. Smith
cathysmith@antden.com

My cousin, Terri Ritchie, sent me the following story entitled "3,900 Saturdays." I would like to share it with you this week. I would also like to wish her a happy birthday.

The Best Day of my Life

Today, when I awoke, I suddenly realized that this is the best day of my life, ever. There were times when I wondered if I would make it to today; but I did!

And because I did I'm going to celebrate! Today, I'm going to celebrate what an unbelievable life I have had so far: the accomplishments, the many blessings, and, yes, even the hardships because they have served to make me stronger.

I will go through this day with my head held high and a happy heart.

I will marvel at God's seemingly simple gifts: the morning dew, the sun, the clouds, the trees, the flowers, the birds.

Today, none of these miraculous creations will escape my notice.

Today, I will share my excitement for life with other people. I'll make someone smile.

I'll go out of my way to perform an unexpected act of kindness for someone I don't even know. Today, I'll give a sincere compliment to someone who seems down. I'll tell a child how special he is, and I'll tell someone I love just how deeply I care for them and how much they mean to me.

Today is the day I quit worrying about what I don't have and start being grateful for all the wonderful things God has already given me. I'll remember that to worry is just a waste of time because my faith in God and his Divine Plan ensures everything will be just fine.

And tonight, before I go to bed, I'll go outside and raise my eyes to the heavens. I will stand in awe at the beauty of the stars and the moon, and I will praise God for these magnificent treasures.

As the day ends and I lay my head down on my pillow, I will thank the Almighty for the best day of my life. And I will sleep the sleep of a contented child, excited with expectation because I know tomorrow is going to be the best day of my life, ever!

May God bless and keep you; May He make his face to shine upon you, and be gracious to you; May the Lord lift up his countenance upon you, and give you peace.

Numbers 6:24-26

Catherine :)

SUDOKU
PRESENTED BY

VolunteerMatch.org
Where volunteering begins.

		2	8	7					
		7				4	9		
2	4								
		8	5				7		
9	6						8	5	
5		6	3						
					1	9			
2	8			6					
		7	1	4					

© 2006, StatePoint Media, Inc. answer on classified page
Fill in the blank squares in the grid, making sure that every row, column and 3-by-3 box includes all digits 1 through 9.

These games are brought to you by the
Hansford County Reporter-Statesman

CROSSWORD

1	2	3	4	5	6	7	8	9	10	11		
12				13				14				
15				16				17				
18			19					20				
		21					22					
23	24	25				26			27	28	29	
30			31		32	33			34			
35			36			37			38			
39				40			41			42		
43				44			45		46			
			47			48	49					
	50	51				52				53	54	55
56						57				58		
59						60				61		
62						63				64		

PRESENTED BY

VolunteerMatch.org
Where volunteering begins.

© 2006, StatePoint Media, Inc. answer on classified page

1970s

<p>ACROSS</p> <ol style="list-style-type: none"> 1. Tim Duncan is one 5. aka GST 8. Derived from madame 12. 1970s Jefferson Airplane offshoot, "Hot ____" 13. Zip, zilch 14. Suicidal location 15. Homer's "The Odyssey", e.g. 16. Big bang theory's original matter 17. Milk bag 18. Nixon's ruin 20. ____ pool, used for refuse 21. Connery's '70s successor 22. Rainbow quality 23. Facet 26. The dough needed this 30. Payment 31. Henson's famous frog 34. Delicatessen 35. '70s advocate of psychedelic drugs 37. Japanese monetary unit 38. Hot joint, pl. 39. Not active 40. Plane house 42. Police investigator 43. Disco brothers 45. Rogue or vagabond 47. 007 creator 48. Especially useful to a salesperson 50. Bird of prey leash 52. Result of '73 OAPEC action 56. Opposite of glossy 57. Carbamide 58. Or ____, threatening 59. Having awns 60. Excessive fervor 61. "____ and void" 62. Ivan the Terrible, e.g. 63. Not divisible by two 64. Nonkosher 	<p>DOWN</p> <ol style="list-style-type: none"> 1. Harbor ill feelings 2. Between larva and adult 3. Quantity of measurement 4. Run against me! 5. Articulated with the back of the tongue 6. Narrow mountain ridge 7. Large book, often scholarly 8. The '70s, according to Tom Wolfe 9. Contributions 10. Def Leppard's "Rock of ____" 11. Sea in French 13. Fertilized ovum 14. Dinero 19. Philly's Italian Stallion 22. Rocker Adam 23. Improvise 24. Rock-n-Roll's famous shoes 25. American painting family 26. "Carrie" novelist 27. Major U.S. airline 28. Older than you 29. '70s dance joint 32. Swedish shag rugs 33. Who's from Mars? 36. Robber's target 38. More wry 40. Female chicken 41. Situated at an apex 44. Alleviated 46. Customer to a lawyer 48. Fathered 49. To ____ guilty 50. '70s beach scare 51. Highest volcano in Europe 52. Greek liquor 53. Disparaging remark 54. ____ of Man in the Irish Sea 55. Ego's domain 56. Type of American welcome
--	--

TEXAS PRESS ASSOCIATION

State Capital

HIGHLIGHTS
By Ed Sterling

TEXAS GIVES PERRY ANOTHER 4 YEARS

Enough voters signified their happiness with Gov. Rick Perry in the Nov. 7 election to reward the 56-year-old Republican with another four-year term in the governor's mansion.

An estimated 1.7 million voters - 39 percent of the registered voters who actually cast ballots - picked Perry. This was widely reported as the lowest percentage for winning the high office of governor in more than a century. But, should Perry serve out the next four years, he will have held the office 10 years - a period two years longer than any of his predecessors.

Democrat Chris Bell, a former U.S. representative from Houston, placed second in the race for governor with 29 percent of the vote, or 1.3 million votes.

Outgoing State Comptroller Carole Keeton "Grandma" Strayhorn, a Republican running as an independent, placed third with 18 percent. Writer and entertainer Richard S. "Kinky" Friedman, also an independent, placed fourth with 12 percent.

James Werner, a Libertarian from Austin, drew 0.6 percent.

Secretary of State Roger Williams' office reported the statewide voter turnout at 32.97 percent of the 13,074,279 Texas residents who registered in time to vote.

Proceeding down the ballot in some of the major statewide races, rounded results taken from unofficial results showed the two biggest vote-getters in each race, as follows:

- Incumbent Republican Lt. Gov. David Dewhurst was re-elected over Democrat Maria Luisa Alvarado, 60 percent to 36 percent.
- Incumbent Republican Attorney General Greg Abbott was re-elected over Democrat David Van Os, 61 percent to 37 percent.
- Agriculture Commissioner Susan Combs, a Republican, was elected to succeed Strayhorn as comptroller of public accounts. Combs' vote percentage was 61 compared with Democrat Fred Head's 36 percent.
- Incumbent Republican Land Commissioner Jerry Patterson was re-elected over Democrat Valinda Hathcox, 55 percent to 41 percent.
- Former State Sen. Todd Staples of Palestine, a Republican, was elected to succeed Combs as agriculture commissioner, over Democrat Hank Gilbert, 55 percent to 42 percent.
- Incumbent Republican Railroad Commissioner Elizabeth Ames Jones was re-elected over Democrat Dale Henry, 54 percent to 42 percent.
- Incumbent Republican Supreme Court Chief Justice Wallace Jefferson was re-elected over Libertarian Tom Oxford, 76 percent to 24 percent.

Republicans swept the other Supreme Court seats on the ballot. In the courts of criminal appeals races, it was almost a GOP sweep. The spoiler was Diane Henson, a Democrat, who won against Republican Will Wilson in the race for Place 3, 3rd Court of Appeals. The margin was 50.32 percent to 49.68 percent.

The GOP also won all but one seat up for re-election on the State Board of Education.

DEMOCRAT TAKES DELAY DISTRICT

Former U.S. Rep. Nick Lampson, a Democrat, emerged the winner in the race for former U.S. Rep. Tom DeLay's U.S. Congressional District 22 seat.

Former House Majority Leader DeLay resigned from Congress in June, having been indicted by the state's chief ethics officer on charges of campaign ethics violations. The story was covered by state and national media for months.

The Republican Party promoted Houston City Council Member Shelley Sekula-Gibbs as its write-in candidate but she lost to Lampson in a field that included other write-ins and a Libertarian. Sekula-Gibbs will serve out DeLay's unexpired term and in January Lampson will take the oath of office and begin service.

JUDGE RULES IN FAVOR OF STATE LAW

U.S. District Judge Rob Junell in Pecos ruled the Texas Open Meetings Act is not in conflict with the U.S. Constitution.

A present member and a former member of the Alpine city council sued the state, alleging the opening meetings law violated their right to free speech because it prevented them from privately discussing matters of public business and was "unconstitutionally vague."

The act requires state and local government officials to notify the public and meet in an open forum when they plan to deliberate on matters of public interest.

The Hansford County Reporter-Statesman
213 Main Street • Spearman, TX 79081
Phone - (806) 659-3434 • Fax - (806) 659-3368
cathysmith@antden.com
Mon.-Thurs. (Closed Fridays) 9 a.m.-12 p.m. & 1-5 p.m.

Gary Smith - Publishers
Catherine Smith - Editor • Clayton Smith - Asst. Editor
Contributing Writers: Dorothy Hudson and Merry Sparks
Contributing Photographer: Charlie Johnson

Subscription Rates
In Hansford County - \$30.00 • Out of County - \$40.00

The Hansford County Reporter-Statesman (USPS 529660) is published weekly in Spearman, TX. Periodical postage paid in Spearman, TX. **POSTMASTER:** Send address changes to: The Hansford County Reporter-Statesman, 213 Main Street, Spearman, TX 79081.

Publication Policy
The deadline to submit news and advertising to The Hansford County Reporter-Statesman is Monday at 5 p.m. Items submitted after the deadline will be published at a later date, as time and space permit. Publication of all items is at the discretion of the editor.

Advertising
Open Display rates are \$4.00 per column inch. Classified Ads are \$6 for the first 25 words and 10¢ per word for each additional word. (Additional charge for boxed classifieds.) There is a \$1 charge per week if billed.

Member of
Gruver Chamber of Commerce
Spearman Chamber of Commerce
Texas Press Association and Panhandle Press Association

LYRIC Cinema
118 Main Spearman, Texas (806) 659-2812

Oct. 27-31 - 7 p.m.

<p>Screen 1 Happy Feet PG Animated</p>	<p>Screen 2 Flags of Our Fathers R</p>
---	---

www.lyriccinema.com

Happy Birthday!

Editor's Note: This Happy Birthday list is run as a public service by the Hansford County Reporter-Statesman. We apologize if any names are misspelled. If you know of a name that needs to be changed, added or deleted, please call 659-3434.

Thank you, Catherine

November 16
Birthday - Felipe Alvarez, Charles Bell, Don Heddins, Chandler Miner, Angela Overbey, Clint Patterson, Charlotte Pearson, Karen (Kenney) Bonath, Keith Goodman, David McGuire, Ryan Quillin, Alexa Thoreson, Lindsey (Smith) Savage, Callie Smith
Anniversary - Bertha & Francisco Martinez

November 17
Birthday - Pam Cassidy, Janyth Hart, Francis Pipkin, Curtis Gross, Abby Winegamer, Bill Sparks
Anniversary - M/M Corky Kizzar, M/M Marvin Jones, Bernie & Kelly Kjos

November 18
Birthday - Bryn Lowe, Gwen Parker, Kevin Rodriguez, Arnold Stork, Amanda Taylor, Jennifer Johnson, Steven Tindell, Rose Mary Tartar, Chris Taylor, Kashey Brown, Rita Underwood, Clayton Fox, Jennifer Nelson, Freida Burgess, Mona Lisa Garcia, Steven Cummings, Gabbi Boyd, Pepe Marquez, Eva Jo Pittman, Jill Clement, Marie Beck, Casie Butt

November 19
Birthday - Cherri Sherill, David Hall, James Davis, Brian Beck, Tim Gikas, Sharon Barkley, Aaron Shawn Moore, Jeff Jackson, Kasey Harris, Jeffrey Davis
Anniversary - M/M Brice Lewis

November 20
Birthday - Scott Davis, Jr. Rodriguez, Johnny Lee, Mrs. Ray McCammond, Jerry Wayne Dunaway, Danny Close, Ron Riley, Garland Dahl, Brenda Ferguson, Freda Sheets, Tammy Batton, Carie Tidwell, Casey Villines, Jason Payne, Josh Purvines
Anniversary - M/M Phillip Turner, M/M Ramon Garcia Jr., M/M Jesse Reñerita, M/M Roberto Tarango

November 21
Birthday - Kaysha Cluck, Jackie Wilson, Jim Burch, Robert Janzen, Jody Robertson, Mark Pearson, Mrs. Jake Vernon, James Owens,

Angie Salgado, Margie Alford, Matt Burnam, Denise Rojas, Victor White, Haley Coomen, Dawn Loomis, Brittanie Osbourne, Jody Robertson
Anniversary - M/M Johnny White, M/M J.L. Griffin, Ted & Cheryl Whitefield, Jose & Sylvia Tarango

November 22
Birthday - Garret Miner, Kevin Russell, Rusty Reed, Bonita Reimer, Phillip Janzan, Lesly Hayes, Nancy Morris, Russell Sheets, John David Bergin, Emily Lilley

November 23
Birthday - Steven Francis, Randy Karlin, Kim Venneman, Clint Venneman Cooper, Wanda Widener, Ronald Swan, LaDell Scroggs, Delores Rylant, Sara George, Mary Hart
Anniversary - Lesly & Maurene Stinson, M/M Jesse Francis, M/M Val Winger, M/M Greg Stork, M/M Steve Mitchell, Andy & April DeLaRosa, Ryan & LaShera McElhany

November 24
Birthday - Brady Hart, Pablo Perez Jr., Danna Sue Floyd, Helen Gibson, Patty Younger, Duane Hart, James Jackson, Dana Garza, Lashera McElhany, Jamie Dawn Hanson, Stephanie Villalobos, Raymond Fairbank, Brianne Burkhammer, Georgia Holt, Teresa Page, Linda Weller, Elvin Wright, Sharon Arrington, Whitney Maestas
Anniversary - M/M Rex Casdorff, M/M David Imke

November 25
Birthday - Kasey Cazares, Tracy Logsdon, Krista Davis, Opal Wallin, Trudie Goodheart, Terrie Orr, Mike Hager, Melissa Moyer, Dustin Red, Kristi Holt, Carmen Roy, Sara Vela, Katy Mitchell, Jerry Moore
Anniversary - M/M Willis Boyd

November 26
Birthday - Lori Perez, Chad Stork, Mollie Holton, Tracy Vernon, Chris Stewart, Scott Barkley, Dale Red, Eldon Sparks, Aaron Brown, James Smith, Jorge Soto, Jr.
Anniversary - M/M Harlan Gerardy

November 27
Birthday - Jim Potts, Dorothy Evans, Marilyn Davis, Jackie Nelson, Monty Ross, Tony Pacheco, Susan Poole, Jesse Moreno
Anniversary - M/M Dale Wofford, M/M James Winger, M/M James Dorman, M/M Ty Williams

Open Letter

It has come to the attention of the officials of Hansford County, Texas and the Texas Department of Transportation, (TxDOT) that rendering companies have now begun to charge for the removal of the carcasses of dead cattle. It has been the practice to drag the "deads" to the ditches, and in many cases the roadside, so that the carcass would be handy for the "used cow" truck to pick up and remove.

This practice is not acceptable unless the cattle producer intends to have the carcass picked up. Dragging the carcass to any highway, farm-to-market road or county road and leaving it is a violation of common littering laws, as well as a violation of the solid waste disposal provisions of Texas Law. In addition to being against the law, the carcasses pose a traffic hazard, a health hazard, and makes for unsightly roadsides.

The purpose of this letter is to inform cattle producers that Hansford County officials will investigate complaints of cattle dumping and take action to discourage the activity. Cattle producers should be aware that cattle dumping on state and county rights of way is illegal and there are misdemeanor and even felony sanctions to punish those responsible. Neither Hansford County nor TxDOT will remove these carcasses.

The officials of Hansford County and TxDOT are counting on your cooperation so that the roadsides of our county remain clear.

Remember, dumping dead cattle near highways and roadways is illegal.

Lower State (Print Name)

Statement of Ownership, Management, and Circulation

1. Publication Title: The Hansford County Reporter-Statesman
 2. Publication Number: 0052-9660
 3. Filing Date: 9/30/05
 4. Issue Frequency: Weekly
 5. Number of Issues Published Annually: 52
 6. Annual Subscription Price: \$20.00 (In County) \$25.00 (Out of County)
 7. Complete Mailing Address of Known Office of Publication (Not printer) (Street, city, county, state, and ZIP+4):
 The Hansford County Reporter-Statesman
 213 Main Street
 Spearman, TX 79081
 8. Complete Mailing Address of Headquarters or General Business Office of Publisher (Not printer):
 The Hansford County Reporter-Statesman
 213 Main Street
 Spearman, TX 79081
 9. Full Name and Complete Mailing Address of Publisher, Editor, and Managing Editor (Do not leave blank):
 Publisher (Name and complete mailing address):
 Gary Smith
 213 Main Street
 Spearman, TX 79081
 Editor (Name and complete mailing address):
 Catherine Smith
 213 Main Street
 Spearman, TX 79081
 Managing Editor (Name and complete mailing address):
 Catherine Smith
 213 Main Street
 Spearman, TX 79081
 10. Owner (Do not leave blank. If the publication is owned by a corporation, give the name and address of the corporation immediately followed by the names and addresses of all stockholders owning or holding 1 percent or more of the total amount of stock. If not owned by a corporation, give the names and addresses of all individual owners. If owned by a partnership or other unincorporated firm, give its name and address as well as those of each individual owner. If the publication is published by a sole proprietor, give its name and address.)
 Full Name: Gary Smith, Complete Mailing Address: 213 Main Street - Spearman, TX 79081
 Full Name: Catherine Smith, Complete Mailing Address: 213 Main Street - Spearman, TX 79081
 11. Known Bondholders, Mortgagees, and Other Security Holders Owning or Holding 1 Percent or More of Total Amount of Bonds, Mortgages, or Other Securities. If none, check box.
 Full Name: Billy Miller, Complete Mailing Address: 810 S. Bernice - Spearman, TX 79081
 12. Tax Status (For completion by nonprofit organizations authorized to mail at nonprofit rates) (Check one)
 The purpose, function, and nonprofit status of this organization and the exempt status for federal income tax purposes:
 Has Not Changed During Preceding 12 Months
 Has Changed During Preceding 12 Months (Publisher must submit explanation of change with this statement)
 13. Publication Title: The Hansford County Reporter-Statesman
 14. Issue Date for Circulation Data Below: 9/25/05

Extent and Nature of Circulation	Average No. Copies Each Issue During Preceding 12 Months	No. Copies of Single Issue Published Nearest to Filing Date
a. Total Number of Copies (Net press run)	1600	1600
b. Paid and/or Requested Circulation		
(1) Paid (Include paid circulation outside the United States)	344	344
(2) Paid circulation outside the United States	495	495
(3) Paid circulation outside the United States	400	400
(4) Other Classes Mailed Through the USPS	0	0
c. Total Paid and/or Requested Circulation (Sum of 13b(1), (2), (3), and (4))	1239	1239
d. Free Distribution Outside the Mail (Carriers or other means)	50	50
e. Total Free Distribution (Sum of 13d and 13e)	50	50
f. Total Distribution (Sum of 13c and 13f)	1338	1338
g. Copies not Distributed	262	262
h. Total (Sum of 13g and f)	1600	1600
i. Percent Paid and/or Requested Circulation (13c divided by 13g times 100)	83%	83%

16. Publication of Statement of Ownership: Publication required. Will be printed in the _____ issue of this publication. Publication not required.
 17. Signature and Title of Editor, Publisher, Business Manager, or Owner: Catherine Smith, Editor, 8/30/05

I certify that all information furnished on this form is true and complete. I understand that anyone who furnishes false or misleading information on this form or who omits material or information requested on the form may be subject to criminal sanctions (including fines and imprisonment) and/or civil sanctions (including civil penalties).

Our Sympathy

WILLIAM J. "BILL" THORNE

William J. "Bill" Thorne, 80, of Amarillo died Saturday, Nov. 11, 2006. Memorial services will be at 10 a.m. Thursday in First Baptist Church with Dr. Howard Batson and the Rev. Chester O'Brien officiating. Private burial will be Thursday in Lipscomb Cemetery in Lipscomb. Arrangements are by Schooler Funeral Home, 4100 S. Georgia St.

Longtime Amarillo ISD and New Mexico administrator, William J. Thorne, 80, died Saturday, Nov. 11, 2006.

Mr. Thorne was born to William Quincey and Ruby Minerva Thorne in Spearman. He married Katy Bussard in 1945 in the Locust Grove community in Lipscomb County. They graduated from Canadian High School in 1944. He served in the U.S. Army.

Mr. Thorne received a B.S. and a master's degree from West Texas State University and an Ed.S. degree from Peabody College of Vanderbilt University in Nashville, Tenn.

He was an elementary principal at Springlake Earth schools, a high school principal in San Jon, N.M., and the superintendent of Grady, N.M., schools. He opened Paramount Terrace School in Amarillo in 1956 and was principal there for 20 years. He then taught at Tascosa High School and West Texas State University and taught senior English at Boys Ranch High School. He also served as principal at Lamar School in AISD.

He taught Sunday school classes at First Baptist Church for many years. He was busy in the Boy Scouts, Kids, Inc., and "Y" ball. He worked in the HOSTS (Helping One Student to Succeed) Program in Palo Duro High School and Horace Mann Middle School.

He touched many lives in New Mexico and the Panhandle of Texas. He and his wife toured all the continents in the world except Antarctica before he became ill.

He was preceded in death by his parents, a sister and two brothers. Survivors include his wife, Katy Thorne; two sons, Stanley Charles Thorne of Amarillo and Steve Thorne and wife Jessie of Covington; five grandchildren, Adam, Stephen, Lauren, Daniel and Rebekah; four step-grandchildren; and three stepgreat-grandchildren.

The family suggests memorials be to a favorite charity or The American Family Justice Project, 3440 Bell St., Suite 320, PMB 332, Amarillo, TX 79109-4147.

LYRIC Cinema

113 Main Spearman, Texas (806) 659-2812

Oct. 27-31 - 7 p.m.

Screen 1	Screen 2
Happy Feet	Flags of Our Fathers
PG	R
Animated	

www.lyriccinema.com

MONUMENTS


Boxwell Brothers Funeral Home

519 Evans • Spearman
659-3802

Dear friends,
 When you buy a monument from us we make sure it is exactly what you want at a price you can afford. If it is not right, we will make it right. And you will not have to search the countryside to find us. We are here when you have a need.

Sincerely,
 Bob Boxwell

HIGH PLAINS PUBLIC RADIO



89.5 KTOT

Top O' Texas @ 89.5
 Spearman-Borger-Canadian-Dumas-Pampa-Perryton
Washburn, Claude, Panhandle @ 91.3
Amarillo @ 94.9

Listen on the web at www.hppr.org

For a complete program schedule contact HPPR 800.678.7444

Tong's Chinese Restaurant

511 S. Hwy. 207 • 659-2838 • Spearman

All-You-Can-Eat Buffet Specials

Tuesday - Steak	\$7.99
Thursday - BBQ Ribs	\$6.50
Friday - Shrimp	\$6.50
Saturday - Catfish	\$6.50
Mon., Wed. & Sat.	\$5.50

Buffet Hours: 11 a.m.-2:30 p.m. and 5:30-Close

Replenish the seed of faith through . . . DAILY BIBLE READING, PRAYER & REGULAR CHURCH ATTENDANCE

<p>Spearman</p> <p>Apostolic Faith Church 822 S. Drexler • 659-2870 Sunday School: 10 a.m. Worship Service: 11 a.m. Sun. Eve.: 6 p.m. Wed. Prayer Mtg.: 7 p.m. Pastor - Roland Haney</p> <p>First Assembly of God 401 N. Bernice • 659-2295 Sunday School: 9:30 a.m. Worship: 10:35 a.m. Kid's Church: 10:35 a.m. Evening Worship: 6 p.m. Wed. Youth: 7 p.m. Pastor - Bob Elder</p> <p>First Christian Church (Disciples of Christ) 29 S. Bernice • 659-2036 Sunday School: 9:45 a.m. Worship: 10:50 a.m. Minister - Gary Smith</p> <p>First Baptist Church 123 N. Bernice • 659-5557 Sunday School: 9:45 a.m. Worship: 11 a.m. Evening Worship: 7 p.m. Men's Bible Study - Wed., 7 a.m. Children's Choir - Wed, 6 p.m. Adult Choir - Wed, 7 p.m. Wed. Bible Study: 7 p.m. Pastor - Jim Medley</p> <p>Church of Christ 121 S. Haney • 659-3244 Sunday Bible Class: 9:45 a.m. Worship: 10:30 a.m. Evening Worship: 6 p.m. Bible Study Wed.: 7:30 p.m.</p>	<p>Sacred Heart Catholic Church 901 Roland • 659-2792 Sat. Night Mass: 5:30 p.m. Sun. Mass: 9 a.m. - English Sun. Mass: 11:30 - Spanish 1:30 p.m. - Gruver - Christo Redentor Mass - Spanish Rev. Guillermo Morales</p> <p>First United Methodist 407 S. Haney • 659-5503 Sunday School: 9:45 a.m. Worship: 8:30 & 11 a.m. Jr. High Youth: 5 p.m. Sunday High School: 6 p.m. Sunday Kids Club: 9 p.m. Wed. Pastor - Derrel Evins</p> <p>Grace Presbyterian Church (Worships with Faith Lutheran Church) 1101 Bernice • 659-2033 Pastor - Beverly Cook</p> <p>Faith Lutheran Church (ELCA) 1101 Bernice • 659-2252 Sunday School: 9:45 a.m. Worship: 11 a.m. (Worships with Grace Presbyterian Church) Pastor - Beverly Cook</p> <p>Union Church 31 S. Endicott • 659-2644 Sunday School: 9:45 a.m. Worship: 10:45 a.m. Evening Worship: 6 p.m. Bible Study: 7 p.m. Wed. Pastor - Dr. Timothy Minor</p> <p>Fellowship Baptist 1102 S. Archer • 659-2783 Sunday School: 10 a.m. Worship: 11 a.m. Sun. Evening Worship: 6 p.m. Youth/Adult Service: 7:30 Wed. Pastor - James Washburn</p>	<p>Primera Mision Bautista 502 E. 7th • 659-3991 Sunday School: 9:45 a.m. Worship: 11 a.m. Evening: 6 p.m. Wed. Prayer Meeting: 7 p.m. Thurs. Visitation: 7 p.m. Pastor Joe Garcia Jr.</p> <p>El Aposento Alto U.P.C.I. 1105 S. Roland Domingos: Escuela-Dominical - 10 a.m. Culto Evangelistico - 7 p.m. Jueves: Oracion - 8 p.m. Mier: Estudio Biblico - 7 p.m. Pastor - A.G. Martell (806) 659-2153</p> <p>Gruver</p> <p>First Baptist Church 402 E. Broadway • 733-2411 Sunday School: 9:45 a.m. Worship: 10:50 a.m. Disciple Training: 6 p.m. Sunday Prayer Meeting: 7:30 p.m. Wednesday Pastor - Scott Curry</p> <p>Church of Christ 209 King • 733-2760 Sunday School: 9:30 a.m. Worship: 10:20 a.m. Evening Worship: 6 p.m. Wed. Worship: 7:00 p.m. Minister - Gayford Cook</p> <p>First Christian Church 510 King • 733-2960 Sunday School: 10:00 a.m. Sunday Worship: 11 a.m. Youth: 7:30, Sunday Adult Bible Study: 7:30, Sun. Wed. Bible Study: 8:00 p.m. Pastor - Gary Gruffoy</p>	<p>Gruver United Methodist Broadway & Garrett 733-2651 Sunday School: 9:45 a.m. Worship: 8:30 & 10:50 a.m. Eve. Worship & UMY: 6 p.m. Pastor - George Price</p> <p>Spanish Cristo Redentor Church Sunday Mass: 1:30 p.m. Friday Evening Mass Summer - 8:00 p.m. Fall/Winter - 7:30 p.m.</p> <p>Oslo</p> <p>Oslo Lutheran Church (ELCA) 6 Miles West & 12 Miles North of Gruver 339-7709 Sunday School: 9:45 a.m. Worship: 11 a.m. Pastor - Arlen Lloyd</p> <p>Morse</p> <p>Morse Baptist Church Pastor - Mike Martin</p>
--	---	--	---

This feature is made possible through the sponsorship of these civic minded businesses.

<p>Deakin ELECTRIC OILFIELD • RESIDENTIAL • COMMERCIAL 321 S. MAIN • SPEARMAN 1-800-999-1506 Chris Deakin (806) 659-5016 President</p>	<p>Bartlett's Lumber & Hardware 105 W. Broadway • Gruver, Texas (806) 733-2404</p>	<p>BERRY CLEANERS Ann & Vernon Pipkin - Owners Phone 659-3122 • P.O. Box 1017 207 Main St. • Spearman, TX</p>	<p>Morse Implement & Auto Supply "Join us in church this week" Tom Dortch 733-2668 P.O. Box 89 • Morse, TX 79062</p>
<p>PRAIRIE MOTORS INC. Hwy. 207 South • P.O. Box 430 Spearman, TX 79081 • (806) 659-2541 www.prairiemotors.com</p>	<p>Gruver Cablevision 308 Main Gruver, TX 79040 733-5295</p>	<p>Hansford County Reporter-Statesman "Proudly Serving Hansford County Since 1907" (806) 659-3434 213 Main Street • Spearman, TX</p>	<p>Interstate Bank, ssb 322 Main • P.O. Box 146 Spearman, TX • 659-2559</p>

HYI

FOR YOUR INFORMATION

Gruver Elementary Collecting Register Tapes
Gruver Elementary is participating in the Lowe's Supermarket Register Tapes for Education Program. Please help us earn free educational equipment by collecting register tapes from Lowe's. Only tapes dated Sept. 1, 2006 through March 31, 2007 are eligible. You can deposit your tapes in boxes in the Gruver Elementary lobby, the Jr. High Library, the Gruver Library, Nite & Day Beauty Salon, Hitching Nails, and Dusty's Place. Jo Alice Clawson will collect the tapes at 711 Womble or they can be mailed to PO Box 488. Call 733-2247 for pickup of tapes, or for more information. Thank you for your help!

Lynx/Lynxette Booster Club Goodie Basket
The Spearman Lynx/Lynxette Booster Club is selling raffle tickets for a goodie basket. The basket contains a blanket, sweatshirt, hat, rally towel, mug, water bottle and clapper. Each chance is \$1.00. The basket will be given away November 9th the last home game. Please come out and buy a chance to win.

Spearman FUMC Choir to host Community Thanksgiving Dinner
The FUMC Chancel Choir will host the annual community Thanksgiving Dinner on Thursday, November 16, 2006 in the Fellowship Hall of the First United Methodist Church serving from 11:30 AM to 1:00 PM. Tickets are \$7.00 for adults with children 6 and under free. Advanced tickets are available from any choir member or can be purchased at the door on the day of the dinner. Take-outs will be available by calling 659-5504 by 10:30 AM. Come join us for the best eating in town featuring, turkey, dressing, salads, with all the trimmings and the most luscious pies and desserts!!! Please enter through the double doors on the west side of the church where you can purchase tickets or pick up the takeouts meals. Thank you for supporting our choir and we know you will enjoy the wonderful meal.

You're Never Alone - Narcotics Anonymous Group
Each year individuals struggling with drug and alcohol addiction make the resolution to quit using drugs. For many of them it is a resolution that they cannot keep. Narcotics Anonymous can help. Open meetings are held on Thursday nights from 8-9 p.m. at the First Christian Church (29 S. Bernice in Spearman) for the "You're Never Alone" group of Narcotics Anonymous. Anyone interested is invited to attend. Drug addiction can leave an individual feeling helpless and out of control.

Panhandle Crisis Center Outreach Office
Panhandle Crisis Center (PCC) has an Outreach Office in the Pittman-Shieldknight Building, 511 SW 11th Avenue, Suite 105, in Spearman. In case of emergencies, please continue to call the hotline, 1-800-753-5308. To schedule an appointment with a worker in Hansford County, please call 659-3391 to leave a message, or call the hotline number above. Panhandle Crisis Center serves victims of domestic violence and sexual assault. Please call for more information regarding PCC's services.

Hansford County Library Thriftshop Donations
The Thriftshop that helps support the Hansford County Library accepts donations of any usable kitchen or household items, clothing, furniture, toys, etc. Donations may be brought to the Thriftshop Monday through Friday during library hours - Summer 10-5 and during the school year 10-6. The Thriftshop is staffed entirely by volunteers who donate their time to sort and price items as well as keeping the Thriftshop open each Saturday afternoon. All donations are appreciated, but please keep in mind that items must be in good enough condition for resale. The community has been extremely generous in recent weeks, and our volunteers have been putting in extra hours sorting and pricing. The Hansford County Library is grateful for the support of the residents of Hansford County on this project, but we ask that you consider our volunteers limited time when bringing in donations by making certain that any items donated are in resale condition. Also, if you bring in small appliances or electronics, our volunteers would appreciate a note attached to the items saying if they are in good working condition or not. If you have questions about the type of items that are accepted, please feel free to call the library at 659-2231.

Crisis Center Needs Volunteers
The Panhandle Crisis Center is in need of volunteers to work at its donation center one to three hours, one day a week, sorting clothing and other donated items. The crisis center gives the items donated to the center to its clients free of charge. To volunteer, contact Janice at the crisis center, 435-5008.

November - National Hospice Month

November is National Hospice Month. Hospice is a special concept of care designed to provide comfort and support to patients and their families facing a life threatening illness. Hansford Hospice staff and volunteers offer a specialized knowledge of medical care, including pain management and symptom control. We deal with the emotional, social and spiritual impact of the disease on the patient and the patient's family and friends. Hansford Hospice volunteers and staff would like to thank the community for its support of the Hospice program in Hansford County.

Celebrate
Gifts for all your celebrations!

Bridal Registry

Shower Dates
Courtney Edwards & John Brock - Dec. 3
Dottie Rickman & Teddie Whitefield - TB&
Kristin Hellinger & Cody Martindale
Sarah Martin & Brad Newman
Janet Eckert & Kevin Cummings

Baby Registry

Monica (Ward) & Mike Hallam - Dec 2
Kiki (Carthel) & David Brabham
Jennifer & Will Evans
Lindsey & Clay Neff
Eric & Leslie Varnon

Celebrate

203 Main St. Spearman, TX
(806) 659-3350 1-800-663-8026

Out At The Lake

by Jim Derington

Lake Level--November 13, 2006--17.60 feet (-0.15)

According to Jim, each day brings a new record low for the Lake. I am glad we do not depend on the Lake for our drinking water.

Last week three men from Amarillo came to the Lake, camped two nights and fished. They left disappointed as they only caught 2 fish.

Another disappointment was the Panhandle Bird Club's trip last Saturday to the Lake. Rudy Cadra of Borger led the trip and only one person, a lady from Amarillo, showed up to look for birds with him. They didn't find many birds, and the eagles, which they particularly wanted to see, stayed out of sight.

Jim told me the best time to see the eagles is after sunrise. They stay around awhile in the trees in the Lake, but by 8:30 or 9:00 in the morning they are gone.

One night last week, Jim made his rounds and found a bobcat near the road on the south side of the bridge. When he came back, he found a doe had been hit and killed by a car. When he examined the

carcass, he saw that some animal had started a meal on the unexpected venison. He looked in the shadows and saw a bobcat watching.

Earlier he had seen a raccoon in that vicinity, too. We wondered if after the bobcat had finished, the raccoon would move in. Raccoons belong to the Carnivore family, but we think of them eating food from the creeks and vegetable matter, such as corn if they get an opportunity.

Board member Margarette Evans has solved Jim's mystery plant. She identified it as Violet Wood Sorrel. Although the color of flowers on Jim's plant was not violet, she said the color of the flowers could change with soil and climate. Some one else thought it was sheep's head. There is also a sheep sorrel that is named that because some can see a resemblance in the leaves and a sheep's head. The leaves on the mystery plant resemble those of the wood sorrel. Both plants are good to eat as their oxalic acid gives them a tart, refreshing taste. They must be eaten in moderation and should not be eaten by anyone with gout or arthritis.

Thank You!

I would like to take this time to thank everyone who helped the veterans feel special this past Veteran's Day weekend. Thank you to the school for the neat program on Friday. Thanks to all the churches for honoring us with special gifts and prayers to remember the good, the bad and the ugly we all endured while we were in active duty. We are a proud group of people.

Thanks again, Spearman
Terry Petr, Navy

Thank You!

The family of Coach Jerry Bass would like to thank all of the friends who have stood by him and his family during this trying time. Phone calls, letters and visits have been greatly appreciated. For those who would like to show their continuing support, letters may be sent to 2009 Harvard, Perryton, TX 79070 or helpcoachbass@hotmail.com.

Thank you,
The family of Coach Bass

DAY AFTER THANKSGIVING

10% OFF

EVERYTHING ON SALE!

STORE WIDE

221 Main • Spearman • 659-3426

Cates Men & Boys

CHRISTMAS

OPEN HOUSE

SUNDAY, NOVEMBER 19TH - 1-5 P.M.

20% OFF ALL GIFTS

65% OFF JEWELRY

START YOUR HOLIDAY SHOPPING AT HOME!

REFRESHMENTS WILL BE SERVED.

Little Tiffanies

103 E. Broadway • Gruver • (806) 733-5290

Words from Faith & Grace

by Cecil R. Biggers, Lutheran Lay Minister

As we seek the God who has intervened in our history, we study Daniel 12:1-8, Psalm 16, Hebrews 10:11-25, and Mark 13:1-8. The theme of this week's lessons is the "Day of the Lord", the "End Times". Daniel, the prophet, sees a vision of the end time and the appearance of Michael, the great prince. In verse 2, we find the clearest statement of resurrection in the old testament. The Psalmist sings variations on a very basic prayer, "Keep me safe, O God!" An appropriate plea for the believer in difficult times.

The writer of Hebrews continues his theme of Jesus as our heavenly High Priest. He emphasizes that Christ Jesus died once to redeem us all—past present and future. Through Jesus we have a new relationship with God and through Jesus only are our sins forgiven. With the assurance of God that His laws are written in our hearts and minds, and our sins are forgiven, we may safely await the Day of the Lord. Yet, we are encouraged to actively hold fast to our hope in Christ Jesus, encouraged to do acts of Christian love and good deeds, encouraged to worship God together, and encouraged to support each other in living holy lives so that we may be prepared for the Day of the Lord.

In Mark 13 we see the beginning of the "eschatological discourse", the teachings of Jesus about the end times. These teachings are also found in Matthew 24 and Luke 21. Jesus discusses with the disciples the destruction of the temple, the signs before the "End of the World", the coming persecutions of believers, the desolating sacrilege, the coming of false "Christs" and prophets, the coming of the Son of Man and the time of that coming, and an exhortation to take heed and watch! Many Christians choose to disregard these teachings; many Christians become so obsessed with these teachings that they ignore all the other lessons Christ taught. Last week we learned that all of scripture hinges on two commandments, "Love the Lord your God with all your heart, all your mind and all your strength" and "Love your neighbor as yourself". Dear Christian if you practice these commandments when our Lord returns you will be found faithful at all times.

May the Holy Spirit keep your hearts and minds in Christ Jesus.

Sip 'N See

Join us to sip tea and see baby Cy James Davis. Welcomed home by Ryan, Kate, Maggie, and Jack Davis.


Saturday, November 18, 2006
10-11:30 am Come & Go
at Karen Hartgraves' home
904 Wilmeth Spearman

It's a Boy!

Kate and Ryan Davis of Spearman wish to announce the birth of their son, Cy James. Cy was born at 2:57 p.m. on October 25, 2006 in Amarillo. He weighed 8 pounds 10 ounces and was 21 inches long.

Paternal grandparents are Liz Hohertz Metcalf of Ft. Collins, CO and the late Mike Davis of Spearman, TX. Maternal grandparents are Mary John and Bill Phinizy of Gail, TX.

Proud brother and sister are Jack (2) and Maggie (4).



Gordon's DRUG

Your place for

Bridal Registry

Couples Currently Registered

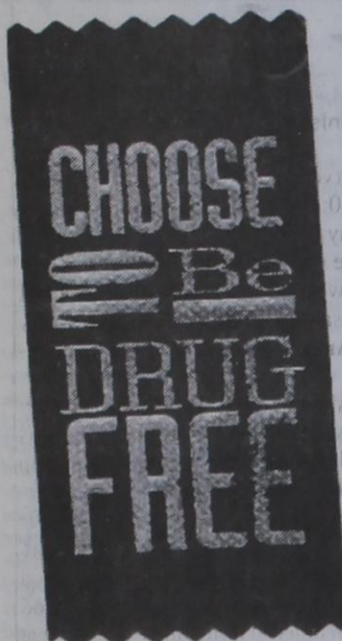
Courtney Edwards & John Brock - Dec. 3
Dottie Rickman & Teddie Whitefield - TB&
Janet Eckert & Kevin Cummings
Marcy (Cherry) & Tao Weldon
Laurie Soane & Chris Strawn

Baby Registry

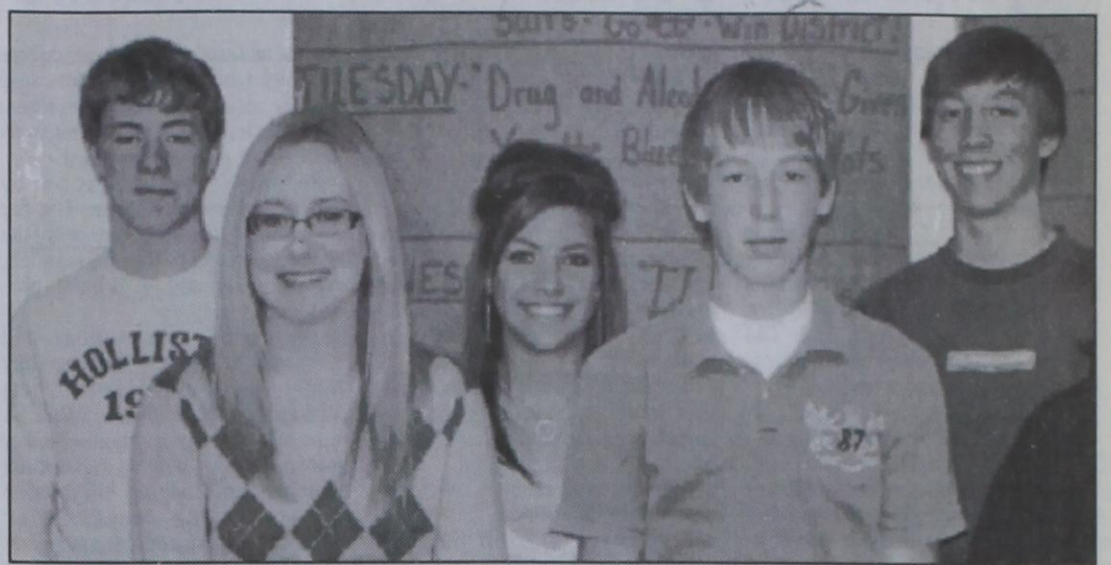
Eric & Leslie Varnon
David & Kiki (Carthel) Brabham
Will & Jennifer Evans
Clay & Lindsey Neff
Sara (Jones) & Jeremy Farmer

Gordon's DRUG 659-2141
314 Main Spearman

Red Ribbon Week



Elementary Red Ribbon Week winners who wore the most red include: PK-Giselle Rey, 1st - Leonor Acosta, K - Kambree Desmond, 4th - Rayel Anderson, 3rd - Gaby Villalobos and 2nd - Kylie Thomas



Red Ribbon Week Bookmark Winners: (Front Row, L-R) Emily Hood - 1st, Tyler Harper - 2nd, Sabrina Cantu - 3rd; (Back Row, L-R) Honorable Mention - Colby Odegaard, Kelcee Rex, Ryan Ramon. All of the bookmarks entered in the contest were given to the elementary library to be used by the elementary students. The theme of the bookmark contest was "Team Up Against Drug and Alcohol Abuse."

How to protect kids from drugs:

1. Talk to them
2. Talk to them
3. Talk to them

Red Ribbon Week

For information about preventing the use of alcohol and drugs, call (877) 9 - NO DRUG

Enrique "Kiki" Camarena grew up in a dirt-floored house with hopes and dreams of making a difference.

Camarena worked his way through college, served in the Marines and became a police officer. When he decided to join the U.S. Drug Enforcement Administration, his mother tried to talk him out of it. "I can't not do this," he told her. "I'm only one person, but I want to make a difference."

The DEA sent Camarena to work undercover in Mexico investigating a major drug cartel

believed to include officers in the Mexican army, police and government. On Feb. 7, 1985, the 37-year-old Camarena left his office to meet his wife for lunch. Five men appeared at the agent's side and shoved him in a car. One month later, Camarena's body was found in a shallow grave. He had been tortured to death.

In honor of Camarena's memory and his battle against illegal drugs, friends and neighbors began to wear red badges of satin. Parents, sick of the destruction of alcohol and other drugs, had begun forming coalitions. Some of these new coalitions took Camarena as their model and embraced his belief that one person can make a difference.

These coalitions also adopted the symbol of Camarena's memory, the red ribbon.

The National Family Partnership organized the first Nationwide Red Ribbon Campaign in 1988. Since that time, the campaign has reached millions of U.S. children.

In 1997, the Texas Commission on Alcohol and Drug Abuse began committing resources to ensure the continuation of the Red Ribbon Campaign in Texas, as well as the hopes and beliefs behind this grassroots effort to protect children from the dangers of alcohol and other drugs.

The Spearman ISD school district celebrated Red Ribbon Week on October 23-31.

TEXAS DEPARTMENT OF TRANSPORTATION

Texas Department of Transportation in Perryton has a temporary immediate opening for Maintenance Tech I.

Entry Level
CDL Preferred but not necessary

Application available at
1103 West Highway 15
Perryton Texas
806-435-2532

An Equal Opportunity/Affirmative Action Employer

Ralph Depee, D.D.S.
Member American Association of Orthodontists

Orthodontics For Children and Adults

- Free exam and estimate of cost
- Free second opinion
- Insurance filed

821 S. Amherst
Perryton, Texas
1-800-521-0831
(806) 435-2320

Save Precious Time for Family & Friends!
Let the Catholic Women's Guild do your holiday baking!

Women's Guild Bake Sale

Wed., Nov. 22nd - Lowe's Marketplace
9 a.m. until sold out

Pies Cakes Breads
Lots of Goodies Cookies
Shop Early for Best Selections!

HAPPY THANKSGIVING

We will close at 2 p.m. on Wednesday, November 22nd and will remain closed through Sunday, November 26th, for the Thanksgiving Holidays.
We will re-open on Monday, November 27th.

MURMUR'S CAFE
100 S. Roland • 659-3580 • Spearman

Order your Thanksgiving Centerpiece now

from **All Occasion Flowers**

202 N. Bernice
(across from the Post Office)
659-5180

We will be closed Nov. 23-26 for Thanksgiving.

How to win friends and influence hostesses.

Teleflora's Country Charm Bouquet

A lovely bouquet in a square metal cachepot painted in the soft colors of autumn. What a perfect gift for the hostess - or anyone you want to impress. Beautiful, affordable, unique.

For nationwide hand-delivery, call or visit our shop.

Thanksgiving is Thursday, November 23rd

teleflora.

Prairie Garden Flowers
209 Main Street • Spearman, TX
659-2212 • 659-3329



Red Ribbon Week Essay Winners: (Front Row, L-R) Sharon Haney - 1st, Bond Pittman - 2nd, Lizet Camacho - 3rd (not pictured) (Back Row, L-R) Honorable Mention - Kegan Garnett, Jose Anaya, Natalie Quintero. The theme for the essay contest was: "What responsibility do you, as a high school student, have in setting a good example for younger students in the community by not abusing drugs and alcohol?"

First Monday Trade Days
Canton, Texas
Oldest & Largest in the USA!

Open Thursday - Sunday before the FIRST MONDAY of every month
Sunup 'til Sundown, Rain or Shine. Pavilions officially open Friday.

Dec 1-4 - Dec 29-Jan 1 - Feb 2-4

Over 7000 Vendors! An Adventure As Big- Free Admission
200 acres open-air stands! 100+ As TEXAS! Clean Restrooms
Indoor market with A/C & Heat City of Canton RV hook-ups

"Home of the World Famous First Monday Trade Days"
P.O. Box 245 • Canton, TX 75103-0245 • 903-567-6556
www.firstmondaycanton.com • cityhall@vzinet.com

TEXAS ROUND-UP FIT TEXAN CHALLENGE

Have you made healthy changes in your life? Are you ready to start? Submit your personal health improvement story and receive a chance to BECOME THE TEXAS ROUND-UP 2007 FIT TEXAN

For complete contest details and to submit your story, visit www.texasroundup.org

Enter to Win a VIP Weekend!

STOP LEG CRAMPS BEFORE THEY STOP YOU.

Calcet's triple calcium formula is designed to help stop low calcium leg cramps. Just ask your pharmacist.

Mission
CAL-06901 Rev 06/06/06 © 2006 Mission Pharmaceutical Company. All rights reserved.

Daniel Boone Log Home Auction
Austin, TX • Sat, Dec. 9th

26 New Log Home Packages to be auctioned.
Take delivery up to one year.
Package includes sub-floor, logs, windows, doors, rafters, roofing, etc.

Daniel Boone Log Homes

For More Info. Call 1-800-766-9474

NO CREDIT CARD REQUIRED!

250+ CHANNELS!
STARTS \$39.99
OR, Dish Network
Lowest Price Ever!

DIRECTV \$19.99 / month!
FREE 1-4 ROOM SYSTEM!
FREE INSTALLATION!
FREE MOVIE CHANNELS!
FREE DVR OR HD RECEIVER!

Call Now 1-800-574-1938

YOUR ROAD TO A NEW CAREER!

- Paid CDL Training!
- No Experience Needed!
- Earn \$40 - \$75K Yearly!

Stevens Transport offers the best comprehensive training program for new drivers! Get your career rolling and enjoy exceptional earnings and great benefits from the #1 premier transportation carrier!

Stevens Transport
For more information, call **800-333-8595**
www.stevenstransport.com

Third Annual Southwest Beef Symposium Set Jan. 16-17 in Amarillo

by Steve Byrns
Texas and New Mexico Cooperative Extension agencies will present the third annual "Southwest Beef Symposium" on Jan. 16-17 at the Fifth Season Inn in Amarillo.

Dr. Bruce Carpenter, Texas Cooperative Extension livestock specialist at Fort Stockton, said the symposium is tailored for Southwest beef producers. The event centers around three educational sessions and a trade show.

"The first session will target critical success factors in ranching and beef production," Carpenter said. "Key leaders in the beef industry will speak on aligning visions and goals, cow type and the environ-

ment, reproductive management, and how they've created flexibility in their own Southwestern range operations.

"The second session on day two will address current issues affecting the industry, including the impacts and opportunities from ethanol production, source verified markets, the occurrence and management of trichomoniasis, and a new way to pregnancy test ruminants."

The final session will look into beef market trends from the consumer, producer and packers' viewpoints, Carpenter said. Meat processors and retailers will discuss consumer trends, and buyers will speak on some of the chal-

lenges and opportunities producers will face when placing feeder cattle into verified source programs. Current trends in packer cow marketing will also be discussed.

Individual registration is \$50 by Jan. 5 and \$60 thereafter. The fee includes a prime rib dinner at the River Breaks Ranch, lunch, refreshments and a printed proceedings.

For more information call Carpenter at 432-336-8585 or Clay Mathis at New Mexico State University at 505-646-8022. A schedule of events and speaker information, as well as registration materials and lodging information can be found at: <http://cahe.nmsu.edu/ces/swbeef>.

Environmental Quality Incentive Program Signup

The Natural Resources Conservation Service has set the signup deadline for the 2007 Environmental Quality Incentive Program (EQIP). The application deadline for the 2007 program year is December 15, 2006. Applications from individual landowners interested in participating in the EQIP during the 2007 program year received before December 15th will be ranked for program eligibility. Applications received after that deadline, as part of the EQIP continuous program sign-up provisions, will be held until the 2008 program year ranking period.

Private landowners should be aware that EQIP provides technical, educational, and financial assistance to eligible farmers and ranchers to address soil, water and related natural resource concerns on their lands in an environmentally beneficial and cost-effective manner. EQIP is a voluntary program and is designed to assist

farmers and ranchers with placing natural resource conservation practices on their property. Cost share is provided to program participants to achieve the goals of a conservation plan designed with the assistance of local NRCS staff. Cost share practices include placement of appropriate structural or vegetative practices, such as animal waste management facilities, irrigation management equipment, vegetative buffers and wildlife habitat enhancement, to name a few. Eligible practices will depend on the location of the farm or ranch on which the practice is to be installed and the major resource concern to be addressed in that particular area. Information on eligible cost share practices and major resource concerns of an area can be secured from your local NRCS field office.

To learn more about EQIP or to submit an EQIP contract application, contact the NRCS at 909 West 9th in Spearman, or call 659-2330 extension 3.

The United States Department of Agriculture (USDA) prohibits discrimination in its programs on the basis of race, color, national origin, age, disability, and where applicable, sex, marital status, familial status, parental status, religious, sexual orientation, genetic information, political beliefs, reprisal, or because of all or part of an individual's income as derived from any public assistance program. (Not all prohibited bases apply to all programs.) Persons with disabilities who require alternative means for communication of program information (Braille, large print, audiotape, etc.) should contact USDA's TARGET Center at (202) 720-2600 (voice and TDD). To file a complaint of discrimination, write to USDA, Director, Office of Civil Rights, 1400 Independence Avenue, S.W., Washington, D.C. 20250-9410 or call 1-800-795-3272 (voice) or (202) 795-6382 (TDD). USDA is an equal opportunity provider and employer.

Panhandle Farm, Ranch Management Symposium Set Nov. 30

by Kay Ledbetter
The 22nd annual Panhandle Farm and Ranch Management Symposium will be Nov. 30, said a Texas Cooperative Extension agent. The event will be in conjunction with the Amarillo Farm and Ranch Show in the Grand Plaza.

Registration for the symposium will begin at 8 a.m., and the program will start at 8:30 a.m. Dr. Brent Bean, Extension agronomist, will speak on weed identification, said Leon Church, Extension agricultural agent in Potter County and

moderator for the event.

The Amarillo Farm and Ranch Show is scheduled for Nov. 28-30, with exhibits open from 9 a.m. to 5 p.m. on Nov. 28-29, and 9 a.m. to 4 p.m. on Nov. 30.

Other topics at the symposium are:

- Drift management, sprayer tips and calibrations, Don Leslie, representative of TeeJet Agricultural Spray Products, Sioux Falls, S.D.
- Chemical modes of action, Jack Lyon, retail account manager for DuPont.

- Alternative fuels/energy, Dr. Steve Amosson, Extension agricultural economist, Amarillo.
- Pesticide laws and regulations, Levon Harmon, Texas Department of Agriculture.

Three pesticide license continuing education credits and three certified crop advisor credits will be offered. One in integrated pest management, one in laws and regulations and one in drift, Church said.

For more information, contact Church at 806-373-0713.

Warm Up Your Holidays

With Cable TV from PTCI!

New subscribers:
Get Cinemax, HBO, Showtime,
and The Movie Channel FREE
for One Month!

PTCI
Bringing Your World...Home.
1-800-562-2556 721 W. 7th
www.ptci.net

Offer good Nov 13-Dec 29, 2006. Some restrictions apply.

FREE PORTRAIT
of you and your entire family!

Just another benefit!

FIRST STATE BANK invites you to take advantage of this special offer. Let us help to make it a memorable event with a FREE professional 8x10 color portrait of you and your entire family, no cost or obligation.

Call early to set up your portrait sitting - AN APPOINTMENT IS NECESSARY. Additional finished portraits will be available from the portrait company in 3 to 4 weeks after your sitting at SPECIAL LOW PRICES!

First State Bank
1 NE Court Place • Spearman • (806) 659-5565
Tuesday, November 21st • 3-8 p.m.

Are You A Victim of Domestic Violence, Sexual Abuse or Physical, Emotional or Sexual Assault?

Call Toll Free Hotline
1-800-753-5308

We can see individuals from Hansford County anytime upon request. Call 435-5008 or 1-800-753-5308 to set up an appointment in Hansford County. We operate a safe place for victims and their children to stay in times of crisis.

Battering Intervention & Anger Management Available

Panhandle Crisis Center
Serving Hansford, Lipscomb & Ochiltree Counties
301 S. Ash • Perryton, TX
Memorials Accepted

Don't Wait Another Minute!

Sign up for new local phone service and get a cordless phone absolutely **FREE!**

Offer good Nov. 13 - Dec. 29, 2006

721 W. 7th
Spearman
1-800-562-2556

www.ptci.net

PTCI
Bringing Your World...Home.

BASKETBALL Gruver Greyhounds

DATE	OPPONENT	JVG	JVB	VG	VB
Nov 17	Booker	5:00		6:30	
Nov 21	@ Panhandle	5:00		6:30	
Nov 28	West Texas	4:00	5:15	6:30	8:00
Nov 30-Dec 2	Fritch Tourney			TBA	TBA
	Gruver J.V. Tourney	TBA	TBA		

DATE	OPPONENT	7G	8G	7B	8B
Nov 20	Sunray	5:00	6:15	5:00	6:15
Nov 27	Boys - home, Girls - there @ Vega	4:00	6:00	5:00	7:00

Spearman Lynx

DATE	OPPONENT	JVG	JVB	VG	VB
Nov 16-18	Canadian JV Tourn	TBA			
Nov 21	River Road	6:30	5:00	8:00	5:00
Nov 28	Texhoma, OK	6:30	5:00	8:00	5:00
Nov 30 - Dec 2	Miami Varsity Tourn			TBA	TBA
Nov 30 - Dec 2	Gruver JV Tourn	TBA	TBA		

DATE	OPPONENT	7	8	9
Nov 16	Canadian (G-H, B-T)	5:00	6:00	7:30
Nov 20	West Texas (G-T, B-H)	5:00	6:00	7:30
Nov 27	Fritch (G-H, B-T)	5:00	6:00	7:30

Gruver Greyhounds

Gruver 25, Booker 16

The Greyhounds blanked the Kiowas 12-0 in the second half Friday, finishing the regular season with a victory and first round bye in the Class 1A playoffs.

Chandler Miner scored two touchdowns in the fourth quarter for Gruver (4-6 overall and 3-2 in District 1-1A), and the defense did the rest.

Booker (4-6, 0-5) did not top 100 yards of offense in the air or on the ground, finishing with 168 yards of total offense.

Miner had 81 yards on 12 carries for Gruver. Diego Luciano had 71 yards on 15 carries and a touchdown.

A MESSAGE FROM COACH FELDERHOFF

We are very proud of how much the boys have improved this year since the beginning of the season. They have shown great heart and desire and have finally realized a dream of playing in the playoffs.

We have a 1st round bye. Wheeler and Nazareth play each other on November 17th at 7:30 in Panhandle. Then we will play the

winner of that game the following week.

Thanks to all those that have come out and supported the boys this season, and especially those that have been there every week.

SCORE BY QUARTERS

	1	2	3	4	Final
Booker	0	16	0	16	
Gruver	7	6	0	12	25

SCORING

G-Diego Luciano 1 run (Baldo Garcia kick)
B-Sergio Padilla 34 FG
G-Chandler Miner 37 pass from Luciano (kick failed)
B-Sam Camacho 7 run (kick failed)
B-Camacho 5 run (Padilla kick)
G-Miner 2 run (kick failed)
G-Miner 7 run (kick failed)

STATISTICS

	BK	GG
First Downs	10	24
Rushing Yards	97	206
Passing Yards	71	97
Total Yards	168	303
Comp-Att-INT	5-17-2	9-16-1
Punts-Avg.	6-34	4-36
Fumbles-Lost	1-0	3-2
Penalties-Yards	7-60	3-20

Spearman Lynx

Panhandle 23, Spearman 20

Panhandle came in needing a win to advance to the playoffs. The Panthers got what they needed, holding off Spearman to clinch the third playoff berth from District 1-2A.

Panhandle (8-2 overall, 3-2 in 1-2A) got two touchdowns from J.W. Benevides, who ran for 67 yards on 10 carries.

The Panthers will take on Muleshoe at 6 p.m. Friday at Dick Bivins Stadium in a Class 2A bidistrict playoff.

The Panther defense capitalized on pressure, sacking Spearman quarterback Jordan Ashmore five times and getting a safety.

Spearman (5-5, 2-3) scored first when Collin Gillaspie ran in from 2 yards out. Roberto Flores led the Lynx with 143 rushing yards and scored on a 5-yard run in the third quarter. Flores added a 28-yard touchdown reception from Ashmore in the fourth quarter.

SCORE BY QUARTERS

	1	2	3	4	Final
Spearman	6	0	8	6	20
Panhandle	0	7	16	0	23

SCORING

S - Collin Gillaspie 2 run (kick failed)
P - Caleb Fields 2 pass from Austin Sherwood (Jonathan Offringa kick)
P - Safety
P - J.W. Benevides 8 run (Offringa kick)

S - Roberto Flores 5 run (Pass from Gillaspie to Zack Nollner)

P - Benevides 12 run (Offringa kick)

S - Flores 28 pass from Jordan Ashmore (kick blocked)

STATISTICS

	SL	PP
First Downs	16	14
Rushing Yards	134	199
Passing Yards	53	62
Total Yards	187	261
Comp-Att-INT	6-20-3	7-13-0
Punts-Avg.	2-31.5	4-30.8
Fumbles-Lost	4-0	6-4
Penalties-Yards	3-20	9-70

PLAYERS OF THE WEEK

SPEARMAN VS. PANHANDLE

OFFENSE: Roberto Flores, 145-pound senior tailback - rushed 26 times for 137 yards and 1 touchdown, caught 5 passes for 48 yards and 1 touchdown; Rhett Renner - 246-pound senior guard - graded 90% on film grade

DEFENSE: Cesar Macias, 204-pound senior noseguard - had 8 tackles, recovered 1 fumble

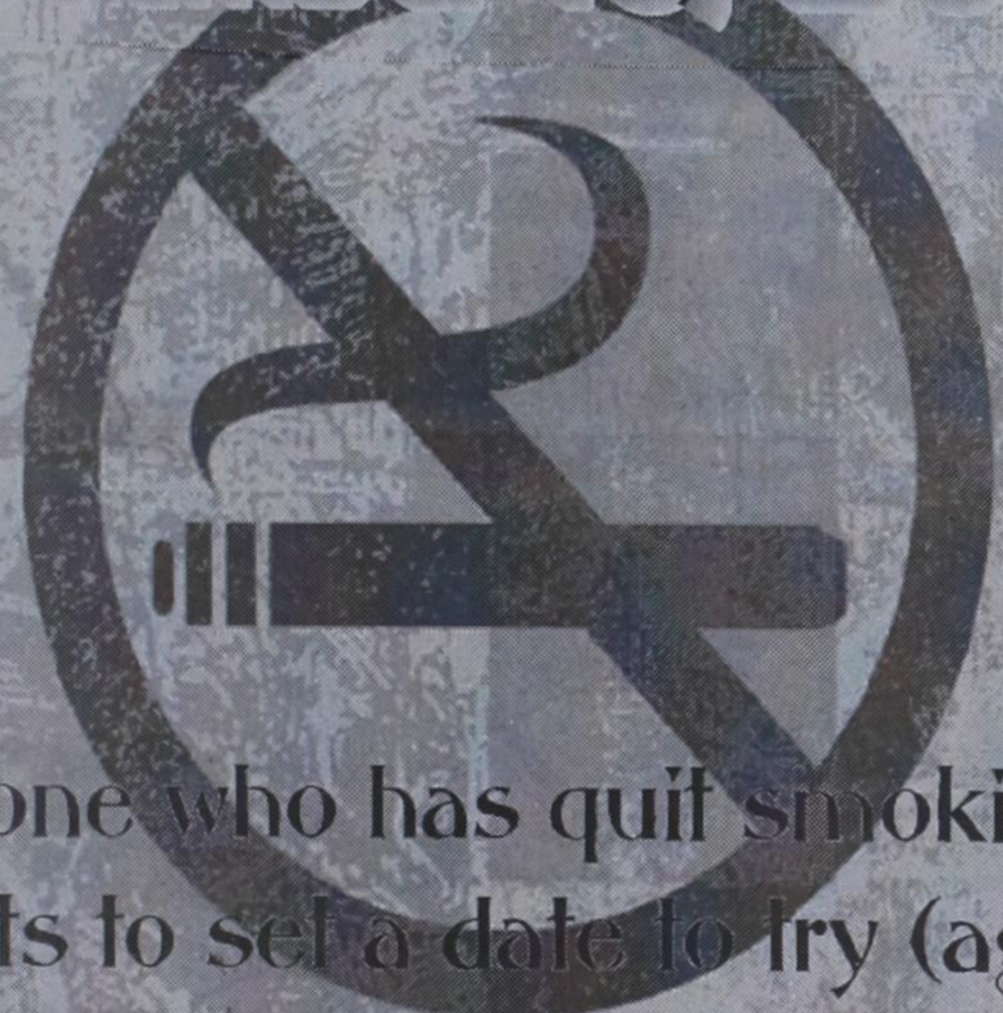
PLAYERS OF THE WEEK

SPEARMAN VS. FRITCH

OFFENSE: Lance Huddleston, 204-pound senior tight end - caught one pass for 14, graded 82% on film grade

DEFENSE: Zack Nollner, 165-pound senior linebacker - had 6 unassisted tackles, 11 assisted tackles, forced 1 fumble, recovered 1 fumble; Nic Cenicerros, 176-pound senior end - had 3 unassisted tackles, 3 assisted tackles

The Great American SmokeOut November 16, 2006



Anyone who has quit smoking or wants to set a date to try (again) is invited to sign our poster at the front door of the Hospital.



NEW
at

SIMPLE SIMON'S PIZZA®

Burrito Pizza!

Refried Beans • Mazzarella
Cheddar Cheese • Salsa

SIMPLE SIMON'S PIZZA®
312 Main Street • Spearman, TX
(806) 659-9991

Small - \$7.99
Medium - \$9.99
Large - \$11.99
Jumbo - \$15.99

Monday-Thursday - 11:30 a.m. - 9 p.m.
Friday - 11:30 a.m. - 10:30 p.m.
Saturday - 12 noon - 10:30 p.m.
Sunday - 12 noon - 9 p.m.

821 S. Amherst
Perryton, Texas
1-800-521-0831
(806) 435-2320

Eat & Be Merry At

MONEY'S

BBQ & STEAK HOUSE

Hotline for Friday & Saturday Nights - 435-3945

We offer Priority Seating!
Give us a call before leaving, and we will save you a place in the seating line.
When you arrive, check in with the hostess.

New Menu (10 new items)
Wed. Night - All-You-Can-Eat Catfish

14 SE 3rd Ave. Perryton, TX

Hansford County FSB Community Supporter

CHRISTMAS CASH LOANS

Up To \$500

"INTEREST FREE"

UP TO 12 MONTHS FOR REPAYMENT*

Proceeds issued in the form of First State Bank Christmas Cash Certificates. Redeemable at participating Hansford County Merchants. Last day for loan is December 22, 2006.

Support Your
Home-Town Community
Shop at Home

FSB

First State Bank
One NE Court - Spearman
(806) 659-5565

Call or stop by for details

*\$500 at 0% APR, 11 monthly payments of \$41.66 and one payment of \$41.74, with approved credit

Member FDIC

REAL ESTATE FOR SALE

FOR SALE: 416 Haney, Spearman - 4BR, 2B, CH & A, new carpet, new paint, close to school, Call 330-0364
TFN(06-08-06)B

FOR SALE: 1115 S. Bernice, Spearman - Nice brick, 3BR, 2B home; fenced back yard, central heat/air, 2CG, large shop in back, new sprinkler system. Call (806) 352-3452 or (806) 259-2614.
REDUCED PRICE!
TFN(7-06-06)B

FOR SALE: 723 Townsend, Spearman: 3BR, 2B, 2 living areas, fireplace, central H/A, finished basement, 2CG, fenced back yard, corner lot. Call (806) 659-3611 for information/appointment.
5(11-09-06)P

FOR SALE: 301 Cluck, Gruver: 2BR, 2B brick home on corner lot w/2BR rent house. Call 733-2602 or 736-0576.
6(11-02-06)B

FOR RENT/LEASE

FOR LEASE: 729 Acres of Land in Ochiltree County - taking offers - dryland or irrigated, section 23, west Ochiltree County. Call 903-725-6733, Howard Swink.
TFN(9-28-06)B

OFFICE SPACE FOR RENT, SPEARMAN: Pittman-Shieldknight building - all sizes available. Call 659-5588 or 659-3399 for more information.
TFN(01-27-05)B

FOR RENT: Three Bedroom Apartment, \$450.00 month, \$300.00 deposit, Water Paid, No Pets. 659-9971. Will be available Sept. 15th.
TFN(7-06-06)B

EMPLOYMENT

HELP WANTED: Watley Seed Co. is now hiring. Call 659-3838.
4(11-16-06)B

HELP WANTED: Taking applications for a part-time church nursery worker. Sunday morning and other various times. Fun job, good pay. Please call 659-5503 or come by 407 S. Haney for information/application.
TFN(8-17-06)B

HELP WANTED: Pen rider, feedmill personnel, general maintenance and cattle processors needed. Apply in person at Dean Cluck Feedyard, 105 Dean Cluck Ave., Gruver.
TFN(09-07-06)B

HELP WANTED: We are taking applications for 2 openings on the yard maintenance crew. We are also taking applications for 1 feedtruck driving position. Apply in person at Hansford County Feeders, 15 miles northwest of Spearman.
3(11-02-06)B

DRIVERS: Top quality drivers for long-haul livestock. Join us and enjoy cow trucking like it was meant to be! Jerry - 800-445-9133.
2(11-09-06)P

HELP WANTED: USA Feedyard in Gruver is now accepting applications for a semi-truck driver. Must have CDL. Good pay, benefits, home nightly. Come by or call (806) 733-5043.
1(11-16-06)B

HELP WANTED: Registered Nurse needed for full-time position as Children First Nurse. Travel will be required. Contact Shawn Logan at 800-687-2626 for an application at the Texas County Health Department, 1410 N. East Street, Guyton, OK. EEO
1(11-16-06)B

HELP WANTED: Nurses Unlimited, Inc. needs attendants to assist with personal care, meal preparation and light housekeeping, part-time, in the Gruver area. Call Mon.-Thurs., 8 a.m.-5 p.m. or Fri., 8 a.m.-12 noon - 888-859-0631.
2(11-16-06)B

HELP WANTED: Auto technician needed at Hi-Plains Auto Supply. Must have own tools. Contact Jimmy Snider or Rob Shields at 118 Main St., Spearman, 659-2506.
TFN(11-16-06)B

SERVICES

FALL IS IN THE AIR! Don't let this winter's monthly heating cost be higher than your house payment. We do home insulation! Be more efficient. Get insulation and keep money in YOUR pocket! Call Circle E Heating & Air today at 659-3576.
TFN(10-26-06)B

CARPENTRY/HANDYMAN WORK: Small jobs, big jobs - roofing, concrete, portable buildings, remodeling, additions, painting, trim. No job too small! Jeff Owen (Waka) 434-2901. References available.
8(10-26-06)4P4B

FOR SALE

FOR SALE: 535 JD Round Bailer; 430 JD Round Bailer; 2 premier R23 twin hydraulic hay rakes. Call 806-748-5000.
4(11-02-06)B

PUBLIC NOTICE

PUBLIC NOTICE
As required by "NO Child Left Behind Act" and the United States Department of Education, this notice is to inform the public that Spearman ISD has met the required 100% Highly Qualified Teacher goal for the 2005-2006 school year. Any questions, please contact SISD, 403 E. 11th Avenue, Spearman TX 79081, or call (806) 659-3233.
1(11-16-06)B

Blankenship Real Estate
659-3052 - 670-3774

NEW LISTING - 3/2/1 brick home - central h/a, hardwood floors, large back yard with storage building. Low maintenance. Great location!
NEW LISTING - 3BR, multi-bath, 2 living areas, fireplace, central H/A, finished basement and workshop on two lots.
Crawford Addition - 3/2/2 with fireplace and storm cellar on large lot. Nice home! **PRICE REDUCED!**
Crawford Addition - 3/2 oversized detached 2-car garage, stormshelter!
2165 sq. ft. Country Home with basement, barn & corral on 6.50 ac. Lots of extras! **PRICE REDUCED!**
Eulalia Blankenship - Sales
Eschol Blankenship - Broker
NEW LISTINGS WANTED!

Real Estate & Rental
HOME OF THE WEEK



Spearman Property
EX- 504 Roland - 3BR, 2B, storm shelter, stg bldg.
623 Brandt - 2BR, 2B, carport, also 2BR, 1B house

Country Property
11802 FM 759 - 13 miles East of Spearman - 3BR, 1B, 2CG, 10+ acres

Gruver Property
EX-505 King - 3BR, 1 3/4 B, carport, newly remodeled
813 Richardson - 2BR, 1B - BIG REDUCTION!
806 Richardson - 2BR, 1B, 5 lots
802 Womble - 2-3BR, carport, corner lot
602 Womble - 3BR, 1/2B & 1/2B, 1CG
House for Rent in Gruver - 2BR, 1B - no pets

Real Estate & Rental for all your real estate needs!
Melinda McCullough, Realtor
(806) 733-5678

Are You A Victim of Domestic Violence or Sexual Abuse?
The Panhandle Crisis Center Can Help
Call Toll Free - Hotline
1-800-753-5308
301 S. Ash - Perryton
435-5008
Battering Intervention & Anger Management Available
Memorials Accepted

hchd
Hansford County Hospital District
Positions Opened at Hansford Manor
Nurse Aide Certification classes to start at Hansford Manor - application's needed.
LVN's needed. Long Term Care experience preferred.
RN position needed for weekends.
Good benefits package including: Retirement, Vacations/Holidays, Sick Leave, Health Insurance. Contact Lelia Bynum, DON, 806-659-5850 or apply at 707 S. Roland, Spearman, TX. Equal Employment Opportunity Employer
Download application at www.hchd.net
2(11-16-06)B

MARTIN & ASSOCIATES REALTY
Serving Hansford County for 14 years
Julie Martin: Broker - 659-2425
IN SPEARMAN
722 Wilbanks - 3/1/1 - nice home in nice neighborhood and close to move into. Free-standing fireplace.
1109 Haney - 3/1/1 - **SOLD** - rent property
701 Wilmeth - 5/2 - **SOLD** - beautiful corner lot
We'd Like Your Listing FOR QUALITY & SERVICE CALL US TODAY!
Equal Housing Opportunity

Transport Drivers Needed
We want you to haul C)2 for us!!!
Welcome
Offering Sign On Bonus
Reliant Transportation is an established company looking for good qualified drivers for day and night driving positions and who are willing to work with the following benefits:
• Scheduled Days Off
• Home most nights
• High position higher rate
• Local Hauling
• Nice Equipment
• Medical Insurance Benefits
• 401k Plan
• Scheduled Paid Vacation
• No 24-Hour On-Call
If you have a clean driving record, current Class A CDL with Hazmat/Tanker endorsement and 2 years driving experience, we would like to hear from you. All applicants must be able to pass drug/alcohol testing and a background check will be performed.
Please call 888-339-0599 for more information.

Are You A Victim of Domestic Violence, Sexual Abuse or Physical, Emotional or Sexual Assault?
Call Toll Free Hotline 1-800-753-5308
We can see individuals from Hansford County anytime upon request. Call 435-5008 or 1-800-753-5308 to set up an appointment in Hansford County. We operate a safe place for victims and their children to stay in times of crisis.
Battering Intervention & Anger Management Available
Panhandle Crisis Center
Serving Hansford, Lipscomb & Ochiltree Counties
301 S. Ash - Perryton, TX
Memorials Accepted

Eat & Be Merry At
MONKEY'S
BBQ & STEAK HOUSE
Hotline for Friday & Saturday Nights - 435-3945
We offer Priority Seating! Give us a call before leaving, and we will save you a place in the seating line. When you arrive, check in with the hostess.
New Menu (10 new items)
Wed. Night - All-You-Can-Eat Catfish
We Are THPLC-2-B
14 SE 3rd Ave. Perryton, TX

See us for:
AUTO • HOME • CROP HAIL • FARM & RANCH • MULTIPERIL • LIVESTOCK
INSURANCE
BORT AGENCY, INC.
510 Main St. • Gruver, TX
(806) 733-2456

5	8	3	7	1	4	6	2	9
2	9	6	3	8	5	1	4	7
4	1	7	2	9	6	3	8	5
6	3	4	1	5	2	7	9	8
7	2	9	4	6	8	5	3	1
8	5	1	9	7	3	4	6	2
9	6	2	5	4	7	8	1	3
1	7	8	6	3	9	2	5	4
3	4	5	8	2	1	9	7	6

O	T	I	S	C	P	A	F	I	N								
V	O	I	T	P	R	O	P	C	O	C	O	A					
U	G	L	I	R	O	S	E	H	O	A	R	D					
M	A	Y	F	L	O	W	E	R	A	T	O	M					
L	I	N	D	Y	F	I	B										
A	R	R	E	S	T	S	E	R	A	P	E	S					
D	E	F	L	O	W	B	O	Y	L	O	L	A					
I	R	A	T	E	O	I	L	A	L	I	G	N					
E	A	C	H	W	O	O	D	E	N	L	I	T					
U	N	T	U	N	E	D											
R	A	T	S	T	O	M	A										
D	O	S	S	T	U	R	K	E	Y	D	A	Y					
P	A	N	D	A	A	G	U	E									
I	D	E	A	L		L	A	M	S		S	E	E	N			
E	A	S				A	R	P						E	W	E	S



The Bunkhouse Restaurant
Spearman's place for steak!
Steaks, Salads & Sandwiches • Prime Rib by reservation

Daily Lunch Buffet
Tues.-Fri., 11:00 a.m. to 1:30 p.m.
Tuesday - TexMex; Wednesday - Baked Potato Bar;
Thursday - Home-Cooking; Friday - Fried Chicken
Sunday Lunch Buffet - 11:30 a.m. to 1:30 p.m.
Lunch menu available Tuesday-Saturday

The Bunkhouse Restaurant
212 Main Street • Spearman • (806) 659-2089
Hours: Tues.-Thurs. 11 a.m.-8 p.m.;
Fri. & Sat. 11 a.m.-9 p.m.; Sun 11 a.m.-2 p.m.; Mon. Closed



TEXAS STATEWIDE CLASSIFIED ADVERTISING NETWORK
TexSCAN

TexSCAN Week of November 19, 2006
AUCTIONS
DANIEL BOONE LOG HOME Auction. Austin, TX - Saturday, December 9th. 26 new log home packages to be auctioned. Take delivery up to one year. Package includes: sub-floors, logs, windows, doors, rafters, roofing, etc. Call 1-800-766-9474.
AUTOS WANTED
DONATE YOUR CAR to the original 1-800-Charity Cars! Full retail value deduction if we provide your car to a struggling family. Call 1-800-CHARITY (1-800-242-7489) www.800CharityCars.org.
BUSINESS OPPORTUNITIES
ALL CASH CANDY Route. Do you earn \$800 in a day? Your own local candy route. 30 machines and candy. All for \$9,995. 1-888-625-5481. Multi Vend, LLC.
BECOME AN INDEPENDENT Home inspector for Fidelity National Field Services, Inc. in the mortgage field services industry. Make your own hours. Work full-time or part-time. Perform occupancy checks and exterior property condition reports on residential properties. Certification and experience not required. Training provided. Requirements: reliable transportation, computer access with internet and E-mail, digital camera, phone/fax, general liability/E&O insurance, excellent organization, time management and personal communication skills. For more information: www.fndfs.com or phone: 1-800-767-8674, ext. 5020. Field services.rep.network@fnf.com.
DRIVERS
ACT NOW! EARLY CHRISTMAS bonus. \$1000- weekly. 36¢- 43¢/gpm/\$1.20 pm. 50 lease, new trucks, CDL-A + 3 months OTR. 1-800-635-8669. Melton Truck Lines.
CDL-A DRIVERS: Expanding Fleet offering Regional/OTR runs. Outstanding pay package, excellent benefits, generous hometime, lease purchase on '07 Peterbilts. National Carriers, 1-888-707-7729. www.nationalcarriers.com
CDL-A DRIVERS- New positions available in your area! New equipment, excellent benefits, new pay package, food grade tanker. Call Oakley at 1-877-882-6537. Get a new start at a great company!

DRIVER CDI-A TRAINING with \$0 down, financing by Central Refrigerated. Drive for Central and earn up to \$40K plus first year! 1-800-727-5865, Ext. 4314. www.centraldrivingjobs.net.
DRIVER: TAKE CARE OF your family. Join ours. Consistent miles, regional and dedicated runs. Company paid Commercial Drivers License training. www.SwiftTruckingJobs.com 1-866-205-9881.
DRIVER- YOUR CHOICE: Temp control, team expedited, (\$5K sign-on bonus), dedicated (guaranteed miles), regional (home weekly), Solos, teams, CDL-A grads, L/P, O/Os. Covenant Transport, 1-866-684-2519, EOE.
DRIVERS - \$\$ HOLIDAY CASH \$\$ Sign-on bonus. Only six month obligation, 1 yr. OTR. Class A-CDL. Terms and conditions apply. FFE, 1-800-569-9232.
FOR SALE
WOLFF TANNING BEDS. Buy direct and save! Full body units from \$22 a month. FREE color catalog. Call today! 1-800-842-1305. www.wp.etscan.com
HELP WANTED
GROUND FLOOR OPPORTUNITY! - Green-R-Power wind, solar systems requires ambitious local distributor. Protected territory, wholesale prices, expanding market. Innovative products. Explosive earning potential. Details 1-877-693-7050.
MISCELLANEOUS
AIRLINES ARE HIRING - Train for high paying aviation maintenance career. FAA approved program. Financial aid if qualify - job placement assistance. Call Aviation Institute of Maintenance, 1-888-349-5387.
ATTEND COLLEGE ONLINE from home. Medical, Business, Paralegal, Computers, Criminal Justice. Job placement assistance. Computer provided. Financial aid if qualified. 1-866-858-2121. www.OnlineTidewaterTech.com
\$22,000-LOVE PREGNANCY ? Become a Surrogate! Make dreams come true. Carry someone else's baby who can't without help. Professional agency to support your journey. www.SurrogateWeb.com.
MOBILE HOMES FOR SALE
OWNER IN JAIL- Make up 3 back payments on manufactured home. Call for details. Many extras. Call LUV Homes. 1-800-934-9644. RBl# 05190.

ZERO DOWN IF YOU own your land. Build your own home! Karstin, Clayton, LUV Homes-Tape and Texture models. We finance. LUV Homes, 1-800-934-9644, RBl# 03190.
PET SUPPLIES
CONTROL HOOK, ROUND, and tapeworms. Rotate Happy Jack's tapeworm tablets with Liquid at Tractor Supply Stores.
REAL ESTATE-LAND FOR SALE
100 ACRES-\$39,900. 1st time offered. Perfect for hunting retreat. Big buck area, plus turkey, dove, quail and more. Very private w/EZ access. Financing available. Texas Land & Ranches. 1-866-899-5263.
AFFORDABLE HILL COUNTRY land. Native, exotic game, hogs, owner terms or Texas Vet financing. 1-800-876-9720. www.ranchenterprisesltd.com.
BEACH FRONT LAND \$199,000. Opportunity of a lifetime. Build a beach house or hold for investment. Crystal Beach, Texas. 1-877-983-6600.
DEL RIO/BIG BEND AREA: 169 acres of desert hunting land, \$235/acre, \$2000 down, \$392 monthly/ 20 year note. 1-830-885-4578. www.ranchenterprisesltd.com.
MASTER PLANNED OCEAN FRONT Community, homes starting mid-\$300K, Gulf front lots \$595K, on beautiful Mustang Island, near Corpus Christi. www.cinnamondshore.com, 1-866-551-0147.
STEAL MY LAND. 2 acres with private boat dock on 44.752 acre lake. Central water, paved streets, electricity. Steal it today. \$44,900. Call Texas Land & Lakes, 1-888-773-5253.
WHY LEASE WHEN YOU can own? Hunting ranch. 100 acres-\$399 per acre. Trophy deer habitat. Good hwy access, rolling hills, good brush, rock outcroppings, EZ terms. Texas Land & Ranches, 1-877-542-6642.

Run Your Ad In TexSCAN!
Statewide Ad..... \$450
299 Newspapers, 1 Million+ Circulation
North Region Only..... \$195
100 Newspapers, 320,814 Circulation
South Region Only..... \$195
99 Newspapers, 449,964 Circulation
West Region Only..... \$195
100 Newspapers, 246,648 Circulation
To Order: Call This Newspaper direct, or call Texas Press Service at 1-800-749-4793 Today!

PUBLIC NOTICE

THURSDAY

PUBLIC

DISPOSAL

PUBLIC DISPOSAL

Perryton Furniture has made the Decision to conduct a Certified Public Disposal. All Must Go! We Will Offer Our Entire Inventory to the Public or Dealers at Whatever it will bring. ALL GOES

ALL MUST GO!

ALL MUST GO IMMEDIATELY

Perryton Furniture is preparing for 10 hours of Public Disposal of their entire Inventory, Every Piece of Furniture and Every set of Bedding must be sold immediately. ALL GOES! Wall to Wall! Prices far below what you would expect to pay. Bring your trucks and trailers and haul away the Bargains. Thursday 9 AM - 7 PM

BE EARLY! HURRY! SAVE! TWIN MATTRESS AND FOUNDATION \$98 BE EARLY	GREAT BUY! \$1799⁹⁵ 5 PIECE CHERRY DINETTE \$488 ONE TO SELL	GREAT SELECTION! HURRY! SAVE! LAMPS \$38 FEW TO SELL
---	--	--

ORDERED
SOLD THURSDAY
9am - 7pm
FINANCING AVAILABLE

SAVE QUEEN MATTRESS AND FOUNDATION \$238 WHILE THEY LAST	GREAT VALUE! \$599 VALUE LA Z BOY RECLINERS \$388 LA Z BOY	BE EARLY! \$349 VALUE QUEEN HEADBOARD \$167 SOLID WOOD
---	--	--

AFTER MANY YEARS

Prices have been slashed! Everything is priced to sell on sight. Cost has been completely forgotten. You'll want to be early and you'll want to brave the crowds Thursday in order to get your share while selection is at its best. Be near the doors when they open Thursday morning. Convenient terms available with little or no money down or use your VISA, Mastercard, or Discover.

TOTAL SELL OFF

RULES OF DISPOSAL

- All advertised items subject to prior sale
- All sold as is and all sales final
- Delivery Available
- All sold on a first come basis
- No phone orders - no prior sales
- Merchandise must be removed

BRING YOUR TRUCKS AND TRAILERS!

WHITE DAYBED \$168 WHILE THEY LAST	6 PIECE BEDROOM DRESSER & MIRROR QUEEN BED NIGHT STAND \$1,888	COMPUTER ARMOIRE \$488 ONLY ONE	\$3999 NOSTALGIC OAK 8 PIECE DINING \$1,798	CHOOSE FROM BROYHILL LA Z BOY ASHLEY RIVERSIDE SERTA	FULL SIZE MATTRESS & FOUNDATION \$148 WHILE THEY LAST
LEATHER LA Z BOY RECLINER \$698 TWO TO SELL	CURIO CABINET \$99	\$2499 5 PIECE FORMAL DINETTE \$488	ALL SERTA BEDDING DISPOSAL PRICED	QUEEN SIZE MATTRESS & FOUNDATION \$228 JUST A FEW SETS	ASHLEY MICROSUDE SOFA \$497 MATCHING LOVESEAT AVAILABLE
"BE EARLY" COCKTAIL AND 2 ENDS \$198 CONTEMPORARY	MAHOGANY GRANDFATHER CLOCK \$1,788	\$3167 VALUE LEATHER SECTIONAL \$1,888 WITH RECLINER	TWIN SIZE CAPTAINS BED W/STORAGE \$398	OAK & WHITE TABLE & 6 CHAIRS \$743 ONLY ONE	ASHLEY MICROSUDE SOFA \$497 MATCHING LOVESEAT AVAILABLE
ALL REMAINING ACCESSORIES DISPOSAL PRICED	QUEEN SIZE MEMORY FOAM BED \$699	COUNTRY OAK TV STAND \$298 QUANTITY LIMITED	TWIN SIZE SLEEPER SOFA \$588	FULL SIZE MATTRESS & FOUNDATION \$148 ONLY TWO	RIVERSIDE OAK TV ARMOIRE \$488 ONLY ONE
ODD BARSTOOLS \$68 WHILE THEY LAST	BEST LEATHER LIKE RECLINER \$488	ASHLEY SOFA & LOVESEAT \$798			

PERRYTON FURNITURE

206 S. MAIN
PERRYTON, TX

12 MOS SAME AS CASH O.A.C.

FINANCING AVAILABLE W.A.C.



Great American Smokeout

As America celebrates the 30th anniversary of the American Cancer Society's Great American Smokeout® this Thursday, Nov. 16, the Society recognizes 14 Texas cities for choosing to go smoke-free. As smokers prepare to quit for a day on the Smokeout, the proliferation of public smoking laws provides an additional incentive to quit.

Most recently, the city of Houston adopted an ordinance in October making virtually all workplaces, including restaurants and bars, smoke-free. On Nov. 7, the citizens of Baytown and Abilene voted to go smoke-free. Houston, Baytown, and Abilene join 11 other Texas cities with comprehensive ordinances that elevate the importance of public health and workplace safety.

"There are 47 ordinances in Texas that have some smoke-free components, and 14 of those cities have reached the gold standard of protecting all workers," said James Gray, government relations director for the American Cancer Society in Texas. In the 14 gold standard cities, all employees in the workplace are protected from secondhand smoke, including employees in restaurants and bars.

Thirty years ago, there were no public smoking ordinances in Texas. The first ordinances to pass in the state provided separate smoking and nonsmoking areas in restaurant and workplaces and did not address bars. Now the growing trend is toward the comprehensive ordinance that treats all workplaces equally.

Smoking rates have dropped from 42 percent to 22 percent in Texas since the release of the Surgeon General's Report on Smoking in 1964. This past June, U. S. Surgeon General Richard H. Carmona released a report on the harmful effects of secondhand smoke and called on public policy makers to protect the health of workforce employees by enacting comprehensive smoke-free laws. The report concluded that there is no safe level of exposure to secondhand smoke.

"Thirty years ago, people could smoke just about anywhere," said Gray. "It was acceptable then to smoke on airplanes, at the movies, even in public schools. Now we know that secondhand smoke causes illnesses and that children and nonsmokers should be protected from the health hazards of involun-

tary smoking."

The 14 Texas cities choosing to go smoke-free include Abilene (ballot vote awaiting city council action), Austin, Baytown, Beaumont, Copperas Cove, El Paso, Fredericksburg, Houston, Laredo, Portland, Robinson, Vernon, Victoria, and Woodway. In the U.S., more than 2,300 communities and 17 states now have smoke-free laws. Ohio and Arizona also voted Nov. 7 to go smoke-free. Hawaii's state law becomes effective Nov. 16.

It is estimated that secondhand smoke causes 35,000 to 45,000 deaths each year from heart disease and 3,000 more deaths from lung cancer among nonsmokers. More than 564,000 Americans will die from cancer this year, and 30 percent of those deaths will be caused by tobacco.

In Texas, almost 11,000 people are expected to die from lung cancer in 2006. All diseases combined, tobacco-related deaths amount to about 27,000 Texans a year – or 500 Texans every week.

Reductions in smoking account for about 40 percent of the decrease in cancer death rates among men since 1991. However, lung cancer is still the leading

cause of cancer death in both men and women, claiming the lives of an estimated 162,460 Americans – including almost 11,000 Texans – this year. In the U.S., tobacco use is responsible for nearly one in five deaths, or approximately 435,000 lives, annually. About 27,000 Texans will die of tobacco-related illnesses this year – amounting to almost 500 deaths every week.

Smokers who want to quit are urged to call the American Cancer Society's Quitline®, a clinically proven, free telephone-based counseling program, at 1-800-ACS-2345, or to log on to www.cancer.org/smokeout, to embark on a personal plan to quit.

The American Cancer Society is dedicated to eliminating cancer as a major health problem by saving lives, diminishing suffering and preventing cancer through research, education, advocacy and service. Founded in 1913 and with national headquarters in Atlanta, the Society has 13 regional Divisions and local offices in 3,400 communities, involving millions of volunteers across the United States. For more information anytime, call toll free 1-800-ACS-2345 or visit www.cancer.org.



Texas Tumbleweeds collected in the vacant lot on Main Street between Spartex and Hi-Plains Auto. The tumbleweeds were carried to town by the 30+ mph winds on Tuesday and Wednesday.

SPEARMAN ISD EVENTS

NOVEMBER 2006

- Nov 16 SISD Fall Play @ 7 p.m.
- Nov 16 9th Grade Lynx @ Canadian, 7:30 p.m.
- Nov 16 JV Lynxettes @ Canadian Tourney
- Nov 17 JV Lynxettes @ Canadian Tourney
- Nov 18 JV Lynxettes @ Canadian Tourney
- Nov 17 Gruver's 75th Anniversary Celebration
- Nov 20 9th Grade Lynxettes @ West Texas HS, 7:30 p.m.
- Nov 20 9th Grade Lynx vs West Texas HS, 7:30 p.m.
- Nov 21 JV & V Lynx & Lynxettes vs River Road (5, 6:30, 8 p.m.)
- Nov 21 SISD Early Release
- Nov 22 SISD Thanksgiving Holiday
- Nov 23 SISD Thanksgiving Holiday
- Nov 24 SISD Thanksgiving Holiday
- Nov 27 9th Grade Lynxettes vs Fritch, 6 p.m.
- Nov 27 9th Grade Lynx @ Fritch, 7:30 p.m.
- Nov 27 DPS Teenage DWI Presentation @ SHS, 8:30 p.m.
- Nov 28 JV & V Lynx & Lynxettes vs Texhoma (5, 6:30 & 8 p.m.)
- Nov 28 Jostens Class Ring Presentation, SHS Junior Class, 9:15 a.m.
- Nov 30 V Lynx & Lynxettes @ Miami Tourney
- Nov 30 JV Lynx & Lynxettes @ Gruver Tourney

**Let us
do the work
for your holiday
party.
Call for details.**

The Bunkhouse Restaurant
212 Main Street • Spearman • (806) 659-2089
Hours: Mon. Closed; Tues.-Thurs. 11 a.m.-9 p.m.;
Fri. & Sat. 11 a.m.-10 p.m.; Sun 11 a.m.-2 p.m.

We want your news!

If you have news or information you would like to have printed in the newspaper, please let us know. We welcome any information pertaining to Hansford County.

The Hansford County Reporter-Statesman is proud to provide coverage of all school activities in Hansford County.

We are currently seeking results for all Gruver, Spearman and Pringle-Morse junior high and high school sporting and academic events. Forms are available for your convenience.

Information may be submitted in any of the following ways: e-mail (cathysmith@antden.com), fax (806-659-3368), mail (213 Main Street, Spearman TX 79081), by calling (806-659-3434), or left at the office (213 Main Street in Spearman) or drop window (located in window to right of office door).



**MITCHELL THEATRES
NORTHBRIDGE CINEMA 8**
Guymon, Oklahoma

Movies beginning November 17

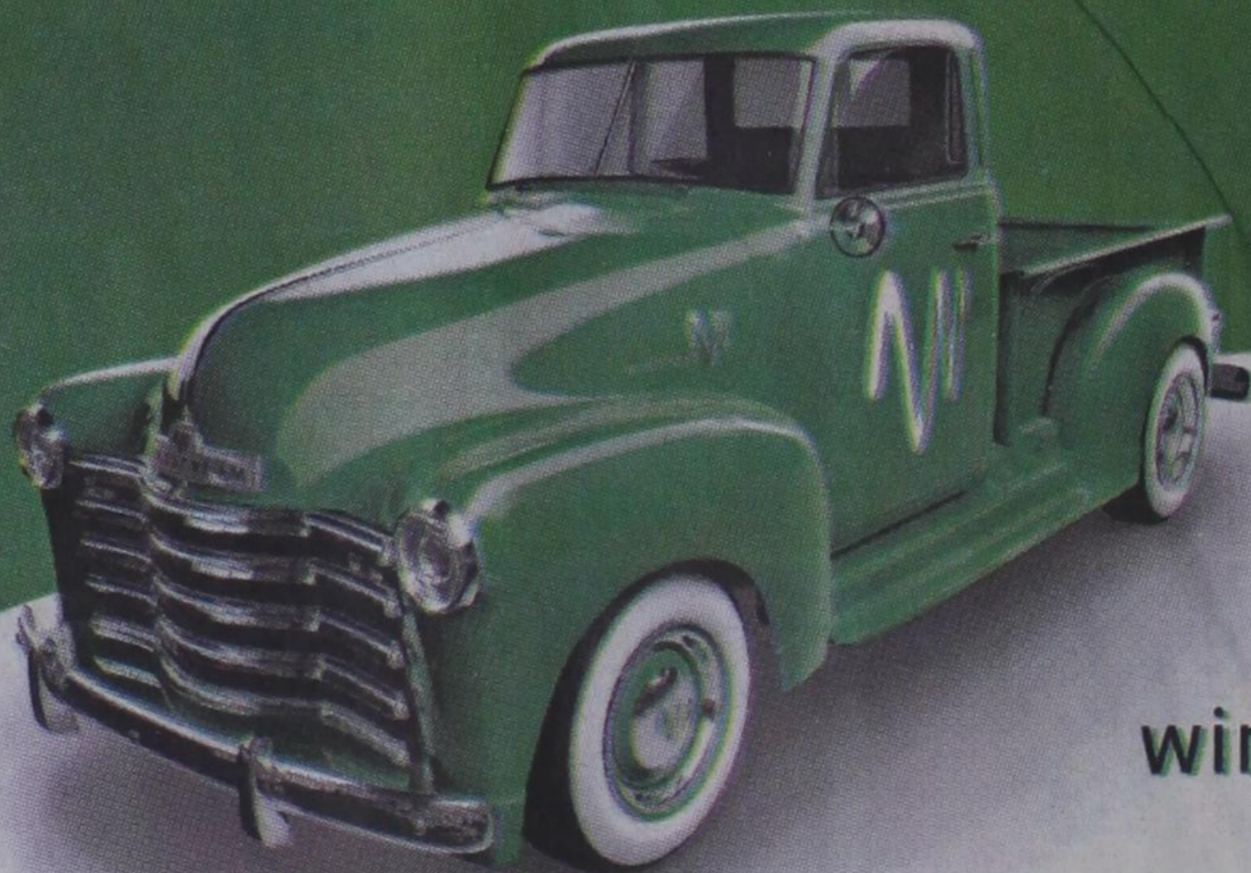
- HAPPY FEET PG - Animated
- CASINO ROYALE PG-13 - Daniel Craig
- BORAT R - Sasha Baron Cohen
- ONE NIGHT WITH THE KING PG - Peter O'Toole, Omar Sharif
- STRANGER THAN FICTION PG - Will Ferrell
- THE RETURN PG - Sarah Michelle Geller
- THE SANTA CLAUS 3 G - Tim Allen
- FLUSHED AWAY PG - Animated

**FRESH POPCORN EVERYDAY!
-PARTY ROOM & ARCADE-**
Call for Showtimes
580-338-3281
www.northridge8.com
Office -- 580-338-8969
CASH & CREDIT CARDS ONLY
THANK YOU!

HIGH-SPEED INTERNET THAT BLOWS THE DOORS OFF CABLE.

TWO MONTHS FREE	BROADBAND	RELIABLE CONNECTIONS: DOWNLOAD MOVIES AND MUSIC SHARE PHOTOS AND MORE
	\$24.95 <small>per month</small> WITH BUNDLE	

~~\$39.95~~ UNLIMITED LOCAL AND LONG-DISTANCE PHONE WITH BUNDLE



PHONE
BROADBAND
DIGITAL TV

windstream
communications

1.877.312.WIND | windstream.com

ANDREWS
112 S.W. 1st Street
432.523.3323

DALHART
310 Rock Island Avenue
806.249.1100

PERRYTON
301 S. Amherst Street
806.435.2050

SEYMOUR
400 N. Main Street
940.888.1220

SUGAR LAND
8306 Highway 90A
281.490.9412

Limited-time offer. Subject to availability in certain locations. Must be a Windstream wireline customer. 2 Months Free Broadband: Must maintain one-year bundle including Connect Package and Broadband 2.5 Service Agreement to be eligible. Connect Unlimited Pricing: \$39.95 when bundled with broadband and DISH Network, includes residential access line, unlimited long distance and certain calling features. Unlimited long distance is for residential 1-plus direct-dialed calls for voice use only. Unlimited Long Distance may not be used for internet services, fax machines, softphones or data devices; transcription services; business (whether for-profit or not-for-profit); telemarketing; auto-dialing; multi-party conference calls (including 3-way calls); party lines; chat lines; adult entertainment lines; calls to 900 and 976 numbers and calls to access voice mail or information services. Additional charges may apply for directory assistance, calling cards, collect calls, operator services, international calling or toll-free calling services. If Windstream determines that usage is not consistent with residential voice service, includes excessive usage or usage predominantly during business hours, Windstream may immediately restrict use or change your long distance plan to the Windstream 10 plan. If any required component of the service bundle is discontinued, the account will convert to the Windstream 10 plan. Broadband Speeds: The actual data transfer rate is an "up to" speed. Windstream cannot guarantee broadband speeds or that Broadband Service will be uninterrupted or error-free. Broadband availability may vary by customer location. Additional Information: Credit approval required and pre-payment may be required. Taxes, fees & other charges, including Universal Service Fund, apply. Windstream reserves the right to cancel or discontinue this plan at any time. If any required bundle component is disconnected, all remaining components convert to the regular tariffed monthly rate. Other restrictions may apply. Offers are subject to the Windstream Terms & Conditions for Communications Services available at any Windstream store or at windstream.com. Contact a Windstream representative for details.