

Pluto loses planet status
Scientists from around the world on Thursday approved a new definition of a planet, downgrading Pluto's status to leave just eight classical planets.

Relatives mourn at Ukraine crash site
Grieving relatives, their heads bowed, gathered on Thursday by a meadow where a Russian airliner bringing holidaymakers back from the seaside crashed in eastern Ukraine, killing all 170 on board.

Lebanon plays down Israel-Syria dispute over troops
Lebanon undertook on Thursday to stop smuggling from Syria, playing down a dispute between Syria and Israel over whether U.N. forces should help the Lebanese army stop arms shipments to Hizbollah guerrillas.

Somalis face more hardships at Kenya camp; aid agency
Nearly 140,000 refugees at a camp in northern Kenya are facing increasing hardships due to cuts in foreign funding, even as more war-weary Somalis pour into the settlement, an aid agency said on Thursday.

U.S. OKs wider access for Barr "morning-after" pill
Barr Pharmaceuticals Inc. won U.S. approval to sell its Plan B "morning-after" contraceptive without a prescription to women 18 and older, the company said on Thursday.

Authorities knew Karr-JonBenet link in 2001
California investigators told Colorado authorities about John Mark Karr's "fascination" with JonBenet Ramsey's murder in 2001 during a wide-ranging probe of the schoolteacher, a spokesman for the Sonoma County Sheriff's Department said on Wednesday.

Congress report faults U.S. intelligence on Iran
The U.S. intelligence community is ill-prepared to assess Iran's nuclear weapons capabilities and its intentions for developing weapons of mass destruction, a congressional report said on Wednesday.

U.S. government tracks manatee odyssey to Northeast
A visitor lumbering past New York city and off Massachusetts this summer has broken a record for the northern-most trip for a certain type of Floridian.

Stock futures inch up as oil slips
U.S. stock futures edged higher on Thursday as oil prices slipped, but investors were cautious before economic data on durable goods and home sales.

McDonald's says president and COO Roberts resigns
McDonald's Corp. on Wednesday said president and chief operating officer Mike Roberts, a 29-year veteran of the fast-food chain, is resigning.

Icahn reaches agreement on ImClone board seats
Billionaire investor Carl Icahn and the board of cancer drug maker ImClone Systems Inc have reached an agreement to put Icahn and three of his associates on management's slate of director nominees, according to a regulatory filing on Wednesday.

Stocks slide on weak housing data, Iran standoff
U.S. stocks fell on Wednesday after a report showed existing home sales declined to the lowest level in more than two years, stoking fears that consumer spending will slow and hurt economic growth.

Rethink needed on ancient earth oxygen
Scientists may have to rethink accepted theories of how the prehistoric earth's atmosphere developed after new discoveries in ancient sulphur raised serious questions, researchers said on Wednesday.

NASA names new moon spaceships Orion
The U.S. spaceships that NASA wants to build to carry astronauts back to the moon will be called Orion, an agency official said on Wednesday.

Criticism of Tom Cruise stirs Hollywood debate
A day after one of Hollywood's most powerful men publicly scolded actor Tom Cruise, the film capital began to think cost-conscious studios may finally be fed up with giving stars the star treatment.



The Hansford County Reporter-Statesman

PROUDLY SERVING HANSFORD COUNTY SINCE 1907

VOLUME 99 • ISSUE 34

THURSDAY, AUGUST 24, 2006

Frances Cudd Memorial Auction

To benefit the Golden Spread Senior Citizen's Center



The Golden Spread Center honored Frances and Gene Cudd at the Frances Cudd Memorial Radio Auction to benefit the Golden Spread Senior Citizen's Center. (L-R) Bob Boxwell and Marsha Murphy, representing the Golden Spread Center, presented Gene Cudd and Mike Cudd with a plaque recognizing the honor.

The Golden Spread Center 'kicked-off' their annual radio auction. This year's auction is being held on two Saturdays, August 19th and August 26th, from 8:00 a.m. to 12:00 noon on Perryton radio station KXDJ.

This year's auction, The Frances Cudd Memorial Auction to Benefit the Golden Spread Senior Citizen's Center, included the presentation of a plaque to Gene Cudd and his family in honor of his late wife, Frances. The Cudd family has been a long-time supporter of the

Golden Spread Center.

The first part of the auction, held on Saturday, August 19th, was a big success. Many listeners called in to place bids on the 64 items.

The second part of the auction will be held this coming Saturday with a great selection of items donated by area merchants and individual.

The GSC is still accepting items, and items may be donated by calling Kathy Bryant @ The O'Loughlin Center (659-3030) or by contacting any board member."

Spearman Police Department recovers stolen property

The Spearman Police Department recovered stolen property after receiving a tip from the Hansford County Sheriff's Department.

According to Hansford County Sheriff's Deputy Tim Glass, the Sheriff's Department received a tip from a local citizen regarding some items that were suspected to be from a series of vehicle burglaries on Sunday night, August 20th and early Monday morning, August 21, 2006. The information was given to Spearman Police Chief Garold McDaniel, who was already working on the case.

After receiving the tip, the Spearman Police Department was able to recover the stolen property, the value of which is estimated to be in excess of \$4000.

The stolen property was taken from six vehicles, all of which were unlocked. "90% of all vehicle break-ins in Spearman involve unlocked cars," stated Chief McDaniel. "This time we were able to recover all the items that were taken."

The Hansford County Sheriff's Department and the Spearman Police Department would like to thank anyone who had any part in helping solve this crime.

Capt. Cornelius honored by classmate

By Brian Brisendine, Herford BRAND Publisher

HEREFORD — Since its inception and certainly in the last few years, this nation has experienced surges of patriotism.

Periods when seemingly every home and storefront flies the American flag, when crowds pause a little longer to listen to the national-anthem. But eventually, the flags come down and the fast pace of life catches up.

Some homeowners and shopkeepers, though remain vigilant

and keep our colors flying high.

Such is the case at Bill Devers' home on County Road 8, just north of the city.

Devers, a resident of Herford for four decades and former choir director in the school system, noticed the lull in patriotism around town and decided to do something about it.

But he didn't just buy a flag and hang it from the porch.

Devers saw an opportunity to do something he's thought about for more than 30 years — paying trib-

ute to a friend and hero who has been listed as missing in action since 1973 when his Air Force F4 Phantom jet went down over Cambodia.

Capt. Sam Cornelius of Spearman was a classmate and friend of Devers and was just 30 when he gave his life in the service of his country, something Devers has never forgotten.

"Sam was just the absolute cream of the crop kind of guy," he said. "He was a world-class athlete and then a career pilot with the Air Force. Above all that, he was a good man and a good friend."

Devers and Cornelius were classmates and worked together in the oil fields around Spearman during summer breaks.

Devers commissioned a plaque in honor of Capt. Cornelius and all of the men and women who serve our country.

The plaque was dedicated July 29 at a ceremony attended by more than 50 people at Devers' home.

"I just felt that it was time I honored Sam and to recognize the members of the Devers family who have served our country and to thank everyone who has ever put on the uniform," Devers said. "It was one of the most memorable evenings of my life. There wasn't a dry eye there. This was about the liberty and the freedom that we all take for granted every day."

Marine Maj. (Ret.) Diego Barella and the Herford High School Junior ROTC also attended

the ceremony and presented the colors of each branch of the military.

The festivities included patriotic music, including the national anthem and the official songs of each branch of service.

Devers invited those in attendance who have served to step forward and be recognized.

"Seeing my family members standing with their branch flags flying behind them was inspiring," he said. "We then had a moment of silence that was broken by the playing of 'Taps' for all those that have given the ultimate sacrifice for our country."

The flag erected over the commemorative plaque also has special meaning.

It flew over the Air Force House overlooking Saddam Hussein's al-Faw palace in the Al-Nasr region of Iraq and was brought home and presented to Devers by his nephew, Master Sgt. Glen Ray Devers, a 25-year serviceman who completed a six-month tour in Iraq.

"I can sit on my porch and just listen to that flag rustle in the wind and look over and see that plaque honoring Sam and my family and all military people," Devers said. "And it just makes me as grateful as a person can be."

"When those people take that oath of service, they are saying 'I will give my life so you can live in freedom.' That's an incredible thing."

Sam Cornelius was an outstand-

ing student and received many honors during his school years. He played football, basketball, baseball and ran track. He was voted Mr. SHS and Most Likely to Succeed by the 1961 senior class at Spearman, of which he also was Salutatorian.

Cornelius was the first Spearman graduate to make the starting line on the Texas Tech varsity football team in 1961. After completing his college career, Sam attended the Air Force Academy in Colorado Springs, Colo.

Upon graduation becoming a career pilot, flying the F4 Phantom jet — capable of speeds of up to Mach 2.

On June 16, 1973, Capt. Cornelius and his electronics officer, Capt. John J. Smallwood, were assigned a strike mission in Cambodia.

Over the target area, the F4 was hit by hostile fire and went down. No parachutes were seen and no emergency signals were heard to indicate that either had ejected safely.

Official word from the Air Force is that their survival was unlikely and both were presumed killed in the crash.

"I'm not unique in losing someone close in the service," Devers said. "Millions of Americans have lost friends and family through the history of our country. It's the ultimate sacrifice for you and me."

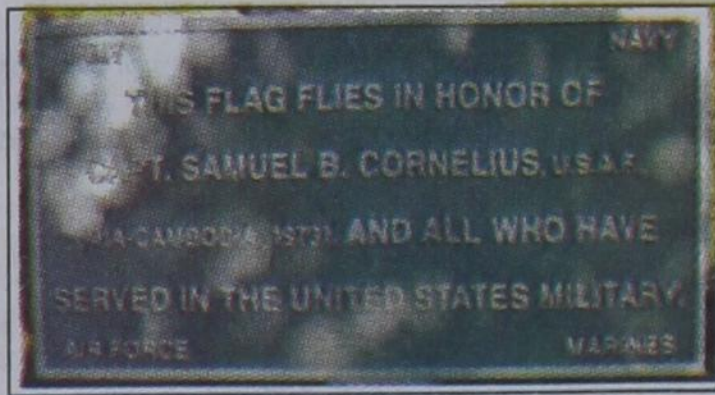
"They're gone, but never forgotten."



Bill Devers stands beside the plaque and flag pole erected at his home north of Herford in honor of Capt. Sam Cornelius of Spearman. Capt. Cornelius has been listed as missing in action since 1973 when his Air Force F4 Phantom jet went down over Cambodia.



The certificate states that the American flag was flown, at the request of MSgt. Glen Devers during Operation Iraqi Freedom on the 26th of May, 2006 at the Air Force House, overlooking the Al Faw Palace in the Al Nasr region of Baghdad, Iraq, in honor of Mr. Bill J. Devers.



The plaque in front of the flag states that it flies in honor of Capt. Samuel B. Cornelius and all who have served in the United States military.

LOCAL WEATHER FORECAST

THURSDAY NIGHT - Partly cloudy with a 20 percent chance of showers and thunderstorms. Lows in the upper 60s. South winds 10 to 15 mph.

FRIDAY - Partly cloudy with a 20 percent chance of showers and thunderstorms. Highs in the mid 90s. Southwest winds 10 to 15 mph.

FRIDAY NIGHT - Mostly cloudy with a 40 percent chance of showers and thunderstorms. Lows in the upper 60s. Southwest winds 10 to 15 mph shifting to the north after midnight.

SATURDAY - Mostly cloudy with a 30 percent chance of showers and thunderstorms. Highs in the upper 80s.

SATURDAY NIGHT - Mostly cloudy with a 50 percent chance of showers and thunderstorms. Lows in the mid 60s.

SUNDAY - Mostly cloudy with a 40 percent chance of showers and thunderstorms. Highs in the lower 80s.

SUNDAY NIGHT - Mostly cloudy with a 40 percent chance of showers and thunderstorms. Lows in the mid 60s.

MONDAY - Mostly cloudy with a 20 percent chance of showers and thunderstorms. Highs in the upper 80s.

MONDAY NIGHT - Mostly cloudy with a 20 percent chance of showers and thunderstorms. Lows in the mid 60s.

TUESDAY - Partly cloudy with a 20 percent chance of showers and thunderstorms. Highs in the upper 80s.

TUESDAY NIGHT - Partly cloudy with a 20 percent chance of showers and thunderstorms. Lows in the upper 60s.

WEDNESDAY - Partly cloudy with a 20 percent chance of showers and thunderstorms. Highs in the upper 80s.

Live,
Laugh &
Love



by Catherine R. Smith
cathysmith@antden.com

I pray this will bless you as it blessed me.

Thanks Be To God

Hello God,
I called tonight
To talk a little while
I need a friend who'll listen
To my anxiety and trial.
You see, I can't quite make it
Through a day just on my own...
I need your love to guide me,
So I'll never feel alone.
I want to ask you please to keep
My family safe and sound.
Come and fill their lives with confidence
For whatever fate they're bound.
Give me faith, dear God, to face
Each hour throughout the day,
And not to worry over things
I can't change in any way.
I thank you God for being home
And listening to my call,
For giving me such good advice
When I stumble and fall.
Your number, God, is the only one
That answers every time.
I never get a busy signal,
Never had to pay a dime.
So thank you, God, for listening
To my troubles and my sorrow.
Good night, God, I love you too,
And I'll call again tomorrow!

May God bless and keep you; May He make his face to shine upon you, and be gracious to you; May the Lord lift up his countenance upon you, and give you peace.
Numbers 6:24-26

Catherine :)

The Hansford County Reporter-Statesman

213 Main Street • Spearman, TX 79081
Phone - (806) 659-3434 • Fax - (806) 659-3368
cathysmith@antden.com
Mon.-Thurs. (Closed Fridays) 9 a.m.-12 p.m. & 1-5 p.m.

Gary Smith - Publishers

Catherine Smith - Editor • Clayton Smith - Asst. Editor
Contributing Writers: Dorothy Hudson and Merry Sparks
Contributing Photographer: Charlie Johnson

Subscription Rates

In Hansford County - \$30.00 • Out of County - \$40.00

The Hansford County Reporter-Statesman (USPS 529660) is published weekly in Spearman, TX. Periodical postage paid in Spearman, TX. POSTMASTER: Send address changes to: The Hansford County Reporter-Statesman, 213 Main Street, Spearman, TX 79081.

Publication Policy

The deadline to submit news and advertising to The Hansford County Reporter-Statesman is Monday at 5 p.m. Items submitted after the deadline will be published at a later date, as time and space permit. Publication of all items is at the discretion of the editor.

Advertising

Open Display rates are \$4.00 per column inch. Classified Ads are \$6 for the first 25 words and 10¢ per word for each additional word. (Additional charge for boxed classifieds.) There is a \$1 charge per week if billed.

Member of
Gruver Chamber of Commerce
Spearman Chamber of Commerce
Texas Press Association and Panhandle Press Association



STATEPOINT SUDOKU

PRESENTED BY



	6			1					
				8	6	5	3		
			9	7				6	
7	4	9	6			2			
	3							1	
		6			5	3	9	4	
5			8		9				
	1	4	5	7					
			1					6	

© 2006, StatePoint Media, Inc.

Fill in the blank squares in the grid, making sure that every row, column and 3-by-3 box includes all digits 1 through 9.

These games are brought to you by the Hansford County Reporter-Statesman

STATEPOINT CROSSWORD

1	2	3	4		5	6	7		8	9	10	11		
12					13					14				
15					16					17				
18					19					20				
				21						22				
23	24	25					26				27	28	29	
30					31		32	33				34		
35					36			37				38		
39								40			41		42	
43					44						45		46	
								47			48	49		
					50	51						53	54	55
56														58
59														61
62														64

PRESENTED BY



© 2006, StatePoint Media, Inc.

answer on page 9

BACK TO SCHOOL

ACROSS

- Fits in socket
- TV manufacturer with a dog in the logo
- Rum cake
- Grey, of tea fame
- Pi-meson
- Hackneyed or commonplace
- Neat
- Acoustic repetition
- Misbehave badly
- Get it by attending school
- A car might do this on a slippery road
- To speak an opinion
- TV's "___/Tuck"
- Create by shaping
- Broken stone used in roadways
- Sick
- Unit of instruction in school
- Coke or Pepsi
- River in Hades
- Politician, abbr.
- Ohio city
- Popular '70s hairdo
- Tax-supported school
- Overnight lodging house
- Speech disorder
- Feeling before vomiting
- Consume
- Disdain
- Most numerous piece in chess
- Course of academic studies, pl.
- Capital of Vietnam
- Fourth largest Great Lake
- Egg shape
- Rossini's or Verdi's product
- Selves
- Communists, slang
- Gape
- One hundredth of a yen
- Knock out

DOWN

- Tennis great Sampras
- Put down
- Pakistan's official language
- Used as antifreeze
- Toxic protein extracted from castor beans
- Type of salmon
- Shakespeare's "at another time"
- Student's carrier
- Not in favor of
- Data transmission rate
- Any mountain peak
- Smaller size than small
- Sharon Stone thriller "___ Instinct"
- Common gift from a teacher's pet
- Indian bread
- Albino from "The Da Vinci Code"
- Chin indentation
- Far beyond norm
- Daniel Defoe's Flanders
- Singer and actress Da
- Unaccompanied
- Miraculous food from heaven
- "___ of the moment"
- Weep convulsively
- Work done outside school
- Type of mites
- Teacher's special student
- Hardens
- Passion for something
- Open wine
- Rise of a wave
- Infectious protein particle
- Mama Bear's husband
- Afresh
- Committee on Earth and Environmental Sciences, acr.
- Part of eye that contains the iris
- Refined woman
- In addition
- Take more than one's share



Gruver Cemetery Seeking Donations for Improvements

In the near future, the Gruver Cemetery Association will be adding roads and driveways to allow access and expansion in the new section of the cemetery. We are asking area citizens and those with loved ones interred in the Gruver Cemetery to make donations and memorials to help the committee complete the work that is needed and to maintain the cemetery in such a way that reflects the honor and respect our loved ones deserve. For more information, contact Rick Barkley, President of the Gruver Cemetery Association, at (806) 733-2500. Please make all donations and memorials payable to the Gruver Cemetery Association, and mail them to Margaret Ralston, Treasurer of the Gruver Cemetery Association, at P.O. Box 629, Gruver, Texas 79040.

Benefit Fund Established for Shelley Jean Pledger

An account has been set up at First State Bank in Spearman to help the family of Shelley Jean Smith Pledger. Donations may be made at First State Bank.

Medical Fund Established for William Bettis

A medical fund has been established at Gruver State Bank in Gruver for the William Bettis family. William was seriously injured in an automobile accident. Any donations would be greatly appreciated.

Panhandle Crisis Center offers new Online Hotline

The Panhandle Crisis Center is joining a new Online Hotline, where individuals seeking help due to sexual assault can chat live with trained volunteers giving secure crisis support to victims, their families and friends. The Panhandle Crisis Center is seeking volunteers for this Online Hotline. For more information, call Janice at 435-5008 or 1-800-753-5308.

Breast Cancer Screening Clinic

The Don and Sybil Harrington Cancer Center Comprehensive Breast Center will conduct a Breast Cancer Screening Clinic at Hansford County Hospital, 707 S Roland, in Spearman on August 28, 2006. Funding is available through the Texas Department of Health for Texas residents who qualify for assistance. All exams are done by appointment only. Call (806) 356-1905 or 1-800-377-4673 for more information or to schedule an appointment.

Pringle-Morse & Campbell's Team Up

Pringle-Morse CISD School is asking parents, teachers and friends in the community to collect Campbell product labels that can be redeemed for free educational merchandise. For more information on how to be a part of Pringle-Morse CISD School's Labels for Education contact VeAnn Clark, at 806-733-2507 or mail labels to Pringle-Morse CISD, Box 109, Morse, Texas 79062. Pringle-Morse ISD appreciates your support.

Spearman Blood Drive

The Coffee Memorial Blood Center is hosting a blood drive on Monday, August 28, 2006 from 3-7 p.m. at the O'Loughlin Center, 502 S. Brandt. Every donor will receive a T-shirt, while supplies last. Call 1-877-574-8800 for an appointment. All blood types are currently needed. Please support the patients of the High Plains Region...Give the Gift of Life!

Gruver Blood Drive

The Coffee Memorial Blood Center is hosting a blood drive on Monday, August 29, 2006 from 3-7 p.m. in the LaCasita Room of Gruver State Bank, 3 Main Plaza. Every donor will receive a T-shirt, while supplies last. Call 1-877-574-8800 for an appointment. All blood types are currently needed. Please support the patients of the High Plains Region...Give the Gift of Life!

Free GED Classes

FREE CLASSES! For adults who want to prepare for the GED test (High School Equivalency). Classes will be every Tuesday night through May beginning Tuesday, August 29, 2006. GED classes will be held in the video conference room at Spearman High School, 6:30 - 9:00pm. For more information you can contact Cindy Blackman 659-3233, ext.1005 or Claudine Hardy, 659-2563, ext.3001.

4-H Awards Banquet

The Annual Hansford County 4-H Awards Banquet will be held on Sunday, August 27, 2006 at the Church of Christ Fellowship Hall in Spearman. The event will begin at 12:30 p.m.

Spearman Booster Club

Spearman Booster Club will meet August 29th at 7:00 PM in the High School library. Everyone is invited to attend the meeting. The first football scrimmage in at Spearman against Gruver starting at 6:00 PM. The first home game is September 8th against Boys Ranch and is parent night.

Spearman Lynx & Lynxette Booster Club have sports sponsorship packages available for 2006-2007. If you are interested in year sponsor, super booster, booster, signature ads or cable listing please contact Lynna Renner at 659-3587 or Tammy Benton 659-3071. These ads are used for broadcasting and cable listings. Individuals are welcome to have signature ads not just for businesses!

If you have a yard sign made by Booster Club that is fading, peeling or falling apart, please take to Kelly Garnett at 515 Barkley for her to repair. If no one is there please leave on the front porch.



WE CARE ABOUT WOMEN'S HEALTH AND WELLNESS

Guymon has a "brand new" doctor with a "brand new" nurse midwife to help you with all your female health issues.

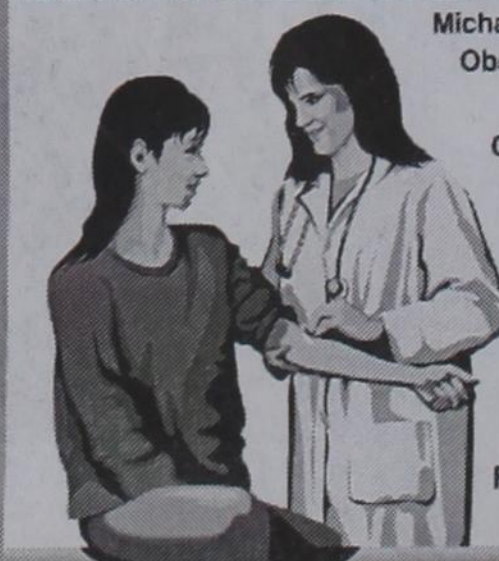
- Routine Well Exams
- Abnormal Bleeding
- Abnormal/Pelvic Pain
- Birth Control
- Infertility
- Menopause
- Colposcopy
- LEEP
- GYN Surgery
- Hysterectomy
- Pregnancy
- High Risk Pregnancy

• 3D/4D Ultrasound - see your baby in pictures before it is born

Michael Hensley, MD, PLLC
Obstetrics/Gynecology
Meghan Stork
Certified Nurse Midwife

Panhandle
Women's
Health Center
1735 N Roosevelt
Guymon

For appointment, call
(580) 338-2637



Happy Birthday!

Editor's Note: This Happy Birthday list is run as a public service by the Hansford County Reporter-Statesman. We apologize if any names are misspelled. If you know of a name that needs to be changed, added or deleted, please call 659-3434.

Thank you, Catherine

August 24

Birthdays - Frances Atwood, Laci Fitzgerald, Sarah Van Buskirk, Rosio Rosales, Charlie West, Claudine Clark, Melissa Kay McLain, Lila West, Marilyn Hughes, Scott Houghton, Willie Lee Wilkerson, LeRoy Farris, Clayton Wilkerson, Charlie West, Travis Boyd
Anniversaries - M/M Terry Austin, M/M Dwayne Mitchell, M/M Randy Brown

August 25

Birthdays - Carol Ross, Kathleen Sutton, Connie Sue Wooley, Kathy Yancey, Linda Young, Courtney Roach, Kathrine Pipkin, Gay Bowen, Michael Janzen, Katie Miesner
Anniversaries - M/M Butch Lasater, M/M Roy Don Gammon

August 26

Birthdays - Wayne Kruse, Debbie Davis, Chayci Dominguez, Mike Cudd, David Archer, Juanita Tucker, Mary Thompson, Kimberly Slater, Ashley Patterson
Anniversaries - M/M Eddie Clemmons, M/M Vernon Morris

August 27

Birthdays - Amy Grubbs, Brian Hoel, Pat Ochoa, June Jackson, Donald Rhea, Gregg Weaver, Chad Davis, Patricia Bevera, Virginio Ortega Jr., J. T. Sanders, Bertha Watts, Gabriel Moreno, Krystal Vela, Christopher Abernathy, Cassidy Odegaard, Dara Faries
Anniversaries - M/M Bill Swan, M/M Reg Robertson, Jim & Pamela Morrison, M/M Jerry Bowling

August 28

Birthdays - KiKi Carthel, Amy Gillispie, Mika McLain, Linda Nunez, Kory Sheppard, Mike Pearson, Joe Bravo, Keith Burgess, Gene Cudd, Andy Jones, Mabry Sutterfield, Penny Sumner

August 29

Birthdays - Rodney Clawson, Ginny Grotegut, Monica Ward, Mark Crooks, Bill Strawn, Richeardo Espinosa, Dusty Vinson, Linda Lou Lewis, Tony Cazares, Holly Brack, Katie Bynum
Anniversaries - M/M Robert Blevins

August 30

Birthdays - Joshua Blount, Roy Dale Karr, Van Lewis, Jeff Nicholson, Chelly Rigdon, Christa Urban

August 31

Birthdays - Jill Hoel, Roger Dean Close, Estella Arjona, Mildred Lewis, Ronnie Beck, Chad Wilkerson, Justin Eslick, Lonnie Shields, Danny Herrington, Bob Boxwell, Dale Jones, Clay Neff, Elizabeth Holton
Anniversaries - M/M Brian Pressley, M/M Kent Guthrie

September 1

Birthdays - Sahala (McCloy) Galliard, Kathy (Nelson) Dumbold, Mrs. Don Allen, Eugene Yarborough, Irma Arjona, Pete Vera Jr., Jessica Williams, Rita Lindley, Erin Wafford, Misty Bynum, Hugo Villa, Richard Shad, Jessica Shad, Laura Bridges, Jace Lang, Ann Pipkin, Dane Harbour, Sandra Blankenship
Anniversaries - M/M Johnny Lee, M/M Daniel Boyd

September 2

Birthdays - Kelly Sue Jones, Melyn Johnson, Archie Smith, Felipe Lomelli, Carlos Mendoza Jr., Larry Gallimore
Anniversaries - M/M Ron Antalek, M/M Everett Vanderberg

September 3

Birthdays - Josh Mayhew, Isabel Martinez, Ruth Lackey, Kory Brown, Sheryl Meek, Sandy Russell, Janet Sandavol, Jessie Moore, Brandon Baker, Michelle Evens, Elena Vargas, Jason Quillin, Coy Herrington
Anniversaries - M/M John Booth, George & Virginia Young

September 4

Birthdays - Val Winger, Peggy Frick, Jimmy Haden, Kathy Bowen, Marty Karr, Laci Murray, Darlene Pierce, Rodney Pointer, Tina Cator, Lighton Torres, Alix Boyd, Hallee Beasley, Kristi Vasquez, Jarry Francis, Jerri Lane
Anniversaries - M/M Ron Fox, Don & Wanda Reed

September 5

Birthdays - Kilee Ryan, Cathy Potts, Howard Nash, Pat Minter, Dawn Brown, Mavis Floyd, David West, Mark Garcia, Betty Thomas, Mary Alice Gibner, Andy Riley, Sonya Tindell, Willie Wallis, Joyce Sharp, Lorenzo Sauz, Connor Odegaard, Daniel Swink, Stephen Lane
Anniversaries - M/M Chuck Ball, Mr. and Mrs. Don Reed, M/M Bobby Hicks

September 6

Birthdays - Brad Hart, Mickey Nash, Ty Williams, Jennifer Profit, Josh Owens, Cheryl Green, Jonas Heath, Osbaldo Lomely, Alison Smith
Anniversaries - George & Tina Rex, M/M Bill Wink, Judy & David Martin, M/M Kenneth Stewart

September 7

Birthdays - Alice Peddy, Kim Boone, Teal Armes, J.L. Brock, Richard Montgomery, Juanita Terceo, Melvin Willis, Kermit McKee, Jennifer Whitefield, Mardell Strawn
Anniversaries - M/M Charlie West, M/M Jim Davis, M/M Ronnie Bullard

September 8

Birthdays - Kevin Hart, Vernon Edens, Teresa Byrd, Richard Davis, Cindy Scarborough, Macy Holton, Suzanne Sanders, Beronica Borounda, Wynette Mullins, Monica Cenicerros, Linda West, Justin Tucker, Bill Miller
Anniversaries - M/M Roger Odegaard, M/M Clarence Zable

Words from Faith & Grace

by Cecil R. Biggers, Lutheran Lay Minister

We search for the God who has entered our lives as the stench of war spreads in our world. Our lessons are found in Joshua 24:1-2a, 14-18, Psalm 34:15-22, Ephesians 6:10-20 and John 6:56-69. Joshua has gathered the tribes of Israel to Shechem, a holy place, to demand that they choose to serve the gods of their ancestors or to serve the one true God. The people answer, "The Lord our God we will serve, and Him we will obey". The Psalmist sings "The eyes of the Lord are on the righteous, and his ears are open to their cry"; he concludes, "The Lord redeems the life of his servants; none of those who take refuge in him will be condemned".

Paul concludes his exhortations to the Ephesians with a plea to "Put on the whole armor of God, so that you may be able to stand against the wiles of the devil". Paul, a prisoner chained to a Roman soldier, finds inspiration in the dress of his guard. The armor of the Christian is found in truth, righteousness, the Gospel of peace, faith, the assurance of salvation and the word of God. The resupply of the Christian is found in prayer and supplication. The reinforcement of the Christian is found in praying for our leaders in the faith community. Meditate on this passage and study it, so that you may "put on your armor" as you face the perils of our times.

Jesus has said, "Those who eat my flesh and drink my blood abide in me, and I in them". Some of his disciples could not accept this teaching, could not accept the dramatic presence of God in an intimate way, they left. Peter, pondering these things, answers, "Lord to whom shall we go? You have the words of eternal life. We have come to believe and know that you are the Holy One of God". The words of Peter's confession of faith are now used in our liturgy. The difficulty in The Way of Christ is that we must surrender all of our "self" to Christ. Consider this, "The things of the flesh all gain their value from the Spirit in which they are done."

Our enemies are not the believers in God who await a yet to come Messiah, nor the believers in God who await the Mahdi, our enemy is Evil, bigotry, fanaticism, the disciples of Hate.

May the Holy Spirit draw you to abide in Christ Jesus, secure in His armor.

All Saints' Episcopal Church



2201 S. Jefferson Perryton

For more information, call
 435-4516,
 435-2697
 or 659-2083



Ralph Depee, D.D.S.

Member
 American Association
 of Orthodontists

Orthodontics For Children and Adults

- Free exam and estimate of cost
- Free second opinion
- Insurance filed

821 S. Amherst • Perryton, Texas
 1-800-521-0831 • (806) 435-2320

Our Sympathy

REBA KAY HAMILTON

MANNFORD, OKLA. - Reba Kay Hamilton, 62, formerly of Spearman, Texas, died Thursday, Aug. 17, 2006, in Tulsa.

Services will be at 2 p.m. Tuesday in First Baptist Church in Spearman with the Rev. Aaron Lavery of Mobeetie, Texas, officiating. Graveside services will follow in Hansford Cemetery in Spearman. Arrangements are by Boxwell Brothers Funeral Home of Spearman.

Mrs. Hamilton passed away Aug. 17, at Tulsa Regional Hospital after a lengthy illness. Kay was in the restaurant business several years of her life and was known for her hospitality and kindness in serving others and especially for reaching out to those who were in need. She was a beloved wife, cherished mom, best friend, granny, daughter and sister.

Kay was a member of First Baptist Church, Mobeetie.

Survivors include her husband, Jim Hamilton; her mother, Georgia McLeod of Spearman; three sons, Mark Hamilton of Mannford and Bobby Hamilton and James Hamilton, both of Sapulpa; two daughters, Kim Francis of Perryton, Texas, and Kathryn Duffy of Heath, Ohio; four sisters, Roxie McLeod, Rita Underwood and Jeanie Hand, all of Spearman, and Susie Holloway of Justin, Texas; a brother, Jimmy McLeod of Spearman; 13 grandchildren; and two great-grandchildren (twins).

The family suggests memorials be to the Arthritis Foundation, P.O. Box 7669, Atlanta, GA 30357-0669.

MARLOS MAY

Marlos May, 52, of Hart, TX, former resident of Olton and Gruver, died August 17, 2006 in Coleman County Medical Center.

Memorial services were held Monday afternoon, August 21, 2006 in First Baptist Church of Hart with the Revs. Matt Baird, pastor, and Scott Curry, pastor of First Baptist Church of Gruver, officiating. Interment was in Olton Cemetery under the direction of Foskey-Lilley-McGill Funeral Homes.

May was born August 13, 1954 in Amherst to Archie and Elfa Lou Akin May. He graduated from Olton High School in 1974 and married the former Rebecca Hodges July 27, 1974. He was a Baptist. He had worked for Federal Land Bank, Watley Seed Co. in sales, was an F.H.A. administrator, and was a member of Northstar Marketing Group.

He was preceded in death by his parents and a sister, Melita May.

Survivors are his wife; a son and daughter-in-law, Jason and Tracy May of Canyon; two daughters and sons-in-law, Janie and Stephen Vincent of Dallas and Julie and Joshua Vincent of The Azores Islands; one sister, Marlana Rothen of Lubbock; his stepmother, Lois May of Lubbock and three grandchildren, Kaylee, Colten and Cambree May.

MONUMENTS

Boxwell Brothers Funeral Home

519 Evans • Spearman
 659-3802

Dear friends,
 When you buy a monument from us we make sure it is exactly what you want at a price you can afford. If it is not right, we will make it right. And you will not have to search the countryside to find us. We are here when you have a need.

Sincerely,
 Bob Boxwell

Replenish the seed of faith through . . . DAILY BIBLE READING, PRAYER & REGULAR CHURCH ATTENDANCE

Spearman

Apostolic Faith Church
 822 S. Dressen • 659-2870
 Sunday School: 10 a.m.
 Worship Service: 11 a.m.
 Sun. Eve. 6 p.m.
 Wed. Prayer Mtg.: 7 p.m.
 Pastor - Roland Haney

First Assembly of God
 401 N. Bernice • 659-2295
 Sunday School: 9:30 a.m.
 Worship: 10:35 a.m.
 Kid's Church: 10:35 a.m.
 Evening Worship: 6 p.m.
 Wed. Worship: 7 p.m.
 Wed. Youth: 7
 Pastor - Bob Elder

First Christian Church
 (Disciples of Christ)
 29 S. Bernice • 659-2036
 Sunday School: 9:45 a.m.
 Worship: 10:50 a.m.
 Minister - Gary Smith

First Baptist Church
 123 N. Bernice • 659-5557
 Sunday School: 9:45 a.m.
 Worship: 11 a.m.
 Evening Worship: 7 p.m.
 Men's Bible Study - Wed., 7 a.m.
 Children's Choir - Wed., 6 p.m.
 Adult Choir - Wed., 7 p.m.
 Wed. Bible Study: 7 p.m.
 Pastor - Jim Medley

Church of Christ
 121 S. Haney • 659-3244
 Sunday Bible Class: 9:45 a.m.
 Worship: 10:30 a.m.
 Evening Worship: 6 p.m.
 Bible Study Wed.: 7:30 p.m.

Sacred Heart Catholic Church
 901 Roland • 659-2792
 Sat. Night Mass: 5:30 p.m.
 Sun. Mass: 9 a.m. - English
 Sun. Mass: 11:30 - Spanish
 1:30 p.m. - Gruver - Christo
 Redentor Mass - Spanish
 Rev. Guillermo Morales

First United Methodist
 407 S. Haney • 659-5503
 Sunday School: 9:45 a.m.
 Worship: 8:30 & 11 a.m.
 Jr. High Youth: 5 p.m. Sunday
 High School: 6 p.m. Sunday
 Kids Club: 3 p.m. Wed.
 Pastor - Derrel Ewins

Grace Presbyterian Church
 (Worships with Faith Lutheran Church)
 1101 Bernice • 659-2033
 Pastor - Beverly Cook

Faith Lutheran Church (ELCA)
 1101 Bernice • 659-2252
 Sunday School: 9:45 a.m.
 Worship: 11 a.m.
 (Worships with
 Grace Presbyterian Church)
 Pastor - Beverly Cook

Union Church
 31 S. Endicott • 659-2644
 Sunday School: 9:45 a.m.
 Worship: 10:45 a.m.
 Evening Worship: 6 p.m.
 Bible Study: 7 p.m. Wed.
 Pastor - Dr. Timothy Minor

Fellowship Baptist
 1102 S. Archer • 659-2783
 Sunday School: 10 a.m.
 Worship: 11 a.m.
 Sun. Evening Worship: 6 p.m.
 Youth/Adult Service: 7:30 Wed.
 Pastor - James Washburn

Primera Mision Bautista
 502 E. 7th • 659-3991
 Sunday School: 9:45 a.m.
 Worship: 11 a.m.;
 Evening: 6 p.m.;
 Wed. Prayer Meeting: 7 p.m.
 Thurs. Visitation: 7 p.m.
 Pastor: Joe Garcia Jr.

El Apuesto Alto U.P.C.I.
 1105 S. Roland
 Domingos: Escuela-Dominical - 10 a.m.
 Culto Evangelistico - 7 p.m.
 Jueves: Oracion - 8 p.m.
 Mier: Estudio Biblico - 7 p.m.
 Pastor - A.G. Martel
 (806) 659-2153

Gruver

First Baptist Church
 402 E. Broadway • 733-2411
 Sunday School: 9:45 a.m.
 Worship: 10:50 a.m.
 Disciple Training: 6 p.m., Sunday
 Prayer Meeting: 7:30 p.m. Wednesday
 Pastor - Scott Curry

Church of Christ
 209 King • 733-2760
 Sunday School: 9:30 a.m.
 Worship: 10:20 a.m.
 Evening Worship: 6 p.m.
 Wed. Worship: 7:00 p.m.
 Minister - Gaylord Cook

First Christian Church
 510 King • 733-2960
 Sunday School: 10:00 a.m.
 Sunday Worship: 11 a.m.
 Youth: 7:30, Sunday
 Adult Bible Study: 7:30, Sun.
 Wed. Bible Study: 8:00 p.m.
 Pastor - Gary Gurntory

Gruver United Methodist
 Broadway & Garrett
 733-2651
 Sunday School: 9:45 a.m.
 Worship: 8:30 & 10:50 a.m.
 Eve. Worship & UMY: 6 p.m.
 Pastor - George Price

Spanish Cristo Redentor Church
 Sunday Mass: 1:30 p.m.
 Friday Evening Mass
 Summer - 8:00 p.m.
 Fall/Winter - 7:30 p.m.

Oslo

Oslo Lutheran Church (ELCA)
 6 Miles West & 12 Miles
 North of Gruver
 339-7709
 Sunday School: 9:45 a.m.
 Worship: 11 a.m.
 Pastor - Paul Fiske

Waka

Waka Church of the Brethren
 435-4598

Morse

Morse Baptist Church
 733-2757
 Pastor - Mike Martin

YOUR ROAD TO A NEW CAREER!

- Paid CDL Training!
- No Experience Needed!
- Earn \$35 - \$75K Yearly!

Stevens Transport offers the best comprehensive training program for new drivers! Get your career rolling and enjoy exceptional earnings and great benefits from the #1 premier transportation carrier!

For more information, call
800-333-8595

Stevens Transport
 www.stevenstransport.com

Welcome To The 11th Annual Yoakum County *Kiss a Pig!*

Watermelon Round Up!

US 82 & 380, Plains, Texas
 Saturday, Sept. 2, 2006 Stage Entertainment

Home of the World's Best Melons!

Classic Car Show! Cow Patty Bingo! Great Food!
 BBQ Cookoff! Free Melon
 Kids Inflatables! Stage Dancing! Slices All Day!

NO EXPERIENCE? NO PROBLEM.

As a driver for Schneider National we'll train you in every aspect of the job.

**Apply Online at
 schneiderjobs.com**

Or call
**1-800-44-PRIDE
 (1-800-447-7433)**

Company-provided CDL training for qualified candidates
 • \$33,500-\$60,500 (depending on experience)
 • Low-cost medical and dental insurance

SCHNEIDER NATIONAL

HOST FAMILIES NEEDED

Make this year the most exciting, unending year ever for you and your family. Share your world with a young foreign visitor from abroad. Welcome a high school student, 15-18 years old, from France, Spain, Germany, Thailand, Mexico, Denmark, Japan, or Italy as part of your family for a school year and make an overseas friend for life.

For more program information or to select your own exchange student from applications with photos, please call
Marcy at 1-800-888-9040 WORLD HERITAGE IS A PUBLIC BENEFIT
 www.world-heritage.org NON-PROFIT ORGANIZATION

Deakin ELECTRIC
 OILFIELD • RESIDENTIAL • COMMERCIAL
 321 S. MAIN • SPEARMAN
 1-800-999-1506 Chris Deakin
 (806) 659-5016 President

Bartlett's Lumber & Hardware
 105 W. Broadway • Gruver, Texas
 (806) 733-2404

BERRY CLEANERS
 Ann & Vernon Pipkin - Owners
 Phone 659-3122 • P.O. Box 1017
 207 Main St. • Spearman, TX

Morse Implement & Auto Supply
 "Join us in church this week"
 Tom Dortch 733-2668
 P.O. Box 89 • Morse, TX 79062

PRAIRIE MOTORS INC.
 Hwy. 207 South • P.O. Box 430
 Spearman, TX 79081 • (806) 659-2541
 www.prairiemotors.com

Gruver Cablevision
 308 Main
 Gruver, TX 79040
 733-5295

Hansford County Reporter-Statesman
 "Proudly Serving Hansford County Since 1907"
 (806) 659-3434
 213 Main Street • Spearman, TX

Interstate Bank, sss
 322 Main • P.O. Box 146
 Spearman, TX • 659-2559



Clarence E. Willmon of Hansford Manor celebrated his 99th birthday on Saturday, August 19th with a party given by his daughter, Virginia Taylor of Gruver and niece Lola Brownlee of Amarillo, who was born on his birthday.

Clarence was born to John and Emma Willmon on August 16, 1907 in Calihand Co., Texas. He was the sixth of their nine children and the only one still living. He moved to Gruver from Stratford in 1999, and into the Manor on October 1, 2004. He lived in Gruver for a little over a year from January 1954 to February 1955.

Out of town family present were: Frank Willmon, R.F. and Edna Willmon, Victoria and Ryan Willmon, Emily Painter and her children Keegan, Rachel and Breeann Wallace, all of Amarillo; Dean Willmon of Alton, TX; Marilyn Reeves of Denton, TX; grandchildren Darla Sue Scroggins of Fritch and Gail and husband Steve Schmidt-Witcher of Dumas; great-grandchildren Tory Scroggins of Borger, Jeff Coates of Spearman and great-great-grandchildren Verna Allen and Falcon Sanders of Borger. Friends from Spearman and Gruver as well as Manor residents.



Floyd Hull (seated) celebrated his 88th birthday on July 19, 2006 with his four great-grandsons (L-R) Grant, Cole, Chandler and Tyler.

Hansford 4-H Judging Team- State Results



The Hansford County 4-H Livestock Judging team competed at the state contest in College Station on June 7, 2006. Team members are (L-R) Eva McCloy, Charles Slough, Casey Cator, and Jimmilee McCloy. When the final points were tallied, they finished with a hard-fought ninth place finish. These judges showed true determination and grit in a rebuilding year. Team highlights were placing 1st in sheep and 3rd in reasons.

Charles led the team, earning the 4th place overall individual award. He also received recognition for placing 4th in sheep and 5th in reasons. Jimmilee had a solid day in her first state contest by placing 10th in cattle. Casey was recognized for placing 3rd in sheep.

This team will hopefully use this contest as motivation for next year. The coaches, Bret Burgin and Burt Williams, are very encouraged by their potential.

Open Letter

To Whom It May Concern:
Hansford County Veteran's Service is seeking to compile a list of names and addresses for any Hansford County military personnel, especially those who are in harms way (Iraq, Afghanistan, etc).

You can mail the name and address to Benny Wilson, Hansford County Judge/Veteran's Service Officer at 16 NW Court St, Spearman, Texas 79081, or call 806-659-4100.

The list will be used by the local churches to send items to those soldiers.

Sincerely,
Benny Wilson, Hansford County Judge
Hansford County Veterans Service Officer

Together with
our parents
Lori Rae Green
and
Eric Colt Vasquez
request the honor
of your presence at
their marriage on
Sat., Aug. 26, 2006
at 4:00 p.m. in the
First Baptist
Church
803 S. College
Scott City, KS



Eric & Lori

Reception and dance
to follow the ceremony
at the 4-H building.

LYRIC Cinema

113 Main Spearman, Texas (806) 659-2812

Aug 25- 29 - 7 p.m.

Screen 1
Monster
House
PG

Screen 2
Talladega Nights:
The Ballad of
Ricky Bobby
PG-13

www.lyriccinema.com

You are invited to attend a
Wedding Shower
honoring
Laurie Soane
(bride-elect of Chris Strawn)
on Saturday, August 26th
from 10:30 a.m.-12:00 noon
in the home of Linda Latta
1101 Barkley Spearman

DIABETICS!
IF YOU HAVE MEDICARE OR PRIVATE INSURANCE, YOU MAY BE ELIGIBLE TO RECEIVE YOUR DIABETIC SUPPLIES AT LITTLE or NO COST!
We also carry Impotence & Arthritis Supplies
FOR INFORMATION CALL EASY ACCESS MEDICAL SUPPLY
1-800-679-1623
Certain Restrictions May Apply • No HMO's, please

NO CREDIT CARD REQUIRED!
- BEST DEAL EVER -
Get ALL 250+ Channels FREE for 4 months with NFL Sunday Ticket
Includes ALL Movie Channels
DIRECTV
FREE 1-4 Room System
FREE Installation
FREE DVR (Ask How)
Call Now **1-800-574-1938**

Urgent news for people who took
SEROQUEL.
Seroquel, an antipsychotic drug also known as Quetiapine, has been linked to diabetes, pancreatitis, diabetic ketoacidosis (DKA) and even death. If you or a loved one have experienced any of these health problems, call us now toll free at 1-800-THE-EAGLE for a free consultation. We practice law only in Arizona, but associate with lawyers throughout the U.S.
GOLDBERG & OSBORNE
1-800-THE-EAGLE
(1-800-843-3245)
www.1800theeagle.com
Open 7 days a week

BENZENE ALERT
If you or a loved one has been diagnosed with Acute Myelogenous Leukemia (AML) or Myelodysplastic Syndrome (MDS), please call us today toll free at 1-866-369-3476 to discuss your legal rights.
THE FOX LAW FIRM, P.C. 1-866-FOX-FIRM
Principal Office-- Dallas, Texas www.FOXFIRM.COM

Black Diamond Park
SOUTHERN COLORADO'S
"Jewel of the Rockies"
A MASTERPLANNED-GATED COMMUNITY
ESTATE HOMESITES • COVENANTS • CITY WATER • UNDERGROUND UTILITIES
BORDERS THE WALSENBURG GOLF COURSE AND LATHROP STATE PARK!
10% Down Financing From the \$40's
TOLL FREE 866-364-6868
Spectacular Views From Every Lot!
BLACKDIAMONDPARK.COM

What Will Your Creditors Accept To Settle Your Debt?
CALL US TO FIND OUT 1-800-794-9700
Your life should be more than creditors, collectors and attorneys. We will help you take control of your finances and your future by settling your debts today.
Ad#1010
ProVanta Corp
The First 25 Callers Who Enroll In Our Program Will Receive A Free Caller ID Manager (Retail Value: \$99.97)

Friends and Family of
Jason Cantrell
Invite you to a
Come and Go Open House
on Saturday, August 26th from 6-9 p.m.
at 422 S. Barkley
-- No Gifts Please --

Gordon's DRUG
your place for
Bridal Registry

Couples Currently Registered
Marcy Cherry & Taos Weldon - Aug. 19
Kassi Wilson & Steven Foster - Aug. 19
Laurie Soane & Chris Strawn - Aug. 26
Halee Beasley & Steve Scott - Sept. 9
Christen Ferguson & Bradley Brown - Sept. 9
Courtney Edwards & John Brock - TBA
Kassandra Drennan & Donnie Davis
Hillary Holmes & Matt Archer
Brianna (Burkhammer) & Erick Eslick
LaDonna Campbell & Chris Parks
Jessica (Crossland) & Matt Dunnihoo
Micha (Lewis) & Brandon Casdorff
Andie (Hager) & John Stafford
Laura Long & Kolby Sumner
Farrell (Farley) & Garrett Griffin
Lori Green & Eric Vasquez

Baby Registry
Sara (Jones) & Jeremy Farmer - TBA
Leonard & Ronda (Renner) Haynes
Luis & Maria Carbajal

Gordon's DRUG 659-2141
314 Main Spearman

Celebrate

Gifts for all your celebrations!

Bridal Registry

- Shower Dates
- Marcy Cherry & Taos Weldon - Aug. 19
 - Alexis Adams & Ryon Atwood - Aug. 26
 - Laurie Soane & Chris Strawn - Aug. 26
 - Kassandra Drennan & Donnie Davis - Sept. 2
 - Halee Beasley & Steve Scott - Sept. 9
 - Christen Ferguson & Bradley Brown - Sept. 9
 - Courtney Edwards & John Brock - TBA
 - Laura Long & Kolby Sumner
 - Farrell Farley & Garrett Griffin
 - Lori Green & Eric Vasquez

Baby Registry

- Sara (Jones) & Jeremy Farmer
- Ronda (Renner) & Leonard Haynes

Celebrate
203 Main St. Spearman, TX
(806) 659-3350 1-800-663-8026

by Dorothy Hudson

Out At The Lake



Kathy Boyd added four ducks to the two white ducks at the Kid's Pond.

Lake Level—August 21, 2006--18.37 feet (+0.20)

Jim in his Monday report said that Horse Creek had run some from the local rain but it did not run west of Spearman.

He had 3 inches of rain in the last week. The Park is really green, but it is early for the fall flowers such as gay feather.

Activity included 3 campers behind the dam, the annual Brandvik family reunion on Saturday, and the use of the shelter by the Spearman Church of Christ on Sunday.

If you drive out to the Lake from Spearman, notice the giant mushrooms just south of the pay booth. This is the second time these large 8 inch mushrooms have appeared at this spot.

Last week in just a few moments Jim saw a large flock of turkeys, an American Kestrel, and a

red headed woodpecker. He takes pleasure from the wildlife he gets to see by living at the Park.

Another Rattlesnake Story
Two weeks ago Manuel Serrano was riding horseback through a grass trap on the Laddie Cluck place three and a half miles west of Gruver when he heard rattlesnakes. He went back to the barn to get Rick Barkley who was there doctoring cattle. Most of the noise was coming from an old concrete culvert, but they could see a few rattlesnakes in front of the opening. Using an automatic .22 pistol and a shovel, the men killed 2 adult and 3 little foot long rattlesnakes. As they were still hearing a buzz

in the culvert, they took paper feed sacks and stuffed them into the other end of the culvert. The wind was right to smoke out the rest of the snakes when they set the sacks on fire. The snakes came out rather slowly, and they were able to kill 5 big ones and 8 little ones. One of the snakes was especially lumpy, so they cut into it and found 18 little snakes about 8 inches long.

With that success, they operated on two more and found 12 little ones in one and 6 in the other. The next day they killed 15 or 16 more.

It is rare to hear of rattlesnake dens in Hansford County. This is not the time for snakes to hibernate, and it puzzled me that Rick had

found a den of them. By doing a little research I found that the females only have babies every other year. When they are pregnant they do not crawl far from their den. I didn't see whether they return to it to give birth, but Rick's story makes me think they might.

Are You A Victim of Domestic Violence or Sexual Abuse?
The Panhandle Crisis Center Can Help
Call Toll Free - Hotline
1-800-753-5308
301 S. Ash - Perryton 435-5008
Battering Intervention & Anger Management Available
Memorials Accepted

Texas crop and weather report

The following specific livestock, crop and weather conditions were reported by Panhandle Extension directors: Temperatures were near to below average during the week. Most of the Panhandle received some rain, from one-quarter to 3 inches in some areas. Soil moisture is rated adequate to very short with most areas reporting short. Corn is about 70 percent dent and rated fair to good. No major pest problems were reported. Cotton is rated very poor to excellent with most areas reporting fair to good. Most cotton has reached the cutout stage. Some dryland fields are a total loss. Peanuts are rated mostly fair to good with a few fields rated excellent. No pest problems were reported. Sorghum is about 70 percent headed and rated poor to good. Soybeans are rated mostly fair. No pest problems were reported on corn, peanuts, sorghum or soybean crops. Range conditions rated fair to very poor but improving with recent rains. Cattle are rated in fair to good condition.

SCHOOL EMPLOYEES & FEDERAL CREDIT UNION
www.hhsefcu.org

PO Box 1187 • 102 N. Main Stinnett • www.hhsefcu.org
(806) 878-2452 • 1-800-882-1740

We Do Business in Accordance With the Federal Fair Housing Law and Equal Credit Opportunity Act.

Dream Big

EQUAL HOUSING LENDER

NCUA
National Credit Union Administration
a U.S. Government Agency

Your savings federally insured to \$100,000

Does this Certificate Rate look interesting to you?

5.15% APY*

*Annual Percentage Yield

800-882-1740
or 878-2452



FREE TWO-YEAR FACTORY WARRANTY

PLUS \$400 WARN WINCH
JUST \$69.95 ON SELECT UTILITY ATVS

PLUS SPECIAL LOW FINANCING

Warranty offer equis 6-month Limited Factory Warranty plus 18-month Yamaha Extended Service (benefit offered to Florida residents is a 24 month Yamaha Limited Warranty). 2500lb. Warn Winch offer available through participating Yamaha dealers only, Aug. 1, 2006 through Dec. 31, 2006, and good on any new 2007 (or new prior year, excluding Bruin 250) Grizzly 700 4x4, Grizzly 600 4x4, Grizzly 400 4x4, Big Bear 400 4x4, Grizzly 350 IRS 4x4, Grizzly 350 4x4, and Grizzly 350 2WD. Dealer participation may affect this offer. Installation not included. ATVs with engines 90cc or greater are recommended for use only by riders age 16 years and older. Yamaha recommends that all ATV riders take an approved training course. For safety and training information, see your dealer or call the ATV Safety Institute at 1-800-587-2887. ATVs can be hazardous to operate. For your safety: Always avoid paved surfaces. Never ride on public roads. Always wear a helmet, eye protection and protective clothing. Never carry passengers. Never engage in stunt riding. Riding and alcohol drugs don't mix. Avoid excessive speed. And be particularly careful on difficult terrain. ©2006 Yamaha Motor Corporation, U.S.A. Offer good only in the United States, excluding the state of Hawaii.

YAMAHA

*******FIVE STAR EQUIPMENT, INC.*******
Hwy. 15 West • Spearman TX • (806) 659-3743

Notice of Vote on Tax Rate

The Hansford Hospital District conducted public hearings on a proposal to increase the total tax revenues of the Hansford Hospital District from properties on the tax roll in the preceding year by 5 percent on August 17, 2006 at 7:00 AM and August 21, 2006 at 7:00 AM.

The Hansford Hospital Board of Directors is scheduled to vote on the tax rate that will result in that tax increase at a public meeting to be held on August 31, 2006, at 6:00 PM at Hansford Hospital Board Room.

713 N. Deahl • 274-3400

J. Shane Rhoton, MD
Obstetrics/Gynecology
Private Practice
in Borger
Clinical Instructor
Texas Tech Dept.
of OB/GYN

Do you need a Doctor to manage your needs?

Diabetes	✓	Abnormal Placenta	✓
Hypertension	✓	Difficult Growth	✓
Pre-Term Labor	✓	Issues	✓
Preeclampsia	✓	Abnormal Fluid	✓
Previous C/S	✓	Breech	✓

I trained at Parkland, NUTH & BSA so you can put your mind at ease. The care you expect is right here in Borger. You can get good care and deliver safely in Borger. The highway between Spearman and Amarillo is no place to have a baby.

YOU HAVE A CHOICE!

Golden Plains Community Hospital
273-1100 • www.goldenplains.org

Spearman ISD Policy For Free and Reduced-Priced Meals

Spearman Independent School District announces its policy for providing free and reduced-price meals for children served under the National School Lunch and Breakfast Program. Each school and/or the central office has a copy of the policy, which may be reviewed by any interested party.

The household size and income criteria identified below will be used to determine eligibility for free and reduced price benefits. Children from households whose income is at or below the levels shown are eligible for free or reduced meals. Foster children who are the legal responsibility of a welfare agency or court may also be eligible for benefits regardless of the income of the household with whom they reside. Eligibility for a foster child is based on the child's income.

Application forms are being distributed to all households with a letter informing households of the availability of free and reduced price meals for their children. Applications also are available at the Principal's office in each school. To apply for free and reduced-price meals, households must fill out the application and return it to the school. Applications may be submitted anytime during the school year. The information households provide on the application will be used for the purpose of determining eligibility and verification of data. Applications may be verified by the school officials at any time during the school year.

For school officials to determine eligibility for free and reduced price benefits, households receiving

food stamps or TANF only have to list their child's name, food stamp or TANF case number and an adult household member must sign the application.

Households who do not list food stamp or TANF case number must list the names of all household members, the amount and source of income received by each household member and the social security number of the adult household member who signs the application. If the adult who signs the application does not have a social security number, the household member must indicate that a social security number is not available by writing the word "NONE." The application must be signed by an adult household member.

Under the provision of the free and reduced price meal policy, the Food Service Director and Jr. High Cashier I will review applications and determine eligibility. Parents wishing to make a formal appeal for a hearing on the decision may make a request either orally or in writing to: Superintendent Rodney Sumner, 403 E. 11th, Spearman, TX 79081, telephone (806) 659-3233.

Households that list food stamps or TANF case number must report when the household no longer received these benefits. Other households approved for benefits based on income information must report increases in household income over \$50 per month or \$600 per year and decreases in household size. Also, if a household member becomes unemployed or if the household size increases, the household should

contact the school. Such changes may make the children of the household eligible for benefits if the household's income falls at or below the levels shown above.

In accordance with federal law and U.S. Department of Agriculture policy, this institution is prohibited from discriminating on the basis of race, color, national origin, sex, age or disability.

To file a complaint of discrimination, write USDA, Director, Office of Civil Rights, Room 326-W, Whitten Building, 1400 Independence Avenue, SW Washington, D.C. 20250-9410 or call 202/720-5964 (voice and TDD). USDA is an equal opportunity provider and employer.

The Spearman School offers a choice of a healthy meal each day.

Children may buy lunch for \$1.75 - high school, \$1.60 - junior high, or \$1.50 - elementary. Breakfast for all grades is 75¢. The snack bar will be strictly cash, and may not be used with lunch tickets. There will be no charging at high school. Only three charges will be allowed at jr. high and elementary.

Children who qualify under the U.S. Dept. of Agriculture guide-

lines may get meals free or at a reduced price of 40¢ for lunch, and 30¢ for breakfast. Parents, the best time to purchase lunch and breakfast tickets is between 7:30 a.m. and 8:15 a.m. Tickets may be purchased in the Jr. High/Elementary Dining Room or the High School Kitchen or Lunch Room Office. Please purchase lunch tickets instead of sending money.

Gruver I.S.D. Free and Reduced-Price Lunch Program

Children need healthy meals to learn. Gruver ISD offers healthy meals every day. Breakfast costs \$1.00; lunch costs Pre-kindergarten-4th grade - \$1.50 and 5th-12th grade - \$2.00. Your children may qualify for free meals or for reduced-price meals. Reduced price is 30¢ for breakfast and 40¢ for lunch.

To apply for free or reduced-price meals, use the Free and Reduced-Price School Meals Application, which will be given to each child the first week of school.

Here are answers to questions you may have about applying:

1. Do I need to fill out an application for each child? No. Complete the application to apply for free or reduced-price meals. Use one Free and Reduced-Price School Meals Application for all students in your household. We cannot approve an application that is not complete, so be sure to fill out required information. Return the completed application to: Tammy Mitchell, school cafeteria, 733-2032.

2. Who can get free or reduced-price meals? Children in house-

holds receiving Food Stamps or TANF can get free meals regardless of household income. Also, if your household income is within the limits of the Federal Income Guidelines.

3. Can homeless, runaway and migrant children get free meals? Please call school counselor at 733-5111 or Mr. David Teal at 733-2001 to see if your child(ren) qualify, if you have not been informed that they will get free meals.

4. Who can get reduced price meals? Your children can get low cost meals if your household income is within the reduced-price limits on the Federal Income Chart.

5. Should I fill out an application if I get a letter this school year saying my children are approved for free or reduced-price meals? Please read the letter you got carefully and follow the instructions. Call the school at 733-2032 if you have questions.

6. I get WIC. Can my child(ren) get free meals? Children in households participating in WIC may be eligible for free or reduced-price meals. Please fill out an application.

7. Will my information be checked? Yes. We may ask you to send written proof.

8. If I don't qualify now, may I apply again later? Yes. You may apply at any time during the school year if your household size goes up, income goes down, or if you start receiving Food Stamps, TANF, or other benefits. If you lose your job, your children may be able to receive free or reduced-lunch meals.

9. What if I disagree with the school's decision about my application? You should talk to a school official. You also may ask for a hearing by calling or writing to: David Teal at 405 Garrett, Gruver, TX 79040, or call 733-2001.

10. May I apply if someone in my household is not a U.S. citizen? Yes. You or your child(ren) do not have to be a U.S. citizen to qualify for free or reduced-price meals.

11. Who should I include as members of my household? You must include all people living in your household, related or not (such as grandparents, other relatives or friends). You must include yourself and all children who live with you.

12. What if my income is not always the same? List the amount that you normally get. For example, if you get \$1000 each month, but you missed some work last month and only got \$900, put down that you get \$1000 per month. If you normally get overtime, include it, but not if you get it only sometimes.

13. We are in the military, do we include our housing allowance as income? If your housing is part of the Military Housing Privatization Initiative, do not include your housing allowance as income. All other allowances must be included in your gross income.

If you have other questions or need help, call 733-2032. Si necesita ayuda, por favor llame al telefono: 733-2032. Si vous voudriez d'aide, contactez nous au numero: 733-2032.

Instructions for Applying

Use a separate application for each foster child. List other children together.

If you are applying for a Foster Child, follow these instructions:

Part 1: List the child's name, school and grade.

Part 2: List the child's personal use monthly income, if any.

Part 3: Skip this part.

Part 4: Sign the form. A Social Security Number is not necessary.

If your household receives Food Stamps or TEMPORARY ASSISTANCE TO NEEDY FAMILIES (TANF), follow these instructions:

Part 1: List the child's name, school and grade.

Part 2: Skip this part.

Part 3: Skip this part.

Part 4: Sign the form. A Social Security Number is not necessary.

If you are applying for a HOMELESS, MIGRANT OR RUNAWAY CHILD, follow these instructions:

Part 1: List the child's name, school and grade.

Part 2: Check the appropriate box.

Part 3: Skip this part.

Part 4: Sign the form. A Social Security Number is not necessary.

ALL OTHER HOUSEHOLDS, follow these instructions:

Part 1: List each child's name, school and grade. **Optional (Social Security Number, Student I.D., or Date of Birth).**

Part 2: Skip this part.

Part 3: Follow these instructions to report total household income from last month.

Column 1 - Names: List the last, first and middle name of each person living in your household, related or not (such as grandparents, other relatives, or friends). You must include yourself and all children. Attach another sheet of paper if needed.

Column 2 - Last month's income and how often it was received: List the types of income your household received last month and how often.

Employment Income: List the gross income each person earned last month. It is not the same as the take-home pay. **Gross income is the amount earned before taxes and deductions.** It should be listed on your pay stub or your boss can tell you. Next to the amount, write how often you receive it (weekly, every-other-week, twice-a-month, or monthly).

Other Income: List the total amount each person received last

month from all other sources. Include welfare, child support, alimony, pensions, retirement, Social Security, Worker's Compensation, unemployment, strike benefits, Supplemental Security Income (SSI), Veteran's benefits (VA benefits), disability benefits, regular contributions from people who don't live in your household, and ANY OTHER INCOME. Report net income for self-owned business, farm, or rental income. Next to the amount, write how often the person received it.

Column 3 - Check if no income: If the person does not have any income, check the box.

Part 4: An adult household member must sign the form and list his or her Social Security Number or mark the box if he or she doesn't have one.

PRIVACY ACT STATEMENT: This explains how we will use the information you give us. The National School Lunch Act requires the information on this application. You do not have to give the information, but if you do not, we cannot approve your children for free or reduced-price meals. The Social Security Number of the adult household member who signs the application is required unless you list Food Stamp or TANF case numbers for all children you are applying for OR if you are applying for a foster child. You must check the "I do not have a Social Security Number" box if the adult household member signing the application does not have a Social Security Number. We WILL use your information to see if your children are eligible for free or reduced-price meals, to operate the program, and to enforce the rules of the program. We MAY share your eligibility information with education, health, and nutrition programs to help them evaluate, fund or determine benefits for their programs, auditors for program reviews, and law enforcement officials to help them look into misuse of program rules.

NON-DISCRIMINATION STATEMENT: This explains what to do if you believe you have been treated unfairly. In accordance with Federal law and U.S. Department of Agriculture policy, this institution is prohibited from discriminating on the basis of race, color, national origin, sex, age or disability. To file a complaint of discrimination, write to USDA, Director, Office of Civil Rights, Room 326-W, Whitten Building, 1400 Independence Avenue, SW, Washington, D.C. 20250-9410 or call 202/720-5964 (voice and TDD). USDA is an equal opportunity provider and employer.

Multi-Child Free and Reduced-Price School Meals Application for 2006-07

District/Charter School

Part 1. Children in School (Use a separate application for each foster child.)

Names of all children in school (Last, First, Middle Initial)	School Name	Social Security #, Student I.D. or Date of Birth (Optional)	Grade	Food Stamp or TANF case # (if any)
1.				
2.				
3.				
4.				
5.				
6.				

If you listed a Food Stamp/TANF case # for one child, skip to Part 4.

Part 2. Foster Child

If this application is for a child who is the legal responsibility of a welfare agency or court, check box and list the amount of the child's personal use monthly income: \$ _____ Skip to Part 4.

Part 3. Household Members and Gross Income From Last Month (List each person in the household. For each person who receives income, write the amount received and how often it is received.)

1. Name. (List everyone in household)	2. Income and how often it is received. Weekly (W), Every 2 Weeks (E), Twice a Month (T), Monthly (M)				3. Check if NO Income.
	Earnings from work before deductions	Welfare, child support, alimony	Pensions, retirement, Social Security	Other	
Example: Smith, Jane B.	\$200/E	\$50/W			<input type="checkbox"/>
1.					<input type="checkbox"/>
2.					<input type="checkbox"/>
3.					<input type="checkbox"/>
4.					<input type="checkbox"/>
5.					<input type="checkbox"/>
6.					<input type="checkbox"/>
7.					<input type="checkbox"/>
8.					<input type="checkbox"/>
9.					<input type="checkbox"/>

Part 4. Signature and Social Security Number (Adult must sign.)

An adult household member must sign this application. If Part 3 is completed, the adult signing the form must also list his or her Social Security Number or mark box if you do not have a Social Security Number. (See Privacy Act Statement on the "Instructions for Applying" page.)

I certify (promise) that all information on this application is true and that all income is reported. I understand that the school will get federal funds based on this information I give. I understand that school officials may verify (check) the information. I understand that if I purposely give false information, my children may lose meal benefits, and I may be prosecuted.

Sign here: _____ Date: _____

Social Security Number: _____ do not have a Social Security Number.

Printed Name: _____ City: _____ State: _____ Zip: _____

Mailing Address: _____

Do not fill in this page for school use only.

Monthly Income: _____ House size: _____ FS/TANF: _____ Date Withdrawn: _____

Eligibility: Free: Reduced: Denied: Reason: _____

Temporary Free: _____ Time Period: _____ (expires after _____ days)

Reviewing Official's Signature: _____ Date: _____

Confirming Official's Signature: _____ Follow-up Official's Signature: _____ Date: _____

2006-2007 Income Eligibility Guidelines

National School Lunch and Child Nutrition Programs 2006-07 Income Eligibility Guidelines

FAMILY SIZE	ANNUALLY		MONTHLY		TWICE PER MONTH		EVERY TWO WEEKS		WEEKLY	
	FREE	REDUCED	FREE	REDUCED	FREE	REDUCED	FREE	REDUCED	FREE	REDUCED
1	\$12,740	\$18,130	\$1,062	\$1,511	\$531	\$756	\$490	\$698	\$245	\$349
2	\$17,160	\$24,420	\$1,430	\$2,035	\$715	\$1,018	\$660	\$940	\$330	\$470
3	\$21,580	\$30,710	\$1,799	\$2,560	\$900	\$1,280	\$830	\$1,182	\$415	\$591
4	\$26,000	\$37,000	\$2,167	\$3,084	\$1,084	\$1,542	\$1,000	\$1,424	\$500	\$712
5	\$30,420	\$43,290	\$2,535	\$3,608	\$1,268	\$1,804	\$1,170	\$1,665	\$585	\$833
6	\$34,840	\$49,580	\$2,904	\$4,132	\$1,452	\$2,066	\$1,340	\$1,907	\$670	\$954
7	\$39,260	\$55,870	\$3,272	\$4,656	\$1,636	\$2,328	\$1,510	\$2,149	\$755	\$1,075
8	\$43,680	\$62,160	\$3,640	\$5,180	\$1,820	\$2,590	\$1,680	\$2,391	\$840	\$1,196
9	\$48,100	\$68,450	\$4,009	\$5,705	\$2,005	\$2,853	\$1,850	\$2,633	\$925	\$1,317
10	\$52,520	\$74,740	\$4,378	\$6,230	\$2,190	\$3,116	\$2,020	\$2,875	\$1,010	\$1,438
11	\$56,940	\$81,030	\$4,747	\$6,755	\$2,375	\$3,379	\$2,190	\$3,117	\$1,095	\$1,559
12	\$61,360	\$87,320	\$5,116	\$7,280	\$2,560	\$3,642	\$2,360	\$3,359	\$1,180	\$1,680
For each additional family member add:										
	\$4,420	\$6,290	\$369	\$525	\$185	\$263	\$170	\$242	\$85	\$121

Even Though You're Away... We'll deliver the paper every week to your dorm, fraternity, sorority or apartment - for just \$25 for nine months.

You'll make new friends, have new experiences and see new things at college, but having a link to your hometown helps keep you in touch with friends and family members and lets you know what's happening in Hansford County.

keep in touch with a student subscription to THE HANSFORD COUNTY REPORTER-STATESMAN

Please make checks payable to: Reporter-Statesman, 213 Main Street, Spearman, TX 79081, (806) 659-3434

Name: _____
School address: _____
City: _____
State: _____ Zip: _____

Parents: _____
Address: _____
City: _____
State: _____ Zip: _____

cut and mail

REAL ESTATE FOR SALE

FOR SALE: 208 Cluck, Gruver - 3BR, 2B, 2CG Brick Home, 2160 sq ft., many updates. Call 806-733-5123
TFN (04-27-06) B

FOR SALE: 416 Haney, Spearman - 4BR, 2B, CH & A, new carpet, new paint, close to school. Call 330-0364
TFN(06-08-06)

FOR SALE: 717 Cotter, Spearman - 3/1, Home, 1 CG, Central H/A Recent updates and new carpet. Call 806-330-0453 or 806-330-0568
TFN(06-15-06)B

FOR SALE: 1115 S. Bernice, Spearman - Nice brick, 3BR, 2B home, fenced back yard, central heat/air, 2CG, large shop in back, new sprinkler system. Call (806) 352-3452 or (806) 259-2614.
TFN(7-06-06)B

FOR SALE: Nelson Addition, Spearman - Very nice 3BR, 2B, 2CG, with lots of extras. Large lot, fenced backyard, shop - home is ready to move into. Call 659-3646.
TFN(7-27-06)B

FOR SALE: 707 Wilbanks, Spearman - 3BR, 2B, 2 car attached garage brick home. Ready to move into! Call (806) 659-5057 or (620) 697-4060 for an appointment.
1(8-24-06)P

FOR SALE: Lubbock - Double-wide mobile home - 3BR, 2B, carport, cellar, fenced yard, covered deck & porch, large storage building on 1 1/2 acres in Lubbock. Call 659-5041.
4(8-3-06)P

FOR SALE: 314 Womble, Gruver - 3BR, 1 1/2B, basement, garage, fenced yard, corner lot. Call Dwan at 800-687-9998. TX LIC RE Agent.
4(8-3-06)P

FOR SALE: 506 Garrett, Gruver - 3BR, 2 3/4B, good location, fenced backyard. Call (806) 733-2034.
4(8-24-06)P

FOR RENT/LEASE

OFFICE SPACE FOR RENT, SPEARMAN: Pittman-Shieldknight building - all sizes available. Call 659-5588 or 659-3399 for more information.
TFN(01-27-05)B

FOR RENT: Two Bedroom Apartment, \$375.00 month, \$300.00 deposit, Water Paid, No Pets. 659-9971.
TFN(7-06-06)B

FOR RENT: 1BR apartment w/washer & dryer hookup, stove & refrigerator, 1CG - \$325/month, \$325 deposit. Call 940-631-0894
TFN(8-24-06)B

FOR RENT: Large 1BR apartment w/washer & dryer hookup, stove & refrigerator, central A/H - \$375/month, \$375 deposit. Call 940-631-0894
TFN(8-24-06)B

Blankenship Real Estate
659-3052 - 670-3774

Crawford Addition - 3/2/2 with fireplace and storm cellar on large lot. Nice home!

Crawford Addition - 3/2 oversized detached 2-car garage, stormshelter!

Close to High School, in condition.

2165 sq. ft. Country Home with basement, barn & 3-car garage. Call for extra! **PRICE REDUCED!**

2268 sq. ft. home with 3-car garage on large lot. Covered patio with pond. Ready to move in!

Eulalia Blankenship - Sales
Eschol Blankenship - Broker
NEW LISTINGS WANTED!

EMPLOYMENT

HELP WANTED: Taking applications for a part-time church nursery worker. Sunday morning and other various times. Fun job, good pay. Please call 659-5503 or come by 407 S. Haney for information/application.
TFN(8-17-06)B

WANTED: Cowboys & Bunk Readers. Competitive pay. Ask about our compensation plan. Contact **Hitch Feeders 1, Inc.** at 580-652-2494 for more details. Treating employees like family for over 100 years. EOE
1(8-17-06)B

HELP WANTED: Experienced automotive technician wanted. Good working environment, paid holidays, paid vacation and health insurance. Chrysler experience helpful. GM & Chrysler Dealership. Call 1-800-692-4657, ask for Mike.
2(8-17-06)B

HELP WANTED: Prairie Motors has an opening in the Service Department for a general helper. Call Mike at 659-2541.
2(8-17-06)B

HELP WANTED: Frontier Feedyard is accepting applications for an experienced mill operator. Contact Kevin or Buddy at 806-882-4251, or come by for an application. EOE
TFN(8-17-06)B

HELP WANTED: Fluid Compressor Partners, Ltd., a growing company in the oil and gas service industry, has openings for **field mechanics** in this area. We offer competitive pay and benefits including health insurance, 125(c), 401k, incentive bonus plan, paid holidays and vacation. Send resume to PO Box 501, Pampa TX 79066, or email to HR@fluidcompressor.com. Or call 806-669-7499 and ask for the Human Resource department.
2(8-17-06)B

HELP WANTED: The Hansford County Sheriff's Office has an opening for a jailer/dispatcher. Must have a high school diploma or GED. Apply at Sheriff's Office, 806-659-4140.
2(8-24-06)B

GARAGE/ESTATE SALE

GARAGE SALE: Saturday, 8 a.m.-3 p.m., 112 Townsend.
1(8-24-06)B

PUBLIC NOTICE

LEGAL NOTICE
First State Bank is accepting sealed bids on a 2000 Dodge Grand Caravan. Bids must be in written form and submitted by August 15, 2006. For more information contact Lenny at 659-5565. First State Bank reserves the right to refuse any and all bids.
2(08-17-06)B

LEGAL NOTICE
First State Bank is accepting sealed bids on a 1992 Lincoln Continental. Bids must be in written form and submitted by August 15, 2006. For more information contact Lenny at 659-5565. First State Bank reserves the right to refuse any and all bids.
2(08-17-06)B

LEGAL NOTICE
NOTICE OF PUBLIC HEARING
SPEARMAN PLANNING
AND ZONING COMMISSION
Date: September 12, 2006
Time: 9:00 a.m.

Place: City Council Chambers, 30 SW Court, Spearman TX
Purpose: To consider in public hearing the plans for improvements made to property listed below due to being zoned Planned Development:
The South 100' by 290' of Tract B, 2nd Advent, City of Spearman, Hansford County, Texas, being addressed as 1115 Roland Street.
If the Planning and Zoning Commission favorably considers the request the City Council will hold a public hearing to consider the amendment as follows:
Date: September 19, 2006
Time: 7:00 a.m.
Place: City Council Chambers, 30 SW Court, Spearman TX
For additional information, call 659-2524.
Cheryl Gibson-Salgado
City Secretary
2(08-17-06)B

NOTICE TO BIDDERS

Sealed bids for the digging of a pit at the Spearman Municipal Landfill will be received by the City of Spearman, Texas, up until 11:00 a.m., September 13, 2006, and then publicly opened and read.
The City reserves the right to reject any or all bids, to waive informalities, and to accept the bid deemed to be the most advantageous to the City. All bids received after the closing hour will be returned unopened.
All bids shall be sealed and marked on the outer envelope of the type of bid being submitted.
Specifications and bidding documents may be secured from City Hall, P. O. Box 37, Spearman, Texas 79081.
2(08-24-06)B

NOTICE TO ALL PERSONS HAVING CLAIMS AGAINST THE ESTATE OF KEN RICHARD JONES

Notice is hereby given that original Letters Testamentary for the Estate of KEN RICHARD JONES were issued to Sara Farmer on August 21, 2006, in Cause No. 2481, pending in the County Court of Hansford County, Texas. All persons having claims against the estate, which is currently being administered, are required to present them within the time and in the manner prescribed by law. All claims should be sent to Sara Farmer, 2429 Fir Street, Pampa TX 79065.
John L. Hutchison,
Attorney for the Estate of
Ken Richard Jones
2(08-17-06)B

PUBLIC NOTICE

Notice is hereby given that the annual return (Form 990-Pf) of the Karl A. Nielson and Karen J. Nielson Scholarship Fund will be

hchd
Hansford County Hospital District

Hansford Manor is taking applications for training classes for **Nurse Aide Certification**. Good benefits package including retirement, vacations/holidays, sick leave, and health insurance. Contact Lelia Bynum, DON, at 806-659-5850 or apply at 707 S. Roland, Spearman, TX. Download application at www.hchd.net
Equal Employment Opportunity Employer
2(08-24-06)B

MARTIN & ASSOCIATES REALTY

Serving Hansford County for 14 years
Julie Martin, Broker - 659-2425

IN SPEARMAN
722 Wilbanks - 3/1 1/2 - nice home in nice neighborhood and close to school. Free-standing fireplace. **SOLD**
1109 Haney - 3/1 1/2 - **SOLD** property 701 Wilmeth - 5/2 **SOLD** beautiful corner lot

We'd Like Your Listing
FOR QUALITY & SERVICE
CALL US TODAY!
Equal Housing Opportunity

Are You A Victim of Domestic Violence or Sexual Abuse?

The Panhandle Crisis Center Can Help
Call Toll Free - Hotline
1-800-753-5308
301 S. Ash - Perryton
435-5008
Battering Intervention & Anger Management Available
Memorials Accepted

hchd
Hansford County Hospital District

Immediate Full-Time Openings
Maintenance person with a wide knowledge of the maintenance field in carpentry, painting, plumbing, electrical H/A, grounds care and welding.
Medical Records person needed at Hansford Manor. Responsibilities include providing and protecting health care information on all residents care.
Phlebotomist needed at HCHD Laboratory. Responsibilities include obtaining blood specimens from in-patient, out-patient and emergency room patients for all ages.
X-Ray Tech needed. MRT license required. ARRT license preferred. AS degree or higher, 1-2 years experience preferred, but not required.
Pharmacy Tech needed in hospital pharmacy.
Great working environment and staff, quality facility providing opportunities for professional growth. Apply at 707 S. Roland, Spearman, TX or contact Jackie Nelson, HR Mgr., 806-659-5841. Download application at www.hchd.net
Equal Employment Opportunity Employer
2(08-24-06)B

Real Estate & Rental
HOME OF THE WEEK

Spearman Property
EX- 504 Roland - 3BR, 2B, storm shelter, stg bldg.

Gruver Property
EX-505 King - 3BR, 1 3/4 B, carport, newly remodeled
813 Richardson - 2BR, 1B - BIG REDUCTION!
806 Richardson - 2BR, 1B, 5 lots
802 Womble - 2-3BR, carport, corner lot
House for Rent in Gruver - 3BR, 2B

Real Estate & Rental
for all your real estate needs!
Melinda McCullough, Assoc.
(806) 733-5678
John Graves, Broker
Toll Free: 1-877-664-5050

Eat & Be Merry At

MONTEAL'S

BBQ & STEAK HOUSE
Hotline for Friday & Saturday Nights - 435-3945

We offer Priority Seating!
Give us a call before leaving, and we will save you a place in the seating line.
When you arrive, check in with the hostess.

New Menu (10 new items)
Wed. Night - All-You-Can-Eat Catfish

14 SE 3rd Ave.
Perryton, TX

PLUG	RCA	BABA
EARL	PION	BANAL
TIDY	ECHO	ACTUP
EDUCATION	SKID	
OPINE	NIP	
SCULPT	MACADAM	
ILL	LESSON	GOLA
LETHE	POL	AKRON
AFRO	PUBLIC	INN
STAMMER	NAUSEA	
EAT	SPURN	
PAWN	CURRICULA	
HANOI	ERIE	OVAL
OPERA	EGOS	REDS
GAWK	SEN	KAYO

8	6	2	3	5	1	4	7	9
4	9	7	2	8	6	5	3	1
3	5	1	9	4	7	8	2	6
7	4	9	6	1	3	2	5	8
2	3	5	4	9	8	6	1	7
1	8	6	7	2	5	3	9	4
5	7	3	8	6	9	1	4	2
6	1	4	5	7	2	9	8	3
9	2	8	1	3	4	7	6	5

The **BEST** *of* **BEST**

The Bunkhouse Restaurant
Spearman's place for steak!

Steaks, Salads & Sandwiches
Prime Rib by reservation

Come & Get It!

DAILY LUNCH BUFFET
Tues.-Fri., 11:00 a.m. to 1:30 p.m.
Tuesday - TexMex; Wednesday - Baked Potato Bar;
Thursday - Home-Cooking; Friday - Fried Chicken

Sunday Lunch Buffet Lunch menu available
11:30 a.m. to 1:30 p.m. Tuesday-Saturday

The Bunkhouse Restaurant
212 Main Street • Spearman • (806) 659-2089
Hours: Tues.-Thurs. 11 a.m.-8 p.m.;
Fri. & Sat. 11 a.m.-9 p.m.; Sun 11 a.m.-2 p.m.; Mon. Closed

PTCI

Have you checked your long distance bill lately?

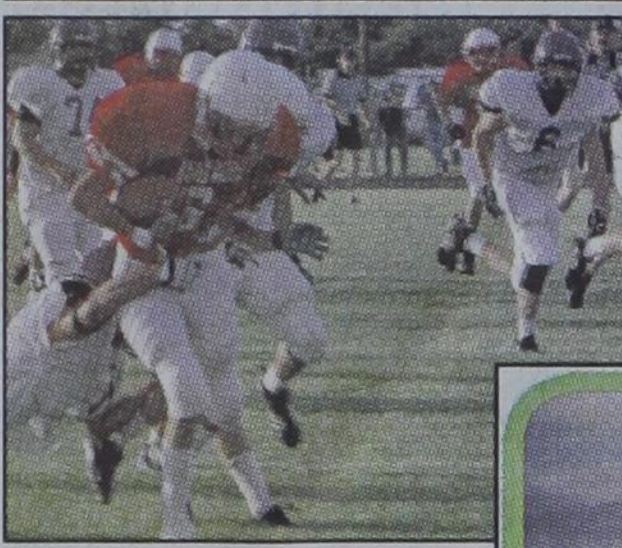
Do all those fees keep **growing** month after month, until that horrifying long distance bill consumes your home? You have to change... change now... change to PTCI®!

Call today and pay no transfer fee!

721 W. 7th Spearman 1-800-562-2556 www.ptci.net

Hounds, Lynx Scrimmage

photos by Charlie Johnson



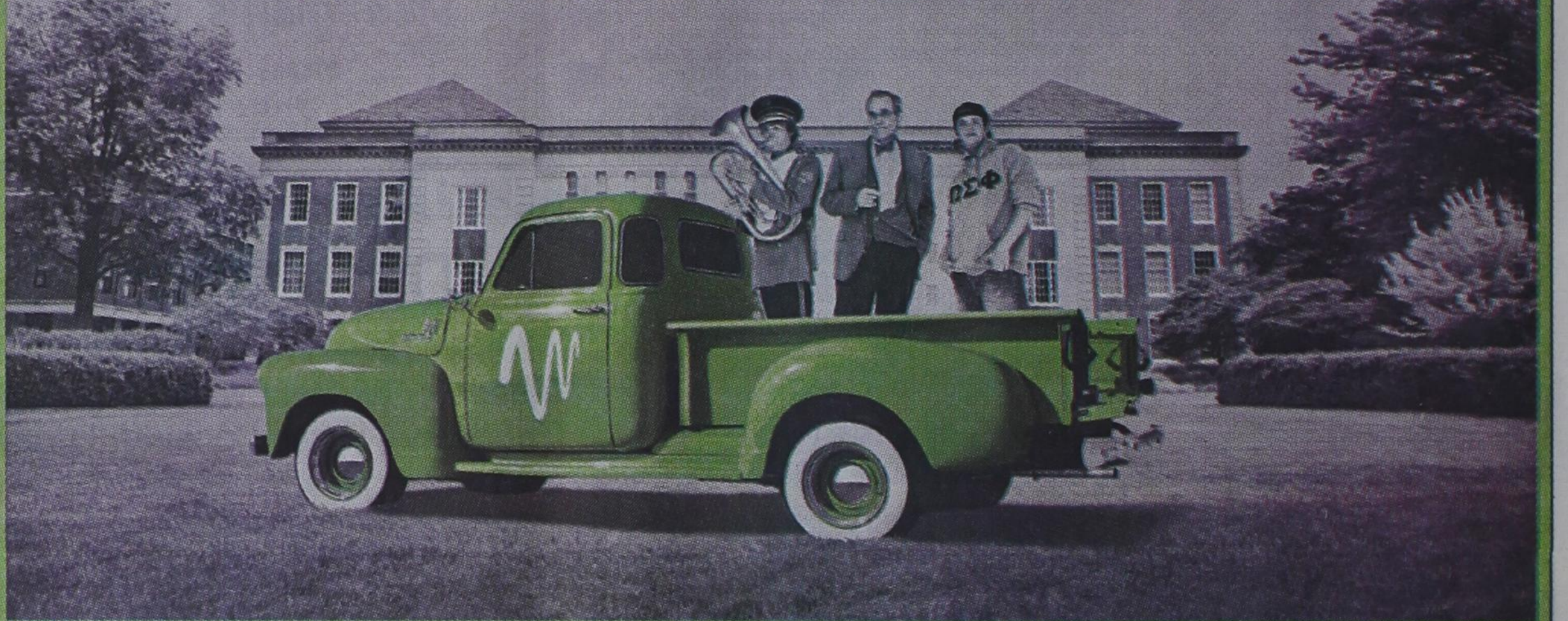
MITCHELL THEATRES
NORTHDRIDGE CINEMA 8
Guymon, Oklahoma

Movies beginning August 25

- INVINCIBLE PG -- Mark Wahlberg
- BEERFEST R -- Jay Chandrasekhar
- ACCEPTED PG-13 -- Justin Long
- SNAKES ON A PLANE R -- Samuel L. Jackson
- WORLD TRADE CENTER PG-13 -- Nicholas Cage
- STEP UP PG-13 -- Channing Tatum
- TALLEDEGA NIGHTS PG-13 -- Will Ferrell
- BARNYARD PG -- Animated

FRESH POPCORN EVERYDAY!
-PARTY ROOM & ARCADE-
Call for Showtimes
580-338-3281
www.northridge8.com
Office -- 580-338-8969
CASH & CREDIT CARDS ONLY
THANK YOU!

BIG SPEED ON CAMPUS. WE BRING IT ALL HOME.



BROADBAND
\$14.99 FIRST 3 MONTHS
PER MONTH
GREAT VALUE!

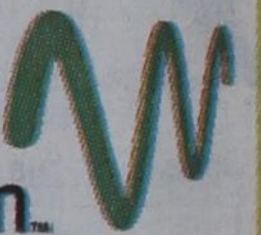
OFFER INCLUDES:
FREE MODEM (AFTER REBATE)
FREE ACTIVATION
FREE SELF-INSTALL KIT
FREE E-MAIL VIRUS & SPAM PROTECTION

HIGH-SPEED INTERNET:
DOWNLOAD FIGHT SONGS
RESEARCH PAPERS ONLINE

30-DAY MONEY BACK
GUARANTEE

LIMITED-TIME OFFER.
HOP ON TODAY.

PHONE
BROADBAND
DIGITAL TV



windstream
communications

grow places

1.800.978.2567 | WINDSTREAM.COM

Limited-time offer. Subject to availability in certain locations. Broadband price shown requires a qualified service and does not include taxes, fees and other surcharges. In areas where a Windstream Value Line is available, the referenced Broadband price reflects Broadband packaged with a Value Line. After first 3 months, Broadband price will revert to standard monthly pricing. Offer does not guarantee service availability on your individual phone line. Broadband price shown reflects up to 38.4 Kbps download speed and up to 2.8 Kbps upload speed; Broadband speeds may vary based on throughput conditions. Free Broadband modem after instant credit of \$49.95 and \$50 mail-in rebate. To qualify for free modem, you must (1) activate new Windstream Broadband service with a 2-month service agreement (2) maintain your Broadband service for at least 30 days from service agreement start date and (3) submit a fully completed rebate certificate by postmark date of 45 days from Broadband service activation date to the address shown on the rebate certificate. Applicable Broadband customer charges, sales tax, shipping and handling fees added to bill statement. Other restrictions and conditions may apply. 30-day Satisfaction Guarantee applies to monthly Broadband service charges, exclusive of taxes, fees and surcharges. Customer must return modem in order to receive money back credit. A \$300 fee will be assessed to Windstream accounts if Broadband service is terminated after the first 30 days of service and before the 2-month term. Broadband service and Broadband modem provided by Windstream Broadband Services. Additional Information: Credit approval required, & pre-payment may be required. Taxes, fees & other charges, including Universal Service Fund, apply. Windstream reserves the right to cancel or discontinue this plan at any time. If any required bundle component is disconnected, all remaining components convert to the regular tariffed monthly rate. Other restrictions may apply. Offers are subject to the Windstream Terms & Conditions for Communications Services available at any Windstream store or at windstream.com. Contact a Windstream representative for details.

W WILDBLUE DELIVERS

- NEWS
- ENTERTAINMENT
- ACCESS
- TRAVEL
- HIGH-SPEED

High-Speed Internet Where You Live!

HIGH-SPEED INTERNET IS HERE!

Introducing WildBlue high-speed Internet - up to 30 times faster than dial-up - and it's now offered to all residents in your area.

WildBlue is always on, so there are no "dial-up" delays and you don't need an expensive second phone line. True broadband allows you to download movies and music, share photos, and more.

\$99.99 FOR EQUIPMENT AND INSTALLATION.

CALL FOR MORE INFORMATION TODAY!

SAVE NOW!
OFFER ENDS
SEPTEMBER 15, 2006

LEC

HIGH SPEED SATELLITE SERVICES

806-561-4588 • 1-877-218-2308
www.lyntegar.coop

Promotion Code: DMPC
Not available in all areas. Requires a clear view of the southern sky. Equipment fee of \$99.99. Installation taxes and minimum term required. Downstream speed comparison between Pro Pak and 42 Kbps dial up. Value Pak is up to 10X faster than dial-up. Speeds are not guaranteed. Usage subject to WildBlue's Fair Access Policy. Monthly fees refer to Value Pak. Equipment and installation charges, taxes and minimum term commitments also apply. Prices subject to change. © 2006 WildBlue Communications, Inc.



W WILDBLUE
Satellite Speed Internet™