

Inside

Lunch Menus	2	Sports	9&10
Among the Neighbors	7	Out at the Lake	8
Museum Musings	3	Classifieds	11
Library Book Notes	4	Obituaries	12

Morse D.A.R.E. Graduation

Page 5

WEATHER FOR WEEK OF 2-02 THRU 2-08

Day	Hi	Lo	Precip	Day	Hi	Lo	Precip
Thu	75	37	.00	Mon	59	28	.00
Fri	56	36	.00	Tue	45	31	.00
Sat	71	26	.00	Wed	--	21	.00
Sun	56	26	.00	Total Precipitation 0.29			

HANSFORD COUNTY LIBRARY
0120 MAIN ST. 79081-
SPEARMAN, TX
EXPIRES 04/01/1995 THANK YOU

The Hansford County

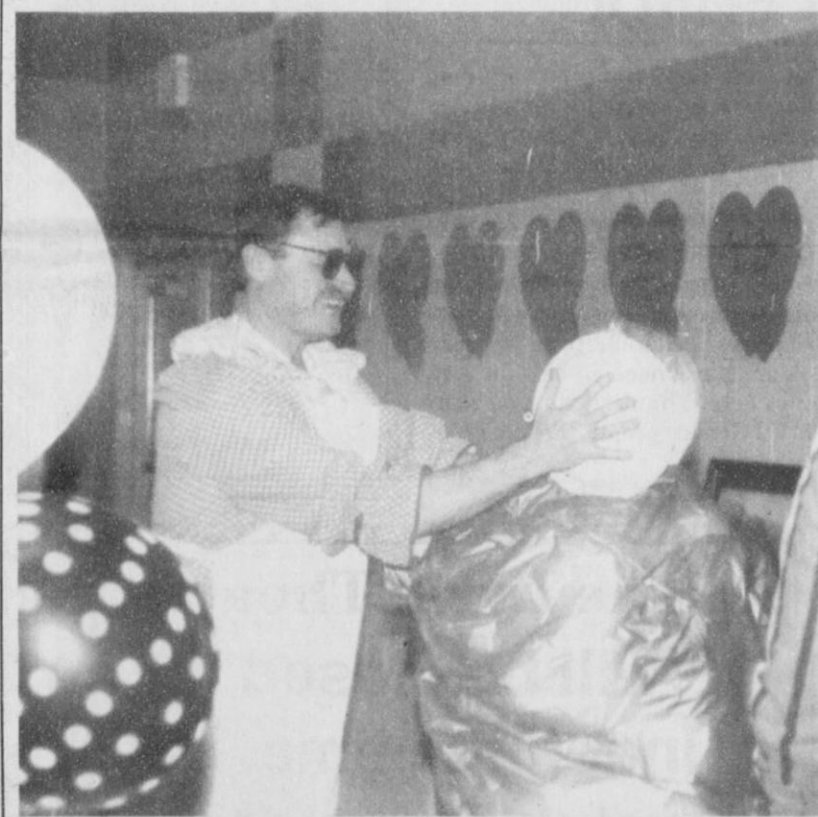
Reporter-Statesman

Serving Hansford County Since 1907

Volume 87 • Issue 6

213 Main • Spearman, Texas 79081

Thursday • February 9, 1995



HEARTY OF A TIME - Folks attending the annual American Heart Association banquet found themselves having a 'hearty old time.' This year's theme "Clowning Around For Hearts" was definitely visible. Most of the celebrity waiters were dressed from head to toe in the proper attire. In the photo above Jimmy Green mans the microphone as he conducts the auction. And in the photo to the side Monty Blackman gets the honor in smashing a cream pie into the face of his wife, Cindy. The event attracted some 200 area residents and helped raise funds for the local chapter. (Photos by Chad Davis)

Congressman Combest cuts red tape for local health care

Facing a shortage of only one doctor in the house, Hansford County District in Spearman found U.S. Representative Larry Combest (R-Texas) able to cut federal red tape so that 5,800 people have a better chance of recruiting another doctor and nurse. Hospital District Administrator Anne Snow contacted Congressman Combest regarding the three-month period for the federal government to process paperwork to receive official designation as a "Health Professional Shortage Area" (HPSA). The designation from the Department of Health and Human Services would greatly increase the recruitment and long term employment of another doctor, a physician's assistant and to operate a clinic.

"When you need a doctor, you need a doctor now - not three months from now," said Combest. "In the case of Hansford County and others, there's no need to bandage rural hospitals in government red tape when rural hospital care has placed an emergency call for help. As we unwrap years of over-regulation, I want to see the most practical approach to addressing the unique needs of the people in rural areas."

Hansford County Hospital District has been recruiting for a primary care physician without success for one year. Designation as a "Health Professional Shortage Area" (HPSA) provides incentive for doctors through the establishment of a rural health clinic and the ability to attract National Health Corps scholarship recipients and arrangements for medical school loans. Already, Hansford County Hospital District officials note problems of access for patients and critical financial strain for the hospital district. The hospital district is currently recruiting a physician and a physician's assistant or nurse for employment in 60 days, at the ear-

liest. For the hospital district, timing of this federal designation is of the essence.

"I was very appreciative of Congressman Combest's quick response to my request for help," said Hospital Administrator Anne Snow. "It has made it possible for us to plan on a date when we can get things rolling. It made me feel that we will stay in contact with Congressman Combest in the future because it does make a difference for us to let him know what our concerns and problems are here in the rural areas."

Congressman Combest notified Snow that the Department of Health and Human Services has assured him they will have a decision by the end of February on Hansford County's request for designation as having a shortage in health professionals.

"Panhandle Day" set in Austin

The Panhandles' Biennial trek to lobby the Texas Legislature has been set for Tuesday, March 28 and includes a full day of lunch, lobbying and laughter and concludes with a barbecue dinner on the Capitol lawn, according to Tindle Ramon, President of the Spearman Chamber of Commerce.

"Panhandle Day in Austin is one

of the most effective ways our region has come up with to impact the legislative process," said Ramon.

Senator Teel Bivins said the biennial Panhandle Day celebration is an integral part of the region's legislative efforts.

"Panhandle Day is a great opportunity for our people to meet the

state's legislative leaders and let them know our concerns," said Bivins. "While it's a lot of fun and the food is good, it's also an important part of the Panhandle's overall legislative effort."

A charter plane departs Amarillo at 10:30 a.m. and arrives in

See PANHANDLE, page 5

Miss Texas 1994 speaks to Spearman students

The Spearman students got to see and meet Miss Texas 1994, Arian Archer, Wednesday, February 1. She spoke at all three schools during the day. She was the guest speaker for the Edna Hartman Chapter of the National Honor Society Induction Ceremony.

Archer told the students about some of the things that happened to her as a child and how she just said no. Then she went through the three step program she uses in her life; first, just say no; second, never give up; third, believe in yourself.

Archer said, "When I decided to get into pageants at sixteen, I came in last every time, so I decided it was not for me and was going to quit. My brother called me a quitter. At that point I realized I was not trying very hard."

This did not make her quit. Because of her determination, she went on to be a Lions Club Sweetheart, 1991 Miss Borger, and Miss Amarillo before going on to her first Miss Texas Pageant. She was in the Miss Texas Pageant twice before she won it. "In my first Miss Texas Pageant I came in 35th," Archer said.

She went on to place in the top ten at the Miss American Pageant, which was not easy for her because she was sick and her grandmother died during the pageant week, but

See MISS TEXAS, page 12

The Debbie Sears story . . .

Coping with the crisis

Editor's Note: This is the second part of a three-part series about Morse's Debbie Sears, who received a heart transplant in April of 1994. The final part of this story will be published in next Thursday's edition.

Coping With The Crisis

When he was at home alone, he found himself wandering from room to room, unable to sleep. At first, he said, he could not even sleep in his and Debbie's bed. He dreaded opening their closet and seeing all his wife's clothes hanging there. Beryl found that certain song lyrics seemed to speak to him and his troubles, and he would listen to them over and over. "But I did get to where I could iron a shirt in less than 20 minutes," he added with a small grin.

When he visited Debbie each weekend, he said he tried to make her laugh. "He always came in with a big smile on his face," Debbie recalled. For Valentine's Day, he arrived with a very tiny, very frilly red "nightie." When he was in Morse, he faxed her xeroxes of Brent's little hands or mailed videos of their son. "I'd watch them

over and over and just cry and cry," Debbie said, "but we tried to stay upbeat. We had to."

There were funny times and sad times. One morning a nurse trainee came in to take Debbie's blood pressure. "She could not get a blood pressure on me," Debbie said. "She tried and tried and finally came up with 10/15. Beryl and I just laughed and laughed over that!"

"And as sad as I was," she continued, "I never forgot how lucky I was. I had somebody--my mom or Beryl--with me almost all the time. There were some people who had no one to see them at all except the pastoral staff."

Heart Failure

The couple believed they were at the end of a long, hard road when Debbie was released from St. Luke's on March 2. They went to Beryl's parents' home in Kemp, Oklahoma, for the first night. Beryl left for Morse the next day, and Debbie went to her parents' home in Durant while she recovered, but by March 5, she was having difficulty breathing and rapidly weakening. Pneumonia, they thought. But it was much worse: heart failure.

On the heels of this disaster came the most emotional moment of all for Beryl. Debbie was sinking quickly in nearby Denison's hospital while Beryl, frantic, tried to make arrangements to have her flown back to St. Luke's.

"Our insurance wouldn't transfer, and I knew she had to be transferred back to St. Luke's," he explained. "The Denison hospital did not request the transfer. The Careflight people had to have a certified check for \$7,000 from me before they would move her." In desperation, Beryl said, he telephoned First National Bank of Spearman to request an immediate loan to cover this fee.

"Bill Pittman said, 'We'll do whatever you need,'" Beryl said, "a touch of wonder in his voice. 'There were no forms, no questions. Just 'Sure. You've got it. Anything else we can do?'"

Pittman faxed a line of credit to Beryl in Denison, Careflight came, and Debbie was transferred back to Houston in a thunderstorm on March 8.

See SEARS, page 7

Hansford Happenings

Swine Meeting

Swine Open Pit Meeting will be held Feb. 9 at 5:30 p.m. in the second floor courtroom at Perryton Courthouse with Vick Ramirez, attorney for Texas Legal Service attending. Open to the public.

Defensive Driving

Defensive driving will be Feb. 22 and Feb. 23. For more information contact Cindy at the Chamber of Commerce Office, 659-5555.

Pot Luck Supper

A pot luck supper will be held at the Morse Community Building, Saturday, Feb. 18 at 6:30 p.m. Fun & games. Bring a covered dish. For more information call 733-2323 or 878-2776.

Commodity Distribution

U.S.D.A. Commodities will be distributed Wednesday, February 15, 1995 from 1:00 p.m. until 4:30 p.m. at the County Ag Barn in Spearman. If you have not certified or re-certified, please do so at the Hansford County Judge's office before the 15th. NO applications will be taken on the 15th. Needed to certify: Proof of income, proof of residence, and identification. For more information, call Donna at 659-4100.

Basket Weaving Program

A basket weaving program will be held on Thursday, Feb. 16. Peggy Ann Combs from Pampa will demonstrate the art of basket weaving in a free luncheon program. (12 to 1 p.m.) at the Blodgett Room of the O'Loughlin Center.

Chill, Stew & Homemade Pie Lunch

Hansford Hospice Volunteers will hold their chill, stew & homemade pie lunch, Wednesday, Feb. 15, 1995, from 11:30 to 1:30 at the Sacred Heart Catholic Church Parish Hall. Tickets are \$4.00. Proceeds to benefit Hansford Hospice.

Hot Lunch Topics

The Chamber of Commerce Hot Lunch Topics will be Friday, February 10 at noon at the O'Loughlin Center. RSVP by Feb. 8, 1995. Telecommuting.

Celebration Name Contest

The Spearman Chamber of Commerce is sponsoring a contest to name the celebration scheduled June 4-11. Judging will be Thursday, February 9, at the Chamber Office. For more information contact Cindy at the Chamber Office, 659-5555.

"Mr. ?" Heart Throb Contest

TAFE is sponsoring their second annual "Mr. ?" Heart Throb Contest to be held Thursday, Feb. 23, at 7 p.m. in the Spearman High School Auditorium. Tickets are \$3 each and can be purchased at the high school from TAFE members or at the door.



ROBOT: Mrs. Haight's first grade students of Gruver Elementary designed and made robots as a class project. The students were very creative in their robot design. Pictured with their robots are: (front row l to r) Jose Torres, Lauren Bergin, Cesar Ortiz and Reid Winger; (back row l to r) Tanner Irwin, Earl Griffin, Colby Griffin, Liz Lopez, Timber Barkley, and Matt Wheelock. (Photo by Cora Thompson)



ROBOTS: Mrs. Miller's first grade class at Gruver Elementary designed and made robots as a class project. The students were very creative in the design of their robots. Pictured with their robots are: (front row l to r) Kelly Jones, Crispin Borunda, Rachelle Holt, Susana Flores, Matt Messer, and Laci Fitzgearald; (back row l to r) Mary Lopez, Ivan Briones, Sarah Mireles, and Justin Horton. (Photo by Cora Thompson)



ROBOTS: Mrs. Cooper's first grade class at Gruver Elementary designed and made robots as a class project. The students were very creative in their robot design. Pictured with their robots are: (front row l to r) Samantha Myatt, Maria Ruiz, Rafael Perez, and Ryan Perez; (back row l to r) Stephen Salazar, Allison Reid, Steve Villegas, Jessica Vele, and Brad Clawson. (Photo by Cora Thompson)

School Lunch Menus

SPEARMAN SCHOOL LUNCH MENU

MONDAY, FEBRUARY 13

Pizza (Sausage), combo salad, sweet peas, applesauce, and milk.

TUESDAY, FEBRUARY 14

Toasted cheese sandwich, beef stew, crackers, apple cobbler, pears, and milk.

WEDNESDAY, FEBRUARY 15

Corndogs, macaroni and cheese, seasoned green beans, steamed carrots, plain jello, raisin cup, and milk.

THURSDAY, FEBRUARY 16

Meat and cheese nachos, refried beans, Spanish rice, pineapple tidbits, toco sauce, and milk.

FRIDAY, FEBRUARY 17

Cheeseburger, french fries, lettuce, tomato, pickle, onion, fresh fruit, and milk.

SISD BREAKFAST

Monday - Cheese toast, fruit, and milk.

Tuesday - Toast, scrambled eggs, fruit, and milk.

Wednesday - Pancake pup, fruit, and milk.

Thursday - Cereal, toast, fruit juice, and milk.

Friday - Two waffles, fruit, and milk.

GRUVER SCHOOL LUNCH MENU

MONDAY, FEBRUARY 13

Steak fingers, mashed potatoes w/gravy, mixed vegetables, cake, hot roll, and milk.

TUESDAY, FEBRUARY 14

Nachos, pinto beans, carrot sticks, fruit, cornbread, and milk.

WEDNESDAY, FEBRUARY 15

Fried chicken, mashed potatoes w/gravy, corn, jello, biscuit, and milk.

THURSDAY, FEBRUARY 16

Hamburger stew, cheese sandwich, peaches, and milk.

FRIDAY, FEBRUARY 17

Sloppy joe, tator tots, fruit, peanutbutter cookie, milk.

GISD BREAKFAST

Monday - Cereal, muffin, juice, and milk.

Tuesday - Two pancakes, juice, and milk.

Wednesday - Breakfast pizza, juice, and milk.

Thursday - Two slices of toast, peanutbutter and jelly, fruit, and milk.

Friday - Two cinnamon rolls, juice, and milk.

PRINGLE-MORSE SCHOOL LUNCH MENU

MONDAY, FEBRUARY 13

Enchiladas, beans, salad, cornbread, cookie, and milk.

TUESDAY, FEBRUARY 14

Steak fingers, potatoes, gravy, rolls, blackeye pea, fruit, and milk.

WEDNESDAY, FEBRUARY 15

Hamburgers, french fries, lettuce, etc., brownie, and milk.

THURSDAY, FEBRUARY 16

Roast beef, potatoes, gravy, salad, rolls, cake, and milk.

FRIDAY, FEBRUARY 17

Grill cheese, stew, fruit, ice cream, and milk.

PMISD BREAKFAST

Monday - Cheese Toast, toast, juice and milk.

Tuesday - Cereal, juice, and milk.

Wednesday - Sausage, pancakes, juice, and milk.

Thursday - Muffins, toast, juice, and milk.

Friday - Eggs, toast, juice, and milk.

"Mr. Wizard" is coming to Spearman February 16

On February 16, the mysterious science will be explored at Spearman Elementary when ECA Educational Services, in conjunction with the Mr. Wizard Studios, presents Mr. Wizard's Supermarket Science.

New guidelines set by the American Academy for the Advancement of Science ask teachers to use hands-on projects in an effort to improve the science programs in our nation's schools. In keeping with these guidelines, Mr. Wizard Science Assembly Programs demonstrate the science of everyday living using interactive teaching methods.

Don Herbert, better known as "Mr. Wizard" from NBC TV's *Watch Mr. Wizard* and Nickelodeon's *Mr. Wizard's World*, has produced a program to bring this hands-on style of science to Spearman at 1 p.m. Although Don Herbert himself will be busy exploring new ways to explain science using everyday items, Don Gaul, his official assistant, will present this fast paced show guaranteed to educate and entertain.

Inspired by Don Herbert's popular book, *Mr. Wizard's Supermarket Science*, this live 40-minute school assembly program will chal-

See WIZARD, page 7

Letter to Editor

Letter to the Editor,

I have been the chairperson of Mobile Meals in Gruver for some time now and it has been very rewarding, just wanted everyone to know that I'm leaving it in the very capable hands of Linda Weller. If anyone needs or hears of anyone needing the meals just let her know at the Gruver City Hall 733-2424, she will see that they receive them. I also want to thank our tried and true carriers (you know who you are) that have been so reliable, I could always count on you being here when you needed to be. And thanks to the school cafeteria people and the Gopher's people for always having meals ready on time. As you can see this has been a group effort

that has been going on for some time now, it started with an idea and has grown to be a truly great thing. It is supported from the generous hearts and pockets of Gruver people. Thanks to Sorority members who Trick or Treat for Mobile Meals every year around Halloween and everyone who contributes so generously that we very seldom have need to call for any other help. Thanks again you wonderful Gruver people. People helping people.

By MARILYN BEEN

My family and I appreciate all the kindness shown us during my recent surgery and recovery. Thanks for your prayers, visits, cards, prayer grams, food and flowers. Spearman and Hansford County have the most concerned and helpful people. I am happy to live where there are such caring friends. God Bless you all! Thanks, Peggy Archer

Olds Chimney Sweep

Safe & Warm Brush Regularly

HOOKER, OKLAHOMA
405-652-2940

At The Lyric Theatre...
We will be closed for an indefinite time, but watch for us soon!

Stay tuned for coming attractions!

113 Main • Spearman

The Hansford County Reporter-Statesman

Serving all of Hansford County
Spearman • Gruver • Morse

USPS 509660 • 213 Main, Box 458 • Spearman, Tx. 79081
(806) 659-3434 • 1-800-395-9482 • FAX (806) 659-3368

Published weekly at 213 Main, Spearman, Texas

Owned & Operated by
Texas Independent Newspapers, Inc.
16607 Blanco Road #100 • San Antonio, Tx. 78232
(210) 492-8907

Second class postage paid at Spearman, Texas 79081

Any erroneous reflection upon the character of any person or firm will be gladly and promptly corrected upon being brought to the attention of the management.

Publisher - Daniel Ramos
Office Manager - Deziree Torres
Staff Writer - Cora Thompson
Staff Writer - Chad Davis

The publisher reserves the right to revise or reject at its option any advertisement which it deems objectionable, either in subject or phraseology, or which it may deem detrimental to its business.



Subscription Rate: Hansford County, \$19.95; out of county, \$24.95 annually.
Postmaster: Send address changes to Hansford County Reporter-Statesman, Box 458, Spearman, Tx. 79081.
Advertising & Story Deadlines
Monday, 5:00 p.m.



We don't clown around!

We take drycleaning seriously! Caring for your clothes is serious business. That's why quality is in everything we do from thorough drycleaning to flawless finishing. We return your clothes spot free, fresh, and ready to wear. Good drycleaning is no laughing matter.

PERRYTON CLEANERS & LAUNDRY
1-800-232-5370



A member of the International Fabricare Institute, the association of professional drycleaners and laundresses.



DUKE'S CHIROPRACTIC CENTER

EVENING HOURS AVAILABLE

- Headaches / TMJ
- Neck Pain / Stiffness
- Low Back Pain
- Shoulder / Arm Pain
- Hip / Leg Pain
- Family Health Care
- Pediatrics
- Athletic Injuries
- Numbness
- Gentle Treatment

AUTO ACCIDENTS • WORK INJURIES
(Most Insurance Accepted)

New Hours:
2-6 p.m. Mon. thru Fri.

659-5505



Darrell D. Duke DC

11 W. Kenneth • Spearman, Tx.

Lifestyles

Homesley/Greene to exchange vows



BROOKE HOMESLEY and DEAN GREENE

Mr. and Mrs. Scott Homesley of Mansfield, Tennessee are pleased to announce the engagement of their daughter, Brooke, to Dean Greene, son of Mr. and Mrs. Jimmy Greene of Spearman.

The bride-elect attended high school in Paris, Tenn. She is presently attending The University of Tennessee in Knoxville, Tenn. majoring in architecture.

The prospective groom graduated from Spearman High School and Abilene Christian University with a degree in Ag. Economics. He is employed by Homesley Construction.

The couple plan a March 18th wedding, at the Church of Christ in Paris. They plan to reside in Paris after the marriage.

Comps to hold basket weaving luncheon

By PEGGY WINEGARNER
Thursday, February 16, Peggy Ann Comps from Pampa will demonstrate the art of basket weaving in a luncheon, (12 to 1 p.m.) at the O'Loughlin Center in Spearman.

Comps makes and sells baskets at area shows. Her presentation will include the history of basketry in our area, selection and care of quality baskets, and use of baskets in the home.

A light lunch will be served to program participants at 12 noon in the Blodgett Room of the O'Loughlin

Center, courtesy of the senior citizens.

The hour program is free and open to all interested in Lunch and Learn! Combs teaches basket weaving classes. If you are interested in taking the classes, call the Extension Office (659-4130 or 733-2901) and your name will be added to the list to receive more information.

Educational programs of the Texas Agricultural Extension Service are open to all citizens without regard to race, color, sex, disability, religion, age or national origin.

Wheatheart Travel

1995 Alaskan Cruise
Princess Cruise Line • Voyage of the Glaciers
July 24th - Departure • Seven Day Cruise
Early Bird Booking by Feb. 14th & Save \$500.00

Call
Spearman 659-2476
Pat Dear
Gruver 733-2592
June Barkley

HANSFORD HOSPICE VOLUNTEERS
Chili, Stew & Homemade Pie Lunch • \$4.00
Wednesday, Feb. 15, 1995 • 11:30 a.m. to 1:30 p.m.
Sacred Heart Catholic Church Parish Hall
Proceeds to benefit Hansford Hospice

HENSON CHIROPRACTIC

300 S. Ash • Perryton, TX

Call for Appointment • 435-7525

OFFICE HOURS:

Monday, Wednesday & Friday 9:00 to 5:00
Tuesday & Thursday 9:00 to 11:30

REMEMBER YOUR VALENTINE

with balloons, cakes, cookies, party favors & assorted trays!

Free Delivery (\$5 minimum)!

Debbie's Ready or Not

315 1/2 Main • Spearman • 806/659-3328

Museum Musings

by Joanne Eaton

When the new Post Office was built, George Finley, postmaster, donated a section of mailboxes, the name plaque, and a Pony Express picture from the old post office to the museum.

The plaque was put on the old Post Office in 1958 when Dwight D. Eisenhower was president.

The picture of the pony express rider was painted in 1929 by J. M. Flagg of Thermopolis, Wyoming. It

was presented to the Post Office in March 1979 by Lawrence Anthony, a relative of J. M. Flagg.

I bought the door to my mailbox which I had for 30 years. I will never forget that combination, B-HI-A. It is etched in my brain permanently. Now all I have to remember is to take my key into the post office with me (which is much harder than remembering a combination).

Helen Fisher called me about my switchboard article. I was right on track about everything, but she did not think I was old enough to remember all that.

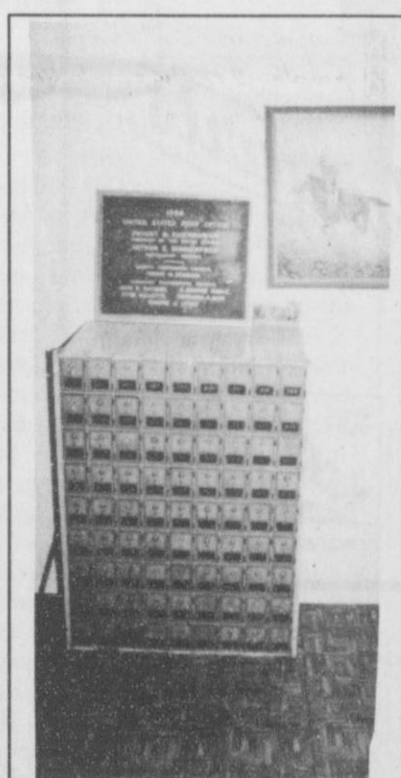
At age 14, Helen became a telephone operator in Spearman. She was also called Central. She worked summers and nights until she went off to college. Can you imagine turning a telephone company over to a 14 year old these days. I'm sure there are many who could do it, but it sounds too dangerous.

At the time Helen worked for the company, the telephone building was across from the old hotel. They had to build their circuits by going from town to town instead of going straight through.

Helen was even the "911" operator as she took emergency calls for Dr. Gibner, then found him to give them to him.

The article jogged a memory for Helen and two of her sisters who also helped as operators.

Museum hours are Tuesday through Saturday from 2 - 5 p.m. Special tours can be arranged by calling J. D. or Rubyjo Wilbanks at 659-3084, Clementine Renner at 659-2335 or Juanita Pierce at 659-5100.



POSTAL DONATIONS - The mail boxes, Pony Express picture, and plaque donated by the Spearman Postal Office can be seen at the local museum.

Vasquez named CNA of the month

Beth Lesly, Director of Nursing at Hansford Manor, announced earlier in the week that the Manor has begun a new program to show appreciation to the Certified Nurse's Aides. Jolynda Vasquez is the first CNA to receive the honor.

Jolynda, who enjoys dancing and cooking, was born in Spearman. She has three children; Stephanie, age 15, Amy who is 12, and 10 year-old Josiah. She is a Bath Aide and has been working at Hansford Manor since 1988.

Vasquez says that the things she likes best about her job are the residents and her co-workers.



JOLYND VASQUEZ

Immunization clinic to be held

A Immunization Clinic will be offering vaccines that give protection against several childhood diseases February 15, in Spearman at the Texas Department of Health Office from 9:30 - 11:30 a.m. and 1-3 p.m.. Protection is against polio, diphtheria, lock jaw (tetanus), whooping cough (pertussis),

measles, rubella, mumps, and HIP (haemophilus influenzae type B).

The Texas Department of Health is charging money to help with the cost of keeping the clinic open. The amount of money charged will be based on family income and size, and the ability to pay.

C.J.'s Xtra Dimensions

518 N. Main Berger, Texas

CLEARANCE SALE

Up to 60% off Fall & Winter Merchandise
Sweaters all 1/2 price
New Springwear arriving daily

Mr. and Mrs Gene Jenkins
and
Mr. and Mrs. Ronnie Post
invite you to share in the joy of
the marriage uniting their children

Cynthia Dawn

and

Robert Dean

This celebration of love will be
on Saturday, the eleventh of February
nineteen hundred and ninety-five
at seven o'clock in the evening
The Wedding Chapel
Wellinton Square
Amarillo, Texas

You Are Invited
to a
Wedding Shower
honoring

Brooke Homesly

Bride-elect of

Dean Greene

Saturday, February 18, 1995

2:30 to 4:00 p.m.

1115 Linn Drive

(home of Claudine Clark)

Selections at Gordon's & Celebrate

COME BY & LET US
HELP YOU SET UP YOUR
SPECIAL GIFT TABLE

Couples Currently
Registered

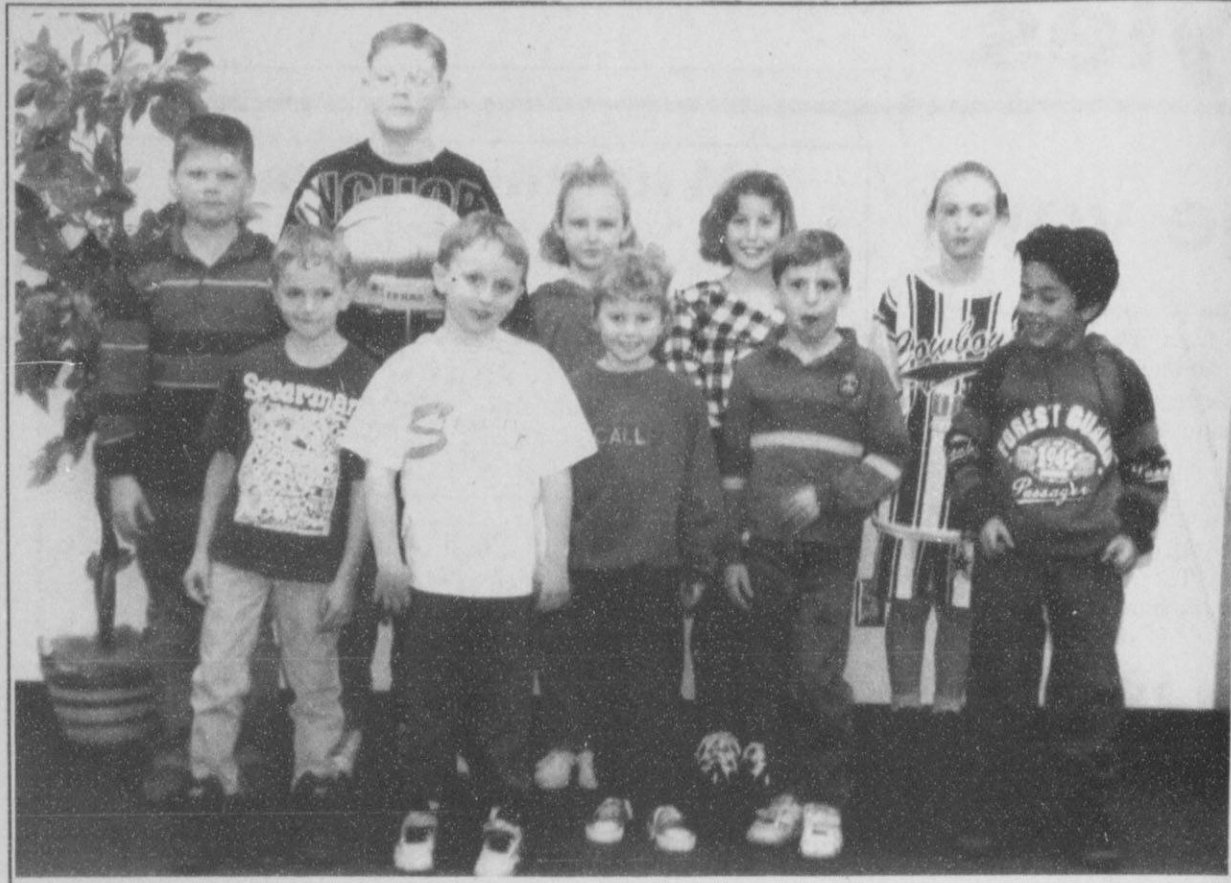
George & Olivia (Salgado) DeSantiago *To be reset
Brad & Tiffany Brown *Feb. 19
Dean Greene & Brooke Homesly *Feb. 18
David Tucker & Traci Jones
Cyndi Jenkins & Robert Post

* Date of the Bridal Shower

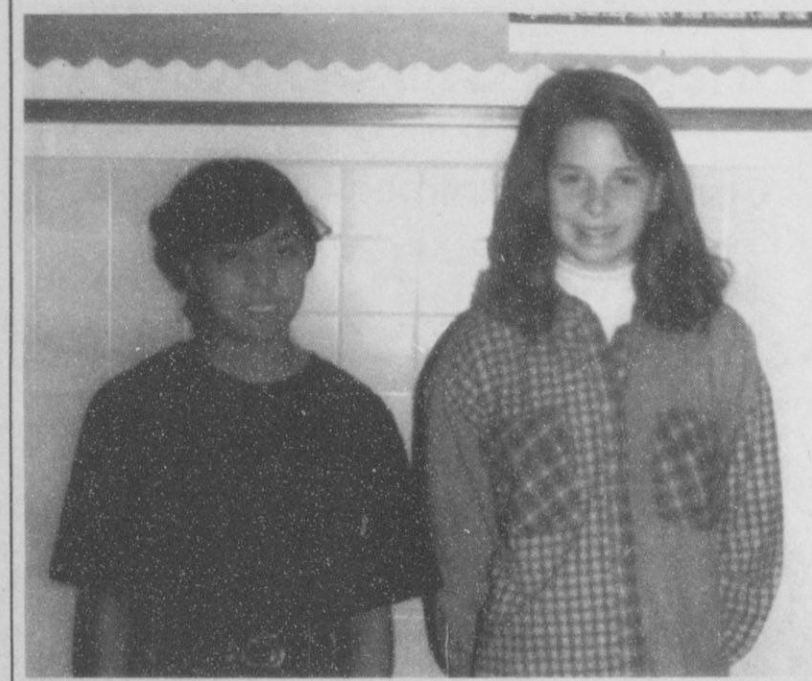
314 MAIN
PHONE
659-2141

Gordon's
DRUG

SPEARMAN
TEXAS



CONTEST WINNERS - The Spearman PTA 1995 Reflections contest winners were announced recently, with this year's theme focusing on "Dare to Discover". Twelve contestants were chosen as this year's top contestants. In the picture above they are: (In no order) Dana Sharp, Jentry Edwards, Tatum Rice, Brian Close, Callie Hargis, Jerick Howard, Chad Scarborough, Ashlee Flowers, Homero Martinez, and Nicholas Behney, all of Primary and Intermediate Division. (Photo by Chad Davis) In the lower picture, the winners are: Maribel Martinez and Leah Baker, both of the Senior Division. (Photo by Daniel Ramos)



Spearman PTA 1995 Reflections contest "Dare to Discover"

By Sandi Pearson Spearman Reflections Chairperson

The top contestants in the Spearman PTA 1995 Reflections contest were announced on January 9. These entries were then due in Amarillo by January 9 for the Regional judging.

The theme for the 1994-95 contest was "Dare to Discover." Students from kindergarten through 12th grade entered the program, interpreting the theme any way they felt appropriate. Categories in the contest were as follows: **Visual Arts** - drawing, painting, collage, printmaking, and needle work. **Photography** - black and white or color, any kind of camera, printed up to 11 x 14. **Literature** - fiction or non-fiction, stories, essays, poems, plays. **Music** - with or without words.

There were 45 total entries this year. Spearman PTA believes there were 45 winners, therefore, each participant will receive special recognition by receiving a certificate and a ribbon. The certificates and prizes will be given at a later date while the ribbons will be given at the awards assembly at the end of the school year.

I would like to let everyone know how much they are appreciated: the teachers who allotted special class time for the students to work on projects; the parents who encouraged their children at home; the students who did the work and put in the extra time to compete; and the local businesses who donated prizes. Also, a special thank you to Cayla Schroeder, Brenda Pierson, and Kandi Wolf for taking up entries at the different campuses.

The National Reflections program encourages the student to explore the culture arts by expressing their thoughts and feelings through the Visual Arts, Photograph, Literature, and Music.

Spearman PTA 1995 Reflections winners are:

Literature - Intermediate - 1st Dana Sharp, 2nd Jentry Edwards, 3rd Tatum Rice. **Senior** - Leah Baker. **Visual Arts - Primary** - 1st Brian Close, 2nd Callie Hargis, 3rd Jerick Howard. **Intermediate** - 1st Chad Scarborough, 2nd Ashlee

Flowers, 3rd Homero Martinez. **Senior** - 1st Maribel Martinez. **Photography - Primary** - Nicholas Behney. **Intermediate** - Chad Scarborough.

Others who entered were: Britany Vera, Courtney Wall, Deidre Pope, Jocelyn Whitefield, Tanner Hand, Chris Cudd, Michael Lozano, Garrett Martin, Marcus Vasquez,

Meggan Whitworth, Dave Pope, Patrick Jerman, Matthew Bain, Diana Flores, Sarah Salazar, Emily Longoria, Russell Sheets, Keilee Goodheart, Mario Ortiz, Hoely Tercio, Chelsea Wall, Justin Eslick, Chambrey Cox, Christina Salgado, Wade Evans, Taylor Simpson, Claudia Vaquero, Chance Dunn, Nekisha Whitefield.

ELLISON BROTHERS INSULATION
 P.O. Box 212
 Canadian, TX 79014

Rockwool & Fiberglass Blow-In
FREE ESTIMATES

Keith Ellison 323-5629
 Allen Ellison 323-5737

1- 10x13 (Wall Photo)
 1- 8x10
 2- 5x7
 2- 3x5
 16- King Size Wallets
 8- Regular Size Wallets

30 Color Photos

99¢ Deposit
 \$11.00 Due at Pick up (plus tax)

\$11.99

WE USE KODAK PAPER

AT **Kids' Stuff**
 719 West 7th
 Wednesday, Feb. 15
 10 a.m. to 5 p.m.

Shugart's inc.

Group charge 99¢ per person

Kodak PAPER
 FOR CREATIVE COLOR PORTRAITS

Hansford County Library Book Notes

by Sheri Benton, Librarian

The Harrington Library Consortium (HLC) is one of the most unique, innovative, and futuristic projects in the library world. Realizing the need to cooperate and share resources, in 1977 the directors of Amarillo Public Library, Amarillo College Lynn Library, and West Texas University Cornette Library began to discuss ways this need could be fulfilled. In 1981, the three sites joined together to form Harrington Library Consortium. Once the holdings of the three original libraries were entered into a common database accessible by all library patrons, the library directors began to explore ways these resources could be shared throughout the Panhandle.

The innovative feature of the project is that the resources of the Consortium are made available to the diverse libraries of the area through a shared database. HLC was the first network in the United States to include diverse libraries in a shared environment, and the HLC patron card is reported to be one of the first accepted as a universal library card. At the present time, the public libraries in Borger, Canyon, Clarendon, Dalhart, Dimmitt, Dumas, Friona, Panhandle, Hereford, McLean, Memphis, Pampa, Perryton, Spearman, Sunray, Tulia, and Wellington are sharing full services, as are the academic and school libraries at Frank Phillips College, Austin Middle School, Caprock High School, the Learning Resource Center at AISD, White Deer High School, Panhandle High School, and Texas State Technical College in Amarillo.

The Harrington Library Consortium's "basic" service includes resource sharing among all members; on-line circulation with real-time tracking of item status, fines, etc.; on-line statistics of material usage; system produced notices of overdues and lost materials; inventory of collection; electronic mail; serials check-in; and integrated on-line public access to your collection and all other HLC collections. HLC basic service offers a proven method for efficient management of library resources.

In addition to the basic service, HLC offers dual session and dial-in capabilities. Dual session allows one terminal to run two software programs at the same time. HLC

has ten high speed dial-in modems available to the public. Ask for more details the next time you are in the library.

The Harrington Library Consortium has made great strides in "bringing the Panhandle closer together" and is now ready to bring the Panhandle closer to the world. HLC now offers you accessibility to an "on ramp" to the "Information Superhighway" by the way of the Harrington Library Consortium. Through Internet we have the capability of reaching across the United States and far beyond to other countries.

Information Gateway is a new generation of on-line catalog which allows the user to retrieve informa-

tion from a diverse variety of resources. It allows links with information resources formerly considered beyond both the physical and financial reach of libraries.

In Information Gateway there is on-line help available from any point in the program. There is introductory help for new users on the first menu screen and there is the Help option which is always on the bar menu. In addition, the (Help) key can be pressed whenever you wish to see help for the option that is currently highlighted.

Information Gateway utilizes such features as a menu bar, pull down menus, and windowed data

See LIBRARY, page 12

When you add a Southwestern Bell service to your phone, this becomes the receiver.



One of Southwestern Bell's favorite subjects is high schools. To prove it, we've created the School Bell Program. For every Call Waiting, Call Forwarding, Three-Way Calling or Speed Calling service you buy between now and April 28, 1995, we'll make a \$2 donation to the board of trustees of the high school listed below nearest you.

Help your school earn up to \$1,500 from Southwestern Bell Telephone to purchase anything from fine arts programs to computer software to band uniforms. Call 1-800-234-BELL and order one of our EasyOptions™ phone services today. The sooner you pick up your receiver, the sooner your high school becomes one.

Southwestern Bell Telephone

"The One to Call On"

- | | | | | | | | | | | |
|----------------------------|----------------------|---------------------------|-------------------------------|--------------------------|----------------------|--------------------------|-----------------------|------------------------|------------------------|------------------------|
| Allison Independent School | Borger High School | Elgin High School | Grand Falls-Royal High School | Hereford High School | Itasca High School | Liberty Hill High School | Marfa High School | Rockdale High School | Snyder High School | West Texas High School |
| Alpine High School | Brewer High School | Flordia High School | Grover High School | Hermleigh School | Kermit High School | Lockhart High School | Monahans High School | Roscoe High School | Sweetwater High School | Westbrook School |
| Bartlett High School | Canyon High School | Fort Davis High School | Hale Center High School | High Prairie High School | Lampasas High School | Lockney High School | Pampa High School | Stanton High School | Taylor High School | White Deer High School |
| Bishop High School | Colorado High School | Fort Stockton High School | | Hillbourn High School | LeFlore High School | Marathon High School | Plainview High School | Smithville High School | Troy High School | Wink High School |
| | | | | | | | | | | Yoe High School |

Offer valid in selected Southwestern Bell Telephone locations.

Panhandle

CONTINUED FROM PAGE 1

Austin before noon on March 28. Buses will provide transportation to a lunch with Governor George W. Bush or Lieutenant Governor Bob Bullock.

After lunch, participants will then divide into legislative teams and visit the legislature and many state agencies to educate legislators about issues of concern to the Panhandle region.

"We are particularly interested in streamlining the permitting processes for businesses and protecting private property rights," said Linda Weller, president of the Gruver Chamber of Commerce. "Also, we need to continue to promote the education facilities within our region and improve our transportation infrastructure".

One regional commodity sure to receive attention is beef as 11 cooking teams from throughout the Pan-

handle will prepare a barbecue dinner for the entire Legislature to be served on the grounds of the Capitol.

Buses will return participants to the airport for an 8:30 p.m. departure from Austin arriving in Amarillo at 9:40 p.m.

Cost of the trip, including both dinners, will be under \$290 and interested parties should contact the Spearman Chamber of Commerce at 659-5555 or the Gruver Chamber of Commerce at 73305114. More than 250 volunteers from the 23 Panhandle communities participated in the 1993 Panhandle Day in Austin.

The Chambers of Hansford County would like to see a good support team represent our area. For more information, call the chambers and they will be able to answer your questions.

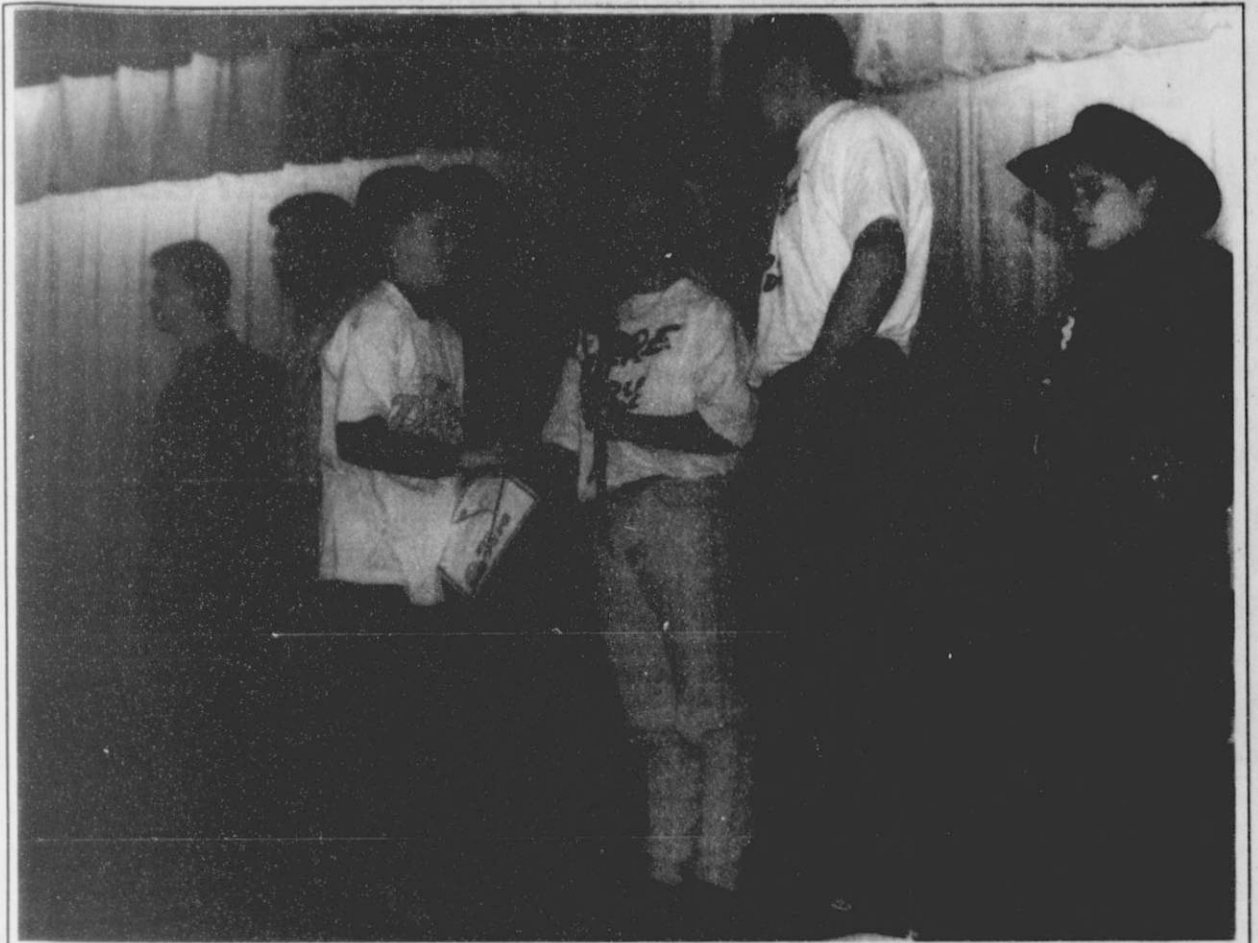
22 kids graduate from D.A.R.E. program

The town of Morse was beaming with pride this past Monday, January 30th, as the town graduated its first ever class of fifth and sixth graders in the D.A.R.E. program.

The program, much like the one that Spearman had, required all of the 22 kids that graduated to take a course involving several steps in the D.A.R.E. program. "In order to graduate, the boy or girl must go through the entire class, not get into any trouble, and complete his or her essay," stated D.A.R.E. Officer John Torres of Fritch. Torres has been becoming to Morse for the last 17 weeks to make sure these kids "have the best" in drug education.

According to most of the kids, "Although the essay portion of the class was not really that bad, it was probably the hardest part of the course." In the program, the four essay winners, Katie Papay, Donnie Davis, Hugo Hernandez, and Monica Behney, all read their award winning essays, as well as they were presented with prizes in the program for their top writing skills.

Also, unlike the Spearman program, a D.A.R.E. student of the year was chosen. The winner, 6th grader Felix De La Cruz, was not only presented with a prize, but he also will have the chance to ride with Officer Torres in his D.A.R.E. Corvette at all the parades it will be



ACHIEVING GOALS - Twenty-two kids from the fifth and sixth grades participated in this year's Morse graduation of the D.A.R.E. program. D.A.R.E. Officer John Torres, of Fritch, was pleased to see all 22 of these kids receive their diplomas and get a head start on saying no to drugs. Pictured here is one of the 22 kids receiving his diploma and a rose from one of the role models, as well as receiving congratulations from many of the other guests there. (Photo by Chad Davis)

Hansford Historical Commission meets

The Hansford County Historical Commission met February 6 at 2 p.m. at Fort Zulu in Spearman.

Bob Izzard, Amarillo author, gave a brief talk to make members aware of a celebration concerning the opening of the Red River War to be held in 1999. He was trying to promote participation from Hansford County in the celebration.

The meeting was called to order by Chairman Sylvia Robertson. Minutes were read by Clementine Renner.

Judge Jim Brown was present to give the Oath of Office to members of the Commission.

Reports were given by the History Appreciation Committee, the Museum Committee, and the Marker Committee.

Plans were made for the Nominating Committee to meet to nominate officers for the coming term. This committee consists of Chairman - Juanita Pierce, J.D. Wilbanks, Johnnie Lee, Jeff Lackey, and Helen Boyd.

Members present were Sylvia Robertson, Clementine Renner, Helen Boyd, Joel Lee Lackey, Jeff Lackey, Joyce Johnson, J.D. Wilbanks, Rubyjo Wilbanks, Joanne Eaton, Gus Renner, and G.W. Robinson. Three new members attending were Cindy Blackman, Kyle Henderson, and Jerry Virden.

Board sets goals for upcoming years

It has been said that "If you don't know where you are going, any road will take you there."

On Saturday, January 21st, the Chamber of Commerce Board of Directors met to plan the goals for the upcoming years. They discussed a number of questions including strengths and weaknesses of the Chamber; any suggestions the directors had on how better use can be made of the talents of our 125 members; any ideas that could help meet the organization's opportunities and challenges; and any other suggestions on how the chamber can be a stronger organization for business.

The goals of the chamber are simple but will make us a stronger organization. The strengths include having a board that is concerned with the future of Spearman and interested in the needs of the membership. The public image of the chamber is that of being very active and our finances ended the year without a loss.

The board hopes to include the general membership in activities, seminars and special events. The businesses will be seeing the directors making visits to their business to identify their needs.

The chamber will continue to work with the schools, museum, city, hospital, and Palo Duro Lake concerning issues that affect Spearman.

The fund raisers will include the golf tournament and casino night. The special events will be the celebration, June 4-11.

The current goals will be a marketing package of the area, marketing Spearman to bring families here to live and work. Since the chamber is the voice of businesses in Spearman our major achievement will be to obtain renovation of the business district. The board of directors understand that this is a long range goal and a project that every member will share in.

Through the association with the Texas Chamber of Commerce, we are able to track legislation affecting your business.

We are trying hard to represent all businesses in our area, and welcome your suggestions. The Chamber Board of Directors holds a monthly meeting that is open to all its members, and we encourage your attendance.

**For Your
BBQ or Smoked Turkey
call
Sutphen's BBQ
(in the Panhandle for 44 years)
806/273-6442
303 N. Cedar
Berger, TX**

**Happy 40th
Kurk!!!**

Still A Cowboy!

**SALE
50% OFF
Winter Merchandise**

February 9th thru 11th

Michele's
(Formerly J.G.'s)
306 Hancock
Spearman, Texas 79081

**Come in and see the Great New Spring Items
arriving daily.**

REPORT OF CONDITION	
Consolidating domestic subsidiaries of the First National Bank of Spearman	
In the state of Texas, at the close of business on December 31, 1994, published in response to call made by Comptroller of the Currency, under Title 12, United States Code, Section 161. Charter Number 18609, Comptroller of the Currency, Southwest District.	
Statement of Resources and Liabilities	Dollar Amounts in Thousands
ASSETS	
Cash and balances due from depository institutions:	
Noninterest-bearing balances and currency and coin	737
Interest-bearing balances	4,152
Securities:	
Held-to-maturity securities	7,052
Available-for-sale securities	2,381
Federal funds sold	1,300
Securities purchased under agreements to resell	0
Loans and lease financing receivables:	
Loans and leases, net of unearned income	27,180
LESS: Allowance for loan and lease losses	293
LESS: Allocated transfer risk reserve	0
Loans and leases, net of unearned income, allowance, and reserve	26,887
Assets held in trading accounts	0
Premises and fixed assets (including capitalized leases)	631
Other real estate owned	4
Investments in unconsolidated subsidiaries and associated companies	0
Customers' liability to this bank on acceptances outstanding	0
Intangible assets	0
Other assets	1,085
Total assets	44,229
Losses deferred pursuant to 12 U.S.C. 1823(j)	0
Total assets and losses deferred pursuant to 12 U.S.C. 1823(j)	44,229
LIABILITIES	
Deposits:	
In domestic offices	40,404
Noninterest-bearing	3,504
Interest-bearing	36,900
Federal funds purchased	0
Securities sold under agreements to repurchase	0
Demand notes issued to the U.S. Treasury	0
Trading liabilities	0
Other borrowed money:	
With original maturity of one year or less	0
With original maturity of more than one year	0
Mortgage indebtedness and obligations under capitalized leases	0
Bank's liability on acceptances executed and outstanding	0
Subordinated notes and debentures	0
Other liabilities	306
Total liabilities	40,710
Limited-life preferred stock and related surplus	0
EQUITY CAPITAL	
Perpetual preferred stock and related surplus	0
Common stock	1,000
Surplus	1,000
Undivided profits and capital reserves	1,560
Net unrealized holding gains (losses) on available-for-sale securities	(41)
Total equity capital	3,519
Losses deferred pursuant to 12 U.S.C. 1823(j)	0
Total equity capital and losses deferred pursuant to 12 U.S.C. 1823(j)	3,519
Total liabilities, limited-life preferred stock, equity capital, and losses deferred pursuant to 12 U.S.C. 1823(j)	44,229
We, the undersigned directors, attest to the correctness of this statement of resources and liabilities. We declare that it has been examined by us, and to the best of our knowledge and belief has been prepared in conformance with the instructions and is true and correct.	
I, Lynanne Maize Vice President & Cashier of the above-named bank do hereby declare that this Report of Condition is true and correct to the best of my knowledge and belief.	
 Bill Pittman	 Lynanne Maize Signature
 Don Lowman	
 Gene Cudd	
	1-27-95 Date

Local sororities name their 1995 club sweethearts

Lackey is Rho Rho Valentine Sweetheart



LINDA LACKEY

Rho Rho chapter of Beta Sigma Phi has chosen Linda Lackey as their 1995 Valentine Sweetheart. Linda has been a member of Beta Sigma Phi since 1992. She has served as vice-president.

Lackey married her husband, Jeff, in 1992. He is self-employed as a farmer. They have spent much of the past two years remodeling their home which was built by the Lackey family in 1911. Jeff began the project in 1985 and it has been an ongoing project ever since. They also enjoy skiing and snowmobiling in northern New Mexico.

During the summer months, Linda spends much of her time off gardening and catching up on her reading. She also helps out every

July with All-star Kids, a national children's pageant system as auditor and judges' hostess. She also teaches modeling and pageant training workshops for All Star Kids throughout the year. Lackey also enjoys helping her parents at Gorden's Drug with wedding showers and gift displays. Lackey attends the first Methodist Church.

Lackey is a graduate of Spearman High School. She received her Elementary Education degree with a minor in Spanish in 1990 from WTSU. She was employed by Amarillo ISD for one year, where she taught 3rd-5th grade ESL language arts. She has taught Spanish I and II and jr. high school ESL for the past three years in Gruver.

Guthrie named by Laureate Gamma Gamma



GLENDA GUTHRIE

county commissioner. They have two children, Mark and Carrie Ann, and one grandchild, Gatlin.

Mark, his wife, Carrie and their son, Gatlin are rural residents of Spearman, where Mark farms and ranches with Kent. Carrie Ann is working for Key Industries and resides in Peoria, Illinois.

Glenda became a member of sorority in November, 1965, and has

held all offices and has received most of the honors that can be awarded to Beta Sigma Phi members. She enjoys being part of a church family, playing with Gatlin, traveling, working on the computer and reading. she says, "What I like most about sorority is the fellowship that we share and the fact that we are active and helpful in the community."

MARY KAY
FACE TO FACE BEAUTY ADVICE™
Leann Gillaspie
Beauty Consultant
659-3889

Family Style
Freshwater Catfish
Cole Slaw-2 sauces-baked potato-french fries-lemon-drinks-\$5 a person
Sutphen's BBQ
(in the Pahnandle for 44 years)
806/273-6442
303 N. Cedar

Preceptor Epsilon Zeta selects Harbour



DENISE HARBOUR

Preceptor Epsilon Zeta's Valentine Queen for 1995 is Denise Harbour.

Harbour is a graduate of Spearman High School and West Texas A&M University with a degree in Business Education. At present, she is a full-time homemaker and accomplished cook. Harbour and her husband, Roy, have two children - a daughter, Macy, who is eight years old and a second grader at Gus Birdwell Elementary, and a son, Dane, who is five years old.

Harbour is the daughter of M.E. "Buddy" and Nell Benton of Spearman. Her and her family are active members of the Spearman Church of Christ and involved in many activities there. She teaches Sunday school, and has served in many other capacities.

As a member of Beta Sigma Phi, Harbour has served as president, secretary and treasurer of various chapters, and is currently treasurer of Preceptor. She has also been Courtesy Chairman and Service Chairman at different times during her years in sorority.

Harbour and her husband are active in the Circle of Friends through the Harrington Cancer Center, and have helped host the local annual banquet for that organization.

Preceptor Epsilon Zeta is honored to have Denise Harbour as our 1995 Valentine Queen. We will be having a dinner in her on Thursday, February 9, in the home of Karen Babbitzka, with Judy Nelson presenting a Valentine program.

Laureate Gamma Gamma chapter of Beta Sigma Phi is proud to announce its selection of Glenda Guthrie as our 1995 Valentine Queen.

She will be honored at the Valentine Ball held for all Spearman Beta Sigma Phi chapters at the O'Loughlin Center on February 18, 1995.

Guthrie is the daughter of Rosa Lee Butt and the late Herbert Butt. She has been a resident of Hansford County all of her life. She graduated from Spearman High School and North Texas State University in Denton, Texas. She teaches Business courses at Spearman High School, including classes in Micro-computer Applications, Advanced Micro, and Desktop Publishing. She is also an active member of First United Methodist Church. Guthrie married her husband, Kent, in 1962. Kent is the owner of Complete Price Management. He is a stock and commodity broker, a farmer, and a

48 and STILL looking great! Happy Birthday M.A.L.!
from, your friends

Xi Zeta names Ramon as Valentine Queen



KRISTI RAMON

since by holding several volunteer positions such as Senior High Youth Director, Children's Education Coordinator, Bible School Coordinator and Sunday School Teacher.

In 1988 Ramon returned to OPSU where she received her elementary education degree. It was during this college term that she gave birth to the last of her three children. His name is Ryan Tindle and he is enrolled in kindergarten at Gus Birdwell Elementary.

Ramon was pledged to Spearman Rho Rho chapter of Beta Sigma Phi in 1987 where she served for five years. During her Rho Rho service she chaired numerous committees and projects. She advanced to the Spearman Xi Zeta chapter of Beta Sigma Phi in 1991 where she is now currently active. She is a past Corresponding Secretary of Xi Zeta.

In August of 1989 she joined the teaching staff at Gus Birdwell Elementary where she has taught First Grade for the past six years. Aside from her teaching duties she serves as the First Grade Representative for the Site Based Planning Committee. She has also served on the Superintendent Advisory Committee and a teacher

applicant screening committee. She enjoys her teaching very much and her sincerity in the classroom is readily apparent through the adoration of her students.

Ramon was invited to pledge to the ETA Alpha chapter of Delta Kappa Gamma Society International in 1993. Delta Kappa Gamma is an international society for women educators which emphasizes excellence and growth in education. She serves on the Ceremonial and Necrology Committee for her chapter and is also their Red Rose Representative. She has also served as Secretary for the Spearman PTA during the last two years and is a member of the Association of Texas Professional Educators.

Above all else, she is a devoted wife and mother who spends her off hours making sure that the homework is done and that her children are able to participate in their various activities. She takes advantage of her summer vacations by being involved with her family as much as possible and by making sure that they are involved with each other. This year's Xi Zeta Valentine Queen is certainly a true Valentine to her family.

Berry Cleaners
has been operating as a sole proprietorship, but has recently incorporated. The ownership and management, however, have not changed. We look forward to serving you in the future!

GET THE **ALCIO** Advantage

FREE
SECOND SET OF PRINTS EVERY TUESDAY!

Receive a second set of 3" prints FREE with any exposure roll of 35mm, disc, 110 or 126 color print film left for developing and printing at our everyday prices! C-41 process only. Excludes larger 4" size prints, photo galaxy or kodalux finishes.

DAILY: 9 a.m. to 8 p.m. SUNDAY: 12 p.m. to 5 p.m.
521 Hwy 207 S. • Spearman, TX

Kristi Dianne Ramon has been named the 1995 Xi Zeta Valentine Queen.

Kristi Dianne Troll was born in Liberal, Kansas where she attended school through the sixth grade. Her family then moved to a farm just west of Turpin, Oklahoma, where she attended school until her high school graduation. Ramon then attended college at Oklahoma Panhandle University in Goodwell where she majored in Home Economics and also participated in the secondary school teaching certification.

Ramon and her husband, Tindle, were married during her freshman year at OPSU. She not only completed her college degree in four years but maintained a household and gave birth to their two daughters during the same period. Her oldest daughter, Amber Kristine, is enrolled in the seventh grade at Spearman Junior High. Her second daughter, Nicole Dianne, is in the fourth grade at Gus Birdwell Elementary in Spearman.

Ramon's husband Tindle began working with First National Bank under Organization in Spearman during February of 1985. The Ramon's moved their family to Spearman in October of 1985 after Kristi had completed her college requirements earlier that summer. Shortly after moving to Spearman she became active in the community by joining the First United Methodist Church of Spearman. Soon afterward she became a member of the Methodist Choir where she served for two years. She has been very active in the church ever

A Special Thanks To
Nick Jordan
Pat Irwin
Sam Gruver
& Kirk Fitzgerald
of the Gruver EMT for your quick response and recovery of Eva McMellian,
and thanks to
Dean Cluck Feedlot Employees
& Lone Star Employees
for all your help!

HL & Eva McMellian
Doug & Evelyn Pio
Teresa & Charles Page
Brian & Holly McMellian

CITIZEN OF THE YEAR ENTRY FORM

Please complete the following information about your nominee and mail it to:

SPEARMAN CHAMBER OF COMMERCE
BOX 161
SPEARMAN, TEXAS 79081

NOMINEE INFORMATION:

NAME _____
OCCUPATION _____
PHONE _____ ADDRESS _____
(Must be complete to qualify)

Describe why your nominee should receive the Citizen of the Year Award. (Use another sheet if necessary)

Wednesday, March 8, 1995 is the deadline

QUALIFICATIONS:

- **Someone who has made outstanding voluntary contributions toward the benefit of others over the past year not directly related to his/her employment.
- **Someone who lives within the Spearman Independent School District.
- **May be of any race, age, or sex and from any or no religious or political affiliation.
- **Keep in mind contributions to community welfare, leadership ability, participation in community affairs.

Sears

CONTINUED FROM PAGE 1

That kindness made Beryl's eyes mist over, all these months later, when he described it. For him, this moment crystallized the outpouring of love and support family and community offered unstintingly to the Sears family throughout the crisis.

Heart Transplant Needed

Back at St. Luke's, Debbie continued to weaken as her damaged heart labored to circulate her blood. Her legs began to turn black from lack of circulation. "My body was just shutting down," Debbie said. It was soon apparent that a heart transplant was no longer an option, but a necessity. Both Debbie and Beryl began to educate themselves about heart transplants in an effort to come to grips with the facts. In the meantime, she lay in the transplant Intensive Care Unit and was put on a weight-loss diet so she could qualify for a spot on the transplant waiting list.

Once stabilized, Debbie was moved from ICU to the 25th floor. Her congestive heart failure caused her body, particularly her lungs, to retain fluid. For this fluid retention, she was given diuretics, which caused her to lose too much potassium. "They were giving me as much potassium as they could through an i.v., but it wasn't enough," Debbie said.

Cardiac Arrest

As a result of this potassium loss, she suffered a cardiac arrest on April 12. Beryl was back in Morse buried in a desk piled high with school paperwork when Debbie's heart stopped and was restarted by the doctors.

"When it happened, my grandmother was with me. We were watching 'Rescue 911' on television, of all things. I knew my potassium level had been dropping all day. Suddenly, I felt dizzy and I passed out," Debbie recalled.

Her grandmother rushed out into the hallway, yelling for help. Seconds later, the first of the team arrived to start Cardio-Pulmonary Resuscitation (CPR), followed immediately by three "shocks" with the defibrillator paddles. This action restarted Debbie's heart.

Debbie said, "I remember the

initial CPR and I could hear voices. The next thing I was aware of was vomiting, and choking on it. As I was wheeled out of the room back to ICU, I was able to give the nurse next to me a thumb's-up."

Later, she was asked if she felt herself traveling through a tunnel or seeing lights during her time that her heart was stopped. "I didn't," she answered, "but I tell people that's because I wasn't ready to go yet."

"The hardest part of this whole thing was the 750-mile distance between us," Beryl commented. "I really needed to be in three places at once: with Debbie, with my staff and with my son."

In retrospect, Debbie believes it was not only financial considerations which made Beryl try to "do it all" during her hospitalization, but also his deep-seated belief that he needed to stay in charge of those things which were under his control.

As he dashed back to Houston, Debbie was reevaluated for a heart transplant and approved, pending approval from her insurance company. That approval came promptly on April 15.

Waiting

Debbie joined a long list of patients on that waiting list, all of whom were predicted to die without a new heart in the next 12 months. "But somehow I just knew I would get one," she said confidently. "Everyday morning when the nurses came in, I would ask, 'Do you have my new heart yet?'"

When Dr. Frazier entered her room each day, he was trailed by trainees like a mother duck, she said. "Here was this world-renowned man, very caring, very quiet and serious," she recalled. "One day he just sat in my room and stared and stared at me without saying anything. So, finally, I asked, 'What is it?' Dr. Frazier's soft response, Debbie said with a catch in her voice, was "I'm just so worried about you." Debbie added that she and Beryl later discovered the surgeon prays before each surgery.

The wait continued. Beryl and Debbie had accepted the fact that she would never leave the hospital

without a transplant. They were able to meet successful heart transplant patients during this time. On her 34th birthday, April 17, she gaily wiggled the party hat fastened to her feet. "We couldn't get it on my face because of all the stuff I had to wear!" she said with a giggle.

And with the waiting, came a period of grappling with the issue of death itself.

Facing Death

"I wasn't scared of dying," Debbie said. "I knew there was a better place. I had such strong faith in God. But I fought to survive because I didn't want to leave my baby and my husband."

Debbie also experienced two visitations by angels, she believes. "I almost hate to mention this, because some people will probably think I was crazy," she said quietly. "I didn't tell anybody about them for the longest time. But the first one was when I was at Beryl's parents' house after the bypass. I was in congestive heart failure, but we didn't know it. I just thought this how you felt after a triple bypass."

A figure appeared over her bed, she said, all in white. "It said that everything would be okay and that I should sit up and breathe." She struggled to a sitting position, but it was gone. "For the next three weeks, I just felt kind of 'watched over,'" she explained.

The presence appeared once more. "This time, it was like a vision," Debbie said. "There were no words this time. It was the night before I went into the transplant. I was worried about Brent."

Earlier, she had spoken with her son on the telephone. "What do you tell a four-year-old who wonders if you are ever coming home again?" she asked. "I just told him I'd call him tomorrow."

She lay there, gazing at a photo of her son which had been taken at the school's Easter egg hunt. The white figure suddenly appeared behind her child in the picture and put its arms around him. "I knew then that, whatever happened, my child was going to be watched over," she said calmly.

A Four-Year-Old's Reactions

And how had little Brent coped

with the weeks and weeks of being uprooted from the only home he knew? Beryl said, "In some ways, he handled it better than any of us. I told him his mommy's heart didn't work any more and she was going to have a new one put in. To him, that was just logical."

"Other times," he went on, "he would suddenly ask, 'Is my mommy dead?'" I would tell him over and over that she was not dead, but I wasn't sure he believed me, that he understood. The child had seen his mother only once in all her time at St. Luke's because children are excluded from the unit where heart patients are hospitalized. Beryl and Debbie explained that this is to help prevent very sick patients from catching germs from the children.

Beryl noticed some behavior changes in Brent, such as refusal to obey adults, including his own father, and a new, more aggressive personality. "He was in loving homes, but he needed family structure. He needed his parents, to be in his own home with his old routines," he said. Beryl and Debbie decided after the transplant was an inevitability to have Brent return to Morse with his father during the work-weeks, with community members taking over his care during Beryl's Houston visits.

To Be Continued...

Wizard

CONTINUED FROM PAGE 2

lunge your creativity. Students helpers from the audience will use common items found on the shelves of a supermarket in common ways to explain science in everyday living. Among other things, you will discover how a baby diaper works, how to crush an egg in your hand (you may not be as strong as you thought!) and how clouds are formed. This show promotes creative thinking by challenging the audience to think in terms of 'functional freedom.' You will never think of a supermarket in the same way again.



CPR

can keep your love alive

Sacred Heart Church Bake Sale

Lowe's Marketplace
Feb. 14, 1995
8:30 a.m. 'til sold-out



Green & blooming plants-ceramics & silk arrangements!

Flowers Say It Best



ALL OCCASION FLOWERS

MARY MOORE, OWNER
1-800-829-5180

cfS FLOWERS-BY-WIRE

517 Plains Shopping Center • Spearman, Tx. • (806)659-5180

Among The Neighbors

by Helen Fisher

Opal Cator of Harraugh, Oklahoma, formerly of Spearman and Sunray has been visiting in this area recently. She has been a guest of Bessie Mitts and Rosalie Cator of Gruver. They all drove to Stratford and Sunray for contacts with friends and relatives.

Last Tuesday they had lunch in the home of Mona Beth Windom. Other of Opal's nieces enjoying the lunch and gathering were Doris Beck, Dorothy Buzzard, Joyce Krum and Betty Scribner. Peggy Archer joined them in the afternoon.

Opal still lives alone in Harraugh tho her eye sight is failing, her general health is fair.

Gwen McLain suffered a broken elbow last Friday as a result of a fall on a rug in her home. She was taken to High Plains Baptist Hospital. On Saturday the break was set with the insertion of a screw and a pin. She is recovering but will not be back to normal for perhaps eight weeks. Since it was her right elbow and she is right handed, many simple tasks are impossible. Gwen says it takes considerable adjustment, but she has able assistance in husband, Don. She has discovered he has ability as a "house husband" and may even win an award from Battered House and Gardens!

Wasn't it a pleasure to read, in last weeks issue, of the engagements of Mark and J Garnett? These handsome young men are the sons of Mike and Marti Garnett and are a credit not only to the family, but to the entire community. J is in the Air Force Academy and Mark is a medical student in Kansas City.

Sada Ruth and Howard Long of Bartlesville, Oklahoma came last week-end. She will remain for a while to assist her sisters in the care of her mother, Mrs. Sada Hoskins.

Howard returned to Bartlesville.

A group from the First Baptist church spent ten days in Matamoros, Mexico working at an orphanage. They returned Sunday.

While there the men built bunk beds, cabinets and stands for the sewing class room, and did some repairs. The ladies prepared the meals and performed other needed tasks.

The orphanage is filled to capacity, and with the current economic conditions in Mexico, there is great need for additional space.

Those giving of their time and efforts to this worthy cause were Bob and Jane Vinson, Doyle and June Jackson, Verlin and Audene Beck, Brooks Beck, Roy Lee Uptergrove, and Joe Garcia formerly of Spearman, joined them at Abilene.

The group was pleased to have

lunch and a good visit with other Spearman folk who met them in Brownsville. They were Paul and Betty Hazelwood, Fred and Wren Holt, Bill and Estelle Jackson, Tom and Kathleen Sutton.

Altha Townsend Kirk is hospitalized as a result of a broken hip. She underwent surgery last Friday in New Port News, Virginia, for hip replacement. It is not known how long she will be hospitalized.

Herbert Kirk reports that Altha's health has deteriorated to the extent that she is almost completely incapacitated, but still enjoys reading and especially hearing from friends.

Cards and reach her through her son Kenneth Townsend, 713 Mayland Drive, New Port News, VA 23601.

We don't know what to do
She's lied to me--she's lied to you.
She's having a birthday don't you see.
And now she's half a century.
How old is she? I know you've wondered.
Heck, she's half a hundred!!



HAPPY BIRTHDAY MARY!!!

Watch Energy Savings Grow With Every Tree You Plant.



You can expect Texas-New Mexico Power Company to furnish reliable power, plus programs to help you use energy wisely. For example, we'll show you how to plant trees in energy-strategic locations so your landscaping helps reduce energy waste. For more information about saving energy, call or visit your local TNP office for our free Energy Management Guide.



Phyllis At CREATIVE EFFEX Family Hair Salon is having a SALE

Bring in this AD and receive an additional 20% of her already low prices.

Men's Hair Cuts.....Now \$ 5.20 Women's Cuts.....Now \$ 6.80
Perms starting at.....\$20.00 Colors starting at.....\$16.00

This offer includes all services performed by Phyllis, including but not limited to Pedicures, Hot Oil Manicures, Sculptured Nails, Weaving, Bleaching and Styles.

Phyllis is Open Monday (Yes Monday!) Through Saturday 8:30 a.m. til 5:00 p.m., except on Thursday when she is open until 9:00 p.m.

Senior Citizens receive an additional 25% off her already low prices every Monday and Friday.

Call Phyllis at 435-5704 or come by 2 S.W. 6th, the Ragsdayle Bldg., 2nd Floor in Perryton

Early appts., Late appts., and walk-ins are always welcomed!

Make your appointment or come by soon, the Sale ends Feb. 18, 1995.

Out at the Lake

By DOROTHY HUDSON
Lake depth -- February 6, 1995 - 19 feet and eight inches.

Last week Don and I attended the opening of the Lake Rita Blanca Wildlife Management Area at the south edge of Dalhart. They had advertised they would have spotting scopes set up and would have a guided nature trail.

Of the two scopes set on tripods, I could see much better from the short wide one opposed to a much longer, more narrow scope. To my dismay, the Texas Parks and Wildlife man demonstrating them said that the one I liked retailed for \$1,005. I had hoped we could keep one at the office to be used there, and, at certain times to be loaned or set up for groups at different spots in the park. I don't think it is a taxpayer expense, though. Maybe eventually a fund could be started for the purchase of a scope.

The nature trail turned out to be a one track dirt road around the lake. As there were only two of us interested in the trail, the walk was only a half mile or so, before we turned back. It is a pretty spot for a hike, but the other lady on the walk said she would never walk it alone,

as she though Dalhart had a drug problem that involved that area. The "treasured moment" of the trip was seeing a big flock of snow geese on a playa lake between Stratford and Dalhart. At first glance it looked like a snow island in the middle of the lake.

Have any of you seen the Akbash guard dogs that are now being used to protect flocks of sheep? Danny and Harleta Carthel, who live west of Gruver, have one of the Great Pyrenees that came from Spearman as a pup. They are considered quite good as guard dogs, but according to an article in last week's *Livestock Weekly*, the white Akbash, which has been guarding sheep in Turkey since before the time of Christ, is the new favorite.

These are big dogs, weighing 90 to 140 pounds, and standing 29 to 32 inches at the shoulder. They are more slender than the Great Pyrenees as there is a greyhound influence. This build enables them to run and jump as high as six feet. These dogs cost \$700 or more each. Many are being sold to Californians who live in the Sierra and want them as protection against mountain lions.

County livestock show set, Feb. 10-11

The Hansford County Junior Livestock Show and Sale will be held in the Spearman County Barn on Friday and Saturday, February 10 and 11.

Steers will be weighed in from 6:30 a.m. to 7:30 a.m. on Friday. Lambs and companion lambs will be weighed in from 7 a.m. to 8 a.m. Swine will be weighed in immediately following the lambs show.

At 9 a.m. all directors, ag teachers, county agents, and FFA sweethearts are to report to the arena for the Grand Opening of the show.

The judging of the steers is scheduled to start at 9:15 a.m. The lamb show will start immediately following the steer show.

On Saturday at 8 a.m. the swine will be judged. Then at 1 p.m. the livestock judging contest is scheduled. Beginning at 6:30 p.m. floor prices will be auctioned. This will be followed by the presentation of showmanship awards and commercial steer awards. Immediately following the awards presentation will be the auction. Livestock will sell in the order of one lamb, one swine, and one steer, etc.

Judging the 1995 Hansford

County Junior Livestock Show are: Dale Dunlap, Wellington - sheep; Mike Schwab, Liberal - Kansas - swine; and Hiram Bergart, Allison - steers.

The 1995 department superintendents are as follows: steers - Jerry Williams, Rick Thompson, and Kevin Holt; sheep - David Armes, Keith Bateman, Craig Cooper, and Richard Pipkin; swine - Glen Ray Mackie, Bret Burgin, Lonnie Shields, Archie Smith, Kyle Nollner, Buddy Lowe, Kenneth Slough, and Clint Irwin. The commercial steer department superintendent is Fran Haefner.

Tommy Mitchell of Texhoma will be the auctioneer. Ringmen will be Joe T. Venneman and Rick Riggins. The announcer for the event is Carl Cooper of Guymon.

Several 4-H'ers and FFA members recently participated at the Fort Worth Livestock Show. Pigs and steers were shown. Placings are as follows:

Ronda Renner - first place in the heavyweight European Cross steer division.

Mandy Vernon - second place in the mediumweight European Cross

Casey Smith - fifth place in the Shorthorn steer show.

Travis Brown - 10th place in the European steer competition.

Reagan Renner - 14th place in the lightweight European Cross steer show.

Also exhibiting steers in the show were Brad Holt, Kaylee Holt and Kallie Smith.

In the swine division the placings are as follows:

Galen Slough - 14th place in the lightweight Duroc show.

Clint Williams - 14th place in the mediumweight Hampshire show.

Kim Venneman - 19th place in the heavyweight Cross show.

Kristy Pittman - 25th in the mediumweight Cross show.

Brittany Morris, Kade Carthel and Scott Stedje also exhibited at the livestock show.

SUTPHEN'S BBQ

303 N. Cedar • Borger, TX
806/273-6442

Catering

25 People or More
\$5 per plate
(choice of 2 meats)

• BBQ Brisket • BBQ Chicken • Polish Sausage • Ham • BBQ Chicken Strips •

With all the trimmings!

• Onion Rings • Potato Salad • Cole Slaw • Beans • Coffee or Tea
* Fruit Cobblers Available *

Association to hold annual meeting

Panhandle Livestock Association will hold its 80th annual meeting Saturday, February 18, 1995 at the Ambassador Hotel (formerly Harvey) in Amarillo.

Earl Wheatly, President of PLA, said the convention will begin at 9 a.m. with registration in the atrium. The Board of Directors will meet at 10:30. Also at 10:30 in the ballroom will be a "Bloody Mary Party" and an art exhibit done by Kenneth Wyatt. Lunch and general business

meeting will begin at 12 noon. Guest speaker for the luncheon will be Red Stegall, western entertainer. Cocktail buffet and dance will begin at 6:30 p.m. with music by Young Country of Amarillo. Breakfast will be served at 11 p.m. following the dance to end the day's events.

Panhandle Livestock Association funds two scholarships to the Ranch and Feedlot Operations program at Clarendon College. Work is now being done to establish a

scholarship for an upper classman majoring in agriculture at West Texas A&M.

To fund the scholarships being offered, a raffle will be held. There will be three featured items raffled off. To purchase chances, or to make a donation to the scholarship fund, contact a PLA member or call (806) 856-5939.

The membership will be compil-

ing a new brand book this year. If you are interested in having your brand registered and joining the PLA, please call one of the numbers listed below.

Reservations can be made for the entire day or any part of the day by calling Earl Wheatly at 806-856-5939, Nancy McIntyre 806-659-2083, or Adolf Schmidt at 806-447-5803.

Underground outlets available in county

By JOE E. VANDERBURG
NATURAL RESOURCES
CONSERVATION
TECHNICIAN

What is an underground outlet? The definition of an underground outlet is a conduit installed beneath the surface of the ground to collect surface water and convey it to a suitable outlet. Its sole purpose is to dispose of excess water from terraces, diversions, or waterways without causing damage by erosion or flooding.

The underground outlet can be designed alone or in combination with practices to provide for safe

non-erosive removal of irrigation tailwater and also a portion of the excess rainfall run-off.

At present there are a number of these outlets completed and functioning in Hansford County. If you are interested or want more information please contact the Natural Resources Conservation Service at 659-2330 or come by 909 W. 9th in Spearman.

Programs and services of the Hansford SWCD and Natural Resources Conservation Service are offered on a non-discriminatory basis without regards for race, color, national origin, age, sex, religion, marital status or handicap.



Valentine Dance

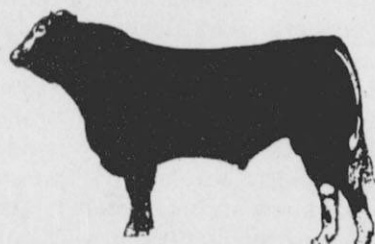
Saturday, February 11
9:00 p.m. - 1:00 a.m.

Music by
Vera Brothers

Mr. C's

721 1/2 N. Main • Perryton, TX

LIMOUSIN BULL SALE



DATE: FEBRUARY 15

TIME: 1:00 P.M.

LOCATION: BEAVER LIVESTOCK SALE BARN
BEAVER, OKLAHOMA

CONSIGNED BY BAGGERLY RANCH OF
ELMWOOD, OKLAHOMA

21 REGISTERED LIMOUSIN BULLS
RANGE-RAISED BREEDING AGE

Recycling Words

By MARGIE FAGAN
Spearman-Gruver Recycling Co-ordinator

What do they do with all that stuff?

You've spent time and effort collecting, sorting and delivering your recyclable material to the recycling center. You can rest assured that your resources are being turned into all kinds of terrific stuff.

Plastics, steel, aluminum and paper industries have spent millions of dollars researching new ways to use your trash. It has now become more of a question of what can't you make from recycled materials!

The plastics industry has overcome the difficulties of plastics recycling making products as diverse as signs, plastic lumber, picnic tables, waste containers, tree grates, roofing tiles, and flooring. Soda bottle plastic (#1 PETE) is made into fiberfill stuffing for mittens, coats and sleeping bags. New soft polyester fabrics (that imitate cashmere), carpet fibers, toys and insulation are also created from old soda bottles! And manufacturers can always make a new container.

Recycles glass often becomes a new jar or bottle - glass containers generally consist of 30% recycled

glass - but it also becomes abrasive beads for sandblasting and reflective beads for road paint at Omega Raz-R-Tex in Panhandle our glass recycler.


Vista Fiber blow-in insulation out of newsprint and corrugated card board and newsprint becomes wallboard and linerboard at other factories. High grade office paper becomes tissue and toweling as well as new office paper. Western Pulp Products Co. uses recycled newspaper, cardboard and scrap paper to make protective for the furniture industry and molded fiber containers for resale in the floral and nursery industry. Newspaper becomes cereal boxes and, wonder of wonders, new newsprint!

Recycled rubber tires may become the roadway you are driving on or rubber surfacing for gyms and under play ground equipment. Manufacturers now make attractive roofing material from old tires which is guaranteed for 50 years.


Recycling is here to stay. too much has been invested for industry to ever go back. Hang on to your hats. The wind of change are blowing.

TODAYS
THE DAY

Stop Smoking.




American Heart Association



CONGRATULATES NCGA STATE WINNERS!!!!

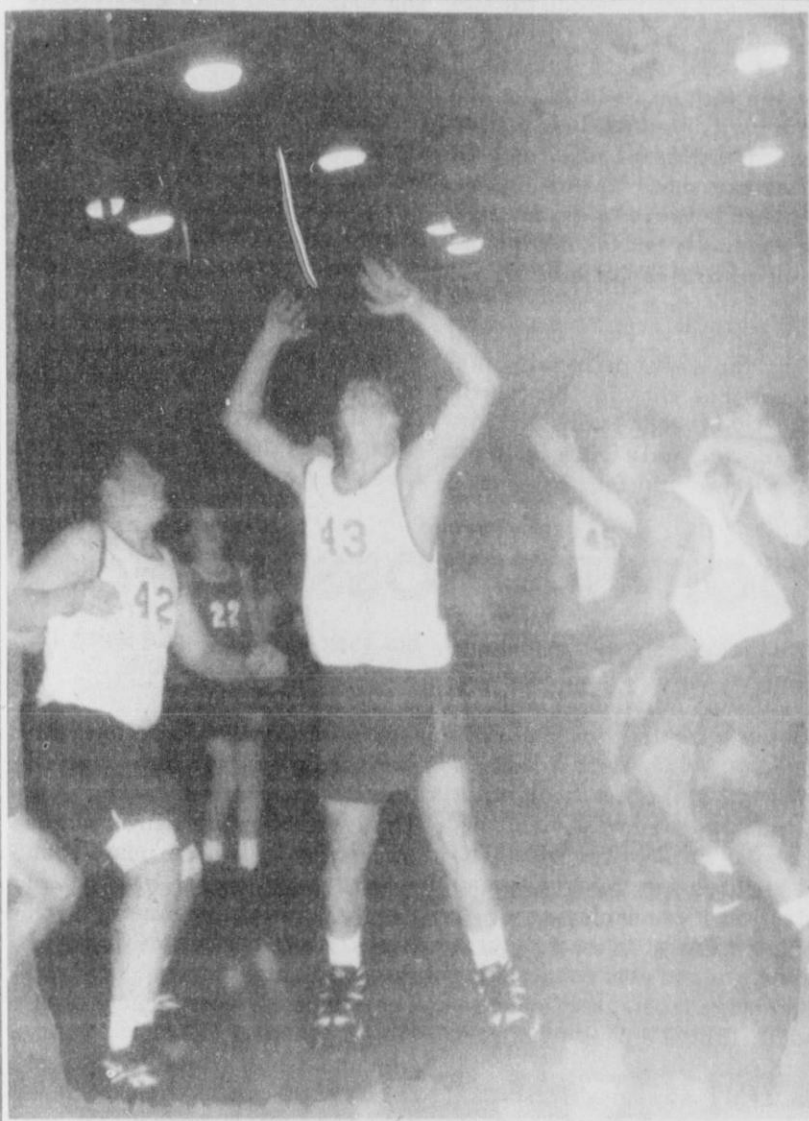
Irrigated:			
1st	H.J. Clark of Dimmitt	NC+ 7117	273.8 bu/ac
3rd	Bradford Farms of Dimmitt	NC+ 7117	260.73 bu/ac
No-Till (Irrigated):			
2nd	Geneo Abbe of Dalhart	NC+ 5037	275.51 bu/ac



America's
Down
to Earth
Seed
Company

Sports

Lady Hounds take District 1-AA title



COMING DOWN - The many-talented Spearman Lynx 8th grade baffled it out with arch-rivals, the Gruver Greyhounds, last Monday. This game, as usual, was one of Spearman's biggest, and they nipped-out the Hounds, 35-27. Pictured here, three of the superstars of the Lynx team, Michael Lusby (43), Carlos Hernandez (44), and Quentin Shiedtknight (42), are all preparing to steal a Hounds' rebound, while Charlie Stavio of Gruver (22) is waiting to see what happens. (Photo by Chad Davis)

For the second year in a row, the Gruver Lady Hounds have won the District 1-AA championship, following their victory over the West Texas Lady Comanches this past Tuesday night February 7 at Greyhound Gym in Gruver. It is the fourth consecutive year that Coach Steve Myatt of the Gruver gals has directed his team to the playoffs, the first year in class A, and the last three years in class AA. Three of those four years the Lady Hounds have garnered district championships. Over his four year tenure as head coach of the Lady Hounds, Coach Myatt has compiled a record of 89-32, for a winning percentage of .736, including a 5-3 record in the state playoffs.

Gruver has one game remaining on their schedule - a now meaningless game with the Spearman Lynxettes at Spearman on Friday, February 10. That game will have meaning to the Lynxettes, however, as they are fighting for the one remaining district playoff spot. Gruver will have some incentive - they will be trying to avenge an earlier loss to the Lynxettes, and to knock them out of the playoffs.

This past Friday night, February 3, at Stratford, the Gruver gals did a number on the Stratford Lady Elks to the tune of 60-54, and this was an exciting game! The Lady Hounds trailed by as much as 8 points, 39-31, in the third quarter.

Molly McLain was a remarkable 11-15 (73%) from the field, including a three-pointer and two 3-point plays, as she was 2-2 from the charity stripe. That totaled out to 25 big points, second only to Kiki Carthel's

26 points this season versus El Paso High, in the tournament at Caprock High School. Molly scored 13 in the first half, and 12 in the second half. For the season (two games) Molly is now 16-21 from the field (76%). In addition, Molly led the Lady Hounds against Stratford with 4 assists. Molly fouled out late in the fourth quarter, with the Gruver gals up by 8, to a standing ovation.

Kaysha Cluck scored 9 points and had 3 steals. And Julie Meyer only scored 6 points on this night, but she led the Lady Hounds with 7 rebounds, and had 3 steals and 3 assists.

The Gruver gals fell behind early 6-3, but McLain hit her trey to tie it 6-6. Then Weslyn Maupin hit the first of two free throws with 50 seconds left in the quarter, and Gruver held a 7-6 lead.

Unbelievably, McLain scored the first 10 points of the second quarter for the Lady Hounds. She hit on jumpers, she hit from under the basket, she hit from everywhere. But Stratford was hot, and they are a good team, playing on their home court. Plus, they were 13-16 from the free throw line in the first half, while the Lady Hounds were only 3-6. Those were some awesome obstacles to overcome! But that's what the Lady Hounds did!

Kiki Carthel kept the Lady Hounds in the game late in the second quarter with two huge baskets. Kiki hit a jumper with 2:44 left in the half to tie the game 19-19; then when the Lady Elks had built their biggest lead of the night thus far, 25-20, Carthel hit at the very end of the half, and Gruver trailed only 25-22 at halftime.

The third quarter started out very badly, as Gruver fell behind by 8, and Stratford was playing very well. But Gruver outscored the Lady Elks 12-2 to take a 43-41 lead with 7:30 left in the game, on a Kaysha Cluck driving layup. Stratford tied it 43-43, and that's when the Gruver gals took the lead for good. Tisha Ralston hit from under the basket with 6:50 left in the game, for a 45-43 lead. Then with 5:43 left in the game, McLain scored

a huge play. It was her second 3-point play, and it gave Gruver a 48-43 lead. It was then curtains for the Lady Elks. They did cut it back to 3 points once, 52-49, but McLain hit again, and Wendy Rodriguez hit a huge trey with 2:31 left, and Gruver held a 57-49 lead. Doomsday for the Lady Elks!

"This was the biggest game at Gruver since I've been here," said a happy Coach Steve Myatt afterwards. "Our bench kept us in the game in the second quarter, when nothing was going our way. We showed championship grit in the second half when we were down by 8. We showed a little bit of the killer instinct that we've been trying to find. This is the toughest district in the state."

See LADY HOUNDS, page 10

Gruver Greyhounds seeking playoff spot against Lynx

The Gruver Greyhounds will be seeking one of the two playoff spots from District 1-AA in their regular season finale with the Spearman Lynx this Friday. That playoff spot would be the first for the Hounds since the glory years of Houndball from 1989-92, when the Hounds won four consecutive district 1-A championships, and it would be their first ever playoff spot in class AA. Gruver's game with the Spearman Lynx this Friday night February 10 at Spearman is now a must win for the Hounds, if they hold any reasonable hopes of claiming that playoff spot. Should the Hounds win, the second seed from District 1-AA would be theirs outright - but if the Hounds lose, then they would finish in a two-way tie with Stratford at 4-4; and possibly a three-way tie with Stratford and Boys Ranch at 4-4, if Boys Ranch should beat West Texas - and a district playoff would be necessary for the state playoff spot. If the Hounds

lose, though, it would mean three straight district losses, and they would not be in good shape for the district playoff. The would much rather win Friday, and win the playoff spot outright. West Texas won the district championship outright this past Tuesday night, February 7, with their victory over the Hounds.

Coach Tim Garland has an overall record of 146-69, for a winning percentage of .679, during his seven-year hitch as head coach of the Hounds. His playoff record is an outstanding 10-4. That record includes the past several years, when the Hounds winning ways have tapered off, with records of "only" 15-10, 12-18, and 12-16 this year.

This past Friday night, February 3, the Hounds were ambushed by the Stratford Elks at Stratford, 58-52. Stratford took the early lead, and the Hounds tried and tried, but they couldn't catch the Elks. The Hounds overcame big deficits three

times, and made runs at the Elks, but the Stratford team didn't flinch in the clutch, and rebuilt their lead each time. It was an outstanding effort by the Elks.

Stratford jumped out to an early 10-2 lead, then 12-4. Then the Hounds made a run at them. Roma Tomlinson hit a trey at the first quarter buzzer, and Phil De La Cruz opened the second quarter with a trey. It was now 12-10. But the Elks regrouped, and built their lead back-up to 22-13 at halftime. That's right - only 13 first half points for the Hounds. Their shooting was ice-cold.

Again, the Hounds made a run at the start of the third quarter. Brant Armes hit a trey, then De La Cruz hit his second trey, and quickly it was 22-19 with 6:37 remaining in the third quarter. But again, the Elks regrouped. They built the lead back up to 7, 33-26. Then Jace Dawson hit a couple of jumpers to knock it back down to 3, 33-30. But the Elks zoomed their lead to 10, 40-30; and then to 11, 47-36. The Hounds looked to be out of it.

But the Hounds rallied again, cutting the lead to 2 points, 48-46, with about three minutes left. The Hounds had scored 12 points consecutively on free throws, 12-12,

See GRUVER, page 10



WHERE TO GO - The B teams of Gruver and Spearman were also in action last Monday night in Spearman. In the picture above, Dan Kunselman of Spearman is trying to decide which way to go with the ball, while several Hounds' players are getting ready to break-up the move. (Photo by Chad Davis)

NEW TRAMPOLINES
Mats & springs
Resew trampoline mats.
Make new boat covers.
Call (806)659-2109
Harry Stumpf
301 W. 12th
Spearman, Texas

★★★★★★★★★★★★★
★ **FOR SALE** ★
★ **UNBELIEVABLY AT** ★
★ **BECKETT PRICE!** ★
★ **Michael Jordan Rookie** ★
★ **Card and/or set. Call** ★
★ **659-3863 or 659-2912** ★
★★★★★★★★★★★★★

SEASONAL Savings

ALLSUP'S

EFFECTIVE FEBRUARY 5-11, 1995
Gruver, Spearman, Perryton, & Booker Only

<p>SAVE ON PEPSI-COLA 3 Liter \$1.49 6 pk. • 12 oz. cans \$2.09</p>	<p>OUR POP SPECIAL!</p>	<p>ALLSUP'S SAUSAGE & BISCUIT FOR ONLY 79¢</p>
<p>MADE TO ORDER BAR-B-Q BEEF SANDWICH FOR ONLY 99¢</p>		<p>ALL FLAVORS GRAB BAG CHIPS REGULAR 69¢ 2 \$1 FOR 1</p>
<p>ALLSUP'S 1.5 LB. LOAF SANDWICH BREAD 69¢ EACH OR 2 \$1 FOR 1</p>		<p>AJAX LAUNDRY DETERGENT 32 OZ. BOX \$1.29</p>
<p>SAVE ON DECKER MEAT FRANKS 12 OZ. PKG. 69¢</p>		<p>SAVE ON SHURFINE CUT GREEN BEANS 16 OZ. CAN 39¢</p>

ALLSUP'S YOUR ONE STOP SHOP FOR SAVINGS!

<p>SHURFINE TOMATO KETCHUP 28 OZ. SQUEEZE 99¢</p>	<p>ALLSUP'S MONEY ORDERS UP TO \$299.00 29¢</p>	<p>SHURFINE GRADE A LARGE EGGS DOZEN 79¢</p>
--	--	---

For Your BBQ or Smoked Turkey call

Sutphen's BBQ

(in the Pahnandle for 44 years)

806/273-6442
303 N. Cedar
Berger, TX

Lynx fall victims to WT Comanches

Despite brilliant efforts by Lynx's players Heath Archer, Jarod Huddleston, Dillon Miller, Shad O'Quin, and Coyt Tigrett, the Spearman Lynx fell victim to a possible district-winning West Texas Comanches team, 70-59, last Friday, February, 3 at Stinnett.

Just like most of the games the Lynx have played in all year, they had a great fourth quarter, in which they took, 24-22, but they failed to take the other three. The Lynx were taken in the first 12-14, in the second, 11-19, and in the third, 12-15.

The two hot shots for the Lynx,

O'Quin and Tigrett, tied the game at 11 points each. The two split the game in points, with O'Quin making all of his in the first half and Tigrett making all of his in the second half. O'Quin was one of the only two to make a trey on the night, in the first quarter. He also went on to make 3 more field goals and went 1-1 from the penalty line in the second quarter. Tigrett's second half points came on a field goal in the third quarter and 2 field goals and 5 out 7 free throw shots in the fourth stanza.

There were also three other Lynx, Archer, Huddleston, and

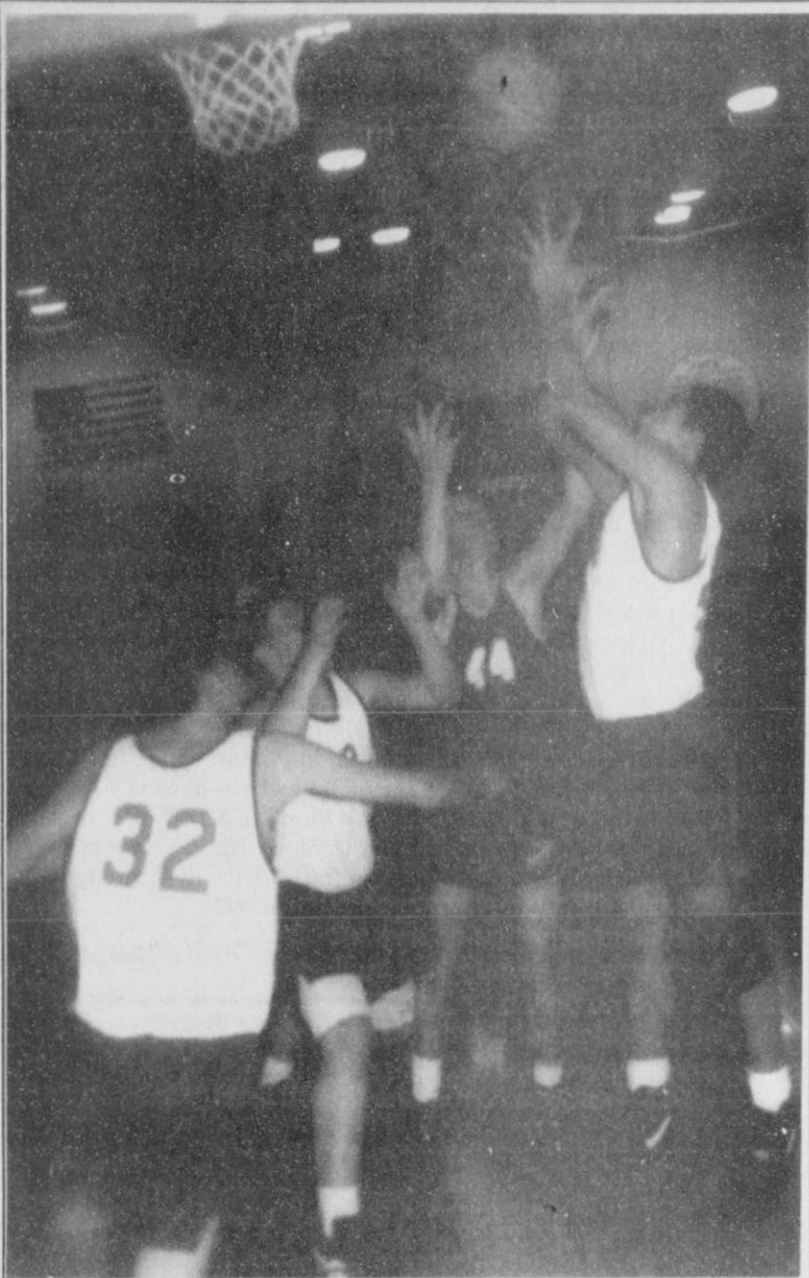
Miller, who tied on points, which were just one point behind the two top point makers. Archer, the king of three pointers, may have had only one trey on the night in the fourth period, but his field goal in the third, and his five made painted line stripe shots in the fourth, quickly added up to 10. Huddleston was only one of two to make points the entire game of each quarter. He put in 2 field goals and a free shot in the first quarter, put 2 more field goals in the basket in the third, and made a free shot in the fourth. Miller, the other one to make points each quarter, had a field goal in the first, second, and fourth stanzas.

He also went on to hit a free shot in the second and third quarters, as well as a deuce of free shots in the fourth.

The only other Lynx to score, senior Chad Wilkerson, went 5-5 from the penalty line and had a field goal, to give him 7 hard-earned points.

The Lynx also had a tough night from the free throw line, by making 23-36, which brought them to 64%.

Spearman will be ready for the rematch against Gruver this Friday at Spearman, as they try to avenge their demoralizing loss last time in Gruver.



ALMOST BLOCKED - The action was fast and furious last Monday night at Spearman. Seen here, several unidentified Lynx's and Hounds' players are fighting to get the ball in the basket for the much-needed 2-point play. (Photo by Chad Davis)

Lynxettes suffer disappointing loss, 61-58

The Spearman Lynxettes were playing hard again last Friday, January 3, against a very determined Lady Comanches of West Texas team. The Lynxettes were hoping to cinch a playoff spot, but the last minute comeback of the Lady Comanches was too much, and the Lynxettes fell, 61-58.

The Lynxettes played a very tight game with West Texas each quarter, as they took two and dropped two. The Comanches took the first stanza, 11-14, but the Lynxettes came back strong in the second, 13-12. Much like the first half, but reversed, the Lynxettes took the third 22-13, but they were taken in the fourth, 12-22.

Three of the Lynxettes, Ashly Shieldknight, Shayla Barber, and Kara Townsen, all managed to hit

double figures in scoring. Shieldknight took this game by storm in the second half, with 14 big points. Shieldknight had an explosive third quarter, in which she made 6-8 free shots and 2 field goals. She also went on to make 2 more field goals in the game's final quarter.

Barber has been playing fantastic lately, and this game with the Lady Comanches was no exception. Barber hit a couple of field goals and a free shot in the first, a field goal in the second, and another field goal, as well as one of only three 3-pointers by the Lynxettes, to give her 12 hard-earned points.

Of course, any game would not be complete without the likes of Kara Townsen hitting points. Townsen had a great half, in which she made 2 field goals in the first

and 3 field goals and a penalty stripe shot in the second. Townsen finished the final quarter with one more free shot, to also give her 12 points.

The two other Shieldknights on the team, Macy and Kelly, finished their game with 7 points each. Macy had a field goal in the first, second, and third periods of play, as well as a painted line shot in the fourth. Kelly hit a field goal in the second and third quarters, and made the second of three 3-pointers, also in the third.

A truly awesome freshman, Lindsey Smith, finished her game with 6 points, while Sam Beasley hit the last trey for Spearman and finished her game with 5 points.

The Lynxettes went to the penalty line 26 times in this ball game,

but they were only able to hit 13, which left them with 50%.

This loss to West Texas did put a damper on the Lynxettes playoff hopes, but they are still not out of it. The game with the Lady Hounds this Friday will mean more than ever to the Lynxettes, as they will need this win to keep their playoff hopes alive. They will also have the incentive that they can beat the Lady Hounds twice and have bragging rights to the Hansford County Championship, as well as say that they beat the district champs. However, the Lady Hounds would like nothing better than to knock the Lynxettes out of the district race and avenge their loss in front of their home crowd last time these two teams met up.



OVER THE HEAD - The Spearman Lynx 9th grade and the Gruver Hounds 9th grade were one of the many teams to play in last Monday night's final ball games in Spearman. Seen here are Gruver's Arturo De La Cruz giving an over the head pass to one of his teammates, while Spearman's Josh Shute is preparing to brake-up the play. The game was a blow-out for the Lynx, as they finished their season in victory, 42-26. (Photo by Chad Davis)

Basketball...

Hounds 7th Red (8-7) vs. West Texas Comanches 7th

Monday 1-30-95 at VG
W-T 6 14 20 23
Gru 11 16 27 38
Gru - Bray Armes - 13, Dallas Henson - 12, Dan Odom - 6, Jared Christian - 3, Daniel Hernandez - 2, Colby Hunt - 2.

Hounds 7th White (3-4) vs. West Texas Comanches 7th

Monday 1-30-95 at AC
W-T 14 16 22 38
Gru 13 14 22 29
Gru - Jesus Rodriguez - 14, Josh Blount - 6, Trevor Ferguson - 4, Lee Nunez - 3, Ricky Arreola - 2.

Hounds 8th Red (9-7) vs. West Texas Comanches 8th

Monday 1-30-95 at VG
W-T 9 18 30 37
Gru 9 18 21 32
3-Pointers - Charlie Stavlo, Jason TeBeest.
Gru - Dustin Ross - 10, Jason TeBeest - 7, Jeff McClure - 5, Charlie Stavlo - 5, T.J. McClure - 4, Clint Robinson - 1.

Hounds 8th White (5-0) vs. West Texas Comanches 8th

Monday 1-30-95 at AC
W-T 6 8 13 17
Gru 2 12 14 21
Gru - Wesley Miser - 6, Crece Gaspar - 4, Clayton Henson - 4, Luke Johnson - 3, Adam Red - 2, Greg Slough - 2.

Hounds 9th (4-12) vs. West Texas Comanches 9th

Monday 1-30-95 at VG
W-T 8 14 20 33
Gru 4 14 21 29
3-Pointer - Jared Johnson.
Gru - Jared Johnson - 16, Kyle McNett - 6, Jody Robinson - 4, Rob Murrell - 2, Keith Cassidy - 1.

Lady Hounds 7th Black (13-2) vs. West Texas 7th

Monday 1-30-95 at Plemons
Gru 10 19 25 32
W-T 0 0 2 7
Gru - Krystle Deeds - 10, Annie Mayhew - 6, Lindy Tolleson - 5, Leah Shults - 3, Essie Bravo - 2, Becky Cassidy - 2, Chelsie Hicks - 2, Amanda Schneider - 2.

Lady Hounds 7th White (4-3) vs. West Texas 7th

Monday 1-30-95 at Plemons
Gru 9 11 13 17
W-T 2 2 2 4
Gru - Dusty Eckhardt - 8, Lacie Osbourne - 5, Randi Atwood - 2, Cayla Simon - 2.

Lady Hounds 8th Black (7-8) vs. West Texas 8th

Monday 1-30-95 at Plemons
Gru 10 22 30 44
W-T 4 12 18 25
3-Pointer - Erika Salmans.
Gru - Jennifer Duggan - 10, Erika Salmans - 9, Kadie Grotegut - 8,

Sabrina Cookenour - 7, Holly McCloy - 5, Kelley Ogilvie - 5.

Lady Hounds 8th White (4-5) vs. West Texas 8th

Monday 1-30-95 at Plemons
Gru 6 9 16 22
W-T 4 4 13 17
Gru - Bobbi Christian - 8, Teresa Crow - 8, Jennifer Lopez - 3, Kaydee Jordan - 2, Audrey Beasley - 1.

Lady Hounds 9th (4-10) vs. West Texas 9th

Monday 1-30-95 at Plemons
Gru 6 11 14 23
W-T 8 17 19 24
Gru - Virginia Barrera - 11, Laura Garcia - 8, Brandy Morris - 4.

Spearman Lynxettes 7th A vs. Sunray Lady Bobcats 7th

Monday 1-30-95 at Spearman
Spm 8 20 20 26
Sun 2 6 8 10
Spm - Camille Smith - 9, Brooke Lesly - 6, Audra Sanders - 5, Halee Beasley - 2, Syd Woodington - 2, Randi Burch - 2.

Spearman Lynx 7th A vs. Sunray Bobcats 7th

Monday 1-30-95 at Sunray
Spm 12 29 41 53
Sun 8 16 25 39
3-Pointers - Dusty Barber - 3, Jeremy Mackie, Clayton Wilkerson.

Spm - Aaron Winegarner - 16, Dusty Barber - 13, Jeremy Mackie - 9, Clayton Wilkerson - 7, Josh Schuman - 4, Landon Delozier - 2, Reagan Renner - 2.

Spearman Lynxettes 8th A vs. Sunray Lady Bobcats 8th

Monday 1-30-95 at Spearman
Spm 4 12 16 32
Sun 3 9 11 13
Spm - Grace Davis - 11, Kristin Beedy - 8, Lisa Swink - 6, Kristi Carbajal - 4, Betsy Holt - 2, Gale Mayfield - 1.

Spearman Lynxettes 9th vs. Sunray Lady Bobcats 9th

Monday 1-30-95 at Spearman
Spm 10 17 25 30
Sun 5 18 24 38
Spm - Kasey Dunnihoo - 13, Ashly Brown - 12, Andee McGaha - 3, Jocelyn Edwards - 2.

Lady Hounds JV (13-10, 1-3) vs. Stratford Lady Elks

Friday 2-3-95 at Stratford
Gru 9 22 35 48
Str 15 31 50 55
3-Pointers - Autumn Bateman - 3, Jill Odom - 3.
Gru - Jill Odom - 14, Autumn Bateman - 13, Mary Dawn Henson - 8, Amy Gillispie - 6, Kathy Slough - 4, Robbi Mathews - 3.

Lady Hounds JV (13-9) vs. Boys Ranch Varsity

Tuesday 1-31-95 at AC
B-R 2 9 15 18
Gru 10 18 31 48

3-Pointers - Erin Derington, Jill Odom.

Gru - Jill Odom - 13, Autumn Bateman - 9, Amy Gillispie - 8, Kathy Slough - 5, Erin Derington - 4, Robbi Mathews - 4, Erikka Barrera - 2, Crystal Christian - 2, Mary Dawn Henson - 1.

Hounds JV (14-11, 3-2) vs. Boys Ranch

Tuesday 1-31-95 at VG
B-R 11 23 30 46
Gru 18 28 40 57
3-Pointers - Scott Jarvis - 2, Daniel Bort.

Gru - Juan Arreola - 18, Scott Jarvis - 13, Daniel Bort - 11, Bailey Barkley - 8, Buster McLain - 3, Tucker Henson - 2, Heath Tolleson - 2.

Hounds JV (15-11, 4-2) vs. Stratford Elks JV

Friday 2-3-95 at Stratford
Gru 9 22 35 43
Str 6 11 11 17
3-Pointers - Scott Jarvis - 2, Daniel Bort.

Gru - Daniel Bort - 11, Bailey Barkley - 10, Scott Jarvis - 8, Juan Arreola - 6, Tye Womble - 6, Doug Gurfory - 2.

Lady Hounds 9th (5-10) vs. West Texas Comanches

Thursday 2-2-95 at WT Tourney
Gru 4 12 16 20 34
W-T 6 8 10 20 25
3-Pointer - Virginia Barrera.
Gru - Virginia Barrera - 11, Brandy Morris - 10, Steffany Simon - 7, Laura Garcia - 4, Amber Roberts - 2.

Hounds 9th (4-13) vs. West Texas Comanches

Thursday 2-2-95 at WT Tourney
Gru 8 12 25 33
W-T 18 39 45 65
Gru - Jared Johnson - 14, Arturo De La Cruz - 6, Kyle McNett - 6, Keith Cassidy - 4, Kevin Harris - 2, Rob Murrell - 1.

Lady Hounds 9th (5-11) vs. Sanford-Fritch Lady Eagles

Friday 2-3-95 at WT Tourney
Gru 8 13 20 29
S-F 8 21 26 36
3-Pointer - Steffany Simon.
Gru - Steffany Simon - 9, Laura Garcia - 8, Virginia Barrera - 7, Amber Roberts - 3, Brandy Morris - 2.

Hounds 9th (4-14) vs. Sanford-Fritch Lady Eagles 9th

Friday 2-3-95 at WT Tourney
Gru 7 23 31 47
S-F 6 16 38 53
3-Pointers - Kevin Harris - 2, Jared Johnson - 2, Keith Cassidy - 2.
Gru - Jared Johnson - 15, Kyle

McNett - 12, Kevin Harris - 6, Arturo De La Cruz - 5, Keith Cassidy - 3, Victor Luciano - 2, Michael Minter - 2, Jody Robinson - 2.

Lady Hounds 9th (6-11) vs. Spearman Lynxettes 9th

Saturday 2-4-95 at WT Tourney
Spm 6 10 12 14
Gru 6 12 12 22
Gru - Virginia Barrera - 9, Steffany Simon - 7, Laura Garcia - 2, Brandy Morris - 2, Amber Roberts - 2.

Spm - Kasey Dunnihoo - 10, Lena Harbour - 2, Leah Mackie - 1, Andee McGaha - 1.

Hounds 9th (5-14) vs. Spearman Lynx 9th

Saturday 2-4-95 at WT Tourney
Gru 2 7 20 38
Spm 5 9 17 26
3-Pointers - Keith Cassidy, Mac Butts.

Spm - Josh Shute - 19, Clint Goodman - 14, Mac Butts - 7, Howell - 4.
Gru - Jared Johnson - 18, Arturo De La Cruz - 10, Rob Murrell - 6, Keith Cassidy - 4.

Spearman Lynx 9th vs. Fritch Eagles 9th

Thursday 2-2-95 at WT Tourney
Spm 5 20 24 41
Fri 10 17 36 49
3-Pointers - Howell.

Spm - Josh Shute - 14, Clint Goodman - 14, Mike Butts - 4, Howell - 3, Keith Winegarner - 2, Mac Butts - 2, Casey Nobles - 2.

Spearman Lynx 9th vs. West Texas Comanches 9th

Friday 2-3-95 at WT Tourney
Spm 5 9 17 26
W-T 5 8 24 38
Spm - Josh Shute - 9, Clint Goodman - 8, Mike Butts - 4, Mac Butts - 2, Casey Nobles - 2, Keith Winegarner - 1.

Spearman Lynxettes 9th vs. Sanford-Fritch Lady Eagles 9th

Thursday 2-2-95 at WT Tourney
Spm 4 13 17 21
S-F 4 10 17 36
Spm - Kasey Dunnihoo - 9, Jocelyn Edwards - 4, Ashly Brown - 3, Geny Kunselman - 2, Lena Harbour - 2, Andee McGaha - 1.

Spearman Lynxettes 9th vs. West Texas Lady Coman. 9th

Friday 2-3-95 at WT Tourney
Spm 12 18 26 31
W-T 6 16 32 45
Spm - Kasey Dunnihoo - 15, Andee McGaha - 9, Jocelyn Edwards - 5, Leah Mackie - 1, Ashly Brown - 1.

Lady Hounds

CONTINUED FROM PAGE 9

Gruver will be shooting for a final regular season record of 23-6 Friday night at Spearman.

Lady Hounds (21-6, 3-1) vs. Stratford Lady Elks

Friday 2-3-95 at Stratford
Gru 7 22 41 60
Str 6 25 41 54

3-Pointers - Molly McLain, Wendy Rodriguez.

Gru - Molly McLain - 25, Kaysha Cluck - 9, Julie Meyer - 6, Tisha Ralston - 5, Kiki Carthel - 4, Weslyn Maupin - 3, Wendy Rodriguez - 3, Tara Shapley - 3, Amber Murrell - 2.

Gruver

CONTINUED FROM PAGE 9

then Aaron Frick hit under the basket on a goaltending call to make it 48-46. All told, in the fourth quarter, the Hounds were 15-17 from the charity stripe.

But the Elks held on, and won by six.

Now it's on to Spearman on Friday, February 10, and the biggest game of the year.

Hounds (12-14, 4-1) vs. Boys Ranch Roughriders

Tuesday 1-31-95 at VG
B-R 11 17 31 44
Gru 7 22 32 54
3-Pointers - Brant Armes - 2, Phil De La Cruz - 2, Roma Tomlinson - 2, Josh Mayhew.

Gru - Phil De La Cruz - 12, Josh Mayhew - 12, Roma Tomlinson - 10, Wylee Maupin - 8, Brant Armes - 6, Jace Dawson - 3, Max Frick - 2, Sammy Renteria - 1.

Hounds (12-15, 4-2) vs. Stratford Elks

Friday 2-3-95 at Stratford
Gru 7 13 30 52
Str 12 22 38 58
3-Pointers - Phil De La Cruz - 2, Brant Armes, Sammy Renteria, Roma Tomlinson.

Gru - Jace Dawson - 10, Phil De La Cruz - 8, Wylee Maupin - 7, Sammy Renteria - 7, Aaron Frick - 6, Josh Mayhew - 6, Brant Armes - 3, Roma Tomlinson - 3, Travis Ferguson - 2.

"IT'S FOR YOU"...

The Classifieds Have Something For Everyone!

The Home Seiler...
The Car Buyer...
The Do-It-Yourselfer...
The Mother's Helper...
The Job Seeker...
The Bargain Reaper...

When you want results, turn to The Classifieds.

The Hansford County Reporter-Statesman

Serving Hansford County Since 1907

Telephone: 1-800-395-9482 or (806)659-3434

AUTOMOBILES

FOR SALE: 90 model Cougar LS. Excellent condition. Call 435-2092 after 5 p.m. \$5, 4tc

FOR SALE: 1984 Ford Truck with 20' van and lift. V-8 diesel engine. Excellent condition. For more information call 659-3432 or 659-2912. \$52, RTN

JOB OPPORTUNITIES

MAKE MONEY TAKING ORDERS FOR AVON: Door to door selling OK but not necessary. Up to 50% commission. Demos always 40% discount. Call Billie 1-800-447-2967. \$59, RTN

OWN YOUR OWN APPAREL OR SHOE STORE, CHOOSE: Jean/sportswear, bridal, lingerie, westernwear, ladies, men's, large sizes, infant/preteen, petite, dancewear/aerobic, maternity, or accessories store. Over 2000 name brands. \$25,900 to \$37,900: inventory, training, fixtures, grand opening, etc. Can open 15 days. Mr. Loughlin (612) 888-6555. \$1, 3tp

HELP WANTED

ADJUNCT FACULTY POSITIONS available. Morning, afternoon, evening instruction schedules open, on or off-campus. All fields of study available. Requires M.A./M.S. with 18 graduate hours in teaching field. Send transcripts, three letters of recommendation and letter of application to Continuing Education, Oklahoma Panhandle State University, P.O. Box 430, Goodwell, Oklahoma 73939. EO/AA Employer. \$6, 3tc

HELP WANTED: Experienced auto mechanic with our tools. Contact Greg at Irwin Auto in Perryton, TX., (806)435-3663. \$6, 3tc

HELP WANTED: Semi truck drivers, CDL required. Must be 25 yrs. old. Conventional's new hopper bottom trailers. McCarty Trucking, 806/362-4807. \$6, 2tc

HELP WANTED: Full-time experienced clerk to train as assistant manager. Must have some knowledge in bookkeeping. Apply in person only at Taylor Food Mart, 17 Collard, Spearman, TX. \$5, 4tp

WANT TO BUY

WANT TO PURCHASE: Mineral rights and other oil/gas interests. Send details to: P.O. Box 13557, Denver, CO 80201. \$60, 20tc

MISCELLANEOUS

Discouraged with diet aids of the past? Look forward to a more satisfying future with **FORMULA THREE**...all-natural and amazing. See Jim Evans - 659-2141 or 659-3379. \$60, RTN?

PUBLIC NOTICE

NOTICE TO CONTRACTORS OF PROPOSED TEXAS HIGHWAY MAINTENANCE WORK

Sealed proposals for mowing of highway rights of way on various highways in the northernmost seventeen (17) counties of the Texas Panhandle will be received by the Texas Department of Transportation located at 5715 Canyon Drive, Amarillo, Texas 79110 until the deadlines of the following schedule: Thursday, Feb. 16-Dallam County at 9:00 a.m.; Gray County at 9:30 a.m.; Ochiltree County at 10:00 a.m.; Deaf Smith County at 10:30 a.m.; Sherman County at 11:00 a.m.; Armstrong County at 1:30 p.m.; Hemphill County at 2:00 p.m.; and Hartley County at 2:30 p.m.; Friday, Feb. 17-Hansford County at 9:00 a.m.; Randall County at 9:30 a.m.; Hutchinson County at 10:00 a.m.; Oldham County at 10:30 a.m.; Potter County at 11:00 a.m.; Groom Maint. at 1:30 p.m.; Moore County at 2:00 p.m.; and Carson County at 2:30 p.m., then publicly opened and read. All prospective bidders are encouraged to attend the Pre-Bidders Conference which will be held at the Texas Department of Transportation's District Office at: 5715 Canyon Drive, Amarillo, Texas, 2:00 p.m., Friday, February 10, 1995. Bidding proposals, plans and specifications will be available at the Engineer's Office at 5715 Canyon Drive, Amarillo, Texas, Telephone (806)356-3283. At: Joyce Davis. \$5, 2tc

SERVICES

J & M Service Center 24-Hour Service 415 Collard, Spearman 79081. 659-5519 or 659-3352. Tires, flats, oil & lube, wash, brakes, batteries and minor repairs. Now selling gas. \$27, 1tc/RTN.

CALL YOUR LOCAL Used Cow Dealer for today's a week stock removal. 659-3544 or 1-800-692-4043. Serving Cattlemen for the past 20 years. \$51/RTN.

PITS CLEANED: Dragline or Loader. Call LeeRoy Mitchell, 733-2384 or 733-2175. \$47, 1tc/RTN.

NEED TEMPORARY SECRETARIAL HELP? Call Mrs. Donnie Arnold at 659-3354. Also will do typing, light bookkeeping, and statements in my home. \$2, 5tc

Free Bible Correspondence Course. Write P.O. Box 604, Perryton, TX 79070. \$46, RTN

CLIFCO WINDSHIELD REPAIR SERVICE: Don't replace your damaged windshields. Mobile service: 435-0126. Home phone: 435-9149. Ask for Clifford Cox. \$43, RTN

WEIGHT WATCHERS is now meeting every Thursday in Gruver. For more information, please call 1-800-359-3131.

PUBLIC NOTICE

LEGAL NOTICE
Hansford County Commissioner's Court will receive bids until 4:00 p.m. on Friday, February 10, 1995 on one, new, 1995 heavy, half-ton pickup with and without trade-in for Precinct 2. Bids will be opened on Monday, February 13, 1995 at the regular Commissioner's Court meeting, beginning at 10:00 a.m.

Specifications are available at the County Judge's Office or the County Auditor's Office in the Hansford County Courthouse. The Court reserves the right to accept or reject any or all bids.

Jim D. Brown
Hansford County Judge
\$4, 3tc

JAN'S ETC. NEW & USED & ANTIQUES TOO

Everything for home and family. Plains Shopping Center in Spearman
Open Monday - Saturday
10 a.m. til 6 p.m.

PUBLIC NOTICE

LEGAL NOTICE

Hansford County Commissioners' Court will receive sealed bids until 4:00 p.m., Friday, February 24, 1995 on the sale of a 1982 GMC 1/2 ton pickup and a 1983 Ford Heavy 1/2 ton super cab. Bids will be opened on Monday, February 27, 1995 at the regular Commissioner's Court meeting, beginning at 10:00 a.m. Pickups may be seen at Hansford County Courthouse. The Court reserves the right to accept or reject any or all bids.

Jim D. Brown
Hansford County Judge
\$6, 3tc

PUBLIC NOTICE

LEGAL NOTICE

In accordance with Section 116, Local Government Code of Texas Revised Civil Statutes, the Commissioner's Court of Hansford County will select an official depository for both County funds and certain School funds handled by the County for the biennium 1995-1997 at their regular meeting on February 27, 1995 at 10:00 a.m. in the Deliberation Room in the Hansford County Courthouse, Spearman, Texas.

Jim D. Brown
Hansford County Judge
\$6, 3tc

PUBLIC NOTICE

NOTICE TO ALL PERSONS HAVING CLAIMS AGAINST THE ESTATE OF ADA HAMILTON MCLAIN

All persons having claims against this Estate which is currently being administered are required to present them within the time and in the manner prescribed by law to Don McLain, P.O. Box 338, Spearman, TX 79081.

Dated the 9th day of February, 1995
Don McLain
Executor for the Estate of ADA HAMILTON MCLAIN, Deceased.

OSGOOD MONUMENT CO. Amarillo, Texas

Dealers of Rock of Ages Granite, as well as all colored granites, marble and bronze memorials.

Represented by **Boxwell Bros. Funeral Home**
519 S. Evans
659-3802

Are You A Victim of Physical Abuse?

Call Toll Free 1-800-753-5308

We are in Spearman on the 1st, 3rd, & 5th Wednesdays of each month at the First Presbyterian Church, 1021 Cotter. On the 2nd & 4th Wednesdays we are at the First Christian Church at 510 King in Gruver. We can come to Spearman & Gruver any time upon request. We operate a safe place for victims & their children to stay in times of crisis.

Panhandle Crisis Center

Serving Hansford, Lipscomb & Ochiltree Counties
317 S. Main Memorials Accepted Perryton, Tx.

NOTICE

The Spearman Housing Authority is now taking applications for residents. Eligible applicants will be placed on a community-wide waiting list. Families with the following incomes are especially needed for occupancy of the Housing Authority:

FAMILY SIZE FAMILY INCOME

FAMILY SIZE	From	To
1 Person	\$11,800	\$18,850
2 Person	\$13,500	\$21,500
3 Person	\$15,150	\$24,250
4 Person	\$16,850	\$26,950
5 Person	\$18,200	\$29,100
6 Person	\$19,500	\$31,250
7 Person	\$20,900	\$33,450
8 Person	\$22,250	\$35,600

Rent is based on family income minus allowances for children and elderly occupants. For more information, contact Gary Elsworth at Spearman City Hall or call 659-2524 from 8:00 a.m. until 5:00 p.m. Mondays through Fridays. The Spearman Housing Authority does not discriminate based on race, religion, sex, age, disability, national origin or other classification protected by federal and state laws.

REAL ESTATE



Allen Alford - Broker • 659-3034
Julie Martin - Sales • 659-2425
Larry Trosper - Sales • 659-3491

1017 Townsend: 3/2/1 - New lower priced!
1103 S. Townsend - 3/1 1/4, 1, good loc.

510 S. Endicott - 3-2, 2 story
417 S. Dressen - 3, 1 1/4, 1, garden, pati.

NEW LISTING
613 Kenneth - 5 BR, 2 story, rock house
1107 S. Barkley - 3, 1 1/4, 2, BELOW

APPRAISAL!
Good Hanger & Storage - Old Airport
1017 Wilmeth Dr. - 5/2/2, two story w/smt
412 Roland - 3/1/1, make offer

FOR QUALITY & SERVICE CALL US TODAY
We Need Your Listing.

FOR RENT

FOR RENT: Trailer park spaces for rent. Located on S.E. 7th and Loop road, Spearman. \$30 per month. Call 435-5080. \$23, 1tc/RTN.

FOR RENT: Got a boat, RV or car to store and not enough room to keep it in? Why not rent an airplane hangar? The City of Spearman has hangars ready for rent at \$70 per month (boats, RVs or vehicles only). Sound like too much money? Why not jointly rent a hangar with other families? Two or three families could rent one hangar and split the costs among them. The hangars are clean, secure, and easy to move into and out of. For more information, call Spearman City Hall at 659-2524 between 8 a.m. and 5 p.m., Mondays through Fridays. \$4, 4tc

FOR RENT: One bedroom newly decorated, furnished apartments, utilities paid. Call 659-3260. \$47, RTN

FOR RENT: 2 bedroom house. 659-3260. \$60, RTN

FOR RENT

4 BDR. 3 B. 2 living areas. kitchen/dining area. utility room with cabinets, panel sunroom, storm cellar, fenced backyard. \$500/month at 703 Steele Dr. Call 802-365-9742.

FARM PRODUCTS

200 ACRES FARMLAND: 6 miles southwest of Spearman, irrigation well, no mineral rights. Seller reserves right to approve buyer. Bob Hardy Realty, 659-3440, Robert Hardy, Broker. \$59, RTN

FOR SALE

FOR SALE: Completely rebuilt 605 International and HD 800 Moline Irrigation engines. Call 733-5263 or 659-5036 7:30 a.m. to 5:30 p.m., Monday thru Friday, 7:30 a.m. to 12 p.m. Saturdays. \$4, RTN

FOR SALE: Radio Shack in Borger has the RCA 18" Digital Satellite System installation available in the Hansford County area. Call 274-7077, 425 W 10th.

FOR SALE: Console/Spinnet piano. Take on small payments. See locally. 1-800-343-6494. \$6, 1tp

EXERCISE

Does Your Heart Good. American Heart Association.

GREAT HOUSE IN GREAT LOCATION FOR SALE

2100 sq. ft., basement, double car garage, 4 bedrooms, 3 baths, big den, fireplace, living room, ceiling fans, central heat and air. 702 Gibner. Call 659-3838, 659-3970, or 733-5555. \$42, RTN

HOUSE FOR SALE: REDUCED!!!! 5 bds/fenced, 2 car carport, shed, hot tub, fish pond, 3 bedroom, 3 bath, handicap accessible, large LR, bar. \$29,000. 605 S. Archer, 659-2235. \$55, RTN

Three Bedroom Brick, two baths, double garage, lots of trees, 1.8 acres, horse barn, 26 by 36 shop. 205 E. 10th, Gruver, Texas. Call J.W. Whitaker at 733-2433. Also 1983 Coachman Motor-home. \$30, 1tp/RTN.

FOR SALE BY OWNER - 3 bedroom, 1 1/2 bath, storm door and windows, fireplace, ceiling fans, 14 closets, 1 car garage, 1728 sq. ft. \$35,000 - 605 Cluck, Gruver. Call 733-2015. \$28, 3tp RTN

FOR SALE OR RENT: Old City Hall building. 221 Sanders. Call 659-2518. \$3, RTN

FOR SALE: Attractive 3 bedroom, 1 3/4 bath, brick home, single garage, storage building, RV port, C.H. & C.A., ceiling fans, storm windows, fenced yard and extra lot 64 by 100 ft. Call (806)659-3353. \$2, 3tp

FOR SALE: 1117 Townsend, great location for your family. Affordably priced. 3 bed, 1 3/4 bath, with game room & basement. Call Real Estate & Rental TODAY for appointment at 435-4623. \$5, RTN

Consider This Our Report Card.

Discover The Power Of Number 1!

Golden Spread Realty
200 S. Main • Perryton, TX
806-435-5444

Equal Housing Opportunity
EACH OFFICE IS INDEPENDENTLY OWNED AND OPERATED.

Obituaries

JERRY D. MILLS
PERRYTON - Jerry D. Mills, 55, died Tuesday, January 31, 1995.

Services were conducted at 2 p.m. Friday in Key Heights Baptist Church with the Rev. Don Ross officiating. Burial was at 4 p.m. Friday in Memory Gardens Cemetery at Pampa by Boxwell Brothers Funeral Home, Inc.

Mills was born in Skellytown and had lived in Perryton since 1990, moving from Gruver. He married Sandra Mercer in 1958 at Tuscola, Ill. He was a supervisor for Diamond Shamrock and had worked for the company for 33 years. He also operated Jerry's Ditching and Backhoe Service in Gruver for 25 years.

He officiated football and basketball games for 15 years. He was a member of Southwest Football Officials Association, Southwest Basketball Officials Association, and Key Heights Baptist Church.

Survivors include his wife; a son, Kelly Wade Mills of Austin; a daughter, Tomi Kay Mills of Fort Worth; two brothers, Donald Mills of Fritch and Ronald Mills of Brenham; two sisters, Carolyn Fitch of Longview and Oweta Cook of Skellytown; and two granddaughters.

The family suggests memorials be to Key Heights Baptist Church, P.O. Box 923, Perryton, Texas 79070.

HANNAH YANKE

GUYMON - Hannah Yanke, 80, longtime Guymon resident, passed away Wednesday afternoon, February 1, 1995 at Memorial Hospital of Texas County.

The daughter of Almelia and Theobald Kirschman, she was born October 3, 1914 in Shattuck, Oklahoma. She was raised and attended school in Darrouzett, Texas. She was united in marriage with Robert Yanke on November 15, 1931 in Booker, Texas. Yanke worked as a cook for Plainview school, west of Texhoma, for several years and later worked as a cook at the Dunaway Manor in Guymon.

As a member of Trinity Evangelical Lutheran Church, she was active in the Lutheran Women's Missionary League. Yanke was known as a loving mother, a wonderful cook and a true homemaker.

Survivors include her husband, Robert Yanke of Guymon; a daughter, Bonita Kay McKisson of San Antonio, TX; three sons, Albert R. Yanke and his wife, Pat, of Satanta, KS, Clarence T. Yanke and his wife, Marilyn, of Sunray, TX and Vernon Lee Yanke and his wife, Irene, of Amarillo, TX. She also leaves behind four sisters, Emily Meier of Logan, OK, Marie Estes of Salina, KS, Rosie K. Carter of Sulphur, OK, and Emma Swedhin of Protection, KS; two brothers, Theobald Kirschman of Eads, CO and Manuel Kirschman of Darrouzett, TX; ten grandchildren and 13 great-grandchildren.

She was preceded in death by her parents, one sister, four brothers, a son-in-law and a granddaughter.

Funeral services were conducted on Saturday afternoon, February 4th at 1 p.m. at the Trinity Evangelical Lutheran Church with Pastor Mark Wescoat, pastor officiating. Interment will follow in Elmhurst Cemetery under the direction of Henson-Novak Funeral Directors.

A Hannah Yanke Memorial has been established for the Lutheran Hour Ministries and will be accepted at the Henson-Novak Funeral Home, Box 1306, Guymon, OK & 3942.

JOSE SALGADO

STANTON - Jose Salgado, 73, died Friday, February 3, 1995 at Martin County hospital after a lengthy illness.

Services were held at 2 p.m. Monday, February 6 at the St. Joseph Catholic Church in Stanton, with Father Hilberto Rodriguez officiating. Rosary were said Saturday and Sunday nights at 7 p.m. at St. Joseph Catholic Church Parish Hall. Burial was in St. Joseph Catholic Cemetery by Branon Funeral Home, Inc.

Salgado was born June 20, 1921 in Barrancos de Guadalupe, Mexico. He married Lola Martinez February 3, 1942 in San Antonio Del Bravo, Mexico. Salgado was a retired employee of the City of Stanton. He was a longtime member of the St. Joseph Catholic Church. He was also a Cursillista, a member of the Knights of Columbus, and a volunteer fireman.

Survivors include: his wife; four sons; Frank Salgado, Gilbert Salgado, and Willie Salgado, all of Spearman; and Jose Salgado of Midland, TX; four daughters, Irma Porras and Linda Garcia both of Odessa, Mary Pena of Midland, and Eloida Bravo of Spearman. He also leaves behind two brothers; Fausto Carrasco of Roswell, NM and Archibaldo Carrasco of Juarez, Mexico; 21 grandchildren, and six great-grandchildren.

RON MCDONALD

AMARILLO - Ron McDonald, 48, of Amarillo died Saturday, February 4, 1995.

Memorial services were conducted Monday, February 6 at the Grand Plaza at the Amarillo Civic Center with James Haynes of Parkway Congregation, Virgil Lowery of Plainview Congregation and Eddie Ripley of San Antonio Congregation officiating. Private committal by Bell Avenue Chapel of Schooler-Gordon-Blackburn-Shaw Funeral Directors.

McDonald was born in Modesto, California on January 19, 1947. His family moved to Spearman in the 1960's. He graduated from Spearman High School in 1965 and attended Amarillo College. He was a SHS yearbook staff members, choir king, and active in football, basketball, and track. He held many Spearman track records at one time.

He had worked for the Amarillo Fire Department and then went into the industrial and residential construction business for himself. He retired from manufacturing and marketing.

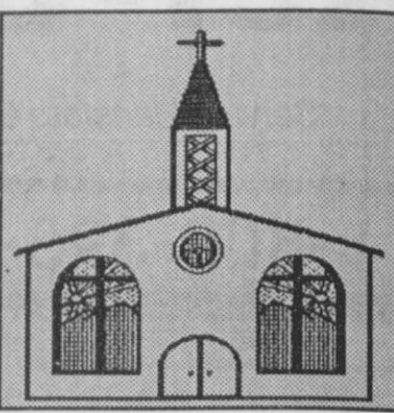
McDonald was an elder in Southwest Congregation of Jehovah's Witnesses. He was active in Kingdom Hall construction and in the administration of the area Watchtower conventions. He had lived in Amarillo for the past 30 years.

He married Anne Regal in 1968 at Amarillo.

Survivors include his wife; a daughter, Tawney Anne McDonald of Amarillo; his parents, R.C. and Lura McDonald of Lubbock; a sister, Mae Von McDonald of Lubbock; and his grandmother, Alma Tiffin of Flomot.

Let us replenish the seed of faith through...

REGULAR CHURCH ATTENDANCE, DAILY BIBLE READING & PRAYER



Curtis' Hot Oilers
 806-659-3432
 "Taking Service to Perfection"
 806-659-2912 P.O. Box 714
 800-821-6714 Spearman, TX 79081

Palo Duro Supper Club
 22 S. Archer
 659-2232

C.O.'S SUPPLY CO.
Plumbing & Tire Sales & Service
 421 W. Kenneth • Spearman
 659-3781 or 659-3555

Bartlett's Ace Hardware
 105 W. Broadway
 733-2404

GILLASPIE
 AUTO & TRUCK CENTER, INC.
 CHEVROLET • OLDS • PONTIAC • BUICK
 CHRYSLER • PLYMOUTH • DODGE
 Hwy 207 South • P.O. Box 430 (806)59-2541
 SPEARMAN, TEXAS 79081

Deakin TELETYPE
 OILFIELD • RESIDENTIAL • COMMERCIAL
 519 Plains Shopping Center
 Spearman, TX 79081
 1-800-999-1506 (806)659-5016

REINKE IRRIGATION SYSTEMS **Paschel Irrigation**
 (806)659-5228 • 1-800-659-6580
 Corner Airport Rd. & Hwy 15 West
 Spearman, Tx.

Gruver Cablevision
 Quality Family Entertainment
 with
 "the Disney Channel"
 308 Main • 733-5295

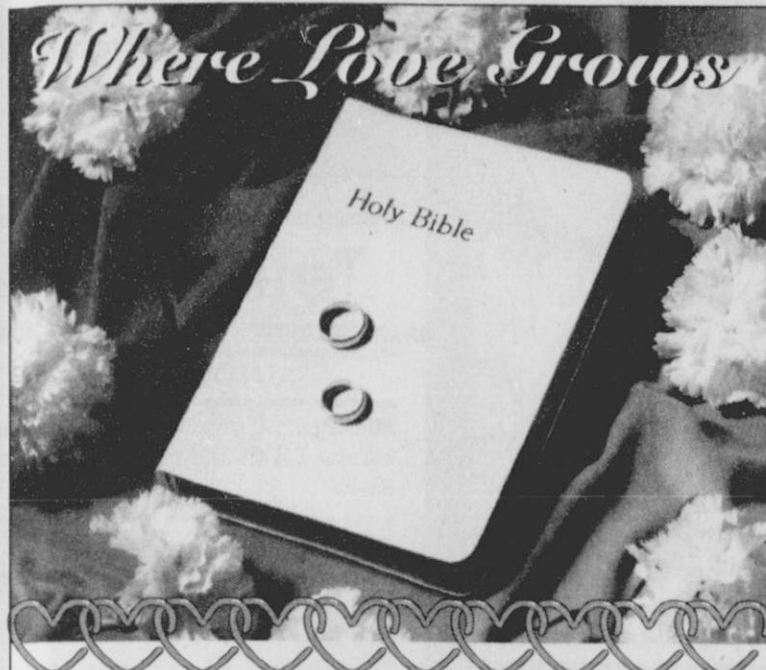
Morse Implement Company
 "Join us in church this week"

Boxwell Bros. Funeral Home

THE HANSFORD COUNTY REPORTER-STATESMAN
 Serving The Communities Of Spearman, Gruver & Morse
 213 Main • 659-3434
 1-800-395-9482

CORONADO HOSPITAL
 Pampa, Texas
 (806)665-3721

Compliments of **G&G FOODLINER**
 516 Main • Gruver
 733-2471



Where does love grow? Do you find love amidst candlelight and roses...in sunsets and love songs? Perhaps...but can you count on the usual scenarios? Often the roots of love flourish in the most unlikely "soil"...

Love may lurk under the bathroom sink as the "plumber" and a "helper" toil together till midnight when a leaking pipe changes party plans from hors d'oeuvres to hot dogs. Truer bonding is hard to find. Love may be found in the hand that feeds aspirin and gingerale to the beloved...not quite that anniversary dinner at the exclusive restaurant with elusive reservations...but a repast of love, nevertheless.

Yes, there remain those precious moments...candlelit dinners and violinist's offerings...the blossoms of love made even more sweet having been watered at the roots.

You may also enrich your spiritual "oil" each Sabbath as you worship as one. Remember, love grows from the roots. May your garden flourish and your Valentine's Day be blessed.

Sunday	Monday	Tuesday	Wednesday	Thursday	Friday	Saturday
Psalm 16	Jeremiah 30:1-11	Jeremiah 30:12-24	Jeremiah 31:1-14	Jeremiah 31:23-40	Galatians 3:1-14	Galatians 3:15-4:7

Copyright 1995, Keister-Williams Newspaper Services, P. O. Box 6005, Charlottesville, VA 22906

In Spearman...

Apostolic Faith Church
 822. S. Dessen • 659-2870
 Sunday School: 10 a.m.
 Worship: 11 a.m.
 Evening Worship: 6 p.m. Sun.
 Wed. Prayer Meeting: 7:30 p.m.
 Pastor James Brown

First Assembly of God
 401 N. Bernice • 659-2295
 Sunday School: 9:45 a.m.
 Worship: 10:50 a.m.
 Evening Worship: 7 p.m.
 Wednesday Worship: 7:30 p.m.
 Youth: 7:30 Wednesday
 Pastor Todd Lillard

First Christian Church (Disciples of Christ)
 29 S. Bernice • 659-2036
 Sunday School: 9:45 a.m.
 Worship: 10:50 a.m.
 Women's Bible Study: 2 p.m. Wed.
 Youth: Wed. 6 p.m. & Sun. 5 p.m.
 Pastor LaVern Draper

First Baptist Church
 123 N. Bernice • 659-5557
 Sunday School: 9:45 a.m.
 Worship: 11 a.m.
 Evening Worship: 7 p.m.
 Jr. High Youth: 6 p.m. Wed.
 High School Youth: 7 p.m. Wed.
 Youth Choir: 6 p.m. Sun.
 Pastor Kyle Henderson

Church of Christ
 121 S. Haney • 659-3244
 Sunday Bible Class: 9:45 a.m.
 Worship: 10:30 a.m.
 Evening Worship: 6 p.m.
 Bible Study Wed. 7:30 p.m.
 KRDF Radio Program
 Living With Christ 7:50 a.m. M-F
 Minister Arnis Pape

Fellowship Baptist
 1102 S. Archer • 659-2783
 Sunday School: 10 a.m.
 Worship: 11 a.m.
 Evening Worship: 6 p.m. Sunday
 Youth & Adult Serv.: 7:30 Wed.
 Pastor Rick Fincher

Primera Mission Bautista
 502 E. 7th • 659-3991
 Sunday School: 9:45 a.m.
 Worship: 11 a.m.
 Pastor Guadalupe Carranza, Jr.

Union Church
 31 S. Endicott • 659-2644
 Sunday School: 9:45 a.m.
 Worship: 10:45 a.m.
 Evening Worship: 6:00 p.m.
 Bible Study & Prayer Meeting: 7:00 p.m. Wed.
 Pastor Billy Stanford

Sacred Heart Catholic Church
 901 Roland • 659-2792
 Sat. Night Mass: 7 p.m.
 Sunday Mass: 8:45 a.m. - English (8:45a.m. Service on KRDF 98.3 FM)
 11:15 a.m. - Spanish
 1:30 p.m. - Gruver - Christo
 Rendentor Mass - Spanish
 Rev.. Fernand Couture

"WE SUPPORT OUR LOCAL CHURCHES"
CAPROCK #1 & #2
 Mike Heard, Gen. Mgr.
 (806)733-5043 or 733-5025
 "Custom Cattle Feeding"

In Gruver...

First Baptist Church
 402 E. Broadway • 733-2411
 Sunday School: 9:45 a.m.
 Worship: 10:50 a.m.
 Disciple Training: 6 p.m. Sunday
 Prayer Meeting: 7:30 p.m. Wednesday
 Pastor Larry Miller

Church of Christ
 209 King • 733-2760
 Sunday School: 9:30 a.m.
 Worship: 10:20 a.m.
 Evening Worship: 6 p.m.
 Wed. Evening Worship: 7:30 p.m.
 Minister Bob Setliff

First Christian Church
 510 King • 733-2960
 Sunday School: 9:45 a.m.
 Worship: 11 a.m.
 Wed. Bible Study: 7:30 p.m.
 Youth: 6:30 Wednesday
 Pastor Gary Gumfory

Oslo Lutheran Church (ECLA)
 West of Gruver on Hwy 15 & N. FM 1162
 339-7646
 Sunday School: 9:45 a.m.
 Worship: 11 a.m.
 Morning Prayer: 9 a.m. Wed.
 Pioneer Clubs (Grades 1-6):
 4-5:30 p.m. Wednesday
 Pastor John R. Chandler

Community Bible Church (Interdenominational)
 Hwy. 15 • 733-2443
 Sunday School: 10 a.m.
 Worship: 11 a.m.
 Wed. Prayer Meeting: 7 p.m.

First United Methodist
 Broadway & Garrett • 733-2651
 Sunday School: 9:45 a.m.
 Worship: 8:30 a.m. & 10:50 a.m.
 Evening Worship: 6 p.m.
 Pastor Lewis Holland

In Morse...

Morse Baptist Church
 Pastor Mike Martin
 733-2757

"Your Home Away From Home"
Nursanickel Motel
 815 Hwy. 207 S.
 Phone: (806)659-3737 P.O. Box 1115
 Spearman, Texas 79081

BERRY CLEANERS
 DAN DESIMONE - OWNER
 Phone 659-3122 • P.O. Box 1017
 207 Main St. • Spearman, TX 79081

GRUVER FORD
 531 Main • Gruver • 733-2431

Interstate Savings & Loan
 322 Main • Spearman • 659-2559

Hagerman Services
 Backhoe • Dozer • Welding
 North Hwy. 15 • Spearman
 659-5131

Gordon Drugs
 Dependable Prescription Service
 314 Main • Spearman
 659-2141
 Jim Evans

Compliments of... **AGCO of Spearman, Inc.**
 "See you in Church"
 659-3751

Miss Texas

CONTINUED FROM PAGE 1

she kept going, remembering her own rule: never give up.

Archer is no stranger to this area and the problems the children face. She was born and reared in Borger.

Library

CONTINUED FROM PAGE 4

presentation to present you with all the possibilities. It is designed to accommodate a wide range of users—from novice to experienced. It also improves access points without adding additional layers of confusion.

Gateway includes full keyword access to the HLC database. For the user unfamiliar with subject searching this is a powerful feature that maximizes search results.

These resources go beyond the catalog of HLC materials which have always been accessible through our public access catalogs.

Her platform as Miss Texas is Prevention of Child Abuse. Archer is a people person and loves to answer any questions that the students may have.

The new Information Gateway will also include seamless access to select databases via the Internet. The selection of database will vary from site to site. Some of the selections available at this time are as follows: New York Public Library, Texas Woman's University, Weather Information, and other various Library Catalogs. Additional selections will be added in the future.

Come by the Hansford County Library today, and check out Information Gateway!