



★ HANSFORD COUNTY ★
THE REPORTER-STATESMAN

CELEBRATING 103 YEARS OF SERVICE TO HANSFORD COUNTY
HANSFORD COUNTY'S ONLY NEWSPAPER

THURSDAY,
MAY 27, 2010

75¢

WWW.SPEARMANREPORTER.COM

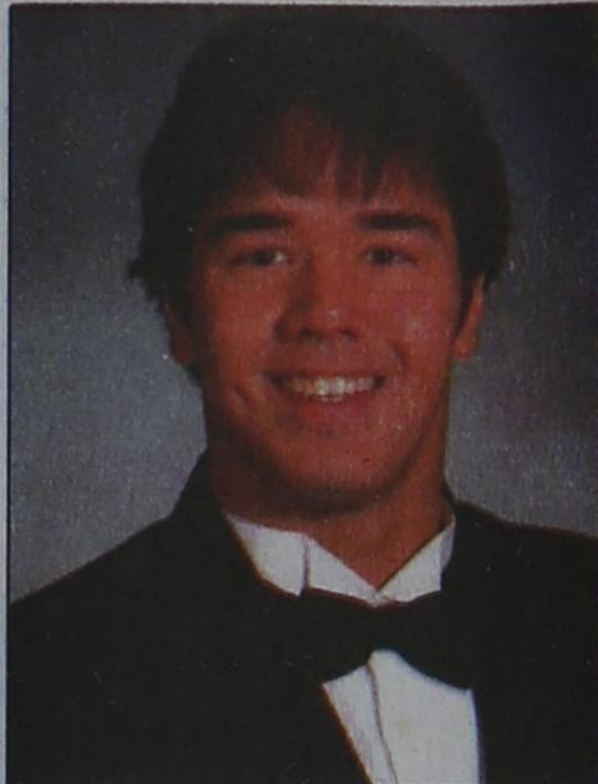
VOLUME 103 • ISSUE 21

reporter@spearmanreporter.com

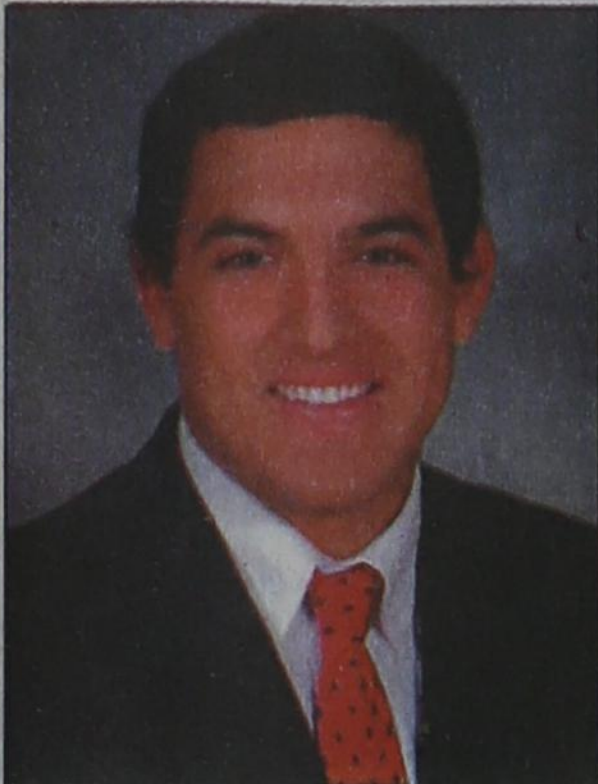
Hansford County Graduates



Rosa Ortiz
Spearman High School Valedictorian



Chance Pack
Spearman High School Salutatorian



Drew Mireles
Gruver High School Salutatorian



Katie Gibson
Gruver High School Valedictorian

Spearman High School

Commencement exercises for Spearman High School will be held Friday, May 28, 2010 at 7:00 p.m. in the Spearman High School Auditorium.

Rosa Ortiz, valedictorian, and Chance Pack, salutatorian, will head a class of 49 students.

The processional and recessional will be played by Mr. Ken Shore with Andi Linn Scarborough giving the invocation.

The Class of 2010 will make a special presentation followed by the introduction of guests by Superintendent Rodney Sumner.

The salutatory address by Chance Pack will be followed by the valedictory address by Rosa Ortiz. The Class of 2010 History will be read by Abbey Eudy.

High School Counselor Krista Baird will recognize both the honor students of the class and the scholarship recipients, with Richey Thompson presenting the Spearman Foundation Scholarships.

The presentation of diplomas will be by Dwayne Mitchell, president of the Spearman School Board and Bill Belger, High School Principal.

Following the Charge to the Class of 2011 by Suttan Garnett, Natalie Saldivar will accept the charge on behalf of her classmates, the class of 2011.

After the school song, Whitney Maestas will give the benediction.

Honor graduates include Isvy Gabriela Acosta+, Preslee Lynne Baker+, Tate Bat-

ton+, Ashton LeAnna Comp+, LeAnna Marie Espinosa+, Abbey Lauren Eudy, Suttan Lauren Garnett, Zackary Tallon Hughes, Gustavo Lopez, Whitney Holli Maestas, Rosa Elisa Ortiz, Koley Chance Pack and Andi Linn Scarborough.

Continued on Page 6

Gruver High School

Gruver High School Commencement Exercises for the Class of 2010 will be held Friday, May 28, 2010, at 8:00 p.m. in the school auditorium.

Katie Michelle Gibson, valedictorian, and Andrew Jess Mireles, salutatorian, will lead a class of 37 students.

Other honor graduates include Mary

Barron, Fatima Anahi Borunda, Carmen Ashley Dahl, Blake Russell Fitzgearld, Cory J. Graves, Parker Heinz Grotegut, Mary Beth Hargis, Luis Enrique Lora, Gabriel Mendoza, Caleb Miller, Lizzete Ortiz, Megan Justine Stedje, Leigh Anne Winger and Mattie Yanke.

Other graduating seniors include Rogelio Acosta, Diana Bernal, Shaney Lyn Collier, Bianca Nayeli Garcia, Eunice Guereca, Lourdes Hernandez, Reagan Karlin, Gustavo Alonso Martinez, Ramon Mendoza, Adrian Ortega, Daniel V. Sanchez, David Sanchez, Gabriela Santillan, Joel Soto, Cindy Suchil, Lorenzo A. Tarrango, Jorge Luis Tarrango, Jeronimo Trejo, Rily Joseph Urban, Gonzalo Vega, and Tyler Keith Wills.

The processional will be presented by pianist Mrs. Kathy Gillispie with Justin Bass, Jesus Lopez and Tadeo Mendoza presenting the colors.

After the Pledge of Allegiance, Megan Stedje will give the invocation followed by the salutatory address presented by Drew Mireles.

Leigh Anne Winger will give the class history, followed by special music presented by Mary Beth Hargis. The valedictory address will be given by Katie Gibson.

Continued on Page 6

The Graduate's Feet

Synchronized steps bring them down the aisle,
Feet that have traveled mile after mile.
Once so tiny, now are grown,
Standing strong and on their own.
Once they kicked within the womb
And brightly danced around my room.
Their first steps I once longed to see;
Now they're walking away from me.
Feet that once had to run to stay
In step with mine, day after day.
Standing in footprints, comparing the two,
Your feet with mine and mine with you.
Following in the footsteps of the One
Who made your feet and the race you run.
Walk on, dear feet; though the path seems rough,
Your Father will always be enough.
Walk on till you reach the streets of gold
And find eternity there to behold.

-Sandy Haney©
used by permission



Hansford County Swimming Pool Information

SPEARMAN

The City of Spearman has announced that the Spearman Swimming Pool's 2010 Season will begin on Monday, May 31st. Hours will be Monday-Sunday from 1-5 p.m.

The cost for children up to 11 years old will be \$1.50, 12 years and older will be \$2.00.

A season pass for children up to 11 years of age is \$93.75 (if bought May 31st), and a season pass for children 11 years of age and older is \$131.25 (if bought May 31st). Passes are pro-rated \$1.25 less each day for 10 and under, and \$1.75 less each day for 11 and older, and are available through June 14th.

The swimming pool is available for rent for \$65 (2-hour minimum) for 2 lifeguards and up to 50 people, \$85 (2-hour minimum) for 3 lifeguards and 51-75 people, and \$100 (2-hour minimum) for 4 lifeguards and 76-100 people.

Family night will be held again on Thursday nights from 7:30-10 p.m.

Ladies aerobics will be held Monday, Tuesday and Thursday from 6:30-7:30 p.m., beginning June 7th. The fee per class is \$1.50 (If small children must accompany the participant, they will need to stay in the kiddie pool area, and will also be charged. No older children will be allowed in the pool area during the aerobics class.)

The pool manager is Gale Womble, assistant manager is Sheila Mayfield, and lifeguards are Morgan Ashmore, Lexi Batton, Stefan Cook, Brent Hansen, Joel Kern, Jacque Mayfield, Cameron Meddock, Cristina Vargas, and part-time lifeguards Cambry Cooper, Dee Mayfield and Jocelyn Whitefield.

The telephone number to the swimming pool is 659-2711.

GRUVER

The Gruver City Pool will open for the summer season on May 31st, 2010. Regular swimming pool hours will be: Monday-Saturday, 1-6 p.m., Saturday, 10 a.m.-6 p.m., and Sunday, 2-6 p.m. A Free Fun Day will be held on Sunday, June 6, 2010.

The cost for ages 3 and up is \$2.00,

under 2 years old are free, entry after 3:30 pm will be \$1.00. Children must be 8 years old to go by themselves, and 13 years old to bring someone under 8.

Ladies hour will be held from 12 noon-1 p.m. and 6-7 p.m.

The pool manager will be Sydney Bean, lifeguards are Kellyn King, Devlin

Reynolds, Lynn Vela, Kaysha Bass, Shelley Gibson, Madison McLain, Riki Jines and Zach Logsdon.

Swim lessons are available upon request. The telephone numbers for the swimming pool are 733-2778 or 733-3120.



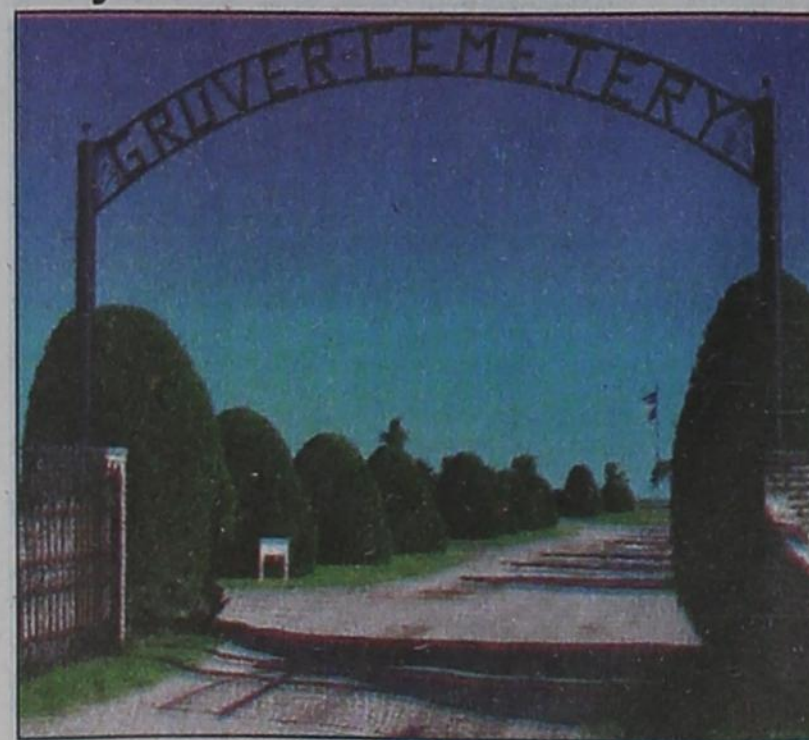
Hansford County Floral Company recently donated a new wreath for the war memorial located at Hansford County Courthouse. The wreath was donated in honor of Armed Forces Day and Memorial Day.

Gruver Cemetery Association Thank You

The Gruver Cemetery Association would like to express their appreciation to our community for their support in maintaining our cemetery on a year-round basis with their generous donations. As we approach Memorial Day of 2010, we would especially like to thank our groundskeeper, Joe Potts, who has done a wonderful job in making our cemetery a place of pride. Also, a special thank you to Chad Logsdon who made it possible for repairs to be made on the brick gated cemetery entrance.

May your Memorial Day week-end be a special time of remembrance and blessings for you and your families.

Sincerely,
Gruver Cemetery Association, Rick Barkley, Pres.



Texas Crop & Weather

The following specific livestock, crop and weather conditions were reported by Panhandle Extension directors: The northern part of the region received rain, wind, hail and tornadoes. An exact appraisal of the damage was not yet available. Wheat was heading out, and was expected to be ready for harvesting in two to three weeks. Depending on the county, corn was 75 percent to 100 percent planted and 25 percent to 100 percent emerged. Cotton was 25 percent to 100 percent planted, and warming soil temperatures should help it emerge, said AgriLife Extension personnel. Soybeans were 100 percent planted with 50 percent emerged. Sunflowers were 80 percent planted, and sorghum was 20 percent to 65 percent planted. Rangeland was in good to excellent condition. Cattle were in good condition.

Weather Forecast

THURSDAY NIGHT - Partly cloudy. Lows in the lower 60s. South winds 10 to 15 mph.

FRIDAY - Partly cloudy. Highs in the lower 90s. South winds 10 to 15 mph.

FRIDAY NIGHT - Partly cloudy. Lows in the lower 60s. South winds 10 to 15 mph.

SATURDAY - Partly cloudy. Highs around 90.

SATURDAY NIGHT - Partly cloudy. Lows in the lower 60s.

SUNDAY - Partly cloudy. Highs in the mid 80s.

SUNDAY NIGHT - Partly cloudy. Lows in the upper 50s.

MEMORIAL DAY - Partly cloudy. Highs in the lower 80s.

MONDAY NIGHT - Partly cloudy. Lows in the lower 60s.

TUESDAY - Partly cloudy. Highs in the upper 80s.

TUESDAY NIGHT - Partly cloudy. Lows in the upper 50s.

WEDNESDAY - Partly cloudy. Highs in the upper 80s.

Read more: <http://www.city-data.com/forecast/w-Spearman-Texas.html#ixzz0p5LrpsMq>

Wolf Creek Heritage Museum Notes

MUSEUM HAPPENINGS
The week went by quickly with work slowing down on the book. It is not completed yet, but the pace is better. I want to repeat what I wrote last week about our e-mail box. While I was gone some stories were rejected because they were too big for my box quota. If you receive an email from the mailbox, please resend. These email also get filtered out sometimes by the virus and junk mail programs so you might check there if you e-mailed us a story during the week of May 10. If you are not sure, call us to check.

Thanks to everyone who has worked so hard on this project. We now know why people only do this kind of project every 10 to 20 years. It is worth it, but the work is not yet finished.

With summer comes a lot of our traditional festi-

vals. Please send us a poster of your events to post for our visitors. People e-mail, call, etc. wanting to know what is going on in our area so they can plan their trips. I like to send them as much information as possible, so please put us on your mailing list.

HISTORICAL MUSINGS

Next Monday is Memorial Day. This day was first declared a holiday by Retired Major General Logan in his order #11 which read "The 30th of May, 1868, is designated for the purpose of strewing with flowers, or otherwise decorating the graves of comrades who died in defense of their country and during the late rebellion (civil war), and whose bodies now lie in almost every city, village and hamlet churchyard in the land. In this observance no form of ceremony is prescribed, but posts and

comrades will in their own way arrange such fitting services and testimonials of respect as circumstances may permit."

Originally known as Decoration Day, it was formally changed to Memorial Day in 1882 and soldiers who had died in previous wars were honored as well. In 1971, along with other holidays, President Richard Nixon declared Memorial Day a federal holiday on the last Monday in May.

Memorial Day is not limited to honor only those Americans from the armed forces. It is also a day for personal remembrance. Families and individuals honor the memories of their loved ones who have died. Church services, visits to the cemetery, flowers on graves or even silent tributes mark the day with dignity and solemnity. It is a day of reflection.

At Arlington National Cemetery in Virginia, the nation's largest national cemetery, in the early hours of the Friday morning before Memorial Day, soldiers of the Third U.S. infantry walk along the rows of headstones. Each soldier stops at a headstone, reaches to a bundle of flags he is carrying, pulls one out and pushes it into the ground. These soldiers are part of a special regiment, the 'Old Guard.' Most consider it a privilege to place flags on the more than two hundred thousand graves of soldiers who served in the wars or who died in them. "They have done their job," said one soldier, "now it's my turn to do mine."

On Memorial Day, the President of the United States gives a speech and lays a wreath on the Tomb of the Unknown Soldier(s). Members of the armed forces shoot a rifle salute in the air. The Tomb actually holds four soldiers from two World Wars, the Korean conflict, and the Vietnam War. The Army's Third Infantry guard the tomb twenty-four hours a day. Veterans and families come to lay their own wreaths and say prayers.

Locally, our Veterans join the various schools in ceremonies and at the cemeteries to honor our soldiers. Please join them this year in remembering our military of the past, present, and future. Celebrate and Remember.

Wolf Creek Heritage Museum

Museum Hours: Monday thru Friday 10 a.m. to 4 p.m., Sunday 2 to 4 p.m. Special hours upon request.
Museum Information: 13310 Hwy 305, PO Box 5, Lipscomb TX 79056; telephone: 806-852-2123; e-mail: wolferk@amaonline.com; website: www.wolfcreekheritagemuseum.org

Words from Faith & Grace



by Cecil R. Biggers, Lutheran Lay Minister

We celebrate the Trinity as we study Proverbs 8: 1-4, 22-31, Psalm 8: 4-9, Romans 5: 1-5, and John 16: 12-15.

We think of God, Father Almighty, yet in parts of His revelation, we see the feminine nature. In Proverbs we see Wisdom personified as a woman. A woman who looks on humanity with delight and who wishes to give her gifts to all mankind. Wisdom is portrayed as being present with God at the Creation. Can we see a reflection of the Spirit here?

The Psalmist is looking at a clear night sky, contemplating God's creation and he sings, "What are human beings that you are mindful of them, mortals that you care for them?" Viewed on the cosmic scale, we humans are not very much. Viewed as the adopted Children of God, we are great, not because of our own worth, but because of His.

Paul is explaining to the Romans that we are justified by faith, whereby we have peace with God through our Lord, Jesus The Christ. The word Paul uses for 'introduction' is "prosagoge" which means an introduction as to royalty. In later Greek, "prosagoge" has the connotation of a harbor, a safe-haven for ships. Thus through Christ we 'know' God and enter the haven of God's grace. Paul then talks about suffering, endurance and character. The word used for "suffering" is "thilipis" which is literally translated 'pressure'. There are many things in life that pressure us. The word used for endurance is "hupomone" which means that spirit which overcomes all trials and tribulations. Weathering trials and tribulations produces "character" and Paul's word is "dokime" which literally means a metal drawn through fire, so that it is pure. We gain 'character' by overcoming our trials through faith. In overcoming our trials, we gain hope that we shall live in God's triumphant presence. The disciple life is not easy, but it is wonderful!

Jesus tells the disciples that he has many things to say, but they cannot yet bear them. God's revelation comes to us only as we have ability to understand. God sent Jesus who showed us the Father; God sent us his Holy Spirit who enables us to have faith in Jesus. The revelation of God is ongoing, it did not stop in the year 120 AD with the last book of the New Testament. We celebrate the Trinity, God the Father, Jesus the Son, and the Holy Spirit. One of my Jewish friends tells me that I am mistaken in my understanding of God, because if we seek to define God by his attributes, then three is too few. One of my Muslim friends tells me that I am mistaken in my understanding of God because God's truth is simple; hence, God is one. I am Christian because my faith works for me. I have survived in combat; I have survived the loss of loved ones; I have survived the loss of money and property; I have survived the loss of health, not by my own merit, but by my steadfast faith in Jesus The Christ.

If it will help you in the concept of Trinity. Water can have three forms--liquid, solid, gas--yet it is the same substance. Light exists in three primary colors--red, yellow, and blue--yet light is one. God exists in three forms--Father, Son and Holy Spirit.

May the Holy Spirit introduce you to God through Jesus The Christ that you may live in His hope now and forever.



STATE CAPITAL HIGHLIGHTS



by Ed Sterling

State Board of Education passes new curriculum standards

AUSTIN — The State Board of Education on May 21 approved new curriculum standards on a series of 9-5 votes after two days of public debate.

Standing-room-only crowds paid close attention as the ideologically divided board jostled over proposed changes to social studies and history standards. The board considered 213 amendments to standards for kindergarten through 12th grade. New standards for the high school economics course passed on a unanimous vote.

The newly adopted standards, or Texas Essential Knowledge and Skills, will be used in classrooms beginning in the 2011-2012 school year, the Texas Education Agency said. Examples of changes:

- Analyze Abraham Lincoln's ideas about liberty, equality, union and government as contained in his first and second inaugural addresses and the Gettysburg Address and contrast them with the ideas contained in Jefferson Davis's inaugural address.
- Examine the reasons the Founders protected religious freedom in America and guaranteed its free exercise by saying that Congress shall make no law respecting an establishment of religion or prohibiting the free exercise thereof, and compare and contrast this to the phrase "separation of church and state."
- Explain instances of institutional racism in American society.
- Discuss the solvency of long term entitlements such as Social Security and Medicare.

Order for budget cuts is made
State agencies are tightening their belts enough to save taxpayers an estimated \$1.2 billion in the current two-year budget cycle, the governor's office said.

In January, Gov. Rick Perry, Lt. Gov. David Dewhurst and House Speaker Joe Straus, R-San Antonio, asked that each state agency make plans to cut general revenue budgets by 5 percent to head off a projected state budget shortfall then estimated at \$10 billion.

Straus said, "We cannot afford business as usual,

but must make tough choices and put every cost savings idea on the table."

On May 18, Perry, Dewhurst and Straus directed the Legislative Budget Board to tell the agencies to implement their budget-savings proposals immediately.

Budget cuts would have totaled close to \$1.7 billion, but some \$483 million in exemptions was granted to the Texas Department of Public Safety Homeland and Border Security; the Department of State Health Services, the Texas Department of Criminal Justice, the Texas Workforce Commission and the Higher Education Coordinating Board.

Capitol metal detectors in use

Screening stations with airport-style metal detectors began functioning at first-floor state Capitol entrances on May 21.

All visitors, including scheduled tours and schoolchildren, must go through the detectors, but legislators and staff will have official access points and don't have to go through if they show their building access badge.

Capitol visitors are asked to remove metal objects before walking through the detectors. Troopers employ handheld wands to check wheelchair-using visitors.

Concealed handgun license holders and law enforcement officers not in uniform must show their license or agency credentials to avoid going through the metal detectors.

Unemployment rate creeps higher

The Texas civilian labor force grew by 51,000 workers in April, but the state's seasonally adjusted unemployment rate rose to 8.3 percent in April, up from 8.2 percent in March.

In its May 21 report, the Texas Workforce Commission said, however, that the state's unemployment rate continues to trend below the U.S. seasonally adjusted unemployment rate for April of 9.9 percent.

Chief exec turns down trailer offer

The Texas chapter of the AFL-CIO on May 19 offered Gov. Perry the use of a new, fully equipped mobile home for \$1 a year.

The labor union said if Perry were to take up residence in the home placed in its parking lot, the savings to taxpayers would total nearly \$120,000 a year on rent the state is paying for Perry's temporary quarters while the arson-damaged Governor's Mansion is being renovated.

Perry's staff quickly rejected the offer on his behalf.

Texas Tribune posts state salaries

The Texas Tribune, a government watchdog Web-based publication, has posted a state payroll database listing employees by name, agency, job title and annual base salary.

The searchable database is at: <http://www.texastribune.org/library/data/government-employee-salaries/>.

SUDOKU
PRESENTED BY
VolunteerMatch.org
Where volunteering begins.

		5	7					1	
				8	1	4			
						6	8	7	
6		9						3	
	4		3		7			9	
		1					4		7
	8	4	6						
			4	2	1				
3						9	7		

© 2010, StatePoint Media, Inc. answer on classified page
Fill in the blank squares in the grid, making sure that every row, column and 3-by-3 box includes all digits 1 through 9.

TV LAND

- ACROSS**
- Some statements on "To Tell the Truth"
 - Bread roll to a Brit
 - Type of cabinetry joint
 - Like Tower of Pisa
 - AV manufacturer
 - CCR's "Born on the _____"
 - Read from in a synagogue
 - Poetic "even"
 - Radio sign
 - "Parks and Recreation" location and native American people
 - "Beet farmer on 'The Office'"
 - Greed or sloth, e.g.
 - "Karma chaser in recent hit comedy"
 - Sheepish sound
 - It comes before a storm?
 - "Color of 'The Simpsons'"
 - They're seen but not identified
 - Like most universities
 - "Superman" Christopher
 - "Betty White on 'The Golden Girls'"
 - Lowest molding on a column
 - A fit of shivering
 - Ax mark, e.g.
 - "Vicki Lawrence's classic comedic character"
 - Buddies
 - Type of electricity
 - "It was artificial in 'The Brady Bunch'"
 - Beatles' "_____ It Be"
 - Urge or prod
 - Long time
 - "Stewie Griffin's hometown"
 - "This family lived on Cemetery Lane"
 - European blackbird
 - Make a mistake
 - Rival of Carthage
 - A sprite
 - Catch a wink
 - "Khloe Kardashian's other half"
 - Novice or beginner
 - "David Duchovny's spouse"
 - Top class
- DOWN**
- "What the biggest loser tries to shed"
 - At the top
 - Italian money
 - Shredded cabbage dish, pl.
 - Like Thai cuisine, e.g.
 - "The perfectionist housewife on Wisteria Lane"
 - Card with one pip
 - Bamboo-eating bear
 - Euphemism for 'darn'
 - Indian nursemaid
 - "Just _____"
 - Opposite of their
 - Water-heating apparatus
 - Decree, as in a law
 - Dry, as in humor
 - The _____ City of Oz
 - "He and Gracie had their own show"
 - Where there's trouble
 - Popular perennial garden plant
 - Rumpelstiltskin's weaver
 - "Scott Bakula made a quantum one"
 - "Boston _____" which aired through 2008
 - Immature ovum
 - Most wee
 - Dissenting clique
 - Russian governmental agency
 - Sliced, as in wood
 - Extremely
 - Pigeon call
 - A small node
 - "A 'CSI' worker, e.g."
 - Relating to birth
 - Wharf built parallel to shoreline
 - Substance abuser
 - Airy prefix
 - River in Armenia

These games are brought to you by the Hansford County Reporter-Statesman

CROSSWORD

1	2	3	4	5	6	7	8	9	10	11	12
13					14			15			
16					17			18			
19					20			21	22		
23					24						
25	26	27	28	29	30	31	32	33	34		
35		36		37		38		39			
40				41		42		43			
44		45		46				47			
48			49	50		51		52			
			53		54		55	56			
57	58	59			60			61	62		
63				64	65		66				67
68				69			70				
71				72			73				

PRESENTED BY
VolunteerMatch.org
Where volunteering begins.

© 2010, StatePoint Media, Inc. answer on classified page

The Hansford County Reporter-Statesman
Mailing Address - 213 Main Street • Spearman TX 79081
Physical Address - 310 Barkley Street • Spearman TX 79081
Phone - (806) 659-3434 • Fax - (806) 398-9080
www.spearmanreporter.com • reporter@spearmanreporter.com
Mon.-Thurs. 9 a.m.-12 p.m., Mon.-Wed. & 1-5 p.m.
Closed Thurs. afternoon and all day Fri., Sat. & Sun.

Gary Smith - Publisher Catherine Smith - Editor
Contributing Writers: Dorothy Hudson, Jim Derington, Merry Sparks, Cecil Biggers
Contributing Photographers: Charlie Johnson, Lisa Johnson, Tammy Batton, Bonnie Bergan

Subscription Rates
In Hansford County - \$30.00 • Out of County - \$40.00
E-Mail Subscription - \$35.00

The Hansford County Reporter-Statesman (USPS 529660) is published weekly in Spearman, TX. Periodical postage paid in Spearman, TX. POSTMASTER: Send address changes to: The Hansford County Reporter-Statesman, 213 Main Street, Spearman, TX 79081.

Publication Policy
The deadline to submit news and advertising to The Hansford County Reporter-Statesman is Monday at 5 p.m. Items submitted after the deadline will be published at a later date, as time and space permit. Publication of all items is at the discretion of the editor.

Advertising
Open Display rates are \$4.00 per column inch. Classified Ads are \$6 for the first 25 words and 10¢ per word for each additional word. (Additional charge for boxed classifieds.) There is a \$1 charge per week if billed.

Member of
Gruver Chamber of Commerce
Spearman Chamber of Commerce
Texas Press Association and Panhandle Press Association

TA **AWARD WINNER**

Happy Birthday!

May 27
Birthday - Jamie Casdorph, Rachelle Holt, Andee Salmans, Julie Stedje, Chris Tomlinson, Julie Latta, Mary Ann George, Darrell West, Debbie Cook, Cindy Hendrick, Roy Black, Jim Myers, Ronnie Thompson, Gloria Perez, Laurcen Williams, Bonnie Thompson, Christian Fisher
Anniversary - M/M Allen Davis, M/M James George, M/M Herb Hager, M/M Jerry Moore, Bobby & Kay Snider

May 28
Birthday - Randy Brown, Lee Schubert, Kevin Nelson, Ramiro Arjona Sr., Nita Barnes, Brandi Blodgett, Martin Ketron, Barbara Sharp, Connie Gammil, Vera Dominguez, Gloria Perez, Crystal Miller, Victoria Vela
Anniversary - M/M Sammy Don Jones, Jr. & Nita Barnes, Lewis & Dolores Moreno, Dr. & Mrs. Scot Martin

May 29
Birthday - Camile Miller, Dayton Edwards, Wilma Francis, Danny Dry, Wayne Groves, Jesus Espinosa, Jana Wright, Allen Alfred, Linda Pearson, Cody Thoms, Clint Schnell, Virginia Cates
Anniversary - M/M Stan Seagler, M/M Kevin Holt, M/M Gary Gumfory

May 30
Birthday - Orvil Brumett, Sharon Cook, Patty Hudson, Lynanne Maize, Phillip Atwood, Kimberly Nelson, John Brinkley, Terri King, Ramero Arjona, Rick Holt, Bobby Lesley, Connie Ross, Marie Hernandez, Richard Paschel
Anniversary - M/M Matt Johnson, M/M David Tomlinson

May 31
Birthday - Jessica Favela, Buster McLain, Virginia Taylor, Jeri Lynn Maize, Brandon Reed, Ronnie Lusby, John Sutterfield, Carl Cook, Shauna Poole, Curtis Newman, Olena Shelton, Brent Fuller, Tommie Dewberry
Anniversary - Mike & Michelle Davis, M/M Wayne Garrett, M/M Chet Pittman

June 1
Birthday - Lexy (Spivey) Glass, Kevin Rook, Avo Gray, Ken Pracher, Kim Reed, Bryon Sutterfield, Phil Sanders, Ivonne Sullivan, Jean Zable, Anthony Arjona, Evan Cudd
Anniversary - Jim & Donetta Greene, M/M

Doyle Jackson, M/M Dale Hendricks, Steven & Susan Poole, M/M Craig Cooper, Joe & Debbie Clement

June 2
Birthday - Weslyn Maupin, Lance Williams, Helen Dickson, A.D. Reed Jr., Johnny Reed, Scotty Reed, Don Fisher, Tyson Dettman, Buddy Newman, Hope Baker, Blayne Baker
Anniversary - M/M James Cunningham, M/M Wesley Brinkley, M/M Larry Evans

June 3
Birthday - Parthena Harvey, John Lopez, Anne (Potts) Jackson, Joe T. Venneman, Tonja Kay Whitefield, Manuela Vela, Robert Renteria, Zach Nollner
Anniversary - Carl & Jeanne Baumgardner, M/M Albert Graves, Sara & Mark Eisfeld

June 4
Birthday - Keith Casady, Cody Cazzares, Cambry Cooper, Victor Raylor, Ann Marie Pacheo, Elizabeth Browning, Davey Turner, James Russell, Donna Trantham, Roy Riley, Lori Schultz, Susan Thompson, Clarissa Anaya, Lanie Snider
Anniversary - M/M Ron Womble, Mr. and Mrs. Bart Shapley

June 5
Birthday - Carolyn Hicks, June Edwards, Henry Freeman, Bambi Torres, Larry Scroggs, Florida Vasquez
Anniversary - M/M Mike Stewart, M/M Bob Womble, Wendell & Jenny Neff

June 6
Birthday - David Armes, Brandea Hicks, Mark TeBeest, Darren Goodheart, Ruth Brown, Joe Bynum, Jan Blackwell, Jane Flowers, June Potts, Margaret Reed, Charles Chritton, Mick Reimer, Melodie Shields, Arturo Huerta Jr., Slade Knowlton
Anniversary - M/M Bob Farr, Mr. and Mrs. Lynn Stedje

June 7
Birthday - Bobbie Evans, Vangie Johnson, Janet Miller, Charlie Stavlo, Monty Blackman, Donna Giddens, Georganne Hutchison, Jim Kunsleman, Lonnie Clemmons, Pete Mauk, Joe Salgado, Shane Harnish, Kimbre Townsen, Clint Townsen
Anniversary - Gene & Joy Byrd, M/M Ted Evans, M/M David Grotegut, Cecil & Mona Slater

Our sympathy

ESTHER E. COOK
 HARDESTY, Okla. - Esther E. Cook, 89, died Sunday, May 23, 2010.

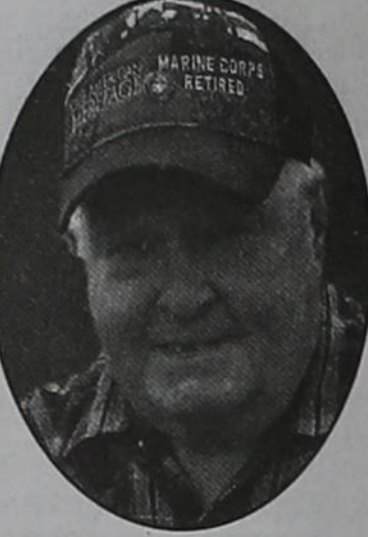
Services were at 2 p.m. Wednesday in Fellowship Baptist Church of Perryton with the Rev. Wes Stevens officiating. Burial was in Ochiltree Cemetery by Boxwell Brothers Funeral Home of Perryton.

Mrs. Cook was born July 25, 1920, in Hooker, Okla. She graduated from Perryton High School in 1939. Esther married Ray S. Cook in 1941. She was a member of Bethel Baptist Church near Hardesty. She worked for SIC, Amarillo Club, El Paso, White Freight and Excelsior Laundry.

Survivors include a son, Ray S. Cook of Hardesty; two daughters, Betty L. Schmidt of Moore, Okla., and Mary E. Dougherty of Horseshoe Bay; two sisters, Lena Regier of Dumas and Murel Esposito of Chicago; seven grandchildren; nine great-grandchildren; and two great-great grandchildren.

The family suggest memorials be to Ochiltree Masonic Lodge Scholarship Fund, P.O. Box 113, Perryton, TX 79070.

CLINTON "BART" McDONALD



MITCHELL, SD - Clinton McDonald, 76, Kimball, died Monday, May 24, 2010, at Avera Brady Health and Rehab in Mitchell, SD. Services will be Thursday, May 27, 2010, 2:00 PM, at the Bitter Funeral Chapel in Mitchell. Military graveside services will be in Servicemen's Memorial Cemetery in Mitchell.

Clinton Bartholomew McDonald, was born May 4, 1934, in Beaver County, OK, to Earl and Nellie (Benner) McDonald. He grew up in Oklahoma and attended Talihina High School in Talihina, OK. On November 10, 1953, he joined the US Marine Corps. He served in the Korean War and two tours of duty in the Vietnam War. On December 31, 1958, he married Zena Faye Bowen, in Washington, DC. They lived in Camp Pendleton, CA, Hawaii, San Diego, CA, and Barstow, CA. After his retirement from the Marine Corps, they lived in West Bountiful, Utah, where he was employed by the Union Pacific Railroad and then Spearman, TX, where he was employed at Baker Taylor Drilling Co. They had been residents of Kimball, SD since 2006.

He is survived by his wife Zena Faye, three children: Teresa Henson of Mitchell; Patricia Quillin of Dallas, TX; Anna McDonald of Altus, OK; ten grandchildren; five great grandchildren; six sisters and three brothers. He was preceded in death by his parents and two sisters.

BONNIE BONHAM

GRUVER - Bonnie Bonham, 70, died Monday, May 24, 2010.

Graveside services will be at 10:30 a.m. Thursday in Gruver Cemetery with the Rev. Scott Curry officiating. Arrangements are by Boxwell Brothers Funeral Home of Spearman.

Bonnie was born Sept. 17, 1939, in Wichita County. She married Jimmy Joe Bonham on Nov. 29, 1956, in Burkburnett. He died in 2007.

She was a homemaker and a member of First Baptist Church of Gruver.

She also was preceded in death by a son, Larry Bonham.

Survivors include two sons, Jimmy Keith Bonham of Corpus Christi and Jeff Bonham of Amarillo; two sisters, Mary Nail of Amarillo and Sissy Sands of Burkburnett; three grandchildren; and two great-grandchildren.

The family suggests memorials be to First Baptist Church, P.O. Box 608, Gruver, TX 79040; or Hansford Hospice, 707 S. Roland St., Spearman, TX 79081.

ROY GLENN MCBRIDE



MIDLAND, TX - Roy Glenn McBride, 66, of Midland, died on May 20, 2010, at his residence. Graveside services with Military Honors were held on Monday, May 24, 2010, at 10:00 AM at Western Roses Cemetery, with Rev. Jan Reed, Hospice Chaplain, officiating.

He is survived by his wife Gerri, of Midland; four sons, William S. Weakley of Columbus, Ohio, Kenneth Weakley of Woodbury, Minnesota, John Weakley and wife Makela of Ft. Worth, and Richard Weakley and wife Renee of Lamar, Colorado; one daughter Sharon Williams and husband Richard of Rio Rancho, New Mexico; 2 sisters, Edna Waddell and husband Gene of Midland, and Barbara McKee and husband Bob of Tomball, Texas; 8 grandchildren and 1 great grandchild.

Roy Glenn is preceded in death by his parents, CW McBride and Verla Havron McBride; and a brother, Danny McBride.

In lieu of flowers, the family suggests donations be made to Hospice Midland, PO Box 2621, Midland, Texas 79702.

Arrangements were under the direction of Nalley-Pickle & Welch Funeral Home & Crematory of Midland. Online condolences can be made at www.npwelch.com

ROSANNE PORTER HAAS



POCATELLO, ID - Rosanne Haas (nee Porter) died peacefully on May 23, 2010 at her daughter's home in Pocatello, Idaho. She was 82 years old.

Mrs. Haas was the wife of the late Franklin C. Haas of Blackfoot, Idaho. She was born in Enid, Oklahoma on November 16, 1927, and raised in Spearman, Texas. Her parents, Raymond LaRue and Florence Rose Chalmers Porter owned a large farm and several businesses in Hansford County, including a local grain elevator. She attended Texas Christian University and North Texas State University and received a degree in Physical Education. She married Mr. Haas in 1951, in Spearman, and they moved to Idaho Falls, Idaho. Subsequently, they relocated to Blackfoot, Idaho. Mrs. Haas taught school in Dumas, Texas, and in Idaho Falls, Idaho.

Mrs. Haas was a member of the Jason Lee Memorial United Methodist Church in Blackfoot, where she sang in the choir for many years. She was also Past Worthy Matron of Esther Chapter of the Order of the Eastern Star in Blackfoot.

She is preceded in death by her husband, late of Blackfoot, Idaho; her parents, late of Spearman; her brothers, R. Chalmers Porter of Spearman and Franklin W. Porter of Chandler, Oklahoma; her sister, Elsa Ruth Porter of Amarillo; and her son-in-law, Stephen Witte of Hudson Ohio.

She is survived by her children, Chalmers Porter (Kristine Schreiber) Haas of Idaho Falls; Carrie Rose (Doug) Lindley, of Pocatello; Alfred Raymond Haas, of Spokane, Washington; and Christina Haas (Stephen, dec) Witte of Hudson, Ohio, as well as three nieces, eight nephews, and six grandchildren: Maurie, Abigail, Jesse, and Natalie Haas, of Idaho Falls, Idaho and Augusta and Luisa Funk of Hudson, Ohio.

Donations in Mrs. Haas's memory may be made to the Jason Lee Memorial United Methodist Church, 168 S. University Ave., Blackfoot, Idaho 83221; the Parkinson's Disease Foundation, William Black Medical Research Bldg, Columbia University Med. Ctr., 650 W. 160th St., New York, New York 10032.

Arrangements were under the direction of Hawker Funeral Home, 132 S. Shilling Ave., Blackfoot, Idaho. Condolences may be sent to: condolences@hawkerfuneralhome.com.

GET YOURS TODAY!
E-SUBSCRIPTION
 to the
Hansford County Reporter-Statesman
 Delivered to your e-mail each Thursday for only \$35/year.
 Purchase online at www.spearmanreporter.com
 Call 806-659-3434 or e-mail reporter@spearmanreporter.com for details.

Naturally Yours, 107 E. Main St.
 PO Box 118, Lipscomb, Texas 79056
****15th & Final Year****
***June Gallery: Doug Ricketts**
***July Gallery: 15 years**
"Artists We Have Known"
***Aug Gallery: 15 years**
"Just For The Record"
***Sept Gallery: 50% Off Sale** ★
Everything we own in the Gallery!
 Meal Served at 7pm / Live Band 8 til
 Dance Platform is supported by donations!
 Tax deductible receipts given by writing a check to:
 Canadian Arts Alliance
 PO Box 777, Canadian, Tx 79014
 Please note: Dance Platform, Lipscomb
****For more info check out our web site****
www.naturallyyours-tx.com

Replenish the seed of faith through . . .

DAILY BIBLE READING, PRAYER & REGULAR CHURCH ATTENDANCE

- Spearman**
- Apostolic Faith Church**
822 S. Dresden - 659-2870
Sunday School: 10 a.m.
Worship Service: 11 a.m.
Sun. Eve.: 6 p.m.
Wed. Prayer Mtg: 7 p.m.
Pastor - Roland Haney
 - First Assembly of God**
401 N. Bernice - 659-2295
Sunday School: 9:30 a.m.
Worship: 10:40 a.m.
Evening Worship: 6 p.m.
Wed. Worship: 7 p.m.
Wed. Youth: 7
Pastor - Jerry Pollard
 - First Christian Church (Disciples of Christ)**
29 S. Bernice - 659-2036
Sunday School: 9:45 a.m.
Worship: 10:50 a.m.
Minister -
 - First Baptist Church**
123 N. Bernice - 659-5557
Sunday School: 9:45 a.m.
Worship: 11 a.m.
Evening Worship: 7 p.m.
Men's Bible Study - Wed. 7 a.m.
Children's Choir - Wed. 6 p.m.
Adult Choir - Wed. 7 p.m.
Wed. Bible Study: 7 p.m.
Pastor - Jim Medley
 - Church of Christ**
121 S. Haney - 659-3244
Sunday Bible Class: 9:45 a.m.
Worship: 10:30 a.m.
Evening Worship: 6 p.m.
Bible Study Wed: 7:30 p.m.
- Sacred Heart Catholic Church**
901 Roland - 659-2792
Sat. Night Mass: 5:30 p.m.
Sun. Mass: 9 a.m. - English
Sun. Mass: 11:30 - Spanish
1:30 p.m. - Gruver - Christo
Renditor Mass - Spanish
Rev. Guillermo Morales
- First United Methodist**
407 S. Haney - 659-5503
Sunday School: 9:45 a.m.
Worship: 8:30 & 11 a.m.
Jr. High Youth: 5 p.m. Sunday
High School: 6 p.m. Sunday
Kids Club: 3 p.m. Wed.
Pastor - Neely Landrum
- Grace Presbyterian Church (Worships with Faith Lutheran Church)**
1101 Bernice - 659-2033
Faith Lutheran Church (ELCA)
1101 Bernice - 659-2252
Sunday School: 9:45 a.m.
Worship: 11 a.m.
(Worships with Grace Presbyterian Church)
Pastor - Cecil Biggers, PLM
- Union Church**
31 S. Endicott - 659-2644
Sunday School: 10:00 a.m.
Worship: 11:00 a.m.
Bible Study: 7 p.m. Wed.
Youth Service: 6 p.m. Wed.
Pastor - Don Baltazor
- Fellowship Baptist**
1102 S. Archer - 659-2783
Sunday School: 10 a.m.
Worship: 11 a.m.
Sun. Evening Worship: 6 p.m.
Sun. Evening Spanish Worship: 7 p.m.
Youth/Adult Service: 7:30 Wed.
Pastor - Philip Hudson
- Primera Mision Bautista**
502 E. 7th - 659-3991
Sunday School: 9:45 a.m.
Worship: 11 a.m.;
Evening: 6 p.m.
Wed. Prayer Meeting: 7 p.m.
Thurs. Visitation: 11 a.m.
Pastor Joe Garcia Jr.
- El Aposento Alto U.P.C.I.**
1105 S. Roland
Domingos: Escuela-Domical - 10 a.m.
Culto Evangelistico - 7 p.m.
Jueves: Oracion - 8 p.m.
Mier: Estudio Biblico - 7 p.m.
Pastor - A.G. Martell
(806) 659-2153
- Gruver**
- First Baptist Church**
402 E. Broadway - 733-2411
Sunday School: 9:45 a.m.
Worship: 10:50 a.m.
Disciple Training: 6 p.m. Sunday
Prayer Meeting: 7:30 p.m. Wednesday
Pastor - Scott Curry
 - Church of Christ**
209 King - 733-2760
Sunday School: 9:30 a.m.
Worship: 10:20 a.m.
Evening Worship: 6 p.m.
Wed. Worship: 7:00 p.m.
Minister - Gaylord Cook
 - First Christian Church**
510 King - 733-2960
Sunday School: 10:00 a.m.
Sunday Worship: 11 a.m.
Youth: 7:30 Sunday
Adult Bible Study: 7:30 Sun.
Wed. Bible Study: 8:00 p.m.
Pastor - Gary Gumfory
- Gruver United Methodist**
Broadway & Garrett
733-2651
Sunday School: 9:45 a.m.
Worship: 8:30 & 10:50 a.m.
Eve. Worship & UMY: 6 p.m.
Pastor - George Price
- Spanish Cristo Redentor Church**
Sunday Mass: 1:30 p.m.
Friday Evening Mass
Summer - 8:00 p.m.
Fall/Winter - 7:30 p.m.
- Oslo**
- Oslo Lutheran Church (ELCA)**
6 Miles West & 12 Miles
North of Gruver
339-7646
Sunday School: 9:45 a.m.
Worship: 11 a.m.
Pastor - Arlen Loyd
 - Morse**
 - Morse Baptist Church**
733-2757
Pastor - Mike Martin
 - Waka**
 - Church of Christ**
300 Rogers Ave.
202-7126
Sunday Worship: 6 p.m.
Wednesday Bible Study: 6 p.m.
Preacher - James Gordon

He has showed you, O man, what is good. And what does the LORD require of you? To act justly and to love mercy and to walk humbly with your God. Micah 6:8

This feature is made possible through the sponsorship of these civic minded businesses:

<p>Deakin ELECTRIC OILFIELD - RESIDENTIAL - COMMERCIAL 321 S. MAIN - SPEARMAN 1-800-999-1506 806) 659-5016 Chris Deakin President</p>	<p>Bartlett's Lumber & Hardware 105 W. Broadway - Gruver, TX (806) 733-2404</p>	<p>BERRY CLEANERS Ann & Vernon Pipkin - Owners Phone 659-3122 • P.O. Box 1017 207 Main St. • Spearman, TX</p>	<p>Morse Implement & Auto Supply "Join us in church" Tom Dortch 733-2668 Box 89 • Morse, TX 79062</p>
<p>PRAIRIE MOTORS INC. Hwy. 207 South • P.O. Box 430 Spearman, TX 79081 • (806) 659-2541 www.prairiemotors.com</p>	<p>MurMur's Cafe 100 Roland St Spearman, TX. 659-3580</p>	<p>Hansford County Reporter-Statesman "Proudly Serving Hansford County Since 1907" (806) 659-3434 310 Barkley • Spearman, TX</p>	<p>INTERSTATE BANK, ssb www.interstatebank.net 322 Main • P.O. Box 146 Spearman, TX • 659-2559</p>

HWYI

FOR YOUR INFORMATION

Medical Fund for Bruce Duncan

A medical fund has been established for Bruce Duncan at First National Bank, Spearman. If you would like to make a donation you may make a deposit with any teller or mail a donation to First National Bank, Bruce Duncan Medical Fund, PO Box 337, Spearman TX 79081.

O'Loughlin Center Hours

The O'Loughlin Center is open for the following hours: Monday-Thursday, 6:00 a.m.-8:00 p.m.; Friday, 6:00 a.m.-6:00 p.m.; and Saturday, 9:00 a.m.-12:00 p.m. (noon). For more information, contact Jada Breedon, Manager, The O'Loughlin Center, 502 S. Brandt, PO Box 733, Spearman TX 79081, 806-659-3030.

Kids Kamp - Lynx Basketball Camp

Kids Kamp will host a Lynx Basketball Camp June 1-4 from 1-5 p.m. in the Lynx Varsity Gym. The cost of the camp is \$60 and includes a T-shirt. Students will learn the fundamentals of the game, learn the Lynx philosophy, and learn and develop a sense of family and pride. A competition will be held every day. The instructor is Coach Josh White. To register, call Cindy Blackman at the Community Resource Office, 806-659-3233, email to cindy.blackman@region16.net, or pick up an application from any school office or the Hansford County Library.

Kids Kamp - Lynxette Basketball Camp

Kids Kamp will host a Lynxette Basketball Camp June 1-4 from 9 a.m.-12 noon in the Lynx Varsity Gym. The cost of the camp is \$50 and includes a T-shirt. This camp is open to kids up to 9th grade and will be coached by Coach Jr. Ashmore. To register, call Cindy Blackman at the Community Resource Office, 806-659-3233, email to cindy.blackman@region16.net, or pick up an application from any school office or the Hansford County Library.

Hansford Golf Club Hosts Tuesday Night Scrambles

The Hansford County Golf Club has begun their Tuesday Night Scrambles. Tee-time is at 6 p.m. sharp. The cost is \$10 per person. Teams are drawn. For more information, or to sign up, call 659-2233.

SHS All School Reunion July 2 & 3, 2010

The Spearman High School All-School Reunion will be held July 2nd & 3rd, 2010. If you have information regarding a specific class reunion, please contact the Hansford County Reporter-Statesman. We will list the specific information for each class reunion, as well as the information for the All-School Reunion in the newspaper as we receive it. Information may be mailed to: Reporter-Statesman, 213 Main Street, Spearman TX 79081; e-mailed to: reporter@spearmanreporter.com; faxed: 806-398-9080; or phoned in: 806-659-3434.

SPWA Seeks Volunteers

The Southwest Pioneer Windmill Association is seeking the next generation of volunteers to continue the work of restoring and maintaining the windmills of the SPWA. If you have an interest in windmills and their upkeep, and/or maintenance of the park, you are needed. For information, call Dwayne Mitchell, 270-0291 or Don Reed 330-0745.

Fire Department Donations

Persons wishing to make donations to the Fire Departments in Hansford County may do so at the following addresses: Spearman Fire Dept., Box 37, Spearman TX 79081; Gruver Fire Dept., Box 947, Gruver TX 79040 or Morse Fire Dept., Box 28, Morse TX 79062

Perryton Parkinson's Disease Support Group

The Perryton Parkinson's Disease Support Group meets the 2nd Friday of each month at 12 noon in the Perryton Mennonite Church, 2821 S. Ash. The next meeting will be October 9th. Anyone interested is invited to attend.

Take Off Pounds Sensibly Meets

Take Off Pounds Sensibly (TOPS) meets on Tuesday morning at 8:30 a.m. at the First Christian Church in Gruver. Anyone interested is invited. Contact Marilyn Been at 806-733-2087.

Child Find

Your school district is looking for children ages 3-21 years who may be slow in developing communication skills, social interactions, walking skills and/or have major physical disabilities. We want to give your child the chance to receive the extra help he/she needs, if the disability interferes with his/her education. Please call your elementary campus to get more information or call Perryton SSA, 435-4412.

Beware of FAFSA Web Scam

Seniors, senior parents, and parents of college students should use the web site www.fafsa.ed.gov when filling out their Free Application for Federal Student Aid (FAFSA) online. There is currently a website that has found an interesting way to get in the college-bound's pocket. Known as fafsa.com, the website charges a fee for submitting the application. There is no fee for submitting the fafsa form on the www.fafsa.ed.gov site.

Region 16 ESC offers Free GED Preparation Software

Region 16 ESC is offering free GED preparation software for students interested in obtaining a GED. You will also have access to a free online GED prep program through the public library. If you are interested in finding out more information about these services, please contact: Cindy Blackman at 659-3233, Maria Carbajal or Margaret Ruttman at 659-2231 or stop by the Hansford County Library.

Panhandle Crisis Center Outreach Office

Panhandle Crisis Center (PCC) has an Outreach Office and Resale Store at 306 Hancock, in Spearman. In case of emergencies, please continue to call the hotline, 1-800-753-5308. To schedule an appointment with a worker in Hansford County, please call 659-3391 to leave a message, or call the hotline number above. Panhandle Crisis Center serves victims of domestic violence and sexual assault. Please call for more information. Hours for the Spearman Resale Store are: Mon., Tues., Thurs. & Fri., 10 a.m.-5 p.m.

Mae Coates Earns Degree, Continues Education



Cantalina Santillan, Dean Coates, and Willie Mae Coates are pictured during their recent trip to the Philippines.

"I'm sorry, but I gotta brag," said Dean Coates.

Willie Mae Coates, daughter of Dean Coates of Spearman and Cantalina Santillan of California, received her Bachelor of Science in Environmental Studies from California State University in Hayward, California, in May of 2009.

Mae recently applied to the nursing program at City College of San Francisco. She was the number one applicant out of 596. She will begin classes this fall.

Mae was born in Berkeley, California on July 30, 1986. She grew up and went to school in Alameda and San Leandro, CA, graduating from San Leandro High School. She attended a year of school in Spearman, TX to be with her dad and brothers, Brett and Seth.

Mae has two older sisters, Marie, an RN in San Francisco, and Lara Jean, who works with Bayer Corporation in Emeryville, CA. Her mother, Cantalina, is also an RN.

As a graduation gift, Dean decided to take his daughter, and her mother, on a trip to her mother's home country, the Philippines. This was Mae's first trip to the Philippines, and they were able to visit many family members.

"Mae, her mother and I had a wonderful trip," said Dean. "We feel blessed. The alligators helped make this trip possible. I want to thank the community for not running me out of town."

Editor's Note: Mae's mother, Cantalina, was recently forced to take an early retirement due to complications arising from a genetic disease polycystic liver and kidney disease (PKD), and is now on hemodialysis due to renal failure. She needs a kidney transplant and is on the list at the U.C. San Francisco Medical Center.

While in the Philippines, Mae was able to meet a cousin, Gregorio Pangilinan, who has offered to donate her one of his kidneys.

Their blood types match, but more tests are needed. If they do match, they will work with immigration to get him to the United States for the surgery.

Her best chance is a kidney donation from a U.S. citizen/resident.

104,748 U.S. patients are currently waiting for an organ transplant; more than 4,000 new patients are added to the waiting list each month. Every day, 18 people die while waiting for a transplant of a vital organ, such as a heart, liver, kidney, pancreas, lung or bone marrow.

Because of the lack of available donors in this country, 4,573 kidney patients, 1,506 liver patients, 371 heart patients and 234 lung patients died in 2008 while waiting for life-saving organ transplants. Nearly 10 percent of the patients currently waiting for heart transplants are young people under 18 years of age.

For more information on becoming a donor, contact MatchingDonors at 1-800-385-0422 or by e-mail at ContactUs@MatchingDonors.com.

Medical Insurance will cover surgery for both patient and donor. Money may also be available to help patients and donors with transplant related expenses not covered by insurance.

Wayward Satellite Could Affect Local Cable TV Programming

A TV communications satellite is drifting out of control thousands of miles from the Earth and could interfere with local cable programming including PTCI Digital TV.

Communication company Intelsat lost control of the Galaxy 15 satellite on April 5, possibly because the satellite's systems were knocked out by a solar storm. Intelsat cannot remotely steer the satellite to remain in its orbit so Galaxy 15 is creeping toward the adjacent path of another TV communications satellite (AMC-11) that serves U.S. cable companies. There is no danger the satellites will collide, but they do operate on the same frequency so if Galaxy 15 floats close to AMC-11, it could interrupt signals to the AMC-11 satellite.

The AMC-11 satellite is most at risk from May 23 to June 7, with the peak risk period being May 31 through June 1, according to AMC-11 owner SES World Skies.

According to Ron Strecker, CEO of PTCI, "PTCI is in the same boat as most US cable TV providers. The situation with the Intelsat satellite is out of our control and there is a chance that PTCI Digital TV customers could experience some reception problems."

PTCI Digital TV network that could be affected include, MTV, Nickelodeon, VH-1, Comedy Central, TV Land, CMT, Spike, Discovery Channel, Discovery Health, TLC, Animal Planet, Travel Channel, A&E, History Channel, Biography Channel, HGTV, Food Network, DIY, FLN, GAC, G4, Golf, Versus and possibly more.

7th annual XIT Trail of Sales scheduled for June 5

by Kay Ledbetter

Seventy-five miles of yard sales, flea markets and food will attract hundreds of shoppers to the annual XIT Trail of Sales on June 5, said a Texas AgriLife Extension Service agent.

The annual XIT Trail of Sales is sponsored by AgriLife Extension, including the 4-H youth groups in both Dallam and Hartley counties, as well as the Dalhart Area Chamber of Commerce, said Megan Becking, the AgriLife Extension family and consumer sciences agent serving both counties.

Becking encouraged families along the route to gather up their garage sale items and get registered at <http://www.dalhart.org>. There is no listing fee. For the rest of the region, Becking advised that they mark their calendars for a great day of shopping for bargains.

The string of sales from Channing via state Highway 385 to Hartley then via Highway 87 to Dalhart will bring visitors into the heart of XIT country. Texline will be the fourth and final stop, via State Highway 87 from Dalhart. For visitors from New Mexico, Colorado and Oklahoma, the trail will be reversed.

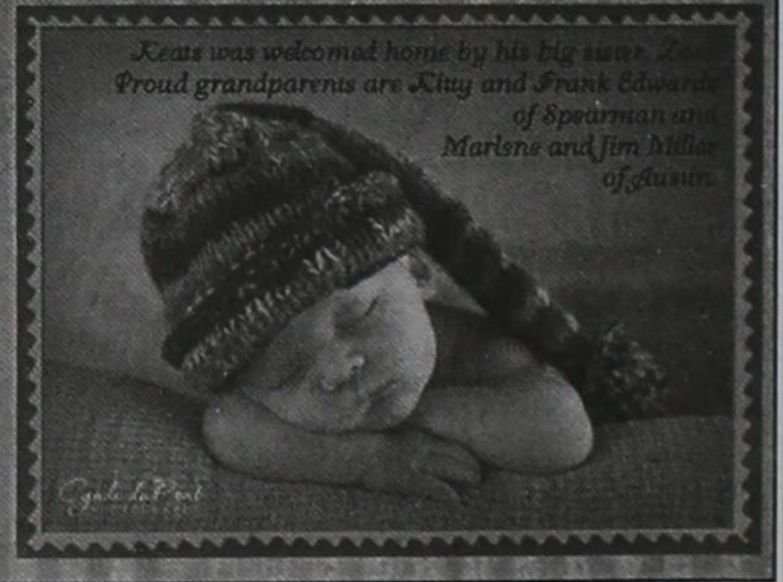
Sales will begin at 8 a.m. and run through 5 p.m. Maps and a list of sales will be available at 601 E. 7th Street in Channing; Hartley Independent School District in Hartley; Chamber of Commerce in Dalhart; and the Allsup's Store in Texline.

For more information, contact the Dalhart Chamber at 806-244-5646 or Becking at 806-244-4434 or mkbecking@ag.tamu.edu.



Introducing
**Keats
Paxton
Miller**

March 15, 2010
8:23am
7lbs. 2oz.
20 1/2"



Keats was welcomed home by his big sister. Proud grandparents are Kitty and Frank Edwards of Spearman and Marlene and Jim Miller of Austin.

LOST DOG

\$100 Reward

English Setter
Answers to Hank
Last seen near
Hitchland TX

Contact Lewis Gilbert
Hardesty OK
580-253-6334



Hansford Hospice

GOLF SCRAMBLE

GUYS & GALS

WHEN: Saturday, June 5, 2010
(shotgun start 8:30 a.m. & 1:30 p.m.)

WHERE: Hansford Golf Club

FEE: \$30.00 per player
(Includes green fees & lunch)

FORMAT: 2-person scramble
(Players must be at least 18 with no high school eligibility left. Players furnish own carts)

PRIZES: Cash Payback
Hole-In-One Prize for Every Hole-In-One on #7 & #16

RAFFLE: Tickets are \$5 each
Traeger Pellet Grill & Smoker Donated by Hansford Implement Co.
Need Not Be Present To Win

Lots of Door Prizes to Be Given Away!

Call one of these numbers to register your team:
Pat Sutterfield - 659-3637 Verna Lee Shirley - 659-5345
Hansford Hospice - 659-5811

All Proceeds to Benefit Hansford Hospice

Shear Style Salon

Wedding & Baby Shower Gifts
Store Hours: Mon-Fri 10 a.m. - 6 p.m.
Saturday 10 a.m. - 2 p.m.

Bridal Shower Registry
Beth Yanke & Nathan Schenk - 6/12
Cassie Schenk & Carlos Borunda - 6/12

Baby Shower Registry
Randi (Atwood) & DJ Warrick - 5/22
Cara (Hathaway) & Seth McAfee - 6/12
Annie (Mayhew) & Brandon Gilbert - 7/3

Shear Style Salon

Leticia Salazar
912 Main • Gruver, TX
806-733-2828 • 806-736-7432

Haircuts, Perms, Color, Wax
Hair products available
Shop hours: Mon-Fri 4:30 p.m.-7 Sat by Appointment

MONUMENTS

Boxwell Brothers Funeral Home

519 Evans • Spearman
659-3802

Dear friends,
When you buy a monument from us we make sure it is exactly what you want at a price you can afford. If it is not right, we will make it right. And you will not have to search the countryside to find us. We are here when you have a need.

Sincerely,
Bob Boxwell

SHS 2010 All-School Reunion

SHS Ex-Students
The Spearman High School 2010 All-School Reunion will be held Saturday, July 3rd beginning at 8:30 a.m. at Spearman High School. The All-School Program will begin at 10 a.m. A barbecue lunch, catered by Hungry Cowboy, will be held after the program in the High School Cafeteria.

The O'Loughlin Center has also been rented for Saturday evening. All Ex-Students are invited to meet there for more fellowship.

The Ex-Students' Association needs your help. In order for us to make plans for the reunion. We need anyone who is planning to attend to RSVP as soon as possible with your updated info (name, mailing address, phone number, e-mail, etc.)

Your \$10 dues are also very important to the Association. The money from dues pays for a multitude of expenses: postage and supplies for mailings; janitorial services, flowers, refreshments, entertainment and supplies for the school assembly; rental of the O'Loughlin Center and various other expenses. The Ex-Students' Association also gives a scholarship each year to a \$500 senior graduate, which also comes from the dues.

Please send in your dues (even if you will be unable to attend the reunion) to: SHS Ex-Students Association, PO Box 132, Spearman TX 79081. Please include your name and class year in any correspondence. For more information, you may call Claude or Jo Nell Sheets at (806) 659-2085.

If you have information regarding a specific class reunion, please contact the Hansford County Reporter-Statesman. We will list the specific information for each class reunion, as well as the information for the All-School Reunion in the newspaper as we receive it. Information may be mailed to: Reporter-Statesman, 213 Main Street, Spearman TX 79081; e-mailed to: reporter@spearmanreporter.com; faxed: 806-398-9080; or phoned in: 806-659-3434.

All Spearman High School Ex Students
A Dance/Social will be held on Saturday, July 3rd at The O'Loughlin Center (502 S. Brandt, Spearman) from 8 p.m.-12 midnight. A live band will perform and a concession stand will be available. The cost is \$10 per person. (BYOB)

Classes of 1943-1953
The SHS Classes of 1943-1953 will meet on

Friday, July 2nd at the Palo Duro Dam Shelter. A catered meal will be served at 6:30 p.m. The cost will be \$10.00 each. Bring your lawn chairs and come visit with your fellow classmates! For more information, or to RSVP, call Margarette Evans at 659-2165.

Class of 1960
The SHS Class of 1960 will hold our class reunion on July 1, 2010 at the Country Barn in Amarillo starting at 5 p.m. The next day we will travel to Spearman for the all school reunion. Contact Mickey Davis Gribble at mickeydg@comcast.net, Zack Fisher at zbfmem@windstream.net or, or Penny Dollar Cupp at cupstr4@aol.com for additional information.

Classes of 1960-1966
The SHS Classes of 1960-1966 will be meeting at The Hungry Cowboy on Friday night, July 2, 2010. The cost of the meal and other things will be \$12.00 per person. (The meal will start at 6:30 p.m.) We will need your RSVP by June 15, 2010 to Sharon Cook or Mary Dixon at 659-3711 or Diane Maxwell at 659-2987. Thank you and we look forward to seeing everyone at the Reunion.

Classes of 1976, 1977, 1978
The classes of 1976, 1977 and 1978 are meeting at The Bunkhouse Restaurant on July 2, 2010 at 7:00 p.m. The cost for the meal will be \$8.00 per person. Send RSVP and money to Shelly Beedy, 1103 Archer St., Spearman, TX 79081 by June 25, 2010.

Classes of 1979-1980
The SHS Classes of 1979 & 1980 (and all other misfits) will meet on Friday, July 2nd at 6 p.m. at Palo Duro Lake (camping spaces 10-14) for a spaghetti dinner (spaghetti and tea will be provided). Please bring your lawn chairs! To RSVP, call Rhonda Robertson at 580-497-6133. (To make reservations for campsites at Palo Duro Lake, call 806-882-4401.)

Classes of 1986
The SHS Classes of 1986 will have a Cookout on Saturday, July 3rd at 4:30 p.m. at the home of Dean & Brooke Green (address and directions provided when you RSVP). There will be plenty of room for kids and adults. Burgers and hot dogs will be provided. Please bring snacks and drinks to share. Bring your lawn chairs and coolers. To RSVP, call Terry Phillips at 903-413-0782, Mary Anne George

at 806-659-1012, or e-mail Spearmanlynx86@geusnet.com. Even if you can't attend, please call or e-mail your current contact information. After the cookout plan to attend the dance at The O'Loughlin Center. The Trey Clark Band will be playing.

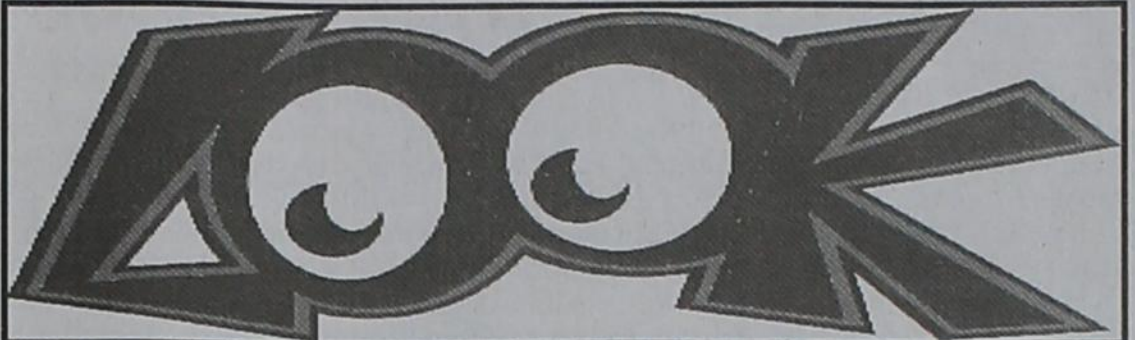
SHS Classes of 1999
The Class of 1999 will have two class only events during the all-school reunion. All students from the Class of 1999 are invited to attend both events. (If you can't make both, please come to one of the events!) Please RSVP to Kristin (Beedy) Whitehead, kristinjan@hotmail.com.

On Friday, July 2nd, the Class of 1999 will meet at 7 p.m. at The Headquarters (217 Main Street, Spearman). The cost is \$20 per person (adults only). Price includes dinner and tip - salad, steak, baked potato, dinner roll, dessert and water/iced tea. (If you would like something other than water or iced tea, feel free to bring it along.) Please pay in advance to: Jess Anne Lusby (Mrs. Michael Lusby), 12950 FM 760, Spearman TX 79081.

On Saturday, July 3rd, the Class of 1999 will meet at the home of Michael and Jess Anne Lusby, 12950 FM 760, Spearman, at 6:30 p.m. Dinner will be potluck, so please bring something to share. Soft drinks will be provided. (If you would like anything other than soft drinks, feel free to bring that along.) Children are welcome. If you have any questions, please e-mail Kristin (Beedy) Whitehead, at kristinjan@hotmail.com.

SHS Classes of 2000
The Class of 2000 will have our get together on Saturday, July 3, 2010 from 5-8 p.m. in the backyard of Marsha & Larry Murphy's home (1114 Bernice). Hamburgers & hot-dogs will be on the grill, and drinks will be BYOB. Please feel free to bring significant others. Please RSVP to either Kathryn Murphy (kathryn.t.murphy@gmail.com) or Amber (Ramon) King (amber_ramon@hotmail.com).

Also, we are still in need of contact information for some of our classmates. So, if you have not already provided your current information to either Kathryn or Amber, please contact us so we may include you on our contact list. Also, if you have any information about other classmates, please pass that along as well.



Spearman ISD Kids Kamp 2010

All students in Spearman, Gruver & Morse invited to Kids Kamp 2010! Summer Fun all Summer Long!

June 1-June 4: Lynxette Basketball Camp program is hosted by Head Coach Jr. Ashmore and is for girls of all school ages to 9th grade. Fundamentals including shooting, passing and ball handling will be included. 9 a.m.- Noon, Varsity Gym, \$50

June 1-June 4: Lynx Basketball Camp hosted by Head Coach Josh White is for boys of all school ages to 9th grade. The camp will stress fundamentals of basketball and how to use the fundamentals in all different situations of the game. T-shirts included in fee. 1-5 p.m., Varsity Gym, \$60

June 8: Catch the Reading Express at Hansford County Library summer reading program to learn all about trains. Age 5 - Grade 2, 10-11 a.m.

June 8: Babysitting Camp will be great fun and a good way to prepare you to be the sitter everyone wants. Peggy Winegarner will be the instructor. Grades 4-8, 9:30-11:30 a.m., Spearman High School, \$10

June 9: Amarillo Zoo Lions, Tigers and Bears, No Way! but they will be bringing a great big snake, a great big spider and a couple of other surprises that you will not want to miss. Grades K-5, 10-11 a.m., Gus Birdwell Elementary, \$5

June 15: Enjoy Magic as the Reading Express rolls through the Dewey decimal system. Age 5 - Grade 2, 10-11 a.m., Hansford County Library

June 15, 17 & 18: Guitar Kidz with Chad Wilkerson! Hey Kids....if you have always wanted to learn to play the guitar well here is your chance. Campers will experience learning easy guitar chords, simple strumming patterns. Bring your own guitar if you have one. Grades 3-8, 706 Wilmeth Drive, 1-2:30 p.m., Limited attendance, \$30 (Must pre-register through KIDS KAMP)

June 16: Sew Much Fun! Is an easy step-by-step sewing class to teach basic sewing skills needed to complete a take home project. Peggy Winegarner is the instructor. (Will break from Noon to 1:00 for lunch and those that do not finish can come back to sew) Pre-registration is needed for this camp. Grades 4-8, 9 a.m.-3 p.m., Spearman High School, \$15

June 21: FORE! Designed to develop or improve your skills and have fun playing golf for years to come. Local area golfers will be teaching fundamentals. Students need to bring their golf clubs. Students also need to bring a sack lunch. Drinks will be provided. Grade 3-8, 10 a.m.-2 p.m., Hansford Golf Course, \$20

June 22: Ride the Reading Express featuring all kinds of railroad music at Hansford County Library. Age 5 - Grade 2, 10-11 a.m.

June 23: Fancy Nancy Tea Party Moms and little girls can wear their very special Fancy Nancy attire. Don't forget your boas, beads, and "Fancy" clothes. Tea party manners and making your very own Fancy Nancy purse will be part of the morning fun. Pre-registration is required for this camp and reservations are limited so call soon. Ages 3-6, 10-11:30am, The Bunkhouse Restaurant, \$20

June 24: Batter Up cooking class will be a fun camp to learn basic cooking skills. Kids will bake cookies to share and to take home. Peggy Winegarner will be the instructor for this very yummy camp. Grades 3-9, 9:30-11:30 a.m., Spearman High School, \$10

June 29: I Love Christmas on the Reading Express. PRIZES! PRIZES! PRIZES! Age 5-Grade 2, 10-11 a.m., Hansford County Library

July 1: Arts/Crafts Day while learning the art of Iris Folding. Make a pretty handmade card using the technique of Iris Folding. Iris Folding refers to a technique where folded strips of colored paper or patterned paper are layered in a spiral pattern. It is called Iris Folding because it resembles the iris of a camera. Margaret Rutman and Betty Pugh will be the instructors for this very fun and interesting class. Supplies are included in fee. Must pre-register for this class. Grades 4-8, 10-11:30 a.m., Spearman High School Library, \$15

July 2: Curious George sponsored by KACV TV will be here to present a fun program for ages 4 to Grade 2. Come by Hansford County Library at 11:30am to read from his books and see what a fun life Curious George has.

July 2: Cyber Chase! Is a math challenge event that will be held all over the Panhandle. Hansford Co. Library will keep a copy of all the programs on a DVD and kids can come there to get on the computers and do the challenge. They can win prizes through KVAC/PBS TV. This will take place at 1:30pm and is for ages 8-12.

July 13: Lyric Theatre Matinee will begin at 10:30am. The movie will be age appropriate for grades K-5. The admission to the movie is \$6 and includes admission, coke and popcorn.

July 14: Jr. EMT Camp is sponsored by Spearman EMS. This year they will focus on outdoor safety including hiking, biking, swimming and outdoor sports. Grades K-5, Spearman EMS Station, 9:30-11:30 a.m., \$5

July 26-29: Lynx Football Camp During your time at LYNX football camp our goal will be to teach you the fundamentals of what is done offensively and defensively on the Lynx team. Campers will participate in individual, group and team drills, instructed by SHS varsity staff with age appropriate groups. Grades 3-9, 8-10 a.m., Lynx Practice Field, \$15

August 2-4: We've Got Spirit Cheer Camp is sponsored by Spearman High School Cheerleaders. Registration is the first day of camp at 8:30am in the Spearman High School Cafeteria. The other two days of camp start at 9:00am and end at 11:45. \$10 per day or \$25 for all three days

August 5: Lyric Theatre Matinee will begin at 10:30am. The movie will be age appropriate for grades K-5. The admission to the movie is \$6 and includes admission, coke and popcorn.

Registration Form KIDS KAMP 2008

Name: _____ Age & Grade: _____

T-shirt size: Youth: 10-12 14-16 Adult: XS S M L XL

Address: _____

Phone Number: Day _____ Other _____

Camp Sessions:

1. _____ 2. _____

3. _____ 4. _____

5. _____ 6. _____

I understand that those individuals registered for the program(s) on this form and myself as a parent/guardian acknowledge that each program, like all physical activities, involves an element of risk or damage for all participants and may cause injury. Therefore, I hereby release Spearman ISD from liability in case of accident.

Parent/Guardian Signature: _____

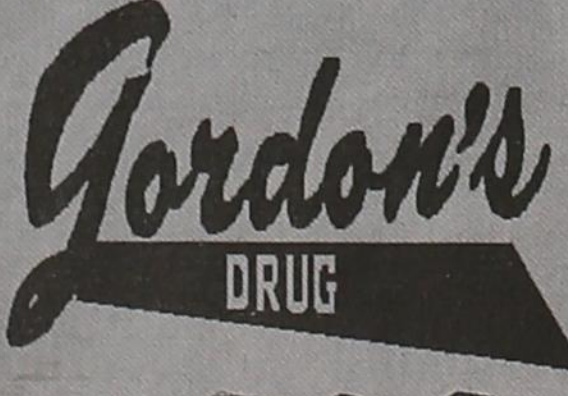
Mail registration form to: Cindy Blackman, Community Resource Coordinator, 403 E. 11th Street, Spearman, TX 79081; 806/659-3233

Or drop off at these locations: Hansford County Library or Gus Birdwell Elementary

IT'S GRADUATION TIME AGAIN!

No time to shop?
Don't know what to buy
your favorite seniors?
Gordon's Drug
has made it easy for you!

Come see our new gift displays for Spearman & Gruver seniors!



314 Main
Spearman
806-659-2141

Where
gift-giving
is effortless
& FUN!

Spearman High School

Continued from Page 1

Other graduating seniors include Victor Alan Arana, Martin Cesar Barajas, Hannah L. Breeden, Charity Elissa Burton, Ruben A. Carbajal Jr., Dakota Mac Cator, Madison Leigh DeSha, Jesus Dominguez Diaz, Julieta Diaz, Carlos Regalado Erives, Mayra Erives+, Adrian Flores, Fernando Flores, Nelly Carolina Garcia+, Daniel Grajeda, Antonio Hernandez, Paula Hernandez+, Cynthia Judith Ibarra+, Sergio Jacquez Jr., Kayla Dawn Lively, Gustavo Lopez+, Ricardo Hiram Lozoya, Jesus Manuel Mendoza+, Manuel Ramon Mendoza+, Caleb Gregory Odegaard, David Quezada, Charles Joseph Renteria, Shelbi Dawn Roberts, Ayan Rosales, Devin Matt Sibley, Jordan Dean Snider, Skyler Lakota Sumner, Andrea Breann Travis, Blanca Esthela Valtierra+, Britani Nicole Vasquez. (+ indicates candidates for Distinguished Achievement Program)

Junior escorts for graduation will be Shi-Ann Bates, Cody Benton, Ramon Garcia, Trent Goodheart, Cameron Meddock, Jessica Pinon, Natalie Saldivar and Joselyn Terrazas.

Senior class sponsors are Junior Ashmore, Diann Crawford, Kenny Eudy, Mollie Holton, Sherry Johnson, Doug Murdock, Glenn Robinson, Josh White and Cheryl Whitefield.

Spearman High School faculty includes Cindy Ashmore, Junior Ashmore, Karen Babitzke, Rhonda Baker, Tammy Batton, Alexis Beck, Myrna Biggers, Sandra Blankenship, Lee Brandon, Treva Braun,

Jackie Burkhalter, Valda Burkhalter, Diann Crawford, Mandy Derington, Kenny Eudy, Melissa Eudy, Denise Harbour, Mollie Holton, Sherry Johnson, Michael Keith, Mickey Kern, Kelly Lampe, Kathryn Mancini, Doug Murdock, Sandra Reeves, Glenn Robinson, Steve Rodman, Kristin Shieldknight, Ken Shore, Amber TeBeest, Josh White, Liz White and Cheryl Whitefield.

SHS Class Officers

President - Suttan Garnett, **Vice-President** - Whitney Maestas, **Secretary/Treasurer** - Preslee Baker

Mr. & Miss SHS - Suttan Garnett and Caleb Odegaard

Best Personality - Antonio Hernandez and Rosa Ortiz

Most Likely to Succeed - Chance Pack and Andi Linn Scarborough

Most Talented - Fernando Flores and Suttan Garnett

Most Spirited - Devin Sibley and Ayana Rosales

Senior Class Favorite - Caleb Odegaard and Suttan Garnett

Who's Who: Ten seniors are chosen by the faculty each year for Who's Who in Spearman High School. To be eligible for consideration, a student must have a 3.00 or above average in academic work, participate in extracurricular activities, and show great promise for future development. This year's Who's Who consists of: Preslee Baker, Tate Batton, Ashton Comp, Abbey Eudy, Suttan Garnett, Jesus Mendoza, Rosa Ortiz, Chance Pack, Andi Linn Scarborough, and Andi Travis.

Gruver High School

Congratulations from Page 1

After the awarding of scholarships by Darlene Curry (high school counselor), the seniors will be presented by high school principal Troy Seagler as they are awarded their diplomas by superintendent David Teal and school board president Dwayne Thompson.

Following the school song, Mattie Yanke will give the benediction.

Serving as honor guards will be junior students Shelby Williams and Haden Hart, Mary Hart, Zach Logsdon, Brianne Mitchell and Wil McCloy will be serving as ushers.

The Gruver ISD Board of Trustees include Mr. Dwayne Thompson (president), Mr. Brent Stedje (vice president), Mr. Jeff Graves (secretary), Mr. Curt Fitzgearld, Mrs. Traci Venneman, Mr. Jeff Purvines and Mrs. Teague Winger.

Gruver High School faculty includes Stacie Armes, Issa Bazaldua, Rod Been, Weston Born, Buster Brown, Sarah Clark, Sandy Cross, Krista Davis, Terry Felderhoff, Kathy Gillispie, Sandra Gumfory, Kelly Hart, Nikki Hart, Kristi Holt, Kimberly Irwin, Cherri Sherrill, Annette Teal,

Fred Tucker, Jill Watson and Donna Wright.

Senior sponsors are Kathy Gillispie, Kimberly Irwin, Fred Tucker and Cherri Sherrill.

GHS Class Officers

President - Katie Gibson, **Vice-President** - Parker Grotegut, **Secretary** - Mattie Yanke, **Treasurer** - Leigh Anne Winger

Class Favorites: Parker Grotegut and Mary Beth Hargis

Mr. and Miss GHS: Rily Urban and Mattie Yanke (Parker Grotegut and Megan Stedje)

Most Likely to Succeed: Drew Mireles and Katie Gibson (Runners Up - Blake Fitzgearld and Mattie Yanke)

Most Handsome and Most Beautiful: Rily Urban and Lizzete Ortiz (Runners Up - Tyler Wills and Megan Stedje)

Most Athletic: Rily Urban and Mattie Yanke (Runners Up - Tyler Wills and Katie Gibson)

Friendliest: Gonzalo Vega and Mary Beth Hargis (Runners Up - Alonso Martinez and Katie Gibson)

Cougar Pride Scholarship

On behalf of Cougar Pride, President Julie Crowl is pleased to announce the 2010 recipients of the organization's scholarship awards. Gruver High School seniors Mary Beth Hargis and Lizette Ortiz each will receive \$500 toward the purchase of textbooks.

High school seniors that graduated from 8th grade at Pringle-Morse are eligible to apply. The scholarship criteria recognizes applicants who excelled academically, involved themselves in school and community organizations, as well as served as volunteers throughout their high school career. Applicants are required to submit two essays.

CONGRATULATIONS
to the graduates of
Hansford County

from
SUN LOAN & TAX SERVICE
106 S. Main • Perryton, Texas
(806) 435-7242
8:30 a.m.-5:30 p.m., Mon.-Fri.
Phone Applications Welcome
Habla Espanol
Get a Loan from \$100 - \$1193
subject to our usual credit policy




Congratulations,
You Did It!

20
Class of
10

hchd
Hansford County Hospital District

Dr. Mark Garnett, DO Michelle Davis, PA-C
Dr. Hasham, MD


707 S. Roland • Spearman, TX
(806) 659-2535

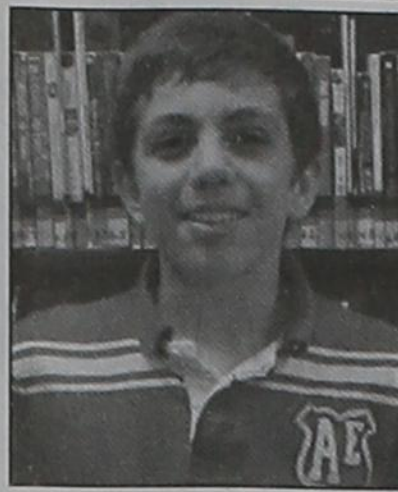


CONGRATULATIONS!
to the
Class of 2010

from
AMA-TECHTEL

Switch today and save over \$250.00 a year.
1-806-322-5500





Spearman 8th grade graduates Martin Jurado (left), valedictorian, and Juan Garcia (right), salutatorian, will lead a class of 51 during graduation ceremonies on Thursday, May 27, 2010.

Gruver 8th grade graduates Hannah Speck (left), valedictorian, and Travis Stedje (right), salutatorian, will lead a class of 34 during graduation ceremonies on Thursday, May 27, 2010.

Pringle-Morse 8th grade graduates Gena Gillispie (left), valedictorian, and Jace Lane (right), salutatorian, led a class of 10 during graduation ceremonies on Tuesday, May 25, 2010.

Spearman Jr. High

Graduation ceremonies for Spearman Junior High will be held at 6:30 p.m., Thursday May 27, 2010 in the high school auditorium.

Ken Shore will play the processional as the 51 eighth grade graduates enter the auditorium.

Vanessa Briseno will lead the Pledge of Allegiance with Jim Reeves giving the invocation.

A graduation address will be given by Jim Reeves, following the welcome by principal Shane Whiteley.

The salutatorian address will be given by Juan Garcia with Martin Jurado presenting the valedictory address.

Other honor students are Vanessa Briseno, Taylor Williams, Seth Carson, Ashley Keim, Taylor Dickerson, Sadye Hanna, Jerry Tang, Ryan Schnell, Carson Pearson, Kelsea Miller, Madison Earle, Sydney McDonald and Connor Willimon.

Spearman junior high eighth grade graduates are Martin Eduardo Almanza Borunda, Juan Garcia, Vanessa Briseno, Marcos Aguilar, Alejandro Aguilera, Vicky Almanza, Alejandro Barrientos, Maria Fernanda Calderon, Jesus Daniel Carrasco, Seth Raley Carson, Alec Cenicerros, Jose Guillermo Chavez,

Taylor Dickerson, Madison Layne Earle, Adolfo Flores, Gladys Flores, Clayton Samuel Getz, Sadye Morgan Hanna, Gena Richelle Hargrove, Bruce Allen Hawkins, Esperanza Hernandez, Stephanie Hernandez, Jessica Nicole Hickman, Tristian Brooke Hughes, Richard Jarvis, Zachary Jones, Hector Juarez, Ashley Kyra Keim, Sydney Renea McDonald, Perla Paloma Mendez, Eulises Mendoza, Veronica Mendoza, Kelsea Maree Miller, Adrian Monge, Christian Ortiz, Ismael Ortiz, Carson Michael Pearson, Alan Robledo, Javier Rosendo, Alejandro Salazar, Ryan A Schnell, Haylee Seay, Alison Smith, Faith Smith, Evelin Sotelo, Jerry Tang, Cesar Torrez, Klarissa Rene Vela, Devin Lee Wells, Taylor Macall Williams, Connor Alexander Willimon.

Shane Whiteley will recognize the honor students, and Superintendent Rodney Sumner and members of the Board of Trustees present certificates. The benediction will be given by Jim Reeves. Ken Shore will play the recessional as the graduates leave the auditorium.

Seventh graders ushers are Javier Caro, Slade Garnett, Brooke Walker and Cameron Wolf.

Gruver Jr. High

Thirty-four students will graduate from Gruver Junior High in ceremonies to be held at 8:00 p.m., Thursday May 27th, in the school auditorium.

Kathy Gillispie will play the processional. Beau Blankenship will lead the Pledge of Allegiance with Marti Frazier giving the invocation.

The salutatory address will be given by Travis Stedje and Niki Brown will present quotes from the class. Sabrina Butman, Zoe Cantrell, Rebecca Fransen and Madi Teal will sing "The Best of Me in You," accompanied by Ms. Sandy Cross.

The valedictory address will be given by Hannah Speck, followed by Cassie McKay singing "River Flows In You," accompanied by Ms. Sandy Cross.

Mr. Micah Davis will present the awards, followed by the presentation of diplomas by superintendent David Teal. Madi Teal will close with the benediction.

Eighth grade graduates include Victor Barrera, Beau Blankenship, Eddie Borunda, Manuel Borunda, Niki Brown, Sabrina Butman, Zoe Cantrell, Allen Dixon, Cinthia Dominguez, Rebecca Fransen, Marti Frazier, Adrian Garcia, Claudia Garcia, Maggie Gaspar, Armando Guereca, Victor Guereca, Ana Lora, Cassie McKay, Cesar Mendoza, Eddie Mendoza, Israel Mendoza, Lupita Mendoza, Yadira Mendoza, Merryly Ramos, Coley Ruebush, Victor Serrano, Kathrine Soliz, Katy Soliz, Hannah Speck, Travis Stedje, Madi Teal, Rachel Teal, Jonathan Terrazas, Madison Williams.

Seventh graders Noemy Guereca and Bailey Rae Poer will serve as escorts while Michaela Davis, Vanessa Garcia, Reagan Haynes and Mason McLain will be greeters.

The class quote is "We are the threads that are woven into a multicultural tapestry. We are the notes in a chord of music...if all the notes were the same, there would be no harmony, no real beauty...because harmony is based on differences, not similarities," by Rosa Guerrero.

Pringle-Morse Junior High

Ten students graduated from Pringle-Morse Junior High in ceremonies held at 7:00 p.m., Tuesday, May 25th, in the school auditorium.

Emilynn Robinson welcomed guests.

The invocation was given by Jace Lane, followed by the salutatory address, also given by Jace Lane. Gena Gillispie presented the valedictory address.

The class history was given by Jennifer Crowl and Molly Lieb. The class wills were read by Christian Fisher.

Eighth grade graduates were Elizabeth Adkins, Jennifer Crowl, Erin Ford, Gena Gillispie, Lehea Holguin, Jace Lane, Molly Lieb, Katie Miesner, Kane Pittman and Emilynn Robinson.

Several awards were presented during the ceremony, including: Athletic Awards, presented by Jeff Forrest: Boy - Jace Lane, Girl - Jennifer Crowl; Band Award, by Anna Marie Holland: Boy - Jace Lane, Girls - Gena Gillispie and Jennifer Crowl; Presidential Excellence Award for Outstanding Academic Achievement, by Kent Hargis; Jennifer Crowl, Gena Gillispie Jace Lane and Molly Lieb; Presidential Improvement Award, by Kent Hargis; Elsa Adkins, Erin Ford, Lehea Holguin, Katie Miesner, Kane Pittman and Emilynn Robinson; the Kathy Stedje Memorial Award, by Cindy Lieb; Gena Gillispie; and the Service Awards, by Kent Hargis: 5 years - Leslie Ford, Kathye Archer and Debbie Tolleson, 10 years - Donna Mullican, Veann Clark and Julie Crowl, 15 years - Laurie Hiser.

Following a slide show, the eighth grade students presented a flower to their parents. Following the presentation of diplomas by Clyde McCloy, Pringle-Morse CISD Board of Trustees President, and Kent Hargis, Principal/Superintendent, Erin Ford gave an acceptance of the diplomas. Katie Miesner gave the benediction, followed by an invitation to a reception by Kane Pittman.

Seventh graders ushers were James Layton and Griselda Lopez.

20
Class of
10

CONGRATULATIONS
to the
Hansford
County
Graduates!

from

PTCI
Communication & Broadband Solutions

721 W 7th
Spearman
800-562-2556

Telephone • Internet • Television

CONGRATULATIONS
GRADUATES!

ENCOURAGING YOU TO CONTINUE
TO BUILD A BRIGHT FUTURE!

B & B SALES CO.
205 Dillon
Spearman, TX 79081
Ph. (806) 659-2662
1-800-570-0520

JESSE R. KELL
President & Manager
Fax# (806) 659-2733

True Value
Help is Just Around The Corner.

RadioShack

Mon.-Sat. 7 a.m.-6 p.m.

CONGRATULATIONS
GRADUATES!

The Bunkhouse Restaurant
Spearman's Place for Steak!

212 MAIN STREET • SPEARMAN
(806) 659-2089

LUNCH HOURS: SUNDAY THRU FRIDAY, 11AM - 2 PM
DINNER HOURS: TUES THRU FRIDAY, 5 PM - 8 PM

Congratulations
to the
Class of 2010
from

CASE III Zimmatic®

FIVE STAR EQUIPMENT, INC.

HIGHWAY 15 WEST • BOX 658
SPEARMAN, TEXAS 79081
PHONE # (806) 659-3743
HOME # (806) 659-3846
CELL # (806) 330-0051
800-978-2759

RICHEY THOMPSON
MANAGER

First National Bank • First State Bank • Interstate Bank
Gruver State Bank and The Hansford County Reporter-Statesman
Proudly Present

Spearman & Gruver High School Graduating Class of 2010

Spearman High School
May 28, 2010
7:00 p.m.
Spearman High School
Auditorium



Gruver High School
May 28, 2010
8:00 p.m.
Gruver High School
Auditorium

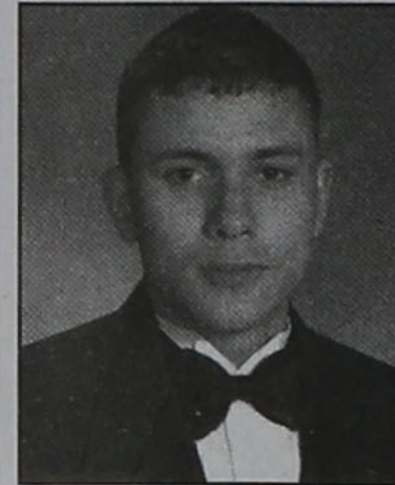
SHS



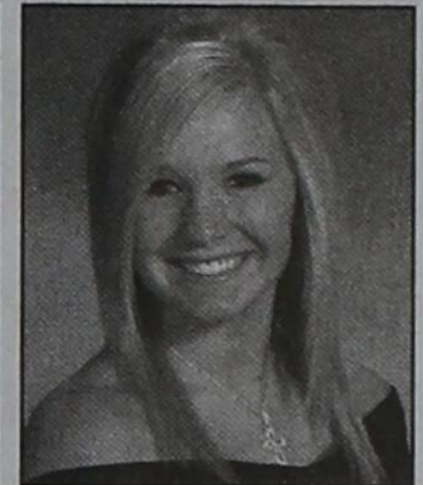
Isvy Acosta



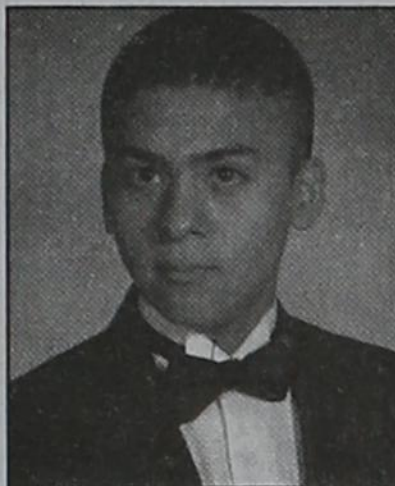
Ariana Aguilera



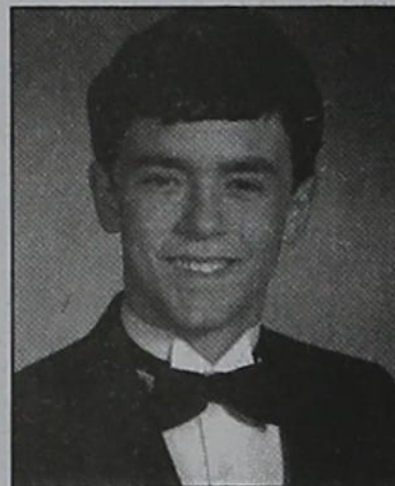
Victor Arana



Preslee Baker



Martin Barajas



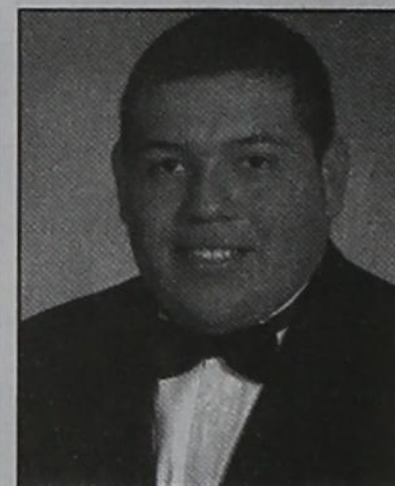
Tate Batton



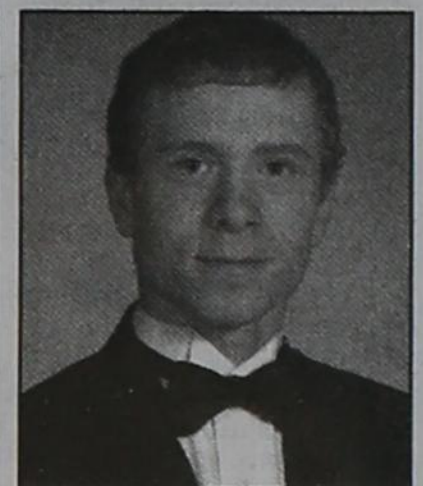
Hannah Breeden



Charity Burton



Ruben Carbajal



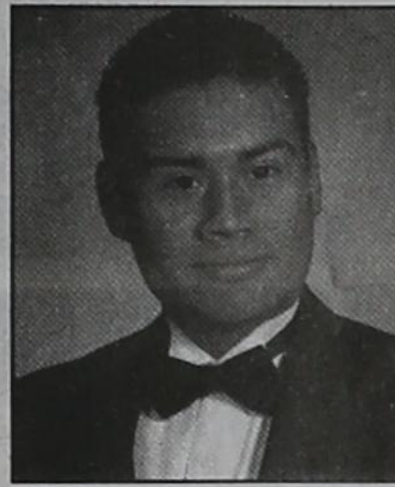
Dakota Cator



Ashton Comp



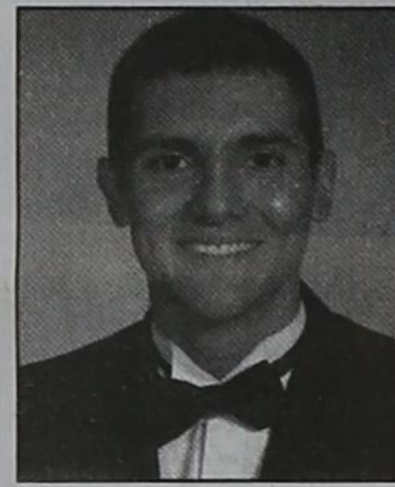
Madison DeSha



Jesus Diaz



Julie Diaz



Carlos Erives



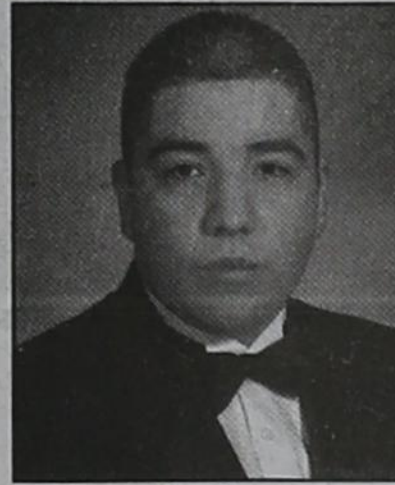
Mayra Erives



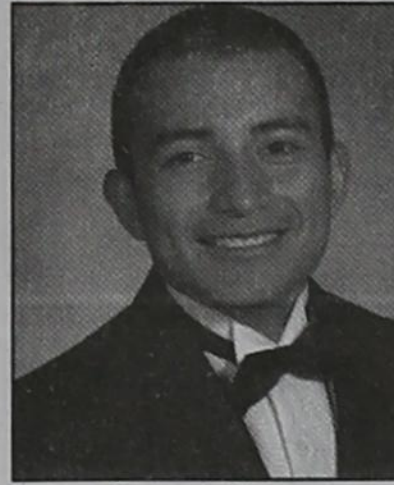
LeAnna Espinosa



Abbey Eudy



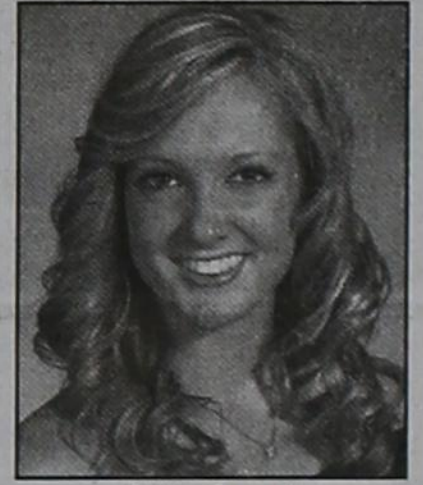
Adrian Flores



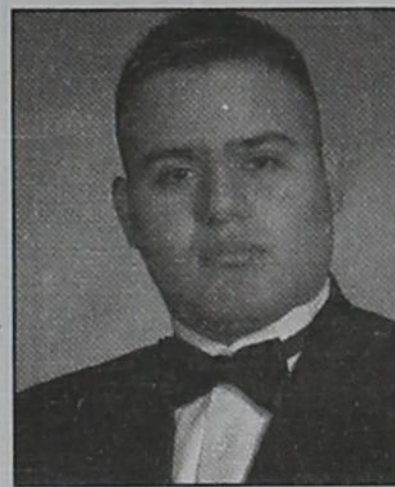
Fernando Flores



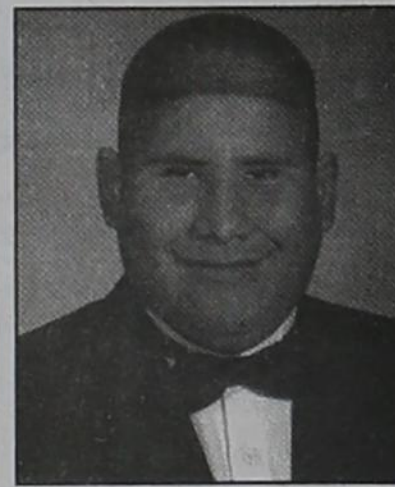
Nelly Garcia



Suttan Garnett



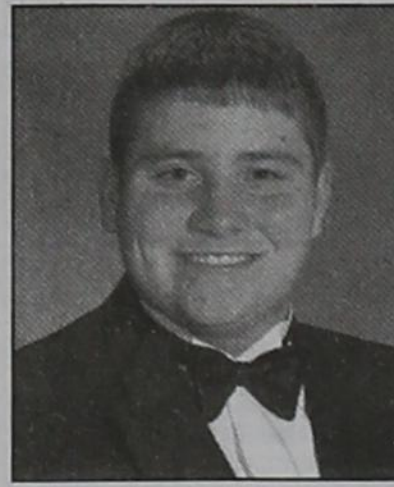
Daniel Garjeda



Antonio Hernandez



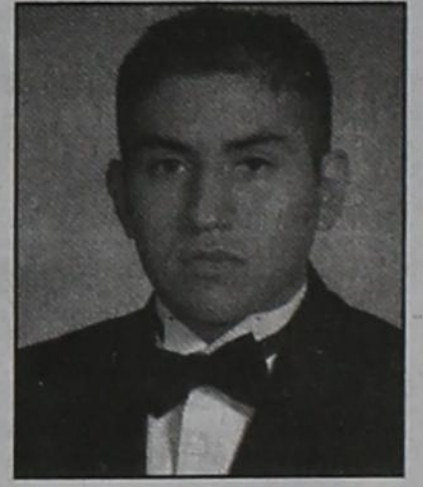
Paula Hernandez



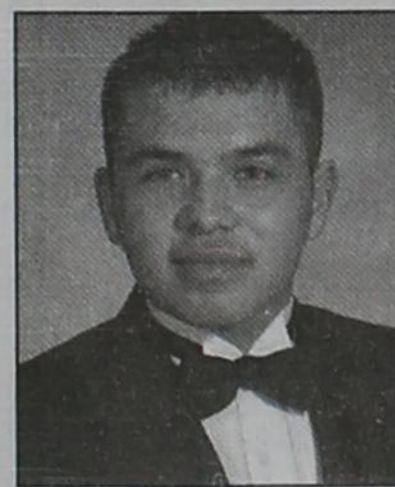
Zack Hughes



Cynthia Ibarra



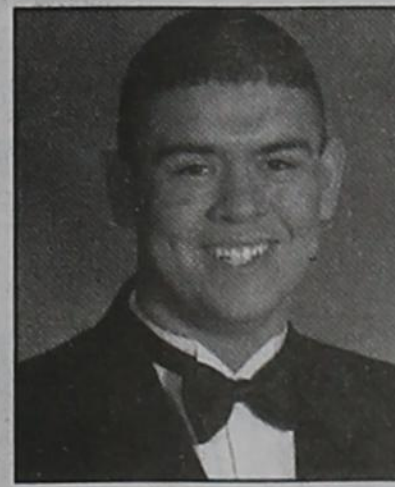
Jose Ibarra



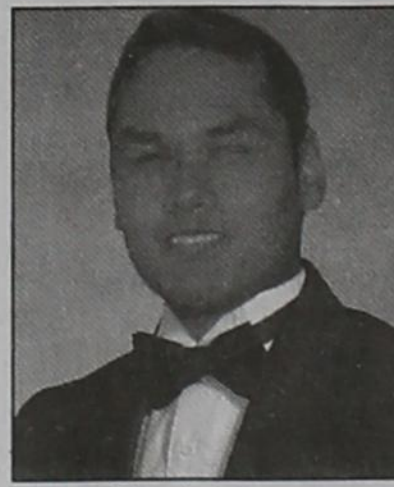
Sergio Jacquez



Kayla Lively



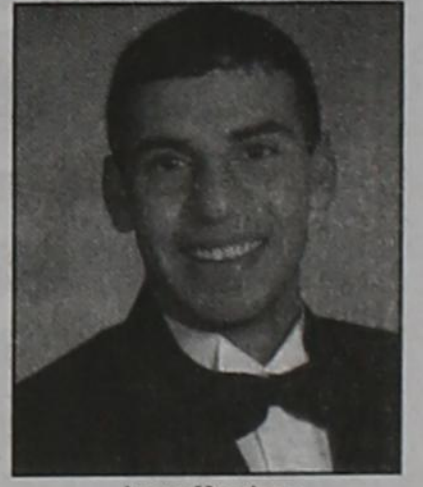
Gus Lopez



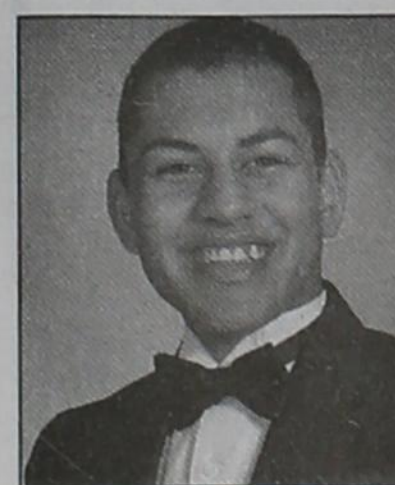
Ricardo Lozoya



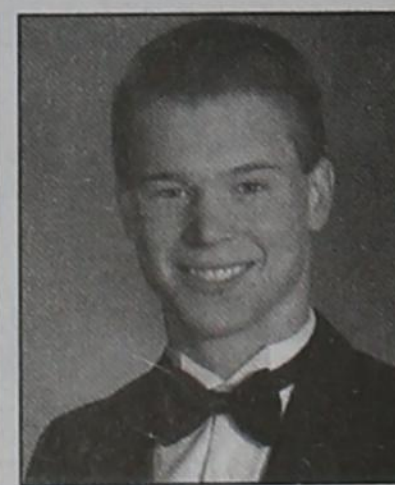
Whitney Maestas



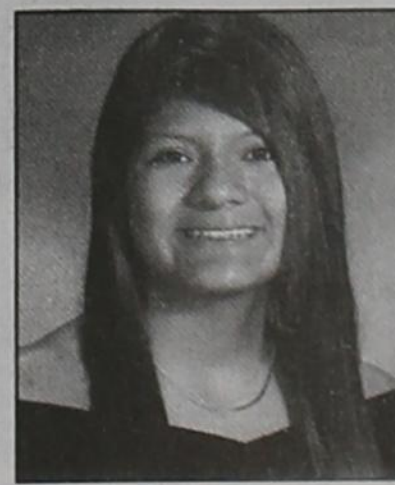
Jesus Mendoza



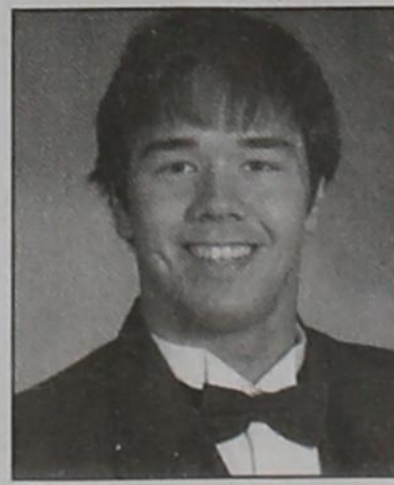
Manuel Mendoza



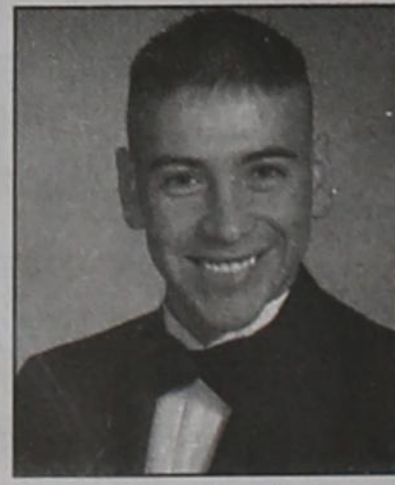
Caleb Odegaard



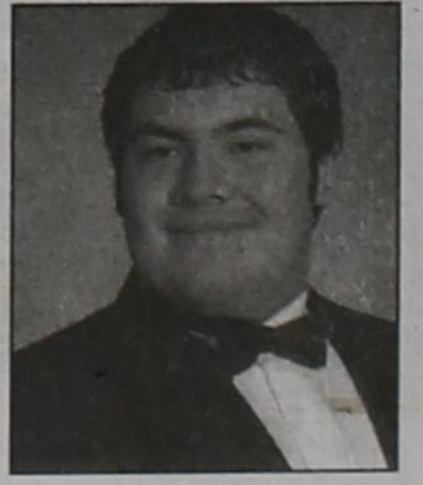
Rosa Ortiz



Chance Pack



David Quezada



CJ Renteria



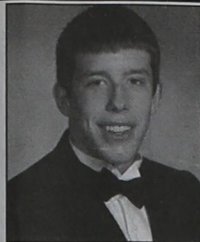
Shelbi Roberts



Ayana Rosales



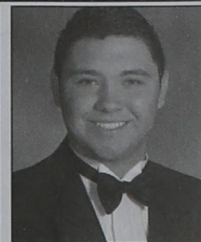
Andi Linn Scarborough



Devin Sibley



Jordan Snider



Skyler Sumner



Andi Travis




Blanca Valtierra



Britani Vasquez


CONGRATULATIONS
to the
class of 2010
from
The Hansford County Reporter-Statesman
213 Main Street • Spearman, Texas
Phone: (806) 659-3434 • Fax: (806) 659-3368

2010 GRADUATES!
Congratulations
You did it!



Gruver State Bank
3 Main Plaza • (806) 733-5061 • Gruver, TX
Member FDIC

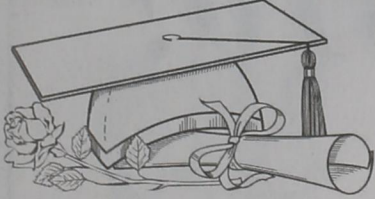
CONGRATULATIONS
To The
Class of **SHS**
of
2010



from
FNBANK
First National Bank
Spearman, Texas 79081 Dumas, Texas 79029
806-659-5544 806-934-8455
800-583-4196 866-583-4196
Member FDIC

Congratulations, You Did It!

SHS




GHS

2010

INTERSTATE BANK, ssb
www.interstatebank.net
A Full Service Bank - FDIC Insured
322 Main Street * Spearman, TX
(806) 659-2559

Congratulations, Graduate



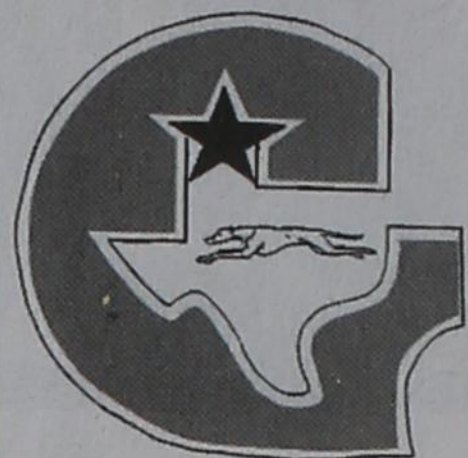
Class of 2010!

FSB

First State Bank
1 NE Court • (806) 659-5565 • Spearman, TX
Member FDIC

GHS

Class of 2010



Rogelio Acosta

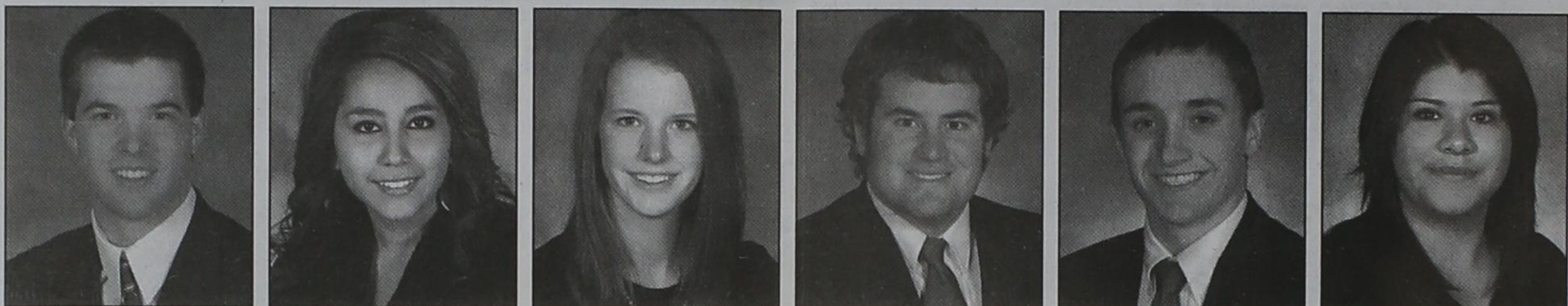
Mary Barron

Diana Bernal

Fatima Anahi Borunda

Shaney Lyn Collier

Carmen Ashley Dahl



Blake Russell Fitzgearld

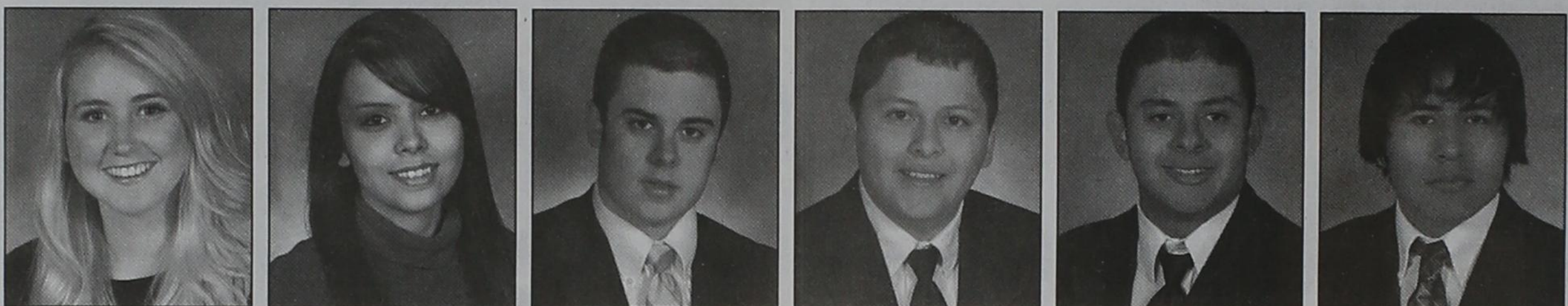
Bianca Nayeli Garcia

Katie Michelle Gibson

Cory J. Graves

Parker Heinz Grotegut

Eunice Guereca



Mary Beth Hargis

Lourdes Hernandez

Reagan Karlin

Luis Enrique Lora

Gustavo Alonso Martinez

Gabriel Mendoza

2010 GRADUATES!

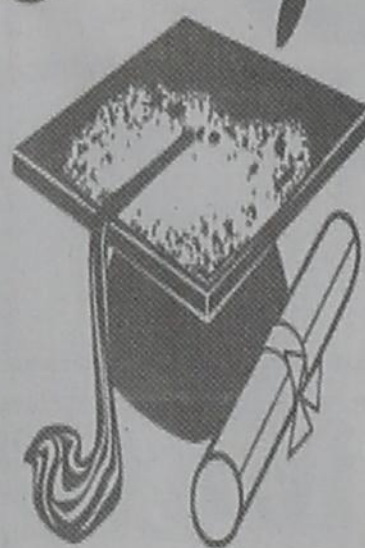
Congratulations
You did it!



Gruver State Bank

3 Main Plaza • (806) 733-5061 • Gruver, TX
Member FDIC

Congratulations,
Graduate



Class of 2010!



First State Bank

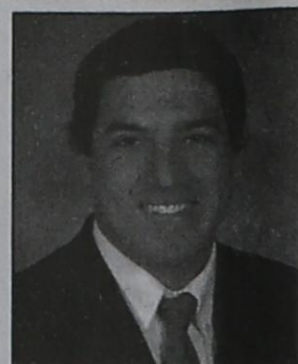
1 NE Court • (806) 659-5565 • Spearman, TX
Member FDIC



Ramon Mendoza



Caleb Miller



Andrew Jess Mireles



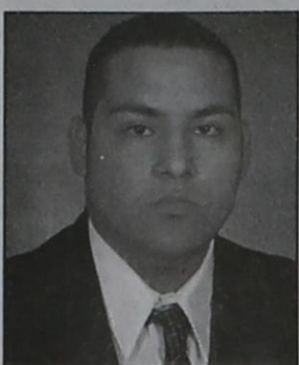
Adrian Ortega



Lizzete Ortiz



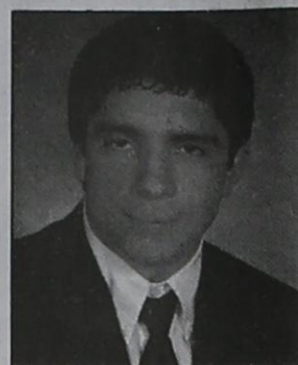
Daniel V. Sanchez



David Sanchez



Gabriela Santillan



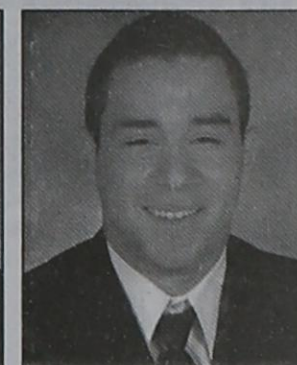
Joel Soto



Megan Justine Stedje



Cindy Suchil



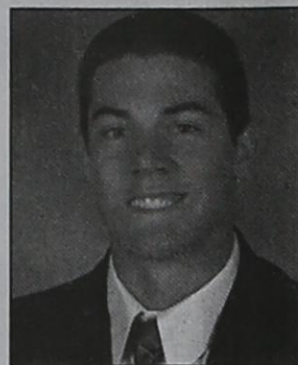
Jorge Luis Tarrango



Lorenzo A. Tarrango



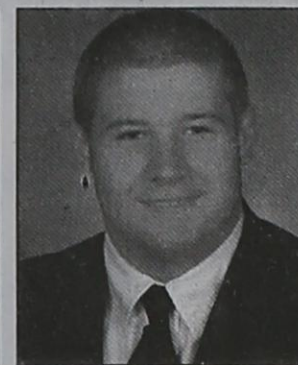
Jeronimo Trejo



Rily Joseph Urban



Gonzalo Vega



Tyler Keith Wills



Leigh Anne Winger

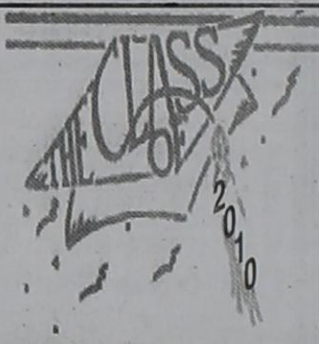


Mattie Yanke

20
Class of
10

CONGRATULATIONS
to the Class of 2010

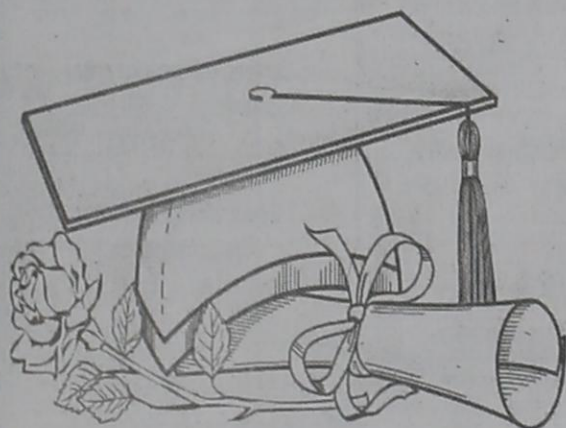
from
The Hansford County Reporter-Statesman
www.spearmanreporter.com
Phone: (806) 659-3434 • Fax: (806) 659-3368
reporter@spearmanreporter.com



Congratulations,
You Did It!

SHS

2
0
1
0



GHS



INTERSTATE
BANK, ssb

www.interstatebank.net

A Full Service Bank - FDIC Insured

322 Main Street * Spearman, TX
(806) 659-2559

CONGRATULATIONS

To The
Class
of

GHS

2010



from



Spearman, Texas 79081 Dumas, Texas 79029

806-659-5544

806-934-8455

800-583-4196

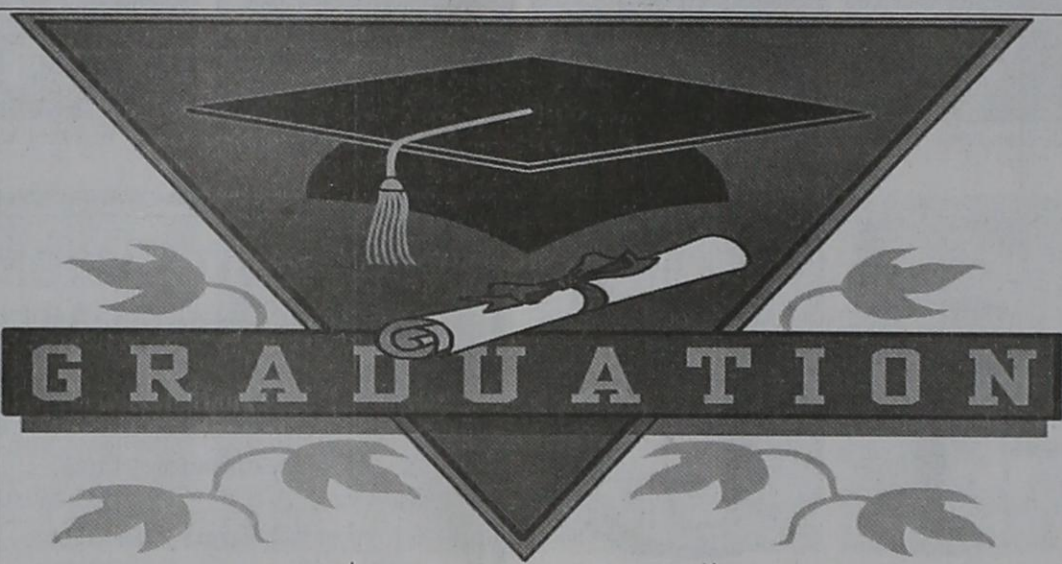
866-583-4196

Member FDIC



Hansford County Graduates!

From these Area Businesses:



Adobe Walls Gin, LP
Spearman • 659-2574

Aeroflight Publications
Gruver • 733-2483

AeroTan
Gruver • 733-2483

All Occasion Flowers
Spearman • 659-5180

AMA TechTel
Gruver • (806) 322-2429

Bartlett's Ace Hardware
Gruver • 733-2404

Berry Cleaners
Spearman • 659-3122

Bort Agency
Gruver • 733-2404

Boxwell Brothers Funeral Home
Spearman • 659-3802

Brown, Graham & Co.
Spearman • 659-2538

The Bunkhouse Restaurant
Spearman • 659-2089

Cargill Ag Horizons
Spearman • 659-3554

Cates Men & Boys
Spearman • 659-3426

City Cafe & Donuts
Spearman • 644-6444

Bob & Cathy Davis
Gruver • Spearman

Dreamers
Spearman • 659-9907

eProperties
(806) 886-6536 • (806) 733-5678

El Vaquero Restaurant
Gruver • 733-2407

Equity Exchange
Spearman • 659-2420

First National Bank
Spearman • 659-5544
member FDIC

First State Bank
Spearman • 659-5565
member FDIC

Five Star Equipment
Spearman • 659-3743

**Frank Phillips College
Allen Campus**
Perryton • 648-1450

Frontier Feedyard
Spearman • 882-4251

Gigot Agri Products
Spearman • 659-3121

Golden Spread Carpet
Spearman • 659-3068

Golden Spread Sales Co.
Spearman • 659-3776

Gordon's Drug
Spearman • 659-2141

The Grocery Store
Gruver • 733-2471

Gruver Dairy Queen
Gruver • 733-2913

Gruver Ford
Gruver • 733-2431

Gruver State Bank
Member FDIC
Gruver • 733-5061

H&H Credit Union
Stinnett • 878-2452

H&H Water Well
Spearman • 659-5577

Hansford Abstract Co.
Spearman • 659-2516

Hansford County Feeders
Gruver • 733-5025

Hansford County Floral Co.
Spearman • 644-4000

**Hansford County Hospital Dis-
trict**
Spearman • 659-2534

**Hansford County
Reporter-Statesman**
Spearman • 659-3434

Hansford County Vet Clinic
Spearman • 659-2100

Hansford Implement Co.
Spearman • 659-2568

Hansford Pharmacy
Spearman • 659-2226

The Headquarters Restaurant
Spearman • 644-4646

Hi-Plains Auto Supply, Inc.
Spearman • 659-2506

Hoochy Poochy Parlor
Borger • 273-2724

Hungry Cowboy
Spearman • 659-5151

Hunny's
Guymon • 580-338-7383

Interstate Bank, ssb
Spearman • 659-2559

The Jarvis Law Office, P.C.
Spearman • 659-2554

J&S Signs & Engraving
Spearman • 736-7020

John L. Hutchison, Atty.
Spearman • 659-3703

Lowe's Marketplace
Spearman • 659-2522

M&D Aerial, LLC
Spearman • 806-202-2360

Mark Sheets Truck, Inc.
Spearman • 659-2773

Money's
Perryton • 435-3945

Morse Implement
Morse • 733-2668

MurMur's Cafe
Spearman • 659-3580

North Plains Electric Coop
806-435-5482 • 800-272-5482

Dr. James Pinkerton, DDS
Spearman • 659-3315

Pizza Hut
Spearman • 659-2547

Prairie Garden Flowers
Spearman • 659-2212

Prairie Motors
Spearman • 659-2541

**Rocking F Boot
& Saddle Shop**
Spearman • 659-3342

Rod Sumner
Spearman ISD Superintendent

Schneider Welding Service
Spearman • 659-3811

Sergio's Body Shop
Spearman • 659-5217

Simple Simon's
Spearman • 659-9991

Sparrow Photography
Spearman • 330-0302

**Spearman Chamber
of Commerce**
Spearman • 659-5555

Speartex Grain Co.
Spearman • 659-3711

Storage Depot & Doodlebug RV
Spearman • 330-1997

**Sunray Co-Op
Gruver Branch**
Gruver • 733-2481

Tong's Chinese Food
Spearman • 644-2838

Video Madness
Spearman • 659-5046



REAL ESTATE

FOR RENT: 1BR furnished apartment and 2BR furnished apartment. Bills paid, free laundry services. Call 659-2247.

SERVICES

NOTICE: Your land or family land gets you your new home. Call 580-254-5504.

Blankenship Real Estate 659-3052 - 670-3774

4BR/2B/2CG Home - Basement, pool, central H/A, fireplace. Price Reduced! 3BR/2B Home - 1500 sq. ft., brick, 2CG, patio, walk-in closets.

NEW LISTINGS WANTED! Eulalia Blankenship - Sales Eschol Blankenship - Broker

113 N. Brandt - Spearman: Spacious 3BR, 2B. An 1,848 sq. ft. home in need of a FAMILY! REDUCED! 902 9th - Gruver: Horse Stables FOR SALE!

This ad is just a small sample of the properties that we currently have for sale. Please check our Web site and give us a call!

MARTIN & ASSOCIATES REALTY Serving Hansford County for 15 years Julie Martin: Broker - 659-2425

CLICK PAINTING & HOME REPAIR Painting, Texturing, Drywall Repair, Fencing & General Carpentry. Serving Perryton, Spearman & Gruver.

GALLAGHER'S PRECISION HARVESTING is booking acres for the 2010 wheat harvest, John Deere equipment, 35 foot draper headers and all support equipment.

FOR SALE: 1997 Ford F100 Pickup. Refurbished with new motor. Good work truck. Call 806-659-2442 or 806-330-0691.

GARAGE SALE - Spearman: 14 S. Brandt, Saturday, May 29th, 9 a.m. until it's gone!

PUBLIC NOTICE

LEGAL NOTICE Hansford County Commissioners' Court will receive bids until 4:00 on Friday, June 11, 2010 up to 1300 tons of A-3, A-4, B-3 and B-4 gravel.

FOR SALE 2001 Pontiac Trans-Am WS6 - Pewter with blue pin stripe, black leather interior (good condition), 462 Horsepower to the rear wheels with Nitros (Dyno sheet proof), 6.0 Liter Engine, with aftermarket aluminum heads, upgraded cam, aftermarket intake, 92mm throttle body, 175 HP NX system (aka Nitros or NAS).

LEGAL NOTICE Spearman I.S.D. is accepting sealed bids for a student drug testing contract for the 2010-2011 school year. Bid is to include the following fees: (1) 9 panel laboratory urine drug test, (2) breath alcohol test, (3) MRO review, (4) anabolic steroid testing, and (5) other fees, etc.

LEGAL NOTICE Hansford County, in Spearman, Texas is accepting bids for individual trades for the following:

Year 2010 Improvements Courthouse Renovations for Hansford County Bids will be received through 5:00 P.M. Thursday June 10th, 2010 and should be addressed or faxed to: Benny Wilson, County Judge

Grid of numbers for a word search puzzle.

FALSE BAP DADO ATILIT RCA BAYOU TORAH EEN ONAIR PAWNEE DWIGHT SIN EARL BAH CALM YELLOW UFOS COED REEVE ROSE TORUS AGUE NOTCH MAMA PALS STATIC LAWN LET GOAD EON QUAHOG ADDAMS OUSEL ERR UTICA FAERY NAP LAMAR TYRO TEA ELITE

MITCHELL THEATRES.COM GUYMON, OK • LIBERAL, KS • NEWTON, KS

NORTHRIDGE 8 Guymon, Oklahoma www.northridge8.com 580-338-3281

SOUTHGATE 6 Liberal, Kansas www.southgate6.com 620-624-5573

CHISHOLM TRAIL 8 Newton, Kansas www.chisholmtrail8.com 316-283-0555

SEQUOYAH 8 Garden City, Kansas www.sequoyah8.com 620-275-7707

FRESH POPCORN EVERYDAY! -PARTY ROOM & ARCADE-

and read aloud in the Hansford County Courthouse @ 16 Northwest Court in Spearman, Texas at 11:00 A.M. On Friday June 11th, 2010.

Plans, Bid Packages and Specifications are available and may be acquired from the Construction Manager: Grimes and Associates, Consulting Engineers, L.P. 21103 FM 179 Wofforth, TX 79382 (806) 863-2462

www.grimesengineering.com If your bid does not cover the bid package and requirements, an advance notification must be faxed to Grimes and Associates two days before the stated bid date with all exclusions listed or your bid may be rejected.

It is intended to award complete bid packages, and breakdowns are included only to verify that pricing for the complete package has been included.

A Pre-Bid Conference will be held at 11:00 A.M. on Thursday May 27th, 2010. All interested parties should meet at the Hansford County Courthouse at 16 Northwest Court in Spearman, Texas.

Hansford County reserves the right to reject any or all bids, and waive all formalities. 2(5/20/10)B

hchd Hansford County Hospital District Openings at Hansford Hospital

Home Health, RN / Patient Care Coordinator: Home Health experience preferred but not required. Graduate of an accredited School of Professional Nursing. Currently licensed in the State of Texas.

RN: 7pm-7am. Graduate of an accredited School of Professional Nursing. Currently licensed in the State of Texas. BCLS, ACLS and TNCC preferred. CPR required.

Openings at Hansford Manor

LVN: Graduate of an approved LPN/LVN program. Must be able to make independent decisions when circumstances warrant. Must possess the ability to deal tactfully with residents, family and public.

Great working environment and staff, quality facility providing opportunities for professional growth. Great benefit package. Apply at 707 S. Roland, Spearman, TX or contact Jackie Nelson at 806-659-5841. Download application at www.hchd.net EEOE (5/20/10)

The Jays of Summer Available all year! SNOW CONE STAND Monday-Friday 1:30-8 p.m. MURMUR'S CAFE 100 S. Roland • Spearman 659-3580

We will be closed on Monday, May 31st in observance of Memorial Day INTERSTATE BANK, ssb www.interstatebank.net 322 Main Street * Spearman, TX (806) 659-2559

First State Bank will be closed on Monday, May 31st for MEMORIAL Day The Bank that has the Tradition of Strength & Service FSB One NE Court Spearman, Texas (806) 659-5565 member FDIC

BUY ME! 113 N Brandt This Seller is READY TO DEAL! Who could resist this @ 1,848 sq ft home with 3 Bed, 2 Bath, Circular Drive, Fireplace, & Large Lot, all in a Nice Quiet Neighborhood! NEW Metal Roof and ONLY \$55,000! Make Us A Offer!

"I use PTCI's Internet for online orders I receive through my home-based business."

Delinda McLaughlin, Creative Memories



"At PTCI, they're always helpful and easy to talk to."

I appreciate the great telephone, TV, & High-Speed Internet I get from PTCI!"

You're at HOME with PTCI!



721 W 7th Spearman 1-800-562-2556 www.ptci.net

Out at the Lake

by Dorothy Hudson



Jim Derington
Palo Duro River Authority
P.O. Box 99
Spearman, TX 79081
806-882-4401
jpdra@dshmail.net



Barrel Cactus Flower

Lake Level--May 24, 2010--26.80 feet

After the recent rain the lake went up to 27.06 feet for an increase of 12 feet. Jim said that surprisingly the level begins to drop even while there is still a flow into the Lake. Evaporation still happens, and the newly covered ground sucks water in before it is saturated. May 4, 1999 was the date of the highest level the Lake has seen. It registered 66.50 feet. On April 18, 1999, a raise of fifteen feet had brought the Lake to 55 feet, a new record. Then in a little over 2 weeks later more big rains fell to give us the all time high.

I think the Lake is considered full when water begins running in the morning glory at 77 feet.

A group from Sunray and Dumas camped in 12 RVs and some tents this

weekend. Many of them had camped at the Park before. One, Harold Hataway, brother of the now deceased former sheriff Joe Hataway of Perryton, had camped as a small boy with his grandfather at Near to Nature Park on the Palo Duro Creek. They visited the Cator ranch nearby, and he was shown Jim Cator's buffalo gun.

The shelter was used for a birthday party on Saturday.

If you drive out to see how the Lake looks with more water, notice all the wild flowers that are in bloom. The wine cups are beginning to show their beauty in the Parks north of the dam. Yucca is in bloom. The little barrel cactus of Jim's picture is harder to find. Look in rocky areas to find this unusual blossom.

Funnell Clouds Spotted in Hansford County

Around 8:25 p.m. on Monday, May 24, 2010, Reserve Deputies Scott Davis and Mike Davis observed potentially threatening clouds to the south and west of Spearman. Deputy Scott Davis then spotted a tornado on the ground, and advised the dispatcher to sound the sirens in Spearman.

Funnel clouds were spotted 12 miles northwest of Spearman as well as the Palo Duro Lake area.

The all-clear was given around 9:10 p.m.

The storm moved to the north, and stayed to the west of the Spearman city limits. The deputies continued to observe the storm as it moved into Beaver County, Oklahoma.

The following pictures were submitted to The Hansford County Reporter-Statesman by Jeannie Swan. If you have photos you would like to share, you may e-mail them to reporter@spearmanreporter.com.



Summer 4-H Activities

Hansford County 4-H would like to announce the following activities will be available during the summer of 2010:

Regional Electric Camp - June 28 - July 2 at Cloudcroft, NM (register by May 1)

Texas 4-H Golf Challenge - June 17 in Lubbock (register by May 28)

State Youth Water Camp July 11-15 at Monahans (apply by May 21)

Texas 4-H Outdoor Challenge - June 17-18 at Brownwood State 4-H Center (register May 21)

District 1 4-H Photography Contest for age 9-13 (entries due in County office by June 25)

4-H Green Out at Texas Rangers game - June 5 (purchase tickets by May 21)

Baby Sitters Workshop - June 8, 9:30 - 12:00 at Spearman High School

Sewing Workshop - June 16, 9 - 12:00 at Spearman High School

Kids in the Kitchen - Batter Up cooking camp - June 24 at Spearman High School

For detailed information, please call the County Extension Office 806-659-4130.

See us for:
 AUTO • HOME • CROP HAIL •
 FARM & RANCH • MULTIPERIL •
 LIVESTOCK

INSURANCE

BORT AGENCY, INC.
 510 Main St. • Gruver, TX
 (806) 733-2456

2010 GRADUATES
 Congratulations
 on your accomplishments!

Going Out Of Business SALE

Great gifts for all your celebrations!

LE+T

Closing Doors on Saturday, May 29th at 5 p.m.

Celebrate

203 Main St. Spearman, TX
 (806) 659-3350 1-800-663-8026

Everything 75% OFF

Congratulations

GARRETT EVAN COUTS
 PAMPA HIGH SCHOOL

HOLLY ANNE LIEDTKE
 AMARILLO HIGH SCHOOL

DREW MIRELES
 GRUVER HIGH SCHOOL

KOLEY CHANCE PACK
 SPEARMAN HIGH SCHOOL

DEVIN RYAN VALDEZ
 CAPROCK HIGH SCHOOL

FOR BEING CHOSEN AS THE 2010 RECIPIENTS FOR THE
HARWELL & HARWELL
ORTHODONTIC SCHOLARSHIP

The Harwell & Harwell Orthodontic Scholarship was created to thank the community for their support over the past 30 years. For nine years, we have given over \$20,000 to graduating seniors in the Panhandle area.

Harwell & Harwell Orthodontics
 Creating Legendary Smiles for the Panhandle
 Amarillo • Borger • Guymon • Pampa
 806.353.3593 • 1.800.7ORTH07
 www.harwellortho.com