



REPORTER - STATESMAN

Spearman Gruver

Volume 86 • Issue 02

213 Main • Spearman, Texas 79081

Thursday • November 4, 1993

News Briefs

The Gruver Greyhounds will be playing the Sunray Bobcats at Greyhound Stadium on Friday, Nov. 5. Kickoff is at 7:30 p.m.

Extension Homemakers membership tea will be held from 3 to 4 p.m. on Sunday, Nov. 7th in the clubroom on Bernice. Everyone is welcome to attend and find out about the organization. Dress casual.

The Gruver gifted and talented students in Mr. Mayhew's class are arranging a Veteran's Day program on Nov. 11 at 2 p.m. in the auditorium.

The Gruver High School Junior Class will sponsor the Second Annual Baked Potatoes on Broadway, Thursday, Nov. 11, at 7 p.m. Tickets will cost \$5 and may be purchased from any junior. The melodrama "Murder Most Fowl" will be presented after the meal. Get your tickets early.

Eck Spahich of Borger, a native of Bosnia, will speak on the country's conflict at Varsity Gym in Spearman at 10 a.m. on Thursday, Nov. 11.

Angie Mitchell, Christian counselor and conference and seminar speaker will be speaking in Gruver Wednesday, November 10th from 12 noon to 1:30 p.m. at the Golden Age Center. The event is sponsored by the Gruver Christian Women's Fellowship.

The Spearman FFA is holding their annual fruit sale from November 1 - November 15th. All FFA members are selling the fruit. There will be no orders after the 15th.

Weather

Day	Hi	Lo	Precip
Thu	70	38	.00
Fri	32	27	.00
Sat	36	13	.00
Sun	65	18	.00
Mon	62	34	.00
Tues	52	40	.00
Wed	--	32	.00
Total Precipitation 21.60			

What's Inside

Society Pages	4, 5
Sports	6, 7
Hansford Happenings	3
Want Ads	11
Obituaries	12
Movies	2
Coffee Time	2
Chamber Chatter	3

Ad Index

Allsups	6
Gordon's Drug	4
Football Contest	7
Church Page	12
United Supermarket	9
Classifieds	11
Gibson's	3
J.G.'s & Celebrate	2
Dairy Queen	8
First National Bank	10
Palo Duro Restaurant	6

H.C. voters cast ballots on Constitutional Amendments

by Angela Jones
Editor

Hansford County voters turned out at the polls to cast their ballots for or against 16 Constitutional Amendments.

The closest vote occurred on Amendment #16 which would authorize up to a "...total of \$100 million in bonds and notes to be issued or sold to finance the Texas Agricultural fund for providing financial assistance to develop, increase, improve or expand the production, processing, marketing or export of crops or products grown or produced primarily in this state by agricultural businesses domiciled in the state." 303 ballots were cast for and 309 were cast against the amendment.

Another close vote was cast for Amendment 9. There were 290 votes for and 286 against. This amendment is to modify the provisions for the redemption of real property sold at a tax sale.

Amendment 12 received a landslide of votes for it to be past, with 545 ballots for and only 67 against. This amendment permits the denial of bail to certain persons charged with certain violent or sexual offenses committed while under the supervision of a criminal justice agency.

Amendment 15 was also a landslide with 519 votes for and 79 cast against. This amendment is to "...permit the voters of a county to decide, at an election called by the commissioners court, whether to abolish the office of county surveyor in the county."

Other election results in the county were as follows:

Amendment 1 received 125 votes for and 481 votes against. This amendment would authorize the legislature to provide for the issuance of \$50 million of general obligation bonds for the recovery and further development of the state's economy.

Amendment 2 had 275 votes for and 325 votes against. This amendment dealt with promoting the reduction of pollution and encouraging the preservation of jobs by authorizing the exemption from ad valorem taxation of real and personal property used for the control of air, water or land pollution.

There were 356 votes for and 209 votes against amendment 3, which was to provide for the clearing of land titles by the release of a state claim in a fractional interest, arising out of the voiding of an interest under a Mexican land

Election cont. pg. 8



Debbie Hornsby was one of many Hansford County residents who gave blood Wednesday, Oct. 27, at Spearman High School. Kendra Brown with Coffee Memorial Blood Services prepares her for the donation.

Hansford County holds Halloween activities for spooks of all ages

by Angela Jones
Editor

Witches, ghosts and goblins participated in a variety of Halloween activities held in Hansford County beginning Friday and continued through the week-end.

Festivities started Friday with the local businesses getting in the Halloween spirit. In Spearman, ALCO won the best costume award with the theme of the 101 Dalmatians. The prize for 100 percent participation went to First National Bank of Spearman with the crew from Gilligan's Island making an appearance. These awards were sponsored by the Spearman Chamber of Commerce.

First State Bank employees, dressed in holiday attire, were spotted throughout town. They travelled to the Spearman Junior High and then made their way to the Hansford Manor. It was at the manor, this rowdy crew met their

match. The cowboys and queens from Stepping Stones were also visiting the residents on the manor.

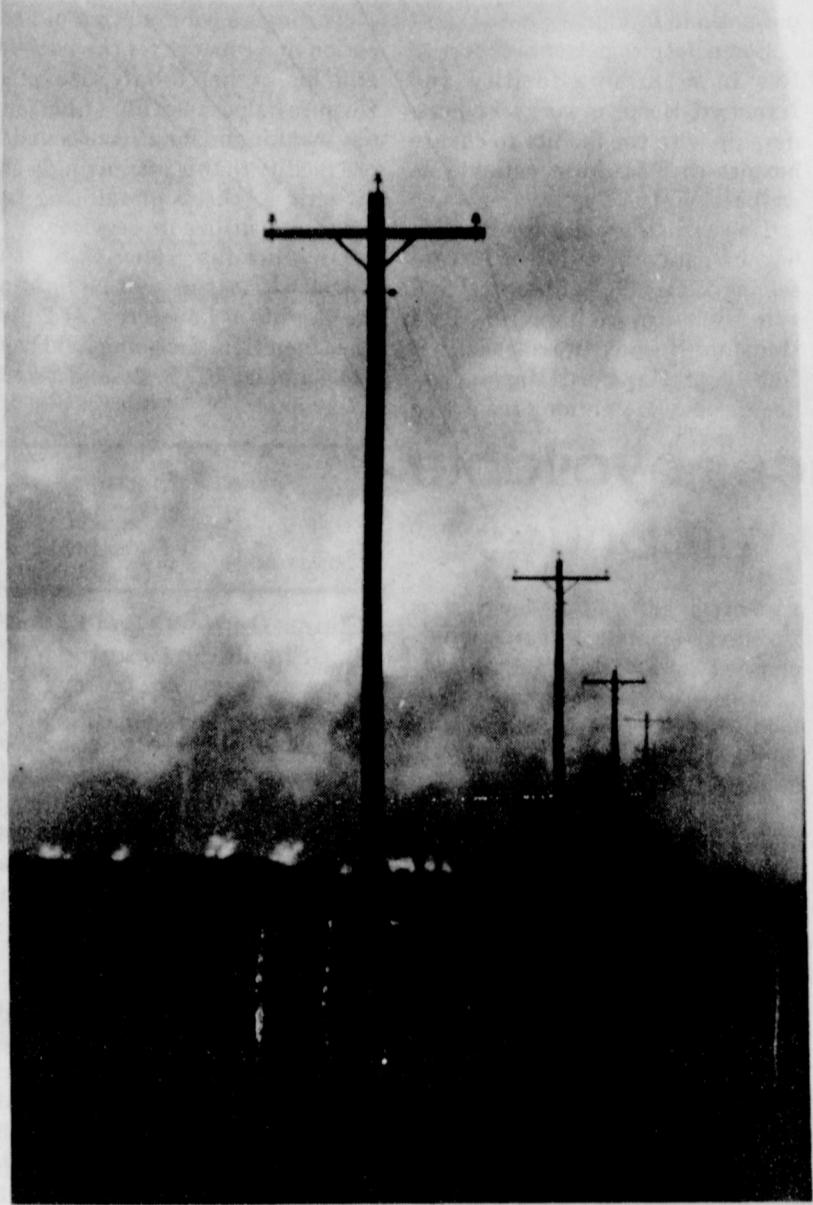
Gruver State Bank was also in the holiday spirit. Costumes at the bank ranged from scarecrows to clowns.

At the Spearman Junior High zombies and werewolves were seen roaming the halls.

Parties were held at the Gruver Elementary. In addition to the students dressing in costumes, activities included games, spooky snacks and witches brew.

On Saturday, the traditional trick or treating festivities were held in the county. Ghosts and goblins even trick or treated at the Hansford Manor. After the goblins made their rounds, they attended Halloween Carnivals.

The Gruver Halloween Carnival, sponsored by the PTA, was held at the Gruver Livestock Barn. Activities at the carnival ranged from getting "hitched by the witch"



The fire rages on as Gruver firemen try to put out this blaze that occurred north of Gruver on Wednesday, Oct. 27.

CRP fires reported in county

by Angela Jones
Editor

Hansford County reported two CRP grass fires within two days of each other last week.

The first fire occurred on Wednesday, Oct. 27. The Gruver Volunteer Fire Department received the call at 6:39 p.m. They responded to a fire located three miles north on Highway 136 and a half a mile west on a county road.

According to Fire Chief Sam Gruver, five units rolled on the fire with 16 firefighters. Mutual aid for a water tanker was requested from Spearman. The firefighters fought the blaze until 9 p.m.

Gruver reported that the fire burned between 100 and 150 acres, but no other damage was reported. The cause of the fire has not yet been determined.

The second fire occurred on the afternoon of Thursday, Oct. 28.

Spearman Volunteer Firefighter Bret Burgin reported that a 1975 white freightliner was traveling

Fire cont. pg. 12

Seminar focuses on economic growth

Don Taylor of the Small Business Development Center conducted an economic development seminar Tuesday, October 26 at the First State Bank Hospitality Room. Twenty-one area residents attended the meeting which outlined the items small communities should focus on when looking to economic development.

During the meeting a survey was filled out by those in attendance. Opinions were asked on the survey concerning Hansford County's most important strengths, weaknesses, and what the county needs to do to build on the strengths and minimize its weaknesses.

The results of the survey were compiled and the most common opinions as to the strengths of the county were: (1) Strong agricultural community. (2) Better medi-

cal facilities than many small towns. (3) School system. (4) People committed to saving our way of life. (5) Safe, healthy environment. (6) Palo Duro Lake. (7) Strong financial institutions. (8) Churches. (9) Work-

ing together makes things happen like the new community center. Weaknesses were listed as (1) utilities. (2) Change of population make-

Seminar cont. pg. 12

Gruver FHA to sponsor blood drive

The Future Homemakers of America are sponsoring a Blood Drive in conjunction with the Coffee Memorial Blood Center of Amarillo on Tuesday, Nov. 9, from 9 a.m. to 3 p.m. at the Gruver High School Library.

According to the release, those donating not only give the "Gift of Life", they receive cookies, juice and a "Kiss Me" sticker.

In a blood drive recently held in

Spearman, 46 people donated the "Gift of Life". This drive was held on October 27 and was sponsored by the Spearman High School and Coffee Memorial Blood Center.

For those people interested in donating blood in Gruver, here is some important information. Donors must weigh at least 110 pounds and be in good health. It is recommended that you eat a meal before donating, preferably one low in fats. Fasting is not recommended.



The Gruver Halloween Carnival Queen for 1993 is freshman Scott Stedje. Stedje is escorted by Lexy Spivey.

H.C. Hospital District names Nov. Employee of the Month

Hansford County Hospital District has selected Charla Roberts as the employee of the month for November. Charla is a life-time resident of Spearman. Charla's parents are James and Mae Hargis, formerly of Spearman. The Hargises now live in Henrietta, Texas.



HCHD Administrator Anne Snow (left) with employee of the month for November, Charla Roberts.

Charla received her LVN at Frank Phillips College. She continued her education and graduated from Amarillo College with an RN Associate Degree.

Charla is married to Larry Roberts. They have a 20 year-old son, Clint, who resides in Spearman. Their 27 year-old daughter, Christa is in nursing school in Liberal, Kansas.

Charla has worked at Hansford County Hospital District for fourteen years. She was promoted to Quality Assurance Director for the District on October 11, 1993.

Some of Charla's pastimes include: collecting quilts, butterflies, and Coca Cola memorabilia. Charla is an avid movie fan and when not working, "Granna" is busy making things for her new grand baby, who will be arriving in February. Hansford County Hospital District is very proud of Charla and her accomplishments. She is doing a fine job in her new position. Come by and congratulate her.



Children from Stepping Stones got everyone in the Halloween spirit when they dressed in their costumes and visited the residents of the Hansford Manor.

It's Your Turn

I wonder if people really care about the leash law in Gruver! Today is my youngest daughter's second birthday, and we went to the Gruver Park with her three-year-old sister. The three-year-old went down the slide and slid in dog poop without me noticing and then proceeded to go down again getting poop all over her clothes!!! (Fun city for all mothers!)

Then my two-year old went through the tunnel and found poop the size of Mt. St. Helen.

Have a heart people!! Keep your dogs on leashes or in their yards. City parks ain't for your dogs. Think about your children or grandchildren.

MAD MOM

Hansford Happenings

The Gladiola Flower Club will hold the Annual Home Tour Sunday, Dec. 5, from 2 to 5 p.m. Five homes are to be featured.

Extension Homemakers membership tea will be held from 3 to 4 p.m. on Sunday, Nov. 7th in the clubroom on Bernice. Everyone is welcome to attend and find out about the organization. Dress casual.

The Gruver gifted and talented students in Mr. Mayhew's class are arranging a Veteran's Day program on Nov. 11 at 2 p.m. in the auditorium.

The Gruver High School Junior Class will sponsor the Second Annual Baked Potatoes on Broadway, Thursday, Nov. 11, at 7 p.m. Tickets will cost \$5 and may be purchased from any junior. The melo-drama "Murder Most Fowl" will be presented after the meal. Get your tickets early.

Eck Spahich of Borger, a native of Bosnia, will speak on the country's conflict at Varsity Gym in Spearman at 10 a.m. on Thursday, Nov. 11.

Angie Mitchell, Christian counselor and conference and seminar speaker will be speaking in Gruver Wednesday, November 10th from 12 noon to 1:30 p.m. at the Golden Age Center. The event is sponsored by the Gruver Christian Women's Fellowship.

The Spearman FFA is holding their annual fruit sale from November 1 - November 15th. All FFA members are selling the fruit. There will be no orders after the 15th.



First State Bank employees were all decked out in their costumes when they showed up at the Spearman Junior High to judge. Rhonda North and Irene Baker show-off their costumes as they judge slogans for the War Against Drugs program.

Chamber Chatter

by Cindy Blackman
Chamber Manager

November events calendar

- 5 - Friday: Coffee Time, 10 - 11 a.m., Attic Antiques.
- 10 - Wednesday: Retail Merchants, 7:30 a.m., Palo Duro Cafe; Women's Division Executive Board, lunch at the Chamber office.
- 11 - Thursday: Board of Directors Meeting, lunch at the Chamber office; Highway Clean-up, 5 p.m.
- 12 - Friday: Coffee Time, 10 - 11 a.m.; P.A.C.E. meeting in Amarillo
- 13 - Saturday: Women's Division Conference in Borger
- 15 - Monday: Leadership Program in Pampa
- 16 - Tuesday: Beltone Hearing Aid, 1:30 - 3 p.m.
- 17 - Wednesday: Women's Division regular meeting, noon at Palo Duro Cafe; Defensive Driving Course
- 18 - Thursday: Defensive Driving Course
- 19 - Friday: Coffee Time, 10 - 11 a.m.
- 20 - Saturday: Women's Division Style how, 10:30 a.m., Catholic church Fellowship Hall
- 25 - Thursday: Thanksgiving Day
- 26 - Friday: Office Closed!
- 27 - Saturday: First Christmas draw, Santa Claus in town in front of chamber office.

Changes in income, resources may affect SSI

If you are receiving Supplemental Security Income (SSI) benefits, your benefits and your eligibility for SSI may be affected by changes in the amount of your monthly income, your living arrangements, and in your resources (such as bank accounts, houses, or cars). A change in any of these items could make your SSI payments go down.

Under the SSI program, income includes cash, checks, and other things that you get that can be used for food, clothing, or shelter. Changes in income include changes in your spouse's or child's income. And if a child who receives SSI starts or stops working, or is age 18-21 and starts or stops attending school, those changes need to be reported to Social Security, too.

Resources include the things you own. Changes to your resources commonly include changes in the value of bank accounts, stocks or bonds, certificates of deposit, or Christmas club accounts. You also need to report if you, your spouse, or your child buy, sell, or become the owner of any real estate, a car, or personal property.

If someone moves into or out of

your home, if someone who lives with you dies, if you or someone who lives with you has a baby, if you start living in someone else's home, if you move out of someone else's home, your living arrangements may have changed and this must be reported to Social Security.

You should report changes in any of these circumstances to Social Security within 10 days after the month in which the change occurs. But, the change usually will not affect your check for the first 2 months after the event. There are penalties for not reporting or changes or for making false statements about changes in your income or resources. In addition, if you have received an overpayment, you will have to pay it back.

You can report changes by telephone either to the local Social Security office 806/669-1010 or by calling the toll-free number 1-800-772-1211.

The Pampa Social Security offices located at 125 S. Gillespie. Office hours are 9:00 a.m. until 4:00 p.m. Monday through Friday except national holidays.

Department of Agriculture reorganization act of 1993

A Farm Service Agency (FSA) will be established through the collocation of ASCS, FCIC, and programs administered by FmHA except for the rural development program. The FSA will carry out programs relating to:

- * Price and income support and other related programs
- * Supervision of the FCIC
- * Agricultural credit programs, formerly assigned to FmHA, and other lending programs for persons engaged in the production of agriculture.

Not included in the function of the Farm Service Agency are Conservation Programs (ACP, CRP, ECP, and etc.) which are to be assigned to the Natural Resources

Conservation Service (Soil Conservation Service-SCS).

* ACP approval authority will be taken away from a producer elected county committee.

In each county or area the Secretary may establish a county or area committee in which activities of the Farm Service Agency are carried out. The committee will consist of five members who are family representatives of the farmers in the county or area. Three of the members shall be elected by the farmers in the county or area under such procedures as the Secretary may prescribe. Two members shall be appointed by the Secretary. The members shall serve for terms not to exceed three years.

Quality Firewood

Seasoned Oak, Hickory, & Mesquite

Also slab firewood

\$100 to \$165 per cord

Delivery Available

Quality Construction

857-2035

Now Growingoinsettias for the Christmas Season

Florist Quality at Wholesale Prices

Watch for our Open House coming soon

D&C Greemouse

2 miles West on Gruver Hwy • 659-517 • Owner, Danny Howell

Perryton, Tx.

HOLIDAY SALE

Shop early and use our terrific Lay-A-Way Plan. And for those really hard-to-shop-for people, try a Gibson's Gift Certificate.

Pre-Holiday Sale 8 page tab now in effect.

If you didn't get your copy in the mail, come by the store & pick up one for great savings!

19.88 Reg. 29.99
14" Santa Kit

Santa Kit - "Timeless Christmas Treasures" is a new collection of beautiful keepsake Santa figures in a kit. Includes everything you need except fabric. 22" Santa Kit...29.88

2/\$7

Folgers Custom Roast Coffee - 14.5 oz. Limit 2 per customer.

\$1

Pennzoil Motor Oil - Your choice of 5W30, 10W10 or 10W40. 1 Quart.

2.97

Baker's Secret Baking - Your choice of a medium cookie sheet, 12-cup muffin pan, oblong pan or large loaf pan.

GREAT GIFT LAYAWAYS AT GIBSON'S

8.97 Super Value!

Proctor Silex Appliances - Your choice of a 2-slice toaster, can opener or a 3-speed mixer. Appliances you use everyday at a super low price.

Gibson's Toyland is now open with Kenner Great Savings!

3.99 Reg. 4.99 to 5.99

Collectible Christmas Cards - Beautiful cards with a special bonus in every pack. Each set of 16 or 18 cards contains a special collectible. Our Reg. 6.99 Christmas Cards...4.99

Prices Good Through November 9, 1993 in Perryton

November proclaimed National Hospice Month

Hansford Hospice joins with other hospice programs around the country in celebrating this "special kind of caring" for those on life's final journey. Patients and families are welcomed into the program and treated with dignity, respect and compassion, and provided comfort when it is most desperately needed.

Hospice care is distinguished from traditional medical care in two important ways. Hospice provides care that relieves pain and controls disease symptoms, but does not seek to provide a cure.

Hospice care also differs in the approach to patient care. Each patient at Hansford Hospice is served by a team of professionals. Medical staff, social workers, pastoral counselors, bereavement counselors and volunteers all coordinate their efforts to provide comprehensive care to the patient and his or her family. The entire team is specially trained to help guide the patient and family through the medical, spiritual and social needs of the terminal disease process.

Hansford Hospice serves the

majority of patients through the Home Care portion of the program. Most patients feel more comfortable in their own homes surrounded by their loved ones.

The Hospice team is there to support the family as they care for the terminally ill patient. The patient is visited in their home by a nurse as often as necessary to monitor the patient's condition and the family has the security of knowing a Hospice nurse is on call 24 hours a day. Home health aides, social and spiritual services and volunteer help are also available to the patient and family.

Some hospice patients choose to live in a nursing facility and Hansford Hospice works in partnership with the facility to ensure hospice care to those patients as well.

However, there are times when hospice patients need an acute care setting to provide pain control and symptom management and Hansford Hospice provides such a facility at Hansford Hospital in Spearman. The patient room and

the family room are both beautifully decorated to provide a relaxed home atmosphere where family and friends can be near. The fences courtyard and gazebo provide an outdoor area for activities or quiet reflection.

The same team of Hospice professionals that work with patients and their families at home, care for the hospice patients in the hospital care facility. Once the patient's pain and symptoms are controlled, they are able to return to their homes with the help of the Hospice Home Care Team.

Through a combination of dedication and concern for the patients and his or her family, Hansford Hospice helps make life's final journey meaningful for all concerned. It is a facility that is increasingly significant to the communities and those who utilize its services.

On Sunday, Nov. 28, the Hansford Hospice will be lighting the "Lights of Love Tree" at 2 p.m. The Open House is being held from 2 to 4 p.m. at 707 S. Roland Street, Spearman.



Gruver and Spearman City Mayors sign proclamation proclaiming November National Hospice Month

Spearman Mayor Burl Buchanan and Gruver Mayor Pro-tem Buster Davis have joined with President Clinton in proclaiming November as National Hospice Month.

Every community should recognize and encourage the dedicated men and women who provide hospice care. Hospice enables terminally ill patients to face natural death without feeling alone or unprepared.

Hospice care remains a positive, viable alternative for terminally ill individuals and their loved ones.

FmHA announces available loan funds for minorities

The Farmers Home Administration (FmHA) has loan funds to help members of socially disadvantaged groups, including minorities, buy land for farming or operate farms in Hansford, Ochiltree and Lipscomb Counties which the Perryton FmHA Office serves.

Under this program enacted by Congress, socially disadvantaged populations groups are Hispanics, Native Americans, African Americans, Asians and Pacific Islanders.

FmHA tries to find members of those groups who are interested in farming and can qualify for an FmHA farm ownership loan. The agency can sell or lease to those

who are eligible a farm held in its inventory or make a loan for purchase of land on the open market.

FmHA can also provide other loan assistance, including operating loans, and advice, if needed to help the borrower get started.

People who think they may be eligible, whether they already are in farming or would like to become farmers, are urged to contact the Farmers Home Administration County Office in their area. The FmHA Office serving Hansford, Ochiltree and Lipscomb counties is located at 800 N. Main, Suite B, Perryton Texas.

Karen's Kozy Korner

by Karen Babitzka
Extension Agent

Claims On New Food Labels Should Be Genuine

Consumers can believe the claims on food packages. Shoppers will be able to believe the descriptor terms that say a food is "low in fat" or the health claims that link a certain nutrient to a specific disease because government regulations now define and regulate the terms and claims.

Products Easier To Compare With New Labels
With the new food labeling, products will be easier to compare because serving sizes will be more comparable for similar food products. For the first time, virtually all processed and packaged products will have to contain nutrition information. The information on the la-

bel will reflect an average serving in amounts customarily consumed. Since the serving size for each product is defined in the regulations, product comparisons will be easier and more meaningful than previously.

Using The Daily Values On New Food Labels

Consumers can take some simple steps to effectively use the new label without having to learn definitions or complex nutrition concepts.

Daily Values on the new labeling serves as a reference for dietary guidance. They help consumers understand how much of a nutrient they should eat at a minimum (for fiber or calcium) or maximum (fat and cholesterol). The Daily Values are listed for people who eat approxi-

mately 2000 calories a day (many older adults, children and sedentary women) or 2500 calories a day (active men, teenage boys and very active women).

By using the % (percent) Daily Value, a person can quickly determine if a product is high or low in a nutrient.

The % Daily Value Column can be used to make an easy comparison between one product and another. If you want to lower the fat in your diet, you can compare products and select the ones with the lower percentage.

The % Daily Value also can be used to make an easy comparison between one product and another. If you want to lower the fat in your diet, you can compare products and select the ones with the lower percentage.

The % Daily Value also can be used to make dietary trade-offs with other foods throughout the day. This means you don't have to deprive yourself of a favorite food that might be high in fat, if you watch what else you eat the rest of the day.

By consulting the Daily Values, you can determine how much (or how little) of the major nutrients you should eat on a daily basis.

People use labels in many different ways. Some only want to make quick comparisons and others want to calculate their nutrient intake. As the new labels appear in your grocery, the Extension Service will provide information to help you understand.

Coffee Time

This column will appear weekly and is done in conjunction with the Spearman Chamber of Commerce.

Attic Antiques is owned and operated by partners Rita and Hazel Lesley. They opened the store in September of 1989 and it is located at 401 Davis Street. Their store offers a good selection of antiques, collectibles, depression glass, decorative glass, furniture and jewelry. Attic Antiques is an active member of the Spearman Retail Merchants Association and the Spearman Chamber of Commerce.

During the holiday season, Attic Antiques will be offering a store-wide discount of 10% off all merchandise in the store through November and December.

If you have a love for collectibles,

this is the store for you. They also have a few antique toys and dolls. Antique jewelry seems to be in fashion so stop by and see their selections.

Rita and Hazel want to invite you to come by on Friday, November 5, from 10:00 - 11:00 a.m. for Coffee Time and register for the door prize to be given away at that time. They will have coffee and plenty for you to see. Remember, it's never too late to start your Christmas shopping and Attic Antiques has the gift for that special person on your list.

At the movies...

Showing at the Lyric Theatre in Spearman is "The Good Son" on screen #1 at 7:45 p.m. and held over on screen #2 at 7:30 p.m. is "Undercover Blues".

"The Good Son" stars Macaulay Culkin. It co-stars Elijah Wood.

Culkin is a "The Bad Seed" in this adult thriller about an evil-minded child. Wood plays Culkin's cousin who suspects Culkin's character isn't as innocent as he appears.

"Undercover Blues" stars Kathleen Turner and Dennis

Quaid. It is directed by Herb Ross.

This action packed comedy is a show you won't want to miss. Turner and Quaid are a pair of married spies on maternity leave in New Orleans. Their vacation soon turns to work when their boss shows up with evidence of an international terrorist ring, a stolen arms shipment and more danger than you can shake a diaper pin at.

One is an undercover agent, one is a martial arts specialist and one needs changed. This is a must see espionage comedy.

At The Lyric Theatre...

Friday, Nov. 5 - Tuesday, Nov. 9

Bargain Nights Mon. & Tue. All Seats \$3
Closed Wednesday & Thursday

SCREEN 1 • 7:45 PM SCREEN 2 • 7:30 PM

The Good Son

Undercover Blues

113 Main, Spearman



Christmas...The perfect time for a portrait



Excellence in Portraiture
Since 1910

1222 W. 10th • Amarillo
806-373-1523

JG's & Celebrate

Are having an

Early Bird Sale



Tuesday, November 9th

7:00 - 9:00 a.m. 30% OFF

9:00 - 11:00 a.m. 25% OFF

11:00 - 6:00 p.m. 20% OFF

SHOP EARLY FOR CHRISTMAS...

JG's
306 Hancock
Spearman, Tx.



Celebrate
203 Main
Spearman, Tx.

The Hansford County Reporter-Statesman

"Serving All Of Hansford County"
USPS 509660
213 Main, Box 458, 659-3434
Spearman, TX 79081
Published Weekly at
213 Main, Spearman, Texas
Owned and Operated by:
Texas Independent Newspapers, Inc.
16607 Blanco Road #707
San Antonio, TX 78232
(210) 492-8907

Second Class postage paid at Spearman, Texas 79081.

Any erroneous reflection upon the character of any person or firm appearing in these pages will be gladly and promptly corrected upon being brought to the attention of the management.

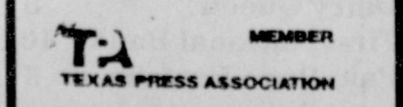
Publisher - Molly Zimmerman
Editor - Angela Jones
Bookkeeper - Sheila LaRochelle
Ad Rep - Debra McNeely

Subscription Rate: Hansford County, \$19.95; out of county, \$24.95 annually.

Postmaster: Send address changes to Hansford County Reporter-Statesman, Box 458, Spearman, TX 79081.

The publisher reserves the right to revise or reject at its option any advertisement which it deems objectionable, either in subject or phrasing, or which it may deem detrimental to its business.

Advertising and Story Deadlines: Tuesday, 12:00 p.m.



H.C. Hospital District names Nov. Employee of the Month

Hansford County Hospital District has selected Charla Roberts as the employee of the month for November. Charla is a life-time resident of Spearman. Charla's parents are James and Mae Hargis, formerly of Spearman. The Hargises now live in Henrietta, Texas.



HCHD Administrator Anne Snow (left) with employee of the month for November, Charla Roberts.

Charla received her LVN at Frank Phillips College. She continued her education and graduated from Amarillo College with an RN Associate Degree.

Charla is married to Larry Roberts. They have a 20 year-old son, Clint, who resides in Spearman. Their 27 year-old daughter, Christa is in nursing school in Liberal, Kansas.

Charla has worked at Hansford County Hospital District for fourteen years. She was promoted to Quality Assurance Director for the District on October 11, 1993.

Some of Charla's pastimes include: collecting quilts, butterflies, and Coca Cola memorabilia. Charla is an avid movie fan and when not working, "Granna" is busy making things for her new grand baby, who will be arriving in February. Hansford County Hospital District is very proud of Charla and her accomplishments. She is doing a fine job in her new position. Come by and congratulate her.

Chamber Chatter

by Cindy Blackman
Chamber Manager

November events calendar

- 5 - Friday: Coffee Time, 10 - 11 a.m., Attic Antiques.
- 10 - Wednesday: Retail Merchants, 7:30 a.m., Palo Duro Cafe; Women's Division Executive Board, lunch at the Chamber office.
- 11 - Thursday: Board of Directors Meeting, lunch at the Chamber office; Highway Clean-up, 5 p.m.
- 12 - Friday: Coffee Time, 10 - 11 a.m.; P.A.C.E. meeting in Amarillo
- 13 - Saturday: Women's Division Conference in Borger
- 15 - Monday: Leadership Program in Pampa
- 16 - Tuesday: Beltone Hearing Aid, 1:30 - 3 p.m.
- 17 - Wednesday: Women's Division regular meeting, noon at Palo Duro Cafe; Defensive Driving Course
- 18 - Thursday: Defensive Driving Course
- 19 - Friday: Coffee Time, 10 - 11 a.m.
- 20 - Saturday: Women's Division Style how, 10:30 a.m., Catholic church Fellowship Hall
- 25 - Thursday: Thanksgiving Day
- 26 - Friday: Office Closed!
- 27 - Saturday: First Christmas draw, Santa Claus in town in front chamber office.

Changes in income, resources may affect SSI

If you are receiving Supplemental Security Income (SSI) benefits, your benefits and your eligibility for SSI may be affected by changes in the amount of your monthly income, your living arrangements, and in your resources (such as bank accounts, houses, or cars). A change in any of these items could make your SSI payments go down.

Under the SSI program, income includes cash, checks, and other things that you get that can be used for food, clothing, or shelter. Changes in income include changes in your spouse's or child's income. And if a child who receives SSI starts or stops working, or is age 18-21 and starts or stops attending school, those changes need to be reported to Social Security, too.

Resources include the things you own. Changes to your resources commonly include changes in the value of bank accounts, stocks or bonds, certificates of deposit, or Christmas club accounts. You also need to report if you, your spouse, or your child buy, sell, or become the owner of any real estate, a car, or personal property.

If someone moves into or out of

your home, if someone who lives with you dies, if you or someone who lives with you has a baby, if you start living in someone else's home or if you move out of someone else's home, your living arrangements may have changed and this must be reported to Social Security.

You should report changes in any of these circumstances to Social Security within 10 days after the month in which the change occurs. But, the change usually will not affect your check for the first 2 months after the event. There are penalties for not reporting or changes or for making false statements about changes in your income or resources. In addition, if you have received an overpayment, you will have to pay it back.

You can report changes by telephone either to the local Social Security office 806/669-1010 or by calling the toll-free number 1-800-772-1211.

The Pampa Social Security offices located at 125 S. Gillespie. Office hours are 9:00 a.m. until 4:00 p.m. Monday through Friday except national holidays.



Children from Stepping Stones got everyone in the Halloween spirit when they dressed in their costumes and visited the residents of the Hansford Manor.

Hansford Happenings

The Gladiola Flower Club will hold the Annual Home Tour Sunday, Dec. 5, from 2 to 5 p.m. Five homes are to be featured.

Extension Homemakers membership tea will be held from 3 to 4 p.m. on Sunday, Nov. 7th in the clubroom on Bemice. Everyone is welcome to attend and find out about the organization. Dress casual.

The Gruver gifted and talented students in Mr. Mayhew's class are arranging a Veteran's Day program on Nov. 11 at 2 p.m. in the auditorium.

The Gruver High School Junior Class will sponsor the Second Annual Baked Potatoes on Broadway, Thursday, Nov. 11, at 7 p.m. Tickets will cost \$5 and may be purchased from any Junior. The melo-drama "Murder Most Fowl" will be presented after the meal. Get your tickets early.

Eck Spahich of Borger, a native of Bosnia, will speak on the country's conflict at Varsity Gym in Spearman at 10 a.m. on Thursday, Nov. 11.

Angie Mitchell, Christian counselor and conference and seminar speaker will be speaking in Gruver Wednesday, November 10th from 12 noon to 1:30 p.m. at the Golden Age Center. The event is sponsored by the Gruver Christian Women's Fellowship.

The Spearman FFA is holding their annual fruit sale from November 1 - November 15th. All FFA members are selling the fruit. There will be no orders after the 15th.

Department of Agriculture reorganization act of 1993

A Farm Service Agency (FSA) will be established through the collocation of ASCS, FCIC, and programs administered by FmHA except for the rural development program. The FSA will carry out programs relating to:

- * Price and income support and other related programs
- * Supervision of the FCIC
- * Agricultural credit programs, formerly assigned to FmHA, and other lending programs for persons engaged in the production of agriculture.

Not included in the function of the Farm Service Agency are Conservation Programs (ACP, CRP, ECP, and etc.) which are to be assigned to the Natural Resources

Conservation Service (Soil Conservation Service-SCS).

* ACP approval authority will be taken away from a producer elected county committee.

In each county or area the Secretary may establish a county or area committee in which activities of the Farm Service Agency are carried out. The committee will consist of five members who are family representatives of the farmers in the county or area. Three of the members shall be elected by the farmers in the county or area under such procedures as the Secretary may prescribe. Two members shall be appointed by the Secretary. The members shall serve for terms not to exceed three years.

It's Your Turn

I wonder if people really care about the leash law in Gruver! Today is my youngest daughter's second birthday, and we went to the Gruver Park with her three-year-old sister. The three-year-old went down the slide and slid in dog poop without me noticing and then proceeded to go down again getting poop all over her clothes!!! (Fun city for all mothers!)

Then my two-year old went through the tunnel and found poop the size of Mt. St. Helen.

Have a heart people!! Keep your dogs on leashes or in their yards. City parks ain't for your dogs. Think about your children or grandchildren.

MAD MOM



First State Bank employees were all decked out in their costumes when they showed up at the Spearman Junior High to judge. Rhonda North and Irene Baker show-off their costumes as they judge slogans for the War Against Drugs program.

Quality Firewood

Seasoned Oak, Hickory, & Mesquite

Also slab firewood

\$100 to \$165 per cord

Delivery Available

Quality Construction

857-2035

Now Growing poinsettias for the Christmas Season

Florist Quality at Wholesale Prices

Watch for our Open House coming soon

D&C Greemouse

2 miles West on Gruver Hwy • 659-517 • Owner, Danny Howell

Perryton, Tx.

HOLIDAY SALE

Shop early and use our terrific Lay-A-Way Plan. And for those really hard-to-shop for people, try a Gibson's Gift Certificate.

Pre-Holiday Sale 8 page tab now in effect.

If you didn't get your copy in the mail, come by the store & pick up one for great savings!

19.88 Reg. 29.99
14.5 oz. Limit 2 per customer.

2/\$7

2.97

GREAT GIFT LAYAWAYS AT GIBSON'S

8.97 Super Value!

3.99 Reg. 4.99 to 5.99

Proctor Silex Appliances: Your choice of a 2-slice toaster, can opener or a 3-speed mixer. Appliances you use everyday at a super low price.

Collectible Christmas Cards: Beautiful cards with a special bonus in every pack. Each set of 16 to 18 cards contains a special collectible. Our Reg. 6.99 Christmas Cards...4.99

Prices Good Through November 9, 1993 in Perryton

November proclaimed National Hospice Month

Hansford Hospice joins with other hospice programs around the country in celebrating this "special kind of caring" for those on life's final journey. Patients and families are welcomed into the program and treated with dignity, respect and compassion, and provided comfort when it is most desperately needed.

Hospice care is distinguished from traditional medical care in two important ways. Hospice provides care that relieves pain and controls disease symptoms, but does not seek to provide a cure.

Hospice care also differs in the approach to patient care. Each patient at Hansford Hospice is served by a team of professionals. Medical staff, social workers, pastoral counselors, bereavement counselors and volunteers all coordinate their efforts to provide comprehensive care to the patient and his or her family. The entire team is specially trained to help guide the patient and family through the medical, spiritual and social needs of the terminal disease process.

Hansford Hospice serves the

majority of patients through the Home Care portion of the program. Most patients feel more comfortable in their own homes surrounded by their loved ones.

The Hospice team is there to support the family as they care for the terminally ill patient. The patient is visited in their home by a nurse as often as necessary to monitor the patient's condition and the family has the security of knowing a Hospice nurse is on call 24 hours a day. Home health aides, social and spiritual services and volunteer help are also available to the patient and family.

Some hospice patients choose to live in a nursing facility and Hansford Hospice works in partnership with the facility to ensure hospice care to those patients as well.

However, there are times when hospice patients need an acute care setting to provide pain control and symptom management and Hansford Hospice provides such a facility at Hansford Hospital in Spearman. The patient room and

the family room are both beautifully decorated to provide a relaxed home atmosphere where family and friends can be near. The fenced courtyard and gazebo provide an outdoor area for activities or quiet reflection.

The same team of Hospice professionals that work with patients and their families at home, care for the hospice patients in the hospital care facility. Once the patient's pain and symptoms are controlled, they are able to return to their homes with the help of the Hospice Home Care Team.

Through a combination of dedication and concern for the patients and his or her family, Hansford Hospice helps make life's final journey meaningful for all concerned. It is a facility that is increasingly significant to the communities and those who utilize its services.

On Sunday, Nov. 28, the Hansford Hospice will be lighting the "Lights of Love Tree" at 2 p.m. The Open House is being held from 2 to 4 p.m. at 707 S. Roland Street, Spearman.



Gruver and Spearman City Mayors sign proclamation proclaiming November National Hospice Month

Spearman Mayor Burl Buchanan and Gruver Mayor Pro-tem Buster Davis have joined with President Clinton in proclaiming November as National Hospice Month.

Every community should recognize and encourage the dedicated men and women who provide hospice care. Hospice enables terminally ill patients to face natural death without feeling alone or unprepared.

Hospice care remains a positive, viable alternative for terminally ill individuals and their loved ones.

FmHA announces available loan funds for minorities

The Farmers Home Administration (FmHA) has loan funds to help members of socially disadvantaged groups, including minorities, buy land for farming or operate farms in Hansford, Ochiltree and Lipscomb Counties which the Perryton FmHA Office serves.

Under this program enacted by Congress, socially disadvantaged populations groups are Hispanics, Native Americans, African Americans, Asians and Pacific Islanders.

FmHA tries to find members of those groups who are interested in farming and can qualify for an FmHA farm ownership loan. The agency can sell or lease to those

who are eligible a farm held in its inventory or make a loan for purchase of land on the open market.

FmHA can also provide other loan assistance, including operating loans, and advice, if needed to help the borrower get started.

People who think they may be eligible, whether they already are in farming or would like to become farmers, are urged to contact the Farmers Home Administration County Office in their area. The FmHA Office serving Hansford, Ochiltree and Lipscomb counties is located at 800 N. Main, Suite B, Perryton Texas.

Karen's Kozy Korner

by Karen Babitzke
Extension Agent

Claims On New Food Labels Should Be Genuine

Consumers can believe the claims on food packages. Shoppers will be able to believe the descriptor terms that say a food is "low in fat" or the health claims that link a certain nutrient to a specific disease because government regulations now define and regulate the terms and claims.

Products Easier To Compare With New Labels

With the new food labeling, products will be easier to compare because serving sizes will be more comparable for similar food products. For the first time, virtually all processed and packaged products will have to contain nutrition information. The information on the la-

bel will reflect an average serving in amounts customarily consumed. Since the serving size for each product is defined in the regulations, product comparisons will be easier and more meaningful than previously.

Using The Daily Values On New Food Labels

Consumers can take some simple steps to effectively use the new label without having to learn definitions or complex nutrition concepts.

Daily Values on the new labeling serves as a reference for dietary guidance. They help consumers understand how much of a nutrient they should eat at a minimum (for fiber or calcium) or maximum (fat and cholesterol). The Daily Values are listed for people who eat approxi-

mately 2000 calories a day (many older adults, children and sedentary women) or 2500 calories a day (active men, teenage boys and very active women).

By using the % (percent) Daily Value, a person can quickly determine if a product is high or low in a nutrient.

The % Daily Value Column can be used to make an easy comparison between one product and another. If you want to lower the fat in your diet, you can compare products and select the ones with the lower percentage.

The % Daily Value also can be used to make an easy comparison between one product and another. If you want to lower the fat in your diet, you can compare products and select the ones with the lower percentage.

The % Daily Value also can be used to make dietary trade-offs with other foods throughout the day. This means you don't have to deprive yourself of a favorite food that might be high in fat, if you watch what else you eat the rest of the day.

By consulting the Daily Values, you can determine how much (or how little) of the major nutrients you should eat on a daily basis.

People use labels in many different ways. Some only want to make quick comparisons and others want to calculate their nutrient intake. As the new labels appear in your grocery, the Extension Service will provide information to help you understand.

Coffee Time

This column will appear weekly and is done in conjunction with the Spearman Chamber of Commerce.

Attic Antiques is owned and operated by partners Rita and Hazel Lesley. They opened the store in September of 1989 and it is located at 411 Davis Street. Their store offers a good selection of antiques, collectibles, depression glass, decorative glass, furniture and jewelry. Attic antiques is an active member of the Spearman Retail Merchants Association and the Spearman Chamber of Commerce.

During the holiday season, Attic Antiques will be offering a store-wide discount of 10% off all merchandise in the store through November and December.

If you have a love for collectibles,

this is the store for you. They also have a few antique toys and dolls. Antique jewelry seems to be in fashion so stop by and see their selections.

Rita and Hazel want to invite you to come by on Friday, November 5, from 10:00 - 11:00 a.m. for Coffee Time and register for the door prize to be given away at that time. They will have coffee and plenty for you to see. Remember, it's never too late to start your Christmas shopping and Attic Antiques has the gift for that special person on your list.

At the movies...

Showing at the Lyric Theatre in Spearman is "The Good Son" on screen #1 at 7:45 p.m. and held over on screen #2 at 7:30 p.m. is "Undercover Blues".

"The Good Son" stars Macaulay Culkin. It co-stars Elijah Wood. Culkin is a "The Bad Seed" in this adult thriller about an evil-minded child. Wood plays Culkin's cousin who suspects Culkin's character isn't as innocent as he appears.

"Undercover Blues" stars Kathleen Turner and Dennis

Quaid. It is directed by Herb Ross.

This action packed comedy is a show you won't want to miss. Turner and Quaid are a pair of married spies on maternity leave in New Orleans. Their vacation soon turns to work when their boss shows up with evidence of an international terrorist ring, a stolen arms shipment and more danger than you can shake a diaper pin at.

One is an undercover agent, one is a martial arts specialist and one needs changed. This is a must see espionage comedy.

At The Lyric Theatre...

Friday, Nov. 5 - Tuesday, Nov. 9

Bargain Nights Mon. & Tue. All Seats \$3
Closed Wednesday & Thursday

SCREEN 1 - 7:45 PM SCREEN 2 - 7:30 PM

The Good Son

Undercover Blues

113 Main, Spearman



Christmas...The perfect time for a portrait

GRAY'S
STUDIO

Excellence In Portraiture

Since 1910

1222 W. 10th • Amarillo
806-373-1523

JG's & Celebrate

Are having an

Early Bird Sale

Tuesday, November 9th

7:00 - 9:00 a.m. 30% OFF

9:00 - 11:00 a.m. 25% OFF

11:00 - 6:00 p.m. 20% OFF

SHOP EARLY FOR CHRISTMAS...

JG's

306 Hancock
Spearman, Tx.



Celebrate

203 Main
Spearman, Tx.

The Hansford County Reporter-Statesman

"Serving All Of Hansford County"

USPS 509660
213 Main, Box 458, 659-3434
Spearman, TX 79081
Published Weekly at
213 Main, Spearman, Texas
Owned and Operated by:
Texas Independent
Newspapers, Inc.
16607 Blanco Road #707
San Antonio, TX 78232
(210) 492-8907

Second Class postage paid at Spearman, Texas 79081.

Any erroneous reflection upon the character of any person or firm appearing in these pages will be gladly and promptly corrected upon being brought to the attention of the management.

Publisher - Molly Zimmerman
Editor - Angela Jones
Bookkeeper - Sheila LaRochelle
Ad Rep - Debra McNeely

Subscription Rate: Hansford County, \$19.95; out of county, \$24.95 annually.

Postmaster: Send address changes to Hansford County Reporter-Statesman, Box 458, Spearman, TX 79081.

The publisher reserves the right to revise or reject at its option any advertisement which it deems objectionable, either in subject or phraseology, or which it may deem detrimental to its business.

Advertising and Story Deadlines: Tuesday, 12:00 p.m.

MEMBER
TEXAS PRESS ASSOCIATION



Spearman I.S.D. second grade studying recycling

The Second Grade classes at Spearman Elementary have been studying recycling in Science. They have collected aluminum, newspapers and plastics.

On Thursday, City Manager Kelvin Knauf presented a video to the classes explaining what happens to recycled materials.

The classes then walked to the recycling center at the courthouse to deposit the material they had collected. Mr. Knauf explained the types of recycling bins and answered the students' questions.

Second grade teachers are Dixie Smith, Jackie Graham and Marsha Pipkin.



Spearman I.S.D. Second Graders toured the recycling facilities available to help in the National recycling efforts on Thursday, Oct. 28.

Among The Neighbors

by Helen Fisher

Sharron and David Hand went thru a harrowing experience weekend before last when they were returning from Lubbock and he suffered a heart attack.

They had gone to Lubbock where she attended a Service Advisory School on behalf of Gillaspie Auto and Tuck Center.

They were at Plainview on the return trip when he suffered chest pains, but decided to go on to Amarillo. By the time they reached Canyon, they realized his condition was serious. Their sons, Lance and Landon, both students at West Texas University, accompanied them to Northwest Texas Hospital.

David underwent angioplasty on Monday and recovered rapidly. He was able to return home on Friday where he is recuperating.

It is indefinite when he can resume his duties at Huber Company.

Friends of Wanda Smith are relieved that she has returned from several days at St. Anthony's hospital and her condition will not require surgery. She has a severely damaged heart and is being treated with medication.

Don, who has been with her constantly, is providing almost professional care.

Grace and Raymond Kirk spent a pleasant long week-end in Oklahoma City recently. They were guests of her son Roger and Joyce Davis.

Roger is the Director of Forestry for the State of Oklahoma.

June and Earl Spencer spoke, across the many miles, with their son, Jeff, Sunday evening. Jeff, a Specialist in Communication with the U.S. Infantry, is stationed at Ryaard, Saudi Arabia. Where he has been since, July.

His wife, Kris, also a Specialist with Communications, joined him in September. They are together and live in army barracks, not tents. He reported that the day time tem-

perature hovers between 125 and 130 degrees.

Their little son is being cared for in Germany until their return, which they hope to be in December.

Cecil and Ellen Reynolds are back after a 30 day stay in California. They headquartered in San Diego with her cousin Sammie and James McNulty, long ago residents of Spearman. They also visited many of Ellen's relatives in California.

The awful fires came within 30 miles of them and the smoke was most distressing.

They reached home on Saturday.

Making her very first visit to her grandparents and the Panhandle is little miss Sarah LeAnne McClellan, daughter of Bill and Sherry McClellan.

They are visiting his parents, Barbara and R.L. McClellan, and will be here several days.

The newest little McClellan, Sarah LeAnne, was born at Port Lavaca on October 4, weighing 8 lb., 12 oz.

She joins two brothers, Travis and Josh, and a sister Katheryn.

Her maternal grandparents are Patti and Jim Fitzpatrick, also of Port Lavaca.

She has one great-grandmother, Mrs. Mildred Daily, of Spearman.

Loyall Turner was rushed to High Plains Baptist Hospital last Tuesday after experiencing a rare emergency when a nasal artery ruptured and he was hemorrhaging.

He is back at home and expects to return to the North Plains Water District for work this Monday.

Sherrill and Bob Meek, accompanied by Bonnie and Mike Shrode and family attended the area High school band contest in Wichita Falls this past week end.

Bonnie and Sherrill's brother, Rich Driscoll, a Spearman High graduate, and now the band instructor at Seymour, had his band in contest.

The Seymour band had qualified to participate in the Area meet by virtue of having won a ONE rating the previous week-end at the Regional Contest. Only those bands with a ONE rating were eligible to enter this meet.

Sherrill, Bonnie, her daughter Kelly and children had also attended the regional meet at Wichita Falls.

Guests of the Dwayne Mitchells over the week-end were Shelley and Chris Bologue and Christian of Amarillo.

Christian, who is four, was enthusiastic in her experiences of "Trick or Treat", but no more so than her grandmother who escorted her.

Shelley and Chris both teach in Amarillo.

Margaret and Roscoe Nelson spent last week in Missouri. They stayed with her mother and sister at Greenridge. Roscoe's brother, Raymond, underwent major surgery on Tuesday at Sedalia and is still seriously ill.

They returned on Saturday.

MARY KAY
FACE TO FACE BEAUTY ADVICE™
Leann Gillaspie
Beauty Consultant
659-3889

Member of
the Principal Financial Group
The Principal / Eppler, Guerin & Turner, Inc.
Investment Bankers
Member - New York Stock Exchange
Robin J. Muir
Investment Counselor
1800 S. Washington, Suite 115
Amarillo, TX 79102-2687
(806) 373-8361
1-800-642-6009

Zombies, werewolves and apes were just a few of the species that roamed the halls of the Spearman Junior High on Friday, Oct. 29.



The winner of the sixth grade Drug Awareness poster contest was Christina Cenicerros (left). The honorable mentions were Danny Davila (center), Brandi Campbell (not pictured) and Sydney Woodington (right).



Ryan Hill (left) won the seventh grade Drug Awareness slogan contest. Those receiving honorable mention were (l/r) Yolanda Ortiz, Dan Kunselman and Mandy Vernon.



Rhonda Dunaway (left) won the eighth grade Drug Awareness slogan contest. Those receiving honorable mention were (l/r) Mac Butts, Nicholas Vinson and Teresa Gomez.

Hometown News

Frank G. Salgado, Jr.

October 21, 1993 (FHTNC) -- Coast Guard Fireman Apprentice Frank G. Salgado, Jr., son of Frank M. Salgado of Spearman, Texas, recently graduated from Coast Guard Recruit Training Center.

During the training cycle at Coast Guard Recruit Training Center, Cape May, N.J., students are taught general military subjects designed to prepare them for further academic and on-the-job training leading toward qualification in one of the Coast Guard's 26 occupational fields.

Studies also include first aid, seamanship, Coast Guard history and regulations, close order drill and damage control.

The 1990 graduate of Spearman High School joined the Coast Guard in July, 1993.

Myers - Stark announce engagement

Mr. and Mrs. Ben Myers of Albuquerque, New Mexico announce the engagement of their daughter Jeanie to Matthew Stark son of Mr. and Mrs. Randy Janzen of Spearman, and Gary Stark of Amarillo.

The couple will be married November 20, in Hill Chapel on the campus at West Texas A&M University in Canyon.

Jeanie, a junior at West Texas A&M, is an education major. Matthew, also a junior at West Texas A&M, is a nursing major.

The couple plan to reside in Canyon.

Cobb honored as outstanding author

Stan Cobb, local dentist, humorist, poet, publisher, author, artist and cowboy was honored Wednesday, Nov. 1st, at the Amarillo Civic Center with other outstanding authors of the Panhandle by the "Friends of the Amarillo Library."

The book, "I've Made a Hand" is stories, poems and illustrations. The publication also received good reviews from "Cowboy Magazine" in the Fall issue.

The book is available by calling 659-2215 or visiting the Spearman Chamber of Commerce.



Stan Cobb

Kindness is in our power but fondness is not.

—Samuel Johnson

PRESERVING THE FAMILY FARM

An informational presentation about the transfer of farm assets to family members.

WHO: Anyone interested in preserving and passing down the family farm.

WHAT: Ideas to avoid excess taxation of the estate, smooth transfer of the estate to the heirs and way to ensure the continuation of the family business.

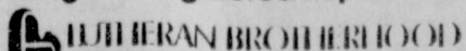
WHEN: 7:00 p.m.; Wednesday, November 10, 1993

WHERE: Oslo Lutheran Church; Gruver, Tx.

For more information call (316)275-1195

Presented by...

Blane Hergert - Registered Representative of



HENSON CHIROPRACTIC

410 S. Davis • Spearman, TX
Call for Appointment • 659-5603

Office Hours:

Mon., Wed., Fri. - 9:00 to 5:00

Tue., Thu. - 9:00 to 11:30

Thank You

We would like to thank everyone for the prayers, phone calls, flowers, cards, and visits during my stay in the hospital. Friends and relatives really do have a special place in our hearts and we appreciate everything that was done for us. May God Bless each and every one of you.

The Swan Family
David, Sharron, Landon,
Lance & Denise

DRY CLEANING

Shirts & Jeans
Laundered With or Without Starch.
FREE Pick-up and Delivery

1-800-232-5370

"It's not how cheap but how good"

Perryton Cleaners

Blackwood gospel singers to perform November 7 in Gruver

by Melyn Johnson

Throughout the past 50 years, the Blackwood Family has been a tradition in gospel music. Today is no different as R.W. and Donna continue to sing His praises. They will be singing those praises in Guymon on Nov. 6 and in Gruver, Texas, on Nov. 7.

The Blackwoods were both reared in Christian homes and nurtured in the Word as children; R.W. in Memphis, Tenn., and Donna in Houston, Texas. After their marriage, they formed the Blackwood Singers, a gospel group.

In the early 70's this group won the prestigious Dove Award and Donna was nominated four years running in the Top Five Finalists for the Best Female Vocalist. At this time Satan painted a beautiful picture of a more prosperous life for them in country music.

So believing, they crossed over into country music where they sang with many of the major country music artists including Dolly Parton, Barbara Mandrell, Kenny Rogers, Charlie Pride, Loretta Lynn, Glen Campbell, Tanya Tucker, Frankie Avalon, Roy Rogers and Dale Evans, Sammy Davis, Jr., and many others. After a successful four years in country music, with six nationally charted songs, their lives fell apart. Laying aside their Christian upbringing, values and principles, they became involved in the things of the world.

The Blackwoods home was falling apart. The couple separated and were near divorce. God intervened and R.W. and Donna realized "the grass may look greener on the other side of the fence, but it's artificial turf."

The Blackwoods restored God into their lives and He restored

their home and rekindled their love for each other. They walked out of Nashville, left a recording contract with Capital Records, thousands of dollars in contract dates, and country music.

God was once again who the Blackwoods lives stood for.

R.W. joined the Grammy Award winning Blackwood Brothers and soon Donna followed. In 1988, the group retired and R.W. and Donna began a ministry on their own. Today they share their testimony, sing praises to God and minister the Word.

In Branson, Mo., The Blackwoods have performed since 1991. They have also appeared on the TBN and CET Christian Television Networks and travel sharing the Word in churches throughout the United States.

Many churches have been blessed by the ministry of the Blackwoods. A pastor from the Wooster Baptist Church in Bayton, Texas, wrote, "Your ministry here was wonderful! You lifted up Jesus, you edified our people, you focused on the Word of God and you blessed our people."

"I have never heard a musical group incorporate more scripture into a concert..." wrote the pastor from Woodlands Community (Texas) Church of the Nazarene.

"I am keenly aware of the over-enthusiasm and flashiness. Although R.W. and Donna are indeed professionals, they somehow graciously blend the delicate aspects of music as entertainment and music as ministry, to create a powerful experience of faith," wrote the pastor from Tree of Life Church in San Angelo, Texas.

"Our people are already asking for you to return as soon as possible," wrote the pastor of the River City Church of God in Louisville, Kentucky.

The Panhandle will be blessed with the music of the Blackwoods on the weekend of November 6 & 7. They will be appearing at the Guymon Church of the Nazarene, 24th and Sunset, on Saturday, Nov. 6, at 7 p.m. The following evening, Sunday, Nov. 7, they will appear at the Oslo Lutheran Church at 7 p.m. (following a chili supper sponsored by the Oslo Lutheran Church youth).



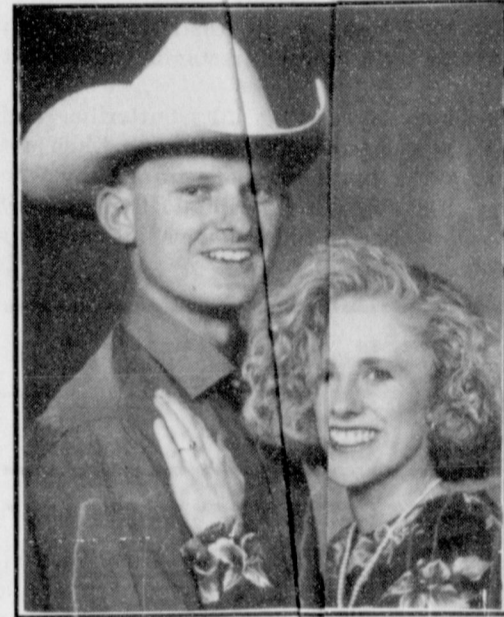
Clay Montgomery was awarded an Honorary State FFA Degree. This is the highest degree bestowed by the State FFA Association.



The Gruver Senior Chapter placed Ninth in Senior Chapter Conducting at the Area competition. Team members are (back row) Brady Tidwell, Max Frick, Travis Ferguson, Sammy Renteria and Bailey Barkle; (front row) Kiki Carthel, Jason Ward and Cori Lowe.

Welch and Pett

Engagement announced



Mr. and Mrs. Denny Welch of Tucumcari, New Mexico proudly announce the engagement of their daughter, Dana Michele to Johnny Petty. He is the son of Mrs. Bill Armstrong of Olney, Texas and Mr. Charles Petty of Midland.

Dana is a graduate of West Texas A&M University with a Bachelor of Science Degree in Elementary Education. She teaches first grade in Spearman. Johnny is a graduate of Texas Tech University in Lubbock, Texas with a Bachelor of Science Degree in Agriculture Communications.

He is employed at Caprock Feedyard in Gruver, Texas. The wedding will be Saturday, November 27, 1993 at 2:00 p.m. at the First Baptist Church in Tucumcari, New Mexico. All friends and relatives are invited to attend.

Cancer society holds meeting

On October 28th, the members of the Hansford County unit of the American Cancer Society met for their regularly scheduled meeting at noon. The Gruver volunteers were hostesses at the B & B Industries building.

After the meal of pizza and peach cobbler for dessert, the meeting was called to order by Elvira Dominguez. She gave a welcome and introduction to staff Camille Nies of Amarillo. Then secretary Clementine Renner had the reading of the minutes and they were approved as read. Officer reports were given concerning the treasurer's report, and letter of acceptance stating the Hansford unit had fulfilled legal requirements making them a functioning unit.

Committee reports were given on current activities and upcoming dates. The October Health Fairs were termed a "Great Success" and on the schedule for November will

be a Great American Smoke Out. A presentation at the Morse schools will be given on November 18th. November 18th will be the date for the Smoke Out observance state and nation wide. We hope that all those who smoke and desire to stop will make the effort to go without smoking for this day and on through their life.

Mrs. Renner gave a report that three patients had been served for an estimated dollar value of \$989. Virginia Taylor gave the totals of money raised from the Cancer Crusade held in April.

The staff report from Camille Nies concerned C.O.R.E. task forces. Our unit will be having meetings to assess and survey the problems of Hansford County. Several of our residents who have had cancer and are now recovered will be asked to give us some input and areas where we can focus to achieve our mission to serve those who may have cancer

in the future.

Our meeting adjourned with our next meeting date scheduled for February 24, 1994. However we have chosen December 6 as a special meeting to tentatively be held at the doctors lounge beginning at 5:30. We urge that anyone who wishes to be a part of this group to come and be with us. If you can't join us at these meetings, we can still use your time in the field to help carry out some of our other activities.

Those who attended this meeting were: Elvira Dominguez, Virginia Taylor, Clementine Renner, Joy Henderson and Ellen Babbs in addition to Camille Day Nies of Amarillo.

The American Cancer Society is the nationwide community based voluntary health organization dedicated to controlling cancer through research, education and service.



The Gruver Elementary ended the week with their students holding Halloween parties. All of Mrs. Henson's kindergarten students seemed to be getting in the holiday spirit. They wore costumes and enjoyed snacks.



Gruver Halloween Carnival Queen First Runner-up Ricky Olivas stares deep into escort Tby Setliff's eyes as they pause from the Gruver Halloween Carnival festivities to get their picture made on Saturday, Oct. 30.

G & G ELECTRONICS

- *2-way radio * Repeater * Satellite
 - * Mobile Telephone * Pagers
 - * Motorola Radios * Kenwood
 - * Maxon * Vertex * Reim
- BRUCE DUNCAN**
(806) 659-3125

Charles H. Ridge, M.D.

710 S. Roland Street

Office Hours:

Monday - Friday

8:30 a.m. - 12 p.m. & 1-5p.m.

For appointments call: 659-3395

Gordon's DRUG

Bridal Gift Registry

COME BY & LET US
HELP YOU SET UP YOUR
SPECIAL GIFT TABLE

Couples Currently Registered

Pete Ochoa & Mary Hernandez *Nov. 20

Regina Abston & Bradley Irvin

Scott Wilkerson & Kelli Sutton *Dec. 5

Chris Williamson & Jennifer Mensen

Cindy Elliot & Troy Franklin *Nov. 27

Tim Willis & Stacy Artho *Nov. 20

Jan Crawford & Chuck Picciuti

*Date of the Bridal Shower

314 MAIN
PHONE
659-2141

Gordon's DRUG

SPEARMAN
TEXAS

Wednesday, November 10
12 Noon to 1:30 p.m.

ANGIE MITCHELL

Christian Counselor & Seminar Speaker
Everyone has been hurt, but has it been difficult for you to forgive? Come hear,

"Forgive and Forget"

Gruver Golden Age Center

- Free admission
- Bring your own sack lunch (coffee & tea provided)
- "Come & Go" to fit your schedule
- Free Nursery (located at Methodist Church)

Sponsored by Gruver Christian
Women's Fellowship

You are cordially invited
to a celebration honoring
Clyde & Ina Soapes
on their
60th Wedding Anniversary
Sunday November 7, 1993
3:00 - 4:30 p.m.
in the fellowship hall of the
First Christian Church
Gruver, Texas
No gifts please.
Your presence will be your contribution in
making this celebration a special occasion.

Spearman Lynx clinch playoff spot, defeat Boys Ranch Roughriders 40-0

by Angela Jones
Editor

The Spearman Lynx Varsity clinched a playoff spot after walking over the Boys Ranch Roughriders 40-0, Friday, Oct. 30, at Boys Ranch.

"We played a good ball game, scoring all of our points in the first half," Coach Ric North stated. He added, "A lot of people got to play in the second half."

Offensively, the Lynx scored 27 points in the first quarter and 13 points in the second quarter. Their defense held the Roughriders scoreless the entire game.

"We've progressed," Smith stated. "Right now we're at the top of our game and that's where you want to be going into the playoffs."

Spearman recorded 370 total yards on offense, while Boys Ranch was held to 127 yards.

In rushing, the Lynx recorded 330 yards. Boys Ranch rushed for 59. Radar Garcia lead the Lynx

rushing attack with 113 yards on eight carries and one touchdown. Brandon Vanderburg followed with 52 yards on 11 carries and one touchdown. Jason Varnon recorded 40 yards on four carries and scored two touchdowns. Shawn Moore had 36 yards on eight carries. Chad Wilkerson recorded 35 yards on five carries, while Chris Jenkins had 30 yards on two carries. Dee Mayfield recorded 24 yards on six carries.

For the passing game, the Lynx recorded 40 yards while the Roughriders had 68 yards. Varnon completed one pass on two attempts for 40 yards for a touchdown. The receiver was Toby Thompson.

Now that the Lynx have clinched a playoff spot, who are they playing? Well, it is still up in the air. "It will probably be Canadian, but if Wheeler beats Canadian then the Lynx will play Wheeler," Smith said. He added that if Panhandle beats Clarendon then there will be a three way tie. In this case, the

Lynx next game will be determined by the flip of a coin.

The Lynx first playoff game is Friday, Nov. 19. If they are playing Canadian, the game will be held at Pampa.



Brandon Vanderburg(33) holds tight to the ball after a hand off from Jason Varnon(11). He heads up field as his team mates Clay Scribner(65), Nick Renteria(74), Cory Lesly(81) and Chad Gardiner(66) clear the way.

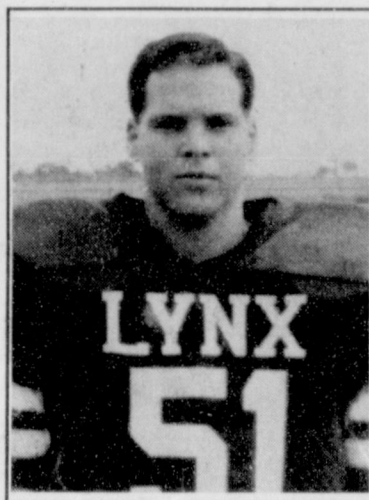
Take it with you



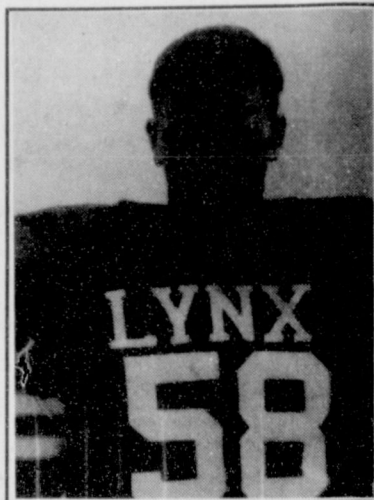
Newspaper...the only portable news medium.

REPORTER-STATESMAN

Spearman Lynx announce players of the week



Offense
Kory Brown



Defense
Jimmy Healey



Shawn Moore attempts to escape being tackled by the Roughrider's defense as he heads up field.

Lunch Menu

Pringle-Morse C.I.S.D.
Nov. 8 - Nov. 10

Lunch

Monday - Burrito, salad, fruit, no bake cookie.

Tuesday - Hamburger steak, potato, gravy, salad roll, blackeye peas, fruit.

Wednesday - Sloppy joe, french fries, fruit, brownies.

Thursday - Lasagna, carrots, salad, pie.

Friday - Sandwiches, veggie stew, fruit, ice cream.

Breakfast

Monday - Muffins, toast, juice.

Tuesday - Honeybun, cheese toast, juice.

Wednesday - Waffles, sausage, juice.

Thursday - Oatmeal, cinnamon toast, juice.

Friday - Biscuits, sausage, juice.

Vaccines offered during immunization clinic Nov. 4

The Texas Department of Health Office located at 720 Archer in Spearman will be offering an immunization clinic today, Nov. 4, from 9-11:30 a.m. and 1-4 p.m.

Immunization clinics offering vaccines that give protection against several childhood diseases are scheduled for November. Protection is against polio, diphtheria, lock jaw (tetanus), whooping cough (pertussis), measles, rubella, mumps, and HIB (haemophilus influenzae Type B).

The Texas Department of Health is charging money to help with the cost of keeping the clinic open. The amount of money charged will be based on family income and size, and the ability to pay.

Spearman Cross Country results Rodriguez qualifies for Regionals at Lubbock

Spearman High School Cross Country contestant Marissa Rodriguez placed fourth at the District Cross Country meet held at Stratford on Monday, Oct. 25.

To earn her the fourth place honors and qualify her to run at the Regional meeting being held in Lubbock on Saturday, Nov. 6, Rodriguez completed the course in 13.58 seconds.

The junior high cross county team also competed at the District meet. Fifteen Spearman Junior High girls competed in the meet. The junior high team consists of eight seventh

grade students and seven eighth grade students.

The results were as follows: 5th, Kristen Beedy, 14.334; 9th, Casey Dunnihoo, 15.02; 11th, Brittini Beedy, 15.23; 14th, Jocelyn Edwards, 15.30; 15th, Keisha OQuinn, 15.32; 16th, Brooke Trantham, 16.02; 17th, Leah Mackie, 16.19; 21st, Lindsey Smith, 16.44; 22nd, Kristi Carbajal, 16.45; 23rd, Leslie Holton, 16.47; 24th, Misha Davis, 16.53; 25th, Holly Pipkin, 16.55; 28th, Sonya Salgado, 17.54; and 29th Crystal Burkhammer, 24.00.

GET THE ALCO Advantage



FREE EVERY TUESDAY!

SECOND SET OF PRINTS

Receive a second set of 3" prints FREE with any exposure roll of 35mm, disc, 110 or 126 color print film left for developing and printing at our everyday prices! C-41 process only. Excludes larger 4" size prints, and photo gallery.



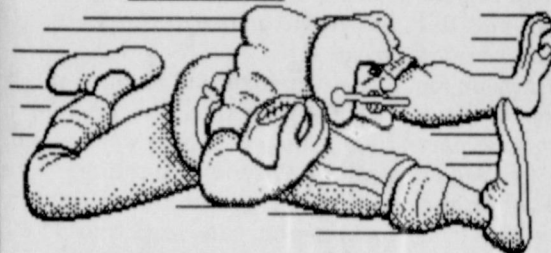
With Attic Ventilation, Saving Energy Is Under Control.



Even with insulation and tightly sealed joints, your home needs attic ventilation to control moisture—and to control attic temperatures. Moisture can build up during the winter and reduce the effectiveness of insulation. In the summer, a lack of ventilation can drive attic temperatures up and put greater strain on your air conditioning system. For more information about saving energy, call or visit your local TNP office and ask for a copy of the "Energy Management Guide."

Texas-New Mexico Power Company.

FOOTBALL CONTEST



--RULES--RULES--RULES--

- In each advertiser's box you will find the name of a team playing this weekend. Circle the team you think will win.
- In the last box you will see a place to enter what you think will be the point spread for that particular game. This will be the tie breaker.
- Fill in your name, address and phone number (please print) and sign the entry.
- Entries in Spearman may be turned in at the Reporter-Statesman Office. Gruver Residents may turn in their entries at the Gruver City Hall or mail them to Box 458 • Spearman, Tx. 79081. **Deadline for entries is 5 p.m. Friday and mailed entries must have an official U.S. Post Office postmark dated no later than Friday.** Winners will be picked on Monday mornings after mail delivery.
- No photocopies will be accepted.

GATES
221 Main • 659-3426
Spearman
Lubbock Monterey at Amarillo High

Little Tiffanies
103 E. Broadway • 733-5290
Gruver
Gruver at Sunray

Motor Parts of Perryton, Inc.
206 E. Brillhart • 435-5454
Perryton
DOCTOR OF MOTORS HEADQUARTERS
Monday at Motley County

TV's HUNGRY COWBOY
1020 S. Hwy 207 • 659-5151
Spearman
Pampa at Randall

Interstate Savings & Loan
322 Main • 659-2559 • Spearman
Member FDIC
Claude at Happy

El Vaquero Restaurant
425 Main • 733-2407
Gruver
Memphis at Wellington

Morris Cattle
Rt. 3 Box 28 • 733-2362
Gruver
Lockney at Springlake-Earth

GILLASPIE
AUTO & TRUCK CENTER, INC.
Hwy 207 • 659-2541
Spearman
Baylor at Georgia Tech

Cargill Grain Division
P.O. Box 265 • 659-3554
Spearman
Kress at Farwell

Spearman Cattle Feeders
Box 339 • 659-2577
Spearman
TCU at Tech

The Knack Shoppe
317 Main • 659-5046
Spearman
New York Giants at Dallas

Lowes
HARBORPLACE
505 Plains Shopping Ctr. • 659-2522
Gruver at Sunray
Tie Breaker _____ Point Spread _____

Name: _____
Address: _____
Town: _____
Phone: _____
Signature: _____



Spearman Gruver
REPORTER-STATESMAN

Greyhounds JV suffers first defeat

by Bob Bort

The Gruver Greyhounds Junior Varsity team suffered their first defeat of the season after eight victories this past Thursday night Oct. 28 in Guymon, to the Guymon Tigers JV. If you were a Hounds fan, it was not a pretty sight, as the Hounds were soundly beaten, 27-8. "We got beat by a good team - a really good ball club," said Hounds coach John Duncan. He continued, "They really outplayed us. They were the hardest hitting ball club we've faced."

The class AAA Tigers were just too much for the Hounds to take on, as the Hounds really stepped up in class for this game, and the Tigers were psyched up knowing they were playing an unbeaten team. Perhaps intimidation was a factor - it may have been a little bit like David vs Goliath, with Goliath, the brute, winning.

The only score for the Hounds occurred in the second quarter, as Bailey Barkley hit Tye Womble in stride down the left sideline for a

71-yard touchdown bomb. With 4:54 left before halftime, the Hounds trailed only 14-8, but Guymon came through with a pre-halftime score of their own to go up 21-8, and they coasted in the second half.

For the game, the Tigers out rushed the Hounds 267-75, and there were other telling statistics. The Hounds had five turnovers, and the Tigers one. In penalties, it was pretty even - the Hounds were flagged nine times for 68 yards, and the Tigers seven times for 65 yards. But the hounds big-play offense never got untracked, and they tried everything, including a couple of halfback passes. The word is that the tigers moved four players down from the varsity team for this game.

The marquee names for the fine Hounds team - Jarrod Hoel, Travis Ferguson, Daniel Bort and the others - all were stopped cold in their tracks. Only the one touchdown pass from Barkley to Womble succeeded.

The positive note is that the Hounds will be playing Sunray this Thursday, Nov. 4, at Greyhound Stadium, trying to finish the sea-

son 9-1 - but more importantly, trying to cap off a perfect District 1-AA record of 6-0, and finish the season as district champions.

One thing for sure: this fine Hounds JV team will make the varsity team of 1994 an improved ball club. There are good things to look forward to for Hounds fans.

Hounds to go for winning record, close season vs Sunray

by Bob Bort

The Gruver Greyhounds will be playing a very important game psychologically this week, in their season-ending contest against the Sunray Bobcats at Sunray. The Hounds are 3-3-1 on the season, 2-3 in district matches. A victory would give them a winning record on the season, and would even up their district games at 3 victories and 3 defeats.

Last year they finished 5-4, 2-4 in district. So this week's game is a very important game to show improvement over last year, and to give them a boost into next year's schedule, when they should be much improved with the addition of the fine JV talent of this year.

The Hounds graduate only 7 players. Those seniors playing their last game this week are Victor Lopez, Kenton Odum, Tek Ferguson, Robert Whitaker, Justin Carthel and Hart Derington. Chris Stork is also a graduating senior. He injured his knee a couple of

For The Sport Of It

by Bob Bort

It's too bad the Gruver Hounds JV had the Guymon game scheduled in their off week. They could have had an unbeaten 9-0 season, if only the game at Guymon were not scheduled. It's too much for Gruver to step up in class and play a team like Guymon on their home turf.

But a 9-1 season is not bad!!! hopefully they will beat Sunray to close the season with a 6-0 record in district game, and the district 1-AA championship.

The final varsity football game is scheduled this week at Sunray, and I am really hoping for a victory to close the season with a winning record 4-3-2, 3-3 in district games. That would be a good stepping stone towards next season, with the fine JV talent up and coming to the varsity in 1994. Several key players will be returning next season as seniors also, including quarterback Aaron Dawson and running back Aaron Frick. We could have a fine season.

Basketball season will be starting here in Gruver before we know it, with the Lady Hounds scheduled for a scrimmage on Nov. 9. The Gruver varsity girls are picked by Bob Springer's Texas Basketball Magazine as the number five AA team in pre-season in the state of Texas. So that puts more pressure on Coach Myatt to have his team live up to expectations. But he can handle it. Besides, the Lady Hounds will do a good job this season, number five or not.

The magazine got their informa-

tion from somewhere, and it was not Gruver. Anyway, the Texas Association of Basketball Coaches (TABC) pre-season poll doesn't list Gruver in the top 25. Abernathy was number two according to the magazine, and number one according to TABC. Panhandle is also highly rated. Spearman is number 25 according to the magazine.

My San Francisco 49ers team didn't fare too well against the local heroes a couple of weeks ago at Texas Stadium in Irving. The 49ers don't appear to be as well-oiled a unit as in past years. But the Cowboys were the better team on that Sunday.

My son, Daniel, has a book on San Francisco autographed by Edward G. DeBartolo, Jr. (owner), Joe Montana, Steve Young and Jerry Rice. It will be a prized item some day in the future.

Getting back to the Lady Hounds basketball season upcoming - they are scheduled to play Tascosa in Gruver on Dec. 20. They are also scheduled to play in the Kids Incorporated Tournament in Amarillo Dec. 9-11 and that will include all the Amarillo AAAAA teams, and a couple from El Paso. Should be an interesting year for the Lady Hounds.

weeks ago, had surgery this past week, and will miss the Sunray contest.

Over the years, the Hounds are 17-20 in 37 games versus the Sunray Bobcats. Last year the Bobcats won a close one in Greyhound Stadium 13-7. The Hounds were open this past week, the Bobcats were blitzed by the West Texas Comanches 42-6. It should be a competitive football game.

Lady Hounds CC vying for fifth straight trip to state

by Bob Bort

In 1989, when the Gruver School Board decided to fund a new sport here at GHS - that new sport being women's cross country - no one had an idea that it would be so successful.

The first year, 1989, the Lady Hounds finished third at Georgetown, just outside of Austin. The next year, still in class A, the Lady Hounds won the state championship. That was followed in 1991 by a second place finish in class A to the Claude Lady Mustangs, and last year in class AA, a sixth place finish at Georgetown. Four straight years, four trips to state at Georgetown.

This year the Lady Hounds are the underdogs as they go for the fifth straight time to regionals at Mae Simmons Park in Lubbock this Saturday, November 6. Stratford is the favorite, ranked second in the state. The girls take off on their two-mile trek beginning at 9:30 a.m.

Competing for the Lady Hounds will be Julie Meyer, Tisha Ralston, Wendy Rodriguez, Myriam Alvarez, Molly McLain, Joni Hart and Tara Shapley. This is the third year as head coach for Steve Myatt, and he and all the girls are looking forward to the trip to Georgetown. Good luck!

Southwest Outdoors

with Mel Phillips

Top Ten Hunting Excuses

Early reports indicate this year's deer hunting in Texas should equal the excellent results of 1992. With the exception of a severe drought in Central Texas, most other areas in Texas had adequate rains during the critical spring fawning season. Deer hunters returning from early archery seasons in both Colorado and New Mexico report seeing large numbers of trophy bucks.

My favorite part of the hunting/fishing experience is telling stories around a blazing campfire. Listen closely, because great story tellers are made, not born. They seldom get bogged down with unnecessary facts or statistics and are rarely without new excuses to explain why a trophy animal was not taken during this trip.

Wait until next year applies not only to the Longhorn football team but is the motto of most good story tellers. If your bag of excuses needs a filling, here are my --

1. Top Ten excuses for not shooting a trophy buck in 1993:
10. It wasn't buck fever.
9. Started worrying about how many trips it would take to haul all the meat and horns out of the woods.
8. Didn't want to cash in a jumbo CD to pay the taxidermist.
7. ...his big beautiful brown-eyes...
6. Saved \$50 on that worthless mail-

order rifle scope.

5. Suddenly remembered that the notorious prankster D.A. Danny Hill had borrowed my deer rifle last weekend.

4. Just as I was squeezing off a shot, a monster buck started polishing his horns on my tree stand.

3. A rookie game warden drove up in his new Ram Charger and "just wanted to check your hunting license, sir."

2. What would President "gun control" Clinton say?

1. Didn't want to get my pickup truck dirty.

SPECIAL CONGRATULATIONS TO JAY FRIEMEL of Canyon, for winning the 1993 Champions Fun Tournament at Lake Greenbelt. At dawn he used a buzzbait, and later in the day he switched to a jig and a Larew salteraw to catch a three-bass limit that weighed 7.23 lbs. Friemel bested fifty anglers from eleven towns to take home \$500 in prize money, the Budweiser "Champions Jacket," and a handsome trophy.

Second place went to JIM BRASWELL of Amarillo, who used a Chatterbox by Jawtec Worms to nail down second place with 4.97 lbs. worth \$250. Third place honors and \$125 went to Canyon's JIM SIMPSON.

Football Contest Winners

- 1st place - Toby Thompson, Spearman - \$25
- 2nd place (tie) - Aaron Frick, Gruver - \$10
- 2nd place (tie) - Kade Carthel, Gruver - \$10

Congratulations!



ALL TYPES PEPSI-COLA



ALLSUP'S CORN DOGS



2 FOR 99¢

SAUSAGE, EGG & BISCUIT FOR ONLY 79¢



PRICES EFFECTIVE Gruver & Spearman Only
OCT. 31-NOV. 6, 1993

DECKER MEAT FRANKS 12 OZ. PKG.	59¢
DECKER MEAT BOLOGNA 12 OZ. PKG.	79¢
SHURFINE APPLE CIDER 64 OZ. BTL.	\$1.49
TOM'S BIG BAG CORN CHIPS 16 OZ. BAG FOR ONLY	\$1.59

Western Family Ibuprofen 100 capsules \$1.99



HOMOGENIZED ALLSUP'S MILK GALLON \$1.99

COMBO OF THE MONTH
CHICKEN BREAST SANDWICH & A TALLSUP FOR ONLY \$1.99

Gatorade Thirst Quencher 16 oz. bottle 69¢

Assorted Shurfine 3/99¢ Vegetables
Corn, Green Beans, Peas

1 1/2 lb. loaf
Allsup's Bread 2/99¢ or 69¢ ea.

GRIFFIN'S GRAPE JELLY 2 LB. JAR 99¢
6 pk. - 12 oz. cans \$1.99

GRIFFIN'S WAFFLE SYRUP 24 OZ. BTL. \$1.49

Mello Crisp Bacon 1 lb. pkg 99¢

Palo Duro Supper Club & Restaurant

Completely Remodeled
Banquet Room - Book your Christmas parties NOW!

Let us cook the menu of your choice for your private parties, receptions, etc.

Coming Soon
Mexican & Seafood Food Buffet Nights

Lunch buffet daily 11:00 a.m. - 2:00 p.m.
Restaurant Hours 5:00 a.m. - 10:00 p.m.
Club Hours: 4:00 p.m. to 12 midnight

22 S. Archer • Spearman
Call Kay at 659-2232 for information & reservations



10 DAY PRIVATE LABEL SALE!

SUN	MON	TUE	WED	THU	FRI	SAT	SUN	MON	TUE
31	1	2	3	4	5	6	7	8	9

Prices good through November 9 in Perryton only
Quantity Rights Reserved. No Sale to Dealers.

Compare And Save

Fine Fare Vegetables
Pinto Beans 15 oz., Golden or White Hominy 14.5 oz., Golden Whole Kernel or Cream Style Corn 17 oz. or Cut Green Beans 16 oz.

3 for \$1

GROCERY

Fine Fare Spinach 15 oz., Mixed Vegetables 16 oz. or Whole or Sliced Potatoes 16 oz.

2 for .88

Fine Fare Crackers 16 oz. **.58**

Fine Fare Apple Juice 64 oz. **.98**

Fine Fare Orange Juice 46 oz. **\$1.18**

Fine Fare Flour

Regular 5 lb. **.78**

Fine Fare Black Pepper

4 oz. **.58**

Fine Fare Macaroni & Cheese Dinner 7.25 oz. **3 for .88**

United Potato Chips 7.75 oz. **.68**

Coke, 7-Up or Dr. Pepper Assl. 6 pk. cans **\$1.59**

Fine Fare Pure Vegetable Shortening

3 lb. **2 for \$3**

United Ice Cream Vanilla, Chocolate, Strawberry, Neopolitan or Vanilla Fudge 1/2 gallon **\$1.68**

Fine Fare Orange, Apple or Grape Juice 12 oz. **.78**

Hy-Top Pizza Pepperoni, Combination, Hamburger or Sausage 7 oz. **.68**

United White Sandwich Bread

24 oz. **2 for \$1**

United Grade "A" Eggs Extra Large dozen **.69**

United Premium Quality Milk Homogenized, Lowfat or Skim gallon jug **\$1.88**

Fine Fare Biscuits Sweetmilk or Buttermilk 10 ct. **5 for \$1**

Fine Fare Paper Towels

2 ply. 1 ct. **2 for .88**

United Mouthwash Mint or Peppermint 24 oz. **\$1.49**

United Antiplaque Rinse Red or Mint 16 oz. **\$1.99**

United Coated Aspirin 250 ct. **\$1.99**

Fine Fare Bleach

gallon **.88**

California Navel Oranges

2 lbs. **\$1**

United Extra Lean T-Bone Steak USDA Choice lb. **\$3.59**

Russet Baking Potatoes large size 3 lbs. **\$1**

US #1 Russet Potatoes 15 lb. bag **\$1.98** each

United Premium Quality Whole Hog Pork Sausage Regular or hot 1 lb. **\$1.59** 2 lb. **\$3.15**

United Premium Quality Grade A Turkey

Limit 1 Please. Thereafter lb. **.69**

10-22 lb. avg. **.49**

Spearman Little House Renovation an endless project

by Carolyn Cummings

God doesn't close a door, that he doesn't open a window. This was really shown to those involved with the Spearman Little House in this last week.

Several years ago we started trying to fix up and paint the Little House. Everything seemed to be stacked against us. Funds, material and help were always the biggest factors.

A few years ago, Archie Smith and Cadette/Senior Girl Scout troop members Vanessa Biggs, Regina Biggers, Alisha LaRochelle and several others worked on texturing and painting the walls of the main room, the Brownie Room and the storage room. Myrna Biggers was leader of the troop, and several of the troop earned their Silver Award (approximately equal to a Life Scout in Boy Scouts).

Shortly after that, things took a downward spin. We couldn't even pay our bills, let alone do any repairs.

Then we got some donations from friends and family that let us catch up on our bills, but still nothing on the repairs. Next, one of the girls, Dawn Loomis, painted a picture and donated it to the Little House. We were able to make some money on that too. But again, that went to pay an insurance bill that we owed on the house.

Shortly after that the parents cooked for Secretary's Day and that got us a little cushion on the upcoming bills. Right after this the Spearman Car Club donated some funds to us.

It was at this time that the Cadette/Senior Girl Scout troop members wanted to get the other rooms completed. This is when the window was opened for us. My brother, Bob Simpson, was visiting from Dallas. But as usual he didn't want to sit still, so we went into action.

On Wed. the girls moved the furniture and picked out paint and wallpaper. On Thursday, Carma Dorton and I picked up the paneling and ceiling tile for the kitchen area, the bathroom and the Junior/Cadette/Senior room.

Later Kelli Cummings, Tracy Powers, Sasha Flores, Cristi Bates, Dawn Loomis, and Vanessa Biggs began to paint while Bob, Wayne

The only fence against the world is a thorough knowledge of it.

—John Locke

and I started on the other parts. Someone had already put up a wall of half paneling and the other part ceiling tile. So we followed that plan. That way we could use the ceiling tile like bulletin boards. Someone had closed off windows, but they still seeped air. So we put the tiles in those and sealed them. This room ended up very light and bright.

The kitchen had some of the older kitchen type paneling on the lower half that had been painted years before. Not wanting to mess with what could be behind that, we elected to leave it for the girls to repaint. However the upper walls were in terrible shape, so we put more of the kitchen paneling on it. We had removed all the crown molding, but luckily Bob and Candy Boxwell had donated the wood from their re-modeling project. So we used it around the ceiling and for a chair railing effect.

The girls did the painting and it ended up being an intense blue. The cabinets now have hand prints as decoration. Rose Roberts had donated some curtains, white with hearts, ducks and blue ribbons for the kitchen and bathroom window.

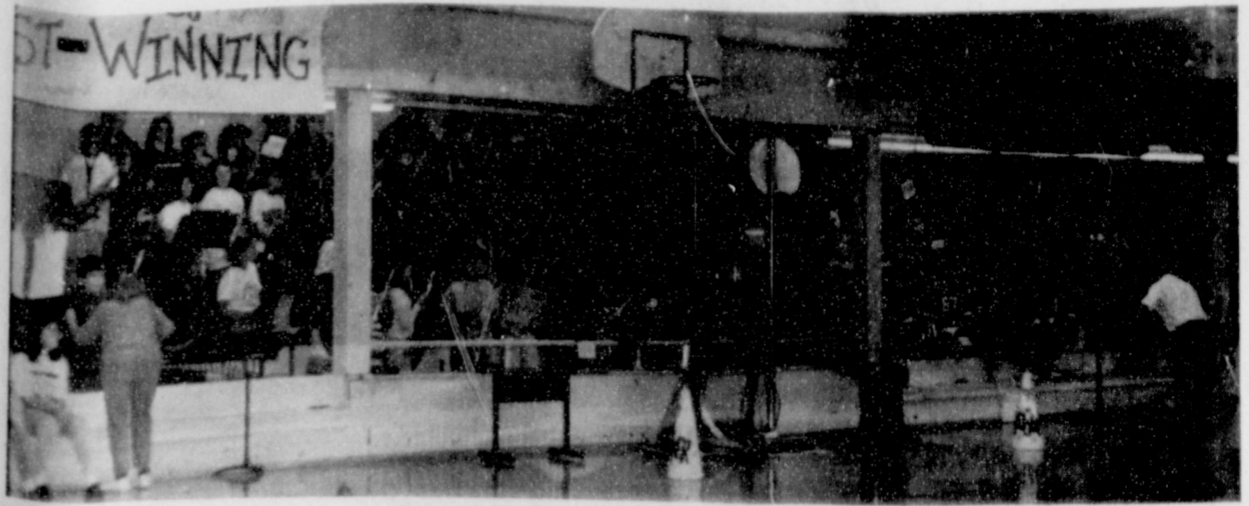
We re-sealed two windows in the Junior/Cadette/Senior room, two in the Brownie room and one in the kitchen. We hung a roll-up window blind donated by Lillian and Bill Whitford and re-hung the curtains donated by Mary K. Harbour for the Brownie room. Vanessa Biggs is working on the bathroom as part of her 15 hours work on her Senior Challenge. The ceiling is white and the upper walls are rose. The trim will be white. The lower half will be wallpaper. After finishing this she's ready to start her application and project for her Gold Award (equal to a Boy Scout Eagle). There's still

a lot that needs to be done, but finances won't allow that now. One of those is floor covering. The girls wanted this badly, but learned what we parents go through when planning repairs and re-modeling. They picked some out when Anne McClure was helping us on the paint, etc. But they quickly decided that would have to wait until later. Just as the front and back doors, evaporative cooler, hot water heater, TV, VCR, refrigerator, and kitchen items and the list could go on. As usual, finances. We have to stop in order to pay for the insurance and the utilities in the months to come.

It definitely was a learning experience for the girls. And we have many to thank: Archie Smith, Carma Dorton, Spearman Car Club, Chamber of Commerce, Bob and Candy Boxwell, McClure's Paint and Supply, Callaway Lumber, Rose Roberts, Bill and Lillian Whitford, Mary K. Harbour, the many people who came and helped with Secretary's Day luncheon, and the Spearman Girl Scout Cadette/Senior Troop. A special thank you for those people who have helped pay the bills in the past year. Also a thank you to June and John Patterson for the microwave and Emma Lou Collins for the ceiling fans. We need some electrical work before we can use the fans, but it is great.

An extra special thank you for Bob Simpson who gave up leisure time to help where he was needed. And to Wayne Cummings who worked his regular job and came in to change hats and work until 11:30 at night on this project. More importantly thanks for all your work and patch jobs on the Little House over the years.

Thanks! The girls really love it.



The Spearman Jr. High School Band came together for the first time this year at the final pep rally of the season Friday, Oct. 29.



Cody Williams participates in one of the Junior High Pep Rally activities as his team mates look on. The pep rally was held Thursday afternoon at the Spearman junior high gym.



First State Bank employees Maria Robledo (front) and Butch Baker (back) study the entries in the Spearman Junior High sixth grade Drug Awareness poster contest.

Police Files

Spearman Police Department Report

The Spearman Police Department filed 25 activity reports for the period from Monday, Oct. 25, through Sunday, Oct. 31.

Two suspicion reports lead the police activities for the period.

On Wednesday, Oct. 27, a suspicion report was received from the 700 block of S. Roland. At approximately 2:30 a.m. unusual noises were reported outside the building. Officers were unable to locate anyone.

At 12:30 a.m. on Thursday, Oct.

28, a suspicious person was reported in the 300 block of W. Kenneth. Officer arrived and transported the subject from the scene. The subject was then advised not to return, Sergeant Steve Schmidt-Witcher stated.

Other reports filed during the period included 11 miscellaneous calls, one ambulance assist, one lost property, and four lockouts. There were five animal control calls during the reporting period.

Election

grant to the owners of certain property in Fort Bend and Austin Counties.

Amendment 4 received 442 votes for and 182 votes against. It deals with prohibiting a personal income tax without voter approval and, if an income tax is enacted, dedicating the revenue to education and limiting the rate of local school taxes.

Amendment 5, to allow the legislature to prescribe the qualifications of sheriffs, had 256 votes for and 345 against.

There were 409 votes for and 122 against the amendment to abolish the office of county surveyor in Jackson County, Amendment 6.

Amendment 7, which deals with repealing certain restrictions on the ability of corporations to raise

capital, received 261 for and 304 against.

413 votes for and 118 votes against amendment 8 were recorded. This amendment abolishes the office of county surveyor in McLennan County.

More election results were: Amendment 10, 277 for, 324 against; amendment 11, 393 for, 190 against; Amendment 13, 313 for, 270 against; and Amendment 14, 258 for, 345 against.

continued from page 1

Hospital Report

October 27 - November 2

Admissions

Wednesday - none
Thursday - Mary Murrell
Friday - O.V. Walker
Saturday - none
Sunday - Will Douglas and Louie Sampson
Monday - Erman Dixon and Ila Mae Buchanan

Dismissals

Wednesday - none
Thursday - none
Friday - none
Saturday - O.V. Walker
Sunday - Mary Murrell
Monday - Louie Sampson

DANCE to music by

VERA BROTHERS



Fri., Nov. 5 AND Sat., Nov. 6
8 p.m.-Midnight 9 p.m.-1 a.m.

Mr. C's

721 1/2 N. Main • Perryton, TX

Memberships Available

Cover Charge

ALCO CUSTOMERS

The Ladies' Western Shirts shown on page 2 of this week's circular for \$17.99 did not meet ALCO's standards for quality and will not be available. Other western shirts are available at the same sale price. We regret any inconvenience to our customers.

ALCO STORES, INC.

The Spearhead Corporation, a privately funded charitable organization, is taking applications for the position of Community Center Director. This position will be responsible for promoting, marketing, managing, operating, maintaining and administering the O-Loughlin Community Center, currently under construction in Spearman, Texas. A college degree is preferred, high school diploma or GED is required. Knowledge of principles and practices of accounting, budgeting, organization, planning, marketing, and building maintenance is required. Positive, effective public relations knowledge and experience is essential. Salary negotiable. Applications and job descriptions may be picked up at the Spearman Chamber of Commerce, 211 Main Street, Spearman, Texas (806)659-5555. Applications and/or resumes should be sent no later than no later than November 26, 1993 to: Spearhead Corporation, P.O. Box 733, Spearman, Texas 79081

Treats & Feels

Country Basket

Four beef steak fingers, fries, country gravy and Texas toast.

\$1.99

Chicken Fillet Basket

Four juicy chicken fillet strips, fries, country gravy and Texas toast.

\$2.99

On Sale at Dairy Queen® November 1-21, 1993

®Reg. TM Am. D.Q. Corp. ®Reg. TM Tx. D.Q. Op. Coun. ©Tx. D.Q. Op. Coun. At participating Dairy Queen stores.

"IT'S FOR YOU"...
The Classifieds Have Something For Everyone!

The Home Seller...
The Car Buyer...
The Do-It-Yourselfer...
The Mother's Helper...
The Job Seeker...
The Bargain Reaper...

When you want results, turn to The Classifieds.



REPORTER-STATESMAN

Telephone: 1-800-395-9482 or (806)659-3434

Oil & Gas Report

New Location, Completion & Plugging Report

Week Ending October 21, 1993

HARTLEY (WILDCAT) Corlena Oil Co., #1 Cedar Draw (1280 ac) 2223' from North & 1442' from East line, Sec. 6,3,B&B, 7 mi SW from Hartley, PD 6800' (415 West 8th., Suite 300, Amarillo, TX 79101)

HEMPHILL (WILDCAT & FELDMAN Douglas) J-Brex Company, #2-7 Texfel (640 ac) 2640' from North & 1980' from West line, Sec. 7,42,H&TC, 20 mi easterly from Canadian, PD 7550' (7201 1-40 West, Suite 321, Amarillo, TX 79106)

HEMPHILL (WILDCAT & WASHITA CREEK Brownville Lime) Kaiser-Francis Oil Co., #1-6 Georgia (640 ac) 1400' from South & 467' from East line, Sec. 2,1A,1,H&GN, 21 mi southeasterly from Canadian, PD 6250' (Box 21468, Tulsa, OK 74121)

HUTCHINSON (WILDCAT & ARRINGTON Morrow) Arrington CJM, Inc., #24 West Turkey Track (3634 ac) 900' from South & 2300' from East line, Sec. 5,H,H&GN, 10 mi NE from Stinnett, PD 7300' (Box 608, Canadian, TX 79014)

HUTCHINSON (WILDCAT & ARRINGTON Morrow) Arrington CJM, Inc., #25 West Turkey Track (3634 ac) 950' from North & 2250' from West line, Sec. 21,M-25,TCRR, 10 mi NE from Stinnett, PD 7300'

HUTCHINSON (S.W. MORSE Brown Dolomite) UMC Petroleum Corp., #3-67 McCloy (640 ac) 2437' from North & 1320' from East line, Sec. 67,5,T,T&NO, 6 mi NW from Pringle, PD 3200' (1202 Louisiana, Suite 1400, Houston, TX 77002)

HUTCHINSON (S.W. MORSE Brown Dolomite) UMC Petroleum Corp., #5-6 Pritchard (640 ac) 700' from North & 2500' from East line, Sec. 6,1,B&B&C, 8 mi NW from Pringle, PD 3200'

OCHILTREE (NORTH FARNSWORTH Marmaton) Canyon Exploration Co., #1 Hogland (572 ac) 933' from South & 3000' from West line, T. Tomlinson Survey, 8 mi NW from Perryton, PD 8300' (Box 15205, Amarillo, TX 79105)

OCHILTREE (WEST LIPS Cleveland) Amoco Production Co., #3 Austin Unit (640 ac) 1320' from South & 1321' from West line, Sec. 47,R,AB&M, 13 mi southerly from Waka, PD 6900' (Box 800, Rm. 2028, Denver, CO 80201)

OCHILTREE (WEST LIPS Cleveland) Amoco Production Co., #35 Lips Ranch B. Unit 15 (640 ac) 1316' from North & 1325' from West line, Sec. 50,R,AB&M, 13.5 mi southerly from Waka, PD 6900'

OCHILTREE (WILDCAT & PARSELL Lower Morrow) Natural Gas Anadarko Co., #1-51 Morrison (651 ac) 2652' from North & 3026' from West line, Sec. 51,43,H&TC, 23.5 mi S-SE from Perryton, PD 11000' (Box 809, Perryton, TX 79070)

OCHILTREE (WILDCAT & PERRYTON Finger) Midwestern Exploration Co., #1 Gary George (320 ac) 990' from South & East line, Sec. 48,11,W. Ahrenbeck & Bros., 2 1/2 mi west from Perryton, PD 8800' (Box 1884, Liberal, KS 67905)

OCHITREE (WILDCAT &

PSHIGODA Douglas) Courson Oil & Gas, Inc., #9-571 First National Trust (640 ac) 467' from North & East line, Sec. 571, 43, H&TC, 12 mi southerly from Perryton, PD 6000' (Box 809, Perryton, TX 79070)

OCHILTREE (WILDCAT & PSHIGODA Douglas) Courson Oil & Gas, Inc., #2-574 Ranch 'A' (666.5 ac) 660' fro Wouth & East line, Sec. 574,43,H&TC, 12 mi southerly from Perryton, PD 6000'

ROBERTS (N.W. MENDOTA, S.W. Granite Wash) Seagull Midcon, Inc., #7-4 Flowers 'A' (640 ac) 1700' from North & 1900' from West line, Sec. 4,-,BS&F, 14 mi N-NE from Miami, PD 10900 (Box 15959, Amarillo, TX 79105)

MOORE (PANHANDLE) W. B. D. Oil & Gas Co., #1MI WBD Tract I, Sec. 155,3-T,T&NO, elev. 3395 gr, spud 2-13-93, drlg. compl 3-4-93, tested 10-2-93, pumped 2.6 bbl. of 38 grav. oil + 52 bbls. water, GOR 30000, perforated 3320-3340, TD 3500', PBTD 3421' --

POTTER (PANHANDLE Red Cave) Helo Energy, Inc., #6 John, Sec. 11,B-11,EL&RR, elev. 3449 gr, spud 1-28-93, drlg. comple 2-1-93, tested 9-23-93, pumped 1.75 bbl. of 38 grav. oil + 1 bbl. water, GOR 22857, perforated 1858-2165, TD 2230', PBTD 2200' --

ROBERTS (MORRISON RANCH Lower Morrow) Newbourne Oil Co., #1 Chambers State, Sec. 176,42,H&TC, elev. 2422 gr, spud 5-25-93, drlg. compl 6-22-93, tested 8-30-93, potential 2600 MCF, rock pressure 2970, pay 10505-10515, TD 10800', PBTD 10755' --

Plugged Wells
GRAY (PANHANDLE) Beta-Tex an Okla. Corp., #28 Parker Fee 'A',

Sec. 15,H,A.W. Wallace, spud 7-10-60, plugged 10-6-93, TD 3045' (oil) --

GRAY (PANHANDLE) Trans Terra Corp., International, #2W Read, Sec. 154,B-2,H&GN, spud 12-12-62, plugged 10-6-93, TD 3160' (disposal) -- Form 1 filed in B.K. Oil Co.

HANSFORD (HANSFORD Middle Morrow) Oneok Exploration Co., #1-40 Phelps, Sec. 40,4-T,T&NO, spud 3-18-93, plugged 9-9-93, TD 8130' (dry) --

HANSFORD (EAST SPEARMAN Douglas) Strat Land Exploration #3 Morton, Sec. 114,4-T,T&NO, spud 12-3-89, plugged 8-31-93, TD 5126' (gas) --

HUTCHINSON (WILDCAT) Strat Land Exploration Co., #1 Jarvis, Sec. 83,6-T,T&NO, spud 7-26-93, plugged 8-3-93, TD 5225' (dry) --

LIPSCOMB (GHEEN Upper Morrow) Philcon Development Co., #1 Coy, Sec. 500,43,H&TC, spud 8-22-73, plugged 9-16-93, TD 10148' (gas) --

LIPSCOMB (MAMMOTH CREEK Tonkawa) Strat Land Exploration Co., #1 Leonore 'B', Sec. 784,43,H&TC, spud 8-24-81, plugged 9-3-93, TD 6752' (oil) -- Form 1 filed in Geodyne Resources

LIPSCOMB (NORTH MAMMOTH CREEK Cleveland) Strat Land Exploration Co., #2-872D Schultz 'B', Sec. 872,43,H&TC, spud 3-30-81, plugged 9-15-93, TD 7750' (oil) -- Form 1 filed in Geodyne Resources

WHEELER (EAST WHEELER Granite Wash 'A') Global Crude, Inc., #1 A.D. May, Sec. 16,A-4, H&GN, spud unknown, plugged 7-20-93, TD 17750' (gas) -- Form 1 filed in Getty Oil Co.

PRIVATE NON-PROFIT North Texas public transportation agency seeking executive director. College degree w/5 years management experience in public transportation and/or human services field preferred. Salary competitive. Respond TAPS, 6104 Texoma Parkway, Sherman, Texas 75090. Applications accepted through November 15, EOE.

BIG 3-DAY HORSE sale Nov. 12, 13, 14. Expecting 1,000 horses of all classes. Clovis Livestock Auction, Clovis, New Mexico. 505-762-4422.

NEED GM TECHNICIANS ASE or STG certified. Good pay, benefits. Located Texas hill country, Canyon Lake. Send resume: Technician, P.O. Box 310697, New Braunfels, TX 78131-0697.

BIG AND TALL menswear mail order company has those hard to find items and sizes, for big, tall men. For information on clothing items 1-800-601-8872.

77 YEAR OLD custom lubricant company interested in area sales reps. Paid field training. Contact Primrose Oil, P.O. Box 29665, Dallas, TX 75229, 214-241-1100.

PIZZA INN SEEKING financially qualified franchisees. *Carry-out/delivery and full-service restaurants * Over 425 restaurants and growing * 2nd fastest growing pizza chain. Call 1-800-880-9955.

DRIVERS: FLATBED 48 state OTR. Assigned new conventional equipment. Competitive pay, benefits, sign on bonus. Rider program. Flexible time off. Call Roadrunner Trucking 1-800-876-7784.

HAROLD IVESTUCKING hiring drivers. Free driver training. Students welcome. Excellent benefits, excellent equipment, excellent training, excellent opportunity. Come grow with us: 1-800-842-0853.

DRIVERS - BLANKET WRAP (refers/shorthaul/OTR opportunities. Late model tractors, excellent pay/benefits, \$500 sign-on bonus (exp. drivers). Training program available for inexperienced drivers. Call anytime - Burlington Motor Carriers: 1-800-JOIN-BMC (ext. 113), EOE.

COVENANT TRANSPORT THE road to your future. Last year our top team earned over \$85,000. Starting at \$2.7 to \$2.9 per mile. Plus bonuses to \$38 per mile. *Solve welcome *Spouse rider program *Truck driving school graduates welcome *Paid insurance *Motel, layover pay *Loading/unloading *Vacation, deadhead pay. Requirements: *Age 23 - 1 yr. verifiable over-the-road *Class A CDL with hazardous materials. 1-800-441-4394/915-852-3357.

SINGLETON SUPPLY METAL Buildings: 24x30x10, \$3,050; 30x40x10, \$4,200; 30x60x12, \$5,995; 40x75x12, \$8,150; 50x100x14, \$12,550. Call for other sizes.

Mini-warehouse systems. Competitive pricing. Fast delivery. 1-800-299-6464.

155+ ACRES, DRY Nueces River. Thick brush and live oak cover. Loaded with deer and turkey. Electricity. \$425/acre with owner terms. Edwards County. 210-257-5564.

BREAST IMPLANT DEADLINE. For information 1-800-833-9121, *Waldman, Smallwood, Grossman & *Carpenter personal injury trial lawyers since 1957, *Board Certified Texas, not Board Certified Texas.

"IMPOTENCE" 30 MINUTE videotells all Dr. Myron Murdock, famous Urologist discusses causes and treatments. \$9.95 + \$4.00 shipping & handling. Call 1-800-221-6603, Encore Medical Centre, P.O. Box 7329, Louisville, KY 40257-0329.

WOLFF TANNING BEDS, new commercial-home units from \$199. Lamps, lotions, accessories. Monthly payments low as \$18. Call today free new color catalog. 1-800-462-9197.

GOT A CAMPGROUND membership or timeshare? We'll take it! America's largest resale clearinghouse. Call Resort Sales International. 1-800-423-5967 (24 hours).

QUICK CASH! TOP price for your owner financed contract of sale, mortgage, or deed of trust. Any state. Call Steve or Ken at 1-800-874-2389.

AMERICAN LAND LIQUIDATORS: Lots, homesites, acreage/vacant land. For sale by owners across the country. Call for free listing/property data. Buyers: 1-800-480-0090. Sellers: 1-800-364-6612.

LAND FOR SALE. Lots, homesites, acreage across Texas. Best prices in the state. \$1,000 - \$100,000. Call for information, Nationwide Liquidation Services, 1-800-591-5591.

BE YOUR OWN boss. Possible \$2,500 part-time/\$8,000 full-time monthly processing insurance claims for physicians, dentists, health-care providers. Software purchase \$7,995, required plus computer. 1-800-722-SAMS.

INFORMATION, IT'S FREE! Our color brochure reveals the money making secret that is enhancing the lives of thousands of people. No obligation. Call 24 hours. 1-800-998-0881.

PROBLEMS/REJECTED, WE can help. Nationwide Auto and Truck Leasing. Any make, any model. We make our own credit decisions. Over 10,000 satisfied customers. 1-800-301-LEASE.

SNACK/SODA ROUTES. \$1,200/week potential. Great investment. 1-800-653-8363. \$4,500 investment.

OWN A PAYPHONE route. \$1,200 week potential. Unique opportunity. 1-800-488-7632. \$4,500 investment.

NOTICE
Wallace Monument Co.
Monuments, Curbing,
Grave Covers
1-800-999-9506
Local Representative
LEONARD JAMESON
Spearman, Texas

HELP WANTED
Help Wanted - Caprock Feedyard - Gruver, Tx, has the following positions available in the cattle department: **Pen Rider** - experience in cattle handling. Must have own horses and tack. **Processing Crew** - experience in cattle handling/doctoring a plus. Contact Fran or Tom for an appointment 733-5025. S01-3tc

HELP WANTED - Truck driver needed. Must have or can get CDL Licence. Call Billy Baker at 659-3642 before 7:00 a.m. or after 7:00 p.m. RTN
Local advertising sales - 2 positions available. Commissions plus bonuses. Call 806-356-8748. Leave name and number for interview. S02-2tp

PETS
Free Puppy - 6 mos. old, part Cocker and part Britany Spaniel. For more information call 733-2029. S02-1t

LOST & FOUND
Lost: Female Kitten - 5 mos. old. Black with white points on her feet, head, and stomach. Return to 702 S. Haney or call 659-3656. S02-1tp

JAN'S ETC.
NEW & USED & ANTIQUES TOO
Everything for home and family.
Plains Shopping Center in Spearman.
Open Monday - Saturday
10 a.m. til 6:00 p.m.

PUBLIC NOTICE
Hansford County will receive bids until 4:00 p.m., Friday, November 5, 1993 on one 1994 Interceptor Patrol car for the Sheriff's Department with and without trade-in. Bids will be opened Monday, November 8, 1993 at the regular meeting of the Commissioner's Court. Specifications are available at the County Judge's office or the County Auditor's office in the Hansford County Courthouse. The Court reserves the right to accept or reject any or all bids.
Jim D. Brown
Hansford County Judge
S52-3tc

Legal Notice
Hansford County Commissioners' Court will receive bids until 4:00 p.m. on Friday, November 19, 1993 on one, new, 1994 3/4 ton extended cab pickup with and without trade-in. Bids will be opened on Monday, November 22, 1993 at the regular Commissioners' Court meeting. Specifications are available at the County Judge's Office or the County Auditor's Office in the Hansford County Courthouse. The Court reserves the right to accept or reject any or all bids.
Jim D. Brown
Hansford County Judge
S02-3tc

SERVICES
CALL YOUR LOCAL Used Cow Dealer for 7 days a week stock removal. 659-3544 or 1-800-692-4043. Serving Cattlemen for the past 20 years. G51-RTN
PITS CLEANED Dragline or Loader. Call Lee Roy Mitchell, 733-2384, 733-2057 or 733-2175. S47-1tcRTN
Drivers Education Classes-Independent Driving School. Lanny Hargrove, 814 S. Main, Perryton, TX. (806) 435-2579. Sign up now! S49-rtn
Will clean houses - Reliable. Plus: Washer & Dryer for sale. Call 659-3865. S02-1tp

Smith's Propane Service
For all your propane needs. Top off your tank now before winter hits. 5% discount for cash. Also rent a motor home for that weekend ball game or mini-vacation. Call Perryton toll free 1-800-536-5844. S51-1tc RTN

NEW TRAMPOLINES
Mats and springs.
Resew trampoline mats.
Make new boat covers.
Available now. 659-2184.
S01-2tc
Harry Stumpf
301 W. 12th
Spearman, Texas

MISC. FOR SALE
Piano for sale-Like new Console piano. Excellent condition. Nothing down with good credit. Call 800-635-7611. S52-3tp

BAHAMA CRUISE! 5 days/4 nights. Underbooked! Must Sell! \$299/Couple. Limited Tickets. (407)767-0208 ext 6346 Mon - Sat 9 a.m. - 10 p.m. S51-4tp

Farm Equipment For Sale - 9 row lynch Harvesters, fits 30 foot platform. 435-7279 S01-2tc

AUTOMOBILES
For Sale - 1978 Ford Van. Rebuilt engine. Runs Good. Good shape. \$1,000 - Call 659-2245. S02-1tc RTN
For Sale - 2 1966 Ford pickups, 6 cyl. and V8; 16 ft. boat, 65 h.p. 14 N. Hazelwood. 659-2113. S01-2tc
For Sale - 1989 Chevy Cheyenne, 1/2 ton, 5-spd., V-6, 74,000 miles. Extra sharp. Must see! \$8,000. Call 435-5505 after 5 p.m. S01-1tc RTN

AA Realty
Allen Alford-Broker-659-3034
Julie Martin-Sales-659-2425
Dennis Nelson-Sales-659-3608
Larry Trosper-Sales-659-3491
417 Townsend - 3 BR, 1B, Detached Garage.
1100 W. 7th - Shop on 1.5 acres
716 Townsend - Under Contract
706 Collier Drive: 3 BR
1017 S. Townsend: 3 BR, 1 B.
714 Gibner: 4 BR, Double garage.
703 East Second: 3 Bedroom, 1 B.
FOR QUALITY & SERVICE CALL US TODAY
We Need Your Listing.
Equal Housing Opportunity

REAL ESTATE
Home for sale: 3BR, 2B, central air, central heat, storm windows, garage, good shape. Call 659-3096 or 857-3448. S02-1tc RTN

For Sale - 4 bedroom, bath and a half, corner lot. FHA assumable loan. 701 Collier. Call 405-338-5314 after 6 p.m. S45-1tc-RTN

Lot for sale-Trailer house lot for sale or rent. (will sell like rent) 100 block N. Endicott. Call 659-2245. S49-1tc-rtn

OSGOOD MONUMENT CO.
Amarillo, Texas
Dealers of Rock of Ages Granite, as well as all colored granites, marble and bronze memorials.
Represented by
BOXWELL BROS. FUNERAL HOME
519 S. EVANS
659-3802

Century 21
GOLDEN SPREAD REALTY
Janye Helton Pointer, Broker Owner
435-5444
1009 Wilmeth: 4 - 2 1/2 Home of distinction!
316 Bernice: 3 - 1 1/2 Large home with large rooms.
Crawford Addition:
2 - 1 1/2 • Will look at all offers!
2 - 1 • Small and affordable!
813 Haney - 3 income properties - 1 low price!
315 1/2 N. Bernice: Lot for sale.
© and ™ trademarks of Century 21 Real Estate Corporation. Equal Housing Opportunity INDEPENDENTLY OWNED AND OPERATED

Are You A Victim of Physical Abuse?
Call Toll Free 1(800)753-5308
We are in Spearman on the 1st, 3rd & 5th Wednesdays of each month at the 1st Presbyterian Church, 1021 Cotter. On the 2nd & 4th Wednesdays we are at the 1st Christian Church at 510 King - Gruver. We can come to Spearman & Gruver any time upon request. We operate a safe place for victims & their children to stay in times of crisis. **Panhandle Crisis Center**
Serving Hansford, Lipscomb & Ochiltree Counties
317 S. Main Memorials Accepted Perryton, TX.

Oil & Gas Reporting Service
Box 2052 • Pampa, TX 79065
Providing the Oil & Gas Report
for Hansford County Readers
Doris Harrison • Phone 665-5800



ALCO, using the theme of 101 Dalmatians, won the Spearman Chamber of Commerce "Best Costume" award on Friday, Oct. 29.



The crew from Gilligan's Island showed up at the First National Bank of Spearman on Friday, Oct. 29, to help the bank win the Spearman Chamber of Commerce award for 100 percent participation.



Gruver State Bank showed their Halloween spirit on Friday, Oct. 29. They helped the community get in the holiday spirit by showing up to work dressed as scarecrows, witches and clowns. Elvis was even spotted in the Gruver State Bank lobby.

State Comptroller reports Hansford County sales tax rebates up

The sales tax rebates for Hansford County for October 1993 are up 13.47 percent from the rebates mailed in 1992. According to a recent release from State Comptroller Jim Sharp, the rebates for both Gruver and Spearman are up for the year. Gruver recorded a 4.07 percent increase for the year to date rebates. The 1993 payments of \$40,927.82 are up from the \$39,323.35 received in 1992. For the month of October, Gruver has also recorded an increase reporting \$3,557.07 as compared to the \$3,506.65 in 1992. This is a 1.43 percent increase for the month.

In Spearman, it is reported that there is a 2.16 percent increase on the year-to-date rebates. Spearman recorded \$139,514.69 in 1993 as compared to the \$136,551.65 reported in 1992. For October, Spearman has recorded \$12,878.86, a 17.31 percent increase from the \$10,978.02 recorded in 1992.

According to the release, a total of \$122.5 million in October sales tax rebates were sent to 979 Texas cities and 109 counties. This is a 19.1 percent increase over their payments of one year ago. Increased consumer spending has raised all city sales tax allocations since October of last year. Texas cities received \$109.6 million, up 19 percent from the \$92.1 million they received last October. Counties received a total of \$12.8 million for their October rebates, a 19.6 percent increase over their

October 1992 rebates, which totaled \$10.7 million. "The state of Texas has experienced year-over-year employment growth every month since January 1992," Sharp said. "The Austin and San Antonio metro areas once again lead the state's six major metro areas in employment growth."

This month's sales tax payments include taxes collected on August sales and reported to the Comptroller in September by businesses filing monthly tax returns.

LA GRONE MONUMENT CO.

Garre LaGrone
901 E. 27th
Amarillo, Texas
1-800-658-6117

Cleta Casdorff
Local Representative
Gruver, Texas
(806)733-2154

Top-ranked junior dog to show in Abilene

(Abilene) -- One of the top ten junior handlers in the nation for her breed will exhibit a dog at the Abilene Kennel Club Dog Show and Obedience Trial June 26th. Sydney Woodington, 11, of Spearman, Texas, will compete for the top junior handler award at the Taylor County Expo Center, as exhibitors from across the nation vie for breed and performance titles.

At ringside recently, fifth grader Sydney smiles as she talks about people who love their dogs and enjoy showing. She seeks the company and counsel of exhibitors whose top priority is having fun, and making sure their dogs have fun, too.

Sydney doesn't have to look far. Her mother, Carla, is an avid dog show participant. The Woodington household caters to a family of canine companions, including

Sydney's prize show dog, Norma Jean. The four-year-old English Cocker Spaniel is an AKC Champion, and has also earned a Companion Dog title in obedience. Sydney is working with Norma Jean toward an advanced obedience title.

The work has been good for both of them Sydney assures us. She claims to be a "shy kind of person." But a good showing dog like Norma Jean, Sydney's persistence, and the encouragement of other fun-loving dog fanciers have brought out the best in both dog and young handler.

Plans for the future? "I'd like to be a veterinarian and show dogs for my hobby," Sydney says thoughtfully. Her face brightens, "Or marry someone rich and show dogs the rest of my life!"

Her advice to other aspiring junior handlers: "Work hard, but have

fun!" To Sydney, winning is a bonus at a dog show. She says, "You should do it for fun, not to win. 'Cause that's why I do it."

Junior handlers help each other, Sydney says, as all of them learn the tricks of the dog show trade. She has a pin pal with whom she trades information. She credits helpful adult handlers, too, who have taken an interest in her talent and enjoyment of the sport of purebred dogs. Some breeds are harder to show than others, Sydney says. Her English Cocker Spaniel is a difficult breed. "It's real competitive," she says. The competition in professional handling might be more than Sydney wants to tackle as she matures. But later on she hopes to get another puppy, and show it to a Championship as she has with Norma Jean.

First Christian Church to host missionaries

First Christian Church of Spearman will be hosting Allan and Joan Eubank November 9, at a 12:00 noon Luncheon in the Fellowship Hall, 29 S. Bernice St. Everyone is invited to be our guests for lunch and the program to follow.

Allan and Joan serve with the Church of Christ in Thailand through the Division of Overseas Ministries of the Christian Church (Disciples of Christ). In 1981 Allan Eubank became director of the newly founded Christian Communications Institute at Payap University which uses various media to present Christ's Gospel to Thailand through drama. Joan Eubank contributes her dramatic and musical expertise in these productions as Assistant Director.

In addition to his responsibilities with the Christian Communications Institute, Allen is Chaplain at Payap University and teaches part-time at McGilvary Faculty of Theology (formerly Thailand Theological Seminary). He has headed both the Department of Philosophy and Religion and the Graduate Theological Studies Department at Payap University. From 1961-71

Allan was a missionary evangelist in rural Thai and Lao Song Villages, Sam Yek Area, Nakon Pathon Province in Central Thailand. He was the first pastor of Sam Yek Church. Prior to his arrival in Thailand he served Seagoville Christian Church in Texas while a student at Texas Christian University, graduation in 1961 with the M.Div. He received the S.T.M. Degree from Yale University in 1966. Born in Texas, Allan studied at Texas A&M University, graduating in 1951 with a B.S. degree in Geological Engineering. He served as Captain in the U.S. Army Corps of Engineers, Korean Conflict, and in the New Orleans, La. District. He was a geologist for Standard Oil Co. of Texas in 1957-58. In addition to his professional activities, Allan has served as a Scoutmaster and Rotarian. In 1975 he authored *Ambassadors for Christ* (Thai language).

Shirley Joan Hovis was born in Abilene, Kansas. She attended the University of Houston (music, 1960) and Brite Divinity School, Texas Christian University (1959-61).

From 1953-58 special studies in music and drama led to stage experience with appearances on television, Broadway, and in major cities throughout the U.S.A. She had leading roles in musical productions in Belgium and England. She and Allan met while she was singing with a U.S.O. troupe in Korea. Joan's ministry in Thailand in 1961 began with work with the Lao Song tribe, beginning a handicraft project which still supports many villagers, as well as teaching English and music. She has directed the semi-annual choir and taught voice in Payap University in addition to playing an active role in founding a school for the deaf (1971-80), and now serves as Assistant Director of productions of the Christian Communications Institute.

The Eubanks were ordained in the East Dallas (Texas) Christian Church. They have four children: David (wife, Julie), Ruthanne, Laurie, and Suewanee.

You will certainly be inspired and challenged as you hear about the work of God's Church in Thailand. Come join us!

REPORT OF CONDITION

Consolidating domestic subsidiaries of the
FIRST NATIONAL BANK of **SPEARMAN** City
 Name of Bank City
 in the state of **Texas** at the close of business on **September 30, 1993**,
 published in response to call made by Comptroller of the Currency, under title 12, United States Code, Section 161.
 Charter Number: **18609** Comptroller of the Currency **Southwestern** District

Statement of Resources and Liabilities

ASSETS		Thousands of dollars
Cash and balances due from depository institutions:		
Noninterest-bearing balances and currency and coin	1,237	
Interest-bearing balances	6,433	
Securities	8,295	
Federal funds sold	0	
Securities purchased under agreements to resell	0	
Loans and lease financing receivables:		
Loans and leases, net of unearned income	22,894	
LESS: Allowance for loan and lease losses	243	
LESS: Allocated transfer risk reserve	0	
Loans and leases, net of unearned income, allowance, and reserve	22,651	
Assets held in trading accounts	0	
Premises and fixed assets (including capitalized leases)	595	
Other real estate owned	60	
Investments in unconsolidated subsidiaries and associated companies	0	
Customers' liability to this bank on acceptances outstanding	0	
Intangible assets	0	
Other assets	738	
Total assets	40,009	
Losses deferred pursuant to 12 U.S.C. 1823(j)	N/A	
Total assets and losses deferred pursuant to 12 U.S.C. 1823(j)	40,009	

LIABILITIES

Deposits:		
In domestic offices	36,659	
Noninterest-bearing	3,376	
Interest-bearing	33,283	
Federal funds purchased	0	
Securities sold under agreements to repurchase	0	
Demand notes issued to the U.S. Treasury	0	
Other borrowed money	0	
Mortgage indebtedness and obligations under capitalized leases	0	
Bank's liability on acceptances executed and outstanding	0	
Subordinated notes and debentures	0	
Other liabilities	193	
Total liabilities	36,828	
Limited-life preferred stock and related surplus	0	

EQUITY CAPITAL

Perpetual preferred stock and related surplus	0
Common stock	1,000
Surplus	1,000
Undivided profits and capital reserves	1,181
LESS: Net unrealized loss on marketable equity securities	0
Total equity capital	3,181
Losses deferred pursuant to 12 U.S.C. 1823(j)	N/A
Total equity capital and losses deferred pursuant to 12 U.S.C. 1823(j)	3,181
Total liabilities, limited-life preferred stock, equity capital and losses deferred pursuant to 12 U.S.C. 1823(j)	40,009

We, the undersigned directors, attest to the correctness of this statement of resources and liabilities. We declare that it has been examined by us, and to the best of our knowledge and belief has been prepared in conformance with the instructions and is true and correct.

I, **LYNNE MAIZE** Name

VICE PRESIDENT AND CASHIER Title

of the above-named bank do hereby declare that this Report of Condition is true and correct to the best of my knowledge and belief.

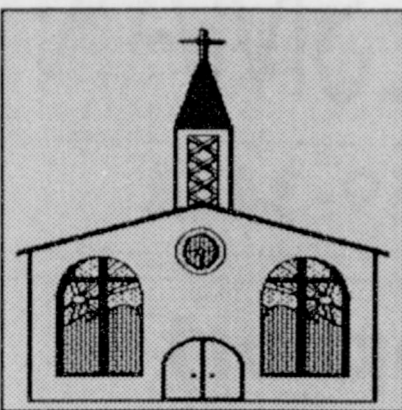
Don Lounsbury
Joe J. Hart
 Directors

Lynne Maize
 Signature

OCTOBER 29, 1993
 Date

Let us replenish the seed of faith through...

REGULAR CHURCH ATTENDANCE, DAILY BIBLE READING & PRAYER



**HI-PLAINS
AUTO SUPPLY, INC.**
Mobile Oil for Irrigation
& Industrial Purposes
118 Main • Spearman
659-2506 • (800)657-8742

**Palo Duro
Supper Club**
22 S. Archer
659-2232

C.O.'S SUPPLY CO.
Plumbing & Tire
Sales & Service
301 S. Davis • Spearman
659-3781

**Bartlett's Ace
Hardware**
105 W. Broadway
733-2404

GILLASPIE
AUTO & TRUCK CENTER, INC.
CHEVROLET • OLDS • PONTIAC • BUICK
CHRYSLER • PLYMOUTH • DODGE
Highway 207 South • P.O. Box 427 (800)859-2541
SPEARMAN, TEXAS 79081

Little Tiffanies
103 E. Broadway • Gruver, Tx.
Open: 10 a.m. - 5:30 p.m.
733-5290

**THE HANSFORD COUNTY
REPORTER-STATESMAN**
DEDICATED TO SERVE THE COMMUNITIES OF
SPEARMAN, GRUVER & MORSE
213 MAIN • 659-3434 • 1-800-395-9482

Gruver Cablevision
Quality Family Entertainment
with
"the Disney Channel"
308 Main • 733-5295

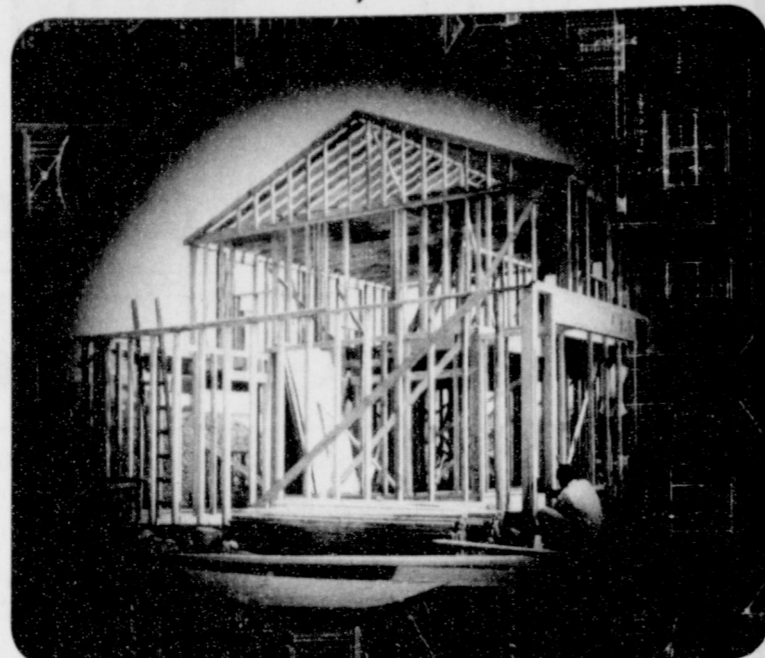
**Morse Implement
Company**
"Join us in church
this week"

**Boxwell Bros.
Funeral Home**

**Speartex Grain
Company**
405 Collard • Spearman
659-3711

**CORONADO
HOSPITAL**
Pampa, Texas
(806)665-3721

Compliments of
**G&G
FOODLINER**
516 Main • Gruver
733-2471



"UNDER CONSTRUCTION"

It is interesting to note our various construction preferences. Some of us find sheer delight in the tactile texture and design of a building, though the edifice itself may be transient in endurance. Others seek satisfaction only in the technically perfect structure which will endure for many years. Then, there are those who simply prefer to watch others do the building. That's fine too. Our world would be rather "lopsided" if our innate preferences were all identically planned.

Yet, there is one set of plans that leaves little room for variance...the plan by which we construct our lives...that which we must do for ourselves. We must construct our lives upon faith as solid as the walls within which we worship each Sabbath, and design them within the guidelines set forth in God's Word. Finally, we must pray each day for the Creator's guidance, for truly we are each...*"under construction"*.

Sunday	Monday	Tuesday	Wednesday	Thursday	Friday	Saturday
Psalm 46	Revelation 7:9-17	Psalm 100	Psalm 165	Psalm 106:1-12	Psalm 107:1-22	Psalm 111

In Spearman...

Apostolic Faith Church
822 S. Drensen • 659-2870
Sunday School: 10 a.m.
Worship: 11 a.m.
Evening Worship: 6 p.m. Sun.
Wed. Prayer Meeting: 7:30 p.m.
Pastor James Brown

First Assembly of God
401 N. Bernice • 659-2295
Sunday School: 9:45 a.m.
Worship: 11 a.m.
Evening Worship: 7 p.m.
Wednesday Worship: 7:30 p.m.
Youth: 7:30 Wednesday
Pastor Ray Cook

**First Christian Church
(Disciples of Christ)**
29 S. Bernice • 659-2036
Sunday School: 9:45 a.m.
Worship: 10:50 a.m.
Women's Bible Study: 2 p.m. Wed.
Youth: Wed. 6 p.m. & Sun. 5 p.m.
Pastor LaVern Draper

First Baptist Church
123 N. Bernice • 659-5557
Sunday School: 9:45 a.m.
Worship: 11 a.m.
Evening Worship: 7 p.m.
Jr. High Youth: 6 p.m. Wed.
High School Youth: 7 p.m. Sun.
Youth Choir: 6 p.m. Sun.
Pastor Kyle Henderson

Church of Christ
121 S. Haney • 659-3244
Sunday Bible Class: 9:45 a.m.
Worship: 10:30 a.m.
Evening Worship: 6 p.m.
Bible Study Wed. 7:30 p.m.
KRDF Radio Program
Living With Christ 7:50 a.m. M-F
Minister Arnis Pape

Fellowship Baptist
1102 S. Archer • 659-2783
Sunday School: 10 a.m.
Worship: 11 a.m.
Evening Worship: 6 p.m. Sunday
Youth & Adult Serv.: 7:30 Wed.
Pastor Rick Fincher

Primera Mission Bautista
502 E. 7th • 659-3991
Sunday School: 9:45 a.m.
Worship: 11 a.m.
Pastor Guadalupe Carranza, Jr.

Trinity Community Church
717 W. 7th Ave. • 659-2671
Celebration of Praise 10:15
Worship Service and
Children's Church 10:30
Sunday Evening 6:30 p.m.
Wednesday evening: 7 p.m.
Pastor Dan Carter

**Faith Lutheran Church
(ELCA)**
1101 Bernice • 659-2252
(Worships with First Presbyterian
Church)

First Presbyterian Church
(Worships with Faith Lutheran
Church)
1021 Cotter • 659-2033
Sunday School: 9:45 a.m. at
Lutheran Church
Worship: 11 a.m. (alternates
monthly between addresses above)
Pastor Beverly Cook

First United Methodist
407 S. Haney • 659-5503
Sunday School: 9:45 a.m.
Worship: 11 a.m.
Jr. High Youth: 5 p.m. Sun.
High School: 6 p.m. Sun.
Pastor Jeff Lust

Union Church
31 S. Endicott • 659-2644
Sunday School: 9:45 a.m.
Worship: 10:45 a.m.
Evening Worship: 6:30 p.m.
Bible Study: 7:30 p.m. Wed.
Youth: 7:30 p.m. Wed.

Sacred Heart Catholic Church
901 Roland • 659-2166
Sat. Night Mass: 7 p.m.
Sunday Mass: 9:00 a.m. - English.
11:30 a.m. - Spanish
Rev. Fernand Couture

*This feature is
made possible
through the
Sponsorship of
these Civic Minded
Businesses*

"WE SUPPORT OUR LOCAL CHURCHES"

CAPROCK #1 & #2
Mike Heard, Gen. Mgr.
(806)733-5043 or 733-5025



"Custom Cattle Feeding"

In Gruver...
First Baptist Church
402 E. Broadway • 733-2411
Sunday School: 9:45 a.m.
Worship: 10:50 a.m.
Disciple Training: 6 p.m. Sunday
Prayer Meeting: 7:30 p.m. Wednesday
Pastor Larry Miller

Church of Christ
209 King • 733-2760
Sunday School: 9:30 a.m.
Worship: 10:20 a.m.
Evening Worship: 6 pm.
Wed. Evening Worship: 7:30 p.m.
Minister Bob Setliff

First Christian Church
510 King • 733-2960
Sunday School: 9:45 a.m.
Worship: 11 a.m.
Wed. Bible Study: 7:30 p.m.
Youth: 6:30 Wednesday
Pastor Gary Gumfroy

Osio Lutheran Church (ELCA)
West of Gruver on Hwy 15 & N. FM 1162
339-7646
Sunday School: 9:45 a.m.
Worship: 11 a.m.
Morning Prayer: 9 a.m. Wed.
Pioneer Clubs (Grades 1-6):
4-5:30 p.m. Wednesday
Pastor John R. Chandler

**Community Bible Church
(Interdenominational)**
Hwy. 15 • 733-2443
Sunday School: 10 a.m.
Worship: 11 a.m.
Wed. Prayer Meeting: 7 p.m.

First United Methodist
Broadway & Garrett • 733-2651
Sunday School: 9:45 a.m.
Worship: 8:30 a.m. & 10:55 a.m.
Sunday Evening: 7 p.m.
UMY: 6 p.m.
Pastor Lewis Holland

In Morse...
Morse Baptist Church
Pastor Mike Martin
733-2757

Henton & Co., P.C.
Certified Public
Accountants
221 Sanders • Spearman • 659-2518

BERRY CLEANERS
DAN DESIMONE • OWNER
Phone 659-3122 • P.O. Box 1017
207 Main St. • Spearman, Tx. 79081

GRUVER FORD
Ford FORD
531 Main • Gruver • 733-2431

**Interstate
Savings
& Loan**
322 Main • Spearman • 659-2559

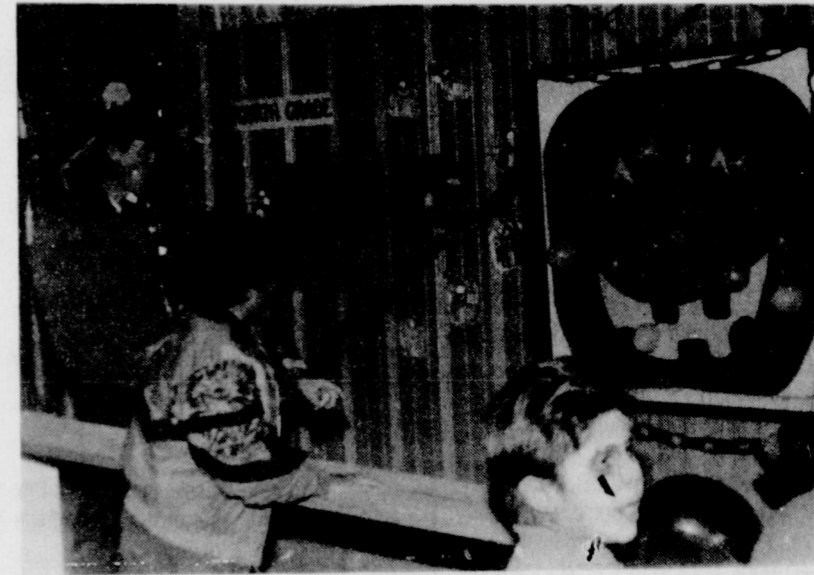
**Hagerman
Services**
Backhoe • Dozer • Welding
North Hwy. 15 • Spearman
659-5131

Gordon Drugs
Dependable
Prescription Service
314 Main • Spearman
659-2141
Jim Evans

Compliments of...
AGCO
of Spearman, Inc.
"See you in Church"
659-3751



Spearman children enjoy the pillow fight booth at the Spearman PTA Carnival held Saturday, Oct. 30. This was just one of the many activities at this year's carnival.



One of the games at the Gruver PTA Carnival was a balloon bust. In this game the contestants threw darts at balloons placed on a pumpkin back board.

Mammography Unit to be in Gruver, Nov. 12

On Friday, Nov. 12, 1993, from 10 a.m. to 3 p.m., The Don and Sybil Harrington Cancer Center and High Plains Baptist Hospital Mobile Mammography Unit will be in Gruver at the Methodist Church, 506 Broadway. Exams are done by appointment only. For information or to schedule an appointment call 1-800-377-HOPE (4673) or (806)359-4673.

The total cost of the screening is \$70. This includes the x-ray, physical breast exam, and the radiology fee for reading the mammogram. Funding has been provided by the Texas Department of Health to allow for free breast screenings for women who qualify.

The major goal of the clinic is the early detection of breast cancer. The clinic provides low cost screening which includes a breast exam by a Registered Nurse trained by breast cancer detection, teaching of breast self examination, and a mammogram. Currently, the most effective method known to win the battle against breast cancer is early detection. Early detection is best done by following the guidelines recommended by the American Cancer Society for breast cancer screening for women who have no signs or symptoms of breast cancer. The guidelines are:

1. Learn and perform breast self examination every month.

Obituary

SHAWN COTTER
DIMMITT - Shawn Cotter, 26, died Friday, Oct. 29, 1993.

Services were held Monday, Nov. 1, at the Fourth & Bedford Street Church of Christ with Harry Riggs, minister, Ronnie Parker, former minister, and Dean Wiseman, associate minister, officiating. Burial was in Castro Memorial Gardens by Foskey Funeral Homes.

Mr. Cotter was born in Perryton and was a former resident of Winters. He moved to Dimmitt in 1983 and graduated from Dimmitt High School in 1987. In 1989 he married Mary Ann Martinez at Winters. He was a member of the Church of Christ.

Survivors include his wife; a daughter, Ashley Nicole Cotter of Dimmitt; his father, Charles Cotter of Dimmitt; his mother, Barbara Phillips of Winters; and a sister, Connie O'Dell of Winters.

The family requests memorials be to Hospice of the Plains, 4416 Olton Road, Plainview, Texas 79072.

Seminar cont. from pg. 1

2. Have a physical examination every year.
3. Have a mammogram according to recommendations by age:

Age: 40 — one baseline mammogram; 40 to 49 — a mammogram every one to two years; and 50 and over — yearly mammograms.

The five most common thoughts on what Hansford County needs to do is: (1) Encourage our young people to return and go into business. (2) Work on business retention. (3) Shop at home. (4) Promote ourselves. (5) Promote county.

A point made at the seminar by one of the attendees was we should not forget quality of life when we are considering growth. "With this in mind, I think we are ready to go forward and make things happen for our county," stated Spearman Chamber of Commerce Manager, Cindy Blackman.

Fire cont. from pg. 1

east on Highway 759. It was approximately one mile out when a mechanical failure caused a fire on the truck. The fire spread to some CRP grass on the right side of the road.

The Spearman Volunteer Fire Department was dispatched and established a defensive position. Burgin stated that John and Mark Brown plowed a fire break and then the fire department started a back fire. The fire was stopped at the break, Burgin said. He added that the department had the fire under control within an hour and it was completely out within an hour and a half.

It was also reported that minor damage occurred to the truck.