

**INSIDE**

Society Pages	4, 5
Obituaries	8
Hansford Happenings	2
Want Ads	11
Movies	2
Sports	6, 7
Spiritually Speaking	2
City Lites	2
FNB Honor Roll	10

# The Hansford County Reporter-Statesman

Serving Hansford County Since 1907

VOL. 85, NO. 26

213 Main Spearman, Texas 50¢

THURSDAY, APRIL 22, 1993

12 PAGES

**WEATHER**

Day	Hi	Lo	Precip
Thu	57	29	.00
Fri	67	34	.10
Sat	70	41	.17
Sun	86	46	.00
Mon	69	47	.00
Tue	58	35	.00
Wed	--	--	.00
1993 Precip			5.82

**In Gruver...**

## Meadowlark makes new fans

by Bob Bort

Meadowlark Lemon paid a visit to the community of Gruver this past weekend, and made a lot of new fans/friends. Lemon put on a performance at Greyhound Gym this past Saturday evening April 17, playing with and against several local teams - a church team, a faculty team, a team of 1993 seniors and a team of ex-hounds. But basketball was not the foremost thing on Meadowlark's mind - preaching the gospel was the reason he came to Gruver.

"I came because I was asked to come," said one of the premier basketball players of all time. "Carolyn Fletcher instigated the whole thing. That lady is my Sister," stated Lemon. Lemon and Richie and Carolyn Fletcher met while working with the inner city poor in Arizona.

Lemon talked about his Meadowlark Ministries. "It is evangelism. I travel throughout the country preaching the Gospel. I can't compare preaching and playing basketball. They are two different things."

Lemon was asked if Gruver was the smallest town he had ever per-

formed in, and he responded no, that he had lived in a smaller town than Gruver. Whether large or small town, performing and traveling with the Harlem Globetrotters, as the "Clown Prince of Basketball", beginning in 1961, was tough, and he wanted to make clear that his lifestyle needed change. Six years ago he started Meadowlark Ministries, based out of Ft. Worth, Texas. Travelling with the Globetrotters in those early years,

and travelling now as a preacher are not the same. He pointed out that attitude makes the whole difference.

Lemon grew up in Wilmington, North Carolina, and has been playing basketball for 40 years now. He keeps fit now by continuing to play, as he did in Gruver.

Lemon stated that it was the Lord Himself who spoke to him, See Lemon page 12



Meadowlark Lemon, the ex Harlem Globe Trotter, takes advantage of an interruption in the game to clown around with the referee of the game.

**Reflections Contest and EPA poster contest winners...**

## H.C. students place in District 8

by Angela Jones  
Editor

Nine Hansford County students recently placed in the District 8, Texas PTA Reflections Contest and EPA Poster Contest.

Those individuals placing in the Reflections Contest were Erin Boxwell and Ashley Phillips.

Boxwell placed second in the kindergarten to third grade literature competition. She attends Gus Birdwell Elementary in Spearman.

Phillips won the intermediate, fourth through sixth grade, photography category. She attends Pringle-Morse C.I.S.D.

The release states that in the Reflections program students use their creative talents by expressing themselves through their own original works in the categories of literature, visual arts, photogra-

phy and music.

Seven students placed in the EPA Poster Contest. Five of these individuals attend Pringle-Morse C.I.S.D., while two attend Gus Birdwell Elementary (GBE) in Spearman. The placings were as follows:

**Kindergarten** - Seth Clemmons, 3rd, P-M C.I.S.D. **First grade** - Lupe Duran, 2nd, P-M C.I.S.D.; **Second grade** - Colton Miller, 1st, GBE; Ross Womble, 4th, P-M C.I.S.D.

**Third grade** - Monica Behney, 3rd, P-M C.I.S.D.; Hector Diaz, 5th, GBE.

**Fourth grade** - Katie Papay, 5th, P-M C.I.S.D.

These students were honored at a reception April 19 during the 70th Annual Spring Conference of

District 8, Texas PTA held at the Radisson Inn in Amarillo.

Here are the results of the Pringle-Morse C.I.S.D. EPA Poster Contest.

**Kindergarten:** Seth Clemmons, 1st; Chase Phillips, 2nd; and Brennan Eudy.

**First grade:** Lupe Duran, 1st; Ashton Shearer, 2nd; and Amanda Apodoca, 3rd.

**Second grade:** Ross Womble, 1st; and Josiah Vasquez, 2nd.

**Third grade:** Monica Behney, 1st; Evan Schmidt, 2nd; and Amber Crowl, 3rd.

**Fourth grade:** Katie Papay, 1st; Amy Vasquez, 2nd; and Diseree Wattier, 3rd.

The first place winners in each class went on to compete in the District Contest.

**Texas Tech Lady Raider...**

## Spearman to honor Kirkland

In honor of her contribution to the Texas Tech Lady Raiders team National Women's Basketball Championship, the Spearman school district will retire the jersey of the 1989 Spearman graduate Krista Kirkland.

The ceremony will take place at an all school assembly on May 21, at the Spearman Varsity Gym, at 2:30 p.m., according to Larry Butler, Spearman I.S.D. superintendent.

Further ceremonies honoring

Kirkland are scheduled for the evening of May 21 by the Spearman Booster Club. According to Peggy Varnon, Kirkland will attend the banquet and be recognized for her accomplishments as a college and a high school athlete.

"Nothing at all in my life compares to the thrill of winning the National Championship," said Kirkland in a phone interview with Bob Bort. It is two weeks after the fact, but the thrill is still there for Kirkland. The Tech Lady Raiders

beat Ohio State for the National Championship in women's college basketball Sunday, April 4, at the Omni in Atlanta, Georgia.

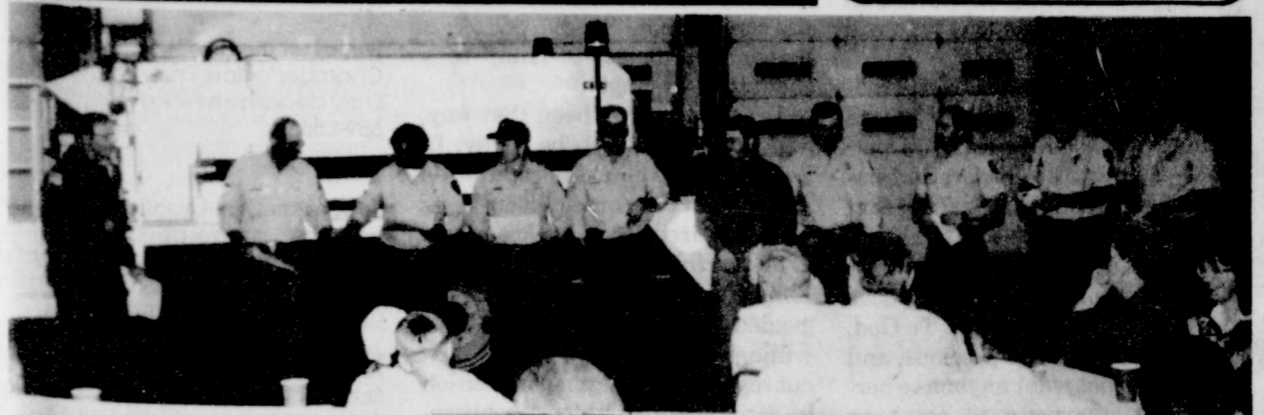
There to share her joy and excitement were her parents, Jim and Phyllis, from Corpus Christi; family and friends from Spearman and her fiancé Bryan Gerlich. Those from Spearman were her aunt Sheila and husband Andy Watley and their two daughters Janae and Amy. Kirkland's roommate at Tech, Kyla Nelson, and her parents Dennis and Judy Nelson were there. Also making the trip from Spearman were Gene and Frances Cudd.

"My dad, definitely, played a large role in my success, noted Kirkland in the phone interview. Jim Kirkland was not only her dad, but her basketball coach. "He taught me all I know," continues Krista. "All of the knowledge part,

See Kirkland page 7



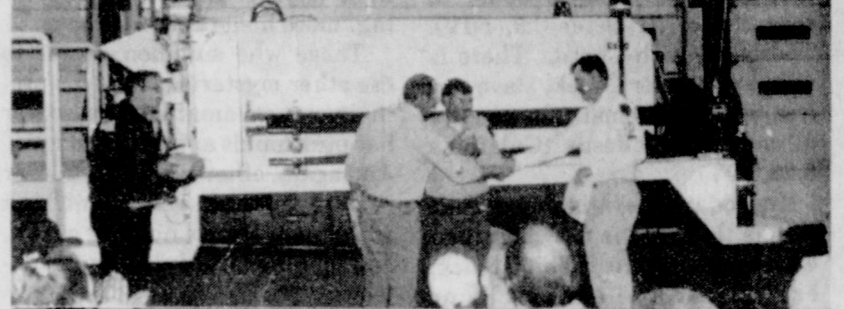
Kirkland family members attending college women's basketball final four were (l-r; front to back) Janae and Amy Watley, Krista and Phyllis Kirkland, Sheila and Andy Watley, Jim Kirkland and Bryan Gerlich.



The Spearman Volunteer Firemen officially took possession of a new fire truck, named a fireman of the year and announced the training achievements of some firemen. In the top picture Chaplain Rey Cook and Assistant Chiefs Bill Porter and Johnny Ring present Basic Certification awards to (l-r) Billy Snider, Keith Goodman, Jeff Hand, Willis Boyd, Randall Sauer, Jim Younger and Mike Davis.

In the middle picture Cook is presenting the advance certificate to firemen Porter and Ring. Ring and Porter then presented the Master Certificate to Ron Antalek, Spearman Fire Chief.

In the bottom picture the firemen's truck committee accepts the keys to a new county fire truck from Jim Brown, County Judge, and Worley Smith, County Commissioner, Precinct 1. Pictured (l-r) are Brown, Keith Goodman, Mike Davis, Sauer, Bret Burgin, Bill Carson, Antalek, Smith.



**Lady Hounds...**

## claim district championship

by Bob Bort

Lady Hounds Track and Field Coach Jim Davis wasn't sure he had enough girls competing to get enough points to win a district championship in 1-AA this season, but he was sure that the pride of the team would shine forth, regardless of their placing. The resulting 145 points, good enough for the district championship, surprised even Coach Davis. It was the effort that was put out by his team that didn't surprise him. He gave, as an example, Brendy Brown hustling for a second place finish in the two-mile run that earned her a trip to Abilene. It was that type of effort that won the district champi-

onship. Seven Lady Hounds will be heading for regionals at Abilene.

The Hounds hustled too, but it was not in the cards on this day, April 16, at Stratford. They earned five - count them, five - third place finishes. But with no first or second place finishes, the Hounds were shut out in their efforts to qualify for regionals.

District champions are Holly Venneman in the high jump, Wynn Maupin in the long jump and triple jump, and the 400 meter relay team of Monica Ward, Julie Meyer, Janelle Haefner, and Venneman. Joining them at Abilene will be Brown with her second place finish in the 3200 run, and Joni Hart with

her second place finishes in the 800 and the 1600 meter runs. Maupin qualified in three events, with her second place finish in the 300 meter hurdles. The Gruver ladies also had six third place finishes - just missing out of the trip to regionals. Myriam Alvarez, Wendy Rodriguez and Kasey Davis were the three Lady Hounds who just missed out of the trip to Abilene.

For the Hounds, Raul Villegas finished third in the 100 meter dash, and in the 200 meter dash. Fabian Royval managed third in the 800 meter run, Bailey Barkley third in the 3200 meter run, and

See GTrack page 6

## Spearman Tracksters head to regionals

Eight Spearman tracksters finished one or two in their event at the district track meet Friday, April 16 in Stratford to earn their spots in the Regional Meet.

Those going to Abilene for regionals on April 29 and 30 are Dee Mayfield, Cody Pipkin, Ashley Shieldknight, Jill Lusby, Michelle Garnett, Holly Jarvis, Mary Cook and Kara Townsen.

Lusby, Shieldknight, Garnett and Jarvis all qualified for regionals in individual events. Shieldknight finished second in the discus. Lusby was second in the 100m hurdles and first in the 300m hurdles. Garnett placed second in the 100 dash and Jarvis finished first in the 200m dash.

The 1600m relay team of Lusby, Cook, Garnett and Townsen finished second to qualify for

See Sp. Track page 3

## Gruver Board of Trustees... approve budgets

by Angela Jones  
Editor

The Gruver Board of Trustees approved the spring 1993-94 athletic budgets presented by Coaches Steve Myatt and Tim Garland during the meeting held April 7.

The budgets were approved as follows: the boys' track budget for \$8,075.05; the girls' track budget for \$6,734.64; the tennis budget for \$3,138.70; and the golf budget for \$2,940.

In other business, bids were awarded for football and boys' basketball equipment. Upon Garland's recommendation the board voted to purchase the football equipment and supplies from Buck's Sporting Goods in Amarillo; while the boys'

basketball equipment and supplies will be purchased from Buck's Sporting Goods and Blick's Sporting Goods in Colorado Springs, Colo.

Val Winger discussed with the board the possibility of the county doing some repairs in the parking areas, especially those around the County Barn and bus parking area. If this proposal is accepted by both groups, then the cost would be shared by both entities. It was also explained that the work would be done while the paving crew was passing through moving from one precinct to another.

The district's business manager, Margaret Fry, reported that TEA has informed the district that it

See Gruver S.B page 12

## Gruver City Commissioners... award seal-coat bid

by Angela Jones  
Editor

The Gruver City Commissioners awarded the seal-coating bid to Lewis Construction of Dumas. Lewis Construction's bid was in the amount of \$49,598.48 and was the low bid, according to City Manager A.J. Ratliff.

Two other bids were received for the project. E.D. Baker Corporation of Borger turned in a bid of \$51,051.15 and Lipham Construction Company of Aspermont had a bid of \$65,577.90.

In other business the possibility of solid waste recycling was discussed. Donna and Ronnie Wil-

liams were present at the meeting for the discussion. According to Ratliff the pros and cons of recycling were considered, but no action was taken.

Monty Blackman of Brown, Graham & Company presented the audit of the financial records for the fiscal year ending September 30, 1992. Mark Irwin motioned that the audit be accepted. Buster Davis seconded the motion and it carried.

In regular business, the commissioners read and approved the minutes from the March 10 and March 24 meetings. The payment of the bills for the month of March was also approved.

**AD INDEX**

Allsup's	6	Southwestern Bell	3
United Supermarket	9	FNB Honor Roll	10
Church ad	8	Gardon's Drug	4
Richard Pipkin	2	Beedy Furniture	12
Gruver Lumber Co.	7	Sheri Benton	7
Gruver State Bank	5	D & C Greenhouse	10
Craig Schumann	3	Dairy Queen	12

J. Winston of Amarillo 6



Dwayne Mitchell of the Spearman Classroom Teachers Organization oversees the drawing for speaking order of the six candidates for the two positions on the Spearman School Board. The candidates are (l-r) Craig Schumann, Sheri Benton, Allen Varnon, Scott Beedy, Carl Kunselman and Richard Pipkin.

### Panhandle Crisis Center

by Mary Frances Elizy

The PCC offers services free of charge to men or women who are victims of domestic violence, whether physical or "merely" verbal. We give counseling, support, and information to victims, plus a shelter to those who feel themselves to be in danger at home. We are available for help 24 hours a day, at 435-5008. If you want information only, call us from 9:00 a.m. to 5:00 p.m. For those who must call us long distance, use the toll-free number: 1-800-753-5308.

This is Sexual Assault Awareness month. The PCC has arranged with the Ministerial Alliance to co-sponsor a Sexual Assault Awareness program at the Full Gospel Church at 7 p.m., Sunday, April 18. Stacey Hughes, pastor of the First Christian Church and a member of the Board of the PCC, will be the speaker. He will not bore you.

It is a fact that: 1) Studies show that 1/3 to 1/2 of all sexual assaults are committed in the victim's home, and half of all rapes occur in private residences. 2) Only 2% of rape reports is false - the same as that of other felonies. 3) Victims are of every age, sex, shape, race, and social class. Rapists choose them because of their availability and comparative lack of strength.

How to avoid rape: Don't go out without clothes - that encourages some men. Don't go out with clothes

- any clothes encourage some men. Don't go out alone at night - that encourages men. Don't go out alone at any time - that encourages some men. Don't go out with a female friend - numbers encourage some men. Don't go out with a male friend - some male friends are capable of rape. Don't stay at home - intruders and relatives sometimes rape. Avoid childhood-little girls "turn on" some men. Avoid old age - aged women "turn on" some men. Don't have a father, grandfather, uncle, or brother - these are the relatives who sometimes rape young women and girls. Don't have neighbors - they sometimes rape women. If you want to be sure of avoiding rape, don't even exist.

Not funny. Let's all attend that sexual assault meeting at the Full Gospel Church, at 7 p.m., Sunday, April 18.

Again: The Panhandle Crisis Center provides help for sexual assault victims.

We are also sponsoring the Ama-

rillo Little Theater presentation of THE NERD at the Booker High School auditorium, on Friday, April 23, at 7 p.m. Tickets are available right now at the PCC office at 317 S. Main, or from any board member, for \$6 for adults and \$4 for children under 12. To enhance the fun and to raise funds for themselves, the FHA is sponsoring a baked potato meal at the school cafeteria at \$4 per person - \$4.50 at the door. On three different occasions I have attended these events and found both of them to be, respectively, delightful and delicious.

We're always in need of volunteers who are willing to take on-calls. When I served as an on-call volunteer, I found myself enriched not only by the gratitude of those whose calls I answered, but also by the things I learned that benefited me. In fact it was one of the most rewarding things I ever undertook. Give us a call - you're not committed until you actually sign up. Even then you can change your mind.

### Sp. Track from page 1

regionals. At press time Lynxettes coach, Richard North, was not sure who would run on the relay team at regionals.

Lynx trackster, Mayfield, vaulted a personal best 12 feet to win the pole vault competition at district. He is joined in the regional field by Pipkin. Pipkin will run in the 800m run. He posted a first place finish at district to qualify for the regional meet.

### Producers must be in compliance with conservation plan

The Food Security Act of 1985 as amended by the Food, Agriculture, Conservation and Trade Act of 1990 discourages the production of crops on highly erodible cropland unless the land is protected from erosion under an approved conservation system. If crops are produced on such fields without an approved conservation system, producers may lose their eligibility for most U.S. Department of Agriculture Program Benefits. In addition to the restrictions for production on highly erodible land, producers will USDA benefits if they plant agricultural commodities on wetland converted after Dec. 23, 1985, or if they convert a wetland to make agricultural production possible after Nov. 28, 1990. Some of the programs that are subject to the highly erodible land and wetland conservation provisions under the 1985 Act as amended are:

Acreage Reduction Programs, Price Support Loans, Multiple peril crop insurance, Farm related FmHA loans, Commodity Credit Corp. storage payments, Disaster Assistance, CRP payments and Conservation cost share payments.

To retain eligibility for USDA benefits, it is important that before producers plant 1993 crops they know whether the SCS has made a highly erodible land determination on the land. Producers must also know if crops and practices to be applied on highly erodible land are authorized under an approved conservation plan. They must also be sure that all conservation practices that are scheduled in the conservation plan for 1993 are applied on highly erodible land.

If you have any questions about eligibility, please contact your local ASCS office.



## RADICAL LIVING

By Dan Carter, Pastor  
Trinity Community Church

### THE VOICE OF THE DEAD Hebrews 11:4

He evidently lived in great fear in the castle in England. Bars covered every entrance and opening. Although he was one of the wealthiest men in the world, only pay phones were available for guests and visitors. J. Paul Getty died several years ago, isolated from family, and possibly friendless. His great wealth couldn't stave off death, and didn't appear to bring him much joy in life.

She was a tiny lady with great courage, and obvious joy. Born near the end of the 19th century, she married young and bore eight children. Although far from rich, she and her husband took in another child to raise. Her house was filled with peace. Family and friends were often around, and even in her later years she desired more children. Nanny, my grandmother, never had much materially, but she was wealthy. The abundance of God was her treasure.

Though dead nearly four years, she still speaks. I think of her often. Her mercy and generosity color my life a little. Her prayers are still effectual. They were, and are being answered in my life. Her descendants rise up and call her blessed.

Having read some about J. Paul Getty, I hear him speaking from death: "Don't come this way. Selfishness is misery enough in life. Avoid its eternal reward, even if it costs eyes and limbs in the present."

The dead still speak. A prudent person takes note now. It's good to consider what legacy, what voice you will leave behind to your children, grandchildren and generations yet unborn.

Sponsored by Trinity Community Church, 717 W. 7th, Spearman

## Letters to the Editor

### Letter to Editor:

Congratulations to the Gruver I.S.D. School Board and Superintendent. You did a super job in setting new policy where cheerleading is concerned. It is the dream of almost every little girl to someday be a cheerleader.

In the past, only a favored few were selected for this honor. Because of a new policy proposed by Barry Haenisch and supported by the school board, each seventh grade girl who wishes to cheer the Gruver Greyhounds on to victory will have that opportunity.

The seventh grade girls in the future will not have to experience the frustration and hurt that is usually associated with cheerleader tryouts. Instead, they will be able to channel their energies in the positive direction of learning skills necessary to encourage and promote Gruver athletes. They will be required to spend part of the sum-

mer preparing themselves for this duty and responsibility.

This truly is a great community that symbolizes the true

American spirit where everyone has an equal opportunity to grow and succeed in the areas they choose. May we always be the kind

of compassionate community that puts the feelings, dreams, and best interest of our children first.

Roy and Debby Mayhew

### FREE EXAMINATION

AS AN INTRODUCTION TO DR. DUKE, A FREE EXAMINATION is being conducted to determine if you can be helped before any expense on your part is incurred. Call 435-5361. LIMITED APPOINTMENTS AVAILABLE - CALL TODAY

A spinal examination should be conducted to determine the cause of  
• Headaches • Nervousness • Low back & leg pain • Chronic tiredness • Dizziness  
• Neck and shoulder pain • Muscle spasms • Pinched nerves • Numbness in hands & feet

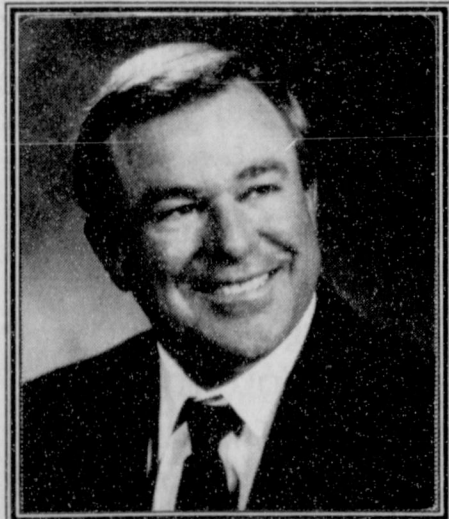
### Duke's Chiropractic Center

Dr. D.D. Duke  
1122 South Main, Perryton  
435-5361

- Work injuries
- Auto accidents
- Athletic injuries
- Personal injuries
- MEDICARE

- Work injuries
- Auto accidents
- Athletic injuries
- Personal injuries
- MEDICARE

THIS OFFER GOOD FOR THE MONTH OF APRIL 1993



## CRAIG SCHUMANN

- I WILL BE PERSISTENT IN REPRESENTING THE BEST INTEREST OF STUDENTS AND TAXPAYERS.
- I WILL LISTEN TO ANYONE'S CONCERNS.
- I WILL VOTE FOR MORE EFFICIENT SPENDING OF AVAILABLE MONEY.
- I WILL VOTE TO KEEP AND ATTRACT QUALITY TEACHERS.
- I WILL CONTINUE TO ASK QUESTIONS AND DO PERSONEL RESEARCH ON ISSUES.

# VOTE

I would appreciate your vote  
MAY 1ST  
AT SPEARMAN HIGH SCHOOL

POLITICAL ADVERTISEMENT PAID FOR BY CRAIG SCHUMANN

## "Let's Talk"

By Gary Stevens, External Affairs Manager

### Southwestern Bell Telephone of Texas

Last week, the Texas Telephone Association (TTA) made public a commitment to invest more than \$1.4 billion in Texas. This would be over and above the normal construction budgets of TTA companies.

A commitment of this magnitude ought to make big news in Texas. Right? Well, chances are, you haven't read much about the \$1.4 billion offer, even though big-city newspaper publishers have known about it for months.

Makes you wonder what gives? And perhaps more importantly, what do these newspaper publishers have to do with blocking a commitment that could bring jobs and technological improvements to Texas?

Texasans deserve to know why they've been kept in the dark about an effort by big-city newspaper publishers to kill one of the biggest economic boosts Texas has ever seen.

### Here's the background so you can decide yourself.

Telephone companies in Texas, including mine, are seeking changes in the way they are regulated. The TTA does not support total deregulation. For example, continued Public Utility Commission (PUC) of Texas regulation of basic local telephone service is essential.

The rate you pay telephone companies for local service is low today, and must continue to remain affordable. The TTA proposes to freeze these low basic local rates for four years.

### So, where's the catch?

Telephone companies in Texas are seeking the flexibility to compete in areas where competition already exists. We want the financial incentives to invest in advanced telecommunications technologies; like Distance Learning which links teachers with distant classrooms over the phone lines; and Telemedicine which allows health care professionals to video conference with patients and educators to share medical expertise. Services like these are examples of how telecommunications stands ready to improve the quality of life for all Texans.

### Enter the "Big-City" Publishers.

For some five months now, the newspaper industry, led by publishers of papers owned by out-of-state media conglomerates, have raised false concerns about the TTA proposal. They called it a deregulation proposal. It's not. They said telephone company profits are financing foreign investments. That's not true. The newspaper bosses are wrong to make such ludicrous, unfounded accusations.

In an attempt to appease the newspaper moguls, state leaders called for meetings between the telephone and newspaper industries to settle their differences. A reasonable idea.

But, we've been trying to get representatives of these publishers to sit down and talk since November. They refused to do so until just recently and have done little more than drag their feet.

Their strategy? It's been reported in their own words. A paid newspaper industry lobbyist is quoted one day saying his group would continue to seek a compromise with telephone companies. Then, speaking before the Texas Daily Newspaper Association the same lobbyist is quoted saying: "We need to slam these guys. Let's take these guys out." So much for the publishers' motives.

### Why are they fighting progress?

Money. The newspaper bosses have used a massive lobbying effort and scare campaign to protect their own self-interests. They see any change in telephone regulation as a direct threat (although unfounded) to their classified advertising profits. As long as they can stall the talks, they can continue to keep any competitive threat at bay.

The publishers would have you believe this is a complicated issue between two large interests that needs to be studied for another two years. Let me simplify the debate, since they won't.

Phone companies are ready to invest \$1.4 billion in a fiber optic system that will bring jobs and new business to Texas. Sure, that will help grow our business, but don't forget, we're also willing to freeze basic phone rates to ensure that our local customers are protected.

The TTA group has negotiated in good faith. TTA representatives attended every meeting held, and tried to work with the publishers in every way reasonable. We said "yes" to rate freezes and even to local network competition.

The newspaper publishers, on the other hand, did little more than to delay any progress serious talks could have produced. They offer no vision for Texas. Let's hope their message to Texans wasn't spoken by their paid lobbyist when he said, "Let's take these guys out." H-m-m-m.

## Spiritually Speaking

Do We Accept Everyone God Accepts?

by Arnis Pape  
Spearman Church of Christ  
What is Christianity known for in the Spearman community? My hope is that it is known for kindness, love and good deeds done by those who confess Christ, and an openness toward anyone who will follow Christ.

Jesus was criticized by the religious leaders of his day for associating with a "lower class" of person—chiefly tax collectors and sinners. He responded by saying that God seeks after each soul as a shepherd does a lost sheep, as a woman does a lost coin, or as a father does a wasteful son (Luke 15). To God, each person's soul is precious, and he "...does not want anyone to perish, but everyone to come to repentance" (II Peter 3:9, NIV). Therefore, with Christ: "There is neither Jew nor Greek, slave nor free, male nor female, for you are all one in Christ Jesus" (Galatians 3:28, NIV).

In today's terminology, that means that God is not concerned with whether one is a White, Black, or Hispanic, educated or uneducated, wealthy or poor—everyone is welcome in the kingdom of God. Unfortunately, God's people

are not always as accepting of others as their Savior is. While a brother or sister of different skin color or background may be perfectly acceptable to God, our standards are higher!! Some have what Max Lucado calls a "screen door" mentality. Jesus may be the door, but they consider themselves to be the screen door. "You've got to get through me to get to Him," they seem to be saying.

It hasn't always been that way, and doesn't have to be today. In fact, the early church's reputation suffered for the same reason Jesus was criticized. In a book entitled *True Doctrine*, a second century Roman philosopher, Celsus, downgraded Christians because of their willingness to accept anyone, without regard for their past or position in society. He first says, concerning "more honorable" religions:

Those who summon people to the other mysteries make his preliminary proclamation: 'Whoever has pure hands and a wise tongue.' And again, others say: 'Whoever is pure from all defilement, and whose soul knows nothing of evil, and who has lived well and righteously.'

He then contrasts those calls with the invitation of the Christians:

But let us hear what folk these Christians call. 'Whoever is a sinner,' they say, 'whoever is unwise, whoever is a child, and, in a word, whoever is a wretch, the kingdom of God will receive him.' Why on earth this preference for sinners?

I believe the church will be closer to what God has called us to be, when we are once again criticized for having "a preference for sinners."



The official name for the White House was first the *President's House* and then the *Executive Mansion* until President Theodore Roosevelt authorized *White House* as the official title in 1901.

### GARAGE SALE ITEMS NEEDED

Hansford Hospice  
Garage Sale  
MAY 1 • 9 to 5  
Gruver Airport



I.M. Global Says:  
"Don't show me a good thing!" Repeat, restore, reuse, reuse!

For information contact  
PAM SCHNELL  
659-2360  
659-2600

## Hansford Happening

Entries for the Hansford County Round-up Rodeo Queen contest are available at the Spearman Chamber office on 211 Main Street • Spearman. Deadline for entry is Saturday, May 1. For more information call Cindy Blackman at 659-5555.

Hansford Hospice Garage Sale is coming up May 1st. DONATIONS ARE NEEDED. Donated items will be picked up. Furniture and household items are needed. Call Sue Gerardy 733-2789; Carolyn Hicks 733-2335; Jack McWhirter 659-2249; Charollette Jackson 659-2867; Pam Schnell 659-2360; Jo Linda Hutchinson 659-3703 or 659-2285.

Entries for the Miss Hansford Beauty Pageant are available at the Spearman Chamber office, Lady Fair, Kids' Stuff, J.G.'s and Main Street Store • Gruver. Entry deadline is Friday, May 7. For more information call Cindy Blackman at 659-5555.

HELP!!!

Spearman Little League has had over 200 youth sign up for Spring Baseball and Softball. We need more coaches and Officials!! PLEASE VOLUNTEER YOUR SERVICES to help the kids of our community by calling Mike Cudd at 659-2568 (days) 659-5030 (nights) or Jeff Beedy 659-2541 (days) 659-3847 (nights) AS SOON AS POSSIBLE!!

Area Christian Singles will be meeting on Friday, April 23, to eat at Western Sizzlin in Pampa at 6:30 p.m. Bowling will be at 8 p.m. in Harvester Lanes, Pampa. Make reservations by April 16th. Call Cindy for car pooling information or any other questions - 435-2030.

215 Boys and Girls signed up for the Little League Program. WANTED Coaches for both Girls softball T-ball and minor league teams. Contact Mike Cudd 659-2568 or Jeff Beedy 659-2451 AT ONCE! MAJOR LEAGUE try outs will be April 15 and 16 at 5 p.m. at the Little League Field. Ages 9 thru 12 both boys and girls.

Entry forms for the Miss Hansford County Scholarship Pageant are available at the Spearman Chamber of Commerce. Deadline is May 7, 1993. Age Groups are Little Miss, 4-6 years old; Jr. Miss, 7-9 years old; Pre-Teen, 10-12 years old; Miss Teen, 13-16 years old; and Miss Hansford, 17-21 years old.

Hansford County Library is celebrating National Library Week by hosting a author's reception and party for Margie Snowden North today, April 22, from 4 to 5 p.m. Margie is the Author of *To Chase a Dream*. Stop in and meet Mrs. North. She is also the mother of SHS girl's basketball coach, Richard North.

First National Bank Spearman is presenting, in concert, the Texas Tech University Jazz Ensemble today, April 22. There will be a FREE concert for the PUBLIC at 7:30 p.m. at the high school auditorium in Spearman. At 2:30 p.m. a FREE concert will be presented for the school system.

Hansford Golf Club will meet on Monday, April 26, at 7 p.m. in the FSB meeting room. All members are welcome.

The Spearman Quilt Guild will meet at 7 p.m. Monday, April 26, at 216 Main.

A piano recital will be presented by the students of Kristi Holt at 3 p.m. on Sunday, April 25, at the Gruver Methodist Church. The public is invited to attend.

Swim meeting Monday, April 26, at 7 p.m. in the FNB meeting room for all parents interested in their children participating in the up-coming summer swim league.

The Spearman Apostolic Faith Church will be having Rev. Wayne Freeman as a guest speaker April 23-26. Services will begin each evening at 7:30 p.m. (Sunday 11 a.m. and 6 p.m.) Pastor Brown and the congregation welcome you to come and worship, as they GET BACK TO THE BASICS!

Michael Reardon will give and form to THE GOSPEL OF JOHN at the Oslo Lutheran Church, 18 miles NW on FM 1262, on Tuesday, April 27 at 7:30 p.m. It is directed by Patrick Lane. These two men have performed world-wide. The public is welcome according to Reverend John Chandler of Oslo Lutheran Church. A reception to meet the artists will follow the performance.

## At the movies . . .

Showing at the Lyric Theatre in Spearman Friday, April 23 through Tuesday, April 27 is "Teenage Mutant Ninja Turtles III" on screen #1 at 7:45 p.m. and held over on screen #2 is "Homeward Bound: The Incredible Journey" at 7:30 p.m.

"Teenage Mutant Ninja Turtles III" is directed by Stuart Gillard.

Raphael, Leonardo, Michelangelo and Donatello are going back in time to ancient Japan in their latest adventure. You don't want to miss it.

"Homeward Bound: The Incredible Journey" co-stars Kim Greist and Robert Hayes and directed by Duwayne Dunham. It was written by Linda Woolverton and Caroline Thompson.

"Homeward Bound: The Incredible Journey" is adventure film about three domesticated pets who become separated from their human family. These two dogs and a cat then journey across the wilds of the Pacific Northwest to find their way home.

When one has much to put into them, a day has a hundred pockets.  
—Friedrich Nietzsche



Picture (l-r) Ramon Rosales, Chuck Vott, Vance Snider, Albert Avila, Billy Baker and Billy Snider. (Not pictured: Jim Morely and Irene Snider.)

## Caprock Industries, Lot 1... names preferred supplier

Caprock Industries, Lot 1, named their Preferred Supplier, Spearman's Hi-Plains Auto Parts Store at a fish fry Saturday, April 3, 1993.

The auto parts store was recognized for its outstanding service supplying the feedlot with parts. Tommy Raper, the Yard Superintendent, presented the crew which

consists of: Vance and Irene Snider, Billy Snider, Billy Baker, Jim Morely, Chuck Vott, Albert Avila and Ramon Rosales with a wall plaque. Each employee also received a satin award jacket.

The store was noted for its special efforts in meeting all of Caprock's needs and going that extra mile to help their customers.

## American Cancer Society... to hold meet April 29

by Joy Henderson

The American Cancer Society (ACS) will be meeting on Thursday, April 29, at the B&B Industries hospitality room in Spearman. The meeting will begin at noon with a luncheon hosted by the Spearman ladies. The public is welcome to attend.

At this meeting preliminary reports of the Cancer Crusade will be given. A special program of the organization is planned and an information booth with pamphlets and other materials will be on display. This will be done to further increase the public knowledge on the purpose and operation of ACS.

In addition the Hansford Unit will be asking for volunteers to join the ACS as some of the members have had to resign for various reasons. Come and join a worthwhile organization.

## City Lites

by Kelvin Knauf  
Spearman City Manager

As warmer weather arrives, the City takes on a whole new look. Trees grow their leaves, flowers bloom, and the grass turns green. Along with these beautiful sights of Spring come the ugly sights—high weeds. High weeds are a problem because not only are they ugly but they also hide pests such as mice, snakes and insects. High weeds also present a fire hazard. Mowing the weeds not only makes your property look better but also discourages pests and minimizes the chances of fire spreading onto your property.

City ordinances require property owners to keep their property mowed. Periodically, I send out letters to property owners reminding them of this responsibility. This year, any person owning property with weeds that are over 18" tall will receive a letter from the City asking the property owner to mow the weeds.

While the City can, legally, mow your property for you and bill you for the cost, this is not our preference. Mowing property takes away from other priorities of the City such as street and park maintenance. We much prefer that property owners either mow their property or arrange to have someone else do it.

While mowing high weeds is not a pleasant job, it is one that has to be done. If property owners will take the time to mow and clean-up their property, Spearman will be a healthier, safer and more pleasant place to live for all of us.

## Margie Snowden North... to be at library today

The Hansford County Library is celebrating National Library Week with an author's reception and party for Margie Snowden North today from 4 to 5 p.m.

Margie is the author of *To Chase a Dream*, as well as several children's books and short stories. She also just happens to be the mother of Richard North, SHS girl's basketball coach.

Sheri Benton, Hansford County Librarian urges you to stop in and meet Mrs. North. The event is open to the public.

## The Hansford County Reporter-Statesman "Serving All Of Hansford County"

USPS 509660  
213 Main, Box 458, 659-3434  
Spearman, TX 79081  
Published Weekly at  
213 Main, Spearman, Texas  
Owned and Operated by:  
Texas Independent Newspapers, Inc.  
15915 Alsace  
San Antonio, TX 78232  
(210) 492-8907

Second Class postage paid at Spearman, Texas 79081.

Any erroneous reflection upon the character of any person or firm appearing in these pages will be gladly and promptly corrected upon being brought to the attention of the management.

Publisher - Robert M. Hulett  
Editor - Angela Jones  
Bookkeeper - Sheila LaRochelle

Subscription Rate: Hansford County, \$19.95; out of county, \$24.95 annually.

Postmaster: Send address changes to Hansford County Reporter-Statesman, Box 458, Spearman, TX 79081.

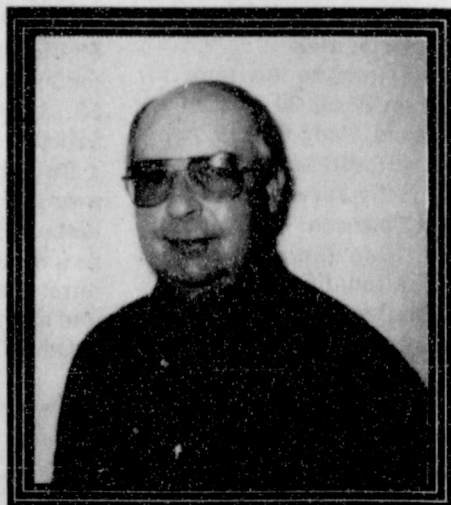
The publisher reserves the right to revise or reject at its option any advertisement which it deems objectionable, either in subject or phraseology, or which it may deem detrimental to its business.

Advertising and Story Deadlines: Tuesday, 12:00 p.m.

MEMBER  
TEXAS PRESS ASSOCIATION

## Elect Richard Pipkin

for  
Spearman Independent  
School District  
Board of Trustees



- Life long Spearman resident
- Concerned for the future of Spearman schools
- Concerned parent
- Sound and conservative economic judgements

Your Vote Appreciated on  
Saturday, May 1

POLITICAL ADVERTISEMENT PAID FOR BY RICHARD PIPKIN

## At The Lyric Theatre. . .

Friday, April 23 - Tuesday, April 27  
Bargain Nights Mon. & Tue. All Seats \$3  
Closed Wednesday & Thursday

SCREEN 1 • 7:45 PM

SCREEN 2 • 7:30 PM

Teenage Mutant Ninja Turtles III

HOMeward BOUND: THE INCREDIBLE JOURNEY

113 Main, Spearman

## On The Go With Joy

by Joy Henderson

I'm back in Gruver for a short time, but will leave again at the end of this week. After taking a few days to tend to some business, see a doctor or two, then maybe I can settle down here at home for awhile. Of course, it won't be long until some of the grandkids will be having birthdays and I will want to be off and running again.

After Mother's funeral service, we invited Dad to come home with us and see the Texas Panhandle again. We knew he could use a change of scenery after having to stay in the Oklahoma City, Norman and Purcell area for several years. He was of the same mind and welcomed the time to come back here to visit old friends and see some of our relatives.

So, we have really been "on the go" Dad was able to visit his former boss in Pampa and church friends there. Also, we tracked down one of my cousins and caught him during his lunch hour. Next day, we travelled to Dumas for an enjoyable few hours with another cousin. We tried to take a day off on Thursday in order to do some laundry, and rest up for another big day in Pampa and Borger plus some side trips to the Borger Greenhouse in the Spring Creek area where we lived so many years. The owners of the Greenhouse are friends from "way back." Among friends in the Stinnett area is Bill Blackney whom some of you in Spearman and Gruver have met. Then on Sunday, we attended church in Borger and ate lunch with them at a downtown restaurant.

One of the other highlights of Dad's visit here is the sharing of musical talents and making new friends who enjoy getting together and playing country and western music. Fortunately Dad brought a fiddle over here in order to be able to continue his interest in music. Saturday night, we took him to Spearman for a session with Otho Gammill and Cap Benson of Gruver. Others enjoying and listening were Lewis and Joy Henderson, Lucille and Alton Tindell, Thelma Tindell, and Cindy Nicholson and various younger ones popping in and out. My Dad, Arthurs Cox and us thoroughly enjoyed the "Get-Together."

Gruver is getting some new faces in town. In addition to the new SPS family getting settled, our new Postmaster and his family will be arriving. Since there are some still in school and will be graduating later on in May, they won't be settled until later on.

Visitors over the weekend were Dale and Mittie Blackburn with

children Branson and Bayley. I imagine that I am safe in supposing they were here for a visit with Mittie's parents Weldon and Elene Green. Weldon is doing real well after his surgery recently.

Also recovering from recent surgeries are Lanette Shapley and C.C. Heath. It was good to see their smiling faces when I returned home. Ora Mae even had a relief smile also, Amanda Walters was able to return home after a stay in the hospital with diabetes problems. All of us need to remember Helen Shapley who is scheduled for surgery and will be in St. Anthony's.

Back to the recent visitors who were in Gruver for the Meadowlark Lemon activities and bridal showers. Registering at First Baptist Church were Jim and Elizabeth Taylor of Spearman, James, Courtney Walker of Sunray, Mr. Brandvik, guests of Ray and Christine Brandvik from Sunray, Billy Blakenship, guest of Sandra Watlington, Donnie and Sandra Waters of Henryetta, TX guests of Delbert McCloy. Kathy Dillard and Julie Payne.

Guests in the Larry Miller home were Lupita Rocha and Javonna Pax of Plainview. Guests of Jill Garrett was Dean Marion of Lubbock, Shelly Crawford guest of the Seaglers; Ruby and Toby Bilderback of Amarillo, guests of the Alfred Bayless family. Other guests from Spearman were Sara Dossett and Cora Hester.

Visitors in Victor and Kathy Taylor were Gordon, Marie, Annabell and Angela Taylor of Borger. Ruby McCullough, mother of Benny McCullough and Nancy Babbs visited in the Babbs home. Also, guest of Wes Babbs was Luke Ayers of Plainview.

For the baptism of Cambry Cooper, young daughter of Craig and Christy Cooper were Reba Pittman, Christy's grandmother, her parents Duane and Yvonne Pittman, Christy's aunt Sharon Wilson all of Stratford, her cousins Tania Avera of Missouri City, Tx and Tamra Neep of Nashville, Tn. Elva Cooper, Craig's grandmother and his mother and husband, Sue and Glen Pafford of Amarillo.

Mozelle McClellan is happy to have her sister back with her for awhile. Mae Johnson of Grove City, Pennsylvania helped take care of Mozelle when she was critically ill a few years ago. We hope she is able to help Mozelle with her recovery after her recent heart attack.

Connie and Bob Burgoon attended a youth rally in Canyon

which their son Andrew sang with the group Rejoice at University Park Church of Christ. Bob will also be travelling south to check on his mother who is being treated for cancer. Connie will also go to Clovis

to visit with relatives there. Brownie Troop #73 recently participated in an overnight activity. Leaders Linda Walters and Aline Bishop were helping 9 Brownies with some exciting activities.

## Club News

The Gruver Music Club met on April 13, 1993, in the Gruver Methodist Church.

It was reported that prizes would be given for first, second, and third place winners in the National Music Week poster contest.

Trixie Holt gave the current musical note and Barbara Cluck accompanied the group in the singing of the hymn of the month, "Jesus Christ is Risen Today".

Thirty-seven members and guests were privileged to hear Kristi Holt, pianist, present "Sonatine" by Ravel and "The Legend of St. Francis Walking Over the Waves" by Liszt.

Marguerite Nelson gave the meditation. The meeting was adjourned and delicious refreshments were served by the hostess, Gyene Spivey.



Junior High Citizens of the Month of April

Citizens of the Month for Gruver Junior High during the month of April are pictured above. They are Chelsie Hicks, fifth grade; Estella Cruz, sixth grade; Amber Roberts, seventh grade; and Mary Dawn Henson, eighth grade.

## Gruver PTA honors Mayhew

The Gruver PTA presented Roy Mayhew with a life time membership during the PTA's associational meeting held April 12 in the Gruver Auditorium.

Mayhew teaches at the junior high. He received this honor for outstanding work for the local school system.

Officers for 1993-1994 were elected. The new officers are Jo Alice Clawson, president; Shelley Carter, vice-president; Christy

Johnson, secretary; and Jody Irwin, treasurer.

The presentation of the colors was led by the seventh graders Darby Johnson and Cody Cazares. Holly Venneman, high school senior, delivered the evening's devotional.

The evening was capped off with a talent show presented by the Gruver Elementary K-4. The program was organized by Mrs. Haley Garland, music teacher.

## School Menu

Pringle-Morse School  
April 26 - April 30

LUNCH

Monday—Burritos, chili, salad, corn, milk, no-bake cookie.

Tuesday—Corn dogs, tots, cole slaw, dessert, milk.

Wednesday—Sandwiches, carrots, fruit, cookie, milk.

Thursday—Lasagna, green beans, salad, rolls, milk.

Friday—Hamburgers, chips, trimmings, applesauce, ice cream, milk.

BREAKFAST

Monday—Honey buns, cheese toast, apple, milk.

Tuesday—Pancakes, sausage, grape, milk.

Wednesday—Muffins, cinnamon toast, orange, milk.

Thursday—Cereal, toast, apple, milk.

Friday—Egg, bacon, toast, orange, milk.

Gruver I.S.D. Menu

April 26 - April 30

LUNCH

Monday & Tuesday — No School Staff Development.

Wednesday — Steak fingers, mashed potatoes with gravy, corn, cake, hot rolls.

Thursday — Ham & cheese, patty melt, pickle spears, potato chips, fruit, milk.

Friday — Hamburgers, french fries, lettuce, pickles, cheese, rice crispies, milk.

BREAKFAST

Wednesday — Cereal, juice, muffins, milk.

Thursday — Toast, peanut butter & jelly, fruit, milk.

Friday — Cinnamon rolls, fruit, milk.

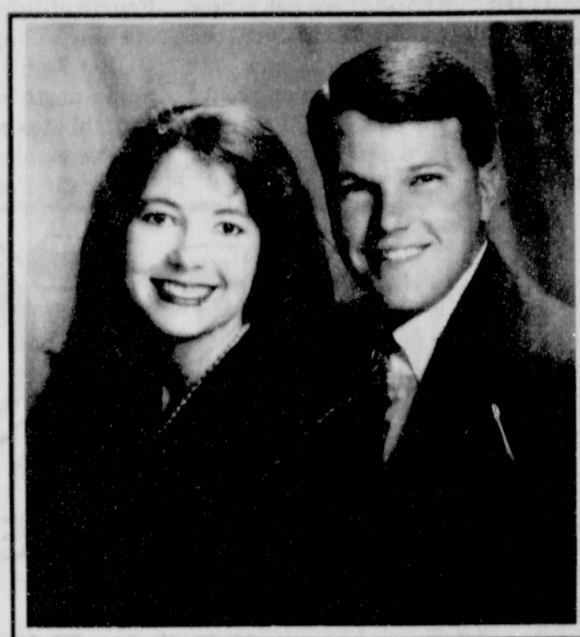
## Holt and Key... to exchange vows

Mr. and Mrs. Nicholas David Holt of Gruver announce the engagement of their daughter, Holly, to Jerrell Kring Key, son of Mr. and Mrs. Charles Edmond Key of Lubbock.

They will marry on June 12 at the Gruver United Methodist Church.

The bride-elect, a graduate of Texas Tech University and a member of Kappa Gamma Sorority, is employed by Lubbock Independent School District.

The future bridegroom, also a graduate of Texas Tech University, was the Texas Tech Masked Rider in 1985 and is a member of Kappa Alpha Fraternity. He is employed by Belton Industries in Ft. Worth.



## Soto and Davila... announce engagement



Mr. and Mrs. Matias Soto of Gruver, Texas, wish to announce the engagement and approaching marriage of their daughter, Cristina, to Rene Davila, son of Mr. and Mrs. Ezequiel Davila of Cactus, Texas.

The bride-elect is currently working in Gruver. The prospective groom owns and operates Cactus Body Shop.

The couple will reside in Cactus after their May 22,

1993 wedding in St. Paul and St. Peter Catholic Church in Dumas, Texas.

To concede is harder than to be enthusiastic.  
—Hugo Von Hofmansthal

## CITIZENS OF GRUVER:

PEOPLE ENJOY LIVING IN SMALL TOWNS. THE TREND INDICATES THAT PEOPLE WANT THE STABILITY AND SECURITY OFFERED BY SMALL COMMUNITIES.

GRUVER IS THE BEST SMALL TOWN AROUND.. WE HAVE BEEN SUCCESSFUL IN TRANSMITTING OUR VALUES FROM GENERATION TO GENERATION. WE WANT TO CONTINUE PASSING THIS HERITAGE TO OUR CHILDREN'S CHILDREN.

GRUVER IS PROUD OF ITS REPUTATION OF HIGH MORAL CHARACTER, SCHOOLS, AND REVERENCE FOR THINGS SPIRITUAL.

ALLOW ME TO HAVE A PART IN CONTINUING THIS IDEAL. PLEASE VOTE FOR ME AS YOUR MAYOR AND, WE AS CITIZENS TOGETHER, MAY CONTINUE THIS HERITAGE.

RESPECTFULLY, ARCHIE NELSON

Political advertisement paid for by Archie Nelson.

PUBLICATION COPY - COMMERCIAL AND SAVINGS BANKS  
CONSOLIDATED REPORT OF CONDITION (including Domestic and Foreign Subsidiaries) STATE OF TEXAS

LEGAL TITLE OF BANK: Gruver State Bank  
P.O. Box 978  
Gruver, Texas 79040-0978

STATE BANK NO.: 1763-34  
FEDERAL RESERVE NO.: 11132318

CITY: Gruver  
COUNTY: Hansford  
STATE: Texas  
ZIP CODE: 79040-0978  
CLOSE OF BUSINESS DATE: March 31, 1993

ASSETS		1993	1992
1. Cash and balances due from depository institutions		1,267	1,4
2. Securities		10,179	8
3. Federal funds sold and securities purchased under agreements to resell in domestic offices of the bank		4,900	34
4. Loans and lease financing receivables		12,017	4.4
5. Assets held in trading accounts		263	5
6. Investments in unconsolidated subsidiaries and associated companies		0	8
7. Other real estate owned		0	8
8. Intangible assets		420	11
9. Total assets (sum of items 1 through 11)		28,746	12
10. Loans deferred pursuant to 12 U.S.C. 1823 (g)		0	12
11. Total assets and losses deferred pursuant to 12 U.S.C. 1823 (g) (sum of items 10 and 11)		28,746	12
LIABILITIES			
12. Deposits		25,204	13
13. Demand notes issued to the U.S. Treasury		0	14
14. Other borrowed money		0	14
15. Mortgage indebtedness and obligations under capitalized leases		0	14
16. Bank's liability on acceptances executed and outstanding		0	14
17. Subordinated notes and debentures		131	20
18. Other liabilities		25,205	21
19. Total liabilities (sum of items 12 through 18)		25,205	21
20. Limited - No preferred stock and related surplus		0	22
21. Preferred stock and related surplus (plus of shares outstanding)		0	22
22. Common stock (No. of shares: Authorized 5,000; Outstanding 5,000)		600	24
23. Surplus (includes all surplus related to preferred stock)		1,000	25
24. Undivided profits and capital reserves		1,761	26
25. LESS: Net unrealized losses on marketable equity securities		0	26
26. Cumulative foreign currency translation adjustments		0	26
27. Total equity capital (sum of items 22 through 26)		3,261	28
28. Loans deferred pursuant to 12 U.S.C. 1823 (g)		0	28
29. Total equity capital and losses deferred pursuant to 12 U.S.C. 1823 (g) (sum of items 28 and 29)		3,261	28
30. Total liabilities, limited - No preferred stock, and losses deferred pursuant to 12 U.S.C. 1823 (g) (sum of items 21, 22, and 29)		28,746	29

MEMORANDA: Amounts outstanding as of Report of Condition date:  
1. Standby letters of credit: 0  
2. Amount of Standby letters of credit in memo 1, conveyed to others through participations: 0

NOTE: This report must be signed by an authorized officer(s) and attested by not less than three directors other than the officer(s) signing the report. The undersigned officer(s) do hereby declare that this Report of Condition has been prepared in accordance with official instructions and is true and correct to the best of my best knowledge and belief.

SIGNATURE OF OFFICER(S) AUTHORIZED TO SIGN REPORT: [Signature]  
DATE SIGNED: April 13, 1993  
TITLE OF OFFICER(S) AUTHORIZED TO SIGN REPORT: [Title]

SIGNATURE OF DIRECTOR(S) AUTHORIZED TO SIGN REPORT: [Signature]  
DATE SIGNED: [Date]  
TITLE OF DIRECTOR(S) AUTHORIZED TO SIGN REPORT: [Title]

My commission expires: 2/29 19 96

The 1992-93 members of ALPHA MU PSI would like to thank everyone who helped to make our year a success. We contributed to the following - Mobile Meals, needy families in the community, school needs, Ministerial Alliance, Gruver Library, Gruver Volunteer Fire Department, Hospice and Hansford Manor, and the Panhandle Crisis Center.

Thanks Again  
Alpha Mu Psi  
Chapter of Beta Sigma Phi

Nadine Sprigg invites you to an 80th Birthday Open House Saturday, April 24<sup>th</sup> 2-4 p.m. Golden Age Center Gruver, TX

# Among the Neighbors

by Helen Fisher

Patti Lee, wife of Bob Lee, in Colorado Springs in contact with friends here Monday morning reports that Bob is showing some slight improvement but has a long, hard road ahead. This is the 9th week he has been in I.C.U. at St. Francis Hospital as a result of a fall he had on ice. He sustained severe head injuries. He still has no control over his eye lids and other muscles, but most if not all of the clots have been dissolved and many of the tubes removed. Friends here are staying in close touch.

Idella Randall and her daughter Cecilia and grandson Deremy returned late Thursday from Ft. Worth. They had gone earlier in the week in order for Cecilia to take the state exam for her L.V.N. license. The first day of their stay was very rainy, but later in the good weather they took time to enjoy some sight-seeing.

At this time Idella doesn't plan to resume her duties at the motel.

Freda Sheets was taken by ambulance to High Plains Baptist Hospital last Wednesday. She spent several days in I.C.U. with a heart condition but at this writing she was in a room and still undergoing tests.

Friends and neighbors are in close contact with her and report that she is in good spirits and they are hopeful that she can soon return home.

Her sister, Nina Taylor, of Lakin, Kansas is with her most of the time.

Billie Jo and Greg Miesner, Melissa and Chris Taylor, Colleen

Burkhammer and Chuck Smith took their dune buggies to Wynoka, Oklahoma for a fun weekend on the dunes. Wynoka was having a carnival and their annual rattlesnake hunt. The Spearman group enjoyed the festivities and their participation in the snake hunt was very careful and distance watching.

Ruth Bryan spent from Thursday thru Sunday in Lubbock. She visited her son James, and her sister Julia and Randy Billingsly. She also enjoyed being with some friends from college days.

Altha Groves accompanied her as she had a cousin in the hospital whom she visited.

The James Martin family was very distressed to learn that some low-down thief had stolen two of their old wagons and a surrey. These are collectors items and prized highly by the Martins. They were stolen from a barn about 4 miles southwest of Spearman at the Chip Martin place.

Agricultural interests are expecting dismal results and aggravation with an appointment last week by the Clinton Administration. Ellen Haas was appointed USDA assistant Secretary for Food and Consumer Services. She is the founder of the consumer advocacy group Public Voice for Food and Health Policy. Her track records includes emphasis on promoting vegetarian diets; environmental concerns—real or imaginary; animal rights—including inspections—and on and on ad nauseum.

Lynda Thompson and her son Troy returned Sunday from a 12 day visit to North Carolina. They went to visit her son Tracy Thompson who is a marine at Camp Johnson, near Jacksonville, North Carolina. They took Kelli, his wife, who will be staying there temporarily.

On the return trip Mrs. Thompson and Tracy drove to Cape Hatteras, and took the ferry to Nag's Head, all very interesting to the Thompson. They stopped in Nashville to attend the Grand Ole Opry.

Monday morning she resumed her duties at the County Clerk's office on Monday morning.

Mrs. Dorothy Brown, 87, the mother of Mrs. Betty Davis, passed away on April 10. She had been a resident of the Hansford Manor since June.

Betty and Gary Davis and daughter April returned from the services last Thursday. The Davis other daughter, Brenda, and Kenny Red of Gruver also attended.

Mary Brock, Dean Draper and Sandy Russell hosted a farewell brunch for Mrs. Doris Fochtman on Monday. It was held in the Club room of Libby's. Mrs. Fochtman is leaving Spearman after three years and going to Lebanon, Oregon to make her home due to her failing health.

Mrs. Fochtman is a friend of many years to Ada and Lester McLain and they spent many pleasant winters at Mission, Texas. When Mrs. McLain became ill, Mrs. Fochtman returned with them to help care for her.

She has made many friends in Spearman and attended the First Christian Church and assisted many at Hansford Manor.

The McLains and Brocks and many friends will miss her and her kind and attentive concern for them. All wish her the best of luck and extend a warm invitation to return.

Her daughter, Carol Whitehead, is here to accompany her to Oregon and was a guest at the brunch.

Others attending and bidding her goodbye in addition to the hostesses were: Loree Booth, Glenda Purcell, Nina Evans, Betty Jean Hill, Gwen Smith, Dorothy Haner, Debbie Hagerman, Verna Brown, Lorene Kunselman, Ruth Bryan, Beth Phelps, Laverne Draper, Lester McLain, Don and Gwen McLain and J.L. Brock.

For Mary Anne Evans and Monte George, the wedding bells rang on Saturday and they are now on a cruise.

A detailed account of the lovely wedding will appear in a later issue.

Adding to the pleasure of the joyous occasion was the gathering of family members from Friday until Monday, guests of Kenneth and Margaret Evans.

Those here for the weekend were: Mr. and Mrs. John Mitchell, Lakewood, Colorado; Mr. and Mrs. Joe Smith, San Antonio; Mrs. Marlene Bolton, Tulsa; Kathy Bolton and son, David, Stillwater; Gary Evans with sons Chris and Matt, Houston.



Pictured here are the winners of the PTA EPA poster contest. (back row) 3rd grade: Amber Crowl, Monica Behney, Evan Schmidt; 4th grade: Katie Papay, Amy Vasquez, Diseree Wattier; 2nd grade: Ross Womble and Josiah Vasquez. (Front) 1st grade: Amanda Apodoca, Ashton Shearer, Lupe Duran; Kindergarten: Chase Phillips, Brennan Eudy and Seth Clemmons.

## Club News

The Gladiola Flower Club met in the home of Gwen Smith on April 15. Fay Holt presided over the meeting. Minutes from previous meetings were read and approved. Roll call, "a type of nut", was answered by members. Treasurers report was given.

Margaret Evans, project chairman will check into the needs of the flower beds at Hansford Manor.

Virginia Head presented Georgianne Hutchison who gave the program on her Mediterranean Cruise. She showed pictures, souvenirs and told the history of places of interest, including Italy, Spain, Greece, France and Monaco.

Flower winners were: Home grown arrangement - Gwen Smith; Specimen - Rose Cummings and pot plant - Gwen Smith.

The next meeting will be with Wanda Brown on May 6.

Those attending were: Wanda Brown, Dorothy Buzzard, Rose Cummings, Betty Davis, Margaret Evans, Ann Flowers, Virginia Head, Mike Hergert, Fay Holt, Estelle Jackson, June Jackson, Lorene Kunselman, Kathleen Sutton, Virginia Trindle and guest Georgianne Hutchinson.

## Hansford Showtime Car Club

The Hansford Showtime Car Club of Spearman, Texas, will be hosting their fifth annual Shine and Show on Saturday, May 8, 1993 at Palo Duro Lake north of Spearman. The Palo Duro Dam Cruise will be held on the dry side of the dam, beginning at 10 a.m. and last until 4 p.m.

Scheduled activities include valve cover races, Pokey's pulling trucks, sale board, games, and fun in general. Entry fee is \$5 per vehicle. There is no pre-registration. All show registered vehicles will receive free dash plaques and goodie bags. The show is open to all vehicles. All proceeds will benefit the Spearman Girl Scouts.

The Boy Scouts will be selling concessions featuring their famous hamburgers. Come join us for a day of fun at Hansford County's newest entertainment attraction on Saturday, May 8. For more information call Sam at 659-3019, Bruce at 659-5410, or Terry at 659-3691.



T.J. Vasquez throws up a shot on the basket and back board he won at the Spearman ALCO store. Store manager Kirk Frazer caught the miss.



Wanda Archer presents Verlin Winegarner with his Presidential Sports Award for the work he did in her exercise class. Not pictured but also receiving the award was Melinda Sasser.

## School Menu

Spearman I.S.D.  
Lunch Menu  
April 26 - 28  
Monday - Chicken Strip, mashed potatoes - gravy optional, green beans, hot rolls - butter optional, applesauce, milk.  
Tuesday - Hamburger, french fries, lettuce - tomato, pickle - onion, cookie, milk.  
Wednesday - Build your own: soft burrito, ground beef, tortillas, refried beans, taco sauce - cheese cup, lettuce - tomato salad, peaches, milk.  
Thursday - NO SCHOOL!!!  
Friday - NO SCHOOL!!!

# Thanks

Thank you Spearman  
for all your support  
(the FAX, calls, cards)  
It all meant a lot to me.

Sincerely,  
**Krista Kirkland**  
Texas Tech Lady Raider  
&  
National Champion

Gordon's  
DRUG

## Bridal Gift Registry

Come by & let  
Laquita Evans  
help you set up your  
Special Gift Table

Couples Currently Registered  
4/24—Krista Kirkland & Bryan Gerlich  
Denise Ware & Lance Breshears  
Mike Pack & Teresa Hayth  
Merritt & Cacy (McGill) Vaughn  
Dusty & Audrey Hill  
Greg Reimer & Lisa Hermann  
Mary Anne Evans & Monte George  
David & Cathy (Minter) Boese

314 MAIN PHONE 659-2141  
**Gordon's** SPEARMAN TEXAS  
JIM EVANS

BRIDAL SHOWER  
for  
**KRISTA KIRKLAND**  
bride-elect of  
**BRYAN GERLICH**  
APRIL 24  
2-3:30 p.m.  
at the home of  
Jackie Pearson  
708 Wilmeth  
Given by hostesses

The Residents & Staff  
request the pleasure of your company  
at an Awards Presentation  
honoring our  
OUTSTANDING VOLUNTEERS  
of Hansford Manor &  
Hansford Hospital  
APRIL 25, 1993  
from two o'clock until four o'clock  
in the dining room of  
Hansford Manor  
707 S. Roland

# Lynx and Lynxettes Around the Track



Possible Lynxettes' runners for the regional 1600m relay team are (l-r) Michelle Garnett, Mary Cook, Holly Jarvis, Kara Townsen and Jill Lusby.



These students represented Spearman High School at the Five State Business Contest at Panhandle State University. They are Michelle Garnett, Justin Boyd, Kimbre Townsen, Sophia Salgado, Alma Martinez and Donetta Cates.



200 Spearman boys and girls tried out for Little League baseball and girls' softball teams Thursday and Friday, April 15 and 17. League Commissioner, Mike Cudd was pleased with the turn out but indicated that the league was in desperate need of the coaches for its teams. Anyone willing to volunteer some time during May to coach please contact Cudd at Hansford Implement.

### Track from page 6

**400 Meter Relay** - Garcia, Bravo, Cassidy, McNett, 2nd, 54.02.  
**800 Meter Run** - Bravo, 1st, 2:30.2.  
**200 Meter Hurdles** - McNett, 4th, 33.32  
**200 Meter Dash** - Garcia, 5th, 29.81.  
**1600 Meter Relay** - Cassidy, Garcia, McLain, Bravo, 2nd, 4:19.01.



Cody Pipkin

### Spearman District 1-AA Track Meet Varsity Boys 4th Place

**Pole Vault** - Dee Mayfield, 1st, 12'.  
**Discus** - Landon Swan - 3rd, 149'10".  
**Long Jump** - Jason Varnon - 3rd, 20'10 1/2".  
**Shot Put** - Landon Swan - 5th, 45'2".  
**High Jump** - Cody Pipkin - 6th, 5'8".  
**800 Meter Run** - Cody Pipkin, 1st, 2:05.95.  
**110 High Hurdles** - Jason Varnon, 3rd, 15.60.

### Kirkland from page 1

he taught me."  
 Her dad coached her all through her high school career. That career started at Sudan in 1986 where she played on teams that posted records of 20-10 her freshman year and 33-3 her sophomore year. Her sophomore year team won the State 1A title.

In 1987 Krista came to Spearman when her father took over the head girls basketball coaching position. The teams she played on at Spearman went 28-3 and 26-6, reaching the area finals both years.

Krista's athletic talents extended to other areas in high school as well. She was All State Cross Country for three years, with the team winning a state title her senior year. She was a regional track qualifier all four years, state runner up in the 1600m run her senior year. She was a regional qualifier in golf one year as well.

At Tech Krista will be getting her degree in the exercise and sports science. She hopes to follow in her father's footsteps and be a basketball coach upon graduation. Starting her senior year she was carrying a 3.477 GPA. and had made the Deans List (3.5-3.99) three semesters and the President's List once (4.0).

Krista's career basketball accomplishments are numerous. She has started the final 96 games of her career and is one of only 11 Lady Raiders to have played in more than 100 career games. She played in 126 of the 128 games, including 110 straight that Tech has played since 1989-90 season.

Another highlight this year was when she became the Lady Raiders' All-Time leader in assists. She has moved into the second place in Southwest Conference circles with 522.

She is a three-time All SWC Selection. She was second team as a sophomore and first team as both a junior and senior.

Here's how she stacks up on the rest of the career list:  
 Scoring - 1,324 pts., 6th  
 Average - 10.51, 10th  
 FG Made - 460, 8th  
 FG Attempts - 1,077, 8th  
 FG Percentage - 42.7%  
 3-pt. FG Made - 219, leader (SWC leader)  
 3-pt. FG Attempts - 525, leader (SWC leader)  
 3-pt. Percentage - 41.7%, 4th  
 FT Made - 184, 11th  
 FT Attempts - 269  
 FT Percentage - 68.4%  
 Blocked Shots - 54, 9th  
 Rebounds - 455, 12th  
 Steals - 177, 5th

### EXERCISE

Does Your Heart Good.  
 American Heart Association

**100 Meter Dash** - Radar Garcia, 6th, 11.71.  
**400 Meter Dash** - Cody Pipkin, 3rd, 53.09.  
**1600 Meter Relay** - Josh Furlow, Jason Varnon, Ricky Garrard, Cody Pipkin - 5th, 3:39.99.

### Junior Varsity Boys 4th Place

**Shot Put** - Robert Howell, 3rd, 37'2 1/2"; Matt Gafford, 4th, 37'1".  
**Long Jump** - Martin Sanders, 2nd, 16'9 1/2".  
**Discus** - Matt Gafford, 2nd, 114'8".  
**400 Meter Relay** - Phillip Sanders, Martin Sanders, Jeremy Blan, Cody McLeod, 3rd, 48.70.  
**800 Meter Run** - Cody McLeod, 2nd, 2:21.66.  
**400 Meter Dash** - Shawn Moore, 5th, 61.59; Jeremy Blan, 6th, 62.84.  
**200 Meter Dash** - Phillip Sanders, 1st, 25.  
**1600 Meter Run** - Mark Parker, 5th, 5:36.35.  
**1600 Meter Relay** - Phillip Sanders, Jeremy Blan, Cody McLeod, Shawn Moore, 3rd, 3:55.64.

### 8th Grade Boys 4th

**Discus** - Eric Varnon, 4th, 118'6".  
**Triple Jump** - Dillon Miller, 3rd, 34'9 1/2".  
**400 Meter Relay** - Dillon Miller, Domingo Salazar, Jake Howard, Micheal Witten, 4th, 50.7.  
**110 Int. Hurdles** - Jake Howard, 5th, 20.7.  
**800 Meter Run** - Micheal Witten, 2nd, 2:17.8.  
**100 Meter Dash** - Micheal Witten - 4th, 12.51.  
**200 Int. Hurdles** - Tyler Lair, 4th, 30.74; Eric Cudd, 6th, 31.60.  
**200 Meter Dash** - Dillon Miller, 6th, 28.03.  
**1200 Meter Run** - Eric Cudd, 6th, 4:00.52.  
**1600 Meter Relay** - Dillon Miller, Tyler Lair, Jake Howard, Colby Bedell, 6th, 4:21.55.

### 7th Grade Boys

**Pole Vault** - Allen Huddleston, 1st, 8'.  
**High Jump** - Allen Huddleston, 1st, 4'10".  
**Shot Put** - Jamie Townsen, 1st, 33'10 1/2".  
**Discus** - Jamie Townsen, 2nd, 113'4".  
**400 Meter Relay** - Cody Williams, Mac Butts, Jamie Townsen, Clint Goodman, 6th, 60.  
**110 Int. Hurdles** - Allen Huddleston, 1st, 18.2.  
**100 Meter Dash** - Allen Huddleston, 2nd, 13.2.  
**200 Low Hurdles** - Allen Huddleston, 1st, 29.52.  
**1600 Meter Relay** - Clint Goodman, Mac Butts, Cody Williams, Puentes, 6th, 5:08.13.

### Spearman 7th Grade Girls Team Results 2nd Place 111 points

**High Jump** - Edwards, 2nd, 4'2"; Smith, 3rd, 4'2".  
**Shot Put** - Mocaby, 2nd, 21'7.25"  
**Long Jump** - Dunnihoo, 4th, 12'10.25"  
**Discus** - Mocaby, 5th, 60'2"  
**Triple Jump** - Trantham, 3rd, 27'1.75"; Davis, 6th, 25'10.25".  
**800 M Run** - Trantham, 2nd, 2:48.34; Oquin, 3rd, 2:51.55.  
**100 Hurdles** - Mackey, 2nd, 19.91; Smith, 3rd, 20.07.  
**200 M Hurdle** - Dunnihoo, 1st, 34.67; Mackey, 4th, 37.11.  
**200 M Dash** - Hernandez, 5th, 33.25.  
**200 M H.** - Dunnihoo, 1st, 34.67;

**Mackey**, 4th, 37.11.  
**1200 M. Run** - Mackey, 2nd, 4:59.04.  
**1600 M Relay** - Spearman, 3rd, 5:01.14.  
**800 M Relay** - Spearman, 3rd, 2:04.29

### 8th Grade Girls 4th Place 121 points

**High Jump** - Rodriguez, 3rd, 4'6"; Tigrett, 4-tie, 4'4"; Barber, 4-tie, 4'4".  
**Shot Put** - Smith, 6th, 22'  
**Long Jump** - Beasley, 2nd, 13'9.25"; Barber, 4th, 13'3.25".  
**Triple Jump** - Rodriguez, 1st, 32'22.25"; Beasley, 3rd, 28'4".  
**400 M Relay** - Spearman, 2nd, 56.75  
**800 M Run** - Rodriguez, 1st, 2:41.70.  
**100 Hurdles** - Lusby, 3rd, 18.99; Shieldknight, 5th, 19.61.  
**400 M Dash** - Barber, 2nd, 69.69.  
**200 M Hurdle** - Lusby, 6th, 36.23  
**200 M Dash** - Bealey, 3rd, 29.61.  
**1200 M Run** - Rodriguez, 1st, 4:40.04; Flores, 6th, 5:14.31  
**1600 M Relay** - Spearman, 2nd, 4:43.72  
**800 M Relay** - Spearman, 5th, 2:15.39

### Varsity Girls Final Results

**High Jump** - Mary Cook, 3rd, 5'2"  
**Shot Put** - Tiffany Bruning, 4th, 30'75"  
**Discus** - Ashly Shieldknight, 2nd, 104'2.5"; Kara Townsen, 4th, 95'9.5"  
**3200 M Run** - Amanda Nobles, 6th, 14:38.81  
**800 M Run** - Ashly Shieldknight, 6th, 2:51.11.  
**100 Hurdles** - Jill Lusby, 2nd, 15.72.  
**100 M Dash** - Michelle Garnett, 2nd, 12.97  
**400 M Dash** - Mary Cook, 3rd, 63.88  
**300 M. Hurdle** - Jill Lusby, 1st,

48.33  
**200 M Dash** - Holly Jarvis, 1st, 27.36  
**1600 M Relay** - Spearman, 2nd, 4:16.96  
**800 M Relay** - Spearman, 6th, 2:11.83

## What does RNA have for YOU?

### Single Premium Annuity!

The Single Premium Annuity available at Royal Neighbors of America, fraternal life insurance since 1895, provides a plan that allows a person to use a single lump sum payment to provide a lifetime income, an income that cannot be outlived.

The lump sum investment earns highly competitive interest rates on a tax-deferred basis providing even higher effective returns. SPA purchasers can choose the age they want payments to them to begin and can choose from several payout options.

This annuity is available either on a qualified (IRA) basis or nonqualified basis (nonIRA). Qualified annuities are available to individuals between the ages of 16 and 69, and nonqualified annuities are available to individuals between the ages of 16 and 98.

If you have a lump sum of money from any source and are interested in a guaranteed income for life, consider the RNA Single Premium Annuity.

For additional information about Single Premium Annuity, other life insurance and annuity plans for whole family protection, and non-contractual fraternal benefits offered by Royal Neighbors of America, please

Call or Write  
**MARILYNN HART**  
 District Deputy  
 Sales Representative

P.O. Box 426, Gruver, TX 79040  
 Home: 733-2226 Office: 733-2066  
 Royal Neighbors of America  
 Fraternal Life Insurance Since 1895

APRIL 1993

SPECTACULAR SPRING SAVINGS

<p style="font-size: 24pt; font-weight: bold;">4<sup>47</sup></p> <p style="font-size: 10pt;">Turf Fertilizer High nitrogen formula promotes vigorous growth and root system. Covers 5,000 sq. ft. 75000 Weed &amp; Feed 75000, \$5.97</p>	<p style="font-size: 24pt; font-weight: bold;">5<sup>99</sup></p> <p style="font-size: 10pt;">YOUR CHOICE EA.</p> <p style="font-size: 10pt;">Spring Brace Lawn Rake or Round Point Shovel Choose a 54" lacquered, hardwood-handled rake or a round point shovel with tempered blade and strong northern ash handle. 70108, 70108</p>
<p style="font-size: 24pt; font-weight: bold;">19<sup>99</sup></p> <p style="font-size: 10pt;">4 Cu. Ft. Wheelbarrow Homeowner's wheelbarrow features seamless steel tray, 14" pneumatic tire and hardwood handles. 71011</p>	<p style="font-size: 24pt; font-weight: bold;">2<sup>49</sup></p> <p style="font-size: 10pt;">2 1/2 Gal. Poly Gas Can Non-rusting body with flexible spout, built-in filter and easy grip handle. Refuel mowers and other gas-powered lawn tools. Ref. 70101</p>

See your Helpful Hardware Man at:

Gruver Lumber Co.

105 W. Broadway 733-2404

HURRY! WHILE SUPPLIES LAST!

## SHERI BENTON

### Candidate for S.I.S.D Board of Trustees

"Dedicated to academic excellence and improving communications"

Hansford County Librarian  
 24 Years Business Experience  
 15 Years Community Service

VOTE

Saturday, May 1  
 Spearman High School

Political advertisement paid for by Sheri Benton.

"No other form of service is more important than service to Spearman's children."  
 -Sheri Benton

Make sure your company's safety program measures up

Protect your work force — and your company's bottom line — by including power line safety in your company's training program for heavy equipment operators. Personnel who operate backhoes, cranes or other equipment should know how to avoid contact with power lines.

For more information on power line safety, call or visit your local Texas-New Mexico Power Company office.

## Southwest Outdoors

with Mel Phillips

### Palo Duro Reservoir

It isn't often that we get a new public lake in Texas. In fact, the total number of public lakes in our region can be counted on one hand and still have enough fingers remaining to give a proper hook 'em horns sign.

Mark your calendar for the Fourth of July weekend, the official opening of our newest lake, PALO DURO RESERVOIR. Located five miles north of Spearman on FM 760, this taxpayer-sponsored oasis has been abundantly stocked by the Texas Parks and Wildlife De-

partment with baitfish, yellow perch, catfish, smallmouth bass, northern bass, Florida bass, and yes even walleye. But these wall-eye are an Arkansas variety that are rumored to grow bigger and faster than their lazy cousins who lurk in Lake White River, Lake Greenbelt, or Lake Meredith.

Palo Duro Reservoir was built and is managed by the Palo Duro River Authority. The purpose of the lake is to furnish water to the cities of Dumas, Sunray, Cactus, Stinnett, Gruver, and Spearman.

The dam is 3,800 feet long, and 128 feet high. Bottom of dam is 700 wide and tapers to 44 feet at the top. When full, the surface area of Lake Palo Duro will be 2,413 acres. The average lake depth, when and if full, will be 46 feet. The average depth at the dam will be 77 feet. The current lake level at the dam is about 35 feet, and local authorities are waiting for a good thunderstorm.

A.I.D. contour maps of Palo Duro can be found in many tackle stores, but NOW IS THE BEST TIME to go to the lake and see the bottom structure before it is flooded.

We look forward to the official opening. Congratulations to the taxpayers in Moore and Hansford Counties and the City of Stinnett for the wisdom and foresight to build Palo Duro.

**TIP OF THE WEEK** — Take a video camera to Palo Duro Reservoir because it will record some of the bottom structural details that

See Reservoir page 8

**RODEO**

**PIONEER DAY  
PRCA RODEO**

Thurs., April 29 - 8 p.m.  
Fri., April 30 - 8 p.m.  
Sat., May 1 - 2 & 8 p.m.  
Pioneer Stadium, Guymon

•Match Bronc Ride  
Every Performance!

WE'RE PART OF OKLAHOMA'S RED CARPET COUNTRY

1-800-447-2698

### GTrack from page 1

Aaron Frick third in the shot put. The Hounds, like the Lady Hounds, were hurt in the numbers game according to Head Coach Doug Frick - not having very many competitors. The Hounds finished fifth with 49 points, nosing out Spearman with 47 1/2 and Sunray with 47. Boys Ranch won both the varsity and junior varsity competitions. Gruver also finished fifth in the JV competition.

Here are the results...

#### Gruver Lady Hounds

Varsity  
1st Place  
145 points

High Jump - Holly Venneman, 1st, 5'2"; Molly McLain, 5th, 5'0".  
Long Jump - Wynn Maupin, 1st, 16' 7 1/2"; Wendy Rodriguez, 7th, 15'9".

Discus - Kiki Carthel.  
Triple Jump - Maupin, 1st, 34' 8 1/2"; Tara Shapley, 6th, 31' 6".  
3200 Meter Run - Brendy Brown, 2nd, 13:48.

400 Meter Relay - Monica Ward, Julie Meyer, Janelle Haefner, Venneman, 1st, 52.32.

800 Meter Run - Joni Hart, 2nd, 2:38.1; Myriam Alvarez, 3rd, 2:44.

100 Meter Hurdles - Maupin, 3rd, 16:19; Haefner, 4th, 16.9.

100 Meter Dash - Ward, 3rd, 13.4.

300 Meter Hurdles - Maupin, 2nd, 49.5; Shapley, 4th, 52.5, Shanna Jarvis.

200 Meter Dash - Rodriguez, 4th, 27.9.

1600 Meter Run - Hart, 2nd, 6:19; Brown, 3rd, 6:22.

800 Meter Relay - Ward, Haefner, Meyer, Venneman, 3rd, 1:54.6.

1600 Meter Relay - Maupin, Rodriguez, Kasey Davis, Venneman, 3rd, 4:23.4.

Rodriguez, Kasey Davis, Venneman, 3rd, 4:23.4.

#### Gruver Lady Hounds

8th Grade  
4th Place  
98 1/2 points

High Jump - Amber Murrell, 1st, 4'10"; Kaysha Cluck, 6th, 4'0".  
Long Jump - Murrell, 3rd, 13' 6 1/2".

Discus - Cara Hathaway, 5th, 71' 10".

Shot Put - Hathaway, 2nd, 26'4".  
Triple Jump - Cluck, 2nd, 30' 11 1/2".

400 Meter Relay - Crystal Christian, Cluck, Amy Gillispie, Murrell, 3rd, 56.8.

100 Meter Hurdles - Christian, 2nd, 18.5.

100 Meter Dash - Angie Johnson, 4th, 14.7; Lexy Spivey, 5th, 15.01.

200 Meter Hurdles - Christian, 1st, 34.9.

200 Meter Dash - Johnson, 6th, 31.2.

1200 Meter Run - Erikka Barrera, 5th, 5:04.4.

800 Meter Relay - Gillispie, Spivey, Hathaway, Cluck, 3rd, 2:03.2.

1600 Meter Relay - Gillispie, Spivey, Hathaway, Johnson, 3rd, 4:46.3.

#### Gruver Lady Hounds

7th Grade  
3rd place  
110 points

Shot Put - Jeanne Swink, 1st, 23'4 1/2".

Long Jump - Weslyn Maupin, 1st, 13' 9 1/2".

Discus - Swink, 3rd, 65'3".  
Triple Jump - Maupin, 1st, 31' 0".

400 Meter Relay - Stephanie Gaines, Kathy Slough, Jill Odom, Laura Garcia, 3rd, 59.76.

100 Meter Dash - Brandy Morris, 5th, 15.04.

400 Meter Dash - Davida Nash, 2nd, 70.4; Garcia, 5th, 77.1.

200 Meter Hurdles - Slough, 5th, 37.5.

200 Meter Dash - Maupin, 2nd, 30.7.

800 Meter Relay - Gaines, Morris, Nash, Maupin, 1st, 1:59.3 (New GJHS school record).

1600 Meter Relay - Nash, Morris, Gaines, Maupin, 1st, 4:37.81 (New GJHS school record).

#### Gruver Hounds Varsity

5th Place  
49 points

3200 Meter Run - Bailey Barkley, 3rd, 11:06; Joe Bravo, 4th, 11:24.

400 Meter Relay - Ryon Atwood, Victor Lopez, Aaron Frick, Raul Villegas, 5th, 45.5.

800 Meter Run - Fabian Royval, 3rd, 2:09.06; Scott McCloy, 4th, 2:10.34.

100 Meter Dash - Villegas, 3rd, 11.25; Lopez.

400 Meter Dash - Rosalio Arreola, 6th, 54.60; Atwood; Wylee Maupin.

200 Meter Dash - Villegas, 3rd, 23.12; Lopez.

1600 Meter Run - Barkley, 5th, 5:13.24; McCloy, Bravo.

1600 Meter Relay - Arreola, Royval, Maupin, Atwood, 7th, 3:40.70.

Shot Put - Frick, 3rd, 46' 8".  
Discus - Frick, 6th, 130' 0".  
Pole Vault - Bravo, 10'.

Triple Jump - Maupin, 38'4"; Arreola, 36' 5 1/2".

Long Jump - Atwood, 19'2"; Villegas, 18' 1/2"; Tek Ferguson, 18' 1/2".

High Jump - Ferguson, 5th, 5'10"; Royval, 6th, 5'8"; Maupin, 5'8".

#### Gruver Hounds Junior

Varsity  
5th place  
45 points

(placings not available)  
3200 Meter Run - Scott Jarvis, 12:19.01.

400 Meter Relay - Daniel Bort, Max Frick, Kevin McNett, Sammy Renteria, 49.91.

110 Meter Hurdles - Travis Ferguson, 18.2; McNett, 18.32.

800 Meter Run - Ricardo Soto, 6:52.22; Andy Morris.

100 Meter Dash - J.D. Christian, 12.77; Ferguson, 13.03; Bort, 13.06.

400 Meter Dash - Phil DeLaCruz; Juan Arreola.

300 Meter Hurdles - Renteria, 43.83; Ferguson, 47.26.

200 Meter Dash - Frick, Arreola, Christian.

1600 Meter Run - Jarvis.

1600 Meter Relay - Bort, McNett, Frick, Renteria, 3:58.19.

Shot Put - DeLaCruz; Arreola; Brady Tidwell.

Discus - Frick; Arreola; Soto.

Pole Vault - Bort, 9'6".  
Triple Jump - Arreola, 35'10"; Renteria, 34'2"; McNett, 33'4".

Long Jump - Ferguson, 15'9"; Bort, 14'3"; Frick.

High Jump - McNett, 5'2".

#### Gruver Hounds

8th Grade  
7th Place  
28 points

High Jump - Josh Mayhew, 6th, 5'2".

Long Jump - Jarrod Hoel, 3rd, 17'5".

Discus - Mayhew, 6th, 113'3".  
400 Meter Relay - John Duncan, Mayhew, Matt Overbey, Hoel, 5th, 50.9.

400 Meter Dash - Hoel, 2nd, 56.09.

100 Meter Dash - Mayhew, 5th, 12.67.

200 Meter Hurdles - Overbey, 5th, 31.5.

1600 Meter Relay - Duncan, Mayhew, Overbey, Hoel, 5th, 4:05.56.

#### Gruver Hounds

7th Grade  
3rd Place  
71 points

High Jump - Buster McLain, 2nd, 4'8"; Kyle McNett, 6th, 4'8".

Shot Put - Jody Robinson, 4th, 30'5 1/2"; McNett, 6th, 29'11".

Long Jump - Juan Bravo, 4th, 14'1 1/2"; Keith Cassidy, 5th, 13' 10 3/4".

Triple Jump - Cesar Garcia, 6th, 29' 8 1/2".

See Track page 7

# ALLSUP'S

PRICES EFFECTIVE  
APRIL 18-24, 1993

305 W. KENNETH,  
SPEARMAN  
659-3135  
101 MAIN, GRUVER  
733-2953



SAUSAGE  
& BISCUIT  
FOR ONLY  
**69¢**

COCA-COLA  
6 pack 12 oz. cans  
**\$1.99**

ALLSUP'S  
HOT  
LINKS

2 FOR **99¢**



ALL FLAVORS GATORADE  
THIRST  
QUENCHER  
32 OZ. BTL.  
**99¢**

WHOLE ROASTED  
BARBECUE CHICKEN  
**\$3.99** or 2/**\$4.99**  
EACH

AJAX LAUNDRY **\$1.29**  
DETERGENT 2 POUND  
BOX

**GOTTA  
HAVE  
IT**

ALL TYPES  
PEPSI  
**\$2.29**  
6 pack  
12 OZ  
CANS

DECKER  
CHOPPED  
HAM  
10 OZ. PKG.  
**\$1.49**

CHARMIN  
BATHROOM  
TISSUE  
8 ROLL PKG.  
**\$2.49**



DECKER  
MEAT  
BOLOGNA  
12 OZ. PKG.  
**79¢**

HOT FOODS MENU		
BARBECUE BEEF SANDWICH	99¢	3 PIECE BOX CHICKEN \$5.99
BARBECUE PORK RIBS (LB.)	\$3.99	BEEF & CHEESE CHIMICHANGA \$1.19
BARBECUE WHOLE CHICKEN	\$3.99	MEAT CORN DOG 69¢
ALLSUP'S BURRITO	79¢	DELICIOUS HAMBURGER 69¢
BREAKFAST BURRITO	99¢	WILSON HOT LINKS 99¢
BURRITO BEEF & SALSA	\$1.19	SAUSAGE ON A STICK \$1.39
DELICIOUS CHEESEBURGER	89¢	SAUSAGE & BISCUIT 79¢
CHICKEN FRIED STEAK	\$1.39	SAUSAGE EGG & BISCUIT \$1.09
3 COUNT CHICKEN STRIPS	\$1.49	SAUTEED SAUSAGE 99¢
W/POTATO WEDGES/CHICKEN (2 PC.) BISCUIT	\$1.99	4 COUNT STEAK FINGERS \$1.00

ALLSUP'S 1 1/2 LB.  
SANDWICH  
BREAD  
69¢ EACH OR  
**2 \$1.09**  
FOR

COMBO OF THE MONTH  
BARBECUE  
BEEF SANDWICH  
& A 16 OZ. COKE  
FOR ONLY  
**99¢**

SHURFINE **\$3.99**  
DOGFOOD 20 Pound  
Bag

## C. O.'s Tire Center

"YOUR ONE  
STOP CAR CARE  
CENTER"

Featuring  
Gas • Tires • Oils  
Regular Maintenance  
Oil Changes & Lube

"FLAT OUT  
SERVICE"

The Big Red Truck  
Is Ready to Fix Flats  
On The Farm, Road  
Or At Home  
CALL 659 - 3555  
415 COLLARD

The floors need waxing.  
Your son left the freezer door open last night.  
You have a parent-teacher conference again.

The new spring fashions are in at J. Winston.

First things first.

j. Winston  
of amarillo

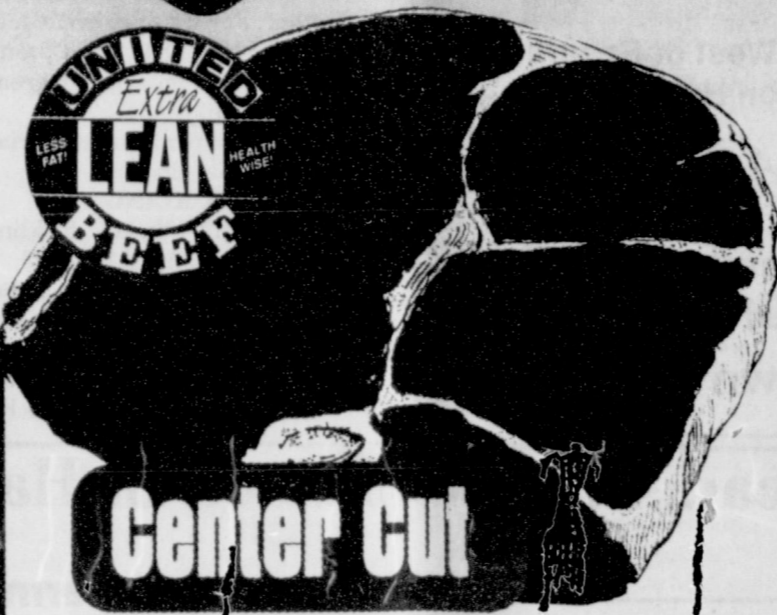
2701 Paramount • Amarillo, TX 79109 • 358-2457



**UNITED**  
★ Supermarket ★

PRICES EFFECTIVE APRIL 21ST  
THROUGH APRIL 27TH, 1993  
IN PERRYTON ONLY.

# A SURE SIGN OF QUALITY



United Extra Lean  
Super Valu Pak

## Round Steak

Single Pak  
Round Steak  
lb. **\$2.08**

lb. **\$1.98**



Roman Meal  
Bread  
**.78**  
24 oz.



Land O' Lakes  
Margarine

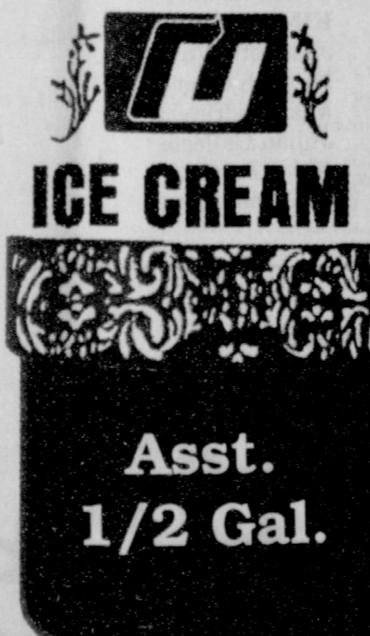
1 lb.  
Qtrs **2 for .88**

Fresh Crisp  
Leaf Lettuce

Red or Green  
Leaf, Boston  
or Romaine

**2 for \$1**

**STOCK UP!**



Asst.  
1/2 Gal.

Pepsi  
Assorted  
**2 for \$3**

United  
Ice Cream  
**2 for \$3**

**COMPARE AND SAVE!**

WED	THUR	FRI	SAT	SUN	MON	TUE
21	22	23	24	25	26	27



### Hospital Report

**ADMISSIONS**  
**Thursday, April 15** - Viola Fickling  
**Friday, April 16** - Elaine Odgaard, Mason Kuehl  
**Saturday, April 17** - William (Bill) Russell  
**Sunday, April 18** - None  
**Monday, April 19** - E.J. Copeland, Dorothy Bryan  
**Tuesday, April 20** - Jennie TeBeest

**DISMISSALS**  
**Thursday, April 15** - Phil DeLaCruz, Juanita Partridge, Mary Murrell, Amber Elliott  
**Friday, April 16** - None  
**Saturday, April 17** - None  
**Sunday, April 18** - Mason Kuehl, Elaine Odgaard  
**Monday, April 19** - None  
**Tuesday, April 20** - Dorothy Bryan  
**CENSUS, Wednesday, April 21:** Bill Russell, E.J. Copeland, Jennie TeBeest and Nova Lee Walker.

## USDA to make '92 corn disaster payments

WASHINGTON, April 9 - Secretary of Agriculture Mike Espy today announced new assistance for producers of corn crops whose harvest was of low-quality due to natural disasters in 1992.

"These corn producers may be eligible for disaster payments based on the low-quality of their crop, even though the quality harvested would not usually qualify them for disaster assistance," said Espy. "I believe this action is neces-

sary to relieve hardships and depressed conditions many corn producers have suffered through no fault of their own," Espy added.

Espy said adjustment in production will be made for corn producers who suffered losses from reduced quality caused by damaging weather or related conditions. "This adjusted production will be used to determine whether these corn producers qualify for disaster payments for the first time, or for

additional payments, as applicable," Espy said. "Corn producers who filed a written disaster application for the corn crops may be entitled to additional payments because of quality production adjustments. Also producers who have not filed a written disaster application for 1992, may file an application through May 7, 1993.

The action came as result of a meeting Espy attended on Capitol Hill two weeks ago with Michigan corn producers and members of the Michigan Congressional delegation. During the meeting, the corn producers showed Espy corn samples and asked that the U.S. Department of Agriculture take action to assist the producers prior to their spring planting.

In response, Espy sent Randy Weber, the acting director of USDA's Agricultural Stabilization

and Conservation Service, to Michigan the next day to see the extent of the low-quality corn firsthand.

"When producers face a critical situation like corn producers face in Michigan, it's important that this agency act quickly to do everything possible to alleviate the hardship and depressed conditions they are facing.

"Much of the 1992 corn crop grown in some states has very low net value," Espy said. "This was due to low test weight, foreign material, damaged kernels and excessive moisture. Often, drying charges and discounts exceeded the value of the corn. Many producers harvested a quantity that did not qualify for disaster payments."

Producers who had such losses are encouraged to contact their ASCS county office to see if they qualify.

### HENSON CHIROPRACTIC

410 S. Davis • Spearman, TX  
 Call for Appointment • 659-5603  
 Office Hours:  
 Mon., Wed., Fri. - 9:00 to 5:00  
 Tue., Thu. - 9:00 to 11:30

### Reservoir from page 6

you might forget. Sure wish that I had used a video record of White River, Greenbelt, and Meredith.

**BETTER LATE THAN NEVER?** Playa Pete noticed several red necks making a video of the dry lake bed at Umberger's old Buffalo lake. Too bad the dam has been permanently breached and

will not hold water.

Spring turkey season ends on Sunday, May 2. Because of the wet spring in 1992, the gobble hunting is excellent in the eastern Panhandle areas from Lipscomb County down to Childress County.

Good hunting. Good fishing Til next week, good bye, everybody.

## LET US REPLENISH THE SEED OF FAITH THROUGH... REGULAR CHURCH ATTENDANCE, DAILY BIBLE READING AND PRAYER

### IN SPEARMAN

**Trinity Community Church**  
 717 W. 7th Ave. 659-2671  
 Sunday School and  
 Children's Church: 9:45 a.m.  
 Worship: 11:00 a.m.  
 Sunday Evening: 6:30 p.m.  
 Wednesday evening: 7 p.m.  
 Pastor Dan Carter

**Union Church**  
 31 S. Endicott 659-2644  
 Sunday School: 9:45 a.m.  
 Worship: 10:45 a.m.  
 Evening Worship: 6:30 p.m.  
 Bible Study: 7:30 p.m. Wed.  
 Youth: 7:30 p.m. Wed.  
 Pastor Jeff L. Burress

### First United Methodist

407 S. Haney 659-5503  
 Sunday School: 9:45 a.m.  
 Worship: 11 a.m.  
 Jr. High Youth: 5 p.m. Sun.  
 High School: 6 p.m. Sun.  
 Pastor Todd Dyess

**Faith Lutheran Church (ELCA)**  
 1101 Bernice 659-2252  
 worships with  
**First Presbyterian Church**  
 1021 Cotter 659-2033  
 Sunday School: 9:45 a.m. at Lutheran  
 Worship: 11 a.m. (alternates monthly between addresses above)  
 Pastor Beverly Cook

### IN GRUVER

**First Baptist Church**  
 402 E. Broadway 733-2411  
 Sunday School: 9:45 a.m.  
 Worship: 10:50 a.m.  
 Disciple Training: 6 p.m. Sun.  
 Prayer Meeting: 7:30 p.m. Wed.  
 Pastor Larry Miller

**Church of Christ**  
 209 King 733-2760  
 Sunday School: 9:30 a.m.  
 Worship: 10:20 a.m.  
 Evening Worship: 6 p.m.  
 Wed. Evening Worship: 7:30 p.m.  
 Minister Bob Setcliff

**First Christian Church**  
 510 King 733-2960  
 Sunday School: 9:45 a.m.  
 Worship: 11 a.m.  
 Wed. Bible Study: 7:30 p.m.  
 Youth: 6:30 Wed.  
 Pastor Gary Gumfory

### Oslo Lutheran Church (ECLA)

West of Gruver  
 On Hwy 15 & N. FM 1162  
 339-7646  
 Sunday School: 9:45 a.m.  
 Worship: 11 a.m.  
 Morning Prayer: 9 a.m. Wed.  
 Pioneer Clubs (Grades 1-6):  
 4-5:30 p.m. Wed.  
 Pastor John R. Chandler

**Community Bible Church (Interdenominational)**  
 Hwy. 15 733-2443  
 Sunday School: 10 a.m.  
 Worship: 11 a.m.  
 Evening Worship: 7 p.m.  
 Wed. Prayer Meeting: 7 p.m.  
 Pastor Zane Gray

**First United Methodist**  
 Broadway & Garrett 733-2651  
 Sunday School: 9:45 a.m.  
 Worship: 8:30 a.m. & 10:55 a.m.  
 Sunday Evening: 7 p.m.  
 UMY: 6 p.m.  
 Pastor Lewis Holland



### A Rite of Renewal

Mmmm ... how sweet the sensation ... those warm wispy fingers caressing your face and running through your hair like faithful friends returning from a long journey. You run to meet them ... smell the fresh familiar fragrance. You embrace Spring.

Spring is a rite of renewal. It is a running start to life. Catch it quickly, and run with it! Soar with the seedlings planted in fertile soil, flowering with faith, petals turned toward the sky.

There is yet another rite of renewal, a weekly renewal with God, the Creator, in His house. Visit regularly and you shall depart refreshed and rejoicing, facing the firmament, filled with strength for whatever challenges life may offer. Embrace Spring. Embrace God.

"Faithfulness will spring up from the ground, and righteousness will look down from the sky."  
 —Psalm 85:11

Copyright, 1993, Keister-Williams Newspaper Services, P.O. Box 8005, Charlottesville, VA 22906  
 Scriptures selected by the American Bible Society

Sunday	Psalm 119:145-152
Monday	Psalm 62
Tuesday	Psalm 33
Wednesday	Psalm 42
Thursday	Romans 8:18-30
Friday	Romans 15:1-13
Saturday	Isaiah 42:1-9



**Morse Baptist Church**  
 733-2757  
 Pastor: Mike Martin

*This Feature is made possible through the Sponsorship of these Civic Minded Businesses.*

### IN SPEARMAN

**Apostolic Faith Church**  
 822 S. Drensen 659-2870  
 Sunday School: 10 a.m.  
 Worship: 11 a.m.  
 Evening Worship: 6 p.m. Sun.  
 Wed. Prayer Meeting: 7:30 p.m.  
 Pastor James Brown

**First Assembly of God**  
 401 N. Bernice 659-2295  
 Sunday School: 9:45 a.m.  
 Worship: 11 a.m.  
 Evening Worship: 7 p.m.  
 Wednesday Worship: 7:30 p.m.  
 Youth: 7:30 Wednesday  
 Pastor Ray Cook

**First Christian Church (Disciples of Christ)**  
 29 S. Bernice 659-2036  
 Sunday School: 9:45 a.m.  
 Worship: 10:50 a.m.  
 Women's Bible Study: 2 p.m. Wed.  
 Youth: Wed. 6 p.m. & Sun. 5 p.m.  
 Pastor LaVern Draper

**Sacred Heart Catholic Church**  
 901 Roland 659-2166  
 Sat. Night Mass: 7 p.m.  
 Sunday Mass: 9:30 a.m.  
 C.C.D.: 10:30 a.m. Sun.  
 Father Edward Kieran

**Church of Christ**  
 121 S. Haney 659-3244  
 Sunday Bible Class: 9:45 a.m.  
 Worship: 10:30 a.m.  
 Evening Worship: 6 p.m.  
 Bible Study Wed. 7:30 p.m.  
 KRDF Radio Program  
 Living With Christ 7:50 a.m. M-F  
 Minister Arnis Pape

**Fellowship Baptist**  
 1102 S. Archer 659-2783  
 Sunday School: 10 a.m.  
 Worship: 11 a.m.  
 Evening Worship: 6 p.m. Sun.  
 Youth & Adult Serv.: 7:30 Wed.  
 Pastor Rick Fincher

**First Baptist Church**  
 123 N. Bernice 659-5557  
 Sunday School: 9:45 a.m.  
 Worship: 11 a.m.  
 Evening Worship: 7 p.m.  
 Jr. High Youth: 6 p.m. Wed.  
 High School Youth: 7 p.m. Wed.  
 Youth Choir: 6 p.m. Sun.  
 Pastor Kyle Henderson

**Primera Mission Bautista**  
 502 E. 7th 659-3991  
 Sunday School: 9:45 a.m.  
 Worship: 11 a.m.  
 Pastor Guadalupe Carranza, Jr.

**HELP SPONSOR THIS ENCOURAGING MESSAGE CALL ...**  
**THE Hansford County Reporter-Statesman**  
 659-3434 • (800)395-9482

Compliments of  
**G & G FOOD LINER**  
 516 MAIN • GRUVER  
 733-2471

**HI-PLAINS AUTO SUPPLY, INC.**  
  
 Mobile Oil For Irrigation & Industrial Purposes  
 118 Main • Spearman  
 659-2506 • (800)657-8742

**Lemon, Shearer, Ehrlich, Phillips and Good**  
 "Attorneys and counselors at Law"  
 Box 1066 • Perryton 79070  
 (806)435-6544

**Little Tiffanies**  
 103 E. Broadway  
 Gruver, Texas  
 Open:  
 10:00 a.m. - 5:30 p.m.  
 733-5290

**LADIES READY TO WEAR**  
 306 Hancock • Spearman  
 659-3424

**CO'S SUPPLY CO.**  
**Plumbing & Tire Sales & Service**  
 301 S. Davis • Spearman  
 659-3781

**GILLASPIE**  
 AUTO & TRUCK CENTER, INC.  
 CHEVROLET • OLDS • PONTIAC • BUICK  
 CHRYSLER • PLYMOUTH • DODGE,  
 Highway 307 South • P.O. Box 427 (800)659-2541  
 SPEARMAN, TEXAS 75061

**FLOWERS**  
 ALL OCCASION FLOWERS  
 MARY MOORE  
 OWNER  
 MON. - FRI.  
 9 a.m. - 5 p.m.  
 Sat.:  
 9 a.m. - 12 noon  
 PLAINS SHOPPING CENTER  
 Spearman, TX • 659-5180

**GOLDEN SPREAD CARPET CLEANING**  
**Don Moore**  
 659-3068  
 "Not Forsaking The Assembling of Ourselves Together"  
 HEBREWS 10:25

**GRUVER CABLEVISION**  
 Quality Family Entertainment With  
 "The Disney Channel"  
 308 Main • Gruver  
 733-5295

**TRUE VALUE HARDWARE**  
**B and B**  
 205 DILLON  
 SPEARMAN, TX  
 (806)559-2662  
 FARM AND HOME SUPPLIES  
 Attend The Church of Your Choice

**BOXWELL BROS. FUNERAL HOME**

**SPEARTEX GRAIN COMPANY**  
 405 Collard • Spearman  
 659-3711

Compliments of...  
**AGCO**  
 of Spearman, Inc.  
 "See you in Church"  
 659-3751

**GORDON DRUGS**  
 Dependable Prescription Service  
 314 Main • Spearman  
 659-2141  
**Jim Evans**

"WE SUPPORT OUR LOCAL CHURCHES"  
**CAPROCK #1**  
 Richard Winter, Manager  
 (806)733-5043  
**CAPROCK #2**  
 Jeff Rudolph, Manager  
 (806)733-5025  
 "Custom Cattle Feeding"

**HENTON & COMPANY**  
 P.C. Certified Public Accountants  
 221 Sanders • Spearman  
 659-2518

**BERRY CLEANERS**  
 DAVE BERRY, OWNER  
 Phone: 679-1122 • P.O. Box 1817 • 307 Main St.  
 SPEARMAN, TEXAS 75061

**GRUVER FORD**  
  
 531 Main • Gruver, TX.  
 (806)733-2431

**Interstate Savings & Loan**  
  
 322 Main • Spearman  
 659-2559

**GRUVER PRINTING COMPANY**  
 "We put our customers FIRST!"  
 434 MAIN • GRUVER  
 (806)733-2662

**Hagerman Services**  
 Backhoe • Dozer • Welding  
 1213 Highway 15, Spearman  
 659-5131

# WANT ADS WORK WONDERS!

**Reporter-Statesman  
CLASSIFIEDS  
659-3434**

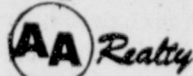
**NOTICE**

Deadline to place of cancel classified line ads is Tuesday noon for Thursday insertion.

**CLASSIFIED RATE**

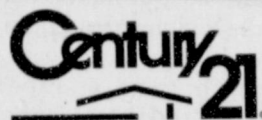
\$4.00 first insertion  
\$3.00 each additional insertion (30 words or less)  
13¢ each word over 30  
Legal Notices: 15¢ per word

Ads must be paid in full in cash before publication, unless advertiser has established credit with the Reporter-Statesman. Payment of out of state classifieds must be in the form of a money order or cashier's check. No tearsheets provided for classified ads. Tearsheets provide on request for legal notices.



**Allen Alford-Broker-659-3034**  
**Julie Martin-Sales-659-2425**  
**Dennis Nelson-Sales-659-3608**  
**Larry Trosper-Sales-3491**

717 S. Steele-3-1 1/2, 2, NICE!  
703 E. 2nd-3-1 1/2  
1115 S. Haney-3-1 1/2, make offer  
706 Collier-3-1 1/2, Nice shop!  
717 Cotter-3/1/1. Very Cheap!!!  
1114 Barkley-3 BR, 1 1/2, reduced  
713 Co UNDER CONTRACT storage,  
700 Collier-3/2/2-Very Nice.  
1114 Dresden-4/3/1, all offers considered  
720 Ha UNDER CONTRACT car garage  
3 1/2 S. Bernice-3 Br, 1 1/2 Bath, study,  
extra lg garage, chain fence, brick p&b  
**NEW LISTING** —  
1025 Townsend-3/2, 1440 sq. ft. Detached garage and shop 720 sq. ft. - Nice.  
**FOR QUALITY & SERVICE CALL US TODAY**  
We Need Your Listing.  
Equal Housing Opportunity



**GOLDEN SPREAD REALTY**  
**Janye Helton Pointer, Broker Owner,**  
**435-5444**

**NEW**

1009 Wilmeth - Transferred executive!  
You can move right into this 4 bedroom, 2 1/2 bath home. It is a large home on a large lot. Call for details!

\*and trademarks of Century 21 Real Estate Corporation. Equal Housing Opportunity. INDEPENDENTLY OWNED AND OPERATED.

**REAL ESTATE**

4 BRM 1 1/2 bath home on large corner lot near school. Has detached garage, car port, basement, central heat. Price reduced. 659-3944 after 5 p.m.  
S11-11cRTN

2 lots for sale. Call 1-405-254-3888.  
S24-RTN

For Sale or Rent — 3 bedroom brick home with stove and refrigerator. 1 1/2 bath, garage and fenced backyard. 213 N. Brandt. \$350 per month/\$250 deposit. Call 659-2245.  
S24-11cRTN

4 Bedroom, 2 1/2 bath, 3 car attached garage with electric opener both ends, 2 story, cellar, brick, new carpet throughout, 1 refinished hardwood floor, central air & heat, huge kitchen, laundry, family, bath. Approximately 2800 sq. ft. Abundant storage, dust-stopper windows & doors. MUST SEE! Call 659-2918.  
S10-11 RTN

House and Barn for Sale  
3 bedroom, 2 bath house - 2340 sq. ft. Plus 2500 sq. ft. barn on 3.4 acres. Located on Spearman - Gruver Highway. Asking \$65,000. Contact FNB Spearman - Brian Gillispie. 659-5544  
S46-11c RTN

Anthony Electric Building (50' X 100'), 519 Plains Shopping Center. Good location. Call after 6 p.m. 659-2819.  
S21-3tp

**REAL ESTATE**

FOR SALE: 4 vacant lots. Corner lot has complete trailer facilities. 300 Block of North Hazelwood, Spearman. 659-3780, leave message.  
S19-11nc

**FOR RENT**

Apartment for Rent: very clean, good location. Call 659-2039. At 119 S. Snider.  
S26-1tp

**HELP WANTED**

The Caprock Feedlot #1 in Gruver, Texas has an immediate full-time opening for a night watch person. Cargill benefits. For more information contact Lawrence or Tommy at 806-733-5043.  
S26-2tc

WANTED: An outside sales person to work for People's Travel Agency, Liberal, Kan. Phone 316-624-7261 from 9 a.m. to 5 p.m.  
S26-2tp

**Job Opening**

The City of Spearman is now accepting applications for the position of a Customer Accounts Clerk in the Financial Administration and Utilities Departments. Position involves customer service, keeping the general ledger, posting receivables, and other duties as assigned. Applications must have a High School Diploma or equivalent; good customer relations skills; knowledge of office equipment and be able to learn accounting systems. Some bookkeeping experience is preferred.

The City has an excellent fringe benefit program which includes retirement, group hospitalization insurance, vacation pay, holiday pay, and sick leave pay. Applications will be received until 5:00 p.m. on May 14, 1993. Applications may be obtained at City Hall, 30 S.W. Court. The City of Spearman is an E.O.E.  
S25-2tc

HELP WANTED: Part-time dispatcher. Apply at Hansford County Sheriff's Department.  
S25-3tc

**SERVICES**

WANTED: To clean houses - lots of experience - call Marie at 659-2741.  
S26-1tp

WANTED: Would like to mow and trim your lawn. Also would like to do odd jobs. Call Darrell Scroggs at 659-1717.  
S23-1tp

CALL YOUR LOCAL Used Cow Dealer for 7 days a week stock removal. 659-3544 or 1-800-692-4043. Serving Cattlemen for the past 20 years.  
G51-RTN

**Libby's #2 Restaurant**  
**Nightly Special**  
**5-9 p.m. \$2.99**  
No carryouts Please

**NOTICE**  
**Wallace Monument Co.**  
**Monuments, Curbing,**  
**Grave Covers**  
**1-800-999-9506**  
**Local Representative**  
**LEONARD JAMESON**  
**Spearman, Texas**

**Smith's Propane**  
For all your deliveries and services. Now serving Texas and Oklahoma. Very competitive prices. 5% discount for cash. Also vehicle conversions. 24 hour emergency service available. Loop 143 East, Perryton, Texas (806)435-5844 or 1-800-753-6330.  
S23-RTN

**MISC. FOR SALE**

Steer and Heifer calves for Sale - pre-conditioned calves available. Texhoma Cattle Company, Garland Dahl, 405-423-7417 (office) or 806-827-7476 (home).  
S26-4t

For Sale: Singer sewing machine in cabinet. Sews forward, backward and zig-zag. Good condition - 659-2620.  
S26-1tp

REDUCE; Burn off fat while you sleep. Take OPAL. Available at Gordon's Drug.  
S25-2tp

Very nice new & used Golf Cars \$650.00 up. Large selection to choose from. Trojan Golf car batteries. Part & Accessories for all makes. Ken's Battery & Electric, 2004 W. 6th, Amarillo, Tx. 1-800-284-9542 on 379-7232.  
S23-4tp

**LEGAL NOTICE**

**NOTICE TO BIDDERS**

Sealed bid proposals will be received by the Gruver Independent School District for the best price offer on all CUSTODIAL AND CLEANING SUPPLIES. The bid will remain in effect for the 1993-94 school year. Specifications sheets may be obtained from the Gruver ISD Business Office, 601 Garrett St., Gruver, TX 79040. Please mark your envelope SEALED BID -- CUSTODIAL AND CLEANING SUPPLIES.

Sealed bid proposals will be received by the Gruver Independent School District for the best discount price off the school purchase price for SCHOOL BAND INSTRUMENTS and SCHOOL BAND SUPPLIES. A bid for SCHOOL BAND INSTRUMENT REPAIRS is requested and should include the hourly rate and/or any pick-up and delivery charges. These bids will remain in effect from September 1, 1993 thru August 31, 1994. Specification sheets and information can be obtained from Todd Parker, P.O. Box 709, Gruver, 79040, or telephone 806-733-2082 or 806-733-2081. Please mark your envelope: SEALED BID -- BAND.

All bids will be received until 4:00 p.m. on May 4, 1993. Any proposal received after that time and date will be returned unopened and not considered. Bidders are invited to be present at the bid opening at the regular Board Meeting, May 7, 1993 at 7:00 a.m. in the Board Room in the Gruver High School Building. Please mail or deliver all bids to: Gruver ISD Business Office P.O. Box 650 Gruver, TX 79040  
The District reserves the right to reject any bid and/or all bids, to make awards as they may appear to be advantageous to the District and to waive all formalities in bidding. Bids received without proper signature will not be accepted.  
S26-2tc

**NOTICE TO BIDDERS**

Sealed bid proposals for ATHLETIC SUPPLIES FOR GIRLS CROSS-COUNTRY, GIRLS BASKETBALL, GIRLS TRACK, AND BOYS AND GIRLS TENNIS will be received for the best discount off of school purchase price. These bids will remain in effect for the time period of August 1, 1993 through May 31, 1994. Please contact Steve Myatt, 806-733-2041, for specifications. Mark your envelope: SEALED BID -- ATHLETIC SUPPLIES.

Sealed bid proposals for CLASSROOM COMPUTERS AND PERIPHERALS (IBM Compatible) will be received. For specifications, contact Debby Odum, 806-733-2477. Mark your envelope: SEALED BID -- CLASSROOM COMPUTERS.

Sealed bid proposals for BUILDING MAINTENANCE AND REPAIRS SUPPLIES will be received for the best percentage discount off of retail price. For information, contact Kenny Red, 806-733-2821. Mark your envelope: SEALED BID -- BUILDING MAINTENANCE AND REPAIRS SUPPLIES.

**ADVERTISING PROVISIONS**

1. Publisher reserves the right to reject, edit, revise and properly classify any advertisement at his sole discretion.
2. Advertiser assumes all liability for advertisements printed pursuant to his instruction and shall indemnify and hold the publisher harmless from and against any and all claims and damages, including all costs incurred by publisher in connection therewith. Advertiser represents that all advertising copy is truthful and not misleading. Advertiser shall indemnify and hold publisher harmless from any claim against publisher arising out of or in connection with publication of advertising (except for modifications made by publisher without Advertiser's approval) including, but not limited to, claims for libel, invasion of privacy, commercial appropriation of one's name or likeness, copyright infringement, trademark, trade name or patent infringement, commercial defamation, false advertising, or any other claim whether based in tort or contract, or on account of any state or federal statute, including state and federal deceptive trade practices acts. If advertiser claims copyright ownership in any of the advertising published, advertiser must include proper notice of its copyright claim in the body of the advertisement, otherwise copyright ownership shall remain in the publisher.
3. Advertiser agrees to check advertisement in the first issue in which it appears and report any error at once as publisher assumes no responsibility for errors after the first insertion. For any error which is the fault of the publisher and of which publisher has been timely notified, publisher will reprint the corrected advertisement for one extra insertion or refund the proportionate cost of the advertisement containing the error. Publisher shall have no responsibility for errors appearing in the copy submitted by advertiser.

**LEGAL NOTICE**

Sealed BIDS -- BUILDING MAINTENANCE SUPPLIES.

All bids will be received until 4:00 p.m. on May 4, 1993. Any proposal received after that time and date will be returned unopened and not considered. Bidders are invited to be present at the bid opening at the regular Board Meeting, May 7, 1993 at 7 a.m. in the Board Room in the Gruver High School Building. Please mail or deliver all bids to: Gruver I.S.D. Business Office P.O. Box 650 Gruver, TX 79040

The District reserves the right to reject any bid and/or all bids to make awards as they may appear to be advantageous to the District and to waive all formalities in bidding. Bids received without proper signature will not be accepted.  
S25-2tc

**SPECIAL NOTICE**

**\$500 REWARD**

WANTED - Information leading to the recovery of a Red 16" X 6 1/2" implement trailer with tandem axles. The trailer was taken on the 26th or 27th of March. If you have any information please contact the Gruver Police Department (733-3124), the Spearman Police Department (659-3707) or George Odum.  
S25-2tp

**GARAGE SALE**

Methodist Men Rummage Sale  
Thursday, April 22 - 6 p.m. to 9 p.m.; Friday, April 23 - 9 a.m. to 9 p.m.; and Saturday, April 24 - 9 a.m. to 5 p.m. at the Old Ford House on Main (across from the courthouse.) Bikes, TV, appliances, furniture, pianos and lots more!  
S26-1tp

YARD SALE - 320 S. Bernice, Saturday, April 24. Almost new girl's bike, lots of clothes, etc. ABSOLUTELY NO SALES BEFORE 9 A.M.  
S26-1tp

**ANTIQU SHOW & SALE**

Guymon, Oklahoma - April 24 & 25, 1993. Texas County Activity Center. Admission \$1.50  
S26-1tc

**RVs & CAMPERS**

**Motor Home Rentals**  
Plan now and reserve a deluxe motorhome or a van for spring break, 3-day weekend or vacation. Call Smith's Auto Sales and Wrecker Service. Loop 143 East, Perryton. Call (806)435-5844 or 1-800-753-6330 — 24 hours.  
S23-RTN

**NEW TRAMPOLINES**

Mats and springs. Resew trampoline mats. Make new boat covers. Call (806)659-2109  
**Harry Stumpf**  
301 W. 12th  
Spearman, Texas

**G & G  
ELECTRONICS**

\*2-way radio \* Repeater \* Satellite  
\* Mobile Telephone \* Pagers  
\* Motorola Radius \* Kenwood  
\* Maxon \* Vertex & Reim  
**BRUCE DUNCAN**  
**(806) 659-3125**

**PUBLIC NOTICE**

The Spearman Independent School District is accepting sealed bids for Removal of Asbestos for the period of April 22, 1993 through May 7, 1993. Required Bid forms, specifications and additional information may be obtained by writing or calling Allen Alford Spearman I.S.D. 403 East 11th Ave., Spearman, TX 79081 806-659-2116. Bid should be marked "Asbestos Removal Bid" and mailed to the above address or delivered to 403 East 11th Ave. Spearman, TX 79081 by 2:00 p.m. on May 7, 1993 at which time they will be opened and then presented to the Board of Trustees on May 10, 1993 at 7:00 p.m.  
S26-2tc

The Spearman Independent School District is accepting sealed bids for Repairs to the Roof at the High School for the period of April 22, 1993 through May 7, 1993. Required Bid forms, specifications and additional information may be obtained by writing or calling Allen Alford Spearman I.S.D. 403 East 11th Ave., Spearman, TX 79081, 806-659-2116. Bid should be marked "Repairs to Roof" and mailed to the above address or delivered to 403 East 11th Ave., Spearman, TX 79081 by 2:00 p.m. on May 7, 1993 at which time they will be opened and then presented to the Board of Trustees on May 10, 1993 at 7:00 p.m.  
S26-2tc

**NOTICE TO ALL PERSONS HAVING CLAIMS AGAINST THE ESTATE OF BOBBY J. NOLLNER, DECEASED**

Notice is hereby given that original Letters Testamentary for the Estate of Bobby J. Nollner were issued on April 16, 1993, in Cause No. 2062, pending in the County Court of Hansford County, Texas, to Dorothy Lee Nollner. The post office address of the Executor is HCR 1, Box 71, Spearman, Texas 79081. All persons having claims against this estate, which is currently being administered, are required to present them within the time and in the manner prescribed by law. DATED the 16 day of April 1993  
John L. Hutchison  
Attorney for the Estate  
S26-1tc

**CLASSIFIEDS WORK!**

**JAN'S ETC.**  
**NEW & USED & ANTIQUES TOO**  
Everything for home and family. Plains Shopping Center in Spearman. Open Monday - Saturday 10 a.m. til 6:00 p.m.



Statewide Classified Advertising Network. Advertise in 301 Texas newspapers for only \$250. Reach 3 MILLION Texans. Call this newspaper for details.

CALIFORNIA BASED COMPANY looking for self-motivated leaders to improve their financial and physical conditions. Commission with residual income. We train. Part-time or full-time. Call 1-800-388-7402.

CANDY VENDING ROUTE: Handling Hershey, Nestle, Frito Lay. Average census shows \$3,200/mo. profit. Excel locations. \$7,400 inv. req. 1-800-725-1557.

DRIVERS: EXPERIENCED OTR flatbed. Benefits, assigned new conventional equipment. Sign on bonus, flexible time off and more. Run 48 states. Call immediately. Roadrunner Trucking 1-800-876-7784.

R.D.S.I. IS HIRING company OTR drivers to run 48 states/Canada. Need: 1 year OTR/ school + 6 months OTR, CDL W/HAZMAT - vans 1-800-285-8267.

SINGLETON SUPPLY METAL Buildings: 24x30x10, \$3,050; 30x40x10, \$4,200; 30x60x12, \$5,995; 40x75x12, \$8,150; 50x100x14, \$12,550. Call for other sizes. Mini-warehouse systems. Competitive pricing. Fast delivery. 1-800-299-6464.

DRIVERS - IS IT time for a change? Call Covenant Transport Now. 1-800-441-4394. Drivers needed for our fleet expansion. Excellent starting pay & benefits. If you are 23 years old & have 1 yr. OTR experience what have you got to lose except better pay & benefits?

SPANISH GIRL 17, anxiously awaiting host family. Enjoys sports, reading. Other Scandinavian, European high school students arriving August. Call Eleanor (812) 467-4619 or 1-800-SIBLING.

SPECIAL HOLSTEIN HEIFER Sale May 3 and 4, 2000 Holstein heifers consigned. Accepting consignments. Portales Livestock, Portales, New Mexico. 505-356-4740.

DISTRIBUTE HERSHEY'S PRODUCTS. High weekly earnings servicing established accounts with Hershey's products line. No selling! Minimum investment \$6K. Financing available. Call Donna 1-800-747-0705.

RAPID WEIGHT LOSS - Lose Pounds Safely and Quickly with New Leading Product! #1 NATIONWIDE! \* Increases Metabolism \* Fat Becomes Energy \* Stops Hunger and Emotional Eating. Call United Pharmaceuticals Now for Information! 1-800-733-3288 ext. 143 (24hrs).

3 WEEK PROGRAM, job placement before training, financing available. Call Tri State Semi-Driver Training, Austin: 512-442-7364.

**Oil & Gas Report--**

**New Location, Completion & Plugging Report**  
**Week Ending April 15, 1993**  
**Intentions to Drill**

GRAY (PANHANDLE) Bradley Operating Co., #4 Adams 'C' (40 ac) 1650' from North & East line, Sec. 3, 26, H&GN, 10 mi east from Lefors, PD 2700' (Rt. 2, Box 36, Pampa, TX 79065)

HANSFORD (WILDCAT & SOUTH BRILLHART Oswego) Phillips Petroleum Co., #2 Wingo (649.5 ac) 900' from North & 2400' from East line, Sec. 18, 1, PSL, 7 mi east from Highland, PD 6800; (Box 358, Borger, TX 79008)

**Gas Well Completions**

HANSFORD (EAST COLDWATER CREEK TONKAWA) Strat Land Exploration Co., #1 Dahl 'A', Sec. 25, 2, GH&H, elev. 3227 gr, spud 11-15-92, drlg. compl 11-17-92, tested 3-17-93, potential 1006 MCF, rock pressure 1486, pay 5306-5211, TD 7431', PBTD 5399' -- Re-Entry

HANSFORD (NORTH HANSFORD Tonkawa) Strat Land Exploration Co., #1 Shiro 'A', Sec. 116, 45, H&TC, elev. 3089 gl, spud 8-20-92, drlg. compl 9-1-92, tested 10-9-92, potential 934 MCF, rock pressure 1378, pay 5235-5241, TD 7800', PBTD 5504' -- Re-Entry

**Plugged Wells**

HANSFORD (HANSFORD Upper Morrow) M.T. Davis, #1 Logsdon, Sec. 141, 45, H&TC, spud 9-6-79, plugged 3-9-93, TD 7300' (oil) -- Form 1 filed in Texas West Oil & Gas Corp.

**CLASSIFIED ADS**  
**PAY OFF!**

**OSGOOD  
MONUMENT CO.**  
Amarillo, Texas

Dealers of Rock of Ages Granite, as well as all colored granites, marble and bronze memorials.

Represented by  
**BOXWELL BROS.**  
**FUNERAL HOME**  
519 S. EVANS  
659-3802

**Are You A Victim of Physical Abuse?**

Call Toll Free (800)753-5308

We are in Spearman on the 1st, 3rd & 5th Wednesdays of each month at the 1st Presbyterian Church, 1021 Cotter. On the 2nd & 4th Wednesdays we are at the 1st Christian Church at 510 King - Gruver. We can come to Spearman & Gruver any time upon request. We operate a safe place for victims & their children to stay in times of crisis. Panhandle Crisis Center

Serving Hansford, Lipscomb & Ochiltree Counties  
317 S. Main Memorials Accepted Perryton, TX.

# Obituaries

## PEARL C. SHAPLEY

SPEARMAN - Pearl C. Shapley, 87, died Friday, April 16, 1993.

Services were held Monday, April 19, in the First Baptist Church at Gruver with the Rev. Larry Miller, pastor, officiating. Burial was in Gruver Cemetery by Boxwell Brothers Funeral Directors.

Mrs. Shapley was born in Goodwell, Okla., and a longtime resident of the Spearman area. She married Jake Shapley in 1922 at Guymon, Okla. He died in 1964. She was a member of the First Baptist Church.

Survivors include a daughter, Margaret Odom of Gruver; two sons,

H.B. Shapley and Darrell Shapley, both of Amarillo; three sisters, Lois Boston of Guymon, Mary Faultz of Reno, Nev., and Jewell Hendritz of Midland; 10 grandchildren; and many great-grandchildren.

## ERMA COOK

DUMAS - Erma Cook, 86, died Friday, April 16, 1993.

Services were held Monday, April

19, in Morrison Funeral Directors Memorial Chapel with the Rev. Jerry Clark, pastor of the Bible Baptist Church, officiating. Burial was in Dumas Cemetery.

Mrs. Cook was born in Beaver County, Okla., and was a Dumas resident since the early 1940s. She married Albert Cook in 1955 at Raton, N.M. She was a homemaker and a member of the Bible Baptist Church.

Survivors include her husband; three daughters, Wanda Warren of Lewisville, Mary Vincent of Hartley and Shirley Harry of Ponca City, Okla.; two sons, Ben Cook of Gruver and Larry Cook of Oklahoma City; two sisters, Ellen Davis of Amarillo and Eileen Clark of Shattuck, Okla.; a brother, Roy Edgington of Chico; 31 grandchildren; 43 great-grandchildren; and four great-great-grandchildren.

The family requests memorials be to Memorial Hospice.

## VIOLA V. FICKLING

SPEARMAN - Viola V. Fickling, 85, died Friday, April 16, 1993.

Services were held Sunday, April 18, in the First Assembly of God with the Rev. Ray Cook, pastor officiating. Burial was in Hansford Cemetery by Boxwell Brothers Fu-

neral Directors.

Mrs. Fickling was born in Arkansas and moved to Spearman in 1953. She was a member of First Assembly of God. She was preceded in death by John E. Fickling, her husband, in 1968.

Survivors include two daughters, Janet Kelley of Borger, and Mary Thomas of Burlington; three sons, Harold Fickling, Nashville, Tenn., Jimmy Fickling of El Paso and Joe Fickling of Early, Okla.; a brother, Clyde King of Quanah; 15 grandchildren; and 10 great-grandchildren.

## RUSSELL B. LANDRUM

GUYMON, Okla. - Russell B. Landrum, 52, died Monday, April 12, 1993.

Graveside services were held Wednesday, April 21, with the Rev. Dick Powell officiating. Burial was in Elmhurst Cemetery by Bunch-Roberts Funeral Home.

Mr. Landrum was born in Muskogee and moved to Guymon in 1978. He attended school in Muskogee and was a member of the National Guard. He was employed as a service station attendant most of his working life.

Survivors include a daughter, Deborah Landrum of Muskogee; a

brother, Melvin Landrum of Muskogee; two sisters, Geraldine Floyd of Columbia, S.C. and Reba Benge of Spearman; a special friend, Wilma Kroeker of Guymon; and two grandchildren.

## MAXINE COX

Maxine Cox, 79, died April 4 at Four Seasons Nursing Home in Norman, Okla.

Funeral services were held Wednesday, April 7 at Little's Funeral Chapel with Mr. Jack Gilliland officiating.

Mrs. Cox was born Oct. 17, 1913 in Fort Worth. She was a homemaker and moved to Purcell in April 1985 from Evening Shade, Ark. She had lived in Borger and Pampa, TX prior to Evening Shade.

She was married to Arthur Cox, Feb. 6, 1931. She was a member of the Jackson and Green Church of Christ. Mrs. Cox was preceded in death by her parents, Wilson and Grace Elliot Brown; one sister, Nadine Schmitz and one brother, Harold Lloyd Brown.

Mrs. Cox is survived by her husband; one son, Stanley Cox of Carrollton, TX; one daughter, Joy Henderson of Gruver; one sister, Oma Lee Cowherd of Miami, OK; eight grandchildren and eight great grandchildren.

# Spring is Sprung



2 Miles West of Spearman on Hwy. 15

Check - Out Our Weekly Specials On A Wide Selection

Bedding Plants • Hanging Baskets • Trees • Shrubs • Rose Bushes  
ferti - lome Products • Clay Pots • Bulk Seed • Spring Bulbs

\*\*\* All Plants Locally Grown \*\*\*

## Recognizing Academic Excellence In Hansford County

### Spearman Elementary

Gus Birdwell Elementary School  
"ALL-A HONOR ROLL"  
for Fifth six weeks

- |   |  |   |
|---|--|---|
| <b>5TH GRADE</b><br>Halee Beasley<br>Stephanie Bynum<br>Brandi Campbell<br>Kelsey Henton<br>Lesly Brook<br>Kathryn Murphy<br>Amber Ramon<br>Stephen Salgado<br>Audra Sanders<br>Mickey Schoenhals<br>Camille Smith<br>Janae Watley<br>Sydney Woodington | <b>5TH GRADE</b><br>Brandon Clyburn<br>David Holt<br>Dib Kirk<br>Michelle Laughlin<br>Haley Lombard<br>Nicole Lozano<br>Chelsea Nollner<br>Sally Pittman<br>Jenn Schnell<br>Adrienne Simpson<br>Chelsey Villines<br>Dusty Vinson<br>Brady Woolley<br>Erin Boxwell<br>Laura Camacho<br>Bethany Furlow<br>Randa Morris | <b>5TH GRADE</b><br>Priscilla Reichen<br>Clara Shieldknight<br><b>2ND GRADE</b><br>Daniel Baker<br>Samantha Baker<br>Kevin Beedy<br>Allison Behney<br>Travis Brown<br>Brienne Burkhammer<br>Adam Cherry<br>Jessica Crossland<br>Wesley Hathaway<br>Dustin Mackie<br>Lindsey North<br>Daniel Pape<br>Taylor Ramon<br>Lance Smith<br>Amy Watley |
|---|--|---|

### B.U.G. (Bring Up Grades) Awards

- |   |   |
|---|---|
| <b>2ND GRADE</b><br>Gerardo Hernandez<br>Paul Bynum                 | <b>2ND GRADE</b><br>Mary Bennett<br>Aaron Mendoza<br>Erik Diaz                            |
| <b>KINDERGARTEN</b><br>Bandon Nava<br>Mathew Sandoval<br>Brad James | <b>KINDERGARTEN</b><br>Endi Robledo<br>Rafael Lopez<br>Adrian Hernandez<br>Juan Hernandez |

### Pringle-Morse C.I.S.D.

Pringle-Morse I.S.D.  
Superintendent's Honor Roll (95 average or better) for the fifth six weeks

- |   |   |
|---|---|
| Amanda Apodaca<br>Monica Behney<br>Holly McCloy | Lisa Papay<br>Ashley Phillips<br>Mikala Reiswig |
|---|---|

### ALL "A" HONOR ROLL

- |  |  |
|--|--|
| <b>8TH GRADE</b><br>Dustin Parks<br>Amber Brown<br>Heather Knox<br>Michelle Schick | <b>3RD GRADE</b><br>Monica Behney<br>Crown<br>Mikala Reiswig<br>Evan Schmidt |
| <b>7TH GRADE</b><br>Augustine Simental<br>Tap Giblin                               | <b>6TH GRADE</b><br>Augustus Schuman<br>Deanna Tarango                       |
| <b>5TH GRADE</b><br>Tap Giblin   | <b>2ND GRADE</b><br>Ross Womble  |
| <b>4TH GRADE</b><br>David Schick   | <b>1ST GRADE</b><br>Amanda Apodaca<br>Lisa Papay                             |

### A-B HONOR ROLL

- |  |  |
|--|--|
| <b>8TH GRADE</b><br>Gabby Hernandez<br>Shelly Torres | <b>5TH GRADE</b><br>Elia Hernandez                 |
| <b>7TH GRADE</b><br>Jared Johnson                    | <b>4TH GRADE</b><br>Desiree Wattier<br>Colton King |
| <b>6TH GRADE</b><br>Stephanie DeLaCruz               | <b>1ST GRADE</b><br>Amy Vasquez<br>Allen Thomas    |

### Awards from "THE FOUNDATION" PRINCIPAL'S LIST

- |   |  |
|---|--|
| <b>5TH GRADE</b><br>Camille Smith<br>Amber Ramon<br>Cynthia Goodman       | <b>5TH GRADE</b><br>Oscar Magana<br>Leslie Goodson<br>Ana Fraire<br>Nicole Ramon<br>Brienne Burkhammer |
| <b>4TH GRADE</b><br>David Lopez<br>Haley Lombard<br>Ty West               | <b>4TH GRADE</b><br>David Pipkin<br>Dustin Mackie  |
| <b>3RD GRADE</b><br>Annabell Velazquez<br>David Rodriguez<br>Matt Dunning | <b>3RD GRADE</b><br>Maira Davila<br>Coby Kyger   |
| <b>2ND GRADE</b><br>T.J. Vasquez  | <b>2ND GRADE</b><br>Roy Wilmeth<br>Felicia Martinz<br>Caleb Gillaspie                                  |

### GOOD CITIZEN AWARDS

- |   |   |
|---|---|
| <b>5TH GRADE</b><br>Monica Davila<br>Stephanie Bynum<br>Steven Salgado<br>Audra Sanders<br>Brooke Lesly<br>Aaron Hernandez<br>Jeremy Mackie               | <b>5TH GRADE</b><br>Shandy McDonald<br>Erin Boxwell<br>Amber Elliott<br>Homer Munoz<br>Nicole Sullivan<br>Nicholas Benton   |
| <b>4TH GRADE</b><br>Jeremy Tunnel<br>Robyn McClure<br>Kayla Richardson<br>Timmy Bynum<br>Stacy Einck<br>Clinton Wrinkle<br>Sarah Goodson<br>Junior Moreno | <b>4TH GRADE</b><br>Rose Lopez<br>Sandra Gutierrez<br>Daniel Longoria<br>Sasha Allen<br>David Crouse<br>Chad Sherlock<br>Kendace Boyd<br>Steven Rogers<br>Fernando Enriquez       |
| <b>3RD GRADE</b><br>Bobby Lujan<br>Tashi Schumann<br>Alexa Kuehl<br>Osiel Flores  | <b>3RD GRADE</b><br>Diana Flores<br>Michael Ortega<br>Kristi Vasquez<br>Jeannette Vasquez<br>Nicole Sander<br>Mike Rodriguez<br>Julian Gallegos<br>Kaley Barnes<br>Brandon Warren |

### Gus Birdwell Elementary "A-B HONOR ROLL"

- |  |   |
|--|---|
| <b>5TH GRADE</b><br>Christina Ceniceros<br>Tommy Dewberry<br>Jeremy Mackie<br>Reagan Renner<br>Kristi Wall | <b>5TH GRADE</b><br>Christopher Cudd<br>Jentry Edwards<br>Wade Evans<br>Diana Flores<br>Ashlee Flowers<br>Keilee Goodheart<br>Michael Lozano<br>Garrett Martin<br>Jessica McClure<br>Jaye Noble<br>Courtney Partney<br>Tatum Rice<br>Cristina Salgado<br>Russell Sheets<br>Taylor Simpson<br>Holly Tercero<br>Claudia Vaquera |
| <b>4TH GRADE</b><br>Travis Burgess<br>Jared Freeman<br>Jacob Harbour<br>Robyn McClure<br>Richard Varon     | <b>4TH GRADE</b><br>Travis Burgess<br>Jared Freeman<br>Jacob Harbour<br>Robyn McClure<br>Richard Varon  |
| <b>3RD GRADE</b><br>Tanner Beedy<br>Monica Cantu<br>Matthew Dunning  | <b>3RD GRADE</b><br>Tanner Beedy<br>Monica Cantu<br>Matthew Dunning   |
| <b>2ND GRADE</b><br>Sasha Allen<br>Mindee Gillaspie<br>Kallie Smith<br>Ryan Warren                         | <b>2ND GRADE</b><br>Sasha Allen<br>Mindee Gillaspie<br>Kallie Smith<br>Ryan Warren  |
| <b>1ST GRADE</b><br>Marshall Hearon<br>Homero Martinez, Jr.<br>Josh Ridge<br>Brittany Vera                 | <b>1ST GRADE</b><br>Marshall Hearon<br>Homero Martinez, Jr.<br>Josh Ridge<br>Brittany Vera  |

**#1 JAZZ ENSEMBLE OF TEXAS TECH UNIVERSITY CONCERT**  
THUR., APRIL 22  
SHS AUD.  
7:30 P.M.

### Spearman High School

5TH SIX WEEKS  
"Superintendent's honor roll"  
(ALL grades 90 or above)

- |  |  |
|--|--|
| <b>12TH GRADE</b><br>Brad Butler<br>Mary Cook<br>Amber Coombs<br>Jennifer Covington<br>Michelle Garnett<br>Holly Jarvis<br>Robert Needham<br>Cody Pipkin | <b>12TH GRADE</b><br>Elizabeth Pipkin<br>Molly Blackman<br>Kortney Henton<br>Mika Pipkin<br>Heather Reimer<br>Carol Alvarado<br>Cari Babitzke<br>Regan Boxwell<br>Cory Butler<br>Melanie Cook<br>Mandi Carter<br>Chuck Cook<br>Alisha LaRochelle<br>Carrie Pearson |
| <b>11TH GRADE</b><br>Melissa Baker<br>Mandi Carter<br>Chuck Cook<br>Alisha LaRochelle<br>Carrie Pearson  | <b>11TH GRADE</b><br>Melissa Baker<br>Mandi Carter<br>Chuck Cook<br>Alisha LaRochelle<br>Carrie Pearson  |

### Principal's Honor Roll (Grades avg. 90 or above)

- |  |   |  |
|--|---|--|
| <b>12TH GRADE</b><br>Donette Cates<br>Wesley Dyess<br>Mike Hager<br>Chris Hornsby<br>Curtis Pearson<br>Laura Pearson<br>Mikki Raper<br>Lore Rosales<br>Sophia Salgado<br>Landon Swan<br>Sylvia Rosales | <b>9TH GRADE</b><br>Lucas Biggs<br>Jeremy Blan<br>Tiffany Bruning<br>Nicole Burgess<br>Derrick Burnett<br>Carrie Burton | <b>9TH GRADE</b><br>Michael Covington<br>Gavin Crum<br>Matthew Gafford<br>Jarod Huddleston<br>Katherine Pipkin<br>Martin Sanders<br>Amy Schoenhals |
|--|---|--|

### Gruver High School

Gruver High School  
"ALL-A HONOR ROLL"  
Fifth Six Weeks

- |   |  |
|---|--|
| <b>SENIORS</b><br>Cody Barkley<br>Brendy Brown<br>Traci Crawford<br>Isaul Cruz<br>Heath Gaines<br>Carey Kauffman<br>Scott McCloy<br>Trevor Shipley<br>Sharlet Slough<br>Kevin Spivey<br>Monica Ward | <b>SENIORS</b><br>Wynn Maupin<br>Junior Rivera<br>SOPHOMORES<br>Rosario Arreola<br>Janyth Hart<br>Jana McCloy<br>Julie Meyer<br>Angela Overbey<br>Bailey Barkley<br>Daniel Bort<br>Kiki Carthel<br>Joni Hart<br>Roxane Holt<br>Scott Jarvis<br>Sahala McCloy<br>Tara Shapley<br>Jon Womble |
| <b>JUNIORS</b><br>Justin Carthel<br>Will Evans<br>Karah Heath<br>Sara Jones   | <b>JUNIORS</b><br>Tammie Stevens<br>SOPHOMORES<br>Jace Dawson<br>Kimberly Wagner<br>FRESHMAN<br>Travis Ferguson  |

### "ALL-A WITH ONE B"

- |                               |   |
|-------------------------------|---|
| <b>SENIORS</b><br>Amy Gumfory | <b>SENIORS</b><br>Tammie Stevens<br>SOPHOMORES<br>Jace Dawson<br>Kimberly Wagner<br>FRESHMAN<br>Travis Ferguson |
|-------------------------------|---|

### Gruver Junior High

"ALL-A HONOR ROLL"  
Fifth Six Weeks

- |   |   |  |
|---|---|--|
| <b>8TH GRADE</b><br>Erikka Barrera<br>John Duncan<br>Chad Gardiner<br>John Holt<br>Tommi Latta<br>Brad Law<br>Karina Magana<br>Alma Martinez<br>Telie OQuin<br>Jami Ralston<br>Tamera Ricke<br>Barbara Ring<br>Nikki Strawn<br>Rainey Whittington | <b>8TH GRADE</b><br>Amber Roberts<br>Jeanne Swink<br>Jennifer Lopez<br>Chase Carter<br>Lauren Miller<br>Jennifer Dahl<br>Wesley Miser<br>Kyler Barkley<br>Dallas Henson<br>Annie Mayhew<br>Britt Carter<br>Lesli Fiel | <b>6TH GRADE</b><br>Luke Johnson<br>Jason TeBeest<br>Matt Watlington<br>Jim Potts<br>5TH GRADE<br>Randi Atwood<br>Dan Odom<br>Lindy Tolleson<br>Candace Casdorff<br>Krystal Deeds<br>Mary Puebla |
| <b>7TH GRADE</b><br>Stephanie Gaines<br>Weslyn Maupin<br>David Nash<br>Darby Johnson<br>Jill Odom   | <b>7TH GRADE</b><br>Julie Gumfory<br>Josh Mayhew  | <b>7TH GRADE</b><br>Brant Armes<br>Kathy Slough  |

### Spearman Junior High

"ALL-A HONOR ROLL"  
Fifth Six Weeks

- |  |   |   |
|--|---|---|
| <b>8TH GRADE</b><br>Samantha Beasley<br>Blake Beedy<br>Clint Faries<br>Kelly Goodman<br>Dillon Miller<br>Orlando Ortiz<br>Candice Pipkin<br>Britt Savage | <b>6TH GRADE</b><br>Casey Beatty<br>Brittini Beedy<br>Kristin Beedy<br>Chrissy Bensinger<br>Kristal Burkhammer<br>Texana Clyburn<br>Grace Davis<br>Betsy Holt<br>Dawn Loomis<br>Gale Mayfield<br>Brian McLaughlin<br>Landon Miller<br>Holly Pipkin<br>Nathan Pipkin<br>Doran Schoenhals<br>Julie Scroggs<br>Lisa Swink<br>Cami Winegarner | <b>8TH GRADE</b><br>Shayla Barber<br>Kelli Cummings<br>Zach Furlow<br>Tom Kirk<br>7TH GRADE<br>Tara Bruning<br>Mike Butts<br>Kasey Dunning<br>Jocelyn Edwards<br>Teresa Gomez<br>Brian Howell<br>Jennifer Neff<br>Keisha OQuin<br>Lindsey Smith<br>Nicholas Vinson<br>6TH GRADE<br>Jared Brown<br>Melissa Garcia<br>Leslie Holton<br>Marissa Macias<br>Michelle Ochoa |
|--|---|---|



"YOUR FIRST LOAN"  
1 - Stop Line of Credit

729 W. 7TH  
P O BOX 337  
SPEARMAN, TEXAS 79081  
(806) 659-5544

**FNBANK**  
First National Bank Spearman

# Spearman Junior High students qualify for state competition

Four Spearman Junior High students are state bound after a day of fierce competition at the Regional Math and Science Coaches' Association Contest in Shallowater, Texas, on Saturday, April 17.

Placing second in this meet, the calculator team of Britt Savage, Blake Beedy, Clint Faries, (eighth graders), and Mike Butts (seventh grader) will move on to the state level. Britt Savage will also compete at state as an individual in both number sense with a first place

finish, and in calculator with a third place.

This was the sixth year for the annual contest, which included class A through class 5-A schools, but the first time for Spearman students to enter. The first, second,

and third place individuals from this contest qualified for state and the first and second place teams made up of the top four scores from sixth, seventh, and eighth grades also qualified for the state contest to be held in San Antonio on May 1.

Twelve students and three teacher sponsors left Spearman on Friday to spend the night in Lubbock before the early morning con-

test on Saturday. The students entering this Shallowater contest were the top contestants in the District U.I.L. Contest in both number sense and calculator applications.

Blake Beedy placed fourth in eighth grade calculator and Kristin Beedy placed sixth in sixth grade number sense. In the sixth grade calculator division, the team of Betsy Holt, Lisa Swink, Gale

Mayfield, and Leslie Holton also placed second.

Other students attending and competing in the calculator contest were Tom Kirk, Josh Bynum, and Zack McCammond. Teachers accompanying the contestants were Amy TeBeest, Carolyn Savage, and Karon Swink.

## ANTIQUE SHOW & SALE

GUYMON, OKLAHOMA

APRIL 24 & 25, 1993

TEXAS COUNTY ACTIVITY CENTER • Admission \$1.50

# SPRING HOUSECLEANING SALE

Store Hours:  
Mon.-Sat.  
8:30-5:30

**New  
Merchandise  
Arriving Daily -  
We Need The Space!!!**

**Sale Begins  
April 22  
Thru May 15**

**Shop Early For  
Best Selections!**

**Free Delivery on all  
Sale Items Within  
100 Mile Radius.  
Many Items Not Listed  
Also Sale Priced**



**BEDROOM  
GROUPS**

up to

**50%  
off**

All La-Z-Boy Recliners on Sale.....	Starting at \$199 <sup>95</sup>
Sofa Sleepers by La-Z-Boy, Benchcraft & Riverside.....	Starting at \$499 <sup>50</sup>
Life Style Twin/Full Bunk Bed.....	\$219 <sup>50</sup>
Daybeds.....	\$119 <sup>95</sup>
All Bedroom Furniture on Sale.....	Up to 50% off
Many Selected Sofas & Chairs.....	25% to 30% off
Selected Dining Room Groups & Dinettes.....	Up to 50% off
All Sizes of Mattresses & Boxsprings on Sale.....	Starting at \$89 <sup>95</sup> twin
Table & Floor Lamps.....	Up to 50% off
Roper Large Capacity Washer & Dryer.....	\$689 <sup>00</sup> pair w/trade
Whirlpool Super Capacity Washer.....	\$399 <sup>00</sup> w/trade
Whirlpool Range with Self-Cleaning Oven.....	\$399 <sup>00</sup> w/trade
Roper 18 cu. ft. Refrigerator.....	\$579 <sup>00</sup> w/trade
Whirlpool 25 cu. ft. Refrigerator w/Ice & Water (as is).....	\$1,499 <sup>00</sup> w/trade
Whirlpool 22 cu. ft. Refrigerator w/Icemaker.....	\$949 <sup>00</sup>
RCA 20" Color TV w/remote.....	\$269 <sup>00</sup>
RCA 26" Stereo Remote Console (two styles).....	\$599 <sup>00</sup>
RCA 31" Console w/picture-in-picture.....	\$1,399 <sup>00</sup>

**Boody FURNITURE CO.**



All Items Subject to Prior Sale  
TERMS: (With Credit Approval)  
24 Month Bank Rate Financing  
W.F.C. Revolving Accounts  
With No Down Payment

723 w. 7th  
spearman, texas

plains  
shopping  
center

### Lemon from page 1

urging him to pray and to change his lifestyle. When asked how he would like to be remembered, Lemon never hesitated. "I want to be remembered as a man who loves God."

### Gruver S.B from page 1

received an overpayment of \$17,000 from the state during the 1991-92 year. She continued to explain that the CED reimbursement to the district would be reduced by that amount this year.

In another report Fry stated that the basketball gate receipts had totaled \$10,059.05 this year. The net to the district after paying the officials was \$5,175.05, according to her report.

Then upon Fry's recommendation the board voted to amend this year's budget in the amount of \$1,805. This is not an increase in the budget, but simply a transfer of money from six other areas to High School Compensatory Supplies, according to Superintendent Barry Haenisch.

Vocational agriculture teacher Clay Montgomery presented the board with a review of his year. He reported a successful year with ag participants winning 22 trophies and banners in contests. It was also reported that animals from the Gruver ag program made the sale at every show students participated in. Montgomery concluded his report by saying that the land judging team and the dairy products judging team, had qualified for the state contest.

A pilot summer school program for at-risk elementary students was proposed to the board by Diane Brown, Gruver second grade teacher. This program would be for six weeks for four hours each day, according to Brown. She stated that the emphasis during the day would be on reading, writing and math. The board voted 7-0 to support the program.

Junior High Principal, Mrs. Laura Blessingame and Haenisch

**MARY KAY**  
FACE TO FACE BEAUTY ADVICE™

*Leann Gillaspie*  
Beauty Consultant

659-3889

presented a change in the selection procedure for the junior high cheerleaders. Haenisch reported to the group that he had asked Mrs. Blessingame to find a way to include all seventh graders who wished to participate as cheerleaders. It was reported that the plan calls for all seventh graders who choose to serve as cheerleader to rotate with each participant being trained. According to the procedure seventh graders will lead cheers at the seventh grade games. It was reported that the eighth grade cheerleaders will continue to be selected as in the past. The only change is that six students will be chosen instead of four. Eighth grade cheerleaders will lead the cheers at the eighth grade games.

The district's health coverage for employees was reviewed. Burl Buchanan answered questions the district had regarding the partially self funded plan, but no changes in the coverage were discussed. The members of the board voted 10-0 to employ J. Mack Hoel as auditor for the district during the 1993-94 year.

Nancy Alvarez was recognized by the board as the high school Student of the Month. Sherry Johnson, math teacher, introduced her. It was reported that Nancy plans to attend Angelo State University after graduation. She has been active in athletics and cheerleading in high school.

Haenisch gave a superintendent's report. He stated that the elementary school (grades 2-6) competed at the UIL literary meet in Stinnett and finished third behind WT elementary and Spearman elementary. At the same contest the junior high finished first. He completed his report by stating that the high school finished in fourth place at the district contest behind WT, Spearman and Boys Ranch.

Board President Stan Seagler called for a special meeting to be held Monday, April 12, for the purpose of adopting a resolution regarding the constitutional amendment being proposed in reference to school finance. The board approved paying bills in the amount of \$69,779.57.

**Treats & Eats**





**Peanut Buster® Parfait**  
DQ® soft serve loaded with hot fudge and Spanish peanuts.

**\$1.29**



**The Dude®**  
Chicken Fried Steak Sandwich.

**\$1.29**

On Sale April 19-May 2, 1993

©Reg. TM Am. D.Q. Corp. \*Reg. TM Tx D.Q. Op. Coun. ©Tx D.Q. Op. Coun. At participating Dairy Queen stores.