



# Spearman REPORTER-STATESMAN

Volume 85 • Issue 50

213 Main • Spearman, Texas 79081

Thursday • October 7, 1993

## News Briefs

The Gruver Greyhounds Hounds and the Spearman Lynx go head-to-head Friday, Oct. 8, at Greyhound Stadium. Kick-off is at 7:30 p.m.

The Spearman Study Club will hold an Arts & Crafts show October 9 from 10 a.m. to 5 p.m. in the High School Cafeteria. Space available. For information contact Trudie Schneider at 659-3691.

A Book Fair will be held October 4-8 from 9 a.m. to 8 p.m. in the elementary library. It is open to parents, students and visitors wishing to purchase books!

The Crop Walk will be held in Spearman on Sunday, Oct. 10, at 2 p.m. It will begin at the Court house. The 10 k walk will wind through town and will have frequent rest stops. To register or for more information call Rev. Dan Carter at 659-2671 or Rev. Jeff Lust at 659-5503.

Spearman Volunteer Fire Department and the Spearman Chamber of Commerce will be holding a parade at 10 a.m. Saturday, Oct. 10. This is being held in conjunction with an Open House at the Spearman Fire Station.

The Pringle-Morse C.I.S.D. School Board will hold their next meeting on Tuesday, Oct. 12, at 8 p.m. in the board room.

The Gruver Music Club will host a program featuring the Sacred Heart Children's Dancers on Tuesday, Oct. 12, at 2 p.m. in the Gruver United Methodist Church Fellowship Hall. Public is invited to attend.

American Heart Association Hansford Division has scheduled a meeting of the Board of Directors at 7 p.m. on Tuesday, Oct. 12, at the El Vaquero in Gruver.

A holiday program entitled "Creative Containers" will be presented by Texas-New Mexico Power Company Home Economist Pat Lucas on Tuesday, Oct. 12, at 7 p.m. Location for the program is the Extension Homemakers Clubroom, 309 N. Bernice. The program is open to the public.

## What's Inside

Society Pages	4, 5
Sports	6, 7, 8
Hansford Happenings	2
Want Ads	13
Police Files	3
School menus	2
Livestock shows	9
Obituaries	10
City Lites	11

## Ad Index

Allsups	6
Dobson Cellular	3
Moonlite madness	2
J. Winston	5
Spearman Equity	11
Hansford County	12
Gordon's Drug	5
Beedy Furniture	14
Football Contest	7
Texas Railroad Com.	7
Pringle-C.I.S.D.	8
Cousins	8
Church Page	10
airy Queen	9
Gillaspie Auto	9

## Casino Nite to be held Saturday

by Angela Jones  
Editor

The second annual Casino Nite is being held Saturday, Oct. 9, at the Activity Center, 503 S. Hazelwood.

The event begins at 7 p.m. with a "tender loin" dinner prepared by the Knights of Columbus Catholic Men. This group always prepares an excellent meal, according to Cindy Blackman, chamber manager.

During the evening a silent auction and "Casino Buck ticket" drawings are scheduled. It was explained that each person is given a set amount of "Casino Bucks" to play when they check in. They use these bucks throughout the evening.

At the end the bucks are turned back in for "Casino Buck tickets" which are used for the drawings. The more "Casino Bucks" a person has, the more tickets they get for the drawing, Blackman explained. She added that more "Casino Bucks" are available to be purchased throughout the night.

Some of the items available for either bidding or the drawing and the sponsoring businesses are as follows: 21" self propelled John Deere lawn mower - Hansford Implement, tire rotation - C.O.'s Tire Center, gift certificate - D&C Greenhouse, gift certificate - Pizza Hut, free physical - Dr. Ridge, Mexican dinner for two - El Vaquero Restaurant, contact reflex analysis exam - Henson Chiropractic, a free meal - I.V.'s Hungry Cowboy, movie rental - Knack Shoppe, haircuts and manicures - Sara Schufeldt, Missie Summer and Barbara Sharp at Barb's Beauty Salon, free haircut - Hays Barber Shop, meal - Dairy Queen, Homelite leaf blower - C.O.'s Supply, two t-shirts - City of Spearman, golf note pads - Charolette Ford Trunks and antique cocktail server - Attic Antiques.

Some more items available are a Woolrich sweater and Pendleton shirt - Bunkhouse, house warming candle - Gordon's Drug, hair care products - Vicki Bullard at The

Vogue, hair care products - Sandy's Beauty Salon, decorative boxes - All Occasion Flowers, fresh fall arrangement - Prairie Garden Flowers, \$50 gift certificate - Dr. Novak, Lowe's gift certificate - Dr. Behney, two newspaper subscriptions and office supplies - The Hansford County Reporter-Statesman, golf balls - Brown, Graham & Co., gift certificate - Ned's Pro Shop, mobile phone - Cellular One, fragrance and bath basket - Cousins, Eagle Eye Halloween Sweater - Lady Fair, \$50 infant package - Kids' Stuff and ice chest - B&B Sales.

Still more items available during the evening are two oil changes - Gillaspie Auto & Truck Center, fireplace set - Celebrate, Farmland Oil (1 case) - Equity, meal for two - Shoney's East in Amarillo, breakfast for two - Shoney's, dinner for two - Luby's, \$30 gift certificate - Furr's, two dinners - El Chico, two dinners - Poncho's, two meals - Chili's dinner for two - Beef Rigger,

cont. on pg. 14

## Spearman City Council Adopts 1993-94 budget, tax rate

by Angela Jones  
Editor

The Spearman City Council adopted a budget and set the tax rate for the 1993-94 fiscal year during the special meeting held Tuesday, Sept. 28.

A \$3,066,026 budget was passed for 1993-94, which is a decrease from the proposed \$3,104,478 budget in 1992-93. However, during this meeting the council amended the 1992-93 budget to \$2,372,251.

It was explained that the city did not spend as much money as it had budgeted for the sewer rehabilitation; therefore, the repair costs are being added to the 1993-94 budget.

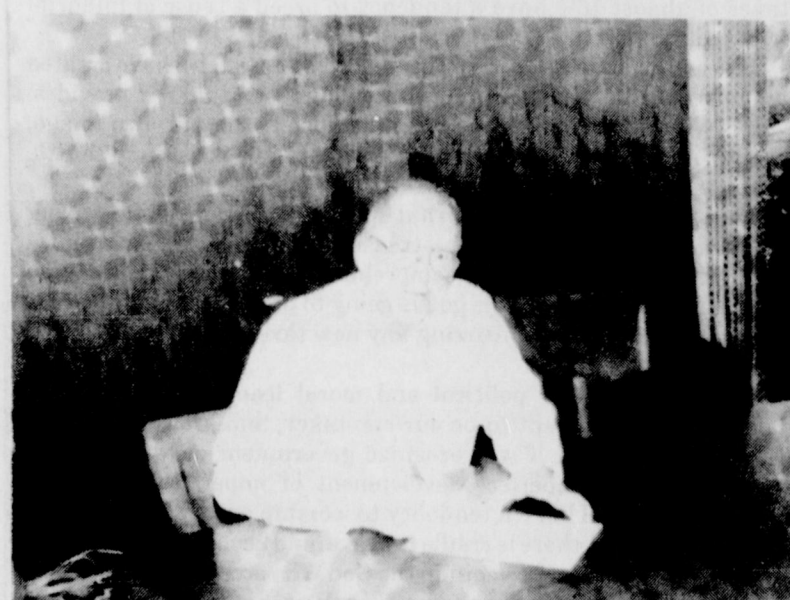
The tax rate for 1993-94 was set at \$0.62786 per \$100 evaluation. This is up 2 1/2¢ from the \$0.6011 rate adopted for 1992-93. It was reported that the tax rate had held at \$0.6011 for approximately three years.

In other business, the council voted to increase the gas surcharge

per mcf. It increased from 95¢ to \$1.00. The gas tap fee and reconnect or transfer fee were also increased. For a 3/4 inch riser gas tap the fee has increased from \$200 to \$225. The reconnect or transfer fees for gas during office hours was raised from \$7.50 to \$10 and for after hours it is increased from \$10 to \$20.

Other fee increases made during the meeting pertain to the water

cont. on pg. 11



Spearman Mayor Burl Buchanan signs a proclamation declaring Crop Walk Week. The Crop Walk will take place Sunday, October 10. See related story pg. 11

## Gruver I.S.D. Board of Trustees adopt tax rate

by Angela Jones  
Editor

Gruver I.S.D. School Board met in special session on Wednesday, Sept. 29, to adopt a tax rate for 1993-94.

They held a public hearing on the 1993-94 proposed tax rate, but no citizens attended. The board then adopted a tax rate of \$1.1123 per \$100 value. It is reported that the tax rate is a decrease from the \$1.2064 set in 1992-93.

According to Superintendent Barry Haenisch, the decrease in taxes was made possible by the

repayment of the bond for the junior high renovation and because of a small increase in the taxable values in the district. The tax rate passed on a 6-0 vote.

In other business the board voted to allow the band to attend the Area Marching Contest if they qualify at the Berger Marching Contest. The Area Marching Contest will be held in Odessa.

A discussion was held on a student attendance policy. The board then voted to table the item until more information could be obtained.

The meeting adjourned.

## Fund established to help local family in time of need

A local man has not only been blessed with a much needed organ donation, but also with the gift of friendship. The friendship of a town that may be small in size but is very big at heart.

Wesley Brown, 41, of Spearman received a kidney transplant in Dallas on Monday, September 27.

He has been on the transplant list for three years before receiving the notice that a match had been found. The surgery was considered a success and as of press time Wesley was doing well and expected

to be returning home ahead of schedule.

As can be expected though, the Brown's have had a tremendous financial burden on their shoulders throughout Wesley's illness. To offset this burden a fund has been established at First State Bank in Spearman. If you would like to help the Brown's during this time please contact the staff at First State Bank.

If you would like to send a card to Wesley his address is: Methodist Medical Center, Room 4923, 301 West Colorado St., Dallas, Texas 75208.

## Museum holds open house

by Angela Jones  
Editor

Hansford County residents gathered at "Zulu, Texas" on Saturday, Sept. 25, for an Open House, tour and ribbon cutting ceremony.

This celebration was to commemorate the completion of a replica of the Zulu Stockade. "It's the fruit of our dream," Climentine Renner stated when talking of the completion. She added that the project had lasted for approximately 20 years.

"We realize it is a far cry from the original, but to make it last for years to come like we'd hoped, we had it made of modern materials," she said. In explanation she said the walls of the original stockade were of pickets hauled from Morse creek, while the roof was pickets covered with sod. The floors of the building were dirt covered with burlap sacks. The replica of the stockade located at the Station Master's House Museum is built with half logs in a vertical position, the roof is steel and the floor is cement covered with burlap sacks.

Although the materials are not exactly the same, the replica is the exact dimensions of the original -

18'X16'.

In the front area of the stockade is a replica of the Zulu Post office and living quarters. Renner commented that the remainder of the building will be used for other historical artifacts from Hansford County.

"We rebuilt the Zulu Stockade to preserve some of the Hansford County History," Climentine stated. She added that the post office was established in Zulu, Texas on Dec. 20, 1888, under Rutherford V. Haze, administrator and Horace Manord, postmaster general. The first postmaster of Zulu Texas was Jim Cator.

The building of the Zulu Stockade replica was made possible by donations, Climentine said. She added that the Station Master's House Museum Committee hired some of the work, but most of it was done by J.D. Wilbanks and various volunteers.

Members of the committee responsible for the Zulu Stockade are: Helen Boyd, president; Juanita Pierce, vice-president; Climentine Renner, secretary; Rubyjo Wilbanks, treasurer; J.D. Wilbanks, Gus Renner, Irvin Boyd, Harry Stumpf and Joel Lee Lackey.



A 1986 Chevrolet four-door was traveling east on 8th St. in Gruver when it struck a 1978 Chevrolet pickup at approximately 5:50 p.m. October 4. There were no injuries reported, however, both vehicles received extensive damage.

## Spearman Fire Department, Chamber of Commerce To hold parade and open house

by Angela Jones  
Editor

The Spearman Volunteer Fire Department in conjunction with the Spearman Chamber of Commerce is holding a parade and Open House on Saturday, Oct. 9.

The parade will begin at 10 a.m. It will start on Main Street, continue down Bernice and end at the fire station. Firefighter Bret Burgin said, "School kids are encouraged to decorate bikes and participate in the parade."

Immediately following the pa-

rade, an Open House at the fire station is planned. This open house will consist of both education and entertainment according to Burgin.

He explained a couple of the activities scheduled. The firemen are going to have a "stop, drop, and roll" area where kids can learn this live saving procedure. He continued, one of the fire trucks is also going to be set up so individuals can experience what it feels like to operate the fire hose as it surges water.

For those citizens getting the "munchies" while attending the

Open House, the firemen are holding a hot dog sale for a fund-raiser.

Citizens are also urged to participate in naming the fire station mascot. The firemen have chosen three names from all those submitted and everyone is asked to vote for their favorite. The name choices are Backdraft, Pumper, and Tag-along.

During the Open House an added attraction will be fire safety posters designed by the school children. These posters will be on display throughout the station.



## Accidents keep police jumping

by Angela Jones  
Editor

Automobile accidents kept the Spearman Police Department hopping during the reporting period from Monday, Sept. 27, through Sunday, Oct. 3.

The first accident for the period occurred at 1:25 p.m. in the 100 block of N. Bernice. It was reported that a 1977 Ford Granada was backing from a parking place when it struck a 1985 Ford F150 pickup pulling into the parking lot. Sergeant Steve Schmidt-Witcher reported that more than \$500 in damage occurred to the vehicles, but no citations were issued and there were no injuries.

On this same day a second accident was reported. It occurred at 9:25 p.m. in the 300 block of W. Kenneth. Schmidt-Witcher reported that an individual was talking on the payphone when a motor vehicle failed to stop, traveled onto the side walk and struck the individual. The driver of the vehicle stated that the brakes had failed. Schmidt-Witcher concurred that the investigation found that the brakes were defective.

The victim was transported to

the Hansford Hospital and later taken to St. Anthony's in Amarillo. The driver was not injured and there was no damage to the vehicle as a result of the accident.

On Thursday, Sept. 30, a hit-and-run accident was reported. It was reported that a vehicle located at the intersection of First and Highway 207. The incident was reported at 10:35 a.m. The case is still under investigation.

Another hit-and-run accident was reported Saturday, Oct. 2. According to Schmidt-Witcher, the incident occurred in the high school parking lot at approximately 10 p.m. in Friday, Oct. 1. It was reported that an unknown vehicle backed into a 1987 Toyota XR1 damaging the front fender and bumper. The damage was under \$500. The incident is still under investigation.

Other reports filed during the week were 18 miscellaneous calls, two ambulance assists, one motorist assist, two lockouts and one animal control call.

On Tuesday, Sept. 28, a suspicion was reported at 9:50 a.m. in the 700 block of Gibner. It was reported that a subject was napping in a vehicle.

On Thursday, Sept. 30, a disorderly conduct was reported in the 400 block of 11th. The incident occurred at 10:05 p.m. Schmidt-Witcher reported that an apparent fight occurred after the game. This fight was allegedly between a football player and ex-student. He added, the suspect fled the scene. It is still under investigation.

On Saturday, Oct. 2, a bicycle was reported stolen. It was reported that the theft occurred between 10 a.m. and 6:25 p.m. (when the incident was reported) in the 400 block of S. Dressen. The bicycle is described as a Huffy 24" Mountain Bike. It is blue with black splatters. The handle bars and front fork are fluorescent green. This bicycle is valued at \$110. It is still under investigation.

A disorderly was reported in the 100 block of S. Townsen. It was reported that the individual had been receiving harassing phone calls for two weeks. The incident is still under investigation.

A suspicion was reported at 11:15 p.m. on Highway 207. An alleged drunk driver was reported. The vehicle was stopped and the driver was found not intoxicated.



The Spearman Chamber of Commerce held a ribbon cutting ceremony last Monday for Cousin's Cards & Gifts, which is located in Plains Shopping Center in Spearman. Owners of the new business are Carla Gumfory and Teresa Barkley.

## Letter to the editor

Dear Editor:

On September 20, I had one of those Mondays. I got a call from Val Furnish to inform me that my house was on fire. By 9:00 that same night, it had burned to the ground.

The house burned, but many, many people worked heroically to stop the fire, and to keep it from spreading to other homes. I would like to thank those people. Val and Rick Furnish discovered the fire and sounded the alarm, and continued to work hard through the night. The wonderful members of the Guymon Volunteer Fire Department were already on the way to the fire when I left town, and stayed on the job until after midnight. Their assistance and efforts were exemplary. I particularly want to thank Gary Manos for going into the library to save what could be saved.

The fine folks from the Gruver, Spearman and Goodwell fire departments responded immediately when asked, and gave yeoman service during the entire evening. I only wish that I had had more water for these fire fighters to use.

Then, there were the efforts of many friends, employees and community members. My mother and

father, Ladd and Lala Hitch, were steadfast in their support. Bill Miller, Ed Maxwell, Gerry Moore, Nelson and Becky Dusenbury, Roger Kauffman, Rod Schemm, Curtis Raines, Bill Skaggs, Marcelino Rios, Carlos Salinas, Lin Cope, Carl Cooper, Steve and Janet Smith, Janet Fajen Patterson and a host of others pitched in and did more than an army of paid people could have accomplished, and did so with strength, courage and good humor.

They overcame my own confusion in organizing water delivery, cutting down trees, removing items of value and dispersing food and drink to the front line personnel. Hell, they were so good at making things happen that, had it been

someone else's house that was burning, it might have been fun.

I know that food, drink and equipment were provided by Panhandle Eastern, Phillips, and Mazzi's. I know that several fire departments and dozens of volunteers spent several hours fighting the fire, and successfully kept it from spreading. I know that I am extremely fortunate to have received the help of all these wonderful people. I know that I have not mentioned many deserving of mention, and apologize for the lapse. I know that I have my life, my health and my family, for which I am eternally grateful. All else can be rebuilt, and will be, God willing.

Texas County's Newest Homeless Person,  
Paul H. Hitch

**LA GRONE MONUMENT CO.**

Garre LaGrone  
901 E. 27th  
Amarillo, Texas  
1-800-658-6117

Cleta Casdorff  
Local Representative  
Gruver, Texas  
(806)733-2154

**We've Got A New Name**  
...and the same reliable hometown service.

**Bartlett's**  
**ACE Hardware**

Gruver Lumber Company  
105 W. Broadway, Gruver, Tx (806)733-2404

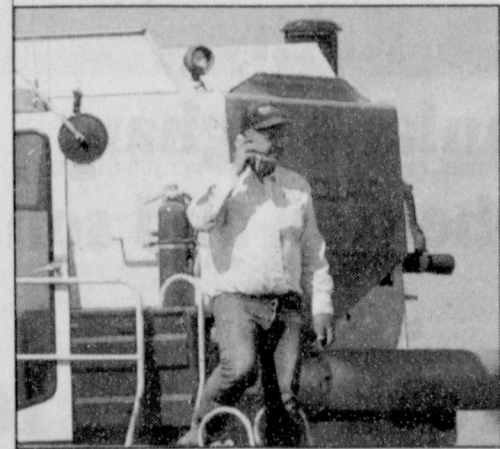
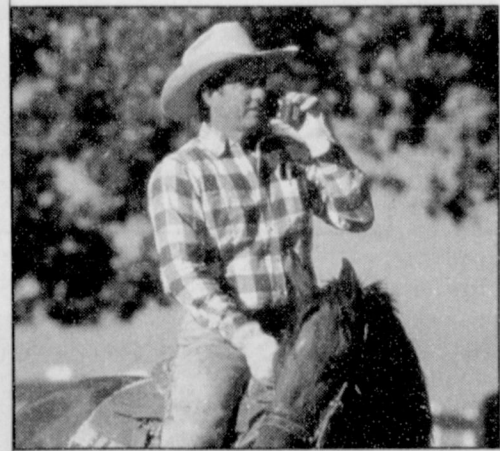
*When it comes to friendly service and a large selection of merchandise you need for these fix 'em up jobs. Home remodeling, decorating, appliances, lumber, hardware. We are where you shop!*

## Now Through October 31!

**Pretty Nifty Under Fifty**

**\$45**

**Cellular Phone Deal**



With Dobson Cellular System's new "Pretty Nifty Under Fifty" deal, you'll get all the quality and convenience of a cellular phone and service from Dobson for a low \$45 per month,\* which includes:

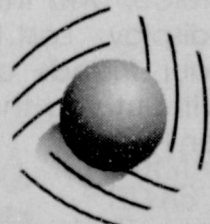
- **A Top-Quality Cellular Phone** (portable or installed)
- **NO MONEY DOWN**
- **Theft/Loss Insurance**
- **60 Minutes FREE Monthly Airtime**
- **Equipment Maintenance/Repair Contract**
- **Feature Plus Package**, including Voice Mail, Call Waiting, Call Forwarding, Three-Way Calling and an additional 120 minutes of Off-Peak airtime to use each month until December 15, 1993!

To take advantage of the "Pretty Nifty Under Fifty" offer, visit the Dobson Cellular Systems office or authorized agent nearest you. But do it today. Because this offer ends October 31st!

Pampa  
2131 Perryton Parkway  
665-0500

The shortest distance between two points is a straight line to...

**DOBSON**  
CELLULAR SYSTEMS



For the location nearest you call 1-800-882-4154 today.

Authorized Agent(s):

Cellular Communication 659-2848 • Gruver Cellular 733-2180

\* Limited time offer. Minimum 24-month service contract required. Offer subject to credit approval. Certain terms and conditions apply.





## RADICAL LIVING

By Dan Carter, Pastor  
Trinity Community Church

### Big Government or Big Brother

Pastoring in New Mexico I was considered self-employed according to government tax definitions. That meant that I was paid my gross (grossly underpaid, I sometimes felt), and then responsible for withholding my own income and social security taxes. Social security taxes of almost 16% have a tendency to breed a sense of financial insecurity in me.

It seems that as Americans, by default or design we have created a monstrous idol that continues to consume more than it provides. Our government, the god we have fashioned after our own image, spouts promises like a geyser, but comes through like a space shuttle - late, if at all and over budget.

Now the same government that sponsors abortion, while waxing eloquent on children being the treasure of our future (isn't that a contradiction?), promises up comprehensive health coverage. From the cradle to the grave, this god is going to make sure healthcare is provided, and without incurring any new taxes. This is truly a god of miracles!

Depending on our political and moral leanings we may rely heavily on government to be our caretaker, and grow demanding when it fails. Even if we recognize government as weak, short-sighted and an imperfect development of imperfect people (us included), we still have a tendency to worship at its altar.

Provisionally, there is cradle to grave (and beyond) provision and assurance for those who worship the God Who made them. Scripture says, "...He (Jesus) is not ashamed to call us brethren..." (Hebrews 2:11). What's more, He delights to meet our every need. He is the beneficent Big Brother.

Are you calling God, Father? He's waiting.

Sponsored by Trinity Community Church, 717 West 7th



The Spearman Chamber of Commerce held a ribbon cutting ceremony last Friday to welcome Cathy and Ladd Gafford as the new owners of The Bunkhouse.

### Hospital Report

September 29 - October 5

### Admissions

Wednesday - none  
Thursday - none  
Friday - B.J. Turner  
Saturday - none  
Sunday - none  
Monday - Teresa Jones and Felix Lopez  
Tuesday - Lynn Martin

### Dismissals

Wednesday - none  
Thursday - none  
Friday - none  
Saturday - B.J. Turner  
Sunday - none  
Monday - none  
Tuesday - Lynn Martin and Woodville Jarvis

### Birth Announcement

Cacy and Merritt Vaughn of Amarillo announce the birth of their son, Merritt Ray Vaughn II, October 3, 1993 at 3:24 a.m. Merritt Ray weighs 8 lbs 5 oz and is 21 inches long.

## Hansford Happenings

Spearman PTA's carnival is set for Sat. October 30, from 7:30 p.m. - 10:30 p.m. at the Hansford Co. Barn. The cost for a booth is \$15. If your club wishes to participate you are urged to respond quickly. Call Cheryl Sander at 659-2989.

The Spearman Study Club will hold an Arts & Crafts show October 9 from 10 a.m. to 5 p.m. in the High School Cafeteria. Space available. For information contact Trudie Schneider at 659-3691.

Trash Camp '93 - Would you like to be an EnviroSmart Master Volunteer? Here's your chance to change our waste problems in Hansford County. October 15-17 at the Texas 4-H Center, Brownwood, Tx. Call the Hansford County Extension office at 659-2030 or 733-2901 for details.

Octoberfest - 55+, then you will enjoy Octoberfest. Four choices of dates to attend. October 12-15, 19-22 or 26-29. Relax on Lake Brownwood by fishing and boating or join in on the hands-on learning centers. Call Hansford County Extension office at 659-2030 or 733-2901 for details. Or call the Texas 4-H Center at 1-800-432-8342.

Some changes have been made in the Panhandle Transit schedules. They are now going to Amarillo on Monday, Wednesday, and Friday of each week. They will arrive in Amarillo at approximately 9:30 a.m. and depart for home at approximately 2:30 or 3:00 p.m. The cost is (20) dollars for round trip. Arrangements should be made the day before by calling 659-3866.

The Spearman Chamber of Commerce and the Panhandle Small Business Development Center will be offering business consultations on Friday, Oct. 15, at the Spearman Chamber of Commerce office. A small business consultant will be able to meet with you either at your place of business or at the chamber office to go over your books and help you with business decisions. These appointments are free and confidential. Call the Chamber of Commerce, 659-5555 to set up your appointment.

A Book Fair will be held October 4 - 8 from 9 a.m. to 8 p.m. in the elementary library. It is open to parents, students and visitors wishing to purchase books!

Girl Scout Nut Sale to be held October 1-17. Contact any Scout or Carolyn Cummings 659-2106, Debbie Hornsby 659-3259 or Barbara Fight 659-3685 to place advance orders.

The Crop Walk will be held in Spearman on Sunday, Oct. 10, at 2 p.m. It will begin at the Court house. The 10 k walk will wind through town and will have frequent rest stops. To register or for more information call Rev. Dan Carter at 659-2671 or Rev. Jeff Lust at 659-5503.

Spearman Volunteer Fire Department and the Spearman Chamber of Commerce will be holding a parade at 10 a.m. Saturday, Oct. 9. This is being held in conjunction with an Open House at the Spearman Fire Station.

The Pringle-Morse C.I.S.D. School Board will hold their next meeting on Tuesday, Oct. 12, at 8 p.m. in the board room.

The Gruver 8th grade will hear a guest speaker from OPSU on Wednesday, Oct. 13. The speaker will discuss career choices and technical courses beyond high school.

The Gruver Music Club will host a program featuring the Sacred Heart Children's Dancers on Tuesday, Oct. 12, at 2 p.m. in the Gruver United Methodist Church Fellowship Hall. Public is invited to attend.

For the convenience of the Spearman Football fans, a gate will be opened on the East side (visitor) of the football game. Those from Spearman can park behind the school and have access to the visitors side.

Yack & Tack Quilt Guild will have a business meeting on Monday, Oct. 11 at 7 p.m. 216 Main. Jo's This N That.

American Heart Association Hansford Division has scheduled a meeting of the Board of Directors at 7 p.m. on Tuesday, Oct. 12, at the El Vaquero in Gruver.

"Make It and Take Class" on the Afghan Jacket will be offered on Thursday, Oct. 21, from 9 a.m. to 3 p.m. at the Expo Center in Perryton. Class will be taught by Cynthia Chattles, County Extension Agent. Cost will be \$35.00 for the Afghan and pattern. Class will be limited to 20 so call 435-3831 early to register.

A holiday program entitled "Creative Containers" will be presented by Texas-New Mexico Power Company Home Economist Pat Lucas on Tuesday, Oct. 12, at 7 p.m. Location for the program is the Extension Homemakers Clubroom, 309 N. Bernice. The program is open to the public. This year's program will feature ideas for creative packaging of homemade food gifts. Energy saving hints and safety tips will be shared. Those attending will receive a copy of the 1993 cookbook, "Creative Connections."

Friends and business associates wishing to donate to help Lee Shaver with his medical expenses from his recent accident may do so by sending their donations to First State Bank.

The City of Gruver will be meeting on Wednesday, Oct. 13.

The Spearman I.S.D. School Board will be meeting on Tuesday, Oct. 12.

Hansford County Commissioner's Court will be meeting on Monday, Oct. 11, at 10 a.m. in the Courthouse.

The City of Spearman will hold their next regular meeting on Tuesday, Oct. 19, at City Hall.

### At The Lyric Theatre...

The Theatre will be closed Friday, October 8 through Tuesday, October 12

Coming October 15

SCREEN 1 - 7:00 PM    SCREEN 2 - 7:30 PM

The Firm                      Son of the Pink Panther  
113 Main, Spearman

# DISCOVER BIG SAVINGS

## Spearman Style MOONLIGHT MADNESS

Thursday  
October 7  
6 - 9 p.m.

# SALE

Thursday  
October 7  
6 - 9 p.m.

J.G.'s  
Ladies Ready to Wear  
306 Hancock

Beedy Furniture  
723 W. 7th

Hickerson Jewelers  
721 W. 7th

Cates Men & Boys Wear  
221 Main

All Occasion Flowers  
517 Plains Shopping Ctr.

Cousins Cards & Gifts  
Plains Shopping Ctr.

Charolette Ford Trunks  
313 Main

Celebrate  
Unique Gifts  
203 Main

Attic Antiques  
411 Davis

Jo's This n' That  
216 Main

The Bunkhouse  
212 Main

Kid's Stuff/Lady Fair  
Children & Ladies Wear  
719 W. 7th

## School Menu

Pringle-Morse C.I.S.D.  
October 11 - October 15  
Lunch

Monday - Pizza, salad, applesauce, raisins.

Tuesday - Chicken Strips, potatoes, green beans, salad, rolls, peach cobbler.

Wednesday - Turkey, tamale pie, rice, vegetable sticks, fruity jello.  
Thursday - Spaghetti, salad, Italian bread, pears.

Friday - NO SCHOOL.  
Breakfast

Monday - Banana, muffins, toast, juice.

Tuesday - Honey buns, toast, juice.  
Wednesday - Waffles, sausage, juice.

Thursday - Cereal, cinnamon toast, juice.  
Friday - NO SCHOOL.

Gurver I.S.D.  
Oct. 11 - Oct. 15  
Lunch

Monday - Chicken patties, mashed potatoes with gravy, corn hot rolls, pudding, and milk.

Tuesday - Soft shell tacos, lettuce, cheese, fruit, and milk.

Wednesday - Pig in a blanket, tater tots, cowboy bread, fruit, and milk.  
Thursday - Beef stew, fruit, cookies, crackers, and milk.

Friday - Hamburgers, lettuce, pickles, cheese, french fries, ice cream, and milk.

Breakfast

Monday - Cereal, donut holes, fruit, and milk.

Tuesday - Biscuits and sausage, fruit, and milk.

Wednesday - Donuts, fruit, and milk.

Thursday - Toast with peanut butter and jelly, fruit, and milk.

Friday - Cinnamon rolls, fruit, and milk.

## Hometown News

Debra S. Davis of Morse was one of 263 candidates to graduate from West Texas A & M University on August 19th. She received her Bachelor of Science degree.

Degrees were officially conferred on the first graduating class of West Texas A & M University. Ninety-eight candidates completed master's degrees, and 165 candidates completed baccalaureate degree requirements during the summer 1993 sessions.

Undergraduates with an overall grade point average of 3.50 or better were recognized as honor graduates and were eligible to wear gold honor cords at the commencement ceremonies. Three levels of recognition are Cum Laude (3.50-3.74), Magna Cum Laude (3.75-3.89) and Summa Cum Laude (3.90-4.00)

The Hansford County Reporter-Statesman  
"Serving All Of Hansford County"

USPS 509660  
213 Main, Box 458, 659-3434  
Spearman, TX 79081  
Published Weekly at  
213 Main, Spearman, Texas  
Owned and Operated by:  
Texas Independent Newspapers, Inc.  
16607 Blanco Road #707  
San Antonio, TX 78232  
(210) 492-8907

Second Class postage paid at Spearman, Texas 79081.

Any erroneous reflection upon the character of any person or firm appearing in these pages will be gladly and promptly corrected upon being brought to the attention of the management.

Publisher - Molly Zimmerman  
Editor - Angela Jones  
Bookkeeper - Sheila LaRochelle  
Ad Rep - Debra McNeely

Subscription Rate: Hansford County, \$19.95; out of county, \$24.95 annually.

Postmaster: Send address changes to Hansford County Reporter-Statesman, Box 458, Spearman, TX 79081.

The publisher reserves the right to revise or reject at its option any advertisement which it deems objectionable, either in subject or phraseology, or which it may deem detrimental to its business.

Advertising and Story Deadlines:  
Tuesday, 12:00 p.m.

MEMBER  
TEXAS PRESS ASSOCIATION

### Charles H. Ridge, M.D.

710 S. Roland Street

Office Hours:

Monday - Friday  
8:30 a.m. - 12 p.m. & 1-5 p.m.

For appointments call: 659-3395





Celebrate, the Spearman High School show choir, gave their first performance of the year at the Spearman Chamber of Commerce Membership Drive Thursday, September 30.

## Among The Neighbors

by Helen Fisher

Mrs. Kaia Hester accompanied Mr. and Mrs. Frank Buzzard and Mr. and Mrs. Jimmy Shieldknight to Enid last Sunday. They attended the funeral of her nephew and their cousin, Jere Koechel. He was 52 and had suffered a fatal heart attack.

Mrs. Grace Johnson and Mr. and Mrs. Ray Phelps hosted a reunion of the Phelps family last Tuesday. They gathered at the Phelps home, then to the Palo Duro Club for a noon meal. Later they had good fellowship at the Christian Church and had ice cream and cake. After another stop at the Phelps, they went their ways.

From Yukon a brother and wife came from Weatherford another brother and wife, from Sugarland a sister and husband, nieces from Weatherford and Conroe.

From this area those attending were Bob and Ada Rose Phelps, Forgan, Mrs. Rhoda Bryan and her daughter, and Mr. and Mrs. Clyde Ragsdale of Perryton. Old friends, Mr. and Mrs. Oscar Dozier were from Hardesty.

Mary Lou Wysong and Jan and Ed Williamson of Spearman were also with them.

Millard Tucker is back at his usual work of beautifying lawns after several days on a fishing trip. He and his brother Wilbur of Graham were in a contest with the fish at Possum Kingdom and the fish won.

Adalyn Barnes spent two weeks in Toledo, Ohio, returning Thursday. She visited an old friend, Irene Briezelaar, who formerly lived in Perryton where her husband was a pastor.

They took many drives in the lush, beautiful countryside and Adalyn tried to absorb all the grandeur. One day they took a train trip into Michigan.

Lola and Charles Newcomb returned Monday from two weeks in Riverside, California. They were guests of their son, Larry and Darlene.

The main purpose of their trip was to get acquainted with the newest of their four great grandchildren. He is Nicholas Craig Newcomb, the son of Larry's son-Ron and Laura Newcomb.

Lola and Charles drove thru and as usual when they drive in Riverside, they are thankful that they live here in the Panhandle where

the problem is not downright awful-referring to traffic.

They reached home in time to quietly observe their 56th wedding anniversary on Tuesday.

Marian Nollner is becoming quite dextrous in performing tasks with just one hand. She had carpal tunnel surgery on her right hand last Thursday at Northwest Texas Hospital and is recovering with no problems.

She had the operation on her left hand on August 23.

Guests of Olive Pendergraft last Thursday thru Tuesday were her nephew Bob and Dee Kirk with Monique. They are from Carrolton.

Sunday marked the last baseball game for the Texas Rangers in the Arlington Stadium; also the last game for Nolan Ryan and the last game for George Brett.

Another last ball game being played was the Cleveland Indians in the Lake Front Stadium. Your neighbor attended some games in that stadium and to a prairie gal in the olden days, even the huge underground parking area was astounding. From the top tier in the stadium the boat traffic on near-by Lake Erie vied for attention with watching the famed Bob Fellers pitch.

Maylynn and I.W. Ayres thoroughly enjoyed three days last week when they attended the National AWCC (Watch and clock) convention held in Amarillo at the Civic Center. It was in conjunction with the Five-States Association. There were as many as 300 attending and there were 164 tables with clocks on display.

I.W. bought five or six to repair and offer for sale. Anyone who hasn't driven by the Ayres and seen the clock mailbox has missed something unusual.

The sale of The Bunkhouse this past week was of interest to the entire community. Pat, who had clerked in various retail stores and developed a knowledge of merchandising, together with Cherry and Dr. Wesley Garnett, opened the store in August, 1973. When the Garnetts left Spearman, Pat became sole proprietor and has been there 20 years.

In addition to managing the store, Pat has been the travel agent for the Wheatheart Travel Agency, and she will continue. This office

will be in an office in the Chamber of Commerce building, and will be open a few days each week.

Pat has earned the admiration of the entire community by her astute business judgment, her desire to please the customers and her efforts in civic affairs.

On looking back over the 20 years experiences, Pat states that the good memories far out-weigh the unpleasant ones. She attributes the success of the store to the people of the Panhandle who have been wonderful patrons.

In addition to her business, Pat has been active in the Spearman Chamber of Commerce, the Beta Sigma Phi Sorority, Women's Division of the Chamber of Commerce, and various others, each of which benefited greatly from her efficiency and dedication.

Her plans include occasionally playing bridge, a great deal of association with her grandchildren, and keeping an eye on husband, Ed.

Pat, the daughter of Darlene and the late Lester Howell, was born in Spearman and finished high school here, as did her mother, her children, and her grandchildren.

She and Ed have a son, Dan, of Canadian, daughters Cindy Blackmon of Spearman, and Cathy Glade of Plano.

Their grandchildren are Cathy's daughters, Ashley and Taylore; Cindi's children are Brandi, a junior at W.T., Monica, a sophomore at W.T., Molly and Shane, in high school here.

The "Top Guy" of the family is the yearling Parker David, son of Dan and Laura.

Enjoy your retirement, Pat, you've earned it!!

### Hometown News

September 20, 1993 (FHTNC)--Marine Pvt. Tracy L. Thompson, son of Linda P. Thompson of Spearman, recently graduated from the Automotive Mechanics Course.

During the course at Marine Corps Service Support School, Marine Corps Base, Camp Lejeune, N.C., students are trained on the functional skills that will enable the graduate to perform inspections, diagnostic tests, adjustments services, and repairs to tactical motor transport equipment under field operating conditions.

The 1990 graduate of Spearman High School joined the Marine Corps in November, 1992.

## TAAS tests scheduled

The Texas Assessment of Academic Skills (TAAS) will be administered to all high school juniors and seniors who have not mastered a section or sections of the exam. Students are first given the TAAS in the 10th grade and must pass all three sections - math - reading - and writing - before graduating from high school.

Testing schedule: High school Junior and Senior retest schedule: October 19, writing; October 20, reading; October 21, mathematics. Testing will be held at 8:15 each day at the auditorium.

Students who are currently en-

rolled in the 10th grade will take the TAAS test for the first time in May, 1994.

Out-of-school TAAS and TEAMS tests will be administered at Spearman High School October 19 through October 21. These tests are for those students who are no longer in school but who have not passed either the TEAMS or TAAS.

Out-of-school students must pre-register to take the exam. Registration forms are available in the high school counselor's office. The forms must be received by the testing center in Iowa City, Iowa no later than September 28.

their dancing, all of which was very entertaining and interesting.

Wesley Brown, who received a kidney transplant, is reported to be recovering, according to family members.

The surgery occurred on September 25 at Dallas after Wesley had waited three years for a donor, during which time he was on dialysis.

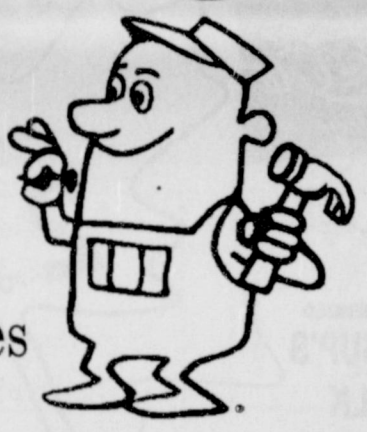
He had expected to leave the medical center on Tuesday for a near-by motel for at least two weeks. Some minor complications developed and it is not definite when he will leave the hospital.

His wife, Pat, is with him.

Wesley's address is Methodist Medical Center, Room 4923, 301 West Colorado St, Dallas, Texas, 75208. Mail would reach him at this address even when he moves to a motel.

# Roofing

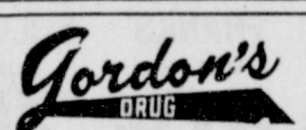
- ✓ Wood
- ✓ Composition
- ✓ Hot Mopping
- ✓ Free Estimates



Call:

**Roscoe Nelson**  
659-2292

**Charles Eaton**  
659-2000



## Bridal Gift Registry

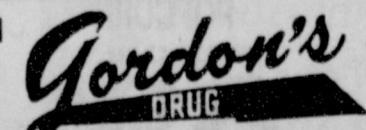
COME BY & LET US HELP YOU SET UP YOUR SPECIAL GIFT TABLE

### Couples Currently Registered

Regina Abston & Bradley Irvin *Oct. 9
Scott Wilkerson & Kelli Sutton
Chris Williamson & Jennifer Mensen *Oct. 16
Cindy Elliot & Troy Franklin *Nov. 27
Tim Willis & Stacy Artho

\* Date of the Bridal Shower

314 MAIN PHONE 659-2141



SPEARMAN TEXAS

## WE ARE NOW CARRYING OFFICE SUPPLIES!

---

**Halloween Pencils for your favorite little spook 25¢ ea.**

**Posterboard white only 40¢ ea.**

**Steno Pads 85¢ ea.**

**Legal Pads white or canary 95¢ ea.**

**Hot Spot Plus Highlighters Assorted colors 65¢ ea.**

**Bic Mechanical Pencils 50¢ ea.**

**Bic Shimmers BallPoint Pens Assorted Colors 60¢ ea.**

**Message Pads 20¢ ea.**

**Uni-Ball Neon Lites Assorted Colors 95¢ ea.**

**Correction Pens \$1.95 ea.**

**Name Tags stick on \$1.95 box**

**Glue Sticks 65¢ ea.**

**Invisible Tape replacement rolls 3/4 inch \$1.25 ea.**

**Push Pins \$1.25 box**

---

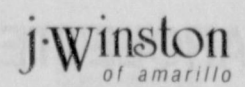
Spearman Reporter-Statesman  
213 Main • Spearman 659-3434 or 1-800-395-9482

# Celebrating to the 9s

j. Winston means being dressed to the nines. Now come and Celebrate to the 9s at our 9th birthday celebration ... all week long, October 4th through 9th.

- Meet Kyle Taylor Dawson; see her unique line of hand crafted collectible cards
- Drawing for a \$500 gift certificate
- Daily Door Prizes
- Holiday Dressing
- Get an early preview of j. Winston's Christmas Cache (a most unusual collection of Christmas gifts)
- \* Bring this ad for **three 25% discounts** (excluding cosmetics and special orders)

Don't miss Celebrating to the 9s at our 9th Birthday Celebration. We really look forward to seeing you.



2701 Paramount 358-2457 Visa - MC - AEX



## Gruver Class of '53 Celebrates 1993 Homecoming

by Marguerite Nelson

The 1993 Homecoming in Gruver was enjoyable for many members of the class of '53. Eighteen out of the class of twenty eight were able to make it back to visit with class members and their mates on this fortieth anniversary out of Gruver High School.

The class met at the Luncheon Friday evening for the chili supper and alumni meeting and went to the Greyhound game at the stadium. Janelle Winkler Talkington was escorted by Bill Hampton as the Alumni Queen Candidate for the class of '53.

Following the game, class members and their mates went to the home of Archie and Maguerite Nelson for a visit and snacking.

Lunch was served to the group at the El Vaquero Saturday at noon. Bill Hampton came the greatest distance, from Tucson, Ariz., and he was also voted the "most changed". The class decided I.L.

Harris was the "least changed". Bonnie McFadin Schaefer and Mardelle Winkler have the most children with four each. The person with the most grandchildren was Valine Henderson Lunn. The only one with a great-grandchild was Bill Hampton. Bonnie McFadin Schaefer has the most formal education with a Ph.D. in Counseling Psychology.

After the Saturday luncheon the group drove to the school campus for a tour of the old school building which is now the Gruver Junior High. Barry Haenisch explained and showed the building.

Barbara and Del Chuck hosted the Saturday night barbecue buffet in their home. Alumni attending the fortieth reunion were: Wanda Allison Whiteley and her husband Don, of Wheeler; Del and Barbara Cluck, Gruver; Betty Cooper Owens, Tulsa; Mavis Dahl Hart of Gruver; Bob and Rosalyn Fryatt, Borger; Bill and Gloria Hampton, Tucson, Ariz.; I.L. and Vanece

Harris, Denver, Colo.; J.B. and Shirley Heath, Stinnett; Valine Henderson Lunn, Wichita Falls; Coy Miles Holt, Gruver; Bonnie McFadin Schaefer, Oklahoma, City; and Calvin and Judy Mitts, Hereford. Others attending were: Don Peddy, Guyton; Donnie and Ann Thoreson, Gruver; Judy Vernon Fletcher and Bob, Lake Tanglewood; Marguerite Winder Nelson and Archie, Gruver; Janelle Winkler Talkington, Dallas; and James Mardelle Winkler, Burleson, TX.

Barbara Cluck compiled a book of high school memories for each class member with an up to date history on each person. Ralph and Beulah Bort, the only parent couple still living, paid for printing the books.



Gruver High School Class Officers for 1993-94 have been elected. Pictured in the back row are the junior and senior officers: (r/l) seniors - Kenton Odom, president; Lee Bob Harper, vice-president; Andee Salmans, sec/treas.; juniors - Tisha Raiston, president; Kayce Haenisch, vice-president; and Janyth Hart, sec/treas. Shown in the front row are (l/r): sophomores - Bailey Barkley, president; Travis Ferguson, vice-president; Sahala McCloy, sec/treas; freshman - Amber Murrell, president; Heath Tolleson, vice-president; and Kaysha Cluck, sec/treas.

### Club News

The Dahlia Flower Club met October 4 in the home of Ethel Ellsworth. Wanda Smith called the meeting to order. Frances Williams led in the pledge to the flag, and Cleo Denman led in the club collect.

The minutes were read and approved. Karen Babitzke was in charge of the installation service. The officers for 1994 will be president - Frances Williams, vice president - Marjorie Curtis, secretary/reporter - Cleo Denman, treasurer - Sada Hoskins, and parliamentarian - Ethel Ellsworth.

Roll call was answered by naming a fall flower. Sara Dossett gave the program.

Refreshments were served to Sammie Bishop, Marjorie Curtis, Cleo Denman, Sara Dossett, Sada Hoskins, Wanda Smith, Karen Babitzke, Ruth Mary Whitson, Frances Williams, Louise Archer, and two guests, Charlotte & Holly Ballinger by the hostess, Ethel Ellsworth.

The next meeting will be December 6 in the home of Wanda Smith.



The Gruver Junior High 1993-94 Class Officers take time out of their busy schedules to get their picture taken. Pictured are back row, (l/r): eighth grade Buster McLain, president; Mike Puebla, vice president; Darby Johnson, sec/treas; third row: seventh grade Erika Salmans, president; Lauren Miller, vice president; Chase Carter, sec/treas; second row: sixth grade Chelsie Hicks, president; Mary Puebla, vice president; Derik Grotegut, sec/treas.; front row: fifth grade, Brooke Salmans, president; Kallie Cluck, vice president; and Seth TeBeest, sec/treas.

# Thank You

To our many friends and customers who have supported us over the last twenty years. We want you to know how much we appreciate you and your business. Spearman has been good to The Bunkhouse and we leave this business with a lot of good memories. We know you will support Cathy and Ladd who will continue to serve you with quality merchandise and service.

**Pat & Cindy**

*Wedding Shower*  
Honoring  
*Regina Abston Irwin*  
Saturday  
October 9, 1993  
2:00 - 4:00  
In the home of Mrs. Bruce Stinson  
103 W. 12th  
Given by the Hostesses  
Selections at Gordon's & Celebrate

**Happy Birthday**  
**Marvin**  
**on October 12**

Love,  
**Carolyn**  
& the staff of the  
**Reporter - Statesman**

**Kelcee Anne Rex**  
**Competes in pageant**

Kelcee Anne Rex recently competed in the All-Star Pageant in Amarillo. She placed first in "Back to School" wear, photogenic, and was named model of the day. Kelcee also placed first runner-up in her age division of beauty. Kelcee is the daughter of George and Tina Rex and the granddaughter of Paul and Joyce Woolley. Her brother Garrett was also along.

# Thank You

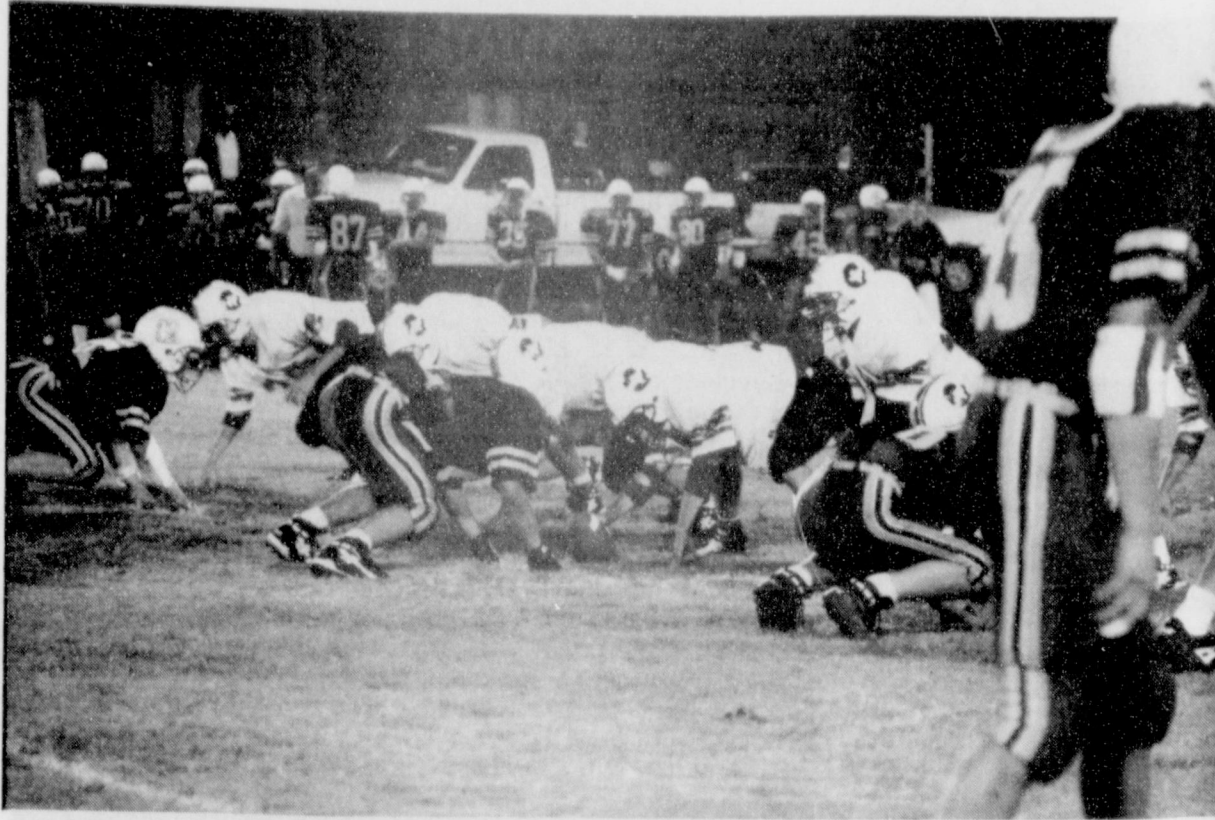
Thanks to each and everyone who helped make our "Open House" at Zulu Stockade such a success. Our special thanks go to Harry Stumpf for his part in serving the hot dogs and drinks as well as the "Wild Turkeys" and their live music. We appreciate the lovely flowers from Byrnic Callaway; the First State Bank with Jim Shirley and his Chuck Wagon; Mr. & Mrs. Bob Izzard; the Ambassadors for the ribbon cutting from the Chamber of Commerce; and those who loaned us the quilts for display. Last but not least, we welcomed our friends and neighbors who attended. Without you there would be no need for an "Open House."

Sincerely,  
The Museum Committee

*Wedding Shower*  
for  
*Jennifer Mensen &*  
*Chris Williamson*  
2 - 3:30 p.m.  
26 Golden Circle  
Given by Hostesses

**Baby Shower for**  
**Kathy**  
**Vanlandingham**  
**Stephenson and son,**  
**Joshua**  
**Saturday, October 16**  
**First Assembly of**  
**God Church**  
**2:00 - 3:30 p.m.**





The Gruver offense is set to go head to head against the Boys Ranch defense. The Hounds defeated Boys Ranch 14-0. (Photo courtesy of Mindy Davis)

## Hounds trip the Roughriders 14-0

by Bob Bort

A stifling defense plus the ability to make the big play led the Gruver Greyhounds to a hard-fought 14-0 victory over the Boys Ranch Roughriders at Boys Ranch this past Friday night, October 1. It was the second straight district 1-AA victory for the Hounds, and leaves them all alone in first place in the district standings. Their overall record is 3-0-2, going into the big game with the Spearman Lynx this Friday, October 8, at Greyhound Stadium in Gruver.

Stifling defense is an understatement, as the Hounds limited the Roughriders to -9 yards in rushing for the night. Gruver had the edge in total yards 185-164, as the Boys Ranch crew threw for 173 yards passing. But the Hounds intercepted the Roughriders quarterbacks four times, thanks to big plays by Kenton Odom, Ryon Atwood twice, and Aaron Frick. Frick also had a fumble recovery. Frick's interception came in the second quar-

ter, and he rambled 31 yards after the pick-off, placing the ball on the Boys Ranch six yard line, and leading to Gruver's first score. The Hounds lost yardage to the 14, but quarterback Jace Dawson then hit tailback Victor Lopez for the 14 yard TD pass with 5:58 left in the half, and after Frick's PAT kick, the score was 7-0.

The biggest play of the game occurred in the third quarter, with 2:41 left. Dawson dropped a step back in the pocket from the 29 yard line, and hit receiver Wylee Maupin over the middle with a beautiful lob, and Maupin, who was already beyond the Boys Ranch secondary, sauntered 71 yards for the touchdown untouched, out for a gay Sunday stroll on a Friday night. After Frick's kick, the score was 14-0, which was the final score.

The score could have been worse. In the fourth quarter, Odom had two touchdowns on successive plays called back due to penalties against the Hounds. One was a 15-yard pass reception, the other was a 25-

yard dash around right end on the reverse.

So it's the Lynx and the Hounds, Spearman and Gruver - the big Hansford County rivalry. Twenty-six times in the past, these two have met to do battle on the football field. The Lynx hold the edge in the overall series, 15-11, including a 13-10 victory last year in Spearman's Homecoming football game. Stay tuned, next week's Hansford Reporter-Statesman will have full coverage...

Gruver Hounds	0	7	7	0	14
Boys Ranch	0	0	0	0	0
GRU	BRA				
7	0	Lopez 14 pass fm			
		Dawson (A Frick kick)			
14	0	Maupin 71 pass fm			
		Dawson (A Frick kick)			
GRU	BRA				
7	7	First downs	7		
100	85	Yards Rushing	-9		
85	185	Yards passing	173		
185	2-11-1	Total offense	164		
2-11-1	6-34.3	Comp/att/int	12-29-4		
6-34.3	4-2	Punts/avg	5-37.2		
4-2	6-40	Fumbles/lost	3-1		
6-40		Penalties/yards	7-60		

## Unbeaten Gruver Greyhounds JV dominates roughriders, 40-7

by Bob Bort

If you are a Gruver Greyhound fan, you would have loved the play of the Hounds Junior Varsity this past Thursday, Sept. 30 at Greyhound Stadium in Gruver. The Hounds came out smoking for a 28-0 first quarter lead, then coasted home to a 40-7 victory over the outmanned Boys Ranch team. It was the fifth straight Hounds victory without a defeat this season. The stats were incredible.

Start with freshman back Jarrod Hoel. Hoel rushed 16 times for 150 yards, and five touchdowns - four via the ground and one airmail. Daniel Bort didn't put any points on the board, but he rushed 14 times for 122 yards. The per carry average was 9.4 yards for Hoel, and 8.7 yards for Bort. In addition to Hoel's five touchdowns, Tye Womble scored the other TD on a pretty 45 yard pass from quarterback Bailey Barkley. Barkley was 5-11 without an interception, for 88 yards, and two touchdowns.

Travis Ferguson, one of the three strong Gruver halfbacks, sat out this game. Ferguson had suffered a concussion at Sunray, and all wanted him to be ready for the titanic clash this week, tonight, Oct. 7, at Spearman with the unbeaten Lynx JV.

Other highlights: Brazilian exchange student Fernando Oliveira did the kick-off chores, and he

kicked the ball 7 times for an outstanding average of 45.1 yards per kick. He plays soccer in his homeland. James Sursa and Kevin McNett both caught passes for the two conversion after touchdowns. There were two interceptions, one by Hoel and one by Bort. There were five big fumble recoveries: Jason Ward, Heath Tolleson, Andy Morris, Barkley and Jeb Lee. One of the interceptions and two of the fumbles led directly to scores for the Hounds.

This week it is the 5-0 Hounds versus the 5-0 Lynx at Spearman. Plan to attend. It may be the best

football game of the year.

Boys Ranch	0	0	7	0	-	7
Gruver JV	28	0	6	6	-	40
BRA	GRU					
0	6	Womble 45 pass fm				
		Barkley (run failed)				
0	12	Hoel 11 pass fm				
		Barkley (run failed)				
0	20	Hoel 2 run (McNett				
		pass fm Barkley)				
0	28	Hoel 9 run (Sursa				
		pass fm Barkley)				
0	34	Hoel 35 run (run				
		failed)				
7	34	51 run (kick good)				
7	40	Hoel 29 run (run				
		failed)				

## Lady Hounds preparing for district showdown

by Bob Bort

The Gruver Lady Hounds cross country team, and the Stratford Elkettes are heading for a district showdown at Stratford in three weeks. This past Saturday, Oct. 2, the Lady Hounds did very well in the Dumas Meet, finishing in the top ten, and beaten by only one AA team, the Elkettes.

"We did really good," stated Lady Hounds coach Steve Myatt. "We scored 240 points, and that's the best we've run. Wendy Rodriguez has a hurt toe, but she finished 51st. Cara Hathaway was sick and didn't run, and Tara Shapley went to the Texas Tech game. But we had a couple of girls break the 14 minute mark - Julie Meyer beat two Stratford girls that have been

beating her all year, and Tisha Ralston beat three Stratford girls that have been beating her. Wendy showed she can run with Julie and Tisha, and Molly McLain was another bright spot," Myatt concluded.

Here are the results:

28, Julie Meyer, 13:55; 29, Tisha Ralston, 13:56; 51, Wendy Rodriguez, 14:36; 63, Myriam Alvarez, 14:56; 80, Molly McLain, 15:06; Amber Murrell, 15:45; Joni Hart, 16:05; Kiki Carthel, 16:35; and \*Robbi Mathews, 17:45.

\*Junior Varsity

The Lady Hounds are scheduled tentatively for the Wheeler Meet this Saturday, then at Stratford the following week, then the big district meet at Stratford in three weeks.

## Letter to the editor

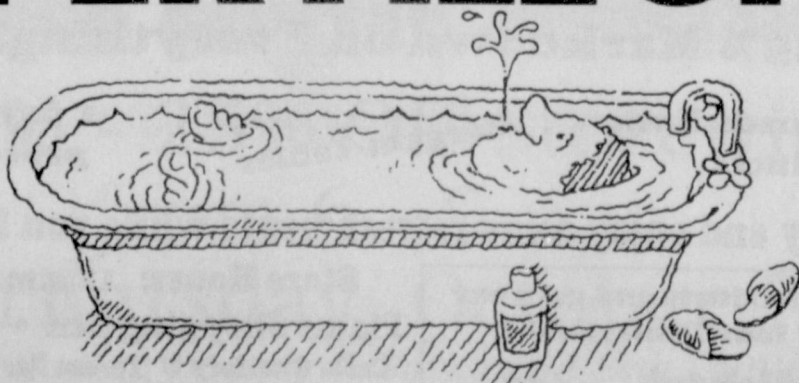
Dear Ladies,  
Thank you so much for letting us tour the newspaper office on the 17th. We never knew there was so much work involved in making a newspaper. It was very interesting to see all the different parts you go through before sending out the news.  
Thanks again,  
Jenny McCloy, Craig M. McCloy, Laure R. McCloy, and Mike McCloy

### Remodeling & Roofing Professionals

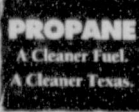
"Serving the Panhandle for 16 years"  
**Quality Construction**

505 Broadway • Fritch, Texas 79036  
1-800-285-8470 or 1-806-857-2035  
Unbeatable Quality - Unbeatable Prices  
Licensed - Bonded - Insured - FREE Estimates

# PAY LESS PER FILL UP.

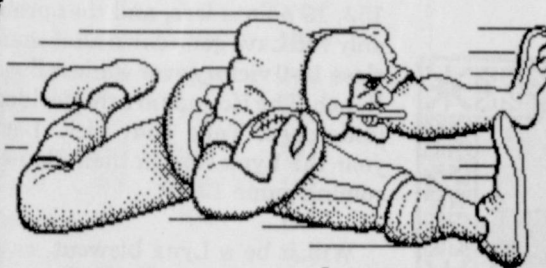


Now you can fill the tub again and again without much water as an electric water heater in the same period of time. Because a propane water heater can save you \$2,000 over the life of the heater. And a propane water heater pays for itself in about two years. It heats twice as



Texas Railroad Commission

# FOOTBALL CONTEST



## --RULES--RULES--RULES--

1. In each advertiser's box you will find the name of a team playing this weekend. Circle the team you think will win.
2. In the last box you will see a place to enter what you think will be the point spread for that particular game. This will be the tie breaker.
3. Fill in your name, address and phone number (please print) and sign the entry.
4. Entries in Spearman may be turned in at the Reporter-Statesman Office. Gruver Residents may turn in their entries at the Gruver City Hall or mail them to Box 458 • Spearman, Tx. 79081. **Deadline for entries is 5 p.m. Friday and mailed entries must have an official U.S. Post Office postmark dated no later than Friday.** Winners will be picked on Monday mornings after mail delivery.
5. No photocopies will be accepted.

- 1st Prize - \$25
- 2nd Prize - \$15
- 3rd Prize - \$5

### GATES

221 Main • 659-3426  
Spearman  
Spearman at Gruver

### Little Tiffanies

103 E. Broadway • 733-5290  
Gruver  
Sanford Fritch at Perryton

### Motor Parts of Perryton, Inc.

206 E. Brillhart • 435-5454  
Perryton  
DOCTOR OF MOTORS HEADQUARTERS  
Stratford at West Texas

### JV's HUNGRY COWBOY

1020 S. Hwy 207 • 659-5151  
Spearman  
Sunray at Boys Ranch

### Interstate Savings & Loan

322 Main • 659-2559 • Spearman  
Member FDIC  
Canadian at Wellington

### El Vaquero Restaurant

425 Main • 733-2407  
Gruver  
River Road at Childress

### Morris Cattle

Rt. 3 Box 28 • 733-2362  
Gruver  
Pampa at Dumas



### GILLASPIE

505 Plains Shopping Ctr. • 659-2541  
Spearman  
Borger at Hereford

### Cargill Grain Division

P.O. Box 265 • 659-3554  
Spearman  
Dalhart at Canyon

### Spearman Cattle Feeders

Box 339 • 659-2577  
Spearman  
North Carolina St. at Texas Tech

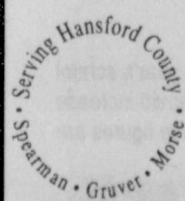
### The Knack Shoppe

317 Main • 659-5046  
Spearman  
Dallas at Indianapolis



505 Plains Shopping Ctr. • 659-2522  
Spearman at Gruver  
Tie Breaker \_\_\_\_\_ Point Spread

Name: \_\_\_\_\_  
Address: \_\_\_\_\_  
Town: \_\_\_\_\_  
Phone: \_\_\_\_\_  
Signature: \_\_\_\_\_



Spearman Gruver  
**REPORTER-STATESMAN**



# Lynx scalp Comanches, 27-3

by Angela Jones  
Editor

The Spearman Lynx scalped the West Texas Comanches, 27-3, during the second district game Friday, Oct. 1, at Lynx Stadium.

In the first quarter, the game was off to a slow offensive start with only three points being scored. Dee Mayfield kicked a 20 yard field goal to put the Lynx on the scoreboard and give them the lead, 3-0. The quarter ended 3-0 in the Lynx favor.

But the Comanches came back in the second quarter, successfully kicking a field goal to tie the game 3-3. The teams remained tied at the half.

In the second half the Lynx offense came to life, while the Comanches remained dormant.

Jason Varnon scored on a 35 yard run and Mayfield answered it with a successful PAT. Then Mayfield again came forward on the offense, kicking a 37 yard field

goal. The Lynx expanded their lead 13-3.

They would score two more touchdowns before the clock would run down. Varnon scored on a 3 yard run and Mayfield kicked another successful PAT. The Lynx stretched their lead with a 9 yard run touchdown by Brandon Vanderburg.

Mayfield again answered with a successful PAT.

As the final seconds ticked off the clock, the score stood with the Lynx winning 27-3.

A total of 341 yards were recorded in 60 carries for the Lynx rushing game. They averaged 5.7 yards per carry. Varnon lead the rushing with 124 yards on 18 carries for a 6.9 average per carry. Radar Garcia was not far behind with 108 yards on 17 carries for a 6.4 average per carry. Vanderburg recorded 89 yards on 21 carries for a 4.2 average. Chad Wilkerson had 16 yards on three carries, averaging 5.3 yards. Mayfield reported

four yards on one carry.

In passing Varnon was three of seven for 52 yards. The receivers were Wilkerson for 12 yards, Garcia for 14 yards and Cory Lesly for 26 yards.

Coach Ric Smith's offensive player of the week is Chad Wilkerson. Chad, a junior, is a 148 lb. running back.

On the defense, Joel Stark, a 168 lb noseguard, was chosen as Smith's player of the week. This Spearman High School junior, recorded two unassisted tackles, five assisted tackles and one quarterback sack. He also recovered one fumble.

The Lynx intercepted four of the Comanches' passes during the game. Garcia, Brad Law, Wilkerson and Vanderburg each recorded one interception during the game.

On Friday, Oct. 8, the Spearman Lynx Varsity will be travelling to Greyhound Stadium. The Lynx - Hounds kickoff is scheduled for 7:30 p.m.



Brandon Vanderburg clutches the ball as he evades the Comanche defense in the second district game of the season October 1. (Photo courtesy of Allen Varnon)

## Lynx JV claw past Comanches

by Angela Jones  
Editor

The Spearman Lynx Junior Varsity clawed their way past the West Texas Comanches 22-21 during the Thursday, Sept. 30, game held at Stinnett.

When the Comanches came out on the field in the first half, they were ready for battle. They scored one touchdown in the first quarter and successfully kicked the PAT. The Comanches scored again in the second quarter, but the PAT failed.

Going into the half, the Comanches were ahead by 13 and the Lynx were scoreless.

It wasn't until the third quarter that the Lynx JV offense came alive scoring 14 points. Gregg Elliott got the Lynx on the scoreboard with a 24 yard touchdown run. The PAT failed. Phillip Sanders also scored

in the third. He had a two yard touchdown run. Cody McLeod score the two-point conversion on a pass from Coyt Tigrett.

But the West Texas offense still pounded their way into the Lynx end zone for one touchdown in the third, and were successful on the two-point conversion. The score was 21 to 14 with the Comanches holding their lead.

Although the Comanches had lead through the entire game the Lynx kept up the fight. In the fourth quarter Sanders clawed his way back into the Comanches end zone with a one yard touchdown run, bringing the Lynx within one. For the two-point conversion, Tigrett again found McLeod in the end zone. The Lynx scraped by the Comanches to take the lead 22-21 and win the game.

For rushing Sanders lead the

Lynx JV. He reported 92 yards in 19 carries for two touchdowns. Elliott had 77 yards on three carries and one touchdowns. Jeremy Blain recorded 25 yards on seven carries and Tigrett had nine carries.

In passing, Tigrett recorded 10 attempts with four completions for 50 yards. McLeod caught three on the passes for 32 yards. Sanders received one pass for 18 yards.

On the defense Sanders, Matt Gafford and Blake Beedy each recovered a Comanche fumble. Spearman had two fumbles during the game.

The Spearman Lynx JV team will be playing the Gruver Greyhounds at Lynx Stadium on Thursday, Oct. 7. The kickoff is set for 8 p.m.

## Lynxette Junior High CC roundup

The Lynxette Junior High Cross Country team competed at Dumas on Saturday, Oct. 2.

Those Lynxettes running and their times were as follows: Casey Dunnihoo 15:14, Keisha OQuinn 15:27, Brooke Tranthem

15:33, Jocelyn Edwards 15:39, Brittini Beedy 15:58, Kristie Carbajal 16:22, Leah Mackie 16:28, Holly Pipkin 16:59, Lindsey Smith 17:00, Leslie Holton 17:14, Misha Davis 17:15, Grace Davis 17:22, and Crystal Burkhammer 18:31.

## Tri-State High School Rodeo contestants compete at Wheeler

by Angela Jones  
Editor

Tri-State High School Rodeo action continued Saturday, Oct. 2, with contestants traveling to Wheeler.

Jana McCloy earned seventh place honors in the breakaway roping event. She roped her calf in 6.182 seconds. The winning time of 4.024 was turned in by Chasity Rickman of Hereford.

Other placings of contestants rodeoing for either S/S or Gruver were as follows:

Saddle bronc: 2, Lance Gaillard, Gruver, 64; and 5, James Griswold, Gruver, 48.  
Calf roping: 3, Wes Avent, S/S, 11.305.  
Team roping: 1, Ben Blue (Gruver) and Jered Norris (Canadian), 7.407; 4, Blue and Jim Locke (Canadian), 8.722; and 8, Matt Eakin (S/S) and Lee Gabel (Adrian), 13.605.

Tri-State High School Rodeo contestants will compete at Stinnett on Saturday, Oct. 9. Performances will be held at 10 a.m. and 3 p.m. Team roping will be held at 1 p.m.

### HENSON CHIROPRACTIC

410 S. Davis • Spearman, TX

Call for Appointment • 659-5603

Office Hours:

Mon., Wed., Fri. - 9:00 to 5:00

Tue., Thu. - 9:00 to 11:30

# ALLSUP'S

PRICES EFFECTIVE  
OCT. 3-9, 1993

Gruver & Spearman Only

ALL TYPES  
COCA-COLA

6 pk. • 12 oz. cans

\$1.99



FAMOUS  
ALLSUP'S  
BURRITOS  
2 FOR 99¢



HOMOGENIZED  
ALLSUP'S  
MILK  
GALLON  
\$1.99

Bonkers Fruit  
Filled Candy  
4 packs/\$1

Kleenex Facial  
Tissues  
179 count 89¢

CORN KING  
MEAT  
FRANKS  
12 OZ. PKG.

49¢

WILSON  
MEAT  
BOLOGNA  
12 OZ. PKG.

79¢

ASSORTED FLAVORS  
ICE MOUNTAIN  
SPARKLING BEVERAGE  
11 OZ. BTL

69¢



ASSORTED FLAVORS  
CELESTIAL  
SEASONING TEA  
16 OZ. BOX

79¢

SHURFINE  
CRISPY  
RICE  
13 OZ. BOX

\$2.19

SHURFINE FANCY  
SWEET  
PEAS  
17 OZ. CAN

39¢

SHURFINE PEELED  
WHOLE  
TOMATOES  
16 OZ. CAN

49¢

ALL FLAVORS  
DORITOS®  
GRAB BAGS  
REG. 59¢

2 FOR \$1

SAUSAGE, EGG  
& BISCUIT  
FOR ONLY  
89¢

Western Family  
Ibuprofen  
100 count \$1.99

COOKED FOODS SPECIAL OF THE WEEK

CORN DOG AND  
A 20 OZ. N.R.  
COKE  
FOR ONLY  
99¢

COMBO OF THE MONTH

TALLSUP AND  
A LARGE  
POPCORN  
FOR ONLY  
89¢

## Football Contest Winners

- 1<sup>st</sup> place - Cody McLeod, Spearman - \$25
- 2<sup>nd</sup> place - Cindy Blackman, Spearman - \$15
- 3<sup>rd</sup> place - Wynn Maupin, Gruver - \$5

Congratulations!

## Quality Firewood

Seasoned Oak, Hickory,  
& Mesquite

Also slab firewood  
\$100 to \$165 per cord  
Delivery Available  
Quality Construction  
857-2035

October 7 • 6 - 9 p.m.  
Moonlight Sale table full of nicknacks Some  
50¢ -- 10% off all other items

- Collar Clip
- Necklace & Earrings
- Attic Babies
- Vests & Christmas Shirts
- Trunks
- Western Gifts
- Floral Arrangements
- Wood Dolls & Country Cutouts
- Afghans with scenes



## CHAROLETTE FORD TRUNKS

Publisher of Trunk Talk • Supplier and Restorer  
Box 536 • Spearman, Texas 79081 • Phone 806-659-3027



## FFA, 4-H compete in area shows

Hansford County 4-Hers and FFA members have been busy showing at area fairs and shows from the Tri-State Fair in Amarillo to the West Texas Fair in Abilene.

The results of the various show are as follows:

### Tri-State Fair Amarillo

Lamb: Medium Wool - 6th, Leah Mackie; 7th, Jeremy Mackie; and 9th, Dustin Mackie.

Barrows: Cross - 3rd, Wendell Ralston; 3rd, Galen Slough-Gruver FFA; 3rd, Greg Slough; 4th, Ralston; 6th, Jamie Ralston; and 10th, Kyle Winter-Gruver FFA.

Steers: Heavy Weight English - 1st, Ronda Renner; Lightweight English - 3rd, Travis Brown; 4th, Clint Williams-Gruver FFA; Exotic cross - 5th, Reagan Renner; 6th, Nikki Strawn; and 10th, Nancy Flores.

### Panhandle Exposition Guyton, Okla. September 25 Livestock Show

Steers: Grand Champion Steer, Champion Senior Showman -

### Weather

Day	Hi	Lo	Precip
Thu	94	53	.00
Fri	73	61	.00
Sat	68	45	.00
Sun	86	44	.00
Mon	87	53	.00
Tues	88	58	.00
Wed	--	--	.00
Total Precipitation 21.28			

Take it with you



Newspaper...the only portable news medium.

REPORTER-STATESMAN

Tommi Latta; Reserve Grand Champion Steer - Autumn Bateman; Shorthorn - 2nd, Tracy Smith; Limousin - 4th, T. Smith; Chianina - 3rd, Casey Smith; and Junior Showman - 3rd, C. Smith. Sheep: Cross Lamb - 2nd, Lori Beth Stedje; and 6th, Brianne Stedje.

### Judging Contest

Senior 4-H Livestock Team - 2nd overall, Scott Stedje, Galen Slough, Kathy Slough and T. Smith; Individual - 3rd, Sc. Stedje; 4th, Ga. Slough.

Junior team participants were Autumn Bateman, Lena Harbour and C. Smith.

### South Plains Fair Lubbock

September 26, 1993  
Swine: Cross - 3rd, Ga. Slough-

Gruver FFA; 5th and 10th, Chris Winter-Gruver FFA; 6th and 9th, K. Winter-Gruver FFA; 7th and 14th, Gr. Slough-Gruver FFA; 11th, Jamie Ralston; 14th, Scott Winter-Gruver FFA.

### West Texas S.S.T. Show Abilene

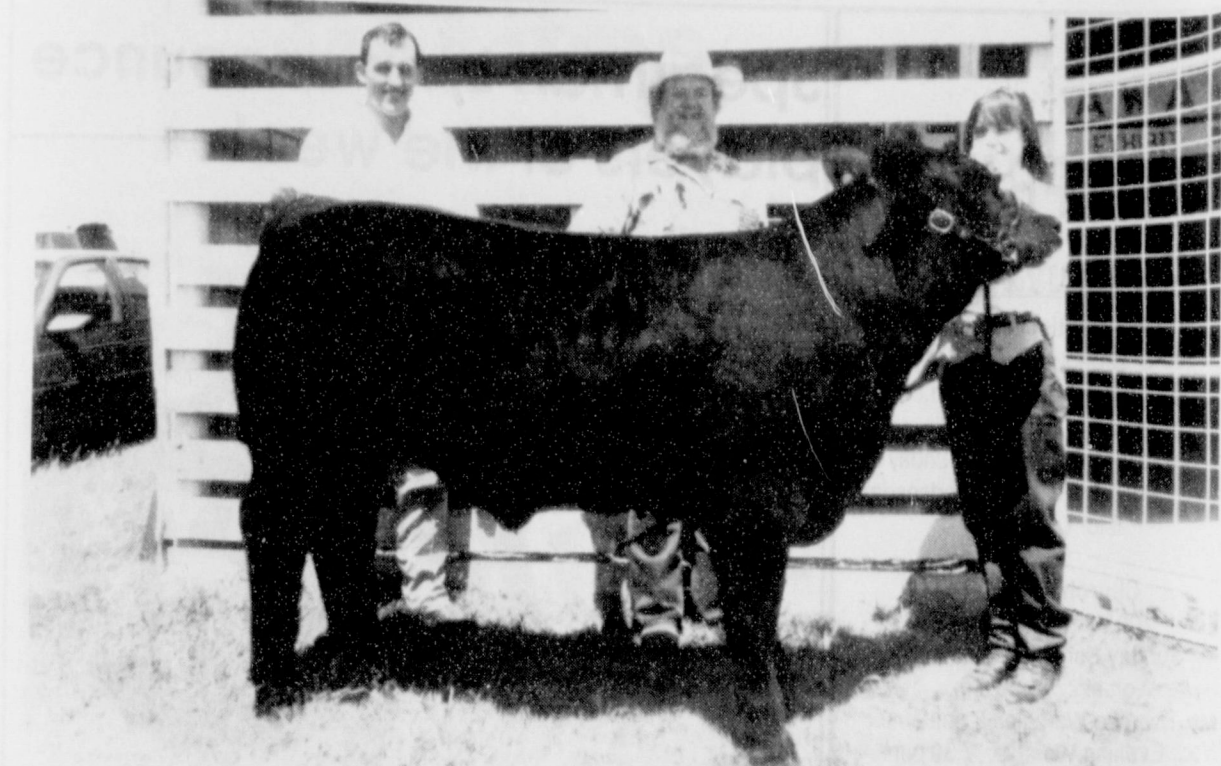
September 19  
Champion English steer - Ro. Renner; Maine Anjou - 1st, Re. Renner; and Simmental - 3rd, T. Latta.

### West Texas Fair Abilene

September 18  
English - 2nd, Ro. Renner; Maine Anjou - 1st, Re. Renner; and Simmental - 4th, To. Latta.

### 5 State Fair Liberal, Kans.

August 21  
Grand Champion Steer - A. Bateman.



Autumn Bateman exhibited "Boomer", the Grand Champion Steer at the 5 State Fair at Liberal, Kans. Pictured with Autumn are Roy Heltwschmidt, Guymon, Okla., steer judge and Nick Hatcher, 5 State Fair President.

## Lamb, Steer show set for Saturday

by Angela Jones  
Editor

A lamb and steer show is being held at the County Barn in Gruver on Saturday, Oct. 9.

The entry fee for the steer show is \$25 and contestants enter the day of the show. Weigh-in from 9 to 11 a.m., with showing scheduled to begin at 11:30 a.m. This steer show is sanctioned by the Texas Club Calf Association (TCCA).

Lamb show entry fees are \$15 with contestants entering the day of the show. Weigh-in is from 9 to 11 a.m. The lamb show will follow the steer show.

In the general rules it is stressed that health papers are required. This show is open to all 4-H and

FFA member. There is no limit to the number of entries per exhibitor; however, exhibitors must own the animals they are showing as indicated by a signature of a vo-ag teacher, county extension agent or adult leader. It is also noted that a substitute showman will be allowed.

If there is a violation of rules or unsportsmanlike conduct the exhibitor will be disqualified and forfeit premium money.

Special rules in the lamb category specify that lambs will be shown as follows: Finewool, Finewool cross, Dorset, Southdown and Blackface. If the numbers are small, breeds may be combined. Ewes and wether lambs may be shown and there will be no weight limits. Artificial coloring, paint or

powder prohibited on lambs. Exhibitors will weigh their own lambs with a 5 lb. weigh back. All lambs are to be slick shorn from knees and hocks up.

Rules specifically for the steer category explain that steers will be shown by breeds as numbers warrant. The number of classes will be according to the number of animals shown.

Grand and reserve grand animals will be selected for both the steer and lamb show.

For more information contact Burt Williams 659-2136 or 659-3680, Jerry Williams 733-2759, D.A. Cator 733-2174, Clay Montgomery 733-2091 or 659-2968, or Bob McGaha 659-2584.

## Save hot water cost without switching to cold showers

AUSTIN, TX-- September 27--A water heater fueled by propane could save the average Texas family nearly \$200 a year compared to the cost of heating water electrically, while at the same time benefiting the environment and creating jobs in Texas.

That's the message of the Railroad Commission's new newspaper and radio advertising campaign that kicks off statewide this week. The campaign is part of the Commission's legislative mandate to educate Texans about propane's benefits as an environmentally beneficial alternative fuel.

Commission studies show the initial expense of installing a propane-fueled water heater is no higher than other types, but the return on investment is much faster. According to Chairman James E. (Jim) Nugent, fuel-cost savings recoup the initial purchase price in about two years. "That's about a 50 percent annual return on investment," Nugent said, "which is considerably more than you get at the bank". Assuming typical delivered costs of 82 cents per gallon for propane, savings over the ten-year life of the water heater could total more than \$2,000, Nugent added.

A major reason for propane's economy is its efficiency compared to other methods of energy production. More than two-thirds of the

energy generated by oil or coal-burning electric utility companies literally goes up in smoke, and is therefore lost at the source. Propane, a clean-burning primary fuel, is nearly 2 1/2 times as efficient, delivering 87 percent of its energy directly to the burner tip.

Propane is widely distributed and readily available throughout Texas. "More than a third of the nation's propane comes from Texas", noted Commissioner Mary Scott Nabers. "Texas has a state-wide propane production and distribution network in place, and the more people take advantage of propane as a domestic and commercial heating fuel, the more jobs that network creates". Nabers added that a new market worth \$65 million a year to the Texas economy would arise if the 60 to 70 percent of all propane-heated Texas households that heat water electrically switched over to propane.

Propane technology has also become more efficient in recent years. Today's propane water heater uses one third less fuel than heaters manufactured as recently as five years ago, which contributes to the fuel's economy. Advanced burner design, energy-saving temperature controls and better insulation make the most of every gallon of fuel.

Texas' environment also benefits

from using propane to heat water, according to Commissioner Barry Williamson. "Air pollution concerns all Texans, in both urban and rural areas", Williamson said. "Gallon for gallon", Williamson added, "it takes nearly three times as much fuel, generating nearly three times as much ozone-depleting greenhouse gas, to heat water electrically as it does to heat it directly with propane".

Quick recovery is a primary benefit of propane water heaters. Anyone who has ever run out of hot water in the middle of a shower, especially in cold weather, will appreciate the prospect of having plenty of hot water on tap. In a comparison of the first-hour recovery rates of typical 40-gallon water heaters, the propane model provided nearly twice as much hot water over the same period of time as a comparable electric model.

As part of the Commission's latest educational consumer campaign, look for newspaper ads touting "Pay less per fill up" in 386 weekly newspapers across the state and statewide radio commercials illustrating the economic and environmental benefits of propane water heating. For more information, call the Texas Railroad Commission's Alternative Fuels Division at 1-800-64-CLEAR.

## Moon Light Madness

20% - 25% Off Storewide  
from 6 - 9 p.m.

Thursday, October 7

(excluding Dooney & Burke and Este Lauder)

Kids' Stuff / Lady Fair

719 W. 7th • Spearman

## Introducing...

## The All New Dodge Ram



They're Here -- We've got 'em!  
And there's more where these came from!



GILLASPIE

AUTO & TRUCK CENTER, INC.

CHEVROLET, OLDS, BUICK, PONTIAC,  
CHRYSLER, PLYMOUTH, DODGE

Hwy 207 South • Spearman, Tx. • (806)659-2541



# Southwest Outdoors

with Mel Phillips

## MEL'S TOP TEN FISHING EXCUSES!!

Good anglers are always looking for new lures and new fishing techniques, but the real test of an angler is his unique explanation for not catching big fish. The following excuses are a few of my favorites.

### TOP TEN REASONS FOR NOT CATCHING "TROPHY BASS"

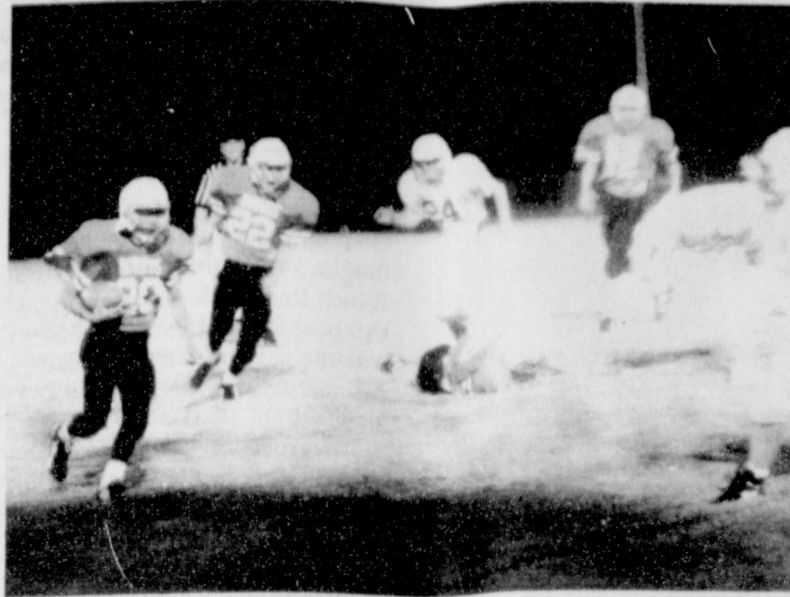
10. The sun/wind/dirt/snow got in my eyes.
9. Reflections off the nudist colony sign broke my concentration.
8. His mouth was so big, I was afraid to put my hand in it.
7. Didn't want to catch a bass bigger than the one my Father claims he caught in 1956 at Buffalo Lake.
6. Didn't want to listen to some biologist tell me about the really big one that he electro-shocked last week.
5. ...had these cute puppy dog eyes...
4. His big brother started ramming the side of my boat.
3. Light line gets more bites but it does lose an occasional fish.
2. His mamma swam up and jerked the anchor rope causing the boat to sink dangerously near the water line.
1. I didn't want to spent all my money developing those extra large JUMBO PRINTS.

**Congratulations to Jerry Jameson of Fritch for winning the September Fun Tournament at Lake Meredith.** Brian Stewart, also from Fritch, finished second while Borger's Rodney Sweet claimed third place.

**Special fishing deal** Some lucky angler will win a guided striper/bass fishing trip for two on Lake Texoma with professional guide CURGUS LOWE (405-564-3898). To win this trip, either bring someone who has not fished a 1993 Fun Tournament or enter your first tournament of 1993 at any of the following three bass tournaments:

OCTOBER 2, Saturday, BIG BASS AT LAKE BAYLOR; OCTOBER 9, Saturday, FUN TOURNAMENT AT GREENBELT, or OCTOBER 16, Saturday, FUN TOURNAMENT AT MEREDITH.

These bass tournaments are open to all interested anglers. Both the Greenbelt and the Meredith tournaments will be called "championship" events. Entry fee is only \$25 and the winner will take home the prize money, a handsome trophy, and a blue satin "champion" jacket courtesy of Budweiser. For additional information call 353-3654.



The Gruver J.V. left the Boys Ranch Roughriders in the dust Thursday, September 30, with a final score of 40-7.

## For the Sport of it

by Bob Bort

The biggest ball game of the year, and it's "Look out, Hounds!!!" The Spearman Lynx will be coming into town for tomorrow night's titanic clash with the Hounds a three-touchdown favorite, according to the Harris Ratings. Last week, Spearman's power rating was 171, and that will have gone up this past week with their 27-3 victory over West Texas.

Meanwhile, the Hounds were at 152, 19 points less, and that probably will have gone down after their close 14-0 victory over winless Boys Ranch. The Hounds are the decided underdogs. Take your pick. Last year the Lynx won in their Homecoming game 13-10.

Will it be a Lynx blowout, or a close defensive game? Will the Lynx' powerful offense with their fine quarterback Jason Varnon and their plethora of running backs, Brandon Vanderburg and Radar Garcia among others, run up the score, or will the Hounds fine defense keep the score down? We'll know in a couple of days. It'll be a big upset if the Hounds pull one out for the victory column.

The Lynx have won three straight games against the Hounds. Prior to last year, they hadn't met since 1986 and 1987. In 1986 the Lynx won 34-6, in 1987 they won 47-0. But in 1985, the last year for Barry Haenisch, the Hounds surprised the Lynx 26-6.

I can't wait till next Friday to read what Jim Lexa has to say about the Lynx and Hounds in the Amarillo newspaper. My guess is that he will acknowledge the rivalry, and pick the Lynx in a close ball game. Good defense always makes an impression, but we will see.

## Greyhound Roundup

by Bob Bort

The two junior high teams were in action this past Thursday prior to the JV game, and the Seventh grade lost 28-0 decision to the Roughriders, while the Eighth grade won their first game of the year, 18-0 over the Boys Ranch Eighth grade.

In the Seventh grade game, the hounds were overmatched by a better team, and the score indicated that. The Seventh grade Hounds are now 1-2 on the year, with their only victory over Highland Park.

Meanwhile, the Eighth grade finally got it together, and won their first game of the year. A 55-yard dash for a touchdown by running back Erik Pando got the Hounds on the board with a 6-0 lead in the second quarter. In the third quar-

ter, an unexpected and exciting play occurred, as Juan Bravo picked off an errant Roughriders pass, and returned it all the way, 41 yards, for the touchdown, to make the score 12-0.

Then in the fourth quarter, Travis Bayless busted his second big one in two weeks, with an 80-yard jaunt for the touchdown and an 18-0 lead. Last week against Highland Park, Bayless had an 85-yard dash for a TD. He looks extremely good in the open field.

All three conversion attempts failed, so the final was 18-0.

The Eighth grade now 1-2 for the season, like the Seventh grade. This week comes the big games with Spearman at Lynx Stadium, beginning with the Seventh grade game at 5 p.m.



Jason Varnon heads for the end zone in Friday's win over the West Texas Comanches.

## Extension offers seminar on farm and ranch management

COLLEGE STATION- Women who are interested in learning more about managing their farm/ranch business, regardless of their current role, will have the opportunity to do so in early 1994. The Texas Agricultural Extension Service will offer the second annual sessions of a new program, "Women in Agriculture: Management Development Seminars" in January and February.

Many educational programs dealing with farm/ranch management are attended primarily by men. "Women may not feel comfortable attending, much less asking questions about the basics of topics covered", said Danny Klinefelter, Extension Service economist and management specialist.

"This program is designed with those women in mind", he said. "Farm and ranch wives, women landowners and those who run the business on their own will all benefit from this exciting educational event".

Women in Agriculture: Manage-

ment Development Seminars will be held in two locations in 1994. The first conference will be January 14-15 in Austin at the Red Lion Hotel/Austin Airport. The second seminar will be February 22-23 in Lubbock Plaza Hotel.

These two-day conferences will begin with registration at 7:45-9 a.m. on the first day and conclude after lunch on the second. Information will be presented by keynote speakers, in smaller workshop settings and in informal discussion sessions. There will be a wide variety of workshop topics, ranging from financial management, marketing and government programs. Each workshop will be repeated. Workshop topics will include: •Family and Business Influence on Decision Making, •Farmers Home Administration Programs, •Basic SCS Information, •Marketing Basics, •Hedging and Options, •Agriculture and Environmental Laws, •Developing a Management Information System, •Understanding Financial Statements, •The Essen-

tials of Labor Laws, •Estate Planning, •Income Tax Management, •Understanding and Working With Lenders, •Hunting Leases, •Cattle Pricing Decisions, •Interpreting Livestock Market News, •NCA's IRM-SPA Program, •Oil and Gas Leasing, •Supervising Employees, •Government Farm Program Provisions, •Cropland Leases, and •Ranchland Leases.

Participants in the Women in Agriculture: Management Development Seminars can expect to learn practical management and marketing skills, gain confidence in participating in new roles on the farm and meet other women with similar interests.

The cost of the conference is \$95, which includes two meals, breaks and all conference materials. The Red Lion Hotel/Austin Airport is on Hwy 290 and I-35. The Lubbock Plaza is located at 3201 Loop 289 South. For more information, or to register, contact your local county agent or call Juncie Baldwin at (409) 845-7171.

**Jo's This n' That**

**I ♥ MY BERNINA**

**Moonlight Madness**

October 7 only  
6-9 p.m.

- 20% off all Bernina Machines
- 30% off all merchandise
- 70% off table of selected items

216 MAIN • SPEARMAN  
659-3999

### This notice is required by the Texas Legislature.

\*The percentage increase shown in the first paragraph below may appear unusually high because it does not reflect 1992 taxes levied by the now-abolished county education district (CED). In 1992, the CED levied a portion of the taxes used for school purposes, and the school district levied the remainder of school taxes. In 1993, school districts will levy all school taxes. For an explanation of the increase, attend the public hearing scheduled below or call your school district.

## Notice of Public Hearing on Tax Increase

The Pringle-Morse Consolidated I.S.D. will hold a public hearing on a proposal to increase total tax revenues from properties on the tax roll in 1993 by 369 percent. Your individual taxes may increase at a greater or lesser rate, or even decrease, depending on the change in the taxable value of your property in relation to the change in taxable value of all other property. The public hearing will be held on October 12, 1993 at 8:00 p.m.

FOR the proposal: Bob Womble, Betty Womble, Clay Reid, Clyde McCloy, Alan Leach, Ron Womble, and Charlie Kiser

AGAINST the proposal: None

PRESENT and not voting: None

ABSENT: None

The statement above shows the percentage increase the proposed rate represents over the 1992 tax rate that the unit published on September 9, 1993. The following table compares taxes on an average home in this taxing unit last year to taxes proposed on the average home this year. Again, your individual taxes may be higher or lower, depending on the taxable value of your property.

	(Optional) Last Year	Last Year School District	This Year School District
Average home value	\$18,500	\$18,500	\$18,500
General exemptions available (amount available on the average home, not including senior citizen's or disabled person's exemptions)	\$10,000	\$10,000	\$10,000
Average taxable value	\$8,500	\$8,500	\$8,500
Tax Rate	\$ .8958/\$100	.33223/\$100	1.25/\$100 <small>(proposed)</small>
Tax	\$76.14	\$28.24	\$106.25 <small>(proposed)</small>
(Optional) Total 1992 School Taxes	\$104.38	(Optional) Total 1993 School Taxes	\$106.25 <small>(proposed)</small>

(School districts publishing optional information must publish the following:)

This paragraph compares last year's CED and school district taxes with this year's proposed school district taxes:

Under this proposal taxes on the average home would increase by \$1.87 or .0176 percent compared with last year's total school taxes. Comparing tax rates without adjusting for changes in property value, the tax rate would increase by \$1.87 per \$100 of taxable value or .0176 percent compared to last year's total school tax rate. These tax rate figures are not adjusted for changes in the taxable value of property.

(All school districts must publish the following:)

This paragraph compares last year's school district tax with this year's proposed school district taxes:

Under this proposal taxes on the average home would increase by \$78.01 or 376 percent compared with last year's school district taxes. Comparing tax rates without adjusting for changes in property value, the school district tax rate would increase by \$78.01 per \$100 of taxable value or 376 percent compared to last year's school district tax rate. These tax rate figures are not adjusted for changes in the taxable value of property.

## Grand Opening

Doris Beck  
659-3338

Juanita Tucker  
659-2950

COUSINS

Cards • Gifts

Kodak Products

Juli Originals

Moonlight Madness

Thursday Night • 6 - 9 p.m.

Storewide Sale

25% Markdown on Everything!

Scrap Books  
I'm Yours

Puzzles

Rug Barn

Upper Canada Bath  
Products

Bargain Tables

1 day photo  
processing

Come by and enjoy some refreshments while you browse!

Buy Kodak products and get your  
choice of four Disneyland®

Mickey's  
TOWNTOWN

plush puppets by Mattel for  
just \$3.50 ea.  
Ask for details

Store Hours: 11 a.m. - 8 p.m.  
Plains Shopping Ctr. • Spearman  
Carla Gumfory & Teresa Barkley, Owners

Daylight Madness Sale

Gruver Cousins

Oct. 7 • 2 - 5 p.m.



# City Lites

by Kelvin Knauf,  
Spearman City Manager

On September 28, the City Council adopted the budget for the fiscal year beginning October 1, 1993. The budget is a very important document since it determines the priorities for the City for the next twelve months. When putting together this budget, City officials received all kinds of requests for money. These requests came from the City staff, our fire and emergency medical service volunteers, and from the community. These requests for money were carefully considered and we tried to fit the requests into our budget as best we could. We didn't have enough money to give everyone everything they wanted but we tried to fund the highest priorities.

The City Council set two major priorities for this new fiscal year. The first priority is to retain the present level of city services while being flexible to meet any new regulations on garbage and the landfill. The other priority is to make our City service more fees-based so that people who are receiving City services are paying for them through fees and reducing our dependence on taxes. As the following chart shows, the City depends much more on fees and sales of utilities (gas, water and sewer) than we do on taxes:

16,686; Total General Fund-\$1,097,736.

Financial Administration-\$225,978; gas-640,962; sewer-800,699; water-300,651; Total Enterprise Fund-\$1,968,290; Total City Budget-\$3,066,026.

One of the new features included in the 1993-94 budget is a voluntary fee that is added to utility bills. In the past (actually, since 1960) the City has charged a 25 cent park assessment on every utility bill. We were told a few months ago that this assessment is no longer valid. Therefore, I recommended to the City Council that a voluntary fee be placed on the utility bills in the amount of \$2.00. This fee (called the PEDL fee) will be added to every utility account beginning October 1. You have the option of deducting this fee from your utility bill. If you pay this fee, we will take your payment and divide it into thirds. One-third will go to improve our city parks (such as buying new playground equipment).

Another third will go towards economic development projects (such as recruiting new businesses to Spearman). The other third will go to the Hansford County Library (to pay for more books and materials). The City will not keep any of



Have you ever met Mr. Spearman? Well he came to the Chamber Office on Tuesday, Oct. 5. Ninety-nine year old Spearman is a resident of Mt. Vernon, Texas and was on his yearly vacation when he decided to do some research on his family tree.

## City Council from pg. 1

services. For a 3/4 riser for a water tap the fee was increased from \$185 to \$200. The reconnect or transfer fees increased from \$7.50 to \$10 for work during office hours. For after hours the fee was raised from \$10 to \$20.

Still more fee adjustments involved sewer taps and zoning applications. The sewer tap fees were increased from \$160 to \$175, while the application fee for zoning amendments went from \$25 to \$35.

The rental rates at the T-hangers at the Spearman Municipal Airport were increased as follows: For monthly - annual lease a large hanger with an office has went from \$115 to \$125; a large hanger increased from \$108 to \$115; the standard hanger gone from \$80 to 95; and the standard hanger with finished office increased from \$88 to \$100.

For those renting month to month your rates were changed from \$168 to \$175 if renting a large hanger, and \$112 to \$120 if it is a standard hanger. The daily charge for a large hanger increased from \$15 to \$20, while standard hangers went from \$10 to \$15.

Adjustments to the H&S Emergency Medical Services were an increase from \$150 to \$175 for basic life support calls, with advance life support calls increasing from \$200 to \$225.

Solicitation Permits are also being increased. They increased from \$50 to \$75 per agent, while a permit with more than one agent went from \$10 to \$20 for each additional agent.

Master and journeyman electricians in the city will also see an increase. The exam fee to certify as a master electrician increased from \$15 to \$20. The exam fee to certify as a journeyman electrician went from \$12.50 to \$15. Annual renew-

## Crop Walk To be held Sunday, Oct. 10

The CROP Walk will be held in Spearman on Sunday, October 10, at 2:00 p.m., beginning at the courthouse. The 10k walk will wind through town and will have frequent rest stops.

The CROP Community Hunger Appeal began 46 years ago with Midwestern farm families sharing their bountiful harvests with hungry neighbors in post-war Europe. And it grew from there, into hundreds and hundreds of CROP rural canvasses.

Then some people in Bismarck wanted to do something different. They decided to walk for the hungry. And get sponsors for their effort. So on October 17, 1969, the

CROP Walk was born in the footsteps of a thousand North Dakotans.

By 1985 there were 262,549 walkers putting their best foot forward in 1,449 CROP Walks for the Hungry. Seven years later the number has grown to 322,060 walkers in 1,918 Walks, rallying around our anthem call, "We Walk Because They Walk."

Represented among the more than 3.3 million walkers and sponsors in the CROP family last year was a vivid cross section of Americana. Pastors and poets. Politicians and priests. Rabbis and retailers. Teachers and toolmakers. Athletes and actors. Soldiers and sojourn-

ers. Clowns and clerks.

They come from congregations. Businesses. Synagogues. Industries. Mosques. Schools. Neighborhoods. Service clubs. They walked to fight hunger locally and internationally. They walked as part of their religious commitment and part of their community involvement. And they were there to get some exercise, besides.

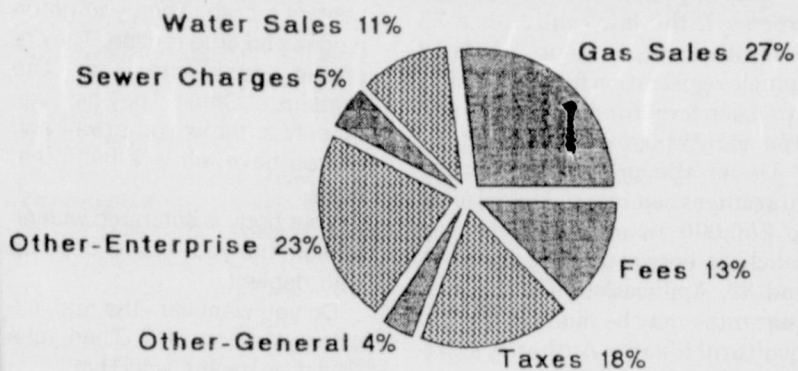
They walked out of loyalty to the CROP Walk and its goals, 58 percent saying it's the only fund raising marathon-type activity in which they take apart.

To register or for more information call Rev. Dan Carter at 659-2671 or Rev. Jeff Lust at 659-5503.

**Advertising Pays \$\$\$\$\$\$**  
**Call 659-3434**  
or  
**1-800-395-9482**

### G & G ELECTRONICS

- \*2-way radio \* Repeater \* Satellite
  - \* Mobile Telephone \* Pagers
  - \* Motorola Radius \* Kenwood
  - \* Maxon \* Vertex \* Reim
- BRUCE DUNCAN**  
(806) 659-3125



With these revenues, we provide money for City services. These services are provided by the City departments. The following chart shows the budget for each of the City departments for the year beginning October 1:

Administration-\$79,954; animal control-15,532; police-285,061; fire-75,216; sanitation-302,719; street-176,213; swimming pool-46,568; civil defense-1,296; parks-36,277; municipal court-13,654; emergency medical service-48,560; airport-

the fee for our administrative expenses.

The parks, economic development and the library are very important services to the community and they need your support. Without them, our quality of life would be much lower and the future for our children would be much more bleak. I hope every person who receives gas, water or sewer service from the city will pay the \$2.00 PEDL fee.

### From the American Heart Association Facts about cardiovascular disease

Cardiovascular disease (CVD) is the No. 1 killer in America. •Of the estimated 1990 U.S. population of about 250 million, more than 70 million\* people - more than one in four Americans - have some form of CVD. •In 1990 CVD killed more than 930,000 Americans, 43 percent of all deaths. •Each year more than one-sixth of all people killed by CVD are under age 65. •CVD accounted for 4,850,000 years of potential life lost in 1989, based on a lifespan of 75 years. •The economic cost of CVD to

the U.S. in 1993 is estimated to be \$1174 billion; this figure includes physician and nursing services, hospital and nursing home services, the cost of medication, and lost productivity due to disability.

But we're making progress. •From 1980 to 1990 age-adjusted death rates from heart attack declined 32.6 percent.

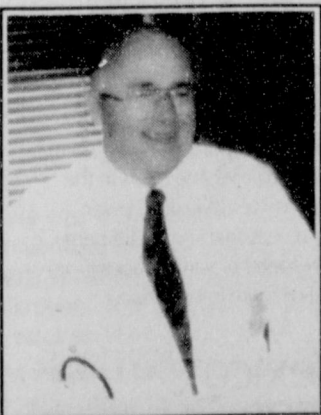
•Age adjusted death rates from stroke declined 32.4 percent in the same period.

•In this same period, age-adjusted death rates from all forms of CVD combined declined 26.7 percent.

I like trees, because they seem more resigned to the way they have to live than other things do.

—Willa Cather

**Dr. & Mrs. Charles Ridge**  
are pleased to announce  
the opening of the  
**Gruver Clinic**  
October 12, 1993



**Office hours:**  
9 - 12  
**Tuesday & Thursday**  
Se Habla Espanol  
**Grand Opening and Health Fair**  
October 12

STATEMENT OF OWNERSHIP, MANAGEMENT AND CIRCULATION		
Required by 39 U.S.C. 3685		
1A. Title of Publication	1B. PUBLICATION NO.	2. Date of Filing
Hansford County Reporter - Statesman	5 2 9 1 6 6 0 0 0	October 1, 1993
3. Frequency of Issue	3A. No. of Issues Published Annually	3B. Annual Subscription Price
Weekly	9	\$24.95
4. Complete Mailing Address of Known Office of Publication (Street, City, County, State and ZIP+4 Code) (Not printer)		
P. O. Box 458; 213 Main St.; Spearman, Texas 79081-0458		
5. Complete Mailing Address of the Headquarters or General Business Office of the Publisher (Not printer)		
Same as above		
6. Full Name and Complete Mailing Address of Publisher, Editor, and Managing Editor (This item MUST NOT be blank)		
Publisher (Name and Complete Mailing Address)		
Molly L. Zimmerman; P. O. Box 458; Spearman, Texas 79081		
Editor (Name and Complete Mailing Address)		
Angela Jones; P. O. Box 458; Spearman, Texas 79081		
Managing Editor (Name and Complete Mailing Address)		
Same as above		
7. Owner (If owned by a corporation, its name and address must be stated and also immediately thereunder the names and addresses of stockholders owning or holding 1 percent or more of total amount of stock. If not owned by a corporation, the names and addresses of the individual owners must be given. If owned by a partnership or other unincorporated firm, its name and address, as well as that of each individual must be given. If the publication is published by a nonprofit organization, its name and address must be stated.) (This item must be completed.)		
Full Name	Complete Mailing Address	
Texas Independent Newspapers	16607 Blanco Rd., #707 San Antonio, Tx. 78232	
Jud-Malford	Same as above	
Muliken-Johnson	Same as above	
Howard-Schram	26482 Los Alamoses, La Grana Hills, Ca. 92659	
8. Known Bondholders, Mortgagees, and Other Security Holders Owning or Holding 1 Percent or More of Total Amount of Bonds, Mortgages or Other Securities (If none, so state)		
Full Name	Complete Mailing Address	
W. M. Miller	810 Bernice; Spearman, Tx. 79081	
9. For Completion by Nonprofit Organizations Authorized to Mail at Special Rate (GSMM Section 412 (2) only) The purpose, function, and nonprofit status of this organization and the exempt status for Federal income tax purposes (Check one)		
(1) Has Not Changed During Preceding 12 Months		
(2) Has Changed During Preceding 12 Months		
(3) Has Changed During Preceding 12 Months (If changed, publisher must submit explanation of change with this statement.)		
10. Extent and Nature of Circulation (Give instructions on reverse side)		
Average No. Copies Each Issue During Preceding 12 Months	Actual No. Copies of Single Issue Published Nearest to Filing Date	
A. Total No. Copies (Net Press Run)	1700	1700
B. Paid and/or Requested Circulation (1. Sales through dealers and carriers, street vendors and counter sales; 2. Mail subscription (Paid and/or requested))	473	524
C. Total Paid and/or Requested Circulation (Sum of B1 and B2)	819	856
D. Free Distribution by Mail, Carrier or Other Means (Samples, complimentary, and other free copies)	120	120
E. Total Distribution (Sum of C and D)	1417	1500
F. Copies Not Distributed (1. Office use, left over, unaccounted, spoiled after printing; 2. Return from News Agents)	283	200
G. TOTAL (Sum of E, F and G—should equal net press run shown in A)	1700	1700
11. I certify that the statements made by me above are correct and complete		
Signature and Title of Editor, Publisher, Business Manager, or Owner		
Molly Zimmerman		

**GET THE ALCO Advantage**

**FREE EVERY TUESDAY!**  
SECOND SET OF PRINTS

Receive a second set of 3" prints FREE with any exposure roll of 35mm, disc, 110 or 126 color print film left for developing and printing at our everyday prices! C-41 process only. Excludes larger 4" size prints, and photo gallery.

**FILL UP. PUNCH OUT. CASH IN.**

Pick up your Frequent Filler Card today and punch you way to FREE MERCHANDISE.

It's our way of rewarding frequent fillers for their continuing loyalty. Here's how it works:

- You get a punch-out for every fill-up.
- Ten punches complete each card.

Cash in:

- 1 Completed Card = 1 Gal. Antifreeze 99¢ gal.
- 2 Completed Cards = 5 qts. Farmland Oil for 99¢
- 3 Completed Cards = FREE 8 Gallons Gas

Every fuel retailer tells you "Hurry back." But we really mean it!

Better Farming. Better Food.™

421 W. Kenneth  
Spearman, Texas



Let us replenish the seed of faith through...

## REGULAR CHURCH ATTENDANCE, DAILY BIBLE READING & PRAYER



**HI-PLAINS AUTO SUPPLY, INC.**  
 Mobile Oil for Irrigation & Industrial Purposes  
 118 Main • Spearman  
 659-2506 • (800)657-8742

**Palo Duro Supper Club**  
 22 S. Archer  
 659-2232

**C.O.'S SUPPLY CO.**  
 Plumbing & Tire Sales & Service  
 301 S. Davis • Spearman  
 659-3781

**Bartlett's Ace Hardware**  
 105 W. Broadway  
 733-2404

**GILLASPIE**  
 AUTO & TRUCK CENTER, INC.  
 CHEVROLET • OLDS • PONTIAC • BUICK  
 CHRYSLER • PLYMOUTH • DODGE  
 Highway 207 South • P.O. Box 427 (800)959-2541  
 SPEARMAN, TEXAS 79081

**Little Tiffanies**  
 103 E. Broadway • Gruver, Tx.  
 Open: 10 a.m. - 5:30 p.m.  
 733-5290

**THE HANSFORD COUNTY REPORTER-STATESMAN**  
 DEDICATED TO SERVE THE COMMUNITIES OF SPEARMAN, GRUVER & MORSE  
 213 MAIN • 659-3434 • 1-800-395-9482

**Gruver Cablevision**  
 Quality Family Entertainment with  
 "The Disney Channel"  
 308 Main • 733-5295

**Morse Implement Company**  
 "Join us in church this week"

**Boxwell Bros. Funeral Home**

**Speartex Grain Company**  
 405 Collard • Spearman  
 659-3711

**CORONADO HOSPITAL**  
 Pampa, Texas  
 (806)665-3721

Compliments of  
**G&G FOODLINER**  
 516 Main • Gruver  
 733-2471

### A Day of Hope

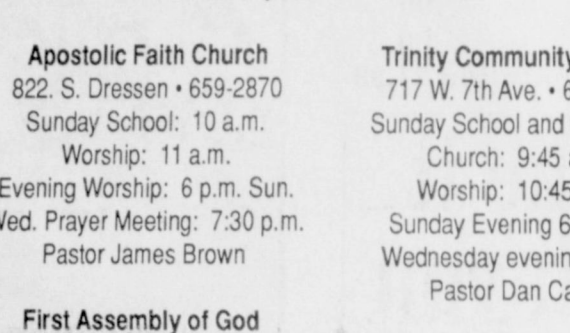
I relish each moment of this autumn day as I crush crusty leaves underfoot. The sun is bright and warm, and the young trees lining my walkway appear to wave and bow to greet me, prompted by a crisp, invigorating breeze.

Following several dimly dark days of dampness, this day is one of clear blue skies enhanced by strands of angel hair clouds.

Several trees are already beginning to lose the first layers of their colorful autumn costumes; yet this day does not speak of loss, but of the hope that only God can provide.

Experience that hope and happiness this autumn and all through the year as God's steeples and chimneys beckon to us each Sabbath.

Each day the Creator sends is a day of hope. Look around you. Job 12:8 tells us, "Speak to the earth and it shall teach thee."



Scripture Selected by The American Bible Society  
 Copyright 1993, Kestler-Williams Newspaper Services, P. O. Box 8005, Charlottesville, VA 22906

**Apostolic Faith Church**  
 822 S. Drensen • 659-2870  
 Sunday School: 10 a.m.  
 Worship: 11 a.m.  
 Evening Worship: 6 p.m. Sun.  
 Wed. Prayer Meeting: 7:30 p.m.  
 Pastor James Brown

**First Assembly of God**  
 401 N. Bernice • 659-2295  
 Sunday School: 9:45 a.m.  
 Worship: 11 a.m.  
 Evening Worship: 7 p.m.  
 Wednesday Worship: 7:30 p.m.  
 Youth: 7:30 Wednesday  
 Pastor Ray Cook

**First Christian Church (Disciples of Christ)**  
 29 S. Bernice • 659-2036  
 Sunday School: 9:45 a.m.  
 Worship: 10:50 a.m.  
 Women's Bible Study: 2 p.m. Wed.  
 Youth: Wed. 6 p.m. & Sun. 5 p.m.  
 Pastor LaVern Draper

**First Baptist Church**  
 123 N. Bernice • 659-5557  
 Sunday School: 9:45 a.m.  
 Worship: 11 a.m.  
 Evening Worship: 7 p.m.  
 Jr. High Youth: 6 p.m. Wed.  
 High School Youth: 7 p.m. Wed.  
 Youth Choir: 6 p.m. Sun.  
 Pastor Kyle Henderson

**Church of Christ**  
 121 S. Haney • 659-3244  
 Sunday Bible Class: 9:45 a.m.  
 Worship: 10:30 a.m.  
 Evening Worship: 6 p.m.  
 Bible Study Wed. 7:30 p.m.  
 KRDF Radio Program  
 Living With Christ 7:50 a.m. M-F  
 Minister Arnis Pape

**Fellowship Baptist**  
 1102 S. Archer • 659-2783  
 Sunday School: 10 a.m.  
 Worship: 11 a.m.  
 Evening Worship: 6 p.m. Sunday  
 Youth & Adult Serv.: 7:30 Wed.  
 Pastor Rick Fincher

**Primera Mission Bautista**  
 502 E. 7th • 659-3991  
 Sunday School: 9:45 a.m.  
 Worship: 11 a.m.  
 Pastor Guadalupe Carranza, Jr.

**Sunday Leviticus** 26:1-13  
**Monday 1 Kings** 8:54-61  
**Tuesday 1 Chronicles** 22:2-19  
**Wednesday Esther** 9:20-32  
**Thursday Psalm** 29  
**Friday Psalm** 37:1-11  
**Saturday Psalm** 85

**In Gruver...**  
**First Baptist Church**  
 402 E. Broadway • 733-2411  
 Sunday School: 9:45 a.m.  
 Worship: 10:50 a.m.  
 Disciple Training: 6 p.m. Sunday  
 Prayer Meeting: 7:30 p.m. Wednesday  
 Pastor Larry Miller

**Church of Christ**  
 209 King • 733-2760  
 Sunday School: 9:30 a.m.  
 Worship: 10:20 a.m.  
 Evening Worship: 6 p.m.  
 Wed. Evening Worship: 7:30 p.m.  
 Minister Bob Setliff

**First Christian Church**  
 510 King • 733-2960  
 Sunday School: 9:45 a.m.  
 Worship: 11 a.m.  
 Wed. Bible Study: 7:30 p.m.  
 Youth: 6:30 Wednesday  
 Pastor Gary Gumbory

**Oslo Lutheran Church (ECLA)**  
 West of Gruver on Hwy 15 & N. FM 1162  
 339-7646  
 Sunday School: 9:45 a.m.  
 Worship: 11 a.m.  
 Morning Prayer: 9 a.m. Wed.  
 Pioneer Clubs (Grades 1-6): 4-5:30 p.m. Wednesday  
 Pastor John R. Chandler

**Community Bible Church (Interdenominational)**  
 Hwy. 15 • 733-2443  
 Sunday School: 10 a.m.  
 Worship: 11 a.m.  
 Wed. Prayer Meeting: 7 p.m.

**First United Methodist**  
 Broadway & Garrett • 733-2651  
 Sunday School: 9:45 a.m.  
 Worship: 8:30 a.m. & 10:55 a.m.  
 Sunday Evening: 7 p.m.  
 UMY: 6 p.m.  
 Pastor Lewis Holland

**Faith Lutheran Church (ELCA)**  
 1101 Bernice • 659-2252  
 (Worships with First Presbyterian Church)

**First Presbyterian Church**  
 (Worships with Faith Lutheran Church)  
 1021 Cotter • 659-2033  
 Sunday School: 9:45 a.m. at Lutheran Church  
 Worship: 11 a.m. (alternates monthly between addresses above)  
 Pastor Beverly Cook

**First United Methodist**  
 407 S. Haney • 659-5503  
 Sunday School: 9:45 a.m.  
 Worship: 11 a.m.  
 Jr. High Youth: 5 p.m. Sun.  
 High School: 6 p.m. Sun.  
 Pastor Jeff Lust

**Union Church**  
 31 S. Endicott • 659-2644  
 Sunday School: 9:45 a.m.  
 Worship: 10:45 a.m.  
 Evening Worship: 6:30 p.m.  
 Bible Study: 7:30 p.m. Wed.  
 Youth: 7:30 p.m. Wed.

**Sacred Heart Catholic Church**  
 901 Roland • 659-2166  
 Sat. Night Mass: 7 p.m.  
 Sunday Mass: 9:00 a.m. - English.  
 11:30 a.m. - Spanish  
 Rev. Fernand Couture

**Henton & Co., P.C.**  
 Certified Public Accountants  
 221 Sanders • Spearman • 659-2518

**BERRY CLEANERS**  
 DAN DESIMONE • OWNER  
 Phone 659-3122 • P.O. Box 1017  
 207 Main St. • Spearman, Tx. 79081

**GRUVER FORD**  
 Ford FORD  
 531 Main • Gruver • 733-2431

**Interstate Savings & Loan**  
 322 Main • Spearman • 659-2559

**Hagerman Services**  
 Backhoe • Dozer • Welding  
 North Hwy. 15 • Spearman  
 659-5131

**Gordon Drugs**  
 Dependable Prescription Service  
 314 Main • Spearman  
 659-2141  
 Jim Evans

Compliments of...  
**AGCO**  
 of Spearman, Inc.  
 "See you in Church"  
 659-3751

## Spearman Lynx announce players of the week



**Offense** Chad Wilkerson  
**Defense** Joel Stark

## Obituaries

**Vida Lee Sanders**  
 Vida Lee Sanders, 79, of Amarillo, died Tuesday, Sept. 28, 1993. Graveside services were held at 10 a.m. Friday, Oct. 1st at Memorial Park Cemetery with the Rev. Robert Field, retired pastor of South Georgia Baptist Church, officiating.

Mrs. Sanders was born in Boyd. In 1955 she moved to Amarillo from Gruver. She married William Edmond Sanders. He preceded her in death in 1957. She was also preceded in death by a son, James Sanders, in 1985. She was a homemaker and a member of South Georgia Baptist Church.

She is survived by three sons, Frex and Charley Sanders, both of Amarillo, and Gene Sanders of Clovis, N.M.; a daughter, Marilyn Fugate of Fort Worth; a brother, Claude Duckworth of Durango, Colo.; two sisters, Veta Tow of Wellington and Vina Claypool of California; 12 grandchildren; and seven great-grandchildren.

**Alfred Fulton Cook**  
 SPEARMAN-Alfred Fulton "A.F." Cook, 72 dies Thursday, Sept. 30, 1993.

Graveside services were held Sun. Oct. 3rd at Ochiltree Cemetery with the Rev. Harrol Waterbury, pastor of the Full Gospel Church in Perryton, officiating. Arrangements were by Boxwell Brothers Funeral Home.

Mr. Cook was born in Waka, and was a lifetime resident of Ochiltree County. He married Barbara Jean Dolloff in 1942 at Wichita, Kan. He was a farmer.

Survivors include his wife; a son, Lynn Cook of Spearman; three daughters, Sharon Farber of Spearman, Brenda Smith of Perryton and Glenda Cook of Pampa; six grandchildren; and a great-grandchild.

The family requests memorials be to Hansford Hospice, 707 Rowland, Spearman, Texas 79081.

## Minding Your Own Business

by Don Taylor, Director, PSBDC

**PREGNANT WOMEN WHO EXERCISE MAY NEED MORE CALORIES**  
 HOUSTON—Pregnant women who exercise may need to increase their caloric intake to compensate for calories burned during exercise. "There is some evidence that rigorous exercise results in low birth weights," said Dr. Nancy Butte of the USDA's Children's Nutrition Research Center at Baylor College of Medicine in Houston.

Traditional advice is that a woman add 300 calories a day to her diet during pregnancy and 500 calories a day during breast feeding.

Cohen calls the process habituation. "In essence, these exercises train the brain to ignore the dizziness," she said.

Repetitive head exercises such as nodding the head up and down or moving it from side to side help the brain recalibrate more quickly in responses to information coming from the inner ear. How the brain does this is unknown.

Cohen is conducting studies to understand better how exercises can help people with inner-ear disorders.

But, Butte suspects these recommendations may not be high enough for exercising moms.

To study the effect of exercise on birth weights, on breast feeding and on maternal weight changes, Butte is conducting a two-year study involving 80 healthy volunteers aged 18-35.

**STDs CAN AFFECT CONCEPTION**  
 HOUSTON—Doctors know that sexually transmitted diseases (STDs) can cause infertility, but they may also affect fertilization and the development of embryos.

"A woman's inability to conceive may be caused by the effect of STD microorganisms on her egg, her partner's sperm, the embryo they produce or all three," said Dr. William Findley of Baylor College of Medicine in Houston.

**VERTIGO MAY BE MINIMIZED THROUGH EXERCISE**  
 HOUSTON—Exercise can help people with vertigo learn to adapt to dizziness.

"It is strange, but true," said Dr. Helen Cohen of Baylor College of Medicine in Houston. "By making them dizzy through special motion exercises, people suffering from vertigo caused by inner-ear disorders that destroy balance and orientation can force their inner ear to compensate."

If research shows that STDs do more than create inflammation and scar tissue to cause infertility, doctors can screen couples with out symptoms before they attempt to conceive.

"Many of these infections can be treated with antibiotics to kill the organisms that may affect an egg, sperm or embryo," Findley said.

**MANURE**  
 CUSTOM SPREADING AT REASONABLE PRICES  
 ASK FOR RICK SANDER  
**SPEARMAN CATTLE FEEDERS**  
 659-2577

"WE SUPPORT OUR LOCAL CHURCHES"  
**CAPROCK#1** Richard Winter, Mgr. (806)733-5043  
**CAPROCK#2** Mike Heard, Mgr. (806)733-5025  
 "Custom Cattle Feeding"





# REPORTER-STATESMAN

Telephone: 1-800-395-9482 or (806)659-3434

**"IT'S FOR YOU"...**  
The Classifieds Have Something For Everyone!

The Home Seller...  
The Car Buyer...  
The Do-It-Yourselfer...  
The Mother's Helper...  
The Job Seeker...  
The Bargain Reaper...

When you want results, turn to The Classifieds.

**AA Realty**

Allen Alford-Broker-659-3034  
Julie Martin-Sales-659-2425  
Dennis Nelson-Sales-659-3608  
Larry Trosper-Sales-3491

**1114 Barkley - UNDER CONTRACT**  
700 Collier-3/2-2-Very Nice.  
1100 W. 7th - Shop on 1.5 acres  
11 S. Brandt - 3 BR, 2 B., 3-garage  
716 Townsend - 4 BRM, 2 B., Fire-  
place, basement, double garage,  
backyard, above ground pool.  
706 Collier Drive: 3 BR  
1017 S. Townsend: 3 BR, 1 B.  
714 Gibner: 4 BR, Double garage,  
703 East Second: 3 Bedroom, 1B.  
FOR QUALITY & SERVICE CALL US TODAY  
We Need Your Listing.

Equal Housing Opportunity

**BUSINESS FOR SALE**

Business for sale-Established carpet, carpet cleaning and paint store for sale. Call or come by McClure Paint and Supply, 307 Main, Spearman, Call 659-2830 or 659-5226.  
S49-2tp

**SERVICES**

**CALL YOUR LOCAL Used Car Dealer for 7 days a week stock removal.** 659-3544 or 1-800-692-4043 Serving Cattlemen for the past 20 years.  
S41-RTN

**PITS CLEANED** Dragline or Loader. Call Lee Roy Mitchell, 733-2384, 733-2057 or 733-2175.  
S47-1tcRTN

**Reduce-Burn off fat while you sleep.** Take Opa! Available at Gordon's Drug.  
S46-6tp

**REAL ESTATE**

**FOR SALE:** A nice two bedroom one bath home in a nice neighborhood. Call 659-3942 after 6.  
S38-2tpRTN

**For Sale - 4 bedroom, bath and a half, corner lot.** FHA assumable loan. 701 Collier. Call 405-338-204 after 6 p.m.  
S45-1tc-RTN

**NEED TO SELL:** 3 BR, 2 bath brick home, 1.5 miles west of Gruver. Newly remodeled, new carpet. Asking \$40,000, O.B.O. Call 733-5283 after 5 p.m. or leave a message at (505) 852-2375.  
S48-4tp

**Lo. for sale:** Trailer house lot for sale or rent. (will sell like rent) 100 block N. Endicott. Call 659-2245.  
S49-1tc-rtn

**OSGOOD MONUMENT CO.**  
Amarillo, Texas

Dealers of Rock of Ages Granite, as well as all colored granites, marble and bronze memorials.

Represented by  
**BOXWELL BROS. FUNERAL HOME**  
519 S. EVANS  
659-3802

**For Sale:** Two Story Country House - 2 mi west of Spearman, 3 Bedroom, 1 bath, hard wood floors, barns, pens and roping arena on 7.125 acres. \$65,000. Shown by appointment only. 659-9801.  
S50-2tp

**For Sale:** Nice 3 bedroom, 1 bath, large backyard, 1 car garage with additional carport. Close to elementary and Jr. High School. Call 659-3539 for more information.  
S50-1tcRTN

**For Sale or Rent** after October 30. 3 bedroom house, large back yard, close to school. Rent \$300 per month. Will sell for \$25,000. Call 659-2024.  
S50-4tp

**AUTOMOBILES**

**For Sale:** 2 1966 Ford pickups, 6 cyl. and V8 16 ft. boat 65 h.p. 14 N. Hazelwood. 659-2113.  
S50-3tc

**MISC. FOR SALE**

**For Sale:** 5 storage van bodies, 8-210 barrel storage tanks with good bottoms, 4-1100X24 truck tires 2 new - 2 excellent. Run tubes \$600. Call Heritage Drilling 659-2503.  
S50-1tp

**For Sale:** Lots of cotton quilt scraps. Bright colors, all pressed. Call 435-4117.  
S49-2tp

**Century 21**

**GOLDEN SPREAD REALTY**  
Janye Helton Pointer, Broker Owner  
435-5444

1009 Wilmet: 4 - 2 1/2 Home of distinction!  
316 Bernice: 3 - 1 3/4 Large home with large rooms.  
Crawford Addition:  
2 - 1 3/4 - Will look at all offers!  
2 - 1 - Small and affordable!  
315 1/2 N. Bernice: Lot for sale!

Equal Housing Opportunity  
INDEPENDENTLY OWNED AND OPERATED

**GARAGE SALE**

**Garage Sale:** Saturday, Oct. 9 from 9 a.m. - ?? Children's clothes, towels, misc. 1017 Linn, Spearman.  
S50-1tc

**JAN'S ETC.**  
NEW & USED & ANTIQUES TOO

Everything for home and family.  
Plains Shopping Center in Spearman.  
Open Monday - Saturday  
10 a.m. til 6:00 p.m.

**Are You A Victim of Physical Abuse?**

Call Toll Free 1(800)753-5308

We are in Spearman on the 1st, 3rd & 5th Wednesdays of each month at the 1st Presbyterian Church, 1021 Cotter. On the 2nd & 4th Wednesdays we are at the 1st Christian Church at 510 King - Gruver. We can come to Spearman & Gruver any time upon request. We operate a safe place for victims & their children to stay in times of crisis. **Panhandle Crisis Center** Serving Hansford, Lipscomb & Ochiltree Counties  
317 S. Main Memorials Accepted Perryton, TX.

**NEW TRAMPOLINES**  
Mats and springs.  
Resew trampoline mats.  
Make new boat covers.  
Call (806)659-2109  
Harry Stumpf  
301 W. 12th  
Spearman, Texas

**HELP WANTED**

North Plains Electric Cooperative, Inc. is now accepting applications to fill the open position of groundman on the Canadian crew. The person selected for this position will be required to live in or near Canadian, Texas. Applicants for this position must be a high school graduate or equivalent; be in good physical condition; be able to perform strenuous work; must have a good driving record and be able to obtain a CDL. Only those interested in full time employment should apply at the Cooperative headquarters, Highway 83 North, Perryton, Texas. All applications must be received by 5:00 p.m., Thursday, October 14, 1993. (Equal Opportunity Employer.)  
S49-2tc

**Truck Drivers Wanted**-Semi-truck drivers wanted. CDL required. Call McCarty Trucking at 806-362-4807.  
S49-2tc

**WANTED:** FULL-TIME maintenance worker at ALCO. Call 659-2600 and ask for Kirk.  
S47-1tcRTN

**Full time ACTIVITY ASSISTANT** for Hansford Manor needed. Position requires an understanding and compassionate attitude toward geriatric residents and families. Must be able to motivate and stimulate residents. Some evening hours may be required. Pension plan, health insurance benefits. Applications may be obtained from the Personnel Office, Hansford Hospital, 707 S. Roland, Spearman, Texas, 79081. EOE.  
S50-1tc

**SERVICES**

Drivers Education Classes-Independent Driving School. Lanny Hargrove, 814 S. Main, Perryton, TX. (806) 435-2579. Sign up now!  
S49-rtn

**NOTICE**  
Wallace Monument Co.  
Monuments, Curbing, Grave Covers  
1-800-999-9506  
Local Representative  
**LEONARD JAMESON**  
Spearman, Texas

**PUBLIC NOTICE**

**NOTICE TO BIDDERS**  
Sealed bids for the purchase of one (1) trailer mounted disc brush chipper will be received by the City of Gruver, at the office of the City Manager up until 2:00 p.m., Thursday, October 28, 1993, then publicly opened and read.  
The City reserves the right to reject any or all bids, to waive informalities and to accept the bid deemed to be most advantageous to the City. All bids received after the above closing date will be returned unopened.  
Specifications and bidding documents may be secured from the Office of the City Manager, P.O. Box 947, Gruver, Texas 79040.  
S50-2tc

**NOTICE TO BIDDERS**  
Sealed bids for the purchase of one (1) 1994 small-size, 4,600 GVWR, Long wheel base, two wheel drive pickup truck will be received by the City of Gruver, at the office of the City Manager up until 2:00 p.m., Wednesday, October 27, 1993, then publicly opened and read.  
The City reserves the right to reject any or all bids, to waive informalities and to accept the bid deemed to be most advantageous to the City. All bids received after the above closing date will be returned unopened.  
Specifications and bidding documents may be secured from the Office of the City Manager, P.O. Box 947, Gruver, Texas 79040.  
S50-2tc

**PUBLIC NOTICE**

**CITATION BY PUBLICATION**  
To: JOHN BYUNGJOO KIM and wife, JULIE WHA KIM, Defendants in the cause described in this citation. You and each of you are commanded to appear and to answer before the 84th District Court in the courthouse in Spearman, Hansford County, Texas, then and there to answer the Petition of J. EDDIE JONES and wife, LAURA JONES, in Cause No. 3986, styled J. Eddie Jones and wife, Laura Jones v. John Byungjoo Kim and wife, Julie Wha Kim, in which J. EDDIE JONES and wife, LAURA JONES, are Plaintiffs, and CLEO COFFEY, JR., JOHN BYUNGJOO KIM and wife, JULIE WHA KIM, are Defendants. The Petition filed on September 16, 1993 discloses that the nature of this suit is as follows:  
Suit to remove cloud from title to the following described real estate commonly known as the Nursanickel Motel in Spearman, Hansford County, Texas, to wit:  
A tract of land out of the SE/4 of Section 89, Block 4-T&NO RR Co. Survey, Hansford County, Texas, and also being a part of Tract A, Golden Circle Addition, Replat as Recorded December 14, 1977, a Hansford County Deed Records, and described by metes and bounds as follows:  
BEGINNING at the intersection of the South line of Seventh Street with the East R.O.W. Line of State Highway 207, said point being 1208.4 feet West and 30 feet South of the Northeast Corner of the SE/4 of Section 89; THENCE South 28 degrees 59' 00" West along said R.O.W. Line a distance of 430.8 feet to the point of beginning this tract for the North-west corner; THENCE continuing South 28 degrees 59' 00" West along Highway R.O.W. Line a distance of 200 feet to a point being the North-west corner of Tract A-1, Golden Circle Addition; THENCE North 89 degrees 55' 00" East along the North Line of Tract A-1 a distance of 200 feet to a point, THENCE South 00 degrees 05' 00" East a distance of 175 feet to a point on the North R.O.W. Line of Ninth Street; THENCE North 89 degrees 55' 00" East along the North R.O.W. Line of Ninth Street a distance of 273.1 feet to a point for the Southeast corner this tract; THENCE North 00 degrees 05' 00" West a distance of 350 feet to a point for the Northeast corner this tract; THENCE South 89 degrees 55' 00" West a distance of 377.16 feet to the point beginning this tract, and containing 2.80 acres of land, more or less. This conveyance is subject to reservation of all minerals by prior grantors, and to easements of record.  
If this citation is not served within ninety (90) days after the date of its issuance, it shall be returned unserved.  
ISSUED AND GIVEN under my hand and the seal of this court on this 28 day of September, 1993, at Spearman, Hansford County, Texas.  
Amelia C. Johnson  
Hansford County District Clerk

**NOTICE TO CONTRACTORS**  
of PROPOSED TEXAS HIGHWAY MAINTENANCE WORK  
Sealed proposals for LANE BLADING OF ROADWAY SNOW AND/OR ICE ON VARIOUS HIGHWAYS FOR POTTER, RANDALL, HEMPHILL, ARMSTRONG MOORE, HANSFORD, DEAF SMITH, CARSON, OCHILTREE AND OLDDHAM COUNTIES, TEXAS  
Will be received by the Texas Department of Transportation located at 5715 Canyon Drive, Amarillo, Texas  
Beginning at 9:00 A.M., Friday, October 8, 1993. Then publicly read.  
All prospective bidders are encouraged to attend the Pre-Bidders' Conference which will be held at the Texas Department of Transportation's District Office at:  
5715 Canyon Drive  
Amarillo, Texas  
Time & Date: 10:00 A.M., Monday, October 4, 1993  
Bidding proposals, plans and specifications will be available at the District Maintenance Engineer's Office at:  
5715 Canyon Drive  
Amarillo, Texas  
Telephone (806) 356-3283  
For information in regard to these proposals, please contact Jim Hays, 356-3283, or Chris Chambers, 356-3272.  
Usual rights reserved.  
S48-2tc

**ABSOLUTE AUCTION: PRIME**  
Presidio county hunting land. 14,000 acres selling in 18 tracts (sections). Opening bid: \$10,000 per acre. Sells 7:00 p.m. Mon., Oct. 25 at Airport Holiday Inn in El Paso. Phone for brochure 918-250-2012 Williams & Williams Realtors. TX Auc. Lic.#10071, RE #0412361.  
29.68 ACRES SOUTH of Rocksprings. Beautiful, gently rolling hill country. Hunting, recreational land, deer, turkey, \$885/ down, \$174/month (11% - 15 yrs.). Additional acreage available. 210-257-5564.  
50'X30'X18' HIGHSTEEL building. One open end. Was \$6,862 will sell for balance \$3,980. Never erected, with blueprints. 1-800-292-0111.  
LOW CALORIE FOODS leave your tank empty? Seven Fill'em' Up low calorie recipes. Very easy and tasty. \$3. LSASE, Smith Scott, P.O. Box 15086, San Diego, CA 92175-0086.  
BRAZILIAN EXCHANGE STUDENT anxiously awaiting host family. Students arriving in Jan. for 2nd semester. Become a host family Now! AISE call: Eleanor 817-467-4619 or 1-800-SIBLING.  
FRIENDLY HOME PARTIES now has openings for demonstrators. No cash investment. Part time hours with full time pay. Two catalogs, over 700 items. Call 1-800-488-4875.  
MEN/WOMEN SEEKING financial security. Info-System shows you. Facts, not H.O.S. 100% guaranteed. Write C.M.C., H.C30 Post 38 Box 5, Lake Brownwood, TX 76801.  
ARTHRITIS? ULCERS? DRINK Aloe Vera. 4 ozs daily. Clear. Tasteless. You'll think it's water. Write Nature's Way, 2123 W. Governor's Cr., Houston, TX 77092, or Leo 713-682-6310.  
WOLF TANNING BEDS, new commercial-home units from \$199. Lamps, lo-

**PUBLIC NOTICE**

**NOTICE TO BIDDERS**  
City of Spearman  
Sealed Proposals addressed to Mr. Kelvin Knauf, City Manager, P.O. Box 37, Spearman, Texas 79081 for:  
Airport and Selected Streets Crack Sealing will be received by the City of Spearman, at City Hall, 30 SW Court, Spearman, Texas until: October 8, 1993, 2:00 p.m.  
Plans and specifications may be obtained from the City of Spearman, 30 SW Court, Spearman, Texas 79081 (806) 659-2524 in the following manner:  
**Bona Fide Bidders:** Upon payment of \$50.00, of which all will be refunded upon submission of a bid and return of the plans and specifications in good condition with the bid, or return of the plans and specifications in good condition BEFORE the bid opening.  
**Suppliers and Subcontractors:** Upon payment of \$50.00, NONREFUNDABLE.  
Bids security in the amount of \$500.00 total bid must be submitted. Bidders to submit cashier's check, certified check, or bid bond payable to the City of Spearman. Bidder will enter into contract and execute bonds in the forms provided.  
Performance and Payment bonds shall be set forth in the contract documents.  
The Owner reserves the right to reject any or all bids and to waive any informalities. In case of ambiguity or lack of clearness in stating the prices in the bids, the City of Spearman reserves the right to adopt such interpretations as may be most advantageous to the Owner, or to reject the bid. No bid may be withdrawn until the expiration of 45 days from the bid date.  
S48-2tc

**NOTICE OF APPLICATION**  
NOTICE IS HEREBY GIVEN that the Applicant, Cabot Oil & Gas Corporation, 9400 N. Broadway, Suite 608, Oklahoma City, OK 73114, has made application for a density exception permit under the provisions of Railroad Commission Statewide

**PUBLIC NOTICE**

Rule 38 (16 Tex. Admin. Code Section 3.38). Applicant seeks exception to the density of the subject field (s). Applicant seeks authority to drill, Well No. 3089, Collard Lease, 640 Acres, Section 89, Block 45, H&TC RR Co. Survey, Hansford (Morrow, Upper) and Hansford (Morrow, Middle) Field, Hansford County, being 6.5 miles in a northerly direction from Spearman, Texas  
The location of this well is as follows:  
1700' from the north line and 2150' from the east line of lease.  
1700' from the north line and 2150' from the east line of survey.  
Field Rules for the Hansford (Morrow, Upper) and Hansford (Morrow, Middle) field are 1250/2500, 640 acres.  
This well is to be drilled to an approximate depth of 8100 feet.  
Pursuant to the terms of Rule 38, (§3.38) this application may be granted without hearing if protest to the application is not received. An affected person is entitled to protest this application. Affected persons include owners of record and the operator or lessees of record of adjacent tracts and tracts nearer to the proposed well than the minimum lease line spacing distance. If a hearing is called, the applicant has the burden to prove the need for an exception. A protestant should be prepared to establish standing as an affected person, and to appear at the hearing either in person or by qualified representative and protest the application with cross-examination or presentation of a direct case. The rules of evidence are applicable in the hearing. If you have questions regarding this application, please contact the Applicant's representative, Jim R. Pendergrass, Drilling Superintendent, at (405) 478-6514. If you have any questions regarding the hearing procedure, please contact the Commission at (512) 463-6718.  
S48-4tc

**TEXAS SCAN**  
Statewide Classified Advertising Network  
314 Texas newspapers for \$250. Call this newspaper for details.

**WANTED: ADMINISTRATOR** FOR 30-bed long-term care facility. Excellent benefits. Submit resume to: Administrator, Crane Memorial Hospital, 1310 Alford, Crane, Texas 79731. FAX 915-558-3734, Phone 915-558-3555. Equal Opportunity Employer.  
**RAPID WEIGHT LOSS:** Lose pounds/inches, safely and quickly \*Specializing in difficult cases \*Increases metabolism \*Stops hunger. Guaranteed fast results!!! Call now and get 20% off. United Pharmaceuticals 1-800-733-3288 (COD's accepted).  
**KARAOKE SHOWTIME, EVERYONE** wants to sing their hearts out. Call Rick for sales - road shows - demos 210-696-2747 your Texas Pioneer rep, keep this ad.  
**DRIVERS! NO EXPERIENCE** required. Be an independent delivering deluxe motor homes and custom vans local and nationwide. 35K/yr. Call 24 hrs. For info. 1-800-510-0672.  
**BUILD YOUR OWN** home now! No downpayment on Miles materials, below market construction financing. Call Miles Homes today, 1-800-343-2884 ext. 1.  
**PIZZA INN** SEEKING qualified franchisees. \*Carry-out/delivery and full-service restaurants. \*Over 425 restaurants and growing. \*2nd fastest growing pizza chain. Call 1-800-880-9955.  
**ABSOLUTE AUCTION: PRIME** Presidio county hunting land. 14,000 acres selling in 18 tracts (sections). Opening bid: \$10,000 per acre. Sells 7:00 p.m. Mon., Oct. 25 at Airport Holiday Inn in El Paso. Phone for brochure 918-250-2012 Williams & Williams Realtors. TX Auc. Lic.#10071, RE #0412361.  
29.68 ACRES SOUTH of Rocksprings. Beautiful, gently rolling hill country. Hunting, recreational land, deer, turkey, \$885/ down, \$174/month (11% - 15 yrs.). Additional acreage available. 210-257-5564.  
50'X30'X18' HIGHSTEEL building. One open end. Was \$6,862 will sell for balance \$3,980. Never erected, with blueprints. 1-800-292-0111.  
LOW CALORIE FOODS leave your tank empty? Seven Fill'em' Up low calorie recipes. Very easy and tasty. \$3. LSASE, Smith Scott, P.O. Box 15086, San Diego, CA 92175-0086.  
BRAZILIAN EXCHANGE STUDENT anxiously awaiting host family. Students arriving in Jan. for 2nd semester. Become a host family Now! AISE call: Eleanor 817-467-4619 or 1-800-SIBLING.  
FRIENDLY HOME PARTIES now has openings for demonstrators. No cash investment. Part time hours with full time pay. Two catalogs, over 700 items. Call 1-800-488-4875.  
MEN/WOMEN SEEKING financial security. Info-System shows you. Facts, not H.O.S. 100% guaranteed. Write C.M.C., H.C30 Post 38 Box 5, Lake Brownwood, TX 76801.  
ARTHRITIS? ULCERS? DRINK Aloe Vera. 4 ozs daily. Clear. Tasteless. You'll think it's water. Write Nature's Way, 2123 W. Governor's Cr., Houston, TX 77092, or Leo 713-682-6310.  
WOLF TANNING BEDS, new commercial-home units from \$199. Lamps, lo-

tions, accessories. Monthly payments low as \$18. Call today free new color catalog. 1-800-462-9197.  
**GOT A CAMPGROUND** membership or time-share? We'll take it! America's largest resale clearinghouse. Call Resort Sales International. 1-800-423-5967 (24 hours).  
**BECOME A PARALEGAL.** Join America's fastest growing profession. Lawyer instructed home study. The finest paralegal program available. P.C.D.I., Atlanta, Georgia. Free catalogue. 1-800-362-7070 Dept. LL722.  
**DRIVERS: OWNER OPERATORS & drivers/fleet owners/tractor purchase plan.** 1-800-633-8287.  
**HAROLD IVES TRUCKING** hiring drivers. Free driver training. Students welcome. Excellent benefits, excellent equipment, excellent training, excellent opportunity. Come grow with us: 1-800-842-0853.  
**DRIVERS - SHORTHAUL/OTR,** contractors. Adding 300 new trucks - outstanding pay/benefits, sign-on bonuses, assigned trucks. Call anytime - Burlington Motor Carrier: 1-800-JOIN-BMC (Ext. 105), EOE.  
**DRIVERS: EXPERIENCED FLATBED OTR.** 48 states. Benefits, assigned new conventional tractors, sign on bonus, flexible time off and more! Call immediately. Roadrunner Trucking 1-800-876-7784.  
**COVENANT TRANSPORT** The road to your future. Last year our top team earned over \$85,000. Starting at \$27 to \$29 per mile. Plus bonuses to \$38 per mile. \*Solos welcome \*Spouse rider program \*Truck driving school graduates welcome \*Paid insurance \*Motel, layover pay \*Loading/unloading \*Vacation, deadhead pay. Requirements: \*Age 23 \*lyr. verifiable over-the-road \*Class A CDL with hazardous materials. 1-800-441-4394/915-852-3357.  
**FORECLOSURES - SAVE 20% to 60% - buy direct.** Single family homes, condos, co-ops, townhouses, commercial property, office complexes, apartment buildings. Thousands available. 24 hours. 1-800-533-6947.  
**AMERICAN LAND LIQUIDATORS:** Lots, homesites, acreage/vacant land. For sale by owners across the country. Call for free lists/property data. Buyers: 1-800-480-0090. Sellers: 1-800-364-6612.  
**OSTRICH:** LET US show you one the most rewarding opportunities, an invest of \$10,000 in 1989 would be worth over \$150,000 today. Call 1-800-562-2952.  
**ADOPTION: HAPPILY MARRIED** couple wishes to adopt newborn. We promise your baby a loving home and a bright future. Call Francesca & Franz anytime 1-800-531-1997. It's illegal to be paid for anything beyond legal medical expenses.  
**ADOPTION: WISH TO adopt** newborn - 1 yr. old. Financially secure, can provide lots of love, attention, and a bright future. Please call Clarence or Kaye 1-800-498-8752. It's illegal to be paid for anything beyond legal medical expenses.  
**ADOPTION: COMPLETE OUR** love, home and happiness with the birth of your newborn. Legal/confidential. Allowed expenses paid. Please call Ann & Joe 1-800-562-3678. It's illegal to be paid for anything beyond legal medical expenses.



## FCC assumes more assertive role

The Federal Commission (FCC) is taking a more assertive role in helping consumers challenge rates for non-basic tiers of cable service and has offered to help local franchising authorities regulate basic service rate complaints.

The FCC is ready to respond between now and Dec. 17 to consumer groups who mobilize to challenge non-basic service rates and to get local franchising authorities certified to regulate basic service.

According to the FCC's two-tier approach to rate regulation, basic cable services and equipment charges are subject to automatic regulation by local franchising authorities, which are usually cities in Texas. These franchising authorities must be certified by the FCC, with applications now being accepted by the FCC.

Consumer groups concerned about local service rates first need to speak to their local franchising

authorities and urge them to file for certification as soon as possible. If a city does not have resources to carry out the regulation, it can inform the FCC of its desire to have basic service regulated, and thus pass the authority for basic rate regulation to the FCC. If a city doesn't ask the FCC to regulate basic service and does not provide it locally, there will be no regulation of the lowest priced tier of basic service.

Filing for certification requires the local franchising authority to undertake two responsibilities. First, they must put procedures in place to give local cable operators the means to challenge rate decisions made by the local authorities. Second, they must pass a local ordinance stating that the franchising authority will carry out the regulatory scheme adopted by the FCC for basic cable rates.

The FCC encourages consumers

to file their complaints with the FCC about current rates for non-basic tiers of service now. All complaints filed prior to December will be accepted. After Dec. 17, complaints will only be accepted for 45 days following notice of a rate increase or service change. Complaints must be filed on the official complaint form and must have the consumer's latest cable bill attached. Forms are available from the FCC, local franchising authorities or the Consumer Federation of America. Copies of the complaint must be sent to the local cable company, local franchising authority and the FCC.

The Consumer Federation of America Legislative Council, Bradley Stillman, encourages consumers to express their complaints now. His help is available to groups coordinating local complaint filing efforts by calling (202) 387-6121.



### Citizen of the Month

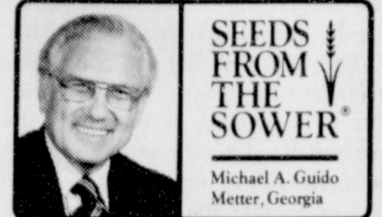
The following students were selected as "Citizen of the Month" for the Gruver Junior High: (1-r) Fifth Grade - Brooke Beville; Sixth Grade - Britt Carter; Seventh Grade - Jason TeBeest; Eighth Grade - Darby Johnson (back). Students were nominated by their teachers as the students who best exemplify those qualities necessary to be a good citizen. These students daily exhibit qualities of proper attitude, self-motivation, friendliness, and the drive to succeed in whatever is presented to them.

## Gruver Junior High holds parents night

The Gruver Junior High School held a "Back to School Night" for parents Sept. 27, 1993.

The school had an overall 41.3% of the parents attend. Parents went through a mini-schedule of their child's day. Teachers visited with them about their class goals and expectations. Some of the students had "test or lessons" ready for their parents when the parents attended class.

A cake party was given to sections 7-1 for the highest percentage (66.6%) of parents attending.



SEEDS FROM THE SOWER  
Michael A. Guido  
Metter, Georgia

"Mother," cried a little girl, "you forgot my soul." "What do you mean?" she asked. "You forgot to say with me," she explained. "Now I lay me down to sleep, I pray, Thee, Lord, my soul to keep."

Have you forgotten your soul? You nourish your body, but you neglect your soul, and life becomes drab. Then you go on a drink and drug routine. They're cheap substitutes for the stimulus of Christ. They pick you up only to throw you down, and all you have left is a habit that hurts.

Your body is saturated with attention, but your soul is dried up with neglect.

Do you want life - the real, exciting, thrilling life? Then take Christ. It begins with Him.

## Texas farmers and ranchers may be due \$5 on farm vehicle license fees

(Austin) - Refunds are now available for agricultural producers who, since January 1, 1992 have been required to pay a special \$5 vehicle license fee on farm and ranch vehicles to fund a state program to help young farmers get started into business, State Comptroller John Sharp has announced.

"County Tax Assessor-Collectors were required to collect the fees between January 1, 1992 and August 30, 1993, but because vehicle registration fees are constitutionally dedicated to Texas highways, the money collected for the Young Farmer Endowment Program could not be used for its intended purpose."

The Texas Legislature has now authorized the refunds on fees for the Young Farmer Endowment Program. Refunds can be obtained from

the Comptroller's Office through November 1, 1993. Refund claim forms are available from the Comptroller of Public Accounts by calling 1-800-252-1382. Claim forms are also available from county Tax Assessor-Collectors.

Information required on the claim form will be the agricultural producer's name, social security number, taxing county and the license number of each vehicle for which a refund is sought.

During the 1993 legislative session earlier this year, lawmakers amended the law to earmark the \$5 fee on farm vehicles to the Texas Agricultural Finance Authority

which will administer the program, now called the Young Farmer Loan Guarantee Program.

Effective September 1, 1993, as amended, the law continues a \$5 "voluntary assessment" on farm vehicle registration fees, but makes provision for refunds to be obtained from county tax-assessor-collectors.

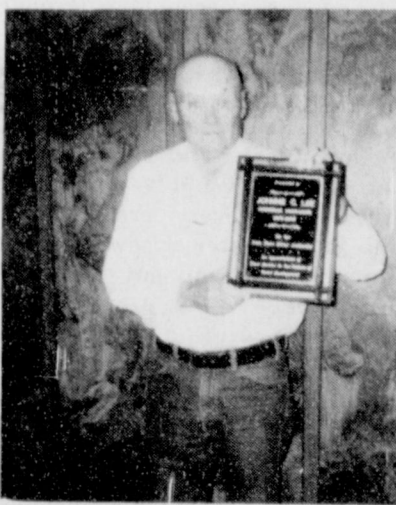
Under the program, the state guarantees commercial loans of up to \$50,000 to new farmers and ranchers between the ages of 18 and 39. Applications for the loan guarantee may be made to the Agricultural Finance Authority starting on October 1, 1993.

## Lee retires as PDRA General Manager

After 15 years as general manager at the Palo Duro River Authority, Johnnie C. Lee retired from the position on October 1.

Lee was born in Stratford and came to Hansford County at two-years-old. He lived in Gruver, where he went to school, except for the brief move to New Mexico when he was six. After just a few months his parents, J.B. (Dick) and Ruth Lee, returned to Gruver to raise their family.

At the age of 17, Johnnie left school and joined the Marines. He was in active combat in the Pacific on Marshall Island, Tinian, Saipan and after three weeks on a hospital



Johnnie C. Lee

ship was sent back into combat on Iwo Jima where he was wounded the second time, this time the wound was of such severity that he spent the next 18 months at the Oakland Naval Hospital at Oakland, Calif. He was awarded two purple hearts.

On returning to Gruver after his honorable discharge from the Marines he finished his schooling. The Hansford County Commissioners Court appointed Johnnie as Hansford County Veterans Service officer, where he served the next two years. At this time he met and married Jo Ann Hoskins.

On the death of County Judge A.F. Barkley the Commissioners Court appointed Johnnie to serve the unexpired term. At the time of his appointment Johnnie was the youngest County Judge to ever serve in Texas. He ran in his first election with three opponents. He continued to serve as the County Judge without another opponent for 29 years and 9 months.

Johnnie retired as County Judge in 1978 to accept the position of General Manager of the Palo Duro River Authority with the vision of building a dam on the Palo Duro. He has served in that position until his retirement on October 1, 1993.

Now that the project has been completed, he feels he can retire. Some of the most important items on his agenda are visits with his son Jack D. Lee DVM and children Kara and Tyron; daughters Jolinda Lee Marshall, husband Charlie and children Allison, Amy and Joe of Leandee; and Johnette Lee Boyle, husband Larry and children Kristin, Erika and Katherine of Lenexa, Kans.

## THANK YOU

I would like to say Thank You to everyone who made our open house and ribbon cutting so special. Thank You for taking the time to stop by and the Chamber Board for the ribbon cutting. Thank you Olga and Marlane for the good food. A special thank you to Pat and Ed Dear for giving me the chance to be a business owner.

Thank You,  
Cathy and Ladd Gafford  
Joy and Matt

### Door Prize Winners

Rocky Mountain Jeans - Cindy Rice  
\$25 Gift Certificate - J.L. Brock  
Mens Woolrich Shirt - Eulalia Blankenship

New store hours:  
9:30 - 5:30 Monday - Saturday  
New Phone # 659-2617

THE BUNKHOUSE

### NOTICE OF SPECIAL ELECTION (AVISO DE ELECCION ESPECIAL)

To the registered voters of the County of Hansford, Texas:

(a los votantes registrados del Condado de Hansford, Texas)

Notice is hereby given that the polling places listed below will be open from **7:00 a.m. to 7:00 p.m.**, on

**November 2, 1993**, for voting in a special election for the purpose of adopting or rejecting the proposed Constitutional Amendments as submitted by the 73rd Legislature, Regular Session, of the State of Texas.

(Notifíquese, por las presente, que las casillas electorales situadas abajo se abrirán desde las 7:00 a.m. hasta las 7:00 p.m. el 2 noviembre de 1993 para votar en la Elección Especial para adoptar o rechazar las enmiendas propuestas constitucionales así como fueron sometidas por la 73a Legislatura Sesión Regular, de la Estado de Texas.)

#### LOCATION(S) OF POLLING PLACES

(DIRECCION(ES) DE LAS CASILLAS ELECTORALES)

- Precinct #1** - Foyer of the Spearman School Dist. Varsity Gym on the Campus of the Spearman School Dist. Junior High School (En La entrada del gimnasio de la Jr. High)
- Precinct #2** - Renner Ranch (El rancho de los Renner)
- Precinct #3** - Community Bible Church, Gruver (Iglesia Bíblica de la Comunidad de Gruver)
- Precinct #4** - Gruver County Agri. Bldg. (El edificio agri. del condado de Gruver)
- Precinct #5** - Spearman County Agri. Building (El edificio agri. del condado de Spearman)
- Precinct #6** - Spearman High School (La escuela secundaria de Spearman)
- Precinct #7** - Oslo Church (La iglesia de Oslo)
- Precinct #8** - Absentee Voting, County Courthouse (La Casa de corte de Spearman)
- Precinct #9** - Morse Community Building (El edificio de Comunidad de Morse)

Absentee voting by personal appearance will be conducted each weekday at: **Hansford County Courthouse, Spearman**  
(La votación en ausencia en persona se llevará a cabo de lunes a viernes en: La Casa de corte de Spearman.)

between the hours of **8:30 a.m.** and **5:00 p.m.** beginning on **October 13, 1993**

(entre las 8:30 de la mañana y las 5:00 de la tarde empezando el 13 octubre 1993)

and ending on **October 29, 1993** (y terminando el 29 octubre, 1993)

Applications for ballot by mail shall be mailed to:  
(Las solicitudes para boletas que se votaran adelantada por correo deberan enviarse a:)

**Amelia C. Johnson**  
(Name of Early Voting Clerk)  
(Nombre del Secretario de la Votación Acelantada)

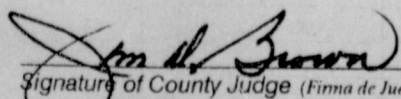
**P. O. Box 397**  
(address) (Dirección)

**Spearman, Texas 79081**  
(City) (Ciudad) (Zip Code) (Zona Postal)

Applications for ballots by mail must be received no later than the close of business on:  
(Las solicitudes para boletas que se votaran adelantada por correo deberan recibirse para el fin de las horas de negocio el:)

**October 26, 1993**  
(date) (fecha)

Issued this the **4th** day of **October**, 1993.  
(Emitada este día 4 de octubre, 1993.)

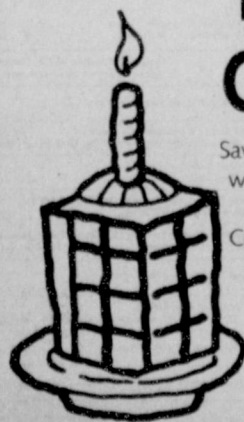
  
Signature of County Judge (Firma de Juez del Condado)

## FHA Fiesta Supper


Friday • October 15  
5:30 - 8:00 p.m.  
High School Cafeteria  
Adults \$5  
Children 4-12 \$3  
3 & Under FREE

Tickets will be sold at home football games or by any FHA member.

## Energy Efficiency Is A Piece Of Cake With A Heat Pump.



Saving energy is always sweet, especially when a high efficiency heat pump lets you save without sacrificing comfort. Because a heat pump cools in the summer and heats in the winter, the savings is year-round. For icing on the cake, Texas-New Mexico Power Company is now offering rebates for new heat pumps with a Seasonal Energy Efficient Ratio (SEER) of 12.0 or higher. Units equipped with a two-speed or variable speed compressor need a minimum SEER of 11.0 to qualify. For more information, call or visit your local TNP office.

 Texas-New Mexico Power Company.



# Oil & Gas Report

## New Location, Completion & Plugging Report

Week ending September 30, 1993  
Intentions to Drill

**HARTLEY (HARTLEY HUGOTON Krider Dolomite)** Cambridge Production, Inc., #1 Frost (520 ac) 990' from North & 1650' from East line, Sec. 416,44,H&TC, 18 mi East from Dalhart, PD 3700' (2201 Civic Circle, Suite 216, Amarillo, TX 79109)

**HEMPHILL (HEMPHILL Granite Wash)** Asher Resources, #8 Mamie Pearl Risley (640 ac) 666' from North & 2500' from East line, Sec. 6,1, I&GN, 10 mi SW from Canadian, PD 11100' (100 Sandau, Suite 300, San Antonio, TX 78216)

**LIPSCOMB (WILDCAT & BRADFORD Tonkawa)** Unit Petroleum Co., #2 Bradford-Laurie 'F' (686 ac) 1980' from South & 750' from East line, Sec. 686,43,H&TC, 9 mi NW from Lipscomb, PD 6685' (Box 702500, Tulsa, OK 74170)

**MOORE (WEST PANHANDLE)** Mesa Operating Ltd. Partnership, #B-107 Masterson (640ac) 330' from South & 750' from West line, Sec. 45,3,G&M, 20 mi SE from Dumas, PD 3010' (Box 2009, Amarillo, TX 79189) Replacement Well

### Oil Well Completion

**ROBERTS (EAST LEDRICK RANCH Granite Wash)** Trans Terra Corp., International, #58-1 Ledrick '58', Sec. 58, C, G&M, elev. 2870 gr, spud 12-26-92, drlg. compl 2-1-93, tested 8-10-93, flowed 7bbl. of 40 grav. oil + 1bbl. water thru 17/64" choke on 24 hour test, csg. pressure 50#, tbg. pressure 185#, GOR 14571, perforated 8461-8606, TD 10100', PBD 10043'

### Gas Well Completions

**HANSFORD (WILDCAT)** Questa Energy Copr., #29-3 Davis-Bryan, Sec. 29,4-T, T&NO, elev.

3079 gr, spd 8-18-93, drlg. compl 8-25-93, tested 9-8-93, potential 900 MCF, rock pressure 614, pay 3460-3466, TD 3846', PBD 3783'

**MOORE (WEST PANHANDLE)** Natural Gas Pipeline Co. of America, #G-1R Powell, Sec. 227,44,H&TC, elev. 3643 gl, spud 7-28-93, drlg. compl 8-3-93, tested 9-3-93, potential 2000 MCF, rock pressure 42.4, pay 3120-3140, TD 3443', PBD 3401'

**MOORE (WEST PANHANDLE Red Cave)** Mesa Operating Ltd. Partnership, #5R Fee, Sec. 77,3, G&M, elev. 3110 gr, spd 5-29-93, drlg. compl 7-1-93, tested 8-23-93, potential 3190 MCF, rock pressure 106.5, pay 1496-1724, TD 1900', PBD 1824'

**OCHILTREE (WEST LIPS Cleveland)** Amoco Production Co., #32 Lips Ranch 'B' Unit 15, Sec. 50, R, AB&M, elev. 3080 gr, spud 7-21-93, drlg. compl 8-1-93, tested 8-30-93, potential 7500 MCF, rock pressure 1880, pay 6734-6780, TD 6900', PBD 6848'

**ROBERTS (WEST LIPS Cleveland)** Amoco Production Co., #2 W.B. McIntire 'B', Sec. 2,R, P>W> Lampkin, elev. 3064 gr, spud 6-25-93, drlg. compl 7-11-93, tested 8-30-93, potential 1690 MCF, rock pressure 918, pay 6622-6722, TD 8800', PBD 8530'

### Plugged Wells

**HUTCHINSON (PANHANDLE)** J.M. Huber Corp., Weatherly, Sec. 26, Y, A&B (oil)--for the following wells:

#32, spud 2-28-45, plugged 9-8-93, TD 3185'

#40, spud 3-16-51, plugged 8-30-93, TD 3097'

#41, spud 11-28-51, plugged 9-1-93, TD 3041'

#56, spud 4-15-62, plugged 9-2-93, TD 3140'

**HUTCHINSON (PANHANDLE)** J.M. Huber Corp., Bryan Mayfield Unit, Sec. 2, M-24, TCRR-- for the following wells:

#907-W & #907-C, 3960' from South & 330' from West Lease line, spud 12-14-41, plugged 8-17-93, TD 3257' (Dual Gas Inj)--

#908, 5280' from South & 990' from West Lease line, spud 1-12-42, plugged 8-25-93, TD 3241' (oil).

#9015W, 330' from South & West Lease line, spud 3-6-46, plugged 8-19-93, TD 3295' (inj)--

## Casino from pg. 1

dinner for two Santa Fe, miter box kit - White House Lumber, and Arrow and London Fog shirts and men's cologne - Cates.

Other items of interest are a Glamour Shots sitting, two tickets to the American Quarter Horse Museum, Guymon Rodeo tickets, a subscription for the Amarillo Daily News and four tickets to The Clubhouse.

Some of the trips up for grab during the night are a weekend for 1 to 4 people at the Terrace Towers Lodge Red River, N.M.; weekend for two at the Fifth Season Inn in Amarillo with tickets to the West Texas Branding Iron Theatre production of "The Miracle Worker"; a weekend package for the Sportsman Lodge and Lifts West in Red River, N.M., and a weekend for two to the Flamingo Hilton in Las Vegas, Nevada.

Other trips include one night at the Comfort Inn West in Amarillo, one night for two at the Holiday Inn in Amarillo, one night for two at the Comfort Inn East in Amarillo, and one night for two at the Fifth Season Inn West.

Some of the other businesses



Pictured above is the pickup involved in the Oct. 4 accident in Gruver.

## Health Tips

**Got a cold? Wash your hands**  
**HOUSTON**—If you catch a cold, remember to wash your hands a lot.

Many colds result from rubbing the nose or eyes with fingers that picked up a virus from hand-to-hand contact, according to Dr. Christine Matson of Baylor College of Medicine in Houston.

When people with colds cough and sneeze into their hands and then touch objects at home, work or school or touch each other, they leave colds-causing viruses behind. Frequent hand washing can lessen this transmission.

Tissues and handkerchiefs can also be helpful because they catch the germs expelled through coughing and sneezing.



The first lighthouse in America was Boston Light-house, on Little Brewster Island in Boston Harbor. First lit in 1716, it was destroyed during the Revolutionary War, but another lighthouse was built on the site in 1783 and still stands.

**MARY KAY**  
FACE-TO-FACE BEAUTY ADVICE™

**Leann Gillaspie**

Beauty Consultant

659-3889

## Need New Business Cards?

Let the  
**Hansford County Reporter-Statesman**  
help you.

We are now taking orders for commercial printing. Whatever you need, call us and we'll be glad to help.

**659-3434 or 1-800-395-9482**

# MOONLIGHT MADNESS

## THURSDAY, OCTOBER 7

Don't Miss It!

6:00 p.m. until 9:00 p.m.

All Home Furnishings **30% OFF**

Up to 30% off on Whirlpool Appliances and RCA Electronics

**CLOSED ALL DAY THURSDAY UNTIL 6:00 P.M. MARKING MERCHANDISE FOR THE SALE**

No Exchanges — No Approvals

TERMS: (With Credit Approval)  
Bank Rate Financing  
W.F.C. Revolving Accounts  
With No Down Payment



**Boody**

**FURNITURE CO.**

plains shopping center

723 w. 7th spearman, texas

