

The Hansford County Reporter Statesman

PROUDLY SERVING HANSFORD COUNTY SINCE 1907

reporter@spearmanreporter.com

VOLUME 101 • ISSUE 50

WWW.SPEARMANREPORTER.COM

THURSDAY, DECEMBER 18, 2008

Letters to Santa



The Hansford County Reporter-Statesman will print Letters to Santa from children in Hansford County in our annual Christmas edition, which will be published on December 25th.

Letters may be mailed to: Santa Letter, % Reporter-Statesman, 213 Main Street, Spearman, TX 79081, or dropped by the Reporter-Statesman office. Office hours are Mon.-Thurs., 9 a.m.-12 noon and Mon.-Wed., 1-5 p.m. (There is a drop-slot located in the window to the right of the door.) Letters may also be dropped off at the new home of the Reporter-Statesman, 310 Barkley Street, Spearman.

In order for your letter to appear in the Christmas issue, it must be at the Reporter-Statesman office by 5 p.m. on Thursday, December 18th. All letters will be forwarded to Santa. (Letters received after the deadline may not have time to reach the North Pole by Christmas.)

Stationmaster's House Museum Exhibit Honors Local WWII Hero Leroy Sheets

Eric Cudd and his wife Tisha have created an exhibit in the Stationmaster's Museum to honor his great-uncle Leroy Sheets. The project coincided with Pearl Harbor Day (December 7th).

Sheets volunteered for the draft in Amarillo on July 12, 1941, to be able to choose his desired branch of service. He chose the field of airplane mechanics when he was called back and inducted on August 12, 1941 at Fort Bliss, TX.

On August 4, 1945 a telegram was received by Nannie Lou Sheets telling her that Samuel L. Sheets, previously reported as missing in action died June 9, 1942 in the Philippine island as a result of dysentery while a prisoner of war of the Japanese government. It was followed later by a letter written on October 6, 1945 by a Major Gambrill telling them that their son had died of dysentery at Cabanatuan Camp, Philippine Islands. He added that Leroy was buried on Luzon.

Jerry and Steve Sheets, nephews of Leroy, have written a book entitled *The Ultimate Sacrifice, The Price of Freedom*. There is a copy of the book in the Hansford County Library and two in the Stationmaster's House Museum (one available for loan) that share the story of Leroy Sheets, Hansford County Soldier.

The Stationmaster's House Museum hours are Tuesday-Saturday, 1-5 p.m., and other hours by appointment. For more information, call Reba Hunter at 806-659-3008.



Editor's Note: Leroy Sheets was honored as a "Hansford County Hero" in the December 11, 2008 edition of the Hansford County Reporter-Statesman.



SVFD Wishes All a Very Merry Christmas

With only a few days before Christmas, the Spearman Volunteer Fire Department would like to provide a few holiday safety tips for your consideration.

When choosing a cut "real" Christmas tree, keep in mind the tree should be selected as being as fresh as possible. Do not purchase a tree that the needles are brittle or fall from the branches easily. The tree should be as green as possible. Test the needles to determine if they are brittle, and stand the tree, tapping it against the ground to determine if it loses needles easily.

The location of your Christmas tree in the home should not be near heater vents or other sources of heat. If it is a real tree, keep the base in water at all times to keep the tree from drying out. Before standing the tree in the water base, it is a good idea to cut the trunk at an angle to allow better water absorption. Test the brittleness of the needles on a daily basis to make sure the tree remains as fresh as possible during display. Remove the tree as soon as possible after Christmas to reduce the potential for fire in your home.

When discarding of the tree, DO NOT burn the tree in your fireplace. This is extremely dangerous in that the tree will burn like gasoline and make a build up of creosote in your chimney. Check with the City on proper disposal of your Christmas tree.

Aluminum or metal trees should be carefully placed away from any electrical outlets or electrical sources. On all trees make sure any decorative elements including lights do not have frayed cords exposing any of the conductors. Avoid placing too many lights on one branch, keep the lights separated according to the manufacture instructions. Carefully consider the instructions for all decorations provided by manufacturers.

When decorating the tree, if you have small children, keep the fragile or easily broken ornaments at a higher placement on the tree. Remember also any animated ornaments can entice cats and other curious animals with their curiosity into climbing and possibly tipping the tree over. It is also advisable to keep an area around the tree clear to reduce the animals ability to "jump" from furniture to the tree. Remember the tree is only seen once a year and is unusual to all family members, keep a close watch on the tree at all times.

Christmas day always is exciting and sometimes we forget to take precautions when opening gifts. Please keep in mind that the colorful wrapping, bows and even the boxes that contain the gifts are flammable. As the gifts are unwrapped make sure the paper and boxes do not come too close to potential sources of fire. Although candles provide a festive element to our celebration, it is advisable to extinguish all fires near the gift opening "arena" before the festivities begin.

Continued on Page 2

Weather Forecast

THURSDAY NIGHT - Partly cloudy. Breezy. Lows in the upper 20s. Southwest winds 15 to 25 mph.

FRIDAY - Partly cloudy. Highs in the mid 50s. Southwest winds 10 to 15 mph.

FRIDAY NIGHT - Partly cloudy. Lows in the mid 20s.

SATURDAY - Mostly cloudy. Highs in the mid 40s.

SATURDAY NIGHT - Mostly cloudy in the evening then becoming partly cloudy. Lows around 11. Wind chill readings 5 below to 5 above zero.

SUNDAY - Partly cloudy. Colder. Highs in the lower 20s. Lowest wind chill readings around 6 below in the morning.

SUNDAY NIGHT - Partly cloudy. Lows around 9. Wind chill readings 6 below to 4 above zero.

MONDAY - Mostly cloudy. Breezy. Highs in the upper 20s. Lowest wind chill readings around 9 below in the morning.

MONDAY NIGHT - Mostly cloudy. Breezy. Lows around 16.

TUESDAY - Mostly cloudy. Windy - warmer. Highs in the upper 40s.

Texas Crop & Weather

The following specific livestock, crop and weather conditions were reported by Panhandle Extension directors: Soil moisture varied from very short to surplus with most areas reporting adequate. Wheat varied from poor to excellent with most areas reporting fair to good. Rangeland varied from very poor to fair with most areas reporting fair. Cattle were reported in good condition. High winds and dry conditions increased the danger of wildfires. The cotton harvest was ongoing.

Community Emergency Management Classes to begin in January

Hansford County Emergency Management has scheduled classes in Intermediate and Advanced Incident Command for January 5-7, 2009. The classes will begin daily at 8 AM and close at 5 PM each day at the Hansford County Agriculture Barn located at N. Hazelwood and 'D' Avenue in Spearman. These classes promote the National Incident Management System mandated by President Bush and acknowledged by all levels of local government through resolution.

The classes promote a standardized, all hazards, and on-scene management system for incidents beyond normal response. Any personnel from emergency first responders to elected officials should attempt to partake in the classes to prepare for incidents or events that occur beyond the capabilities of the local jurisdiction.

Although our community has very capable responders, the community will be faced with incidents that develop rapidly requiring an effective and efficient system to handle the emergency. This training provides the foundation for a team effort to prepare for these difficult times.

Although the training has been mandated, and recognized by local authorities, it is only as effective as the emergency services will implement. This training is to develop the unified focus to achieve proper management of an incident during its rapid expansion. This training provides the motivation by all disciplines to pre-plan and prepare for difficult situations before these occur. When jurisdictions have not trained in proper management techniques for these overwhelming incidents, their communities have needlessly suffered loss.

The classes are open to all community leaders that will participate in large-scale emergencies as well as those from the community that would like to assist in difficult times. You may register for the free training classes by contacting Hansford County Emergency Management Coordinator Ron Antalek by e-mail at ron@antden.com or phone at (806) 659 2045.

All of Hansford County is encouraged to participate in the training, including the communities of Gruver and Morse, as well as each school district, all emergency responders, all elected officials and any private business or industry. All participants that successfully participate in the classes will receive a certificate of participation as well as a Governor's Division of Emergency Management Certificate. For those who are interested in continuing education, arrangements can be made to accommodate CEUs. All Law Enforcement officers can receive TCLEOSE credit for completion.

To register for the two consecutive classes contact Hansford County Emergency Management Coordinator Ron Antalek by e-mail at ron@antden.com or phone at (806) 659 2045. If you or your organization would like the training but the scheduled classes are not convenient, contact Ron Antalek EMC to schedule the training for your organization's participation.

Operation Christmas Greeting

The Hansford Hospital Auxiliary has begun their yearly fundraiser - Operation Christmas Greeting. Instead of mailing greeting cards, individuals who wish to may donate money to the Hansford Hospital Auxiliary and have their greeting published in this paper. The money is used to purchase equipment and supplies that are not budgeted at the Hospital and Manor.

Your donations can be mailed to Operation Christmas Greeting Chairman Judy Nelson, 130 Nelson Road, Spearman, Texas 79081. Checks should be made to Hansford Hospital Auxiliary and marked Operation Christmas Greeting. Thank you so much for supporting this fundraiser.



Granville and Muriel Boyd
David and Kathy Boyd
Nordeen Cochran
Wayne and Carolyn Cummings
We's and Beth Daniel
Irvin and Betty Davis
Mary Alice Gibner
David and Mary Kay Harbour
Doyle and June Jackson
Verna Gail Keim
Dorothy Keys
Steve and Celia Krug
JoAnn Lee

from

Wilson and Joan McClellan
Thane and Sue McCloy
Don and Gwen McLain
Dennis and Judy Nelson
Jim and Nan Nicholson
Nell Patterson and Bailey Patterson
Doc and Susan Pearson
Babe Pendergraft
James and Betty Pugh
Gary and Cathy Smith
Gwen Smith
Patty Spoonmore
John and Virginia Trindle

TPWD Sets Panhandle Pheasant Scoping Meetings

The Texas Parks and Wildlife Department is asking for public input on possible changes to the traditional first weekend in December opening date for pheasant season in the Panhandle. A series of scoping meetings is set for January to give the public additional opportunities to comment.

"The purpose of this discussion is to gain feedback from hunters and landowners regarding the possibility of opening future pheasant seasons the Friday after Thanksgiving to afford hunters a three-day holiday weekend to enjoy pheasant hunting," said Vernon Beville, TPWD game bird program director.

The current pheasant season framework calls for opening the first Saturday in December for 30 consecutive days.

No immediate changes to the pheasant season framework are being considered in order to ensure the public has ample opportunity to weigh in on the discussion.

TPWD will present all rule change proposals to the Texas Parks and Wildlife Commission for consideration in January. The Commission will determine which rule change proposals will be published in the Texas Register for public comment and only after additional public comment is received next spring will the Commission decide whether or not to take final action.

Continued on Page 2

Deadline Notice!

The deadline to submit news and advertising to the Hansford County Reporter-Statesman is Monday at 5 p.m. Items submitted after the deadline will be published at a later date, as time and space permit.

The deadline for the December 18th and December 25th issues will be Monday, December 15th at 5 p.m. The deadline for the January 1st issue will be Wednesday, December 17th at 5 p.m.

Items may be submitted by phone (806-659-3434), fax (806-398-9080), mail (Reporter-Statesman, 213 Main Street, Spearman TX 79081), or e-mail (reporter@spearmanreporter.com).

For more information, please contact Catherine Smith at 659-3434, or e-mail to reporter@spearmanreporter.com

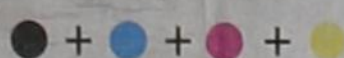
COME TO THE GAME

Spearman Lynx/Lynxettes

11/21/18-20 JVB at River Road Tournament
12/19 JVG (5), VG (6:30), VB (8) vs Gruver
12/29-31 VG, VG at Caprock Tournament - Lubbock
1/1-3 JVB (TBA) at River Road JV Boys Tournament
1/3-5 9th Grade at 9th Grade Perryton Tournament
1/6 JVG (4), JVB (5), VG (6:30), VB (8) at White Deer
1/8 7th G (5), 8th G (6), 9th G (7) at Highland Park
1/8 7th B (5), 8th B (6), 9th B (7) vs Highland Park
1/9 JVB (5), VB (8) vs Stratford
1/9 JVG (5), VG (6:30) vs Highland Park*

Gruver Greyhounds/Lady Hounds

12/19 JVG (5), VG (6:30), VB (8) at Spearman
12/29-31 VB at Canadian Tournament
12/29-31 VG at Caprock Tournament - Lubbock
1/2 JVG (TBA), JVB (TBA), VG (TBA), VB (TBA) vs Dimmitt at Amarillo
1/6 JVG (4), JVB (5-15), VG (6:30), VB (8) at Texhoma
1/9 JVG (5), VG (6:30) vs Stratford* *District Game



Wolf Creek Heritage Museum Notes

MUSEUM HAPPENINGS

Winter is truly here with ice, snow, cold, chilly, windy, weather which makes travel to the museum interesting if not difficult. We still manage to have both visitors and volunteers venture in. We thank all who visit us during these days of bad weather.

Dorothy and Georgia managed to travel down from Follett last week after the ice had melted away. Different groups of area ladies have made it to the museum to see the beautiful Holiday quilts. The quilts will begin to disappear this week so that their owners can use them in their homes during their holiday celebrations. We thank each of you for sharing your creations with us.

We have a new item in the gift shop. The Texas Capital Tree Ornaments. We have all the years from 1998 to 2008. We only have two of each year except this year, which we have 5. If you haven't seen these beautiful one-of-a-kind collectables, please come by and see them. We exhibited LaVaun Kraft's collection last year and decided to add them to our gift shop. Remember us for your Christmas shopping.

The year is almost over and we are scheduling for 2009 and evaluating 2008. Your comments and suggestions would be greatly appreciated. We will be closed for Christmas next Wednesday (24th), Thursday (25th), and Friday (26th). We will be available for appointments, please call if interested for out of town visitors.

HISTORICAL MUSINGS

Christmas Caroling

As other customs, caroling has its roots in early pagan customs to celebrate the winter solstice. The word carol means "dance in circle." Carols were written and sung during all four seasons. Early

Christians took over the pagan solstice celebrations for Christmas and gave people Christian songs to sing. In 129 AD, a Roman Bishop introduced a song called "Angel's Hymn" and had it sung at a Christmas service in Rome.

Caroling as we know it today was probably started in the 13th century by Saint Francis of Assisi, who is credited with starting Nativity plays in Italy. His energetic, joyful carols were sung by everyone and were in sharp contrast to the somber liturgical church hymns. The plays and music spread throughout Europe.

The earliest carol was written in 1410 with only a very small fragment of it still in existence. Its theme was about Mary and Jesus meeting different people in Bethlehem. Most carols from this time and the Elizabethan period are very loosely based on the Christmas story about the holy family and were seen as entertaining rather than religious songs. They were usually sung in homes rather than in churches.

In 1647, when Oliver Cromwell and the Puritans came to power in England, the celebration of Christmas and singing carols was stopped (until 1660). The carols survived, having been sung in secret during the puritan time.

Before caroling became public and popular, there are two traditions that probably led to the modern day caroling practice. The first was a custom called 'waits.' These were bands of people led by important local leaders who sang only on Christmas eve as a way to announce that the Christmas celebrations had officially begun. They were called waits because Christmas eve was called watch-night or waitnight referring to the shepherds watching their sheep when the angels appeared.

The second tradition of caroling by church groups for charity is claimed to be based on the custom when poor citizens would "sing for their supper" in exchange for food or drink. Others say it is based on 'wassailing,' when peasants would request nourishment from their superiors in exchange for singing good tidings.

Today, caroling door to door and carol services in churches are still popular. A common legend says that Christmas carols were named after Carol Poles, a little English girl who supposedly went missing in London during the holiday season in the late 19th century. People supposedly searched for her by going door to door, singing to declare their good intentions. Nice story, but no factual basis.

Continue the customs and enjoy caroling this Christmas and the wonderful carols that we have today.

MERRY CHRISTMAS AND JOY TO WORLD!

Wolf Creek Heritage Museum

Museum Hours: Monday thru Friday 10 a.m. to 4 p.m., Sunday 2 to 4 p.m. Special hours upon request.

Museum Information: 13310 Hwy 305, PO Box 5, Lipscomb TX 79056; telephone: 806-852-2123; email: wolfcreek@amaonline.com; website: www.wolfcreekheritagemuseum.org

State Capital HIGHLIGHTS

AUSTIN - Gov. Rick Perry on Dec. 11 requested an extension of the registration deadline until Jan. 10 for Hurricane Ike victims to apply for individual assistance from the Federal Emergency Management Agency.

FEMA's current registration deadline for Ike victims ended Dec. 12.

"Since Ike made landfall on our coast, families and communities have struggled to restore their lives," Gov. Perry said. "If granted, this extension will allow more families the assistance they need and deserve to rebuild their homes and lives."

Individual assistance is for individuals, families and small businesses with disaster-related expenses not covered by insurance, including:

- Temporary housing and rental assistance;
- Crisis counseling;
- Unemployment assistance;
- Legal services; and
- Low-interest loans from the U.S. Small Business Administration for homeowners, renters, businesses and non-profit organizations.

To date, more than 700,000 households from the affected area have registered, and more than 150 residents have registered each day since Dec. 1, Perry's office reported. Ike hit Texas in mid-September.

Beach debris removal begins

The Texas General Land Office has been preparing for Hurricane Ike beach debris removal by creating cleanup zones marked by 5-foot-tall metal posts. The top 12 inches of each post will be painted bright orange. Debris removal was set to begin after Dec. 15.

Sharp to run for U.S. Senate

John Sharp, the former Texas comptroller, said Dec. 10 he will run for the Democratic nomination for the U.S. Senate.

The seat is currently held by Kay Bailey Hutchison, who has filed papers necessary to run for governor in 2010. Her six-year term of office as a U.S. senator will expire in 2012, but she could resign to run before then.

In his announcement, Sharp said, "I will be a candidate whether the election is in 2012 or any time before then."

Sharp, who received the highest percentage of votes statewide of any Democrat during the past decade, added, "Texans face tough challenges that call for innovative solutions, and that's what our campaign is all about."

Sharp said he is forging the step of forming an exploratory committee and will file the required papers on Jan. 1 so that he can begin raising money and campaigning across the state in the new year.

As state comptroller from 1991-99, Sharp earned national recognition for initiating the Texas Performance Review, a government

GOVERNOR ASKS FOR NEW FEMA AID EXTENSION



by Ed Sterling

tal body auditing program that saved taxpayers billions of dollars.

Sharp previously served as a member of the Texas House, the Texas Senate and as chairman of the Texas Railroad Commission.

In 2005, Sharp was appointed by Gov. Perry to serve as chair of the Texas Tax Reform Commission, a bi-partisan committee that produced a solution to fund public schools without the creation of a state income tax.

Sharp, 58, is currently a principal in the Austin office of Dallas-based Ryan & Company, a tax-consulting firm.

Gov. Perry supports new ID rules

Gov. Perry on Dec. 9 spoke out regarding Department of Public Safety rule changes requiring non-U.S. citizens to present proof they are in this country legally before being issued an original, renewal or duplicate Texas driver's license or identification card.

"I strongly support the recent

DPS rule changes that ensure public safety and national security, and am confident the vast majority of Texans feel the same way. ..."

Perry said the new policy is no different than what U.S. citizens must do to obtain a driver license in most Mexican states and Canadian provinces.

Troopers get in-car computers

A \$15 million project to equip troopers across Texas with in-car computers is close to completion the Department of Public Safety, reports.

When the project is completed, nearly 2,000 highway patrol and commercial vehicle enforcement units will have in-car computers.

In-car computers give troopers a way to instantly identify wanted individuals and stolen vehicles. The secure network provides real-time alerts, digital photographs and homeland security information and GPS (Global Positioning System) technology.

Weatherford Construction
Septic Systems

Kirk Weatherford (806) 336-2820
8126 FM 3395 Toll Free: 1-800-585-6047
Sarıford, TX 79078 Email: kirk@weatherford-construction.com

SVFD Wishes All A Very Merry Christmas

Continued from Page 1

Many times during the excitement of opening presents, the boxes get tossed aside with little caution. Be prepared to intervene in the excitement to catch some of these projectiles to avoid hazardous conditions.

During the clean up of the discarded wrappings avoid burning these in the fireplace. To assist in landfill management, it is suggested that the boxes be cut or folded, then stacked for possible recycling. Check with the City for the best procedures for discarding of the cardboard, when checking on the tree disposal.

Always keep the exterior decorations in mind during the season as well. Avoid keeping the lights lit when few spectators are likely to view. During weather check the exterior lights for damage or exposure issues. For example if the wind is blowing makes sure the light strings are held against your home and are not in danger of being damaged. Of course keep straw and flammable decorative elements from exposure to heat, but keep in mind many times the wind will assist in deciding the resting-place of straw. If you have an exterior display with straw or hay make sure the location will not expose it to dangerous fire potential when the wind blows.

The Spearman Volunteer Fire Department wishes that all have a SAFE and enjoyable Christmas. We hope that some of these tips will help you accomplish a Merry Christmas.

TPWD Sets Panhandle Pheasant Scoping Meetings

Continued from Page 1

Any change to pheasant season could take effect Nov. 27, 2009 or be delayed until Nov. 26, 2010 to give hunters and outfitters ample time to make travel plans.

In addition to the following scoping meetings, the public is encouraged to participate in an informal online scoping survey available on the TPWD home page <http://www.tpwd.state.tx.us/> by clicking on the Public Comments link. Public input can also be made in writing to Vernon Beville, TPWD Game Bird Program Director, 4200 Smith School Rd., Austin, TX 78744 or at one of the upcoming scoping meetings; locations and dates to be determined.

Pheasant Scoping Meetings

- Jan. 12, 2009 - Dimmitt - Dimmitt City Hall, 201 East Jones
- Jan. 13, 2009 - Dalhart - First National Bank, 302 Denrock Ave.
- Jan. 14, 2009 - Amarillo - Texas A&M University Agricultural Research & Extension Center, 6500 Amarillo Blvd. West
- Jan. 15, 2009 - Spearman - Hansford County Courthouse, County Courtroom, 2nd Floor, 12 N.W. Court

HAPPY HOLIDAYS

ACROSS

- Lou Bega's "No. 5"
- *Christmas and New Year's are days
- Cheap reads
- Abhorrence or loathing
- Needlefish
- Long bones of forearms
- Nucleus of political movement
- Swedish shag rug
- Opposite the pinnacle
- *A.K.A. Claus
- *Where the big ball drops
- Mai
- Capone's mark
- *Go there before Santa comes
- Shaq's dominant shot
- Beef or mutton fat, e.g.
- Taken by a fighter
- Canned
- It's fuzzy and has a pit
- Belinda Carlisle was one
- *Seemingly ageless host
- Opposed to
- Turn
- Joanie of "Happy Days"
- 3-handed card game
- An empty _____ may miss the kids
- Homer's "Iliad," e.g.

DOWN

- Treat with contempt
- Sixth month of civil year
- Between mini and maxi
- *Candles are made to be this
- Opposite the alphas
- Fiona or Shrek, e.g.
- Fairy or elf
- *100 centimes
- *What kids do with most holiday gifts
- Backward arrow in software applications
- Bear's hang-out
- Company car, e.g.
- *Done to eliminate guessing game
- Whitman's famous flower
- Jack Sprat could-

These games are brought to you by the Hansford County Reporter-Statesman

- n't do this to fat
- Christmas arplums
- 24. One who smears
- 36. Will not
- 57. Nimble and quick
- 25. *Ralphie's dream
- 38. Type of coffee maker
- 58. Algonquian people
- 26. Run off together
- 42. Mack the _____
- 59. "Rome" in Italy
- 27. Venetian magistrates
- 45. Frees from mist
- 60. Burden
- 29. Wheel shaft
- 49. Short for "regular"
- 61. "Cobbler, cobbler, _____ my shoe"
- 31. Pasturelands
- 51. Bergall, North Atlantic fish
- 62. *_____ in" the New Year
- 32. Sri _____
- 54. Bird of prey nest
- 63. Largest continent
- 33. Base-8 numeral system
- 56. *His children had visions of sug-
- 64. Achilles' weakness
- 67. Old-fashioned "far"

CROSSWORD

1	2	3	4	5	6	7	8	9	10	11	12		
13					14			15					
16					17			18					
19					20			21					
				23				24					
25	26	27		28		29		30		31	32	33	34
35				36		37		38		39			
40					41			42		43			
44					45			46		47			
48						49		50		51		52	
					53			54		55		56	
57	58	59	60					61			62	63	64
65						66		67		68			
69						70				71			
72						73				74			

PRESENTED BY

VolunteerMatch.org
Where volunteering begins.

© 2008, StatePoint Media, Inc. answer on page 7

SUDOKU
PRESENTED BY

VolunteerMatch.org
Where volunteering begins.

				4	6			
3	1			5				
8			1				7	4
3								2
		4	1		6	5		
5								6
7	2			8				4
			3				2	9
			9	5				

© 2008, StatePoint Media, Inc. answer on page 7

Fill in the blank squares in the grid, making sure that every row, column and 3-by-3 box includes all digits 1 through 9.

The Hansford County Reporter-Statesman
213 Main Street • Spearman, TX 79081
Phone - (806) 659-3434 • Fax - (806) 398-9080
www.spearmanreporter.com
reporter@spearmanreporter.com
cathysmith@valonnet.com

Mon.-Thurs. 9 a.m.-12 p.m., Mon.-Wed. & 1-5 p.m.
Closed Thurs. afternoon and all day Fri., Sat. & Sun.

Gary Smith - Publisher Catherine Smith - Editor
Contributing Writers: Dorothy Hudson, Jim Derington,
Merry Sparks, Cecil Biggers
Contributing Photographer: Charlie Johnson

Subscription Rates
In Hansford County - \$30.00 • Out of County - \$40.00

The Hansford County Reporter-Statesman (USPS 529660) is published weekly in Spearman, TX. Periodical postage paid in Spearman, TX. **POSTMASTER:** Send address changes to: The Hansford County Reporter-Statesman, 213 Main Street, Spearman, TX 79081.

Publication Policy
The deadline to submit news and advertising to The Hansford County Reporter-Statesman is Monday at 5 p.m. Items submitted after the deadline will be published at a later date, as time and space permit. Publication of all items is at the discretion of the editor.

Advertising
Open Display rates are \$4.00 per column inch. Classified Ads are \$6 for the first 25 words and 10¢ per word for each additional word. (Additional charge for boxed classifieds.) There is a \$1 charge per week if billed.

Member of
Gruver Chamber of Commerce
Spearman Chamber of Commerce
Texas Press Association and Panhandle Press Association

Happy Birthday!

December 18
Birthdays - Jimmy Faren, Ronnie Schaefer, Cassie Butt, Malory Martin, Ben Gruver, Monalisa Garcia, Juanita Vera
Anniversary - Tom & Rita Reed, M/M Dwayne Hart, M/M Dave Karlin

December 19
Birthdays - Steve Beville, Jim Norton, Steve Watkins, Fausto Ruiz, Betty Vernon, Georgia Gaitner, Nan Nicholson, Irene Reed, Sara Dosselt, Pat Dear, Gwen McLain, Ford McIntyre, Zachary Brelans, Billy Jo Miesner, Delphine Etling, Cindy Walton, Ruby Katherine Thornton, Marguerite Nelson
Anniversary - Frank & Carol Lemons, Earl & June Spencer, M/M Roy Diaz, Kyle & Jennifer Nollner

December 20
Birthdays - Harletta Carthel, Doug Garrett, Esmeralda Renteria, Bill Turner, Peggy Papay, Charles West, Quentin Hayes, Brittni Beedy Sanders, Alicia Nikolas, Lexie Woodward, Mary Webster, Quentin Harper, Brock Schroeder, Megan Evans
Anniversary - Sam & Brenda Pierson, Gary and Catherine Smith, M/M Dale Jones

December 21
Birthdays - Lidwine Carpiaux, Cammie Steele, Anita Ruiz, Linda Garnett, Dallasene Reynolds, Eddy Rojas, Thomas Rodriguez, Johnny Kenny, Terry Womble, Chunky Blackburn, Betty Clifford, Nick Dettmann, Clyde Conley, Michael James Renteria, Robert Dahl, Cheryl Evans, Elaine Bain
Anniversary - M/M Wayne Cummings, Doris & Danny Hendricks, M/M Bob Tolleson, M/M Kenneth Slough, M/M Steve Duncan, M/M Roy Kauffman, Toby & Sally Thomas

December 22
Birthdays - Ted Evans, Richie Fletcher, Molly Blackman, Danna Kay Willis, Tammy Jackson, Andy Watley, Mary Moore, Steve Womble, Temp Shepard, Deanna Kenney, Diane DeLaCruz, Shirley Molden, Solomon Tarenjo, Becky Beedy, Frank Domiquuez

December 23
Birthdays - Odie Blount, Joel Lee Lackey, Joe Potts, Pat Morris, Sandy Brewer, Judith Jackson, Lloyd McWhirter, Nell Burke, Judy Tindell, Linda Maywell, Jimmy Duncan, Patti Evans, James Knoll, Rey Cook, Lavon Reid
Anniversary - M/M Marty Raser, M/M Loren Dahl, M/M Mack Beville

December 24
Birthdays - Kay Hobbs, Benny Wilson, Howard Heffey, Kenny Bratton, Melissa Thompson, Jocelyn (Edwards) Miller, Sandee Smith, Mark Eisfeld, Gabby Bravo, Chris Bravo
Anniversary - Oscar & Rhonda Valdez, Mr. & Mrs. Eugene Sadler, M/M Gary Davis

December 25
Birthdays - Joni Hart, Ellen Norton, Melanie Hutton, Bill

Miller, Christy Freeman, Noreen Sutton, Jeff Graves, Sharon Hamilton, Gil Harnish, Jimmy Vanlandingham, Dean Womble, John Cass
Anniversary - M/M Red Byrd, M/M Bart Baker

December 26
Birthdays - Jennifer Dahl, Glenda Harvey, Rodney Schroder, Woody Fowler, Chris Perez
Anniversary - M/M L.T. Wright, M/M Jerry Womble, Eugene & Judy Yarbrough, Cari & Brandon Baker

December 27
Birthdays - Lance Sparks, Sue Close, Jesse Renteria Sr., Shane Abel, Lynn Vernon, Edna Grimmer, Judy McCloy, Julie Deakin, Nicole Burgess, Chad Knowlton, Kaleb Puentes
Anniversary - M/M Jerry Younger, M/M Ralph Blodgett, M/M Gene Reynolds, M/M Todd Parker

December 28
Birthdays - Autumn Gruver, Delbert Williams, Billy Dave Hand, Frank Edwards, Jennifer Wells, Kenneth Bullard, Ann Flowers, Fred Mayfield, Pauline Mayes, Tina Breedon, Mary Hart, Samantha Cummings, Debbie Hornsby
Anniversary - M/M Everett Tracy, M/M Pat Patterson, M/M Jimmy McLeod, M/M Tony Shapley, M/M Roy Deeds, M/M Pat Holt, Annetta & Charles McIver, Larry & Robbie Butts

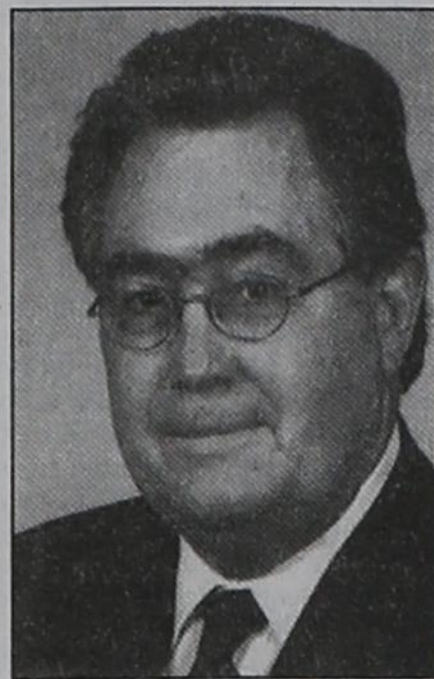
December 29
Birthdays - Bray Armes, Erin Bergin, Amy Tolleson, Cecilia Trejo, Jerry Williams, Mrs. W.T. Woodward, Sharon Rhea, Deanna Martin, Del Baskin, Julie Barkley Stedje, Thomas Reyes, Robert Elliott, Ed McIntyre, Deann Rosales, Martin Raser, Brittany Taylor, Connie Wood, Diana Bynum
Anniversary - Don & Gwen McLain, M/M Brad Spivey, M/M Pat O'Connell, M/M John Duncan, M/M Ronnie Harris, James & Karen Schnell

December 30
Birthdays - Julie Meyer, Kim Younger, Angela Van Buskirk, Robert Cochran, Fern Robinson, Robert Black, Traci White, James Red, Sammie Goehring, Kelley Ogilvie, Joyce Simon, Angelica Huerta
Anniversary - M/M Verlin Behne, M/M Phillip Renner, M/M Jerry Morris, M/M Randall Schell, M/M Stan Josephson, M/M Jimmy Brown, M/M Bart Thoreson, M/M Van Bradford, M/M Rodger Ferguson, Doug & Linda Cummings, Josh & Katie Bynum

December 31
Birthdays - Lera Beasley, Justin Pressley, JoAnn Schneider, John Gaitner, Jerry Ross Jr., Hazel Stumph, Rick Morris, Helen Boyd, Seth Redwine, Andrew Vela, Billy Joe Boyd, Heather Gammon, Lucy Gilmore, Delfino Parra, Kare Thompson, Joel Pecha
Anniversary - M/M Oscar Rojas Jr., M/M John Gaitner, Michael and Patricia Quillin, M/M Kelly Arrington, M/M Marlon Mitchell, M/M Charles Page, M/M James Smith, Jim & Marlene Miller

Our Sympathy

DANNY RAY ROBERTSON



SPEARMAN - Danny Ray Robertson, 59, died Friday, December 12, 2008.

Graveside services were at 1 p.m. Tuesday, December 16, 2008 in Hansford County Cemetery in Spearman. Memorial services will be at 10 a.m. Thursday, December 18, 2008 in First Presbyterian Church in Midland with the Rev. Jim Houston-Hencken officiating. Arrangements were by Boxwell Brothers Funeral Home of Spearman and Ellis Funeral Home of Midland.

Dan was born April 17, 1949, in Perryton to T. Ray and Sylvia Martin Robertson of Spearman. He grew up in Spearman and graduated from Spearman High School in 1967. Armed with little more than an outsized sense of curiosity and a music scholarship, Dan left Spearman to attend West Texas State University in Canyon. He later enrolled at the University of Texas after following Donna Freeland, the love of his life, to Austin from Dallas, and became intrigued with political work. In spite of the considerable time and effort he devoted to both, he still managed to graduate with honors in 1976, earning a Bachelor of Arts degree in government.

Dan and Donna were married on July 31, 1971, in Austin, and both worked there while completing their degrees at the University of Texas. During that time, and after graduation, Dan worked on a number of political campaigns, resulting in an invitation to join the staff of Congressman Bob Krueger. In 1979, Dan joined Atlantic Richfield Co. (ARCO) to work in public affairs. While working for ARCO, Dan and Donna - and their growing young family - lived and worked in Houston, Dallas and then Midland. At ARCO, Dan served in numerous executive positions including director of government affairs with key responsibilities for legislative policy. Throughout his life, Dan earned the respect and admiration of colleagues and elected officials across the country. Though his work regularly took him to Washington, D.C., and many state capitols, Dan never left Texas behind. Instead, he took it with him everywhere he went, enough so he was able to leave a little behind with those people who didn't have any. They were always grateful for it.

Dan's work, extensive travel and wide-ranging experience with people in government and politics provided him with a limitless supply of human interest stories. He had great appreciation for family, friends, art, music and people in general, and his engaging personality and insight helped others learn, laugh and love from each of his tales.

At the time of his death, Dan was president of 180 Petroleum in Midland and was an oil and gas investor and consultant. He was an active member in the Permian Basin Petroleum Association, the Texas Alliance of Energy Producers and the Petroleum Club of Midland. He was a past director of the Texas Lyceum Association with much of his public affairs work focused in Austin. Dan was a longtime participant on the Legislative Committee of the Texas Oil and Gas Association in Austin. In Midland, Dan was active in numerous oil and gas activities. He served for about a year as editor of the Oil Report for the Midland Reporter-Telegram, and also served on the Permian Basin Workforce Development Board, was a member of the Midland Wildcat Committee and the committee overseeing the refurbishment of the Permian Basin Petroleum Museum. Dan also served on the board of Midland Community Concerts and was a constant advocate and supporter of the Save the Girls collection of the American Airpower Heritage Museum.

Of all the things that this young boy from Spearman was able to experience and accomplish in his life, nothing was more important, or made him prouder than his loving wife and the two remarkable young men who are his sons. As he often said of them, "Bless their hearts."

Survivors include his wife, Donna Freeland Robertson of Midland; two sons: his elder son, Duncan Robertson and wife Stephanie of Austin and Stephen Robertson and wife Leah of Midland; a sister, Brenda Annen and husband Claude of Dimmitt; an aunt, Sybil Miller and husband Billy of Spearman; a sister-in-law, Peggy Betz and husband Dennis of Houston; and several nieces and nephews.

In lieu of flowers, the family suggests memorials be to Save the Girls Collection, American Airpower Heritage Museum, P.O. Box 62000, Midland, TX 79711; Permian Basin Petroleum Museum, 1500 W. Interstate 20, Midland, TX 79701; or to a favorite charity.

KRISTI RENEE JONES

AMARILLO - Kristi Renee Jones, 42, of Amarillo died Sunday, December 14, 2008.

Services were at 1 p.m. Wednesday, December 17, 2008 in Minton/Chatwell Funeral Directors Minton Memorial Chapel in Borger with Dick Marcear, minister of The Colonies Church of Christ in Amarillo, officiating. Burial was in Eastlawn Garden in Highland Park Cemetery.

Kristi was born March 3, 1966, in Borger. She was a teacher at Sanford Frith High School, Spearman High School and Vega High School.

Survivors include her parents, Lonnie and Vonna Jones of Amarillo; and two brothers, Steven Jones of Allen and Mark Jones of Bakersfield.

The family suggests memorials be to High Plains Children's Home, 11461 S. Western St., Amarillo, TX 79118.

WANDA LOU WIDENER

SPEARMAN - Wanda Lou Widener, 74, died on Tuesday, December 16, 2008.

Funeral services will be held at 10:30 a.m. on Friday, December 19, 2008 at the First Baptist Church in Spearman with the Rev. Jim Medley and Rev. Nick Widener officiating. Interment will be at Hansford Cemetery under the direction of Boxwell Brothers Funeral Home in Spearman.

Wanda was born on November 23, 1934 in Clinton, OK to Fay and Lucille Stiles. She married Ted Widener on June 19, 1953 in Clinton, OK. She was a bookkeeper and a member of the First Baptist Church of Spearman.

Survivors include her husband, Ted of Spearman; a son, Steve Widener of Amarillo; a daughter-in-law, D'Anda Widener of Spearman; a sister, Jeanine Irby of Alamogordo, NM; a granddaughter, Leslie McLaughlin of Spearman; a grandson, Brett Widener of Spearman; a great-grandson, Brice McLaughlin of Spearman; a great-granddaughter, Rilee McLaughlin of Spearman; and three nieces, Denise Baker of Roswell, NM, Renee Teller and Cheree Dennett, both of Alamogordo, NM.

She was preceded in death by her parents, Fay and Lucille Stiles; and a son, Larry Widener in 2002.

The family requests memorials be to Hansford Hospice, 707 S. Roland, Spearman TX 79081; or the American Cancer Society for Pancreatic Cancer Research, 3915 Bell St., Amarillo TX 79109.

MELVIN L. MITCHELL

GRUVER - Melvin L. Mitchell, 66, died Tuesday, December 16, 2008. Graveside services will be held on Friday, December 19, 2008 at 2 p.m. in Gruver Cemetery with the Rev. Gene Greer officiating. Interment will be under the direction of Boxwell Brothers Funeral Home of Spearman.

Melvin was born on September 13, 1942 in Montague County, Texas. He married Marion Phillips on May 2, 1963 in Gruver, TX.

He was a dirt contractor, and owned and operated Mitchell Dirt Contracting. He was a member of the First Baptist Church of Gruver.

Melvin was preceded in death by his mother, Ruby Lee Mitchell.

Survivors include his wife, Marion Mitchell of Gruver; a son, Marlon Mitchell of Gruver; a daughter, Cheryl Lindsey of Gruver; a brother, Larry Don Mitchell of Gruver; his father, Leroy Mitchell of Nocona, TX.; and three grandchildren.

MONUMENTS

Boxwell Brothers Funeral Home

519 Evans • Spearman
659-3802

Dear friends,
 When you buy a monument from us we make sure it is exactly what you want at a price you can afford. If it is not right, we will make it right. And you will not have to search the countryside to find us. We are here when you have a need.
 Sincerely,
 Bob Boxwell



KICK BACK. RELAX. AND EXPERIENCE NORMAN'S NEWEST HOTEL.

With spacious two-room suites, exceptional dining and unrivaled amenities, the new Embassy Suites Norman is the area's premier place to spend the night. Plus, we're located right where you want to stay - minutes from downtown Oklahoma City and only five miles from the University of Oklahoma. Book our Drive & Stay Package and you'll save 10%.

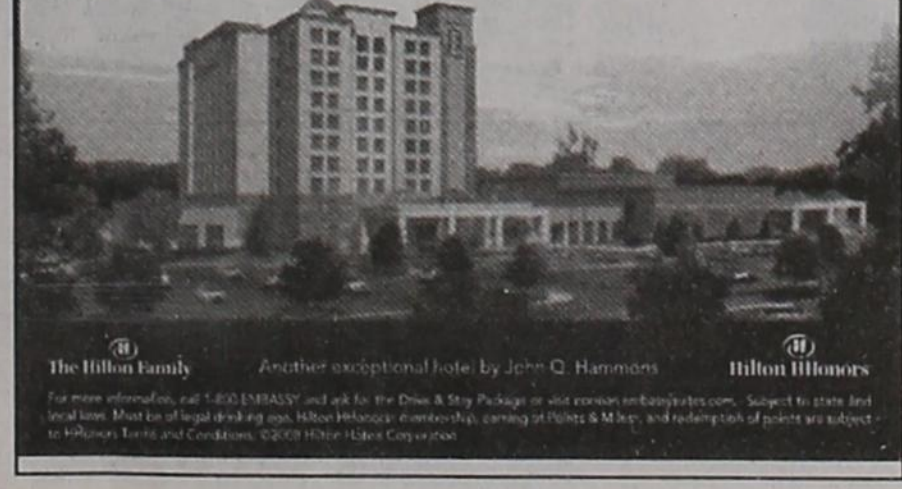
Call 1-800-EMBASSY and ask for the Drive & Stay Package.

- Spacious two-room suites
- Complimentary cooked-to-order breakfast
- Evening Manager's Reception

Drive & Stay Package Save 10%*

*Must present this ad to receive promotional rate. Based on availability. Not available on special event dates. Offer good through 12/31/09.

EMBASSY SUITES®
 Norman - Hotel & Conference Center
 2501 Conference Drive, Norman, OK 73069
 Tel: 405-364-8040
 Fax: 405-364-3377
 norman.embassysuites.com



Replenish the seed of faith through . . . DAILY BIBLE READING, PRAYER & REGULAR CHURCH ATTENDANCE

- | | | | |
|---|--|--|---|
| <p>Spearman</p> <p>Apostolic Faith Church
 822 S. Dressen • 659-2870
 Sunday School: 10 a.m.
 Worship Service: 11 a.m.
 Sun. Eve.: 6 p.m.
 Wed. Prayer Mtg.: 7 p.m.
 Pastor - Roland Haney</p> <p>First Assembly of God
 401 N. Bernice • 659-2295
 Sunday School: 9:30 a.m.
 Worship: 10:40 a.m.
 Evening Worship: 6 p.m.
 Wed. Worship: 7 p.m.
 Wed. Youth: 7
 Pastor - Jerry Pollard</p> <p>First Christian Church (Disciples of Christ)
 29 S. Bernice • 659-2036
 Sunday School: 9:45 a.m.
 Worship: 10:50 a.m.
 Minister -</p> <p>First Baptist Church
 123 N. Bernice • 659-5557
 Sunday School: 9:45 a.m.
 Worship: 11 a.m.
 Evening Worship: 7 p.m.
 Men's Bible Study - Wed., 7 a.m.
 Children's Choir - Wed., 6 p.m.
 Adult Choir - Wed., 7 p.m.
 Wed. Bible Study: 7 p.m.
 Pastor - Jim Medley</p> <p>Church of Christ
 121 S. Haney • 659-3244
 Sunday Bible Class: 9:45 a.m.
 Worship: 10:30 a.m.
 Evening Worship: 6 p.m.
 Bible Study Wed.: 7:30 p.m.</p> | <p>Sacred Heart Catholic Church
 901 Roland • 659-2792
 Sat. Night Mass: 5:30 p.m.
 Sun. Mass: 9 a.m. - English
 Sun. Mass: 11:30 - Spanish
 1:30 p.m. - Gruver - Christo
 Rectorator Mass - Spanish
 Rev. Guillermo Morales</p> <p>First United Methodist
 407 S. Haney • 659-5503
 Sunday School: 9:45 a.m.
 Worship: 8:30 & 11 a.m.
 Jr. High Youth: 5 p.m. Sunday
 High School: 6 p.m. Sunday
 Kids Club: 3 p.m. Wed.
 Pastor - Neely Landrum</p> <p>Grace Presbyterian Church (Worships with Faith Lutheran Church)
 1101 Bernice • 659-2033</p> <p>Faith Lutheran Church (ELCA)
 1101 Bernice • 659-2252
 Sunday School: 9:45 a.m.
 Worship: 11 a.m.
 (Worships with Grace Presbyterian Church)
 Pastor - Cecil Biggers, PLM</p> <p>Union Church
 31 S. Endicott • 659-2644
 Sunday School: 10:00 a.m.
 Worship: 11:00 a.m.
 Bible Study: 7 p.m. Wed.
 Youth Service: 6 p.m. Wed.
 Pastor - Don Baltazor</p> <p>Fellowship Baptist
 1102 S. Archer • 659-2783
 Sunday School: 10 a.m.
 Worship: 11 a.m.
 Sun. Evening Worship: 6 p.m.
 Youth/Adult Service: 7:30 Wed.
 Pastor - James Washburn</p> | <p>Primera Mision Bautista
 502 E. 7th • 659-3991
 Sunday School: 9:45 a.m.
 Worship: 11 a.m.
 Evening: 6 p.m.
 Wed. Prayer Meeting: 7 p.m.
 Thurs. Visitation: 7 p.m.
 Pastor Joe Garcia Jr.</p> <p>El Aposento Alto U.P.C.I.
 1105 S. Roland
 Domingos: Escuela-Dominical - 10 a.m.
 Culto Evangelistico - 7 p.m.
 Jueves: Oracion - 8 p.m.
 Mier: Estudio Biblico - 7 p.m.
 Pastor - A.G. Martell
 (806) 659-2153</p> | <p>Gruver United Methodist
 Broadway & Garrett
 733-2651
 Sunday School: 9:45 a.m.
 Worship: 8:30 & 10:50 a.m.
 Eve. Worship & UMY: 6 p.m.
 Pastor - George Price</p> <p>Spanish Cristo Redentor Church
 Sunday Mass: 1:30 p.m.
 Friday Evening Mass
 Summer - 8:00 p.m.
 Fall/Winter - 7:30 p.m.</p> |
|---|--|--|---|

He has showed you, O man, what is good. And what does the LORD require of you? To act justly, and to love mercy and to walk humbly with your God.

Micah 6:8

This feature is made possible through the sponsorship of these civic minded businesses:

<p>Deakin</p> <p>ELECTRIC</p> <p>OILFIELD • RESIDENTIAL • COMMERCIAL 321 S. MAIN • SPEARMAN 1-800-999-1506 Chris Deakin 806) 659-5016 President</p>	<p>Bartlett's Lumber & Hardware</p> <p>105 W. Broadway • Gruver, Texas (806) 733-2404</p>	<p>BERRY CLEANERS</p> <p>Ann & Vernon Pipkin - Owners Phone 659-3122 • P.O. Box 1017 207 Main St. • Spearman, TX</p>	<p>Morse Implement & Auto Supply</p> <p>"Join us in church"</p> <p>Tom Dortch 733-2668 Box 89 • Morse, TX 79062</p>
<p>PRAIRIE MOTORS INC.</p> <p>Hwy. 207 South • P.O. Box 430 Spearman, TX 79081 • (806) 659-2541 www.prairiemotors.com</p>	<p>MurMur's Cafe</p> <p>100 Roland St Spearman, TX. 659-3580</p>	<p>Hansford County Reporter-Statesman</p> <p>"Proudly Serving Hansford County Since 1907"</p> <p>(806) 659-3434 310 Barkley • Spearman, TX</p>	<p>INTERSTATE BANK, sss</p> <p>www.interstatebank.net 322 Main • P.O. Box 146 Spearman, TX • 659-2559</p>



Medical Fund for Krystal Puentes
An emergency medical fund has been established for Krystal (Burkhammer) Puentes at First National Bank, Spearman. If you would like to make a contribution you may make a deposit with any teller or mail a donation to First National Bank, Krystal Puentes Medical Fund, PO Box 337, Spearman TX 79081.

Medical Fund for Rene Griffin
A medical fund has been established for Rene Griffin at First State Bank, Spearman. If you would like to make a contribution you may make a deposit with any teller or mail a donation to First State Bank, Rene Griffin Medical Fund, PO Box 247, Spearman TX 79081.

Medical Fund for Bruce Duncan
An emergency medical fund has been established for Bruce Duncan at First National Bank, Spearman. If you would like to make a donation you may make a deposit with any teller or mail a donation to First National Bank, Bruce Duncan Medical Fund, PO Box 337, Spearman TX 79081.

Medical Fund for Nancy DeLuna Jernberg
An emergency medical fund has been established for Nancy DeLuna Jernberg of Stinnett. Nancy was recently diagnosed with a rare malignant brain tumor and will be undergoing treatment. If you would like to make a contribution you may make a deposit with any teller or mail a donation to H&H Federal Credit Union, 104 Main Street, Stinnett TX 79083.

Hansford County Courthouse Holiday Hours
Hansford County Courthouse offices will close for Christmas at 12:00 noon on Wed. Dec. 24 and reopen Monday, Dec. 29 at 8:00 a.m.

Beginning EMT Classes Scheduled
Beginning EMT classes will begin January 21, 2009. Call the City of Spearman at 659-2524 for more information, or to sign up.

Remember When
Christmas memories... aren't they great? Hillside Christian Church, 6100 Soncy, Amarillo, invites you and your family to make a memory this year as you join us for a light-hearted look at Christmas traditions of the past. Sped an evening with us celebrating all the fun traditions that make the holidays special while enjoying your favorite holiday music, from traditional Christmas hymns to lighter holiday favorites. Performances will be held at 7 p.m. each evening, December 18-14. Doors open at 6:30. A Matinee performance will be held at 3 p.m. on Sunday, December 14, with doors opening at 2:30 p.m. Complimentary tickets are available Monday through Thursday from 12 noon-5:30 p.m., and any Sunday morning at church. For more information, please call (806) 457-4960 or visit the church Web site at www.hillsidewired.com.

Region 16 ESC offers Free GED Preparation Software
Region 16 ESC is offering free GED preparation software for students interested in obtaining a GED. You will also have access to a free online GED prep program through the public library. If you are interested in finding out more information about these services, please contact: Cindy Blackman at 659-3233, Maria Carbajal or Margaret Ruttman at 659-2231 or stop by the Hansford County Library.

Spearman Lynx Basketball Fundraiser
The Spearman Lynx Varsity basketball players are painting paws on driveways (\$15 each or 2 for \$25) to raise money for tournament expenses this year. If you are interested in purchasing paws, please contact Coach Jr. Ashmore or any member of the Lynx basketball team.

SHS Band Selling Discount Cards
Spearman HS Band is selling the discount band cards for \$10 ea. Good for 1 yr. The Band has a trip in the spring and needs your support. Contact Jerry at 659-2563 ext. 3005 or Sherrie at 659-2584 ext. 2202.

GISD Offering Reward for Information
Gruver Independent School District is offering a \$1,000 reward for information that leads to the arrest and conviction of the person or persons who burglarized two Gruver teachers homes between October 17-19 2008. If you have any information, contact: Troy Seagler at 806-733-2477, Micah Davis at 806-733-2081, David Teal at 806-733-2001 or the Hansford County Sheriff's Office at 806-733-2901.

Web Page Development - Level 1 Class
There have been some inquiries expressing an interest in a "Web Page Development" class. If you are interested in taking this class, contact Cindy Blackman, at 659-3233 or cindy.blackman@region16.net.

Child Find
Your school district is looking for children ages 3-21 years who may be slow in developing communication skills, social interactions, walking skills and/or have major physical disabilities. We want to give your child the chance to receive the extra help he/she needs, if the disability interferes with his/her education. Please call your elementary campus to get more information or call Perryton SSA, 435-4412. Our staff will answer your questions about early intervention.

Gruver Elementary Collects Register Tapes for Education
Gruver Elementary is participating in the Lowe's Marketplace Register Tapes for Education. Gruver Elementary is also collecting the pink Box Tops for Education and the yellow UPC bar code Labels for Education from Campbell and Swanson products. You can deposit your register tapes, pink Box Tops and UPC Bar Codes in the Elementary School Lobby, City Library, City Hall, Night & Day Beauty Salon or Hitchin' Nails Salon. Jo Clawson will also collect them at 711 Womble. Please help us earn free education equipment by collecting these items.

Don't Wait to Find Help for Someone Who is Addicted
Trying to help someone who's having a problem with drugs or alcohol? Substance abuse all too often leads to accidents, arrest, illness, financial hardship and even homelessness and death. Don't wait to find help for someone you love. Call Narconon Arrowhead drug rehabilitation and education center for a free addiction consultation or referral to treatment in your area. Call 1-800-468-6933 or visit www.stopaddiction.com.

Beware of FAFSA Web Scam
Seniors, senior parents, and parents of college students should use the web site www.fafsa.ed.gov when filling out their Free Application for Federal Student Aid (FAFSA) online. There is currently a website that has found an interesting way to get in the college-bound's pocket. Known as fafsa.com, the website charges a fee for submitting the application. There is no fee for submitting the fafsa form on the www.fafsa.ed.gov site.

You're Never Alone - Narcotics Anonymous Group
Each year individuals struggling with drug and alcohol addiction make the resolution to quit using drugs. For many of them it is a resolution that they cannot keep. Narcotics Anonymous can help. Open meetings are held on Monday and Thursday nights from 8-9 p.m. at the First Christian Church (29 S Bernice, Spearman) for the "You're Never Alone" group of Narcotics Anonymous. Anyone interested is invited to attend. Drug addiction can leave an individual feeling helpless and out of control - we can help.

Spearhead AA Group
The Spearhead AA Group meets every Tuesday at 8 p.m. in the Pittman-Shieldknight building. Alcoholics Anonymous is a fellowship of men and women who share their experience, strength and hope with each other that they may solve their common problem and help others to recover from alcoholism. The only requirement for membership is a desire to stop drinking. There are no dues or fees for AA membership; we are self-supporting through our own contributions. AA is not allied with any sect, denomination, politics, organization or institution; does not wish to engage in any controversy, neither endorses nor opposes any causes. Our primary purpose is to stay sober and help other alcoholics to achieve sobriety. For more information, call 662-1111.

Panhandle Crisis Center Outreach Office
Panhandle Crisis Center (PCC) has an Outreach Office and Resale Store at 306 Hancock, in Spearman. In case of emergencies, please continue to call the hotline, 1-800-753-5308. To schedule an appointment with a worker in Hansford County, please call 659-3391 to leave a message, or call the hotline number above. Panhandle Crisis Center serves victims of domestic violence and sexual assault. Please call for more information regarding PCC's services. Hours for the Resale Store in Spearman are: Monday, Tuesday, Thursday & Friday from 10 a.m.-5 p.m.

Breast Cancer Screening Clinic
The Don and Sybil Harrington Cancer Center Comprehensive Breast Center will conduct a Breast Cancer Screening Clinic at Hansford County Hospital, 707 S Roland, in Spearman the fourth Monday of each month. Breast cancer affects one in eight women. The key to winning the battle against cancer is early detection by having an annual breast exam, mammogram and performing a breast self-exam each month. Funding is available through the Texas Department of Health for Texas residents who qualify for assistance. All exams are done by appointment only. Call (806) 356-1905 or 1-800-377-4673 for more information or to schedule an appointment.

Words from Faith & Grace
by Cecil R. Biggers, Lutheran Lay Minister



During the third week of Advent we learn of Joy, as we study Isaiah 61:1-4, 8-11, Luke 1: 47-55, 1 Thessalonians 5:16-24, and John 1:6-8, 19-28.

Isaiah's text is the subject of Jesus' first sermon in Nazareth. It reveals things that were important to Jesus; it is revolutionary. The Spirit of God [Hebrew = ruach] is upon the Servant. He is to bring good news to the oppressed, to bind up the broken-hearted, to proclaim liberty to the captives, and release to the prisoners. God is intervening in human history! The Lord will cause righteousness and praise to spring up before all nations. A gospel of Joy to those who are despised by the world.

In Luke, the revolution continues. A young girl [think of a 7th or 8th grade girl you know] becomes pregnant by the Holy Spirit [Hebrew = ruach] and is to bear the Son of God! From what we know of Mary, she was a young, serving girl. She was not the smartest, not the richest, not socially elite. She was chosen of God. In this scripture, Mary's older cousin, Elizabeth, has become pregnant in her older age. Together these two women, one older, one younger, are prophets to the Good News. Revolutionary! The prophet of God is to be born of an older woman. The King of Creation is to be incarnate of a poor woman. Mary sings a song of praise that we call "The Magnificat". Disregarding the strains of Handel's, "The Messiah", hear the words: God respects the poor. God feeds the poor. God helps the poor. God remembers the poor. This is the stuff of moral revolution, of social revolution, of economic revolution. God keeps his promises!

The Apostle John tells us that John the Baptist was not the Light, but came to point to the Light. When approached by the Pharisees, perhaps sent by the Sanhedrin who were charged with dealing with false prophets, John denies that he is the Messiah, John denies that he is Elijah, John denies that he is an expected prophet (either Jeremiah or Isaiah). When asked what he says about himself, John the Baptist quotes Isaiah, I am the voice of one crying in the wilderness, "Make straight the way of the Lord." John tells the Pharisees that the Messiah has come and is among them. John the Baptist is like us; we as believers are to point others to the Light.

May the Holy Spirit [ruach] fill you with joy as we prepare to celebrate the birth of our Savior and as we prepare to experience His return. Maranatha!

Words from Faith & Grace
by Cecil R. Biggers, Lutheran Lay Minister



In the fourth week of Advent we learn lessons of Love, as we study 2 Samuel 1:1-11,16, Psalm 89:1-4,19-26, Romans 16:25-27, and Luke 1:26-38.

Our Old Testament lesson has the prophet Nathan telling David to go ahead with his plan to build a house (temple) for God. Nathan is told by God to go back to the King and deny him the right to build a Temple for God; but, God promises David that God will build a house (dynasty) for David that will last forever. Later the prophets Isaiah, Jeremiah, and Ezekiel, growing weary of the number of bad kings in David's line, announce that God's promise will be fulfilled in the future. The hope of Messiah is born!

The Psalmist sings a song of praise for God's steadfast love and his covenant with David. In this Psalm, God promises that if David's line should forsake God's law and not walk according to God's plan, God will punish them, but God will not forget his promise to David.

Paul writes a benediction to his letter to the Romans. In prior verses 17-20, Paul focuses on men who like wolves will attempt to tear asunder the flock of the faith community; here Paul focuses on God. God is the source of all our blessings. God strengthens us and allows us to endure the attacks of "wolves". God reveals to us the "mystery" of his salvation through Jesus Christ, Our Lord.

Thus, God brings us to the obedience of faith, which is for His glory. In Luke we read the story that has come to be called "The Annunciation".

The angel Gabriel appears to young Mary and tells her that she will bear a son, who will be named, Jesus. "He will be great, and will be called the Son of the Most High, and the Lord God will give to him the throne of his ancestor, David. He will reign over the house of Jacob forever, and of his kingdom there will be no end." Mary questions how this could be as she is a virgin. Gabriel explains that the Holy Spirit will come upon her. And he explains that her older cousin, Elizabeth has already conceived, showing that nothing is impossible with God. Mary, the young serving girl, says, "Here am I, the servant of the Lord; let it be with me according to your word."

We prepare to celebrate the miraculous birth of Our Lord, Jesus Christ as we prepare our hearts for his return. May the Holy Spirit fill you heart with God's love now and forever. Maranatha!

You are invited to a **Wedding Shower** honoring **Brittany Morris** (bride-elect of Dustin Borden) on **Saturday, January 3, 2009** from **10:00-11:30 a.m.** in the home of Mrs. Terry Sherrill 103 Etling Gruver, TX

Merry Christmas from Heaven

I still hear the songs
I still see the lights
I still feel your love
on cold wintry nights

I still share your hopes
and all your cares
I'll even remind you
to please say your prayers

I just want to tell you
you still make me proud
you stand head and shoulders
above the crowd

Keep trying each moment
to stay in his grace
I came here before you
to help set your place

You don't have to be
perfect all the time
He forgives you the slip
if you continue the climb

To my family and friends
please be thankful today
I'm still close beside you
in a new special way

I love you all dearly
now don't shed a tear
Cause I'm spending my
Christmas with Jesus this year

written by John W. Henry Jr.

We love and miss you!
Larry, Mom, Amanda and Amber; Papa and Stans;
Paul and Xim; Victor, Patty, Gonnev and Victoria



Engagement Announcement

Kevin Hinds of Richardson, TX and Mary Nell Hinds of Richardson, TX wish to announce the engagement of their daughter, Kathy Hinds, to Carlos (Hernandez) Lopez. Carlos is the son of Maria Hernandez of Amarillo, TX and Mark and Margy Schoenhals of Spearman, TX.

Kathy is the granddaughter of Leslie and Hilda Hinds of Midland, TX and the late Clarence and Jody Miller of Gilliland, TX.

Carlos is the grandson of Jose Angel and Anselma Martinez of Mexico.

The couple will exchange vows on February 21, 2009 in Dallas, TX at Westlake Park. A reception will follow the ceremony.

Kathy attended West Texas A&M University and graduated in 2004 with a Bachelor of Science degree in Mass Communications. She is an Account Manager for The Trade Group (a Marketing firm in Carrollton, TX).

Carlos attended West Texas A&M University and graduated in 2004 with a Bachelor of Science degree in Mass Communications.

He is a Promotions Account Executive at Lopez Negrete (a Hispanic advertising agency in Houston, TX).

Dec. 21-27 Hanukah
Dec. 21 Winter Solstice
Dec. 25 Christmas Day
Dec. 26 Kwanzaa

All Occasion Flowers

202 N. Bernice (across from the Post Office)
659-5180 • Spearman

Celebrate
Gifts for all your celebrations!

Bridal Registry

Brittany Morris & Dustin Borden - 1/3
Kathy Hinds & Carlos Lopez - 1/24
Dusty Desmond & Clayton Thompson
Lisa Espinosa & Dave Pope
Lauren Payne & Steven Haney
Macy Harbour & Kevin Beedy
Madeline Reed & Jeremy Schank

Baby Registry

Kaisi (Foster) & Andy Cunningham - 12/13
Kelci & Jordan Brock - 12/28
Courtney & John Brock - 12/28
Christen (Ferguson) & Bradley Brown
Tara & Chad Gardiner
Janae (Watley) & Kyle Igo

Celebrate

203 Main St. Spearman, TX
(806) 659-3350 1-800-663-8026

Hansford County Basketball

Athlete of the Week

Jordan Ashmore of Spearman was named to the Amarillo-Globe-News Athlete of the Week Honor Roll on Tuesday, December 16, 2008. Ashmore averaged 28 points, 7.6 rebounds and 4 assists at the Vernon Tournament, including a 37-point, 14 rebound 8 assists performance against Borger. The Lynx finished second in the tournament.

Spearman Lynx & Lynxettes

12/11-13/08

Varsity Lynxettes

The Spearman Lynxettes defeated Holliday and Quanah to face Wichita Falls Rider in the championship game at the Vernon Varsity Tournament. They were defeated 48-40 and brought home the 2nd place trophy. Bond Pittman was named to

the All-Tournament Team. Morgan Ashmore scored 20 points and Bond Pittman scored 16 in the championship game.

Varsity Lynx

The Spearman Lynx defeated Vernon and Borger to advance to the championship game on Saturday night in the Vernon Varsity Tournament. The Lynx were defeated by Hereford 62-47, to take 2nd place in the tournament. Jordan Ashmore was named to the All-Tournament Team.

Jordan Ashmore scored 36 points and Brett Winegamer scored 12 in the championship game.

Junior Varsity Lynx

The JV boys played Bushland on Friday, losing 68-39 in the Spearman JV Tournament. They played Fritch for 3rd place on

Saturday, and won 53-40, taking 3rd place.

12/16/08

Junior Varsity Lynxettes

West Texas 26, Spearman 25, (lost in overtime)

Varsity Lynxettes

Spearman 7 24 37 51, West Texas 13 20 30 36
S-Hanna 14, Ashmore 11. WT-Jenna Wilson 13, Chaslyn Tull 7.

Junior Varsity Lynx

JV Boys lost 41-40 - got a foul at buzzer, but both free throws were missed

Varsity Lynx

Spearman 21 32 52 66, West Texas 4 13 27 37
S-Jordan Ashmore 20, Schnell

Gruver Greyhounds & Lady Hounds



12/11-13/08

Varsity Lady Hounds

The 2008 Lady Hounds travelled to Hugoton, KS to compete in the Blue and Red Classic. The Lady Hounds made it to the winner side of the bracket by beating the home team Lady Eagles on Thursday night. On Friday the Lady Hounds defeated the Lady Tigers of Ulysses in the semi-final round, setting up a match-up between last year's champion, Southwestern Heights High School's Lady Mustangs, and the Lady Hounds. Unfortunately, the Lady Hounds proved not up to the challenge as they were defeated in the championship game by a score of 29 to 46. On the bright side, Lynn Vela and Mattie Yanke were selected to the All-Tournament Team, making it two for two for both of these awesome Lady Hounds!

12/16/08

Varsity Lady Hounds

Gruver 11 21 28 48, Canadian 19 34 48 57
G-Yanke 19, Vela 13, C-Senter 12, Merket 12. Records: Canadian 13-1.

Junior Varsity Lady Hounds

Canadian 43, Gruver 35.

LEFT: Mattie Yanke shoots in the game with the Southwestern Heights team from just east of Liberal, KS.

BELOW: Rily Urban dunks the basketball in a game with Ulysses, KS.

(Photos by Charlie Johnson)

Stock Show Registration

submitted by Weston Born

The Hansford County Stock Show is implementing a new online entry application for the 2009 Hansford County Stock Show. You are now able to get online to enter the stock show at <http://hansfo.fairmanager.com>.

On this website you will create your own application, password, user id and submit your information to the Hansford County Stock Show. You will designate what species, what club or organization, and give some information regarding how to contact the exhibitor. You will also designate breed for swine and you will need the animal's identification number which is its tag ID.

This is a new process and is something that will be a continual part of the Hansford County Stock Show, as with anything new we will expect some problems. Please feel free to contact me and I will be able to help you. It is very important to speed the process of the show along, so please complete these applications as soon as possible.

Every stock show requires an online application and it is important that Hansford County Stock Show stay current.

Gruver Ag Farm Project

submitted by Weston Born

It is with great appreciation that I make this Greyhound News. For some time the ag farm project has been something talked about, but now it has become reality. With the approval of Superintendent of Gruver ISD, David Teal, and the board of trustees Curt Fitzgaurd, Jeff Graves, Jeff Purvines, Brent Stedje, Dwayne Thompson, Tracy Venneman, and Teague Winger this Gruver FFA goal began mid September.

Without a doubt this project could not have become an achievement without the help of many volunteers. Volunteers for this project included Buster Davis, Curt Fitzgaurd, Jeff Graves, Mike Grotogut, Kyle Irwin, Darrell Messer, Chris Spivey, Brent Stedje, Johnnie Williams, Ronnie Williams, Mike Yanke, and (Precinct 4) Danny Henson, Joe Robinson and Crew.

These volunteers worked endlessly on two barns that are now the home of twenty-two Gruver FFA and Jr. FFA student projects. The barns are at capacity and make for a great new facility for the students to house their projects.

Volunteers were in charge of the total structure that makes up the enclosed part of each facility. The volunteers framed, insulated, tinned, and ran electricity in the barns along with making automatic watering systems for each individual pen. Volunteers also helped with dirt work to help with water drainage around the barns. The Junior and Senior agricultural classes completed twenty new pens for the buildings and have plans to make individual storage compartments for each pen.

The project also included some contracted labor. These included Lupe Mendoza (plumbing), Ty Seagler (welding of outside hog runs), Gruver Red-Mix (concrete), Kyle Nollner (electricity service), and Kenny Red for all his help. Each of these individuals did a great job on this project.

I would like to thank each of the people mentioned above. I would also like to make a special thank you to the volunteers as this project would not have happened without your diligence and hard work. It is great to be associated with a community that cares so much about each of its schools activities. Please feel free to go and see this new project and please tell each of these volunteers thank you for their time spent in support of the Gruver FFA program.

Gruver Ag Farm Improvements

Gruver ISD would like to say a special "Thank You" to the following volunteers: Buster Davis, Curt Fitzgerald, Jeff Graves, Mike Grotogut, Kyle Irwin, Darrell Messer, Chris Spivey, Johnnie Williams and Ronnie Williams for the many hours spent on the construction of the ag farm buildings. The construction cost for the new buildings went from \$100,000 to \$50,000, because of the many volunteer hours spent on this project.



Spearman Lynx & Lynxettes

<http://spearmansports.smugmug.com>

Photos available of Spearman Lynx and Lynxette athletic events.





Tong's Chinese Restaurant


(806) 644-2838
22 Archer Street • Spearman

Buffet Specials

Monday: Chicken w/Spiced Salt, Mongolian Beef, Sweet & Sour Chicken, Fried Rice, Etc. - \$6.75
Tuesday: Grilled Pork Chop, Black Pepper Chicken, Rice Noodles, Egg Roll, Etc. - \$6.99
Wednesday: Fried Shrimp, BBQ Chicken, Pork Sub Gum, Chop Suey, Lo Mein, Etc. - \$6.99
Thursday: BBQ Pork Ribs, Pepper Chicken, Won Ton Soup, Seafood Bun, Etc. - \$6.99
Friday: Shrimp w/Spiced Salt, Sesame Chicken, Broccoli Chicken, Rangoon, Etc. - \$7.25
Saturday: Catfish, Pepper Steak, Egg Drop Soup, Stir-Fry Mixed Vegetables, Etc. - \$7.25
Sunday: Roast Beef, Grilled Shrimp, Biscuits, French Fries, Mushrooms, Etc. - \$7.25

Lunch Buffet 11 a.m.-2:30 (7 Days A Week)

Dinner Buffet 5:30-9 P.M. (Monday-Saturday)




The Spirit of Christmas

12th Annual
Community Christmas Dinner

Where: The O'Loughlin Center
When: December 25th • 12:00-1:30 p.m.
What: A free dinner will be provided for anyone in the community who would like to share the Christmas spirit with food and fellowship.

Everyone is invited for this special occasion.

Rides will be available to and from the O'Loughlin Center.
Call 659-3550, 659-3584 or 659-3434
and leave message if you need transportation.



HELP WANTED

HELP WANTED: Gigot Agra Products, Valley Center Pivot Dealer, is seeking additional service technicians at our Spearman location. Experience desired, but not required. Benefit package is available. Send resume to PO Box 1413, Guymon OK 73942, or call 580-338-2536 or 806-659-3121. TFN(9-18-08)B

HELP WANTED: General mechanic for automotive, irrigation work and tire repair. Tools provided. Apply at Morse Implement and Auto Supply in Morse. Call 06-733-2668. Ask for Tom or Gary. Good pay and working conditions. TFN(10-02-08)

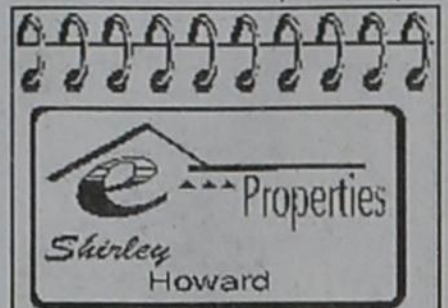
HELP WANTED: Hansford County Library is now accepting resumes for part-time employment. Position includes working with the public and some computer knowledge. Must be able to multitask. Send resumes to 122 Main, Spearman TX 79081. TFN(11-13-08)B

HELP WANTED: Shop man to per-

form oil changes and minor mechanical repairs. Apply at Frontier Feedyard or phone 806 882-4251, and ask for Ben. ESOP, Benefits, and ESOP. TFN(12-04-08)B

HELP WANTED: Duties include elevator operations, warehouse and fertilizer maintenance, some clerical and computer. English a must, bilingual is good. Must have valid driver's license. Good Benefits, vacation, insurance, and retirement. Contact Sandy Earp, Spearman Equity, 104 Collard, Spearman, TX. 806-659-2420 or 806-270-0073. TFN(12-11-08)B

HELP WANTED: First State Bank is now taking applications for a full time building and yard maintenance person. Applicant should be self-motivated, have mechanical skills and be in good health and physical condition. A strong work ethic is a must. Benefit program includes group hospitalization insurance, retirement, paid vacation and a sick leave program. Contact Ginger Turner, 659-5565. An Equal Opportunity Employer. 2(12-18-08)B



Shirley Howard
We're out of houses!
We NEED listings!
Call us now
to help YOU sell
your home for top dollar!

Shirley Howard, Broker/Owner
806-886-6536, Cell
Melinda McCullough, Realtor
(806) 733-5678

We would LOVE to sell
your HOUSE!
CALL US!

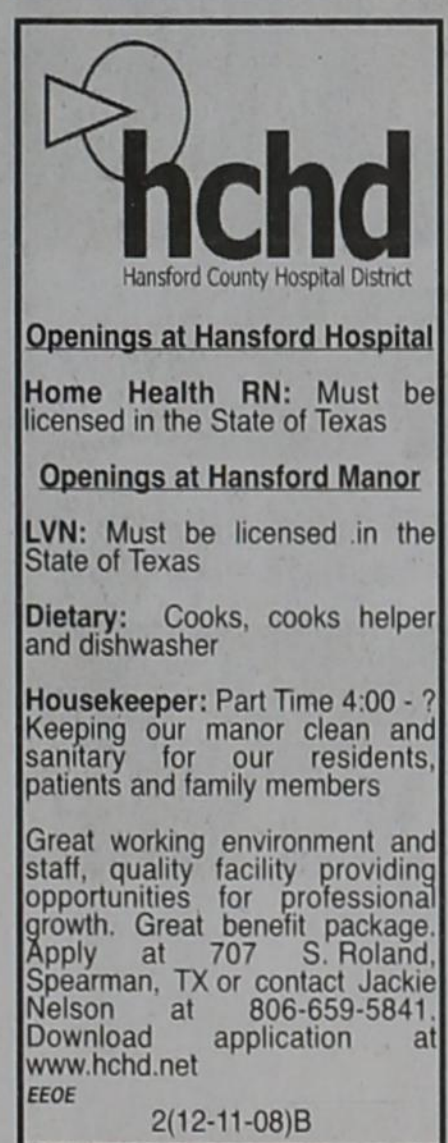


Golden Spread Realty
101 Wanda Dr., SPEARMAN - 1,321 sq. ft., 3BR, 1B, fireplace.
Gina Deal, Broker/Owner
(806)435-5444
www.century21.com
INDEPENDENTLY OWNED & OPERATED.
©1992® and TM Century 21 Real Estate Corporation. Equal Housing Opportunity. EOW(12-11-08)B

Blankenship Real Estate
659-3052 - 670-3774

Beauty Salon (Spearman) - 1-3 Bays, fixtures & inventory included.
3BR/1B Home (Spearman) - 2 living areas, nice backyard, UNDER CONTRACT close to school and hospital!

NEW LISTINGS WANTED!
Eulalia Blankenship - Sales
Eschol Blankenship - Broker



Hansford County Hospital District

Openings at Hansford Hospital
Home Health RN: Must be licensed in the State of Texas

Openings at Hansford Manor
LVN: Must be licensed in the State of Texas

Dietary: Cooks, cooks helper and dishwasher

Housekeeper: Part Time 4:00 - ? Keeping our manor clean and sanitary for our residents, patients and family members

Great working environment and staff, quality facility providing opportunities for professional growth. Great benefit package. Apply at 707 S. Roland, Spearman, TX or contact Jackie Nelson at 806-659-5841. Download application at www.hchd.net
EEOE
2(12-11-08)B



MARTIN & ASSOCIATES REALTY

Serving Hansford County for 14 years
Julie Martin, Broker - 659-2425

IN SPEARMAN
1111 S. Townsend - Split level, 3/2/1 Are you looking for a home with that brand new feeling? This home has been redone throughout- all new flooring, paint, fixtures, baths, remodeled kitchen w/new appliances, granite counter tops, split level deck. REDUCED! 703 Collier - 3/1/1 SOLD day - Let's Make a Deal!
1005 S. Bernice - 3/2/2 bath, 2100 sq ft w/fireplace
We'd Like Your Listing FOR QUALITY & SERVICE CALL US TODAY!
Equal Housing Opportunity

HELP WANTED: Dental Hygienist wanted for a busy, fast paced, expanding dental practice. We have a large patient base with a well established recall program. Our Hygienist also performs non-surgical periodontal treatment and placement of sealants. Applicant must be energetic, possess a positive attitude and have outstanding people skills. Mail or hand deliver resume to Zoel G. Allen II, DDS, 19 Southeast Fifth Avenue, Perryton TX 79070. 2(12-11-08)B

SERVICES

HOOCHY POOCHY PARLOR Call us for all your pet's grooming and boarding needs. Call now for reservations! 806-273-2724. TFN(11-2-07)

Are You A Victim of Domestic Violence, Sexual Abuse or Physical, Emotional or Sexual Assault?

Call Toll Free Hotline
1-800-753-5308

Battering Intervention & Anger Management Available

Panhandle Crisis Center
Serving Hansford, Lipscomb & Ochiltree Counties
301 S. Ash - Perryton, TX
Memorials Accepted



Cates Men & Boys
221 Main Street
Spearman, Texas
(806) 659-3426
Mon.-Sat., 9 a.m.-6 p.m.

FREE DIRECTV 4 ROOM SYSTEM!

265+ ALL DIGITAL CHANNELS!
130 HD CHANNELS!
Channel Pkgs. Start \$29.99 / mo

FREE HBO, Showtime & Starz for 3 Months!
Packages Start only \$29.99
FREE DVR/HD
No Start Up Costs!
We're Local Installers!

Toll Free 800-214-7110

Stop being gouged by cable!

dish NETWORK Authorized Retailer

Basic Programming Starting at \$24.99 Includes Locals

Ask how to get: Free DVR and Free iPod
Call 1-800-886-8849
High Speed Satellite Internet available everywhere!

Industrial or Toxic CANCER

EXPERIENCE COUNTS
Lawyers with over 85 years combined experience.

may occur 15 to 50 years after exposure. **MESOTHELIOMA or LUNG CANCER** may be caused by asbestos exposure, **ACUTE MYELOID LEUKEMIA** by Benzene exposure and **MELANOMA, KIDNEY or BLADDER CANCER** by coal tar pitch exposure. Family members may also be exposed by dirty clothes. Call us for professional insight.

Ryan A. Krebs, M.D., J.D. Doctor-Lawyer in Full-time Law Practice
Richard A. Dodd, L.C.
Timothy R. Cappolino, P.C.
Board Certified Personal Injury Trial Law and Civil Trial Law by the Texas Board of Legal Specialization
NO FEE FOR FIRST VISIT
CAMERON, TEXAS
1-888-MESO-FIRM
(1-888-637-6347)
www.AsbestosLaw.com



MITCHELL THEATRES NORTHDRIDGE CINEMA 8
Guymon, Oklahoma
FRESH POPCORN EVERYDAY!
-PARTY ROOM & ARCADE-
Call for Showtimes
580-338-3281
www.northridge8.com

Are You A Victim of Domestic Violence, Sexual Abuse or Physical, Emotional or Sexual Assault?

Call Toll Free Hotline
1-800-753-5308

Battering Intervention & Anger Management Available

Panhandle Crisis Center
Serving Hansford, Lipscomb & Ochiltree Counties
301 S. Ash - Perryton, TX
Memorials Accepted

WHY WISH FOR SAVINGS?
Get them here.
Christmas Sale 2008
Sale Prices Good From December 8-24

Men's L/S Dress Shirts Arrow, Van Heusen, Valcon Bay, Chaps, Siegfried 25% OFF	Men's Fashion Jeans Tommy, Chaps, Company 81 \$39.95	All Men's & Boys Shoes Adidas, Reebok 25% OFF
Men's Cinch Shirts Men's Cinch Black Label (Medium & Dark Denim), Blue Label & White Label Jeans \$39.95	Boys Carhartt L/S & S/S Knit Shirts - 25% Off	Boys Carhartt Jeans - 25% Off
Men's Wrangler Riatas Assortment of sizes and colors \$29.95	Boys 20X Shirts & 20X Jeans - \$19.95	Boys L/S George Strait Shirts - \$19.95
Men's 20X Shirts \$35.95	Boys Cinch Shirts & Jeans - \$24.95	Boys Jeans - 20% Off Wrangler, Levi, Denim & Colored
Men's George Strait Shirts \$35.95	Boys Fashion Jeans - \$29.95 Tommy, Union Bay	
Men's Levis 550 & 560 Jeans - Light, Medium, Dark \$29.95		
Sale Rack - 1/2 Price Men's & Boys Shirts		

Cates Men & Boys
221 Main Street
Spearman, Texas
(806) 659-3426
Mon.-Sat., 9 a.m.-6 p.m.

Christmas Countdown Sale

FREE DIRECTV 4 ROOM SYSTEM!

265+ ALL DIGITAL CHANNELS!
130 HD CHANNELS!
Channel Pkgs. Start \$29.99 / mo

FREE HBO, Showtime & Starz for 3 Months!
Packages Start only \$29.99
FREE DVR/HD
No Start Up Costs!
We're Local Installers!

Toll Free 800-214-7110

Stop being gouged by cable!

dish NETWORK Authorized Retailer

Basic Programming Starting at \$24.99 Includes Locals

Ask how to get: Free DVR and Free iPod
Call 1-800-886-8849
High Speed Satellite Internet available everywhere!

Man Tries Out For Pro Team After Using Thera-Gesic

BEXAR COUNTY- After applying Thera-Gesic to his sore right knee, Tom W. tried out for his favorite basketball team. When asked why a 5'9" older man could possibly think he would make the team, he painlessly replied: "None of your dang business!"

Go painlessly with Thera-Gesic
Go Tom Go

See us for:
AUTO • HOME • CROP HAIL • FARM & RANCH • MULTIPERIL • LIVESTOCK

INSURANCE

BORT AGENCY, INC.
510 Main St. • Gruver, TX
(806) 733-2456

MAMBO	OFF	PULP
ODIUM	GAR	ULNAE
CADRE	RYA	NADIR
KRINGLE	NEWYORK	
TAT	SCAR	
BED	SLAM	TALLOW
BLOW	AXED	PEACH
GOGO	CLARK	ANTI
UPEND	ERIN	SKAT
NESTER	EPIC	ALE
	FEAR	FUM
SCROOGE	MENORAH	
PRONG	RYE	NOISE
REMUS	ION	ERNIE
YEAS	END	REGAL

9	7	2	8	3	4	6	5	1
4	3	1	7	6	5	9	8	2
6	8	5	9	1	2	3	7	4
3	1	6	4	5	8	7	2	9
2	9	4	1	7	6	5	3	8
8	5	7	2	9	3	4	1	6
7	2	3	6	8	9	1	4	5
5	6	8	3	4	1	2	9	7
1	4	9	5	2	7	8	6	3



Christmas Treasures

SAVE ON ALL JOHN DEERE TOYS!!!

STOP, SHOP & SAVE!!!

John Deere Kids: Start 'em Out Right

HANSFORD IMPLEMENT

13005 Hwy. 207 South Spearman, TX. 79081 806-659-2568

12098 E. Frederic Pampa, TX. 79065 806-665-1888

S. Loop 143 Perryton, TX. 79070 806-435-4036

939 N. Dumas Ave. Dumas, TX. 79029 806-935-7720

TEXAS STATEWIDE CLASSIFIED ADVERTISING NETWORK

TexSCAN

TexSCAN Week of December 14, 2008

BUSINESS OPPORTUNITIES
100% RECESSION PROOF! Do you earn \$800 in a day? Your own local candy route. 25 machines and candy. All for \$9,995. 1-888-625-5481. Multi Vend, L.L.C.

DRIVERS
CDL-A DRIVERS: EXPANDING Fleet offering Regional/OTR runs. Outstanding pay package. Excellent benefits. Generous hometime. \$300 lease special on Volvos. National Carriers. 1-888-707-7729. www.nationalcarriers.com
DRIVER- OTR. GREAT Miles/Hometime. No Forced NE. Dedicated Positions. Great Benefits. Late Model Equip. 1yr. recent OTR exp. O/O's \$1.10 +MILE. 1-888-988-8666 www.gulfcoast-transport.com
DRIVER: JOIN PTL today! Company Drivers- Earn up to 40¢ cpm, 1/2 cpm increase every 60K miles. Average 2,800 miles/week. CDL-A required. www.ptl-inc.com 1-877-740-6262.

HOMES FOR SALE
7BR/4BA HUD \$25,812! 3BR/2BA only \$10,900! SBR/3BA only \$16,275! Foreclosures & bank repos! These homes must sell! For local BNI listings call 1-800-544-6258 ext. 9847

MISCELLANEOUS
AIRLINES ARE HIRING, Train for high paying aviation maintenance career. FAA approved program. Financial aid if qualified. Housing available. Call Aviation Institute of Maintenance. 1-888-349-5387.
ATTEND COLLEGE ONLINE from home. Medical, Business, Paralegal, Computers, Criminal Justice. Job placement assistance. Computer available. Financial aid if qualified. Call 1-866-858-2121. www.CenturaOnline.com

REAL ESTATE
COLORADO FORECLOSURE 40 acres \$29,900 Outstanding views access to BLM canyon recreational land. Financing. Call 1-866-696-5263 ext.4847.
TEXAS & OLD MEXICO: Affordable hunting & fishing property. 100 acres for \$79,000 with 10% down & no credit check. All sizes available up to 20,000 acres. Call 1-877-77-BIGLAND (1-877-772-4452)

TEXAS 20 ACRES Only \$13,500-50-down \$135.00 monthly. No credit check. Roads-Surveyed. That's only 1.5¢ per sq. ft! Free information. 1-877-532-4511 www.lonestarinvestments.com

WEST TEXAS, EAST of Sanderson, 219.97 acres. \$315 per acre. Deer, dove, and quail. Brush country. Seller financing or VET Ranch Enterprises Ltd., 1-866-286-0199.

3.21 ACRES NORTH of Brady. Water, electricity. Seasonal creek, oak, elm, and mesquite trees. \$1225 down, \$241/mo., (5% down, 11%, 20 years.) 1-800-876-9720. www.texasranchland.com

141 ACRES, 1 HOUR from Albuquerque/Santa Fe. Beautiful mountain views, good tree cover, all weather county road frontage. \$725/acre terms. Toll free 1-877-797-2624. www.newmexranches.com

Run Your Ad In TexSCAN!

Statewide Ad	\$450
303 Newspapers, 1,017,914 Circulation	
North Region Only	\$195
98 Newspapers, 276,853 Circulation	
South Region Only	\$195
103 Newspapers, 488,823 Circulation	
West Region Only	\$195
102 Newspapers, 252,398 Circulation	

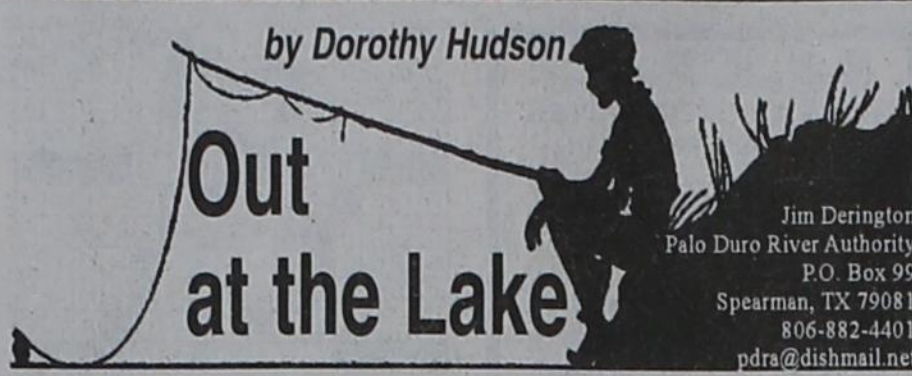
To Order: Call This Newspaper direct, or call Texas Press Service at 1-800-749-4793 Today!

NOTICE: While most advertisers are reputable, we cannot guarantee products or services advertised. We urge readers to use caution and when in doubt contact the Texas Attorney General at 1-800-621-0508 or the Federal Trade Commission at 1-877-FTC-HELP. The FTC web site is www.ftc.gov/bizop

Extend your advertising reach with TexSCAN, your Statewide Classified Ad Network.



These pictures of adult male Elk were taken in Fort Davis, TX on Sunday, December 7, 2008 by Corey Ritchie (Cathy Smith's brother). In Texas, Elk were once present only in the Guadalupe Mountains. Now, five small herds of wild Elk live in Texas, in the Guadalupe Mountains, Glass Mountains, Wylie Mountains, Davis Mountains, and Eagle Mountains. Many others are kept on ranches all over the state.



by Dorothy Hudson

Out at the Lake

Jim Derington
Palo Duro River Authority
P.O. Box 99
Spearman, TX 79081
806-882-4401
pdra@dishmail.net



Lake Level—December 15, 2008—22.45 feet (-0.24)

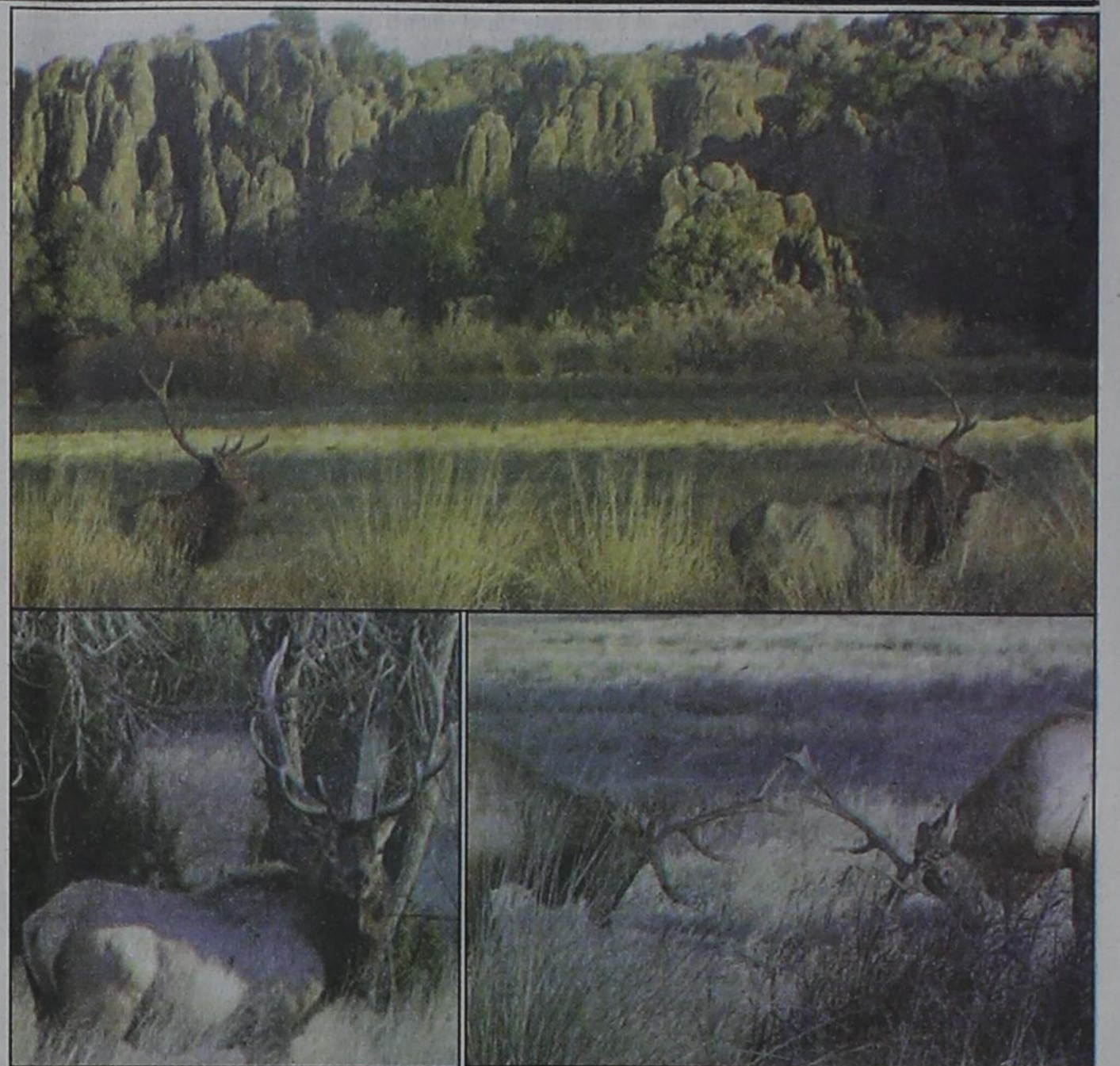
The outer part of the Lake is frozen, but there is plenty of water for the big flock of Canada geese that have come in. They come in to the Lake before dark and go out to feed on the stalk and wheat fields in the morning. Jim said they left about 8:00 o'clock this morning. More ducks have arrived, too. Usually when the water fowl increase, we get more eagles. Jim Pope told Jim that the Fed Ex driver had seen two bald eagles in a field south of Spearman.

Daniel Harris were driving on Highway 15 just west of Gruver when they saw a hawk dragging a wing in the bar ditch. A dog was near by eyeing the bird. By dropping a sweat shirt over it, they were able to capture and contain it.

The Sheriff's office contacted our game warden, Mike Wheat of Perryton, and he came after the immature Red-tailed Hawk. I called Mike to see if the bird had to be destroyed or if it was being rehabilitated. He said it was doing fine and recommended that when we find an injured animal or bird that we call him rather than try to treat the problem ourselves.

Rescued Hawk

The last of November Pat and



Job Searches in Tough Times

With the quickly tightening economy and layoffs looming, finding a job this winter will require using some solid job search strategies. Sarah Fuller, author of Job Searches Beyond the Big Cities: Finding Employment in Medium to Small-Sized Markets, offers the following tips for job seekers:

Work the network. People naturally look to hire people that they know well or friends and acquaintances of those individuals. This principal is especially true in the smaller markets where people pride themselves on being "in the know" about others.

Start your networking with friends and family, as well as, members of community-based groups to which you belong such as churches and sports teams. Other networking resources include alumni of schools that you attend or attended and business associations.

Make smart use of online job boards. Along with larger job boards, make use of those sites that offer you narrow geographic targeting such as regional or career specific job sites. Also, sign up for job search agents that will e-mail you search results on a regular basis. These agents are real time savers.

Newspapers and regional magazines can provide great info. Not only can you find classified ads in these publications, but also they are great sources of additional leads. The business and social news often provides details about the movers and shakers in town.

To get more tips for finding jobs, check out www.jobsearchright.com.

Hoochy Poochy Parlor

Don't forget your furry family members this Christmas!

Christmas gifts and sweaters in stock for a gift under the tree.

For Boarding reservations and grooming appointments, call now!

Hoochy Poochy Parlor
471 E. 79th St.
Spearman, TX 79087
806-273-2724
hoochypoochy@att.net
www.hoochypoochy.net

Hours:
Mon-Fri., 8 a.m. until done
Saturday by appointment only
Please visit us for a free estimate on your pet care needs.

We put the Hoochy in your Poochy

Jeffrey's Steaks & More

511 Plains Shopping Center
Spearman, Texas (806) 644-0953

For the best good ole country cooking around, don't drive out of town - get it right here at home!

Daily Lunch Buffet (11 a.m.-2 p.m., Tuesday-Friday, 11 a.m.-3 p.m., Sunday)
Includes 2-3 meats, 5-6 vegetables, homemade rolls and homemade desserts

Hours: Tues-Thurs. 11 a.m.-2 p.m.; Fri. 11 a.m.-10 p.m.; Sat. 2-10 p.m.; Sun. 11 a.m.-2 p.m.

Palace Theatre

MOVIE SHOW TIMES
Friday-Thursday - 7 p.m.
Sunday - 2 p.m.
Closed Sunday Night

FRESH POPCORN & DRINKS!
PARTY ROOM & ARCADE
MOVIE RENTALS

Palace Theatre
210 Main Street
Canadian TX 79014
806-323-5133
www.palacetheatre.com

The Palace Theatre meets Lucasfilm THX specifications for site and sound quality.

PTCI

DIGITAL TV

Get Local

Weather Central
Amarillo Networks
721 W 7th - Spearman
1-800-562-2556 www.ptci.net

New Customers!

- FREE installation - up to 2 set-top boxes
- One month FREE expanded basic pkg

Your name will go into drawing for a
~FREE 40" LCD HDTV!~

Drawing will be held Dec. 31

Channel 2
Real Local
Programming

PTCI
Communication & Broadband
Solutions

Services not available in all areas. Some restrictions apply.

GIVE THEM THE WORLD

Check out the new VISA gift cards now available at your Hometown Bank First State Bank, Spearman

Gift cards are great gifts or stocking stuffers for the holidays. A VISA gift card can be used anywhere VISA is accepted. The cards can also be used to get cash from ATM machines nationwide.

Come by and see the new cards and stock up for the holidays!

First State Bank
1 NE Court • Spearman, TX • (806) 659-6565