



# Happy Thanksgiving



## INSIDE

At the Movies	2	Out at the Lake	8
Among the Neighbors	4	For the Short of It	7
Crisis Center Report	4	School Lunch Menus	2

## Basketball

See Sports

## The Hansford County

# Reporter-Statesman

Serving Hansford County Since 1907

Volume 87 • Issue 47

213 Main • Spearman, Texas 79081

Thursday, November 23, 1995

HANSFORD COUNTY LIBRARY  
0120 MAIN ST.  
SPEARMAN, TX 79081-2064  
EXPIRES 04/15/1996 THANK YOU

## Pringle-Morse Consolidated School District Board holds meeting

Pringle-Morse Consolidated Independent School District Board of Trustees met in regular session on November 14, 1995.

A quorum was established and the meeting was called to order at 7:12 p.m. No one was present for public forum. Members present were: Ron Womble, Betty Womble, Clay Reid, Clyde McCloy, Lonnie Clemmons, and Pete Schuman. Members absent were: Charlie Kiser. Superintendent Linda Kay Barnhart, Business Manager Paige Speck, and Travis Wolfe of Brown, Graham, and Co. were also present.

A motion was made by Betty Womble to remove the October expenditure checklist from the consent Agenda. Clay Reid seconded. The motion passed 6-0.

Betty Womble moved to approve the Consent Agenda. Clyde McCloy seconded. The motion passed 6-0.

Lonnie Clemmons made a motion to approve monthly expenditures. Betty Womble seconded. The motion passed 6-0.

Clyde McCloy made a motion to approve the audit report presented by Travis Wolfe. Clay Reid seconded. The motion passed 6-0.

No action was taken on the 7th grade budget.

Lonnie Clemmons made a motion to approve the second reading of the Employment Policy. Clyde McCloy seconded. The motion passed 6-0.

Clyde McCloy made a motion to approve the superintendent's job description, performance goals, and evaluation instrument with changes and edits. Betty Womble seconded. The motion passed 6-0.

Betty Womble made a motion to rescind the July 13, 1993 motion regarding meal allowances. Ron Womble seconded. The motion passed 6-0.

Lonnie Clemmons made a motion to reimburse travel meals up to \$10 with receipts. Clay Reid seconded. The motion passed 6-0.

No action was taken on additional funding for items in Superintendent's Report.

The superintendent discussed score board estimates. Estimates for garage door replacement, bathtub repair, floor repair, and window repairs in the superintendent's house were discussed. Mrs. Barnhart gave board members school board handbooks.

Pete Schuman made a motion to adjourn. Clay Reid seconded. The motion passed 6-0. The meeting adjourned at 10:05 p.m.

## The Hansford County Reporter-Statesman to be closed Thanksgiving

Thanksgiving, a time to be with loved ones and friends. We here at The Hansford County Reporter-Statesman plan to be home this holiday with family. We will be closed Thursday, November 23, 1995, and Friday, November 24, 1995 in observance of Thanksgiving. We will resume to normal

business hours on Monday, November 27, 1995.

**WE WISH EVERYONE A VERY HAPPY THANKSGIVING !!!**

## Newspapers to be delivered Friday, Nov. 24th

Most of our subscribers should get their newspapers in the mail on Friday, November 24, 1995, due to the Post Office being closed on Thanksgiving. They will, however, be open Friday, the day after Thanksgiving, to deliver your weekly newspapers.

## Suicide case turns to possible homicide

Last week, Hansford County residents were shocked when they heard about the sudden death of Cynthia Howell, a Spearman business woman. Howell, who was found in a ravine near Skellytown last Monday, was believed to have committed suicide, but now, after an autopsy report and several unanswered questions, investigators are looking into a possible homicide.

Although investigators do believe that Howell's death was homicide, no suspects have been arrested at this time. "We are continually questioning people, but we have no certain suspects at this time," stated Carson County Sheriff Loren Brand.

The autopsy reports did show that Howell died from two gunshot wounds to the chest. However, both bullets did exit her body, but only one was found at the location. To add another twist, the alleged 9mm handgun that was found at the scene may not have been the weapon that fired the two shots.

If the homicide proves true, this would be the first homicide in Carson County in several years.

As of now, Danny Howell, her husband, who was flown to Northwest Texas Hospital in Amarillo after stabbing himself in the abdomen when he heard about his wife's death, has been recently released.



**AWARD WINNERS** - The Hansford County Soil and Water Conservation District, along with the three Hansford County Banks, held an appreciation dinner for local area farmers last Thursday night at the O'Laughlin Center in Spearman. Besides great entertainment by Rod & Les Barkley and Glen Harris, two awards were presented. In the photo above, District Conservationist, Rick Harrell, is seen giving a plaque to Billy Logsdon for the Outstanding Conservation Farmer of the year award. In the photo below, Teresa Barkley is seen giving a short speech after winning this year's Outstanding Homemaker award. (Photos by Chad Davis)



## Hansford Soil and Water Conservation District holds banquet

An appreciation dinner for the farmers of the area was put on last Thursday, November 16, by the Hansford Soil and Water Conservation District (HSWCD) and the Hansford County banks at the O'Laughlin Center in Spearman.

A crammed packed house turned out to the dinner, which was brisquet provided by Ivey's Hungry Cowboy.

The Master of Ceremonies, Willard McCloy, talked a while on several things that the Conservation District does, and how much they appreciate the local farmers of the area. Mr. McCloy also introduced the three banks of Hansford County that were there. Gruver State Bank's Kenneth Irwin, Spearman First National Bank's Don Townsen, and Spearman First State Bank's Jim and Verna Lee Shirley, Mike and Clay Schnell, Ginger Turner, and Worth Whitworth,

duced at the program. After all introductions, Pastor John Chandler, of the Oslo Lutheran Church, gave the invocation.

The fun really started after that. Rod & Les Barkley and Glen Harris, one of the finest trios around, put on 30 minutes and 7 selections of great singing to entertain the packed house.

Moments later, two awards were presented for outstanding service. The first award, Outstanding Homemaker, was presented by Elsie Watley. She gave a beautiful leather plaque to Teresa Barkley, a Gruver resident and the owner of Cousins, for her outstanding work as a homemaker. The second award, Outstanding Conservation Farmer, was given by Rick Harrell, District Conservationist and the main force in the organization. He too presented a plaque. Billy Logsdon received the honor for his help in

were all introduced. Dova Burton, Joe Vanderburg, Avo Gray, Ben Uschurch, Jo Anne Eaton, Peggy Winegarner, and other members of the NRCS, the Hansford County Extension Agency, and the Hansford County FSA were also introducing to farm with a conservation idea in mind.

There are new and exciting things going on every day for the area farmers that the HSWCD are doing, including new ways to grow crops and new ideas on the best way to use the land for replanting. The HSWCD is here to help the farmer do that, and, despite the way the farmers used to think of the HSWCD as a bad thing, they are working constantly to help farmers. Harrell summed it up best when he said, "We want to make our agency helpful, and we want to serve the farmers."

## Hansford Happenings

### Manor Empty Stocking Crafts Bazaar

Hansford Manor Crafts Bazaar will be December 8 from 9 a.m. to 3 p.m. in the Hansford Manor Activity Room. For more information contact Debby Sanford at 659-5535.

### Home for the Holidays Promotion

The Christmas drawing for the holiday promotion will be Dec. 16th at 2:15 p.m. at the Spearman Chamber of Commerce Office, 211 Main. Call the Chamber at 659-5555 for more information.

### Commodity Distribution

There will be NO commodity distribution for the remainder of 1995.

### Home Tour

The Gladlola Flower Home Tour will be Dec. 10th from 2 p.m. to 5 p.m. Tickets are \$5 and can be purchased from club members or Main Street of Gruver.

### Defensive Driving

Defensive driving courses will be held Dec. 13 and 14. For more information call the Spearman Chamber of Commerce Office at 659-5555.

### Lights of Love

Hansford Hospice "Lights of Love" Christmas tree lighting will be Dec. 4th from 6 to 7 p.m. by the Hansford Hospital gazebo. Reception following in the Hansford Manor Living Room.

### Windbreak Trees

The Hansford Soil and Water Conservation District will have "Earth Mat" available for the 1996 plantings. Orders for these seedling trees will be taken from now through March 8, 1996. Contact HSWCD at 659-2330 for more information.





FFA - Eleven students of FFA traveled to convention in Kansas City, Missouri last Nov. 7, 1995. (photo by Chad Davis)

## FFA'ers travel to convention

By Lena Harbour

On November 7, 1995, eleven people went to Kansas City, Missouri, for the National FFA convention. Mr. McGaha and Mrs. Biggers joined Norma Hinojos, Lena Harbour, Ashley Brown, Andee McGaha, Monty Herrington, Brian McLaughlin, Ryan Hill, Dan Kunselman, and Chuck Grayson. The theme of the convention was "Leadership for a Lifetime."

The next day, the group toured the career show which had many interesting exhibits. Colleges and many different ag-related businesses had booths set up at the show. On November 9, the FFA'ers went to the first general session of the convention. They heard Miss America, Shawntel Smith, give a speech on how FFA helps children learn. Diana Golden, a one-legged gold medal skier, also gave an in-

spirational speech about how to overcome fears and achieve one's dreams. After the session, the group toured the Federal Reserve Bank and learned many interesting things about it. They also stood on the spot where Lewis and Clark had stopped on their way back from their expedition. A couple of hours later, they visited the Steamboat Arabia Museum. November 10, began with an early workshop hosted by Louie Brown, a past national officer. He taught the group a lot about what it takes to be a good leader.

On the 11th, the group headed home on a few slick roads because it had snowed the night before. The FFA'ers learned many interesting things and wish they could have stayed longer to enjoy the company of the many fine friends they met at the convention.

## Armes' home to be toured

The Gladiola Flower Club and Doris Armes invite you to come by 407 Cluck, Gruver, December 10, 1995 from 2:00 to 5:00 p.m.

This modern seven room, two bath home was built in 1957 by Mr. Turner. Doris purchased the home in 1994 from the Community Bible Church. She has done her own painting, redecorating and drapes. She loves being busy with tole painting, decoupage and other crafts seen

throughout the home. Doris is a very gracious host and will be expecting you to visit her during The Tour.

Other homes on The Tour are Mr. and Mrs. C.L. (Jr.) Crossland at 303 S. Bernice in Spearman and Mr. and Mrs. Randall Willis at 706 Wilmeth Dr. in Spearman.

Tickets are \$5 and may be purchased from club members and at Main Street of Gruver.



HOME TOUR - Doris Armes' home located at 407 Cluck in Gruver will be one of the homes on tour on Dec. 10. The Gladiola Flower Club is sponsoring a Home Tour of several different homes on this day.

## Lieb receives \$900 Allie Collins scholarship

Lori Lieb, a senior elementary education reading major from Morse, was named the 1995-96 recipient of a \$900 Allie Smith Collins Scholarship. Lieb was honored along with Frances Christian of Claude and Mary Bagot of Amarillo, daughters of the late Allie Smith Collins, at a luncheon November 7.

The children, grandchildren and great grandchildren of Collins, a first-grade teacher for 26 years, established the memorial scholarship in 1975.

"This is such a good match, because our mother was also a primary teacher," Christian said. "We are so happy to be able to do something like this at West Texas."

Lieb, who will also earn an early

childhood endorsement along with her degree, will student teach during the spring semester.

"I felt honored to be chosen," Lieb said. "It was also especially nice to meet the people who are giving me this gift."

Since 1991 the Allie Smith Collins Scholarship has grown by more than \$10,000 and awarded more than \$4,000 in education scholarships.

Student recipients for the Allie Smith Collins Scholarship are required to meet the following eligibility requirements: two semesters at WTAMU; major in education; junior, senior or graduate classification; and a 3.0 grade point average.



SCHOLARSHIP RECIPIENT - Lori Lieb was honored at a luncheon Nov. 7 at West Texas A&M University. Frances Christian of Claude, Mary Bagot of Amarillo, Lieb, a senior elementary education major, and Dr. Russell Long, WTAMU president, are pictured.

## TO ALL OF OUR FRIENDS IN SPEARMAN

The Howell and Born families want to say

### THANK YOU

from the depths of their hearts for all your loving support during this time of sorrow. Your gracious kindness and heartfelt prayers have been and will continue to be much appreciated during the weeks and months to come. Thank You.

I would like to **THANK** everyone for the phone calls, prayers, visits, cards, gifts, and flowers. I am doing real good since my surgery. I am planning on going back to work on Dec. 6th. Hope to see you soon!

Thanks once again,  
Barbara Sharp

You are cordially invited to attend the Lighting of Hansford Hospice Lights of Love Tree and Open House (6:00 to 7:00 p.m.) Monday, December 4, 1995 Hansford Hospital Lawn 707 S. Roland Street Spearman, Texas Refreshments Served

Zoel G. Allen D.D.S.

Is pleased to announce the association of Zoel G. Allen II D.D.S., with his dental practice.

Office Hours:  
Monday thru Friday  
By appointment  
19 S.E. 5th • Perryton, Texas  
(806)435-5335

Royal Neighbors  
OF AMERICA

100 Years  
Fraternal Life Insurance

Complete FRATERNAL LIFE INSURANCE for the entire family including Omni-Plus II Universal Life Annuities and IRAS - Highly Competitive Interest Rates Term-Plus

MARILYNN HART  
P.O. BOX 426  
GRUVER, TX  
(806)733-2066



**Thank You**  
The Family of Don DeArmond gratefully acknowledges your kind expression of sympathy. We sincerely appreciate the prayers, cards, flowers, food, love and support given our family.

Myrtle DeArmond  
Billy, Cynthia, and Shanna DeArmond  
Bobby and Lynn DeArmond  
Dennis DeArmond  
Bo and Terry DeArmond  
Mary Lou and Charlie White

Gordon's  
BRUG  
Bridal Gift Registry

COME BY & LET US HELP YOU SET UP YOUR SPECIAL GIFT TABLE

Couples Currently Registered

Sally Donahue & Lance Swan \*Dec. 9th  
Clint and Emily DeArmond \*Nov. 11th

\* Date of the Bridal Shower

314 MAIN  
PHONE  
659-2141

Gordon's  
BRUG

SPEARMAN  
TEXAS



# School Lunch Menus

## SPEARMAN ISD LUNCH MENU

**Monday, November 27**  
Soft burrito, tortilla, seasoned beef, refried beans, shredded lettuce, sliced tomato, grated cheese, Spanish rice, pineapple tidbits, and milk.

**Tuesday, November 28**  
Chili dog, tator tots, diced onion, pickle relish, pork and beans, birthday cake, mixed fruit, and milk.

**Wednesday, November 29**  
Stuffed baked potato, chili con carne, steamed broccoli, cheese sauce, sour cream, bacon bits, yeast batter bread, pears, and milk.

**Thursday, November 30**  
Chicken nuggets, whipped potatoes, gravy (opt.), seasoned green beans, hot rolls, lemon chiffon pie, and milk.

**Friday, December 1**  
Cheeseburger, French fries, shredded lettuce, sliced tomato, pickles, onions, peaches, and milk.

### BREAKFAST

**Monday** - Breakfast pizza, fruit, and milk.  
**Tuesday** - Cereal, toast, fruit juice, and milk.  
**Wednesday** - Pancake, sausage on a stick, fruit, and milk.  
**Thursday** - Ham and egg breakfast taco, fruit, and milk.  
**Friday** - French toast sticks, fruit, and milk.

### GRUVER ISD LUNCH MENU

**Monday, November 27**  
Pizza pocket, corn/fruit, tossed salad, and milk.

**Tuesday, November 28**  
Chili/crackers, carrot sticks, fruit, donut, and milk.

**Wednesday, November 29**  
Chicken fried steak, mashed

potatoes, green beans, pudding, rolls, and milk.

**Thursday, November 30**  
Burrito, chili, cheese, tossed salad, fruit, and milk.

**Friday, December 1**  
Hamburger, lettuce, pickle, cheese, French fries, cookies, and milk.

### BREAKFAST

**Monday** - Cereal, muffin, juice, and milk.  
**Tuesday** - Oatmeal, toast, juice, and milk.  
**Wednesday** - Pancakes, juice, and milk.  
**Thursday** - Biscuit, sausage, juice, and milk.  
**Friday** - 2 cinnamon rolls, juice, and milk.

### PRINGLE-MORSE CISD LUNCH MENU

**Monday, November 27**  
Enchiladas, beans, rice, salad, corn bread, and milk.

**Tuesday, November 28**  
Bar-B-Q chicken, potato salad, blackeye peas, rolls, dessert, and milk.

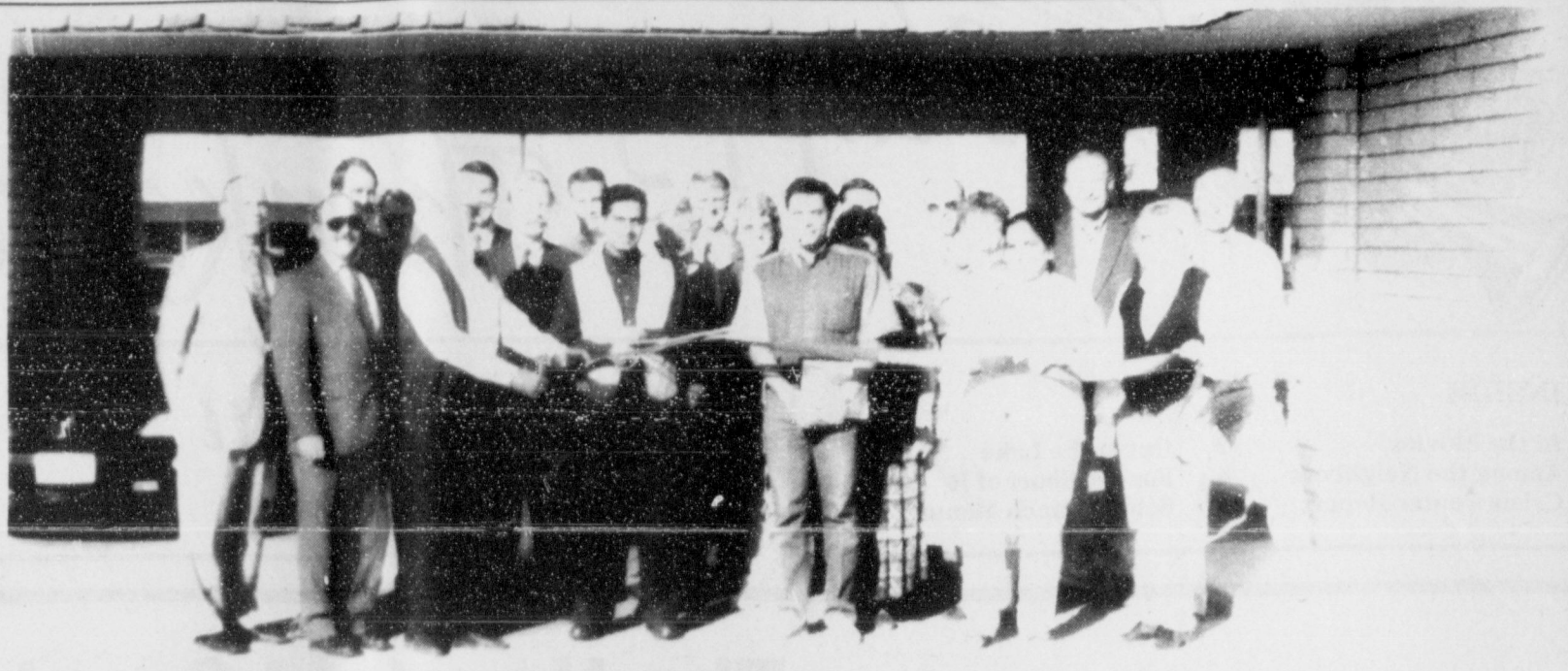
**Wednesday, November 29**  
Hamburger, French fries, fruit, and milk.

**Thursday, November 30**  
Spaghetti, green beans, rolls, dessert, and milk.

**Friday, December 1**  
Sandwiches, stew, fruit, ice cream, and milk.

### BREAKFAST

**Monday** - Cheese toast, toast, juice, and milk.  
**Tuesday** - Cereal, toast, juice, and milk.  
**Wednesday** - Pancakes, sausage, juice, and milk.  
**Thursday** - Cinnamon rolls, toast, juice, and milk.  
**Friday** - Biscuits, eggs, juice, and milk.



**GRAND OPENING** - A grand opening was held for the new owners of the Nursanickel Motel last Friday, November 17, 1995 at 10 a.m. Pal, Raj, and Barkafh Bai moved here from Dallas. They are currently going through renovation and remodeling of the motel. They have bought all new mat-

resses, added all new paint, have added 25" television sets in some rooms, and have added HBO. Their location is the same, 815 Hwy 207 South. We welcome them to our town whole-heartedly and wish them luck with their new business.

## Spearman churches hold city-wide services

About 200 people gathered together Sunday evening, November 19, 1995, to attend the Thanksgiving city-wide services hosted by the First United Methodist Church and the Spearman Ministerial Alliance. The Ministerial Alliance is made up of the following churches: Apostolic Faith, First Assembly of God, First Baptist, Church of the Brethren, Sacred Heart Catholic, First Christian (Disciples of Christ), Church of Christ, Trinity Community, Faith Lutheran, First Presbyterian, First United Methodist, and Union.

Everyone enjoyed listening to the First United Methodist Church Choir directed by Betty Womble and the First Baptist Church Choir di-

rected by Carol Pack. A special choral number, "Count Your Blessings", conducted by Carol Pack, consisted of choir members from several churches. The choirs were accompanied by Sheryl Meek, Verna Strawn, and Denise Bridges.

The Invocation was given by Dan Carter, Trinity Community Church. Welcome was given by Jeff Lust, First United Methodist Church, and the Responsive Reading was given by James Brown, Apostolic Faith Church. Kyle Henderson, First Baptist Church, led the Offertory Prayer as well as reading a passage in the New Testament. All monies from the offering will go to the Spearman Welfare Fund (66%) and the Spear-

man Ministerial Alliance (33%). The fund is used to feed and clothe the needy people in the community for the coming year.

Arnis Pape, Church of Christ, delivered the sermon, and the service was closed by singing the Hymn, "How Great Thou Art."

Walter Greaser, Minister of the First Assembly of God, read from the Old Testament and Hymns of Praise were sung throughout the evening.

The Benediction was given by Jeff Lust, Minister of the First United Methodist Church.

Afterwards, everyone adjourned to the Fellowship Hall for refreshments.

The Staff of  
**THE HANSFORD COUNTY REPORTER-STATESMAN**  
Wishes everyone a  
**Very Happy Thanksgiving**

Dezi, Chad, Bob, & Marvin

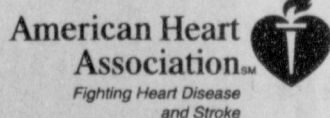
## From Where I Sit

by Judge Gary El' worth

On November 11th each year we Americans pass and give honor to the men and women that have served in the United States Armed Forces. Texas laws governing the issuance of Vehicle License Plates, also provide a way by which active or retired members of the United States Armed Forces may be recognized and honored. By application through the county tax assessor-collector, those who qualify may be issued "special" license plates. The following is a list of those "special" plates: Veterans with Disabilities, Congressional medal of Honor Recipients, members of the Texas National Guard or United States Armed Forces Reserves, Former Prisoners of War, Pearl harbor survivors, Purple Heart Recipients, World War II Veterans, Korean Conflict Veterans, Vietnam Veterans, Desert Shield or Desert Storm Veterans, Surviving Spouses of

Certain Military Veterans, Members of United States Armed Forces Auxiliaries, and the 74th Legislature added these "specially designed" license plates: Recipients of the Air Force Cross or the Distinguished Service Cross, the Army distinguished Service Cross, the Navy Cross and the Medal of Honor. The fees for these plates vary so you would need to check with your county tax office for the registration fees. Also, they can provide you with the guidelines for acquiring these special military and veteran plates. I hope those of you that these plates honor will take advantage of this opportunity to let other veterans know who you are as well as we Texans who are thankful and proud that you took the oath to protect our shores and the Constitution of the United States of America. And that's the way I see it from where I sit.

**If you are what you eat, why not cut back on fat?**



## The Hansford County Reporter-Statesman

Serving all of Hansford County  
Spearman • Gruver • Morse

USPS 509660 • 213 Main, Box 458 • Spearman, Tx. 79081  
(806) 659-3434 • 1-800-395-9482 • FAX (806) 659-3368

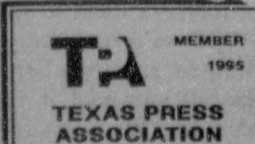
Published weekly at 213 Main, Spearman, Texas  
Owned & Operated by  
Texas Independent Newspapers, Inc.  
16607 Blanco Road #100 • San Antonio, Tx. 78232  
(210) 492-8907

Second class postage paid at Spearman, Texas 79081

Any erroneous reflection upon the character of any person or firm will be gladly and promptly corrected upon being brought to the attention of the management.

Publisher - Deziree Torres  
Editor/Advertising - Chad Davis  
Gruver Correspondent - Bob Borf

The publisher reserves the right to revise or reject at its option any advertisement which it deems objectionable, either in subject or phraseology, or which it may deem detrimental to its business.



Subscription Rate: Hansford County, \$19.95; out of county, \$24.95 annually.  
Postmaster: Send address changes to Hansford County Reporter-Statesman, Box 458, Spearman, Tx. 79081.  
Advertising & Story Deadlines  
Monday, 5:00 p.m.

## At the movies...

Showing at The Lyric Theatre  
Friday, November 24 through Tuesday, November 28 on Screen 1 beginning at 7:30 p.m. is "Goldeneye", and on Screen 2 beginning at 7:45 p.m. is "Assassins".

In "Goldeneye", James Bond

enters the '90s with Pierce Brosnan debuting as 007 armed with the traditional bevy of techno-toys.

In "Assassins", Sly Stallone is a veteran assassin, the red-hot Antonio Banderas is his young challenger, and Julianne Moore is a woman interested in the outcome.

## At The Lyric Theatre...

Friday, November 24 - Tuesday, November 28

**Bargain Nights Mon. & Tue. Adults - \$4  
Fri., Sat., Sun., Adult \$5 - Child \$3 every night  
Closed Wednesday & Thursday**

SCREEN 1 • 7:30 PM SCREEN 2 • 7:45 PM

**Goldeneye**

(PG-13)

**Assassins**

(R)

113 Main • Spearman

## MANOR EMPTY STOCKING CRAFTS BAZAAR

December 8, 9:00 - 3:00

Hansford Manor Activity Room

All proceeds will benefit the Empty Stocking Fund. Donations of craft items and baked goods are needed.

Contact Debby Sanford for more information. 659-5535

ALLSUP'S  
**Keep Truckin'**  
WITH A TOY THAT PAYS FOR ITSELF\*  
Die-Cast Collectable Metal  
PREMIER EDITION COLLECTORS SERIES  
\*Die-cast trucks command \$1,000's in the collectable markets!  
Toy Tanker Truck features:  
• Friction Motorized Wheels  
• Working Doors and Parts  
• Die-Cast Metal Cab  
• Mold Injected Tanker  
Quality Gas FINA Convenience  
\$5.99 with fill up (8 gallon minimum)  
\$8.99 without fill up

## MUST SELL OR RENT SPEARMAN HOME NOW!

Owners already relocated!  
Ready to Bargain!!!

2,000 sq. ft. brick house, 3 bedroom, 2 bath, double lot, garage apartment, 2 living areas, many built-ins, kitchen appliances, play-yard equipment, window treatments and ceiling fixtures included.

Serious buyers only

Call collect

(812)331-8873

or call locally - Cecil Biggers

659-5531

Credit Check Required







# Among The Neighbors

by Helen Fisher

From her new home base in Bangkok, Thailand, Kathryn Gumfory has reported on her activities and adventures, graphically shown on her videos.

Kathryn is the daughter of Carla Gumfory, Gruver, and the late Tommy Gumfory. She is the granddaughter of Peggy and Carl Archer and the late Ruth and Paul Gumfory.

Kathryn and a friend, Andrea Chapman of Carrollton, arrived in Bangkok in July. They are teachers in the International Community School, part of The Network of International Christian Schools. Kathryn teaches the first grade and Andrea the second. The students are chiefly children of the personnel of the foreign embassies and of the school, and most have at least a rudimentary knowledge of English. Kathryn's students are from eight different countries. The residence for the teachers is a school dormitory.

As can be imagined, the girls are seeing a vast difference in the U.S.A. and Thailand. They are getting adjusted to the different life styles, the food, languages, congested traffic, smothering smog and transportation.

They are very relieved that the monsoon rains have finally, apparently, stopped and they can do some sight-seeing. They are finding much of interest, --the local landmarks, ancient temples, and even an elephant.

Kathryn will be teaching there for two years, but does have a Christmas vacation and will arrive back home on December 23 and be here until January 9.

Dr. William and Laura Porter, with Jennifer, Stephanie and Matthew, are visiting his parents, Betty and Chalmers Porter. They will be here for Thanksgiving. They are from Fargo, North Dakota, where he has a private medical practice.

The Sunday Amarillo News-

## Hansford Hospice installs new officers

Hansford Hospice installed new officers in a ceremony held at Gruver United Methodist Church on November 13. Carolyn Hicks challenged each new officer with their duties. Installed were President Verna Lee Shirley, Vice President Sandy Russell, Secretary Doyle and June Jackson, Reporter LoRee Booth, Treasurer Muriel Boyd, and Historian JoLinda Hutchison. The invocation was given by Beverly Cook.

The business meeting was led by Verna Lee Shirley. June Jackson read the secretary's report. The door prize was won by Verna Lee Shirley. The next meeting will be January 15 at Spearman First State Bank.

Plans for lighting our "Lights of

Globe mentions that Lori Lieb, a WT Senior elementary education major from Morse, was named the 1995-96 recipient of the Allie Smith Collins Scholarship. Among other requirements, the recipient must have a 3.0 grade point average.

She is the daughter of Mr. and Mrs. Dean Lieb.

Kristi and Will Jarvis announce the arrival of a son, Richard Nolan, on October 31, 1995, at High Plains Baptist Hospital in Amarillo. He weighed 9 lbs., 5 oz., and was 21 1/2 inches long.

His grandparents are Linda and Britt Jarvis, Spearman and Paula and Ted Simpson, Brownwood. Great grandparents are Mrs. Ollie Jarvis, Stinnett, and Nolan and Fay Holt, Spearman.

He joins a three year old brother, Matthew, and six year old sister, Jessica. Matthew celebrated his birthday the previous weekend and his relatives, included Grandfather Simpson of brownwood, shared his celebration.

Mrs. Simpson, who had been here since the birth of the new son, returned home with him this past weekend.

Guests of Myrtle DeArmond for several days last week were her grandchildren. Mary Lou White, with Malina and Jacob of Carrizozo, new Mexico. She had been here two weeks ago for the services of her father, Don DeArmond.

Also coming again were her brother Dennis DeArmond of Roswell, and Chief of Police Bo DeArmond and wife, Teri, of Dumas. Joining them on Sunday were Clint and Emily De Armond of Perryton.

They also visited in the home of their aunt, Martha and Billy Haden.

The family and friends of Edith Pipkin were very pleased that she could be brought home on Tuesday. She has been undergoing therapy at the Bivins Rehab Center following a stroke.

"Love Tree" are scheduled for December 4 from 6:00 to 7:00 p.m. at Hansford Hospice. The public is invited to meet at the gazebo with a reception to follow in Hansford Manor Dining Room. A memorial Christmas tree will also be displayed at Hansford Hospital.

An inspirational film "Home for the Holidays -- What to Expect and How to Cope" was enjoyed by members. Refreshments were served to JoLinda Hutchison, LoRee Booth, Doyle and June Jackson, Connie Gammill, Beverly Cook, Eloise Renner, Garland Hopper, Edith Womble, J.C. Harris, Verna Lee Shirley, Sandy Russell, Cheri Sherrill, Carolyn Hicks, Sue Gerardy, Anne Snow, and Evi Meyer.

Their home had to have some adjustments made in order to accommodate her wheelchair.

Their daughter, Betty Clifford, of Ingersol, Ontario, Canada, arrived on Monday for an extended stay. Other family members have been in constant attendance.

Edith is most optimistic that, with continued therapy, she will regain most of her mobility. She is looking forward to having visitors, and expresses appreciation, as does her family, for all the expressions of encouragement, prayergrams, cards, and visits during her hospitalization.

## Panhandle Crisis Center Report

Mary Frances Ellzey

This is the season to be thankful, and The Panhandle Crisis Center has an abundance of thankfulness. What we need is a full slate of volunteers to receive all this thankfulness. With two or three more volunteers, very few of us would be on call more than once or twice a month. Think about it: one or two opportunities each month to know down to the soles of your shoes that you've really helped someone who was in a bad situation. That's a truly good feeling. Call in right this minute to make your application. The phone number is 435-5008.

This last (74th) Texas Legislature has presented a number of new regulations for helping in cases of domestic violence.

One of them is that, as of now, a peace officer may stay with a victim of family violence to protect the victim while she/he collects whatever articles are needed by the victim (and child, or children) before going to a safe haven. Used to be that this had to be done at another time, when the batterer was away from the house.

In every Texas county are from one to three prosecuting attorneys who must accept a protective order. The word must is a new here. (Our area has been a bit ahead of some counties in the state.) As soon as this protective order is received, the prosecuting attorney must then forward the information to the state's central system for recording all protective Orders. This makes the information immediately available to all states in the United States. This, for example, when someone tries to buy a gun, the seller must check the records to see whether the buyer has a Protective Order listed against him. If so, no gun. So, beginning January 1, 1996, law enforcement officers in other states will be able to enforce a Protective Order issued in Texas.

Her's another goody: Until now, though a person had to report the first occasion of being stalked, the police were not allowed to act until a second occasion had occurred. Now, the first occasion is enough to put the stalker in jail. In addition, the officer making the arrest must put the phone number and address

talization.

\*\*\*\*\*

Dennis Cline, who underwent major back surgery at High Plains Baptist Hospital on November 10, is now in Bivins Rehab Center. He expects to return home as soon as he has regained strength enough to enable him to walk, probably a couple of weeks.

\*\*\*\*\*

Sympathy is extended to Clarence and all the family of Lulu Mitchell, 80. She lived here for 48 years. Interment was in Hansford Cemetery on Monday.

of the victim on the record. This is to make possible a "reasonable attempt to notify the victim" if the offender is released on bail or for any other reason.

Wow! Texas has come a long way since I first became (somewhat dimly!) aware of its customs and laws. I remember a famous case in Amarillo wherein a man, who had caught his wife in bed with another man, was exonerated for killing her. (He shot her.) Tue, the woman was caught being "unfaithful." But did that give him the right to kill her? What makes this true story even more "primitive" is that the husband had done some bed-hopping himself. But that was different! By the way, the story was fictionalized in an outstanding novel of the period - received a "Book of the Year" award. I'd probably never have read it but one of our sons was assigned the book to read while he was attending Texas Tech. The book (and its implied "customs") so appalled him that he had to talk it over with me. The book is probably still in my library, but I've never bothered to read it more than that once. Reminded me of THE SCARLET LETTER, written some 200 years ago. Remember hearing about that one while you were in high school? Actually, both were protests against unseemly retribution.

The Panhandle Crisis Center offers services free of charge to men or women who are victims of domestic violence, whether physical or "merely" verbal. We give counseling, support, and information to these victims, plus available for help 24 hours a day, at 435-5008. If you want information only, call us from 9:00 a.m. to 5:00 p.m. For those who must call us long distance, use the toll-free number: 1-800-753-5308.

# Main Street

## 20% OFF

### All Cash Purchases

November 24 - 26

Wranglers always \$19<sup>95</sup>

One group ties and arrow shirts  
50% OFF

OPEN DAILY

9:30 a.m. TO 5:30 p.m.

SUNDAY • 1 TO 5 p.m.

506 Main • Gruver



POLARIS  
A Variable Annuity

## A Happy, Secure Retirement

It can be yours if you start planning now!

Your retirement may last up to twenty years, so taking control of your financial future now is definitely a step in the right direction.

The Polaris Variable Annuity offers:

- Tax advantages
- A wide range of fixed and variable investments
- Option to receive income payable for life
- Additional programs to help you meet your retirement goals

For more complete information about the Polaris Variable Annuity and to obtain a prospectus including charges and expenses, call today!

John D. Fritzen  
Registered Representative  
SunAmerica Securities, Inc.  
(806)852-4231  
Supervisory Office:  
3712 Walton Ave.  
Ft. Worth, Tx. 76133

Read the prospectus carefully before you invest or send money. Polaris is issued in New York by First SunAmerica Life Insurance Company, New York, NY and in all other states by Anchor National Life Insurance Company, Los Angeles, CA.

Investment returns and value of principal will fluctuate, and an investor's shares, when redeemed, may be worth more or less than their original cost.

SunAmerica  
A-7019-CRT; 9-7035

Distributed by SunAmerica Capital Services, Inc.

## GOBLIN' GOOD DEALS!

AT&T  
Bag Phones  
FREE

Motorola  
Flip Phone  
\$29<sup>95</sup>\*

Motorola  
Bag Phone  
\$29<sup>95</sup>\*

Home Roaming  
Rates  
Now in Amarillo

\*All phone sales require at least a 1 yr. contract

Authorized Agent  
Country Cellular  
Box 430  
659-2541

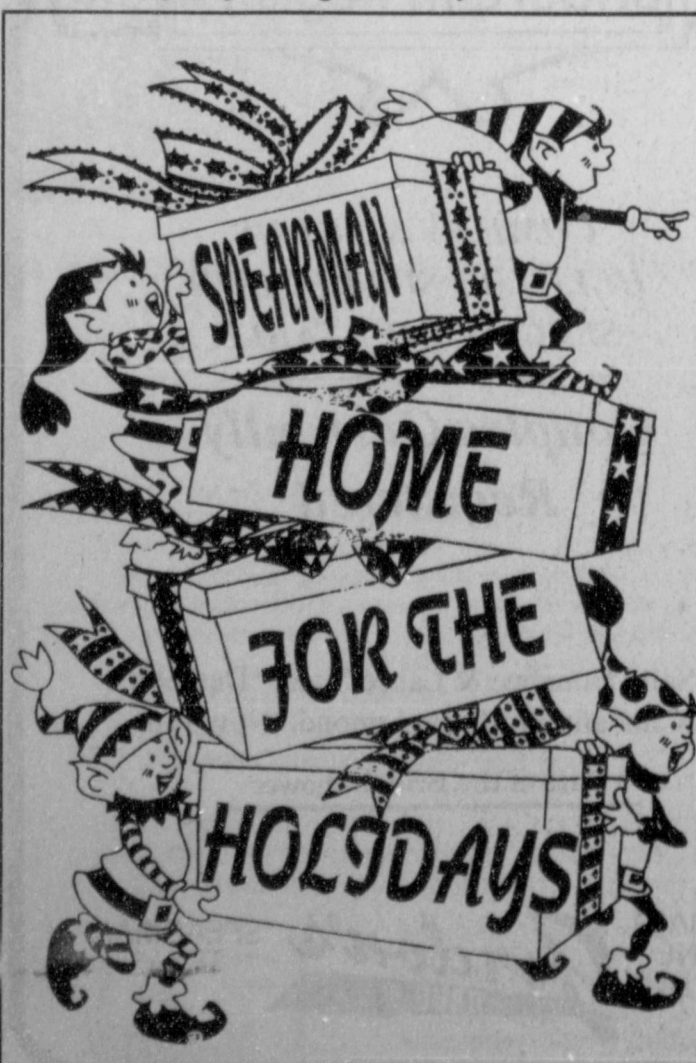
## FREE

3 Months  
Nights & Weekends With  
New Activation

Not to exceed 300 minutes, non-primetime per month. Offer expires November 30, 1995

Don't Leave Town Without A Cellular Phone from

# CELLULARONE®



## Dec. 16th

12 p.m.

Santa Claus will be at the Shopping Center

2 p.m.

FREE movie for kids  
(12 & under - under 3 must be accompanied by paying adult)  
at the Lyric Theatre

2:15 p.m.

Christmas drawing at the Chamber Office, 211 Main

For every \$10 of merchandise purchased at these participating businesses, receive one ticket.

Cates Men & Boys Wear, Bunkhouse, Celebrate, Beedy Furniture, Kids' Stuff, Lady Fair, Gordon's Drug, Earl's TV & Appliance, Michele's, JK Farm & Ranch Supply, Alco, Prairie Garden Flowers, All Occasion Flowers, and Hickerson's





**LYNXETTE PRESSURE** - Although the Lynxettes did fall just short of the Lady Haversters, the Lynxette defense did a good job. Seen here, sophomore, Lindsey Smith is trying to get the ball away from a Lady Harvester. Also seen are, Kara Townsen, as she is setting up to help Smith, and Macy Shieldknight, who is coming in on the play. (Photo by Chad Davis)

**Basketball...**

3-Pointers - Molly McLain - 3. Gru - Molly McLain - 22, Kiki Carthel - 18, Weslyn Maupin - 18, Kaysha Cluck - 8, Amber Murrell - 4, Cara Hathaway - 3.

**Synopsis:** The Lady Hounds showed a tremendous amount of character in this game. In the second quarter, the Gruver ladies fell behind by 15 points, 27-12, and they were really rattled. But they pulled themselves together by the shoelaces and fought back, scoring 50 points in the second half. Weslyn Maupin was 8-9 from the free throw line, 7-8 in the fourth quarter! Molly McLain hit from under the basket with 6:22 left in the third quarter, and the Lady Hounds had come all the way back to lead 34-33. With 4:26 left, Kiki Carthel hit from under the bucket and the Lady Hounds led by four. But Claude kept coming back. With 1:26 left in the third quarter, Cara Hathaway hit a crucial 3-point play, as she scored from under the basket and big number 20, Lacie Howell, their sophomore post, drew her foul, and Cara sank

the free throw to make it 45-44 in favor of Gruver. But Claude kept coming back. Carthel hit from under the basket 5:54 left in the game, and Gruver was up by five. Howell fouled out with Gruver leading 55-53 and 5:12 left. Claude tied it at 57-57, but McLain nailed a gorgeous rainbow trey with 3:36 left, and that was the shot that broke their backs. Gruver was only up 64-62 though, with 2:00 left, when McLain nailed another rainbow trey to put us by five, 67-62. The final was 73-63, and the Lady Hounds had scored 25 points in each of the final two quarters. It was a real-good, feel-good win, one that will do the Lady Hounds a world of good later in the year, whenever they play before a hostile crowd.

**Hounds (2-1) vs. Claude**

Tuesday 11-21-95 at Claude  
Gruver 18 29 40 57  
Claude 17 26 37 53

3-Pointers - Phil De La Cruz.  
Gru - Brant Armes - 12, Wylee Maupin - 12, Josh Mayhew - 7, Phil De La Cruz - 6, Travis Ferguson - 6, Juan Arreola - 4, Bailey Barkley - 3, Max Frick - 2, Scott Jarvis - 2, Sammy Renteria - 2, Andy Morris - 1.

**Synopsis:** The Hounds couldn't shake the pesky Mustangs for the duration of the game. The Hounds

jumped to a 7-0 lead, but Claude kept fighting back, and played a fine game. Gruver's largest lead was 38-30 in the third quarter, but the Mustangs then scored 7 unanswered points to trail 38-37, then went into the lead 45-42. It wasn't until the steady Brant Armes hit a jumper with 3:18 left in the game, that the Hounds had the lead for

good, 48-47. Wylee Maupin was impressive with a 15 to 20 foot jumper that he consistently hit. Armes was 6-7 from the free throw line in the fourth quarter, and with 21 seconds left in the game, Armes hit the crucial package - both ends of the one and one, to increase a 55-53 lead to 57-53. It was a very good game for the Hounds.

**For the Sport of it**

by Bob Bort

The Top of Texas Basketball Magazine annual is out, and the Gruver Hounds and Lady Hounds are each picked to win district 1-AA. The predicted order of finish: (Boys), 1. Gruver; 2. West Texas; 3. Spearman; 4. Boys Ranch; 5. Stratford. (Girls), 1. Gruver; 2. Stratford; 3. Spearman; 4. West Texas.

As with all pre-season polls, they can be taken with a grain of salt. The Lady Hounds, and the Hounds are going to have to prove themselves on the basketball court, not

on paper. In the case of the Lady Hounds, Stratford and Spearman are formidable opponents, and the Lady Hounds could get knocked off if they are not up to snuff in each and every game. Remember, the Gruver gals are not ranked in the state's top twenty in the TABC pre-season poll, and they are picked THIRD in the TABC pre-season district 1-AA forecast. The Hounds will have to contend with an outstanding Spearman Lynx club that

See SBORT, page 8

**1995 LYNX AND LYNXETTE BASKETBALL SCHEDULE**

VARSIITY

DATE	OPPOONENT	LOCATION	TIME
11/14	White Deer	T	5:00-JV G&B, 6:30-V G, 8:00-V B
11/16 - 18	Perryton Tourney	T	TBA - JV B&G ONLY
11/17	Pampa	H	7:30 - V GIRLS
11/17	Guymon	T	7:00 - V BOYS
11/21	Wheeler	T	4:00-JVG , 5:30-JV B, 7:00-V B, 8:30 V B
11/28	Panhandle	H	5:00 - JV B&G, 6:30 V G, 8:00 - V B
11/30 - 12/2	Canyon Tourney	T	TBA - V GIRLS ONLY
11/30 - 12/2	Miami Tourney	T	TBA - V BOYS AND JV GIRLS ONLY
11/30 - 12/2	Gruver Tourney	T	TBA - JV BOYS ONLY
12/5	Canadian	H	5:00 - JV B&G, 6:30 - V G, 8:00 V B
12/7 - 9	Amarillo Tourney	T	TBA - GIRLS ONLY
12/7 - 9	Spearman Tourney	H	TBA - JV GIRLS ONLY
12/7 - 9	Perryton Tourney	T	TBA - V BOYS ONLY
12/7 - 9	Borger Tourney	T	TBA - JV BOYS ONLY
12/12	Sanford-Fritch	H	5:00 - JV B&G, 6:30 - V G, 8:00 V B
12/15	Perryton	T	5:00 - JV B & G, 6:30 - V G, 8:00 V B
12/19	Booker	H	5:00 - JV B & G, 6:30 - V G, 8:00 V B
12/28 - 30	Canadian Tourn.	T	TBA - V BOYS AND GIRLS
1/2	Sudan	Highland Park	5:30 - JV BOYS, 7:00 V B
1/5	Sunray	H	5:00 - JV B & G, 6:30 V G, 8:00 V B
1/9	Boys Ranch*	T	6:30 - JV G, 5:00 - JV B, 8:00 V B
1/12	Stratford*	H	5:00 - JV B&G, 6:30 - V G, 8:00 V B
1/16	West Texas*	T	5:00 - JV B & G, 6:30 - V G, 8:00 V B
1/19	Sunray	T	5:00 - JV B & G, 6:30 - V G, 8:00 V B
1/23	Gruver*	H	5:00 - JV B & G, 6:30 - V G, 8:00 V B
1/26	Boys Ranch*	H	6:30 - J V G, 5:00 - JV B, 8:00 V B
1/26	Guymon	T	6:00 - JV G, 7:30 - V G
1/30	Stratford*	T	4:00 - JV G, 5:30, 5:30JV B, 7:00-VB, 8:00VB
2/2	West Texas*	H	5:00 - JV B&G, 6:30 - V G, 8:00 V G
2/6	Hooker	H	5:00 - JV B&G, 6:30 - V G, 8:00 V B
2/9	Gruver	T	5:00 - JV B&G, 6:30 - V G, 8:00 V B

\* DISTRICT GAMES

**We support our Lynx !!!**

**ALPHA/OMEGA CONSTRUCTION**

Roofing • Siding • Remodeling • Replacement Windows

Licensed • Bonded • Insurance

**SAVE**

**FREE ESTIMATES**  
5 Year Written Warranty on Labor!

**\$1000**

with this ad!

**WILL BEAT ANY WRITTEN BID.**  
Call (806)383-6163 or the digital pager number 1-800-625-8076

**BOB JOHNSON MOTOR COMPANY IN BORGER**

FORD • LINCOLN • MERCURY • CHRYSLER • PLYMOUTH • DODGE

For all your Ford truck needs come by and visit **JOHN CRAWFORD, 1993-1994 SALESMAN OF THE YEAR** at Bob Johnson Motor Company in Borger, TX.



273-7541

**Bob Johnson**  
MOTOR COMPANY

West Hwy. 136

SALES (800)753-5370  
PARTS (800)999-3042

Hansford County Hospital District announces the opening of the clinic at 702 S. Roland

**Dr. Ahmed Iqbal**

Internal Medicine  
General Medicine

Office Hours: 8-12; 1-5  
Call 659-2846 for appointment

Clinic Staff: Betty Pugh, Darlene Pierce, Helen Prachar, & Elizabeth Duncan, RN



**Basketball . . .**

Gru - Molly McLain - 15, Kiki Carthel - 14, Kaysha Cluck - 5, Cara Hathaway - 4, Weslyn Maupin - 4, Amy Gillispie - 3, Autumn Bateman - 2, Amber Murrell - 2, Tara Shapley - 2.

Synopsis: The Lady Hounds stepped up in class for the second game in a row to play the AAA Lady Eagles, but it's the Lady Hounds who are the class of the Panhandle. Kiki Carthel and Molly McLain, two seniors, are showing their senior leadership by playing very steady basketball, and according to head coach Steve Myatt, they are going to have to play steady basketball for Gruver to be successful. Gruver led 12-8, when they went on a tear, outscoring the Lady Eagles 16-3 to take a 28-11 lead. The Lady Hounds led 40-17, and 46-19, before the Lady Eagles spurred at the end. The Lady Hounds looked a bit ragged at times, but they were playing a team that played four quarters of ragged basketball, and it's very hard to show any consistency when your opponent plays like that. This team is very good, and they will get much better.

**Hounds (1-1) vs. Sanford-Fritch**

Friday 11-17-95 at Fritch  
Gruver 15 33 52 60  
Fritch 16 30 45 70  
3-Pointers - Brant Armes - 3, Phil De La Cruz.

Gru - Brant Armes - 19, Wylee Maupin - 10, Bailey Barkley - 6, Josh Mayhew - 6, Daniel Bort - 5, Travis Ferguson - 5, Sammy Renteria - 4, Phil De La Cruz - 3, Scott Jarvis - 2.

Synopsis: These two teams are going to have some classic battles this year, if this first game is any indication. The AAA Eagles, unbeaten with their other victory over 5A Caprock, were a formidable opponent for the Hounds - too formidable! Phil De La Cruz canned a trey with 5:44 left in the first quarter, to give the Hounds the early lead, 5-4. A Wylee Maupin slam dunk gave the Hounds a 9-6 lead. But then the Eagles took over, and jumped to a five point, 26-21, lead. That's when the Hounds spurred at the close of the first half. A nice 3-point play on a breakaway layup by Daniel Bort as the halftime buzzer sounded gave Gruver a 33-30 lead. The Hounds showed their muscle in the third quarter, and looked

like they would coast home to victory, as they led 52-40 - by 12 big points - after Scott Jarvis had canned a jumper. But the Fritch team outscored the Hounds 30-8 the remainder of the way, as they were red hot, and Gruver was ice cold. Only Brant Armes, who scored all eight of the Hounds fourth quarter points, could hit the basket. But it may have been a good loss for the Hounds, a learning experience, as no one expected them to be perfect any more. The Hounds will get other shots at the Eagles this year.

**Lynx 7th A vs. Boys Ranch 7th**

Monday 11-13-95 at the Ranch  
Spm 11 25 34 48  
Ran 10 17 25 27

3-Pointers - Dusty Vinson.  
Spm - Jimmy Gayton - 14, Griffin - 10, Travis Atwood - 6, Dib Kirk - 6, Timmy Bynum - 4, Wooley - 3, Dusty Vinson - 3, Ty West - 2.

Synopsis: This was the very first game for this brand new set of Lynx, and they looked great. Kirk, Bynum, Griffin, and Gayton were the first ones of this new team to knock in points, including 6 points by Gayton in the first quarter alone.

**Lynxette 8th A vs. Stratford 8th**

Monday 11-20-95 at Stratford  
Spm 5 9 22 23  
Str 11 20 30 42

3-Pointers - C. Smith, H. Beasley, K. Murphy.  
Spm - Haley Beasley - 9, C. Smith - 6, Audrey Sanders - 3, K. Murphy, Amber Ramon - 2.

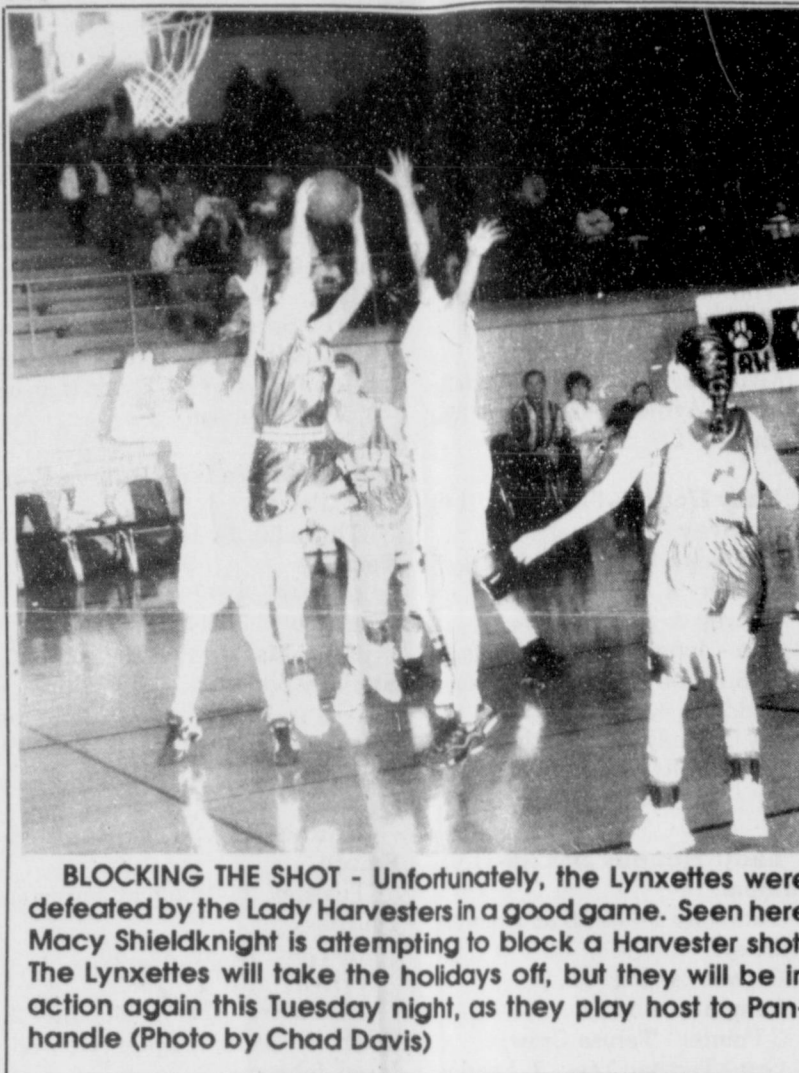
Synopsis: Although this was a loss for the Lynxettes, all the point getters in this game really did great. Three girls hit treys in this game, and Haley Beasley really had a fantastic night with a trey in the first quarter and three buckets in the third.

**Lynxette 8th B vs. Stratford 8th**

Monday 11-20-95 at Stratford  
Spm 2 7 12 19  
Str 11 15 26 36

Spm - Brenda Carbjal - 9, Kelcee Beezley - 5, Jamie Kunselman - 2, Leslie Widener - 2, Chelsea Villines - 1.

Synopsis: This may have been a loss for this Lynxette team, but don't count them out yet. Brenda Carbjal and Kelcee Beezley should lead this team to a victory soon.



**BLOCKING THE SHOT - Unfortunately, the Lynxettes were defeated by the Lady Harvesters in a good game. Seen here Macy Shieldknight is attempting to block a Harvester shot. The Lynxettes will take the holidays off, but they will be in action again this Tuesday night, as they play host to Panhandle (Photo by Chad Davis)**

**Basketball . . . .**

**Lynx 8th A vs. Boys Ranch**

Monday 11-13-95 at the Ranch  
Spm 16 27 37 57  
Ran 6 13 24 34

3-Pointers - Landon Delozier, Jeremy Mackie.

Spm - Jeremy Mackie - 11, Aaron Winegarner - 9, Josh Schumann - 9, Clayton Wilkerson - 7, Dusty Barber - 7, Landon Delozier - 5, Teddy Whitefield - 5, Reagan Renner - 4.

Synopsis: Of course, with talent like that, how could you lose any game. This set of guys, coming off an awesome year on the football field, has nothing to worry about as long as Mackie, Winegarner, Schumann, Wilkerson, Barber, Delozier, Whitefield, and Renner keep on playing the same.

**Lynx 7th B vs. Stratford**

Monday 11-20-95 at Spearman  
Spm 1 6 6 15  
Str 4 2 8 19

Spm - No individual stats.

**Lynx 8th B vs. Stratford**

Monday 11-20-95 at Spearman

**Basketball...**

**Lynx 7th A vs. Stratford**

Monday 11-20-95 at Spearman  
Spm 5 7 15 21  
Str 9 17 21 25

3-Pointers - Martin Griffin.  
Spm - Jimmy Gayton - 6, Brady Wooley - 4, Ty West - 3, Martin Griffin - 3, Richard Varnon - 2.

**Lynx 8th A vs. Stratford**

Monday 11-20-95 at Spearman  
Spm 20 33 50 66  
Str 8 19 27 38

3-Pointers - Dust Barber - 4, Clayton Wilkerson, Jeremy Mackie, Teddy Whitefield.

Spm - Dusty Barber - 20, Aaron Winegarner, Clayton Wilkerson - 15, Jeremy Mackie - 11, Teddy Whitefield - 5.

Synopsis: Can anyone stop these guys? This game made two wins in a row for this Lynx team. Dusty Barber's 4 treys and 20 points was remarkable for 8th grader. Aaron Winegarner had no treys, but his 18 points was enough to really help. Clayton and Jeremy also had great games.

**Lynxette 9th grade vs. Stratford**

Monday 11-20-95 at Spearman  
Spm 7 11 15 17  
Str 10 26 37 51

Spm - Lisa Swink - 6, Kristi Carbajal - 4, Gale Mayfield - 2, Mandy Vernon - 2, Grace Davis - 2.

**Hounds 7th (1-1) vs. Boys Ranch**

Monday 11-20-95 at Greyhound Gym  
Boys Ranch 6 11 17 39  
Gruver 4 7 23 27

Gru - Kasey Harris - 6, Chase Lamb - 4, Anthony Villalobos - 4, Taos Weldon - 4, Bradley Duncan - 2, Brady Hart - 2, Cory Schneider - 2, Chad TeBeest - 2, Greg Ehrenberg - 1.

**Hounds 8th (1-1) vs. Boys Ranch**

Monday 11-20-95 at Greyhound Gym

Boys Ranch 10 18 24 28  
Gruver 9 16 24 35

Gru - Bray Armes - 10, Dan Odom - 8, Derik Grotegut - 6, Colby Hunt - 4, Tyler Barkley - 3, Jared Christian - 2, Jesus Rodriguez - 2.

Synopsis: Derik Grotegut hit a free throw at the start of the 4th quarter to put the Hounds up 25-24, and they were up to stay. Jared Christian and Bray Armes followed with buckets, and the Hounds were up 29-24, enroute to the 7-point victory.

**Hounds 9th (1-2) vs. Boys Ranch**

Monday 11-20-95 at Greyhound Gym  
Boys Ranch 4 14 22 41  
Gruver 13 21 34 39

3-Pointers - Jason TeBeest - 2, Matt Watlington - 2, Charlie Stavlo. Gru - Jason TeBeest - 10, Matt Watlington - 8, Kris Kanczewski - 5, Charlie Stavlo - 5, Wesley Miser - 4, Luki Johnson - 3, Crece Gaspar - 2, T.J. McClure.

**Lady Hounds JV (2-3) vs. Claude**

Tuesday 11-21-95 at Claude  
Gruver 6 13 24 40 43 45  
Claude 10 17 25 40 43 47

3-Pointers - Crystal Christian  
Gru - Kathy Slough - 18, Jill Odom - 12, Crystal Christian - 10, Erika Barrera - 2, Kelley Ogilvie - 2, Kadie Grotegut - 1.

**Hounds JV (2-3) vs. Claude**

Tuesday 11-21-95 at Claude  
Gruver 10 21 36 45  
Claude 1 6 18 27

3-Pointers - Jared Johnson - 2, Kevin Harris, Buster McLain.  
Gru - Jim Potts - 15, Heath Tolleson - 9, Jared Johnson - 7, Buster McLain - 5, Kevin Harris - 3, Blake Ferguson - 2, Rob Murrell - 2, Keith Cassidy - 1, Jody Robinson - 1.

**Lady Hounds (3-0) vs. Claude**

Tuesday 11-21-95 at Claude  
Gruver 9 23 48 73  
Claude 18 31 50 63

See BASKETBALL, page 7

**Customer Appreciation SALE**

Friday, Nov. 24 - Thursday, Nov. 30

**Kids' Stuff**



**Lady Fair**

719 W. 7TH

Buy any regular price item at full price and get another item of equal or lesser value for 1/2 price (excluding Estee Lauder & Dooney and Bourke)

FREE GIFT WRAP

LAYAWAYS

Hansford County Hospital District announces the opening of the clinic at 710 S. Roland

**Dr. Raul C. Tamayo**  
Pediatrics  
General Medicine

Office Hours: 8-12; 1-5  
Call 659-5234 for appointment

Clinic Staff: Brenda Busch and Tanja Whitefield, LVN



**NOVEMBER BLOW OUT**

OVER 1,000 NEW VEHICLES AND 200 USED VEHICLES IN THE IRWIN NETWORK TO CHOOSE FROM

**BUY AT HOME FOR THE BEST PRICE AND FOR THE BEST SERVICE**

EXAMPLE #95105  
95 CAMARO Z28

LEATHER INTERIOR, POWER SEAT, T-TOP WITH SHADES, POWER WINDOWS & LOCKS, AM-FM CD PLAYER, 5.7 LT1 V8, PERFORMANCE AXLE, ACCELERATION SLIP REGULATION AND MUCH MORE

LIST \$25,545.00

DISC 4,600.00

BEST PRICE \$20,945.00

**BEST PRICE GUARANTEE**

SHOP UNTIL YOUR HEARTS CONTENT, BRING US YOUR BEST DEAL SIGNED BY A MANAGER AND WE WILL BEAT IT OR WE WILL SEND YOU ON A \* FREE CARIBBEAN CRUISE \*



CHEVROLET

**IRWIN AUTO CO.**

Right On The Corner  
Right On The Price!

409 S. Main - Perryton, TX  
806-435-3663

\* See Manager for Details



# Obituaries

**JOSE C. URRUTIA**  
Olton-Jose C. Urrutia, 85, died November 14, 1995.

Services were held November 16, 1995 at 2:00 p.m. at St. Peters Catholic Church in Olton with Pastor Fr. Martin Pina, officiating.

Mr. Urrutia was born in Guadalupe Zac, Mexico. He was a retired farmer.

Survivors include a sister, Antonia Rojas of Spearman.

**LULA O. MITCHELL**  
Spearman-Lula O. Mitchell, 80, died Saturday, November 18, 1995.

Graveside services were held Monday, November 20, 1995 at 4 p.m. in the Hansford Cemetery with T.J. Pittman, brother-in-law of the deceased, officiating. Arrangements are by Boxwell Brothers Funeral Home Inc.

Mrs. Mitchell was born in Elkhart. She had lived in the Spearman area for 48 years, moving from Hollis, Oklahoma. She married Clarence Mitchell in 1947 at Childress. She was a homemaker and a member of the Church of Christ. She was preceded in death by a daughter, Anita Tweedy, in 1993.

Survivors include her husband;

five sisters, Lorene Brown of Hollis, Margie Hall of Altus, OK., Willa Mae Pittman of Woodward, OK., and Deannie Gilley and Cleo Cotter, both of Spearman; two grandchildren; and three great-grandchildren.

**CYNTHIA JEAN HOWELL**  
Spearman-Cynthia Jean Howell, 36, died Monday, Nov. 13, 1995.

Services were held at 2 p.m. Thursday, November 16, 1995, in First Baptist Church with the Rev. Dan Carter, pastor of Trinity Fellowship Church, officiating. Burial was in Heart Cemetery at Booker by Boxwell Brothers Funeral Home Inc.

Mrs. Howell was born in Beaver, Oklahoma, and had lived in the Spearman area for 17 years. She married Danny Dale Howell in 1978 at Darrouzett. She was a homemaker and co-owner of D&C Greenhouse. She was a member of Trinity Fellowship Church.

Survivors include her husband; three sons, Bruce Wayne Howell, Brian Keith Howell and Rodney Allen Howell, all of the home; her parents, Art and Doris Born of Perryton; and two brothers, Lyndon Born and Leslie Born, both of Perryton.



**CONGRATULATIONS - Flat Stanley, store representative for Celebrate, presents a \$200 gift certificate to Jonell Grayson that was given away during their Christmas Open House held Nov. 11th and 12th. (photo by Chad Davis)**

There are two times in a man's life when he should not speculate: when he can't afford it and when he can.

—Mark Twain

**Century 21**  
**GOLDEN SPREAD REALTY**  
Janye Helton Pointer, Broker Owner  
435-5444

414 Hwy 760 - 3/1 3/4, large lot, roomy house & a pool!

205 Hazelwood - Great buy, excellent condition

315 1/2 N. Bernice: Lot for sale.

East 7th Street - Mobile homes, lots to lease!!

® and ™ trademarks of Century 21 Real Estate Corporation. Equal Housing Opportunity INDEPENDENTLY OWNED AND OPERATED.

**Are You A Victim of Domestic Abuse . . .**  
Physical, Emotional or Sexual?  
Call Toll Free  
1-800-753-5308

We are in Spearman on the 1st, 3rd, & 5th Wednesdays of each month at the First Presbyterian Church, 1021 Cotter. On the 2nd & 4th Wednesdays we are at the First Christian Church at 510 King in Gruver. We can come to Spearman & Gruver any time upon request. We operate a safe place for victims & their children to stay in times of crisis.

**Panhandle Crisis Center**  
Serving Hansford, Lipscomb & Ochiltree Counties  
317 S. Main  
Perryton, Tx.  
Memorials Accepted

**Reality is expensive.**

Prepare yourself for college with U.S. Savings Bonds.

Start saving now for those future college costs with U.S. Savings Bonds. They're guaranteed safe, earn Treasury-based rates, and you can get them through most banks or through employers offering the Payroll Savings Plan. Plus, families and individuals who use Savings Bonds for college tuition may qualify for a special tax exclusion.\*

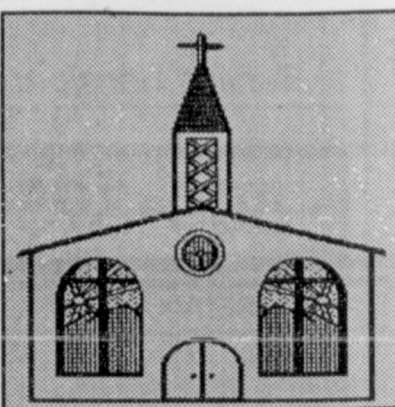
For the Savings Bond Investor Information pamphlet, write U.S. Savings Bonds, Washington, DC 20226.

\*Maximum income and other limitations apply; read IRS Publication 550 and Form 8815 for details.

**U.S. SAVINGS BONDS**  
Take Stock in America

A public service of this newspaper

## Let us replenish the seed of faith through... REGULAR CHURCH ATTENDANCE, DAILY BIBLE READING & PRAYER



**Curtis' Hot Oilers**  
806-659-3432  
"Taking Service to Perfection"

806-659-2912 P.O. Box 714  
800-821-6714 Spearman, TX 79081

**Palo Duro Supper Club**  
22 S. Archer  
659-2232

**C.O.'S SUPPLY CO.**  
Plumbing & Tire Sales & Service  
421 W. Kenneth • Spearman  
659-3781 or 659-3555

**Bartlett's Ace Hardware**  
105 W. Broadway  
733-2404

**GILLASPIE**  
AUTO & TRUCK CENTER, INC.  
SPECIALTY OF OLDS • PONTIAC • BUICK  
CHRYSLER • PLYMOUTH • DODGE.  
Hwy 207 South • P.O. Box 430 (806)659-2541  
SPEARMAN, TEXAS 79081

**Deakin ELECTRIKID**  
OILFIELD • RESIDENTIAL • COMMERCIAL  
321 Main Street  
Spearman, TX 79081  
1-800-999-1506 (806)659-5016

**PORTER SATELLITE**  
TREY PORTER  
806-659-3657  
420 Davis  
Spearman, Texas 79081

**Gruver Cablevision**  
Quality Family Entertainment with  
"the Disney Channel"  
308 Main • 733-5295

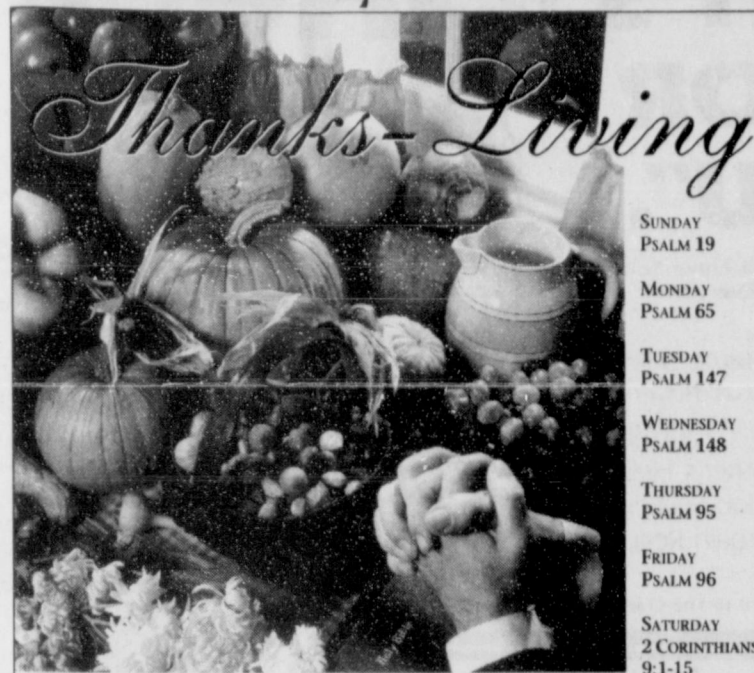
**Morse Implement Company**  
"Join us in church this week"

**Boxwell Bros. Funeral Home**

**THE HANSFORD COUNTY REPORTER-STATESMAN**  
Serving The Communities Of Spearman, Gruver & Morse  
213 Main • 659-3434  
1-800-395-9482

**CORONADO HOSPITAL**  
Pampa, Texas  
(806)665-3721

Compliments of  
**G&G FOODLINER**  
516 Main • Gruver  
733-2471



The poet both haunts and helps at Thanksgiving time when he wrote:  
"Don't let it be forgot, that once there was a spot,  
for one brief shining moment that was known as Camelot."  
A place, a time, a person, it makes little difference.  
Camelot has come to mean "the height of something special." And Thanksgiving is a time of recalling one's Camelots. It is the reality (or memory) of little children gathered around an open fire in the den finding expressed delight in identifying flickering flames as "rabbit ears" or "teddy bear's feet."  
Camelot is turkey served full-bodied to family members, but it is more.  
Camelot is gratitude for life, and the life-giver without whose daily presence there would be no Camelots. It is thankfulness that God is actively, creatively, and redemptively at work in our world and in us.  
Thanksgiving is reviewing the Camelots along the path and expressing gratitude for each. It is hearing the surgeon say "benign" instead of "cancer"; a kindly soul who rings your doorbell to enlighten the load; a letter with words that send doldrums scurrying for cover, and it is the reality of knowing that God cares; that He is the Source and Resource of all we shall ever need.  
But Thanksgiving is better pronounced "Thanks-Living," the only true way to celebrate this Thanksgiving, Camelot Season.

Scriptures Selected by The American Bible Society  
Copyright 1995, Keister-Williams Newspaper Services, P. O. Box 8005, Charlottesville, VA 22906

### In Spearman...

**Apostolic Faith Church**  
822 S. Dressen • 659-2870  
Sunday School: 10 a.m.  
Worship: 11 a.m.  
Evening Worship: 6 p.m. Sun.  
Wed. Prayer Meeting: 7:30 p.m.  
Pastor James Brown

**Trinity Community Church**  
717 W. 7th Ave. • 659-2671  
Celebration of Praise 10:15  
Worship Service and  
Children's Church 10:30  
Sunday Evening 6:30 p.m.  
Wednesday evening: 7 p.m.  
Pastor Dan Carter

**First Assembly of God**  
401 N. Bernice • 659-2295  
Sunday School: 9:45 a.m.  
Worship: 10:50 a.m.  
Evening Worship: 7 p.m.  
Wednesday Worship: 7:30 p.m.  
Youth: 7:30 Wednesday  
Pastor Walter Greaser, Jr.

**Faith Lutheran Church (ELCA)**  
1101 Bernice • 659-2252  
(Worships with First Presbyterian Church)

**First Christian Church (Disciples of Christ)**  
29 S. Bernice • 659-2036  
Sunday School: 9:45 a.m.  
Worship: 10:50 a.m.  
Evening Bible Study Worship: 6:30 p.m. Sundays.  
Pastor LaVern Draper

**First Presbyterian Church**  
(Worships with Faith Lutheran Church)  
1021 Cotter • 659-2033  
Sunday School: 9:45 a.m. at Lutheran Church  
Worship: 11 a.m. (alternates monthly between addresses above)  
Pastor Beverly Cook

**First Baptist Church**  
123 N. Bernice • 659-5557  
Sunday School: 9:45 a.m.  
Worship: 11 a.m.  
Evening Worship: 7 p.m.  
Jr. High Youth: 6 p.m. Wed.  
High School Youth: 7 p.m. Wed.  
Youth Choir: 6 p.m. Sun.  
Pastor Kyle Henderson

**Church of Christ**  
121 S. Haney • 659-3244  
Sunday Bible Class: 9:45 a.m.  
Worship: 10:30 a.m.  
Evening Worship: 6 p.m.  
Bible Study Wed. 7:30 p.m.  
KRDF Radio Program  
Living With Christ 7:50 a.m. M-F  
Minister Arnis Pape

**Fellowship Baptist**  
1102 S. Archer • 659-2783  
Sunday School: 10 a.m.  
Worship: 11 a.m.  
Evening Worship: 6 p.m. Sunday  
Youth & Adult Serv.: 7:30 Wed.  
Pastor Tim Luttrall

**Union Church**  
31 S. Endicott • 659-2644  
Sunday School: 9:45 a.m.  
Worship: 10:45 a.m.  
Evening Worship: 6:00 p.m.  
Bible Study & Prayer Meeting: 7:00 p.m. Wed.  
Pastor Billy Stanford

**Sacred Heart Catholic Church**  
901 Roland • 659-2792  
Sat. Night Mass: 7 p.m.  
Sunday Mass: 8:45 a.m. - English (8:45a.m. Service on KRDF 98.3 FM) 11:15 a.m. - Spanish  
1:30 p.m. - Gruver - Christo Rendentor Mass - Spanish  
Rev. Fernand Couture

**Primera Mision Bautista**  
502 E. 7th • 659-3991  
Sunday School: 9:45 a.m.  
Worship: 11 a.m.; Evening: 6 p.m.  
Wed. Prayer Meeting: 7 p.m.  
Thurs. Visitation: 7 p.m.  
Pastor Isaias Martinez.

**"WE SUPPORT OUR LOCAL CHURCHES"**

**CAPROCK #1 & #2**  
Bill Park, Gen. Mgr.  
(806)733-5043 or 733-5025

**QUALITY CAPROCK'S BRAND**

**"Custom Cattle Feeding"**

### In Gruver...

**First Baptist Church**  
402 E. Broadway • 733-2411  
Sunday School: 9:45 a.m.  
Worship: 10:50 a.m.  
Disciple Training: 6 p.m. Sunday  
Prayer Meeting: 7:30 p.m. Wednesday  
Pastor Larry Miller

**Church of Christ**  
209 King • 733-2760  
Sunday School: 9:30 a.m.  
Worship: 10:20 a.m.  
Evening Worship: 6 p.m.  
Wed. Evening Worship: 7:30 p.m.  
Minister Bob Setliff

**First Christian Church**  
510 King • 733-2960  
Sunday School: 9:45 a.m.  
Worship: 11 a.m.  
Wed. Bible Study: 7:30 p.m.  
Youth: 6:30 Wednesday  
Pastor Gary Gumfroy

**Oslo Lutheran Church (ECLA)**  
West of Gruver on Hwy 15 & N. FM 1162  
339-7646

Sunday School: 9:45 a.m.  
Worship: 11 a.m.  
Morning Prayer: 9 a.m. Wed.  
Pioneer Clubs (Grades 1-6):  
4-5:30 p.m. Wednesday  
Pastor John R. Chandler

**Community Bible Church (Interdenominational)**  
Hwy. 15 • 733-2443  
Sunday School: 10 a.m.  
Worship: 11 a.m.  
Wed. Prayer Meeting: 7 p.m.

**First United Methodist**  
Broadway & Garrett • 733-2651  
Sunday School: 9:45 a.m.  
Worship: 8:30 a.m. & 10:50 a.m.  
Evening Worship: 6 p.m.  
Pastor Lewis Holland

### In Morse...

**Morse Baptist Church**  
Pastor Mike Martin  
733-2757

**"Your Home Away From Home"**  
**Nursanickel Motel**  
815 Hwy. 207 S.  
Phone: (806)659-3737 P.O. Box 115  
Spearman, Texas 79081

**BERRY CLEANERS**  
DAN DESIMONE • OWNER  
Phone 659-3122 • P.O. Box 1017  
207 Main St. • Spearman, Tx. 79081

**GRUVER FORD**  
531 Main • Gruver • 733-2431

**Interstate Savings & Loan**  
322 Main • Spearman • 659-2559

**Hagerman Services**  
Backhoe • Dozer • Welding  
North Hwy. 15 • Spearman  
659-5131

**Gordon Drugs**  
Dependable Prescription Service  
314 Main • Spearman  
659-2141  
Jim Evans

Compliments of...  
**AGCO of Spearman, Inc.**  
"See you in Church"  
659-3751



# Out at the Lake

By Dorothy Hudson  
November 20, 1995--Lake  
Depth--26 feet 3.5 inches

This was a rather quiet week at the Lake despite the warm weather, but it was an exciting week for me as two things I wanted to see fell in place. Ollie Jarvis rode out to the Park with me, and I have my brother Jack Hart's face to face encounter with the mountain lion to report.

I wrote about "buck rubs" last week, and now I have seen some. Cottonwoods seem to be the favored tree, although they work on the lacebark elms some. The deer

## Hospice "Lights/Love" ceremony to be held

The public is invited to attend the annual lighting of the "Lights of Love" Christmas Tree on Monday, December 4. The program will begin at 6 p.m. in the Hansford Manor Living Room and will include Christmas music and refreshments. It will conclude with the lighting of the Christmas Tree located on the north grounds by the gazebo.

You can help Hansford Hospice turn on the Christmas lights and at the same time, honor and remember special people by making a gift to help illuminate the "Lights of Love."

Hansford Hospice provides a program of physical, emotional and spiritual care to the terminally ill and their families. These services are provided regardless of the family's ability to pay. Therefore we rely on the on-going generosity of the very caring community to help fund this program of special care. Please support Hansford hospice in this ministry of love. Your gift is greatly appreciated by the patients and their families who are cared for by the Hospice team.

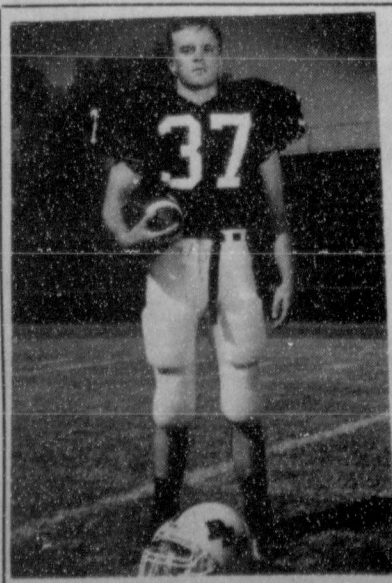
## Sport

CONTINUED FROM PAGE 7

did receive some pre-season ink in the TABC newsletter, Roundball Roundup. It will be a while before the polls mean anything, and then it's the Texas Association of Basketball Coaches (TABC) periodic rankings that mean most. But as we all know, the game is not over until it's played on the court, and then either team can win.

\*\*\*\*\*  
We wish Canadian's Wildcats and head coach David Flowers the best of luck in the football playoffs. Hopefully, they will go a long way.

\*\*\*\*\*  
The Lady Hounds will have had their first big test the year this past Tuesday, before this newspaper comes out. That is against class A's Claude Lady Mustangs. Claude opened the season with wins over Alamo Catholic 113-30, and at Highland Park 86-27. They are averaging 99.5 points per game! This column is being written prior to that game, so you will know the results of Tuesday's action at Claude. Last year, the Lady Hounds beat Claude at Gruver 61-47, but their JV trampled our JV girls. It should be interesting.



**PLAYER OF THE WEEK** - Clay Scribner, a former Lynx football player, was recently named the Panhandle State University Red Shirt Player of the Week.

choose a smaller tree than I had expected. The size seems to vary according to the size of the buck, but the trees I saw rubbed in Dedication Park, where the Huge cottonwood tree is, were around four inches in diameter. Some of the bark is shredded, some is completely rubbed off, and some just has a polished look. There are some young trees directly north of the office that bobby Mosier and Raymond put PVC pipe on to keep from being destroyed.

Robert Novak and Kenneth Evans, P.D.R.A. members who will have served 20 years this January, both live east of Spearman and both have stories to tell of the tremendous flocks of sand hill cranes that frequent their neighborhoods. I have had a strong desire to see this sight, but it is one that you have to be in the right place at the right tie. They were just east of Spearman using a playa lake that was fast drying up for a base. The wheat pasture and various stalk fields around it were the feed grounds. These big birds are truly a sight to see. I saw them three different

times, but when I took my daughter and part of her children to see this wondrous sight, they were gone.

Last Wednesday, November 15, during the middle of the day, Jack Hart was out of his pickup counting a covey of blue quail on the ranch where the Zulu Stockade was. Several of the quail were missing, and he began to look for shot gun shells, thinking someone might have been shooting them. As he looked around he found himself staring into the face of a young mountain lion. Jack thought the lion had been stalking the quail. As they stared at each other, the big cat's tail was twitching back and forth. Jack decided it was time for him to get back to his pickup. I don't have the details of how far apart they were and if Jack backed or turned around. There have been several sightings of a lion in this area.

The Texas Parks and Wildlife have been conducting a survey of mountain lions in Texas. They hope anyone that makes a sighting will call 1-800-792-1112 and report it.

I will save the Ollie Jarvis stories until next week.



**5 STATES BAND** - The Junior High 5 States Band chairs were recently announced. To get into the elite group of players, a band student must have an excellent performance against several other players in the 5 state region, which takes several hours of practice and dedication. Over 250 kids from towns such as Pemyton, Liberal, Spearman, Pringle-Morse, and other surrounding towns competed at the try-outs. Out of all those kids, eight Spearman Junior High Band members made the tops of the big band. They are (top row l to r) Sonia Fraire 8th grade, Maria Vargar 8th grade, and Tommy Dewberry 8th grade. (Middle Row l to r) Stephen Salgado 7th grade, Junior Moreno 7th grade, and Juan Reza 7th grade. (Bottom Row l to r) 7th graders, David Schick and Chelsey Villines.

# Why a Dobson Cellular Phone & Service Makes the Best Christmas Gift.

- ★ **The PHONE is Free.\***  
Sign up for clear, convenient Dobson service and a top-quality Motorola® cellular phone is yours FREE. Choose from: Flipless hand-held portable, transportable "bag phone" or a traditional vehicle-installed phone.
- ★ **The PLAN is Perfect.**  
Money-saving PerfectPlan™ and PerfectPlan+™ automatically adjust to your calling needs. The sliding price/usage scale ensures that no matter how much or how little you talk, you're always on the right plan.
- ★ **The PERFORMANCE is the Difference.**  
The Dobson Difference is more than a phrase — it's a promise to deliver true performance in every aspect of your cellular service, like:
  - **Coverage** - A home coverage area 48,000 square miles wide, plus roaming capabilities in thousands of U.S. cities;
  - **Clarity** - State-of-the-art cellular signal towers, equipment and 24-hour system monitoring ensure clarity in every call;
  - **Customer Service** - Courteous, competent Customer Service, on-line 24 hours a day, seven days a week PLUS reliable, on-site technicians for quality installations and repairs;
  - **Cost Savings** - Enjoy FREE calls to the (806) and (405) Area Codes from inside home area;
  - **Commitment** - For over 50 years, a dedication to delivering a real difference in the telecommunications quality you receive.

The Difference Maker

**DOBSON**  
CELLULAR SYSTEMS  
**1-800-882-4154**

**MOTOROLA**  
Authorized Dealer

AUTHORIZED AGENTS:

**Cellular Communications  
Gruver Cellular  
W.T. Services**

659-3762  
733-2180  
273-2092

\*Certain terms and conditions apply. Subscriber is responsible for monthly service charges and airtime use. Minimum service contract required. ©1995, Dobson Cellular Systems

Olto  
Novem  
Serv  
16, 199  
Cathol  
tor Fr.  
Mr.  
Guada  
retired  
Sur  
Antoni  
Spe  
died Sa  
Gra  
Monda  
p.m. in  
T.J. Pi  
deceas  
ments  
Funer  
Mrs  
Elkhar  
man an  
Hollis  
Clare  
Childr  
and a  
Christ  
by a d  
1993.

Sur  
C  
Cel  
thal  
Nov

G  
Jany  
414 H  
house  
205 H  
condit  
315  
East  
lease!!  
© and  
Corp  
IND



**"IT'S FOR YOU"...**  
The Classifieds Have Something For Everyone!

The Home Sealer...  
The Car Buyer...  
The Do-It-Yourselfer...  
The Mother's Helper...  
The Job Seeker...  
The Bargain Reaper...

When you want results, turn to The Classifieds.

# The Hansford County Reporter-Statesman

Serving Hansford County Since 1907

Telephone: 1-800-395-9482 or (806)659-3434

### JOB OPPORTUNITIES

**OWN YOUR OWN APPAREL OR SHOE STORE, CHOOSE:** Jean/sportswear, bridal, lingerie, westernwear, ladies, men's, large sizes, infant/preteen, petite, dancewear/aerobic, maternity, or accessories store. Over 2000 name brands. \$25,900 to \$37,900: inventory, training, fixtures, grand opening, etc. Can open 15 days. Mr. Loughlin (612) 888-6555. S1, 3tp

**HELP WANTED:** Semi truck drivers, CDL required. Must be 25 yrs. old. Conventional's new hopper bottom trailers. McCarty Trucking, 806/362-4807. S10, RTN

**HELP WANTED:** Outreach Health Services needs a provider in Spearman. Call 800-800-0697 and leave message. EOE. S47, 2tc

**HELP WANTED:** Need truck driver with Class A or B CDL. Call 659-3402 after 5:00 p.m. S42, 2tc

**HELP WANTED:** Spearman Equity is now accepting applications for bookkeeper. Qualified individuals will receive competitive wages along with outstanding benefit package. Apply in person. S46, RTN

**CERTIFIED NURSE AIDE CLASS:** Hansford Manor will begin classes for certified nurse aides Monday, December 4, 1995 beginning at 8:30 a.m. Classes will be daily 8:30 a.m. - 5:30 p.m., Monday through Friday, December 4 - 20. Applications must be placed no later than December 1. For more information or to apply, contact Linda Stalcup, Personnel Director, Hansford County Hospital District, 707 S. Roland, Spearman, TX 79081, 806/659-2535. EOE S46, 3tc

**HANSFORD COUNTY HOSPITAL DISTRICT HAS THE FOLLOWING POSITIONS AVAILABLE:** Full-time position in central supply; hours 8 a.m. to 5 p.m., Monday thru Friday. Some lifting required with computer experience preferred. Maintenance position open for 8 a.m. to 5 p.m., Monday thru Friday. Successful applicant will be eager and outgoing and must have a high school diploma. Some heavy lifting required with previous maintenance experience preferred. Will be working in a clean, pleasant environment with excellent benefits. EOE. For more information or to apply, contact Linda Stalcup, Personnel Director, 707 S. Roland, Spearman, Texas, 806/659-2535. S46, 2tc

### AUTOMOBILES

**FOR SALE:** 1985 T-Bird with power windows and locks, nearly new tires, AM/FM cassette, looks good, runs good, would make good kid car. Available in December. \$2,700. Call 659-3846 after 6:00 p.m. S44, RTN

**FOR SALE:** 1984 Ford Truck with 20' van and lift. V-8 diesel engine. Excellent condition. For more information call 659-3432 or 659-2912. S52, RTN

**FOR SALE:** Good dump truck for sale. If interested call after 6:00 p.m., (806)249-5827. S35, RTN

**FOR SALE:** 1994 Pontiac Sunbird. Like new, low miles. 27 MPG in town. Priced to sell. 659-3494. S47, 1tp

### FOR LEASE

**FOR LEASE:** 2 1/2 acres fenced in yard. 50x70 building with crane, office space on front of building, located at industrial area by old airport. \$500 per month. For more information call 316-626-8906 or 316-624-5358. S38, RTN

## OSGOOD MONUMENT CO.

Amarillo, Texas

Dealers of Rock of Ages Granite, as well as all colored granites, marble and bronze memorials.

Represented by  
**Boxwell Bros. Funeral Home**  
519 S. Evans  
659-3802

### SERVICES

**PITS CLEANED:** Dragline or Loader. Call Lee Roy Mitchell, 733-2384 or 733-2175. S47, 1tc/RTN

**J & M Service Center 24-Hour Service-415** Colliard, Spearman 79081. 659-5519 or 659-3352. Tires, flats, oil & lube, wash, brakes, batteries and minor repairs. Now selling gas. S27, 1tc/RTN

**LAUNDRY SERVICE:** Special - 60¢ a pound. Mon., Wed., and Fri. Family Laundry. S40, RTN

**SERVICES:** Kathy's Gift & Accessory featuring Home Interior items. Call 882-4466 and leave message. S40, RTN

**CHIMNEY SWEEP SERVICES:** Chimney fires can be prevented. 18 years experience. Call John at (806)665-4686. S44, 5tc

**HOUSE CLEANING:** Need help with your house cleaning? Dependable work and reasonable rates. Call 659-2184. S47, 1tc

**WANT TO LOSE WEIGHT WITHOUT GIVING UP YOUR FAVORITE FOODS?** Want to be better nourished and slimmer? The solution is simple, and within easy reach. Just pick up the phone and call me: 1-800-311-6909. S46, 4tc

### FOR SALE

**FOR SALE:** 38 squares of 25 year three tab fiberglass shingles. Call 659-3260. S47, 2tc

**FOR SALE:** Make us an offer! Nice waterbed with attractive roses on headboard. Call 659-9816. S47, RTN

**FOR SALE:** Toddler bed and baby swing, stroller, walker, carrier, 2 booster car seats, and 2 travel play yard/cub. 659-5415. S47, 1tc

**FOR SALE:** A Mobile Air electric oxygen machine. Low hours. Call 659-3332 or 659-3580. S46, RTN

**H&B ARCHERY:** We have a good selection of archery equipment and now ordering black powder guns and accessories. Air rifles and gift certificates. Call for price of bows on closeout. H&B Archery, Amarillo, TX, (806)381-1666. S46, 6tc

**FOR SALE:** Sears Lifestyler treadmill. 2 years old...not used much. 1.5 to 5 mph with digital read-out. \$75. 659-2870. S47, 2tp

**FOR SALE:** A-Brandt Ranch Oak furniture, excellent condition. Call (806)353-4882. S47, 1tc

### PUBLIC NOTICE

**PUBLIC NOTICE**  
The School Board of Trustees for the Gruver Independent School District will be accepting bids on three different 53 passenger school buses: 1975 International, 1977 International, and 1980 International. Bids will be accepted on each bus individually or as a group. Bids will be accepted until 4:00 p.m. on December 6, 1995. They should be marked BUS BID and sent to Gruver I.S.D., Box 650, Gruver, TX 79040 or delivered to the Business Office in the Gruver High School at 601 Garrett Street, Gruver, TX. The bids will be awarded at the regular school board meeting scheduled to meet at 6 p.m. on December 7, 1995. The School Board reserves the right to accept or reject any or all bids in the best interest of the School District. S46, 2tc

### PUBLIC NOTICE

**ABSOLUTELY NO HUNTING** will be allowed on the Jarvis place on Hwy 281. Trespassers will be prosecuted to the fullest extent. Don't ask and don't call. S46, 4tc

### CLASSIFIED RATE

\$4.00 first insertion  
\$3.00 each additional insertion (30 words or less)  
13¢ each word over 30  
Legal Notices: 15¢ per word

### JAN'S ETC. NEW & USED & ANTIQUES TOO

Everything for home and family. Plains Shopping Center in Spearman  
Open Monday - Saturday  
10 a.m. til 6 p.m.

### PUBLIC NOTICE

**NOTICE TO BIDDERS**  
Sealed bids for the sale of one (1) 1990 Ford Crown Victoria, 4 door sedan will be accepted by the City of Gruver, at the office of the City Manager up until 2:00 p.m., Thursday, November 30, 1995, then publicly opened and read. The city reserves the right to reject any or all bids, to waive informalities and to accept the bid deemed to be most advantageous to the city. All bids received after the above closing date will be returned unopened. The successful bidder shall make payment in full to the City of Gruver in the form of cash or cashier's check. No personnel checks will be accepted. The vehicle may be seen at Gruver City Hall, 108 E. Broadway, Gruver, Texas. Bids shall be sent to City of Gruver, P.O. box 947, Gruver, TX 79040, and shall be sealed and marked Bid on 1990 Ford Crown Victoria. S46, 2tc

### PUBLIC NOTICE

By virtue of an Order of Sale issued out of the Honorable 84th Judicial District Court of HANSFORD County on the 7 day of Nov., 1995 by the Clerk thereof, in the case of HANSFORD COUNTY VS. HAHN, TOMMY & ELLA HAHN LIFE ESTATE. Cause #541 and to me, as SHERIFF directed and delivered, I will proceed to sell, at 2:00 o'clock p.m. on the 5th day of DECEMBER, 1995 which is the first Tuesday of said month, at the OFFICIAL DOOR of the Courthouse of said HANSFORD County, in the city of SPEARMAN Texas, the following described property, to wit: All of Lots Numbers one (1), Two (2), and Three (3), in Block Number Fifty-Four (54), Original Town of Gruver, Hansford County, Texas. Levied on the 9 day of Nov., 1995 as the property of TOMMY HAHN ARAK THOMAS T. HAHN BY VIRTUE OF TWO WARRANTY DEEDS VOLUME 128, PG 23 VOLUME 130, PG 119, HANSFORD COUNTY, TEXAS to satisfy a judgment amounting to \$1,362.61 with interest from the 22ND DAY OF AUGUST, 1995 at 10 percent, per annum, and all costs of suit in favor of HANSFORD COUNTY, CITY OF GRUVER, GRUVER INDEPENDENT SCHOOL DISTRICT AND COUNTY EDUCATION DISTRICT #20 FOR GRUVER ISD. Given under my hand this 7 day of Nov., 1995. SHERIFF R.L. McFarlin.

### PUBLIC NOTICE

By virtue of an Order of Sale issued out of the Honorable 84th Judicial District of HANSFORD County on the 7 day of November, 1995 by Clerk thereof, in the case of HANSFORD COUNTY VS. KEIM, J.R. Cause #464 and to me, as SHERIFF directed and delivered, I will proceed to sell, at 2:00 o'clock p.m. on the 5th day of DECEMBER, 1995 which is the first Tuesday of said month, at the OFFICIAL door of the Courthouse of said HANSFORD County, in the City of SPEARMAN Texas, the following described property, to wit: The South Twenty Feet (S20') of Lot Number 8, in Block Number 30, Reeves Addition to the Town of Spearman, Hansford County, Texas and all of Lot Number 6, in Block Number 3, Glover Addition to the town of Spearman, Hansford County, Texas. Levied on the 9 day of November, 1995 as the property of J.R. KEIM BY VIRTUE OF A CASH DEED IN VOLUME 132, PAGE 625 THE RECORDS OF HANSFORD COUNTY, TEXAS to satisfy a judgment amounting to \$4,004.23 with interest from 22ND DAY OF AUGUST, 1995 at 10 percent, per annum, and all costs of suit in favor of HANSFORD COUNTY, CITY OF SPEARMAN, SPEARMAN INDEPENDENT SCHOOL DISTRICT AND COUNTY EDUCATION DISTRICT #20 FOR SPEARMAN ISD. Given under my hand this 7 day of November, 1995. R.L. McFARLIN, SHERIFF.

### PUBLIC NOTICE

**GRUVER INDEPENDENT SCHOOL DISTRICT INVITATION FOR PROPOSAL**  
Notice is hereby given for sealed proposal for qualifications for District-wide Energy Conservation Services Program. Proposals will be opened December 7, 1995 at 6:00 p.m. Please mail or deliver your proposal to Gruver ISD School Board of Trustees, P.O. Box 650, 601 Garrett St., Gruver, TX 79040. Inquiries concerning specifications should be addressed to Barry Haensch, Superintendent, (806)733-2001. S47, 2tc

### PUBLIC NOTICE

**NOTICE OF SHERIFF'S SALE**  
The State of Texas County of Hansford By virtue of an Order of Sale issued out of the Honorable 84th Judicial District Court of HANSFORD County on the 7 day of Nov., 1995 by the Clerk thereof, in the case of Hansford County vs. Goodson, Bill. Cause #560 and to me, as SHERIFF directed and delivered, I will proceed to sell, at 2:00 o'clock p.m. on the 5th day of DECEMBER, 1995 which is the first Tuesday of said month, at the OFFICIAL door of the Courthouse of said HANSFORD County, in the City of SPEARMAN, Texas, the following described property, to wit: Lot No. Four (4), Block Thirty-three (33), First Addition to the Town of Spearman, Hansford County, Texas. Levied on the 9 day of Nov., 1995 as the property of THE ESTATE AND HEIRS OF BILL GOODSON BY VIRTUE OF A WARRANTY DEED IN VOLUME 66, PAGE 479 OF THE RECORDS OF HANSFORD COUNTY TO satisfy a judgment amounting to \$337.74 with interest from the 22nd DAY OF AUGUST, 1995 at 10 percent per annum, and all costs of suit in favor of HANSFORD COUNTY, CITY OF SPEARMAN, SPEARMAN INDEPENDENT SCHOOL DISTRICT AND COUNTY EDUCATION DISTRICT #20 FOR SPEARMAN I.S.D. GIVEN UNDER MY HAND THIS 7 day of NOV, 1995. R.L. McFarlin, Hansford County Sheriff.

### PUBLIC NOTICE

By virtue of an Order of Sale issued out of the Honorable 84th Judicial District Court of HANSFORD County on the 7 day of Nov., 1995 by the Clerk thereof, in the case of HANSFORD COUNTY VS. WATSON, WM SGT FSC. Cause #526 and to me, as SHERIFF directed and delivered, I will proceed to sell, at 2:00 o'clock p.m. on the 5th day of DECEMBER, 1995 which is the first Tuesday of said month, at the OFFICIAL door of the Courthouse of said HANSFORD County, in the City of SPEARMAN Texas, the following described property, to wit: All of Lot Number Eight (8) out of Out Lot Number Eighteen (18), Green Seitz Addition to the City of Spearman, Hansford County, Texas. Levied on the 9 day of Nov., 1995 as the property of SGT FSC WILLIAM WATSON BY VIRTUE OF A WARRANTY DEED IN VOL. 140, PAGE 399 OF THE RECORDS OF HANSFORD COUNTY, TEXAS to satisfy a judgment amounting to \$2,384.54 with interest from the 22nd DAY OF AUGUST, 1995 at 10 percent, per annum, and all costs of suit in favor of HANSFORD COUNTY, CITY OF SPEARMAN, SPEARMAN INDEPENDENT SCHOOL DISTRICT AND COUNTY EDUCATION DISTRICT #20 FOR SPEARMAN I.S.D. GIVEN UNDER MY HAND THIS 7 DAY OF NOV., 1995. R.L. McFarlin, SHERIFF, HANSFORD COUNTY.

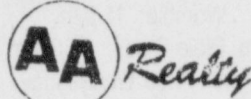
### PUBLIC NOTICE

**OPEN HOUSE AND PUBLIC MEETING**  
TxDOT Route Study - Lubbock to IH 10 and Amarillo North  
The Texas Department of Transportation (TxDOT) is hosting an open house and public meeting on December 11, 1995 at the Lubbock Memorial Civic Center, 1501 Sixth Street, Lubbock, Texas. The open house will be held from 4 to 7 p.m. and the public meeting will begin at 7 p.m. The purpose of this open house and public meeting is to present the results of the route feasibility study from Lubbock to IH 10 and from Amarillo north to the state line. The open house will feature exhibits and maps. The public is invited to speak with members of the study team during the open house. Comment forms will be provided at the open house and a court reporter will be available to take private comments. The formal public meeting will begin at 7 p.m. with a brief presentation by the study team. Public comments will be limited to 3 minutes each. There will be no responses to comments at the public meeting. Citizens with questions for the project team are urged to attend the open house prior to the public meeting. Written comments may be submitted at the open house and public meeting or mailed to Billy D. Parks, P.E., Amarillo District Engineer, P.O. Box 2708, Amarillo, Texas, 79105 up to 10 days following the public meeting date.

### PUBLIC NOTICE

**LEGAL NOTICE**  
Hansford County Commissioner's Court will receive sealed bids until 9:00 a.m., Monday, November 27, 1995 on one 1996 Full-Size Police Special four-door sedan for the Sheriff's Department, with and without trade-in. Bids will be opened Monday, November 27, 1995 at the regular meeting of the Commissioner's Court, beginning at 10:00 a.m. Specifications are available at the offices of the County Judge and County Auditor in the Hansford County Courthouse, Spearman, Texas. The Court reserves the right to accept or reject any or all bids. S45, 3tc

### REAL ESTATE



Allen Alford - Broker • 659-3034

Julie Martin - Broker • 659-2425

1103 S. Townsend - 3/1 1/1, good loc.  
613 Kenneth - 5 BR, 2 story, rock house  
Good Hanger & Storage - Old Airport  
REDUCED!!!

### NEW LISTINGS

2 LOTS at 7th & Barkley - Bldrs. Dream  
1010 Haney - 3/1/1

160 Acres - S.E. of county

Gruver - 400 - W01 - Front Street

FOR QUALITY & SERVICE CALL US TODAY

We Need Your Listing.

1117 TOWNSEN: Price reduced to under

\$50,000! New paint! New carpet! Affordable 3 bedroom, 1 3/4 bath, with game room and basement. Call Real Estate and Rental TODAY! 435-4623. S32, RTN

**MAKE US AN OFFER:** Great brick home in great location. 2,200 sq. ft., 4 bedrooms, 3 baths, big den with fireplace, basement, double car garage. 702 Gibner. Call and let's make a deal! 659-3838 or 733-5555. S19, RTN

**FOR SALE:** Lots 4 and 5, Unit 2, Tract 3, Crawford Addition - just north of Ag Farm - 10 feet tall chain linked outer fences, storage building, tack room, electric waters, sheds. Excellent facility for horses or any animals. Call (806)287-1538. S25, 3tp, RTN

**HOUSE FOR SALE:** Must see to appreciate, older victorian home, 2,800 sq. ft. and weight and suntan room and art room. Extra adjoining corner lot. 3 bedroom, 3 baths, and basement. Call (806)659-2117 or 3762, 104 S. Barkley, (new roof), in Spearman. S42, RTN

### REAL ESTATE

**HOUSE FOR SALE: REDUCED!!!!** 5 lots fenced, 2 car carport, shed, hot tub, fish pond, 3 bedroom, 3 bath, handicap accessible, large living room, bar, and all contents, all or part and we take trades. Saturdays only, 12 til 7, 605 Archer, 659-2235. S46, RTN

**FOR SALE:** 5 acre vacant lot, agriculture zoned, N.E. side of Spearman. Call (806)659-2117 or 3762. S42, RTN

**OFFICE & BUILDING FOR SALE:** 2,600 sq. ft. office and 45x60 Morton Building setting on 2+ acres. Barn heated and fully insulated. Nice facility. Please call (806)659-2117 or 3762. Located in Spearman. S42, RTN

**DISPLAY HOMES:** Nationwide homes will be on display in your area November the 27th through December 2nd. We finance, manufacture, insure and service our homes. We are Texas' #1 mobile home dealer. See us at 1217 West Highway 15, Perryton Texas. You won't be disappointed. S45, 3tc

**FOR SALE BY OWNER:** Easy to buy nice brick 3 bedroom home for smaller family. Fenced, nice neighborhood. Assume loan at 6% interest \$2,000 to seller, \$320 payments, taxes and insurance included. Lease purchase option. Call (806)296-6727. S44, RTN

**HOUSE FOR SALE OR RENT:** Brick, corner lot, 3 bedroom, 1 1/2 bath. Den could be used as bedroom, storage building, deck, central heat and air. Call 659-5108 after 6 p.m. S47, 3tp

### FOR RENT

**FOR RENT:** 3 bedroom, 1 bath, fenced yard, Call 659-2103. S45, 4tp

**FOR RENT:** Nice three bedroom house. One bath, attached garage, central heat and air. Good paint inside and out. Carpet just cleaned. \$350/mo. 659-2870. S47, 2tp

**FOR RENT:** Available after Nov. 15. Country home about 5 miles on Hwy 15. 3 bedroom, 1 1/2 bath, central air and heat, fireplace. \$350/mo., \$250 deposit. Call 659-2245. S44, RTN

### WANTED

**WANTED:** Would like to purchase a good, used motorized treadmill, call 659-3134. S46, 2tp

**NEED TO BUY:** Southwest Airline Company Club ticket. Call 806/733-2817 and leave message. S47, 1tc

## Starlite Satellite Systems

We are open  
Tuesday/Friday • 3 to 6 p.m.  
Saturday • 10 a.m. to 1 p.m.  
We also make late appointments  
We speak Spanish • Se habla Espanol  
420 N. Main, Borger  
273-6940

### NEW TRAMPOLINES

Mats & springs  
Resew trampoline mats.  
Make new boat covers.  
Call (806)659-2109  
Harry Stumpf  
301 W. 12th  
Spearman, Texas

## HOMETOWN REALTY

Selling Spearman!  
List your home with the  
Real Estate Professionals  
that the BUYERS call!

Rex Hoover - Broker • 800-755-4291

Larry Trosper - Sales • 659-3491

Diana Hoover - Sales • 658-9113

711 Collier - 3 bedroom, 1 bath, garage, central heat, PRICED TO SELL!  
4 1/2 Miles West of Spearman - 2,894 sq. ft., 3 bedroom, 2 1/2 bath, fireplace, basement, 11 acres.

908 S. Bernice - 1,355 sq. ft., 3 bedroom, 1 bath, hardwood floors, 2 living areas, ceiling fans, storage building.

6 Miles South of Spearman - 320 acres irrigated Farm Land.

706 Collier Dr. - 1,344 sq. ft., 3 bedroom, 1 1/2 bath, alarm, new kitchen, extra 720 sq. ft. barn.

1013 Linn Drive - 1,000 sq. ft., 3 bed, 2 1/2 bath, screened porch.

730 Gibner - 1,900 sq. ft., 4 bed, 1 bath, large, beautiful yard, storage building.

We need and appreciate your listings!