



HANSFORD COUNTY ★ THE REPORTER-STATESMAN ★

CELEBRATING 104 YEARS OF SERVICE TO HANSFORD COUNTY

HANSFORD COUNTY'S ONLY NEWSPAPER
REPORTER@SPEARMANREPORTER.COM

75¢



HANSFORD COUNTY LIBRARY
0122 MAIN ST
SPEARMAN TX 79081-2064
COMP
SCR2

WWW.SPEARMANREPORTER.COM
VOLUME 105 • ISSUE 31

THURSDAY, AUGUST 2, 2012



Weekly Update

Texas, July 30 - Average retail gasoline prices in Texas have fallen 0.9 cents per gallon in the past week, averaging \$3.33/g yesterday. This compares with the national average that has increased 0.4 cents per gallon in the last week to \$3.50/g, according to gasoline price website TexasGasPrices.com.

Including the change in gas prices in Texas during the past week, prices yesterday were 28.2 cents per gallon lower than the same day one year ago and are 18.1 cents per gallon higher than a month ago. The national average has increased 12.1 cents per gallon during the last month and stands 20.2 cents per gallon lower than this day one year ago.

"While motorists in many regions saw gasoline prices stabilize over the last week, it's only a matter of time before last week's rise in wholesale prices translates to a continued march higher on the retail level," said GasBuddy.com Senior Petroleum Analyst Patrick DeHaan. "The late week rally in stocks seemed to also fuel commodities higher, leading me to believe that pump prices will again pick up over the next week," DeHaan said.

GasBuddy operates, TexasGasPrices.com, and over 225 other local gasoline pricetracking websites that follow prices at over 125,000 gasoline stations in the United States and Canada. GasBuddy also uses Facebook (facebook.com/gasbuddy) Twitter (twitter.com/gasbuddy), and phone apps to keep motorists ahead of changing gasoline prices.

Weather Forecast

WEDNESDAY - Mostly sunny. Highs around 108. Southwest winds 5 to 10 mph.

WEDNESDAY NIGHT - Mostly clear. Lows around 70. Southwest winds 10 to 15 mph.

THURSDAY - Partly cloudy. Highs around 104. Northwest winds 10 to 15 mph.

THURSDAY NIGHT - Mostly cloudy with a 20 percent chance of showers and thunderstorms. Lows in the lower 70s. Northeast winds 10 to 15 mph.

FRIDAY - Mostly cloudy with a 20 percent chance of showers and thunderstorms. Highs around 102.

FRIDAY NIGHT - Mostly cloudy with a 20 percent chance of showers and thunderstorms. Lows in the lower 70s.

SATURDAY - Mostly cloudy with a 20 percent chance of showers and thunderstorms. Highs around 100.

SATURDAY NIGHT - Mostly cloudy with a 20 percent chance of showers and thunderstorms. Lows around 70.

SUNDAY - Partly cloudy. Highs in the upper 90s.

SUNDAY NIGHT - Partly cloudy. Lows in the lower 70s.

MONDAY - Partly cloudy. Highs in the upper 90s.

MONDAY NIGHT - Partly cloudy. Lows in the upper 60s.

TUESDAY - Partly cloudy. Highs in the upper 90s.

Read more: <http://www.city-data.com/forecast/w-Spearman-Texas.html#ixzz21agfkqtQ>

Texas Crop & Weather

The following specific livestock, crop and weather conditions were reported by Panhandle Extension directors for July 31, 2012: The region's hot, dry and windy weather continued. Soil moisture was mostly very short to short. Some counties received from 0.25 to 0.75 inch of rain, with a few isolated areas getting as much as 3 inches. Many fields of corn were heat stressed, and irrigators were having problems meeting the crop's water demands. Alfalfa was also moisture stressed. Cotton under irrigation was doing well. Manure trucks were going fast and furiously applying compost to fields that will be planted to wheat this fall. Grain sorghum was coming along with some fields heading, but moisture stress was affecting the crop's development. Rangeland and pastures were in from very poor to excellent condition, with most reporting very poor to poor. Cattle were in fair condition. Southwestern corn borer moth trap counts increased. Producers were spraying for second generation corn borer and applying fungicides at tassel.

PTCI Announces Email Workshops

Some customers are still having difficulty with PTCI's recent email conversion. Those customers are encouraged to call the support line at 866-307-6857. Additionally, PTCI is offering come-and-go workshops to help with conversion issues. These workshops will continue as long as there is a need for them. A schedule of these workshops can also be found at www.ptci.net/workshops.

WORKSHOPS: Mondays - 11:00 am - 1:00 pm at PTCI Perryton office, 222 S. Amherst, and 4:00 pm - 6:00 pm at PTCI Spearman office, 721 W. 7th; Tuesdays - 11:00 am - 1:00 pm at PTCI Guymon office, 2222 NW Hwy 64, and 4:00 pm - 6:00 pm at PTCI Boise City office, 115 W. Main; Wednesdays - 11:00 am - 1:00 pm at PTCI Spearman office, 721 W. 7th, and 4:00 pm - 6:00 pm at PTCI Perryton office, 222 S. Amherst; Thursdays - 11:00 am - 1:00 pm at PTCI Beaver office, 115 Douglas Ave., and 4:00 pm - 6:00 pm at PTCI Guymon office, 2222 NW Hwy 64; Fridays - 11:00 am - 1:00 pm at PTCI Laverne office, 101 W. Jane Jayroe Blvd.

In the near future, PTCI's old email server will be turned off. At that point, you will no longer be able to access your email through that server, making it extremely important for customers to get their settings updated as soon as possible. We want PTCI email customers to enjoy easy access to their email, and as always, we are available to assist you in any way we can.

GOP Chooses Tea Party-Backed Cruz for Senate

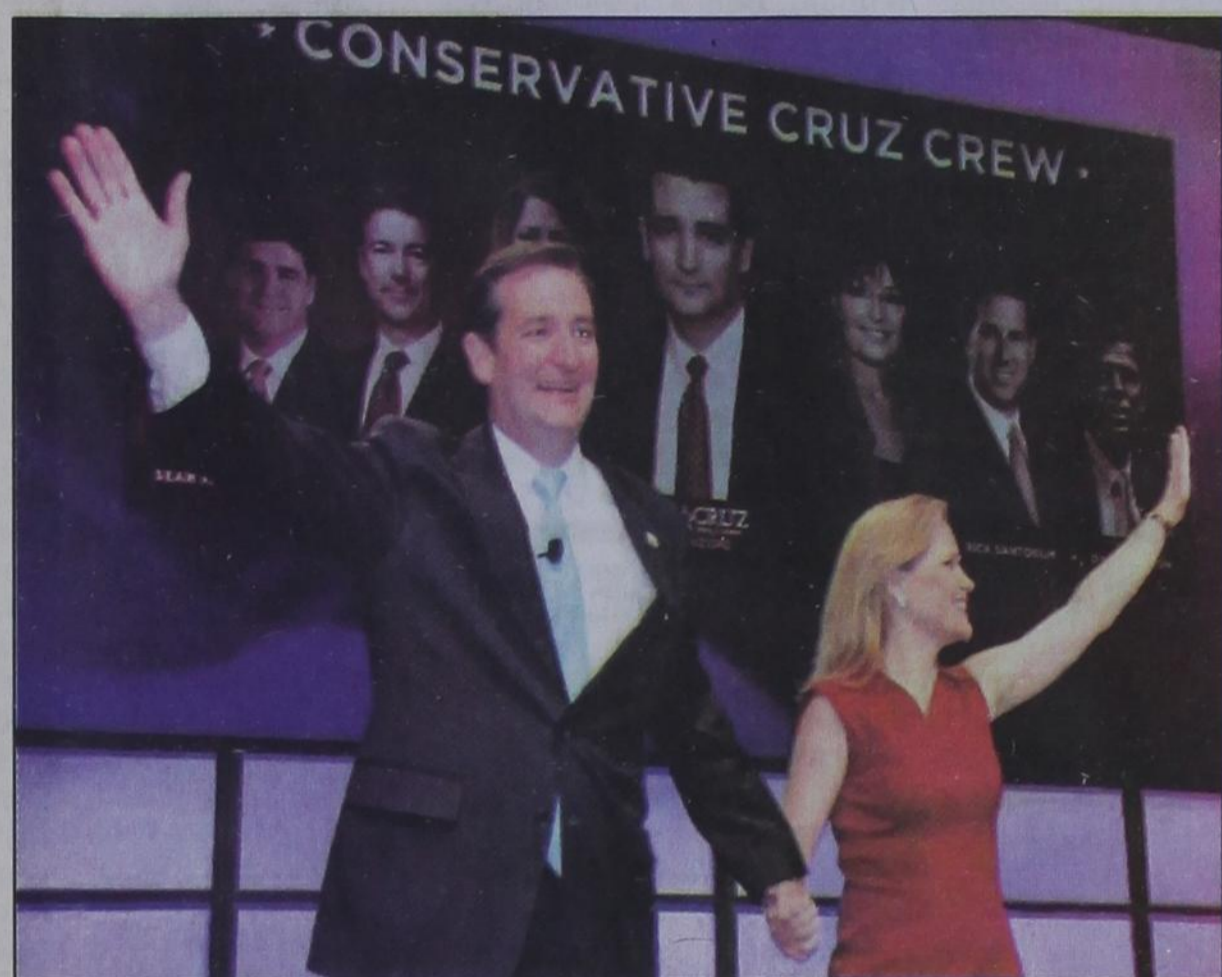
The Associated Press

Tea party darling Ted Cruz convincingly defeated the Republican establishment favorite, Lt. Gov. David Dewhurst, in Texas' runoff election Tuesday, capturing the GOP nomination to replace retiring U.S. Sen. Kay Bailey Hutchison as fiercely conservative voters shook one of America's reddest states to its political core.

The race had been closely watched nationally as one of the nation's most-vivid contrasts between the GOP mainstream and grassroots, conservative activists. But as results began to pour in, it turned out to be no contest. Cruz grabbed early leads in key cities around the state where Dewhurst had once enjoyed stronger name recognition, fundraising and political organization just weeks earlier.

Overseeing the state Senate from the powerful lieutenant governor's post since 2003, Dewhurst was long considered a slam dunk in his race with Cruz, the former state solicitor general and son of a Cuban immigrant. Dewhurst had the endorsement of much of Texas' Republican mainstream, including Gov. Rick Perry, who despite his failed run for president is still widely popular back home. He also had a \$200 million personal fortune he could dip into at will and did, loaning his Senate campaign at least \$24.5 million.

But Cruz has a fiery stage presence that made tea party supporters across the state swoon, and received millions from national, conservative organizations which targeted Dewhurst as too moderate. Even though the lieutenant governor oversaw



Ted Cruz and his wife, Heidi, thank his supporters in his successful defeat of Republican rival Lt. Gov. David Dewhurst in a runoff election for the GOP nomination for the seat that will be vacated by Sen. Kay Bailey Hutchison, who is retiring.

some of the most-conservative state legislative sessions in Texas history and helped speed the passage of laws requiring women to undergo a sonogram before having an abortion and voters to show identification at the polls, he also occasionally compromised with Democratic lawmakers to keep the legislative agenda moving.

Meanwhile, former Democratic state Rep. Paul Saddler easily bested perennial candidate Grady Yarbrough to capture his party's nomination and face Cruz in November's general election, but Cruz begins that race the overwhelming favorite.

Cruz memorized the U.S. Constitution while in high school and successfully painted his opponent as wishy-washy — even though they actually disagree on lit-

tle, either politically or ideologically.

The 41-year-old Cruz had never run for political office but bolstered his political credentials arguing in front of the state Supreme Court as the longest-serving solicitor general in Texas history.

Cruz's father Rafael is a pastor outside Dallas. He fought with Fidel Castro's rebels in Cuba before Castro took power and eventually embraced communism, and the elder Cruz fled to the U.S. with nothing but \$100 sowed into his underwear.

Texas Republicans aren't used to losing: The state has not elected a Democrat statewide since 1994. But Cruz attacked Dewhurst from the right, and the lieutenant governor's campaign had no real answer.

The state primary was pushed back from Super Tuesday to late May due to a legal fight over redistricting maps drawn by the GOP-dominated Legislature. The 66-year-old Dewhurst beat Cruz by 10 percentage points in the primary but fell about 70,000 votes short of the majority needed for an outright win in a nine-

Republican field vying for the party's nomination.

Besides Perry and other state GOP big guns, Dewhurst was endorsed by former baseball great Nolan Ryan. Dewhurst also won the endorsements of former Dallas Mayor Tom Leppert, who finished third in the Republican primary, and ex-NFL running back and ESPN commentator Craig James, the primary's fourth-place primary finisher.

None of it was enough.

Cruz got millions from national tea party groups and other conservative organizations including the Washington-based Club for Growth. He was endorsed by ex-Alaska Gov. Sarah Palin, radio talk show host Glen Beck, U.S. Sens. Jim DeMint of South Carolina and Kentucky's Rand Paul, as well as former GOP presidential hopeful and Pennsylvania Sen. Rick Santorum.

At a morning campaign stop in Houston, Cruz said he heard from voters statewide interested in changing what they view as insider-politics in Washington.

"That's the way the democratic process is supposed to work. It's not supposed to be a bunch of guys in a smoky room in Austin picking the next senator," Cruz added.

Just blocks away a few hours later, Dewhurst said, "This is a tough race, but if we remind voters I'm the only true conservative in the race," we can win, Dewhurst said, promising to "turn Washington upside down" if elected.

Natache Reeves, a 42-year-old nurse from the Dallas-Fort Worth suburb of Grapevine, said she voted for Cruz because he had Palin's support and was less likely to restrict handgun use.

"I love Sarah Palin, and she's backing Ted Cruz," Reeves said. "I pretty much agree with everything that rolls out of her mouth."

But Cruz wasn't for everyone. Frank Martinez of Dallas said despite finding Dewhurst's campaign ads "very mean" he couldn't support Cruz, even though they share Cuban roots.

"I think (Dewhurst) has more experience, and he's not a lawyer. So the ad worked," said Martinez, 54, who is unemployed after a workplace accident two years ago left him disabled.

Cruz has drawn comparisons to Indiana, where state Treasurer Richard Mourdock defeated incumbent Sen. Richard Lugar in the Republican primary. But in Texas, the nation's second-most populous state, a win by a tea party-backed candidate is likely to resonate even more.

Xcel Energy Asks Customers to Curb Electricity Use

Xcel Energy is asking electricity customers in its Texas and New Mexico service territory to conserve energy because of expected high electricity demand and an unplanned generation outage.

Extremely high electricity demand across a wide region has tightened power supplies, and a major Xcel Energy generating unit is down for unplanned repairs until later this evening.

The utility company urges consumers to limit their power use through 7 p.m. in order to reduce the strain on the power grid. Xcel Energy should produce enough power to meet demand today, but it is possible that reserve margins could tighten as air conditioning load rises in the afternoon hours.

Customers can help prevent power emergencies by:

- Turning off unneeded lights, computers and appliances.
- Setting the thermostat to 78 degrees or higher at home.
- Turning up the thermostat to 85 degrees before leaving home.
- Using major appliances and equipment after 7 p.m., when power demand is lower.

"We take our responsibility to supply energy to our customers very seriously, and we will declare an Energy Alert only after exhausting all other options," said Riley Hill, president and CEO of Southwestern Public Service Company, an Xcel Energy company.

"Our customers have helped us through similar situations in the past, and we look to them today to help us maintain the integrity of their electricity system. Turning off all lights and appliances that are not essential to health and safety will help us meet everyone's energy needs without service interruptions. We at Xcel Energy — and your friends and neighbors — thank you."

Xcel Energy Warns of New Customer Scam

Xcel Energy has received numerous reports about a new scam targeting customers in the Texas-New Mexico area.

Some customers have been contacted by callers claiming to represent Xcel Energy, indicating the customers' electric service is soon to be disconnected. The caller then tells customers to make their utility payments by purchasing a Green Dot pre-pay VISA card at a local drug or convenience store.

When customers purchase the card and call the phone number provided by the scammer, they are then directed to another phone number where the card information is obtained and the cash value is removed from the card. Additionally, the card customers purchase at stores is only a temporary card, so when they provide their information, the permanent card may be registered in another name and redirected.

This scam typically targets Hispanic customers and is perpetrated by callers who may speak Spanish.

Xcel Energy is communicating the following advice in the wake of this scam:

Any time customers are unsure if they've been contacted about their accounts or payments by Xcel Energy, call us at 1-800-894-4999 to verify that we sent the email or letter or made the phone call.

We do not recommend a specific payment method or type. We offer a variety of payment options so customers can select the one that best suits them.

Customers who may need assistance paying their bill should call us at 1-800-895-4999.

Customers can find more information on our website about protecting their personal information and about phone and e-mail scams.

Customers who have been impacted by this scam should report it to their local police department.

Xcel Energy (NYSE: XEL) is a major U.S. electricity and natural gas company with regulated operations in eight Western and Midwestern states. Xcel Energy provides a comprehensive portfolio of energy-related products and services to 3.4 million electricity customers and 1.9 million natural gas customers through its regulated operating companies. Xcel Energy's headquarters are located in Minneapolis. More information is available at www.xcelenergy.com.

Wolf Creek Heritage Museum Notes

by Virginia Scott
MUSEUM HAPPENINGS
I hope everyone is staying cool. The heat advisory is in effect as I write this and our air conditioners are working overtime trying to keep the museum at the required temperature for our collection. If you need a cool spot, join us.

Summer Camp August 7-11, for 4th to 8th graders. There is still time to register, so call us today at 806-852-2123. It promises to be a lot of fun!

HISTORICAL MUSINGS

We had a family traveling through Texas with two goals. One is to visit every county seat and two to find as many geocaches that they could locate. They found ours (we have three in town) and stopped into the museum after locating the museum cache hidden on the museum ground. They were a delightful family.

The Texas State Historical Association's "Texas Day by Day" for July 30th reported the following: "On this day in 1902, Charles Rath died in Los Angeles, California. Rath, born near Stuttgart, Wurttemberg, in 1836, came to the United States in 1848. About 1853, Charles joined William Bent's Colorado trading empire, working as an independent freighter hauling supplies and trade goods across Kansas. In the early 1870s Rath brought Andrew Johnson into his employ. Rath was among the first to take advantage of the growing buffalo-hide trade, hunting, freighting, and marketing the hides for a high profit. Often the

hideyard of the Rath Mercantile Company was filled with 70,000 to 80,000 hides at one time. In 1874, as the buffalo slaughter moved south into the Texas Panhandle, Rath and a business partner opened a combination store and restaurant at Adobe Walls, near the site of William Bent's old outpost. Rath himself was back in Kansas on June 27 and thus missed the second battle of Adobe Walls. In the 1870s, Rath and partners such as Frank E. Conrad and William McDole Lee opened commercial establishments at Fort Griffin, Mobeetie, and Rath City. By 1879, however, the buffalo supply was exhausted. Although Rath and his associates profited briefly from the bones their crews hauled away and sold for fertilizer, his fortune soon decreased as his debts from unsuccessful land speculations mounted. He lived in Mobeetie for a while before moving to Los Angeles, where he died of 'mitral insufficiency' (heart failure)."



STATE CAPITAL HIGHLIGHTS



by Ed Sterling

Fund to generate \$1.7B for schools: but not yet

AUSTIN — In 2011, the Texas Legislature cut \$4 billion from the public school budget for 2012-2013, and school districts across the state are still adjusting to the loss of funding.

But there is a plan in place to pump about \$1.7 billion into the budget for Texas public schools over the next biennium.

According to the Texas Education Agency, the State Board of Education on July 20 approved a percentage distribution of the Permanent School Fund of 3.3 percent for fiscal years 2014 and 2015. This, officials expect, should produce a payout of about \$830 million each year. The funding is used to pay for instructional materials and general education expenses for the state's public school students.

The \$25 billion Permanent School Fund is the second-largest educational endowment in the country, behind only Harvard's endowment.

In other news, the Texas Education Agency announced The Foundation School Program's new automated bond application program won a Best of Texas award from the national Center for Digital Government for "best information technology collaboration among organizations."

The program automates components of the funding system financing almost \$1 billion annually for school district construction projects, the Texas Education Agency reported, adding that "the improved system now provides prompt, accurate payments, improved reporting to school districts, on-demand ledger access and a detailed audit trail."

New policy restricts lobbying

Texas Railroad Commission, the three-member state agency that regulates the oil, gas, mining and pipeline industries in Texas, on July 17 announced the adoption of a new policy that restricts lobbying.

Under the policy, for two years after a commissioner or executive director leaves the agency, he or she may not appear before the commission or otherwise communicate with current commissioners, agency officers or employees with the intent to influence

agency action on behalf of any person and in connection with any matter.

"This policy should leave no doubt among our staff, the industries we regulate, and the general public that the Railroad Commission is complying with both the letter and the spirit of the Texas Revolving Door Statute," agency Chairman Barry Smitherman said. "Adopting this policy is an important step to maintaining the public trust."

Commissioner Buddy Garcia joined Smitherman in voting for the policy. The Railroad Commission news release did not mention the agency's third commissioner, David Porter.

Early voting was last week

Early voting in the 2012 Primary Runoff Elections was conducted July 23 through July 27.

Secretary of State Esperanza "Hope" Andrade, the state's chief elections officer, notified Texans that Tuesday, July 31, is the day for regular voting in the runoffs.

Care clinics held in Valley

Operation Lone Star, the annual effort to provide free medical care to people in South Texas was conducted July 23 through July 27.

Locations included a school in each of the following cities: Brownsville, Mission, Rio Bravo, Rio Grande City, San Juan and Zapata.

According to the Department of State Health Services, people in need were able to obtain services including health screenings and treatments, immunizations for children, student

physicals, hearing and vision exams, and dental care at some sites.

"This gives people the chance to see a doctor for basic health care, learn what steps will help them stay well, and get linked to ongoing health services," said Dr. David Lakey, DSHS commissioner. "It's also an opportunity for local, state and federal emergency responders to exercise operating public health clinics in a real-world setting."

Dead trees pose safety threat

Not counting the untold number of trees killed by wildfire last year, the Texas Forest Service in early July said foresters and analysts have estimated that as many as 500 million trees in rural forested areas and another 5.6 million trees in populated urban areas of Texas were killed as a result of the 2011 drought.

Texas Forest Service, noting the volume of dead trees poses a hazard, encouraged homeowners and landowners to remove fire- and drought-killed trees that are within falling distance of neighboring homes, roads and pathways.

Texans in Games are listed

Texas lays claim to at least 33 athletes competing in the 2012 Summer Olympic Games in London, the governor's office and an assortment of Texas newspapers reported last week.

Posted by the governor's office is a list showing each athlete's name, event(s) and hometown.

Find the list at www.governor.state.tx.us.

Texas Primary Runoff Election Results

Office of the Secretary of State 2012 Republican Party Primary Runoff Election Night Returns Unofficial Results (As of: 7/31/2012, 11:20:48 p.m.)

Justice, 5th Court of Appeals District, Place 2

Railroad Commissioner

Office of the Secretary of State 2012 Republican Party Primary Runoff Election Night Returns for HANSFORD COUNTY Unofficial Results

Railroad Commissioner - Unexpired Term

U. S. Senator

Justice, Supreme Court, Place 4

Railroad Commissioner

Member, State Board of Education, District 10

Railroad Commissioner - Unexpired Term

Member, State Board of Education, District 12

Justice, Supreme Court, Place 4

State Senator, District 25

State Representative District 88

State Representative District 88

Office of the Secretary of State 2012 Democratic Party Primary Runoff Election Night Returns Unofficial Elections Results (As of: 8/1/2012 12:20:53 a.m.)

The Hansford County Reporter-Statesman Mailing Address - 213 Main Street • Spearman TX 79081

Gary Smith - Publisher, Catherine Smith - Editor Clayton Smith - Reporter, Jill Noel - Photographer

Subscription Rates In Hansford County - \$30.00 • Out of County - \$40.00

The Hansford County Reporter-Statesman (USPS 529660) is published weekly in Spearman, TX.

Publication Policy The deadline to submit news and advertising to The Hansford County Reporter-Statesman is Monday at 5 p.m.

Advertising Open Display rates are \$4.00 per column inch. Classified Ads are \$7 for the first 20 words and 15c per word for each additional word.

Member of Gruver Chamber of Commerce Spearman Chamber of Commerce

TEXAS PRESS ASSOCIATION AWARD WINNER

COUNTRIES

- ACROSS 1. "Angela's ___" memoir 6. Fairytale princess test 9. Mark of a saint 13. Musketeer's hat decoration 14. TV classic "___ in the Family" 15. Vietnam's capital 16. Like a beaver? 17. Flying saucer 18. Declare invalid, as in divorce 19. Type of agreement 21. "a.k.a. Magyarorszag 23. Opposite of yang 24. School project, e.g. 25. Tube in old TV 28. Dwarf buffalo 30. A radio or television antenna 35. Strikes with an axe 37. Does something wrong 39. Like a nose reacting to allergies 40. Hipbones 41. Element Xe 43. ___ Jim snack 44. Connected series or group 46. Farmer's storage 47. Bristle 48. Churchill's successor 50. Your own identity 53. ___ A Sketch 55. Part of a circle

- 29. Miners' bounty, pl. 31. a.k.a. Russell 32. Scandinavian fjord, e.g. 33. Hill or Baker, e.g. 34. ___ Frank Baum 36. First king of Israelites 38. The only one 42. Baseball Hall of Famer Ryan 45. Becoming 49. Approximated landing time 51. "Home to famous bike race 54. Patsy Cline hit 56. Owner of famous online list 57. TV classic "___" test 58. Christmas time 59. "United ___ Emirate rates 60. "Tiny" Archibald 61. Douses 62. Monet's water flower 63. Socially awkward act 66. "___ Hard" 68. Scholastic aptitude test

CROSSWORD grid with numbers 1-74.

if you could save \$522 ... why wouldn't you? Call 1-866-929-9071 to get your fast, free car insurance quote.

FOR YOUR INFORMATION

Medical Fund Established for Jeremy Frost
A fund has been set up at First National Bank for Kylee and Jeremy Frost. To donate you can either call the bank at 659-5544 or mail it to Box 337, Spearman.

John DeLaRosa
A medical account has been opened for John & Deborah DeLaRosa at First National Bank. John has been diagnosed with oral cancer. He will be going through radiation and chemo treatment.

Spearman Food Bank 1st Thursday
If you would like to help the Spearman Food Bank, they need help unloading the truck at 11:30 each 1st Thursday of each month. Contact Cecil Biggers for more information.

Farmer's Market
The local Farmer's Market is held every Wednesday afternoon. Anyone interested in participating is asked to contact Linda Venneman at 806-898-0969.

SHS Class of 1981 Big Ol' Birthday Bash in Lieu of a Class Reunion - (Yikes - we are turning 50!)
The SHS Class of 1981 is holding a Big Ol' Birthday Bash in lieu of a Class Reunion on Saturday, October 13th. Festivities will be out at the River Breaks Ranch, www.riverbreaks.com, (just a few miles outside of Amarillo) beginning around 5-6ish. There will be fun, great food, and lots and lots of visiting. The cost will be around \$40ish per person. Sorry, we don't get the AARP discount yet! A block of rooms is reserved at the Drury Inn, Amarillo, TX (800-325-0720). More information to follow. Please send RSVPs, regrets, emails, phone numbers and old fashion addresses of classmates to Bonnie & Hunter Novak, novakh@ptsi.net, P.O. Box 403, Guymon, OK 73942. River Breaks Ranch - Amarillo, Texas www.riverbreaks.com

Lady Hound Basketball Camp
The Lady Hound Basketball Camp of Champs 2012 will be held August 6th-8th. Session I: Incoming 2nd - 6th Grade Girls (9 a.m. - 11 or 12 depending on size of camp); Session II: Incoming 7th - 9th Grade Girls (1 - 4 p.m.). The camp will be held in the new Gym and will cost \$40 (includes T-Shirt). If cost is keeping you from coming, please contact Coach Lankford (806-206-2942) Walk-ins welcome! In Session I (grades 2-6), the FUNDamentals of the game are taught and repeated. Dribbling, passing, form shooting, and a few defensive fundamentals. Fun and entertaining games will be played but not sacrificing the fundamental work that is taught. In Session II (grades 7-9), skills and drills will be introduced that will be taught at the JH and used in the high school. There will be competitions. Other aspects of the game will be taught too. The camp will be directed by Coach Lankford, head girls basketball, and assisted by the girls basketball staff of Coach Morrison, Coach Davis, and Coach Skarke.

Range Riders Rope for a Cure Event
Range Riders is roping together their fourth annual Rope for a Cure event to benefit children with Type 1 Diabetes and the Panhandle Juvenile Diabetes Research Foundation (JDRF). On Friday, August 10 through Sunday, August 12, Range Riders welcomes young and old to experience the art of roping at the Range Rider Indoor Arena at 313 W. Loop 335 South, Amarillo, TX.

Raffle for Jeremy Frost Benefit Fund
A Raffle for Jeremy Frost Benefit Fund for \$250 gas from Spearman Farm Supply will be held on Aug. 4th. Tickets are \$2 each or three for \$5. See Jan or Rick Howard or call 330-0388 or 659-2875 to purchase tickets.

SHS Booster Club Membership Drive
The 2012-2013 Spearman Athletic Booster Club Membership Drive is underway. Membership forms can be downloaded and printed at www.spearmanlynx.org. Join by August 6th to get painted paws on your driveway and a poster with signature ad. Also, senior athletes are currently selling ads to businesses for the football/basketball poster, football program & the Panhandle-Plains basketball book. In addition businesses will also receive information in the mail about sponsorship. The Booster Club officers for the 2012-2013 school year are very eager and excited to work as a team with parents, students, coaches and the community to fulfill the many needs of the SHS Athletic program. Your support is greatly appreciated! Go Lynx & Lynxettes!

Wheatheart Wheat Conference
The Wheatheart Wheat Conference will be held on Thursday, August 9, 2012 in the Ochiltree County Expo Center- Perryton, Texas. Registration will begin at 8 a.m., and is \$10. 3 CEUs will be given for Pesticide, including 1 in Laws and Regulations. Topics will be Wheat Market Outlook and Marketing Strategies, Variety Selection and Wheat Breeding Programs, Disease Management, Pesticide Laws and Regulations and Wheat Judging Contest Results. Lunch will be provided. For more information call the following Texas AgriLife Extension Service offices: Burt Williams, Hansford (806)659-4132 Kristy Synatschek Hutchinson (806)878-4026; Kyle Barnett, Hemphill (806) 323-9114 JR Sprague, Lipscomb (806)862-4601 or Scott Strawn, Ochiltree (806)435-4501.

Oslo Lutheran Church VBS
Oslo Lutheran Church will host Vacation Bible School Monday-Friday, August 6-10, from 6-8:30 p.m. The theme for this year is "Splash In God's Word." Come enjoy Bible Lessons, Science Projects, Food, Crafts, Games and Music. There is no charge to attend, but they would like anyone planning to attend to please call 806-339-7646 so they can get a count of those planning to attend, and get T-Shirt sizes.

BBBS Big Fun Run
The 5th Annual Big Fun Run and Family Fun Walk will be held Saturday, August 25th at 8 a.m. starting at Perryton High School. A Family Fun 1 Mile Walk immediately follows at 8:30 a.m. Proceeds will benefit Big Brothers Big Sisters in Perryton, Spearman and Gruver. To register for the 5K race or one mile fun walk call the BBBS office at 434-0016 or on our website: bbbstxpan.org. Registration will be available the day of the event. Registration is \$25. Members of SWFTR or Lone Star Runners Club pay \$20. Family Fun Walk Package (family of 4) is \$90. Male and female first and second place prizes will be awarded in four divisions: 14 & under, 15-25, 26-40, and 41+. Register by August 10th to guarantee shirt sizes.

GHS Cross Country Workouts
All Gruver High School Cross Country runners (boy or girl) need to report for workouts beginning Monday, August 13th, at 7 a.m. behind the old varsity gym.

Gruver Gym Hours
The Gruver Gym will be open in June and July for the following hours: Monday - Girls Night (JH-HS Girls) 7-9 p.m.; Tuesday - Boys Night (JH-HS Boys) 7-9 p.m.; Wednesday - Adult Night (HS-Old*) 7-9 p.m.; Thursday - Elementary Night 6-8 p.m. There will be 1 adult supervisor and 1-3 student workers each night (3 for elementary nights). All participants will need a signed release (students 17 or under will need parent/guardian signature). Out of town guests are welcome with signed release.

Second (Indianhead) Division Association, Inc.
The Second (Indianhead) Division Association is searching for anyone who ever served in the 2nd Infantry Division at any time. For information about the national association and our annual reunion in Reno, Nevada from August 23-26, 2012, visit our website at www.2ida.org or contact the association's secretary-treasurer, Bob Haynes, at 2idahq@comcast.net or (224) 225-1202.

Hansford Co. Library Thrift Shop Accepting Donations
Alley Katz (Library Thrift Shop) is accepting donations of quality items. You may ask for the key to the Thrift Shop at the library desk during regular hours (9:30 a.m.-5 p.m., Monday-Friday). Alley Katz is open from 10 a.m.-4 p.m. each Wednesday.

Firefighters Wanted
The Spearman Volunteer Fire Department is actively recruiting new members. Both men and women age 18 and over are welcome. The number of volunteers has dropped to dangerously low levels and the roster needs to be increased. If you have an interest in helping to keep your community safe, the SVFD would like to talk to you. All new candidates will have access to the best training available. All interested parties should either come to the fire station located at 513 S Hazelwood or call Kimmi Rivera at 806-202-6374. The SVFD meets every Thursday night at 7 PM. Bring a friend and come join the team.

TWC Warns Texans about Gift Card Email Scam

Agency encourages Texas residents to educate themselves about online security

The Texas Workforce Commission (TWC) warned today that emails claiming to offer free gift cards "on behalf of Texas Workforce Commission" are not to be trusted. Such offers are not attributable to TWC, and anyone who receives such an email should delete it immediately. Responding to the email, or clicking on the included web link, may result in harmful malware being downloaded to the recipient's computer, TWC warned. TWC has received reports of scam emails claiming to be sent on behalf of TWC stating the recipient has won a \$1,000 gift card. The email instructed the recipient to visit a website called "rewards2012" to claim the gift card. However, if a recipient follows the link to the website, malware attempts to download to their computer.

This is a known "phishing" scam, and TWC reminds Texans never to click on links in an email from an unknown source. Phishers and scammers often will direct people to websites that look very similar to legitimate websites in order to obtain login credentials or personally identifiable information, such as social security numbers, dates of birth or mother's maiden names. Following these links may result in monetary or identity theft.

Texas residents also are reminded that TWC staff will never call or email to obtain personally identifiable information, perform home visits, or use text messages to contact them. Unemployment benefit recipients should only give personal information when filing for benefits online at ui.texasworkforce.org or when speaking to an unemployment benefit customer service representative on the Tele-Center phone filing system at 800-939-6631.

TWC encourages individuals to check their bank or other online account settings for unusual activity if they suspect they are victims of identity theft. To avoid becoming a victim of online scams, visit the Office of the Attorney General online at www.oag.state.tx.us/consumer/scams.shtml or www.onguardonline.gov, managed by the Federal Trade Commission, for more information. To report suspicious emails posing as official TWC messages, please call TWC's Fraud and Program Abuse Hotline at 800-252-3642.

Brush & Weed Management Seminar Scheduled

Ranchers and other landowners can attend a "Brush and Weed Management" program Aug. 17 at the Gray County Annex, 12125 E. Frederic Ave. in Pampa.

The event is planned by the Texas AgriLife Extension Service office in Gray County, said Brandon McGinty, AgriLife Extension agriculture and natural resources agent in Gray County.

"With the continuing drought, weed and brush control are a must, but rainfall is needed to maintain decent controls," McGinty said. "This program will assist producers with their brush and weed management decisions."

The program is scheduled to begin at 10 a.m. and end at 2 p.m. Those attend-

ing will be offered two Texas Department of Agriculture private pesticide applicator continuing education units - one general and one drift, he said.

On the program will be Jodie Stockett, Dow Agro-Sciences, Claude, discussing herbicides, and Will Hatler, AgriLife Extension ecosystem science and management program specialist in Stephenville, talking about setting up and use of equipment; treatment: hot, dry, moisture and timing; and determining needs - evaluation of a range site.

A \$10 fee will be charged at the door for this program. Those planning to attend should RSVP by Aug. 14 to the AgriLife Extension office in Gray County at 806-669-8033.

Thank You!

The family of Stella Cummings would like to extend our appreciation for all the prayers, visits, phone calls, flowers, cards, e-mails, food and other acts of kindness shown to us during Mom's illness and death. Words can never express what all of these meant to us and how they touched us. We would like to say a special thank you to the nurses and staff of Hansford Manor and Hospital for the love and the care that you showed to Mom and to us. Thank you to the ladies of First Assembly of God Church for the wonderful meal, to Melba Rook for the lovely music and to Pastor Brad Smith for his song and for his kind words during the service.

MITCHELL THEATRES.COM
GUYMON, OK • LIBERAL, KS • NEWTON, KS

NORTHRIDGE 8
Guymon, Oklahoma
www.northridge8.com
580-338-3281

SOUTHGATE 6
Liberal, Kansas
www.southgate6.com
620-624-5573

SEQUOYAH 8
Garden City, Kansas
www.sequoyah8.com
620-275-2760

CHISHOLM TRAIL 8
Newton, Kansas
www.chisholmtrail8.com
316-283-0555

FRESH POPCORN EVERYDAY!
-PARTY ROOM & ARCADE-

Words from Faith & Grace

by Cecil R. Biggers, Lutheran Lay Minister



In the tenth week of the Season of Pentecost, we learn about the 'bread of life' as we study Exodus 16: 2-4, 9-15, Psalm 78: 23-29, Ephesians 4: 1-16, and John 6: 24-35.

The whole congregation of Israel is complaining against Moses and against God. After traveling in the wilderness the people are hungry and are remembering the food of Egypt. God tells Moses, "I am going to rain bread from heaven for you, and each day the people shall go out and gather enough for that day. The people receive the promised 'bread'. Then the people complain because they have no meat. The Lord causes a wind to blow and quail are blown down upon the ground in great numbers. We learn from this that God provides for our needs and desires; yet, we are not always grateful nor appreciative of his gifts. People, including us, are not satisfied even when they receive what they want! The difficulty for Aaron and Moses was to get the people to rely on God and not on themselves. Learn that 'knowing' God is not an intellectual exercise; to know God one must experience God.

The Psalmist sings a song of praise to God for his guiding of Israel in the wilderness, for his providing manna for them, for his providing quail for them. The song tells future generations of the provision by God for his people.

Paul, who is in prison, writes to the Church at Ephesus as a "prisoner in the Lord". Prison for Paul is only another opportunity to spread the gospel. We learn that God's presence and power are not limited only to those places we consider holy and sacred. Dear Christian, we, like Paul, are called by God and we live in this calling. By our lives, in our every day pursuits, we only point the way to Jesus the Christ. Do not feel overly 'righteous' as we do not "own the truth", we only testify to it.

John again invites us to answer, "Who is this Jesus?" The crowd sees a "bread king", a person who can provide bread daily for them. Jesus tells them that they must seek for the 'food' that endures. The people talk of Moses providing manna for their ancestors; Jesus responds that the manna was from God. The people ask for the 'bread that comes down from heaven'. Jesus declares, "I am the bread of life. Whoever comes to me will never be hungry, and whoever believes in me will never be thirsty." Who is this Jesus?

May the Holy Spirit guide you through the Gospel of John that you may answer for yourself, "Who is this Jesus?"

ATTENTION
2012 Summer Clearance Sale
Sale Prices Good from August 6-18

NO SALES TAX ON PURCHASES MADE FRIDAY & SATURDAY, AUGUST 17 & 18
(Excludes jewelry, buckles, wallets, and any items selling for \$100 or more)

30% OFF

- Men & Boys Summer Clothing
- Men Summer Pullover & Sport Shirts
- Men Shorts & Swim Suits
- Men Summer Tallman Pullover & Sport Shirts
- Men & Boy Western & Fashion Straw Hats
- Boy Summer Clothing - Shirts & Shorts
- Men & Boys Adidas & Reebok Shoes

50% OFF
Men's Tabasco & Chili Wear Shirts

20% OFF
Boys Jeans (Levi, Wrangler, Cinch, 20X & Carnatt)

Boys Shirts (Cinch, 20X)

Men Fashion Jeans - \$39⁹⁵
Men Cinch Black Label Jeans - \$49⁹⁵
Men Cinch Green Label Jeans - \$37⁹⁵
Men Cinch White Label Jeans - \$49⁹⁵
Men Levi 550 & 560 Jeans - \$37⁹⁵
Men Riata Pants - \$32⁹⁵
Boy Fashion Jeans - \$29⁹⁵

Come visit us at:
221 Main Street
Spearman, TX
(806) 659-3426

Store hours: Monday-Saturday, 9 a.m.-6 p.m.

Hoochy Poochy Parlor

Don't forget your furry family members this summer!

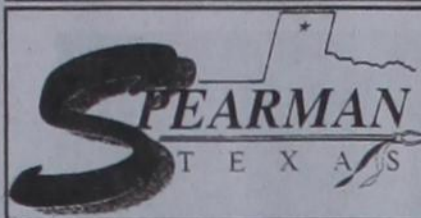
Let us take care of your four-legged friends while you are on vacation!

For Boarding reservations and grooming appointments, call now!

Hoochy Poochy Parlor
421 E. 10th St.
Borger, TX 79007
806-273-2724
hoochypoochy@att.net

Hours:
Mon.-Fri., 8 a.m. until done
Saturday by appointment only
Please visit us for a free estimate on your pet care needs.

We put the Hoochy in your Poochy



Chamber Chatter



by Tex Kopke

Who I am? I'm Tex Kopke. I'm your new Spearman Chamber of Commerce and Economic Development director. To begin with, I am one of you. I grew up here and went all the way through school here, graduating with the great class of 1975. In high school I worked for TG&Y for one year at the old store on Main St. and for one year at the new store at the mall. So now I have gone full circle. I am working on Main St. again, only this time at the Chamber/EDC office and I run the 1st Saturday Country Market store out at the mall. I am also the guy with the Spearman Charity Limousine. The big white Mercedes Benz limo you may have seen here in town.

Before returning to Spearman and opening the Country Market I worked for 20 years as an accountant for Atmos Energy, a large gas utility company. Originally working for them in Amarillo and then transferring with them as they moved headquarters from Amarillo to Dallas. After retiring from Atmos Energy I earned my certification as a tour director from the International Tour Management Institute of California and began tour directing. My first two seasons were spent in Alaska doing cross country motor coach tours of Alaska and the Canadian Yukon traveling from Skagway to Fairbanks for Holland America Cruise Line. Since my name is Tex the people I met from Alaska liked to remind me of how small Texas was compared to Alaska. Being called a small state is not something we Texans are used to. Now I know how people from all the little states feel. At the end of my second season in Alaska I assisted a Seattle travel agency with a 10 day cruise to the Hawaiian islands. I worked in Alaska my third season also but this time stationed out of Anchorage working as a train car captain and narrator for Holland America cruise line on their glass domed scenic double

decker tour train which traveled from Anchorage through Denali National Park and on to Fairbanks. Between seasons I also did student tours in San Antonio, Austin and Houston for a student tour company based out of Michigan. For my last season I was a tour director for American Orient Express, a luxury vintage train tour company. In the spring their tours were of the east coast alternating between Civil War history tours and home and garden tours. These trips included tours of Savannah, Charleston, colonial Williamsburg and Washington D.C. I also assisted on the great transcontinental train tour where we traveled from Washington D.C. through New Orleans, San Antonio, Santa Fe, the Grand Canyon and on to Los Angeles. The rest of the season we did tours of the great western national parks including Zion, the Grand Canyon, Yellowstone, the Grand Tetons and Glacier National Park.

After all this touring I told mom that it was time to stop and take a few months to clear out dad's estate which was filling a couple of houses and two storage yards. This led to the opening of the 1st Saturday Country Market as a means of clearing out his vast collection of junk accumulated from going to way to many farm auctions and estate sales. We only needed half the building for selling his collection so we divided up the remaining spaces and rented them out to other people to sell whatever they wished. The idea was to make this a monthly community market event on the 1st Saturday of each month, similar to the Canton 1st Monday Trade Days held in Canton, Texas near Dallas. Canton 1st Monday Trade Days is the largest trade days/flea market in the country with thousands of dealers and an unbelievable assortment of stuff from

new to old and luxury items to junk. Living in Dallas I had visited the Canton Trade Days often and thought our selling off my fathers estate would be a good excuse to do a small town version of the same thing here for at least as long as it took to sell off all my father's collection. Now 5 years or so later dad's collection is long gone but everyone has enjoyed Spearman's 1st Saturday Country Market so much that we are still doing it and I never did move to Colorado as planned. If you haven't ever gone to Dallas for Canton's 1st Monday Trade Days it is unbelievable and worth a trip to Dallas just to see it. If you can't make it to Dallas you can see a (slightly) smaller version of it at Spearman's 1st Saturday Country Market.

So, many of you already know me or know who I am. For those who don't know me yet please stop by the Chamber office and say hello. The coffee is on and I would love to have a cup with you and hear what some of your dreams and desires are for Spearman. I think we can all agree that as great as Spearman is there is always room for improvement - yes really. Of course a dream or desire isn't worth much without plan, a leader and some volunteers so if you can lead, have a plan and can round up some volunteers lets talk about the possibility of making your vision come to life. I have great hopes and dreams for Spearman and I hope you do too. What's stopping Spearman from being the greatest place in the whole state to work and live - only us and our desire to make it happen. So please get on board, come up with some ideas and be willing to lead, follow or at least to get out of the way - ha. Let's be willing to, as they say, think out of the box. After all look where thinking inside the box has gotten us. Yes we have

many things here that we can be proud of but is this really the best we can be? I hope not and I hope you hope not also. Be willing to try some new ideas. Don't wait for someone to come knocking on your door begging you to help. Step up, volunteer your time, money and effort without having to be asked.

Part of my plan to get the ball rolling is to write a Chamber & EDC (Economic Development Corp.) News update each week or as often as something is happening. Hopefully if everyone knows what is going on around here they will want to get involved or at least contribute to the cause. The new Chamber/EDC office hours will be Tuesday - Friday from 10:00 - 6:00. Since this is a one person office I will often be out but will post an expected return time on the door as well as a phone number I can be reached at. I will try to always be in the office from 5:00 - 6:00 P.M. though for anyone wanting to see me in person. If you want to see me in person though it is always a good



Tex Kopke, Spearman Chamber of Commerce & Economic Developer

idea to call the office first at 659 - 5555 to make sure I am in before coming up. I will also be available Saturdays from 10 - 6 out at the Country Market at the mall.

Within a year I hope to get out to visit with all the Chamber businesses and also hope to eventually visit all the businesses in town. I want to find out who everyone is and what it is their business does so that I can refer calls to them as they come in. After all, it is the local businesses that contribute the funds that allow us to operate so I want to meet all these fine folks who support the community by funding the Cham-

ber and support Spearman in so many other ways. Please make a point to look for the Chamber of Commerce window sticker on these businesses and support them as they support you and your city. Thank them for caring enough to give their time, money and effort to support the work and activities of the Chamber. Without their generous support there would be no annual celebration, Cinco De Mayo or any of the many other activities the Chamber initiates.

Next week I want to talk with you about a little thing called Spearman Pride - do you have it?

Big Brothers Big Sisters BIG FUN RUN SERIES 2012 Race 2

5K Race @ 8AM & Family Fun 1 Mile Walk @ 8:30AM
Saturday, August 25th @ Perryton High School

FINISHER'S OF BOTH 5K RACES RECEIVE A FINISHER'S MEDAL!!

Registration Form

Deadline to pre-register May 4th for Spearman & August 10th for Perryton. Registration available race day.

Name: _____ Age: _____ Gender: _____
Address: _____ City: _____ State: _____
Phone: _____ Email: _____
Emergency Contact & Phone #: _____

ALL PROCEEDS BENEFIT WHEATHEART SATELLITE OF BIG BROTHERS BIG SISTERS SERVING KIDS IN PERRYTON, SPEARMAN AND GRUVER.

Entry Fee: walkers are welcome at all events

- o 5K Run Spearman \$25 _____
- o 5K Run Perryton \$25 _____
- o 5K Run Series (both races) \$40 if registered by May 13th _____ \$50 after May 13th _____
- o 5K Run Spearman - Member of: Lone Star Runners Club \$20 _____ SWFTR Club \$20 _____
- o 5K Run Perryton - Member of: Lone Star Runners Club \$20 _____ SWFTR Club \$20 _____
- o Fun Walk Spearman \$25 _____
- o Fun Walk Perryton \$25 _____
- o Family Fun Walk Package: Spearman \$90 _____ Perryton \$90 _____ (Includes 4 t-shirts - additional shirts for \$15)
- o Spearman - Names of Walkers and shirt sizes: _____
- o Perryton - Names of Walkers and shirt sizes: _____
- o Sweet Dreams Run (Love the program but don't walk or run!) Spearman \$25 _____ Perryton \$25 _____
- o Additional Donation _____

Total Amount Enclosed: _____

T-Shirt Size: Adult Small _____ Medium _____ Large _____ X-Large _____ XX-Large _____
Shirts guaranteed to first 75 entries per event.

Prizes will be awarded to the 1st and 2nd place male and female in each division.

By participating in the BIG FUN RUN, the undersigned waives and releases any and all claims for the undersigned and any of the undersigned's dependents or any minor/child participating in this event with the undersigned (collectively "Releasing Parties" herein), that Releasing Parties may have against Big Brothers Big Sisters (BBBS herein) or any affiliated agency, any of the race sponsors, their staff, Perryton Independent School District or race volunteers and officials for any injury, illness or property loss that may directly or indirectly result from my participation in the BIG FUN RUN. I also consent to medical treatment I may require during the race. Photographs taken by race officials/volunteers become the property of BBBS and may be used for promotional purposes without compensation to the participants. In the event of cancellation due to weather, please consider my registration fee a donation to the Wheatheart Satellite of BBBS.

Signature of Participant (or Signature of parent if under 18)

Date

Make checks payable to:
Big Brothers Big Sisters
Mail payment and registration form to:
PO Box 365
Perryton, TX 79070
For more information: 806-434-0016 or bbbswheatheart2@ptsi.net

HOST AN EXCHANGE STUDENT TODAY!

(for 3, 5 or 10 months)



Pierre from France, 17 yrs.
Loves the outdoors and playing soccer. Pierre's dream has been to spend time in America learning about our customs.

Make this year the most exciting, enriching year ever for you and your family. Welcome a high school student, 15-18 years old, from Italy, France, Norway, Denmark, Spain, Germany, Brazil, Thailand or China as part of your family for a school year (or less) and make an overseas friend for life.

For more information or to select your own exchange student please call:

Marcy at 1-800-888-9040 (Toll Free)
or e-mail us at info@world-heritage.org

For privacy reasons, photos above are not photos of actual students



www.whhosts.com

World Heritage is a public benefit, non-profit organization based in Laguna Beach, CA.



Elisa from Italy, 16 yrs.
Likes to play tennis, swim, and loves to dance. Elisa can't wait to join her host family's activities.



DIGITAL TV RULES

\$29.99 mo
First 6 months*

SAVE with FREE Set-top Boxes!

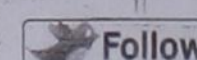
FREE HD for 6 months

FREE Installation first 4 set-top boxes

Watch OKC & Amarillo Channels in HD



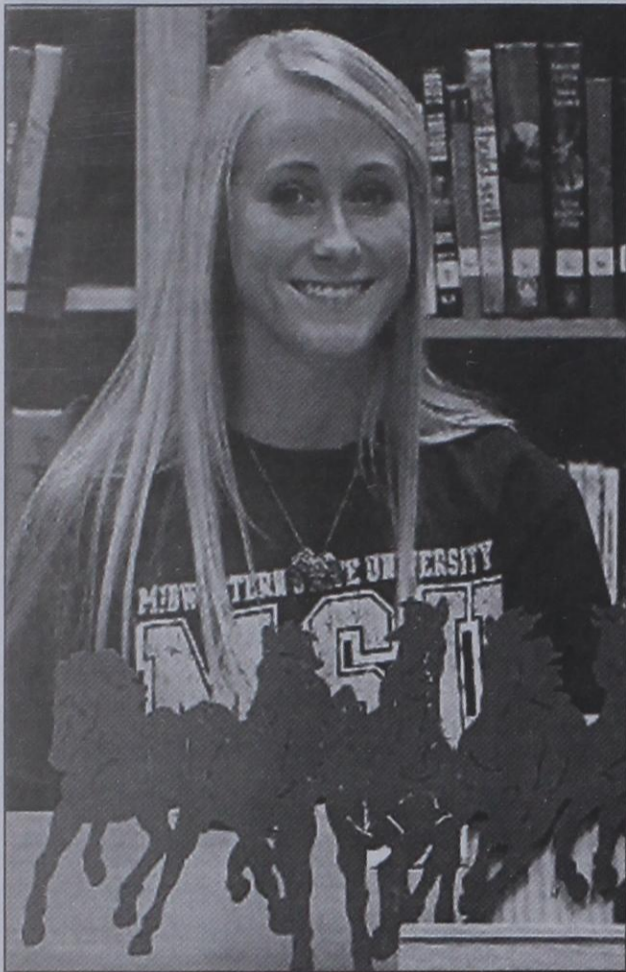
ptci.net
721 W 7th - Spearman
800-562-2556



*with 2-yr commitment

Spearman High School Athlete Commits to Midwestern State University

Tylo Farrar's Life-Long Dream of Running Track in College was Fulfilled with the Help of NCSA Athletic Recruiting



Tylo Farrar

When Tylo Farrar committed to Midwestern State University in Wichita Falls to run track, she knew she made the right decision that would impact not only her next four years but her next forty years. With the help of NCSA Athletic Recruiting, Tylo was given the opportunity to be proactive in her recruiting process and become educated on the steps she needed to take to achieve her ultimate goal of competing in college track.

Tylo had many accomplishments while attending Spearman High School both academically and athletically, attaining a cumulative GPA of 4.9, and being a four year Varsity starter, four year Captain of her team, and All-State 1st Team. Tylo's hard work and dedication to the recruiting process paid off as she strived to be a leader in both sports and in her community, and as a result, Tylo has been rewarded with the opportunity to play the sport she loves at the next level.

She received the Cross Country Athlete of the Year in 2009 as a sophomore. She was the lead runner of a three time State Championship team and has been the leader every year except for her freshman year when she was placed second on the team. She received All-State in cross country since her freshman year. She is a very hard worker and sets her standards high. She has many goals that she hopes to reach someday and can offer herself as a great runner to any team, striving to make the team better. She pushes herself to the limit in every work out and always finish strong.

She plans to major in Physical Education in hopes of someday being a coach or an athletic trainer.

Thousands of student-athletes dream of playing collegiate sports, but only a small percentage are actually recruited to play. NCSA Athletic Recruiting helped Tylo achieve that dream and become one of the very few to continue playing and becoming a leader through sports.



Southwestern Oklahoma State University's 57th annual band camp, which was held July 8-13 on the Weatherford campus, attracted 552 students—the largest attendance in nearly 30 years. Camp director Keith Talley said the students auditioned for placement in one of five concert bands and participated in rehearsals as well as a variety of recreational activities. The camp ended with a final concert featuring all five bands. Among the students attending the camp from Gruver TX were (from left): Zoe Cantrell, Amber Johnson, Yadira Mendoza and Emilyynn Robinson.



Kirk Weatherford
8125 FM 3305
Sanford, TX 79078

(806) 336-2820
Toll Free: 1-800-585-6047
Email: kirk@weatherford-construction.com

2012 Property Tax Rates in Hansford County

This notice concerns the 2012 property tax rates for Hansford County. It presents information about three tax rates. Last year's tax rate is the actual tax rate the taxing unit used to determine property taxes last year. This year's effective tax rate would impose the same total taxes as last year if you compare properties taxed in both years. This year's rollback tax rate is the highest tax rate the taxing unit can set before taxpayers start rollback procedures. In each case these rates are found by dividing the total amount of taxes by the tax base (the total value of taxable property) with adjustments as required by state law. The rates are given per \$100 of property value.

	General Fund	Special Road/ Bridge Fund
Last year's tax rate:		
Last year's operating taxes	\$2,132,861	\$509,009
Last year's debt taxes	\$0	\$0
Last year's total taxes	\$2,132,861	\$509,009
Last year's tax base	\$676,068,530	\$673,381,400
Last year's total tax rate	\$0.315480/\$100	\$0.075590/\$100
This year's effective tax rate:		
Last year's adjusted taxes (after subtracting taxes on lost property)	\$2,131,678	\$508,697
+ This year's adjusted tax base (after subtracting value of new property)	\$639,642,027	\$636,967,745
= This year's effective tax rate for each fund	\$0.333261/\$100	\$0.079862/\$100
Total effective tax rate (Maximum rate unless unit publishes notices and holds hearings.)	\$0.413123/\$100	
This year's rollback tax rate:		
Last year's adjusted operating taxes (after subtracting taxes on lost property and adjusting for any transferred function, tax increment financing, state criminal justice mandate, and/or enhanced indigent healthcare expenditures)	\$2,131,678	\$508,697
+ This year's adjusted tax base	\$639,642,027	\$636,967,745
= This year's effective operating rate	\$0.333261/\$100	\$0.079862/\$100
x 1.08=this year's maximum operating rate	\$0.359921/\$100	\$0.086250/\$100
+ This year's debt rate	\$0/\$100	\$0/\$100
= This year's rollback rate for each fund	\$0.359921/\$100	\$0.086250/\$100
This year's total rollback rate	\$0.446171/\$100	

Statement of Increase/Decrease

If Hansford County adopts a 2012 tax rate equal to the effective tax rate of \$0.413123 per \$100 of value, taxes would increase compared to 2011 taxes by \$11,398.

Schedule A: General Fund - Unencumbered Fund Balance

The following estimated balances will be left in the unit's property tax accounts at the end of the fiscal year. These balances are not encumbered by a corresponding debt obligation.

Type of Property Tax Fund	Balance
General Fund	3,020,000

This notice contains a summary of actual effective and rollback tax rates' calculations. You can inspect a copy of the full calculations at 14 NW Court, Spearman, Tx 79081.

Name of person preparing this notice: Linda Cummings, RTA
Title: Tax Assessor - Collector
Date Prepared: July 25, 2012

2012 Property Tax Rates in Hansford Hospital District

This notice concerns the 2012 property tax rates for Hansford Hospital District. It presents information about three tax rates. Last year's tax rate is the actual tax rate the taxing unit used to determine property taxes last year. This year's effective tax rate would impose the same total taxes as last year if you compare properties taxed in both years. This year's rollback tax rate is the highest tax rate the taxing unit can set before taxpayers start rollback procedures. In each case these rates are found by dividing the total amount of taxes by the tax base (the total value of taxable property) with adjustments as required by state law. The rates are given per \$100 of property value.

Last year's tax rate:	
Last year's operating taxes	\$2,156,369
Last year's debt taxes	\$0
Last year's total taxes	\$2,156,369
Last year's tax base	\$676,068,874
Last year's total tax rate	\$0.318957/\$100
This year's effective tax rate:	
Last year's adjusted taxes (after subtracting taxes on lost property)	\$2,155,173
+ This year's adjusted tax base (after subtracting value of new property)	\$639,642,027
= This year's effective tax rate (Maximum rate unless unit publishes notices and holds hearings.)	\$0.336934/\$100
This year's rollback tax rate:	
Last year's adjusted operating taxes (after subtracting taxes on lost property and adjusting for any transferred function, tax increment financing, state criminal justice mandate, and/or enhanced indigent healthcare expenditures)	\$2,177,026
+ This year's adjusted tax base	\$639,642,027
= This year's effective operating rate	\$0.340351/\$100
x 1.08=this year's maximum operating rate	\$0.367579/\$100
+ This year's debt rate	\$0/\$100
= This year's total rollback rate	\$0.367579/\$100

Statement of Increase/Decrease

If Hansford Hospital District adopts a 2012 tax rate equal to the effective tax rate of \$0.336934 per \$100 of value, taxes would increase compared to 2011 taxes by \$9,320.

Schedule A - Unencumbered Fund Balance

The following estimated balances will be left in the unit's property tax accounts at the end of the fiscal year. These balances are not encumbered by a corresponding debt obligation.

Type of Property Tax Fund	Balance
General Fund	7,163,378

Schedule F - Enhanced Indigent Health Care Expenditures

The Hansford Hospital District spent \$39,038 from July 1, 2011 to June 30, 2012 on enhanced indigent health care at the increased minimum eligibility standards, less the amount of state assistance. For the current tax year, the amount of increase above last year's enhanced indigent health care expenditures is \$21,853.

This notice contains a summary of actual effective and rollback tax rates' calculations. You can inspect a copy of the full calculations at 14 NW Court, Spearman, Tx 79081.

Name of person preparing this notice: Linda Cummings, RTA
Title: Tax Assessor - Collector
Date Prepared: July 25, 2012

by Dorothy Hudson

Out at the Lake

Jim Derington
Palo Duro River Authority
P.O. Box 99
Spearman, TX 79081
806-882-4401
pdra@dishmail.net

Lake Level--July 30, 2012--27 feet (-0.34)

Jim reported a very quiet week. He did have 2 campers on each side of the dam. A few people fished and some were swimming.

The mystery of a possible pair of nesting eagles has not been solved. Jim did see one bald eagle on the ground near the intake this week. Another puzzle is the roadrunner Jim and Mandy are seeing. Could they be seeing two but never together? Roadrunners usually pair bond and live in

their territory year around. I learned a new word pertaining to this cocky bird this morning. As it belongs in the cuckoo family, its feet are zygodactylous with two toes pointing forward, two backward. It has been clocked at running at a speed of 15 miles per hour.

The Cators and Frisco Grove

Cleon Roberts of Hereford has sent new information to be added to the Cator family history.

Hardesty Herald, July 10, 1896:

"On the eve of July 4th Judge J. H. Cator, of Hansford County, was telling us about the growth of the Frisco Grove. Twenty-one years ago the Judge—then a buffalo hunter—camped with his party near where the grove is now located. Believing that it would be a good central point for the hunting party he concluded to construct a house, and members of the party searched up and down the 'Frisco, cutting down every small sapling, leaving nothing along that stream except the underbrush. Shortly

after the house was completed, and the hunting not proving as good as anticipated owing to a scarcity of game, the camp was abandoned. Since that time the grove has made its growth—a delightful place, large trees; dark cool shades, with a bright, sparkling stream rippling down through the center, and a Fourth of July celebration the 'Frisco is always the choice of the people. The trees are on the ranches of D. C. Davis and J. T. Threlkeld (Hooker) who are always willing and pleased to extend the freedom of the grove to the general public for a picnic or a celebration."

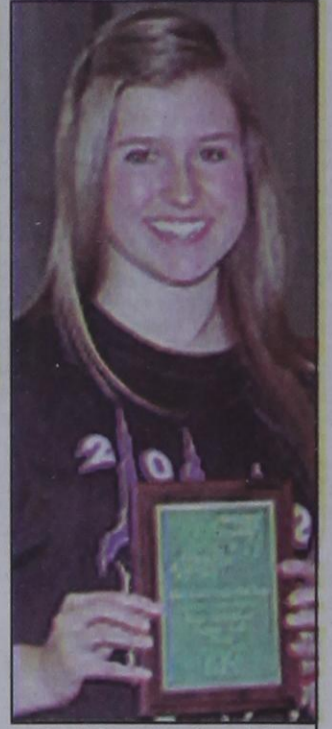
Frisco Creek was originally San Francisco Creek, but I think it was the buffalo hunters that shortened the name. When you drive from Gruver to Guymon on highway 136 you cross the Frisco Creek not long after you pass into Oklahoma. This creek travels on east and feeds into the Coldwater Creek.

I am curious if there is still a Grove, and if so, are picnics still held there?

4-H Livestock Judging Contest Held



Varsity 4-H Livestock Judging Team (L-R) Callie Stedje, Jennifer Crowl, Audrey Lieb, and Travis Stedje.



Jaci Burgin placed 1st in the sheep contest with a rare perfect score.

The Hansford County 4-H livestock judging team competed at the OSU Big 3 competition July 17-19 in Stillwater. This three day competition attracted 1710 students representing 261 teams who competed in four divisions. T

The Hansford County Varsity team represented the Panhandle very well placing 1st in swine, 3rd in cattle, and 8th in sheep. In the overall competition, which combines the scores from all three days, Hansford placed 2nd to Payne County, the reigning Oklahoma state champion based out of Stillwater.

Hansford also entered their Junior Varsity team, who placed 7th in sheep, 9th in cattle, and 10th overall in the same competition.

Individually, several of the local youth received recognition. Travis Stedje placed 6th overall for the three day event. In species he placed 8th in cattle and 10th in swine. Audrey Lieb placed 12th overall, 7th in swine and 13th in cattle. Jaci Burgin placed 19th overall and 1st in sheep with a rare perfect score. Jennifer Crowl placed 20th overall, 8th in swine, and 15th in sheep. Callie Stedje placed 4th in swine and 19th in cattle. Jonathon Crowl placed 18th in cattle. Other members competing on the JV team were Rayel Anderson and Maggie Pipkin.

The Varsity team will continue their preparations throughout the summer and fall so they can represent Texas at the American Royal in Kansas City in November for the national contest.

Are You A Victim of Domestic Violence, Sexual Abuse or Physical, Emotional or Sexual Assault?

Call Toll Free Hotline
1-800-753-5308

Battering Intervention & Anger Management Available

Panhandle Crisis Center
Serving Hansford, Lipscomb & Ochiltree Counties
301 S. Ash • Perryton, TX

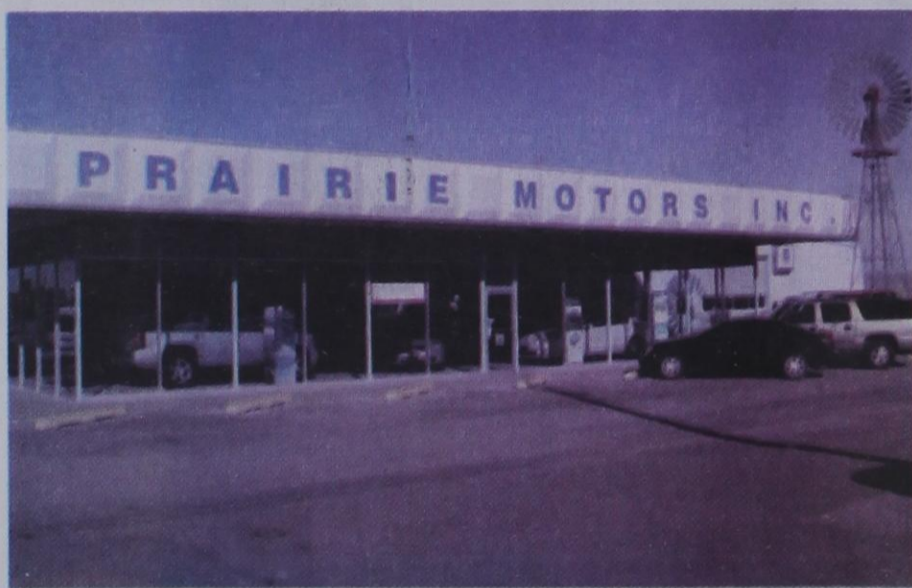


Nicolas Keith Huffaker was born on July 13, 2011. He celebrated his first birthday on July 15th. He is the son of Christina & Aaron Huffaker.

MURMUR'S

MurMur's Cafe
26 Archer St
Spearman TX
806-659-3580

Snow Cone Stand
Monday-Friday
2-8 p.m.



FOR SALE IN SPEARMAN: 3.87 Acres of land including a multi use steel building featuring over 20,000 sq ft of covered space. Includes a Shop Area, Showroom, Parts Area with Upper Level, and a Basement. Highway Frontage. Building can easily be reconfigured. For more information call Dick Gillaspie, Prairie Motors, 720 Hwy 207 South, 806-659-2541.

School supply drive

Help a child in need.

You may donate supplies or cash.

Supplies needed are: pencils, crayons, markers, scissors, paper and Kleenex

Donations accepted at our Dumas and Spearman locations.

First National Bank Member FDIC

Tong's Chinese Restaurant

(806) 644-2838
22 Archer Street • Spearman

Daily Buffet

Lunch - 11 a.m.-2:30 p.m. • Dinner - 5:30-9 p.m.
Open Wednesday-Monday - Closed Tuesday

Sushi on Sunday Buffet

COSTNER CONTRACTING

Jerry Costner
Carpenter/Concrete/Windows/Doors/Painting

217 S Endicott
Spearman TX 79081
806-330-0492
costnercrew3@yahoo.com
Insured

Ask about our Summer Paint Specials