

SCR2  
COMP  
HANSFORD COUNTY LIBRARY  
0122 MAIN ST  
SPEARMAN TX 79081-2064

# The Hansford County Reporter-Statesman

PROUDLY SERVING HANSFORD COUNTY SINCE 1907

VOLUME 98 • ISSUE 26

THURSDAY, JUNE 30, 2005

TEXAS PRESS ASSOCIATION  
BETTER NEWSPAPER CONTEST  
AWARD WINNER

## IN THE NEWS

**Iran's president-elect no hostage-taker, leaders say**  
Two leading figures in the 1979 seizure of the U.S. embassy in Iran denied on Thursday reports president-elect Mahmoud Ahmadinejad took part in the 444-day hostage drama which led Washington to break ties with Tehran.

**Israeli troops fire on Hizbollah at Lebanon border**  
Israeli troops shot at Lebanese Hizbollah guerrillas in a disputed border zone on Thursday, a day after an attack that killed an Israeli officer in the worst violence there for six months.

**Spain defies Church to legalize gay marriage**  
Spain legalized same-sex marriages on Thursday, becoming only the fourth country to do so after Belgium, Canada and the Netherlands and overriding fierce opposition from the Catholic Church.

**U.S. in tricky recovery effort at Afghan crash site**  
U.S. forces were conducting a tricky search and recovery operation on Thursday in mountainous eastern Afghanistan, where a U.S. military helicopter carrying 17 U.S. troops was shot down by militants on Tuesday.

**Congress seen paving way for private toll roads**  
The next road you travel -- and pay a toll to use -- could be privately owned. Looking for ways to finance highway projects without hitting the public trough, the U.S. Congress appears set to pass a proposal to encourage private ownership of new toll roads.

**NBC could combine network and cable news - NY Post**  
The NBC television network is considering a plan to combine its news division and cable channels CNBC and MSNBC at an operation based in New Jersey, the New York Post reported on Thursday.

**Senate rejects attempt to ease Cuba travel**  
The U.S. Senate on Wednesday rejected a proposal to ease American travel restrictions to Cuba that would have allowed a Cuban-American veteran of the Iraq war to visit his ill son.

**Senate approves emergency vets health care funds**  
The U.S. Senate on Wednesday approved \$1.5 billion in emergency funds for veterans health care to pay for the rising cost of Iraq war injuries and illnesses of aging veterans from past wars.

**Spending flat in May, inflation tame**  
U.S. consumer spending was a bit weaker than expected in May, government data showed on Thursday, while a key inflation gauge held steady -- good news for the Federal Reserve as it mulls another interest rate hike.

**Bank of America to buy MBNA for \$35 bln**  
Bank of America Corp., the No. 2 U.S. bank, on Thursday said it agreed to buy MBNA Corp. for about \$35 billion, which will make Bank of America one of the largest U.S. credit card issuers.

**Orbitz, Priceline sign marketing pact**  
Orbitz, an online travel agency owned by Cendant Corp., and rival Priceline.com Inc. on Thursday said they have signed a travel marketing agreement.

**Scientists shed new light on aging process**  
Scientists in Hong Kong have shed new light on why cell repair is less efficient in older people after a breakthrough discovery on premature aging, a rare genetic disease that affects one in four million babies.

**NASA managers assess shuttle launch plans**  
NASA managers began a two-day meeting on Wednesday hopeful they would confirm a date for the next space shuttle launch in July, barring some last minute snag.

**Texas A&M raises tuition**  
Texas A&M University students will see a 12% hike in tuition this fall. Regents agreed in March to raise tuition \$3 to \$19 per credit hour, depending on what level of funding the Legislature approved. With the increase, A&M students will pay \$137 per hour, up from \$122.50.

**Rate increases predicted**  
The Fed will continue its yearlong, interest-rate raising campaign through 2005 in a bid to keep inflation under wraps, economists surveyed by USA TODAY say. The Fed is expected to raise rates at the end of its two-day meeting Thursday by a quarter-percentage point to 3.25%.



## Canadian plans July 4th festivities

Round up the kids, pack the car and celebrate this year's 4th of July in Canadian, Texas, where the annual festival is more than a simple holiday -- it's a century-old local tradition.

For more than 117 years, townspeople have hosted a fun-filled, family-oriented Independence Day celebration like none other. Canadian's rejuvenated downtown district provides the perfect backdrop for a host of exciting Fourth of July activities.

Starting on Friday, July 1st, and Saturday, July 2nd, plan to attend the roo-tin' tootin' Rodeo Performances held 7:00 P.M. nightly.

After the rodeo, boot scoot over to the Rodeo Dances and dance under the stars to the tune of Deryl Dodd and the Home-ick Crawboyy.

Saturday, July 2nd, Auto enthusiasts can check out everything from muscle cars to motorcycles at the Hotter Than Hell Car Show then rev up their engines and compete in Canadian's fourth annual Poker Run.

Following the Car show everyone is invited to beat the heat while enjoying the 3:00 matinee at the Palace Theatre. Participants in the Car Show will receive two free-admission tickets.

Monday morning, July 4th get ready to "Celebrate Our Western Heritage" with the annual parade, followed by Turtle Races, Water Polo, hot dog lunches, hamburger feeds, barbeque and much more. Visitors can then wander through the Arts and Crafts Fair on the Court House Lawn or admire the work of local and area artists at the Sagebrush Painters Art Show, held at the WTCU. At 2:00 P.M., head over to the Rodeo Grounds to watch the 117th annual Fourth of July Rodeo.

The fun doesn't end at the city limits, however. Visitors will enjoy walking the historic Canadian River Wagon Bridge. Spanning the wetlands habitat over the scenic Canadian River Valley, the bridge provides the perfect opportunity for bird and wildlife viewing.

As evening draws near, the day's events are still far from over. After watching the great Canadian duck race enjoy a slice of free watermelon.

Independence Day celebrations wouldn't be complete without Canadian's spectacular fireworks display. The amazing show begins at dusk. For more information on Canadian's exciting Fourth of July Celebration, a full schedule of events, information on hosting a booth at the Arts and Crafts Fair, or entering the parade (no entry fee required), call the Canadian Chamber of Commerce at 806-323-6234.

## Lone Star Rising! celebrates the 4th

Lone Star Rising! presents a special performance Monday, July 4th, at the Fritch Fortress amphitheatre at Lake Meredith National Recreation Area. The show starts at 8:15 p.m., and the special July 4th show will feature a distinctive patriotic grand finale.

Lone Star Rising! ordinarily shows Wednesdays through Sundays through August 14 at 8:15 p.m., with a Texas chuck wagon supper served on show nights at 6:30 pm.

Now in its fifth season, Lone Star Rising! is, according to founding director Neil Hess, "Lighthearted, fun, and inspiring. It's like a great Western shindig, with beautiful costumes, rip-roaring Western dances, and special production numbers paying tribute to the American Indian, Spanish, and Mexican cultures which are such an important part of our history."

Tickets for Lone Star Rising! can be purchased at the box office or can be reserved by calling the Center for Texas Culture office at (806) 677-1706. There is pre-show entertainment as the western-style meal is being served. On Tuesday nights, at the same theatre, there is a "western opry" featuring music, dance, comedy and specialty acts. The Tuesday show is called "Lakefest" and features top Panhandle talent.

For further information, theatergoers can call the Borger Chamber of Commerce at (806) 274-2211, the Center for Texas Culture (806) 677-1706, or the Frank Phillips College Department of Theatre and Dance at (806) 457-4200 ext. 835.

## Welcome Home, SHS Exes!



This 18' Eclipse is one of the windmills donated by J.B. Buchanan to the Southwest Pioneer Windmill Association. It is located in the SPWA windmill park on Highway 207 south in Spearman.

## WEEKEND WEATHER FORECAST

**THURSDAY NIGHT** - Partly cloudy with a 30 percent chance of showers and thunderstorms. Lows in the mid 60s. Northeast winds 10 to 15 mph.  
**FRIDAY** - Partly cloudy with a 30 percent chance of showers and thunderstorms. Highs in the mid 90s. East winds 10 to 15 mph.  
**FRIDAY NIGHT** - Partly cloudy with a 30 percent chance of showers and thunderstorms. Lows in the mid 60s. South winds 10 to 15 mph.  
**SATURDAY** - Partly cloudy. Highs in the upper 90s.  
**SATURDAY NIGHT** - Partly cloudy. Lows in the upper 60s.  
**SUNDAY** - Partly cloudy. Highs in the upper 90s.  
**SUNDAY NIGHT** - Partly cloudy. Breezy. Lows in the upper 60s.  
**INDEPENDENCE DAY** - Partly cloudy. Highs in the mid 90s.  
**MONDAY NIGHT** - Partly cloudy. Lows in the mid 60s.

## INSIDE THIS ISSUE

- Letters to the Editor, FYI - Pg. 2
- Birthdays, Obituaries - Pg. 3
- Wedding, Engagements - Pg. 4
- Manor Matters; Wolf Creek Heritage Museum - Pg. 5
- College Corner, Out at the Lake - Pg. 6
- SHS All-School Reunion schedule - Pg. 7
- SPWA Windmill information - Pg. 8
- SPWA Vintage Windmill collection information - Pg. 9-11
- Classified Ads - Pg. 12

## Three killed, one injured in vehicle accident

Three people were killed and one critically injured in a one-vehicle roll-over accident on Monday night 8.4 miles north of Spearman. Holly S. Mundt, 38, and Sabrina Michelle King, 14, both of Liberal, Kan., and Mindy Michelle Hightower, 16, of Tyrone, Okla., died in the crash, according to a Texas Department of Public Safety report. Sheila Bryan, 35, also of Tyrone, was airlifted to University Medical Center in Lubbock. According to family members, she received severe injuries to both of her legs. The four women were in a 2002 Chevy Blazer traveling on County Road 24 at 7:20 p.m. The driver of the car, Bryan, was negotiating a curve when the vehicle went off the left side of the road. She then apparently over-corrected, and went off the roadway to the right, causing it to roll three or four times and ejecting both King and Hightower, who were not wearing their seat belts, the report said.

Live, Laugh & Love



by Catherine R. Smith
cathysmith@antden.com

I would like to share this column sent to me from my friend Cindy Ballard. It is entitled "Ordering Pizza in 2008."

Ordering Pizza in 2008

This is so close to what is probably going to be happening in 2008 that we're not sure how funny this really is...
Operator: Thank you for calling Pizza Hut. May I have your national ID number?

Customer: Hi, I'd like to place an order.
Operator: I must have your NIDN first, sir.
Customer: My National ID Number, yeah, hold on, eh, it's 6102049998-45-54610.

Operator: Thank you Mr. Sheehan. I see you live at 1742 Meadowland Drive, and the phone number is 494-2366. Your office number over at Lincoln Insurance is 745-2302 and your cell number is 266-2566. Email address is sheehan@home.net. Which number are you calling from sir?

Customer: Huh? I'm at home. Where'd you get all this information?

Operator: We're wired into the HSS, sir.
Customer: The HSS, what is that?

Operator: We're wired into the Homeland Security System, sir. This will add only 15 seconds to your ordering time.

Customer: (sighs) Oh well, I'd like to order a couple of your All-Meat Special pizzas.

Operator: I don't think that's a good idea, sir.

Customer: Whaddya mean?
Operator: Sir, your medical records and commode sensors indicate that you've got very high blood pressure and extremely high cholesterol. Your National Health Care provider won't allow such an unhealthy choice.

Customer: What?!?! What do you recommend, then?
Operator: You might try our low-fat Soybean Pizza. I'm sure you'll like it.

Customer: What makes you think I'd like something like that?

Operator: Well, you checked out 'Gourmet Soybean Recipes' from your local library last week, sir. That's why I made the suggestion.

Customer: All right, all right. Give me two family-sized ones, then.

Operator: That should be plenty for you, your wife and your four kids. Your 2 dogs can finish the crusts, sir. Your total is \$49.99.

Customer: Lemme give you my credit card number.

Operator: I'm sorry sir, but I'm afraid you'll have to pay in cash. Your credit card balance is over its limit.

Customer: I'll run over to the ATM and get some cash before your driver gets here.

Operator: That won't work either, sir. Your checking account is overdrawn also.

Customer: Never mind! Just send the pizzas. I'll have the cash ready. How long will it take?

Operator: We're running a little behind, sir. It'll be about 45 minutes, sir. If you're in a hurry you might want to pick'em up while you're out getting the cash, but then, carrying pizzas on a motorcycle can be a little awkward.

Customer: Wait! How do you know I ride a bike?

Operator: It says here you're in arrears on your car payments, so your car got repo'd. But your Harley's paid for and you just filled the tank yesterday.

Customer: Well, I'll be a #%#^&\*\$%^&@#

Operator: I'd advise watching your language, sir. You've already got a July 4, 2003, conviction for cussing out a cop and another one I see here in September for contempt at your hearing for cussing at a judge. Oh yes, I see here that you just got out from a 90 day stay in the State Correctional Facility. Is this your first pizza since your return to society?

Customer: (speechless)

Operator: Will there be anything else, sir?

Customer: Yes, I have a coupon for a free 2 liter of Coke.

Operator: I'm sorry sir, but our ad's exclusionary clause prevents us from offering free soda to diabetics. The New Constitution prohibits this. Thank you for calling Pizza Hut.

May God bless and keep you; May He make his face to shine upon you, and be gracious to you; May the Lord lift up his countenance upon you, and give you peace.

Numbers 6:24-26
Catherine :)

Letters to the Editor

Letter to the Editor
Ginger and I walk a lot around and through Spearman. I am proud to say that the yards in Spearman are in great shape. The vast majority of the yards are neatly mowed, trimmed, and many are landscaped beautifully.

The holly hocks and day lilies are especially colorful now as were the many lilac bushes earlier. The apple and cherry trees are loaded. It is obvious that the citizens of Spearman take great pride in their property.

We are truly blessed to live in this wonderful community. And the best thing about walking, not considering the mosquitoes, is that everyone you pass waves hello.
Bill Pittman

issue during a special legislative session.

The Honorable Rick Perry
Governor of Texas
P.O. Box 12428
Austin, TX 78711
Fax: 512-463-1849
www.governor.state.tx.us/contact

The Honorable Davis Dewhurst
Lieutenant Governor
P.O. Box 12068
Austin, TX 78711
Fax: 512-463-0039
www.ltgov.state.tx.us/contact

The Honorable Tom Craddick
Speaker of the House
P.O. Box 2910
Austin, TX 78768-2910
Fax: 512-463-0675
www.house.state.tx.us/members/dist82/craddick.htm

Thank goodness we have such a generous and kind community. You don't have to look very far to see communities with no nursing home, or with no nursing home you would want to live in.
Sincerely,
Anne Snow, Administrator
Hansford Manor

Dear Editor,
I am writing to alert the citizens of Hansford County to a shameful turn of events in our state: the continued under-funding of nursing home care for our sickest, frailest, and poorest elderly people, who are Medicaid beneficiaries.

About 70% of all nursing home residents in Texas are covered by Medicaid. Medicaid is different from Medicare. It is a program for the indigent, elderly and disabled. Roughly half of the cost of Medicaid is borne by the state, and half by the federal government.

Many states have instituted a bed tax, which nursing homes pay to increase the level of Medicaid reimbursement to nursing homes. Thus, when the state pays more, the federal government must also increase their share. The net effect is that nursing homes who have Medicaid residents get their bed tax back, and then some, in the form of increased federal payments. This has enabled most states to improve nursing home care without costing state taxpayers any money.

The catch is that all nursing homes have to pay the tax, but those with no Medicaid beds do not get anything back. So these homes are motivated to pass the additional cost on to their private-pay residents.

The bill proposed in the last legislative session included mechanisms to prohibit the tax being passed on. But Gov. Perry threatened to veto it at the last minute, and it failed to pass.

So, Texas nursing homes who provide care to the sickest and poorest people in the state will not get any increase in reimbursement for the fourth year in a row! Yet our costs for everything, including food, wages, benefits, medical supplies, utilities, and gasoline continue to rise. Currently, we are paid over \$20 per resident, per day, less than it costs to take care of our residents. The proposed bed tax would give Hansford Manor a net increase of between \$7.50 and \$15.00 per resident per day. It's not all that we need, but a lot better than nothing.

Meanwhile, Gov. Perry and our other elected state officials get the political credit for opposing the "granny tax," for keeping a "lid" on costs, and not raising taxes. Why didn't Perry allow an up or down vote?

I hope your readers will make their wishes known. Write, email or fax the officials listed below and ask them to revisit the nursing home bed tax and reimbursement

Letter to the Editor:
I am a 1975 graduate of Spearman High School and in speaking with my mother, who lives there, I found out that my 30th Class Reunion is being held on July 2nd. My problem with this is that unless I had called my mom, I would never have known. I know that several of my classmates still live and work in the area but none have ever had the decency to call or contact my mom for my address. Instead they just send the invitations to her address thinking she will forward to her children.

My mother is a great person but she is not the postal service. Why are they incapable of picking up the phone or "god forbid" going by her house or even asking her for the information when they see or speak to her in public. If not her how about my sister-in-law or one of my nieces how still live there. But I guess like it was when we were in school, things have not changed. If you weren't popular you weren't included and they didn't bother with you. I didn't fit in then so I don't fit in now and I know that I won't fit in because I was one of the few Hispanic students in the class. To my fellow classmates that might still remember me I hope you enjoy yourselves. Next time the organizers might want to get actual addresses and send the invitations to the students and not their parents because even though I hope my mom would live forever, I don't think she'll be around for my 40th and 50th reunion if we are all lucky to live that long.

I am not the only one in my family that graduated from Spearman, in fact four of five of us graduated there. The only one that gets an invitation sent to his address is my brother who lives there. Why can't people there be more friendly and just go by and ask for addresses. My mom, sister-in-law or nieces will be happy to give them the information for any of the other family members.

I guess this is all for now.
Patricia (Barrera) Yates
Glenrock WY

Editors Note...
Freedom of speech is one of the guarantees of the First Amendment of our Constitution, so we encourage readers to express themselves, even if we don't agree with what is said. However, freedom involves responsibility. Therefore, the only letters we will consider publishing are from individuals who are willing for their names to appear with the letter. Letters must contain the telephone number, address and a personal signature of the writer. We will not knowingly publish any letter containing libelous statements.
In the event that numerous letters are received concerning the same subject, letters can be limited to one pro and one con letter per publication. Eligible letters will be published in the order in which they were received.
"Letters To The Editor," like all materials submitted to this newspaper, are subject to editing for space and clarity. The publication of any letter or article is the decision of the Editor and Publisher. Deadline for all news, as well as "Letters To The Editor," is 5 p.m. on Monday.
The Hansford County Reporter-Statesman

The Hansford County Reporter-Statesman
213 Main Street • Spearman, TX 79081
Phone - (806) 659-3434 • Fax - (806) 659-3368
cathysmith@antden.com
Mon.-Thurs. (Closed Fridays) 9 a.m.-12 p.m. & 1-5 p.m.
Gary Smith - Publisher • Catherine Smith - Editor
Carolyn Cummings - Asst. Editor • Clayton Smith - Student Editor
Contributing Writers: Dorothy Hudson and Merry Sparks
Contributing Photographer: Charlie Johnson
Subscription Rates
In Hansford County - \$25.00 • Out of County - \$30.00
The Hansford County Reporter-Statesman (USPS 529660) is published weekly in Spearman, TX. Periodical postage paid in Spearman, TX. POSTMASTER: Send address changes to: The Hansford County Reporter-Statesman, 213 Main Street, Spearman, TX 79081.

Publication Policy
The deadline to submit news and advertising to The Hansford County Reporter-Statesman is Monday at 5 p.m. Items submitted after the deadline will be published at a later date, as time and space permit. Publication of all items is at the discretion of the editor.
Advertising
Open Display rates are \$4.00 per column inch. Classified Ads are \$5 for the first 25 words and 10¢ per word for each additional word. (Additional charge for boxed classifieds.) There is a \$1 charge per week if billed.
Member of
Gruver Chamber of Commerce
Spearman Chamber of Commerce
Texas Press Association and Panhandle Press Association
T.A. PANHANDLE PRESS ASSOCIATION TEXAS PRESS ASSOCIATION AWARD WINNER

Record-setting holiday travel prompts need for increased safety measures

More Americans are expected to travel this Fourth of July holiday weekend than ever before, resulting in potential traffic congestion, delays and, more importantly, safety concerns. More than 30 million people are expected to hit the road this weekend, and millions more will travel by airplane or other means.

The Fourth of July is among the deadliest travel times of the year. Irving's Texas Transportation Summit encourages Texas travelers to use particular caution as they head out to see family and friends this weekend.

The Texas Transportation Summit is a nationwide gathering of more than 1,200 regional, state and federal officials, as well as the nation's top transportation organizations and industry leaders. This year's eighth annual event, scheduled for August 9-12, will kick off a national celebration of the 50th anniversary of the Interstate Highway System, the most significant transportation investment in American history. As plans are already underway to recognize the importance of America's transportation infrastructure, Summit organizers are encouraging travelers to put safety first this holiday season.

To ensure a safe commute during the holiday, Americans are encouraged to utilize the following safety tips:

Highway Travel
\* Before leaving, perform all necessary maintenance checks on your vehicle, and be sure to bring along a roadside emergency and first aid kit.
\* Avoid over-packing your vehicle with luggage or other items,

which can limit the driver's visibility.
\* Always buckle seatbelts and be sure child safety seats are properly secured.
\* Avoid speeding which can reduce your ability to react to other vehicles or obstacles.

\* When traveling long distances, stop often and rest as needed to prevent driving while tired.
\* Do not operate any vehicle after drinking alcohol or with a driver who has been drinking alcohol.

Air Travel
\* Before leaving home, call the airport to make sure your flight is on schedule.
\* Arrive two hours early to allow enough time for security processing and baggage checking, as airports will be much busier than normal.

\* Avoid making jokes or comments concerning security when passing through airport safety checks.
\* Have all tickets and personal identification ready to present to airline personnel to avoid additional delays.

\* Leave all fireworks at home, as they are prohibited onboard aircraft.
\* Do not carry on prohibited items, such as knives, scissors or firearms.

\* Do not leave your bags unattended, and do not accept items from someone you do not know prior to boarding.
The City of Irving's Texas Transportation Summit and Dean International, Inc. wish all Americans a safe and happy holiday weekend!

FOR YOUR INFORMATION
Lunch & Learn
Great grilling hints, no fuss cooking ideas and food safety tips for outdoor cooking will be the topic for "Great Grills Afire!" Lunch and Learn, presented by Bill Carson, amateur chef who likes to grill and loves to eat! The program is Thursday, July 7th from 12:00-1:00 p.m. in the Fellowship Hall of Spearman Church of Christ. Door prizes will be given. A \$4.00 donation for lunch will be accepted at the door. The program is sponsored by the Texas Cooperative Extension and Hansford Extension Education Agent at 659-4131 or 733-2901, for more information.
Union Church hosts concert
The Spearman Union Church will be hosting a concert on Saturday, June 25th at 7 p.m., featuring Brandon Dorris from Joplin, Missouri. He has been to Spearman several times before, both to minister in the churches and to speak to students in the schools. Young and old alike are blessed in his services. Everyone is invited!
Breast Cancer Screening Clinic
The Don and Sybil Harrington Cancer Center Comprehensive Breast Center will conduct a Breast Cancer Screening Clinic at Hansford County Hospital, 707 S. Roland, in Spearman on July 25, 2005. Breast cancer affects one in eight women. The key to winning the battle against cancer is early detection by having an annual breast exam, mammogram and performing a breast self-exam each month. Funding is available through the Texas Department of Health for Texas residents who qualify for assistance. All exams are done by appointment only. Call (806) 356-1905 or 1-800-377-4673 for more information or to schedule an appointment.
You're Never Alone - Narcotics Anonymous Group
Each year individuals struggling with drug and alcohol addiction make the resolution to quit using drugs. For many of them it is a resolution that they cannot keep. Narcotics Anonymous can help. Open meetings are held on Thursday nights from 8-9 p.m. at the First Christian Church (29 S. Bernice in Spearman) for the "You're Never Alone" group of Narcotics Anonymous. Anyone interested is invited to attend. Drug addiction can leave an individual feeling helpless and out of control.
Panhandle Crisis Center Outreach Office
Panhandle Crisis Center (PCC) has an Outreach Office in the Pittman-Shieldknight Building, 511 SW 11th Avenue, Suite 105, in Spearman. In case of emergencies, please continue to call the hotline, 1-800-753-5308. To schedule an appointment with a worker in Hansford County, please call 659-3391 to leave a message, or call the hotline number above. Panhandle Crisis Center serves victims of domestic violence and sexual assault. Call for more information regarding PCC's services.
PUBLIC MEETINGS
Spearman Fire Department meets every Thursday at 7 p.m. at the Spearman Volunteer Fire Department.
Gruver Fire Department meets the first, second and fourth Tuesday of each month.
American Legion and Auxiliary Post 254 meets the first Monday of each month at 7 p.m. at the Senior Citizen Center in Perryton.
Gruver Chamber of Commerce meets the first Tuesday of each month at 12 noon at the El Vaquero.
Hansford County Commissioners Court meets the second and fourth Mondays at 10 a.m. at Hansford County Courthouse.
Stationmaster's House Museum Board of Directors meets the second Monday at 2 p.m. at the Stationmaster's House Museum.
Spearman ISD Board of Trustees meets the second Monday of each month at 7 p.m. in the Spearman High School Library.
Hansford Hospice meets on the second Monday of each month at 7 p.m.
Palo Duro River Authority meets on the second Tuesday of each month at 2 p.m. at the P.D.R.A. office.
Genealogy Club meets on the second Tuesday of each month at 7 p.m. in the home of Velma Sanders, 1015 Linn Drive, in Spearman.
Women's Division of the Spearman Chamber of Commerce Board of Directors meets the second Wednesday of each month at noon.
Gruver City Commission meets the second Wednesday of each month at 5 p.m. in Gruver City Hall.
Spearman Chamber of Commerce Board of Directors meets the second Thursday of each month at noon.
Pringle-Morse CISD Board of Trustees meets the second Thursday of each month at 7 p.m.
Spearman City Council meets the third Tuesday of each month at 7 a.m. in the City Hall Chambers at City Hall.
Women's Division of the Spearman Chamber of Commerce meets the third Wednesday of each month at noon.
Gruver ISD Board of Directors meets the fourth Tuesday of each month at 6 p.m. in the Board Room at Gruver High School.
Hansford County Hospital District Board of Directors meets the fourth Wednesday of each month at 6:30 p.m. in the Board Room at Hansford Hospital.
Hansford County Historical Commission Board of Directors meets the first Monday of January, April, July and October at 2 p.m. in the Zulu Museum building.

Alva Monument Co.
Formerly Liberal Monument & Memorial Company
New Location:
111 Tucker Road
Liberal, Kansas
North of the New Wal-mart
Serving Kansas, Oklahoma & Texas for 93 years
(316) 624-4211 toll free # 888-654-9318

# Happy Birthday!

*Editor's Note: This Happy Birthday list is run as a public service by the Hansford County Reporter-Statesman. We apologize if any names are misspelled. If you know of a name that needs to be changed, added or deleted, please call 659-3434.*

Thank you, Catherine

## June 30

**Birthday** - Mike Minter, Ricky Thompson, Esmeralda Vela, John Snider, Margarette Evans, Kyle Brock, Jeff Hohertz, Keri Lou Schneider, Willie Vera, Paige Burgin, Daniel Crug, Ed Cook, Austin Benton, Katelyn Villarreal, Shari (Smith) Githens

**Anniversary** - Ishmael & Anna Vela, M/M Claude Sheets Jr., M/M D.A. Cator, M/M Walter Murrell, M/M Paul Stavlo, M/M S.J. Wells, M/M Carl Kunselman, Joe & Elvia Avila

## July 1

**Birthday** - Ida Hendrick, Pauline Lopez, Pauline Jackson, Rosa Rojas, James Cunningham, Loydell Sparks, Dwayne Smith, Manlene Cook

**Anniversary** - M/M Dee Mayfield, M/M Jerry Hart, M/M Charles Brillhart, Kevin & Ronda Bynum, Clay & Pam Schnell

## July 2

**Birthday** - Lou Chapman, Janet Irwin, Wayne Biggs, Luis Hermsillo, Joe Hermsillo, Keri George, Channing Burgess, Gary Ellsworth

**Anniversary** - M/M Jimmy Valandingham, Burt & Lynell Williams, Ron & Loretta Cook, John & Debbie DeLaRosa

## July 3

**Birthday** - Julie Gumfory, Randy Lowe, Todd Williams, Charlie Lopez, Audene Beck, Lynn Sheets, Trudie Gordon, Meredith Benton, Ronda Gibson, Gene Reynolds, Trevor Shipley, Debra Gallimore, Verlin Behne, Bill Porter, Cheryl Salgado, Henniretta Andrews

**Anniversary** - Bill & Verna Strawn

## July 4

**Birthday** - Barry Barkley, Donna Been, Gene Duncan, Mary Weldon, Farena Williams, Faye Cunningham, James Umphress, Ofelia Vela, June Patterson, Melvyn Bradley, Kim Swink

**Anniversary** - Mike & Kathy Peck, M/M Walter Postoak, M/M Jerald Ray Scribner

## July 5

**Birthday** - Sydney Clawson, Kent Benton, Mrs. George Rook, Mack McLain, Linda Walker, Jamie Davis, Tom Dortch, Dawn Bridges, Connie Gibson, Dixon, Blayne

Schrader, Alfonso Martinez, Melanie Elliott

**Anniversary** - M/M Bill Been, Mike & Kathy Brown, M/M Anthony Wilkerson, Burton & Wanda Schubert

## July 6

**Birthday** - Alan Biggers, Scott Attwood, Monte Beck, Rickey Shields, Gene Dennis, June Day, Kimberly Ann Vasquez, Cody Benton, Lometa Sparks

## July 7

**Birthday** - Pat O'Connell, Steve Benton, Brenda Sue Bowling, Greg Meisner, Steve Lesly, Virginia Reyes, Magda Rivera, Brian Sparks, Justin Bowman, Daniel Ward, Karen Pierce, Mattie Davis, B.J. Hughes, Reid Swan

**Anniversary** - M/M Kenny Bratton, Kelly & Johnnie Fuller

## July 8

**Birthday** - Buddy Benton, Janna Nickles, Aaron Hart, Craig Morris, Gay Pipkin, Luis Martinez, Jody Fowler, Samantha Prouty, Loree Espinosa, Kathy Lindsey

**Anniversary** - M/M Rodney Clawson, Leo & Phyllis Cummings, M/M Rod Fulce, M/M Greg Miesner

## July 9

**Birthday** - Edith Smith, Donna Farris, Johnny Jo Roach, Sally Swan, Kyle Kirk, Sean Travers Baker, Donna Custard, Sharolyn Finley, Darlene Hoel

**Anniversary** - M/M Richard Booth, M/M Dewey Taylor, M/M Jimmy Finley, Joanna (Moore) & Wayne Pierson, Kevin & Ann Rook, Mr. and Mrs. Leon Bagwell

## July 10

**Birthday** - Steven Greever, Donna Sheets, Lorene Kunsleman, Carolyn Shields, Cathy Gafford, Mitch Gillian, Belinda Francis, Felex Lopez, Jolynda Vasquez, Justin Bass, Jerrill Key, James Sursa

**Anniversary** - M/M Randy Kirk

## July 11

**Birthday** - Louis Schnell, Marvin Jones, Danny Pope, Juanita Paul, Sharon Archer, Scott Russell, Kenneth Schaeffer, Debbie George, Zeke Henson

## July 12

**Birthday** - Carolyn Fletcher, Larry Hicks, Justin Horton, Jenie Kirkland, J.W. Jenkins, Cheryl Long, Glenda Guthrie, Olga Gafford, Lucas Biggs, Stan Josephson, Dustin Irlbeck, Charlie Spencer, Madison Schad, Colton Meek, Melinda Tidwell, Mandie Hunter

**Anniversary** - M/M Fred Davidson, Harold & Joyce Crooks

## Words from Faith & Grace

by Cecil R. Biggers, Lutheran Lay Minister

As I practice my weekday profession, I see misery, depression, and despair in the lives of many; yet, most times, I see also a lack of the Love of God in these lives. Perhaps there is a connection. Our lessons this week are Zechariah 9:9-12; Psalm 145; Romans 7:13-25; and, Matthew 11:16-30.

Zechariah speaks a word of hope to captives, "Today I declare that I will restore you double."

The Psalmist rejoices that God is gracious and merciful, slow to anger and abounding in steadfast love.

Paul shows us the nature of the law. The law is holy, just and good; yet, by defining what sin is, the law convicts us as transgressors. Paul then talks of the dilemma of the Christian. We know what is right, we know what is good, but many times we do not do these things. How can we prevail? We cannot achieve righteousness through the law; but, through the grace of our Lord Jesus, we are deemed righteous and our sin is "hid". I know this is so through the action of the water and the Word in the sacrament of my baptism!

Matthew shows us the "contrariness" of human nature. We look for the worst in others and quite often we find what we look for in others. Matthew shows us that the greater our relationship is with Jesus, the greater is our condemnation if we fail to bear our responsibilities. Yet, Jesus assures us that his "yoke" is easy, or a better translation, "fits well".

Jesus tells us, "Come to me all you who are exhausted and weighted down with your burdens, and I will give you rest". Jesus does not relieve us of our responsibilities. He enables us to bear them lightly.

May the Holy Spirit give you the assurance of God's steadfast love in your life and may He make your yoke fit well.

## Our Sympathy

**MARVIN JACKSON "JACK" SPARKS**

GRUVER - Marvin Jackson "Jack" Sparks Sr., 75, died Monday, June 13, 2005.

Services will be at 10 a.m. Wednesday in the Church of Christ with Doug Messer and Jeff Messer officiating. Burial will be in Gruver Cemetery by Boxwell Brothers Funeral Home.

Mr. Sparks was born Feb. 22, 1930, in Bronte. He served in the Army during the Korean conflict. He married Carol Joyce Wallace on July 29, 1960, and moved to Gruver in 1967. He retired after 25 years from the Texas Department of Transportation in 1993.

He was preceded in death by his father, William Marvin Sparks; his mother, Wilma Leigh Sparks; and a daughter, Norma Lynn Blount.

Survivors include his wife; a daughter, Julie Williams and husband, Neal, of Gruver; a son, Marvin Sparks and wife, Dorothy; a son-in-law, Robert Blount of Gruver; six grandchildren; two great-grandchildren; a sister, Rosa Leigh Messer and husband, Buddy, of Canyon; a special cousin, James Waide and wife, Claudia, of Roswell, N.M.; and numerous nieces and nephews.

The family suggests memorials be to Alzheimer's Association, 2200 W. Seventh Ave., Amarillo, TX 79106; or Hansford Hospice, 707 S. Roland St., Spearman, TX 79081.

## Thank You

Thank you for all of the kindness shown to us in our time of grief. Thank you for all the phone calls, visits, cards and wonderful foods provided for our family. We are also thankful for all our friends and such a giving community.

The Jack Sparks Family

## Thank You

"Thank you for all the kindness expressed to me and my family after the passing of my father. Your phone calls, visits, and kind words will never be forgotten. How blessed we are to be among so many friends."

Damon Sibley and Family



Ralph Depee, D.D.S.

Member American Association of Orthodontists

## Orthodontics For Children and Adults

- Free exam and estimate of cost
- Free second opinion
- Insurance filed

821 S. Amherst • Perryton, Texas  
1-800-521-0831 • (806) 435-2320

## WHEN DOES YOUR SUBSCRIPTION EXPIRE?

SCR1  
06/05 EXPIRES  
JOHN Q. PUBLIC  
PO BOX 123  
SPEARMAN TX 79081

Expiration dates are printed on the top of all mailing labels. Our readers can help keep the cost of subscriptions down by mailing in renewals in the appropriate month.

Thank you, Catherine Smith

**THE HANSFORD COUNTY REPORTER-STATSMAN**  
213 Main Street • Spearman, TX 79081  
**Annual Subscription Rates**  
In Hansford County - \$25  
Out of County - \$30

**UNICORN**  
Painting • Remodeling  
Apartments  
Residential  
Commercial  
**Israel Villanueva**  
(806) 330-0446

## MONUMENTS

Boxwell Brothers Funeral Home  
519 Evans • Spearman  
659-3802

Dear friends,  
When you buy a monument from us we make sure it is exactly what you want at a price you can afford. If it is not right, we will make it right. And you will not have to search the countryside to find us. We are here when you have a need.

Sincerely,  
Bob Boxwell

### Baseball Camp for Kids 5 Years Old and Up

Location: Mike Hargrove Field, Perryton TX 9 a.m.-12 p.m.  
Dates: July 18-19 - Hitting; July 20th - Field & Fundamentals  
Cost: \$50 a day or \$100 for three days  
Instructor: All-Star professional hitter & catcher Mike Silva  
• 2003-2004 Pensacola Pelicans - Central League  
• 2004 Richmond Roosters - Frontier League

To Register for the Camp, Please Call, Write or Email Player information, age and days attending to:

1210 S Fordham  
Perryton TX 79070  
All payments will be due at 8 a.m. the day of the camp

If mailing registration, send payment in the form of cash or check  
781-242-9038 or 806-435-5019  
mike6204@hotmail.com  
Registration will be available the day of the camp at 8 a.m., for an additional \$15

### Baseball Camp for Grades 7 and Up

Location: Mike Hargrove Field, Perryton TX 9 a.m.-12 p.m.  
Dates: July 11-12 - Hitting; July 13th - Field & Fundamentals  
Cost: \$50 a day or \$100 for three days  
Instructor: All-Star professional hitter & catcher Mike Silva  
• 2003-2004 Pensacola Pelicans - Central League  
• 2004 Richmond Roosters - Frontier League

To Register for the Camp, Please Call, Write or Email Player information, age and days attending to:

1210 S Fordham  
Perryton TX 79070  
All payments will be due at 8 a.m. the day of the camp

If mailing registration, send payment in the form of cash or check  
781-242-9038 or 806-435-5019  
mike6204@hotmail.com  
Registration will be available the day of the camp at 8 a.m., for an additional \$15

## Happy Birthday AMERICA

Add a little spark to your celebration with a patriotic arrangement from **All Occasion Flowers**

202 N. Bernice (across from the Post Office)  
**659-5180**

We will be closed July 4th in observance of Independence Day.

## Replenish the seed of faith through . . . DAILY BIBLE READING, PRAYER & REGULAR CHURCH ATTENDANCE

<p><b>Spearman</b></p> <p><b>Apostle Faith Church</b> 822 S. Drexler - 659-2870 Sunday School: 10 a.m. Worship Service: 11 a.m. Sun. Eve.: 6 p.m. Wed. Prayer Mtg: 7 p.m. Pastor - Roland Harey</p> <p><b>First Assembly of God</b> 401 N. Bernice - 659-2295 Sunday School: 9:30 a.m. Worship: 10:30 a.m. Kid's Church: 10:35 a.m. Evening Worship: 6 p.m. Wed. Worship: 7 p.m. Wed. Youth: 7 p.m. Pastor - Bob Elder</p> <p><b>First Baptist Church</b> (Disciples of Christ) 29 S. Bernice - 659-2036 Sunday School: 9:45 a.m. Worship: 10:50 a.m. Minister - Gary Smith</p> <p><b>First Baptist Church</b> 123 N. Bernice - 659-5557 Sunday School: 9:45 a.m. Worship: 11 a.m. Evening Worship: 7 p.m. Men's Bible Study - Wed., 7 a.m. Children's Choir - Wed, 6 p.m. Adult Choir - Wed, 7 p.m. Wed. Bible Study: 7 p.m. Pastor - Jim Medley</p> <p><b>Church of Christ</b> 121 S. Haney - 659-3244 Sunday Bible Class: 9:45 a.m. Worship: 10:30 a.m. Evening Worship: 6 p.m. Bible Study Wed.: 7:30 p.m. KPDF Radio Program Living W/Christ: 7:50 a.m. Minister - Leonard Harper</p>	<p><b>Sacred Heart Catholic Church</b> 901 Roland - 659-2792 Sat. Night Mass: 5:30 p.m. Sun. Mass: 9 a.m. - English (aired on KRDF-FM 98.3) Sun. Mass: 11:30 - Spanish 1:30 p.m. - Gruver - Christo Rendontor Mass - Spanish Rev. Guillermo Morales</p> <p><b>First United Methodist</b> 407 S. Haney - 659-5503 Sunday School: 9:45 a.m. Worship: 8:30 &amp; 11 a.m. Jr. High Youth: 5 p.m. Sunday High School: 6 p.m. Sunday Kids Club: 3 p.m. Wed. Pastor - Derrel Ewins</p> <p><b>Grace Presbyterian Church</b> (Worships with Faith Lutheran Church) 1101 Bernice - 659-2033 Pastor - Beverly Cook</p> <p><b>Faith Lutheran Church (ELCA)</b> 1101 Bernice - 659-2252 Sunday School: 9:45 a.m. Worship: 11 a.m. (Worships with Grace Presbyterian Church) Pastor - Beverly Cook</p> <p><b>Union Church</b> 31 S. Endicott - 659-2644 Sunday School: 9:45 a.m. Worship: 10:45 a.m. Evening Worship: 6 p.m. Bible Study: 7 p.m. Wed. Pastor - Dr. Timothy Minor</p> <p><b>Fellowship Baptist</b> 1102 S. Archer - 659-2783 Sunday School: 10 a.m. Worship: 11 a.m. Sun. Evening Worship: 6 p.m. Youth/Adult Service: 7:30 Wed. Pastor - Gene Foster</p>	<p><b>Primera Mision Bautista</b> 502 E. 7th - 659-3991 Sunday School: 9:45 a.m. Worship: 11 a.m.; Evening: 6 p.m. Wed. Prayer Meeting: 7 p.m. Thurs. Visitation: 7 p.m. Pastor Joe Garcia Jr.</p> <p><b>El Aposento Alto U.P.C.I.</b> 1105 S. Roland Domingos: Escuela Dominical - 10 a.m. Culto Evangelistico - 7 p.m. Jueves: Oracion - 8 p.m. Mier. Estudio Biblico - 7 p.m. Pastor - A.G. Martell (806) 659-2153</p> <p><b>Gruver</b></p> <p><b>First Baptist Church</b> 402 E. Broadway - 733-2411 Sunday School: 9:45 a.m. Worship: 10:50 a.m. Disciple Training: 6 p.m. Sunday Prayer Meeting: 7:30 p.m. Wednesday Pastor - Scott Curry</p> <p><b>Church of Christ</b> 209 King - 733-2760 Sunday School: 9:30 a.m. Worship: 10:20 a.m. Evening Worship: 6 p.m. Wed. Worship: 7:00 p.m. Minister - Gaylord Cook</p> <p><b>First Christian Church</b> 510 King - 733-2960 Sunday School: 10:00 a.m. Sunday Worship: 11 a.m. Youth: 7:30, Sunday Adult Bible Study: 7:30, Sun. Wed. Bible Study: 8:00 p.m. Pastor - Gary Gumfory</p>	<p><b>Gruver United Methodist</b> Broadway &amp; Garrett 733-2651 Sunday School: 9:45 a.m. Worship: 8:30 &amp; 10:50 a.m. Eve. Worship &amp; UMY: 6 p.m. Pastor - George Price</p> <p><b>Spanish Cristo Redentor Church</b> Sunday Mass: 1:30 p.m. Friday Evening Mass Summer - 8:00 p.m. Fall/Winter - 7:30 p.m.</p> <p><b>Oslo</b></p> <p><b>Oslo Lutheran Church (ELCA)</b> 6 Miles West &amp; 12 Miles North of Gruver 339-7709 Sunday School: 9:45 a.m. Worship: 11 a.m. Pastor - Paul Fiske</p> <p><b>Waka</b></p> <p><b>Waka Church of the Brethren</b> 435-4598</p> <p><b>Morse</b></p> <p><b>Morse Baptist Church</b> 733-2757 Pastor - Mike Martin</p>
--	--	--	--

This feature is made possible through the sponsorship of these civic minded businesses.

**Deakin ELECTRIC**  
OILFIELD • RESIDENTIAL • COMMERCIAL  
321 S. MAIN • SPEARMAN  
1-800-999-1506  
806) 659-5016  
Chris Deakin  
President

**Bartlett's Lumber & Hardware**  
105 W. Broadway • Gruver, Texas  
(806) 733-2404

**BERRY CLEANERS**  
Ann & Vernon Pipkin - Owners  
Phone 659-3122 • P.O. Box 1017  
207 Main St. • Spearman, TX

**Morse Implement & Auto Supply**  
"Join us in church this week"  
Tom Dortch 733-2668  
P.O. Box 89 • Morse, TX 79062

**PRAIRIE MOTORS INC.**  
Hwy. 207 South • P.O. Box 430  
Spearman, TX 79081 • (806) 659-2541  
www.prairiemotors.com

**Gruver Cablevision**  
308 Main  
Gruver, TX 79040  
733-5295

**Hansford County Reporter-Statesman**  
"Proudly Serving Hansford County Since 1907"  
(806) 659-3434  
213 Main Street • Spearman, TX

**Interstate Bank, ssb**  
322 Main • P.O. Box 146  
Spearman, TX • 659-2559



**Engagement Announcement**

Phillip and Toni Atwood of Gruver wish to announce the engagement of their daughter, Randi Lark, to D.J. Warrick of Amarillo. D.J. is the son of Dan and Donna Warrick of Hereford.

Randi is a graduate of Gruver High School and Amarillo Junior College. She is an Early Head Start teacher for Region 16 in Amarillo. D.J. is a graduate of Hereford High School and West Texas A & M University. He is a supervisor at Best Buy in Amarillo.

The wedding is set for September 17, 2005 in the Gruver United Methodist Church.

**Winegarner, Meason wed**



Mrs. Jody Meason

Cami Arlene Winegarner and Jody Lahn Meason, both of Amarillo, were married Saturday, May 21, at Southwest Baptist Church. The Rev. Bradley Speer officiated.

The bride is the daughter of Linda and Nolan Winegarner of Spearman. Grandparents of the bride are Delma and Herbert Winegarner and Ila Willis, all of whom attended the wedding.

Groom's parents are Brenda and Alfred Bayless of Pryor, Okla., and Bette and Joe MEason of Amarillo. Grandparents of the groom are

Ruby and Toby Bilderback, who attended the wedding, and Audie Meason.

Maid of honor was Audrey Winegarner, cousin of the bride. Bridal attendants were Abby Winegarner, cousin of the bride, and Kristi Carbajal.

Best man was Toby Bilderback, grandfather of the groom. Groom's attendants were Toby Meason, brother of the groom, and Grant Harbison.

Flower girl was Maddy Willis, cousin of the bride. Ring bearer was Caleb Willis, cousin of the bride. Ushers were Josh Winegarner and Keith Winegarner, both brothers of the bride.

The wedding reception was at the church. Reception attendants were Jodie Rogers, Andrea Stuart, Jill Manley, Ashley Roberts, Brittany Snider and Jamie McGuire.

The bride is a graduate of Spearman High School. She graduated from West Texas A&M University in Canyon with a bachelor of science degree in nursing. She is a registered nurse at Baptist St. Anthony's Health System.

The groom is a graduate of Caprock High School. He received a bachelor of theology degree from Texas Baptist Seminary in Henderson. He works in computer operation for McKesson.

The couple planned a honeymoon trip to San Antonio. They will reside in Amarillo.

**Hospice Minutes For June**

The Hansford Hospice Volunteers met on Monday, June 13, 2005, at First State Bank, Spearman, Texas, with President Verna Lee Shirley presiding over the business meeting.

The minutes of the May meeting were read and approved. It was reported that the Hospice Golf Tournament was very successful. Sandy Russell reported on the Hospice Ranch Rodeo, which will be June 30th. Sandy said we need about 12-15 teams.

The program that was set for tonight was canceled due to the illness of the speaker.

Hospice will have a special program on Alzheimer's for the community on October 3rd with Roy Puentes as the guest speaker.

Pat Irwin reported that the July program will be Ann Parish who will give a "hat program". The July meeting will be at Gruver State Bank on July 11, 2005.

The meeting was adjourned.

**Gladiola Flower Club Meeting**

The Gladiola Flower Club met June 16th in the home of Wanda Brown. Elaine Odegaard gave an enlightened program on what she learned about growing antique roses from clippings from roses growing at old abandoned houses and cemeteries when she attended a Rose Symposium in Amarillo.

Roll call was answered by telling your favorite time of the day. Judy Yarbrough won for arrangement and Wanda Brown for potted plant!

The next meeting will be at 3:00 P.M., July 7th in the home of Virginia Trindle.

Those present: Dickie Allen, Muriel Boyd, Verna Brown, Wanda Brown, Dorothy Buzzard, Betty Jean Davis, Margarette Evans, Ann Flowers, Estelle Jackson, June Jackson, Lorene Kunselman, Eloise Renner, Kathleen Sutton, Virginia Trindle and Judy Yarbrough.

**Happy Birthday!**



Still celebrating your "independence" at 50

Love,  
Charles & Girls  
Linda & Girls  
Butch, Bonny & Clayton  
Mom & Dad

**Mexican Trade Representative To Be In Panhandle Area**

Bob Dietrick, President of The White Wheat Producers Alliance, announced today that the Alliance will sponsor a **FREE BBQ LUNCH** on Thursday, June 30, 2005 at 11:30 A.M. in the Texas County Activity Center Meeting Room.

The Oklahoma Wheat Commission and The White Wheat Producers Alliance are sponsoring this lunch in order to provide an opportunity for wheat farmers and elevator managers to meet and visit with marketing representatives of the ALTEX MILL of Toluca, Mexico.

The Mexican representatives who oversee purchases for the Altex Mill, a milling facility in Toluca, Mexico will be available to provide information to area wheat farmers in regard to quality specifications and quantity amounts that are required to sell wheat to Altex Mill and what quantities (both red and white) they will need in the future.

All Wheat Farmers Are Invited To Meet These Representatives, Regardless Of The Variety of Wheat Being Raised.

Contact Helen Robbins (580-338-8443) or Bob Dietrick (580-651-7877).

**Stationmaster's House Museum**

The Stationmaster's House Museum will be open to visitors Saturday, July 2 from 1-4 p.m.

**BEAUTICONTROL**

Our product line has something for everyone. Our skin analysis helps to determine which skin care product is best for you.

To schedule your complimentary Skin Age Analysis, call Stephanie Brock at 659-1774



**Donate your vehicle & lawn mowing equipment**

(running or not) to

**Golden Spread Senior Citizens' LIVE Auction**

to be held

**Saturday, July 16th at the O'Loughlin Center 502 S. Brandt, at 10 a.m.**

**Call 659-3030**

(Proceeds will benefit the Golden Spread Senior Citizens Center)

**You're invited to attend a Baby Shower**

honoring

**Jack Owen Whitson**

son of Laura (Pearson) & Jason Whitson

on Saturday, July 2nd

from 2:00-3:30 p.m.

in the home of Ginger Pittman

508 Roland • Spearman

**You're invited to attend a Wedding Shower**

honoring

**Nicole Lozano**

bride-elect of Wesley Clymer

on Saturday, July 10th

from 2:00-3:30 p.m.

in the home of Mike & Pat Cudd

22 Golden Circle • Spearman

**You're invited to attend a Wedding Shower**

honoring

**Felicia C. Martinez**

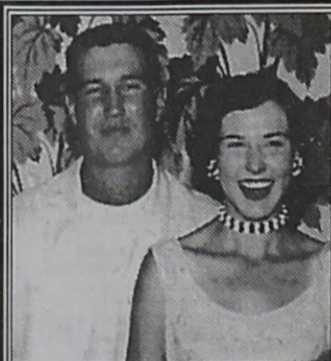
bride-elect of Gilbert R. Perez

on Saturday, July 9th

from 3:00-5:00 p.m.

in the First State Bank Hospitality Room

1 NE Court • Spearman



The children of Jo Nell & Claude Sheets Jr. invite you to

attend a reception honoring the 50th Anniversary of the marriage

of our parents on June 30, 1955. Sunday, July 3, 2005 at 2:00 p.m. Church of Christ Fellowship Hall



**Bridal Registry**

- Nicole Lozano & Wesley Clymer - 7/10
- Jennifer Neff & Josh Butler - 7/16
- Tuesday Blankenship & Michael Foster - 7/23
- Regan Boxwell & Gavin Benke - 7/23
- Lisa Swink & Eric Vasbinder - 7/23
- Miranda Thoreson & Heath Hill - 7/30
- Randi Atwood & D.J. Warrick - 8/6
- Taryn Adcock & Marshall Long
- Felicia Martinez & Gilbert Perez
- Cassie Butt & Kevin Beckwith
- Dineke Travis & Brett Holmes
- Holly Hart & Marcus McLean
- Leah Mackie & Marc Strickland
- Tandalee Leo & Ben Harris
- Cassie Harrison & Landon Swan
- Amy Kaweck & Markus Schick
- Jamie Yamane & Mike McCloy

**Celebrate**

Gifts for all your celebrations! 203 Main St. • Spearman, TX

(806) 659-3350

1-800-663-8026

# Manor Matters

by Merry Sparks

What a great community we live in! The Methodist Church of Gruver brought services to the Manor on the 26th for the Residents. Thank you very much!

We have been trying to get outside to enjoy the patio and the flowers that have been planted around and just the great out of doors. As everyone that lives here knows, the mosquitoes have taken over. Therefore, we have run for cover. We killed one in the activity room today that was at least one inch long! Anyway, we have opted to look out the windows instead of going out at this particular time because of them and done alternate exercises. We love to play kickball, volleyball, exercise to music and music programs.

Rho Rho Sorority has been hosting bingo on Monday nights throughout June. Thank you to the Rho Rho Sorority!

Janie Kunselman played several different tunes on the piano for Name That Tune Tuesday. She played a variety of music but the Residents could name almost every one of them.

Anne Whitaker led Bible study on Wednesday morning. Thank you Anne!

Wednesday night the First Christian Church brought Christian Buffet to the Manor. Oh my what good food! The Residents and staff alike enjoyed it very much. Thank you for all of your hard work.

Thursday afternoon the auxiliary hosted bingo for the Residents.

Thank you for your faithfulness!

On top of hosting bingo Thursday, the auxiliary also hosted the birthday party on Friday afternoon. Oh my all of the wonderful pies. They were so pretty and tasty. When we had honored the birthday girls for June, (there were no male birthdays in June) Verna Strawn put on a wonderful interactive music program with the Residents. It was fun for us because the Residents helped her sing. Thank you Verna for such a good program!

As you can tell, it has been a very busy summer already as I am sure it has been for you. We are active and lively for the most part around here. When someone gets bored, they show up in the activity room to ask what is going on. Of course that just sets us up for another project. There is always something to do around here even if it is to peel onions or chop tomatoes.

Since time is pressing because I have to be gone to a seminar this week, I will not be writing Manor Matters next week. I will talk to you soon though. We have a lot more going on around here than what I mention in the paper. To find out what I guess you'll just have to come visit. I do hope that all of you will be thinking about our annual dog show that we will have the first part of August. I will start working it up in a couple of weeks. That has been a lot of fun in the past and I think will be great again. Thanks to one and all.

## Wolf Creek Heritage Museum Notes

End of the month and this month we are changing exhibits. The very successful art exhibit by Martha Keim came to a close on Monday. We again thank everyone who came out to view her beautiful paintings and a special thanks to Martha who graciously brought her paintings to the museum, hung them, and then took them down. We appreciate your willingness to bring your art to us.

We need local artists. If you know any one or you are one, call us. Mildred will be setting our 2006 calendar in the very near future. We are a great place to have a first show.

Our exhibit for July and August will be a Navajo Woven Textiles. A collection owned by Leah Smith of Leedy, OK. We look forward to this exciting collection.

### Holiday History

Another month and another holiday. The "Fourth of July" is a celebration of the birth of our nation. In 1773, The Boston "tea party" and the subsequent "massacre" started the events that led to our independence.

Virginia led the way by setting up the first Continental Congress in September of 1774. This resulted in a document of grievances that separated the colonies from England. George Washington took command of the Continental Army and began fighting the British in Massachusetts. For the next eight years, colonists fought fervently in the Revolutionary War.

On July 2, 1776, the Second Continental Congress created a second draft of the grievances. The document, called the Declaration of Independence, was treasonous against the crown and the fifty-six men who signed it were in danger of being executed.

Independence Day is celebrated on July 4 because that is the day when the Continental Congress adopted the final draft of the Declaration of Independence. It was read publicly for the next month with celebrations occurring with each reading. The war dragged on until 1783 and it was that year that INDEPENDENCE DAY was made an official holiday. It became a federal holiday in 1941.

Traditions associated with July 4th are fireworks started by an Italian family named Vitale in 1922. They still produce over a 1000 shows each year.

Celebrations with picnics and parades always include the singing

of Yankee Doodle and America the Beautiful. Yankee Doodle is a 15th century Dutch harvesting song that was rewritten by Richard Schuckburgh, a British Surgeon. He wrote it for the British troops to use to ridicule the colonists fighting in the French and Indian War. It was also used in the Revolutionary war but the colonists used it as a rallying anthem.

"America the Beautiful" was a poem by Katherine Lee Bates written in 1893 after she had viewed Pikes Peak. It was later set to the music of a hymn written by Samuel Ward. The words and music traveled around the world, and today Mexico, Canada, and Australia sing it with their own countries' names instead of "America".

A symbol of our freedom is the "Liberty Bell". The Bell came from England in 1752 but at the first blow from a hammer to test it, it cracked. It was recast twice before it was ready for use.

The bell was used to celebrate each major national event: It rang on July 8, 1776 to mark the occasion of the adoption of the Declaration of Independence. On April 16, 1783, to announce the proclamation of peace and the end of the Revolutionary War and our new Independence.

In 1789, it announced the election of George Washington; in 1797, the election of John Adams; in 1799, the death of Washington; and in 1801, the election of Thomas Jefferson. On July 4, 1826, the bell was nearly three quarters of a century old, and the nation was 50. Then, on July 8, 1835, while tolling for the funeral procession John Marshall, Chief Justice of the

Supreme Court and one of the signers of the Declaration of Independence, the great bell cracked.

Fearing further destruction, officials ordered it taken down from the tower. It was at this time that the bell was named the Liberty Bell. No one living has heard the sound of the bell since it has not been rung since 1835. The crack is prevented from widening through a device called a spider installed inside the bell.

The English foundry in London that originally cast the great bell offered to a few years ago to melt the bell and recast it at no cost to the United States. The Keepers of the bell considered the offer but concluded that the cracked liberty bell is a cherished symbol of America's struggle for freedom. On behalf of the American people, the officials thanked the London foundry for its generous offer, but refused, adding: "We like the bell as it is, crack and all. It is an important part of our heritage."

### 4th of July in Lipscomb County

In the July 8th, 1887 edition of the Panhandle Interstate reported on the celebration of the fourth in Lipscomb. It reported that over 300 people came to the county seat. A parade of decorated wagons "with flags, decorations and sweet young girls nicely dressed, was an attraction that pleased all. ... The procession of wagons marched around the town and then drove up to the grand stand."

There was a program of speeches and "the stars and stripes floating from its tall staff stirred the patriotism in every heart." The program was followed by a dinner and at "2 o'clock the tournament was

called and six gallant Knights rode down the list. The Knight of the Lone Star, the Knight of the Cottonwood, the Knight of the Printers, the Knight of Plumb Creek, (his typo), the Knight of the Box T, and the Knight of Lipscomb. All rode and rode well, the rings with their lance as like lightning they sped down the course. When a gallant Knight make a good run he was loudly cheered, or when he failed he was loudly laughed at."

The winner was L.R. Woodson, the Knight of the Lone Star and he chose Miss Lottie McDonald as the Queen of Love and Beauty.

At 4 pm the music started and dancing began. They danced through supper and continued towards morning.

Sounds great right. Hold on, there was controversy even then. It appears that the "People of Lipscomb feel that they were not treated right on the Fourth of July by the church people and a part of the people in the west part of the county. Every opportunity was given for the church people to assist us in our program, but we understand that they would not help us because there was to be horse racing and dancing. ... Each person has a right to do just as they think best, and select those with whom they wish to associate, but if they slight the people of Lipscomb, and refuse to help us, they must in turn expect to be slighted, and assistance refused them when they ask it." Ah, Democracy and the freedom of the press.

Enjoy the Fourth, On Saturday and Sunday, July 2-3, please join Lipscomb county celebrate our freedom by attending the Duesches fest in Darrouzett.

See us for:  
**AUTO • HOME • CROP HAIL • FARM & RANCH • MULTIPERIL • LIVESTOCK**  
**INSURANCE**  
  
**BORT AGENCY, INC.**  
 510 Main St. • Gruver, TX  
 (806) 733-2456

**Wolf Creek Heritage Museum**  
**Museum Hours:** Monday thru Friday 10 a.m. to 4 p.m., Sunday 2 to 4 p.m. Special hours upon request.  
**Museum Information:** Hwy 305, Lipscomb; telephone: 806-852-2123; fax: 806-852-217; email: wolcck@amaonline.com; website: www.wolfcreekheritagemuseum.com

**— AUCTION —**  
**GRUVER ISD – SILENT AUCTION**  
**Saturday, July 9th**  
**7:00 a.m. – 12 a.m.**  
**Item Pickup 12:30 p.m. - 2:30 p.m.**  
**At the County Barn in Gruver, TX**  
**Various surplus items including:**  
 2 buses, computers, furniture, cabinets, kitchen equipment, appliances, sewing machines, lockers

**PTCI's Regional Telephone Directory has hit a HOMERUN!**  
 Survey results prove what we've known all along...  
**PTCI's directory is the most used telephone directory in the Panhandle -- 3 to 1**  
 To get your ad in the PTCI Yellow Pages call 888-646-6680

- It's Smart
- It's Easy
- It's Affordable

**PTCI YOUR #1 CHOICE**

**COMING SOON!**  
**GREAT NEW PHONE SERVICE FROM PTCI**  
**Get One Month FREE for Early Sign-UP**  
 Drop in and visit with Sally or Teresa today!  
**721 West 7th Spearman**  
**1-800-562-2556**  
 Bringing Your World ... Home.

**TOUGHER THAN ALL OUTDOORS.**  
  
**AS LOW AS \$49/MONTH FOR 24 MONTHS**  
 AT 6.9% APR WITH NO MONEY DOWN ON ALL MOTORCYCLES, SCOOTERS, ATVs & PRO HAULERS  
 PLUS UP TO \$300 CASH BACK ON SELECT MODELS\*  
\*Cash back offer good on select models. Finance offer available at participating Yamaha dealers on the Yamaha card, subject to credit approval. 6/1/05 - 8/31/05, on any new 2005 (or new prior year) Yamaha Motorcycle (excluding FJR models and Rhino 680), ATV, or Scooter model. Reduced Rate 6.9% APR and as low as \$49 monthly payment effective on these purchases for 24 months, if your Account is kept current. Example: \$49 monthly payment based on YFZ450 with a purchase price of \$6,899. Thereafter a Standard Rate currently 10.99%, 14.99%, 18.99%, or 22.99% APR will apply and minimum monthly payments will be required as described in your cardholder agreement. For Accounts not kept current, the Default Rate 24.99% will be applied to all balances. Minimum Finance Charge \$1.00. Certain rules apply to the allocation of payments and Finance Charges on your promotional purchase if you make more than one purchase on your Yamaha card. Call 1-888-367-4310 or review your cardholder agreement for information. ATVs with engines 90cc or greater are recommended for use only by riders age 16 years and older. Yamaha recommends that all ATV riders take an approved training course. For safety and training information, see your dealer or call the ATV Safety Institute at 1-800-687-2887. • ATVs can be hazardous to operate. For your safety: Always avoid paved surfaces. Never ride on public roads. Always wear a helmet, eye protection and protective clothing. Never carry passengers. Never engage in stunt riding. Riding and alcohol/drugs don't mix. Avoid excessive speed. And be particularly careful on difficult terrain. Shown with optional Yamaha accessories. Offer good only in the United States, excluding the state of Hawaii. Shown with optional accessories.  
**YAMAHA 50th**  
**FIVE STAR EQUIPMENT, INC.**  
 Hwy 15 West • Spearman TX 79081-0658 • 806-659-3743

# American Windpower Trail

by Gina Gillispie

Where does the Windpower Trail end and where does it begin? This question will be answered with as much variety as people roving the route. But, for conversation's sake, let's say that you've left Woodward and Shattuck, traveled through Higgins, and are on your way to Spearman. You could turn west on Hwy 760 or you could take the scenic route through Canadian and Wolf Creek, crossing the state line with only a hint of change.

I must recommend the trip from Canadian to Spearman, as it is truly breathtaking. One must imagine what heaven it must have been for the weary pioneers traveling by wagon, to enter these gently rolling plains, an oasis in the midst of the flat lands. You will enjoy a variety of right of way windmills, but be prepared to be captivated by the view. It's not uncommon to see large herds of deer or antelope grazing in the distant pastures, and be certain the sky will be filled with blue and birds.

As you make your way into the town of Spearman, you will find a progressive and happening little town. The folks here are friendly, remember, Texas is nicknamed the "Friendly State". And you might just get to see a real live Texas cowboy with his real live horse and trailer, parked at a hot lunch spot for a bite to eat. If you aren't from around here, this might entice you to use some of that film in your camera for cowboy poses instead of windmills. Be assured there's plenty of both.

Spearman is home to the World Famous J.B. Buchanan Windmill Collection. Mr. Buchanan's collection was once located at his homeplace (this is what they call your house when you live on a farm) which was fourteen miles South on Hwy. 207. However, in 1997, the collection was donated to the city of Spearman and was taken down, lovingly restored, and relocated to the J.B. Buchanan Windmill Park just on the edge of Spearman. One of Mr. Buchanan's windmills resides in the Smithsonian, which proves the magnitude of the windmill's impact on settlement of the Plains.

Spearman has claimed this collection of windmills and embraced the idea of becoming known as "The Windmill Town". The collection includes such a variety of vintage mills that you could linger all day absorbing the beauty and history. It also has Lake Palo Duro, a winter nesting site for the American Bald Eagle; Lindbergh

landed here in 1927; and is located twenty miles from the famous Adobe Walls Battle site. In case you might want to spend a little more time here exploring other interesting things, there are five quaint bed & breakfasts to make you feel at home and offer you a place to mosey a spell.

Spearman is a mixture of old and new, as most Texas Panhandle towns are. Hanging on to the past is one of the things we do best. If you head west (or any other direction for that matter), and get in just the right spot, the panorama extends miles and miles, with nothing else in view except the sky meeting the horizon. This is how it must have looked thousands of years ago and exactly why it is called the High Plains.

Feast your eyes on acres upon acres of wheat, corn, and milo, and discover what REAL crop circles look like. Amid the irrigated land, you can also see miles of boot-high golden silver grass swaying in the breeze...evidence of the invisible energy that has made it's way from our past into our future...and that energy is the wind...the wind that ripples the grass as a pebble ripples a pond. The contrast of wild winter grass against an azure sky is alluring, but you may wonder why in the world someone would choose to live in this lonely, wide open place, until you look around and see it... really see it... freedom...as compelling as the path of wind across the grass.

Let yourself become a bird on a wire. Your view from here takes some time to get used to. Larkspur, Rough Legged Hawks, Killdeer, Texas Tumbleweeds, flatness, dirt. And then you become aware of the human touch entering into this equation...barbed wire, cedar fences, pumpjacks, granaries, herds of cattle, and ruts in the caliche roads made by rain and trucks.

You are in a sci-fi daydream...among all this nothing, comes into view, a giant and "Watt a Giant"...one of four of the largest wind turbines in the world today! This massive structure enjoys its own freedom. It stands boldly against the horizon with its modernism totally out of place. It's like all the rest of its similar beings..."something" smack dab in the middle of nothing.

After a few ooohs and aaahhs, its time to head back into town. Take time for a coffee break and get in on some of the gossip. It's known fact in Spearman, that the best tellers of tall tales are the men at the coffee shop. It's been said of a

certain table in town that there's a lot that gets talked about at that table and by gosh! It's all true! If you're lucky, you just might get to share a piece of pie with one of the Amalgamated Windmill Workers of America, Spearman's only "union" whose sole purpose in life (other than restoring vintage mills) is to coffee break. It's a wonder the town has fifty mills standing.

But, it does, and it is because of them. The Amalgamators are a self-taught group of individuals, and one talented painter named Wanda. They have learned to pour rabbit, reconstruct vanes, and negotiate trades across the Mid-West. They have created a one of a kind arena whereby the mills are adopted by local businesses and proudly displayed all over town, thus making the entire community one large outdoor museum of windmill history. This strategy was concocted to include you in our quality of life. You are wanted here...for a long time.

The collection has some rare finds indeed, including the Woodmanse Model S on a cable tower, which seems to be the only one like it in the world. And they also boast of a rare 12' Aermotor that was manufactured for only one in year 1915, and is a water-pumping working windmill with a depth of 495 feet. The variety is outstanding by any measure, and savvy windmillers will recognize the names...Zephyr, Butler, Monitor, Clipper, Eli, Eclipse, Challenge, Perkins, and so much more. The John Deere place even has its own John Deere mill. This extensive collection made the town an excellent location to host the International Windmill Tradefair in 2002 and they plan to make a bid to host it again in 2007. The windmillers come from all over the country for one thing and one thing only...to buy, sell, and trade...IRON...or as we pronounce in this part of the world..."um".

If you can bear to leave this sassy little town, you still have lots to look forward to. Remember, the land is flat, and on a clear day you will be able to see many of the towns ahead of you (at night at least twenty six miles!). Wide open space, freedom to kick off your new pointy toe cowboy boots, unsnap your pearl snap shirt, put your "pedal to the metal" and travel on South to Lubbock with a few good stops in between...you might even come across another kind of icon down there...best to "Get Your Guns Up!"

# J.B. Buchanan Windmill Collection

One man's passion is quickly becoming one town's pride with the relocation of the windmill collection of J.B. Buchanan to the City of Spearman.

J.B. Buchanan, whose fascination with windmills at age three led him to climb the Currie windmill near his Oklahoma ranch home, began his first restoration project when he was only 14. Having found a dilapidated windmill half-buried in a creek bank, Buchanan retrieved the windmill, restored the blades, and erected it atop a pole at the entrance of his family ranch.

The cattle at the range were the first to enjoy Buchanan's handiwork. "At first, the cows would just wander up and stare at it and look around for the water trough that was supposed to be below it," Buchanan related.

Years later, Buchanan's fascination for the whirling wonders was rekindled when he surveyed the uncluttered plain of the Texas Panhandle and realized how he missed seeing the majestic windmills which had been a part of his youth vanished by modern immovable electric pumps. Even so, Buchanan's love may never have resulted in an actual collection and restoration had fate not stepped in.

In 1968, while browsing in a store in New Mexico, he discov-

ered something he couldn't resist - an Eclipse Windmill still in its original shipping crate.

"The Eclipse was to windmills what a Stetson is to hats," Buchanan remarked.

After purchasing the windmill and erecting it in his back yard, the first of a collection that would become the largest in Texas, was begun.

Searching for old windmills soon added other models such as the Star mill, the Dempster Umbrella mill (a unique variation that folds its 18' blades in on themselves to protect them when the wind is too strong), and Curries, similar to the ones known in his youth.

Two of Buchanan's treasures have been given to the Smithsonian Museum in Washington, D.C., but the remainder have stood in the yard of his farm house through the years.

Restoration of his finds molded Buchanan into a competent carpenter and blacksmith. In his barn that doubles as a workshop, he has hammered bent metal blades flat on an anvil, shaped wheels from water-soaked oak, and cut precise grooves for the countless, wooden blades for the Dempster models.

In 1997, after climbing on one of his spinning beauties to make repairs at the age of 92, Buchanan promised his dismayed wife, Ila Mae, that he had scaled his last windmill tower. So, in early 1998, Buchanan offered his priceless collection to the City of Spearman.

The Spearman Chamber of Commerce, Buchanan's grandson, Roger, and son, Burl (former Mayor of Spearman), formed the Southwestern Pioneer Windmill Association and dedicated a five-acre plot on the southern edge of the town to be used in the display of the collection.

Businesses of Spearman are adopting windmills and will assume the maintenance of them. "We're getting some other windmills from around the state, and we hope to eventually have about 30, with my grandfather's in one spot

and about 15 others scattered throughout the town," stated Roger Buchanan.

Spearman's aspiration of becoming known as the "Windmill City" as a step closer to reality with the move of the first of the Buchanan collection being moved on January 21, 1999. A ceremonial groundbreaking of the proposed site was also held on that day. The first windmill arrived on a horse-drawn wagon, before being erected.

News of Spearman's planned outdoor "museum" of windmills has been received with great anticipation in the Panhandle region. The Big Texan Steak Ranch of Amarillo, which greets thousands of tourists each year, has endorsed the collection to its guests through a special exhibition in the restaurant's courtyard. One of the Buchanan windmills, a Samson Windmill, is on display in the scenic area with a large placard inviting tourists to visit the entire collection at the Spearman site.

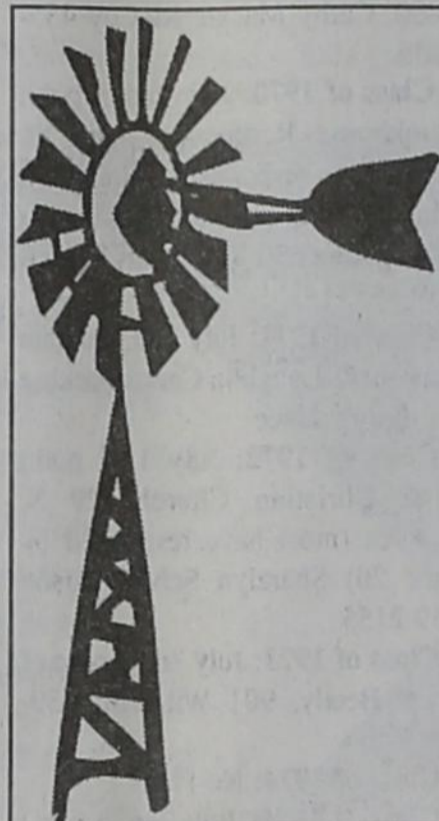
With the relocation of the windmills, the Buchanan farm yard is now devoid of the prairie pumpers which have adorned it for thirty years. But, in a larger sense, one man's love for the stately majestic towers of the Plains will now be shared to fascinate and mesmerize generations.

## Windmill collector laid to rest

J.B. Buchanan passed away on Monday, January 6, 2003 at the age of 96.

Buchanan was a member of the First United Methodist Church of Spearman, and a member of the Hansford Lodge No. 1040 A.F. & A.M. He was past Worshipful Master and a 50 year Mason. He also donated windmills to the Smithsonian Institution. He was 1999 Spearman Citizen of the Year.

The family requests memorials go to the Southwestern Pioneer Windmill Association, % PO Box 805, Spearman, Texas 79081.



# Welcome Back Ex-Students

from  
**First State Bank**  
and our Ex-Student Employees



(Back, L-R) Ginger Turner, Cheryl Hill, Leann Carson, Mike Schnell, Clay Schnell  
(Front, L-R) Gale Womble, Linda Town, Veronica Quintero, Diana Bynum



First State Bank

The Bank that has the Tradition of Strength & Service.

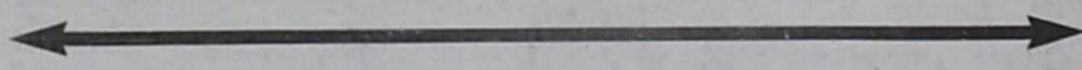
One NE Court • Spearman • (806) 659-5565

member FDIC

# Welcome Back SHS Exes!

from  
**FIVE STAR EQUIPMENT, INC.**

Hwy 15 West • Spearman TX 79081-0658 • 806-659-3743



We're proud of our ex-student employees!



(L-R) Eric Vasquez, Kevin Baker, Alvin Byers, Steve Benton and Chuck Ball

# Southwestern Pioneer Windmill Association Vintage Windmill Collection

*History and location of the 51 windmills erected in Spearman, written by J.D. Wilbanks. Photos and histories may be viewed at <http://www.spearman.org/windmillhistory.html>*

**10' Wood Eclipse**  
Olive Green with red tips on a wooden tower. J.B. saw this mill behind a country church in New Mexico. A lady sold it to him. It was up at J.B.'s farm and is now at the park with a new wheel, vanes, and tower. Wanda Reed did the lettering. Erin Boxwell, Matt Dunnihoo, and Nicholas Benton painted the wheel and vanes.  
Location: SPWA Park; No Adopter

**8' Steel Eclipse**  
This is an 8' steel Eclipse mill on a 24' Samson steel tower. Type: WG, the last mill type Fairbanks Morse made. It came to J.B. Buchanan's farm from Roland Wheat, a rancher near Higgins, Texas. He had purchased it new in 1926. The steel Samson tower came from a farm near Lamont, Oklahoma. This mill was at J.B.'s farm. All Eclipse mills have two tails.  
Location: SPWA Park; No Adopter

**6' Currie**  
This is a 6' Currie metal mill on a wood tower. The Currie has a steel band running around the outside of the wheel. This mill is from Francis Sacket near Cleo Springs, OK. It was up at the J.B. Buchanan's farm, and is one of the first put up at the park, then taken down for restoration. The wheel and pumping mechanism was rebuilt and mounted on a wooden tower. The cost of a Currie was very cheap.  
Location: SPWA Park; Adopter: Edna Bassel

**8' Currie**  
This is an 8' Swallowtail Currie metal mill on a wooden tower. Made in Topeka, Kansas. Currie mills had wood bearings. The tail, when shut off, angled up at 45 degrees. This mill came from Francis Sackett, near Cleo Springs, OK.  
Location: SPWA Park; Adopter: Edna Bassel

Oklahoma. When on J.B.'s farm, it was on a steel tower from the Reynold's place west of Spearman. Location: SPWA Park; It was adopted by the employees of Hansford Implement in memory of Jeff Lackey.

**6' Butler**  
This is a 6' double open gear metal Butler mill. The mill has red tips and is on a wood tower. It is from Ila Mae Buchanan's uncle, Otis Pierce. He put it up on his farm in 1903 near Alene, Oklahoma. It was up at the J.B. Buchanan farm. Then in the SPWA Park. Then lowered to be restored. Finally up at the park on 2/15/02.  
Location: SPWA Park; Adopter: Rotary Club

**8' Star**  
This is a Model #15 Star direct stroke wood mill. It is a white mill with red tips. Tails have blue and red stars. This mill is on a wood tower. This mill was bought by the Laubban family of Follett, Texas in 1916. Sold to J.B. Buchanan who had seen it in Laubban's junk pile. J.B. sawed the lumber for this tower on his farm. It has twin tails with stars. Now rebuilt and on a new tower.  
Location: SPWA Park; No adopter.

**10' OK**  
This is a 10' OK wood mill on a wood tower. This mill was made by the Challenge Company. It is white with green tips on a wood tower. The Original OK was the first wood wheel mill made by Challenge about 1885. It has a cotton scale weight to keep it on in the wind. J.B. Buchanan got this mill from the sand hills of Nebraska. The tower legs and ladder was found near Morse, Texas. It is now on a wood tower built as was the tower on J.B.'s farm.  
Location: SPWA Park; No adopter.

**10' Dempster**  
This is a 10' Dempster Model #11 wood mill. It has white blades with red tips. Trailing edge of vane out-

lined in red. It is on a metal tower. Made by Dempster Windmill Company. This mill took the first step toward the need of self oiling mills. A dipper lifts oil from the reservoir to special channels which feed the oil to the bearings.  
Location: First State Bank, 1 N.E. Court; Adopter: First State Bank

**10' Hummer**  
This is a 10' Hummer wood mill on a metal tower. It is a white umbrella mill with red tips. The weights are a chicken on top of a ball filled weight. It is a direct stroke vaneless mill. It was owned by Clyde Kile and stored in one of his buildings. His daughter, Vona Sue Albert, gave it to the SPWA. It was hauled out in many pieces, hauled to the SPWA barn, and reconstructed. Now at the Chamber of Commerce triangle.  
Location: Chamber of Commerce Triangle 17 Collard Street; Adopter: Collard Family

**6' Woodmanse**  
This is a 6' Woodmanse Model S Mill. This mill is on a very unique cable tower. This is an open gear mill. Woodmanse quit making these in the 30's. It was erected on the Ronald Shorb homestead in the Oklahoma Panhandle after WWI. Brought to Spearman in 1997. The unusual cable tower cannot be traced, but it was factory made. Erected at the First National Bank in July 2000.  
Location: First National Bank, 729 W. 7th Ave.; Adopter: First National Bank

**10' Eli**  
This is a 10' metal Eli mill on a metal tower. This is a direct stroke metal mill. The blades are mounted behind the outside rings. Made by Kregel Windmill Company of Nebraska City, NE. Only 2000 of the mills were produced for a small area in the 50 years of production. It has no gears. Very simple design and durable.  
Location: Prairie Motors, Hwy 207 South; Adopter: Prairie Motors

**12' Dempster**  
This is a 12' Dempster Model #4 wood mill. This in an umbrella mill. The wheel is cypress wood, white with red tips. It is on a wood tower. Weight is a short tail horse on a square black iron weight. J.B. Buchanan found it near Bryan's Corner, OK. J.B. rebuilt some of the metal parts, built a wood wheel and set it on a short tower. After a storm damaged it, the SPWA acquired and rebuilt it for the park.  
Location: SPWA Park; Adopter: Pittman Family

**5' Star Zephyr**  
This is a 5' Star Zephyr metal mill on a metal tower. This mill was only made for two years during WWII. It is from Lloyd Fry of Lipscomb, Texas. The wheel was completely covered by dirt and the blades were all bent and crumpled by the many hooves of cattle walking over them for years. Three heads were found, but it took all three to make one good one.  
Location: SPWA Park at corner of SWPA Barn; Adopter: Danny Robertson

**8' Fairbury**  
This is an 8' steel Fairbury mill on a steel tower.  
Location: 622 Townsend  
This is a special Heligear oil bath mill on a 12' steel tower. It was made by the Fairbury Windmill Company of Fairbury, Nebraska. This mill was purchased already restored in Denver in April 2002. It is up at the original home of J. B. Buchanan in Spearman. This house was moved from Old Hansford to Spearman. It was put up here on J.B.'s 94th birthday, July 2002. Privately owned by Don and Wanda Reed

**12' Challenge**  
This is a 12' Challenge Model 27 mill with red tips on a 25' metal tower. This mill is from Willie Urbancyx of White Deer, Texas. K&K Inc., of White Deer provided the crane needed to erect it. Car

club and Enron employees helped in all the work. The wheel and tail were taken to Denver and regalvanized. Tower donated by Robert Novak. Walter Woolley restored the gearhead.  
Location: SPWA Park; Adopter: Show Time Car Club

**12' Monitor**  
This is a 12' Monitor Model L Vaneless wood mill. It is white with red tips. Has a cement football for a balance weight. Made by Baker Co., of Evansville, Wisconsin. Built about 1916. J.B. Buchanan had this mill up on a steel tower from Hooker, Oklahoma. Iron head from Wichita, Kansas. J. D. Wilbanks did the machine work. Don Reed and Orville Latham rebuilt the wheel.  
Location: SPWA Park; No Adopter

**6' Samson**  
This is a 6' Samson open double back geared steel mill on a wood tower. This mill was made by the

Stover Co. of Freeport, Illinois in 1900. Ila Mae's father put it up on the Pierce farm for her grandmother in 1916. Later it was moved to the J.B. Buchanan farm and rebuilt. It was taken down and rebuilt by the SPWA, and put back up on J.B.'s farm on July 25th, 2001. J.B. said the Samson was his pick of the windmills when he was a boy. After J.B.'s death, the family consented for the mill to be moved to the SPWA park where the J.B. Buchanan windmill collection is located.  
Location: SPWA Park; No adopter.

**10' Samson**  
This is a 10' Samson steel mill. It is an open gear mill on a wood tower. This is a very sturdy rugged mill. J.B. Buchanan had it in his barn but never got it put up. Now in the SPWA Park.  
Location: SPWA Park; No Adopter

Continued on page 10

## Welcome Back Ex-Students



### Hutchison Law Office

306 Main St • Spearman • 659-3703  
John Hutchison, attorney

## Welcome Back, Ex-Students!

while you're here, visit the Texas Alligator Ranch

10450 W Hwy 15  
Spearman

Open 9 a.m.-7 p.m.,  
Monday-Saturday



For tours, call Mary Poole at 330-0032

## Welcome Back, Ex-Students

# 20% OFF

any meal when you wear your name tag

### Palo Duro Cafe

Hwy. 207 S. • Spearman • 659-2232

## WELCOME BACK

# 10% OFF

your ticket when you wear your name tag

### SIMPLE SIMON'S PIZZA

312 Main St • (806) 659-9991 • Spearman  
Simply Great Pizza!

## The BEST of The BEST

### The Bunkhouse Restaurant

Spearman's place for steak!

Steaks, Salads & Sandwiches • Prime Rib - Fri. & Sat.

### Come & Get It!

**Daily Lunch Specials**  
from 11 a.m. to 2 p.m.

**Fri., 7/1** - Try our New Lunch Menu!

**Sat., 7/2** - Footlong Chili Dog w/Fries - \$5<sup>95</sup>, tax

**Sun., 7/3** - Fried Chicken, Gravy, Mashed Potatoes, Corn on the Cob, Salad, Bread, Dessert - \$10<sup>95</sup>, tax

**Mon., 7/4** - Have a Safe July 4th!

**Tues., 7/5** - NEW! Monte Cristo Turkey Sandwich w/Chips - \$6<sup>00</sup>, tax

**Wed., 7/6** - NEW! Turkey Sandwich - \$4<sup>50</sup>, tax

**Thurs., 7/7** - NEW! Open-Faced Chili Burger - \$5<sup>00</sup>, tax

Check out our New Lunch Menu!

New Items, Lower Prices - Same Great Taste!

## The Bunkhouse Restaurant

212 Main Street • Spearman • (806) 659-2089

Hours: Tues.-Thurs. 11 a.m.-9 p.m.;  
Fri. & Sat. 11 a.m.-10 p.m.; Sun 11 a.m.-2 p.m.; Mon. Closed

## We will be closed on Monday, July 4th

### in observance of Independence Day.

### FNBANK

First National Bank

Spearman, Texas 79081    Dumos, Texas 79029

806-659-5544            806-934-8455

800-583-4196            866-583-4196

Member FDIC

### FSB

First State Bank

The Bank that has the Tradition of Strength & Service.

One NE Court  
Spearman, Texas  
(806) 659-5565

member FDIC

### \$ Interstate Bank, ssb

A Full Service Bank  
FDIC Insured

322 Main Street  
Spearman, TX 79081  
Phone - (806) 659-2559  
Fax - (806) 659-3276

# Southwestern Pioneer Windmill Association Vintage Windmill Collection

Continued from page 9

### 10' Aermotor

This is a 10' Model 702 Aermotor steel mill. It is on a 33' metal Aermotor metal tower. This metal mill was donated by F.W. Thomas. The metal Aermotor tower was donated by Dean and Joe Paul. It came from 5 miles Northeast of Farnsworth, Texas.  
Location: Blodgett Park at 11th Avenue and Cotter Drive; No Adopter

### 8' Woodmanse

This is a 10' Samson steel mill. It is an open gear mill on a wood tower. Woodmanse mills were popular at one time in the area around Beaver, Oklahoma. Walter Woolley found it abandoned on a tower three miles South of Beaver. He obtained the mill from Mr. McGrew then began rebuilding the gear box and tail.  
Location: North Plains Insurance Company at 715 W. 7th Avenue; Adopter: North Plains Insurance Company

### 8' Chandler

This is an 8' Chandler open gear steel mill.  
It is on a metal tower and has red tips. Butler made this mill but sold by Chandler Company. The mill and tower came from Duckett Farm in the Oklahoma Panhandle. It was donated to the SPWA; Dwayne and Maurice Mitchell, Burl and Roger Buchanan jacked up the entire mill to get it on a trailer for the SPWA. Terry Schneider restored and painted it.  
Location: Lowe's Market, 505 Plains Shopping Center; Adopter: Lowe's Market

### 8' Fairbury

This is an 8' Fairbury Model 7AA mill on a steel tower. It has red tips. Clowe & Cowan were distributors. Dwayne Mitchell and Walter Woolley bought this mill at an auction at Boise City, Oklahoma. Walter Woolley assembled the mill,

and put the mill on the tower. Parts were also used from Dennis Nelson's donated Fairbury mill.  
Location: R&R RV Park on 7th Street West of the Dairy Queen; Adopter: R&R RV Park

### 10' Dempster

This is a 10' Dempster Model 14 wood mill on a steel tower. It is white with red tips. This is an umbrella or vaneless mill with a short tail horse and box for weight. It is at the intersection of Roland and 11th Avenue.  
Location: Pittman Sheildknight Building, 511 SW 11th Avenue; Adopter: Jimmy Sheildknight

### 8' New Elgin

This is a 8' New Elgin metal mill with blue tips on a steel tower. This mill was donated by Raymond Halliburton of Slapout, Oklahoma. Walter Woolley and Julian Villarreal restored and assembled it. It is beside Hi-Plains Auto with the old John Deere tractor.  
Location: Hi-Plains Auto, 18 N. Main Street; Adopter: Hi-Plains Auto in memory of Vance Snider

### 10' Duplex

This is a 10' Duplex vaneless mill. It is a yellow mill with green tips on a white wood tower. This is a very colorful yellow and green mill. Terry Schneider restored and painted it. It was destroyed by a windstorm right after being put up. Now it has been restored and put up again.  
Location: Golden Spread Sales, 414 Hwy 207 South; Adopter: Golden Spread Sales Company

### 10' Perkins

This is a 10' Perkins wood mill. It is white with red tips on a white tower. A mill like this was in the yard of the hotel at Old Hansford. Very ornate with a 10' blue and white wooden tail and a large tail sheet that is striking. Dwayne Mitchell, J.B., and Burl Buchanan

got this mill from Marvin Stinson of Leedy, Oklahoma.  
Location: Hansford County Courthouse; Adopter: Hansford County

### 8' Easy

This is an 8' Easy mill with a red gearbox on a three legged steel tower. This mill was made by the Cushman Company of David City, Nebraska. They later moved to Lincoln, Nebraska and made scooters. Very few of the original Easy mills are in existence. It was obtained from Marvin Stinson.  
Location: Nursanickle Motel, Highway 207 South; Adopter: Nursanickle Motel

### 6' Star Zephyr

This is a Short Tail metal 6' Star Zephyr mill. This mill was donated by Darrell Richards of Hardesty, Oklahoma. Bryan Jones located it and many other parts and pieces of mills. Walter Woolley put a new tail and blades on it and rebuilt the gear box. Also a new shaft and bearings.  
Location: Hansford County Vet Hospital, County Road # 24 and 7th Street; Adopter: Dr. Tom Latta

### 8' Star

This is an 8' Model # 24 metal Star Mill with red tips and a green gear box. It has 1924 painted on the tail. This mill was obtained from Windmill Traders of Denver, Colorado. Don Reed and Burl Buchanan picked up this one on one of their many trips to Denver to buy or trade mills, towers, and parts.  
Location: Five-Star Equipment, Hwy. 15 West; Adopter: Five Star Equipment

### 10.5' Original Star

This is a 10.5' wood Original Star Mill. It is a direct stroke white mill with red tips. This mill was made by Flint & Walling Company of Kendellville, Indiana in 1878. It has

a big and little tail. J.B. Buchanan bought it from a homestead near Sedan, New Mexico. They had bought it in 1915. J.B. put it up on a redwood tower from Frank Allen. Orville Latham and Don Reed cut and rebuilt a new wheel and tails.  
Location: SPWA Park; No Adopter

### 12' Eclipse

This is a 12' wood Eclipse on a wood tower. It is olive green with red tips. Fairbanks Morse of Beloit, Wisconsin made these mills. It is one of the first solid wheel mills made. It has a half-moon weight to hold it in the wind. Smithsonian paid John Laubhan to make a replica of the Eclipse that J.B. donated to the Smithsonian for J.B. to put on his farm. This mill has a new wheel and tails made by the SPWA workers. This mill was raised on June 6, 2002 at the SPWA Park during the International Windmill Tradefair 2002 held in Spearman, J.D. Wilbanks used his steam engine to raise the mill.  
Location: SPWA Park; No Adopter

### 8' Butler

This is an 8' Butler steel mill with red tips with a green gear box. It is a double open gear mill on a white tower. This mill is from Dorothy Woolley's parents' farm where Dorothy grew up. The tail was sticking up out of the fence row. The original blades were saved. During its life it had to be hand oiled.  
Location: SPWA Park; No Adopter

### 6' Monitor

This is a 6' Monitor steel mill on a steel tower. Don and Lynanne Maize went to Denver, Colorado in October of 2001 to get this mill. After obtaining some necessary parts and pieces, it was raised at Don Maize's and Ronnie Willis' shop at the corner of Hancock and Carson Streets.  
Location: Don Maize and Ronnie Willis' shop at 600 Hancock; Privately owned by Don Maize and

Ronnie Willis

### 6' Aermotor

This is a 6' metal Aermotor mill on a 35' Aermotor steel tower. This mill is displayed at the Stationmaster's House Museum in front of the other museum buildings. The mill was donated to the museum by Sy McCloy of Morse, Texas and the tower was donated by Phil Sanders of Spearman, Texas. The tower came from the Power's Place on the Palo Duro Creek north of Spearman, J.D. Wilbanks restored the mill and tower.  
Location: Stationmaster's House Museum, 30 S. Townsend; Privately owned by the Stationmaster's House Museum

### 6' Aermotor

This is a 6' Aermotor steel mill on an unpainted wood tower. It is displayed with a wood tank also on an unpainted tower. Claude Sheets Jr.,

started out with an ornamental mill. After it was damaged he went to San Angelo, Texas and purchased a new Aermotor which he now has displayed with a wood water tank.  
Location: Claude Sheets residence, 610 E. Kenneth Avenue; Privately owned by the Sheets Family

### 6' Baker

This is a 6' Baker mill on a trailer well house. The well house is from the Omar Cotter farm. This is a working mill and will pump water. Clarence Mitchell and Fred Mayfield put this mill on a trailer so that it could be taken to parades and other events. It is from Clarendon, Texas. It had been down for about 20 years when they got it. This mill was only made from 1920 to 1933.  
Location: Clarence Mitchell residence, 14 S. Brandt; Privately owned by Clarence Mitchell

Continued on page 11

**Welcome Back,**  
**SHS**  
**Classmates**  
from  
**Dreamer's Salon**  
*Hair Styles, Tanning, Nails & Massage*  
Missie Sumner Bates, owner  
306 Hancock • Spearman • 659-9907



WELCOME BACK  
EX-STUDENTS  
from  
**Hungry Cowboy**  
Hwy 207 S • Spearman • 659-5151  
Tobe & JJ Shields, owners  
Open Monday-Saturday, 11 a.m.-8 p.m.

Welcome Back  
Students  
from  
**VALOR**  
**TELECOM**  
Local and Long Distance phone service  
High Speed DSL Internet service  
Digital Satellite Dish Network TV  
Call our Perryton Retail store at  
1-866-477-5498 for more information



**WELCOME HOME**  
**SHS STUDENTS!**  
**3J Beef INC.**  
VENNEMAN RANCH  
Home Raised, Dry Aged, Hormone Free  
"Beef With Tradition"  
10175 CR H • Spearman • (806) 733-2998  
www.3jbeef.com • rimrock@ptsl.net




welcome former  
SHS students  
from  
**MurMur's Cafe**  
100 S. Roland • Spearman • 659-3580  
HOURS: Mon-Fri, 10:30 a.m.- 8 p.m.  
Closed Saturday & Sunday  
Snowcone Stand: Mon-Fri, 1:30 - 8 p.m.

Welcome Back  
Ex-Students  
from  
**NAPA**  
**HI-PLAINS**  
**AUTO SUPPLY, INC.**  
• AUTOMOTIVE •  
• INDUSTRIAL & OILFIELD SUPPLIES •  
• WHOLESALE & RETAIL • IRRIGATION PARTS •  
• FEEDYARD SUPPLIES • MOBIL OIL & GREASES •  
P.O. Box 116 • 118 N. Main • Spearman  
(806) 659-2506 • 1-800-657-8742  
OPEN 7 a.m.-6 p.m., Mon-Fri; 7 a.m.-5 p.m., Sat



Welcome Back  
Ex-Students  
from  
**A**  
**Athena Energy, Inc.**  
205 Main St • Spearman • 659-2952



Welcome  
Back SHS Exes  
**LYRIC Cinema**  
\*\* TWO SCREENS \*\*  
113 Main • Spearman, Texas  
**(806) 659-2812**



Welcome  
Home  
from the  
**TEXAS PRESS ASSOCIATION**  
**AWARD WINNER**  
**The Hansford County**  
**Reporter-Statesman**  
PUBLISHED THURSDAYS  
PROUDLY SERVING HANSFORD COUNTY SINCE 1907  
213 Main Street • Spearman, TX 79081  
(806) 659-3368 • (806) 659-3368 - fax  
Pick up a subscription from from the  
registration table and receive a \$5 discount  
on all new one-year subscriptions



Welcome back  
to Spearman  
**First Christian Church**  
(Disciples of Christ)  
29 S. Bernice  
Spearman  
(806) 659-2036  
Sunday School  
9:45 a.m.  
Sunday Worship  
10:50 a.m.





# Southwestern Pioneer Windmill Association Vintage Windmill Collection

Continued from page 10

**8' Aermotor**  
This is an 8' steel Aermotor on a 30' steel tower. This mill was bought one mile East of Stinnett, Texas. Clarence Mitchell rebuilt it. The tower is from the Turkey Track Ranch.

Location: Mur Mur's Cafe, 100 S. Roland Street; Privately owned by Mur Mur's Cafe

**14' American West**  
This is a 14' steel American West mill on a 35' American West steel tower. H&H Water Well Service raised this mill and with Global (American West Co.) donated an American West Display to be auctioned off during the Trade Fair with proceeds going to the Southwestern Pioneer Windmill Association.

Location: H&H Water Well Service, Hwy 15 West; Privately owned by H&H Water Well Service

**8' Aermotor**  
This is an 8' Aermotor on a 40' steel Aermotor tower. This mill is one the Burch Contract Pumping property. This was originally owned by Merle Beck who put it up to pump water. The water well has long been abandoned.

Location: Hwy 15 West and County Road #24; Privately owned by Burch Contract Pumping Company

**8' Aermotor**  
This is an 8' steel Aermotor on an unpainted wood tower. Perry Sheets owns this mill. It was brought in from the home place on the Palo Duro Creek. Originally bought from the old Womble Hardware of Spearman. Several parts had to be replaced before it could be put up.

Location: County Road #24 South of Hansford Vet Clinic; Privately owned by Perry Sheets

**8' Aermotor**

This is an 8' steel Aermotor with red tips on a 30' steel tower. Jerry Sheets bought this mill on E-Bay. He then drove to Macon, Georgia to pick it up. It has been up for one and a half years (2001) displayed with other items at his home.

Location: Jerry Sheets residence, 1120 S. Drensen Street; Privately owned by Jerry Sheets

**8' Aermotor**  
This is an 8' Aermotor mill on a 32' Aermotor tower. This mill was moved from the Bob Driscoll homestead land 6 and 1/2 miles SE of Hardesty, Oklahoma. It was purchased and raised in 1919. It was restored by Louis Schnell for his son James. It is now on the James Schnell farm. The Texas A&M logo was added in honor of James' Texas A&M alma mater.

Location: 1 and 1/2 miles North of Spearman on FM Road 759; Privately owned by the James Schnell Family

**8' Aermotor**  
This is an 8' steel Aermotor on a 20' steel Aermotor tower. This mill came from H.L. Wilbanks' pasture North of Old Hansford. Donated to J.D. Wilbanks by Ray Phelps. J.D. rebuilt the mill and put it up on April 7, 1990. J.D. developed the concept of the 2" pipe base hinged to pipe legs set in concrete. This was used on the museum mill, and later adopted by the SPWA for use on their steel towers. It has recently been modified to use on wood towers also. This mill has a recirculating pump that pumps water into a 4' tank when the mill is running.

Location: 3 and 1/2 miles East of Spearman on Farm Road #759; Privately owned by J.D. and Rubyjo Wilbanks

**8' Challenge**  
This is an 8' Challenge mill on a steel tower. This windmill came from the Clayton Born Family a few miles Southeast of Follett, Texas. It was restored and installed by Walter Woolley.

Location: J&M Service Center, 415 Collard Street; Privately owned by

J&M Service Center of Spearman, Texas

**10' Western**  
This is a 10' Western steel mill on a wood tower. This is a geared gearless mill in that it uses cams to pump water. Two revolutions of the wheel is required for one pump stroke. This mill came from Colorado, and is one of a kind for this size mill. It has been completely rebuilt and painted by J.D. Wilbanks. It has been put up on an unpainted tower in the SPWA Park.

Location: SPWA Park; No Adopter

**10' Leader**  
This is a 10' Leader wood mill. It is white with red tips on a wood tower. Made by Flint & Walling, Kendallville, Indiana. J.B. Buchanan had this mill but never put it up. The metal work (done by J.D. Wilbanks) included pouring new babbitt bearings and making the shaft. The tower came from Frank and Debbie Thomas of Channing, Texas.

Location: SPWA Park; No Adopter

**6' Clipper**  
This is a 6' Clipper single back geared steel mill on a wood tower. This mill was obtained in Colorado. Nothing is known about its history except it was well used. It required extensive restoration. All new bearings were poured and a complete steel stub tower was fabricated. 4 x 4" wood tower legs were used instead of the conventional 5 x 5" tower legs. New wheel blades on a restored wheel came with the tower. The vane also had the lettering done.

Location: SPWA Park; No adopter

**12' Aermotor**  
This is a 12' Model 502 Aermotor mill on a 32' Aermotor steel tower. This is a working water pumping windmill. There is a water well located under this mill connected to the mill. This mill is a very rare Aermotor windmill. It was manufactured only one year in 1915. The

mill was discontinued due to lubrication problems. Later a kit was made available to overcome this problem. During the restoration of this mill, this kit was installed. Little is known of the history except it came from Nebraska and was restored in Denver, Colorado. The tower came from Rocky Ford, Colorado, and was also obtained along with the mill from an individual in Denver. The wheel needed some repairs and this was done by Orville Latham, Don Reed, and J.D. Wilbanks here in Spearman. Orville Latham restored the platforms on the tower, J.D. Wilbanks made the base for the tower, and Don Reed painted the mill. Wanda Reed did the lettering on the vane. It was erected on location, and Rick Cazares of the Panhandle Water Well Service put the restored mill on the tower. The water well was financed by Mr. Wallace Stanberry, CEO of TRANSPETCO. The well was drilled by the Burkett Drilling Company of Sunray. Mr. L.C. Burkett of the drilling company allowed a very generous discount on the drilling bill. The well is 495 feet deep. It is a 9" hole with 5" PVC casing gravel packed with 30' of perforation from 450 to 480'. Water level is 331'. There is 364' of 2" galvanized pipe with 1 1/8" wood sucker rods hooked to a 1 7/8" diameter working barrel and valves on the bottom. Mr. Britt Jarvis of Spearman donated 241' of pipe and sucker rods, and the rest was purchased new. Mr. Rick Cazares set the pipe and rods in the well. The well was drilled July 9, 2003. The project was completed and the first water pumped was August 12, 2003. The tank for this well was made several years ago by Mr. Delon Kirk of Spearman. It was used on his farm for several years until the bottom started to leak. It was made of 13 steel implement wheels welded together with a steel plate for a bottom. When the bottom started leaking the tank was discarded. It was donated to the SPWA by the Kirk family. J.D. Wilbanks took it to his shop where it was redesigned for this project. A part was cut off to be used for a base and a new plate

welded to the rest with the old bottom becoming the top of the tank. It was painted bright silver by Don Reed. The tank sets on new railroad ties for the base. The tower along with the tank was placed on location by Dwayne Mitchell, Don Reed, Orville Latham, and J.D. Wilbanks. The well is to be used to irrigate in the park, and as an added attraction to the SPWA Park.

**5' Monitor Exhibit**  
This is a 5' Model V Monitor open single back geared steel windmill mounted on a 5' steel stub tower. This stub is mounted on a two wheel trailer for towing. This mill was obtained by the SPWA in Colorado. Little is known of its history before being owned by the SPWA. It has been restored by J.D. Wilbanks which consisted of some machine work and painting. The tail was lettered by Wanda Reed. The trailer was donated to the SPWA by O.E. and Sandra Drake of Waka, Texas. It was originally used to haul a motorcycle on. The

SPWA modified it to put this mill and sign on. The sign and painting of the trailer was donated by Terry Schneider of Spearman, Texas. The mill and trailer is available to be exhibited or shown at any kind of show or parade. When not being used it is stored in Dwayne Mitchell's barn.

**Well Drilling Machine**  
This is a homemade cable tool well drilling machine (spudder). Henry Buschman built this well drilling machine in 1924. He obtained a patent on the concept of this rig. It was last used in 1939. The family has kept it on the family farm North of Waka, Texas. It is on loan to the SPWA from the Bushman family. J.D. Wilbanks arranged for the loan of the rig, moved, restored, and painted it.

Location: SPWA Park; Privately owned by the Buschman Family

continued on page 13

**Welcome Exes**  
from Jarvis Law and our  
**Ex-Student Employees**  
*Shelly Schumann Beedy*  
*Brianne Burkhammer*

**Jarvis Law**

124 W Kenneth - Spearman - 659-2554  
*Britt Jarvis, attorney*

**Welcome Back, Ex-Students**  
*We're proud of our ex-student employees!*  
*Carolyn McLeod*  
*Veronica Hernandez*

**\$ Interstate Bank, ssb**

A Full Service Bank FDIC Insured

322 Main Street • Spearman, TX 79081  
Phone - (806) 659-2559 • Fax - (806) 659-3276

**Welcome Back, Ex-Students**

from

**The Bunkhouse Restaurant**

212 Main Street • Spearman • (806) 659-2089

*Spearman's place for steak!*

*Junior & Stephanie Crossland, owners*

Hours: Fri. & Sat. 11 a.m.-10 p.m.;  
Sun 11 a.m.-2 p.m.; Mon. Closed;  
Tues.-Thurs. 11 a.m.-9 p.m.

**Welcome Back, Alumni**  
for every \$25 spent in  
Gordon's Drug, receive a  
**FREE Anniversary TShirt**  
*must have coupon, offer good June 30-July 7*  
**Gordon's Drug**  
314 Main St • Spearman • 659-2141

**Welcome Back, Ex-Students**  
*Wear your name tag, and receive 20% off your purchase (excludes Webkins)*  
**Celebrate**  
**Gifts for all your celebrations!**  
203 Main St. • Spearman, TX  
(806) 659-3350 1-800-663-8026

**Welcome Back, Ex-Students**  
*Wear your name tag and receive 15% off your purchase (excluding advertised specials & coupons)*  
**Pizza Hut**  
Hwy 207 S • 659-2547

Welcome to **SPEARMAN TEXAS**  
*Home of the Lynx & Lynxettes*  
Welcome Back, Ex Students  
Glad to see you back home!  
**City of Spearman**  
30 SW Court • 659-2524

**Spearman Dairy Queen Welcomes EX-Students**  
Wear your name tag and receive a 4-piece Chicken Combo and 12 oz. Blizzard for only \$5.49!  
*(Saturday only)*  
**Dairy Queen**  
Hwy 207 S • 659-3324

**Welcome Back, Ex-Students**  
*Drop by and register to win a 12-pack case of Trop-Artic Motor Oil (drawing will be held July 2nd)*  
from  
**Golden Spread Sales Company**  
414 S Hwy 207 • Spearman • 659-3776  
Everett Tracy, Owner Kevin Bynum, Mgr

**Welcome Back Ex-Students**  
from our  
**Ex-Student Employees**  
Kim Brock, owner  
Sue Davis Robinett • Juanita Rosales Vera  
**Brock Insurance Agency**  
121 S. Main • Spearman • 659-2541

**REAL ESTATE FOR SALE**

**FOR SALE: 727 Wilbanks, Spearman** - 3-4BR, 1 1/2B, office, living room, dining room, laundry room, central H/A, garage, lg. covered porch, lg. backyard, lg. carport, on 112 lots. Call 432-268-4746 or 432-264-7781. TFN(9-16-04)B

**FOR SALE: Spearman** - 3BR, 1B, attached garage, fresh paint inside & out, hardwood floors, new garage door & new roof. Call 659-5064 or 323-5813. \$29,000 OBO. TFN(06-09-05)B

**FOR SALE: 702 S Bernice, Spearman** - 3BR, 1B, attached garage & adjoining room. Call 806-886-4165 or 806-434-0033. 4(06-16-05)B

**FOR SALE: 408 Womble, Gruver** - 2BR, 2 1/2B, large rooms, 1690 sq. ft., near churches & school. Must see to appreciate! Call 733-2304. 3(06-16-05)P

**FARM LAND FOR SALE: 1 mile south of Spearman** on paved road, 426 acres; 1100 g/m well. Contact Tom or Patty Myers at 352-245-5088 or 352-208-7862. 2(06-23-05)B

**FOR SALE: PRICE REDUCED! 808 Front Street, Gruver** - Nice 1999 Fleetwood 4BR, 2B doublewide home on six city lots with carport, horse barn and pens. Call Ben or Kerry Poer at (806) 733-5532 or (806) 736-5554. TFN(6-30-05)B

**FOR SALE OR RENT: 501 E Kenneth, Spearman** - Small 2BR house on large lot. Call (806) 878-2217. 2(6-30-05)P

**FOR RENT/LEASE**

**OFFICE SPACE FOR RENT, SPEARMAN:** Pittman-Shieldknight building - all sizes available. Call 659-3751 for more information. TFN(01-27-05)B

**FOR RENT, SPEARMAN:** Recently remodeled 1BR, 1B apartment, water paid. Call 659-3889. TFN(03-03-05)B

**FOR RENT, SPEARMAN:** 2BR apartment, water paid. Call 659-9971. TFN(04-21-05)B

**FOR RENT, SPEARMAN:** 1BR furnished apartment, utilities paid. Call 659-2247. 1(06-30-05)B

**WANTED**

**LAND WANTED:** 1/4 section or more for a dairy, house included is preferred. 300-500 g/m well needed. Dry land farm OK. Contact Spearman EDC at 659-5555. TFN(1-13-05)B

**EMPLOYMENT**

**HELP WANTED:** Sprinkler service tech needed. Salary plus commission and benefits. Apply in person at Five Star Equipment, Hwy. 15 West in Spearman, or call (806) 659-3743. TFN(05-05-05)B

**HELP WANTED:** Steady job with good pay and benefits. Need CDL drivers' license, hazmat endorsements (will help qualify) and must pass drug tests. If interested come in or call Golden Spread Sales Co. (806) 659-3776. TFN(05-19-05)B

**HELP WANTED:** Now hiring full-time counter/parts person. Apply in person or send resume to Hi-Plains Auto Supply, 118 Main Street, Spearman. TFN(6-16-05)B

**HELP WANTED:** Need night watchman at Hansford County Feeders. Call (806) 736-9533. 2(6-23-05)B

**HELP WANTED:** Painter and painter helper. Starting immediately. Mike Murphy Painting, Inc. (806) 373-1596. 2(6-23-05)B

**HELP WANTED:** Wolf Creek Feedyard, a division of Cactus Feedyards, Inc. and located in Perryton, is accepting applications for a Feed Truck Driver, Mill Operator and Mill Maintenance employees. Some experience is preferred, but training will also be provided for this opportunity. We offer a competitive wage with benefits that include company Employee Stock Ownership Plan, year-end bonus, wage increases, health insurance, paid vacation and holidays. Please call 435-5697 for more details and come by the office to fill out an application. 2(6-23-05)B

**HELP WANTED:** USA Feedyard is currently taking applications for a full-time clerical position. Feedyard office experience is preferred. Competitive salary and benefits. Apply in person at USA Feedyard, 14 miles Southwest of Gruver on County Road W. Office hours 7 a.m.-5 p.m., Monday-Friday, 7 a.m.-noon, Saturday. **HELP WANTED:** Responsible person needed, CDL preferred but not required. Health insurance and retirement plan offered. Call or come by Trencor Enterprises, 1103 W 7th, Spearman, 659-3911. 2(6-30-05)B

**VEHICLES**

**FOR SALE:** 1999 Ford Explorer 4WD Limited Edition. 97,300 miles, new tires, electric sun roof, 6CD changer, heated seats, excellent condition. Call 659-3720 or 659-5555. 2(06-30-05)P

**GARAGE SALE**

**ESTATE SALE:** Friday, July 8th & Saturday, July 9th; 9 a.m.-7 p.m.; 1010 Blodgett Drive, Spearman. Everything must go! Furniture, appliances, miscellaneous. (803) 517-9107. 3(06-23-05)B

**Blankenship Real Estate**  
659-3052 - 670-3774

**SPEARMAN**

Great Home with full finished basement, 4BR, 1 3/4B, 1CG, fireplace, lots of storage, covered patio.

3BR, 1B all-brick home, CHCA, close to Jr. High & Elementary

205 N. Snider - 2BR, 1 3/4B, 2 living areas, storm cellar, steel siding, single detached garage, storage building. Owner will help w/closing costs.

716 Cotter - PRICED RIGHT! 3BR, 1B, 1CG, storm shelter. "Fixer upper"

Eulalia Blankenship - Sales  
Eschol Blankenship - Broker  
New Listings Wanted

**LEGAL/PUBLIC NOTICE**

**PUBLIC NOTICE**

Pringle-Morse CISD is accepting bids for fuel and maintenance of school vehicles. Interested bidders should contact the Superintendent's Office for bid specifications. Address: 100 Fifth Street, PO Box 109, Morse TX 79062; phone: 806-733-2507. Bids must be received in the school office by July 14, 2005 at 11 a.m. Bids will be opened at that time in the Superintendent's office and considered by the PMCISD Board of Trustees at its regular meeting in July. The Board reserves the right to accept or reject in whole or part of any and all bids. 2(6-30-05)B

**Are You A Victim of Domestic Violence, Sexual Abuse or Physical, Emotional or Sexual Assault?**

**Call Toll Free Hotline**  
1-800-753-5308

We can see individuals from Hansford County anytime upon request. Call 435-5008 or 1-800-753-5308 to set up an appointment in Hansford County. We operate a safe place for victims and their children to stay in times of crisis.

Battering Intervention & Anger Management Available

**Panhandle Crisis Center**

Serving Hansford, Lipscomb & Ochiltree Counties

301 S. Ash • Perryton, TX  
Memorials Accepted

**We've Moved!**

**SHOP**

**'THE CLOTHES OUT'**

**IN THE**

**KIDS STUFF BUILDING**

719 W. 7th

**SUPER SALE RACKS - \$8 OR LESS**

**WOMEN'S CLOTHES & SHOES PLUS CLOTHES & SHOES FOR BOYS & GIRLS!**

**TAKE AN EXTRA 20% OFF LOWEST SALE PRICE!**

**OPEN SATURDAYS 9 A.M. TO 5 P.M.**

**IT'S A GREAT DAY TO SAVE BIG DURING**

**SUMMER SAVINGS DAYS**

UP TO \$5,000 CASH BACK OR AS LOW AS 0% APR FINANCING\*



2005 FORD EXPLORER

- Best-Selling SUV\*\*
- Industry-First Roll Stability Control Technology
- America's Most Trusted SUV†

UP TO \$5,000 CASH BACK OR AS LOW AS 0% APR FINANCING\*



2005 FORD EXPEDITION

- Standard V8 Engine
- First-in-Class Safety Canopy™ System

UP TO \$4,500 CASH BACK\*\* PLUS HOME DEPOT® SPECIAL PACKAGE† or \$500 BONUS CASH



2005 FORD F-150 SUPERCAB

**FORD F-SERIES**  
Best-Selling Truck 28 Years in a Row!†



UP TO \$2,500 CASH BACK\*\* PLUS HOME DEPOT® SPECIAL PACKAGE† or \$500 BONUS CASH



2005 FORD SUPER DUTY

- Best-in-Class Horsepower\*\*
- Best-in-Class Towing Capacity\*\*
- Best-in-Class Payload Capacity\*\*



**BEST IN TEXAS**

**GRUVER FORD**

531 Main St. • Gruver TX 79040 • (806) 733-2431

Visit [www.texasford.com](http://www.texasford.com) to find the dealer nearest you!

\*On 2005 Expedition and Explorer 4-Dr. NOT ALL BUYERS WILL QUALIFY FOR FORD CREDIT APR FINANCING. For financing or cash back, take new retail delivery from dealer stock by 6/30/05. See dealer for residency restrictions and complete details. \*\*R.L. Polk, MY total registrations since 2000. †Based on repurchase numbers among '93-'94 vehicle buyers. ††On 2005 F-150 SuperCab. NOT ALL BUYERS WILL QUALIFY FOR FORD CREDIT APR FINANCING. \$4,500 Cash Back includes \$1,000 FMCC Bonus Cash available when financing through Ford Credit only. For Financing or cash back, take new retail delivery from dealer stock by 6/30/05. See dealer for residency restrictions and complete details. †Buy or lease any F-150, Super Duty or Ranger and get your choice of \$500 bonus cash or a package or Gift Card from The Home Depot. ††The Home Depot® and The Home Depot® logo are registered trademarks of Home, TLC, Inc. Must take new retail delivery from dealer stock by 6/30/05. See dealer for details. †††On 2005 Super Duty. NOT ALL BUYERS WILL QUALIFY FOR LOWEST PAYMENTS. For cash back, take new retail delivery from dealer stock by 6/30/05. See dealer for residency restrictions and complete details. †Based on '04 CY sales. ††Class is full-size pickups over 8,500 GVWR, when properly equipped for towing and payload.

**Eat & Be Merry At**

**BBQ & STEAK HOUSE**

Hotline for Friday & Saturday Nights - 435-3945

We Are THPLC-2-B

**We offer Priority Seating!**  
Give us a call before leaving, and we will save you a place in the seating line.

When you arrive, check in with the hostess.

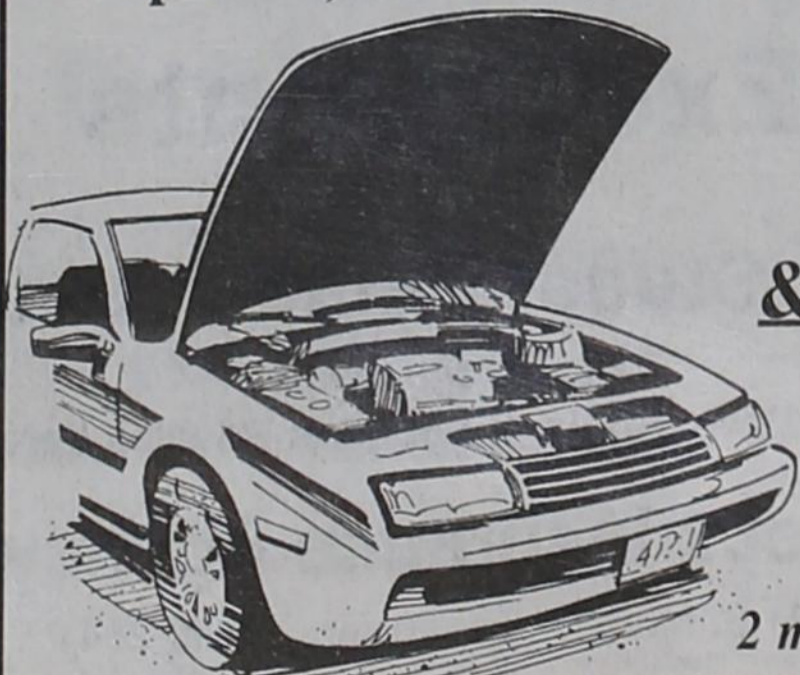
**New Menu (10 new items)**

**Wed. Night - All-You-Can-Eat Catfish**

**VACATION TIME IS HERE!**

*Hot water weather a toll on your vehicle. We do quality work for reasonable prices.*

**Batteries, Auto Parts, TX State Inspection, AC Work, Brakes**



**Spearman Farm & Auto Supply, Inc.**

313 S. Hwy. 207  
Spearman, TX  
(806) 659-2588

*2 mechanics on duty for repairs*

**GIANT - 1/2 Price End-Of-Season -SALE-**

at

**D&C Greenhouse**

**Everything Must Go!**

**Perennials**

**Hanging Baskets**

2 Miles West on Hwy. 15 • Spearman  
(806) 659-5171

## Vintage Windmill Collection

Continued from page 11

### 18' Jacob Wind Plant

This is an 18' Jacobs 110 volt wind plant on a three legged steel tower. This Jacobs Wind Plant was originally purchased by Wallace A. Stanberry directly from Marcellus Jacobs in 1975. Mr. Stanberry generously donated the wind plant to the City of Spearman for the Windmill Park Collection. The City of Spearman, in conjunction with Texas Parks and Wildlife, provided funds for the wind plant's refurbishment and installation. Location: Blodgett Park; Privately owned by Transpetco

### 8' John Deere

This is an 8' John Deere open single back geared steel windmill on a wooden tower. Very little is known about this windmill other than it came from Colorado. Evidently it had been used very little as it showed very little wear on the gears and other parts. The Southwestern Pioneer Windmill Association workers had quite a bit of a problem putting it together as they had no information on the mill. Some parts had to be fabricated during the assembly of the mill to make it complete. Location: Hansford Implement Company, Highway 207 S; Adopter: Hansford Implement Company

### 8' Wonder Elgin

This is an 8' Model B Elgin Wonder windmill on a steel Elgin tower. This windmill was donated to the SPWA by Guy and Roma Harvey of Laverne, Oklahoma. The mill came from their home southeast of Slapout, Oklahoma. The tower was donated by the Delon Kirk estate to the associa-

tion. Burl Buchanan, Dwayne Mitchell, Walter Woolley, and Roger Buchanan took the mill down from the tower to bring to Spearman. Walter Woolley rebuilt the mill and Terry Schneider did the lettering on the tail. The association did the modification on the tower. Location: SPWA Park; No adopter

### 10' Star

This is a 10' Star Model 12 open double back geared steel windmill on a modified Elgin steel tower. This windmill was originally installed about 1914 on a farm near Boise City, Oklahoma. It was taken down about 1947 and put up on the J.B. Buchanan farm in his collection in June of 1986. It has gone through extensive restoration, including straightening blades and tail, reabbating bearings, machining new shafting, painting and lettering the tail. This work has been done by the following: Terry Schneider, J.D. Wilbanks, Don Reed, and Dwayne Mitchell. This is the only windmill in the SPWA collection that was raised then lowered for a slight modification and then raised for a second time on the same day. Location: SPWA park; No Adopter

The SPWA's Memorial Fence is located at the West end of the park. It has an entrance road in and out from HWY 207 S. Provisions are made to purchase tile/brick in honor or memory as a contribution to the SPWA. Four bays have been completed and filled, with extensions built as needed.

To purchase a tile or brick, write to: Southwestern Pioneer Windmill Association, % PO Box 805, Spearman, Texas 79081.

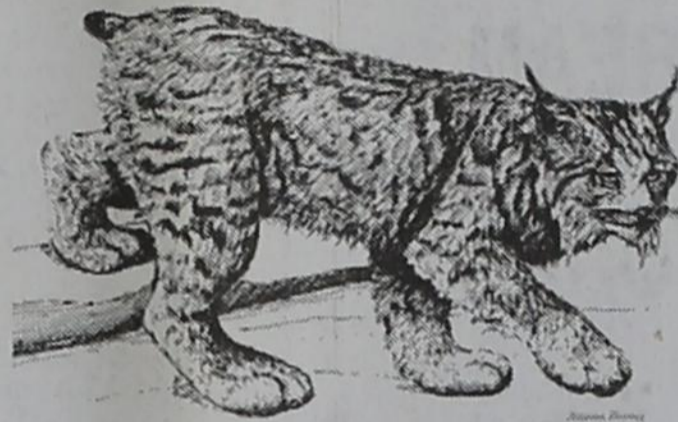
# Fight Song School Song

Go down that field,  
you Spearman Lynx

And never yield,  
you Spearman Lynx

We are behind  
the Purple 'n White

Come on, you Spearman Lynx,  
Fight! Fight!



Deep in our hearts there lives a love  
For dear old SHS  
We'll sing her praise  
Through all our days.  
The high school we love best.

She stands for truth and loyalty.  
Her aim and purpose high  
Though we may roam afar from home  
We'll ever sound her cry.

SHS all hail to thee  
SHS will ever be  
In our hearts there's a precious memory  
All hail to SHS

## Join us in our 40th Anniversary

In honor of our founders and in thanks for the continual support from our surrounding communities, we invite all residents of Hansford county to come see TEXAS LEGACIES and TEXAS EXPRESS for a "2 for 1" discount from June 23 - June 30, 2005. Advanced reservations requested.



TEXAS EXPRESS

806.655.2181

www.epictexas.com

SOUTHWEST.COM

TEXAS LEGACIES TUESDAYS THROUGH SATURDAYS JUNE 2-AUGUST 20  
TEXAS EXPRESS WITH LANDY CHASE SUNDAYS & MONDAYS THROUGH AUGUST 14

## HANSFORD COUNTY HOSPITAL DISTRICT proudly presents the Employee of the Month



The June 2005 Employee of the Month is Linda Beeson, who has been employed in the District's Pharmacy since October 1, 1989. Linda was nominated for the following reasons:

**Loyalty:** Linda has worked with HCHD for 15 years, and she has maintained her Pharmacy Technician Certification for 10 years.

**Positive Attitude:** Change, change, change... Rules, regulations, and policies, as well as staff members and their expectations, are always changing.

**Devotion to Duty:** Linda is always willing to make the needed changes and make sure that everything gets done when and how it needs to be done.

**Courtesy to Patients/Residents/Employees:** Linda always has a smile and is concerned about the well-being of her co-workers as well as patients of the District.

**Promotion and Participation in District Functions:** Linda has really stepped up many times over the years to keep things running smoothly in the Pharmacy through some really tough times. Since the recent resignation of a Pharmacist, she has had to spend extra hours and effort to keep everyone organized and on the same page in the Pharmacy.

Other employees nominated for this honor were: Jan Ellsworth and Jim Younger.

The Employee of the Month receives one day off with pay, a reserved parking space for the month, and becomes a candidate for Employee of the Year.

**Hansford County Hospital District**

707 S. Roland • Spearman, TX

(806) 659-2535

\$19.95  
FOR FAST  
INTERNET.  
ANYTHING ELSE IS HALF-FAST  
OR TWICE THE PRICE.

VALOR has the lowest price in town for High-Speed Internet. With our DSL package, you'll enjoy instant, always-on access to the Internet where you can search, shop, e-mail, send and receive large photos, watch full-motion videos or play online games, all at blazing speeds and all for just \$19.95 per month. You'll also get a FREE DSL Modem and FREE activation.

Now you can save even more by combining our High-Speed Internet, Telephone and Digital Satellite TV services in one package, on one bill, for just \$79.95 per month.

Not a VALOR Telecom customer yet? Switch your phone service to VALOR and receive a \$100 sign-up credit in addition to our everyday great savings on the services you want. You can

keep your same phone number, there's no fee to switch, plus you get a \$100 sign-up bonus.

Don't wait any longer for High-Speed Internet, telephone or digital Satellite TV service. Come by the VALOR Store and schedule your installation today.

- Speeds up to 1.5 Mbps download and 512 Kbps upload
- FREE DSL Modem — a \$99.95 value
- Fast, Always-on Connection
- Up to 5 E-mail Boxes
- SPAM and Virus Protection
- 24 X 7 Tech Support

\$100 CREDIT WHEN YOU SWITCH

Visit the VALOR Telecom Store at 301 S. Amherst, Perryton 435-2050

www.valortelecom.com



Price does not include Subscriber Line Charge, taxes, fees and other surcharges. Bundle price is based on the Lock-in Savings Plan<sup>SM</sup> with one-year service agreement. Sign-up bonus is available for new VALOR Telecom customers only. \$100 sign-up bonus will appear as a \$25 credit on the first four monthly bill statements. Limited time offer. Offer does not guarantee service availability on your individual phone line. DSL Internet service and DSL modem provided by VALORnet Internet services. A \$100 fee will be assessed to VALOR accounts if services are terminated before the 12-month term. Other restrictions and limitations apply. VALOR Telecom is a registered trademark of Valor Telecommunications, LLC.

# HUNGRY COWBOY

**BBQ**

**ICE CREAM**

**FIREWORKS**

**AN AMERICAN TRADITION**

# Hometown Fireworks

Located in the parking lot at the Hungry Cowboy

**Locally OWNED and OPERATED**

*Check out our Gruver stand, too!*

Support your Hometown  
Celebrate the USA  
June 24-July 4

**Hungry  
Cowboy**  
Monday-Saturday,  
11 a.m.-8 p.m.  
Hwy. 207 S  
Spearman  
659-5151

**Hometown  
Fireworks**  
June 24-July 4  
9 a.m.-midnight  
Spearman • Gruver