

COMP
HANSFORD COUNTY LIBRARY
0122 MAIN ST
SPEARMAN TX 79081-2064
SCR2

THE NEWS

Suicide bomber kills 36 at Iraq Shi'ite funeral

A suicide bomber killed 36 people and wounded 40 during the funeral of a member of one of Iraq's main Shi'ite Muslim political parties northeast of Baghdad on Wednesday, police and security officials said.

Russia and Ukraine settle gas dispute

Russia and Ukraine reached a face-saving deal on Wednesday in a bitter gas dispute which hit supplies to Europe and cast doubt on Moscow's reliability as a safe supply source.

Taliban behead teacher in Afghan south

Suspected Taliban guerrillas have beheaded a schoolteacher in southern Afghanistan, the latest in a series of attacks on teachers and schools, an official said on Wednesday.

Aid helicopters flying again in Pakistan quake zone

Relief helicopters were flying again in Pakistan's earthquake zone on Wednesday after snow and rain grounded them for days, but forecasters warned more frigid weather would add to the misery of survivors.

Joy turns to grief: just one survivor at Virginia mine

Only one man survived after an explosion in a West Virginia coal mine, a mine official said on Wednesday, transforming joy into grief just hours after an incorrect report emerged that 12 of 13 missing miners were still alive 40 hours after the blast.

US to seek dismissal of terror detainees cases

The U.S. Justice Department will seek to dismiss about 160 cases of inmates at Guantanamo Bay who have challenged their detention in court, a department official said on Tuesday.

Affluent Calif. county joining disaster list: lawmaker

As California towns hit hard by flooding after days of heavy rains cleaned up on Tuesday, a state lawmaker said officials would add affluent Marin County, north of San Francisco, to a list of counties eligible for disaster funds.

In US mines, the safety record has been on an upswing

Vigils like the one for 13 trapped coal miners are much less common today, after 25 years of closer government oversight.

Trash mounts as California cleans up from floods

Residents and businesses in Northern California towns cleared away debris on Tuesday as Gov. Arnold Schwarzenegger expanded his list of counties eligible for flood disaster funds.

Average retail gas price jumps 4.1 cents: govt

The price U.S. motorists paid for gasoline jumped 4.1 cents over the last week as crude oil costs soared to the highest level in almost three months, the government's top energy forecasting agency said on Tuesday.

Stocks rally, buoyed by Fed, energy shares

U.S. stocks rallied on the first trading day of 2006 on Tuesday, boosted by signs the Federal Reserve is nearly done raising interest rates and by energy shares' strong gains as oil prices jumped.

Sharon fighting for his life

Israeli Prime Minister Ariel Sharon, a dominant figure for decades in shaping the Middle East, was fighting for his life on Thursday after suffering a massive brain hemorrhage.

Turkish boy died from killer bird flu: doctor

Turkey said on Wednesday two people had been diagnosed with bird flu - the first human cases outside Southeast Asia and China - and a doctor said one of them, a 14-year-old boy, had died from the killer H5N1 strain.

For pariah nations, 'rogue' status pays off

Experts say there are rational explanations for the actions of countries like Iran and North Korea.

America's waning clout in Iraq

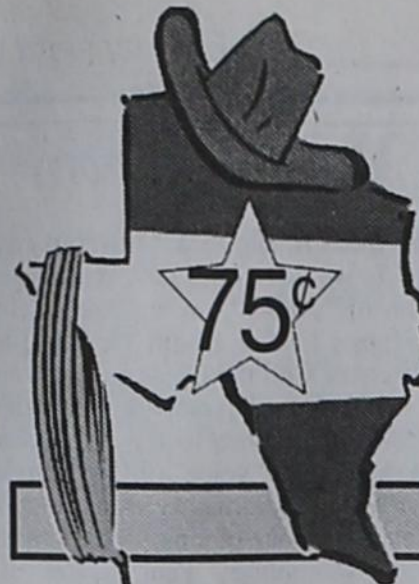
As the weight of the Shiite Islamist victory in Iraq's election is still being calculated, US influence in the country - in reconstruction, security, and politics - is steadily receding.

Pentagon loses legal round on Guantanamo names

A federal judge rejected the U.S. Defense Department's argument for not disclosing the names of detainees at the U.S. naval base in Guantanamo Bay, Cuba, but stopped short of ordering that the names be released.

Bush goes around Congress again on Amtrak board

For the second time, President George W. Bush has circumvented Congress to seat two members of the Amtrak board, the White House said on Wednesday.



The Hansford County Reporter-Statesman

PROUDLY SERVING HANSFORD COUNTY SINCE 1907

VOLUME 99 • ISSUE 1

THURSDAY, JANUARY 5, 2006

Governors approve change in postage rates

New rates go into effect January 8

The Governors of the U.S. Postal Service today voted to accept the Postal Rate Commission's recommendations to increase most postal rates and fees by approximately 5.4 percent across-the-board to take effect January 8.

This rate increase - the first since 2002 - is needed to fulfill the requirement of a federal law passed in 2003. That law requires the Postal Service to establish a \$3.1 billion escrow account, with use of the funds to be determined by Congress at a later date. Without this federal mandate, it would not have been necessary to raise rates in 2006.

Among the rate adjustments, the single-piece rate for First-Class Mail will increase from 37 cents to 39 cents, and the postcard rate will increase by one cent to 24 cents. The Board of Governors of the Postal Service set January 8, 2006, as the effective date for the changes.

Jim Miller, Chairman of the Postal Service's Board of Governors, said: "The Governors take this action mindful of our obligation to assure the financial integrity of the nation's postal system. These increases will allow the Postal Service to meet the obligation established by Congress to place funds in escrow in 2006."

The Commission's Recommended Decision came after a proceeding in which most of the participants signed a settlement agreement adopting the Postal Service's uniform, across-the-board increase proposals. The settlement shortened to six months the Commission's administrative review, which normally takes ten months.

International rates, which are determined separately from domestic prices, will be adjusted to coincide with the domestic rate changes. International rates have not been adjusted since January 2001.

For a chart on selected rates, please see below.

Since 1775, the Postal Service and its predecessor, the Post Office Department, has connected friends, families, neighbors and businesses by mail. It is an independent federal agency that visits 143 million homes and businesses every day, six days a week and is the only service provider delivering to every address in the nation. The Postal Service receives no taxpayer dollars for routine operations, but derives its operating revenues solely from the sale of postage, products and services. With annual revenues of more than \$69 billion, it is the world's leading provider of mailing and delivery services, offering some of the most affordable postage rates in the world. The Postal Service delivers more than 46 percent of the world's mail volume - some 206 billion letters, advertisements, periodicals and packages a year - and serves seven and a half million customers each day at its 37,000 retail locations nationwide. Its website, usps.com, attracts more than 21 million visitors each month.



Selected Rate Changes

	Current	New
First-Class Letter (1 oz.)	37¢	39¢
First-Class Letter (2 oz.)	60¢	63¢
Postcard	23¢	24¢
Priority Mail (1 lb.)	\$3.85	\$4.05
Express Mail (1/2 lb)	\$13.65	\$14.40
Express Mail (2 lb)	\$17.85	\$18.80

Fee and Service Changes

	Current	New
Certified Mail	\$2.30	\$2.40
Delivery Confirmation (Priority)	45¢	50¢
Delivery Confirmation (First Class)	55¢	60¢
Return Receipt (Original Signature)	\$1.75	\$1.85
Return Receipt (Electronic)	\$1.30	\$1.35
Money Orders (up to \$500)	90¢	95¢

Environmental Quality Incentive Program Signup

The Natural Resources Conservation Service has set the signup deadline for the 2006 Environmental Quality Incentive Program (EQIP). The application deadline for the 2006 program year is February 17, 2006. Applications from individual landowners interested in participating in the EQIP during the 2006 program year received before February 17th will be ranked for program eligibility. Applications received after that deadline, as part of the EQIP continuous program sign-up provisions, will be held until the 2007 program year ranking period.

Private landowners should be aware that EQIP provides technical, educational, and financial assistance to eligible farmers and ranchers to address soil, water and related natural resource concerns on their lands in an environmentally beneficial and cost-effective manner. EQIP is a voluntary program and is designed to assist farmers and ranchers with placing natural resource conservation practices on their property. Cost share is provided to program participants to achieve the goals of a conservation plan designed with the assistance of local NRCS staff. Cost share practices include placement of appropriate structural or vegetative practices, such as animal waste management facilities, irrigation management equipment, vegetative buffers and wildlife habitat enhancement, to name a few. Eligible practices will depend on the location of the farm or ranch on which the practice is to be installed and the major resource concern to be addressed in that particular area. Information on eligible cost share practices and major resource concerns of an area can be secured from your local NRCS field office.

To learn more about EQIP or to submit an EQIP contract application, contact the NRCS at 909 West 9th in Spearman, or call 659-2330 extension 3.

The United States Department of Agriculture (USDA) prohibits discrimination in its programs on the basis of race, color, national origin, age, disability, and where applicable, sex, marital status, familial status, parental status, religious, sexual orientation, genetic information, political beliefs, reprisal, or because of all or part of an individual's income as derived from any public assistance program. (Not all prohibited bases apply to all programs.) Persons with disabilities who require alternative means for communication of program information (Braille, large print, audiotape, etc.) should contact USDA's TARGET Center at (202) 720-2600 (voice and TDD). To file a complaint of discrimination, write to USDA, Director, Office of Civil Rights, 1400 Independence Avenue, S.W., Washington, D.C. 20250-9410 or call 1-800-795-3272 (voice) or (202) 795-6382 (TDD). USDA is an equal opportunity provider and employer.

Crop Protection Clinics Offered This Month in Panhandle

by: Kay Ledbetter

Area producers and crop advisors have an opportunity to earn continuing education credits at four Crop Protection Clinics this month. Attendees will have eight concurrent one-hour sessions to choose from at each clinic. The clinics are sponsored by Texas Cooperative Extension, Pioneer Hi-Bred International and DuPont.

Clinics, each scheduled to run from 9:30 a.m. to 3:30 p.m., will be held: Jan. 9, Rita Blanca Coliseum in Dalhart; Jan. 10, Moore County Community Building in Dumas; Jan. 12, Hansford County Barn in Spearman; and Jan. 13, Carson County Ag Building in Panhandle.

Texas Department of Agriculture has approved five continuing education units for each meeting. Certified crop advisor continuing education units also will be available.

- Topics are:
- Major diseases and insects for corn, as well as refuge requirements for Bt rootworm corn;
 - Weed management in strip-till, as well as drift control and tank contamination issues;
 - Alternative crops such as canola and cowpeas, and possible pest concerns;
 - Crop irrigation and efficiency, regulations for chemigation;
 - Reduced tillage for moisture and soil conservation;
 - Grain sorghum production for both dryland and irrigated grain sorghum, including fertility man-

- agement and fertilizer economics;
 - Insect control strategies for irrigated cotton; and
 - Sunflowers, including fertility management and economics.
- For more information, contact the local county Extension office.

WEATHER WATCH

THURSDAY NIGHT - Mostly clear. Lows in the mid 20s. Northwest winds 10 to 15 mph.
FRIDAY - Mostly sunny. Highs in the lower 60s. Southwest winds 10 to 15 mph.
FRIDAY NIGHT - Mostly clear. Lows in the lower 30s. West winds 10 to 15 mph.
SATURDAY - Mostly sunny. Breezy. Highs in the mid 70s.
SATURDAY NIGHT - Mostly clear. Breezy. Lows in the lower 30s.
SUNDAY - Mostly sunny. Highs in the lower 60s.
SUNDAY NIGHT - Mostly clear. Lows in the upper 20s.
MONDAY - Mostly sunny. Highs in the mid 50s.
MONDAY NIGHT - Mostly clear. Lows in the mid 20s.
TUESDAY - Mostly sunny. Highs in the upper 50s.
TUESDAY NIGHT - Partly cloudy. Lows in the lower 20s.
WEDNESDAY - Partly cloudy. Highs in the mid 50s.

Tips to lower heating costs

Put plastic sheeting on screen doors and windows. Make sure door can still open and close.

Use door on warmest side of house if that is an option or go through garages or enclosed porches to create an airlock entry. Less wind and cold air enter directly into a house when there is an airlock. Minimize the number of times you go in and out during the day.

Install storm windows if possible.

Layer windows with draperies and curtains to create airlocks and put up insulated and/or lined draperies.

Use draft dodgers at base of doors and windows. Close damper on fireplace. Change furnace filter every month.

Keep thermostat at 68°. At minimum reduce thermostat a few degrees at night and when you are not at home for long periods of time. Lowering it every time you go out is not cost effective, if you are constantly bringing your home back up to a comfortable temperature.

Insulate electrical outlets and light switches, especially on outside walls. Also hot water heater, pipes in basement and unheated areas.

Remove or insulate window air conditioners.

Use fireplace if you have one; have chimney cleaned. Have alternate heat sources, such as electric heater or legal kerosene (blue) or diesel fuel can (usually 5 gallons)

Gas prices rise for City of Spearman

The old natural gas contract between the City of Spearman and West Texas Gas expired on December 31, 2005.

The Utility invoice that City of Spearman customers received in January is the last invoice with the old price attached to it. The invoice that will be sent out in February will have the new market price attached to it, which will be \$10.79.

If you have not as of yet begun to change your consumption habits, you should to start now.

When and if a new price contract price is agreed upon, it will in all likelihood be higher then what it was last year.

so you can purchase that fuel in an emergency if delivery cannot be made before you run out. Keep emergency cash, \$15-\$20, in an envelope with the can, so you have it available to purchase fuel. Know where the nearest supplier of kerosene or diesel fuel is to your home.

If you heat by oil, do not let the tank go to empty. Get on the program for automatic delivery for 200 gallons. Consider the budget plan. If you are a renter, and you do run out of fuel, call the local Board of Health immediately. Have the number available. Call 211, People Help, etc.

Do not remain in an unheated house. Go to family, friends or neighbors who have heat. Close off rooms that do not have water pipes in the walls, ceilings or floors, and that you do not use.

Keep water trickling out of faucets in bathrooms and kitchens

to minimize freezing pipes. (A plumber told me this once when my furnace stopped working. He said it works in the short term, as when waiting for the repairman, but not the long run.)

Do not be a couch potato: move around.

If you knit or crochet, make yourself afghans, hats, socks, etc. to keep you warm.

Invest in an electric blanket.

Wear a woolly hat to bed.

Around the house, wear a sweat suit (jogging outfit) and/or layered clothing.

Consult your utility company for free weatherization tips.

Call NORWESCAP for possible help with heating issues: 1-888-454-4778.

Think about closing up your house for the winter; move in with a relative or friend. If you can, go to Florida!

School Board Recognition Month

Governor Rick Perry has proclaimed January 2006 as School Board Recognition Month. Districts across the state will use this opportunity to show their appreciation and bolster understanding of the critical role elected boards of education play in their local schools and communities.

"...The full promise of this great nation heavily depends on how well young Americans are prepared to embrace and succeed at the challenges ahead. Critical to achieving this goal is ensuring excellence in education.

"Throughout the Lone Star State, school boards work to meet this mission, achieving successes that continue to make a positive difference. Through their efforts in working with educators, government officials and the community, school boards help to provide young Texans with the tools necessary for success.

"Created in 1949 to foster educational excellence in districts throughout the Lone Star State, the Texas Association of School Boards will be conducting an awareness campaign throughout the month of January to highlight the many contributions of school boards.

"I encourage all Texans to recognize the important roles that school boards play in ensuring a quality education for young Texans. Through their commitment and focus on the future, we are building an even stronger foundation for the

Texas of tomorrow," he said.

"We encourage every community to take time in January to acknowledge the vital contributions made by locally elected school trustees and support them as they tackle the challenging and rewarding task of preparing our students for the future. School board members are extraordinary people who are dedicated advocates for Texas youth, yet few people fully understand the demands and far-reaching implications of their responsibilities on local boards," said James B. Crow, TASB executive director.

"More than 7,000 men and women serve their Texas communities on school boards and give of their vision, knowledge, leadership

and time, working purely for the common good of every child. It is important to recognize the commitment that board service requires as local trustees work with parents, educators, and community leaders to develop sound educational policies in their districts. They help us to set high standards in the education system, urging us all to strive to reach educational excellence and better prepare the next generation," he said.

TASB is a nonprofit association established in 1949 to serve local school districts. School board members are the largest group of publicly elected officials in the state. The districts they represent serve more than 4.3 million public school students.

Letter to the Editor

Dear Editor,

I would like to thank the citizens of Spearman for the opportunity to have served you for the past 22 plus years. I personally hope it has been a positive thing for most.

The first part of November I left to help the hurricane victims in South Texas and parts of Louisiana. Shortly after my departure, I was terminated from the City of Spearman - even though I did have more than enough vacation time on the books to cover my absents from my duties.

After my short time at home for the holidays, I will be returning to Louisiana to help the homeless and jobless victims still left by hurricane Katrina. When I complete my duties there, I will be returning back to Spearman.

If there is anything I can do to help any of you when I return, please let me know.

Once again, I thank you for the opportunity to serve you.
Galen Coates

DEADLINE NOTICE

The deadline to submit news and advertising to the Hansford County Reporter-Statesman is Monday at 5 p.m. Items submitted after the deadline will be published at a later date, as time and space permit.

For more information, please contact Catherine Smith at 659-3434, or e-mail me at cathysmith@antden.com.

Live,
Laugh &
Love



by Catherine R. Smith
cathysmith@antden.com

My friend Sheri Benton sent me this list of "Natural Highs." I hope you enjoy them.

Natural Highs

1. Falling in love.
2. Laughing so hard your face hurts.
3. A hot shower.
4. No lines at the supermarket.
5. A special glance.
6. Getting mail.
7. Taking a drive on a pretty road.
8. Hearing your favorite song on the radio.
9. Lying in bed listening to the rain outside.
10. Hot towels fresh out of the dryer.
11. Chocolate milkshake (vanilla or strawberry).
12. A bubble bath.
13. Giggling.
14. A good conversation.
15. The beach
16. Finding a 20 dollar bill in your coat from last winter.
17. Laughing at yourself.
18. Looking into their eyes and knowing they love you.
19. Midnight phone calls that last for hours.
20. Running through sprinklers.
21. Laughing for absolutely no reason at all.
22. Having someone tell you that you're beautiful.
23. Laughing at an inside joke
24. Friends.
25. Accidentally overhearing someone say something nice about you.
26. Waking up and realizing you still have a few hours left to sleep.
27. Your first kiss (either the very first or with a new partner).
28. Making new friends or spending time with old ones.
29. Playing with a new puppy.
30. Having someone play with your hair.
31. Sweet dreams.
32. Hot chocolate.
33. Road trips with friends.
34. Swinging on swings.
35. Making eye contact with a cute stranger.
36. Making chocolate chip cookies.
37. Having your friends send you home-made cookies.
38. Holding hands with someone you care about.
39. Running into an old friend and realizing that some things (good or bad) never change.
40. Watching the expression on someone's face as they open a much desired present from you.
41. Watching the sunrise.
42. Getting out of bed every morning and being grateful for another beautiful day.
43. Knowing that somebody misses you.
44. Getting a hug from someone you care about deeply.
45. Knowing you've done the right thing, no matter what other people think.

May God bless and keep you; May He make his face to shine upon you, and be gracious to you; May the Lord lift up his countenance upon you, and give you peace.

Numbers 6:24-26

Catherine :)

Happy Birthday!

Editor's Note: This Happy Birthday list is run as a public service by the Hansford County Reporter-Statesman. We apologize if any names are misspelled. If you know of a name that needs to be changed, added or deleted, please call 659-3434.

Thank you, Catherine

January 5
Birthday - Brice Lewis, Kent Rimmel, LaNetta Shapley, Glenda Cambell, Scotty DeWitt, Becky Renteria, Linda Tope, Kim Stinson, Rick Cazares, Jacinda Perez, Kent Rimmel
Anniversary - M/M Jimmy Blau

January 6
Birthday - Benny McCullough, Debbie Knight, Julie Logsdon, Valerie Hull, Joyce Sparks, Sam Boone, Teresa Pope, Alicia Davis, Ron Antalek, Kenny Kentron, Lesa Moffett
Anniversary - M/M Arnold Stork

January 7
Birthday - Brad Holt, Marsha Lowe, Lucy Pittman, Judy Virden, Mrs. Perry Hawkins, Michael Rodriguez, Pam Porter, Buddy Parker, Christina Bayless, Dorothy Nollner, Kimberly Irwin
Anniversary - M/M Howard Nash

January 8
Birthday - Cody Barkley, Haley Shields, Tina Brogdon, Doris Hendricks, Fontella McKee, Ross Womble, Lisa Brown, Amanda Schneider, Destiny Fisher

January 9
Birthday - Bob Bort, Miles Messer, Louise Vanderberg, Kirby Taylor, Eric Brown, Britt Jarvis, Connie Holmes, Jim Bass, Edna Marie Walker, Kiley Coombs, Helen Blau, Bill Eting, Desiree Harris
Anniversary - M/M Manuel Gomez, M/M Sonny Kell, M/M Bill Logsdon

January 10
Birthday - Mary Schuman, Jerry Pat Davis, Willie Salgado, Larry Kelly, Kyle McLaughlin, Chrissy Bensinger, Barbara Rojas, Justin Johnson, Alex Logsdon, Devin Sibley, Andrea Woolley

January 11
Birthday - Norma Edens, Marcy Hendrick, Gloria Knox, Chad Riggins, Karen Kirk, Bill Pittman, Louise Kizzar, Shayla Jo Barber, Leeta Prather
Anniversary - M/M Melvin Bradley

January 12
Birthday - Imogene Williams, Helen Fisher, Georgia McLeod, Francis Biles, Toni Archer, Dori Anderson, Britt Savage, Cory Anderson, Earl Wattier, Steve

Stedje, Bryant Layton, Steve Ellis, Downing Salazar, Bradley Carlisle, Tara Davis, Brandlee James, Griffin Novak

Anniversary - Alton & Peggy Ellsworth, M/M Billy Miller, M/M Cliff Lang, M/M Jerry Overbey

January 13
Birthday - Nancy Babbs, Debbie Knight, Justin Carthel, Trisha Fitzgearld, T.J. Johnson, Molly McCloy, Regina Biggers, Don Ed Watson, Laura Mackie, Susan Sheets Noel, Jana Buchanan, Sherry Allen, Nancy Wilson, Kim Vera, Jimmie Vernon, Diane Boyd, Tiffany Brown, June Mitchell, Abigail Hartgraves

January 14
Birthday - Debbie Coates, Ellen Reynolds, Cliff Barkley, Karsten Irwin, Charlene Spivey
Anniversary - Greg & Shonda Odegaard

January 15
Birthday - Christopher Clawson, Tucker Henson, Nancy Boyles, Loyall Turner, Shannon Scroggs, Kim Jenkins, Brenda McLain, Jay McCormick, Kristi Wall, Carl Urban, Dustin Beck, Dorothy Sparks, Jennifer Poer, Remmington Smith, Gary Faries
Anniversary - Billy & Martina Miller

January 16
Birthday - Viva Renner Pierson, Ynese Williams, Steve Reed, Irvin Davis, Jodi Wilson, Jason Babbitzke, Kelly Sue Cates, Norman Brack, Felix Sandavol, Clifton Morrison, Josh Schumann, Carlene Kirkpatrick, Eva Espinosa, Shirley Burton, Mike Babbs, Crispin Borunda, Viviana Huerta

January 17
Birthday - Derik Grotogut, Justin Johnson, Karen Kelly, Terry Sherrill, Butch Schaefer, Jeffrey Spencer, Dana Booth, Sheri Benton, Frank Miller, Nancy Groves, Wayne Bayless, Tera Red, Jason Ridge, Justin Gifford

January 18
Birthday - Daniel Boyd, Ervin Wright, Doyle Jackson, Curtis Davis, Candy Golden, Bradley Bell, Larry Evans, Schane Schneider, Bett Brown, Ole Dahn, Pat Randall, Jessica Blau, Robert Gilmore

January 19
Birthday - Paula Kizziar, Elvia Perez, Walter Murrell, Calvin Bodey, Carlton Nelson, Melissa Sutterfield, Curtis Ray Hays, Barbara Collier, Donna Murray, Rosa Linda Reger, Justin Harris, Billy Hays, Jose Favela Jr., Stacy DeLaCruz, Jeremy Vera, Bradi Brown
Anniversary - M/M Roy Diaz

Words from Faith & Grace

by Cecil R. Biggers, Lutheran Lay Minister

As we discover a new year, we enter the season of Epiphany, the season of "AHA!", where we discover God! Our lessons are found in Genesis 1:1-2:4, Psalm 29, Acts 19:1-7, and Mark 1:4-11. In Genesis we discover God the Creator, we also see that the creation was done by the "voice of God" [compare this to the "Word" of the Gospel of John]. The Psalmist ascribes to the Lord glory and strength, and wonders at the power of the "voice" of God. In Acts, Paul meets some members of the early faith community who know only the baptism of John (the Baptist) for repentance of sins. John's message is one of threat, "Repent for the Lord is coming!" Paul baptizes them in the name of Jesus, and they receive the Holy Spirit. Jesus' message was the good news, "your sins are forgiven and you are Children of God!"

Our word "forgiveness" comes from a root meaning to "let go". There is a story of one who wanted to trap a monkey. So he placed food in a narrow-necked jar. The monkey could get his hand in the jar, grasp the food, but then could not take his hand out. The monkey's nature would not let him let go of the food; hence, he was easier to trap. Silly monkey! Satan allows us to find our favorite things; and, our nature will not allow us to just let go. I need my cigarettes, methamphetamine, extramarital sex, ill-gotten riches, [insert your favorite sin here]. Silly People! The Holy Spirit allows us faith to believe in Jesus Christ and God by His grace allows us to "let go". He forgives our sin. Happy People!

In this season of discovery, may the Holy Spirit allow you to discover Jesus in your life and to "let go" of those things which seek to deny that you are a child of God.

Gruver Chamber of Commerce Decorating Contest Winners

The Gruver Chamber of Commerce would like to congratulate Jesus Renteria at 401 Cooper, Debbie Odom at 303 Broadway and Mario Garcia at 402 Front as our 2005 winners for the home decorating contest. Each of these winners will receive \$25.00 of Gruver Bucks to be spent at any Gruver Merchant.

We would also like to thank and acknowledge the following people who decorated trees in the park: In Memory of Dr. Damon Gregg by Marty & Molly McCloy and Mike & Diane McLain, In Memory of Karen "Shorty" McCloy by Marty & Molly McCloy, In Memory of Pete, Fran & Wes Maupin by the Maupin Tribe, In Memory of Loren Murphy by Lanasa Washburn, Cub Scout Pack 550, In Memory of T. J. Bergin and Blanche Tabor by their family, In Memory of Don Morley and In Honor of her Grandchildren by Pat Morley, In Memory of Coy Winders by his family, In Memory of Art Salazar by his family, In Memory of Cecil and Alfred Ralston by their family, In Memory of Cease Riley by her family, In Memory of Charley Casdorff and In Honor of Cleta Casdorff by their family, Delphine Eting, In Memory of Bob & Olene Cluck, Colt Cluck & Jimmy Shieldknight by Laney Harper, In Memory of Jesus M. Torres by his family, In Memory of Mark Beasley, Wes Maupin, and Coy Winders by the Class of 1971, the GHS Cheerleaders and 2 other trees which were decorated but had no sign. We would also like to acknowledge Larry and Kevin Babbs for the outstanding Christmas decorations they make and put up every year for all our enjoyment.

We greatly appreciate everyone's efforts in decorating at this busy time of the year. It truly makes Gruver a beautiful place to live and raise our families.

Renaissance Greeting Cards Inc.

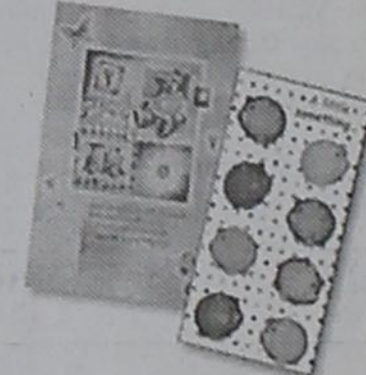
Everyday

"It will be the design not the message that draws her to the card. But it will be the message that makes the sale."

- A Year in the Life of a Greeting Card by Sean Gallagher and Don Lutzdner



Something New...
...refreshed monthly with new trends and treatments.



Verses...

Celebratory wishes and heartfelt thoughts please all who stop and read Renaissance Cards!

at
All Occasion Flowers

202 N. Bernice (across from the Post Office)

659-5180

The Hansford County Reporter-Statesman

213 Main Street • Spearman, TX 79081
Phone - (806) 659-3434 • Fax - (806) 659-3368
cathysmith@antden.com

Mon.-Thurs. (Closed Fridays) 9 a.m.-12 p.m. & 1-5 p.m.

Gary & Catherine Smith - Publishers/Owners
Carolyn Cummings - Editor • Clayton Smith - Student Editor
Contributing Writers: Dorothy Hudson and Merry Sparks
Contributing Photographer: Charlie Johnson

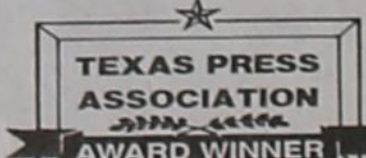
Subscription Rates
In Hansford County - \$30.00 • Out of County - \$40.00

The Hansford County Reporter-Statesman (USPS 529660) is published weekly in Spearman, TX. Periodical postage paid in Spearman, TX. POSTMASTER: Send address changes to: The Hansford County Reporter-Statesman, 213 Main Street, Spearman, TX 79081.

Publication Policy
The deadline to submit news and advertising to The Hansford County Reporter-Statesman is Monday at 5 p.m. Items submitted after the deadline will be published at a later date, as time and space permit. Publication of all items is at the discretion of the editor.

Advertising
Open Display rates are \$4.00 per column inch. Classified Ads are \$5 for the first 25 words and 10¢ per word for each additional word. (Additional charge for boxed classifieds.) There is a \$1 charge per week if billed.

Member of
Gruver Chamber of Commerce
Spearman Chamber of Commerce
Texas Press Association and Panhandle Press Association



Local & Long Distance phone service
High-Speed DSL Internet service
DISH Network® TV
Stop by our new Perryton Retail store
at 301 Amherst Street in Perryton
For more information, call 1-866-477-5498

from
Texas Farm, Inc.
Perryton • 435-7129

Our Sympathy

INA CADEL TERRELL

RALLS - Ina Caddel Terrell, 87, Friday, December 30, 2005, at Crosbyton Hospital in Crosbyton, Texas.

Services were at 10 a.m., Saturday, December 31, 2005 at the Emma Church of Christ in Ralls with Tim Mills officiating.

Burial followed in the Idalou Cemetery under direction of Adams Funeral Home of Ralls.

She was born on June 19, 1918 in Idalou to the late J. M. and Mamie (Derrick) Caddel. On January 1, 1937 she married J. R. Terrell in Lubbock. He preceded her in death.

She was a member of the Church of Christ and had lived in Crosby County most of her life. She was a homemaker who was dedicated to her family and loved life. She will be deeply missed.

She is also preceded in death by a son Bob Terrell.

Survivors include; three daughters and their husbands; Carolyn and Dwayne Moses of Ralls, Donna and Ronnie Williams of Gruver, Sandra and Jackie Mize of Lubbock, six grandchildren; Misha Mize and Kelly Mize both of Lubbock, Clint Williams of Perryton, Stacey French of Ulysses, Kansas, Rick Moses of Post, Tifanee Crane of Gruver and seven Great Grandchildren; Justin and Kristen Moses, Braxton and Makenzie Crane, Brennon and Braydon French and Talitha Mize.

Serving as pallbearers will be: Dwayne Moses, Ronnie Williams, Jackie Mize, Kelly Mize, Clint Williams, Rick Moses, Brian French, Will Crane and serving as honorary pallbearer will be the great grandchildren.

The family suggests memorials to the Lubbock Children's Home 4404 Idalou Hwy. Lubbock, Texas 79403 or a charity of your choice.

BERNICE MOSES

RALLS - Bernice Moses, 85, died on December 27, 2005, at Crosbyton Hospital in Crosbyton, Texas.

Services were at 10 a.m. Thursday, December 29, 2005 at Adams Funeral Home in Ralls with Dwayne Moses and Rev. Larry Carson officiating. Burial followed in the Ralls Cemetery under direction of Adams Funeral Home.

Mrs. Moses was born November 18, 1920 in Kaufman County, Texas to the late James Bradley and Ida Mae (Bates) Buie.

On March 23, 1935 she married Thomas Willard Moses in Crosby County. He preceded her in death September 11, 1989.

Also preceding her in death is her stepfather, Mordecai Odom. Bernice lived most of her life in Crosby County and was a homemaker and a member of the Ralls First Baptist Church. Survivors included a son and his wife, Dwayne and Carolyn Moses, a daughter, Sue Clayton of Wimberley, Texas, a sister, Ruth Mize of Crosbyton, 5 grandchildren, Tasa Kersh of Olton, Tonda Hatfield of Canton, Talie Henry of Wimberley, Ricky Moses of Post and Tifanee Crane of Gruver and 9 great grandchildren.

ESTHER DAHL



GRUVER - Esther Dahl, 94, passed away Sunday morning, January 1st, 2006 at her home.

The daughter of Johanna (TeKronney) and Herman M. TeBeest, she was born August 21, 1911 in Bemis, South Dakota. She grew up with four brothers and three sisters and was married to Oscar Dahl in 1931 in Watertown, South Dakota. The Dahl family settled northwest of Gruver where they farmed. There were four children blessed to their marriage, Louella Andrews, Mavis Floyd, Loren Dahl and Robert Dahl. After the death of her husband in 1990, Mrs. Dahl moved into Gruver. Always active in her family, church and community, she was a member of the Gruver United Methodist Church, U.M.Women, a quilting and birthday club, and Royal Neighbors.

Survivors include a daughter, Mavis and husband, Don Floyd; two sons, Loren Dahl and wife, Evelyn; and Robert Dahl and wife, Suellen, all of Gruver; son-in-law, Marvin Andrews of Guymon, OK; and a sister, Johanna Moen of Guymon. To honor her memory are her grandchildren and their families, Randy Andrews of Guymon; Kenny Andrews of Elkhart, KS; Laurie and Russell Dahl of Amarillo, TX; Kevin Hart of Gruver; Wade Dahl of Wimberly, TX; Brenda Hopkins of Gruver; Kelley Hart Richardson of Vega, TX; Terri Hart Breaux of Cedar Park, TX and Scott Dahl of Guymon; sixteen great grandchildren and four great-great grandchildren.

She was preceded in death by her husband of 58 years, Oscar Dahl; daughter, Louella Andrews who died in 2003; two sisters, Ruth Hull and Gerie TeBeest; and four brothers, Reuben, Henry, Ben and Ted TeBeest.

Memorial services were Tuesday afternoon, January 3rd at 2 p.m. at the Gruver United Methodist Church with Rev. George Price, pastor officiating. Interment was in Gruver Cemetery under the direction of Henson-Novak Funeral Directors of Guymon.

Memorials may be given to the Gruver Methodist Church or charity of choice, c/o Henson-Novak Funeral Directors, Box 1306, Guymon, OK 73942.

ASHLEY RENEE CUMMINGS

BORGER - Ashley Renee Cummings, 9, died Monday, December 19, 2005, in Amarillo.

Services were at 2 p.m. Thursday, December 22 in First Baptist Church with Larry Miles, minister of Trinity Fellowship in Amarillo, officiating. Arrangements were by Brown Funeral Directors.

Ashley was born Sept. 6, 1996, in Amarillo. She was a third-grade student.

Survivors include her parents, Paul and Audrey Cummings of Borger; her grandparents, Archie and Carolyn Cummings of Borger, Ronald and Loretta Mick of Perryton and Kirby Brillhart of Ulysses, Kan.; and her great-grandparents, Peggy Shelton of Perryton and Charles Brillhart of Spearman.

In lieu of flowers, the family suggests memorials be to the OI (Osteogenesis Imperfecta) Foundation, P.O. Box 630342, Baltimore, MD 21263-0342.

JAMES "JIMMY" CROUCH

PAMPA - James "Jimmy" Crouch, 75, died on Wednesday, January 4, 2006.

Services will be held at 2 p.m. on Friday, January 6, 2006, at First Baptist Church, with Dr. Johnny Funderburg, pastor, and Rev. Richard Bartel, pastor of Calvary Baptist Church, officiating. Interment will be in Fairview Cemetery under the direction of Carmichael-Whately Funeral Directors.

Jimmy was born on June 30, 1930 in Pampa, where he had been a life-long resident and a graduate of Pampa High School. He married Kay Lanette Howell on June 2, 1960 in Spearman. He was a veteran of the U.S. Army, serving during the Korean Conflict, and was discharged with the rank of Sgt. He owned and operated Crouch Office Equipment & Supply for 10 years and then worked for Pampa Office Supply and Fugate Office Supply for a total of 30 years. He was a member of the First Baptist Church.

Survivors include his wife, Kay Crouch of the home; one son, James Kirt Crouch and wife, Cindy, of St. Louis, Missouri; two daughters, Candace Kay Thompson of Pampa and Marsha Layne Matthews and husband, Gary, of Seminole; one sister, Nelda Johnson and husband, Joe, of Pampa; four grandsons, Colton Crouch of St. Louis, Missouri, Ryan Thompson of Pampa, Cody Matthews of Lubbock and Ben Matthews of Austin; one granddaughter, Lindsey Thompson of Pampa; three nieces, Beth Johnson, Cindy Blackman and Cathy Glade; two nephews, Brad Johnson and Dan Dear; and one sister-in-law, Pat Dear and husband, Ed, of Spearman.

He was preceded in death by his parents, James Thomas and Emma Elizabeth Crouch.

The family requests memorials be to Alzheimer's Research, % Alzheimer's Association, 1400 Wallace Blvd., Amarillo TX 79106, or First Baptist Church, PO Box 621, Pampa TX 79066-0621.

WANDA JEAN BURKE

SPEARMAN - Wanda Jean Burke, 81, of Amarillo, formerly of Spearman, died Thursday, Dec. 22, 2005, in Amarillo.

Services will be at 2 p.m. Monday in Union Church in Spearman with the Rev. Timothy Minor, pastor of Union Church, officiating. Burial will be in Hansford Cemetery by Boxwell Brothers Funeral Directors of Spearman.

Mrs. Burke passed away at Baptist St. Anthony's Hospice in Amarillo on Thursday afternoon, Dec. 22, 2005, after a lengthy illness. Wanda was born March 29, 1924, in Cave City, Ark., to Witten and Melissa Stewart. She graduated from Cave City High School in 1943 and then moved to Borger to work as a telephone operator.

She married Bob Burke on Sept. 25, 1948, in Borger and had 57 years of a loving and happy marriage. They made their home in Spearman from 1948 until March 2003 when, due to illness, they moved to Amarillo to live with their daughter. She was a homemaker and a loving mother and grandmother. She enjoyed her family greatly and loved having her children and grandchildren coming to see her. She was a member of Union Church in Spearman and was also active in the ladies missionary group of the church.

She was preceded in death by four sisters and two brothers.

Survivors include her husband of Amarillo; a daughter, Sandi Clements and husband Charles of Amarillo; two sons, Ronald Burke of Littlefield and Terry Glen Burke of Hobbs, N.M.; eight grandchildren; and two great-grandchildren.

The family suggests memorials be to the Multiple Sclerosis Society Panhandle Chapter, 6222 Canyon Drive, Amarillo, TX 79109.

JUAN DANIEL PUENTES

SPEARMAN - Juan Daniel Puentes, 1, passed away on Thursday, December 29, 2005 at Lubbock, Texas. Services were at 10:30 A.M. on Wednesday, January 4, 2005 at the Sacred Heart Catholic Church in Spearman. Burial was in Hansford Cemetery with Boxwell Brothers Funeral Home of Spearman.

Juan Daniel is survived by his parents, Luis and Elizabeth Puentes of Spearman; sisters, Andrea, Veronica and Samantha all of Spearman; brothers, William and Luis Jr. Puentes both of Spearman and his grandparents: Juana Puentes of El Paso, Texas and Lelaria and Daniel Vargas and Marta Camacho of Juarez, Mexico.

HELEN LOUISE PRACHAR

SPEARMAN - Helen Louise Prachar, 81, died Monday, Dec. 26, 2005. Graveside services will be at 2 p.m. Wednesday in Hansford Cemetery.

Arrangements are by Boxwell Brothers Funeral Home of Spearman.

Known by multitudes as Granny Prachar... Helen was born August 6, 1924 in Richards, Colorado to John R. and Virginia (Cook) George, the youngest of 10 children.

She married Albert Ray Prachar on November 9, 1941 in Ulysses, KS. They lived in Southeastern Colorado until 1957 when they moved the family to Gruver- then to Spearman in 1959.

Helen began nursing in Walsh, Colorado and continued after moving to Hansford County. She worked at the "old" hospital while the "new" hospital was being built; and at many doctors' offices- including many years with Dr. Don Hackley. After nearly 30 years of practical nursing, she graduated with her LVN degree from Frank Phillips College in 1982.

She continued working at the hospital, doctors' offices and home health services until 1997 when she retired at age 73.

Her failing health forced her into the Hansford Manor in June, 2005 where she thoroughly enjoyed her many friends and the interaction with the wonderful staff members.

Helen was preceded in death by her parents, 8 siblings, and her husband, Ray, in 1984. She is survived by one sister, Dorothy Utt of Walsh, CO; daughters and sons-in-law Nelva Snow and Gerald Beck of Spearman; Patty and D.A. Cator of Gruver; and Bonnie and Bob Aubrey of Mead, OK; sons and daughters-in-law Gary and Jerri of Littlefield, TX and Ken of Arlington, TX; 13 grandchildren, 30 great-grandchildren; numerous nieces, nephews and cousins. Many special friends including the entire staff at Hansford Hospital and Hansford Manor. Special friends Betty Scribner, Marcy Villalobos, Shirley Wyssman and her savior, Dr. Mark Garnett.

Helen was a member of the First United Methodist Church of Spearman.

Graveside services were Wednesday, December 28, 2005 at Hansford Cemetery with the Rev. Ken Cole. Boxwell Brothers of Spearman conducted the services.

In lieu of flowers, the family requests memorials to Hansford Hospice or your favorite charity.

CATHERINE MARGARET DILLER

AMARILLO - Catherine Margaret Diller, 83, passed from this life on Saturday, December 24, 2005 in Amarillo, Texas. Rosary services were Tuesday, December 27th at 7:00 P.M. at St Joseph Catholic Church in Stratford, Texas. Funeral Mass was at 10:00 A.M., Wednesday, December 28, 2005 with Fr. Scott Raef, pastor Church of The Holy Spirit of Tulia, Texas. Burial was in the Stratford Cemetery with Morrison Funeral Directors of Stratford, Texas.

Mrs. Diller was born June 23, 1922 at Fowler, Kansas and was a long-time Gruver area resident since 1948. She married Charles L. Diller on April 19, 1944 at Fowler, Kansas. Mrs. Diller was a longtime member of St. Joseph Catholic Church in Stratford, Texas. She was a homemaker.

Mrs. Diller was preceded in death by a daughter, Mary Agnes Diller in 1957 and by her husband, Charles, in 1987.

Survivors include her five children: sons; Richard Diller and wife, Barbara, and Tom Diller and wife, Sherry, of Gruver and Mark Diller and wife, Debbie, of Dalhart, Texas; daughters: Barbara Unruh and husband, C. J. of Dalhart, Texas and Alice Slough and husband, Kenneth, of Gruver, Texas; 18 grandchildren and 22 great grandchildren.

The family requests memorials be made to St. Joseph Catholic Church of Stratford, Texas, 79084.

Ralph Depee,
D.D.S.

Member
American Association
of Orthodontists



Orthodontics For Children and Adults

- Free exam and estimate of cost
- Free second opinion
- Insurance filed

821 S. Amherst • Perryton, Texas
1-800-521-0831 • (806) 435-2320

All Saints' Episcopal Church



2201 S. Jefferson
Perryton

For more
information, call
435-4516,
435-2697
or 659-2083

Jan. 8 - 11 a.m. - Father Spannagel
Jan. 15 - 10 a.m. - Father Nix; 11 a.m. - Annual Mtg.
Jan. 22 - 11 a.m. - Father Spannagel
Jan. 29 - 11 a.m. - Morning Prayer

MONUMENTS

Boxwell Brothers Funeral Home

519 Evans • Spearman
659-3802

Dear friends,
When you buy a monument from us we make sure it is exactly what you want at a price you can afford. If it is not right, we will make it right. And you will not have to search the countryside to find us. We are here when you have a need.

Sincerely,
Bob Boxwell

Replenish the seed of faith through . . .

DAILY BIBLE READING, PRAYER & REGULAR CHURCH ATTENDANCE

Spearman

Apostolic Faith Church
822 S. Dressen • 659-2870
Sunday School: 10 a.m.
Worship Service: 11 a.m.
Sun. Eve.: 6 p.m.
Wed. Prayer Mtg.: 7 p.m.
Pastor - Roland Haney

First Assembly of God
401 N. Bernice • 659-2295
Sunday School: 9:30 a.m.
Worship: 10:35 a.m.
Kid's Church: 10:35 a.m.
Evening Worship: 6 p.m.
Wed. Worship: 7 p.m.
Wed. Youth: 7 p.m.
Pastor - Bob Elder

First Christian Church (Disciples of Christ)
29 S. Bernice • 659-2036
Sunday School: 9:45 a.m.
Worship: 10:50 a.m.
Minister - Gary Smith

First Baptist Church
123 N. Bernice • 659-5557
Sunday School: 9:45 a.m.
Worship: 11 a.m.
Evening Worship: 7 p.m.
Men's Bible Study - Wed. 7 a.m.
Children's Choir - Wed. 6 p.m.
Adult Choir - Wed. 7 p.m.
Wed. Bible Study: 7 p.m.
Pastor - Jim Medley

Church of Christ
121 S. Haney • 659-3244
Sunday Bible Class: 9:45 a.m.
Worship: 10:30 a.m.
Evening Worship: 6 p.m.
Bible Study Wed.: 7:30 p.m.
Minister - Leonard Harper

Sacred Heart Catholic Church

901 Roland • 659-2792
Sat. Night Mass: 5:30 p.m.
Sun. Mass: 9 a.m. - English
Sun. Mass: 11:30 - Spanish
1:30 p.m. - Gruver - Christo
Renditor Mass - Spanish
Rev. Guillermo Morales

First United Methodist
407 S. Haney • 659-5503
Sunday School: 9:45 a.m.
Worship: 8:30 & 11 a.m.
Jr. High Youth: 5 p.m. Sunday
High School: 6 p.m. Sunday
Kids Club: 3 p.m. Wed.
Pastor - Derral Evin

Grace Presbyterian Church (Worships with Faith Lutheran Church)
1101 Bernice • 659-2033
Pastor - Beverly Cook

Faith Lutheran Church (ELCA)
1101 Bernice • 659-2252
Sunday School: 9:45 a.m.
Worship: 11 a.m.
(Worships with Grace Presbyterian Church)
Pastor - Beverly Cook

Union Church
31 S. Endicott • 659-2644
Sunday School: 9:45 a.m.
Worship: 10:45 a.m.
Evening Worship: 6 p.m.
Bible Study: 7 p.m. Wed.
Pastor - Dr. Timothy Minor

Fellowship Baptist
1102 S. Archer • 659-2783
Sunday School: 10 a.m.
Worship: 11 a.m.
Sun. Evening Worship: 6 p.m.
Youth/Adult Service: 7:30 Wed.
Pastor - James Washburn

Primera Mision Bautista

502 E. 7th • 659-3991
Sunday School: 9:45 a.m.
Worship: 11 a.m.
Evening: 6 p.m.
Wed. Prayer Meeting: 7 p.m.
Thurs. Visitation: 7 p.m.
Pastor Joe Garcia Jr.

El Aposento Alto U.P.C.I.
1105 S. Roland
Domingos: Escuela-Dominical - 10 a.m.
Culto Evangelistico - 7 p.m.
Jueves: Oracion - 8 p.m.
Mier. Estudio Bblico - 7 p.m.
Pastor - A.G. Martell
(806) 659-2153

Gruver

First Baptist Church
402 E. Broadway • 733-2411
Sunday School: 9:45 a.m.
Worship: 10:50 a.m.
Disciple Training: 6 p.m. Sunday
Prayer Meeting: 7:30 p.m. Wednesday
Pastor - Scott Curry

Church of Christ
209 King • 733-2760
Sunday School: 9:30 a.m.
Worship: 10:20 a.m.
Evening Worship: 6 p.m.
Wed. Worship: 7:00 p.m.
Minister - Gaylord Cook

First Christian Church
510 King • 733-2960
Sunday School: 10:00 a.m.
Sunday Worship: 11 a.m.
Youth: 7:30 Sunday
Adult Bible Study: 7:30 Sun.
Wed. Bible Study: 8:00 p.m.
Pastor - Gary Gumfroy

Gruver United Methodist

Broadway & Garrett
733-2651
Sunday School: 9:45 a.m.
Worship: 8:30 & 10:50 a.m.
Eve. Worship & UMY: 6 p.m.
Pastor - George Price

Spanish Cristo Redentor Church
Sunday Mass: 1:30 p.m.
Friday Evening Mass
Summer - 8:00 p.m.
Fall/Winter - 7:30 p.m.

Oslo

Oslo Lutheran Church (ELCA)
6 Miles West & 12 Miles
North of Gruver
339-7709
Sunday School: 9:45 a.m.
Worship: 11 a.m.
Pastor - Paul Fiske

Waka

Waka Church of the Brethren
435-4598

Morse

Morse Baptist Church
733-2757
Pastor - Mike Martin

This feature is made possible through the sponsorship of these civic minded businesses.

Deakin ELECTRIC
OILFIELD • RESIDENTIAL • COMMERCIAL
321 S. MAIN • SPEARMAN
1-800-999-1506 Chris Deakin
806 659-5016 President

Bartlett's Lumber & Hardware
105 W. Broadway • Gruver, Texas
(806) 733-2404

BERRY CLEANERS
Ann & Vernon Pipkin - Owners
Phone 659-3122 • P.O. Box 1017
207 Main St. • Spearman, TX

Morse Implement & Auto Supply
"Join us in church this week"
Tom Dortch 733-2668
P.O. Box 89 • Morse, TX 79062

PRAIRIE MOTORS INC.
Hwy. 207 South • P.O. Box 430
Spearman, TX 79081 (806) 659-2541
www.prairiemotors.com

Gruver Cablevision
308 Main
Gruver, TX 79040
733-5295

Hansford County Reporter-Statesman
"Proudly Serving Hansford County Since 1907"
(806) 659-3434
213 Main Street • Spearman, TX

Interstate Bank, sbb
322 Main • P.O. Box 146
Spearman, TX • 659-2559

by Jim Derington
Out At The Lake

Lake level - December 19 - 24.18 feet

The lake is mostly iced over this morning. I do not know how accurate my lake level is. I shoot from a known point on the concrete, down to the actual water level. When the ice melts, I think the level will rise, some. The creeks have been frozen for two to three weeks now.

Dorothy had a heart cath last week, and got a good report. I agreed to write the article, while she was recuperating. She is relieved and feeling well. She questions the readers' interest in the article sometimes. I think we all enjoy her weekly efforts, and it makes a nice addition to our paper. Your (readers) comments and pictures are always appreciated.

As you might guess, things are slow at the lake this time of the year. There is not much activity here, except for the really avid cat fishermen. The ice has made it

hard even for them. I did see two Bobcats, walking slowly north this morning, on the east side of Horse Creek. I probably would not have seen them, if not for the white background of snow and ice. I usually see large numbers of Bald Eagles, when the lake and surrounding areas are frozen, for extended periods of time. This expectation has not held true this year.

The office has a new face, since the retirement of Jo Ann Hawkins. Lucy Villa is doing an excellent job as our new office manager. Ramon Cantu and Alfredo Anima are busy with maintenance and repair in the off season. These are the ones who deserve the many compliments that I hear, on our parks and facilities.

The Board of Directors decided, in a recent meeting, not to raise park fees for 2006. The annual permits are available at the office, for the coming year.



Kate (left) and Meghan (right) McNulty pose with Santa. Kate and Meghan are the granddaughters of Gary and Cathy Smith of Spearman.

Operation Christmas Greeting

The Hansford Hospital Auxiliary has begun their annual fundraiser - "Operation Christmas Greeting." Instead of mailing greeting cards, persons may donate money to the Hansford Hospital & Manor Auxiliary. This money is used to purchase equipment and supplies that are not budgeted at the Hospital and Manor.

Merry Christmas

- | | |
|--------------------------|-----------------------------|
| Rosa Lee Butt | F.W. & Betty Thomas |
| Gwen Smith | JoAnn Lee |
| Lorene Kunselman | Irvin & Betty Jean Davis |
| Nordeen Cochran | Ralph & Johanne Blodgett |
| Doyle & June Jackson | Estelle Jackson |
| Judy & Dennis Nelson | Betty & James Pugh |
| Ric & Sandee Smith | Sonny & Nell Patterson |
| Thane & Sue McCloy | John & Virginia Trindle |
| David & Mary Kay Harbour | Grace Simpson |
| John & LoRee Booth | Roy & Ann Flowers |
| Nolan & Helen Holt | Charles Brillhart |
| Verna Gail Keim | Mary Schumann |
| Dortha Keys | Norma Jean Mackie |
| Grandville & Muriel Boyd | Don & Gwen McLain |
| Steve & Celia Krug | Leroy & May Lee Smith |
| Verna Brown | Don & Lyanne Maize |
| Mary Fern Terry | Wilson & Joan McClellan |
| Jim & Nan Nicholson | Margarette Evans |
| Marvin & Ruth Ann Jones | Joe Copeland |
| Kathleen Sutton | Charles Ball |
| Noreen Sutton | I.W. & Maylynn Ayers |
| Olive "Babe" Pendergraft | Gary, Cathy & Clayton Smith |

Your donations can be mailed to Operation Christmas Greeting, 723 Steele Dr., Spearman, Texas 79081.

Lights of Love

Hansford Hospice would like to thank all those who donated to "Lights of Love."

- | | |
|----------------------------------|-----------------------------|
| Karen and Richie Thompson | Joann Lee |
| Chris & Tammy White | Mr. & Mrs. Bill Pittman |
| Verlin & Audene Beck | H&H Water Well Service |
| Brian Beck | Diane Stedje Battles |
| Michael & Teresa Dodson | Jeri Lane |
| Lawrence Tindell | Don & Mary Allen |
| Idella Randall | J.D. & Ruby Jo Wilbanks |
| Roy McClellan | Callie & David Van Kleek |
| Dennis & Judy Nelson | Alton & Norma Daniell |
| John & Pat Sutterfield | John & Jo Linda Hutchison |
| Benita Puentes | Omar & Sharon Sutton |
| Helen Dry | Klyda Blackman |
| Mary Alice Gibner | Charla Hargis |
| Charles Ball | Mary Fern Terry |
| Mark & Annette McCloy | David & Mary Kay Harbour |
| Mr. & Mrs. Leroy Smith | Louetta McClellan |
| Don & LynnAnne Maize | Edna Largent |
| Joel & Hailey Shields | Five Star Equipment |
| Margaret Novak | Dean & Veleta Most |
| Don & Wanda Reed | Sandra Drake |
| Edith Womble | Danny & Mary Jane Henson |
| Hazel Lesly | Dean & Linda Lieb |
| John & Ynese Williams | Lenis Seedig |
| Peggy Archer | Alfonso & Carrie Cenicerros |
| Reba & Theodore Benge | Ruby Riley |
| Ernie Sandoval & Rosetta Barrera | |



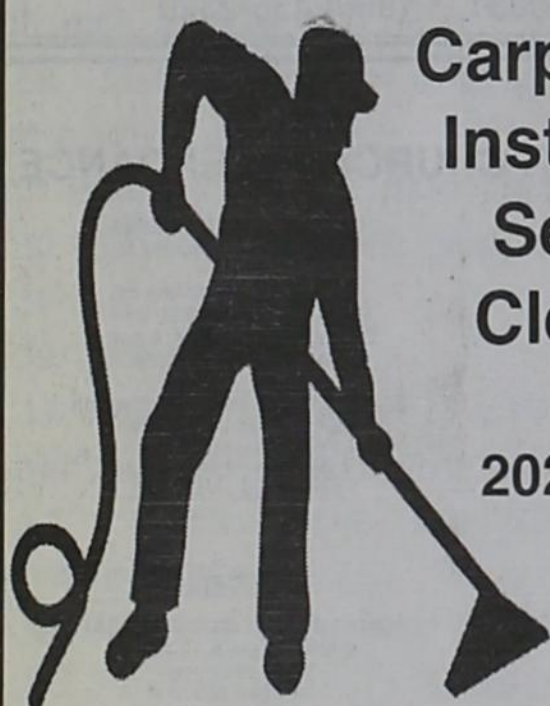
The family of Irvin Davis invites you to his 80th birthday party on Saturday, January 14th from 2-4 p.m. at the

First Christian Church fellowship hall. Please come help us celebrate.

NO GIFTS PLEASE!



GOLDEN SPREAD CARPET CLEANING



Carpet Sales
Installation
Service
Cleaning

202 N. Bernice
Spearman
659-3068

Brighten the winter day
With a fresh bouquet



from
Prairie Garden Flowers

209 Main Street • Spearman, TX
659-2212 • 659-3329

REMINDER:
VALENTINE'S DAY IS COMING!
ORDER EARLY!

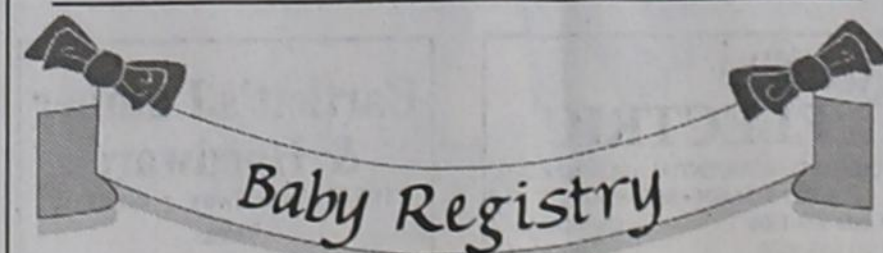
Gordon's DRUG



Bridal Registry

Couples Currently Registered

Brianne Wilson & Schane Schneider - Feb. 18
Shane & Michelle Hill
Jeremiah & Katy (Hipps) Shrode



Baby Registry

Pat & Tracy (Logsdon) Mulady - Jan. 28

Gordon's DRUG 659-2141
314 Main Spearman

Jentry Edwards Inducted into Golden Key International Honor Society

Jentry Elise Edwards of Spearman has accepted membership in Golden Key International Honor society and was honored during a recent induction ceremony at Texas Tech University.

"It is only fitting that a top academic achiever like Jentry be recognized by Golden Key," said Alexander D. Perwich II, Golden Key's Chief Executive Officer. "Our members are inspired and motivated not only to achieve exceptional academic accomplishments, but also to make a positive impact on our world through the Society's commitment to service."

Golden Key International Honor Society is the premier college/university honor society in the world, with more than 1.5 million members in 334 chapters in the United States, Australia, Canada, Malaysia, South Africa and New Zealand. The global nonprofit organization provides academic recognition to college juniors and seniors in the top 15 percent of their class as well as leadership development opportunities, community service, career networking and scholarships. Membership into the Society is by invitation only, to students in all fields of study. Golden Key was founded in 1977 in Atlanta, Georgia. The society is a member of ACHS, the Association of College Honor Societies.



Prairie Rivers Musical

The Prairie Rivers Musical is featured on the 3rd Saturday of each month (October through April) at Canadian Middle School. There is no admission charge. For more information, call (806) 323-6213.

DeLaCruz Medical Fund

If you wish to contribute to help with the burial expenses for Phil DeLaCruz you may do so by sending to the following fund: Felix DeLaCruz Special Account, %H&H Credit Union, PO Box 1187, Stinnett, Texas 79083. Thank you and God bless you!

Place Football Picture Order

The 2005 Football pictures will be on display Sunday, January 8, 2006 from 2:00-4:00 PM at the Church of Christ Fellowship Hall. This is the time you need to come pick out the pictures you would like to order. Prepayment will be required this year.

Spearman Blood Drive

Coffee Memorial Blood Center will have the Spearman Community Blood Drive at The O'Loughlin Center, 502 S. Brandt on Monday, January 9th from 3 to 7 p.m. Call 1-877-574-8800 to schedule an appointment.

Medical Fund Established

A medical fund has been set up for the Al Smith family at First State Bank, Spearman. For more information call 659-2783.



Farmer's Ag Supply, L.L.C.

Seed Cleaning • Seed
Feed • Fertilizer
Spearman, Texas

806-659-5000

Farmer's Ag Supply, L.L.C.

invites you to a
Cotton Varieties Meeting
presented by
Helena Chemical Co.
Tuesday, January 10th
12 noon
703 Collard Street
Spearman

Hamburgers will be served.

Celebrate

Gifts for all your celebrations!

Bridal Registry

Brianne Wilson & Schane Schneider - Feb. 18

Baby Registry

Jocelyn (Edwards) & Dillon Miller
Lindsey (Smith) & Britt Savage
Melinda & Crockett Tidwell

Celebrate

203 Main St. Spearman, TX
(806) 659-3350 1-800-663-8026

Manor Matters

by Merry Sparks

Well, if you have not been by the Manor in a month or so you have really missed it! We have so many wonderful days and surprises!

The Residents are wonderful. They come by every day to see what might be going on and you know when you are preparing for Santa to come you try to hide all that you can. It has been more fun!! Of course, they just stop by to visit---although the activity (whatever it is) whether Newscurrents, Trivia, or whatever (except bingo) is going on down the hall. We have had so many different activities going on all over the place that I cannot keep up. Every department of this facility has been involved in the holiday activities as well as all of the extra help from our volunteers in the community. What a great place to live!! I had the best compliment on this area from one of our Residents that came to us from Fritch. She said that she brags on our community to others all the time because she has never seen so many different people with big hearts giving to others like we do in our community. I will have to say that I agree!! Preston Graham brought us a crate of apples and Tong's Chinese Restaurant sent us a crate of oranges. Thank you to each and every one of you for your generosity and the cheerful spirit that you give with. Believe me, the whole world sees and recognizes the spirit of giving that is here.

The Methodist Church of Spearman has hosted bingo all through December. We have also been blessed with the Fellowship Baptist and First Assembly of God bringing services to the Manor on Sunday afternoons in December. On top of that Anne Whitaker has been leading bible studies on Wednesday mornings. Thank you one and all!!

We also had a whole crew including Bethany Flores, Claudine Laxton, Mary Kay Harbour, and Nikki Swenn helping with manicures on the 12th. Charles Brillhart came on the 13th to play for Name That Tune. The kindergarten children came on the 16th in the morning for a Christmas visit with the Residents. They sang Christmas carols for the Residents and watched a movie with them. They had made Christmas decorations for the Residents and the Residents had made gingerbread men for the children. It was a great time!! Thank you to each of you!!

Then, the time had come for the BIG Christmas party hosted for the Residents and their families and friends. The auxiliary brought dozens of cookies and the dietary department furnished punch for the Residents. The activity department was furiously making our list and counting it twice, thrice and four times to make sure that everyone was covered. Steve and Pam Ezzell

played the guitar and sang after Steve presented a Christmas story from the bible. Anne Snow presented a gift to the Resident of the Year, Ruth Benefield. She was totally surprised. Lelia Bynum, DON, presented a gift to the CNA of the Year, Suzie Lawrence. Janie Kunselman played carols and everyone sang then until we were interrupted by Santa himself!! He was leading the pack of a whole string of elves with stacks and stacks of presents!! The elves helped pass out presents and the afternoon was spent opening gifts, visiting, and enjoying refreshments.

Saturday morning the Residents had an exercise session and then after lunch they gathered in the dining room for a very fun game of Crazy Bunko. When I left, there were 8 tables pulled together and Residents all around them. The middle of the table was piled with prizes and the Residents were ready to roll!!

The auxiliary has also hosted bingo every Thursday afternoon. They are wonderful!! We have not neglected our exercise classes or the Newscurrents throughout all of the rest of the activity either!! On the afternoon of the 23rd we had volunteers all over the > place!! We played another of the Resident's favorite games, Cake walk. It is a little like musical chairs except we walk a circle from the north end of the dining room to

the south end of the living room with numbers glued to the floor. Many in wheelchairs need a designated driver, thus the need for so many volunteers. When the music stops they go to the nearest number, then a number is drawn from the box to produce a winner!! Boy, was the cart piled high when we started and flat when we finished!! We had 12 volunteers on top of staff and the electric wheel chairs and walkers in the game. Everyone was out to play that could. Some Residents had goodies piled so high in their laps when it was over that they needed help to get back to their rooms!! What fun!!

Everyone thought that Saturday the 24th would really be quiet but not so!! Jennifer & Krystal of the activity department did make overs all morning in the activity room to dress the Residents up for Christmas and then played Skip-Bo all afternoon. Then---of all things---Santa came again in the middle of the night via the night shift and left gifts in each Resident's room for Christmas morning!! Woo Woo!!

I hope that you have all had as fun a holiday season as we have had and if not, come on up---it's not over!! Thank you to everyone that has donated to the Empty Stocking Fund. It made it possible to do many more things for the Residents than we have ever been able to do before. We have great plans for the future of the Manor as

we continue the changes from a "Regular" nursing home into a "Home" for long term care!! Thank you one and all---you have made a tremendous difference in many, many lives!!

The afternoon was very pleasant listening to the music, some dancing, and some singing. Thank you to the auxiliary, Steve & Janie for singing.

Then, Saturday---New Year's Eve was upon us. We had exercise in the morning and then after lunch we had a recap of some of the activities that we did in 2005. I read some of the New Year's Resolutions that we had placed in a

time capsule from 12/31/2004. I think that we all agreed that only one person kept theirs and it was to never make a resolution at all!! Refreshments were served and then we were entertained by Steve Lane. He played his guitar and sang for a long time even though he was suffering from a sore throat. We appreciate him coming and his wife bending his arm!! Many thanks to you all for a great year in 2005.

January-2006							
Sun	Mon	Tue	Wed	Thu	Fri	Sat	
3:00 Church living room First Methodist Spearman	1 HAPPY NEW YEAR HOLIDAY 3:00 Church living room First Methodist Spearman	2 10:00 Exercise living room 2:30 Happy Hour activity room	3 10:00 Bible Study living room 2:30 Crafts activity room	4 10:00 Exercise living room 1:30 Bingo dining room	5 10:00 Exercise living room 2:30 Popcorn & Movie living room	6 10:00 Exercise living room 2:30 Taboo living room	7 10:00 Exercise living room
3:00 Church living room First Methodist Greener	8 10:00 Newscurrents living room 2:30 Spelling Bee living room 6:30 Bingo dining room Xi Zeta	9 10:00 Let's Make a Stew activity room 2:30 Name That Tune living room	10 10:00 Bible Study living room 2:30 Crafts activity room	11 10:00 Exercise living room 1:30 Bingo dining room	12 10:00 Exercise living room 2:30 Crazy Hats living room	13 10:00 Exercise living room 2:30 Crazy Bunko dining room	14 10:00 Exercise living room 2:30 Crazy Bunko dining room
3:00 Church living room Primer Iglesia Bautista	15 10:00 Newscurrents living room 2:30 Trivia living room 6:30 Bingo dining room Xi Zeta	16 10:00 Sing Along living room 2:30 Manicures activity room	17 10:00 Bible Study living room 2:30 Crafts activity room	18 10:00 Cooking Club activity room 1:30 Bingo dining room	19 10:00 Olympic Practice living room 2:30 Birthday Party dining room	20 10:00 Exercise living room 2:30 Table Games activity room	21 10:00 Exercise living room
3:00 Church living room Church of Christ Greener	22 10:00 Newscurrents living room 2:30 Sewing activity room 6:30 Bingo dining room Xi Zeta	23 9:00 Meet in the activity room to go shopping in Perryton/Spearman 2:30 Resident Council activity room	24 10:00 Bible Study living room 2:30 Crafts activity room	25 10:00 Olympic Practice living room 1:30 Bingo dining room	26 10:00 Olympic Practice living room 2:30 Tail Tails living room	27 10:00 Exercise living room 2:30 Bible Trivia living room	28 10:00 Exercise living room
3:00 Church living room Lutheran & Presbyterian	29 10:00 Newscurrents living room 2:30 Sewing activity room 6:30 Bingo dining room Xi Zeta	30 10:00 Olympic Practice living room 2:30 Chinese New Year Party dining room	31 10:00 Bible Study living room 2:30 Crafts activity room				

WARM UP SPECIALS

When the North winds blow, come in and warm up with our daily luncheon specials.

Tuesday
Stew with Cornbread

Thursday
Chicken & Dumplings with Cornbread

MURMUR'S

100 S. Roland • Spearman • (806) 659-3580

There's always a big supply of coffee and hot chocolate ready and waiting.

Winter Hours: Mon.-Fri., 11 a.m.-7 p.m.

The BEST of The BEST

The Bunkhouse Restaurant

Spearman's place for steak!

Steaks, Salads & Sandwiches • Prime Rib - Fri. & Sat.

Come & Get It!

NEW DAILY LUNCH BUFFET

Tues.-Fri., 11:30 a.m. to 1:30 p.m.

Tuesday - TexMex; Wednesday - Soup;
Thursday - Home-Cooking; Friday - Fried Chicken

Sunday Lunch Buffet **Sat. Lunch Special**
11:30 a.m. to 1:30 p.m. 11 a.m. to 2 p.m.

Now accepting reservations for Christmas parties.
Call for more information.

The Bunkhouse Restaurant

212 Main Street • Spearman • (806) 659-2089

Hours: Tues.-Thurs. 11 a.m.-9 p.m.;
Fri. & Sat. 11 a.m.-10 p.m.; Sun 11 a.m.-2 p.m.; Mon. Closed

When precision planting is the heart of your operation;
It's got to be a White.

White's 8000 Series Planters offer an impressive choice of frame and row-spacing options that let you take on a wide range of planting applications. And, now, for a limited time, you can get spectacular early-order pricing that makes an 8000 Series Planter even more attractive.

- White's accurate seed placement provides "Picket Fence" stands and higher yields
- Features the industry's #1 Seed Metering System - White's exclusive "Positive Air" metering system is gentle on seeds
- Plants the last seed of the season just as accurately as the first
- Unmatched seed disc visibility - easy access
- 2 or 3 bushel seed hoppers, or 90 bushel CFS (Central Fill System)
- Three-year meter guarantee* ensures dependable performance. If you are required to replace parts in the metering system within the first 3 years, we'll simply give you the parts at no charge
- Frame configurations of 4 to 31 rows (wide or narrow), rigid, folding and flex frames

See your local White Planter dealer today and start maximizing productivity and profitability by owning the leader in row crop technology. Find your local dealer at www.whiteplanter.com.

*Does not include row unit assembly, frames or attachments.

WHITE PLANTERS

SIMPLY ADVANCED

FIVE STAR EQUIPMENT, INC.

Hwy 15 West • Spearman TX 79081-0658
(806) 659-3743

Out-Of-School Examinee Registration

Individuals who are no longer enrolled in school and who have not previously met minimum expectations on all sections of the TAAS test, but have met all other graduation requirements, may retake the necessary sections.

The TAAS and TAKS test will be given on February 21 (TAAS writing; ELA TAKS), February 22 (math), February 23 (TAKS social studies) and February 24 (TAKS science).

A student can register for the TAAS test online by accessing the website at <http://k12testing.tx.ncspearson.com/ooos> or by completing a registration form. Registration forms may be picked up at the high school counselor's office between the hours of 8 a.m. and 4 p.m. Registration packets are due in Austin no later than 5 p.m. on January 20, 2006. Please contact Krista Baird at 659-2584 if you have any questions.

Los individuos que ya no están matriculados en la escuela y que todavía no han cumplido con los requisitos mínimos en todas las secciones del examen del TAKS, pero han cumplido todos los otros requisitos necesarios para graduarse, pueden tomar los exámenes necesarios del TAKS.

Damos el examen de TAAS el 21 de febrero (escritura TAAS), también el (ELA TAKS), el 22 de febrero (matemáticas), y el 23 de febrero (estudios sociales TAKS), 24 de febrero (el TAKS de ciencia).

Un alumno puede registrar para el examen por computadora en el sitio <http://k12testing.tx.ncspearson.com/ooos> o pueden cumplir una forma de registración. Pueden recoger esta forma en la oficina de la consejera de high school entre las horas de 8 a.m.-4 p.m. Los papeles de registración tienen que estar en Austin antes de las 5 p.m. el 20 de enero, 2006. Favor de comunicar con Krista Baird, 659-2584, si tienen preguntas.

Spearman School Calendar - January, 2006

- January 5 - JV & V Lynx vs. Boys Ranch (T) 5, 6:00 & 8:00
- January 6 - 9, JV Lynx - Perryton Tourney JV & Lynxettes vs Highland Park (H) 5 & 6:30; V Lynx vs Highland Park (H) 8:00
- January 7 - 9th & JV Lynx Perryton Tourney; Choir Area Auditions @ Midland
- January 9 - 9th Lynx vs WT (T) 7:30; 9th Lynxettes vs WT (H) 7:30
- January 10 - JV & V Lynx & Lynxettes vs. Fritch (T) 5, 6:30, 8:00; Early out 12:00 Staff Development; FCCLA Regional Mtg. - Odessa
- January 11 - 10th & 11th Social Studies Benchmark; FCCLA Regional Mtg.-Odessa
- January 12 - 10th Science Benchmark
- January 13 - JV & Lynx & Lynxettes vs Panhandle (H) 5, 6:30, 8:00
- January 16 - 9th Lynx vs. Canadian (H) 7:30; 9th Lynxettes vs Canadian (T) 7:30; Jostens Cap, Gown, Invitations Presentation Seniors-10:30
- January 17 - JV & V Lynx & Lynxettes vs. WT (H) 5, 6:30, 8:00
- January 20 - JV & V Lynx & Lynxettes vs. Canadian (T) 5, 6:30, 8:00
- January 23 - Jostens Cap, Gown, Invitation Orders- 10:30 Auditorium
- January 24 - JV Lynxette vs San Jacinto (T) 6:30
- January 26 - 9th Lynxettes Canadian Tourney
- January 27 - 9th Lynxettes Canadian Tourney JV & V Lynx & Lynxettes vs Boys Ranch (H) 5, 6:30, 8:00; District Wide Pep Rally 2:30 Varsity Gym- Basketball Homecoming
- January 28 - 9th Lynxettes Canadian Tourney; CX Debate- Highland Park
- January 30 - 9th Lynx vs Boys Ranch (T) 6:15
- January 31 - JV vs V Lynx & Lynxettes vs Highland Park (T) 5, 6:30, 8:00

Need a Gift?
How about a subscription to the Hansford County Reporter-Statesman?
Call 659-3434 for details.

Reporter-Statesman
213 Main St. • Spearman
(806) 659-3434

BASKETBALL HOOPLA

12-01-05
Lynxettes 40 vs Follett 38
L. Short, 5; J. Short, 8; Vanderburg, 6; Flowers, 7; Schneider, 6; Hart, 6; Lozano, 2
Coach's Comments: We overcame some poor FT shooting to beat a previously undefeated team.

12-28-05
Lynxettes 44 vs Artesia, NM 41
L. Short, 8; J. Short, 12; Vanderburg, 4; Rex, 2; Flowers, 2; Schneider, 7; Howard, 4; Hart, 5
Coach's Comments: We played good defense in the first half and held on for the victory.

12-28-05
Lynxettes 28 vs Goldthwaite 33
L. Short, 9; J. Short, 3; Flowers, 7; Schneider, 2; Hart, 5; Lozano, 2
Coach's Comments: We had a hard time scoring versus a good defensive team.

12-29-05
Lynxettes 66 vs. Farwell 41
L. Short, 6; J. Short, 8; Vanderburg, 8; Rex, 11; Schneider, 6; Howard, 7; Hart, 8; Lozano, 12
Coach's Comments: We followed one of our worst offensive games with our highest point total of the year.

12-29-05
Lynxettes 48 vs. Tulia 29
L. Short, 11; J. Short, 2; Shields, 2; Vanderburg, 2; Rex, 2; Flowers, 2; Schneider, 6; Howard, 8; Hart, 6; Lozano, 7
Coach's Comments: We played well in the first half. This was our 4th game of the tournament and the girls showed a lot of team-work.

12-30-05
Spearman 38 vs. Artesia NM 52
L. Short, 1; J. Short, 12; Vanderburg, 2; Rex, 1; Flowers, 10; Schneider, 7; Howard, 2; Lozano, 3
Coach's Comments: We did not play well versus a very good team

and dug ourselves a hole. We played 5 games in less than 45 hours so we got good experience and we look forward to the district race.

1-4-06
Lynxettes 58 vs. Boys Ranch 27
L. Short, 13; J. Short, 4; Shields, 4; Vanderburg, 4; Rex, 3; Flowers, 8; Schneider, 11; Howard, 8; Hart, 1; Lozano, 2
Coach's Comments: We are working on improving free throw shooting, offensive execution and team defense.

Federal Crop Insurance Overview to be Offered

by Kay Ledbetter
Producers wanting to learn how to evaluate crop insurance alternatives are invited to attend a one-day short course.

Incorporating Crop Insurance into the Marketing Plan will be held from 9 a.m. to 4 p.m. Jan. 24 at the Texas A&M University System Agricultural Research and Extension Center here.

"If you've ever wondered about the pros and cons of the various crop insurance products or what is the best level of insurance, you need to attend this course," said Dr. Steve Amosson, Texas Cooperative Extension economist.

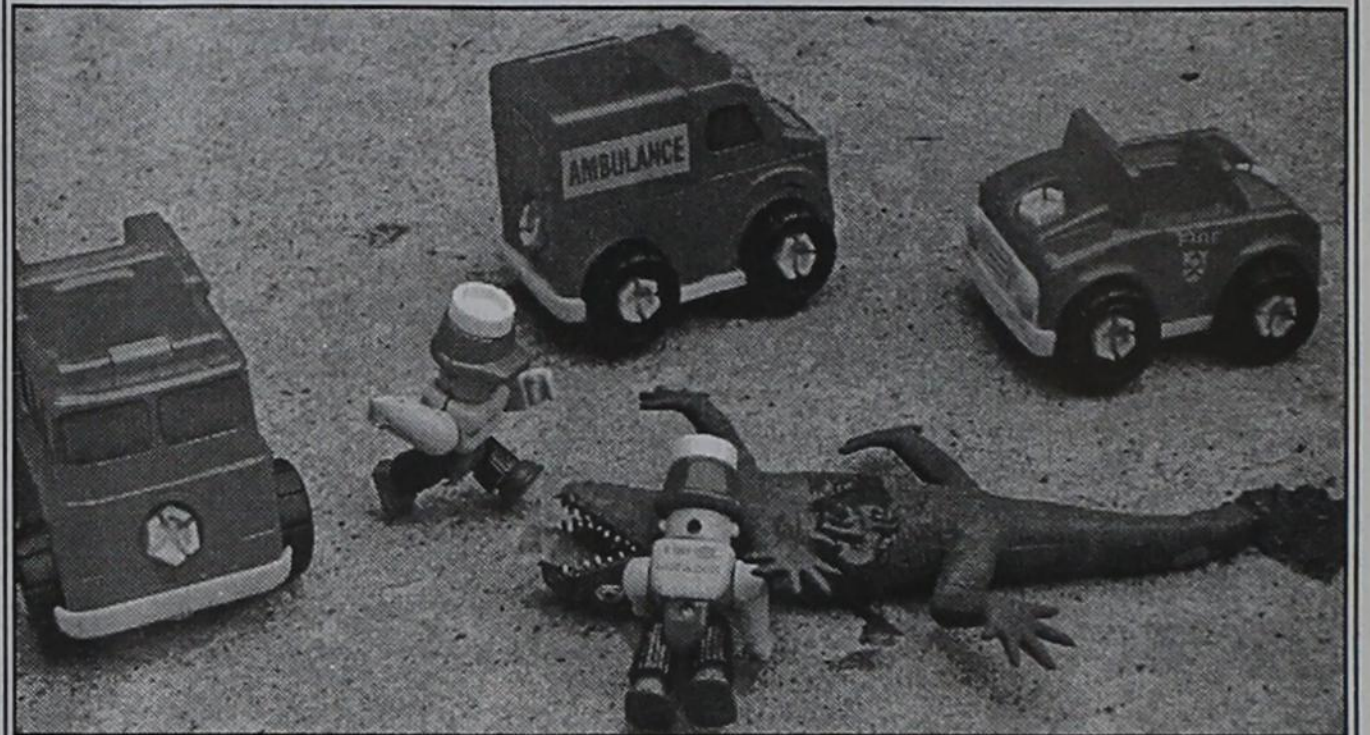
"The instructor, Dr. Art Barnaby, is one of the leading authorities on crop insurance products," Amosson said. "He was one of the developers of crop revenue coverage insurance."

Barnaby is a professor of agricultural economics at Kansas State University in Manhattan, Kan. He will cover hail, multi-peril and crop revenue coverage, as well as other insurance currently or soon to be available.

The short course is a part of the Advanced Topic Series hosted by Extension's Master Marketer Educational System, Amosson said.

A fee of \$75 will cover instruction, materials and lunch. For more information, contact Amosson at (806) 677-5600 or visit the Master Marketer Web site at <http://mastermarketer.tamu.edu>.

Lonely lizard injured in valiant effort to return home for Christmas



Tuesday, December 24, 2005—At approximately 6:30 pm on Christmas Eve, Lonzo narrowly escaped the vicious grasp of his captors, Robert and Joan Farr. After days of endless verbal, physical, and psychological abuse with needles, thread, and other various quilting supplies, Lonzo made a break for the open door. While attempting to escape Jo's Torture 'N' Torment*, the heavy cell door was slammed shut by Joan's futile attempt to keep her victim under lock and key. With only the warm thoughts of spending Christmas Eve at home at The Panhandle Diner, Lonzo used the last bit of his strength for an extra burst of speed that allowed him to escape the pestilential prison only suffering the loss of his regenerative tail. (Nice try, Joan...) Although his tail is regenerative, the unnatural injury resulted in a great loss of blood that slowed Lonzo to a mere crawl. When asked what happened next Lonzo weakly replied, "I heard a horrible sound—a sound that could only mean impending doom as I spotted the silhouette of a blue and white Chevrolet Silverado 1500 with a camper** barreling over the horizon headed straight toward me! After that, it all went black." Lonzo is now in ICU at an undisclosed location for his protection. Sources say his chances for survival are good, but the recovery from the psychological trauma will be a long one—but you know how rumors fly in small towns! Visit the Panhandle Diner 'N' Deli for updates on his condition.

*AKA: Jo's This 'N' That **AKA: Bob's truck

Panhandle Diner & Deli

217 Main St. • Spearman • 659-3864

2nd Six Weeks Honor Roll

**Gruver ISD
9-Week Honor Roll
Pre-Kindergarten**

Ermilo Acosta, Cristal Alvarez, Reed Anderson, Desiree Castorena, Sindy Gaspar, Denisse Hernandez, Fernando Villalobos

Kindergarten

J.T. Borunda, Eimi De La Cerda, Trey Essler, Ruby Gaviro, Klaire Irwin, Aneth Jimenez, K.D. McCloy, Pablo Ortiz, Juan Perez, Sammi Sparks, Tyler Stedje, Kaycee Anderson, Sierra Bass, Johana Borunda, Luz Gaspar, Kalire King, Cole Logsdon, Ariel Ortiz, Favian Ortiz, Creed Spivey, Kaitlyn Stedje, Carlos Tarango

**All A's
1st Grade**

Blaise Davis, Macy Haight, Wyatt Poer, Jazmin Ramirez, Abigail Trejo, Kennedy Venneman, Braxton Crane, Ramiro Hernandez, Amber Johnson, Jasmine Puebla

2nd Grade

Lesley Bernal, Trenton Finley, Karsten Irwin, Kennedy King, Justin Moreno, Ulysses Valverde, Kolt Casaus, Adam Casdorff, Aaron Felderhoff, Ady Garcia, Mattie Mayfield, Nick Rivera, Brennyng Seagler, Hadlee Spivey

3rd Grade

Michaela Davis, Dax Haight, Mason McLain, Bailey Poer, Israel Flores, Vanessa Garcia, Reagan Haynes, Megan Sparks, Carson Williams

4th Grade

Zoe Cantrel, Maggie Caspar, Cesar Mendoza, Dillon Payne, Travis Stedje, Rachel Teal

5th Grade

Nikki Beasley*, Korbin Irwin*, Maggie Key*, Alex Logsdon, Dallas Reynolds, Ashley Williams

6th Grade

Taylor Felderhoff, Shelley Gibson, Kramer King, Madison McLain

7th Grade

Zack Logsdon, Colton Moffett

8th Grade

Katie Gibson, Leigh Anne Winger

Freshman

Marisol Hernandez, Matt Salazar, Veronica Teal, Lynn Vela

Sophomores

Yadira Garcia, Maydeli Ortiz, Morgan Ross, Adriana Soto, Adam Tichy, Seth Thompson, Emily Williams, Abbi Yanke

Juniors

Sydney Been, Brian Johnson, Jimmilee McCloy, Justin Thompson, Victoria Vela

Seniors

Timber Barkley, Crispin Borunda, Rachelle Holt, Kelly Jones, Matt Messer, Ryan Perez, Maria Ruiz

**All A's and 1 B
5th Grade**

Callie Stedje

6th Grade

Clarissa Anaya, Kaysha Bass, Ana Pastrana, Ali Taylor

7th Grade

Mary Hart

8th Grade

Parker Grotegut, Drew Mireles

Freshman

Devlin Reynolds
Sophomores
Sorrelle Blevins, Tonya Lara, Chandler Miner

Juniors

Conrad Curry, Bonnie Frick, Mayra Hernandez, Lauren Urban

Seniors

Ivan Briones, Lanie Graves, Joel Hernandez, Tyler Lane, Sarah Mireles, Ofelia Rodriguez, Stephen Salazar, Reid Winger
**Denotes Principal's Honor Roll - These students had 90 or better in all core subjects.*

Spearman ISD

**All A's
1st Grade**

Aileen Flores, Rosario Flores, Yesica Gonzalez, Zariah Arzate, Jonathan Blan, Jada Crooks, Lane Farrar, Corbin Hughes, Kayla Servantes, Caitlyn Tender, Tyler Thoms, Ashley Vasquez, Daniel Anima, Karina Barrio, Tori Bennett, Michael Borunda, Steven Johnson, Dylan Kemp, Halston Kenney, Emilee Key, Orion Mayberry, Edward McIntyre, Daisy Perez, Pheobe Silva, Reid Swan, Kane McDaniel, Courtney White, Trenton Baird, Jamie Burk, Cade Garnett, Derek Holloway, Taryn Hughes, Kyler Limbocker, Jose Orozco, Zane Patterson, Brantly Shields

2nd Grade

Marilyn Almanza, Lupe Brisenino, Kevin Castillo, Della Duarte, Michael Fox, Griffin George, Payton Harrell, Brianna Howard, Hunter Kenney, Enrique Ortiz, Trea Rice, Trent White, Brennan Greene, Dustyn Kelley, Daisy Lopez, Bryan Meza, Haylee Miesner, Moises Rosendo, Shelby Sasser, Maria Tarango, Maria Tarango, Alexis Alvarez, Jaci Burgin, Christina Cano, Lupita Flores, Angela Mendoza, Julio Morales, Trace Patterson, Logan Sowder

3rd Grade

Peyton Garnett, Tyann Hight, Zane Hughes, Belen Robledo, Brock Schroeder, Callie Yarbrough, Ruben Frayre, Beau Brown, Marshall Cator, Codi Evans, Slade Garnett, Madison Price, Jose Valles, Tanner Baird, Alfredo Barajas, Susy Flores, Israel Hernandez, Cayton Limbocker, Emily Miser, Hannah Patterson, J. D. Reed, Brigitte Vargas, Brooke Walker

4th Grade

Vanessa Brisenno, Kimberly Gibson, Kelsea

Miller, Carson Pearson, Miranda Hargus, Sydney McDonald, Christian Ortiz, Katie Miesner, Ryan Schnell

5th Grade

Alexis Mendoza, Adrianna Corralejo, Audy Reed, Erynn Saenz, Jeb Cantu, Allison Brown, Arik Mires, Maria Pena, Mason Price, Katy Miser, Alfredo Rosendo, Cynthia Mendoza, Crystal Cantu

6th Grade

Morgan Ashmore, Lexi Batton, Gately Garnett, Margarita Ibarra, Katelyn Kizziar, Malory Martin, Chandler Short, Sarah Snider, Anna Sowder

7th Grade

Niki Boyd, Jessica Pinon

8th Grade

Preslee Baker, Tate Batton, Zack Hughes, Whitney Maetas, Rosa Ortiz, Chance Pack, Andi Scarborough

Freshman

Jordan Ashmore, Cha'tae Avila, Ashley Close, Destiny Fisher, Kegan Garnett, Brett Landers, Bond Pittman, Tyler Schnell, Haley Smith, Dylan Sumner, Chasity Thomoas, Brett Winegarner, T.J. Worley

Sophomores

Blayne Baker, Brittney Bradley, Lizet Camacho, Mattie Davis, Kylee Howard, Clara Kern, Natalie Quintero, Kyla Reed, Kendall Schneider

Juniors

Sara Barnes, Saylee Flowers, Bryn Garnett, Karina Hernandez, Lance Huddleston, Jordanna Lozano, Wilma Macias, Aaron Maestas, Stuart Martin, Zack Nollner, Rhett Renner, Kelcee Rex

Seniors

Katie Baehler, Angelica Brisenno, Tonya Hart, Kaylee Miesner, Maribel Moreno, Mallory Paul, Adriana Pinon, Alejandro Rios, Jordan Short, Aleisha Sweat, Si Li Tang, Abby Winegarner, Courtney Worley

**A Average
1st Grade**

Ronnie Rey, Kegan Rey, Alex Rosales, Estrella Flores, Eduardo Mendoza

2nd Grade

Daniela Enrique, Cristal Pena, Suzanna Vargas, Eliana Arzate, Maggie Pipkin, Colton Cator, Austin Holguin, Taylor Varnon

3rd Grade

Ethan Sellers, Omar Mendoza, John Holloway, Nicole Rindlesbacher, Vanessa Vela, Jesus Avila, Anne Marie Comp, Maria Rodriguez

4th Grade
Eulises Mendoza, Seth Carson, Tristian Hughes, Devin Wells, Stephanie Hernandez, Lalo Jurado, Juan Garcia, Jerry Tang, Conner Willimon

5th Grade
Kyla Walker, Junior Garcia, Andrew Landers, Anthony Ochoa, Luis Vela, Ruben Ponce, Greg Torres, Itzel Meza, Kylee Porter

6th Grade
Cassie Bowers, Ivette Brisenno, Tylo Farrar, Brody Hargrove, Bryce Jarvis, Lauren Patterson, Justin Rindlisbacher, Blanca Rosendo, Cristina Vargas

7th Grade
Laura Hernandez, Seth Salgado

8th Grade
Leanna Espinosa

"A's-1-B" Honor Roll

Freshman
Sabrina Cantu, Cullie Cooper, L.J. Fishburn, Tyler Harper, Colby Odeard, Jennifer Perez, Vicky Renteria, Hailey Tindell

Sophomores
Jessica Diaz, Wendy Gayton, Christy Lang, Tara Shields

Juniors
Cara Gwin, Sharon Haney, Trudy Hart, Emily Hood, Christina Hunter, Jessica Jarvis, Mirna Ortiz, Ryan Ramon, Anthony Renteria, Noemi Rodriguez

Seniors
Jessica Bates, Roy John Bulls, Brian Close, Edgar Elwood, Jarick Howard, Jenna McElroy, Tabatha Shields, Bryan Thomas, Brock Town

**Pringle-Morse CISD
Principal's Honor Roll
90 or above on all core subjects**

1st Grade
Joslyn Aguilar, Getsy Chavira, Joshua Deaver, Paloma Holguin, Tyrcie Mikles, Chase Rannals, Taci Taylor

2nd Grade
Hunter Hopkins, Rynne Howell, Ella Speck

3rd Grade
Gena Gillispie, Jace Lane

5th Grade
Kaysha Allen, Reese Clark, Halli Mans, Hannah Speck

6th Grade
Katelyn Wilson

7th Grade
Maci Forrest, Haden Hart, Jesus Lopez

8th Grade
Mary Beth Hargis

Congratulations on your academic achievements!



Local & Long Distance phone service
High-Speed DSL Internet service
DISH Network® TV
Stop by our new Perryton Retail store
at 301 Amherst Street in Perryton
For more information, call 1-866-477-5498



**North
Plains
Electric
Cooperative**

14585 Hwy. 83 North • PO Box 1008
Perryton TX 79070
(806) 435-5482 • 800-272-5482

REAL ESTATE FOR SALE

FOR SALE: 727 Wilbanks, Spearman - 3-4BR, 1 1/2B, office, living room, dining room, laundry room, central H/A, garage, lg. covered porch, lg. backyard, lg. carport, on 12 lots. New carpet, fresh paint inside & outside. Call 432-268-4746 or 432-264-7781. TFN(9-16-04)B

FOR SALE: 810 Womble, Gruver - 1700 sq. ft., detached garage, 4 1/2 lots. Call 806-733-2402 after 5 p.m. TFN(8-11-05)B

FOR SALE: 700 Collier, 3BR, 1 3/4 B, lg. family room, 1911 sq. ft. CH/CA, double car garage, Call 878-2271 or 898-1126 TFN(12-22-05)B

FOR SALE: 26 Golden Circle - Four bedroom, three bath brick home with new ceramic tile floors. Excellent neighborhood. Two car garage with built-in shelving. Nice front and large backyard have sprinkler systems. Please call 659-3568 for appointment - must see to appreciate. TFN(01-05-06)B

FOR RENT/LEASE

OFFICE SPACE FOR RENT, SPEARMAN: Pittman-Shieldknight building - all sizes available. Call 659-5588 or 659-3399 for more information. TFN(01-27-05)B

FOR RENT, SPEARMAN: Recently remodeled 1BR, 1B apartment, utility allowance. Call 659-3889. TFN(03-03-05)B

FOR RENT, SPEARMAN: 2BR apartment, water paid. Call 659-9971. TFN(04-21-05)B

FOR RENT, SPEARMAN: Beautiful 3BR apartment. Water paid, NO PETS! 659-9971. TFN(8-11-05)B

FOR RENT: 2 BR apartment, \$375.00 per month, Call Larry O'Neal, 659-9971 TFN(10-20-05)B

FOR LEASE: 3BR, 1B house w/ basement. NO PETS! \$450.00 per month; \$450.00 deposit. Call 940-631-0894. TFN(12-15-05)B

FOR LEASE: Large 1BR Apartment w/washer/dryer hook-up. NO PETS! \$350.00 per month; \$350.00 deposit. Call 940-631-0894. TFN(12-15-05)B

FOR SALE OR RENT: 3BR, 1B house. Call 659-3889. TFN(12-22-05)B

WANTED

LAND WANTED: 1/4 section or more for a dairy, house included is preferred. 300-500 g/m well needed. Dry land farm OK. Contact Spearman EDC at 659-5555. TFN(1-13-05)B

EMPLOYMENT

HELP WANTED: Wolf Creek Feedyard, a division of Cactus Feedyard, Inc. and located in Perryton, TX, is accepting applications for a Pen Rider employee. Some experience is preferred, but training will also be provided for this opportunity. We offer a competitive wage with benefits that include company Employee Stock Ownership Plan, year-end bonus, wage increases, health insurance, paid vacation and holidays. Also provided is a monthly stipend for horse expenses. Riders must provide their own horse and tack. Please call 435-5697 for more details and come by the office to fill out an application. 2(1-05-06)B

HELP WANTED: Now hiring full time mechanic. Apply in person or send resume to Hi-Plains Auto Supply, 118 Main St., Spearman TFN(12-22-05)B

HELP WANTED: CDL Drivers needed for grain, hay and heavy equipment hauling. Please call 806-733-2066 2(1-05-06)B

HELP WANTED: USA Feedyard-accepting applications for a truck driver, must have CDL. Good pay, benefits, and home nightly. Come by or call 733-5043 2(01-05-06)B

HELP WANTED: Due to increased volume in service work, Jim Holeman Chevrolet is looking for two GM or ASE certified technicians. Apply in person to Neal at 823 East 12th in Guymon, OK. 2(01-05-06)B

PETS

LOST: Dark brown tea-cup size male Pomeranian. Last seen on Wednesday, December 28th. Has epilepsy and needs medicine. Call 659-3467. 2(01-05-06)

MISC FOR SALE

WANTED: Responsible party to take on small monthly payments on High Definition Big Screen TV. 1-800-398-3970 1(01-05-06)P

AUTOMOBILE

FOR SALE: 1998 Dodge Ram SLT 1500 extended cab pickup. 659-2255 or 330-0762 5(12-1-05)B

FOR SALE: 2003 Dodge Dakota Quad Cab pickup. 659-2870 5(12-1-05)B

PUBLIC NOTICE

NOTICE TO TAXPAYER
Pursuant to Texas Transportation Code Chapter 258, the Commissioners Court of Hansford County, Texas, intends to consider the adoption of an official county road map.

The Purpose of this action is to clarify the public verses private status of the existing rural road network. After adoption, the official county road map will serve as conclusive evidence of the public's right of access over roads shown on the map and of the county's authority to spend public money to maintain the roads included on the map.

The Commissioners Court of Hansford County will hold a public hearing on Monday, January 23rd, 2006 at 1:30 p.m. in the Law Library at the Hansford County Courthouse, at which a citizen has the right to protest the county's claim of a public interest in a road included on the map. A person may also file a written protest to the County Judge at any time prior to the public meeting.

The proposed official county road map will be available for viewing beginning December 23, 2005, during regular business hours at the Hansford County Courthouse. 4(12-22-05)B

Alva Monument Co.
Formerly Liberal Monument & Memorial Company

New Location:
111 Tucker Road
Liberal, Kansas

North of the New Wal-mart

Serving Kansas, Oklahoma & Texas for 93 years
(316) 624-4211 toll free # 888-654-9318

HIGH PLAINS PUBLIC RADIO



89.5 KTOT

Top O' Texas @ 89.5
Spearman-Borger-Canadian-Dumas-Pampa-Perryton

Washburn, Claude, Panhandle @ 91.3

Amarillo @ 94.9

Listen on the web at www.hppr.org

HPPR station affiliate
For a complete program schedule contact HPPR 800.678.7444

See us for:
AUTO • HOME • CROP HAIL • FARM & RANCH • MULTIPERIL • LIVESTOCK

INSURANCE

BORT AGENCY, INC.
510 Main St. • Gruver, TX
(806) 733-2456

Are You A Victim of Domestic Violence or Sexual Abuse?

The Panhandle Crisis Center Can Help
Call Toll Free - Hotline
1-800-753-5308
301 S. Ash - Perryton
435-5008
Battering Intervention & Anger Management Available
Memorials Accepted

SALE

25% OFF All Carhartt & Key Coveralls

True Value
Help Is Just Around The Corner.

Band B SALES
FARM AND HOME SUPPLIES

Toll Free 800-570-0520
806-659-2662
205 Dillon • Spearman
Mon-Sat 7 AM-6 PM
Mon-Sat. 7 a.m.-6 p.m.

Cruises from \$249!

Our Biggest Cruise Sale Ever!

Resident and Senior Rates Available!

Carnival
The Fun Ships.

www.CruiseCafe.com
Or Call 1-800-788-2545

Car Wrecks

are not accidents. Someone was not paying attention. Maybe they were distracted or didn't adjust for road conditions. Maybe the trucker was late, sleepy or did not maintain his rig. Many injuries, like head trauma, are not readily apparent. Apparent injuries, like bumps, paralysis or death, have many underlying and life altering consequences for you and your family. Our experience can help you now and your family's future. Call us for professional insight.

EXPERIENCE COUNTS
Lawyers with over 50 years combined expertise and staff with over 90.

Ryan A. Krebs, M.D., J.D.
Doctor-Lawyer in Full-time Law Practice

Richard A. Dodd, L.C.
Craig W. Brown, P.L.L.C.

Timothy R. Cappolino, P.C.
Board Certified Personal Injury Trial Law and Civil Trial Law by the Texas Board of Legal Specialization

NO FEE FOR FIRST VISIT
Cameron, TX

1-800-460-0606
www.texas-injury-law.com

CASH NOW As seen on T.V.

FOR STRUCTURED SETTLEMENTS, ANNUITIES and INSURANCE PAYOUTS

(800) 794-7310

J.G. Wentworth means CASH NOW for Structured Settlements!

COMPANY PAID CDL TRAINING

Call now to find out about the largest pay increase in company history!

- No Experience Needed!
- Great Benefits & 401K!
- No layoffs in 25 years!

Stevens Transport offers the best comprehensive training program for new drivers! Get your career rolling and enjoy exceptional earnings and great benefits from the #1 premier transportation carrier!

Stevens Transport

For more information, call **800-333-8595**

www.stevenstransport.com

NEW YEAR

Drive into the New Year with a new career. Schneider National has unlimited driving opportunities available, choose the one right for you!

- Experience rewarded but not required
- Company-provided CDL training for qualified candidates
- \$34,500-\$37,500 (depending on experience)
- Immediate benefits for experienced drivers

Apply Online @ schneiderjobs.com
Or Call 1-800-44-PRIDE (1-800-447-7433)
Sun. 11am-5pm (Central Time)

SCHNEIDER

...for new opportunities.

January 6, 7 & 8
First Friday, Saturday & Sunday Monthly
Antiques • Arts & Crafts • Food

OLD MILL TRADE DAYS

Post, TX • U.S. Hwy 84 & Texas 207 • 806-495-3529

MRS. TEXAS
30th Anniversary

Friendship Family FUN!

Entry Deadline: February 1, 2006

Entry Requirements:
At least 18, Married, US Citizen, Resident of TX

Call Today for Information! 817-442-8896 MrsTexas.net

Reagan & Brown Auctioneers
PO Box 658 • Dalhart, TX 79022 • (806) 244-6776

FARM EQUIPMENT SALE AUCTION

TERRY GROEN & SAGE BRUSH FARMS

LOCATION: From Dalhart, go 8 miles east on Farm Road 297 to Charles Road then north 1 mile to Auction Site; From Dumas go 16 miles north on Hwy. 287 then 20 miles west on Farm Road 297 to Charles Road then 1 mile north to Auction Site; From Stratford, to 18 miles south on Hwy. 287, then 20 miles west on Farm Road 287

THURSDAY JAN 12
Starting time - 10 a.m.
Storm date: Tues., Jan. 19

WATCH FOR SIGNS

We are quitting farming and will sell at auction the following - Terry Groen & Sagebrush Farms - Owners
For more information, call Terry Groen at (806) 268-0529

Auctioneers Note: Don't miss this sale for some of the cleanest and most well maintained equipment to be sold. Most of it has been shedded.

TRACTORS, COMBINES, GRAIN CARTS, FARM EQUIPMENT, TANKS, TRUCKS, TRAILERS, PICKUP, IRRIGATION SUPPLIES, RADIOS, GUIDANCE SYSTEM, PRESSURE WASHER, MISC.

For more information, or a brochure, call us at 806-244-6776, email us at rbauact@xit.net or visit our website at www.texasuctionguide.com and link to Reagan & Brown Auctioneers, or call Leon Laney at 806-333-2738.

Reagan & Brown Auctioneers - TXS 16071 - Office (806) 244-6776

TEXAS STATEWIDE CLASSIFIED ADVERTISING NETWORK

TexSCAN

TexSCAN Week of January 1, 2006

ADOPTION
Note: It is illegal to be paid for anything beyond medical and legal expenses in Texas adoption.
PREGNANT? THINKING ADOPTION? Talk with caring people specializing in matching birthmothers with loving families nationwide. Expenses paid. Toll free 24/7. One True Gift Adoptions. 1-866-921-0565.

BUSINESS OPPORTUNITY
ALL CASH CANDY Route. Do you earn \$800 in a day? Your own local candy route. 30 machines and candy. All for \$9,995. 1-888-625-5481. Multi Vend. LLC.

DRIVERS
DRIVER - COVENANT TRANSPORT. Excellent pay and benefits for experienced drivers. OTR, solos, teams and graduate students. Bonuses available. Refrigerated now available. 1-888-MORE PAY (1-888-667-3729).

DRIVERS! NEW YEAR, new career! Top pay and more home time. No experience? No problem - low cost CDL & 100% Tuition Reimbursement. 1-800-796-9888, www.SwiftTruckingJobs.com

DRIVERS - OTR HOLIDAY Cash\$. Class "A" CDL. 1 year OTR. From start, get extra \$800 first 8 weeks. Then .03 cpm to \$4,000. Call FFE Transportation, 1-800-569-9232.

NOTICE: While most advertisers are reputable, we cannot guarantee products or services advertised. We urge readers to use caution and when in doubt, contact the Texas Attorney General at 1-800-621-0508 or the Federal Trade Commission at 1-877-FTC-HELP. The FTC web site is www.ftc.gov/hotip

Extend your advertising reach with TexSCAN, your Statewide Classified Ad Network.

O/O DRIVER - FFE. The FFS is higher here! \$1.11 average. \$2,000 sign-on. \$2,600 referral bonus. Base plate provided. No truck, no problem. Low payment with short lease. 1-800-569-9298.

FOR SALE
WOLFF TANNING BEDS. Buy direct and save. Full body units from \$22 a month. FREE color catalog. Call today. 1-800-842-1305, www.np.estan.com

JOB TRAINING
NOW HIRING FOR Postal Positions. \$18,500-\$59,000/yr. Full benefits/paid training and vacations. No experience necessary. 1-800-584-1775. Public Announcement Reference #5401.

MISCELLANEOUS
AIRLINE MECHANIC - Rapid training for high paying Aviation career. FAA predicts severe shortage. Financial aid if qualify - job placement assistance. Call AIM 1-888-349-5387.

EARN DEGREE ONLINE from home. Medical, Business, Paralegal, Computers. Job placement assistance. Computer & financial aid if qualify. 1-866-858-2121. www.onlinedegree.com

REAL ESTATE
A BARGAIN - 75 Acres - \$39,900. Rolling hills, good brush, rock outcroppings. Trophy deer habitat. Good highway access. Easy terms. Perfect for hunting retreat. Texas Land & Ranches, 1-877-542-6642.

AFFORDABLE HILL COUNTRY hunting property. Why lease when you can own? 1-800-876-9720. ranchenterprisesltd.com

NEW TO MARKET - 100 Acres - HUNTING RANCH. First chance to own hunting retreat. Big buck area, plus turkey, dove, quail and more. Very private with EZ highway access. \$49,900 w/financing. 1-866-899-5263.

REPO HOMES FOR SALE. 20% to 50% off. www.RepoInGo.com

225+ ACRES, West Texas, Terrell County. Deer, dove, quail, and javelina. \$210 per acre, owner financed, non-qualifying with 5% down. 1-830-885-4578. www.ranchenterprisesltd.com

STEEL BUILDINGS
BUILDINGS DIRECT! 25 years. Order now for spring delivery and save! Extensive range of sizes and models. Built to last. Priced to sell. Pioneer. 1-800-668-5422.

Run Your Ad In TexSCAN!

Statewide Ad.....	\$400
306 Newspapers, 1.1 Million Circulation	
North Region Only.....	\$175
102 Newspapers, 381,000 Circulation	
South Region Only.....	\$175
101 Newspapers, 462,000 Circulation	
West Region Only.....	\$175
103 Newspapers, 254,000 Circulation	

To Order: Call This Newspaper direct, or call Texas Press Service at 1-800-749-4793 Today!

Blankenship Real Estate
659-3052 - 670-3774

SPEARMAN
NEW LISTING: 1106 Dosses - 3BR, 1B, 1 1/2B, 1CG. Needs paint and minor repairs.

NEW LISTING: 703 E. 2nd - 3BR, 1 1/2B, nice home!

NEW LISTING: Great Home with Income Property - 3BR, 2B, 2CG, basement - office - apartment - workshop - 1CG & RV port. 616 & 620 Evans.

Eulalia Blankenship - Sales
Eschola Blankenship - Broker

NEW LISTINGS WANTED!

MARTIN & ASSOCIATES REALTY

Serving Hansford County for 14 years
Julie Martin - Broker - 659-2425

IN SPEARMAN
722 Wilbanks - 3/1/1 - nice home in nice neighborhood and ready to move into. Free-standing fireplace.
1109 Haney - 3/1/1 - investment property

We'd Like Your Listing
FOR QUALITY & SERVICE
CALL US TODAY!
Equal Housing Opportunity

FEMA Authorizes Millions To Help Texas, Oklahoma, New Mexico Fight Fires

The U.S. Department of Homeland Security's Federal Emergency Management Agency (FEMA) this week authorized the use of federal funds from the Nation's Disaster Relief Fund to help Texas, Oklahoma and New Mexico fight 17 fires burning in those three states.

David Paulson, Acting FEMA Director, said the three states' requests for federal fire management assistance were approved as firefighters worked tirelessly to contain wind-driven wildfires.

"These fire management assistance grants are critical and necessary steps towards enabling state and local governments fight these fires," said Paulson. "We are committed to getting our firefighters the funds they need to extinguish dangerous fires that threaten lives and property."

The authorization makes FEMA funding available to pay 75 percent of the state's eligible firefighting costs under an approved grant specifically designed for managing, mitigating and controlling any fire that threatens to become a major disaster.

The following fires were approved for Fire Management Assistance Grants:

- TEXAS**
- * Carbon Fire in Eastland County, which has already burned more than 10,000 acres.
- * Ringgold Fire in Montague and Clay counties, which has burned more than 2,200 acres and destroyed more than 27 homes.
- * Kennedale Fire, Tarrant County, which killed one person

and has burned more than 300 acres and threatened more than 100 homes.

* Callahan County Fire, which has burned more than 1,000 acres and destroyed more than 60 homes near Cross Plains.

OKLAHOMA

- * Hughes County Fire Complex, Hughes and Seminole counties, which has burned more than 2,600 acres.

* Depew Fire Complex in Creek County, which has burned more than a thousand acres and threatened 1,450 homes in Bristow.

* Wainwright Fire Complex in Muskogee County, which has burned more than 4,000 acres and threatened nearly 12,000 homes in Muskogee.

* Shamrock Fire Complex in Creek County, which threatened more than 300 homes in Drumright and Shamrock.

* Bethel Acres Fire in Pottawatomie County, which has burned more than 600 acres and threatened 50 homes in Bethel.

* Cashion Fire Complex in Kingfisher County, which has burned more than 12,800 acres and threatened more than 100 homes in Cashion.

* Guthrie Fire in Logan County, which has burned more than 1,000 acres and threatened approximately 100 homes in Guthrie.

* Sapulpa Fire Complex in Creek County, which has burned more than 800 acres and threatened more than 6,500 homes near Kellyville.

* Prague Fire Complex in Lincoln and Okfuskee counties, which has burned more than 640

acres and threatened 2,650 homes in eight communities.

* 63rd Street Fire in Oklahoma County, which has burned some 700 acres near Oklahoma City. The fire threatened 85 homes outside the city.

* Eastern Oklahoma County Fire Complex, which has destroyed 12 homes and threatened 680 residents.

* Achilles Fire Complex, Bryan County, which is burning on each side of Achilles. Ten homes have been destroyed and another 165 are threatened.

NEW MEXICO

- * Hobbs Fire in Lea County, which has burned more than 35,000 acres and forced more than 10,000 people to evacuate. The fire threatened Hobbs and Tatum.

"The federal emergency response family continues to monitor the fires in New Mexico, Oklahoma and Texas extremely closely," Paulson said. "The National Interagency Fire Center in Boise is supporting the operational needs of all states. FEMA will continue to provide coordination and support at the regional and national level as needed."

Federal fire management assistance is provided through the President's Disaster Relief Fund and made available by FEMA to assist in fighting fires that threaten to cause a major disaster. Eligible costs covered by the aid can include expenses for field camps; equipment use, repair and replacement; tools, materials and supplies; sheltering; and mobilization and demobilization activities.

OUTDOORS by Jim Foster

Writer/Photographer



(Back Row, L-R) Tommy Mushinski, Sugar Ferris, Dr. John Callison, Jim Foster, and Corbin Shepherd; (Front Row, L-R) Alan Mushinski, Julian MarDock, and John Artz.

The Cold North - Texas That Is

So what do you tell your friends from places like San Antonio, Laredo, and Brownsville when the bank sign flashes the time, 6:49 AM, and a temperature of 6 degrees? One answer could well be to dress warm, however the best answer is to dust off the shotgun - it's time for the Texas pheasant season.

This is what happened last week in the Texas panhandle town of Spearman when this writer and a group of good friends gathered to hunt for the Hansford County bird de Jure, the ring-necked pheasant.

In spite of the "cooler" weather the rooster pheasant were there in good supply and in spite of some, shall we say, dubious shooting skills limits were bagged. Even after 20 years hunting the area around Spearman the thrill of a flushing bird in the stubble has not decreased.

The first pheasants in the panhandle counties emigrated from western Oklahoma in 1939 or 1940. During the 1930s and 1940s landowners helped to establish pheasant populations in several areas of the panhandle.

In 1946, Paul V. Jones of the Texas Game, Fish and Oyster Commission described the pheasant population in the Panhandle as being "extremely spotty in distribution and consisting of a drifting and very intermittent population." He estimated the maximum population size at 1000 birds and remarked "the true figure is in all probability

considerably less than that." Today that number has increased many times over.

During 1950, Pheasants occupied portions of at least 18 counties, occurring primarily along tributaries, rivers, and other riparian habitat corridors of the Texas Panhandle. The face of agriculture changed drastically during the 1950s as ranching on short grass prairie and dry land farming were replaced by irrigated cropland throughout much of the High Plains and Northern Rolling Plains.

This year's hunt was better than average and fulfilled the Pheasants Forever's predictions for a great season. If you are not familiar with this conservation association it would be a good idea to look them up. They have projects in progress in Hansford County.

Our hunters this year were Sugar Ferris and Dr. John Callison from San Antonio, Julian MarDock from McKinney, John Artz, Tommy Mushinski, Alan Mushinski from Houston, Corbin Shepherd from Kerville and last but in no way least the Rev. Gary Smith from Spearman. Oh yes, yours truly did a bit of shooting also.

It was a great group of people and a great hunt. I would like to

thank Gary Smith and his wife Cathy for their hospitality. It will be worth the trip back just to visit with them.

The Texas pheasant season runs until January 1, 2006. Get out and enjoy our outdoors.

Are You A Victim of Domestic Violence, Sexual Abuse or Physical, Emotional or Sexual Assault?

Call Toll Free Hotline
1-800-753-5308

We can see individuals from Hansford County anytime upon request. Call 435-5008 or 1-800-753-5308 to set up an appointment in Hansford County. We operate a safe place for victims and their children to stay in times of crisis.

Battering Intervention & Anger Management Available

Panhandle Crisis Center
Serving Hansford, Lipscomb & Ochiltree Counties
301 S. Ash • Perryton, TX
Memorials Accepted

TxDOT supports volunteer firefighters during statewide fire emergency

Texas Governor Rick Perry, through the State Operations Center, has asked the Texas Department of Transportation (TxDOT) to provide statewide assistance to volunteer fire departments that are fighting wildfires.

The Amarillo District of TxDOT is prepared to provide fuel, equipment, and traffic control to volunteer fire departments across the panhandle that qualify for the assistance.

On Sunday, January 1, 2006, the Hereford section of TxDOT provided 68 gallons of gasoline and 118 gallons of diesel fuel to Hereford-area volunteer fire departments fighting a grass fire in Deaf Smith County. Smoke from the fires forced the Department of Public Safety and TxDOT to temporarily close US 60 east of Hereford. TxDOT crews also provided gasoline to motorists who were running out of fuel on US 60 while waiting for the roadway to reopen.

In addition to the fuel, the Hereford section also provided 7 employees, 4 pickup trucks, a sign truck, a flatbed truck, a dump truck, a trailer, and a message board to assist in controlling the blaze.

January 3rd, a red flag warning was posted for the Texas Panhandle. Winds are in excess of 40 mph, and conditions are ideal for wildfires to get out of control.

So far 75 counties across the state have burn bans in effect. Counties in the Amarillo District of TxDOT that have declared burn bans as of January 3rd, include Armstrong, Deaf Smith, Gray, Hartley, Hemphill, Hutchinson, Moore, Oldham, Potter, Randall and Sherman. Counties without burn bans include Hansford, Lipscomb, Roberts, Ochiltree and Dallam.

Crop Protection Clinics To Be Offered This Month in Panhandle

by: Kay Ledbetter

Area producers and crop advisors have an opportunity to earn continuing education credits at four Crop Protection Clinics this month.

Attendees will have eight concurrent one-hour sessions to choose from at each clinic. The clinics are sponsored by Texas Cooperative Extension, Pioneer Hi-Bred International and DuPont.

Clinics, each scheduled to run from 9:30 a.m. to 3:30 p.m., will be held: Jan. 9, Rita Blanca Coliseum in Dalhart; Jan. 10, Moore County Community Building in Dumas; Jan. 12, Hansford County Barn in Spearman; and Jan. 13, Carson County Ag Building in Panhandle.

Texas Department of Agriculture has approved five continuing education units for each meeting. Certified crop advisor continuing education units also will be available.

- Topics are:
- Major diseases and insects for corn, as well as refuge requirements for Bt rootworm corn;
 - Weed management in strip-till, as well as drift control and tank contamination issues;
 - Alternative crops such as canola and cowpeas, and possible pest concerns;
 - Crop irrigation and efficiency, regulations for chemigation;
 - Reduced tillage for moisture and soil conservation;
 - Grain sorghum production for both dryland and irrigated grain sorghum, including fertility management and fertilizer economics;
 - Insect control strategies for irrigated cotton; and
 - Sunflowers, including fertility management and economics.
- For more information, contact the local county Extension office.

Eat & Be Merry At

BBQ & STEAK HOUSE

Hotline for Friday & Saturday Nights - 435-3945

We offer Priority Seating!
Give us a call before leaving, and we will save you a place in the seating line.
When you arrive, check in with the hostess.

New Menu (10 new items)
Wed. Night - All-You-Can-Eat Catfish

14 SE 3rd Ave. Perryton, TX

Tong's Chinese Restaurant

511 S. Hwy. 207 • 659-2838 • Spearman

All-You-Can-Eat Buffet Specials

- Tuesday - Steak \$7.99
- Friday - Shrimp \$6.50
- Saturday - Catfish \$6.50
- Mon., Wed., Thurs. & Sat. \$5.50

Buffet Hours: 11 a.m.-2:30 p.m. and 5:30-Close

MITCHELL THEATRES
NORTHBRIDGE CINEMA 8

Guymon, Oklahoma

Movies beginning Jan 6

HOSTEL
R - Jay Hernandez & Derek Richardson

SYRIANA
R - George Clooney & Matt Damon

CHEAPER BY THE DOZEN 2
PG - Steve Martin & Hilary Duff

FUN WITH DICK & JANE
PG-13 - Jim Carrey & Tia Leon

THE RINGER
PG-13 - Johnny Knoxville

RUMOR HAS IT
PG-13 - Jennifer Aniston & Kevin Costner

KING KONG
PG-13 - Naomi Watts & Jack Black

CHRONICLES OF NARNIA
PG - The Lion, Witch & Wardrobe

FRESH POPCORN EVERYDAY!
-PARTY ROOM & ARCADE-

Call for Showtimes
580-338-3281
www.northridge8.com
Office - 580-338-8969
CASH & CREDIT CARDS ONLY
THANK YOU!

CHANGE YOUR PHONE COMPANY, NOT YOUR NUMBER.

Nobody likes change, unless it's good. So, make the easy switch to PTCI where the service is really good and you can keep the same telephone number you have now.

You'll like the change.

- Local office, local people
- Local and long distance service
- Cable TV • High Speed Internet
- One bill convenience
- Valuable calling features

Bringing Your World...Home.

Office Hours M-F
8:30 am - 12:30 pm
1:30 pm - 5:30 pm

721 W 7th Ave
Spearman
1-800-562-2556
ptcispearman.net