

INSIDE

Karen's Kozy Komer.....3
Sports.....6,7
Classified Ads.....9
Obituaries.....10

The Hansford County Reporter-Statesman

Serving All of Hansford County

10 pages

WEATHER

Day	Hi	Lo	Precip
Thu	61	45	0.00
Fri	63	42	0.03
Sat	82	49	0.01
Sun	70	54	0.00
Mon	76	42	0.00
Tue	72	55	0.00
Precip to date			14.76

Vol. 83, No. 48

213 Main

Spearman, Hansford County, Texas

25¢

Thursday, September 26, 1991

County fair this weekend

by JoAnn Morton
Editor

Area residents are reminded the Hansford County Fair is scheduled for Thursday, Sept. 26 through Sunday, Sept. 29 in Gruver.

Exhibits will be placed in the Gruver Elementary School gym, and the steer and lamb show will be in the Gruver County Barn for the 1991 edition of the fair. Food booths will also be available for fair-goers.

Additional enticements to this year's fair include a dog show, which will be staged on the Gruver Elementary playground; a dance, which will take place in the Sparks Brothers hangar at the Gruver municipal airport; and roping at the Gruver roping arena.

A very special event will be the Hansford County Fair Variety Show, scheduled for 6:30 p.m. Saturday, Sept. 28 in the Gruver High School auditorium.

The fair will start at 3 p.m. Thursday, Sept. 26, when the gym opens to accept non-perishable exhibits. These will include art, needlework, crafts and hobbies, tole painting, china painting, antiques, clothing, photography, canned goods and quilting. The building will close at 8 p.m.

On Friday, Sept. 27, both perishable and non-perishable exhibits will be accepted from 9 to 11 a.m. at the gym. The exhibits will be judged from 11 a.m. to 3 p.m., and the building opens to the public at 4 p.m. for viewing exhibits. Concession stands will also be open at that time. The exhibition will close at 7 p.m.

The fair really gets under way Saturday, Sept. 28 at 8 a.m. Registration for the dog show will be from 8:30 to 9 a.m., and weigh-in for steers will be from 9 to 10 a.m. Lamb weigh-in is

set for 9 to 11 a.m. that day. The dog show will begin at 9:30 a.m., and the steer and lamb show will begin at 11:30 a.m. Saturday.

The variety show will provide fun family entertainment at 6:30 that evening, in the high school auditorium. The fair closes at 8:30 p.m. Saturday.

Beginning at 9 p.m. in the Sparks Brothers hangar, the band "Slow Motion" will provide country/western music for a dance. Admission to the dance is \$12 for couples and \$7 for singles.

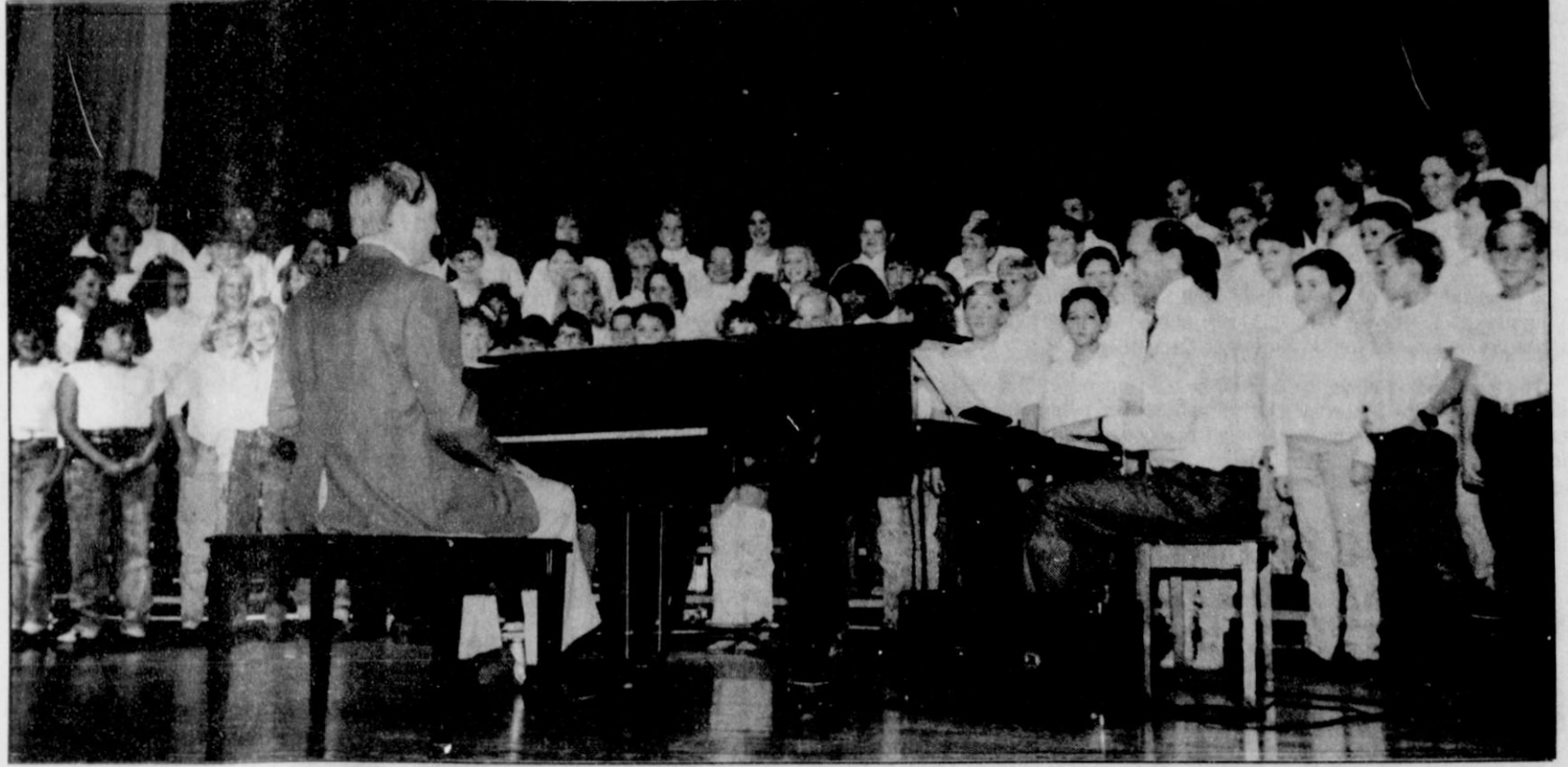
Sunday events will include calf roping and breakaway roping, to begin at 10 a.m. at the Gruver roping arena, just east of town on Highway 15. A break in the action at noon will provide time for church services, also to be held at the arena.

Then at 1 p.m. the arena will again be the site for activity when barrel racing competition starts, followed by team roping.

Removal of exhibits from the gym will take place from 1 to 3 p.m. on Sunday, Sept. 29, the last official day of the 1991 Hansford County Fair.

Potential exhibitors should take note of the fact that this year's fair has two new departments for entry: literary (creative writing), and quilting.

Entries are open for competition to adults, school children, 4-H members, FFA members and FHA members who live in Spearman Independent School District, Gruver Independent School District, and/or Pringle-Morse Independent School District. The jackpot show is open to all bona fide 4-H or FFA members from any state, county or school district. All entries to the fair are welcome.



The Spearman fifth grade choir entertained at the Spearman PTA's first meeting of the year on Monday, Sept. 23. The fifth graders sang several patriotic and religious songs, accompanied

by their director, Eddie Gail Martin, on piano and by Jeff Burress on electric keyboard.

Hansford County...

Commissioners say no re-districting

by JoAnn Morton
Editor

Re-districting for commissioners' precincts in Hansford County was discussed at the Hansford County Commissioners' Court meeting on Monday, Sept. 23.

According to Hansford County Judge Jim Brown, the consensus among commissioners was that there is no need to re-district the county.

Other business for the commissioners' court included selection of a health plan re-insurance carrier. Brown explained that the county is self-insured, but that claims over

\$10,000 are paid by supplemental insurance. The supplemental insurance carrier will be American Continental Insurance Co., he said.

Commissioners also set a salary for Steve Cross, district attorney for Hutchinson and Hansford Counties. Brown said that according to Title 2, Sec. 46.003 Cross, as a professional prosecutor, will be given the same salary as the highest paid district judge in the district. He will also be

furnished an office in the Hansford County Courthouse.

Commissioners discussed the appointment of a Hansford County Appraisal District board member. Brown explained that the position is to represent Morse, and that the other taxing entities in the county are to give approval, but a board member has not yet been appointed. The item was tabled until the next commissioners' court meeting.

The commissioners' court approved road easements for Maxus Exploration and for Danny McLaughlin.

Final amendments to the 1990-91 budget were approved. Regular business for commissioners included approval of minutes of the previous meeting, receiving the treasurer's report and report of investments, and approval of claims for payment.

School boards set tax rates

Spearman ISD rate set at 37 cents

During a special meeting of the Spearman ISD Board of Trustees, a unanimous vote set the local school property tax rate at 37 cents per \$100 evaluation.

This brings the total Spearman school property tax rate to \$1.15 per \$100 evaluation. A person owning a \$50,000 dollar home will pay \$575 dollars in property taxes this year.

The board approached the tax issue by having each member propose a total rate figure. The figures ranged from a low of \$1.11, proposed by Carl Kunselman and Kerry Henton, to a high of \$1.17, proposed by Charles Shieldknight.

During the discussion it was brought out that if the board adopted a total rate less than \$1.15 the district would have to use approximately \$100,000 in local reserves to meet its adopted 1991-92 budget. It was also pointed out that if the board had to adopt a higher tax rate next year to meet increasing operating costs, a lower rate this year will hamper that effort.

Shieldknight supported his higher-than-needed proposal to balance the budget rate by stating his concern about how much and when the district might get its CED money this year. He summed up his position by saying, "I fought every tax increase to come down the pike, but this year we better get what we can. The CED scares me to death and I'm afraid

about what will happen next year."

According to Larry Butler, what Shieldknight fears is a mandatory increase in the CED rate (with Spearman getting less back) to 82 cents, and an increase in the 1992-93 school budget due to mandates from the Texas Education Agency.

In further business the board voted to accept a bid of \$10,071 for computer equipment for the high school computer lab. The bid was to purchase two IBM computers, eight letter-quality printers and the hardware to hook them up.

The board voted to give the school aides a total raise in salary of \$570 for the year. According to Butler this equals the raise received by the school teachers in the district.

The board heard reports from three of the district education improvement strategy committees. The first to report was Richard Olsen and Ronnie Lusby. They reported on the committee to establish a system of staff development and curriculum improvement.

They reported that their committee recommends that the district implement a district-wide departmentalization system, with heads of each department meeting weekly to exchange information about what is going on in their departments and to voice concerns about what the district as a whole is doing.

The second strategy report was delivered by Don Townsen and Freda Burgess. They reported on the staff development to teach higher-order thinking skills. They indicated that there needs to be a greater emphasis placed on teaching problem-solving skills to the students in Spearman ISD. They stated that a majority of the students in the Spearman school district had trouble solving mathematical word problems. They pointed to the performance of Spearman students on the Texas Assessment of Academic Skills test from last year as evidence.

Burgess and Townsen reported that their committee recommends the district form an 11-person task force to oversee a district-wide training regimen for teachers, to help them teach higher-order thinking skills to their pupils. The task force would set up the training and the school principal would oversee its implementation.

The final report was delivered by Elodia Bravo, representing the committee to increase the number of Spearman graduates attending college. She reported that the committee's goal is for 80 percent of the Spearman graduates to attend a college in 1992.

Bravo stated that her committee proposes several strategies to accomplish its goal. The committee recommends there should be more Hispanic role models in the schools. The schools should have career awareness at all grade levels, and the parents of students entering Spearman High School should be provided with more information about high school courses and how they relate to what their child can do after high school graduation.

In a final piece of business the board responded to a request by Jim Kirkland, Spearman High School principal, to clarify a high school budget item. He wanted the board to indicate whether the high school could purchase a Scan Tron grading machine, and the board gave approval.

To benefit St. Jude's Hospital

Bike-A-Thon set for Oct. 12

St. Jude Children's Research Hospital has announced that Bob Farr will coordinate the Spearman "Wheels for Life" Bike-A-Thon. The date of Saturday, Oct. 12 has been selected for the ride.

Bike-A-Thon participants will gather at the Rocket Slide Park, across from Spearman High School, beginning at 9 a.m. that day.

Farr said that riders who raise at least \$30 will receive a certificate and a special St. Jude t-shirt. Riders who raise at least in pledges \$75 will receive a barrel tote bag in addition to the certificate and t-shirt.

Farr encourages participation in the Bike-A-Thon by both children and adults of all ages. He added that refreshments will be furnished.

Pledge cards will be available at the schools and at various businesses locations throughout Spearman.

Founded by Danny Thomas in 1962, St. Jude Children's Research Hospital is the largest childhood cancer research-treatment-education center in America. Although located in Memphis, Tenn., the hospital has a local impact because area doctors and hospitals can use treatments and procedures developed at St. Jude.

St. Jude Hospital is non-sectarian, interracial and provides medical care for over 3,600 active patients. Currently, over \$100,000 is needed each day to keep the doors open. These funds come primarily from public contributions.

This year's Bike-A-Thon is dedicated to Brooke Simon. Six-year-old Brooke, from Delcambre, La., developed Wilms Tumor in November 1988. Following the removal of her left kidney, she has undergone radiation and chemotherapy. Though her prognosis is good, her fight still continues.

Spearman city council...

Landfill contract amended

The Spearman municipal landfill was a subject of discussion for the Spearman City Council at its Tuesday, Sept. 17 meeting.

According to minutes from the meeting, the council voted to amend Spearman's contract for solid waste disposal with the City of Gruver. It was noted that the amended contract will reflect a 7 percent increase in fees in addition to an increase per ton of the solid waste "tipping fee" which is mandated by the state.

The Spearman landfill is also in violation of several new regulations, and council members discussed the violations but took no action at this meeting.

In other business, a new animal control ordinance was adopted by the council which entirely replaces the former ordinance. The new ordinance was drawn up after months of study by an ad hoc committee.

Council members voted to enter into an agreement with Hansford County, Hutchinson County and Ochiltree County for fire protection and rescue services for one year beginning Oct. 1. It was noted that the agreement is the same as that approved last year.

A resolution was approved which adopts and implements an anti-drug program for the employees of the City of Spearman. The anti-drug program was reviewed by the Texas Railroad Commission, which advised that certain amendments be added.

Those amendments included listing the city manager as an employee subject to drug testing, and lowering estimated property damage amounts.

City employee service credits toward retirement were discussed. It was noted that updated service credits had been adopted annually, but the city can now update service credits automatically through an or-

dinance. The ordinance was adopted.

Regular business for the council included approval of minutes of previous meetings; approval of monthly fire, ambulance, police, municipal court and animal control reports; approval of monthly bills payable in the amount of \$114,387.70; approval of current cash position; and approval of the revenue and expense report for July.

Gruver's wastewater plant needs repair

by JoAnn Morton
Editor

Gruver City Commissioners worked a short agenda at their Wednesday, Sept. 18 meeting.

According to City Manager A.J. Ratliff, the commission discussed the city's wastewater treatment plant, noting that repairs are needed in the aeration system. After discussion, the city engineer was instructed to check into options for replacements for the aeration system.

Discussion of a new sanitation truck for the city was on the agenda, but the commission took no action on the item. It was noted that commis-

sion members will attend the Texas Municipal League annual meeting, to be held in Fort Worth in October. New equipment of this sort will be on display, according to Ratliff, and a decision about a new sanitation truck will be made after a perusal of offerings at the TML meeting.

Appointment of two members to the Hansford County Appraisal District board was tabled until the next meeting.

Regular business for the Gruver City Commission included approval of minutes of its Aug. 14 and 29 meetings, and approval of accounts payable for August 1991.

Gruver ISD rate set at \$.3338

The Gruver School Board of Trustees set the local property tax rate at .3338 cents per \$100 of property evaluation, according to Tommy Cathey, GISD superintendent.

The rate was set at a special board meeting on Thursday, Sept. 19. Cathey said he had presented several taxing options from which the board could choose. The one chosen will raise enough revenue to just cover the \$3.167 million budget the board accepted at a previous meeting.

The local rate added to the county education district rate of 78 cents will bring the total school property tax

rate to \$1.10838. A person owning a \$50,000 home will pay \$554.19 in school property taxes this year.

In further business, Cathy reported the board voted to amend the district's sick leave policy. The board voted to add two days of sick leave to all full-time employees' benefit packages. The two day are non-cumulative and can be used for personal illness, illness of a family member or in case of a death of a family member.

The board concluded business and adjourned.

Hansford Happenings

Spearman Volunteer Fire Department has established a fund at First State Bank of Spearman to benefit Stanley Hudson, former Spearman resident. Hudson, now a Pampa resident, sustained numerous severe injuries in a Labor Day vehicle accident. Anyone wishing to contribute to the fund can contact the First State Bank.

Applications are currently being taken for the Panhandle Community Services Weatherization Program. This program provides free weatherization of low income homes with emphasis on homes of elderly and handicapped individuals. Weatherization can reduce the cost of utility bills up to 30 percent, allowing these individuals to live in a better home environment. Money to provide for this free service is a result of a fund for energy conservation by the state and federal government. For more information, contact Panhandle Community Services at 417 Amherst, Perryton, TX 79070, or call 435-2478.

The kick-off of monthly support group meetings on Alzheimer's disease will be Sunday, Oct. 6 at 2 p.m. in the Hospitality Room of the First State Bank of Spearman. The public is invited to attend the support group and share with others. More information is available by calling Hansford Manor at 659-5535.

Anyone who wishes to sell crafts at the Hansford County Fair on Friday and Saturday, Sept. 27 and 28, should call Fran Duncan at 806-733-2866 or 733-5215.

Spearman PTA's Fall Festival is scheduled for Saturday, Nov. 9. Any club or organization interested having in a booth should contact Debbie Clements at 659-2191 or Lyn Woolley at 659-3550. Both food booths and game booths are needed.

A representative of the Pampa Social Security office will visit Spearman on Thursday, Oct. 10 from 10 to 11:30 a.m. at the Hansford County Courthouse. No visits are scheduled for November or December.

The Panhandle Relays, sponsored by the Spearman Chamber of Commerce, are scheduled for Saturday, Oct. 19 at 7:30 a.m. Information and entry forms can be obtained from the Spearman Chamber of Commerce office at 211 Main in Spearman, 659-5555.

Girl Scouts active

Junior Girl Scout Troop 126 has been activated for the year.

At a recent meeting, Cadette Girl Scouts Amber LaRochelle and Kelli Cummings visited the troop to show how a flag ceremony is performed.

After refreshments, troop members discussed their ambitions for the year's activities and created a "Treasure Box" of ideas. Some said they would like a sleepover, others mentioned bowling and skating, some suggested a visit to the Discovery Center and a special Christmas surprise.

Next week, the troop will begin National Poster Contest on "Girl Scouts

Care for the Earth."

The girls worked on their dance badge, learning the Electric Slide by dancing to "Everybody Dance Now." They also learned how to do the Roger Rabbit, the bird, running man and several other dance steps. They paid a visit to Paula's Dance Studio to observe their dance classes.

Any girl interested in Girl Scouting can still join a troop at any level of Scouting. Juniors meet on Wednesday after school from 4 to 5 p.m. at the Girl Scout Little House at 22 S. Endicott. All fourth, fifth and sixth graders are welcome to drop by on Wednesday, or call Carolyn Cummings at 659-2106.

Chamber Chatter

by Cindy Blackman

On Tuesday, Sept. 17, Monty and I went to the Gruver Chamber of Commerce banquet in Gruver. They had a real good attendance and the food was delicious. Jerry Williams and family catered the meal. Kenneth Wyatt was the speaker and as usual he was great entertainment. Thanks to A.J. Ratliff and the Gruver chamber for the tickets.

On Oct. 1, from 6:30 p.m. to 9:30 p.m., the chamber will sponsor a small business seminar at the First United Methodist Church fellowship hall. Don Taylor, director of the WTSU Panhandle Small Business Development Center, will conduct the workshop. The text will cover "Surviving the 1990s." Don is an excellent speaker and will have a few good ideas that we as small business owners can use. Contact the chamber office at 659-5555 for information and to register for the seminar.

Let's not forget the Hansford County Fair this weekend. There are lots of people from Spearman and Gruver who have put in a lot of time

to make this a good fair, so let's go out and show them we appreciate what they have done. Look for the chamber booth to see the picture. Buy a chance and see how many people you can recognize! The booth will be open Saturday starting at 8 a.m. and will close around 6 p.m.

The chamber is operating with just one person - me - now, so please be patient. If for some reason I need to leave the office, I will leave a note. The answering machine will also help me to take messages so please use it. Lots of chambers run this way. Just be ready to talk to a machine sometimes.

I hope everyone got out Tuesday night and took advantage of Moonlight Madness. That really seems to be a big success and the whole community gets involved in it. You would be surprised at the people who actually start their Christmas shopping that night! I can't believe there are people who are that organized. Maybe someday I will be!

9-1-1 system to be activated Oct. 3

Telephone subscribers in the Spearman (659), Gruver (733), Guyton (339) and Hardesty (882) exchanges will be able to access 9-1-1 services beginning Thursday, Oct. 3.

The announcement was made in a press release from the Panhandle Regional Planning Commission, which has been in charge of setting up the 9-1-1 service.

The 9-1-1 system in Hansford County is among the first of 23 planned systems to be implemented across the Panhandle.

The availability of 9-1-1 service in

Hansford County was made possible through a cooperative effort with Hansford County, the Cities of Spearman and Gruver, the Panhandle Regional 9-1-1 Network and the Panhandle Regional Planning Commission.

Local elected officials, law enforcement, emergency medical services, fire department personnel, local businesses and the citizens of the area have volunteered their services to ensure that the 9-1-1 system will be successful, said the release.

Drilling permits up, completions down

AUSTIN - A total of 1,114 drilling permits were issued by the Railroad Commission in August, according to RRC Chairman Lena Guerrero. In July, the total was 1,111. August 1990's total was 1,359.

The August total included 674 permits to drill new oil and gas tests, 41 to re-enter existing well bores, 29 to deepen existing holes, 152 to plugback existing holes, and 59 for other wells. Operators were also issued 159 amended drilling permits.

Guerrero said permits issued for new oil and gas holes in August included 44 in the San Antonio area, 34 in the Refugio area, 44 in Southeast Texas, 52 in deep South Texas, 20 in East Central Texas, 60 in East Texas, 91 in West Central Texas, 81 in the San Angelo area, 69 in the Midland area, 56 in the Lubbock area, 97 in North Texas, and 26 in the Panhandle.

In the first eight months of 1991, the Commission has issued 9,511 drilling permits, a 6 percent decrease from the 10,071 issued during the same period of 1990.

The 1,114 permits issued in August included 502 oil permits, 174 gas permits, 387 oil and gas permits, 27 injec-

tion permits, nine disposal permits and 15 other permits.

Texas oil and gas operators reported 211 gas and 472 oil completions in August, according to Guerrero. In July the total was 267 gas and 468 oil completions. August 1990's total was 244 gas and 479 oil completions.

Gas completions in August included one in the San Antonio area, 25 in the Refugio area, 15 in Southeast Texas, 89 in deep South Texas, six in East Central Texas, 34 in East Texas, 10 in West Central Texas, 17 in the San Angelo area, eight in the Midland area, seven in North Texas, and 19 in the Panhandle.

Oil completions included 66 in the San Antonio area, 20 in the Refugio area, 48 in Southeast Texas, 17 in deep South Texas, 10 in East Central Texas, 16 in East Texas, 40 in West Central Texas, 35 in the San Angelo area, 82 in the Midland area, 53 in the Lubbock area, 70 in North Texas, and 15 in the Panhandle.

Total completions reported in August included 472 oil, 211 gas, and 75 service completions. In August 1990, operators filed 479 oil, 244 gas, and 53 service completion reports.

In the first eight months of 1991 the Commission has recorded a total of 6,811 well completions, a 7 percent increase from the 6,336 well completions recorded during the same period of 1990.

Guerrero said operators reported 754 holes plugged in August, compared to 1,247 in July. A total of 107 dry holes were reported in August, compared to 200 in July.

Police Files

Gruver Police Department

A gas leak in the 100 block of Etling was reported on Monday, Sept. 16. According to Police Chief Steve Gaines, a vehicle apparently ran into a gas meter.

On Monday, Sept. 16, Gruver police received a report of a domestic dispute involving two women in the 100 block of East 10th.

On Tuesday, Sept. 17, a calf was reported out on the roadway in the 100 block of Highway 15. The calf was run off the road into a field. Its owner could not be located.

On Wednesday, Sept. 18, police received a report of a theft from the First Baptist Church of Gruver. Gaines said that the offering from Monday and Tuesday's revival meetings was reported taken. Then, on the morning of Friday, Sept. 20, Gruver State Bank reported to police that several checks from the church's offering had been left in the bank night depository. The checks were valued at \$265, which brought the total loss in the theft at \$50 to \$60

in cash, said Gaines.

On Thursday, Sept. 19, a woman called from Oklahoma, saying she had left her checkbook at Allsup's several days before. She said she had contacted the clerk to ask that the checkbook be returned, but had not received it. She asked that an officer go to Allsup's and inquire. The store clerk advised police that the checkbook had been mailed that day.

Police responded to an alarm in the 100 block of Main on Friday, Sept. 20. It was determined to be a false alarm.

Also on Sept. 20, a hit and run accident was reported in the 800 block of Womble. A vehicle had run into a fence, causing minor damage.

On Saturday, Sept. 21, an officer was dispatched to Allsup's to check on a malfunction in the store's cash register. The officer was unable to repair the machine.

On Sunday, Sept. 22, four skunks were reported in the 100 block of Cooper. The animals were destroyed by police.

Sales tax analyzed

The State Comptroller's Office has released a county-by-county analysis of the state sales and use tax for the first quarter of 1991.

In the retail trade division, Hansford County had 78 reporting outlets in the first quarter of this year, as compared with 89 reporting outlets in the first quarter of 1990. Those retail trade outlets reported gross sales of \$8,451,214 in January, February and March of this year, down 9.9 percent from the \$9,381,930 in gross sales reported during the same period of last year.

Use tax purchases for the reporting outlets totaled \$4,578 in first quarter 1991, and \$2,733,566 was listed as the amount subject to state sales and use tax.

For all industries in Hansford County during first quarter 1991, there was a total of 134 reporting outlets, down from 163 in the first quarter of 1990. They reported gross sales of \$14,868,013 during the first three months of this year, which is down 1.1 percent from the gross sales of \$14,930,957 reported in the same period of 1990.

Use tax purchases totaled \$89,461 in

the first quarter of 1991, while the amount subject to state sales and use tax totaled \$4,360,232.

The comptroller's office defines reporting outlets as the number of individual business locations with a sales and use tax permit who filed a return. Gross sales is defined as the total amount of all sales, leases and rentals of tangible personal property and all labor and service charges made during the reporting period.

Use tax purchases are defined as the cost of all taxable items removed from inventory for personal or business use and all purchases on which no Texas sales tax was paid or use tax accrued. Taxable sales are not listed on the report, but an explanation is needed in order to understand the amount subject to state sales and use tax. This is the total amount of sales, leases and rentals of taxable personal property and taxable labor and service charges made during the reporting period.

The amount subject to the state sales and use tax is calculated by taking taxable sales and adding use tax purchases.

DPS gives statistics

Capt. Rusty Davis, district supervisor of the Amarillo Highway Patrol District comprising 31 counties, announced that for the month of August, troopers investigated six fatal accidents, 75 personal injury accidents and 88 property damage accidents. There were nine persons killed and 106 persons injured in these accidents.

Sgt. Timothy Thompson of Borger said that in Hansford County, troopers investigated two personal injury accidents and one property damage accident in August. Two persons were injured in these accidents.

Lookin' back

5 YEARS AGO...

Thursday, Sept. 25, 1986

Kevin Bynum was inducted as a new member in the Spearman Rotary Club.

Dusty Hill, Matt Tucker, Will Black, David Cazarez and Scott Swan were named "Outstanding Players of the Week."

Spearman Study Club President Virginia Young, presented a check for \$100.00 to Eschol Blankenship to be used for the new "Teen Town" project in Spearman.

10 YEARS AGO...

Thursday, Sept. 24, 1981

The crowd at the Gruver football game on Friday night set an all-time attendance record at the Gruver Stadium.

Sevitors members were kidnapped at their homes by five "gangsters" late Saturday night. They were taken to the Lyric Theatre where they were given rations of popcorn and coke while watching the movie "Stripes."

15 YEARS AGO...

Thursday, August 5, 1976

Janie Renae Kirkland, daughter of Mr. and Mrs. W.E. Kirkland of Spearman, was selected for inclusion in the 1976 edition of "Outstanding Young Women of America." She is a 1966 graduate of SHS.

Society News Policy

In order to serve the public better and to avoid misunderstandings, it is necessary that certain guidelines be followed when submitting an article for publication in the Reporter-Statesman. Deadline for running stories in the Reporter-Statesman is noon Tuesday.

For club reports and other general news stories in the Reporter-Statesman, an article will not be published more than two weeks after the event.

Wedding stories and birth announcements will not be published more than three weeks after the event; however, a wedding story without photo will be published up to four weeks after the event.

Engagements should be announced four to six weeks before the wedding.

Anniversary announcements and articles will only be written for local residents celebrating their 25th, and every fifth year after that.

Birthday celebrations will only be written for local residents who are 70 years old or older. All other birthday wishes may be submitted to the advertising department.

There is no charge for publishing weddings, engagements, anniversaries or any other article in the Reporter-Statesman, provided they are turned in by the deadline. The Reporter-Statesman has forms available upon request for weddings, engagements and birth announcements.

In the area of photographs, color prints will be considered, but as a general rule, black and white reproduce better.

The Reporter-Statesman reserves the right to reject or edit any and all copy submitted.

To submit an article or obtain more information, contact the Reporter-Statesman, from 8 a.m. to 5 p.m. Monday through Friday, at 659-3434 in Spearman or 1-800-395-9482 outside Spearman.

Hospital Notes

ADMISSIONS

Thursday, Sept. 19 - Buck Mosley
Friday, Sept. 20 - Gary Cates
Saturday, Sept. 21 - Mary Johnson, Albert Mackie
Sunday, Sept. 22 - J.W. Davis, Thelma Mitchell
Monday, Sept. 23 - Bruce Sheets
Tuesday, Sept. 24 - none

DISMISSALS

Thursday, Sept. 19 - none
Friday, Sept. 20 - Silas Dozier
Saturday, Sept. 21 - Gary Cates
Sunday, Sept. 22 - Buck Mosley, Albert Mackie
Monday, Sept. 23 - Mary Johnson
Tuesday, Sept. 24 - J.W. Davis

PATIENT CENSUS

Wednesday, Sept. 25 - Thelma Mitchell, Bruce Sheets

At The Lyric Theatre . . .
Friday, September 27 - Tuesday, October 1
Bargain Nights Mon. & Tue. All Seats \$3
Closed Wednesday & Thursday

Screen 1 - 7:30 p.m. Screen 2 - 7:15 p.m.

THE MOTHER OF ALL MOVIES!

Bill & Ted's Bogus Journey
IT'S A TRIP.

PG-13

113 Main, Spearman

Good neighbors with good advice for saving energy

You can reduce energy waste by taking a few simple steps to lower the amount of energy needed to heat water in your home. For many water heaters an insulation blanket is an easy way to save energy. A leaking hot water faucet wastes energy so check regularly for leaks.

For more ways to save energy, call or visit your local TNP office today and ask for a copy of the "Energy Management Guide."

9/1/91

Texas-New Mexico Power Company. Sue Smith, West Columbia, Texas, clerk.



The Hansford County Reporter-Statesman

"Serving All Of Hansford County"

USPS 509600
213 Main, Box 458, 659-3434
Spearman, TX 79061

Published Weekly at
213 Main, Spearman, Texas

Owned and Operated by:
Texas Independent Newspapers, Inc.
15915 Alsace
San Antonio, TX 78232
(512) 545-1739

Second Class postage paid at Spearman, Texas 79061.

Any erroneous reflection upon the character of any person or firm appearing in these pages will be gladly and promptly corrected upon being brought to the attention of the management.

Publisher - Robert M. Hulett
Editor - JoAnn Morton
Bookkeeper - Sheila LaRochelle

Subscription Rate: Hansford County, \$19.95; out of county, \$24.95 annually.

Postmaster: Send address changes to Hansford County Reporter-Statesman, Box 458, Spearman, TX 79061.

The publisher reserves the right to revise or reject at its option any advertisement which it deems objectionable, either in subject or phraseology, or which it may deem detrimental to its business.

Advertising and Story Deadlines: Tuesday, 12:00 p.m.

T-2 MEMBER TEXAS PRESS ASSOCIATION

Karen's Kozy Korner

by Karen Schmitzke

Job Stress

Do you come home physically and emotionally drained? Do you have little enthusiasm for dealing with family or personal matters? Do you dread going to work every day? Do your head hurt, your stomach churn and your body ache? Do you smoke too much, take too many pills or drink too much alcohol?

You may be among tens of millions of American workers who are suffering from job-related stress, a problem far more common than either workers or employers realize.

A recent national survey by a Minneapolis-based insurance company found that cutbacks in personnel and employee benefits are major contributors to a national epidemic of job stress. In the random sample of 600 full-time workers in all types of jobs, 72 percent said they suffered from three or more stress-related conditions very often or somewhat often.

Stress-related problems most often mentioned included exhaustion, anger or anxiety, muscle pain, headaches, insomnia and gastrointestinal disorders. Some workers reported as many as eight or more stress-related ailments.

The growing problem of job stress on employees takes its toll by increasing job turnover and absenteeism and decreasing productivity. One-third seriously considered quitting last year to reduce their stress, while 14 percent actually did quit or change jobs. Those who were stressed-out presumably functioned at a less-than-ideal level.

Major causes of the job stress were identified in the survey:

- Little personal control allowed in doing one's job.

- Reduction in employee benefits.
- Merger, acquisition or a change in the company's ownership.
- Reduction in the size of the work force or position cuts.
- Major departmental reorganizations.
- And frequent requirement for overtime work.

More than half of the workers who suffered burnout said their employers did not have supportive work and family policies and did not have effective lines of communication. Forty-nine percent said their employers did not provide health insurance for mental illness and chemical dependency; and 39 percent complained of inflexible work schedules.

It's the smart worker who takes charge of their work and family pressures before job stress creates mental or physical health problems. Failure to cope with job-stresses may be more difficult than changing jobs.

When Adult Children Move Back

If an adult child is out on his own, what he does is no longer under parents' jurisdiction. It's one thing to give adult children advice or express opinions when they live away, but

when the over-twenty "child" moves back home to live (or hasn't moved out yet), clear ground rules have to be established to avoid conflict.

Some suggested rules are:

- Everyone pays his or her own way. If an adult child is out of work, parents may want to help out by providing room and board temporarily, but not forever. Charging a reasonable rent and a share of household expenses is in order.

- Everybody shares housework. Make a list of all household chores and agree on who does what.

- Everybody says when he/she is coming home. This is not keeping tabs. It keeps the family from worrying and makes meal and activity planning easier.

- Everyone sees to his/her personal needs. It's no longer the parents' responsibility to make doctor's appointments, take clothes to the cleaners, provide clean socks or make sure the car has gasoline.

- Everyone shows consideration for others in the household. This is a major task since it encompasses everything from checking before inviting guests over to avoiding loud music to opening mail belonging to others.



Mrs. Rowland's fifth grade APT class visited the First National Bank recently. Bill Pittman, bank president, offered insight into small business enterprising. The students kicked off their "Great Student/Great Parent" campaign for their APT class assignment. They have

designed t-shirts for sale to the public and will be learning the fundamentals of small business enterprising. The students hope to make profit enough to send their entire fifth grade class on a field trip to Amarillo to see "A Christmas Carol" and visit area cultural exhibits.

4-H district level...

Bake show winners announced

4-H youth competed at the District I Better Bake Show on Saturday, Sept. 14. The Bake Show is sponsored by the Tri State Fair Association, Arrowhead Mills Inc. of Hereford, and the Texas Wheat Producers Association.

4-H youth participated throughout the year in a number of educational workshops. These events were designed to promote knowledge in learning about the nutritional value of wheat products in the diet as well as skills of planning, preparing, serving and scoring products made with

the Panhandle's major agriculture product.

Senior winners in this year's product contest included Kristy Hornfeld, Oldham County, first place; Lori Urbanczyk, Deaf Smith County, second place; and Karla Kunselman, Hansford County, third place.

Senior project record form winners included Salem Callahan, Potter County, first place; Kristy Hornfeld, Oldham County, second place; and Corey Frost, Ochiltree County, third

place.

Junior product winners included Craig Scarborough, Moore County, first place; Dara Whately, Carson County, second place; and Nicole Bowers, Dallam County, third place.

Junior project winners were LeWayne Lyckman, Hutchinson County, first place; Shannon Shores, Lipscomb County, second place; and Becca Mathews, Armstrong County, third place.

Lynn Griffin, manager of the Tri State Fair Association, presented cash, ribbons, plaques, and flour awards to winners and participants.

Other senior product contestants and their counties included Stefan Hardin, Carson; Bobby Stull, Dallam; Dee Ann Sisco, Hartley; Sherry Graham, Hemphill; Jacey Smith, Hutchinson; Corey Frost, Ochiltree; Salem Callahan, Potter; Laurie Garner, Randall; Buffy Ellison, Sherman.

Other senior project record contestants and their counties included April Cook, Carson; Holly Stull, Dallam; Jennifer Hicks, Deaf Smith; Karla Kunselman, Hansford; Dee Ann Sisco, Hartley; Sherry Graham, Hemphill; Kim Mathias, Hutchinson; Frances Gregg, Randall; and Buffy Ellison, Sherman.

Other junior product contestants and their counties included Brent Rider, Armstrong; Ashley Bridge, Deaf Smith; Angie Davenport, Gray; Ashley Brown, Hansford; Randa Clayton, Hartley; Betsy Murray, Hemphill; Ryan Hand, Hutchinson; Sean Shores, Lipscomb; Andrea Dutcher, Ochiltree; Jarrod Cook, Oldham; Joseph Callahan, Potter; Chris Williams, Randall; Hillary Baskin, Sherman; and Melissa Reynolds, Wheeler.

Other junior project record contestants and their counties included Kerri Howell, Carson; Nicole Bowers, Dallam; Ashley Bridge, Deaf Smith; Carrie Burton, Hansford; Randa Clayton, Hartley; Betsy Murray, Hemphill; Craig Scarborough, Moore; Lynnette Griffith, Ochiltree; Jennifer Brorman, Oldham; Paula Shawver, Potter; Kari Beth Garner, Randall; Hillary Baskin, Sherman; and Andy King, Wheeler.

Special exhibit to trace horse history

AMARILLO - The American Quarter Horse Heritage Center & Museum will host a special exhibit in collaboration with the Smithsonian Institution's National Museum of Natural History beginning May 16, 1992. The exhibit, entitled "Seeds of Change: The Horse Returns," explores the 500 years of encounter and exchange which have occurred since Christopher Columbus' first expedition to the Americas in 1492.

According to Jim Pfluger, director of the American Quarter Horse Heritage Center & Museum, the exhibit will open on Saturday, May 16, 1992, and run through June 6, 1993. Pfluger said, "Hosting this exhibit in collaboration with the Smithsonian brings numerous opportunities to our community. 'Seeds of Change: The Horse Returns' will have tremendous educational value, especially for our young people."

Pfluger added, "This historical exhibit will open May 16, the same weekend as Amarillo's popular All-Ranch rodeo. The western heritage celebrated by the rodeo's participants and fans relates well with the 'Seeds of Change' exhibit."

The Smithsonian will open its "Seeds of Change" exhibition October 26, 1991 through April 1, 1993. The exhibition illustrates that Colum-

bus' voyages to the Americas were some of the most catalytic events in world history. His explorations brought together two worlds which had been isolated from each other for more than 10,000 years and set into motion a process of changes and exchanges.

The Smithsonian's Natural History Museum's exhibition focuses on five key agents involved in cultural and environmental change. These five seeds are: disease, corn, sugar, the potato and the horse.

The American Quarter Horse Heritage Center & Museum is one of a handful of facilities scattered across the U.S. which will host a collaborative "Seeds of Change" exhibit.

Pfluger said, "Naturally, our exhibit will focus on the horse, but the other seeds also will be covered, providing an excellent opportunity to focus on the Panhandle's leadership in agriculture and medicine."

The American Quarter Horse Heritage Center & Museum is a new facility devoted to the history and modern activities of the American Quarter Horse breed. The Heritage Center is located along Interstate 40 East at the Quarter Horse Drive exit in Amarillo.

Why Rent When You Can Own?

2 Bedroom • 1 1/2 Bath • Extra nice & clean • Fireplace • Large storage shed & cellar • 3 Car carport • Priced to Sell in the low 20's

Extra large lot • 4 Car carport • Lots of living space • Large fish pond • Hot tub • Large storage bldg. • 2 Bath • 3 Bedroom • Wet bar • 2 Large patios • Large kitchen & storage area • Close to school, shopping & hospital • Priced to Sell in mid 20's

Allen Alford Call
659-3034 or

Larry Trosper
659-3491

OCEAN SPRAY JUICE COCKTAIL \$2.29
48 Oz. Bottle

ALL VARIETIES COCA-COLA 6 PACK/12 OZ. CANS \$2.39

ALL FLAVORS GATORADE 32 OZ. BTL. \$1.29

BEEF & SALSA BURRITO EACH 89¢

FRITO-LAY DORITOS CHIPS REG. 99¢ 89¢

HOMOGENIZED ALLSUP'S MILK GALLON \$1.89

BAR-S MEAT BOLOGNA 1 LB. PKG. 89¢

CAMPBELL'S BEEF OR CHICKEN RAMEN NOODLES 3 OZ. BLOCK 8 \$1 FOR

BREAKFAST BURRITO SHURFINE LIQUID BLEACH EACH 89¢ GALLON 99¢

PRICES EFFECTIVE SEPTEMBER 22-28, 1991

2nd ANNUAL
Old Lincoln County
COWBOY SYMPOSIUM
October 3 - 6
Ruidoso Super Select Sales Pavilion
Glencoe, New Mexico
Located 12 miles east of Ruidoso Downs on Hwy 70

For more information and a brochure, call
1-800-545-0402

CHARMIN BATHROOM TISSUE 4-Roll Pkg. 99¢

SWEET & LOW SWEETENER 100-count Pkg. \$1.79

SURF LAUNDRY DETERGENT 2 Lb. 7 Oz. Box \$1.99

ALWAYS THE BEST PRODUCTS AT THE BEST PRICES! SHOP & SAVE

305 W. KENNETH, SPEARMAN
101 MAIN, GRUVER

Among the Neighbors New curator named

by Helen Fisher

The obituary for Larry David Smith, 32, was carried in the last issue of this paper, and sympathy is extended to his father, Dick Smith, who was prevented from attending the services by serious ill health. David was born here. His mother was the former Edna Gould, daughter of the Bill Goulds, former Spearman residents. The late Maude Mathews was his grandmother, and Don Smith an uncle.

A welcome guest of Athalie Traylor last week was Anna Bell Hooten, a citizen of Spearman for a number of years. She now lives in Glenwood Springs, Colo., near her son Jerry Parrish and his wife and son. Her daughter Estelle, who attended school here, is a resident of Henderson, Tenn.

Olive and Owen Pendergraft entertained Mr. and Mrs. Art Axelson of Windsor, Colo., from Sunday to Thursday. She is a niece of Owen's.

Of interest to the former classmates of Rick Desimone was his picture in the Sunday Amarillo newspaper. Announcement was made of his promotion to the Banking Officer of the Canyon Branch of the First National Bank of Amarillo.

Rick was a 1972 graduate of Spearman High School and graduated from West Texas State University. He and his wife, Lori, and children Jonathan, Nathan and Naomi, live in Amarillo. He is the son of Mr. and Mrs. Daniel Desimone.

Robert Howell, sophomore at Spearman High, underwent a long operation for a knee injury sustained in a recent football game. The operation was in St. Anthony's Hospital a week ago last Friday. Robert is hopeful of returning to school on Tuesday, but his football participation is over for this season.

He is the son of Suzanne Howell and grandson of Elvagne Dixon of Morse.

The vacation of Don and Gloria Knox in Santa Fe was cut short when they were notified that her sister, Joy, would undergo emergency surgery on Tuesday. They returned to Amarillo on Friday and Gloria flew to Casper, Wyo., to be with her. Don spent Sunday with his aunt in Canadian.

Andy Watley is recovering rapidly from back surgery and is expected home in a few days. The operation was performed on Wednesday at High Plains Baptist in Amarillo.

Virginia Head spent a most enjoyable week in the Ozarks in the Branson, Mo., country. She went with her sisters, Elizabeth Carr of

Miami, and Catharine and Zane Hall of Pampa.

They saw a number of the shows that the area is noted for, took a river trip and toured the scenic areas. Virginia said there was rain every day and every where until they returned to the Panhandle. It was a little early for the foliage to be turning.

Carlee Dixon flew in from Dallas for the weekend with her parents, the Perry Dixons. She finds life in Dallas and her work with Horizon Technology very interesting.

W.R. and Eulalie Greever returned Thursday from a month at Fun Valley near South Fork, Colo. They report excellent weather and good fishing the entire month.

As this is written, family members report that R.E. Sanders is in I.C.U. at High Plains Baptist Hospital. Pneumonia and complications followed his angioplasty surgery last Wednesday.

A reminder that the 90th birthday of Viola Graves is September 30. Inez Holland has her address in Lubbock for those wishing to send cards.

Comments and reports from Memphis that those attending the Hall County Fair last weekend were impressed to the point of amazement by the vocal numbers by Laquita Evans. At first they thought the songs were professional recordings. They wonder if Spearman realizes what a treasure she is in musical circles. They have been emphatically reassured that indeed Laquita is much appreciated and admired in Hansford County.

This column is being written on September 23, 1991 - fifty years from September 23, 1941 - that day Zack Fisher was killed in an accident.

Hospice selling afghan tickets

The Hansford County Hospice met for their regular meeting Monday, Sept. 16 at the LaCasita Room at Gruver State Bank. Garland Hopper, R.N., presented a program on patient care. Hansford County Hospice members are selling tickets for one of Edith Womble's elegant handmade afghans. Tickets are priced at \$2 each or three for \$3. The lucky winner's name will be drawn before the closing of the Hansford County Fair on Sept. 28.

An advisory board for financial advice concerning Hansford County Hospice has been appointed. Board members are Roy Harris of Morse; Kenneth Irwin and Rick Barkley of Gruver; and Bob Boxwell and John Hutchison of Spearman.

Hospice provides physical, emotional and spiritual support to terminally ill patients and their families. Anyone interested in utilizing hospice service for themselves or a family member should call Brenda Wall at 733-2364, 659-2535 or 659-2663.

Those attending the meeting were Jack and Molly McWhirter, Opal Wallin, Brenda Wall, Carolyn Hicks, Connie Gammill, Garland Hopper, Edith Womble, Eloise Renner, Verna Shirley, J.C. Harris, JoLinda Hutchison, Betty Davis, Betty Pugh, Beth Phelps, Charolette Jackson, Muriel Boyd, Wanda Steward, Ruth Bryan, Kay Vernon, LoRee Booth, Altha Groves and Cleo Denman.

Shirley Stafford is the new curator at the Stationmaster's House Museum in Spearman. She will open the museum five days a week.

J.D. Wilbanks prepared a plot at the southeast corner of the museum lot, and Ms. Stafford obtained bluebonnet seeds, so residents should be on the lookout next spring for bluebonnets.

The museum has received memorials recently in the name of Billy Jarvis from J.D. and Rubyjo Wilbanks, Gus and Clementine Ren-

ner, and the Class of 1931; in memory of Buena Hays from Everett and Dixie Tracy; in memory of Cricket Giles from Everett and Dixie Tracy; in memory of Joe Traylor from Frances Williams; and in memory of Jessie Britten from Frances Williams.

Other contributions have been made in memory of Billy Jarvis and Joe Traylor by Everett and Dixie Tracy; and in memory of Mable Edwards by Gus and Clementine Renner.

PTA wants members

The Spearman PTA membership race got off to a big start, but there is more room for more students.

The class from Spearman Elementary having the most memberships will win a pizza party in their class, and will have the first shots at getting Dr. Partney dunked on the dunking board.

Spearman PTA has a poster showing the results of the race on the school library window, but the race is

not over. The deadline for the membership race is Tuesday, Oct. 15, and students are urged to get those memberships in and watch their class take the lead in the race.

A poster is also up in the junior high school building, to keep track of the junior high students' progress in the PTA membership race. The winning junior high class also will get a pizza party, and will have a chance to throw a pie at Mr. Olsen.

Cantaloupes linked to food poisoning

Editor's note: The following was written by Frank J. Dainello and Al B. Wagner, Extension vegetable crops specialist and Extension food technologist, of the Texas Agricultural Extension Service, Department of Horticultural Sciences, Texas A&M University.

The article was provided by the Hansford County Extension office.

Earlier this summer an outbreak of salmonellosis food poisoning occur-

red in the Midwest and the Northeast. Minnesota health officials were quick to speculate that melons purchased from South Texas were the source of the outbreak. The claims were made based on epidemiological interviews with affected persons. There were no melon samples left to confirm them as the source of contamination. It has been reported that over 400 people in 23 states and Canada became ill after



(photo courtesy PSU) Several Oklahoma Panhandle State University students began their student teaching this fall. They include (front row, l-r) Joy Schnabel, Cheyenne Wells, Colo.; Dani Baker, Perryton; Johnnie Fuller, Spearman; (back row, l-r) Gary Page, Eads, Colo.; Scott Beavers, Sunray; and Michael Lamb, Sunray.

eating cut cantaloupe ("The Packer," Aug. 24, 1991).

This occurrence of salmonellosis is not a new problem. Salmonella is a common occurring bacteria on the surface of most unwashed fruits and vegetables. As a matter of standard procedure, most melon packing houses brush wash cantaloupe and follow this with another wash using chlorinated water, prior to packing. This procedure helps remove field

heat from the fruit and kills most surface pathogens that can cause fruit breakdown in storage and transit. Salmonella is one of the pathogens reduced by this procedure.

Surface recontamination of melons can occur at several points during the normal food distribution cycle. As a result, by the time that most melons reach the home, a low level of Salmonella may be present on the fruit surface. The edible flesh can then become contaminated by the knife used to cut the fruit.

Historically, cantaloupes were consumed almost immediately after cutting and/or refrigerated for use at a later time. The low levels of bacteria that may be present were normally insufficient to cause illness. Refrigeration slows down bacteria growth and prevents it from reaching a level that can cause illness. However, the proliferation of fresh fruit on salad bars and in many food service operations including supermarkets is changing consumption patterns of many foods as well as cantaloupes.

In many instances, the fruit are cut or prepared many hours prior to actual consumption. With the ease of salad and fruit bars, the melons are left out for customers to eat at their leisure. Often times the temperature of the fruit bar is insufficient to retard bacterial growth. As a result, the levels can build and illness can occur.

Most of the cantaloupe/salmonella illnesses reported have been traced to situations described above. Home consumers of fresh cantaloupes have little to worry about, especially if common sense prevails and the fruit is gently brush washed prior to preparation for eating. This should be done prior to eating any fresh produce item.

As it is with most situations involving our food, the farmers and shippers are paying the price. Media hype has resulted in current sales declines of 30 to 50 percent ("The Packer," Aug. 24, 1991) although the incidents occurred earlier this summer.

Changing lifestyle and food consumption patterns are the real culprits, not cantaloupes or cantaloupe producers.

Penicillin and Marcus Welby

by Charles H. Ridge, M.D.

Before the discovery of penicillin, elderly people who contracted pneumococcal pneumonia usually died. The disease was often called "The old man's friend."

The patient was often senile and debilitated. With pneumonia, he would lapse quietly into a coma and die. It was a rather gentle and painless departure.

Penicillin changed all that. It was a "magic bullet" which would cure this and many other types of infection. Many medical advances have been made since then with new diagnostic procedures, new drugs, and fantastic new surgical techniques.

The public has expected "magic bullets" for other ailments such as heart disease, cancer, and arthritis. Some folks even expect pills to stay slim in spite of an appetite like an elephant, pills to stay young and beautiful as a movie star, and pills to

stay sexy as Cary Grant until age 90. The failure of medical science to produce "penicillins" for all of life's afflictions often arouses anger and suspicion. Could it be that some great discovery is being withheld from poor suffering humanity to satisfy the greed of the health care industry?

As if this were not enough, television has given us Dr. Kildare and Marcus Welby. These idols were always handsome, kind, and thoughtful. Their diagnoses were flawless. They had unlimited time to devote to each patient, knew the inmost secrets of the family, and could solve every problem however trivial. If there was no "magic bullet," Dr. Welby could somehow work things out.

The irony is that doctors can help patients more than ever but meet more distrust and suspicion than ever. There are no Marcus Welbys among us, and people often expect more than we can deliver. When we

tell some people to solve their own problems, ("lose weight, stop smoking, stop drinking, wear seat belts"), they respond with a blank stare. If we say "take aspirin, force fluids, and rest," they feel cheated. They can get the same advice on television (and for free, too). They want the doctor to "do something" (meaning give a shot or prescribe something).

The hope for a pill or potion for every discomfort in life makes many of us vulnerable to promoters. Some authors make a fortune writing books to reveal some new hidden cure for life's afflictions. "Organized medicine wants to hide some great new discovery to protect the incomes of members of the profession." You can learn the great secret if you'll buy their latest book at only \$10.00 a copy.

On TV, we are bombarded by handsome actors who are paid enormous salaries to persuade us that some nostrum they promote will give us health and happiness. There are "health stores" and mail order businesses by the hundreds which sell herbs, minerals, and vitamins that will cure baldness, impotence, and constipation. These products seldom help us and actually might not hurt us. (Their main function is to separate us from our money.)

The points to remember are that 1. Not all of life's problems have solutions; otherwise, we'd all live forever. 2. There is a place for health check-ups, 3. There are treatments for many ailments, but 4. We still have to solve most of our own problems - without pills.

PSU sponsors tour

GOODWELL, Okla. - Cajun music, food and fun will all be a part of the Louisiana Cuisine and Historical Tour that is being sponsored by the Home Economics department of Oklahoma Panhandle State University.

Nights will be spent in Dallas and in Shreveport, Alexandria and Lafayette, La. The tour leaves Guyton, Okla., on a special motor-

coach Saturday, Feb. 29, 1992, and will return Friday, March 6, 1992.

The cost for the tour is \$599 per person double occupancy, \$85 triple and a single is \$775. Reservations should be made by Oct. 5 with a \$50 deposit. Final payment is due by Jan. 15, 1992.

For a detailed itinerary and a registration form, contact Sandra Latham, PSU home economics department chair at (406) 349-2611, ext. 242.

THANK YOU

We wish to extend our thanks for all the kindness shown to us by the food, flowers and calls.

We also wish to thank the nurses at Hansford Manor and Dr. Ridge.

Friends are what keeps the world a good place to live in.

Each act of kindness will be long remembered.

The Family of Mabel Edwards

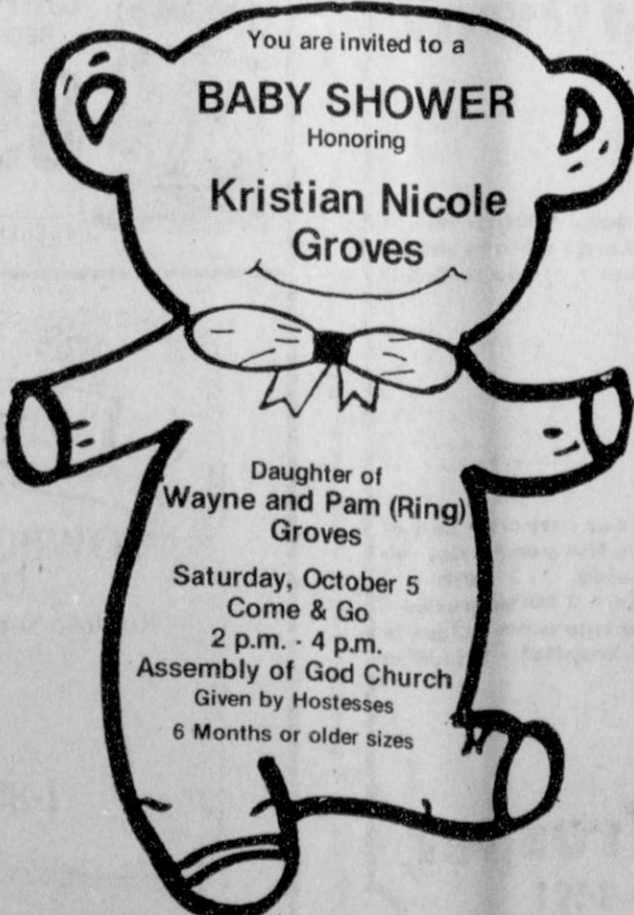
THANK YOU

Words cannot express our deep appreciation to all of you who have so generously given of your time and help during these last few weeks.

The phone calls, visits, food both here at home and at the church building, memorials, flowers, beautiful cards and especially, your prayers have been a comfort to us while we've struggled with the grief over Joe's passing away.

May you all be richly blessed.

Athalie, Charles, Judi, DeWain and Michelle Traylor



Club News

GLADIOLA FLOWER CLUB

The Gladiola Flower Club met in the home of Fay Holt on Thursday Sept. 19.

President Dickie Allen called the meeting to order and roll call was answered with each member naming her favorite vacation place.

Judy Martin won Home Grown Arrangement, and Fay Holt won Potted Plant Division. A letter of appreciation for a scholarship was read, which was received from Traci Scribner.

Betty Jean Davis presented a program on preserving and displaying

old memorable keepsakes. Each member added to the program by bringing something they had which was displayed in a variety of ways.

Next meeting will be Thursday, Oct. 3 in the home of Virginia Head. Those attending this meeting were Dickie Allen, Myra Berner, Wanda Brown, Betty Jean Davis, Margarette Evans, Ann Flowers, Dorothy Haner, Mike Hergert, Estelle Jackson, June Jackson, Lorene Kunselman, Judy Martin, Jo Larson, Gwen Smith, Kathleen Sutton, Virginia Trindle and hostess, Fay Holt.

The first scientifically researched natural nail care system Amera challenges anyone in Texas with these problems:

- splitting, peeling, weak nails
- dry, cracked cuticles
- manicures that don't last
- can't keep long or nicely shaped nails

Or are you just tired of the expense of artificial nails?

Call today to schedule your complimentary instructional manicure!

Julie Martin
359-2425



(photo by Joy Henderson)

Selected as Gruver Junior High School's "Citizens of the Month" for September were Cherynn Thompson, fifth grade; Amber Roberts, sixth grade; Kelly Boone, seventh grade; and Sahala McCloy, eighth grade. Students were nominated by their teachers as the students who best exemplify those qualities necessary to be a good citizen. These students daily exhibit qualities of proper attitude, self-motivation, friendliness, and the drive to succeed in whatever is presented to them.

Ortega honored at bridal shower

by Joy Henderson

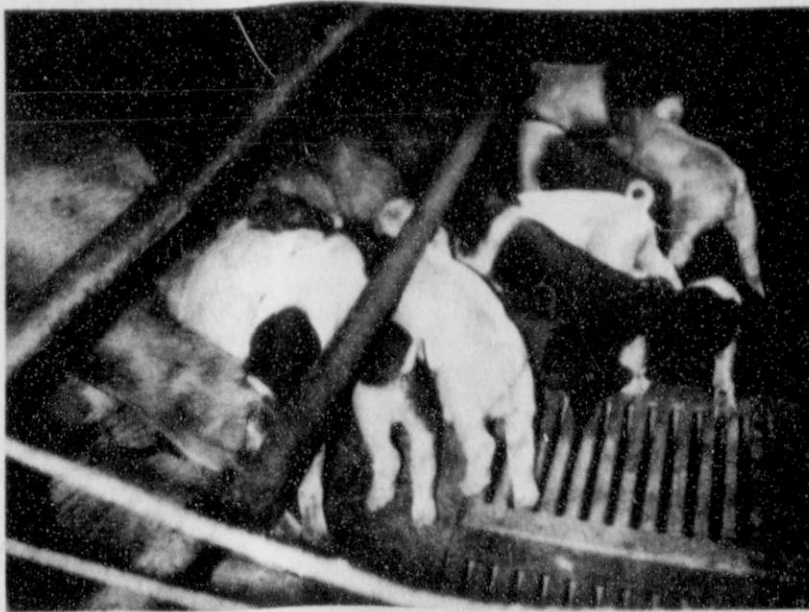
Dee Dee Ortega was honored with a bridal shower at the home of Keith and Janet Miller on Sept. 14, during the hours of 2 to 3:30 p.m.

Daisy corsages were presented to the honoree's mother, Merry Sparks. Her grandmother, Alisha Ortega, was unable to attend due to the arrival of a new grandchild. The honoree was presented with a rose corsage.

The guests were registered by Socorro Ortega. The serving table was adorned with a peach and white tablecloth with peach and country blue napkins. The centerpiece was a country blue and peach flower arrangement. A white cake with peach and blue flowers was served with

peach sherbet punch from a silver coffee and tea set. The refreshments were served by Denise Karlin and Pauline Lopez.

Hostesses for the occasion were Sharon Seagler, Angie Clawson, Rhonda Hicks, Linda Hiller, Janet Miller, Georgia Davidson, Sandra Gumfory, Mary Wright, Tammy Wright, Phyllis Atwood, Janice Harvey, Ann Dorman, Gyene Spivey, Melyn Johnson, Sadie Thomas Goodall, Jamie Casdorff, Rosemary McKee, Darlene Hoel, Camille Miller, Lucille Schad, Melba Rasor, Lil Fletcher, Helen Woods, Carolyn Fletcher, Sharon Barkley, Norma Red, Josephine Fletcher and Pat Overbey.



(photo by Joy Henderson)

Pigs at "Mama Sow's dinner table." There were 14 babies born in this litter, owned by Dennis Henderson of Henderson Farms.

Hansford ACS unit meets in Spearman

by Joy Henderson

The Hansford unit of the American Cancer Society met Sept. 19 at B & B Farm Industries in Spearman. The Spearman members were hostesses for the noon meal.

Mozelle McClellan presided over the meeting and announced that she would resume the office of presidency. Mary TeBeest would be second vice president. Secretary Clementine Renner read the minutes of the last meeting. Arbeta Nobles gave the treasurer's report.

Chairman reports included a report from Virginia Taylor, who

stated that 85 percent of the Crusade goal had been reached with \$9,040 being raised. Public Education Chairman Dolly McWhirter stated that dollar value of services was \$16,165, with 2,674 adults and 3,032 youth being reached. Patient Services Chairman Clementine Renner stated that dollar value of services was \$2,597, with eight patients receiving services for the year.

Amy Marshall, staff member with the district office in Amarillo, attended and gave several dates to remember for the rest of 1991. The month of September is Childhood Cancer Awareness Month, and Sept. 28 is the observance of "We The Survivors." October is Breast Health Awareness Month and November 21 is the day for the Great American Smokeout.

The next meeting date for the Hansford unit will be Oct. 31. The group will finalize plans for celebrating the Great American Smokeout.

Those in attendance for the September meeting were Mozelle McClellan, Clementine Renner, Arbeta Nobles, Dolly McWhirter, Virginia Taylor, Betty Davis, Pat Morley and Amy Marshall.

Gruver Senior Citizens meet

by Joy Henderson

Sept. 23 was the date for the fourth Monday meeting of the Gruver Senior Citizens in the newly remodeled building. A big crowd enjoyed the food and fellowship.

Those attending were Vivian Green, James and Ada Joyce Stedje, Eva Boyd, Viola Boyd, Ida Hendrick, Jessie Spivey, I.W. and Maylynn Ayres, Jim Strawn, Adalynn Barnes, Maude McClellan, Polly Jones, Delphine Etling, Rebecca Westfield, Nellie Albrecht, Veta Alloway, Leo Frazier, LaMoyné Cator, Ben and Merle Arthur, Mary Lou Trent, Fay Blount, Grover Taylor, J.C. Harris, Bob Setliff, Pete Maupin, and Ralph and Beulah Bort.

Nurse Christine Garza of Stratford took blood pressure. Several of those attending were visitors, and all are welcome to join.

On The Go With Joy

by Joy Henderson

Last year, I told you about a scheme whereby we hoped to get the U.S. Ag department to pay us for not raising hogs. All inquiries brought very negative responses. We not only didn't find out what kind not to raise, they didn't even let us know when we could expect a check.

So, since we already had a few hogs standing around idle and eating up a bunch of feed, I suggested to D.K. "why didn't he put them to work making money." Well, that sounded O.K. until we realized that it would take money which is in very short supply around here, and would require a visit to Banker Turf-N-All. The visit should be arranged for a day after a nice spell of wet weather and a day when the markets were up (both livestock and grain).

One lucky day, everything fell into place and a visit was made to get some information on how much would it cost to borrow some money for a good boar. (Now stay with me, because words get tricky around here.)

The next question asked by D.K. was "Can you give me a closer figure than 'It will cost you a bundle!'"

To make a long costly story short, the boar and the sows got together and now instead of getting paid for not raising hogs, Henderson Farms is not getting paid enough for raising show pigs. We even have a few sows that have produced litters of 12-17 baby pigs, but by the time the old sow lays on a couple, some of our litters are kind of small. However, you have to keep hoping and praying.

Word was received today that Sam Marshall had passed away. He and his family were residents of the Phillips plant and later moved to Booker and later to Bryan. I am rely-

ing on my own memory for this information and some provided by Lanetta Shapley. His survivors include wife and three daughters Belinda, Jamie and Mona. Sam suffered with Lou Gehrig's disease.

Vivian Green just returned from an extended trip through the Deep South. She was having such a good time and saw so many places, that she is having a hard time remembering. Louisiana and Mississippi and particularly Natchez were mentioned. She was accompanied by her son R.C. and his wife Betty. Also on the trip was Betty's mom. One of those visited was R.C.'s and Betty's sons, who lives in that area at the request of his company.

Those visiting in Gruver this weekend included Sue Hartranft's daughter Terry; Beth (Holt) Tripp and children Holt and Landry from Hot Springs, Ark.; Jackie and Lisa (Nelson) Ellis with daughters Mary Beth and Alexandra from Lubbock. Also, Margarite's sister Anna Beth Wood from Austin. Some of the kids home for a brief spell from college were Christy Brown (Tech), Chris Spivey (South Plains, Levelland), and Jody Holland (McMurry).

Dodie Banks, a former teacher here in Gruver and now of Idalou, has had back surgery in Lubbock. Tiffanie Hill, granddaughter of Frances Cearley, is scheduled for surgery in Arizona this week.

Zane Grey is all smiles after tests showed that he has no cancer.

Well, I am all smiles because "It's Fair Time." Everyone get out this coming weekend and visit the fair in Gruver. That will have to do me, because I've missed the fairs in Guymon and Amarillo.

25 Lb. BEEF PACK - \$39⁵⁰
Includes steak, roast, and hamburger

1/2 BEEF - \$1³⁹ per lb.
Includes cutting & wrapping to Your Orders.

15 lb. BEEF STEAK PACK - \$27⁰⁰

SUNRAY LOCKER We accept Visa
948-4403 MasterCard
& Food Stamps.

Introducing Two New Faces at First State Bank Spearman



Kelley Hearon

Vana Stapleton

Kelley Hearon

Kelley Hearon, drive-up teller, moved to Spearman from Borger in January of this year. Her husband Randy works for Gillaspie Auto & Truck Center as a mechanic. They have two boys: Chris, age 7, and Marshall, age 5. Her hobbies include riding bicycles and bowling on a league in Borger. She says her family really enjoys living in Spearman.

Vana Stapleton

Vana Stapleton, proof operator, is the daughter of Mr. and Mrs. Van Bradford of Gruver. She has two children: Chase, age 8, and Chelsea, age 4. She enjoys riding bikes and doing crafts in her spare time.



One N.E. Court

659-5565

Spearman, Texas

MEMBER FDIC

Panhandle Events

CLOVIS, N.M. - Clovis will be the site of the 17th annual Allsup's Fall Roadraces. On Oct. 26, running enthusiasts from across the southwest will compete in what has become known as one of New Mexico's friendliest roadraces.

Unique to the southwest, Allsup's Fall Roadraces offers runners a choice of competing in either a half-marathon, 10,000 meter run, 5,000 meter run or one-mile run. All races will begin promptly at 8 a.m. MST at the same location. Running surfaces are flat, fast asphalt throughout the course.

Specially produced awards by Nambé Mills of Santa Fe will be awarded to the first three male and female finishers in each race and age group. All finishers will receive a specially designed long sleeved t-shirt and all registered runners will be eligible for post race drawings.

Entry fees are \$8 if registered before Oct. 5, and \$10 after Oct. 5. Entry forms are available at any Allsup's Convenience Store or by contacting Allsup's Roadraces, P.O. Box 1907, Clovis, N.M. 88102-1907, phone (505) 769-2311, ext. 100.

HEREFORD - Wesley United Methodist Church will host its 11th annual Festival of Arts and Crafts on Dec. 7 from 9 a.m. to 5 p.m. at the Hereford Community Center.

A limited number of booths will be available, with applications being screened. Booth fee is \$10. Applications can be obtained by writing to or calling Ellen Collins, 801 Miles, Hereford, TX 79045, phone 364-0774.

AMARILLO - The first annual Susan G. Komen Foundation "Race for the Cure" is scheduled for Saturday, Sept. 28.

The event features a 5K race for women and a one-mile walk/run for the entire family. Proceeds from the race benefit the Circle of Friends of the Don & Sybil Harrington Cancer Center for breast cancer research, treatment and education.

A fee of \$15 will be charged for entry. Race pre-registration can be done by mail or in person at Lady Foot Locker, Regis or at the Harrington Cancer Center. Late registration will be Saturday, Sept. 28 at the Signature at the east entrance to Westgate Mall.

More information can be obtained from Karla Coon, 355-1205, or Tricia Gossett, 355-0444.

GOODWELL, Okla. - The Oklahoma Panhandle State University campus will be the site for a cowboy concert Thursday, Oct. 3 in Hughes-Strong auditorium.

The concert will feature Don Edwards, internationally known

cowboy balladeer, along with Buck Ramsey and R.W. Hampton, cowboy singers. An addition to the show will be Guy Logsdon, who will emcee and perform. The concert is sponsored by the PSU Rodeo Club, with help from the Student Senate, in an attempt to raise money to support rodeo at the university.

The concert is being held in conjunction with PSU Homecoming Week activities. The performance will start at 8 p.m. on Thursday, Oct. 3 at Hughes-Strong Auditorium on the university campus. Advance tickets are available through the PSU rodeo office or from individual rodeo club members at \$5 per ticket.

"We love this older home. And the cleanliness of the Dual Fuel Heat Pump is great."



The McKays of Paris

The McKays gave attention to every detail when they remodeled their older home. They captured the flavor and feel of the Victorian era. But the most modern system, the Dual Fuel Heat Pump, heats and cools the home.

Dual Fuel Heat Pump Right for any home.



Brady Pool shows his chute dogging technique at this summer's 4-H rodeo. Pool won second place in saddle bronc riding at last Saturday's Tri State High School rodeo in Spearman.



Mark Eakin won All-Around Cowboy honors at the Tri State High School rodeo in Spearman last Saturday. Here, he shows his chute dogging prowess at the 4-H rodeo this past summer.

GYMNASTICS CLASSES

Starting Tuesday, Oct. 1, Gymnastics Classes are offered as follows:

- Monday 5:30 - 6:30 (K-3rd)
- Tuesday 5:30 - 6:30 (3-5 yrs.)
- Wednesday 5:30 - 6:30 (7th-8th)
- Thursday 5:30 - 6:30 (4th-6th)

Unless otherwise notified after classes have begun.

For more information contact Meli (Floyd) Burgess after 5:00 at 659-3504.

Public Notice

On June 28, 1991, Southwestern Bell Telephone Company (Southwestern Bell) filed an application with the Public Utility Commission of Texas (Commission) to add a new optional service offering for business Private Branch Exchange (PBX) Trunk customers called Digital Loop Service. The application has been assigned Docket No. 10461.

Digital Loop Service provides digital transmission of circuit switched voice and data communications between the customer's premises and the central office. This service allows the customer to use a 1.544 Mbps facility capable of delivering up to 24 line terminations. Southwestern Bell will provide Digital Loop Service within the customer's serving central office where facilities are available.

If approved by the Commission, the rates for the Digital Loop Service facilities will be \$445 per month for each digital transmission loop arrangement which provides a capacity of up to 24 line terminations, plus \$5 per month for each line termination and \$9 per month for each channel termination. The proposed rate for the unlimited use of the central office varies from \$12.25 up to \$18.90 per month for each line termination depending on the rate group classification, determined by the customer's location. Southwestern Bell estimates revenue of \$2.1 million from this offering during the first year.

As proposed by Southwestern Bell, customers who currently receive digital loop compatibility through facilities installed under a special construction agreement will have the option to receive their current digital loop arrangements pursuant to the Digital Loop Service Tariff or continue to pay their current charges until they make a change of location or account. Any increase in the number of line terminations to a customer's current digital transmission loop arrangement will be provided pursuant to the proposed Digital Loop Service Tariff; however, the customer will continue to have the option of paying current charges for the existing digital transmission loop capacity. Southwestern Bell's proposal to "grandfather" existing digital loop facility arrangements is subject to review and approval by the Commission.

Persons who wish to intervene or otherwise participate in these proceedings should notify the Commission as soon as possible, but not later than October 15, 1991. A request to intervene, participate, or for further information should be mailed to the Public Utility Commission of Texas, 7800 Shoal Creek Blvd., Suite 400N, Austin, Texas 78757. Further information may also be obtained by calling the Public Utility Commission Public Information Office at (512) 458-0256. The telecommunications device for the deaf (TDD) number is (512) 458-0221.

Southwestern Bell Telephone

Rodeo results

Mark Eakin of Spearman was named All-Around Cowboy at the Spearman Tri State High School Rodeo, held last weekend at Oscar Archer Arena. He was one of the Spearman/Stinnett rodeo team members.

Eakin garnered 21 points on his way to the All-Around title, with a win in saddle bronc riding, a second place in steer wrestling, and a third place finish in ribbon roping.

He scored 68 points to take the saddle bronc win. In steer wrestling he had a time of 7.575 seconds, and in ribbon roping his time was 9.418.

Brady Pool of the Gruver team tied for second place in saddle broncs with Chad McFall of Pampa. Each had a score of 56 points. Marty McCloy of Gruver took a win in calf roping with a time of 9.209 seconds.

Defeating White Deer 49-0...

Lynx up record to 2-1

The Spearman Lynx varsity football team upped its record to 2-1 with a 49-0 defeat of White Deer.

Through most of the first quarter of the game at White Deer on Friday night, it appeared that the Bucks might give the Lynx a hard time. Even though starting running backs Tim Dooley and Brian Beck made small gains each time they carried the ball, the Lynx line could not seem to spring the backs into the secondary untouched by the Bucks defensive linemen.

Spearman had only one first down in their first two possessions. In their second possession the offense was pushed back for lost yards on a fourth-and-inches play.

In their third possession of the first quarter the Lynx offense began to assert itself. With steady running from Beck and Dooley, the Lynx scored on a 12 yard run by Beck early in the second quarter.

Later in the third quarter Dooley scored the second Lynx TD of the

quarter on a 37 yard run. A two-point PAT run by Beck was good to make the score 14-0.

The excitement of the quarter did not end there. Chad Riggins intercepted a Bucks pass on the Lynx' 21 yard line and ran it back to the Bucks' 7 yard line. The clock ran out on the half before the Lynx could score.

In the second half it was all Spearman Lynx. The Lynx offensive line began to open big holes in the Bucks defensive front line, allowing the Lynx running backs into the secondary at full speed and untouched.

The Lynx quickly scored on both their possessions of the ball in the third quarter. Brandon Vanderburg scored on a 4 yard run and Dooley scored on a 6 yard run.

Dooley opened the fourth quarter running 87 yards for a TD. He was followed by Lonny Gallegos with a 44 yard TD run, and Jason Varmon, who scored on a 17 yard quarterback keeper play.

The Lynx played good defense against the Bucks. They allowed the Bucks only two first downs the entire game. One of those first downs was the result of a penalty.

Spearman's next game is at home against Panhandle on Friday, Sept. 27.

SPEARMAN FOOTBALL ROUNDUP

JV VS. BOYS RANCH
Spr 43 - BR 20

SPEARMAN SCORING
Radar Garcia scored all six TDs.

8th VS. BOYS RANCH
Spr 28 - BR 0

SPEARMAN SCORING
Jeremy Blain scored two TDS, Phillip Sanders scored two TDS and a PAT, Coyt Tigrett passed to Brent Collins for a PAT.

7th vs. BOYS RANCH
Spr 0 - BR 0



Spearman Lynx defense "shut out" the White Deer offense. The Lynx only allowed three White Deer first downs during the entire Friday game.

Oil & gas report

WEEK ENDING SEPT. 19

Intentions to Drill

LIPSCOMB (WILDCAT & S.W. LIPSCOMB Morrow) Medallion Petroleum, Inc., #1 Tubbs (646 ac) 467' from South & West line, Sec. 284,43,H&TC, 9 mi SW from Lipscomb, PD 11500' (401 South Boston, Suite 2000, Tulsa, OK 74103)

MOORE (PANHANDLE) Gordon Taylor Oil Co., #2 Mary (160 ac) 330' from North & East line, Sec. 152,3-T,T&NO, 8.5 mi SE from Sunray, PD 3600' (Box 670, Sunray, TX 79066)

Oil Well Completions

OCHILTREE (FARNSWORTH CONNER Des Moines) Natural Gas Anadarko Co., #1-20 Pletcher, Sec. 20,12,H&GN, elev. 2970 gr, spud 8-12-91, drlg. compl 8-29-91, tested 9-4-91, pumped 38.6 bbl. of 41.1 grav. oil + 123 bbls. water, GOR 2513, perforated 7009-7137, TD 8800', PBDT 8282' - Plug-Back

OCHILTREE (HODGES Des Moines) Mewbourne Oil Co., #1 Harbaugh, Sec. 146,13,T&NO, elev. 2946 kb, spud 6-29-91, drlg. compl 7-11-91, tested 8-30-91, pumped 32 bbl. of 38.1 grav. oil + 39 bbls. water, GOR 625, perforated 7760-7860, TD 8100', PBDT 8037' -

Gas Well Completions

LIPSCOMB (LIPSCOMB Atoka) Exxon Corp., #1-C Harry Parker, Sec. 697,43,H&TC, elev. 2411 df, spud 5-12-89, drlg. compl 7-15-89, tested 1-29-91, potential 240 MCF, rock pressure 672, pay 8982-8987, TD 10165', PBDT 9723' - Plug-Back - Dual Com-

pletion

Plugged Wells

CARSON (WEST PANHANDLE) Phillips Petroleum Co., #1 Eil, Sec. 200,3,I&GN, spud 3-30-30, plugged 7-29-91, TD 2720' (gas) - Form 1 filed in King Oil Co.

HARTLEY (PROCTOR RANCH Wolfcamp) McKinney Operating Co., #2-65 Proctor, Sec. 65,22,Capitol Syndicate Subdivision, spud 8-20-91, plugged 8-29-91, TD 4145' (dry) -

HUTCHINSON (PANHANDLE) Canadian River Processing, Inc., Sec. 1,M-26,TCRR (oil) - Form 1 filed in Reo Industries, Inc., for the following wells:

#1-11 Whittenburg, spud 8-27-82, plugged 9-3-91, TD 3300' -

#1-21 Whittenburg, spud 8-18-81, plugged 9-3-91, TD 3300' -

#1-13A Whittenburg, spud 1-26-82, plugged 9-3-91, TD 3218' -

HUTCHINSON (PANHANDLE) Canadian River Processors, Inc., #32-7 Whittenburg 'A', Sec. 32,47,H&TC, spud 3-18-82, plugged 8-27-91, TD 3190' (oil) - Form 1 filed in Reo Industries, Inc.

HUTCHINSON (PANHANDLE) Canadian River Processors, Inc., #33-7 Whittenburg, Sec. 33,47,H&TC, spud 2-3-82, plugged 9-4-91, TD 3265' (oil) - Form 1 filed in Reo Industries

LIPSCOMB (S.W. LIPSCOMB Lower Morrow) Bracken Energy Co., #1-247 Tubbs, Sec. 247,43,H&TC, spud 12-16-90, plugged 9-3-91, TD 11775' (dry) -

WHEELER (BRISCOE Morrow) Cambridge Production, Inc., #1 Finsterwald, Sec. 51,M-1,H&GN, spud 6-21-81, plugged 8-29-91, TD 14920' (gas) -

Hunter course set

James Wilson, State Game Warden, will conduct a Hunter Education Class on Saturday, Oct. 5 from 9 a.m. to 6 p.m. and Sunday, Oct. 6 from 2 to 6 p.m. at the Spearman Fire Station, at 513 S. Hazelwood.

There will be a \$5 fee for materials. A Social Security number will also be needed.

Anyone interested in hunting who was born after Sept. 1, 1971 but before Aug. 31, 1975 must take the class to be

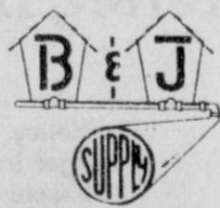
able to hunt. Participants must be at least 12 years old to take the class.

Wilson extended a special invitation to women and young girls interested in the class.

Interested participants should pre-register as soon as possible by calling the Hansford County Sheriff's Office at 659-2930 or by calling James Wilson at 435-5643.

Participants will receive a Hunter Education Card which is required to hunt.

For All Your Plumbing Needs



Expert Customer Service

10% Off Retail

- ★ Delta Faucet Parts
- ★ PVC Plastic Pipe & Fittings
- ★ Steel Pipe & Fittings
- ★ Rain Bird, Toro & Hunter Sprinkler Parts
- ★ Supplies for Trailers

Fast Delivery On Special Orders!

B & J Supply

707 E. Brillhart Perryton 435-7667

Rob's Auto Service

100 N. Bernice Spearman 659-2381

Automotive Service and Repair

- All Makes and Models
 - Import and Domestic
 - Ford, Lincoln and Mercury Factory Trained Technician
 - Computer and Fuel Injection Service
 - Competitive Prices and Personal Service
- Ask about our \$19.95 Oil Change Special!
- Rob Shields: Owner-Operator**



The Gruver defense gets ready to dig in against the Stratford Elks on Friday, Sept. 20.

Greyhounds fall 37-7

The Gruver varsity Greyhounds lost their home opener to the Stratford Elks, 37-7, on Friday night, Sept. 20.

"Take out the last two minutes of each half, it was a good ball game," said Barry Haensch, Hounds head coach. The Elks scored 21 of their points in the last two minutes of each half.

In the first half the Gruver defense held the Stratford offense to only one TD until that last two minutes. The touchdown came when the Bucks were able to capitalize on a Hound fumble, on the Hounds' 25 yard line. "They had to work hard to get the touchdown," said Haensch. In the last two minutes of the half the Elks broke a 75 yard run for their second TD.

In the second half the Greyhounds scored on a 16 yard pass play. Kevin Spivey pulled in the pass from Shannon Pool. If the scoring had stopped here it would have left the score 21-7. But it did not stop.

In the last two minutes of the second half the Elks broke two long running plays. The first went 63 yards for a TD. The second went 65 yards for the Elks' last TD.

Overall, Haensch felt that the Hounds made a good showing and

showed improvement over their first game. He pointed to the increase in passing success as an example.

Haensch indicated that the two Gruver quarterbacks, Pool and Matthew Hoel, threw for 136 total passing yards. Marty McCloy and Matt Etheredge led receivers with three catches each. Three other receivers had one catch each. They were Ryan Mathews, Kent Odorn and Spivey.

Haensch said Gruver was only able to generate 109 yards rushing. Mathews ran for 69 yards, and Victor Lopez for 40 yards.

This week the Hounds face another tough game as they travel to Clarendon. Clarendon is another 2A school who is off to a good start.

- 30 -

GRUVER FOOTBALL ROUNDUP

JV AT WEST TEXAS

Grv 6 - WT 20

GRUVER SCORING

35 yard pass - Jace Dawson to Fabian Royal

JR HIGH at WEST TEXAS

Grv 2 - WT 6

GRUVER SCORING

Defensive safety in the fourth quarter



The Gruver Lady Hounds cross country team gets off to a fast start at the Hereford cross country meet. They finished in fourth place among Division I schools. The only 1A school to finish ahead of them was Claude, which finished third. Lady Hounds individual finishes and times included Cory Meyer, 12th place, 13:40; Brendy Brown, 34th, 14:29; Julie Meyer, 49th, 14:46; Tisha Ralston, 54th, 14:52; Holly Venneman, 61st, 14:55 and Traci Crawford, 115th, 16:02. Kasey Davis was injured.

Reviews requested

by Virginia DeWitt
SSA branch manager

PAMPA - Almost 200,000 children with disabilities whose claims were previously denied for medical reasons or whose disability benefits were suspended have already responded to a Social Security review of their Supplemental Security Income (SSI) disability claims under the new regulation resulting from the Supreme Court decision in Sullivan v. Zebley.

The new regulation requires that when deciding if a child is disabled, Social Security must take into account how the child's impairment(s) affect his or her ability to perform activities carried out by healthy children of the same age.

In July, the Social Security Administration (SSA) mailed notices to more than 450,000 children informing them of their right to review. In the same envelope was a reply form that they were asked to fill out and mail back to SSA within 120 days if they

wanted a review of their case.

Social Security officials are pleased that so many responses were returned so quickly. An extensive public information campaign has been conducted to get people to send the response card back right away, and it looks like the effort has paid off.

About 150,000 notices were returned as undeliverable. Social Security only keeps updated addresses for people who are receiving benefits so in many cases notices were sent to claimants whose addresses were more than 10 years old.

Social Security is making special efforts to locate these 150,000 children. The agency will conduct computer tape matches with state social service agencies to try to get current addresses. National non-profit organizations and state and local entities are also supporting the agency's efforts. They are helping secure current addresses and distributing posters and other informational material.

Suicide prevention

HOUSTON - Teachers sometimes go beyond the ABC's - they are often the first to recognize suicidal tendencies in their students.

Suicide is the third leading cause of death in young adults, averaging 5,000 each year in the United States, and is becoming more common in young children, said an assistant professor of psychiatry at Baylor College of Medicine in Houston.

"Statistics from the U.S. Department of Health and Human Services show that approximately 12,000 young children are hospitalized each year for intentionally injuring themselves," said Dr. Letha Cole.

Children express their emotions in several ways. Joy, sorrow, anger or

depression can be seen through their art, music, and the way they play. Parents and teachers should pay particular attention to these activities.

"Children and teenagers unknowingly tell us what they are feeling through their schoolwork," Cole said. "Children who draw pictures of death or who write about it in a paper may be asking for help."

Parents and teachers should be aware of other warning signs of suicidal behavior such as:

- * Prolonged periods of sadness or loneliness
- * Withdrawing from family and friends
- * "Showing no interest in activities

School menus

PRINGLE-MORSE SCHOOL
SEPT. 30 - OCT. 4

BREAKFAST

Monday - cereal, toast, grape juice, milk

Tuesday - waffles, sausage, apple juice, milk

Wednesday - muffins, cinnamon toast, orange juice, milk

Thursday - donuts, cheese toast, apple juice, milk

Friday - biscuits, sausage, assorted juice, milk

LUNCH

Monday - corn dogs, frito pie, broccoli rice casserole, fries, fruit, cookie, milk

Tuesday - Salisbury steak, buttered potatoes, corn, salad, rolls, fruit, milk

Wednesday - barbecue on bun, baked beans, tater tots, cinnamon rolls, milk

Thursday - ham, macaroni & cheese, green beans, salad, wheat rolls, cake, milk

Friday - grilled cheese sandwiches, stew, jello, carrot sticks, fruit, milk

SPEARMAN LUNCH MENU

SEPT. 30 - OCT 4

Monday - burrito, fried okra, buttered corn, rice pudding, apple juice, milk

Tuesday - juicy burger, tater tots, pears, banana bread squares, milk

Wednesday - pizza, raw vegetables, ranch dressing, apple cobbler, orange juice, milk

Thursday - beef fritter, gravy,

orange glazed sweet potatoes, parker house rolls, fruit cup, milk

Friday - hamburger, french fries, lettuce, tomato, pickle, onion, cookie, milk

Junior high - hamburger-meat choice daily

High school - salad bar daily

GRUVER SCHOOLS

SEPT. 30-OCT. 4

LUNCH

Monday - chicken fried steak, mashed potatoes, gravy, green beans, pudding, hot rolls, milk

Tuesday - burritos, chili, cheese, tossed salad, fruit, milk

Wednesday - pig-in-a-blanket, corn, fruit, cowboy bread, milk

Thursday - nachos with meat, pinto beans, fruit, corn bread, milk

Friday - hamburgers, french fries, lettuce, pickles, cheese, rice crispies treats, milk

Salad bar Monday, Tuesday and Wednesday only.

BREAKFAST

Monday - cereal, cinnamon toast, fruit, milk

Tuesday - homemade toast, peanut butter, jelly, fruit, milk

Wednesday - french toast sticks, fruit, syrup, milk

Thursday - cowboy bread, fruit, peanuts, milk

Friday - cinnamon rolls, fruit, peanuts, milk

Menu subject to change without notice.

SOUTHWEST OUTDOORS



Mel Phillips

Talk with any serious fisherman and, depending on the moon phase, the tides on Venus and several even more mysterious factors, he might reveal some of his fish catching secrets. Might, because big fish require special skills, refined over a lifetime of serious fishing. For our purposes big fish will henceforth be called "hawgs."

Said hawgs can be bass, walleye, catfish, striper, trout, redbass or even slab crappie. The key to catching hawgs is to cleverly reveal the "new" bait only to hawgs and never give the little ones so much as a glimpse. Now you know why real hawg-hunters don't want you using their secret baits. It is not the fear of a competitor catching the hawgs, it is the horror that in the hands of a novice, every fish in the lake will be educated!

If you will promise not to use the following secrets to educate all the little fish, then read on.

HAWG TIP #1. Big baits catch big fish. Fairly obvious, but the big baits must be worked in slow motion. So slow that few mortals possess the patience to spend an entire hour and make five casts. Joe Carter of Canyon is the master of using a large saltcrab and letting it soak for up to 10 minutes. During a two day tournament, he caught nine bass that weighed 40 pounds!

HAWG TIP #2. Show 'em something

new. Ben Kirkpatrick of Post, starting linebacker for Texas Tech, used a Slug-go to impersonate a quivering-unable-to-swim minnow. He won two Fun Tournaments at White River with nearly twice the weight caught by the second place angler. A slight tap on the rod was the proper quiver. Very little reeling, no hopping action, and no swimming the lure. Amazing what "deadsticking" can do.

Frankly, it amazes me that tournament anglers can fish so s-l-o-w for so long. After 15 minutes of hawg hunting, I grab either a rattletrap or a buzzbait and proceed to start educating those little fish. Of course, I do usually get a final pleasure of watching the tournament winners s-l-o-w-l-y walk away with my entry fees.

The last scheduled 1991 Big Bass Tournament at Lake Baylor will be Saturday, Sept. 28. Entry fee is \$50 and this newspaper copy of my column will save you the \$10 late fee. You must call 806-353-3654 and let me know you are coming. Fishing starts at 7 a.m. and continues till 2 p.m. Based on 100 entries, biggest bass will earn \$2,600 and hourly winners make \$100.

It's officially Fall, and as the water gets cooler the big fish will get more active. Crankbaits. Crankbaits.

Good hunting and good fishing, I love the Fall.

Complete FRATERNAL LIFE INSURANCE for the Entire Family

Omni-Plus Universal Life and Annuities and IRA's - Highly Competitive Interest Rates

For more information phone or write to our local representative

MARILYNN HART
District Deputy
P. O. Box 426
Gruver, TX 75040

Phone: Home 806-733-2226
Office 806-733-2066

ROYAL NEIGHBORS OF AMERICA
230-16th St., Rock Island, Illinois 61201-8645
Fraternal Life Insurance Since 1895

Clarendon Band Boosters Invite You To A

Mexican Pile-On

Friday, Sept. 27 1991
5 p.m. to 7 p.m.

Clarendon High School Cafeteria

Child/Student \$2.50
Adults \$3.50

THE INFILTRATOR

State of the Art Septic System Drain Field. Uses less yard area. And no gravel to get in your lawn.

Available at

BOYD DITCHING

State Certified Installers - 11 yrs. experience

New Septic Systems or Old Ones Repaired

Other Services
Utility Line Replacement & Repair
Roto-Rooting • Septic Tank Pumping
Backhoe & Ditching Services

At A Price You Can Afford

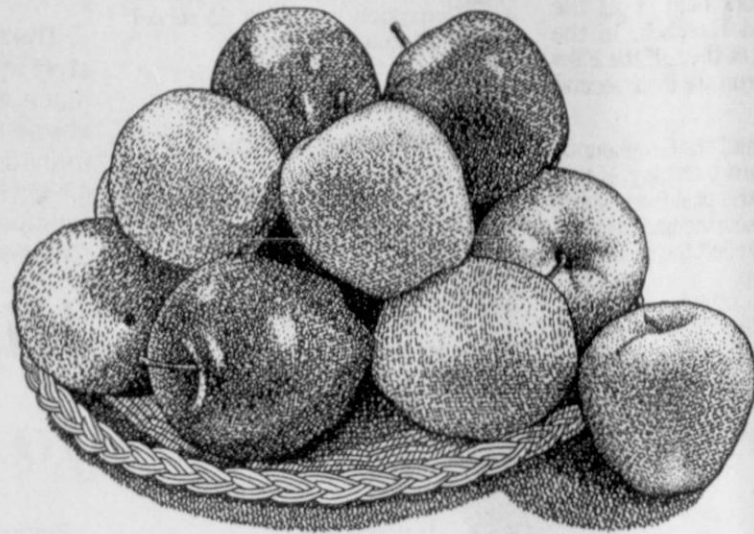
Call for an estimate

Daniel Boyd

Spearman 659-3304 Gruver 733-2812

Apple Harvest

United's produce department is showing the colors of fall with a delicious new crop selection of apples! Try our bright yellow Golden Delicious Apples...they are wonderful for salads and fresh eating. The McIntosh Apple is bright red striped with carmine over greenish-yellow and is an excellent apple for home-baked pies. Another good bright red baking apple is the Jonathan Apple with medium tartness. And a favorite apple for those who like crisp tartness...the yellow green Granny Smith Apple. Remember, a medium apple provides about 66 calories and is an excellent snack and lunch box stuffer.



EASY!

New Crop Apples

• Golden Delicious • Granny Smith • Jonathan • McIntosh

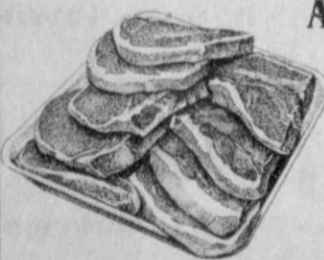
2 \$1

lbs.



Prices Good Thru October 1, 1991 in Perryton, TX Only

Farmland Extra Tender Quarterloin Pork Chops



Assorted Ends & Center Chops
\$1.79
lb.



Beef Fillets

Bacon Wrapped
6 oz. each
2 for \$3.98

Coke, 7Up Dr. Pepper

6 pk. 12 oz. cans
\$1.79

Carnation Chunk Lite Tuna

In Water or Oil - 6 oz.
2 for \$1
Carnation Tuna Solid White \$1.29

PLAINS Ice Cream

Assorted 1 1/2 Gallon
\$1.89

Lay's Potato Chips

Assorted 6.5 oz.
.99

UNITED

DOUBLE COUPONS
7 days a week See sbre for details



Gruver High School Principal Barry Haenisch presents a National Merit Certificate to Benny McClenagan as his parents Dean and Rosalynn look on.



Gruver High School Principal Barry Haenisch presents a National Merit Certificate to Luke Miller as his parents Barry and Camille look on.

Miller, McClenagan commended students

Barry Haenisch, Gruver High School principal, announced that Luke Miller and Benny McClenagan have been named Commended Students in the National Merit Scholarship Program. A Letter of Commendation from National Merit Scholarship Corporation, which conducts the program, will be presented by the school to these outstanding seniors.

About 35,000 Commended Students throughout the nation are being honored for their outstanding performance on the 1990 Preliminary Scholastic Aptitude Test/National Merit Scholarship Qualifying Test, which was the route of entry to the 1992 Merit Program. Commended Students have shown exceptional academic promise by placing among

the top 5 percent of more than one million program entrants, but their qualifying test scores are slightly below the level required to continue in the 1992 competition for Merit Scholarships.

An officer of NMSC stated, "The high performance of the young people honored as Commended Students in the Merit Program is indicative of outstanding scholastic ability. We hope that recognition of these students will increase their motivation to make the best use of their talents and to develop skills that our nation will need in the future. Being named a Commended Student in this keen competition is a credit to these young men and women as well as to their schools, which play a key role in their development."

Spelling Bee set

AMARILLO - For the 44th year the Amarillo Globe-News will sponsor the National Spelling Bee for students in grades eight and below.

Rules established by the national sponsors, the Scripps Howard Newspapers, state that no student in a grade higher than the eighth or older than 16 by the end of the current school term may compete. The Bee is open to any student in a public, private, or parochial school. Directors in each of the counties are responsible for scheduling their own county eliminations.

There are two levels of competition: the Junior Bee is for students in the fifth and lower grades; the Senior Bee is open to students primarily in grades six through eight; however, some directors in the small areas combine the two levels of competition.

Each county Junior winner and each county Senior winner will be guests of the sponsors on April 11, 1992 - the date of the Regional Bee to be held on the campus of WTSU. The winner in that competition will represent the sponsors in the 1992 National Bee in Washington, D.C., beginning on May 25. The trip includes free airline tickets for the champion and one parent.

Each of the champions honored in Amarillo will be given special awards.

The director in Hansford County is Freida Burgess, Spearman Elementary School in Spearman.

Any interested student or teacher should contact the director for additional information. Or, contact Jeanne Bartlett, Spelling Bee Coordinator, Amarillo Globe-News, Box 2091, Amarillo, Texas.

Call Toll Free
1-800-232-5370

DRY CLEANING

Professional Shirt Laundry Service
Jeans Starched and Ironed

1-800-232-5370

Free Pickup & Delivery Monday & Thursday!

PERRYTON CLEANERS & LAUNDRY

1-800-232-5370

WANT ADS Work Wonders!

Reporter-Statesman
CLASSIFIEDS
659-3434

NOTICE
Deadline to place or cancel classified line ads is Tuesday noon for Thursday insertion.
CLASSIFIED RATE
\$4.00 first insertion
\$3.00 each additional insertion (30 words or less)
13¢ each word over 30
Legal Notices: 15¢ per word
Ads must be paid in full in cash before publication, unless advertiser has established credit with the Reporter-Statesman.
Payment for out of state classifieds must be in the form of a money order or cashier's check.
No tearsheets provided for classified ads.
Tearsheets provided on request for legal notices.

REPORTER-STATESMAN CLASSIFIEDS WORK!

BOB HARDY REALTY
803 WILMETH DR.
659-3440
NEW LISTINGS
526 S. TOWNSEND - 4 b/r/k, 2 Bath, Basement.
Colorado Property For Sale.
ROBERT HARDY - BROKER

AA Realty
Allen Alford-Broker-659-3034
Julie Martin-Sales-659-2425
Dennis Nelson-Sales-659-3608
Lamy Tropper-Sales-659-3491
605 S. Archer-Lot & Trailer-Great Buy!
217 N. James-3/1 1/4-Dbl. Garage
729 Cotter Dr.-3/1 1/4-Dbl. Garage
1121 Dessen-Neat-3/1 1/4-garage
221 S. Barkley-Good Investment-REDUCED
515 Evans-3 BR-2 Bath
416 W. 13th-3/2-Dbl. Garage
Trailer Court-13 Hooks-4th & Roland
Homes to Show Not Listed
Just Call For Showings
FOR QUALITY & SERVICE CALL US TODAY
Equal Housing Opportunity

Century 21
GOLDEN SPREAD REALTY
Janye Helton Pointer, Broker
Owner, 435-5444
Jennifer Nollner, Sales Associate
659-5243
821 Dessen - 5/2, lots of house for the money! Call today!
207 James - Large bonus room with basement for play area!
701 Wilbanks - 3/2, price slashed! Must see!
700 Collier - 3/1 1/4, pool and game room add to the desirability of this home!
407 W. 12th - 4/1 1/4, quiet street, carport!
605 Archer - 3/2, large rooms plus deck and hot tub!
515 S. Bernice - 4/1 1/4, extra large lot & close to school!
18 S. James - 3/2, extras include basement and large building in back!
118 Townsend - 4/2, apartment included. Price slashed!
505 Haney - 3/1 1/2, owner will sell or rent!
703 E. Second - 3/1 1/2, great location!
501 Oklahoma - 3/1 1/2, beautiful hardwood floors!
13 S. Brandt - 2 1/2 - 3/4 Home property, UNDER CONTRACT!
116 Jamt - UNDER CONTRACT!
205 Lonita - 3/1, starter home!
308 Hazelwood - 2/1, for the thrifty!
611 S. Evans - 3/1 1/4, affordable!
Barn Off County Road - For sale!
315 1/2 N. Bernice - Lot for sale!

Century 21
Equal Housing Opportunity

REAL ESTATE

MUST SEE: 3 bedroom, 2 bath, detached double garage with studio. Many extras including new tile and hardwood flooring. This is extra nice. Call Julie Martin, AA Realty 659-2425.
\$47-3tp

HOUSE FOR SALE: 110 South Brandt, Spearman. Two bedrooms, one bath, two corner lots, storm cellar, garage. Any serious offer considered, must sell. 733-2914 or 733-2097.
\$45-4tc

HOUSE FOR SALE: 709 Womble, Gruver. Four bedrooms, three baths, five lots. Lots of storage. 733-2914 or 733-2097.
\$45-4tc

HOUSE FOR SALE by owner. 4 bdr, 2 bath, central heat & air, ceiling fan in every room, two fireplaces, large yard with fruit trees, two storage sheds. 1006 S. Barkley, Spearman, 659-3112.
\$45-4tp

WANT TO LIVE in the country? Five acres of land, a mobile home and barn in the country. Call 659-5233.
\$45-4tc

SUPER PRICE! Nice 3 bedroom, 1 bath brick home, close to schools and parks, with garage, storage shed, fenced backyard. Call 659-2962.
\$37-RTN

FOR SALE - 2100 sq. ft. (living space) home, 3 large bedrooms, 2 1/2 baths, large kitchen, living room and den. Attached garage, fireplace, large yard with trees. 224 Barkley, call Bob Boxwell at 659-3802 for appointment to see.
\$37-RTN

SMALL EQUITY - Low interest assumable loan. Nice three bedroom, two bath home. Sunken living room, fireplace, fenced back yard, two car garage. Very nice location for children. 1120 Archer, Spearman. Call 659-2306.
\$32-RTN

FOR SALE: 3 Bedroom, 2 bath home. Sunken living room, parquet floors, fireplace, covered patio, 2 car garage, sprinkler system, 2193 sq. ft. living space, excellent location. Call 659-3587 or 659-5022.
\$33-RTN

THREE BEDROOM BRICK home with six acres. House unfinished, all electric. Call 659-2674.
\$48-4tp

MOBILE HOMES

FOR SALE OR RENT: Three bedroom trailer on three trailer lots. Located at 204 N. Hazelwood. For information call (405) 254-3888.
\$47-4tp

MUST SELL NOW! Mobile home, 101 S. Hazelwood. Three bedroom, two bath, two car garage. Fenced in yard, sprinkler system, corner lot. 659-5095 or 435-5110.
\$48-3tp

AUTOMOBILES

1980 HONDA CIVIC: new paint, five speed, great gas mileage, runs and looks good. \$1000. Call 659-2448.
\$48-1tp

PETS

GREAT PYRENEES weaned puppies, \$75. Six-month pups, bonded to sheep, \$150. Call (806) 659-3181 after 6 p.m. or 659-3765. Leaning T Ranch, Spearman, TX
\$48-2tc

Today's Best Buys

CHARMIN BATHROOM TISSUE
4-Roll Pkg.99¢
ALLSUP'S CONVENIENCE STORE

COKE, DR. PEPPER OR 7UP
6-Pack, 12 Oz. Cans. \$1.79
UNITED SUPERMARKET-PERRYTON

CARNATION TUNA
6 1/2 Oz. Can. 2/\$1.00
UNITED SUPERMARKET-PERRYTON

LAY'S POTATO CHIPS
Assorted, 6 1/2 Oz. Pkg.99¢
UNITED SUPERMARKET-PERRYTON

FOR RENT

APARTMENTS FOR RENT. One and two bedrooms, furnished. Call J.P. at 659-2117.
\$25-2tpRTN

FOR RENT: large mobile home lgt. storage bldg., sidewalk and 2-car parking slab. 6 ft. wood privacy fence. 1 block from swimming pool and close to schools. Call 659-2954, leave name and phone number.
\$35-RTN

MOBILE HOME SPACES in Spearman for rent, \$50 per month. Call Bill Bailey, 435-5080.
\$38-RTN

THREE BEDROOM one bath, fireplace, fenced yard, central heat & air. Also, two bedroom trailer, 14 X 70, carpet, private lot, air conditioning, off-street parking. Call 659-3657, leave message.
\$48-1tpRTN

SPECIAL NOTICE

IS DRINKING AFFECTING your life negatively? Join us at AA or Al-Anon. Tuesdays at 8 p.m., at 30 Hwy 760 (three blocks south of the Moose).
\$44-8tp

RENT VCR'S & MOVIES
Buy used movies, rent Nintendo & Genesis games. Blank tapes, candy, popcorn for parties, pickles, hot roasted nuts. NEW Camcorder movie camera for rent - Tape Your Parties!
THE KNACK SHOPPE
A Video Specialty Store
317 Main St.
Spearman, Texas 79081
(806) 659-5046
\$45-4tp

SERVICES

FOR REASONABLE, QUALITY guaranteed gearhead repair, call 806-435-4900, 8-12 Monday-Friday, 806-435-3939 after 6 p.m. and weekends. Loaner gearheads available in most cases.
\$37-RTN

SERVICES

Stay in touch! with **G&G ELECTRONICS** CellPhone USA
*2-way Radio
*Mobile Telephones
\$35/month No Air Time
*Repeater Spaces
*Pagers
*Satellite Work
Call Bruce Duncan (806) 659-3673

SERVICES

OSGOOD MONUMENT CO.
Amarillo, Texas
Dealers of Rock of Ages Granite, as well as all colored granites, marble and bronze memorials.
represented by **BOXWELL BROS. FUNERAL HOME**
519 S. Evans
659-3802

SERVICES

Bob Williams
435-4835
Sweep Air Seeder
\$6/A -200 Acres
\$50/A -+200 Acres

SERVICES

CALL YOUR LOCAL Used Cow Dealer for 7 days a week dead stock removal. 659-3544 or 1-800-692-4043. Serving Cattlemen for the past 20 years.
G51-RTN

SERVICES

JACK OF ALL TRADES! We do anything and everything: Painting, tree trimming, mowing, yard work & clean up, landscaping, roofing, fence building (all types). You need it done, call David Pearson at 659-3352.
\$43-1tcRTN

SERVICES

UNIDEN SATELLITE SYSTEM complete with descrambler and remote control. 659-3046.
\$48-4tc

SERVICES

STEEL BUILDINGS - Must sell two steel buildings from cancellation. One is 40 X 40. BRAND NEW, Sell for balance owed. CALL BOB 1-800-552-8504.
\$48-2tp

SERVICES

BARGAIN BUY on Baldwin piano. Excellent condition. Will sell below value. Will consider payments. Great Christmas gift! Call 659-2468. Leave message.
\$46-4tp

MISC. FOR SALE

JAN'S ETC. NEW & USED & ANTIQUES TOO
Everything for home and family. Plains Shopping Center in Spearman. Open Monday - Saturday, 9:30 a.m. til 6:00 p.m.
\$16-RTN

PIANO FOR SALE: Wanted responsible party to take on small monthly payments. See locally. Trade-ins accepted. Credit manager 1-800-233-8663.
\$47-3tp

NEW TRAMPOLINES
Mats and springs. Resew trampoline mats. Make new boat covers.
Call 806-659-2109
Harry Stumpf
301 W. 12th
Spearman, Texas

PIANO FOR SALE: Wanted: Responsible party to take on small monthly payments on piano. See locally. Call Manager at 800-635-7611.
\$47-3tp

SERVICES

HANDYMAN - YOU WANT it done and can't or don't want to do it yourself!! Call Uncle Ed (Pearson) 659-3328 anytime! House, yard, fence, car, mower, bicycle, air conditioner, etc... Anything!!
\$37-RTN

SERVICES

FRONT PORCH SALE Saturday, Sept. 28, 9 a.m. to 12 noon, 1107 Townsend St. Dishes, towels, drapes, sheets, dresses sizes 8-10.
\$48-1tp

SERVICES

GARAGE SALE: tools, furniture, clothes, swing set, 15 foot boat, small engine tools, trolling motor, pickup tool box, kerosene heater, parakeets, misc. Sept. 27-28, 9:00 - ?, 207 S. James, 659-2448.
\$48-1tp

SERVICES

SECRETARY FOR CPA firm. Experienced in word processing, 10-key and typing. Resume to Henton & Co., P.C., Box 296, Spearman, TX 79081.
\$48-1tc

SERVICES

YARD SALE - Saturday, Sept. 28, 9 a.m. - 3 p.m. Ceramics, crafts, children's books, large women's clothing, toys, lots of misc. No early sales! 106 Wanda Dr.
\$48-1tp

SERVICES

GARAGE SALE: tools, furniture, clothes, swing set, 15 foot boat, small engine tools, trolling motor, pickup tool box, kerosene heater, parakeets, misc. Sept. 27-28, 9:00 - ?, 207 S. James, 659-2448.
\$48-1tp

SERVICES

NOTICE
Wallace Monument Co.
Monuments, Curbing, Grave Covers
1-800-999-9506
Local Representative
LEONARD JAMESON
Spearman, Texas
35s-rtn

SERVICES

DEER HUNTERS SPECIAL: 50 acres, \$595/acre, wooded, excellent hunting, county road. Texas veteran or owner financing, prime acreage. Fox Real Estate, 500 Buchanan Dr., Burnet, Texas. 1-800-725-3699.

SERVICES

NOTICE-COUNTRY/WESTERN songwriters: 6th Annual "Making Texas Music" Songwriting competition, Nov. 8-9. For application, write "Making Texas Music", Putnam, TX 76469.

SERVICES

WOLFF TANNING BEDS: New commercial-home units from \$199. Lamps, lotions, accessories. Monthly payments low as \$18. Call today. FREE new color catalog. 1-800-462-9197.

SERVICES

ARE YOU RECEIVING payments on an owner-financed CONTRACT or DEED OF TRUST? We convert payments to CASH! Please call American Equity Funding, Inc. 1-800-874-2389.

SERVICES

FRIENDLY HOME PARTIES has openings for dealers. No cash investment. No service charge. Highest commission and hostess awards. Three catalogs, over 800 items. Call 1-800-488-4875.

SERVICES

SNICKERS - MARS: Be a distributor for the most famous brands in America. No selling. Investment from \$5,000 to \$100,000. 1-800-825-4058.

HOUSEHOLD GOODS

38 YARDS of kitchen and utility carpet. Real good condition. 659-3236.
\$45-1tpRTN

WANT TO BUY

WANTED: GOOD USED alto or tenor saxophone. Please call Pam Edwards in Sayre, OK at (405) 928-5104 or Jonell Grayson at 659-2122.
\$46-3tp

HELP WANTED

PART TIME OUTREACH Worker needed for Hansford County. 14 hours per week at \$6 per hour. Will start 10/15/91. Call the Panhandle Crisis Center at 1-800-753-5308 for application and information.
\$47-2tc

HELP WANTED

SECRETARY FOR CPA firm. Experienced in word processing, 10-key and typing. Resume to Henton & Co., P.C., Box 296, Spearman, TX 79081.
\$48-1tc

GARAGE SALES

LARGE GARAGE SALE - 1107 South Barkley. Clothes, dishes and lots of seashells. Sept. 27 and 28, 8 a.m. - ???
\$48-1tp

GARAGE SALES

YARD SALE - Saturday, Sept. 28, 9 a.m. - 3 p.m. Ceramics, crafts, children's books, large women's clothing, toys, lots of misc. No early sales! 106 Wanda Dr.
\$48-1tp

GARAGE SALES

FRONT PORCH SALE Saturday, Sept. 28, 9 a.m. to 12 noon, 1107 Townsend St. Dishes, towels, drapes, sheets, dresses sizes 8-10.
\$48-1tp

PUBLIC NOTICES

ORDINANCE #605
An ordinance repealing Chapter 3, Animals, of the Spearman City Code and enacting a new Chapter 3 defining Terms; defining Nuisances relating to Keeping of Animals; establishing Standards of Care; requiring Vaccinations; regulating Guard Dogs; prohibiting Wild Animals; dealing with Estrays; providing for Capture and Possession of Animals at Large; providing for Disposition of Unclaimed Animals; providing for Rabies Control; establishing Impoundment and Animal Control Services Fees, all as more fully set out herein; providing for a Penalty; and providing for an Effective Date.
\$48-1tc1290

PUBLIC NOTICES

REACH 3 MILLION TEXANS for only \$250
Now you can run your classified ad in newspapers all across Texas for \$250.
That's right—a 25 word ad costs only \$250 to run in 293 newspapers with a combined circulation of more than 1.8 million (that's more than 3 million readers) throughout the Lone Star State.
One call to this newspaper, that's all. We'll place your ad in 293 newspapers. All you have to do is get ready for results.
This new sales opportunity is brought to you by this newspaper and the Texas Press Association member newspapers.
Call this newspaper for details
Tex SCAN
Statewide Classified Advertising Network

PUBLIC NOTICES

DRIVERS: KLLM INC., Dallas and Houston terminals are now hiring single drivers and teams with one year recent Tractor Trailer experience! Call 1-800-925-5556, Monday-Friday.

PUBLIC NOTICES

SEARCHING FOR OPPORTUNITY to achieve total financial freedom and time freedom to go with it. Complete training and support. If you are serious call 713-866-4015.

PUBLIC NOTICES

PIONEER STEEL BUILDINGS Fall Special 30X40X10 ... \$4,250; 30X50X12 ... \$5,295; 30X75X12 ... \$6,250; 40X75X12 ... \$8,695; 50X100X14 ... \$13,175; 80X100X14 ... \$19,995. ALL SIZES. Mini-Storage. Financing available. 1-800-637-5414.

PUBLIC NOTICES

(5) 1988 Pete 377, Cat, 9 over drive, big bunk and (10) 1989 Freightliner 8664T, Cummins, 9 speed, under 300k miles, and (3) 1988 White WIA 64T, Cummins, 9 speed, single bunk. Nice fleet trucks. Call Jim Stevenson 1-800-827-7690.

PUBLIC NOTICES

REPLACEMENT WINDOWS BY ACROLINE: Save energy and add security. Easy installation, years of maintenance-free beauty at an affordable price. 25-yr. guarantee. CALL NOW: 1-800-275-6715

PUBLIC NOTICES

AUTO FINANCE!! Bad credit OK. - no down payment. 1987-1991 models. Make low monthly payments on financially distressed vehicles. 1-800-274-8141 information 24 hrs.

ADOPTION - FULL-TIME MOM, loving dad and cuddly cat searching for special newborn to fill our hearts. Beautiful riverside home with garden, sandbox and jungle gym. Summers at the beach, vacations in Scandinavia, Christmases at Grandma's. Allowed expenses paid. Call Brenda & John collect anytime 212-926-9078.



REPORTER-STATESMAN CLASSIFIEDS WORK!

Reach 3 million Texans for only \$250

Now you can run your classified ad in newspapers all across Texas for \$250.

That's right—a 25 word ad costs only \$250 to run in 293 newspapers with a combined circulation of more than 1.8 million (that's more than 3 million readers) throughout the Lone Star State.

One call to this newspaper, that's all. We'll place your ad in 293 newspapers. All you have to do is get ready for results.

This new sales opportunity is brought to you by this newspaper and the Texas Press Association member newspapers.

Call this newspaper for details



Statewide Classified Advertising Network

Tex SCAN
Statewide Classified Advertising Network
Advertise in 293 Texas newspapers for only \$250.
Reach 3 MILLION Texans. Call this newspaper for details.

DEER HUNTERS SPECIAL: 50 acres, \$595/acre, wooded, excellent hunting, county road. Texas veteran or owner financing, prime acreage. Fox Real Estate, 500 Buchanan Dr., Burnet, Texas. 1-800-725-3699.

NOTICE-COUNTRY/WESTERN songwriters: 6th Annual "Making Texas Music" Songwriting competition, Nov. 8-9. For application, write "Making Texas Music", Putnam, TX 76469.

WOLFF TANNING BEDS: New commercial-home units from \$199. Lamps, lotions, accessories. Monthly payments low as \$18. Call today. FREE new color catalog. 1-800-462-9197.

ARE YOU RECEIVING payments on an owner-financed CONTRACT or DEED OF TRUST? We convert payments to CASH! Please call American Equity Funding, Inc. 1-800-874-2389.

FRIENDLY HOME PARTIES has openings for dealers. No cash investment. No service charge. Highest commission and hostess awards. Three catalogs, over 800 items. Call 1-800-488-4875.

SNICKERS - MARS: Be a distributor for the most famous brands in America. No selling. Investment from \$5,000 to \$100,000. 1-800-825-4058.

HAPPY JACK FLEAGARD: All metal patented device controls fleas in home without chemicals or exterminators. Results overnight! At farm feed drug & hardware stores.

\$ LOCAL ROUTE handling Frito Lay, Nabisco, etc. Full company support. Census shows earnings of \$39,000 net per year. Requires cash investment of \$15,000. 1-800-635-3003, Operator 2.

ADOPTION - FULL-TIME MOM, loving dad and cuddly cat searching for special newborn to fill our hearts. Beautiful riverside home with garden, sandbox and jungle gym. Summers at the beach, vacations in Scandinavia, Christmases at Grandma's. Allowed expenses paid. Call Brenda & John collect anytime 212-926-9078.

ADOPTION - FULL-TIME MOM, loving dad and cuddly cat searching for special newborn to fill our hearts. Beautiful riverside home with garden, sandbox and jungle gym. Summers at the beach, vacations in Scandinavia, Christmases at Grandma's. Allowed expenses paid. Call Brenda & John collect anytime 212-926-9078.

ADVERTISING PROVISIONS

1. Publisher reserves the right to reject, edit, revise and properly classify any advertisement at his sole discretion.
2. Advertiser assumes all liability for advertisements printed pursuant to his instruction and shall indemnify and hold the publisher harmless from and against any and all claims and damages, including all costs incurred by publisher in connection therewith. Advertiser represents that all advertising copy is truthful and not misleading. Advertiser shall indemnify and hold publisher harmless from any claim against publisher arising out of or in connection with publication of advertising (except for modifications made by publisher without Advertiser's approval) including, but not limited to, claims for libel, invasion of privacy, commercial appropriation of one's name or likeness, copyright infringement, trademark, trade name or patent infringement, commercial defamation, false advertising, or any other claim whether based in tort or contract, or on account of any state or federal statute, including state and federal deceptive trade practices acts. If advertiser claims copyright ownership in any of the advertising published, advertiser must include proper notice of its copyright claim in the body of the advertisement, otherwise copyright ownership shall remain in publisher.
3. Advertiser agrees to check advertisement in the first issue in which it appears and report any error at once as publisher assumes no responsibility for errors after the first insertion. For any error which is the fault of the publisher and of which publisher has been timely notified, publisher will reprint the corrected advertisement for one extra insertion or refund the proportionate cost of the advertisement containing the error. Publisher shall have no responsibility for errors

Batteries must now be recycled

The Texas Department of Health soon will publish new rules governing the disposal of automobile batteries. Under a law (SB 1340) which became effective Sept. 1, lead-acid automobile batteries are no longer permitted in municipal landfills and must instead be recycled.

The Texas Board of Health, at its Aug. 24 meeting adopted emergency rules for public compliance with the law. Those rules are now published in the "Texas Register." Final rules will be adopted after a Sept. 25 public hearing and a review of public comments ending on Oct. 11.

Under the new law, anyone who wishes to dispose of a car battery must take it to a wholesale or retail battery dealer, a secondary lead smelter or a recycling center authorized to accept it.

The law further requires that all

battery retailers must accept used batteries offered for recycling.

Similarly, battery wholesalers are required to accept, and pick up within 90 days, used batteries collected by their retail customers.

Retailers also must post signs advising the public about the new requirements. The law specifies the wording for the signs, and the signs themselves will be produced and distributed by TDH.

TDH inspectors have the authority to enforce compliance with the recycling law. According to T.A. Outlaw, chief of the TDH Bureau of Solid Waste Management, "The inspectors may issue warnings or citations to any battery retailer who fails to post the new signs. The penalty for failing to post the sign within three days of receiving a warning can be

as much as \$100 a day."

Outlaw added, "Besides posting the required signs, businesses must collect a fee on the wholesale or retail sale of any lead-acid battery." For each battery with a capacity of at least six volts but less than 12 volts, the fee is \$2. For batteries of 12 volts or more, the fee is \$3.

All such fees from battery sales must be reported to the Texas Comptroller of Public Accounts on or before the 20th day of the month, following the month in which they were collected. Reporting forms and information about fees are available from the Comptroller's office at 1-800-252-5555. The Comptroller's office will deposit battery sale fees into the Hazardous and Solid Waste Remediation Fee Fund, administered by the Texas Water Commission.

Outlaw said that, in a related action, the lawmakers authorized the TDH Bureau of Solid Waste Management's merger with the Texas Water Commission, effective March 1, 1992, as part of the creation of a single state environmental agency.



A ribbon was cut to mark the grand opening of Cellular Communications of Spearman on Tuesday, Sept. 17. Cutting the ribbon were owners J.P. and Gina Davis, along with office manager Melissa Beck and Mary Alice Roberts, representative of Dobson Cellular Systems. Spearman Chamber of Commerce am-

bassadors helped with the ribbon cutting ceremony and then presented Davis with his business's first dollar of clear profit. Cellular Communications of Spearman, at 902 Highway 207, just south of the Pizza Hut, offers the very latest technology in mobile communication systems.

SSA announces new toll-free number

by Virginia DeWitt
SSA branch manager

PAMPA - The Social Security Administration (SSA) will change its toll-free telephone number as of Tuesday, Oct. 1. The new number is 1-800-SSA-1213. (1-800-772-1213).

SSA is giving early notice so that people will not be taken by surprise when they call. We want people to be on the lookout for it and note the change before they have to use it.

The SSA number change resulted from Congressional legislation that requires Federal Government agencies to convert to a new telecommunications system called "FTS 2000." Since the new system is managed by a different service carrier than the agencies had used in the past, SSA had to change its toll-free number.

Since its nationwide implementation two years ago, the 800 number service has become a popular option for people who have Social Security business. Callers find that their requests can be handled easily, conveniently and expeditiously by phone. In many instances, their business

can be completed at the time of the initial call. Recent studies show that more than two-thirds of the 800-number callers prefer using the telephone over having to visit a Social Security office in person.

SSA also offers a telephone response unit that uses an automatic script to speed the processing of certain routine requests. Using a pushbutton telephone, you can: request an application for a Social Security number; obtain a request form for a Personal Earnings and Benefit Estimate Statement; request written verification of the amount of your Social Security benefit or Supplemental Security income payment; order publications; and listen to general information about Social Security programs.

With the assistance of a teleservice representative at the 800 number, you can change a mailing address, make an appointment to apply for benefits, report a missing check, or simply ask a question.

Service on the 800 number is available weekdays from 7 a.m. to 7 p.m. But, the best times to call are early in the mornings or late in the afternoon, Wednesday through Friday, after the first week in the month.

The local Social Security office is located at 125 South Gillespie, Pampa, Texas. Office hours are 9 a.m. until 4 p.m. Monday through Friday except on national holidays.

New grant, loan directory computerized

AUSTIN - State Comptroller John Sharp unveiled a new computerized directory - the first of its kind in the nation - that will greatly assist Texas communities, businesses and non-profit organizations in applying for state and federal grants and loans.

"This is the only comprehensive directory in Texas of federal/state grants and loans, and to our knowledge there's nothing like it anywhere in the United States," Sharp said at a State Capitol news conference where he demonstrated the "user-friendly" aspects of the new computer directory.

"Since 1981, Texas has consistently ranked 45th or worse in per capita federal aid for state and local governments. To get \$1 back, Texas has to send \$1.31 to Washington. This grant directory is a new tool to help us bring more of our fair share of federal funding back to the state," Sharp said.

"Not only will the Comptroller's Office assist with identifying sources for grants and loans, but we also want to help groups and individuals assess their resources and plan their economic development strategies," Sharp said.

Sharp said the computerized grant

directory, which is already drawing national interest, was developed in-house by the Comptroller's Economic Development Division and an agency computer programmer, at a savings of hundreds of thousands of dollars to the state.

"Consulting firms assured us they could develop the directory at a cost of \$250,000 or more. We did it by utilizing the talents of our own people to write the grant directory program and load it onto a small desktop computer," Sharp said.

"We have already placed these computers at six locations in Texas - in Austin and in our field offices in Dallas, Longview, McAllen, San Antonio and Tyler. Our economic development specialists in each of these offices also have the directory loaded into lap-top computers for meetings outside their offices.

"You don't have to be a computer whiz kid to use the directory. The 'user-friendly' computer information can be retrieved quickly and made available to Texas citizens or organizations that need it. And, best of all, we will provide the information at no charge," Sharp said.

The grants are indexed on the com-

puter under 20 broad subject areas, ranging from agriculture to transportation. They can be retrieved by subject area or by grant number.

The information for each grant includes the agency providing the grant and the appropriate contact for the program, along with the eligible applicants (local governments, non-profit organizations, educational institutions, businesses, individuals and/or state agencies).

The program search also displays the application procedure and deadline, the uses and restrictions of the grant, any formula or matching requirements and the average of financial assistance that has been awarded. The information on the federal grants also names the Texas Congressional members on the authorizing and appropriations committees relevant to the program.

"The federal information was retrieved from the Catalog of Federal Domestic Assistance, and the state information was compiled

by Comptroller's Office employees from a recent survey of all state agencies.

"This is no one-shot deal. We will update the federal grant information twice each year and the state information every year. We will supplement the information weekly with updates of new grant announcements and deadline notices from both the 'Federal Register' and the 'Texas Register,'" Sharp said.

"The Economic Development Division staff in these six offices is fully trained to help Texans get the information they need. When applicable grant information is found, it is printed and turned over to the person asking for it. We will also send along an evaluation form to give us feedback on any problems with the information or the service," Sharp said.

"I have long thought that a directory of grants and loans would be an invaluable tool to local communities and the people who work, teach and live there," Sharp said.

Obituaries

Bessie Melton
HASKELL, Texas - Bessie Melton, 73, of San Angelo died Tuesday, Sept. 17 in St. Johns Hospital in San Angelo.

Mrs. Melton was born Aug. 21, 1918 at Clayton, N.M. and had been a longtime Haskell County resident. She had lived in Vernon, and in San Angelo since 1965. She had been an active member of the Vernon AA Club and was a member of Calvary Baptist Church in Vernon. She was a homemaker.

She married Freeman Mullins in 1936. He died in 1954. She married Raymond Melton on May 21, 1947 at Haskell. He died in 1978. She was preceded in death by a son, Dr. Clint Melton, on July 4, 1991.

Survivors include two daughters, Myrtis Marie Ivey of Haskell and Darlene Marla Reimers Hill of Newport, R.I.; three sons, Franky Don Mullins of Spearman, Eugene Milford Mullins of Marlin, and Ben Melton of San Angelo; three sisters, Maye Bledsoe of Haskell, Linnie Carrigan of Sallisaw, Okla., and Nan McClain of Dallas; one brother, Perry Patterson of Wichita Falls; eight grandchildren; and 10 great-grandchildren.

Funeral services were conducted Friday, Sept. 20 in East Side Baptist Church with the Rev. Paul

Cheatham and the Rev. R.D. Williams officiating. Burial was in Willow Cemetery under the direction of Holden-McCauley Funeral Home of Haskell.

The family requests memorials be to Vernon State Hospital at Vernon, Texas, or to the American Cancer Society or a favorite charity.

Mabel Berner Edwards

Mabel Berner Edwards, 89, of Spearman died Wednesday, Sept. 18.

Mrs. Edwards was born in Madison, Mo., and moved to Spearman from Gotebo, Okla., in 1921. She was a retired licensed vocational nurse and beauty operator. She was a member of Dahlia Flower Club and the First Baptist Church. She was preceded in death by a daughter, Thora Jean Van Cleave in 1994.

Survivors include a son, Wayman Edwards of Spearman; a daughter, June Weant of Tucson, Ariz.; nine grandchildren; 13 great-grandchildren; and two great-great-grandchildren.

Funeral services were conducted Saturday, Sept. 21 in the First Baptist Church with the Rev. Russ Gibbs, pastor, and the Rev. Lealand Grimmer, pastor of Apostolic Faith Church, officiating. Burial was in Hansford Cemetery.

YOU ARE INVITED TO ATTEND

"SURVIVING THE 1990'S"
A Practical Business Development Seminar for Small Business Owners and Managers

6:30 to 9:30 p.m.
Tuesday, October 1, 1991

Location:
First Methodist Church
Fellowship Hall

TOPICS: Marketing and Marketing Research
Financial Management
Customer Care

SPEAKER: Don Taylor

COST: \$10.00 per business (Chamber members)
\$15.00 per business (Non-members)

Sponsored By:
Spearman Chamber of Commerce
WTSU Panhandle Small Business Dev. Center

MARY KAY
ADVANCED NAIL CARE SYSTEM
Remarkable Strength.
Unmistakable Beauty.

Find out how Mary Kay's Advanced Nail Care System can help you develop longer, stronger, more beautiful natural nails. Call today!

Independent
Mary Kay Beauty Consultant
CAROLYN TAYLOR
659-3676

Senior citizens may need B6

WASHINGTON - Older people, particularly older women, appear to need more vitamin B6 than currently recommended, according to a U.S. Department of Agriculture study published in the July issue of the "Journal of Nutrition."

The three-month study of 61 to 71-year-old men and women broadens the age range of data for setting future Recommended

Dietary Allowances for B6. These are currently based on studies of younger adults, said researchers at USDA's Human Nutrition Research Center on Aging at Tufts, Boston.

Since the vitamin plays an important role in central nervous system functioning, a low intake in adults could lead to depression, lethargy, confusion or nervousness. But these symptoms of B6 deficiency could also result from other causes, including deficiencies of other B vitamins, said study leader Judy D. Ribaya-Mercado.

According to Ribaya-Mercado, "many surveys that have been done show that people—both young and old—are not getting enough B6. But the actual intakes may, in fact, be underestimated because the food tables don't give B6 values for all foods—and surveys would rely on the tables." In this study, she noted, "we knew exactly how much B6 we were feeding the volunteers. Every food item was chemically analyzed."

Poultry, red meat, fish, fruits, vegetables and grain products all provide good amounts of B6.

AUCTION
WILLIAMS WELDING
SURPLUS VEHICLES & EQUIPMENT
Saturday, Sept. 28, 1991 • 10:00 A.M.
1315 W. Wilks (Hwy 60 W.) Pampa, TX

TRACTORS - FORKLIFT 1-1981 KUBOTA L130SD Diesel Utility Tractor, MFWD, 307 hrs., 4 sp. Hi-Lo, 540/1000PTO, 3pl. Model/L1720 Front End Loader w/5 Bucket, Weighted 1-1941 CASE Tractor, 4 cyl. Gas, 4 sp. 540 PTO, Elec. Hyd. 3pl. 1-1960 YALE Forklift, 5200# LR, 15 Mast, Hand Rubber Tires WATER WELL DRILLING RIG 1-Trailer Mounted Water Well Drilling Rig w/15' Mast, Hydraulic Power Sawal, V4 Wisconsin Power, 10'10" 3/2" 3" 8" Drill Stem, 3 1/2" Baler, Trailer Mounted Circulation Pump Unit w/2" 2 1/2" Can. High Pressure, V4 Wisconsin Power 480' 4 1/2" Water Well Casing 350' 1 1/4" Rod - 1075	VEHICLES - POWER WAGON SCOOTERS - TRAILERS 1-1971 B1 Loader 1700 2 T Truck w/1500 gal. Water Tank, 345 V8, 4sp/2hp, AM, Era Wheels 1-1970 CHEVY 1/2 T Pickup, 350 V8, AT, PS, PB, AC, AM, LWB 1-1964 CHEVY 1/2 T Pickup, 250 5 Cyl, 3 sp, LWB 1-1947 DODGE Power Wagon 1 T, 4x4, 6 cyl, 4 sp (beats clutch), w/1 1/2" x 8" Flatbed, HEIL Model 125 Winch, Gt. Poles, Rolling Tailboard (Truck & Bed Offered Separately & as a Unit) 2-1985 YAMAHA Riva 125 Scooters w/AT 1-BIRDVIEW Satellite Trailer, TA, Tongue Mounted Hyd. Brakes, 7 1/2" Floor 1-1989 Trailer SA, 4x7 1/2" W, Tandem Frame, Folding Tongue 2-CHEVY PU Bed Trailers, LWB 1-FORD PU Bed Trailer, SNB, Tongue Incomplete ENGINES - PARTS 1-360 FORD Engine w/G6 AT 1-351 FORD Windsor Engine w/C6 AT 1-360 CHRYSLER Engine w/AT 1-353 DETROIT Diesel w/ Spicer 5 sp 1-Set 1 T Military Front & Rear Third Members & Transfer Case 1-CHEVY PU Bed Bumper 1-Lot Brake Pads & Shoes (Foreign & Chrysler) 1-Lot Tires & Wheels	CARS - PARTS ONLY NO TITLES 1-1978 OLDS Delta 88, 350 V8, AT (Has Title) 1-1977 CHEVY PU Cab (No Top or Back) 1-1971 SUBARU w/ Transmission 1-1970 CHEVY Camaro - Hull 2-1968 CHEVY Buicks - Hulls 1-1955 CHEVY 2dr Post. Hull SHOP EQUIPMENT - TOOLS IRON - CENTRIFUGAL PUMPS 1-MILLER BlueStar Welder, 2 cyl, w/200' Lead 1-ROLAIR Portable Air Compressor w/1hp KOHLER, Elec. Start, 2 Stage Compressor 1-QUINCY 2 cyl 1 1/2" x 2 1/2" x 3 Air Compressor 1-5 hp Motor, 5hp, 220 v 1-Line Tap Clamps, 2.4, 6, 8, 10 & 12" 1-2000 B6, Elec. Hyd., Adj. Boom, PU Mount 1-Lot Hand & Power Tools 1-18 FT Pneumatic Cement Drill 100 lbs. w/ Assorted Bits 14 Pieces 12" 6x10 1/8" Beam 6 Pieces 10" 3x3x5/16 Angle Iron 40 Sheets Corrugated Tin, 10' x 12" 100' 3/4" Winch Line 1-5 Gal. Mounted and Centrifugal Pump w/1 cyl. In Box 1-1 1/2" x 1 1/2" IR X Centrifugal Pump w/B5S Engine 2-100 lbs. Tanks	GUNS - 2-WAY RADIOS 1-REMINGTON Wingmaster 870 12 ga Shotgun, Adj. Choke w/ Full 1-SEARS Ted Williams Model 21 20 ga. Vent Rib Sight Adj. Choke 2 3/4" x 3" 1-WHICHERSTER 1200 20 ga. Mtd. Choke 1-MIDLAND UHF 2 Way Mobile, 35 Watts 1-MIDLAND UHF 2 Way Mobile, 25 Watts PREFAB BLDG. FRAME NON CLASSIFIED 1-30' x 40' Prefab Building Frame w/Roof 1-WARD Home Tiler, 8 hp Gas, 2 sp 1-BAD 29" Elec. Lawnmower Dual Blade w/Catcher 1-20" Gas Lawnmower 1-Approx. 100 gal. Pressure Tank, 75 PSIG 1-6 gal. Electric Water Heater 1-Lot Insulation - R11 & R19 1-180 gal. Used Oil Tank 1-Lot High Pressure Air Hose 1-WARD 700 Central Gas Heater 1170 CFM 1-Centel AC 2-Trailer Dolly 1-Walk In Cooler, 10' x 20' 1-SIGNATURE 25 Deep Freezer ANTIQUE 1-MIKEE Kristina Iccbia 1-3 Runner Hooked w/Oven 1-3 Runner Hooked 2-Teapots
---	--	---	--

DENZEL TEVIS
AUCTION & REALTY

P.O. Box 861
Perryton, Texas 79070
(806) 435-2768
TXS-7498

Back-to-School Special
For New Patients and our Current Patients, Too.

HENSON CHIROPRACTIC
20% Off All Chiropractic Services
Including Spinal X-Rays
Coupon Good through Sept. 30, 1991

Bring coupon in to our office
HENSON CHIROPRACTIC
410 S. Davis Spearman, Texas
Call For Appointment 659-5603
Office Hours: Mon., Wed., Fri. 8:30-5:00
Tue., Thu. 8:30-11:30