

THURSDAY

FEBRUARY 24, 2000

213 MAIN
SPEARMAN, TX 79081

REPORTER STATESMAN

COMP
HANSFORD COUNTY LIBRARY
0120 N MAIN ST
SPEARMAN TX 79081

50¢

VOL. 93 • ISSUE 8

NEWS • SPORTS • PICTURES

SERVING HANSFORD COUNTY SINCE 1907

SHS Debate Teams Go To State



Spearman High School Debate Teams: (Back Row, L-R) Syd Woodington, Amber Ramon, Cynthia Goodman; (Front Row, L-R) Evan Cudd, Tommie Dewberry, and Stephen Salgado.

The UIL Cross-X Debate District Competition was held on February 12, 2000 in Stinnett. Of the three Spearman teams competing, all advanced to the semi-final rounds.

Evan Cudd and Stephen Salgado, both seniors, were awarded 4th place after a speaker-point decision was made.

Amber Ramon and Syd Woodington, also seniors, placed 3rd. This qualifies them for State Alternates.

Tommie Dewberry and Cynthia Goodman, both seniors as well, placed 2nd, and will therefore compete in State Competition.

The State meet will be held in Austin on March 12th-14th. All three teams (two being alternates) have the opportunity to travel to the capital.

We wish the best of luck to Spearman at the tournament, and we know they will make Spearman proud at State!

Lynxettes Lose Heartbreaker

by Jeff Beedy

When you look up the definition of heart and determination in the dictionary, you will find a picture of the Spearman Lynxette basketball team! These girls exemplify what it means to play hard and give it 100%. The Lynxettes traveled to Plainview Friday night and played the Eula Pirates in the area game of the Texas High School playoffs. These girls fell behind and came back and fell behind again and came back, but came up two points short as they lost to Eula 53-51. These young ladies need to be commended for the effort they gave because they never gave up even when they were down by 13 going into the 4th quarter. I walked away from that game feeling that the best team did not win, but I guess that is why you play the game. Spearman had a good crowd on hand as we had 2-3 times as many people there as Eula did. Every one that was there definitely got their money's worth as this turned out to be a very exciting game.

Both teams came out very aggressive as they both put on the full court press from the start of the game. Eula was not shy about shooting from three point range. When they could not work the ball into their post, Maegan Norton, they were shooting the three ball. Norton was their leading scorer with 11 points followed by Tanya Trojak and Brittany Densman both with 9 points each. Spearman was led by Jenn Schnell with 16 points followed by Haley Beasley and Brooke Lesly with 10 points each. Spearman trailed after the first quarter 14-11 and that is as close as they could get until late in the game.

The Lynxettes trailed all of the 2nd quarter. Eula got hot from three point land, hitting three 3 pointers. Eula's inside game was strong in the 2nd quarter also, as Norton had 11 second quarter points, but she also picked up her third foul. Spearman was led by Schnell who had 7 points in the 2nd quarter. Adrienne Simpson hit a big three pointer midway through the quarter to keep the Lynxettes close. Eula led at the half 33-26.

Spearman came out the second half and had a few turnovers and got down by 13 or 14 points, but came back and got within 3 points. We had some girls that were getting into some foul trouble which didn't help, but they continued to play hard. They ended up trailing at the end of the 3rd quarter 43-35.

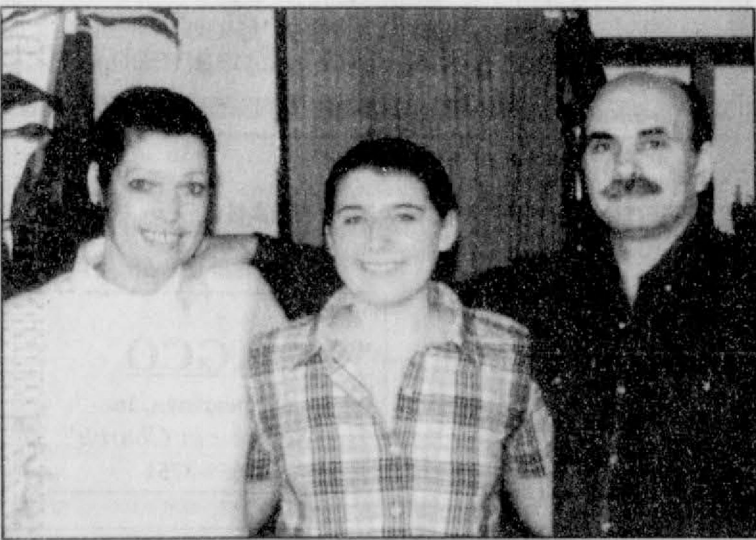
The Lynxettes trailed by as much as 13 points early in the fourth quarter, that is when they turned everything up a notch. They started playing much better defense and their full court press hurt Eula as they got several turnovers. They were working the ball around and getting better shots on the offensive end of the court, also. They fought their way back into the game and pulled to within one point, but could not get any closer than that. The Lynxettes had two good looks at the basket in the last 8 seconds of the game to send the game into overtime, but just could not get the ball to go in the basket and they ended up losing by 2 points.

I know the girls are disappointed and being the competitors that they are, they should be, but you did not lack in effort. I know we had too many turnovers and this was not one of their best games played. But you know what, a turnover or missed bucket at the first of the game is just as important as the end of the game. That is why you are called a team. You win as a team, and you lose as a team. I am very proud to be from Spearman and to be associated with the Spearman Lynxettes! You young ladies have nothing to hang your head about because you gave a great effort Friday night as you have all year long and all the people of Spearman are very proud of you. Haley, Brooke, Amber and Camille, you are going to be greatly missed, but you did an outstanding job this year and we are very proud of you! I am one that hates to say, "Wait until next year", but the future does look bright and I will be looking forward to next year. Coach Short and Coach Walker, you did a great job this year and everyone is very proud of you guys and your hard work! You have earned the respect of the girls and of the community. Lynxettes, you have been a joy to watch this year and I wish you the best of luck in the future!

Date: 2-18-2000	Place: Plainview	Record: 23-7			
Score by Quarters	1st	2nd	3rd	4th	Final
Lynxettes	11	15	9	16	51
Eula	14	19	10	10	53

Coach's Comments: We did not shoot or play as well as we would have liked to. Eula made some 3's and we missed some makeable shots. Our effort was good throughout and we stuck together through the bad spells to make a good run at the end. We did end playing our best game but the girls had a great year. I was very proud of the way they worked all year.

Pipkin Completes 6 Months In Argentina As Exchange Student



Kara Pipkin (center) is pictured above with her new host family in Argentina.

submitted

Kara has now spent half of her year's stay in Ushuaia, Tierra del Fuego, Argentina. She is enjoying summer break from December through February and is having a wonderful time.

Kara has become fluent in Spanish since that is almost all she hears. Her host sister, Loraina, speaks English quite well, but they converse in Spanish most of the time.

When Kara arrived in Ushuaia, she started to school immediately. She said everything is somewhat like here, except for the hours. She went to school from 4 p.m. to 11 p.m. each evening. Many of the social events take place late at night too.

The first Rotary meeting she attended started at 11:00 p.m. and ended at 3:00 a.m. Of course in the winter, the daylight hours are very short as the sun doesn't come out until around 11:00 a.m. and sets around 4 p.m.

The summer is just the opposite. They have heavy curtains to keep the sun out in the summer so as not to wake up with the sun at 4:00 in the morning.

She has found the people most friendly and courteous to her. Since this is mostly a tourist town, they know how to welcome new faces. She has met many new friends there who like to go to the movies, and go shopping, but her favorite hobby is to go hiking and cooking out at the mountains.

Kara will be moving to her second host home this month and will stay there until she returns home on August 1.

She is having a great time, but she does miss her family and friends. She has enjoyed hearing from so many here who have written. She sends everyone Greetings from The End Of The World.

Pringle-Morse CISD Board Honored

by Carol Forrest

Pringle-Morse CISD Board members were honored by students on Monday, February 14, 2000 at the regular meeting of the Board of Trustees. In recognition of Board Member Appreciation Month, each class took special interest in one board member.

The Pre-K class made a wonderful book for President Alan Leach. Jace Lane and Nathan Forest, along with their teacher, Mrs. Janet Wilson, presented the book to him.

The Kindergarten class presented Mrs. Betty Womble with a beautiful book of all the things they like about their school. Katelyn Wilson and Kindergarten teacher, Mrs. Carla Martin, presented the book to Mrs. Womble.

First Graders Jacob Lieb, Maci Forrest, Haden Hart, Danny Bonilla, along with their teacher, Mrs. Shannon Lane, presented Mr. Jerry Hart with a story book they had written and illustrated, as well as some valentine candies and balloons.

Second graders made a presentation to Mr. Ronny Womble with a computer story of all the things they were glad about at their school. Sheldon Fields, Rily Urban, and their teacher, Mrs. Janet Wilson, made a Kidworks computer slideshow presentation.

The third grade class presented Mrs. Carolyn Shields with a beautifully decorated heart with messages of thanks. Jenna Lee Wilson made the presentation to Mrs. Shields.

Fourth grader, Tarryn Dixon, presented Mr. Monte Dixon with a banner the fourth grade class had made to thank him for all his devotion to the school.

And lastly, the Junior High classes went together to make a banner for Mr. Lonnie Clemmons, along with balloons and candy to thank him for his invested time and caring for the school. Tyler Lane, Jessica Schmidt, along with librarian Mrs. Monica Schmidt, made the presentation to Mr. Clemmons.

We truly appreciate the way our School Board is devoted to our students and their families. Keep up the good work board members!

Early Voting To Begin February 28th

Two candidates have filed to challenge incumbents in the upcoming March 14, 2000 Hansford County election.

Cecil R. Biggers has filed for the office of county attorney now held by John L. Hutchinson, and Ty Williams has filed for the precinct 3 commissioner's seat now held by Kent Guthrie.

Running unopposed are Tax Assessor/Collector Helen Dry, Sheriff R.L. McFarlin, Precinct 1 Commissioner Butch Reed, Precinct 3 Commissioner (unexpired term) Joe T. Venneman, 84th. District Judge William D. Smith, and 84th. District Attorney Clay Ballman. According to Kim V. Vera, County and District Clerk of Hansford County.

Early balloting will begin February 28 and continue through March 10.

NOTICE

The Hansford County Reporter-Statesman is now printing in Amarillo with the Amarillo Globe News. We are making this change in an effort to improve the quality of our newspaper.

Laugh and Live



by Catherine R. Smith
CathyRSmit@aol.com

I found the following prayer several years ago, and have had several people give it to me during the last several weeks so I decided I would share it with you. I hope you enjoy it.

Pastor Joe Wright of the Wichita Central Christian Church gave the following invocation to the Kansas state legislature on January 13, 1996.

Heavenly Father, we come before You today to ask Your forgiveness and to seek Your direction and guidance. We know that Your Word says, "Woe be to those who call evil as good," and that's exactly what we have done. We have lost our spiritual equilibrium, and we've inverted our values. We confess that we have ridiculed the absolute truth of Your Word in the name of moral pluralism. We have worshiped other gods and called it multi-culturalism, and we've endorsed perversion and called it alternative lifestyle. We have exploited the poor and called it a lottery. We have neglected the needy and called it self-preservation. We have rewarded laziness and called it welfare.

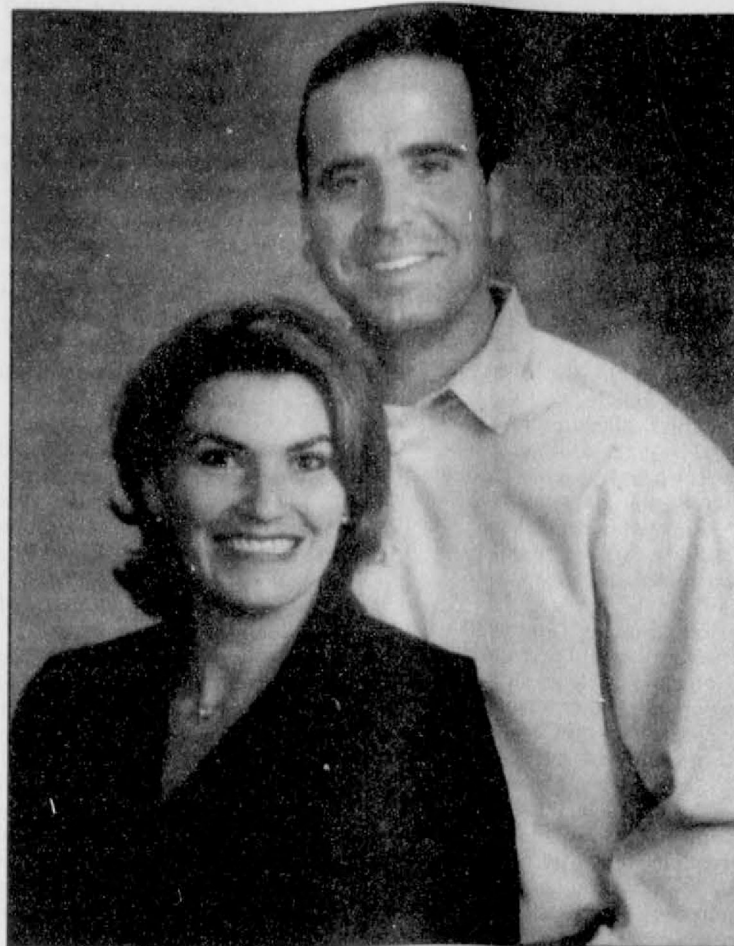
Father, in the name of choice, we've killed our unborn, and then in the name of right-to-life we've executed the abortionist. We have neglected to discipline our children and called it building esteem. We have abused power and called it political savvy. We have coveted our neighbors' possessions and called it taxes. We have polluted the air with profanity and pornography and called it freedom of expression.

We have ridiculed the time-honored values of our forefathers and called it enlightenment. Search us, O God. Know our hearts today. Try us, and show us any wickedness in us. And then cleanse us from every sin, and set us free!

Guide and bless these men and women who have been sent here by the people of Kansas and who have been ordained by You to govern this great state. Grant them Your wisdom to rule, and may their decisions direct us to the center of Your will. I ask it in the name of Your Son, the Living Savior, Jesus Christ. Amen.

Following the prayer, many Kansas legislators stormed out, and others called the prayer "blasphemous, ignorant, overbearing, and an attempt at political subversion." The governor of Kansas apologizes "for the pastor's inappropriate use of prayer to make political statements." These responses show how far American culture has changed from when pastors and churches were sought for moral guidance.

May God Bless Each of You,
Catherine :)



Engagement Announcement

Sheryl and John Scott of Austin and Nancy and Guymon Phillips of Dallas wish to announce the engagement of their daughter, Jennifer Lorraine Phillips of Irving, to Monte Verlin Beck of Irving. Monte is the son of Audene and Verlin Beck of Spearman.

The couple plans an April 15, 2000 wedding at the University Christian Church, 2007 University Avenue, in Austin.

Jennifer is a graduate of Westlake High School in Austin. She has a BBA in Marketing from Texas Technological University in Lubbock, and is currently working on her Masters at the University of Texas in Austin. She is a Major Accounts Manager at U.S. Sprint. She served as President of Delta Delta Deltas.

Jennifer's grandparents are the late H.L. and Lorraine Wilbanks, Dorothy Wilbanks, and the late J.G. and Lenora Phillips, all of Stinnett, and Lois Scott of Atlanta, GA.

Monte is a graduate of Spearman High School. He has a BA in Advertising from Texas Technological University in Lubbock. He is a Director of National Marketing at GTE. He is a member of Kappa Alpha.

Monte's grandparents are the late Clarence and Gertrude Luttrell of Claude, TX and the late Thomas Edward and Velma Beck of Spearman.

Cancer Screening Scheduled

The Women's Center of the Don and Sybil Harrington Cancer Center and Baptist St. Anthony's Health System in conjunction with Hansford County Hospital will conduct a Breast Cancer Screening Clinic at 712 South Roland, in Spearman on February 28, 2000. Participants will receive a low-cost screening mammogram. Each woman screened will receive a breast health risk appraisal and individual instruction by a registered nurse in breast self-examination. Funding is available through the Texas Department of Health for Texas residents who qualify for assistance. All exams are done by appointment only. Call (806) 356-1905 or toll free 1-800-377-4673 for more information.

For The Bride & Groom

Come by and let us help you set up your special gift table

Couples Currently Registered

- Monte Beck & Jennifer Phillips - March 4th
- Cody Pipkin & Abby Johnson - March 18th
- Maria Ochoa & Luis Carbajal

314 Main 659-2141 **Gordon's DRUG** Spearman, Texas

HANSFORD HAPPENINGS

Barnes Medical Fund Established
A medical fund has been established at First National Bank for Doug and Shannon Barnes.

Davis Medical Fund Established
A medical fund has been established at First State Bank for the family of Chad and Tara Davis.

Fund Established for George Young
A medical fund has been established at First National Bank for George Young.

AARP Offers Free Tax Help
AARP Tax-Aide is in Spearman at the Hansford County Library, 122 Main Street, every Tuesday from 1:00-5:00 p.m. AARP Tax-Aide is: a free quality service; a confidential service that prepares tax returns and answers tax questions from February 1st through April 15th; services available to all taxpayers with middle- to low-income, with special attention to those age 60 and older; 31,000+ dedicated and proud IRS-trained and certified volunteers; a charitable non-profit program; an AARP Foundation program and part of the National Community Service Programs Group. It is administered through the AARP Foundation in cooperation with the IRS. For more information, call 1-888-AARPNOW (1-888-227-7669), or visit their web-site at www.aarp.org/taxaide/

Hansford County Promise Keepers
All men in our community are invited to attend the weekly Promise Keepers meeting on Thursdays at noon in the Panhandle Diner and Deli at 217 Main Street in Spearman. This interdenominational meeting will provide food, fellowship and an opportunity for studying some of the great men in the Bible. Come join us as we grow in becoming more like Christ.

Holt Club Scholarship
The Holt Club will provide a \$500 scholarship to a graduating senior from Spearman High School. Interested students should contact Glenda Guthrie. Deadline for application is April 28, 2000.

Bereavement Support Group
Hansford Hospice is hosting a Bereavement Support Group. It meets every-other-week 7:00 p.m. in the Parlor of the First United Methodist Church in Spearman. The facilitator is Ken Cole, Pastor. If you, or someone you know, would be interested in this Bereavement Support Group, please join us. Everyone is welcome.

Morse Lions Club Trap Shoot
The Morse Lions Club will host a Trap Shoot on March 5th at 2:00 p.m. It will be held in Morse (watch for the signs), and will feature cash prizes. A concession stand will be available. Everyone is invited to attend.

Spring Soccer Sign-Up
The Hansford Soccer Association is now accepting new players for the Spring Soccer League. Boys and girls, ages 4-15, are welcome. The season will begin March 11th and will go through April 8th. To sign-up, or for more information, contact Rick Patrick at 659-2619 or Alford Avila at 659-3830.

Walk Across Texas
Walk Across Texas is a fun and flexible way to exercise. It provides people with the necessary support to not only start walking, but also find a group that can keep them walking even when they feel like quitting. Teams are made up of eight people who want to keep track of the amount they walk for 8 weeks. Walking, running, biking, aerobics, swimming, all count in the total mileage. Exercise can be done individually or with team members. About 6,000 Texans participated in the program last year with 160 of those being from Hansford County. Immediate benefits include increased energy levels and feeling less stressed. This year we are offering a weight management letter series with the program. To find out how you can Walk Across Texas, call Peggy Winegarner, County Extension Agent, at 659-4130 or 733-2901.

Waka Church of the Brethren Hosts Renewal Service
The Church of the Brethren in Waka, TX will hold Renewal Services February 24th-27th. Thursday, Friday and Saturday evening services will begin at 7:00 p.m. Sunday morning services will begin at 11:00 a.m. The speaker will be David Smalley of Kansas City, KS, and special music will be by Trudi Schneider of Spearman.

Widowed Persons Service
The North Panhandle Chapter of the Widowed Persons Service invite all widowed persons in the North Panhandle area to attend a chili and soup supper with drinks and dessert. Games of dominoes and cards will follow. A donation to help cover the cost of the meal will be greatly appreciated. The social will be held in the Community Room of the First State Bank Southwest, Second & Main Street in Perryton on Saturday, February 26th, at 6:00 p.m. If you need a ride, call 435-3192.

Bridal Registry

- Jennifer Phillips & Monte Beck - March 4th
- Abby Johnson & Cody Pipkin - March 18th

Celebrate
Gifts for all your celebrations!
203 Main St. • Spearman, TX

(806) 659-3350 1-800-663-8026

At the Lyric Theatre . . .
113 Main St. • (806) 659-2812 • Spearman
Open: Friday, Saturday & Sunday Only

Check us out on the web at: hollywood.com

Closed Until March 17th

Adults - \$6.00; Children & Senior Citizens - \$4.00

No one under 17 admitted to "R" rated movies without parent or legal guardian

The Hansford County
Reporter-Statesman
213 Main Street • Spearman, TX 79081
Phone - (806) 659-3434 • Fax - (806) 659-3368

Open Monday-Thursday (Closed Fridays)
9:00 a.m.-12:00 p.m. & 1:00-5:00 p.m.

Member Texas Press Association
and Panhandle Press Association



Serving Spearman, Gruver and Morse
and all of Hansford County

Published weekly in Spearman, TX
Owned and operated by Gary & Catherine Smith

Gary Smith - Publisher • Catherine Smith - Editor
Harletta Carthel - Assist. Publisher
Contrib. Writers: Helen Fisher, Dorothy Hudson, Mildred Lewis & Jeff Beedy
Contrib. Photographers: Mark Schoenhals, Allen Varnon & Charley Johnson

Annual Subscription Rates
In Hansford County - \$20.00 • Out of County - \$25.00

Advertising and Story Deadlines: Monday - 5:00 p.m.

Periodical Postage Permit: USPS 509660
Postage paid in Spearman, TX

Letters Policy
The Hansford County Reporter-Statesman welcomes letters to the editor on any subject. All letters must be signed and will be published with the name of the writer. Letters must include an address and telephone number for verification. Letters should be kept at a reasonable length. The editor reserves the right to edit all letters. Any letter may be rejected for publication without reason. Letters that are libelous and/or slanderous will not be published. The deadline to submit letters is noon on Monday. Letters may be mailed to: Catherine Smith, Editor, Hansford County Reporter-Statesman, 213 Main Street, Spearman, TX 79081.

Publication Policy
The deadline to submit news and advertising to The Hansford County Reporter-Statesman is Monday at 5:00 p.m. Items accepted after the deadline will be published at a later date, as time and space permit. Publication of all items is at the discretion of the editor.

Chamber Accepting Business of the Year & Citizen of the Year Nominations

The Spearman Chamber of Commerce is now accepting nominations for Business of the Year and Citizen of the Year. Nominations must be submitted to the Chamber office by 5:00 p.m. on Friday, March 17, 2000. The awards will be awarded at the Annual Chamber of Commerce Banquet, which will be held on Tuesday, March 28, 2000.

Citizen of the Year Nomination

This award recognizes an individual for exceptional service that has contributed to the development of Spearman. The award may recognize contributions that have enhanced Spearman's quality of life, or its economic development. It may encompass exceptional achievements related to government leadership, the arts, social welfare programs, civic services, or other appropriated avenues that have enhanced life for all Spearman citizens. While the award is intended to recognize an individual for specific achievements that have occurred during the year immediately preceding the presentation, it may, however recognize an individual for distinct lifetime achievement in the area of community service. Nominations may be made by any resident of Spearman or by any Spearman social service or organization.

Nominee: _____
 Name of Business (if appropriate): _____
 Address: _____
 Phone: _____

In the space below, discuss in detail those achievements which, in your judgment make this individual uniquely qualified for the award indicated above.

If necessary, please attach additional pages.

Signed by: _____
 Phone: _____
 Nominations must be returned to the Chamber office by 5:00 p.m. on Friday, March 17, 2000.

Citizen of the Decade Nomination

This award will recognize an individual for exceptional service that has contributed to the development of Spearman during the last ten years. The award may recognize contributions that have enhanced Spearman's quality of life, or its economic development. It may encompass exceptional achievements related to government leadership, the arts, social welfare programs, civic services, or other appropriated avenues that have enhanced life for all Spearman citizens. This award is intended to recognize an individual for specific achievements that have occurred during the decade from 1990-2000. Nominations may be made by any resident of Spearman or by any Spearman social service or organization.

Nominee: _____
 Name of Business (if appropriate): _____
 Address: _____
 Phone: _____

In the space below, discuss in detail those achievements which, in your judgment make this individual uniquely qualified for the award indicated above.

If necessary, please attach additional pages.

Signed by: _____
 Phone: _____
 Nominations must be returned to the Chamber office by 5:00 p.m. on Friday, March 17, 2000.

Citizens of the Century Nomination

This award will recognize a man and woman for exceptional service that has contributed to the development of Spearman into the 21st Century. The award may recognize contributions that have enhanced Spearman's quality of life, or its economic development. It may encompass exceptional achievements related to government leadership, the arts, social welfare programs, civic services, or other appropriated avenues that have enhanced life for all Spearman citizens. This award may also recognize an individual for distinct lifetime achievement in the area of community service. Nominations may be made by any resident of Spearman or by any Spearman social service or organization. Nominees may include living or deceased citizens, and may also include former citizens of Spearman and Hansford County.

Nominee: _____
 Name of Business (if appropriate): _____
 Address: _____
 Phone: _____

In the space below, discuss in detail those achievements which, in your judgment make this individual uniquely qualified for the award indicated above.

If necessary, please attach additional pages.

Signed by: _____
 Phone: _____
 Nominations must be returned to the Chamber office by 5:00 p.m. on Friday, March 17, 2000.

Business of the Year Nomination

This award recognizes a Spearman business for achievement and leadership in business. Eligibility requirements include membership in the Spearman Chamber of Commerce; a business that has been in business for at least two years; a record of involvement in the Chamber of Commerce and other civic endeavors; and a business that promotes Spearman and the residents it serves.

Name of Business: _____
 Address: _____
 Phone: _____

In the space below, discuss in detail those achievements which, in your judgment, make this business uniquely qualified for the award indicated above.

If necessary, please attach additional pages.

Signed by: _____
 Phone: _____
 Nominations must be returned to the Chamber office by 5:00 p.m. on Friday, March 17, 2000.

LEGAL NOTICE

NOTICE
Palo Duro Supper Club has applied for private club registration permit for location of 22 S. Archer, Spearman, Hansford County, Texas. Officers being Reba Kay Hamilton, President/ Secretary-Treasurer; James Lloyd Hamilton, Vice President.

NOTICE
 Pringle-Morse CISD is accepting competitive sealed proposals for the purchase of a three-bedroom, 1 1/2 to 2 bath home located within two miles of the Pringle-Morse Consolidated school building in Morse, TX. Specifications and bid forms are available at the Pringle-Morse CISD business office or by calling 806-733-2507. Bids should be submitted to the office by March 9, 2000. Opening of bids will be on March 10, at 3:00 p.m. Following opening, the bids will be considered at a regularly scheduled Board meeting. The Board of Education of the Pringle-Morse

CISD reserves the right to refuse any and all bids.

LEGAL NOTICE
 Hansford County Commissioner's Court will receive bids until 4:00 p.m. on Friday, March 10, 2000 on 1600 tons of A4 & B4 gravel. Bids should be submitted to the Hansford County Judge's office, Box 367, Spearman, TX 79081. Bids will be opened on Monday, March 13, 2000 during the Commissioners' Court meeting beginning at 10:00 a.m.

Hansford County reserves the right to accept or reject any or all bids.

Jim D. Brown
 Hansford County Judge

LOCAL LET MAINTENANCE CONTRACT
Plans are required for this project.
 County: Hansford; Highway: SHO 136; Length: 1.000 Mi.; Control Number: 6055-11-001; Project Number: RMC - 605511001;

DBE/HUB Goal: 0.0%; Type: Hot Mix Level Up; Time for Completion: 20 Working Days; Guaranty: 8,000; Bids Received Until: 2:00 p.m., March 24, 2000; Bids Will Be Opened: 2:00 p.m., March 24, 2000; Est Cost: 230,447.25; Mail or Deliver Bids To: Texas Department of Transportation, Amarillo District, 5715 Canyon Dr., Amarillo TX 79110-0000, (806) 356-3283; Contact Person: Davis, Joyce, 5715 Canyon Drive, Amarillo TX 79110, (806) 356-3283; Limits From: See Plans for Various Locations; Limits To: In Four (4) Counties

NOTICE OF IMPOUNDMENT OF ESTRAY
 On the 6th day of February, 2000, I impounded the following estray: Kind of Animal - Bovine, Breed - Angus, Color - Black, Sex -


Female, Age - Unknown, Size - 1000 Pounds, Brand, Marks, Identifying Characteristics - No Brand Found, and on the 16th day of February, 2000, I filed a Notice of Estray in the Estray Book of Hansford County, Texas.

I have made a diligent search of the register of recorded brands in Hansford County, Texas, for the owner of said estray, but the search did not reveal the owner.

Notice is hereby given that, if the ownership of said estray is not determined by the 3rd day of March, 2000, said estray will be sold at public auction/sheriff's sale at Guymon Livestock Auction.

Witness my hand this 16th day of February, 2000.
 R.L. McFarlin, Jr.
 Sheriff of Hansford County, Texas

REEL IN A GREAT DEAL
 Come by Lynn's Bait & Tackle and check out our complete line of live bait and tackle. Supplies for all your fishing needs!
Lynn's Bait & Tackle
 302 Airport Road • Spearman, Texas
 659-5377

Old Hansford Bed & Breakfast
 4 miles West of Spearman on Hwy. 15
 3 Bedroom, 1 Bath - Country Decor
 Call 659-3273 for Rates.

COUCH DRILLING AND PUMP SERVICE
 Serving the Panhandle Since 1963

DRILLING SERVICES Reverse Circulation Drilling Test Hole Services Electric Logging Services	WELL REHABILITATION Down-Hole Video Surveys Aquafreed CO2 Treatments Sonar-Jet Treatments Chemical/Acid Treatments
--	--

PUMP AND GEARHEAD SERVICES
 Turbine and Submersible - Sales and Service
 Dealer for Simmons, Worthington Pumps
 Gearhead - Sales and Service

IRRIGATION - INDUSTRIAL - MUNICIPAL - DOMESTIC
806-966-5658
 24 Hour Pager 806-934-6938


SHARE
 The Luck of The Irish
 with someone you love with a St. Patrick's Day arrangement from
 Prairie Garden Flowers
 659-2212 • 659-3329



Leap Year Bingo
Great Prizes
 sponsored by
Spearman Retail Merchants
 February 29th • 6:30 p.m. - ?
 O'Loughlin Center
 Stew, Cornbread, Dessert & Drink
PLUS 1 Bingo Card - \$7⁰⁰
 Each additional card - \$1⁰⁰



Trap Shoot
 to benefit
Morse Lions Club
March 5th at 2:00 p.m.
Concession Stand
Cash Prizes
 Watch for signs in Morse.
Bring the Family!



Walk Across Texas!

Most people know they should increase their activity level by walking or aerobics classes. In fact, many of you probably made a New Year's resolution this year to start on January 1 and have already given up. Is there any hope?

The answer is yes. Changing any habit requires several tries and a great deal of effort for most people. Increasing your activity level can have a great impact on your health both now and later in life.

A recent article in the *Archives of Internal Medicine* reported on a study where 100 middle-aged women were encouraged to walk for exercise while another 100 were not encouraged to walk. Ten years later, women in the walking group had significantly less health problems than the non-walking group of women. The women in the walking group were walking seven miles more each week than those in the other group. Only 2% of the walking group were diagnosed with heart disease, whereas almost 13% of the non-walkers had a diagnosis of heart disease. Walkers also had fewer hospitalizations, surgeries, and falls. Participating in the short-term walking program ten years earlier was the main difference between these two groups!

So, trying again is important. Studies have shown that walking with others and engaging in a program long enough to make walking a habit promoted success. If you would like to get started now, call your county Extension agent, Peggy Winegarner, at 659-4130 or 733-2901 and ask about *Walk Across Texas*.

This is a free, fun, group physical activity program. All you need is a group of 8 friends, family members, or co-workers who want to keep track of the amount they exercise for 8 weeks. You can walk together, individually, outside or at a gym, any way that fits your schedule and lifestyle. Walking, running, biking, aerobics, and swimming all count in the total mileage. You can encourage one another to keep going and see if your team can *Walk Across Texas* in 8 weeks.

Walk Across Texas starts March 12 and will end on May 6. This year we are offering a weight management letter series with the program.

Getting started is the hard part, but starting and keeping going is much easier with the support of others!

Farm Policy Field Hearings Set

by U.S. Rep. Larry Combest

U.S. House Agriculture Committee Chairman Larry Combest (R-Texas) and Ranking Minority Member Charlie Stenholm (D-Texas) recently announced the schedule of farm policy field hearings in ten cities in regions from March through May, encouraging producers to submit detailed proposals for agricultural policy.

The regional hearings are convened exclusively for producers to describe specific policy issues and to respond to Ag Committee Members' questions about how producers want those problems addressed.

Producers may be invited to offer testimony as a witness, or if not selected, producers may either submit specific views for the record, or e-mail informal comments to the Committee. Producers who are not able to attend one of the ten regional hearings may listen through the Ag Committee's web site on the Internet: <http://agriculture.house.gov>

To be considered as a potential witness at the hearing, producers should include information about their agricultural experience and their farming operations. The Committee will select witnesses with a breadth of experience who are qualified to provide specific testimony about federal farm policy, and answer questions posed by Agriculture Committee Members about policy alternatives.

A hearing will be held on Monday, March 6 in Lubbock, Texas. Hearings will then move to the following cities (listed alphabetically): Boise, ID; Kutztown, PA; Peoria, IL; Raleigh, NC; Sacramento, CA; Sioux Falls, SD; and West Chester, OH.

"The House Ag Committee strongly encourages the men and women who manage their farming operations throughout the country to detail the specific changes needed in federal farm policy," said Chairman Combest. "Producers' financial futures are closely tied to government policies on agriculture -- a resulting lack of adequate safety net, lost market values, burdensome regulations, unfulfilled trade deals -- and these policies relate directly to the serious, practical problems that involved more than the farm bill. Throughout these hearings, Committee Members will listen closely for a consensus from farmers in order to identify specific changes that would not abandon popular policies such as the producer's freedom to choose the crops they grow."

Those who are interested in testifying at the field hearings in March for Lubbock, Memphis or Auburn, must immediately send a letter addressed to the Chief Clerk, c/o House Committee on Agriculture at 1301 Longworth Building, Washington, D.C. 20515. If contacted to testify for the hearing, producers are required under the Rules of the House of Representatives to file an affidavit disclosing the amount and source of each federal contract or grant they receive (disclosure of farm payments or USDA loans is not required). A brief biography of the witness must also be included. Also, those witnesses will need to provide 100 copies of their testimony in advance.

Producers who are unable to testify at a field hearing may instead submit written testimony for the official record by May 20, 2000, but must include their name, address, phone number and 10 copies of their testimony in their letter to the Agriculture Committee's Chief Clerk.

Those who wish to offer comments informally on farm policy may e-mail farmpolicy@mail.house.gov. However, requests to testify and statements for the official record cannot be accepted by e-mail.

CECIL R. BIGGERS

REPUBLICAN CANDIDATE

FOR

HANSFORD COUNTY ATTORNEY

☆ TWENTY-FIVE YEARS OF EXTENSIVE EXPERIENCE IN TRIAL OF STATE AND FEDERAL CRIMINAL CASES

☆ EXTENSIVE EXPERIENCE IN FAMILY LAW TO INCLUDE CONTESTED PROTECTIVE ORDERS AND CONTESTED JUVENILE CASES

☆ EXPERIENCE IN THE AREAS OF GOVERNMENT CONTRACTS, CLAIMS & LABOR LAW

☆ A EXPERIENCE IN APPEALS TO THE COURT OF CRIMINAL APPEALS, COURT OF APPEALS.

☆ A PAST PRESIDENT AND CONTINUING LEGAL EDUCATION COORDINATOR FOR THE NORTH-EAST PANHANDLE BAR ASSOCIATION

☆ A MEMBER PRO BONO COLLEGE OF THE STATE BAR OF TEXAS (DELIVERY OF LEGAL SERVICES TO THE POOR)

☆ PLEASE VOTE "BIGGERS" IN THE MARCH 14TH REPUBLICAN PRIMARY. EARLY VOTING FEBRUARY 28TH THROUGH MARCH 10TH.

Political Advertisement paid for by Cecil R. Biggers, Yvette Hopper, Treasurer, P.O. Box 342, Spearman, Texas 79081

BEST IN TOWN

The Premium Treasury

Checking Account

(Personal Account)

5.70% APY

Annual Percentage Yield
for Balances \$20,000 & above*

INTEREST PAID ON ALL BALANCES

**YES, this is a Regular Checking Account
with unlimited check writing.**

*Yield tied to 91 day treasury bill which is adjusted on the first business day of each month based on the average auction rate of the T-Bill on that date. Minimum deposit of \$20,000.00. Interest will drop to regular savings account rate if balance decreases less than \$20,000.00. The savings account rate may change after account is opened. Monthly \$20.00 service charge if balance drops below \$20,000.00. Fees could reduce earnings.

Interstate Bank, s.s.b

A Full Service Bank - FDIC Insured

322 Main Street • Spearman, TX 79081
Phone - (806) 659-2559 • Fax - (806) 659-3276

301 Main Street • Perryton, TX 79070
Phone - (806) 435-4071 • Fax - (806) 435-4153

2000 Hansford County Stock Show

Lamb Results

Class I

1 - Chad Clift, Gruver FFA; 2 - Malissa Montgomery, Gruver FFA; 3 - Kylie McGaha, Spearman 4-H; 4 - Zack Murray, Spearman 4-H; 5 - Misty Brown, Spearman 4-H; 6 - Jenny Diaz, Spearman 4-H; 7 - Marshall Hearon, Spearman 4-H; 8 - Rachele Holt, Gruver 4-H

Class II

1 - Dustin Mackie, Spearman 4-H; 2 - Coy Herrington, Spearman 4-H; 3 - David Pipkin, Spearman 4-H; 4 - Jordanna Lozano, Spearman 4-H; 5 - Chase Schubert, Spearman 4-H; 6 - Jessica Jarvis, Spearman 4-H; 7 - Jessica Schmidt, Morse 4-H; 8 - Britney Montgomery, Gruver Jr. FFA; 9 - Josh Lackey, Spearman FFA

Class III

1 - Lanie Graves, Morse 4-H; 2 - Orie Cooksey, Spearman 4-H; 3 - Noemi Rodriguez, Spearman 4-H; 4 - Kaylee Holt, Gruver 4-H; 5 - Bailey Reid, Morse 4-H; 6 - Bobby Lujan, Spearman FFA; 7 - David Sharp, Spearman FFA; 8 - Michael Dillard, Gruver Jr. FFA; 9 - Kade Carthel, Gruver FFA

Class IV

1 - Melody Shields, Spearman 4-H; 2 - Seth Clemmons, Morse 4-H; 3 - Tim Bynum, Spearman FFA; 4 - Lindsey Clift, Gruver FFA; 5 - Evan Schmidt, Morse 4-H; 6 - Zack Nollner, Spearman 4-H; 7 - Tara Shields, Spearman 4-H; 8 - Tayshia James, Spearman 4-H; 9 - Kali Shields, Spearman 4-H

Class V

1 - Jeremy Mackie, Spearman 4-H; 2 - Teal Arnes, Gruver 4-H; 3 - Sammi Johnson, Gruver 4-H; 4 - Nicholas Slough, Gruver 4-H; 5 - Jessica Montgomery, Gruver Jr. FFA; 6 - Blayne Baker, Spearman 4-H; 7 - Brad Holt, Gruver 4-H; 8 - Amanda Apodaca, Morse 4-H

Class VI

1 - Charlie Slough, Gruver 4-H; 2 - Brian Johnson, Gruver 4-H; 3 - Lance Smith, Spearman 4-H; 4 - Nancy Flores, Spearman 4-H; 5 - Kallie Smith, Spearman 4-H; 6 - Nathan Buschman, Spearman 4-H; 7 - Derik Grotgut, Gruver FFA; 8 - Tyrel King, Gruver FFA

Class VII

1 - Matt Messer, Gruver Jr. FFA; 2 - Aaron Weller, Gruver FFA; 3 - Britney Morris, Gruver 4-H; 4 - Kirby Johnson, Morse 4-H; 5 - Amy Gift, Gruver 4-H; 6 - Tyler Lane, Morse 4-H; 7 - Eric Flores, Spearman 4-H; 8 - B.J. Hughes, Spearman FFA

Class VIII

1 - Kyna Shields, Spearman 4-H; 2 - Bray Arnes, Gruver FFA; 3 - Miles Messer, Gruver Jr. FFA; 4 - Mollie Burnam, Gruver Jr. FFA; 5 - Tabatha Shields, Spearman 4-H; 6 - Valerie Burnam, Gruver Jr. FFA; 7 - Ryan Buschman, Spearman 4-H; 8 - Kellyn King, Gruver 4-H
Grand Champion Lamb - Charlie Slough, Gruver 4-H
Reserve Grand Champion Lamb - Kyna Shields, Spearman 4-H
Junior Lamb Showmanship - Kali Shields
Honorable Mention Junior Lamb Showmanship - Tabatha Shields
Senior Lamb Showmanship - Kyna Shields
Honorable Mention Senior Showmanship - Jeremy Mackie & Melody Shields

STEERS

Light Weight

1 - Taylor Williams, Gruver 4-H; 2 - Kyna Shields, Spearman 4-H; 3 - Britney Morris, Gruver 4-H; 4 - Kali Shields, Spearman 4-H; 5 - Misty Brown, Spearman 4-H

Light Medium

1 - Brad Holt, Gruver 4-H; 2 - Tracy Brown, Spearman 4-H; 3 - Melody Shields, Spearman 4-H; 4 - Jessica Montgomery, Gruver 4-H; 5 - Malissa Montgomery, Gruver 4-H

Medium

1 - Tucker Williams, Gruver 4-H; 2 - Rachele Holt, Gruver 4-H; 3 - Clayton Vanderburg, Spearman 4-H; 4 - Lance Williams, Gruver 4-H; 5 - Britney Montgomery, Gruver 4-H

Medium Heavy

1 - Travis Brown, Spearman 4-H; 2 - Bailey Reid, Morse 4-H; 3 - Clete Vanderburg, Spearman 4-H; 4 - Rhett Renner, Spearman 4-H; 5 - Colton King, Gruver 4-H; 6 - Britta Vanderburg - Spearman 4-H

Heavy

1 - Kaylee Holt, Gruver 4-H; 2 - Reagan Renner, Spearman 4-H; 3 - Clayton Thompson, Gruver 4-H; 4 - Tyrel King, Gruver 4-H; 5 - Kirby Johnson, Morse 4-H

Grand Champion Steer - Travis Brown - Spearman 4-H
Reserve Grand Champion Steer - Kaylee Holt - Gruver 4-H
Junior Steer Showmanship - Lance Williams
Senior Steer Showmanship - Melody Shields

SWINE

Chester

Class I

1 - Blayne Baker, Spearman 4-H; 2 - Lindsey Clift, Gruver 4-H; 3 - Tayshia James, Spearman 4-H
Breed Champion - Blayne Baker
Reserve Breed Champion - Lindsey Clift

Duroc

Class II

1 - Tyler Lane, Morse 4-H; 2 - Rachele Holt, Gruver 4-H; 3 - Casey Cator, Spearman 4-H; 4 - Kylie McGaha, Spearman 4-H

Class III

1 - Brian Johnson, Gruver 4-H; 2 - Coy Herrington, Spearman 4-H; 3 - David Parker, Gruver FFA; 4 - Jared Lozano - Spearman FFA

Class IV

1 - Chad Clift, Gruver FFA; 2 - David Sharp, Spearman FFA; 3 - Timber Barkley, Gruver 4-H; 4 - Kirby Johnson, Morse 4-H

Class V

1 - Malissa Montgomery, Gruver Jr. FFA; 2 - Chelsea Reid, Gruver 4-H; 3 - Kali Shields, Spearman 4-H; 4 - Dustin Red, Gruver FFA; 5 - Tim Bynum, Spearman FFA; 6 - Lanie Graves, Morse 4-H; 7 - Michael Dillard, Gruver 4-H; 8 - Uriel Garcia, Spearman FFA

Class VI

1 - Jessica Montgomery, Gruver Jr. FFA; 2 - Colby Weldon, Gruver FFA; 3 - Tessa Yanke, Spearman 4-H; 4 - Valerie Burnam, Gruver Jr. FFA; 5 - Amy Gift, Gruver 4-H; 6 - Lance Williams, Gruver 4-H

Hampshire

Class VII

1 - Seth Clemmons, Morse 4-H; 2 - Melody Shields, Spearman 4-H; 3 - Tessa Yanke, Gruver Jr. FFA; 4 - Amanda Adams, Spearman 4-H; 5 - Kegan Garnett, Spearman 4-H; 6 - Josh Lackey, Gruver FFA; 7 - Chad Scarborough, Spearman FFA

Class VIII

1 - Bray Arnes, Gruver FFA; 2 - Teal Arnes, Gruver 4-H; 3 - Orie Cooksey, Spearman 4-H; 4 - Brook Beville, Gruver FFA; 5 - Chase Lamb, Gruver FFA; 6 - Chase Reid, Gruver FFA; 7 - Rhett Renner, Spearman 4-H

Class VIII

1 - Bailey Reid, Morse 4-H; 2 - Tracy Brown, Spearman 4-H; 3 - Travis Brown, Spearman 4-H; 4 - Kyna Shields, Spearman 4-H; 5 - Mollie Burnam, Gruver Jr. FFA

Class X

1 - Reagan Renner, Spearman 4-H; 2 - Brandon Casdorff, Gruver FFA; 3 - Stuart Martin, Spearman 4-H; 4 - Kade Carthel, Gruver FFA; 5 - Chasity Thomas, Spearman 4-H; 6 - Aaron Cookenour, Gruver FFA

Class XI

1 - Britney Morris, Gruver FFA; 2 - Britney Montgomery, Gruver Jr. FFA; 3 - Matt Messer, Gruver Jr. FFA; 4 - Taylor Williams, Gruver 4-H; 5 - Tucker Williams, Gruver 4-H; 6 - Ty West, Spearman FFA
Breed Champion - Britney Morris - Gruver FFA
Reserve Breed Champion - Seth Clemmons - Morse 4-H

York

Class XII

1 - Ashlee Flowers, Spearman 4-H; 2 - Misty Brown, Spearman 4-H; 3 - Keilee Goodheart, Spearman 4-H; 4 - Clayton Thompson, Gruver FFA; 5 - Christy Clift, Gruver FFA; 6 - Ricky Garcia, Spearman 4-H

Class XIII

1 - Brad James, Spearman 4-H; 2 - Macy Harbour, Spearman 4-H; 3 - Miles Messer, Gruver Jr. FFA; 4 - Abbi Yanke, Gruver Jr. FFA

Class XIII

1 - Kallie Smith, Spearman 4-H; 2 - Nicholas Slough, Gruver 4-H; 3 - Taos Weldon, Gruver FFA; 4 - Derik Grotgut, Gruver FFA; 5 - Lindy Weldon, Gruver Jr. FFA

Breed Champion - Kallie Smith, Spearman 4-H
Reserve Breed Champion - Nicholas Slough, Gruver 4-H

We salute all the participants of the 2000 Hansford County Livestock Show.

C.O.'s Supply Co.

421 W. Kenneth • Spearman, TX 79081
 (806) 659-3555 • (806) 659-3781

Subscribe to the Reporter-Statesman.
 Call 659-3434 for details.

We salute all of the FFA & 4-H members who participated in the 2000 Hansford County Livestock Show!

The Hansford County Reporter-Statesman

Way To Go, Hansford County Exhibitors!

Congratulations to the participants of the 2000 Hansford County Livestock Show!

Hansford Supply Inc.
 210 Main Ave. • Gruver, Texas
 733-2469

CONGRATULATIONS!

We believe in the future of Farming & Ranching!



FN BANK
 First National Bank Spearman

729 West 7th Street • Spearman, Texas 79081
 806-659-5544 • 800-583-4196
 24 hour First Call service - 659-1011

"The bank that always puts you first."

Member FDIC

CONGRATULATIONS FFA & 4-H Members!

We salute you on all your hard work!





Hansford Implement Co.

Hwy 207 • Spearman, TX • 659-2568
 Hours: 8 a.m. to 6 p.m. Monday-Friday

CONGRATULATIONS 4-H & FFA Members!

First State Bank is proud to be involved in various community activities, such as The Hansford County 4-H & FFA Livestock Show. We would like to congratulate all of the participants.



from
First State Bank
 "The Good Ag Bank"

1 NE Court • 806-659-5565 • Spearman, Texas 79081
 member FDIC

2000 Hansford County Stock Show

Crosses

Class XV

1 - Tanner Irwin, Gruver 4-H; 2 - Chelsea Nollner, Spearman 4-H; 3 - Saylee Flowers, Spearman 4-H; 4 - T.J. Vasquez, Spearman FFA; 5 - Colby Odegaard, Spearman 4-H; 6 - Bryn'r Garnett, Spearman 4-H; 7 - Bobby Lujan, Spearman FFA

Class XVI

1 - Timber Thomas, Spearman 4-H; 2 - David Pipkin, Spearman 4-H; 3 - Sammi Johnson, Gruver 4-H; 4 - Justin Thompson, Gruver 4-H; 5 - Hunter Bevill, Gruver FFA; 6 - Dane Harbour, Spearman 4-H; 7 - Wayne McCubbin, Spearman FFA

Class XVII

1 - Brock Irwin, Gruver 4-H; 2 - Chad Howe, Gruver FFA; 3 - Eric Vasquez, Spearman FFA; 4 - Beth Yanke, Gruver Jr. FFA

Class XVIII

1 - Dustin Mackie, Spearman 4-H; 2 - Kaylee Holt, Gruver FFA; 3 - Brad Holt, Gruver FFA; 4 - Aaron Weller, Gruver FFA; 5 - Seth Thompson, Gruver 4-H; 6 - Jordanna Lozano, Spearman 4-H

Class XVIII

1 - Jeramy Mackie, Spearman 4-H; 2 - Garrett Martin, Spearman 4-H; 3 - Zack Nollner, Spearman 4-H; 4 - Charlie Slough, Gruver 4-H
Breed Champion - Dustin Mackie, Spearman 4-H
Reserve Breed Champion - Jeramy Mackie, Spearman 4-H
Grand Champion Swine - Dustin Mackie, Spearman 4-H
Reserve Grand Champion Swine - Jeramy Mackie, Spearman 4-H
Junior Swine Showmanship - Teal Armes
Senior Swine Showmanship - Kaylee Holt

Commercial Steers

1 - Tracy Brown, Spearman 4-H; 2 - Brittany Morris, Gruver 4-H; 3 - Kirby Johnson, Morse 4-H; 4 - Lance Williams, Gruver 4-H; 5 - Travis Brown, Spearman 4-H; 6 - Taylor Williams, Gruver 4-H; 7 - Tabatha Shields, Spearman 4-H; 8 - Rachelle Holt, Gruver 4-H; 9 - Clayton Thompson, Gruver 4-H; 10 - Bailey Reid, Morse 4-H; 11 - Jacob Harbour, Spearman FFA; 12 - Brad Holt, Gruver 4-H; 13 - Tara Shields, Spearman 4-H; 14 - Kaylee Holt, Gruver 4-H

Livestock Judging Contest Adults

1 - Marshall Cator, 283; 2 - Tom Benton, 280; 3 - Kenton Johnson, 277; 4 - Greg Slough, 276; 5 - Lenny Pecha, 272

Individuals

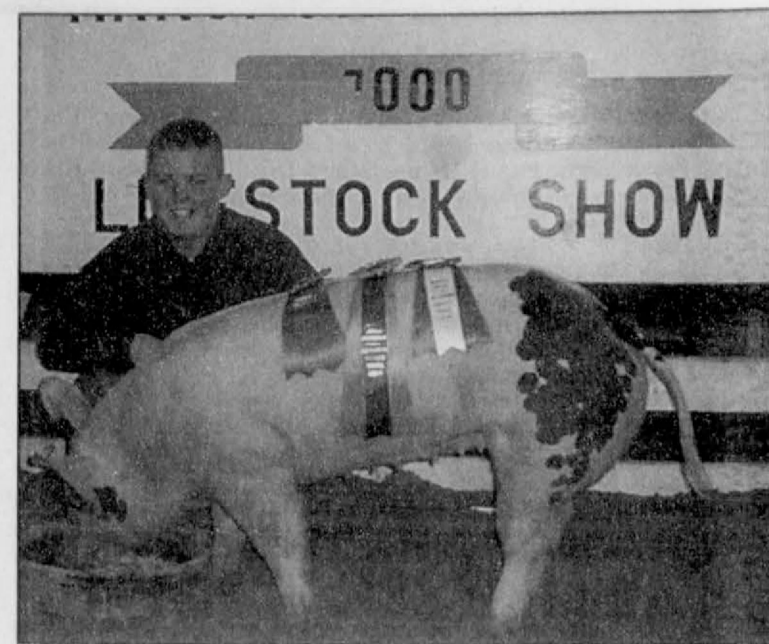
1 - Logan Brace, Texhoma FFA-287; 2 - Kyna Shields, Hansford 4-H-280; 3 - Brad Holt, Hansford 4-H-274; 4 - Kirby Johnson, Hansford 4-H-273; 5 - Nick Slough, Hansford 4-H-265; 6 - Justin Weller, Liberal, KS-264; 7 - Travis Brown, Hansford 4-H-263; 8 - Ryan Powers, Texhoma, OK-262; 9 - Melody Shields, Hansford 4-H-258; 10 - Lance Williams, Hansford 4-H-250

Teams

1 - Hansford 4-H - Brad Holt, Kirby Johnson, Melody Shields, Kyna Shields - 827; 2 - Hansford 4H JV - Dustin Mackie, Nick Slough, Clete Vanderburg, Lance Williams - 755; 3 - Hansford Conquistadors - Casey Cator, Wayne McCubbin, Charlie Slough, Mattie Wheelock - 715; 4 - Texhoma FFA - Ryan Powers, Ole Dahl, Desarae Simon, Bryan Zinkel - 702; 5 - Texhoma FFA - Justin James, Kendal Moore, Cassie Mangraves, Haley Berry - 701; 6 - Texhoma FFA Blue - Cody James, B.J. Thomason, Logan Brace - 691; 7 - Hansford Chaps - Bailey Reid, Jessica Schmidt, Kali Shields, Rhett Renner - 691; 8 - Spearman 4-H I - Britta Vanderburg, Zach Nollner, Saylee Flowers, Jordanna Lozano - 580; 9 - Hutchinson 4-H - Tray Little, Seth Shields, Carson Curry - 679; 10 - Spearman 4-H II - Ashley Flowers, Jessica Jarvis, Keilee Goodheart, Jentry Edwards - 677



Grand Champion Steer
Travis Brown -Spearman 4-H

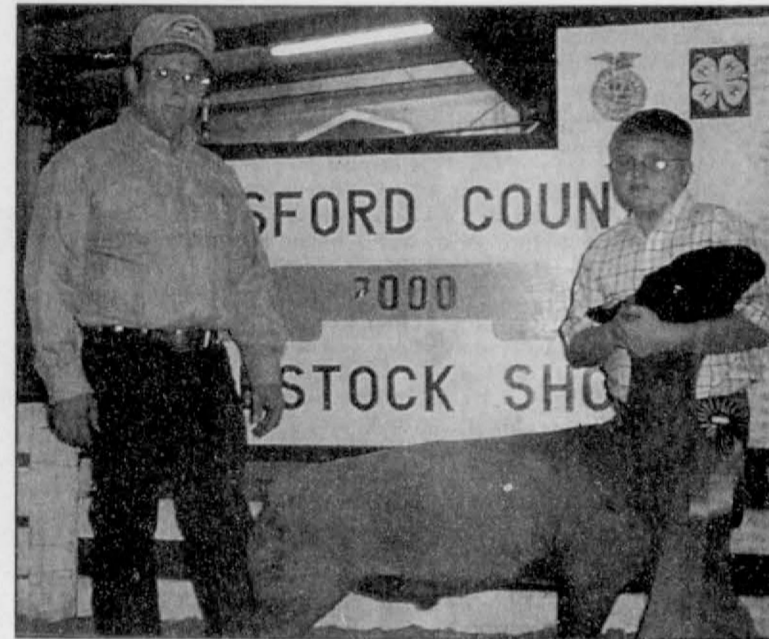


Grand Champion Swine
Dustin Mackie, Spearman 4-H

CONGRATULATIONS!

WE ARE PROUD TO SUPPORT OUR AREA YOUNGSTERS!

Watley Seed Co.
Hwy. 15 East • Spearman, TX
659-3838



Grand Champion Lamb
Charlie Slough, Gruver 4-H

We're Proud Of You!

We were proud to see the young people -- FFA and 4-H youths -- adults and sponsors who supported our youngsters at the 2000 Hansford County Livestock Show.

Five Star Equipment, Inc.
Spearman, Texas ★★★★★ (806) 659-3743

CONGRATULATIONS

to all the boys and girls in the FFA and 4-H on a great job in the 2000 Hansford County Livestock Show.

Ivey's Hungry Cowboy
Hwy. 207 S. • Spearman, X
659-5151

Congratulations





4-H and
FFA on a job
well done!

H&H Water Well Service Inc.
Gruver Highway • Spearman, TX
659-5577

CONGRATULATIONS!

We Are Proud To Support Our Area Youngsters Who Showed In the Hansford County Livestock Show!



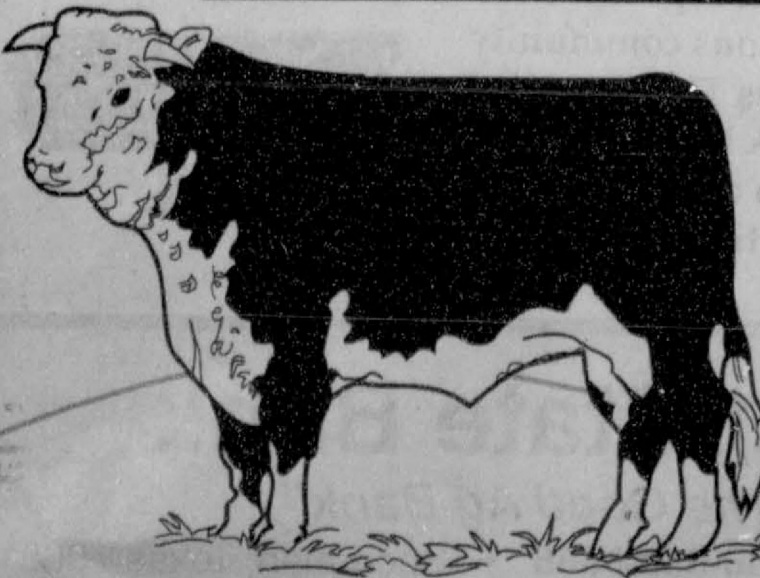


Cargill, Inc.
Hwy. 15 West • 659-3554 • Spearman, TX

Working For The

FUTURE

Supporting the Youth of Hansford County



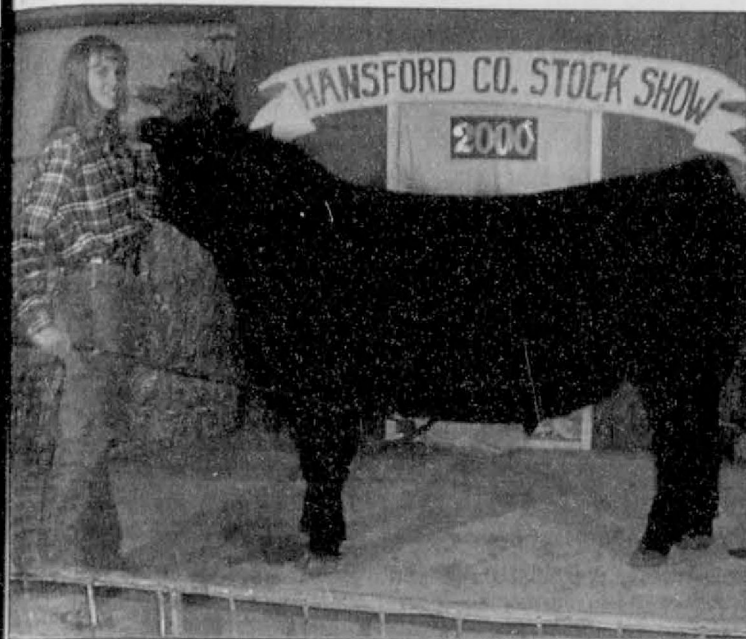
We want to take this opportunity to recognize the farming and ranching youths of our area.

Your hard work was very evident when you displayed your animal projects at the Hansford County Livestock Show.

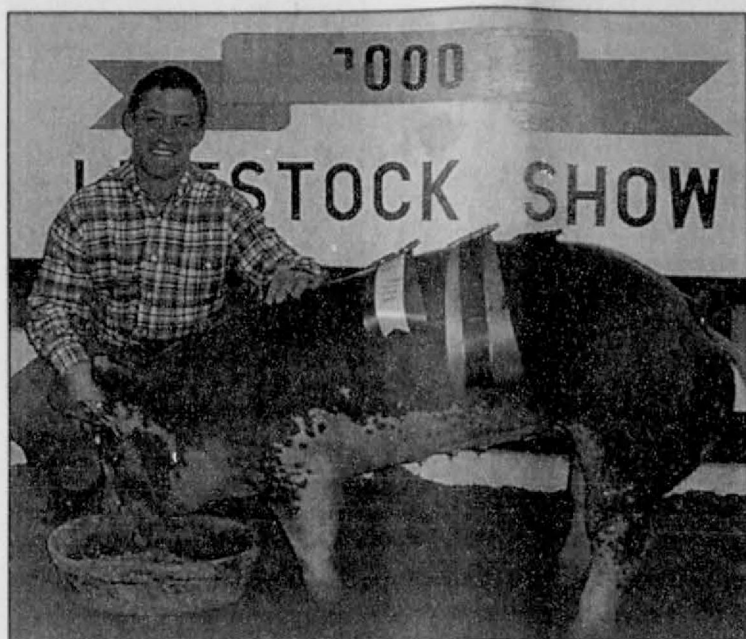
#INTERSTATE BANK, ssb

322 Main Street • 659-2559 • Spearman, TX
FDIC Insured

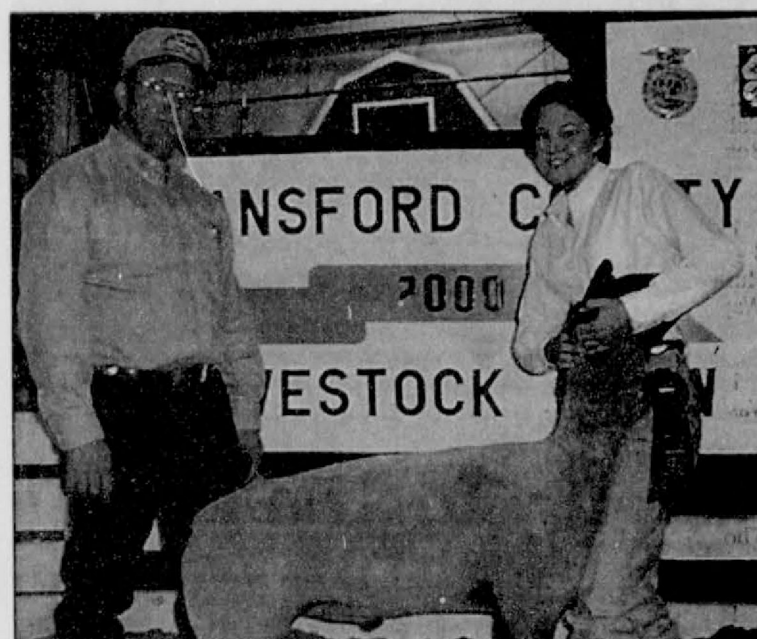
2000 Hansford County Stock Show



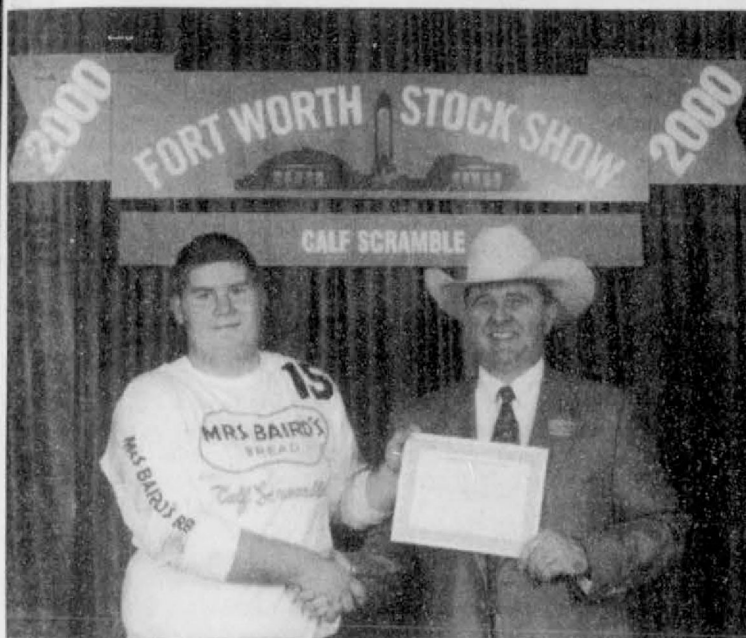
Reserve Grand Champion Steer
Kaylee Holt - Gruver 4-H



Reserve Grand Champion Swine
Jeremy Mackie, Spearman 4-H



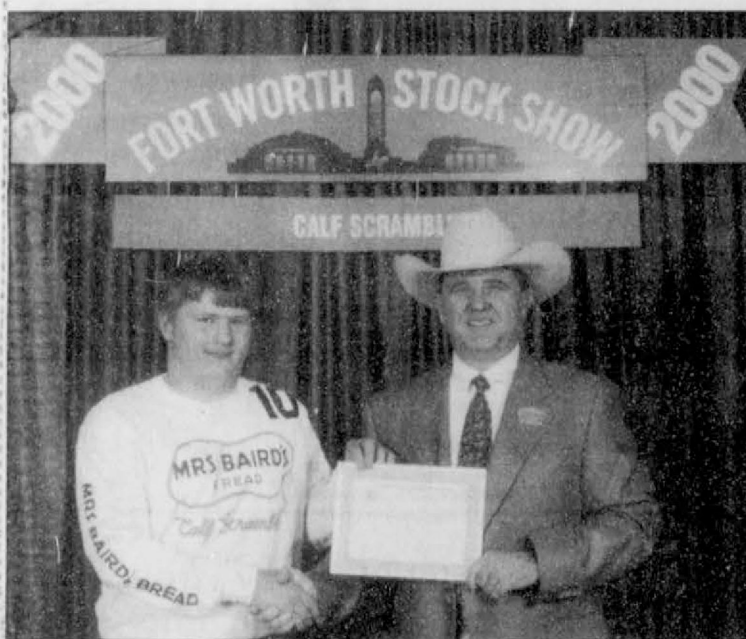
Reserve Grand Champion Lamb
Kyna Shields, Spearman 4-H



Wayne McCubbin, Spearman FFA, was among the winners at the Fort Worth Stock Show Calf Scramble at Will Rogers Coliseum in Fort Worth. Parents of Wayne are Ray & Donna of Spearman. Sponsor for Wayne's effort will be Texland Petroleum, Inc. of Ft Worth.



(Back Row, L-R) Senior Lamb Showmanship - Kyna Shields, Senior Swine Showmanship - Kaylee Holt. Senior Steer Showmanship - Melody Shields, Junior Swine Showmanship - Teal Armes; (Front Row, L-R) Junior Steer Showmanship - Lance Williams, Junior Lamb Showmanship - Kali Shields



Coy Herrington, Spearman FFA, was among the winners at the Fort Worth Stock Show Calf Scramble at Will Rogers Coliseum in Fort Worth. Parents of Coy are Danny and Debbie of Spearman. Sponsor for Coy's effort will be Whit and Gretchen Smith of Ft. Worth.

Local Youths Win In Calf Scramble

Wayne McCubbin and Coy Herrington, both of Spearman FFA, were among the winners at the Fort Worth Stock Show Calf Scramble during the 2:00 p.m. February 2nd performance of the rodeo underway through Sunday night, February 6th, at Will Rogers Coliseum in Fort Worth. Parents of Wayne are Ray & Donna of Spearman. Sponsor for Wayne's effort will be Texland Petroleum, Inc. of Ft Worth. Parents of Coy are Danny and Debbie of Spearman. Sponsor for Coy's effort will be Whit and Gretchen Smith of Ft. Worth.

The event pits 480 area high school youngsters against 240 wild running calves in the exciting event. The young people are sophomores and juniors out to catch and halter a calf with hopes of winning a \$500 purchase certificate that will help buy a registered heifer for a yearlong 4H or FFA project.

Winners must care for their animal and return to the 2001 Stock Show and exhibit it in the Junior Heifer Show. Those who do the best job will be in line for freshman year scholarship funds when they enter college. Last year, the grants were made to 32 young people.

The Calf Scramble, which allows 16 students to contest at each of the 30 Stock Show rodeo performances, has eight performance winners. All entries receive a special T-shirt with their contestant number and a Justin Boots red windbreaker. Those eight at each rodeo who fail to catch a calf receive certificates for a pair of Justin Roper Boots.

Mrs Baird's Bread and Justin Boots sponsor the contest each year. This year's Fort Worth Stock Show is the first major event of the new century for the city. Over 22,000 head of animals are entered for the exposition. Prize and premium money for the livestock show and the accompanying 30-performance rodeo will total over \$800,000. All events are held in the world-class Will Rogers Memorial Center.

Spearman Attends UIL Practice Meet

Spearman High School attended the Canadian Academic UIL Practice Meet on February 12, 2000. Listed below are the results of this meet.

Extemp. Informative Speaking - John Brock; Poetry - Kathryn Murphy - 1st, Cristy Alvarado - 2nd, Chelsey Villines - 4th; Prose - Haley Lombard, Jennifer Whitefield, Allison Haney - 3rd, Nicole Ramon; Lincoln-Douglas Debate - Angela Pipkin - 1st, Jennifer Schnell - 2nd; Science - Denise Paschel; Mathematics - Denise Paschel; Calculator - Denise Paschel - 3rd, Art Maestas, Tanner Beedy; and Ready Writing - Cynthia Goodman - 1st, Chelsea Nollner, Sally Pittman - 4th.

Our Kids Are Learning From Hands-On Experience

The Hansford County Livestock Show is made up of dedicated young people, parents and adult leaders. For the exhibitors, there are lessons to be learned that only experience can teach.

We congratulate these young people for the months of hard work, for the dollars invested in their animals, and for the "hands-on" education they have experienced.

Agco of Spearman Inc.

511 S.W. 11th St. • Spearman, Texas
659-3751

Speartex Grain Co. Salutes

the 4-H and FFA youth for demonstrating personal responsibility, exhibiting high standards in animal care and promoting production agriculture.

Speartex Grain Co.

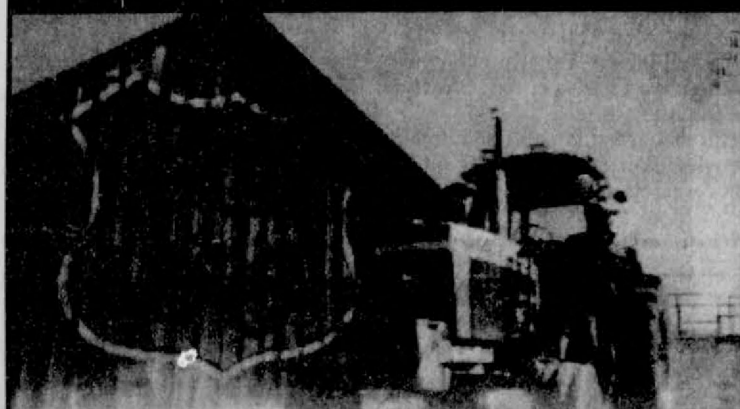
405 Collard • Spearman, TX
659-3711

Dear Mr. Boyd,

Thank you and North Plains Insurance for buying Big Red, my pig at the Hansford County Stock Show.

Love,
Timber Barkley

Farm Lube Special!



Phillips 66 Premium Quality Lubricants for Farm, Home & Industry.

Phillips 66 Lubricants meet or exceed most major manufacturers' performance requirements.

HG Tractor Fluid
Super HD II
MOTOR OIL

AVAILABLE AT
GOLDEN SPREAD
SALES CO.

(806) 659-3776
414 S. Hwy. 207 • Spearman, TX

We support the youth of Hansford County, and want to congratulate all the participants of the 2000 Hansford County Livestock Show.

Sorority Valentine Sweethearts



Carmon Baker is "Going To The Dogs."

"Going To The Dogs"

by Harletta Carthel

Carmon Baker's business is "Going to the Dogs," and it's all part of the plan. She hopes to have oodles of poodles, dozens of dachshunds, and lots of Lhasa Apsos. With her customized van, Baker caters to her canine clientele.

In her customized courier equipped in Georgia, Baker pampers pets with the latest grooming innovations.

There's a power shower that blends the cleansing agent with just the right amount of water in a spray header. Small or timid dogs are bathed the traditional way, but all pooches are pampered with perfectly constant warm water heated by the van's motor. There's also the Davis dryer which uses high velocity to turn drippy doggies to handsome hounds. Last but not least is the clipper vac which cuts the mutt's hair and takes it out of there.

While portable pet pamperers are not a new innovation, the idea is unique to small towns and rural areas. Baker, a thirty year veteran of the grooming business, hopes to establish a regular route with Hansford County in her tour on the first and third Fridays of the month.

The former owner of Carmon's Canine Clip Joint in Spearman from 1980-1982, Baker hopes to give Rover the make-over right in his own home town.



Melissa Sutterfield

Melissa Diane Sutterfield was chosen as the 2000 Valentine Queen for the Rho Rho chapter of Beta Sigma Phi.

Melissa is married to Hank Sutterfield, and they have two children, Sawyer Hank, 7, and Mabry Rachele, 5.

Melissa, the daughter of Kari and Kevin Russell and Craig and Denise Schumann, is a lifelong resident of Spearman. She graduated from Spearman High School in 1990 and earned a degree in Elementary Education from Oklahoma Panhandle State University. She began her teaching career in August of 1999 with fourth and fifth grade at Gus Birdwell Elementary.

She is a member of the Church of Christ of Spearman.

Besides teaching, Melissa enjoys being a mother, reading, crafts, and spending time with her family.

Rho Rho is proud to have Melissa Sutterfield represent them as their 2000 Valentine Queen.



Cayla Schroeder

Cayla Schroeder, daughter of Charles and Joanne Eaton, has been a member of Beta Sigma Phi for six years. She is currently serving as president of the Xi Zeta Chapter.

Cayla graduated from Spearman High School in 1987. After earning a degree in Elementary Education from Panhandle State University, she has taught third grade at Spearman Elementary for seven years.

Cayla is married to Don Schroeder. They have two children, Blayne Lloyd, 7, and Brock Lyndon, 3.

Besides teaching, being a wife and mother, and sorority, Cayla enjoys being a member of First Baptist Church, gardening, scrap-booking and golfing.



Brenda Winegarner

Preceptor Epsilon chapter of Beta Sigma Phi has chosen Brenda Winegarner for their 2000 Valentine Queen.

Brenda is married to Verlan Winegarner, and they have one son, Brett, who is nine years old.

Born and raised in Natick, Massachusetts, Brenda graduated from Framingham State College in 1981, with a degree in Economics. She worked as a Financial Analyst until moving to Spearman in 1984, where she began working for First National Bank when it opened.

Brenda received her teaching certificate in 1989, and taught in the Spearman Independent School District for ten years before deciding to become a stay-at-home wife and mother. She enjoys doing projects around the house, baking and spending more time with her husband and her son. Her hobbies include traveling and decorating.

After becoming a member of Beta Sigma Phi in 1987, Brenda served as Vice-President and worked on the scrapbook committee in various chapters. She is currently serving as Vice-President of Preceptor chapter and as President of Beta Sigma Phi's City Council.

Brenda and her family are active members of the First United Methodist Church of Spearman.

The members of Preceptor Epsilon are honored to have Brenda Winegarner representing them as their 2000 Valentine Queen.



Peggy Archer

Laureate Gamma Gamma Sorority is proud to have Peggy Archer representing their sorority as Valentine Queen for 1999-2000.

Peggy became a member of Beta Sigma Phi about 20 years ago when she was invited to be an honorary member for Rho Rho Sorority.

Peggy married Carl M. Archer on August 22, 1939, and they have been residents of Spearman for 60 years now. They are the parents of two daughters, Mary Dixon of Spearman and Carla Johnson of Morse. Carl and Peggy really enjoy having six grandchildren and five great-grandchildren.

Peggy is a member of the First Baptist Church of Spearman, where she has always been very active. She is such a special member. The word "no" is hardly in her vocabulary. She has always been happy to have many socials and meetings in her home through the years.

Carl and Peggy were chosen as Spearman Chamber of Commerce citizens of the year in 1996. Peggy is the co-owner of Speartex Grain Company where they have been in business for 32 years.

Congratulations Peggy, Queen of Laureate Gamma Gamma.

Library Booknotes

by Sheri Benton

Since many people depend on the public library for their access to the Internet, I thought I would pass along some interesting facts I read recently in information from the American Library Association about libraries and the Internet. In fact, for people without computers at home, public libraries are the number one point of access. We currently have only one public access Internet terminal in our library, but will be adding two more sometime this spring.

Almost all public libraries offering Internet access have or are developing Internet use policies, and ours is no exception. We do not charge for using the Internet or for printing off any materials that you may need. We do ask that any users under the age of twelve have a parent with them while they are using the Internet in our library since we do not use any type of filter.

Filters block one of every five sites containing legal, useful information. They also block only 85 percent of material defined as undesirable. Less than 2 percent of all Web sites contain sexually explicit material. The majority of today's filters don't work very well. Such sites as the FBI, SuperBowl XXX and the Quakers have all been blocked by one filter or another. The Chicago Public Library even found that one filter blocked its site. Filtering software can give a false sense of security.

Parents should take time to learn about the Internet and how it works. Every computer has child-safe search engines that will lead

children to positive sites. It is very important that parents learn about this medium so they can teach their children how to use it effectively. Parents should set rules - we don't let children play unsupervised in the streets - neither should we let them play unsupervised on the Internet. There are many common sense tips that will ensure children have a positive experience online. For example, all children should be taught not to give their names to strangers online as well as off, and never to agree to meet someone they met online without a parent or guardian present. Teach your children values and guidelines to use in selecting what they read and view. Not every Web site is right for every child, anymore than every book in the library is right for every person. It is up to parents, not library staff, to let their children know what subjects and Web sites are off-limits and why.

Librarians and library staff care deeply about children - most of us are parents too! The best way to protect children is to teach them to use technology properly and to make good choices. This is up to you as parents. Please help us to help your children by coming with them when they visit the public library particularly when they need to look for information on the Internet! Also realize that there are still many occasions when we have the information your child is looking for in a print source that will be much easier to find than that same information on the Internet!

Assembly Of God To Host Meetings

Reaching into communities throughout the United States and Canada, Emil and Jane Solbrekken, a husband and wife evangelistic team, bring a clear message of hope and healing for hurting people. Their travels have taken them to 30 states and 5 provinces. North America is their mission field.

The Solbrekkens will be special guest speakers at the Spearman First Assembly of God Church, 401 N. Bernice. Services will be held on Sunday, February 27th at 10:35 a.m. and 7:00 p.m., and on Monday-Wednesday evenings at 7:30 p.m.

Their ministry of faith and love is evident as they point their congregation to the miracle working Christ who has never changed. They believe that Jesus can still forgive sin, heal the sick and help people with their problems today.

This Spirit-filled couple are no strangers to the older-type denominations. Emil was raised in the Lutheran Church and surrendered his life to God when he was a child. Jane accepted Christ as her Savior as an adult. Two years later God instantly healed her of an incurable arthritic condition and a multitude of food allergies.

During the meetings the Solbrekkens reach out to everyone whether they be children, teenagers, middle-aged or elderly. They preach the old-fashioned gospel in all of its purity and power and have a special time of prayer in every service for the sick and needy.

Everyone is welcome to attend the meetings.

Farm & Ranch Equipment Consignment Auction April 1, 2000

Tractors • Combines • Trucks • Trailers
Industrial Equipment • Recreational Vehicles
Irrigation Equipment • Livestock Equipment
Shop Tools • Vehicles

To consign, call:

Naylor Auction & Realty

Randy Schreiner (TX 9095) - Sales Associate
(580) 423-2449

Advertising deadline - March 9, 2000



24-Hour Emergency Number
1-888-204-1781

If you are planning any excavation or construction work, let us be the first to know. Two (2) working days, or 48 hours prior to commencing with any work, call the One-Call Center in your state with all the facts. If we have facilities in the area, your request for information will be relayed to us. We will contact you and supply you with pertinent information regarding our pipeline, and send out a representative who will show you the exact location, route, and depth of the pipeline, and suggest safety measures you should follow while working near the line.

Texas Number: 1-800-344-8377

Monogramming
available at
Jo's This 'N' That
214 Main St. • Spearman
659-3999
Personalization &
Custom Computer
Designs Available

Subscribe to the
Reporter-Statesman.
Call 659-3434
for details.

HELP!

My bear wandered away from the O'Loughlin Center during the New Year's Eve party. If you have seen If you can help, please call me (Shirley Lowe) at 733-2682 or The O'Loughlin Center at 659-3030. It was part of the decorations under the Christmas trees, and was not intended to be given away.

You're invited to attend
Renewal Services
at the
Church of the Brethren
Rogers & Main • Waka, Texas

February 24th-27th
Thursday, Friday & Saturday Evenings at 7:00 p.m.
Sunday Morning Services at 11:00 a.m.

Special Speaker: David Smalley - Kansas City, KS
Special Music: Trudi Schneider - Spearman

For more information, call (806) 435-4598

Dr. Rick Sheppard, D.D.S.
1-800-687-2010
• Family Dentistry • Braces •
146 Pioneer • Booker, TX
Cleaning, Examination & X-ray

www.antden.com

Check out Antalek Independent Services' new website.

It celebrates Spearman and our community, and is really a great website!