

THE HANSFORD COUNTY Reporter-Statesman

Serving Hansford County Since 1907

THURSDAY, FEBRUARY 15, 1996

213 MAIN • SPEARMAN, TEXAS, 79081

VOLUME 89, ISSUE 7

Kindness Strikes Spearman

Good things are happening in Spearman. Thanks to the ideas, efforts and talents of some of our finest young people, even better things are about to happen.

The members of the Spearman 8th Grade Girls athletics program began a "Random Words of Kindness"

campaign on Wednesday, February 14th. The entire Girls Athletic Program (grades 7 through 12) is participating in the program.

The goal of the program is to spread kindness around Spearman. The girls plan to do this by saying something nice and smiling at

people they see. Their hopes are that this will spread throughout the whole community. They also have plans to "do as well as say." They intend to do kind deeds as well as say kind words.

The girls started the program because they feel we have become a negative society.

Said one of the young ladies, "It is easier to be negative. It is harder to be positive."

Another stated, "People wonder what you want when you are kind to someone, but maybe they won't think we're up to something."

These energetic young women really want to make an impact on Spearman. They plan to speak and give skits on kindness for elementary school kids and civic groups. They also plan to get quotes from people about kindness.

These young citizens are urging everyone in Spearman to try to help them. They are striving for acts of kindness and words of kindness and they ask for your help in "passing it on."

Said one bright eyed, smiling young lady, "We might be able to make a difference."



Syd Woodington demonstrates kindness by cleaning up Spearman.



(L-R) Clay Schnell, Mike Schnell and Ginger Turner

FSB Elects New Officers

The Board of Directors of First State Bank has announced their election of Mike Schnell as president, following the recent retirement of Jim Shirley.

Mike previously served as Executive Vice President of First National Bank and has 21 years banking experience. He worked at First City Bank of Dallas and Citizens Bank of Richardson prior to 1979, when he joined First State Bank on a full time basis. Mike graduated from Spearman High School in 1971 and Southern

Methodist in 1975.

The board also announces the election of Clay Schnell as Executive Vice President and Chief Finance Officer. He has served as Vice President since 1988. He has 15 years banking experience. He previously worked for United Bank of Grand Junction, Colorado. Clay graduated from Spearman High School in 1968, the University of Colorado in 1978, and the Southwest Graduate School of Banking in 1993.

Ginger Turner has been

elected Vice President of Agricultural Lending. Ginger has been with First State Bank since 1985 and was appointed Assistant Vice President in 1991.

The board members of First State Bank are Verna Lee Shirley, J.W. Gibner, Michael L. Schnell, R. Clay Schnell, and P. Stinson Gibner of Houston. Advisory Directors are Tom Dortch of Morse, Texas and Lee Ann Gibner Schrader of Fritch, Texas.

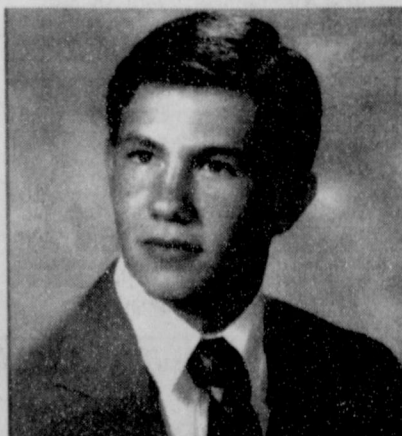
Gruver Thefts

There has been an increasing number of thefts in the city of Gruver. For the month of January there were (4) Burglary of Motor Vehicles, (1) Robbery, (1) Burglary of a Building, and (1) Theft reported.

It takes a thief less than 10 seconds to steal a small tool box, mobile phone, radar detector, or other small items out of vehicles and they can easily be sold for cash and are hard to find once they have been stolen and sold. To protect valuables, vehicles, storage buildings, tool boxes, or any place where a thief might have access with little chance of being seen, should be kept locked. Businesses should leave a light on in the building so that police patrols can see into the building from the street. Security lights or motion lights should also be installed around back doors and in areas where vehicles or equipment is stored. Residents should report to the Police

Continued on Page 5

Tidwell To Pharmacy School



Crockett L. Tidwell of Gruver, Texas has been accepted and is enrolled in his first semester in the Southwestern

Oklahoma State University School of Pharmacy of Weatherford. Tidwell is the son of Henry M. and Linda Tidwell of Gruver, Texas.

A total of 40 students were accepted to the 1996 spring semester pharmacy school class at Southwestern. Chosen from 127 qualified applicants, the class has an average of 3.28 and is composed of 20 women and 20 men.

Minimum requirements for admission to the School of Pharmacy at Southwestern include the completion of at least 60 semester hours of specified pre-pharmacy courses with a cumulative GPA of at least 2.0.

Feds Cut Cheese

On February 4, the Panhandle Community Services in Amarillo received notice from the Texas Department of Human Resources regarding The Emergency Food Assistance Program more commonly known as the Commodity Surplus Program.

The notice stated that Congress did not provide USDA with funds to purchase TEFAP commodities during FY 1996; thus USDA will not ship commodities to TEFAP Contractors this year.

Needless to say, this will place more emphasis on local food pantries, counties, churches, and the High Plains Food Bank. The Panhandle Community Services

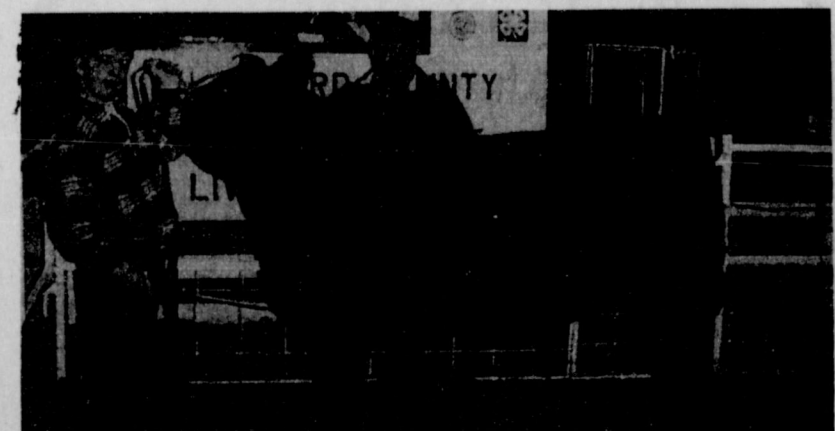
agency has averaged serving over 8,000 families during each distribution and the TEFAP program has supplemented many meals for over 12 years.

On behalf of the PCS board, staff, and the citizens of the panhandle, I, Johnny Raymond, Executive Director, salute each

volunteer, county court and all of the agencies who have donated so many hours to making the panhandle TEFAP program one of the most successful in the state.

Through your unselfish volunteering, thousands of families have been assisted and hunger was addressed.

1996 Gruver Stock Show



Reagan Renner - Grand Champion Steer
Purchased by Hansford Implement

Stock Show Results in Next
Week's Reporter-Statesman

Hansford Happenings

Spearman/Gruver Chamber of Commerce Goat Shares

The Spearman/Gruver Chamber of Commerce is still accepting money for the Hansford County Stockshow goat shares. For donations or more information, please call Cindy at the Chamber 659-5555 or A.J. Ratliff at 733-5144.

Hospice Meeting

The Feb. Hospice meeting will be Monday, Feb. 19 at 6:30 p.m. in the El Vaquero Restaurant in Gruver. The Hansford Hospital District Board members are invited to this meeting for a presentation for a check from the volunteers for Hospice Endowment Fund.

Gruver Classroom Teachers' Association

The Gruver Classroom Teachers' Association will be awarding their annual college scholarship next August to an education major having completed 60 or more college hours. Applications are being taken now. To apply, contact Gruver I.S.D. Superintendent's Office, P.O. Box 747, Gruver, Texas 79040. Phone 733-2001. Application deadline is July 1.

Windbreak Trees

The Hansford Soil and Water Conservation District will have "Earth Mat" available for the 1996 plantings. Orders for these seedling trees will be taken from now through March 8, 1996. Contact HSWCD at 659-2330 for more information.

Hospice Chilli Supper

The Hansford Hospice Volunteers will be hosting a homemade chilli, soup, and homemade pie supper Thursday, Feb. 29th, from 11:30 a.m. - 1 p.m. at the Parish Hall in the Sacred Heart Catholic Church. The cost is only \$5, and all proceeds go to the Hansford Hospice organization.

Texas Tomorrow Fund

On January 2, 1996, Texas launched a new and exciting program called Texas Tomorrow Fund. This program is designed to help Texas families with the cost of providing their children with a college education. Initial enrollment in the Texas Tomorrow Fund runs from January 2 through March 31, 1996. The Texas Tomorrow Fund allows Texas families to lock in the cost of tomorrow's college tuition and required fees at today's prices. The Fund is flexible and offers a variety of plans and payment options. If you would like more information, brochures are available in the counselor's office at either Spearman Junior High or Spearman High School, or Spearman Chamber of Commerce, 211 Main. Interested persons can also call 1-800-445-4723 for more information.

February Clinic Schedule

Immunization Clinics offering vaccines that give protection against several childhood diseases are scheduled for February. The one in Spearman will be at 721 South Evans on February 21st from 9:30 - 11:30 a.m. & 1-4 p.m.

Old Fashioned Pie Auction

The Waka Lions Club is having an old fashioned pie auction Feb. 24th at 7:00 p.m. at the Waka School Cafeteria.



Laugh and Live

by Gary Smith

I like country music and I like our Hansford County radio station, KRDF. Some country songs really have great titles. I do not know where they come up with this stuff, but I think that it is great. Here are a few of my favorites.

- "Does Your Chewing Gum Lose Its Flavor On the Bedpost Overnight?"
- "Don't Cry On My Shoulders Cause Your Rustin' My Spurs"
- "Drop-kick me, Jesus, through the Goal posts of Life."
- "Here's a Quarter, Call Someone Who Cares."
- "How Can I Miss You If You Won't Go Away?"
- "How Can You Believe Me When I Say I Love You When You Know I've Been A Liar All My Life?"
- "I Been Roped and Thrown by Jesus in the Holy Ghost Corral."
- "I Can't Love Your Body if Your Heart's Not In It"
- "I Don't Know Whether to Kill Myself or Go Bowling."
- "I Fell In A Pile Of You, And Got Love All Over Me"
- "I Flushed You From The Toilets Of My Heart."
- "I Would Have Writ You A Letter, But I Couldn't Spell Yecch!"
- "I Wouldn't Take Her To A Dawg Fight, Cause I'm Afraid She'd Win"
- "I'd Rather Have a Bottle in Front of Me than a Frontal Lobotomy."
- "I'm Gonna Hire a Wino to Decorate our Home."
- "I'm Just A Bug On The Windshield of Life."
- "I'm So Miserable Without You, It's Like Having You Here" AND
- "I've Got Four On the Floor and a Fifth Under The Seat"

Like I said, I like these. So, if you would, please let me know your favorite title. Write it on a piece of paper and drop it off at my office. If you give me the best song title, I will give you a dinner for two at the Hansford County eating establishment of your choice. (Contest ends February 31, 1999. No phone calls please.)

Center Piece

by Garland Hopper

Monday evening the Golden Spread Senior Citizens Board met in the Blodgett Room at 502 South Brandt. Charles Brillhart and Carolyn Cummings were welcomed as new members to the board. The membership also welcomes them and thanks them for accepting the responsibility. Other business included a discussion on possible activities for the Golden Spread Senior Center.

The last news article mentioned a quilt the Crafters are planning to make. Since that time the design has been changed. The next article will contain a name and description.

The GS Seniors welcome

Gary Smith and his family to Spearman. It is nice to have the Hansford Reporter-Statesman owned by someone interested living in Spearman and caring about our County. The last issue of the paper was really easy on the eyes. Thank you, Gary.

The senior members offer their condolences to those who have lost loved ones. May those who are ill have a speedy recovery. When members are absent from activities for any reason they are missed.

HAPPY BIRTHDAY TO FEBRUARY BABIES OF ALL AGES!

MAY GOD BLESS OUR COUNTRY

Thank You

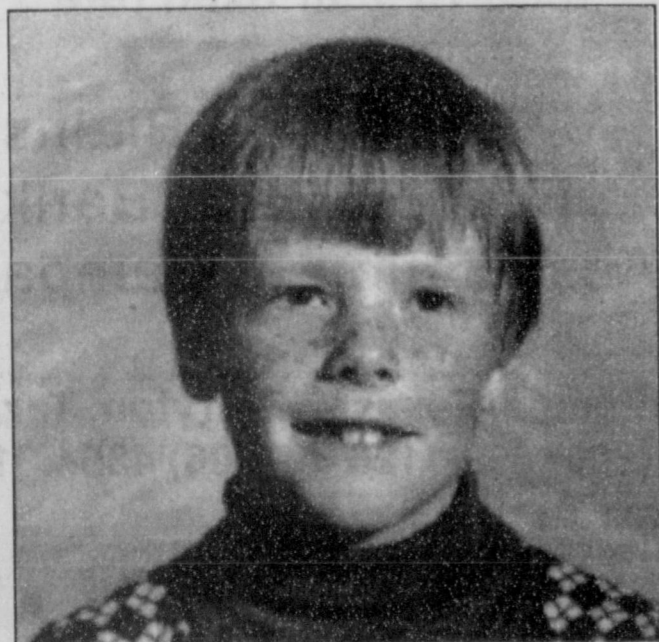
Thank you for the prayers, cards, calls, visits, and all other expressions of sympathy extended to me and my family during the loss of my son, Jack.

Lilly Love and Family

Thank You

We would like to thank everyone for the many prayers, cards, calls, flowers, meals and visits that we have received. Each act of kindness is greatly appreciated. God bless each of you.

HAPPY BIRTHDAY 30TH, MARK GUTHRIE!



You don't ACT a day over 5!

We love you,
Carrie, Gatlin & Grace

1996 Gruver Stock Show



Leah Jo Mackie - Reserve Champion Lamb
Purchased by Perryton Equity



Sammie Stavlo - Grand Champion Sow
Purchased by C.A. & Jerri Davis

At The Movies

Showing at the Lyric Theater Friday, February 16 through Tuesday, February 20 on Screen I beginning at 7:30 p.m. is "White Squall" and on Screen II beginning at 7:45 p.m. is "Eye for an Eye."

In "White Squall", Jeff Bridges stars as a tough but fair captain of a ship of teen-age sailors. The ship goes down in the

Caribbean, resulting in a Coast Guard inquest.

"White Squall" is rated (PG-13).

In an "Eye For an Eye", a brutal rape/murder sets the stage for this overwrought John Schlesinger drama with Sally Field.

"An For an Eye" is rated (R).

At the Lyric Theater...

Friday, February 16 - Tuesday February 20

Bargain Nights Mon. & Tues. Adults - \$4
Fri., Sat., Sun., \$5 - Child \$3 every night
Closed Wednesday & Thursday

SCREEN I

WHITE SQUALL
(PG-13)

SCREEN II

EYE FOR AN EYE
(R)

213 MAIN * SPEARMAN

ALL FALL & WINTER MERCHANDISE

50%-80% OFF

Michele's
Lady's & Junior Wear
306 Hancock, Spearman
9:00 a.m., February 16th

We listen to

KRDF

98.3 FM

The Voice of
Hansford
County



The O'Loughlin Center
is proud to sponsor the
Kenny Freeman Benefit
Co-Ed Volleyball
Tournament
to be held
Friday, March 8th &
Saturday, March 9th



Entry forms may be picked up at the O'Loughlin Center. Entry fee is \$10.00 per person. Entry deadline is March 1st.

For more information, call
Kathy Bryant at 659-3030
or Robbie Dewberry
(evenings) at 659-3915

HUNGR-BUSTER COMBO



\$2.59

Now for a limited time, get our delicious Hungr-Buster® Combo for just \$2.59! That's our 1/4-lb. pure beef burger topped with the works, an order of crisp fries and cold soft drink. All for only \$2.59!
On Sale February 5-25, 1996.

Make it a Combo Plus™ - just 39¢ more!



For just 39¢ more get your choice of a DQ® Sandwich, Dilly® Bar or 5-oz. Cone with your combo.

Offer good at participating Dairy Queen® stores. ©1996 U.S. Pat. & Trad. Off. Am. D.Q. Corp. *Tax. Ex. D.Q. Op. Cost. †Pre-cooked weight.

Our Sympathy



W.L. "Pete" Maupin

W.L. "Pete" Maupin, 81, died Tuesday, January 30, 1996.

Services were held at 2:00 p.m. on Thursday, February 1st in the United Methodist Church of Gruver with the Rev. Lewis Holland, pastor, officiating. Burial followed in the Gruver Cemetery by Boxwell Brothers Funeral Home of Spearman.

Mr. Maupin was born in Hansford County and was a lifetime resident of the Gruver area. For the past few years he

also had maintained a residence in Amarillo. He graduated from Gruver High School and attended McMurry College. He was a World War II veteran, serving with the Army's 440th Signal Corps in New Guinea and the Philippines.

He married Fran Cook in 1949 at Livingston, Montana. She died in 1988. He was a retired farmer and rancher. He was a member of the Gruver Masonic Lodge No. 1326 AF&AM and United Methodist Church.

Survivors include two daughters, Merilee Nuttall O'Neal of Leadville, Colorado, and Sher Kerschen of Glenwood Springs, Colorado; a son, Wes Maupin of Gruver; six grandchildren; one great-grandson; and dear friends, Irene McClarty and family.

The family suggests memorials be to Gruver United Methodist Church Scholarship Fund; United Methodist Church in Glenwood Springs, Colorado; or the Alice Moody Fund at Amarillo National Bank.

Chamber Chatter

by Cindy Blackman
Spearman Chamber of Commerce Manager

Over the past few months, numerous businesses (both large and small) and communities within the Panhandle have received inspections and audits by various regulatory agencies resulting in Notices of Violations, fines and bad publicity. These fines extended from \$7000 to multi-millions of dollars. In order to assist the local businesses in precluding these occurrences from happening in our area, the Spearman Chamber of Commerce, in conjunction with Compliance Management Systems Incorporated, a private consulting firm, will present a seminar on Thursday, February 26, 1996 from 6:00 p.m. to 10:00 p.m., at the O'Loughlin Center in Spearman.

The seminar will cover the following subjects:

- Regulatory compliance and How to Win;
- The new House Bill on self-assessment and What it can do for you;
- Changes in Enforcement approach by the EPA, TNRC, and OSHA;
- What ISO is and Why you need to know about it;
- The Compliance

Management Program (How It Can Save You Money and Time)

We need to understand that the rules of doing business on local, national and international arenas have changed dramatically. We can no longer do business the way we have in the past and expect to remain competitive as a company, state or a nation. It is imperative that we understand the rules of the game so we aren't put out of business by these fines, rules and a standards-based world economy.

The Chamber of Commerce strongly urges you to attend this functional and informative seminar. We all need to keep up to date with these type of changes. There is a \$40 per person fee for the seminar which should be forwarded to the Spearman Chamber of Commerce by Monday, February 26, 1996. The cost of the seminar will include information handouts. For more information, contact Cindy Blackman, Executive Director, Spearman Chamber of Commerce, P.O. Box 161, 211 Main Street, Spearman, Texas 79081, Phone 806-659-5555, FAX 806-659-2476. You must preregister. We need at least 10 registered before we will have the seminar.

**Many Thanks To
Hansford Implement Co.
and
Phillip and Lynna Renner
For Purchasing Our Pigs
Jocelyn and Jentry Edwards**

**The Hansford County
Reporter-Statesman**
213 Main
Spearman, TX 79081
Serving Spearman, Gruver and Morse
Published weekly in Spearman, TX
Owned and operated by Gary and Catherine Smith

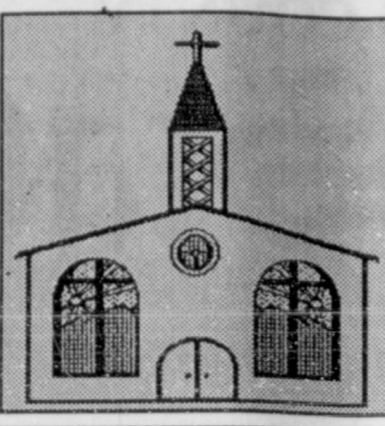
Gary Smith - Publisher
Catherine Smith - Editor
Chad Davis - Associate Publisher
Second Class postage permit USPS 509660
Postage paid in Spearman, TX

TA MEMBER 1995
TEXAS PRESS ASSOCIATION

Annual Subscription Rates
In Hansford County, \$20.00
Out of County, \$25

Advertising and Story Deadlines
Tuesday 12:00 noon

Let us replenish the seed of faith through... REGULAR CHURCH ATTENDANCE, DAILY BIBLE READING & PRAYER



**Curtis'
Hot Oilers**
806-659-3432
"Taking Service to Perfection"

806-659-2912 P.O. Box 714
800-821-6714 Spearman, TX 79081

**Palo Duro
Supper Club**

22 S. Archer
659-2232

C.O.'S SUPPLY CO.
**Plumbing & Tire
Sales & Service**
421 W. Kenneth • Spearman
659-3781 or 659-3555

**Bartlett's Ace
Hardware**
105 W. Broadway
733-2404

GILLASPIE
AUTO & TRUCK CENTER, INC.
Dodge • Olds • Pontiac • Buick
Chrysler • Plymouth • Dodge
Hwy 207 South • P.O. Box 430 (806)659-2541
SPEARMAN, TEXAS 79081

**THE HANSFORD COUNTY
REPORTER-STATSMAN**
Serving The Communities Of
Spearman, Gruver & Morse
213 Main • 659-3434
1-800-395-9482

**PORTER
SATELLITE**
TREY PORTER
806-659-3057
420 Davis
Spearman, Texas 79081

Gruver Cablevision
Quality Family Entertainment
with
"the Disney Channel"
308 Main • 733-5295

**Morse Implement
Company**
*"Join us in church
this week"*

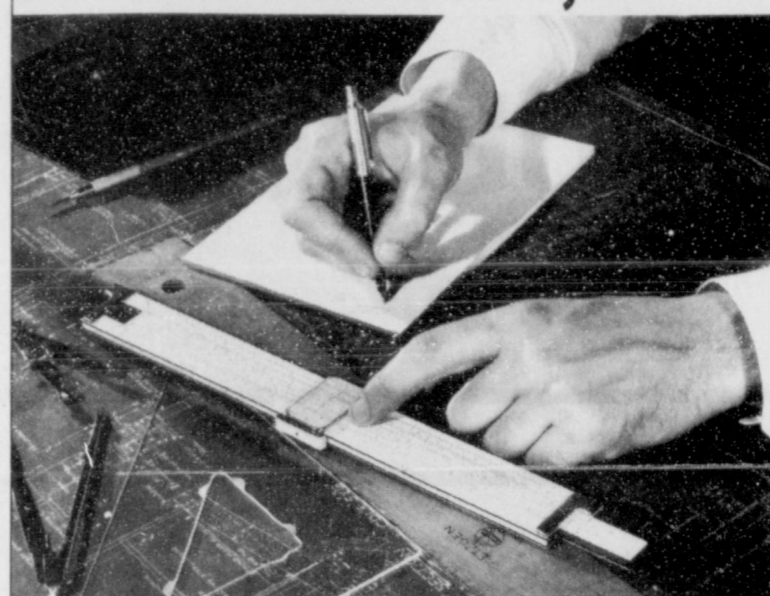
**Boxwell Bros.
Funeral Home**

**THE HANSFORD COUNTY
REPORTER-STATSMAN**
Serving The Communities Of
Spearman, Gruver & Morse
213 Main • 659-3434
1-800-395-9482

**CORONADO
HOSPITAL**
Pampa, Texas
(806)665-3721

Compliments of
**G&G
FOODLINER**
516 Main • Gruver
733-2471

A Halt or a "Hallelujah"?...



Do you sometimes hesitate to begin a project or approach a goal for fear it is out of reach? Then you are not unlike most of us. The deciding factor is that which follows the hesitation. Is it a halt or a "hallelujah"? Only when one tries, is there a chance of success. You must believe in your dreams.

Louisa May Alcott expressed this exquisitely... "Far away there in the sunshine are my highest aspirations. I may not reach them, but I can look up and see their beauty, believe in them, and try to follow where they lead."

Your Heavenly Father believes in you. He created us in His image, the very reason we must believe in our potential. Worship God this Sabbath. Feel His presence and His power. Believe in your goals, for they are within reach... as near as your next "hallelujah".

Sunday	Monday	Tuesday	Wednesday	Thursday	Friday	Saturday
Ezekiel 28:1-21	Joshua 1:1-9	Joshua 1:10-18	Judges 4:1-24	Judges 16:25-31	Ruth 1:1-22	Ruth 4:13-22

Scriptures Selected by The American Bible Society
Copyright 1996, Kestler-Williams Newspaper Services, P. O. Box 8005, Charlottesville, VA 22906

In Spearman...

Apostolic Faith Church
822 S. Dessen • 659-2870
Sunday School: 10 a.m.
Worship: 11 a.m.
Evening Worship: 6 p.m. Sun.
Wed. Prayer Meeting: 7:30 p.m.
Pastor James Brown

Trinity Community Church
717 W. 7th Ave. • 659-2671
Worship Service and
Children's Church 10:30
Sunday Night School 5:30 p.m.
Wednesday Nigh Youth: 7 p.m.
Interm Pastor Richard Humphries

First Assembly of God
401 N. Bernice • 659-2295
Sunday School: 9:45 a.m.
Worship: 10:50 a.m.
Evening Worship: 7 p.m.
Wednesday Worship: 7:30 p.m.
Youth: 7:30 Wednesday
Pastor Walter Greaser, Jr.

**Faith Lutheran Church
(ELCA)**
1101 Bernice • 659-2252
(Worships with First Presbyterian Church)

First Presbyterian Church
(Worships with Faith Lutheran Church)
1021 Cotter • 659-2033
Sunday School: 9:45 a.m. at
Lutheran Church
Worship: 11 a.m. (alternates
monthly between addresses above)
Pastor Beverly Cook

First United Methodist
407 S. Haney • 659-5503
Sunday School: 9:45 a.m.
Worship: 11 a.m.
Jr. High Youth: 5 p.m. Sun.
High School: 6 p.m. Sun.
Pastor Jeff Lust

Union Church
31 S. Endicott • 659-2644
Sunday School: 9:45 a.m.
Worship: 10:45 a.m.
Evening Worship: 6:00 p.m.
Bible Study & Prayer Meeting:
7:00 pm. Wed.
Pastor Billy Stanford

Sacred Heart Catholic Church
901 Roland • 659-2792
Sat. Night Mass: 7 p.m.
Sunday Mass: 8:45 a.m. - English
(8:45a.m. Service on KRDF 98.3 FM)
11:15 a.m. - Spanish
1:30 p.m. - Gruver - Christo
Rendentor Mass - Spanish
Rev. Fernand Couture

"WE SUPPORT OUR LOCAL CHURCHES"
CAPROCK #1 & #2
Bill Park, Gen. Mgr.
(806)733-5043 or 733-5025
"Custom Cattle Feeding"

In Gruver...

First Baptist Church
402 E. Broadway • 733-2411
Sunday School: 9:45 a.m.
Worship: 10:50 a.m.
Disciple Training: 6 p.m. Sunday
Prayer Meeting: 7:30 p.m. Wednesday
Pastor Larry Miller

Church of Christ
209 King • 733-2760
Sunday School: 9:30 a.m.
Worship: 10:20 a.m.
Evening Worship: 6 p.m.
Wed. Evening Worship: 7:30 p.m.
Minister Bob Setliff

First Christian Church
510 King • 733-2960
Sunday School: 9:45 a.m.
Worship: 11 a.m.
Wed. Bible Study: 7:30 p.m.
Youth: 6:30 Wednesday
Pastor Gary Gumfroy

Oslo Lutheran Church (ECLA)
West of Gruver on Hwy 15 & N. FM 1162
339-7646
Sunday School: 9:45 a.m.
Worship: 11 a.m.

Morning Prayer: 9 a.m. Wed.
Pioneer Clubs (Grades 1-6):
4-5:30 p.m. Wednesday
Pastor John R. Chandler

**Community Bible Church
(Interdenominational)**
Hwy. 15 • 733-2443
Sunday School: 10 a.m.
Worship: 11 a.m.
Wed. Prayer Meeting: 7 p.m.

First United Methodist
Broadway & Garrett • 733-2651
Sunday School: 9:45 a.m.
Worship: 8:30 a.m. & 10:50 a.m.
Evening Worship: 6 p.m.
Pastor Lewis Holland

In Morse...

Morse Baptist Church
Pastor Mike Martin
733-2757

"Your Home Away From Home"
Nursanickel Motel
815 Hwy. 207 S.
Phone: (806)659-3737 P.O. Box 115
Spearman, Texas 79081

BERRY CLEANERS
DAN DESIMONE • OWNER
Phone 659-3122 • P.O. Box 1017
207 Main St. • Spearman, Tx. 79081

GRUVER FORD
Ford FORD
531 Main • Gruver • 733-2431

**Interstate
Savings
& Loan**
322 Main • Spearman • 659-2559

**Deakin
ELECTRIC**
OIL FIELD • RESIDENTIAL • COMMERCIAL
321 S. Main
Spearman, Texas 79081
1-800-999-1506 Chris Deakin
(806) 659-5016 President

Gordon Drugs
Dependable Prescription
Service
314 Main • Spearman
659-2141
Jim Evans

Compliments of...
AGCO
of Spearman, Inc.
"See you in Church"
659-3751

Mr. & Miss Hansford Manor



Bertha Brown

The 8th Annual Mister and Miss Hansford Manor Pageant was held on Monday, February 12, 1996. The honorees were voted on by the residents and staff of Hansford Manor.

The ten runners-up for the Mister Hansford Manor were: Leon Burch, R.P. Stout, Wendall Pittman, E.W. Dickson, Kim Cluck, Ernest Newcomb, Donald Hull, Roy Blackman, Lawrence Anthony, Otis Dry. The ten runners-up for the Miss Hansford Manor were: Catherine Balentine, Friendlar Monk, Edith Hoff, Marilyn Parrish, Ruby Miledge, Lois Beeson, Henrietta Andrews, Myrle Holt, Esther Weeks, and Fern Pope.

The First Runner-Up for Mr. Hansford Manor was Ralph Bort. Ralph was born on December 15, 1897 in Bunker Hill, Illinois to parents Christian and Emma Bort. He grew up near the small town of Iberia, Missouri. He attended school at the Iberia Academy, and the College of Business at Springfield, Missouri. Ralph was married to Beulah Owenby on June 1, 1930. They have two daughters, Barbara Cluck and Peggy Jones, 6 grandchildren, and 2 great-grandchildren. Ralph came to Spearman in 1926 to work in the bank. He moved to Gruver in 1929 when the First State Bank of Gruver opened. That bank later merged with the bank in Spearman and Ralph was able to get a charter for the Gruver State Bank. He served there first as the executive vice president, then as



Beecher Dees and Pauline Pshigoda

president, and now is still recognized as the chairman of the Board. Ralph has many friends who love and visit him often, and has made many new friends since coming to the Manor in 1993.

The First Runner-Up for Miss Hansford Manor was Bertha Brown. Bertha was born on October 20, 1905 in Missouri to parents Thomas and Alma Coffin. She celebrated her 10th birthday on the road as her family was moving to this area, where her parents farmed. Bertha grew up and went to school with her 5 brothers and 2 sisters in this area. Bertha married Melton Brown, and they farmed near San Jon, New Mexico and Friona, TX until 1949, when they moved back to Hansford County. Bertha had three children, and three grandchildren, Kathy Smith of College Station, TX, and Wesley and Douglas Brown of Spearman. She has 5 great-grandchildren. Bertha came to the Manor in 1994. She is actively involved in all of the activities and has made many friends. Her sweet smile helps to lighten the hearts of everyone she meets.

Mr. Hansford Manor was awarded to Beecher Dees. Beecher was born on March 26,

1910 to parents Mr. and Mrs. J.M. Dees in Ryan, Oklahoma. He grew up and went to school in Electra, Texas, where he met Dorene Gamble. Beecher and Dorene eloped on December 17, 1933, across the state line to Altus, Oklahoma. They lived in Electra until 1942, when they were transferred to Illinois. They returned to Texas during WWII, when they moved to Borger. The Dees' have three sons, Val, who lives in Corpus Christi, TX, Bill, who lives in Lampe, MO, and Mike, who lives in Fritch, TX. They have 11 grandchildren and 17 great-grandchildren. Beecher came to the Manor in November of 1995. He is active in all of the activities and has fast become everyone's sweetheart.

Miss Hansford Manor was awarded to Pauline Pshigoda. Pauline was born on April 2, 1926 in Shattuck, Oklahoma to parents George and Julia Deal. She and her 12 brothers and sisters grew up and went to school in Shattuck. When Paula graduated from High School, she wanted to go to work at a hospital, but her mother did not want her to leave home. She did get to leave home in 1947, when she married Fred Pshigoda.

Gruver Thefts

Continued from Page 1
Department any suspicious activity, noises, vehicles, or people so that they may be checked out. If a suspicious vehicle is noticed you should try to get a license plate number and state and a color and type of vehicle. Suspicious persons should be reported with their size and clothing descriptions. The Gruver Police Department has an electric engraver which can be loaned to anyone who wishes to engrave their property with their names, drivers license number, etc. It may be picked up at Gruver City Hall during normal business hours.

Residents who are going to be out of town on vacations and such should go by City Hall and fill out a security check request. By doing so, your residence will be checked periodically while you are gone.

With the Seaboard operations growing in Guymon and surrounding area, there will likely be an increase in Gruver's population and in the traffic

moving through the city. It is expected that crimes such as theft, and motor vehicle burglaries will also increase. Citizens are urged to help the police, neighbors, and themselves by keeping a watchful eye out and reporting suspicious activity to the local law enforcement.

Pottery Class

Perryton artist, Betty Devers, will be instructing a class on making a pottery vase. A sample of the finished product is on display at the Museum of the Plains.

The workshop will be held on Saturday and Sunday, March 2nd and 3rd. Saturday's class will be from 8:30 a.m. to 5:30 p.m. so participants should bring a sack lunch. Sunday's class will be from 1:30 to 5:00 p.m.

Classes will be held at the Museum of the Plains, 1200 North Main, in Perryton. A fee of \$30.00 per person will be charged.

Anyone interested in attending should register at the museum office as soon as possible. A deposit of \$15 is required to hold a space. The deadline for signing up is February 28th. There is no age limit.

Contact the Museum of the Plains office at (806) 435-6400 for more information.

Baby Shower

A baby shower in honor of Kelsea Maree and her parents, Bill and Martina Miller will be held on Saturday, February 24th from 3:00 to 4:30 p.m. The shower will be held at the home of Francis Biles, 104 Wanda Drive.



Ralph Bort

Fred and Pauline lived and farmed in Ochiltree County, TX. Pauline has two sons, Vernon, who lives in Perryton, and Duane, who lives in Ochiltree County. She has four grandchildren. Pauline finally did get her wish to work in a hospital, as she worked in the dietary department at Ochiltree General Hospital for several years. She came to the Manor in March of 1995. She has made many friends among the residents and staff. Her bright smile and wonderful sense of humor have made her everyone's favorite.

Laquita Evans presented special music as well as announcing the finalists and winners.



EFFECTIVE FEBRUARY 11-17, 1996
305 W. Kenneth • 659-3135

SAVE ON
Pepsi-Cola
3 Liter or 6 Pack
\$1.99
25 Pack - \$5.99

THE SAVINGS ARE IN... BLACK & WHITE!

SHOP OUR EVERYDAY LOW PRICES!!!

ALLSUP'S SAUSAGE, EGG AND BISCUIT EACH 99¢	SHURFINE NATURAL VEGETABLE OIL 48 OZ. \$1.99	POLAR CHUNK STYLE TUNA 6.1 OZ. 69¢
LANA'S PORK EGG ROLLS REGULAR 89¢ 2 \$1 FOR	VALLEY FARE BATH TISSUE 4 ROLL PKG. 79¢	SHURFINE SYRUP 24 OZ. BTL. \$1.49
HORMEL LITTLE SIZZLER SAUSAGE 12 OZ. PKG. 79¢	ALL VARIETIES CHEETOS® & LAY'S® GRAB BAGS REGULAR 75¢ 2 \$1 FOR	SHURFINE FACIAL TISSUE 175 CT. BOX 99¢
ALLSUP'S 1.5 LB. LOAF SANDWICH BREAD 59¢ EACH OR 2 \$1 FOR	LANCE ALL FLAVORS TAKE HOME PACK CRACKERS 8-PACK \$1.89	Sausage & Biscuit - 79¢ Allsup's Hot Links - 2/\$1.00 Frito's (All Varieties, Reg. \$2.09) - \$1.59 Wilson's Meat Franks (12 oz. Pkg.) - 59¢ Hershey's Bag Candy (All Varieties, Reg. \$1.69) - \$1.29 Lance Potato Chips (Family Size, Reg. \$1.39) - 99¢

SAVE YOUR TIME AND YOUR MONEY AT ALLSUP'S

BAD TV RECEPTION? NOT ENOUGH CHANNELS?

WHY PUT UP WITH HAVING ONLY A FEW, POOR-RECEPTION CHANNELS TO CHOOSE FROM?

Starting at about \$1 a day and a one-time installation fee you can get PRIMESTAR and your favorite channel choices: all the best basic cable channels, premium service like HBO and The Disney Channel, and pay-per-view channels. Plus you'll get a razor sharp picture, CD-quality digital sound and more!

Nothing to buy! Forget about spending a

small fortune on an expensive mini-dish. With PRIMESTAR, you can rent everything and look what you get:

- Packages start at about \$1 a day for equipment and programming
- No-hassle, professional installation is just \$199
- 100 page monthly guide
- Worry-Free Warranty
- One call. One bill!

PRIMESTAR
PRIMESTAR BY TCI

1-800-716-0004

OR CALL YOUR LOCAL AUTHORIZED PRIMESTAR RETAILER.

ABC, CBS, NBC, PBS and FOX channels are available only for homes (1) which cannot receive an acceptable picture from local ABC, CBS, NBC, PBS and FOX affiliates via a conventional, outdoor, rooftop receiving antenna; and (2) which have not subscribed to cable television in the last 90 days. ©1996 PRIMESTAR By TCI

Ask Dr. Dobson

QUESTION: How should I respond if my child says, "I hate you!" when he is angry?

DR. DOBSON: If my child screamed his hatred at me for the first time in a moment of red-faced anger, I would probably wait until his passion had cooled down and then convey this message in a loving and sincere manner:

"Charlie, I know you were very upset earlier today when we had our disagreement, and I think we should talk about what you are feeling. All children get angry at their parents now and then, especially when they feel unfairly treated. I understand your frustration. But that does not excuse you for saying, 'I hate you.' You'll learn that no matter how upset I become over something you've done, I'll never tell you that I hate you. And I can't permit you to talk to me that way."

"It hurt me for you to say that you hated me, just as you would be

hurt if I said something like that to you. You can, however, tell me what angers you, and I will listen carefully.

"You are free to say anything you wish to me, but you will never be permitted to scream, call names and throw temper tantrums. If you behave in those childish ways, I will have to punish you."

These questions and answers are excerpted from the book Dr. Dobson Answers Your Questions. Dr. James Dobson is a psychologist, author and president of Focus on the Family, a nonprofit organization dedicated to the preservation of the home. Correspondence to Dr. Dobson should be addressed to: Focus on the Family, P.O. Box 445, Colorado Springs, CO 80903. (c), 1982, Tyndale House Publishers, Inc.

Dr. Dobson is brought to you each week by these fine businesses and people: Gillaspie Auto and Truck, Cunningham Insurance Agency, Ivey's Hungry Cowboy, B&B Sales Co., and Tom and Linda Latta.

Aggressive prosecution puts criminals in prison - and keeps them there.



Roy, Dee, Teresa and Meredith

I will continue to do everything the law allows to keep our community safe for your family and mine.

VOTE

ROY CARPER
FOR
DISTRICT ATTORNEY

March 12 - Republican Primary

Pol. Ad. Pd. R. Carper, 138 Fairview, Borger, TX

Lunch Menu

SPEARMAN ISD LUNCH MENU

Monday, February 19
Tuna Sandwich, vegetable soup, potato chips, pears, and milk.

Tuesday, February 20
Steak fingers, broccoli, cheese sauce, opt. steamed carrots, hot rolls, pineapple tidbits, and milk.

Wednesday, February 21
Ham, potato salad, pinto beans, corn bread, sweet potato pie, and milk.

Thursday, February 22
French bread pizza, whole kernel corn, pea salad, fruit cobbler, and milk.

Friday, February 23
Hamburger or fish sandwich, French fries, shredded lettuce, sliced tomato, pickle-onion, peaches, and milk.

BREAKFAST

Monday - English muffin, fruit, butter - jelly, and milk.

Tuesday - 2 Cinnamon toast, fruit, and milk.

Wednesday - Blueberry loaf, fruit, and milk.

Thursday - Cinnamon roll, fruit, and milk.

Friday - Cereal, toast, fruit, and milk.

GRUVER ISD LUNCH MENU

Monday, February 19
Chicken fried steak, potatoes w/ gravy, corn, pudding, roll, and milk.

Tuesday, February 20
Chili, crackers, carrot sticks, fruit, and donut, and milk.

Wednesday, February 21
Chicken nuggets, potatoes, with gravy, green beans, roll, pudding, and milk.

Thursday, February 22
Western burger, corn, peach cobbler, and milk.

Friday, February 23
Corn dog, French fries, fruit juice bars, and milk.

BREAKFAST

Monday - Cereal, muffin, juice, and milk.

Tuesday - Biscuit, sausage, juice, and milk.

Wednesday - Donuts, juice, and milk.

Thursday - 2 pancakes, syrup, juice, and milk.

Friday - 2 cinnamon rolls, juice, and milk.

PRINGLE-MORSE CISD LUNCH MENU

Monday, February 19
Burrito, chili, salad, fruit, cornbread, and milk.

Tuesday, February 20
Hamburger steak, potatoes, gravy, salad, dessert, rolls, and milk.

Wednesday, February 21
Sloppy Joe, tator tots, fruit, and milk.

Thursday, February 22
Lasagna, salad, fruit, salad, and milk.

Friday, February 23
Nacho's, beans, cornbread, fruit, ice cream, and milk.

BREAKFAST

Monday - Cereal, toast, juice, and milk.

Tuesday - Toast, juice, and milk.

Wednesday - Pancakes, sausage, juice, and milk.

Thursday - Cinnamon, toast, juice, and milk.

Friday - Biscuits, sausage, juice, and milk.

Strings and Keys for Elementary Kids

Dawn Harms, Violinist, and Ann Saslav, Concert Pianist presented a concert and demonstration for the 3rd through 8th grade students at Spearman Elementary and Junior High on Monday, February 12th.

Dawn Harms is a native of Paradise, California. She received degrees from the New England Conservatory of music from State University of New York at Stony Brook. Dawn made her Carnegie Hall debut as a member of the Stony Brook Piano Trio. She spent the 1995 fall season as acting Principal Violist of the San Francisco Opera Orchestra. In January she returned to Amarillo to resume her teaching position at West Texas A&M University and continue concertizing as first violin of the Harrington String Quartet, of which she has been a member since 1985. Dawn has appeared as soloist with the Tchaikovsky Chamber Orchestra and the Boston Chamber Orchestra on tours of South America, Israel, and Europe. In 1993 she was selected to be the first violinist with the New Zealand String Quartet on a tour of New Zealand. She is Music Director and Conductor of the Amarillo Youth Symphony.

Ann Saslav presents internationally recognized and award-winning programs to schools, universities, orchestras, and concert audiences of all ages. Programs include piano recitals, concerto solo appearances and lecture recitals. Interactive school programs for grades K-12 include "Adventures with 88 Keys," "Adventures with the Violin and Piano," and "Adventures with Music and Design." With narrator and orchestra, Saslav offers "Peter and the Wolf" and Keyboards with performances on six keyboard instruments: harpsichord, forte piano, celeste, grand piano, organ, and



Dawn Harms assists Tanner Hand in his first Violin solo.

synthesizer.

The program presented was "Adventures with Violin and Piano." This is a pilot project of the Region XVI Education Service Center, is being presented in an effort to bring world class quality music to children of rural areas. Dawn and Ann are currently on a

two-week tour which includes Vega, Channing, Pampa, Perryton, Dumas, Canyon and Spearman.

Major funding for this project is being provided by the Amarillo Area Foundation and the Harrington Foundation.

Specializing in Fluid Injection Equipment



Agri Inject Inc.

"Service Also Available On Other Brands Of Chemigation Equipment."

A-1 SERVICES 806/733-2794
RON WOMBLE 104 N. 3rd
PO Box 120 MORSE, TX 79062

Parts, Sales & Service

*Prairie
Garden
Flowers*

Flowers for All Occasions

209 Main Street
Spearman
659-2212 or 659-3329

DRIVER EDUCATION CLASSES

Independent Driving School
814 S. Main • Perryton
(806)435-2579
Lanny Hargrove

SHEAR ACTION HAS SOMETHING NEW!!!

Karen and Sue are now GIFT WRAPPING for ALL occasions... PLUS... We will get your packages ready to mail. All wrapping will include the box, tissue paper or packing materials such as foam, peanuts, etc... Wrapping both plain or fancy and the name tag... AND... in the case of packages to be mailed we could even take them to the post office for you!
Call Sue at 733-2789 or Karen at 733-2830 or SHEAR ACTION 733-5426
Come by and check out the SALE PRICES on hair care products and Arbonne skin care

FINAL MARK-DOWN FALL & WINTER MERCHANDISE

Up To
70% off

Starts Thursday, February 15th • 9:30 a.m.

The Leprechaun
DOWNTOWN PERRYTON

Betty's
DOWNTOWN PERRYTON

Footprints
DOWNTOWN PERRYTON

Kid's Stuff
DOWNTOWN
Guyan, OK

Jackie's
DOWNTOWN PERRYTON

Lady Fair
Kid's Stuff
718 W. 7th
Spearman, TX

All Sales Final • No Approvals • No Returns • Lay-Aways Welcome

Long-Term Agricultural Real Estate Loans

5-35 years
VARIABLE RATE
7.8%*
and
FIXED RATES
ranging from

7.65%** for a 5-year fixed rate to
8.05%*** for a 15-year fixed rate

High Plains
Federal Land Bank
Association of Pampa

Pampa, Texas (806) 669-1126
Perryton, Texas (806) 435-4319

Part of the fabric of rural life.

* Annual percentage rates are 7.69% to 8.18% depending on length of contract. Variable rates are subject to change.

** Annual percentage rates are between 7.74% APR and 8.03% APR.

*** Annual percentage rates range between 8.14% APR and 8.21% APR.

Rates good through the week of February 14-21, 1996.

Among the Neighbors

by Helen Fisher

Sympathy is extended, very sincerely, to all the family of Mrs. Mildred Daily, 94. Services for her were held Monday morning. Further details are in the obituary.

Interment was in Hansford Cemetery beside Dr. F.J. Daily who preceded her in death by 28 years. She had been a resident of the Hansford Manor for a number of years.

Old friends remember her in her active years, her helpfulness, her interest in church, school and community. She came to Spearman as a young bride and lived here through all the stages of adult life—bride, mother, grandmother, great-grandmother.

If an unusual number of young people were dozing at the morning services at the First Methodist church Sunday, the pastor needn't feel that his sermon was responsible.

Nineteen 7th and 8th grade students and four sponsors had driven from Angel Fire Saturday night. They left Spearman at five a.m. on Friday morning and spent that day and Saturday skiing, then drove home that night.

The four sponsors were Linda Cummings, Kyla Nelson, Bobby Smith and Dennis Nelson. They were proud that each break at cafes, the management commented on the fine behavior of the young people. Certainly this is a compliment to the youth, to their sponsors and to their parents.

Wasn't it a pleasure, at the post office, to be greeted again with that cheerful, charismatic, charming, classic, congenial, cordial, contagious smile of Billy Turner? He has been substituting at the Texhoma post office for the last four months.

In the past weeks' edition of the Generation Y section of the Amarillo Daily News, Joni Hart had her usual excellent presentation of her sports column. Tye Womble had the response to the weekly question. Both are students at Gruver High School.

Doris Bateman returned the 4th from St. Anthony's Hospital in Amarillo after undergoing another back surgery. Her daughter, Vickie Adkison, of Hobbs left Thursday after being here with her for several days. Her older daughter, Barbara Webb, of Canadian was with her during her hospitalization.

Doris is most grateful to all those thoughtful friends who brightened her stay and really enjoys the food they have been bringing to her. She also expresses her appreciation for the care provided by the North Plains Home Health Care.

This surgery consisted of the removal of the rod from her spine, and since some of the screws that held it have worked loose, they were removed. Doris will be in a back brace for some months, but is recovering and welcomes visitors. She sends word to friend Clay Schnell, that she has had her loose screws removed - so now it is his turn!!!

All the neighbors are pleased by the announcement that Sheriff McFarland has Allan Mires as a new deputy. Allan, a graduate of Spearman High, is well qualified for this responsibility by his education, training and experience. All who knew him express confidence in him, in his integrity and his ability. A warm welcome is extended to him and his family.

Deputy Dennis Cline has taken a leave of absence and best wishes go with him.

One day early last week Tony Clements, a student at Spearman High School, became ill and started to their rural home east of Spearman. When his pick-up stalled on the road, he went to a neighbor's home to call his father, Joe Clements. His neighbor noticed that the pick-up was on fire. The fire department answered the call quickly, but the vehicle burned. They were unable to determine the cause other than it started in the motor.

Virginia Head spent some time one day last week with Janelle Stenkenig at Borger. She was pleased that Janelle's health is much improved and she sends greetings to her Spearman friends. Janelle taught in Spearman for four years, and was a graduate of Spearman. She is retired now after teaching 37 years.

John Will Van Cleave, 79, a former Spearman resident, died February 4, 1996. Services were held at Palisade, Colorado, where he lived.

Survivors include his wife, Doris; a daughter and a son, both of Palisade; and a son in California. Also surviving are his sister, Ruth Jane Van Cleave Lee of Portales; brothers Sam of Carson City, Nevada and Earl Gene of California, and grandchildren and great grandchildren.

The Van Cleave family lived on a farm southwest of Spearman years ago and the children attended school here. John Will and Ruth Jane visited here a little more than a year ago, and all have friends here.

Dorcus Collard returned recently from Detroit where she has been since July. She is happy to report that she has completely recovered her good health. In

Detroit, her son and wife, Randy and Vickie, both well known here, are in good health as are their two children.

Dorcus had planned to return to Spearman to avoid the winter weather in Detroit, but Randy was spending some time in Germany in connection with his work so she stayed to assist Vickie.

They had a pleasant family Christmas as her daughter D'De, who now lives in Albany, New York shared the holidays with them.

Little miss Shay Ann Bryant, daughter of Gwen and Tim Bryant, had plenty of attention over the week-end. Her grandparents, Alton and Anita Bryant of Tucumcari and Bill and Nancy Smith of Lovington came for her dedication rites at the First Methodist Church here. Others coming were Gwen's brother, Russell and Kim Smith, of Lubbock.

Samantha Beasley created a stir last Thursday at the high school when an ambulance was called to take her to the hospital. She had a traumatic reaction to an allergy medication and since it had not happened previously, caused much alarm. She recovered after treatment and is back in school. Her parents are Jan and Ed Williamson.

The dreadful floods and mud slides in Oregon and Washington have caused concern here by those who have relatives in that area.

Jetty and Willard Davis have been in contact with daughters, Mickey and Judy. Mickey Gribble lives in Centralia, Washington, 90 miles north of Portland, and 90 miles south of Seattle. All areas have been much in the news.

Mickey and family are fortunate that their home is on a hill, but the two rivers that run through the city have been above flood stage, and she has been unable to get to the school where she teaches. It is closed and she doesn't know what shape it is in nor when it can reopen. The highways, especially the interstates, have been blocked due to mudslides. Her son lives in Centralia, but his home has escaped the actual flooding. He has been very active in assisting with the sand bags, and other flood control efforts.

Judy lives east at Chiloquin and reports no real flooding there.

Rita Reed's mother lives at Aberdeen northwest of Centralia,

and since her home is on high ground, she has escaped the ravages of the water. For this they are indeed thankful.

Linn Gibner, son of Lois and Woodie Gibner, lives in Portland. Fortunately his home is high on a hill. However his business is in downtown Portland, and his last report, before the worst of the flooding, was that the water had not reached it. He could not reach it and his parents are anxious to learn the outcome.

Ray Phelps and Grace Johnson have a sister-in-law and a niece who live in Hillsboro, a suburb of western Portland. Mrs. Johnson spoke with her over the week-end and was relieved to learn that her home had escaped any flooding damage. There were tremendous rains, but they drained away from her area.

The death of Vi McNabb Whitson on Monday morning is detailed in the obituary. She was a resident of Hansford Manor and a long time citizen of Hansford County. She is survived by a son and a daughter.

Many are the compliments on the "New Look" of the Reporter-Statesman. Thanks to the new publisher, Gary Smith.

(Y'reckon he could take another relic and make equal improvements for a "New Look" for a certain Widow Wannabee?)

A mid-winter combination ski trip and reunion made a week-end long to be remembered by the family of Buddy and Nell Benton. They, with sons Kent and Tammy and family; Steve and Sheri and family and daughter Denise and Roy Harbour and family, all of Spearman spent the week-end in Red River.

They left Thursday right after school and returned Sunday. The skiing was excellent, the weather perfect and plenty of activities for all 13 of them. In addition to the reunion and skiing, they also celebrated the birthdays of Roy and Denise - both birthdays on Sunday and both the same age.

MARY KAY
FACE-TO-FACE BEAUTY ADVICE™

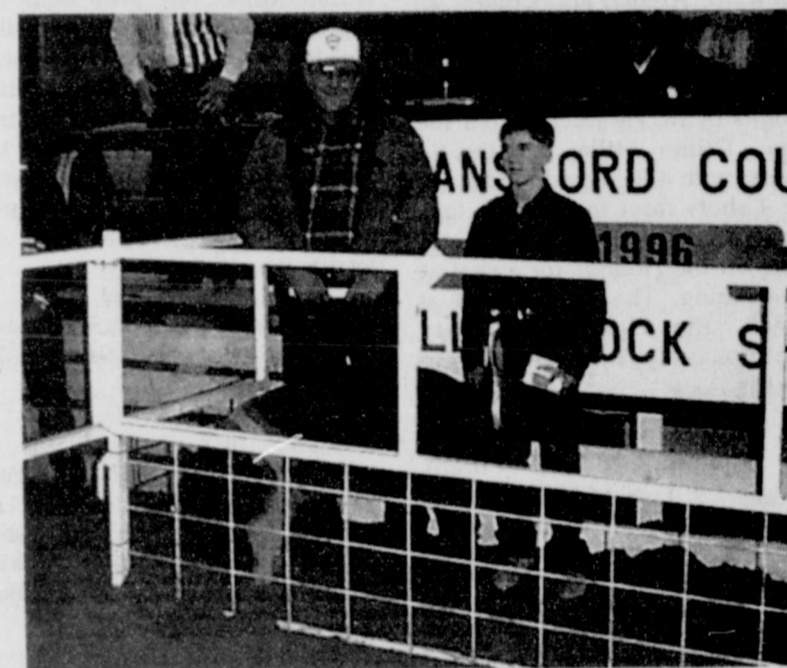
Leann Gillaspie
Beauty Consultant

659-3889

1996 Gruver Stock Show



Kathy Slough - Grand Champion Lamb
Purchased by Gruver State Basketball



Ty West Reserve Champion Sow
Purchased by Agco



Kaylee Holt - Reserve Champion Steer
Purchased by H&H Water Well

MEAT SALE

20 lb. Pork Pack • \$29⁵⁰

25 lb. Family Pack • \$32⁵⁰

25 lb. Beef Pack • \$39⁵⁰

50 lb. Freezer Pack • \$79⁵⁰

SUNRAY LOCKER • (806)948-4403

NEW BUSINESS

**Southwest Electric,
Heating & Air**

Kyle Nollner - Owner
659-5243 • Mobile # 662-1282

*Ask about energy savings, rebates,
& financing on a heat pump.*

TRANE DEALER

SAVE 6%
By February 15

SAVE 4%
By March 15

Buy seed from
**CARGILL GRAIN
DIVISION**

and get a cash discount on
every bag, plus volume
discounts. Paying less per bag
can save you a pile of cash.

CARGILL GRAIN DIVISION
659-3554 Spearman, TX
Brent Emch -- Manager

James F. Hayes & Co.
AGRICULTURAL REAL ESTATE SERVICES
CLARENDON MULESHOE THROCKMORTON COLEMAN
(806) 874-5200 (806) 272-3100 (817) 849-4100 (915) 625-2200

FARMLAND

SHERMAN COUNTY - 1,780 acres good irrigated land, 9 irrigation wells, ½ mile pivot sprinkler available on the property.

OLDHAM COUNTY - 640 acre dryland farm, 535 acres in cultivation, windmill.

DONLEY COUNTY - 300 acre irrigated peanut and cotton farm with water drive pivot sprinkler. Good water area, 900 GPM well.

DONLEY COUNTY - DREAM SETUP, small dryland farm sells with tractors, combine, grain truck, equipment, parts and supplies. Turn key deal. 158 acres, small house and barn. Neat and clean.

*When land involves cows and plows
You'll find us in the thick of it . . .*

Gary Sutherland, Agent
Office: 806-874-5200
Home: 806-665-8813

Farm - Ranch
Sales & Appraisals
1-800-299-LAND

Out at the Lake

Museum Musings



by Joanne Eaton

In the late twenties, the clock in the picture above hung on the wall at the Burran Grocery Store. The store was on the Main Street of Spearman where Prairie Garden is located now. This clock can be seen ticking away at the Stationmaster's House Museum in the sitting room at the front.

This clock was given to Dick Kilgore when the grocery store closed. Dick and Francis, his wife, donated it to the Museum.

The clock is in excellent condition. It has a very loud ticking sound and keeps good time. J.D. Wilbanks repaired it when it came to the Museum. This clock is unusual in comparison with today's clocks. The outside ring of the face has the days of the month printed on it from one to thirty-one. The red hand on the clock advances each day to show the date. In addition to this feature, it also tells the time.

(I was told at one time there were seven grocery stores on Main Street of Spearman. That is hard to imagine in just three blocks.)

Clementine Renner, of the Hansford County Preservation Committee "Museum," reported that she and Barbara Rojas, Museum personnel, have been spraying old articles with a preservative and arranging them in some type of order in mylar.

This week, Verna Strawn's Food and Nutrition classes from the high school came to tour the Museums. They are studying kitchen utensils and wanted to see kitchen items from previous times. Rubyjo and Clementine were out of town that day and asked me to guide the morning tour. I was a little worried about this as I didn't think I was old enough to know what all the things were.

Well, I didn't have to worry as I knew what it all was except one lemon squeezer. In fact, I was right in place with some of it. I heard Jennifer Hughes say she was glad she lived in 1996. Can't say as I blame her!

Students in the morning class were Jana Ellsworth, Rhonda Dunaway, Tracey Powers, Greg Elliott, Heath Archer, Jennifer Hughes, Kelly Shieldknight, and Misty Vera.

Barbara Rojas showed the afternoon classes through the Museum. Students in that class were: Gerardo Munoz, April Grimes, Katherine Pipkin, Kara Townsen, Coyt Tigrett, Shad OQuin, Shad OQuin, Joe Jenkins Jose Tarrango, Amber Morgan, Betsey Holt, Ben Alanzo, and Daniel Hernandez. Mrs. Strawn accompanied both classes.

It is really nice when the Spearman teachers show an interest in the Museum and make their students aware that it is

here. I heard several students say they did not know something was there. One girl's mother had even lived in the Steele house at one time. There is a picture of it on display.

Elementary Students: I'm not going to give up on you yet. I realize how cold it has been since we started this contest, but I know one of you would like to have \$5.00. Remember the rules! You must be accompanied by a parent or another adult. Find this article in the Museum, write down what it is, and where it is. Give the paper to Barbara and she'll write the date and time on it.

*This ball of stuff
 Was made to tie.
 It's in a metal ball,
 And that's no lie.*

 We'll soon be able to announce who our King, Queen, or both will be for the Hansford County parade. Cindy Blackman is already lining up a lot of entries for the parade and the Museum is always happy to add our part. Our earlier settlers have added so much to our lives.

 Museum hours are 1:00 to 5:00 p.m. Tuesday through Saturday. Special tours can be arranged by calling Rubyjo or J.D. Wilbanks at 659-3084 or Clementine Renner at 659-2335. *Come Visit!*

by Dorothy Hudson

The lake depth on Monday, February 12th was 24 feet and 4 inches.

The lake is almost 5 feet higher now than it was at this time last year. The ice has gone, but the big flocks of geese are still enjoying the area. Jim mentioned that the bald eagles are harder to find, but that early morning and late evenings were the best time to see them.

This is the month to get your new taxpayer permit if you pay taxes on real property - that is, a house, business, building, land, or minerals. A car license does not count. The office is open from 8:00 a.m. to 5:00 p.m., Monday through Friday. Jim said they would designate a time to issue the

permits at the Spearman courthouse later this month.

These permits are for entry only, but they can save a family that uses the park regularly \$30 a year, or an individual \$15 a year.

PARK FEES

Daily Entry: \$2.00 per car up to four people. Additional persons are \$1.00 each. Children twelve (12) and under are free.

Daily Boat: \$2.00 + entry fee
Daily Camping: \$4.00 + entry fee

RV w/hookups: \$10.00; Extra Tent: \$4.00; Camping permits expire at 2:00 p.m. on the following day.

Annual Family Entry Permit: \$30.00

Annual Individual Entry Permit: \$15.00

Annual Boat Permit: \$30.00
Lost Permit Replacement: \$2.00

Shelter Rent (by reservations only): \$25.00; Clean-up Deposit - \$25.00; Entry fee required with shelter use (\$2.00 daily)

The above fees were adopted on the Regular Meeting of the Palo Duro River Authority in September 1995.

All Alco Customers

on page 6 of this week's circular, the prices shown on grills A & B are reversed. Grill A, style 303B3, is on sale for \$129.99 and Grill B, style 241A1, is on sale for \$99.99. We regret any inconvenience to our customers.

Alco Stores Incorpor
 Thank You

Clay L. BALLMAN

for District Attorney

Committed For All The Right Reasons

- Lifetime Resident of the District
- Former Hutchinson County Commissioner
- Current Hutchinson County Prosecutor

March 12 • Republican Primary

Political Advertising Paid for by Clay L. Ballman, 210 Inverness, Borger, TX 79007

10% OFF SALE
NORTH PLAINS FORMICA

CURVE FLOW FORMICA TOPS

FREE ESTIMATES-CALL
806-659-3467
SPEARMAN, TEXAS

Blue Ridge Specialty Meat

(formerly Prairie State Meat)

announces new Ownership and Management

Mike Nixon (formerly with Prairie State Meat)

IS BACK AS MANAGER!

Custom Processing • Smoking • Retail Meats

Specials Each Week • USDA Choice Beef by Whole, Half, Quarter or \$1.39 per lb.

Cut and Wrapped to Your Specifications

(806)658-4597 • Booker, TX

Take a Coffee Break

with

Dr. Ahmed Iqbal and Dr. Raul C. Tamayo

Tuesday, February 27, 1996
 9:00-11:00 a.m.

**Family Medical Clinic
 of Hansford County**

702 S. Roland & 710 S. Roland
 Spearman, Texas

*Come have your morning coffee with the physicians and staff of our clinics.
 Tour the clinics and get to know us.*

Cates

Men and Boys
Mid-winter Sale

COATS

BY LONDON FOG AND PACIFIC TRAIL

1/2 OFF

MENS

- Long Sleeve Sport Shirts(regulars and talls)...1/2 OFF
- Long Sleeve Knit Shirts.....1/2 OFF
- Sweaters.....1/2 OFF
- Leather Jackets.....1/2 OFF
- One group of WESTERN SHIRTS.....1/2 OFF
- One group of Joe Boxer Shorts.....1/2 OFF

BOYS

- Long Sleeve Shirts.....1/2 OFF
- Coats.....1/2 OFF

Special Savings Throughout the Store

This is one sale that is...

TOO GOOD TO MISS!!

CATES MEN AND BOYS

221 MAIN

Spearman, Texas

1996 Sorority Valentine Queens



Mary Ann George

Rho Rho chapter of Beta Sigma Phi has chosen Mary Anne George as their 1996 Valentine sweetheart. Mary Anne has been a member of Beta Sigma Phi since 1993. She has served as service chairman, secretary-treasurer and is currently serving as president.

Mary Anne married her husband, Monte, in 1993. He is a Spearman native and is employed by Northern Natural Gas Company.

Both Monte and Mary Anne enjoy the outdoors. They enjoy working in their yard and Monte is an avid hunter. In her spare time, Mary Anne enjoys working on

their home, traveling, cooking and reading, but spends most of the summer months working in her flower gardens.

Although living in Amarillo for several years prior to becoming Mrs. Monte George, Mary Anne's home will always be in Spearman where she is glad to be involved with the community through Beta Sigma Phi.

Mary Anne is a member of the First Christian Church. She is a Spearman native and graduate of Spearman High School. Mary Anne works for Brown, Graham & Company, P.C.



Mary Dixon

Laureate Gamma Gamma's Valentine Queen for 1996 is Mary Dixon.

Mary's affiliation with Beta Sigma Phi began in 1970 when she became a member of Rho Rho Chapter. Since that time she has been an active member of Xi Zeta Upsilon, Preceptor Epsilon Zeta and at this time is Vice-President and Social Chairman for her Laureate Gamma Gamma Chapter.

The twenty-five years Mary has been a member of Beta Sigma Phi she has served every office numerous times very capably and enthusiastically.

A native of Hansford County, Mary graduated from Spearman High School, attended Panhandle State College and West Texas State University. Mary's husband is Perry Dixon, their family consists of one daughter, Carlee who lives in

Denver, two sons, Monty of Morse and Mike of Lubbock. Three grandsons and two granddaughters. Carl and Peggy Archer of Spearman are Mary's parents.

Speartex Grain is Mary's place of employment. She is a member of The First United Methodist Church of Spearman, teaches the High School Sunday School Class, is a member of The Chancel Choir and serves on the Local Church Activities Committee. Hobbies are reading, cooking, traveling, babysitting and entertaining her grandchildren.

Mary's enthusiasm, energy and humor keep us going for whatever project we undertake. Laureate Gamma Gamma has shown their appreciation to Mary by selecting her to represent their chapter as Valentine Girl for 1996.



Debbie Reed

Xi Zeta Sorority of Beta Sigma Phi is pleased to present Debbie Reed as their 1996 Valentine Queen. Debbie has been a member of Beta Sigma Phi since 1989. She was in Rho Rho for five years and was treasurer for two years, social chairman two years and extension officer one year. She has been in Xi Zeta the past two years and is currently serving as President. She also has served on City Council for five years.

Debbie is married to Butch Reed, a local farmer/rancher. They have a very active six year old kindergarten daughter, Kyla.

She is presently employed at Brown and Graham, Co. Debbie and her family attend the First

Christian Church.

Debbie is a graduate of Amarillo High. While in high school she was involved in cheerleading and Student Council. She was the Senior Class

Vice President and graduated with honors. After high school Debbie attended Amarillo College. She has worked for Amarillo National Bank, Dr. Richard Smith, and has also modeled.

Debbie's hobbies include sports and outdoor activities. She is also very busy helping at Spearman school with different activities. Xi Zeta is proud to have Debbie Reed as this year's Valentine Queen.

Preceptor Epsilon Zeta has chosen Sheri Benton for their 1996 Valentine Queen. Sheri has been an active member of Beta Sigma Phi for 17 years, and has served as an officer in Rho Rho, Xi Zeta and Preceptor. She is currently serving as President of Preceptor.

Sheri and her husband, Steve, have four children - Kellie Francis and Salina, Meredith and Nicholas Benton. Steve is a partner at Five Star Equipment, and serves on the City Council. Sheri and her family are active members of the First Baptist Church where she is the Toddler Nursery Coordinator.

Even though Sheri is employed as the librarian at the Hansford County Library, she finds time to participate in many community activities. Sheri is a member of the Board of Trustees of the Spearman Independent School District where she is currently serving as Secretary. A long time member of the Women's Division of the Spearman Chamber of Commerce, Sheri has served in all

offices and has been honored as their Member of the Year. She also served on the Board of Directors of the Chamber for three years. Sheri helped organize and chaired the Spearman Task Force on Parenting, and serves as Treasurer for the Spearman PTO (Parent-Teacher Organization).

Professional activities for Sheri include serving on the Planning Committee for the Public Library Division of the Texas Library Association, serving as Chair for TLA District 2 and immediate Past Chair for the Harrington Library Consortium Users Group. She has also served on the Texas Panhandle Library System Long Range Planning Committee, and was nominated this year for the Tall Texans Leadership Institute for librarians.

Preceptor Epsilon Zeta is pleased to have Sheri Benton represent their chapter as the 1996 Valentine Queen.



Sheri Benton

Don't Miss Our
"Building Value Day"
February 22, 23, 24, 1996
7:00 a.m. to 6:00 p.m.

Lowest Prices of the Year!

Bob Martin, Manager
(806) 935-6881
Dumas, Texas

Receive two free "Field Jackets" with the purchase of a new Morton Building. Watch for special price ad fliers in your area or contact your local Morton Buildings' construction center for details. All Morton Buildings will reflect special sale pricing. Sale ends February 24th, 1996 - Call Now!

Clay L. BALLMAN

for District Attorney

Clay, Kandice, Conrad, Cameron and Chance

A Prosecutor Who Demands Honesty and Integrity in the Criminal Justice System.

Vote for Clay L. Ballman, March 12, 1996 Republican Primary

Political Advertising Paid for by Clay L. Ballman, 210 Inverness, Borger, TX 79007

SPRING AVAILABILITY WITH ZIMMATIC RELIABILITY

Zimmatic center pivot systems are available for spring installation from your Lindsay dealer.

Lindsay Manufacturing Co. has the manufacturing capacity to respond to the needs of the American grower. During our growth, Lindsay has developed a working relationship with vendors and raw material suppliers to get materials needed for increased capacity. Availability is just one reason for Zimmatic to be the answer to your irrigation needs. Get the rest of your full service Lindsay Dealer.

ZIMMATIC The Raining Champion.

★ ★ FIVE STAR EQUIPMENT, INC. ★ ★
SPEARMAN, TEXAS
(806) 659-3743

LINDSAY

pective
held on
0 a.m. to
will be
tment of
M-739
seventh
Building,
Austin,
ons are
ed space,
that each
re than (2)

rested in
ation, call
at (512)
RFA kit.
be sent to
of Health,
Children,
on: Sherril
th Street,
(512) 458-
must be
e March 26,
"on time."
request a
stal Service
a legibly
commercial
metered
acceptable
ling.

ICE
ebruary 27,
ver will test
icy warning
be tested at
rmitting.

Arch 13
n

ARMAN
EXAS

Sports Roundup

by Chad Davis



Lynx (16-11) (4-2) vs. Hooker
Friday 2-9-96 at Spearman
3-Pointers - Jake Howard - 2,
Heath Archer, Brent Collins.

Spm 19 38 46 66
Hok 9 20 44 58

Spm - Heath Archer - 18,
Dillon Miller - 11, Jarod
Huddleston - 10, Jake Howard -
10, Eric Cudd - 5, Shad O'Quin - 4,
Brent Collins - 3, Clay Neff - 2,
Martin Sanders - 1.

Synopsis: Spearman was up and ready for this non-district clash. Three Lynx's players, Howard, Archer, and Collins, all hit treys in the game. Archer was 100% from the painted stripe, which would explain his leading points of 18. He hit 7-7 from the line. Dillon Miller hit the 11 mark, with 4 field goals and 3 out of 4 shots from the penalty line. Spearman was getting ready to take on the Hounds for a shot at everything. The playoffs are at stake, the Hansford County Championship, and even bragging rights.

Lynx (17-11) (5-2) vs. Gruver
Tuesday 2-9-96 at Gruver
3-Pointers - Gru - Brent
Armes - 2, Josh Mayhew. Spm -
Heath Archer - 3, Jake Howard.

Gru 21 38 52 71
Spm 10 26 39 56

Gru - Brent Armes - 21,
Sammy Renteria - 16, Phil
DeLaCruz - 8, Wylee Maupin - 7,
Josh Mayhew - 7, Tye Womble - 4,
Juan Arreola - 2.

Spm - Jarod Huddleston - 17,
Heath Archer - 16, Shad O'Quin -
8, Dillon Miller - 7, Jake Howard -
6, Eric Cudd - 2.

Synopsis: It came down to the last of the last in roundball season this year between the Lynx and the Hounds, just as in football. The Lynx gave everything they had in this last district battle and game, but the calm and cool Hounds used their terrific know how to put a stop to Spearman's inside men Dillon Miller and Shad O'Quin. Miller and O'Quin did do an excellent job, as well did all Lynx players. Of course, with the talents of Brent Armes, who scored an unbelievable 21 points, and Renteria, who had a better than usual game of 16 points, the Hounds were hot. Gruver now will take the number one spot in District AA, and the Lynx will battle it out for the second seed against Stratford.

Lynx (17-12) (5-3) vs. Stratford

Tuesday 2-13-96 (Playoff Game)

3-Pointers - Jake Howard - 3,
Heath Archer - 2.

Spm 14 25 43 53
Str 11 26 41 61

\$ JOBS FOR ALL AGES \$

- Extra Money
- No Experience Necessary
- Schedule Your Own Days and Hours

For more information send \$5 and a SASE to:
P.O. Box 93623
Albuquerque, NM 87499-3623

Gruver Heads to Playoffs

by Bob Bort

The Gruver Greyhounds and the Gruver Lady Hounds bid adieu to class AA regular season activity this past Friday night at Greyhound Gym in Gruver, and the Spearman Lynxettes and Lynx were the frustrated teams left in the wake of outstanding 1996 seasons for both the Hounds and the Lady Hounds. In the girls game Gruver romped late 51-38, and in the boys game, Gruver romped early and late 71-56. The home crowd was thoroughly entertained; the visitors could do nothing but go home and dream of next year for the Lynxettes; while still holding hopes for the Lynx in a district playoff with Stratford this week for the remaining season.

Next year the Hounds and Lady Hounds will drop down to class A for the first time in five years, and what did they do to the Lynx and Lynxettes over the past three years for posterity? The Hansford County teams met 14 times, with Gruver winning 12 times. The lone Lynx victory over the Hounds in eight tries was December 11, 1993 in the Perryton Lions Club Invitational. The lone Lynxettes victory over the Lady Hounds came on January 24, 1995 at Spearman. The scores of those two games was 58-44 for the Lynx, and 48-45 for the Lynxettes. Gruver will leave class AA having established themselves as the basketball kings and queens of Hansford County, going 5-0 versus the Spearman teams in 1995-96.

The Lady Hounds are a very, very good team - unfortunately, they are playing crippled right now, having lost point guard Autumn Bateman and wing Molly McLaine for the rest of the season. Cara Hathaway has been ill on and off, and Kaysha Cluck is playing on one good leg. But Kiki Carthel is healthy, and she exploded for 12 big points in the fourth quarter when she was needed the most. Kiki had 14 points total, and she was leading scorer for the Lady Hounds, with Wesley Maupin with 13 and Cluck with 11. Other scorers were Hathaway (5), Tara Shapley (4) Jill Odom (3), on a clutch try with the Gruver ladies trailing 27-25, and Odom got all net to put us up 28-27. Gruver never trailed after that try by Odom, and Amber Murrell (1).

The Lady Hounds fell behind early, 14-7, and you just knew this game would be much closer than the 30-point blowout for the Gruver ladies in their first game with the Lynxettes at Gruver in January. Kara Townsen for the Lynxettes did all she could to keep the Spearman gals in the game, but it was not enough. Townsen scored 19 points to lead all scorers. It was Townsen who gave the Lynxettes their last lead of the game when, with the score 23-21 Lady Hounds at halftime, Townsen struck twice to start the

third quarter, and it was 25-23 Lynxettes. They scored again on a nice shot by number 21, Macy Shieldknight, to go up 27-23, but that is when the Lady Hounds rallied. Macy Shieldknight was second leading scorer with 6, and the scoring dropped way off after the 19 by Townsen. Gruver's scoring was much better balanced.

The game broke open for the Lady Hounds early in the fourth quarter. With the score tied 33-33, Gruver went on an 8-0 tear, as Cluck nailed a jumper for the lead for good 35-33; and then Carthel scored 6 quick points to up the lead to eight. At that point Spearman, for all intents and purposes, was out of the game.

The Hounds jumped out to the big lead and coasted. Sammy Renteria hit on a 3-point play, one of two 3-point plays for Renteria on the night, and the Hounds led 24-10 at the start of the second quarter. Their largest lead was 16 points, 69-53, near the end of the game. Brant Armes was super, very aggressive, on the night, and he scored 21 points. Renteria added 16 points. Other scorers for the Hounds were Phil De La Cruz (8), Wylee Maupin (7), Josh Mayhew (7), Bailey Barkley (6 all on free throws), Tye Womble (4), and Juan Arreola (2). Jarod Huddleston and number 22, Heath Archer, were dominant for the Lynx with 17 points and 16 points respectively. Archer nailed 3 tries, and he really tried to spark the Lynx. Huddleston used his height, and he was dominant inside. Other scorers were Shad O'Quin (8), Dillon Miller (7), Jake Howard (5), and Eric Cudd (3).

The Hounds will now play the Clarendon Broncos from district 2-AA in their bi-district clash on the 22nd or 23rd of February, at a site to be determined, possible Pampa. The Lynx played the Stratford Elks in a district 1-AA playoff for second place, and if they won, they will also be involved in a bi-district game on the 22nd or 23rd. That Stratford-Spearman was played this past Tuesday at Borger's Tex Hanna Fieldhouse.

UMY Date Night

The First United Methodist Church Senior High UMY is sponsoring a Date Night Dinner Theater on Sunday, February 25th at 6:00 p.m.

Everyone is encouraged to dress up and join the UMY for a special evening of "good food, live entertainment and service with a smile".

Tickets are \$12.50 per person for adults, and \$10.00 for persons 17 and under. They must be purchased in advance and are available from any UMY member or at the FUMC church office. Tickets will not be available at the door.



Martin Sanders (44) and Clay Neff (4) are pictured above during the Stratford district play-off game.

Public Notice

TITLE V FUNDING ALERT

The Texas Department of Health (department), Bureau of Women and Children (BWC) is currently issuing a request for applications (RFA) for Title V Maternal and Child Health (MCH) Block grant services and projects. The RFA seeks qualified applicants statewide for a) the provision of MCH clinical and case management services to eligible women, children and adolescents; and b) the performance of population-based public health projects.

The department is seeking contractors using a competitive application process. Any applicant capable of meeting the minimum requirements in the RFA is eligible to apply for a contract.

Funding for selected applications will depend upon available federal funds and state appropriations. The department reserves the right to reject any and all offers received in response to the RFA and to cancel the RFA if it is deemed in the best interest of the department.

Applicants may apply for one fiscal year (FY) of funding beginning September 1, 1996 through August 31, 1997 only. Funding for FY98 and FY99 will be renewable contingent upon satisfactory performance, submission of acceptable interim applications, and the availability of funds.

A Title V Bidders'

Conference for prospective contractors will be held on February 20, 1996 from 8:30 a.m. to 12:00 p.m. The meeting will be held in the Texas Department of Health Board Room, M-739 which is located on the seventh floor of the Moreton Building, 1100 W. 49th Street, Austin, Texas. No reservations are necessary. Due to limited space, the department requests that each organization send no more than (2) representatives.

If you are interested in submitting an application, call Jacqueline Underwood at (512) 458-7700 to request the RFA kit. All applications should be sent to the Texas Department of Health, Bureau of Women and Children, Room M-370, Attention: Sherril Miller, 1100 W. 49th Street, Austin, Texas 78756, (512) 458-7700. Applications must be postmarked on or before March 26, 1996 to be considered "on time."

Applicants should request a legible dated U.S. Postal Service postmark or obtain a legibly dated receipt from a commercial carrier. Private metered postmarks will not be acceptable as proof of timely mailing.

PUBLIC NOTICE

On Tuesday, February 27, 1996 the City of Gruver will test the outdoor emergency warning siren. The siren will be tested at 1:00 p.m., weather permitting.

(2-15-96)b

Portraits by Kolorkraft

Our Lower Total Price
Includes a FREE 10 x 13
Our Entire Portrait Package is Just \$21.95

You get our best poses in the advertised package.
We NEVER hold back the better pictures to sell at a higher price.

300 deposit when photographed
18⁹⁵ balance on delivery

21⁹⁵ FULL PRICE

Year 3 Pose Package Includes
2 - 8 x 10s
3 - 5 x 7s
12 Billboards
AND a FREE 10 x 13



THURSDAY, FEB. 22ND
10 A.M. TO 7 P.M.

Satisfaction Guaranteed or your deposit refunded.

No age limit • No Quantity Limit • No Extra Charge for Groups
Families Welcome • Infants to adults • Low-priced reorders available by mail
Double Exposure and Black Backgrounds at No Extra Charge



Full Size Professional Prints

All of our portraits are full size borderless prints
We care as much about your portraits as you do.

ALCÓO

521 Highway 207 South - Spearman, TX

Gordon's DRUG Bridal Gift Registry

COME BY & LET US
HELP YOU SET UP YOUR
SPECIAL GIFT TABLE

Couples Currently
Registered

Kara Faries & Robert Womble *March 13

Clint Sasser & Heather Vinson

Shawn Cook & Traci Peden

* Date of the Bridal Shower

314 MAIN
PHONE
659-2141

Gordon's
DRUG

SPEARMAN
TEXAS

Rho R
Sigma Phi h
George as
sweetheart.
member of
1993. She
chairman, s
is currently
Mary
husband, M
Spearman r
by Nortl
Company.
Both
enjoy the
working in
is an avid
time, Mary

Prece
chosen Sh
Valentine
an active
Phi for 17
an officer
Preceptor.
as Preside
She
Steve, ha
Francis a
Nicholas
partner
Equipme
Council.
active r
Baptist C
Toddler I
Eve
employe
Hansfor
finds tin
commur
member
the Spea
District
serving
member
of the
Comme

Sell it Fast, fast, fast in...

Call today 659-3434

The Reporter-Statesman Want Ads

MAKE US AN OFFER: Great brick home in great location. 2,200 sq. Ft., 4 bedrooms, 3 baths, big den with fireplace, basement double car garage. 702 Gibner. Call and let's make a deal! 659-3838 or 733-5555.

FOR SALE OR LEASE: Former Anthony Electric building. Call 659-2819.

FOR SALE: Barn heated and fully insulated. Nice facility. Please call (806) 659-2117 or 3762. Located in Spearman.

FOR SALE: Vacation at home, wet bar, golf course, swimming pool, hot tub, 3 bedroom, 3 baths. All this can be yours at an affordable price. Call to see today. Real Estate and Rental. (806)435-4623.

FOR SALE: 2,000 sq. Ft. Brick, 4 bedroom, 1 3/4 bath, double garage, central air/heat, lots of improvements, 18x27 Morton building in back yard, new fence and gates. Call (home) 659-3071 or (work) 659-3072.

FOUND: Border Collie pup, 2 miles west of Spearman. Also Cow dog, black face and feet. Red collar. Please call 659-2574.

HELP WANTED: Semi truck drivers, CDL required. Must be 25 years old. Conventional new hopper bottom trailers. McCarty Trucking, 806/362-4807.

FOR RENT: 1 bedroom furnished apt. Call 659-3260.

FOR RENT: 1 Bedroom apartment. Call Gus McLain at 659-2274. RTN(2-15-96)C

FOR SALE: 1992 Suburban fully 4x4 fully loaded. Below loan value. White with gray interior. 733-2375.

FOR SALE: 1984 Ford Truck with 20' van and lift. V-8 diesel engine. Excellent condition. For more information call 659-2912 or 659-3434.

FOR SALE: Good dump truck for sale. If interested call after 6:00 p.m. (806) 249-5827.

PITS CLEANED: Dragline or Loader. Call LeeRoy Mitchell, 733-2384 or 733-2175.

J & M SERVICE CENTER 24 HOUR SERVICE 415 Collard, Spearman, Tx, 79081. 659-5519 or 659-3352. Tires, flats, oil & lube, wash, brakes, batteries and minor repairs. Now selling gas.

LAUNDRY SERVICE: Special - 60 cents a pound. Mon., Wed., and Fri. Family Laundry.

SERVICES: Kathy's Gift & Accessory featuring Home Interior items. Call 882-4466 and leave message.

ROOF LEAKING? We have the answer. Conklin Roofing Systems. 1-800-359-3131.

FOR SALE: Queen size waterbed, good condition. Has headboard, mattress, pad heater, and 12 underneath drawers. \$100. Call 659-2875 after 6 p.m. Or leave message.

FOR SALE: Like new Necchi sewing machine. Call 659-2844.

FOR SALE: Waterbed with 6 underneath drawers, good condition. \$50. Call 659-2912.

FOR RENT: 1 Bdr. House. Call Les McLain at 659-3260.

WANTING TO RENT: Young family wanting to relocate in the Gruver and Spearman area. Must allow dog. (806) 935-7607.

WANTING TO BUY: Old Junk cars. Call Hank Salvage collect or anyway you can, and let me know if you got them. No motor necessary. (806)435-2008.

REWARD: \$500 reward for information on 4 mudgrip tires with 6 hole aluminum wheels. Name or persons who took them out of the barn. Call 753 4511.

HELP WANTED: Service writer. Apply in person at Gillaspie Auto and Truck Center. Hwy. 207 South.

HELP WANTED: Outreach Health Services needs a provider in Spearman. Please Call 1-800-800-0697. EOE

HELP WANTED: HANSFORD COUNTY FSA is accepting applications for a temporary full-time position to help administer current farm programs. Computer and farm background helpful. Applications will be accepted through February 12 at the Hansford County FSA Office, 711 West 7th, Spearman. Hansford County FSA is an Equal Opportunity Employer.

HELP WANTED: OUTREACH HEALTH Service WIC program now accepting applications for LVN in Perryton office. Must hold current license in State of Texas. 30% travel required. Please submit application to Frannie Nuttall, 514 S. Main, Perryton. 806-435-4908 or fax to 806-371-9515 EOE.

HELP WANTED: Now taking applications for full or part time sales position. Anyone interested please apply in person at Lady Fair. 719 A.W. 7th. Spearman.

PIANO FOR SALE: Wanted Responsible party to take on small monthly payments on piano - See locally - ph. 1-800 658-1724 - Brier & Hale Music - Liberal.

FOR RENT: 3bedroom, 1 bath, 811 Roland. Call 659-2103.

FOR SALE: Trailer house furnished. 12x65. Can see at 4th & Archer. Call 659-2810. \$4,500.

FOR LEASE: 470 Acres between Spearman and Perryton. 302.9 acres wheat based. .65 acres sorgum based cash based bids accepted until Feb. 23, 1996. For more information. Call 733-2305.

REQUEST FOR BIDS ON TEXAS HIGHWAYS CONSTRUCTION

Sealed proposals for 5.230 miles of two cst, grading, reworking base, etc. on FM 1573 from Sherman County Line to junction of SH 15 covered by CD 1489-2-8 in Hansford County, will be received at the Texas Department of Transportation, Austin, Texas, until 1:00 p.m., March 13, 1996, and then publicly opened and read.

Plans and specifications, including minimum wage rates as provided by Law, are available for inspection at the office of Kenneth Per, Area Engineer, Borger, Texas, and at the Texas Department of Transportation, Austin, Texas. Bidding proposals are to be requested from the Construction and Maintenance Division, 200 East Riverside Drive, Austin, Texas 78704-1205. Plans are available through commercial printers in Austin, Texas, at the expense of the bidder.

The Texas Department of Transportation hereby notifies all bidders that it will insure that bidders will not be discriminated against on the ground of race, color, sex or national origin, in having full opportunity to submit bids in response to this invitation, and in consideration for an award. Usual rights reserved. 2(2-15-96)b

Spearman Independent School District INVITATION FOR PROPOSAL

Notice is hereby given for sealed proposal for:

Qualifications for Districtwide Energy Conservation Services Program.

Proposals will be opened Friday, March 8, 1996 at 9:00 a.m. Proposals not received by 5:00 p.m.

CAREER OPPORTUNITY IN HEALTH CARE

Now hiring hardworking, caring, reliable people for positions as Certified Nurse Assistants (CNA)

- Will train for certification
- \$5.00/hr. training wage
- \$5.50/hr. upon certification
- Extra pay for evening, night, and weekend shifts
- Mileage reimbursement
- 9 paid holidays per year
- Sick pay
- Two weeks paid vacation
- Wellness benefits
- Health insurance
- Pension
- Scholarship opportunities
- Credit union membership for car loans, etc. and savings
- Clean, safe, and attractive surroundings

CNA course for new employees starts Monday, Feb. 19. Call now for more information and application. Linda Stalcup, Personnel Director, Hansford Co. Hospital District, 707 S. Roland, Spearman TX. 806-659-2535, or 806-733-2954 in Gruver and Morse. An Equal Opportunity Employer

on Thursday, March 7, 1996, will be returned unopened. Selection of an energy service partner will occur at the March 18, 1996 Board of Trustees Meeting.

Please mail or deliver your proposal to:

Troy Vanderburg, Business Manager, Spearman ISD, 403 East Eleventh, Spearman, Texas 79081.

Inquiries concerning specifications should be addressed to Troy Vanderburg, 806-659-5623. 2(2-15-96)b

Spearman Independent School District INVITATION FOR PROPOSAL

Notice is hereby given for sealed proposal for:

Purchase of a new school vehicle.

Proposals will be opened Friday, March 8, 1996 at 9:00 a.m. Proposals not received by 5:00 p.m. on Thursday, March 7, 1996, will be returned unopened.

Please mail or deliver your proposal to:

Troy Vanderburg, Business Manager, Spearman ISD, 403 East Eleventh, Spearman, Texas 79081.

Inquiries concerning specifications should be addressed to Troy Vanderburg, 806-659-5623. 2(2-15-96)b

Spearman Independent School District INVITATION FOR PROPOSAL

Notice is hereby given for sealed proposal for:

Purchase of band uniforms.

Proposals will be opened Friday, March 8, 1996 at 9:00 a.m. Proposals not received by 5:00 p.m. on Thursday, March 7, 1996, will be returned unopened.

Please mail or deliver your proposal to:

Troy Vanderburg, Business Manager, Spearman ISD, 403 East Eleventh, Spearman, Texas 79081.

Inquiries concerning

specifications should be addressed to Troy Vanderburg, 806-659-5623. 2(2-15-96)b

PUBLIC NOTICE

Hansford County Texas

Community Development Program

Hansford County will hold a public hearing at 5:30 p.m. on February 22, 1996 at the Hansford County Courthouse in the Commissioner's Court Room in regard to the submission of an application to the Texas Department of Housing and Community Affairs for a Texas Community Development Program (TCDP) grant. The purpose of this meeting is to allow citizens an opportunity to discuss the citizen participation plan, the development of local housing and community development needs, the amount of TCDP funding available, all eligible TCDP activities, and the use of past TCDP funds. The County encourages citizens to participate in the development of this TCDP application and to make their views known at the public hearing. Citizens unable to attend this meeting may submit their views and proposals to Jim D. Brown, County Judge at the Hansford County Courthouse. Handicapped individuals who wish to attend this meeting should contact the County to arrange for assistance.

UPHOLSTERY

Home Furnishings and Office, Cars, Pickups, Trucks and Tractors Recovering seats, headliners, etc.

B.G.'s Upholstery
(806) 659-3879

Are You A Victim of Domestic Abuse...

Physical, Emotional or Sexual? Call Toll Free 1-800-753-5308

We are in Spearman on the 1st, 3rd, & 5th Wednesdays of each month at the First Presbyterian Church, 1021 Cotter. On the 2nd & 4th Wednesdays we are at the First Christian Church at 510 King in Gruver. We can come to Spearman & Gruver any time upon request. We operate a safe place for victims & their children to stay in times of crisis.

Panhandle Crisis Center
Serving Hansford, Lipscomb & Ochiltree Counties
317 S. Main
Perryton, Tx.
Memorials Accepted

HOMETOWN REALTY

Selling Spearman!
List your home with the Real Estate Professionals that the BUYERS call!

Rex Hoover - Broker • 800-755-4291

Larry Trosper - Sales • 659-3491

Diana Hoover - Sales • 658-9113

711 Collier - 3 bedroom, 1 bath, garage, central heat, PRICED TO SELL!

6 1/2 Miles West of Spearman - 2,894 sq. ft., 3 bedrooms, fireplace, basement, 1 1/2 acres.

4 Miles South of Spearman - 320 acres Irrigated Farm Land.

1013 Linn Drive - 2,600 sq. ft., 3 bed, 2 1/2 bath, fireplace, screened porch.

730 Gibner - 1,900 sq. ft., 2 bath, large, beautiful back yard, storage building.

We need and appreciate your listings!

AA Realty

Spearman's ONLY locally owned and operated Realty.
Alfred Alford - Broker 659-3034
Julie Martin - Broker 659-2425

1103 S. Townsend - 3/1 1/2, good location.
1010 Haney - 4/1 1/2 w/fireplace, Hanger & Storage - Old Airport, REDUCED!!!
2 Lots at 7th & Barkley - Builder's Dream
160 Acres - SE of County
Gruver - 400 & 402 Front Street

NEW LISTINGS

515 S. Evans - 3/2 1/2, two story
718 S. Bernice
1025 S. Townsend - 3/1 1/2, must see

621 S. Endicott - 3/2, clean & cozy
807 S. Haney - 3/1 1/2, great home, large lot

We'd Like Your Listing FOR QUALITY & SERVICE CALL US TODAY!
Equal Housing Opportunity



WE'LL REPRESENT YOU TO FIND THE RIGHT HOME, AT THE RIGHT PRICE.

Real estate sales associates don't just sell homes. If you're looking to buy a home, look to your local CENTURY 21® buyer representative to counsel you, not the seller. It's called Buyer Representation. Just another way you can rely on your CENTURY 21 professional.

LEAN ON US.
Century 21
Golden Spread Realty
200 S. Main
Perryton, Texas
806-435-5444

FOR SALE

By Owner

COUNTRY HOME

Available in July
3 Bedroom - 3 1/2 Bath
Sunken Living Room w/ Fireplace
Balcony & Cathedral Ceiling
Two Story - Formal Dining Room
Office - Basement - Utility
Fenced Back Yard - Lots of Storage
Garage - Patio - 2 Storage Bldgs.
Central Heat & Air

806-659-3289

By Appointment Only - Serious Inquiries Only

