

THURSDAY
MAY 29, 2003

213 MAIN ST • SPEARMAN, TX 79081

THE HANSFORD COUNTY

REPORTER STATESMAN

HANSFORD COUNTY LIBRARY
0122 MAIN ST
SPEARMAN TX79081
COMP 1

\$5

VOL. 96 • ISSUE 22

NEWS • PICTURES • SPORTS

PROUDLY SERVING HANSFORD COUNTY SINCE 1907

Spring Clean-Up Held

The Spearman Independent School District, the City of Spearman, the Spearman Chamber of Commerce and Northern Natural Gas Company planned a Spring Clean-Up on May 16, 2003. This clean-up began after Mayor Steve Benton declared the week of May 12-19 as spring clean-up week.

The National Honor Society program rounded up over 150 students to help clean on the 16th, with employees from Northern Natural and the City of Spearman assisting for several tasks at hand.

Although inclement weather rained out the efforts after only a few hours of work, this partnership of local business and government entities and was important step in helping Spearman more attractive.

Open Letter

I have been wanting to thank Carolyn Cummings for several weeks for all the work she went to in making and displaying the ribbons at the courthouse.

It meant a lot to my family to see them, especially after my granddaughter, Stephanie, came home briefly from Afghanistan before returning. I guess realizing what our military is going through made it even a more special sight.

So, Carolyn, thank you for doing what so many of us only thought about doing!

Nita Bynum

The Newcomers of Spearman is a new organization that has formed to provide information and support for an easier transition to welcome the "New" women of Spearman. In the process, we are putting together "Welcome to Spearman" packets and they will be handed out to new residents each month.

We are asking retailers and organizations if they could please provide information about their business/organization for us to include in these packets. It does not have to be much, it can be a brochure, business card, pens, pencils, rulers, magnets, etc.

Items may be dropped off at the Chamber office, 211 Main Street in Spearman.

If you have any questions or comments, please contact Gina Gillispie at the Chamber of Commerce Office (659-5555) or Kim Patrick (659-1758).

Environmental Quality Incentive Program Sign-Up

The Natural Resources Conservation Service has set the sign-up deadline for the 2003 Environmental Quality Incentive Program (EQIP). The application deadline for the 2003 program year is June 13, 2003. Applications from individual landowners interested in participating in the EQIP during the 2003 program year received before June 13th will be ranked for program eligibility during the month of June. Applications received after the June 13th deadline, as part of the EQIP continuous program sign-up provisions, will be held until the 2004 program year ranking period.

Private landowners should be aware that EQIP provides technical, educational, and financial assistance to eligible farmers and

ranchers to address soil, water and related natural resource concerns on their lands in an environmentally beneficial and cost-effective manner. EQIP is a voluntary program and is designed to assist farmers and ranchers with placing natural resource conservation practices on their property. Cost share is provided to program participants to achieve the goals of a conservation plan designed with the assistance of local NRCS staff. Cost share practices include placement of appropriate structural or vegetative practices, such as animal waste management facilities, irrigation management equipment, vegetative buffers and wildlife habitat enhancement, to name a few. Eligible practices will depend on the location of the farm or ranch on which the practice is to be

installed and the major resource concern to be addressed in that particular area. Information on eligible cost share practices and major resource concerns of an area can be secured from your local NRCS field office. Contracts for eligible producers are made for a period of five to ten years and include incentive payments to assist with implementation of land management practices, such as nutrient management and grazing land management. It should be noted that program funds target natural resource concerns of farmers, as well as, livestock producers.

To learn more about EQIP or to submit an EQIP contract application, contact the NRCS at 909 West 9th in Spearman, or call 659-2330.

USDA Extends Conservation Reserve Program Sign-Up

Sign-up period for the Conservation Reserve Program (CRP) has been extended from May 30, 2003 to June 13, 2003 announced Cary Hanlin, County Executive Director for the Hansford County Farm Service Agency.

Interest in the general CRP sign-up has been strong. This extension gives busy producers more time to enroll in this highly successful, environmentally beneficial program," said Hanlin.

CRP is the nation's largest private lands environmental improvement program-it protects millions of acres of topsoil from erosion, provides valuable wildlife habitat and safeguards America's ground and surface water quality. The 2002 Farm Bill authorized CRP enrollment up to 39.2 million acres. For fiscal year 2003, NAME County CRP participants have received \$XX in rental payments as of May 2003, and approximately XX acres are currently enrolled in the program.

CRP participants voluntarily remove environmentally sensitive land from agricultural production

by entering into long-term contracts for 10 to 15 years. In exchange, they receive annual rental payments and a payment of up to 50 percent of the cost of establishing conservation practices.

Current participants with contracts expiring this fall-covering about 1.5 million acres-can make new contract offers, which, if accepted, will become effective on Oct. 1, 2003. All other contracts awarded under this sign-up will become effective either at the beginning of the next fiscal year, Oct. 1, 2004, whichever the producer chooses.

FSA will evaluate and rank eligible CRP offers using the Environmental Benefits Index (EBI), a ranking of environmental benefits to be gained from enrolling the land in CRP. Decisions on the EBI thresholds will be made by the Secretary after the sign-up ends and after FSA analyzes the EBI numbers of all the offers. Those who would have met previous sign-up EBI thresholds are not guaranteed a contract

under this sign-up.

"Producers who enroll acreage in CRP promote conservation and stewardship by protecting sensitive land for future generations and reduce production of surplus commodities. In return, producers receive needed income support through program payments and use of the land for recreational purposes," said Hanlin.

Aside from the general sign-up, the CRP continuous sign-up program is available on an ongoing basis for private lands currently in production. FSA has reserved 2 million acres for the continuous sign-up program, which protects the most environmentally desirable and sensitive land. FSA is making a special effort to help enhance wildlife habitats and air quality by earmarking 500,000 of these acres for hardwood tree planting. Continuous sign-up for hardwood planting will start after the general sign-up. For more information on CRP, visit FSA's Web site at: <http://www.fsa.usda.gov/dafp/cep/default.htm>

City of Gruver Closes Landfill

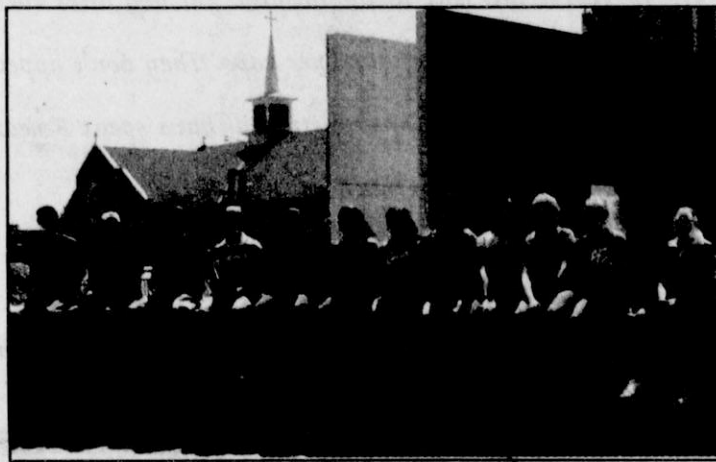
On April 1, 1990 the City of Gruver closed its public landfill. Since that time the City has tried to allow the public a convenient place to take their grass clippings, tree limbs and scrap metal. The laws on closed landfill sites are very strict and the fines for illegal dumping are very high.

Even with the posting of signs listing what is allowed at the City Sewer Plant, people continue to dump TV's, mattresses, furniture, tires and other items.

It is with regret but in the best interest of the taxpayers that the city will have to step up control of what is taken to the City Sewer Plant. Those individuals who would like to continue taking their grass clippings, tree limbs, and scrap metal are asked to bring a pad lock to city hall for the new gate being built.

The City is sorry for any inconvenience this may cause, but feels it is our duty to avoid the possibility of being fined a very large sum of money, which would be a gross waste of taxpayer's money.

Oklahoma City Trip



Spearman 7th and 8th grade Gifted & Talented Class.

by Saylee Flowers & Brittney Montgomery

Mrs. Strawn's 7th and 8th grade G&T (Gifted & Talented) Class recently got the opportunity to visit the Oklahoma City National Memorial. The memorial was built to honor those people whose lives were lost in the bombing and is made up of 3 components: the Outdoor Symbolic Memorial, the indoor museum, and the Terrorist Institute. While there, they got to experience the tragedy, the pain, and the hope.

After the trip, the students were asked to respond to this question: "What was most memorable about the Oklahoma City National Memorial? Why?"

Their replies are listed below.

Callie Cazares: "The most memorable part of the memorial was the Field of Empty Chairs. There are 168 chairs, 19 of them different sizes, to remember the children and adults. There was a story that our tour guide told us. She said the architects couldn't decide between the chairs and something else. A small child said the chairs because sitting in the chairs would be like sitting in his mom's lap."

Brittney Bradley: "I would say the sound of the bomb when you walk into one of the first rooms. I think it is most memorable because it shows how you can be going on with a normal day and anything can change in an instant. I bet everyone who goes in there remembers it for the rest of their lives. Also when the victim's faces pop up after hearing the tape, it's sad because they lost their lives for no reason."

Elliott Sheets: "The trip was very neat and interesting. My favorite part was the field of empty chairs because it lets you see just how many people died."

Amy Boyd: "I really liked the story about the chairs. The designers had two committees come and choose the winning design. The second committee had a 10-year-old little boy, his mom had been a victim and they asked him which design he wanted. He said he wanted the chairs so when he sat in his mom's chair it would feel like I'm sitting on her lap. It was sad, it made my heart feel warm."

Brittney Montgomery: "Going into the conference room and hearing the bomb go off was most memorable to me. A man told me you would hear it go off, but nothing could have prepared me for what I was about to hear. Right as I walked out of that room- to see just what happened that day gave me the chills and a large knot in my stomach. What we saw at the memorial goes on to show, you never know if something bad will happen, and you aren't guaranteed tomorrow. It made me think of all I have and be grateful for it. It was a day I'll never forget."

Cara Gwin: "The field of empty chairs was probably the most memorable to me because of the story about the boy wanting the chairs so that he could sit in his mother's chair and it would be like he was sitting in her lap. That was so sweet."

Aaron Maestas: "The wall of faces and the recording of the trial at the time of the bomb. When we were sitting in there, we heard the recording and all the faces just came on...it was just hard to believe."

Collin Gillaspie: "I remember the reflecting pool the most. Mostly because it was the first thing I saw when I walked through the entrance. Also, I could see a perfect reflection of myself and it made me think of all the victims, and it was really neat."

Zack Nollner: "The part of the memorial with all the 168 victims faces. The reason that was the most memorable was because there was a little box with some of the victim's belongings. You could see what they were interested in and what they were like."

Stuart Martin: "The most memorable thing about the Oklahoma City National Memorial was the Field of Empty Chairs. I thought that it was really neat that family or friends could go sit in remembrance of a person that died in the bombing."

Brynn Garnett: "I think the room in the museum that they did not repair was the most memorable because it showed how bad the damage was even though this was not the building that was actually bombed."

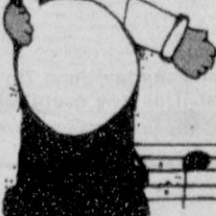
Saylee Flowers: "The moment I walked through the gates my heart stopped. I knew at that moment I would feel all the pain everyone felt the day of April 19, 1995. The most memorable moment was actually hearing the bomb go off and seeing the 168 faces appear on the screen. Chills ran down my spine and my heart raced. At that moment, I thanked God for all that he had blessed me with. I felt so bad for all who had experienced it. It made me realize to live everyday to it's fullest and to remember everything God gave you."

Women's Division Spearman Chamber of Commerce presents

Rock Around the Clock

2003 Miss Hansford Scholarship Pageant

Spearman High School Auditorium
Tuesday, June 3, 2003
7:00p.m.



Crisis Center Receives Amarillo Area Foundation Grant

The Don and Sybil Harrington Foundation awarded the Panhandle Crisis Center \$35,000 for the Center's capital campaign. The Crisis Center was notified by the Amarillo Area Foundation that this supported would be granted.

Panhandle Crisis Center has purchased the building located at 301 S. Ash in Perryton with funds raised thus far in the campaign and is continuing its fund-raising efforts for financial support to renovate the building. Once renovated, this space will serve as a comprehensive counseling center for victims of family violence and sexual assault.

At this new location, the Crisis Center also plans to open a resale store where second-hand clothing and furniture will be sold. The profits from this store will be used to support the Center's services to victims in Ochiltree, Hansford and Lipscomb counties.

"We are pleased to announce the Harrington Foundation's gift," said Cindy Smith, director of Panhandle Crisis Center. "The Center has raised 49% of its goal due to the Foundation's support, and our local fund-raising efforts."

"This project reflects strong local support, and the Board of Directors of The Don and Sybil Harrington Foundation enjoys partnering with communities that

demonstrate such a high level of commitment," said Jim Allison, President and CEO of the Foundation.

According to the Crisis Center, several local individuals and businesses have already contributed to the capital campaign, which made the purchase of the building possible earlier this year. The entire budget for the project is \$198,457. The Center has raised \$62,882 locally since beginning its campaign in December of 2002.

Andy Anderson, chairman of the Crisis Center board of directors reports that the agency plans to have all funds raised by August 2003 so that renovation may begin on the building. The Center hopes to move to the new building in December.

According to Anderson, the Crisis Center plans to apply to other foundations for assistance, but local support is vital to the success of the project.

The fifteen-member board of directors is actively seeking donors for this project. Contributors will be recognized on donor plaques at the new facility.

Anyone wishing to donate may contact Cindy Smith or Alta Williams at 435-5008 for more information about the project and donor recognition levels.

Laugh
and
Live



by Catherine R. Smith
CathyRSmit@aol.com

My dear friend Sally sent me the following True or False test. I hope you enjoy it.

True or False

Decide whether true or false after reading each line, then scroll down for answer at the end. Read the complete list first.

- Apples, not caffeine, are more efficient at waking you up in the morning.
- Alfred Hitchcock didn't have a bellybutton.
- A pack-a-day smoker will lose approximately 2 teeth every 10 yrs.
- People do not get sick from cold weather; it's from being indoors a lot more.
- When you sneeze, all bodily functions stop, even your heart.
- Only 7% of the population are lefties.
- 40 people are sent to the hospital for dog bites every minute.
- Babies are born without knee caps. They don't appear until they are 2-6 years old.
- The average person over fifty will have spent 5 years waiting in lines.
- The toothbrush was invented in 1498.
- The average housefly lives for one month.
- 40,000 Americans are injured by toilets each year.
- A coat hanger is 44 inches long when straightened.
- The average computer user blinks 7 times a minute.
- Your feet are bigger in the afternoon than the rest of the day.
- Most of us have eaten a spider in our sleep.
- The REAL reason ostriches stick their head in the sand is to search for water.
- The only 2 animals that can see behind itself without turning its head are the rabbit and the parrot.
- John Travolta turned down the starring roles in "An Officer and a Gentleman" and "Tootsie".
- Michael Jackson owns the rights to the South Carolina State anthem.
- In most television commercials advertising milk, a mixture of white paint and a little thinner is used in place of the milk.
- Prince Charles and Prince William never travel on the same airplane just in case there is a crash.
- The first Harley Davidson motorcycle built in 1903 used a tomato can for a carburetor.
- Most hospitals make money by selling the umbilical cords cut from women who give birth. They are reused in vein transplant surgery.
- Humphrey Bogart was related to Princess Diana. They were seventh cousins.
- If coloring weren't added to Coca-Cola, it would be green.

(Believe it or not, all of them are true.)

May God bless and keep you; May He make his face to shine upon you, and be gracious to you; May the Lord lift up his countenance upon you, and give you peace.

Numbers 6:24-26

Catherine :)

4-H Livestock Team Finishes Season

Hansford County 4-H Livestock Team competed in two contests to finish their season. On March 29, they travelled to Clarendon College. The senior team, consisting of Bailey Reid, Kali Shields, Nick Slough, and Clete Vanderburg, placed third overall. They were 2nd in cattle, 4th in sheep, 4th in swine, and 4th in reasons. The team was paced by consistent performances from Bailey and Kali with both of them finishing just outside of the top ten overall. Individually, Nick placed 6th in cattle and 10th in swine. Kali placed 9th in sheep. This contest was won by La Plata County, Colorado.

Tucker Williams competed in the Junior Division, placing 7th in sheep and 4th overall.

On April 25th, the team went to West Texas A&M to compete in the District Contest. The senior team was made up of Dustin Mackie, Nick Slough, Bailey Reid, and Kali Shields. They had a long, frustrating day as the team finished 8th overall, failing to qualify for the state contest. Hansford County placed 3rd in swine, 4th in reasons, 8th in cattle, and 9th in sheep. Individually, Dustin placed 6th in reasons and Nick was 1st in swine.

Junior team members making the trip were Tucker Williams, Casey Cator, Austin Benton, Cody Benton, Brenna Reid, Taylor Williams and Dakota Cator. The Juniors placed 2nd overall at the District Contest. They placed 1st in swine, 5th in sheep, and 7th in cattle. Individually, Tucker led the team winning 3rd high individual overall. In species, Tucker placed 4th in cattle and 6th in sheep, Casey placed 10th in swine, and Taylor placed 10th in sheep.

Metabolife-356™/Ephedra Herbal, Dietary & Nutritional Supplements

Many nutritional, herbal and dietary products contain a Chinese herb called ephedra (mahuang). Studies have shown that these ephedrine alkaloids can lead to heart attacks and strokes for some users. If you believe that you or a loved one have been injured due to ephedra use from these products then call us for a Free Confidential Consultation.

David P. Willis
BOARD CERTIFIED TOLL FREE 1-800-883-9858
PERSONAL INJURY TRIAL LAWYER FREE 1-800-468-4878
Texas Board of Legal Specialization

Dr. Rick Sheppard, D.D.S.

1-800-687-2010

•Family Dentistry •Braces

146 Pioneer • Booker, TX

TEETH FOR A LIFETIME

40th Annual

"World's Largest" Fish Fry

June 7th • 11 a.m.-7 p.m.

Borger Aluminum Dome

All - You - Can - Eat!

Catfish • Corndogs • Freedom Fries • Cole Slaw
Hush Puppies • Drinks • Dessert

For more information, call the Borger Chamber of Commerce at (806) 274-2211.

Don't forget to visit the
15th Annual Downtown
Merchant's Beach Party

Sand Volleyball • Antique Car Show
Entertainment & Much More!

The Hansford County Reporter-Statesman

213 Main Street • Spearman, TX 79081
Phone - (806) 659-3434 • Fax - (806) 659-3368
CathyRSmit@aol.com
Mon.-Thurs. (Closed Fridays) 9 a.m.-12 p.m. & 1-5 p.m.

Gary Smith - Publisher • Catherine Smith - Editor
Harletta Carthel - Assist. Editor

Contributing Writers: Helen Fisher, Dorothy Hudson • Contrib. Photographer: Charlie Johnson

Subscription Rates

In Hansford Co. - \$25.00 • Out of County - \$30.00

The Hansford County Reporter-Statesman (USPS 529660) is published weekly in Spearman, TX. Periodical postage paid in Spearman, TX. POSTMASTER: Send address changes to The Hansford County Reporter-Statesman, 213 Main Street, Spearman, TX 79081.

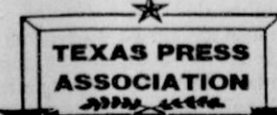
Publication Policy

The deadline to submit news and advertising to The Hansford County Reporter-Statesman is Monday at 5:00 p.m. Items submitted after the deadline will be published at a later date, as time and space permit. Publication of all items is at the discretion of the editor.

Advertising

Open Display rates are \$4.50 per column inch. Classified Ads are \$5 for the first 25 words and 10¢ per word for each additional word. (Additional charge for boxed classifieds.) There is a \$1 charge per week if billed.

Member of
Texas Press Association and Panhandle Press Association



HANSFORD HAPPENINGS

"One on One" Computer Classes

To better target the needs of the community and the surrounding area, the Spearman ISD Community Resource Program has implemented a "one on one" computer training. When a customer needs a specific type of computer training, we simply match them to one of our computer instructors. Clients who cannot attend a regular class will appreciate this for its flexibility and focus. Call Cindy Blackman at the Community Resource Office, 659-3233, to set up a meeting at your convenience with an instructor who will help with any application problems you are having. Class time can range from 1 hour to several sessions, depending on your needs and/or skill level. The cost for a 1-hour session is \$15.00. Instructors will be Lisa Short or Mandy Derington.

Beware of FAFSA Web Scam

Seniors, senior parents and parents of college students should use the web site www.fafsa.ed.gov when filling out their Free Application for Federal Student Aid (FAFSA) online. There is currently a website that has found an interesting way to get in the college-bound's pocket. Known as fafsa.com, the website charges a fee for submitting the application. There is no fee for submitting the fafsa form on the www.fafsa.ed.gov site.

Medical Fund for Maria Avila Family

A medical fund has been established at First State Bank for the family of Maria Avila.

Hansford Golf Club Hosts Tuesday Night Scrambles

The Hansford Golf Club began the Tuesday Night Scrambles on April 29th. Tee-off is at 6 p.m. each Tuesday. Contact Ross Donahue, Curtis Covington or Sheri Benton for more information.

Coffee Memorial Blood Center Blood Drive

The Coffee Memorial Center will be in Gruver on Monday, June 2nd from 2-7 p.m. at the Gruver State Bank, LaCasita Room, for a blood drive. The Texas Panhandle is currently experiencing a critical need for all blood types. All blood donors will receive a t-shirt, a hot dog and beverage as a thank you for their support. For more information, contact Danny Cervantes at (806) 358-4563.

Spearman ISD Seeking Students With Special Needs

Spearman ISD is trying to locate children who are currently enrolled in home school and/or private school who may need special education services to enable them to progress in their education. Students who meet eligibility criteria for special education services may be able to access some of these services through the public school. If you feel your child is in need of or you know of a child in need of such services, please contact the superintendent of schools, Rod Sumner, or Marsha Murphy, director of special education services, at 659-3233.

Women's Softball Teams

Women's softball teams are being formed for all ladies 18 and older. If you are interested in joining, call Ester Cortez at (806) 435-0106.

Spearman Lynx HS Band Discount Cards

The Spearman Lynx High School Band has some Discount Cards left from their fundraiser earlier this year. The cards originally sold for \$10 each, but are now being sold for only \$5 each. They offer discounts from the following businesses: Simple Simon's Pizza, Smoke House Restaurant, Sonic, Tang's Chinese Food, Amigos Cafe, Pizza Hut, Prairie Garden Flowers, Dreamer's Salon, Dairy Queen, Celebrate, J&M Service Center, Panhandle Diner, Jeanette's Sweet Creations and the Mutt Hut. If you would like to purchase a card, please leave a message for Anna Marie Holland at the Jr. High (659-2563) or the High School (659-2584). We would also like to thank the businesses who supported us by offering these discounts.

2003 Texas Reading Club at Hansford County Library

Your mission, should you choose to accept it, is to solve a mystery, break a code, catch a spy and enjoy adventures with the 2003 Texas Reading Club at the Hansford County Library. Come check out books and participate in our programs this summer for children age 3 through second grade. "Mission Possible: Spy a Book!" is the theme for this year. Reading programs will begin on Tuesday, June 3rd, but a sign-up began on Monday, May 19, 2003. Come to the library and join the fun! For more information, please call 659-2231 (Hansford County Library) or 659-3233 (Community Resource Coordinator).

Plant Clinic

Dr. Harold Kaufman, Plant Pathologist with Texas Cooperative Extension Service, will be in Hansford County on June 19, 2003 for home visitations. He will be looking at problems with yard plants, trees, lawns and gardens. Appointments may be made by calling Hansford County Cooperative Extension office at (806) 659-4130 or (806) 733-2901.

Panhandle Tourism & Market Council Meeting

The Panhandle Tourism and Market Council will meet on Friday, June 6th at noon at the Hungry Cowboy in Spearman. Lunch will be \$10 per person. Following the meeting will be a tour of the J.B. Buchanan Windmill Park. For more information and details, contact the Spearman Chamber of Commerce at 659-5555 or spearman@arn.net, or Seth Davidson at (806) 868-2094 or seth@wildsteps.com. You may also visit the Panhandle Tourism & Market website at www.texasptmc.org.

PANHANDLE PLANNER

Area Agency on Aging Seeks Volunteers

The Nursing Home Ombudsman program of the Area Agency on Aging of the Panhandle is actively seeking individuals to serve as advocates for residents of area nursing homes. Volunteer opportunities are available throughout the Panhandle. Ombudsmen promote resident rights, quality of life and quality of care by identifying and resolving complaints by or on behalf of residents. To learn more about this rewarding volunteer opportunity, please contact Jeff Price or Tanya Mock of the Area Agency on Aging of the Panhandle at (800) 642-6008.

Borger Rotary Club Sponsors Poker Run

The Borger Rotary Club is gearing up for its first annual Poker Run to be held Saturday, May 31, 2003. Funds raised will be used to help eradicate Polio, one of Rotary's main goals, by the year 2005. The entry fee is \$10. Sign in for the Poker Run will be held from 10 a.m. until 1 p.m. at Frank Phillips College, with the first bikes leaving at 12 p.m. The last bike will leave at 1:10 p.m. The route consists of about 70 miles that will take the rider around various areas of Hutchinson County, beginning and ending at Frank Phillips College. At each of the five stops, the rider will draw a playing card in order to get their poker hand. Riders have the chance to win \$250 for the best hand and \$100 for the worst hand. There will be games, door prizes and a free lunch of hamburgers and hot dogs.

Bloomsday Festival Slated in Guymon

They happen all around the globe, but the first in Oklahoma happens in Guymon! Leopold Bloom's adventurous June 16, 1904, is the story in the James Joyce book Ulysses. Throughout the world, Bloomsdays are celebrated around June 16th. Oklahoma's first Bloomsday Festival will be held Sunday afternoon, June 15th at the Ambassador Inn ballroom in Guymon. For the price of a \$10 ticket, you can enjoy a great bowl of stew and kick back and enjoy the Celtic music of the band "Banish Misfortune," from 1-3 p.m. The live dance tunes include jigs, reels, hornpipes, waltzes and slides. The Oklahoma City based musicians play with the authentic lilt and lift of the beautiful traditional music. Be a part of celebrating Ireland at the Bloomsday Festival from noon to 3 p.m. at the Ambassador Inn in Guymon. Tickets are \$10 per person and can be purchased at the Guymon Public Library or at the gate. For more information, contact Melyn Johnson at (580) 338-5838. This program is made possible with the assistance of the Oklahoma Arts Council and the Guymon Convention and Tourism Department.

American Indian Dancers

The American Indian Dancers will perform on Saturday, June 7th at 2 p.m. at Elk's Lawn off Sunset Lane in Guymon. This free event will be held in conjunction with the Flatlanders Car Show.

CORNER SERVICE STATION

your full-service station!

- Gasoline
- Oil Changes
- Battery Service
- Flat Tire Service
- Car Washing & Cleaning
- Tire Rotation & Balancing
- Free Pick Up & Delivery!

101 Main Street • Spearman, Texas
(806) 659-2722 • Joe & Nita Bynum

Our Deepest Sympathy

MARGARETT J. HARNISH

SPEARMAN - Margaret J. Harnish, 80, died Friday, May 23, 2003. Graveside services were at 11 a.m. Tuesday, May 27, 2003 in Hansford Cemetery with the Rev. Patrick Six officiating. Arrangements were by Boxwell Brothers Funeral Home.

Mrs. Harnish was born Oct. 28, 1922, in Plainview where she had lived since 1958. She was a member and nursery attendant at First Baptist Church for many years.

She was preceded in death by her husband, Zachary T. Harnish; and a son, Gerald Harnish.

Survivors include a daughter, Lyda Littleton of Island Falls, Maine; three sons, Gil Harnish and Gerry Harnish, both of Lawrenceville, Ga., and Bill Harnish of Amarillo; 10 grandchildren; and nine great-grandchildren.

The family suggests memorials be to Hansford Hospice, 707 Roland, Spearman, TX 79081.

OPAL THOMAS ARCHER

PERRYTON - Opal Thomas Archer, 84, died Friday, May 16, 2003. Services were at 11 a.m. Monday, May 19, 2003 in the Church of Christ with Mikel Peterson and Terry Danley officiating. Burial was in Ochiltree Cemetery by Boxwell Brothers Funeral Home.

Mrs. Archer was a legal secretary and was a member of the Church of Christ. She was a graduate of Gruver High School and was on the state basketball team.

She was preceded in death by her husband, Dan E. Archer; and her parents, Walter and Ella Thomas.

Survivors include a daughter, Danna Kay Archer Brady of Arnett, Okla.; a son, Scott Archer of Perryton; a granddaughter, Cathy Nelson Fryar of Houston; five grandsons, Scott Nelson Archer and Joshua Nelson Archer, both of Sugar Land, Daniel Thomas Archer and Michael Burns Archer, both of Perryton, and Nicholas Morgan Archer of Arnett; and five great-grandchildren.

The family suggests memorials be to a favorite charity.

Out At The Lake

by Dorothy Hudson

Lake Level--May 27, 2003--29.00 feet

Early Sunday morning a big rain raised the Lake level 19 inches. The office gauge showed a total of 3.24 inches from the big rain and the light one Sunday morning. Most of the rise came locally, although a little water came in from the creeks.

As the rain caught the campers by surprise, Jim and Ramon Cantu spent Sunday morning pulling people out of the mud. Two pickups had to be pulled out of the water. As the Memorial Day Weekend had been forecast to be wet, there were not as many campers as usual, but it was still a nice turnout.

The hookups on the office side were all taken at times, and those behind the dam were about half

full. There were few tent campers. Doug Barnes had two teepees set up, but things got so wet in them, he abandoned them and went back to a dry house in Spearman.

The rain came so hard that many of the roads were eroded badly. Jim said they would be busy this week doing road repair.

Nice size catfish were being caught. One man had two weighing 16-pound and 8-pound.

Jim and Mandy had seen a doe slowly going across the road and then noticed she had wobbly-legged twin fawns with her. By the time they got closer she disappeared down a draw. After searching quite a while they found the babies close to the road under a sagebrush bush. This was a first for Jim to see fawns in May.

Happy Birthday!

Editor's Note: This Happy Birthday list is run as a public service by the Hansford County Reporter-Statesman. We apologize if any names are misspelled. If you know of a name that needs to be changed, added or deleted, please call 659-3434.

May 29

Birthday - Camile Miller, Mrs. Richard Holton, Dayton Edwards, Wilma Francis, Danny Dry, Wayne Groves, Jesus Espinosa, John Allen, Jana Wright, Allen Alfred, Linda Pearson, Cody Thoms, Clint Schnell, Virginia Cates

Anniversary - Mr. & Mrs. Stan Seagler, Mr. & Mrs. Kevin Holt, Mr. & Mrs. Gary Gumfory

May 30

Birthday - Orvil Brumett, Sharon Cook, Patty Hudson, Lynanne Maize, Phillip Atwood, Kimberly Nelson, John Brinkley, Terri King, Ramero Arjona, Rick Holt, Bobby Lesley, Connie Ross, Marie Hernandez, Bill Swan, Richard Paschel

Anniversary - Mr. & Mrs. Matt Johnson, Mr. & Mrs. David Tomlinson

May 31

Birthday - Jessica Favela, Buster McLain, Virginia Taylor, Jeri Lynn Maize, Brandon Reed, Ronnie Lusby, John Sutterfield, Carl Cook, Shauna Poole, Curtis Newman, Olena Shelton, Brent Fuller, Tommie Dewberry

Anniversary - Mike & Michelle Davis, Mr. & Mrs. Hugh Bell, Mr. & Mrs. Wayne Garrett, Mr. & Mrs. Chet Pittman

June 1

Birthday - Lexy (Spivey) Glass, Kevin Rook, Avo Gray, Ken Pracher, Kim Reed, Bryon Sutterfield, Phil Sanders, Ivonne Sullivan, Jean Zable, Anthony Arjona, Evan Cudd

Anniversary - Jim & Donetta Greene, Mr. & Mrs. Doyle Jackson, Mr. & Mrs. Dale Hendricks, Steven & Susan Poole, Mr. & Mrs. Craig Cooper, Joe & Debbie Clement

June 2

Birthday - Weslyn Maupin, Lance Williams, Helen Dickson, A.D. Reed Jr., Johnny Reed, Scotty Reed, Don

June 3

Birthday - Parthena Harvey, John Lopez, Anne (Potts) Jackson, Joe T. Venneman, Tonja Kay Whitefield, Mary Nava, Manuela Vela, Robert Renteria, Zach Nollner

Anniversary - Carl & Janeen Baumgardner, Mr. & Mrs. Albert Graves, Robert & Jackie Graham, Sara & Mark Eisfeld

June 4

Birthday - Keith Cassady, Cody Cazzares, Cambry Cooper, Victor Raylor, Ann Marie Pacheco, George Rook, Elizabeth Browning, Davey Turner, James Russell, Donna Trantham, Roy Riley, Lori Schultz, Susan Thompson

Anniversary - Mr. & Mrs. Ron Womble, Mr. and Mrs. Bart Shapley

June 5

Birthday - Carolyn Hicks, June Edwards, Henry Freeman, Bambi Torres, Larry Scroggs, Florida Vasquez

Anniversary - Mr. & Mrs. Mike Stewart, Mr. & Mrs. Bob Womble, Wendell & Jenny Neff

June 6

Birthday - David Armes, Brandea Hicks, Mark TeBeest, Darren Goodheart, Ruth Brown, Joe Bynum, Jan Blackwell, Jane Flowers, June Potts, Margaret Reed, Charles Chritton, Mick Reimer, Melodie Shields, Arturo Huerta Jr.

Anniversary - Mr. & Mrs. Bob Farr, Mr. and Mrs. Lynn Stedje

June 7

Birthday - Bobbie Evans, Vangie Johnson, Janet Miller, Charlie Stavlo, J.W. Ward, Monty Blackman, Donna Giddens, Georganne Hutchison, Jim Kunsleman, Lonnie Clemmons, Pete Mauk, Joe Salgado, Shane Harnish, Kimbre Townsen, Clint Townsen

Anniversary - Gene & Joy Byrd, Mr. & Mrs. Ted Evans, Mr. & Mrs. David Grotegut, Cecil & Mona Slater

LYRIC Cinema

113 Main Spearman, Texas (806) 659-2812
On the Web @: www.lyriccinema.com/newweek.asp
Children 3 thru 11 - \$4.00 Adults - \$6.00
Sr. Patrons (65 & older) - \$4.00

Showing: May 30th thru June 5th

Screen 1 Weekend Showtimes 7:00 & 9:00	Screen 2 Weekend Showtimes 7:00 & 9:00
Finding Nemo Featuring the voices of Albert Ericks, Alexander Gould Rated G	The Matrix Reloaded Starring Keanu Reeves, Laurence Fishburne Rated R For Sci-Fi Violence & Sexuality

For Ratings Conscience Parents: www.screenit.com

Two Showtimes on Friday & Saturday Nights
(TIMES NOTED ABOVE MOVIE TITLES)

Coming June 13th: Rugrats Go Wild

IS YOUR \$100/MONTH OIL/GAS ROYALTY WORTH \$5,000.00?

We Purchase Minerals & Royalties
Quick, Confidential Response

M IV OPS, INC. (210) 930-5220
Al Bacon 1-800-283-8029

MONUMENTS

Boxwell Brothers Funeral Home
519 Evans · Spearman
659-3802

Dear friends,
When you buy a monument from us we make sure it is exactly what you want at a price you can afford. If it is not right, we will make it right. And you will not have to search the countryside to find us. We are here when you have a need.

Sincerely,
Bob Boxwell

SMOOTH RIDES. POWERFUL DEALS.

SPORTSMAN 700 TWIN

NEW! SPORTSMAN 600 TWIN

SPORTSMAN 500 H.O.

SPORTSMAN FAMILY

- Sportsman is the world's best-selling automatic ATV
- 4 engine choices: 400, 500 H.O., 600 Twin and 700 Twin
- Independent rear suspension for a legendary smooth ride

POLARIS.
The Way Out.

COME IN AND ASK ABOUT:

0/0/0 FINANCING TILL '04 OR \$99 MONTH PAYMENTS OR \$300 IN PURE POLARIS ACCESSORIES*

Hansford Implement
Highway 207 S • (806) 659-2568 • Spearman, TX

Replenish the seed of faith through . . .

DAILY BIBLE READING, PRAYER & REGULAR CHURCH ATTENDANCE

<p>Spearman</p> <p>Apostolic Faith Church 822 S. Dressen • 659-2870 Sunday School: 10 a.m. Worship Service: 11 a.m. Sun. Eve.: 6 p.m. Wed. Prayer Mtg.: 7 p.m. Pastor - Roland Haney</p> <p>First Assembly of God 401 N. Bernice • 659-2295 Sunday School: 9:30 a.m. Worship: 10:35 a.m. Kid's Church: 10:35 a.m. Evening Worship: 6 p.m. Wed. Worship: 7 p.m. Wed. Youth: 7 p.m. Pastor - Bob Elder</p> <p>First Christian Church (Disciples of Christ) 29 S. Bernice • 659-2036 Sunday School: 9:45 a.m. Worship: 10:50 a.m. Minister - Gary Smith</p> <p>First Baptist Church 123 N. Bernice • 659-5557 Sunday School: 9:45 a.m. Worship: 11 a.m. Evening Worship: 7 p.m. Wed. Fellowship Meal: 6 p.m. Wed. Disc. Time: 6:30 p.m. Wed. Youth Mtg.: 8 p.m. Pastor - Patrick Six</p> <p>Church of Christ 121 S. Haney • 659-3244 Sunday Bible Class: 9:45 a.m. Worship: 10:30 a.m. Evening Worship: 6 p.m. Bible Study Wed.: 7:30 p.m. KRDF Radio Program Living W/Christ: 7:50 a.m. Minister - Leonard Harper</p>	<p>Sacred Heart Catholic Church 901 Roland • 659-2792 Sat. Night Mass: 5:30 p.m. Sun. Mass: 9 a.m. - English (aired on KRDF-FM 98.3) Sun. Mass: 11:30 - Spanish 1:30 p.m. - Gruver - Christo Rendentor Mass - Spanish Rev. Guillermo Morales</p> <p>First United Methodist 407 S. Haney • 659-5503 Sunday School: 9:45 a.m. Worship: 8:30 & 11 a.m. Jr. High Youth: 5 p.m. Sunday High School: 6 p.m. Sunday Kids Club: 3 p.m. Wed. Pastor - Ken Cole</p> <p>First Presbyterian Church (Worships with Lutheran) 1021 Cotter • 659-2033 Sunday School: 9:45 a.m. Worship: 11 a.m. (alternates monthly between Lutheran & Presbyterian Church Bldg.) Pastor - Beverly Cook</p> <p>Faith Lutheran Church (ELCA) 1101 Bernice • 659-2252 (Worships with First Presbyterian Church)</p> <p>Union Church 31 S. Endicott • 659-2644 Sunday School: 9:45 a.m. Worship: 10:45 a.m. Evening Worship: 6 p.m. Bible Study: 7 p.m. Wed. Pastor - Bill Sparks</p> <p>Fellowship Baptist 1102 S. Archer • 659-2783 Sunday School: 10 a.m. Worship: 11 a.m. Sun. Evening Worship: 6 p.m. Youth/Adult Serv.: 7:30 Wed. Pastor - Gene Foster</p>	<p>Primera Mision Bautista 502 E. 7th • 659-3991 Sunday School: 9:45 a.m. Worship: 11 a.m., Evening: 6 p.m. Wed. Prayer Meeting: 7 p.m. Thurs. Visitation: 7 p.m.</p> <p>El Aposento Alto U.P.C.I. 1105 S. Roland Domingos Escuela-Dominical - 10 a.m. Culto Evangelistico - 7 p.m. Jueves: Oracion - 8 p.m. Mier. Estudio Biblico - 7 p.m. Pastor - A.G. Martell (806) 659-2153</p> <p>Gruver</p> <p>First Baptist Church 402 E. Broadway • 733-2411 Sunday School: 9:45 a.m. Worship: 10:50 a.m. Disciple Training: 6 p.m. Sunday Prayer Meeting: 7:30 p.m. Wednesday Pastor - Scott Curry</p> <p>Church of Christ 209 King • 733-2760 Sunday School: 9:30 a.m. Worship: 10:20 a.m. Evening Worship: 6 p.m. Wed. Worship: 7:00 p.m. Minister - Gaylord Cook</p> <p>First Christian Church 510 King • 733-2960 Sunday School: 10:00 a.m. Sunday Worship: 11 a.m. Youth: 7:30. Sunday Adult Bible Study: 7:30. Sun. Wed. Bible Study: 8:00 p.m. Pastor - Gary Gumfory</p>	<p>Gruver United Methodist Broadway & Garrett 733-2651 Sunday School: 9:45 a.m. Worship: 8:30 & 10:50 a.m. Eve. Worship & UMY: 6 p.m. Pastor - Jerry Moore</p> <p>Spanish Cristo Redentor Church Sunday Mass: 1:30 p.m. Friday Evening Mass Summer - 8:00 p.m. Fall/Winter - 7:30 p.m.</p> <p>Oslo</p> <p>Oslo Lutheran Church (ELCA) 6 Miles West & 12 Miles North of Gruver 339-7709 Sunday School: 9:45 a.m. Worship: 11 a.m. Pastor - Paul Fiske</p> <p>Waka</p> <p>Waka Church of the Brethren 435-4598</p> <p>Morse</p> <p>Morse Baptist Church 733-2757 Pastor - Mike Martin</p>
---	--	---	---

This feature is made possible through the sponsorship of these civic minded businesses.

<p>Compliments of . . .</p> <p>AGCO of Spearman, Inc. "See you in Church" 659-3751</p>	<p>Bartlett's Lumber & Hardware 105 W. Broadway • Gruver, Texas (806) 733-2404</p>	<p>BERRY CLEANERS Ann & Vernon Pipkin - Owners Phone 659-3122 • P.O. Box 1017 207 Main St. • Spearman, TX</p>	<p>Hansford County Reporter-Statesman "Proudly Serving Hansford County Since 1907" (806) 659-3434 213 Main Street • Spearman, TX</p>
<p>PRAIRIE MOTORS INC. Hwy. 207 South • P.O. Box 430 Spearman, TX 79081 • (806) 659-2541 www.prairiemotors.com</p>	<p>Gruver Cablevision 308 Main Gruver, TX 79040 733-5295</p>	<p>Interstate Bank, ssb 322 Main • P.O. Box 146 Spearman, TX • 659-2559</p>	

Among The Neighbors

by Helen Fisher

by Helen Fisher

Granville and Muriel Boyd recently spent eight days in Oklahoma and Missouri. In Branson they attended the reunion of the Second Division of Company B, Pacific Division Marine Corps, of which Granville was a part. That division was involved in several of the heroic and much publicized island battles. There were about 25 vets at the reunion.

They then visited Muriel's aunt and cousin in Yale, OK. Next they were guests in Springfield, MO of her granddaughter, Mindi Werner and family. All through the area tornado warnings were out and one was on the ground within ten miles of them.

Babe Pendergraft enjoyed having her niece, Nancy Rush, visiting her recently. She is from Medina, Tx.

Helen and Nolan Holt, John and David Holt, and Linda and Britt Jarvis returned recently from an interesting trip to Brazil. Their primary purpose was to attend the wedding of George Eisenhauer to Ann Monterio. George is the son of Anita Holt Eisenhauer, formerly of Spearman and niece of Nolans. All three live and work in Houston.

The wedding was very ceremonial. It was held in a 300 year old church and was conducted in both Portuguese and English. The reception was very formal with close to 250 guests.

The family members from Spearman toured Rio de Janeiro and Iquacu Falls. The falls are a huge complex of water falls at the juncture of Argentina, Paraguay, and Brazil and is an international tourist attraction. It is much larger than Niagara Falls.

May is Brazil's fall so the weather was in the 70's and 80's and very humid. The Spearman folk flew to Rio and toured the area and then the falls before flying into Recife for the wedding. At the Miami airport security was very tight. Helen was required to remove her jacket and shoes to satisfy the guards.

Gilbert and Ernestina Salgado had a most pleasant weekend in Dallas with their daughter and husband, Olivia and George De Santiago. The main highlight of the trip was to witness Olivia receive her degree from Texas A. & M. University, a Master of Science in Education.

Also attending the ceremony was the Salgado's other daughter, Sonja and J. Jensen, and baby J. Jensen the 3rd, grandson of the Salgados. Many other family members and friends were there to congratulate and celebrate with her.

Andrew Cummings has had an interesting few months. Andrew's Commanding Officers recommended him for the Army Achievement Medal. He did receive the high honor and received the rank of Specialist. He came home for Christmas and the wedding of his brother Christopher. Upon returning to Ft Bragg, NC he received deployment orders. He left for Iraq on April 2, 2003. He spent several weeks in Kuwait and then advanced into Iraq. He is now in Mosul, Iraq.

When he was able to contact his family he e-mailed them from the Palace there. Andrew's job is in demolition. All weapons, explosives etc. that is found in Northern Iraq is taken to Mosul. It is inventoried and then the guy's like Andrew dispose of it. He is enjoying doing his job and proud to be there. He

has many stories to tell about his experiences.

Dr. Glenn and Kyra Keim of Clovis spent the weekend with their son Kyle and Jennifer and family. Enjoying the weekend with their grandchildren, Ashley, Klara, Aubrey and Waylan. They also visited her father, Jack Crum of Perryton and his mother Verna Gail Keim in Spearman.

Visitors of Ivan Allen for her birthday celebration were her son, Eldon Vernon of Oklahoma City; Janice and Jerry Sheets, her daughter and son-in-law of Spearman; friend Pat Cudd of Spearman; and her nephew and his wife, Mr. and Mrs. E.L. Selby of Rose Sharon, Texas.

Celebrating her birthday with cake, ice cream and coffee were friends June Kelp, Marlene Cook, Avo Gray and Wilma Reese.

Wilma is visiting her daughter and son-in-law, Pat and Wesly Brown and family of Spearman, and her son and daughter-in-law, Jimmy and Brenda of Amarillo.

A very pleasant time of visiting and playing Skipbo was enjoyed by all.

Many complimentary remarks have emphasized the excellent condition of the Hansford Cemetery. Visitors have been going out for several days.

They have complimented the members of the Cemetery Board for their work and concern. Many readers of this column have expressed their appreciation.

The Gruver Grapevine

by Harletta Carthel

Community Receives Rain
An official .65 inch of rain was reported by Gruver City Hall over the weekend.

Junior High Cheerleaders Selected

Eight grade girls selected as cheerleader for the 2003-2004 school year will be Kayla Swink, Sorrel Blevins, Abbi Yanke, Denise Villegas, Delilia Santillan, and Kailee Reed.

Seventh grade cheerleaders will be Vanessa Barrera, Sydney Clawson, Macy Jones, Lindsey Morales, Mallory Reid, Devlin Reynolds, Katie Smith, Dani Wheelock, Lynn Villa, and Amber Chambers.

Elementary Hosts Awards Assembly

Gruver Elementary recognized students with prizes and awards during the annual school awards assembly held Friday, May 24.

Honored were students making the BUG (Brought up Grades) honor roll, the report card honor roll, the Accelerated Reading Program achievements, perfect attendance, Pre-kindergarten and Kindergarten graduates, UIL academic participants, and winners, Presidential awards, and the TAKS academic excellence achievers.

Community Care Concerns
Marie Bell spent some time last week in Hansford Hospital.

Quintero Selected to Honor Choir

Natalie Quintero was selected for the 2003 Texas Choral Directors Association Honor Choir, competing with over 560 audition tapes throughout the state. This elite group of singers will perform at the TCDA convention in San Antonio July 29-31, 2003.

Natalie auditioned for Soprano. The choir consists of 40 Sopranos, 40 Altos, 40 Bass and 40 Tenors, selected from Junior High students across the state.

Mrs. Hoffman, Spearman Junior High Choir Director, said, "I am very proud of Natalie and all of her accomplishments this year. This proves that making 1st Chair at All-Region, (which includes all Panhandle area Junior High's) was

not a "fluke." Natalie has tremendous talent, and I know she will continue to do well in her music endeavors."

We would like to thank Becky Byers and Carol Pack for her support, and for making the audition tape that was sent to TCDA.

Are You A Victim of Domestic Violence, Sexual Abuse or Assault . . . Physical, Emotional or Sexual?

Call Toll Free 1-800-753-5308

We can see individuals from Hansford County anytime upon request. Call 435-5008 or 1-800-753-5308 to set up an appointment in Hansford County. We operate a safe place for victims and their children to stay in times of crisis.

Panhandle Crisis Center
Serving Hansford, Lipscomb & Ochiltree Counties
317 S. Main • Perryton, TX
Memorials Accepted

40th Annual "World's Largest" Fish Fry

June 7th • 11 a.m.-7 p.m.

Borger Aluminum Dome

All - You - Can - Eat!

Catfish • Corndogs • Freedom Fries • Cole Slaw
Hush Puppies • Drinks • Dessert

For more information, call the Borger Chamber of Commerce at (806) 274-2211.

Don't forget to visit the
15th Annual Downtown Merchant's Beach Party
Sand Volleyball • Antique Car Show
Entertainment & Much More!

MARY KAY
Beauty Consultant
Leann Gillaspie
659-3889
America's best selling brand


Eat & Be Merry At
MONEY'S
BBQ & STEAK HOUSE
Hotline for Friday & Saturday Nights - 435-3945

We offer Priority Seating!
Give us a call before leaving, and we will save you a place in the seating line.
When you arrive, check in with the hostess.

We Are THPLC-2-B
14 SE 3rd Ave. Perryton, TX

New Menu (10 new items)
Wed. Night - All-You-Can-Eat Catfish

FOR EXCELLENCE IN PRENATAL CARE
Visit caring, compassionate, professional doctors



For your appointment call:

DR. GORDON & DR. JUDY GRAHAM
212 S. BLISS, DUMAS, TEXAS
806-934-4975

Used Equipment Auction

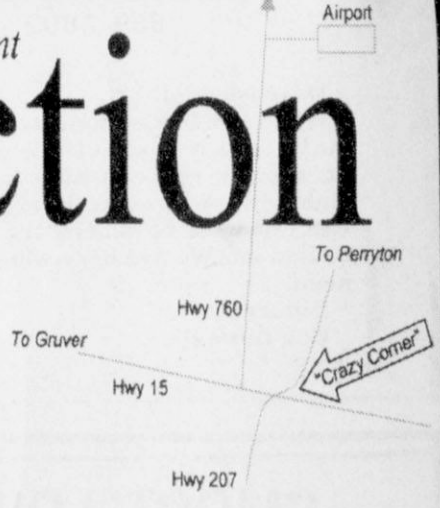
June 7, 2003

Hansford County Hospital District is doing some Spring cleaning...

You are invited to attend a public auction of used equipment to be held on Saturday, June 7, 2003 at the Spearman Airport. The auction will begin at 10:00 a.m. Many items have been collected (a list of some of the items is provided below). This list is a partial listing of all equipment that will be auctioned.

The Hospital District employee's H&M Board will have a concession stand and restroom facilities will be provided. All equipment will be sold to the highest bidder. No guarantees or warranties will be given, and all items sold will be "as is" with no returns.

- Hospital Beds
- Dixon Lawn Mower
- Waiting Room Furniture
- High-back Chairs
- Weight Chairs
- Couches/Chairs/End Tables
- Roll of New Carpet
- Lighting Fixtures
- Miscellaneous Electrical
- Roll of New Pad
- Furniture Parts
- Exam Lights
- Blanket Warmer
- Countertops
- View-boxes
- Lazyboy Recliner
- Kitchen Hot Box
- Antique Medical
- Ice Machines
- Gurney (2)
- Books
- Chest Freezer
- Industrial Coffee Makers
- Much, Much More!!
- Electric Motors
- Kitchen Wares
- Drinking Fountain
- Bed Night Stands (58)
- Refrigerated Cabinet
- Refrigerator
- Wheel Chairs
- Bath Lift
- 22" John Deere Mower
- Computer Equipment



hchd
Hansford County Hospital District
For more information, please call John Kunselman at 659-2535

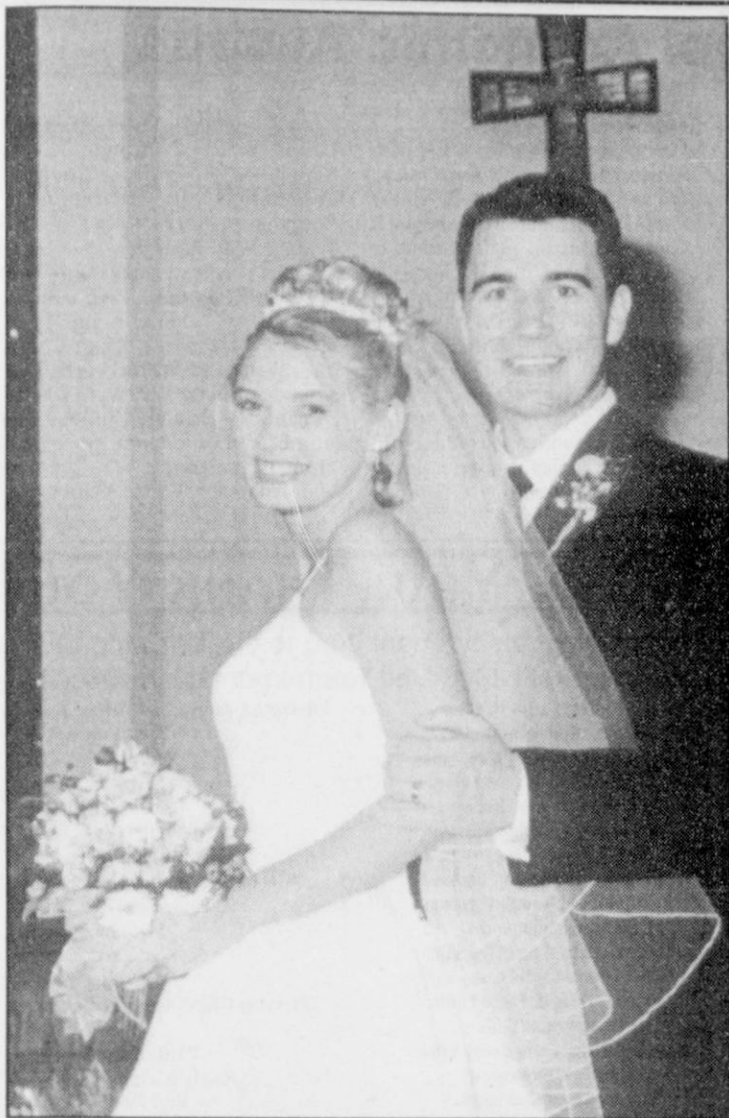
Collegiate Theme Gifts for Graduates & the College Set
Choose from Texas Tech, UT, Texas A&M, OU & OSU

Then & Now Frames for Graduation & Weddings
My Class Frames for Elementary School
New Baby Gifts

EVERYTHING You Need For Beautiful Lawns, Flower, Herb, Vegetable and Water Gardens

Trees & Shrubs
Blooming Container
Roses
Grasses
Bedding Plants
Vegetables Herbs
Annuals Perennials
Gorgeous Hanging Baskets
Landscape Rocks
Soils & Conditioners
Fertilizers & Insecticides
Complete Line of Water Gardening Products, Plants & Fish

Visit Our Web Site Often:
www.knights.hhtx.com
Knight's Nursery, Garden Center & Gift Shop
912 S. 2nd (Hwy. 60/83)
Canadian (806)323-5577
OPEN: M-F 8:30-6:30
Sat 10-5



Leader, Dawson Wed

Alyson Lee Leader and Jace Paul Dawson were married March 22, 2003 at the Lutheran Church of Our Savior in Tulsa, OK. The Rev. Leonard Busch officiated. The bride is the daughter of Mr. and Mrs. Lan Leader of Tulsa. She is the granddaughter of the late Mr. and Mrs. Phillip Miller and the late Mr. and Mrs. Clifford Leader. She is an auditor with the State of Oklahoma. The bridegroom is the son of Pat Dawson of Gruver and Larry Dawson of Arnett. He is the grandson of Mae Farren and the late Paul Farren, the late Fae Christian and the late Harvey Dawson. He is marketing manager with The Railroad Yard Inc. Honor attendants were Tricia Rumph and Rex Ralston. Bridal attendants were Lori Wilkerson, Suzanna Conaway, Jaree Haines, Keela Stough and Lindsay McDowell, all of Tulsa, OK. The flower girl was Ramsey Jenschke of Austin. Groom attendants were Dane Sallaska of Stillwater, OK; Sammy Renteria and Travis Ferguson of Lubbock; Ryon Atwood of Gruver; and Roma Tomlinson of El Reno, OK. The guest book attendant was Tisha Ralston of Spearman. A reception followed the ceremony at the Home Builders Association.



Gwin, Brady Wed

Dennis and Sherrie Gwin of Spearman are proud to announce the marriage of their daughter Jennifer Denise to Seth Lee Brady of Purcell, OK. The couple were married April 26, 2003, at the Purcell Lake, Purcell, OK, with Michael Gwin, uncle of the bride, officiating. Jennifer is a 1999 graduate of Spearman High School and the granddaughter of Joyce and John Tucker of Lawton, Ok., Ed Shinn of Kingston, Ok, and Opal Heugatter of Norman, Ok. She is the great granddaughter of Robbie Kerner of Purcell, OK. She has a brother Eric of Pascagoula MS who attended the wedding and a sister Cara of Spearman. Seth is the son of Vernon and Betty Brady of Purcell, OK and is a graduate of Purcell High School. He has a brother Nathan, also of Purcell. The couple are making their home in Spearman.

Gruver High School Academic Awards

Academic awards were given in May to Gruver High School students for their excellence in class work. Receiving awards were English I - Samantha Myatt, English II - Gabriella Rosales, English III - Cassie Myatt, English IV - Alan Tarango, and Advanced English IV - Amy Watley. Literary Genres - Ashleigh Sherrill, Photo journalism - Cecilia Rosales, Communication Applications - Ashleigh Sherrill, Theatre I - Amy Watley, Art - Jose Torres and Tanner Irwin, and Choir - Julie May. Algebra I - Lanie Graves, Algebra II - Samantha Myatt, Geometry - Kaley Crawford, Pre-Calculus - Cassie Myatt, Calculus AP - Ashleigh Sherrill, and Integrated Physics and Chemistry - Ben Williams. Biology I - Samantha Myatt, Biology AP - Cassie Myatt, Chemistry - Cecilia Rosales, Physics - Christi Clift, and Anatomy and Physiology - Amy Watley. Business Computer Information Systems I - Cassie Myatt, Business and Computer Information Systems II - Aaron Boyd, Accounting - Amy Watley, Introduction to Business - Mark TeBeest, Telecommunications and Network - Lori Swink, Multimedia - Eric Cruz, Desktop Publishing - Kaley Crawford, World History - Cassie Myatt and Samantha Myatt, U.S. History - Meagan Knight, Government - Kristina Christian, Economics - Miriam Trejo, Advanced Government - Ashleigh Sherrill, Advanced Economics - Amy Watley, and World Geography - Jessica Montgomery.

NOW OPEN
Armadillo Upholstery Shop
 For All Your Upholstery Needs

Quality Work
 Free Pickup & Delivery

26 County Road • Spearman, TX
 (806) 659-5025

Bridal Registry

- Stephanie Reinart & Kyle McNett - May 31
- Kelly Walker & Michael Covington - May 31
- Leslie Holton & John Green II - June 7
- Sarah Godino & Aaron Witten - June 14
- Korin & Derrick Burnett - June 14
- Elise Tittle & Matt Gafford - June 21
- Jaime Blades & Alan Huddleston
- Cheile Ortiz & Frank Perez
- Jerry Bass & Cathy Lander
- Kristin Beedy & Robert Whitehead
- Kristin Evans & Weston Born
- Stacy DeLaCruz & Scott Vantine
- Erika Salmons & Scott Stedje
- Jennifer Lopez & Thomas Torres
- Mary Dawn Henson & Michael McEnany
- Ashley Brown & Adam Lowe
- Alexis Shelton & Brian Beck

Celebrate

Gifts for all your celebrations!
 203 Main St. • Spearman, TX
 (806) 659-3350 1-800-663-8026

Siding - Windows - Metal Roofs
Sunrooms - Room Additions
Have you compared price?

If saving money is important,
 call Perry (806) 683-6339.
 perryhaley1@cs.com

You are invited to a
Bridal Shower
 honoring
Leslie Holton
 bride-elect of John Sullivan Green II
 on Saturday, June 7, 2003
 from 10:00-11:30 a.m.
 in the home of Bob & Jackie Pearson
 708 Wilmeth Dr. • Spearman, TX

You are invited to a
Bridal Shower
 honoring
Kelly Walker and Michael Covington
 on Saturday, May 31, 2003
 from 2:00-3:30 p.m.
 in the home of Shelly Beedy
 1103 S. Archer • Spearman, TX

ASD ♥ BBN

Mr. and Mrs. David Shelton
 and Mr. and Mrs. Ronnie Beck invite you
 to help celebrate the marriage of their children
Alexis D'Ann Shelton
 and
Brian Neil Beck
 Saturday, the Thirty First of May, Two
 Thousand Three at two o'clock in the afternoon
 at the First Baptist Church
 200 North Main • Stinnett, Texas
 Reception Following

SCHOOL EMPLOYEES & FEDERAL CREDIT UNION
 www.hhsefcu.org

Contact us about our great loan rates

as low as **3.9% APR***

New or Used Boats, Cars & RVs
 Membership now available for ALL residents of **HANSFORD, Hutchinson, Carson & Moore counties.**

PO Box 1187 • 102 N. Main
 Stinnett • www.hhsefcu.org
 (806) 878-2452 • 1-800-882-1740

NCUA
 We Do Business in Accordance With the Federal Fair Housing Law and Equal Credit Opportunity Act.

DUNN'S
 FISH FARMS OF ARKANSAS, INC.
 P.O. Box 10 • Monroe, AR 72108
 www.dunnfishfarm.com

Channel Catfish, Bass, Hybrid Bluegill, Red Ear, Copper Nose Bluegill, Fathead Minnows, Koi, Crappie, and Triploid Grass Carp are now available for Pond and Lake Stocking. Permit and one week notice required for Triploid Grass Carp purchase.

- We furnish Hauling Containers.
- We guarantee live delivery.
- Discounts/Special Deliveries are on large orders.
- Turtle Traps, Fish Feeders, Fish Traps
- Liquid Pond Fertilizer and Gift Certificates

Delivery will be **Tuesday, June 3, 2003** at the times listed for the following towns and locations.

- Briscoe - County Line Coop (806) 375-2321 - 8-9 a.m.
- Canadian - Canadian Equity Coop (806) 323-6428 - 10-11 a.m.
- Pampa - Lazy "S" Feed & Garden (806) 665-4189 - 12-1 p.m.
- Borger - Borger Feed Barn (806) 274-2099 - 2-3 p.m.
- Spearman - Spearman Equity (806) 659-2420 - 4-5 p.m.

To place your order or for more information, call one of our Aquatic Consultants, local dealer, or email sales@dunnfishfarm.com.

Offices located in Oklahoma & Arkansas!
 Mon-Fri 7 a.m.-8 p.m. • Sat. 8 a.m.-6 p.m. - CST
 1-800-433-2950 Fax 1-870-589-2029
 www.dunnfishfarm.com

For The Bride & Groom

Come by and let us help you set up your special gift table

Couples Currently Registered

- Michael Covington & Kelly Walker - May 31
- Kyle McNett & Stephanie Reinart - May 31
- Leslie Holton & John Green II - June 7
- Korin & Derrick Burnett - June 14
- Matt Gafford & Elise Tittle - June 21
- Clint Townsen & Dawn Conley
- Jerry Bass & Cathy Landers
- Jace & Alyson Dawson
- Kristin Beedy & Robert Whitehead
- Kristin Evans & Weston Born
- Stacy DeLaCruz & Scott Vantine
- Jennifer Lopez & Thomas Torres
- Mary Dawn Henson & Michael McEnany
- Cheile Ortiz & Frank Perez, Jr.
- Ashley Brown & Adam Lowe
- Amanda Smith & Josh Brown
- Alexis Shelton & Brian Beck
- Kristen & Todd Trammell

314 Main
 659-2141

Gordon's DRUG

Spearman, Texas

GHS Scholarship Recipients

Hunter Bevell: \$1000 - Sharon Saltzman Memorial FFA Scholarship; \$500 - Dennis Stedje Memorial Scholarship; \$500 - Wes Babbs Memorial Scholarship; \$500 - Gruver Lions Club.
 Aaron Boyd: \$750 - Dennis Stedje Memorial Scholarship; \$500 - Wes Babbs Memorial Scholarship; \$500 - Gruver Lions Club.
 Kasey Cazares: \$500 - Gruver Alumni Scholarship, \$500 - Gruver Lions Club.
 Kristina Christian: \$1,000 - CCST, \$500 - Gruver Lions Club.
 Christi Clift: \$1,500 - Don and Sybil Harrington Honor Scholarship, \$200 - Academic Scholarship/Dept. of Life, Earth, and Environmental Sciences, \$500 - Gruver Lions Club.
 Eric Lopez Cruz: \$4,800 - CAMP Scholarship, \$1,000 - Residence Hall Scholarship, \$500 - Gruver Lions Club.
 Brandi Griffin: \$500 - Lloyd Lynn Buzzard Memorial Scholarship, \$500 - Gruver Lions Club.
 Lisa Johnson: \$500 - Gruver Scholarship Fund, \$500 - Wes Babbs Memorial Scholarship, \$500 - Gruver Classroom Teachers Association, \$500 - Gruver Lions Club.
 Samantha Johnson: \$1,000 - Frank Lewis Memorial Scholarship/H&H Credit Union; \$646.78 - Nielson Scholarship; \$1,000 - Superior Scholastic Achievement Scholarship; \$1,000 - Gruver Lions Club/Presidential Freedom.
 Katie Jones: \$1,000 - Marjorie Urban Scholarship; \$646.78 - Nielson Scholarship; \$500 - Wes Maupin Memorial Scholarship, \$500 - Gruver Lions Club.
 Bryn Lowe: \$1,078 - Evelyn May and Robert Wayne Gilpatrick Scholarship; \$500 - Gruver Lions Club.
 Julie May: \$1,000 - Residence Hall Scholarship WTAMU, \$150 Farm Bureau Talent Competition; \$500 - Gruver Lions Club; \$500 - Gruver Music Club.
 Christie McDowell: \$646.78 - Nielson Scholarship; \$1,000 - Roy B. Mitchell Memorial Scholarship; OPSU Out of State Tuition Waiver (80%); \$1,000 - Gruver Lions Club.
 Chris Perez: \$1,000 - CCST.
 Misael Rosales: \$4,800 - CAMP Scholarship; \$1,000 - Gruver PTO, \$500 - Gruver Lions Club.
 Ashleigh Sherrill: \$1,000 - J. Harold Dunn Scholarship; \$750 - Excellence in Education Scholarship; \$1,000 - Students Reach Out...Volunteer; \$250 - T.J. Bergin Memorial Scholarship; \$500 - Gruver Lions Club.
 Carrie Stewart: \$1,000 - CCST.
 Wade Stewart: \$1,000 - WTAMU Residential Scholarship, \$500 - WTAMU College Day Scholarship, \$500 - Gruver Lions Club.
 Lori Swink: \$200 - Tuition Scholarship; \$800 - Residence Hall Scholarship; \$300 - Chamber of Commerce Scholarship; \$1,000 - Gruver Lions Club/Presidential Freedom.
 Alan Tarango: \$4,800 - CAMP Scholarship; \$1,000 - Residence Hall Scholarship; \$1,000 - United Food and Commercial Workers District Union Local Two and Seaboard Farms Scholarship; \$1,000 - Early Graduate Tuition Exemption.
 Lilianna Tarango: \$100 - Panhandle Plains Higher Education Authority; \$200 - Helen White Moore Award; \$4,800 CAMP Scholarship.
 Miriam Trejo: \$1,000 - ACET Scholarship.
 Modesta Trejo: \$4,800 - CAMP Scholarship.
 Salvador Vega: \$100 - Panhandle Plains Higher Education Authority.
 Dan Villegas: \$4,800 - CAMP Scholarship, \$500 - Gruver Lions Club.
 Amy Watley: \$1,000 - Superior Scholastic Achievement Scholarship (renewable); \$1,000 - Percy Ruth Price memorial Scholarship (renewable); Highest Ranking Graduate Exemption (Valedictorian) Approx. value \$1,380-\$2,000, \$500 - Gruver Lions Club.

Spearman High School Academic Awards

Spearman High School students were honored for their academic achievements in an awards assembly May 14, 2003.

Two students from each high school class were given \$100 US Savings Bonds from First State Bank of Spearman for perfect attendance.

To be eligible for this award, students must not have had any absences other than extracurricular. Two students' names were drawn from each class from those who qualified.

Sophomores Ashley Swan and Gerardo Ruiz. Qualifiers were Ashley Swan, Gerardo Ruiz, and Lisha Whitefield.

Juniors Bertha Ortiz and Garrett Martin. (No other qualifiers.)

Seniors Raul Zamora and Laura Flores. Qualifiers, Raul Zamora, Matthew Stewart, Laura Flores, Meagan Dorton, and Ross Daigle.

The Best All Around Boy and Girls Awards were presented to Adam Cherry and Jessica Crossland for showing outstanding scholarship, citizenship, and leadership.

UIL Scholar Awards were presented to Kevin Beedy, Jessica Crossland, Kallie Smith, Jeffrey Swan, and David Pipkin as seniors who graduated in the top ten percent of their class and who have participated in at least one UIL academic, music or athletic contest.

Individual classroom awards presented were as follows:

English: English IV - Loree Espinosa; English IV AP and Concurrent - Adam Cherry; Career Connections - Katie Baehler; English I, Pre AP - Si Li Tang; English II - Homar Flores; English II Pre AP - Cayla Smith; English I - Jessica Bates; English III - Marcus Vasquez; English III AP - Ashlee Flowers; English Second Language I - Oscar Prieto; English Second Language II - Yuliana Alvarez.

Foreign Language: Spanish I - Jessica Moreno; Spanish II - Gerardo Ruiz; Spanish III - Claudia Vaquera.

Theater Arts: Theater Arts I - Michael Huffaker, Debate - Russell Sheets; Communications Applications - Reyna Ruiz.

Science: Anatomy and Physiology - Garrett Martin; Biology I Pre AP - Si Li Tang; Biology I - Timberly Thomas; Physics I AP - Garrett Martin; Chemistry I - Homar Flores; Chemistry Pre AP - Dana McLaughlin; IP&C - Eric Flores.

Art: Art I - Katie Baehler; Art II - Chris Cudd; Art III - Michael Lozano; Art IV - Raul Zamora.

Math: Geometry - Jordan Short; Pre-Calculus - Garrett Martin; Calculus - Kevin Beedy; Algebra I - Si Li Tang; Algebra II - Cayla Smith; Aim Algebra - Timberly Thomas.

History: World History - Ashley Hernandez; World Geography Pre AP - Adrianna Pinon; College History 1301 - Jeff Swan; College History 1302 - Jessica Crossland; Government - Jessica Crossland;

Economics - Kevin Beedy; Government 2305 - Adam Cherry; Economics 2301 - Kallie Smith; World Geography - Hervey Rodriguez; Health - Timberly Thomas.

Music: Choir - Yuliana Alvarez; Band - Megan Dorton.

Real World Skills: Communications - Matthew Stewart; Community & Citizenship - Fernando Ortiz; Applied Science - Adan Briseno; Vocational Experience - James Terrace Baker; Applied Math - Merced Juarez; Occupational Prep

- Dave Pope.
 Computer Sciences: Business Computer Information Systems I - Jessica Freeman; Business Computer Information Systems II - Garrett Martin; Multimedia - Loree Espinosa; Video Technology - Scott Sauer; Web Mastering - Ashlee Flowers; Desktop Publishing - Cayla Smith, Digital Graphics and Animation - Ashlee Flowers; Yearbook - Jessica Crossland.

Home Economics: Personal and Family - Angelica Briseno; Food Science & Technology - Lorena

Lopez; Child Development - Laurel Smith; Nutrition & Food Science - Emily Longoria; Preparation for Parenting - Fernando Flores; Ready, Set, Teach - Raul Zamora.

Ag Science: Applied Ag Science - Jacob Jones; Ag Power Technology - Daniel Longoria; Ag Metal Fabrication - Adam Cherry; Introduction to World Agricultural Science - Sonny Parker; Marketing Dynamics - Brianne Burkhammer; Home Maintenance - John Thomas; Land Design & Maintenance - Dustin Mackie.

THANK YOU, THANK YOU, THANK YOU

The Panhandle Crisis Center would like to say Thank You to the following businesses and individuals for making our April 2003 Golf Tournament a big success.

- | | | |
|---|--|--------------------------------------|
| Ace Hardware-Perryton | Dunlavy's Jewelry | Lipscomb County Child Welfare Board |
| Alexander Oil Field Service, Inc. | Earl McKinley Insurance | Marcia Cowan, CPA |
| Alfred Construction | Edna's Flowers/Peak Photography | Mary's Cut-N-Curl |
| Alpar Resources | Edward Jons Investments | Maverick Books |
| Animal Clinic of Perryton | Edwards Tractor Repair | McCallie Properties |
| Arkoma Transport, Inc. | First National Bank Spearman | North Plains Electric |
| Auto Mart | First State Bank Spearman | Ochiltree General Hospital |
| Badger Resources, Inc. | FirstBank Southwest - Booker | OGH Medical Equipment & Supply |
| Beckman Well Servicing Company | FirstBank Southwest - Perryton | Panhandle Diner & Deli |
| Berry Cleaners | Five Star Equipment | Perryton Cleaners |
| Bob Jay's Plumbing | Foster Testing/Wright Trucking | Perryton Coca-Cola |
| Booker Chiropractic Clinic | Golden Spread Sales Company | Perryton Herald |
| Booker Packing | Gordon's Drug & Photo Finish | Perryton Office Supply/Radio Shack |
| Booker Transport | Gruver State Bank | Prairie Motors |
| Bowwell Brothers Funeral Home | Hansford County Veterinary Clinic | PTSI - Your #1 Choice |
| Brock Insurance | Hansford Implement | Randy & Theresa Brillhart |
| Brown, Graham & Company | Hansford Insurance Agency | Real Estate & Rental |
| C.O.'s Supply Company/Novus Windshield Repair | Hergert Ford | Redman Pipe & Supply |
| Celebrate | Hickerson Jewelry | Renco Tool Company |
| Covenant Title Company | Hometown Realty - Linda Lewis | Riley Energy |
| Corner Drug | Irwin Auto | Ronnie & Linda Kerr |
| Courson Oil & Gas | Hungry Cowboy | Schlumberger Well Service |
| Dana Kay Brady, Attorney at Law | J&M Service Center | Security Insurance |
| David Pond Well Service | Jackie's, Betty's, Leprechaun & Footprints | Shawn Tevis Photography |
| David Scott, Attorney at Law | Janet & Rocky Tregellas | Sonny Halpain |
| Don hooten, CPA | Janet K's Hallmark | Talk To Me Wireless |
| Dr. Billy Nowlin, DO | Jerry, Bobbie & Monte Eisenman | Taylor's Old Times Shoppe |
| Dr. Zoel Allen, DDS | Jet Well Service Company | Texas Farm |
| Dr. Kevin Walcher, DS | Jim Seybert Home Builders | Tim's Pro Shop |
| Dr. Rex Mann, MD | Jim's Tire Service | Turner Transport |
| Dr. Rick Siewert/Dr. Tripps Childers & Staff | John Hutchison, Attorney at Law | Waide's Pharmacy |
| Dr. Claude Betty, MD | KEYE Radio | W-B Supply Company |
| Drilling Fluids, Inc. | Kirk & Krista Courson | Western Hot Oil Service |
| | Lemon, Shearer, Phillips & Good | William P. Harris Oil & Gas Products |
| | Lemon Insurance | Williams Plumbing & Heating |
| | Lone Star Restaurant | |

A special Thank You to the following donors of Gifts, Food Items & Services.

- | | | |
|--|------------------------------------|------------------------|
| Jet Well | Dollar General - Spearman | Kiowa Drug |
| Perryton Coca-Cola | Lowe's, Paul Lopez | Dean Arnold |
| Pack-A-Sack | United Supermarket | Sonic Drive-In |
| Alo - Spearman | MurMur's - Spearman | Dixie Dog Drive-In |
| The Legend-KSCB Radio 107 & KLDG Radio 102 | KRDF-FM - Spearman | First Christian Church |
| All Occasion Flowers - Spearman | Hansford County Reporter-Statesman | Andy's Lawn Service |
| | | Cox Communications |



Driven to Success
CFI is now Hiring
 COMPANY - OWNER OPERATORS
 SINGLES AND TEAMS
 Loads with miles available immediately!
 Ask about our spouse-training program
Call 800-CFI-DRIVE
 www.cfidrive.com

Nursing Home Neglect NO FEE FOR FIRST VISIT

Neglect at nursing homes may result in severe weight loss, dehydration, decubitus ulcers (bedsores), and even death. Call us for professional insight.

Ryan A. Krebs, MD, JD
 Doctor-Lawyer in full time Law Practice

Richard A. Dodd, L.C.
 Timothy R. Cappolino, P.C.
 Board Certified Personal Injury, Trial Law & Civil Trial Law, Texas Board of Legal Specialization

1-800-460-0606
 www.texasnursinghomelaw.com

Jewelry Blow-Out Total Stock Reduction Sale!

Register To WIN Over \$3,000 In Fabulous Prizes, Including A 32" Color TV!

FOOD DRIVE! Bring In Non-Perishable Food Items to Benefit the Ministerial Alliance & You Can Win A Fabulous Prize!

Every Single Item In The Store Slashed 25% to 75% OFF!

ALL 14kt Gold Earrings 25% to 50% OFF	ALL Diamond Rings 25% to 75% OFF	ALL Pulsar Watches 25% to 50% OFF	ALL Colored Stone Rings 25% to 75% OFF
ALL Diamond Earrings 25% to 60% OFF	ALL 14kt Gold Chains & Bracelets 25% to 50% OFF	ALL Diamond Bracelets 25% to 75% OFF	

WE ACCEPT: Cash/Check MC/Visa Discover Layaway

Dunlavy Jewelry
 209 Main Street • Perryton, TX
 806-435-3136

SALE HOURS:
 Monday thru Friday 9:30 AM to 5:30 PM
 Saturdays 9:30 to 4
 CLOSED Sundays!

Return this ad for 1,000 Free Diamond Points good towards Winning Fabulous Jewelry Prizes!
 Limit 1 Ad per day per entrant. Expires 06/03
 © Profit Plus, Inc.

Stop Wheel Tracks this Spring!

SoilMAX Track Packs stop wheel tracks before they start!

If you're tired of dealing with wheel track problems, use the SoilMAX Track Pack this spring. The Track Pack consists of inexpensive soil-stabilizing polymer tablets in a mesh bag. Once attached to your pivot's towers, the irrigation spray causes the polymer to be released into the wheel tracks, which stabilizes the soil aggregate. This helps reduce wheel track erosion, compaction and puddling. It's simple. It's inexpensive. And it works.

CHOOSE FROM ONE OF THESE MONEY-SAVING OFFERS ON NEW ZIMMATIC IRRIGATION SYSTEMS:

- Cash rebates up to \$150 per tower or \$1,200 on 8-tower Zimmatic systems.
- 3.9% low interest with only 5% down. Five-year financing. First payment in 12 months.
- Interest free for two years.
- Interest free for 12 months with only 10% down. 3.4% effective rate. Five-year financing.

BUT HURRY! ORDERS MUST BE RECEIVED BY MAY 31, 2003.

Five Star Equipment
 Spearman, Texas ***** (806) 659-3743

Zimmatic
 STRENGTH TO GROW ON

See your Zimmatic dealer for complete details or visit us online at www.zimmatic.com. Zimmatic is a registered trademark of Landsys Manufacturing Co. Certain restrictions and conditions apply to each of these offers.

SHS Scholarships

The Spearman graduates listed below received the following Spearman Foundation Scholarship Recipients.

Kevin Beedy: Bob and Jackie Pearson - \$500, Kerry Henton Memorial Scholarship - \$500, North Plains Insurance - \$500, Renner and Pearson, Inc. - \$500.

Jessica Crossland: Brown, Graham, and Co. PC - \$500, Trencor Enterprises Inc., - \$500, Carl and Peggy Archer - \$250, Gene and Francis Cudd - \$250.

Kallie Smith: Rotary Club in Memory of Pete Fisher - \$500, Kerry Henton Memorial Scholarship - \$500, John and Jo Linda Hutchinson - \$250, Johnny and Carol Dunnihoo - \$250.

David Pipkin: Cargill Inc. - \$150, J&M Service Center - \$250, Hansford Implement Co. - \$500, Rotary Club in Memory of Jack McWhirter - \$500, First State Bank of Spearman - \$500, Kerry Henton Memorial Scholarship - \$500, Speartex Grain Company - \$250.

Dustin Mackie: Cargill Inc. - \$150, KRDF-FM Radio - \$100, Hi-Plains Auto Supply Inc. - \$500, Tharin Company Inc. - \$500, DACO - \$250, Phillip and Lynna Renner - \$500, Pat and Cathy Patterson - \$1,000, Carl and Peggy Archer - \$250.

Garrett Griffin: Rotary Club in Memory of Kerry Henton - \$500, Bob and Candy Boxwell - \$500, Elvonna Davis - \$250, Irwin and Betty Davis - \$500.

Lucy Villa: Hickerson Jewelers - \$100, Rotary Club of Spearman - \$500, Irwin and Betty Davis - \$500, Spearman Chamber of Commerce - \$500.

Nicole Ramon: First National Bank of Spearman - \$400, Lady Fair - \$500, Matt Archer - \$500.

Adam Cherry: Gene and Francis Cudd - \$250, Kerry Henton Memorial Scholarship - \$500, Agco of Spearman - \$500.

Lance Smith: Don and Russell Savage - \$250, Jane Henton - \$500, Hi-Pro Feeds - \$1,450, Mike Davis Memorial Scholarship - \$500, Perry and Mary Dixon - \$250.

Brianne Burkhammer: Spearman School Board & Superintendent - \$500, Pittman and Sons Inc. - \$500, Britt and Linda Jarvis - \$250.

Mindee Gillaspie: Trencor Enterprises, Inc. - \$500, Anonymous - \$200.

Scott Sauer: Rotary Club of Spearman - \$500, D&C Greenhouse - \$300, Brock Insurance Agency - \$200.

Colton Miller: Betty and Irwin Davis - \$500.

Travis Brown: Tim and Terrie Harper - \$250, Mike Davis Memorial Scholarship - \$500, Five Star Equipment - \$500, Mike and Pat Cudd - \$250.

Lance Baker: Gordon's Drug - \$500, Kerry Henton Memorial Scholarship - \$500, Richie and Karen Thompson in Memory of Kerry Henton - \$250, Mike Davis Memorial Scholarship - \$500, Britt and Linda Jarvis - \$125.

Elsa Vargas: First National Bank - \$400, James Pinkerton, DDS - \$500, Kerry Henton Memorial Scholarship - \$500.

John Thomas: Cargill, Inc. - \$150, Hansford Implement Company - \$500, Carol and Johnny Dunnihoo - \$250, H&H Water Well Service Inc. - \$500, Speartex Grain Company - \$250, Jason and Cindy Duvall - \$250.

Gerardo Hernandez: Frontier Feedyards - \$250, Golden Spread Sales Company - \$250.

Eric Vasquez: Keith and Jody Hight - \$250, Perry and Mary Dixon - \$250, D&D Cattle Hauling - \$50, Donahue Ditching - \$50, Hansford Abstract - \$250, Interstate Savings Bank - \$100, FSB of Stratford - \$100.

Laura Flores: Ron Gibson - \$250, Bill and Ginger Pittman - \$500, Cates Men and Boys Wear - \$100, Anonymous - \$50, Rue Sanders - \$350.

Designated Continuing Scholarships

Nancy Flores: Kent and Glenda Guthrie - \$500, Larry and Robbie Butts in Memory of Kerry Henton and Mike Davis - \$500, James and Faye Cunningham - \$250, Lowe's Marketplace - \$750, Hansford Retired School Employees - \$250.

Chad Scarborough: B&B Sales Company - \$100, James and Faye Cunningham - \$250, Anonymous - \$100, Britt and Linda Jarvis - \$125.

Monica Cantu: Erlis Pittman in Memory of Ethel Pittman - \$500.

Other scholarships awarded are as follows.

Lance Baker - H&H Credit Union - \$1,000; Garrett Rex Memorial - \$500; Booster Club - \$500; Holt Club - \$500

Jessica Crossland: Amarillo Globe News - \$1,000; Booster Club - \$500; Women's Division of the Spearman Chamber of Commerce - \$825; McFadden Honors Scholarship, Texas Tech - \$1,500/year for four years; Garrett Rex Memorial - \$500

Dustin Mackie: Hansford County 4-H - \$500; High Plains A&M \$250; National Honor Society - Outstanding Volunteer - \$500; Booster Club - \$500

Travis Brown: Hansford county 4-H - \$500; Booster Club - \$500

Kallie Smith: Lions Club - \$250; National Honor Society - \$250; Fernando Flores: Prairie Garden Flowers - \$200

Paul Bynum: National Honor Society - \$500; West Texas A&M Residence Hall - \$1,000; Gladiola Flower Club - \$500; Booster Club - \$500; West Texas A&M - \$1,000

Nicole Ramon: National Honor Society - \$250; Booster Club - \$500

John Thomas: Karl Nielsen & Sister Karen Nielsen - \$646.78; Booster Club - \$500

David Pipkin: West Texas A&M Residence Hall - \$1,000; Booster Club - \$500

Jeff Swan: West Texas A&M Residence Hall - \$600; Booster Club - \$500; Spearman Ex-Students Association - \$1,600

Kevin Beedy: Booster Club Tennis Scholarship - \$500; Abilene Christian University Academic Scholarship - \$6,000; Abilene Christian - \$3,000

Adam Cherry: Booster Club - \$500; McMurry Academic Scholarship - \$5,000

Mindee Gillaspie: Booster Club - \$500; Marjorie Urban Memorial Scholarship - \$1,000; Wayland Vocal Scholarship - \$7,200

Garrett Griffin: Booster Club - \$500; West Texas A&M University - \$1,000

Colton Miller: Booster Club - \$500

Scott Sauer: Booster Club - \$500; Evelyn Gilpatrick - \$2,025; Small School Academic Competitions - \$1,383; Oklahoma State University - Waive of out-of-state tuition

Lance Smith: Booster Club - \$500

Elsa Vargas: Booster Club - \$500; Sacred Heart Catholic Church Women's Guild - \$200; Karl Nielsen & Sister Karen Nielsen - \$646.78

Eric Vasquez: Booster Club - \$500; Chamber of Commerce - \$500; Five Star Equipment - \$250

Lucy Villa: Max & Dorothy Baggerly - \$1,000

Ross Daigle: Small Schools Academic Competition - \$1,383; Southwestern Oklahoma State University - Waive of out-of-state tuition

Reyna Ruiz: Sacred Heart Catholic Church - \$50; TEA Early Graduation - \$1,000

Sandra Lopez: TEA Early Graduation - \$1,000

Adan Brisenio: TEA Early Graduation - \$1,000

Jose Hernandez: TEA Early Graduation - \$1,000

Daniel Longoria: Marines (GI Bill) - \$38,000; Marines (Tuition Assistance) - \$35,460

Spearman ISD Kids Kamp 2003

June 3: MISSION POSSIBLE-SPY a BOOK invites children to explore history, cultures, adventures, spies, secret codes, mysteries, and partnerships with books at the Hansford County Library. Ages 3-5: 10:00-10:45am. Grades K-2: 11:00-11:45am.

June 3-5: HANSFORD GOLF CLUB KID'S CLINIC. This golf clinic is a beginner level course designed to develop or improve your skills for the game of golf. The cost of practice balls and green fees at Hansford Golf Course are included in the registration fee. Grades 3-5: 9:00-10:00am. Grades 6-8: 10:30-12:00pm. \$25.00

June 5: LIGHTS, CAMERA, and ACTION... morning matinee at Lyric Theatre for grades K-5. The price of \$4.00 includes drink and popcorn. Matinee starts at 10:30am.

June 9-13: Lynx BASKETBALL CAMP-SESSION I is for current grades 6-8 at the Varsity Gym. Cost of the camp is \$25 and includes t-shirt and a basketball. Camp time is 9:00-11:30am.

June 10: MISSION POSSIBLE-SPY a BOOK
Ages 3-5: 10:00-10:45am
Grades K-2: 11:00-11:45am

June 11: TWO FOR TEA-MOM and ME is a special time for mothers and daughters to put on that special dress and have a fun tea-party. It's also a great time for grandmas and aunts. Each girl will model a garden hat designed by her and her mom. Don't forget the camera! Ages 4-8 \$20.00 a pair 10:30-Noon. Reservations are limited to 12 pairs. The party will be held in the backyard of Karen Thompson, 1104 Linn Dr.

June 16-20: LYNX BASKETBALL CAMP SESSION II is for current grades 3-5. The camp will be held from 9:00-11:30am in Varsity Gym. The cost is \$25 and includes a t-shirt and basketball.

June 17: MISSION POSSIBLE-SPY a BOOK

June 18 & 19: SEWING CAMP is for students in grades 4-8. Peggy Winegarner and Karen Babitzke will teach basic sewing skills needed to complete a take-home project during this two-day camp. Camp will be held 10:00-noon each day at Spearman High School. The cost is \$10.00. Pre-registration is required!

June 23-27: SPEARMAN JUNIOR THEATER will have Hollywood calling your name! Under the direction of Tony Sidwell and his high school drama class, campers will play games, create skits and then perform for the public. Junior Theater is for students in grades 2-8. It will meet from 10:00am-noon at the Spearman High School Auditorium. Cost of the camp is \$50 and pre-registration is required.

June 30: SESSION I Kinder Café - Kids will work the noon hour at the Panhandle Diner & Deli. Skeeter Huffaker will instruct students on job safety, meal preparation and waiting tables. This enrollment is limited to 10 students grades 4-6 10:30am-1:00pm

June 24: MISSION POSSIBLE-SPY a BOOK

JULY 1-3: CODE BLUE-JR. EMERGENCY MEDICAL TECHNICIAN CLASS is for students who will be in grades 7-8. This class is limited to 10 students. The cost of this camp is \$45 and will include medical training on the Jr. High level. Spearman Fire Station 10:30am-noon

July 8: Lights, Camera, and Action... grades K-5 10:30am Lyric Theatre

July 8 & 9: ALL ABOUT ME is wonderful! Through humor and song, character is defined and kids learn that what you are inside is what really matters. How to make good choices will be introduced through Character Counts. The camp will be held at the Church of Christ, 121 S. Haney Ages 3, 4, & 5 10:00-11:00am. Instructors Peggy Winegarner, Sheri Benton, and Cindy Blackman. \$5.00

July 10: MAKE A SPLASH! KID'S KAMP SWIM Spearman Swimming Pool \$1.00 Grades K-5 10:30-noon

July 15-17: GIGGLEBYTES COMPUTER CAMP has limited enrollment. Instructors Lisa Short and Mandy Derington will teach Internet research, web design, digital camera and t-shirt screening. \$50.00 grades 3-6 10:00-noon

July 21-24: CHEERLEADING CAMP is sponsored by Spearman High School Cheerleaders. Registration is the first day of camp at Spearman High School. Cost is \$5.00 per day.

July 28: KINDER CAFÉ SESSION II same as session I

August 4-7: LYNXETTE BASKETBALL CAMP
Session I-grades 5 & 6 8:00-10:00am \$40.00
Session II-grades 7-9 10:00am-12:30pm \$40.00
Session III- grades 2-4 2:00pm-4:00pm \$20.00

Contact Cindy Blackman, Community Resource Coordinator for more information or to register.

Community Resource Program
403 E. 11th Street
Spearman, Texas 79081
Phone: (806) 659-3233
Fax: (806) 659-2079
Email: cindy.blackman@region16.net

Texas Beef Feedyard

Palo Duro Feeders

TWO LOCATIONS FOR DELIVERY OF YOUR WET CORN



- ✓ **PRICE.** Seasonal price trends have generally advantaged sellers of wet corn. Competitive basis offers allow you to cash in the crop while prices are high. You can price when the market is right for you.
- ✓ **PRODUCTION.** Lower the production risk with an early harvest and don't leave your crop vulnerable to wind damage, weak plant roots and the many risks assumed by a late harvest. As a bonus, save what could be the profit margin by saving an extra month of water with record gas prices.
- ✓ **BALANCE.** Making a decision on crops is usually difficult and is based on changing information. Planning a portion of your farm crops for wet corn just makes good sense. No one knows the future.
- ✓ **PAYMENT.** Have the payment made at your instruction from a financially sound business. Log on to the web and view your deliveries or check your historic yields from year to year on a tract of land. Electronic settlement and clearing available for faster payments and less paperwork.

GIVE US A CALL ABOUT CONTRACTING YOUR CORN

Texas Beef Feedyard - Sunray

Palo Duro Feeders - Gruver

Dwayne Thompson 948.4163 or
Craig Clyburn 930.1233

Slayton Johnson 733.2416 or
Craig Clyburn 930.1233