

Inside

At the Movies	2	At the Buzzer	5
Lunch Menus	2	For the Short of It	5
Chamber Chatter	4	Classifieds	6
Out at the Lake	4	Obituaries	7

Among the Neighbors

See Page 4

WEATHER FOR WEEK OF 12-29 THRU 1-04

Day	Hi	Lo	Precip	Day	Hi	Lo	Precip
Thu	57	31	.00	Mon	44	23	.00
Fri	45	36	.00	Tue	25	19	.03
Sat	29	25	.00	Wed	--	18	.00
Sun	39	15	.01	Total Precipitation 0.04			

HANSFORD COUNTY LIBRARY
0120 MAIN ST.
SPEARMAN, TX 79081-2064
EXPIRES 04/15/1995 THANK YOU

The Hansford County

Reporter-Statesman

Serving Hansford County Since 1907

Volume 87 • Issue 1

213 Main • Spearman, Texas 79081

Thursday • January 5, 1995

City of Gruver gets ready for proposed recycling center

The city of Gruver has purchased property adjacent to its City Hall and is in the process of removing a dilapidated building that occupied the property, in anticipation of opening Gruver's new recycling center.

In Spring of 1994 Gruver along with other members of the Panhandle Subregion II Solid Waste Task Force (Perryton, Spearman, Booker, Darrouzett, Follett and Canadian) applied for a grant with Texas Natural Resource Conservation Commission (TNRCC) to purchase recycling trailers and hire a recycling coordinator to establish recycling programs in each community. In December of 1994 the grant obtained its final approval and the recycling trailers (known as Protrailers) were put into production a Protrailer (a manufacturer of steel solid waste containers).

Gruver anticipates receiving a Protrailer for recycling in early January but has taken steps to establish an alternative recycling program should the shipment be delayed in any way. Gruver is working with CEG (Concerned Environmental Group) of Borger to arrange for collection of most recyclables from dumpsters to be set up on the cleared property next to City Hall. The center should be fully estab-

lished by the first of February.

Through CEG, Gruver will be able to recycle office/computer paper, news print, HDPE #2 (milk jug type) and PETE #1 (Soda Bottle Type) plastics, steel/tin cans, magazines and aluminum. Residents will also be able to recycle used motor oil and filters with CEG.

Omega Raz-R-Tex of Panhandle will pick up and recycle clear and colored glass for the community. Omega manufactures abrasive glass beads for sandblasting and reflective beads for street paints. They will process 150 tons of recycled Panhandle glass per month when they are in full production.

Subregion II Solid Waste Task Force Recycling Coordinator, Margie Fagan, has been contacting community groups to present, Recycling-A Solid Waste Solution, a program to inform the residents of Gruver about recycling in their community. She can be reached at Perryton City Hall (435-4014) or you may leave a message at Gruver City Hall (733-2424) and Margie will contact you.

By supporting recycling, residents will help reduce Gruver's rising solid waste disposal costs and keep money in the community that can be used to the benefit of all citizens. Make a pledge and support recycling in Gruver.



RAISE YOUR RIGHT HAND - Last Thursday, December 29, the Hansford County officials were sworn in by District Judge Bill Smith in the District Court room. Those that were sworn in were (l to r) County Commissioner Precinct #4 Danny Henson, District County Clerk Kim Vera, Hansford

County Treasurer Norma Jean Mackie, Justice of the Peace Michele Davis, and County Judge Jim Brown, and County Commissioner Precinct #2 Joe T. Venneman (not pictured). (Photo by Cora Thompson)

Southwestern Bell includes area code

As of this past Tuesday, January 3, 1995, Southwestern Bell Telephone Company customers in West Texas and the Texas Panhandle must now include their three-digit area code when making long-dis-

ance calls within their won area codes.

The dialing change - which will not affect customers' rates for basic telephone service, their long-distance rates or 9-1-1 services - is a result of mandated modifications to the North American Numbering Plan, which were announced last fall. The new dialing pattern will affect customers in the 806 and 915 area codes.

The plan is administered in the United States, Canada, Bermuda and parts of the Caribbean by Bell Communications Research (Bellcore). Last fall, Bellcore and Southwestern Bell Telephone Company announced the planned

changes and local business and residential customers were notified through bill inserts, letters, newspaper ads and bill messages.

The "permissive" dialing period began July 1, 1994, for Southwestern Bell Telephone Company customers to start dialing their area code in long-distance calls within their area code region. Beginning January 3, 1994, customers must dial a "1" or "0" plus the area code and seven-digit number of all long-distance calls.

While the new dialing pattern is just being introduced to Southwestern Bell Telephone Company customers in West Texas and the Texas

Panhandle, it already is in effect in major metropolitan areas in more than a dozen states and includes Houston, Dallas, Fort Worth, San Antonio, Austin, Waco and other Texas market areas.

The numbering plan was established nearly 50 years ago by the old Bell Laboratories, and is being modified to include the numbers "2" through "9" as the middle digit in new area codes. The numeric combination enables Bell core to create 640 more area codes, which can be assigned as needed through 2025 or beyond, and establishes billions of new phone numbers during the next 30 years.

TNMP gives notice to TUElectric

Texas-New Mexico Power Company today announced that it has provided notice to TU Electric of its intent to cease purchasing full requirements power and energy at its points of delivery currently served by TU Electric, effective no later than Jan. 1, 1999.

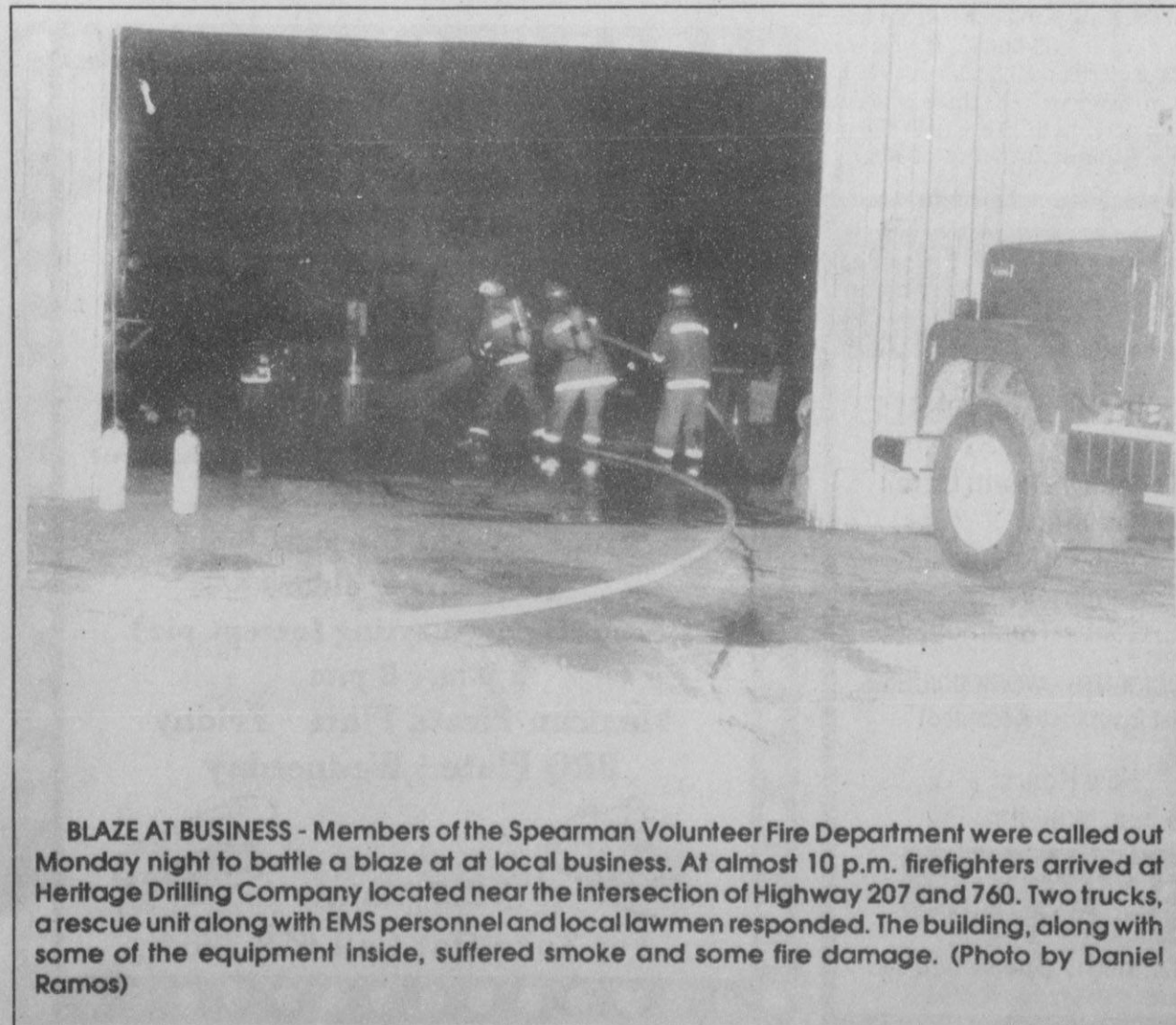
"Texas-New Mexico Power Company is committed to making its

pricing more competitive," said Kevern Joyce, the company's president and CEO. "We will strive to make new arrangements that are more favorable to our customers," Joyce said. According to Joyce, the wholesale market has opened up considerably within the last two to three years, in large part because of the Energy Policy Act of 1992.

"Given the increasingly competitive nature of the wholesale power market, we are confident that we will succeed in this effort," he said.

Joyce explained that the company's purchased power costs are recovered from customers on a pass-through basis. As a result, he

See TNMP, page 2



BLAZE AT BUSINESS - Members of the Spearman Volunteer Fire Department were called out Monday night to battle a blaze at a local business. At almost 10 p.m. firefighters arrived at Heritage Drilling Company located near the intersection of Highway 207 and 760. Two trucks, a rescue unit along with EMS personnel and local lawmen responded. The building, along with some of the equipment inside, suffered smoke and some fire damage. (Photo by Daniel Ramos)

Sorting through the right recycling materials needed

By Margaret Fagan

With all recycling symbols popping up on plastic packages these days we wonder why our recycling center will accept one plastic and not another. The reasons are varied as the packaging and correct sorting is the key to a successful program.

Packaging is the single largest use of plastics in the U.S.; it consumes almost 2 million tons of plastics each year yet only a small portion of that is recyclable. Spearman's recycling center accepts HDPE #2 clear (milk jug type) and PETE #1 (beverage containers) because there is a strong market for them at this time. They must be sorted in this way to be of value to GEC, Spearman's recyclables collector. All other plastics must be placed in the "other plastics" bin or they will contaminate the highly marketable product.

Colored plastics (regardless of the code) are not currently recyclable because there is no market for them. You may have noticed many detergent manufacturers have switched to clear packaging for this

reason. Containers that held oily product cannot be recycled because they are too difficult to clean. Plastic bags are not recyclable because they are too expensive to sort. Do not recycle look-alike plastics.

See SORTING, page 2

Hansford Happenings

Meals-On-Wheels Service

To sign up for Meals-On-Wheels Service or to receive information, call Ernestina Salgado at 659-2535, ext. 226 between 8 a.m. and 5 p.m.

55 Alive Defensive Driving Classes

55 Alive Defensive Driving Classes will be held Jan. 9 & 12 at the O'Loughlin Center. Texas drivers age 50 and over who complete this course, by law, may save up to 10% on their automobile insurance for three years. Sign-up will be at the O'Loughlin Center, 502 S. Brandt, or for more information contact Kathy Bryant at 659-3030.

American Heart Association

The American Heart Association meeting will be held Jan. 9 at 7 p.m. at Lozano's Cafe. All members are encouraged to attend.

Calendar Misprint

Gruver schools will have school Feb. 3, 1995. This is not a holiday.

"Common Bond"

First United Methodist Church of Spearman will host a concert this Sunday, Jan. 8, by gospel singing group "Common Bond." Youth activities for 7th - 12th graders begin at 5 p.m. and the concert begins at 7 p.m. For more information contact Jeff Lust at 659-5503.

School Lunch Menus

Spearman Lunch Menu
Monday, January 9
 Steak fingers, whipped potatoes, sweet peas, hot rolls, pears, and milk.

Tuesday, January 10
 Oven fried chicken, whole kernel corn, orange glazed sweet potatoes, bread slice, birthday cake, and milk.

Wednesday, January 11
 Corndogs, macaroni & cheese, seasoned green beans, steamed carrots, cornbread, plain jello, and milk.

Thursday, January 12
 Meat and cheese nachos, refried pinto beans, Spanish rice, pineapple tidbits, and milk.

Friday, January 13
 Hamburger, french fries, shredded lettuce, sliced tomato, pickle-onion, cookie, and milk.

SISD Breakfast
Monday - Breakfast pizza, fruit or fruit juice, and milk.
Tuesday - two waffles, fruit juice, and milk.
Wednesday - Biscuit, sausage pattie, fruit juice, and milk.
Thursday - Cereal, toast, fruit juice, and milk.
Friday - Toast, scrambled eggs, hash browns, fruit juice, and milk.

Gruver School Lunch Menu
Monday, January 9
 Steak fingers, mashed potatoes w/gravy, English peas, pudding, hot roll, and milk.
Tuesday, January 10
 Nachos, pinto beans, carrot

sticks, fruit, cornbread, and milk.

Wednesday, January 11
 Fried chicken, mashed potatoes w/gravy, corn, jello, biscuit, and milk.

Thursday, January 12
 Pigs-in-a-blanket, pork & beans, fruit, and milk.

Friday, January 13
 Hamburger, french fries, lettuce, pickle, cheese, rice krispie treats, and milk.

GISD Breakfast
Monday - Cereal, muffin, juice and milk.
Tuesday - Donuts, juice and milk.
Wednesday - Breakfast burrito, scrambled eggs w/sausage, juice and milk.
Thursday - Two slices toast, peanutbutter and jelly, fruit and milk.
Friday - Two cinnamon rolls, juice and milk.

Pringle-Morse Lunch Menu
Monday, January 9
 Beef and cheese enchiladas, beans, rice, salad, cornbread, cookie, and milk.
Tuesday, January 10
 Roast beef, potatoes, gravy, rolls, green beans, fruit and milk.
Wednesday, January 11
 Corn dogs, pork n beans, salad, cake, and milk.
Thursday, January 12
 Spaghetti, salad, rolls, dessert and milk.
Friday, January 13
 Cheese, noodle soup, salad, fruit, ice cream, and milk.

PMISD Breakfast
Monday - Cheese toast, juice and milk.
Tuesday - Cinnamon toast, oatmeal, juice and milk.
Wednesday - Sausage, waffles, juice and milk.
Thursday - Cinnamon rolls, toast, juice and milk.
Friday - Eggs, toast, juice and milk.

Correction:

Hansford County District/County Clerk's new phone number is 806-659-4110, NOT 806-659-4120.

50 year celebration of D-Day

The recent 50-year celebration of D-Day was a somber reminder for many World War II veterans that those war-time buddies who did survive the war are fast succumbing to old age. Many veterans lost touch with their friends upon the war's end and a return to civilian life. Now with most WWII vets in retirement, many have time to reflect on their war-time friendships.

Several search organizations assist vets in finding old comrades. One relatively new and unique one is the Registry of American Veterans (ROAV). It was begun to alleviate the problems veterans encounter in searching for one another and putting them back in touch with each other.

ROAV gathers information from veterans and computerizes their name, current residence, military units they served in and the time periods served in each outfit. Persons who join ROAV will receive an initial and annual printout of the database informations of all veterans who served in the same unit during the same time frame as the joining member. The printout will

See D-DAY, page 7

Panhandle Crisis Center Report

by Mary Frances Ellzey

Everyone is getting to know our "new" Executive Director, name of Candi Smith, who has been with us since last June. She was on KEYE last Wednesday, acquainting the community at large with her into and dedication. Furthermore, she was engaged as a speaker for the local chapter of the AARP - that is, the Senior Center. She's quite willing to talk with anyone who will have her. So you program committee chairs, be advised of an excellent speaker.

Last week saw a first for the PCC. We've often received letters of gratitude from our clients. But this time we had an excellent letter of gratitude from a client's family. Things like that are delightful lagniappe. Be the fact is that the work is always gratifying, even when we're ready to tear our hair, even when the progress is inchworm slow. It's always gratifying!

And that reminds me that we are, as always, in need of volunteers. You have only to make an inquiry at the office on Main Street and fill out an application. Nothing is either difficult or embarrassing about this application. It is merely

Sorting

CONTINUED FROM PAGE 1

tics without the correct number code on them as they are a different type of resin. Some plastics start to disintegrate at the same temperature that barely melts another. A single flake of the wrong plastic in PETE recycling will ruin the entire batch making it yellow and brittle. Caps and neck rings should be removed from recyclable plastics and disposed of. Containers should be stomped flat to help conserve space in the bin. A recycling bin will hold 50% more plastics when crushed reducing the number of

times CEG must travel from Borger to collect the resources.

The plastics industry is continually researching new uses for recycled plastics. Pete resins (#1 soda bottles) can now be recycled into toys, plastic lumber, boat docks, insulation, fiberfill, carpet fiber, household items and new containers. It is fairly easy too see that recycled plastics can be a valuable resource.

Please make a choice to recycle instead of throwing it all away and don't forget - STEP ON IT!

TNMP

CONTINUED FROM PAGE 1

said, any savings that are realized through the negotiation of more favorable purchased power contracts can be passed directly on to customers without the need for time-consuming rate proceedings. "Obtaining less expensive purchased power is one direct way we can make a difference in our customer's bill," Joyce said. "We also have frozen our base rates, and we will continue to look for other ways to improve service and reduce expenses in the future.

TU Electric currently supplies approximately 29 percent of the

company's Texas capacity requirements. The company generates another 29 percent of its Texas capacity requirements at its TNP One generation station. The remaining 42 percent of its capacity requirements are supplied by other utilities and third-party power producers.

Texas-New Mexico Power Company is an electric utility serving 90 towns and cities with more than 215,000 customers in Texas and New Mexico. It is the principal wholly owned subsidiary of Fort Worth-based TNP Enterprises, Inc.

At the movies...

Showing at the Lyric Theatre in Spearman Friday, January 6, through Tuesday, January 10, are "Dumb and Dumber" on screen #1 at 7:30 p.m. and "The Pagemaster" on screen #2 at 7:45 p.m.

In "Dumb and Dumber" Jim Carrey and Jeff Daniels star as a pair of very dim bulbs who find a briefcase full of cash and go cross-

country trying to return it. Also starring Lauren Holly and Teri Garr.

"Dumb and Dumber" is rated PG-13.

In "The Pagemaster" Macaulay Cukin stars in this partially animated fantasy about a boy who is sent on a wild ride through the fiction section after he seeks refuge in a library during a thunderstorm.

"The Pagemaster" is rated G.

The Hansford County Reporter-Statesman

Serving all of Hansford County
 Spearman • Gruver • Morse

USPS 509660 • 213 Main, Box 458 • Spearman, Tx. 79081
 (806) 659-3434 • 1-800-395-9482 • FAX (806) 659-3368

Published weekly at 213 Main, Spearman, Texas

Owned & Operated by

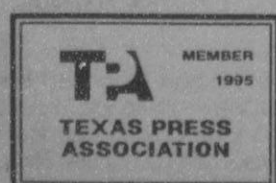
Texas Independent Newspapers, Inc.
 16607 Blanco Road #100 • San Antonio, Tx. 78232
 (210) 492-8907

Second class postage paid at Spearman, Texas 79081

Any erroneous reflection upon the character of any person or firm will be gladly and promptly corrected upon being brought to the attention of the management.

Publisher - Daniel Ramos
 Office Manager - Deziree Torres
 Staff Writer - Cora Thompson
 Staff Writer - Chad Davis

The publisher reserves the right to revise or reject at its option any advertisement which it deems objectionable, either in subject or phraseology, or which it may deem detrimental to its business.



Subscription Rate: Hansford County, \$19.95; out of county, \$24.95 annually.
 Postmaster: Send address changes to Hansford County Reporter-Statesman, Box 458, Spearman, Tx. 79081.
 Advertising & Story Deadlines
 Monday, 5:00 p.m.

DUKE'S CHIROPRACTIC CENTER



DUKE'S CHIROPRACTIC CENTER

EVENING HOURS AVAILABLE

- Headaches / TMJ
- Neck Pain / Stiffness
- Low Back Pain
- Shoulder / Arm Pain
- Hip / Leg Pain
- Family Health Care
- Pediatrics
- Athletic Injuries
- Numbness
- Gentle Treatment

AUTO ACCIDENTS • WORK INJURIES
 (Most Insurance Accepted)

New Hours:
 2-6 p.m. Mon. thru Fri.

659-5505



Darrell D. Duke DC

11 W. Kenneth • Spearman, Tx.

Letter to Editor

Dear Editor;

This is a letter I would appreciate if it could be published. My family and I were travelling through Spearman on our way to Perryton on Christmas day. When about five or so miles before Spearman between Stinnett and Spearman our car died and that was that, after waiting, for a little while a man and a lady came by and asked if they could help. I sent my 16 year old with them into Spearman to the Taylor's there so he could call our family in Perryton to come help us.

We'll let me tell you this gentleman restored my faith in human kind, not only did he drop my son at Taylor but he went home and changed, came back to see if he had gotten a hold on anyone. Then he then offered us the use of his vehicle. I cannot tell you that at point in the day I really once again started to believe in Santa Clause. I could kick myself a thousand times for not getting this nice-kind gentleman's name. But if you could publish this letter, he knows who he is and I want him to know myself, my husband, and my children owe him a debt of gratitude that can never be repaid. But I want

him to know that because of him we had a good Christmas and a great time with family because of this man. I wish I knew your name, but you have my heartfelt gratitude and you will never be forgotten.

Sincerely
 Julie Henson
 Amarillo, Texas

The Right One

for quality drycleaning and laundry service.
 Shirts-Jeans Starched.
PERRYTON CLEANERS & LAUNDRY
 1-800-232-5370

At The Lyric Theatre...

Friday, Jan. 6 - Tuesday, Jan. 10

Bargain Nights Mon. & Tue. Adults - \$4
 Fri., Sat., Sun., Adult \$5 - Child \$3 every night
 Closed Wednesday & Thursday

SCREEN 1 • 7:30 PM SCREEN 2 • 7:45 PM

Dumb and Dumber

(PG-13)

The Pagemaster

(G)

113 Main • Spearman

GET THE ALCO Advantage



FREE EVERY TUESDAY!

SECOND SET OF PRINTS

Receive a second set of 3" prints FREE with any exposure roll of 35mm, disc, 110 or 126 color print film left for developing and printing at our everyday prices! C-41 process only. Excludes larger 4" size prints, and photo gallery.



Picnic Place Restaurant

11 a.m. - 8 p.m.

Monday - Saturday

Serving:

Hot & cold sandwiches,
 many flavors of ice cream
 and baked potato pile-on

HAPPY HOUR: 3:30-4:30 p.m. (special prices)

Saturday Night Special

Senior Citizens Discount Night
 (65 years & older)

Discounts on everything (except pie)

5 p.m. - 8 p.m.

Mexican Fiesta Plate - Friday
 BBQ Plate - Wednesday



217 Main

For Take-Out Call 659-3864



Lifestyles

Friendship Quilter's Guild enjoys Luncheon

By ILENE FLOYD

A Christmas Luncheon in the beautifully decorated home of Margie Fagan was enjoyed December 14th by the Friendship Quilter's Guild. A Christmas fabric exchange was held by the members along with a handmade tree ornament exchange. Caroline Lowry, hospitality chairman, was in charge of the exchanges.

Bonita Campbell gave each member a German cut-out ornament, and Martha Pulis presented each with an angel ornament. Reta Baldwin shared miniature scissor with each member.

A short business meeting was held with vice-president Lillian Miller presiding in the absence of

the president, Margaret Fluitt who is in Arizona for the winter months. A Christmas card from Margaret was read along with a thank-you letter from Maxine Roper Nylin for the wall hanging sent to her from the guild. It was reported that a sympathy card had been sent to Fay Sell who recently lost her sister.

Programs coming up for the guild will be pattern drafting in January with member Jean Powell, and charm square collecting with Eva Lou Koons from Liberal, Kansas for February.

For the show and share part of the meeting, Bonita Campbell and Ilene Floyd showed their quilt tops for the Christmas block of the month

patterns, and Lois Bartz showed several Christmas blocks and a Santa wall hanging. Viola Cone showed her Christmas Tree wall hanging made at the November meeting from a workshop with Margie Fagan, and Ruth Oberlander brought some large Parasol Doll blocks she is using to quilt for her granddaughters. Reta Baldwin brought a quilt given to her recently that was made by her Aunt Ellen Martin prior to 1913. It is a crazy-quilt block design with ornate fabrics and embroidery stitches. Cynthia Shattles showed a Christmas vest she had made and

machine quilted with metallic thread. All of the members especially enjoyed show and share time.

A holiday luncheon followed the meeting in Margie's home, and members present besides those previously mentioned were Georgia Allen, Sandy Drake, Louise Chase, Evelyn Cain, Zella Mae Wauhob, Gail White, Fay Sell, and Ruby Collingsworth.

TODAY'S THE DAY
Stop Smoking.
American Heart Association

DIVORCE RECOVERY WORKSHOP

A six week seminar for separated or divorced men and women.

Led by Rev. Jeff Lust

Wednesdays, January 18 - February 22
7:00 - 9:00 p.m.

Cost: \$15.00

Free child care for children up to 5 years old
Please call 659-5503 to register or for more information

First United Methodist Church
407 S. Haney Box 547
Spearman, TX 79081
(806) 659-5503

"Offering Help and Hope"

After Christmas Sale

50% to 75% OFF
all Christmas merchandise
50% OFF
on selected items

Celebrate Cards & Gifts

203 S. Main
Spearman, TX
806/659-3350



COME BY & LET US
HELP YOU SET UP YOUR
SPECIAL GIFT TABLE

Couples Currently
Registered

Brad Brown & Tiffany Kemp
Kayrene & James Tylan Pierce

* Date of the Bridal Shower

314 MAIN
PHONE
659-2141

Gordon's DRUG SPEARMAN TEXAS



MARK, LUKE and JOHN GREEN

Common Bond to preform in Spearman

First United Methodist Church will host a concert this Sunday, January 8, by gospel singing group "Common Bond." Youth activities for 7th - 12th graders begin at 5 p.m. and the concert begins at 7 p.m.

"Common Bond" is a family project. Singers Mark, Luke & John Green are twenty-one years old identical triplets who began sing-

ing together at five years of age. Recently, their singing became a full-time ministry. Their recording is "The Journey" featuring the single "Jesus Paid the Price." "Common Bond" records on the Destiny Records label.

The concert on January 8 is free and the public is invited. A love offering will be taken. Child care is provided for children five and younger.

Life-style choices for healthy weight

By PEGGY WINEGARNER, COUNTY EXTENSION AGENT

Families can avoid the hazards of obesity by taking off extra pounds wisely, according to a new letter series on weight maintenance currently offered to Hansford County residents.

Families can change eating habits that cause overeating and this letter series explains how.

The series, Lifestyle Choices for Healthy Weight, is available from the County Extension office by writ-

ing box 129, Spearman, Texas 79081 or by calling 659-4131 or 733-2901.

The Lifestyle Choices for Healthy Weight letters - mailed each month - will feature such topics as why people overeat, how to determine the amount of weight to lose and how to plan meals to control calories and change eating habits to maintain normal weight.

The letter series is free.

Educational programs of the Texas Agricultural Extension Service are open to all citizens without regard to race, color, sex, disability, religion, age or national origin.

Immunizations offered

An Immunization Clinic will be held Wednesday, January 18 from 9-11:30 a.m. and 1-3 p.m. at the Texas Department of Health Office in Spearman, 720 Archer.

Immunization Clinics offer vaccination that protect against several childhood diseases like Polio, Diphtheria, Lock jaw (tetanus),

whooping cough (pertussis), measles, rubella, mumps, and HIB (haemophilus influenza type B).

The Texas Department of Health is charging money to help with the cost of keeping the clinic open. The amount of money charged will be based on family income and size, and the ability to pay.

Birth announcement

SYDNEY ALICE CLEVELAND

Tom and Kristine Cleveland, of Weatherford, Oklahoma, and formerly of Spearman, are thrilled to announce the birth of their daughter Sydney Alice Cleveland. Sydney was born December 24, 1994, 10:10 a.m. at Southwestern Memorial

Hospital in Weatherford, Oklahoma, and weighed 7 lbs. 11 oz. and was 20 inches in length.

Grandparents are Loren and Dessie Cleveland of Buffalo, OK, and Robert and Doris Akers of Follett, TX.

Sydney is welcomed home by 2 year old brother, Hunter Steven.

You are cordially invited
to a reception
to honor
MARGARET RALSTON
Thursday
the twelfth of January
Nineteen hundred
and ninety-five
one-thirty until three in the
afternoon
Gruver State Bank
Gruver, Texas
Margaret has been with the bank
for 25 years.

Call Weight Watchers
today. And
get with the
program.

EIGHT WEEKS \$69

Join Weight Watchers
and save over \$30.

Learn how you, too, can lose weight with sensible, safe eating and exercise habits. Call today and get started on a whole new you!

Come See What Weight Watchers Is All About!!

Attend a FREE meeting in Gruver!
First Christian Church • 510 King • Thursday, January 12--6:00 p.m.
Pre-registration required on January 12 for the next 8-Week Series beginning Thursday, January 19.
MUST HAVE AT LEAST 20 MEMBERS FOR A COMMUNITY MEETING.
For more information, please call 1-800-359-3131.

Weight Watchers

Offer valid in South Texas, West Texas, and Santa Barbara County, CA. Participants ages 17, 96 and 107 only. ©1994 Weight Watchers International, Inc. Owner of the Weight Watchers trademark. All rights reserved.

SHOPPING @ WINSTON
j. Winston invites you to add to your fall and winter collections at absolutely fantastic savings. All fall and winter merchandise is now marked 30% - 50% off

j. Winston women's fashion 358-2457
of amarillo 2701 paramount visa•mc•e•x

Rainbow Kids' Klub

Wednesdays 3:45 - 5:30
First United Methodist Church
407 S. Haney 659-5503

Crafts--Games--Snacks
Singing--Devotional

Begins January 4

Church van will pick up after school (3:30-3:45). Parents can pick up children at church after Klub or we will deliver them home.

Among The Neighbors

by Helen Fisher

Ora Lee Blackburn reports that her granddaughter, Lisa Popejoy, of Amarillo is recovering and the family is very encouraged.

Lisa had undergone brain surgery a few weeks ago and was back at her home surprising all with her rapid recovery. She was rushed back to the hospital when a sudden and unforeseen complication developed. She again required surgery.

Mrs. Blackburn visited her shortly after Christmas and was elated that she was making good progress. Lisa is a native of Spearman.

Joni Hart, the Gruver correspondent for the Y Section of the Amarillo News-Globe, had another interesting report on Friday. This one cleverly dealt with the reason and result of the shaved heads of the Gruver boys basketball team.

Many, many Spearman families enjoyed guests during the Christmas and New Year's holidays. Some follow:

The Reverend Wesley and Beth Daniels, former residents of Spearman, were week long guests in the home of their daughters-Becky and Regan Baker and Lynn and Joey Woolley. The Daniels live at Breckinridge.

Wesley delivered the sermon at the First United Methodist Church here on Christmas Day.

Other family members coming for Christmas were Colonel James and Thel Lemons and two children of Travis Air Force base in California; Kim and Haldon Messamore and two children of Sudan and Buzz Daniel of Lubbock.

With Hersh and Wanda Jones were all their children and grandchildren. Filling the house were Ronda and Bret Wheeler of Wellington, Roger and Diane Jones, Amarillo and Jim and Martha Jones of Dalhart with their families.

New Year's Day will find Roger and his family at the Cotton Bowl where Texas Tech will be playing. An interesting article concerning Roger, an Alumni of Tech and an outstanding football player, appeared in the Wednesday's edition of the Amarillo News-Globe. Since U.S.C. is meeting Tech at the Cotton Bowl, the article dealt with a previous game in September, 1979 when Roger starred in the game.

Of course, by the time this column is being read, the game will be over.

Travis Buzzard of Little Rock, Arkansas visited his grandmother,

Dorothy Buzzard, recently when he was enroute to Denver and Caspar, Wyoming.

On his return trip, he, Dorothy, and Patty and Terry Butts of Canyon, with Matt and Kam Taylor, shared their Christmas here, somewhat early.

Dorothy drove back to Little Rock with him, then accompanied him to nearby Bald Knob. They had Christmas with his mother, Betty and Finis Bailey, and family.

Travis will be finishing medical school in May. He then will be in residency to finish his internship as a family practitioner.

Dorothy flew back from Little Rock.

The joy of a family reunion of the John Trindle family was marred by an accident.

With them were Jan and Larry Holt and children, and from Graham, Connie and Dr. Segar with Nathan and Abby.

All were so very pleased with Connie's good health and condition as she has had serious illness. On Christmas afternoon, she fell in the bedroom. Tho she felt little pain, she was badly bruised so remained inactive. Doug had to return to his practice, but by Thursday, he felt she should have some x-rays made in Spearman. This revealed a broken hip, so she underwent joint replacement at St Anthonys in

Amarillo on Friday. Connie is recovering but will be hospitalized for some time yet. She is in room 544 and enjoying visits by her Spearman friends.

The children have returned to Graham to be in school and the Trindles are with Connie in Amarillo.

Pam and Clay Schnell enjoyed an extended holiday time with guests for a couple of weeks. Her parents, Jake and Viola Vinson of Raleigh, North Carolina, and her sister Tracy and Ralph Smith of Grand Junction, Colorado were here.

Robin, a student at Amarillo College, was home for the holidays. The Vinsons have purchased a home in Spearman and plan to, eventually, make their home here.

Jettie and Willard Davis had a son Ned David of Denver, his child.

See NEIGHBORS, page 7

★★★★★★★★★★★★★★
 ★ Jackson Welding Service ★
 ★ Agricultural & Oil Field ★
 ★ Welding ★
 ★ 17 Years Pipe Welding ★
 ★ Experience ★
 ★ Fully Insured ★
 ★ Contact Roy Jackson ★
 ★ 659-2137 or 659-5129 ★
 ★★★★★★★★★★★★★★★



CASINO NIGHT - The Spearman Chamber of Commerce put on a New Year's Eve bash last Saturday night, and several people kept themselves entertained throughout the night by bidding on silent auction items and winning contest. Sheri Benton, in charge of the silent auction, Cindy Blackman, and Jim Shirley (top) all helped out with the auction, while Charles and Melanie Elliott (bottom) show their smile after winning round-trip tickets to anywhere in the Continental U.S. (Photo by Cora Thompson)



Chamber Chatter

by Cindy Blackman
Chamber Manager

I want to remind the businesses that 1995 dues are now due and will be printing a list of businesses that are back in 1995 soon. The Chamber appreciates the support that the business community gives to us and hope we can serve them in the future.

January Calendar:

Wednesday, 4: Stock Show Board Meeting, Gruver show barn, 8 p.m.

Wednesday, 11: Retail Merchants Meeting, 7:30 a.m., Palo Duro Cafe Women's Division Exec., Noon Chamber Office.

Thursday, 12: Board of Directors, Noon, Palo Duro Cafe

Friday, 13: P.A.C.E. Meeting, Amarillo

Wednesday, 18: Women's Division, Noon, Palo Duro Cafe, Defensive Driving Class, Call 659-555 to register.

Thursday, 19: Defensive Driving Class

Saturday, 21: Chamber Board

Retreat, 8:30-3, O'Loughlin Center

The Chamber will be scheduling a meeting to start organizing the 1995 celebration for Hansford County. We urge clubs and organizations to send representatives to this meeting so plans can be made for events.

Don't forget: Hansford County Stock Show, February 10 and 11; Spearman Show Barn.

Heart Assc. Banquet-February 4th!

The Chamber and the Rotary will be sponsoring the 1995 career fair for grades 10, 11 and 12 on April 18 at the Spearman High School. Mrs. Alford, High School Counselor, is also helping us with this event.

The Chamber has noticed a lot of trash on Main Street. Please do your part and do not throw trash out on the street. There are trash cans on Main Street for this purpose.

Borger holds Country Opry

Borger will be having their Country Opry Saturday, January 7, at 111 E. Coolidge (Local 351 Union Hall). Doors will open at 6:30 and performances will begin at 7 p.m. The dinner menu will consist of stew, cornbread and dessert. The cost of evening will be donations only and all proceeds will be used for children needing coats and shoes to be distributed by Pete Loftis and Joyce Connors. Raffle tickets are still available for the hand-made quilt and \$200 Borger Bucks for the cost of \$1 each.

Entertainers for the Country Opry will be: Heaven Bound and Kirk Welch of Amarillo, Jerad Miller and Marissa Moran of Fritch, LaQuita Evans of Spearman, Rose Black of Borger.

We are looking forward to a big turnout for a family-night of entertainment. If you would like to audition for the Country Opry, please call Rose Black at 274-2837. Everyone is invited to attend.

Out at the Lake

By DOROTHY HUDSON

Lake Depth--January 2, 1995--20 feet and 4 inches.

A January, 1995 copy of the Texas Highways with the excellent article and pictures of eagles that Si McCloy recommended is now at the office at the lake and in the Gruver Library. I have a copy for the Hansford County Library in Spearman, and I have sent off my subscription for the magazine.

Joyce Johnson of the Oslo Community has tactfully told me about a mistake in the column. I have written of Canadian geese--the proper name is Canada geese or a Canada goose. I appreciate correction of my mistakes, and I am not thin skinned about criticism. The

column should be a forum for people who care about what goes on at the lake with some history of the area and stories of the plant and animal life on the watershed.

John Hutchison, our Hansford County attorney, tells me he has a bois d' arc tree at his home east of Spearman. John and Jo Linda live on the farm that Carl Hutchison, John's grandfather, brought his family to in 1929. Carl planted a living fence of bois d' arcs in the early 1930's. Many of these trees were dead when John and Jo Linda decided to build their new home on that spot. John bought a chain saw, thanking he would cut the old trees out. Much to his surprise, the chain saw could only cut an inch or so in

the wood before it clattered as if it had hit a steel post. He wound up having the trees bulldozed out, but he did save one that was a nice big tree and not in the way of the house. In wet years the hedge apples are so abundant and heavy that they sometimes break the branches.

Jim Derington is still finding lion tracks at the lake. Mrs. D. A. Cator and son Marshall got to hear a cougar scream about a month ago at Old Hansford. The current classification of cougars in Texas is that of a nonprotected nongame species. Texas is the sole western state that does not regulate mountain lion hunting. However, if you kill one, you are expected to have a hunting licence

Make The Switch To Smart Lighting.

Texas-New Mexico Power Company provides reliable power, plus bright ideas for conserving electricity. ★ Compact fluorescent bulbs can brighten your home using only about one-fourth of the electricity that incandescent bulbs use. Lighting isn't typically a home's biggest energy user, but making the switch to high-efficiency lights can help. ★ Call your local TNP office for our free Energy Management Guide.

Texas-New Mexico Power Company.

Miniscopic Deep-Canal Hearing Instrument Now Available

Our office is happy to announce that we are currently fitting a completely in-the-canal hearing instrument. This remarkable new hearing instrument is discreet and comfortable to wear. It's placement deep in the canal of the ear (see illustration at top) makes it barely visible. Others may not recognize you are wearing a hearing aid.

The Miniscopic is the smallest hearing instrument ever manufactured by NU-EAR. Call now to schedule an appointment for your hearing assessment and consultation.

Hearing tests are for hearing aid selection and not for medical diagnosis of hearing loss. © 1994 NU-EAR/ADS 1042094A.

HIGH PLAINS HEARING AID CENTER
 Golden Spread Senior Citizens Room in the O'Loughlin Community Center
 Every 2nd & 4th Tuesday
 2:00 p.m. to 4:00 p.m.
 274-5311
 1-800-753-1696
 659-3866

Delivering Technology to Your Field

Cooperator: Ricky Thompson
Location: Gruver, TX

Hybrid	Moisture	Yield	Rank
ICI 8285	14.1	140.4	1
ICI 8281	13.3	137.1	2
ICI 8272	13.4	120.2	5
ICI 8344	12.5	115.2	7
Asgrow RX899	14.7	114.6	8
ICI 8326	12.7	97.5	12
Pioneer 3162	15.1	92.6	13
Cargill 7997	14.0	92.5	14

Plot Averages
EXTREME STRESS PLOT - Limited water

Gruver: Ricky Thompson - 733-2782
Spearman: Darrell West - 659-3800

BECAUSE EVERY DOLLAR COUNTS

Superior product performance and expert year-round service mean high-yielding value for your farm.

An additional **7% SAVINGS** on all Pioneer® brand products purchased between now and **JANUARY 10** (on top of any Quantity Savings) improves your bottom line!

MAKE YOUR INPUT-BUYING DOLLARS GO EVEN FURTHER. TALK TO YOUR PIONEER SALES REP TODAY.

See or call:

NORTH PLAINS CHEMICAL, INC.
 Gruver • 733-2376

JON TOLLESON • Stinnett • 878-2380

PIONEER BRAND-PRODUCTS

All sales are subject to the terms of labeling and sale documents. ®Registered trademark of Pioneer Hi-Bred International, Inc., Des Moines, Iowa, U.S.A.

Sports

Hounds stick it to the Tornadoes, 64-49

The Gruver Greyhounds simply had more depth, and overpowered the scrappy Texline Tornadoes this past Thursday afternoon, December 29, at Texline. Texline kept the game close throughout the first half, and continually came back on the Hounds. But the Hounds closed the game strong, and won by 15 points.

The Hounds took a 2-0 lead in this game, as post Wylee Maupin tipped the ball to Travis Ferguson and Travis drove for the layup. They never trailed in the game, though Texline rallied to tie it once, at 8-8. But Roma Tomlinson hit a trey to put the Hounds ahead 11-8, and the Tornadoes never caught the Hounds after that.

But make no bones about it, this was a battling crew of Tornadoes. They trailed only 29-28 early in the third quarter, then the Hounds built the lead to 12 points early in the 4th quarter, 51-39. But the Tornadoes came back. They cut the lead to 4 points, 53-49, with about three minutes left in the game. Then the Hounds finally took control, closing the game with a fantastic 11-0 run, to win 64-49.

The Hounds hit 10 treys in this game, with four of them by the great Phil De La Cruz in the second and third quarters. It was the best long ball performance by the Hounds this year.

According to Coach Tim Garland, "In the second half we tried to

pick up the tempo with our press, which was pretty effective. I told the boys that it was good they didn't get out of control with their offense when we did that. We shot the long ball well, and it was a good win for us."

Coach Garland noted that Jace Dawson really picked the Hounds up in the third quarter, and early in the fourth quarter, with an outstanding performance. Jace had ten points on five buckets in the second half to help the Hounds to that 12 point lead early in the fourth quarter.

In the end, according to Coach Garland, depth was a factor. Coach Garland noted the Hounds did not do as good a job as he would have

liked on the boards - this year they have seemed to do a better job on the boards against the taller teams. But it was a very good win, a 15 point win, and the fifth win of the year for the Hounds.

Hounds (5-10) vs. Texline
Thursday 12-29-94 at Texline
Gru 11 27 47 64
Tex 10 24 37 49

3-Pointers - Phil DeLaCruz - 4, Travis Ferguson - 2, Sammy Renteria - 2, Brant Armes, Roma Tomlinson.

Gru - Phil DeLaCruz - 14, Jace Dawson - 11, Sammy Renteria - 9, Travis Ferguson - 8, Aaron Frick - 5, Wylee Maupin - 5, Roma Tomlinson - 5, Brant Armes - 3, Max Frick - 2, Ricardo Soto - 2.

Hounds JV (9-8) vs. Texline
Thursday 12-29-94 at Texline
Gru 16 25 38 54
Tex 3 5 13 15

3-Pointers - Daniel Bort, Scott Jarvis, Tye Womble.

Gru - Bailey Barkley - 12, Daniel Bort - 9, Scott Jarvis - 9, Heath Tolleson - 7, Tye Womble - 6, Tucker Henson - 4, Jared Johnson - 3, Juan Arreola - 2, Arturo DeLaCruz - 2.

Synopsis: Gruver opened a 16-0 lead, and it was no contest. Three freshmen were called up for this game by Coach Burnam, and Jared Johnson, Arturo DeLaCruz and Rob Murrell all played well.

At The Buzzer

By Chad Davis

Not much to say on the local front of Hansford County sports this week, except for the Canadian Tournament last December 29th through the 31st. Way to go Spearman Lynx and Lynettes! The Lynx, who took home the consolation prize, and the Lynettes, who took home third for the tournament, did a great job this weekend - not bad for playing basketball over the holidays.

Heath Archer has done a really awesome job this year, and I feel that he is really not getting the credit he deserves. Heath led all Lynx's scorers in the consolation game against River Road with 18. He has also done a great job in other games and tournaments, but several people do not realize this. Chad Wilkerson also did a fabulous job on the last game of the tournament for the Lynx by putting in 17. At the first of the basketball season, I was beginning to get worried about Wilk. He got off to a slow start. Now, not a slow start for someone of mediocre caliber, but for someone of Wilk's talent, he should have done better. He is now making up for it better than ever.

Kara Townsen, with 17, and Ashly Shieldknight, with 11, helped lead the Lynettes to a third place

win by leading all scorers. Townsen and Shieldknight usually lead the scorers, but next time you go to a game, try and count all of the assists by other girls on the team.....

OK, trivia fans, each week that my column is published, I will try and stick a sports question for you to think about until next week's issue. The week after the question is printed, the answer for it will appear in next week's issue. Here's the first weeks': What school finally won its first ever Rose Bowl - 31 years after its most recent appearance? Answer will appear next week.....

So it goes.....

Some desire is necessary to keep life in motion.
—Samuel Johnson

★★★★★★★★★★★★★
★ **FOR SALE** ★
★ **UNBELIEVABLY AT** ★
★ **BECKETT PRICE!** ★
★ **Michael Jordan Rookie** ★
★ **Card and/or set. Call** ★
★ **659-3863 or 659-2912** ★
★★★★★★★★★★★★★

For The Sport Of It

by Bob Bort

Big news for the Lady Hounds!!! Senior Julie Meyer went back to the doctor this past Tuesday, January 3, and she is expected to return to action shortly, following a stress fracture to her foot, which has had her out of action for a month. Perhaps she will play some this week, if all went well with her doctor's appointment.

And junior Molly McLain went back to the doctor this past Thursday, December 29, and she began workouts in earnest on December 30, for the first time this season. She is due back in action, following surgery to repair a tear to her anterior cruciate ligament (which happened on August 29), on January 27 - her release date is scheduled to be January 26. That means she could play at Texhoma in a non-district clash on the 27th. She will miss the first three district games, but will play at Stratford on February 3. Is that good news, or what!!

Here are some odds and ends. The records of the four girls basketball teams in district 1-AA at the conclusion of 1994 - going into this past Tuesday night's games (Jan 3) are as follows: 1. Stratford, 13-3 .813; 2. Gruver, 13-4 .765; 3. Spearman, 12-4 .750; 4. West Texas, 13-5 .722. I think those are all correct. Does that look like a tough district, or what!

The Lady Hounds were the pre-season pick for the state championship in class AA by the Texas Association of Basketball Coaches (TABC) organizational poll. They were ranked number one in the state. After early season losses at Borger by one point, and to Panhandle 50-41, as of December 3, Panhandle (9-0) had moved up to number one and Gruver (6-2) had dropped to number 13 in the Whataburger/TABC Top 20, published by the TABC Roundball Roundup.

The Lady Hounds suffered two more early season losses, to Dumas and Tascosa, dropping their record to 9-4 as of December 10. They may or may not still be in the class AA top twenty when the new Roundball Roundup is published early this month.

But the Lady Hounds now have four very impressive victories in a row, five if they managed to beat Hooker this past Tuesday night, and they have blossomed into a truly outstanding team. But mark my words! When Julie Meyer and Molly McLain return, the two leading returnees and the third and fourth leading scorers on the 1993-94 team, this team will not just be an outstanding team, they will be an awesome team, and deserving of the number one ranking in the state.

One note - some of you may wonder why I keep referring to Julie and Molly as though they are invaluable, and as the two leading scorers, when Molly hasn't even played this year. It is, of course, because they are the two leading scorers returning from last year's regional finalist team, and you can't buy their experience.

Shame on the 64th Annual Stratford Invitational Basketball Tournament!!! Gruver's girls are in the top half of the bracket with two JV

teams, one from Guymon and one from Stratford. The opening game for the Lady Hounds pits them against the Guymon JV by 21 points last month, and the Gruver varsity beat the Guymon varsity by 36. Can you imagine - now the Lady Hounds varsity against the Guymon JV??? Gruver may score 110 points, and the game will really be an eyesore. If the Stratford Tournament could fill only six of eight slots, they should not have held a tournament! Gruver will rout Texhoma on Friday, then be in the championship game Saturday night against one of three teams - Vega, Tucumcari or Stratford.

Meanwhile, the Hounds have their work cut out for them. They open with Texhoma on Thursday at 12:30 P.M., and the winner of that game will probably play Sudan. Ouch! There are no JV teams in the boys bracket. The question I have how good are the Tucumcari boys? We will find out, if the Hounds make it to the championship game.

Elizabeth Holt also guessed the name of the country that I am planning on moving to in the summer of 1996. That makes six.

Here are a couple of corrections to the first article last week, on the 1954 Greyhoundettes. A couple of typographical errors, now spelled correctly: Rachael Harris Paitner and Betty Mathews Forester.

As near as I can tell, the Greyhoundettes of that time were district 19 runners-up in 1951, then district 1-B champions 1952-54, beaten in the playoffs by Claude each year. If you know differently, just contact me.

It is time to reminisce again this week. This is the second in a 12-part series of historical basketball stories in this column.

As most of you remember, 1966 was the last time we had a state championship here in Gruver. So here it goes. I was 17, and a junior at GHS.

Sam Tipton (23.5), Billy Lieb (13.0), Mack Hoel (11.0), Ronnie Laxson (7.0), and Gary Wilson (6.0) were the Hounds five starters back in 1966, with their PPG averages. Their five starters averaged over 60 PPG. Frank Silva was their sixth man. If they had had a three-point shot, they may have averaged 80 points per game as a team, as Tipton from straight on and Lieb from the corner shot what is now a trey regularly. Tipton would have averaged 27, and Lieb 17 points per game easily.

Besides those six, other team members were Allen Etter, Benny Wilson, and Steve Butts; and sophomores Jerry Hart, John Mike Blankenship, and George Odom were added to the roster for the playoffs.

They ran through the regular season and district season nearly unscathed, with a 24-4 record. But what was to come was thrilling. I remember it like it was almost yesterday, but to make sure of all the facts, I did some research. A special thanks to Doty Jones and The Gruver Leader.

Their bi-district game was at the Buffalo Fieldhouse in Canyon against the Clarendon Broncos.

Gruver took a 47-46 lead near the very end, then the ball exchanged hands three times in the final seconds with no more scoring. I was there. As I remember, Clarendon had the last shot, and yes, it was just barely off the rim. A state championship nearly ended in bi-district! Sam Tipton scored 19 points, and what a thriller that was. But it only foretold of what was to come.

At regionals in Lubbock, there were four entries in Class A - Gruver, Big Lake, Hale Center and Stanton. The first game was Saturday morning against the Stanton Buffalos, and it was spectacular. Gruver trailed 69-68 with only 3 seconds remaining. The Hounds had the ball out of bounds, in-bounded the ball to Tipton, who was off balance and falling, and he threw it up from about 15 feet and it went. I still can picture that shot in my mind. A 70-69 victory, and Tipton had 38 points in that game.

The game that night was against the Hale Center Owls, and it was rout (comparatively). Gruver won 63-60, and Tipton had 30 points. On to the state tournament at Gregory Gym on the campus of the University of Texas.

The Hounds were one of four - Gruver, Woodsboro, Fairfield and Honey Grove. The Hounds first game was against Fairfield, and Tipton had an unbelievable 39 points, as Gruver hung on for a 61-57 victory. Against Honey Grove, though, it was the Hounds third one-point decision in the five games, with the other two by three and four points. As I remember, the Hounds had a 3 point lead against Honey Grove, but Honey Grove scored, and the Hounds hung on at the very end for the 63-62 victory and the state championship. Tipton had 26 points in that game, for an average of 30.4 points per game in the five playoff games. The Hounds final record was 29-4.

A week later, a brand new 1966 Ford Galaxy was presented to head coach Wayne Tipton by the Gruver businessmen and local residents. The keys to the car were presented by Bob Cluck. You think the town of Gruver wasn't happy!

Later, Wayne Tipton was named Basketball Coach of the Year for the Panhandle Sports Hall of Fame. And his son Sam, of course, had been named class A first team All-State.

A lot of people will always claim the 1965 Hounds team, with seniors Royce Mathews, Wayne Leatherman and Mart Hart, was better than the 1966 team. In 1965, the Hounds finished the regular season 20-8, and rolled through the playoffs, losing finally to Woodsboro in the semi-finals at Austin. They were 4-1 in the playoffs, beating Clarendon at Pampa 59-44, Farwell 67-58 and Big Lake 55-54 at the Lubbock Coliseum at Texas Tech, and Whitesboro for 3rd place at Austin 43-39. They had lost their first game at Austin to the Woodsboro Eagles 83-69. Their final record was 24-9.

It was the year that starters Tipton, Lieb and Hoel, as juniors, got their playoff experience. And it helped them to the state championship the next year.

Check Out!

the Savings!

ALLSUP'S

EFFECTIVE JANUARY 1-7, 1995
Gruver, Spearman, Perryton, & Booker Only

ALLSUP'S CANADIAN BACON, EGG, & BISCUIT FOR ONLY **99¢**

ALLSUP'S BEEF & SALSA BURRITOS FOR ONLY **99¢**

SAVE ON COCA-COLA 6 pk. 12 oz. cans **\$1.89**

ALL VARIETIES REGULAR OR WAVY LAYS[®] REGULAR \$1.49 **99¢**

ALLSUP'S HOMOGENIZED MILK GALLON **\$1.99**

ALLSUP'S SANDWICH BREAD 1.5 LB. LOAF 69¢ EACH OR **2 FOR \$1**

WESTERN FAMILY IBUPROFEN PAIN RELIEVER 100 CT. **\$1.99**

WESTERN FAMILY Ibuprofen Modern Pain Medicine TABLETS/200 mg. EACH

SAVE ON FITTI DIAPERS 30 MEDIUM OR 20 LARGE **\$4.99**

SHURFINE TOMATO KETCHUP 28 OZ. SQUEEZE **99¢**

SHURFINE APPLE JUICE 99¢

SHURFINE BLEACH 99¢ gallon

PRINGLES POTATO CHIPS \$1.69

BOLO DOG FOOD 29¢ can

"IT'S FOR YOU"...

The Classifieds Have Something For Everyone!

The Home Seller...
The Car Buyer...
The Do-It-Yourselfer...
The Mother's Helper...
The Job Seeker...
The Bargain Reaper...

When you want results, turn to The Classifieds.

The Hansford County Reporter-Statesman

Serving Hansford County Since 1907

Telephone: 1-800-395-9482 or (806)659-3434

REAL ESTATE

AA Realty

Allen Alford - Broker • 659-3034
Julie Martin - Sales • 659-2425
Larry Trosper - Sales • 659-3491

1017 Townsend - 3/2/1 - New lower price!
1103 S. Townsend - 3/1 1/2, 1, good loc.
510 S. Endicott - 3-2, 2 story
417 S. Dressen - 3, 1 1/4, 1 garden, pati.

NEW LISTING
613 Kenneth - 5 BR, 2 story, rock house
1117 Townsend - 3, 2, w/basement
1107 S. Barkley - 3, 1 1/2, 2, BELOW APPRAISAL!

Good Hanger & Storage - Old Airport
1017 Wilmet Dr. - 5/2/2, two story w/bmsl
412 Roland - 3/1/1, make offer

FOR QUALITY & SERVICE CALL US TODAY
We Need Your Listing.

REAL ESTATE

HOME FOR SALE: REDUCED, REDUCED, REDUCED!!!! 2400 sq. ft. 3 bedroom, 3 bath, large living area, inside grill, two door refrigerator, dishwasher, furniture (opt.), 6 ft. picket fence-steel posts. Garden area 640 sq. ft. Self sustaining pond 13x15, 300 sq. ft. deck with hot tub, walking and bicycle track, cabanna bar, out building, 160 sq. ft. storage, 9 hole golf course with 210 ft. stream and 5 ponds. Large carport, 24x24. Total under roof 3000 sq. ft. Property offered at \$29,000. Shown by appointment 806/659-2235.
S56, RTN

FOR RENT

FOR RENT
4 BDR. 3 B. 2 living areas, kitchen/dining area, utility room with cabinets, panel sunroom, storm cellar, fenced backyard. \$500/month at 703-Steele Dr. Call 802-365-9742.

FOR RENT

FOR RENT: 2 bedroom, fully carpeted, built-in cook top and oven, two car garage, chain link fence, 1 block from the Elementary and Jr. High. 659-2184 or inquire at 510 S. Barkley.
S1, RTN?

FOR RENT: Trailer park spaces for rent. Located on S.E. 7th and Loop road, Spearman. \$30 per month. Call 435-5080.
S23, 11c/RTN.

FOR RENT: 2 bedroom house. 659-3260.
S60, RTN

FOR RENT

FOR RENT: One bedroom newly decorated, furnished apartments, utilities paid. Call 659-3260.
S47, RTN

FOR RENT: 3 bedroom, 1 1/2 bath, central heat and air, beautiful yard. 703 E. 2nd, home-273-2768 or office-273-3793.
S60, RTN

WANT TO BUY

WANT TO PURCHASE: Mineral rights and other oil/gas interests. Send details to: P.O. Box 13557 Denver, CO 80201.
S60, 20c

FARM PRODUCTS

200 ACRES FARMLAND: 6 miles southwest of Spearman, irrigation well, no mineral rights. Seller reserves right to approve buyer. Bob Hardy Realty, 659-3440, Robert Hardy, Broker.
S59, RTN

FOR SALE

FOR SALE: Nintendo, cleaner, gun and five games for \$50. 659-3204.
S1, 1tp

FOR SALE: Radio Shack in Borger has the RCA 18" Digital Satellite System installation available in the Hansford County area. Call 274-7077, 425 W 10th.

FOR SALE

FOR SALE: Used pivots, Paschel Irrigation, Hwy 15 West, 659-5228.
S62, 4tc

AUTOMOBILES

FOR SALE: 1984 Ford Truck with 20' van and lift. V-8 diesel engine. Excellent condition. For more information call 659-3432 or 659-2912.
S52, RTN

JOB OPPORTUNITIES

MAKE MONEY TAKING ORDERS FOR AVON: Door to door selling OK but not necessary. Up to 50% commission. Demos always 40% discount. Call Billie 1-800-447-2967.
S59, RTN

OWN YOUR OWN APPAREL OR SHOE STORE, CHOOSE:

Jean/sportswear, bridal lingerie, westernwear, ladies, men's, large sizes, infant/preteen, petite, dancewear/aerobic, maternity, or accessories store. Over 2000 name brands. \$25,900 to \$37,900: inventory, training, fixtures, grand opening, etc. Can open 15 days. Mr. Loughlin (612) 888-6555.
S1, 3tp

MISCELLANEOUS

Discouraged by diet aids of the past? Look forward to a more satisfying future with FORMULA THREE...all-natural and amazing. See Jim Evans - 659-2141 or 659-3379.
S60, RTN?

BAHAMA CRUISE!!

5 days/4 nights, Underbooked! Must Sell! \$279/Coupe. Limited Tickets. (407) 830-5100 ext. 6346, Mon. - Sat. 9 a.m. to 10 p.m.
S62, 4tp

SERVICES

J & M Service Center 24-Hour Service 415 Collard, Spearman 79081. 659-5519 or 659-3352. Tires, flats, oil & lube, wash, brakes, batteries and minor repairs. Now selling gas.
S27, 11c/RTN.

WEIGHT WATCHERS

is now meeting every Thursday in Gruver. For more information, please call 1-800-359-3131.

CALL YOUR LOCAL Used Cow Dealer

for days a week stock removal. 659-3544 or 1-800-692-4043. Serving Cattlemen for the past 20 years.
G51/RTN.

PITS CLEANED:

Dragline or Loader. Call Lee Roy Mitchell, 733-2384 or 733-2175.
S47, 11c/RTN.

CLIFCO WINDSHIELD REPAIR SERVICE

Don't replace your damaged windshields. Mobile service: 435-0126. Home phone: 435-9149. And toll free at 1-800-753-9849. Ask for Clifford Cox.
S43, RTN

Free Bible Correspondence Course.

Write P.O. Box 604, Perryton, TX 79070.
S46, RTN

CHIMNEY CLEANING SERVICE:

For appointment call (405) 652-2940.
S62, 2tp

HELP WANTED

HANSFORD MANOR IS ACCEPTING APPLICATIONS FOR POSITION OF PART-TIME HOUSEKEEPER. Contact Linda Sanders, Personnel Director at Hansford County Hospital District, 707 S. Roland, Spearman, Texas 79081, 806/659-2535. EOE.
S62, 2tc

JOB OPENING: The City of Spearman is accepting applications for a Police Chief. Requires a high school diploma or GED, graduation from an accredited law enforcement academy and five years of law enforcement experience with two years supervisory experience. Salary negotiable. Apply at City Hall, P.O. Box 37, Spearman, Texas 79081. The City of Spearman is an Equal Opportunity Employer. Position open until filled.
S62, 2tc

JOB OPENING:

The City of Spearman Police Department is now accepting applications for a part-time Dispatcher. Example of the work is to operate communication equipment to receive incoming calls for assistance and dispatches personnel to scene of emergency. Must be able to work various shifts. Experience helpful, but not required. The City has an excellent fringe benefit program which includes retirement, hospitalization insurance, vacation, holidays, and sick leave. Applications may be obtained at the Police Department, located at 30 S.W. Court. The City of Spearman is an Equal Opportunity Employer. Open until filled.
S1, 2tc

PUBLIC NOTICE

NOTICE TO BIDDERS
The City of Gruver offers for sale by sealed bid one 1984 Ford LTD automobile. Bids will be received until January 10, 1995 at 4:00 p.m. and will be opened and awarded at the City Commission meeting to be held on January 11, 1995 at 5:00 p.m. The auto can be seen at the Gruver City Hall.
S62, 2tc

CLASSIFIED RATE

\$4.00 first insertion
\$3.00 each additional insertion (30 words or less)
13¢ each word over 30
Legal Notices: 15¢ per word

STEEL BUILDING FACTORY SPECIALS

Sizes from 800 to 10,000 sq. ft.
Limited supplies. Call Rick 806/948-4398.

JAN'S ETC. NEW & USED & ANTIQUES TOO

Everything for home and family. Plains Shopping Center in Spearman
Open Monday - Saturday 10 a.m. til 6 p.m.

Research saves lives.

American Heart Association

Don't Miss Another Issue

Subscribe Now

\$19.95 yr. in county
\$24.95 yr. out of county

Spearman Reporter-Statesman Gruver
213 Main • P.O. Box 458 • Spearman, Tx. 79081
(806)659-3434 • 1-800-395-9482

TexSCAN

Statewide Classified Advertising Network
More than 300 Texas newspapers for \$250. Call this newspaper for details.

A WONDERFUL FAMILY experience. Scandinavian, European, Brazilian high school exchange students arriving August. Become a host family/AISE. Call Eleanor 817-467-4619 or 1-800-SIBLING.

ATTENTION DRIVER TEAMS \$15,000 in bonus. Paid monthly, quarterly & yearly plus top mileage pay, 401(K) plan. \$500 sign-on bonus. Other paid benefits *vacation *health & life *dead head *motel/layover *loading & unloading. Covenant Transport, solos and teams call: 1-800-441-4394/915-852-3357, students and driving school grads call: 1-800-338-6428.

CALL TODAY - START tomorrow, ECK Miller expanding! Need flatbed drivers. All miles paid (new scale) Life/health, Rider/bonus program. 1-800-395-3510, owner/operators also welcomed!

DRIVERS 3 TOP opportunities, North American Van Lines has owner operator openings in relocation services, high value products and blanketwrap divisions. Tuition free training for inexperienced drivers, outstanding tractor purchase plan available. Ask about our RSD Performance Compensation - Earn up to 6% over already top compensation! 1-800-348-2147, Dept. A-36.

DRIVERS - NEW YEAR! New career! Get home often. Starting pay up to \$30/mile plus bonuses, assigned trucks & great benefits. Call anytime - Burlington Motor Carriers: 1-800-JOIN-BMC, EOE.

HAROLD IVES TRUCKING hiring drivers. New Year... new career. Free driver training. Students welcome. Experience pay up to 28¢ per mile. Excellent benefits: 1-800-876-7784.

DRIVERS: FLATBED 48 state OTR. Assigned new conventional. Competitive pay, benefits. \$1,000 sign on bonus, rider program, flexible time off. Call Roadrunner Trucking 1-800-876-7784.

TRUCK DRIVER POSITIONS available now. No experience required. In just 4 weeks, you could be starting a new career with U.S. Xpress or Southwest Motor Freight. Both companies offer great pay, bonuses, benefits, plus a retirement plan. For more information, call 1-800-288-2879, Dept. D-17. Must be 21. Minimum investment req. for company-sponsored training. EOE M/F/V/H.

HAPPY JACK FLEABEACON: latest technology in home flea control without chemicals. Works night & day on dog & cat fleas. Distributed by WALCO International 1-800-234-1375.

SUNQUEST WOLFF TANNING beds new commercial-home units from \$199. Lamps, lotions, accessories. Monthly payments low as \$18. Call today, free new color catalog, 1-800-462-9197.

DAVID P. WILLIS, Houston, Texas ***** Board Certified Personal Injury Trial Lawyer.

COMPLICATIONS FROM NORPLANT implants or breast lactation drug, Parlodel, or failed back fusion (Pedicule Screws)? Call 1-800-833-9121, free legal consultation. Carl Waldman, Board Certified Personal Injury Trial Law Texas.

CAREER INFORMATION, COMPLETE information guide/workbook for postal & government jobs. Includes sample exam & applications. Scott Career Systems. 1-800-489-1170 24hrs.

BEST ONE MAN BUSINESS! Invest \$15,000 reinvest profits 9 months, make up to \$8,700 a month. 9-year-old company. 62% profit margin. Call Vendi 1-800-527-8363.

SALES REP & 2-way techs - to sell, service Motorola in Conroe. Call 1-800-433-6036 or mail to: Mobile 2-Way, P.O. Box 68, Beaumont, TX 77704.

CLEANING FRANCHISE: BUILD a family business. Let the ServiceMaster family help your family start your own residential or commercial cleaning franchise for as little as \$5,955 down. Fortune 500 company offering unique training and marketing support. Financing available. Call for a free brochure: 1-800-230-2360.

51 ACRES, NORTH of Bracketville, rolling hill country, live oaks, cedar, pinon pine, Whiteoak, turkey, feral hog, Indian mound, \$1,020/down, \$221/month (11%-15 yrs.) 1-800-876-9720.

GOT A CAMPGROUND membership or timeshare? We'll take it. America's most successful resort resale clearinghouse. Call Resort Sales information toll free hotline 1-800-423-5967.

CASH NOW! WE buy mortgages, trust deeds, land contracts. Sold property? Receiving payments? Get cash you need now! Best prices! National Mortgage Buyers, Inc. 1-800-222-5199.

CASH FOR REAL estate notes up to 95% of your balance! No points or commissions. Cash in 5 days. Free quote. Monday-Saturday, 1-800-501-FNAC.

PROSTATE, ARTHRITIS, DIABETES, and circulatory disorders discussed in doctor's report on case studies using European food supplement. All natural. Call for free report copy, 1-800-310-3381.

RAPID WEIGHT LOSS with new pharmaceutical-strength products! *Increase Metabolism *Stop Hunger *Boost Energy. Call now for free consultation, information. United Pharmaceutical 1-800-733-3288 (C.O.D.'s accepted).

ADOPT: TV JOURNALIST couple offers your newborn a secure home, full of love, laughter, grandparents, many cousins and good food. Please call our attorney Suzi - 1-800-845-0242. It's illegal to be paid for anything beyond legal/medical expenses.

ADOPTION: KINDERGARTEN TEACHER, now full-time mom, financially secure husband and adorable adopted son, wish to surround your precious newborn with love, music and the joy of laughter. Call Sheera/ Richard for reassurance. 1-800-484-1359-1836. It's illegal to be paid for anything beyond legal/medical expenses.

FOR SALE BY OWNER - 3 bedroom, 1 1/2 bath, storm door and windows, fireplace, ceiling fans, 14 closets, 1 car garage, 1728 sq. ft. \$35,000 - 605 Cluck, Gruver. Call 733-2015. S28, 3tp RTN

Three Bedroom Brick, two baths, double garage, lots of trees, 1.8 acres, horse barn, 26 by 36 shop. 205 E. 10th, Gruver, Texas. Call J.W. Whitaker at 733-2433. Also 1983 Coachman Motor-home. S30, 1tp/RTN.

GREAT HOUSE IN GREAT LOCATION FOR SALE
2100 sq. ft., basement, double car garage, 4 bedrooms, 3 baths, big den, fireplace, living room, ceiling fans, central heat and air. 702 Gibner. Call 659-3838, 659-3970, or 733-5555.
S42, RTN

FOR SALE-No Sign: 3 bedroom, 1 3/4 bath, 1450 sq. ft., remodeled kitchen, 12x12 covered deck, \$31,500. Not for rent/407 W. 12th. Call 659-3956.
S48, RTN

HOUSE FOR SALE: 3 bedroom, 1 bath with attached garage, private fenced back yard, built-in appliances. Call 659-3523. \$25,000
S53, RTN

HOUSE FOR SALE: REDUCED!!!! 510s fenced, 2 car carport, she 1, hot tub, fish pond, 3 bedroom, 3 bath, handicap accessible, large LR, bar. \$29,000. 605 S. Archer, 659-2235.
S55, RTN

The Results Are In.

Homeowners Rate Us #1 Again...and Again and Again.

- Most Professional
- Best At Finding A Home
- Best In Customer Service
- Best At Selling Homes
- Most Trustworthy

In 12 separate categories, homeowners rated the CENTURY 21 system first, every time, by a wide margin. This top honor is a member of the real estate sales organization that homeowners trust the CENTURY 21 system. Discover The Power of Number 1.

Source: 1990 Nationwide Survey of Homeowners. This survey included 1,547 telephone interviews with a random sample of homeowners from throughout the USA and was conducted during October 2-12, 1990 by The Opinion Group, a leading survey research organization. The results show the Century 21 system consistently ranked #1 or 2 in 12 categories. Homeowners also stated: "New listing, first and only real estate organization which one would call to buy a home" and "The most professional and knowledgeable agent." In the field of home ownership, the "top choice" is Century 21. The real estate industry's "best at selling homes" and "most trustworthy" are Century 21. For more information, call 1-800-854-2222. CENTURY 21 is a registered trademark of Century 21 Real Estate Company, Inc. Equal Housing Opportunity. ©2

Century 21
Golden Spread Realty
202 S. Main • Perryton, TX
800-435-2444

Are You A Victim of Physical Abuse?

Call Toll Free 1-800-753-5308

We are in Spearman on the 1st, 3rd, & 5th Wednesdays of each month at the First Presbyterian Church, 1021 Cotter. On the 2nd & 4th Wednesdays we are at the First Christian Church at 510 King in Gruver. We can come to Spearman & Gruver any time upon request. We operate a safe place for victims & their children to stay in times of crisis.

Panhandle Crisis Center

Serving Hansford, Lipscomb & Ochiltree Counties
317 S. Main Memorials Accepted Perryton, Tx.

High heels were invented by a woman who had been kissed on the forehead.
—Christopher Morley

Obituaries

CLYDE YEARY
WAKA - Clyde Yeary, 83, died Thursday, December 29, 1994. Services were at 3 p.m. Saturday in Waka Church of the Brethren with the Reverend Martin Gauby, pastor, officiation. Burial was in Ochiltree Cemetery by Boxwell Brothers Funeral Home of Perryton.

Mr. Yeary was a lifetime resident of Ochiltree County. He married Ima Carter in 1937; she died in 1959. He then married Helen

Pattison in 1961; she died in 1983. He worked for Berry Grain and was a member of Waka Lions Club and the First Christian Church of Spearman.

Survivors include two stepsons, Leroy Carter of Springtown and Pat Pattison of San Diego; two stepdaughters, Phyllis Ragle of England and Kathi Davison of Maine; a brother, Grady Yeary of Perryton; eight grandchildren; and several great-grandchildren.

Neighbors

CONTINUED FROM PAGE 4

dren, Brady and Lacey Davis of San Antonio, also J.R. and Leigh Ann Temple and baby. He is now stationed at Fort Campbell, Kentucky.

Mrs. Betty Lemons guests were her sons and families. Colonel James and Thel of Travis Air Force Base, California and two children; Frank with his children Andy and Megan, Hannibal, Missouri, and Rachel Jennings, also of Hannibal made up the group.

Bethany and Jay Lauersdors with son Carl of Houston shared Christmas with Frankie and Oscar Donnell. Others here were Steve and Denise Donnell with Marsha and Lindsey of Canyon, J.W. and Rhonda Ward, with Monica and Jason of Gruver.

Monica is a student at Texas Tech and plans to attend the Cotton Bowl on Monday which is agreeable with her parents as she made the Dean's List.

Steve is now with the Federal Land Bank.

Ray and Helen Gibson had their daughter Karen Cargill, with Jenifer and Jason of Denver City. Others were Rhonda and George Jennings with Megan of Amarillo and Ronnie Gibson and Cheryl Gibson.

With Maxine Banister were her niece Marilyn and John Gragg of Nipoma, California. Marilyn who was a Crawford is a native of Spearman.

Mary Ooley was relieved to be able to return to Spearman on Christmas Day. She and Hershal were guests of the Richard Ooleys. Mary has been quite ill in the Ochiltree General Hospital, and will be undergoing further treatment in Amarillo.

Pearl Pierce spent Christmas in San Antonio with her son Mike and Sue and especially with grandson. She flew back in time to get the full benefit of the cold weather.

Howell Ray and Sandra Phelps with Todd all of Austin spent Christmas with his parents, Beth and Ray Phelps.

Their grandson David and Stephenie of Dallas came also, as did their daughter Janice.

Ruth Bryan was a guest along with her family. They are Mansel and Nanda, Fort Stockton, and Joe Mike and Del and their sons of Houston.

The Joe Mike branch of the Bryans will be moving to New Orleans. In fact he has already begun his employment there, and his family will be joining him.

Joan and Wilson McClellan drove to Arlington and visited their son Chris. He joined them as they went to Greenville where her mother lives. Later for Christmas they went to the home of Joan's sister at Wolfe City. Another sister of Dallas and her family made the gathering complete. June and Earl Spencer's daughter, Ola, and little Theron, were here for a week. They live in San Antonio.

Gloria and Don Knox had a busy Christmas with sons and families. David and Rita Knox with Tracy came from Hart. Danny and Cathy Knox with Lee Isaac and Julie were from Odessa.

Julia was not as active as usual as the day before they came, she fell from a trampoline and broke an ankle. She is seven years old.

Greeting old friends in Spearman and Gruver was former resi-

dent Ruby McCullough. She lives in Sundown, Texas and drove up with her brother Joe and Edith Cage.

She has been a guest in the home of her children, Nancy and Larry Babbs and the Benny McCulloughs of Gruver.

Ann and Rue Sanders entertained members of her family reunion for the first time in ten years. The festivities began the Friday before Christmas and lasted several days.

Enjoying every minute of the reminiscences, laughter, visiting, food, and gifts were: Ann's sister, Dr. Mary Burnett, Littleton, her son Chris Snedeker, Boulder; Charley and Marguerite Millican, New Braunfels; Charles and Dorothy Mann, with Richard, Tallahassee, Florida; Elmo McClellan, Sandy and Kerry Foster with Kaisie, all of Gruver; Ron McClellan, Stratford; Melanie and Shane Simmons with Seth, Arlington; Mrs. Ollie Jarvis, Julie and Kurk Adams, with Brooke and Amanda Spearman.

On Monday Julie and Kurk hosted a birthday dinner for Dr. Burnett at the Palo Duro Club.

A New Year-a time for reflection of last year's mistakes and resolutions for the New Year.

The following are some of the local resolutions that were made or should have been made:

Worley Smith - resolves to do more of his hunting in the great outdoors, and less at singles bars.

Pete Fisher - to be more selective in his choice of speakers for the Rotary Club.

Rubyjo Wilbanks - to give up some of her leisure time to some civic, charitable or church cause.

Bob Cluck - to share his experience as an entrepreneur in the production of sheep, hogs, and full feeding Holsteins.

T. Ray Robertson - to proceed with his plan to present to certain Republicans gift certificates for the services of Dr. Kevoirke.

Millard Tucker - to take a course in Outsourcing Cats.

Maxine Banister - to instruct her associates in her expertise in keeping a sense of direction.

Burl Buchanan - to support Aid to Farmers by at least once patronizing those Farmer's Outlets for barley, corn, rye, wheat, sugar cane and grapes. (These outlets are sometimes called by other names.)

Helen Etter - as an act of charity to drop a few crumbs of her sagacity in the financial markets.

Carl Archer - to share with others his pleasure in the three A M Rush Limbaugh show.

Jim Evans - (Information was that he had planned to make a resolution to read a book on Memory Retention - but by January 1, forget what his resolution was.)

Since these resolutions were not notarized, your neighbor will expect any cracking sound to be that breaking resolutions.

Anyway, Friends, best wishes for a fine New Year.

D-Day

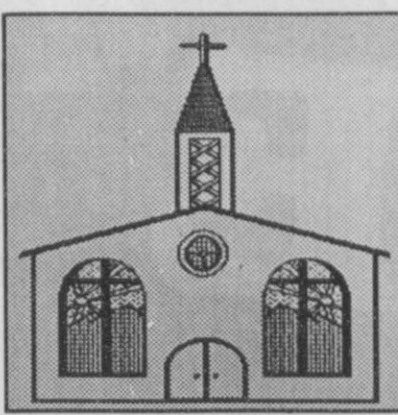
CONTINUED FROM PAGE 2

show the current address and phone number of surviving unit members.

Veterans are encouraged to write to ROAV for information on how to get themselves registered. ROAV will then send them the proper form to complete and become part of the database. The address is Registry of American Veterans, P.O. Box 51148, Riverside, California 92517.

Let us replenish the seed of faith through...

REGULAR CHURCH ATTENDANCE, DAILY BIBLE READING & PRAYER



Curtis' Hot Oilers
806-659-3432
"Taking Service to Perfection"
806-659-2912 P.O. Box 714
800-821-6714 Spearman, TX 79081

Palo Duro Supper Club
22 S. Archer
659-2232

C.O.'S SUPPLY CO.
Plumbing & Tire Sales & Service
421 W. Kenneth • Spearman
659-3781 or 659-3555

Bartlett's Ace Hardware
105 W. Broadway
733-2404

GILLASPIE
AUTO & TRUCK CENTER, INC.
DIESEL • ST • OLDS • PONTIAC • BUICK
CHRYSLER • PLYMOUTH • DODGE.
Hwy 207 South • P.O. Box 430 (806)659-2541
SPEARMAN, TEXAS 79081

Deakin TELESTAR
OILFIELD • RESIDENTIAL • COMMERCIAL
519 Plains Shopping Center
Spearman, TX 79081
1-800-999-1506 (806)659-5016

REINKE PASCHER IRRIGATION SYSTEMS
(806)659-5228 • 1-800-659-6580
Corner Airport Rd. & Hwy 15 West
Spearman, Tx.

Gruver Cablevision
Quality Family Entertainment with "the Disney Channel"
308 Main • 733-5295

Morse Implement Company
"Join us in church this week"

Boxwell Bros. Funeral Home

THE HANSFORD COUNTY REPORTER-STATESMAN
Serving The Communities Of Spearman, Gruver & Morse
213 Main • 659-3434
1-800-395-9482

CORONADO HOSPITAL
Pampa, Texas
(806)665-3721

Compliments of **G&G FOODLINER**
516 Main • Gruver
733-2471



"Perfect Peace"

What does an infant dream as the corner of a tiny mouth twitches into a sideways "grin"? Is it a dream of the angels so recently bid farewell upon beginning the journey into life as we know it? Perhaps the "old wives" conclusion is more than just a "tale". Perhaps the twitch is truly a smile.

So close is an infant to heaven...to that realm of perfection and peace...as near as we shall be until once more life is no longer dependent upon the beating of the heart or breathing out and breathing in...when the spirit shall again fly free, the soul unblemished by human frailty.

Each infant born is a living reminder of God's miraculous omnipotence. "Thou whose glory above the heavens is chanted by the mouth of babes and infants..." (Psalm 8:2).

Worship your Father this Sabbath with the trust of a newborn babe. "Thou dost keep him in perfect peace, whose mind is stayed on Thee, because he trusts in Thee" (Isaiah 25:3).

Copyright 1995, Keator-Williams Newspaper Services, P. O. Box 8005, Charlottesville, VA 22906

In Spearman...

Apostolic Faith Church
822 S. Drensen • 659-2870
Sunday School: 10 a.m.
Worship: 11 a.m.
Evening Worship: 6 p.m. Sun.
Wed. Prayer Meeting: 7:30 p.m.
Pastor James Brown

First Assembly of God
401 N. Bernice • 659-2295
Sunday School: 9:45 a.m.
Worship: 10:50 a.m.
Evening Worship: 7 p.m.
Wednesday Worship: 7:30 p.m.
Youth: 7:30 Wednesday
Pastor Todd Lillard

First Christian Church (Disciples of Christ)
29 S. Bernice • 659-2036
Sunday School: 9:45 a.m.
Worship: 10:50 a.m.
Women's Bible Study: 2 p.m. Wed.
Youth: Wed. 6 p.m. & Sun. 5 p.m.
Pastor LaVern Draper

First Baptist Church
123 N. Bernice • 659-5557
Sunday School: 9:45 a.m.
Worship: 11 a.m.
Evening Worship: 7 p.m.
Jr. High Youth: 6 p.m. Wed.
High School Youth: 7 p.m. Wed.
Youth Choir: 6 p.m. Sun.
Pastor Kyle Henderson

Church of Christ
121 S. Haney • 659-3244
Sunday Bible Class: 9:45 a.m.
Worship: 10:30 a.m.
Evening Worship: 6 p.m.
Bible Study Wed. 7:30 p.m.
KRDF Radio Program
Living With Christ 7:50 a.m. M-F
Minister Arnis Pape

Fellowship Baptist
1102 S. Archer • 659-2783
Sunday School: 10 a.m.
Worship: 11 a.m.
Evening Worship: 6 p.m. Sunday
Youth & Adult Serv.: 7:30 Wed.
Pastor Rick Fincher

Primera Mission Bautista
502 E. 7th • 659-3991
Sunday School: 9:45 a.m.
Worship: 11 a.m.
Pastor Guadalupe Carranza, Jr.

"WE SUPPORT OUR LOCAL CHURCHES"
CAPROCK #1 & #2
Mike Heard, Gen. Mgr.
(806)733-5043 or 733-5025
"Custom Cattle Feeding"

In Gruver...
First Baptist Church
402 E. Broadway • 733-2411
Sunday School: 9:45 a.m.
Worship: 10:50 a.m.
Disciple Training: 6 p.m. Sunday
Prayer Meeting: 7:30 p.m. Wednesday
Pastor Larry Miller

Church of Christ
209 King • 733-2760
Sunday School: 9:30 a.m.
Worship: 10:20 a.m.
Evening Worship: 6 p.m.
Wed. Evening Worship: 7:30 p.m.
Minister Bob Setliff

First Christian Church
510 King • 733-2960
Sunday School: 9:45 a.m.
Worship: 11 a.m.
Wed. Bible Study: 7:30 p.m.
Youth: 6:30 Wednesday
Pastor Gary Gumfory

Oslo Lutheran Church (ECLA)
West of Gruver on Hwy 15 & N. FM 1162
339-7646
Sunday School: 9:45 a.m.
Worship: 11 a.m.
Morning Prayer: 9 a.m. Wed.
Pioneer Clubs (Grades 1-6):
4-5:30 p.m. Wednesday
Pastor John R. Chandler

Community Bible Church (Interdenominational)
Hwy. 15 • 733-2443
Sunday School: 10 a.m.
Worship: 11 a.m.
Wed. Prayer Meeting: 7 p.m.

First United Methodist
Broadway & Garrett • 733-2651
Sunday School: 9:45 a.m.
Worship: 8:30 a.m. & 10:50 a.m.
Evening Worship: 6 p.m.
Pastor Lewis Holland

In Morse...
Morse Baptist Church
Pastor Mike Martin
733-2757

Henton & Co., P.C.
Certified Public Accountants
221 Sanders • Spearman • 659-2518

BERRY CLEANERS
DAN DESIMONE • OWNER
Phone 659-3122 • P.O. Box 1017
207 Main St. • Spearman, Tx. 79081

GRUVER FORD
531 Main • Gruver • 733-2431

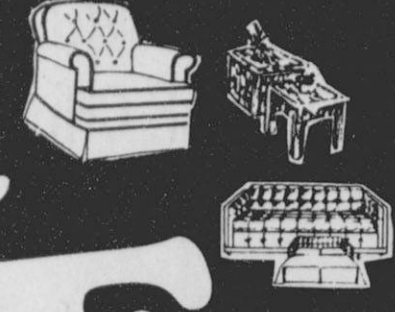
Interstate Savings & Loan
322 Main • Spearman • 659-2559

Hagerman Services
Backhoe • Dozer • Welding
North Hwy. 15 • Spearman
659-5131

Gordon Drugs
Dependable Prescription Service
314 Main • Spearman
659-2141
Jim Evans

Compliments of... **AGCO**
of Spearman, Inc.
"See you in Church"
659-3751

Annual Winter CLEARANCE SALE



All BEDSPREADS Sale Priced up to 70% OFF!
 All DAYBED COVERLETS Sale Priced up to 70% OFF!
 All LAMPS, PICTURES & ACCESSORIES On Sale!
 All RECLINERS up to 40% OFF!

BRASS & GREEN BAKER'S RACK
 Reg. \$74.50 ea.
SALE \$39⁹⁵
 Cash & Carry

GLASS TOP, METAL BASE COCKTAIL TABLE
 Reg. \$119.50 ea.
SALE \$69⁹⁵
 Cash & Carry

LA-Z-BOY RECLINERS
 Reg. \$419.50 ea.
SALE \$249⁵⁰
 Cash & Carry

OAK STUDENT DESK
 Reg. \$339.50 ea.
SALE \$179⁵⁰
 Cash & Carry

LIVING ROOM

	REG.	SALE
Black & Beige Stripe Sofa.....	\$619.50	\$298.50
Mauve, Green, Black Feather Velvet Sofa & Loveseat--2 Pc.....	\$1495.00	\$1095.00
Black Vinyl Group consisting of Sofa, Loveseat, 3 Glass & Brass Tables & 2 Table Lamps--7 Pc.....	\$1350.00	\$995.00
Southwest Mauve, Blue & Green Print Sofa by La-Z-Boy.....	\$1020.00	\$689.50
Southwest Indian Print Sofa & Loveseat--2 Pc.....	\$1495.00	\$995.00
Country Blue Print Sofa, Loveseat & Recliner--3 Pc.....	\$1675.00	\$1195.00
Country Blue Print Sofa & Loveseat--2 Pc.....	\$1595.00	\$1099.00
Red, White & Blue Indian Print Sofa & Loveseat--2 Pc.....	\$1795.00	\$1249.00
Blue Print Wing Chair.....	\$539.50	\$298.50
Peach Print Lounge Chair.....	\$529.50	\$249.50
1 Pr. Beige & Blue Print Swing Rockers--ea.....	\$349.50	\$198.50
Blue Leather Match Chair & Ottoman--2 Pc.....	\$1559.00	\$995.00
Blue All Leather Sofa by La-Z-Boy.....	\$1995.00	\$1450.00
Beige & Blue Print Modular consisting of 2 Recliners, Sleeper, & 2 Tables--5 Pc.....	\$1995.00	\$1395.00
Large Blue Velvet Modular consisting of Sleeper, Recliner, Chaise, & Corner Table--4 Pc.....	\$2750.00	\$1995.00
Large Brown Velvet Modular consisting of 2 Recliners, Sleeper, Armless Chair, & Wedge--5 Pc.....	\$2495.00	\$1795.00

RCA DSS **\$699⁰⁰**

DIGITAL SATELLITE SYSTEM

- Sharper Picture
- Clearer Sound
- Greater Choices
- Up to 150 channels of programming from DIRECTV™ & USSB²

1 DIRECTV™ and DSS™ are official trademarks of DIRECTV, Inc., a Unit of GM Hughes Electronics.
 2 USSB, Inc. is a subsidiary of Hubbard Broadcasting, Inc.

APPLIANCES

	REG.	SALE
15 Cubic Feet Roper Freezer.....	\$519.00	\$429.00 w/t
18 Cubic Feet Roper Refrigerator.....	\$699.00	\$569.00 w/t
20 Cubic Feet Whirlpool Refrigerator.....	\$819.50	\$679.00 w/t
22 Cubic Feet Whirlpool Side x Side w/Ice & Water in Door.....	\$1,389.00	\$1,159.00 w/t
Roper Electric Range.....	\$379.00	\$299.00 w/t
Whirlpool Gas Range w/Sealed Burners.....	\$599.00	\$499.00 w/t
Whirlpool Smooth Top Electric Range.....	\$829.00	\$689.00 w/t

All Laundry & Dishwashers Sale Priced.

ELECTRONICS

	REG.	SALE
RCA 20" Remote TV.....	\$339.00	\$249.00
RCA 26" Stereo Table TV.....	\$549.00	\$449.00
RCA 26" Stereo Console TV w/Picture-in-Picture.....	\$748.00	\$569.00
RCA 46" Home Theatre TV w/Picture-in-Picture.....	\$2,369.00	\$1,999.00
RCA VCRs starting at.....		\$229.00

STARTS... THURSDAY, JANUARY 5th at 9 A.M.

FRUITWOOD TEA CART
 Reg. \$179.50 ea.
SALE \$99⁹⁵
 Cash & Carry

TABLE BIRDCAGE CURIO
 Reg. \$279.50 ea.
SALE \$99⁹⁵
 Cash & Carry

DAYBEDS & BUNKBEDS

	REG.	SALE
White Waterfall Arm Daybed w/White Porcelain Knobs.....	\$169.50	\$109.50
Ivory Waterfall Arm Daybed w/Decorator Porcelain Knobs.....	\$189.50	\$129.50
White Daybed w/Canopy Frame.....	\$289.50	\$198.50
Matte Black Life Style Daybed.....	\$249.50	\$169.95
Knotty Pine Daybed.....	\$319.50	\$229.50
Cast Iron White & Brass Daybed.....	\$379.50	\$269.50
Twin/Twin Black or Red Bunkbed.....	\$279.50	\$199.95
Twin/Full Black, Red or White Bunkbed.....	\$299.50	\$219.50

BRASS PHARMACY FLOOR LAMPS
 Reg. \$79.50 ea.
SALE \$39⁹⁵
 Cash & Carry

BRASS PLANT STANDS
 Reg. \$17.95 ea.
SALE \$10⁹⁵
 Cash & Carry

RUSH SEAT BENCH
 Reg. \$675.00 ea.
SALE \$199⁹⁵
 Cash & Carry

WASH STAND & MIRROR
 Reg. \$875.00 ea.
SALE \$399⁵⁰
 Cash & Carry

SLEEPERS

	REG.	SALE
Hunter Green, Cranberry & Beige Full Sleeper.....	\$829.50	\$599.50
Hunter Green, Cranberry & Beige Queen Sleeper.....	\$849.50	\$629.50
Jewel Colors Queen Plaid Sleeper.....	\$998.50	\$749.50
Teal, Blue, Mauve Plaid Queen Sleeper.....	\$925.00	\$698.50
Beige Print Queen Sleeper w/Matching Reclining Loveseat by La-Z-Boy (2 piece).....	\$2,295.00	\$1,599.00
Blue Velvet Queen Sleeper.....	\$798.50	\$598.50
Blue/Green Print Queen Sleeper w/Matching Loveseat (2 piece).....	\$1,295.00	\$598.50
Beige, Blue, Mauve Tweed Queen Sleeper.....	\$889.50	\$629.50
Royal Blue, Mauve & Beige Striped Herculon Queen Sleeper.....	\$889.50	\$659.50

DINING ROOM

	REG.	SALE
Set of 4 Oak Nostalgic Dining Chairs.....	\$399.00 set	\$279.50 set
40" Butcher Block & White Table (top slightly marred) & 2 Chairs.....	\$349.50 set	\$249.50 set
Small Rectangular Butcher Block & White Table & 4 Chairs.....	\$439.50 set	\$339.50 set
Small Rectangular Butcher Block & White Table & 4 Chairs.....	\$529.50 set	\$398.50 set
44" Round Butcher Block & Black Table & 4 Chairs.....	\$869.50 set	\$399.95 set
38"x58" Rectangular Tile Top & Butcher Block Table & 4 Chairs.....	\$579.50 set	\$439.50 set
48" Round Oak Pedestal Base Table & 6 Chairs.....	\$1,150.00 set	\$869.50 set
Oak Glass Front China Cabinet.....	\$995.00	\$699.00
Hunter Green & Cherry China Cabinet.....	\$849.50	\$639.50
Round Oak Tile Top Table & 6 Chairs.....	\$1,249.50 set	\$939.50 set
42" Round Pedestal Base Table & 4 Cushion Chairs On Casters.....	\$1,095.00 set	\$769.50 set
Pine Painted Panel Front Corner Cabinet.....	\$359.50	\$269.50
Pine Painted Panel Front Vegetable Bin.....	\$159.50	\$119.50
Pine Painted Panel Front Jelly Cabinet.....	\$249.50	\$189.50

LEATHER RECLINERS

	REG.	SALE
Black or Burgundy All Leather Recliners by Benchcraft (each).....	\$1,095.00	\$699.00
Royal Blue Leather Match Recliner by La-Z-Boy.....	\$1,175.00	\$822.50
Teal Leather Match Recliner by La-Z-Boy.....	\$1,159.50	\$812.00

BEDROOM

	REG.	SALE
Colored Drawer Fronts Double Dresser, Mirror, 4 Drawer Chest & Full or Queen Bed (4 piece).....	\$1,397.50	\$979.50
Colored Drawer Front 4 Drawer Chest (as is).....	\$429.50	\$319.50
Pine Student Desk w/Colored Drawer Fronts.....	\$249.50	\$189.50
White Double Dresser, Mirror, 5 Drawer Chest & Queen or Full Size Bed (4 piece).....	\$688.90	\$519.50
White Computer Desk.....	\$179.50	\$134.50
White Loft Bed Consisting of Twin Beds, Desk w/Deck, 4 Drawer Chest, Bookcase & Ladder (set).....	\$998.50	\$749.50
White Traditional Double Dresser, Mirror, 4 Drawer Chest & Full or Queen Headboard (4 piece).....	\$1,298.50	\$979.50
White Sweater Chest.....	\$349.50	\$269.50
5 Piece Oak Triple Dresser, Mirror, Chest, Nite Stand & Queen or Full Headboard (5 piece).....	\$2,250.00	\$1,495.00
Scrubbed Pine Triple Dresser, Mirror, Door Chest, Queen Headboard & 1 Nite Stand (5 piece).....	\$2,233.00	\$1,559.50
Knotty Pine Double Dresser, Mirror, 5 Drawer Chest & Queen Bed w/Footboard (5 piece).....	\$2,174.00	\$1,519.50

BEDDING

	SALE
Twin Mattresses starting at.....	\$89.95 each
Full Mattresses starting at.....	\$119.95 each
Full Sets starting at.....	\$199.00 set
Queen Sets starting at.....	\$299.00 set
King Sets starting at.....	\$399.00 set

STORE HOURS:
 8:30 A.M. - 5:30 P.M.
MONDAY THRU FRIDAY
 8:30 A.M. - 5:00 P.M.
SATURDAY

ALL ITEMS SUBJECT TO PRIOR SALE

DISCOVER NOVUS VISA MasterCard

FINANCING AVAILABLE WITH APPROVED CREDIT
 WIREPOOL FINANCIAL CORP.
 BANK RATE FINANCING
 90 DAYS SAME AS CASH

Boody FURNITURE CO.
 723 W. 7th • Spearman, Texas 79081