

**INSIDE**

At the Movies	2	City Lites	2
Among the Neighbors	4	Out at the Lake	3
Obituaries	10	For the Short of It	5
School Lunch Menus	2	Chamber Chatter	8
Extension News	2	A "Center" Piece	3

**FOOTBALL  
CONTEST**

Pages 6&7

**WEATHER FOR WEEK OF 8-31 THRU 9-06**

Day	Hi	Lo	Precip	Day	Hi	Lo	Precip
Thu	97	69	.00	Mon	100	73	.00
Fri	96	67	.00	Tue	106	70	.00
Sat	99	67	.00	Wed	--	70	.00
Sun	102	68	.00	Total Precipitation			18.33

HANSFORD COUNTY LIBRARY  
0120 MAIN ST.  
SPEARMAN, TX 79081-2064  
EXPIRES 04/15/1996 THANK YOU

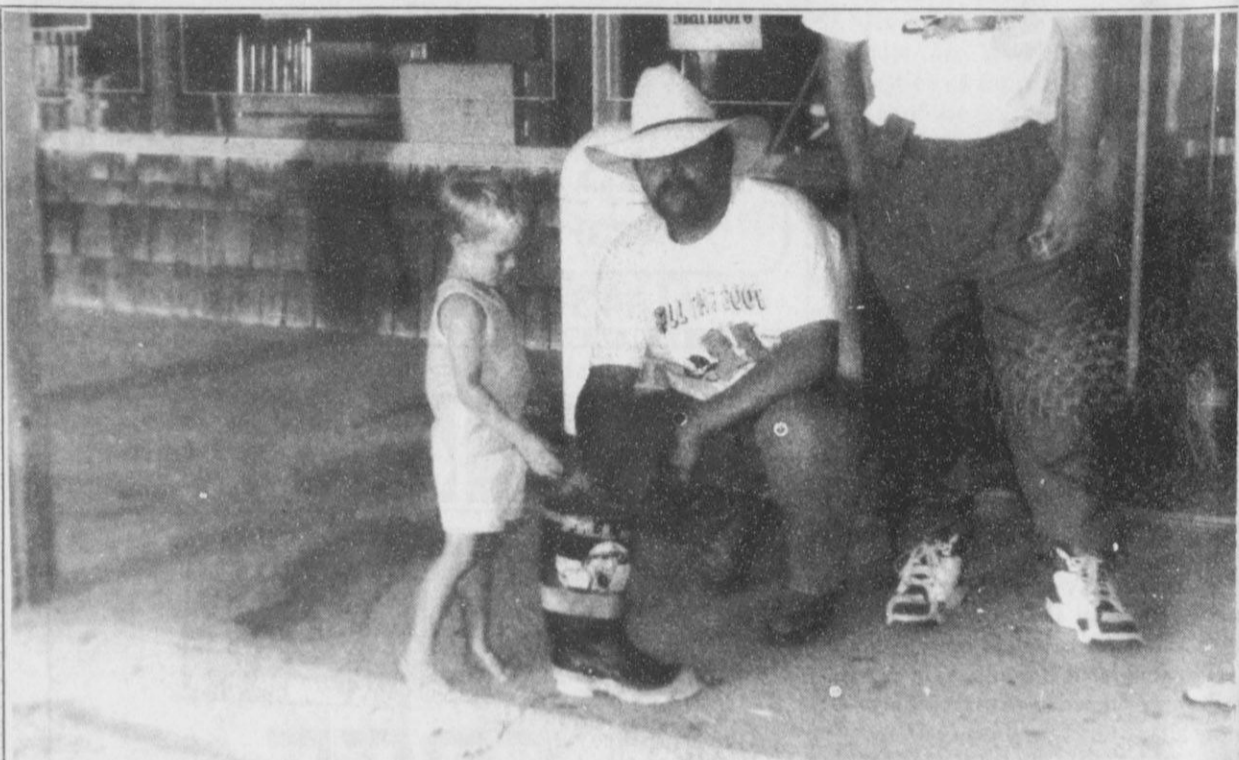
**The Hansford County  
Reporter-Statesman**

Serving Hansford County Since 1907

Volume 87 • Issue 36

213 Main • Spearman, Texas 79081

Thursday • September 7, 1995



**FILING THE BOOT** - The Spearman Fire Department went on a very special call this past week. The Department took their newest fire engine, and one of their boots they wear while fighting fires, across town to help raise money for 'Jerry's Kids'. Seen here, Seth Redwine, age 4, is helping out by putting in his fair share of the money for the charity, as August Vargas gladly sets the boot to Seth's height. The program, which kicked-off the Labor Day Holiday raised over \$860.00. (Photo by Chad Davis)

**Retiree keeps busy at Spearman City Hall as gardener due to grant**

Joe Avila is a busy man these days. Although officially retired, he keeps busy by helping to keep Spearman City Hall looking good. Joe is the City's gardener, thanks to a grant from Green Thumb, Incorporated. Joe's job includes watering, mowing, and de-weeding the landscaped areas around City Hall and the City's traffic islands. "Thanks to contributions from local citizens for buying plants and the grant from Green Thumb, we have improved the looks of City Hall," said City Manager Kelvin Knauf. "We bought 24 rose bushes and more than 100 plants to dress up the bare areas around City Hall. Joe is responsible for seeing to it that these plants are maintained and that the weeds don't become a problem. It's really made City Hall more attractive and friendly-looking place, rather than looking like

an institution. We're hoping that the businesses in the downtown area will follow the City's lead and use more landscaping to improve the looks of downtown." Mr. Avila's salary is paid by Green Thumb, Incorporated. Green Thumb, Inc. operated the Senior Community Service Employment Program under a grant with the Employment and Training Administration of the United States Department of Labor with Federal funds appropriated under Title V of the Older Americans Act. Sponsored by Texas Farmers Union, the program provides part-time employment and training opportunities for economically disadvantaged seniors age 55 and older. Currently operating in 132 Texas counties and two counties in New Mexico, the program provides almost 1,000 senior trainees with the

opportunity to earn wages while contributing to the maintenance and growth of local areas by providing manpower assistance to community-based organizations. These temporary training assignments average twenty hours per week and are developed upon an individual basis to meet the talents, interests, and ambitions of each senior. Participants are assigned to local non-profit agencies such as senior service centers, municipalities, libraries, schools, day care centers, environmental projects, and public works. Mr. Avila has been working for the City of Spearman since May of this year. "As long as the money keeps on coming from Green Thumb, we intend on keeping a retired citizen working for the citizens of Spearman." Knauf said. "It's really been a good program for us."

**Gruver Independent School District adopts 95-96 budget**

The Gruver ISD Board of Education met at 6:00 p.m. in special session to hear comments from the community regarding the proposed 1995-96 budget. The board discussed various proposed expenditures for the year. By board action, the 1994-95 budget was amended. \$22,000 was transferred from the cafeteria to vehicle, \$16,000 was moved from high school salaries and the cafeteria to General Administration, and \$42,000 went from high school salaries to Plant Management and Operation. This action represented the movement of money from one account to another, but did not increase the amount of money spent by the district in 1994-95. State law requires that all budget accounts end the year with money. The district's fiscal year ended on August 31, 1995. Policy Update 49 was adopted by the board. This update covered a wide variety of subjects, but many will be revised because of passage of the new education legislation, Senate Bill 1. Money that was left in reserve from the 1994-95 budget was designated for use by the district in future years by action of the school board. \$73,302 was earmarked to be used to help meet the 1995-96 budget. This action helped the trustees reduce the tax rate needed

to meet the budget. A new pickup for use by the ag department has been planned, and \$23,000 was designated for that use. \$40,000 was set aside to meet health insurance costs from the district's partially self funded health insurance program for employees. Building improvement projects received \$180,000 to be used to update the district's buildings. Projects to be considered during the year are the addition of an elevator in the junior high for use by disabled persons, painting and remodeling needed in the varsity gym, and the addition of energy efficient windows in the elementary school. The school board was informed that Loyd Looper, Laura Blassingame, Angie Lopez, and Rebecca Borunda would serve on the secondary Language Proficiency Assessment Committee for 1994-95. After paying bills totalling \$46,135.51, the board voted to adjourn at 6:40. The Gruver ISD Board of Education met in special session at 7:00 p.m. to adopt the budget for 1995-96, and to set a tax rate to meet the budget. After brief deliberation, the board adopted a budget of \$3,385,643.00 and set the tax rate at \$1.33075 per \$100 value for 1995-96.

The tax rate tax rate was below the effective rate of 1.3383. The effective tax rate is the tax rate needed to generate the same amount of taxes that were raised in 1994-95. The increase in the tax rate from 1994-95 to 1995-96 was necessitated by a \$20,000,000 drop in values in the district for the year. After taking these actions, the board adjourned at 7:25 p.m.

**CRP to hold 13th sign-up**

The 13th sign-up to enter land into the Conservation Reserve Program (CRP) will begin Monday, September 11 and run through Friday, September 22. Sign-up will be held at the Farm Service Agency (FSA) office located at 711 West 7th. At this time, the FSA or the Natural Resources Conservation Service (NRCS) do not know the specific details of the new sign-up, but local officials will be attending training late this week. It is known that the system for bidding land into the program will be totally different from previous sign-ups. After Friday of this week, both offices will be able to provide additional information. Since employees from both agencies are required to be present during the sign-up, it is crucial that interested parties call the FSA office for an appointment at 659-3036.



**HARD AT WORK** - Joe Avila, the Spearman City Hall Gardener since May of last year, is seen here busy at work tending to the everyday hassles that this retiree keeps up with. Mr. Avila's salary is paid by Green Thumb, Incorporated, which is operated by the Senior Community Service Employment Program under a grant with the Employment and Training Administration. For more information on him, please see the related story. (Photo by Chad Davis)

**Child Care Challenges conference set**

Child Care Challenges, a conference for child care providers, will be Saturday, September 23, at the Expo Center in Perryton, TX. Sponsored by the Texas Agricultural Extension Service and Oklahoma Cooperative Extensions Service, the conference will provide training sessions on a variety of topics important to child care providers. The keynote address, "New Elastic for Stretched Out People," will be provided by Dr. Jerry Lane,

Counselor with Clarendon College-Pampa Center. He will share tips and techniques for guidance and discipline while building positive self-esteem. During the afternoon, six concurrent sessions will be offered. Participants will be able to attend three of the sessions. "Fun With Infants" by Miriam Lynch, Teen Parent Coordinator with the Pampa ISD and Director of Bright Beginnings Day Care Center will focus on activities and fun things to do with infants from birth to 18 months. "Fun and Learning-After School" by Donna Brauchi, Gray County Extension Agent and Gwen Franks, Lipscomb County Extension Agent will provide activities, curriculum ideas, and hints for making after-school child care exciting.

Marsha Murphy, Director of Special Education for 5-School Cop in Ochiltree County, will provide insight into how to identify and program for children with special needs in the session "Identifying Children With Special Needs." Mary Jett, Beaver County Extension Agent, and Joanna Blackwell, Director of Kids Corner Daycares in Goodwell and Guymon, will share resources and how to incorporate music into the child care setting in "Music Across the Curriculum." "Crafty Ideas" by Jan Schafer, Hemphill County Extension Agent, and Cynthia Shattles, Ochiltree County Extension Agent, will provide instructions for crafts for children of various ages. "Storytelling", by Celestine Thompson, Librarian of the Perry Memorial Library and Jeanne Gramstorff of Perryton will give child care providers information on how to tell stories to various age groups.

Child care providers may earn 5 1/2 contact hours of training through conference participation. The conference will be from 9:00 a.m. to 4:00 p.m. Registration cost is \$5.00 per person. To register for the conference or receive more information, contact your local County Extension Office by calling 659-4130 or 733-2901. Registration is due by September 15.

**Hansford Happenings**

**Medical Funds**  
There have been medical funds set up for Avo Tope Gray at First State Bank and Ed Whitefield at First National Bank, both in Spearman. For more information contact FSB at 659-5565 and FNB at 659-5544.

**Spearman/Gruver Football Game**  
Spearman and Gruver Varsity will have their first football games of the season on Friday, Sept. 8. Spearman will play in Panhandle at 8:00 p.m. and Gruver will play against Wheeler at 7:30 p.m. at Greyhound Stadium. Spearman JV game is scheduled for Thursday, Sept. 6, at 6:00 p.m. against Straiford at Lynx Stadium and Gruver JV will play against Boys Ranch at 6:00 p.m. at Greyhound Stadium.

**Cross Country**  
Saturday, September 8, Gruver and Spearman will have a cross country meet at Wolf Creek at 9:00 a.m.

**Sealed cases now open**

Last week, The Reporter-Statesman ran a story on the indictments handed down from the Spearman Sheriff Department. The section of the article that featured the part on two trials in the last 16 years should have read: Only 2 Jury Trials in the 16 years. In fact, all other cases in that time frame have all had guilty pleas. As for this week, 4 of the sealed cases that were up last week are now open. Christina Loeffelholz

was charged with intoxication/ manslaughter. Melanie Teague was charged with injury to child, as well Leticia Salazar was charged with tampering with government records. The arraignment trial for all of the indictment charges was last Tuesday, September 5. The pre-trial will be this October 10 at 9:30 a.m., and if needed, jury trials are scheduled for December 4 at 10:00 a.m.



# School Lunch Menus

PRINGLE-MORSE ISD LUNCH MENU	GRUVER ISD LUNCH MENU
<b>Monday, September 11</b> Taco or soft burrito, refried beans, salad, cornbread, cookie, and milk.	<b>Monday, September 11</b> Steak finger basket with gravy, French fries, fruit, hot roll, and milk.
<b>Tuesday, September 12</b> Steak fingers, potatoes with gravy, salad, rolls, fruit, and milk.	<b>Tuesday, September 12</b> Nachos, pinto beans, carrot sticks, fruit, cornbread, and milk.
<b>Wednesday, September 13</b> Corn dogs, green peas, salad, cake, and milk.	<b>Wednesday, September 13</b> Fried chicken, mashed potatoes with gravy, corn, jello, biscuit, and milk.
<b>Thursday, September 14</b> Ham, corn, rolls, salad, fruit, and milk.	<b>Thursday, September 14</b> Pigs in a blanket, pork-n-beans, fruit, and milk.
<b>Friday, September 15</b> Pizza, salad, fruit, ice cream, and milk.	<b>Friday, September 15</b> Tuna sandwich, lettuce/pickle, potato chips, fruit, cookie, and milk.
<b>BREAKFAST</b>	<b>BREAKFAST</b>
<b>Monday</b> -Eggs, toast, juice, and milk.	<b>Monday</b> -Cereal, muffin, juice, and milk.
<b>Tuesday</b> -Cereal, toast, juice, and milk.	<b>Tuesday</b> -Two cowboy bread, juice, and milk.
<b>Wednesday</b> -Waffles, sausage, juice, and milk.	<b>Wednesday</b> -Breakfast pizza, juice, and milk.
<b>Thursday</b> -Cinnamon rolls, toast, juice, and milk.	<b>Thursday</b> -Two slices of toast, peanutbutter and jelly, juice, and milk.
<b>Friday</b> -Cheese toast, toast, juice, and milk.	<b>Friday</b> -Cinnamon roll, juice, and milk.

## Extension News

By Peggy Winegarner  
Hansford County Extension Agent

Take time...to be a positive parent. Taking time to be a positive parent is not always easy, but your child is worth it!

Take time to write a note to your child. This can make your child feel special, proud, and most importantly, loved.

- \* Put a note of encouragement with your child's lunch. "Have a good day at school!"
- \* Slip a note of appreciation into the pocket of your child's jeans or shirt. "Thank you for feeding the cat."
- \* Send a big hug by mail, on a post card or in an envelope. "Just to say 'I love you!'"
- \* Stick a note of apology on the bathroom mirror. "I'm very sorry I yelled at you!"

Take time to be together with your child. Time spent together, caring about one another, will support your child when you have to be apart.

- \* Save a minute each day to give a big hug and to say "I love you" to each child, and have a family hug.
- \* Sing together, dance, play games, or just laugh.
- \* Share at least one meal together every day.
- \* Spend time working together on some easy jobs around the house to make your child feel like a helping member of the family.

These ideas, written by the Children's Trust Fund of Texas, are available on a pocket size card at the county Extension Office. You may have a copy by calling or coming by the courthouse.

## Faith and substance abuse to be discussed

"Faith and the Struggle with Substance Abuse" is the topic that will be discussed on Saturday, September 9, 1995, at the Wheatheart Shriners Club at 2401 S. Georgia, Perryton, Texas at 2:00 p.m.

Father Al Embry, Chaplain at Northwest Texas hospital, will lead the discussion.

There is no charge for admission. The discussion is sponsored by the Episcopalians.

Please call 1-800-279-4509 for more information.



SIGN 'EM UP-Gwen Gibson signs up Levi Schneider and Lance Henderson at the Cub Scout Round-Up held last week on August 31 at the Elementary School Cafeteria.

## City Lites

by Kelvin Knauf,  
Spearman City Manager

The Chamber of Commerce has begun developing materials for attracting new residents and businesses. The materials are being developed by the Spearman Connection, a group of local business volunteers. The Spearman Connection has been busy coming up with ideas about how to best promote Spearman: our culture, our life-style, our business environment, and all kinds of statistical information.

The neat thing about these materials is that they are being developed for showing on the Internet. In case you don't know, the Internet is a worldwide communication system. Once on the Internet, the Spearman Connection materials can be seen by anyone in the world who can access the Internet (you need a computer, a modem, and the software to get on the Internet).

For instance, suppose someone in California is getting tired of the rat race in Los Angeles and wants to move somewhere that doesn't have drive-by shootings, smog, and a two hour commute to work. By cruising the Internet, this person may come across the pleasant community of Spearman, Texas. After viewing the materials, the Californian can send a message over the Internet to the Spearman Chamber of Commerce requesting more information. Or better yet, the Californian may visit Spearman and decide that it is a nice little place to live.

If Spearman is to compete in the modern world, we have to let others know about us. If anyone has any ideas about the kinds of things Spearman needs to promote on the Internet, please contact Tindel Ramon or Cindy Blackman.

## Medical funds created

Everyone knows how medical expenses and the rising cost of doctor's bills can really take a dent out of a common person's pocketbook.

For that very reason, two medical funds have been set up for two widely known Spearman people. Avo Tope Gray and Ed Whitefield have both been hospitalized, but are now released, and they are in need of money to help with their rather larger bills.

Gray's fund has been set up at First State Bank in Spearman, and Whitefield has a fund at First National Bank in Spearman.

**MARY KAY**  
FACE-TO-FACE BEAUTY ADVICE™

**Leann Gillaspie**  
Beauty Consultant

659-3889

**PERRYTON CLEANERS & LAUNDRY**

Furs & Woolens

Cleaned and then stored in our temperature and humidity controlled locked vault.

**CALL FOR DETAILS**  
1-800-232-5370

# At the movies...

Showing at The Lyric Theatre - world watched. In "Clueless", a satirical look at a young women (played by Alicia Silverstone) coming of age in up-per-crust Beverly Hills. Directed by Amy Heckerling, the woman behind "Fast Times at Ridgemont High".

Next week the Lyric will be featuring the new hits Something to Talk About and Babe.

**At The Lyric Theatre...**

Friday, September 8 - Tuesday, September 12

**Bargain Nights Mon. & Tue. Adults - \$4**  
**Fri., Sat., Sun., Adult \$5 - Child \$3 every night**  
**Closed Wednesday & Thursday**

SCREEN 1 - 7:30 PM SCREEN 2 - 7:45 PM

**Appollo 13** (PG)  
**Clueless** (PG-13)

113 Main • Spearman

GET THE **ALC/O** Advantage

**FREE**  
SECOND SET OF PRINTS EVERY TUESDAY!

Receive a second set of 3" prints FREE with any exposure roll of 35mm, disc, 110 or 126 color print film left for developing and printing at our everyday prices! C-41 process only. Excludes larger 4" size prints, photo galaxy or kodalux finishes.

DAILY: 9 a.m. to 8 p.m. **521 Hwy 207 S. • Spearman, TX**  
SUNDAY: 12 p.m. to 5 p.m.

**First Christian Church**  
29 South Bernice, Spearman, Texas  
invites you to their

**Revival Services**

Sunday, September 10th to Tuesday, September 12th  
Starting each evening at 7:00 p.m.

Doug Skinner, Minister of the First Christian Church of Amarillo, Texas will be our speaker and Debra Brook Brown of Austin, Texas will lead our singing. There will also be a Bible Study, Monday and Tuesday from 11:30 a.m. to 1:30 p.m. which includes a light lunch. First Christian Church is working in the Spiritual Growth program, "Taking the Name of Jesus" and Doug Skinner will be bringing a series of lessons on "The Basics of Jesus Christ". In Christian Fellowship, we ask you to come join with us during this time of praise and worship.

**UNBELIEVABLE!!!**  
Baguette Diamond Rings  
1 Carat TW

Your Choice  
**\$299**  
While They Last!

Gorgeous Baguette Diamonds With Your Choice of Colored Center Stone.  
Hurry! Quantities are limited!

**Little Tiffanies**

**The Hansford County Reporter-Statesman**  
Serving all of Hansford County  
Spearman • Gruver • Morse

USPS 509660 • 213 Main, Box 458 • Spearman, Tx. 79081  
(806) 659-3434 • 1-800-395-9482 • FAX (806) 659-3368  
Published weekly at 213 Main, Spearman, Texas  
Owned & Operated by  
Texas Independent Newspapers, Inc.  
16607 Blanco Road #100 • San Antonio, Tx. 78232  
(210) 492-8907

Second class postage paid at Spearman, Texas 79081  
Any erroneous reflection upon the character of any person or firm will be gladly and promptly corrected upon being brought to the attention of the management.

Publisher - Deziree Torres  
Editor/Advertising - Chad Davis  
Associate Editor - Wade Atwood  
Student Assistant - Erin Atwood

The publisher reserves the right to revise or reject at its option any advertisement which it deems objectionable, either in subject or phraseology, or which it may deem detrimental to its business.

Subscription Rate: Hansford County, \$19.95; out of county, \$24.95 annually.  
Postmaster: Send address changes to Hansford County Reporter-Statesman, Box 458, Spearman, Tx. 79081.  
Advertising & Story Deadlines  
Monday, 5:00 p.m.

BORGER AREA  
**OIL & GAS PROPERTIES FOR SALE**

J.M. HUBER CORPORATION  
Huber is accepting sealed bids on certain of its oil and gas properties located in the Borger area covering 77 active wells, 35 shut-in wells and 6 SWD wells.

To obtain a list of the properties and Procedures and Rules of Offering, please contact:  
J.M. Huber Corporation  
7120 I-40 West, Suite 232  
Amarillo, Texas 79106  
Attention: Patrick Garrard  
(806)353-9837

All bids must be received by 3:00 p.m. on September 20, 1995

**FISH**

Now is the time for Pond and Lake Stocking of Hybrid Bluegill, Florida Hybrid Bass, Channel Catfish, Fathead Minnows, and Triploid Grass Carp.

The Hybrid Bluegill can REACH the weight of 2 1/2 to 3 lbs.

We furnish you Hauling Containers.  
We guarantee live delivery.

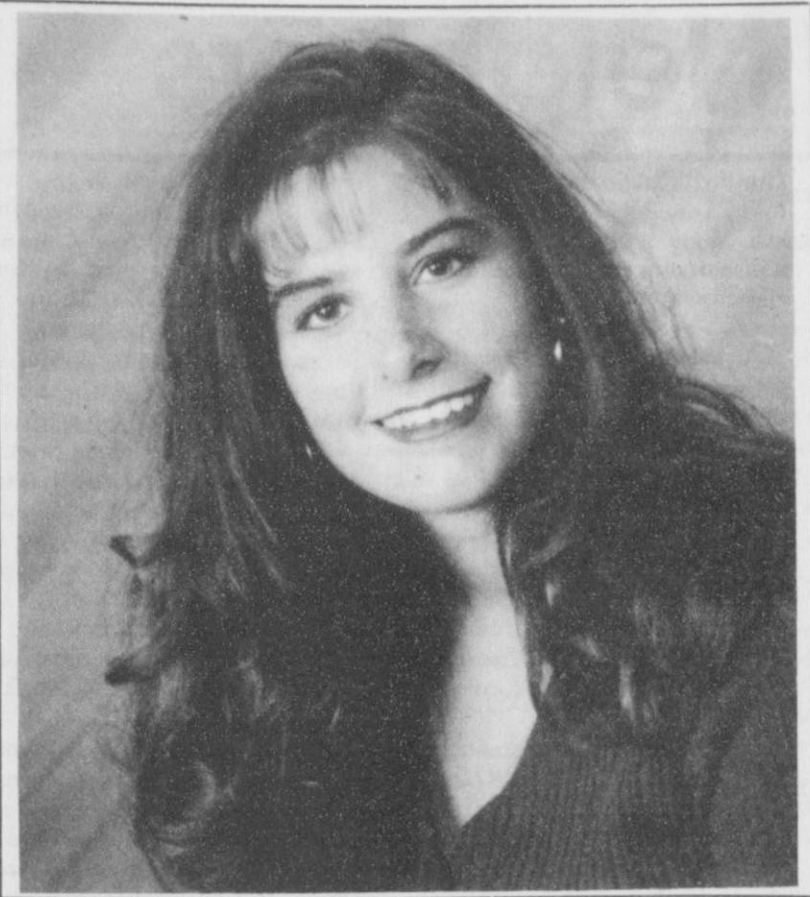
Supplies - Fish Feeders, Turtle Traps, Fish Traps, Liquid Fertilizer, Commercial fish Cages.

Delivery will be Wednesday, September 13, at the times listed for the following towns and locations:

Spearman - Spearman Equity • 659-2420 • 7:30-8:30 a.m.  
Texhoma - Texhoma Wheat Growers • 827-7261 • 10-11 a.m.  
Eiter - Hi-Pro Feed • 966-5113 • 12-1 p.m.  
Dalhart - Stockman's Feed Bank • 800-433-2950 • 2-3 p.m.  
Textline - Textline Feed & Ranch Supply • 362-4351 • 4-5 p.m.

To Place Your Order Call: **DUNN'S FISH FARM**  
405-777-2202 • 800-433-2950  
P.O. Box 85  
Fittstown, OK 74842  
Fax 405-777-2899





KIKI D. CARTHEL

## Carthel named as finalist in Wendy's H.S. Heisman

KiKi D. Carthel, a senior at Gruver High School, has been selected as a state finalist in the Wendy's High School Heisman Award program.

KiKi will receive a bronze medal by Wendy's International and will also be eligible to compete for the award of state winner and national finalist which will be selected in October.

Competition in the Wendy's High School Heisman Award program is very rigorous and is based on scholarship, leadership, community service, and athletic participation.

The competition's ultimate goal is the naming of twelve national finalists who will receive their gold medals in ceremonies in New York on live television.

## Tomlinson attends ROTC advanced training camp

Chris L. Tomlinson received practical work in military leadership at the Army ROTC Advanced Camp at Fort Lewis, Tacoma, Washington.

The camp, attended by cadets normally between their third and fourth year of college, includes instruction in communications, management, and survival training. Successful completion of the ad-

vanced camp and graduation from college results in a commission as a second lieutenant in the U.S. Army, Guard, or Reserve.

The cadet is a student at Texas Tech University in Lubbock.

Tomlinson is the son of David Tomlinson of Gruver.

He graduated from Gruver High School in 1985.

## Wright appointed as director of TJPC

The Texas Juvenile Probation Commission Board (TJPC) has appointed Vicki L. Wright as the new Executive Director, effective August 24, 1995. Ms. Wright has served as Interim Executive Director of the agency since January 31, 1995, performing all executive responsibilities for the agency, its functions and preparation of the biennial budget. She has been employed by TJPC for nine years functioning in a variety of positions, including Deputy Assistant Director, Director of Training and Staff Development and Resource Specialist. Ms. Wright has represented TJPC in numerous state and national level committees and task forces regarding training issues related to juvenile probation and interagency efforts. She received her M.A. degree in Education from the University of Massachusetts,

Amherst. Created in 1981 by the Texas Legislature, the Texas Juvenile Probation Commission developed a comprehensive, coordinated, community-based juvenile justice system for troubled children and their families throughout the state, providing funding, technical assistance, and training in partnership with 165 juvenile boards and probation departments. In little more than a decade, juvenile probation services have been extended to all 254 counties and 55 juvenile detention centers which are operated by juvenile probation departments. Texans believe local problems demand local solutions; therefore, juvenile probation in Texas is administered and controlled at the county level. TJPC is the primary agency through which counties receive juvenile justice funds from the state.

## Out at the Lake

Lake Depth-September 4, 1995-27 feet and 11.5 inches-80 degrees. Continuation of "The Beavers of Hansford County".

Although the industrious beaver is one of the most intriguing of the mammals, it has been shot at, trapped, and generally hated in Hansford County, because our few trees are precious to us. John Mark Stavlo of Perryton was the first one that I talked to that had good things to say about the beavers that lived on the Knutson Ranch in the northeast corner of the county. Before the Dam was built, the Palo Duro was a live stream as it ran through the ranch. John Mark had seen the beavers build a dam four to five feet high and back the water into a small lake. The had a lodge in the deepest water.

We usually think of mountain beaver or lodge beaver doing this and plains beavers making their dens in the banks of the creek with the entrance below the water line. Their trashy looking little dams usually only raise the water level six inches or so. Our game warden, James Wilson, seems inclined to believe that rather than two species of beaver, the smart rodent adapts to his environment.

A beaver is America's largest rodent, 3-4 feet in length, and weighing up to 70 pounds. Dark brown in color, it has small, clawed forefeet that serve as hands, and large webbed, hind feet that help propel it while it swims. The chisel-shaped large incisor teeth, two above and two below, are very yellow.

The unusual hairless tail is broad, flat, trowel shaped, and covered with overlapping scales. It is used as a prop for standing, a rudder when swimming, and a means of signaling other beavers of danger.

James Wilson said it is legal to trap beavers for their pelts only in December and January, but that they may be shot by anyone with a hunting license for their body anytime. His theory is that the veg-

etarian beaver, who eats grass, weeds, shrubs, and small trees, does not attack the bigger trees unless they have run out of most of their food. He enjoys the beavers as part of our world, but he appreciates that we care for our trees. He said the best thing to do is watch the beaver colony, spot the biggest beavers, and then shoot one, two, or three of the biggest-whatever it takes to make the numbers fit with their food supply.

## A "Center" Piece

A new month is here! My how time dies fly! Hostesses for this month are Emma Lou Collins and Susan Delk. And Pearl has arranged some informative programs to be presented.

Tuesday evening, September 12th, at 6:30 p.m., representatives of Southwestern Public Service and Spearman Chamber of Commerce will be present to explain and answer questions about the new tax proposal.

Thursday, September 14th, at 1:00 p.m., a representative of Panhandle Health Information, Counseling and Advocacy Program will be present to help with any Medicare or Medicaid problems or answer any questions.

For either program bring a covered dish and join us for the programs.

Tuesday the 12th from 2-4:00 p.m., and Tuesday the 26th from 2-4:00 p.m., a hearing aid representative will be present.

Also on Tuesday the 26th at 6:30 p.m., some one will be present to check blood pressures.

Mark your calendars so you won't forget!

Of course you are welcome to visit and participate in activities at any time.

Monday the 11th, at 5:00 p.m., is the regular Board Meeting. The meeting is open to the public and you are welcome to attend.

May God Bless Each Of You

**CPR**  
can keep your love alive

American Heart Association  
Fighting Heart Disease and Stroke

The Spearman Task-Force on Parenting (S.T.O.P.) would like to thank everyone who helped make our parenting seminar "Love and Limits" such a success. We hope to continue this effort with seminars held annually. Special thanks and recognition go out to:

Rotary Club  
Women's Division  
Gillaspie Auto & Truck Center  
City of Spearman  
Spearhead Board of Directors  
Richey & Karen Thompson  
David Furlow  
Gary Ellsworth  
Gruver ISD  
Hansford Reporter-Statesman  
Lowe's Marketplace

First State Bank  
First National Bank  
Lions Club  
Guadalupeanas  
B&B Sales  
Samme Goehring  
Judy Nelson  
Joe Bravo  
Five Star Equipment  
Spearman ISD  
KRDF

All business, individuals and organizations who contributed financial support, facilities and equipment.

## OSGOOD MONUMENT CO.

Amarillo, Texas

Dealers of Rock of Ages Granite, as well as all colored granites, marble and bronze memorials.

Represented by  
**Boxwell Bros.**  
Funeral Home  
519 S. Evans  
659-3802

\*\*\*\*\*  
★ **SIGNS ...** ★  
★ **SIGNS ...** ★  
★ **SIGNS !!!** ★  
★ Get your business the attention it deserves. ★  
★ Update your old sign or get a new one. ★  
★ Call for FREE estimate Professional-quality, References. ★  
★ **659-5319** ★  
\*\*\*\*\*

**Grace**<sup>TM</sup>  
STEEL GARAGES & BUILDINGS

**Porta**  
1-800-287-6782

Sanders & Custer Construction  
P.O. Box 610 - Booker, Texas 79005  
GRACE & PORTA DISTRIBUTORS  
Some Dealerships Still Available

# Remember Debbie's

on  
**GRANDPARENT'S DAY**  
Sunday, September 10th  
**Order Now!**

**Debbie's Ready or Not**  
315 1/2 Main • (806)659-3328

A BABY SHOWER

For:  
Greg & Gwen Gibson  
Sunday, Sept. 10, 1995  
2 - 4:00 P.M.  
~ in the home of Mary Murrey -  
(call 659-3728 for directions)

# Thank You

For all the prayers, calls,  
concern and food that all  
of you shared with us at  
our time of loss with our  
loved one, Joe Ortiz.

Love,  
Eusibil, Carmen & Cheile Ortiz  
Jose, Lusi & Josi Corralejo

*Gordon's*  
DRUG

**Bridal Gift Registry**

COME BY & LET US  
HELP YOU SET UP YOUR  
SPECIAL GIFT TABLE

**Couples Currently  
Registered**

Chad & Tara (Russell) Davis  
Brandon & Misti Babitzke  
J Garnett & Brooke Bivins  
Kimberly Slater & Kelly Smith

\* Date of the Bridal Shower ..

314 MAIN  
PHONE  
659-2141

SPEARMAN  
TEXAS



# Among the Neighbors

by Helen Fisher



GINGER INGRAM BROWN

## Ventriloquist to present "Littlefolk" at Oslo Lutheran

Ventriloquist, Ginger Ingram Brown and the "Littlefolks" will be coming to Oslo Lutheran Church at 1:30 p.m. on September 10th according to Pastor John Chandler.

Ginger has traveled nation wide, and in foreign countries, conducting kids revivals, teaching at kids camps, and presenting workshops. She has made various guest appearances on television.

Ginger and husband, Noal Brown, are founders of "Littlefolks Gospel Productions, Inc." They recently moved to Wichita Falls, TX, where Noal is employed as Water Purification Superintendent for the City. Together, the Browns pro-

duce puppet scripts and songs to create drug awareness among primary age children.

Writer and producer of children's productions, Ginger is also a song writer and recording artist. Her many voices may be heard on several audio and video cassettes produced by "Littlefolks Productions" as well as other ministries productions. Having past experience in the public school classroom, Ginger has a deep love for children.

Children and adults alike laugh and cry with these delightful characters as they sing and tell stories.

Come and join us for the ministry of the "Littlefolks".

The four couples who spent the few days at Chucara, Colorado last week were not keeping their identities secret-the names were inadvertently omitted from the item. Sharing the leisure and loafing were Linda and Tom Latta, Cheryl and Bob Meek, Helen and Eschol Blankenship, and Judy and Dennis Nelson.

The Generation Y issue in the Friday Amarillo Globe-News includes a well written and thought provoking article by KiKi Carthel, senior, of Gruver. It deals with the experiences, hopes, fears, and plans of the senior at the start of their last year of high school-the beginning of the end.

Joni Hart, who wrote so ably for the first Friday edition of the Generation Y last year, graduated last spring.

Clarence Alexander, long known to Hansford County, celebrated his 92nd birthday in Guymon on September 1 with a gathering of his relatives.

Friends report that he is still quite active and handles his business with his usual humor and acumen. He has had extensive land holdings in Hansford County and been involved in several other enterprises.

Best wishes are extended to Mr. Alexander for many more birthdays.

After 13 sad years, Mary Lee (93) was brought back to lie beside her husband, R.E. (Ec) Lee at Hansford Cemetery. She had been living in Colorado Springs since she left

here in 1982.

Services were held for her in the First United Methodist Church on Tuesday morning; the church where for so many years she worked so faithfully and effectively.

Her obituary is elsewhere in this issue.

Ray and Sylvia Robertson entertained guests briefly during the week-end. Maurice and Phyllis Woehle and his mother of Plano were enroute to Wyoming and stopped over. They are relatives of Donna and Danny Robertson.

Red Whitefield, 65, passed away on Sunday afternoon. He had been hospitalized for two weeks in Ochilree General Hospital for heart and lung problems but had been released during the week-end.

He and his wife, LaRue, are the owners of Murmurs. They came her in the early 1960's with Baker and Taylor Drilling Company. Their four sons and one daughter attended school here and reside here. More complete details will be in the obituary. Funeral details are pending as of this writing.

Sympathy is extended to the family.

Danny and Beth Jackson of

Huntsville, Arkansas are guests of his brother Pat and Charlotte Jackson. During their stay here they will visit others of his brothers and sisters.

Very low key was the observance of the 56th wedding anniversary of that honeymoon couple-Louise and Everett Vanderburg. It was on Saturday, and the day before and after, their children came. Wishing them many more anniversaries were Nelda and Jack Vanderburg, Dalhart; Donna and Lee Callaway, Amarillo; Michelle and Tom Vanderburg, Lubbock; Rhonda and Troy Vanderburg and Linda and Jim Davis, Spearman.

Naturally in 56 years, some observations would be made-Louise she has been mistaken a few times, but, completely, 56 years ago when she thought the greatest labor saving device invented would be the husband. Everett-envies his dentist-the only man who can tell a woman to close her mouth and get results!!

Seriously, old friends, you are wished many, many more anniversaries.

Ora Lee Blackburn, who continues to amaze all with her boundless energy and activities, had a busy

week-end over Labor Day.

On August 23, she returned from nearly three weeks in Alaska, a week of which she spent in Kenai with Elaine and Bill Cessnum.

Since they were leaving for Texas, she spent the rest of the time at Anchorage with her two granddaughters and a grandson.

They went by train to Seward, then took a boat to Resurrection Island. Ora Lee was fascinated in watching the whales and other sea mammals in the northern waters.

During her entire stay, the weather was ideal, cool, and at night, even cold. Such a contrast to the heat when she arrived back in the Panhandle.

She spent the next few days cooking and preparing for the week-end. All was in readiness and she could relax when her son, C.E. (Chunky) arrived from Houston. Elaine and Bill came over from Dalhart where they have their motorhome at his mothers. Bodill and Jack Bradley came from Hereford. In Spearman, Denise and Cary Bridges with little Amy spent some time with them before going to Dimmitt.

All were pleased to learn that Chunky had been appointed to fill

See NEIGHBORS, page 8

**ALCO CUSTOMERS**  
The metal rocker and magazine rack pictured on page 2 of this weeks Ad did NOT meet our quality and safety standards and will NOT Be Available. We regret any inconvenience this may cause our customers.  
**ALCO STORES, INC.**

**HERGERT FORD**  
Top Quality Body and Paint Repairs  
DARL HERGERT  
420 S. Main Perryton, TX 435-7676

**BAGGERLY'S INC. OF SPEARMAN**  
B and B 205 DILLON SPEARMAN, TX 79081 (806) 659/2662  
S.A.L.E.S. (800) 570/0520 FARM AND HOME FAX (806) 659/2733  
True Value Help Is Just Around The Corner.

**True Value.**  
Help Is Just Around The Corner.

Available in over 1000 colors  
Your choice **14.99**  
**PREMIUM QUALITY E-Z Kare™ Flat or Satin Latex Enamel** both offer excellent coverage with maximum resistance to stains! The perfect start to your decorating project! Gallon 121475E1 R 461851258 916 14  
PAINTING QUESTION? CALL 1-800-933-0061

**TRU-TEST. Official Paint Supplier of the NFL.**

**EZKARE** Interior Latex Flat Enamel  
**EZKARE** Scrubbable Beautifully Tough. Interior Latex Satin Enamel

**TRU-TEST. 8.99**  
BETTER QUALITY Easy Color™ Interior Flat Latex Wall Paint is available in over 1000 colors. 311 R 258 577 14

**TRU-TEST. 4.88**  
4-Piece Performance Paint Set includes a roller with cover, 1 1/2" trim brush and a foam plastic tray. 100 R 400 R 207 555 12

**20% OFF ALL PAINT NOT ON SALE**

**65th Annual Gruver High School Homecoming Celebration**  
**Reunions for the Classes of: 1935, 45, 55, 65, 75, 85, 95**  
**SEPTEMBER 15TH**  
7:00 p.m. - Alumni Chili Supper - School Cafeteria  
8:00 p.m. - Crowning of Alumni Queen and Homecoming Queen  
8:00 p.m. - Gruver Greyhounds vs. Texhoma Red Devils - Greyhound Stadium

Individual class gatherings will follow the game. The location will be announced at the game.

**SEPTEMBER 16TH**  
9:00 p.m. to 1:00 a.m. - All School Alumni Dance - Harland Gerardy's hangar at the Gruver Airport  
starring "The Rowdy Ace Band"  
\$5.00 per person

**ALUMNI QUEEN CANDIDATES AND ESCORTS:**  
1935 - Frances Thoreson Glasgow & Joel Stavlo  
1945 - Alma Dahl Walker & Arnold Bayless  
1955 - Evalyn Edwards Dahl & Glen Ward  
1965 - Judy Hill Larch & Mike Stedje  
1975 - Terri Baguell Thompson & Gregg Carroll  
1985 - Holly Holt Key & Bart Shapley  
1995 - Julie Meyer & Jace Dawson

GO GO GO



# Sports

## For the Sport of it

by Bob Bort

The Hounds scrimmaged the Canadian Wildcats this past Friday, September 1, and they are looking quite good. The Hounds performed well against the Wildcats on defense, though they did give up three scores. Jason Ward had an interception that was nice, and the Hounds held the Wildcats without a first down until late in the first series. On offense, Bailey Barkley had three nice pass completions - two to Wylee Maupin for 23 and 18 yards, and one to Tye Womble for 40 yards. Matt Overbey also had a nice pass reception from Barkley. Daniel Bort and Sammy Renteria had some nice runs, but the Hounds did miss Travis Ferguson, who didn't play, but will be ready for Wheeler. Jason Smith filled in admirably for Ferguson.

The JV really looked super, with two touchdowns to 0 for Canadian. Running backs, Smith, Clint Robinson, and Travis Bayless really excelled, as did quarterbacks Jim Potts and Jared Johnson.

This week it all counts. Gruver versus Wheeler. See you there.

\*\*\*\*\*

One big plus this year - the Hounds had hoped they would be injury free as a lack of depth is a big problem with this year's team. Well, the Hounds are getting their wish. Other than a couple of bruises, there are no injuries for the Hounds varsity opening this season with Wheeler. Thanks to God for that!

Here is the starting lineup for the 1995 Gruver Greyhounds, if the starting lineup would be made up of just seniors...

**OFFENSE:** 12- Bailey Barkley, senior QB; 44- Sammy Renteria, senior TB; 23- Travis Ferguson, senior FB; 24- Daniel Bort, senior SE/FL; 20- Tye Womble, senior QE; 34- Wylee Maupin, senior TE; 54- Juan Arreola, senior C; 51- Jason Ward, senior SG, 53- Scott Jarvis, senior QG, 56- Max Frick, senior ST; and 59- Andy Morris, senior QT. 11 seniors.

**DEFENSE:** 51- Jason Ward, senior DL; 59- Andy Morris, senior DL; 54- Juan Arreola, senior DE; 12-

Bailey Barkley, senior DE; 44- Sammy Renteria, senior LB; 56- Max Frick, senior LB; 23- Travis Ferguson, senior LB; 24- Daniel Bort, senior DB; 20- Tye Womble, senior DB; 34- Wylee Maupin, senior DB; and 53- Scott Jarvis, senior DB. 11 seniors.

Of course, some of these juniors may have a word or two to say about that: 7- John Duncan, QE/DB; 33- Matt Overbey, TE/DL; 50- Scott Stedje, ST/DL; 52- Heath Tolleson, ST/DL; 57- Blake Ferguson, QG/DL; 77- Jeb Lee, C/DE; and 80- James Sursa, TE/DB. Show up Friday night and find out....

\*\*\*\*\*

The Hounds open tomorrow night, Friday, September 8, against the Wheeler Mustangs at Greyhound Stadium. Wheeler leads the all-time series with the Hounds 5-4-1 in the ten games that have been played between the two teams. Wheeler is ranked in the top ten in the state in class A, but is picked to have their hands full with Shamrock for the district title in district 1-A. Shamrock is also ranked in the top twenty in the state in class A. Wheeler and Shamrock meet October 20 in Wheeler.

Last year, Gruver beat Wheeler 14-7 at Wheeler, and it was an upset. Wheeler will be favored this year also. The Harris Ratings have Gruver a 4 point underdog. But the Hounds should match up well as an underdog again, and the game is at Greyhound Stadium, where the Hounds will have the advantage. A loss would not look bad on the Hounds' record. But look for a Gruver upset victory at home. My prediction: Hounds 21 Wheeler 7. What a great way to start the season - with an upset victory at home!

\*\*\*\*\*

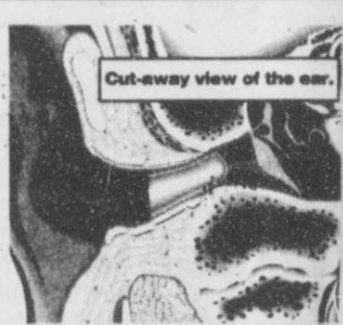
Saturday, August 26, was a big day in sports. First of all, on ABC, was the opening of the collegiate football season with Virginia vs. Michigan at Ann Arbor in the annual Pigskin Classic. Michigan fell behind 17-0, but rallied for three touchdowns in the fourth quarter, including the game winning touch-

down pass on the last play of the game for an 18-17 victory. It was great way for ABC to kick off the football season, no matter for which team you were rooting.

Then a complete turnaround, and tragedy for ABC. The Pigskin Classic was followed by the Little League World Series, with Spring, Texas, versus a team from Tainan, Taiwan. Taiwan won 17-3, and it was humiliating to watch our 12 year old boys beaten so badly.

Taiwan is so self-conscious about China, that they insist on their team being called Chinese Taipei, instead of Taiwan, which is the name of the island. Taiwan still claims it is the official government of China, ever since Chiang Kai-shek left the mainland with his people for Taiwan in 1949, forced out by Mao Tse-tung and his Communist troops (remember Chairman Mao??). They call themselves the Republic of China, and now want to be called just China-Taipei (Taipei is the capital of Taiwan). If you address a letter to "Taiwan", it will likely be returned for proper addressing, "Republic of China", or "China". Talk about some hard feelings - the gov-

See SBORT, page 7



### Miniscopic Deep-Canal Hearing Instrument Now Available

Our office is happy to announce that we are currently fitting a completely in-the-canal hearing instrument. This remarkable new hearing instrument is discreet and comfortable to wear. It's placement deep in the canal of the ear (see illustration at top) makes it barely visible. Others may not recognize you are wearing a hearing aid.

The Miniscopic is the smallest hearing instrument ever manufactured by NU-EAR. Call now, to schedule an appointment, for your hearing assessment and consultation.

Hearing tests are for hearing aid selection and not for medical diagnosis of hearing loss. © 1994 NU-EAR/AIDS/04/204944

**HIGH PLAINS HEARING AID CENTER**  
Golden Spread Senior Citizens Room in the O'Loughlin Community Center  
Every 2nd & 4th Tuesday  
2:00 p.m. to 4:00 p.m.  
274-5311  
1-800-753-1696  
659-3866

## Lady Hounds compete at Borger x-meet

The Gruver Lady Hounds cross country team competed minus several of its team members, due to sickness, injury, and vacation, this past Saturday, September 2 at Borger in the first cross country meet of the year. They performed very well. Placings, either individual or team, will not be known until next week. Here are how the girls competed against themselves, and their times.

1. Myriam Alvarez, 14:40
2. Amy Gillispie, 14:42
3. Kadie Grotegut, 15:16
4. Kiki Carthel, 15:20
5. Joni Hart, 15:29
6. Weslyn Maupin, 15:42
7. Holly McCloy, 15:52
8. Amber Murrell, 17:30

9. Amber Roberts, 18:40

One note: It was the first cross country meet that Amber Roberts has ever competed in, and Coach Steve Myatt was especially proud of her. Kadie Grotegut, Holly McCloy and Roberts are all freshmen.

This week, the Lady Hounds will be competing at Perryton. They will be without one of their aces, junior Cara Hathaway, who has injured (sprain) her ankle severely, and will be out two to four weeks.

The Lady Hounds will be gearing up all season, readying themselves for the big district 1-AA cross country meet to be held at Stratford at 4 P.M. on October 23. That is when it all really counts.

Interested citizens will meet in the Ochiltree Co. Expo Center on Thursday, September 7 at 7:30 p.m. to voice our concerns about hog operations in Hansford and Ochiltree counties. Speakers from areas already effected by swine operations will be present to emphasize problems that CAFO's will create. We expect to welcome new attendees from surrounding counties. A membership donation table will be set up. Tea and coffee will be served. Guests are encouraged to bring cookies along with a guest.

Thanks,  
Donnie Dendy, VP Accord Ag. Inc.

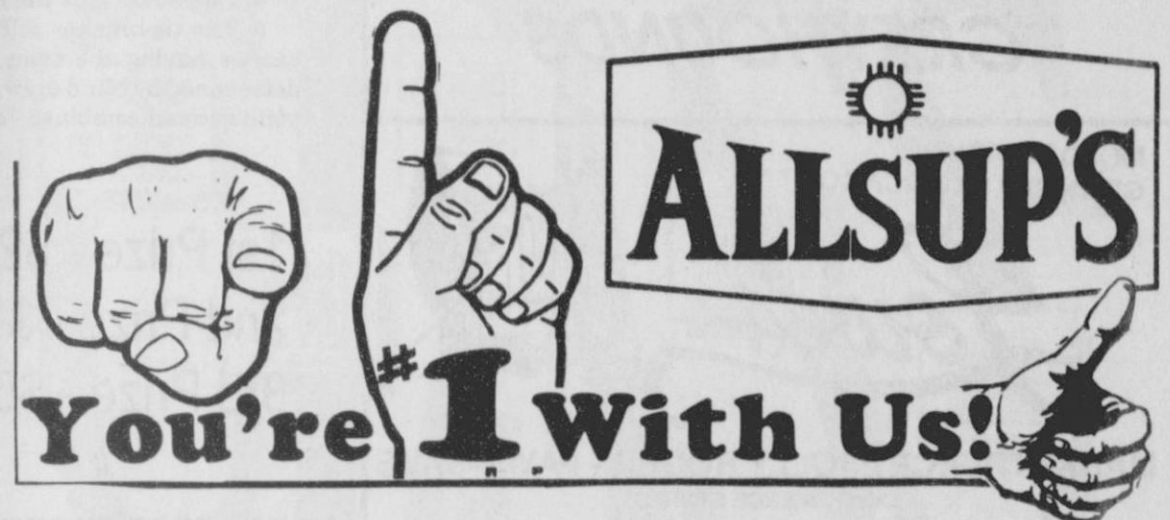
## WHY SPEND TIME ON TILLAGE WHEN YOU CAN NO-TILL YOUR WHEAT INTO STALKS?

Brian Watley is now booking acres for no-tilling wheat into corn and milo stalks!

**NEW 30' JOHN DEERE NO-TILL DRILL WITH 7140 CASE IH TRACTOR AND TANDEM TRUCK**

For more information or to book your acres CONTACT BRIAN AT WATLEY SEED

659-3838 OR 659-3618 (evenings) or (806)898-1329 (mobile)

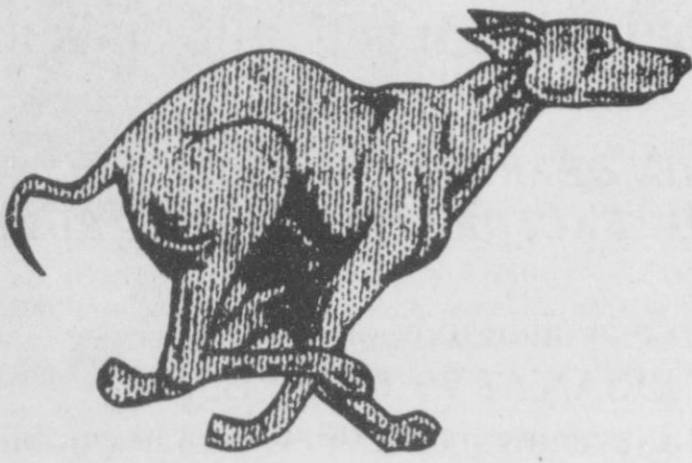


Enjoy <b>Coca-Cola CLASSIC</b>		SPEARMAN — GRUVER		PRICES EFFECTIVE SEPTEMBER 3-9, 1995		OZARKA SPRING WATER 33.8 OZ. <b>99¢</b>	
SAVE ON COCA-COLA SOFT DRINKS <b>\$2.19</b> six-pack 12 oz. cans.		AMERICAN CHEF COOKED HAM 10 OZ. PKG. <b>\$1.79</b>		ALL SUP'S SAUSAGE, EGG & BISCUIT FOR ONLY <b>99¢</b>		ALL FLAVORS ALL SUP'S ICE CREAM 1/2 GALLON <b>\$1.49</b>	
SAVE ON ALL SUP'S CORN DOGS REGULAR \$1.49 <b>2 FOR \$1</b>		FAMILY SIZE LANCE POTATO CHIPS REGULAR \$1.39 <b>89¢</b>		ALL SUP'S HOMOGENIZED MILK GALLON <b>\$1.99</b>		SOLARAY SUNGLASSES GET ANY PAIR <b>\$1.00 OFF</b>	
STORE SPECIAL		STORE SPECIAL		<b>GAS FOR A YEAR WINNERS:</b> Bobby Langston • Plainview, TX. Leroy Bray • Gallup, N.M. Helen Sutton • Hobbs, N.M. J.M. Moss • Roswell, N.M. Kathleen Ferguson • Merkel, TX. Kaye Price • Loving, N.M. Antonio Medina • Ballinger, TX. Kelly Raber • Spur, TX. James Loyd • Abilene, TX.			
<b>ALLSUP'S DRINK SPECIAL</b> 32 OZ. FOUNTAIN DRINK TALLSUP .....EA. <b>59¢</b>				<b>CASH WINNERS:</b> Maria Pennington • Petersburg, TX. <b>1000</b> Bernice Freeman • Seagraves, TX. <b>1000</b> Ida Ortega • Hobbs, N.M. <b>1000</b> Frances Collier • Plainview, TX. <b>500</b> Joe Cisneros • Alamogordo, N.M. <b>500</b> Jose Garcia • Santa Fe, N.M. <b>500</b> Becky Hill • Spur, TX. <b>500</b> Kenneth Hughes • Eunice, N.M. <b>500</b> Gloria Ramon • Abilene, TX. <b>500</b> Edward Gonzalez • Tahoka, TX. <b>500</b> Belia Aquilar • Hereford, TX. <b>500</b> Robin Rumfield • Carlsbad, N.M. <b>500</b> Lynette Stowe • Abilene, TX. <b>500</b>			
ALL SUP'S 1.5 LB. LOAF SANDWICH BREAD 69¢ EACH OR 2 FOR <b>\$1.00</b>		SHURFINE SUGAR ..... 4 LB. <b>\$1.59</b>		VALLEY FARE 4 ROLL PKG. BATH TISSUE .....EA. <b>79¢</b>		ALL FLAVORS GATORADE .....16 OZ. <b>69¢</b>	
VALLEY FARE JUMBO ROLL PAPER TOWELS 2 FOR <b>\$1.00</b>		No Purchase Necessary. Game begins May 28, 1995 and ends August 18, 1995. Official Rules and game piece available at participating ALLSUP's locations or by sending a SASE to "RAILSNAKE ROUND-UP", P.O. Box 1277, Lynnwood WA 98046-1277 by August 18, 1995. Game open to legal NM, OK and TX residents. Void where prohibited.					

Every Ticket Can Win!



**GOOD LUCK**



**GREYHOUNDS**

MONDAY NIGHT  
GREEN BAY AT CHICAGO



MARKETPLACE - JOLLY ROGER - PAY-N-SAVE  
CONVENIENCE STORES

1804 Hall Avenue  
Littlefield, Texas 79339  
In Spearman at 505 Plains Shopping Center

GAME OF THE WEEK  
WHEELER AT GRUVER



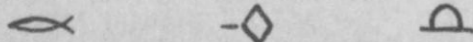
**GRUVER STATE BANK**

3 Main Plaza  
Gruver, Tx. (806) 733-5061  
Member FDIC



**DEAN CLUCK  
CATTLE CO., LTD.**

STRATFORD AT SUDAN HCR 3, Box 47  
Gruver, Tx. 79040  
(806) 733-5021



SPEARMAN AT PANHANDLE



**GILLASPIE**  
AUTO & TRUCK CENTER, INC.  
CHEVROLET, OLDS, BUICK, PONTIAC  
CHRYSLER, PLYMOUTH, DODGE  
Highway 207 South • P.O. Box 430  
Spearman, Texas 79081  
(806)659-2541

See us for all your automotive needs:  
**Sales  
Service  
Parts**



221 Main • Spearman  
659-3426  
212 S. Main • Perryton  
435-4261



QUANAH AT MEMPHIS

The Hansford County  
**Reporter-Statesman**

Serving Hansford County Since 1907  
213 Main • Spearman, Texas 79081

**1995  
FOOTBALL CONTEST**

--- RULES --- RULES --- RULES ---

1. In each advertiser's box you will find the name of a team playing this weekend. Place the team you think will win in the entry form below.
2. Fill in your name, address and phone number (please print) and sign the entry.
3. Entries in Spearman may be turned in at the Reporter-Statesman Office. Gruver Residents may turn in their entries at the Gruver City Hall or mail them to: Reporter-Statesman, Box 458, Spearman, Tx. 79081. Deadline for entries is 5 p.m. Friday and mailed entries must have an official U.S. Post Office postmark dated no later than Friday. Winners will be picked on Monday mornings after mail delivery.
4. No photocopies will be accepted.
5. The tie-breaker will be used to break ties. In the event of entries having the same tie-breaker then the winner will be determined by blind draw. The tie-breaker is the total number of points scored(combined - both teams) on the game of the week.

1st Prize - \$25  
2nd Prize - \$15  
3rd Prize - \$5

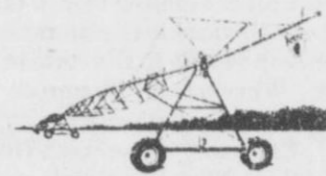


**GOOD LUCK**



**LYNX**

CHILDRESS AT W.T. HIGH



Reinke is the leader in  
Innovation in the Pivot Industry.

**Paschel  
Irrigation Inc.**

Richard & Arlene Paschel  
(806)659-5228  
Hwy 15 W. • P.O. Box 69  
Spearman, TX 79081



PALODURO HIGH AT ODESSA

Tires • Flats • Oil & Lube • Wash • Brakes & Motor Repairs • Front End Alignments

**J & M Service Center**

24 Hour Road Service

**DAVID PEARSON - Owner**  
(806) 659-5519



415 Collard  
Spearman, TX 79081  
24 Hr. Service  
(806) 659-3352

CANADIAN AT SANFORD-  
FRITCH



**G&G  
FOODLINER**

516 Main • Gruver  
733-2471

*Little Tiffanies*



DIAMONDS - FINE JEWELRY  
BRIDAL REGISTRY

GUYMON AT PERRYTON

The Hansford County  
**Reporter-Statesman**

Serving Hansford County Since 1907  
213 Main • Spearman, Texas 79081

Tie-Breaker:

Total points scored  
in 'Game of the Week'



- Lowe's Marketplace: \_\_\_\_\_  
Gruver State Bank: \_\_\_\_\_  
Dean Cluck Cattle Co.: \_\_\_\_\_  
Gillaspie Auto: \_\_\_\_\_  
Cates: \_\_\_\_\_  
Main Street: \_\_\_\_\_  
J & M Service Center: \_\_\_\_\_  
Paschel: \_\_\_\_\_  
G&G: \_\_\_\_\_  
Little Tiffanies: \_\_\_\_\_  
Caprock: \_\_\_\_\_  
Curtis' Hot Ollers: \_\_\_\_\_  
Bunkhouse: \_\_\_\_\_  
Gruver Ford: \_\_\_\_\_  
Hi Plains Auto: \_\_\_\_\_  
Reporter-Statesman: \_\_\_\_\_  
Equity: \_\_\_\_\_



Name: \_\_\_\_\_  
Address: \_\_\_\_\_  
Town: \_\_\_\_\_  
Phone: \_\_\_\_\_  
Signature: \_\_\_\_\_

DUMAS AT DALHART

*Main Street Store*



506 Main Gruver, Tx. 733-5040

"We Support Our Local Teams"

**CAPROCK #1 & #2**

Mike Heard, General Manager  
(806) 733-5025

"Custom Cattle Feeding"

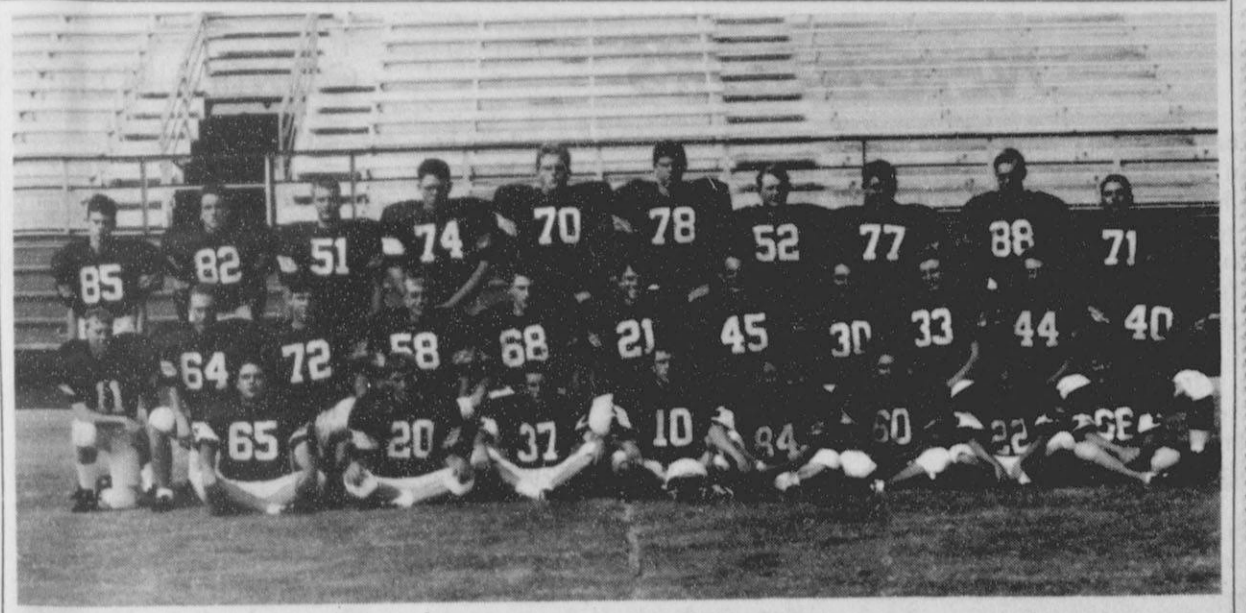


BIG SPRING AT BORGER





1995 LYNX VARSITY - The Spearman Lynx will be in action this Friday night against the Panhandle Panthers. These are the players to look for: (Back Row l to r) Head Coach Ric Smith, Frankie Dominguez, Phillip Sanders, Coyt Tigrett, Jamie Townsen, Dillon Miller, Martin Sanders, Matt Gafford, Tom Kirk, Joe Jenkins, Eric Varnon, Lee Jarvis, and Manager Lucas Biggs. (Middle Row l to r) Carlos Hernandez, Skip Lesly, Brent Collins, Jake Howard, Clay Neff, Cody McLeod, Greg Elliott, Tony Clement, Blake Beedy, and Travis Loomis. (Front Row l to r) Jeremy Blan, Eric Cudd, Michael Witten, Mark Parker, Cody Leicht, Jason Holton, Britt Savage, and Michael Lusby. (Photo Courtesy of Cathy Gafford and Peggy Varnon)



1995 JV LYNX - The Spearman Lynx JV teams will be in action for the first time this Thursday, as they host the Stratford Elks. This group of athletes are: (Back Row l to r) Landon Jackson, Landon Miller, Josh Gilley, Michael Carey, Doran Schoenhals, Jamie Townsen, Quentin Shieldknight, Monty Herrington, Brandon Morgan, and Anthony Bravo. (Middle Row l to r) Lance McMahan, Dan Kunselman, Scott Thompson, Brian Howell, Clancy Vanderburg, Clint Goodman, Jason Sangar, Kevin Baker, Aaron Witten, Michael Lusby, and Carlos Hernandez. (Front Row l to r) Joey Salgado, Phillip Creel, Chuck Grayson, Josh Bynum, Dwayne Creel, Phillip Navarate, Brian Black, and Brian McLaughlin. (Photo Courtesy of Cathy Gafford and Peggy Varnon)

## Sbort

CONTINUED FROM PAGE 5

ernment there really has a complex...!!! Little League baseball does wonders for their ego...

My prediction is that it won't be too long before there are Major League Baseball teams in Japan, and then Taiwan will let their boys start playing baseball as grown-ups. Now they grow up to be doctors and merchants and generals... waiting for the moment their government retakes the mainland and is restored to power as the legitimate government over the entire, vast country of China. Who knows? Someday it might happen, but I would think it's not likely...

\*\*\*\*\*

Here is some Lady Hounds basketball news. The annual Pizza Hut/Toot n' Totum Tip Off Classic in Amarillo scheduled for December 7-8-9 will be played this year at

Amarillo High. That is where it was played two years ago, when the Lady Hounds made it to the finals against the Lady Sandies. This year, watch out for Amarillo Tascosa...

\*\*\*\*\*

The Amarillo Daily News Pigskin Preview came out last Thursday morning, and it is nothing to brag about. They pick district 1-AA exactly the same as everyone else: 1. West Texas; 2. Spearman; 3. Gruver; 4. Stratford; 5. Boys Ranch. I didn't care much for their article on Gruver, "Greyhounds aiming to clear playoff barrier this season". They wrote, "Maybe playoff bound any other year. Maybe this year. Maybe not." That was a dumb comment.

\*\*\*\*\*

TRIVIA QUESTIONS FOR NEXT WEEK: Question number

one: The Hounds have opened the season in modern years as late as Sept. 13 (1968), but September 8 is one of the latest dates to start a season. The last time Gruver opened on September 8 was 1989, and it was at Stratford. What happened around halftime of that game?

Question number two: The Hounds have played Texhoma in their homecoming game several times in their history. Altogether, they have met 11 times, with the Hounds holding a 6-5 advantage. What happened around halftime of the game in 1965, Saturday the 23rd of October, against Texhoma's Red Devils?

Question number three: How many miles do Coach Steve Myatt's parents average in travelling from Dimmitt to watch the Lady Hounds play basketball each year...?

## Lynx and Lynxettes shine at Borger cross country meet

The Spearman Lynx and Lynxettes' Cross Country Team competed in their first meet of the season last Saturday, September 2nd, against a very tough group of competitors at Borger.

As many people already know, the team this year features boys, the first guy runners since the Jerald Blan days of 1989. Jason Villines came through for the team and finished with a time of 22:56. Heath Archer and Zack Furlow, the

other two members of the team, finished their 2 mile runs with a time of 27:03 each.

As for the girls, Audra Sanders and Samantha Beasley really gave Spearman something to be proud of in this first meet of the season. Sanders topped all Lynxettes with a 12th place time of 12:20. Beasley was a real close 13th with a time of 12:21. Both of these girls received medals for the outstanding efforts. Also competing for the team were Jennifer Whitefield, 17:30, Sid

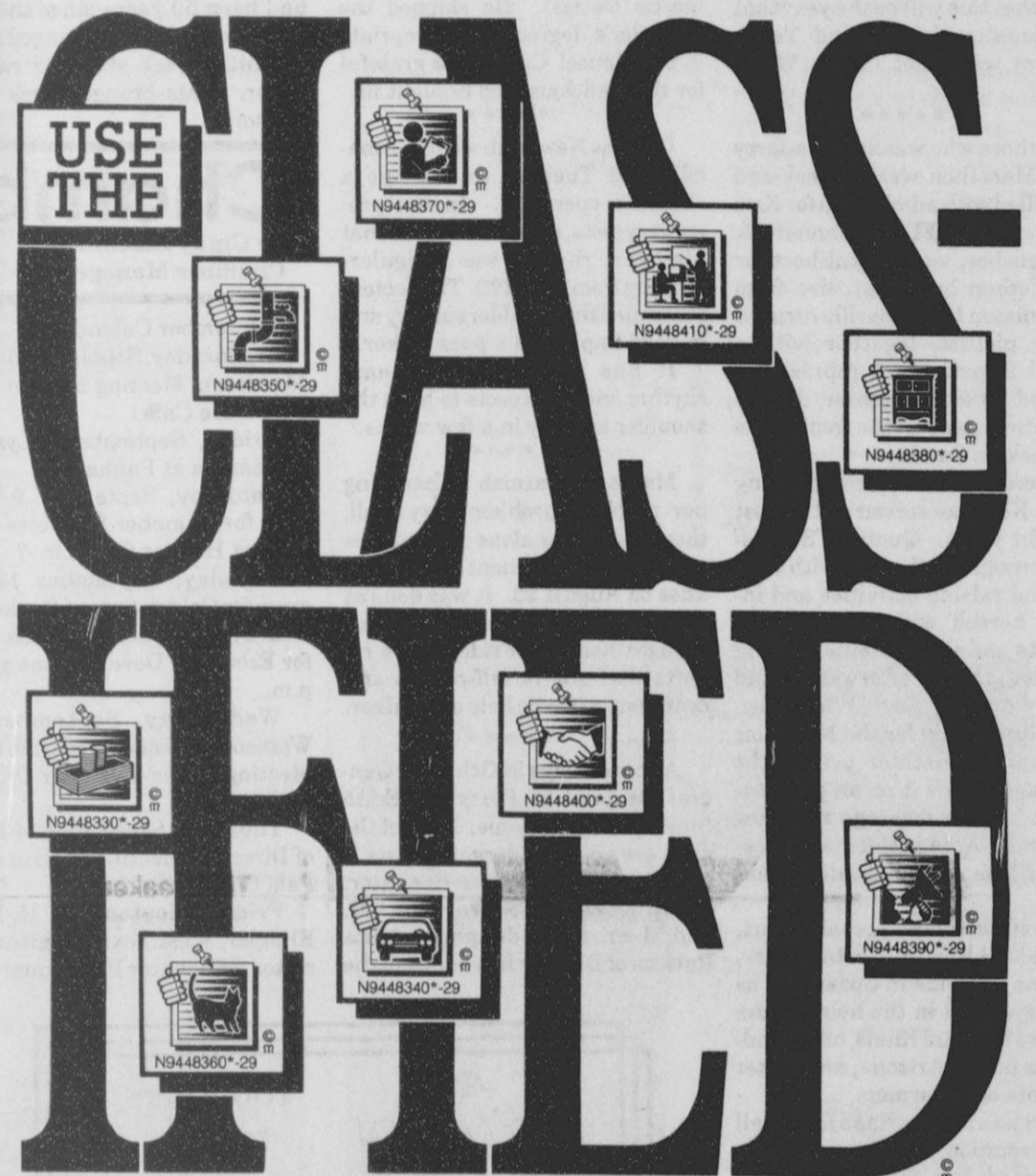
Woodington, 17:01, Amber Ramon, 16:39, Chelsie Villines, 17:44, and Sara Goodson, 17:44.

Please remember, this is the first meet of the season, and these times will improve. It does take time to stretch out old muscles and get back into the swing of things.

The team will travel next to Wolf Creek, Lake Fryer, to compete in another grueling 2 mile stretch. Running time is scheduled for 9:00 a.m.



People once believed that carrying the green and red quartz known as the bloodstone or heliotrope would render them invisible.



### SECTION!

There's something for everybody in the Classifieds. Everything from autos to zoom lenses.

**Call Today!**

**The Hansford County Reporter-Statesman**  
(806) 659-3434 or 1-800-395-9482

**DENVER AT DALLAS**

**Curtis' Hot Oilers**  
806-659-3432  
"Taking Service to Perfection"

**GRUVER FORD, INC.**  
531 MAIN • GRUVER  
"Well worth the drive"

**FORD**

BOOKER AT BEAVER

**NOTRE DAME AT PURDUE**

**THE HANSFORD COUNTY REPORTER-STATESMAN**

Serving Hansford County since 1907  
213 Main, Spearman (806)659-3434  
P.O. Box 458 1-800-395-9482

**NEBRASKA AT MICHIGAN ST.**

**The Bunkhouse**  
Cathy Gafford, Owner

Clothing & Accessories for Men, Women

Buyers:  
Ladd Gafford  
Jan Betzen  
Betty Lookingbill

(806)659-2617  
212 S. Main  
Spearman, Tx.

**TEXAS TECH AT PENN STATE**

AUTOMOTIVE • INDUSTRIAL • OILFIELD SUPPLIES  
WHOLESALE AND RETAIL - IRRIGATION PARTS

**Hi-Plains Auto Supply, Inc.**  
VANCE SNIDER • CLOIS (BILLY) BAKER  
Owners

Box 116  
Spearman, Texas 79081  
806/659-2506  
800-657-8742

**NAPA**

Mobile Numbers  
806/435-0289  
806/435-0288

**PERRYTON EQUITY**

BUS. (806) 659-2420

Spearman Perryton Morse holt

**WEST TEXAS A&M AT ADAMS STATE**



# NEIGHBORS

the unexpired term of a state judge in Houston by the governor. Chunky was surprised and honored when he was informed that he had been selected from 125 judges. He has been serving that area as a "sitting judge".

Mrs. Myrtle Lackey was honored on her 90th birthday on Saturday in the home of her daughter, Mrs. Elvonna Davis.

Mrs. Lackey was delighted that so many of her friends came to wish her a Happy Birthday, and is grateful for the many cards and flowers. Also attending were two of her nieces, one from Denver and one from Oklahoma City, and her nephew from Perryton.

Mrs. Lackey moved here from Amarillo four years ago. She was born September 1, 1905, at Brad, Texas.

She is sort of a rarity for Spearman, an avid baseball fan. She and your neighbor agree that it is unlikely that this will be the year that the Houston Astros and Texas Rangers will meet in the World Series!

All those who watched the Jerry Lewis Marathon over the week-end were filled with admiration for Kari King. Kari, KFDD, Channel 10, news anchor, was a local host for the telethon broadcast, live from the Radisson Inn, Amarillo Airport.

Her picture, together with a United Supermarket representative and an eighth grader, dystrophy patient, was on the front of the TV Week on Sunday.

According to the accompanying article Kari has served as the host for eight years. Quoting "She assists throughout the year with various fund raising activities and involves herself with many of the patients and their families during the telethon and afterward." And directly quoting Kari "When I began volunteering for the Muscular Dystrophy Telethon over eight years ago, I saw it as an opportunity to send a message to fellow Panhandle Area residents, a message of love, understanding, and hope."

The attractive and capable Kari, a niece of Altha and Pete Fisher, had many friends in Spearman as she has visited in the home of the Fishers. The Bud Kinds, her grandparents now of Arizona, are former residents of Spearman.

Kari was in Spearman for the all school reunion in July as she accompanied her father, Bud, an alumni. He is living in Cash, Oklahoma.

Reports on the ill: Herbert Winegarner underwent surgery at High Plains Baptist Hospital in Amarillo on Wednesday, August 30, at 1:30.

Mr. Winegarner lives at Campo, Colorado, but as most of his family



The U.S. Mint was created in 1792.

live here, he chose Amarillo to be near them. His sons-Arlan, Nolan, Rolan, and Verlan, all of Spearman, were encouraged after the surgery as he came through in fine shape.

At this writing it is expected that he will leave the hospital on Wednesday and return to their home in Campo.

Peggy Archer returned home last week-end after undergoing surgery in High Plains Baptist Hospital on Thursday. She had the same surgery previously last winter, and unfortunately it had to be repeated. She is recuperating and although her activities are curtailed, she is looking forward to full recovery soon.

Peggy is most grateful for the care and concern shown by friends and family, including husband Carl. He has been most helpful. In fact he is closing in on being certified for his M.D.D. degree (Master of Domestic Duties). He skipped the Bachelor's degree-not appropriate in that house! Carl is also grateful for the delicious food brought in.

Charles Newcomb went to Amarillo last Tuesday to undergo a shoulder operation. In the pre-surgery tests, it was discovered that his heart rhythm was irregular-varying from 38 to 190. The doctors postponed the shoulder surgery and instead implanted a pace maker.

It has stabilized his heart rhythm and he expects to have the shoulder surgery in a few weeks.

Margaret Harnish is handling her mobility problem very well, though she lives alone. She underwent knee replacement on her right knee on August 23. It was done at St. Anthony's Hospital and she was brought home on Friday. She reports that she is self-reliant and confident with the help of a walker.

After ten days in Ochiltree General Hospital in Perryton, Edith Smith is back at home. Most of the days are spent undergoing tests.

Edith and Preston's daughter, Dorothy Cator, of Sunray took her, and their other daughter Anita Ralston of Dalhart has added to the

## CONTINUED FROM PAGE 4

care she has received.

On Friday evening, descendants of the late Ralph and Myrtle Fullbright gathered at K-Bobs in Perryton for a pleasant evening of reminiscing and bringing each other up to date on the family.

Present were Edith and John Pipkin, Orville and Malolah Fullbright, Edna Scroggs, Wilbur and Lorraine Fullbright, Ethel and J.W. Depew, Reba and Lesly Banks, Shirley Depew, Richard and Lisa Pipkin and children, and one guest, Jeremy Sutterfield.

The next day, Saturday, cousins from five states met at Pampa, with 35 present, from Texas, Oklahoma, Arkansas, California, and Massachusetts.

After lunch, they drove to Mobeetie. Their grandparents, the Dan files, had lived there, and their sons had attended school there and some of the cousins had memories of the place. For some of them it had been 50 years since they had been there. All had changed except the little creek still had running water. This brought back many memories.

Those enjoying the reunion were: Minnie Sharp, daughters Charlene and Loyce Ina; Danny Barton and wife; Elvin and Eileen Zell; Ann and Quinn Eudy; Wilbur and Lorraine Fullbright; Ethel and J.W. Depew; Reba and Lesly Banks; Orville and Malolah Fullbright; Cloetta and Gene Shotts, Clisresa and Christian; Ralph and Shirley Depew and Jordan; Yvonda and Larry Stokes, Crystal and baby; Ann Hare; Edna Scroggs; Mary and Louis Miesner; and Edith and John Pipkin.

Generally Panhandle art lovers consider pictures of beautiful landscapes, sculptures of animals or noted individuals as art. The Sunday edition of the Amarillo paper included a detailed account of the international contemporary art exhibition to be shown in Santa Fe for the next few months. Several exhibits were described-one of the following- "Carlos Capelan's mud-walled, mock museum space, where glass cases enclose both prehistoric rocks and already chewed gum..." 'S' fact-right there in black and white.

# Chamber Chatter

by Cindy Blackman Chamber Manager

September Calendar:  
Wednesday, September 6-Retail Merchants Meeting at noon at the Palo Duro Cafe.

Friday, September 8-Lynx vs. Panhandle at Panhandle.

Saturday, September 9-Workshop for Chamber Directors at the Airport Hanger 9:00 a.m.-?

Tuesday, September 12-Program for Golden Spread Senior Citizens by the Spearman Task Force for Economic Development at 6:30 p.m.

Wednesday, September 13-Women's Division Executive Board Meeting at the Chamber Office at noon.

Thursday, September 14-Board of Directors Meeting at noon at the Palo Duro Cafe.

Friday, September 15-Hans Klingler, West Texas Regional Director for Senator Phil Gramm will

be in Spearman for a Townhall Meeting at 2:00 p.m. at the First State Bank Hospitality Room.

Monday, September 18-Spearman Task Force for Economic Development meeting with the Rotary and Lions Clubs. The speaker will be Cheryl Pink, Manager of Economic Development with Southwestern Public Service.

Wednesday, September 20-Women's Division Meeting at noon at the Palo Duro Cafe.

Thursday, September 21-Lion's Club broomsale.

Friday, September 22-Homecoming-Lynx vs. Clarendon.

Saturday, September 30-St. Jude's Bike-A-Thon. Call Judy Yarbrough for information.

## COMING CLASSES

Sunbonnett Sue will resume • Sept. 7th  
9 a.m. 1:00 p.m. 6:30 p.m.

Bible Sampler • Sept. 11th  
9 a.m. 1:00 p.m. 6:30 p.m.

Christmas Sampler • Sept. 12th  
9 a.m. 1:00 p.m. 6:30 p.m.

Watch for class on Fantastic Star

For more information call or come by

Jo's This N' That

216 Main • Spearman, TX 79081  
(806) 659-3999

# AUCTION

FARM EQUIPMENT  
Frank Daugherty, Leon Daugherty  
Estate & Others

Saturday, Sept. 9 • 10 A.M. (storm date-Sept. 16)

Location: Pampa, TX - At the Intersection of Hwy 60 and Loop 171 (east side of Pampa, TX) Go E 2.5 mi, Then N 1 mi, Then E 1/2 mi, Then N 1/2 mi.

TRACTORS - COMBINE  
JD 4630; JD 4440 (4216 hrs); 1988 FORD TW5 w/Loader (2204 hrs); JD 4010 (recent OH); JD 720, 70, and (2) 'D's; CASE 'SC' and 'LA' '68 MF 510 Combine.  
VEHICLES - ATV'S  
'63 Dodge Truck; '86 Chevy 4WD; '83 Cadillac (84,000 mi); JD AMT 5 whlr. SUZUKI 125 4 Whlr.  
TRAILERS  
'87 HILLSBORO 7'X20' Lvsst Gsnk Trlr, Utility and Flatbed Trailers, JD 8'X28' Imp Trlr  
EQUIPMENT  
Krause Discs - 14" thru 25"; 4 and 6 row equipment; Oneways; Spike and Disc Drills; Reynolds 5 yd Carry All; JD Land Plane; Shredder, etc.  
IRRIGATION  
MM HD 800 6-A Eng; Rolline H8840 Eng; IH 605 Eng; 3" Tailwater Pumps; Alum pipe  
LIVESTOCK - SCALES - WINDMILLS - HAY HAULER FLATBED  
Troughs; Blk Feeders; Port. Panels; 7'X10' Scales; 8' and 10' Aermotor Mills and Fans; Flatbed Hay Hauler, 77'X9' Bed, Hideaway Forks  
GRAIN BINS  
(2) 1000 bu Hopper Bottom Grain Bins  
NOTE: Partial Listing Only

DENZEL TEVIS (806) 435-2768  
814 S. Main  
Perryton, TX 79070  
AUCTION & REALTY TxS 7498

**Royal Neighbors**  
OF AMERICA

**100 Years**  
Fraternal Life Insurance

Complete  
FRATERNAL LIFE INSURANCE  
for the entire family including  
Omni-Plus II Universal Life  
Annuities and IRAs -  
Highly Competitive Interest Rates  
Term-Plus

**MARILYNN HART**  
P.O. BOX 426  
GRUVER, TX  
(806)733-2066



## AWARENESS

**AIDS**  
A Disease of Global Concern  
Seminar taught by Donna Sweet, M.D.

Dr. Sweet is a native of Wichita and a graduate of the University of Kansas School of Medicine. She is Chair of the Internal Medicine Department and Director of Internal Medicine Education at St. Francis Regional Medical Center in Wichita. She is best known for the medical treatment and research she has done on AIDS. She has received the Award of Courage from the American Foundation for AIDS Research, The U.S. Department of Health/Human Services Public Health Service Award for Region VII, and the Samuel Crumline Medal for outstanding service for Kansas health.

## Free Public Seminar

Friday, September 15  
7 P.M. Seward County 7 P.M.  
Community College Theatre

Find out about the following:  
Is AIDS spreading at epidemic proportions?  
Do mosquitoes spread HIV?  
Can you get AIDS from drinking from a common cup?  
If I touch an AIDS patient, will I get AIDS?  
As a family-member caregiver, what do I need to know?

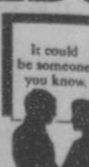
Sponsored by





Southwest Home Care and WeKARE

Talk About--

THE FACES OF AIDS







# BAD TV RECEPTION? NOT ENOUGH CHANNELS?

**WHY PUT UP WITH HAVING ONLY A FEW POOR-RECEPTION CHANNELS TO CHOOSE FROM?**

For just about \$1 a day and a one-time installation fee you can get PRIMESTAR and your favorite channel choices; all the best basic cable channels; premium service like HBO and The Disney Channel; pay-per-view channels; razor sharp picture; CD-quality digital sound, and more!  
Nothing to buy! Forget about spending a small fortune on an expensive mini-dish.

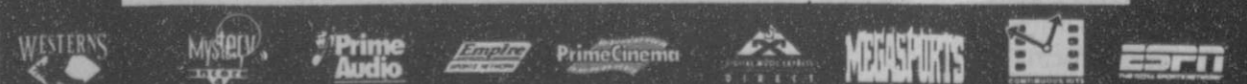
With PRIMESTAR, you can lease everything and look what you get:

- Lease packages start at about \$1 a day for everything-equipment and programming
- No-hassle, professional installation is just \$149
- Worry-Free Warranty
- No-Risk Money Back Guarantee
- One call gets it all!

**PRIMESTAR**  
WE BRING SATELLITE TELEVISION DOWN TO EARTH

**IN SPEARMAN AND SURROUNDING AREAS, call 1-800-716-0004**

CALL TODAY AND ASK HOW TO SAVE \$60 MORE!









# Obituaries

## Mary Lee

SPEARMAN-Mary Lee, 93, died Thursday, August 31, at 10:00 a.m. Services for Mrs. Lee were Tuesday, September 5, at First United Methodist Church in Spearman, with pastor Jeff Lust officiating. Burial was at Hansford Cemetery under the direction of Boxwell Brothers Funeral Home.

Mrs. Lee was born in Harrisonville, Missouri in 1902. She had lived in Spearman for 52 years, moving from Borger. She moved to Colorado Springs, Colorado in 1982.

She was married to R.E. Lee in 1925 at Cleburne, TX, who died in 1980.

She was a homemaker, a member of the First United Methodist Church of Spearman, taught Sunday school and sang in the choir, was a member of Beta Sigma Phi, and was the Spearman Chamber of Commerce Woman of the Year in 1976.

She is survived by one daughter, Nancy Robertson of Colorado Springs, CO; one son, W. R. "Bob" Lee of Colorado Springs; 4 grandchildren, and 8 great-grandchildren.

## Harvey Hugh "Red" Whitefield

Red Whitefield, 66, died Sunday, September 3, 1995.

Services were Wednesday, September 5, 1995, at 2:00 p.m. at the Church of Christ of Spearman with Arnis Pape officiating. Graveside services were at Hansford Cemetery by Boxwell Brothers Funeral Home.

Mr. Whitefield was born in Lakeview, TX, on September 8, 1928, and has lived here since 1961.

He married LaRue Goodwin on March 6, 1947 in Dumont, TX.

Mr. Whitefield was a truck supervisor for Baker and Taylor Drilling Company, and worked as a ranch hand for several ranches in the panhandle area prior to his employment with Baker and Taylor.

He was a member of the Church of Christ in Spearman.

He is survived by his wife; four sons, Harvey D. Whitefield of Canadian, Donlane Whitefield, Teddie D. Whitefield, and Eddie Whitefield, all of Spearman; one daughter, Janice Gayle Mayfield of Spearman; twelve grandchildren; and five great-grandchildren.

## Edgar R. "Slick" Close

Edgar R. "Slick" Close died Wednesday, August 30, at his residence.

Services were held on Thursday, August 31, 1995, in the First Christian Church Chapel with the Rev. Tommy Potter officiating, assisted by Rev. Waugh. Graveside services were held on Friday, September 1, at Lipscomb County Cemetery by Ellis Funeral Home.

Mr. Close was born November 30, 1907 on a ranch at Lela Hill near Shamrock, TX. He was the son of pioneer rancher John Thomas and Ivy Close. He was raised and attended school in Shamrock. After High School, he attended college and played football at first, Wayland College, then Texas Tech, where he played under coach Pete Cawthon.

He married Lina Lee Shahan in Canadian, TX on April 1, 1944. He ranched in Canadian, TX; Chaimberlain, South Dakota; Macon, Mississippi; and back in Texas in Morgan and Carrizo Springs. He moved to Midland in 1982. He was a member of First Christian Church and was a 32nd degree Mason. He enlisted in the Army in 1942, flew air transport, and was discharged in 1946.

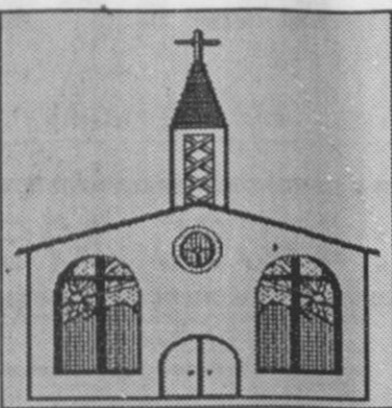
He was preceded in death by his wife in 1982, and by five brothers and one sister.

He is survived by two sons: Mike Close of Midland and Pat Close of Waco; by a daughter, Terry Lee Sory of Athens, TX; seven grandchildren; two great-grandchildren; and several nieces and nephews.

Memorials may be made to the Hospice of Midland, P.O. Box 2621, Midland, TX 79702, or First Christian Church, 1301 W. Louisiana, Midland, TX 79701.

Let us replenish the seed of faith through...

# REGULAR CHURCH ATTENDANCE, DAILY BIBLE READING & PRAYER



**Curtis' Hot Oilers**  
806-659-3432  
"Taking Service to Perfection"  
806-659-2912 P.O. Box 714  
800-821-6714 Spearman, TX 79081

**Palo Duro Supper Club**  
22 S. Archer  
659-2232

**C.O.'S SUPPLY CO.**  
Plumbing & Tire Sales & Service  
421 W. Kenneth • Spearman  
659-3781 or 659-3555

**Bartlett's Ace Hardware**  
105 W. Broadway  
733-2404

**GILLASPIE**  
AUTO & TRUCK CENTER, INC.  
2701 S. 11th • Old • Pontiac • Buick  
Chrysler • Plymouth • Dodge  
Hwy 207 South • P.O. Box 430 (806)659-2541  
SPEARMAN, TEXAS 79081

**Peak ELECTRIC**  
OILFIELD • RESIDENTIAL • COMMERCIAL  
321 Main Street  
Spearman, TX 79081  
1-800-999-1506 (806)659-5016

**PORTER SATELLITE**  
TREY PORTER  
806-659-3657  
420 Davis  
Spearman, Texas 79081

**Gruver Cablevision**  
Quality Family Entertainment  
with  
"the Disney Channel"  
308 Main • 733-5295

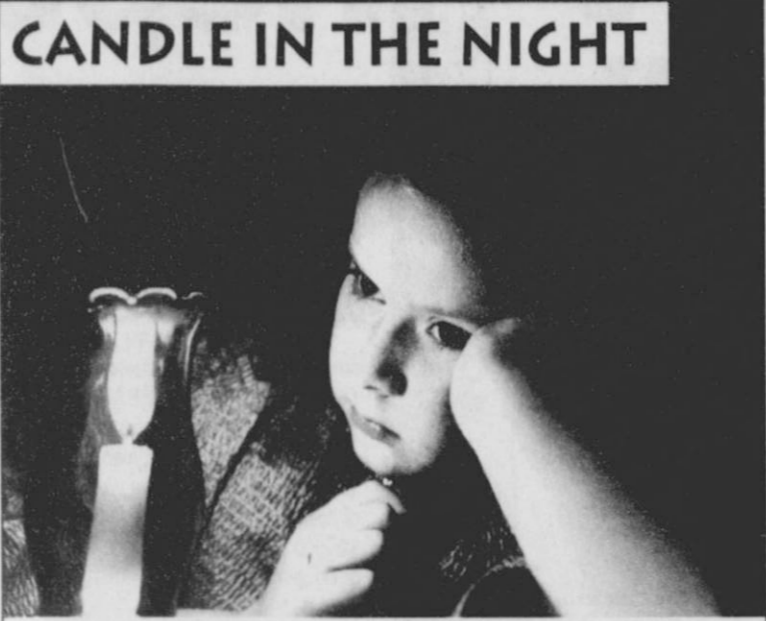
**Morse Implement Company**  
"Join us in church this week"

**Boxwell Bros. Funeral Home**

**THE HANSFORD COUNTY REPORTER-STATESMAN**  
Serving The Communities Of Spearman, Gruver & Morse  
213 Main • 659-3434  
1-800-395-9482

**CORONADO HOSPITAL**  
Pampa, Texas  
(806)665-3721

Compliments of  
**G&G FOODLINER**  
516 Main • Gruver  
733-2471



**CANDLE IN THE NIGHT**

There is something about a candle...something about a flame...something about fire itself...that has fascinated man throughout the centuries. Despite the fact that you can translate fire, these days, into a known chemical formula, it is still a mystery, a wonder, and sometimes a fear.

It is an elemental thing that this little girl is studying as she watches the candle flicker. And, like so many of the elemental things - like Nature itself, and like Faith, for that matter - it is awesome.

Faith, too, is a mystery and a wonder. Yet, the only feat that Faith engenders is the fear, deep within one's heart, that it might be lost. So that this essential ingredient of life does not elude you and does not diminish during misfortune, make it a habit of attending the church or synagogue of your choice regularly. Here you will be given spiritual strength and inspiration and kindle the mystery of love and joy within your heart.

SUNDAY	MONDAY	TUESDAY	WEDNESDAY	THURSDAY	FRIDAY	SATURDAY
Galatians 5:1-15	Galatians 6:1-10	Leviticus 19:1-10	Ruth 2:1-23	2 Kings 4:1-7	Nehemiah 5:14-19	Hebrews 13:1-19

Scriptures Selected by The American Bible Society  
Copyright 1995, Keister-Williams Newspaper Services, P. O. Box 8005, Charlottesville, VA 22906

## In Spearman...

**Apostolic Faith Church**  
822. S. Dessen • 659-2870  
Sunday School: 10 a.m.  
Worship: 11 a.m.  
Evening Worship: 6 p.m. Sun.  
Wed. Prayer Meeting: 7:30 p.m.  
Pastor James Brown

**First Assembly of God**  
401 N. Bernice • 659-2295  
Sunday School: 9:45 a.m.  
Worship: 10:50 a.m.  
Evening Worship: 7 p.m.  
Wednesday Worship: 7:30 p.m.  
Youth: 7:30 Wednesday  
Pastor Todd Lillard

**First Christian Church (Disciples of Christ)**  
29 S. Bernice • 659-2036  
Sunday School: 9:45 a.m.  
Worship: 10:50 a.m.  
Evening Bible Study Worship: 6:30 p.m. Sundays.  
Pastor LaVern Draper

**First Baptist Church**  
123 N. Bernice • 659-5557  
Sunday School: 9:45 a.m.  
Worship: 11 a.m.  
Evening Worship: 7 p.m.  
Jr. High Youth: 6 p.m. Wed.  
High School Youth: 7 p.m. Wed.  
Youth Choir: 6 p.m. Sun.  
Pastor Kyle Henderson

**Church of Christ**  
121 S. Haney • 659-3244  
Sunday Bible Class: 9:45 a.m.  
Worship: 10:30 a.m.  
Evening Worship: 6 p.m.  
Bible Study Wed. 7:30 p.m.  
KRDF Radio Program  
Living With Christ 7:50 a.m. M-F  
Minister Arnis Pape

**Fellowship Baptist**  
1102 S. Archer • 659-2783  
Sunday School: 10 a.m.  
Worship: 11 a.m.  
Evening Worship: 6 p.m. Sunday  
Youth & Adult Serv.: 7:30 Wed.  
Pastor Tim Luttrall

**Primera Mision Bautista**  
502 E. 7th • 659-3991  
Sunday School: 9:45 a.m.  
Worship: 11 a.m.; Evening: 6 p.m.  
Wed. Prayer Meeting: 7 p.m.  
Thurs. Visitation: 7 p.m.  
Pastor Isaias Martinez.

**"WE SUPPORT OUR LOCAL CHURCHES"**  
**CAPROCK#1 & #2**  
Bill Park, Gen. Mgr.  
(806)733-5043 or 733-5025  
"Custom Cattle Feeding"

## In Gruver...

**First Baptist Church**  
402 E. Broadway • 733-2411  
Sunday School: 9:45 a.m.  
Worship: 10:50 a.m.  
Disciple Training: 6 p.m. Sunday  
Prayer Meeting: 7:30 p.m. Wednesday  
Pastor Larry Miller

**Church of Christ**  
209 King • 733-2760  
Sunday School: 9:30 a.m.  
Worship: 10:20 a.m.  
Evening Worship: 6 p.m.  
Wed. Evening Worship: 7:30 p.m.  
Minister Bob Setliff

**First Christian Church**  
510 King • 733-2960  
Sunday School: 9:45 a.m.  
Worship: 11 a.m.  
Wed. Bible Study: 7:30 p.m.  
Youth: 6:30 Wednesday  
Pastor Gary Gumfory

**Oslo Lutheran Church (ECLA)**  
West of Gruver on Hwy 15 & N. FM 1162  
339-7646  
Sunday School: 9:45 a.m.  
Worship: 11 a.m.  
Morning Prayer: 9 a.m. Wed.  
Pioneer Clubs (Grades 1-6):  
4-5:30 p.m. Wednesday  
Pastor John R. Chandler

**Community Bible Church (Interdenominational)**  
Hwy. 15 • 733-2443  
Sunday School: 10 a.m.  
Worship: 11 a.m.  
Wed. Prayer Meeting: 7 p.m.

**First United Methodist**  
Broadway & Garrett • 733-2651  
Sunday School: 9:45 a.m.  
Worship: 8:30 a.m. & 10:50 a.m.  
Evening Worship: 6 p.m.  
Pastor Lewis Holland

## In Morse...

**Morse Baptist Church**  
Pastor Mike Martin  
733-2757

**"Your Home Away From Home"**  
**Nursanickel Motel**  
815 Hwy. 207 S.  
Phone: P.O. Box 116  
(806)659-3737 Spearman, Texas 79081

**BERRY CLEANERS**  
DAN DESIMONE - OWNER  
Phone 659-3122 • P.O. Box 1017  
207 Main St. • Spearman, Tx. 79081

**GRUVER FORD**  
531 Main • Gruver • 733-2431

**Interstate Savings & Loan**  
322 Main • Spearman • 659-2559

**Hagerman Services**  
Backhoe • Dozer • Welding  
North Hwy. 15 • Spearman  
659-5131

**Gordon Drugs**  
Dependable Prescription Service  
314 Main • Spearman  
659-2141  
Jim Evans

Compliments of...  
**AGCO of Spearman, Inc.**  
"See you in Church"  
659-3751

**AMWAY**  
Anything from cleaning products, to make-up, & to vitamins and health products, plus a wide variety of anything you could want.  
Call your AMWAY representative today:  
**Tiki Farrar • 659-2845**  
\* Call today and ask about the Make-up trying out sale!

**HENSON CHIROPRACTIC**  
300 S. Ash • Perryton, TX  
Call for Appointment • 435-7525  
OFFICE HOURS:  
Monday, Wednesday & Friday 9:00 to 5:00  
Tuesday & Thursday 9:00 to 11:30

**PALO DURO DOWNS**  
would like to take this opportunity to THANK everyone who came to the Labor Day Race. We appreciate your business and look forward to races every Sunday.  
There will be a concession stand and lots of family fun and entertainment each Sunday at the Palo Duro Downs 7 miles W. and 2 miles N. of Spearman, Texas.  
**We hope to have ostrich races each Sunday!**  
\$2/over 13 • \$1/6 to 13 years • Free/6 and under  
Aprovecha esta oportunidad para darles GRACIAS a todos por asistir a la inauguracion de las carreras el dia de tyaba Palo Duro Downs va a tratar de que usted y su fam. Se sientan comodis por lo tanto vamos a esperar su cooperacion y no deven de tyder licor o bebidas ya que aqui se encontrara de lo mas indispensable; sodas, cerveza. Antojitos Mexicanos y las carreras de Avestruz seran a las 2 p.m. la direccion es en el camino N. 1 and 7 millas al poniente de Spearman y 2 al Norte.