

The Hansford County Reporter-Statesman

Serving Hansford County Since 1907

10 PAGES

VOL. 84, NO. 25

213 Main Spearman, Texas

50¢

THURSDAY, APRIL 16, 1992

WEATHER

Day	Hi	Lo	Precip
Thu	73	51	.00
Fri	86	44	.00
Sat	62	48	.00
Sun	51	42	.00
Mon	84	43	.00
Tue	82	57	.00
Wed	--	55	.11
1992 Precip			2.57

INSIDE

Society News	4, 5
Sports	7, 8
Hansford Happenings	2
Want Ads	9
Obituaries	10

S.I.S.D. Board of Trustees vote no on the band program

After months of both private and public discussions, the issue of reinstating the band program in the Spearman Independent School District (SISD) was formally decided with the Board of Trustees voting 5-2 against reinstatement of the band.

The vote came Monday night, April 13, at the board's regularly scheduled meeting. Though the band issue was low down on the agenda, it was brought up at the beginning of the meeting when the board heard Carolyn Cummings read a statement of support for reinstating the band. Cummings was the spokesperson for about 20 people present at the meeting. She presented a petition with 150 names on it to the board.

In her statement, Cummings asked that the band program be reinstated and that the board make a long term commitment of support for the band program. Reasons she mentioned in her statement were interest in the program on the Junior High level, a trend in 2A schools toward band and the results of a study saying instrumental students do well in professional careers other than music.

She further addressed some of the concerns of the band supporters in the way the board handled the band program and the board meetings in general. She stated that their feelings were that there was an active movement with in the school district to dismantle the band. She cited the fact that re-

quired classes were scheduled opposite the band class at the high school. These classes were not offered at any other time.

When the board voted to stop the band program, it was not clearly stated on the agenda for that meeting what the board was intending to do. She asked that on the agenda the board make a clear statement of what it is intending to do at that meeting.

After Cummings finished reading the band supporters' statement, trustees Tom Latta and Charles Shieldknight addressed Cummings and the band supporters. Latta stated that he resented the comments indicating that the board made an "unthought out decision" on the band program. He stated that the board has wrestled with the band question and he "agonized" over it.

Shieldknight stated that the problem is that as SISD 8th graders enter high school they find they can take only one elective a year and still stay in athletics. They must choose between band, FFA, FHA and choir. Band was the low priority.

Further discussion on the band issue was put on hold until later on in the meeting when the issue came up on the agenda. A closed executive session that was listed behind the band issue on the agenda, was moved up ahead of the band issue.

When the band issue was formally brought up before the board, Trustee Kerry Henton opened the discussion by stating, "I would like to see the band back, we owe the kids the opportunity to participate."

Trustee Carolyn Gressette suggested a Junior High band just to start. Craig Schumann asked if it was possible to hire a good director for the band program. Larry Butler, SISD superintendent, answered it would depend on what the board was willing to pay and that they would just have to advertise and see who was interested.

Trustee Shieldknight pointed out that if the Junior High band hall could not be converted to regular classroom space, that the board would have to look at the expense of temporary buildings at the Junior High. Butler added that that would require some shifting of classes around as well.

After this discussion Trustee Henton made a motion to reinstate the band program in both the Junior High and High School of the SISD. The motion was seconded by Trustee Schumann. With no further discussion the board voted. Trustees Henton and Schumann were the only two who raised their hands for the band. Trustees Shieldknight, Gressette, Latta, James Schnell and Carl Kunselman voted against reinstating the band program.

Coming back to the beginning of the meeting the board heard from Arnis Pape, pastor of the Spearman Church of Christ, asking the board to consider not starting the 1992-1993 school year as early as August 14. He said that the Churches in the area had several bible schools scheduled for the month of August and starting school so early would make it difficult on the churches.

Next the board met in closed

executive session to discuss the vocational agriculture position and a coaching vacancy.

The board met back in open ses-

sion and took up the business of opening bids for reequipping the high school science labs. There were

See S.I.S.D. page 2

Gruver grows by annexing

Gruver City Council members passed ordinance #228, annexing Cooper Street and State Highway 278 into the city at the Wednesday, April 8 meeting held at 5 p.m. at City Hall.

Only half of Cooper Street was in the city limits before this ordi-

nance, said A. J. Ratliff, city manager in a conversation after the meeting. The city traffic laws couldn't be enforced on the half of the street that was not in the city limits, he said.

The only cost to the city will be maintaining Cooper Street, the Highway Department maintains State Highway 278, said Ratliff, city manager.

Buster Davis motioned that ordinance #228 be passed and Mark Urwin seconded it.

Urwin made a motion that the council accept Tom Rasor as the election judge for the May 2 election. The motion was seconded and it passed. Corky Chapmin had been nominated at a previous meeting but had decided to run for the school board, so the council had to elect another judge.

The motion was made for the city to pick-up trash in Hitchland for \$200 a trip. It was seconded and the motion carried.

Auditor Mac Hoel presented the audit for the 1990-1991 fiscal year. Urwin motioned the audit be accepted and Davis seconded it. The motion carried.

Council read and approved the March 11 minutes. March accounts payable was presented and approved.

Patterson wins run-off

The April 14, Democratic Party Primary Run-off Election had a small turnout with just 27% of the registered voters showing at the polls. Cathy Patterson received 53.3% of these votes to win the Democratic primary.

In the early voting for County Commissioner, incumbent Dick Gillaspie received 22 of the 34 votes. But when the final ballot was counted Patterson claimed 98 of the 184 votes. Gillaspie received the remaining 86 votes.

Patterson will go on to face Republican Worley J. Smith in the general election on Tuesday, Nov. 3.

Smith defeated Jerry Pat Davis in the March 10 Republican Primary.

Reiswig Appointed Post Master



Milana Reiswig was appointed the new Postmaster in Morse, Texas effective April 4, 1992, Sectional Center Manager/Postmaster Donald S. Bloyd of Lubbock announced recently.

Ms. Reiswig has been a clerk in

the Morse, Texas office since 1978. She has served as acting Postmaster since November of 1990, in the Morse office.

Postmaster selections are made on the basis of merit. The Lubbock Sectional Center manager and director of field operations interviews the candidates and selects the most qualified applicant.

Milana is married to Travis Reiswig. Travis is a self-employed contractor. They have a son, Shelby, age 11, and a daughter, Mikala, age 8.

Ms. Reiswig enjoys playing the piano and is very active with the local PTA and school activities.

Ms. Reiswig has stated that it is a real honor to serve as Postmaster for the Morse community.

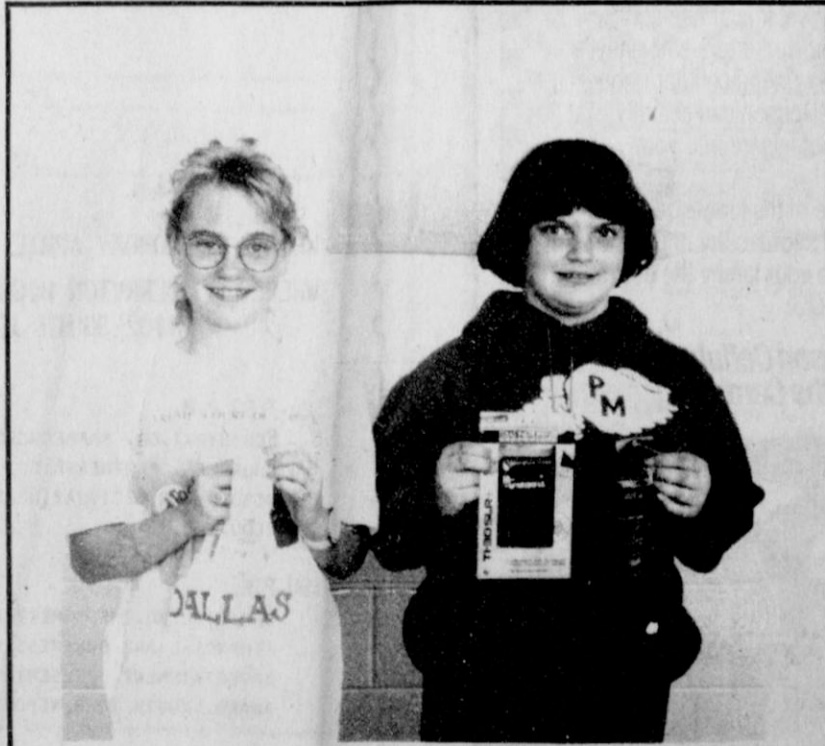


Reception for signers of Declaration July 4, 1776.

Fifth grade APT students re-enacted this reception on April 10, 1992.

The students dressed up and took on the personality of a character who signed the Declaration. These students have studied and understand the four parts of the Declaration. The purpose of this activity was to help them know more about the people who signed the Declaration. These men in our past pledged "their lives, their wealth and their honor."

Pictured above in front row (l/r): Matt Scott as Thomas Nelson, Jr.; Texan Clyburn as Mrs. Benjamin Franklin, a woman in protest; Kristin Beedy as Lewis Morris; Holly Pipkin as John Hancock; Mandy Vernon as Laura Ingalls, a woman in protest; Grace Davis as Thomas Jefferson. Back row (l/r): Dawn Loomis as Thomas McKean; Lisa Swink as John Hart; Cassie Butt as Benjamin Franklin; Julie Scroggs as Thomas Hayward.



(Photo provided by Joanna Phillips.)

Two Morse youths placed in the High Plains Regional Science Fair in Amarillo on April 4. On the right is Michelle Schick. She won 1st place for her project on "Using chromatography to separate pigments in leaves." On the left is Ashley Phillips. She won 3rd place for her project, "The process of recycling paper."

Churches plan Easter specials

Some of the churches in Gruver and Spearman are having special activities in connection with the Easter season.

Community Bible Church, 407 Cluck in Gruver, will hold a regular Easter Service and Communion. They will have an Easter Dinner at noon and an Easter egg hunt for the children will follow. They are also going to have a room in the church that will be fixed as the tomb.

First Baptist Church, 402 E. Broadway of Gruver, will be holding their regular worship. Sunday school is at 9:45 a.m. and worship is at 10:50 a.m. Church training is at 6 p.m. With worship again at 7 p.m.

United Methodist Church, 506 Broadway in Gruver, is holding a Communion service Wednesday at 7 p.m.

On Sunday, they will have service at 8:30 a.m. and Sunday school at 9:50. The choir will perform special music at the 10:50 p.m. service. They will also have a night service at 6 p.m.

On Easter Sunday, the Easter musical "The Boy Who Believed" will be performed at 7 p.m. at **First Assembly of God Church**, 401 N Bernice of Spearman. Regular services will also be held on Sunday.

First Baptist Church, 123 S Bernice of Spearman, will begin their Rival on Easter Sunday. They are having Evangelist Larry Ramsour speak at the Sunday morning worship. At the Sunday night worship, special musician Kerry Wood will perform.

Sacred Heart of Jesus Catholic Church, 901 S Roland of Spearman, will hold services at 7 p.m. in commemoration of "Our Lords Supper."

Sacred Heart Catholic Church will observe Good Friday, April 17 at 7 p.m.

Easter Vigil will be Saturday, April 18 at 10 p.m.

On Easter Sunday, services will be at 9 a.m. An Easter egg hunt will follow this service.

First Christian Church, 29 S Bernice of Spearman, will observe Maundy Thursday at 7:30 p.m. April 16 with a service commemorating the "Last Supper."

The Church Choir will present "Sacrifice of Glory" on Easter Sunday, April 19 beginning at 10:30 p.m.

Church of Christ, 121 S Haney of Spearman, will have Bible class at 9:45 a.m. and worship at 10:30 a.m. They also have evening worship at 6 p.m. Friends and families are welcome to attend.

On April 16 at 7 p.m., **First United Methodist Church**, 407 S Haney of Spearman, will have Passover meal in Fellowship Hall followed by Maundy Thursday Communion service.

April 17 there will be a Good Friday service at 7 p.m.

Easter Sunday at 11 a.m. the Easter Cantata will be performed by the Chancel Choir during the morning worship.

Union Church, 31 S Endicott of Spearman, will have special music by the choir at the Easter Sunday worship. The message will be the "6 Most Important Hours in the History of the World."

At the evening worship they will have a hymn sing.



Hansford Hospital Auxiliary... honor their volunteers

The Hansford Hospital Auxiliary met April 6, at 11:30 a.m. at Ivy's Hungary Cowboy, for the Spring Luncheon.

Virginia Trindle gave the opening prayer.

The meeting was conducted by chairman Mert Bohanan.

Visitors representing the hospital and Manor were recognized.

Members will be responsible for Meals on Wheels and Bingo at the Manor for a month.

Discussion was held on projects using the Christmas Card Fund.

A group will represent the Auxiliary in the Hansford Roundup Parade.

Edith Smith presented pins and bars to the following members in recognition of service hours:

50 HOURS:

Mary K. Harbour
Margarette Evans
Carolyn Cummings

100 HOURS:

Rosa Lee Butts
Verna Maupin

150 HOURS:

Mary Fern Terry
Virginia Head

Edith Smith

Luncheon was attended by six visitors and 27 members.

At the movies . . .

Beginning Friday, April 17 and running through Tuesday, April 21 at the Lyric Theatre in Spearman "Wayne's World" held over on screen 1 at 8 p.m. and "Memoirs of an Invisible Man" on screen 2 at 7:45 p.m.

"YOU'LL LAUGH, YOU'LL CRY, YOU'LL HURL!" "WAYNE'S WORLD" rated PG-13
"Memoirs of an Invisible Man" stars Chevy Chase and Daryl

Hannah.

The special effects in this film are more accomplished than those in previous invisible-man films, states a leading review magazine. The effects appear to be designed to answer all the questions you had about these movies when you were eight-years-old says the review. It answers questions like, "Okay, if the invisible man had something to eat, wouldn't you see the food in his stomach?" You bet you would

and you do. In this film you see the food in his stomach and you also get to see him smoke cigarettes said the review. Chase plays Nick Halloway, a lonely guy. He is a stock analyst. Halloway turns invisible after being caught in a high-tech laboratory accident. He appears after having makeup painted on his face.

After he becomes invisible all he is trying to do is find himself says the review. But he becomes the target of a bunch of bad guys that want to get him for illegal dealings.

Hannah plays the sexiest PBS documentary film maker in history states the review. Chase and Hannah make a sweetly silly couple.

"If you've ever wondered what it looks like when the invisible man chews bubble gum..." the review states. Then you need to see this movie.

"MEMOIRS OF AN INVISIBLE MAN" rated PG-13

S.I.S.D. from page 1

two bids submitted. The C and C Equipment Company submitted a bid of \$106,000 for the equipment and its installation.

American Desk Manufacture submitted a bid of \$69,597 for just delivery of the equipment.

The board decided to table the acceptance of the bids until each member had time to study the bid proposals in detail.

The board decided to hold a special meeting Thursday, April 23, to consider the lab bids again.

Bids to repair the roofs on several of the school buildings were considered next. Charles Elliott, SISD head of maintenance, presented two bids. Smiley Dewitt Roofing proposed a bid of \$28,700. Parsley's Sheet Metal and Roofing Co. proposed a bid of \$36,840. Elliott recommended that the board except the higher bid because it was back by a national company, TAMCO. The board vote unanimously to accept Elliott's recommendation.

The board voted unanimously to See S.I.S.D. page 7

Hansford Happenings

A Hospice training class will begin April 21 at 6:30 p.m. in the First State Bank Community Room.

Early Childhood Screening is scheduled for Tuesday, April 21, 1992, from 9 a.m. to 12 p.m. at the Pringle-Morse School. Parents are urged to bring their children who will be 5-years-old before September 1, 1992, and eligible for kindergarten in the Pringle-Morse C.I.S.D. All parents are welcome to bring children ages 3 to 6 for screening. Contact the school at 733-2507 for more information.

Gruver Elementary School Kindergarten Round-up, Screening scheduled for Tuesday, April 28, 1992 at the Church of Christ Fellowship Hall, 209 King Street. Parents are asked to bring their child's birth certificate, immunization records and social security number to the pre-registration. The pre-screening will take approximately 1 hour. Please bring the children according to the time schedule: A - C at 9:30 a.m.; D - K at 10:30 a.m.; L-R at 1 p.m.; S-Z at 2 p.m.

The Hospice Monthly meeting will be held April 20 at 7:30 p.m. in the First State Bank Community Room.

Chamber Chatter

by Cindy Blackman
Chamber Manager

We want to take this time to welcome two new chamber members: Mission Cable of Spearman and Debbie's Ready or Not. Thank you for your investment and your support.

The Chamber of Commerce wants to encourage all of you to stop by the office this week. April 13 is Commerce Week.

Spearhead Corp. board meeting - April 16 at 8 a.m. at the chamber office. A change of plans for Miss Hansford Pageant: Girls entered in Miss Hansford will be asked to wear sportswear instead of swimsuits. Call Kathy Boyd, 659-5544 or the chamber office if you have questions about the pageant. The Board of Directors held its monthly meeting April 9 at the chamber office. President Randy Kirk called the meeting to order with everyone present except one director. Committee reports were given on the

round up, the golf tournament and our clean up Spearman Campaign.

Mark your calendars for May 8th. The quarterly membership luncheon will be held at the swimming pool park with First State Bank cooking hamburgers. Should be lots of fun!

All of you people with green thumbs get ready! The Chamber of Commerce is sponsoring a yard of the week starting June 1st. Each week the chamber will choose a different yard in town to be the yard of the week. Spearman has so many people who really get out and work on their yards. You don't have to enter. Everyone will be eligible to win! Let us know if you have any special projects going.

Quote: Dick Gillaspie, member of Ambassadors of Spearman: "Economy is on the upturn... We have bottomed out. I believe 1992 is going to be a prosperous year."

H.C.H.C...

meets to accepts donation

Hansford County Historical Commission met April 6 at the museum. Post master, George Finley presented the museum with a plaque and a section of mail boxes from the old post office.

Joyce Johnson gave a report on Olso Church. May 16 is the constitution day for Norway and is celebrated by most Norwegian communities. They plan an Annual Banquet and have invited dignitaries from several places in the Texas and Oklahoma Panhandle. They also plan on having folk dancing.

Papers were drawn up to accept the Faló Duro School for the museum grounds. The 20th Century Club plans on building the foundation and moving the school. Anyone wishing to help with the cost

may donate money to Verna Gail Kiem or any member of the 20th Century Club.

The bluebonnets are just starting to bloom at the museum. You are invited to come by and see them. They are in the south east corner in the front yard at the museum.

Present at the meeting was: J.D. and Ruby Wilbanks, Silvia Robertson, Melba Rasor, Clementine Renner, Joyce Johnson, Jenny Blankenship, Juanita Pierce, Chamber of Commerce Manager Cindy Blackman and Post Master George Finley.

NO POLICE REPORTS WERE GIVEN THIS WEEK!

The Hansford County Reporter-Statesman "Serving All Of Hansford County"

USPS 509660
213 Main, Box 458, 659-3434
Spearman, TX 79081
Published Weekly at
213 Main, Spearman, Texas
Owned and Operated by:
Texas Independent
Newspapers, Inc.
15915 Alsace
San Antonio, TX 78232
(512) 545-1739

Second Class postage paid at Spearman, Texas 79081.

Any erroneous reflection upon the character of any person or firm appearing in these pages will be gladly and promptly corrected upon being brought to the attention of the management.

Publisher - Robert M. Hulet
Copy Editor - Angela Jones
Bookkeeper - Sheila LaRochelle

Subscription Rate: Hansford County, \$19.95; out of county, \$24.95 annually.

Postmaster: Send address changes to Hansford County Reporter-Statesman, Box 458, Spearman, TX 79081.

The publisher reserves the right to revise or reject at its option any advertisement which it deems objectionable, either in subject or phraseology, or which it may deem detrimental to its business.

Advertising and Story Deadlines: Tuesday, 12:00 p.m.

MEMBER
TEXAS PRESS ASSOCIATION

HENSON CHIROPRACTIC

410 S. Davis • Spearman, TX

Call for Appointment • 659-5603

Office Hours: Mon, Wed, Fri - 9:00 to 5:00
Tue, Thu - 9:00 to 11:30

At The Lyric Theatre . . .

FRIDAY, APRIL 17 - TUESDAY, APRIL 21

Bargain Nights Mon. & Tue. All Seats \$3

Closed Wednesday & Thursday

Screen 1 - 8:00 p.m.

Screen 2 - 7:45 p.m.



WAYNE'S WORLD

Memoirs of an Invisible Man

PG-13

PG-13

113 Main, Spearman

PRESENT THIS COUPON FOR

FREE EXAMINATION & X-RAY

As an introduction to Dr. Duke, A FREE EXAMINATION & X-RAY is being conducted to determine if you can be helped before any expense on your part is incurred. CALL 435-5361

LIMITED APPOINTMENTS AVAILABLE - CALL TODAY.

A SPINAL EXAMINATION SHOULD BE CONDUCTED TO DETERMINE CAUSE OF:

- HEADACHES
- CHRONIC TIREDNESS
- MUSCLE SPASMS
- NERVOUSNESS
- DIZZINESS
- PINCHED NERVE
- LOW BACK & LEG PAIN
- NECK & SHOULDER PAIN
- NUMBNESS IN HANDS & FEET

B & J CHIROPRACTIC CLINIC

Dr. D.D. Duke

- Work Injuries
- Auto Accidents
- Athletic Injuries
- Personal Injuries
- MEDICARE

1122 S. Main • Perryton • 435-5361

This Offer Good Through The Month Of April 1992

ASK ABOUT OUR CASH PLAN FOR UNINSURED PATIENTS

Playing Cards.

All day, every day, it's nothing but work, work, work. So, to maximize your leisure time with family and friends, you've really got to play your cards right -- with Dobson Cellular Systems phone service.

By helping you work more efficiently, a convenient, hard-working cellular phone and service from Dobson can actually put **more** hours of leisure into your leisure hours.

Take advantage of the king-size convenience and affordability of Dobson Cellular, and give your family the best gift of all...more of YOU!

For You, Dobson Cellular is Definitely in the Cards.

DOBSON CELLULAR SYSTEMS

1-800-882-4154



Authorized Dobson Cellular Dealers
Cellular Communication
659-3762

PLAN TO ATTEND

NORTH PLAINS ELECTRIC'S
48TH ANNUAL MEMBERSHIP MEETING



WHEN? MONDAY APRIL 20
WHERE? PERRYTON HIGH SCHOOL RANGERETTE CENTER
1102 SOUTH JEFFERSON

6:00-7:00 P.M.

REGISTRATION, BARBECUE DINNER. (FOR THOSE REPRESENTING CHURCHES, PARTNERSHIPS, CORPORATIONS, ETC., A WRITTEN RESOLUTION DESIGNATING THEM AS VOTING DELEGATE WILL BE REQUIRED.)

7:00 P.M.

OFFICIAL BUSINESS MEETING: BOARD PRESIDENT'S REPORT, FINANCIAL AND BUSINESS REPORTS, ELECTION OF DIRECTORS, ENTERTAINMENT, PRESENTATION OF SERVICE AWARDS AND SAFETY AWARD, YOUTH TOUR REPORT, AND PRIZE DRAWINGS.

TAKE PART IN THE BUSINESS OPERATION OF YOUR COOPERATIVE BY ATTENDING THE ANNUAL MEETING ON MONDAY, APRIL 20.

'Post' Scripts

by George Finley
Spearman Postmaster

I want to tell you about something that will be effecting us by the year 1995. That's automation. You're saying "That's a long way off. Why worry about it this early." The fact is, it's not that far off; and it will be here before you know it and we must start now to get ready for it. Example of time: how old is your refrigerator, or your T.V.? See how time has gone by. There are

machines in place and coming that will sort 35,000 letters per hour or 9 per second. They will take 2 people to operate where it took around 23 people to sort this many by hand. Your letter will also be sorted to what we call walk sequence. This is where the letters will come into us already in delivery order. Set the mail in front of the carrier and he is gone. The carrier will have

more time for delivery of mail and less office time. Now you're thinking, "Sounds to me like your wanting to do away with everyone's job, and a lot of people are going to be out of work." Not true. The Postal Service is looking ahead in a not work harder, but think smarter time. As people retire, leave, or just quit, the Postal Service doesn't replace this person. They may pay a little overtime, or may share an employee with another office, but this is looking out for the employees we have.

consistent. You will get faster delivery of your mail when it is received here. Your mail is and will remain our main concern. How Can We Help! Everyone get your correct mailing address on all your mail. If your address is not correct the machine will not recognize it and will send it back. Address all your mail correctly. I mean all capitals, no commas or periods; just the dash in the Zip +4. Use your Zip +4.

Here in Spearman, if you have not moved your box to the curb please do so. It will help more than you know.

If you have more than 10 pieces of mail bring it in and let us cancel it. This will help your mail skip one process and give you better service and less chance of your mail being damaged, this will also get Spearman cancellation on more letters going all over the world.

If anyone has any questions please let us visit with you, or we will be glad to do a program.

Just remember, we want to do what is best for you and us

CAR CARE

Americans and their cars: A love affair that's had its ups and downs

Each culture has its national preoccupations. For the Italians, there is romance, opera, and soccer. France is home to haute cuisine, wine and fashion.

Americans may have varied passions as well, but they are undeniably in love with their cars.

American cars have been honored so often in rock 'n' roll songs that these two symbols of freedom and independence seem almost inseparable. The Beach Boys sang of a little firebrand who'd have fun three times over until "Daddy took the T-bird away." Even before that, teenage girls all over America imagined the Beatles were talking to them when they sang, "Baby you can drive my car."

And today, although Americans can no longer buy new cars as they would records, as quickly as styles changed, the subject of cars is still a favorite with songwriters: As a symbol of promiscuity in Prince's "Little Red Corvette" and in Grace Jones' "Pull up to the Bumper"; of extravagance in "Pink Cadillac"; and as the sole place in the world to find respite and hope in Tracy Chapman's "Fast Car."

Even if cars do not figure in the titles of songs, they crop up everywhere in the lyrics. Who doesn't remember the first line of "Fire" — "I'm drivin' in your car."

In this case, the car is the site of a passionate seduction, but in a Eurythmics song, there is a more sinister mood: "Love is a stranger in an open car/To tempt you in and drive you far away."

During the first half of this century, the creation and mass production of automo-

biles forever changed American notions of quality of life. Henry Ford and his model T were the incarnation of the American dream while Preston Tucker, a visionary crushed by the Detroit "Big Three," represented its failure. Hand in hand with the steel industry, automobile production meant high wages for factory workers. Steel towns and their suburbs boomed and the auto and steel workers' mass consumption boosted the economy. Cars were big and beautiful and assuming unlimited progress, parents counted on their children outdoing them economically.

Then, everything changed. The combination of rising oil prices and foreign competition wreaked havoc on industry. Chrysler fell and had to be put back on its feet by the government. Thousands of workers found themselves laid off, or worse, living in towns whose life blood had been a factory that shut down: a situation which inspired Billy Joel's heart-wrenching song, "Allentown."

Today, it is not only a waste of money to drive a big car; it is socially irresponsible. The environmental organization Greenpeace reports that "if the government raised efficiency standards for cars just 1 MPG it would save 420,000 barrels of oil a day, or twice the amount lost in the (Alaskan) oil spill." With the belated attention we are now paying to the environment, we must alter realistically at our infatuation with cars, and move into the next stage of a love affair: understanding and shared responsibility.

When we are in full swing with automation, and mail comes in sorted we won't have an excess of employees and need to tell someone you are no longer needed. They will still have a job. Now you think "How is all this going to help me?" First it will help keep postage at the same rate because we have less costs. Also your mail will get the best service possible. If you had a letter going to Houston one time in 2 days next time in 5 days this will help stabilize this where it will be

Letter to the editor

Dear Editor:

I want to thank Carolyn Cummings, Bob Boxwell and Al LaRochelle for their help in trying to get the Spearman Band Program reinstated. I also want to thank Kerry Henton and Craig Schumann for their support.

I never knew what it was like running into a brick wall until I became a concerned parent and began attending some of the S.I.S.D. board meetings.

How can the "board policy" change from one meeting to the next? When the band was on the agenda before, the thoughts and comments of those attending were heard...but last night (April 13) it was against policy?

Why was the agenda order changed and the "Executive Session" held at the beginning, sending everyone out into the hall for a VERY long wait. Were you hoping we'd get tired and go home?

It was suggested that the Band Program be put on "hold" for a few years. Is this so the band hall can be

turned into permanent class rooms?

Thank Heavens for the chance to get some new faces on the school board next year. Don't forget to vote! We'll be back next month and next year if that is what it takes.

Sincerely,
Sheila LaRochelle

Bees fly about 12 miles per hour.

REMEMBER!

EASTER'S HOPPIN' AT DEBBIE'S
cookies, bunnies, mlnts, cakes, balloons,
buckets, supplies, etc.

315 1/2 Main

CELEBRATE

303 MAIN
SPEARMAN, TX
684-3359
Authorized Precious Moments
and Hallmark store.
Visa and Mastercard
accepted.

GILLASPIE AUTO & TRUCK
HIGHWAY 207 S.
659-2541
SPEARMAN, TEXAS

NOTICE OF GENERAL ELECTION (AVISO DE ELECCION GENERAL)

To the Registered Voters of the City of Gruver, Texas:
(A los votantes registrados del Ciudad de Gruver)

Notice is hereby given that the polling places listed below will be open from 7:00 a.m. to 7:00 p.m., on May 2, 19 92, for voting in a general election to elect One Commissioner

(Notifíquese, por las presentes, que las casillas electorales situadas abajo se abrirán desde las 7:00 a.m. hasta las 7:00 p.m. el May 2 de 19 92 para votar en la Elección General para elegir One Commissioner

LOCATION(S) OF POLLING PLACES
(DIRECCIONES) DE LAS CASILLAS ELECTORALES)

Absentee voting by personal appearance will be conducted each weekday at
(La votación en ausencia en persona se llevará a cabo de lunes a viernes en)

CITY HALL 108 E BROADWAY ST GRUVER TX
(location) (sitio)

Recommended but not required

between the hours of 8:30 a.m. and 5:00 p.m. beginning on APRIL 13, 1992 (date)

(entre las 8:30 de la mañana y las 5:00 de la tarde empezando el APRIL 13, 1992) (fecha)

and ending on APRIL 28, 1992 (date) (y terminando el APRIL 28, 1992) (fecha)

Applications for ballot by mail shall be mailed to:
(Las solicitudes para boletas que se votarán en ausencia por correo deberán enviarse a)

A J RATLIFF
(Name of Absentee Voting Clerk)
(Nombre del Secretario de la Votación En Ausencia)
PO BOX 947
(Address) (Dirección)
GRUVER TX 79040-0947
(City) (Ciudad) (Zip Code) (Código Postal)

Applications for ballots by mail must be received no later than the close of business on
(Las solicitudes para boletas que se votarán en ausencia por correo deberán recibirse para el fin de las horas de negocio el)

APRIL 24, 1992
(date) (fecha)

Issued this the 16TH day of MARCH, 19 92.
(Emitido este día 16TH de MARCH, 19 92)

Keith Wilson
Signature of Mayor (Firma del Alcalde)

SPEARMAN 659-3135
GRUVER 733-2953

ALLSUP'S

PRICES EFFECTIVE APRIL 16 - 22

305 W. KENNETH, SPEARMAN
101 MAIN, GRUVER

WE ACCEPT FOOD STAMPS AND MANUFACTURERS' COUPONS

MONEY ORDERS 29¢

ALL TYPES PEPSI-COLA 6 PACK CANS **\$1.89**

NAVEL ORANGES 4 LB. BAG **\$1.19**

BAR-S MEAT FRANKS 12 OZ. PKG. **69¢**

GREEN CHILI SAUSAGE IN A TORTILLA SAUTEAYA EACH **89¢**

SAUSAGE, EGG & BISCUIT EACH **79¢**

LAY'S POTATO CHIPS REG. \$1.49 **99¢**

BAR-S SLICED BACON 1 LB. PKG. **99¢**

SURF LAUNDRY DETERGENT 39 OZ. BOX **\$1.99**

COOKED FRESH HOT FOODS MENU			
24 HRS. A DAY			
BARBECUE BEEF SANDWICH	99¢	9 PIECE BOX CHICKEN	\$5.99
BARBECUE PORK RIBS (LB.)	\$3.99	BEEF & CHEESE CHIMICHANGA	\$1.19
BARBECUE WHOLE CHICKEN	\$3.99	(MEAT) CORN DOG	69¢
ALLSUP'S BURRITO	79¢	DELICIOUS HAMBURGER	69¢
BREAKFAST BURRITO	99¢	WILSON HOT LINKS	99¢
BURRITO BEEF & SALSA	\$1.19	SAUSAGE ON A STICK	\$1.39
DELICIOUS CHEESEBURGER	89¢	SAUSAGE & BISCUIT	79¢
CHICKEN FRIED STEAK	\$1.59	SAUSAGE EGG & BISCUIT	\$1.09
3COUNT CHICKEN STRIPS	\$1.49	SAUTEAYA SAUSAGE	99¢
W/POTATO WEDGES/CHICKEN (2 PC.) BISCUIT	\$1.99	4 COUNT STEAK FINGERS	\$1.00

CALL IN ORDERS WELCOME CHECK OUR WEEKLY SPECIALS

SHUR FINE DOG FOOD 25 LB BAG **\$4.99**

SHUR FINE WHOLE KERNAL CORN OR CUT GREEN BEANS 16 OZ CAN **3/99¢**

BROCK'S CHOCOLATE COVERED MINT PATTIES 8 3/4 OZ PACKAGE **\$1.29**

ALL BRANDS BOLOGNA 12 OZ PACKAGE **79¢**

BASEBALL OR FOOTBALL CARDS ALL 59¢ CARDS **3/\$1**

MAMA'S SANDWICH COOKIES VARIETY OF FLAVORS 15 OZ PACKAGE **79¢**

CHARMIN BATHROOM TISSUE 4-ROLL PACKAGE **99¢**

School menu

Spearman School Lunch Menu
April 21 - April 24
Tuesday: Grilled cheese sandwich, french fries, mixed vegetables, cake, milk.
Wednesday: Meat & cheese nachos, pinto beans, spinach, sopapilla & honey, milk.
Thursday: Hot turkey sandwich - gravy, mashed potatoes, sweet peas, extra bread slice optional, apple crisp, milk.
Friday: Cheese burgers, tator tots, lettuce & tomato, pickle & onion, cookie, milk

ADULT
\$1 Hearing Test
Thursday & Friday, April 23 & 24
Testing Thursday 1 to 4 p.m.
Friday 9 a.m. to 4 p.m.

If you have trouble hearing or understanding, this Test (which uses the latest electronic equipment) will determine your particular loss. Test is performed by State Licensed Hearing Aid personnel. You will see a hearing Aid so tiny it fits totally within the ear canal.



Miracle-Ear®
 America's Better Hearing Centers™

Corner Drug
122 South Main • Perryton
435-3637 • Call for appointment to avoid waiting

PUBLICATION COPY - COMMERCIAL AND SAVINGS BANKS
 CONSOLIDATED REPORT OF CONDITION (including Domestic and Foreign Subsidiaries) STATE OF TEXAS

LEGAL TITLE OF BANK: Gruver State Bank (224)
 FEDERAL RESERVE DISTRICT NO: 1783-34
 PO Box 978
 Gruver, Texas 79040
 FEDERAL RESERVE DISTRICT NO: 11 13 22318
 CITY: Gruver STATE: Texas OFF CODE: 79040 CLOSE OF BUSINESS DATE: 03/31/1992

ASSETS	Dollar Amount in Thousands	Bl	Mt	Thous
1 Cash and balances due from depository institutions				552
2 Securities				11,245
3 Federal funds sold & securities purchased under agreements to resell				2,800
4 Loans and lease financing receivables				13,270
5 Assets held in trading accounts				13
6 LESS: Allowance for loan and lease losses				(1,270)
7 Other real estate owned				192
8 Investments in unconsolidated subsidiaries and associated companies				20
9 Intangible assets				10
10 Other assets				20
11 Total assets (sum of items 1 through 10)				29,122
12 Liabilities				28,172
13 Deposits				25,800
14 Federal funds purchased and securities sold under agreements to repurchase				2,372
15 Demand notes issued to the U.S. Treasury				0
16 Other demand notes				0
17 Mortgage indebtedness and obligations under capitalized leases				0
18 Bank's liability on acceptances issued and outstanding				0
19 Subordinated notes and debentures				0
20 Other liabilities				200
21 Total liabilities (sum of items 12 through 20)				28,172
22 Liabilities - no preferred stock and related surplus				0
23 Preferred stock and related surplus (no. of shares outstanding)				0
24 Common stock (no. of shares)				0
25 Surplus (include all surplus related to preferred stock)				600
26 Unretained profits and capital reserves				1,320
27 Cumulative foreign currency translation adjustments				0
28 Total equity capital (sum of items 23 through 27)				1,920
29 Liabilities deferred pursuant to 12 U.S.C. 1823 (g)				0
30 Total equity capital and losses deferred pursuant to 12 U.S.C. 1823 (g) (sum of items 28 & 29)				1,920
31 Total liabilities, limited - no preferred stock, equity capital, and losses deferred pursuant to 12 U.S.C. 1823 (g) (sum of items 22, 29, and 30)				29,122

MEMORANDUM: Amounts exceeding \$1 million are reported in thousands.

1. Amount of Shareholders' equity in items 1 & 2 (conveyed to others through participation)

NOTE: This report must be signed by an authorized officer and attested by not less than three directors other than the director signing the report. The undersigned officer, by signing this report, certifies that this Report of Condition has been prepared in accordance with official instructions and is true and correct to the best of his (her) knowledge and belief.

DATE SIGNED: April 6, 1992
 OFFICE: 1783-34
 (800) 753-5011

SIGNATURE OF DIRECTOR: [Signature]
 SIGNATURE OF DIRECTOR: [Signature]

STATE OF TEXAS
 APR 16 1992
 Notary Public

If any of you missed me last week, I had to make an emergency trip to see my mother who became ill and was hospitalized over the week-end. One of the final diagnosis was pneumonia, but the complications which developed was a cardiac arrest plus she stopped breathing which resulted in a "code blue" ambulance trip to an Oklahoma City hospital 35 miles away. Treatments used at the Purcell Hospital were installation of a pacemaker and a respirator which were successful at keeping her alive.

As of this writing, Sunday p.m., one week later, the pace-maker has been removed and no visible evidence of a heart attack. The possibility of some brain damage due to a lack of oxygen remains as there are some signs relating to the position of her toes pointing downward but the neurologist can not make his final diagnosis until the respirator tube is removed and he has the opportunity to talk with her. Also an allergic reaction to the IV medication caused a rash to her arm and another specialist was consulted. As a result of the infiltration, her skin became translucent and she will have some peeling (probably something like a sunburn). But through all of this, we are hopeful and thank God for modern medicine.

Another complication that mother contends with is chronic leukemia which leaves her weak and she is susceptible to infections. Which brings me to the subject of the Cancer Crusade month of April. The Hansford unit of ACS will probably be contacting most of you for a donation to help fight this terrible disease.

You know, if you have spent anytime at all in the waiting room of the ICU units in any hospital, you will find many kindred spirits, all of you waiting for a dreaded operation to be over and the hopeful relief after encouraging words from the doctor or surgeon that you probably have never known before. The continuing vigil waiting for the next 10 minutes visit can make you bosom buddies after a few days. The lady in charge of receiving and relaying family messages over the phone soon learns to call you by your given name. In fact, she visits the ICU and gets first hand information on the patients, who is new, who has been transferred to another room and the telephone number to call.

Another unusual item about the Presbyterian hospital were the doctors and nurses who gave us every bit of information concerning our loved one and we didn't have to drag it out of them or feel like we were taking up too much of their time. Mother's on duty nurse whom we talked to at 11 p.m. Sunday night gave us information as to everything that had happened to her from the beginning. And then drew me a map showing how to get back on I-35 to continue on down the road to Purcell. Believe you me, I tried to think of something to ask but couldn't, or if I needed confirmation, it was repeated.

Well, we were indeed shocked when we learned of the tragedies here in Gruver when we returned home. Our sympathy is extended to the family members of Richard DeSantiago.

We checked on Amanda Walters who is having trouble with her dia-

On The Go With Joy

by Joy Henderson

betes. She is looking much better and it is hoped that they will have it under control soon. However she will have to spend a few more days in Nwth in Amarillo.

We have a new bunch of babies to write about this week. First of all, Dennis and Kathryn (Cotter) Flournoy are the parents of a new daughter Kelly Renea' who was born Friday, April 3 in Amarillo. Congratulations to them and the proud Grandpa John Cotter. Aunt Karen Cotter is probably up in the air and anxious to start the TLC.

I don't know the important details, but Del Roy and Reatta Gammon are welcoming a new granddaughter. Parents are Bob and Mindy (Gammon) Evans who live in Lubbock (I think). The baby has been named Kelsey and this makes great-grandma Verna Finley very proud of her growing brood of "greats."

Also born this very Sunday afternoon at 4:45 p.m. was a daughter for Trevor and Cynthia Williams. Everyone in Gruver heard about the charming Miss Brooks (with an s) Williams before Grandma Rita could get to Lubbock to welcome the first girl for Rita and Jerry even though it is one step lower in the generation ladder. Congratulations to all!

Quite a bit of excitement for Jim Deakin Saturday night, April 4th when he was picked up in the fire truck by Michael Booth. Both are volunteer firemen. Boy was Jim surprised to find out the fire at the senior citizens building was just a "hot" birthday party to honor him on his 50th year and being way "over the hill." The party which was planned last Christmas by family

members and kept secret up to the very beginning spark. There were 85 - 90 guests which included several firemen and family members included were Jim's and Diedra's children, DeNetta and Larry Hagerman from Austin, Julie Deakin of Lubbock and those from Gruver in addition to the Michael Booth family were David and Lori Schultz and family, Chris and Jamie Deakin and Family. Congratulations and many more years to you, Jim!

Visitors in our area recently were Jerry Barker who was a guest of Ron Green in the home of Ron's parents, Weldon and Elene Green. -Velma Renner decided to enjoy the cool cloudy weather and visit her son B.J. and Glenda Renner. -Rosie Ortega of San Diego, California visited her mother Margaret Buchanan and brother Dave Karlin and his family.

Several of Vivian Green's members attended funeral services of Joel Wheeler in Albuquerque last Tuesday. He was Vivian's son-in-law.

Some of our Gruver people had surgery in Amarillo last week but are home now. How about sending a card or better yet go a visiting to Reta Gross and Kay Christian.

More visitors in Gruver were Juke and Jeff Coates from Spearman grandsons of Dewey and Virginia Taylor. Visiting Yvette Miller was Matt Jones of McCamey who is a student of Wayland.

Former Gruverites visiting services of UMC were Myrtle Bernstein and Theodore and Alene Bayless from Amarillo. The Archie Nelsons enjoyed having daughters Cheryl and family as guests recently.

You are Invited to a
 Bridal Shower
 honoring
 Shayla Waters
 bride-elect of
 Cinda Novak
 bride elect of Jamie Haruch
 On SATURDAY, APRIL 25, 1992
 3:00 to 4:30
 in the home of
 Charolette Jackson
 1105 Linn Dr.
 given by Hostesses

BRIDAL SHOWER
 honoring
 Shayla Waters
 bride-elect
 of
 Travis Buzzard
 on Saturday, April 25
 2:00 - 3:30
 home of
 Lynna Renner
 900 S. Barkley



A change in your phone service is on the horizon.

It's a change that will make a difference. A difference you can hear. Because Southwestern Bell is in the process of installing a state-of-the-art switching system, which will put your calls through faster and make them sound crystal clear. Proving that Southwestern Bell is committed to making all of Texas technologically up-to-date. And that's something nice to wake up to.



Among the Neighbors

by Helen Fisher

Lois and Woodrow Gibner were pleased to have guests from Canadian last Sunday. Josie and Elton Miller are friends of nearly 50 years as Elton and Woodrow were in the Sea Bees together. Josie and Lois spent many months at Williamsburg during that time.

In this column last week there was an item of the Bob Boxwell family moving into their new home. In wishing them the best of luck, a metaphor was used "that the home would not only be a roof over their heads, but would EVER be a foundation under their feet." The print-out appeared "would NEVER be a foundation, etc." Meaning the opposite-sorry, Boxwells.

Gertrude Archer returned last Friday from a warm, pleasant winter in Phoenix with daughter Sue Venters.

On the trip home she and Sue drove through to Lubbock where she spent a week with Patton Ann Hamilton and family.

Patton Ann is a 4th grade teacher in near-by Wilson. That week the Lynn County Soil and Water Conservation committee, at their annual program, selected Patton Ann the Soil Conservation Teacher of the Year. She will attend the Regional Awards Program to be held at Plainview on May 14. This is under sponsorship of the Association of Soil and Water Conservation Districts of Texas, and the winner will qualify to go on to the statewide selection.

Patton Ann is a Spearman High School graduate and a native of Spearman.

The children of Richard Smith arrived here during the week to attend memorial services and interment for their brother, Larry David Smith, age 28. He died at Stockton, Calif. on September 16, 1991. The services will be held Saturday morning at 11 a.m. at the Union Church, and interment of the remains will be at Hansford Cemetery beside his grandfather, W.E. Gould.

Richard's other children are Mary Smith, Latrop, Calif and Terry of Stockton and Charles of Las Vegas. Their mother, Edna Gould Smith, of Lathrop also survives. Donald H. Smith of Spearman is an uncle.

Another Spearman lass became an octogenarian on April 3. Lois Nollner was honored at a family dinner to commemorate her 80th birthday. Lois is making great progress from her frightening and dangerous ordeal and weeks in the hospital.

She has surprised all by her recovery and says it would not have been possible without the strengthening support from her family and friends. She was surprised and touched by the outpouring of concern and thoughtfulness from so many and expresses her deepest appreciation.

Her daughter, Betty Dean, of Corpus Christi is still here with her.

Don and Wanda Smith spent three days last week at Two Buttes, Colorado with their son, Don, Jr. He is doing well and is fairly independent the medical care is required daily. Don, Jr. had purchased a home there as he had lived there previously and has many friends in the area.

Altha Groves was in Albuquerque last Monday and Tuesday with Mr and Mrs Weldon Green and Mrs Vivian Green. They attended the funeral of the husband of an

other cousin in Albuquerque.

All Spearman folk would be well advised to read the letter in last weeks issue from Spearman's Mayor to the United States EPA Small Community Coordinator. Whew!! How much more can be piled on small communities?

Paul and Betty Hazlewood came motoring back to Spearman last Saturday. They had been in the lower Rio Grande Valley at Brownsville for two months. The temperature was perfect and Paul was able to walk every day. He had been forbidden to walk if the temperature was below 60. He says his health has improved so much he may be forced to do a little work.

They enjoyed the beach and Padre Island—that is, until the "Spring-Breakers" moved in. Ruefully he admits not once was he asked to join in a chugalug contest. He really wasn't ready to leave—but after two months on the sand, he'll spend the rest of the year on the rocks.

Mike Cudd is able to participate in any advisory position only in the preparation for the Little League season. He underwent orthoscopic surgery last Wednesday at St Anthonys. It had been anticipated that more intensive surgery would be required, so all are pleased at his rapid recovery.

Well, daylight saving time is again in effect—somehow there is supposed to be more daylight by turning up the clocks—remember the woman who wanted longer sheets, so she removed one end and attached it to the other end.

Friends of Eddie Lee Blackburn will be interested in learning that he and his wife have moved to Midland from Houston. He is associated with a communication company and is well pleased with his change. He spent the week-end here with his mother, Ora Lee Blackburn.

Other "snowbirds" Estelle and Bill Jackson returned from the valley last week. They were at Brownsville where their daughter, Kay Wade, and family live. The weather down there was fine, except in the early part of the winter there was a great deal of rain.

Spearman folk may need to put Dr. Walters of Pampa on a retainer fee here. Three "Spearmanese" had cataract surgery there last week. Phyllis Owens, W.R. Greever and John Bishop (who is so pleased he can again see the pretty girls).

Graveside services were held Monday afternoon at Hansford Cemetery for Betty McKay Richardson of Lubbock. Church services were held earlier at Lubbock. Betty, the daughter of the late

Church hosts archaeology series



Dr. Harvey Porter

Angus and Bess McKay, came here as a very young child and finished high school, as did her husband Arnold Richardson. The obituary appears elsewhere in this issue. Helen Etter was her sister-in-law.

Judy and Ray Martin spent the week-end in Vega in the home of their daughter, Mary Ann and Roger Morris. The Martins proudly witnessed the christening of young Roger Louis Morris in the United Methodist Church.

Virginia Hale of Hardesty has been in Spearman with her mother, Mary Bruce, for several days. Also Mary's sister Gracie Kunkle of Amarillo and Mary's granddaughter, Donna have been here. Mary is seriously ill at Hansford Hospital.

The hospital bond election last Tuesday was over-shadowed by another very important election that opened that day. The election to determine which picture of Elvis Presley will appear on the U.S. postage stamp—the picture before he became a drug addict or the one after. After all, he provided the nation with such groanin', gruntin', grindin' and gyration that surely is far superior to the mediocre achievement of those other guys on the stamps—George Washington and Abraham Lincoln.

Gruver School Menu April 21 - April 24 LUNCH

Tuesday: Pig-in-a-blanket, tator tots, fruit, milk - salad bar.

Wednesday: Steak fingers, mashed potatoes with gravy, vegetables, jello, hot rolls, milk - salad bar.

Thursday: Deli. sandwiches, ham & cheese sandwiches, pickles, fruit, cookies, milk.

Friday: Chicken patty on a bun, french fries, lettuce & pickles, brownies, milk.

BREAKFAST

Tuesday: Oatmeal, blueberry muffins, juice, milk.

Wednesday: Donuts, fruit, milk.

Thursday: Toast, peanut butter & jelly, fruit, milk.

Friday: Cinnamon rolls, fruit, milk.

Dr. Harvey Porter will present a series of four slide presentations entitled, "Archaeology of New Testament Cities," at the Spearman Church of Christ, April 20 - 23 at 7:30 p.m. The ancient cities of Jerusalem, Pergamum, Athens and Ephesus will be presented, and Bible text will be compared to archaeological discoveries.

Porter has preached for the Montgomery Blvd. Church of Christ in Albuquerque for thirty-six years. He started when the congregation of thirty members was established in 1956, and has continued with them as their membership has surpassed 1100. He holds degrees from

Abilene Christian University, Pepperdine University, and McCormick Theological Seminary.

During his 25 trips to the Bible Lands, Porter has photographed and researched important archeological sites. He has photographed Biblical artifacts in Edinburgh, Oxford, the British Museum, the Louvre, the Vatican, the Cairo Museum, The Palestinian Museum of Archeology, the Israeli Museum, the Teheran Museum, Susa Museum and smaller museums and archeological sites. He has filmed a series of 52 presentations of *The Bible and Archaeology* for New Mexico Educational Television.



Pamper Your Fur

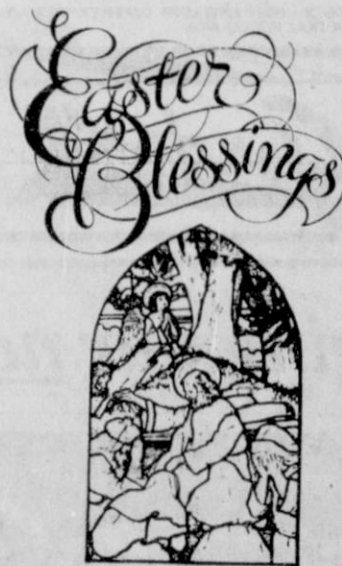
Your precious furs are professionally cleaned and individually stored on hangers in our expertly controlled, refrigerated vault... safe from fire, theft, heat, humidity, and moths.

PERRYTON CLEANERS & LAUNDERS
1-800-232-5370

419 S. Main Perryton, Texas 702 S. Main



A member of the International Fabricare Institute, the association of professional drycleaners and laundries.



ADELA'S

SEND AN EASTER BLESSING

To Parents, Family, Friends

Easter Lillies
Easter Bouquets
or plants

511 Hwy 207 S.
659-5180

You are cordially invited to a
Wedding Shower
Tuesday, April 28, 1992
honoring
Sonya Ooley
bride elect of **Hadley Reed**
given in the home of **Lorreto Cook**
714 Gibner
7:30 p.m. to 9:00 p.m.
Given by Hostesses

You are invited to a
BRIDAL SHOWER
honoring
TAMMY ROBERTSON
bride elect of **Geoff Kiss**
ON SATURDAY, APRIL 18, 1992
2:00 to 3:30
AT THE HOME OF **LYNANNE MAIZE**
707 E. 2nd
Given by Hostesses
Selections at Celebrate and ChaLor's
or
A money tree for the honeymoon to
England will be at the shower.

Archaeology of New Testament Cities

In the times of Jesus and Paul
with **Harvey Porter**

Church of Christ
121 S. Haney
Spearman, Texas
April 20-23, 7:30 P.M.

- Monday: Jerusalem
- Tuesday: Pergamum
- Wednesday: Athens
- Thursday: Ephesus

Full-Color Slide Presentations

Take charge of the ups and downs of your energy bills

Gain control of the highs and lows of your electric bill with the Budget Billing Plan from Texas-New Mexico Power Company. You'll be able to chart a plan for budget success by averaging the seasonal highs and lows of your bill so that you pay about the same amount each month. TNP will keep you advised of your actual monthly billing charges.

To see if your credit qualifies you for this plan, call or visit your nearest TNP office.

Texas-New Mexico Power Company.

The heartbreak of the loss of our loved one, was eased by the thoughtfulness of our many friends. For the visits, flowers, food, cards, and the many contributions for so many worthwhile causes, and above all, for the sympathy and prayers. We will always be grateful.

The Family of Carroll Harper

K.O.T. relays accepting entries

Elkhart Chamber of Commerce is hosting the 25th Annual K.O.T. (Okie Relays), Inc. Saturday, May 16.

K.O.T. (Kansas, Oklahoma, Texas) (Okie relays), Inc. is a 4-man relay race from the Texas State line to the Kansas State line at Elkhart, Kan. along the route of State Highway 95. The race is 41.3 miles long.

The race is divided into seven different divisions: 1- high school; 2 - Under 30 years old; 3 - ages 30 to 39; 4 - Master, 40 and over; 5 - women (all ages); 6 - open (if your entire team does not fit one of the above); 7 - Individual runner (one runner the entire 41.3 mile distance)

Entries must be received before May 1. Individuals wanting to enter or that would like more information call (316)697-4600 between 9 a.m. and 5 p.m. Monday through Friday.



Spearman FFA students (l/r) Brad Law, Mark Eakin, Edle Herrington travelled to Lubbock Saturday, April 11, to compete with 51 other teams in the state horse judging contest. The trio qualified for the state competition by finishing #1 in the district and 5th in the area.

APT classes... compete in KMO test

by Tiffany Bruning

This year the eighth and seventh grade Advanced Pupil Training class, along with two chosen others, will be competing in the Knowledge Master Open (KMO) on April 22. KMO is a computerized test of two hundred questions. Scoring is based on speed and accuracy with a possible 2,000 points. The questions are challenging and often a matter of which is the best guess. Members of the eighth grade APT class include: Tiffany Bruning, Kelly Shieldknight, Regan Boxwell, Melanie Cook, Haley Farber, Jason Villines, Phillip Sanders, Martin Sanders, Cody McLeod, and Mark Parker. We chose Clayton Hergert to assist us who is a former APT student. The seventh grade includes Dillon Miller and Britt Savage who chose Clint Farris to help also. We are looking forward to the two hour contest where we can relax but concentrate. We all hope to do well under the supervision of Mrs. Mullins while competing against the some odd 50,000 other students.

HANDY MAN Some shortcuts to fast cutting

Recent design and manufacturing changes have brought new respect and greater utility to the hand saw, which has long been a reliable and trusted friend of do-it-yourselfers and professionals.

Today's hand saw may look a lot like the sawdad always used whenever he had to cut through a two-by-four or make two pieces of wood from one...but, in this case, looks are deceiving.

The new "space-age" hand saws cut 50 percent faster than conventional saws because each tooth is precision-set and bevelground with three distinct cutting angles that enable constant contact with the wood to be maintained. With more and more saws incorporating this faster, more aggressive tooth configuration, homeowners are using hand saws for an increasing number of cutting chores.

Following are some tips from the experts to help you select the hand saw most appropriate for your needs:

Because the mahouity of wood cutting projects involve cutting against the wood's grain, the crosscut saw is considered the most valuable all-purpose cutting tool. Crosscut saw teeth are like alternating rows of angled knife points—designed to crumble out wood. In addition to having bevel-sharp-

ened teeth and the aggressive new tooth configuration, the crosscut saw also should be compact and lightweight. The number of teeth per inch dictates the speed and width of the cut. A crosscut saw with eight teeth (points) per inch can handle a majority of applications efficiently. Saws with more than eight teeth per inch deliver a fine and slow cut, and ones with less than eight tend to give a rough and fast cut. For hard wood, or thin wood, the experts suggest using a saw with more teeth per inch.

When you don't want to saw straight cuts, you can use a key-hole saw, which lets you start in the middle of a piece of wallboard and cut along irregular and curving lines, or a coping saw, which is ideal for intricate circles, irregular shapes, sharp angles and curves in thin wood, plywood and hardboard.

The rigid backsaw, with reinforced back, should be used when you need to saw the perfect straight cut on any angle, for making joints, or any precise woodwork cuts.

Nothing beats the rip saw for cutting down the grain. Because there is less resistance down than across the grain, the rip saw has big chisel-like teeth that easily rip down the grain of a peice of wood.

A picture perfect Easter Special

PHOTO CENTER

DOUBLE PRINTS

SAVE · SAVE · SAVE

Coupon good on 2 sets of standard size prints from 35mm, Disc, 110 or 126 color print film (C-41 process only).

12 EXP. ROLL/24 PRINTS	15 EXP. DISC/30 PRINTS
\$2.99	\$3.69
24 EXP. ROLL/48 PRINTS	36 EXP. ROLL/72 PRINTS
\$5.49	\$7.99

COUPON MUST BE ATTACHED TO OUTSIDE OF ORDER ENVELOPE. OFFER EXPIRES 0-00-00. Not valid with any other coupon offer. LIMIT ONE ROLL PER COUPON. 2991

314 MAIN PHONE 659-2141 **Gordon's DRUG** SPEARMAN TEXAS

We're changing our name not our smiling faces



NOTICE

WE HAVE BEEN

THRIFTWAY

NOW WE ARE

Lowe's

MARKETPLACE / PAY-N-SAVE

NO WE DIDN'T SELL OUT !!! We are going to join our other 35 stores under one name and one advertising circular. This change will give us lower advertising cost and greater buying power. It will also allow us to pass those savings onto you.

OUR CUSTOMER

YOU will still see the same smiling faces doing business the same friendly way as you have in the past.

ONLY THE NAME WILL BE DIFFERENT

THANKS FOR YOUR PATRONAGE

ALL AMERICAN FOOD STORES

WE WILL BE CLOSED EASTER SUNDAY, APRIL 19

GRUVER LUMBER
105 W. BROADWAY
733 - 2404
GRUVER, TEXAS

WE'VE GOT

SHUR-LOK
ROLL UP TARP

THE PREFERRED ROLLUP TARP FOR FARM TRUCKS AND SEMI-TRAILERS



- *No ropes, cables, clamps or ties.
- *One man operation from the ground — no climbing.
- *Opens or closes in seconds.
- *Virtually maintenance free.
- *Easy off system allows complete tarp removal in just minutes.

AMERICAN
EQUIPMENT & TRAILER, Inc.

610 N. Grand
Amarillo, Texas
806-383-8831

3707 Quirt
Lubbock, Texas
806-747-2991

Hergert announces for S.I.S.D. school board



CAROL J. HERGERT

My name is Carol Hergert and I would like to be on the Spearman Ind. School Board. I have taken the opportunity to run for this elected office this year because I have the desire to be involved in helping to make policies and decisions regarding our school system.

The current State Legislature has an overwhelming task this session and probably the next session to provide laws to govern our school district. Once mandated, a law must be implemented. I have enjoyed working with the various Federal, State and local laws as they have applied to health care. I

CBI group...

looking for members

American soldiers stationed in China - Burma - India during World War II risked their lives flying over the Himalayan Mountains.

Because it was primarily a British military operation in that part of the world, the Americans were a tight knit group and the bond forged transporting supplies from India to China was strong. The nine or so local veterans calling themselves the CBI group meet monthly to trade war stories and share fellowship.

"We just like to get together. We are a self-eliminating group. I mean they aren't making any more of us. We are all getting up into our 60s and 70s, and it's just a fraternal

We apologize...

We apologize to the following UIL District Meet participants from Gruver for not getting their results in the last edition of the newspaper. Below are the rest of the results.

UIL District Meet Gruver Junior High Oral Reading -

Eighth grade, Doug Gumforty, 1st; Bailey Barkley, 2nd; Scott Jarvis, 3rd

Seventh grade, Lexy Spivey, 2nd; Kelly Boone, 6th

S.I.S.D. from page 2

accept the ITF cable agreement, the business managers report and the Texas Association of School Boards Policy Update 41-first reading. Allen Alford, business manager, presented \$59,397.82 in bills for the month. He also proposed several budget amendments.

The board voted to table the adoption a 1992-1993 school year calendar. Butler proposed a calendar that the school administrators and teachers voted to accept. This calendar proposed that school start August 14. The first semester would end before Christmas break and the break would run two weeks. The spring break would be the first 5 days in March. School would end May 26.

Before the board tabled the calendar adoption, the trustees suggested that the start date be moved back a week. To accomplish this they suggested that two days be cut out of Christmas break and spring break. Butler indicated he would take the boards suggestions and rework the calendar and present it at a later meeting.

The board next voted unanimously to establish the districts transfer student fee at \$1,465.17.

They voted unanimously to set May 4 as the meeting date to canvass the May 2 SISD School Board election results. They voted unanimously to authorize the school

See S.I.S.D. page 10

think that the current fiasco in our existing State laws will require that the people who serve on the school board have experience or understanding in how these laws will be mandated. In addition, I believe that the implementation of the changes in law at our local school level will be challenging and should be considered strongly before choosing to be a candidate. I am a strong person and am educated, both formally and in work experience. I like challenges. I am not intimidated by changes made for purposes of progress or projected deficits, especially when all avenues have been explored. I don't have any pet projects. My children's educational progress in the Spearman Schools have been an important report card for me. Children are the barometers of how well our educators have been and I'm very proud of the present situation.

I graduated from Texas Christian University in 1976. I have a Bachelor of Science degree in Nursing and a second major in general science. I attended Spearman schools. I attribute to this school system my intense love of reading and continuing education. My education foundation comes from my parents, from this community and from Spearman Independent

School District.

I have attended graduate school and have eighteen hours of work in health related fields and management. I am currently working at Hansford Hospice and Home Care in multi-facets of the operations. My position of record is that of Director/administrator of these two agencies.

My husband, Donnie, and I have two sons. Clayton is an eighth

grader who believes that sports and academics are of prime concern. Kirby is a fourth grader with a wonderful optimism and few concerns, at this time. Both of them believe that I would be a hard working member of the school board and I have promised them that I would be fair and equal in my assessments and decisions concerning the issues of our school district.

Political advertisement paid for by CAROL J. HERGERT



There are more than 2,000 sport balloonists in the United States today. Almost all use hot air balloons.

COUPON
BUY ONE MEAL GET ONE FREE
Saturday, Monday, & Tuesday Night
Not for Large Parties
Closed on Sunday Nights

CASA ALVAREZ
#819 Hwy. 207 South Spearman 659-3422
GOOD THROUGH THURSDAY APRIL 30

INVESTING IN OUR FUTURE

LARRY BUTTS

CANDIDATE SISD SCHOOL BOARD



EXPERIENCED

Independent businessman with experience in finance, budgets and regulatory agencies. Elected 3 times to the Sunray City Council. Master Degree in finance from W.T.S.U.

COMMITTED

My wife and I moved to Spearman with the prime objective of a quality education for our four children.

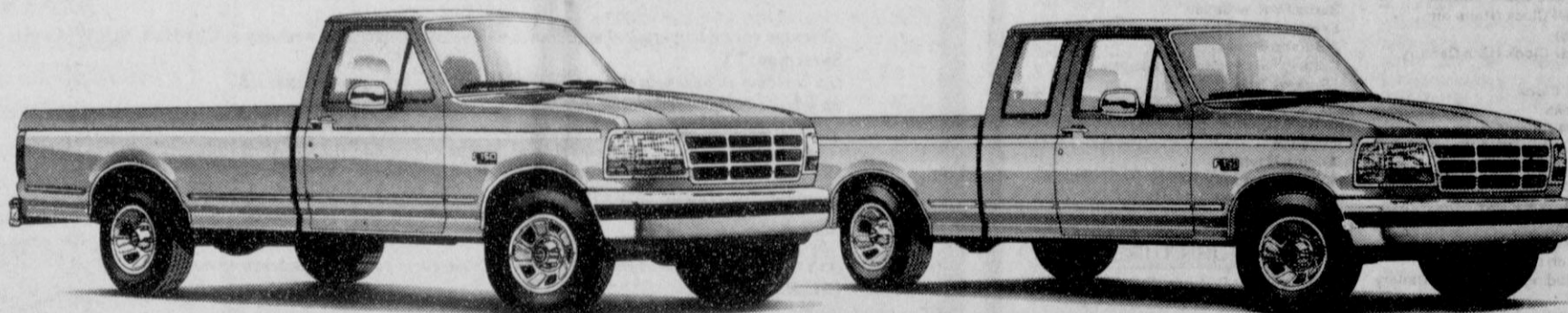
CONCERNED

Tough decisions will have to be made in the next few years. I can make the hard decisions.

A QUALITY EDUCATION, WITH IN THE BOUNDS OF FISCAL RESPONSIBILITY

Political advertisement paid for by Larry Butts

Test Drive The New '92 F-Series. We Dare You.



F-150 XLT Lariat

F-150 XLT Lariat Supercab

We'll give you \$100 if you test drive the new '92 Ford F-Series and then buy a GMC or Chevy truck.*

During your Texas Ford Dealers "Dare to Compare" Sales Event, we're sure the price and quality of the new '92 F-series will win you over. In fact, we're so sure that if you buy a GMC or Chevy truck after you test drive the F-Series we'll give you \$100!

You see, last year Americans bought more than 400,000 Ford

F-Series** which isn't surprising, considering Ford trucks have a higher customer satisfaction rating than Chevy or GMC.***

So take the F-Series for a test drive during our "Dare To Compare" sales event. With each Ford Dealer marking his absolute lowest selling price on every F-Series in stock this is one dare where you can't lose!

TAKE THE DARE IN HANSFORD COUNTY AT

GRUVER FORD, Inc

531 Main Gruver, Texas phone: 733-2431

*Limited time offer, April 15-27, 1992. Purchase of Chevy C/K Series or GMC C/K Series must be within 7 days. Limit one. Proof of purchase required. See participating dealer for qualification details. **Based on R.L. Polk total registrations through 12/91. ***Based on 1991 New Vehicle Buyers Survey of '91 products at 3 months in service.

Spearman track results announced

Spearman Varsity Girls
Dalhart Meet, 4/10-4/11
100 M Hurdles: Gafford, 1st, 16.05; Sanders, 6th, 18.2
100 M Dash: Garnett, 1st, 13.23
300 M Hurdles: Gafford, 1st, 48.89
800 M Run: Lusby, 4th, 2:34.4
High Jump: Sanders, 2nd, 5'; Cook, 3rd, 5'; Lusby, 4th, 4'10"
Long Jump: Jarvis, 8th, 14'4 1/2"
4 X 100 Relay: Reed, Jarvis, Holton, Nitschke, 5th, 54.53

Spearman Varsity Boys
Dalhart Meet, 4/10-4/11
Shot Put: Chad Davis, 3rd, 45'5"; Brian Kidder, 4th, 44'11 1/4"
High Jump: Tim Kizziar, 2nd, 6'4"; Chris Strawn, 4th
100 M: Strawn, 2nd, 11.48
110 H: Brian Beck, 4th, 15.9
Spearman JV Boys
Dalhart Meet, 4/10 - 4/11
Long Jump: Jason Varnon, 1st, 19'2"
Pole Vault: Dee Mayfield, 2nd, 11'6"

Shot Put: Chad Gardiner, 4th, 38'6 1/2"; Nick Renteria, 6th, 35'3"
100 M: Josh Furlow, 3rd, 12.31
400 M: Ernesto Puentes, 5th, 58
110 H: Varnon, 1st, 16.2
400 Relay: Furlow, Varnon, Gallegos Scribner, 3rd, 47.3
Spearman 8th - Girls
District 1-2 A Meet
Sunday, 4/10 - 4/11
Finished 3rd - 132 points
100 M Hurdles: Boyd, 6th, 20.13
100 M Dash: Bruning, 2nd, 14.54
800 M Relay: 1st, 2:02.37
200 M Hurdles: Shieldknight, 1st, 33.90
200 M Dash: Townsend, 1st, 28.84
1200 M Run: Burton, 6th, 5:05.91

1600 M Relay: 2nd, 4:49.75
High Jump: Bruning, 2nd, 4'8"
4 Kilo Shot Put: Rex, 1st, 25'2"
Long Jump: Shieldknight, 2nd, 14' 3/4"
Discus: Townsend, 1st, 87'2"; Bruning, 5th, 67'7"
Triple Jump: Townsend, 1st, 30'8 1/2"
Spearman 7th - Girls
District 1-2 A Meet
Finished 1st - 209 points
400 M Relay: 1st, 58.11
800 M Run: Rodriguez, 2nd, 2:50.62; Smith, 3rd, 2:51.88
100 MH: Shieldknight, 5th, 20.24
100 M Dash: Butt, 1st, 14.74; Lusby, 4th, 15.06
800 M Relay: 3rd, 2:09.98

200 M H: Shieldknight, 3rd, 37.41; Dooley, 5th, 39.2
200 M Dash: Beasley, 1st, 29.91; Goodman, 3rd, 31.10
1200 M Run: Rodriguez, 1st, 4:44.75; Fouquet, 4th, 4:57.17
1600 M Relay: 1st, 4:49.49
High Jump: Barber, 2nd, 4'8"; Rodriguez, 3rd, 4'6"; Tigrett, 5th, 4'2"
4 Kilo Shot Put: Butt, 1st, 21'11 1/2"; K. Smith, 3rd, 21'4"
Long Jump: Beasley, 1st, 14' 3/4"; Barber, 4th, 13'4 3/4"; Lusby, 5th, 13'0"
Discus: Butt, 3rd, 61'4"
Triple Jump: Beasley, 1st, 29'8 1/4"; Rodriguez, 2nd, 28' 1/4"; Lusby, 5th, 26'6 1/2"



Krista Kirkland

Kirkland... scheduled to play in Australia

Krista Kirkland, First Team All-Southwest Conference, has been selected to play on the team of ten Southwest Conference players. They will travel to Australia to play some Australian teams. In June the players will train in Dallas for one week and then be gone to Australia for two weeks. Krista is a junior at Texas Tech and had been on the Dean's Honor Roll List the last three semesters. She was also nominated for Academic All-American for Region 6 in which only two girls from Texas were nominated. The Texas Tech Lady Raiders are Southwest Conference and Southwest Conference Tournament Champions. They were defeated in the NCAA West Regional game by Stanford, the that went on to win the NCAA Women's National Championship this year.

Texas aggie... annual muster scheduled

The Annual Texas Aggie Muster will be held in Gruver on April 21. The Muster activities will begin at 7:30 p.m. at the El Vaquero Restaurant. Dinner will be served and the Muster program will follow. The Aggie Muster dates back to the mid-1880's and has been held annually since that time. More than 600 Musters will be held around the world April 21. Every Muster ceremony throughout the world is the same. The Aggies pay their respect to their University, the nation and the state of Texas, and honor those who are absent, because of death, since the last Muster was held. All students, former students and friends of Texas A & M University are invited to attend. The Muster activities in Gruver are being sponsored by the High Plains A & M Club which is made up of Aggies from Hutchinson, Hansford and Carson counties. For more information or reservations call David Bergin at 733-2713 or Johny Jarvis at 878-2240.

School menu

- Pringle-Morse CISD Menu**
April 21 - April 24
Lunch
Tuesday: Steak, potatoes, gravy, salad, green beans, roll, fruit, milk.
Wednesday: Sloppy Joes, tator tots, baked beans, fruit, milk.
Thursday: Spaghetti, salad, carrots, milk, brownies.
Friday: Sandwiches, soups, fruit, ice cream, milk.
BREAKFAST
Tuesday: Waffles, sausage, apple juice, milk.
Wednesday: Toast, cereal, orange juice, milk.
Thursday: Donuts, cheese toast, grape juice, milk.
Friday: Bacon & eggs, toast, orange juice, milk.

Support research.
American Heart Association

GARDEN TIME

Cutting the Cutting Garden
 Once your plants reach maturity, they can be cut for indoor arrangements. But, before you head out to the garden, gather a pair of gloves, a sharp floral knife or scissors, and a clean bucket half-filled with lukewarm water.
 The best time to cut plants and flowers is early morning or early evening. Each stem must be cut at an angle then immediately placed stem-down in the bucket of water. Try to cut flowers with at least 10-inch stems, so that you can trim them as needed for your arrangement. When you've collected all the plants and flowers you want, carry your bucket of cuttings inside and spray them with an antitranspirant spray, such as Plant Saver by Easy Gardener. Spraying freshly-cut plants and flowers with Plant Saver will ensure water retention and reduce stress on plants after they have been cut, helping them stay and look fresher longer. Then, allow the flowers to stand in deep water in a cool place for several hours or overnight.
 Before arranging, trim each stem again, this time holding it under water while you cut. Cut it at a sharp angle to allow more surface area for water to enter.

Arranging Fresh Flowers
 Before making your cutting arrangement, thoroughly clean your vase with bleach, then rinse it well. If your vase is large, you may want to place floral foam in the bottom to hold the stems in place.
 Begin by filling your vase with room-temperature water. The first flowers to use should be the tallest and the primary color in the arrangement. Always use odd numbers of each flower or color to create a strong, visual pattern.
 Once the larger flowers are in place, add the secondary flowers of coordinating colors. Finish the arrangement by adding small accents, such as baby's breath, ornamental grasses or evergreen clippings. Then, place your arrangement anywhere in your home where it will receive plenty of fresh air, sunlight and praise from all who see it.
 For more information on water-saving gardening, send a self-addressed, stamped, #10 envelope to: Every Drop Counts, Easy Gardener, Inc., P.O. Box 21025, Waco, TX 76702.

D&C Greenhouse
 Gruver Highway W. 659-5171
 Spearman, Texas

AUCTION

CLOCK COLLECTION AND HOUSEHOLD ITEMS
 of I.W. and Maylynn Ayres (Phone: 806-733-2267)
Saturday, April 25, 1992 • 10:30 a.m.
Location: Hansford County Barn, Gruver, TX
 From Hwy 15 at Gopher's Convenience Store - Turn South and Go 2 Blocks

ANTIQUE CLOCKS
 Blindman (or Grandson Ray)
 German Grandfather Blm Bam Clock
 Granddaughter Clock
 RAY & INGRAHAM 30 hr. Shelf Clock w/ Reverse Painting (Made in 1841 or 1843)
 Documentation Available
 SETH THOMAS Shelf Clock-Documentation Available
 INGRAHAM Banjo Clock
 Carriage Clock
 8-Day Cuckoo Clock

OTHER CLOCKS & CLOCK WORKS
 HERSCHDE 9 Tube Grandfather Clock w/ Triple Chimes & Moon Dial
 Grandmother Clock w/Westminster Chimes, Handmade Cedar Cabinet
 Atmospheric Shelf Clock (Runs on Pressure Changes)
 Gothic Wood Gear Clock (15th Century Replica)
 Wood Gear Shelf Clock
 Anniversary Clocks
 Electric Clock w/4 Chimes
 Handmade Star Pattern Wall Clock
 School Mom (or Regulator) Clock
 31 Day Tear Drop Wall Clock
 2-Cuckoo Clocks - 1 & 8 Day
 Vienna Wall Clock
 Key Wound Pocket Watch
 Gold Pocket Watch Case
 More Clocks Including Shelf, Wall, Battery and Electric
 Work Tower (Set Works in for Repair)
 Several Sets of Assorted Works
 Sundial on Cement Pedestal
 Clock Shelves

HOUSEHOLD
 Pitchers, Bowls, Dishes, Glasses
 Cup Rack
 Picture Frames
 Cedar Candle Stick Holders
 SINGER Sewing Machine w/Cabinet & Stool
 KIRBY Sweeper
 Bathing Hand Rail
 Handmade Fold Up Stool
 Handmade Diamond/Star Pattern Box-455
 Pieces of Wood
 Thermos Jugs
 Wicker Baskets
 Table Cloths
 Blankets, Bedspreads, Pillows
 Parlor Games
 White Artificial Christmas Trees
 15" x 17" Stained Leaded Glass Butterfly Window Ornament

5 Piece Fireplace Set
 2 Handmade Oak Fireplace Match Boxes
 Intercoms, Radios, Tape Recorder
 Cassette, 8 Track, Radio & Record Player in Upright Cabinet
 3 Silver Plated Cream & Sugar Sets
 Holy Land Gavel
 Umbrella Stand & Umbrellas

ANTIQUES
 Hand Crank Drill Press
 Visa
 Anvil w/Cutter
 Cream Separator
 Hand Water Pump
 Cow Yoke
 2 SINGER Sewing Machine Heads
 Electric Mower
 Automobile Guide

NON-CLASSIFIED
 Barbell Set w/Bench
 Exercise Bike
 2-Butane Stoves
 Cutting Torch w/Hoses, Gauges, Brazing Tips
 Tackle Box w/Tackle
 School Annuals
 Luggage
 Adding Machine
 8' Yard Windmill
 Small Floodlight w/Adj. Stand
 Hooley Sticks

FURNITURE
 3 Piece Maple Bedroom Suite
 6 Piece Queen Size Bedroom Suite
 Matching Sofa & Swivel Chair
 Couch
 2 Coffee Tables
 2 End Tables
 Swivel Rocker
 2 Matching Swivel Chairs
 2 Matching Arm Chairs w/Wicker Sides
 2 Matching Arm Chairs
 Mahogany Cabinet w/Shelves
 3 Wall Mirrors
 Walnut Plant Stand
 ZENITH Console Color TV w/Remote
 Console TV Cabinet w/Roll Around Front
 School Chair
 Book Cases
 3 Kitchen Stools
 2 Tables-1 w/ 1 1/8" Pine Top
 Floor, Hanging & Table Lamps

PLATFORM SCALES
 To Be Sold Offsite - For Inspection - Go 2 Mi. West of Gruver on Hwy 15, then 2 Mi. South on Paved Road.
 40,000 lbs. Platform Scales - 11'x27' w/10' High 8" Channel Iron Frame.

DENZEL TEVIS (806) 435-2768
AUCTION & REALTY P.O. Box 861
 Perryton, TX 79070
 TxS 7498

SPRING REVIVAL AT FIRST BAPTIST CHURCH - SPEARMAN



Larry Ramsour **Kerry Wood**
April 19 - 23
Evangelist: Larry Ramsour
Worship Leader: Kerry Wood
Sunday at 11:00am - 7:00pm
Monday thru Thursday at noon
Lunch provided & meal at 7:30

(AVISO DE ELECCION REGNTE)
NOTICE OF TRUSTEE ELECTION
 To the Registered Voters of the City of Spearman, Texas:
 (A los votantes registrados del Ciudad de Spearman, Texas.)

Notice is hereby given that the polling places listed below will be open from 7:00 a.m. to 7:00 p.m., on May 2, 1992, for voting in a general election, to elect a Mayor and two (2) Alderman for two year terms.
 (Notifiquese, por las presente, que las casillas electorales sitados abajo se abirran desde las 7:00 a.m. el 2 de Mayo de 1992 para votar en la Eleccion General para elegir al Mayor de la ciudad y dos Funcionarios por un periodo de dos años.)

Location(s) of polling places
 (Direccion(es) de las casillas electorales)
 SPEARMAN HIGH SCHOOL
 403. W. 11TH
 SPEARMAN, TEXAS 79081

Absentee voting by personal appearance will be conducted each weekday at City Hall, 30 S.W. Court, Spearman, TX
 (La votacion en ausencia en persona se llevara a cabo de lunes a viernes en) La oficina de la ciudad localizadas en 30, sw court, Spearman, TX between the hours of 8:00 a.m. and 5:00 p.m. beginning on April 13, 1992 (entre las 8:00 de la manana y las 5:00 de la tarde empezando el 13 de Abril 1992) and ending in April 28, 1992. (y terminando el 28 de Abril 1992.)

Application for ballot by mail be mailed to:
 (Las solicitudes para boletas que se votaran en ausencia por correo deberan enviarse a):
 CHERYL GIBSON
 (name of Absentee Voting Clerk)
 (Nombre del Secretario de la Votacion En Ausencia)
 P.O. BOX 37
 (address) (Direccion)
 Spearman, Texas 79081-0037
 (city) (Ciudad) (Zip Code) (Zona Postal)

Applications for ballots by mail must be received no later than the close of business on
 (Las solicitudes para boletas que se votaran en ausencia por correo deberan recibirse para el fin de las horas de negocio el)
 April 24, 1992. April 24, 1992.
 (date) (fecha)

Issued this the 18 day of February, 1992.
 (Emitada este dia 18 de Febrero, 1992.)

Signature of Mayor (Firma del Alcalde)

WANT ADS Work Wonders!

Reporter-Statesman CLASSIFIEDS 659-3434

NOTICE

Deadline to place or cancel classified line ads is Tuesday noon for Thursday insertion.

CLASSIFIED RATE

\$4.00 first insertion
\$3.00 each additional insertion (30 words or less)
13¢ each word over 30
Legal Notices: 15¢ per word

Ads must be paid in full in cash before publication, unless advertiser has established credit with the Reporter-Statesman. Payment for out of state classifieds must be in the form of a money order or cashier's check. No tearsheets provided for classified ads. Tearsheets provided on request for legal notices.

HELP WANTED

HELP WANTED: Now taking applications for experienced small engine mechanic for summertime. Work starting immediately. Apply in person at Hansford Implement, Hwy 2075 S25-2tc

Help wanted: Palo Duro Feed Yard has an opening for an evening secretary/assistant computer operator. **MUST BE ABLE TO WORK WEEKENDS!!!** Please call 733-2416 for more information. S24-2tc

FOR RENT

FOR RENT: Nice, small 3 bedroom house with fenced yard and carport. Call 659-3539. S25-1tcRTN

HOUSE FOR RENT in Morse. Call 935-7969. S22-4tpRTN

GARAGE SALES

GARAGE SALE: Saturday, April 18 at Scheel Storage Building on Industrial Road. from 9 a.m. to 2 p.m. S25-1tp

SERVICES

MARY KAY COSMETICS: Complimentary facials. Free delivery! Call about April Spring Specials. Barbara Penfold, beauty consultant, 878-3505 S25-3tp

IS DRINKING AFFECTING your life negatively? Join us at AA or Al-Anon. Tuesdays at 8 p.m. at 30 Hwy 760 (three blocks south of the Moose). Alateen meets Tuesdays at 7 p.m. at the same location. S23-14tp

HANDYMAN - You want it done and can't or don't want to do it yourself!! Call Uncle Ed (Pearson), 659-3328 - Anytime - Anything!! House, yard, fence, car, garage, etc. (Clean up, repair, paint, trim trees & bushes, etc.) S15-1tcRTN

CALL YOUR LOCAL Used Cow Dealer for 7 days a week dead stock removal. 659-3544 or 1-800-692-4043. Serving Cattlemen for the past 20 years. G51-RTN

HANDY MAN: We do anything and everything: Painting, tree trimming, mowing, yard work & clean up, landscaping, roofing, fence building (all types). You need it done, call David Pearson at 659-3352. S43-1tcRTN

AUTOMOBILES

FOR SALE: 66 Ford Galaxy. 659-2189 or 659-3434 S24-2tc

NOTICE

Wallace Monument Co. Monuments, Curbing, Grave Covers 1-800-999-9506 Local Representative LEONARD JAMESON Spearman, Texas

OSGOOD MONUMENT CO. Amarillo, Texas

Dealers of Rock of Ages Granite, as well as all colored granites, marble and bronze memorials.

Represented by **BOXWELL BROS. FUNERAL HOME 519 S. Evans 659-3802**

FURNITURE

FOR SALE: Dining room table-8 chairs, 2 leafs. Glassed in hutch with lighting. 659-2189 or 659-3434 S24-2tc

PUBLIC NOTICES

NOTICE TO CREDITORS

NOTICE TO ALL PERSONS HAVING CLAIMS AGAINST THE ESTATE OF THOMAS MAC GUMFORY, DECEASED:

NOTICE is hereby given that original Letters Testamentary upon the Estate of Thomas Mac Gumfory, Deceased, were granted to me on April 6, 1992, by the County Court of Hansford County, Texas. All persons having claims against said estate are hereby required to present the same to me within the time prescribed by law at the following address:

Carla Lee Archer Gumfory
P.O. Box 668
Gruver, Texas 79040-0668

Key:
Jody Sheets
SHEETS & HOLCOMB
620 S. Taylor, Ste. 208
Amarillo, Texas 79101
S25-1tp

MISC. FOR SALE

Debbie's Ready or Not
315 1/2 Main
Spearman - 659-3328
For your wedding: Supplies, cake tops, toasting glasses, pillows, servers, garters, cakes, or catering, etc. For Easter: Cookies, bunnies, balloons, etc. For Birthdays - Anniversaries - Quinceanera. Remember Secretary Day Wednesday, April 22nd with Big cookies, balloons, cups, buckets, etc. Just call or come by! We deliver!

NEW TRAMPOLINES

Mats and springs. Resew trampoline mats. Make new boat covers.
Call 806-659-2109
Harry Stumpf
301 W. 12th
Spearman, Texas

Stay in touch!

with
G & G ELECTRONICS
Cellphone USA
*2-way Radio
*Mobile Telephones
*\$35/month No Air Time
*Repeater Spaces
*Pagers
*Satellite Work
Call Bruce Duncan (806) 659-3673

JAN'S ETC. NEW & USED & ANTIQUES TOO

Everything for home and family. Plains Shopping Center in Spearman. Open Monday - Saturday 9:30 a.m. til 6:00 p.m.

THE KNACK SHOPPE

A Video Specialty Store
Wide Selection of Movies
• VCR & TV Rentals
• Nintendo Games & Units
• Sega Genesis Games & Units
• Blank Tapes • Popcorn • Snacks
659-5046 317 Main St. Spearman

ADVERTISING PROVISIONS

- Publisher reserves the right to reject, edit, revise and properly classify any advertisement at his sole discretion.
- Advertiser assumes all liability for advertisements printed pursuant to his instruction and shall indemnify and hold the publisher harmless from and against any and all claims and damages, including all costs incurred by publisher in connection therewith. Advertiser represents that all advertising copy is truthful and not misleading. Advertiser shall indemnify and hold publisher harmless from any claim against publisher arising out of or in connection with publication of advertising (except for modifications made by publisher without Advertiser's approval) including, but not limited to, claims for libel, invasion of privacy, commercial appropriation of one's name or likeness, copyright infringement, trademark, trade name or patent infringement, commercial defamation, false advertising, or any other claim whether based in tort or contract, or on account of any state or federal statute, including state and federal deceptive trade practices acts. If advertiser claims copyright ownership in any of the advertising published, advertiser must include proper notice of its copyright claim in the body of the advertisement, otherwise copyright ownership shall remain in the publisher.
- Advertiser agrees to check advertisement in the first issue in which it appears and report any error at once as publisher assumes no responsibility for errors after the first insertion. For any error which is the fault of the publisher and of which publisher has been timely notified, publisher will reprint the corrected advertisement for one extra insertion or refund the proportionate cost of the advertisement containing the error. Publisher shall have no responsibility for errors appearing in the copy submitted by advertiser.

PUBLIC NOTICES

PUBLIC NOTICE
NOTICE is hereby given that the annual return (Form 990-Pf) of the Karl A. Nielson and Karen J. Nielson Scholarship Fund will be available for inspection at the First State Bank, Spearman, Texas during regular business hours by any citizen who requests inspection within 180 days after the date of this notice. The person to contact for inspection is Verna Lee Shirley at the First State Bank, One N.E. Court, Spearman, Texas, 806-659-5565. S25-1tc

LEGAL NOTICE

TO THE RESIDENT QUALIFIES VOTERS OF PRECINCT 2 OF THE NORTH PLAINS GROUNDWATER CONSERVATION DISTRICT NO. 2.

NOTICE IS HEREBY GIVEN that an election will be held within and for NORTH PLAINS GROUNDWATER CONSERVATION DISTRICT NO. 2, on the 2nd day of May, 1992 for electing one director for precinct No. 2. Directors precinct No. 2 is all of the area in Hansford County and the area within the District in Hutchinson County. Early voting will begin on Monday, April 13, and run through Tuesday, April 28, 1992. The early voting polling place for precinct No. 2 will be in the North Plains Groundwater Conservation District No. 2 field office located in the Pittman-Shieldknight-Building, 511 SW 11th Av., Spearman, Texas. Early voting polls will be open during the regular office hours, 8 a.m. through 5 p.m. Monday through Friday. The polling place on the day of the election for Hansford County voters will be in the Spearman High School, 403 11th Av., Spearman, Texas. The polling place on the day of the election for Hutchinson County voters will be in the Pringle-Morse Consolidated ISD, Morse, Texas. The polls will be open from 7 a.m. to 7 p.m. on the day of the election. S25-1tc

NOTICE OF RATE CHANGE REQUEST AND STATEMENT OF INTENT

Notice is hereby given that Rita Blanca Electric Cooperative, Inc. (the "Utility") intends to change rates for electric utility service effective July 15, 1992, or as soon thereafter as may be permitted by law. The Utility has not had a general rate increase since 1979. Based upon a test year ending September 30, 1991, the increase requested over actual test year revenues is \$297,500 or 4.9%. The changes are applicable to all areas, all customer classes, and all customers served by the Utility. The Utility proposes to change all rates for residential, irrigation, small commercial, large commercial, including demand, energy, minimum and other charges. The proposed changes are expected to affect the classes as follows: for the 1, 912 customers in the farm and home class, the proposed increase will be \$97,247 or a 8.37% change in revenue; for the 188 customers in the fence charger class, the proposed increase will be \$2,981 or a 15.4% change in revenues; for the 783 customers in the small commercial class, the proposed increase will be \$27,638 or a 3.17% change in revenues; for the 1, 169 customers in the small irrigation class, the proposed increase will be \$55,693 or a 9.75% change in revenues; for the 164 customers in the large power class, the proposed increase will be \$66,602 or a 3.13% change in revenues; for the 103 customers in the large irrigation class, the proposed increase will be \$37,260 or a 3.10% change in revenues; for the 614 customers in the lighting class, the proposed increase will be \$3,390 or a 8.91% change in revenues. The Utility also intends to change its service

PUBLIC NOTICES

rules and regulations, including rules relating to obtaining service, line extension and line extension charges, the provision of electric service, service fees and discontinuance of service. Information concerning the proposed rate changes, including the proposed rate change, including the proposed revisions of tariff and schedules is available at the General Office of the Utility, located at Highway 87 North Dalhart, Texas. Inquiries should be directed to Mr. Bob Elliott, general manager. The Utility is required to give notice of the percentage increase in base revenues which is 12.22%. The percentage increase in base revenue is not an indication of how much your bill will increase. Rather, it is a measure of the increase needed by the Utility for its own operations, excluding payment of the cost of power purchased by the Utility from its wholesale power suppliers. On or about May 15, 1992, the Utility will file with the Public Utility Commission of Texas, a Statement of Intent to Change Rates, specifying in detail each proposed change. Requests to intervene must be filed no later than 45 days after the application filing date; Thus, the Utility anticipates the deadline for intervening and objecting to the rate changes will be June 29, 1992. Persons who wish to intervene or otherwise participate in these proceedings should notify the Commission as soon as possible. A request to intervene, participate, or for further information should be mailed to the Public Utility Commission of Texas, 7800 Shoal Creek Boulevard, Suite 400N, Austin, Texas 78757. Further information may also be obtained by calling the Public Utility Commission Consumer Affairs Division at (512) 458-0223 or (512) 458-0227, or (512) 458-0221 teletypewriter for the deaf. S25-4tc

Legal Notice:

NOTICE TO BIDDERS: Sealed bid proposals will be received by the Gruver Independent School District for the best price offer on all CUSTODIAL AND CLEANING SUPPLIES. The bid will remain in effect until December 31, 1992. Specification sheets may be obtained from the Gruver ISD Business Office, 601 Garrett St., Gruver, TX 79040. Please mark your envelope: SEALED BID-CUSTODIAL AND CLEANING SUPPLIES. Sealed bid proposals for ATHLETIC SUPPLIES for FOOTBALL will be received for the best discount off of school purchase price. The bid will remain in effect for the 1992-93 school year. Contact Barry Haenisch, 806-733-2477 or 806-733-2943, for a specification sheet. Please mark your envelope: SEALED BID-ATHLETIC SUPPLIES/FOOTBALL. All bids will be received until 4 p.m. on May 5, 1992. Any proposal received after that time and date will be returned unopened and not considered. Bidders are invited to be present at the bid opening at the regular Board Meeting, May 6, 1992 at 1 p.m. in the Board Room

PUBLIC NOTICES

in the Gruver High School Building. Please mail or deliver all bids to: Gruver ISD Business Office, P.O. Box 650, Gruver, TX 79040. The District reserves the right to reject any bid and/or all bids, to make awards as they may appear advantageous to the District and to waive all formalities in bidding. Bids received without proper signature will not be accepted. S24-2tc

NOTICE TO ALL PERSONS HAVING CLAIMS AGAINST THE ESTATE OF CLARENCE P. WEEKS, ALSO KNOWN AS C.P. WEEKS, DECEASED:

NOTICE is hereby given that original Letters Testamentary for the Estate of Clarence P. Weeks, also known as C.P. Weeks, were issued on the 14th day, 1992, in Cause No. 2025, pending in the County Court of Hansford County, Texas, to Loree Johnson Booth, Independent Executrix. The addresses of the Independent Executrix is as follows:
Loree Johnson Booth, 905 Barkley, Spearman, Texas 79081
All persons having claims against this Estate which is currently being administered are required to present them within the time and in the manner prescribed by law.
DATED the 14th day of April, 1992
LEMON, SHEARER, EHRlich, PHILLIPS & GOOD
By: F. Keith Good
State Bar No. 08139000
Interstate Saving & Loan Bldg.
P.O. Box 1066
Perryton, Texas 79070
Telephone: 806-435-6544
Facsimile: 806-435-4377
ATTORNEYS FOR THE ESTATE OF CLARENCE P. WEEKS, ALSO KNOWN AS C.P. WEEKS, DECEASED
S25-1tc

LEGAL NOTICE: NOTICE OF PUBLIC HEARING SPEARMAN ZONING BOARD OF ADJUSTMENT

Notice is hereby given that the Zoning Board of Adjustment will hold a public hearing on May 7, 1992, 7:30 p.m. in the Council Chambers of City Hall, 30 S.W. Court. The purpose of the public hearing is to consider the following zoning variance:
Request a variance to waive the restriction on the dimensions of signs in order for a lighted sign to be erected on Lot 15, Block 10, Original Town, City of Spearman, Hansford County, Texas, being located at 205 Dillon.
Any interested party may attend the open meeting to speak for or against the proposed variance. For more information call 659-2524. S25-1tc

TexSCAN

Statewide Classified Advertising Network
Advertise in 284 Texas newspapers for only \$250.
Reach 3 MILLION Texans. Call this newspaper for details.

DEER HUNTERS SPECIAL: 37 acres, \$795/acre, wooded, excellent hunting, adjoins paved road. Texas veteran or owner financing, prime acreage. Fox Realty, 500 Buchanan Dr., BURNET, TX 1-800-725-3699.

DRIVER/TRUCK DRIVERS: Take this job and love it. We pay for your OTR experience up to \$0.28 per mile. Training available for the inexperienced driver. Phone applications welcomed for first seat drivers. Call J.B. Hunt today: 1-800-2JB-HUNT. EOE/subject to drug screen.

MILITARY RETIREE-CHAMPUS supplement will pay the 25% allowed, plus 100% of all excess charges. For brochure call 1-800-627-2824 ext. 259.

COVENANT TRANSPORT: Hiring tractor trailer drivers. New equipment coming in! 1 yr. O.T.R. Teams 27-31¢ Incentives-Benefits-Minimum age 23-Single 19-22¢ East coast pay. 1-800-441-4394.

LEARN TO BE AN AUCTIONEER! Texas Auction Academy, Dallas, Texas. Next class June 1st. Two week term, \$495. Call for more information 214-350-6225. TEA approved.

PROGRESSIVE COMPANY with terminals in Chicago, Laredo, Nashville, Memphis, El Paso, Detroit and Indianapolis needs drivers to operate late model tractors for automotive freight/general commodities in good lines that will get you home. We offer excellent starting pay, full benefits, good miles and assigned dispatchers. Call in your application today and be on the road by Thursday. Celadon Trucking 1-800-729-9770.

BECOME A PARALEGAL. Join America's fastest growing profession. Work with attorneys. Lawyer instructed home study. The finest paralegal program available. Free catalogue 1-800-362-7070 Dept. LE7202.

HAPPY JACK MANGE LOTION: Promotes healing & hair growth to any mange, hot spot, fungus on dogs & horses without cortisone. At TSC Stores.

REPOSSESSED TEXAS LAND 10+/- AC. 4% in interest, 30 year, 0 down, \$5/mo. Most areas, week-end getaway, homestead or great investment. Limited time, hurry, call now! 1-800-275-REPO.

HAVE YOU HAD a silicone breast implant? For information on your rights. "Walkman" Smallwood "Grossman" Carpenter Attorneys at Law, 1-800-833-9121. *Board Certified. *Not Board Certified.

LONG HAUL TRUCKING: Get into a high demand

career as an owner/operator with North American Van Lines! Operate your own tractor. If you don't have one, we offer a lease purchase program that is one of the best in the industry. No experience necessary. If you need training, we will train you, tuition free! You must be 21, have a good driving record, and pass substance abuse test. Call North American for information package. 1-800-348-2147. Ask for operator 489.

ARE YOU COLLECTING PAYMENTS on real estate you've sold? We'll give you cash now for these payments! Call National Fidelity Corporation today! 1-800-364-1072.

MAKE A FRIEND...FOR LIFE! Scandinavian, European, Yugoslavian, South American, Japanese high school exchange students...arriving August...host families needed! American Intercultural Student Exchange. Call Eleanor 817-467-4619 or 1-800-SIBLING.

WOLFF TANNING BEDS: New commercial-home units from \$199. Lamps, lotions, accessories. Monthly payments low as \$18. Call today. FREE NEW color catalog. 1-800-228-6292.

FLATBED COMPANY DRIVERS with CDL needed - paid miles & life/health insurance - rider & bonus programs provided - prefer steel & aluminum coil experience - call 1-800-395-3510.

HOTSHOTS BIGSHOTS! INWAY life specialty division. Join our fleet of professional owner operators by leasing on your hotshot or bigshot today. Call for details 1-800-366-1622.

ADOPTION: PERHAPS WE can answer your prayers. Childless couple wishes to adopt your newborn and provide warm & loving home. Please call collect by dialing 0 for live operator assistance. 516-294-6034. Anytime. *It's illegal to be paid for anything beyond legal/medical expenses.*

ADOPTION: A BABY brother or sister is my fondest dream. Please call my parents if you want a great family for your baby. Call Bonnie & Gary anytime. 1-800-796-7193. *It's illegal to be paid for anything beyond legal/medical expenses.*

ADOPTION: FINANCIALLY SECURE, college educated couple want to become a Mommy & Daddy. Will share our lives and love with your child forever. Please call attorney Heidi Cox collect. 1-817-992-5564. *It's illegal to be paid for anything beyond legal/medical expenses.*

ADOPTION: FINANCIALLY SECURE, college educated couple want to become a Mommy & Daddy. Will share our lives and love with your child forever. Please call attorney Heidi Cox collect. 1-817-992-5564. *It's illegal to be paid for anything beyond legal/medical expenses.*

ADOPTION: FINANCIALLY SECURE, college educated couple want to become a Mommy & Daddy. Will share our lives and love with your child forever. Please call attorney Heidi Cox collect. 1-817-992-5564. *It's illegal to be paid for anything beyond legal/medical expenses.*

REAL ESTATE

House for Sale or Lease: 1350 sq. ft. at 712 Wilbanks. 3 bedroom and 2 full baths. Double garage. Good location. Call 659-5216 or 659-3489 S24-4tp

BETTER HURRY: Good location, brick, 3 bed, 2 bath, 2 car garage. Below appraisal. Call today. Julie Martin, 659-2425. AA Realty S25-3tc

Are You A Victim of Physical Abuse?

Call Toll Free 1-800-753-5308

We are in Spearman on the 1st and 3rd Wednesdays of each month from 9:30 to 11:30 a.m. Call for an appointment. Also, we can come to Spearman at any time upon request. We also operate a safe place for victims and their children to stay in times of crisis.

Panhandle Crisis Center

Serving Hansford, Lipscomb and Ochiltree Counties
317 S. Main Perryton, TX

*******CUSTOM UPHOLSTERY*******
 Home and Office Furniture
 Custom Made Seat Covers for Pickups, Trucks, and Tractor Seats
 Coverlay Plastic Dash Covers - Like the Original
 Coverlay Replacement Door Panels - At Half The Cost of New
 Nifty Molded Carpets on Rubber Floor Mats
 Jeep Tops and Accessories
 Plastic Marine Fittings and Ready Made Boat Covers by Bimini
 Hundreds of Fabric and Vinyl Samples to Choose From
 CALL 806-733-5235 or VISIT
TEBEST UPHOLSTERY - 304 Main (rear door), Gruver, TX

4,000 Square feet and it's full!
 Several pieces of nice antiques, appliances,
 used furniture and collectibles.
 Open 6 days a week 9 a.m. - 5:30 p.m.
 Our prices are reasonable!!!
SECOND TIME AROUND
 801 Main (405)338-1481 Guymon, Ok.

McClure Paint & Supply
 Tarkett Lifetime Series 20% off vinyl flooring
 Dalworth Interior-Exterior Paint 20% off
 through end of April
 307 Main 659-2830

Obituary

Richard DeSantiago, 16, died Wednesday, April 8, 1992.
 Memorial services were held Friday at 2 p.m. at the Gruver High School auditorium with the Rev. Larry Miller, pastor of the First Baptist Church officiating. Funeral mass was said at 11 a.m. Saturday at the First Baptist Church with the Rev. Al Bruning, pastor of Sacred Heart Catholic Church in Spearman, officiating. Burial was at Gruver Cemetery by Boxwell Brothers



Funeral Home of Spearman.
 Mr. DeSantiago was born July 5, 1975, in Childress. He had lived in Gruver for seven years and was a junior at Gruver High School where he played the drums in the band. For the past several years, he had played baseball in the American Legion League at Guymon, Okla.
 He had worked at G & G Food Liner in Gruver for the past year. Paula Kelly of G & G said, "He was one of the best we ever had. Never complained about any job, just did it."
 Honoring the memory of Richard DeSantiago, the Gruver schools did not participate in any sporting events during the week-end.
 Survivors include his parents, Ruben and Lydia DeSantiago of Gruver; three brothers, George

DeSantiago, Hector DeSantiago and Ruben DeSantiago, Jr., all of Gruver; and his grandparents, Luis and Paula Munoz of Childress.

S.I.S.D. from page 7

administration to set up an administrative pool to allow teachers to donate personal days to fellow teachers who may need paid time off due to extended illness.

The board voted to change the graduation requirements and course scope and sequence at the high school. It passed unanimously. The new graduation requirements will not effect any students until the 1995 graduating class. Students seeking to graduate in that class will be required to have taken a speech class and a geography class.

Changes in the curriculum adopted were requiring 9th graders to take U.S. History and then choosing as 10th graders to take two new courses World History or World Geography.

The curriculum changes also involved offering new classes in Anatomy and Physiology and Calculus by the 93-94 school year.

Jim Kirkland, high school principal, who presented the changes to the board stated that the changes would lead to better TASS preparation for the students and that the changes were recommended by the District's Strategic Planning Committees.

Under personnel matters the board voted unanimously to adopt

Kirkland's and Ric Smith's recommendations to move Kirk Ashmore to the teaching and coaching position at the high school. Ashmore has been a teacher and coach at the junior high for several years.

The meeting concluded with Butler's superintendent's report. In his report Butler stated that the state had informed the school it would be sending \$143,000 less than it said it would at the beginning of the school year. He further stated that as the board considers the budget for next year that this loss of money and the loss of money from decrease in tax evaluation will have to be considered. He did not feel that the board could vote for a tax increase to make up for these short falls in revenue for the district.

He proposed that the board consider an across the board 5% cut in proposed budgets for the entire school system.

He also reminded the board that there was \$500,000 in capital improvement money available from the Birdwell Fund. He suggested that the board consider using the money to improve school roofs, parking lots and classrooms.

Board President Shieldknight interrupted the superintendents report to offer a resolution nominating Butler as Superintendent of the Year for the state of Texas. The resolution passed unanimously.

The board adjourned.

Cancer Information Service
1-800-4-CANCER

LA-Z-BOY
 RECLINERS & SLEEPERS
 \$199.95 Try Us - We Have Lower Prices Than the Big Stores
Ondracek Furniture
 (405)837-5325
 RNT Logan, Okla.

Spring is dealing time at Gillaspies

NEW 1991'S IN STOCK CLOSE OUT PRICED

1991 Buick Park Avenue **NEW**
 FULLY LOADED - CLOTH INTERIOR - LAST ONE AT THIS PRICE
 LIST \$26,786 - YOURS FOR ONLY \$23,195 - \$1,000 Factory Rebate
 FULL FACTORY WARRANTY **\$22,195**

1991 DODGE 2 1/2 TON VAN SE **NEW**
 WELL LOADED - ENGINEER - FULL FACTORY WARRANTY
 CLOSE OUT PRICE **\$17,725**

1991 DODGE 2 1/2 TON DIESEL 2WD PICKUP **NEW**
 SAND - SEATS - Auto, AM/FM Radio
 "WORK" **SOLD**

Close Out Price **\$16,900**
 FULL FACTORY WARRANTY
 HURRY ONLY 1 OF THESE POPULAR TRUCKS LEFT AT THIS PRICE

USED CARS

1986 Chevrolet Caprice 2dr. Black Full Size Car **\$3995**
 V8, Auto, Air PWR Windows & Locks & Seats, Tilt, Cruise, AM/FM
 Cassette, Wire Wheel Covers
 NICE 65,000 miles SOUND

1984 Cadillac Eldorado **\$3650**
 Lt. Beige & Mauve - See this to appreciate - Leather Seats
 Fully Loaded, Landau Vinyl Top - NICE CAR

1988 Oldsmobile 98 Regency **\$8995**
 Fully Loaded, Red - w- Red Cloth Interior
 SUPER NICE - MUST SEE - CLEAN

1991 Program Cars with Low Mileage

1991 Corsica Light Blue 4dr. **\$9995**
 Auto, V6, Cass. Tilt, Air
SOLD Wise Buy

1991 Oldsmobile Cutlass Supreme - White 4dr. **\$13,995**
 Auto, V6, Cassette, Tilt, Cruise, Power Locks & Windows, Air
 Red Interior - Digital Display Dash 10,750 mi.

1991 Cutlass Ciera S - Grey 4dr. **\$11,995**
 Auto, V6, Air, cassette, Tilt, Cruise, PWR Windows & Locks
 DEFOGGER 16,900 miles

1991 Chevrolet Cavalier - Dark Red 4dr. **\$9995**
 Auto, Air, PWR Steering, Brakes, Windows, Locks, Cruise
 7600 miles

1991 Pontiac Grand Prix Light Red 4dr. **\$13,995**
 Auto, V6, Cass. Tilt, Cruise, PWR Windows and Locks,
 Rear Window Defogger - 6500 miles
SOLD

1991 Pontiac 6000 Blue 4dr. Great Family Car **\$9995**
 Auto, V6, PWR Windows and Brakes, Cassette, AC, Defogger,
 Nearly New - Wise Buy

1991 Pontiac Sunbird Dark red 4dr. **\$8995**
 Auto, Air, PWR Steering, PWR Brakes, Am/FM, Fuel Injected Engine
 Rear Window Defogger - 18,000 miles

1991 Pontiac Grand Prix LE. Metallic Blue 4dr. **\$12,400**
 Auto, V6, Cassette, Tilt, Cruise, PWR Windows & Locks
 13,000 miles - Rear Window Defogger

1991 Oldsmobile Cutlass Ciera 2dr. **\$12,299**
 Auto, V6, Cassette, PWR Windows & Brakes
 Rear Window Defogger - 9600 miles

1991 Chevrolet Lumina Euro Sport 4dr. **\$12,399**
 Spoiler, Aluminum Wheels, AC, V6, Auto, AM/FM Cassette
 PWR Windows & Locks, Tilt, Cruise
 Sporty 11,700 miles

SEE THESE SALES REPRESENTATIVES FOR YOUR BEST DEAL

JAMES CUMMINGS - JOHN CRAWFORD
JEFF BEEDY

Fred Taylor, Service Manager, and Nita Bynum, Parts Manager, cordially invite you to visit our Service and Parts Departments.

Four Factory Trained Technicians are Ready to work on your GM or Chrysler Vehicles.

We carry a Large Stock of GM and Chrysler Parts. Overnight delivery is available.

See Us for your New or Used Car and Truck Needs, or for Service and Parts.

GILLASPIE
 AUTO & TRUCK CENTER, INC.
 CHEVROLET, OLDS, BUICK, PONTIAC,
 CHRYSLER, PLYMOUTH, DODGE
 Highway 207 South P.O. Box 427 (806) 659-2541
 SPEARMAN, TEXAS 79081

USED TRUCKS

1987 Chevrolet Suburban 4x4 Lt. Blue/Dark Blue **\$9100**
 Panel Doors, Bucket Seats, Frt. & Rear AC, PWR Locks &
 Windows, Running Boards, Tilt, Cruise, Cassette
 MUCH MORE - RUNS GREAT,

1988 Chevrolet S-10 Blazer 4x4 Lt. Blue/Dark Blue **\$8650**
 4.3 liter V6, Auto, Tilt, Cruise, AM/FM Cassette, MUCH MORE
 61,000 miles - REAL NICE

1988 Chevrolet 3/4 Ton 4WD Pickup **\$7850**
 Reg. Cab, L.W.B., 4Sp. Man. Trans., 350 Cheyenne
 AM/FM Radio, Tilt & Cruise
 7700 miles - SHARP TRUCK

1988 Chevrolet 3/4 Ton 2WD White Pickup **\$7800**
 Auto 3SD, Air L.W.B., 59,500 miles, AM/FM Cassette
 Tilt, Cruise Cloth Seats
 REALLY NICE

1988 Chevrolet 1/2 Ton 4x4 White **\$5800**
 350, 4 speed, Air, AM/FM, L.W.B., RUNS GREAT
 LOOKS PRETTY GOOD - NEEDS A HOME

1985 Chevrolet 1/2 Ton 2WD Silverado ...
 WAS \$4995 NOW **\$4250**
 Nearly New 350 Engine, Auto Transmission & Air Conditioner
 Other Equipment: PWR Windows & Locks, Tilt, Cruise - NICE

1983 Chevrolet 1/2 Ton 4x4 Diesel **\$4200**
 Silverado, Cloth Seats, Brown & Tan

1989 Chevrolet 1/2 ton 4WD **\$12,600**
 4sp., Air, Ext. Cab, Blue/Blue - REALLY NICE & CLEAN TOO
 AM/FM Radio, split Bench Seats, Tilt, Cruise
 - 29,200 Actual Miles -

Putting you First - Keeps Us First