



HANSFORD COUNTY

THE REPORTER-STATESMAN

THURSDAY,
FEBRUARY 24, 2011

CELEBRATING 103 YEARS OF SERVICE TO HANSFORD COUNTY
HANSFORD COUNTY'S ONLY NEWSPAPER

75¢

WWW.SPEARMANREPORTER.COM

VOLUME 104 • ISSUE 8

reporter@spearmanreporter.com

Spearman Lynxettes Area Champs

The Spearman Lynxettes overcame a 12-point deficit after one quarter by keeping their composure and eventually turning things around in escaping with a 48-45 Class 2A regional quarterfinal victory against Littlefield before about 1,100 fans Tuesday night at the Canyon High gym.

The Lynxettes, 27-2, advance to the Region 1-2A tournament that begins Friday at Midland.

The Spearman Lynxettes will play Hico in the Regional Quarterfinals on Friday, February 25th at 7:30 p.m. They will play in the Midland College Chaparral Center, 3600 N. Garfield Drive, in Midland. Tickets are \$10 for adults and \$5 for students and senior citizens.

Spearman ISD will dismiss at 12 noon on Friday, February 25th.

Photo by Tami Hargrove



Gruver Lady Hounds Area Champs

The Gruver Lady Hounds defeated New Deal 35-28 on Friday, February 18, 2011 to become the Area Champions.

The Lady Hounds played the Panhandle Pantherettes on Tuesday, February 22nd in Borger for the Regional Quarterfinals. The Lady Hounds lost 35-65.

Photo by Kimberly Irwin

Spearman Lynx District Champs

The Spearman Lynx took on the Muleshoe Mules in the Bi-District game on Tuesday, February 22, 2011 at Canyon High School.

The Lynx lost to Muleshoe, 35-69. Spearman's Blayne Schroeder scored a team-high 10 points, followed by Tristian Wilborn with 8. The Lynx end their season with a record of 15-11.



Gruver Greyhounds District Champs

The Gruver Greyhounds defeated the West Texas Comanches 44-43 on February 11, 2011 to become the District Champions.

The Greyhounds had a bye for Bi-District, and will face Wellington on Friday night, February 25th at 7:30 p.m. at Amarillo High School. Photo by Kimberly Irwin

SHS Students Advance to State Texas Assoc. of Community Schools Academic Challenge



Back Row: Josue Briseno, Jake Willimon, Colton Close, Jace Lang, Cameron Meddock; Front row: Crystal Cantu, Tori Sheets, Samantha Ward (Photo submitted by Mandy Derington)

Spearman students competed in the Texas Association of Community Schools Academic Challenge at the Area Contest in Dalhart on, Thursday, February 24, 2011.

Two Spearman teams competed and both teams qualified for the State Meet in Belton, TX on the Mary Hardin-Baylor Campus on April 20, 2011.

These students have worked very hard to prepare for this competition and we are very proud of them. Members of the teams are: Jake Willimon, Colton Close, Josue Briseno, Tori Sheets, Cameron Meddock, Jace Lang, Crystal Cantu, and Samantha Ward. Their sponsor is Mrs. Derington.

Congratulations students, on a job well done.

Weather Forecast

THURSDAY NIGHT - Partly cloudy in the evening then becoming mostly cloudy. Lows around 20. Northeast winds 10 to 15 mph becoming east around 5 mph after midnight.

FRIDAY - Partly cloudy. Highs in the mid 50s. South winds 5 to 10 mph.

FRIDAY NIGHT - Mostly cloudy. Lows in the upper 20s. East winds 10 to 15 mph.

SATURDAY - Partly cloudy. Highs in the upper 60s.

SATURDAY NIGHT - Mostly cloudy. Lows in the lower 30s.

SUNDAY - Partly cloudy. Windy. Highs in the lower 60s.

SUNDAY NIGHT - Mostly cloudy in the evening then clearing. Windy. Lows in the upper 20s.

MONDAY - Mostly sunny. Highs in the upper 50s.

MONDAY NIGHT - Mostly clear. Lows in the upper 20s.

TUESDAY - Mostly sunny. Highs in the mid 60s.

TUESDAY NIGHT - Mostly clear. Lows around 30.

WEDNESDAY - Mostly sunny. Highs in the mid 60s.

Read more: <http://www.city-data.com/forecast/w-Spearman-Texas.html#ixzz0xJSWQKT>

Junior Market Barrows: Berkshire



The Junior Market Barrows Show was held on February 13, 2011 at the San Antonio Livestock Show and Rodeo.

Grand Champion Berkshire honors were received by Jose Martinez of Spearman, TX. Martinez is currently a member of Spearman FFA. Awards courtesy of San Antonio Livestock Show and Rodeo included a \$10,000 scholarship to put towards a school of his choice. Jake Booth of Levelland received Reserve Champion Berkshire honors. Booth is currently a member of Levelland FFA chapter.

SALE has a rich tradition and history of stewardship to the community, agriculture industry and youth of Texas. With a clear vision of the future, a successful past and continual dedication from over 5,000 volunteers, SALE will continue to provide wholesome family entertainment and be a pillar of strength and support to the youth of Texas. To date, the San Antonio Stock Show & Rodeo educational commitment exceeds \$105 million with a record \$8.5 million committed in 2010 in the form of scholarships, grants, endowments, auction, calf scramble program and show premiums paid to youth.

Wolf Creek Heritage Museum Notes

by Virginia Scott

MUSEUM HAPPENINGS
Weather was warm and dry, so most of us came for our Wednesday work session and were doing great until our attention was distracted by grassfires on both sides of us. We spent the afternoon watching the smoke and hoping that our county land, cattle, and most of all our firefighters would be safe. Damage was kept to grass, and cattle which was regretful. WE THANK EVERYONE WHO WORKED TO PUT THE FIRES OUT. Photos will be added to our weather file.

We are presently working on a grant award for our photographs. This grant allowed us to purchase appropriate storage supplies for our photos. Now we have to reprocess all our photographs into storage boxes, etc. This requires many hours of work and will take us at least 6 to 12 months. If you come in and see us with photographs everywhere with boxes, you will know we are in the midst of another project. We sometimes wonder when we are going to take a break.

We have added a new look to the gift shop, so come by and check it out.

HISTORICAL MUSINGS

In cleaning out their Obits, Lovella gave me an obit about one of our early cowboys, Commodore Hopper.

Commodore was an early day cowboy in Lipscomb County. He was born Oct. 27, 1880 in Iowa. He attended schools in Beaver City in 1886. Schools in Cimarron Territory, of which Beaver City was the capital, were supported by local subscription. Hopper's father helped residents at Canadian erect the first bridge to span the Canadian River. Later he moved his family to Lipscomb.

Wolf Creek Heritage Museum

Museum Hours: Monday thru Friday 10 a.m. to 4 p.m., Special hours upon request.

Museum Information:
13310 Hwy 305, PO Box 5, Lipscomb TX 79056; telephone: 806-852-2123; e m a i l : wolferk@amaonline.com; website: www.wolfcreekheritagemuseum.org

Commodore owned ranch land near Higgins and lived at the Higgins Hotel for many years. He never married. He died at age 79 in 1960 and is buried in Lipscomb Cemetery.

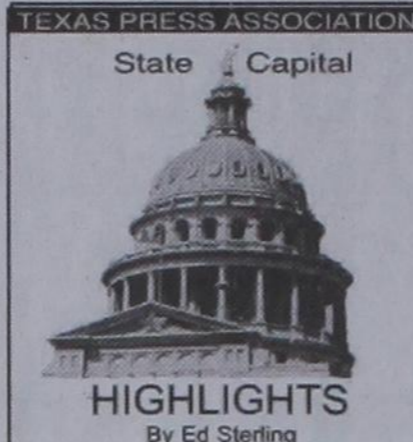
We also found an article from 1922 about a boiler explosion. The boiler on a Red Martin steam tractor blew up and severely scalded two men - Ernest Griswold and Fred Nickson. The men were rushed to Dr. Markley office and Dr. Newman from Shattuck was also called to treat them. Mr. Griswold also received a broken leg. After initial treatment, Fred Nickson was moved to the Higgins Hotel and later to his home. Mr. Griswold died later that night.

This week in history the following happened:

On February 19, 1838, Indians captive Rachel Plummer was reunited with her husband after spending a year with Comanches. In May 1836 her settlement was attacked by a large group of Indians. Five settlers were taken captive - Rachel and her son James Pratt Plummer, Cynthia Ann and John Parker, and

Mrs. Elizabeth Kellogg. Rachel's, son James Pratt, was taken from her and she never saw him again. She was a slave to the Comanche and traveled thousands of miles with the band. She was pregnant at the time of her capture and bore a second son. The Indians thought that the baby was interfering with her work, so they killed him when he was about six weeks old.

Rachel was ransomed by Mexican traders north of Santa Fe in June, 1837. Several months later, Rachel's brother-in-law escorted her back to Texas, where she was reunited with her husband. In 1838 she published an account of her captivity entitled *Rachael Plummer's Narrative of Twenty One Months Servitude as a Prisoner Among the Comanche Indians*. (The spelling of Comanche is the spelling Rachael used). This was the first narrative about a captive of Texas Indians published in Texas. Rachael bore a third child in 1839 and died in Houston shortly thereafter; the child died two days later.



STATE CAPITAL HIGHLIGHTS



by Ed Sterling

Senate, House committees tangle with state budget

AUSTIN — Last week, the Senate Finance and the House Appropriations committees were busy gathering input in daily hearings to fine tune their respective versions (Senate Bill 1 and House Bill 1) of the state budget for 2012-2013.

The committees have to figure out how to make ends meet on much less revenue, so it's all about what to cut. They are looking at a spending ceiling of perhaps \$160 billion for the two-year period, in the face of budget requests from all agencies totaling more than \$200 billion.

It's a monumental task to sort through compelling needs brought before them as they struggle toward decisions that will result in cuts to education, health and human services, prisons, transportation, law enforcement and more.

Meanwhile, the decennial United States Census figures for Texas arrived on Feb. 16. The information not only provides the basis for the Congressional seat allocation and redistricting, it generally determines how much federal funding Texas rates. And that will play into state budget calculations Texans will see in the House and Senate bills.

Sonogram bill gets approval

The Texas Senate on Feb. 17 passed legislation that would require a medical doctor who is about to terminate a pregnancy to make a digital image of the fetus and offer to show the sonogram image to the patient before the procedure continues.

Senate Bill 16, authored by Dan Patrick, R-Houston, tentatively approved on a vote of 21-10, now moves to the House for consideration. The doctor also would be required to record the heartbeat of the fetus and offer the patient the opportunity to hear it; plus, the doctor would be required to give a verbal explanation of the images. That explanation would be optional if the pregnancy is a result of sexual assault or incest; or the fetus has an irreversible medical condition or abnormality, as previously identified by reliable diagnostic procedures and documented in the patient's medical file.

And, among further requirements in the bill, there is a clause that authorizes a doctor to perform an abor-

tion without obtaining informed consent in a medical emergency.

Gov. Rick Perry praised the Senate in regards to SB 16 and said, "I look forward to working with House members to pass this legislation quickly, to ensure Texans are fully informed when considering such an important decision."

AG testifies against EPA actions

Texas Attorney General Greg Abbott was in Washington, D.C., on Feb. 9 to testify before a subcommittee of the U.S. House Energy and Commerce Committee.

Abbott, while discussing the state of Texas' legal challenge to the U.S. Environmental Protection Agency's recent takeover of the greenhouse gas regulatory role, said "Texas cannot support the EPA - and in fact must challenge it - when it pursues regulations that are contrary to the (Clean Air Act) and devastating to the economy."

Free tax filing available to some

The Texas Workforce Commission on Feb. 11 announced the availability of Free File, a free, federal income tax preparation and electronic filing program for eligible taxpayers.

Taxpayers with a 2010 Adjusted Gross Income of \$58,000 or less who meet additional requirements can qualify to use it. Visit

IRS.gov for more information.

The Workforce Commission also encouraged qualified taxpayers to take advantage of the Earned Income Tax Credit allowing lower-income earners and families to pay less or no federal income tax, or receive cash payments.

Tuition program near deadline

Feb. 28 is the deadline to enroll in the Texas Tuition Promise Fund, the state's prepaid college tuition program.

Texas Comptroller Susan Combs last week reminded families to take advantage of the program, which offers a hedge against future increases in tuition and required fees at Texas public colleges and universities.

Participants lock in the cost of undergraduate tuition and required fees at today's prices and choose from a variety of options to prepay for those costs.

Longest-serving jurist laid to rest

Former Texas Supreme Court Chief Justice Joe Greenhill, 96, died Feb. 11. He joined the court in 1957 and served as chief justice from 1972 to 1982.

The Houston native's 25-year tenure on the high court is the longest of any Supreme Court justice in the history of Texas. Burial was in the Texas State Cemetery on Feb. 15.

Words from Faith & Grace

by Cecil R. Biggers, Lutheran Lay Minister



Don't worry! We discover God's provision for his people as we study Isaiah 49: 8-16, Psalm 131: 1-3, 1 Corinthians 4: 1-5, and Mathew 6: 24-34.

Isaiah offers comfort to a people living in exile. Regardless of where they go, the Lord is with them. The Lord has given the "Suffering Servant" to lead the people home again. Jerusalem, Zion, cries that the Lord has forsaken her as an abandoned woman. God offers assurance that he has not forsaken her anymore than a woman will forget her nursing child. Learn that regardless of our circumstances, God is always with us, indeed his spirit dwells within us.

The Psalmist sings "My heart is not lifted up, my eyes are not raised too high." This is similar to our liturgy wherein we say, "Lift up your hearts" and the response is, "We lift them up to the Lord". Yet the meaning here is different. The Psalmist is saying that he is humble before God. His heart is not "lifted" because the word he uses implies haughtiness or pride. His eyes are not "raised too high" because the word he uses means arrogant. The Psalmist quiets his soul like a weaned child with its mother. The Psalmist is now prepared to worship God. Learn that God provides for us as a mother provides for her child.

Paul urges the Corinthians to think of Cephas, Apollos, and Paul as slaves of Christ and as stewards of the Church. Note that a 'steward' had much responsibility, but was still a slave. Learn from this that regardless of our position in the Church, we are all servants of Jesus The Christ. Paul tells the Corinthians that he is not concerned with being judged by them, by any human court, or even by himself. Only the Lord will judge Paul (and us). Learn from this that each of us, as a Christian, is called by God and only God will judge our fulfillment of that calling.

Jesus tells us that we cannot be slaves to two masters. We cannot serve God and our own desire for wealth. Jesus tells us not to worry! Don't be anxious about what you will eat, or what you will drink, or what you will wear. Life is more than possessions and power. Rest assured that God knows what we need and God will provide us with our needs. (Note: God did not promise to give us all our "wants".) Learn from this that God provides for his people.

May the Holy Spirit free you from the bondage of anxiety and enable you to live in God's Kingdom.

SUDOKU
PRESENTED BY
VolunteerMatch.org
Where volunteering begins.

9	2								
						1		4	
	7					5	2		
4	7					3		1	
3		6	2			7			
		4				8	9		
6		5	1	9					
7	8		5		4				

© 2011, StatePoint Media, Inc. answer on classified page
Fill in the blank squares in the grid, making sure that every row, column and 3-by-3 box includes all digits 1 through 9.

The Hansford County Reporter-Statesman
Mailing Address - 213 Main Street • Spearman TX 79081
Physical Address - 310 Barkley Street • Spearman TX 79081
Phone - (806) 659-3434 • Fax - (806) 398-9080
www.spearmanreporter.com • reporter@spearmanreporter.com
Mon.-Thurs. 9 a.m.-12 p.m., Mon.-Wed. & 1-5 p.m.
Closed Thurs. afternoon and all day Fri., Sat. & Sun.

Gary Smith - Publisher Catherine Smith - Editor
Contributing Writers: Dorothy Hudson, Jim Derington, Merry Sparks, Cecil Biggers
Contributing Photographers: Charlie Johnson, Lisa Johnson Tammy Batton, Bonnie Bergan

Subscription Rates
In Hansford County - \$30.00 • Out of County - \$40.00
E-Mail Subscription - \$35.00

The Hansford County Reporter-Statesman (USPS 529660) is published weekly in Spearman, TX. Periodical postage paid in Spearman, TX. **POSTMASTER:** Send address changes to: The Hansford County Reporter-Statesman, 213 Main Street, Spearman, TX 79081.

Publication Policy
The deadline to submit news and advertising to The Hansford County Reporter-Statesman is Monday at 5 p.m. Items submitted after the deadline will be published at a later date, as time and space permit. Publication of all items is at the discretion of the editor.

Advertising
Open Display rates are \$4.00 per column inch. Classified Ads are \$6 for the first 25 words and 10¢ per word for each additional word. (Additional charge for boxed classifieds.) There is a \$1 charge per week if billed.

Member of
Gruber Chamber of Commerce
Spearman Chamber of Commerce
Texas Press Association and Panhandle Press Association

U.S. PRESIDENTS

ACROSS

- Coolness and composure
- Princess tester
- Coke, e.g.
- Donor's bequest
- Hole punching tool
- Apartment building level
- Often done to frying pan
- Fishing mesh
- Cut down to fewer decks, as in ship
- "He coined term "normalcy" yet gave his dog special seat at the cabinet table
- *First president to have a phone in his office
- Drink rocks
- One in mattress
- *1600 Pennsylvania
- Cream-filled treat
- Kind of room
- *James K. Polk is considered the first "horse" candidate
- Unit of force
- Moth-repelling wood
- Petri dish gel
- Sacrum, pl.
- Hipbone
- "___ to my ears!"
- Settler of Serbia
- Classic song "___ on Me"

DOWN

- Victoria Beckham, formerly
- Aquarium show star
- Borodin's opera "Prince ___"
- *Arabia
- Famous tenor Caruso
- Sudden spasm of pain
- Mama sheep
- Poetic although
- Member of eastern European people
- What goo will do
- One who gets things done
- Am is to I as ___ is to we
- Lark about
- They had their revenge in the 80s
- "O" in OPEC
- Pack heat, e.g.
- *Primary author of Monroe Doctrine
- Undefined
- Remove, as in wrong answer
- Young hawk
- Bride's cover
- Ran in neutral
- Water nymph
- *First president to run against a woman
- Actor Kristofferson
- Makes mistakes
- Olden day calculators
- *Camp David Accords witness
- Romance
- Humorist
- ___ is to out as on is to ___
- School to Madeline
- ___ fide
- Lemony Snicket's evil count
- Incision
- Suggestive look
- It often cleans itself
- Legendary actress Turner
- Basketball big man O'___
- 1990s negation
- *James Buchanan.

These games are brought to you by the **Hansford County Reporter-Statesman**

only president never 68. Affleck ___ Garner to ___

CROSSWORD

1	2	3	4	5	6	7	8	9	10	11	12
13					14			15			
16					17			18			
19					20			21	22		
23					24						
25	26	27	28	29	30	31	32	33	34		
35		36		37		38		39			
40				41		42		43			
44				45		46		47			
48				49		50		51		52	
53				54		55		56			
57	58	59			60			61	62	63	
64				65	66			67			
68				69		70					
71				72		73					

PRESENTED BY
VolunteerMatch.org
Where volunteering begins.

© 2011, StatePoint Media, Inc. answer on classified page

Happy Birthday!

February 24
Birthdays - Lori Messer, Linda Scroggs, Adam Holaday, Mani Noble, Tiffany Goodrich, Chuck Morgan, Sherry Boyd, Fernando Saldana, Glenda Close, Barbara Townsen, David Swink, Frances Davis
Anniversary - M/M Tom Cathey Sr., M/M Quentin Hart, Andrea & Gary Woolley

February 25
Birthdays - Marian Tomlinson, Lynna Renner, Don Schmer, Mike Brown, Leslie Paul, Crystal Carson, Loree Viola, Tabettha Thoms
Anniversary - Bob & Jackie Pearson

February 26
Birthdays - Debbie Davis, Bruce Knight, Suzie Womble, Burl Buchanan, Pam Edwards, Margie Schubert, Lynn Pierce, Marinell Webster, Deziree Hughes, Carol Poole, LaQuita Evans, Bob Meier, Kip Francis, Denise Paschel, Tony Holquin, Nicholas Cenicerros, Kay Ann Miller
Anniversary - Britt & Linda Jarvis

February 27
Birthdays - Roy Diaz, Colby Weldon, Sharon Sutton, Cindy Jenkins, Adrian Barrera, Rosie Jackson, Melinda Hall, Winnie Vernon, Clint Goodman, Lance Wood, Vanessa Vela, Lacey Salgado
Birthdays - Robert Blount, Max Davis, Karen Sparks, Shannon Bowling, Debbie Carter, James Lair, Sammy Don Jones, Edna Anderson, Willie Shields, Hal Bennett, Davis Nash, Parker Grotegut
Anniversary - M/M Gilbert Salgado, Tim & Jackie Nelson

February 29
Birthdays - Clifton Harden, Michael Holt

March 1
Birthdays - Lori Swink, Justin Ooley, David Stafford, Michael Rosales, Gary Cates, Ruby Mitchell, Mary Saldavar, Nora Baca, John Duncan, Peggy Robinson, Caleb Miller, Danny Parker, Colt Close
Anniversary - M/M Robbie Dewberry, M/M Harold King, Norlan & Linda Winegarner, Jeffrey & Danielle Jackson

March 2
Birthdays - Wynn (Maupin) Essler, Justin Thompson, Tonni Yanke, Olive "Babe" Pendergraft, Wayne Barber, Matthew Baker, Carma Dorton, Bob Farr, Robin

March 3
Birthdays - Sue Smith, Jackie Womble, Vicky (Papay) Cummings, Doris Brogdon, Kim Scroggs, Kelley Hart, Cass Lasater, Andy Scarborough, Brian Black, Darla Black, Amber Fox, Allan Taylor, Denise Schuman, Crystal Harris, Richard Melton, Paxton Pittman, Matti Wheelock, Pam Schnell, Sandra Reeves

March 4
Birthdays - Evelyn Dahl, Don Evans, Tanner Sherrell, Tommy Hahn, Jon Garnett, Virgil Jones, Chuck Taylor, Jose Renteria, David Harbour, Ron Fox, Judy Park, Brenda Red, Ronald Kirby, Heather Hamilton, Lucio Vela, Carrie Guthrie, David Rosser, Don Townsen

March 5
Birthdays - Ron Dunning, Beth Swink, Barry Beck, Brooks Beck, Mark Garnett, Mary Garza, Mike Cowan, Trixie Pearson, Mike Garrard, Alexis Johnson, Benny Brandvick, Steve TeBeest, Shelby Williams, Ramon Garcia, JJ Anaya, Cleo Hughes, Ashley Vasquez
Anniversary - M/M Ramiro Morales, Mark & Jamie Brown

March 6
Birthdays - Brenda Hart, Charlie Slough, Marcie Womble, Bobby Archer, Tommy Barkley, Travis Patterson, Janet Reger, Doran Dulana, Kenneth Slough, Lindsey Clift, Nancy Evans, Mick Sharp
Anniversary - M/M A.R. Cazares

March 7
Birthdays - David Imke, Dee Dee Shelton, Mike Garnett, Molly Turner, Bernice McBride, Viola Boyd, Donald Lane, Beulah Harris, Howard Thompson

March 8
Birthdays - Patty Cator, Drew Grotegut, Mike McLain, Bill Harnish, Melvin Swene, Kirby McAdams, Deana Shields, Dee Allen, Steve Cruise, Candi Delozier, Ben Cook, Colby Red, Eric Olsen, Rae Lynn Cook, Cindee Thomas, Christi Clift, Michelle Schick
Anniversary - M/M Richard Wagner

March 9
Birthdays - Rachelle Moreno, Josh Winegarner, Ryan Hill, Sammy Renteria
Anniversary - M/M Joel Lackey

Our Sympathy

ANNIE GLOVER
AMARILLO - Annie Glover 98, died Sunday, February 20, 2011 in Amarillo, Texas.
 Graveside services were at 2 p.m. on Tuesday, February 22, 2011, at Fairview Cemetery with Mark Lance, pastor of Mary Ellen and Harvester Church of Christ, officiating. Arrangements were under the direction of Carmichael-Whatley Funeral Directors.
 Mrs. Glover was born December 2, 1912 in Archer City.
 Annie married Marson Luther Glover on April 20, 1935 in Spearman and he preceded her in death on December 24, 1959. Annie has been a resident of Pampa for 40 years. She was a buyer for Sandra Company for 18 years and she worked for Walmart for 8 years. Annie was a member of the Mary Ellen and Harvester Church of Christ and she also was proud to say she had been a member of the Church of Christ since the age of 14.
 Survivors include 1 grandson: Doug Glover and wife Annie Heng of Santa Monica, California; 1 great grandson: Lucas Glover of Santa Monica, California; 2 special nieces: Connie Ward of Belmont, California and Rue Anne Santos of Las Vegas, Nevada. Annie was preceded in death by a son: Bobby Wayne Glover on January 20, 1997; 3 sisters: Jewel Parnell, Lena Schumacher and Nell Daigle; 1 brother Rueben Deering.
 The family suggest memorials be to Mary Ellen and Harvester Church of Christ, 1342 Mary Ellen, Pampa TX 79065.

ARNOLD JONES
WAKA - Arnold Jones, 66, died Friday, Feb. 18, 2011. Services were at 11 a.m. Wednesday in Community Worship Center with Terry Danley officiating and the Rev. Tim Ramsey assisting. Graveside services were at 3:30 p.m. in Laverne Cemetery in Laverne, OK. Arrangements were by Boxwell Brothers Funeral Home of Perryton.
 Mr. Jones was born May 16, 1944, in Texline. He married Vallerie Jones on June 18, 1966.
 Survivors include his wife; a son, Wayne Jones of Balko, OK; a daughter, Michelle Holt of Canadian; a brother, John Richard Adamson of Perryton; a sister, Donna Coates of Waka; 10 grandchildren; and nine great-grandchildren.
 The family suggests memorials be to American Cancer Society, 3915 S. Bell St., Amarillo, TX 79109; or American Heart Association, 2514 82nd St., Suite B, Lubbock, TX 79423.
 The family will receive friends from 6 to 8 p.m. Tuesday at the funeral home.

ANNIE LOIS GLOVER
PAMPA - Annie Lois Glover, 98, died Sunday, Feb. 20, 2011, in Amarillo.
 Graveside services were at 2 p.m. Tuesday in Fairview Cemetery with Mark Lance, pastor of Mary Ellen and Harvester Church of Christ, officiating. Arrangements were by Carmichael-Whatley Funeral Directors.
 Mrs. Glover was born Dec. 2, 1912, in Archer City. She married Marson Luther Glover on April 20, 1935 in Spearman and was resident of Pampa for 50 years.
 Survivors include a grandson, Doug Glover Heng of Santa Monica, Calif.; and a great-grandson, Lucas Glover of Santa Monica, Calif.
 The family suggests memorials be to Mary Ellen and Harvester Church of Christ, 1342 Mary Ellen St., Pampa, TX 79065.

MARSHALL EDWARD HIBBS, SR.

SPEARMAN - Marshall Edward Hibbs, 86, passed away peacefully on Monday, February 21, 2011 in Spearman, Texas. Ed was born on December 8, 1924 in Beaver, Oklahoma to Ralph Fairbanks Hibbs and Alice Opal Day Hibbs.



Ed married Edna Mae Caldwell on February 18, 1943 in Woodward, Ok. Shortly after their marriage, Ed was enlisted in the United States Army in WWII where he proudly served his country. In December of 1955, Ed and Edna Mae moved to Enid, Ok. And in 1966 they established the Hibbs Western Store which they owned and operated for 24 years. Edna Mae passed away in 1990.

Ed married Vernetta Lesly on May 28, 1991, in Canadian, Texas. Ed and Vernetta enjoyed traveling and spending time with one another, their children and grandchildren. Ed was a member of the Church of Christ and was baptized on November 21, 1993. Ed was a sports fanatic and absolutely adored his Oklahoma Sooners and Dallas Cowboys. Vernetta passed away in 2010.

He was preceded in death by his parents, his first wife, Edna Mae, his second wife, Vernetta, and a great grandson, Jonathan Brungardt.

Survivors include his two sons, Edward Hibbs, Jr and wife Lynne of Enid, OK and Richard Hibbs and wife Cathy of Edmond, OK; two step daughters, Hazel Scott and husband, John of Spearman, TX, and Linda Thrasher and husband Kenneth of Canadian, TX; a sister, Louise Bartel of Washington, MO; 18 grandchildren; 25 great-grandchildren; a great-great-granddaughter; and a niece; a nephew; and a great niece.

Graveside services will be at 1:00 pm on Thursday, February 24, 2011 at the Enid Cemetery. John Scott will officiate.

The family suggest memorials be to: Hansford Hospice - 707 S. Roland, Spearman TX 79081 or one's favorite charity.

MONUMENTS

Boxwell Brothers Funeral Home

519 Evans • Spearman
659-3802

Dear friends,
When you buy a monument from us we make sure it is exactly what you want at a price you can afford. If it is not right, we will make it right. And you will not have to search the countryside to find us. We are here when you have a need.

Sincerely,
Bob Boxwell

www.spearmanreporter.com

STOP LEG CRAMPS BEFORE THEY STOP YOU.

Calcet® is designed to help stop low calcium leg cramps. Just ask your pharmacist.

Helps fight leg cramps. For those with milk allergies. Fights osteoporosis.

Mission

285+ Channels 160+ HD Channels

Packages Start At \$29.99 Mo.

DIRECTV

Direct Sat TV 1-800-360-1395 Local Installers!

2 FREE Upgrades - HD DVR & HD Receiver - Ask How!

HBO SHOWTIME starz cinemax For 3 Months

DISH Network's LOWEST ALL-DIGITAL PRICE!

As low as \$24.99/mo plus FREE HD FOR LIFE!

Call for limited time BONUS!

Call Now! 1-866-799-8039

GET CASH NOW!

1-866-FUND-108

Get cash for your structured settlement or annuity payments. High payouts. Rated A+ by the Better Business Bureau.

J.G. WENTWORTH™

www.jgwentworth.com

HOME PHONE SERVICE

NO Pre-Payment • NO Deposit Required!

Rates from \$6.99 per month* (\$17/month including approximate taxes & fees)

FREE 1st Month of Service

Caller ID & Call Waiting included in Packages**

New-Talk 866.934.3448

Replenish the seed of faith through . . .

DAILY BIBLE READING, PRAYER & REGULAR CHURCH ATTENDANCE

Spearman Apostolic Faith Church 822 S. Drexler • 659-2870 Sunday School: 10 a.m. Worship Service: 11 a.m. Sun. Eve.: 6 p.m. Wed. Prayer Mtg.: 7 p.m. Pastor - Jack Cornell First Assembly of God 401 N. Bernice • 659-2295 Sunday School: 9:30 a.m. Worship: 10:40 a.m. Evening Worship: 6 p.m. Wed. Worship: 7 p.m. Wed. Youth: 7 Pastor - Jerry Pollard First Christian Church (Disciples of Christ) 29 S. Bernice • 659-2036 Sunday School: 9:45 a.m. Worship: 10:50 a.m. Minister -	Sacred Heart Catholic Church 901 Roland • 659-2166 Sat. Night Mass: 5:30 p.m. Sun. Mass: 9 a.m. - English Sun. Mass: 11:30 a.m. - Spanish Rev. Gregory Bunyan First United Methodist 407 S. Haney • 659-5503 Sunday School: 9:45 a.m. Worship: 8:30 & 11 a.m. Jr. High Youth: 5 p.m. Sunday High School: 6 p.m. Sunday Kids Club: 3 p.m. Wed. Pastor - Toni Bailey Grace Presbyterian Church (Worships with Faith Lutheran Church) 1101 Bernice • 659-2033 Faith Lutheran Church (ELCA) 1101 Bernice • 659-2252 Sunday School: 9:45 a.m. Worship: 11 a.m. (Worships with Grace Presbyterian Church) Pastor - Cecil Biggers, PLM Union Church 31 S. Endicott • 659-2644 Sunday School: 10:00 a.m. Worship: 11:00 a.m. Bible Study: 7 p.m. Wed. Youth Service: 6 p.m. Wed. Pastor - Don Baltazor Fellowship Baptist 1102 S. Archer • 659-2783 Sunday School: 10 a.m. Worship: 11 a.m. Sun. Evening Worship: 6 p.m. Sun. Evening Spanish Worship: 7:30 p.m. Youth/Adult Service: 7:30 Wed. Pastor - Philip Hudson	Primera Mision Bautista 502 E. 7th • 659-3991 Sunday School: 9:45 a.m. Worship: 11 a.m., Evening: 6 p.m. Wed. Prayer Meeting: 7 p.m. Thurs. Visitation: 7 p.m. Pastor Joe Garcia Jr. El Aposento Alto U.P.C.I. 1105 S. Roland Domingos: Escuela-Dominical - 10 a.m. Culto Evangelistico - 7 p.m. Jueves: Oracion - 8 p.m. Mier. Estudio Biblico - 7 p.m. Pastor - A.G. Martell (806) 659-2153 Gruver First Baptist Church 402 E. Broadway • 733-2411 Sunday School: 9:45 a.m. Worship: 10:50 a.m. Disciple Training: 6 p.m. Sunday Prayer Meeting: 7:30 p.m. Wednesday Pastor - Scott Curry Church of Christ 209 King • 733-2760 Sunday School: 9:30 a.m. Worship: 10:20 a.m. Evening Worship: 6 p.m. Wed. Worship: 7:00 p.m. Minister - Gaylord Cook First Christian Church 510 King • 733-2960 Sunday School: 10:00 a.m. Sunday Worship: 11 a.m. Youth: 7:30, Sunday Adult Bible Study: 7:30, Sun. Wed. Bible Study: 8:00 p.m. Pastor - Gary Gumfory	Gruver United Methodist Broadway & Garrett 733-2651 Sunday School: 9:45 a.m. Worship: 8:30 & 10:50 a.m. Eve. Worship & UMY: 6 p.m. Pastor - George Price Spanish Cristo Redentor Church Hwy 15 806-659-2166 Gruver, TX Sun. Mass: 1:30 p.m. - Spanish Rev. Gregory Bunyan Oslo Oslo Lutheran Church (ELCA) 6 Miles West & 12 Miles North of Gruver 339-7646 Sunday School: 9:45 a.m. Worship: 11 a.m. Pastor - Arlen Lloyd Morse Morse Baptist Church 733-2757 Pastor - Gary Stevens Waka Church of Christ 300 Rogers Ave. 202-7126 Sunday School - 9:30 a.m. Sunday Worship: 10:30 a.m. & 6 p.m. Wednesday Bible Study: 7 p.m. Preacher - Ed Jenkins
--	---	--	--

He has showed you, O man, what is good. And what does the LORD require of you? To act justly and to love mercy and to walk humbly with your God. Micah 6:8

This feature is made possible through the sponsorship of these civic minded businesses:

Deakin ELECTRIC OILFIELD • RESIDENTIAL • COMMERCIAL 321 S. MAIN • SPEARMAN 1-800-999-1506 Chris Deakin (806) 659-5016 President	Bartlett's Lumber & Hardware 105 W. Broadway • Gruver, TX (806) 733-2404	BERRY CLEANERS Ann & Vernon Pipkin - Owners Phone 659-3122 • P.O. Box 1017 207 Main St. • Spearman, TX	Morse Implement & Auto Supply "Join us in church" Tom Dortch 733-2668 Box 89 • Morse, TX 79062
PRAIRIE MOTORS INC. Hwy. 207 South • P.O. Box 430 Spearman, TX 79081 • (806) 659-2541 www.prairiemotors.com	MurMur's Cafe 100 Roland St Spearman, TX. 659-3580	Hansford County Reporter-Statesman "Proudly Serving Hansford County Since 1907" (806) 659-3434 310 Barkley • Spearman, TX	INTERSTATE BANK, sbb www.interstatebank.net 322 Main • P.O. Box 146 Spearman, TX • 659-2559

HYI

FOR YOUR INFORMATION

Education Fund For Johnson Children

An education fund has been set up at First National Bank for the children of David Johnson. If anyone would like to donate, they can mail to PO Box 337, Spearman, TX or bring by the bank and give to any teller.

Dance at No Man's Land Center

A country and western dance with music by "Cottonwood" is taking place at the No Man's Land Center, 515 NE 15th in Guymon on Sat., Feb. 19th from 8 to 11 pm. There is no alcohol or smoking allowed in the building. For the \$6 cover charge, you are also able to enjoy the pot luck supper. "It's a chance for cooks to show off their skills or a chance to get rid of their leftovers," laughs Leita Andvik, the organizer for the monthly dances. "Bring a friend. Bring a dish. Or just come by yourself and have a great time with the folks that like to dance and enjoy live country and western music." For more information, call 580-338-7216. This is another Epic Saturday event through a partnership with Main Street Guymon and Epic Touch.

Youth Writing Contest Announced

Panhandle Professional Writers has announced its 2011 Youth Writing Contest. The competition is open to any student in grades three through twelve. There are three age groups: grades three through five, six through eight, and nine through twelve. Students may enter as many times as they like in three different categories: short story, poetry, and memoir. All entries will be judged by published authors. Entries must be post-marked no later than April 16, 2011. Complete rules and entry forms can be requested at ppwriters@gmail.com First, second, and third place winners in each category will be announced in July. Panhandle Professional Writers, located in Amarillo, Texas, is the second oldest continually functioning writers group in the nation. It is open to writers at all levels and of all genres.

Ready, Set, Sew 4-H Fashion & Fun Project

Ready, Set, Sew 4-H Fashion and Fun project for youth third grade and older will be held in March. Participants will learn basic sewing skills and complete simple sewing projects. To sign up and receive more information about the workshops to be held in Spearman, Gruver and Morse, visit the Hansford County Extension office located in the Courthouse, or call Peggy Winegarner, Hansford County Extension Agent, at 806-659-4130 or 806-733-2901.

Miss Irish Rose Pageant

Once again, Shamrock, Texas will be hosting their annual Saint Patrick's Celebration on March 18-20, 2011. One of the many highlights of this celebration is the crowning of Miss Irish Rose. This scholarship pageant is open to all young ladies that are between the ages of 14-19 and enrolled in high school. None of the contestants need to live in the Shamrock or Texas area, nor do they need to be currently holding a title to reign. The 2011 Miss Irish Rose, along with her three runner-ups and Miss Congeniality, will receive scholarships to the college of their choice. For further information, please send a SASE to Miss Irish Rose, Attention Terri Whiteley, 17 S Nebraska, Shamrock TX 79079, or call Terri at 806-216-0449, or the Chamber of Commerce Office at 806-256-2501. The deadline for entry forms to be received is March 3, 2011.

Project Graduation

The parents of the Spearman High School Senior Class of 2011 are hosting a "Project Graduation Party" following commencement exercises Friday, May 27th. This event is sponsored by the Texas Department of Transportation. This project offers the students the opportunity to have an alcohol and drug free celebration. To encourage the students to stay the entire night, door prizes are distributed throughout the evening. All students staying the entire night will be awarded a \$100 gift card. Prizes, gift certificates, and cash are needed for the evening's gifts. If you, the community, who have supported and encouraged these seniors for the past 13 years of school, would like to share in this final "Class of 2011" memory (making this project "special"), please contact either Sharon Kern at 659-2017; Sherry Boyd at 659-3844; or Tammy Benton at 659-3071. Contributions or donations can be mailed to: Project Graduation, Tammy Benton, P.O. Box 415, Spearman, TX 79081. On behalf of the parents and family of the Senior Class, we would like to thank you for all of your support.

NOTICE

The District Clerk's Office for Hansford County is no longer issuing applications for passports. The public can have an application issued from the District Clerk's Office at the Courthouse in Stinnett or the Post Office in Perryton.

Take Off Pounds Sensibly

Take Off Pounds Sensibly meets on Tuesday mornings at 8:30 a.m. at the First Christian Church in Gruver. For more information, contact Marilyn Been at 806-733-2087.

Hansford Gun Club Rifle Shoot

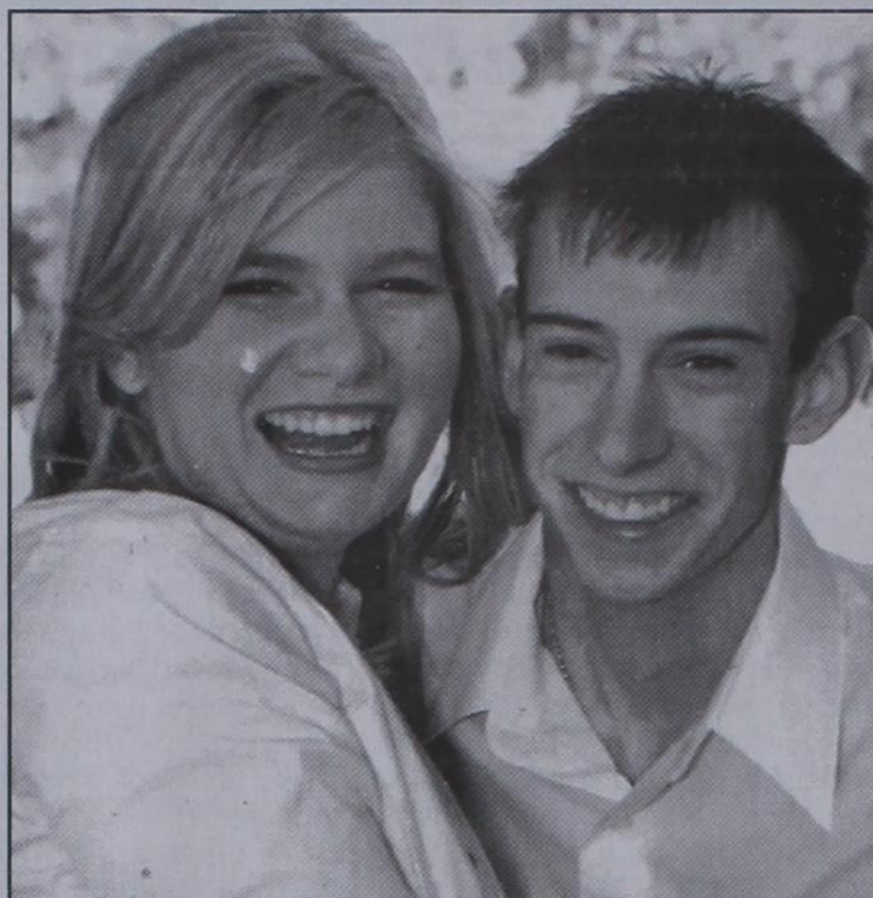
The Hansford Gun Club holds a .22 rifle shoot on the second Sunday of each month, starting at 1:30 p.m. at the gun range (located on Hwy. 15 between Spearman and Gruver).

Care Packages

If you would like to help with Care Package Drop Offs, please contact Less Sullivan at lessullivan@hotmail.com. Less is collecting items for care packages in conjunction with AmericaSupportsYouTexas.com. Journals are also located at the O'Loughlin Center, Spearman High School, and Gus Birdwell Elementary for anyone wishing to sign them. For more information, contact Less at 330-0973.

Rainbow Kids Klub is Back!!

Our new building if finished and we are inviting all children Kindergarten -Fifth grade to join Rainbow Kids Klub. This is a weekly after school program with snacks, recreation, character building Bible lessons, memorization, music, games and its all free. Rainbow Kids Klub begins Wednesday, September 8, after school until 5 p.m. at the First United Methodist Church, 407 Haney, Spearman. For more info, call 659-5503.



Engagement Announcement

Thomas and April Newton of Canyon and Jeff Bonham of Amarillo wish to announce the to Dustin Harold Artho, son of Harold and Karen Artho of Umbarger.

Chelcie is the granddaughter of Sam and Debbie Abston of Spearman, Jerry and Patty Black of Grand Junction, CO and the late Jimmy Joe and Bonnie Bonham of Gruver.

She is a 2006 graduate of Canyon High School. She graduated in 2009 from West Texas A&M University with a bachelors in Business Administration.

The prospective groom is a 2006 graduate of Canyon High School. He will graduate in May of 2011 with a bachelors degree in Aerospace Engineering from Embry Riddle Aeronautical University in Arizona.

The couple plan to wed at St. Mary's Catholic Church in Umbarger in September 2011.



Engagement Announcement

Steve and LuAnn Shields of Morse would like to announce the engagement of their daughter Tabatha Shields to Matt Jones, both of Bowie. Matt is the son of Kent & Holly Jones of Bowie.

The couple plan to wed June 18, 2011, at the home of Larry & Cindy Stark in Bowie.

The bride-elect is a graduate of Spearman High School. She graduated from West Texas A&M University in Canyon with a Bachelor of Science degree in Mathematics. She teaches high school math at Windthorst High School.

The prospective groom is a graduate of Bowie High School. He is employed by WB Jones Construction and is also a real estate agent for Jones Real Estate.

You are invited to a
Bridal Shower
honoring Sarah Hedtke
bride-elect of Brodie Savage!
(son of Tim & Terrie Harper)
Saturday, February 26, 2010
from 1-2:30 a.m.
at the home of Cheryl Sander
718 Gibner Dr. Spearman TX

You are invited to a
Baby Boy Shower
honoring Karlon & Lee Brandon
on Thursday, March 3, 2010
from 3:45-4:45 p.m. at the
Spearman Elementary Library
511 Townsend Spearman TX

Sergio's Auto Sales
We appreciate your support!
Sergio Vargas
120 W Kenneth Ave • Spearman TX 79081
(806) 659-9971 - day • (806) 330-0173 - night
Canyon Location Phone Number: (806) 231-8388

SERGIO'S AUTO-SALES

SERGIO VARGAS

120 W. KENNETH AVE. SPEARMAN, TX 79081
806 659 9971 CEL. 806 330 0173

Gordon's
Your place for
Bridal Registry
Couples Currently Registered

Sarah Hedtke & Brodie Savage - 2/26
Tonya (Hart) & Brenton Hughes
Mary Beth (Hargis) & Jordan Hicks
Emily Longoria & Mark Thomas
Jennifer Cook & Donny McMahan
Amanda Wells & Scott Earle

Baby Registry

Kristie & Reagan Renner (Twins) - T&B
Linzi McCubbin & Kris Mixon (Boy)
Amber (Ramon) & Dustin-King (Girl)
Mattie DeSha (Girl)
Jennifer (Laxson) & Anthony Smith (Boy)
Donia & Jason Varnon (Girl)

Gordon's 659-2141
314 Main Spearman

MITCHELL THEATRES.COM
GUYMON, OK • LIBERAL, KS • NEWTON, KS

NORTHRIDGE 8
Guymon, Oklahoma
www.northridge8.com
580-338-3281

SOUTHGATE 6
Liberal, Kansas
www.southgate6.com
620-624-5573

SEQUOYAH 8
Garden City, Kansas
www.sequoyah8.com
620-275-2760

CHISHOLM TRAIL 8
Newton, Kansas
www.chisholmtrail8.com
316-283-0555

FRESH POPCORN EVERYDAY!
-PARTY ROOM & ARCADE-

PTCI Digital TV - Amarillo Networks in HD, & More!

"We have PTCI's Digital TV here at the station. We depend on it to watch the local TV channels during severe weather and winter weather events.
(We also like to watch ourselves on PTCI's local access channel 😊)"

~Darin Clark
KEYE Radio
Perryton, Texas

"We chose PTCI's Digital TV at the Rib Joint because of the great selection of channels that include sports, movies, and news.
Plus, we don't experience rain fade with PTCI's TV like you do with satellite TV."

~Steve Clumsky
The Rib Joint
Perryton, Texas

www.ptci.net
800-562-2556
272 W 7th in Spearman

PTCI
Communication & Broadband Solutions

EXERCISE

O'Loughlin Centers Fitness Center Challenge

The O'Loughlin Center Fitness Challenge began on January 15, 2011 with 63 people signed up to compete in the 8 week weight loss challenge. The challenge modeled after the famous Biggest Loser television show was developed for Hansford residents of all shapes, sizes and ages that want to develop a healthy way to lose weight and keep it off.

Jackie Pearson, Certified Personal Trainer has been instrumental in working with the contestants on fine tuning their exercise programs. Sabina Cotter, Registered Dietician has been available to review food diaries and offer nutritional tips. Missie Bates has been a driving force by helping lead workouts twice a week, along with motivating contestants with her real life tips on weight loss success.

The challenge is based on 3 key areas with prizes being awarded in each area.

Most times worked out: 1st Place: \$100 AND 2 Tickets to Pot O' Gold; **2nd Place:** 1 month FREE Fitness Center Individual Membership

Most percentage of weight loss: 1st Place: \$100 AND 2 Tickets to Pot O' Gold; **2nd Place:** 1 month FREE Fitness Center Individual Membership

Most Inches lost: 1 month FREE Fitness Center Individual Membership

The O'Loughlin Fitness Challenge continues to have outstanding results from all our contestants. We still have over 80% of the original participants working out and losing weight and inches!

Results After 5 Weeks:

182 inches have been lost (average of 6 inches per person) * we still have a few measurements to be taken

337 Pounds have been lost (average of 7.2 lbs per person)

897 Total Workouts

Most Inches Lost to Date: 1st - Johnnie Byrd, 2nd - Telie Crum, 3rd - Esther Lozano, 4th - Nicholas Byrd, 5th - Jeanne Swan and Jamie Brown, 6th - Melinda Roberts and Ember Keith

Most Workouts to Date: 1st - Karla Flowers, 2nd - Kara Harrell, 3rd - Melodie Kelp, 4th - Dean Greene, 5th - Telie Crum, 6th - Johnnie Byrd

Most # of Pounds Lost to Date: 1st - Nicholas Byrd, 2nd - Jeanne Swan, 3rd - Esther Lozano, 4th - Ember Keith, 5th - Telie Crum, 6th - Johnnie Byrd

Highest Percentage of Weight Lost (Pounds Lost divided by Beginning Weight): 1st - Melodie Kelp, 2nd - Karla Flowers, 3rd - Jeanne Swan, 4th - Kara Harrell, 5th - Nicholas Byrd, 5th - Ember Keith, 6th - Esther Lozano

Campus Corner

FPC

Frank Phillips College

Greetings from the Northernmost Facility of Higher Education in the Great State of Texas! To date during this academic year the Allen Campus has served 1,685 students and other residents of Perryton and the surrounding area. Academic classes account for 205 of these students, while Continuing Education classes have served 653 students and Community Service classes and events have served an additional 826 people.

Mark Twain said it best... "The rumors of my death have been greatly exaggerated". Recently it was reported via the Amarillo media that Frank Phillips College would be closing due to cuts in funding by the state of Texas. Nothing could be further from the truth and it is unfortunate that the issue was reported in that manner. Here are the facts as the college knows them today. The first draft of the House of Representatives budget did indeed zero fund four community colleges in the state and Frank Phillips College was one of those four. It should be noted

Allen Campus

News and Information

Start Here... Go Anywhere!

that the most important word in that last sentence is "draft". The state's budget goes through many changes before being finalized in May. Further, when the Senate's initial draft of the budget was published, no community colleges were included for zero funding. By the time the two sides come together and finalize the budget for the next biennium, FPC is confident that we will not be included on any zero funding list.

The college is extremely appreciative of all the emails, phone calls, and visits we have received since the story broke. We have always taken pride in the knowledge that we touch lives on a daily basis, but the sheer number of contacts we have had on both campuses has been overwhelming. Also know that your contacts with our state legislators have been appreciated by us and them. The support you continue to show means a great deal to us and we look forward to many more years of service to you. Please feel free to call (806.648.1450) or come

by the Allen Campus (2314 S. Jefferson) if you have any questions.

The Allen Campus continues to offer a wide variety of continuing education and community service classes. **Studying the Book of Revelations** is a free of charge class that will begin on February 21st and continue on Monday nights from 7:30 to 8:30 PM through March 28th. **High School Equivalency (GED) classes** are underway and there is still room for enrollment. These classes are on Thursday nights from 6:00 to 9:00 PM and are free of charge. **English as a Second Language (ESL) classes** are also underway and are full at the moment. A waiting list has been

started so come by the campus to get your name on the list.

An Easter themed **Cupcake Decorating class** will be held on March 8th from 6:00 to 9:00 PM at a cost of \$55.00. The next **Coffee Blood Memorial Blood Center blood drive** will be on March 29th from 11:00 AM to 7:00 PM in the Conference Center so please come and donate! Also in March we will have a **Concealed Handgun Licensing** as well as a Basic Computer class.

Coming soon will be a **Health Screening and HIV Testing Clinic**. You will also be able to have your blood pressure, blood glucose, BMI (body mass index) and cholesterol check and all services are free of charge.

For more information on any of these classes or if you are interested in teaching a class please call (806.648.1450) or come by (2314 S. Jefferson) and visit with Jaci Geheb at the Allen Campus in Perryton.

School, City Election Filing Dates

The filing date for the May 14th General Election began on February 12, 2011. The Deadline to file for election is Monday, May 14, 2011 at 4 p.m. Monday, March 21, 2011 is the last day for write-in candidates to file declarations of write-in candidacy for regular officers.

The City of Spearman has three Alderman positions up for reelection - Kathy Boyd, Mike Schnell and Tobe Shields. As of now, no one has filed.

Spearman ISD has two terms up this year. At this time no one has filed. The two terms expiring are Dwayne Mitchell and Joel Shields

Gruber ISD has two positions on the ballot this year, but no one has filed. The two candidates up for reelection are Traci Venneman and Teague Winger.

Early voting for these elections will be held from May 2nd to May 10th. Election day will be Saturday, May 14th.

Texas Crop & Weather

The following specific livestock, crop and weather conditions were reported by Panhandle Extension directors: The region was warm and windy for the week. Soil-moisture levels were very short to short. The windy weather fanned wild-fires throughout the area. Wheat was mostly poor. Rangeland was very poor to poor. Some farmers were preparing fields for spring planting. Ranchers continued supplemental feeding of livestock. Cattle were reported in good condition.

Spearman Lynx & Lynxettes

<http://spearmansports.smugmug.com>

Photos available of Spearman Lynx and Lynxette athletic events.

Owned & Operated by Linda & Charles Stephens

Double XXL Steakhouse

(formerly Flying X Steakhouse)

From Stinnett: Go West on Hwy. 152
17 miles - Turn Left at Big White Sign
(About 2 miles on Gravel Road)

From Dumas: Go East on Hwy. 152
16 miles - Turn Right at Big White Sign
(About 2 miles on Gravel Road)

(806) 93JESUS
(806) 935-3787

www.doublexxlranch.bravehost.com
reservations suggested

Tong's Chinese Restaurant

(806) 644-2838
22 Archer Street • Spearman

Daily Buffet

Lunch - 11 a.m.-2:30 p.m. • Dinner - 5:30-9 p.m.
Open Wednesday-Monday - Closed Tuesday

NEW
Sushi on Sunday Buffet

Come & Get It!

HAPPY HOUR

3-5 p.m., Monday-Friday

ALL FOUNTAIN DRINKS 69¢

MURMUR'S CAFE

100 S. Roland • 659-3580 • Spearman

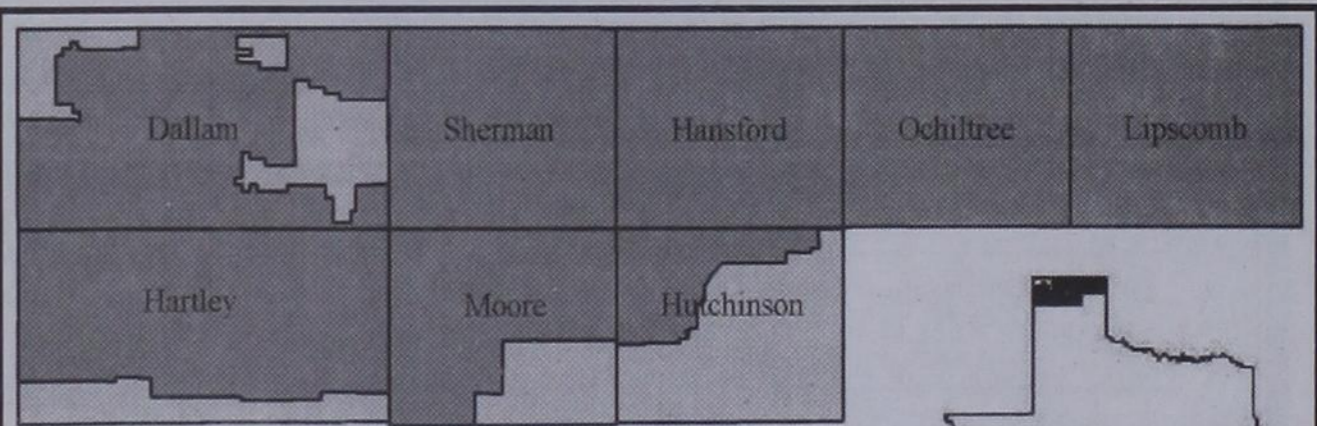
The **Jays** of Summer
All Year

SNOW CONE STAND

1:30-8 p.m., Monday-Friday

MURMUR'S CAFE

100 S. Roland • Spearman
659-3580



NORTH PLAINS GROUNDWATER CONSERVATION DISTRICT

Attention All Producers of Groundwater in the North Plains Groundwater Conservation District

Your 2010 production reports are due in the Dumas office by 5 pm on March 1st.

Submitting your reports by the March 1 deadline is especially important this year, since 2010 is the beginning of the District's Conservation Reserve Program. The District's Conservation Reserve Program will allow you to reserve unused allocation from 2010 and apply it to your 2011 or 2012 crop. Only producers who submit their completed reports by the March 1st deadline will qualify for the District's Conservation Reserve Program for 2010. Remember, annual allowable production will decrease in 2011 from 24 inches-per-acre to 21 inches-per-acre, and then to 18 inches in 2012. If you want to have the option of applying unused allocation from 2010 to your 2011 or 2012 crop year, your 2010 production reports must be in the Dumas office of the:

North Plains Groundwater Conservation District
PO Box 795, 603 E 1st Street
Dumas, TX 79029

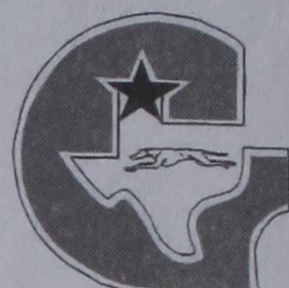
by 5 pm on March 1st

For more information about 2010 production reporting, call the office at
806-935-6401



**SPEARMAN
LYNX &
LYNXETTES**

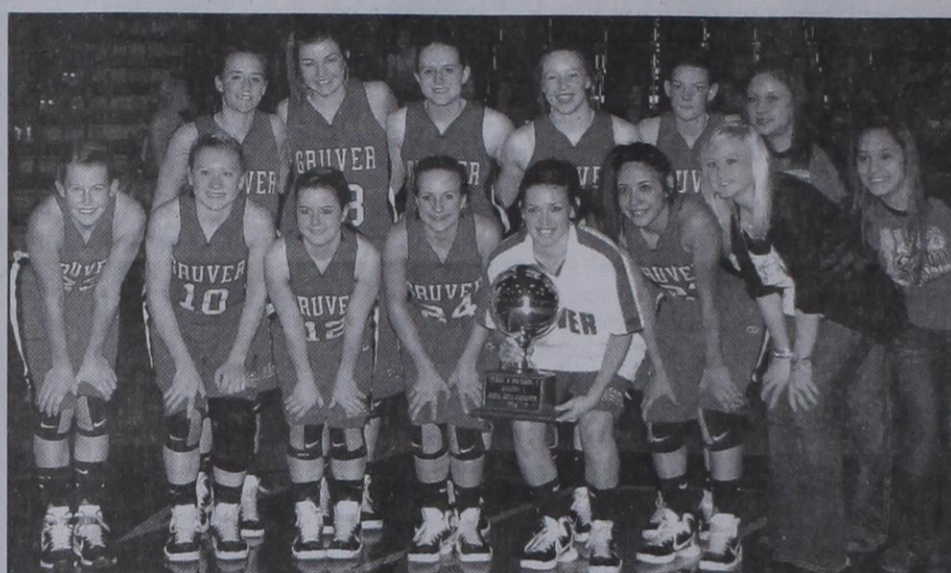
**GRUVER
GREYHOUNDS
& LADY HOUNDS**



BASKETBALL TEAMS

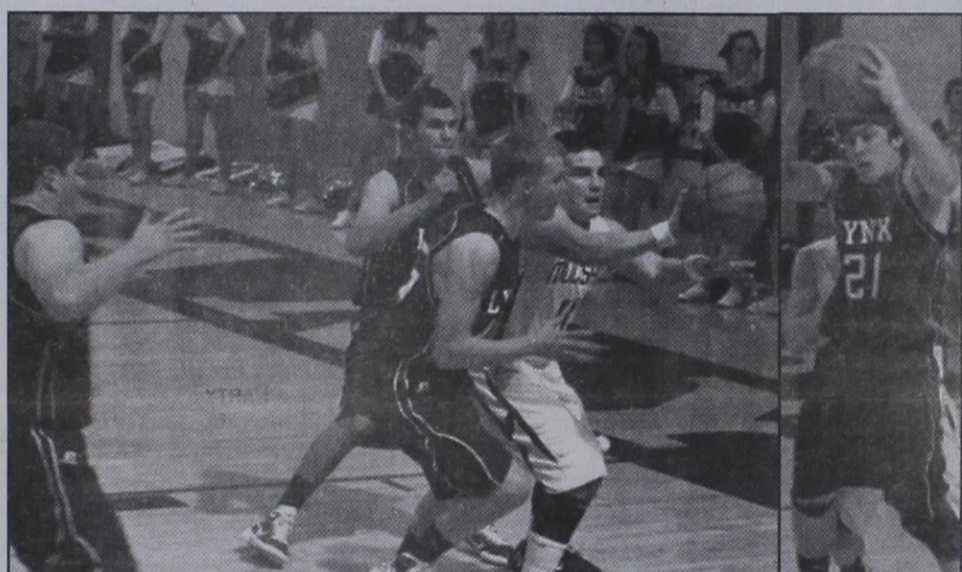


**Spearman Lynxettes
2A Area Champions**

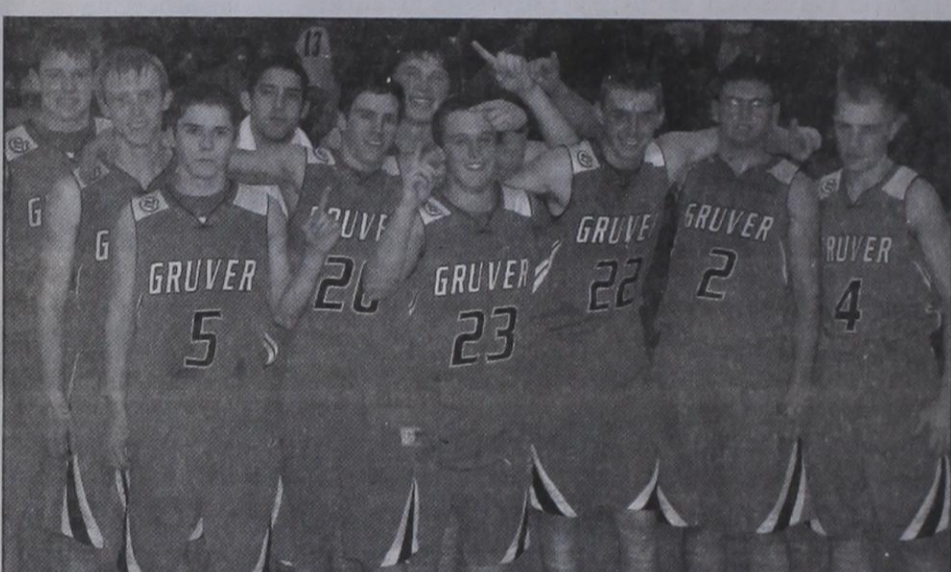


**Gruver Lady Hounds
1A Area Champions**

CONGRATULATIONS!



Spearman Lynx - 2011 Playoffs



Gruver Greyhounds - District Champions

WE'RE PROUD OF YOU!

From These Local Businesses

Adobe Walls Gin, LP Spearman • 659-2574	Cates Men & Boys Spearman • 659-3426	Gordon's Drug Spearman • 659-2141	Hoochy Poochy Parlor Borger • 273-2724	Perryton Office Supply Perryton • (806) 435-4812
Aeroflight Publications Gruver • 733-2483	Delinda McLaughlin Photo Solutions Spearman • 659-2800	Gruver Ford Gruver • 733-2431	Hungry Cowboy Spearman • 659-5151	Pizza Hut Spearman • 659-2547
AeroTan Gruver • 733-2483	Dreamers Spearman • 659-9907	Gruver State Bank Member FDIC Gruver • 733-5061	Interstate Bank, ssb Spearman • 659-2559	Prairie Motors Spearman • 659-2541
All Occasion Flowers Spearman • 659-5180	El Vaquero Restaurant Gruver • 733-2407	H&H Credit Union Stinnett • 878-2452	Kirk Insurance Agency Spearman • 659-2794	Rocking F Boot & Saddle Shop Spearman • 659-3342
AMA TechTel Gruver • 806-322-5500	Equity Exchange Spearman • 659-2420	H&H Water Well Spearman • 659-5577	J&S Signs & Engraving Spearman • 736-7020	Sergio's Body Shop Spearman • 659-5217
Bartlett's Ace Hardware Gruver • 733-2404	First State Bank Spearman • 659-5565 member FDIC	Hansford Abstract Co. Spearman • 659-2516	Jarvis Law Office, P.C. Spearman • 659-2554	Spearman Lynx & Lynxette Booster Club
Berry Cleaners Spearman • 659-3122	Five Star Equipment Spearman • 659-3743	Hansford County Feeders Gruver • 733-5025	Jim's Diamond Shop Borger • (806) 274-2370	Spearman Chamber of Commerce Spearman • 659-5555
Bob & Cathy Davis Gruver • Spearman	Frank Phillips College Allen Campus Perryton • 648-1450	Hansford County Floral Co. Spearman • 644-4000	Lowe's Marketplace Spearman • 659-2522	Sunray Co-Op Gruver Branch Gruver • 733-2481
Bob & Jackie Pearson Gruver • Spearman	Frontier Feedyard Spearman • 882-4251	Hansford County Hospital District Spearman • 659-2534	M&D Aerial, LLC Spearman • 806-202-2360	Tong's Chinese Food Spearman • 644-2838
Bort Agency Gruver • 733-2404	Gigot Agri Products Spearman • 659-3121	Hansford County Reporter-Statesman Spearman • 659-3434	Money's Perryton • 435-3945	Willis Boyd Dirt Services Spearman • 659-9848
Boxwell Brothers Funeral Home Spearman • 659-3802	Golden Spread Carpet Spearman • 659-3068	Hansford County Vet Clinic Spearman • 659-2100	Morse Implement Morse • 733-2668	Xcel Energy Responsible By Nature Perryton • 806-435-4052
Brown, Graham & Co. Spearman • 659-2538	Golden Spread Sales Co. Spearman • 659-3776	Hansford Pharmacy Spearman • 659-2226	MurMur's Cafe Spearman • 659-3580	
The Bunkhouse Restaurant Spearman • 659-2089		Hi-Plains Auto Supply, Inc. Spearman • 659-2506	North Plains Electric Coop 806-435-5482 • 800-272-5482	
Cargill Ag Horizons Spearman • 659-3554				

FOR RENT

FOR RENT: 1BR & 2BR furnished apartments for rent. All bills paid, free laundry. Call 659-2247.
TFN(1/20/11)B
FOR RENT: Large 3BR apartment, located at 822 S. Roland, \$500.00 month, one year lease required, Water paid, NO PETS. Available by 2/28/2011. Call Larry O'Neal at 405-285-8782 for lease application and to view apartment.
TFN(2/17/11)B

HELP WANTED

HELP WANTED: The Nursanickel Motel is seeking a housekeeper. Call 659-3737, or go by 815 Hwy. 207 S. in Spearman.
4(2-24-11)B
HELP WANTED: Experienced automotive technician needed. Good working environment, holiday pay, health insurance. Also service department helper needed. Apply in person at Prairie Motors in Spearman. (806) 659-2541 or 1-800-692-4657.
TFN(12/2/10)B

SERVICES

HOOCHY POOCHY PARLOR
Call us for all your pet's grooming and boarding needs. Call now for reservations! 806-273-2724.
TFN(11/2/07)B
TIRED OF GARAGE SALE PRICES? Let me buy your good used furniture! 2nd Chance Antiques & Furniture, Don 806-648-1480; 806-202-1391 cell.
TFN(1/20/11)B

PUBLIC NOTICE

HELP WANTED
City of Spearman is accepting applications for a Maintenance Worker II position in the Utilities Department. A high school diploma or equivalency and a Texas drivers license is required. The City has an excellent benefit package which includes retirement, health insurance, vacation, holiday, and sick leave pay. Applications may be obtained at City Hall, 30 SW Court, until position is filled. EOE.
2(2/24/11)B

LEGAL NOTICE

Hansford County Commissioner's Court will receive sealed bids until 4:00 p.m. on Friday, March 11, 2011 on the sell of one used Catapillar motor grader.
Bids will be opened on Monday, March 14, 2011 at the regular Commissioners' Court meeting beginning at 10:00 a.m. in the Law Library of the Hansford County Courthouse.
Call 806-736-0162 or 806-659-3144 to make appointment to see the 1991 - 140 G series motor grader.
The Court reserves the right to accept or reject any or all bids.
Benny Wilson
Hansford County Judge
1(2/17/11)B

DON'T DIG
in streets, alleys or easements until you call the City of Spearman your gas company.
The City of Spearman will then mark their underground gas lines with yellow stakes, flags or spray paint.
Make request 48 hours in advance. This service is available at "no charge"

Are You A Victim of Domestic Violence, Sexual Abuse or Physical, Emotional or Sexual Assault?

Call Toll Free Hotline
1-800-753-5308

We can see individuals from Hansford County anytime upon request. Call 435-5008 or 1-800-753-5308 to set up an appointment in Hansford County. We operate a safe place for victims and their children to stay in times of crisis.
Battering Intervention & Anger Management Available

Panhandle Crisis Center
Serving Hansford, Lipscomb & Ochiltree Counties
301 S. Ash • Perryton, TX
Memorials Accepted

French & Co., Realtors
273-7355

Beautiful 3 BR. 2B home in Morse, Texas. 1.06 acres.
Updates Galore, Gorgeous tile & wood floors, stunning trim, custom paint, 28x33 garage & separate shop.
Call Michele for details.
806 273 7355

Century 21
Golden Spread Realty

404 4th Ave, GRUVER - 2BR, 1B, 1090 sq. ft. Also available for rent.
121 S. Hwy. 207, Spearman - Apartment complex & Bunkhouse. **PRICE REDUCED - MAKE OFFER.**
Gina Deal, Broker/Owner
(806)435-5444
www.century21.com

INDEPENDENTLY OWNED & OPERATED.
©1992® and "Century 21 Real Estate Corporation. Equal Housing Opportunity.
EOW(8-05-10)B

Subscribe to the Reporter-Statesman.
Call 659-3434 for details.

MARTIN & ASSOCIATES REALTY

Serving Hansford County Since 1990

Julie Martin: Broker - 659-2425

We'd Like Your Listing!

FOR QUALITY & SERVICE CALL US TODAY!

Equal Housing Opportunity

Blankenship Real Estate
659-3052 - 670-3774

LET US HELP YOU SELL YOUR HOME.

4BR, 2B, 2CG, basement, separate garage & workshop. Excellent location and condition. Many special features.

NEW LISTINGS WANTED!

Eulalia Blankenship - Sales
Eschol Blankenship - Broker

hchd
Hansford County Hospital District
Openings at Hansford Hospital

Administrative Assistant: Responsible for a clear communication with the District CEO and CFO. Manages CEO calendar and schedules appointments. Assist the CEO and CFO as needed with dictation, reports, filing and other item as needed. Perform daily task as assigned by CEO. Records minutes for the District Board Meeting and Department Head Meeting. Must have great communication skills. Must be well organized.

Hospital LVN: Night shift 7p-7a. Graduate of approved LVN/RN program. Provide nursing care to patients in a hospital setting.

Home Health/Hospice LVN: Graduate of approved LVN program. Provide general nursing care to patients in resident setting. Interacts with patients and patient's families, Medical Staff members and other departments of HCHD on a continuous basis.

Great working environment and staff, quality facility providing opportunities for professional growth. Great benefit package. Apply at 707 S. Roland, Spearman, TX or contact Jackie Nelson at 806-659-5841. Download application at www.hchd.net
EEOE
(2/17/11)

9	5	2	4	1	7	6	3	8
8	6	3	9	5	2	1	7	4
4	7	1	8	3	6	5	2	9
5	9	7	3	4	1	8	6	2
2	4	6	7	8	5	3	9	1
1	3	8	6	2	9	7	4	5
3	1	4	2	7	8	9	5	6
6	2	5	1	9	3	4	8	7
7	8	9	5	6	4	2	1	3

POISE PEA SODA
ORGAN AWL FLOOR
SCOUR NET RAZEE
HARDING HOOVER
ICE COIL
AVE OREO LIVING
DARK DYNE CEDAR
AGAR SACRA ILIA
MUSIC SERB LEAN
SEESAW ASAP DDT
ROIL CUE
BOSTON LINCOLN
NOLLE OWE NOVAE
ONAIR FEE ELENA
TAFT FDR RENAL

See us for:
AUTO • HOME • CROP HAIL • FARM & RANCH • MULTIPERIL • LIVESTOCK

INSURANCE

BORT AGENCY, INC.
510 Main St. • Gruver, TX
(806) 733-2456

This ad is just a small sample of the properties that we currently have for sale.

Please check our Web site and give us a call! We need your listings both large and small, all types of properties (ESPECIALLY CRP).

SHERMAN CO., TX - 640 acres. 2 pivots *180 acres expired CRP *110 acres native grass, cattle pens *170 acres, 1 pivot, cattle pens *320 acres, expired CRP.

BUDDY CLINE ROAD - Moore Co., TX. - 1/2 section choice land, two wells and sprinklers, house and shop.

HANSFORD CO., TX. - 4 sections, strong water, dev. with sprinklers, wells, feedyard, home, barns, pvtm., possibility of purchasing four additional sections in the area.

SWINE PRODUCTION FACILITY - Moore Co., TX. - 1200 sow Farrow to Finish, capable of running 28,000 pigs annually, computerized feed mill, flex-flo leading system, management in place. **PRICED TO SELL! INVESTORS WELCOME!**

SEE OUR WEBSITE OR CALL US!
www.scottlandcompany.com
Shawn Gillispie 806/922-5532
Ben G. Scott, Broker
1-800-933-9698 day/eve
TFN(2-17-11)

Shirley Howard Properties
Howard

We NEED listings!
Call us now to help YOU sell your home for top dollar!

1108 Dressen - Spearman: 1,400 sqft - 4 bed, 1 3/4 bath, CACH, Carport, Storm Shelter!

Shirley Howard, Broker/Owner
806-886-6536, Cell

Melinda McCullough, Realtor
(806) 733-5678

We would LOVE to sell your HOUSE!
CALL US!

M&D Aerial, LLC

David & Megan George
P.O. Box 520
Spearman, Texas 79081
David: (806) 202-2360
Megan: (806) 202-2359
mdaerial@yahoo.com

JINES REAL ESTATE

Farnsworth 208 Locust - \$132,000
Residence - Apartment - 3 Car Garage
14601 NW Loop 143 - \$124,900
10+ Fenced Acres w/Manufactured Home
New Listings Coming Soon!
I Look Forward to Working For You!

Remember, I can show you homes in the Spearman and Surrounding areas even if listed with another Broker.

Linda Jines • Broker-Owner
806-202-4752
View Photos at www.jinesrealestate.com

Palace Theatre

MOVIE SHOW TIMES
Friday-Thursday - 7 p.m.
Sunday - 2 p.m.
Closed Sunday Night

FRESH POPCORN & DRINKS!
PARTY ROOM & ARCADE
MOVIE RENTALS

Palace Theatre
210 Main Street
Canadian TX 79014
806-323-5133
www.palacetheatre.com

The Palace Theatre meets Lucasfilm THX specifications for site and sound quality.

TEXAS STATEWIDE CLASSIFIED ADVERTISING NETWORK

TexSCAN

TexSCAN Week of February 13, 2011

DRIVERS

COMPANY DRIVERS! REGIONAL Southwest up to .36¢ per mile. Class A-CDL. 1 year OTR required. Steady freight, exceptional benefits. Apply today! 1-888-440-2465 or www.nationalcarriers.com

DRIVER: CDL-A: Regional Texas opportunity steady miles and regular home time. Great equipment, must have CDL-A, 8 month OTR experience. 1-888-730-9312 www.deboertrans.com

DRIVER: COMPANY/OWNER operator great OTR and regional routes with Tango Transport Company. Start up to 36¢ per mile. O/O 90¢ empty and \$1.26 loaded. Call 1-877-826-4605 today!

DRIVERS-OTR seeking a new career/guaranteed job? FFE is offering free tuition at our FFE driver academy in Fort Worth, Texas. Call 1-800-569-9232 or e-mail: recruit@ffe.net

DRIVERS-OWNER/OPERATORS Solo teams, fleets. At least 2,800 miles per week. Home every 10-14 days. We have more freight than available trucks. 1-877-901-8591.

DRIVERS- PAID CDL training and a stable career. No credit check! No experience required. Trainers earn 49¢/mile. 1-888-417-7564; CRST EXPEDITED; www.JoinCRST.com

YOU GOT THE drive, we have the direction. OTR drivers, APU Equipped, Pre-Pass, EZ-pass, Pets / passenger policy. Newer equipment. 100% NO touch. 1-800-528-7825

FINANCIAL

CASH NOW! Cash for your structured settlement or annuity payments. Call J.G. Wentworth. 1-866-494-9115 Rated A+ by the Better Business Bureau.

HELP WANTED

SEE THE WORLD from your backyard! ISE is looking for families and representatives in your community to work with exchange students. 1-888-634-8789 for more information.

REAL ESTATE

160 ACRES WEST Texas, \$31,840 (\$99/acre) with \$540 down. Best deal USA! Call Joan; 1-949-722-7453.

676 ACRES-REEVES County, 15 Miles North Pecos. River frontage. Call Jack 1-214-755-6224.

ABSOLUTELY THE BEST VIEW Lake Medina/Bandera 1/4 acre tract, central W/S/E, RV/motor home/house, OK only \$830 down \$235 month (12.91%/10yr), Guaranteed financing. More information call 1-830-460-8354

18.95 ACRES, Kinney County. Oaks, heavy brush. Deer, turkey, exotics, hogs. \$1700/acre, long term owner or TX vet financing. 1-800-876-9720. www.texasranchland.com

HUNT WEST TEXAS; deer, dove, and quail; 132.65 acres at \$295/acre to 494.01 acres at \$350/acre, Terrell County. 1-866-286-0199. www.westernland.com

AFFORDABLE RESORT LIVING on Lake Fork. RV and manufactured housing OK! Guaranteed Financing with 10% down. Lots starting as low as \$6900 Call Josh, 1-903-878-7265

OWN 20 ACRES! \$13,900 near growing El Paso, Texas (safest city in America) Low down, no credit checks, owner financing. Free map/pictures; 1-866-569-5455, www.SunsetRanches.com

RUIDOSO, NM AREA, 5 acres with city water and city maintained roads near small fishing pond and golf course. Only \$19,900, financing available. Call NMRS; 1-877-926-8201.

\$106 MONTH BUYS land for RV, MH or cabin. Gated entry, \$690 down, (\$6900/10.91%/7yr) 90 days same as cash. Guaranteed financing. 1-936-377-3235

SCHOOLS/TRAINING

AIRLINES ARE HIRING Train for high paying aviation career. FAA approved program. Financial aid if qualified, job placement assistance. Call Aviation Institute of Maintenance, 1-877-523-4531

CANYOU DIG IT? Heavy equipment school, 3week training program. Backhoes, bulldozers, trackhoes. Local job placement assistance. Start digging dirt now. 1-866-362-6497

HIGH SCHOOL DIPLOMA graduate in 4 weeks! Free brochure! Call now! 1-866-562-3650. ext. 55. www.southeasternHS.com

Run Your Ad in TexSCAN!

Statewide Ad \$500
301 Newspapers, 942,418 Circulation

North Region Only \$230
98 Newspapers, 263,811 Circulation

South Region Only \$230
101 Newspapers, 366,726 Circulation

West Region Only \$230
102 Newspapers, 311,881 Circulation

To Order: Call this Newspaper direct, or call Texas Press Service at 1-800-749-4793 Today!

Hotline for Priority Seating - 435-3945

MONEY'S

BBQ & STEAK HOUSE

We Are THPLC-2-B

14 SE 3rd Ave. Perryton, TX

Stan and Donna Zepp

New, Updated Menu Same Great Service

Proudly Celebrating Two Years

FRONTIER FENCING & CONSTRUCTION

FF

NOW OFFERING OVER 20 YEARS OF THE HIGHEST QUALITY FENCING EXPERIENCE

Barbed Wire Fencing Pipe Fences Corrals Metal Buildings - Prefabs & Pole Barn Residential Fence Various Construction & Carpentry Projects

Contact - Brandt Oquin (806) 202-2208

NOTICE: While most advertisers are reputable, we cannot guarantee products or services advertised. We urge readers to use caution and when in doubt, contact the Texas Attorney General at 1-800-621-0508 or the Federal Trade Commission at 1-877-FTC-HELP. The FTC web site is www.ftc.gov/bizop.

Extend your advertising reach with TexSCAN, your Statewide Classified Ad Network.

by Dorothy Hudson

Out at the Lake

Jim Derington
Palo Duro River Authority
P.O. Box 99
Spearman, TX 79081
806-882-4401
pdra@dishmail.net



This is a picture of the Palo Duro Creek bridge, at Lake Palo Duro. It washed out in mid June 2010 flood.

Lake Level--February 21, 2011--45.16 feet (-0.27)

With the advent of warmer weather, the ice on the Lake has thawed, and the geese have gone. The eagles are still seen at times. If you are lucky, you may still see the mountain blue birds and the cedar waxwings.

A camper from Hooker visited over the weekend. He was there when the electricity was out for awhile.

On the weekend, several visitors came out just to drive around. One fisherman was out, possibly hoping to catch a big blue catfish. This is the time of year they begin to move around.

Along with the warmer weather, we have an increased risk of fire. Be careful and watchful. As of today Jim hadn't put up fire bans.

Wild Horse News

Representative Dan Burton, Republican of Indiana, has lead a charge to reduce the budget of the Bureau of Land Management (BLM) by two million dollars. He is unhappy with the expense of wild horse care, but his motion did not address how to resolve the issue. The Burton motion carried with a voice vote in the House and now moves forward for debate in the Senate.

In his February 19 column in the in the Amarillo Globe-News, Baxter Black discussed another side of the wild horse controversy. Specifically, there have been unintended consequences from the efforts to protect horses by banning slaughterhouses in the United States. Now many horses are being abandoned because the expense of euthanasia and burial is more than owners are willing to pay.

Baxter is calling this the tragic abandoned horse issue. In response he is promoting new Centers for Humane Euthanasia and Equine Recycling to be called CHEER.



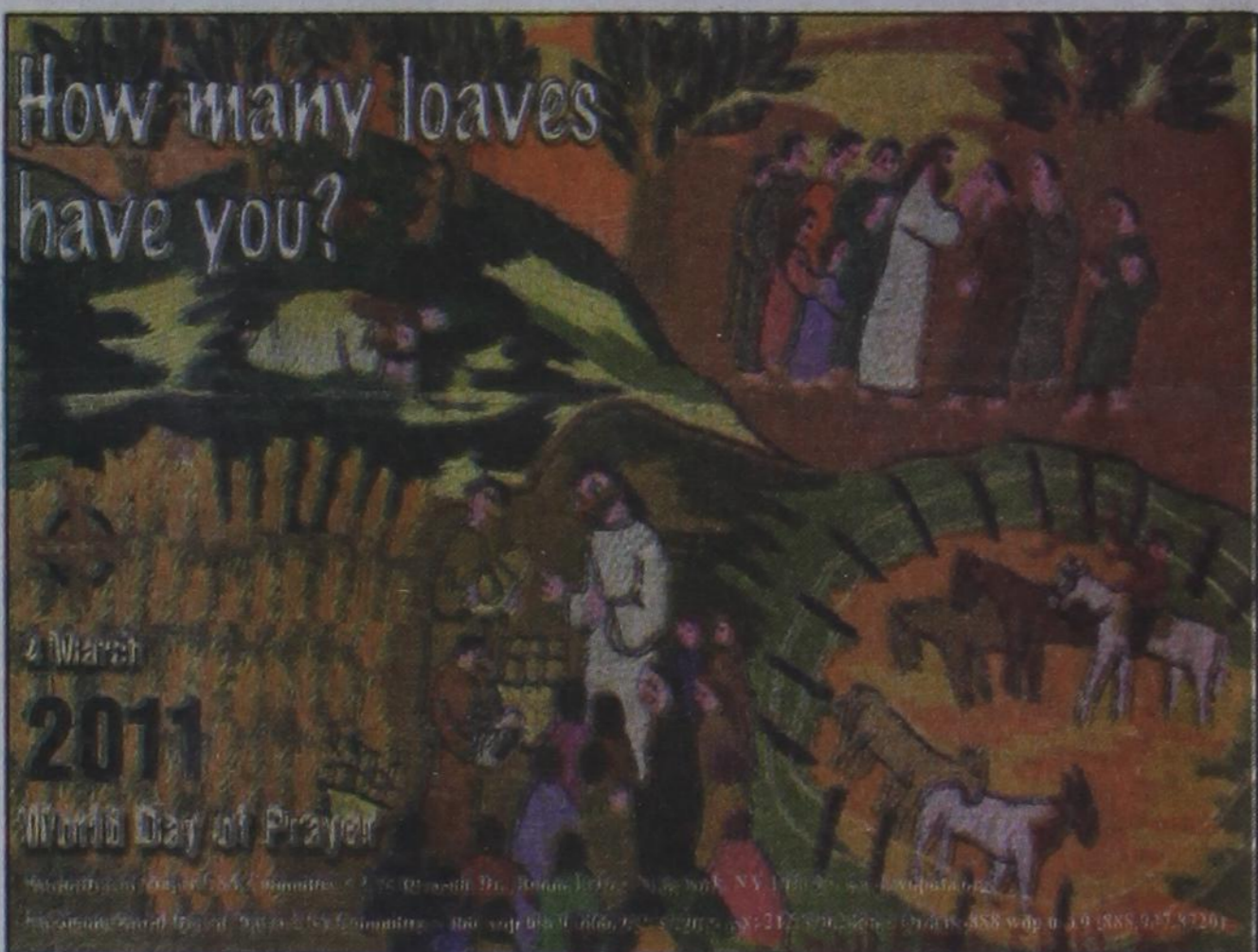
Local Cub Scout Troup Tours Courthouse

On 10 Feb 2011 (Left to Right) *The Honorable Benny Wilson, Hansford County Judge; John L. Hutchison, Hansford County Attorney; Bob Davis, Justice of the Peace; and Hansford County Sheriff, Gary Evans* gave an educational tour of the Hansford County Courtroom and other parts of the Courthouse to Spearman Webelos and cub scout troops, of Boy Scout troop 578.

The scouts learned about the judicial process and local law enforcement. They gained an appreciation for living in a free society and the exceptional freedoms and rights we get to enjoy being citizens of the United States of America.

The main tour was guided by The Honorable Benny Wilson and the Honorable John L. Hutchison. The example and service of these men encouraged the scouts to want to be good citizens!

Scouts attendind the tour included (Left-Right) *Ethan Cotter, Nic ortiz, Steven Dettmer, Aiden Garnett, Brandon Dettmer, Reed Anderson, Dalton Shields*



Friday, March 4, 2011

First United Methodist Church, Spearman

9:30 a.m. - Fellowship/Coffee & Donuts; 10 a.m. - Service

Hoochy Poochy Parlor

For Booking reservations and grooming appointments, call now

Where Spearman Customers Get Priority!

Hoochy Poochy Parlor Please visit us for a free estimate on your pet care needs.

421 E. 10th St.
Borger, TX 79007
806-273-2724
hoochypoochy@att.net
www.hoochypoochy.net

Hours:
Mon-Fri, 8am-5pm
Saturday by appointment only

We put the Hoochy in your Poochy

POT O' GOLD

Dinner & Dance

To Benefit The O'Loughlin Center

SAVE THE DATE

SATURDAY MARCH 26, 2011 @ 7PM

Enjoy Tenderloin & All the Fixings
Dance to Insufficient Funds
Win your Pot O' Gold!!!

\$2500 Grand Prize,
Consolation Prizes and Much More!

\$60 per person

Call 806-659-3030 or any Board Member for tickets.

Three Falls COVE

From Sanford, take Hwy. 139 across the Lake Meredith Dam. About 1/2 mile after crossing the dam, turn left on Hwy. 3395. Go 2 miles until you see a pond surrounded by beautiful cottonwood trees.

For map, go to www.threefallscove.com

Shopping items and Gift Certificates available.

Kirk and Rebecca Weatherford
805 FM 3395
Sanford TX 79083
806-690-2366