

SCH2  
COMP  
HANSFORD COUNTY LIBRARY  
0122 MAIN ST  
SPEARMAN TX 79081-2064



# HANSFORD COUNTY THE REPORTER-STATESMAN

THURSDAY,  
MAY 12, 2011

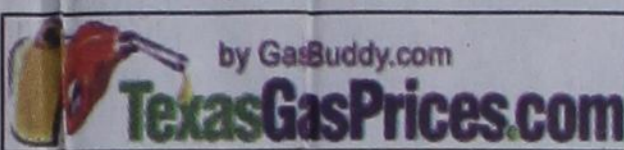
CELEBRATING 104 YEARS OF SERVICE TO HANSFORD COUNTY  
HANSFORD COUNTY'S ONLY NEWSPAPER

75¢

WWW.SPEARMANREPORTER.COM

VOLUME 104 • ISSUE 19

REPORTER@SPEARMANREPORTER.COM



## Weekly Update

Texas, May 9- Average retail gasoline prices in Texas have fallen 1.5 cents per gallon in the past week, averaging \$3.32/g yesterday. This compares with the national average that has fallen 0.8 cents per gallon in the last week to \$3.43/g, according to gasoline price website TexasGasPrice.com.

Including the change in gas prices in Texas during the past week, prices yesterday were \$1.04/g higher than the same day one year ago and are 16.2 cents per gallon higher than a month ago. The national average has increased 19.4 cents per gallon during the last month and stands 100.0 cents per gallon higher than this day one year ago.

GasBuddy operates GasBuddy.com, TexasGasPrices.com, and over 225 other local gasoline pricetracking websites that follow prices at over 125,000 gasoline stations in the United States and Canada. GasBuddy also uses Facebook (facebook.com/gasbuddy) Twitter (twitter.com/gasbuddy), and phone apps to keep motorists ahead of changing gasoline prices. GasBuddy.com was named one of Time magazine's 50 best websites and to PC World's 100 most useful websites of 2008.

## Burn Ban

On Monday, March 7, 2011, Hansford County Judge, Benny Wilson issued a Burn Ban, effective for 7 days.

The Hansford County Commissioners Court voted to extend the Burn Ban on Monday, March 14, during their regular Commissioners Court meeting. The extension will last an additional ninety days. Unless rescinded, the burn ban will be effective through June 4th.

For more information about the burn ban in Hansford County, contact Judge Benny Wilson at 806659-4100.

## Weather Forecast

THURSDAY NIGHT - Partly cloudy. Breezy. Lows in the lower 40s. North winds 15 to 25 mph decreasing to 10 to 15 mph after midnight.

FRIDAY - Mostly sunny. Breezy. Highs around 70. Northwinds 15 to 25 mph.

FRIDAY NIGHT - Partly cloudy. Lows in the lower 40s.

SATURDAY - Partly cloudy. Highs in the upper 60s.

SATURDAY NIGHT - Partly cloudy. Lows in the lower 40s.

SUNDAY - Partly cloudy. Highs in the lower 70s.

SUNDAY NIGHT - Partly cloudy. Lows in the mid 40s.

MONDAY - Partly cloudy. Highs in the mid 70s.

MONDAY NIGHT - Partly cloudy. Lows in the mid 40s.

TUESDAY - Partly cloudy. Highs around 80.

Read me: <http://www.city-data.com/forecast/w-Spearman-Texas.html#ixzz0xgJ5WQkT>

## Texas Crop & Weather

The following specific livestock, crop and weather conditions were reported by Panhandle Extension directors: The region was hot, rains and windy. The danger of wildfire remained high. Most corn planting was finished; farmers were steadily irrigating to keep up with the water demand of crops. Planting of cotton, and peanuts was ongoing. Rangeland was in very poor condition. There was very little green-up in pastures. Cattle were in good condition with continual supplemental feeding.

## May 14th Election

The City of Spearman, Spearman ISD and Gruver ISD will hold elections on Saturday, May 14, 2011.

The City of Spearman has three Alderman positions up for reelection - Kathy Boy, Mike Schnell and Tobe Shields. In addition to the three incumbents, Marc Earland and John E. Woodward filed to run.

Spearman ISD has two terms up this year. The two terms expiring are Dwayne Mitchell and Joel Shields. The two incumbents filed, as did Mikal Willimon.

Gruver ISD has two positions on the ballot this year. The two candidates up for reelection are Traci Venneman and Tigge Winger. In addition to the two incumbents, Greg Haight and Chad Logsdon filed.

The Gruver ISD Board of Trustees election will be held in the Jr. High Library from 7 a.m.-7 p.m.

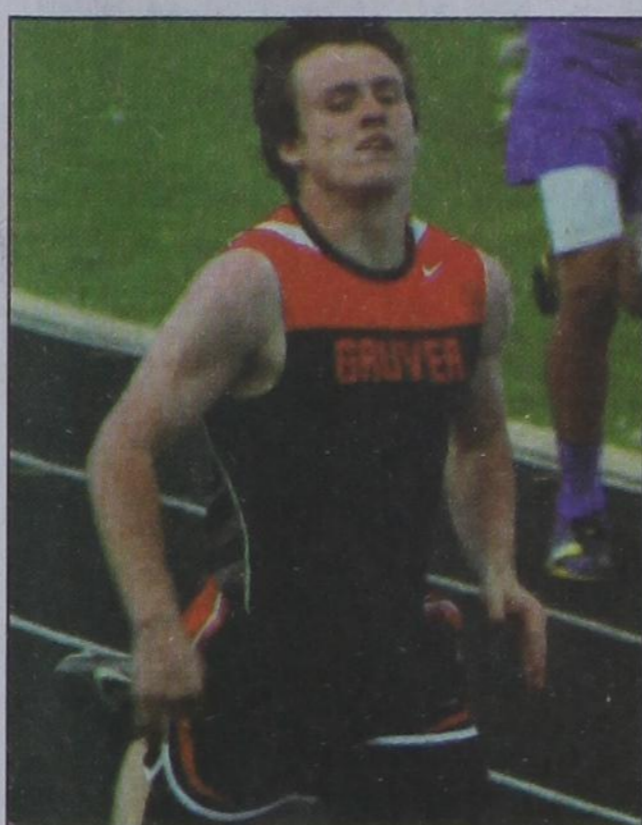
The City of Spearman and the Spearman ISD elections will be held at the Spearman ISD Business Office, 403 E. 11th Ave., from 7 a.m.-7 p.m. on May 14th.

Remember to take your driver's license or voter registration card.

## Hansford County Athletes Head to State Track Meet



Shelley Gibson continues to set and break records on her way to Austin. Shelley broke her previous record in the 3200 when she posted an impressive time of 11:55.48. On day two, Shelley lowered her personal best and set a new mark in the 1600 meter run of 5:25.51. Shelley, as only a Junior, has earned her way to Austin every year and this marks the 2nd year in a row for "bookend" trips. Shelley will compete in the 3200 meter State Run on Friday, May 13th and the 1600 on Saturday, May 14th.



Jerrod Collier competed in the 400 meter dash and the 200 meter dash. Jerrod qualified for the State Meet in the 400 meter dash by finishing second and running a personal best time of 50.77 seconds. Jerrod then made a quick turn around, and competed in the 200 meter dash finishing 7th. Jerrod will run in Class A State 400 Meter Dash Final at 1:55 on Saturday, May 14th.

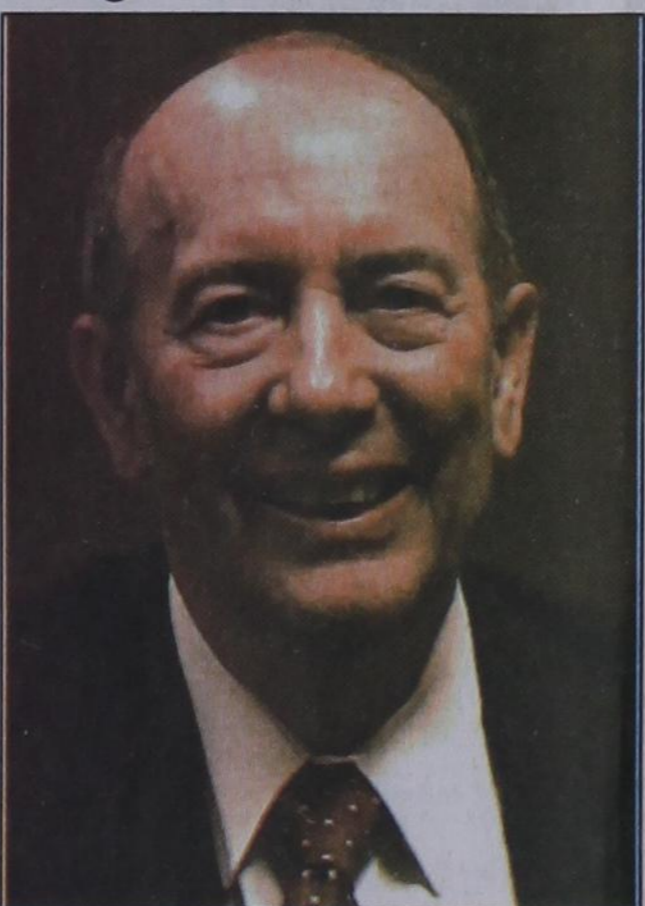


Sarah Snider got first place at Odessa on May, 3 2011 with a time of 2:20.02. She will be headed to Austin for the State Track Meet on May 13 & 14 2011. Sarah is the daughter of Jimmy & Jeanie Snider and the Granddaughter of Irene Snider and the late Vance Snider and Vernon and Sarah Hayes of Elkhart KS.



Senior Airman Jordanna Lozano Wilson came to visit Mrs. Flowers' first grade class this week. She talked to the students about her position and her job. The students were so excited to see SrA Jordanna and had lots of questions for her. Jordanna is a 2007 graduate of Spearman High School and has been in the United States Air Force for 4 years. She is in the 36th squadron and is a C-130 loadmaster stationed at Yakota Air Force Base in Japan. Jordanna is the daughter of Frank Lozano and Tina and John Adams. Thank you Jordanna for your service and for protecting the United States of America. We are so proud of you!

## Whitson Inducted into Texas A&M Agricultural Economics Honor Registry



By Blair Fannin

Dr. Robert E. Whitson has been inducted into the Tyrus R. Timm Honor Registry in the Texas A&M University Department of Agricultural Economics.

Whitson, a Spearman native, was honored at a reception and dinner held at the Best Western Atrea in Bryan.

The registry recognizes outstanding former students for meritorious accomplishments in their field. It is the highest department-level honor and is named after Tyrus R. Timm, who led the agricultural economics department from 1953 until 1973 during its rise to national prominence in teaching, research and Extension. Timm was known for his knowledge of finance and agricultural banking.

Whitson is vice president of the Division of Agricultural Sciences and Natural Resources at Oklahoma State University and Dean of the College of Agricultural

Sciences and Natural Resources. He also is director of both the Oklahoma Agricultural Experiment Station and Oklahoma Cooperative Extension Service. Recently, he was appointed to Oklahoma Gov. Brad Henry's Science and Technology Council.

Previously, Whitson served as deputy director of Texas AgriLife Research and associate vice chancellor and associate dean for the College of Agriculture and Life Sciences at Texas A&M. He also served as interim department head of animal science at Texas A&M during his time in administration.

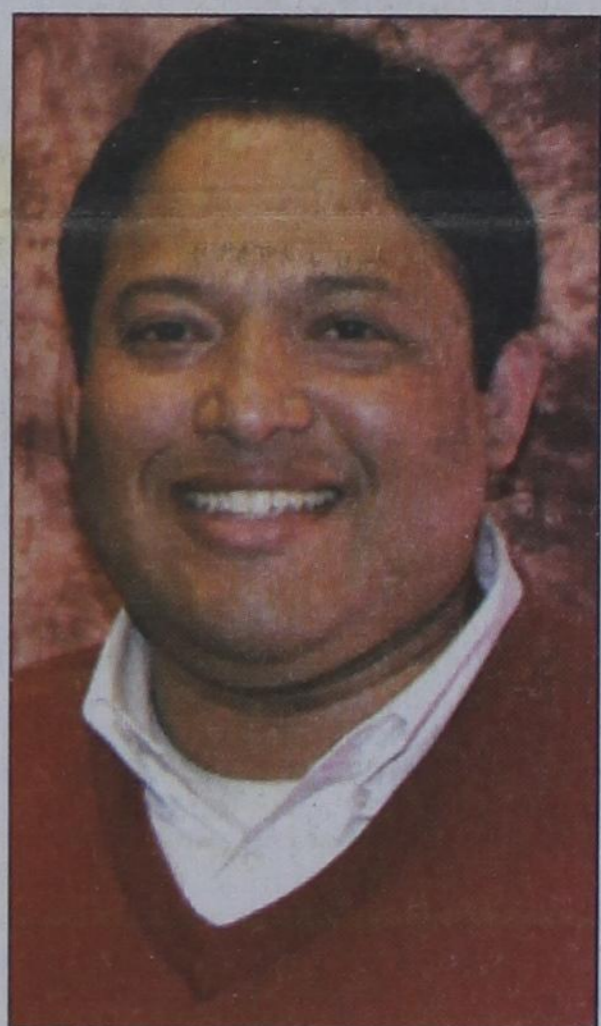
"Bob is truly deserving of this honor," said Dr. John Nichols, head of the department of agricultural economics. "His leadership in Extension, research and teaching are at levels of high standards of excellence beneficial to all stakeholders. He always places the interests of people first."

Whitson worked for Frost National Bank in San Antonio for 12 years, moving from assistant vice president in 1981 to senior vice president in 1984-1993. His responsibilities included managing portfolios of real estate, farm and ranch assets. In 1994, he returned to Texas A&M as professor and head of the department of rangeland ecology and management to lead a department of 34 teaching, research and Extension faculty, both on-campus and at six research and Extension centers across the state. That later led to his administrative roles with the A&M System.

Whitson earned his doctorate in agricultural economics from Texas A&M University in 1974. He received his bachelor's in range management and master's in agricultural economics from Texas Tech University.

More information about the Tyrus R. Timm Honor Registry is available at <http://agecon2.tamu.edu/ty%20timm/ty-timm.html>.

## Canyon ISD Names Teacher of the Year



Noe "Nick" Renteria

Canyon Independent School District has announced the 2010-2011 Teachers of the Year.

The Elementary Teacher of the Year for is Nick Renteria. Renteria teaches second grade at Lakeview Elementary School, where he has taught for four years. He graduated from West Texas A&M University in 2007 with a bachelor's degree in interdisciplinary studies. He is a 1994 graduate of Spearman High School.

Elementary Teacher of the Year finalists were Ginger Denney, Greenways Intermediate School, and Nick Renteria, Lakeview Elementary School. Secondary school finalists are Marcie Cook, Canyon High School, and Steven Singleton, Randall High School.

Honorees will compete for regional elementary teacher of the year, which will be announced in August.

## WHEN DOES YOUR SUBSCRIPTION EXPIRE?

SCR1  
05/11 EXPIRES  
JOHN Q. PUBLIC  
PO BOX 123  
SPEARMAN TX 79081

Expiration dates are printed on the top of all mailing labels. Our readers can help keep the cost of subscriptions down by mailing in renewals in the appropriate month.

Thank you, Catherine Smith

THE HANSFORD COUNTY REPORTER-STATESMAN  
213 Main Street • Spearman, TX 79081

### Annual Subscription Rates

In Hansford County - \$30

Out of County - \$40

E-Subscription - \$35 (sent through e-mail)

# Wolf Creek Heritage Museum Notes

by Virginia Scott  
MUSEUM HAPPENINGS

First, I must apologize and correct my mistakes from last week! I totally got Sharon's name wrong. I apologize. The current exhibit is a beautiful display of fabric art by Pam with paintings by Missy, Sharon and their mother. Therefore it is titled the Akers Family Exhibit. The exhibit will be on display for the months of May and June. On June 26, Monte Akers will be at the museum for a book signing and reception for the Akers, family so mark your calendars.

With the changing of exhibits, the museum was very busy Wednesday hanging the quilts and paintings which were a challenge since we had not used our new quilt hangers. Once we got the hang of it, the process went smoothly

and the art room was bright with color and wonderful designs by lunch time. This is one exhibit you should not miss.

Also on Wednesday, we had Jason Watson, Fire Marshall for the Higgins Fire Department, come over and inspect the museum for fire safety and to inservice the staff on how to work a fire extinguisher. This was our activity for National Emergency Preparedness Week by National Heritage Presentation, Inc.

### Historical Musings

May 6 through 12 is National Nurses Week.

The first National Nurse Week was observed from October 11-16, 1954. The year of the observance marked the 100th anniversary of Florence Nightingale's mission to Crimea. In

1972, a resolution was presented by the House of Representatives for the President to proclaim "National Registered Nurse Day." It did not occur.

In January of 1974, the International Council of Nurses (ICN) proclaimed that May 12 would be "International Nurse Day." May 12 is the birthday of Florence Nightingale. In February, a week was designated by the White House as National Nurse Week, and President Nixon issued a proclamation.

In 1981, the American Nurses Association, with other nursing organizations, rallied to support a resolution initiated by nurses in New Mexico, through their Congressman, Manuel Lujan, to have May 6, 1982, established as "National Recognition Day for Nurses." The resolution passed.

In the 1990's, the American Nurses Association designated the dates of May 6 thru 12 as the permanent dates for the National Nurses Week, with May 6 as Nurses Recognition Day and May 8 as Student Nurses Day.

The museum needs the names of Lipscomb County Nurses that have practiced in the county over the years. We have many of our doctors names, but not too many of the nurses. We appreciate pictures, names, etc. that would help us expand our medical history.

Please thank our local nurses for their dedication to their profession and for taking care of our health needs.

May 8 was Mothers Day and I hope each and everyone of you did something special for your mom. It was President Wilson that proclaimed the first National Mother's Day in 1914.

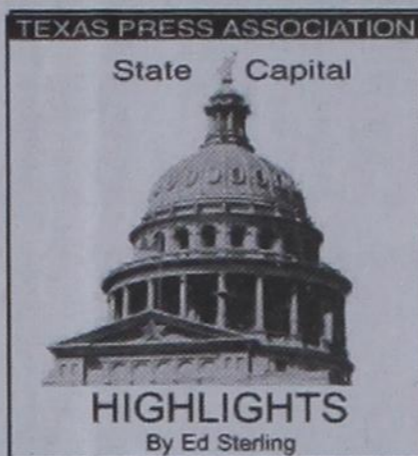
Enjoy the week!

## Wolf Creek Heritage Museum

Museum Hours: Monday thru Friday 10 a.m. to 4 p.m., Special hours upon request.

Museum Information: 13310 Hwy 305, PO Box 5, Lipscomb TX 79056; telephone: 806-852-2123; e m a i l : wolfcrk@amaonline.com; website: www.wolfcreekheritagemuseum.org

See us for: AUTO • HOME • CROP HAIL • FARM & RANCH • MULTIPERIL • LIVESTOCK  
**INSURANCE**  
BORT AGENCY, INC.  
510 Main St. • Gruver, TX (806) 733-2456



# STATE CAPITAL HIGHLIGHTS



by Ed Sterling

## End of session slowdown mires legislation

AUSTIN — Deadlines for legislation to meet or die are fast approaching, and so the Texas House of Representatives last week worked evenings, including Saturday morning, May 7.

But the body fell short of its goal of debating long lists of bills as philosophical differences between the Republican majority and the Democratic minority ate up the clock, and that, coupled with procedural sticking points, brought action to a trudge and finally a halt.

HB 400, the public education "flexibility" bill by Rep. Rob Eissler, R-The Woodlands, was in the pack. The bill would allow school districts to increase the students-to-teacher ratio, furlough teachers and reduce their pay in the name of saving money.

Last week, Gov. Perry suddenly ordered the Legislature to put "loser pays" legislation on the fast track as an emergency item. That's HB 274 by Rep. Brandon Creighton, R-Conroe, amending civil court procedure. In floor action on Saturday, parliamentary inquiries, points of order and a spate of amendments dragged out the debate. The bill was tentatively passed and soon after, the House recessed. When this happens, other bills die because there won't be enough time to bring them up on following days.

The last day of the session is May 30, and this week, important deadlines for legislation kick in, such as Monday, May 9: Last day for House committees to report House bills and joint resolutions (proposed constitutional amendments).

## Bills signed or awaiting signature

About 60 Senate bills and 15 House bills have made it through the gauntlet to Gov. Perry's desk. As of May 8, only 21 Senate bills and no House bills had been signed by the governor. Here are a few of the signed ones:

• SB 24 by Sen. Leticia Van de Putte, D-San Antonio, and House sponsor Senfronia Thompson, D-Houston, relating to the prosecution, punishment, and certain criminal and civil consequences of offenses involving or related to the trafficking of persons and to certain protections for victims of those offenses.

• SB 37 by Sen. Judith

Zaffirini, D-Laredo, and House sponsor Elliott Naishat, D-Austin, extending the life until Sept. 1, 2017 of the Promoting Independence Advisory Committee to ensure appropriate care settings for persons with disabilities.

• SB 115 by Sen. Carlos Uresti, D-San Antonio, and House sponsor Pete Gallego, D-Alpine, limiting the liability of space flight entities to encourage development of a commercial space launch industry in Texas.

• SB 309 by Sen. Chris Harris, R-Arlington, and House sponsor Diane Patrick, R-Arlington, making the Academy of Country Music Awards, the National Cutting Horse Association Triple Crown, and a national convention of the Republican National Committee or the Democratic National Committee eligible for the state's Major Events Trust Fund program and to require a study of the measurable economic impact of the events.

## Officials comment on bin Laden

With messages posted to their official state websites, Gov. Rick Perry and other state officials on May 2 hailed the United States' successful mission to find and kill international terrorist Osama bin Laden.

On May 1, the planner of the Sept. 11, 2001, attacks

on America was in a walled compound in Abbottabad, Pakistan, when a team of U.S. Navy SEALs entered and killed him on orders from President Barack Obama. The body of the al-Qaeda leader was transported to an aircraft carrier and buried at sea.

Except from Perry's statement: "Our thoughts and prayers remain with those who will continue to wage our global fight on terror, placing their own lives on the line to keep us safe back here at home."

Lt. Gov. David Dewhurst: "I salute President Bush, President Obama, the brave men and women of the United States military and our intelligence community who never gave up on bringing Osama bin Laden to justice for the deaths of 3,000 innocent Americans on 9-11. The demise of bin Laden sends a clear message to al-Qaeda and the enemies of freedom still seeking to do harm to America. We will never forget 9-11 and we will not rest until we bring justice to those responsible."

Attorney General Greg Abbott: "The face of evil has been eradicated thanks to American forces' dogged pursuit of justice. The Twin Towers may no longer stand, but American justice — and exceptionalism — will never prevail. We will never forget."

## Words from Faith & Grace

by Cecil R. Biggers, Lutheran Lay Minister



In the fourth week of the Season of Easter, we study Acts 2: 42-47, Psalm 23, 1 Peter 2: 19-25, and John 10: 1-10.

Luke addresses the characteristics of the Church (what I call the Faith Community). The Holy Spirit calls each of us believers individually, but we are not meant to be hermits. Those called to this early faith community were interested in learning from the teaching of the apostles and the fellowship of believers. This faith community was committed to daily prayer and the breaking of bread, ritually and literally, together. This faith community was one in which marvelous things were done, where things happened. The individuals of this faith community shared their wealth and possessions with others of the community who were in need. The faith community spent much time in worship. This faith community was happy and others upon seeing the actions of this faith community, could not help but like it. Does this describe your faith community? Should it?

Much has been written about the 23rd Psalm, but we can learn something of it by looking at Psalm 22. Psalm 22 was quoted by Jesus on the cross. "My God, My God why have you forsaken me!?" Psalm 23 is a song of praise for guidance and a song of trust in God's steadfast love. Psalm 23 answers the fears of abandonment expressed in the lament of Psalm 22.

Peter addresses a gathering of domestic/household slaves. With over sixty million slaves in the Roman Empire, the Empire treated these slaves as things. Peter explains that Christianity is a way of life. That if a believer is beaten or suffers unjustly, then this is exactly what Christ suffered for the believer. Christ treats the believer as a loved individual. Christ freed believers from sin, allowing believers to live righteously. Christ is the Shepherd and guardian of the believers souls. Perhaps, we miss this point when we think of our Christianity as a system of belief. We tend to think that we must believe certain things, we must act a certain way and perform certain rituals to be Christian; actually, Christianity is a way of life, a daily task, a way of 'being'. If you put on Jesus Christ (like a coat), then those who meet you will see a reflection of Christ. Think about this.

John shows us Jesus as the Good Shepherd. The necessary characteristics of a good shepherd were constant vigilance, fearless courage, and patient love for his flock. When Jesus' audience seemed to miss the point of the Good Shepherd, Jesus used a figure of speech saying, "I am the gate for the sheep. Whoever enters by me will be saved, and will come in and go out and find pasture. In the hills there were open stone enclosures used to pen the sheep at night. There was no "gate" but the shepherd laid down across the opening so that he could observe if any sheep were injured as they went in and in the morning, the Shepherd led them out to pasture. The Shepherd as Gate defended the flock from roving predators. Makes you feel good to be a 'sheep', doesn't it.

May the Holy Spirit enable you to be part of the faith community, and to live the disciple life.

SUDOKU PRESENTED BY  
**VolunteerMath.org**  
Where volunteering begins.

2	5	8		9				
		8	3	1				
				2	5			
8			2					1
	4			7			2	
1					6			5
		4		3				
				9	2	3		
		7			4	6		8

© StatePoint Media / SPXZ answer on classified page  
Fill in the blank squares in the grid, making sure that every row, column and 3-by-3 box includes all digits 1 through 9.

## WEDDING BELLS

**ACROSS**

- Bluish green
- Possesses
- Shirley MacLaine's 1963 character
- Child-eating queen of Greek mythology
- As opposed to rent
- Town \_\_\_ or public announcer
- Accepted as truth
- Actress Thompson
- Post-\_\_\_, or as fast as possible
- \*2011 royal groom
- \*Groom-to-be
- Overnight lodging
- Hindquarters
- Learning disorder
- Malaria symptom
- Examine
- Home to students
- The Beatles' "Back in the \_\_\_"
- \*Spot for a boutonniere
- Equal to pi times square of the radius
- \*Popular fabric choice for a gown
- They turn a bathtub into a hot tub
- Sacred song
- Many focuses
- Against
- Dental plaque
- Rock opera version of "La Boheme"
- Buck's mate
- Toothy tool
- Likewise
- Buttocks' muscles
- \*Tie \_\_\_
- Native of Oman
- U Rah \_\_\_!
- Sir Michael, Oscar-winning actor
- A river \_\_\_
- The poem "\_\_\_ to Spring"
- Sleep disorder
- Of the present month
- \*Promise
- Apple is a popular flavor of this, pl.

**DOWN**

- Fare ride
- Sitka, aka the Fourth Stooze
- Garlic mayo
- Thin layer
- River islet
- "Shock and \_\_\_"
- State of complete confusion
- Ahmadinejad's home
- Reduced instruction Set Computer
- Boundary line
- "\_\_\_ we there yet?"
- \*Common \_\_\_ marriage
- "\_\_\_ of Love" by The Dixie Cups
- Popular type of beef
- Mischievous little rascal
- Rejuvenate or reconstruct
- Accommodate
- Back of the body, pl.
- Gloomy and drab
- Defender of skies
- Prince of India
- Stand on end
- Vigorous fight
- Famous cow
- As opposed to a shake
- \*Thrown in celebration
- Famous Beethoven symphony
- \*"Father of the Bride" twice
- Charlotte of "Facts of Life" fame
- Front-of-shoe protector
- Famous Russian ballet troupe
- Giraffe-like African animal
- FBI agent
- Lad's counterpart
- A standard of measurement
- Muscle or strength
- \*Zsa Zsa Gabor was married this many times
- Dollar bills
- Actress Leoni
- \_\_\_-Wan Kenobi
- \*Much \_\_\_ About

These games are brought to you by the  
**Hansford County Reporter-Statesman**

Nothing"

**CROSSWORD**

1	2	3	4	5	6	7	8	9	10	11		
12					13			14				
15					16			17				
18				19			20	21				
					22			23				
24	25	26		27		28		29	30	31	32	33
34				35		36		37		38		
39						40		41		42		
43				44		45				46		
47					48	49		50		51		
					52	53		54		55		
56	57	58				59				60	61	62
63						64	65			66		
67						68				69		
70						71				72		

PRESENTED BY  
**VolunteerMath.org**  
Where volunteering begins.

© StatePoint Media answer on classified page

**The Hansford County Reporter-Statesman**  
Mailing Address - 213 Main Street • Spearman TX 79081  
Physical Address - 310 Barkley Street • Spearman TX 79081  
Phone - (806) 659-3434 • Fax - (806) 398-9080  
www.spearmanreporter.com • reporter@spearmanreporter.com  
Mon-Thurs. 9 a.m.-12 p.m., Mon-Wed. & 1-5 p.m.  
Closed Thurs. afternoon and all day Fri., Sat. & Sun.

**Gary Smith - Publisher** Catherine Smith - Editor  
Contributing Writers: Dorothy Hudson, Jim Derrington, Merry Sparks, Cecil Biggers  
Contributing Photographers: Charlie Johnson, Lisa Johnson Tammy Batton, Bonnie Bergan

**Subscription Rates**  
In Hansford County - \$30.00 • Out of County - \$40.00  
E-Mail Subscription - \$35.00

The Hansford County Reporter-Statesman (USPS 529660) is published weekly in Spearman, TX. Periodical postage paid in Spearman, TX. **POSTMASTER:** Send address changes to: The Hansford County Reporter-Statesman, 213 Main Street, Spearman, TX 79081.

**Publication Policy**  
The deadline to submit news and advertising to The Hansford County Reporter-Statesman is Monday at 5 p.m. Items submitted after the deadline will be published at a later date, as time and space permit. Publication of all items is at the discretion of the editor.

**Advertising**  
Open Display rates are \$4.00 per column inch. Classified Ads are \$6 for the first 25 words and 10¢ per word for each additional word. (Additional charge for boxed classifieds.) There is a \$1 charge per week if billed.

Member of  
Gruver Chamber of Commerce  
Spearman Chamber of Commerce  
Texas Press Association and Panhandle Press Association

**TA** **TEXAS PRESS ASSOCIATION** AWARD WINNER

# Happy Birthday!

**May 12**  
**Birthday** - Kristin Evans, John Holland, Trevor Ferguson, Deanna Johnson, Dave Karlin, Jimmy Greene, Hazel Scott, Gary Gumfory, Ernesto Puentes, Karen Hamilton, Toni Atwood, Bonnie Benson, Anita Spivey, Lauren Carter, Karen Hodge, Kenneth Redwine  
**Anniversary** - M/M Bob Davis

**May 13**  
**Birthday** - Kerry Foster, Billy Horton, Cora Meyer, Terry Butt, Roy Stinson, Tom Fanning, Sarah Moore

**May 14**  
**Birthday** - Nancy Barkley, Debbie Deeds, Gerald TeBeest, Vickie (Hand) Nickel, Patsy Barrera, Fran Quinby, Janice Gerrad, Luis Garcia, Sharon Seagler, Eric Titus, Jim Bartimus, Chris Johnson, Buck Tidwell, David Terry, Brandy Shelton, Sue Gerardy, Kevin Harris  
**Anniversary** - M/M Felipe Lomeli

**May 15**  
**Birthday** - Monte Cluck, Brooke Holt Ruhlin, Jamie Maize, Tommy Russell, Charles Eaton, Wayne Cook, Francisco Borunda Jr., Tommie Mitchell, Luis Moreno, Trent Seagler, Ortha Fay Watkins, Trena Horton, Sadie Goodall, Janean Baumgardner, Jean Armes, Bryan Dudley, Jennifer Traylor, Lance Smith  
**Anniversary** - M/M Don Kjos

**May 16**  
**Birthday** - Charles Evans, Mary King, Justin Miller, Ashley Sherrill, Gayle Smith, Kurt Spoonmore, Linda Latta, Cinda Wolf, Shelly Whitefield, Mary Trent, John Sprig, Michael Gruver, Linda Lujan, Rhonda Christian, Landry Fletcher, April Payne  
**Anniversary** - M/M Randy Reid, M/M Justin Gifford, M/M Darrell Wright

**May 17**  
**Birthday** - Bart Thoreson, Karen Burke, Billy Close, Lorene McGuire, Earla Spencer, Matt Lair, Scott Boyd, Angela Pipkin, Lloyd Laxton, Marcy Villalobos, Cleavene Elliott, Edith Volden  
**Anniversary** - M/M Randy Reid, M/M Justin Gifford, M/M Darrell Wright  
**May 18**  
**Birthday** - Dan Carthel, Phylis Haefner, Amy Lewis, Darrell Messer, Clint Swink,

Jerry Swink, Sally Desimone, Paula Fryrear, Alma Ricketts, Byron Kenney, Joy Gafford, Ernestine Gray, Luis Moreno Jr., Kimberly Rhea, Ann Atchison, Amy Sparks, Thea Beck, Danny Henson, Kenny Virnden, Travis Hodge, Justine Rosales  
**Anniversary** - Roy & Denise Harbour, Raymond & Judy Jenkins, M/M Mark McCloy, M/M Robert Elliott

**May 19**  
**Birthday** - Yvette Miller, S.J. Wells, Cora Lee Frantz, Wayne Ellsworth, Bettie Davis, Debbie Schumann, Nita Burger, Lori Scroggs, Ricky Deluna, Joanne Blodgett, Sandi Pearson, Beatrice Self, Mary Delarosa, Brandi Allen, Otto Gammill, Brandy Morris, Linda Cummings, Cami Winegarner, Kate Haruch

**Anniversary** - M/M Terrell Evans, Shorty & Carol Hester, M/M Tom Fanning, M/M Tim Smith

**May 20**  
**Birthday** - Donna Ralston, April Graham, Barbara Kenney, Ronny Smith, Cindy Scribner, Beatrice Ellsworth, Jacob Harbour, Vernon Gardner, Beatrice McCloy, Lanasa Washburn  
**Anniversary** - M/M Steve Stejde, M/M Pete Stafford, M/M Donnie Davis, Richard & Donna Trantham, Shawn & Dynell Moore, Brooks & Debbie Beck

**May 21**  
**Birthday** - Steven Foster, Holly Holt Key, Jenny Hart, Brad Johnson, Mae McLoughlin, Dennis Baker, Mike Kizzar, Carolyn McDaniel, Judy Vela, Faye Schmehr, Tracy Kirkpatrick, Veronica Gomez, Michael Quillin, Gaby Briones, James Martin  
**Anniversary** - M/M Francisco Borunda

**May 22**  
**Birthday** - Kaitlyn Poole, Sorrele Blevens, Geneva Eddleman, Tamra Gammon, Kathryn Gumfory, Jo Copeland, Amy Gumfory Seagler, Lacey Morris, Alan Shields, James Osbourne, Joe Garza, Maria Vela, Vickie Genn, Flossie Boyd, Cassie Myatt, Carla Woodington, Detsi Vera  
**Anniversary** - Irvin & Helen Boyd, M/M Steve Reed, M/M Rex Reid

# Our Sympathy

## WINNIE JEFFUS



ELKHART, KS - Winifred Wacker Jeffus went to be with her Lord and Savior on Monday, May 2nd, 2011 at the Morton County Care Center in Elkhart, KS.

She was born on November 16th, 1918 in Hutchinson, KS. She was the middle child born to Henry William Wacker & Elgie Lyon Wacker. Her family, which also included a brother, Henry, Jr. and a sister, Ruth (Miller), moved to Guymon in the summer of 1925 in their model "T" Ford. In the fall, Henry Jr. started to 6th grade and Winnie started 2nd grade at what is now Academy Grade School. It was the only grade school in Guymon at that time. - Mildred Moore was her teacher.

The family attended the First Christian Church where her mother taught Sunday school. Winnie later played the piano (she always said "not very well") and also taught Sunday school for many years.

Winnie graduated from Guymon High School with the class of 1936. She was a member of the Pep Club and always said that the members had to wear ugly sweaters and high heel shoes to the games. If they won a game, they had to march in their high heel shoes down Main Street! They also had to wear these high heel shoes to school and the class ahead of them wore hats to school & left them on all day! Winnie attended college for 2 years at Panhandle Agricultural and Mechanical College (now known as Oklahoma Panhandle State University) following High school. A carload of students drove to Goodwell everyday on an unpaved road. At that time, room, board and tuition totaled \$18 a month. During the months of March and April, her dad thought the dust storms were so dangerous that they spent those months living in Goodwell. Attending college was a big financial strain on her family, so her father wouldn't let her pay the bill until it was posted on the bulletin board in the hall of the Administration building - this was a very embarrassing experience for her!

In 1940, her future husband, Worth Jeffus, went to Fort Sill as a one-year trainee in the Army. When war was declared, everyone had to serve for the duration plus six months. They were united in marriage on October 9th, 1941, at her parents' house. After the wedding, Winnie traveled wherever the Army took Worth, when possible. They lived at Aberdeen, MD, El Paso, TX, and Arcadia, CA. Worth was gone overseas for more than 2 years and she wasn't allowed to go with him at that point. When Worth was discharged after 5 years, they moved to Pampa, Texas. Worth worked for Gulf Research as a surveyor on a seismograph crew.

Their first son, Larry Worth, was born on October 15, 1946, in Pampa. In 1947, they came to Guymon for the Pioneer Days celebration. They had such a good time and saw so many old friends. They went to the dances and stayed up all night finally finishing off with breakfast with Ed and Mary Nash. Later that year, they moved back to Guymon so Worth could return to the farming industry. In 1950, their second son, James Hal, was born. The good Lord took him from them in December of 1974.

In 1952, they joined the First Presbyterian Church where Winnie taught 2nd grade Sunday school for 5 years and adult ladies class for 13 years. Later in life, she was the Church librarian for at least 15 years.

Winnie worked on various civic committees within the community. Her first activity outside the church was as an assistant Cub Scout leader. She also worked with the hospital auxiliary, the Artists' Studio Northwest Club, P.E.O. of which she was a 50 year + member, and the Presbyterian Hope Circle.

Winnie developed a passion for painting in the early

1970's. A class was being held at Ann Thom's country home in Gruver, TX. She only attended this workshop because Louie Rimmel and Mickey Nash, her friends since childhood, were going too. Mrs. Thom was a wonderful woman and teacher. She encouraged Winnie to use oils. Another wonderful artist, Stephan Kramer, told her to never paint anything but flowers. Her favorite mediums were: oils, watercolors and pastels. She was a charter member of the Northwest Artist Association. Winnie attended many art shows in Guymon, Liberal, Greensburg and Elkhart, KS. She also put on some workshops in Goodwell and Hooker, OK as well as Hugoton, KS with Louie Rimmel. Winnie would hold fundraisers in her home for the Presbyterian Youth groups by displaying her paintings for sale and donating all the money to the Youth.

One of her greatest enjoyments was getting to know more people all the time and time spent with family. She enjoyed her many games of bridge played with numerous bridge clubs. Her very favorite pastime was shopping. Almost every Friday was spent shopping in either Gruver, Spearman or Amarillo, TX with granddaughter Elgie, or friends Charlotte Dixon and Mickey Nash. What a grand time everyone always had on shopping trips with Winnie!

Winnie will always be remembered as the "Purple" lady! She seldom left the house without wearing a beautiful purple outfit.

How appropriate that Winnie passed away the first week of May. She was from a true pioneer family and was honored as Pioneer Queen in 1999. The celebration here will not compare to the celebration in heaven.

Winnie is survived by a son, Larry Jeffus, of Guymon, 5 grandchildren: Paula Everett and husband Chet of Stratford, TX, Elgie Davis of Guymon, Brooke Jeffus and Jancy Jeffus of Grandfield, OK and Blaine Jeffus of Guymon. She was also blessed with great-grandchildren: Madison & Mercedes Davis of Guymon and Hunter & Bethany Everett of Stratford, as well as special great-grandsons, Jonathan, Anthony & Michael Davis. Winnie is also survived by nieces, Barbara Paslay and husband Michael of Brentwood, TN, Connie Jeffus of Grapevine, TX, Joan Connelly and husband Pat of Valencia, CA, and Kathryn Jeffus of New York, NY, Ginger Wacker of Copperas Cove, TX., Amber Wacker of Northglenn, CO and Carol Wacker of Guymon, nephews, Randy Miller and wife Glenda of Brentwood, TN, and Kenneth Jeffus of Thibodaux, LA, and a special cousin Charlene Gould & husband Rick of Overland Park, KS.

Winnie was preceded in death by her husband of almost 67 years, in 2008, her sister, Ruth Miller, and brother, Henry Wacker, Jr.

Graveside services were Tuesday, May 10th, 1:30 p.m. at Elmhurst Cemetery. Memorial services followed at 2 p.m. at the First Presbyterian Church, 310 NW 7th Street, Guymon with Pastor Deborah Hollified officiating.

Memorials in lieu of flowers may be given to the Presbyterian Church LOGOS or a charity of your choice, in care of Henson-Novak Funeral Directors, P.O. Box 1306, Guymon, OK 73942. www.hensonnovak.com

## MONUMENTS

### Boxwell Brothers

### Funeral Home

519 Evans • Spearman  
659-3802

Dear friends,  
When you buy a monument from us we make sure it is exactly what you want at a price you can afford. If it is not right, we will make it right. And you will not have to search the countryside to find us. We are here when you have a need.

Sincerely,  
Bob Boxwell

## Mesothelioma

EXPERIENCE COUNTS  
Lawyers with over 100 years combined expertise.

may occur 30 to 50 years after exposure to asbestos. Many workers were exposed from the 1940s through the 1970s. Industrial and construction workers, along with their families (second hand exposure) are among those at risk for mesothelioma, lung cancer or gastro cancer (throat, stomach, colon). Call us for professional insight.

Ryan A. Krebs, M.D., J.D.  
Doctor-Lawyer in Full-time Law Practice  
Richard A. Dodd, L.C.  
Timothy R. Cappolino, P.C.  
Board Certified Personal Injury Trial Law and Civil Trial Law by the Texas Board of Legal Specialization  
NO FEE FOR FIRST VISIT  
CAMERON, TEXAS

1-888-MESO-FIRM  
(1-888-637-6347)  
www.MesoFirm.com

## VISIT COLORADO, GET A FREE HAT!

Order yours at COLORADO.COM/HATGIVEAWAY and pick it up when you visit any Official Colorado Welcome Center.

Offer good while supplies last. One free hat per customer. Must be at least 18 years of age or accompanied by an adult. Some restrictions apply.

Packages starting at:

# \$24.99

MO FOR 12 MONTHS  
Local Channels Included Everywhere!

CALL NOW!  
1-866-799-8039

Offer ends 05/17/11. Restrictions apply. Call for details.

285+ Channels  
160+ HD Channels

# \$29.99

Mo.

Direct Sat TV  
1-800-360-1395

2 FREE Upgrades - HD DVR & HD Receiver - Ask How!

Offers end 7/26/11 on approved credit. New customers only. Other restrictions apply. Call for details.

- Our pools create Generations of Memories everyday, vacations never end!
- Aboveground & Inground pools at WHOLESALE PRICING
- SIMPLE DIY Pool Kit Assembly
- SAVE MONEY on All Pool Supplies & Accessories. Ships Fast

Call Today! 800-950-2210

## Replenish the seed of faith through . . .

### DAILY BIBLE READING, PRAYER & REGULAR CHURCH ATTENDANCE

<p style="margin: 0; font-weight: bold;">Spearman</p> <p style="margin: 0; font-size: 0.7em;"><b>Apostolic Faith Church</b> 822 S. Drexler • 659-2870 Sunday School: 10 a.m. Worship Service: 11 a.m. Sun. Eve.: 6 p.m. Wed. Prayer Mtg.: 7 p.m. Pastor - Jack Cornell</p> <p style="margin: 0; font-size: 0.7em;"><b>First Assembly of God</b> 401 N. Bernice • 659-2295 Sunday School: 9:30 a.m. Worship: 10:40 a.m. Evening Worship: 6 p.m. Wed. Worship: 7 p.m. Wed. Youth: 7 Pastor - Brad Smith</p> <p style="margin: 0; font-size: 0.7em;"><b>First Christian Church</b> (Disciples of Christ) 29 S. Bernice • 659-2036 Sunday School: 9:45 a.m. Worship: 10:50 a.m. Minister -</p> <p style="margin: 0; font-size: 0.7em;"><b>First Baptist Church</b> 123 N. Bernice • 659-5557 Sunday School: 9:45 a.m. Worship: 11 a.m. Evening Worship: 7 p.m. Men's Bible Study - Wed., 7 a.m. Children's Choir - Wed., 6 p.m. Adult Choir - Wed., 7 p.m. Wed. Bible Study: 7 p.m. Pastor - Jim Medley</p> <p style="margin: 0; font-size: 0.7em;"><b>Church of Christ</b> 121 S. Haney • 659-3244 Sunday Bible Class: 9:45 a.m. Worship: 10:30 a.m. Evening Worship: 6 p.m. Bible Study Wed.: 7:30 p.m.</p>	<p style="margin: 0; font-size: 0.7em;"><b>Sacred Heart Catholic Church</b> 901 Roland • 659-2166 Sat. Night Mass: 5:30 p.m. Sun. Mass: 9 a.m. - English Sun. Mass: 11:30 a.m. - Spanish Rev. Gregory Bunyan</p> <p style="margin: 0; font-size: 0.7em;"><b>First United Methodist</b> 407 S. Haney • 659-5503 Sunday School: 9:45 a.m. Worship: 8:30 &amp; 11 a.m. Jr. High Youth: 5 p.m. Sunday High School: 6 p.m. Sunday Kids Club: 3 p.m. Wed. Pastor - Tori Bailey</p> <p style="margin: 0; font-size: 0.7em;"><b>Grace Presbyterian Church</b> (Worships with Faith Lutheran Church) 1101 Bernice • 659-2033</p> <p style="margin: 0; font-size: 0.7em;"><b>Faith Lutheran Church (ELCA)</b> 1101 Bernice • 659-2252 Sunday School: 9:45 a.m. Worship: 11 a.m. (Worships with Grace Presbyterian Church) Pastor - Cecil Biggers, PLM</p> <p style="margin: 0; font-size: 0.7em;"><b>Union Church</b> 31 S. Endicott • 659-2644 Sunday School: 10:00 a.m. Worship: 11:00 a.m. Bible Study: 7 p.m. Wed. Youth Service: 6 p.m. Wed. Pastor - Don Baltazor</p> <p style="margin: 0; font-size: 0.7em;"><b>Fellowship Baptist</b> 1102 S. Archer • 659-2783 Sunday School: 10 a.m. Worship: 11 a.m. Sun. Evening Worship: 6 p.m. Sun. Evening Spanish Worship: 7 p.m. Youth/Adult Service: 7:30 Wed. Pastor - Philip Hudson</p>	<p style="margin: 0; font-size: 0.7em;"><b>Primera Mision Bautista</b> 502 E. 7th • 659-3991 Sunday School: 9:45 a.m. Worship: 11 a.m. Evening: 6 p.m. Wed. Prayer Meeting: 7 p.m. Thurs. Visitation: 7 p.m. Pastor Joe Garcia Jr.</p> <p style="margin: 0; font-size: 0.7em;"><b>El Aposento Alto U.P.C.I.</b> 1105 S. Roland Domingos: Escuela-Dominical - 10 a.m. Culto Evangelistico - 7 p.m. Jueves: Oracion - 8 p.m. Mier: Estudio Biblico - 7 p.m. Pastor - A.G. Mantell (806) 659-2153</p> <p style="margin: 0; font-size: 0.7em;"><b>Gruver</b></p> <p style="margin: 0; font-size: 0.7em;"><b>First Baptist Church</b> 402 E. Broadway • 733-2411 Sunday School: 9:45 a.m. Worship: 10:50 a.m. Disciple Training: 6 p.m. Sunday Prayer Meeting: 7:30 p.m. Wednesday Pastor - Scott Curry</p> <p style="margin: 0; font-size: 0.7em;"><b>Church of Christ</b> 209 King • 733-2760 Sunday School: 9:30 a.m. Worship: 10:20 a.m. Evening Worship: 6 p.m. Wed. Worship: 7:00 p.m. Minister - Gaylord Cook</p> <p style="margin: 0; font-size: 0.7em;"><b>First Christian Church</b> 510 King • 733-2950 Sunday School: 10:00 a.m. Sunday Worship: 11 a.m. Youth: 7:30, Sunday Adult Bible Study: 7:30, Sun. Wed. Bible Study: 8:00 p.m. Pastor - Gary Gumfory</p>	<p style="margin: 0; font-size: 0.7em;"><b>Gruver United Methodist</b> Broadway &amp; Garrett 733-2651 Sunday School: 9:45 a.m. Worship: 8:30 &amp; 10:50 a.m. Eve. Worship &amp; UMY: 6 p.m. Pastor - George Price</p> <p style="margin: 0; font-size: 0.7em;"><b>Spanish Cristo Redentor Church</b> Hwy 15 806-659-2166 Gruver, TX Sun. Mass: 1:30 p.m. - Spanish Rev. Gregory Bunyan</p> <p style="margin: 0; font-size: 0.7em;"><b>Oslo</b></p> <p style="margin: 0; font-size: 0.7em;"><b>Oslo Lutheran Church (ELCA)</b> 6 Miles West &amp; 12 Miles North of Gruver 339-7646 Sunday School: 9:45 a.m. Worship: 11 a.m. Pastor - Arlen Lloyd</p> <p style="margin: 0; font-size: 0.7em;"><b>Morse</b></p> <p style="margin: 0; font-size: 0.7em;"><b>Morse Baptist Church</b> 733-2757 Pastor - Gary Stevens</p> <p style="margin: 0; font-size: 0.7em;"><b>Waka</b></p> <p style="margin: 0; font-size: 0.7em;"><b>Church of Christ</b> 300 Rogers Ave. 202-7126 Sunday School - 9:30 a.m. Sunday Worship: 10:30 a.m. &amp; 6 p.m. Wednesday Bible Study: 7 p.m. Preacher - Ed Jenkins</p>
---	---	---	---

He has showed you, O man, what is good. And what does the LORD require of you? To act justly and to love mercy and to walk humbly with your God.

Micah 6:8

This feature is made possible through the sponsorship of these civic minded businesses:

<p style="margin: 0; font-weight: bold; font-size: 1.2em;">Deakin ELECTRIC</p> <p style="margin: 0; font-size: 0.7em;">OILFIELD • RESIDENTIAL • COMMERCIAL 321 S. MAIN • SPEARMAN</p> <p style="margin: 0; font-size: 0.7em;">1-800-999-1506 Chris Deakin (806) 659-5016 President</p>	<p style="margin: 0; font-weight: bold; font-size: 1.2em;">Bartlett's Lumber &amp; Hardware</p> <p style="margin: 0; font-size: 0.7em;">105 W. Broadway • Gruver, TX (806) 733-2404</p>	<p style="margin: 0; font-weight: bold; font-size: 1.2em;">BERRY CLEANERS</p> <p style="margin: 0; font-size: 0.7em;">Ann &amp; Vernon Pipkin - Owners Phone 659-3122 • P.O. Box 1017 207 Main St. • Spearman, TX</p>	<p style="margin: 0; font-weight: bold; font-size: 1.2em;">Morse Implement &amp; Auto Supply</p> <p style="margin: 0; font-size: 0.7em;">"Join us in church" Tom Dortch 733-2668 Box 89 • Morse, TX 79062</p>
<p style="margin: 0; font-weight: bold; font-size: 1.2em;">PRAIRIE MOTORS INC.</p> <p style="margin: 0; font-size: 0.7em;">Hwy. 207 South • P.O. Box 430 Spearman, TX 79081 • (806) 659-2541 www.prairiemotors.com</p>	<p style="margin: 0; font-weight: bold; font-size: 1.2em;">MurMur's Cafe</p> <p style="margin: 0; font-size: 0.7em;">100 Roland St Spearman, TX. 659-3580</p>	<p style="margin: 0; font-weight: bold; font-size: 1.2em;">Hansford County Reporter-Statesman</p> <p style="margin: 0; font-size: 0.7em;">"Proudly Serving Hansford County Since 1907" (806) 659-3434 310 Barkley • Spearman, TX</p>	<p style="margin: 0; font-weight: bold; font-size: 1.2em;">INTERSTATE BANK, sss</p> <p style="margin: 0; font-size: 0.7em;">www.interstatebank.net 322 Main • P.O. Box 146 Spearman, TX • 659-2559</p>

# HYI

FOR YOUR INFORMATION

### Project Graduation 2011

Continuing with tradition, the parents of the Spearman Class of 2011 are planning a post-graduation event known as "Project Graduation". This event is an all-night, chaperoned alcohol and drug-free party that takes place after the graduation ceremony. The Class of 2011 will be provided with food, entertainment, sports, and lots of fun...not to mention memories that will last a lifetime! All this fun with the peace of mind that the Class of 2011 will be safe and having a night they will not soon forget. We are asking for help to support this event. If any business or community member, would like to donate to further defray the cost, we would be very appreciative. We will gladly accept prizes, gift certificates, and cash donations. Donations will be received until May 6th. Every dollar raised and donated goes directly towards the cost of the party. If you have any questions please contact Tammy Benton at 659-3071. Please make checks payable to Project Graduation 2011 Mail to: SHS Project Graduation 2011; C/O Tammy Benton; P.O. Box 415; Spearman TX 79081.

### Perryton Area Parkinson's Disease Support Group

The Perryton Area Parkinson's Disease Support Group will meet Friday May 13, 2011 at the Perryton Mennonite Church located at 2821 S. Ash. A lunch will be provided for the 12 noon meeting. Tutti Burkett with Medtronic Deep Brain Stimulation will give our program. She accompanies patients when they have this surgical therapy. Anyone who has PD or a family member with PD is welcome to attend. For more information, call Bev Burger 806-435-3437 or 435-0579.

### Rushing Wind Emmaus Community

The Rushing Wind Emmaus Community will meet on Saturday, May 14th at 6 p.m. in the Waka Christian Center for a potluck supper. Bring your family and friends for an evening of fellowship and worship. A nursery will be provided for the children. We are blessed with a strong Emmaus community to support and sponsor the "Walk to Emmaus" weekends. Come and be a part of the RW community.

### Gruver EMS Open House

You are invited to visit Gruver EMS as we celebrate EMS week Sunday, May 15 from 2-4 p.m. Everyone is invited to come by the EMS Building at 108 East Broadway to meet the EMS personnel, enjoy some refreshments, have your blood pressure taken, and take a look at the new AEV Ambulance that has been purchased from funds from the City of Gruver, Hansford County, the Hansford County Hospital District, and a grant from the Amarillo Area Foundation. The EMS Service is always in need of more volunteers. If you would be interested in taking an EMT-Basic class there will be information and a sign up sheet for a class to begin in August. We hope you can plan to attend!

### FUMC Spearman Hosts Evangelist

Wesley Putnam, widely acclaimed evangelist, singer, and composer, will be at First United Methodist Church Spearman on May 15-18, 2011. BibleQuest will be held at 6 p.m., followed by the Revival Service at 7. He delivers a clear call to commitment through both word and song that has impacted the lives of people of all ages from all walks of life.

### Spearman Blood Drive

A Spearman Community Blood Drive will be held on Tuesday, May 17th from 1-7 p.m. in the O'Loughlin Center Gym. (Must have a donor card or picture ID to donate.) Every eligible donor who presents to donate will receive a "Share the Road" t-shirt and a chance to win a new bicycle. For appointments, call 806-331-8800 or 877-574-8800.

### Gruver Elementary Spring Choir Concert

The Gruver Elementary 3rd/4th grade choir and pre-k choir will be holding their Spring Choir Program on Wednesday May 18, at 2:30 p.m. in the Gruver Auditorium. These students have been working very hard all semester to prepare a wide variety of music that everyone will be sure to enjoy! Please come out and support our elementary students!!

### 2nd Annual Heritage Days Skate Competition

The Skatepark Fundhouse, Inc. invites you to come hang out and watch our local and area skaters battle it out for Heritage Days Skate Champion. Judges include local and Palo Duro Skatepark founder, Chad Wilkerson, all the way from Lubbock, Texas, Mr. Steve Forcade, and Amarillo resident, Big Kris Barnings. The event will be held at 1 p.m. on May 21, 2011. Entry fees are \$5. (All patrons must sign a waiver of liability) Prizes of cash, decks, T-shirts and more will be awarded. Skaters will be divided into their specific ability and age groups. Highest cumulative score of 3 runs will win their divisions contest. Participant will have 1 minute, 30 seconds to shred. The \$5 entry fee will enable the skater to participate in the Bowl, Street, and Best Trick.

### Spearman Big Fun Run

The 2nd Annual Spearman Big Fun Run and Family Fun Walk will be held Saturday, May 21st at 8:30 a.m. starting at the Purple Park (403 East 11th) in Spearman. A Family Fun 1 Mile Walk immediately follows at 9:00 a.m. Proceeds will benefit Big Brothers Big Sisters in Perryton, Spearman, and Gruver. This will be the first race of a two race series. The second race will be held August 20th in Perryton. Male and female first and second place prizes will be awarded in four divisions: 14 & under, 15-25, 26-40, and 41+. Medals will also be awarded for runners who compete in both events. Registration is \$25/single race or \$40 if competing in both races. Members of SWFTR or Lone Star Runners Club pay \$20. Family Fun Walk Package (family of 4) is \$90. To register for the 5K Big Fun Run or the One Mile Family Fun Walk, call the BBBS office at 434-0016. Registration will be available the day of the event. T-shirts will be guaranteed to the first 75 entries per event.

### Stationmaster's House Museum Drawing

The Stationmaster's House Museum will hold a drawing for a 42" Samsung LED TV. The drawing will be held at 2:30 p.m. on May 21st on the lawn of Hansford County Courthouse, during the Heritage Days Celebration. Tickets may be purchased for \$5 each from any museum member, or from Doris Breeden at the Zulu Museum Building.

# Our Sympathy

### NANCY PHILLIPS

GREENVILLE, TX - Nancy Ann Stephens Phillips, 72, of Greenville, TX passed away on May 10, 2011 at her residence.

Services will be held at 2 p.m. Friday at Coker-Mathews Funeral Home Chapel, 5100 Interstate 30E in Greenville. Mr. Thomas Willess will officiate. Visitation will be held from 6-8 p.m. Thursday at the funeral home. Interment will be at 1 p.m. Saturday at Quail Cemetery in Quail, TX.

Nancy was born on August 11, 1938 to George T. Stephens and Bertha Mary (Guinn) Stephens on the family farm in Quail, TX.

While growing up on the farm, Nancy worked with her hands pulling cotton. When she wasn't working on the farm she enjoyed playing basketball in school. She was awarded a scholarship and played basketball for Clarendon Junior College. On June 13, 1960 she married Lee Phillips in Clarendon, TX. They have two sons Toby and Terry. Lee and Nancy moved to Spearman, TX after Lee's military service to start their family. During their time in Spearman, Nancy worked at First State Bank of Spearman, Hansford Feeders and Baker & Taylor Drilling Company. Lee & Nancy moved to the Greenville area in 1986.

One of her proudest achievements was going back to college later in life. She received her teaching degree in Elementary Education from Panhandle State University. She taught elementary school in Hartley, TX and Quinlan, TX.

Nancy was a devoted wife and spent several years as a caregiver to her husband Lee until his death in 2006.

Nancy loved working crossword puzzles, playing bingo, the slot machines at Choctaw, watching her Dallas Mavericks and most of all spending time and spoiling her four grandchildren.

She is survived by her sons Toby Phillips and his wife Sylvia, Terry Phillips and his wife Melissa of Greenville, TX. Granddaughters, Lora Lee and Linzi Phillips of Commerce, TX, Grandsons AIC Travis Phillips of Elmdorf AFB, AK and Austin Phillips of Greenville, TX. Brother, James Stephens and wife Alice of Odessa, TX, Sister, Jerri Martin and husband Tommie of Lakeview, TX, and Sister-in-law, Monda Fults and husband Tom of Pattonville. She also leaves behind several nieces and nephews.

Pallbearers are Mike Poteet, Eddie Poteet, Steve Miller, Howard Wayne Baker, Jay Wayne Tolly and Bobby Willson

Honorary Pallbearers are her grandchildren, Lora Lee Phillips, Travis Phillips, Austin Phillips and Linzi Phillips.

For more information or to express condolences, visit [www.cokermathews.com](http://www.cokermathews.com)



### WILLIE L. WILKERSON

SPEARMAN - Willie L. Wilkerson, 87, passed away surrounded by loved ones May 7, 2011, and went to be with his Lord.

Graveside services were at 2 p.m. Monday, May 9, 2011 in Hansford Cemetery with Jim Medley officiating. Arrangements were by Boxwell Brothers Funeral Home of Spearman.

Willie was born Aug. 24, 1923, in Welty, Ok. He married Neoma Lee Dodson on July 17, 1947, in Henrietta, Ok.

Willie was a member of First Baptist Church. He was employed for many years at Daco Well Service until his retirement in 1994.

He and Neoma would have celebrated their 64th wedding anniversary on July 17. He was a tail gunner in the Army Air Corps in World War II.

He was preceded in death by his parents, one grandson, 2 sisters, and 10 brothers.

Survivors include his wife, Neoma Wilkerson; seven sons, Roddy Woodson and wife Stephanie of Saxie, W.L. Dowdy and wife Diane of Grants Pass, OR, Roy Woodson and wife Melinda of Lewisville, William Wilkerson and wife Mary of Tyler, Anthony Wilkerson and wife Linda and Marvin Wilkerson and wife Anne, all of Spearman, and Ronald Wilkerson and wife Doreen of Allegan, MI; a daughter, Darlene Taft and husband John of Raton, NM; two brothers, Otis Wilkerson of Valdosta, GA, and Jimmy Don Wilkerson of Terrell, OK; two sisters, Imogene Critten of Sapulpa, OK, and Vivian Lowery of California; 17 grandchildren; 22 great-grandchildren; and a great-great-grandchild.

The family suggests memorials be to Hansford Hospice, 707 Roland St., Spearman, TX 79081; or First Baptist Church Building Fund, P.O. Box 399, Spearman, TX 79081.

### Osteoporosis Drug Femur Fractures

Fosamax®, Boniva® & Acetone® are drugs taken for osteoporosis. They have been linked to an increased risk of fractures of the femur (thighbone). If you took these drugs and had a femur fracture, call us. You may be entitled to compensation.

A. Craig Eiland  
Attorney at Law  
Galveston, TX

1-409-763-3260

Cases may be referred to other counsel for principal responsibility

### Fosamax® Femur Fractures

Fosamax® is an osteoporosis drug. It has been linked to an increased risk of fractures of the femur (thighbone). If you took Fosamax and had a femur fracture, call us. You may be entitled to compensation. Please call us at 1-409-763-3260.

A. Craig Eiland  
Attorney at Law  
Galveston, TX

1-409-763-3260

Cases may be referred to other counsel for principal responsibility

### HOME PHONE SERVICE

NO Pre-Payment • NO Deposit Required!

Rates from \$6.99 per month\*

(\$17/month including approximate taxes & fees)

FREE 1st Month of Service

Caller ID & Call Waiting included in Packages\*\*

New-Talk 866.934.3448

\*\$1.99/month with auto pay \*\*Requires silver or gold package

Are You A Victim of Domestic Violence, Sexual Abuse or Physical, Emotional or Sexual Assault?

Call Toll Free Hotline  
1-800-753-5308

We can see individuals from Hansford County anytime upon request. Call 435-5008 or 1-800-753-5308 to set up an appointment in Hansford County. We operate a safe place for victims and their children to stay in times of crisis.

Battering Intervention & Anger Management Available

Panhandle Crisis Center

Serving Hansford, Lipscomb & Ochiltree Counties

301 S. Ash • Perryton, TX

Memorials Accepted

## Spearman Housing Authority Projects for 2011



Spearman Housing Authority is currently considering the following projects for 2011 pertaining to its 5 duplex apartment buildings and grounds:

- Repairing/Caulking/Re-painting of soffits & trim & installation of covered guttering system
- Re-modeling front porches and sidewalks of 9 apartment entrances to improve accessibility
- Replacement of windows with Simonton Generations series welded vinyl replacement windows, or close equivalent (quote for each building)
- Replacement of cook stoves (gas, with electric ignition), overhead vent hoods with light, water heaters (tall, 30-gal., electric), refrigerators (17 c.f.) (All quotes for appliances should include delivery/installation charges and 48-hour service guarantee.)
- Installation of Central A/C
- Installation of 2 separate sewer lines
- Installation of Housing Authority-wide watering system

In addition, Spearman Housing Authority from time to time has need of electricians, plumbers, a/c & heating specialists, carpenters, general handymen and lawn care individuals/contractors. Interested parties may specify availability and apply to be added to our call list. Contact Beverly Cook at (806) 659-9990; leave message on answering machine, if necessary.

Spearman Housing Authority - (806) 659-9990

### Mitchell Theatres.com

GUYMON, OK • LIBERAL, KS • NEWTON, KS

### NORTHRIDGE 8

Guymon, Oklahoma  
[www.northridge8.com](http://www.northridge8.com)  
580-338-3281

### SOUTHGATE 6

Liberal, Kansas  
[www.southgate6.com](http://www.southgate6.com)  
620-624-5573

### SEQUOYAH 8

Garden City, Kansas  
[www.sequoyah8.com](http://www.sequoyah8.com)  
620-275-2760

### CHISHOLM TRAIL 8

Newton, Kansas  
[www.chisholmtrail8.com](http://www.chisholmtrail8.com)  
316-283-0555

FRESH POPCORN EVERYDAY!

-PARTY ROOM & ARCADE-

# YOUR SPEED

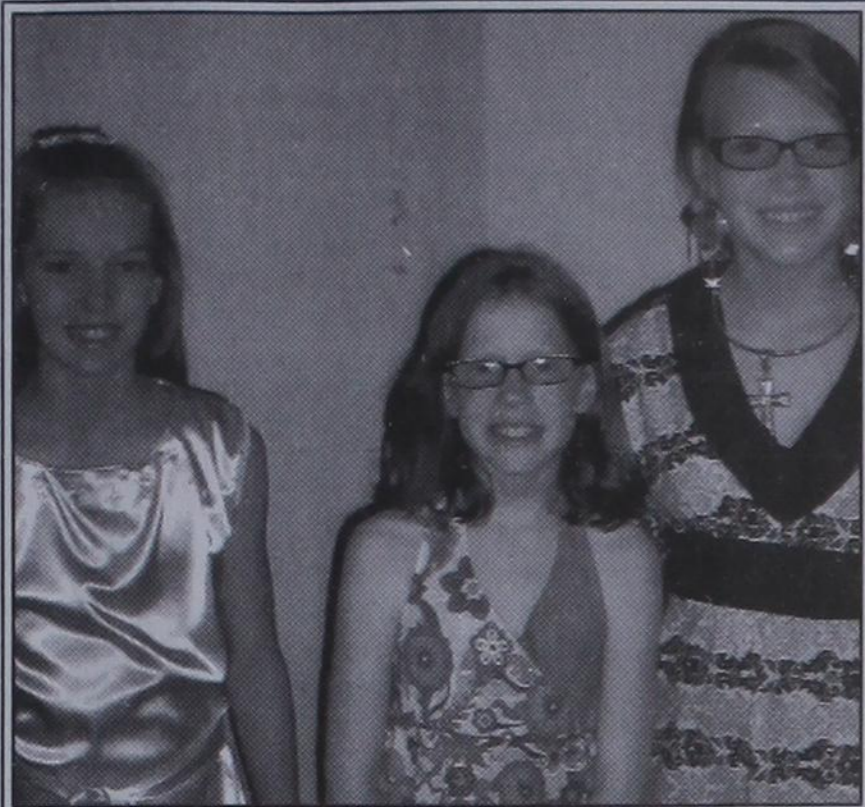
# with PTCI INTERNET

1-800-562-2556  
721 W 7th in Spearman

Services not available in all areas. Some restrictions apply.

www.ptci.net

Communication & Broadband Solutions



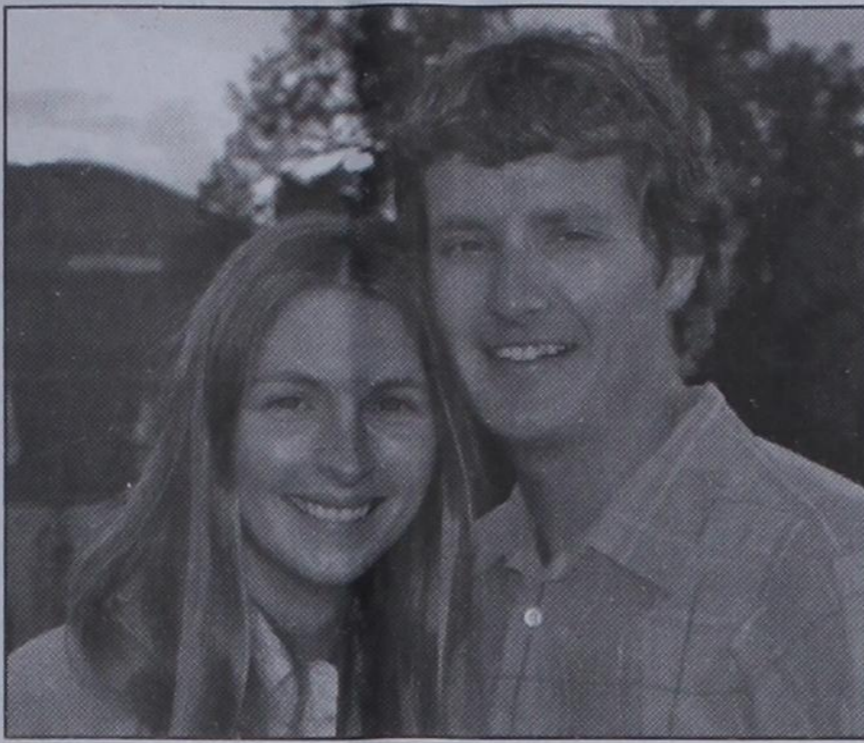
Hansford 4-H Fashion Show winners (L-R) Maren Garnett, Kaycee Anderson & Rayel Anderson

**4-H Fashion Show Winners**

4-Hers from 16 counties competed in the District 1 4-H Fashion Show on April 30 at Boys Ranch. 71 Youth completed a clothing project in either the buying, sewing or construction categories and 33 in fashion design divisions. The objectives of the 4-H fashion project are for youth to learn construction techniques, comparison shopping and clothing selection skills, fibers, clothing care, interpretation and understanding of style and modeling and presentation skills. Youth may also learn principles of designing apparel, fabric and accessories.

More than 100 boys and girls competed in these activities and recognition awards were given following the style show. In the junior division Kaycee Anderson of Gruver, competed in the casual daywear construction category placing 4th. Maren Garnett of Spearman, competed in the dressy daywear construction category placing 4th. Rayel Anderson of Gruver, competed in the intermediate division casual daywear construction category placing 2nd.

Eight Hansford 4-H youth submitted entries in the District 1 4-H Arts and Crafts Display. Richard Jarvis, Rayel Anderson, Gracie Adams, Mollie Harbour, Kaycee Anderson, Serena Harbour, Maren Garnett and Reed Anderson submitted a total of 15 entries in the competition. Richard Jarvis, Mollie Harbour, and Maren Garnett had 1st place entries. Kaycee Anderson, Serena Harbour, and Maren Garnett had 2nd place entries. Gracie Adams and Maren Garnett had 3rd place entries.



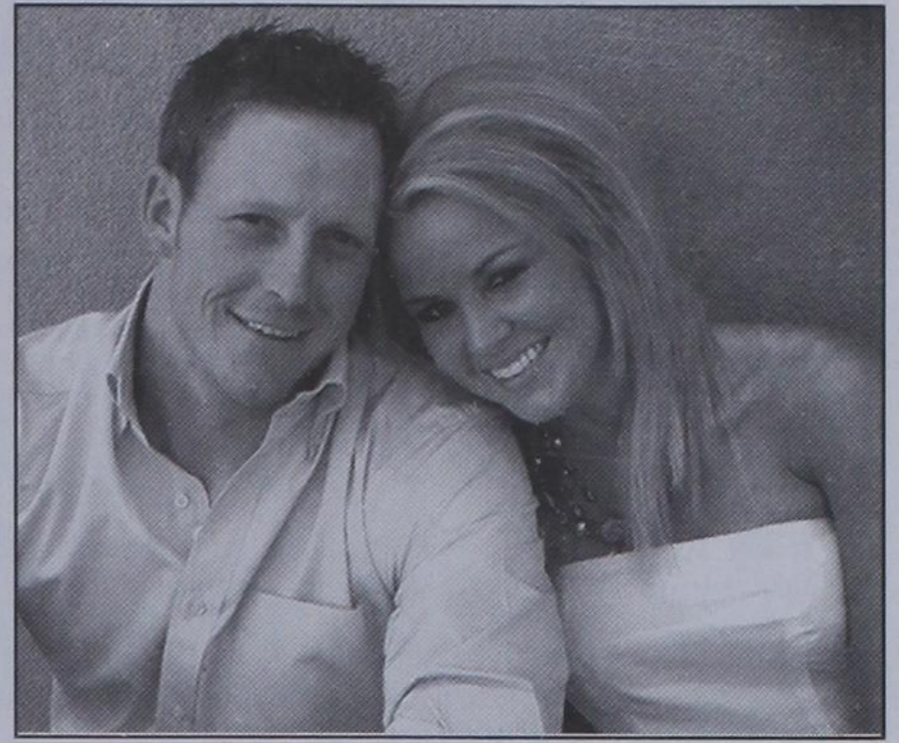
**Engagement Announcement**

Mr. and Mrs. Lloyd Harper of Fredericksburg announce the engagement and approaching marriage of their daughter, Lisa Beth, to Daniel Lyle Odom, son of Debby Odom of Gruver, Texas and George Odom of Dalhart, Texas.

Miss Harper is a 2002 graduate of Fredericksburg High School, and a 2006 graduate of the University of Texas at Austin. She received a Master's Degree in Elementary Education from Texas Tech University in 2008 and is employed by Lubbock-Cooper ISD as a second grade teacher.

Mr. Odom is a 2000 graduate of Gruver High School and a 2004 graduate of Texas Tech University with a Bachelor of Business degree in Marketing. He is employed by the Texas Department of Banking as a Financial Examiner.

The couple will be married June 18, 2011 in Fredericksburg.



**Engagement Announcement**

Dennis and Sherrie Gwin of Spearman would like to announce the engagement of their daughter Cara Gwin to Lance Baker, both of Lubbock, Texas. Lance is the son of Reagan Baker and Beckee Baker of Spearman.

The couple plans to wed July 16, 2011 in Ransom Canyon, Texas at the Little Chapel of Brookhollow.

The bride and groom are both graduates of Spearman High School. Cara will be graduating from the Covenant School of Nursing in May 2011 and will be continuing to pursue her Nurse Practitioner License through Lubbock Christian University and Texas Tech University beginning next fall.

Lance is currently a Firefighter for the City of Lubbock.

**Go Painlessly™**  
THERA-GESIC  
Ounce for Ounce - Compare and Save!  
The top-quality & top-value pain creme

**Weatherford Construction**  
Septic Systems  
Kirk Weatherford  
8126 FM 3395  
Sanford, TX 79078  
(806) 336-2820  
Toll Free: 1-800-585-6047  
Email: kirk@weatherford-construction.com

See us for:  
AUTO • HOME • CROP HAIL •  
FARM & RANCH • MULTIPERIL •  
LIVESTOCK  
**INSURANCE**  
BORT AGENCY, INC.  
510 Main St. • Gruver, TX  
(806) 733-2456

**Dedicated Truck Driving Positions**  
Predictable Work Schedule  
Experienced Truck Drivers  
**SCHNEIDER NATIONAL**  
Apply at [schneiderjobs.com/newjobs](http://schneiderjobs.com/newjobs)  
Call 1-800-44-PRIDE for more information



If you are here...



you want someone here!

**VOLUNTEER**  
**659-2524**

Please join the Hansford County Hospital District Board of Directors, Medical Staff Employees, Patients and Residents of Hansford County Hospital District in Expressing Admiration and Appreciation to our Nurses on the Occasion of **NATIONAL NURSES WEEK** May 6 - 12, 2011

**Hansford Manor, Hansford Hospital, Home Health, Hospice & Clinics**

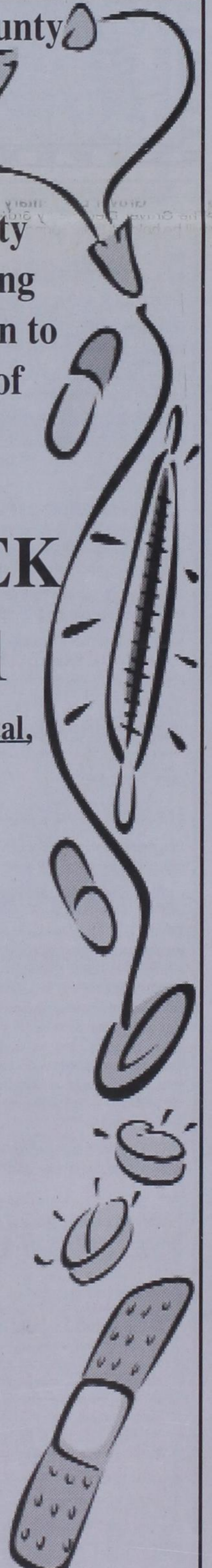
Registered Nurses

- Judith Anders
- Kim Blevins
- Blythe Boyd
- Lelia Bynum
- Carla Caddell
- Bethany Callaway
- Kimberly Edwards
- Jan Ellsworth
- Melanie Gillespie
- Lanie Graves
- Elizabeth Hartsell
- Shirley Kimbrough
- Kim Lehr
- Myrna McCarl
- Tammy Murray
- Stacie Ruga
- Cyndi Sanders
- Joann Schneider
- Carmen Shaw
- Sharon Sutton
- Sharon Whitefield
- D'Anda Widener
- Iris Wood

Licensed Vocational Nurses

- Rosetta Barrera
- Gabriela Borunda
- Sara Bulls
- Randi Burris
- Brandi Cooper
- Tracy DeLuna
- Kimberly Doughty
- Connie Eckert
- Loree Hodges
- Cleo Hughes
- Elizabeth Karlin
- Vicki Nickel
- Janice Nivens
- Rosa Ortiz
- Vicki Risner
- Denise Rojas
- Debra Russell
- Julie Stedje
- Vicki Stewart
- Jeanne Swan
- Deidre Tice
- Stephannie Tyler
- Katrina Vasquez
- Tanja Whitefield
- Dana Younger

**hchd** 707 Roland  
Spearman TX  
(806) 659-2535  
Hansford County Hospital District



## SISD Celebrates School Nurse Appreciation Day

A few weeks ago at the High School District Track Meet, I noticed Mr. Whiteley trying to remove a loose tooth from his son's (Shad) mouth. Shad is a kindergarten student at Gus Birdwell Elementary School. After watching Shad squirm around, it became evident that the tooth wasn't ready to come out. I wondered to myself if that tooth would come out at school, if Nurse Nellie (Linda Winegarner), as she is sometimes called, would be the person who would finally get the job done!

Well, I was right, and the next day Shad's smile showed a big gap where once a tooth could be found, and Linda Winegarner just happened to help. Nurse Winegarner said that she tries to get the students to pull their own teeth, but if that doesn't work, a gentle tug is usually all that is needed. She added that in a year's time that she probably pulls around one hundred teeth and keeps a supply of tooth containers to send the tooth home to be put under a pillow for the Tooth Fairy!

Ever wonder what a school nurse does? Well,

now you know just one of the many responsibilities. Linda Winegarner graduated from North West Texas Hospital School of Nursing in 1973 and has worked as a Registered Nurse since that time. She was a staff nurse at North West Texas Hospital in Amarillo, Texas, Hansford Hospital in Spearman, and was an office nurse for James Thomas, MD in Spearman for several years. In 1985, she was hired by School Superintendent, James Cunningham, to fill the position of long time school nurse, Dickie Allen, who had retired. Linda Winegarner has served as the Spearman ISD School Nurse for the past twenty-six years!

Some of her daily responsibilities include providing direct care for students with injuries or illness and notifying the parents as needed. In addition, each day she administers medication to students on a long or short term basis according to District policies and procedures based on a Doctor's orders. Other responsibilities include performing mandatory health screening for vision, hearing, scoliosis, height and

weight and completing the required reports to the Department of State Health Services. This process includes reviewing and evaluating each student's immunization record to meet the requirements set by the Department of State Health Services and the Texas Education Agency. Parents are notified when immunizations are needed and an annual Immunization Report is sent to the DSHS. Nurse Winegarner is seen all over the school district and serves as a resource to teachers in health instruction and health counseling as needed. A great amount of her time is spent documenting and maintaining the health records for each student in the school district. The most recent responsibility added to her job description is that of the District's Wellness Coordinator. She works with the Spearman ISD employees promoting healthy living and healthy lifestyles!

Over the past twenty-six years, Nurse Winegarner said what has changed the most is the development of computerized records for documentation of health and immunization records.

When asked what advice she had for parents, she responded by saying, "Encourage your child to eat breakfast each morning before school! I see a lot of stomachaches and headaches that are probably caused by a lack of good nutrition." She added, "A healthy child is able to learn and grow. But, please keep children home that have fevers or a communicable disease until they are able to return to school." The past few years have been extremely difficult with the various types of flu and other health scares. Hand washing and other personal



hygiene habits can make a big difference, claims Nurse Winegarner.

According to School Superintendent Rodney Sumner, we are indeed fortunate to have a full-time school nurse like Linda Winegarner working with the children in our school district. She works closely with the local doctors and often serves as the first contact parents have with a health care provider when there are questions about what health services are needed. Mr. Sumner added, "She is a valuable part of our educational team and helps support our overall mission of educating the children of our community."

Please join the school community on Thursday, May 12, 2011, as we pause to thank Linda Winegarner for an outstanding job as we celebrate School Nurse Appreciation Day! Thank you for caring and for your gentle touch in cleaning a scrape or wound, and comforting a child by wiping away a tear and letting them know that they are special and everything will be okay!

## Spearman Booster Club News

The Spearman Booster Club met last week to make final plans for this year's Athletic Banquet. The event will be held on May 16th at 6:30 p.m. at The O'Loughlin Center. The cost is \$12 per person, or \$20 per couple. Food will be provided by the Hungry Cowboy.

The Booster Club will be taking orders on a Lynx hitch insert the night of the banquet for \$30 each.

The scholarship applications were looked over to make sure that all who applied had lettered in a sport, sold the ads for the basketball book and their parents were a member of Booster Club. There were a couple of questions on two who had applied. Someone was appointed to make sure the requirements were met.

The Booster Club is wanting to get 3 or 4 sets of parents from 7th-12th grade to help get each grade more involved in Booster Club. (It is hoped that this will help keep everything from being done by the same 10-12 people.)

This year in sports is coming to an end; but don't forget to support Sarah Snider in her run for State Champ in the 800.

The Booster Club would like to thank everyone for all the support this year. With your help we were able to redo the sign on Hwy. 207 with and update the names of State winners; sponsor the Meet the Lynx & Lynxettes Watermelon Feed; made posters for all sports; playoff games; football field flags; flags for the gym, or wherever needed; and many, many other little things. Again, thank you so much for your support!

New officers were also discussed: President - ? (Don is going to find someone), Boys VP - Ed Hansen, Girls VP - Tiki Farrar and Kelly Garnett, Treasurer/Secretary - Martina Miller, Ways & Means - Jeanne Swan, Membership - Kellye Buchanan (she would love to find someone to help her), Web page - Frank Salgado, Broadcast of home games - Frank Salgado & Radar Garcia (need someone to do out of town games)

NOTICE!

We will be closed Monday, May 16th and Tuesday, May 17th. We will open for regular business hours on Wednesday, May 18th.

Don't Forget!

Snow Cone Stand  
Monday-Friday  
2-8 p.m.

Happy Hour  
Monday-Friday, 3-5 p.m.  
All Fountain Drinks - 69¢

100 S. Roland  
Spearman  
659-3580

AVAILABLE NOW!

E-SUBSCRIPTION

to the  
**Hansford County  
Reporter-Statesman**

Delivered to your e-mail each  
Thursday for only \$35/year.

Purchase online at  
[www.spearmanreporter.com](http://www.spearmanreporter.com)

Call 806-659-3434 or e-mail [reporter@spearmanreporter.com](mailto:reporter@spearmanreporter.com) for details.

## Property Tax Protest and Appeal Procedures

### SPECIAL DEADLINES:

For change of use (the Appraisal District informed you that you are losing agricultural appraisal because you changed the use of your land), the deadline is before the 30th day after the notice of the determination was mailed to you.

For ARB changes (the ARB has informed you of a change that increases your tax liability and the change did not result from a protest you filed), the deadline is before the 30th day after the notice of the determination was mailed to you.

If you believe the Appraisal District or ARB should have sent you a notice and did not, you may file a protest until the day before the taxes become delinquent (usually February 1). The ARB decides if it will hear your case based on evidence about whether a required notice was mailed to you.

\*The deadline is postponed to the next business day if it falls on a weekend or holiday.

**REVIEW BY THE DISTRICT COURT OR AN ARBITRATOR:** After it decides your case, the ARB must send you a copy of its order by certified mail. If you are not satisfied with the decision, you have the right to appeal. If you choose to go to court, you must start the process by filing a petition within 45 days of the date you receive the ARB's order. As an alternative and within the same time period, you may file a request for binding arbitration with the county appraisal district in certain cases.

**TAX PAYMENT:** You must pay either the amount of taxes due on the portion of the taxable value not in dispute or the amount of taxes due on the property under the order from which the appeal is taken.

**MORE INFORMATION:** You can get more information by contacting the Hansford County Appraisal District at (806) 659-5575 or 709 W 7th Ave, Spearman, TX 79081-3407. You can also get a pamphlet describing how to prepare a protest from the Appraisal District or from the State Comptroller's Property Tax Division, PO Box 13528, Austin, TX 78711-3528.

### DEADLINE FOR FILING A PROTEST WITH THE APPRAISAL REVIEW BOARD\*

#### USUAL DEADLINE:

Thirty (30) days after a notice of appraised value was mailed to you.

Late protests are allowed if you miss the usual deadline for good cause. Good cause is some reason beyond your control, like a medical emergency. The ARB decides whether you have good cause.

Late protests are due the day before the Appraisal Review Board approves the records for the year. Contact your Appraisal District for more information.

The ARB is an independent board of citizens that reviews problems with appraisals or other concerns listed above. It has the power to order the appraisal district to make the necessary changes to solve problems. If you file a written request for an ARB hearing (called a notice of protest) before the deadline, the ARB will set your case for a hearing. You will receive written notice of the time, date and place of the hearing. If necessary, you may request a hearing in the evening. Prior to your hearing, you may ask to review the evidence the appraisal district will use to uphold their determination. The appraisal district may ask you for a copy of the evidence you plan to present. The hearing will be informal. You or a designated agent may appear in person to present evidence or you may send notarized evidence for the ARB to review at your hearing. The appraisal district representative will present evidence about your case. You may cross-examine the appraisal district representative. The ARB will make its decision based on the evidence presented. The appraisal district has the burden of establishing the property's value by a preponderance of the evidence presented. You can get a copy of a protest form from the Appraisal District office at 709 W 7th Ave Spearman, Texas 79081.

**NOTE:** You should not try to contact ARB members outside of the hearing. The law requires the ARB members to sign an affidavit saying they have not talked about your case before the ARB hears it.

The law gives property owners the right to protest actions concerning their property tax appraisals. You may follow these appeal procedures if you have a concern about:

- the market or appraised value of your Property
- the unequal appraisal of your property
- the inclusion of your property on the appraisal roll
- any exemptions that may apply to you
- the qualification for an agricultural or timber appraisal
- the taxable status of your property
- the local governments which should be taxing your property
- the ownership of property
- the change of use of land receiving special appraisal
- any action taken by the chief appraiser, appraisal district or appraisal review board that adversely affects you

**INFORMAL REVIEW:** If you wish to have an informal review of your property with our staff, please come to our office in Spearman M-F, 8:30 a.m. to 5 p.m. except holidays.

**REVIEW BY THE APPRAISAL REVIEW BOARD:** If you cannot resolve your problem informally with the appraisal district staff, you may have your case heard by the appraisal review board (ARB).

## Dwayne Mitchell Board Candidate for Reelection

My name is Dwayne Mitchell. I am seeking my fourth term on the Spearman ISD Board of Education. I have an unique characteristic that is an advantage, I believe, that none of the present board members or the new candidate has. I have been a teacher, and I know how board decisions, action, inaction, loose talk, etc. affect the educational process. I respect the experience that other board members bring to the table, but I can't claim to know how to practice medicine just because I have been hospitalized and neither does a board member have complete knowledge of a school system just because he attended one. Case in point is the selection of a superintendent. Obviously, a superintendent must not only be chosen from the board's point of view but from the view point of the entire system. I have specific qualities for a superintendent candidate that I think are important to Spearman ISD.

I am also an advocate of the going-through-the-channels approach to decision making and settling disputes. Any patron, student, employee is welcome to use the process. If a person does not receive satisfaction at any level below the board level, state law provides for the appeal process to the board. I believe most decisions can be arrived at below board level, but not all. As a board member, I have no authority other than when the board is in session. School personnel including students are answerable to their appropriate-level supervisor but not to a board member. Some present board members attempt to exercise authority which they do not possess. As a former teacher, I am very mindful that we act only as a unit.

I have a passion for Spearman ISD. For 31 years I was an employee who tried to give 100% for his paycheck. For nine years I have given my time as a board member because I have always been delighted by the qualities of our Spearman students, and I want the best for them, educationally. I appreciate the culture of Spearman and Spearman ISD that values, and expects quality education.

Spearman ISD is a leader among schools in the Texas Panhandle, and yes, in the state of Texas. Other schools look to us for ideas. We are not beyond looking at other schools, of course, but we are the envy of other schools because of the quality of education provided to our students, our facilities, our technology, our innovations, our ratio of students to teachers, our co-curricular programs including athletics, our students who draw unsolicited compliments for their behavior and on and on. Our position as a leader did not happen by accident but because our community supported a tax rate to fund the system, and supported a board of education that responded to the expectations of excellence asked for by the community. I take pride in the quality of education that we provide, and I resent those who criticize without adequate background. I believe that one of the choices to be made in this election is whether or not we continue that excellence. One of the important decisions to be made in the continuation of excellence will be the choice of a superintendent. A hugely critical decision.

We have only to look to our neighbor to the east, Perryton ISD, to praise the far-sightedness of the taxpayers of SISD in passing the bond issue to raze an out-of-date, beyond-renovation junior high building and replace it with a modern facility that will last much of the century, God willing.

Yes, we incurred debt. The district obtained a very good interest rate and we are well on our way to retiring that debt. The modern facilities and our use of them every day speak to the wisdom of the voters. Debt may be a four-letter word, but most of us have used debt at some time and so may a school district. The district has no indebtedness other than the long term bond indebtedness.

I have no children of my own in this district. There are more than 800 that I have a passion to see educated to the best of the district's ability. I will be an advocate for every student. I am self-employed now and have time, enthusiasm and dedication to the position as a SISD board member.

The mathematics used in a school district is fairly basic. Even an English teacher with a calculator and guided by the specialists hired by the district can understand the basic economics of the school system. Understanding of tax rates, valuations, state aid, statutes, budgeting and how it affects the educational process, etc. comes from experience.

I have always supported a quality athletic program. I believe that the quality of all our co-curricular programs show the willingness of the board to support those programs. I support any program that is student oriented, has been vetted as to funding costs, instructional costs, etc. I have never demonstrated a closed mind to any proposal, and, unbelievably, at times even changed my mind because of facts or other information that I did not originally have.

It has been my privilege to be a part of Spearman ISD for forty years. I have always been convinced that a quality education is a necessity for our students to realize the American dream, and that a tax supported public education is one of the cornerstones of a republic and essential to the continuation of the lifestyle that we enjoy in this great and wonderful country. I take pride in the achievements of our students and the great school system that we have in Spearman.

I ask for your vote for reelection to the Board of Trustees, Spearman ISD, May 14, 2011. I believe that my record justifies your voting for me.

Pol. Ad Paid for by Dwayne Mitchell

# VOTE Saturday, May 14

**HELP WANTED**

**HELP WANTED:** Experienced automotive technician needed. Good working environment, holiday pay, health insurance. Also service department helper needed. Apply in person at Prairie Motors in Spearman. (806) 659-2541 or 1-800-692-4657. TFN(12/2/10)B

**HELP WANTED:** Now seeking a temporary full/part time dependable salesperson to operate Spearman store. Duties: Assisting customers, maintaining plants, and operating cash register. Starting pay: \$8.00/hour - 40 hour work week. No experience necessary. Hiring begins April 1st. Send resume to D&C Greenhouse, 36 Nelson Drive, Spearman TX 79081. 8(3/31/11)B

**HELP WANTED:** Deakin Electric is looking for an individual to join their office team. Candidate must possess basic computer skills, good phone and organizational skills and must be willing to learn Quickbooks or have previous knowledge of the program. Some additional responsibilities include filing and other secretarial/office duties. Pay depending upon qualifications. Apply in person at 321 Main Street, Spearman TX 79081. TFN(3/31/11)B

**HELP WANTED:** Deakin Electric is currently for someone dependable to clean the offices weekly. Please apply in person at 321 Main Street, Spearman TX 79081. TFN(3/31/11)B

**HELP WANTED:** Dean Cluck Feedyard in looking for Feed Truck Drivers and Mill Manager/Operator. Please apply in person or fax resume to 806-733-2244. Attn: Chad Grimes. TFN(4/14/11)B

**HELP WANTED:** Gigot Agra Products of Spearman is looking for a full-time service technician. NO EXPERIENCE NECESSARY. Come by and pick up an application today! 4(4/14/11)B

**HELP WANTED:** Stratford Hospital District is seeking a District Business Manager to be responsible for the successful oversight of the District Businesses including Elk Pharmacy, Stratford Family Medical Clinic, Stratford Emergency Medical Service and Coldwater Manor Nursing Home. Necessary skills needed: accounting knowledge, multi-tasking, computer skills, proficient in Quickbooks, HR experience, public relations, team player. Stratford is a small town in the northern Texas Panhandle. Send resume to Board President, Stratford Hospital District, gssw05@xl.net, or PO Box 1189, Stratford TX 79084. Phone 806-396-5568. EOE 3(5/12/11)B

**HELP WANTED:** Mission Petroleum Carriers. Accepting Applications. Class 8 Diesel Mechanic. Paid Weekly. Vacation, 401K, Medical, Life, Full Time/Class C Drivers License Required. Contact: DeAnna Bales 800-737-9982 ext. 1207 or dbales@mipe.com. To Apply in Person, Stop By: 1101 North Dumas Ave. Dumas, TX 79029 Mon-Fri 8am-5pm. EOE. 2(5/12/11)B

**FOR SALE**

**FOR SALE:** Registered Border Collie Pups. Born 4/1/11. Black & White, some Tri-Colored. Call 580-652-2646. 2(4/21/11)B

**SERVICES**

**HOOCHY POOCHY PARLOR**  
Call us for all your pet's grooming and boarding needs. Call now for reservations! 806-273-2724.  
TFN(11/2/07)B

**TIRED OF GARAGE SALE PRICES?** Let me buy your good used furniture! 2nd Chance Antiques & Furniture, Don 806-648-1480; 806-202-1391 cell.  
TFN(1/20/11)B

**GARAGE SALE**

**BIG, BIG GARAGE SALE:** Saturday, May 14th, 1112 Townsend St., 8 a.m.-2 p.m.; Furniture, kitchen "stuff," decorating items, outdoor furniture, lamps, bedding - to many items to mention!  
1(5/12/11)

**PUBLIC NOTICE**

**LEGAL NOTICE**  
Hansford County Commissioner's Court will receive bids until 4:00 p.m. on Friday, May 13, 2011 on one new 2011 1/2 ton or 3/4 ton regular cab, 4-wheel drive pickup with/without trade-in for Precinct 3. Bids will be opened and reviewed prior to Monday, May 23, 2011's regular Commissioners' Court meeting beginning at 10:00 a.m.  
Specifications are available in the County Judge's Office or the County Auditor's office in the Hansford County Courthouse in Spearman. The Court reserves the right to accept or reject any or all bids.  
Benny Wilson  
Hansford County Judge  
3(5/5/11)B

**LEGAL NOTICE**  
**NOTICE OF PUBLIC HEARING**  
**SPEARMAN PLANNING AND ZONING COMMISSION**  
Date: May 25, 2011  
Time: 9:00 a.m.  
Place: City Council Chambers, 30 S. W. Court, Spearman, Texas  
Purpose: To consider in public hearing the rezoning of the property listed below plus one-half of all bounding streets, alleys and public ways from Single Family Residential District to Mobile Home Residential District.  
Legal Lots 7, 8, 9, 10, 11 & 12, Etter Subdivision, City of Spearman; Hansford County, Texas, being addressed as the even side of the 400 block of S. Hazelwood St.

If the Planning and Zoning Commission favorably considers the request the City Council will hold a public hearing to consider the amendment as follows:  
Date: June 21, 2011  
Time: 7:00 a.m.  
Place: City Council Chambers, 30 S. W. Court, Spearman, Texas  
For additional information call 659-2524.  
/s/ Cheryl Gibson-Salgado, City Secretary  
2(5/5/11)B

**REQUEST FOR QUALIFICATIONS (RFQ) FOR COMMUNITY SHELTER(S) CONSTRUCTION MANAGER-AGENT**  
Hansford County, on behalf of the Pringle-Morse Consolidated School District (CISD), is seeking to contract with a qualified firm or individual to provide construction management services in conjunction with the construction of a community storm shelter in Morse, Texas.  
Firms interested in responding to this opportunity must submit a Statement of Qualifications (SOQ) indicating their capability and capacity to perform the necessary services. This RFQ process is being coordinated through the CISD. To obtain a copy of the RFQ packet, contact Kent Hargis with the CISD by mail at Box 109, Morse, TX 79062; or by phone at: (806) 733-2507; or by email at: kent.hargis@region16.net.  
SOQs must be received by the CISD no later than 4:00 p.m. on Monday, May 16, 2011, to be considered. Hansford County reserves the right to negotiate with any and all firms or individuals that submit SOQs, as per the Texas Professional Services Procurement Act and Office of Management and Budget Circular No. A-102.  
Hansford County is an Affirmative Action/Equal Opportunity Employer.  
2(5/5/11)B


**NOTICE TO ALL PERSONS HAVING CLAIMS AGAINST THE ESTATE OF DONALD EUGENE HEDDINS, DECEASED**  
Notice is hereby given that original Letters Testamentary for the Estate of DONALD EUGENE HEDDINS were issued to Jerry Hawkins and Donna McCubbin in the County Court of Hansford County, Texas, in Cause No. P02628 on the 10th day of May 2011. All persons having claims against this estate which is currently being administered, are required to present them within the time and manner prescribed by law. All claims should be sent to Donna McCubbin, 18 S. James Street, Spearman TX 79081.  
John L. Hutchison  
PO Box 506  
Spearman TX 79081  
Attorney for the Estate  
1(5/12/11)B

**Steffan & Devin's Mowing Service**



Steffan Werner (620) 482-0763  
Devin Wells (806) 330-0752  
References available upon request.

**M&D Aerial, LLC**



David & Megan George  
P.O. Box 520 Spearman, Texas 79081  
David: (806) 202-2360  
Megan: (806) 202-2358  
mdaerial@yahoo.com

**Alva Monument Co.**  
Formerly Liberal Monument & Memorial Company

**New Location:**  
N Tucker Road  
Liberal, Kansas

North of the New Wal-mart

Serving Kansas, Oklahoma & Texas for 93 years  
(316) 624-4211 toll free # 888-654-9318

T	E	A	L	H	A	S	I	R	M	A		
L	A	M	I	A	O	W	N	C	R	I	E	R
A	X	I	O	M	L	E	A	H	A	S	T	E
W	I	L	L	I	A	M	F	I	A	N	C	E
I	N	N	R	U	M	P						
A	D	A	G	U	E	P	E	R	U	S	E	
D	O	R	M	U	S	S	R	L	A	P	E	L
A	R	E	A	S	A	T	I	N	J	E	T	S
P	S	A	L	M	F	O	C	I	A	N	T	I
T	A	R	T	A	R	R	E	N	T	D	O	E
R	A	K	E	T	O	O						
G	L	U	T	E	I	T	H	E	K	N	O	T
O	M	A	N	I	R	A	H	C	A	I	N	E
B	A	S	I	N	O	D	E	A	P	N	E	A
I	N	S	T									

2	3	5	8	6	7	9	1	4
4	9	8	3	1	5	2	7	6
7	1	6	4	2	9	5	8	3
8	5	9	2	4	3	7	6	1
6	4	3	5	7	1	8	2	9
1	7	2	9	8	6	4	3	5
9	6	4	7	3	8	1	5	2
5	8	1	6	9	2	3	4	7
3	2	7	1	5	4	6	9	8

**TEXAS STATEWIDE CLASSIFIED ADVERTISING NETWORK**

**TexSCAN**

**TexSCAN Week of May 8, 2011**

**DRIVERS**  
BILL HALL JR Trucking is looking for end dump and belly dump drivers and owner/operators in San Antonio, San Marcos and Uvalde areas. www.BillHallTrucking.com or 1-210-622-3019

**DRIVER CDL-A:** Great Regional Opportunity. We care about drivers. We'll keep you running and get you home. Call for details! CDL-A, 8 month. OTR experience. 1-888-730-9312

**DRIVER COMPANY/OWNER Operators:** Tango Transport hiring solos and teams. Consistent miles, competitive pay, great benefits, all new trucks. CDL-A and 15 months experience. www.drivertango.com; 1-877-826-4605

**DRIVER DEDICATED DRIVERS** average \$1000-\$1200 per week. Consistent home time. CDL-A with 1 year tractor-trailer experience required. Call 1-888-362-8603 or apply online Avertitcareers.com EOE

**DRIVER-MANY CHOICES:** Part-time. Full-time, casual, express lanes, dry van, refrigerated. Weekly or daily pay. Local orientation. CDL-A. 3 months recent experience required. 1-800-414-9569. www.drivknight.com

**DRIVERS-STUDENTS** Free tuition at FFE Driver Academy. Earn CDL in 18 days (start to finish). Great career path, constant freight and pay. recruit@ffx.net. 1-855-378-9333.

**DRIVERS-DEDICATED DRIVERS.** Start at 35¢ cpm with stop pay. BC/BS benefits package. Mon-Fri with some Saturday. CDL-A with 1 year experience and Hazmat required. Call 1-888-595-9720 or apply at AVERITTCareers.com. EOE.

**DRIVERS** Flatbed and Reefer. Average \$1.12 to \$1.24/ mile (+fuel surcharge) Paid CDL training available & benefits! Call Prime Inc today! 1-800-277-0212 or www.primeinc.com

**DRIVERS-NO EXPERIENCE.** No problem. 100% paid CDL training. Immediate benefits. 20/10 program. Trainers earn up to 49¢ per mile! CRST Expedited. 1-800-326-2778. www.joinCRST.com

**DRIVERS-OWNER/OPERATORS** Solo teams, fleets. \$1.28 per mile (includes FSC) 900 mile average length haul. We have more freight than available trucks! 1-877-901-8591.

**DRIVERS-PAY INCREASE!** Regional Van Drivers start at 37¢ cpm with 1 year experience. Training available for drivers with less experience. Great benefits/home weekly. Call 1-888-362-8608 or visit AVERITTCareers.com. EOE.

**PAID CDL TRAINING!** No experience needed. Stevens Transport will sponsor the cost of your CDL training. Earn up to \$40K first year. Excellent benefits! EOE. 1-800-333-8595. www.becomedriver.com

**QUALITY DRIVE AWAY, INC.** is seeking 50 qualified CDL drivers to deliver new trucks out of Garland and Laredo. Flexibility, miles based bonus program, safety reward program. Call 1-866-764-1601 or www.qualitydriveaway.com

**YOU GOT THE drive.** we have the direction. OTR drivers, APU Equipped, Pre-Pass, EZ-pass, Pets / passenger policy. Newer equipment. 100% NO touch. 1-800-528-7825

**CASH NOW! CASH** for your structured settlement or annuity payments. Call J.G. Wentworth. 1-866-494-9115. Rated A+ by the Better Business Bureau.

**REAL ESTATE**  
\$106 MONTH RENT for RV, MH or cabin. Gated entry, 5600 down. (\$6000/10/91/5/7/9) 90 days same as cash. Guaranteed financing. 1-936-377-3235

**ABSOLUTELY THE BEST VIEW** Lake Medina/Bandera 1/4 acre tract, central W/S/E. RV/motor home/house, OK only \$830 down \$235 month (12.91¢/10yr). Guaranteed financing, more information call 1-830-460-8354

**AFFORDABLE RESORT LIVING** on Lake Fork. RV and manufactured housing OK! Guaranteed Financing with 10% down. Lots starting as low as \$6900. Call Josh. 1-903-878-7265

**SCHOOLS/TRAINING**  
AIRLINES ARE HIRING Train for high paying aviation career. FAA approved program. Financial aid if qualified, job placement assistance. Call Aviation Institute of Maintenance. 1-877-523-4531

**HIGH SCHOOL DIPLOMA** graduate in 4 weeks! Free brochure! Call now! 1-866-562-3650. ext. 55. www.southeasternHS.com

**STEEL BUILDINGS**  
CANCELLED ORDER BUILDINGS! Save thousands. Must go! Easy Payments! 16X20, 20X30, 35X40 Act now! 1-800-991-9251, ask about our display program. www.usbuildingssystem.com

**Run Your Ad In TexSCAN!**  
Statewide Ad ..... \$500  
50 Newspapers, 842,811 Circulation  
North Region Only ..... \$230  
50 Newspapers, 282,811 Circulation  
South Region Only ..... \$230  
101 Newspapers, 386,728 Circulation  
West Region Only ..... \$230  
102 Newspapers, 311,881 Circulation  
To Order: Call This Newspaper direct, or call Texas Express Service at 1-800-749-4793 Today!

NOTICE: While most advertisers are reputable, we cannot guarantee products or services advertised. We urge readers to use caution and when in doubt, contact the Texas Attorney General at 1-800-621-0508 or the Federal Trade Commission at 1-877-FTC-HELP. The FTC web site is www.ftc.gov/whzop

Extend your advertising reach with TexSCAN, your Statewide Classified Ad Network.

**The Joy of Summer**

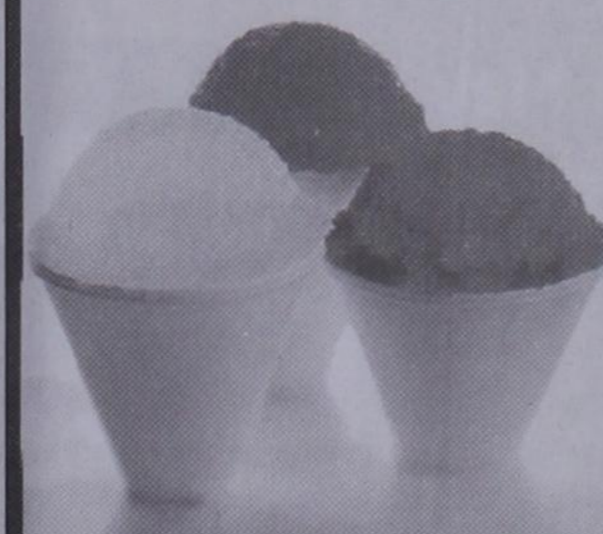
**Available all year!**

**SNOW CONE STAND**

Monday-Friday  
2-8 p.m.

**MURMUR'S CAFE**

100 S. Roland • Spearman  
659-3580



**Blankenship Real Estate**  
659-3052 - 670-3774

**LET US HELP YOU SELL YOUR HOME.**

3BR, 1 1/2 BA, 1600 sq. ft. central heat, all appliances stay.

3BR, 1B, 2C Detached Garage, newer central heat/air and roof.

**NEW LISTINGS WANTED!**  
Eulalia Blankenship - Sales  
Eschol Blankenship - Broker

**French & Co., Realtors**  
273-7355

Beautiful 3 BR. 2B home in Morse, Texas. 1.06 acres. Updates Galore, Gorgeous tile & wood floors, stunning trim, custom paint, 28x33 garage & separate shop.  
Call Michele for details.  
806.273.7355

**Century 21**

**Golden Spread Realty**  
404 4th Ave. GRUVER - 2BR, 1B, 1090 sq. ft. Also available for rent.  
121 S. Hwy. 207, Spearman - Apartment complex & Bunkhouse. PRICE REDUCED - MAKE OFFER.  
Gina Deal, Broker/Owner (806)435-5444 www.century21.com  
INDEPENDENTLY OWNED & OPERATED. ©1992-2011 Century 21 Real Estate Corporation. Equal Housing Opportunity. EOW(8-05-10)B

**Shirley Howard Properties**  
Shirley Howard

**We NEED listings! Call us now to help YOU sell your home for top dollar!**

1016 S Barkley - Spearman. 4,081 sq ft, 4 bed, 4 bath 3 lvg areas, 2 Att gar, Fireplace, Corner Lot!

Shirley Howard, Broker/Owner  
806-886-6536, Cell  
Melinda McCullough, Realtor  
(806) 733-5678

We would LOVE to sell your HOUSE!  
CALL US!

**MARTIN & ASSOCIATES REALTY**

Serving Hansford County Since 1990  
Julie Martin: Broker - 659-2425  
We'd Like Your Listing!  
FOR QUALITY & SERVICE CALL US TODAY!  
Equal Housing Opportunity

**hchd**  
Hansford County Hospital District

**Openings at Hansford Hospital**  
Home Health/Hospice RN and LVN: Provide general nursing care to patients in resident setting. Interacts with patients and patient's families, Medical Staff members and other departments of HCHD on a continuous basis.

**Openings at Hansford Manor**  
CNA: CNA certification required. Must be able to provide assigned residents with routine daily nursing and services in accordance with the residents assessment and care plan, and as may be directed by your supervisor.

Great working environment and staff, quality facility providing opportunities for professional growth. Great benefit package. Apply at 707 S. Roland, Spearman, TX or contact Jackie Nelson at 806-659-5841. Download application at www.hchd.net EEOE (4/28/11)

This ad is just a small sample of the properties that we currently have for sale.

Please check our Web site and give us a call! We need your listings both large and small, all types of ag properties (ESPECIALLY CRP).

**SHERMAN CO., TX** - 627 acres, choice land, four 1/4 mile sprinklers, fully developed, one 1/4 mile off Hwy. 287 on paved CR - CC, 3 phase electricity, new irrigation well drilled in 2010.

**AMARILLO, TX.** - 4 MI. N. OF LOOP 335 - development potential (wind enery, comm., res.) 4872.8 ac. +/- of beautiful ranch country, pvmt. on four sides. Deer, quail & dove. 50% MINERALS!

**CASTRO CO, TX.** - on pvmt., 1808 ac. +/-, permitted for 7,200 cows (4,000 milking), precon. pens w/permit, sprinklers, irr. wells, employee housing, barns.

**DEAF SMITH COUNTY SECTIONS** - Three adjoining sections east of Hereford, Texas, dryland farm, stock water, good fence.

**WEST OF DUMAS** on pvmt. 606 ac. +/-, 17 tower sprinkler, four irr. wells, excellent location for residential or commercial development.

**BUDDY CLINE ROAD** - Moore Co., TX - 1/2 section choice land, two wells (one new) and sprinklers.

**MOORE CO., TX** - 800 ac. with 1/2 section rigged for sprinkler plus 480 acres of CRP. 1 1/2 miles out of Dumas with pvmt. on two sides.

**1200 SOW FALLOW TO FINISH OPERATION** - Moore Co., TX - PRICE REDUCED! Two separate units can be divided - Please contact broker for info package and price info.

SEE OUR WEBSITE OR CALL US!  
www.scottlandcompany.com  
Shawn Gillispie 806/922-5532  
Ben G. Scott, Broker  
1-800-933-9698 day/eve  
TFN(5-12-11)

**Sergio's Auto Sales**

We appreciate your support!

Sergio Vargas  
120 W Kenneth Ave • Spearman TX 79081  
(806) 659-9971 - day • (806) 330-0173 - night  
Canyon Location Phone Number: (806) 231-8388

**SERGIO'S AUTO SALES**

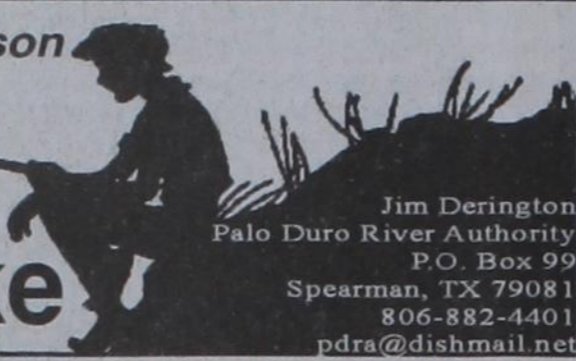
**SERGIO VARGAS**

120 W. KENNETH AVE. SPEARMAN, TX 79081  
806 659 9971 CEL. 806 330 0173



by Dorothy Hudson

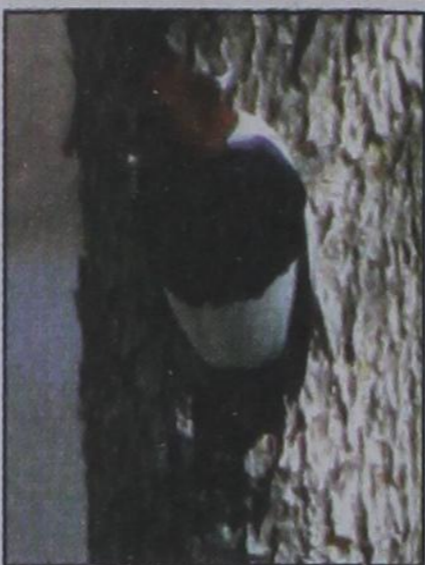
# Out at the Lake



Jim Derington  
Palo Duro River Authority  
P.O. Box 99  
Spearman, TX 79081  
806-882-4401  
pdra@dishmail.net



This is a pair of blue-winged teals, spotted near the stilling basin.



A red-headed woodpecker, seen near the office.

Lake Level--May 9, 2011--41.60 feet (-0.41)

gather on Sunday. There were three RVs on each side during the weekend. The campers are telling Jim that they are enjoying seeing the wild turkeys back moving through the camp-

grounds. May is the time of year for area schoolchildren to make trips to the Park. This week, groups from Perryton, Spearman, and Stinnett

are scheduled. It is often June before Jim sees the first fawn, but he said some are born in May. Be alert if you are driving around the Park roads, you may be the first to spy one of the spotted babies in the spring of 2011.

### Field Day on the Palo Duro Creek

May 3, Dr. Scott Brosowske and James Coverdale of Courson Archaeological Research, joined by author Cleon Roberts of Hereford, met with some of us in Gruver to plan a Field Day to study early historic times on the the Palo Duro Creek. One of the sites they want to document is the location of the first stores for the buffalo hunters and then later for the first ranchers. This site, although known by the

descendants of Dave and Joe Jones, was confused by our early Panhandle historians as the Cator store at old Zulu. The second site they hope to find is the spot where Charley Newell had his dugout and then later built a three room adobe house. We think it will be up the creek from the store, and between the store and a large grove of trees that we are assuming was the grove in later years known as Near to Nature Park. A group with metal detectors will be the hunters. Scott said this group was almost uncanny in how they could find sites. They will welcome visitors. June 4 is the probable date but more on that later.

While we were on the creek, Scott, James, and Cleon walked to the top of a

hill and found two burial pits. I had learned as a child that the Indians buried their dead in the canyons under rocky ledges. According to Scott, burials were quite often on the high points of hills. Usually the grave was covered with rocks to keep the wolves and coyotes from digging out the body. Sometimes if rocks weren't available, they transplanted prickly pear to cover the top. Most of these graves were ransacked by early settlers. As he stood talking by one of the pits, he spied a bead in one pit. Larger than the beads I had seen before, he called it a "pony" bead and said it was a trade bead that originated in Florence, Italy. The smaller ones are known as seed beads and also come from Italy.

## HANSFORD CEMETERY CLEANUP

Attention all Hansford Cemetery property owners: We will be doing a cemetery clean-up beginning May 16th. If you have anything you need to pickup please do so before May 16th. All flowers not picked up will be disposed of permanently. If you have any questions please call 659-3082.

Thank you for your assistance.  
The Hansford Cemetery Board



**Tong's Chinese Restaurant**  
(806) 644-2838  
22 Archer Street • Spearman

**Daily Buffet**  
Lunch - 11 a.m.-2:30 p.m. • Dinner - 5:30-9 p.m.  
Open Wednesday-Monday - Closed Tuesday

**NEW**  
Sushi on Sunday Buffet

## Canadian River Music Festival 2011

May 14  
Jones Pavilion

Headliner:

Robert Earl Keen

Advance tickets go on sale  
Friday, April 1st.

To purchase tickets or for  
more information:

[www.canadianrivermusicfestival.com](http://www.canadianrivermusicfestival.com),  
or the Canadian Chamber of  
Commerce at 806.323.6234.

Photo courtesy of Peter Figen

## GET READY FOR SPRING WITH KUBOTA!



RTV1140

• 24.8 HP, 3-Cylinder Kubota Diesel Engine • Quickly converts from 2 to 4-person seating



ZD326

26 HP, 3-Cylinder Kubota Diesel Engine



L4400

45.3 HP, 4-Cylinder Kubota Diesel Engine



M135X

135 HP, 4-Cylinder Turbo-Charged Kubota Diesel Engine



B3200

30 HP, 3-Cylinder Kubota Diesel Engine

**\$0 DOWN, 0% A.P.R. FINANCING FOR UP TO 60\* MONTHS ON SELECT NEW KUBOTAS!**

### PANHANDLE IMPLEMENT CO., INC.

710 NORTH MAIN STREET • PERRYTON, TX

806-435-6508

**Gordon's DRUG**

**iPad**

**Give-A-Way**  
One entry for each prescription filled in May Refills, New & Transfers!

314 Main  
Spearman  
806-659-2141

Come in and visit us for all your prescription and over-the-counter needs!

**Kubota** EVERYTHING YOU VALUE

\*50 down, 0% A.P.R. financing for terms up to 60 months on purchases of select new Kubota equipment from available inventory at participating dealers through 6/30/2011. Example: A 60-month monthly installment equipment term of 0% A.P.R. requires 50 payments of \$16.67 per \$1,000 borrowed. 0% A.P.R. interest is available to customers if no dealer documentation preparation fee is charged. Dealer charge for document preparation fee shall be in accordance with state law. Only Kubota and select Kubota performance-matched Load Pro and equipment is eligible. Inclusion of eligible equipment may result in a higher interest rate. Not available for Rental, National Accounts or Governmental customers. 0% A.P.R. and low rate financing may not be available with customer credit ratings (C.R.I.) other than "A" or "B". Financing is available through Kubota Credit Corporation, U.S.A. (KCC) and Kubota Finance (KFB), subject to credit approval. Some exceptions apply. Offer expires 6/30/2011. See us for details on these and other low-rate options or go to [www.kubota.com](http://www.kubota.com) for more information.

