



The Hansford County Reporter Statesman

PROUDLY SERVING HANSFORD COUNTY SINCE 1907

reporter@spearmanreporter.com

VOLUME 101 • ISSUE 11

WWW.SPEARMANREPORTER.COM

THURSDAY, MARCH 20, 2008

Lipscomb Union Church to Dedicate Historical Marker

The public is invited to the Lipscomb Union Church dedication of their historical marker. The event will be held at 9 a.m. on Easter Sunday, March 23, 2008. Lipscomb Union Church is located in downtown Lipscomb.

Services will begin as soon as the dedication is completed. Pastor Jon Nichols will be the guest speaker.

Spearman Blood Drive

The Coffee Memorial Blood Center is hosting a Spearman Community Blood Drive will be held on Monday, March 31st from 2-7 p.m. in the gym of The O'Loughlin Center, located at 502 S. Brandt.

Try Your Luck at Winning a 42" Flat Screen TV and a Fajita Party for 20.

Every eligible donor receives a GREEN T-SHIRT!!

ALL BLOOD TYPES ARE CURRENTLY NEEDED!

The need is real. There is no substitute for blood. It can only come from volunteer blood donors. Please support the patients of the High Plains Region...Give the Gift of Life! For an appointment please call 1-877-574-8800.

Benefit Donation Dinner

A Benefit Donation Dinner will be held on Sunday, March 30th for the Nolan Meyer family. The meal will be held at the Booker ISD Cafeteria from 11:30 a.m. to 1:45 p.m.

All proceeds will go to help with expenses of the of Nolan's illness.

Nolan is the son of Teresa and Darren Meyer of Booker. Three years ago he was diagnosed with a brain tumor and had it removed. Several complications occurred and Nolan has many physical, medical and emotional problems. He has been on medication and seen doctors from Amarillo to Fort Worth. Currently he is in a brain rehabilitation center in Fort Worth. Teresa is on leave from her job as a fourth grade teacher at Booker ISD and is staying with him in Fort Worth.

Darren is working and taking care of their sophomore son, Jackson. They also have a daughter Blair, who attends Oklahoma State. Darren, Blair, and Jackson travel to Fort Worth as often as possible to help Teresa and to visit with Nolan.

On Sunday, March 30, the staff of Booker ISD will be hosting a donation dinner to help with the many expenses that the Meyer family has incurred and is continuing to incur during this ordeal. We are preparing for 500 people, and we pray that we run out of food!

Weather Forecast

THURSDAY NIGHT - Partly cloudy. Breezy. Lows in the upper 30s. Southwest winds 15 to 25 mph shifting to the northwest 10 to 15 mph after midnight.

FRIDAY - Mostly sunny. Highs in the upper 60s. North winds 10 to 20 mph.

FRIDAY NIGHT - Partly cloudy. Lows in the lower 30s. Southeast winds around 10 mph.

SATURDAY - Mostly cloudy. Highs in the mid 50s.

SATURDAY NIGHT - Mostly cloudy. Chance of rain in the evening - then a chance of rain and snow after midnight. Lows around 30. Chance of precipitation 30 percent.

SUNDAY - Partly cloudy. A 20 percent chance of rain in the morning. Highs in the lower 50s.

SUNDAY NIGHT - Partly cloudy. Lows in the lower 30s.

MONDAY - Partly cloudy. Highs in the mid 60s.

MONDAY NIGHT - Partly cloudy. Lows in the upper 30s.

TUESDAY - Partly cloudy. Highs in the lower 70s.

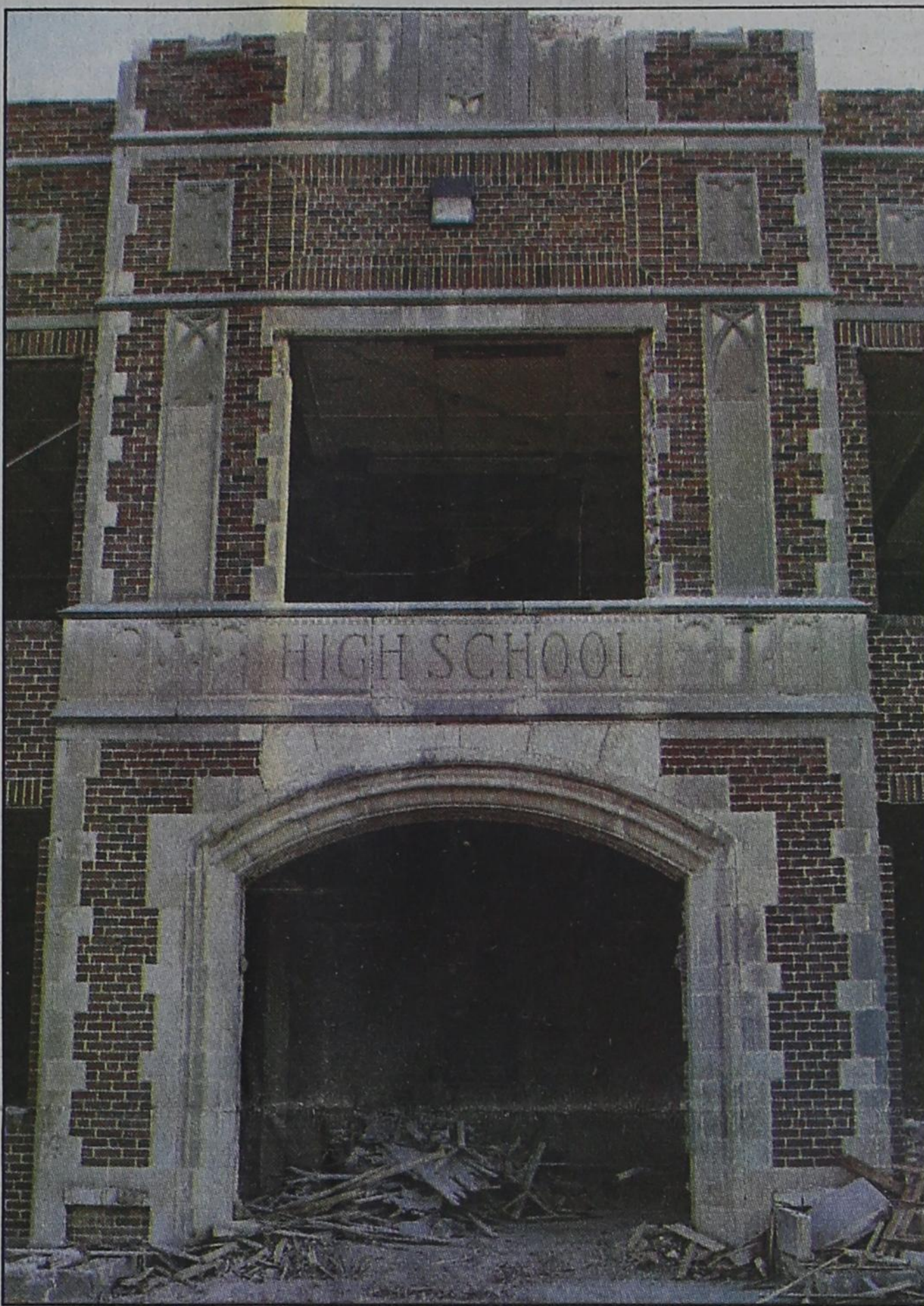
TUESDAY NIGHT - Partly cloudy. Lows around 40.

WEDNESDAY - Mostly sunny. Highs in the mid 70s.

Texas Crop & Weather

The following specific livestock, crop and weather conditions were reported by Panhandle Extension directors: Soil moisture was very short to adequate, with most areas reporting very short to short. Wheat was mostly very poor to poor. Rangeland was mostly poor. The danger of wildfires remained high. Cattle were in fair condition, with producers continuing to supply supplemental feed.

The 'Hollowed' Halls of SHS



The old Spearman Junior High school building, which was previously Spearman High School, will soon become a parking lot for the new junior high building and newly remodeled Gus Birdwell Elementary buildings. This building was built in 1930, and served as Spearman High School until 1963, when students began attending the new high school. This building then became the junior high building, housing students until the fall of 2007, when students and teachers moved into the new junior high building.



The First United Methodist Church will hold a Maundy Thursday service on Thursday, March 20th at 7 p.m.

A Tenebrae service will be held on Friday, March 21st at 7 p.m. at the First Christian Church.

An Easter Sunrise Service will be held at 6:30 a.m. on Sunday, March 23rd at Lake Palo Duro (weather permitting). Breakfast will follow, provided by United Methodist Men.

President Declares Emergency Disaster for Texas

The head of the U.S. Department of Homeland Security's Federal Emergency Management Agency (FEMA) announced that the President yesterday declared an emergency exists in the state of Texas and ordered federal aid to supplement state and local response efforts in the area struck by wildfires beginning on March 14, 2008, and continuing.

FEMA Administrator David Paulson said that the President's action makes FEMA to coordinate all disaster relief efforts which have the purpose of alleviating the hardship and suffering caused by the emergency on the local population, and to provide appropriate assistance for required emergency measures, authorized under Title V of the Stafford Act, to save lives and to protect property and public health and safety, and to lessen or avert the threat of a catastrophe in over 100 counties, including Hansford County.

Specifically, FEMA is authorized to identify, mobilize, and provide at its discretion, equipment and resources necessary to alleviate the impacts of the emergency. Emergency protective measures, limited to direct Federal assistance, will be provided at 75 percent Federal funding.

Paulson named Kenneth G. Clark as the federal coordinating officer for federal recovery operations in the affected area.

FEMA coordinates the federal government's role in preparing for, preventing, mitigating the effects of, responding to, and recovering from all domestic disasters, whether natural or man-made, including acts of terror.

SCR2
COMP
HANSFORD COUNTY LIBRARY
0122 MAIN ST
SPEARMAN TX 79081-2064

RABIES ALERT: Are your pets protected?

By Mark Mathews, Hansford County Assistant Emergency Management Coordinator

Hansford County has had two positive case of rabies this year. It is essential that if you have any pets, have them vaccinated for rabies. Contact the Hansford County Veterinary Hospital at (806) 659-2100 for information and prices on getting your animals vaccinated.

Rabies is a serious disease of the brain and spinal cord and is caused by a virus. The rabies virus is carried in the saliva and nervous tissues of an infected animal and can be transmitted to humans or other animals by a bite or scratch. Once someone gets sick with rabies, the disease is almost always fatal. Fortunately, the disease is preventable in humans if the exposure is recognized and treated promptly.

How can rabies be prevented?

- Enjoy wild animals from a distance. Do not feed or pet strays. Avoid any animal-wild, farm or pet-that you don't know. Report any animal that behaves oddly to either the City of Spearman at (806) 659-2425 (if within the Spearman city limits) or the Hansford County Sheriff's Office at (806) 659-4140.

- Do not handle dead, sick or injured wild animals. If you must handle the animal, use heavy gloves, sticks or other tools to avoid direct contact.

- Make sure your pets are vaccinated against rabies and that their shots are kept up to date.

- Do not feed pets outdoors and keep them indoors at night.

What should you do if you are bitten or scratched by an animal?

- Wash the wound with soap and water immediately for at least ten minutes.

- Call your health care provider or local board of health after you wash the wound.

- Call the above listed numbers for assistance in locating or catching the animal.

- If you think your pet has been bitten or scratched by a rabid animal, put on gloves before touching your pet and consult your veterinarian.

What is the treatment for people exposed to rabies?

- The treatment for people exposed to rabies involves two medications. One, called rabies immune globulin contains antibodies to fight the virus and is given once. The other medication is rabies vaccine, which ensures long-lasting protection. To work best, medications should be given as soon as possible after the bite or scratch.



Altha Groves celebrated her 101st birthday on Wednesday, March 19, 2008 at Hansford Manor. Many Manor residents, staff members and family and friends were on hand for the momentous occasion.

Deadline Notice!

The deadline to submit news and advertising to the Hansford County Reporter-Statesman is Monday at 5 p.m. Items submitted after the deadline will be published at a later date, as time and space permit.

Items may be submitted by phone (806-659-3434), fax (806-398-9080), mail (Reporter-Statesman, 213 Main Street, Spearman TX 79081), or e-mail (reporter@spearmanreporter.com).

For more information, please contact Catherine Smith at 659-3434, or e-mail to reporter@spearmanreporter.com



Lullabies, Legends & Lies

by Parson Smith, the Prime Minister of Laughter

We have three grandchildren. Our oldest daughter gave birth to two of them. One is adopted.

The youngest loves to play basketball.

Just knee high to a grasshopper, he loves throwing a ball at a hoop. When he started, he almost never made a basket and when he would miss, the adults would all say, "Almost."

Soon, basketball simply became, "Almost."

"Want play almost?"

Our oldest grandchild is almost eight years old. Her hair is beautiful. She and her mother love caring for and brushing her hair.

She was told about "Locks of Love," an organization that accepts donations of hair and uses that hair to make wigs for underprivileged children who lose their hair because of sickness and disease.

While sitting in the chair to have her hair trimmed, granddaughter Meghan, hearing about the constant need for donations, had her hair cut off, so that she could help another child.

We will not call this game, "Almost."

I think that we shall call it, "Perfect."

Until the next time,
May God Bless.

State Capital



HIGHLIGHTS

AUSTIN - With the U.S. population at 303 million and growing, whatever finds its way into the water supply is increasing.

Say you take a prescription medication, the part of it that your body does not use passes naturally. This residue continues through a sewer line or septic system, eventually ending up in the city water supply.

The Associated Press did a five-month study to learn the pharmaceutical content in the water supplies of selected cities across the nation. The AP reported the results, and those results were widely published.

Surprisingly, the tapwater here in your capital city came up negative when tested for pharmaceuticals. The city tapwater in Albuquerque, N.M., also tested negative, and so did the tapwater in Virginia Beach, Va.

The rest of the cities tested did not fare as well. Think San Francisco, Philadelphia, Washington, D.C., and others. Sixty-three substances found included such things as antidepressants, cholesterol inhibitors and sex hormones.

Now, changing the subject from water to air: Austin, of course, is the Travis County seat, and it turns out the air in Travis County does not meet the Environmental Protection Agency's new air quality standards for ozone.

Travis isn't alone; other counties the EPA identified as not meeting air standards include Bexar, Brazoria, Collin, Dallas, Denton, El Paso, Ellis, Galveston, Gregg, Harris, Harrison, Hood, Hunt, Jefferson, Johnson, Montgomery, Orange, Parker, Rockwall, Smith and Tarrant.

Gov. Rick Perry on March 12 called the EPA standards a "moving target" that in effect restrict commerce.

But Perry lauded a March 3 editorial in the Wall Street Journal hailing the Lone Star State's economic strength despite the national economic slowdown.

Continuing on the subject of commerce, your capital city was consumed March 7 through 16 with the annual South By Southwest music, film and interactive festivals.

Tens of thousands of people came to hear bands rang-

STUDY OF WATER SUPPLIES SHOWS AUSTIN IS OK



by Ed Sterling

ing from the famous to the barely known from across America and around the world. They purchased "SXS" wristbands that worked like a passport to all the clubs they could squeeze into.

Austin's welcome guests bunked at hotels, ate heartily at cafes and bistros and shopped euphorically, even with the cost of gasoline, milk, wheat and corn inching skyward.

Employers to receive tax break

The Texas Workforce Commission announced a plan to give about 370,000 employers a break from paying unemployment insurance tax.

Employers who had a payroll in 2007 and paid all taxes on time will qualify to receive the break, which will come in the form of a surplus tax credit.

Qualified employers will receive the surplus tax credit after their first quarter 2008 tax returns are filed and taxes are paid.

The tax credit is expected to total about \$90 million. That would average about

\$243 per employer. "Thanks to our healthy economy and low unemployment rate last year, the state collected more money for the unemployment trust fund than we need, which is why I'm directing the state to bring that tax to a screeching halt for this year," Gov. Perry explained in a March 10 news release.

Pauken named commission chair

Gov. Perry appointed Dallas attorney Tom Pauken as chairman of the Texas Workforce Commission for a term to expire Feb. 1, 2013.

Pauken served as chairman of the Republican Party of Texas, 1994 to 1997.

President declares disaster

David Paulison, head of the U.S. Department of Homeland Security's Federal Emergency Management Agency announced that the president has declared an emergency exists in the state of Texas and ordered federal aid to supplement state and local response efforts in the area struck by wildfires beginning on March 14, and continuing.

TEXAS Health Matters

Focus on Nutritional Services Important at Any Age

For many older Texans the checklist for living independently includes sound finances, a support community and quality medical care. Another vital element that is sometimes overlooked is nutrition. Staying healthy by making better food choices can contribute to a long life of living independently.

The Texas Department of Aging and Disability Services (DADS), through local Area Agencies on Aging, offers nutrition services that include counseling, consultation and education as well as meals at senior centers or delivered to a home. Services are provided to individuals who are 60 years of age and older who have the greatest economic and social needs. Meals are served at senior centers, adult daycare facilities and multigenerational meal sites. People with certain health issues may receive meals delivered to their homes.

Another aspect of nutritional services is education and counseling. Learning about nutrition can promote a person's well-being and delay the onset of health conditions that may be the result of poor nutrition or a sedentary lifestyle. Counseling also is available to help older residents learn more about nutrition, how foods may interact with their medications and their overall health status.

Eating well is always important, but our nutritional needs change as we age. Take the time to evaluate your current nutritional needs and see what steps you can take to improve your health and well-being. If you

have specific medical conditions or are starting an exercise program for the first time, you may also want to check with your doctor.

Here are some tips to help get you started:

Evaluate your current weight and normal weight to determine the number of calories you need each day. High blood pressure, coronary artery disease and stroke can all be related to your weight.

Include vegetables, fruits and whole grain foods in your meals and snacks on a daily basis.

Replacing fluids in your body each day is important. Soup, water, juice and milk are all liquids you should consider when thinking about replacement of fluids.

Intestinal problems may be avoided by eating more fiber. Fiber is found in fruits, vegetables, beans, nuts, whole grains and brown rice. If you need to add more fiber to your diet, do so slowly to avoid stomach problems and be sure to drink plenty of liquids.

Be aware of your intake of discretionary calories, such as those in oil, fat and sugar.

Shopping for food and keeping the costs down can be a concern. Remember to think about the amount of the food or ingredients you will use, and make a list before you go to the grocery store. A larger container of a product may be less expensive at the checkout lane, but the savings may be lost if you can't use that amount by the expiration date. Plan your meals and keep canned or frozen meal on hand in case you do not feel like cooking or for emergencies. Using generic brands and freezing leftovers are other commonsense ways to save money.

Simplicity and enjoyment should be a part of your good nutrition lifestyle. Avoid making too many changes at once. Develop your plan, and you soon will be on the path to good nutrition and a healthy lifestyle that will last a lifetime.

To learn more about nutritional services and locate your local Area Agency on Aging, call 1-800-252-9240. You may also visit the Texas Department of Aging and Disability Services website at www.dads.state.tx.us.

Letter to the Editor

Dear Editor,

After moving back to Spearman in late 2005, I have been meaning to write a thank you note to the City of Spearman to commend the city for providing the excellent recycle bins for the use of its citizens. I would also like to give my note of approval for the designated clean-up days promoted by the city and the chamber to clean up our community. Pride in our community's appearance reflects the caring nature of its inhabitants and draws good comments from out-of-town visitors about our community.

The recycle bins are located with easy access and it makes my job of stewardship of God's garden planet Earth very easy and hopefully better for future generations.

So, thank you, City of Spearman.
Madalyn Fuqua

SUDOKU
PRESENTED BY

VolunteerMatch.org
Where volunteering begins.

			1	9	5	8	2		
								6	
9			2			7			3
2					1				8
	4					6			
1			3						7
4	8			3					5
	1								
	9	6	4	1	8				

© 2008, StatePoint Media, Inc. answer on classified page

Fill in the blank squares in the grid, making sure that every row, column and 3-by-3 box includes all digits 1 through 9.

These games are brought to you by the
Hansford County Reporter-Statesman

The Hansford County Reporter-Statesman
213 Main Street • Spearman, TX 79081
Phone - (806) 659-3434 • Fax - (806) 398-9080
www.spearmanreporter.com
reporter@spearmanreporter.com
cathysmith@valonet.com

Mon.-Thurs. 9 a.m.-12 p.m., Mon.-Wed. & 1-5 p.m.
Closed Thurs. afternoon and all day Fri., Sat. & Sun.

Gary Smith - Publisher Catherine Smith - Editor
Contributing Writers: Dorothy Hudson, Jim Derington,
Merry Sparks, Cecil Biggers
Contributing Photographer: Charlie Johnson

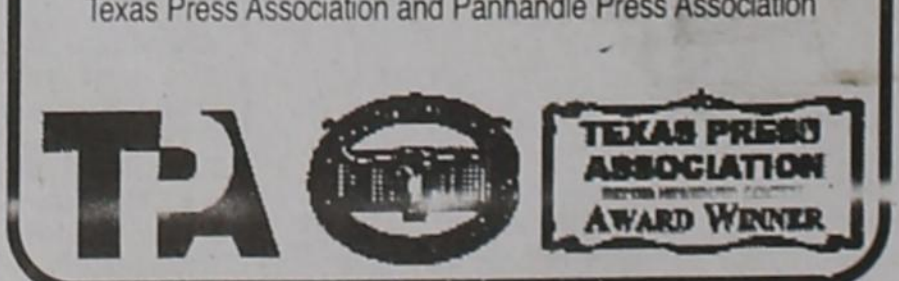
Subscription Rates
In Hansford County - \$30.00 • Out of County - \$40.00

The Hansford County Reporter-Statesman (USPS 529660) is published weekly in Spearman, TX. Periodical postage paid in Spearman, TX. **POSTMASTER:** Send address changes to: The Hansford County Reporter-Statesman, 213 Main Street, Spearman, TX 79081.

Publication Policy
The deadline to submit news and advertising to The Hansford County Reporter-Statesman is Monday at 5 p.m. Items submitted after the deadline will be published at a later date, as time and space permit. Publication of all items is at the discretion of the editor.

Advertising
Open Display rates are \$4.00 per column inch. Classified Ads are \$6 for the first 25 words and 10¢ per word for each additional word. (Additional charge for boxed classifieds.) There is a \$1 charge per week if billed.

Member of
Gruber Chamber of Commerce
Spearman Chamber of Commerce
Texas Press Association and Panhandle Press Association



COFFEE CRAZE

ACROSS

1. Bottle to a baby?
5. Mentally quick and resourceful
8. "Do it, or ___!"
12. As quickly as you can
13. Intense anger
14. Bible song
15. Irritate
16. Viking name
17. Domes or vaulted recess on a building
18. Social movement in coffee market
20. Formerly
21. Small jar
22. Legendary West
23. Opposite of potential
26. Flight without connections
30. Type of constrictor
31. Harmful tool
34. Type of grape
35. Base-8 numeral system
37. Found at the pump
38. Evade
39. Sound of pain
40. Beat seeds from grain
42. Surprised expression, pl.
43. Makes coffee drinks
45. Limestone landscape forms
47. Sun in Mexico
48. Legal excuse
50. Equal to 1.3 ounces in Asia
52. Espresso plus hot water
56. The original spe-

- cialty coffee drink?
57. Black fossil fuel
 58. Gradations of colors
 59. Leopard marks
 60. State of confusion
 61. And elsewhere
 62. Female equivalent of "sir" in England
 63. Old fashioned "before"
 64. Play alone

DOWN

1. Vomit
2. Iraq and Syria are among its countries
3. Island east of Java
4. Short synopsis
5. Sign of a saint, pl.
6. Lion group
7. Nipper or kid
8. "Coffee" in Italy?
9. Lad's counterpart
10. Incision
11. 1/6 inch in printing, pl.
13. A paddle or switch
14. Hymn of praise
19. Long fishing line with shorter lines attached
22. "My" in French
23. Goal of Manhattan Project
24. Added to a mocha drinks
25. Turkic language of people living from Volga to Ural Mountains
26. Target of rhinoplasty
27. Commotions or hoo-hahs
28. Should
29. French ___ coffee

40. Through-the-lense maker
41. Sounds of a bagpipe
44. Typically the first to go on shoes
46. From rags to what?
48. Love in France
49. Rental agreement
50. Paperlike cloth made in South Pacific
51. Particle in #23 Down
52. Cartoon company?
53. A grand theft
54. After O in Shaq's name
55. Capital of Norway
56. Acid drug

CROSSWORD

1	2	3	4		5	6	7		8	9	10	11		
12					13				14					
15					16				17					
18				19					20					
			21				22							
23	24	25					26			27	28	29		
30					31	32	33			34				
35					36				37			38		
39					40				41			42		
43					44				45			46		
					47				48	49				
	50	51							52			53	54	55
56									57					58
59									60					61
62									63					64

PRESENTED BY

VolunteerMatch.org
Where volunteering begins.

© 2008, StatePoint Media, Inc. answer on classified page

Happy Birthday!

Editor's Note: This Happy Birthday list is run as a public service by the Hansford County Reporter-Statesman. We apologize if any names are misspelled. If you know of a name that needs to be changed, added or deleted, please call 659-3434.

Thank you, Catherine

March 20
Birthday - Mack Bevell, Travis Ferguson, Chad TeBeest, Martha Stinson, Florencio Martinez, Angela Sinta, Jane Henton, Kim King, Marion Upchurch, Kay Christian, Garry Hathaway, Lisa Tice, Rocio Garcia
Anniversary - M/M R. M. Crawford, M/M Benny McCullough, M/M Rod Barkley

March 21
Birthday - Kathy Duncan, Kelly Hart, Nancy Alvarez, Rhonda Riley, Judy Hergert, Chelsey Clark, Pepe Tarrango, Jose Tarango
Anniversary - Bill and Jo Ann Weaver

March 22
Birthday - Veta Allaway, Charmaine Gross, Maggie Key, Bob Miller, Payton Mitchell, Marty McCloy, Kelly Rauscher, Randie (Renner) Baumann, Roy Garrard, Rosalinda Vela, Tim Kizzar, Michael Burke, Doug Gumfroy, Tavo Borunda, Jorge Soto, Carla Jones, Debbie Clement, Andy Lindsey, Reid Wilson, J.J. Gallegos
Anniversary - Mr. and Mrs. Benny Wilson

March 23
Birthday - Tanner Irwin, Mercedes Perez, Dwayne TeBeest, Annie Houghton, Jamie Sterling, Beth Ann Flowers, Angela Craig, Teresa Russell, Marvin G. Wilson, Christopher Turner, Ramon Garcia Jr., Bernice Flores, Jason Evans, Carter Strawn, Wilbur Hull
Anniversary - Mr. and Mrs. Tony Cazares

March 24
Birthday - Dillion Payne, Marie Bell, Mike Floyd, Charles Haight, Frank Sursa, Lesa Deakin, Kari Coates, Patricia Pool, Lera Deakin, Jeri Diane Sterling, Chandra Lee, Carla James, Rebecca Garza, Cory Haight, Beth Phelps
Anniversary - Mr. and Mrs. Mike Babbs, Mr. and Mrs. John Smith, Mr. and Mrs. Greg Breland, Mr. and Mrs. Blair Traham

March 25
Birthday - Scott Jarvis, Jason Ward, Nellie Albrect, Oscar Rojas Jr., Kendra Kay Burke, Mike Dixon, Donna Brogdo, Jean Schaffer, Michael Covington, Joe Baca, Amy Bridges, Chad Howe, Mario Soto, LuAnn Hunter
Anniversary - M/M Josh Reed

March 26
Birthday - Keith Dillard, Jamie Smith, George Jackson, Tanda Taylor, James Brown, Judy Irlbeck, Greg Holladay, Ruth Baker, John Paul Molina, Danny Bass, Joann Reynolds, Kristi Ann Balderrama, Sabrina Cantu, Joanna Myers
Anniversary - Mr. and Mrs. Davis

Andy Riley, M/M Jimmy Morley
March 27

Birthday - Tommy Boone, Diana Stork, Carol Scroggs, Ylana DeLuna, Bill Stevens, Wanda Wagner, Anthony Wilkerson, Clark Dunaway, Gary Urban, Debbie Herrington, Michael McCarney, J.D. Schick
Anniversary - Steve and Debbie Rogers, Mr. and Mrs. Louis Schnell

March 28
Birthday - Ryan Renteria, Roma Tomlinson, Janet Cudd, Mandi Lair, Ray Hawkins, Jarrett Hendricks, Ross Jarvis, Byrnic Callaway, Rick Riggins, Carlos Castillo, Janet Scarborough, Mickey Schoenhals, Mark Hodges, Verna Strawn, Colten King, Tyrell King
Anniversary - M/M Larry Clawson, M/M Howard Hefley, M/M Jerry Tipps, M/M Richard Carter

March 29
Birthday - Lacy Barkley, Dixie Karlin, Joshua Kirby, Jessica Stork, Josephine Salgado, Scott Beedy, Melissa Taylor, Tiki Farrar, Chad Guthrie, David West, Marg Cook, Janis Maupin, Josh Harris, Jeann Thompson, Scot Martin, Ruth Shields, Ramon Garcia Jr., Greyson Karlin
March 30
Birthday - Jesus Favela, Loni Lamb, Vi Hornsby, Mrs. Elmer Longley, Nikki Strawn, Grady Cline, Denae Baker, Jimmy Blain, Heather Cline, Krystal Burkhammer, Shane Atwood, Mike Schick, Marvin Sparks, Dorothy Longley
Anniversary - M/M Ruben De Santiago

March 31
Birthday - Reaetta Gammon, Crystal Gruver, Ken Jones, Comfort Winders, Kay Patterson, Nellie Buchanan, Dionne Pencille, Santiago Tercero Jr., Johnny Vernon, Cheryl Linde, Jolinda Wilson, David Flowers, Cortney Valdez, Teresa Carter, Weston Castillo, Kenton Johnson
Anniversary - M/M Chuck Sparkman, M/M Daniel Miser, M/M Jim Bass, M/M Dan Carthel, M/M Allan Beasley

April 1
Birthday - Cynthia Henson, Matt Messer, Chris Stork, Wayne Ware, Bob Hohertz, Lorie Acevedo, Jack Duncan, Tanner Brown, Elizabeth Duncan, Ashlynn Miner
April 2
Birthday - Margaret Odom, Dorothy O'Connell, Norma Hermosillo, Kyle Keim, Steve Templeton, Pam Barber, Phillip Turner, Amy Schoenhals, Paulene Galvon, Eugene Sadler
Anniversary - Bob & Debra Dennis

April 3
Birthday - Bob Gillispie, Don Rempel, Brenda Rudolph, Pam Buzzard, Teri Taylor, Bill Gaitner, Doris Beck, Jeff Williamson, Eric Varnon, Ryan Noble, Jared Bass, Tracy Graham, Katie Baehler, Betty Davis

Words from Faith & Grace

by Cecil R. Biggers, Lutheran Lay Minister
CHRIST HAS RISEN!

As we celebrate the new beginning of our life in Jesus Christ, we study Jeremiah 31:1-6, Psalm 118:1-2, 14-24, Colossians 3:1-4, and John 20:1-18. From Jeremiah's "Book of Consolation" we read of the restoration of Judah and Israel. God promises his steadfast love to the people of the captivity. The "Chosen people" turned away from God, but He did not disown them. We as Christians remember that "God so loved the world...". God loved us even while we were sinners. The Psalmist sings of the steadfast love of God; he sings that the stone the builders rejected has become the chief cornerstone; he proclaims, "This is the day the Lord has made; let us rejoice and be glad in it." It is thought by some that this is the psalm that Our Lord and his disciples sang as they left from the seder (the Last Supper) to go to the Mount of Olives.

Paul reminds the Colossians that if they have been raised with Christ, then they are to seek the things that are above. As Christians we rise from the waters of baptism reborn into a new life with new values! We now view everything against the background of God's Kingdom. Yes, we still live in this world, but our focus should now be on giving rather than getting, on serving rather than ruling, on forgiving rather than avenging. In baptism we have stripped away our old self and are now clothed with the new self, in the image of Jesus Christ. Dear Christian please do not go looking for your old "clothes" even if you thought they were comfortable.

Read John 20:1-18 carefully. Note that Mary Magdalene went to the tomb during the last watch of the night (3 a.m. to 6 a.m.). She discovers the tomb of Jesus is open. Immediately she runs to inform Peter and John. Peter and John run to the tomb. John arrives first, he is younger than Peter, but Peter enters the tomb first. They both see the body wrappings lying there; we are told John "believed". The male disciples go home. Mary stays weeping. She looks in the tomb and sees two angels who ask, "Woman, why are you weeping?" She tells them and a man asks, "Woman, why are you weeping?" Mary does not recognize the man until he calls her by name. Please note that the first disciple to see the risen Christ was a woman! The first person to communicate the gospel was a woman! When we meet the risen Lord our lives are transformed.

May the Holy Spirit show you the risen Christ.
CHRIST HAS RISEN, INDEED!

Our Sympathy



JOE HATAWAY
DUMAS - Sheriff D. "Joe" Hataway - 65 passed away Sunday, March 16, 2008 in Dumas, Texas.

Services were held at 2:00 p.m., March 19, 2008 at the Sunray Church of Christ with Joe Mitchell of Green Bay, Wisconsin officiating, assisted by Johnathan Zerby, minister of the church. Burial was in Lane Memorial Cemetery with flag detail by the Lubbock County Sheriff's Department Honor Guard. Arrangements are by Morrison Funeral Directors.

D. Joe Hataway was born March 26, 1942 in Sunray, Texas to Homer Jay and Edith Marie Hataway. He was the middle child of seven children but was his mother's favorite. He graduated from Sunray High School with the class of 1960. In 1961 he joined the National Guard. On November 22, 1963 he married Yvonne Farris in Dumas. He was actively involved helping with Cal Farley's Boys Ranch for many years.

He joined the Amarillo Police Department and worked in Amarillo for five years. Joe graduated from the Department of Public Safety Academy in 1967 and was the Driver's License Trooper in Borger for a year and then transferred to Knox City, Texas. He stayed in Knox City for two years and then transferred to Perryton. He remained a DPS Trooper in Perryton from 1971 to 1980. On August 1, 1980 Joe was elected to his first term as sheriff of Ochiltree County. He remained in office until his retirement on March 31, 2007.

Survivors include: his wife Yvonne of Sunray; sons, Joe Vaughn Hataway and wife, Tammie of Trinidad CO. and Jayson Lee Hataway and wife, Jennifer of Borger; daughters, Joy Dawn Blundell and husband Jim of Iowa Park, TX and Jana Marie Newman and husband Wilson of Graford, TX; brothers, Harold Hataway and wife, Annis and Jim Hataway and wife, Barbara all of Sunray, Donnie Hataway of Joplin, MO, sisters, Darlene Keeton and husband Buster of Enid, OK, Collene Seright of Albuquerque, NM, Marlene Irwin and husband Al of Midwest City, OK; ten grandchildren, many nephews and nieces.

Pallbearers will be Sheriff James Robertson of Lipscomb County, Sheriff Bo DeArmond of Moore County, Sheriff Gary Evans of Hansford County, Sheriff Don Copeland of Gray County, Sheriff Jack Halle of Sherman County, Sheriff David Medlin of Oldham County, Sheriff Gary Henderson of Hemphill County and Sheriff Joel Richardson of Randall County. Honorary Pallbearers will be the Sheriff and Deputies of the Ochiltree County Sheriff's Department.

Memorial may be made to Cal Farley's Boys Ranch, PO Box 1890, Amarillo, TX 79105

SIGN UP FOR A FREE SCOOTER
One Scooter Given Away Each Month
Toll Free 800-606-9860
Med Care MEDICAL SUPPLY
www.medcaremedicalsupply.com

Med Care MEDICAL SUPPLY
Ask us if you qualify for a **POWER CHAIR** at little or no cost to you.
In most cases, Medicare, Medicaid & Insurance will cover 100% of the cost for your Power Chair.
Toll Free 800-606-9860
www.medcaremedicalsupply.com

OUR BODY
THE UNIVERSE WITHIN
Actual Human Bodies
Through May 26, 2008
WITTE MUSEUM
3801 Broadway • San Antonio, TX • 78209
www.witte-museum.org • 210.257.9100

MONUMENTS
Boxwell Brothers Funeral Home
519 Evans • Spearman
659-3802
Dear friends,
When you buy a monument from us we make sure it is exactly what you want at a price you can afford. If it is not right, we will make it right. And you will not have to search the countryside to find us. We are here when you have a need.
Sincerely,
Bob Boxwell

Replenish the seed of faith through . . . DAILY BIBLE READING, PRAYER & REGULAR CHURCH ATTENDANCE

- Spearman**
- Apostolic Faith Church**
822 S. Dressen • 659-2870
Sunday School: 10 a.m.
Worship Service: 11 a.m.
Sun. Eve.: 6 p.m.
Wed. Prayer Mtg: 7 p.m.
Pastor - Roland Haney
 - First Assembly of God**
401 N. Bernice • 659-2295
Sunday School: 9:30 a.m.
Worship: 10:35 a.m.
Kid's Church: 10:35 a.m.
Evening Worship: 6 p.m.
Wed. Worship: 7 p.m.
Wed. Youth: 7
Pastor - Bob Elder
 - First Christian Church**
(Disciples of Christ)
29 S. Bernice • 659-2036
Sunday School: 9:45 a.m.
Worship: 10:50 a.m.
Minister -
 - First Baptist Church**
123 N. Bernice • 659-5557
Sunday School: 9:45 a.m.
Worship: 11 a.m.
Evening Worship: 7 p.m.
Men's Bible Study - Wed. 7 a.m.
Children's Choir - Wed. 6 p.m.
Adult Choir - Wed. 7 p.m.
Wed. Bible Study: 7 p.m.
Pastor - Jim Medley
 - Church of Christ**
121 S. Haney • 659-3244
Sunday Bible Class: 9:45 a.m.
Worship: 10:30 a.m.
Evening Worship: 6 p.m.
Bible Study Wed.: 7:30 p.m.
 - Sacred Heart Catholic Church**
901 Roland • 659-2792
Sat. Night Mass: 5:30 p.m.
Sun. Mass: 9 a.m. - English
Sun. Mass: 11:30 - Spanish
1:30 p.m. - Gruver - Christo
hendator Mass - Spanish
Rev. Guillermo Morales
 - First United Methodist**
407 S. Haney • 659-5503
Sunday School: 9:45 a.m.
Worship: 8:30 & 11 a.m.
Jr. High Youth: 5 p.m. Sunday
High School: 6 p.m. Sunday
Kids Club: 3 p.m. Wed.
Pastor - Neely Landrum
 - Grace Presbyterian Church**
(Worships with Faith Lutheran Church)
1101 Bernice • 659-2033
Pastor - Beverly Cook
 - Faith Lutheran Church (ELCA)**
1101 Bernice • 659-2252
Sunday School: 9:45 a.m.
Worship: 11 a.m.
(Worships with Grace Presbyterian Church)
Pastor - Beverly Cook
 - Union Church**
31 S. Endicott • 659-2644
Sunday School: 9:45 a.m.
Worship: 10:45 a.m.
Evening Worship: 6 p.m.
Bible Study: 7 p.m. Wed.
Pastor - Dr. Timothy Minor
 - Fellowship Baptist**
1102 S. Archer • 659-2783
Sunday School: 10 a.m.
Worship: 11 a.m.
Sun. Evening Worship: 6 p.m.
Youth/Adult Service: 7:30 Wed.
Pastor - James Washburn
 - Primera Mision Bautista**
502 E. 7th • 659-3991
Sunday School: 9:45 a.m.
Worship: 11 a.m.
Evening: 6 p.m.
Wed. Prayer Meeting: 7 p.m.
Thurs. Visitation: 7 p.m.
Pastor Joe Garcia Jr.
 - El Aposento Alto U.P.C.I.**
1105 S. Roland
Domingos: Escuela Domiciliar - 10 a.m.
Culto Evangelistico - 7 p.m.
Jueves: Oracion - 8 p.m.
Mier: Estudio Biblico - 7 p.m.
Pastor - A.G. Martell
(806) 659-2153
 - Gruver United Methodist**
Broadway & Garrett
733-2651
Sunday School: 9:45 a.m.
Worship: 8:30 & 10:50 a.m.
Eve. Worship & UMY: 6 p.m.
Pastor - George Price
 - Spanish Cristo Redentor Church**
Sunday Mass: 1:30 p.m.
Friday Evening Mass
Summer - 8:00 p.m.
Fall/Winter - 7:30 p.m.
- Oslo**
- Oslo Lutheran Church (ELCA)**
6 Miles West & 12 Miles North of Gruver
339-7646
Sunday School: 9:45 a.m.
Worship: 11 a.m.
Pastor - Arlen Lloyd
- Gruver**
- First Baptist Church**
402 E. Broadway • 733-2411
Sunday School: 9:45 a.m.
Worship: 10:50 a.m.
Disciple Training: 6 p.m. Sunday
Prayer Meeting: 7:30 p.m. Wednesday
Pastor - Scott Curry
 - Church of Christ**
209 King • 733-2760
Sunday School: 9:30 a.m.
Worship: 10:20 a.m.
Evening Worship: 6 p.m.
Wed. Worship: 7:00 p.m.
Minister - Gaylord Cook
 - First Christian Church**
510 King • 733-2960
Sunday School: 10:00 a.m.
Sunday Worship: 11 a.m.
Youth: 7:30, Sunday
Adult Bible Study: 7:30, Sun.
Wed. Bible Study: 8:00 p.m.
Pastor - Gary Gumfroy
- Morse**
- Morse Baptist Church**
733-2757
Pastor - Mike Martin
- He has showed you, O man, what is good. And what does the LORD require of you? To act justly and to love mercy and to walk humbly with your God.
Micah 6:8

GRAND OPENING - COMING SOON!
Copper Ridge - Premiere of the Ridge
1-2 acre estate homesites from the \$80's.
New Braunfels Distinctive Acreage Community.
Ridgeline Views, Guarded & Gated.
Accepting appointments for tours now!
Call 800-539-8051
www.land.copperridgetx.com

FREE DIRECTV 4 ROOM SYSTEM!
NOW 92 HD CHANNELS!
265+ CHANNELS!
Pkgs. start at \$29.99
FREE Showtime + Starz
FREE DVR/HDI
No Start up costs!
We're Local Installers!
1-800-214-7110

Car Wrecks
EXPERIENCE COUNTS
Lowest rates with over 35 years combined experience.
Ryan A. Krebs, M.D., J.D.
DANIEL K. GUNTER, M.D., J.D.
Richard A. Dodd, L.C.
Taraouly R. Cappolino, P.C.
1-800-460-0606
www.YourCarWreck.com

CAREER OPPORTUNITY
Petroleum Engineering Service Company has immediate openings for **Production Testing and Slickline Personnel** in the **OZONA, TEXAS** area.
REQUIREMENTS: Minimum of high school education required. Must be neat in appearance, responsible, dependable and have strong desire to excel. Good work history with excellent references a must.
BENEFITS: Retirement plan, group insurance, life insurance, liberal vacation policy.
SALARY: Open (commensurate w/ experience)
Send resume to: **FESCO LTD.**
P.O. Box 1568
Ozona, TX 76943
44 Equal Opportunity Employer
www.fescoltd.com

Deakin
ELECTRIC
OILFIELD • RESIDENTIAL • COMMERCIAL
321 S. MAIN • SPEARMAN
1-800-999-1506
806) 659-5016
Chris Deakin
President

Bartlett's Lumber & Hardware
105 W. Broadway • Gruver, Texas
(806) 733-2404

BERRY CLEANERS
Ann & Vernon Pipkin - Owners
Phone 659-3122 • P.O. Box 1017
207 Main St. • Spearman, TX

Morse Implement & Auto Supply
"Join us in church"
Tom Dortch 733-2668
Box 89 • Morse, TX 79062

PRAIRIE MOTORS INC.
Hwy. 207 South • P.O. Box 430
Spearman, TX 79081 • (806) 659-2541
www.prairiemotors.com

MurMur's Cafe
100 Roland St
Spearman, TX.
659-3580

Hansford County Reporter-Statesman
"Proudly Serving Hansford County Since 1907"
(806) 659-3434
310 Barkley • Spearman, TX

INTERSTATE BANK, sbb
www.interstatebank.net
322 Main • P.O. Box 146
Spearman, TX • 659-2559

SHS Spring Sports

Spearman Lynx Win First at Booker, 2nd at Guymon

Blayne Schroeder Takes the 2nd Place Medal

The Spearman Lynx win first at the Booker Golf Meet with Blayne Schroeder winning the second place medal with a score of 79.

The team consists of: Cullie Cooper, Trent Goodheart, Tyler Harper, Brett Winegarner, and Blayne Schroeder

The team also played in the Gruver tournament at Sunset Hills Golf Course in Guymon winning 2nd as a team.

The team consisted of: Blayne Schroeder, score of 80; Tyler Harper 83; Jordan Ashmore 88; Brett Winegarner 88; Cullie Cooper 97.

lost to Chisum (Dal) 8-0

Boys Doubles

T J Worley & Gabriel Moreno (SP) defeated McCloy & Lopez (Gruver) 8-1; lost to Castillo & Reeves (Wellington) 8-3; defeated Holmes & DeRouch (Bor) 8-4; lost to Messer & Vinsor (Wheeler) 8-5

L J Fishburn & Andy Mendez (SP) defeated Hart & Miller (Gruver) 8-2; lost to Jensen & Jones (Pan) 8-1; defeated McCloy & Lopez (Gruver) 8-6; defeated Schafer & Dorris (Can) 8-3

Jeremy Frost & Joel Kern (SP) lost to Cantu & Johnson (Well) 8-3; defeated Britton & Weller (Groom) 8-2; lost to Torres & Barkley (Groom) 8-4

Long Jump: 3. Kylee Howard, Spearman, 15-0.

3200: 1. Suttan Garnett, Spearman, 13:09.53. 3. Jessica Diaz, Spearman, 13:29.25.

800: 1. Jessica Diaz, Spearman, 2:37.50. 6. Bond Pittman, Spearman, 2:44.40. 100 Hurdles: 5. Kylee Howard, Spearman, 17.40.

400: 6. Preslee Baker, Spearman, 69.91

300 Hurdles: 4. Kylee Howard, Spearman, 52.88.

1600: 1. Suttan Garnett, Spearman, 6:04.19.

1600 Relay: 2. Spearman 4:31.37.

Boys

Team Totals: 1. Childress 172. 2. Panhandle 111. 3. Boys Ranch 89. 4. Highland Park 62. 5. West Texas 40. 6. Spearman 37. 7. Sanford-Fritch 34 1/2. 8. River Road 29. 9. Clarendon 26 1/2. 10. Bushland 16. 11. (tie) Arbor Academy and Follett 0.

Pole Vault: 1. Dakota Cator, Spearman, 11-6.

3200: 4. Joel Mendoza, Spearman, 11:11.53.

800: 5. Mendoza, Spearman, 2:16.51.

110 Hurdles: 1. Jeremy Frost, Spearman, 15.35.

300 Hurdles: 6. Dakota Cator, Spearman, 46.14.

1600: 5. Mendoza, Spearman, 5:13.82.

1600 Relay: 5. Spearman 3:44.97.

Pantex Relays

Pantex Relays at Sanford-Fritch

Girls

Team Totals: 1. (tie) Childress and Spearman 98. 3. River Road 83. 4. Sanford-Fritch 68. 5. (tie) Panhandle and West Texas 67. 7. Boys Ranch 52. 8. Clarendon 38. 9. Highland Park 21. 10. Arbor Academy 18. 11. Follett 0.

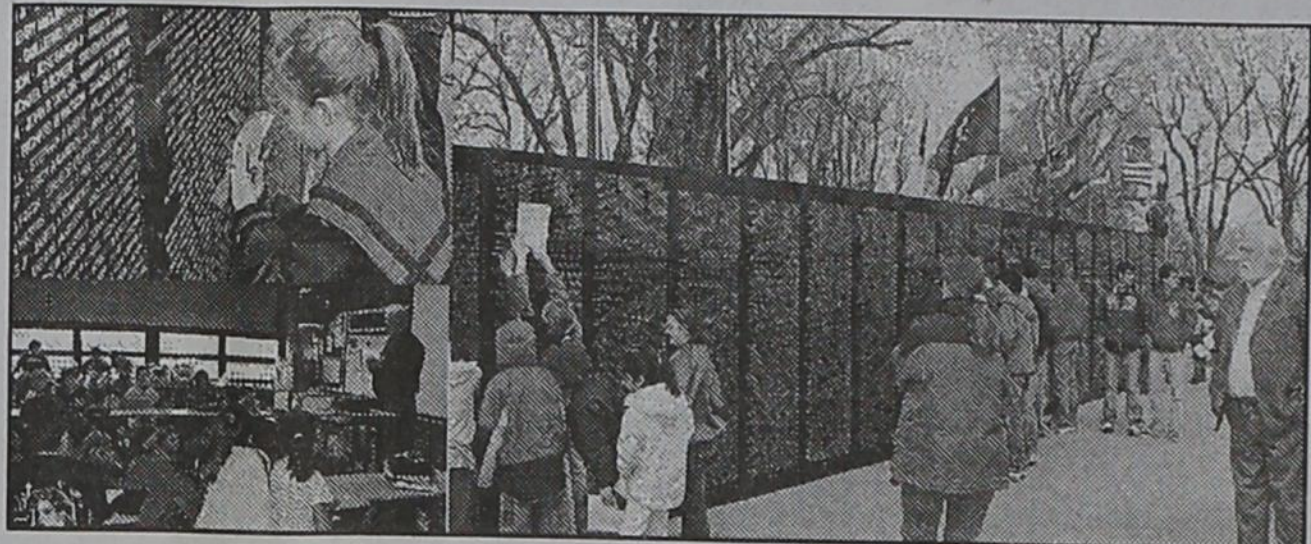
Discus: 1. Kendall Schneider, Spearman, 98-11 1/2.

Triple Jump: 1. Savanna Keys, Childress, 33-4. 2. Kylee Howard, Spearman, 32-9 1/2.

Pole Vault: 2. Suttan Garnett, Spearman, 7-8. 3. Jessica Diaz, Spearman, 7-0.

Costs of Freedom

3rd & 4th graders had an opportunity to learn about freedom and to whom we owe our gratitude last week through two opportunities. The first opportunity came when they were able to visit with and interview our own Mr. Jim Roberts who is one of our veterans who fought in Vietnam. After this opportunity, the students traveled to Perryton and saw the Freedom Wall that is touring the United States with names of fallen and Missing in Action Vietnam Veterans. 3rd and 4th graders now know that our freedom has come with a high price.



Author Visits Schools

The students from Spearman and Gruver PK-6th grade were visited by Panhandle's own author, John Erickson, on Thursday, March 13th.

Mr. Erickson presented a delightful rendition of his Hank the Cowdog songs and books. The program was educational and very entertaining.

Local PTOs made this possible for the students. Morse Elementary shared in the program with Gruver.



Spearman Lynx Tennis Results

The Spearman Lynx competed in the Panhandle Boys Tennis Tournament on Tuesday, March 11, 2008.

Boys Singles

Juan Ibarra (SP) defeated Jeremy Henderson (Pan) 9-7; lost to Terry Menefeld (Wheeler) 8-4; defeated Loftin (Dal) 9-8 (7-2); lost to Vance (Bor) 8-1; lost to Thomas (Can) 8-1

Travis Bennett (SP) was defeated by Aragon (Dal) 8-0;

GHS, SHS 2008-2009 Cheerleaders

Gruver High School and Spearman High School recently held cheerleading elections for the 2008-2009 school year.

Newly elected GHS cheerleaders are Cambry, Devlin, Lindsey, Lynn, Megan, Shaney

Newly elected SHS cheerleaders are Bond Pittman, Senior; Destiny Fisher, Sr.; Preslee Baker, Jr.; Suttan Garnett, Jr.; Leanna Espinosa, Jr.; Morgan Ashmore, Fr.; Malory Martin, Fr.; and Cassie Bowers, Fr. Louie the Lynx will be Andi Travis, Jr.

Lady Hounds Academic All-District

Congratulations to the following Lady Hounds who were named to the Academic All-District Team: Seniors - Eva McCloy, Diana Solis, Emily Williams; Juniors - Lindsey Mireles, Devlin Reynolds, Lynn Vela; Sophomores - Katie Gibson, Mattie Yanke

ATTENTION

Coaches: We need your news!

The Hansford County Reporter-Statesman is proud to provide coverage of all school activities in Hansford County. We are currently seeking scores for all junior high and high school sports from Gruver, Spearman and Pringle-Morse. Game reports may be called in (659-3434), faxed (806-398-9080), e-mailed (reporter@spearmanreporter.com) or left in the drop window (located in the window to the right of office door at 213 Main Street). Please help us to help you provide this information to interested fans and parents of your players.

Amarillo Globe-News Athlete of the Week Honor Roll (March 18th)

Suttan Garnett, Spearman Track: Took first in the 1600 (6:04.19) and the 3200 (13:09.53) at the Pantex Relays.

Tong's Chinese Restaurant

511 S. Hwy. 207 • 659-2838 • Spearman

All-You-Can-Eat Buffet Specials

- Tuesday - Steak \$7.99
- Thursday - BBQ Ribs \$6.50
- Friday - Shrimp \$6.50
- Saturday - Catfish \$6.50
- Mon., Wed. & Sat. \$5.50

Buffet Hours: 11 a.m.-2:30 p.m. & 5:30-Close

Cherokee Auto Group AUCTION



Thursday, March 20th at 10AM
106 N. Main, Perryton, Texas

Antique Tractors, Vehicles, Trailers
Watercraft, Shop & Office Equipment
Vintage Coca-Cola Machines, Jukebox
Scooters and Much More

A GREAT AMERICAN AUCTION GROUP

806-236-0323

Auction Day Catalog Available at:
www.GreatAmericanAuctionGroup.com

5% Buyer's Premium, Brent R. Graves #13507



MITCHELL THEATRES
NORTHDRIDGE CINEMA 3

Guymon, Oklahoma

Movies beginning 3/14

HORTON HEARS A WHO
G -- Animated (Jim Carey)

THERE WILL BE BLOOD
R -- Daniel Day-Lewis

10,000 B.C.
PG-13 -- Steven Strait, Camilla Belle

COLLEGE ROAD TRIP
G -- Martin Lawrence

SEMI-PRO
R -- Will Ferrell, Woody Harrelson

WITLESS PROTECTION
PG-13 -- Larry the Cable Guy

VANTAGE POINT
PG-13 -- Dennis Quaid, Sigourney Weaver

FOOL'S GOLD
PG-13 -- Kate Hudson, Matthew McConaughey

FRESH POPCORN EVERYDAY!
-PARTY ROOM & ARCADE-

Call for Showtimes
580-338-3281

www.northridge8.com
Office -- 580-338-8969

CASH & CREDIT CARDS ONLY



- Feed yard operating loans
- Dairy operating loans
- Crop and livestock production loans
- Real estate loans

Generous Patronage Sets Us Apart

"Unlike traditional lenders, we offer generous patronage payments back to our borrowers."

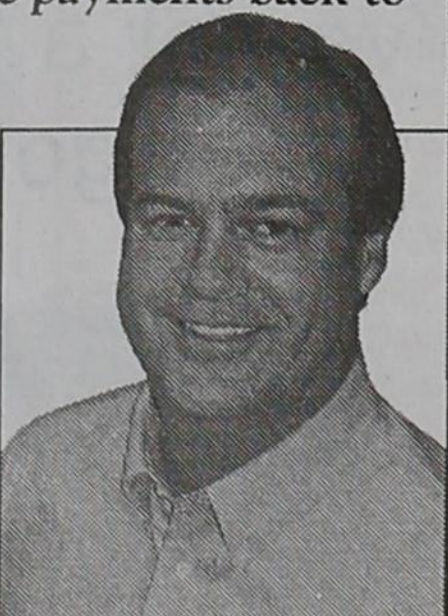
We don't have to get all your business, just the part where you'd like to save money. We're experts at real estate and other ag-related loans. We've got rates that will compete with anybody in this area, plus you get money back!

Johnny Schmucker,
Great Plains Loan Officer

1315 E. 1st Street
Dumas, Texas

(806) 935-6851

greatplainsagcredit.com



GREAT PLAINS AG CREDIT

GREAT PLAINS...GOOD PEOPLE

Hotline for Priority Seating - 435-3945

MONEY'S BBQ & STEAK HOUSE



Stan and Donna Zepp

Under New Ownership
Same Great Service & Menu!

"Stick With The Best Food In Town"

Flying X Steakhouse

By Reservation Only

From Stinnett: Go West on Hwy. 152
17 miles - Turn Left at Big Red Cactus
(About 2 miles on Gravel Road)

From Dumas: Go East on Hwy. 152
16 miles - Turn Tight at Big Red Cactus
(About 2 miles on Gravel Road)

(806) 935-9427

Sheree & Eddie Burgess

FOR RENT/LEASE

FOR SALE - 903 Richardson, Gruver: Owner Finance - 2BR, 1B, central heat, new carpet. Low payments, easy qualify. Call 806-665-4595.
3(3-13-08)B
FOR RENT: 2BR apartment, \$375.00 per month, water paid. Call Larry O'Neal at 580-772-5617 or 580-819-0007.
TFN(7-06-06)B
 house sale morse
FOR SALE - Country Home near Morse: 2400 sq. ft. - 3BR, 2 3/4B, basement, shed and pen. Call 733-9439 or 330-1119.
2(3-20-08)B

HELP WANTED

HELP WANTED: Now seeking a temporary full/part time dependable salesperson to operate Spearman store. Duties: assisting customers, maintaining plants, and operating cash register. Starting pay: \$8.00/hour - 40 hour work week. No experience necessary. Hiring begins April 1st. Send resume to D&C Greenhouse, 36 Nelson Drive, Spearman TX 79081.
6(3-06-08)B
HELP WANTED: Reliable Farm Employee needed - tractor driving, irrigation, equipment maintenance. Must be very dependable. Experience required. Year-round employment. Call Steven Greever at 659-3105 or 330-0070.
6(3-06-08)B

HELP WANTED: Amarillo Road Company is in need of people to work at a crushing operation just north of Spearman. Heavy equipment operators and laborers are needed. Wages range from \$9/hour to \$12.50/hour, based on experience and position. Please contact Wade Sillivent at 806-681-0986 for application and interview. Pre-employment physical and drug screen required. Amarillo Road Company is an Equal Opportunity Employer and does not discriminate based on race, religion, age, color, sex, national origin, disability or veteran status.
1(3-20-08)B
HELP WANTED: Pet sitter and house sitter needed April 15-20. Very good money for right person. Must interview - 1006 Evans, Sherry Moore. Must be good with both dogs and cats. Do not apply if can't do both.
4(3-20-08)B
HELP WANTED: Frontier Feedyard north of Spearman, TX is hiring experienced pen-riders. Must have horses and tack. Also hiring processors. Call 806-882-4251 or apply in person, ask for John. EOE
4(3-20-08)B

AUTOMOBILES

FOR SALE: 1996 Lincoln Town Car Great School Car, Work Car, Trip Car, Family Car! Super comfortable ride. Leather seats. Huge Trunk. Power everything. 22 miles per gallon. Local car. \$2795. Call 806-330-0076.
TFN(2-14-08)

SERVICES

HOOCHY POOCHY PARLOR Call us for all your pet's grooming and boarding needs. Call now for reservations! 806-273-2724.
TFN(11-2-07)

FOR SALE OR TRADE

FOR SALE: Full Size mattress set, Brand New, still in package. Sell for \$125. 806-341-6233
TFN(1-31-08)
FOR SALE: All new QUEEN pillow top set - \$150. NEW in plastic. 806-341-6233
TFN(1-31-08)

hchd
 Hansford County Hospital District

Openings at Hansford Hospital

Medical Laboratory Technician: Must have a Baccalaureate accredited college or university. Must have a certificate of MT or MLT registration from a nationally recognized organization of laboratory medicine.

Maintenance Person: Performing duties for maintenance of the building, grounds, including carpentry, painting, plumbing, electrical work, air conditioning, gardening, furniture repair, welding, etc.

Insurance/Billing Clerk: Responsibilities include filing and follow up of insurance claims, assisting with admissions and discharges.

Openings at Hansford Manor

Housekeeping: Providing a clean, neat and sanitary facility for the comfort of our patients, residents and staff.

Certified Nurse Aide: Assisting RN and LVN with the care of our residents.

LVN: Must be licensed in the State of Texas

RN: Must be licensed in the State of Texas

Great working environment and staff, quality facility providing opportunities for professional growth. Great benefit package. Apply at 707 S. Roland, Spearman, TX or contact Jackie Nelson at 806-659-5841. Download application at www.hchd.net
EEOE
2(2-28-08)B

FOR SALE: Brand Name King pillow top mattress set, new in plastic w/warranty. Must sell - \$250. 806-341-6233
TFN(1-31-08)
FOR SALE: QUEEN ORTHOPEDIC Mattress Set. New, still in plastic w/warranty - \$140. 806-341-6233
TFN(1-31-08)
FOR SALE: A great deal: NASA memory foam mattress set. Never used. Sacrifice for \$350. 806-341-6233
TFN(1-31-08)
FOR SALE: Twin mattress set w/warranty - \$100. 806-341-6233
TFN(1-31-08)
FOR SALE OR TRADE: King-size bed - includes frame, mattress and box spring. Very nice. Need to downsize. Will sell or trade for full-size bed. Call 659-3808 for more information or to make offer.
TFN(2-7-08)

WANTED

WANTED: Full-size bed. Need to downsize. Have King-size bed - includes frame, mattress and box spring. Very nice. Willing to trade. Call 659-3808 for more information or to make offer.
TFN(2-7-08)

PUBLIC NOTICE

PUBLIC NOTICE
 The City of Spearman is accepting applications through March 27, 2008 for:

- Swimming Pool Manager
 - Asst. Pool Manager
 - Lifeguards
 - Park Maintenance
 - Asst. Manager and lifeguard positions must be able to obtain certified lifeguard training.
- Applications may be obtained at City Hall, 30 SW Court, E.O.E.
2(3-13-08)B

PUBLIC NOTICE

Blankenship Real Estate
659-3052 - 670-3774

- 3/1/1 - Lots of storage inside & out, cul-de-sac, close to schools.
- 3/2/1 - Brick, 2 living areas, fenced w/storage
- 2/2/1 - Brick, 2 living areas, storage

NEW LISTINGS WANTED!
 Eulalia Blankenship - Sales
 Eschol Blankenship - Broker

KIDNEY FAILURE LINKED TO DRUG USED DURING SURGERY

Trasylol®, a drug used to control bleeding during surgery, has been linked to kidney failure, dialysis and death. If you or a loved one had surgery and then developed kidney failure, call us now at 1-800-THE-EAGLE for a free consultation. We practice law only in Arizona, but associate with lawyers throughout the country.

GOLDBERG & OSBORNE
 1-800-THE-EAGLE
 (1-800-843-3245)
www.1800theeagle.com

WINDMILL SUITES OF ARIZONA - SUITE DESERT DEALS!

Work or play, the best place to stay!
 ~ TRUE Suites with private bedroom, wet bar, microwave, mini-fridge, in-room coffee, Wi-Fi Internet and more.
 ~ Enjoy a generous breakfast each morning.
 ~ Children under 18 stay free in adult's suite
 ~ Convenient to local attractions and events
 To learn more or find out about specials, please call us toll free or check online...

PHOENIX - SURPRISE - CHANDLER - TUCSON
(800) 547-4747 www.windmillsuites.com **ID: 7032408X**

Are You A Victim of Domestic Violence or Sexual Abuse?

The Panhandle Crisis Center
 Can Help
 Call Toll Free - Hotline
1-800-753-5308
 301 S. Ash - Perryton
435-5008
 Battering Intervention & Anger Management Available
 Memorials Accepted

OF PUBLIC MEETING AND PUBLIC HEARING

Region A Panhandle Water Planning Group will hold a public hearing and a public meeting starting at 10:00 am on April 16, 2008 and at 1:30 pm on May 14, 2008 at the offices of the Panhandle Regional Planning Commission located at 415 W. 8th Ave Amarillo, Potter County, Texas.

1. Notice is hereby given that the Region A Panhandle Water Planning Group is seeking public input on the scope of work for the third round of regional water planning at 10:00 am on April 16, 2008. Written and oral comments regarding the scope of work will be accepted at the public meeting. Written comments may also be received by mail by 5:00 pm on April 22, 2008.

2. Notice is also given that the Panhandle Regional Planning Commission (PRPC) will submit, on or before June 13, 2008, a grant application for financial assistance to the Texas Water Development Board (TWDB) to carry out the scope of work. The public hearing and meeting for this item will be at 1:30 pm on May 14, 2008. Copies of the grant application may be obtained from the PRPC when it becomes available. Written and oral comments regarding the grant application will be accepted at the public hearing. Written comments regarding the grant application may be submitted by mail to the PRPC by 5:00 pm May 14, 2008 and to the TWDB, Attn: Kevin Ward, Executive Administrator, P.O. Box 13231 Austin, TX 78711-3231

The Region A Panhandle Water Planning Group (PWPG) includes all of the following counties: Dallam, Sherman, Hansford, Ochiltree, Lipscomb, Hartley, Moore, Hutchinson, Roberts, Hemphill, Oldham, Potter, Carson, Gray, Wheeler, Randall, Armstrong, Donley, Collingsworth, Hall and Childress Counties.

For additional information, submission of written comments, requests and nominations, please contact the PRPC, Chris Sharp, Local Government Services Director, P.O. Box 9257 Amarillo, TX 79105 or call 806-372-3381. csharp@theprpc.org
2(3-13-08)B

NOTICE OF SHERIFF SALE THE STATE OF TEXAS COUNTY OF HANSFORD

By virtue of Orders of Sale issued out of the 84th Judicial District Court of HANSFORD County in the following cases on the 5th day of March, 2008, and to me, as Sheriff, directed and delivered, I will proceed to sell at 11:00 A.M. on the 1st DAY OF APRIL, 2008, which is the first Tuesday of said month, at the OFFICIAL door of the Courthouse

of said HANSFORD County, in the City of SPEARMAN, Texas, the following described property located in HANSFORD County, to-wit:

Cause No. 785 and No. 706 HANSFORD COUNTY VS FLORES ROSE MARY

TRACT 1: All of Lot Number 14 of the Delon Kirk Addition, a sub-division of Out Lot #14 and a portion of Out Lot #17, lying adjacent to the town of Spearman, Hansford County, Texas
 Levied on the 5th day of March 2008 as the property of ROSEMARY FLORES BY VIRTUE OF A DEED WITHOUT WARRANTY RECORDED IN VOLUME 232, PAGE 619 OF THE RECORDS OF HANSFORD COUNTY, TEXAS

Cause No. 792 GRUVER INDEPENDENT SCHOOL DISTRICT VS SPIVEY, ANNITA

TRACT 1: Lots No. 4, 5, 6, 7 and 8, in Block Number Fifty Six (56), Original Town of Gruver, Hansford County, Texas
 Levied on the 5th day of March 2008 as the property of ANNITA MARIA SPIVEY, JENNIFER M WHITE, HOPE BAKER AND LINDA GAIL SHAW BY VIRTUE OF A DEED RECORDED IN HANSFORD COUNTY, TEXAS

Cause No. 791 CITY OF SPEARMAN VS. FAUS R P EST

TRACT 1: All of Lot Number Fourteen (14), in Block Number Fifteen (15) Original Town of Spearman, Hansford County, Texas
 Levied on the 5th day of March 2008 as the property of RP FAUS BY DEEDS IN VOLUME 47, PAGE 373; VOLUME 67, PAGE 308; VOLUME 67, PAGE 310; VOLUME 87, PAGE 75; VOLUME 87, PAGE 77; VOLUME 87, PAGE 79; VOLUME 87, PAGE 81; VOLUME 87, PAGE 83; VOLUME 87, PAGE 85; AND VOLUME 87, PAGE 291, ALL IN THE RECORDS OF HANSFORD COUNTY, TEXAS.

ALL BIDDERS MUST REGISTER WITH THE TAX OFFICE PRIOR TO SHERIFF'S SALE.

Levied on the 5th day of March, 2008 as the property of said Defendants to satisfy the judgments rendered in the above styled and numbered causes, plus all taxes, penalties, interest, and attorney fees accrued to the date of sale and all costs recoverable by law in favor of HANSFORD COUNTY, CITY OF SPEARMAN, SPEARMAN INDEPENDENT SCHOOL DISTRICT, CITY OF GRUVER AND GRUVER INDEPENDENT SCHOOL DISTRICT.

W	I	S	P	R	U	T	A	R	G	O		
A	D	A	R	M	O	N	A	Q	U	E	E	
G	Y	R	O	D	I	N	U	T	I	L	E	
E	L	I	Z	A	B	E	T	H	I	O	N	
A	D	I	O	S	E	R	G					
F	I	S	C	A	L	A	N	T	I	O	C	
A	N	T	G	E	O	R	G	E	R	A	R	
U	N	I	T	E	P	Y	A	L	O	R	E	
N	E	E	R	Q	U	A	R	R	Y	E	E	
A	R	D	U	O	U	S	A	C	I	D	L	I
M	B	A	P	A	C	E	R					
L	O	P	E	C	A	T	H	E	R	I	N	
T	O	W	E	L	A	P	S	E	U	S	A	F
U	T	E	R	I	K	E	E	L	P	L	A	T
T	I	N	Y	E	R	A	T	E	N	S		

HIGH PLAINS PUBLIC RADIO

89.5 KTOT

Top O' Texas @ 89.5
 Spearman-Borger-Canadian-Dumas-Pampa-Perryton
 Washburn, Claude, Panhandle @ 91.3
 Amarillo @ 94.9

Listen on the web at www.hppr.org
 HPPR station affiliate
 For a complete program schedule contact HPPR 800.678.7444

Shelley Properties
 Howard

115 Nelson Rd, SPEARMAN - 2/2/2 - 1,900 sq ft, 1/2 acre land - Country & City all at once!

I would LOVE to sell your HOUSE!
 Call ME!
 Cell: 806-886-6536

MARTIN & ASSOCIATES REALTY

Serving Hansford County for 14 years
 Julie Martin: Broker - 659-2425

IN SPEARMAN
 1111 S. Townsend - Split level, 3/2/1 Are you looking for a home with that brand new feeling? This home has been redone throughout: all new flooring, paint, fixtures, baths, remodeled kitchen w/new appliances, granite countertops, split level deck. \$134,000
 703 Collier - 3/1/1 investment property, subject to lease
 1114 S Dressen - 3/1/1 sprinkler system, CAVCH

We'd Like Your Listing FOR QUALITY & SERVICE CALL US TODAY!
 Equal Housing Opportunity

OCEANS OF WATER II - Hansford Co., Texas - 4 sections, strong water, dev. with sprinklers, wells, leedyard, home, barns, pvt., 2 mi. hwy. frontage.

HARTLEY CO - 640 acres with nice home, landscaped, barns & sprinklers.

PRIME LOCATION FOR DAIRY, FARMING & CATTLE - East of Dalhart, on pvt., 3 1/2 sections, strong water area, wells & sprinklers, nice home, barns and preon. pens.

SPEARMAN DAIRY - permitted for 3,600 hd. (1,400 milking), 320 acre operation, milking started as construction nears completion.

MOORE CO. - 1766 acres, fully developed with wells & sprinklers & really nice home on all-weather road, priced to sell!

Choice milk processing and dairy sites available in Dallam, Hartley, Moore, Oldham, Sherman and Hutchinson Counties.

SEE OUR WEBSITE OR GIVE US A CALL!
www.scottlandcompany.com
 Shawn Gillispie 806-922-5532
 Ben G. Scott, Broker
 1-800-933-9698 day/eve
TFN(1-17-07)

FSB First State Bank

P.O. Box 247
 Spearman, TX 79081
 Telephone 806-659-5565
 Member FDIC

Planning to buy a home, but not sure if you can get an affordable mortgage?
 Interest too high on your present mortgage?
 Want to do business with a local bank?

We can help!

Come by First State Bank, Spearman.
 Check out our competitive fixed and adjustable rate mortgages for terms up to 30 years.
 We can work with you to find a mortgage that fits your needs and help you buy or refinance your home.
 Contact Ginger Turner and find out more.

TEXAS STATEWIDE CLASSIFIED ADVERTISING NETWORK

TexSCAN

TexSCAN Week of March 23, 2008

BUSINESS OPPORTUNITIES
 ALL CASH CANDY ROUTE. Do you earn \$800 in a day? Your own local candy route 30 machines and candy. All for \$9,995. 1-888-625-5481. Multi Vend. LLC
 AMERICA'S FAVORITE COFFEE distributor. Guaranteed accounts. Multi billion \$\$ industry. Unlimited profit potential. Free information 24/7. 1-800-729-4212, Continental Coffee
 PICK YOUR OWN hours. Up to \$3K-\$5K potential per week immediately! No selling. Not MLM. Leave message. Success Business, 1-800-242-0363, Ext. 5654
 TIME-SHARES RESALES! The cheapest way to buy, sell and rent Time-shares. No commissions, or broker fees. Call or go to 1-866-901-9796 www.buyatimeshare.com
DRIVERS
 DRIVER-MORE MONEY! more miles! Solo, O/O & teams welcome. Class A-CDL, 4 months OTR experience. Qualify by phone. 1-888-446-5289, Company 1-800-437-5907, O/O www.knighttrans.com
 DRIVER: O/O'S: NEW pay scale plus fuel surcharge. Company drivers \$5000 signing bonus for minimum 1 year experience. Let's drop & hook! www.aal.com Guy at 1-800-387-1011
 DRIVERS: ASAP! Sign-On Bonus 35-42 cpm. Earn over \$1000 weekly. Excellent benefits. Need CDL-A and 3 months recent OTR. Melton Truck Lines, 1-800-635-8669
 DRIVERS-CDL-A The grass is Greener at PTL. Student's welcome - excellent training program. Company drivers earn up to 46c cpm. Owner Operators earn \$1.21 cpm. meet age requirement, 12 mos OTR. No forced northeast! Company drivers call 1-866-606-6200. Owner operators call 1-877-774-3533 www.pil-inc.com

DRIVERS STUDENTS: START your new career with sponsored training or tuition reimbursement! Possible \$40K 1st year. Experienced drivers, ask about \$5000 sign-on! www.fhenc.com, 1-800-569-9232

HELP WANTED
 EXPERIENCED REPRESENTATIVES NEEDED to recruit families for FE Students. Willing to complete with pay/benefits of current employer. Contact: rltether@laafi.org or 1-626-964-9588 ext. 113

HOMES FOR SALE
 BRAND NEW MOBILE/manufactured homes with warranty. Buy at the factory for \$17,750. Photos/floor plans online. www.BuyAtTheFactory.com, Free color brochure! Call Factory Expo Home Center. 1-800-464-0062

MEDICAL SUPPLIES
 SCOOTERS & POWER WHEELCHAIRS. Did you know in most cases Medicare, Medicaid and Insurance pay 100% of the cost? Call Melissa or Jon for details. 1-800-606-9860 www.medcaremedicalsupply.com

MISCELLANEOUS
 AIRLINES ARE HIRING - Train for high paying aviation maintenance career. FAA approved program. Financial aid if qualified, job placement assistance. Call Aviation Institute of Maintenance, 1-888-349-5387
 ATTEND COLLEGE ONLINE from home. Medical, Business, Paralegal, Computers, Criminal Justice. Job placement assistance. Computer available. Financial aid if qualified. Call 1-866-858-2121, www.OnlineTidewaterTech.com
 WOLFFTANNING BEDS as low as \$28 a month! Free DVD player. Order by 3/29/08. Call ETS Tan today! 1-800-842-1305, www.np-etlan.com

PET SUPPLIES
 HAPPY JACK® NOVATION® protective ban. get patented release 8-month flea/tick control before heavy infestation. At Farm Feed & Hardware stores. www.happyjackinc.com

REAL ESTATE
 NEAR RUIDOSO NEW MEXICO. 140 acre ranch parcels from \$995/acre. Great views, excellent horse property. Power & gravel roads. Borders national forest, may split. 1-877-289-6650. www.swproperties.com
 REMODELED HISTORICAL BUILDING with loft and restaurant for sale in quaint downtown Colorado City, TX. Completely furnished and equipped. Only \$79,000! Lonestar Properties 1-31-207-5990 or www.lonestarprops.com
 SOUTHERN COLORADO RANCH Sale 35 acres - \$29,900. Spectacular rocky mountain views, year round access, electricity/telephone included. Excellent financing available with low down payment. Call Red Creek Land Co. Today! 1-866-696-5263 x 3473
 STOP RENTING! GOV'T & Bank foreclosures! Consumer Resource Network, call now 1-800-724-2318
 5.02 ACRES North of Brady, Texas. Country living, central water, electricity. Seasonal creek, oaks, mesquite trees. Low down, \$399/month or TX Vet financing. 1-325-456-4678 www.hillcountryranches.com

Run Your Ad In TexSCAN!

Statewide Ad\$450
 303 Newspapers, 1,017,914 Circulation
 North Region Only\$195
 98 Newspapers, 276,893 Circulation
 South Region Only\$195
 103 Newspapers, 488,623 Circulation
 West Region Only\$195
 102 Newspapers, 252,398 Circulation

To Order: Call direct, or call Texas Press Service at 1-800-749-4793 Today!

NOTICE: While most advertisers are reputable, we cannot guarantee products or services advertised. We urge readers to use caution and when in doubt contact the Texas Attorney General at 1-800-621-0508 or the Federal Trade Commission at 1-877-FTC-HELP. The FTC web site is www.ftc.gov/bizop
 Extend your advertising reach with TexSCAN, your Statewide Classified Ad Network.

Hansford County Library Holds Book Signing

Hansford County Library invites the public to a book signing on Thursday, March 27th from 10 a.m.-1 p.m. Author Elaine Littau of Perryton will be in the library to visit with patrons and sign her book, "Nan's Journey."

Desperate to save her life and that of her five-year-old brother, Nan packs and flees an abusive home, embarking on a journey that will test her faith, determination, and spirit. Set in the 1800s, "Nan's Journey," follows Nan and her brother, Elmer, as they seek safety and find refuge and hope in the arms of a family of strangers—including Fred Young, a disgruntled preacher turned mountain man, who reaches out to help, only to find a hope and love renewed in his own heart.

In her first novel, author Elaine Littau weaves memorable characters into the vivid background of the wild, unsettled heart of America, presenting readers with the timeless struggle of overcom-

ing adversity, and seeking hope above all through "Nan's Journey."

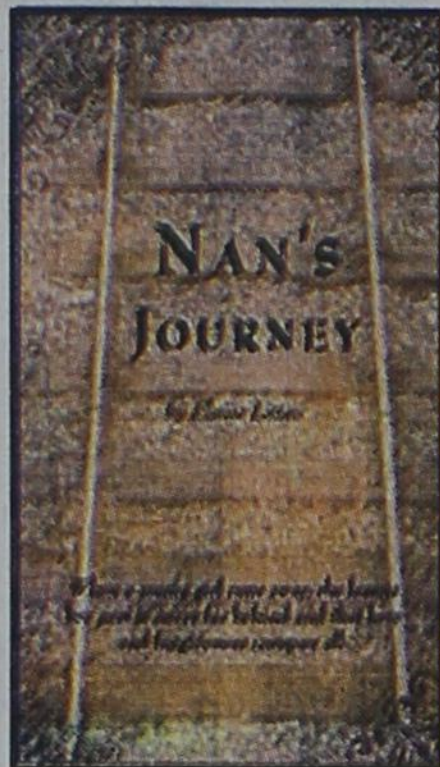
"I love to write books that deal with current issues even though it may be a totally different time period," said Elaine Littau. "I love to experience life with my husband of thirty-three years, Terry. He is a hoot. I love to tell stories about him and even myself and our experiences."

"Everyone thinks that I stretch the truth about our misadventures, but I swear, it is the ABSOLUTE TRUTH! God has begun a good work in me and I know He will complete it!"

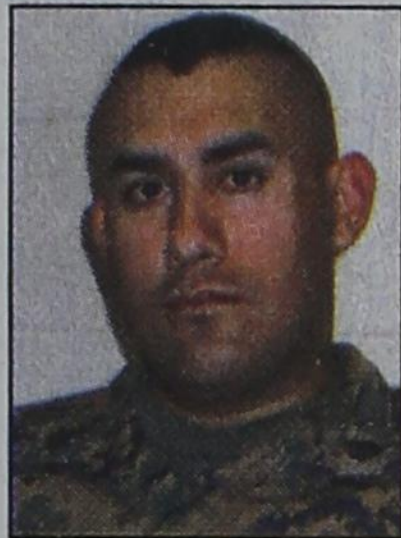
During this special treat for citizens of Hansford County, books may be purchased for \$12.99 each, with audio versions selling for \$24.99. Please welcome this special guest to the library and the community.



Elaine Littau author of "Nan's Journey"



Rojas Leaves for 3rd Deployment



Rojas, their three dogs and their first child in April.

He is the son of Eddie and Barbara Rojas of Spearman and the grandson of Rosa Rojas and the late Aurora Vela, also of Spearman.

Sgt. Juan Rojas of Richlands, NC is preparing for deployment at the end of March 2008. This will be his third deployment and his second tour in Iraq. Extensive pre-deployment training was required, including a three-week stay in the Yuma, AZ desert.

Sgt. Rojas has been in the Marines for nearly seven years. He has been selected for the rank of SSgt and will be pinned sometime in August.

Juan lives in Richlands, NC with his wife, Ssgt Amy

North Plains Groundwater Conservation District to Hold Public Stakeholder Meetings

The North Plains Groundwater Conservation District will conduct three public meetings to receive input from well owners and other stakeholders within the District about recent Texas legislation that will affect District rules, and specifically rules limiting the production of groundwater within the District. The public meetings are scheduled to begin at 7:00 p.m. on the dates and at the locations as follows:

March 25 - Perryton Expo Center, 402 South Expo Drive, Perryton, TX;

March 31 - Dalhart Senior Citizens Center, 610 Denrock Avenue, Dalhart, TX;

April 1 - Amarillo College Moore County Campus Auditorium, 1220 East 1st, Dumas, TX.

There will be a one-hour presentation (approximately) by the District staff and then

the floor will be opened for public discussion.

Part of the recent Texas groundwater legislation requires the District to establish management goals. Based on the District-wide pumping rates, the District set a management goal in Dallam, Hartley, Moore and Sherman Counties to retain at least 40% of the total current groundwater after 50 years. In Hansford, Hutchinson, Lipscomb, and Ochiltree Counties, the District set a management goal to retain 60% of the total current groundwater after 50 years. These goals may require changes in the District's rules, including reducing the current annual production limit of 2 acre-feet per acre. During the public meeting, the District staff will discuss:

Current groundwater conditions;

Proposed management goals and the related requirements of the State of Texas;

Creation of two production management areas in the District with separate goals;

The possibility (and the effect) of reducing the current 2 acre-feet per acre per year production cap;

The possibility (and the effect) of implementing a three-year production period

and setting the production cap for the production period at 6 acre-feet (or perhaps less) for the production period;

The appropriate time frame for implementing a reduced annual production cap;

The possibility of requiring flow meters to be installed on all nonexempt wells; and,

Other proposed changes to District rules and operations.

Following the presentation by the District staff, public input and questions will be solicited on these issues.

It is a huge task for the District Board and Staff to develop and adopt groundwater rules that will affect the people of this District for the next 50 years. Therefore, we are requesting your participation and input as a stakeholder prior to adopting any new rules. The current District Rules and the District's Management Plan can be found on the District's website at www.npwwd.org. For more information about the public meetings, please contact Steven Walthour, District General Manager, or Rhonda Artho, Education & Public Relations Coordinator, at 806-935-6401, or e-mail Rhonda at artho@npwwd.org.

Go Gorillas!

Myrna Biggers cheers for the Amarillo Gorillas during a recent game.



Gorillas Have Two Home Games Left in Regular Season

by Myrna Biggers

The Amarillo Gorillas have two home games remaining in the regular season. They will play Austin tonight, Thursday, March 20th and Arizona on Friday, March 21st. The puck drops at 7:05 p.m. both nights.

Following both games

there is a public ice skating for those who would like to try that. Following the Friday game, all of the Gorillas players will be signing autographs and visiting with the fans.

For those of you who have been reading about my adventures at the hockey

games, you know how much fun it is. I encourage everyone to go to at least one of these games. It is during our Spring Break and you, too, can be a winner. I warn you, though, you might also get hooked on hockey!

For tickets, call 242-PUCK. See you at the game!

Pampa Remembers Black Sunday

Black Sunday, April 14, 1935, Pampa, Texas. Where were you? Were you there? Do you know someone who lived through that day? Do you know someone who has pictures of the Dust Bowl days? Do you have any letters that told of those days?

Pampa's Tribute to Woody Guthrie Center will be commemorating the Dust Bowl Days on April 10, 11, 12 and 13 at the Woody Guthrie Center, located at 320 South Cuyler in Pampa.

Children from Lamar Elementary will perform during the afternoon on Saturday, April 12th.

Anyone who has pictures, stories, letters, etc., is asked to let us know and/or mail them to us at the Center, 320 South Cuyler, Pampa TX 79065, or email to lmmb777@hotmail.com.

See us for:
 AUTO • HOME • CROP HAIL •
 FARM • RANCH • MULTIPERIL •
 LIVESTOCK

INSURANCE

BORT AGENCY, INC.
 510 Main St. • Gruver, TX
 (806) 733-2456

Sacred Heart Church Women's Guild

Delicious Enchilada Sale
 \$12 per Dozen
 Pre-Sale Orders Only

Orders will be taken from March 20th-April 7th. Please call Anita Sumner at 659-5046, 659-9991 after 11:30 a.m. or Celina Sintas at 659-2398.

Enchiladas will be ready for pick-up or delivery on April 13th at 2 p.m. in Parish Hall.

THE POWER OF KUBOTA!

ZERO DOWN, 0% APR. FINANCING FOR UP TO 42* MONTHS

PANHANDLE IMPLEMENT CO
 710 NORTH MAIN STREET
 PERRYTON, TX
 806-435-6508

*Example: A 42-month repayment term at 0% APR requires 42 payments of \$27.91 per \$1,000 borrowed. 0% APR interest is available to customers if no dealer documentation preparation fee is charged. Dealer charge for document preparation fee shall be in accordance with state laws. Not available for Rental, National Accounts or Governmental customers. Financing is available through Kubota Credit Corporation, U.S.A., subject to credit approval. Some exceptions apply. Offer expires June 30, 2008. See your local Kubota dealer for details on these and other low-rate options or go to www.kubota.com for more information.

Kubota
 EVERYTHING YOU VALUE