

The Hansford County Reporter-Statesman

Hansford County Fair Show next Saturday

The Hansford County Fair Show will be Saturday, Sept. 29 at 6:30 p.m.

Joel Lee Lackey and his band will perform from 6:00-6:30 while the people are arriving, then his band will kick off the first half of the show. There will be a brief intermission, during which Charles Brillhart and his band will perform. They will kick off the second half of the show.

Sometime during the show, the winners of all the fair entries will be announced. It is promised the show will be no more than two hours long.

There will be a variety of music including the "big band era" sound, gospel and country music. The majority of the show's music will be country music. The performers will be doing some current hit songs as well as some "golden oldies." There will also be some fantastic gospel numbers.

Some of the entertainers will be

singing some hits recorded by Kathy Mattea, Lori Morgan, George Strait and Patsy Cline. There will be duets from Joe T. Venneman and Betty Chisum, Pete and Brenda Wall, James and Connie Walker, Rod and Les Barkley and Brenda Dahl and Betty Chisum.

The individual acts will be Laquita Evans, Gwen Benson, Joe T. Venneman, Misty Savage, Robin Castillo, Ciria Vela, Stephanie Gaines, Benny Wilson, Gloria Knox, Mary Schuman and Betty Chisum.

There will be some surprise vocal collaborations and a "grand finale" with all the entertainers in the show.

Admission is \$3.00 for adults, \$2.00 for students, and pre-school children are admitted free. The show will be held in the Gruber Auditorium. Refreshments will be offered before, during intermission and after the show.



The Spearman Lynx knocked the wind out of the Memphis Cyclones last Friday, 42-14. They will be stalking the White Deer Bucks this Friday in the Homecoming '90 game, 8 p.m.

Spearman Lynx post season's second win

The Lynx varsity football team posted their second win of the 1990 football season last Friday night with a 42-14 win over the Memphis Cyclones, in Memphis. Though the score indicates a great offensive effort, it was the defensive play of the Lynx that contributed handily to the 42 points scored by the Lynx.

The Lynx defense forced the Cyclones to turn the ball over nine times. Eight of those nine turnovers gave the Lynx the ball inside the Cyclone 40 yardline. The Lynx offense scored three touch downs off those turnovers.

The game started off right for the Lynx with captains Brandon Baker and Tim Kizziar winning the coin toss. The Lynx elected to receive.

In the first set of plays the Lynx offense got off to a good start, advancing the ball 64 yards to the Cyclone 12 yard line. The drive was highlighted by a 35 yard pass play to Edgar Nava from Khris Kelp. Kelp hit Nava on a 10 yard pass over the middle and Nava ran for 25 more yards before he was tackled on the Cyclones' 22 yard line.

From the 22 the Lynx drive stalled out on the Cyclones' 13 yard line. The Lynx gave the ball up when they failed to make 2 yards on fourth down.

As the Cyclones started their first series of offensive plays for the night it looked like it might be a long night for the Lynx. The running game of the Cyclones, led by tail back Jay Lynn Runnels gained steady yardage. They advanced the ball out to the Cyclone 37 yard line before a penalty and a behind the line tackle of a Cyclone running

back by Kidder forced the Cyclone quarterback to try and get a first down with a pass. When the Cyclone quarterback put the ball in the air Lynx cornerback, Brian Beck, came down with it.

Beck's interception gave the Lynx the ball back on the Cyclone 39 yard line. On the second play from scrimmage Beck caught the ball again, this time it was a pitch from his own quarterback, Kelp. Beck ran around the right end of the Cyclone line and cut back to the middle of the secondary and scampered 36 yards for the touchdown. The Lynx tried and succeeded with a 2 point conversion and were on the score board first with 8 points.

The Lynx kicked off to the Cyclones and they began their second drive of the game on their own 25 yard line. This drive was cut short by a fumble that was recovered by Lynx guard Kidder on the Cyclone 34 yard line. It was there that the Lynx started their third drive.

The third offensive drive of the Lynx extended into the early minutes of the second quarter when it stalled out on the Cyclones 17 yard line. The Cyclones took over on downs. On the Cyclones second play from scrimmage the Lynx defense struck again.

This time Joel Shields crashed through the Cyclone line and stripped the Cyclone quarterback of the ball. The ball was recovered by Kidder on the Cyclone 20 yard line. Three plays later Lynx running

See Lynx page 7



The Gruber Greyhounds held off a challenge issued by the Turpin Cardinals last Friday to hang onto a 7-0 victory. The Hounds will face the Stratford Elks at Stratford this Friday at 7:30 p.m.

Hounds get 7-0 victory...

Defense hangs tough

by Bob Bort

SITUATION: Early third quarter, Gruber leading Turpin 7-0. Turpin has taken the kickoff 69 yards in nine plays to a first and goal at the Gruber one yard line.

First and goal from the one: stuffed. The front four of Max Davis, Chris Spivey, P.D. Swink and Billy Crawford denies Turpin.

Second and goal from the one: Defensive ends Carey Kauffman and Clint Bell collapse on ball carrier. stuffed.

Third and goal from the one: stuffed. Linebackers Crockett Tidwell and Garrett Gumfroy engage ball carrier in backfield - loss of two yards.

Fourth and goal from the three: Quarter back moves to the right. Defensive backs Dan McCloy, Marty McCloy and Kevin Spivey make certain there are no available receivers. Quarterback pitches, loss of three yards, Gruber's ball first and 10 from the six.

It was a goal line stand by the Gruber Greyhound defense that denied Turpin when they had the momentum, and saved the day for the Hounds in a tough, close-fought 7-0 victory over the Turpin Cardinals at Turpin, Friday, Sept. 14. The Hounds are now 1-1 and Turpin

is 1-2. In the series between the two clubs since 1958, they have played four games in consecutive years. Turpin has won twice at Gruber, while Gruber has won twice at Turpin.

The game started off auspiciously for the Gruber team. Quarterback Matthew Hoel would hit on four of his first five passes, and the Hounds would be able to move the ball early.

On the Hounds' second possession, they drove 90 yards in 11 plays for the only score of the game. They were aided by one facemask penalty, but the long drive culminated with 1:06 left in the first quarter.

Key plays were a nice 20 yard run by tailback Dan McCloy, a 16-yard pass from Hoel to Kevin Spivey, and a 14-yard touchdown pass on a very nice catch from Hoel to Marty McCloy. The ball that McCloy caught may have been tipped by a defender, but Marty made the nice, diving, turf-top catch anyway.

The kick for point by Trevor Shipley was good, and Gruber led 7-0.

Gruber had two more drives in the first half that put them in Turpin territory, but they failed on

See Hounds page 6

New landfill regs adopted by council

Spearman city fathers, at their Sept. 11 meeting, adopted new landfill regulations, tabled the purchase of a portable defibrillator and discussed the city's budget.

Jim Murray, city manager, explained to the city council that the 1989 State Legislature enacted a statute prohibiting landfills from burying whole tires. The tires must be split, quartered or shredded before being covered, he said.

After discussion, the council adopted the new regulations, which also provide for a penalty of a fine of up to \$200 for violations. The city is asking residents to contract with a business to split or quarter tires before disposal in the city landfill.

In other business, the council opened bids on a portable defibrillator for the H&S EMS. Only one bid was received, from Physio Control, in the amount of \$9,995. The council voted not to accept the bid, and tabled the purchase.

A public hearing concerning the proposed city budget for 1990-91 and amendments to the 1989-90 budget drew no comments from residents. Council members discussed the budgets but took no action.

Murray told the council that the city was recently given a Key Rate inspection by the State Board of Insurance which listed a few recommendations. The evaluation recommends that four fire hydrants be installed along a portion of Highway 207; that the Spearman Volunteer Fire Department have at least 20

active members; that a list of parts and suppliers be compiled for the 1962 Chevrolet pumper; that an electrical inspection form be implemented by the city; and that all non-residential structures be inspected once a year by the fire chief.

Spearman Mayor Burl Buchanan stated that overall, the city has a good Key Rate, and the council voted to accept the report from the State Board of Insurance.

Council members agreed to cast the city's vote for board members on the Texas Municipal League Group Benefits Risk Pool. Mayor Buchanan read the names of the candidates for the four places on the board, and the council decided to vote for Virgil Gray, place 1; Saul Ramirez, place 2; Charles C. Bogan Jr., place 3; and L. Don Dodson, place 4.

Regular business for the council included approval of minutes of the Aug. 28 council meeting; approval of the August fire, ambulance, police, municipal court and animal control reports; and approval of monthly bills payable in the amount of \$226,128.99. The council also approved the city's current cash position.

Those attending the meeting included Mayor Burl Buchanan; Aldermen Wilson McClellan, Mike Cudd, Bob Boxwell, Don Reed and Ed Garner; City Manager Jim Murray; City Secretary Cheryl Gibson; and visitors Ronnie Antalek and Galen Coates.

Retail sales down

While statewide sales were up from last year, retail sales in both Spearman and Gruber showed a downturn, according to the State Comptroller's Office.

The Comptroller's Office sent a city sales tax rebate check in the amount of \$10,733.01 to Spearman this month. The check received by Spearman in September 1989 totaled \$14,622.44, which amounts to a decrease of 26.6 percent from last year to this year.

Gruber received a check for \$2,809.25, down 8.85 percent from the \$3,082.04 returned during the same month last year.

1990 payments to date for Spearman total \$130,604.02, off 7.86 percent from the 1989 year-to-date receipts of \$141,751.29. Gruber's returned city sales taxes for this year, however, show a slight increase - 0.26 percent - over 1989 receipts through September. This year's total is \$34,183.47, while a

total of \$34,096.00 had been received as of this time last year.

This month's checks reflect taxes collected on July sales and reported in late August by businesses filing monthly tax returns.

Merchants collect the state and local sales taxes and send them to the Comptroller's office with their tax returns. The state keeps its 6 1/4 percent share and each month sends cities and counties their portion of the sales tax.

All local sales taxes must be approved by local voters and may be used for any legal city or county expenses. Most areas put the regular 1 percent city sales tax in their General Fund and use it for operations like fire fighting, maintaining roads and law enforcement. Cities use additional 1/2 percent city sales taxes to help fund local economic development and to reduce property taxes.

Homecoming 1990 activities abound

We say purple!
You say white!
Purple! White!
Purple! White!
(Spearman Lynx Cheer)

Purple and white are undoubtedly the most popular colors in Spearman this week, as the schools and community at large gear up for Homecoming 1990.

The entire week has been called "Love Ya Week," reported Spearman Cheerleader Sponsor Linda Wilkerson, a fourth grade teacher at Spearman Elementary. "And there are activities to help encourage school spirit each day."

These events will culminate in Friday evening's 8:00 p.m. football game, in which the Lynx will battle the White Deer Bucks. Just prior to the game at 7:30 p.m., the 1990 Homecoming King and Queen will be crowned in an on-the-field ceremony.

Homecoming Queen candidates are senior girls nominated by the varsity football team members from a list of every senior girl's name. The winner's name is at this moment Spearman's "best-kept secret," as the team selected the winner by secret ballot on Monday. "Only the principal, myself and certain school personnel know the name of the queen right now," commented Wilkerson.

This year's homecoming queen candidates are: Cam Butts, daughter of Mr. and Mrs. Larry Butts; Jana Hawkins, daughter of Mr. and Mrs. B.J. Hawkins; and Kyla Nelson, daughter of Mr. and Mrs. Dennis Nelson.

Homecoming King candidates, who are nominated from among

the pool of senior football players, are Brandon Baker, son of Mr. and Mrs. Buford Baker; Joel Shields, son of Mr. and Mrs. Lonnie Shields; and Chris Williamson, son of Mr. and Mrs. Ed Williamson.

Homecoming attendants, chosen by each class's football team members, are: Junior Attendant Mendy Lasater, daughter of Mr. and Mrs. Jack Lasater; Sophomore Attendant Jill Lusby, daughter of Mr. and Mrs. Ronnie Lusby; and Freshman Attendant Tommi Latta, daughter of Dr. and Mrs. Tom Latta.

Leading up to Friday night's game and celebrations are several other Homecoming Week activities.

On Thursday, Sept. 20, the annual bonfire will be lit across from the high school tennis courts on the southeast corner of Eleventh Street and Cotter. This activity will begin at 8:30 p.m. with a snake dance on the west parking lot, which will "snake" its way to the bonfire. Wilkerson said Lynx fans of all ages are invited to take part.

An all-school pep rally is slated for Friday, Sept. 21 at the junior high's varsity gym. The pep rally, which will get started at about 2:55 p.m., has as its theme "Can't Touch Us." The general public is invited to attend this event along with the entire Spearman student body.

Friday night's football game will be immediately followed by a dance in the high school cafeteria. Music will be provided by Gary Ellsworth's Cruisin' Tunes and all Spearman students, alumni and guests are invited. Parents of the

See SHS page 3

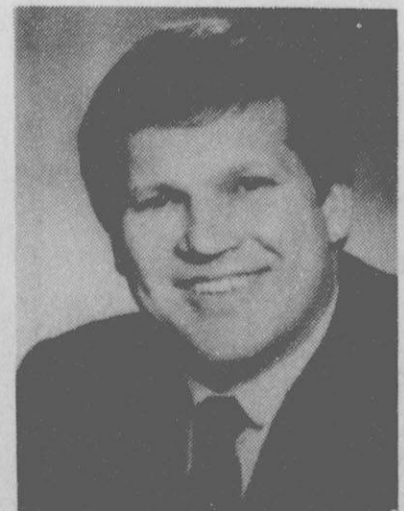
Gruber C. of C...

First banquet set

The Gruber Chamber of Commerce will celebrate its first fiscal year of operation at its first annual banquet, set for Tuesday, Sept. 25 at 7 p.m. in the school cafeteria.

Featured speaker will be humorist Jerry Kunkel of Ft. Worth. Mike Grotegut, chamber president, says Kunkel is "both entertaining and thought-provoking."

Kunkel, a member of the National Speakers Association, has been used as a motivational consultant for state educational commis-



JERRY KUNKEL

sions, corporate managers, marketing departments, insurance and real estate groups, schools, churches, chambers of commerce, businesses and civic clubs across the United States.

The evening's meal will be catered by John Boney. Chamber members will elect three persons to the board of directors during the business portion of the evening. They will assume expiring terms of office. Nominees are June Barkley, Nelle Evans, Zane Gray, Barry Haenisch, Roy Mayhew and Bob Tolleson.

The current Gruber Chamber of Commerce Board of Directors includes Mike Grotegut, president; Marian Tomlinson, vice president; Rita Williams, treasurer; and members Buster Davis, Mark Irwin, Ila Jo Hart, Billy Kelly, Ron Dunning and Steve Gross.

Grotegut proclaimed the chamber's first year "a tremendous success." He pointed out a few of the organization's achievements, including the Fourth of July celebration, city park beautification and Hansford County Stock Show goatshares.

Tickets for the banquet are \$10 for members and \$12.50 for non-members. Tickets can be obtained at Gruber City Hall or from any chamber board member.

Chamber Chatter

by Brett Whitford

This is Homecoming Week in Spearman! Friday night there will be lots of activities for everyone! Don't forget about the ball game.

Friday is also the date of our Membership Meeting. It will be from 11:30 until 1:00 at the Catholic Church Parish Hall. We will be serving stuffed baked potatoes, and our speaker will be Robert Collier of Spearman. We would like to say a big THANK YOU to Beedy Furniture Company, who is sponsoring the Membership Luncheon.

The Retail Merchants Association will be holding an Advertising Seminar in conjunction with the Panhandle Small Business Development Center. It will be on Tuesday, October 2, 1990 from 7:00 until 9:00 p.m. You will be getting more information on this.

As you remember from the last seminar, Advertising was the next subject that you asked for!

That about does it for this week. Until next time, Brett

Club News

SPEARMAN STUDY CLUB

The Spearman Study Club met Monday, Sept. 10 in the home of Cindy Scribner. Members present included Cindy Scribner, Billie Willingham, Claudine Hardy, Francis Biles, Tanya Close, Sandy Smith, Linda Close, Virginia Young, Trudie Schneider and Barbara Collier.

Club members decided to present its \$100. fall scholarship to Beth Lesly to help complete her R.N. Degree.

The club's annual Arts and Crafts Show is set for Oct. 20, 9 a.m. to 5 p.m.

After the meeting adjourned, refreshments were served by the hostesses.

GRUVER MUSIC CLUB

Gruver Music Club, member of the State and National Federation of Music Clubs, met for its annual reassembly dinner Sept. 11 at the Gruver United Methodist Church

fellowship hall to begin a new club year.

The official invocation and benediction was sung by Frances Murrell and Janet Irwin. Murrell gave the greeting and introduced the Harmony Club and the program.

The program was given by students of Mrs. Godley, who accompanied the vocalists. Performances included a song by Chris Kauffman, one of the music club's scholarship recipients; a piano duet by Katie Williams and Holly Venneman; a song by Kauffman, Venneman, Williams and Amy Gumfory; and two songs by Kauffman, Venneman and Gumfory.

The hospitality committee, consisting of Jean Zable, Juanita Taylor and Carmen Roy, decorated the tables with festive ivy baskets, and those attending were treated to a meal served by the Methodist Women.

Approximately 25 members and 13 Harmony Club guests enjoyed the evening.

For soldiers . . .

Addresses given

Doris Pinkerton, Gruver postmaster, has provided information about sending mail to service men and women in Saudi Arabia.

Individuals interested in sending mail or care packages to members of the armed forces in Saudi Arabia or on ships in the region can mail items to the following addresses:

For members of the Army, Air Force, and Marine Corps on the ground in Saudi Arabia, mail should be addressed to:

ANY SERVICE MEMBER
OPERATION DESERT SHIELD
APO NEW YORK 09848-0006

For members of the Navy and Marine Corps on ships in the Saudi regions, mail should be addressed to:

ANY SERVICE MEMBER
OPERATION DESERT SHIELD
FPO NEW YORK 09866-0006

Mail should meet all postal standards and Saudi Arabian customs requirements. For further information, individuals can contact the post office in their town.

Children to present legend with music

This Saturday night, Sept. 22 at 7:30 p.m. at the Spearman High School auditorium, the Palo Duro Players theatre group will present Tom Sawyer, an American legend with music.

The children's play, written by Dave Barton and Matt Bond, is based on the novel by Mark Twain. Thirty-nine local youth will be featured in the show.

The play begins with an upbeat opening number, as seven pairs of young dancers entertain the audience. Greg Elliot, Jana Brock, Landon Miller, Cassie Butt, Lindsey Smith, Janae Watley, David Parker, Britni Beedy, Wayne McCubbin, Brooke Trantham, Brandon Clyburn, Amber Elliot, Sean Baker and Sammie Stavlo are choreographed by Marlene Miller. Miller has directed the dancers throughout the show. She involves the entire cast in the finale, which should be fun for both the audience and cast of characters.

Backstage, Brenda Ross and Ron Dunning, both of Gruver, have provided props and technical assistance. Linda Butt is the director of the play. She has worked long hours along with other "volunteers," to make this program a success.

While rehearsals have been somewhat demanding, Linda says she hopes working on the program has been educational and rewarding for those involved. This type of entertainment has not been provided

in quite some time in this area.

Songs will be scattered throughout the play. In one scene Holly Jarvis, Tara Butt and Tony Clement have practiced a rhythmic interaction of song where timing is critical to the piece. In this episode the strong singing voice of Holly Jarvis is complimented by the eagerness of Tony Clement and the ready actions of Tara Butt. This scene would be a challenge for much older actors and actresses, but these youngsters are capable of commanding the scene.

Other actors and actresses in leading roles not mentioned earlier include Alan Hutchison as Huck Finn, Bill Pittman as Injun Joe, Dillon Miller as Judge Thatcher, and Ashley Dooley as the Constable. All these youth and the entire cast have worked to create entertainment worth watching.

Palo Duro Players invite everyone to come out and see the program Saturday, Sept. 22 at 7:30 p.m. Tickets are \$4 for adults and \$2 for students.

PDP will also present a play in late October, with an adult cast. The play will be Plaza Suite by Neil Simon. It will be directed by Palo Duro Players vice president Ron Dunning. Auditions for the play are scheduled for Sunday, Sept. 23, from 3 to 5 p.m. at the Gruver High School auditorium. Anyone interested in trying out for a part is encouraged to attend.



Allen Jarvis and Tony Clement, with Alan Hutchison as Huck Finn and Heath Tallefer as Injun Joe, in "Tom Sawyer," to be presented Saturday at 7:30 p.m. in the SHS auditorium.



Tara Butt plays the role of Mary in Palo Duro Players production of "Tom Sawyer." Admission to the children's play is \$4 for adults and \$2 for students.

Choir auditions begin

The selection process for Texas All-State Choir will begin Saturday, Sept. 22 at Pampa High School, when students from Spearman High School will audition.

At this, the first audition, 20 singers and two alternates will be chosen. These 20 singers will then compete at a second audition on Saturday, Nov. 17, from which 12 people will be named for each section to make up the Region I all-region choir. These 12 students are eligible to audition for the All Area Choir in December, with the top six going to the All State Audition in Midland on Jan. 5, 1991.

At the Pampa audition, each participant will sing a cut from two audition selections. Judging is done by area choir directors, and there is no division in school size for this audition process. Spearman students will be competing with students from A through 5A schools.

Students auditioning Saturday will include: in soprano II, Misty Savage, daughter of Carolyn and Don Savage, 17 yrs., 12th grade; Rosa Ortiz, daughter of Guadalupe and Antonio Ortiz, 16 yrs., 11th grade; Karen England, daughter of Teresa and Don England, 16 yrs., 11th grade; Mikki Raper, daughter of Marilyn and Tommy Raper, 15 yrs., 10th grade; Regina Abston, daughter of Sam Abston, 15 yrs.,

10th grade; and Vanessa Biggs, daughter of Kathy and Wayne Biggs, 15 yrs., 9th grade.

Auditioning for alto I will be Cindy Melton, daughter of Helen Melton, 17 yrs., 12th grade; and Carla Greene, daughter of Doneta and James Greene, 16 yrs., 11th grade.

Competing in alto II division will be Adrian Blackburn, daughter of J.E. and Zetha Blackburn, 16 yrs., 10th grade; Elizabeth Pipkin, daughter of Frances and Roy Pipkin, 14 yrs., 9th grade; and Christie Taylor, daughter of Robin and Eddie Taylor, 14 yrs., 9th grade. In the audition for tenor I is Brandon Close, son of Carolyn and Mike Close, 16 yrs., 10th grade.

Also auditioning will be tenor II, Ross Jarvis, son of Cheri and Wesley Jarvis, 17 yrs., 12th grade; and Curtis Pearson, son of Ed and Debbie Pearson, 15 yrs., 10th grade.

In the bass I section of the audition is Brad Butler, son of Paula and Larry Butler 15 yrs., 10th grade; and competing for bass II will be Kory Brown, son of Rosemary and Jim Brown, 16 yrs., 9th grade; Michael Cummings, son of Don and Linda Cummings, 15 yrs., 10th grade; and Sam Graham, son of Preston and Ellen Graham, 15 yrs., 10th grade.

Celebrate singers chosen

During the week of Sept. 3-7, auditions were held for this year's "Celebrate" singers at Spearman High School.

The following students were selected: soprano: Misty Savage, Mikki Raper and Regina Abston; alto: Carla Greene, Adrian Blackburn and Dezi Pearson; tenor: Ross Jarvis and Curtis Pear-

son; bass: Sammy Graham and Brad Butler.

"Celebrate" is available to perform for civic organizations and would appreciate the opportunity to do so says Roy Benson, choir director. For more information regarding performances, call Benson at the high school, or at home, 659-2311.

Completions reported

AUSTIN - Texas oil and gas operators reported 244 gas and 479 oil completions in August, according to Railroad Commission Chairman Kent Hance. In July the total was 260 gas and 437 oil completions. August 1989's total was 266 gas and 523 oil completions.

Gas completions in August included seven in the San Antonio area (District 1), 32 in the Refugio area (District 2), 26 in Southeast Texas (District 3), 66 in deep South Texas (District 4), seven in East Central Texas (District 5), 31 in East Texas (District 6), 14 in West Central Texas (District 7B), 30 in the San Angelo area (District 7C), six in the Midland area (District 8), one in the Lubbock area (District 8A), 11 in North Texas (District 9), and 13 in the Panhandle (District 10), according to Hance.

Oil completions included 58 in the San Antonio area (District 1), 17 in the Refugio area (District 2), 29 in Southeast Texas (District 3), 17 in deep South Texas (District 4), 14 in East Central Texas (District 5), 14 in East Texas (District 6), 47 in West Central Texas (District 7B), 52 in the San Angelo area (District 7C), 106 in the Midland area (District 8), 65 in the Lubbock area (District 8A), 48 in North Texas (District 9), and 12 in the Panhandle (District 10).

Total completions reported in August included 479 oil, 244 gas, and 53 service completions. In August 1989, operators filed 523 oil, 266 gas, and 64 service completion reports.

In the first eight months of 1990 the Commission has recorded a total of 6,338 well completions, a 12 percent increase from the 5,601 well completions recorded during the same period of 1989.

Hance said operators reported 1,061 holes plugged in August, compared to 1,041 in July. A total of 177 dry holes were reported in August, compared to 211 in July.

A total of 1,359 drilling permits were issued by the Railroad Commission in August, according to Hance. In July, the total was 1,166. August 1989's total was 1,403.

The August total included 827 permits to drill new oil and gas tests, 57 to re-enter existing well bores, 43 to deepen existing holes, 153 to plugback existing holes, and 113 for other wells. Operators were also issued 166 amended drilling permits.

Hance said permits issued for new oil and gas holes in August included 47 in the San Antonio area (District 1), 39 in the Refugio area (District 2), 47 in Southeast Texas (District 3), 75 in deep South Texas (District 4), 23 in East Central Texas (District 5), 65 in East Texas (District 6), 136 in West Central Texas (District 7B), 64 in the San Angelo area (District 7C), 104 in the Midland area (District 8), 88 in the Lubbock area (District 8A), 116 in North Texas (District 9), and 23 in the Panhandle (District 10).

In the first eight months of 1990, the Commission has issued 10,071 drilling permits, an eight percent increase from the 9,281 issued during the same period of 1989.

The 1,359 permits issued in August included 632 oil permits, 197 gas permits, 462 oil and gas permits, 40 injection permits, nine disposal permits, and 19 other permits.

Cancer Information Service
1-800-4-CANCER

The Hansford County Reporter-Statesman

"Serving All Of Hansford County"

USPS 509660
213 Main, Box 458, 659-3434
Spearman, TX 79081

Published Weekly at
213 Main, Spearman, Texas

Owned and Operated by:
Texas Independent Newspapers, Inc.
16607 Blanco Road, Suite 701
San Antonio, TX 78232
Second Class postage paid at Spearman, Texas 79081.

Any erroneous reflection upon the character of any person or firm appearing in these pages will be gladly and promptly corrected upon being brought to the attention of the management.

Publisher - Robert M. Hulett
Copy Editor - JoAnn Morton
Bookkeeper - Colleen Burkhammer

Subscription Rate: Hansford County, \$19.95; out of county, \$24.95 annually.

Postmaster: Send address changes to Hansford County Reporter-Statesman, Box 458, Spearman, TX 79081.

The publisher reserves the right to revise or reject at its option any advertisement which it deems objectionable, either in subject or phraseology, or which it may deem detrimental to its business.

Advertising and Story Deadlines: Tuesday, 12:00 p.m.

MEMBER
TEXAS PRESS ASSOCIATION

Area Eye Center
Dr. Billy Nowlin
Optometrist
206 Main 659-3109
Hours: Tuesday 9-12 & 1-5 Friday 9-12
Selection of Frames and contact lenses serving this area for 13 years.

LONE STAR RESTAURANT
GRAND OPENING
Best In The Panhandle For
★ Atmosphere
Enjoy our Clown Mon. & Sat. 6-8 p.m.
★ Food
Steaks, Mexican Food & Seafood
★ Prices
Fri. & Sat. Night Prime Rib Special \$8.99
★ Banquet Facilities
Open Sun. thru Thur. 11 a.m. to 9:30 p.m.
Fri. & Sat. 11 a.m. to 10 p.m.
1020 MEGERT CENTER
BORGER, TEXAS

HENSON CHIROPRACTIC
410 S. Davis Spearman, TX
Call For Appointment 659-5603
Office Hours: Mon., Wed., Fri. 8:30-5:00
Tue., Thu. 8:30-11:30

Make a difference with insulation
For free information on saving energy with insulation, call or visit your local TNP office and ask for the brochure, "Straight Talk About Insulation."
Texas-New Mexico Power Company.

Reunion planned for Gruver city park

by Bob Bort
Marian Tomlinson, class of 1965 at GHS, has announced plans for an all-school reunion for Gruver High School graduates.
The reunion will be celebrated with a barbecue, to be held Oct. 6 at Gruver City Park, beginning at noon.

participate in the reunion.
The homecoming football game will be played Friday night, Oct. 5, against the Sunray Bobcats. All graduates should make contact with Tomlinson or Johnson prior to Oct. 3, so that the food arrangements can be made.

It is an opportunity to see and meet old friends, to rekindle friendships, and even to make some new friends. There will be plenty of time for socializing on Saturday afternoon and evening, during and after the barbecue.

AHA sponsors Food Festival next week

The American Heart Association wants you to think twice as you walk down the aisle...the grocery store aisle, that is.
From September 23 through 29 more than 8,000 supermarkets nationwide all participate in American Heart's Food Festival. Developed by the American Heart Association, the Food Festival is a national event that focuses the attention of the American public on the selection of foods that meet AHA dietary guidelines.
The AHA's guidelines for wise eating patterns emphasize weight control; a limited intake of cholesterol, saturated fats, refined sugar and sodium; and the assurance that the diet includes a variety of foods.
An obvious place to begin to integrate these guidelines into a person's lifestyle is at the grocery store—the place where Americans make the majority of their decisions on food selection. The event

will provide consumers with information on how to improve their diets, yet enjoy a full assortment of delicious foods.
Gruver and Spearman grocery stores will provide nutritional information. "The week-long event is aimed at increasing nutrition awareness," said Charlotte Bergin. "While a consumer will probably not make any major dietary pattern changes in just one week, we hope that through this event people will become aware of the role diet plays in their overall health."
American Heart's Food Festival is the first national health awareness project held cooperatively by a national voluntary health agency and supermarkets across the United States.
In addition, free cholesterol screening will be provided Friday, Sept. 28 from 9 a.m. to 2 p.m. in the LaCasita Room at Gruver State Bank.

SHS from page 1

Spearman High School cheerleaders will be present as chaperones at the dance, which will end at 1 a.m.
This week at the high school, students are participating in special "spirit days," reported Wilkerson. On Monday, they were invited to "come as you are" for "Scare 'em Day." Tuesday was "We Are Super Stars Day," with students dressing up as their favorite celebrities. Wednesday was "Make 'em See Double Day" during which several pairs of "twins" could be spotted in hallways and classrooms. "Stalk

the Bucks Day" featured students garbed in hunting and camouflage attire on Thursday and Friday's day will be the time for the traditional "Show Your Pride" with students on all three campuses donning purple and white clothing and accessories.
"Everyone is encouraged to take part and to help make the 1990 Lynx Homecoming a complete success," summarized Wilkerson. She also commended the high school cheerleaders for all the time and effort they have put into Homecoming 1990.

Obituaries

Carl K. Scroggs
WAKA - Carl K. Scroggs, 73, died Wednesday, Sept. 12.
Born in Girard, Mr. Scroggs was a longtime resident of the Waka area. He was a farmer and had worked many years in construction. He married Edna Fullbright in 1940 in Spearman. He was a member of the Apostolic Faith Church in Hardesty, Okla.
Survivors include his wife; four daughters, Donetta Greene of Spearman, Anna Margaret Kinser of Hardesty, Marcena Hutson of Modesto, Calif., and Noveta Backstrom of Russellville, Ark.; three sisters, Irene Janzen of Perryton, Jean Scroggs of Waka and Nell Wadley of St. George, Utah; a brother, Oakes Scroggs of Spearman; 14 grandchildren; and six great-grandchildren.
Funeral services were conducted Saturday, Sept. 15 in the Apostolic Faith Church in Hardesty with the Rev. Ollie Kinser, pastor, officiating. Interment was in Hansford Cemetery.
Helen Louise Brown Reed
AMARILLO - Helen Louise Brown Reed, 68, died Friday, Sept. 14.
Born in Nazareth, Mrs. Reed had been a longtime resident of Amarillo. She managed Brown Drilling Co. for many years. She was a member of St. Martin's Catholic Church and St. Laurence Cathedral. She was preceded in death by two sisters, Juanita Hallford in 1986 and Virginia Dale Pruitt in 1969, and a brother, Wesley, Stork, in 1980.
Survivors include her husband,

Floyd Reed; a stepson, Pete Brown of Amarillo; a sister, Francis Gerber of Umbarger; two brothers, J.R. Stork of Gruver and Charles Stork of Amarillo; three step-grandchildren; and several nieces and nephews.
Rosary was Sunday, Sept. 16 in Boxwell Brothers Ivy Chapel. Mass was Monday, Sept. 17 in St. Martin's Catholic Church with the Rev. Francis Crowe, pastor, officiating. Interment was in Memorial Park Cemetery.
The family requests memorials be to St. Martin's Catholic Church, 1501 N. Adams St., Amarillo, 79107.



by LaVern Draper
First Christian Church

Spiritually Speaking

The religion of Jesus is more than a pious hope or a psychological joy to keep us moderately happy. It does provide hope and joy, but it is much more than a positive psychological experience.
The religion of Jesus can help us make sense out of life. We all desire to find the means for making sense out of existence. Sometimes we become desperate in our search for meaning and find ourselves living by an illusion. Jesus can save us from such illusion. We need to look at and read John 8:31-32. When we bring the focus of God's truth as revealed by Jesus into place where life is lived, we gain a divine perspective on our human predicament. Only with such perspective can we find sense in life.
Christ taught us that the deeper meaning of life is to be found in the life lived from God and the life lived with God as its center. This calls for total trust in God's power, total immersion in God's love, and total support through God's grace.

The religion of Jesus can give life direction and purpose. Many people are meandering their way through life. They have no satisfying purpose that captivates them. They have no sense of direction. Life remains aimless and dull. Not so the Christian. Jesus suggests that every life has the purpose of living unto the Lord. With the purpose to love God and serve him, we find our lives set in the direction of meaning and purpose that brings life its fullness and joy.
Do we remember Zaccheus who climbed a tree to see Jesus? Then he came down the tree to meet the Master. His whole direction in life was changed. His purpose was no longer self-serving but became self-building through his service to others. Jesus' final comment in that instance was "For the Son, of man has come to seek and save the lost." (Luke 19:10)
The religion of Jesus helps us develop those God-given interior resources of spiritual vitality. Jesus had a way of looking deep into the heart of those he met. He never judged a person for what he was or what he had been. He always looked at a person and saw him for what he might become.
He called fishermen like Peter and James and John, who could be as rude illiterate men who caught fish for a livelihood. He said to them, "Come after me and I will make you to become fishers of men." He saw the possibilities in a rich young ruler and was saddened when the young man turned away, unwilling to pay the price of discipleship. He could see in the hardened heart of Saul of Tarsus the possibilities of a Paul the apostle. He knew that the resources of

vital religion were there because God has put them there. He summoned them forth to endow the leadership of the early church with one who campaigned throughout the world on behalf of Christ.
Paul wrote to Timothy, a young man, "Stir up the gift of God that is within you." Such a development of inner resources gives the Christian strength to face life and know he has power beyond his own. He waits on the Lord and renews his own strength so he can run and not be weary, so he can walk and not faint.

The religion of Jesus can bring us an estimate of human life as of essential worth. One of the reasons many persons have given up on life is that they have failed to put a high enough estimate on its worth. In his first sermon to his home congregation, Jesus spoke of his ministry as designed to bring new life and hope into hungering hearts who had given up because life seemed to hold so little for them (Luke 4:18-19).
In its very charter, as Jesus expounded it, the Christian faith speaks to every person and says: "You are of worth. Your life counts. You have been given the most priceless possession God can give—(human personality). You are sacred because it is sacred. Live up to the estimate of worth God has placed on your life."
The religion of Jesus makes a difference in our lives because it requires a constant renewal of faith working through love which brings Christian maturity. Some forms of religion emphasize works. It makes little difference, they say, what you believe in terms of dogma and faith. Action counts. Do good, serve your fellows, and you will be worthy. Jesus came to link faith and works in the spirit of God's love and real in human experience.

The maturity of life which enables us to walk and not faint comes only as we wed faith with loving service. A religion only of belief is irrelevant to human experience. A religion only of works lacks the vertical dimension that links life with the divine. Jesus brings these two together in the human life to make possible the kind of religion which renews our strength, gives wings to our efforts, and enables us to move through life constantly empowered by God to meet life and to master it.
A man had been in prison for years and had accepted his fate as hopeless but one day walked out into liberty because he tried the door and found it was not locked. To say "This I believe" or to say "For this I pray" may be the trying of the door. Try it: the door of the church is not locked.

Hansford Happenings

The Gruver Chamber of Commerce will host its annual banquet Tuesday, Sept. 25 at 7 p.m. at the school cafeteria. Featured speaker for the evening's festivities will be Jerry Kunkel of Fort Worth. All member of the chamber are invited and encouraged to attend. More information can be obtained by contacting a chamber member or by calling 733-5037.

Spearman Study Club will host its 10th annual arts and craft show Saturday, Oct. 20 from 10 a.m. to 5 p.m. in the Spearman High School cafeteria. More information can be obtained and booth space reserved by contacting Claudine Hardy at 659-3440 after 5 p.m. or Donna Trantham at 659-2046 after 5 p.m.

FFA Bar-B-Que Homecoming night Sept. 21 in the High School cafeteria. For tickets contact any FFA member. Performances are scheduled for 10 a.m. and 3 p.m., with team roping at 1 p.m. Admission price is \$3 for adults and \$1 for age 12 and under. In addition, a jackpot team roping for Tri State members only will be held Sunday, Sept. 23 at 11 a.m.

The Spearman Tri State High School Rodeo is set for Saturday, Sept. 22 at Oscar Archer Arena in Spearman. Performances are scheduled for 10 a.m. and 3 p.m., with team roping at 1 p.m. Admission price is \$3 for adults and \$1 for age 12 and under. In addition, a jackpot team roping for Tri State members only will be held Sunday, Sept. 23 at 11 a.m.

The Hansford Hospital Auxiliary and Manor will host a reception for the county's new doctor, Dr. Charles Ridge, his wife Judy and their family, in the Hansford Manor dining room Sunday, Sept. 30 between 1:30 and 3:00 p.m.

The Hansford County Fair will open its doors at Gruver Elementary School gym Thursday, Sept. 27 at 3 p.m. to receive all non-perishable exhibits. They will be accepted until 8 p.m. Perishable goods can be registered at the gym Friday, Sept. 29 from 9 to 11 a.m. All exhibits will be judged that same day, with the building open to the public from 4 to 7 p.m. that evening. The Hansford County Fair will officially open to spectators at 8 a.m. Saturday, Sept. 29, with the concluding event, the rodeo, held the afternoon of Sunday, Sept. 30. Fair booklets are available free of charge at local businesses in Spearman, Gruver and Morse; Spearman and Gruver banks; Spearman and Gruver electric companies; and the Spearman Chamber of Commerce.

Those desiring food booth space at the Hansford County Fair (civic and non-profit organizations) should contact Marian Tomlinson at 733-5030. Tomlinson is also handling assignment of commercial booths, which are not limited to county clubs and can be for-profit. Individuals or clubs wanting crafts booths can contact Fran Duncan at 733-2866. Hansford County Fair Chairman Troy Morris of Gruver encourages all interested parties to reserve booths now, as a limited amount of booth space is available.

Spearman PTA will have its first meeting of the school year Monday, Sept. 24 at 7 p.m. in the high school auditorium. Following a brief business meeting, the topic of students' self-image will be explored through a 45-minute film entitled "Believing for the Best in You." All parents and junior high and high school students are invited to attend.

Hospital notes

Friday, September 14 Admissions: Ilene Hyman Dismissals: None	Monday, September 17 Admissions: None Dismissals: Edith Womble
Saturday, September 15 Admissions: J.W. Davis	Tuesday, September 18 Admissions: None Dismissals: J.H. Martin
Sunday, September 16 Admissions: John Sitzs, Edith Womble, Lloyd Buzzard, and John Henry Martin. Dismissals: None	Patients in the hospital are Ilene Hyman, John Sitzs, L. Buzzard, and J.W. Davis.

COUPON Expires Nov. 30, 1990

HIGH PLAINS HEARING AID CENTER

Serving the Panhandle Area More Than 14 Years

- Service on All Makes
- FREE Hearing Test
- FREE Trial Period
- Lowest Battery Prices on Best Brands

We are so confident that you will prefer our brands and styles of hearing aids, and of our service, that we will **BEAT COMPETITORS PRICE BY 10%**

Or come to us first, and we will take **\$100 OFF the Hearing Aid You Buy!**

14 S. Haney • Golden Spread Center • 659-3866
Every 2nd & 4th Tuesday, 2:00 p.m. to 4:00 p.m.



GEORGE R. WALTERS, M.D. P.A.

IS PLEASED TO ANNOUNCE THE ASSOCIATION OF
RONALD W. INGRAM, M.D.

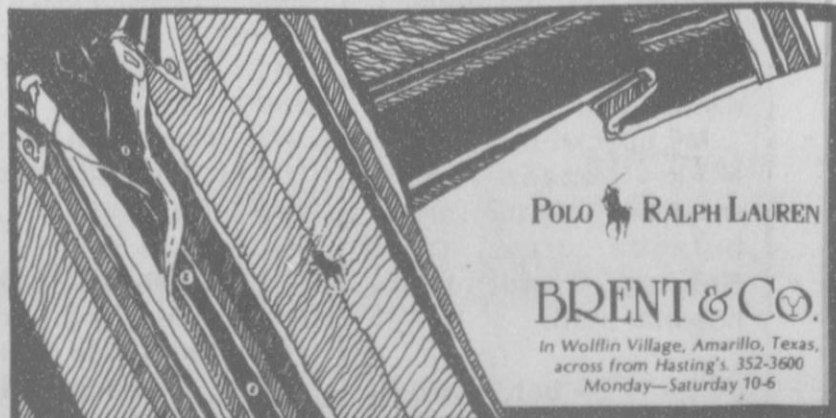
AND
THE OPENING OF THE
BORGER BRANCH OFFICE OF



REGIONAL
EYE
CENTER

BORGER BANK BUILDING
301 W. 6TH STREET, SUITE 319
BORGER, TEXAS 79007

FOR APPOINTMENT CALL-1-800-322-3931



POLO RALPH LAUREN

BRENT & CO.

In Wolfen Village, Amarillo, Texas,
across from Hastings' 352-3600
Monday-Saturday 10-6



People
who
own 'em...
love 'em!

Dual Fuel Heat Pump

The number of people who are heating and cooling their homes and businesses with the Dual Fuel Heat Pump continues to grow. In the past five years, sales have increased nearly 800%! Folks love Dual Fuel Heat Pumps for their economy, dependability and cleanliness.

Call your Dual Fuel Heat Pump Dealer.

BEHNE ELECTRIC & CONSTRUCTION

Electrical Repairs
& Handy Man Service
Reasonable Rates

CALL 659-3404

Among The Neighbors

by Helen Fisher

Notes of those serving their country:

Mr. and Mrs. Red Byrd are anxiously watching the news as their son, Robert Gene, Chief on a Guided Missile Cruiser, but is now temporarily assigned to duty at White Sands Missile range proving grounds.

Robert Gene graduated from Spearman in 1975 and is a career Navy man. His wife is with him.

His twin brother William, who is in the Naval Reserve, has not yet been called.

Leland Cook and family are waiting for some word from his son, Carl. Carl is a corporal with the Second Marine Division now in Saudi Arabia.

Carl, who graduated from high school here in 1977, has served in the Marine Corps for six years. His base camp is LaJue, N.C.

Another family whose thoughts and hearts are in Saudi Arabia is the family of Airman First Class Kris Horton. He graduated from Gruver High School in 1988 and entered the U.S. Air Force in 1989. He has been stationed in Sicily, Italy where he is a computer operator in the Air Force, and has been sent to Saudi Arabia. No further word has been received by his mother Terry Horton. She is employed at the First State Bank. Kris is the grandson of Bill and Marilyn Been of Gruver.

Billy Kuehl reports that he is on the mend after surgery for arterial blockage. It occurred last Tuesday in High Plains Baptist Hospital. Mr. Kuehl can give full time to his recuperation since he is retired.

Little Miss Stacy D'Ann has brought joy to her parents, George David and Vela Schick, by her arrival on September 7. She weighed 7 pounds 8 ounces at High Plains Baptist Hospital.

She joins two brothers, David Duane and Seth Daniel. Her grandparents are Carolina Schick, Spearman; Thelma Beth, Amarillo and Jack Wilson, Amarillo.

Her great-grandmother is Lola Wilson, also of Amarillo.

Gary and Audry Thomas proudly announce the arrival of Chasity Mae on August 12. She was born in Ochiltree General Hospital at Perryton weighing 5 pounds, 14 ounces. Her 2½ year old sister, Timberly, is also proud of her.

Grandparents are Penny and Jim Thomas and Carol and Don Burke, all of Spearman. Great-grandparents are Nelson Atchley and Mrs. Nelle Burke of Spearman.

Lois Nollner just returned from

To All Our Many Friends,

We wish to express our thanks to each of you for the concern you showed us when we lost our brother and uncle, J.W. Garrett.

Thanks for all the cards, phone calls, prayers, flowers, food, prayergrams and other expressions of sympathy. These all helped us to bear our loss.

**Peggy & Carl Archer
Mary & Perry Dixon
and family**

**Carla & Tommy Gumfory
and family**



When I was a child, I spake as a child, I understood as a child, I thought as a child; but when I became a man, I put away childish things.

**Happy 40th Birthday
Terry Delozier**
from your "sister"

Guymon where she participated in an activity she couldn't have ever predicted. She sat for a five generation picture with her daughter, Nella Beth McCoy, her granddaughter, Yvonne Maytum, her great-granddaughter, Alisha Warren, and her great-great-granddaughter, Lindsey Warren.

Lindsey was born in July and her parents are Alisha and Burrell Warren, her grandparents are Mr. and Mrs. Lawrence Maytum, all of Guymon.

Margaret Gibner, after a fall in her home which resulted in a slight fracture to the upper arm, was taken by ambulance to Hansford Hospital, and then to Amarillo on Monday.

She is being cared for at Hansford Manor temporarily as Pope, who is in bad health, is unable to care for her at home.

Margaret would welcome friends calling at the Manor.

More distressing news from Lucile Hagerman. Friends were notified on Monday that she was undergoing surgery at St. Anthony's Hospital. At this writing she is in I.C.U. This is the 6th major surgery for Lucile in as many months.

A gathering which was intended for an 80th birthday observance for Darlene Howell resulted in a party and reunion for practically every one attending.

Four generations of old friends greeted old friends and former co-workers and school mates renewed friendships.

The party was held in the hospitality room of the First State Bank with Darlene's daughters, granddaughters, and great-granddaughters, as well as the in-laws, presiding at the guest registry and serving tables. The tables were beautifully arrayed and it was reported that Danny Dear supervised their arrangement and decoration.

Darlene, as gregarious and vivacious as she was 60 years ago, surely felt honored at the large attendance. How proud she should be of her pretty feminine relatives as well as the handsome gentlemen of the family.

A gorgeous bouquet of yellow roses was the remembrance of Darlene's grandson, Kurt Crouch of St. Louis, who was unable to attend. Two other grandchildren regretfully missed the event - Candy Thompson of Denver and Marsha Mathews of Seminole.

Darlene came with her parents, the late Oscar and Beulah McLeod, to Hansford County 79 years ago from Greer County, Okla.

She and her husband Lester Howell, who died in 1981, were the parents of three children. Their son died when a little child and her two daughters are Pat Dear of Spearman and Kay Crouch of Pampa.

Darlene earned the gratitude of the farmers in this area by her long years of considerate service in the A.S.C.S. office, and many of them

THANK YOU

We would like to thank the Fire Department for saving our house on August 30.

We appreciate your good work.

Thanks again.

Mr. and Mrs. J.T. Pond

Dixon gives guidance



CARLEE DIXON

Member, Crown Classic Chairperson and Social Committee Chairperson.

She also participated in campus activities while attending college. She was a member of Pi Delta Alpha, President's Round Table, Raider Rampage Executive Committee, Who's Who at Texas Tech, Pre-Law Society, Order of Omega, Rho Lambda and Kappa Tau Alpha.

Dixon applied for the TLC position because she wanted to share her involvement with Zeta Tau Alpha. "I wanted to share the respect and love I have for the fraternity with Zeta Tau Alphas all over the country," she says.

Others selected as Traveling Leadership Consultants include Collette Peta, Norcross, Ga; Melissa Kerns, Austin, Katherine Jackson, Tonkawa, Okla.; Julie Charron, Reston, Va.; and Kelley Snow, Russellville, Ark.

As 12 million college students return to classes this fall, a select number of students will receive extra guidance from Carlee Dixon of Spearman, a Zeta Tau Alpha Traveling Leadership Consultant (TLC). She is the daughter of Mr. and Mrs. Perry Dixon of Spearman. Those getting a helping hand from this 1990 Texas Tech University graduate are members of the Zeta Tau Alpha Fraternity for women.

Dixon is one of six TLCs who will travel the United States and Canada assisting collegiate members of Zeta Tau Alpha with leadership skills and motivation. Each TLC will provide extra guidance for the chapter as a whole. The Traveling Leadership Consultants will assist the 157 Zeta Tau Alpha collegiate chapters in chapter organization, motivation, officer training and new member selection.

Dixon began preparing for a successful year as a 1990-91 Traveling Leadership Consultant by completing a national training program led by Zeta Tau Alpha professionals and national officers. She is now visiting various Zeta Tau Alpha collegiate chapters across the United States and Canada.

Dixon first became involved in Zeta Tau Alpha while she was a student at Texas Tech University where she was a member of Gamma Tau Chapter of Zeta Tau Alpha. She earned a bachelor of arts degree in journalism in 1990. As a collegiate member of Zeta Tau Alpha, she served in the positions of President, Assistant Membership Chairperson, Judicial Committee

Club News

DAHILIA FLOWER CLUB

Jewel Turner was hostess to the Dahilia Flower Club Mon., Sept. 17th.

Cleo Denman and Karen Babitzke helped the president with the opening exercises before the business meeting. Marjorie Curtis called for Louise Archer to read the slate of newly selected officers. They are President, Marjorie Curtis, Vice Pres. - Wanda Smith, Secretary/Reporter - Sara Dosssett, Treasurer - Ethel Ellsworth, and Parliamentarian - Karen Babitzke.

Roll call was answered with a quick gift idea. After all the gift ideas were explained, Louise Archer showed knitted dish cloths, coasters, and covered hangers which she presented with a birthday card to Marjorie.

The program on neck scarves was given by Karen Babitzke and Cleo Denman modeled the many styles she presented.

Louise Archer's pink rose was judged first place specimen and Cleo Denman's pink mum arrangement also received a first place.

Jewel served a lovely refreshment plate to the following members! Sammie Bishop, Ethel Ellsworth, Sada Hoskins, Louise Archer, Marjorie Curtis, Hollie Riley, Sara Dosssett, Mabel Edwards, Cleo Denman, Ruth Mary Whitson and Karen Babitzke.

ETA ALPHA

The September meeting of the Eta Alpha Chapter of Delta Kappa Gamma, an honor society for women teachers, was held in the Perryton Public Library Saturday, Sept. 16.

Terri Burke from Perryton gave the devotional and then regular business was conducted by Sue Cochran, president.

The initiation ceremony of Ada Feaster served as the program and then refreshments were served to 35 members by hostesses from Perryton.

Those teachers attending from Spearman were Freida Burgess, Wilma Clark, Cynthia Clyburn and Sandee Smith.

THANK YOU

Thank you for all the flowers, cards, phone calls, visits and most of all prayers, during my recent hospital stay.

Your thoughtfulness and concern was deeply appreciated.

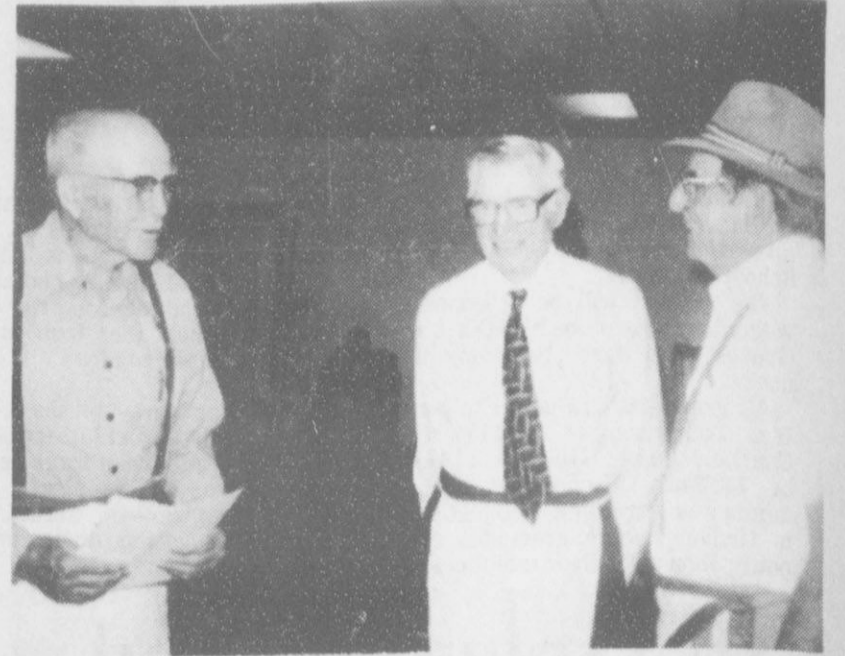
Carol Short

THANK YOU

Spearman has the greatest people in the world, and I deeply appreciate all the help, calls, food, flowers and prayers I received after my accident.

My special thanks to Nikki Lozano and members of the ambulance crew, Dr. Behney, and the hospital staff.

Betty Perry



Masonic Brothers Woodville Jarvis, Major Lackey and R.L. McClellan celebrate the fact that Jarvis has just received his 65-year membership certificate and pin by Worshipful Master McClellan. Both Jarvis and Lackey are nonagenarians (in their 90s). Jarvis petitioned the Lodge in 1925 and was elevated to the Master Masons Degree in that year. He served as Worshipful Master of Hansford Lodge twice, in 1929-30 and 1932-33. Lackey was elevated to the Master Mason Degree in 1927 and served as Worshipful Master of Hansford Lodge during the 1933-34 year. These men were neighbors in their younger years, living in the Holt and Lieb communities south of Spearman in Hutchinson County. Both of these men have served the Spearman-Hansford area as venerable community leaders. Both of them managed to "catch" Spearman school teachers and rear highly-esteemed families. Jarvis married the former Verna Lawrence, who taught English and Spanish in Spearman High School. Lackey married the former Ruth Murphy, who taught in Spearman Elementary School. Hansford Lodge meets on the second and fourth Mondays of each month at 8 a.m. at their Lodge Hall at 406 E. 11th in Spearman. Meetings will begin at 7:30 p.m. beginning in October.

Retired teachers meet

The Hansford Retired Teachers were escorted by Johnnie Lee, general manager of Palo Duro River Authority, to the Palo Duro River dam Tuesday evening, Sept. 11. He pointed out various construction sites and provided data on the dam's completion.

The group returned to the home of Wilma Clark, where chefs: Latham, Robinson and Brack grilled hamburgers served with all the trimmings. The meal was topped off with homemade ice cream and cookies.

Everyone especially enjoyed Wilma's new spacious redwood

deck. Members, associates and guests attending were: Mr. and Mrs. Raymond Birchfield, Mr. and Mrs. Norma Brack, Mr. and Mrs. Stanley Freriks, Olga Gafford, Mr. and Mrs. A.F. Holland, Mr. and Mrs. Nolan Holt, Georgianne Hutchison, Mr. and Mrs. Orville Latham, Johnnie Lee, Pauline McGee, Mr. and Mrs. G.W. Robinson, Carol Short, Mr. and Mrs. Joe Traylor, with hostesses Wilma Clark and Dorothy Roden.

The group expressed thanks to Johnnie Lee, Wilma and Dorothy for a good time.

School Lunch Menu

SPEARMAN HIGH SCHOOL MENU	JR. HIGH-ELEMENTARY MENU
Sept. 24 - 28	SEPT. 24 - 28
MONDAY	MONDAY
PIZZA	PIZZA
SALAD BAR	TOSSED SALAD
BLACKEYED PEAS	BLACKEYED PEAS
CAKE	CAKE
MILK	MILK
TUESDAY	TUESDAY
STUFFED BAKED POTATO	STUFFED BAKED POTATO
CHILI	CHILI
BROCCOLI	CHEESE SAUCE
SALAD BAR	BROCCOLI
YEAST BATTER BREAD	YEAST BATTER BREAD
PEACH RICE CREAM	PEACH RICE CREAM
MILK	MILK
WEDNESDAY	WEDNESDAY
HOT TURKEY SANDWICH	HOT TURKEY SANDWICH
WITH GRAVY	WITH GRAVY
WHOLE KERNEL CORN	WHOLE KERNEL CORN
CANDIED SWEET POTATOES	CANDIED SWEET POTATOES
BREAD SLICE	BREAD SLICE
MIXED FRUIT	MIXED FRUIT
MILK	MILK
THURSDAY	THURSDAY
BEEF TAMALE PIE	BEEF TAMALE PIE
SWEET PEAS	SWEET PEAS
SALAD BAR	DILL SPEAR
PAN MUFFIN	PEARS
MILK	PAN MUFFINS
FRIDAY	MILK
HAMBURGER	FRIDAY
TATOR TOTS	HAMBURGER-Elementary
SALAD BAR	BAR B. Q. on a Bun-Jr. High
COOKIE	FRENCH FRIES
MILK	LETTUCE/TOMATO
	PICKLE ONION
	COOKIE
	MILK

THANK YOU

The family of Lorene Burke would like to thank everyone for the flowers, food, cards, visits and prayers following the loss of our wife, mother and grandmother.

We are grateful to live in a town with such wonderful people.

**Kenneth Burke
Debbie Hornsby & Chris
Gary and Linda Burke
Kenda Burke
Steve Burke**

Moments of Reflection

Each Sunday at 9:05 a.m. beginning September 16th on KRDF-FM radio

Faith Lutheran and First Presbyterian Churches

will present five-minute devotional programs.

LISTEN AND BE FED



Session Three:
The Legacy of the 20th Century Family:
Part I

the Hurried Family video series

Sunday nights at 7 through November 11th

Hosted by the Church of Christ Meeting at Faith Lutheran, 11th & Bernlee

Babysitting Provided

Tim Kimmel

Based On His Best-Selling Book,
LITTLE HOUSE ON THE FREEWAY

Cazares, Link united

Mary Elizabeth Cazares and David John Link were united in marriage in a double-ring ceremony at St. Thomas the Apostle Catholic Church in Amarillo on Aug. 18 with Father Norbert Kieferly and deacon Bill Thiele officiating.

Parents of the couple are Mr. and Mrs. A.R. Cazares of Gruver and Mr. and Mrs. John Link of Gurnee, Ill.

The pair was highlighted with two arched candelabra entwined with greenery and decorated with bright peach bows. There were also two white and two peach floor arrangements. Large peach bows lined the aisle along with a white aisle runner.

Escorted to the altar and given in marriage by her parents, the bride was attired in a white, full-length wedding dress featuring a scooped neckline, lavishly beaded and sequined fitted bodice and puffed sleeves of satin and taffeta. The full skirt was elaborately layered with rows of ruffles and a large bow in the back, along with a chapel length ruffled train.

Her waist-length veil of sheer illusion featured a pearl and lace headband with streaming pearls and a ruffled pouf. She carried a cascading bouquet of white roses highlighted with peach roses and accented with white lace ribbons and peach satin streamers.

The bride's mother wore a peach street length dress and the groom's mother wore a peach street length suit.

In keeping with tradition, the bride carried her grandmother's handkerchief as something old; her wedding attire and a pearl necklace given to her by her parents served as something new; a pair of pearl earrings from her sister served as something borrowed; and the something new was the traditional blue garter. She also wore a penny in her shoe.

Serving as maid of honor was Mary Griggs, sister of the bride, of Amarillo; and bridesmaid was Susie Wood, friend of the bride, of Albuquerque, N.M. Samantha and Kasey Cazares, nieces of the bride, were flower girls. Registering guests was Sandy Spivey of Gruver.

The bridesmaids wore tea length emerald green satin and lace dresses with fitted bodices, and the flower girls wore emerald green dresses with peach and white ribbons and hair bows, along with white bloomers. The bridesmaids' bouquets were of peach and white roses and streamers.

Music for the bride's entrance was provided by organist Jim Gardner of Amarillo, who played "Trumpet Voluntary." Before the ceremony Chris Kauffman of Gruver sang "The Wedding Prayer," and while the couple lit the unity candle he sang "Two Candles." During the ceremony Lynn Kite, uncle of the bride, of San Antonio, read several passages from the Bible which were chosen by the bride and groom.

The groom was attired in a dark gray cutaway long-tail stroller tuxedo with a light gray ascot tie. His boutonniere was fashioned from a peach rose with peach ribbon.

Jeff Link, brother of the groom, of Evanston, Ill., served as best man and Jim Caccamo, brother-in-law of the groom, of Waukegan, Ill., was groomsmen. Ushers were Brian Payne of Quitaque, Okla. and Vance Scarborough of Newark, Texas. Candlelighter was Cody Cazares, nephew of the bride, of Gruver.

The men in the wedding party,



MR. AND MRS. DAVID JOHN LINK

along with both fathers, wore dark gray stroller tuxedos with light gray ascot ties. Their boutonnieres were also peach roses with peach ribbons.

After the ceremony, the couple was driven in a convertible to the reception by the best man and maid of honor. The reception was held at the Harvey Hotel in Amarillo where, upon entrance, all guests were served strawberries and champagne. White scalloped lace table cloths covered all three serving tables.

The bride's table held a three-tier wedding cake. The confection was in white with peach decorations and featured a peach fountain flowing underneath. Greenery and babies' breath was between the

tiers, and a china bridal couple figurine was on top. Peach mints and nuts were also served, and the bride's bouquet served as the centerpiece.

The groom's table held a dark chocolate cake with an English-style "L" and decorations done in light chocolate. The bridesmaids' bouquets served as the centerpiece. A center table held the punch and coffee, which were served from crystal and silver services and were served by Lisa and Misty Payne.

The couple will make their home in Gruver, where the groom is employed by Caprock Industries. The bride is employed by Brock Insurance Agency in Spearman.

On The Go With Joy

by Joy Henderson

The column this week will be devoted to the recent news of the Gary Doty family. Gary was critically injured March 1, 1990 when he fell 37 feet at an elevator where he was working.

For a few weeks, Doty clung to life in I.C.U. in an Amarillo hospital, having four surgeries, and then was transferred to Craig Rehabilitation Hospital in Denver on April 11th. His major problems have been the spinal cord and head injuries, and it was not until the

middle of May that his back began to heal.

Progress remained very slow, but on August 6th, his physical therapist stood him up between the parallel bars and he took a step, and another, then walked the length of the bars with assistance. His walking is slow but he has graduated from walker to cane. However, most of his time is spent in a wheelchair as walking takes lots of energy.

Other good news is that his speech therapist has retested him, and as for his head injury - he rates above average overall. August 27th was another milestone for the Dotys. Doty became an outpatient and is able to live at the apartment where his wife lives. He has a full day with therapy at the hospital Mon. - Fri. from 9-4.

Their goal is to be home by November 1st. By that time he should be completely independent in his own personal care. For those who wish to contact them, their address is Craig Hospital 3425 S. Clarkson - Englewood, Co. 80110, apartment phone 303-789-8382.

If anyone has any information on the whereabouts of Glenda Reed who attended schools in Gruver and graduated with the class of 69-70 - contact Melinda Nobles-McCulloch.

Lookin' Back

5 YEARS AGO...

Thursday, Sept. 19, 1985
The Gruver Greyhounds won the county championship against the Spearman Lynx during Gruver's Homecoming game. Carrie Hart was crowned Queen and Ila Jo Hart was Alumni Queen.

10 YEARS AGO...
Thursday, Sept. 18, 1980
Tom Beasley, a 1972 graduate of GHS won 1st place in Division 1 of the Professional Adult Class in oil painting at the Tri-State Fair in Amarillo. The title of the award winning canvas was "Steele's Barn."

15 YEARS AGO...
Thursday, Sept. 18, 1975
Gruver will play Lefors at the 1975 Homecoming game. Queen candidates are Kelly Hadley, Beth Holt and Tina Clawson.

Pauline Winger celebrates 80th

by Joy Henderson

The children of Pauline Winger hosted a family pot luck dinner and birthday party at the Golden Age Center in Gruver. Marie and Monte Harbour, Val and Marlene Winger, Joette Riley and Kay Hobbs planned the festivities to begin after church services and there were 62 for the family dinner.

After the dinner, guests began to arrive to wish Pauline a "Happy Birthday" and to chat a few moments with her and the children, grandchildren and great-grandchildren. Guests were registered by Manda Winger.

The refreshment table centerpiece was a birthday cake with white icing and coral icing roses, decorated by Opal Wallin. Other refreshments served were pies, cakes, nuts, coffee, tea and punch.

There were 132 to register including the following family members: Joette Riley of Amarillo, grandchildren George and Pati Buchenau, Micah and Jori of Amarillo, Mike and Linn Riley and John of Perryton and Roy and Denise Harbour with children Macy and Dane of Spearman. Also from Spearman were David and Mary Kay Harbour and children Lena and Jacob.

Davin and Teague Winger with children Ryan and Reid of Gruver attended, as did Marva Burnam, Valerie and Molly from Friona. Manda Winger of Lubbock, Bret Hobbs of Houston and Clay Hobbs of Gruver completed the list of grandchildren who attended.

Grandchildren who were unable to attend were: Daniel and Glenda Riley and Ragan of Richardson; Bart and Annette Regor and daughter of Lubbock, Darin and Tanya Winger of Ft. Worth. Others unable to attend were Jill and Stone Starkey of Amarillo, Scot and Rona Jo Kirk and son Brent of Dallas.

Also, unable to attend was Pauline's sister Edith Balanz of Denison.

Friends from out-of-town who dropped by for a visit were Victoria Lobe from Lubbock, Rick, Sharolyn, Blythe and Cason Finley of Amarillo, Glenda Bell Steed of Canadian and Alta Halbert and C.D. Alexander of Guymon.



Helping Pauline Winger (center) celebrate her 80th birthday recently were (l-r) Joette Riley, Marie Harbour, Kay Hobbs and Val Winger.

Gruver Menu

GRUVER LUNCH MENU

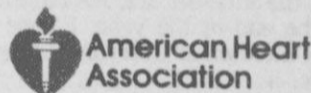
- Sept. 24 - 28
- MONDAY
- PIG-IN-A-BLANKET
- TATER TOTS
- FRUIT
- CHOCOLATE CHIP COOKIES
- MILK
- TUESDAY
- NACHOS
- BEANS
- FRUIT
- MILK
- WEDNESDAY
- STEAK FINGERS
- MASHED POTATOES/GRAVY
- GREEN BEANS
- CAKE
- HOT ROLLS
- MILK
- THURSDAY
- FRITO PIE
- TOSSED SALAD
- FRUIT
- MILK
- FRIDAY
- HAMBURGERS
- FRENCH FRIES
- LETTUCE PICKLES CHEESE
- COOKIES
- MILK

Nachos: Mon., Wed., High School and Teachers
Baked Potatoes: Tues., Thurs., High School and Teachers.
CASH ONLY: \$1.75 for nachos and baked potato - high school.

BREAKFAST

MONDAY
Cereal, Juice, Muffins, Milk
TUESDAY
French Toast Sticks, Syrup, Fruit, Milk
WEDNESDAY
Cowboy Bread, Fruit, Peanuts, Milk
THURSDAY
Toast, Peanut butter, Jelly, Fruit, Milk
FRIDAY
Cinnamon Rolls, Fruit, Peanuts, Milk
Menu subject to change, due to availability of food.

We need you.



Salad bar - Mon., Tues., Wed., Thurs. - Jr. High, High School, Teachers.

A Feast of Celebration Gruver

Chamber of Commerce
First Annual
BANQUET

Celebrating a Great Year

Featuring
JERRY KUNKEL

Tuesday, September 25, 1990
Gruver School Cafeteria
7:00 p.m.

Please Join Us

PUBLIC NOTICE

BRIEF EXPLANATORY STATEMENT OF PROPOSED

CONSTITUTIONAL AMENDMENT

GENERAL ELECTION
NOVEMBER 6, 1990

PROPOSITION NO. 1 ON THE BALLOT

Senate Joint Resolution 2, Sixth Called Session, 71st Legislature, proposes a constitutional amendment to provide that if the Senate, at any special session, does not take final action to confirm or reject an appointee of the Governor made during a recess of the Senate, the appointee is entitled to continue in office until the Senate rejects the appointee at a subsequent session or until the Governor appoints another person to fill the vacancy, but such a nominee whom the Senate does not act to confirm or reject at a subsequent regular session is considered to be rejected when the session ends.

The proposed amendment will appear on the ballot as follows:

"The constitutional amendment to clarify the authority of the senate to consider certain nominees to state and district offices and to provide for filling vacancies in those offices."

Este es el informe explicatorio sobre la enmienda propuesta a la constitución que aparecerá en la boleta el día 6 de noviembre de 1990. Si usted no ha recibido una copia del informe en español, podrá obtener una gratis por llamar al 1/800/252/8683 o por escribir al Secretario de Estado, P.O. Box 12060, Austin, Texas 78711.

Published by Secretary of State George S. Bayoud, Jr.

SEED WHEAT

\$3.50/bu. & Up

Certified, Registered & Select
*2180 Pioneer *2157

Public Varieties
*TAM 200 *Triticale
*TAM 107 *Post Barley
*Beardless Russian *Scout
*Grazers Wheat *Turnup

AgriPro Varieties
*Abilene *Bronco *Mesa
*Thunderbird *Victory

Test Weight 63-65#
Bagged or Bulk
Cleaned thru length grader

**WATLEY
SEED**

P.O. Box 51
Spearman, TX 79081

806-659-3838
am/pm

1-800-338-2885

Hounds, Elks to do battle

by Bob Bort

The Gruver Greyhounds and the Stratford Elks have met every year for the past 32 years, and probably longer, if those records could be found. Stratford holds the edge in the series since 1958, 17-14-1.

It is the 23rd year in coaching, the third at Stratford, for head coach Dwayne Gray. He graduated from Eunice High School in Eunice, N.M., and from Texas Tech. Last year the Elks were 6-4. This year they opened with a 42-28 loss at Springfield, Colo. and then tied Dalhart 14-14 at Dalhart. They are

0-1-1 for 1990, and the game against the Hounds will be the Elks' first home game of the year.

Coach Gray commented before the season started, "We're going to be down this year. We have a lot of holes to fill, and only 36 kids out for football. That's our major weakness."

Coach Gray continued, "Our only real strength will be our running game."

In Stratford's first game against Springfield, tailback Paul Davis rushed 33 times for 239 yards, and earned mention as the class AA Player of the Week. If backs such

as Junior Gomez and Justin Long stay healthy, Stratford will have an awesome ground attack.

Against AAA Dalhart the Elks rushed for another 161 yards, so Gruver can expect a continued ground attack in their game against the Elks this Friday.

Other Stratford players to watch, according to Gray, are offensive linemen Sammy Ellison and Phillip Zinck.

For Gruver, it was quarterback Matthew Hoel and receiver Shannon Pool who made the honorable mention list in the Player of the Week competition. That was after the tough 7-6 loss to Texhoma. But the 7-0 victory over Turpin rekindled some old fashioned enthusiasm for the fans.

"Our injury situation looks like this," says Gruver head coach David Steele. "We have a lot of kids that are banged up and bruised, but they should be fine by Friday. It looks like it may take a while for J.J. Renteria, though. He suffered a knee injury prior to the Texhoma game, and they did an MRI scan on the joint, and we haven't seen the results yet. But he is probably out for awhile."

Coach Steele comments on the Elks. "They have a sophomore quarterback, who is the coach's son, and he is a good little quarterback. He gets the job done. But we will be looking for a lot of running plays this week, and we will be getting our run defense a lot of work prior to the game."

For The Short Of It

by Bob Bort

First, a correction from last week. The game between Gruver and Turpin was not just their third meeting in three years, it was their fourth meeting in four years. Turpin defeated Gruver 28-6 in Gruver, on homecoming in 1987, so the win by Gruver this past week ends the series at 2-2 since 1958. The game in 1987, that I left out, was played on a night when it rained torrents.

Here are my predictions for this week:

Friday, Sept. 21- Gruver at Stratford (Hounds 15-14)

Saturday, Sept. 22- Texas Tech at New Mexico (Red Raiders, 32-24) (Lobos Jeremy Leach is an outstanding quarterback, and it won't be easy for Tech to gain their first win of 1990.)

Sunday, Sept. 23- Dallas at Washington (Skins, 39-14) (Washington won't forget they lost this game to the Cowboys in 1989, 13-3.)

Last week I named several Hounds players in my articles, but I left out three who performed well this past week - Kevin Spivey, Marty McCloy and Trevor Shipley, who do the kick-off and PAT duties. By the end of the year, I hope to have mentioned everyone several times.

I was recently asked by a reader, since I have written so much about the Persian Gulf crisis, whether I was, myself, ever in that area. The answer is yes. In January-February, 1975, I was one of two airmen sent TDY from Offutt Air Force Base Nebraska to the Mediterranean island of Cyprus, in support of the U2 aircraft there, stationed at Akrotiri RAFB with the British. The U2 flew reconnaissance missions along the coast of Lebanon and Syria. We charted its flight path, and relayed information to the pilot. I was there only two months before returning to Nebraska.

Stratford leads the series against Gruver since 1958 17-14-1. They

have played every year, without exception, over that 32-year span. A couple of interesting scores: in 1959 under Head Coach Corky Chapman, Gruver won 42-0; and, in 1977 under Head Coach Steve Burleson, Gruver lost 44-8. Those were the two biggest blowouts I could find. With such an outstanding defense for the Hounds, despite the great running attack of the Elks, it is my guess that the game will be a close, low-scoring contest

It is official now - there won't be a ninth grade Lady Hounds basketball team, according to coach Mike Banks. There are simply not enough girls. Twenty-two girls will be competing in high school basketball this year, and there will be junior varsity and varsity basketball teams. Both teams will be vastly improved from last year. That is my feeling.

For those of you who are interested, I am keeping the stats for the Gruver games this year and calling them in to the Amarillo newspaper on Friday nights. Their office must be a terrible, confused place to be on Friday nights! Anyway, I am trying to do the best I can (spelling the names, getting the totals, and key plays right), and I have a lot of respect now for people like Russ Chisum, who has done this before, and the Greyhound scouts, who keep all sorts of stats and diagram plays, etc. Coaches like Shane Reagan, John Duncan and Jim Davis have been doing this every Friday night for years, and it isn't as easy as it may seem at first.

But anyway, I am trying to do the best I can, and I will get better after I have done it a few times!

Well, two weeks into the NFL season, and the San Francisco 49ers are already in sole possession of first place in the NFC West. Even when they don't play well, as was the case against New Orleans, they still win. It could be a boring NFL season, if the 49ers continue to improve each week.



Members of the Gruver Cross Country Team are: (left-right) Dawn McCullough, Mika McClain, Wynne Maupin, Marcela Oliva, Sharlet Slough and Eva Babbs (2nd row, 1-r) Traci Crawford, Sara Jones, Ashley Wagner, Brendy Brown, Cora Meyer, Monica Ward and Elda Pando (3rd row, 1-r) Nancy Alvarez, Kasey Davis, Akiko Bort, Meredith Rynan, Anissa Ryan and Coach D.D. Bradshaw (4th row, 1-r) Andee Salmans, Shanna Jarvis, Gina Hoel and Pooh Hart.

Lady Hounds open season

by Bob Bort

The 1990 Lady Hounds Cross Country season will open this Saturday, Sept. 22, with the Perryton Meet. Despite their success last year, the Lady Hounds have evidently earned little respect, as the first poll of the season lists Munday, Nazareth and Spearman in the A-AA 10, but fails to mention the Lady Greyhounds.

1989 was the first year for a cross country program in Gruver. It was also the first year for head coach D.D. Bradshaw. The result was a district championship, second place at regional and third place at state. What do you do for an encore?

"Our goal is to win state," says Bradshaw, without hesitation. "I talked with the girls," says coach Mike Banks, "and their answer to that question is that they plan to win state this year." With so much

confidence, it is obvious that Gruver should be the favorite at Georgetown this year, especially since the two teams that finished ahead of them in 1989, Nazareth and Munday, appear to be weaker this year. But as mentioned, such is not the case in the early rankings, and Gruver does not appear to have earned much respect.

In 1989 Munday won the state championship with 36 points and Nazareth was second with 66 points. Then came the surprising Lady Hounds with 80 points.

"We will definitely be stronger this year," says Bradshaw. "Our strength will be experience, and there really isn't a weakness. We want to build a tradition at Gruver in cross country, just like Nazareth in basketball, where our young girls will be striving each year to

continue the winning tradition."

"There are three reasons why I have girls going out for the cross country program," explains Bradshaw. "One is due to the fact that they want to be top athletes, and want to improve themselves for that reason. Two is due to basketball, and I have several girls that are running because they want to be ready when basketball season opens. And three is self-satisfaction, which is what I see as the major benefit of a cross country program. The girls are able to push themselves to the limit of their abilities, and that is an uplifting experience."

Speaking of the basketball teams this year, where there are several spots open on the roster, Bradshaw says, "Cross country could make the difference. It could be the edge between making the team or not."

Sports brief

MORE ATHLETES SEEKING STEROIDS—Physicians are receiving more requests from athletes for performance-enhancing drugs. But in the September issue of *Texas Medicine*, a federal health official says doctors should reject such requests on ethical and legal grounds. An estimated 80 percent of bodybuilders and 17-20 percent of college athletes in all sports use steroids or growth hormones to enhance their abilities. State law passed in 1989 outlaws use of those drugs for athletic purposes. Dr. Thomas L. Kurt, Southwest regional health officer for the U.S. Food and Drug Administration, warns an undetectable hormone, erythropoietin, is gaining popularity.

"The temptation is there for physicians to get involved in these other things that might not even be detected," Kurt says. "But it involves cheating on the part of athletes, and physicians' ethics should prevent them from getting involved."

Buckle Up!



DRIVING CAN BE A CONTACT SPORT

both drives to put points on the board. Gruver led 7-0 at the half, and Turpin had been manhandled. In first half statistics, the Hounds had eight first downs, to only one for Turpin. Gruver had 62 yards rushing and 52 yards passing, to only 24 total yards for Turpin. The Turpin quarterback, Chris Elerick, was 0-7 in passing attempts. But the left-hander would make up for it in the second half, when he was 8-15 with 118 yards, to almost pull it out for the Cardinals. They may have won the game if the Turpin receivers had not dropped several key passes.

Turpin had two more second half drives that put them in Greyhound territory. One drive took them to the 37 yard line, and the other to the 27 yard line, but both times the defense stiffened and Gruver held their 7-0 lead.

The Hounds themselves had a fourth quarter drive that netted 53 yards in 15 plays. They failed on a fourth and five yards from the Turpin 20, when Geronimo Ortega burst up the middle. But they could gain only four yards to the 16-where the Cardinals took over on what was to be their last possession of the ball game.

Dan McCloy had a nice night of ball-handling, with 66 yards on 14 carries. Ortega also had 14 carries for 49 yards, and quarterback Hoel was 7-19 for 69 yards. He carried the ball 10 times himself, making yardage on several quarterback-keepers.

Kevin Spivey caught three passes for 40 yards to lead Gruver's receivers. Marty McCloy had the one touchdown catch, Chris Kauffman had two receptions for 14 yards, and Ortega also caught one pass out of the backfield.

	Turpin	Gruver
First Downs	7	14
Yards Rushing	33	139
Yards Passing	118	69
Completions	8	7
Attempts	22	19
Interceptions	0	0
Total Yards	151	208
Punts	6-33	6-30
Fumbles/Lost	0-0	0-0
Penalties	3-35	6-50

Senior Citizens \$1 Hearing Test
Thursday & Friday, Sept. 27 & 28
Testing - 9 a.m. to 11 a.m.

If you have trouble hearing or understanding, this Test (which uses the latest electronic equipment) will determine your particular loss. Test is performed by State Licensed Hearing Aid personnel. You will see a hearing Aid so tiny it fits totally within the ear.

West Texas Miracle-Ear Center
Corner Drug
122 South Main Perryton
435-3637 Call for Appointment to Avoid Waiting

Drive a Deere ...FREE!



OPERATION Limited Time Offers EXPOSURE

See us about a demonstration drive in a John Deere 55 Series, 105- to 200-hp tractor. Because the best way to understand a tractor is to drive it and compare it.

We'll also fill you in on:

- NO finance charges until March 1, 1991, or special low-rate financing, or cash discount
- FREE 5-year Customer Protection Plan for your new tractor
- EXTRA savings on John Deere hay and tillage tools

Note: For qualified buyers. Offers may be withdrawn at any time.



Ask us about a FREE test drive on a John Deere tractor

HANSFORD IMPLEMENT
Highway 207 659-2568
Spearman 733-2088

LEADERSHIP AT WORK



"Would you believe I done got so much life insurance I'm afraid of my wife and kids?"

Would you believe that we can provide a safe place for all your valuables? Don't be afraid to come in and rent one from us today. The cost is low so come in to FIRST STATE BANK and choose the size suited to your needs.

FSB
First State Bank

One NE Court 659-5565

MEMBER FDIC



The Spearman Cross Country team will travel to Perryton for their second meet this Saturday. Girls running for the team are (front row, l-r) Ashley Shieldknight, Amanda Nobles, Mary Cook, Jill Lusby, Joy Gafford and Kimbre Townsen (back row, l-r) Michelle Garnett, Suzanne Sanders, Haley Shieldknight, Coach Richard North, Mendy Lasater, Sonya Nitschke and Gwen Benson.

Military personnel should apply for absentee ballots before leaving

AUSTIN - Texas Secretary of State George Bayoud advised all military personnel who enter or re-enter active duty to apply for absentee ballots before they leave their home county.

Under Texas election laws, absentee ballots for this year's Nov. 6 general election can be mailed to eligible voters beginning Sept. 22.

entering or re-entering active duty is to apply for their absentee ballots before they leave home," said Bayoud, the state's chief elections officer. "By doing this, they can expedite the process of voting absentee by mail."

Once a registered voter receives an absentee ballot by mail, he or she can vote and return the ballot immediately by mail to his or her home county, Bayoud said.

"I stand committed to our nation's military personnel and want them to rest assured that making it convenient for them to vote is a high priority of my administration," Bayoud said.

Bayoud reminded military personnel if they encounter voting-related problems from where they are stationed that they should notify their voting officer.

The Texas Secretary of State's toll-free election hotline number is 1-800-252-VOTE (8683).

Lookin' Back

SPEARMAN 5 YEARS AGO...

Thursday, Sept. 19, 1985
Hansford County 4-H members placed well at the Tri State Fair. In steers class 1, Rodney Karlin was 1st; class 2 - Kim Boone was 3rd; and Chris and Nikki Strawn placed 5th. In Champion Exotic Feeder Steer Kevin Williams placed 7th and Klint Venneman placed 10th in class 1; in class 2, Chris Brooks was 7th and Brandon Close was 10th. In class 3, Trevlor Williams and Lee Bob Harper placed and in Market Steers Quentin Harper was 6th.

10 YEARS AGO...

Thursday, Sept. 18, 1980
Russell Pogue of First Baptist Church announced that three of their students had been inducted into The Society of Distinguished American High School Students. They were Greg Davis Hazelwood, Mary Jane Flowers and Lea Ann Gibner.

15 YEARS AGO...

Thursday, Sept. 18, 1975
One of the highlights of the entertainment at the Chamber of Commerce breakfast was a song by the "Hansford Cowboy," known as the Rhinestone Cowboy alias the "Shamrock Slim Cowboy" who is none other than our own Kent Guthrie!

20 YEARS AGO...

Thursday, Sept. 17, 1970
One hundred and twenty five persons entered the first football guessing contest of the season and a tie for first place resulted from the count. Ricky Butler and Lance Anthony split first and second place prize money entitling them to \$7.50 each.

BOOSTER CLUB SAYS THANKS TO BUSINESSES

- | | |
|------------------------------------|---------------------------|
| AGCO of Spearman, Inc. | Kerry Henton P.C. |
| B&B Farm Industries | Hickerson Jewelers |
| B&B Sales Co. | John Hutchison Atty. |
| Beedy Furniture Co. | Interstate Savings & Loan |
| Berry Cleaners | Ivey's Hungry Cowboy |
| Boxwell Bros. Funeral Directors | J.G.'s Ladies Wear |
| Brock Insurance | Jack & Jill |
| Brown Braham & Co. | KRDF-FM |
| The Bunkhouse | Lady Fair Shop |
| Buster's Aerial Dusters | Lyric Theater |
| Cates Men & Boys Wear | Russ McClure Construction |
| ChaLor's | Merle Norman Studios |
| Charolette Ford Trunks | Miss B's Shoes |
| Cinderella Beauty Salon | Earl Novak DDS |
| Collard Insurance | Billy Nowlin OD |
| Hi-Plains Conoco | Penny's Photos |
| Country Stitches | Prairie Garden |
| Davis Chevron Gulf | Sacks Third Ave. |
| Data Gas | Safety Glass Co. |
| First National Bank | Sam's Shoe Clinic |
| First State Bank | Schneider Welding |
| Fuller's Jewelers | Schnell Electric |
| Gillaspie Auto | Spearman Auto |
| Golden Spread Sales Co. | Spearman Super Service |
| Gordon's Drug | Speartex Grain |
| H&H Water Well | Thriftway |
| Hansford Agency | Video Hut |
| Hansford County Farm Bureau | Wardrobe Cleaners |
| Hansford County Reporter-Statesman | Watley Seed |
| Hansford Implement | White House Lumber |

Lynx from page 1

back, Tim Dooley ran the ball the last six yards for the Lynx second touchdown. The 2 point conversion attempt succeeded, leaving the score 16 to 0 in favor of the Lynx.

The score remained 16 to 0 despite two interceptions of Cyclone passes by Lynx defensive back Chriss Williamson. The first was given the Lynx the ball on the Cyclone 33 yard line. The second was at the end of the half and gave the Lynx the ball on their own 37 yard line. The Lynx failed to score on either possession. The half ended with the Lynx driving after the second Williamson interception.

The second half started out kind of quiet. The Lynx kicked off to the Cyclones and forced them to punt on fourth down. As the Cyclone punter started his punt a surge of Lynx defensemen came up the middle and blocked the punt. A Lynx picked the ball up and ran it into the end zone for the score. With the 2 point conversion the score stood at 24-0.

The Lynx defense held the Cyclones on their possession, and forced them to give up the ball on downs on the Cyclone 48 yard line. On the Lynx's first play from scrimmage, Beck took the ball up the middle of the Cyclone defense and scored on a 48 yard touchdown run. The 2 point conversion failed, leaving the score 30-0.

The Cyclones finally managed to score on the Lynx defense toward the end of the third quarter. They managed to put a 95 yard drive together to score their first touchdown. Sandwiched within the drive was an exchange of fumbles at midfield, but in the end the Cyclones scored with two seconds left in the third period. This brought the score to 30-6.

This Cyclone score did not end the third quarter fireworks. Lynx running back, Dooley, took the ensuing Cyclone kickoff and returned it 45 yards to the Cyclone 40 yard line. This effort put the Lynx in scoring territory again to start the last quarter.

The Lynx offense moved the ball the last 40 yards for a touch down to open the final quarter. A near disaster was avoided during this series by the hustling play of team captain Kizzar. After a 24 yard gain,

the Lynx running back fumbled the ball on the Cyclone 13 yard line. Kizzar, hustling down field from his tackle position, was there to recover the ball before two other Cyclones could fall on it. This play kept the ball in the hands of the Lynx offense and allowed Williamson to score on the next play. The Lynx conversion kick attempt failed, to leave the score 36-6.

The rest of the action in the fourth quarter consisted of an 85 yard kickoff return by Cyclone running back Brian Brown, a fumble recovery by Kelp to stop a Cyclone drive and a second fumble recovery by Nova, to set up the Lynx's final touch down late in the fourth quarter. This touch down brought the score to its final resting place of 42-14.



HIGH SCHOOL JRS. & SRS.
Learn How To Score High on College Entrance Tests
SRS - Oct. & Nov. ACT & SAT
JRS - Oct. PSAT (National Merit Qualifying)
8 Lesson Extensive Review Saturdays, 2:00-5:00
the RIGHT TRACK
EDUCATIONAL TESTING METHODS
Amarillo 372-4898

ALLSUP'S

PRICES EFFECTIVE
SEPTEMBER 19-25

SAVE EVERY DAY OF THE WEEK!

 ALL COKE FAMILY COKES 6 PACK/12 OZ. CANS \$2.29	ALLSUP'S SANDWICH BREAD 1 1/2 LB. LOAF 3 FOR \$1 
 \$2.29	MELLO CRISP BACON 1 LB. PKG. 99¢

ALLSUP'S BARBECUE BEEF SANDWICH FRESH DAILY 89¢ EACH	ALL FLAVORS LAY'S® RUFFLES REG. \$1.59 \$1.19
10/\$1 Light Tuna 6 1/2 OZ. SHURFINE 59¢ Star Kist Chunk Light TUNA 6 1/2 OZ. 69¢ Smith's Pride 10 lb. bag PREMIUM POTATOES 99¢	SHURSAVING WHOLE KERNEL GOLDEN CORN 3 16 OZ. CANS \$1 SHURSAVING DRY DOG FOOD 25 LB. BAG \$3.49 SHURSAVING FACIAL TISSUE 150 CT. BOX 79¢

COOKED FRESH 24 HRS. A DAY		HOT FOODS MENU		AVAILABLE AT ALL ALLSUP'S LOCATIONS
BARBECUE BEEF SANDWICH	89¢	3 PIECE BOX CHICKEN	\$4.99	
BARBECUE PORK RIBS (LB.)	\$3.99	BEEF & CHEESE CHIMICHANGA	\$1.19	
BARBECUE WHOLE CHICKEN	\$3.99	(MEAD) CORN DOG	69¢	
ALLSUP'S BURRITO	79¢	DELICIOUS HAMBURGER	59¢	
BREAKFAST BURRITO	99¢	WILSON HOT LINKS	99¢	
BURRITO BEEF & SALSA	\$1.19	SAUSAGE ON A STICK	\$1.59	
DELICIOUS CHEESEBURGER	79¢	SAUSAGE & BISCUIT	79¢	
CHICKEN FRIED STEAK	\$1.59	SAUSAGE, EGG & BISCUIT	\$1.09	
3 COUNT CHICKEN STRIPS	\$1.49	SAUTEYA SAUSAGE	\$1.09	
W/POTATO WEDGES/CHICKEN (2 PCS) BISCUIT	\$1.99	4 COUNT STEAK FINGERS	\$1.00	

CALL-IN ORDERS WELCOME CHECK OUR WEEKLY SPECIALS

ALLSUP'S CONVENIENCE STORES, INC.
305 W. KENNETH
SPEARMAN, TX 79081
Also Effective in GRUVER

AMARILLO LIVESTOCK AUCTION

SALES EVERY TUESDAY

SPECIAL FALL WEANER CALF SALES
BEGIN TUESDAY, SEPTEMBER 18th 1:00 P.M.

CALL 806-373-7464

CONSIGN THOSE WEANER CALVES
and COME ENJOY OUR NEW ULTRA MODERN FACILITY

THE MARKET

for STOCKER and FEEDER Cattle

Terry Jones - Mgr. Charlie Alford - Asst. Mgr.

LUV YA LYNX!

Homecoming 1990

Go Lynx!



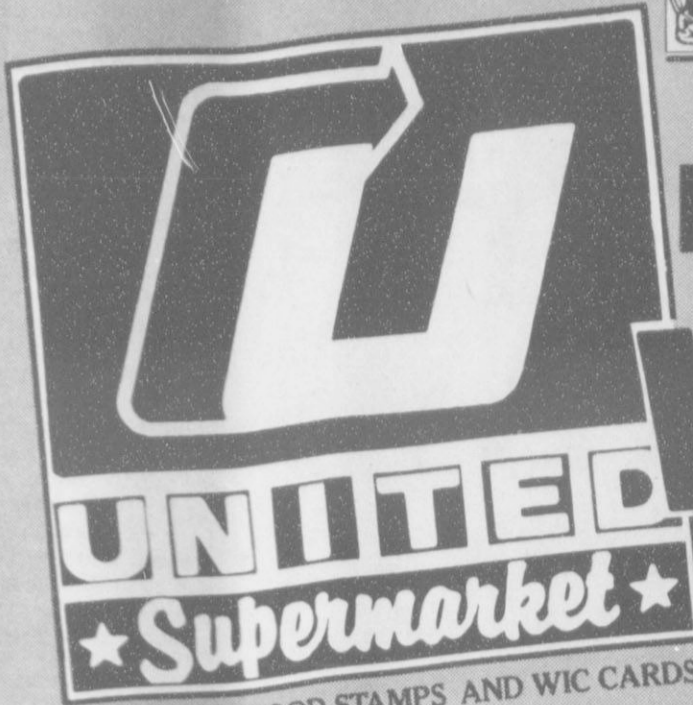
Spearman Lynx



Go Spearman!

UNITED Supermarket

Perryton



WE ACCEPT FOOD STAMPS AND WIC CARDS.



ALWAYS, EVERYDAY!

VALUE

it's the personal touch

GOOD THRU SEPT. 25 IN PERRYTON ONLY. DOUBLE COUPONS UP TO & INCLUDING \$1.00 THIS WEEK.



KEEBLER CRACKERS
REGULAR, LOW SALT, UNSALTED, WHEAT

.69

16 OZ.

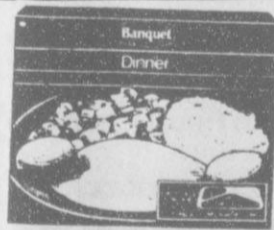
HILLS BROTHERS OR MJB

COFFEE

ASSORTED REGULAR GRINDS

\$1.69

13 OZ.



BANQUET DINNERS
ASSORTED

EXCEPT HAM & BEEF

10 OZ. TO 12 OZ.

.89

DOUBLE COUPONS

PRICES GOOD THRU TUES. SEPT. 25TH

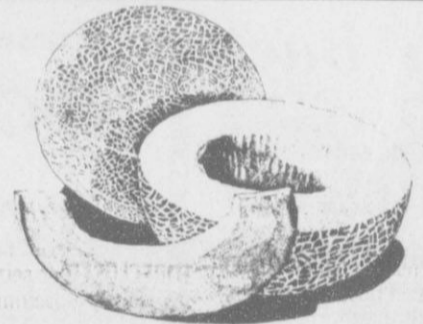
WED	THUR	FRI	SAT	SUN	MON	TUES
19	20	21	22	23	24	25



THOMPSON OR RED SEEDLESS GRAPES

.69

LB.



CALIFORNIA SWEET JUICY CANTALOUPE

3 \$1

LBS.

COUNTRY PRIDE GRADE "A" WHOLE FRYERS



.49

LB.

POTTER'S WHOLE HOG PORK SAUSAGE
REGULAR OR HOT



\$3.57

2 LB. ROLL

1 LB. ROLL \$1.79

the personal touch



We "Luv Ya Lynx" HOMECOMING '90 CELEBRATION



The Students



Monday students come to school dressed as they sleep.



Tuesday was "superstar" day at SHS.

★ The Lynx Team



On Friday night after beating the Memphis Cyclones 42-14 the Lynx football team came together in the middle of Cyclone Stadium to celebrate their victory. They will be bringing that spirit to their Homecoming game against the White Deer Bucks, Friday night at 8:00 p.m.

The Royal Court

Coronation at 7:30 p.m., Friday night, Lynx Stadium

Senior Attendants Janna Hawkins Kyla Nelson Cam Butts
 Junior Attendant Mendy Lasater
 Sophomore Attendant Jill Lusby
 Freshman Attendant Tommi Latta
 King Candidates
 Brandon Baker Joel Shields Chris Williamson

Beat The Bucks!!!

SpearTex Grain
Bag A Buck!

West Texas Gas
Get 'Em!

Cates Men & Boys Wear
Your Levi & Wrangler Headquarters

Tom & Linda Latta
Luv Ya Lynx!

Adela's
Order Your Mums Here!

Barb's Beauty Salon
Barbara & Missy
Lynx Are On The Prowl!

Sacks Ave. Third
203 Main
We're Behind Ya Lynx!

Hi-Plains Auto Supply
659-2506
Look Out Bucks!

Kids' Stuff Lady Fair
U Can't Touch The Lynx!

J.G.'s
306 Hancock
Beat White Deer!

Sam's Shoe Clinic
Miss B's Shoes
209 Main

Berry Cleaners
Good Luck Lynx!

Hi Plains Conoco
Claw The Bucks!

Lynx & Lynxettes
Booster Club
Luv Ya Lynx!

Buster's Aerial Dusters
Bust The Bucks!

Dr. & Bobbie Novak
Co Lynx!

McClure Paint & Supply
307 Main

White House Lumber Co.
Go For It Lynx!

Safety Glass Co.
We Luv Our Lynx!

Farm Bureau of Hansford County
Box 578 659-3133

Thriftway
505 Plains Shopping Center
659-2522

Spearman Jack & Jill
Home Owned-Home Operated

Five Star Equipment
Go Lynx!

Transpotco
Lynx Are Tops!

Charolette Ford Trunks
659-3027
U Can't Touch The Lynx!

Wardrobe Cleaners
Lynx Are The Best!

Gordon's Drug
314 Main 659-2141

C & C Transmission
The Bucks Stop Here!