

SCR2
COMP
HANSFORD COUNTY LIBRARY
0122 MAIN ST
SPEARMAN TX 79081-2064



HANSFORD COUNTY ★ THE REPORTER-STATESMAN

CELEBRATING 103 YEARS OF SERVICE TO HANSFORD COUNTY
HANSFORD COUNTY'S ONLY NEWSPAPER

THURSDAY,
NOVEMBER 25, 2010

75¢

WWW.SPEARMANREPORTER.COM

VOLUME 103 • ISSUE 47

reporter@spearmanreporter.com



HAPPY THANKSGIVING

November 25, 2010

Closed Notice!

The Hansford County Reporter-Statesman will be closed Tues., Nov. 23-Sun., Nov. 27 for Thanksgiving.

COME TO THE GAME

Spearman Lynx/Lynxettes

11/29 7G (5), 8G (6), JVV (6) @ Fritch
11/29 7B (5), 8B (6), 9B (6) vs. Fritch
11/30 JVG (5), JVB (5), VG (6:30), VB (8) vs. Texhoma

Gruver Greyhounds/Lady Hounds

11/29 7G (6), 7B (5), 8G (5), 8B (6) vs. Sunray
11/30 VG (6:30), JVG (8) @ Pampa
11/30 JVB (5), VB (8) @ Boys Ranch

Weather Forecast

TUESDAY NIGHT - Partly cloudy in the evening then becoming mostly cloudy. Lows around 30. South winds 10 to 15 mph.

WEDNESDAY - Partly cloudy. Highs in the upper 50s.

WEDNESDAY NIGHT - Partly cloudy. Lows around 13.

THANKSGIVING DAY - Mostly sunny. Colder. Highs in the upper 30s.

THURSDAY NIGHT - Mostly clear. Lows around 13.

FRIDAY - Sunny - warmer. Highs in the lower 50s.

FRIDAY NIGHT - Clear. Lows in the lower 20s.

SATURDAY - Mostly sunny. Highs in the upper 50s.

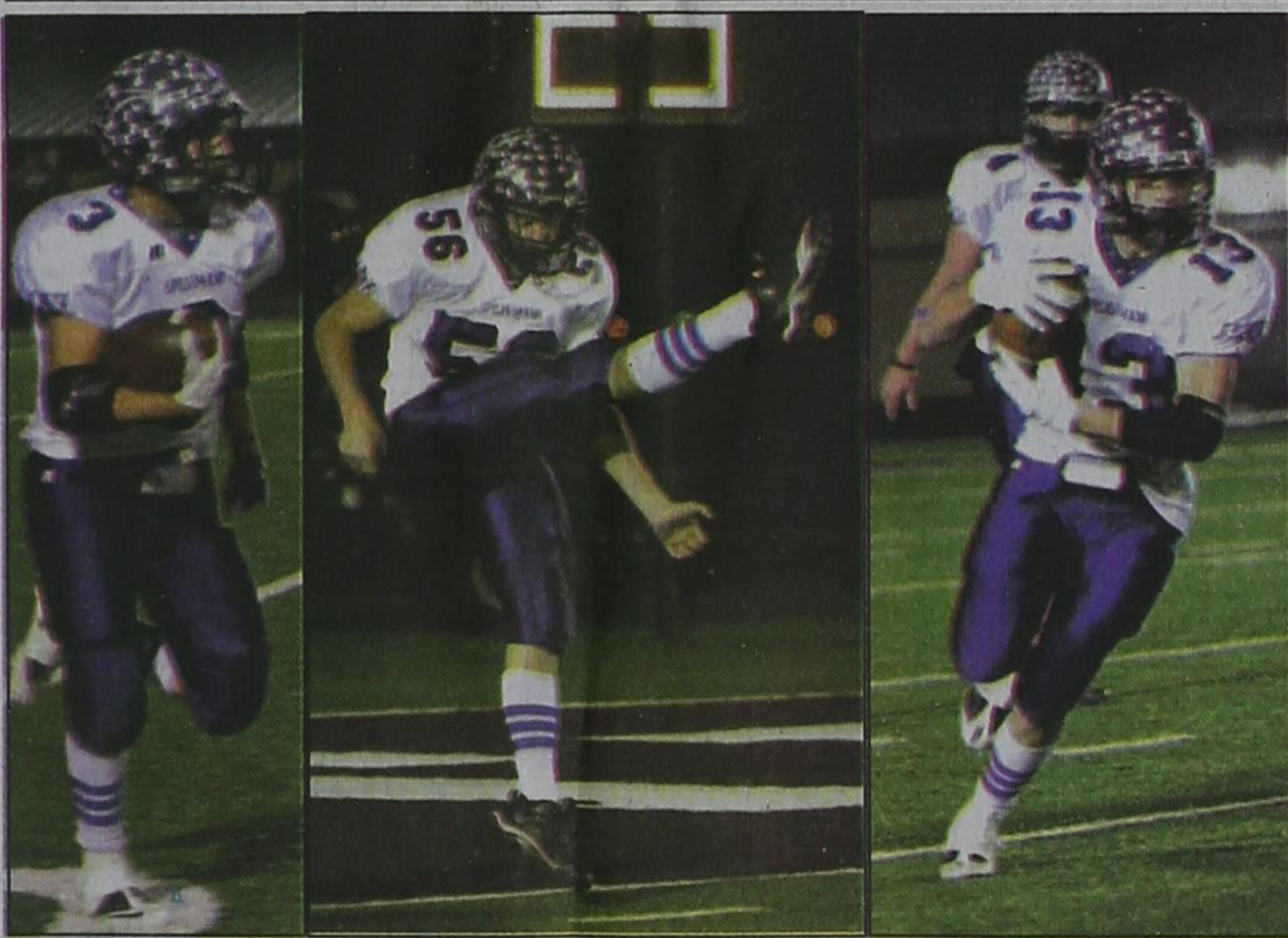
SATURDAY NIGHT - Mostly clear. Lows in the upper 20s.

SUNDAY - Mostly sunny. Highs around 60.

Read more: <http://www.city-data.com/forecast/w-Spearman-Texas.html#ixzz0xgJSWQkT>

Texas Crop & Weather

The following specific livestock, crop and weather conditions were reported by Panhandle Extension directors: Temperatures were near to above average early in the reporting period, with rain, sleet and snow coming to most of the region by the middle of the first week of November. By the following weekend, temperatures returned to near average or above. Soil-moisture levels were short to surplus with most counties reporting adequate. A few isolated fields of corn remained to be harvested. Wheat varied in condition from poor to good, with most counties reporting poor to fair. Rangeland varied from very poor to fair condition, with most counties reporting it to be in poor shape. Cattle were in good condition.



Lynx Fall to Crawford

The Spearman Lynx were defeated by Crawford 20-0 on Friday, November 19, 2010 in Seymour in the Class 2A Division II area playoff game.

See story on page 7

FAR LEFT: Jose Mendoza (#3) returns a Crawford kick-off.

LEFT CENTER: Trent Goodheart (#56) punts for the Lynx.

LEFT: Blayne Schroeder (#4) watches as Jace Lang-Swan (#13) tries for a first down.

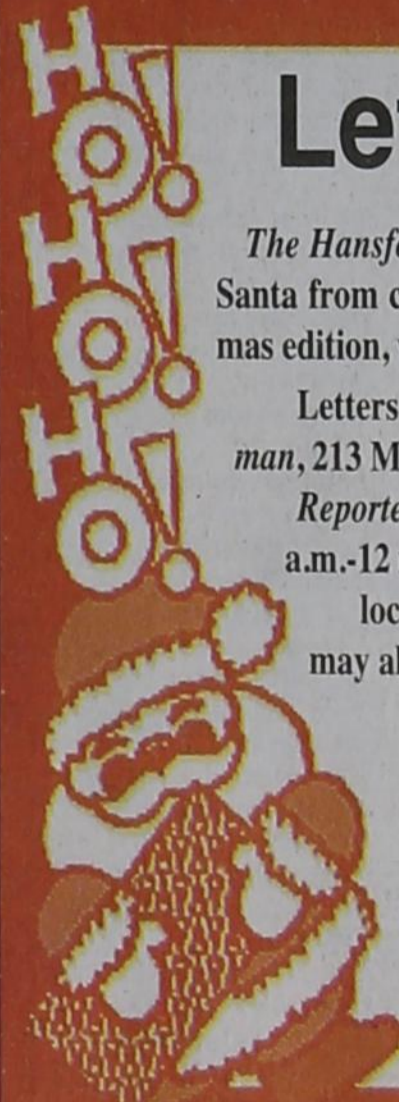
(Photos by Tami Hargrove. Pictures available at <http://spearmansports.smugmug.com>)

Letters to Santa

The Hansford County Reporter-Statesman will print Letters to Santa from children in Hansford County in our annual Christmas edition, which will be published on December 23rd.

Letters may be mailed to: Santa Letter, % Reporter-Statesman, 213 Main Street, Spearman, TX 79081, or dropped by the Reporter-Statesman office. Office hours are Mon.-Thurs., 9 a.m.-12 noon and Mon.-Wed., 1-5 p.m. (There is a drop-slot located in the window to the right of the door.) Letters may also be dropped off at the new home of the Reporter-Statesman, 310 Barkley Street, Spearman.

In order for your letter to appear in the Christmas issue, it must be at the Reporter-Statesman office by 5 p.m. on Thursday, December 16th. All letters will be forwarded to Santa. (Letters received after the deadline may not have time to reach the North Pole by Christmas.)



Deadline Notice!

The deadline to submit news and advertising to the Hansford County Reporter-Statesman is Monday at 5 p.m. Items submitted after the deadline will be published at a later date, as time and space permit.

The deadline for the December 23rd and December 30th issues will be Thursday, December 16th at 12 noon.

Items may be submitted by phone (806-659-3434), fax (806-398-9080), mail (Reporter-Statesman, 213 Main Street, Spearman TX 79081), or e-mail (reporter@spearmanreporter.com).

For more information, please contact Catherine Smith at 659-3434, or e-mail to reporter@spearmanreporter.com

Wolf Creek Heritage Museum Notes

by Virginia Scott
MUSEUM HAPPENINGS
 We are tidying up the museum in preparation for our Christmas Vacation. Wednesday was spent organizing our archive room with our new shelves. Moving and rearranging the newspaper books and our collection boxes was quite a chore. We were all exhausted by days end and the archive room is beautiful. Now we can work on specific projects, i.e. our maps, paintings, etc.

public is invited. We have some interesting projects for 2011, so join us.

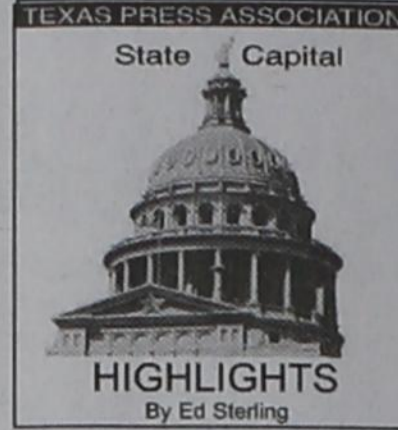
HISTORICAL MUSINGS

Mr. Skaggs was editor, publisher, and writer for the Lipscomb Limelight for years. He had a wonderful way with words - country, wise, humorous, and entertaining. I give you his editorial for April 15, 1915 (saved by Lovella).

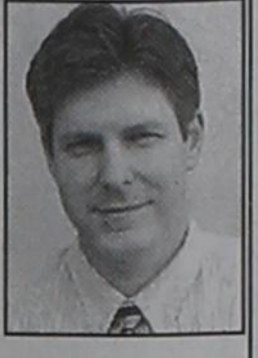
"Died - Last part of last week from complication of natural causes, at the age of about fifteen months, the Lipscomb Military Band. It had survived the cold and chilly blasts of the winter days, had been nourished through the teething period in safety and would have been able to toddle alone with another twelve months growth, but such is fate. A flower bloometh in the spring, spreads its brilliant leaves to the light of the sun for a time with its sweet fragrance blown to the breezes and it's no more; so it is with the band, the pride of Lipscomb, it has furnished the musical notes that entertained the crowds on the Fourth, pleased the gatherings at church socials and school houses, without that which to sustain life, it succumbs to the fate of the times and dwindleth into oblivion. It grieves Lime Light that this be so. It creates a relentless stream of wakefulness to shoot through our anatomy like a bunch of fox terriers chasing a lame duck. Our sympathy is with the mourners who have been such zealous tooters, and as we scatter the last garland of flowers we cherish the thought all is well that ends well."

Did I mention that he created his own words? Have fun picking out his creations in this piece.

Have a great Thanksgiving. We are closed on Thursday, Thanksgiving Day, but open on Friday.



STATE CAPITAL HIGHLIGHTS



by Ed Sterling

Board sets state budget growth limit for next biennium

AUSTIN — Lt. Gov. David Dewhurst and House Speaker Joe Straus, in a joint announcement on Nov. 15, said the Legislative Budget Board had adopted an 8.92 percent estimated growth rate for the 2012-13 fiscal biennium.

The 10-member Legislative Budget Board, on which Dewhurst and Straus both serve, is a permanent joint committee of the Texas Legislature that develops budget and policy recommendations for legislative appropriations for all state agencies and performs fiscal analyses of proposed legislation.

The growth limit is designated for state tax revenues not dedicated in the Texas Constitution. The constitutional spending limit is based on the spending limit of the previous biennium and the economic forecast from the Texas Comptroller of Public Accounts.

Dewhurst, who presides over the Senate, said, "I believe Texans understand and appreciate that government agencies have to tighten their belts, just like small businesses and families are doing across our state, and do more with less."

Straus, R-San Antonio, said, "The cuts we are making are essential to address Texas' budget challenges to ensure we are fiscally responsible with taxpayer funds."

State agencies have been under a governor's directive to cut spending in light of the projected budget deficit, which has been estimated between \$8 billion and \$24 billion.

Certain agencies, however, have the authority to move funds to help with the budget crunch.

The State Board of Education on Nov. 19 voted to increase the amount of funding it will pour into the state budget to \$1.9 billion over the 2012-2013 biennium, thanks to a boost from the General Land Office.

In September, the SBOE agreed to a payout of about \$1.58 billion from the Permanent School Fund, a \$20 billion endowment fund that supports the state's public schools. On Nov. 18, Land Commissioner Jerry Patterson told the SBOE that he will ask the School Land Board to transfer \$500 million from the Real Estate Special Fund Account to the Permanent

School Fund. (The General Land Office manages the Permanent School Funds' land and mineral holdings.)

The transfer, about \$300 million larger than anticipated, allowed the SBOE to increase its payout from \$1.58 billion to about \$1.9 billion for the next biennium.

Money from the Permanent School Fund, which flows through the "Available School Fund," is required to be spent on textbooks and educational programs.

Ethics code change is proposed

Teachers must refrain from inappropriately communicating with students through the use of social media under the requirements of an updated Educators' Code of Ethics endorsed by the State Board of Education on Nov. 19.

Rules proposed by State Board for Educator Certification must come to the State Board of Education for review before they become effective.

According to a Texas Education Agency news release dated Nov. 19, "Staff requested the change to the ethics code because they said they are receiving disciplinary case referrals in which teachers were found to have sent students thousands of text messages. Sometimes the content of the messages was not inappropriate on their face but the volume of messages and time of day the messages were sent indicated that the educator was

'grooming' the student for a future sexual relationship."

A school district employee commits a second-degree felony under Penal Code Section 21.12 if the employee engages in sexual contact with a student who is not their spouse, the Texas Education Agency stated.

Unemployment rate stays put

The Lone Star State's unemployment rate remained at 8.1 percent in October and continued to trend below the U.S. unemployment rate of 9.6 percent for October, according to the Texas Workforce Commission's monthly report released Nov. 19.

Texas' total non-farm employment was up by 47,900 jobs in October representing the addition of 172,800 jobs in the last year.

New appliance rebate is scheduled

Texas Comptroller Susan Combs on Nov. 19 announced a new rebate program for certain energy efficient appliances.

The program, which will begin Dec. 20, lets Texans who want to save money on appliances apply for mail-in rebates on those purchases.

About \$10 million in rebates is available for the purchase of certain "Energy Star" appliances such as air-source heat pumps, central air conditioners, clothes washers, dishwashers, freezers, refrigerators, room air conditioners and water heaters.

City of Spearman Authorized Certificates of Obligation

submitted by City Manager Ed Hansen

The City of Spearman has authorized the issuance of about \$3.4 million dollars in Certificates of Obligation. These bonds will be used for the financing of some much needed infrastructure projects. Aging sewer mains will be re-

placed. New water wells will be drilled, along with the connection of the two ground storage tanks. These funds can also be used to assist in improvements of sidewalks, parks and the landfill.

The city earned an "A" credit rating due to its positive past fiscal perform-

ance and its current cash position.

"Our philosophy of paying as we go was also a point in our favor, along with the lack of debt," said Ed Hansen.

The interest rate for the cost of the bonds is 4.14%; the debt has a twenty year payout time line although the city has the option of paying them off early at ten years.

Many smaller aspects of these projects have been, or are being done now. You might have noticed that there has been a survey crew plotting elevations around town. Also a camera crew has been in town videotaping our sewer mains.

The city is also in the process of applying for a disaster grant as a result of the rain event that we experienced last summer. If awarded these funds they will be used toward these projects also.

Thank You!

To our Hansford County friends, We gratefully acknowledge your support since the death of our mother (grandmother and great-grandmother) Leona Stavlo. The love, care, and concern shown to us is sincerely appreciated especially that of the emergency response team. The "Leona stories" you have shared have been comforting and heartwarming. Thank you also for the food and other gifts you brought to our homes.

Sincerely,
 The family of Leona Stavlo



We will be closed Thursday-Monday, November 25th & 29th for the Thanksgiving Holidays. We will re-open on Tuesday, November 30th.

MURMUR'S CAFE

100 S. Roland • 659-3580 • Spearman

Dear Editor

Dear Editor, We just wanted to say how proud we are of the Lynx football players and their coaches. You are an awesome bunch of guys who had a great season! Thanks for all the thrills and enjoyment you gave us this year!

Mary & Perry Dixon

See us for:
 AUTO • HOME • CROP HAIL • FARM & RANCH • MULTIPERIL • LIVESTOCK

INSURANCE



BORT AGENCY, INC.
 510 Main St. • Gruver, TX
 (806) 733-2456

THANKSGIVING

ACROSS

- Wet nurses
- A light touch
- Sometimes used as colorful decoration, sing.
- Mechanical fastener used on denim clothing
- International Labor Organization
- Chopin's instrument of choice
- "___ your plate before dessert."
- Polar toy-maker
- *To plant again after a harvest
- *Cause for celebration
- Facade, adj.
- Yup, uh-huh
- It's jumped through to impress
- Banned pesticide
- Maryland Institute College of Art
- The Six Million Dollar Man, e.g.
- ___ Cartman of "South Park"
- Bride's cover
- Madagascar primate
- Transmitted by kissing?
- Curtain fabric
- Comedian Carvey
- Verdi's opus, e.g.
- Pinnacle

- Inmate's weapon
- Unit of poem
- Military group
- "___ day now"
- Leave out
- Huck Finn's traveling mate
- *First celebrant
- *"One who proclaimed Thanksgiving as a national holiday
- Part of a play
- *Four score and seven years ___
- Icy hut
- Long stories
- *Pilgrims sometimes depicted holding a blunderbuss ___
- Suicidal location
- To brag or ___ your own horn
- Mine deposit
- Many affirmatives

DOWN

- St. Louis attraction
- Actress Kunis
- Affirm
- *Normal feeling after turkey meal
- Running water
- *Impossible to do on Thanksgiving
- "___ the President's Men"
- Very successful
- Right to take another's property

- *Coast where first settlers landed
- Dwarf buffalo
- *Turkey, e.g.
- Alkyl obtained from propane
- Plural of #47 Across
- Mythical giant bird
- *Shave and a ___ two bits"
- Visual presentations
- Obsolete spelling of "dropped"
- Ringworm
- Plural of cecum
- Flower ___ pl.
- Nebraska's largest city
- Angry confrontation
- *Turkey byproduct
- *It has to be shucked
- Make a portrait of
- "Enlightened rule" in Japan
- Portuguese islands in Atlantic Ocean
- Friend from Paris
- Adverb of 'tiny'
- Idealized image
- "NCIS" character Timothy ___
- Attention-getting sound
- U.N. civil aviation agency
- Child's building block
- Annoying biting fly
- Describes Ranger

These games are brought to you by the Hansford County Reporter-Statesman

- who rode Silver
- He founded Oldsmobile in 1897
- Private theater box
- Opposite of #74 Across
- Niger-Congo languages

CROSSWORD

1	2	3	4	5	6	7	8	9	10	11	12
13					14			15			
16					17			18			
19					20			21	22		
23					24						
25	26	27	28	29	30	31	32	33	34		
35		36		37		38		39			
40				41		42		43			
44			45	46		47					
48			49	50		51		52			
53			54		55		56				
57	58	59	60		61		62	63	64		
65				66	67		68				
69				70		71					
72				73		74					



Where volunteering begins.

© 2010, StatePoint Media, Inc. answer on classified page

The Hansford County Reporter-Statesman
 Mailing Address - 213 Main Street • Spearman TX 79081
 Physical Address - 310 Barkley Street • Spearman TX 79081
 Phone - (806) 659-3434 • Fax - (806) 398-9080
 www.spearmanreporter.com • reporter@spearmanreporter.com
 Mon.-Thurs. 9 a.m.-12 p.m., Mon.-Wed. & 1-5 p.m.
 Closed Thurs. afternoon and all day Fri., Sat. & Sun.

Gary Smith - Publisher Catherine Smith - Editor
 Contributing Writers: Dorothy Hudson, Jim Derington,
 Merry Sparks, Cecil Biggers
 Contributing Photographers: Charlie Johnson, Lisa Johnson
 Tammy Batton, Bonnie Bergan

Subscription Rates
 In Hansford County - \$30.00 • Out of County - \$40.00
 E-Mail Subscription - \$35.00

The Hansford County Reporter-Statesman (USPS 529660) is published weekly in Spearman, TX. Periodical postage paid in Spearman, TX. **POSTMASTER:** Send address changes to: The Hansford County Reporter-Statesman, 213 Main Street, Spearman, TX 79081.

Publication Policy
 The deadline to submit news and advertising to The Hansford County Reporter-Statesman is Monday at 5 p.m. Items submitted after the deadline will be published at a later date, as time and space permit. Publication of all items is at the discretion of the editor.

Advertising
 Open Display rates are \$4.00 per column inch. Classified Ads are \$6 for the first 25 words and 10¢ per word for each additional word. (Additional charge for boxed classifieds.) There is a \$1 charge per week if billed.

Member of
 Gruver Chamber of Commerce
 Spearman Chamber of Commerce
 Texas Press Association and Panhandle Press Association

Happy Birthday!

November 24 Birthday - Brady Hart, Pablo Perez Jr., Danna Sue Floyd, Helen Gibson, Patty Younger, Duane Hart, James Jackson, Dana Garza, Lashera McElhany, Jamie Dawn Hanson, Stephanie Villalobos, Raymond Fairbank, Brianne (Burkhammer) Eslick, Georgia Holt, Teresa Page, Linda Weller, Elvin Wright, Sharon Arrington, Whitney Maestas

Anniversary - M/M Rex Casdorff, M/M David Imke

November 25 Birthday - Kasey Cazares, Tracy Logsdon, Krista Davis, Opal Wallin, Trudie Goodheart, Terrie Orr, Mike Hager, Melissa Moyer, Dustin Red, Kristi Holt, Carmen Roy, Sara Vela, Katy Mitchell, Jerry Moore, Donnie Pool

Anniversary - Sherry & Willis Boyd

November 26 Birthday - Lori Perez, Chad Stork, Mollie Holton, Tracy Vernon, Chris Stewart, Scott Barkley, Dale Red, Eldon Sparks, Aaron Brown, James Smith, Jorge Soto, Jr.

Anniversary - M/M Harlan Gerardy

November 27 Birthday - Jim Potts, Dorothy Evans, Marilyn Davis, Jackie Nelson, Monty Ross, Tony Pacheco, Susan Poole, Jesse Moreno, Jackie Nelson

Anniversary - M/M Dale Wofford, M/M James Winger, M/M James Dorman, M/M Ty Williams

November 28 Birthday - Casey Smith, Clint Williams, Jeanie McClellan, Frank Shields, Patty Spoonemore, Thelma Ford, Caroline Schick, Jeny Womble, Pat Hamilton, Harley Murrell, Marie Belle Vargas, Rick Howard, Toni Pittman, Tammy Red, Darlene Curry, Neely Landrum

Anniversary - M/M Julian Rodriguez, Mary Lou & Steve Matthews, Brenda & Verlan Winegarner

November 29 Birthday - Brian Presley, Steven Salazar, Wanda Wagner, Genna Floyd, Robert Browning, Ciria Vela, Ted Vela, Troy Lane Brown, Brenda Salgado, Amanda Burress

Anniversary - M/M Kermit Ford, M/M David Schick, M/M Jose Garcia, M/M Phil Tripp, M/M Brad Hart

November 30 Birthday - Cass Cooper, Roxane Holt, Rosie McClellan, Judy Stedje, Miranda Thoreson, Dan Desimone, Don Maize, Jed Meisner, Mark Nelson, Judy Speck, Steve Harnish, Ernest Bowen, Eulalia Reyes, Mary Reyes, Marion Mitchell, Lisa Payne, David Reid, Cinda Haruch, Bonnie Bergan

Anniversary - M/M Lee Roy Mitchell, M/M Ross Walker, M/M Rick Harvey, M/M Luis Salazar

December 1 Birthday - Georgia Davidson, Robert Stayton, Peggy Archer, Debra Dennis, Peggy Ellsworth, Bill Martin, Brian Paul, Shane Vela, Eleen Wright, Sha Lynn Harris, Lynn Vela, Jennifer Neff, Graham Hartgraves

December 2 Birthday - Audrey Beasley, Don Dillow, Paul Stavlo, Mike Close, Sharon Freeman, Kristin Dunnihoo, Ginger McClellan, Jana Price, James Terry, Amanda Gaines, Blare Tittle, Christi Cooper, Cecilia Favela, Frances & Jeffrey Davis

December 3 Birthday - Shell Haynes, Bethany Harris, Lila (Mike) Hergert, Kevin Harris, Francisco Lozano, Jewell King, Alvin Auld, Mark Taylor, Jenny Neff, Phyllis Cummings

Anniversary - M/M Elbert Dorton, M/M John Haynes

December 4 Birthday - Chris Spivey, Lynn Stedje, Denise Ferguson, Heather Gikas, Kristy Easley, Imogene Baker, Joyce Duncan, Tim Fletcher, Amber Newman, Kristina Christian, Aleta Jackson

Anniversary - Kent & Tammy Benton, Crockett & Melinda Tidwell

December 5 Birthday - Martha Haden, Billy Dearmond, Mike Skinner, Arbeta Nobels, Gwen Smith, Norman Scroggs, Susie Oakley, Beatrice Comp, Cory Marrs, Brayden Bynum

Anniversary - Alfonso & Carrie Cenicerros

December 6 Birthday - Ryan Ramón, Penny Kruse, Coleen Brummett, Ed Dear, Mrs. Johnny Gaither, Cecelia Randall, Mayleea Castillo, Carolyn Harnden, Kelli Cummings, Lisa Keetch, Mary Venneman, Chevy Smith, Jerald Ray Scribner, Jenna McElroy

Anniversary - Burl & Nellie Buchanan, Bill & Ginger Pittman

Our Sympathy

NORMAN BURTON
Norman Burton, 92, of Amarillo, formerly of Canadian, died Wednesday, Nov. 17, 2010. Services were at 4 p.m. Fri., Nov. 19th in Hughs Funeral Home Memorial Chapel in Canadian with the Rev. Tom Stribling officiating and Larry Mote assisting. Burial was in Edith Ford Memorial Cemetery in Canadian. Norman was born Aug. 18, 1918, in Bard, N.M., to the late E.B. Burton and Dollie Starkey Burton. He attended schools in San Jon, N.M.

He married Lorene Massey on May 16, 1940, in San Jon. They moved to Claude before they settled in Hemphill County near Canadian. Norman did custom baling and raised registered Yorkshire hogs and livestock. He served as Hemphill County commissioner and was a member of various organizations. He was an avid supporter of livestock shows. The family would like to thank the staff of Canyon View Estates and Interim Hospice. He was preceded in death by a brother, Cloyd Burton. Survivors include his wife of 70 years, Lorene Burton; four sons, Dorland Burton and wife Ann and Shelby Burton and wife Sue, all of Stratford, Oran Burton and wife Ann of Stinnett, and Duval Burton and wife Shirley of Spearman; two sisters, Mildred Mote and husband Hobart of Broadview, N.M., and Elsie Wiseman of Vega; 10 grandchildren; 10 great-grandchildren; and two great-great-grandchildren.

The family suggest memorials be to a favorite charity. Leave online condolences at www.hughsfuneral-home.com.

JANELLE WOMBLE STEINKOENIG
Janelle Womble Steinkoenig, 87, of Amarillo died Monday, Nov. 15, 2010. Graveside services were at 3:30 p.m. Sat., Nov. 20th in Hansford Cemetery in Spearman. Memorial services were at 5 p.m. in Minton/Chatwell Funeral Directors Minton Memorial Chapel in Borger with Jake Minton officiating. Mrs. Steinkoenig was born Feb. 5, 1923, in Hansford County to Jesse and Lula Womble. She spent countless hours teaching primary schoolchildren in Spearman and Borger until her retirement after 38 years. Survivors include two sons, Richard Steinkoenig of Boulder, Colo., and Mike Steinkoenig of Amarillo; eight grandchildren; and many great-grandchildren. In lieu of flowers, Janelle asked that donations be in the form of educating a child.

JOHN IRVIN FARQUHAR
LUBBOCK - On Monday, Nov. 15, 2010, God our Savior called John Irvin Farquhar home. Family and friends gathered to celebrate his life of 74 years at 1 p.m. Thurs., Nov. 18th at Oakwood Baptist Church. A time of fellowship and remembrance followed in church parlor. Arrangements were by Lake Ridge Chapel and Memorial Designers of Lubbock. John was an avid golfer and became Texas Tech's first Southwest Conference Champion in any sport. As an amateur golfer, he played in the Master's four times and the National Open twice. He also was a member of the 1971 Walker Cup Team. John was also inducted into the Texas Sports Hall of Fame. On Sept. 5, 1959, he married Carolyn Wilmeth in Spearman. He was preceded in death by his parents, Vern Henry and Ada Grace Farquhar; and a sister, Joan Miller. Survivors include his loving wife of 51 years, Carolyn; a son, John Wilmeth Farquhar of Lubbock; a daughter, Kristi Anna Adams and husband Jamie of Lubbock; three grandsons, Ryan Richardson, Logan Richardson and J. J. Adams, all of Lubbock; a sister, Jane Oliver and husband Bo of Richardson; a brother-in-law, Dee Miller of Amarillo; several nieces and nephews; and their beloved Shih Tzu, Muffin. The family suggests memorials be to Ecclesia Church, 6007 66th St., Lubbock, TX 79424. Leave online condolences at www.memorialdesigners.net.

WILLIAM ALFRED WHITE
CLAUDE - William Alfred White, 84, died Saturday, Nov. 20, 2010. Services will be at 10 a.m. Tuesday in Claude Church of Christ with Jim Yates officiating. Burial will be at 2 p.m. in Wellington Cemetery. Arrangements are by Boxwell Brothers Funeral Home of Claude. Alfred was born Feb. 18, 1926, at home in Lela to William Lesley White and Merle Elizabeth Hite White. He grew up in Quail and Wellington area and graduated from Wellington High School. After high school, Alfred joined the U.S. Coast Guard, where his service on the USS Cambria took him through the invasion of the Marshall Islands, Saipan, Leyte, Lingayen Gulf and Okinawa. Alfred was a minister of the Church of Christ and worked with congregations in Canadian, Bovina, Olton, Gruver, Texhoma, Okla., Amarillo, Aberdeen, S.D., Stratford and Groom. Survivors include his wife of 63 years, Mary Nell Chandler White; three children, Bill White and wife Susie of Amarillo, Beth Graham and husband Bugs of Omaha, Neb., and Jim White and wife Janeane of Andrews; a grandson, Ky White and wife Kendra of Warner, Ga.; a sister, Betty White Tribble of Albuquerque, N.M.; and two sisters-in-law, Ladell Popwell and husband Leo of Wellington and Kay White of Richardson. Viewing will be from 11 a.m. until 6 p.m. today at the funeral home. The family suggests memorials be to New Mexico Christian Home, 1356 N.M. 236, Portales, NM 88130.

HIP IMPLANT RECALL

Johnson & Johnson has recalled the DePuy ASR XL Acetabular hip socket implant system due to an unacceptably high failure rate. One in eight patients experience symptoms like infection, bone fracture, dislocation and pain. Other complications include increased metal ion levels in the blood, bone staining, necrosis, swelling, nerve damage, tissue damage and/or muscle damage. If you had hip replacement surgery during or after 2005 and you know you have a DePuy ASR XL Acetabular hip implant, or are unsure, please talk to your doctor right away, then contact us toll-free for professional insight into your legal rights.

APPOLINO | DODD | KREBS
1-800-460-0606
www.DefectiveDrugsLaw.com
NO FEE FOR FIRST VISIT | Cameron, TX

MONUMENTS

Boxwell Brothers Funeral Home

519 Evans • Spearman
659-3802

Dear friends,
When you buy a monument from us we make sure it is exactly what you want at a price you can afford. If it is not right, we will make it right. And you will not have to search the countryside to find us. We are here when you have a need.
Sincerely,
Bob Boxwell

COSTA RICA \$995 + tax & fees
10 Day Tour All-Inclusive
Available at Caravan.com.
Fully Guided vacation packages.
Priced \$995 to \$1,295 + tax & fees.
8 days Grand Canyon, Zion
8 days Yellowstone Park
8 days New England
9 days Canada - Rockies
10 days Canada - Nova Scotia

PANAMA Canal Cruise & Tour
8 day all-inclusive guided vacation. Join experienced travelers and smart shoppers who rely on Caravan.com.
GUATEMALA with Tikal
10 day all-inclusive guided vacation. Caravan.com makes it so easy and so affordable to explore your world.
Free 28 Page Brochure. Since 1952
Caravan.com
Call 1-800-CARAVAN

LIMITED TIME DIRECTV OFFER!
FREE **starz** + **SHOWTIME** for 3 months!
FREE HD Access!
FREE Standard Installation
ASK HOW! CALL DIRECTV START TV. Toll Free 800-214-7110

FREE HD FOR LIFE!
Only on DISH Network

- Lowest Price in America!
- \$ 24.99/mo for over 120 channels!
- \$500 Bonus!

Call Now!
1-866-799-8039

DIRECTV
Direct Sat TV
1-800-577-1322
Local installers!

285+ Channels
160+ HD Channels
Packages Start At \$29.99 Mo.
2 FREE Upgrades - HD DVR & HD Receiver - Ask How!
FREE **starz** & **SHOWTIME** For 3 Months

HOME PHONE SERVICE
NO Pre-Payment • NO Deposit Required!
Rates from \$6.99 per month*
(\$17/month including approximate taxes & fees)
FREE 1st Month of Service
Caller ID & Call Waiting included in Packages**
New-Talk 866.934.3448

Replenish the seed of faith through . . .
DAILY BIBLE READING, PRAYER & REGULAR CHURCH ATTENDANCE

Spearman Apostolic Faith Church 822 S. Drexler • 659-2870 Sunday School: 10 a.m. Worship Service: 11 a.m. Sun. Eve.: 6 p.m. Wed. Prayer Mtg.: 7 p.m. Pastor - Jack Cornell	Sacred Heart Catholic Church 901 Roland • 659-2166 Sat. Night Mass: 5:30 p.m. Sun. Mass: 9 a.m. - English Sun. Mass: 11:30 a.m. - Spanish Rev. Gregory Bunyan	Primera Mision Bautista 502 E. 7th • 659-3991 Sunday School: 9:45 a.m. Worship: 11 a.m.; Evening: 6 p.m. Wed. Prayer Meeting: 7 p.m. Thurs. Visitation: 7 p.m. Pastor Joe Garcia Jr.	Gruver United Methodist Broadway & Garrett 733-2651 Sunday School: 9:45 a.m. Worship: 8:30 & 10:50 a.m. Eve. Worship & UMY: 6 p.m. Pastor - George Price
First Assembly of God 401 N. Bernice • 659-2295 Sunday School: 9:30 a.m. Worship: 10:40 a.m. Evening Worship: 6 p.m. Wed. Worship: 7 p.m. Wed. Youth: 7 Pastor - Jerry Pollard	First United Methodist 407 S. Haney • 659-5503 Sunday School: 9:45 a.m. Worship: 8:30 & 11 a.m. Jr. High Youth: 5 p.m. Sunday High School: 6 p.m. Sunday Kids Club: 3 p.m. Wed. Pastor - Neely Landrum	El Aposento Alto U.P.C.I. 1105 S. Roland Domingos: Escuela-Dominical - 10 a.m. Culto Evangelistico - 7 p.m. Jueves: Oración - 8 p.m. Mier: Estudio Biblico - 7 p.m. Pastor - A.G. Martell (806) 659-2153	Spanish Cristo Redentor Church Hwy 15 806-659-2166 Gruver, TX Sun. Mass: 1:30 p.m. - Spanish Rev. Gregory Bunyan
First Christian Church (Disciples of Christ) 29 S. Bernice • 659-2036 Sunday School: 9:45 a.m. Worship: 10:50 a.m. Minister -	Grace Presbyterian Church (Worships with Faith Lutheran Church) 1101 Bernice • 659-2033 Faith Lutheran Church (ELCA) 1101 Bernice • 659-2252 Sunday School: 9:45 a.m. Worship: 11 a.m. (Worships with Grace Presbyterian Church) Pastor - Cecil Biggers, PLM	Gruver First Baptist Church 402 E. Broadway • 733-2411 Sunday School: 9:45 a.m. Worship: 10:50 a.m. Disciple Training: 6 p.m. Sunday Prayer Meeting: 7:30 p.m. Wednesday Pastor - Scott Curry	Oslo Oslo Lutheran Church (ELCA) 6 Miles West & 12 Miles North of Gruver 339-7646 Sunday School: 9:45 a.m. Worship: 11 a.m. Pastor - Arlen Lloyd
First Baptist Church 123 N. Bernice • 659-5557 Sunday School: 9:45 a.m. Worship: 11 a.m. Evening Worship: 7 p.m. Men's Bible Study - Wed., 7 a.m. Children's Choir - Wed, 6 p.m. Adult Choir - Wed, 7 p.m. Wed. Bible Study: 7 p.m. Pastor - Jim Medley	Union Church 31 S. Endicott • 659-2644 Sunday School: 10:00 a.m. Worship: 11:00 a.m. Bible Study: 7 p.m. Wed. Youth Service: 6 p.m. Wed. Pastor - Don Baltazor	Church of Christ 209 King • 733-2760 Sunday School: 9:30 a.m. Worship: 10:20 a.m. Evening Worship: 6 p.m. Wed. Worship: 7:00 p.m. Minister - Gaylord Cook	Morse Morse Baptist Church 733-2757 Pastor - Gary Stevens
Church of Christ 121 S. Haney • 659-3244 Sunday Bible Class: 9:45 a.m. Worship: 10:30 a.m. Evening Worship: 6 p.m. Bible Study Wed.: 7:30 p.m.	Fellowship Baptist 1102 S. Archer • 659-2783 Sunday School: 10 a.m. Worship: 11 a.m. Sun. Evening Worship: 6 p.m. Sun. Evening Spanish Worship: 7 p.m. Youth/Adult Service: 7:30 Wed. Pastor - Philip Hudson	First Christian Church 510 King • 733-2960 Sunday School: 10:00 a.m. Sunday Worship: 11 a.m. Youth: 7:30, Sunday Adult Bible Study: 7:30, Sun. Wed. Bible Study: 8:00 p.m. Pastor - Gary Gumtory	Waka Church of Christ 300 Rogers Ave. 202-7126 Sunday School - 9:30 a.m. Sunday Worship: 10:30 a.m. & 6 p.m. Wednesday Bible Study: 7 p.m. Preacher - Ed Jenkins

He has showed you, O man, what is good. And what does the LORD require of you? To act justly and to love mercy and to walk humbly with your God. Micah 6:8

This feature is made possible through the sponsorship of these civic minded businesses:

Deakin ELECTRIC OILFIELD • RESIDENTIAL • COMMERCIAL 321 S. MAIN • SPEARMAN 1-800-999-1506 Chris Deakin (806) 659-5016 President	Bartlett's Lumber & Hardware 105 W. Broadway • Gruver, TX (806) 733-2404	BERRY CLEANERS Ann & Vernon Pipkin - Owners Phone 659-3122 • P.O. Box 1017 207 Main St. • Spearman, TX	Morse Implement & Auto Supply "Join us in church" Tom Dorch 733-2668 Box 89 • Morse, TX 79062
PRAIRIE MOTORS INC. Hwy. 207 South • P.O. Box 430 Spearman, TX 79081 • (806) 659-2541 www.prairiemotors.com	MurMur's Cafe 100 Roland St Spearman, TX. 659-3580	Hansford County Reporter-Statesman "Proudly Serving Hansford County Since 1907" (806) 659-3434 310 Barkley • Spearman, TX	INTERSTATE BANK, sss www.interstatebank.net 322 Main • P.O. Box 146 Spearman, TX • 659-2559

H&S

FOR YOUR INFORMATION

Education Fund For Johnson Children
An education fund has been set up at First National Bank for the children of David Johnson. If anyone would like to donate, they can mail to PO Box 337, Spearman, TX or bring by the bank and give to any teller.

Pheasant Hunt to Benefit Moore County 4-H
Moore Co. 4-H is hosting a guided Pheasant hunt Dec. 4th. Cost is \$250 per hunter. There is over 50,000 acres of prime hunting land. There will be a kick-off steak dinner Friday night, Dec. 3rd. Saturday, 4 Dec. breakfast and lunch. This is 4-H's major fund raiser. Proceeds go to promote Moore County 4-H and other youth educational activities Assistance is needed to market this event. Please, contact Sue, Marcel or Alicia at the Moore Co. AgriLIFE Extension Office: 806-935-2594.

Pringle-Morse CISD Cougar Pride Selling Cookbooks
The parent-teacher organization of Pringle-Morse CISD-Cougar Pride, is selling one-of-a-kind cookbooks. The cookbooks are a collection of recipes from the 1995 cookbook and more from this year, with over 1,300 recipes included. The recipes were collected from our community, friends, and family members. The proceeds from the books goes toward school and community projects. Please contact the school at 733-2507 or cindy.lieb@region16.net if you are interested in purchasing a cookbook.

Take Off Pounds Sensibly
Take Off Pounds Sensibly meets on Tuesday mornings at 8:30 a.m. at the First Christian Church in Gruver. For more information, contact Marilyn Been at 806-733-2087.

Hansford Gun Club Rifle Shoot
The Hansford Gun Club holds a .22 rifle shoot on the second Sunday of each month, starting at 1:30 p.m. at the gun range (located on Hwy. 15 between Spearman and Gruver). Everyone is invited to join the fun.

Care Packages
If you would like to help with Care Package Drop Offs, please contact Less Sullivan at lessullivan@hotmail.com. Less is collecting items for care packages in conjunction with AmericaSupportsYouTexas.com. Journals are also located at the O'Loughlin Center, Spearman High School, and Gus Birdwell Elementary for anyone wishing to sign them. For more information, contact Less at 330-0973.

Rainbow Kids Klub is Back!!
Our new building if finished and we are inviting all children Kindergarten -Fifth grade to join Rainbow Kids Klub. This is a weekly after school program with snacks, recreation, character building Bible lessons, memorization, music, games and its all free. Rainbow Kids Klub begins Wednesday, September 8, after school until 5 p.m. at the First United Methodist Church, 407 Haney, Spearman. For more info, call 659-5503.

Amarillo Botanical Gardens
Gate admission is free in 4th quarter to the Amarillo Botanical Gardens (1400 Streit Drive, Amarillo) thanks to the Josephine Anderson Trust. Everyone is invited to come out and take advantage of this great opportunity! Events and activities are subject to a fee. The conservatory currently has several unique and marvelous orchids in bloom. We also have a ginger plant in bloom that is very striking as well. The Botanical Gardens is an inviting sensory experience! Enjoy the many colors, aromas and textures in the gardens. Visit Tuesday-Saturday: 9a-5p. Annual Photo contest continues: Visit the Gardens, take photos of your favorite plants or garden spots and submit them to us for a chance to win a membership. Visit our website under 'photo gallery/ visitor shots' for more information or to view this year's submissions. CONTACT: We are now on Facebook! Become a fan! Visit our website at www.AmarilloBotanicalGardens.org. Call the office at 806-352-6513 for additional information.

Adult ESL Class
Improve your English skills and enroll in an adult ESL Class. Learn to speak the English Language and receive the educational skills necessary to help your children in school. Registration will be the first night of class. Classes begin Thursday, September 16, 2010, and will be held from 6:30-8 p.m. at Spearman High School. Mrs. Lopez will be the instructor. Classes will be held on Tuesday and Thursday nights. There is no charge for the class. For more information call Cindy Blackman at the Community Resource office, 659-3233.

Fire Department Donations
Persons wishing to make donations to the Fire Departments in Hansford County may do so at the following addresses: Spearman Fire Dept., Box 37, Spearman TX 79081; Gruver Fire Dept., Box 947, Gruver TX 79040 or Morse Fire Dept., Box 28, Morse TX 79062.

Low-Income Tax Clinic
The Texas Tech School of Law operates a Low-Income Tax Clinic to provide assistance relating to issues involving controversies with the Internal Revenue Service to low-income taxpayers and to individuals for whom English is a second language. Law students, under the supervision of a law professor, handle a wide range of issues and such as innocent spouse, offers in compromise, federal tax levies, payment agreements and representation before the United States Tax Court. Persons interested in seeking representation should contact the Texas Tech Law School Low Income Tax Clinic at (806) 742-4312 or (800) 420-8037 for further information or to schedule an appointment.

Words from Faith & Grace

by Cecil R. Biggers, Lutheran Lay Minister



As we enter the season of Advent we prepare for the Second Coming as we prepare to celebrate the birth of Jesus. We study Isaiah 2:1-4, Psalm 122, Romans 13: 8-14, and Matthew 24: 36-44.

The prophet Isaiah, as does his contemporary Micah, foretells the coming of the Lord to judge between the nations so that no one shall learn war anymore. In the midst of distress, God sends his people a message of Justice and Peace. God's Justice and Peace are coming dear Christian, are you ready?

The Psalmist sings "I was glad when they said to me, 'Let us go to the house of the Lord'. He praises Jerusalem as the site of the temple. He prays for peace in Jerusalem so that all who gather there to praise God may do so in peace.

Paul advises the Romans, "Owe no one anything except to love one another." He refers here to private debts. If we believe that the Lord is coming soon, we should owe nothing except the fulfillment of our duty to love. He exhorts the Romans to 'put on' Christ as you would 'put on' a coat. Let the world see Christ when it sees you. If we 'put on' Christ, there is no room to gratify our selfish desires. Dear Christian, our debt of love must be paid each day.

Jesus is speaking to his disciples about two things. If we read verses 32 through 35 as referring to the destruction of the temple at Jerusalem and we read verses 36-41 as referring to the Second Coming, then this passage makes sense and is not contradictory of itself. Jesus warns us that no one knows the date of the Second Coming other than God, the Father. Beware the television evangelist who claims to know the date or time. Jesus warns us to be ready, for the Son of Man is coming at an unexpected hour. Learn from this dear Christian that we should be found doing our duty of love each day.

May the Holy Spirit enable you to 'put on' Christ so that those you meet may see your good works and praise your Father in heaven. Have a blessed Thanksgiving.



The Cub Scout Pack #578 held their Father & Son Cake Contest & Sale on Saturday, November 20, 2010. The cakes were all auctioned following the contest. Golden Spread Sales Company bought the top two cakes, pictured above. The horseshoe cake is by Charles Mark Pearson. The square cake was by Dalton Shields.

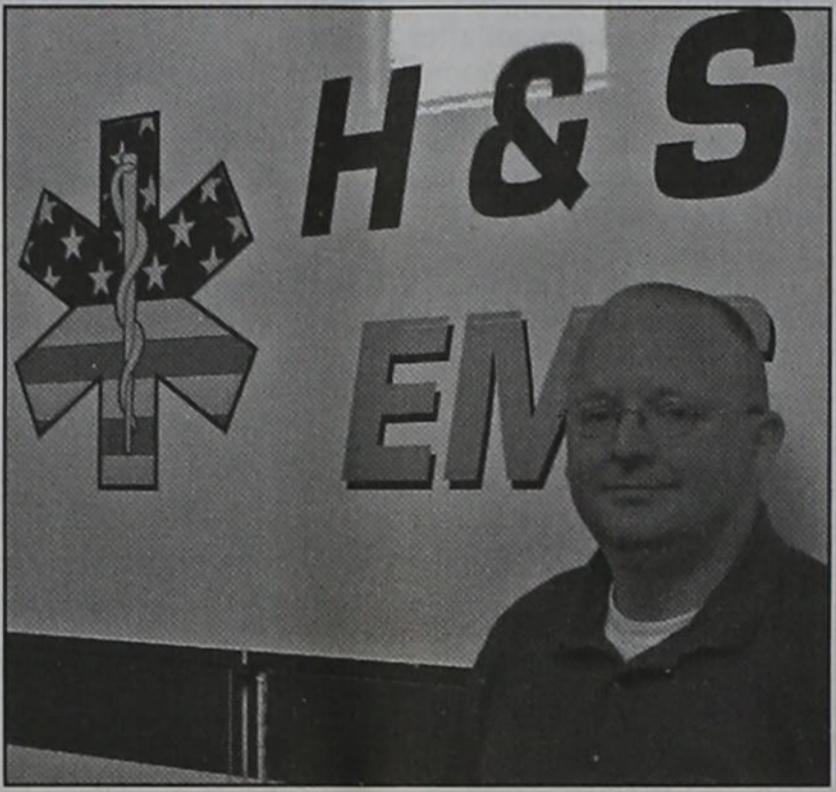
Cub Scout Father & Son Cake Contest and Sale

Cub Pack #578 held a Father & Son Cake Contest and Sale Saturday, November 20, 2010. The winners of the Judges Choice (Best Overall) were Charles Mark Pearson- 1st Place and Dalton Shields- 2nd Place.

In Best Tiger, Issac Martinez was 1st Place and Man Womble was 2nd Place. Keanan DeLaRosa won 1st Place in Best Wolf. In Best Bear, Charles Mark Pearson was 1st Place and Miles Keith was 2nd Place. In Best Wobolo, Dalton Shields was 1st Place and Reed Anderson was 2nd Place.

In the Tallest cake category, Marco Salgado was 1st and Issac Martinez was 2nd. In the Smallest cake category, Ethan Cotter was 1st and Miles Keith was 2nd. In the Most Original category, Marco Salgado placed 1st and Jacob Baker placed 2nd. In the Prettiest category, Issac Martinez was 1st and Sam Turner was 2nd. In the Most Unusual category, Man Womble was 1st and Ryan Baker was 2nd.

The cakes were all auctioned after the contest. Golden Spread Sales Company bought the top two cakes, pictured above. The horseshoe cake is by Charles Mark Pearson. The square cake was by Dalton Shields.



Justin Boyd Receives Governor's Appointment

The office of Governor Rick Perry announces the appointment of Justin Boyd to the EMS Committee. The appointment is for a 3-year term.

The function of this committee is to review pertinent issues and make recommendations to the Governor's EMS and Trauma Advisory Council who, in turn, makes recommendations to the Texas Department of State Health Services.

Boyd will begin his term with an orientation on November 21st in Austin, and will meet on a quarterly basis. His first official meeting will be February 23-25.

real estate auctions

90+ Texas Home Auctions Begin Dec 1st

Nominal Opening Bids from \$1,000

For details, see williamsauction.com

Many Available for Online Bidding

WILLIAMS & WILLIAMS
williams@real-estate-auction.com
800.801.8003

Celebrating 90 Years!!

Please join us to celebrate The 90th birthday of Ruby Lorene Riley Saturday, December 4, 2010 From 2 p.m.- 4 p.m. At Church of Christ - Fellowship Hall 121 S. Haney Spearman, Texas Cards may be mailed to: Ruby Riley 205 W. 12th Ave, Spearman TX 79081 Best Wishes Only, please

Are You A Victim of Domestic Violence, Sexual Abuse or Physical, Emotional or Sexual Assault?

Call Toll Free Hotline 1-800-753-5308

We can see individuals from Hansford County anytime upon request. Call 435-5008 or 1-800-753-5308 to set up an appointment in Hansford County. We operate a safe place for victims and their children to stay in times of crisis.

Battering Intervention & Anger Management Available

Panhandle Crisis Center Serving Hansford, Lipscomb & Ochiltree Counties 301 S. Ash • Perryton, TX Memorials Accepted

FPC Frank Phillips College

REGISTRATION

for **SPRING 2011 CLASSES** is underway at the ALLEN CAMPUS (2314 S. Jefferson, Perryton, Texas) and classes begin on January 18th.

SO... WHAT ARE YOU WAITING FOR?

WHY SHOULD YOU CHOOSE THE FPC ALLEN CAMPUS?

- Close to Home!
- Small Class Size!
- Affordability!
- Quality Education!
- Transferability of Classes!

With our **AFFORDABILITY** and **GUARANTEED TRANSFERABILITY** of **CORE CURRICULUM COURSES (IT'S THE LAW!)** to other **PUBLIC COLLEGES AND UNIVERSITIES IN TEXAS (PROVIDED YOU MAKE A GRADE OF "C" OR BETTER)** it just makes "CENTS" to take classes at Frank Phillips College.

Call (806.648.1450) or stop by the Allen Campus to complete your paperwork. You can download an Allen Campus class schedule as well as a full schedule of classes offered by FPC by accessing our website:

www.fpctx.edu

Writing Matters AT FRANK PHILLIPS COLLEGE www.fpctx.edu

Ask us about this!!

REAL ESTATE

FOR SALE: 3BR, 2B, attached 2 car garage on 3.78 acres of land; 1,878 sq. ft. living space. 120 Nelson Rd., 2 miles west on Hwy 15. Call 806-659-2000 for appointment to show.
TFN(11/18/10)B

HELP WANTED

HELP WANTED: Mission Petroleum Carriers: Immediate Openings! Crude Oil Drivers. Home Daily, Competitive Weekly Pay, Great Training Pay, Excellent Benefits: Vacation, 401K, Medical, Life, Rx Plan, Dental, Vision, Class A CDL-X req. 2 yrs T/T or 1 yr w/Driving School Record. Min. age 23. Contact: Christie Lawrence 800-737-9973, Mon-Fri. 8 am - 5 pm EOE.
2(11/18/10)P

HELP WANTED: First United Methodist Church, Spearman is currently taking applications for a nursery worker. Need to be available for Sunday church services and various times throughout the week and for funerals. If interested, please come by the church to pick up an application. 806-659-5503. 407 S. Haney.
TFN(11/18/10)B

HELP WANTED: Wolf Creek Feedyard, located in Perryton, TX, is accepting applications for positions in our Mill, Cattle and Yard Maintenance departments. Experience is not required. We will train in the right applicants. We offer a competitive wage, benefits including health insurance and a retirement plan. Please call 435-5697 or come by the office to fill out an application.
2(11/25/10)

FIREWOOD FOR SALE

Cedar firewood for sale. Delivered & stacked, or self pickup. Call (806) 658-2573. 15(8/12/10)P

This ad is just a small sample of the properties that we currently have for sale.

Please check our Web site and give us a call! We need your listings both large and small, all types of ag properties (ESPECIALLY CRP).

HARTLEY/MOORE COUNTY LINE - corn, wheat, cotton, cattle with all the perks, 992 acres, sprinkler irrigated with some improved pasture, large brick home, large set of slate of the art steel working pens with concrete feed bunks and covered working area, on pavement. House, shop & horse barn on 2 acres may be bought separately.

DALLAM COUNTY - Three adj. sections of dryland, some native grass, irrigation in area (new wells across the road).

SWINE PRODUCTION FACILITY - Moore Co., TX. - 1200 sow capacity, capable of running 28,000 pigs annually, computerized feed mill, flex-flo feeding system, management in place. **PRICED TO SELL! INVESTORS WELCOME!**

SEE OUR WEBSITE OR CALL US!
www.scottlandcompany.com
Shawn Gillispie 806/922-5532
Ben G. Scott, Broker
1-800-933-9698 day/eve
TFN(11-11-10)

Shirley Howard

We NEED listings!
Call us now to help YOU sell your home for top dollar!

902 9th - Gruver: Horse Stables FOR SALE! 18,000 sq. ft. circular training arena, & 4500 sq ft barn on 10.42 acres! **PRICE REDUCED!!**

1101 Dresden, 1.8 AC sqft - 3BR, 1.5B, plus 2 car carport

Shirley Howard, Broker/Owner
806-886-6536, Cell

Melinda McCullough, Realtor
(806) 733-5678

We would LOVE to sell your HOUSE!
CALL US!

SERVICES

HOUSE CLEANING: I do house cleaning. Reasonable rates and references available. Call 806-330-1159, Maria Garcia.

CLICK PAINTING & HOME REPAIR Painting, Texturing, Drywall Repair, Fencing & General Carpentry. Serving Perryton, Spearman & Gruver. Don Click, 648-1480, or 202-1391 (cell).

HOOCHY POOCHY PARLOR Call us for all your pet's grooming and boarding needs. Call now for reservations! 806-273-2724.
TFN(11/2/07)B

PUBLIC NOTICE

LEGAL NOTICE

North Plains Electric Cooperative, Inc. is the recipient of Federal financial assistance from the Rural Utilities Service, an agency of the U.S. Department of Agriculture (USDA). The USDA prohibits discrimination in all its programs and activities on the basis of race, color, national origin, age, disability, and, where applicable, sex, marital status, familial status, parental status, religion, sexual orientation, genetic information, political beliefs, reprisal, or because all or part of an individual's income is derived from any public assistance program. (Not all prohibited bases apply to all programs.) Persons with disabilities who require alternative means for communication of program information (Braille, large print, audiotape, etc.) should contact USDA's TARGET Center at (202) 720-2600 (voice and TDD).

The person responsible for coordinating this organization's nondiscrimination compliance efforts is Randy Mahannah, General Manager. Any individual or specific class of individuals, who feels that this organization has subjected them to discrimination may obtain further information and the status and regulations listed above from and/or to file a written complaint with this organization, write to USDA, Director, Office of Civil Rights, 1400 Independence Ave., SW, Washington DC 20250-9410 or call toll free (800) 795-3272 (voice) or (202) 720-6382 (TDD). "USDA is an equal opportunity provider, employer, and lender."
1(11/25/10)B

GRUVER ISD INVITATION TO BID
Gruver Independent School District's Board of Trustees are accepting bid proposals until 1:00 pm on December 6, 2010 for the following: 1 Ford 2009 Expedition XLT EL, four wheel drive, automatic transmission, 5.4 liter engine, front and rear heat and air conditioning, leather seats, carpet, cruise, white exterior color, all standard equipment. The District reserves the right to reject any and/or all bid proposals, to make awards as they may appear advantageous to the District and to waive all formalities in the bid proposal process. Please mail or deliver proposals to Gruver ISD, Debby Odom, 601 Garrett St. (PO Box 460 if mailed) Gruver TX 79040.
2(11/18/10)B

A	M	A	H	S	D	A	B	L	E	A	F		
R	I	V	E	T	I	L	O	P	I	A	N	O	
C	L	E	A	R	E	L	F	R	E	S	O	W	
H	A	R	V	E	S	T	F	R	O	N	T	A	L
Y	A	H	H	O	O	P							
D	D	T	M	I	C	A	C	Y	B	O	R	G	
E	R	I	C	V	E	I	L	L	E	M	U	R	
M	O	N	O	S	C	R	I	M	D	A	N	A	
O	P	E	R	A	A	C	M	E	S	H	I	V	
S	T	A	N	Z	A	U	N	I	T	A	N	Y	
P	I	L	G	R	I	M	L	I	N	C	O	L	N
S	C	E	N	E	A	G	O	I	G	L	O	O	
S	A	G	A	S	G	U	N	L	E	D	G	E	
T	O	O	T	O	R	E	Y	E	S	E	S		

4	2	6	7	3	5	1	9	8
1	3	7	9	4	8	2	5	6
5	8	9	2	1	6	3	7	4
9	5	2	3	6	4	7	8	1
7	4	8	1	2	9	5	6	3
3	6	1	5	8	7	4	2	9
2	1	5	6	9	3	8	4	7
6	7	4	8	5	1	9	3	2
8	9	3	4	7	2	6	1	5

French & Co., Realtors
273-7355

Beautiful 3 BR, 2B home in Morse, Texas. 1.06 acres.
Updates Galore, Gorgeous tile & wood floors, stunning trim, custom paint, 28x33 garage & separate shop.
Call Michele for details.
806 273 7355

Blankenship Real Estate
659-3052 - 670-3774

LET US HELP YOU SELL YOUR HOME.

4BR, 2B, 2CG, basement, separate garage & workshop. Excellent location and condition. Many special features.

NEW LISTINGS WANTED!
Eulalia Blankenship - Sales
Eschol Blankenship - Broker

MARTIN & ASSOCIATES REALTY

Serving Hansford County Since 1990
Julie Martin: Broker - 659-2425

We'd Like Your Listing!
FOR QUALITY & SERVICE CALL US TODAY!
Equal Housing Opportunity

hchd
Hansford County Hospital District
Openings at Hansford Manor

LVN: Graduate of an approved LPN/LVN program. Must be able to make independent decisions when circumstances warrant. Must possess the ability to deal tactfully with residents, family and public.

Great working environment and staff, quality facility providing opportunities for professional growth. Great benefit package. Apply at 707 S. Roland, Spearman, TX or contact Jackie Nelson at 806-659-5841. Download application at www.hchd.net
EEOE (11/11/10)

Century 21 Golden Spread Realty

903 S. Bernice, Spearman - 1,644 sq. ft., 3 BR, 1 3/4B, CH/CA, 1C attached & 1C detached garage, nice shop & storage building in back, RV parking with extra lot.
7959 FM 1573, GRUVER - 3BR, 1 3/4B, 2C attached garage, 1961 sq. ft. on 5 acres.
404 4th Ave, GRUVER - 2BR, 1B, 1090 sq. ft. Also available for rent.
121 S. Hwy. 207, Spearman - Apartment complex & Bunkhouse. **PRICE REDUCED - MAKE OFFER.**
Gina Deal, Broker/Owner (806) 435-5444
www.century21.com

INDEPENDENTLY OWNED & OPERATED.
©1992-2010 Century 21 Real Estate Corporation. Equal Housing Opportunity.
EOW(8-05-10)B

M&D Aerial, LLC

David & Megan George
P.O. Box 520 Dawh. (806) 202-2360
Spearman, Texas 79081 Megan (806) 202-2358
mdaerial@yahoo.com

Are You A Victim of Domestic Violence, Sexual Abuse or Physical, Emotional or Sexual Assault?

Call Toll Free Hotline
1-800-753-5308

We can see individuals from Hansford County anytime upon request. Call 435-5008 or 1-800-753-5308 to set up an appointment in Hansford County. We operate a safe place for victims and their children to stay in times of crisis.
Battering Intervention & Anger Management Available

Panhandle Crisis Center
Serving Hansford, Lipscomb & Ochiltree Counties
301 S. Ash - Perryton, TX
Memorials Accepted

MITCHELL THEATRES.COM
GUYMON, OK • LIBERAL, KS • NEWTON, KS

NORTHBRIDGE 8
Guymon, Oklahoma
www.northridge8.com
580-338-3281

SOUTHGATE 6
Liberal, Kansas
www.southgate6.com
620-624-5573

SEQUOYAH 8
Garden City, Kansas
www.sequoyah8.com
620-275-2760

CHISHOLM TRAIL 8
Newton, Kansas
www.chisholmtrail8.com
316-283-0555

FRESH POPCORN EVERYDAY!
-PARTY ROOM & ARCADE-

Spearman Lynx & Lynxettes

<http://spearmansports.smugmug.com/>

Photos available of Spearman Lynx and Lynxette athletic events.

Taylor Petroleum Companies
Equal Opportunity Employer

At Taylor, it's all about a positive thinking attitude!

Right now, we're looking for hard-working, high-energy, dedicated individuals who want to work with others in a dynamic environment.

Be a part of the Taylor Team and enjoy flexible hours, competitive wages, free uniform shirts, wage reviews, career advancement opportunities & benefits. Taylor has some of the best full-time and part-time positions available in the industry.

APPLY NOW AT: www.taylorfoodmart.com

TEXAS STATEWIDE CLASSIFIED ADVERTISING NETWORK

TexSCAN

TexSCAN Week of November 21, 2010 AUCTIONS

NO RESERVE INTERNET Auction: harvesting equipment, tractors, loaders, tillage, heavy trucks all selling to the highest bidder on Dec. 8th. For detailed photos, descriptions and bidding visit www.purplewave.com

DRIVERS

50 CDL DRIVERS needed to deliver new trucks from Garland and Laredo across the U.S./Canada. 43¢/mile and up with fuel, tolls & permits paid. For information: 1-866-764-1601 or www.qualitydriveaway.com

ASAP-NEW PAY increase! 34¢-40¢/cpm. Excellent benefits. Need CDL-A and 3 months recent OTR. 1-877-258-8782. www.meltontruck.com

DRIVER-CDL-A Drive In style! New 2011 Freightliner Cascadias plus the best miles, pay & performance bonus. \$500 sign-on for Flatbed, CDL-A, TWIC card and good driving record. Western Express; 1-866-863-4117

DRIVERS- COMPANY \$1000 Sign-on bonus. FFE seeks Class-A, CDL and 1 year experience for OTR. Also hiring 000's Students welcome. Call 1-800-569-9232 or recruit@fex.net

DRIVERS- 100% Tuition paid CDL training! Start your new career. No credit check, no experience required! Call 1-888-417-7564, CRST EXPEDITED, www.JoinCRST.com

DRIVERS EARN up to 49¢/mile! 1 year minimum OTR experience qualifies you to be a trainer for our fleet. Call 1-888-417-7564, CRST EXPEDITED; www.JoinCRST.com

DRIVERS-FOOD TANKER drivers needed OTR positions available now. CDL-A with Tanker required. Outstanding pay & benefits; call a recruiter today! 1-877-882-6537. www.oakleytransport.com

DRIVERS-HOME WEEKLY! SW regional lanes: TX and LA. New base pay: 38¢ to 41¢ cpm. CDL-A with 6 months recent experience. 1-800-483-5182. LinkAmerica; www.LKAM.com

DRIVERS-OWNER/OPERATORS Solo, teams, fleets. At least 2,800 miles per week, home every 10-14 days. We have more freight than available trucks! 1-877-901-8591

18.95 ACRES, NORTH of Brackettville. Oak, cedar cover. Whitetail, axis, hogs, turkey. \$1700/acre, owner or TX Vet financing. 1-800-876-cost. Class-A CDL, Hazmat and tanker required. 1-888-240-4808. www.millerdriving.com

DRIVERS- REGIONAL Van drivers. 35-37 cpm based on experience. BCBS benefits package. Home every week. CDL-A with 1 year experience required. Call 1-888-362-8608 or apply at www.aveeritcareers.com. EOE

HIRING OWNER/OPERATORS - Texas based. Miles, home, money. Check it out! Call Paul at 1-713-674-4206.

HOME FOR THE HOLIDAYS! OTR drivers, APU Equipped, Pre-Pass, EZ-pass, every 60k mile raises. 2007 or newer equipment. Passenger /Pet Policy 100% NO touch. 1-800-528-7825

NOW HIRING CDL-A Drivers for Texas regional fleet. Home most weekends, solid miles, great equipment. 8 months OTR experience. 1-888-730-9312. www.deboertrans.com

JOIN THE ELITE Fleet, you'll be thankful you did! Regional Southwest. Up to 36¢ per mile. Class A CDL. 1 year OTR. 1-888-440-2465 or www.nationalcarriers.com

FINANCIAL

DO YOU RECEIVE payments on a note? Need cash now? Full and partial buy-outs. Safeway Capital; Toll Free 1-866-241-9922.

HELP WANTED

ABLE TO TRAVEL Hiring 8 people. No Experience necessary. Transportation & Lodging furnished. Paid training. Work and travel entire USA. Start Today! www.proteckchemical.com. 1-832-495-8428

BETWEEN HIGH SCHOOL and College? Drop that entry level position. Earn what you're worth! Travel with successful young business group. Paid training, transportation and lodging provided. Success Express Sales, Inc. 1-877-646-5050.

TRAVEL, WORK, PARTY Play! Now hiring guys/gals to travel with fun business group. NY, LA, Miami. 2 weeks paid training. Hotel/transportation provided. Return guaranteed. Call today/start today! 1-877-259-6983

REAL ESTATE

ABSOLUTELY THE BEST View Lake Medina/Bandera 1/4 acre tract, central W/S/E, RV/motor home/house, OK only \$830 down \$235 month (12.91%/10yr). Guaranteed financing. More information call 1-830-460-8354

1895 ACRES, NORTH of Brackettville. Oak, cedar cover. Whitetail, axis, hogs, turkey. \$1700/acre, owner or TX Vet financing. 1-800-876-cost. Class-A CDL, Hazmat and tanker required. 1-888-240-4808. www.millerdriving.com

676 ACRES-REEVES County, 15 Miles North Pecos. River frontage. Call Jack 1-214-755-6224. 9720. www.hillcountryranches.com

\$106 MONTH BUYS land for RV/motor home/house, pier, boat ramp, pool, clubhouse, gated entry, on Lake Fork, \$690 down (\$690/10.91%/7yr) apply at www.aveeritcareers.com. EOE

\$106 MONTH BUYS land for RV, MH or cabin. Gated entry, \$690 down, (\$690/10.91%/7yr) 90 days same as cash. Guaranteed financing. 1-936-377-3235

WEST TEXAS - Mule deer, Brewster County, 334.28 acres at \$395/acre. White tail, Terrell County, 255.34 acres at \$295/acre. 1-866-286-0199; www.westtexasland.com

SCHOOLS/TRAINING

AIRLINES ARE HIRING Train for high paying aviation career. FAA approved program. Financial aid if qualified, job placement assistance. Call Aviation Institute of Maintenance, 1-877-523-4531

CANYOU DIG IT? Heavy equipment school, 3 week training program. Backhoes, Bulldozers, Trackhoes. Local job placement assistance. Start digging dirt now. 1-866-362-6497

HIGH SCHOOL DIPLOMA graduate in 4 weeks! Free brochure! Call now! 1-866-562-3650. ext. 55. www.southeasternHS.com

Happy Thanksgiving!

We will be closed Thursday, November 25th in observance of Thanksgiving.

Let us help you decorate this holiday season!

Thanksgiving Centerpieces with or without Candles
Fall ceramic containers for plants or fresh flowers
Gourmet baskets for Thanksgiving or Christmas (or anytime)
Cornucopias • Gift Baskets • Christmas Home Decor

Order your Poinsettias now!

All Occasion Flowers

202 N. Bernice (across from the Post Office)
659-5180 • Spearman

Thanksgiving - 11/25
Christmas - 12/25

NOTICE: While most advertisers are reputable, we cannot guarantee products or services advertised. We urge readers to use caution and when in doubt, contact the Texas Attorney General at 1-800-621-0508 or the Federal Trade Commission at 1-877-FTC-HELP. The FTC web site is www.ftc.gov/bizop

Extend your advertising reach with TexSCAN, your Statewide Classified Ad Network.

Christmas Specials

at **Gordon's DRUG**

314 Main • Spearman • 806-659-2141
Where gift-giving is effortless & FUN!

Thursday Night Savings

Different Special Each Thursday Night

Open until 8 p.m. each Thursday through December 23rd

Photo Machine
Fast Printing Time
Personalized Christmas Cards
Poster-Size Photos

We would like to wish you a

Happy Thanksgiving

from **Gordon's DRUG**

314 Main • Spearman • 806-659-2141

To all the people who have been to our doors, both at home and the store, and offered food, help, thoughts and prayers, Thank You. The kids and I are thankful and appreciative to you for your continued support. You are a symbol of God's grace.

Have a blessed Thanksgiving from
Gordon's Drug.
Sandi, Steven, Carlee, Mattee,
Suzee and Dixee Johnson

Where gift-giving is effortless & FUN!

Sale on Gift Items

Starts Wednesday, November 24th

UNBELIEVABLE SAVINGS

5:30-8 a.m., Friday, Nov. 26

Unbelievable Savings on TV's, laptops, GPS, and Toys for all ages!

A Sale That Is Too Good To Be True!

RadioShack **verizon wireless**

Perryton

OFFICE SUPPLY #RadioShack

We're helping local families like only local families can.
123 S Main St • Perryton TX
(806) 435-4812
www.perrytonofficesupply.com

Holiday Hours:
Now through Dec. 24th
Mon.-Sat., 8:30 a.m.-7 p.m.; Sun., 1-4 p.m.

Happy Thanksgiving

We are thankful for our community!

hchd

Hansford County Hospital District

Dr. Mark Garnett, DO
Dr. Hasham, MD

Michelle Davis, PA-C
Dr. Heath Cotter, MD

707 S. Roland • Spearman, TX
(806) 659-2535

The clinics will be closed on Thursday, November 25th in observance of Thanksgiving.

<p>Mark Garnett, D.O. Palo Duro Medical Clinic 712 South Roland Spearman, Texas 79081 (806) 659-1778 Mon-Fri (8 a.m. to 5 p.m.)</p>	<p>Dr. Hasham Family Medical Clinic II 712 South Roland Spearman, Texas 79081 (806) 659-5234 Mon-Fri (8 a.m. to 5 p.m.)</p>
<p>Dr. Heath Cotter Family Medical Clinic I 712 South Roland Spearman, Texas 79081 (806) 659-2846 Mon-Fri (8 a.m. to 5 p.m.)</p>	<p>Michele Davis, PAC Family Medical Clinic I 702 South Roland Spearman, Texas 79081 (806) 659-2846 Mon-Wed (8 a.m. to 6 p.m.)</p>

Local Sports

GHS All-District Football Team

submitted by Coach Terry Felderhoff

As you know our season came to an end on Friday, November 12th.

Words cannot express how proud I was of our boys. All year they had to overcome some type of adversity, and the double overtime playoff game against Shamrock was not any different. We suffered the loss of several linemen throughout the game, and the backups, and even some JV players admirably stepped in to fill the holes.

While the loss does not define our season, the effort by the entire team does. Our motto of "One Heartbeat" was very appropriate to this group.

Back on August 2nd a bunch of individuals showed up bright and early to begin this season in hopes of returning Greyhound Football to the playoffs. Through the course of the year they came together and began playing as one. They began to care for each other, love each other, and hold each other accountable. The result was a team that was fun to watch (and also nerve racking at times, depending on your perspective) and played hard regardless of the score.

To those of you who came out and supported these young men... THANK YOU!

Please congratulate these young men on their accomplishments when you see them.

2010 All District 1-A Coach of the Year - Wade Wilson, White Deer
MVP - Jerrod Collier, Gruver Jr

Offensive MVP - Braden Montgomery, White Deer Sr*

Defensive MVP - Eric Rohrbach, Vega, Jr*

1st Team Offense: QB - Payton Thoreson, Sr; WR - Zachary Saylor, Sr; Guard - Forrest Lopez, Jr*

2nd Team Offense: RB - Colton Moffett, Sr; Center - John Bergin, Sr; Tackle - Justin Bass, Sr; Kicker - Lupe Pena, Soph

1st Team Defense: De-

fensive Lineman - Forrest Lopez, Jr*; LB - Colton Moffett, Sr; DB - Payton Thoreson, Sr; Punter - Zachary Saylor, Sr

2nd Team Defense - Defensive Lineman - Justin Bass, Sr; Dallas Reynolds, Soph; **Defensive End** - Rito Mendoza, Sr; **LB** - Zachary Saylor, Sr; **DB** - Kramer King, Jr

Honorable Mention: **Offensive Tackle** - Trey Fransen, Sr; **Tight End** - Korbin Irwin, Soph; **Defensive Back** - Cole Wills, Soph
*represents unanimous vote

Academic All-District Seniors - Justin Bass, Zach Logsdon, Colton Moffett, Zachary Saylor, Payton Thoreson; **Junior** - Kramer King; **Sophomores** - Korbin Irwin, Saul Suchil, Cole Wills

GHSXC Update
submitted by Coach Rod Bean

This is going to sound "kinda" bad..... but I told you so!

No I didn't predict a victory, but I did tell you they would run like champions, compete like warriors, and never, never quit on each other. In doing so, the Gruver Varsity Girls Cross Country team was able to make history for their school by being the first to win back-to-back state championships! Although this race was won on November 13, 2010 in Round Rock, Texas, it began in Guymon, Oklahoma several years ago when Abbie Yanke told me she wanted Gruver to have a "great cross country team," and although only some of these girls were able to claim a state championship, no one can discount what they did to inspire others to want to fulfill Abbie's vision.

These girls have never known anything other than "compete like warriors," and "fear regret more than failure." It's what they do..... they are Lady Hounds! Somewhere on the wall in the new gym will be a sign that says "You run for those who have come before, and you set the bar

for those to follow." These girls have given unselfishly to accomplish their goal. They continue to be shining examples of what it means to run for GHSXC.

Lynx Pillaged by Pirates

The Spearman Lynx were shut out, 20-0, in their Class 2A Division II area game, falling to Crawford at Fair Park Stadium in Seymour.

Quarterback Blayne Schroeder led Spearman (9-3) with 82 passing yards, while Cameron Meddock added 26 yards rushing off 11 carries.

Crawford (11-0) will face Idalou (8-3) in the third round of the Class 2A Division II playoffs in a game set for 7:30 p.m. Friday, November 26th in Clyde.

Sanford-Fritch (9-2) will face Holliday (8-3) at 3 p.m. on Saturday, November 27th at Dick Bivins Stadium in Amarillo.

Score by Quarters

Spearman	0	0	0	0
Crawford	0	14	6	0

Team statistics

	SL	CP
First Downs	9	19
Rushing	25-89	51-241
Passing	85	76
Total Yards	174	317
C-A-I	7-20-1	5-11-0
Punts	6-35	4-42
Fumbles-Lost	2-1	4-0
Penalties	6-61	6-60

GHS Red & Black

Gruver HS will be hosting their annual junior varsity Black and Red Classic December 2-4. Games will begin on Thursday, December 2, at 3 p.m. and will be continuing through early Saturday afternoon. The Gruver JV girls' team will take the court Thursday at 6 p.m. in the varsity gym against Sunray and the JV boys' team will play immediately after the girls at 7:30 p.m. against Panhandle. Everyone is invited to come out and support the JV teams in the tournament.

Lang Nurses Broken Hand



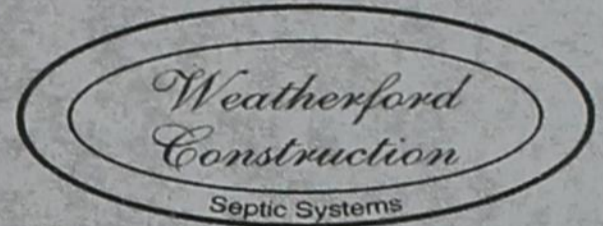
Christy Lang

Christy Lang, a third-year player for the Oklahoma Panhandle State University Lady Aggies,

fractured her right hand in practice Monday morning, November 15, 2010. Lang, a junior, sustained a spiral fracture below the ring finger of her right hand, and will be out for at least 5-6 weeks.

Lang, a fine athlete and hardworking 5'10 guard, also has a fine work ethic in the classroom and earns excellent grades as she pursues a degree in Biology.

Lang, a 2008 graduate of Spearman High School, is the daughter of Jeanne Swan and Scott Swan of Spearman. She attended Spearman schools for 13 years, and played basketball for the 7 years, playing on varsity for 2 years.



Kirk Weatherford
8125 FM 3305
Sanford, TX 79078
(806) 336-2820
Toll Free: 1-800-585-8047
Email: kirk@weatherford-construction.com

After Thanksgiving Specials!

Thanksgiving Day 25

Stuck in a Contract?
We'll buy you out!*

Black Friday 26
ONLY!

We're Open!

Free Internet Installation

Digital TV
\$29.99 per month for six months

PLUS: HBO, Starz/Encore Showtime, Cinemax, The Movie Channel for one month FREE*

Offers good Friday, Nov. 26
7 am to 1 pm
Perryton Office only
222 S Amherst in Perryton

www.ptci.net
800-562-2556

*Restrictions apply. See your PTCI Customer Service Representative for details. All services not available in all areas.

JINES REAL ESTATE

Farnsworth 208 Locust - \$132,000
Open Sunday, June 20 • 1-4
Residence - Apartment - 3 Car Garage
14601 NW Loop 143 - \$124,900
10+ Fenced Acres w/Manufactured Home
New Listings Coming Soon!
I Look Forward to Working For You!
Remember, I can show you homes in the Spearman and Surrounding areas even if listed with another Broker.

Linda Jines • Broker-Owner
806-202-4752
View Photos at www.jinesrealestate.com

You're Invited

to an
80th Birthday Celebration
honoring
Dan Desimone

on Tuesday,
November 30th
from 9 a.m.-2 p.m.
at Berry Cleaners
207 Main St
Spearman

No Gifts Please

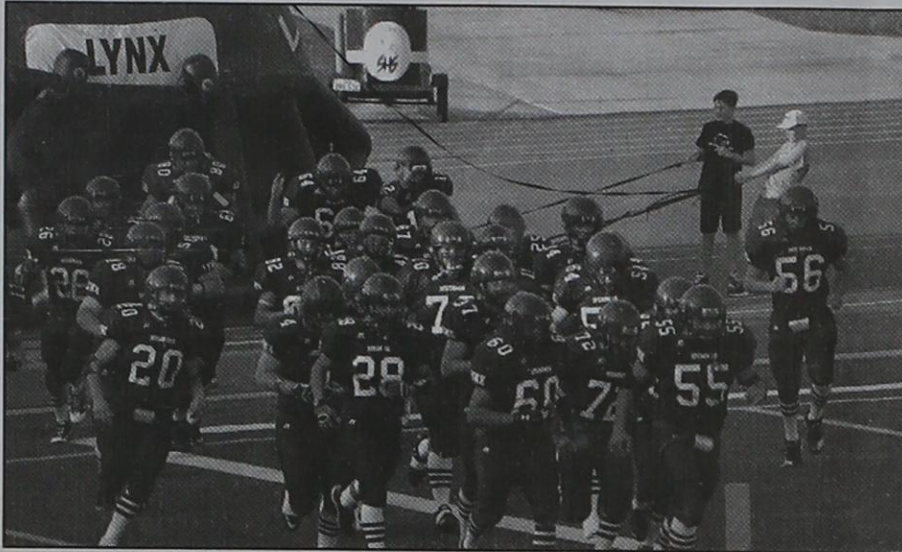


**SPEARMAN
LYNX &
LYNXETTES**

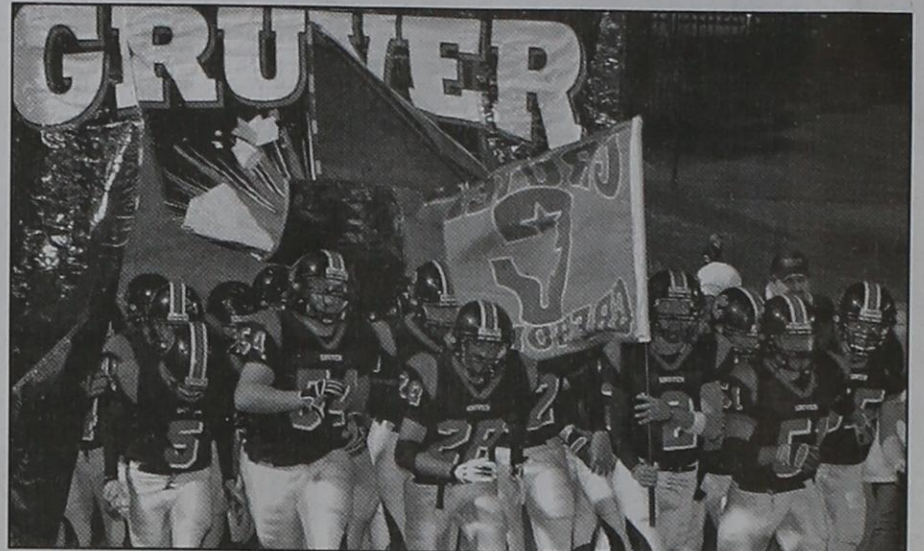
**GRUVER
GREYHOUNDS
& LADY HOUNDS**



FOOTBALL TEAMS



**Spearman Lynx - Bi-District Champions
2010 Regional Play-Offs**



**Gruver Greyhounds
2010 Bi-District Play-Offs**

CROSS COUNTRY TEAMS



**Spearman Lynxettes
2A State Champions
3rd Year In-A-Row**



**Gruver Lady Hounds
1A State Champions
2nd Year In-A-Row**

**CONGRATULATIONS!
WE'RE PROUD OF YOU!**

Adobe Walls Gin, LP Spearman • 659-2574	Cates Men & Boys Spearman • 659-3426	Gordon's Drug Spearman • 659-2141	Hoochy Poochy Parlor Borger • 273-2724	Perryton Office Supply Perryton • (806) 435-4812
Aeroflight Publications Gruver • 733-2483	Delinda McLaughlin Photo Solutions Spearman • 659-2800	Gruver Ford Gruver • 733-2431	Hungry Cowboy Spearman • 659-5151	Pizza Hut Spearman • 659-2547
AeroTan Gruver • 733-2483	Dreamers Spearman • 659-9907	Gruver State Bank Member FDIC Gruver • 733-5061	Interstate Bank, ssb Spearman • 659-2559	Prairie Motors Spearman • 659-2541
All Occasion Flowers Spearman • 659-5180	El Vaquero Restaurant Gruver • 733-2407	H&H Credit Union Stinnett • 878-2452	Kirk Insurance Agency Spearman • 659-2794	Rocking F Boot & Saddle Shop Spearman • 659-3342
AMA TechTel Gruver • 806-322-5500	Equity Exchange Spearman • 659-2420	H&H Water Well Spearman • 659-5577	J&S Signs & Engraving Spearman • 736-7020	Sergio's Body Shop Spearman • 659-5217
Bartlett's Ace Hardware Gruver • 733-2404	First State Bank Spearman • 659-5565 member FDIC	Hansford Abstract Co. Spearman • 659-2516	Jarvis Law Office, P.C. Spearman • 659-2554	Spearman Lynx & Lynxette Booster Club
Berry Cleaners Spearman • 659-3122	Five Star Equipment Spearman • 659-3743	Hansford County Feeders Gruver • 733-5025	Jim's Diamond Shop Borger • (806) 274-2370	Spearman Chamber of Commerce Spearman • 659-5555
Bob & Cathy Davis Gruver • Spearman	Frank Phillips College Allen Campus Perryton • 648-1450	Hansford County Floral Co. Spearman • 644-4000	Lowe's Marketplace Spearman • 659-2522	Speartex Grain Co. Spearman • 659-3711
Bob & Jackie Pearson Gruver • Spearman	Frontier Feedyard Spearman • 882-4251	Hansford County Hospital District Spearman • 659-2534	M&D Aerial, LLC Spearman • 806-202-2360	Sunray Co-Op Gruver Branch Gruver • 733-2481
Bort Agency Gruver • 733-2404	Gigot Agri Products Spearman • 659-3121	Hansford County Reporter-Statesman Spearman • 659-3434	Money's Perryton • 435-3945	Tong's Chinese Food Spearman • 644-2838
Boxwell Brothers Funeral Home Spearman • 659-3802	Golden Spread Carpet Spearman • 659-3068	Hansford County Vet Clinic Spearman • 659-2100	Morse Implement Morse • 733-2668	Willis Boyd Dirt Services Spearman • 659-9848
Brown, Graham & Co. Spearman • 659-2538	Golden Spread Sales Co. Spearman • 659-3776	Hansford Pharmacy Spearman • 659-2226	MurMur's Cafe Spearman • 659-3580	Xcel Energy <i>Responsible By Nature</i> Perryton • 806-435-4052
The Bunkhouse Restaurant Spearman • 659-2089		Hi-Plains Auto Supply, Inc. Spearman • 659-2506	North Plains Electric Coop 806-435-5482 • 800-272-5482	
Cargill Ag Horizons Spearman • 659-3554				

HS Senior Information

Hansford County School Calendars

Senior Reminders!

**College application deadlines are around the corner—December 1. Please make sure you have completed your apply-texas.org application if you plan to attend a public university in Texas.

** If you plan to go out of state you will need to complete their application by the time specified.

**Don't forget to bring me a transcript request so I can send your high school transcript to the college where you have applied.

**Remember to send the application fee if there is one—nothing will be pulled from the web until all monies and transcripts have been received by the university.

**Remember you can't apply for housing or scholarships until you have FIRST been accepted by the university!!!

Have a great Thanksgiving Holiday with your senior—this is the last one with them as a high school student!!!

Make College Your Goal

PTCI's Scholarship Program is starting its twenty-third year of providing scholarships to high school seniors. This year, PTCI will award \$2,000 in scholarships to students in Booker, Perryton or Spearman.

Applicant must be a graduating high school senior who resided with and is the child, adopted child, step-child or full dependent ward of a parent or parents in the service area of PTCI. The recipients of these scholarships are required to attend a vocational/technical school, college or university, or any certified school that provides for future job training.

Deadline to apply is January 14th, 2010. Applications are available at each high school counselor's office, PTCI offices located in Perryton and Spearman, online at www.ptci.net or by calling PTCI at 1-800-562-2556.

Baylor University Scholarship Program

The Carr P. Collins Scholars Program is a substantial scholarship program at Baylor University. Scholars are awarded at least \$4,500 their freshman year, renewable for three additional years.

Requirements for this scholarship include:

- *Top Quarter of graduating class
- *Minimum score of 28 on ACT
- *Resident of Texas for at least one year
- *Completed a college preparatory program
- *Nomination from a teacher, counselor or principal

KFC Colonel's Scholars

KFC Colonel's Scholars Program will accept online applications from December 1 to February 9, 2011 at www.kfescholars.org

To qualify, graduating seniors must:

- *Earn a minimum high school GPA 2.75
- *Enroll in a public college or university within their state of residence
- *Plan to pursue a bachelor's degree
- *Be a U.S. citizen or permanent resident
- *Demonstrate financial need

Texas Engineering Foundation Scholarship

Texas Engineering Foundation Scholarships for those students planning to attend an ABET accredited university. The Texas universities that would qualify are: Baylor University, Lamar University, LeTourneau University, Midwestern State University, Prairie View A & M University, Rice University, St. Mary's University, SMU, Tarleton State University, Texas A & M University, TCU, TTU, Trinity University, University of Houston, UNT, UTA, UT, UTD, WTAMU

Please see the counselor for an application if you are

interested or you may go to www.tspe.org. Applications must be postmarked by January 14, 2011.

Texas Student Housing Scholarship

The 2011-12 Scholarship Application for Texas Student Housing is now available. The scholarship is open to students accepted to colleges in Austin, College Station, or Denton, TX. Application deadline is January 31, 2011.

Mass Communications Scholarship

The Helen DeVitt Jones Mass Communications Scholarship for Texas Tech University is now available. Majors include: Advertising, Electronic Media and Communications, Journalism, and Public Relations.

Fifteen \$3,000 scholarships will be awarded to undergraduate students enrolling full-time in the Texas Tech University College of Mass Communications.

Apply for the Helen DeVitt Jones:

www.depts.ttu.edu/masscom/programs/scholarships/hjones.php

Scholarship deadline is February 11, 2011.

Dual-Credit Economics

As of November 22, 2010 the Texas Virtual School Network does NOT have a provider for Dual-Credit Economics for the Spring semester. This could change; however, if it does not, seniors must plan to register for dual-credit Economics with Frank Phillips for the Spring semester. The major change is that the expense of the course falls upon the student and registration will take place December 14 @ 9:00 a.m. The cost for the course through FPC is \$209.00. Students must complete FPC paperwork with the high school counselor BEFORE December 14 registration.

Gruver ISD

November
24-26 - School Holiday
26 - HS Varsity Football Regional Game
29 - 5-7:30 p.m., JH BB vs. Sunray
30 - 5-9:30 p.m., HS Houndball @ Boys Ranch; 6:30-10 p.m., HS LHB @ Pampa

December
2-4 - Gruver JV BB Tourney; Varsity @ Fritch BB Tourney
7 - HS Basketball vs. Beaver, 4-10 p.m.
8 - HS ASVAB (all juniors)
9-11 - JV Boys @ River Road Tourney; JV Girls @ Spearman Tourney; Varsity BB @ Claude Tourney
14 - HS LHB vs. Borger, 4-8 p.m.
17 - HS BB @ Spearman, 4-9:30 p.m.
20-31 - Christmas Vacation
28-20 - Varsity @ Canadian Tournament

Pringle-Morse CISD

November
24-26 - School Holiday
29 - Cougar BB @ Morse

December
6 - Cougar BB @ Morse
13 - Cougar BB @ Arbor Academy
17 - Early Dismissal
20-31 - Christmas Vacation

Spearman ISD

November
24-26 - School Holiday
28 - JV Lynx @ Fritch 6:00
29 - Lynx vs Fritch 7:30 - Parent Night; Speech Tournament @ Stratford
30 - Girls BB Scrimmage @ Sunray; Speech Tournament @ Stratford

December

1 - Elem./JH UIL Academic Contest, Childress
2 - HS Choir Pre-Area Auditions, Pampa
2-4 - Nazareth Varsity BB Tourney; Gruver JV BB Tourney
3-4 - State FFA LDE Contest, Huntsville
6 - School Health Advisory Council Meeting, 4 p.m., HS Library; Band ATSSB Auditions, Pampa
7 - Supt's Administrative Council Meeting, 8:30 a.m., HS Library
8 - 8th Grade Parent Meeting, 5 p.m., JH; Team

of Eight Board/Superintendent Training, 6 p.m., Bunkhouse

9-11 - Spearman JV BB Tourney (Lynxettes); Vernon Varsity BB Tourney; Borger JV BB Tourney (Lynx)

11 - Five States Band Clinic/Concert, Guymon
12 - Band & Choir Christmas Concert, 2 p.m., Auditorium

13 - Regular School Board Meeting, 7 p.m., HS Library

15 - DEIC Meeting, 4 p.m., HS Library

16 - 2nd Grade Christmas Program, 8:30 a.m., Elementary

17 - HS Final Exams (4th & 5th Period)

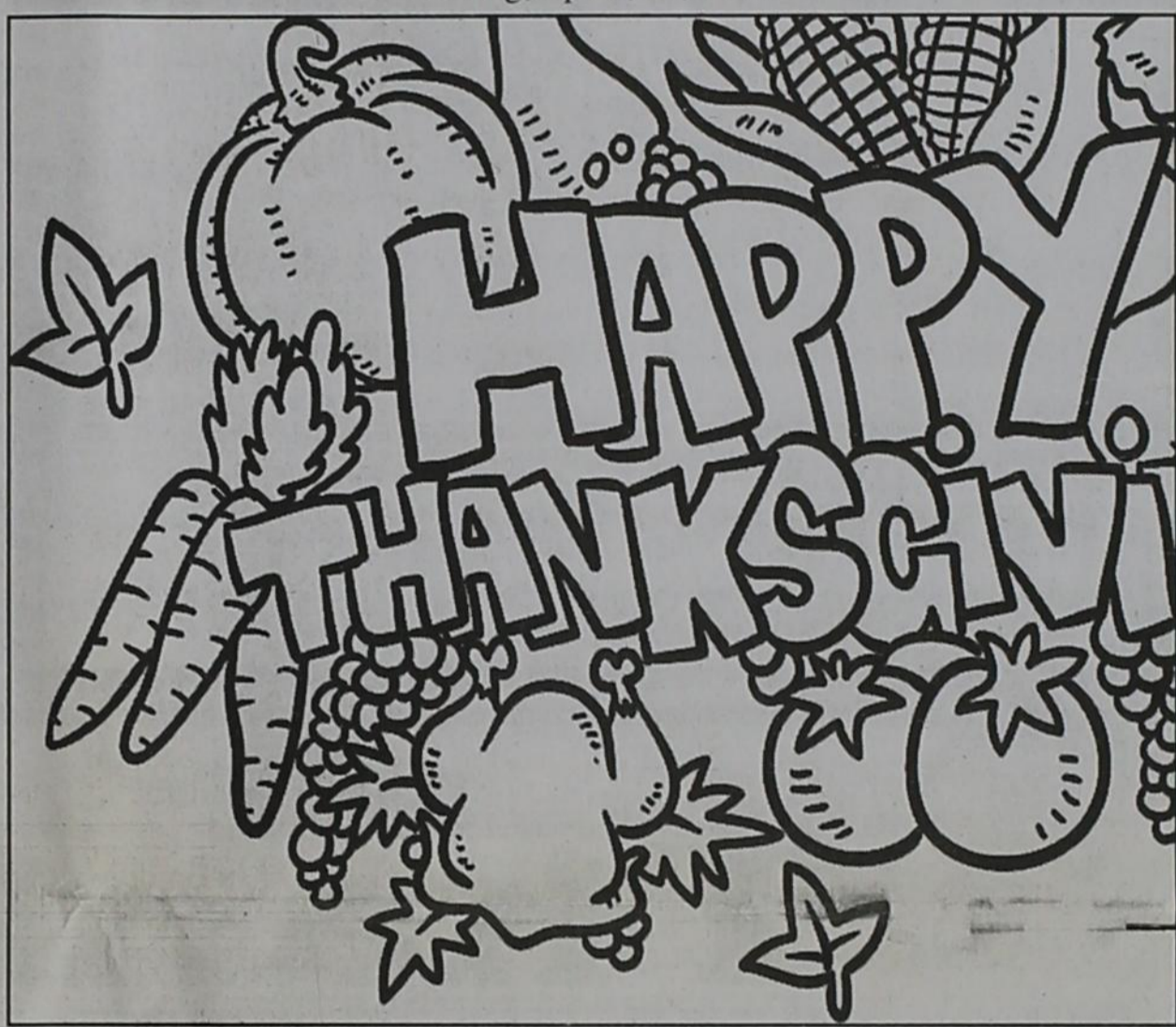
20 - HS Final Exams (1st, 2nd, 3rd Period - A Day)

21 - HS Final Exams (1st, 2nd, 3rd Period - B Day); End of 3rd Six Weeks; Early Release for Christmas Holidays, 1 p.m.

22-31 - Christmas Vacation

28-30 - Caprock Classic Varsity BB Tourney (Lynx/Lynxettes) Lubbock

Jan. 3 - First Day of 2nd Semester



**We will be closed on Thursday,
November 25th in observance of the**



Thanksgiving Holiday



INTERSTATE BANK, ssb

www.interstatebanksb.com

**322 Main Street * Spearman, TX
(806) 659-2559**

**We will be closed on Thursday, Nov. 25th
in observance of the Thanksgiving Holiday.**

H
A
P
P
Y



First State Bank

One NE Court • P.O. Box 247
Spearman, Texas 79081
(806) 659-5565 • Fax 659-5292

*Strength is our Tradition
Service our Goal*

A Full Service Bank
That Wants Your Business.

T
H
A
N
K
S
G
I
V
I
N
G



Save your local economy...
three stores at a time.

the 3/50 project™

SAVING THE BRICK AND MORTARS OUR NATION IS BUILT ON

3

Think about which three independently owned stores you'd miss most if they were gone. Stop in and say hello. Pick up a little something that will make someone smile. Your contribution is what keeps those businesses around.

50

If just half the employed U.S. population spent \$50 each month in independently owned stores, their purchases would generate \$42,629,700,000 in revenue.* Imagine the positive impact if 3/4 of employed Americans did that.

68

For every \$100 spent in independently owned stores, \$68 of it returns to the community through taxes, payroll, and other expenditures. If you spend that in a national chain, only \$43 stays here. Spend it online and *nothing comes home.*

1

The number of people it takes to start the trend...you.

Pick 3. Spend 50. Save your local economy.

For more information, visit the350project.net

© Cinda Baxter 2010; all rights reserved. Proudly supporting RetailSpeaks and independent retailers everywhere.
* Employment statistics courtesy U.S. Department of Labor/Bureau of Labor Statistics, 2/6/2009

brought to you by the
Spearman Chamber of Commerce
and the
Spearman Economic Development Corporation

Karen Taranto - GHS Band Student of the Month for November



Karen Taranto, 15-year-old daughter of Alberto and Ana Taranto, was named the GHS November Band Student of the Month. The sophomore plays the Baritone, Trombone and Tuba. She has a sister, Lizbeth, and a brother, Adan Tarango. Karen's favorite subject is Chemistry because she like to learn how everything functions and the building blocks of life. She has made the 5-States Honor Band for the 2nd year in a row, and was selected for the Amarillo Globe News Academic Spotlight.

Karen participates in Band, One Act Play, FCCLA, Band ad Together for Christ.

After high school she plans to go to college, become a nurse or physical therapist, get married and have kids.

Karen says her favorite thing about band is spending time with other band members and becoming a better player. Her best memory from band is looking on everyone's face when they found out that we received the sweepstakes.

Karen was selected as the outstanding band student for the month of November. Karen received this honor for her outstanding leadership and willingness to work towards betterment of the high school band.

As only a sophomore, Karen has shown what it truly means to be a member of a sweepstakes winning band! During summer band, Karen volunteered to learn how to play the tuba for field marching so that

the band would have a chance at competing in Regional field marching contest. Despite having back problems, she carried around her tuba and baritone to every single football game and contest without a single complaint.

After concert season began and Mrs. Cross realized the trombone section was lacking, Karen, once again, offered to switch to yet another instrument so that she could help out the band. No matter what is asked of her, Karen will give 110% at everything she does and will have a positive attitude!

Karen was recently selected as the Amarillo Globe News Academic Spotlight of the Week and her picture along with a biography will appear a Sunday edition of the Amarillo Globe.

We are very proud of Karen and the wonderful talents she is blessed with, and seeing the bright future that she has in store for her!

Annual Panhandle Farm & Ranch Management Symposium Set for Dec. 1st

The Texas AgriLife Extension Service will host the 25th annual Panhandle Farm and Ranch Management Symposium in conjunction with the Amarillo Farm and Ranch Show held Nov. 30-Dec. 2 at the Amarillo Civic Center.

The symposium will be on Dec. 1 in the Grand Plaza immediately following the 10th annual Texas Commodity Symposium and Amarillo Chamber of Commerce Ag Appreciation Luncheon.

Registration will be from 1-1:15 p.m. with presentations to follow, said Brandon Boughen, AgriLife Extension agriculture

and natural resources agent for Potter County. Program topics and speakers will be:

- Laws and Regulations, Lavon Harmon, Texas Department of Agriculture inspector.
- Managing Herbicide Resistance and New Weed Control Options, Dr. Brent Bean, AgriLife Extension agronomist.
- Corn and Cotton Insect Management and Biotechnology, Dr. Ed Bynum, AgriLife Extension entomologist.
- Emerging Research, Control and Management of Viral Wheat Diseases, Jacob Price, Texas AgriLife Research associate.

The program will offer four continuing education units for pesticide applicator participants: one in laws and regulations, one in pesticide factors and two in integrated pest management, Boughen said.

The Panhandle Farm and Ranch Management Symposium is free, however there is a \$2 show admission charged by the Amarillo Farm and Ranch Show, which is donated to local FFA chapters.

For more information, contact Boughen at 806-373-0713 or bw-boughen@ag.tamu.edu.

ife Research associate.

The program will offer four continuing education units for pesticide applicator participants: one in laws and regulations, one in pesticide factors and two in integrated pest management, Boughen said.

The Panhandle Farm and Ranch Management Symposium is free, however there is a \$2 show admission charged by the Amarillo Farm and Ranch Show, which is donated to local FFA chapters.

For more information, contact Boughen at 806-373-0713 or bw-boughen@ag.tamu.edu.

The Hansford County Reporter-Statesman 2010 Holiday Schedule

SANTA LETTERS: The Reporter-Statesman will publish Santa Letters in the Thursday, December 23rd edition. The deadline to for this issue will be Thursday, December 18th.

HOLIDAY GREETINGS: Anyone wishing to place a holiday greeting in the paper is encouraged to call or come by the Reporter-Statesman office as soon as possible.

OFFICE CLOSED: The Reporter-Statesman office will be closed Wednesday-Friday, November 23-26 for Thanksgiving. (The deadline for the Thanksgiving edition is Friday, November 19th at 5 p.m.) The office will be closed December 21-31 for the Christmas Holidays. (The deadline for the December 23rd and 30th issues is Thursday, December 16th at 5 p.m.)

Tong's Chinese Restaurant
 (806) 644-2838
 22 Archer Street • Spearman
Daily Buffet
 Lunch - 11 a.m.-2:30 p.m. • Dinner - 5:30-9 p.m.
 Open Wednesday-Monday - Closed Tuesday
Closed for Thanksgiving
 We will be closed Tues.-Thurs., Nov. 23-25.
 Will open for regular business on Friday, Nov. 26th

Thank You!

At this time of Thanksgiving celebration, our thoughts turn gratefully to you with warm appreciation

Spirit of Performance
2009 & 2010



Awards and Recognition Program

- 2009 Top Performer Spirit of Performance
- 2010 Top Performer Spirit of Performance

Recognizing
Golden Spread Sales Co.
for achieving an outstanding level of
Image Excellence - *Congratulations!*

Gasoline & Diesel

Wholesale & Retail - Phillips 66
Bulk - Free Delivery
24 Hour Fuel Card

Propane

Commercial, Domestic & Bulk-Loading

Farm Fertilizer

Anhydrous Ammonia & Liquid Solutions

Motor Oil

Professional Service
Quality Oils and Filters

Tires

Specialty Tires and Tires

GOLDEN SPREAD
SALES CO.

114 S. Hwy 207
Spearman, TX 79081

Phone: (806) 659-9141

Edward D. Gray - President

Richard M. Tracy - Vice Pres.

Kevin A. Wilson - Manager

Asst. Secretary

Employee

James R. Smith - Truck

James R. Smith - Pump

James R. Smith - Fuel

James R. Smith - Propane

James R. Smith - Tires

James R. Smith - Oil

James R. Smith - Wash