

Inside

Lunch Menus	2	Sports	7, 8&9
Among the Neighbors	5	Out at the Lake	6
Chamber Chatter	2	Classifieds	10

Hoop Highlights

Inside

WEATHER FOR WEEK OF 1-26 THRU 2-01

Day	Hi	Lo	Precip	Day	Hi	Lo	Precip
Thu	52	32	.00	Mon	57	21	.01
Fri	50	37	.08	Tue	63	24	.00
Sat	41	37	.02	Wed	--	34	.00
Sun	38	28	.00	Total Precipitation 0.29			

HANSFORD COUNTY LIBRARY
0120 MAIN ST.
SPEARMAN, TX 79081-2064
EXPIRES 04/15/1995 THANK YOU

The Hansford County

Reporter-Statesman

Serving Hansford County Since 1907

Volume 87 • Issue 5

213 Main • Spearman, Texas 79081

Thursday • February 2, 1995

Two vehicle accident results in one injured

A 1993 Dodge Caravan, driven by Evelyn McMellian, pulled out of the Lone Star Service Center driveway into the path of a 1987 Peterbilt, driven by Leroy Merkel of Perryton on Monday, January 30 at approximately 2 p.m..

It is speculated by persons at the scene that McMellian, who resides at Dean Cluck Feed Lot, had just filled up with gasoline and was pulling out of the driveway when her right front fender hit the left front fender of the truck. The van then swung around and the back of it hit the back dual wheels of the truck and the front of the trailer.

The eighteen-wheeler, leased to Petro Source Partners LTD, out of Dumas, was southbound on Farm to Market Road 1573 when it was struck by McMellian. The driver of the truck was uninjured but visibly shaken.

McMellian was found sitting between the two back seats of the van.

Employees of Lone Star rendered aid to the victim until Pat Irwin, an EMT, arrived on the scene. Irwin works at Dean Cluck Feed Lot and heard the call on the radio. She stayed with McMellian until the Gruver Ambulance arrived.

Nick Jordan, Pat Irwin, Sam Gruver, and Curt Fitzgearld, all EMTs, removed one seat and turned McMellian around and put her on a back board, according to Nick Jordan, Gruver police chief. "She was unable to turn herself around and get out because of her back injury," said Jordan.

McMellian was transported by Gruver Ambulance to Memorial Hospital in Dumas where she was stabilized. She was then transported on to Northwest Texas Hospital in Amarillo. She is in critical but stable condition due to a back injury.

See ACCIDENT, page 11



TWO VEHICLE ACCIDENT - A local woman was transported to the hospital after a collision with a tractor-trailer rig near Lone Star Service Center on Farm to Market Road 1573. Emergency personnel were on the scene to render assistance. The Gruver EMTs had to remove a seat from the van to gain access to the woman, who was unable to get out of the vehicle due to injuries. (Photo by Cora Thompson).

Local youth hospitalized after wreck

A 16-year-old Spearman youth was hospitalized at around 7:14 p.m. Tuesday, January 31, when the 1983 Yamaha motorcycle he was riding collided with a 1992 Ford pickup driven by Jesus Espinoza, 67, of Spearman.

The motorcycle, driven by the youth, was eastbound on Highway 15, and the pickup, driven by Espinoza, was westbound on Highway 15. The pickup went to make a left hand turn onto the 400 block of north Bernice when it struck the motorcycle head-on.

The youth was transported to the Hansford County Hospital by ambulance. He was treated for a broken wrist and is in satisfactory condition as of press time.

"The pickup looked like it hit a telephone pole. The youth is lucky he was wearing a helmet," said Officer Jamie Downs of the Spearman Police Department.

Hansford Happenings

Blood Drive

A blood drive will be held Feb. 6, 1995, in the Catholic Church Parish Hall from 4 to 7 p.m. All eligible donors are encouraged to come give blood.

Ground Hog Supper

The Church of the Brethren in Waka will have its Ground Hog Supper Feb. 4, 1995, from 6 to 8 p.m. Free will donations to the heating and cooling fund.

Calendar Misprint

Gruver schools will have school Feb. 3, 1995. This is not a holiday.

Mexican Pile-On

The Panhandle Crisis Center Mexican Pile-On will be Feb. 5, 1995, from noon to 2 p.m. at the First Christian Church located at 9th and Jefferson, Perryton, Texas. Tickets are \$5 for adults and \$3.50 for children.

Stress Management Seminar

Regina Partain, Certified Educational Kinesologist will be presenting a stress management seminar the weekends of Feb. 3-4 and Feb. 10-11, Fridays from 6 to 10 p.m. and Saturdays from 8 a.m. to 5 p.m. For more information and to register call 659-3221 or 800-440-9207.

Corn Producers Seminar

The Texas Agricultural Extension Service, Watley Seed Co. of Spearman and Pioneer Seed Company will be sponsoring a corn producers seminar Wednesday, Feb. 8, 1995, at the Hansford County Barn. Registration will begin at 9:30 a.m.

Chill, Stew & Homemade Pie Lunch

Hansford Hospice Volunteers will hold their chill, stew & homemade pie lunch, Wednesday, Feb. 15, 1995, from 11:30 to 1:30 at the Sacred Heart Catholic Church Parish Hall. Tickets are \$4.00. Proceeds to benefit Hansford Hospice.

Hot Lunch Topics

The Chamber of Commerce Hot Lunch Topics will be Friday, February 10 at noon at the O'Loughlin Center. RSVP by Feb. 8, 1995. Telecommuting.

Celebration Name Contest

The Spearman Chamber of Commerce is sponsoring a contest to name the celebration scheduled June 4-11. Judging will be Thursday, February 9, at the Chamber Office. For more information contact Cindy at the Chamber Office, 659-5555.

"Kelly Spurs"

Sat., Feb. 4, 1995, at 2:00 p.m., Jim Krierlhm of Panhandle will be at the Fort Zulu Museum, 30 S. Townsend, to give a talk and slide show about "Kelly Spurs." He will have many spurs on display. Everyone is invited! Admission is free.

"Mr. ?" Heart Throb Contest

TAFE is sponsoring their second annual "Mr. ?" Heart Throb Contest to be held Thursday, Feb. 9, at 7 p.m. in the Spearman High School Auditorium. Tickets are \$3 each and can be purchased at the high school from TAFE members or at the door.

Gruver First Baptist Church Revival

Gruver First Baptist Church will be hosting revival meetings February 5-8, Sunday at 10:50 a.m. and 7 p.m., Monday through Wednesday, noon services and Pot Luck Meals and 7 p.m. services. Everyone is invited.

Hansford County Livestock Show and Sale

The Hansford County Livestock Show and Sale will be held in the Spearman County Barn on Friday and Saturday, February 10 and 11.

Steers will be weighed in from 6:30 a.m. to 7:30 a.m. on Friday. Lambs and companion lambs will be weighed in from 7:00 a.m. to 8 a.m. Swine will be weighed in immediately following the lamb show.

At 9 a.m. all directors, ag teachers, county agents, and FFA sweethearts are to report to the arena for

the Grand Opening of the show.

The judging of the steers is scheduled to start at 9:15 a.m. The lamb show will start immediately following the steer show.

On Saturday at 8 a.m. the swine will be judged. Then at 1 p.m. the livestock judging contest is scheduled. Beginning at 6:30 p.m., floor prices will be auctioned. This will be followed by the presentation of showmanship awards and commercial steer awards. Immediately fol-

lowing the awards presentation will be the auction. Livestock will sell in the order of one lamb, one swine, and one steer, etc.

Judging the 1995 Hansford County Junior Livestock Show are: Dale Dunlap, Wellington - sheep; Mike Schwab, Liberal, Kansas - swine; and Hiram Bergart, Allison - steers.

The 1995 department superintendents are as follows: steers - Jerry Williams, Rick Thompson,

and Kevin Holt; Sheep - David Armes, Keith Bateman, Craig Cooper, and Richard Pipkin; Swine - Glen Ray Mackie, Bert Burgin, Lonnie Shields, Archie Smith, Kyle Nollner, Buddy Lowe, Kenneth Slough, and Clint Irwin. The commercial steer department superintendent is Fran Haefner.

Tommy Mitchell of Texhoma will be the auctioneer. Ringman will be Joe T. Venneman and Rick Riggins. The announcer for the event is Carl Cooper of Guymon.

Morse resident's transplant.....

Debbie Sears: "I LOVE MY NEW HEART!"

Editor's Note: This is the first of a three part series written especially for the Hansford County Reporter-Statesman by Jean Ann Behney.

Reporter's note: The following is the story of Hansford County resident Debbie Sears's heart transplant. This article was timed to coincide with the county heart association's annual banquet and fundraiser.

Nowadays when a person dials the Beryl and Debbie Sears home in Morse, Texas, their answering machine has the following cheerful message from Debbie: "Hi! You've reached the home of Beryl, Debbie and Brent. Chances are I'm out doing some kind of Home Interiors project. Beryl's at school working as usual and Brent's having a great time, wherever he is!"

One year ago, the message would have been quite different when the phone rang in that same empty house—if there had been a message at all! Debbie Sears, then 33, lay dying of heart failure at St. Luke's Episcopal Hospital in Houston. Beryl Sears, 37, spent every waking hour flying back and forth from Debbie's bedside to his job as superintendent of the Pringle-Morse Consolidated Independent School District or running to drop off or pick up their four-year-old son, Brent, from various relatives and friends.

The miraculous, happy ending to that nightmarish existence was

a heart transplant for Debbie April 26, 1994. The series of events that in Beryl's words, "changed our lives forever" was brutally kicked off last January 19th.

That evening, Debbie returned to Morse from her teaching job at Hillcrest Elementary School in Dumas with a sore right arm. She blamed the new aerobics exercise routine she had begun that day in an after-school teacher shape-up session. By supper time, she reports, "I was so exhausted, I couldn't cook. I lay on the couch, feeling that I had no strength."

By 9 p.m., the pain in her arm had intensified and Debbie began experiencing chest pains. These she correctly identified as a heart attack, because, she said, "You never forget this kind of pain."

First Attack in '88
In 1988, Debbie had suffered a mild heart attack in Pottsboro, Texas, where she, then single, lived and taught 5th grade. "I was sitting at a swimming pool and started to feel very funny. Out of the blue, I passed out."

Debbie explained, "I thought it was heat stroke, because the chest pains came later. But even then, I thought it couldn't be a heart attack because I was too young!"

The 28-year-old was hospitalized and diagnosed as having suffered a myocardial infarction, or, in



TOGETHER - Heart transplant recipient Debbie Sears appreciates quality family time with her husband Beryl and favorite cyclist Brent, age 5, in Morse (Photo by Daniel Ramos).

See SEARS, page 12

School Lunch Menus

SPEARMAN SCHOOL LUNCH MENU

MONDAY, FEBRUARY 6
Chicken fried steak fritter, gravy, whipped potatoes, seasoned green beans, hot roll, butter, applesauce, raisin cup, and milk.

TUESDAY, FEBRUARY 7
Tasty rib shaped pattie on hamburger bun, BBQ sauce, tator tots, whole kernel corn, apple crisp, and milk.

WEDNESDAY, FEBRUARY 8
Chicken pot pie, tossed salad, ranch dressing, crackers, fruit cup, and milk.

THURSDAY, FEBRUARY 9
Hamburger, french fries, shredded lettuce, sliced tomato, pickle, onion, peaches, and milk.

FRIDAY, FEBRUARY 10
No school

SID BREAKFAST
Monday - Breakfast pizza, fruit, and milk.

Tuesday - Cereal, toast, fruit juice, and milk.

Wednesday - Sausage, biscuit, fruit, and milk.

Thursday - Two toast, butter, jelly, scrambled eggs, fruit juice, and milk.

Friday - No School.

GRUVER SCHOOL LUNCH MENU

MONDAY, FEBRUARY 6
Chicken fried steak, mashed potatoes w/gravy, black-eyed peas, pudding, hot roll, and milk.

TUESDAY, FEBRUARY 7
Burritos, chili, cheese, tossed salad, fruit, and milk.

WEDNESDAY, FEBRUARY 8
Roast beef, mashed potatoes w/ gravy, corn, apple cobbler, hot roll, and milk.

THURSDAY, FEBRUARY 9
Chicken noodle soup, crackers, cheese stick, carrot stick, fruit, and milk.

FRIDAY, FEBRUARY 10
No School

GISD BREAKFAST
Monday - Cereal, donut, juice, and milk.

Tuesday - Two cowboy bread, fruit, and milk.

Wednesday - Breakfast pizza, juice, and milk.

Thursday - Two cinnamon rolls, juice, and milk.

Friday - No school

PRINGLE-MORSE SCHOOL LUNCH MENU

MONDAY, FEBRUARY 6
Beef and cheese Enchiladas, beans, rice, cornbread, cookie, and milk.

TUESDAY, FEBRUARY 7
BBQ chicken, potato salad, peas, roll, fruit, and milk.

WEDNESDAY, FEBRUARY 8
Hot dogs, french fries, slaw, fruit, and milk.

THURSDAY, FEBRUARY 9
Spaghetti, salad, rolls, dessert, and milk.

FRIDAY, FEBRUARY 10
Pizza, salad, fruit, ice cream, and milk.

PMISD BREAKFAST
Monday - Cheese toast, toast, juice, and milk.

Tuesday - Cinnamon roll, toast, juice, and milk.

Wednesday - Sausage, waffles, juice and milk.

Thursday - Cinnamon toast, toast, juice and milk.

Friday - Sausage, biscuits, juice, and milk.



ALL REGION BAND - Four students from Pringle-Morse made all region band for 1994-95. They are (from l to r) Earl Wattier, trombone; Stephine DeLaCruz, baritone; Ashley Phillips, flute; and Kirby Johnson, baritone. (Picture by Cora Thompson).

Gruver local selected for Who's Who

Kaisin A. Foster of Gruver has been selected for honorary recognition in Who's Who Among American High School Students.

Who's Who Among American High School Students has been published annually since 1967. Students who are recognized have to have a minimum grade point average of "B" or better and be involved in extracurricular activities.

Who's Who Among American High School Students funds over \$125,0090 in scholarship awards annually; distributes up to 15,000 free books to high schools, colleges, and libraries each year; has been favorably reviewed by the American Library Association; and sponsors the largest opinion poll of high-achieving students, which is released to the press every fall.

Sutton named to OSU in Okmulgee honor roll

Brandon Sutton of Spearman was one of five Oklahoma State University, Okmulgee, Okla., students to be named to the Fall Semester Honor Roll. Sutton is a diesel and heavy equipment technology major.

Each earned above a 3. grade average on a 4. system throughout the 15-week semester.

Grade point averages are computed on the student's grade in his/her major area of study and related

general education subjects.

OSU-Okmulgee is the only college in Oklahoma which was established specifically for technical education. It offers college-level technical/occupational programs of study in 11 major disciplines.

TAAS/TEAMS Test registration available

Individuals who are no longer enrolled in school and who have not previously met minimum expectations on all sections of the TAAS/TEAMS Test, but have met all other graduation requirements, may re-take the necessary section(s).

Individuals must register in advance to retest. Registration forms are available in the high school counselor's office. The registration forms must reach Iowa City by February 14.

All tests will begin at 8:15 a.m. in the high school auditorium.

Test dates are:
March 7, TAAS Writing; March 8, TAAS Mathematics and TEAMS Mathematics; March 9, TAAS Reading and TEAMS English Language Art.

High School Students who have not passed the TAAS, including 10th graders, are automatically registered and will take the tests at the high school on the above dates.

Chamber Chatter

by Cindy Blackman
Chamber Manager

Please make a note: The quarterly "Hot Lunch Topic" lunch has been rescheduled for Friday, February 10, noon at the O'Loughlin Center. Cost is still \$7 a person. There will be several issues discussed. Those wanting to attend need to RSVP to the Chamber office, 659-5555.

February Calendar:

February 1, Wednesday: noon meeting, Miss Hansford Committee meeting.

February 2, Thursday: Spearhead Coop meeting, 7:45 a.m. at the O'Loughlin Center.

February 4, Saturday: Heart Association Banquet, 7 p.m.

February 8, Wednesday: W.D.S.C.C. exec. Board

February 9, Thursday: Board of Directors for the C of C, at the Palo Duro Cafe.

February 10, Friday: "Hot Lunch Topics" 12, noon, at the O'Loughlin Center, \$7 a person; Hansford County Stock Show.

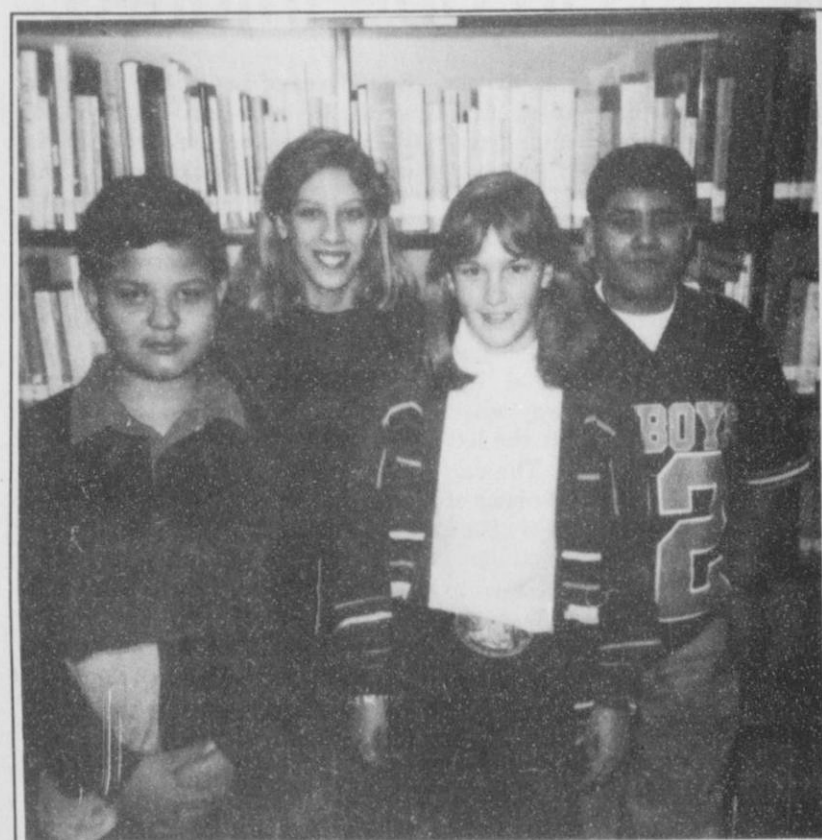
February 11, Saturday: Hansford County Stock Show and Sell

February 15, Wednesday: W.D.S.C.C. meeting; Hospice Chili Dinner.

February 21, Tuesday: Beltone Representative at Chamber office, 1:30 - 3:00 p.m.

February 22, Wednesday: Defensive Driving Course.

February 23, Thursday: Defensive Driving Course.



CITIZEN OF THE MONTH - Students of the Gruver Jr. High were nominated by their teachers as the students who best exemplifies those qualities necessary to be a good citizen. Students for the month of January are: Israel Arzate, fifth grade; Casie Bridwell, sixth grade; Jesus Rodriguez, seventh grade, and Teresa Crow, eighth grade.



NEW \$100 BILL - First grade students at Gus Birdwell Elementary were asked to design a new \$100 bill. A winner and honorable were selected from each class. The first place winners were presented two brand new one dollar bills, a notepad, and a pen. Honorable mention winners got one dollar, a notepad and pen. The First National Bank of Spearman sponsored the contest. The winners were (front row) Jessica Villareal (HM), and Lance Henderson (FP) from Mrs. Clyburn's class (back row); Garrett Rex (HM) and Cory Cook (FP) from Mrs. Noller's class (back row); Jessica Brown (HM) and Mike Rodriguez (FP) from Mrs. Ramon's class (back row). The prizes were presented to the winners by Tindle Ramon (back row) (Picture by Cora Thompson).

Gus Birdwell Elementary observes 100th Day of School Celebration

The Gus Birdwell Elementary first graders celebrated the 100th day of school in a big way Tuesday, January 24.

There were many activities going on during the day to help the students understand the concept of 100. They were to read books with

100 in the title; make a chart categorizing then things into ten different groups; make a list of 100 words; make necklaces of 100 fruit loops. These are only a few of the activities that the students participated in.

The highlight of the day was a

demonstration by Tindle Ramon of the Spearman First National Bank. He introduced the students to some of the functions that go on in a bank. He explained to them how the loan process is accomplished, how a savings account works, and how it all works together.

Ramon asked "How many pennies does it take to make a dollar?" The students were each given a roll of pennies (to take home), they then opened the roll and counted the pennies. "How many rolls of pennies does it take to make a dollar," he wanted to know. The students were asked to pair up with another student to demonstrate that it takes two rolls of pennies to make a dollar.

Ramon showed the students a one dollar bill, a ten dollar bill, and a 100 dollar bill, and asked them who was pictured on the bills. He told the first graders, "The one dollar bill is the most used bill, and it is a big honor to be pictured it."

He also explained to the students how money that has been torn and damaged is sent back to the government. "It is then ground into little pieces and a new one is printed," he told them.

The first graders are to design a new 100 dollar bill for the Spearman First National Bank. The designs will be judged by bank personnel and the winning bill or bills will be on display at the bank.

The Hansford County Reporter-Statesman

Serving all of Hansford County
Spearman • Gruver • Morse

USPS 509660 • 213 Main, Box 458 • Spearman, Tx. 79081
(806) 659-3434 • 1-800-395-9482 • FAX (806) 659-3368

Published weekly at 213 Main, Spearman, Texas

Owned & Operated by

Texas Independent Newspapers, Inc.

16607 Blanco Road #100 • San Antonio, Tx. 78232

(210) 492-8907

Second class postage paid at Spearman, Texas 79081

Any erroneous reflection upon the character of any person or firm will be gladly and promptly corrected upon being brought to the attention of the management.

Publisher - Daniel Ramos
Office Manager - Deziree Torres
Staff Writer - Cora Thompson
Staff Writer - Chad Davis

The publisher reserves the right to revise or reject at its option any advertisement which it deems objectionable, either in subject or phraseology, or which it may deem detrimental to its business.

Subscription Rate: Hansford County, \$19.95; out of county, \$24.95 annually.
Postmaster: Send address changes to Hansford County Reporter-Statesman, Box 458, Spearman, Tx. 79081.

Advertising & Story Deadlines
Monday, 5:00 p.m.



At The Lyric Theatre...
We will be closed for an indefinite time, but watch for us soon!

Stay tuned for coming attractions!

113 Main • Spearman

DUKE'S CHIROPRACTIC CENTER

EVENING HOURS AVAILABLE

- Headaches / TMJ
- Neck Pain / Stiffness
- Low Back Pain
- Shoulder / Arm Pain
- Hip / Leg Pain
- Family Health Care
- Pediatrics
- Athletic Injuries
- Numbness
- Gentle Treatment

AUTO ACCIDENTS • WORK INJURIES
(Most Insurance Accepted)

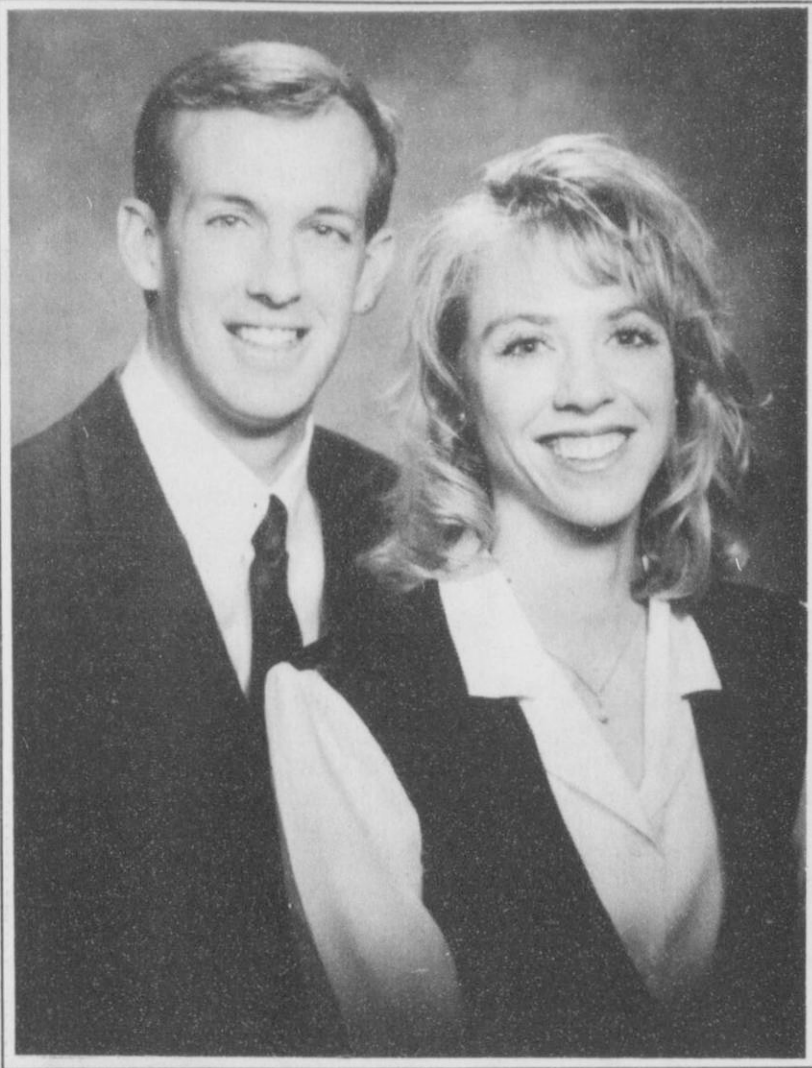
New Hours:
2-6 p.m. Mon. thru Fri.

659-5505

11 W. Kenneth • Spearman, Tx.

Darrell D. Duke DC

Lifestyles



MARK GARNETT and KAREN GEDDES

Garnett and Geddes plan marriage vows

Dr. and Mrs. Wilford Geddes of Ogden, Utah, announce the engagement of their daughter, Karen, to Mark Hamilton Garnett, son of Mr. and Mrs. Jon Michael Garnett of Spearman.

Geddes graduated in 1993 from Brigham Young University, Provo, Utah with a major in Special Education. She played the violin for three years for the Utah Mormon Youth Symphony and served for 18 months in Hawaii on a Mission for The Church of Jesus Christ of Latter-Day Saints.

The past two years she taught

special education classes at Wasatch High School in Heber City, Utah.

Garnett graduated from Spearman High School in 1987, and from Brigham Young University in Provo, Utah in 1993 with a major in history. He served a two-year mission for The Church of Christ of Latter-Day Saints in Puerto Rico.

Presently, Garnett is attending medical school at the University of Health Science in Kansas City, Missouri. After Garnett finishes his education, he and Karen plan to return to Spearman, where he will open a family practice.

Bivins and Garnett announce engagement

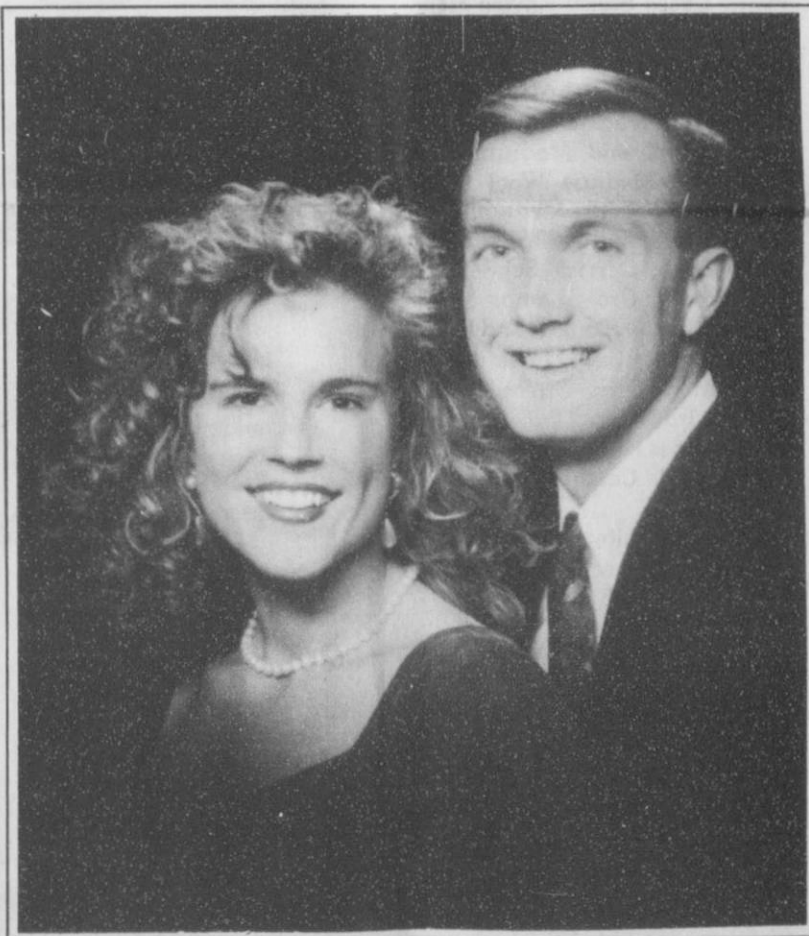
Mr. and Mrs. Robert Henry Bivins of Santa Cruz, California are pleased to announce the engagement of their daughter, Brooke, to J Travis Garnett, son of Mr. and Mrs. Jon Michael Garnett of Spearman.

Bivins graduated from Brigham Young University in 1993 with a degree in Elementary Education. After graduation she traveled throughout the United States as a reading specialist and during this time met J while teaching in Colorado Springs, Colorado. Bivins is currently teaching second grade in

the Salt Lake City, Utah Schools.

J is a 1989 graduate of Spearman High School. From 1991 to 1993 he served a mission in Japan for The Church of Jesus Christ of Latter-Day Saints. He is presently attending the United States Air Force Academy in Colorado Springs, Colorado, and will graduate this May with a major in Near Eastern Asian Studies and Japanese. Upon graduation J will be commissioned as an officer in the United States Air Force.

The couple plan to marry in California this August.



BROOKE BIVINS and J GARNETT

Birth announcement

Ron and Colleen Schaefer are happy to announce the birth of two great-granddaughters within 16 hours of each other.

Gunnar and Sara (Sanders) Hardwick of Phoenix, AZ are the proud parents of Madison Riley Hardwick. Madison was born January 6, 1995 at 2:59 a.m. in Glendale, AZ and weighed 7 lbs 13 ozs and was 21 inches in length. Maternal grandparents are Phil Sanders of Spearman and Linda Butt of Amarillo. Paternal grandparents are Mr. and Mrs. Frank Cappelletti of Glendale, AZ and Mr. and Mrs. Kevin Hardwick of Sentinel, Ok. Maternal great-grandparents are Mr. and Mrs. Ron Schaefer and Mr. and Mrs. R. E. Sanders, all of Spearman. Paternal great-grandparents are Virginia Parks of Phoenix, AZ and Mr. and Mrs. Roy Hardwick of Sentinel, Ok. Madison is also welcomed by three aunts, Suzanne Sanders of Austin, TX; Cassie Butt of Amarillo; and Tara Butt. Also welcoming the baby are Martin,

Phillip, and Audra Sanders all of Spearman. Madison is most especially welcomed by her new cousin of 16 hours, Kelsey Breanne Hawkins, baby daughter of Taydawn (Elliott) and Bruce Hawkins of Chicago, ILL.

Kelsey was born January 5, 1995 at 12:15 p.m. in Great Lakes, Illinois. She weighed 8 lbs 7 ozs and was 21 inches in length. Maternal grandparents are Charles and Melanie Elliott of Spearman and Dianne Davis of Amarillo. Maternal great-grandparents are Charlie and June Elliott of Amarillo, and Ron and Colleen Schaefer of Spearman. Kelsey is also welcomed home by two aunts, Michele and Amber Elliott, and an uncle, Greg Elliott all of Spearman.

Gunnar, Sara and Madison live at 13850 N. 19th Ave. #327E Phoenix, AZ 85023 and Bruce, Taydawn and Kelsey live at 2342C Calif Great Lakes, Illinois 60088 and would welcome any correspondence from friends and relatives in Spearman.



MADISON RILEY HARDWICK



KELSEY BREANNE HAWKINS

You Are Invited to a
Bridal Shower
honoring
Olivia (Salgado) DeSantiago
Sunday, February 5, 1995
2:30 to 4:30 p.m.
First Christian Church
29 S. Bernice
Given by Hostesses
Selections at Gordon's & Celebrate
Come & Go

Portraits by Kolorkraft

Our Lower Total Price
Includes a FREE 10 x 13
Our Entire Portrait Package is Just \$19.95

You get our best poses in the advertised package.
We NEVER hold back the better pictures to sell at a higher price.

3 ⁰⁰ deposit when photographed	Year 3 Pose Package Includes
16 ⁹⁵ balance on delivery	2 - 8 x 10s
19 ⁹⁵ FULL PRICE	3 - 5 x 7s
	12 Billboards AND a FREE 10 x 13

FRIDAY, FEB. 10TH
10 A.M. TO 7 P.M.

Satisfaction Guaranteed or your deposit refunded.
No age limit • No Quantity Limit • No Extra Charge for Groups
Families Welcome • Infants to adults • Low-priced reorders available by mail
Double Exposure and Black Backgrounds at No Extra Charge.

Full Size Professional Prints
All of our portraits are full size borderless prints
We care as much about your portraits as you do.

ALCO

521 Hwy. 207 South -- Spearman, TX

BEST DEAL

10K GOLD TEMPO
\$139 SAVE OVER \$85!
OFFER ENDS MAY 31, 1995
2-3 WEEK DELIVERY

10K GOLD CHAMPION
\$199

ARTCARVED CLASS RINGS
BRING THIS AD

Dunlavy's Jewelry
209 S. Main • Perryton, TX

SUTPHEN'S BBQ

303 N. Cedar • Borger, TX
806/273-6442

Catering

25 People or More
\$5 per plate
(choice of 2 meats)

- BBQ Brisket • BBQ Chicken • Polish Sausage • Ham • BBQ Chicken Strips

With all the trimmings!
• Onion Rings • Potato Salad • Cole Slaw • Beans • Coffee or Tea
* Fruit Cobblers Available *

We don't clown around!

We take drycleaning seriously! Caring for your clothes is serious business. That's why quality is in everything we do from thorough drycleaning to flawless finishing. We return your clothes spot free, fresh, and ready to wear. Good drycleaning is no laughing matter.

PERRYTON CLEANERS & LAUNDRY
1-800-232-5370

Member of the International Fabricare Institute, the association of professional drycleaners and laundrers.

Gordon's DRUG

Bridal Gift Registry

COME BY & LET US
HELP YOU SET UP YOUR
SPECIAL GIFT TABLE

Couples Currently Registered

- George & Olivia (Salgado) DeSantiago *Feb. 5
- Dean Greene & Brooke Homesly *Feb. 18
- Cyndi Jenkins & Robert Post
- David Tucker & Traci Jones
- Brad Brown & Tiffany Kemp

* Date of the Bridal Shower

314 MAIN PHONE 659-2141
SPEARMAN TEXAS

Gordon's DRUG

Practice stock show winners

The Spearman Practice Stock Show was held Friday, January 27, at the Spearman County barn. The show is an annual preparation for the Hansford County Show, which will be held February 10-11 at the Hansford County Barn in Spearman.

Steers:
Class I: Mandy Vernon - 1st, Reagan Renner - 2nd, and Tracy Brown - 3rd.

Class II: Mandy Vernon - 1st, Travis Brown - 2nd, Kacee Smith - 3rd, and Nancy Flores - 4th.

Class III: Ronda Renner - 1st, Reagan Renner - 2nd, Kallie Smith - 3rd, and Ashley Brown - 4th.

Grand Champion - Mandy Vernon

Res. Champion - Ronda Renner Jr. Showmanship - Reagan Renner and Sr. Showmanship - Mandy Vernon.

Lambs

Class I: Jeremy Mackie - 1st, Kallie Smith - 2nd, Brian Black - 3rd, Josh Bynum - 4th, Monty Herrington - 5th, Timmy Bynum - 6th, and David Pipkin.

Class II: Leah Mackie - 1st, Kacee Smith - 2nd, Tatum Rice - 3rd, Justin Eslick - 4th, Kara Pipkin - 5th, Darla Black - 6th, and Coy Herrington - 7th.

Class III: Mandy Vernon - 1st, Nekisha Whitefield - 2nd, Josh Winegarner - 3rd, Eric Eslick - 4th, Dustin Mackie - 5th, and Stephanie Bynum - 6th.

Grand Champion - Jeremy Mackie

Res. Champion - Mandy Vernon.

See STOCK SHOW, page 11

Corn producers seminar set in Feb.

The Texas Agricultural Extension Service, and Pioneer Seed Company will be sponsoring a corn producers seminar Wednesday, February 8th at the Hansford County Barn in Spearman. Registration will begin at 9:30 a.m. The seminar will be worth 5 CEU's for person's obtaining credits for commercial, non-commercial, licensed private and certified private types of pesticide applicators license.

Topics will include: Ridge Till Farming System, Corn Planter calibration, Anhydrous Rig Calibration, Corn Plant Physiology, Irrigation System Efficiency and Worker Protection Standards. Speakers will include: David Collins, Corn Producer in Cofenburg, Nebraska; Russell French, Pioneer District Sales Manager; Charles Ikard, Pioneer Agronomist; Leon New, District 1 Extension Agricultural En-

gineer - Irrigation; and Kent Shaw, TDA Inspector. The seminar will include four concurrent sessions and one overall session and will conclude around 4:00 p.m.

American Cyanamid is sponsoring the noon meal. Persons interested in attending one of these programs need to RSVP by contacting Watley Seed at 659-3838.

Area livestock show results

Hansford County 4-H and Gruver FFA members started the new year off entering area livestock shows. Several members have been very successful at the early shows. Results are as follows:

Bob Skaggs Futurity
January 7-9, 1995
Pampa, Texas

Steers: Brad Holt - Reserve Champion English Steer, Casey Smith - 3rd English Steer, Ronda Renner - 3rd Exotic cross Steer, 4th Exotic Cross Steer, Kaylee Holt - 4th English Steer, Reagan Renner - 7th Exotic Cross Steer, Mandy Vernon - 7th Exotic Cross Steer.

Lambs: Casey Smith - 2nd Medium Wool Lamb.

Hogs: Kim Venneman - 1st Medium Weight Duroc, 3rd Light

Weight Hamp, 3rd Heavy Weight Cross; Casey Smith - 4th Medium Weight Cross; Bobbi Kay Christian - 5th Cross; Kristina Christian - 5th Cross.

National Western Livestock Show

January 9-12
Denver, Colorado

Several Hansford County youth attended the National Western Livestock Show at Denver, Colorado recently. 4-H and FFA members from 17 states attended the show. Scott Stedje of Gruver exhibited the Reserve Champion Hampshire market hog. Brian Black exhibited a 3rd place Berkshire market hog. Darla Black showed a 7th place Spot market hog. Brittany Morris and Brad Holt also attended the show.

Top of Texas Livestock Show
January 21-22
Pampa, Texas

Hansford County 4-H and Gruver FFA members exhibited six steers, eight lambs, and eight hogs at the Top of Texas at Pampa. Results are as follows:

Steers: Clint Williams - 1st Light Weight Exotic Cross, Reserve Champion Exotic Cross; Casey Smith - 1st Middle Weight English Steer; Brad Holt - 1st Heavy Weight English Steer; Bray Armes - 2nd Heavy Weight Exotic Cross, 4th Exotic Cross Steer; Kaylee Holt - 5th Light Weight English Steer.

Sheep: Brandy Morris - 1st Medium Wool Lamb, 6th Medium Wool Lamb; Leah Mackie - 2nd Medium Wool Lamb, 2nd Medium Wool Lamb, 4th Medium Wool Lamb; Casey Smith - 6th Medium Wool Lamb; Chase Reid - 3rd Medium Wool Lamb; Derrick Schneider - 3rd Finewool Cross Lamb.

Hogs: Kathy Slough - 2nd Heavy Weight Cross, Kim Venneman - 3rd Medium Weight Duroc, Galen Slough - 3rd Medium Weight Hamp, Brant Armes - 4th Medium Weight Hamp, Kade Carthel - 6th Heavy Weight York.

Other exhibitors showing hogs were Bray Armes, Brady Tidwell, and Chelsea Nollner.

TAES to sponsor farm and ranch seminars

The Texas Agricultural Extension Service is sponsoring four, two-day Farm and Ranch Estate Planning Seminars for farmers and ranchers at the following locations:

Amarillo, February 8-9, at the Harvey Hotel, 3100 IH-40 West.

George West, February 15-16, at Buck West House, Chamber of Commerce Building (east side of Hwy. 281).

San Angelo, February 21-22, at the Holiday Convention Center, 441 Rio Concho Drive.

Ft. Worth, February 28 - March 1, at Green Oaks Inn, 6901 W. Freeway.

The two days are designed to give a thorough analysis of relevant

income and estate tax rules as they affect families and their agricultural businesses. It is designed for each of a married couple in that it discusses estate administration and tax reporting requirements for the surviving spouse. This same information is useful for potential executors and trustees of estates and to all who want to make their estate settlement less of a burden to their loved ones. The goal is to give the participants knowledge sufficient to make an informed choice as to the best alternative for their family and financial situation.

If you have questions, please call Wayne Hayenga or Carol Sabo at (409) 845-2226.

★ Jackson Welding Service ★
★ Agricultural & Oil Field ★
★ Welding ★
★ 17 Years Pipe Welding ★
★ Experience ★
★ Fully Insured ★
★ Contact Roy Jackson ★
★ 659-2137 or 659-5129 ★



REINKE
IRIGATION SYSTEMS

RAMS
REINKE AUTOMATED MANAGEMENT SYSTEM
for Computerized Center Pivot Irrigation

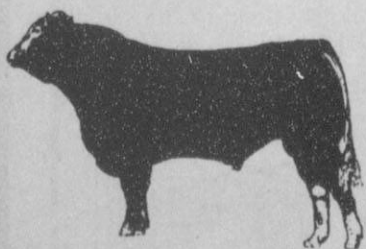
- Provides Greater Efficiency
- Offers Simplicity of Operation
- Gives Precision Sensing
- Designed for Operator Convenience
- Allows Selection for Specific Amount of Water Applied to ANY Segment of the Field
- Provides Lower Operating Costs

More User-Friendly than Any System on the Market

PASCHEL IRRIGATION INC.
Hwy 15 W. • P.O. Box 69
(806) 659-5228
1-800-659-6580

REINKE
THE FIRST NAME IN IRRIGATION

LIMOUSIN BULL SALE



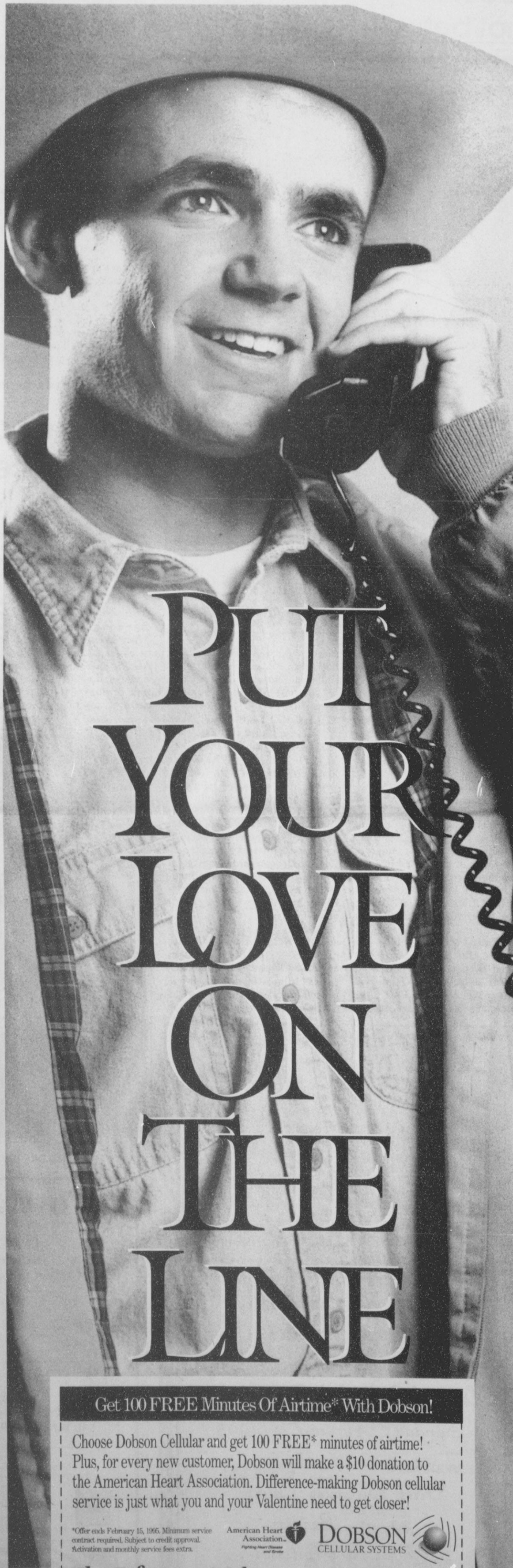
DATE: FEBRUARY 15

TIME: 1:00 P.M.

LOCATION: BEAVER LIVESTOCK SALE BARN
BEAVER, OKLAHOMA

CONSIGNED BY BAGGERLY RANCH OF
ELMWOOD, OKLAHOMA

21 REGISTERED LIMOUSIN BULLS
RANGE-RAISED BREEDING AGE



PUT YOUR LOVE ON THE LINE

Get 100 FREE Minutes Of Airtime* With Dobson!

Choose Dobson Cellular and get 100 FREE* minutes of airtime! Plus, for every new customer, Dobson will make a \$10 donation to the American Heart Association. Difference-making Dobson cellular service is just what you and your Valentine need to get closer!

*Offer ends February 15, 1995. Minimum service contract required. Subject to credit approval. Activation and monthly service fees extra.

American Heart Association
DOBSON
CELLULAR SYSTEMS

The Difference Maker. 1-800-882-4154

Authorized Agents: Cellular Communications 659-2848
Gruver Cellular 733-2180
Setliff Cellular 733-2180
W.T. Services 273-2092

MOTOROLA
Authorized Dealer

Among The Neighbors

by Helen Fisher

Suzanne Sanders, a junior at the University of Texas, was honored by a personal invitation by George W. Bush to attend his inaugural ball at the Frank Erwin Center, and to stand in the receiving line.

Suzanne is the vice-chairman of the University Republican Club, and her roommate, who is the social chairman of the club, also attended. She was escorted by Coy Albracht, son of Dr. David Albracht of Amarillo.

Suzanne is a political science major and has had contacts with Secretary Rick Perry and Senator Teel Bivins.

She is a 1992 graduate of Spearman High and the daughter of Phil Sanders of Spearman and Linda Butt, Amarillo.

Janie and Carl Kunselman with sons Cameron and Dan spent the week-end in Boise City. The occasion was to help her mother, Reba Goff, celebrate her 86th birthday.

Mrs. Goff has lived in the Boise City area most of her life. Four of her six children and their spouses were able to share the party with her.

Sandi and Vernon Morris enjoyed a week of relaxing and fishing last week. They spent some time at

Choke Lake, between San Antonio and Corpus Christi, then went to Falcon Lake and Corpus Christi Lake.

They had fair luck fishing but great success in resting and a change of pace from their work. Vernon's brother and his wife of Dumas accompanied them.

Madison Hardwick, two weeks old, flew all the way from Phoenix, Arizona last week-end to meet her grandparents and great-grandparents.

Her parents, Sara and Gunnar Hardwick, brought her. She won the hearts of her grandfather Phil Sanders, great-grandparents R.E. and Velma Sanders, and Coleen and Ronnie Schaeffer.

She also visited her grandmother Linda Butt in Amarillo and went on to Oklahoma to meet Gunnar's family.

Many in the community are having health problems-among them are: Family members report that Marsha Pipkin is in Northwest Texas Hospital and currently her room number is 409. She and the family are deeply appreciative of the concern shown and she will welcome prayers, cards, and visits. She was taken by ambulance Saturday evening from Hansford Hos-

pital. Her mother, Mary Schumann, husband Vernon and other family members are with her.

Debbie Sanford, Activity Director at Hansford Manor, is back at work. She was hospitalized last week for treatment in Ochiltree General Hospital.

According to friends, Freeman Barkley is expected to be able to leave St. Anthony's Hospital in Amarillo by the middle of the week and go to his son, Bill's home.

He has been undergoing treatment for pneumonia for several days.

He had gone to Amarillo to bring his sister Gertrude Archer home when she flew in from Phoenix. They were en route to Spearman and at Fritch, an ambulance was called as it appeared that he could be having a heart attack.

Gertrude had been visiting her daughter, Sue, in Phoenix since early December.

Olive Pendergraft is recovering from major back surgery a week ago Monday at High Plains Baptist Hospital in Amarillo.

She is undergoing therapy at Hansford Manor and is hopeful she can soon return to her home.

Freda Sheets was relieved when she learned that her sister, Nina Taylor, is doing well after her back surgery. She was hospitalized at Ft. Collins, Colorado early last week.

Nina lives at Lakin, Kansas and has many friends here as she was a resident of Spearman at one time.

Friday was a joyful day for Connie Segar and her family as she was able to return to her home in Graham after about a month in the rehab center of St. Anthony's.

On Christmas day she broke her hip and was taken to St. Anthony's, then to the rehab.

She and her parents, the John Trindles, are high in their praises for staff and treatment at the St. Anthony's Rehab Center.



LOST AND FOUND - Some time ago, during the football season, the Pampa Harvesters signed and let loose a football with the creator of the helmet phone number. Three months later, Sue Bowling and her daughter, Stephnie, found the helmet seven miles south of Spearman. By freak coincidence, one of the players', Matt Garvin, mothers, Terri Garvin, was the one who created the helmet, which was given to his aunt JoAnne Eaton. (Photo by Chad Davis)

UFO ? . . .

Helmet hits Hansford

By JOANNE EATON

It's a bird! It's a plane! It's a what? It's a Pampa Harvester flying football helmet. You're kidding!

Last Friday, January 27, Sue Bowling and her daughter, Stephnie were on the McKibbin road about seven miles south of Spearman. For a couple of weeks they had noticed an object caught in the fence. Sue said curiosity finally got the best of them. They got out of their car to investigate.

Sue and Stephnie found a large foam-board cut-out of a football helmet. On the helmet were all the names of Pampa's 1994 football

team and coaches. Also on the helmet was a phone number. Stephanie talked Sue into calling the number.

Terri Garvin, mother of a Pampa player, Matt Garvin, answered the phone. The helmet, which she made, surrounded with three 42 inch helium balloons, had been turned loose at Pampa's Homecoming game, October 14.

Matt is the nephew of Charles and Joanne Eaton of Spearman. Terri had Charles retrieve the helmet.

Who would have thought the helmet would have landed, three months later, so close to the relatives of one of the players!

A "Center" Piece

By Garland Hopper

The newest addition to the Senior Citizen's center is a beautiful coat and hat rack, and new coat hangers compliments of three of our board members. Thank you from all of the members

The Monday lunch group has been enjoying a good crowd with a lot of fellowship. Some staying to play games after lunch.

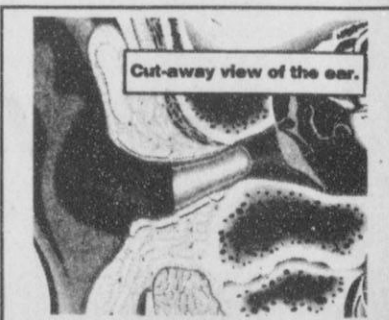
The Thursday crafts group have had good attendance. We enjoyed

Judy Scarbrough meeting with us and making suggestions for future projects. She also helped with a project of making Valentine Favors for residents of Hansford Manor. Thank you Judy.

February 16th Senior Citizen members will host a lunch program by Peggy Ann Combs on the art of basketry. Be sure to mark your calendars! The public is invited to attend this program.

MAY GOD BLESS EACH OF YOU

For Your
BBQ or Smoked Turkey
call
Sutphen's BBQ
(in the Pahnandle for 44 years)
806/273-6442
303 N. Cedar
Borger, TX



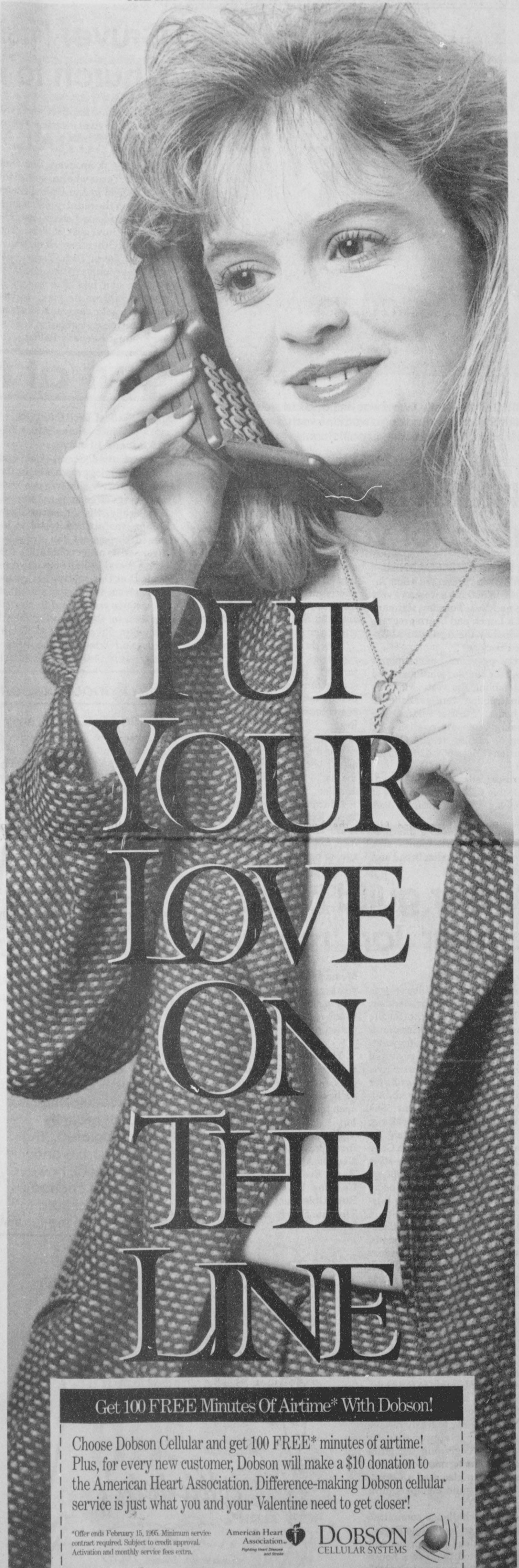
Miniscopic Deep-Canal Hearing Instrument Now Available

Our office is happy to announce that we are currently fitting a completely in-the-canal hearing instrument. This remarkable new hearing instrument is discreet and comfortable to wear. It's placement deep in the canal of the ear (see illustration at top) makes it barely visible. Others may not recognize you are wearing a hearing aid.

The Miniscopic is the smallest hearing instrument ever manufactured by NU-EAR. Call now to schedule an appointment for your hearing assessment and consultation.

Hearing tests are for hearing aid selection and not for medical diagnosis of hearing loss. © 1994 NU-EAR/IDS10420945.

HIGH PLAINS HEARING AID CENTER
Golden Spread Senior Citizens Room in the O'Loughlin Community Center
Every 2nd & 4th Tuesday
2:00 p.m. to 4:00 p.m.
274-5311
1-800-753-1696
659-3866



Get 100 FREE Minutes Of Airtime* With Dobson!

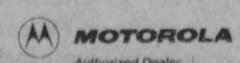
Choose Dobson Cellular and get 100 FREE* minutes of airtime! Plus, for every new customer, Dobson will make a \$10 donation to the American Heart Association. Difference-making Dobson cellular service is just what you and your Valentine need to get closer!

*Offer ends February 15, 1995. Minimum service contract required. Subject to credit approval. Activation and monthly service fees extra.

American Heart Association
DOBSON CELLULAR SYSTEMS

The Difference Maker. 1-800-882-4154

- Authorized Agents:
- Cellular Communications 659-2848
 - Gruver Cellular 733-2180
 - Setliff Cellular 733-2180
 - W.T. Services 273-2092





STITCHING - Nelle Evans was on hand last week to present a demonstration on making a woman's vest using neckties. The workshop attracted some 40 participants.

Nickties make handy fabric for vest making

By PEGGY WINEGARNER
Nelle Evans presented a demonstration on making a woman's vest using neckties, Tuesday, January 24, at a Lunch and Learn program sponsored by the Agricultural Extension Service.

Forty program participants learned the simple techniques used in assembling the vest. Patterns and instruction were available to take home. Further instructions for lining vests are available by calling or coming to the County Extension Office. (659-4131 or 733-2901)

Byrnic Callaway, Lynn Brown, and Debbie Eslick were winners of the sewing notions given as door prizes.

In addition to sewing information, program participants also learned tips to revitalize bread and

quick bread recipes for healthy eating. Three dessert choices were offered along with the recipes which had been modified to reduce saturated fat and cholesterol, decrease sugar and increase fiber.

How do we know if we're on the right track toward building a strong family? Six qualities known to strong families have been identified by two well-known family researchers who surveyed 3,000 families.

Lunch and Learn participants received the results of this survey as an encouragement to develop the same attributes in their own families.

Educational programs of the Texas Extension Service are open to all citizens without regard to race, color, sex, disability, religion, age, or national origin.

Quilter guild holds regular Jan. meeting

By ILENE FLOYD
"Drafting your own Blocks" was the topic of a talk given by member, Jean Powell as the program for the Friendship Quilters Guild on January 11, 1995 at the regular meeting. Mrs. Powell also reviewed drafting equipment, various rulers, and gave exhibits of block grids for creating original blocks or changing the size of an existing one. She reviewed a helpful book, "Drafting, Plus" by Sharon Squires Craig.

For show and share, Viola Cone brought a reversible, crazy-style quilt with fabrics from the 1930-40 era, and Margie Fagan read a poem written by Tom Walker, the husband of a friend of hers in Montana titled, "I Wish I were a Quilt" depicting a typical quilters husbands' lament. Faye Sell brought the door prize which was won by Ilene Floyd, and Martha Pulis won the fabric quarter for wearing her name tag.

During the business meeting called to order by Vice-president Lillian Miller, Bonita Campbell read a thank-you from M'Laine Tyree of Caldwell, Texas, for her honorary membership to the guild. She received a guild pin, and a certificate of honorary membership, which entitles her to freely receive the newsletter in appreciation for her work in beginning the guild and implementing many of the programs. Lillian also read a Christmas letter to guild members from M'Laine.

The block challenge committee was reported on by Margie Fagan, and several ideas were presented. The group voted to make a house block reflecting seasonal changes as the block of the month.

Eva Lou Koons from Liberal, Kansas, is scheduled to give the next program on charm squares and charm quilts on February 8th. Other up-coming events include the March Quilt Show at the Perry

Memorial Library, the school service project for the 5th graders, and also meeting with Jody Logsdon about a possible museum participation project.

The next meeting is scheduled for January 25th, and the raffle quilt Attic Windows will be put together for quilting. Membership is open to anyone interested in quilting.

Members attending other than those previously mentioned were: Georgia Allen, Reta Baldwin, Lois Bartz, Evelyn Cain, Sandy Drake, Caroline Lowery, Lana Pulpan, Ruby Oblander, Cynthia Shattles, Thelma Stark, and Zella Mae Wauhob.

Gruver First Baptist Church to hold revival

Gruver First Baptist Church will be hosting revival meetings February 5-8, which will be led by Jon Randles.

Randles is an evangelist from Lubbock, Texas who has spread the word of God in the United States and also in the country of Romania. He has conducted chapel services with the University of Texas football team. Other team chapels have included Texas Tech, Texas A&M and other universities and high schools. Jon has also served in growth conferences, youth camps, youth retreats, campus revivals on many university campuses, and has led Promise Keeper's Rallies.

The music for Gruver's revival services will be led by a very talented young man, Doug Garrett of Lubbock, Texas. Doug is a graduate of Gruver High School, Texas Tech University, and is currently music director at Live Oak Community Church in Lubbock.

The public is invited to attend any or all of the services scheduled. Sunday Morning Worship Service begins at 10:50 a.m. Sunday Evening Worship Service is at 7 p.m.

Monday through Wednesday - 12 noon Services (Pot Luck Meals), and Evening Services are set for a 7 p.m. start.

Out at the Lake

By JIM DERINGTON
Lake Depth - January 30, 1995 - 19 feet and 10 inches.

The United States Fish and Wildlife Service proposes to list the Arkansas River Shiner (a two-inch minnow) as an endangered species. Historically, the Arkansas River Shiner was abundant and widespread throughout the Arkansas River and its major tributaries. The U.S. Federal Wildlife Service contends that this species has disappeared from over eighty percent of its historic range, and is now restricted to the Canadian/South Canadian River in New Mexico, Texas, and Oklahoma. They believe the primary threat is habitat loss,

due to diversion of surface water for irrigation, stream dewatering/depletion due to excessive groundwater pumping, water quality degradation, and construction of impoundments.

The effects of such a listing would be widely felt: Required release of water from lake Palo Duro and Lake Meredith, reduced pumping for irrigation, regulation of feedlot operations, lower property values, and the erosion of property rights, to name a few.

A public meeting was held in Amarillo, Wednesday, January 25,

See LAKE, page 11

Birth Announcement

Griffin McCloy Novak

Hunter and Bonnie Novak of Guymon announce the birth of a son born at 6:07 p.m., Thursday, January 12, 1995 at Memorial Hospital of Texas County.

Griffin McCloy Novak weight 9 lb. and 6 oz. and was 21 and 1/2 inches long.

Griffin is welcomed home by a brother, Ethan Hunter Novak.

Proud grandparents are Thane and Sue McCloy of Morse, TX. and Dr. Earl and Bobbie Novak of Spearman; and great-grandparents Woodrow and Fern Fulkerson, also of Spearman.

Berry Cleaners

has been operating as a sole proprietorship, but has recently incorporated. The ownership and management, however, have not changed. We look forward to serving you in the future!

Did you know ???
Michele Goodheart recently purchased JG's and is now the new owner of Michele's. Still the same great location, with the same great clothes, plus new lines and looks.

Come in and see what's new!
at
Michele's
306 Hancock
Spearman, Texas 79081
806-659-3424

Store Hours 9:30 - 5:30 Mon. - Sat.

HANSFORD HOSPICE VOLUNTEERS
Chili, Stew & Homemade Pie Lunch • \$4.00
Wednesday, Feb. 15, 1995 • 11:30 a.m. to 1:30 p.m.
Sacred Heart Catholic Church Parish Hall
Proceeds to benefit Hansford Hospice

ELLISON BROTHERS INSULATION
P.O. Box 212
Canadian, TX 79014

Rockwool & Fiberglass Blow-In
FREE ESTIMATES

Keith Ellison 323-5629
Allen Ellison 323-5737

Bearing gifts, just for her!

World's Cutest Valentine

For those hard-to-find gifts just for girls. Come see us, today.

COUSINS
Cards • Gifts
434 Main • Gruver

Free Valentine helium balloon and delivery with purchase of Dreamside, Plush, Candy or T-Shirt!

The Hansford County Division
Board of Directors
of the
American Heart Association
Cordially invites you to attend

"CLOWNING AROUND FOR HEARTS"

February 4, 1995
7:00 p.m. • O'Loughlin Center
Tickets \$25.00 per person
Steak Dinner prepared by Knights of Columbus

R.S.V.P. to Rosemary Brown
January 28, 1995

There will be a silent and live auction. During your meal you will be waited on by the Hansford County Clowns.

In Memory of
Lloyd Buzzard

Morse, Gruver, and Spearman
are
"CLOWNING AROUND FOR HEARTS"

Sports

Lynxettes take first leg of Hansford County basketball championship

The first half of the girls' Hansford County Championship was decided last Tuesday, January 24th, and with a standing room only crowd, the Spearman Lynxettes held on to a late second victory against a very determined Gruver Lady Hounds' team, 48-45.

The game started out much like it ended - tight and close the whole way. Sam Beasley's free shot late in the first stanza gave Spearman the lead, 15-14, as the quarter ended.

The second quarter of the close contest was taken by the Lady Hounds, 11-6. Of those 11 points, Julie Meyer's had 6, which were both 3-pointers. Meyers' last 3-pointer, late in the quarter, pulled the Lady Hounds up, 23-22. Tara Shapley also hit another trey late in the quarter, which brought Gruver to an even higher score.

At the start of the third quarter, the Lady Hounds widened the gap further by taking the Lynx again, 12-5. The Lady Hounds put a up a mean fight until 5:19 was left in the quarter. It wasn't until then that the Lynxettes made their first point of the quarter, which came on a Macy Shieldknight free shot. Later in the stanza, the Lynxettes were forced to take a time-out in

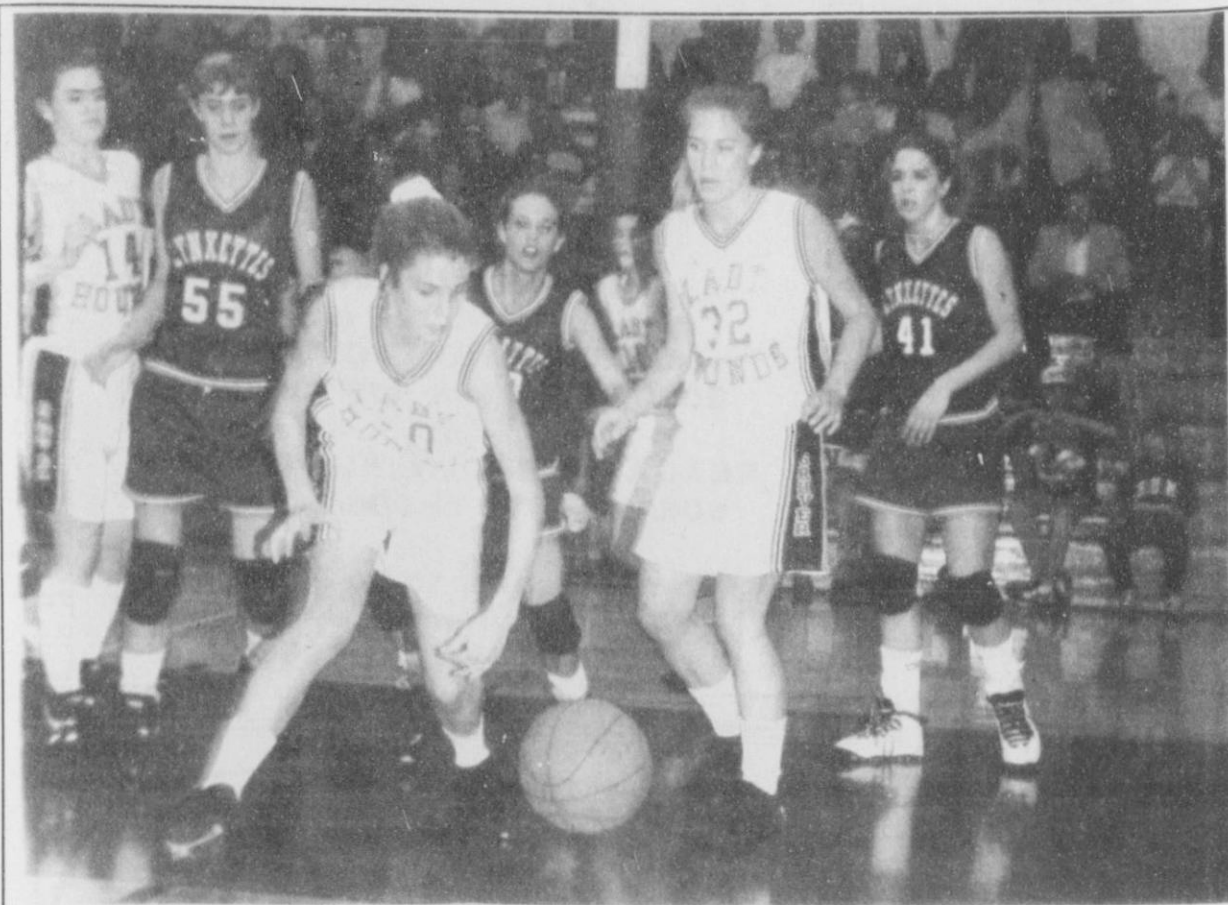
order to cool down from a long streak of Lady Hounds' points. At this point Gruver had its biggest lead yet, 31-25, which was how the quarter almost ended, 35-27.

The fourth and final quarter left everyone in the "heater dome" on their feet. Early in the quarter, 7:49 left, Spearman retaliated Gruver's reluctant defense that they had put up with all quarters before. Two of the life-lines of the Lynxettes, Kara Townsen and Ashly Shieldknight, got things going for the Lynxettes by putting in points. Shayla Barber, who dominated the board all night, put in 2 baskets on free shots, to bring the Lynxettes within 2, 40-38. However, it wasn't until later in the quarter, 4:23 left, that the Lynxettes finally tied up the game, with the help of Beasley's 2 points. Almost 2 minutes went by before either team could score again, until Misha Davis was able to put in a field goal to give the Lynxettes the lead, 42-41. As the game was coming to a close, neither the Lynxettes, the Lady Hounds, nor the tension stopped. The Gruver gals gave the Lynxettes quite a scare up until the end, when Wendy Rodriguez just barely missed her two free throws with only 6 seconds left. Weslyn Maupin was fouled

shortly after with 4.4 ticks left, but on her second shot from the penalty stripe, which was just short of the goal, Townsen was fouled on the rebound. This gave the Lynxettes the sure victory, but the game was not quite over until Meyers' 3-pointer fell just short and the final buzzer went off. The Lynxettes took the first of this two game heated series, 48-45.

This game showed all of the many talented girls that Hansford County has. Each player ended her game with impressive numbers. For the Lynxettes, Townsen had one of the best games of her life by putting in 18 points. Townsen's points came on a trey, 2 field goals, a steal, and rebound in the first quarter; she had trouble in the second with no points, came back in the third with 2 field goals, a pair of rebounds, and a steal. In her final quarter she excelled with 2 field goals and 3 free shots, while stealing the ball once and rebounding it 4 times. Townsen has had higher numbers than this before, but in this game 18 is an outstanding number. The next two, Barber and Shieldknight, put in 8 points each. Barber was strong in the first and fourth quarters of play,

See LYNXETTES, page 9



ON THE CHASE - The long awaited first half of the girls' Hansford County Championship was finally played last January 24, in Gruver. Seen here, Weslyn Maupin (Gruver) is trying to retain a loose ball before Sam Beasley, Misha Davis, and Kara Townsen (Spearman) get to it, while Julie Meyer, Amber Murrell, and Kaysha Cluck (Gruver) get set to help. The game was fast and furious, and the Lynxettes took home the win by a narrow margin. (Photo by Daniel Ramos)

Gruver Greyhounds handily defeat Lynx in district play, 68-44

The boys' version of the big game between Gruver and Spearman was not as close and heated as the girls' was. The outcome was also different, as this time Gruver overpowered and beat Spearman, 68-44.

If not for the talent of hot-handed Brant Armes of Gruver, the entire game would have been a big yawn. It wasn't until 5:29 left in the first quarter before either team scored. That's when the bombardier hit the first of two treys for that quarter. Just seconds later Spearman also got its first score of the night on a free shot from Jarod Huddleston. Shad O'Quin really shined for the Lynx not only in this quarter, but throughout the entire game. He kept the quarter ending 13-8 Gruver lead close by making 5 points at the quarter's end.

The second quarter belonged all to the Hounds. Gruver blew the game wide-open at the start of the quarter by having a 20-8 lead on the Lynx before Coyt Tigrett was able to leap on a rebound and put in a field goal for Spearman with 4:14 left in the quarter. The well-rounded Chad Wilkerson was the only other Lynx player to can a shot in the quarter. Armes of Gruver also had another trey on his list, while his teammates, Phil DeLaCruz and Sammy Renteria,

joined him on a 3-pointer for themselves. To add insult to injury, Roma Tomlinson sank a huge field goal as the half-time buzzer was going off, and the Lynx were really trailing, 30-12.

The second half began much better for Spearman, but the Hounds were still pumped from the first half. Gruver came out and exploded all over Spearman again by increasing their lead and taking yet another quarter from the Lynx, 21-13. O'Quin was again the only highlight of the quarter, when he put in 6 points and pulled down a deuce of rebounds for the Lynx. Again, just like the end of the second quarter, a late shot at the end of the buzzer fell through for the Hounds.

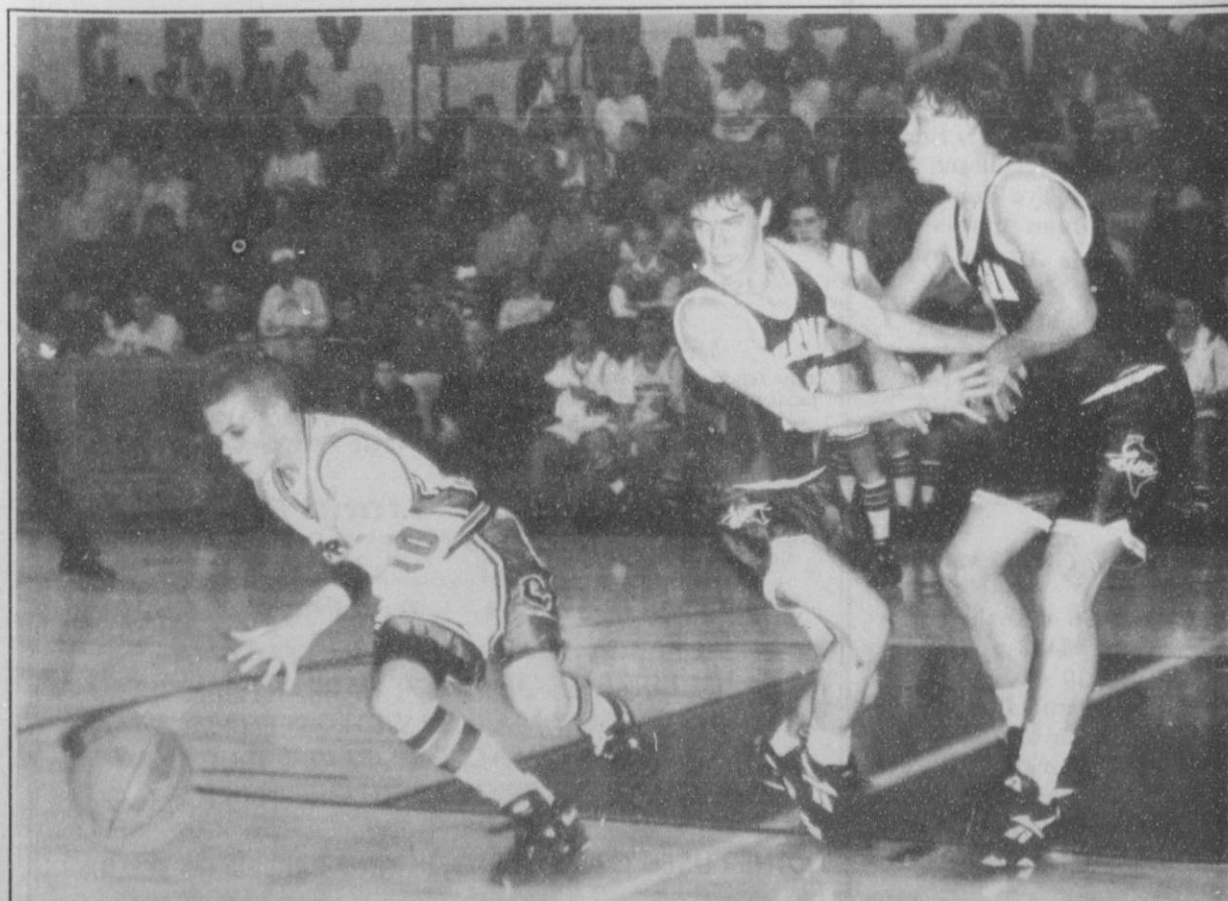
In the last stanza of play, Spearman took charge and banged home 19 points, more points than they scored in the first half combined. This quarter belonged to Archer, Huddleston, and Eric Cudd. The three marvels of the Lynx team joined efforts to give Spearman 13 big points and 7 much-needed rebounds. By this time, the much-needed help was pointless, and Gruver played everyone of its players this quarter.

As the stats clearly show, Gruver had control of this ball game the entire way. Only one Hound player,

Jace Dawson, made double digits with 11, but almost every other Hound put points on the board. Dawson played an awesome game with a field goal and a 2 free shots in the first quarter of play, 2 more field goals in the second, a field goal and a pair of rebounds in the third, and he ended his game with a shot from the penalty stripe. Four other Hound players, Armes, DeLaCruz, Sammy Renteira, and Tomlinson all tied with 9 points. A number like 9 is decent for an average player, but when these four hot superstars combine their points, 36 seems more impressive. Travis Ferguson also racked up the score by giving Gruver 7 hard-earned points. A 3-pointer by Josh Mayhew gave him 3 points at the game's end, while Ricardo Soto, Aaron Frick, Wylee Maupin, Ryon Atwood, and Eric Wright finished the game with 2 points each. Max Frick finished out the Hounds' scoring with 1.

For the Lynx, Shad O'Quin, pounced his way up for the leading scorers of Spearman with 14. O'Quin had a quiet first half with only 2 field goals and free shot - all within the first quarter. However, he came back in the second half with 6 points, 2 free shots, and 2

See GREYHOUNDS, page 8



WHICH WAY DID HE GO - The lightning fast Brant Armes (Gruver) was one of the many stars to shine in the boys' Spearman vs. Gruver game. This game was not as close as the girls', but many of the players on both teams, including Heath Archer and Dillon Miller (Spearman), had several fantastic plays. The game was won easily by the Hounds, 68-44. (Photo by Daniel Ramos)

WINTER Extravaganza

ALLSUP'S

EFFECTIVE JAN. 29- FEB. 4, 1995
Gruver, Spearman, Perryton, & Booker Only

SAVE ON PEPSI-COLA

3 Liter **\$1.49**

6 pk. - 12 oz. cans **\$2.09**

ALLSUP'S CANADIAN BACON, EGG & BISCUIT FOR ONLY

99¢

ALLSUP'S 1.5 LB. LOAF SANDWICH BREAD

99¢ EACH OR

2 FOR \$1



ALL FLAVORS LAY'S POTATO CHIPS

REG. OR WAVY \$1.49 SIZE

99¢



ALLSUP'S HOMOGENIZED MILK GALLON

\$1.99



DECKER MEAT BOLOGNA

12 OZ. PKG.

89¢



SHURFINE TOMATO KETCHUP

28 OZ. SQUEEZE

99¢



SHURFINE CUT GREEN BEANS

16 OZ. CAN

39¢

ALLSUP'S MONEY ORDERS

UP TO \$299.00

29¢



MELLO CRISP SLICED BACON

1 LB. PKG.

99¢

ALLSUP'S SAUSAGE ON A STICK

FOR ONLY

99¢



GIRLS BASKETBALL - These girls recently participated in the Spearman Girls Basketball League program. It began December 1, 1994, continued through January 31, 1995. After one month of fundamental practice, the girls were divided into teams at which time team practices continued. January 7th and 8th, the mini-tournament began. Each girl played in three games that weekend. On January 21st and 22nd the second half of the mini-tournament was played. Again each team participated in three games. Throughout this time, the girls have performed at home basketball game half times. Coaches and girls in fifth and sixth grade division are: (Top picture) back row l to r: Coaches Craig Schumann, Fred Shieldknight, James Schnell, and Karen Thompson; third row l to r; Laura Gillaspie, Crista Johnson, Natasha Burch, Chelsey Villines, Adrienne Simpson, Jenn Schnell, Audrey Winegamer, Jennifer Whitefield, Melody Shields, Leslie Widener, and Clara Shieldknight; second row l to r: Amber Elliott, Catie Cobb, Miranda Fight, Brenda Carbajal, Chelsey Nollner, Nicole Lozano, Jenny Longoria, Randa Morris, and Jamie Kunselman; front row l to r: Cheryl Gibson, Haley Lombard, Kara Pipkin, Tashi Schumann, Sarah George, Misty Hand, and Misty Brown. Third and Fourth grade division - (bottom picture) front row l to r: Amber Morgan, Nicole Ramon, Chelsey Wall, Courtney Wall, Jocelyn Whitefield, and Claudia Vaquera; middle row l to r: Elsa Vargas, Kyna Shields, Ashlee Flowers, Jentry Edwards, and Loree Espinosa; back row l to r: Coach Leann Gillaspie, Kimberly Vasquez, Brianne Burkhammer, Jessica Crossland, Kellee Goodheart, Mindee Gillaspie, Grace Cobb, and Megan Dorton.



Basketball . . .

Lady Hounds (20-6) vs. Texhoma, Ok.
 Friday 1-27-95 at Texhoma
 Gru 10 16 33 46
 Tex 6 13 19 30
 3-Pointer - Kiki Carthel.
 Gru - Molly McLain - 10, Julie Meyer - 10, Kaysha Cluck - 8, Kiki Carthel - 5, Amber Murrell - 4, Tisha Ralston - 4, Cara Hathaway - 3, Wendy Rodriguez - 2.
 Synopsis: Julie Meyer and Molly McLain each scored 10 to lead the Lady Hounds. It was Molly's first appearance in a Lady Hounds uniform this season, and she looked good, especially with her jumper from about 15 feet. Molly was 5-6 from the field for 83% shooting. Weslyn Maupin had six blocked shots.

Hounds (11-4) vs. Texhoma
 Gru 11 22 37 55
 Tex 20 35 48 71
 3-Pointers - Brant Armes - 2, Phil De La Cruz, Sammy Renteria, Roma Tomlinson.
 Gru - Brant Armes - 10, Wylee Maupin - 10, Jace Dawson - 8, Sammy Renteira - 7, Josh Mayhew - 6, Max Frick - 4, Phil De La Cruz - 3, Roma Tomlinson - 2, Ricardo Soto - 2.

Synopsis: This was a meaningless game, a non-district game prior to the big second half of the district season. Should the Hounds win their next four games, they would be outright district champions.

Greyhounds

CONTINUED FROM PAGE 7
 rebounds in the third quarter, and he also hit a field goal, a free shot, and a rebound in the fourth. Although Wilkerson did not have the best game of his life, he did manage to make a field goal, steal a ball, and rebound in the first stanza, hit a field goal in the second and third quarters, and finally, he put in the only trey for the Lynx in the fourth. Mr. Clean of the backboards, Huddleston, finished the game with 6 points, but Huddleston ended the game with 7 rebounds - more than twice that of any Lynx or Hounds' player. Eric Cudd ended the game with 4 points. Archer played a very hard game, but his 4 points could not compete with his awesome 7 treys against Sunray. Dillon Miller, with 3 points and 3 rebounds, and Tigrett with 2 points and 2 rebounds finished up the Lynx's scoring.

**GRUVER LIONS CLUB
 1995
 CONSIGNMENT AUCTION**

**Thursday, March 16, 1995
 Conducted by
 Reagan & Brown Auctioneers**

**Anyone with items or
 equipment to sell contact:
 GRUVER LIONS CLUB at
 806/733-2421 or 806/733-2988
 or
 REAGAN & BROWN AUCTIONS at
 806/249-6776 or 806/249-4038**

**Consignments to be listed on
 the sale bill must be in by
 FEBRUARY 10, 1995**



1993 Chevrolet Lumina
 White/Blue cloth seats, 23,600 miles, 4 dr., V-6 automatic, cruise, tilt, air conditioning, power windows and brakes, electric windows, AM/FM cassette
List New \$17,319 Your Price \$10,500

1994 Pontiac Grand Am SE
 Bright blue/graphite cloth seats, 17,500 miles, 4 dr., automatic transmission, cruise, tilt, air conditioning, power steering and brakes, power door locks, AM/FM cassette
List New \$15,131 Your Price \$12,500

1994 Oldsmobile Cutlass Ciera S
 White/Blue cloth seats, 17,300 miles, 4 dr., automatic transmission, cruise, tilt, air, power steering and brakes, V-6, power windows and locks, AM/FM cassette
List New \$18,262 Your Price \$12,500

1994 Pontiac Grand Am SE
 Maroon/graphite cloth seats, 15,700 miles, 4 dr., automatic transmission, cruise, tilt, air, power steering and brakes, AM/FM cassette, power door locks.
List New \$15,131 Your Price \$12,500

1994 Pontiac Grand Prix SE
 Bright blue/cloth interior, 20,400 miles, 4 dr., V-6 automatic transmission, cruise, tilt, air, power steering and brakes, power windows/locks, AM/FM cassette
List New \$17,794 Your Price \$14,500

1994 Chevrolet Beretta
 Maroon/graphite cloth bucket seats, 18,000 miles, 2 dr., V-6 automatic, cruise/tilt, air, power steering and brakes, power windows and door locks, AM/FM cassette
List New \$15,583 Your Price \$11,700

1994 Oldsmobile Cutlass Supreme
 Maroon/red cloth seats, 19,500 miles, V-6 automatic, cruise, tilt, air, power steering and brakes, power windows and locks, AM/FM cassette
List New \$19,695 Your Price \$14,500

1994 Pontiac Grand Prix SE
 Teal green/graphite cloth seats, 14,700 miles, 4 dr., V-6 automatic, cruise, tilt, power steering and brakes, power windows and door locks, AM/FM cassette
List New \$17,794 Your Price \$14,500

1994 Pontiac Bonneville SE
 Gray/gray cloth seats, 15,200 miles, 4 dr., V-6, auto, cruise, tilt, air, power steering and brakes, power windows and locks, AM/FM cassette, power seats.
List New \$22,292 Your Price \$16,900

1994 Pontiac Grand Prix SE
 Bright red/gray cloth seats, 18,100 miles, 4 dr., V-6, auto, cruise, tilt, air, power steering and brakes, power windows & locks, AM/FM cassette
List New \$17,794 Your Price \$14,500

ALL ABOVE HAVE REMAINING FACTORY BUMPER TO BUMPER WARRANTY!!
ALL UNITS CLEARLY MARKED WITH GREEN PRICE TAG.
ALL 1994 NEW FACTORY CARS & TRUCKS FINAL CLOSEOUT PRICED WITH GREEN PRICE TAG IN WINDOW.
OTHER USED CARS IN STOCK AND PRICED TO SELL!!!

GILLASPIE
 AUTO & TRUCK CENTER, INC.
 CHEVROLET, OLDS, BUICK, PONTIAC, CHRYSLER, PLYMOUTH, DODGE
 Highway 207 South • P.O. Box 430
 Spearman, Texas 79081
 (806) 659-2541

American Heart Association
 Fighting Heart Disease and Stroke

CPR
 can keep your love alive

Basketball...

Lady Hounds 8th White (3-5) vs. Stratford Lady Elks 8th
 Monday 1-23-95 at AC
 Str 7 15 21 25
 Gru 2 8 12 17
 Gru - Teresa Crow - 5, Bobbi Christian - 4, Jennifer Lopez - 4, Kaydee Jordan - 2, Lauren Miller - 2.

Lady Hounds 9th (4-9) vs. Stratford Lady Elks 9th
 Monday 1-23-95 at VG
 Str 10 17 30 38
 Gru 5 13 20 25
 3-Pointer - Brandy Morris.
 Gru - Erikka Barrera - 8, Steffany Simon - 7, Amber Roberts - 5, Brandy Morris - 3, Laura Garcia - 2.

Hounds 7th Red (6-5) vs. Stratford Elks
 Monday 1-23-95 at Stratford
 Gru 5 7 13 23
 Str 4 12 18 21
 Gru - Bray Armes - 10, Dan Odom - 6, Derik Grotegut - 3, Dallas Henson - 2, Colby Hunt - 2.

Hounds 7th White (3-3) vs. Stratford Elks 7th
 Monday 1-23-95 at Stratford
 Gru 3 8 16 20 24
 Str 6 14 18 20 22
 Gru - Jesus Rodriguez - 19, Josh Blount - 4, Trevor Ferguson - 1.

Hounds 8th (8-4) vs. Stratford Elks 8th
 Monday 1-23-95 at Stratford
 Gru 8 16 20 28
 Str 6 25 40 52
 3-Pointers - Jason TeBeest - 2, Matt Watlington.
 Gru - Jason TeBeest - 10, Matt Watlington - 9, Luke Johnson - 2, Jeff McClure - 2, Clint Robinson - 2, Charlie Stavlo - 1.

Hounds 9th (4-11) vs. Stratford Elks 9th
 Monday 1-23-95 at Stratford
 Gru 14 16 18 25
 Str 6 17 30 33
 3-Pointers - Keith Cassidy, Jared Johnson.
 Gru - Jared Johnson - 10, Arturo

De La Cruz - 6, Kyle McNett - 4, Keith Cassidy - 3, Kevin Harris - 2.
Spearman Lynxettes 7th A vs. West Texas 7th
 Monday 1-23-95 at Spearman
 Spm 13 26 41 55
 WT 5 10 12 16
 Spm - Haley Beasley - 21, Camille Smith - 8, Kristi Wall - 8, Amber Ramon - 6, Brooke Lesley - 6, Audra Sanders - 4, Kathryn Murphy - 2.

Spearman Lynxettes 7th B vs. West Texas 7th
 Monday 1-23-95 at Spearman
 Spm 6 7 11 15 17
 WT 4 4 13 15 15
 Spm - M. Marcella - 6, Cindy Goodman - 4, Nacy Flore - 4, Maria Vela - 2, Irene V. - 1.

Spearman Lynx 7th B vs. West Texas 7th
 Monday 1-23-95 at WT
 Spm 2 10 21 31
 WT 14 26 36 40
 Spm - Johnson - 8, Shmear - 5, Villarreal - 4, Villines - 4, Davis - 2, Hernandez - 2, Moreno - 2.

Spearman Lynx 7th A vs. West Texas 7th
 Monday 1-23-95 at WT
 Spm 11 20 33 42 45
 WT 9 17 36 42 52
 Spm - Aaron Winegamer - 13, Clayton Wilkerson - 9, Jeremy Mackie - 6, Dusty Barber - 5, Josh Schuman - 5, Schoenhals - 3, Landon Delozier - 2.

Spearman Lynxettes 8th B vs. West Texas 8th
 Monday 1-23-95 at Spearman
 Spm 9 17 22 23
 WT 4 5 9 11
 Spm - Dynell Vera - 12, Brittini Beedy - 4, Rachel Burch - 4, Mandy Vernon - 3.

Spearman Lynx 8th B vs. West Texas 8th
 Monday 1-23-95 at WT
 Spm 3 5 12 19
 WT 1 15 22 32
 Spm - Jackson - 5, Evans - 5, Carey - 4, Sprauge - 4, Brown - 1.

Spearman Lynx 8th A vs. West Texas 8th
 Monday 1-23-95 at WT
 Spm 9 33 48 59
 WT 9 16 37 47
 3-Pointers - Michael Lusby, Aaron Witten.
 Spm - Aaron Witten - 23, Carlos Hernandez - 19, Michael Lusby - 12, Quentin Shieldknight - 3, Landon Miller - 2.

Spearman Lynxettes 9th vs. West Texas 9th
 Monday 1-23-95 at Spearman
 Spm 3 17 28 36
 WT 4 10 18 26
 Spm - Kasey Dunnihoo - 14, Ashley Brown - 9, Andee McGaha - 7, Leah Mackie - 3, Jennie Kunselman - 2, Jocelyn Edwards - 1.

Lady Hounds 7th Black (9-2) vs. Stratford 7th
 Monday 1-23-95 at VG
 Str 7 17 23 32
 Gru 5 13 20 26
 Gru - Janae Watley - 13, Lindy Tolleson - 5, Chelsie Hicks - 4, Krystle Deeds - 3, Mary Puebla - 1.
 Synopsis: This team, coached by Sheila Watley, has lost only twice this season, both times to the tough Lady Elks team.

Lady Hounds 7th White (3-3) vs. Stratford 7th
 Monday 1-23-95 at AC
 Str 2 9 11 11
 Gru 6 10 14 22
 Gru - Essie Bravo - 8, Amanda Schneider - 6, Cayla Simon - 6, Dusty Eckhardt - 2.

Lady Hounds JV (12-8, 1-2) vs. Spearman Lynxettes JV
 Tuesday 1-24-95 at VG
 Spm 10 22 27 36
 Gru 8 14 18 27
 3-Pointers - Kathy Slough - 2, Erin Derington.

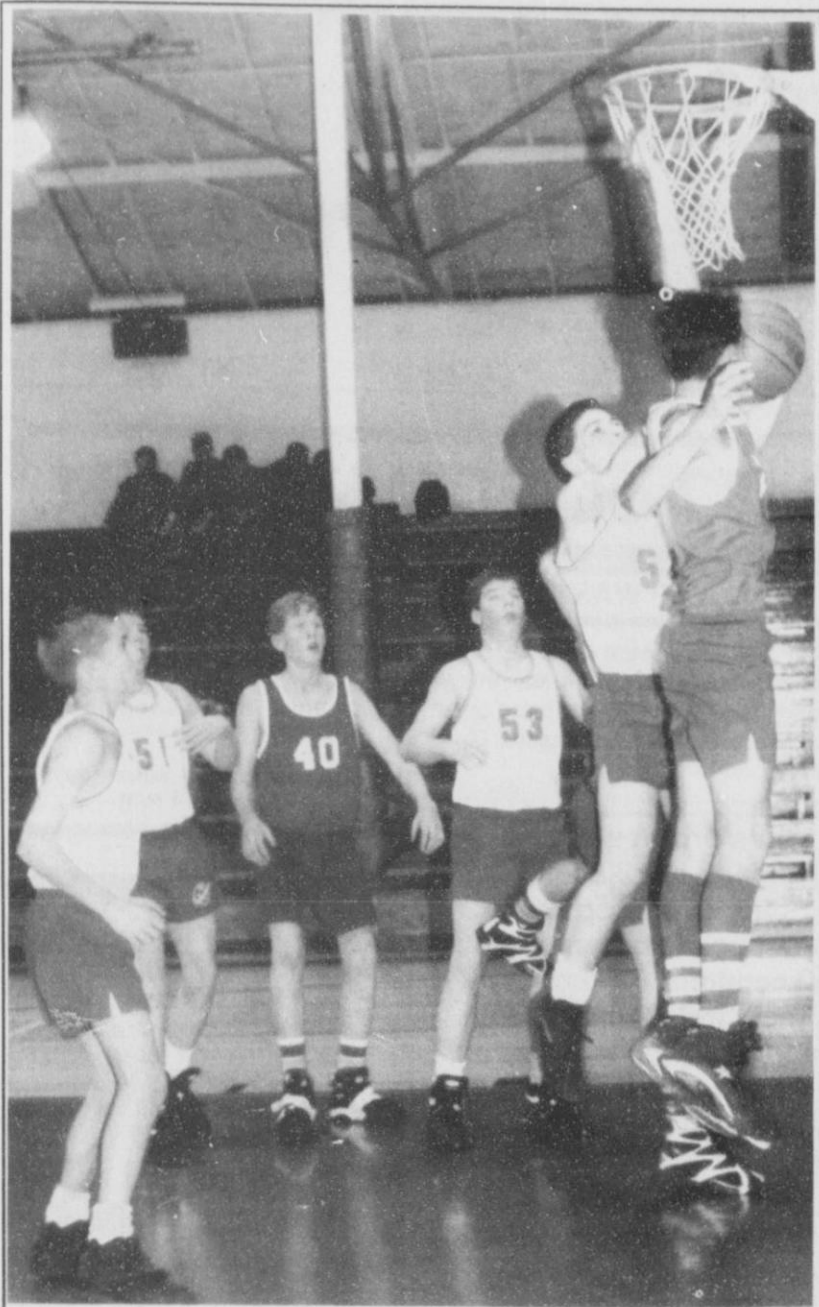
Gru - Joni Hart - 8, Kathy Slough - 8, Jill Odom - 4, Erin Derington - 3, Autumn Bateman - 2, Mary Dawn Henson - 2.
Hounds JV (12-11, 2-2) vs. Spearman Lynx JV
 Tuesday 1-24-95 at AC
 Spm 9 14 29 42
 Gru 14 21 25 39
 3-Pointers - Daniel Bort, Scott Jarvis.

Gru - Scott Jarvis - 11, Bailey Barkley - 9, Heath Tolleson - 6, Tucker Henson - 4, Tye Womble - 4, Daniel Bort - 3, Juan Arreola - 2.

Lady Hounds JV (12-9) vs. Texhoma, Ok.
 Friday 1-27-95 at Texhoma
 Gru 5 7 15 18
 Tex 4 10 17 21
 3-Pointer - Lexy Spivey.
 Gru - Amy Gillispie - 6, Jill Odom - 4, Autumn Bateman - 3, Lexy Spivey - 3, Joni Hart - 2.

Hounds JV (13-11) vs. Texhoma, Ok.
 Friday 1-27-95 at Texhoma
 Str 17 31 43 53
 Tex 8 18 30 41
 3-Pointers - Daniel Bort - 2, Tye Womble - 2, Buster McLain.
 Gru - Bailey Barkley - 13, Tye Womble - 2, Juan Arreola - 8, Daniel Bort - 8, Buster McLain - 7, Heath Tolleson - 4, Blake Ferguson - 2.

Lady Hounds seventh grade wins tourney



ON THE REBOUND - The Gruver round-robin tournament was held last Thursday and Saturday in both gyms at Gruver. Seen here, four Hounds' 8th grade players, Charlie Stavlo, T.J. McClure, Jeff McClure, and Jim Potts, are struggling to get that inside move for a rebound. Unfortunately, the Hounds fell just short of the championship, which was awarded to Stratford. (Photo by Chad Davis)

The Gruver Junior High Tournament was held last January 26 and 28. Several 7th and 8th grade teams, including Stratford, Perryton, Spearman, and Gruver, all competed in this year's round-robin tournament.

One of the big highlights of the tournament was the Lady Hounds 7th grade kept the championship at home. The 8th grade boys from Gruver did well also, but they were just edged-out by Stratford.

Lady Hounds 7th (10-2) vs. Spearman Lynxettes A

Thursday 1-26-95 at Gruver

Tourney VG

Spm 2 6 9 14

Gru 9 19 29 34

Gru - Krystle Deeds - 8, Lindy Tolleson - 8, Becky Cassady - 4, Chelsie Hicks - 4, Annie Mayhew - 4, Janae Watley - 4, Leah Shults - 2. Spm - Amber Ramon - 3, Brooke Lesly - 3, Camille Smith - 2, Haley Beasley - 2, Audra Sanders - 2, Kristi Wall - 2.

Hounds 7th (6-6) vs. Spearman Lynx 7th

Thursday 1-26-95 at Gruver

Tourney VG

Spm 10 25 33 41

Gru 3 11 18 27

3-Pointers - Spm - Clayton Wilkerson. Gru - Derik Grotegut. Gru - Derik Grotegut - 9, Jared Christian - 4, Daniel Hernandez - 4, Dan Odom - 4, Bray Armes - 3, Dallas Henson - 2, Jesus Rodriguez - 1.

Spm - Winegarner - 24, Clayton Wilkerson - 5, Dusty Barber - 4, Josh Schuman - 4, Henton - 2, Jeremy Mackie - 2.

Lady Hounds 8th (6-6) vs. Spearman Lynxettes 8th

Thursday 1-26-95 at Gruver

Tourney VG

Spm 13 24 36 46

Gru 1 3 13 18

Gru - Sabrina Cookenour - 3, Jennifer Duggan - 3, Missy Johnson - 3, Kelley Ogilvie - 3, Teresa Crow - 2, Kadie Grotegut - 2, Holly McCloy - 2.

Spm - Kristin Beedy - 18, Grace Davis - 11, Brittni Beedy - 6, Kristi Carbajal - 4, Betsy Holt - 4, Leslie Holton - 2, Lisa Swink - 1.

Hounds 8th (8-5) vs. Spearman Lynx 8th A

Thursday 1-26-95 at Gruver

Tourney VG

Spm 10 20 30 43

Gru 7 18 22 31

3-Pointers - Charlie Stavlo, Matt Watlington. Spm - Carlos Hernandez - 16, Aaron Witten - 12, Landon Miller - 6, Michael Lusby - 3, Brian Black - 2, Clancy Vanderburg - 2, Quinten Shieldknight - 2.

Gru - Charlie Stavlo - 9, Dustin Ross - 8, Jeff McClure - 5, Jason TeBeest - 4, Matt Watlington - 3, Clint Robinson - 2.

Gru - Charlie Stavlo - 9, Dustin Ross - 8, Jeff McClure - 5, Jason TeBeest - 4, Matt Watlington - 3, Clint Robinson - 2.

Lady Hounds 7th (11-2) vs. Perryton Rangers 7th

Saturday 1-28-95 at Gruver

Tourney at VG

Per 2 8 12 17

Gru 11 17 24 36

Gru - Janae Watley - 16, Lindy Tolleson - 6, Krystle Deeds - 4, Amanda Schneider - 4, Becky Cassady - 2, Annie Mayhew - 2, Mary Puebla - 2.

Hounds 7th (7-6) vs. Perryton Rangers 7th

Saturday 1-28-95 at Gruver

Tourney VG

Per 4 6 13 25

Gru 6 13 22 35

Gru - Bray Armes - 7, Josh Blount - 6, Colby Hunt - 6, Jesus Rodriguez - 5, Daniel Hernandez - 4, Dallas Henson - 3, Derik Grotegut - 2, Dan Odom - 2.

Lady Hounds 8th (6-7) vs. Perryton Rangers 8th

Saturday 1-28-95 at Gruver

Tourney VG

Per 7 17 26 39

Gru 3 9 19 25

Gru - Jennifer Duggan - 10, Kelley Ogilvie - 9, Erika Salmans - 4, Missy Johnson - 1, Holly McCloy - 1.

Hounds 8th (9-5) vs. Perryton Rangers 8th

Saturday 1-28-95 at Gruver

Tourney VG

Per 6 10 12 20

Gru 6 14 27 36

Gru - Dustin Ross - 9, T.J. McClure - 6, Charlie Stavlo - 6, Jeff McClure - 5, Luke Johnson - 4, Jason TeBeest - 3, Matt Watlington - 2, Clayton Henson - 1.

Lady Hounds 7th (12-2) vs. Stratford Lady Elks

Saturday 1-28-95 at Gruver

Tourney VG

Str 2 6 14 23

Gru 9 16 26 33

Gru - Janae Watley - 13, Krystle Deeds - 6, Chelsie Hicks - 5, Lindy Tolleson - 5, Becky Cassady - 2, Annie Mayhew - 2.

Hounds 7th (7-7) vs. Stratford 7th

Saturday 1-28-95 at Gruver

Tourney VG

Str 7 11 21 24

Gru 6 15 18 26

3-Pointers - Erika Salmans - 2. Gru - Erika Salmans - 9, Teresa Crow - 5, Missy Johnson - 5, Kelley Ogilvie - 4, Sabrina Cookenour - 2, Kadie Grotegut - 1.

Hounds 8th (9-6) vs. Stratford Elks 8th

Saturday 1-28-95 at Gruver

Tourney VG

Str 10 15 26 37

Gru 7 11 23 33

3-Pointers - Jason TeBeest - 6.

Gru - Jason TeBeest - 18, Jeff McClure - 8, T.J. McClure - 3, Luke Johnson - 2, Dustin Ross - 2.

Spearman Lynxettes 7th A vs. Perryton Rangerettes 7th A

Saturday 1-28-95 at Gruver

Tourney

Spm 6 14 23 30

Per 8 21 22 30

Spm - Audra Sanders - 9, Haley Beasley - 7, Amber Ramon - 6, Camille Smith - 5, Kristi Wall - 4, Brooke Lesly - 2, Kathryn Murphy - 2, Randi Burch - 2.

Spearman Lynxettes 7th A vs. Stratford Lady Elks 7th A

Saturday 1-28-95 at Gruver

Tourney

Spm 4 14 23 27

Str 6 13 16 24

Spm - Camille Smith - 11, Haley Beasley - 10, Audra Sanders - 2, Brooke Lesly - 1, Kristi Wall - 1.

Spearman Lynx 7th vs. Stratford Elks 7th

Saturday 1-28-95 at Gruver

Tourney

Spm 6 14 28 43

Str 6 10 21 27

3-Pointer - Clayton Wilkerson. Spm - Clayton Wilkerson - 14, Aaron Winegarner - 11, Josh Schuman - 6, Jeremy Mackie - 6, Schoenhals - 4, Reagan Renner - 2, Dusty Barber - 2.

Spearman Lynx 7th vs. Perryton Rangers 7th

Saturday 1-28-95 at Gruver

Tourney

Spm 17 33 49 61

Per 3 8 12 17

3-Pointer - Clayton Wilkerson, Kelsey Henton. Spm - Clayton Wilkerson - 16, Aaron Winegarner - 10, Dusty Barber - 9, Josh Schuman - 6, Jeremy Mackie - 6, Schoenhals - 6, Reagan Renner - 4, Landon Delozier - 2, Kelsey Henton - 2.

Spearman Lynxettes 8th A vs. Perryton Rangerettes 8th A

Spm 7 15 16 24

Per 5 7 13 22

Spm - Kristin Beedy - 9, Kristi Carbajal - 6, Leslie Holton - 4, Grace Davis - 4, Holly Pipkin - 2, Betsy Holt - 1.

Spearman Lynxettes 8th A vs. Stratford Lady Elks 8th A

Spm 4 12 19 33

Str 4 6 14 21

Spm - Kristin Beedy - 14, Grace Davis - 7, Leslie Holton - 6, Gale Mayfield - 2, Kristi Carbajal - 2.

Spearman Lynx 8th vs. Perryton Rangers 8th

Saturday 1-28-95 at Gruver

Tourney

Spm 10 19 31 45

Per 2 4 8 14

Spm - Schoenhals - 9, Landon Miller - 6, Quentin Shieldknight - 6, Carlos Hernandez - 6, Michael Lusby - 5, Aaron Witten - 5, Clancy Vanderburg - 4, Brian Black - 2, Vargus - 2.

Spearman Lynx 8th vs. Stratford Elks 8th

Saturday 1-28-95 at Gruver

Tourney

Spm 10 17 24 32

Str 11 15 28 52

Spm - Michael Lusby - 12, Carlos Hernandez - 9, Quentin Shieldknight - 6, Clancy Vanderburg - 3, Landon Miller - 2.

Lady Hounds 8th (6-8) vs. Stratford Lady Elks 8th

Saturday 1-28-95 at Gruver

Tourney VG

Str 6 16 24 36

Gru 10 13 18 26

3-Pointers - Erika Salmans - 2. Gru - Erika Salmans - 9, Teresa Crow - 5, Missy Johnson - 5, Kelley Ogilvie - 4, Sabrina Cookenour - 2, Kadie Grotegut - 1.



WAITING FOR THE PERFECT MOMENT - The 8th grade Lady Hounds' team of Gruver was primed and ready for their round-robin tournament. Kadie Grotegut, Kelley Ogilvie, and Teresa Crow are all seen here preparing to block-out the opposing team and steal and offensive rebound. (Photo by Chad Davis)

Lynxettes CONTINUED FROM PAGE 7

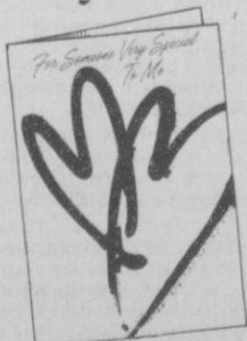
and so was Shieldknight. Beasley managed to bring in 5 points, while she was assisting, stealing, and rebounding. Two of the younger girls of the team, Misha Davis and Lindsey Smith, both had 4 points each. The eight points they contributed not only helped the Lynxettes win, but many of their other plays contributed to the winning cause. Another Shieldknight, Macy, also did her fair share in the game, as well as rounded out the Lynxettes scoring with 2.

As for the Lady Hounds, they too had many girls with impressive stats. Meyers led all the Lady Hounds in scoring with 14 points. Meyers had a hot first quarter with a field goal and 3-4 shots from the free throw line. She also added more points on her total in the second with a couple of consecutive treys, and 3 more points on a field goal and a free shot in the fourth. Kaysha Cluck also had a fantastic game, in which she brought home 12 points. Cluck's points came all in the first and third stanzas of the ball game, with 2 field goals in the first and 3 field goals and 2 free

shots in the third. Weslyn Maupin put on a show for Gruver and Spearman fans alike by having 11 points and an impressive team leading 5 rebounds. Tara Shapley had a hot hand in the game with 8 points. The only other Lady Hound to score, Rodriguez, had a field goal in the first quarter, as well as she was second behind Maupin with 3 rebounds.

This was only the first of two games between the Lynxettes and the Lady Hounds. The next game, which will be the last of district play, will take place on the 10th of February in Spearman. The game should be just as close as the first, and it will not only decide the best girls' team in the county, it may decide who will be first and second in the district.

We have a wide selection of Valentine's Day cards.



Come in today and see our Valentine gift display too!



Cousins
Cards • Gifts

434 Main • Gruver

16 ft. of Valentine Cards including "Long Distance Greetings" and "Recordable Greetings"



With Call Forwarding, he only has to know one number to find you any number of places.

It's not impossible for someone to learn the phone numbers of all the places you might be. But it is unnecessary. Because with Call Forwarding from Southwestern Bell, you can have your home phone number ring wherever you go. And when your number keeps up with you, it's easier for your family and friends to do the same. To order, or for more information on this and other EasyOptions™ calling services, call 1-800-234-BELL.

Southwestern Bell Telephone

"The One to Call On"®

Available in selected Southwestern Bell Telephone areas.

School Bell Program

From now until April 28, 1995, Southwestern Bell Telephone will donate \$2 to the board of trustees of your local high school when you purchase the Call Forwarding service. Your school can earn up to \$1,500 to help purchase anything from fine arts programs to computer software to band uniforms.



"IT'S FOR YOU..."

The Classifieds Have Something For Everyone!

The Home Sealer...
The Car Buyer...
The Do-It-Yourselfer...
The Mother's Helper...
The Job Seeker...
The Bargain Reaper...

When you want results, turn to The Classifieds.

The Hansford County Reporter-Statesman

Serving Hansford County Since 1907

Telephone: 1-800-395-9482 or (806)659-3434

REAL ESTATE

AA Realty

Allen Alford - Broker • 659-3034
Julie Martin - Sales • 659-2425
Larry Trosper - Sales • 659-3491

1017 Townsend - 3/2/1 - New lower price!
1103 S. Townsend - 3/1 1/4, 1, good loc.
510 S. Endicott - 3-2, 2 story
417 S. Drensen - 3, 1 1/4, garden, pati.

NEW LISTING

613 Kenneth - 5 BR, 2 story, rock house
1107 S. Barkley - 3, 1 1/4, 2, BELOW APPRAISAL!

Good Hanger & Storage - Old Airport
1017 Wilmet Dr. - 5/2/2, two story w/bsmt
412 Roland - 3/1/1, make offer

FOR QUALITY & SERVICE CALL US TODAY
We Need Your Listing.

REAL ESTATE

Century 21

GOLDEN SPREAD REALTY
Janye Helton Pointer, Broker Owner
435-5444

712 Collier - 2/1/2, Owners anxious to sell!

117 Brandt - 3/1, REDUCED to \$27,500—immediate possession!

Crawford Addition:
2 - 1 3/4 • Will look at all offers!
2 - 1 • Small and affordable!

205 Hazelwood - Great buy, excellent condition

211 Hazelwood - 3/1, Make an offer.

315 1/2 N. Bernice: Lot for sale.

East 7th Street - 9 mobile home lots. Buy one or all!

© and TM trademarks of Century 21 Real Estate Corporation. Equal Housing Opportunity. INDEPENDENTLY OWNED AND OPERATED

HOME FOR SALE: 10 miles west of Perryton, Hwy 15, (close to pavement) 2.5 acres, 2200 sq. ft., new roof, new water well, new carpet & flooring, new hot water heaters, new paint, new heating system, 3 large bedrooms, 2 full baths, extra large utility room, beautiful patio cover. Assume 17 yr. note at 7%, ready to move into. Reduced to \$76,500. Please call 435-6919. S3, 3tp

GREAT HOUSE IN GREAT LOCATION FOR SALE
2100 sq. ft., basement, double car garage, 4 bedrooms, 3 baths, big den, fireplace, living room, ceiling fans, central heat and air. 702 Gibner. Call 659-3838, 659-3970, or 733-5555. S42, RTN

HOUSE FOR SALE: Updated 2BR, 1B, country kitchen, 2 living areas, utility, stove & refrig. included, new CA & CH. 10x10 storage building, 1002 Bernice. \$29,900. 25x125 commercial bldg., new roof in '94, appraised at \$18,500, sale price \$15,000, 307 Main. Package deal: 307 Main & 1002 Bernice, \$39,500. Will rent. Call for prices (806)358-6148 or (806)733-2617. S2, 1tp

HOUSE FOR SALE: REDUCED!!!! 510x150 ft., 2 car carport, shed, hot tub, fish pond, 3 bedroom, 3 bath, handicap accessible, large LR, bar. \$29,000. 605 S. Archer, 659-2235. S55, RTN

Three Bedroom Brick, two baths, double garage, lots of trees, 1.8 acres, horse barn, 26 by 36 shop. 205 E. 10th, Gruver, Texas. Call J.W. Whitaker at 733-2433. Also 1983 Coachman Motor-home. S30, 1tp/RTN.

FOR SALE: 1117 Townsend, great location for your family. Affordably priced. 3 bed, 1 3/4 bath, with game room & basement. Call Real Estate & Rental TODAY for appointment at 435-4623. S5, RTN

FOR RENT

FOR RENT: Trailer park spaces for rent. Located on S.E. 7th and Loop road, Spearman. \$30 per month. Call 435-5080. S23, 1tp/RTN.

FOR RENT: Got a boat, RV or car to store and not enough room to keep it in? Why not rent an airplane hangar? The City of Spearman has hangars ready for rent at \$70 per month (boats, RVs or vehicles only). Sound like too much money? Why not jointly rent a hangar with other families? Two or three families could rent one hangar and split the costs among them. The hangars are clean, secure, and easy to move into and out of. For more information, call Spearman City Hall at 659-2524 between 8 a.m. and 5 p.m., Mondays through Fridays. S4, 4tc

FOR RENT: One bedroom newly decorated, furnished apartments, utilities paid. Call 659-3260. S47, RTN

FOR RENT: 2 bedroom house. 659-3260. S60, RTN

Are You A Victim of Physical Abuse?
Call Toll Free 1-800-753-5308

We are in Spearman on the 1st, 3rd, & 5th Wednesdays of each month at the First Presbyterian Church, 1021 Cotter. On the 2nd & 4th Wednesdays we are at the First Christian Church at 510 King in Gruver. We can come to Spearman & Gruver any time upon request. We operate a safe place for victims & their children to stay in times of crisis.

Panhandle Crisis Center
Serving Hansford, Lipscomb & Ochiltree Counties
317 S. Main Memorials Accepted Perryton, Tx.

FOR RENT

FOR RENT: 4 BDR, 3 B, 2 living areas, kitchen/dining area, utility room with cabinets, panel sunroom, storm cellar, fenced backyard, \$500/month at 703 Steele Dr. Call 802-365-9742.

FOR RENT

FOR RENT: Completely rebuilt 605 International and HD 800 Moline Irrigation engines. Call 733-5263 or 659-5036 7:30 a.m. to 5:30 p.m., Monday thru Friday, 7:30 a.m. to 12 p.m. Saturdays. S4, RTN

FOR SALE: Radio Shack in Borger has the RCA 18" Digital Satellite System installation available in the Hansford County area. Call 274-7077, 425 W 10th.

FOR SALE: Spearman yearbooks. Deadline is Feb. 9, cost is \$30. Contact Toni Thomas at the high school. S3, 3tc

TREES TREES: Order your spring shade & fruit trees now at D&C Greenhouse. Call for sizes and prices at 806/659-5171. S5, 1tc

FOR SALE: 90 model Cougar LS. Excellent condition. Call 435-2092 after 5 p.m. S5, 4tc

FOR SALE: 1984 Ford Truck with 20' van and lift. V-8 diesel engine. Excellent condition. For more information call 659-3432 or 659-2912. S52, RTN

FOR RENT

FOR RENT

4 BDR, 3 B, 2 living areas, kitchen/dining area, utility room with cabinets, panel sunroom, storm cellar, fenced backyard, \$500/month at 703 Steele Dr. Call 802-365-9742.

FARM PRODUCTS

200 ACRES FARMLAND: 6 miles southwest of Spearman, irrigation well, no mineral rights. Seller reserves right to approve buyer. Bob Hardy Realty, 659-3440, Robert Hardy, Broker. S59, RTN

FOR SALE

FOR SALE: Radio Shack in Borger has the RCA 18" Digital Satellite System installation available in the Hansford County area. Call 274-7077, 425 W 10th.

FOR SALE: Spearman yearbooks. Deadline is Feb. 9, cost is \$30. Contact Toni Thomas at the high school. S3, 3tc

AUTOMOBILES

FOR SALE: 90 model Cougar LS. Excellent condition. Call 435-2092 after 5 p.m. S5, 4tc

FOR SALE: 1984 Ford Truck with 20' van and lift. V-8 diesel engine. Excellent condition. For more information call 659-3432 or 659-2912. S52, RTN

JOB OPPORTUNITIES

MAKE MONEY TAKING ORDERS FOR AVON: Door to door selling OK but not necessary. Up to 50% commission. Demos always 40% discount. Call Billie 1-800-447-2967. S59, RTN

OWN YOUR OWN APPAREL OR SHOE STORE, CHOOSE: Jean/sportswear, bridal, lingerie, westernwear, ladies, men's, large sizes, infant/preteen, petite, dancewear/aerobic, maternity, or accessories store. Over 2000 name brands, \$25,900 to \$37,900: inventory, training, fixtures, grand opening, etc. Can open 15 days. Mr. Loughlin (612) 888-6555. S1, 3tp

PUBLIC NOTICE

NOTICE TO CONTRACTORS OF PROPOSED TEXAS HIGHWAY MAINTENANCE WORK

Sealed proposals for mowing of highway rights of way on various highways in the northernmost seventeen (17) counties of the Texas Panhandle will be received by the Texas Department of Transportation located at 5715 Canyon Drive, Amarillo, Texas 79110 until the deadlines of the following schedule: Thursday, Feb. 16—Dallam County at 9:00 a.m.; Gray County at 9:30 a.m.; Ochiltree County at 10:00 a.m.; Deaf Smith County at 10:30 a.m.; Sherman County at 11:00 a.m.; Armstrong County at 1:30 p.m.; Hemphill County at 2:00 p.m.; and Hartley County at 2:30 p.m.; Friday, Feb. 17—Hansford County at 9:00 a.m.; Randall County at 9:30 a.m.; Hutchinson County at 10:00 a.m.; Oklahoma County at 10:30 a.m.; Potter County at 11:00 a.m.; Groom County at 1:30 p.m.; Moore County at 2:00 p.m.; and Carson County at 2:30 p.m., then publicly opened and read. All prospective bidders are encouraged to attend the Pre-Bidders' Conference which will be held at the Texas Department of Transportation's District Office at: 5715 Canyon Drive, Amarillo, Texas, 2:00 p.m., Friday, February 10, 1995. Bidding proposals, plans and specifications will be available at the Engineer's Office at 5715 Canyon Drive, Amarillo, Texas, Telephone (806)356-3283, Attn: Joyce Davis. S5, 2tc

SERVICES

J & M Service Center 24-Hour Service 415 Collard, Spearman 79081. 659-5519 or 659-3382. Tires, flats, oil & lube, wash, brakes, batteries and minor repairs. Now selling gas. S27, 1tc/RTN.

CALL YOUR LOCAL Used Cow Dealer for days a week stock removal. 659-3544 or 1-800-692-4043. Serving Cattlemen for the past 20 years. G51/RTN.

PITS CLEANED: Dragline or Loader. Call LeeRoy Mitchell, 733-2384 or 733-2175. S47, 1tc/RTN.

CLIFCO WINDSHIELD REPAIR SERVICE Don't replace your damaged windshields. Mobile service: 435-0126. Homephone: 435-9149. And toll free at 1-800-753-9849. Ask for Clifford Cox. S43, RTN

Free Bible Correspondence Course. Write P.O. Box 604, Perryton, TX 79070. S46, RTN

NEED TEMPORARY SECRETARIAL HELP? Call Linda Arnold at 659-3354. Also will do typing, light bookkeeping, and statements in my home. S2, 4tc

WEIGHT WATCHERS is now meeting every Thursday in Gruver. For more information, please call 1-800-359-3131.

HELP WANTED

HELP WANTED: Automotive mechanic needed. Good pay and benefits provided. Friendly, team-oriented working environment, excellent small town atmosphere. Apply in person or send resume to Murphy Olds GMC, Inc., 520 N. Durmas Ave., Durmas, TX 79029.

HELP WANTED: North Plains Home Health, Inc. has immediate openings for CARING and COM-PASSIONATE RN's/LVN's and Home Health Aides to provide local home health care. Excellent pay and working conditions. For more information and/or applications contact Vera Dominguez at 120 Main, Gruver or call 733-5808. S4, 2tc

HELP WANTED

HELP WANTED: Full-time experienced clerk to train as assistant manager. Must have some knowledge in bookkeeping. Apply in person only at Taylor Food Mart, 17 Collard, Spearman, TX. S5, 4tp

Hansford Hospital is accepting applications for part time Hospice RN. Must possess a caring and exceptional attitude. Contact Linda Sanders, Personnel Director, Hansford County Hospital District, 707 S. Roland, Spearman, Texas 79081, 806/659-2535. EOE.

Tex SCAN

Statewide Classified Advertising Network
More than 300 Texas newspapers for \$250. Call this newspaper for details.

CASH FOR REAL estate notes up to 95% of your balance! No points or commissions. Cash in 5 days. Free quote. Monday-Saturday, 1-800-501-FNAC.

CASH NOW! We buy mortgages, trust deeds, land contracts. Sold property? Receiving payments? Get cash you need now! Best prices! National Mortgage Buyers, Inc. 1-800-222-5129.

FREE DEBT CONSOLIDATION. Immediate relief! Too many debts? Overdue bills? Reduce monthly payments 30%-50%. Eliminate interest. Stop collection callers. Restore credit. NCCS, nonprofit. 1-800-955-0412.

MORTGAGE-NOTE-TRUST-Deed holder? Need a solution to your money needs? Turn your payment stream into cash now! Free quote. Call Loyal Funding 1-800-297-5570.

NEED MONEY NOW? We buy and sell notes and mortgages. Wintex Funding 1-800-428-8114. Guaranteed top price. Call for free quote.

WE BUY NOTES secured by real estate. Have you sold property and financed the sale for the buyer? Turn your note into cash 1-800-969-1200.

20/20 WITHOUT GLASSES! Safe, rapid, non-surgical, permanent restoration in 6-8 weeks. Airline pilot developed, doctor approved. Free information by mail: 1-800-422-7320, 406-961-5570, FAX 406-961-5577. Satisfaction guaranteed.

50-150 ACRES, TEXAS hill country, Rocksprings. Loaded with deer, turkey, 3395 to 4450/acre, owner terms. Electricity or water available on some parcels. 1-800-876-9720.

80 ACRES WYOMING, just west of Rawlins. Only \$9,995. \$95 down, \$99/month, 9% interest for 15 1/2 years. No credit qualifying! Call John (619) 280-2823.

GREAT COMMERCIAL PROPERTY. Fronts three U.S. highways; 12,000 motorists daily. Ideal for retail, restaurant or professional office. Growing community, Lampasas, Texas. 512-556-6333. After 6, 512-556-3406.

LOSE WEIGHT WHILE you sleep. All natural. FDA approved lab. Clinically proven very effective, 100% guarantee. Call 1-800-710-8142 or send money order: \$32.95 (6 week supply). Worldwide Nutrition, P.O. Box 871988-262, Dallas, TX 75287.

NATIONAL LISTING SERVICE, American Land Liquidators. Lots, homesites and acreage. For sale by owners across the country. Call for free lists. Buyers: 1-800-480-0090, sellers: 1-800-364-6612.

RAPID WEIGHT LOSS "Only \$17.95." Burns fat • calories • stops hunger. Lose 3-5 pounds/week. Money back guarantee. Call for information. United Pharmaceutical 1-800-733-3288 (C.O.D.'s accepted).

SUNQUEST WOLF TANNING beds. New commercial-home tanning units from \$199.00. Lamps-lotions-accessories. Payments low as \$20.00. Call today. Free new color catalog, 1-800-462-9197.

TIMESHARE UNITS and campground memberships. Distress sales—cheap! Worldwide selections. Call Vacation Network U.S. and Canada 1-800-543-6173. Free rental information 305-563-5586.

BREAST IMPLANTS, FREE registration forms and free consultation. Call 1-800-833-9121, women and post-implant children. Carl Waldman, Board Certified personal injury trial lawyer, Texas, since 1978.

GM TRUCK FIRES, Bronco II, Jeep, ATV, Minivan & pickup rollovers. Serious injuries & death. Free consultation 1-800-883-9858 David P. Willis, Houston, Texas **** Board Certified Personal Injury Trial Lawyer.

BECOME A PARALEGAL - accredited attorney instructed diploma and degree home-study. Up to 50% credit awarded for academic and life/work experience. SCI-NIPAS free catalog, 1-800-669-2555.

BEST ONE MAN business! Invest \$15,000 reinvest profits 9 months, make up to \$8,700 a month. 9-year-old company. 62% profit margin. Call Vends 1-800-527-8363.

BRANSON, MO VACATION Counselors. Arrange travel groups, vacation packages for your local area. Training, materials, seminar provided. Year Around, Woods Resort, 2201 Greta Rd., Branson, MO 65616.

CLEANING FRANCHISE: BUILD a family business. Let the Service-Master family help your family start your own residential or commercial cleaning franchise for as little as \$5,955 down. Fortune service 500 company offering unique training and marketing support. Financing available. Call for a free brochure: 1-800-230-2360.

LEARN HOW TO BUY and sell small businesses. Free information 24 hours. 1-800-943-6050.

NO SIGN-UP FEE! Networkers, earn commissions on product and literature. Distribute inexpensive pycnogenol and other nutritional products. Free call, free information. 1-800-726-7911, 24 hr message.

YOUR OWN BUSINESS: Information superhighway of telecommunications is coming. Build your own tollbooth now with seven year public utility company. \$195 investment. Immediate cash. 1-800-871-7436.

EXPANDING INDOOR/OUTDOOR swim production units in Georgia. Seek livestock personnel. Send resume to: Suite 448, 2351 College Station Road, Athens, Georgia 30605.

INBOUND TELEMARKETING REPRESENTATIVE - Background in telecommunication, telemarketing preferred. Bachelor degree in business or marketing. 30-40K depending on experience. 100K possible with incentives. Qualified applicant reply: CAO President, PO Box 1350, Ridgeland, MS 39158-1350.

ATTENTION DRIVER TEAMS: \$15,000 in bonus, paid monthly, quarterly & yearly,

HELP WANTED

HELP WANTED: Full-time experienced clerk to train as assistant manager. Must have some knowledge in bookkeeping. Apply in person only at Taylor Food Mart, 17 Collard, Spearman, TX. S5, 4tp

WANT TO BUY

WANT TO PURCHASE: Mineral rights and other oil/gas interests. Send details to: P.O. Box 13557, Denver, CO 80201. S60, 20tc

MISCELLANEOUS

Discouraged with diet aids of the past? Look forward to a more satisfying future with FORMULA THREE...all-natural and amazing. See Jim Evans - 659-2141 or 659-3379. S60, RTN?

PUBLIC NOTICE

LEGAL NOTICE

Hansford County Commissioner's Court will receive bids until 4:00 p.m. on Friday, February 10, 1995 on one, new, 1995 heavy, half-ton pickup with and without trade-in for Precinct 2. Bids will be opened on Monday, February 13, 1995 at the regular Commissioner's Court meeting, beginning at 10:00 a.m. Specifications are available at the County Judge's Office or the County Auditor's Office in the Hansford County Courthouse. The Court reserves the right to accept or reject any or all bids.

Jim D. Brown
Hansford County Judge
S4, 3tc

JAN'S ETC. NEW & USED & ANTIQUES TOO

Everything for home and family. Plains Shopping Center in Spearman

Open Monday - Saturday
10 a.m. til 6 p.m.

NEW TRAMPOLINES

Mats & springs
Resew trampoline mats.
Make new boat covers.
Call (806)659-2109
Harry Stumpf
301 W. 12th
Spearman, Texas

FOR SALE

UNBELIEVABLY AT BECKETT PRICE!

Michael Jordan Rookie Card and/or set. Call 659-3863 or 659-2912

OSGOOD MONUMENT CO.
Amarillo, Texas

Dealers of Rock of Ages Granite, as well as all colored granites, marble and bronze memorials.

Represented by
Boxwell Bros. Funeral Home
519 S. Evans
659-3802

Lake CONTINUED FROM PAGE 6

to address this issue. The U.S. Federal Wildlife Service conducted the meeting. Surface water, groundwater, lending institutions, grain associations, Texas Cattle Feeders Association, the oil and gas industry, and the family farm were all well represented. Each of our elected officials in Texas, as well as in Washington, was either present or sent a staff member to speak. Every single speaker was opposed to listing the shiner as endangered.

According to the Texas Parks and Wildlife Department, the shiner is plentiful in the Canadian River of Texas. It seems that Texas would be penalized for the loss of the shiner in Kansas, Oklahoma, and Arkansas.

The Arkansas River Shiner is present in the Pecos River of New Mexico. The U.S. Federal Wildlife Service does not recognize this population, as it was introduced by man.

The meeting in Amarillo was very convincing not to list the shiner. Many views were presented. I have been told that the U.S. Federal Wildlife Service considers only biological facts.

The Endangered Species Act expired in 1992. Congressmen representing us have called for a moratorium on any listings until the Act is reinstated. I encourage everyone to write to your representatives in Washington and tell them how you feel. Hopefully, no such endangered species listings will take place, until a new revised Endangered Species Act is written.

I do not believe the listing of the Arkansas River Shiner is warranted, especially not at the expense of our water and food supply, our property rights, and our economy.

By DOROTHY HUDSON

Items from the Livestock Weekly interview of Rick Gilliland, wildlife biologist with the U.S.D.A. for 16 countries in the Rolling Plains, South Plains and Panhandle of Texas, of special interest were:

When called by a rancher with coyote problems, he always checks (if he is shown an intact carcass) to see if the calf was nursing or if the coyote was just scavenging a still-born calf. If the calf had been licked clean by its mama and if it had dirt on the hooves, then he knows it was nursing. He also checks to see if the calf was grabbed by the tail or by the throat. The experienced coyote goes for the throat and is usually over three years old. If the rancher comments he has a lot of bobbed tailed calves, Rick knows the predator coyotes are inexperienced and don't have it figured out yet. They're young and just begging to prey on calves.

Coyotes have more pups in a low density area with litters of 10 to 13 pups as opposed to 4 to 6 in areas that are more crowded. The young coyotes are forced out of a dominant coyote's territory, but if calving is going on, all the coyotes in the area are drawn. The younger coyotes will go for the afterbirth and the older coyotes for the calves.

In the most extreme situation Gilliland has found, coyotes killed 20 per cent of the calf crop four or five years ago on one Panhandle ranch.

The article concluded with a warning from Gilliland that an old menace may be returning. Mountain lion numbers are increasing in the mountains of New Mexico, and their territory will widen with them coming down the river beds into the Texas Panhandle. We could tell him they are already here.

Leona and Joel Stavlo are interested in the wild life of the area. Joel used to trap on the Palo Duro as a teenager. They have a coyote in their locality that they recognize when they see him. To most of use all coyotes look alike, so this made me wonder if others of you keen observers kept up with certain coyotes or even named them. At one time, I think there was a big coyote-maybe part dog-near Morse that was well known.

Accident CONTINUED FROM PAGE 1

Two ambulances and four fire trucks from Gruver were dispatched to the scene. Medivac and the Spearman Rescue Unit, with the jaws of life, were put on standby but were not needed. "We like to alert units

that might be needed, because we don't know what the situation is until we get there, and it is better to have them on stand-by and not need them," said Jordan.

Stock Show CONTINUED FROM PAGE 4

Jr. Showmanship - Jeramy Mackie and Sr. Showmanship - Leah Mackie.

Swine:
Hamps, Class I: Texana Clyburn - 1st, Brian Black - 2nd, Ty West - 3rd, Jeramy Mackie - 4th, Rhett Renner - 5th, and Leah Mackie.

Class II: Monty Herrington - 1st, Dustin Mackie - 2nd, Mandy Vernon - 3rd, and Rhett Renner - 4th.

Class III: Darla Black - 1st, Kylie McGaha - 2nd, Rhett Renner - 3rd, and Jeramy Mackie - 4th.

Spots:
Chelsea Nollner - 1st, Coy

Herrington - 2nd, and Monty Herrington - 3rd.

Cross:
Zack Nollner - 1st, Reagan Renner - 2nd, Leah Mackie - 3rd, Ty West - 4th, Josh Winegarner - 5th, Joclyn Edwards - 6th, and Paul Bynum - 7th.

York:
Josh Bynum - 1st, Brandon Clyburn - 2nd, Timmy Bynum - 3rd, and Chuck Grayson - 4th.

Grand Champion - Darla Black Res. Champion - Josh Bynum.

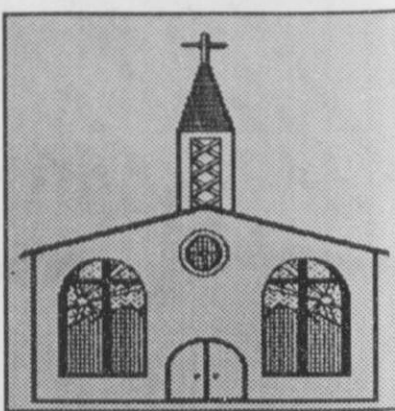
Jr. Showmanship - Brandon Clyburn and Sr. Showmanship - Darla Black.



DICKENS HONORED - Iona Dickens was honored with a retirement party after 25 years of loyal service at what is now Lowe's. She has worked in the produce department since 1970 when the store was named Cut Rate and owned by Pete Fisher. Pictured are (l to r) Joyce Frost, Iona Dickens, and June Spencer. Frost and Spencer are coworkers in the produce department and have worked with Dickens for many years. (Photo by Cora Thompson).

Let us replenish the seed of faith through...

REGULAR CHURCH ATTENDANCE, DAILY BIBLE READING & PRAYER



Curtis' Hot Oilers
806-659-3432
"Taking Service to Perfection"
806-659-2912 P.O. Box 714
800-821-6714 Spearman, TX 79081

Palo Duro Supper Club
22 S. Archer
659-2232

C.O.'S SUPPLY CO.
Plumbing & Tire Sales & Service
421 W. Kenneth • Spearman
659-3781 or 659-3555

Bartlett's Ace Hardware
105 W. Broadway
733-2404

GILLASPIE
AUTO & TRUCK CENTER, INC.
CHEVROLET • OLDS • PONTIAC • BUICK
CHRYSLER • PLYMOUTH • DODGE
Hwy 207 South • P.O. Box 430 (806)659-2541
SPEARMAN, TEXAS 79081

Deakin ELECTRIK
OILFIELD • RESIDENTIAL • COMMERCIAL
519 Plains Shopping Center
Spearman, TX 79081
1-800-999-1506 (806)659-5016

REINKE IRRIGATION SYSTEMS Paschel Irrigation
(806)659-5228 • 1-800-659-6580
Corner Airport Rd. & Hwy 15 West
Spearman, Tx.

Gruver Cablevision
Quality Family Entertainment with
"the Disney Channel"
308 Main • 733-5295

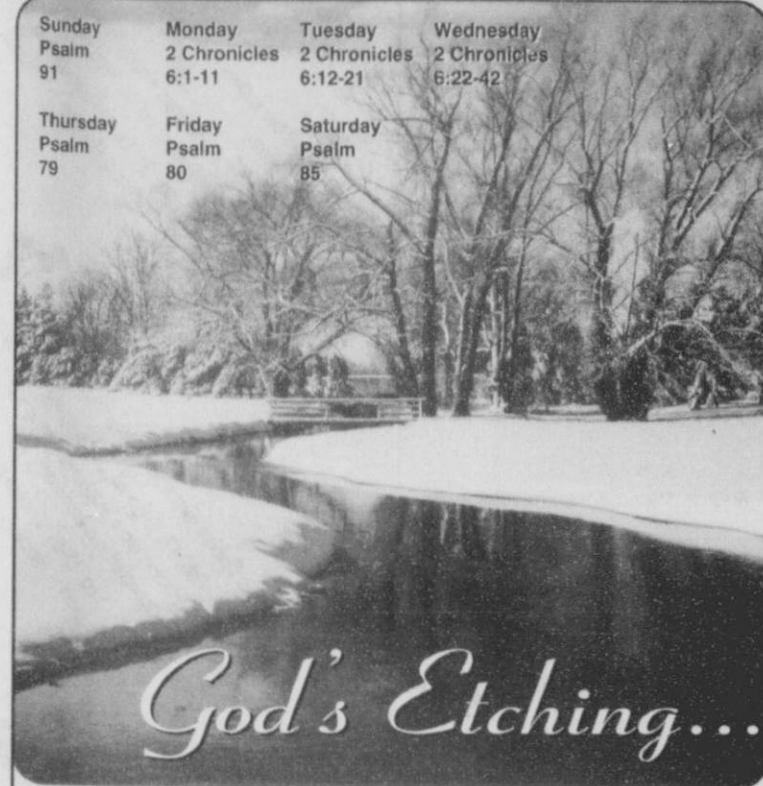
Morse Implement Company
"Join us in church this week"

Boxwell Bros. Funeral Home

THE HANSFORD COUNTY REPORTER-STATESMAN
Serving The Communities Of Spearman, Gruver & Morse
213 Main • 659-3434
1-800-395-9482

CORONADO HOSPITAL
Pampa, Texas
(806)665-3721

Compliments of
G&G FOODLINER
516 Main • Gruver
733-2471



Man's ventures in art merely imitate the magnificence of God's designs. No museum can offer a winter landscape to rival God's own etching. The works of the Divine Artist not only bring us beauty, peace and inspiration, but also teach us fundamental lessons for everyday living. The love so evident in nature's beauty is a love we can all share. The orderliness of creation inspires unity, trust and brotherhood. For all our spiritual searching, you and I cannot match the touch of the Almighty. But following lines He has drawn for us - perhaps one day our human scene will look more like something God etched.

Scriptures Selected by The American Bible Society
Copyright 1995, Keister-Williams Newspaper Services, P. O. Box 8005, Charlottesville, VA 22906

In Spearman...

Apostolic Faith Church
822. S. Dressen • 659-2870
Sunday School: 10 a.m.
Worship: 11 a.m.
Evening Worship: 6 p.m. Sun.
Wed. Prayer Meeting: 7:30 p.m.
Pastor James Brown

First Assembly of God
401 N. Bernice • 659-2295
Sunday School: 9:45 a.m.
Worship: 10:50 a.m.
Evening Worship: 7 p.m.
Wednesday Worship: 7:30 p.m.
Youth: 7:30 Wednesday
Pastor Todd Lillard

First Christian Church (Disciples of Christ)
29 S. Bernice • 659-2036
Sunday School: 9:45 a.m.
Worship: 10:50 a.m.
Women's Bible Study: 2 p.m. Wed.
Youth: Wed. 6 p.m. & Sun. 5 p.m.
Pastor LaVern Draper

First Baptist Church
123 N. Bernice • 659-5557
Sunday School: 9:45 a.m.
Worship: 11 a.m.
Evening Worship: 7 p.m.
Jr. High Youth: 6 p.m. Wed.
High School Youth: 7 p.m. Wed.
Youth Choir: 6 p.m. Sun.
Pastor Kyle Henderson

Church of Christ
121 S. Haney • 659-3244
Sunday Bible Class: 9:45 a.m.
Worship: 10:30 a.m.
Evening Worship: 6 p.m.
Bible Study Wed. 7:30 p.m.
KRDF Radio Program
Living With Christ 7:50 a.m. M-F
Minister Arnis Pape

Fellowship Baptist
1102 S. Archer • 659-2783
Sunday School: 10 a.m.
Worship: 11 a.m.
Evening Worship: 6 p.m. Sunday
Youth & Adult Serv.: 7:30 Wed.
Pastor Rick Fincher

Primera Mision Bautista
502 E. 7th • 659-3991
Sunday School: 9:45 a.m.
Worship: 11 a.m.
Pastor Guadalupe Carranza, Jr.

Trinity Community Church
717 W. 7th Ave. • 659-2671
Celebration of Praise 10:15
Worship Service and Children's Church 10:30
Sunday Evening 6:30 p.m.
Wednesday evening: 7 p.m.
Pastor Dan Carter

Faith Lutheran Church (ELCA)
1101 Bernice • 659-2252
(Worships with First Presbyterian Church)
First Presbyterian Church
(Worships with Faith Lutheran Church)
1021 Cotter • 659-2033
Sunday School: 9:45 a.m. at Lutheran Church
Worship: 11 a.m. (alternates monthly between addresses above)
Pastor Beverly Cook

First United Methodist
407 S. Haney • 659-5503
Sunday School: 9:45 a.m.
Worship: 11 a.m.
Jr. High Youth: 5 p.m. Sun.
High School: 6 p.m. Sun.
Pastor Jeff Lust

Union Church
31 S. Endicott • 659-2644
Sunday School: 9:45 a.m.
Worship: 10:45 a.m.
Evening Worship: 6:00 p.m.
Bible Study & Prayer Meeting: 7:00 p.m. Wed.
Pastor Billy Stanford
Sacred Heart Catholic Church
901 Roland • 659-2792
Sat. Night Mass: 7 p.m.
Sunday Mass: 8:45 a.m. - English (8:45a.m. Service on KRDF 98.3 FM)
11:15 a.m. - Spanish
1:30 p.m. - Gruver - Christo
Rendtor Mass - Spanish
Rev.. Fernand Couture

This feature is made possible through the Sponsorship of these Civic Minded Businesses

"WE SUPPORT OUR LOCAL CHURCHES"
CAPROCK #1 & #2
Mike Heard, Gen. Mgr.
(806)733-5043 or 733-5025
"Custom Cattle Feeding"

In Gruver...

First Baptist Church
402 E. Broadway • 733-2411
Sunday School: 9:45 a.m.
Worship: 10:50 a.m.
Disciple Training: 6 p.m. Sunday
Prayer Meeting: 7:30 p.m. Wednesday
Pastor Larry Miller

Church of Christ
209 King • 733-2760
Sunday School: 9:30 a.m.
Worship: 10:20 a.m.
Evening Worship: 6 p.m.
Wed. Evening Worship: 7:30 p.m.
Minister Bob Setliff

First Christian Church
510 King • 733-2960
Sunday School: 9:45 a.m.
Worship: 11 a.m.
Wed. Bible Study: 7:30 p.m.
Youth: 6:30 Wednesday
Pastor Gary Gumfory

Oslo Lutheran Church (ECLA)
West of Gruver on Hwy 15 & N. FM 1162
339-7646
Sunday School: 9:45 a.m.
Worship: 11 a.m.
Morning Prayer: 9 a.m. Wed.
Pioneer Clubs (Grades 1-6): 4-5:30 p.m. Wednesday
Pastor John R. Chandler

Community Bible Church (Interdenominational)
Hwy. 15 • 733-2443
Sunday School: 10 a.m.
Worship: 11 a.m.
Wed. Prayer Meeting: 7 p.m.

First United Methodist
Broadway & Garrett • 733-2651
Sunday School: 9:45 a.m.
Worship: 8:30 a.m. & 10:50 a.m.
Evening Worship: 6 p.m.
Pastor Lewis Holland

In Morse...
Morse Baptist Church
Pastor Mike Martin
733-2757

BERRY CLEANERS
DAN DESIMONE - OWNER
Phone 659-3122 • P.O. Box 1017
207 Main St. • Spearman, Tx. 79081

GRUVER FORD
531 Main • Gruver • 733-2431

Interstate Savings & Loan
322 Main • Spearman • 659-2559

Hagerman Services
Backhoe • Dozer • Welding
North Hwy. 15 • Spearman
659-5131

Gordon Drugs
Dependable Prescription Service
314 Main • Spearman
659-2141
Jim Evans

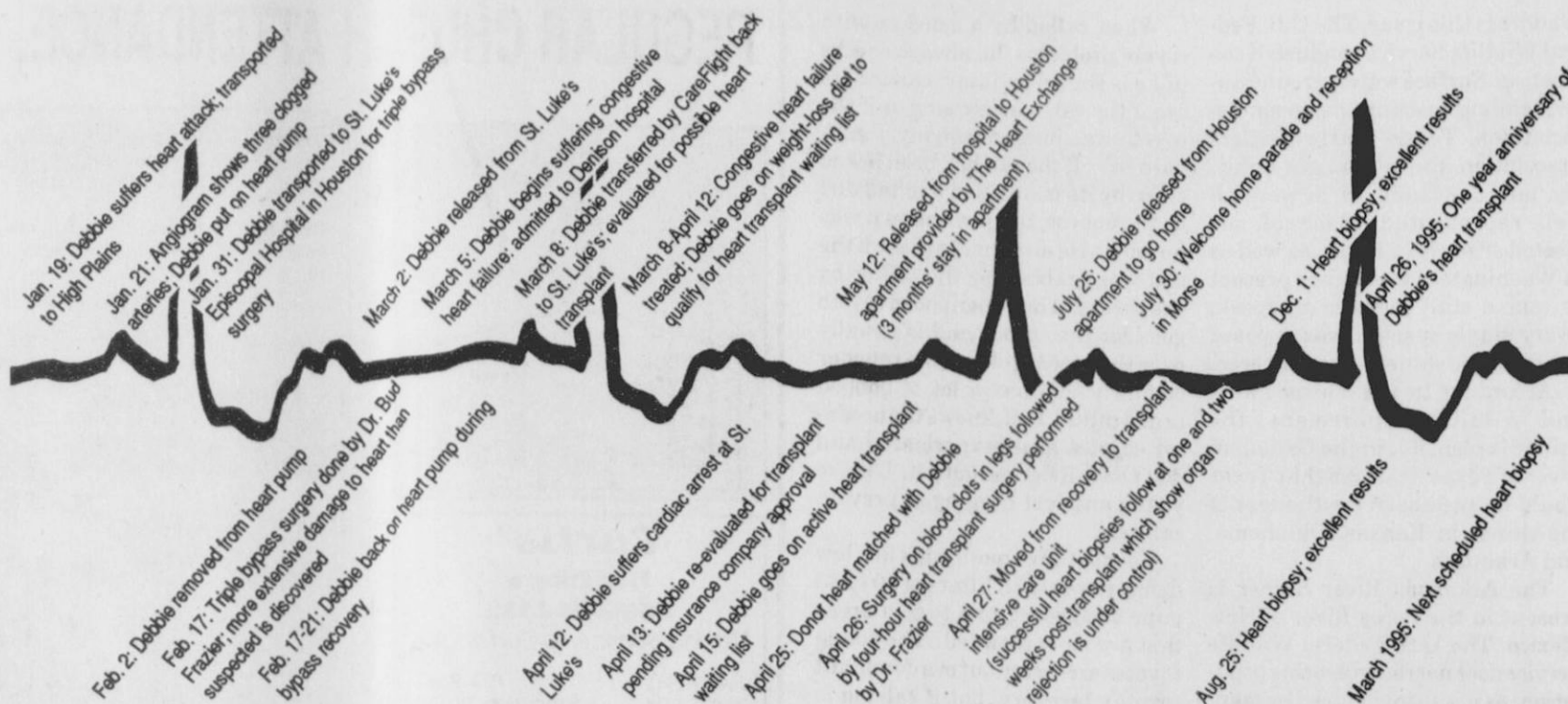
Compliments of...
AGCO
of Spearman, Inc.
"See you in Church"
659-3751

Heart-Smart Vocabulary

cardiology: branch of medicine dealing with the diagnosis and treatment of heart disorders; heart doctors are cardiologists.
myocardial infarction: a "heart attack," or sudden complete blockage of a coronary artery, stopping blood flow to one section of heart muscle; also called a "coronary."
coronary arteries: the vessels that supply oxygen-rich blood to the heart itself.
cardiac arrest: literally, "stoppage of the heart."
congestive heart failure: occurs when the heart fails to pump enough blood to the body.
Coronary Artery Disease (CAD): the narrowing of the arteries supplying blood to the heart, reducing the amount of blood the heart receives; also called "heart disease."
coronary bypass: type of surgery used to rechannel blood flow past blocked coronary arteries.
angiogram: test performed using X-rays to view the blood vessels.
heart transplant: procedure in which a heart is permanently transferred from one person to another to replace a diseased, damaged or destroyed heart.

Source: World Book Encyclopedia 1994 ed. "Heart"

HEARTBEATS: A Timeline of Events for Debbie Sears



TRANSPLANT TALK

"St. Luke's Transplant Team Manager Discusses Hearts"

By JEAN ANN BEHNEY

Reporter's Note: The following is an interview conducted by telephone with Penny Powers, manager of the transplant service at St. Luke's Episcopal Hospital in Houston where Debbie Sears received her new heart. Parentheticals are mine.

Question: How many heart transplants are done at St. Luke's, and who does them?

Answer: We currently average about 50 transplants a year, and have done a total of 580 since the program began in 1982. Dr. (O.H.) Frazier is our main surgeon, and Dr. Denton Cooley is also still operating. He started the program in '82.

Q: What is the survival rate for heart transplant patients?

A: At one year, 80 to 85 per cent survival is the general survival statistic. Rejection and infection usually happen in the first three months following the transplant, so in general, after that, these are less of a factor. Any problems after the first year are generally not life-threatening.

Q: How long has St. Luke's longest-lived patient survived?

A: We have a man from our second year of the program who is still living. That has been 12 years! Worldwide, there are 22-year-long survivors.

Q: Who are the patients who get hearts?

A: Our youngest transplant patient was 30 days old and our oldest 70 years. Forty per cent, or about half, of our patients suffer Coronary Artery Disease. Another 40 per cent have dilated cardiomyopathy, or hearts that just won't work any more, often for unknown reasons. The remaining 20 per cent are a mixture of heart problems. Some have viral cardiomyopathy. The patients go through a work-up process to qualify to get on the transplant waiting list. They go through a screening committee of 20 people. We have to make sure they have no other illnesses, for example. Then they get a Status-1 or Status-2 rating. Debbie Sears was a Status-1. (She could not leave the hospital without a new heart.)

Q: Where do the donor hearts come from?

A: We fly up to 1,500 miles in the United States to get the hearts through our procurement group, Life Gift.

Q: Who has donated these hearts?

A: It used to be mostly young adult accident victims, but with new motorcycle helmet and seat belt laws, there are not as many of these now. The hearts come from catastrophic loss, whether that be motor vehicle accidents or other sudden death. The typical donor is now someone in their thirties. By the way, the number of people waiting for hearts has quadrupled in the last few years. There aren't enough available.

Q: Is it true that you call the people who get the hearts a "Harvest Team" and that they carry them in little red coolers?

A: Yes. And it is one of those Igloo coolers!

Q: How long is the average wait for a heart at St. Luke's?

A: The wait varies according to blood type, but about 300 days.

Q: But can the patients wait that long?

A: Sometimes, no. Patients on the waiting list already have less than a year to live without a new heart.

Q: Who decides who gets a donor heart when it becomes available?

A: We have a computer program with each patient's blood type, size and other factors put in. The computer analyzes which patient would be the best recipient for the heart. But we have to update this information daily, because a patient might become too sick while waiting.

Q: How was Debbie Sears a typical heart transplant patient and how was she atypical?

A: She was typical in that she was very, very sick. She had to be maintained in the ICU the majority of the time. She was atypical in that she was a young female. Young females do not usually have coronary artery disease. There are six to eight risk factors for coronary artery disease, like high cholesterol, family history and high blood pressure, and she did have several of these.

Q: Did you get to know her while she was at St. Luke's?

A: Very well, and she was such a special person! The whole family was special.

Q: How sick was Debbie?

A: Let's put it this way—every day that we still had her, waiting for her heart, we could hardly believe she had hung on that much longer.

Q: What is the biggest concern of patients (on the waiting list) pre-operation?

A: "Will I have enough time until I get a heart?"

Q: What is the biggest concern after the transplant?

A: Initially, they worry about rejection.

Q: How have heart transplants changed or improved over the last, say, two to four years?

A: The procedure itself hasn't changed much, but the technology supporting these patients while they are waiting (for hearts) is better. We have different heart pumps now. There has been a lot of refinement in the immuno-suppressant drugs given to patients to prevent rejection (after the transplant.)

Q: What will the future hold for those who need new hearts?

A: In the next ten years, there will be an implantable pump for the left side of the heart. It will have an electric source of a battery pack the patient can wear. (Heart patients with today's pumps have to remain in the hospital, in part because of the size of the equipment.)

Q: There hasn't been any advancement on the artificial heart then?

A: Right now there is nothing to take the place of the donated human organ. But the Texas Heart Institute (associated with St. Luke's and located in the same building in Houston) is doing all kinds of research and education.

Q: So the best thing a person could do is to be a donor?

A: Absolutely, and the number of donors will not increase without lots of public education.

layman's terms, "heart attack." "That first attack did three per cent damage to the right side of my heart," she said. "The surgeons found a 100 per cent blockage in one of my arteries but just left it, because it was so damaged there was no point in opening it up."

Debbie's problem was traced to an inherited tendency to high cholesterol and overweight. "As a child, I was just healthy, but always chubby," she said. She was placed on a low-fat diet.

Two months later, she was out celebrating Beryl's birthday, and over the next few years, they had married and welcomed Brent into their family. End of story? So they believed, although Debbie did establish herself as a patient with a cardiologist, Dr. Joel Osborn of Amarillo, when they moved to Morse in 1992.

Fast-forward to the night of January 19th and the chest pains she remembered from six years earlier. Beryl telephoned Golden Plains Hospital in Borger to say they were on their way, and why. ("Waiting for an ambulance would have cost us a lot of minutes," he said, referring to Morse's rural location and lack of emergency facilities.) Brent was awakened and taken to friends.

"All the way there, I kept telling Beryl 'Faster! Faster! Don't let me die!'" Debbie recalled. She said she was more frightened then than at any other time during the ordeals to come.

Soon after arrival to the emergency room at Borger's hospital, a helicopter was summoned from Amarillo. "Although I never left them in Borger, I was still having chest pains until the helicopter arrived and all during the ride," Debbie said.

Angiogram Shows Clogged Arteries

Once at High Plains Baptist Hospital, Dr. Osborn and Dr. Robert Taylor did an angiogram and found that Debbie had three completely clogged arteries to her heart and a triple bypass surgery would be required. In the meantime, her seriously-injured heart was kept working with a special balloon pump. "No one talked about heart transplants at this time," Beryl explained. "And we would have been resistant to the idea. We knew of no one who had undergone one, and it just sounded too scary." Debbie added, "We clung to the idea of a bypass as what would 'fix' my heart."

It was decided that this procedure should not be attempted in Amarillo due to the nature of Debbie's heart damage and the risk

of complications, so arrangements were made for her to be flown on Medflight to St. Luke's Episcopal Hospital in Houston. On January 31, Debbie went to the airport in an ambulance equipped with snow-chains to combat the 13 inches of snow on the ground. On the flight, Debbie was "awake and alert," she said, and never out of the eyesight of the transfer team, which included a balloon pump specialist.

Triple Bypass Surgery

Once established as a cardiac patient at St. Luke's, Debbie was taken off the balloon pump and prepared for the triple bypass surgery, which was performed Feb. 17 by Dr. Bud Frazier. During the procedure, more extensive damage to her heart than was originally suspected was discovered. During her recovery from this surgery, Debbie was put back on the heart pump.

Looking back on this now, Beryl said, "Seeing her after this bypass was the worst time of all, because she was on a ventilator. Her appearance was shocking, and all I could feel was this helplessness, because it was all out of my control."

By this time, Debbie's mother had practically taken up residence at St. Luke's to be at her daughter's bedside while Beryl's parents took over the care of Brent in Oklahoma. Beryl commuted to and from his office at Pringle-Morse School, his parents' home and St. Luke's in Houston. It wasn't long before the airline personnel at Southwest all knew him by name, he said, and he had his "frequent flyer" mileages figured precisely at all times. (Later, he was to receive a personal letter from the airline's president.)

Sears CONTINUED FROM PAGE 1

"The hardest part of this whole thing was trying to cover all the bases," he commented. "Without a quality staff (at the school) and friends and family, we just couldn't have made it as a family."

To Be Continued . . .

For Your BBQ or Smoked Turkey call
Sutphen's BBQ
 (in the Pahnandle for 44 years)
 806/273-6442
 303 N. Cedar
 Borger, TX

HENSON CHIROPRACTIC
 300 S. Ash • Perryton, TX
Call for Appointment • 435-7525
OFFICE HOURS:
 Monday, Wednesday & Friday 9:00 to 5:00
 Tuesday & Thursday 9:00 to 11:30

UNLOCK AND MAXIMIZE YOUR POTENTIAL
Create Definite and Positive Changes In Your Life
 Regina Partain, Certified Educational Kinesiologist, is presenting a practical hands-on class for individuals interested in learning how to move through life with greater ease and joy, with better health and less stress. You will learn how to stay positive, active, clear and energized for all your own goals, as well as how to help others.
WHEN: Weekends of Feb. 3-4 and Feb. 10-11
Fridays: 6 - 10 p.m. and Saturdays: 8 a.m. - 5 p.m.
TUITION: \$250 • Visa & MasterCard accepted
For more information call: 659-3221 or 800-440-9207

GET THE ALCO Advantage

FREE SECOND SET OF PRINTS EVERY TUESDAY!

Receive a second set of 3" prints FREE with any exposure roll of 35mm, disc, 110 or 126 color print film left for developing and printing at our everyday prices! C-41 process only. Excludes larger 4" size prints, photo galaxy or kodalux finishes.

DAILY: 9 a.m. to 8 p.m. SUNDAY: 12 p.m. to 5 p.m.
 521 Hwy 207 S. • Spearman, TX

Olds Chimney Sweep
 Safe & Warm Brush Regularly
 HOOKER, OKLAHOMA
 405-652-2940

Watch Energy Savings Grow With Every Tree You Plant.

You can expect Texas-New Mexico Power Company to furnish reliable power, plus programs to help you use energy wisely. ★ For example, we'll show you how to plant trees in energy-strategic locations so your landscaping helps reduce energy waste. ★ For more information about saving energy, call or visit your local TNP office for our free Energy Management Guide.

Texas-New Mexico Power Company.

We appreciate all the prayers, cards, flowers, visits, & phone calls while Connie Steger was in St. Anthony's Hospital and Rehab. She returned to her home in Graham with her family January 27. Thanks for the support enabling her speedy recovery. God Bless You All, John & Virginia Trindle