

WEST TEXAS Country Trader

The West Texas Country Trader is a supplement of:

ABERNATHY WEEKLY REVIEW
Abernathy, Tx - Hale County
CANYON NEWS
Canyon, Tx - Randall County

CLARENDON NEWS
Clarendon, Tx - Donley County
CASTRO COUNTY NEWS
Dimmit, Tx - Castro County

HEREFORD BRAND
Hereford, Tx - Deaf Smith County
HOCKLEY COUNTY NEWS
Lubbock, Tx - Hockley County

LAMB COUNTY LEADER
Littlefield, Tx - Lamb County
LORENZO EXAMINER
Lorenzo, Tx - Crosby County

PLAINVIEW DAILY HERALD
Plainview, Tx - Hale County
RALLS REPORTER-NEWS
Ralls, Tx - Crosby County

SLATON SLATONITE
Slaton, Tx - Lubbock County
TULIA HERALD
Tulia, Tx - Swisher County

Thursday, July 1, 1993



CORN GETS BIG DRINK — Going into its most water critical stage, corn in the Texas Panhandle is getting a continual drink of water this month.

Perry promotes value-added concept

By **KELLY SHANNON**

Associated Press Writer

SAN ANTONIO (AP) — Texas Agriculture Commissioner Rick Perry said Friday the state must work harder to keep its agricultural products close to home for processing to create jobs and boost the economy.

"This is truly where we need to be focusing our efforts," Perry told the 114th summer convention of the Texas Press Association. "We want to add the value of those agricultural products in the private sector."

Perry noted that 92 percent

of all cotton raised in Texas is shipped out of state for processing, also known as "value adding."

If Texas could just improve its value-added industry from its current 8

percent to 13 percent, it would have a \$2.5 billion economic impact, Perry said.

FOR SALE Case 1H 7130 MFD 1989 1500 Hours 18.4 42 Dualed Still in Warranty. \$46,000 364-2132 Hereford, Texas

MUST SELL! 1988 Chevrolet C-1500 pickup, 1/2 ton, 4 speed, good work pickup, cruise, air conditions, AM/FM cassette. No back payments to make, no old contract to assume, just need responsible party to make reasonable monthly payments. Call the Credit Dept. at Western Ford. 1-800-264-6334. Hereford, Texas

MUST SELL! 1992 Ford Aerostar Extended Wagon, electric windows & door locks, tilt wheel, AM/FM cassette, dual air conditioning. No back payments to make. No old contract to assume. Just need responsible party to make reasonable monthly payments. Call the Credit Dept. at Western Ford. 1-800-264-6334. Hereford, Texas.

MUST SELL! 1989 Chevrolet Cavalier Z-24. Power steering, brakes, air conditioning, tilt wheel, cruise, AM/FM cassette. No back payments to make. No old contract to assume. Just need responsible party to make reasonable monthly payments. Call the Credit Dept. at Western Ford. 1-800-264-6334. Hereford, Texas

Foosball Table

With **\$250**
light

Street Smart
Arcade Game

2 **\$400**
players

806-364-3918
Hereford, Texas

FOR ALL YOUR WHEAT SEED NEEDS.

TAM 105,107,109,200,
202,2180,CHISOLM,
KARL, BEARDLESS
WHEAT
ELBON, MATON RYE,
TRITICALE,
BULK OR BAGGED,
ALSO CUSTOM SEED
CLEANING.

Gayland Ward Seed Co.
806-258-7394,
6 miles east of Hereford

RESURFACING SPECIALIST

SAVE 50 to 80% of replacement cost. Let West Tex Resurfacing resurface your bathtubs, counter-tops, sinks, ceramic tile, and appliances. We color coordinate everything! Call 806-364-7117. Hereford, Texas

**MARK'S
DIESEL FUEL
INJECTION**

Route 1, Box 850 E. Hwy. 60
Hereford, Texas 79045
806-364-4231

- Diesel Pumps
- Turbo's
- Glow Plugs

- Vacuum Pumps
- Additives
- Injectors

- Filters
- Controllers
- Block Pumps

Celebrating 17 years in Business. Hours: Mon-Fri 9-6 Sat. 9-1

Wheat being sought by Panhandle feeders

AMARILLO — Because export demand is down and prices are favorable, many feedyards are looking at wheat as a possible feed grain, according to Bill Nelson, Executive Vice President of the Texas Wheat Producers Association.

Two years ago, when a similar situation existed, Nelson said feedyard demand accounted for an extra 25-50 cents per bushel for farmers that wouldn't have existed otherwise.

"And since feedyards tend to buy premium wheat because of its higher protein, they represent an important market for our growers," he said. "The quality of the wheat harvested so far this year is higher than last year, and we're seeing higher protein and much higher test weights than normal."

PROPERTY FOR SALE

RED RIVER- 3.67 acres in city limits on main highway in view of downtown.

BROWNWOOD- 2 bedroom, 1 bath mobile home. Nice location, lot #3 at Sandy Beach.

SUNNYSIDE, TX- 2 acres in citylimits on Hwy 385.

806-227-2368

FREE PEPSI! **FREE BALLOONS!**

JOE'S BOOT SHOP

AND COUNTRY JUNCTION
1-800-658-6378 106 E. American Blvd., Muleshoe, Tx.

COWTOWN

PANHANDLE SLIM

Invites You To The...

10th Annual BOOT TENT SALE!

Thurs.-Fri.-Sat.-Mon.
July 1st, 2nd, 3rd & 5th

Over 3,000 Boots Under The Tent!

FREE Tony Lama Buckle (Your Choice) Given Away Each Hour!
(Must Be Present To Win)

"Hundreds" of Mulehide-Crepe-Lacera-Roper-Bullhide-Cowhide
Snakeskins-Lizards-Smooth Ostrich

ONLY ~~\$45~~ **\$35**
Cowhide Ropers - \$39
Bullhide Ropers - \$39

1 Lot: Bullhide-Deerskin-Elkskin-Cowhides-Snakeskins-Smooth
Ostrich-Elephants-Mulehides 13" - 16" Tops **\$79 Each**

BUY A PAIR OF BOOTS - GET A FREE BARBEQUE SANDWICH OR FAJITA
(Winkler Barbeque Wagon)

Hundreds Of Belts: Concho-Leather-Exotics **\$5 Each**

All Straw & Felt Hats **20% Off** - Bailey-Stetson-Resistol

All Mens & Boys Shirts **50% Off**

All Ladies Jeans & Tops **50% Off**

Hundreds Of Rocky Mountain Jeans - **\$19.99**

Register For **FREE** Pair Of Ladies Jeans! Panhandle Slim-Blaze-Rocky Mountains
To Be Given Away at 10 a.m. - 12 p.m. - 2 p.m. - 4 p.m. Each Day
(Must Be Present To Win)

Huge Sidewalk Sale At Country Junction
Truckload Of Unfinished Woods-Shelves-Deacon Benches-Heart Wreaths-Etc.

BMX Bikes \$25

Hundreds Of Other Items At Garage Sale Prices!

We'll Buy Used 501 Levi's Up To \$10 Cash
One Pocket Levi Jackets Up To \$150
Regular Levi and Lee Jackets Up To \$15

Patchwork Band
Amarillo, Tx.
Fri. July 2nd

Larry Scott
From KWKA - Shreveport, La.
Special Guest Emcee Each Day

Red Stegall & His Cowboy Band
Sat. July 3rd

Jana Stanfield
Clovis, Nm.
Thurs. July 1st

Colt Prather & Band
Mon. July 5th

"For Kids"
Orange Jeter
Rodeo Clown-Each Day

AgReview



Calendar

Ag News

July 3

HALE CENTER CENTENNIAL ROPING — A Centennial Team Roping contest — coinciding with the city's 100th birthday — has been set for July 3 to benefit the Hale Center FFA.

It will be a 15x15 Round Robin tournament, \$100 per man/progressive after one head.

Information is available from Brian Patterson or Danny Ivy.

July 3

HALE CENTER JULY FOURTH CENTENNIAL — A tractor show will be the highlight of Independence Day events, with a parade set at 11 a.m.

July 3

ANNUAL WEBB TRACTOR SHOW AND PLAYDAY — Donald and Sallie Webb will host a tractor play day 3 miles northeast of Amarillo on FM 136. A parade, tractor pull, slow race, wheat threshing and log sawing will be held. Also, a Baker fan demonstration, feed grinding and other activities.

July 10

LEVELLAND CELEBRATION & TRACTOR PARADE — A parade featuring tractors at 10 a.m. in the downtown area will highlight the day's festivities. For information, contact Preston Reeves, 562-4381.

COUNTRY CALENDAR

SUBMIT ITEMS TO: Editor, Country Trader AgReview, P.O. Box 1240, Plainview Daily Herald, Plainview, TX 79072. Or phone 296-1354.

Cotton developing ahead of schedule

By GORDON ZEIGLER
AgReview Writer

LUBBOCK — As High Plains cotton nears the traditional replanting cutoff date of

July 4th, the crop is thought to be in top form for this time of year — and farmers continue to hope nothing comes along to spoil their optimism.



HAKE

"Lots of producers are saying that, for this time of year, it is as good as it has been in recent years," said Kater Hake, Texas A&M cotton specialist, who assessed the crop in a swing across the area's cotton patch late last week.

"At least we've gotten very far into the year without major problems," Hake said.

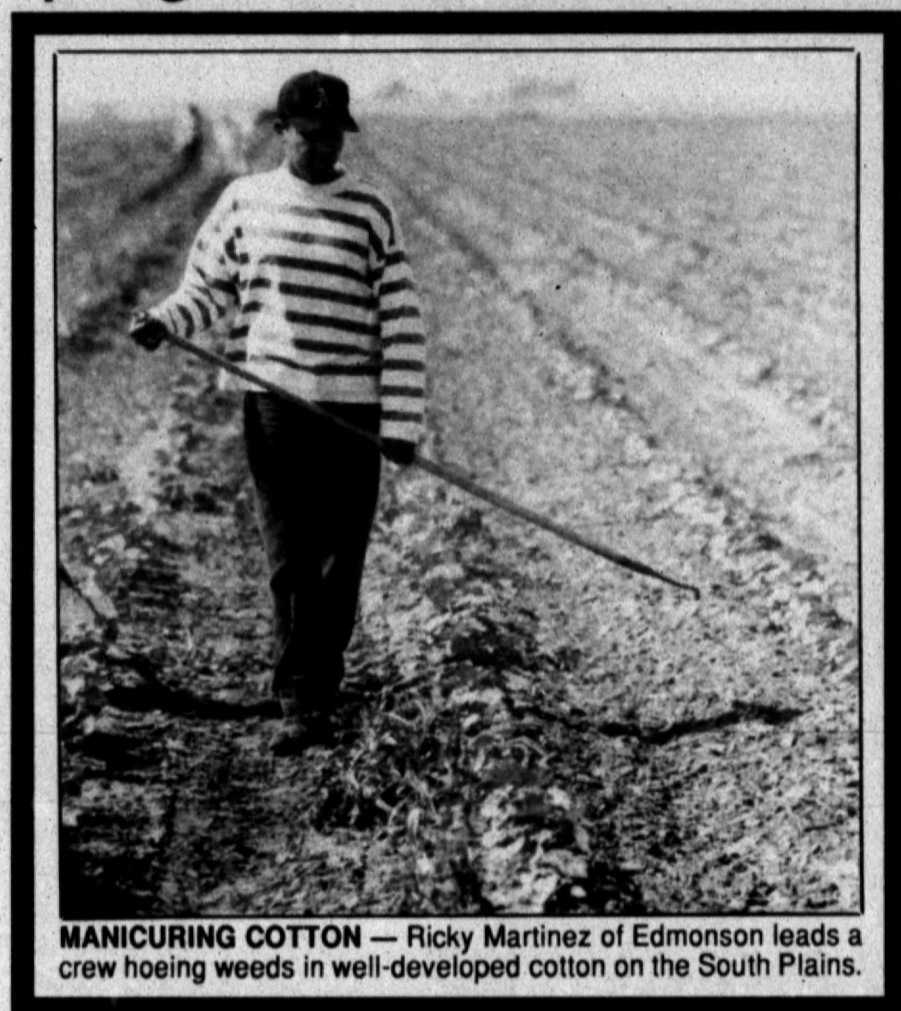
Early crops have, traditionally, been higher quality crops — packing better yields and possessing higher micronaire.

The crop's earliness, however, creates an immediate challenge on irrigated farms, since its advance in growth also translates into an earlier-than-usual need for water.

While it is common for cotton to be a much smaller plant in June or July, this year much larger plants are seen — ones that are using substantially more water, Hake points out.

This is seen as an added pressure on a farmer's water management activities.

"Water management will be a key factor this year," said Hake. "We're getting rain, but not enough to keep up with demand. Just about all the irrigation systems on the South



MANICURING COTTON — Ricky Martinez of Edmonson leads a crew hoeing weeds in well-developed cotton on the South Plains.

Plains, except some on the northern areas, cannot deliver enough to keep up."

Fields will be using up more water than normally comes in rainfall. Lubbock County fields, for instance, have received 10 inches less rainfall to date this year than is normal — causing farmers to make up for it with underground irrigation.

One aspect of the 1993 crop that experts are watching closely this year, Hake says, is the performance of the newly introduced cotton variety HS200 (A Paymaster/Cargill product) — designed to produce maximum grade quality under South Plains irrigated growing conditions. HS200 is being touted as having

the potential of giving the Texas plains a product that will market competitively with the best that California has to offer. It has been compared with the San Joaquin Valley's noted Acela variety.

"Acela is considered the real standard for high quality cotton," Hake said. "The San Joaquin Valley product gets a premium price."

On the South Plains in 1992, an estimated 15 percent of our crop was HS200.

"That has gone up substantially, though we don't know exactly how much," Hake estimated.

But HS 200 is a bit more sensitive

See COTTON, Page 8

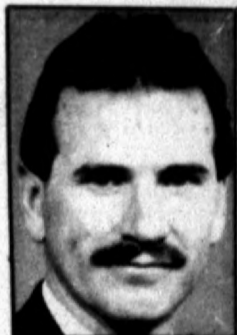
Seasonal pressure continues on wheat prices

As the winter wheat harvest continues to move north through Texas and Oklahoma and into Kansas, normal seasonal pressure continues to weigh on cash and futures prices. The crop continues to be in fairly good condition, but condition ratings have eroded some with 66 percent of the crop rated good to excellent.

The crop continues to run a couple of weeks behind on maturity, and the increased moisture has led to concerns about disease and moisture problems. However, there is not much evidence that any wide spread problems have occurred yet.

From a supply/demand standpoint, the situation may not be as dismal as the current price situation might indicate, but there are a few concerns that the market is having a difficult time with.

The U.S. is looking at a good crop this year, unless we run into problems getting the crop out due to weather. While beginning stocks and production are both forecast to be above last year's level, they are not all that much higher, and are not at an unmanageable level. The continued growth in imports, while it is not large, continues to be a



GRAIN MARKET UPDATE

Dr. Mark Waller

hinderance.

Food and seed use should be up slightly from last year, but the biggest boost to domestic demand could be a good increase in feed use, given the narrow spread between cash wheat and corn prices in the Texas panhandle and elsewhere. The biggest problem will be in the export arena, where U.S. market share could erode further.

Part of the problem is due to a decrease in world exports and stiff competition for the remaining business among all

the major exporters. The rest of the problem, however, the trade considers to be the inability of the administration to get it's act together concerning new crop EEP allocations and other competitive efforts.

World production, exports, and ending stocks are all expected to be lower for the 1993-94 marketing season. The lower export figure will likely keep exporting nations very competitive, but hopefully the lower ending stocks figure will help prices improve as we get past the harvest season.

From a marketing prospective, new crop prices appear to be low, but seasonally they may continue to move lower yet. Once we get through the harvest season, prices may be able to rally into the winter months. To a large extent, the size of any post-harvest rallies will depend on strong domestic demand, and the governments willingness to push exports.

(Dr. Mark Waller, Grain Marketing Specialist with the Texas A&M Extension Service, is an authority on the nation's grain markets.)

South Plains
Ag News

July 17

SEAGRAVES DAYS — The Texas Plains Chapter of the Two-Cylinder Club will bring the sounds of the Old Poppin Johnnie to Seagraves residents celebrating their annual community event.

July 17

CHILDRESS PICNIC & REUNION — Jim Parker will head up the event, which includes spotlighting old tractors.

July 17

SWISHER COUNTY PICNIC — A parade at 10 a.m. and the traditional noon barbecue will highlight this annual celebration. Old tractors will be part of the parade, which begins lining up at 9 a.m.

July 24 & 25

SECOND ANNUAL AMARILLO TRUCK & TRACTOR SHOW — The event will be centered at the Travelodge East, 3205 I-40 East.

July 24 & 25

WESTERN WHEATLAND GREEN & YELLOW EXPO — Old tractor buffs from Texas, Kansas, Missouri, Arkansas, Louisiana and Oklahoma will gather for a salute to the old tractor. Featured model this year is the John Deere Model D. Machines from 1923, 24 still needed. Jim Cole, Rt. 2, Seiling, OK, 73663, is show coordinator.

Farm values rise slowly

WASHINGTON (AP) — The value of U.S. farm real estate is expected to rise an average of 1 percent to 3 percent this year, according to the Agriculture Department's Economic Research Service.

Program aims at boosting cotton profits

A&M EXTENSION SERVICE

LUBBOCK — Increasing the profitability of growing cotton while reducing soil erosion is a challenge that is being met head-on by researchers at the Texas Agricultural Experiment Station here.

Because the growing season for cotton on the High Plains is marginally short, a late planting or replanting date combined with cool, wet weather in the fall can reduce cotton yields and quality.

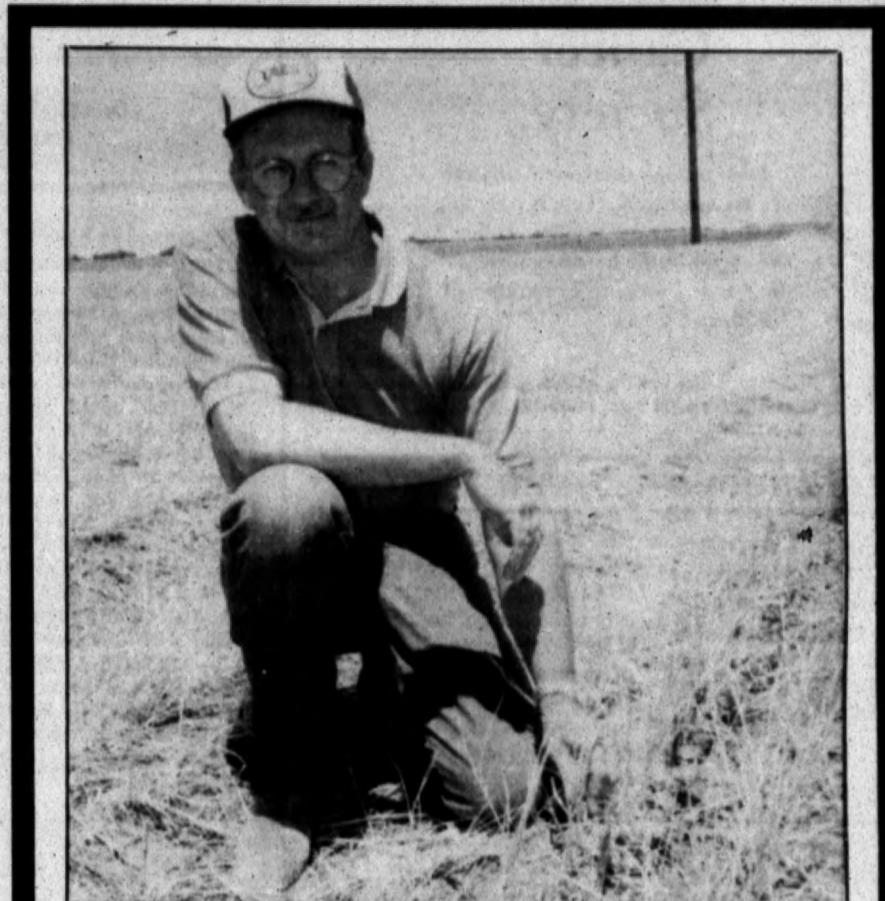
Nonetheless, cotton remains the most agriculturally viable crop in the area in terms of both acreage and crop value. Any means of providing it with a better start and protecting it from the adversities of the West Texas weather allows cotton growers to better take advantage of the short growing season.

Research being conducted at the experiment station here is providing answers to challenges facing cotton growers. For the past seven years, scientists have been studying cotton growth in conservation tillage systems using crop residue to provide early season protection from the weather.

These conservation tillage systems are gaining acceptance not only in West Texas, but across the United States as well. This is because of their effects in reducing soil erosion, allowing more efficient use of soil water, decreasing costs of production and increasing profitability, said Dr. Wayne Keeling, systems agronomy scientist at the Lubbock station.

Since 1990, agricultural scientists have been able to test such new technology as conservation tillage under the same conditions High Plains farmers are facing. With the development of a 160-acre farm, called the Agricultural Complex for Advanced Research and Extension Systems (AG-CARES) at Lamesa, irrigation, fertility, weed and insect management are now being evaluated in a whole farm situation.

Through such research, a conservation tillage system has been found that has gained acceptance in



RESIDUE IS THE KEY — Texas A&M's Dr. Wayne Keeling is shown on land where crop residue is benefitting cotton.

growing areas with sandy soils west and south of Lubbock. It consists of using wheat or rye as a winter cover crop, Keeling explained.

The cover crop is sprayed and chemically killed prior to planting the cotton. The cotton is then planted directly back into the cover crop residue. This standing stubble from the cover crop protects the soil from erosion and helps the cotton get an improved growing start.

Because of this and other research, interest has increased across the cotton belt in producing cotton in a conservation tillage system.

"Conservation tillage systems in which the crop is planted into the residue from previous crops have shown potential for reducing machinery, fuel and labor use," said Keeling. "It has also shown potential as a means of increasing profit."

The advantage of using conservation tillage systems as compared to a clean tilled soil lies in the erosion factor, he said. On a clean tilled soil, with no crop cover,

every time it rains or the ground is irrigated the soil is slicked over. It must be roughed up again with equipment such as a sandfighter or rotary hoe to prevent soil from blowing and damaging young plants.

Keeling says one of the initial obstacles in using conservation tillage systems is weed control. Cotton growers are accustomed to having herbicides incorporated into the soil before planting the cotton. Therefore, other means of controlling weeds are essential.

One method of combatting weeds is through strip tillage. This consists of an incorporated band where the cotton is planted. Strip tillage along with chemigation herbicide applications can effectively provide weed control equaling that of a conventional tillage system, Keeling said.

With the adoption of conservation tillage systems, growing cotton can now be a less risky option for farmers on the High Plains, the scientist says.

Texas cows can fly, all the way to Thailand

AUSTIN — "Who says cows can't fly?" joked Texas Ag Commissioner Rick Perry as he put a load of Brahman on board a jet for Thailand.

Perry bid bon voyage to Texas Brahman heifers recently as they left for Thailand through the TDA export pens at Houston Intercontinental Airport. The Brahman are part of a record-breaking sale to the Thai government.

Over 700 Texas cattle, costing more than \$840,000, will be sent to Thailand in three air shipments. Thai government farms have been purchasing Texas breeding stock since 1986. A 191 Brahman purchase by Thailand was the largest of its kind at the time.

"Texans don't know the

meaning of the word impossible. We've learned that cows can fly and be happy living somewhere people don't speak in a Texas twang," Perry joked.

Perry cited Texas' reputation for excellent cattle genetics, saying Thailand has had good experience with Brahman from the Lone Star State. The climates are similar, he said.

"Our Brahman have helped the Thais improve their own cattle stock," Perry said.

Ausswin Wongwan, director of Complete Agriculture Systems of Thailand, purchased the cattle for the Thai Department of Livestock Development. The Thai government runs 32 farms and the Brahman heifers will be distributed over those farms to

improve the quality of Thai Brahman.

On Monday, 310 heifers were loaded onto special 747 jumbo jets bound for Bangkok. One June 10, 300 more heifers will be shipped. Cattle for a June 29 shipment are still being tested, so the final number to complete the shipment has yet to be determined. The cattle were selected from 69 Brahman breeders across Texas. The total economic impact of the deal is over \$2.6 million.

In 1991, the Thai government purchased 660 head of Texas Brahman, the largest single Texas cattle purchase by any foreign country in the past 20 years and the largest effort every by Thailand.

Under Perry, TDA began a marketing program called

"Texas Livestock . . . Best in Any Language," which promotes the excellent quality of Texas livestock around the country as well as to foreign countries.

"Houston is a world-class international port, especially for our agricultural products," Perry said. "Houston Intercontinental is a great facility to bring buyers to from around the world, and our Texas farmers and ranchers provide us with the highest quality product available. The economic impact is important not only to our agriculture community but to the Texas economy overall."

Texas has now exported over 3,000 head of livestock valued at over \$3 million through Houston Intercontinental since Janu-

ary, and over 300,000 head were shipped to India through all TDA export pens. Over 2,000 sheep

were shipped to India through the Houston pens a month ago.

The 'Fourth' minus one in Canyon

The 1993 Independence Day Celebration in Canyon will be on July 3rd, and follows the theme, "Youth: The Future of Our Nation."

The schedule begins at 7 a.m. with the traditional Kiwanis Pancake Breakfast.

The remainder of the day will follow the following schedule:

- 10 a.m. — Bicycle contest and patriotic ceremony.
- 11 a.m. — Parade

with Bar-B-Que following.

■ 9 a.m. to 3 p.m. — Arts and Crafts booths and entertainment on the square featuring musical dancers from "T.E.X.A.S."

■ Evening activities in Conner Park

■ Dusk — Firework display.

Those interested in booths may call Martha Hester at 655-1597, 655-4294 or 655-0366.

This Sword Says We're Your American Cancer Society



Even though there are many cancer organizations, there is only one American Cancer Society. Follow the sword in the battle against cancer. For more information call 1-800-ACS-2345.

THERE'S NOTHING MIGHTIER THAN THE SWORD



MISCELLANEOUS

FACTORY CARPET WAREHOUSE: Warehouse prices on carpet and vinyl, including irregular and discontinued. 100-plus room-size remnants. Highway 84 East, Texico, N.M.

10-4tp/ccn

HANGING FURNACE—Trane forced-air unit, 225,000 BTU, natural gas-fired, thermostatically controlled. Only four years old, like-new condition. Currently heating 3,400 sq. ft. business building with 9-ft. ceiling; more than adequate in coldest weather. \$500 cash, F.O.B. Don Nelson, Castro County News, Dimmitt, 647-3123.

11-1tc/ccn

REAL ESTATE

TRAILER LOTS for sale or trade in Hart. Contact Bob McLain at 806/938-2323 after 7 p.m.; or leave message on answering machine and I will call you. 5-tfc

FOR SALE BY OWNER: 11,000-plus deeded acres in Central New Mexico (Guadalupe Co.), all sheep fenced. 6 large pastures and five traps. Excellent water supply. Close to town. 806/647-5633, Dimmitt. 4-tfc

FOR SALE BY OWNER: 1 section, 220 acres are native grass and the remainder is cultivated acres. Good wheat allotment. Well watered for livestock. 806/647-5633, Dimmitt. 4-tfc

HELP WANTED

DRIVERS — Local and nationwide delivery of luxury motor homes and vans. No experience needed. Valid driver's license required. Up to \$30,000 per year. Call direct, 1-800-510-0672.

10-10tc/ccn

VEHICLES

MUST SELL! '93 Ford Mustang LX, automatic transmission, air conditioning, power windows, power

VEHICLES

door locks, tilt steering wheel, cruise control, AM/FM stereo cassette. No old contract to assume, no back payments to make. Just need responsible party to make reasonable monthly payments. Call Doug Bolt in the Credit Dept., Friona Motors, 806/247-2701.

11-1tc/ccn

MUST SELL! '93 Ford H.D. F-250, 4X4, XLT Lariat, factory turbo diesel 7.3, H.D. 5-speed transmission, power windows, power door locks, cruise control, tilt steering wheel, AM/FM stereo cassette. No old contract to assume, no back payments to make. Just need responsible party to make reasonable monthly payments. Call Doug Bolt in the Credit Dept., Friona Motors, 806/247-2701.

11-1tc/ccn

MUST SELL! '92 Chrysler LeBaron, 4-door, power windows, power door locks, tilt steering wheel, cruise control, AM/FM stereo. No old contract to assume, no back payments to make. Just need responsible party to make reasonable monthly payments. Call Doug Huldeman in the Credit Dept., Friona Motors, 806/247-2701.

11-1tc/ccn

MUST SELL! '92 Chevrolet C 1500, Silverado, longbed, 350, automatic transmission, air conditioning, power windows, power door locks, cruise control, tilt steering wheel, AM/FM stereo cassette. No old contract to assume, no back payments to make. Just need responsible party to make reasonable monthly payments. Call Doug Bolt in the Credit Dept., Friona Motors, 806/247-2701.

11-1tc/ccn

MUST SELL! '92 Buick Regal 4-door sedan, V-6, power windows, power door locks, cruise control, tilt steering wheel, AM/FM stereo. No old contract to assume, no back payments to make. Just need responsible party to make reasonable monthly payments. Call Doug Bolt in the Credit Dept., Friona Motors, 806/247-2701.

11-1tc/ccn

8th ANNUAL SUMMER FARM EQUIPMENT AUCTION 2 DAY AUCTION

Farm, Irrigation, & Shop Equipment, Trucks, Tractors, & Vehicles

Monday & Tuesday, July 12 & 13, 1993

Starting Time will be 10:00 A.M. EACH DAY

MILLER AIRPORT, DALHART, TEXAS

LOCATION: From Dalhart, TX, 5 miles Northeast on Hwy. 54, then 2 miles East on F-M 295 to Miller Airport. (Sale Adjacent to Miller Airport for anyone wishing to fly in). WATCH FOR AUCTION SIGNS.

TRUCKS AND TRAILERS

1—1984 KW W-900B Truck Tractor, 300-hp Big Cam III Cummins Engine with AC, Power Steering, 11.00X24.5 Steel Belted Tires, Aluminum Wheels, 4-Spring KW Suspension, 36" Sit-in Sleeper, 370 Rearend 9-speed Transmission, 14609 Fuller, 250,000 miles + 1—1964 Chevrolet 80, 366 V8, Single Axle Truck Tractor with Air Brakes + 1—1970 Chevrolet C50 Grain Truck, V8, 5-speed/2-speed Tandem Tag with 20-ft. Kin Bed and Hoist + 1—1976 GMC 6500 Truck Chassis, 360 V8, 5-speed/2-speed with Flowtation Tires + 1—1958 Chevrolet Grain Truck, 6-cylinder, 4-speed with 15-ft. Bed and Hoist + 1—1951 Studebaker Truck, 2-Ton, 6-cylinder, Low Mileage. One owner, looks and drives good + 1—1985 Trailmaster 6X26 Gooseneck Stock Trailer with 2/3-Top and 2 Divider Gates + 1—1980 Featherlight 6X20 7-ft. Gooseneck Aluminum Stock Trailer + 1—La Crosse 20,000 Lowboy 20-ft. Trailer + 3—Pickup Bed Trailers + 1—Shopmade Pull Over Equipment Hauler + 1—1970 Fleet 30-ft. Cattle Trailer + 1—Jackson 6'X16' Gooseneck Full Top Stock Trailer + 1—1973 IHC 1700 Loadstar with 12-ft. American Reifer Cooler Box and Tommy Lift + 1—New 5X8 Utility Trailer with Ramps + 1—19-ft. Heavy Duty Tandem Trailer with 450 and 200-Gallon Tanks, Spray Pump and Hose + 1—8X16 Flat Bed Tandem Trailer + 1—8X32 Overhead Machinery Carrier, Tandem Axle.

MOTOR HOMES, TRAVEL TRAILERS, CAMPERS

1—1977 Diplomat II Motor Home, 27-ft., 440 Engine, Automatic Transmission, Completely Self-Contained with New Rubber + 1—1981 Road Ranger Travel Trailer, 25-ft., Extra Clean + 1—1973 Terry Travel Trailer, 27-ft. + 1—1968 Fields Overhead Pickup Camper Model 909-6, Sleeps 4 with Table, Bed, Sink, Looks Good.

HAY BALERS AND SILAGE CUTTER

1—Vermeer 605 for Round Baler + 2—NH 271 Wire PTO Balers + 1—Graves Bale Loader + 1—NH 3-Row Silage Head + 1—John Deere N 6 Silage Cutter.

PICKUPS, CARS, VAN, SUBURBAN

1—1982 GMC Conversion Van, V8, Automatic, Loaded, 4 Captain Chairs, Sink, New Rubber + 1—1983 Ford F-250 Super Cab, 4X4, V8, Automatic, LWB + 1—1980 Chevrolet 1/2-Ton Flat Bed, V8 + 1—1981 Chevrolet 1/2-Ton, V8, Automatic, LWB + 1—1976 Chevrolet 1-Ton Truck + 1—1977 Chevrolet 1/2-Ton Pickup + 1—1983 Chevrolet Caprice Classic 4-Door V8, 78,000 Miles + 1—1950 Chevrolet 1/2-Ton Chassis and Cab + 1—1948 Nash Ambassador 4-Door Car, One Owner, 61,000 Actual Miles, Looks and Runs Good + 1—1951 Buick Special 4-Door Car, Low Mileage, Runs Good, One Owner, Needs Window + 1—Konig Pickup Service Bed + 1—1978 Ford LTD, 350 V8, 4-Door, Loaded + 1—1960 Ford 3/4-Ton with Utility Box Bed and PTO Drive Air Compressor with Air Tank in Back + 1—1965 Ford F-250 4X4 Pickup with Utility Box, Needs Repair + 1—1974 Chevrolet 3/4-Ton Pickup, 350 V8 + 1—1984 Silverado Suburban.

TANKS

1—Shopmade 5550-Gallon Fuel Tank + 1—1000-Gallon Fertilizer Tank on Trailer + 1—2000-Gallon Water Tank for Tandem Truck + 1—1000-Gallon Diesel Fuel Tank on 4-Wheel Trailer

ORDER OF SALE

Monday, July 12—Livestock Equipment, Radios, Pickups, Cars, Suburban, Van, Motor Home, Travel Trailers, Camper, Boat, 3-Wheeler, Motorcycle, Tanks, Shop Equipment and Tools, Lawn Mowers & Garden Supplies, Miscellaneous and Unclassified, Horse Buggy and Pony Carts
Tuesday, July 13—Tractors, Combines, Scraper, Grinder Mixer, Farm Equipment, Irrigation Engines & Equipment, Trucks, Trailers, Hay Balers and Silage Cutter

NOTICE—Free Hamburgers and Hot Dogs served both days to REGISTERED BUYERS

TRACTORS, COMBINES, SCRAPER, AND GRINDER MIXER

1—1988 John Deere 4850 MFWD Diesel Tractor with Cab, Air, Heater, Power Shift, 18.4X42 Radial Duals, Excellent Condition, 4550 Hours + 1—1982 Case 4690 Diesel Tractor, 4X4 with Cab, Air, 20.8X34 Rubber, New Crate Motor with 30-Day Warranty + 1—1977 John Deere 4630 Diesel Tractor with Cab, Air, Heater, Quad Range, 18.4X38 Duals + 1—1975 John Deere 8630 Diesel Tractor with Cab, Air, Quad Range, 50 Series E line, 18.4X38 Duals + 1—1976 Case 1570 Diesel Tractor with Cab, Air, 20.8X38 Duals, 1300 Hours on Overhaul, Clean + 1—1974 Case 1175 Diesel Tractor with Cab, Air, 18.4X38 Rubber + 1—1971 Case 970 Diesel Tractor with Cab, Air, GB 800 Workmaster Front End Loader, 16.9X38 Rubber + 1—1963 John Deere 4010 LP Tractor with Cab, GB Front End Loader, 18.4X34 Rubber + 1—1966 John Deere 5020 Diesel Tractor with Cab, 24.5X32 Rubber, Needs Work + 1—1955 MF 65 Gas Tractor, Hi-Lo Transmission, Front End Loader, Good Rubber + 1—M Farmall Gas Tractor with Front End Loader + 1—M Farmall LP Tractor, Wide Front + 1—M Farmall LP Tractor, Narrow Front + 1—1941 Farmall B Tractor + 1—1951 MM UB Tractor LP with 3-pt. + 1—Ferguson Tractor + 1—1968 Case Comfort King 1030 Diesel Tractor, No Cab, 18.4X34 Rubber + 1—1965 Case 930 Diesel Tractor with Cab, 16.4X34 Rubber + 1—Johnson Paddle Scraper + 1—1974 John Deere 7700 Diesel Combine with Cab, Air, 24-ft. Header + 1—Big 12 Grain Cart, 400-Bushel + 1—John Deere 643 6-Row Corn Head + 3—Gleaner 3-Row Corn Heads + 1—McCurry 24-ft. Air Reel for Soybeans + 1—John Deere 95 LP Combine with 14-ft. Header + 1—1971 Case 1070 Diesel Tractor, Cab, 3-pt. PTO, 18.4X38 Duals, 6500 Hours + 1—John Deere 700 Grinder Mixer 100-Bushel Capacity + 1—Row Crop Head Model 653, 30".

RADIOS

5—Motorola VHF Mobile Radios, Frequency 43.20 + 1—Motorola VHF Base Radio, Frequency 43.20.

SHEEP SHEARING UNIT

1—Wyoming Sheep Shearing Set - Hand Piece with Combs and Cutters with 4-ft. 2-pc Drop with Motor

LIVESTOCK EQUIPMENT

1—20-Ton Portable Cattle Feeder on Skids + 145—T-Posts, 6-1/2 ft. + 400—Electric Fence Posts + 1—Oliver 15-1/2" Saddle + 1—Lot Miscellaneous Bridles, Bits, Etc. + 2—Saddles.

FARM EQUIPMENT

1—Marliss 28-ft., 8" Spacing Double Disc Grain Drill with Press Wheels + 1—AMCO 35-ft. Folding Tandem Disc + 2—John Deere 400 30-ft. Rotary Hoes + 1—Flex King 5X5 Sweep Plow with Pickers and Flex King 320 Air Seeder + 1—John Deere 7000 Maxi Merge 8-Row, 3-pt. Plateless with Monitor + 1—Wylie 1000-Gallon Sprayer with 34-ft. Boom + 1—King 24-ft. Offset Disc + 1—Big Ox Shank Ripper + 1—Noble 54-ft. Spring Tooth Harrow + 2—Krause 816 18-ft. Oneways + 2—John Deere DRA 16X10 Grain Drills with Press Wheels + 1—John Deere 205 5-ft. Gramore Mower + 1—Crustbuster 36-ft. Hoe Drill + 1—John Deere 8-Row, 3-pt. Cultipacker + 2—John Deere 8200 8" Spacing Grain Drills + 1—Sunflower Folding Offset Disc with Near New Blades + 1—Melroe 8-Row Rod Weeder + 6—IHC 295 Flex Planters on Double Bar with Hydraulic Markers + 1—Heavy Duty 8-Row Cultivator + 1—John Deere 7000 Maxi Merge, 8-Row, 3-pt. + 1—Hamby 30-ft., 3-Bar Tool Bar + 1—30-ft., 3-Bar NH3 Applicator + 1—John Deere 8-Row Bedder + 1—Noble 8-Row Cultivator + 1—Caldwell 7-ft., 3-pt. Blade + 1—John Deere 400 Rotary Hoe + 1—IHC 9-Shank Ripper + 1—Bush Hog 5-ft. Shredder + 1—John Deere 20-ft. Oneway + 1—Stratford Welding Shopmade Land Plane + 1—IHC 10 16X10 Grain Drill with Press Wheels + 1—5-Shank, 20-ft. Subsoiler + 2—IHC 510 20-ft. 8" Double Disc Grain Drills + 1—21-ft. DIA Bar with 7-Shanks and Gauge Wheels + 1—Serv 8", 3-pt. Blade + 1—IHC 6-Row 5X7 Bar Lister Planter + 1—6-Row Lister on 4X7 Bar with Gauge Wheels and Markers + 1—Folding Rope Wick Front Mount + 1—John Deere 6-Row Lister Planter with Gauge Wheels + 6—John Deere 71 Flex Planters on DIA Bar + 6—Roll-A-Cone Colters + 1—IHC 6-Row Monitor Cultivator + 1—Hoeme 15-ft. Chisel Plow + 1—MM Grain Drill with Grass Attachments + 1—5-Row Lister Planter Rig + 1—Double DIA Bar with Gauge Wheels + 1—John Deere Sickle Mower + 1—John Deere 6-Row Plate Type Planter on Double Bar + 1—Clod Buster Packer + 1—John Deere 15-ft. Oneway with Hydraulics + 1—John Deere DRB Grain Drills + 3—3 Drill Hitches + 1—Tye 21-ft., 8" Spacing Grain Drill + 1—3136A Krause 36-ft. Landsman + 1—John Deere 680 Tandem Axle PTO Manure Spreader Trailer + 1—Bush Hog 12615, 15-ft. Folding Shredder + 1—John Deere 606 72" Shredder for Small Tractor, 3-pt. + 2—Tye 6-Row Disc Bedders + 1—Case 4-Bottom Roll-Over Plow + 1—IHC 4-Bottom Roll-Over Plow + 2—Lilliston 6-Row Cultivators + 12—New Lilliston Fenders + 3—Noble 7-ft. Mulchers + 1—Set Flex King Pickers

2—8 ft. Aero Motor Windmills, Completely Reconditioned with Stub Tower

IRRIGATION ENGINES AND EQUIPMENT

1—MM 800 Heavy Duty with Turbo Irrigation Engine + 1—IHC 605 Irrigation Engine, Rebuilt + 2—MM 800 Irrigation Engines + 1—Chevrolet 292 with Berkley Tailwater Pump + 4—10" Irrigation Hydrants + 20 Joints 40-ft. Hi-Pressure Aluminum Flow Line

SHOP EQUIPMENT AND TOOLS

BOAT, 3-WHEELER, MOTORCYCLE

1—Newman 14-ft. Bass Boat, 85-hp Evinrude with Minn Kota Trolling Motor, on Trailer + 1—1976 Kawasaki KZ 900 Motorcycle with Windshield, Luggage Rack, 9220 miles + 1—Kawasaki 3-Wheeler, Good

LAWN MOWERS AND GARDEN SUPPLIES

GUNS

1—Remington .22-caliber Pump - 261079 + 1—Remington Model 11, 12-gauge Semi-Automatic - 311963 + 1—Glenfield by Marlin, 22-caliber Long with Scope + 1—Old Smith & Wesson .38 Special CTGE + 1—Smith & Wesson .38 Special C & G + 1—Smith & Wesson .22 Magnum with Holster

MISCELLANEOUS & UNCLASSIFIED

HORSE BUGGY AND PONY CARTS

1—Old Horse Buggy - Single Seat with Harness, Good Shape. 2—Pony Carts with Harness



OFFICE PHONE (806) 249-6776

Office Located at 1627 Tennessee - Apache Shopping Center DALHART, TEXAS

DALE REAGAN
(806) 384-2066
TXS-058-007443

BOB BROWN
(806) 249-4038
TXS-058-007442

Muleshoe Farms

- Custom Farming
- Custom Planting
- Custom Harvesting
- Best in Equipment
- Able to Travel

(806) 772-4926

Anytime

CLASSIFIED

FOR SALE: 17' Glasstron Boat - Walk Thru; Tri-Hull, Volvo Engine - New Interior Carpet, \$3995.00 - Dave Taylor, D&B Construction, 1-800-333-2066.

FOR SALE

■6-row John Deere Planter
■6-row spring tooth - Noble
■Ditch Filler ■Graham Chisel
■5-row Lister - John Deere
■2, 12-row sand fighters
Call 806-842-3580

WARRIOR REDUCED TO **\$29,950**

dash A/C - roof A/C
-AM/FM cassette - generator
-cruise - self-contained

10% down at 9.25% APR for 144 months at \$332.99 per month WAC

WINNERADO
THE MOTOR HOME PEOPLE

Billy Sims TRAILER TOWN

745-8791 • S. Loop 289 & Tahoka Exit

FOR SALE

FOR SALE: 1985 Mustang - Like New Engine - Transmission - Needs some restoration - \$2750.00 - Dave Taylor, D&B Construction, 1-800-333-2066.

Carpet, Vinyl, Tile, Wood

Mustang Wholesale Flooring

23 Years Experience  Shop Our Warehouse For Best Buys

Ron Cowart

5271-C 34th Street Lubbock, Texas 79407
806-791-1086 800-530-4990

Lorenzo Mfg. Co., Inc.
Lorenzo, Texas
806-634-5942

Bedrollers, Stalkcutters,
Water Farrow Drags, Clamps,
Extended Clamps, Shanks,
Tool Bar Spacers
Will Custom build to your requirements

GARAGE DOORS - ROLLING STEEL
ELECTRIC OPENERS - COMMERCIAL - RESIDENTIAL
SALES - SERVICE - INSTALLATIONS

We work on all Brands of Doors & Openers
Lots of Used Parts Available

RAYNOR GARAGE DOORS

Doug Williams Mark Karr
Bus. (806) 747-9746 Lubbock, Texas 79403
1-800-766-2074

(806) 795-9880



Hamilton Mobile Home Service
RELOCATE & SET UP

Buy & Sell

BILLY "BOOTS" HAMILTON 2006 KELSEY ST LUBBOCK, TX 79407

Dura-Bilt
Portable Buildings

BUILT LOCALLY - ALSO ON SITE
- MANY BUILDINGS ON DISPLAY
Top Quality - Custom Orders

All Sizes
- GARAGES - CARPORTS - PATIO COVERS
- STORAGE - OFFICES - BARNs - ETC.


794-1779
3 1/2 MI. SW OF LOOP 289
ON BROWNFIELD HWY 62-62

ALL TYPES OF FINANCING

S.C. & Associates
Rapid Weight Loss

Call Sue or Staci at 788-0012 - Lubbock
Come By For a Free Sample

30 Lbs.
30 Days
\$30



I've been on this diet for two weeks ... So far, I've lost 15 pounds and four friends."

Fergusons
Discount Flooring

Get Your Best Deal on Major Brands of

- CARPET
- SHEET VINYL
- VINYL TILE
- WOOD FLOORING
- CERAMIC FLOORING
- CERAMIC TILE
- LAMINATE
- COUNTERTOPS

And we will try to beat it!

* Free In-Home Estimates
* Financing Available
* Quality Installation

The Little Store that Saves You More!
796-1910

5021 34th * Lubbock

Celebrate July 3rd In Lorenzo Hometown Hoedown, 10:00a.m. BBQ lunch, 11:30 a.m. Street dance 8:00 p.m.

100% FINANCING
FREE ESTIMATES
With A Personal Touch



DON VOYLES
PAM VANCUREN
5226 - 34th
Lubbock, TX 79407
806/791-1296 or Toll Free 1-800-375-1296

CONSTRUCTION COMPANY

Siding & Overhangs
Storm & Replacement Windows
Carport & Patio Covers
Additions - Remodeling

"We Strive for Excellence and Customer Satisfaction"

Auto Home
Crop Farm

Caprock Insurance Agency

807 Main Ralls, Texas
Pat Terry
Nunley Rainwater
253-3031

SINGER KENMORE WHITE PFAFF NECCHI ELNA

ONE DAY SERVICE \$14.95

SINGER APPROVED DEALER Reg. \$44.95
A trademark of The Singer Company

Clean, Oil & Adjust Tensions Any Make Or Model

SINGER SERVICE CENTER

5418 Slide Rd. Lubbock, Tx ■ 788-0608
Monday-Friday 9:30-5:30 ■ Saturday 9:30-3:00

DRESSMAKER VIKING BERNINA MONTGOMERY WARD

KARR ELECTRONICS

Now Available
HOME SATELLITE CABLE!
For the Country--

\$35 Per Month W.A.C. & No Down Payment
--Act Now & Receive
1 Year's Basic Programming Free!


ECHOSTAR
HOME CABLE


- Crystal Clear Picture
- Digital Stereo Sound
- Premiums Optional At An Additional Charge

7104 W. 82ND 794-1822 1-800-288-9168
RITE ON 82ND BETWEEN FRANKFORD & UPLAND

CNN
WGN
HBO
THE FAMILY CHANNEL
SCI-FI CHANNEL
DISNEY
CNBC
TBS

You Spend One-third Of Your Life in Bed Why Not Enjoy It??

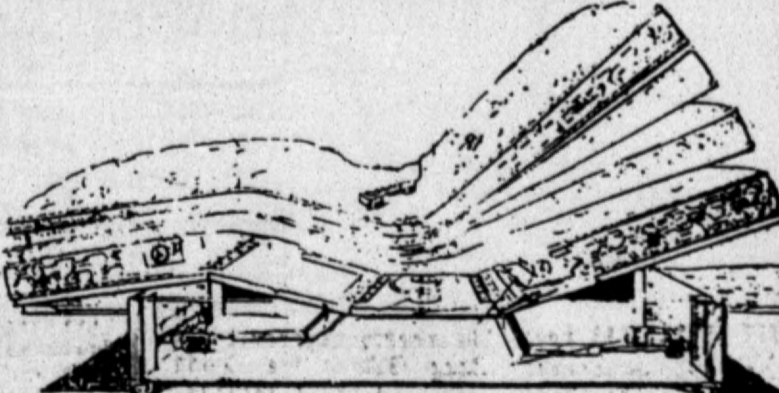
 **BODY-MATE...The Lifetime Sleep System.** Especially comfortable for people with back problems because the bed supports the back completely in any position...sitting or lying.



HELP INDUCE DEEP, RESTFUL SLEEP
INCREASE BLOOD CIRCULATION WHERE APPLIED
RELIEVE HIATAL HERNIA AND EVERYDAY FATIGUE
RELIEVE MINOR PAINS OF RHEUMATISM AND ARTHRITIS

RELIEVE SIMPLE BACKACHE, OTHER MINOR ACHES AND PAINS
RELIEVE SIMPLE NERVOUS TENSION WITHOUT DRUGS OR PILLS

BODY MATE ADJUSTABLE BEDS ARE NOW BUILT LOCALLY by American Therapy!



Bring This Ad By Our Factory Showroom For A FREE Demonstration And Your Senior Citizen Discount On Each Purchase!

Phone (800) 942-0813 or (806) 747-3634

AMERICAN THERAPY PRODUCTS

2219 CLOVIS ROAD LUBBOCK, TX 79415

This Sword Says We're Your American Cancer Society



Even though there are many cancer organizations, there is only one American Cancer Society. Follow the sword in the battle against cancer. For more information call 1-800-ACS-2345.

THERE'S NOTHING MIGHTIER THAN THE SWORD

AMERICAN CANCER SOCIETY

MISCELLANEOUS

FACTORY CARPET WAREHOUSE: Warehouse prices on carpet and vinyl, including irregular and discontinued. 100-plus room-size remnants. Highway 84 East, Texico, N.M.

10-4tp/ccn

HANGING FURNACE—Trane forced-air unit, 225,000 BTU, natural gas-fired, thermostatically controlled. Only four years old, like-new condition. Currently heating 3,400 sq. ft. business building with 9-ft. ceiling; more than adequate in coldest weather. \$500 cash, F.O.B. Don Nelson, Castro County News, Dimmitt, 647-3123.

11-tfx

REAL ESTATE

TRAILER LOTS for sale or trade in Hart. Contact Bob McLain at 806/938-2323 after 7 p.m.; or leave message on answering machine and I will call you. 5-tfc

FOR SALE BY OWNER: 11,000-plus deeded acres in Central New Mexico (Guadalupe Co.), all sheep fenced. 6 large pastures and five traps. Excellent water supply. Close to town. 806/647-5633, Dimmitt. 4-tfc

FOR SALE BY OWNER: 1 section, 220 acres are native grass and the remainder is cultivated acres. Good wheat allotment. Well watered for livestock. 806/647-5633, Dimmitt. 4-tfc

HELP WANTED

DRIVERS — Local and nationwide delivery of luxury motor homes and vans. No experience needed. Valid driver's license required. Up to \$30,000 per year. Call direct, 1-800-510-0672.

10-10tc/ccn

VEHICLES

MUST SELL! '93 Ford Mustang LX, automatic transmission, air conditioning, power windows, power

VEHICLES

door locks, tilt steering wheel, cruise control, AM/FM stereo cassette. No old contract to assume, no back payments to make. Just need responsible party to make reasonable monthly payments. Call Doug Bolt in the Credit Dept., Friona Motors, 806/247-2701.

11-1tc/ccn

MUST SELL! '93 Ford H.D. F-250, 4X4, XLT Lariat, factory turbo diesel 7.3, H.D. 5-speed transmission, power windows, power door locks, cruise control, tilt steering wheel, AM/FM stereo cassette. No old contract to assume, no back payments to make. Just need responsible party to make reasonable monthly payments. Call Doug Bolt in the Credit Dept., Friona Motors, 806/247-2701.

11-1tc/ccn

MUST SELL! '92 Chrysler LeBaron, 4-door, power windows, power door locks, tilt steering wheel, cruise control, AM/FM stereo. No old contract to assume, no back payments to make. Just need responsible party to make reasonable monthly payments. Call Doug Huldeman in the Credit Dept., Friona Motors, 806/247-2701.

11-1tc/ccn

MUST SELL! '92 Chevrolet C 1500, Silverado, longbed, 350, automatic transmission, air conditioning, power windows, power door locks, cruise control, tilt steering wheel, AM/FM stereo cassette. No old contract to assume, no back payments to make. Just need responsible party to make reasonable monthly payments. Call Doug Bolt in the Credit Dept., Friona Motors, 806/247-2701.

11-1tc/ccn

MUST SELL! '92 Buick Regal 4-door sedan, V-6, power windows, power door locks, cruise control, tilt steering wheel, AM/FM stereo. No old contract to assume, no back payments to make. Just need responsible party to make reasonable monthly payments. Call Doug Bolt in the Credit Dept., Friona Motors, 806/247-2701.

11-1tc/ccn

8th ANNUAL SUMMER FARM EQUIPMENT AUCTION 2 DAY AUCTION

Farm, Irrigation, & Shop Equipment, Trucks, Tractors, & Vehicles
Monday & Tuesday, July 12 & 13, 1993

Starting Time will be 10:00 A.M. EACH DAY

MILLER AIRPORT, DALHART, TEXAS

LOCATION: From Dalhart, TX, 5 miles Northeast on Hwy. 54, then 2 miles East on F-M 295 to Miller Airport.
(Sale Adjacent to Miller Airport for anyone wishing to fly in). WATCH FOR AUCTION SIGNS.

TRUCKS AND TRAILERS

1—1984 KW W-900B Truck Tractor, 300-hp Big Cam III Cummins Engine with AC, Power Steering, 11.00X24.5 Steel Belted Tires, Aluminum Wheels, 4-Spring KW Suspension, 36" Sit-in Sleeper, 370 Rearend 9-speed Transmission, 14609 Fuller, 250,000 miles + 1—1964 Chevrolet 80, 366 V8, Single Axle Truck Tractor with Air Brakes + 1—1970 Chevrolet C50 Grain Truck, V8, 5-speed/2-speed Tandem Tag with 20-ft. Kin Bed and Hoist + 1—1976 GMC 6500 Truck Chassis, 360 V8, 5-speed/2-speed with Flowtation Tires + 1—1958 Chevrolet Grain Truck, 6-cylinder, 4-speed with 15-ft. Bed and Hoist + 1—1951 Studebaker Truck, 2-Ton, 6-cylinder, Low Mileage. One owner, looks and drives good + 1—1985 Trallmaster 6X26 Gooseneck Stock Trailer with 2/3-Top and 2 Divider Gates + 1—1980 Featherlight 6X20 7-ft. Gooseneck Aluminum Stock Trailer + 1—La Crosse 20,000 Lowboy 20-ft. Trailer + 3—Pickup Bed Trailers + 1—Shopmade Pull Over Equipment Hauler + 1—1970 Fleet 30-ft. Cattle Trailer + 1—Jackson 6'X16' Gooseneck Full Top Stock Trailer + 1—1973 IHC 1700 Loadstar with 12-ft. American Reifer Cooler Box and Tommy Lift + 1—New 5X8 Utility Trailer with Ramps + 1—19-ft. Heavy Duty Tandem Trailer with 450 and 200-Gallon Tanks, Spray Pump and Hose + 1—8X16 Flat Bed Tandem Trailer + 1—8X32 Overhead Machinery Carrier, Tandem Axle.

MOTOR HOMES, TRAVEL TRAILERS, CAMPERS

1—1977 Diplomat II Motor Home, 27-ft., 440 Engine, Automatic Transmission, Completely Self-Contained with New Rubber + 1—1981 Road Ranger Travel Trailer, 25-ft., Extra Clean + 1—1973 Terry Travel Trailer, 27-ft. + 1—1968 Fields Overhead Pickup Camper Model 909-6, Sleeps 4 with Table, Bed, Sink, Looks Good.

HAY BALERS AND SILAGE CUTTER

1—Vermeer 605 for Round Baler + 2—NH 271 Wire PTO Balers + 1—Graves Bale Loader + 1—NH 3-Row Silage Head + 1—John Deere N 6 Silage Cutter.

PICKUPS, CARS, VAN, SUBURBAN

1—1982 GMC Conversion Van, V8, Automatic, Loaded, 4 Captain Chairs, Sink, New Rubber + 1—1983 Ford F-250 Super Cab, 4X4, V8, Automatic, LWB + 1—1980 Chevrolet 1/2-Ton Flat Bed, V8 + 1—1981 Chevrolet 1/2-Ton, V8, Automatic, LWB + 1—1976 Chevrolet 1-Ton Truck + 1—1977 Chevrolet 1/2-Ton Pickup + 1—1983 Chevrolet Caprice Classic 4-Door Car, 78,000 Miles + 1—1950 Chevrolet 1/2-Ton Chassis and Cab + 1—1948 Nash Ambassador 4-Door Car, One Owner, 61,000 Actual Miles, Looks and Runs Good + 1—1951 Buick Special 4-Door Car, Low Mileage, Runs Good, One Owner, Needs Window + 1—Kong Pickup Service Bed + 1—1978 Ford LTD, 350 V8, 4-Door, Loaded + 1—1960 Ford 3/4-Ton with Utility Box Bed and PTO Drive Air Compressor with Air Tank in Back + 1—1965 Ford F-250 4X4 Pickup with Utility Box, Needs Repair + 1—1974 Chevrolet 3/4-Ton Pickup, 350 V8 + 1—1984 Silverado Suburban.

TANKS

1—Shopmade 5550-Gallon Fuel Tank + 1—1000-Gallon Fertilizer Tank on Trailer + 1—2000-Gallon Water Tank for Tandem Truck + 1—1000-Gallon Diesel Fuel Tank on 4-Wheel Trailer

ORDER OF SALE

Monday, July 12—Livestock Equipment, Radios, Pickups, Cars, Suburban, Van, Motor Home, Travel Trailers, Camper, Boat, 3-Wheeler, Motorcycle, Tanks, Shop Equipment and Tools, Lawn Mowers & Garden Supplies, Miscellaneous and Unclassified, Horse Buggy and Pony Carts
Tuesday, July 13—Tractors, Combines, Scraper, Grinder Mixer, Farm Equipment, Irrigation Engines & Equipment, Trucks, Trailers, Hay Balers and Silage Cutter

NOTICE—Free Hamburgers and Hot Dogs served both days to REGISTERED BUYERS

TRACTORS, COMBINES, SCRAPER, AND GRINDER MIXER

1—1988 John Deere 4850 MFWD Diesel Tractor with Cab, Air, Heater, Power Shift, 18.4X42 Radial Duals, Excellent Condition, 4550 Hours + 1—1982 Case 4690 Diesel Tractor, 4X4 with Cab, Air, 20.8X34 Rubber, New Crate Motor with 30-Day Warranty + 1—1977 John Deere 4630 Diesel Tractor with Cab, Air, Heater, Quad Range, 18.4X38 Duals + 1—1975 John Deere 8630 Diesel Tractor with Cab, Air, Quad Range, 50 Series Engine, 18.4X38 Duals + 1—1976 Case 1570 Diesel Tractor with Cab, Air, 20.8X38 Duals, 1300 Hours on Overhaul, Clean + 1—1974 Case 1175 Diesel Tractor with Cab, Air, 18.4X38 Rubber + 1—1971 Case 970 Diesel Tractor with Cab, Air, GB 800 Workmaster Front End Loader, 16.9X38 Rubber + 1—1963 John Deere 4010 LP Tractor with Cab, GB Front End Loader, 18.4X34 Rubber + 1—1966 John Deere 5020 Diesel Tractor with Cab, 24.5X32 Rubber, Needs Work + 1—1955 MF 65 Gas Tractor, Hi-Low Transmission, Front End Loader, Good Rubber + 1—M Farmall Gas Tractor with Front End Loader + 1—M Farmall LP Tractor, Wide Front + 1—M Farmall LP Tractor, Narrow Front + 1—1941 Farmall B Tractor + 1—1951 MM UB Tractor LP with 3-pt. + 1—Ferguson Tractor + 1—1968 Case Comfort King 1030 Diesel Tractor, No Cab, 18.4X34 Rubber + 1—1965 Case 930 Diesel Tractor with Cab, 16.4X34 Rubber + 1—Johnson Paddle Scraper + 1—1974 John Deere 7700 Diesel Combine with Cab, Air, 24-ft. Header + 1—Big 12 Grain Cart, 400-Bushel + 1—John Deere 643 6-Row Corn Head + 3—Gleaner 3-Row Corn Heads + 1—McCurry 24-ft. Air Reel for Soybeans + 1—John Deere 95 LP Combine with 14-ft. Header + 1—1971 Case 1070 Diesel Tractor, Cab, 3-pt. PTO, 18.4X38 Duals, 6500 Hours + 1—John Deere 700 Grinder Mixer 100-Bushel Capacity + 1—Row Crop Head Model 653, 30".

RADIOS

5—Motorola VHF Mobile Radios, Frequency 43.20 + 1—Motorola VHF Base Radio, Frequency 43.20.

SHEEP SHEARING UNIT

1—Wyoming Sheep Shearing Set - Hand Piece with Combs and Cutters with 4-ft. 2-pc Drop with Motor

LIVESTOCK EQUIPMENT

1—20-Ton Portable Cattle Feeder on Skids + 145—T-Posts, 6-1/2 ft. + 400—Electric Fence Posts + 1—Oliver 15-1/2" Saddle + 1—Lot Miscellaneous Bridles, Bits, Etc. + 2—Saddles.

FARM EQUIPMENT

1—Marills 28-ft., 8" Spacing Double Disc Grain Drill with Press Wheels + 1—AMCO 35-ft. Folding Tandem Disc + 2—John Deere 400 30-ft. Rotary Hoes + 1—Flex King 5X5 Sweep PLOW with Pickers and Flex King 320 Air Seeder + 1—John Deere 7000 Maxi Merge 8-Row, 3-pt. Plateless with Monitor + 1—Wylie 1000-Gallon Sprayer with 34-ft. Boom + 1—King 24-ft. Offset Disc + 1—Big Ox Shank Ripper + 1—Noble 54-ft. Spring Tooth Harrow + 2—Krause 816 18-ft. Oneways + 2—John Deere DRA 16X10 Grain Drills with Press Wheels + 1—John Deere 205 5-ft. Gramore Mower + 1—Crustbuster 36-ft. Hoe Drill + 1—John Deere 8-Row, 3-pt. Cultivator + 2—John Deere 8200 8" Spacing Grain Drills + 1—Sunflower Folding Offset Disc with Near New Blades + 1—Melroe 8-Row Rod Weeder + 6—IHC 295 Flex Planters on Double Bar with Hydraulic Markers + 1—Heavy Duty 8-Row Cultivator + 1—John Deere 7000 Maxi Merge, 8-Row, 3-pt. + 1—Hamby 30-ft., 3-Bar Tool Bar + 1—30-ft., 3-Bar NH3 Applicator + 1—John Deere 8-Row Bedder + 1—Noble 8-Row Cultivator + 1—Caldwell 7-ft., 3-pt. Blade + 1—John Deere 400 Rotary Hoe + 1—IHC 9-Shank Ripper + 1—Bush Hog 5-ft. Shredder + 1—John Deere 20-ft. Oneway + 1—Stratford Welding Shopmade Land Plane + 1—IHC 10 16X10 Grain Drill with Press Wheels + 1—5-Shank, 20-ft. Subsoiler + 2—IHC 510 20-ft. 8" Double Disc Grain Drills + 1—21-ft. DIA Bar with 7-Shanks and Gauge Wheels + 1—Serv 8", 3-pt. Blade + 1—IHC 6-Row 5X7 Bar Lister Planter + 1—6-Row Lister on 4X7 Bar with Gauge Wheels and Markers + 1—Folding Rope Wick Front Mount + 1—John Deere 6-Row Lister Planter with Gauge Wheels + 6—John Deere 71 Flex Planters on DIA Bar + 6—Roll-A-Cone Colters + 1—IHC 6-Row Monitor Cultivator + 1—Hoeme 15-ft. Chisel PLOW + 1—MM Grain Drill with Grass Attachments + 1—5-Row Lister Planter Rig + 1—Double DIA Bar with Gauge Wheels + 1—John Deere Sickle Mower + 1—John Deere 6-Row Plate Type Planter on Double Bar + 1—Clod Buster Packer + 1—John Deere 15-ft. Oneway with Hydraulics + 1—John Deere DRB Grain Drills + 3—3 Drill Hitches + 1—Tye 21-ft., 8" Spacing Grain Drill + 1—3136A Krause 36-ft. Landsman + 1—John Deere 680 Tandem Axle PTO Manure Spreader Trailer + 1—Bush Hog 12615, 15-ft. Folding Shredder + 1—John Deere 606 72" Shredder for Small Tractor, 3-pt. + 2—Tye 6-Row Disc Bedders + 1—Case 4-Bottom Roll-Over PLOW + 1—IHC 4-Bottom Roll-Over PLOW + 2—Lilliston 6-Row Cultivators + 12—New Lilliston Fenders + 3—Noble 7-ft. Mulchers + 1—Set Flex King Pickers

2—8 ft. Aero Motor Windmills, Completely Reconditioned with Stub Tower

IRRIGATION ENGINES AND EQUIPMENT

1—MM 800 Heavy Duty with Turbo Irrigation Engine + 1—IHC 605 Irrigation Engine, Rebuilt + 2—MM 800 Irrigation Engines + 1—Chevrolet 292 with Berkley Tailwater Pump + 4—10" Irrigation Hydrants + 20 Joints 40-ft. Hi-Pressure Aluminum Flow Line

SHOP EQUIPMENT AND TOOLS

BOAT, 3-WHEELER, MOTORCYCLE

1—Newman 14-ft. Bass Boat, 85-hp Evinrude with Minn Kota Trolling Motor, on Trailer + 1—1976 Kawasaki KZ 900 Motorcycle with Windshield, Luggage Rack, 9220 miles + 1—Kawasaki 3-Wheeler; Good

LAWN MOWERS AND GARDEN SUPPLIES

GUNS

1—Remington .22-caliber Pump - 261079 + 1—Remington Model 11, 12-gauge Semi-Automatic - 311963 + 1—Glenfield by Marlin, 22-caliber Long with Scope + 1—Old Smith & Wesson 38 Special CTGE + 1—Smith & Wesson 38 Special C & G + 1—Smith & Wesson 22 Magnum with Holster

MISCELLANEOUS & UNCLASSIFIED

HORSE BUGGY AND PONY CARTS

1—Old Horse Buggy - Single Seat with Harness, Good Shape. 2—Pony-Carts with Harness



OFFICE PHONE (806) 249-6776

Office Located at 1627 Tennessee - Apache Shopping Center DALHART, TEXAS

DALE REAGAN
(806) 384-2066
TXS-058-007443

BOB BROWN
(806) 249-4038
TXS-058-007442

Muleshoe Farms

- Custom Farming
- Custom Planting
- Custom Harvesting
- Best in Equipment
- Able to Travel

(806) 722-4926

Anytime

CLASSIFIED

FOR SALE: 17' Glasstron Boat - Walk Thru; Tri-Hull, Volvo Engine - New Interior Carpet, \$3995.00 - Dave Taylor, D&B Construction, 1-800-333-2066.

FOR SALE

■6-row John Deere Planter
■6-row spring tooth - Noble
■Ditch Filler ■Graham Chisel
■5-row Lister - John Deere
■2, 12-row sand fighters
Call 806-842-3580

WARRIOR REDUCED TO
\$29,950

dash A/C • roof A/C
•AM/FM cassette •generator
•cruise •self-contained

10% down at 9.25% APR for 144 months at \$332.99 per month WAC

WINNERADO
THE MOTOR HOME PEOPLE

Billy Sims TRAILER TOWN
745-8791 • S. Loop 289 & Tahoka Exit



Lorenzo Mfg. Co., Inc.

Lorenzo, Texas

806-634-5942

Bedrollers, Stalkcutters,
Water Farrow Drags, Clamps,
Extended Clamps, Shanks,
Tool Bar Spacers
Will Custom build to your requirements

GARAGE DOORS - ROLLING STEEL
ELECTRIC OPENERS - COMMERCIAL - RESIDENTIAL
SALES - SERVICE - INSTALLATIONS

We work on all Brands of Doors & Openers
Lots of Used Parts Available

RAYNOR GARAGE DOORS

Doug Williams Mark Karr
Bus. (806)747-9746 Lubbock, Texas 79403
1-800-766-2074

**S.C. & Associates
Rapid Weight Loss**

Call Sue or Staci at 788-0012 - Lubbock
Come By For a Free Sample

30 Lbs.

30 Days

\$30

I've been on this diet for two weeks ... So far, I've lost 15 pounds and four friends."



FOR SALE

FOR SALE: 1986 Mustang - Like New Engine - Transmission - Needs some restoration - \$2760.00 - Dave Taylor, D&B Construction, 1-800-333-2066.

Carpet, Vinyl, Tile, Wood
**Mustang Wholesale
Flooring**

23 Years Experience

Shop Our Warehouse For Best Buys



Ron Cowart

5271-C 34th Street Lubbock, Texas 79407
806-791-1086 800-530-4990

Celebrate July
3rd In Lorenzo
Hometown
Hoedown,
10:00a.m.
BBQ lunch,
11:30 a.m.
Street dance
8:00 p.m.

**Fergusons
Discount Flooring**

Get Your Best Deal on Major Brands of

- CARPET
- SHEET VINYL
- VINYL TILE
- WOOD FLOORING
- CERAMIC FLOORING
- CERAMIC TILE
- LAMINATE
- COUNTERTOPS

And we will try to beat it!

- Free In-Home Estimates
- Financing Available
- Quality Installation

The Little Store that Saves You More!

796-1910

5021 34th * Lubbock

- 100% FINANCING
- FREE ESTIMATES
- With A Personal Touch



DON VOYLES
PAM VANCIUREN
5226 - 34th
Lubbock, TX 79407
806-791-1296 or Toll Free 1-800-375-1296

CONSTRUCTION COMPANY

- Siding & Overhangs
- Storm & Replacement Windows
- Carport & Patio Covers
- Additions • Remodeling

"We Strive for Excellence and Customer Satisfaction"



(806) 795-9880

Hamilton Mobile Home Service

RELOCATE & SET UP

Buy & Sell

2006 KELSEY ST
LUBBOCK, TX 79407

BILLY "BOOTS" HAMILTON



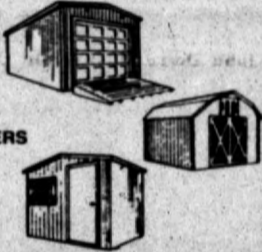
ALL TYPES OF FINANCING

BUILT LOCALLY - ALSO ON SITE
• MANY BUILDINGS ON DISPLAY
Top Quality • Custom Orders
All Sizes

GARAGES • CARPORTS • PATIO COVERS
STORAGE • OFFICES • BARN • ETC.

794-1779

3 1/2 MI. SW OF LOOP 289
ON BROWNFIELD HWY 62-62



Auto Home



Caprock Insurance Agency

807 Main Ralls, Texas
Pat Terry
Nunley Rainwater
253-3031

You Spend One-third
Of Your Life in Bed
Why Not Enjoy It??



BODY-MATE...The Lifetime Sleep System.
Especially comfortable for people with back problems because the bed supports the back completely in any position ...sitting or lying.



HELP INDUCE DEEP, RESTFUL SLEEP

INCREASE BLOOD CIRCULATION WHERE APPLIED

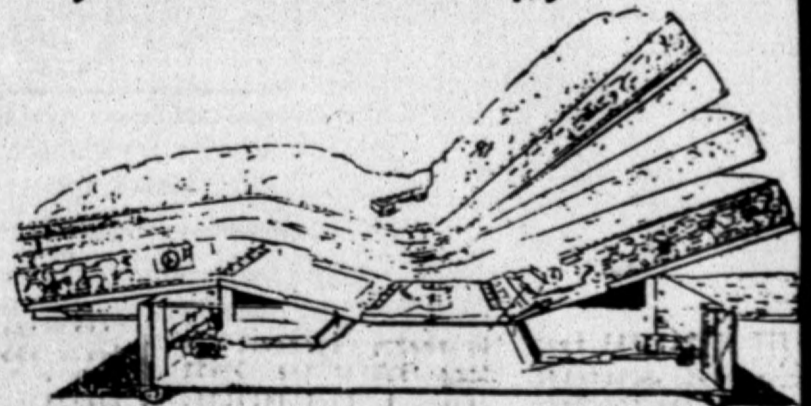
RELIEVE HIALAL HERNIA AND EVERYDAY FATIGUE

RELIEVE MINOR PAINS OF RHEUMATISM AND ARTHRITIS

RELIEVE SIMPLE BACKACHE, OTHER MINOR ACHES AND PAINS

RELIEVE SIMPLE NERVOUS TENSION WITHOUT DRUGS OR PILLS

**BODY MATE ADJUSTABLE BEDS
ARE NOW BUILT LOCALLY
by American Therapy!**



Bring This Ad By Our Factory Showroom For A FREE Demonstration And Your Senior Citizen Discount On Each Purchase!

Phone (800) 942-0813 or (806) 747-3634

AMERICAN THERAPY PRODUCTS

2219 CLOVIS ROAD LUBBOCK, TX 79415

SINGER KENMORE WHITE PFAFF NECCHI ELNA

ONE DAY SERVICE \$14.95

SINGER
APPROVED DEALER
Reg. \$44.95

Clean, Oil & Adjust Tensions Any Make Or Model

SINGER SERVICE CENTER

5418 Slide Rd. Lubbock, Tx ■ 788-0608
Monday-Friday 9:30-5:30 ■ Saturday 9:30-3:00

DRESSMAKER VIKING BERNINA MONTGOMERY WARD

- The Nashville Network
- ESPN
- The Discovery Channel
- USA Network
- Cinemas
- TNT
- Mind Extension University
- Headline News
- A&E

KARR ELECTRONICS

Now Available
HOME SATELLITE CABLE!
For the Country--

\$35 Per Month W.A.C. & No Down Payment
--Act Now & Receive

1 Year's Basic Programming Free!



- Crystal Clear Picture
- Digital Stereo Sound
- Premiums Optional At An Additional Charge

7104 W. 82ND 794-1822 1-800-288-9168
RITE ON 82ND BETWEEN FRANKFORD & UPLAND

- CNN
- WGN
- HBO
- THE FAMILY CHANNEL
- SCH-R CHANNEL
- DISNEY
- CNBC
- TBS

**Driving Safety Classes
for
Traffic Ticket Dismissal
and / or
Auto Insurance Discounts**

Driving School of the Southwest
3639 Wolflin
(Across from Tascosa High School)
Amarillo TX 79102
352-0561
or 1-800-462-3721

Classes also scheduled in
Hereford and Dumas
Call 1-800-462-3721

Classes also offered in the Lubbock area

Great Plains Driving School 744-0334
Hub City Driving School 793-8696
Lubbock Driving School 792-9600

USED SADDLES & HORSE
TACK, large selection priced to
sell & ready to ride. Call David
622-0855.

LARGE BILLBOARDS on I-
27 and U.S. 60 approaching
Amarillo and Canyon, \$150-
\$350/month. Call Canyon Out-
door Advertising. (806)655-
7121.

1978 GRANADA, grey/arev.

runs good, transmission good,
\$800. Call David 622-0855.

FIRESTART, 9mm compact
semi-automatic, in box, 8
shot, new, \$425. Call David
622-0855.

FOR SALE: PLAINS STRAN-
MASTER steel building,
24x48, needs new roof. Priced
to sell. Located Hwy 385, 10
miles South of Hereford. 806-
655-0316.

Canyon's LARGEST Used Car Dealer



- '91 CAPRICE \$9,995
V-8, 53,000 Miles, like new.
- '92 TEMPO GL \$8,995
Absolutely perfect, white, 24,000 miles
- '91 OLDS CUTLASS SUPREME \$8,995
2 dr. coupe, loaded, immaculate
- '92 GEO STORM \$8,795
Hatchback, like new, 17,000 mi., auto, power, air
- '87 CADILLAC SEVILLE \$7,295
Loaded, new car trade, leather seats
- '91 CHEVY P.U. 3/4 ton \$7,295
Maroon, loaded, 79,000 miles
- '90 DYNASTY \$7,295
V-6, white, absolutely perfect, loaded
- '91 DODGE SHADOW \$5,795
4 door, maroon, super clean

-We Buy Clean Used Cars-

EDDIE KNOWLES
700 23rd St. • 655-4032

APPLIANCES-
REFINISHED/REPAINTED!
Free estimates. Call Quality
Appliance in Canyon at 806-
655-9219.

School of Needlery! Learn
how to tat, needle point, knit,
crochet. Dan's Fifth Ave, 655-
3355.

**SUPER SIZZLING
SUMMER SAVINGS**

- STEREOS
- CAMERAS
- C.D.s
- GUNS
- RIFLES
- HANDGUNS
- SHOTGUNS
- GOLF CLUBS
- TV'S •VCRS



Pawn Loans
Up To \$380.00

**Country Sales
& Pawn**

AMARILLO • 622-0855

**Anchor Marine
INC.**
Amarillo, Texas

BANK RATE FINANCING

BOATS (New & Used)

- Bayliner • Astro • Skeeter • Starcraft • Ebbtide • Cobra •
- Buccaneer Deck Boats • Mariah • Galaxie Deck Boats •
- Bass Boats • Cruisers • Ski Boats • Deck Boats • 2-Man Fishing Boats •

MOTORS

- Outboards • Inboard-Outboard •
- Evinrude • Mercury • Merc Cruiser •
- Force • OMC •

PONTOON
BOATS



ACCESSORIES & TACKLE
• Rods & Reels • Boat Parts & Accessories •
• Fishing Supplies • Water Skis & Equipment •
• Trout Fishing Department • Trailers •

SALES
SERVICE
REPAIR

4217 CANYON DR. • E-WAY & GEORGIA • OPEN 8-6 MONDAY - SATURDAY

Jan's Quilt Shop

2433 I-40 West • 806-353-2646 • Amarillo



Let us Quilt your Quilts
"Hand or Machine"

FABRICS New Shipments Daily
SUPPLIES Rotary Cutters and other supplies
as seen on PBS Quilting Programs.

CLASSES - Register Early

- 3 D Workshop - July 17
- Pineapple - June 15
- Tennessee Waltz - June 17

SIDEWALK SALE EVERY SATURDAY



MACK - \$4,500
2 to choose from!



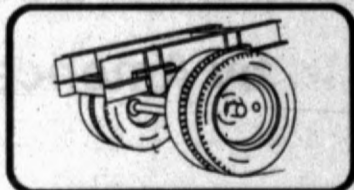
Carpet Pole - Yale Forklift
\$3,250



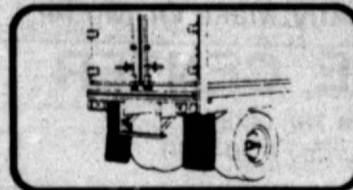
INTERNATIONAL Single Axle Tractor
\$5,500



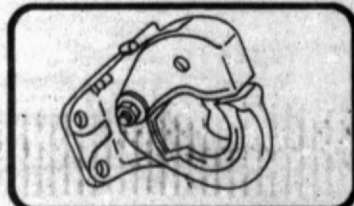
\$1500



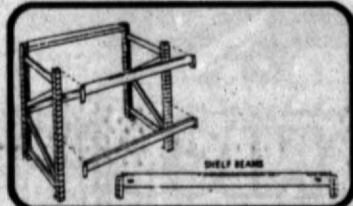
Take Out Trailer Axel with
or w/out tire & wheels -
\$350 & up!



Mudflaps - **\$1**



Used Pintel Hook - **\$55**



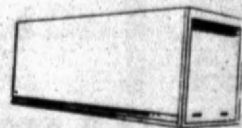
Pallet Shelving - Save 50%



4 w Dock Carts
\$45



Used budd or open
trailer wheels - All Sizes!



Trailer Storage Box
8'x27' & 8'x45'



Metal Shelving
Save 50%



Trailer Vans



Safety Signs
\$4.00!

Amarillo

GRAYMAC

622-2248

Just off Loop 335, 1/2 mile East of South Washington on Farmers Avenue.

The Upholstery Shop -- Custom furniture upholstery, antique and custom auto interiors. "Around The Square" in Canyon, 417 16th St. 655-3355

Stevens Flowers and Country Room -- Since 1937: Flowers for all occasions, unique gift items and collectibles. "Around The Square" in Canyon, 509 16th St. 655-3732

Gamble's Frame and Art -- Prints, paintings, Danny Gamble original and prints, custom framing and hand-thrown pottery. "Around The Square" in Canyon. 414 15th St. 655-7323

The Canyon Grill. Food so good you'll write home about it. "Around The Square" in Canyon -- 5th Ave @ 16th St. Breakfast Mon - Sat- Lunch Specials you won't forget - Open for Dinner after June 1. The Best Food In Town.

Katies Antiques & Collectibles -- 1701 5th Ave, Around The Square, in Canyon. We Deal In Treasures From The Past - Buy, Sell, Trade - 9 a.m. - 6 p.m. Mon - Sat. or, 655-9118 eve, & weekends.

SAVE...SAVE...SAVE...SAVE
 FS DISCOUNT Trailer Parts & Supplies, AXLES, WHEELS, BRAKES, COUPLERS, BALLS, JACKS, HUBS, FENDERS AND MUCH MORE!!! 6100 S. Washington, 373-6805 or 800-462-5954. SAVE...SAVE...SAVE...SAVE

Tweedle Dee - Unique and distinctive apparel and gifts for newborns through ladies sizes. Mother/ Child combos also. "Around the Square" in Canyon: 1601 4th Ave, 655-4771.

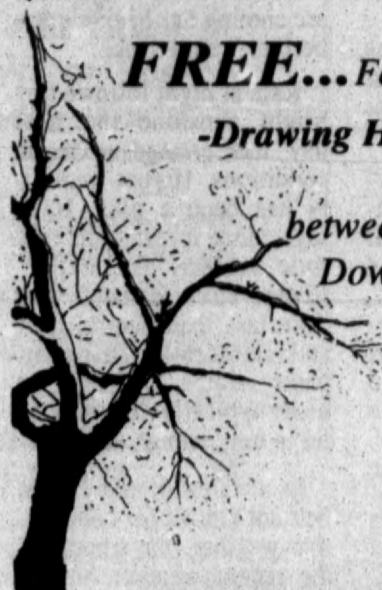
Down Home: Creating tomorrow's memory's today. A unique collection of gifts, antiques, and collectibles. "Around the Square" in Canyon - 1517 4th Ave, 1655-8783

Johnston's Hardware: Hardware, automotive, plumbing, electrical, custom mixed paint, glass & screen repair. "Around the Square" in Canyon - 408 15th St, 655-3116.

MUST SELL! 89 F150 S/C 4x4. Just need responsible person to make reasonable monthly payments. Ask for Brad Garrett. (806)622-3400. Ron Clark Ford, Inc.

Shop Canyon's Historic Courthouse Square Till 9 P.M. Every Thursday

FREE...Food, Gifts, Antiques, Art, Hairstyling, -Drawing Held Weekly- Register at Participating Merchants each Thursday Evening between 4th & 5th Ave. and 14th & 17th St., Downtown Canyon, "Around the Square"!



UNIQUE SPECIALTY SHOPS

- Custom Framing • Boutiques & Dress Shops • Needle Arts
- Antiques • Collectibles • Gifts
- Weaver's Studio • Sculpture Studio • Wood Carver • Bronze Sculptor
- Saddle Maker • Four Art Galleries
- Antique Mall • Garden Center
- Greenhouse • Florists Shops
- China & Gift Shop • Hallmark Cards
- Furniture • Professional Licensed Massage Therapy • Dry Cleaner • Chiropractic Clinic • Upholstery Shop
- Hair Styling Salon Barber Shop
- Hardware Store • Complete Home Center • Office Space Available

FOOD - Some of the best restaurants in Canyon are on or around the square.
FUN - Regular events for the whole family.
'TEXAS' Box Office - Tickets & reservations.
ACCOMODATIONS - Bed & Breakfast Inns
STUDIOS & GALLERY'S - Both Artists-In-Residence and Galleries representing the best of local and area artists: sculpture, painting, pottery, wood carving, weaving, saddle making.
FARMERS MARKET - Local produce starting July 6.
PULSE & BANKING SERVICES • BUS SERVICE



The Square

MoneyGram **Money Orders**

You're in

CENTRAL BAIL BONDS
 KENNETH KNOWLES OWNER/MGR

Country

SE HABLA ESPANOL **24 HRS.**

1-800-999-9368

AMERICAN EXPRESS, VISA, MASTERCARD, DISCOVER

Drive a Little... Save a Lot!

MIDWAY Chevrolet GEO

1-27 & Rockwell Road Canyon, Texas 655-7774 Open 8 to 8

SE HABLO ESPANOLA

'93 GEO METRO 2 DR	1993 S-10 PICKUP
MSRP \$6995, Rebate \$300, Sale Price \$6695 + TT&I #P6764371	MSRP \$9215, Discount \$470, Rebate \$750, Sale Price \$995 + TT&L #9015
\$6695	\$7995

USED CARS	USED TRUCKS
88 FORD TEMPO \$5,995 4 Dr, white, blue cloth, auto/air, am/fm #4737-1	84 SUBURBAN 2WD \$5,995 White/Blue/Cloth, Full Power, one owner, #9054-1
88 PONTIAC GRAND AM \$6,995 White, gray cloth, 2 dr. tilt, cruise, air, cassette	89 ISUZU TROOPER \$8,995 Black/Gray/Cloth, V-6, Auto, Air, 4x4, #4688-2
92 TOYOTA TERCEL \$7,995 2 dr., red/gray interior, A/C, AM/FM, #8745-1	91 MITSUBISHI EXT CAB \$10,995 Auto, Air, Tilt, Cruise, Cassette, Sharp, #9203-1
89 FORD MUSTANG LX \$8,995 Black/gray cloth, automatic, full power, #4749	91 CHEVY 3/4 TON REG. CAB .. \$11,995 Blue/Blue cloth, V-8, 5 Spd, Air, AM/FM Cassette, Special, #9032-2
92 CHEVY CORSICA \$9,995 Red/red cloth, V6, auto, A/C, pretty car, #4756	92 FORD F-150 EXT CAB \$13,995 V-8, 5 Spd, Tilt, Cruise, Cassette, Air, Red/Red cloth, #3558-1
90 GEO STORM GSI \$9,995 Red/gray cloth A/C, AM/FM cassette, #4731	92 CHEVY SPORTSIDE \$16,995 Silverado, V-8, auto, full power, low mi. #9055-1
91 CHRYSLER 5TH AVE \$12,995 4 Dr., white / blue cloth, full power, #9039-1	92 CHEVY EXT CAB 4X4 \$17,995 Silverado, Full Power, V-8, Auto, Red/Red cloth, #8894-1
91 PONTIAC FIREBIRD \$13,995 V-8, automatic, full power, low miles, #9161-1	

SPECIAL CREDIT PLAN COUPON

You may qualify for 1 of our special credit plans on a new or used vehicle. Send in this coupon & get your credit pre-approved, quickly & with no hassles. Must be over 18. Terms on any basis your credit justifies.

Mail coupon to:
 Midway Chevrolet
 P.O. Box 31447
 Amarillo, TX 79120-1447

FULL NAME _____
 ADDRESS _____ CITY _____ ZIP _____
 PHONE _____ WORK PH. _____
 SOC. SEC. # _____
 DESIRE NEW USED CAR TRUCK VAN
 I certify that the above information is complete and accurate. I authorize an investigation of my credit history and the release to you of information about my credit experience.
 SIGNATURE _____ DATE _____

CATTLE AUCTION EVERY WEDNESDAY

-4 ANNUAL HORSE SALES
-SPECIAL COW SALES
-VIDEO CATTLE SALES

Next Video Sale - July 8

Next Horse Sale, August 20, 21, 22.
 Catalog Deadline, July 20.

Phone 505-762-4422

Clovis Livestock Auction, Inc.

Serving ALL Your Livestock Marketing Needs!

P.O. Box 187 • Clovis, N.M. 88101 • 505-762-4422

'91 Caprice, V-8, 53,000 miles - this car is just like new \$9995. Eddie Knowles in Canyon, 700 23rd St, 655-4032.

'87 Cadillac Seville, this car is loaded -- a new car trade -- leather seats -- \$7295. Eddie Knowles in Canyon, 700 23rd St, 655-4032.

'91 Dodge Shadow - Super Clean, Maroon, 4 door -- \$5795. Eddie Knowles in Canyon, 700 23rd St, 655-4032.

1971 Dodge Mini Motor Home - Extra Nice, Low Miles, Sleeps 6, #8427-4, \$4995. Midway Chevrolet "June Jamboree", 1-27 & Rockwell Rd, Canyon. 655-7774.

1992 Chevy Lumina APV Van -- Full Power, V-6, Auto, A/C, Red/Red cloth, #3526-1 -- \$17,995. Midway Chevrolet "June Jamboree", 1-27 & Rockwell Rd, Canyon. 655-7774.

1993 Chevy SWB PU V-6, Automatic, A/C, Tilt, Cruise, Teal/Gray Cloth, #4754- \$16995. Midway Chevrolet "June Jamboree", 1-27 & Rockwell Rd, Canyon. 655-7774.

COUNTRY FRIENDS CRAFTS has booths available. Now under new management and looking for quality crafts in wood, ceramics, jewelry. 1603 4th Ave in Canyon. Ted Porsch 806-655-3391. Closed on Sunday.

BRAKE LATHES, Antifreeze/Coolant Recyclers, Parts Washers, Waste Oil Heaters, Air Compressors, Lubrication Equipment, Shop Cranes/Floor Jacks, Lifts, Wheel Balancers. Call PMA, 1-800-377-1655.

Hail Yes!
 Low Cost Paintless Dent Repair

FREE Pickup and Delivery in the Panhandle
 Save Up To 50% Over Conventional Body Shops.

Dent Repairs starting at \$45
 *Color Match Touch Up Available
 *Door Dents While You Wait *FREE ESTIMATES

Dent Dudes

Example
 Hail Damage Insurance Check \$2,000
 DENT DUDES will give you \$1,000 back in change.

INSURANCE APPROVED

353-3368 • 1-800-687-3368
 4549 Western - Behind Ingram's - Amarillo

COTTON

From Page 2

to drought conditions, and crop watchers are judging its performance with a critical eye.

Crop watchers say there are potentials for big yields this year if the plants can avoid undue stress during July and early August.

"Those periods have the best potential to make good crop, but it is also a time when plants are most vulnerable to drought stress," Hake said.

A key will be to make sure that, by early bloom, that enough moisture has been banked in ahead of time.

"Lots of fields are just over a week away from that," said Hake. "If they haven't gotten quite a bit of moisture, one would need to check the soil moisture real closely and take advan-

tage of warm days to put moisture down there, so as to store it."

Hake said a major plus this crop year is that most planted after cold weather subsided in mid-May.

After that followed a period of extremely dry weather — a phenomenon that destroyed many dryland acres.

But the effect of the dryness apparently did not hurt cotton that had found enough moisture to germinate.

"It was the perfect time to have a drought," commented Hake. "It occurred at a time when the plant doesn't use any water to speak of, but is vulnerable to cooling."

What followed in the last two weeks has been a series of rains. Though sometimes spotty, and not the general soaking kind, they have been welcome and helpful.

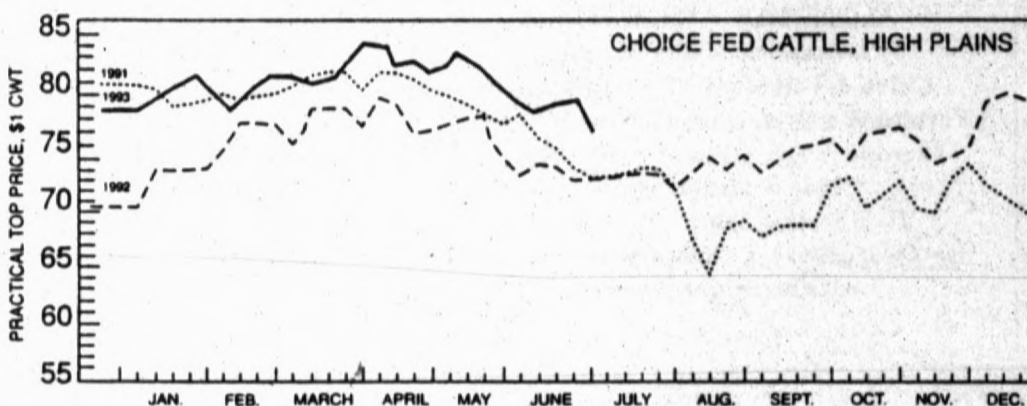
"We're getting humidi-

ties up, frequent rains... even the way rains are coming has been picture perfect," said Hake.

Rain at night followed by bright sunshine the next day has created textbook conditions. Higher humidity has been a plus, Hake says, since it results in very little surface evaporation. (Evaporative demand has been less than one-third of an inch recently. That compares with a half inch or better typically experienced on a hot, windy day.)

In an area of the cotton belt not known for cooperative weather, the timing of the recent weather on the South Plains has been exceptional, Hake commented.

"It is unfortunate to have so much dryland acreage that is either quite late, or has failed," said Hake. "It is unfortunate because cotton as a whole is getting off to an excellent start."



Courtesy Texas Cattle Feeders Association, Amarillo

Choice fed cattle, High Plains

The above report reflects market activity through June 25.

Huge Purina Mills sold to investors

CLEVELAND (AP) — BP America Inc. is selling its animal feed division, Purina Mills Inc., to an investor group that includes Purina managers, the company said Wednesday.

BP America, the U.S. subsidiary of British Petroleum, said its BP Nutrition unit had reached agreement to sell Purina Mills to investors led by The Sterling Group Inc. for about \$425 million.

BP America said the deal should be completed in the third quarter of this year.

Purina Mills, the largest supplier of animal feeds in the U.S., is based in St. Louis, Mo. It operates 54 feed mills employing about 2,600 people.

The Sterling Group, based in Houston, is a private organization that acts as investment banker for leveraged and management buyouts.

William Oehmig, a principal of The Sterling Group, said in a statement that Purina Mills management is participating in the purchase and an employee stock ownership program is planned.

BP also has sold several

REAL ESTATE FOR SALE

FOR SALE: 865 acres (600 in love grass), 20 miles south of Plains. (806) 863-2483 after 5 p.m.

To list your farm in the West Texas Country Trader call Kim Hagood at the News-Press. 894-3121. Levelland.

other non-core business operations this year. The consumer products division was sold for \$375 million and the consumer foods division for \$124 million.

FOR SALE: 28-foot 1982 Road Ranger, clean good trailer, new air. Health bad, can't travel. Also a pop-up, sleeps 5, good condition, price is right. See at 3313 26th St., Lubbock, or call 795-3101.

VEHICLES FOR SALE

FOR SALE: 1990 white Dodge Caravan Cargo Van, 3.3 liter engine, automatic with air. \$7,450. Worley Welding Works. (806) 894-7701. Levelland.

FOR SALE: 1991 Chevrolet S-10 Durango Super Cab, AM/FM stereo, 21,700 miles, tilt and cruise. (806) 245-6536. Whiteface.

MISCELLANEOUS FOR SALE

PORTABLE STORAGE BUILDINGS
Any size you need.
Metal or Masonite.
Call for a Price Quote.
1-800-768-8378
(806) 894-6773
Levelland.

FOR SALE: Optometrist chair and light pole. Made by American Optical Company. Hydraulic, electrical, in very good shape. 1207 Ave. B, Levelland. (806) 894-5424.

Orthodontics Can Be Affordable.

Dr. Paul C. Dunn
General Dentist Practicing Orthodontics
For Children and Adults.
Serving You In
Levelland and Amarillo
701 8th 7201 W. 34th
79336 79109
894-3535
1-800-658-6748 806-355-7463
Medicaid Patients Accepted.
Member of the American Orthodontic Society, Inc.

Windshields • Windshields • Windshields

Lowest Prices Ever!!!!

Chevrolet & GMC Pickups & Suburbans

1978-1987 Fullsize Pickups & Suburbans (Shaded)	\$57 ⁰⁰
1988-1992 Fullsize Pickups & Suburbans (Shaded)	\$125 ⁰⁰
1993 Fullsize Pickups & Suburbans (Shaded)	\$198 ⁰⁰
S-10 & Jimmy Blazers (Shaded)	\$80 ⁰⁰

Ford Pickups

1980-1986 Fullsize Pickups (Shaded)	\$85 ⁰⁰
1980-1986 Fullsize Pickups (Tinted)	\$80 ⁰⁰
1987-1993 Fullsize Pickups (Shaded)	\$85 ⁰⁰
1987-1993 Fullsize Pickups (Tinted)	\$80 ⁰⁰
Ford Ranger & Bronco II (Shaded)	\$85 ⁰⁰

Dodge Pickups

1974-1993 Fullsize Pickups (Shaded)	\$110 ⁰⁰
1974-1993 Fullsize Pickups (Tinted)	\$91 ⁰⁰

*All above prices are installed plus tax.

65% OFF All Foreign Windshields

75% OFF All Domestic Windshields

*Plus labor, kit and tax

Windshield Repairs

\$20⁰⁰

Installed in Lubbock Only

Offer good through Sept. 1, 1993

Crafton's Glass Inc.

4801 I-27

Lubbock

744-4838

744-3511

The Levelland Chamber of Commerce
Invites You To Attend

The 32nd Annual Early Settlers Celebration

Sr. Citizens Breakfast 6 a.m. - Noon
in the Senior Citizen's Building

★ Arts & Crafts Booths ★ Huge Parade --
Just Show Up At 10 a.m. at 1st & West,

Hand Made Western Trophies Will Be Awarded

Best Decorated Bicycle Judging

9:30 a.m. at Western Auto

★ Jr. Parade Marshall - Buckaroo & Buckarette

Judging at 9:30 a.m. at Western Auto

Ages 3 - 7 With Appropriate Dress

Play Day For Kids At Sheriff's Posse Arena

★ Roping at Harley's Arena

★ Necrology Service at

Levelland Baptist Temple, 10 a.m.

Quilt Show at Old Levelland State Bank

on South Side of Square

★ Food Booths, Games For Kids &

Music All Day On The Square

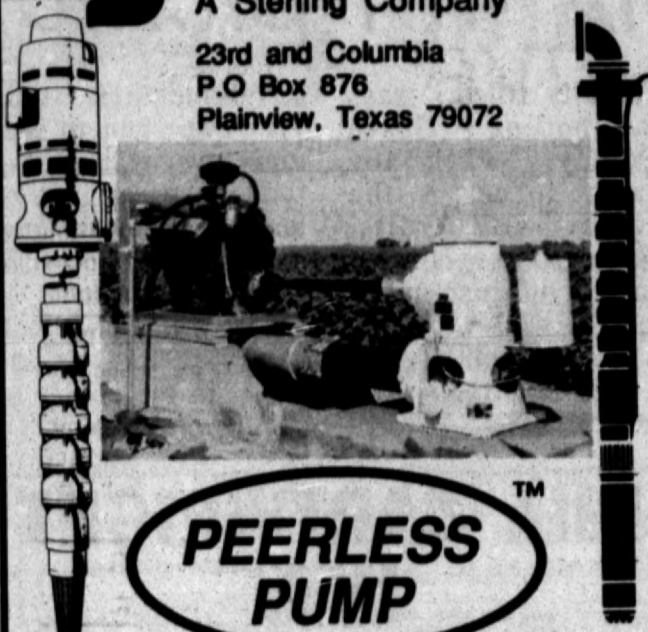
Street Dance 8 a.m. - Midnight

To Music From The Silver Creek Band

★ **Make Plans To Attend &**

See Some Old Friends & Make New Ones

Peerless Pump
A Sterling Company
23rd and Columbia
P.O. Box 876
Plainview, Texas 79072



PEERLESS PUMP™

296-5581 Fax 293-2781

Celebrate our Nation's Birthday at Texas Water Rampage In Lubbock, Texas

Bring this ad and get \$3.00 off general admission before 6:00 p.m. on July 4! After enjoying a full afternoon in the water park, stay and enjoy the Firework Spectacular in honor of Independence Day!

Brought to you by:
BRACH'S CANDIES
SEVEN UP
WIENERSCHNITZEL
KAMC TV
KILL RADIO

TEXAS WATER RAMPAGE
Spur 327 & Brownfield
Lubbock, TX
(806) 796-0701 ★

Financial Questions Can Lose Time and Money

We Specialize in...
Farm and Business Management
Payroll Reports
Tax Reports
Annual Income Tax Reports

M.E. McILROY TAX SERVICES

707 W. 7th Plainview 293-3527

TEXAS VETERANS TRACTS
Kirchhoff Company, 293-7542

One Chevrolet 454 Irrigation motor.
1982 Ford XLT Pick-up. 296-9697.

Temporary Help: 21 years of age or older, need CDL with Hazmat endorsement. 889-3719.

Avon Wants Individuals Interested in Earning \$6-\$10 hour. No Door to Door. 1-800-827-4640.

Farley CONCRETE WORKS
Patios Basements Sidewalks
NEW DRIVEWAY!
\$475⁰⁰ (10x25' Maximum)

CALL NOW FOR FREE ESTIMATE

OFFICE - 293-2854
PAGER 1-800-959-4936



HYDRA TRAC

Hydraulic Drive Spot Spray Tractors
• 1 Man • 2 Man • 3 Man
All Wheel Drive Available
FINANCING AVAILABLE - Now Is The Time To Buy!

Manufactured by
Chuck Humphreys Industries
2109 S. Date St. (806) 293-0533
Plainview, Texas 79072 Night 296-9315

WHEAT CLEANING
Bagged - Bulk - Treated
PRODUCTION PLUS
719 East 6th, Plainview, Texas
79072. Day, 293-3103. Nite,
293-0880.

400 BALES WHEAT HAY
For Sale. \$1.75 bale. Dent Jones;
293-3494.

BOOM
National Retail Firm Expanding into the Plainview Area. FT/PT openings. Idea for college students. \$9.25 starting. Interviews in Lubbock, 1-793-0992.

MOBILE HOMES
New 2, 3, & 4 bedroom. 16 wide & double wide. Free delivery and setups. Lowest prices around. 806-894-7212.

Horse quality Alfalfa Hay in the barn. 65 to 70 pound bales. \$4.25 per bale, 20 pounds minimum. 296-7347.

REPO'S! REPO'S! REPO'S!
Must sell two and three bedroom. Single and doubles. 806-894-7212.

HORSESHOEING
DON McMAHAN, 296-2021. Mobile, 296-8631.

Underwater Adventures. Tropical Fish, Aquariums and Supplies. 1903 Quincey, 293-3474.

ROTTWEILER PUPPIES for sale, eight weeks old. \$150 each. Hale Center, (806)839-2270.

Highway Maintenance Manager. Full-time position. Must be 25 years of age or older. Valid Texas Driver's License. Good written and verbal communication skills. Must have HS Diploma or GED. Apply at 2700 Yonkers. EEO/AAE/ADA.

MH Specialist I. Required: HS Diploma or GED and minimum one year college and two years in mental health field. Must have a valid driver's license. Prefer four or more years experience in mental health field. Apply at 2700 Yonkers. EEO/AAE/ADA.

FOR SALE
Small Business - Small Price. Business involves ladies and children's clothes and accessories. Interested persons, please call 293-7305 after 6 P.M. weekdays.

A 15 STORE ROUTE
Contemporary Greeting Card Business. No Selling. Requires 6 - 10 hours per week. Income to \$1,000 plus a week. Parent company will sell for \$15,600. 1(800)329-7725.

Fresh onions & squash now ready. Beans, peas, okra ready soon. Pancho's Garden, 1013 Sandhill Hwy. Lockney, Texas. 652-2727.

Did you know you can Buy a Storage Building for as little as \$35 a month. Many sizes available, 1207 West 24th, 9-7, Monday thru Saturday.

KILL ROACHES!
Buy ENFORCER OverNite Roach Spray, or Overnite Pest Control Concentrate. Makes Two Gallons. Kills Roaches Overnight Or Your Monday Back. **GUARANTEED!** Available at Plainview Hardware, 1505 West 5th.

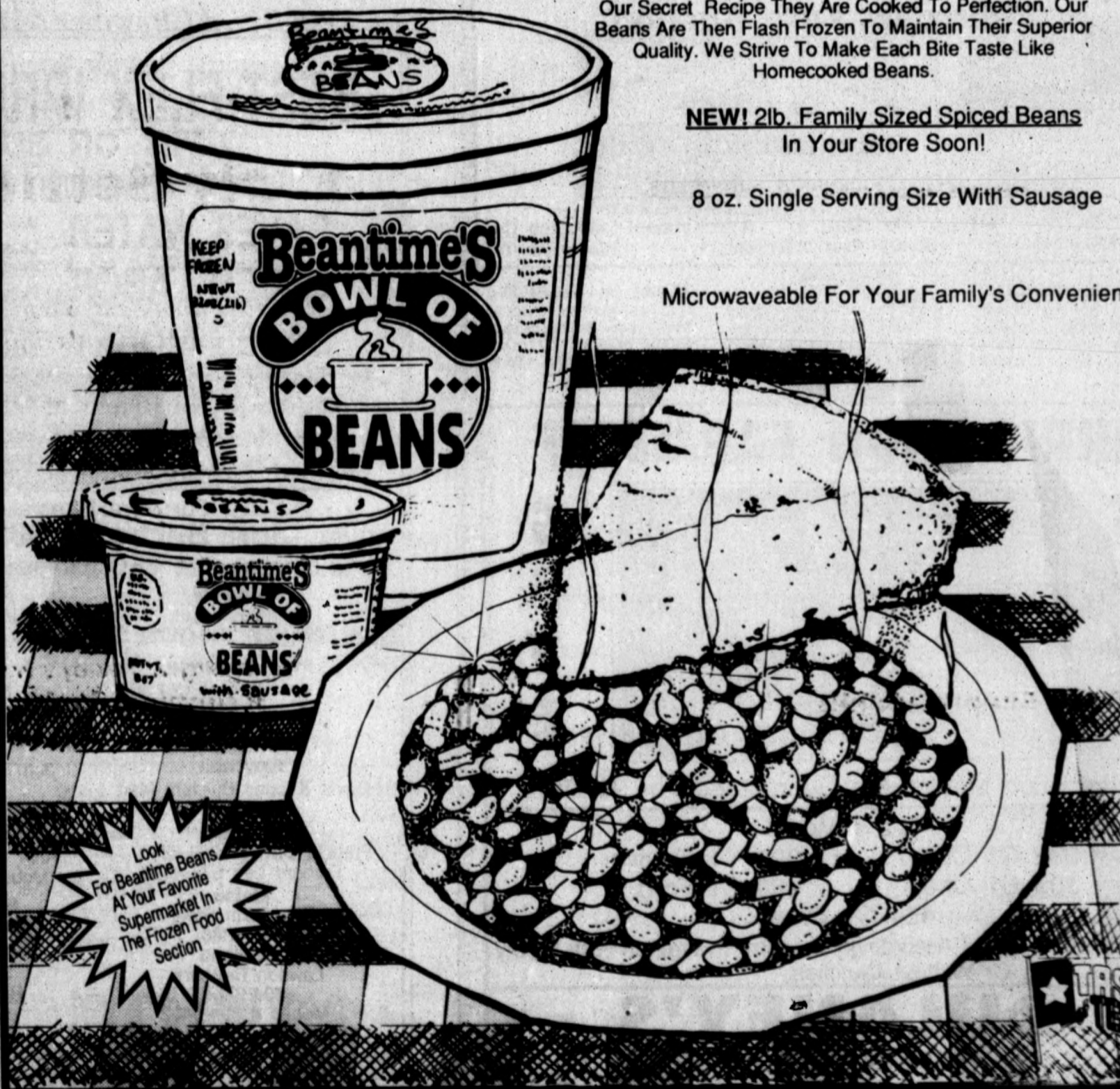
Homegrown Beans Home Cooked Taste

114 Area Farmers Grow Our Protein Packed Pinto Beans With Texas Pride. They're Rushed To Our Beantime Kitchen In Plainview. Using Our Secret Recipe They Are Cooked To Perfection. Our Beans Are Then Flash Frozen To Maintain Their Superior Quality. We Strive To Make Each Bite Taste Like Homecooked Beans.

NEW! 2lb. Family Sized Spiced Beans
In Your Store Soon!

8 oz. Single Serving Size With Sausage

Microwaveable For Your Family's Convenience



Look For Beantime Beans At Your Favorite Supermarket In The Frozen Food Section



Tainted food could spoil July 4th picnic

By MARGARET SCHERF
Associated Press Writer

WASHINGTON (AP) — With those lazy, hazy, crazy days of summer opening the gate to picnics, barbecues and camping trips, the Agriculture Department wants to

be sure food safety is part of the fun.

The department's hotline is warning consumers that at warm temperatures food poisoning bacteria can begin to multiply on food and could cause illness.

Something you may not have thought of in preparing for a picnic: Pack foods in reverse-use order so those used last stay in the cooler and aren't shifted around by warm hands until just before eating.

Of course, pack all

perishable foods in a cooler, taking them directly from the refrigerator or freezer. Use gel packs, ice cubes or blocks of ice to keep the food cold.

"A full cooler maintains its cold temperature longer than one that is only

partially filled," says the hotline's Susan Conley. "Pack any extra space in the cooler with fruits, other nonperishable foods or just more ice."

And she underlines the following:

"Remember, it is very important to securely overwrap or bag foods that may drip or leak, particularly raw meat, poultry and fish. Don't let raw meat or poultry juices touch ready-to-eat foods either in the cooler or during preparation."

Your Farming Needs Are Important To Us
Serving You With:

Elevators-For Upcoming Wheat Harvest And Marketing Needs

Fertilizer-Dry Liquids NH 3
Foliar Fertilizers

COOP Talk To Us About Cotton Ginning This Fall

Also Available Used Crossties

Lockney Cooperatives

652-3377



NOW OPEN
IN OUR NEW LOCATION

PLAINVIEW TOWNE CENTRE

GREAT PRICES
AND THE
LARGEST SELECTION IN PLAINVIEW
10 A.M.-5:30 P.M. MON-SAT

Marbara's
Jewelry

Mike & Marbara Richardson-Owners
296-9629 PLAINVIEW TOWNE CENTRE

BILL CARTWRIGHT INC.

USED GEAR HEADS BUY-SELL-TRADE

CALL FOR PRICES



(806) 296-6368
1-800-524-3286

2315 West 5th Plainview

HARP AGRI-MANAGEMENT SERVICES, Inc.
Specializing in insurance for West Texas farmers

Crop Health Life Workers' Comp Alternatives
See Elbert Harp
Box 500 Abernathy 298-4093

Plainview Auto Auction



S. I-27 Ex. 48 * Buy Or Sell * A McKeibent Linecomb Co.
1-800-598-1193 Every Thur. 7:00 p.m. Plainview, Tx.

ANTIQUES LUBBOCK
Wholesale Antique Broker. Elegant furnishings & accessories. Estate liquidations, appraisals. 2217 34th., Lubbock. 763-5177.

DRIVERS
Local and nationwide delivery of Luxury Motor Homes and Vans. No experience. Valid Drivers License required. 1-800-510-0672.

ANTIQUE 1964 OLDSMOBILE
Four door hard top. Clean as brand new. Actual mileage 42,000. 293-3739. 3017 Dimmitt Road, Trailer 110-B, Plainview.

IRRIGATION FARMERS!

SAVE SAVE



All Irrigation Motors Are Guaranteed For 90 Days

Late Model

292 C1 Chev.	300 C1 Ford
305 C1 Chev.	460 C1 Ford
454 C1 Chev.	

These Motors Priced Accordingly And Are In Frames With Safety Switches. With Or Without Clutches.

DULANEY'S
Auto Parts

311 S. Columbia Plainview (806) 296-7456

BEST-FLEX IRRIGATION
2-PLY OR BUST!
Flexible Irrigation Tubing

SAVES WATER SAVES LABOR SAVES MONEY

We Are The ONLY Distributor Of 2-Ply Orange And White Poly Tubing.
Dealers Across The South Plains

2-Ply Advantages

1. Strength	3. Holds Plugs
2. Durability	4. Holds Gates

For More Information
Jeff Bertrand 983-5583
Or If Busy Call B&G Harvesting 983-2009

Abernathy Tommy Wages 298-2927 298-4287	Petersburg Higginbotham-Bartlett 667-2281
Riley Agri Service 298-4050 Fieldton Mike Oden 262-4011 Floydada	Plainview Van Miller 889-3580 Mobile # 889-3518
Davis & Sons Builders Mart 983-3113 Hereford Freddie Savage 289-5389 Richard Lee 578-4568	Ralls Jeff Payne Irrigation 253-2924 Mobile # 253-3324
Idalou The Farm Store 892-2860 Levelland Lawson Brothers 894-9764 Mobile # 894-0402	Ropesville Arin Ryals 297-3395 Mobile # 924-6637
	Shallowater Dwight Hurley 799-0028
	Southland Ronnie Dunn 495-2097



CROP CHEM'S

SUPER SUCCESSFUL **SUPER SHOT - 40** THAT SAFENS YOUR CROP FROM HERBICIDE INJURY or STUNTING;

- HAS A BROTHER -

SUPER SHOT-40 PLUS WHICH CONTAINS **SUPER PGA-VII** "THE MOST SUCCESSFUL PLANT GROWTH ACTIVATOR ON THE MARKET TODAY!!" **SUPER PGA-VII** HAS NOT ONLY (1) or (2) REGULATORS **BUT** (7), THAT ENABLES IT TO STIMULATE **ANY** PLANT EVERY TIME IT IS APPLIED; TO ASSIST THE PLANT TO MAXIMIZE ITS YIELD; **AND** IS (4) to (6) TIMES THE STRENGTH of PGR-IV, MAXON AND OTHERS; AND IS ABOUT (1/2) THE PRICE!

- ALL THREE PRODUCTS ARE AVAILABLE -

CALL YOUR DISTRIBUTOR FIRST and IF THEY CANNOT SUPPLY YOU **CALL** US AT 1-800-484-4015 (1238). SOMEONE WILL GET BACK WITH YOU QUICKLY. . . .

Olton Mini Mall
Summer Clearance

30%-75% off

10 A.M. - 6 P.M. Mon. - Sat.

285-2212

710-714 Main

Olton

HEALTH INSURANCE

For The Self-Employed At Affordable Group Rates

- On The Job Coverage
- Non-Cancellable
- Stable Cost
- No Pre-authorization
- AA+ In Claims Paying
- Builds Cash Value!

CALL COLLECT
806-791-5749

Dale Powell Irrigation

Flexible Irrigation Tubing



Cut Your Cost And Not Your Pocket Book

A Dependable Quality Product
A Straight Forward Dealer

We Stand Behind Our Product!

DURABILITY

We Guarantee: **DEPENDABILITY**
ROCK BOTTOM PRICES

Let Us Cut Your Irrigation Expense

DON'T Be-Fooled By Other Ad's

LOOK For The Facts

CALL We'll Be Happy To Service You

Blanco Gin
(Mt. Blanco)
697-2631

Mark Moore
(Petersburg)
657-4573
or Lorenzo
634-5766

Max Ag.
864-3314

Todd Morphis
293-0621 Home
774-5996 Mobile

Rick Kellison
(Lockney)
652-2544

Mark Gilly
(Floydada)
983-3689 - Home
983-4021 - Mobile

DALE POWELL

652-2641 Lockney, Texas

296-1416 Mobile

Answering Machine 748-2916

Serving You For The Summer



Chris Lawson

Jamie Williams

Larry Veazey

Jim Graham

Ricky Weaver

Let Our Professional And Capable Staff Care For All Your Air Conditioning Needs.

24-Hour Service On Any Brand Heat Pump
293-5326 Or 1-800-559-5326 Sales & Service

WILLIAMS HEATING & COOLING

824 Ash

293-5326

Working in the agriculture business can be a challenging job, especially these days. Your local **LAND BANK ASSOCIATION** is ready to help you face these challenges.

With you in mind, the **LAND BANK ASSOCIATION** offers a variety of loan options and long-term financing plans for your ag business.

For more details on our ag credit programs come by and see the people at your



LAND BANK ASSOCIATION

We're dedicated to helping you.

Association offices conveniently located at:

AMARILLO
3615 S. Georgia
(806) 353-6688

HEREFORD
709 N. Main
(806) 364-1464

MULESHOE
316 Main Street
(806) 272-3010

CHILDRESS
Highway 83 South
(817) 937-6181

LEVELLAND
613 Ave. G
(806) 894-6155

PLAINVIEW
629 Baltimore
(806) 296-5579

CROSBYTON
207 S. Berkshire
(806) 675-2761

LITTLEFIELD
504 Phelps Ave.
(806) 385-4425

SPUR
403 East Hill Street
(806) 271-3378

DIMITT
105 W. Bedford
(806) 647-4178

LUBBOCK
1117 65th Drive
(806) 745-3277

TULIA
115 N. Armstrong
(806) 995-3128



CHEMIGATION EXPERTS

With over 10 years of business in the chemigation market, you can be assured that Agri-Inject is indeed the expert when it comes to providing you with the correct equipment for your chemigation, fertigation, and other application needs.



100-gallon chemigation unit



30x30 gph fertilizer pump & blower

Agri-Inject offers a wide range of equipment. Chemigation units: 10, 200-gallon capacities. Milton-Roe injection & fertilizer pumps, 25 to 227 gph. Mixer, Mixer Check Valves. A variety of options including electric mixers and switches, dual head pumps, 12 volt, single and three phase motors, and more!

Agri-Inject is devoted to providing the highest quality equipment available and we are continually developing new technology to benefit today's farmer.

CALL TODAY FOR A DEALER NEAR YOU



Agri-Inject Inc.

1-800-4-INJECT

Plainview Address:
2607 W. 17

5500 E. Hwy. 34, Plainview, Tx. 79072
P.O. Box 437, 806-296-2469 Contact Kirk Holl
Yuma, CO. 80759 Fax: 806-293-7827

The shoe for all reasons.



If you're looking for lightweight comfort in a work shoe, look no further. This Rockport 3 eyelet lace in Cordovan brown is available in sizes 8-12 N (B) 8-13 m (D) & 8 1/2-12 W (EE)

✂ Clip & Mail

Name		
Address		
City & State		
Zip		Size
Phone	Reg. *90 ⁰⁰ Sale	\$79 ⁹⁵
Allow 2 Weeks For Delivery	Tax	*6 ⁰⁰
	S & H	*3 ⁰⁰
	Total	\$91 ⁵⁵

Marse & Son

WESTVIEW

3415 Olton Road Plainview, Texas 79072
(806) 296-6381

Broke? Out Of Control? Down And Out?



If gambling makes you feel out of control, stop. Gambling loses money, jobs, families, freedom and maybe life itself.

Want To Stop Your Losing Streak?

We can help.

Serenity Center

806 El Paso

Plainview

293-9722

Edcot Gin

Edmonson

864-3335

A Progressive Gin

Latest information on chemicals, insects, and farm programs.



"Customer service is our specialty"

Larry Nelson
manager

Brett Aven
commodity spec.

Cotton Planting Seed Delinting & Treating 296-7566

Associate Growers & Distributors for Paymaster/LanKart Certified Cotton Seed Serving Farmers Since 1958 Your One Stop Cotton Seed Serv. Center

PLAINVIEW ACID DELINTING CO.

1600 E. 24th Plainview, Tx.

EXPERIENCED & DEPENDABLE SERVICE

- Blue Flex Poly Pipe
- Aluminum Pipe & Fittings
- Underground Irrigation Sys.
- New Improved Armin Poly Pipe

See Shorty Cantwell
Your Pipe Man For 43 Years
293-2506

CANTWELL IRRIGATION CO.

0% Interest* For Six Months

Caterpillar irrigation engines have built a solid reputation in panhandle farming applications. Now, West Texas Power Systems is making owning dependable Cat irrigation power easier than ever. For a limited time, West Texas Power Systems is offering Cat G3306 irrigation engines interest free for six months! This is a limited time offer while supplies last so contact Richard Hall in Amarillo today. It's never been easier to own Cat irrigation power.

*Restrictions apply, contact West Texas Power Systems for details

Becky Wieck
Dumas, Texas
Cat G3306TA Irrigation Engine Owner

- Diesel or Gas Arrangements
- Local Field Service / Installation
- Low Operation & Maintenance Cost
- Easy Starting & Clean Running
- Lease / Rent / Purchase Options
- Financing Available

West Texas



1-40 & FM 1912, Amarillo, Texas
Contact Richard Hall at: (806) 335-1511