

WEST TEXAS Country Trader

The West Texas Country Trader is a Supplement of:

Abernathy
Weekly Review
The Canyon News

The Castro County News
The Clarendon News

Halls County
AMERICAN
HEREFORD BRAND

The Lorenzo
EXAMINER
Plainview Daily Herald

Ralls Reporter-News
The Slatonite

Thursday, October 21, 1993

The Tullia Herald

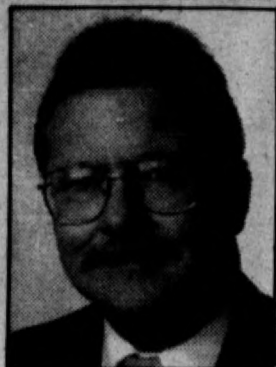
Proposition 13 counts heavily in TSTC's future 'Yeah' vote Nov. 2 could benefit ag, business, industry trainees

■ Monies available;
'yes' would start their
flow to TSTC system

By BOB PEARCE

Manager of Development TSTC Amarillo

AMARILLO — On April 22, 1965, Governor John Connally signed a bill creating James Connally Technical Institute of Texas A&M University with the vision of offering modern, top-quality technical programs tailored to meet the present and future needs of Texas industry.



PEARCE

In 1969, the college separated from Texas A&M, changed its name to Texas State Technical College (TSTC), and had its own

Guest Viewpoint

Board of Regents appointed by the governor. In the next two decades, the Texas State Technical College System would expand dramatically, graduating thousands of technicians each year to fuel the growth of Texas business and industry.

IN 1984, THE Legislature created the Higher Education Assistance Fund (HEAF) to aid Texas public universities that are outside the University of Texas and Texas A&M University systems. Until 1984, UT and A&M system schools alone had a constitutionally dedicated source of funding for capital needs: the Permanent University Fund (PUF).

The HEAF was created to provide a similar constitutional fund for all other state universities.

When TSTC (formerly TSTI) separated from Texas A&M, it was not considered a four year college nor a community college. It provided technical and vocational education, not academic degrees. Unlike community

colleges, TSTC does not have a local tax base to supplement its state appropriated funding.

TSTC operations are funded primarily through state appropriations under an allocation formula designed for two-year academic and vocational/technical institutions. Since TSTC has not been a part of the HEAF, capital expenditures have been funded through special appropriations.

TEXAS STATE Technical College has never been able to conduct long range planning because of the lack of a dedicated fund for capital needs. Proposition 13 would add the Texas State Technical College System and its campuses, but not its extension centers or programs, to the Constitution's list of institutions that receive HEAF funds. The annual allocation to TSTC could not exceed 2.2 percent of the annual HEAF Appropriation.

Funds have already been appropriated for the HEAF fund. Passage of Proposition 13

allows TSTC to have a dedicated source of funds for buildings, facilities and other permanent improvements, and capital equipment. TSTC's access to the HEAF funds will also allow the college to leverage other fund sources which require funding matches. In other words, the college would be able to secure federal grant funds, if it is able to match those funds with local or state funds.

THE TEXAS STATE Technical College System is a leader in technical education serving a vast variety of industries throughout Texas. It supports: agriculture through programs such as Farm and Ranch Management, Food Service Technology, Meat Processing & Marketing, and Diesel Mechanics; manufacturing through Industrial Maintenance Mechanics, Manufacturing Engineering Technology, and Semiconductor Manufacturing Technology; and over 55 other programs designed to help Texas industries and businesses be more competitive in the global market.

It is our belief you will be supporting the future of Texas by voting Yes for Proposition 13.

Historic PCG meeting held at first ag show

By SHAWN WADE

Plains Cotton Growers

LUBBOCK — The directors of Plains Cotton Growers held a historic meeting Wednesday at the site of the first Annual Texas Farmer-Stockman Show.

It was historic in that it was the first PCG meeting at the Lone Star State's first ever working farm and ranch exposition — and perhaps the biggest ag exposition ever held in the

state.

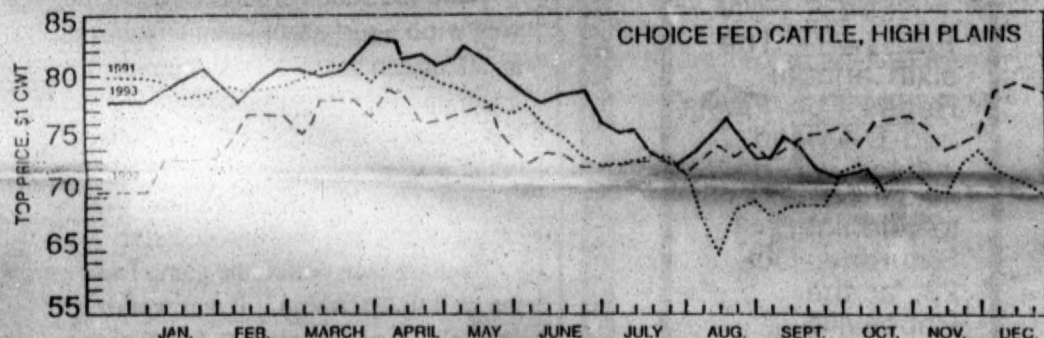
PCG Board members discussed a number of issues including the North American Free Trade Agreement, the Plant Variety Protection Act, Federal Crop Insurance, recommendations for the 1994 Farm Program and the reorganization of the United States Department of Agriculture.

ALSO DISCUSSED was the progress of the 1993 PCG Boll Weevil Control

Program.

PCG Board members were given an opportunity to view some of Dr. John Gannaway's new cotton breeding lines developed through the PCG Plains Cotton Improvement Program.

Harvesting activities have picked up steam across the High Plains with producers treating fields in preparation for harvest.



Courtesy Texas Cattle

Choice fed cattle, High Plains

The above report reflects market activity through October 15.

This sale is sure to knock
your family's socks off.



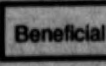
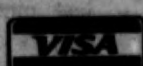
12TH Annual Fall Sale!
Save Now On

Carpet • Vinyl • Hardwood Floors
Ceramic Tile • Wallpaper
Blinds & Counter Tops

During this factory authorized sale.

Reagan's Floors & Interiors

510 Ash
293-4453



Plainview, Tx
1-800-776-4453



Corn Planting Seed
Discount
Up To

30%

Guaranteed Early Price Program on '94 Corn Planting Seed

- ★ Order and pay for before November 1ST
- ★ Price will be protected from potential increase
- ★ Provides Opportunity to purchase Cargill's High Performing Genetics
- ★ First time buyers of corn varieties 8327/7997 also can receive 2 free bags with purchase of 10 bags
- ★ Call or stop by to check out further details & lock in your corn seed supplies for '94



Cargill Grain Division

601 E. 5TH St.
Plainview, Tx.

293-5256

- John Zietz -

AgReview



South Plains

Ag News

Oct. 23

GALLERY OF GIFTS IN DIMMITT — The Dimmitt Chamber of Commerce will hold its first annual Gallery of Gifts Arts & Crafts Show at the Castro County Expo Building from 9 a.m. to 5 p.m.

Those wishing to obtain details and to reserve booths may call 647-2524.

Oct. 23

ROPES FUN FIESTA — The sixth annual Ropes Fun Fiesta and Diamond Jubilee will be held from 9 a.m. to midnight Saturday, Oct. 23, at the Ropesville Community Building.

This year the fiesta will feature cowboy poets, story tellers, music, crafts and food. An auction will be held at 1 p.m. and a street dance will begin at 8 p.m.

Well 'brushing' does trick for old casing

By TAMARA DANIEL
High Plains Water District

SLATON — In 1992, Richard Benarz purchased a farm with two irrigation wells which were about 49 years old.

One of the wells had originally produced about 600 gallons of water per minute. Bednarz metered the well's yield at only 150 gallons per minute before it broke suction.

In an attempt to improve the well yield, Bednarz first tried chlorinating the well. Bacterial growth on the casing sometimes restricts the flow of water from the formation into the well. This is especially true in wells equipped with oil-lubricated pumps.

The chlorine mixture kills the bacteria and causes it to slough off the casing wall so it can be pumped from the well.

Chlorination did not improve the well yield.

Next, the Slaton producer treated the well with a surfactant (soap mixture) in an attempt to break the water molecules down into smaller particles to help remove any silt or clay particles lodged in the perforations restricting the flow of water from the formation into the well casing. This, too, was unsuccessful.

Bednarz then pulled the pump from the well to determine if it was working properly. A small hole was found in the column pipe. He concluded that this did not cause the well to break suction.

A perplexed Bednarz called Wolf Irrigation Company of Abernathy for assistance with the well-yield problem.

Workers from the irrigation company lowered a video camera into the well to examine the casing for any obvious signs

of trouble.

"The underwater camera is used to check the condition of the casing and helps us determine what to do with the well," said Ralph Wolf of Wolf Irrigation.

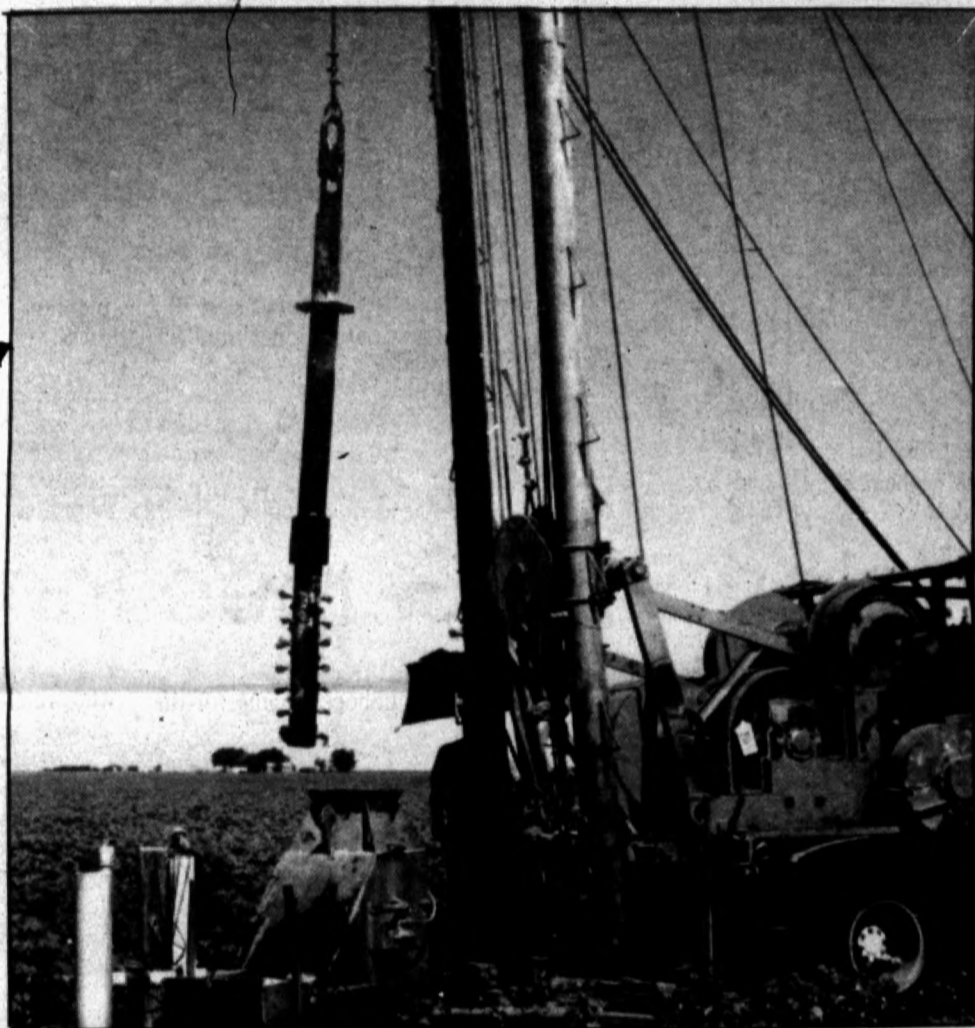
"In some cases, the downhole camera will reveal conditions that are so bad that repairs would be too costly. The best option in that case is to drill a new well,"

he said.

In other instances, the camera may show clogged perforations which can be cleaned out to improve the well yield.

Typically, the camera is able to produce a very clear image of the inside of the casing from the top to the bottom

See Well, Page 4



CLEANING TECHNIQUE — Wolf Irrigation of Abernathy prepares to lower a brush with a surge block on the end into a well on Marvin Menzel's farm west of Shallowater. The same equipment was used to clean a well on Richard Bednarz' farm.

Feedgrain crop shrinks, wheat enjoys a rally

The October release of World Agricultural Supply and Demand Estimates lowered the 1993/94 production estimate for both the U.S. and the rest of the world.

U.S. corn and sorghum production are estimated at 6.96 billion bushels and 639 million bushels respectively, down 268 MB for corn and 10 MB for grain sorghum from last month.

The size of the estimated crop continues to shrink from month to month as USDA and the trade get a better idea of the full extent of this year's flood related losses. Some in the trade are already guessing that the numbers could drop even further next month.

ESTIMATED WORLD production is also down from last month at 579.86 million metric tons (MMT) as a result of lower estimates for Russia, Eastern Europe and Kazakhstan, but keep in mind that is still up 9.73 MMT from last year.

With world consumption at 830.65 MMT and production at 795 MMT, world ending stocks will shrink 121.96 MMT. That would lower the world stocks/use ratio to a relatively tight 14.7 percent. U.S. corn and sorghum consumption, estimated at 8.0 BB and 723 MB respectively, are down from last month and from last year as higher prices are expected to ration demand. The U.S. ending stocks/use ratio for corn is 13.6 percent and for sorghum



GRAIN MARKET UPDATE

Dr. Mark Waller

12.7 percent, both of which should be plenty low enough to provide good support for prices.

The only real poor part of the outlook picture is in the export arena, where a slow world economy and a lack of available money are keeping expectations at low levels. It will be difficult for prices to truly reflect how tight supplies are unless export demand improves.

WORLD AND U.S. ESTIMATES were lowered from last month for production, use, and ending stocks by USDA in the October World Agricultural Supply and Demand Estimates. As the U.S. wheat harvest finally winds down, the quantity and quality impacts associated with this year's weather and disease problems are becoming a little

more obvious. U.S. wheat production is estimated by USDA to be 2.422 billion bushels (BB), down 71 million bushels (MB) from last month's estimate, and down 37 MB from last year. Weather delays hampered the crop from planting clear through harvest, reducing both acreage and yield from what they might have otherwise been.

World production was also reduced from last month, with Canada, Russia and Kazakhstan also showing decreased production. Keep in mind, however, that world wheat production, estimated at 564.44 million metric tons (MMT), is still up from last year as also are consumption and ending stocks. On the other hand, world export trade is expected to continue to decrease as the world economy continues to drag along at a slow pace and Eastern Europe and the Former Soviet Union continue their reorganizations.

THE U.S. ENDING stocks/use ratio continues to stand at about 30 percent, essentially the same as last month, up from 21 percent last year. The world ending stocks/use ratio continues to stand at about 25 percent, similar to last year. These stock levels are not burdensome by any means, and should allow for a continued post harvest rally, but exports will need to improve before prices can go very far.

(Dr. Mark Waller, Grain Marketing Specialist with the Texas A&M Extension Service, is an authority on the nation's grain markets.)

South Plains
Ag News

Oct. 27-28

TEXAS AG SUMMIT — A meeting of agricultural leaders to explore solutions to the expected hot issues of the 21st century: changing consumer preferences, uncertain world markets, managing business changes, the environment, technology, public policy and innovative leadership.

Oct. 30

HOUSTON 4-H LAMB & HEIFER SHOW — Will be held at Crockett Porth Ag Arena, Crockett.

Oct. 30

FLOYDADA PUNKIN DAYS — A day of family fun including pumpkin contests of all types and a safe trick-or-treat for children is part of Floydada's annual celebration, boosted by the town and Floyd County pumpkin producers.

Oct. 30

SILVERTON FALL CARNIVAL — The Progressive Homemakers will hold their annual Fall Carnival at 6 p.m. at the Briscoe County Showbarn.

Nov. 20

SILVERTON ARTS & CRAFTS JUBILEE — Progressive Extension Homemakers will hold a Christmas Arts and Crafts Jubilee in the County Showban. Booths measuring eight by ten feet are available for \$5. Tables will be available on first call, first serve basis.

Information is available by calling 823-2131, ext. 11, or 823-2093 after 5 p.m.

South Plains sorghum, cotton 'excellent'

LUBBOCK (AP) — The outlook for the sorghum crop appears average across most of Texas, because of unpredictable weather and late planting, the Texas Agricultural Extension Service reports.)

Dr. Bob Robinson,

Extension director in Lubbock, said producers are harvesting sorghum and cotton, and both crops looks excellent.

"Yields are great on irrigated land. Both crops should be above average." The Abilene, Amarillo

and Uvalde areas experienced pea to baseball size hail Tuesday evening and Wednesday morning. Dr. George Alston, Extension agronomist in Stephenville, said while there is a possibility that damage was sustained, most crops that

would have been sensitive to hail damage have already been harvested.

Paul E. Gross, Extension director in Amarillo, said no severe damage has been reported, but it is still too early to tell.

Gross said the sorghum

crop in the Panhandle looks good, but many field will be harvested late regardless of what happens. Good rains in the summer helped the crop, but many fields were planted later and could use another rain.

Magazine launches first ag show

By GORDON ZEIGLER

Herald Staff Writer

ON THE CITY OF LUBBOCK FARM — Thousands had the same idea.

They wanted to invade the 800-acre site of Texas' first-ever "working farm show" and see the country's newest tractors — many rolling off the assembly line just days ago. They wanted to kick the tires, maybe even drive one through a corn or cotton patch.

And they wanted to meet and talk with experts on every ag subject imaginable that set up exhibits in the Texas Farmer-Stockman Show "Info Plaza."

THEY GOT THEIR chance Tuesday when Farm Progress, Inc., and its Texas-based magazine launched "Day One" of its first show of a planned minimum 10-year show schedule.

To use the cliché — if they don't have it on display on this show site, you don't need it.

Promoters are hoping for a 10,000-a-day average attendance, and may well get it as today and Thursday are projected to be the biggest days.

But, no one seemed disappointed with initial crowd impressions — especially the editor of the ag magazine putting on the show.

"I would say we had a very enthusiastic first-day crowd," commented Charles Taylor, editor of the Texas Farmer-Stockman magazine, who was obviously happy with the inaugural day.

"**IT IS REALLY** hard for us to judge this turnout, since it is only our first year," Taylor said, adding that he was glad to meet show-goers from distant locations ranging from the top of the Panhandle to Beeville, Pecos and Wichita Falls, plus numerous out-of-state and national attendees.

So, at first glance, Taylor said hopes for widespread appeal have been realized.

"We deliberately chose Lubbock because of the

'We deliberately chose Lubbock because of the high concentration of cotton growing, plus diversification in other crops and livestock-

— Charles Taylor
— Editor, Farmer-Stockman

high concentration of cotton growing, plus diversification in other crops and livestock," Taylor said. "But, we also want to say this is not a Lubbock show, it is an area show — and we have seen the diversified interest we expected."

Farm Progress puts on another huge show in the Midwest — which rotates annually from Indiana to Illinois to Iowa. The Texas show differs in the fact it will be based at one location only.

AN EXHIBITOR at a booth from Tye Equipment Co. of Lockney told one onlooker his displays had been "pulled out of the Iowa mud" just about three weeks ago in preparation for shipment back for the Lubbock show.

VISITORS PARKED on a huge lot south of the show, just off FM 835 (East 50th Street) about 1½ miles east of Loop 289.

They streamed out into the fields to see harvest demonstrations, catching trailer shuttles out to the sites. Many major companies held "see-and-drive" trips to the field for a half hour every hour, allowing their prospective buyers to try out equipment.

Reaction from farmers were positive.

"This show is great," commented Muleshoe farmer Ernest Ramm, a Bailey County cotton producer who watched a new Case IH burr-extracting cotton

stripper take out a four-row swath.

RAMM SAID HE was so intent on seeing the event in its entirety that he and his wife brought their RV, which they parked on the hookup-equipped show lot and lived in for the next two days before returning home.

"This is impressive, all the new technology," commented a Lubbock insurance agent who was viewing the show for the first time. "With 225 exhibitors, and all these major ag manufacturers, it's really impressive all the equipment they have out here. And, it will probably be bigger next year and over the years to come. It could become one of the major shows in the country."

Though all new equipment and new models from all manufacturers were gaining attention, there was heightened interest over several specific innovations:

- Dodge showed its all-new, designed from the ground up, 1994 pickup.

- Massey Ferguson showed its 3670 and 3690 tractors featuring up 170 hp and a dynashift transmission and upgrades to its 8570 combine.

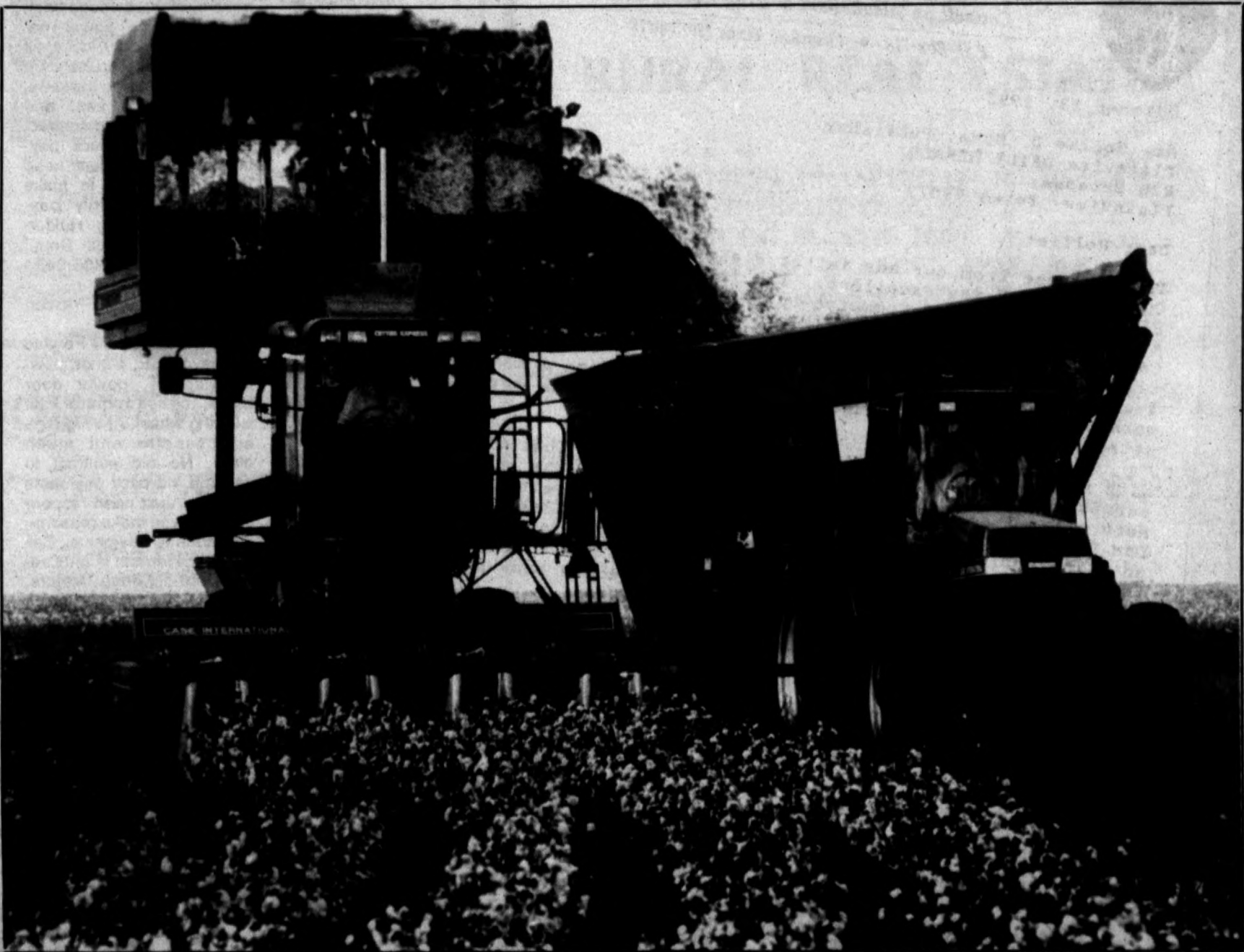
- John Deere showed its new corn header equipped with its first-in-the-industry, all-plastic cones and hoods — designed for durability and an environmentally-friendly use of recycled plastic.

- Case IH showed its latest line of Magnum tractors, featuring engineering refinements and embellishments in the cab.

MORTON BUILDINGS is an exhibitor that put a lot of labor into the erection of its model barn — with its exposed beams in the ceiling showing off engineering, design and materials.

Morton pushed the nature of its buildings in protecting big investments on today's farm equipment, with aid from an expert in the field, Dr. Neil Meador of University of Missouri-Columbia.

Meador spoke on the "ideal farm shop" design.



In-field equipment demo

Acres of crops awaited a continual onslaught of harvesting at the Texas Farmer-Stockman Show in Lubbock last week. The idea was to give show-goers a look at the complete farming cycle — from harvest through shredding, plowing and planting to show just what the year's new farm equipment will do.

Gordon Zeigler/AgReview

WELL

From Page 2

of the well. However, the water in Bednarz's well was cloudy and resulted in poor visibility. Clear water was then pumped into the well, and a second attempt was made with the down-hole camera to view the inside of the casing. The second attempt had greater success.

The down-hole video revealed that the biggest openings left in the perforations were only two to three inches long and very narrow.

"I didn't realize that the perforations in a well casing could grow shut that bad. They were nearly closed up!" Bednarz said.

The view from the camera showed the steel casing to be in otherwise good condition. No splits or shifts in the casing could be seen on the video.

Since the casing was in good condition, Bednarz decided to try an old remedy: brushing and swabbing the well with a surge block.

The "brush" is made of a piece of pipe 10 to 12 feet long, about four inches smaller than the casing and with holes drilled through it. A piece of cable with

frayed ends is threaded through the holes to create the brush.

The surge block is located on the end of the pipe. It is made from gin belting.

The cleaning tool is lowered into the well with a high speed bailer and moved up and down. The purpose of the wire brush is to break and loosen the material in the perforations, and the purpose of the surge block is to create a vacuum to pull the material into the well where it can be removed with a bailer.

"The suction in the well was so great that it sounded like a shotgun blast when the surge block was pulled out," Bednarz said.

As the surge block moves up and down in the well, it "surges" the water in and out of the casing perforations. This is how it cleans the casing.

Bednarz said that he thought the brushing and surging was not going to work either, since the well was slow in refilling with water after the first treatment. A high speed bailer was used to clean the well out.

The same process was repeated the next morning. This time, the well filled with water much faster.

According to Wolf, the amount of time required to brush, surge, and bail a well depends upon the condition of the well and the amount of foreign material pulled in. With the use of a high speed bailer, an average surging job can take from five to 10 hours.

Bednarz decided to stop the process after about six hours of work on the well. "It is scary to use a surge block on a well that old and know that the next trip into the well might collapse the casing," Bednarz said.

After reinstalling the pump, the well is producing more than 500 gallons of water per minute — four

times more than when the brushing and surging process started.

"This process won't help all wells," Wolf said. "But if the water is there, a lot of wells can benefit from this treatment — especially the older ones," he said.

Wolf says he recommends taking a down-hole look at the condition of the casing with the video camera before doing any brushing or surging.

Once the well has been cleaned through the surge process, Wolf recommends an annual chlorination to help keep it clean, especially those equipped with oil-lubricated pumps.



1988 CHEVROLET SILVERADO SWB - V-8 350, - 0 - Mile Since Rebuilt Engine. Loaded. \$6500. DELTON AUTOMOTIVE, 296-5556.



1966 FORD BRONCO - 4 Wheel Drive. New Red And White Paint, Tow Behind Motor Home Or Hunting. Sell Or Trade \$3400. Day, 293-0533. Night, 296-9315.

'Gallery of Gifts' planned Saturday

If you want to get an early start on Christmas shopping, Saturday will be a good time to begin.

The Dimmitt Chamber of Commerce is sponsoring a "Gallery of Gifts" arts and crafts show Saturday from 9 a.m. to 5 p.m. at the Expo Building in Dimmitt.

The 39 exhibitors signed up for the show will display a variety of items including wooden toys; wooden cut-out holiday decorations; dried flowers; southwest vests, skirts and jackets; home-made jellies; potpourri; broomstick skirts; jewelry made from china dishes; gold and silver jewelry; quilted bears; muslin dolls; metal art; watercolors; clocks; framed and matted prints; calligraphy; cherub angels; painted signs; special cosmetics;

birdhouses; ceramics; tole painting; painted clothing; baked goods and more.

Admission to the show is \$1 per person, and that fee will register you for door prizes which will be given away throughout the day. Those making purchases will have a chance to win an RCA 13-inch television with an AC/DC hookup suitable for home or vehicle use. The television was donated by American Maize-Products Co.

A lasagna dinner will be served from 11 a.m. to 1:30 p.m. and takeout plates will be available.

A style show will be presented at 12:30 with modeled fashions from Village Shop, Sheffy's Western & Casual Wear, Anthony's, Alco, Tots and Teens and Merle Norman.

Say, "I saw it in the Country Trader."

REAL ESTATE

FOR SALE: 14-ft. wide mobile home to be moved. Two bedrooms added (also movable) makes three bedroom home with study. Without addition, it's a 2-bedroom. Has new living room carpet. Call 945-2632, leave message. 27-1tc

VEHICLES

MUST SELL! '93 Ford Thunderbird, automatic transmission, carriage roof, air conditioning, power windows, power door locks, tilt steering wheel, cruise control, AM/FM stereo cassette, power driver's seat and much more. No old contract to assume, no back payments to make, just need responsible party to make reasonable monthly payments. Call Doug Hulderman in the Credit Dept., Friona Motors, 806/247-2701. 27-1tc/ccn

MUST SELL! '93 Pontiac Bonneville SE, 4-door, power windows, power door locks, cruise control, tilt steering wheel, AM/FM stereo cassette and much more. No old contract to assume, no back payments to make. Just need responsible party to make reasonable monthly payments. Call Doug Hulderman in the Credit Dept., Friona Motors, 806/247-2701. 27-1tc/ccn

VEHICLES

MUST SELL! '91 Pontiac Sunbird Convertible, automatic transmission, air conditioning, power windows, power door locks, cruise control, tilt steering wheel, AM/FM stereo with compact disc and 10-disc changer. No old contract to assume, no back payments to make. Just need responsible party to make reasonable monthly payments. Call Doug Hulderman in the Credit Dept., Friona Motors, 806/247-2701. 27-1tc/ccn

MUST SELL! '90 Ford F-150 Supercab, XLT Lariat, automatic transmission, air conditioning, power windows, power door locks, tilt steering wheel, AM/FM stereo cassette and much more. No old contract to assume, no back payments to make. Just need responsible party to make reasonable monthly payments. Call Doug Hulderman in the Credit Dept., Friona Motors, 806/247-2701. 27-1tc/ccn

MUST SELL! '89 Ford F-150 XLT Lariat, short-wide bed, automatic transmission, low miles, air conditioning, power windows, power door locks, cruise control, tilt steering wheel, AM/FM stereo cassette and much more. Just need responsible party to make reasonable monthly payments. Call Doug Hulderman in the Credit Dept., Friona Motors, 806/247-2701. 27-1tc/ccn

Another Advertiser is ... Sold on Country Trader!



Floyd, Hale, Lamb County
Council on Alcoholism & Drug Abuse, Inc.
P.O. Box 118 • Plainview, Texas 79073-0118

October 13, 1993

Mr. Rollie D. Hyde, Publisher
Plainview DAILY HERALD
820 Broadway
Plainview, Texas 79072

Dear Rollie:

The response from our ads in the Plainview DAILY HERALD, and COUNTRY TRADER was excellent. The initial meeting at the Plainview Chamber of Commerce building on September 27th was attended by 83 people from Plainview, Tullis, Dimmitt, Hart, Canyon and Lubbock. Now, at the end of the third week of classes, 89 people are enrolled and attending counselor training. I consider this result outstanding. My staff and I have been working very hard to produce a fine service for the participants attracted.

With such a reaction from the public, I surmise that the right service was presented at the right time through the right media. Naturally, I am extremely pleased with the ad developed by Mr. Don Smith, who took time to research my services and produce the ad. The article by Richard Orr on the course offerings related to the prison announcement was timely and of great help. Thank you for the excellent job done in letting people know of the opportunity to train to be licensed counselors.

I feel that this is the beginning of a new trend that will produce enough trained alcoholism/drug abuse counselors to eventually turn the tide for clean and sober living. In the future, when this happens and the phenomenal burgeoning substance abuse/addiction problem is ameliorated, history may indicate the beginning of the trend as a result of the efforts here in Plainview with your newspaper.

It is wonderful working with all these people and I enjoy every minute of it.

Respectfully,

Sam
Sam Parker

The Furniture Corner

For the Best in Pre-Owned
Furniture, Antiques & Collectibles

123 W. Grand, Clovis, N.M.

(505) 762-1113



Buy, Sell Or Trade

Quality Horses & Trailers



McKIBBEN TRAILER & HORSE SALES

CM & W-W Trailers
Steel & Aluminum
Parts, Service & Repairs
(505) 762-7149

505 S. Hull
Clovis, NM 88101

MOZAJUN McKIBBEN
ALVIE McKIBBEN
Owners

HALE CENTER COOPERATIVE GIN



Ready to serve the cotton farmer
For the Upcoming Harvest

- Modern Gin Plant With Gin UD Press
- Experienced Gin Employees
- Telcot Markets Plus Local Markets If Needed
- Friendly, Helpful Staff Ready to Serve You

New Customers Are Welcome, Needed
& Appreciated

General Manager **839-2436**
Gene Latham



American
Industrial & Bearing
Supply Co.

BUY AMERICAN IT PAYS

Supplies & Equipment For Gins Elevators, Mills
& Other Industry
Stripper Parts • Belts • Bearings
Weld On Hubs • Gears • Hydraulic Hose
Bats & Brushes • Barkless Bats
24 Hour Service In Season

3412 Olton Rd. 702 E. 34th St.
Plainview Lubbock
(806) 293-2673 (806) 762-0698
1-800-874-5504

Southwestern Cotton

All Growths • Cotton Merchants

806-296-0678
Fax 296-0679

Box 98
Plainview, TX 79073

ONE ACRE TRACTS
Outside city limits. Close to Plainview. 293-9150.

TEXAS VETERANS TRACTS
Kirchhoff Company. 293-7542

Building for sale: Nazareth, Texas, on highway. Includes two car garage, block building with modular house. \$80,000. (806)293-7542 Broker.

Gary's Cotton Boll Gin, Inc.

"Precision Ginning With A Personal Touch"

Bill & Les Gary
Invite You-
To Their Gin This Cotton
Season. They Are Members
Of The Texas Marketing
System & Have Just
Installed A New UD Press.
They Will Be Ginning 24 Hrs.
A day.

We Appreciate Your Business
879-4491

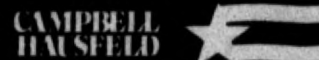
5 Mi. S. Of Hale Center, You Can Count On Us To
I-27 & Fm 37 Complete With The Best

FOR SALE FOR SALE FOR SALE

Asphalt Paving Equipment

- 1 - Heavy Duty Dump Truck With 7x10 foot bed
 - 1 - Heavy Duty Tank Truck
 - 1 - Massey Ferguson Front End loader
 - 1 - Steel Wheel Roller w/8 horse motor
 - 1 - Asphalt Spreader
- And Other Miscellaneous Equipment
Call 806-296-7937 for Information

FOR SALE FOR SALE FOR SALE



VT6171 - 5 HP
Gas Air Compressor
• Honda engine
• 20 gallon ASME tank
• Max pressure: 110 PSI
• Delivers 11.4/9.0 CFM @ 40/90 PSI
• Cast iron compressor
• 15' air hose and tire chuck included



VT6172 - 5 HP
Gas Air Compressor
• Honda engine
• Twin 4 gallon tanks (8 gallon total)
• Max. pressure: 110 PSI
• Delivers 11.4/9.0 CFM @ 40/90 PSI
• Solberg industrial filter
• Cast iron compressor
• Air shut-off valve and tank pressure gauge included

Donald Trading Post Inc.

1401 S. Columbia
Plainview, Tex.

Bus. Ph. (806) 296-9239
Fax (806) 293-7798

WE NEED Milo stalks fields for grazing cattle. 806-879-2192.

Local farmer needs experienced dedicated employee looking for a job with a future. Send letter detailing tractor, combine, cotton stripper, and irrigation experience, along with name, address and phone number to: Box F-19, c/o Plainview Daily Herald. References must be included. Drinkers need not apply.

CAR LOT FOR SALE OR LEASE
On 5th Street. Call 293-4011 for information.

COMMERCIAL BUILDING

High traffic location, attractive, brick and glass, versatile interior, 3030 square feet, parking, good access. Business district. On Highway 87, 7th and Columbia Street in Plainview. Will sell or lease and remodel. Contact Gary Garrison, (806)296-6353.

BEEFMASTER BULLS
FOR SALE: Certified Beefmaster Bulls. Call (806)983-2656.

HORSESHOEING
DON McMAHAN, 296-2021. Mobile, 296-9631.

I WANT GRAZING LAND, any size. Woods Motor Company, 2208 East 5th Street. 293-3688.

Pasture Needed: Paying top dollar for wheat, rye, triticale. Grazing pasture for cattle. Ask about help with fencing. (806)879-2192.

Edcot Gin

Edmonson 864-3335

A Progressive Gin



- High Volume
- Proven Quality
- Aggressive Marketing
- Customer Service

We can process your "POP" paperwork at the Gin Office.

Larry Nelson manager Brett Aven commodity spec.

Health Insurance

At Affordable Group Rate
CALL

1-800-285-2204

GOOD NEWS!!!

FCIC has extended the SALES CLOSING DATE for

WHEAT
BARLEY
OATS
RYE

to **OCTOBER 31, 1993**, to help all farmers plan their risk management strategies and meet disaster assistance requirements.

See a crop insurance agent for details.



Crop Insurance
Risk Management
for the 90's
An Equal Opportunity Program

VARIABLE RATE LOANS

7.5%

RURAL REAL ESTATE

- LONG-TERM FINANCING UP TO 35 YEARS
- NO PREPAYMENT PENALTY
- ONE POINT CLOSING FEE
- FUNDS HELD ACCOUNTS AVAILABLE
- FIXED RATE LOAN PLANS AVAILABLE - Repriced Weekly

We're dedicated to helping you.

Association offices conveniently located at:

AMARILLO 3615 S. Georgia (806) 353-6688	HEREFORD 709 N. Main (806) 364-1464	MULESHOE 316 Main Street (806) 272-3010
CHILDRESS Highway 83 South (817) 937-6181	LEVELLAND 613 Ave. G (806) 894-6155	PLAINVIEW 629 Baltimore (806) 296-5579
CROSBYTON 207 S. Berkshire (806) 675-2761	LITTLEFIELD 504 Phelps Ave. (806) 385-4425	SPUR 403 East Hill Street (806) 271-3378
DIMITT 105 W. Bedford (806) 647-4178	LUBBOCK 1117 65th Drive (806) 745-3277	TULIA 115 N. Armstrong (806) 995-3129



• Annual percentage rates are 7.79% to 8.08% depending on length of contract. Variable rates are subject to change.



WELL

From Page 2

of the well. However, the water in Bednarz's well was cloudy and resulted in poor visibility. Clear water was then pumped into the well, and a second attempt was made with the down-hole camera to view the inside of the casing. The second attempt had greater success.

The down-hole video revealed that the biggest openings left in the perforations were only two to three inches long and very narrow.

"I didn't realize that the perforations in a well casing could grow shut that bad. They were nearly closed up!" Bednarz said.

The view from the camera showed the steel casing to be in otherwise good condition. No splits or shifts in the casing could be seen on the video.

Since the casing was in good condition, Bednarz decided to try an old remedy: brushing and swabbing the well with a surge block.

The "brush" is made of a piece of pipe 10 to 12 feet long, about four inches smaller than the casing and with holes drilled through it. A piece of cable with

frayed ends is threaded through the holes to create the brush.

The surge block is located on the end of the pipe. It is made from gin belting.

The cleaning tool is lowered into the well with a high speed bailer and moved up and down. The purpose of the wire brush is to break and loosen the material in the perforations, and the purpose of the surge block is to create a vacuum to pull the material into the well where it can be removed with a bailer.

"The suction in the well was so great that it sounded like a shotgun blast when the surge block was pulled out," Bednarz said.

As the surge block moves up and down in the well, it "surges" the water in and out of the casing perforations. This is how it cleans the casing.

Bednarz said that he thought the brushing and surging was not going to work either, since the well was slow in refilling with water after the first treatment. A high speed bailer was used to clean the well out.

The same process was repeated the next morning. This time, the well filled with water much faster.

According to Wolf, the amount of time required to brush, surge, and bail a well depends upon the condition of the well and the amount of foreign material pulled in. With the use of a high speed bailer, an average surging job can take from five to 10 hours.

Bednarz decided to stop the process after about six hours of work on the well. "It is scary to use a surge block on a well that old and know that the next trip into the well might collapse the casing," Bednarz said.

After reinstalling the pump, the well is producing more than 500 gallons of water per minute — four

times more than when the brushing and surging process started.

"This process won't help all wells," Wolf said. "But if the water is there, a lot of wells can benefit from this treatment — especially the older ones," he said.

Wolf says he recommends taking a down-hole look at the condition of the casing with the video camera before doing any brushing or surging.

Once the well has been cleaned through the surge process, Wolf recommends an annual chlorination to help keep it clean, especially those equipped with oil-lubricated pumps.



1988 CHEVROLET SILVERADO SWB - V-8 350, - 0-Mile Since Rebuilt Engine. Loaded. \$6500. DELTON AUTOMOTIVE, 296-5556.



1966 FORD BRONCO - 4 Wheel Drive. New Red And White Paint, Tow Behind Motor Home Or Hunting. Sell Or Trade \$3400. Day, 293-0533. Night, 296-9315.

'Gallery of Gifts' planned Saturday

If you want to get an early start on Christmas shopping, Saturday will be a good time to begin.

The Dimmitt Chamber of Commerce is sponsoring a "Gallery of Gifts" arts and crafts show Saturday from 9 a.m. to 5 p.m. at the Expo Building in Dimmitt.

The 39 exhibitors signed up for the show will display a variety of items including wooden toys; wooden cut-out holiday decorations; dried flowers; southwest vests, skirts and jackets; home-made jellies; potpourri; broomstick skirts; jewelry made from china dishes; gold and silver jewelry; quilted bears; muslin dolls; metal art; watercolors; clocks; framed and matted prints; calligraphy; cherub angels; painted signs; special cosmetics;

birdhouses; ceramics; toile panting; painted clothing; baked goods and more.

Admission to the show is \$1 per person, and that fee will register you for door prizes which will be given away throughout the day. Those making purchases will have a chance to win an RCA 13-inch television with an AC/DC hookup suitable for home or vehicle use. The television was donated by American Maize-Products Co.

A lasagna dinner will be served from 11 a.m. to 1:30 p.m. and takeout plates will be available.

A style show will be presented at 12:30 with modeled fashions from Village Shop, Sheffy's Western & Casual Wear, Anthony's, Alco, Tots and Teens and Merle Norman.

Say, "I saw it in the Country Trader."

REAL ESTATE

FOR SALE: 14-ft. wide mobile home to be moved. Two bedrooms added (also movable) makes three bedroom home with study. Without addition, it's a 2-bedroom. Has new living room carpet. Call 945-2632, leave message. 27-tfc

VEHICLES

MUST SELL! '93 Ford Thunderbird, automatic transmission, carriage roof, air conditioning, power windows, power door locks, tilt steering wheel, cruise control, AM/FM stereo cassette, power driver's seat and much more. No old contract to assume, no back payments to make, just need responsible party to make reasonable monthly payments. Call Doug Hulderman in the Credit Dept., Friona Motors, 806/247-2701. 27-1tc/ccn

MUST SELL! '93 Pontiac Bonneville SE, 4-door, power windows, power door locks, cruise control, tilt steering wheel, AM/FM stereo cassette and much more. No old contract to assume, no back payments to make. Just need responsible party to make reasonable monthly payments. Call Doug Hulderman in the Credit Dept., Friona Motors, 806/247-2701. 27-1tc/ccn

VEHICLES

MUST SELL! '91 Pontiac Sunbird Convertible, automatic transmission, air conditioning, power windows, power door locks, cruise control, tilt steering wheel, AM/FM stereo with compact disc and 10-disc changer. No old contract to assume, no back payments to make. Just need responsible party to make reasonable monthly payments. Call Doug Hulderman in the Credit Dept., Friona Motors, 806/247-2701. 27-1tc/ccn

MUST SELL! '90 Ford F-150 Supercab, XLT Lariat, automatic transmission, air conditioning, power windows, power door locks, tilt steering wheel, AM/FM stereo cassette and much more. No old contract to assume, no back payments to make. Just need responsible party to make reasonable monthly payments. Call Doug Hulderman in the Credit Dept., Friona Motors, 806/247-2701. 27-1tc/ccn

MUST SELL! '89 Ford F-150 XLT Lariat, short-wide bed, automatic transmission, low miles, air conditioning, power windows, power door locks, cruise control, tilt steering wheel, AM/FM stereo cassette and much more. Just need responsible party to make reasonable monthly payments. Call Doug Hulderman in the Credit Dept., Friona Motors, 806/247-2701. 27-1tc/ccn

Another Advertiser is ... Sold on Country Trader!



**Floyd, Hale, Lamb County
Council on Alcoholism & Drug Abuse, Inc.**
P.O. Box 118 • Plainview, Texas 79073-0118

October 13, 1993

Mr. Rollie D. Hyde, Publisher
Plainview DAILY HERALD
820 Broadway
Plainview, Texas 79072

Dear Rollie:

The response from our ads in the Plainview DAILY HERALD, and COUNTRY TRADER was excellent. The initial meeting at the Plainview Chamber of Commerce building on September 27th was attended by 83 people from Plainview, Tulia, Dimmitt, Hart, Canyon and Lubbock. Now, at the end of the third week of classes, 89 people are enrolled and attending counselor training. I consider this result outstanding. My staff and I have been working very hard to produce a fine service for the participants attracted.

With such a reaction from the public, I surmise that the right service was presented at the right time through the right media. Naturally, I am extremely pleased with the ad developed by Mr. Don Smith, who took time to research my services and produce the ad. The article by Richard Orr on the course offerings related to the prison announcement was timely and of great help. Thank you for the excellent job done in letting people know of the opportunity to train to be licensed counselors.

I feel that this is the beginning of a new trend that will produce enough trained alcoholism/drug abuse counselors to eventually turn the tide for clean and sober living. In the future, when this happens and the phenomenal burgeoning substance abuse/addiction problem is ameliorated, history may indicate the beginning of the trend as a result of the efforts here in Plainview with your newspaper.

It is wonderful working with all these people and I enjoy every minute of it.

Respectfully,

Sam
Sam Parker

The Furniture Corner

For the Best in Pre-Owned
Furniture, Antiques & Collectibles

123 W. Grand, Clovis, N.M.

(505) 762-1113



Buy, Sell Or Trade

Quality Horses & Trailers



McKIBBEN TRAILER & HORSE SALES

CM & W-W Trailers
Steel & Aluminum
Parts, Service & Repairs

(505) 762-7149

505 S. Hull
Clovis, NM 88101

MOZAUN MCKIBBEN
ALVIE MCKIBBEN
Owners

HALE CENTER COOPERATIVE GIN

*Ready to serve the cotton farmer
For the Upcoming Harvest*

- Modern Gin Plant With Gin UD Press
- Experienced Gin Employees
- Telcot Markets Plus Local Markets If Needed
- Friendly, Helpful Staff Ready to Serve You

*New Customers Are Welcome, Needed
& Appreciated*

General Manager
Gene Latham **839-2436**

American Industrial & Bearing Supply Co.

AIBSCO

BUY AMERICAN IT PAYS

Supplies & Equipment For Gins Elevators, Mills & Other Industry

Stripper Parts • Belts • Bearings
Weld On Hubs • Gears • Hydraulic Hose
Bats & Brushes • Barkless Bats

24 Hour Service In Season

3412 Olton Rd. Plainview (806) 293-2673 1-800-874-5504

702 E. 34th St. Lubbock (806) 762-0698

Southwestern Cotton

All Growths • Cotton Merchants

806-296-0678
Fax 296-0679
Box 98
Plainview, TX 79073

ONE ACRE TRACTS
Outside city limits. Close to Plainview. 293-9150.

TEXAS VETERANS TRACTS
Kirchoff Company, 293-7542

Building for sale: Nazareth, Texas, on highway. Includes two car garage, block building with modular house. \$80,000. (806)293-7542 Broker.

Gary's Cotton Boll Gin, Inc.

"Precision Ginning With A Personal Touch"

Bill & Les Gary Invite You- To Their Gin This Cotton Season. They Are Members Of The Texas Marketing System & Have Just Installed A New UD Press. They Will Be Ginning 24 Hrs. A day.

We Appreciate Your Business
879-4491

5 Mi. S. Of Hale Center, I-27 & Fm 37 You Can Count On Us To Compete With The Best

FOR SALE FOR SALE FOR SALE

Asphalt Paving Equipment

1 - Heavy Duty Dump Truck With 7x10 foot bed
1 - Heavy Duty Tank Truck
1 - Massey Ferguson Front End loader
1 - Steel Wheel Roller w/8 horse motor
1 - Asphalt Spreader

And Other Miscellaneous Equipment

Call 806-296-7937 for information

FOR SALE FOR SALE FOR SALE

CAMPBELL HAUSEFELD

VT6171 - 5 HP Gas Air Compressor

- Honda engine
- 20 gallon ASME tank
- Max pressure: 110 PSI
- Delivers 11.4/9.0 CFM @ 40/90 PSI
- Cast iron compressor
- 15' air hose and tire chuck included

VT6172 - 5 HP Gas Air Compressor

- Honda engine
- Twin 4 gallon tanks (8 gallon total)
- Max. pressure: 110 PSI
- Delivers 11.4/9.0 CFM @ 40/90 PSI
- Solberg industrial filter
- Cast iron compressor
- Air shut-off valve and tank pressure gauge included

Donald Trading Post Inc.

1401 S. Columbia Plainview, Tex. Bus. Ph. (806) 296-9239 Fax (806) 293-7798

WE NEED Milo stalks fields for grazing cattle. 806-879-2192.

BEEFMASTER BULLS
FOR SALE: Certified Beefmaster Bulls. Call (806)983-2656.

I WANT GRAZING LAND, any size. Woods Motor Company, 2208 East 5th Street. 293-3688.

Local farmer needs experienced dedicated employee looking for a job with a future. Send letter detailing tractor, combine, cotton stripper, and irrigation experience, along with name, address and phone number to: Box F-19, c/o Plainview Daily Herald. References must be included. Drinkers need not apply.

HORSESHOEING
DON McMAHAN, 296-2021. Mobile, 296-8631.

Pasture Needed: Paying top dollar for wheat, rye, triticale. Grazing pasture for cattle. Ask about help with fencing. (806)879-2192.

CAR LOT FOR SALE OR LEASE
On 5th Street. Call 293-4011 for information.

COMMERCIAL BUILDING
High traffic location, attractive, brick and glass, versatile interior. 3030 square feet, parking, good access. Business district. On Highway 87, 7th and Columbia Street in Plainview. Will sell or lease and remodel. Contact Gary Garrison, (806)296-6353.

—Edcot Gin—

Edmonson 864-3335

A Progressive Gin

- High Volume
- Proven Quality
- Aggressive Marketing
- Customer Service

We can process your "POP" paperwork at the Gin Office.

Larry Nelson manager Brett Aven commodity spec.

Health Insurance

At Affordable Group Rate

CALL
1-800-285-2204

GOOD NEWS!!!

FCIC has extended the SALES CLOSING DATE for

**WHEAT
BARLEY
OATS
RYE**

to **OCTOBER 31, 1993**, to help all farmers plan their risk management strategies and meet disaster assistance requirements.

See a crop insurance agent for details.

FCIC Crop Insurance
Risk Management for the 90's
An Equal Opportunity Program

VARIABLE RATE LOANS

7.5%

RURAL REAL ESTATE

- LONG-TERM FINANCING UP TO 35 YEARS
- NO PREPAYMENT PENALTY
- ONE POINT CLOSING FEE
- FUNDS HELD ACCOUNTS AVAILABLE
- FIXED RATE LOAN PLANS AVAILABLE- Repriced Weekly

We're dedicated to helping you.

Association offices conveniently located at:

AMARILLO 3615 S. Georgia (806) 353-6688	HEREFORD 709 N. Main (806) 364-1464	MULESHOE 316 Main Street (806) 272-3010
CHILDRESS Highway 83 South (817) 937-6181	LEVELLAND 613 Ave. G (806) 894-6155	PLAINVIEW 629 Baltimore (806) 296-5579
CROSBYTON 207 S. Berkshire (806) 675-2761	LITTLEFIELD 504 Phelps Ave. (806) 385-4425	SPUR 403 East Hill Street (806) 271-3378
DIMMITT 105 W. Bedford (806) 647-4178	LUBBOCK 1117 65th Drive (806) 745-3277	TULIA 115 N. Armstrong (806) 995-3129

Federal LAND BANK Association

• Annual percentage rates are 7.79% to 8.08% depending on length of contract. Variable rates are subject to change.

LENDER
(806)296-9239

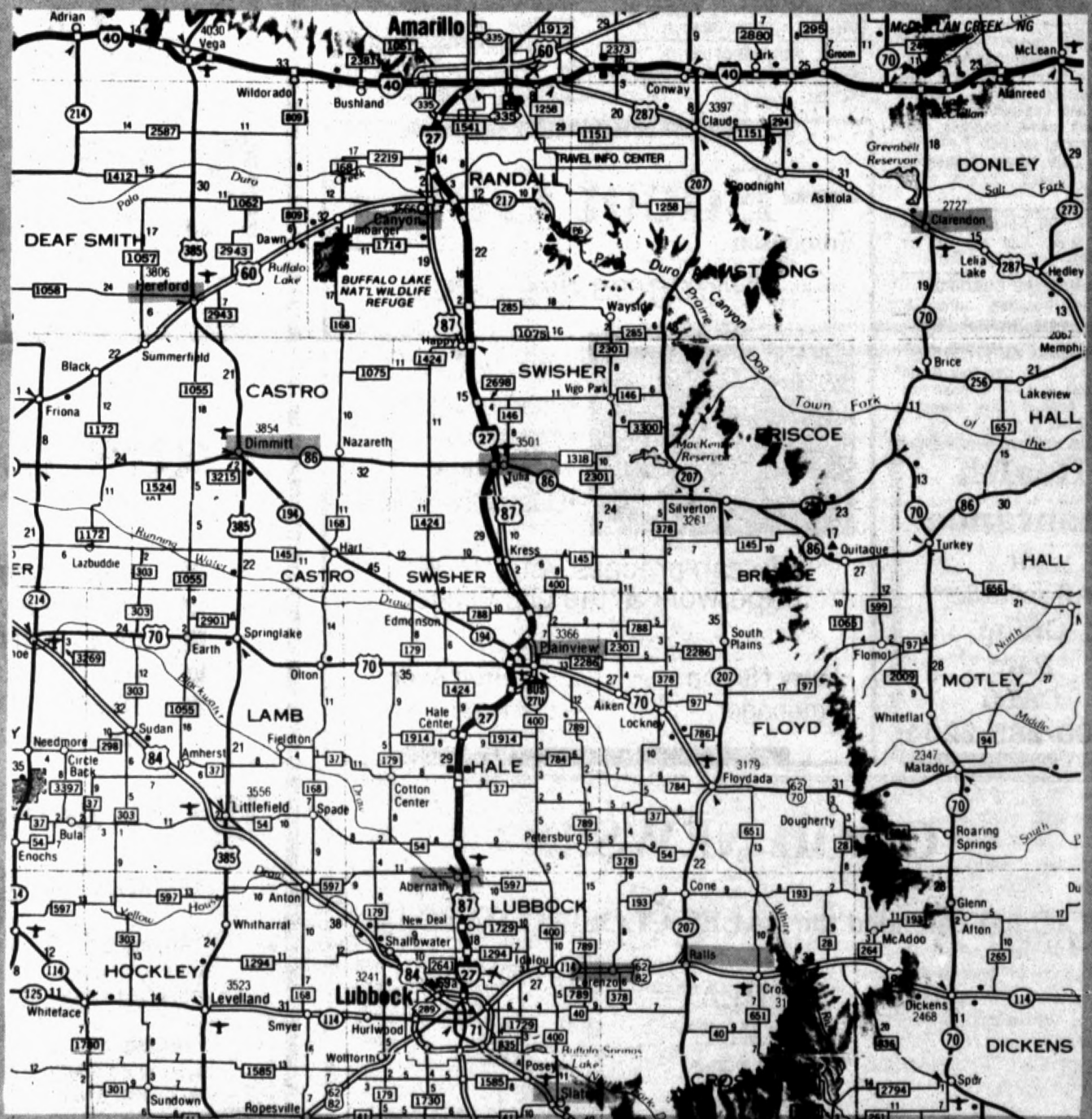
Advertise In The West Texas Country Trader!

The *COUNTRY TRADER* is a weekly section produced and published by these following newspapers:

- Abernathy Review*, Hale County 298-2033
- Canyon News*, Randall County 655-7121
- Castro Co. News*, Castro County 647-3123
- Clarendon News*, Donley County 874-2259
- Hereford Brand*, Deaf Smith County 364-2030

- Lorenzo Examiner*, Crosby County 634-5390
- Plainview Daily Herald*, Hale County 296-1300
- Rails Reporter News*, Crosby County 634-5390
- Slaton Slatonite*, Lubbock County 828-6201
- Tulia Herald*, Swisher County 995-3535

It reaches across the 10,000 square miles of the Texas plains and lower Panhandle illustrated here:



Reach a
\$3.3 Billion
dollar market
with the
West Texas
Country Trader

For approximately
double the ad cost
of one newspaper,
you can reach
Twelve
newspapers!
over **36,000**
Paid Subscribers

Reach this rich
market with a
quarter page ad
for as little as
\$5.40
per thousand
homes.

Advertisers wishing
to expand their
businesses by
reaching interested
buyers all across
this area should
call the publication
in your area.

Wool subsidy bites dust

WASHINGTON (AP) — The Senate sent President Clinton legislation early Friday ending federal subsidies for wool and mohair next year but also approved a separate measure that would phase them out more slowly.

On a voice vote after 1 a.m., senators sent Clinton compromise legislation providing \$71 billion for agriculture programs for fiscal 1994, which began Oct. 1.

The measure would allow government payments to producers of wool and mohair to continue this calendar year, but terminate them beginning in January.

The subsidies will cost \$190 million in 1993. Supporters say they are crucial to the survival of many wool and mohair ranchers. But opponents say the payments are a waste of money that often go to well-to-do people.

The House had approved its version of the measure Sept. 30.



1988 CHEVROLET SUBURBAN - Red; Plainsman Package. \$9,950. 296-2127.

Want Ads Bring Results

BAR H DUDE RANCH FALL SPECIAL

Buffalo Burgers

\$4.95

Mesquite Grilled
Sirloin Steak

\$6.50

Call for reservations.

Bar H Working Dude Ranch

(800) 627-9871

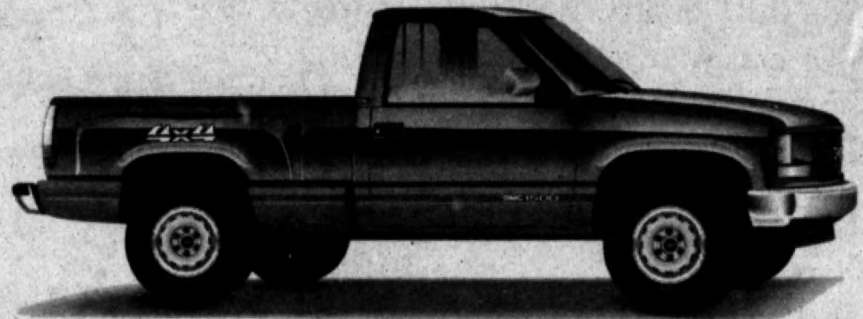
Clarendon: 874-2634

REWARD

\$1,000 REWARD

For information leading to return of lost 1982 model John Deere 4-row 484 Cotton Stripper, Serial Number 1708. Disappeared on night of October 2nd 12 miles NNW of Lubbock, Tex. Call 806-746-6522 Collect.

Don't Trade Until You Check With Chamberlain MOTOR COMPANY



Chevrolet & GMC Pickups
Cadillac, Buick,
Oldsmobile, Pontiac,
Chevrolet

"It's downhill all the way!"

Highway 287 East, Clarendon, Texas

Texas Watts: (800) 692-4088

Amarillo: 376-9041

Clarendon: 874-3527

Auto Home
Crop Farm
YOUR Independent AGENT
Caprock Insurance Agency
807 Main Rails, Texas
Pat Terry
Nunley Rainwater
253-3031

SINGER * KENMORE * WHITE * PFAFF * NECCHI * ELNA * VIKING * BERNINA * MONTGOMERY WARD
ONE DAY SERVICE \$14.95
SINGER Reg. \$44.95
Clean, Oil & Adjust Tensions Any Make Or Model
SINGER SERVICE CENTER
5418 Slide Rd. Lubbock, Tx ■ 788-0608
Monday-Friday 9:30-5:30 ■ Saturday 9:30-3:00
NEW HOME * ATLAS * BROTHER * SEARS * DRESSMAKER

COMMERCIAL BUILDING. 40 X 60 on two lots. \$32,000. Pay 1/2 down, owner will carry balance at 8%. 293-5868 for information & location.

TRAILER HOUSE completely furnished. Has large room built on. Overall cover. Fox Hollow at Possum Kingdom, \$14,000. Also: Metal Barn at rodeo grounds. 296-7261.

GET A JUMP ON 1994 Shred, disc, chisel, bed, CRP. Titan Agri Services Call Dale, 293-1583

Three of a kind small white mules, hard to find. Quality game chickens. Nice horses priced right. Top paint mare, will run barrels. (806)293-1241 nights.

MID-PLAINS "Singles" Halloween Dance. October 29th, 8 P.M. to 12 A.M. First Christian Church, 1800 N. I-27, Plainview. \$5 person. Costumes optional but prizes given for best costumes. No Alcohol. For more information call Pat White, 806-296-6630.

Antiques For Sale - 1-IHC 2 row short binder, 1-IHC 2 row tall binder, 1-10 ft. grain binder, 1-lot new and used parts, 40-balls binder twine. 806-364-2110. Hereford, TX.

For Sale Gopher Getter in good condition. Hay fluffer Used very little. \$200 each. 78 Ford Ranchero, loaded and propane equipped. Call 806/364-1596. Hereford, Texas.

Q.What is green & has the name of a man and an animal and is ready to run?
A. John Deere Combine Model 95 with a 19ft. Grain Header. Call 806-364-4011, \$1500 Hereford, Texas.

Windshields • Windshields • Windshields

Lowest Prices Ever!!!!

Chevrolet & GMC Pickups & Suburbans

1978-1987 Fullsize Pickups & Suburbans (Shaded)	\$57 ⁰⁰
1988-1992 Fullsize Pickups & Suburbans (Shaded)	\$125 ⁰⁰
1993 Fullsize Pickups & Suburbans (Shaded)	\$198 ⁰⁰
S-10 & Jimmy Blazers (Shaded)	\$80 ⁰⁰

Ford Pickups

1980-1986 Fullsize Pickups (Shaded)	\$85 ⁰⁰
1980-1986 Fullsize Pickups (Tinted)	\$80 ⁰⁰
1987-1993 Fullsize Pickups (Shaded)	\$85 ⁰⁰
1987-1993 Fullsize Pickups (Tinted)	\$80 ⁰⁰
Ford Ranger & Bronco II (Shaded)	\$85 ⁰⁰

Dodge Pickups

1974-1993 Fullsize Pickups (Shaded)	\$110 ⁰⁰
1974-1993 Fullsize Pickups (Tinted)	\$91 ⁰⁰

*All above prices are installed plus tax.

65% OFF All Foreign Windshields

75% OFF All Domestic Windshields

*Plus labor, kit and tax

Windshield Repairs

\$20⁰⁰

Installed in Lubbock Only

Offer good through Nov. 1, 1993

Crafton's Glass Inc.

4801 I-27

744-4838

744-3511

Lubbock

CLASSIFIEDS

FOR SALE: IHC 275 Diesel - Completely Overhauled & 520 John Deer With Cab & All the Weights, Tires like new, 24.5-32s, Motor like New. 806-634-5690. Nights - 806-657-4644.

FOR SALE: Show Pigs, Hamps, Durocs, Chesters & Crosses - (806) 842-3844.

1994 25' WINNERAR WARRIOR!! \$3500⁰⁰ DOWN PAYMENT ONLY \$286.03
Sole Price \$31,800⁰⁰
T.T.&L. \$2,087⁵⁰
Down Payment \$3,500⁰⁰
Top Finance \$30,387⁵⁰
*7.75% INTEREST WITH APPROVED CREDIT 180 MONTHS @ \$286.03
745-8791 • S. Loop 289 & Tahoka Exit

AUGER REPAIR
Cotton Strippers - JD - IHC
Combines - All Models
Grain Carts - All Models
Replacement Hubs For
JD & IHC Row Auger Gears
Assorted Cotton Stripper
Repair Parts
LORENZO MFG CO., INC.
Lorenzo, Tx - Hwy 62-82
(806) 634-5942

Bargains, Great Deals, Garage Sales, Freebies and Classified Ads ...

The Canyon News has been delivering these to your door for 97 years ... and now, through a partnership with CNN 1550 AM Radio,

The "Canyon News Country Trader"

10 a.m. to 11:30 a.m. Every Saturday.

When you place your classified ad with The Canyon News you'll also get it read on the Country Trader radio program! Or call your bargain in to us Saturday morning, and we'll share it LIVE with all our CNN listeners.



Upright piano for sale, \$150. 655-7808.

Remington 870 Pump Action Magnum Express Shotgun, 12 gauge, 28" barrel. Brand new. Has never been fired. \$225, call 655-1701.

MUST SELL! Credenza 27"x49" with shelf and locking compartment. Heavy black metal 5 drawer file cabinet, 12" B&W Sanyo TV. Woody, after 6pm, 489-2722.

Want to rent/lease grazing land, or wheat land for cattle. 293-3305 or 293-3688. Woods Motor Company, Plainview.

Have place to keep 2 horses or calves, has barn or shelter. 655-2296.

SELLING OUT GAMEBIRD EQUIPMENT. Hatchers, incubators, brooders, breeding pens, waterers and feeders. Call after 6pm, weekdays and all day weekends. 622-1631.

New storage units for rent. 10'x20', \$50/month. 655-3411.

HITACHI HOME THEATRE system, drastically reduced. 353-6700 or 1-800-299-1518. Used and repo systems also available.

COUNTRY FRIENDS CRAFTS in Canyon has new crafts arriving daily. Top quality handmade clothing, jewelry, ceramics, woodwork - other unique crafts. Booths available... Ted, 1603 4th Ave., 655-3391.

ATTRACT THOUSANDS of motorists daily with large 10'x40' billboards approaching Lubbock, right-hand readers, 4

miles from Loop on Hwy 62-82. South Slaton city limits on U.S. 84. \$150 each month or both for \$250 month. 806-655-7121.

SALES AGENTS, FT/PT, flexible hours, highest commissions. Ideal for college student, second income or career. Call 679-4681 or 995-4672.

SHOP FOR RENT: 30'x40' Metal building w/separate office space. Just off Canyon E-way and Rockwell Rd. \$300/month, 655-7252 or 353-1392.

7 foot sofa. Early American style. Forest green. Tufted back. Very good condition. Velvet fabric, \$100.00. For appt 655-9976.

Sale Every Saturday

Canyon Livestock Commission, Inc.

Licensed and Bonded
Joe and Cindy Burnett - Owners

-10 A.M.-
HOGS, SHEEP, GOATS
-12 NOON-
CATTLE SALE

Contact:
488-2535 or 499-3713
Canyon

Fall Wreaths: Made from real corn and mile. 26" across, \$30. Call 426-3587, to reserve yours now.

Bahama Cruise. 5 days/4 nights. Under booked. Must sell! \$279/couple, limited tickets. 407-767-8100, ext. 6205. Monday-Saturday. 8:00am-9:00pm.

Available! 3 choice cemetery lots in Canyon's Dreamland Cemetery. 359-9180, \$400/each.

Remember the flavor of real fryers raised on the farm? Now you can enjoy eating chicken again!

Experience the difference...

FULL SEASON FARMS

Umbarger, Texas

Delicious chicken raised and dressed on the farm...

Saturdays 10 - 2 Weekdays by Appointment
Call **806-499-3384** for more information
Order your Holiday Turkey today.

VANN - ROACH CATTLE

A History of Integrity Since 1950

Suppliers of All Classes
Stocker Cattle
Buying Yearlings
For Spring Delivery

Weldon Vann Roger Vann Gary Vann
Call Toll Free 800-792-2940
Ft. Worth, Texas

John Kuker 806-353-9994
Amarillo, Texas

"I'm sorry, but I can only sell a life insurance policy to someone who has a life."

Good, clean 1984 Cadillac Biarritz, maroon with white leather interior, \$3,500. 655-7507.

For Sale: 81 Chevrolet Pickup, 3/4 ton. \$1500/OBO. 655-2459.

1988 Saab 900. White 4 door, mint, low miles. \$8,200. 359-9802.

1988 Olds Cutlass Supreme. Great condition, 655-7240.

1986 Ford extended cab F-150. P.U. All electric, bucket seats. 499-3470.

1977 GMC Suburban, low mileage, good tires, 1111 4th Avenue. 655-3894. 9:00-11:00a.m. or after 1:00pm.

1972 Grand Torino, 2 DR. \$63,800 actual miles. 351 Engine, power brakes, steering, cruise control. Rebuilt trans. 655-0289 or 655-4417. x

Matching sofa with bed and swivel rocker chair. Both for \$100. Call 655-8572.

Imperial freezer, 16 cu.ft., white, \$85.00. 655-7962.

For Sale: 23" Zenith color console. Early American cabinet. After 5PM, 655-7342.

Butcher block table and chrome chairs, good condition, \$80. 655-1725.

Blonde bookcase headboard and dresser plus other dressers and miscellaneous furniture. 655-3840.

Country Television Entertainment

NOW AVAILABLE IN YOUR AREA!

CNN

WGN

HBO

THE FAMILY CHANNEL

BSI

Trinity Broadcasting Network

DISNEY

CNBC

TBS

CNBC

TBS

As Low as \$29 Month

100% Financing
(With Approved Credit)

The Discovery Channel

USA Network

The Nashville Network

ESPN

The Discovery Channel

USA Network

Cinemax

Black Entertainment Television

Mind Extension University

Headline News

A&E

SANDERS SATELLITE SYSTEMS

1-800-299-1518 3101 S. Western St. • Amarillo

353-6706 Financing Available

Industrial Supply

Miller Bobcat 225G

or

Lincoln G8000 Welding Machine

Compact Design 225 Amp Industrial Duty Welding Machine
8000 Watts Auxiliary Power, 115/230 Volts available while welding
Convenient integrated controls in damage resistant recessed panel
8 Gallon gas tank for all day operation with top fill spout opposite the exhaust outlet for safe refueling
Ammeter for monitoring charging circuit (Lincoln model only)
Full KVA available through one multi-use plug.

In the Lubbock Area call 1-800-692-4243
In the Amarillo Area call 1-800-692-4051

Give your calves more heavyweight potential

Effective, convenient parasite control with IVOMEC® can give your stocker calves added weight—and profit—advantages

Now's The Time To Ask For IVOMEC!

Before you turn out your stocker calves to wheat pasture this fall, make sure they're not carrying a parasite burden that could cost valuable pounds and profits. IVOMEC® (ivermectin) effectively controls both mature and immature parasites, helping to maximize weight gain.

While you're handling your incoming calves, treating them with IVOMEC gives them the advantages of internal and external parasite control from their first day on your pasture. An advantage that can translate into faster, more efficient gains. And by treating at turnout, you can decrease the level of pasture contamination caused by placing incoming cattle on pasture.

You can get IVOMEC in a convenient pour-on or an injectable form. Both can kill a broad spectrum of parasites. And for stocker calves that come from liver fluke areas use IVOMEC-F® (ivermectin and clorsulon) Injection. It provides the broadest spectrum of parasite control available, including adult liver flukes.

Now's the time to ask for IVOMEC. And give your calves more heavyweight potential.

ivomec
(ivermectin)
Proving its worth year after year

Merck AgVet, Division of Merck & Co., Inc. Rahway, NJ 07065-0912
© 1993 Merck & Co., Inc. IVB-3-1139-AAS