

# The Hereford Brand



97th Year, Vol. No. 85 Deaf Smith County, Texas Friday, October 31, 1997 12 Pages 50 Cents

## Things get batty at school

By DIANNA F. DANDRIDGE  
Staff Writer

'Tis the season for - bats! Or, at least that's what the second-grade classes at Tierra Blanca Primary School learned this week.

The classes were visited by Lenny and Squiggy, two Egyptian fruit bats owned by the Don Harrington Discovery Center of Amarillo.

The furry, flying visitors were accompanied by Aaron Guzman, the center's Outreach to Go coordinator.

Guzman also brought along numerous other items, including slides and garbage bags, to teach the students all about bats.

Because of problems with transporting large numbers of bats, Guzman uses slides to show the many types and kinds of bats which can be found throughout the world.

Guzman teaches the kids facts about bats by breaking some old myths.

"Bats are not just rodents with wings," he said. "Rodents all have two big front teeth. Bats don't have rodent teeth."

Most bats have teeth and jaws very much like a cat's. Some teeth are made for chewing, some for grinding and some for ripping their food apart, explained Guzman.

"Bats are also not birds. Birds have feathers and feed their young from outside sources. Bats are fur-bearing mammals and feed their young milk."

Guzman also said bats are not blind, they see about as well as humans do, but because they fly at night, bats use echo location to find their meals.

Bats feed off either plants and fruits or insects. Those feeding off fruits and plants have tiny ears, close to the bat's head.

A carnivorous bat has ears that are often nearly as large as the rest of the bat's body.

"Usually bats don't attack humans," said Guzman. "They're smart enough to know that if they mess with humans, they're going to get whacked."

"Even the vampire bats of South America and Europe bite only animals which won't strike back," he said.

Bats range in size from the tiny bumble bee bat, which measures only



Brand Photo by Dianna F. Dandridge

Lenny and Squiggy, two Egyptian fruit bats, were a big hit this week when they visited the second-grade classes at Tierra Blanca Primary School. The two bats are owned by the Don Harrington Discovery Center of Amarillo.

11/2 inches long to the giant fruit bat, which can be nearly 7 inches long. "Along with the bats' ears and eyes, they also use their sense of smell to help locate their food," said Guzman.

To get this point across to the students, Guzman had an array of items the children had to identify by smelling the contents.

As a final teaching tool, Guzman taught the kids how bats fly and allowed them to make bat wings from large black trash bags.

However, the biggest hit of all was Lenny and Squiggy themselves. Lenny and Squiggy are 5- and 6-year-old brothers, and like human brothers, they often showed off by starting an argument with the other or squabbling over a piece of fruit.

Like all bats kept in captivity, Lenny and Squiggy are tagged with an ear number and their number is registered with the National Bat Conservatory.

"This way, if they should ever become lost and someone finds them they'll know where they belong," Guzman said.

Guzman said Lenny and Squiggy eat about a half-pound of fruit a day and will eat apples, pears, berries and melons.

## Sugar beet industry's impact told

By DIANNA F. DANDRIDGE  
Staff Writer

Members of the regional press corps got a first-hand look Thursday at the impact of the sugar beet industry on the Panhandle and state.

Texas is the only state that produces both sugar beets and sugar cane. Sugar produced from these two sources pumps more than \$875 million a year into the Texas economy.

Dennis Printz, agricultural manager for Holly Sugar, told reporters gathered for the annual Sugar Beet Media Day "30 percent of the harvest will be complete by Saturday."

Printz said the harvest is averaging 22 tons per acre, with sugar contents of 13.4-13.5 percent.

"Some late rains caused the sugar content to be less than we would like it, but when it starts to dry out, the sugar content should come back up," he said.

Sugar beets are being harvested as far north as Dalhart and as far south as Plainview and west to Clovis in eastern New Mexico.

Kenneth Frye, president of the Texas-New Mexico Sugar Beet Growers Association said about 350 producers in the Texas-New Mexico growing area will produce more than 18,000 acres of sugar beets, an increase of nearly 25 percent from last year.

"We have seen an increase in production in the northwestern Panhandle area," said Frye. "Farmers in Dallam, Hartley, Moore and Sherman counties will harvest about 6,000 acres of beets this year, compared to about 1,500 acres from last year."

Production rose when farmers realized less water is needed to irrigate sugar beets than other field crops. Sometimes the farmers can use 30-40 percent less water in irrigation, he said.

Frye said many farmers are finding sugar beets to be an excellent alternative crop which fits nicely into their current rotations.

Seed companies are working closely with Holly Sugar to produce higher yielding, higher quality beets.

Visitors attending the local media day learned that Holly Sugar, which is a subsidiary of Imperial Sugar, pays more than \$700,000 annually in school, county and hospital taxes.

The local plant spends about \$16 million on materials needed to operate the plant, much of which is spent with local companies.

Holly Sugar of Hereford produces approximately 15,000 100-pound bags of sugar daily. The giant silos inside the Holly compound hold nearly 750,000 pounds of sugar and the company fills a silo every six to seven days.

Along with the Holly brand of sugar, the plant also packages sugar for Albertson's, United and Rainbow.

"It's all the same sugar," plant manager Dave Duncan said. "We just change the bags and fill them up."

Holly Sugar produces sugar in various forms and quantities as their buyers request it.

The local plant produces 3-, 4-, 5-, 10-, 25-, 50-, 100-pound bags as well as batch bags of 1,200-2,000 pounds of granulated sugar and various size bags of confectioners and bakers sugar.

"About the only size container we don't make is the individual packages," said Duncan.

See SUGAR, Page 7

## Celtic tradition is origin of Halloween

By DIANNA F. DANDRIDGE  
Staff Writer

Pumpkins have been harvested, days have shortened, leaves have faded from bright green to yellow, and now all the little hobgoblins, ghouls, spooks plan on the one night of the year when they can dress like a netherworld being and go beg treats from friends and neighbors.

And, this is generally done without the little ghouls and goblins having the slightest idea about the meaning of Halloween.

All Hallows' Eve had its origins in a traditional Celtic celebration of the first night of harvest festival. Celts dressed as spooks to scare off evil spirits which might damage the crops.

During the period of the Roman Conquest, the Roman conquerors allowed the Celtic peoples to continue with their ancient festival of Samhain (Celtic Lord of Death), but it was combined with the festival of Pomona, goddess of fruit and trees.

The holiday, though popular in Great Britain and Ireland for centuries, didn't become popular in the United States until the mid-1800s when immigrants brought their traditions and festivals with them. Among these celebrations came the fun of allowing children to dress in strange costumes and ask for treats or play harmless tricks on other people.

One of the numerous traditions of Halloween is the carved Jack-o'-lantern. The jack-o'-lantern came from an Irish legend about a man named Jack who could not enter heaven because of his miserly ways, but could not enter hell because of the jokes he had played on the devil. Jack's soul was forced to walk the earth until Judgment day with only his lantern fashioned from a potato.

Immigrants coming to this country found the giant golden gourds made much better jack-o'-lanterns than potatoes or turnips and were more fun to carve. Jack's face into than turnips and so came the familiar jack-o'-lantern.

The idea of witches and ghosts came from the ancient Celts, who believed that witches came out on All Hallows' Eve to worship the devil. Ghosts were merely the souls of the dead returning to their earthly homes for one evening of celebrations.



Bats and werewolves were brought into the festivities from Hungarian immigrants who believed in undead spirits. Bats, which swarm only at night, were the perfect scapegoat for weird, late-night activities.

Werewolves were derived from wolves, which were supposed to be howling at the walking spirits of the dead.

From these tales and legends come the modern Halloween. Children dress in costumes of choice and roam the neighborhoods in search of special treats - all part of an age-old festival.

## Speed limit could be cut

AUSTIN (AP) - Texans concerned about road speeds that they think are dangerously high could see them lowered by as much as 12 mph under an emergency rule approved Thursday by the Texas Transportation Commission.

Prompted by a 17.8 percent increase in state traffic fatalities last year - after the speed limit rose to 70 mph on many roads - the rule will give Texas Department of Transportation engineers more flexibility in recommending lower speeds to the commission.

The rule won't automatically lower maximum speeds, which must be based on engineering studies and practices. It comes after the agency had 26 meetings around the state to get public input on speed limits.

"What we heard during these meetings is that most Texans generally agree with the higher speed limit,

but there are some roadways, particularly narrow rural highways, that we should re-examine," said commission Chairman David Laney.

Carlos Lopez, deputy director of the agency's traffic operations division, said public input varied by region. "Mainly in West Texas, everything's cool," he said.

But in areas with fewer wide-open spaces and more curves in the roads, more concern was expressed about whether speed limits were too high.

Lopez said the emergency adoption will allow the agency to put the procedures in place right away, and that it will be responsive to the public.

"Our engineers can go out and look at roadways as people call in with maybe some concerns and apply these new procedures as they study the roadways," he said.

Engineers also will look at roads people expressed concern about at the meetings, he said. The commission will make the final determination on a road's speed.

Under previous rules, engineers could recommend

See SPEED LIMIT, Page 7

## Producers eye safety issue

How safe is our food? That question has been asked frequently in recent months, especially in wake of the E. coli outbreaks that have created major headaches for the beef industry.

Nowhere has food safety been a more important issue than for the beef producers of Texas, New Mexico and Oklahoma.

Assuring the public that the meat it purchases in the stores or orders in restaurants is safe will be an industrywide effort for the area producers of 30 percent of the nation's fed beef.

No one is more concerned with the safety and wholesomeness of beef than cattlemen, according to a new release from the Texas Cattle Feeders Association.

Texas Cattle Feeders Association has been working

on an update of its 11-year-old Beef Quality Assurance program, which was developed to give cattle feeders a blueprint to help ensure they produce safe and wholesome beef.

Several years ago, the principle of HACCP (Hazardous Analysis and Critical Control Points) was introduced to the beef industry. Now TCFA is looking at the possibility of incorporating HACCP-type principles into its Beef Quality Assurance program.

HACCP is a system approach to solving problems. Potential hazards are identified, then the entire production system is evaluated and the best point to control the hazard is determined.

TCFA is working to determine where the critical control points exist on farms, ranches and feed yards.

The work is still in the preliminary stages, but the industry is anticipating a time when farm-to-table production systems governed by some type of HACCP program will be commonplace throughout the industry.

TCFA was the first state cattle organization to offer a Beef Quality Assurance program to its members and for more than 10 years the association has worked to get ahead of the curve of major production trends.



## Sculpture exhibit

A sculpture exhibit, featuring works depicting a Christmas theme, will be on display in Hereford starting Sunday. See story, Page 2.

OCT 31 1997

## Local Roundup

### Teacher's meeting

The Professional Development Appraisal System (PDAS) will be the topic of discussion at the Region 16 meeting of the Association of Texas Professional Educators. The meeting will take place 11 a.m. Saturday at the Plaza Restaurant in Amarillo.

Brock Gregg, ATPE Lobbyist, will present the controversial new appraisal instrument developed by the Texas Education Agency and implemented by 92 percent of the school districts across the state. He will also discuss issues for the upcoming legislative session and give a review of education-related legislation that emerged from the 75th Legislative Session.

With more than 80,000 members, ATPE is the largest educators' group in Texas. It also is the largest such non-union group nationwide. ATPE's membership consists primarily of classroom teachers, but also includes administrators, paraprofessionals, college students and retired educators.

### Partly cloudy

Tonight, partly cloudy with low in lower 40s. Mostly sunny and cooler Saturday, high 60-65. Saturday night, partly cloudy and colder, low in 30s.

## News Digest

### AGENCY DEVELOPS ZERO TOLERANCE QUIZ

AUSTIN (AP) - One in four Texas high school seniors has driven while drunk at least once during the past year, the Texas Commission on Alcohol and Drug Abuse reports.

The commission said Thursday that its research also found that 17 percent of seniors have driven while intoxicated several times during the last year.

That's why the agency has developed a Zero Tolerance Quiz to help educate young Texans about the state's new zero-tolerance alcohol law. The law prohibits Texans under 21 from having any amount of alcohol in their blood.

Minors found violating Texas liquor laws run the risk of losing their drivers' licenses, whether the offense involves driving under the influence or consuming, possessing, purchasing or attempting to purchase alcohol.

"This will not be a popular law among Texas youth. But it will save lives," said Dr. Richard Spence, the agency's assistant deputy for drug and alcohol treatment and prevention programs.

The quiz will be made available to the public. It asks questions designed to increase awareness about the new law.

### UT CAMPUSES EXPAND COMMUNICATIONS TECHNOLOGY

AUSTIN (AP) - The University of Texas System and its 15 campuses are expanding the use of advanced communications technology that UT officials say is rapidly changing the face of education.

With \$3.4 million approved by the UT regents this year, the expansion will include development of what officials Thursday called the "UT TeleCampus," the beginning of a "virtual university" of the future.

Among the initiatives planned are expanding the UT telecommunications infrastructure, creating a "knowledge management center" that includes broadly expanded digital library services, pilot projects in tele-health, a project for multimedia educational information delivery and pilot projects for developing a "smart card" that would allow access to resources from throughout the UT system at a single point.

"The board is mindful of the need for higher education institutions to respond to the changing needs of learners, both traditional and non-traditional students," said Donald Evans, regents chairman.

"We must change as the way people learn changes, and, indeed, we must not only react but must help lead the way," he said.

### DNA TESTS FREE MAN FROM PRISON

AUSTIN (AP) - It was the sentence Ben Salazar had been waiting to hear for five years.

He heard it Thursday in the same courtroom where five years earlier he had been sentenced to 30 years in prison for the rape of an Austin woman in 1991.

"The court finds that he is not guilty of this offense," said District Judge Jon Wisner. The judge made the ruling after hearing that three DNA tests had shown that Salazar was not guilty.

The judge said that Salazar's trial was handled correctly, "but now we have better evidence."

Salazar, 31, hugged David Schulman, his lawyer, and his mother, Dolores Almaguer.

### 2 OFFICERS INDICTED IN SCAM

CORPUS CHRISTI (AP) - Two Corpus Christi police officers have been indicted on fraud and felony theft charges in an alleged insurance scam.

The indictment returned Thursday by a Nueces County grand jury, accuses Lt. Leandro Benavides, 43, and Senior Officer Joe Manning, 33, of faking auto and home burglaries in order to make false insurance claims, police investigators said.

Ken Botary, a lawyer representing Benavides, says his client is innocent and is being framed by a jilted girlfriend with a checkered past.

"These allegations are not true," Botary said.

Botary said the former girlfriend is on probation for theft in San Patricio County following her conviction on charges of stealing funds from a high school band booster club.

### PAUL, SESSIONS TOP DEMOS' HIT LIST

WASHINGTON (AP) - Rolling out their list of targets in next year's House races, Democratic leaders say the defeat of Republican congressmen Ron Paul and Pete Sessions will be their top priority in Texas.

"We will be very competitive in Texas," Rep. Martin Frost, the Dallas lawmaker who chairs the Democratic Congressional Campaign Committee, said at a briefing Thursday.

To help fund Texas campaigns, the DCCC is bringing Vice President Gore to Dallas on Nov. 24 for a fund-raiser.

Republicans professed little concern for the future of Sessions, whose Northeast Texas district lies south of Dallas, and Paul, whose sprawling district stretches from the outskirts of Austin down to the Gulf of Mexico.

House Majority Leader Dick Armey, whose district neighbors Frost's, shrugged off his fellow Texan's prognostication.

### FORMER LAWMAKER HONORED BY HOUSE

WASHINGTON (AP) - When Congress is gavelled in session in January, Henry B. Gonzalez will be missing after a 36-year stint on Capitol Hill.

But visitors to the House Banking Committee hearing room, where the San Antonio Democrat held sway as chairman for six years, will have a tangible reminder of his presence.

The retiring Texas lawmaker returned to Washington on Thursday for the unveiling of his official portrait, which now hangs in the committee room where he spent so many hours fashioning banking regulations, housing policy and more.

Gonzalez is only the seventh chairman in the Banking Committee's 132-year history given such an honor.

### SEPARATISTS MAKE LAST-DITCH DEFENSE BID

ALPINE (AP) - Texas separatists have made a last-minute attempt to mount a defense in their organized crime trial, turning their case over to the court-appointed attorneys they ignored for nearly a week.

Republic of Texas leader Richard McLaren and his co-defendant, Robert Otto, asked their standby counsel to step in Thursday after the prosecution had wrapped up its case.

McLaren's attorney, Frank Brown, said it would be difficult taking over at this late a date.

"I guess being standby counsel is like being a fireman," Brown said outside the courtroom.



### Nativity of Herrmann

Sculptor Carl Herrmann created his idea of the nativity after seeing a special Christmas Pageant. His first nativity set was

made as a gift for his mother. Now he makes his pieces so more people can enjoy the beauty he finds in Christian art.

## Christian sculptor comes to town

A hobby that just came kind of easy is the way Carl Herrmann, sculptor, describes the work he enjoys.

Herrmann effect people emotionally which effect people emotionally.

Herrmann, a native of Oklahoma, never intended on making art his career. He has a degree in accounting and another in advertising.

"I kind of got into it by accident," said Herrmann. "I've messed with computer animation and piano for years, and I've made things with clay

since I was just a kid."

"About 12 years ago I went to a Christmas pageant and it just really touched my heart," he said. "After I saw the pageant I decided to make Mary and the baby Jesus for my mother's Christmas gift."

Herrmann goes on to say that each year he made his mother a new piece and after she showed them he was strongly encouraged to do other pieces.

"I like to do pieces with a message," he said. "One of my favorite pieces is Noah with the dove

holding an olive branch."

Herrmann says his work of Joseph is very special because it shows how much he really cares about Mary.

Life is about choices and Herrmann said that at one point he had to make the choice to do one of a kind pieces and show them in museums or do work that more people could enjoy. He chose the latter.

Now he does each sculpture, makes a latex mold. The molded pieces are set in hydro-stone and are

finished in one of three finishes - natural white with a wax covering to help keep it clean, an antique white or a bronze with a green patina.

Herrmann will be in town completing a sculpture on Sunday, November 2, at the Peddler's Cove.

He says that sculpting appointments eliminates sculptors block. "I've made an agreement to sculpt, so I guess I'll just have to sculpt."

The public is invited to come see Carl Herrmann complete his work of the Prodigal Son.

## Santa Fe, DOE reach travel agreement

SANTA FE (AP) - The U.S. Department of Energy and city of Santa Fe have reached agreement on when nuclear waste headed to the Waste Isolation Pilot Plant in southeastern New Mexico can travel through the city.

At a council meeting that ended early Thursday, the DOE and city signed the agreement that will allow waste shipments to go through Santa Fe only between 1 a.m. and 5 a.m., Monday through Friday along St. Francis Drive.

The shipments would travel from Los Alamos National Laboratory in

northern New Mexico to the WIPP near Carlsbad.

Shipments would be prohibited through Santa Fe during critical construction activities along St. Francis Drive, during all state and federal holidays, the annual Santa Fe Fiesta, and the Indian and Spanish markets.

The agreement was signed by George Dials, DOE manager of the Carlsbad area office, Mayor Debbie Jaramillo and Jennifer Salisbury, chairperson of the New Mexico Radioactive Waste Consultation Task

Force.

Council members had discussed an ordinance proposed by Councilor Patti Bushee that would have allowed waste shipments through Santa Fe between 1 a.m. and 4 a.m.

But councilor Amy Manning said such an ordinance would be meaningless because the city wouldn't be able to enforce it. Manning said Thursday the signed agreement would provide significant protection for the city's interests and its residents.

"The agreement is a lot broader than the proposed ordinance,"

Manning said. "This was a very long process. It isn't easy to get agreements out of the federal government."

The U.S. Environmental Protection Agency recently approved DOE plans to open the waste dump near Carlsbad, possibly as soon as next May.

In addition to the EPA's ruling, federal legislators have pushed to secure funding to help build the Santa Fe relief route to eventually divert nuclear shipments around the city instead of being trucked through it.

## Trouble in West delays Conrail takeover

WASHINGTON (AP) - Two East Coast railroads mindful of safety and service problems in the West are slowing down their plans to take over Conrail.

Executives with CSX Corp. and Norfolk Southern Corp. said Thursday they would wait months after getting regulatory approval before linking computer systems and adjusting their operating procedures.

"Do nothing is a viable alternative," said Ike Prillaman, executive vice president for marketing at Norfolk Southern. "Day One will extend for a period of time until we are ready to go forward."

His comments came at a railroad conference at which the Federal Railroad Administration announced

plans to dispatch 85 inspectors to Texas and other states after the two latest train wrecks involving Union Pacific rail cars.

"This is a crisis for Union Pacific," Administrator Jolene Molitoris said. "We are not going to go away until these issues are resolved."

Union Pacific spokesman John Bromley said the company will cooperate fully. On Monday, railroad executives apologized for service disruptions and said they were on their way to resolving them by the end of the year.

Ms. Molitoris said that, given the problems with Union Pacific, "the assumption of a smooth passing of the baton is not something we can

make." She said she would scrutinize the Conrail transaction before making a recommendation to the Surface Transportation Board next year.

The conference, sponsored by Traffic World magazine, was on a \$10 billion proposal by CSX and Norfolk Southern to carve up Conrail and control virtually all rail traffic east of Kansas City, Mo.

Nevertheless, last year's merger between Union Pacific Corp. and Southern Pacific Rail Corp. was on the minds of many participants.

Randy Evans, vice president for acquisitions development at CSX,

said the need for caution became apparent as his company began meeting with West Coast railroads that have merged in recent years. The problems that surfaced with Union Pacific only underscored the need to slow down, he said.

Union Pacific has faced service complaints from shippers, and a string of crashes that killed seven people over the summer prompted the Federal Railroad Administration to take action.

The federal agency initially deployed 90 inspectors to monitor Union Pacific operations.

## Emergency Services

Activities reported by law enforcement agencies include:

### Police Department

#### Arrests

--A 53-year-old man was arrested in the 200 block of Hereford Calle and charged with public intoxication.

--A 22-year-old man was arrested in the 300 block of east Sixth and charged with assault and domestic violence.

--A 24-year-old woman was arrested in the 300 block of east Sixth and charged with assault, and domestic violence.

--At 11:13 p.m. officers responded to the 300 block of Bradley on a vehicle pedestrian accident. Officers found a semi (beet) truck had struck a pedestrian. The pedestrian was taken to Hereford Regional Medical Center and later transported to Northwest Texas Hospital for further treatment. The 40-year-old driver of the semi was arrested and charged with intoxicated manslaughter.

--At 7:08 p.m. officers responded to the 500 block of north Avenue K on a vehicle pedestrian accident. Officers found that a south bound

vehicle struck a pedestrian. The pedestrian was taken to Hereford Regional Medical Center by private vehicle with non-incapacitating injuries.

--Theft was reported in the 300 block of Avenue J.

--Disorderly conduct was reported in the 200 block of Avenue F.

--Theft was reported in the 1100 block of west First.

--Failure to stop and render aid was reported in the 500 block of Avenue K.

--Assault domestic violence was reported in the 200 block of west Eighth.

--Criminal Mischief was reported in the 500 block of Avenue G.

--Theft was reported in the 300 block of north 25 Mile Avenue.

--Theft was reported in the 300 block of north 25 Mile Avenue.

--Five traffic tickets were issued.

--No curfew violations were reported.

--Two traffic accidents were reported.

--No fire calls were reported.

## Ford recalls vans

WASHINGTON (AP) - Ford Motor Co. is recalling 769,000 Mustang minivans and Mustang sports cars after complaints the hoods were flying off some of the vehicles.

The government's highway safety agency received 45 complaints that the top panel of the hoods detached from the lower panel, flying off or up against the windshield while the vehicle was moving, according to a National Highway Traffic Safety Administration report released Thursday.

The lower panel remains over the engine, secured by the hood latch, the report said.

"Ford is addressing the issue and dealers will have parts shortly" to fix the vehicles, Ford spokeswoman Karen Shaughnessy said.

NHTSA spokesman Tim Hurd said the recall involves 769,000 Windstars, model years 1995-96, and Mustangs, model years 1994-96.

Motorists claimed the flying hoods caused at least two crashes and one injury. The company has told the government the likely cause was damage in earlier low-speed collisions.

The safety agency, in its monthly report on auto defects, also said it has upgraded an investigation into more

than 200 complaints of windshield wiper failure in 1992-93 Chrysler minivans. More than 900,000 of those minivans are on the road.

Some motorists complained the entire wiper arm was stripped from its pivot in snow or rain and thrown from the minivan. "These failures occur without warning," the NHTSA report said.

No injuries were reported, but Chrysler told the government 15,050 warranty claims were made on the wiper systems. Chrysler redesigned the wiper pivots in May 1993.

The agency also opened some preliminary inquiries into inadvertent air bag deployments:

--1996-97 Chevrolet Cavaliers; six complaints air bags inadvertently deployed while motorists were driving or starting the cars. Two injuries were reported. About 350,000 of the vehicles are on the road.

--1995 Dodge and Plymouth Neons; 15 complaints the dual air bags deployed inadvertently. Motorists reported two crashes and five injuries. About 240,000 of the vehicles are on the road.

The agency has three other ongoing investigations into air bag deployments in Mazda, Subaru and Chevrolet cars.

# Lifestyles

## Lutheran Churches nationwide will observe 150th anniversary

Immanuel Lutheran Church at 100 Avenue B, Hereford, will observe the 150th anniversary of The Lutheran Church--Missouri Synod with 6,000 other Lutheran Churches affiliated with the Missouri Synod throughout the nation during the worship services this Sunday, Nov. 2 according to the Rev. Robert Kuhlmann, interim

pastor. Lutheranism first came to the Texas Panhandle area in the early 1900s. Services were first held in home of members in 1914, later in the old Christian College and then moved to the courtroom of the county courthouse. The present building located at 100 Avenue B was

dedicated on Sept. 18, 1949. "The members of Immanuel Lutheran want to continue to serve the people of all ages in the Hereford community with the teachings of God's Word into the 21st century," according to Rev. Kuhlmann. For further information, call Immanuel at 364-1668.



### Church anniversary

Immanuel Lutheran Church will observe the 150th anniversary of The Lutheran Church--Missouri Synod with 6,000 other Lutheran Churches during worship services this Sunday.

## Ann Landers

Dear Ann Landers: I just read your column about the do's and don'ts when conversing with pregnant women. How about the do's and don'ts when talking with an infertile couple?

Don't say:

1. Just relax. You are trying too hard.
2. Don't think about it so much.
3. Go away on vacation.
4. Get drunk.
5. Adopt, and then you'll get pregnant.

6. Well, she has to mother something. (About a woman who is playing with someone else's children.)

I assure you, Ann, all these things are very hurtful and not helpful. There is no scientific evidence that relaxing will make sperm swim any faster.

Do say:

1. I hope the best for you two. You will be wonderful parents.
2. My prayers are with you.

Here are some facts: There are only two or three days a month that a woman can conceive. The vacation may not be scheduled during ovulation. When you want desperately to have a baby, you can't help but think about it a lot, especially when you are going through infertility

treatments. Hot tubs can reduce sperm count for up to three months. Adopting doesn't mean you will get pregnant, and it is not necessarily the answer for many couples.

If you doubt my facts, talk to a reproductive endocrinologist. They specialize in fertility. Even if your gynecologist tells you he or she knows all about infertility, it may not be true. I would also like to recommend RESOLVE, a wonderful support group for infertile couples with local chapters around the country.

Thanks for listening, Ann. -- Broken-Hearted Couple in Fort Lauderdale, Fla.

Dear Couple: You've written a letter that is sure to be enormously helpful to a great many readers. Thank you for your sane and solid suggestions.

For those who want more information, send a long, self-addressed, stamped envelope to: RESOLVE, 1310 Broadway, Dept. AL, Somerville, Mass. 02144-1779 (www.resolve.org).

Dear Ann Landers: Here's another one for your "how-we-met" file. I hope you can find room for it.

I was living in Scotland in August 1939 and visited a school friend in

Southern England. Within 10 minutes of my arrival, I was asked to help repair a faulty drain trap. I was lying on my back underneath the sink when someone entered the room. All I could see was a pair of long and lovely legs. When I scrambled out, disheveled and dirty, I found that the rest of my friend's 15-year-old sister was equally attractive. We got along famously.

Not long after, I was in the Air Force. She and I wrote occasionally, even though we were 400 miles apart. We shared our joys, our sorrows and our secrets through the mail. I didn't get back to England until 1946. I phoned her from the train station, and we arranged to meet at the top of the escalator. Only then did I wonder if I would recognize her. Suddenly, a beautiful young woman stepped off the escalator, threw her arms around me and gave me a more-than-friendly kiss.

We've been more than friends ever since. Recently, our five children and five grandchildren helped us celebrate our 49th wedding anniversary. -- Contented in Canada

Dear Canada: Your letter was irresistible. I loved it. Happy anniversary, and please give my best to "Legs."

Hereford has a number of excellent retail stores who make every effort to fill your needs or services. Shop at home with the local folks. They help support your church, your kids, your entire community.

**DALENE T. SPRINGER**  
SPRINGER INSURANCE AGENCY  
204 N. Main Street • 806.364.7676

**HOLIDAY SALE** Perfect 10 Lorie Valdez  
411 N. Main (inside Val's) 364-4181  
Tuesday - Saturday 10:00 am - 5:30 pm

Set of Nails .....(odorless).....Reg. \$30.00	\$20.00
Oil Manicures .....	\$15.00
Plain Manicures .....	\$10.00

## Church News

**FIRST UNITED PENTECOSTAL CHURCH**  
Pastor Warren McKibben is pleased to announce the opening of an Acts 2:38 Bible believing church. We welcome all for a truly down to earth praise and worship experience with our Lord.

If you are seeking answers, come and let's worship together in the name of Jesus. If you are looking for a blessing and still believe in miracles, then this is the place to come. We are one big happy family of God.

We invite all to attend our services at 2 p.m. Sunday.

For further information, call 1-800-454-6051.

### CALVARY BAPTIST CHURCH

We at Calvary Baptist Church extend a hearty welcome for you to attend our Sunday school and church services.

When you come, we believe you will especially enjoy the wholesome Christian fellowship and spiritual service. There will be a Sunday school class for every member of your family.

Sunday school is at 9:45 a.m. and worship is at 11 a.m.

Ray Sanders is the pastor.

### BIBLE BAPTIST CHURCH

Bible Baptist Church is happy to announce that Travis Curry of Lubbock is our new pastor.

He and his wife, Louise, are presently commuting to be in our services Sundays but will be moving to Hereford very soon.

Bible Baptist Church has Sunday

School for all ages with lessons taught directly from the Bible at 10 a.m. Sunday, Bible preaching at 11 a.m. and 6 p.m. Sunday and Prayer and Bible Study Meetings at 7 p.m. on Wednesdays.

If you are searching for a church that centers around the Word of God, you will find it here.

You will receive a warm and friendly welcome at 1204 Moreman Avenue. Call 364-3729 or 364-3102.

### DAWN BAPTIST CHURCH

The congregation of Dawn Baptist Church invites you and your family to worship with us each Sunday with Sunday school at 10 a.m. and worship at 11 a.m.

Sunday evening at 5:30 the adults are currently studying the "Experiencing God" series. We would also like to invite the youth to join us for Team Kids, which is a club for youth ages 4-13 where they enjoy fun, games, Bible lessons and snacks.

A nursery is provided for both morning and evening services. Starting Nov. 9 through Nov. 12, Dawn Baptist Church will have their fall revival.

Services will be at 11 a.m. Sunday with a covered dish meal following. Weeknight services will begin at 7. Evangelist will be James Peach, pastor of First Baptist Church of Vega and music will be under the direction of Bobby Jordan, minister of music of First Baptist Church of Washburn.

Make plans to be with Dawn Baptist church during its Fall Revival. For more information or prayer needs contact Charles Ellingburg, Pastor, at 258-7330. Hope to see you soon.

**FRIO BAPTIST CHURCH**  
Pastor Larry Perkins and the congregation of the Frio Baptist Church invite you to join them for Sunday and Wednesday services.

Sunday School begins at 9:45 a.m. and is followed by worship at 10:45 a.m. Evening services begin with Discipleship Training at 5 which is followed by evening worship at 6.

We would also like to invite any youth to join us and our interim youth minister Brett Baldwin.

Wednesday prayer services begin at 7 p.m.

### NEW HOPE CHURCH OF THE NAZARENE

13th and Avenue H  
Pastor Elda Olivarez and congregation invite you to worship with them.

Sunday School is at 9:30 a.m. and morning worship is at 10:30. Evening worship is at 6 on Sunday and 7 on Wednesday.

The youth meet Friday at 7 p.m. There are monthly meetings for men and women.

New Hope Church of the Nazarene was founded by Pastor Olivarez in June 1992, right in the center of the barrio. We are reaching out to single mothers, teenagers, the elderly and lots of children.

We would like to thank all who were involved in our Vision of "expanding out to reach out." Our new addition will include four Sunday school rooms, a cry room, fellowship hall and restrooms.

We are still praying and raising funds to complete our Vision.

(More CHURCH NEWS, Page 4)

**ANNOUNCING:** PANHANDLE VISION CENTER

We are pleased to announce our acquisition of Balfour Optical, North Gate Shopping Center, in Hereford. Effective immediately, we personally pledge to bring you the highest quality of eye care, consistent availability of doctors, and affordable prices on glasses and contact lenses. The new name for our clinic will be PANHANDLE VISION CENTER - Hereford.

**Dr. Ken McCarty • Dr. Janet Townsend • Dr. William Townsend**  
**Dr. Vanessa Ransom**  
Optometrists  
364-3030  
517 N. 25 Mile Avenue  
Hereford, TX 79045

Ask about our November Contact Lense Special!!

# SUPER WEEKEND SALE!

super storewide savings on the season's best offerings!

FRIDAY, SATURDAY & SUNDAY ONLY!

<p>Entire Stock of Ladies' &amp; Men's Outerwear</p> <p><b>SAVE 30%</b></p> <p>Misses', juniors', reg. \$4.00-\$20.00, sale 37.80-\$224.00. Men's, reg. \$8.00-\$295.00, sale 47.60-\$206.50. <small>*Excludes Chaps</small></p>	<p>Ladies' Sag Harbor Jackets, Pants &amp; Skirts</p> <p><b>SALE! 29.99-59.99</b></p> <p>Misses' &amp; women's sizes. A wool collection also in petites sizes. Orig. 40.00-\$80.00</p>
<p>Ladies' Pantsuits &amp; Vest Dresses</p> <p><b>SAVE 25%</b></p> <p>Misses', juniors' and special sizes Reg. \$9.00-\$9.00, sale 44.25-\$66.75</p>	<p>Juniors' Tops, Shirts, Sweaters &amp; Knits</p> <p><b>50% OFF</b></p> <p>A great collection of selected styles Orig. 18.00-\$24.00, sale 8.99-\$11.99</p>
<p>14K Gold, Sterling &amp; Vermeil Jewelry</p> <p><b>SAVE 60%</b></p> <p>Earrings, necklaces, rings, bracelets, charms and pendants</p>	<p>Men's Levi's 505 Denim Jeans</p> <p><b>SALE! 26.99</b></p> <p>Levi's classic fit in the straight leg style. All cotton</p>
<p>Men's and Ladies' Selected Athletic Shoes</p> <p><b>SALE! 49.99</b></p> <p>Guess, K-Swiss, Nike, more Reg. 6.00-\$9.00</p>	<p>Entire Stock of Men's Sweaters</p> <p><b>25% OFF</b></p> <p>Reg. 30.00-\$8.00, sale 22.50-\$6.00</p>

**ANNOUNCEMENT:**  
Effective Monday, November 3rd, 1997

# SPARKLE CLEANERS

Dry Cleaning • Shirt and Jean Service • Alterations

... of Clovis, NM, will open it's newest location in Hereford!  
700 S. 25 Mile Avenue

**SPARKLE Cleaners** WE CARE - ABOUT YOU

**BEALLS**  
We're all about you!

CHARGE IT!

Fine Jewelry not available at Carthage, Gilmer, Longview (in the Village Shopping Center), Vidor, TX, Sand Springs, OK. Petites' and Men's Dress Clothing at most stores. Just a sample of the savings you'll find. Styles, sizes & colors may vary by store. Interim markdowns may have been taken. Vermeil is 18K gold over sterling.

# Church News

## HEREFORD CHURCH OF THE NAZARENE

Pastor Ted Taylor and congregation of the Nazarene Church cordially invite you to join us at 9:30 a.m. for Sunday School and 10:30 a.m. for worship. Sunday's sermon is titled, "The Battlefield of the Mind." We will partake in communion and will have special music in honor of the music ministry.

Children will join their families for services this Sunday.

Teens are invited to join us at 9:30 a.m. for our new Junior High Sunday School class with Cathy Bunch and Senior High Sunday School class with Jim Pope and for Sunday night Car Groups: 7th-8th grade Ladies at 107 Nueces, 9th-10th grade Ladies at 244 Douglas, 11th-12th grade ladies at 710 Cherokee, 7th-8th grade Men at 107 Centre, and 9th-12th grade Men at the Church in the Solid Rock.

Join us at the Nazarene Kid's Korner on Wednesdays and Fridays for kid's day out. All children are welcome to come and share in the fun, games and outings we enjoy. Call Leslie Easley at 364-8161 for more information.

Come and enjoy the teaching of the Word by Susie Merrick at 10 a.m. on Tuesday mornings.

The NCA P.T.F. will place an American flag in your front yard six times a year for a donation of \$20 per year. Call 364-1697 for more information.

## WESLEY UNITED METHODIST CHURCH

Wesley United Methodist Church wishes to join forces with other churches to establish a chance for Christian young adults, married or single, to join together for fun, food and fellowship.

Wesley United Methodist Church in Hereford is a small church with very few young adult or single members. We realize many other small churches face the same dilemma. We would like to get together with other churches in this situation by forming a Christian Fellowship group to meet monthly to give young adults and single Christian people an opportunity to fellowship with other Christians, regardless of denomination.

The first get-together will be Friday, Nov. 7 at 7 p.m. at Wesley United Methodist Church at 410 Irving. Wesley will provide soft drinks, tea, and coffee. Bring yourself, a friend and a snack to this gathering.

For more information call Rev. Bonnie DunsWorth at 806-364-3908 or Nina Brown at 806-364-5857.

## FIRST UNITED METHODIST CHURCH

"Following At a Distance" is the Sunday morning sermon title chosen by Dr. Tom Fuller with scripture lesson Luke 22:47-54. The Men's Choir will sing "Bringing in the Sheaves" as the offertory, and the Women's Choir will present "This is My Father's World" as the anthem. The services will begin at 10:45 a.m. following Sunday school classes which begin each week at 9:30 a.m.

The United Methodist Men will host a fish fry in Fellowship Hall immediately following the morning worship. Love gifts will be accepted and the monies will be used to buy carpet for the hallways in the main church building. Volunteers to set up for the meal are asked to meet at 3 p.m. Saturday.

The Children's Council will kick off its annual collection of non-perishable food items this Sunday when the children will bring their offerings of canned goods to the altar. The church family is invited to bring food anytime this month to the harvest booth. The children will deliver the food baskets on Nov. 23 right after church. Ten needy families will receive the food which will include a turkey for each basket.

The United Methodist Youth Council will meet at 5:30 p.m. Sunday for a planning session. The weekly youth snack supper and program meetings will follow at 6:30 p.m.

The vespers service is set for 6 p.m. in Ward Parlor.

The Finance Committee will meet at 6:30 p.m. Monday in the Koinonia Classroom, and the Administrative Board will meet in Ward Parlor at 7:30 p.m.

The Worship Committee will meet at 7 p.m. Tuesday in the Koinonia Classroom.

The Mission Team of United Methodist Women will gather in the library for its business session Wednesday, followed by the general meeting of the UMW group.

The November meeting of the Caring Committee will be held in the Koinonia Classroom at 9:30 a.m. Thursday. The Education Committee will meet in the same room at 6:30 p.m.

## FIRST ASSEMBLY OF GOD CHURCH

You are cordially invited to join us for our Sunday morning service to experience worship that heals, preaching that inspires, and ministry

that uplifts and delivers. Our Sunday morning service begins at 10:45 a.m. and has a simultaneous Children's Church service for kids in grades kindergarten through fifth grade. Our Sunday school classes, for all ages, begin at 9:45 a.m. Nursery is provided for all services.

On Sunday at 6 p.m., Jeanette Lunsford, the "One Day At a Time" lady, will sing and share the inspiration of her songs. Her ministry will bless your heart. She will also star in the Sheriff's Department "Texas Music Jubilee" in November. Admission is free; an offering will be taken.

Your kids will love our Missionettes and Royal Rangers programs (scouting programs for girls and boys). They meet each Tuesday from 7 p.m.-8:15 p.m. They have campouts, sleepovers, earn badges, do crafts, and much more, yet are distinctly Christ-centered.

On Wednesday night is our dynamic Prayer and Bible service characterized by praise and worship, followed by in-depth teaching from the Word of God. Since all Christians are to represent Christ daily, a mid-week service is beneficial to "recharge" for the remainder of the week. The service starts at 7 p.m.

While the adults enjoy the Wednesday night service in the sanctuary, the youth gather in the Fellowship Hall for their own Youth Service (at 7 p.m.) where they study the Word, praise, have sports and refreshments. Your youth will enjoy the company of this on-fire group.

## IMMANUEL LUTHERAN CHURCH

Everyone is invited to our Christian Education hour beginning at 9:15 a.m. with groups for all age levels at Immanuel Lutheran, 100 Avenue B on Sunday mornings. This Sunday note the change of our Sunday schedule for the 9:15 a.m. hour and the 10:30 a.m. worship time with fellowship get acquainted at 10:15 a.m.

In the Church Year Calendar, we observe "All Saints' Day" this Sunday. "Saint" is another word for "believer" as we confess the words of the Apostle's Creed. "I believe in the Holy Christian Church, the communion of saints."

The sermon topic "Who Made Your Reservation in Heaven" is based on the words of Revelation 22:27.

On Wednesday evening at 7:30 we search the Scriptures and discuss the topic "God With Us" on the subject of the History of the Christian Church today and the application of Christian Worship in our daily lives.

A congregational voters' meeting will be conducted at 7:30 p.m. Thursday.

In this season of the Reformation, we will also observe the 150th anniversary of the Lutheran Church--Missouri Synod. The ministry of Immanuel Lutheran, Hereford, came into existence since the early 1900s in the Texas Panhandle.

For further information about Immanuel and parish activities and ministries, please call the Rev. Robert Kuhlmann, interim pastor or the church office at 364-1668.

## FELLOWSHIP OF BELIEVERS

As a follow-up to All Hallows Eve (All Saints Eve/Halloween) and All Saints Day (Nov. 1), the Fellowship of Believers will celebrate the saints on Nov. 2. The saints (known and lesser-known) will be celebrated both in sermon and sacrament as folks will be invited to gather at the Table the Holy Communion. The lectionary gospel is Mark 12:28-34.

In a sermon entitled, "Eating with Rufus Spain, Saint Augustine and Mother Teresa," Pastor Nathan L. Stone, Ph.D., will join the people in exploring questions like: "What is at the heart of pure religion?" "What could Saint Augustine have meant when he promoted the notion that a person should 'Love God and do as you please?'" And, "Is there a connection between the obscure film, 'Babette's Feast' and All Saints Day?"

It is important to the people of this Fellowship of Believers to be beholden to no one. Therefore, the church is intentionally independent. In spite of being independent, the church also seeks to be ecumenical, cooperative and inclusive.

Worship service begins at 10:30 a.m. and concludes no later than 11:20 a.m. The people will then have plenty of time for lunch before the Dallas-San Francisco kickoff at 3 p.m.

Prior to worship the church gathers at 9:15 a.m. for homemade goodies, coffee and casual conversation. Something called "Forum" meets at 9:37 a.m. "Forum" is an open-discussion-style Sunday School for adults and young people. This Sunday we may dialogue around the question, "Why are evangelicals so often pushy and off-putting?" Unless, of course, some independent FOB-er wants to discuss something else.

A supervised nursery is available for all services.

Fellowship of Believers is located at 245 North Kingwood (at Moreman). For transportation to the services phone 364-0359.

## TEMPLE BAPTIST CHURCH

The congregation and the pastor, H. Wyatt Bartlett, of the Temple Baptist Church wishes to invite everyone to come worship with us Sunday and the coming week.

Sunday School begins at 9:45 a.m. with classes for all ages. Morning worship begins at 11 a.m. This Sunday we will observe the ordinance of The Lord's Supper, the pastor will preside at this service.

Evening worship Sunday begins at 5:45 with the continuing of PrayerLife Study; also at 5:45 p.m. TeamKID Club will meet. At 7 p.m. our evening worship service will begin. Deacon's will meet after our evening service.

Wednesday we will meet at 7 p.m. for Prayer Meeting and Bible Study. We are continuing the study of 1 Timothy. Choir meets at 7:45 p.m.

## ST. THOMAS' EPISCOPAL CHURCH

"Who Are These...?" is the title of the sermon by The Rev. Charles A. Wilson on All Saints' Sunday and is based on Revelation 7:2-4; 13-14 and a hymn text by Theobald Heinrich Schenck, 1656-1727. A Festival Holy Eucharist, Rite II, will be celebrated at 11 a.m. and there is a fellowship meal after the service. Food assignments for the meal are: A-B, desserts; C-G, salads; H-Mc-meat dishes; N-W, vegetables. A supervised nursery is provided during the Christian education and worship hours.

Christian Education for all ages begins at 9:30 a.m. Children and Youth gather in the Education Wing for "Living the Good News," our curriculum based on the Sunday readings in the Eucharist. The Adult Class begins a series called "From Christ to Constantine: The Trial and Testimony of the Early Church." The series will include videos and discussion.

The regular Wednesday Public Service of Healing is at 7 p.m. and includes the Litany of Healing, the Laying-on-of-Hands with Holy Unction, and Holy Communion. The proper collect and readings are those for the Various Occasion "For Social Service."

Intercessory prayer requests from the community are most welcome. To have them included in the Prayers of the People at all services, please call 364-0146 and leave a message.

In case of emergency, or to make appointments for personal conferences, please call Father Wilson in Amarillo at 353-1734.

## ST. ANTHONY'S CATHOLIC CHURCH

St. Anthony's is big and it holds a lot of people. There's enough room for another saint, another sinner. Liturgies are at 6 p.m. Saturday and 9 a.m. and 11 a.m. Sunday. We are celebrating the Feast of All Souls and the Feast of All Saints this weekend. Scriptures for these feasts are: Revelation 7:2-14, 1 John 3:1-3, and Matthew 5:1-12; and Wisdom 3:1-9, Romans 6:3-9, and John's Gospel 6:37-40.

All Souls Remembrance rosaries will be prayed Nov. 2 at 1 p.m. at St. Anthony's Cemetery and at 1:30 p.m. at Restlawn Cemetery. In case the weather is severely uncomfortable we will meet to pray in the church at 1 p.m.

The annual Book Fair will be Nov. 8-9 following liturgies and from 8:30 a.m.-5:15 p.m. Nov. 10-14 in the school library.

Homeland Holiday Bucks are being collected in the office and through the collection. They will be used to prepare Thanksgiving and Christmas baskets for the needy.

Crushed coke cans for the altar servers' projects are being taken now in white barrels on the school-church property.

"The Greatest Story NEVER Told," a one day workshop on Vatican II, will be from 9 a.m.-3 p.m. Nov. 22 at DeFalco Retreat Center. The \$15 fee includes lunch. Mail check (to Diocese of Amarillo) to BDFRC, 2100 N. Spring, Amarillo, TX 79107, by Nov. 12 or call 806-383-1811.

## WESTWAY BAPTIST CHURCH

We continue to be blessed Sunday by Sunday as visiting speakers come to minister as God has directed. You are cordially invited to join the congregation as we worship and study God's word.

Sunday School begins at 9:45 a.m. and worship at 11 a.m. There are classes for each age group. Worship service is a time of expectation and excitement as we experience week by week what is happening. The speakers are of various backgrounds and experiences and we rejoice with them as they share what God has and is doing for them and will do for us. Please join us this Sunday and rejoice and be glad in "Him."

## AVENUE BAPTIST CHURCH

The congregation of Avenue Baptist Church, located at 130 North 25 Mile Avenue, invites you to worship with them.

Sunday School begins at 9:45 a.m. and morning worship follows at 11. Sunday evening worship begins at 6.

The Ladies Prayer Service and Bible Study, led by Thelma Cherry, meets at 6:30 p.m. Monday.

Brian O'Donnell, music director, reminds all choir members that choir practice is Monday nights from 8-9 p.m.

Wednesday night Prayer Service is at 6:30.

Youth director, Carol Keyes, invites the youth to meet Wednesday nights at 7 in the church fellowship hall.

## FIRST PRESBYTERIAN CHURCH

On Sunday morning at 10:30, J. Jeremy M. Grant, minister, will deliver a sermon entitled "Judging and Not Judging." Scriptures are New Testament: I Corinthians 5, the Gospel Lesson Matthew 7:1-6. During the morning worship, the Sacrament of Holy Communion will be celebrated.

You are more than welcome to join us for Bible study in one of our Sunday morning classes at 9:15 a.m. We have a nondenominational class for people with special needs. We also have classes for young married and singles, other adults, youth, elementary age, preschool and nursery.

The folks at First Presbyterian Church invite you to join us in the worship of our Lord and Savior, Jesus Christ.

At 10:10 a.m., we gather each Sunday for a cup of coffee, a goodie and great fellowship. Come and meet a friend this Sunday.

The First Presbyterian Prayer Group gathers for the lifting of joys and concerns to God at 7 p.m. on Mondays.

Little Blessings Day Care is open from 7:45 a.m. to 6 p.m. Monday and Tuesday. Space is limited, call for a reservation, 364-2472.

Adult Choir will practice at 7:30 p.m. Wednesday.

LOGOS are at 5 p.m. Wednesday.

For more information, call the church office from 9 a.m. to 1 p.m. at 364-2471.

## NEW BEGINNINGS ASSEMBLY OF GOD BILINGUAL CHURCH

The congregation of New Beginnings along with Pastors Rafael and Linda Rosado would cordially like to invite you to join us this Sunday morning at 9:45 for an incredible study in prophecy. There are classes for all ages, so bring your kids.

Sunday evening praise and worship is at 6.

Wednesday night Bible study is on the book of Genesis at 7.

Youth night service is at 7 p.m. Friday.

The ladies meet for prayer and Bible study on Thursdays at 9:30 a.m. If you need prayer call 363-9007 or 364-0210.

God bless you. See you in church. We are located at the corner of Bradley and Ironwood, across from West Park Cemetery.

## GOOD NEWS CHURCH

400 N. 25 Mile Ave. Sugarland Mall  
Pastor David Alvarado and the Good News congregation invite you to come and worship the Lord Jesus Christ with us in the spirit of love.

Come and experience the goodness of God and His power.

Sunday services are at 10 a.m. and 6 p.m. Wednesday services are at 7 p.m.

If you have any questions or you need prayer, please call Pastor David Alvarado at 364-5239. God bless you.

## COMMUNITY CHURCH

Pastor Dorman Duggan and congregation invite you to come and worship and praise with them Sunday morning.

Sunday school for all ages begins at 9:30 a.m. and the morning worship service starts at 10:30. A nursery is provided.

The Sunday evening service is at 6 and a nursery is again provided.

The Intercessory Prayer Group meets Monday night at 7 p.m.

Tuesday morning at 9:30 the Ladies Prayer Group meets.

The Wednesday service, children's church and youth group all begin at 7 p.m.

For more information or if you need prayer, call 364-8866 or 364-2423.

## TRINITY BAPTIST CHURCH

Sunday school begins at 10 a.m. and the Sunday worship services are held at 11 a.m. and 5 p.m.

Pastor Ed Warren and the church congregation invite the public to all services at the church located on S. Hwy. 385 and Columbia St.

For additional information, call 364-3487.

## COUNTRY ROAD CHURCH OF GOD

401 Country Club Drive  
Pastor Woody Wiggins and the church congregation invite the public to attend all services and activities at the church.

Country Road Church of God will host a "Hallelujah Night" at the church located at 401 Country Club Drive in Hereford from 7 p.m. to 10 p.m. tonight, Friday. No costumes please. Admission is free. Children between the ages of 4-12 are welcome to attend. There will be a puppet ministry, lots of games, candy, music, snacks and prizes. For more information call Pastor Woody at 364-5390 or Rick at 364-1592.

The following is the regular schedule of services.

Sunday school begins at 10 a.m. and the Sunday worship services are held at 11 a.m. and 6 p.m. Services are conducted at 6 p.m. each Wednesday. Thursday evening prayer service is at 6 p.m.

Gospel singing will be held the last Sunday of each month starting at 5 p.m.

A nursery is provided during all services.

Pastor Wiggins says, "Come and experience what God is doing here - a church where the Spirit is alive and God is moving by His power, a

church full of love where you are somebody and Jesus is Lord."

Our 24 hour prayer line is 364-5390.

## CHRISTIAN ASSEMBLY

Christian Assembly is a non-denominational church desiring to minister to individual needs.

Join us for praise, worship, open sharing and ministry.

We are located at 1100 S. Main. Call 364-0974 or 364-2284.

## FIRST BAPTIST CHURCH

You are always welcome at First Baptist Church.

Our schedule of activities includes:

**Sunday**  
9:45 a.m.--Family Bible Study  
10:50 a.m.--Morning worship  
4 p.m.--Team Kid  
4:30 & 5 p.m.--Disciples College  
5 p.m.--Youth

**Monday**  
6:30 p.m.--Adult handbells

**Wednesday**  
5:30 p.m.--Fellowship supper

6 p.m.--Children's choirs

6 p.m.--Acteens

6:15 p.m.--Prayer meeting

7 p.m.--Youth

7 p.m.--G.A.'s and Mission Friends

7:10 p.m.--Adult choir

There is room for you in each of the above areas of fellowship and ministry. There is a place for you at First Baptist Church.

## BARN CHURCH

Barn Church is a non-denominational Christian ministry. Our goal is to worship God and fellowship with each other. Barn Church is for everyone that likes things a little on the country side. We'll have some singing, some preaching and maybe a testimony or two.

It's come as you are, so dust off your jeans and come on out. Bring the family and tell your friends.

Regular meetings of Barn Church are held on the second Thursday of each month at 7:30 p.m. in the B Bar S Arena.

## CENTRAL CHURCH OF CHRIST

Come worship with us each and every Sunday at 10:25 a.m. and 6 p.m. Bible Classes are held Sunday at 9:30 a.m. and Wednesday at 7 p.m. for all ages.

We are located at the corner of Sunset and Plains.

We would love to have you come and study God's word with us.

Our minister is Tom Bailey.

## Hereford MUSIC STORE

Sugarland Mall • 363-1111  
Open Monday - Saturday 10 am to 6 pm  
Horn Repair • Guitar Repair • Drum Repair • Guitar Lessons

**2 WEEK SPECIALS!!**

Roland Pro Keyboard EP-50 \$499.00	Lots of Portable Keyboards
New Bass Guitars post-dial \$299.95	Button & Piano \$79.95 to \$599.95
JB-Player 12-String post-dial \$100 Off	Accordions \$599.95
Full size drum set with stool \$399.95	Lots of Used Amps & Guitars
Fender Pro 185 Amp special \$399.95	Full Size Viola w/case \$299.95
Plenty of Reconditioned Horns	(Reg. \$500)
Banjoes & Mandolins (new & used)	Violas & Accessories
Used Martin Acoustic \$499.00	
Small Jr. Drum Sets (new) \$199.95	

We take trade-ins!  
In house financing & lay-a-ways.

## Take Time for Yourself

Now is the best time for your yearly mammogram

10% Discount on Mammograms during October National Breast Cancer Awareness Month

Call 364-2141, Ext. 248 today, to schedule your appointment



**Hereford Regional Medical Center**

"Neighbors Caring For Neighbors"

Hereford Regional Medical Center's Mammography Unit and female technologists are certified by the American College of Radiology, the Texas Department of Health, and also approved by the Federal Drug Administration.

# Sports

## On the Sidelines

### High School Football

#### District 1-4A

Bolger at Canyon Randall, 7:30 p.m.  
Canyon at No. 9 Dumas, 7:30 p.m.  
Pampa at Amarillo Caprock, 2 p.m.  
Saturday.  
Hereford idle.

#### District 2-4A

Lubbock Estacado at Lamesa, 7:30 p.m.  
Levelland at Wolfforth Friendship, 7:30 p.m.  
Plainview at Snyder, 7:30 p.m.

#### District 4-4A

Big Spring at No. 2 Sweetwater, 7:30 p.m.  
San Angelo Lake View at Pecos, 7:30 p.m.  
Fert Stockton at Andrews, 7:30 p.m.

#### District 3-5A

Amarillo Palo Duro at Amarillo High, 7:30 p.m. Thursday.  
Lubbock Monterey at Amarillo Tascosa, 7:30 p.m.  
Lubbock High at Lubbock Coronado, 7:30 p.m.

#### District 4-5A

No. 5 Abilene Cooper at San Angelo Central, 7:30 p.m.  
Midland Lee at Odessa Permian, 7:30 p.m.  
Odessa High at Midland High, 7:30 p.m.  
Abilene High idle.

#### District 1-3A

Dimitri at Amarillo River Road, 7:30 p.m.  
Dalhart at Sandford-Fritch, 7:30 p.m.  
Muleshoe at Tulia, 7:30 p.m.  
No. 5 Friona at Perryton, 2 p.m. Saturday

#### District 3-2A

Hart at Amarillo Highland Park, 7:30 p.m.  
Bovina at Oton, 7:30 p.m.  
Lockney at Hale Center, 7:30 p.m.

#### District 2-1A

No. 10 Springlake-Earth at Motley County, 7:30 p.m.  
Farwell at Sudan, 7:30 p.m.  
Happy at Nazareth, 7:30 p.m.  
Valley at Kress, 7:30 p.m.

#### District 1-1A

Claude at Vega, 7:30 p.m.  
Shamrock at Booker, 7:30 p.m.  
Wheeler at Gruver, 7:30 p.m.

### Volleyball Playoffs

Pairings  
Class 4A  
BI-District  
Region I

Dumas (20-9) vs. Lubbock Estacado (11-13), Saturday, 8 p.m., Canyon HS  
Andrews, bye  
El Paso High vs. Pecos (17-11), Saturday, 8 p.m., Van Horn High School  
Lamesa, bye  
Stephenville vs. Ft. Worth Western Hills, TBA

Springtown, bye  
Burkburnett (18-9) vs. Ft. Worth Boswell (12-14), Thursday, 7 p.m., Graham High School  
Arlington Heights, bye  
Canyon Randall (18-10) vs. Snyder (18-10), Saturday, 8 p.m., Lubbock Monterey High School

El Paso Borges, bye  
El Paso Bowie vs. San Angelo Lake View (25-5), Saturday, 5 p.m., Sul Ross State University, Alpine  
Hereford (23-6), bye  
Weatherford vs. Ft. Worth Trimble Tech, Saturday, 5 p.m., Ft. Worth Brewer High School  
Denton, bye  
Sherman vs. Justin Northwest, TBA  
Brownwood, bye

## IN BRIEF

### Frosh 'B' win

From staff reports  
AMARILLO -- One big play was all the Hereford freshman "B" team needed.

Roger Rios ripped off a 93-yard touchdown in the third quarter as the Hereford "B" downed their counterparts from Valleyview Thursday night.

"The kids played great," said coach Robert Castillo. "They never got down, even when we got caught in some serious situations deep in our own territory."

The win completes a four-game sweep of Valleyview by the freshman Whitefaces. Three of the four games were played at Valleyview.

Hereford had another touchdown in the third quarter called back because of a holding penalty.

In pitching the shut out, the Whitefaces picked off a Valleyview pass and made a pair of fumble recoveries.

Lane Arnold picked off the pass in the third quarter. Arnold recovered a fumble, also in the third quarter.

Drew Recio recovered the other fumble for Hereford.

"The kids just rose up and played well for four quarters, which is something we have seldom done all year. They played tough," Castillo said.

The Hereford freshman "B" team will close out their season Thursday when they host the Plainview freshman team at Whiteface Stadium.

### Sports calendar

Friday

Cross Country  
Hereford at District 1-4A meet in Amarillo, TBA.

Saturday

Football  
Hereford junior varsity White at Amarillo High junior varsity, 10 a.m.

## Picture not as rosy now for Oklahoma St.

STILLWATER, Okla. (AP) -- Suddenly, the outlook for Oklahoma State's football team isn't nearly as bright as it was just a week ago.

The defense, considered such a strength during a 6-0 start, got whipped most of Saturday in a 51-50 double-overtime loss to Missouri. The Tigers ran for 221 yards against a unit that had been allowing 60 per game, and finished with 452 total yards.

But the biggest blow was suffered by the offense, when tight end Alonzo Mayes separated his left shoulder.

He's finished for the rest of the regular season.

Bob Simmons did a great job guiding his team in August after the Cowboys lost 11 players because of academic and discipline problems. The challenge he faces in the final four games might be even greater.

No. 19 Oklahoma State's final four games are at Texas A&M, at Oklahoma, home against Texas Tech, and at Baylor. Before last week, victories in three of those four seemed likely. But now?

"We're in control of that," Simmons said. "We're going to talk about that ... and really that's the importance of this ballgame (against Texas A&M). Everything we've talked about doing we still can achieve."

At the start of the season, seven victories seemed a reasonable goal. That changed as the Cowboys started 4-0, then defeated Texas and Colorado to get to 6-0 and reach No. 12 in the rankings. Nine or even 10 victories seemed possible.

Beating Missouri would have done nothing to change that, and the Cowboys nearly pulled it off. They scored 30 straight second-half points to turn a 30-7 deficit into a 37-30 lead with under two minutes remaining.

But Missouri drove 80 yards for the tying touchdown, and Oklahoma State gave no indication that it could have stopped the Tigers if the game had gone more than two overtimes.

"We did lose, but I saw something in this team that I liked in that it fought and found a way to actually

put itself in a position to win the game," Simmons said.

That's the bright side. But the Cowboys were outplayed in all phases during the first 35 minutes, something that hadn't happened in the first six games.

"We were completely, across the board, not ready to come out and play like I thought we would be," Simmons said.

He and some of his players used the term "wake-up call" to describe

Please see ROSY, page 6



Photo by Julius Bodner

### Rejected

Hereford's Kristin Fangman stuffs Canyon Randall's Courtney Gilmore Tuesday night at Caprock Activity Center in the District 1-4A seeding tournament. Also at the net is Hereford's Catie Betzen. The Lady Whitefaces downed the Lady Raiders 11-15,

15-9, 15-12. With the win, Hereford received a bye into the area round and will play the winner of the El Paso Bowie-San Angelo Lake View bi-district match at a time and site to be determined.

## HJHS takes two from Canyon

From staff reports  
CANYON -- The Hereford Junior High School seventh-grade teams were both winners Tuesday, tossing a pair of shutouts against the Canyon seventh-graders.

In the seventh-grade "A" game, the Whitefaces won 18-0.

Jose Reece got Hereford on the board in the first quarter when he returned an interception 46 yards for a touchdown. The conversion failed and Hereford held an early 6-0 lead.

Neither team was able to score in the second quarter, but Hereford got back on the scoreboard when Derek Mendoza scored on a seven-yard run. Again the conversion failed and Hereford led 12-0.

The Whitefaces scored their final

touchdown in the fourth quarter on a 24-yard touchdown pass from Tyson Yosten to Luis Perez to make the final 18-0.

Hereford coach John Nino credited the Whitefaces with great defensive play. The Whitefaces forced four turnovers by Canyon. In addition to the Reece interception, Jim Schlabs, Yosten and Mendoza each recovered a fumble.

In the "B" game, the Whitefaces jumped but to a 14-0 first-quarter lead on their way to 34-0 clawing of the Eagles.

Brian Gaitan got the first Hereford points on a 36-yard touchdown run. Hereford went up 8-0 with the two-point conversion from Jeremy Blakely to Anthony Ramirez.

Blakely connected later in the quarter on a 26-yard scoring strike to Edward Villareal to make the score 14-0.

The Whitefaces score twice in the second quarter to run their lead to 28-0 at halftime. Blakely found Richard Hernandez on a 46-yard touchdown pass. The conversion failed and Hereford held a 20-0 lead. Hereford tallied later in the quarter when Gaitan scored on a 36-yard run. Patrick Jones ran the ball in for two points.

Hereford got their final points when Gaitan ran 72 yards for a touchdown in the third quarter to put the Whitefaces up 34-0.

Anthony Ramirez intercepted a pass for the Whitefaces.

## Hereford JV Maroon holds off Clovis, 29-27

From staff reports  
The Hereford junior varsity Maroon rallied from a five-point halftime deficit to hold off the Clovis junior varsity 29-27 at Whiteface Stadium Thursday.

The Wildcats got out to a 14-0 lead before Greg Ewing got the first Hereford points on a 10-yard run.

Jose Martinez connected with Felix Talamantes for the two-point conversion that left the Whitefaces trailing by six, 14-8.

Johnny Zamarnipa tied the score at 14-14 on a 30-yard run. Martinez broke the tie with his extra point.

Clovis then scored to take a 20-15 lead into the locker room.

In the second half, the Whitefaces retook the lead on a 97-yard kickoff return. Martinez added the extra point and Hereford went up by two points, 22-20.

Eddie Lacey added Hereford's final touchdown on a five-yard run. Clovis scored once more to cut the final margin to 29-27.



Photo by Rick Castaneda

### Nowhere to go

Hereford tailback Jeremy Miller makes a cut behind the block of teammate Jeremy Scott Friday night at Whiteface Stadium. Miller found little running room against the Dumas defense, picking up 38 yards on 13 carries against the Demons. Dumas won 11-6 in the District 1-4A game.

## Cowboys-49ers Teams prepare to renew rivalry

IRVING (AP) -- Games against San Francisco are always special, no matter the record of the participants.

This year, the 49ers have a chance to put the Dallas Cowboys into a deep hole from which there may be no recovery.

While San Francisco rides high at 7-1, the Cowboys are limping along with a 4-4 record and are in danger of falling too far behind to defend their NFC East title. The New York Giants lead the division the Cowboys have won for the last five years with a 6-3 ledger.

Bill Bates, the Cowboys' special teams captain who has been around for every San Francisco-Dallas game in the last 15 years, said the 49ers would take special delight in beating

the Cowboys Sunday.

"They see us down and they want to be the first team to dig in a word and twist it," Bates said. "This series has always been so competitive. ... There have been some great memories of some of the games we've lost and some of the games we have won."

Quarterback Troy Aikman said games against the 49ers mean more than the average NFL regular-season game.

"Both franchises have a lot of pride," Aikman said. "We're always excited about playing them. This year this may be a bigger game for us than for them. We're not as good as we've been in the past but we're still a pretty good team. But there always

seems to be a lot at stake when we play the 49ers."

Aikman said San Francisco "has a good defensive team as you can find in the NFL."

Then, almost as a warning to his own teammates, he added: "If we don't play better we'll get embarrassed. Our team doesn't have a whole lot of chances left. There is no room for error. Our goal is still to win the NFC East and I still feel we can do that."

Running back Emmitt Smith said he knows the 49ers will be geared to stop him.

"They always play the run tough," Smith said. "They always get up for the Cowboys. We need to

Please see RIVALRY, page 6

## Vikes look for an owner

EDEN PRAIRIE, Minn. (AP) -- The Minnesota Vikings are looking elsewhere for a solution to their unusual ownership structure, and that means the team could be headed elsewhere, too.

The Vikings' 10 primary owners, unable to find someone among them to meet the NFL's mandate of a 30 percent owner, secretly have been trying to sell the team for two months.

"We have to explore all the possibilities," John Skoglund, one of the owners and chairman of the board of directors, said Wednesday. "I think eventually we have to sell."

Whether the buyer -- the Vikings already have listened to five suitors and have rejected one offer -- would keep the team in Minnesota or move it to another city is uncertain.

The millionaire owner of the Twin Cities television station WFTC,

Please see VIKES, page 6

## Vikings

Channel 29, has a standing offer of \$150 million to purchase the Vikings and keep them in Minnesota, the Saint Paul Pioneer Press reported Thursday.

Red McCombs, the founder of the San Antonio Spurs and former owner of the Denver Nuggets, said he made the offer six weeks ago and was rejected with the understanding that talks could resume later.

"The stadium situation is an issue, and they wanted to see how some other things there in the city played out. They asked me if I was interested at a later date, and the answer was yes," McCombs said.

It is believed that part of his \$150 million offer would go to refurbishing the Metrodome. If stadium funding improvements were approved, the entire \$150 million would go to the team's 10 owners.

The current owners consider themselves burdened with a stadium that significantly hampers their ability to compete financially. They have been seeking a new lease and substantial renovation at the 16-year-old Metrodome.

Any prospective buyer almost certainly would have the same opinion.

"They're linked together," NFL spokesman Joe Browne said of the

stadium and ownership issues. "If the Vikings had a better lease at the stadium, they would find it easier to sell the club, and perhaps they wouldn't have to sell the club."

Gov. Arne Carlson and Metropolitan Sports Facilities Commission chairman Henry Savelkoul said Wednesday they expect the owners to honor their Metrodome lease, which runs through the year 2012.

The lease requires that the Vikings pay damages if they breach it. If they left today, it could cost them as much as \$29 million.

The Vikings' stadium needs have taken a back seat to those of baseball's Twins, who have been pushing for a new facility for two years. The Legislature adjourned a special session on the Twins stadium Tuesday and plans to reconvene Nov. 13.

On Wednesday, Carlson called for state lawmakers to find a broad-based solution that would help the Twins, Vikings, the University of Minnesota football team and the expansion NHL franchise scheduled to begin play in 2000. The cost to state and local government could be \$520 million.

"Something's got to be done," Skoglund said. "I think everybody would like to see (the Vikings) remain here. I think a lot of it depends

on what ends up with the stadium situation."

Owner James Binger declined comment on the sale Wednesday. Four others -- Wheelock Whitney, team president Roger Headrick and vice chairmen Jaye Dyer and Philip Maas -- did not return telephone calls.

A three-member committee composed of Headrick, Whitney and N. Bud Grossman has met with prospective buyers from Los Angeles, Toronto, Birmingham, Ala., Cleveland, the city around which most past speculation about a Vikings' move has centered, has not become involved.

Former Vikings general manager Mike Lynn has also said he is interested in buying the team.

The asking price is believed to range as high as \$210 million.

NFL commissioner Paul Tagliabue met with the Vikings owners in Minneapolis in June, stressing the need for the team to meet the league mandate that each team have one owner with at least a 30 percent stake.

The 10 primary owners currently own equal shares worth nearly 10 percent apiece. The decision to sell arose from the inability or unwillingness of any of the current owners to step forward and meet the NFL's 30 percent mandate.

Maas told the Star Tribune on Tuesday that the sale has caused a rift among the owners, including whether to take less money from a buyer who would keep the team in Minnesota or demand a higher price without regard for the team's future home.

Skoglund said all 10 at least have agreed they would sell their shares, "because that's the only way anything is going to get done."

"There isn't anybody (among the current owners) that's prepared to come up with the 30 percent, and I think (an outside buyer) would want to buy 100 percent," he said.

The potential sale of the team took precedent Wednesday over the controversy surrounding the release last week of coach Dennis Green's autobiography. In it he threatened to sue the owners to gain a 30 percent share of the team, although he since has backed off.

Although Green's future with the team is set at least through this season, the owners still are awaiting an explanation from him on his threat. Tagliabue asked Green on Monday to make a statement to the owners, and that could come at a scheduled board meeting Tuesday.

"I'm still waiting to hear what he meant by it," Skoglund said.

## Report contends NCAA in violation of Disabilities Act

WASHINGTON (AP) -- The Justice Department says the NCAA is violating a federal law that protects students with learning disabilities by improperly limiting their athletic eligibility, USA Today reported.

The newspaper reported Thursday that the Justice Department accused the NCAA of being too rigid and urged that it award a fourth season of athletic eligibility to 34 unidentified students who were barred from intercollegiate competition as freshmen.

The NCAA also was told to **Blue Jays will not be sold** TORONTO (AP) -- Interbrew SA, in a surprise move, said Wednesday it had taken the Toronto Blue Jays off the market and will keep the team. compensate five unnamed students

who claimed their rights under the federal Americans with Disabilities Act were violated.

The newspaper had no further details. The Justice Department said the NCAA refused to give credit toward athletic eligibility for many classes designed for learning disabled students. USA Today reported.

"Several of the things they recommend we do, we're already doing," Elsa Cole, the NCAA's general counsel said.

**To See:**  
  
**Jerry Shipman, CLU**  
 801 N. Main  
 (806) 364-3161  
State Farm Insurance Companies  
 Home office: Bloomington, Illinois

## Lobos worry about winless TCU

ALBUQUERQUE, N.M. (AP) -- This could be the ideal Saturday for winless TCU to unload its bag of trick plays on a New Mexico team that already has enough to worry about.

TCU coach Pat Sullivan has announced his resignation effective at the end of the season. The Horned Frogs are 0-7 for the season and 0-4 in the Western Athletic Conference.

New Mexico (6-2, 3-2 WAC) is struggling on offense and trying to snap back to the form that carried the Lobos to six straight wins before back-to-back losses to Rice and Utah the past two weeks.

The TCU-New Mexico game Saturday will kickoff at 2:05 CST in Fort Worth.

New Mexico coach Dennis Franchione said teams traditionally play better in the game following a coach's resignation.

"We should expect them to play their best game of the year," Franchione said. "There's some things that go along with a coach being relieved. The pressure is off the kids. The pressure is off the coaches. Down through the years, the teams that do this come back the next week and play pretty good. Whatever is going to happen with the coach has happened. Bygones are bygones."

And a coach on the way out may be more inclined to take more chances on both offense and defense, said Franchione.

"There's nothing to lose anymore. It's been lost," said Franchione. "Fake punts, onside kicks. Anything you ever wanted to try, you can try now."

Sullivan, in a telephone interview this week, blamed TCU's problems on injuries that have riddled the

offensive line, too much inexperience -- 11 sophomores and freshmen are on the offensive two-deep chart -- and a defense that has been too generous, too often.

"We've played well in spurts, but the biggest thing is we've given up some big plays," Sullivan said.

TCU has given up 30 or more points five times this season. Sullivan announced his resignation on Sunday, a day after the Horned Frogs lost 31-10 at BYU.

Injuries have created constant turnover and turmoil in the offensive line. Sullivan has used nearly a dozen players and the Frogs have yet to be able to start the same five offensive linemen for two games.

"We should have a lot of linemen with previous playing experience around here next year," said offensive coordinator Pete Hoener.

New Mexico won't have to wait until next year if the Lobos can fix their problems with the running game. The Lobos can stay in contention for a bowl bid if they can beat TCU, BYU and Tulsa the rest of the way.

The Lobos are averaging 217 yards per game rushing, but have slowed to a crawl over the past three weeks. They had 157 yards at San Diego State, 86 against Rice and just 37 yards on 31 carries in last week's 15-10 loss at Utah.

Franchione's hoped to fix the problem by increasing the physical contact in practices this week. He especially was unhappy with the play of the offensive line against Utah and has challenged those players to step it up this week.

## Herniated disc ends season for Spielman

ORCHARD PARK, N.Y. (AP) -- The Buffalo Bills will be without linebacker Chris Spielman for the rest of the season after he sustained a herniated disc in his neck.

Spielman had felt numbness throughout his body for more than a week before telling team doctors Sunday after Buffalo's 23-20 overtime loss to the Denver Broncos. The injury could require surgery and threaten the linebacker's 10-year career.

"He was heartbroken," Bills

coach Marv Levy said. "But, he understands. It's not a shoulder or ankle. It could turn into something serious if he isn't treated correctly. I know Chris told me, 'I'll be there next year,' but I just don't know."

Spielman refused to speak with reporters on Tuesday, when he was replaced on injured reserve.

The Bills signed free agent Mark Maddox, who played six years for Buffalo before being cut during training camp. First-year linebacker John Holeczek, held out last week with

an ankle injury, is expected to start Sunday against the Miami Dolphins.

Spielman led the Detroit Lions in tackles for eight seasons before signing a four-year contract worth \$8 million last year with the Bills. In his first season with Buffalo, he established a team record with 206 tackles.

"He's a great, great player and a great individual," Levy said. "And he's tremendously meaningful to our team."

Spielman is considered one of the

toughest players in the league and was one of Buffalo's leaders on defense. He and Damien Covington were tied for the team lead with 97 tackles through Buffalo's first eight games this year.

In 1995, he sustained a torn pectoral muscle in the season opener against the Pittsburgh Steelers, but played the whole season and led Detroit with 137 tackles. He had not missed a game since 1990, when he missed four with a separated shoulder.

## Rosy

the result. The loss got their attention, but the Cowboys must figure out how to move the ball without Mayes, their best offensive player.

Freshman quarterback Tony Lindsay has been outstanding and has provided a huge lift. But when the Cowboys needed a big play in the passing game, they always looked first to Mayes. That was underscored Saturday when he came back in the game after getting hurt and caught the go-ahead touchdown late in regula-

tion.

No one else on the roster can match Mayes' combination of size, speed and great hands. Perhaps more importantly, Mayes gave the offense some swagger -- he always wanted the ball, particularly in crucial moments, and seldom disappointed.

"Alonzo did a lot for us, making big plays, showing a leadership role, picking guys up, giving them a little pep talk," fullback Brian Atkins said. Simmons said the only thing the

team can do is adjust. The wide receivers, in particular, need to make more plays.

"We can't belabor the issue that we don't have him," he said.

And, as Missouri proved, players on each side of the ball can't simply expect to win any of the remaining games.

"If you think you're better than any football team, then you're not thinking in the right process," Simmons said.

## Rivalry

correct our problems quickly. We're starting to run out of real estate. If we do correct our problems there are a whole bunch of teams out there who are in a lot of trouble."

San Francisco coach Steve Mariucci said he has noticed a different feeling in his training camp

this week.

"I've sensed a different atmosphere at our facility," Mariucci said. "Dallas is all you can hear on the talk shows. Everybody seems to be getting jacked up. It's always a huge game between two teams who have won 10 of the last 15 Super Bowls."

## Sims ordered to pay support

OKLAHOMA CITY, Okla. (AP) -- An attorney for the state Department of Human Services wants former Heisman Trophy winner Billy Sims ordered to pay \$327.89 a month.

**PREMIER CINEMA CLUB**  
**MOOVIES 6**

Sugarland Mall 400 N. 25 Mile Ave. • Hereford, TX  
 Business Office: 364-0101 • Movie Hotline: 364-2000  
 Friday, Oct. 31st - Thursday, Nov. 6, 1997

<b>RED CORNER</b>	2:00 - 4:00	7:05 - 9:25
<b>LA CONFIDENTIAL</b>	4:30	7:00 - 9:30
<b>KISS THE GIRLS</b>	7:15 - 9:15	
<b>SEVEN YEARS IN TIBET</b>		
<b>ROCKET MAN</b>		
<b>LAST SUMMER</b>		

Adults: \$4.75 - Kids & Seniors: \$2.75  
 Bargain Matinees: \$2.75  
 All Shows before 6 pm

25th Anniversary Celebration!! 25th Anniversary Celebration!!

**Specials! Specials! Specials!**

Monday - BBQ Sandwich	99¢
Tuesday - Foot Long Chili Cheese Dog	99¢
Wednesday - 1/4 lb. Single Burger w/2 toppings	99¢
Thursday - Mr. Spud Stuffed Potato	\$1.99
Friday - "FREE FRY FRIDAY" Free small fry w/purchase of any regular priced sandwich	
Saturday - Deluxe Steakfingers Basket	\$2.99
Sunday - Deluxe Chicken Finger Basket	\$2.99

**Mr. Burger**

820 E. Park 364-4321  
 Delivery After 5:00

821 W. Park 364-5712

25th Anniversary Celebration!! 25th Anniversary Celebration!!

We are proud to

**Announce**

that Steve Langford is now associated with our Agency

**Langford & Associates**  
 3004 - D W. 27th  
 Amarillo, Texas

Group Health • Occupational Accident  
 Annuities • Life • Health  
 Cafeteria Plans • Med-care Supplements

Amarillo 1-800-223-3075  
 Hereford 364-1890

**Johnny P's**  
 Presents...

**"TUCSON"**

Cover Charge  
**\$500** per person  
**Saturday, Nov. 1st**  
**9 pm - 1 am**

**Holiday Parties?? Call Us!!**

Friday, Oct. 31st Halloween Costume Party  
 Doug & The CD's • 8pm til Midnight

1803 E. First 364-2812

**bryant**

**UP TO \$800.00 REBATE**

w/purchase of a complete Bryant residential System 13 SEER or higher. Includes qualifying utility and manufacturer's rebates. Expires Nov. 28, 1997.

**BOB'S HEATING & AIR CONDITIONING**  
**364-1195**  
 TAOL 8002609C

**UP TO \$800.00 REBATE**

w/purchase of a complete Bryant residential System 13 SEER or higher. Includes qualifying utility and manufacturer's rebates. Expires Nov. 28, 1997.

**BOB'S HEATING & AIR CONDITIONING**  
**364-1195**  
 TAOL 8002609C

## News Digest

### TEXAS LOTTERY SUFFERING A SLUMP

AUSTIN (AP) - The Texas Lottery, dealing with a year of controversy, a decline of enthusiasm for its numbers games and orders to increase the state's share of profits is suffering its first real slump in sales.

The head of the lottery's three-member governing commission says a look at the five-year-old agency's successful past could point the way for its future.

But a lottery industry analyst said Thursday that Texas is risking "the wrath of players."

And the latest causality of the agency's internal turmoil, former executive director Lawrence Littwin, says Texans are being ripped off.

Littwin was fired Wednesday, less than six months after being hired. Members of the Lottery Commission, Chairman Harriet Miers, John Hill and Anthony Sadberry, wouldn't talk about Littwin's dismissal. Gov. George W. Bush said he believes the commission realized it made a mistake hiring Littwin.

### FED GOVERNOR SEES NO DOWNTURN

HOUSTON (AP) - The nation's economy may be headed for slower growth, but it appears there's no downturn in sight, Federal Reserve Board Governor Susan Phillips says.

"If you look at the fundamentals of what's going on in the U.S. economy, the U.S. economy is doing quite well," Ms. Phillips told a group of Houston bankers who asked her about this week's dramatic stock market plunge.

"It may well be that there will be somewhat of a slowdown, but quite frankly from the fourth quarter (1996), really through the last year, the U.S. economy has been growing at an unsustainable pace, so there was naturally going to be some what of a slowdown," she said Thursday. "But that doesn't mean it's going to be a slowdown into a downturn, rather just the slower growth. We would be looking for more moderate growth."

The Dow Jones industrial average plummeted 875 points in three sessions this week, including a 554-point plunge on Monday that shut down the stock exchange. But after a stumble Thursday, Wall Street avoided another tailspin in the latest round of global financial tag, leading many experts to conclude that the worst is over for U.S. investors.

Ms. Phillips, the featured speaker at a one-day symposium, "Pathways to Profits: Banking in the 21st Century," discussed how federal oversight of the nation's banking system has tried to remain vigilant, while unobtrusive.

### GOVERNOR MAKES 12 APPOINTMENTS

AUSTIN (AP) - Gov. George W. Bush has made 12 appointments to the new Statewide Health Coordinating Council.

The council, established during the last Legislature, is responsible for collecting and analyzing educational and employment trends for health professionals in the state.

Appointed Thursday to terms ending Aug. 1, 1999 were: Joan Biggerstaff from Plano, James Endicott, Jr. of Harker Heights, Joe Frush of Abilene and Susan Scott of Bryan.

Appointed to terms that end Aug. 1, 2001 were: P.J. Schneider of Fair Oaks Ranch, Margaret Ford of Houston, Judy Wolf of San Antonio and David Valdez of San Antonio.

Appointed to terms expiring Aug. 1, 2003 were: Laura Gordon of El Paso, Charles Ku of Flower Mound, Ben Raimer of Galveston and Rebecca Uribe-Garza of Laredo.

The appointments are subject to Senate confirmation.

### NUCLEAR WASTE STORAGE IN NEVADA OK'D BY HOUSE

WASHINGTON (AP) - Legislation that would create a warehouse in Nevada for thousands of tons of nuclear waste is on the verge of being approved by Congress, but faces a promised veto from President Clinton.

The House passed the bill by a 307-120 vote Thursday. It must be reconciled with a Senate version before going to the White House.

Sponsors of the legislation, which would give the nuclear industry a centralized storage facility for as much as 40,000 tons of used reactor fuel rods, said they are confident they will have the votes to override a presidential veto.

"The votes will be there," said Sen. Frank Murkowski, R-Alaska, predicting final approval early next year.

The margin in the House easily exceeded the two-thirds that would be needed to overcome a veto.

### SECURITY LAPSES AT LABS CITED

WASHINGTON (AP) - Thousands of scientists, researchers and officials from Russia and China gained access to the three U.S. nuclear weapons laboratories without security background checks, a new congressional report finds.

The General Accounting Office report cited the Department of Energy labs - Lawrence Livermore in California and the Los Alamos and Sandia laboratories in New Mexico - for lax security, including an instance in which boxes marked "sensitive materials" sat in hallways accessible to the foreign visitors.



CONTINENTAL SHOWS, LTD.

ANTIQUES

SHOW & SALE

AMARILLO

OCT. 31, NOV. 1, 2

Amarillo Civic Center  
4th & Buchanan

Fifty independent exhibitors, will display antiques of every description, in every price range...collectibles and investments of every value and description

Tri-State Area's Finest Show!

DON'T MISS IT!  
SOMETHING FOR EVERYONE

SHOW HOURS

Friday 12-8, Saturday 12-7  
Sunday 12-5

ADMISSION \$3.00  
(One Admission good all three days)

CHILDREN FREE

LARGE OR SMALL, YOUR BEST INVESTMENT MAY BE ANTIQUES

512-756-9731



A worker at Holly Sugar makes a routine check of the many gauges, dials and meters which keep the plant producing sugar crystals. Every step of the sugaring process is controlled by walls of computerized meters, guaranteeing the highest quality product.

## SUGAR

From Page 1

Hereford's Holly Sugar is the supplier of choice to such big-name buyers as Gerber and General Mills.

"We were one of the first to be a certified supplier to Gerber," he said.

With all this going for the local sugar suppliers, the Sugar Beet Growers Association is expecting more growers to begin producing sugar beets, boosting the

money going back into the local economy next year.

"We are receiving inquiries from farmers in northern states interested in producing beets in our area. With all that interest, we see a great future for sugar beet production here," Printz said.

"The Hereford plant remains Holly's finest processing facility nationwide. We remain committed to working with farmers in this area," he added.



## Ribbon cutting

The Deaf Smith Chamber of Commerce Hustlers recently hosted a ribbon cutting at Hereford State Bank's new automated teller machine, located at the corner of Sampson St. and 2nd St. The ATM, formerly located in the bank's foyer, will allow bank customers the convenience of drive-up banking. Hereford State Bank Vice Presidents, Terry Bromlow (left) and Waldo Baxter, shown at center, were joined by Chamber representatives and other bank employees as they cut the ribbon on the new facility.

## Economy's growth robust

WASHINGTON (AP) - The strongest consumer spending in 51/2 years propelled economic growth to a robust 3.5 percent annual rate over the summer and early fall while inflation all but disappeared.

The July-September expansion pace in the gross domestic product was even better than the healthy 3.3 percent rate in the second quarter, the Commerce Department said today.

Neither period came close to the torrid 4.9 percent registered during the first three months of the year.

Normally, such rapid growth would raise inflation warning flags and draw interest-rate increases from the Federal Reserve. Analysts believe the stock market's recent sharp decline will help slow growth next year to a rate monetary policy makers view as more sustainable.

Moreover, inflation has consistently improved over the year. A price measure tied to the GDP rose at a 2.4 percent annual rate in the first quarter, 1.8 percent in the second and 1.4 percent in the third, the lowest since 1964.

"The economy, firmly on the same track of moderate growth and low inflation, should offer the financial markets breathing room over the next few months," said economist Oscar Gonzalez of John Hancock in Boston.

After losing 125 points Thursday, the Dow Jones industrial average headed 70 points higher in opening trading this morning.

Consumer spending was the driving force in the

third quarter along with business investment. They more than offset weaker export sales and a slower buildup of inventories of unsold goods.

Consumer spending grew at a 5.7 percent annual rate, the strongest since the first quarter of 1992. Much of that was supported by growing incomes, but it also came at the expense of the smallest savings rate in three years. Consumers saved only 3.6 percent of their disposable income.

Their spending had dwindled to a scant 0.9 percent annual rate in the second quarter, but an inventory buildup and business investment spending supported economic growth.

In the third quarter, spending on big-ticket durable goods from autos to personal computers surged at a 16.7 percent annual rate, the most rapid advance in nine years. Spending also was robust for non-durable goods: 4.7 percent, the fastest in three years; and services, 4.1 percent, speediest in five years.

Business investment grew at an 18.7 percent annual rate in the third quarter, the fastest increase in 13 years. Investment in new equipment slowed only slightly from the rapid second quarter rate - to 22.1 percent from 23 percent. Investment in new buildings picked up sharply, rising at a 10.1 percent rate after falling at a 4.7 percent pace.

Also, the Commerce Department said housing construction grew at a moderate 2.8 percent pace, down from a 7.4 percent surge in the second quarter.

## SPEED LIMIT

From Page 1

that posted speed limits be raised or lowered up to 5 miles per hour from the so-called 85th percentile - the speed which 85 percent of motorists are traveling at or below.

At locations with a higher-than-average crash rate, the speed could be lowered up to 7 mph.

Under the new rule, speeds still could be raised 5 mph if warranted. But they could be lowered up to 10 mph if there are, for example, pavement widths of 20 feet or less; horizontal or vertical curves; or hidden driveways and other development.

At locations with crash rates higher than the state average, the speed can be lowered by as much as 12 mph.

Changes will be rounded to a number that ends in a 5 or 0. If the 85th percentile speed is 67 mph, for example, the maximum speed on a road might be lowered to 60 mph - or 55 mph, if it has a high crash rate.

In addition, the emergency rule implements a state law allowing the Transportation Commission, at the request of a county commissioners court, to lower speed limits on farm-to-market or ranch-to-market roads that are 20 feet wide or less. Lopez said the agency would have a public meeting in such cases.

People with a concern about speed limits can contact their Texas Department of Transportation district office, Lopez said. Currently, about 47,000 miles of Texas roadway are at 70 mph, out of a 77,000-mile system.

NOW THRU ELECTION DAY!

# 30% OFF

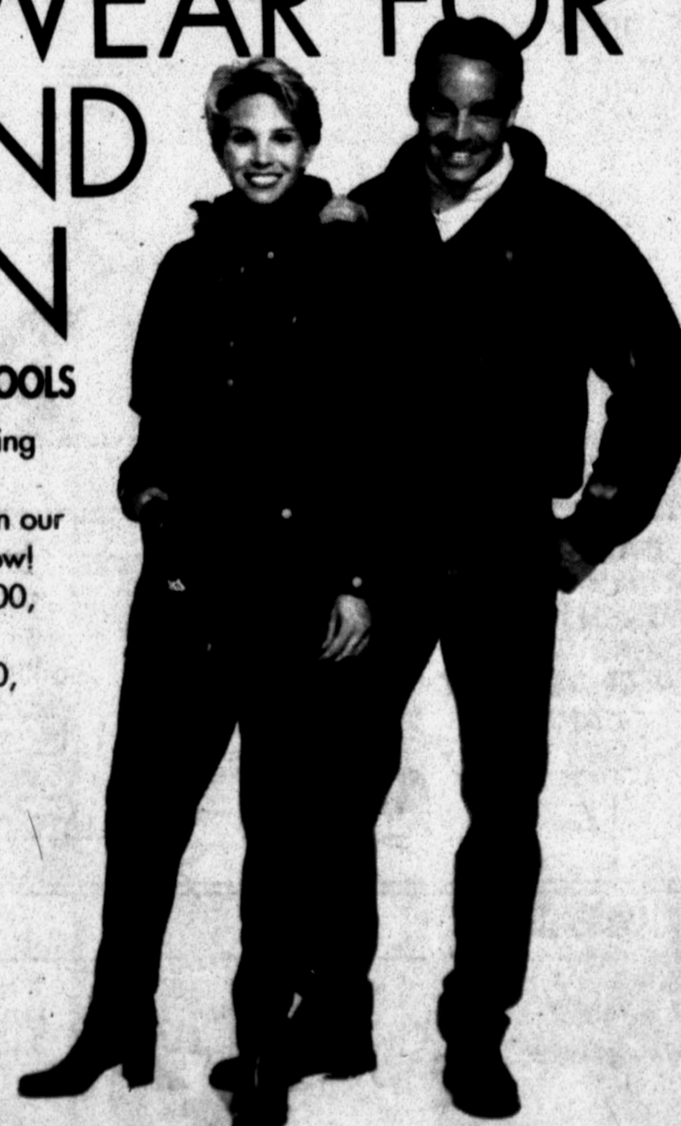
## ENTIRE STOCK OF OUTERWEAR FOR MEN AND WOMEN

• ALL-WEATHERS • LEATHERS • WOOLS

Choose from our entire stock including poly-fill jackets, full-length coats, all-weatherers with zip-out liners, even our huge selection of leather, on sale now!  
Misses' collection, reg. 54.00-320.00, SALE 37.80-224.00.  
Men's collection, reg. 68.00-295.00, SALE 47.60-206.50.

Hurry in, sale ends Tuesday, November 4.

Men's & Women's Coats.



BEALLS  
We're all about you!





# HEREFORD'S DEVOTIONAL PAGE

**SUBWAY**  
104 N. 25 Mile Ave. • 364-5140 • Hfd. Tx.

**McGinty & Associates PC**  
Certified Public Accountants  
205 W. 4th Hereford, Texas 364-6432

**OSWALT Livestock Products**  
DIV. OF HEYCO, INC. 364-0250  
John C. Hays  
Territory Sales, Manager

**High Plains Laboratory Inc.**  
1502 Park Ave. 364-0212

**POYNOR'S Western Auto**  
114 E. Park Tony Cortez Hereford, Texas 79045  
(800) 364-0574

**SCOTT SEED CO.**  
We Can Help At  
Box 1732 • 364-3484  
Hereford, Tx

**FirstBank Southwest Hereford**  
300 N. Main • 364-2435 • Hereford, Texas

**Qix FUNERAL DIRECTORS OF HEREFORD**  
135 GREENWOOD 364-6533  
CARING FOR WEST TEXAS FOR OVER 100 YEARS

**MARK'S DIESEL FUEL INJECTION**  
Celebrating 21 Years  
Pump & Injector Repair Is Our Specialty  
Hwy. 80 East 364-4231 • Hereford, Texas  
MARK LANDRUM Owner • DAVE McGAUOCK Technician

**CIRCLE THREE FEED YARDS, INC.**  
Box 830 • Hereford, Texas  
276-5241

**GILLILLAND-WATSON FUNERAL HOME**  
24 Hr. Obituary Information 364-2294  
411 E. 6th St. 364-2211

**Mechanical Techniques**  
364-7714

**Tri-State Cattle Feeders**  
364-4030  
Bob Sims Sam Kirk

**Lemons LIFELINE HEALTH CARE PRODUCTS**

**HAROLDS BODY SHOP, INC.**  
364-8515  
Main & Hwy 60 Hereford, Tx.

**True Value Carl McCaslin Lumber Co.**  
Building Hereford Since 1939  
344 E. 3rd • 364-3434

**A.O. THOMPSON ABSTRACT CO. INC.**  
242 E. 3rd 364-6641  
Hereford, Texas

**PARKSIDE CHAPEL**  
DEDICATED TO SERVICE  
401 N. Main 363-2300  
Hereford, Texas

**Hereford STATE BANK**  
Member FDIC  
212 E. 3rd St. Time & Temperature - 364-5100 364-3456

**HEREFORD CABLEVISION**  
119 E. 4th 364-3912

**CROFFORD AUTOMOTIVE**  
Complete Repair & Full Service Center  
Of Both Foreign & Domestic Cars & Trucks  
600 N. 25 Mile Ave. 364-7650

392 *Facts About The BIBLE* BY JOHN LEHTI

This is a dramatized version of facts taken from the Book of Esther, intending to show some of the customs of these ancient and traditional times.

**EVIL HAMAN**  
STUMBLING CLUMSILY ON THE QUEEN IN HIS FRENZY OF FEAR TO BEG FOR HIS LIFE, HAMAN HAS FURTHER INCURRED THE KING'S WRATH AND IS DULY SENTENCED TO DEATH, NOW...

IF IT PLEASE THE KING, MAY I SPEAK?

HARBONAH, THE KING'S CHAMBERLAIN, MAKES A SUGGESTION...

BEHOLD, HAMAN HAD A GALLOWS CONSTRUCTED ON WHICH TO HANG MORDECAI WHO DID GOOD FOR THE KING--WOULD IT NOT BE FITTING...?

INDEED! HANG HIM THEREON!

AND SO IT IS THAT HAMAN ENDS HIS EVIL DAYS HANGED ON THE VERY SAME GALLOWS UPON WHICH HE HAD PLANNED TO HANG MORDECAI, ALL OF WHICH HAS BEEN RECORDED IN THE BOOK OF ESTHER, CHAPTERS, 3-7.

THIS DEVOTIONAL & DIRECTORY IS MADE POSSIBLE BY THESE BUSINESSES WHO ENCOURAGE ALL OF US TO ATTEND WORSHIP SERVICES.

- |  |  |  |  |
|--|--|--|--|
| <p><b>ASSEMBLY OF GOD</b><br/>Assembly of God<br/>15th &amp; Ave. F • 364-0305<br/>Rev. John B. Gaston<br/>Templo Calvario<br/>Asamblea de Dios<br/>136 Ave. G • 364-6975<br/>Rev. Jesus Z. Gomez<br/>Templo Camino<br/>Verdad Y Vida<br/>802 Ave. K • 364-7826<br/>Pastor Pablo Moreno, Jr.<br/>New Beginning<br/>Assembly of God<br/>West Bradley<br/>363-9007<br/>Pastor Rafael Rosada<br/><b>BAPTIST</b><br/>Avenue Baptist<br/>130 N. 25 Mile Ave.<br/>364-1564 • 364-8330</p> <p><b>Bible Baptist</b><br/>1204 Moreman Ave.<br/>364-3102</p> <p><b>Dawn Baptist</b><br/>258-7330<br/><b>First Baptist</b><br/>5th &amp; Main St. • 364-0696<br/>Pastor Rev. Terry Cosby<br/><b>Frio Baptist</b><br/>7 miles S. on Fm 1055<br/>276-5380<br/>Pastor Larry Perkins<br/>Grace Baptist Church<br/>W. 4th &amp; Jackson<br/>363-1087<br/>Pastor Gary G. Grant<br/>Mision Bautista<br/>Nueva Vida<br/>201 Country Club Drive<br/>364-2209<br/>Pastor Francisco Soto</p> | <p><b>Iglesia Bautista Fundamental</b><br/>319 Ave. L • 364-6913<br/>Pastor Ernest Rodriguez<br/>Mt. Sinai Baptist<br/>302 Knight • 364-3580<br/>Palo Duro Baptist<br/>Wildorado Community<br/>Pastor Mike Bartlett<br/>Primera Iglesia Bautista<br/>1 Mile N. on Hwy 385<br/>364-1217<br/>Pastor Ignacio Torres<br/>St. John's Baptist<br/>400 Mable St.<br/>364-0942<br/>Minister C.W. Allen<br/>Summerfield Baptist<br/>357-2535<br/>Minister Ellis Parson<br/>Temple Baptist<br/>700 Ave. K • 364-1892<br/>Minister H.W. Bartlett<br/>Trinity Baptist<br/>Corner of S. 385 &amp; Columbia<br/>Rev. Ed Warren<br/>Westway Baptist<br/>Rt. 4 • 289-5554<br/>Calvary Baptist<br/>1410 W. First Street<br/>Pastor Ray Sanders</p> <p><b>CATHOLIC</b><br/>La Iglesia De San Jose<br/>13th &amp; Brevard • 364-5053<br/>Rev. Domingo Castillo, Pastor<br/>St. Anthony's Catholic<br/>115 N. 25 Mile Ave.<br/>364-6150<br/>Mgr. Orville R. Blum, Pastor<br/><b>CHURCH OF CHRIST</b><br/>Central Church of Christ<br/>148 Sunset • 364-1604<br/>Tom Bailey<br/>15th Street Church of Christ<br/>15th &amp; Blackfoot</p> | <p><b>La Iglesia De Cristo</b><br/>334 Ave. E • 364-6401<br/>Jose Salas<br/>Park Ave. Church of Christ<br/>703 W. Park Ave.<br/><b>CHURCH OF GOD</b><br/>Country Road Church of God<br/>401 Country Club Drive •<br/>364-5390<br/>Rev. Woody Wiggins<br/>Faith Mission Church of God<br/>in Christ<br/>307 Brevard • 364-6553<br/>Rev. Richard Collins<br/><b>CHURCH OF JESUS CHRIST</b><br/>OF LATTER DAY SAINTS<br/>Church of Jesus Christ of<br/>Latter Day Saints<br/>500 Country Club Drive •<br/>364-1288<br/><b>EPISCOPAL</b><br/>St. Thomas Episcopal Church<br/>601 W. Park Ave. • 364-0146<br/>Rev. Charles A. Wilson, Rector<br/><b>JEHOVAH'S WITNESSES</b><br/>Jehovah's Witnesses<br/>111 Ave. H • 364-5763<br/><b>LUTHERAN</b><br/>Immanuel Lutheran<br/>100 Ave. B • 364-1668<br/>Rev. Robert Kuhlmann<br/><b>METHODIST</b><br/>First United Methodist Church<br/>501 N. Main St. • 364-0770<br/>Dr. Tom Fuller, Pastor<br/>Iglesia Metodista San Pablo<br/>220 Kibbe • 364-3100<br/>Rev. Luis Orozco<br/>Wesley United Methodist<br/>410 Irving • 364-4419<br/>Pastor Bonnie Dunsforth<br/><b>NAZARENE</b><br/>Church of the Nazarene<br/>La Plata &amp; Ironwood • 364-8303<br/>Pastor Ted Taylor</p> | <p><b>Iglesia Del Nazareno</b><br/>340 Ave. H • 364-7548<br/>Pastora Eida Olivarez<br/><b>PENTECOSTAL</b><br/>Iglesia De Cristo<br/>103 Alamo • 364-2906<br/>Min. Aquilino Flores<br/>United Pentecostal<br/>Ave. H &amp; Lafayette • 364-6578<br/>Rev. L.G. Poe<br/><b>PRESBYTERIAN</b><br/>First Presbyterian<br/>610 Lee St. • 364-2471<br/>Rev. Jeremy Grant<br/><b>SEVENTH-DAY ADVENTIST</b><br/>Seventh-Day Adventist<br/>711 W. Park Ave.<br/>Pastor Joe Ortega</p> <p><b>CHRIST'S CHURCH FELLOWSHIP</b><br/>Christ's Church Fellowship<br/>401 W. Park Ave. • 364-0373<br/>Minister Bill Weaver<br/><b>OTHER</b><br/>Christian Assembly<br/>South Main St. • 364-5882<br/>Fellowship of Believers<br/>245 Kingwood • 364-0359<br/>Pastor Nathan L. Stone<br/>Good News Church<br/>400 N. 25 Mile Ave.<br/>Sugarland Mall • 364-5239<br/>Pastor David Alvarado<br/>Hereford Community Church<br/>15th &amp; Whittier • 364-8866<br/>Pastor Dorman Duggan<br/>Templo La Hermosa<br/>200 Columbia<br/>Rev. Andres Del Toro<br/>Western Heritage<br/>Christian Church<br/>Westway Community Center<br/>Pastor Jim Sutherland</p> |
|--|--|--|--|

**GEORGE WARNER SEED COMPANY, INC.**  
120 SOUTH LAWTON ST. 364-4470  
HEREFORD, TEXAS

**Beef'n More** HEREFORD MADE REAL BEEF DRY DOG FOOD

**American Dusting Co.**  
AERIAL SPRAYING  
364-2662  
HEREFORD, TEXAS

**CAVINNESS PACKING COMPANY, INC.**  
P.O. Box 790 Hereford, Texas

**Dawn Cattle Feeders, Inc.**  
P.O. Box 57 • Dawn, Tx. • 258-7246  
Guy Walker, Pres. & Gen. Mgr.

Hereford Texas Federal **Credit Union**  
330 Schley 364-1888

**OGLESBY EQUIPMENT CO., INC.**  
S. Kingwood case 364-1551

**KING'S MANOR METHODIST HOME**  
"Adding years to life and life to years"  
400 RANGER DR. Hereford, Tx. 364-0661

**Marcum Motor Co.**  
413 N. 25 Mile Ave. • 364-3565  
Open Mon-Fri 8 am - 6 pm • Sat 8 am - 3 pm

**POARCH BROS., INC.**  
METAL FABRICATORS  
102 Holly Rd. 364-0015  
Hereford, Texas

**WATER WELL DRILLING FULL PUMP SERVICE**  
364-0353

THE BEST SELECTION IN USED CARS & PICKUP  
**WARREN BROS. MOTOR CO.**  
REPUTABLE BUSINESS SINCE 1948  
364-4431  
1410 E. PARK AVE.

**HEREFORD CARE CENTER**  
"When People Need Care Only The Best Should Do"  
231 Kingwood 364-7113  
Hereford, Tx.  
Trillium Healthcare Inc.

**TAYLOR & SONS**  
Your Low Price Leader

**WEBSTER CARPET**  
Carpet - Ceramic Tile - Vinyl

**HEREFORD IRON & METAL**  
North Progressive Road  
364-3777  
Hereford, Tx 79045

**GARRISON SEED COMPANY**  
364-0560  
Hereford, Tx 79045

**WALL & SONS DRILLING INC.**  
COMPLETE LINE OF PUMPS  
15th St. & Progressive Rd.  
364-0635

did somebody say M?  
**.99¢ Quarter Pound w/lettuce & tomato**  
Limited Time Only!  
1112 W. 1st Hereford 363-6161

**WEST TEXAS RURAL TELEPHONE CO-OP**  
S. Hwy 385  
364-3331

**50 Years of Service**  
Suit's Auto Supply Company  
Your Complete Parts Store  
115 Schley 364-1500

**PLAINS NEW HOLLAND, INC.**  
Hwy. 385 South  
364-4001

**Cliff A. Skiles, Jr. D.V.M.**  
CONSULTING VETERINARIAN  
1906 WEST PARK HEREFORD, TEXAS 79045 808-364-5151

**Reefing Fattfe Feeders**  
(806)357-2261 SCOTT KEELING

**R & P Feedyard**  
276-5575  
Hereford, Tx  
PAT ROBBINS • 276-5387 • CURTIS SMITH

**champion feeders**  
(806)364-6051 DAVE HOPPER, Manager

THE EMPLOYEES OF SHUR-GRO ENJOY COURAGE YOU TO ATTEND THE CHURCH OF YOUR CHOICE  
**SHUR-GRO LIQUID FEED**  
A DIVISION OF PM AG PRODUCTS, INC.  
BOX 1150 • 364-5200 • HEREFORD, TEXAS

**Keyes Electric & Magnets**  
RELIABLE & COURTEOUS SERVICE PROMPT PROFESSIONAL SERVICE  
364-5435  
201 East 1st St. - Hereford, Tx. 79045 Thad Keyes - Owner

**HEREFORD PARTS**  
702 W. 1st 364-3522  
Anthony Montelongo- Asst. Mgr.

**Bar-G-Feedyard**  
8 Miles Southwest of Hereford  
806-357-2241  
Route 3 • Summerfield, Tx 79045

**HEREFORD JANITOR SUPPLY, INC.**  
1301 E. Park Ave.  
364-0517  
Hereford, Tx.

Call Jean Watts

# Classifieds

364-2030

## The Hereford Brand

Since 1901  
Want Ads Do It All!

You Want It  
You Got It!  
**CLASSIFIED**

364-2030  
Fax: 364-8364  
313 N. Lee

### CLASSIFIED ADS

Classified advertising rates are based on 15 cents a word for first insertion (\$3.00 minimum), and 11 cents for second publication and thereafter. Rates below are based on consecutive issues, no copy change, straight word ads:

Times	RATE	MIN
1 day per word	.15	3.00
2 days per word	.26	5.20
3 days per word	.37	7.40
4 days per word	.48	9.60
5 days per word	.59	11.80

### CLASSIFIED DISPLAY

Classified display rates apply to all other ads not set in solid word lines those with captions, bold or larger type, special paragraphing, all capital letters. Rates are 4.35 per column inch.

### LEGALS

Ad rate for legal notices are 4.80 per column inch.  
**ERRORS**  
Every effort is made to avoid errors in word ads and legal notices. Advertisers should call attention to any errors immediately after the first insertion. We will not be responsible for more than one incorrect insertion. In case of errors by the publisher an additional insertion will be published.

## 1. ARTICLES FOR SALE

The Roads of Texas and The Roads of New Mexico are for sale at The Hereford Brand in book form. Texas maps are \$14.95 plus tax, and New Mexico maps are \$14.95 plus tax. Discover roads you never knew were there. Hereford Brand, 313 N. Lee. 24757

A must book for every home. THE TEXAS ALMANAC, 1996-97 edition. Updates info, facts on Texas counties, politics, education and more, including special features. \$12.95 plus tax at the Hereford Brand. 313 N. Lee St. 31062

Rebuilt Kirby's 1/2 price with warranty. Other name brands. \$39 & up. Sales & Repairs on makes & models. 364-4288. 32086

Start Dating Tonight! Play the Texas Dating Game. 1-800-ROMANCEext7086. 33957

For Sale: Sofa and matching chair. Brown and orange colors, trim in solid oak, like new. Come by 606 Ave. F after 6 PM or call 364-2655 after 6 PM. 35472

For Sale: Harris Rabbit Farm, Commercial New Zealand White, M-70 Series Rabbits. Fryers or Stock. Call (806) 276-5574. 35486

## Couch for Sale

85 inches long, color is grey on grey, 3 cushions, in excellent condition. Call 364-3942 Saturday only.

## FOR SALE

**LARGE SIZE ROCKER RECLINER** with back vibrator & storage arms. \$100.00  
**X-Tra LONG BRASS ROD** for draw drapes. \$75.00 Will give drapes. All hardware included.  
**SMALL MICROWAVE OVEN** Almost New \$60.00  
**3 TIRES - \$12.00** Size P-225/75R15  
**27" 10 SPEED BICYCLE** \$20.00  
Call 364-1443

## 1A. GARAGE SALES

2 Family Moving Sale: 113 E. Walnut Rd., Saturday, 8 til 7. Clothes, exercise equipment, snow skis & accessories, furniture, baby swing & miscellaneous. 35481

Garage Sale: 431 Barrett, Friday 9 to 5 and Saturday 9 to 2. Jeans, coats, sweaters, baby clothes and lots of miscellaneous. 35482

Garage Sale: 1201 South Main, Friday & Saturday, 9 to 5. Furniture & Miscellaneous. 35485

Garage Sale: 204 Aspen, Friday & Saturday, 8:30 to ?? Heaters, Jackets, Clothes, & miscellaneous items. 35488

Garage Sale: 421 Ave. H, Saturday only, 9 to ?? Toddlers clothes, dishes, home interior, shoes, tools, Ford PU window, & miscellaneous. 35489

Garage Sale: 209 Star, Saturday only, 9 to 5. Lot of plus size clothes (men & women), lots of miscellaneous. 35490

## 2. FARM EQUIPMENT

Custom Wheat Seed cleaning, bulk or bagged. Call John or Gayland at 258-7394. 34495

For Sale: 6 Round Bale Cattle Feeders on Wheels. Call 364-2937. 35271

For Sale: Round Bales, \$35.00 each. Bright hay, Garrison Bale III. LeRoy Williamson, 258-7765, 3 miles North of 60 on Hi-Way 2943. 35483

For Sale: 4 hole implement wheels with tires. \$10.00 each. Pile of bicycles. \$10.00. Call 364-7700. 35492

## 3. VEHICLES FOR SALE

'97 Chevrolet S10 pickup with cowboy conversion for sale. No down, refinance existing loan. Call 364-2030. 35434

For Sale: '87 Suburban, 2 WD, 350 Engine, Good condition, Oakridge Conversion, \$3800. Call 538-6231. 35459

For Sale: '74 Suburban, White, Needs motor, \$500.00. Call 538-6231. 35461

For Sale: 1992 Black short-wide Chevy Pickup. 89,000 miles. Asking \$7100.00. Call 364-2327. 35466

For Sale: 1988 Ford Ranger, Big Cab, V-6 Automatic. Red with white strips. \$3750.00. Call 364-7700. 35468

For Sale: 1994 Chevy Suburban, FX package, maroon & white, 4 wheel drive, extra clean. Call 578-4550. 35475

For Sale: 1982 Buick Riviera. Call evenings 364-2385. 35480

For Sale: '86 Thunderbirds, 2 for 1 price - \$600.00. One runs good, one not running. Call 538-6231. 35487

See Us Before You Buy  
**Marcum Motors Co.**  
Clean Used Cars & Trucks  
413 N. 25 Mile Ave. - 364-3565

## 4. REAL ESTATE

**FLEETWOOD HOME CENTER**  
Portales Homes

Announces the opening of its Clovis Outlet, REALTY HOMES on 3500 Mabry drive, Specializing in Repo's, used and factory outlet New Homes. PORTALES HOME 800-867-5639 DI. 366. Realty homes 505-762-3488 DI. 772. Se habla español.

**OAKWOOD MOBILE HOME, INC.**  
14x70 - 3 bedroom, 2 baths, \$35,000 cash. Please call 1-800-372-1491.

For Rent: Nice 2-Bedroom House, \$200.00 per month. 503 Blevins. Call (806) 762-4339. 35484

## CROSSWORD

by THOMAS JOSEPH

**ACROSS** 1 Give the boot 5 St. Louis sight 9 Fishing aids 11 Telegrams 13 Fight site 14 Writer - Rogers Saint Johns 15 - de plume 16 Jury heads 18 Tossed bomb 20 Stop 21 Idolize 22 Invasion time 23 Yale rooster 24 Usher's creator 25 Costa - 27 Chagall et al. 29 Top card 30 Serving girl 32 Oil-well topper 34 Street caution 35 Chihuahua ciao 36 Stand for a painting 38 Actress Rene 39 Lorelei's home

**DOWN** 1 Loose talk 2 Dawn goddess 3 Cherry liqueur 4 Barbie's beau 5 Cognizant 6 Carnival attraction 7 Currant liqueur 8 Western capital 10 Game hunt 12 Comics dog 17 Keats creation with frost 19 Hit song of 1915 22 Frosh quarters 24 Jazz's Charlie 25 Speeder's bane 26 Got covered 27 Buddy 28 Un-speaking 30 Plains grazers 31 Portions 33 Stood under-standing

**YESTERDAY'S ANSWER**

10-31

10-31

10-31

10-31

10-31

10-31

10-31

10-31

10-31

10-31

10-31

10-31

10-31

10-31

10-31

10-31

10-31

10-31

10-31

10-31

10-31

10-31

10-31

10-31

10-31

10-31

10-31

10-31

10-31

10-31

10-31

10-31

10-31

10-31

10-31

10-31

10-31

10-31

10-31

10-31

10-31

10-31

10-31

10-31

10-31

10-31

10-31

10-31

10-31

10-31

10-31

10-31

10-31

10-31

10-31

10-31

10-31

10-31

10-31

10-31

10-31

10-31

10-31

10-31

10-31

10-31

10-31

10-31

10-31

10-31

10-31

10-31

10-31

10-31

10-31

10-31

10-31

10-31

10-31

10-31

10-31

10-31

10-31

10-31

10-31

10-31

10-31

10-31

10-31

10-31

10-31

10-31

10-31

10-31

C	A	F	E	D	U	P	E	D
A	L	O	N	G	A	S	I	D
P	A	R	D	O	R	E	L	I
E	M	U	W	H	E	R	E	T
R	O	M	E	R	O	S	O	Y
R	O	T	S	I	R	S		
D	A	R	N	H	A	I	N	S
A	I	R	G	W	I	N	S	
S	O	S	O	L	D	H	A	T
T	R	E	V	I	N	O	A	T
R	A	N	I	S	C	A	B	O
O	M	A	N	I	K	L	I	N
S	A	L	E	S	S	I	T	E

## YESTERDAY'S ANSWER

19 Hit song of 1915  
22 Frosh quarters  
24 Jazz's Charlie  
25 Speeder's bane  
26 Got covered  
27 Buddy  
28 Un-speaking  
30 Plains grazers  
31 Portions  
33 Stood under-standing

**STUMPED?** For answers to today's crossword, call 1-900-454-7377! 99¢ per minute, touch-tone / rotary phones. (18+ only.) A King Features Service, NYC.

## OAKWOOD MOBILE HOME, INC.

\$999 down on all double wide O.A.C. Ex. \$32,900 with \$999 down at 10.5% APR = Pmts of \$291.81 for 360 months. Please call 1-800-372-1491.

## OAKWOOD MOBILE HOME, INC.

\$499 down on all single wide homes. Ex. \$21,900, 3 bdrm., 2 baths, with \$499 down at 10.5% APR = Pmts of \$202.06 for 300 months O.A.C. Please call 1-800-372-1491.

## For Sale or Lease

**Buick Pontiac GMC Main Bldg & Parking Lot w/large shop. 7 offices, showroom, 1 upstairs office & storage. Located at 142 N. Miles Used car lot on Hwy. 60. & Miles. For more information call Earl Stagner 364-2231 day or night. John Stagner 364-4587 night.**

For Sale: Only \$4995.00, 14x48 Mobile Home. 2 BR-A/C, Central Heat. Ideal to move to lake or great for couple. Call 364-6420. 35267

For Sale: 2 BR Duplex, reasonable terms to person with good references. Owner financed. Call 364-2131. 35474

For Sale: 2 BR, 1 Bath house, detached garage at 1012 E. 3rd. Call (806) 647-2491. 35479

## 5. HOMES FOR RENT

**APARTMENTS:** Blue Water Gardens HEAT, A/C, LIGHTS INCLUDED  
Rent based on income. Accepting applications for 1, 2, 3, 4 bdrms. CALL Debra or Janis TODAY for information & directions. 12-5pm (806)364-9861. Equal Opportunity.

For Rent: Extremely nice two bedroom house. Located 608 West Second. For information call 806-355-1874. 35471

For Rent: Nice 2-Bedroom House, \$200.00 per month. 503 Blevins. Call (806) 762-4339. 35484

Best deal in town, 1 bedroom efficiency apartments. Bills paid, red brick apartments. 300 block West 2nd. 364-3566. 920

Nice, large, unfurnished apartments. Refrigerated air, two bedrooms. You pay only electric-we pay the rest. \$335.00 month. 364-8421. 1320

Self-lock storage. 363-6212. 1360

Eldorado Arms Apts, 1 & 2 bedroom unfurnished, apts. refrigerated air, laundry, free cable, water, & gas. 364-2302 or 364-4332. 18873

Paloma Lane Apartments, 2 BR's available. \$170.00 deposit required. No pets, application required. Call 364-1255. EHO 34894

For rent: 2 Or 3 BR mobilehome, stove & refrigerator furnished. Call after 5, 364-0064. 35358

Need extra storage space? Need a place to have a garage sale? Rent a mini-storage. Two sizes available. Call 364-4370. 35373

For Rent: Small Bachelor's apartment. (One person), 1/2 water paid. Deposit-will work with you. Call 363-6569, for Sand. 35406

For Rent: Livingroom, kitchen combination, Bedroom, bath. Very clean. References required. Single or couple only. \$125.00 deposit. Call 364-8878. 35491

## 6. WANTED

I would like to buy a used riding lawn mower, running or not. Will pay cash. Call 364-0064. 34867

ROOFING, small hot ROOFS and General Roofing Repairs. Weldon Toews - 276-5763. 35079

Custom CRP Mowing, Kenneth Williams, Box 433, Vega, Texas, 79092. Call (806)267-2474. 35299

Custom Grass Planting CRP or other. Call now to book limited seed supplies. Call Kirk Marnell @ 346-2708 or 258-7326. 35372

I do Adult Baby-Sitting! Call for an appointment to 364-6569. 35476

## 8. HELP WANTED

Hereford Care Center needs R.N.'s, L.V.N.'s, Medication Aides, & C.N.A.'s. Come by 231 Kingwood or call 364-7113. 33472

**Sales Person Needed**  
inside for local Hereford facility of National Animal Health Distributor. Animal health background and sales experience desired. Send salary requirements and resume to: Division Manager, P.O. Box 818, Dimmit, TX 79027.

**WANTED SERVICE TECHNICIAN**  
for Fast Oil Change Service, responsible, 5 days, 8 to 6, 8-12 Saturday.  
Apply at  
**Scott Oil Change**  
413 S. 25 Mile Ave.

The Service Cafe is looking for fun, highly motivated individuals seeking assistant manager and manager positions in food service for the Plainview, Friona and Dumas locations. Great pay and benefits that include Signing Bonus, Med/Dental, 401K, Incentive Program, and Vacation. If serious about a career, mail letters of recommendations, references, and resume to: The Service Cafe, P. O. Box 1692, Hereford, Texas 79045. Attn: Food Service Director.

**LIVESTOCK PRODUCTS SPECIALIST** - wanted for full-charge position which includes sales, ordering, inventory control, billing, and store-front operations. Extensive knowledge of products is required. Only stable, dependable persons with references need apply. 45 hour week Mon-Sat. Attractive salary and benefits. Apply in confidence to PO Box 1467, Hereford, Tx. 79045.

AVON has openings for representatives in Hereford, Dimmit, Friona & VEGA. For information call 364-0899. 35420

More than

Call Jean Watts

# Classifieds

364-2030

## SHOWCASE Rent-To-Own

SHOWCASE RTO is now looking for people interested in delivery positions. If you are self motivated, courteous and personable, we need you!

- JOB REQUIREMENTS:**
- Good driving records is essential
  - Some college hours are preferred
  - A desire to advance
  - An ability to load and unload
  - Must pass drug screen
  - Bilingual is a plus

**AS A MEMBER OF OUR TEAM YOU WILL RECEIVE:**

- Full medical
- Paid vacation
- Paid holidays
- Delivery \$6-7.50/hour + bonus
- Top performers advance quickly

**APPLY IN PERSON**  
519 N. 25 Mile Avenue  
Hereford, Texas

Garage Door and Opener Repair & Replacement. Call Robert Betzen, 289-5500. If No answer Call Mobile, 344-2960. 14237

We buy cars & pickups running or not running. We sell used auto parts of all kinds. 364-2754. 27574

Tree & Shrub trimming & removal. Leaf raking & assorted lawn work, rotary tilling & seeding of new lawns. 364-3356. 31572

Welding & Repair Service: All Steel Storage Barns. L & M Manufacturing West on Deere Road, 364-4223, Mobile 357-9192. 33852

For Assistance with decorating your home, call Cynthia Miller, 364-2525 and leave message. 35189

Hereford Music Instrument repair - Guitar lessons, 10:00 AM - 6:00 PM. Monday - Saturday. Call 363-1111, Sugarland Mall. 35260

Forrest Insulation & Construction: 6" blow in insulation, 24 cents per sq. ft. installed. 8", 28 cents per sq. ft. installed. Call 364-5477. 35397

## 9. CHILD CARE

Experience Child Care openings for infants & toddlers under 5 years. Call Bonnie Cole at 364-6664. 35298

## HEREFORD DAY CARE

Offering an excellent program of learning and care for your children 0-12! State Licensed

Also - SPECIAL AFTER-HOURS pick-up for Kindergarten Children!  
**364-5062**

## 11. BUSINESS SERVICES

Defensive Driving Course is now being offered nights and Saturdays. Will include ticket dismissal and insurance discount. For more information, call 289-5851. #C0023-C0733, McKibben ADS. 700

We buy scrap iron, metal, aluminum cans, all batteries, tin, copper & brass. 364-3350. 970

## Affordable Computers

- Service
- Supplies
- Upgrades

# CICS

319 N. Main • 364-6067

**Opening Soon**  
Hereford Bowling & Recreation Center  
Sugarland Mall

## LEGAL NOTICES

NOTICE OF PUBLICATION STATE OF TEXAS

TO: VALDO MENDOZA

You have been sued. You may employ an attorney. If you or your attorney do not file a written answer with the clerk who issued this citation at 10:00 A.M. on the Monday next following the expiration of 20 days after you were served this citation and amended petition, a default judgment may be taken against you. The amended petition of TEXAS DEPARTMENT OF PROTECTIVE AND REGULATORY SERVICES petitioner, was filed in the District Court of Deaf Smith County, Texas on the 15th day of October, 1997, against GRACE UVALLE, JOE GUITERREZ, VALDO MENDOZA, Respondent, numbered DR-97C-050 and entitled, IN THE INTEREST OF STACY ANN UVALLE AND VENESSA UVALLE, MINOR CHILDREN. The suit requests APPOINTMENT OF TEMPORARY MANAGING CONSERVATOR AND TERMINATION OF PARENTAL RIGHTS. The date and place of birth of the children who are the subject of the suit: STACY ANN UVALLE - 7/16/93, place of birth unknown, VENESSA UVALLE - 11/5/94, place of birth unknown. The court has the authority in this suit to enter any judgment or decree in the Children's interest which will be binding upon you, including the termination of the parent-child relationship, the determination of paternity and the appointment of a conservator with authority to consent to the children's adoption.

Issued and given under my hand and seal of said court, at Hereford, Texas, this 29th day of OCTOBER, 1997.

LOLA FAYE VEAZEY  
District Clerk, Deaf Smith County Texas  
By: Sonya G. Varela Deputy

NOTICE TO PUBLIC OF NO SIGNIFICANT IMPACT ON THE ENVIRONMENT AND NOTICE OF INTENT TO REQUEST RELEASE OF FUNDS

City of Hereford  
P. O. Box 2277  
Hereford, Texas 79045

TO ALL INTERESTED AGENCIES, GROUPS AND PERSONS:

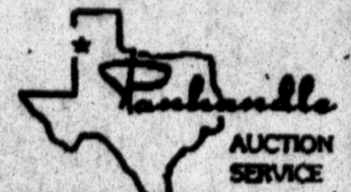
Seventeen (17) days after this publication the City of Hereford intends to request the Texas Department of Housing and Community Affairs (TDHCA) to release Federal funds under Title I of the Housing and Community Development Act of 1974 (P.L. 93-383), for Project No. 717319 to be used for the following project: installation of 2,380 linear feet of sewer pipe, manholes, service connections, yard lines, lift station and acquisition of a site for the lift station in the eastern and western sections of the City.

**Finding of No Significant Impact**

It has been determined that such request for release of funds will not constitute an action significantly affecting the quality of the human environment and accordingly the above named City of Hereford has decided not to prepare an Environmental Impact Statement under the National Environmental Policy Act of 1969 (P.L. 91-190). The reason for such a decision is based upon the fact that all environmental concerns could either be minimized or mitigated.

An Environmental Review Record for the proposal project has been made by the City of Hereford which documents the environmental review of the project and more fully sets forth the reasons why such statement is not required. This Environmental Review Record is on file at the office of the City Manager, City of Hereford, 224 North Lee, Hereford, Texas, 79045 and is available for public examina-

# AUCTION!!!



Saturday, November 1, 1997  
10:00 am - Sugarland Mall (inside)  
North 25 Mile Avenue - Hereford, Texas

This is the first of two Auctions featuring the contents of Mrs. Cheek's store. The following is a partial list of the collectible and everyday items to be sold.

- |  |                      |                      |                             |
|--|----------------------|----------------------|-----------------------------|
| <b>COLLECTIBLES &amp; ANTIQUES</b>     | <b>CHINA</b>         | Eugene/Lorrie        | Car Seats/Stroller          |
| Fire-King                              | Bavaria              | Fisher-Price         | Display Racks/Cases         |
| Glasbake                               | Ben Franklin         | Horsman              | Stuffed Animals             |
| Fry Overglass                          | Claremont            | Ideal                | Toys/Games                  |
| Pyrex                                  | Cronin               | Kewpie               | Argus Projector             |
| Cut, Milk, Carnival & Depression Glass | Crown Ming           | Mattel               | Metal Foot Locker           |
| Coming                                 | Cunningham & Pickett | Playmates            | <b>FURNITURE/APPLIANCES</b> |
| Salt & Pepper Shakers                  | Duet                 | Sun Rubber           | 15 cu.ft. Refrigerators     |
| Cream & Sugars                         | Franciscan           | Topsy-Turvy          | Electric Stove              |
| Butter Dishes                          | Gold Standard        | Uneeda               | Quasar Color TV             |
| Toothpick Holders                      | Golden Wheat         | Vogue                | Sofa                        |
| Stoneware/Pottery                      | Harkerware Stone     | <b>MISCELLANEOUS</b> | Loveseat Sleeper            |
| Silverware/Chests                      | Haviland             | Snack Sets           | Coffee/End Tables           |
| Figurines                              | Homer Laughlin       | Punch Bowl Sets      | Occasional Chairs           |
| Tea Pots                               | Kaysons              | Pots & Pans          | Small Wooden/Metal Desk     |
| Avon Bottles (100s)                    | Lefton               | Flatware/Utensils    | Storage Cabinets            |
| Collector Mugs/Cups                    | Lifetime             | Collector Plates     | Table Magazine Rack         |
| Serving Trays/Platters                 | Limoges              | McNichol             | Gun Racks                   |
| Baseball Cards                         | Mikasa               | Mikasa               | Baby Beds                   |
| Melmac Dinnerware                      | Nautilus             | Noritake             | 3 Piece Bedroom Suite       |
| Tins (various sizes)                   | Sheffield            | Royal Ming           | Headboards                  |
| Whiskey Decanters                      | Sheffield            | Sheffield            | Night Stands                |
| Whiskey Bottles                        | Style House          | Style House          | Assorted Kitchen Chairs     |
| Costume Jewelry                        | Syracuse             | Syracuse             | Glass Top Table/4 Chairs    |
| Music Boxes                            | Taylor-Smith-Taylor  | Universal            | <b>SHOP/YARD</b>            |
| Insulators                             | W.S. George          | Wallace              | Metal Lawn Chairs           |
| Buttons                                | <b>DOLLS</b>         | Alexander            | Webbed Lawn Chairs          |
| Hats/Hat Boxes                         | American Character   | Arranbee             | Hard Hats                   |
| Cigar Boxes                            | Arrow                | Barbie               | Fire Extinguishers          |
| Cream Jars (singles)                   | Barbie               | Deluxe Reading       | Hand Tools/Tire Irons       |
| Beveled Mirrors                        | Effanbee             | Effanbee             | Door Knobs                  |
| Sewing Machines                        |                      |                      | Light Fixtures              |
| Smoker's Stand                         |                      |                      | Grease Guns                 |
| Gossip Bench                           |                      |                      | B&D Circular Saw            |
| Folding Table                          |                      |                      | Cot                         |
| Wooden Rocking Chairs                  |                      |                      | Titan Electric Heater       |
| Wooden Baby Bed (old)                  |                      |                      | Wooden/Metal Shelves        |
| Metal Sleigh Bed Frame                 |                      |                      | MORE!!!                     |

For more information contact: BRICE R. BUSBY, TX License 11407, 806-364-7597, PANHANDLE AUCTION SERVICE, 510 E. 5th, Hereford, Texas 79045.

Terms: Cash or Check with proper identification. Announcements Sale Day take precedence over all printed material. Viewing: Sale Day, November 1, 1997 - 8:00 am. LUNCH AVAILABLE.

tion and copying upon request between the hours of 8:00 a.m. and 4:00 p.m., Monday through Friday.

### Public Comments on Finding

All interested agencies, groups and persons disagreeing with this decision are invited to submit written comments for consideration by the City to the address set forth above. Such written comments must be received at the address specified within sixteen (16) days after this publication. All such comments so received will be considered and the City will not request the release of funds or take any administrative action on the project prior to the date specified in the preceding sentence.

### Release of Funds

The City of Hereford will undertake the project described above with Community Development Block Grant under Title I from its program year 1997 under grant numbered 717319 from the Housing and Community Development Act of 1974. The City of Hereford is certifying to TDHCA that Robert D. Josseland, in his official capacity as Mayor, consents to accept the jurisdiction of the Federal Courts if an action is brought to enforce responsibilities in relation to environmental reviews, decision making and action; and that these responsibilities have been satisfied. The legal effect of the certification is that upon its approval, the City of Hereford may use the Block Grant funds and it will have satisfied its responsibilities under the National Environmental Policy Act of 1969. TDHCA will accept an objection to its approval only on one or more of the bases and the procedure described in 24 CFR Part 58.75. Objections are to be addressed to the Texas Department of Housing and Community Affairs, P. O. Box 13941, Austin, Texas 78711.

Objections to the release of funds on bases other than one of

those stated above will not be considered by TDHCA. No objection received later than thirty-three (33) days after this publication will be considered by TDHCA. The Chief Executive Officer of the city of Hereford is Robert D. Josseland.

Hereford leading supermarkets and grocery stores advertise in the pages of *The Hereford Brand*. Shop *The Brand* ads to look for money-saving coupons and to compare prices. Many Hereford households use *The Brand* ads to do their shopping at one of Hereford's fine supermarkets!

AXYDLBAAXR  
is LONG FELLOW

One letter stands for another. In this sample A is used for the three L's, X for the two O's, etc. Single letters, apostrophes, the length and formation of the words are all hints. Each day the code letters are different.

10-31 CRYPTOQUOTE  
PURJR ZJR LIXV PCL  
KZFMXMRN MI PUR CLJXE,  
PUR UZDRN ZIE PUR  
UZDR-ILPN - ARJDZIPRN  
Yesterday's Cryptoquote: HE WHO GOES AGAINST THE FASHIONS IS HIMSELF A SLAVE.—LOGAN SMITH

## There's A Deal Waiting For You IN THE CLASSIFIEDS

**Whether You're Buying or Selling CLASSIFIEDS WORK!**

## Schlabs Hysinger

SERVING HEREFORD SINCE 1979

COMMODITY SERVICES


1500 West Park Avenue • 364-1281  
Richard Schlabs Amber Griffith

Phone 364-1266 Each Trading Day After 5:30 P.M.  
for Recorded Commodity Update

Prices effective: Thursday, October 30, 1997

<h3>CATTLE FUTURES</h3> <p><b>CATTLE-FEEDER (CME) 50,000 lbs., cents per lb.</b></p> <table border="1"> <tr><td>Oct</td><td>76.70</td><td>76.70</td><td>76.70</td><td>76.70</td><td>76.70</td></tr> <tr><td>Nov</td><td>77.00</td><td>77.00</td><td>77.00</td><td>77.00</td><td>77.00</td></tr> <tr><td>Dec</td><td>77.50</td><td>77.50</td><td>77.50</td><td>77.50</td><td>77.50</td></tr> <tr><td>Jan</td><td>78.00</td><td>78.00</td><td>78.00</td><td>78.00</td><td>78.00</td></tr> <tr><td>Feb</td><td>78.50</td><td>78.50</td><td>78.50</td><td>78.50</td><td>78.50</td></tr> <tr><td>Mar</td><td>79.00</td><td>79.00</td><td>79.00</td><td>79.00</td><td>79.00</td></tr> <tr><td>Apr</td><td>79.50</td><td>79.50</td><td>79.50</td><td>79.50</td><td>79.50</td></tr> <tr><td>May</td><td>80.00</td><td>80.00</td><td>80.00</td><td>80.00</td><td>80.00</td></tr> <tr><td>Jun</td><td>80.50</td><td>80.50</td><td>80.50</td><td>80.50</td><td>80.50</td></tr> <tr><td>Jul</td><td>81.00</td><td>81.00</td><td>81.00</td><td>81.00</td><td>81.00</td></tr> <tr><td>Aug</td><td>81.50</td><td>81.50</td><td>81.50</td><td>81.50</td><td>81.50</td></tr> <tr><td>Sep</td><td>82.00</td><td>82.00</td><td>82.00</td><td>82.00</td><td>82.00</td></tr> <tr><td>Oct</td><td>82.50</td><td>82.50</td><td>82.50</td><td>82.50</td><td>82.50</td></tr> <tr><td>Nov</td><td>83.00</td><td>83.00</td><td>83.00</td><td>83.00</td><td>83.00</td></tr> <tr><td>Dec</td><td>83.50</td><td>83.50</td><td>83.50</td><td>83.50</td><td>83.50</td></tr> <tr><td>Jan</td><td>84.00</td><td>84.00</td><td>84.00</td><td>84.00</td><td>84.00</td></tr> <tr><td>Feb</td><td>84.50</td><td>84.50</td><td>84.50</td><td>84.50</td><td>84.50</td></tr> <tr><td>Mar</td><td>85.00</td><td>85.00</td><td>85.00</td><td>85.00</td><td>85.00</td></tr> <tr><td>Apr</td><td>85.50</td><td>85.50</td><td>85.50</td><td>85.50</td><td>85.50</td></tr> <tr><td>May</td><td>86.00</td><td>86.00</td><td>86.00</td><td>86.00</td><td>86.00</td></tr> <tr><td>Jun</td><td>86.50</td><td>86.50</td><td>86.50</td><td>86.50</td><td>86.50</td></tr> <tr><td>Jul</td><td>87.00</td><td>87.00</td><td>87.00</td><td>87.00</td><td>87.00</td></tr> <tr><td>Aug</td><td>87.50</td><td>87.50</td><td>87.50</td><td>87.50</td><td>87.50</td></tr> <tr><td>Sep</td><td>88.00</td><td>88.00</td><td>88.00</td><td>88.00</td><td>88.00</td></tr> <tr><td>Oct</td><td>88.50</td><td>88.50</td><td>88.50</td><td>88.50</td><td>88.50</td></tr> <tr><td>Nov</td><td>89.00</td><td>89.00</td><td>89.00</td><td>89.00</td><td>89.00</td></tr> <tr><td>Dec</td><td>89.50</td><td>89.50</td><td>89.50</td><td>89.50</td><td>89.50</td></tr> <tr><td>Jan</td><td>90.00</td><td>90.00</td><td>90.00</td><td>90.00</td><td>90.00</td></tr> <tr><td>Feb</td><td>90.50</td><td>90.50</td><td>90.50</td><td>90.50</td><td>90.50</td></tr> <tr><td>Mar</td><td>91.00</td><td>91.00</td><td>91.00</td><td>91.00</td><td>91.00</td></tr> <tr><td>Apr</td><td>91.50</td><td>91.50</td><td>91.50</td><td>91.50</td><td>91.50</td></tr> <tr><td>May</td><td>92.00</td><td>92.00</td><td>92.00</td><td>92.00</td><td>92.00</td></tr> <tr><td>Jun</td><td>92.50</td><td>92.50</td><td>92.50</td><td>92.50</td><td>92.50</td></tr> <tr><td>Jul</td><td>93.00</td><td>93.00</td><td>93.00</td><td>93.00</td><td>93.00</td></tr> <tr><td>Aug</td><td>93.50</td><td>93.50</td><td>93.50</td><td>93.50</td><td>93.50</td></tr> <tr><td>Sep</td><td>94.00</td><td>94.00</td><td>94.00</td><td>94.00</td><td>94.00</td></tr> <tr><td>Oct</td><td>94.50</td><td>94.50</td><td>94.50</td><td>94.50</td><td>94.50</td></tr> <tr><td>Nov</td><td>95.00</td><td>95.00</td><td>95.00</td><td>95.00</td><td>95.00</td></tr> <tr><td>Dec</td><td>95.50</td><td>95.50</td><td>95.50</td><td>95.50</td><td>95.50</td></tr> <tr><td>Jan</td><td>96.00</td><td>96.00</td><td>96.00</td><td>96.00</td><td>96.00</td></tr> <tr><td>Feb</td><td>96.50</td><td>96.50</td><td>96.50</td><td>96.50</td><td>96.50</td></tr> <tr><td>Mar</td><td>97.00</td><td>97.00</td><td>97.00</td><td>97.00</td><td>97.00</td></tr> <tr><td>Apr</td><td>97.50</td><td>97.50</td><td>97.50</td><td>97.50</td><td>97.50</td></tr> <tr><td>May</td><td>98.00</td><td>98.00</td><td>98.00</td><td>98.00</td><td>98.00</td></tr> <tr><td>Jun</td><td>98.50</td><td>98.50</td><td>98.50</td><td>98.50</td><td>98.50</td></tr> <tr><td>Jul</td><td>99.00</td><td>99.00</td><td>99.00</td><td>99.00</td><td>99.00</td></tr> <tr><td>Aug</td><td>99.50</td><td>99.50</td><td>99.50</td><td>99.50</td><td>99.50</td></tr> <tr><td>Sep</td><td>100.00</td><td>100.00</td><td>100.00</td><td>100.00</td><td>100.00</td></tr> <tr><td>Oct</td><td>100.50</td><td>100.50</td><td>100.50</td><td>100.50</td><td>100.50</td></tr> <tr><td>Nov</td><td>101.00</td><td>101.00</td><td>101.00</td><td>101.00</td><td>101.00</td></tr> <tr><td>Dec</td><td>101.50</td><td>101.50</td><td>101.50</td><td>101.50</td><td>101.50</td></tr> <tr><td>Jan</td><td>102.00</td><td>102.00</td><td>102.00</td><td>102.00</td><td>102.00</td></tr> <tr><td>Feb</td><td>102.50</td><td>102.50</td><td>102.50</td><td>102.50</td><td>102.50</td></tr> <tr><td>Mar</td><td>103.00</td><td>103.00</td><td>103.00</td><td>103.00</td><td>103.00</td></tr> <tr><td>Apr</td><td>103.50</td><td>103.50</td><td>103.50</td><td>103.50</td><td>103.50</td></tr> <tr><td>May</td><td>104.00</td><td>104.00</td><td>104.00</td><td>104.00</td><td>104.00</td></tr> <tr><td>Jun</td><td>104.50</td><td>104.50</td><td>104.50</td><td>104.50</td><td>104.50</td></tr> <tr><td>Jul</td><td>105.00</td><td>105.00</td><td>105.00</td><td>105.00</td><td>105.00</td></tr> <tr><td>Aug</td><td>105.50</td><td>105.50</td><td>105.50</td><td>105.50</td><td>105.50</td></tr> <tr><td>Sep</td><td>106.00</td><td>106.00</td><td>106.00</td><td>106.00</td><td>106.00</td></tr> <tr><td>Oct</td><td>106.50</td><td>106.50</td><td>106.50</td><td>106.50</td><td>106.50</td></tr> <tr><td>Nov</td><td>107.00</td><td>107.00</td><td>107.00</td><td>107.00</td><td>107.00</td></tr> <tr><td>Dec</td><td>107.50</td><td>107.50</td><td>107.50</td><td>107.50</td><td>107.50</td></tr> <tr><td>Jan</td><td>108.00</td><td>108.00</td><td>108.00</td><td>108.00</td><td>108.00</td></tr> <tr><td>Feb</td><td>108.50</td><td>108.50</td><td>108.50</td><td>108.50</td><td>108.50</td></tr> <tr><td>Mar</td><td>109.00</td><td>109.00</td><td>109.00</td><td>109.00</td><td>109.00</td></tr> <tr><td>Apr</td><td>109.50</td><td>109.50</td><td>109.50</td><td>109.50</td><td>109.50</td></tr> <tr><td>May</td><td>110.00</td><td>110.00</td><td>110.00</td><td>110.00</td><td>110.00</td></tr> <tr><td>Jun</td><td>110.50</td><td>110.50</td><td>110.50</td><td>110.50</td><td>110.50</td></tr> <tr><td>Jul</td><td>111.00</td><td>111.00</td><td>111.00</td><td>111.00</td><td>111.00</td></tr> <tr><td>Aug</td><td>111.50</td><td>111.50</td><td>111.50</td><td>111.50</td><td>111.50</td></tr> <tr><td>Sep</td><td>112.00</td><td>112.00</td><td>112.00</td><td>112.00</td><td>112.00</td></tr> <tr><td>Oct</td><td>112.50</td><td>112.50</td><td>112.50</td><td>112.50</td><td>112.50</td></tr> <tr><td>Nov</td><td>113.00</td><td>113.00</td><td>113.00</td><td>113.00</td><td>113.00</td></tr> <tr><td>Dec</td><td>113.50</td><td>113.50</td><td>113.50</td><td>113.50</td><td>113.50</td></tr> <tr><td>Jan</td><td>114.00</td><td>114.00</td><td>114.00</td><td>114.00</td><td>114.00</td></tr> <tr><td>Feb</td><td>114.50</td><td>114.50</td><td>114.50</td><td>114.50</td><td>114.50</td></tr> <tr><td>Mar</td><td>115.00</td><td>115.00</td><td>115.00</td><td>115.00</td><td>115.00</td></tr> <tr><td>Apr</td><td>115.50</td><td>115.50</td><td>115.50</td><td>115.50</td><td>115.50</td></tr> <tr><td>May</td><td>116.00</td><td>116.00</td><td>116.00</td><td>116.00</td><td>116.00</td></tr> <tr><td>Jun</td><td>116.50</td><td>116.50</td><td>116.50</td><td>116.50</td><td>116.50</td></tr> <tr><td>Jul</td><td>117.00</td><td>117.00</td><td>117.00</td><td>117.00</td><td>117.00</td></tr> <tr><td>Aug</td><td>117.50</td><td>117.50</td><td>117.50</td><td>117.50</td><td>117.50</td></tr> <tr><td>Sep</td><td>118.00</td><td>118.00</td><td>118.00</td><td>118.00</td><td>118.00</td></tr> <tr><td>Oct</td><td>118.50</td><td>118.50</td><td>118.50</td><td>118.50</td><td>118.50</td></tr> <tr><td>Nov</td><td>119.00</td><td>119.00</td><td>119.00</td><td>119.00</td><td>119.00</td></tr> <tr><td>Dec</td><td>119.50</td><td>119.50</td><td>119.50</td><td>119.50</td><td>119.50</td></tr> <tr><td>Jan</td><td>120.00</td><td>120.00</td><td>120.00</td><td>120.00</td><td>120.00</td></tr> <tr><td>Feb</td><td>120.50</td><td>120.50</td><td>120.50</td><td>120.50</td><td>120.50</td></tr> <tr><td>Mar&lt;/</td></tr></table>	Oct	76.70	76.70	76.70	76.70	76.70	Nov	77.00	77.00	77.00	77.00	77.00	Dec	77.50	77.50	77.50	77.50	77.50	Jan	78.00	78.00	78.00	78.00	78.00	Feb	78.50	78.50	78.50	78.50	78.50	Mar	79.00	79.00	79.00	79.00	79.00	Apr	79.50	79.50	79.50	79.50	79.50	May	80.00	80.00	80.00	80.00	80.00	Jun	80.50	80.50	80.50	80.50	80.50	Jul	81.00	81.00	81.00	81.00	81.00	Aug	81.50	81.50	81.50	81.50	81.50	Sep	82.00	82.00	82.00	82.00	82.00	Oct	82.50	82.50	82.50	82.50	82.50	Nov	83.00	83.00	83.00	83.00	83.00	Dec	83.50	83.50	83.50	83.50	83.50	Jan	84.00	84.00	84.00	84.00	84.00	Feb	84.50	84.50	84.50	84.50	84.50	Mar	85.00	85.00	85.00	85.00	85.00	Apr	85.50	85.50	85.50	85.50	85.50	May	86.00	86.00	86.00	86.00	86.00	Jun	86.50	86.50	86.50	86.50	86.50	Jul	87.00	87.00	87.00	87.00	87.00	Aug	87.50	87.50	87.50	87.50	87.50	Sep	88.00	88.00	88.00	88.00	88.00	Oct	88.50	88.50	88.50	88.50	88.50	Nov	89.00	89.00	89.00	89.00	89.00	Dec	89.50	89.50	89.50	89.50	89.50	Jan	90.00	90.00	90.00	90.00	90.00	Feb	90.50	90.50	90.50	90.50	90.50	Mar	91.00	91.00	91.00	91.00	91.00	Apr	91.50	91.50	91.50	91.50	91.50	May	92.00	92.00	92.00	92.00	92.00	Jun	92.50	92.50	92.50	92.50	92.50	Jul	93.00	93.00	93.00	93.00	93.00	Aug	93.50	93.50	93.50	93.50	93.50	Sep	94.00	94.00	94.00	94.00	94.00	Oct	94.50	94.50	94.50	94.50	94.50	Nov	95.00	95.00	95.00	95.00	95.00	Dec	95.50	95.50	95.50	95.50	95.50	Jan	96.00	96.00	96.00	96.00	96.00	Feb	96.50	96.50	96.50	96.50	96.50	Mar	97.00	97.00	97.00	97.00	97.00	Apr	97.50	97.50	97.50	97.50	97.50	May	98.00	98.00	98.00	98.00	98.00	Jun	98.50	98.50	98.50	98.50	98.50	Jul	99.00	99.00	99.00	99.00	99.00	Aug	99.50	99.50	99.50	99.50	99.50	Sep	100.00	100.00	100.00	100.00	100.00	Oct	100.50	100.50	100.50	100.50	100.50	Nov	101.00	101.00	101.00	101.00	101.00	Dec	101.50	101.50	101.50	101.50	101.50	Jan	102.00	102.00	102.00	102.00	102.00	Feb	102.50	102.50	102.50	102.50	102.50	Mar	103.00	103.00	103.00	103.00	103.00	Apr	103.50	103.50	103.50	103.50	103.50	May	104.00	104.00	104.00	104.00	104.00	Jun	104.50	104.50	104.50	104.50	104.50	Jul	105.00	105.00	105.00	105.00	105.00	Aug	105.50	105.50	105.50	105.50	105.50	Sep	106.00	106.00	106.00	106.00	106.00	Oct	106.50	106.50	106.50	106.50	106.50	Nov	107.00	107.00	107.00	107.00	107.00	Dec	107.50	107.50	107.50	107.50	107.50	Jan	108.00	108.00	108.00	108.00	108.00	Feb	108.50	108.50	108.50	108.50	108.50	Mar	109.00	109.00	109.00	109.00	109.00	Apr	109.50	109.50	109.50	109.50	109.50	May	110.00	110.00	110.00	110.00	110.00	Jun	110.50	110.50	110.50	110.50	110.50	Jul	111.00	111.00	111.00	111.00	111.00	Aug	111.50	111.50	111.50	111.50	111.50	Sep	112.00	112.00	112.00	112.00	112.00	Oct	112.50	112.50	112.50	112.50	112.50	Nov	113.00	113.00	113.00	113.00	113.00	Dec	113.50	113.50	113.50	113.50	113.50	Jan	114.00	114.00	114.00	114.00	114.00	Feb	114.50	114.50	114.50	114.50	114.50	Mar	115.00	115.00	115.00	115.00	115.00	Apr	115.50	115.50	115.50	115.50	115.50	May	116.00	116.00	116.00	116.00	116.00	Jun	116.50	116.50	116.50	116.50	116.50	Jul	117.00	117.00	117.00	117.00	117.00	Aug	117.50	117.50	117.50	117.50	117.50	Sep	118.00	118.00	118.00	118.00	118.00	Oct	118.50	118.50	118.50	118.50	118.50	Nov	119.00	119.00	119.00	119.00	119.00	Dec	119.50	119.50	119.50	119.50	119.50	Jan	120.00	120.00	120.00	120.00	120.00	Feb	120.50	120.50	120.50	120.50	120.50	Mar</
Oct	76.70	76.70	76.70	76.70	76.70																																																																																																																																																																																																																																																																																																																																																																																																																																																																																																																																																		
Nov	77.00	77.00	77.00	77.00	77.00																																																																																																																																																																																																																																																																																																																																																																																																																																																																																																																																																		
Dec	77.50	77.50	77.50	77.50	77.50																																																																																																																																																																																																																																																																																																																																																																																																																																																																																																																																																		
Jan	78.00	78.00	78.00	78.00	78.00																																																																																																																																																																																																																																																																																																																																																																																																																																																																																																																																																		
Feb	78.50	78.50	78.50	78.50	78.50																																																																																																																																																																																																																																																																																																																																																																																																																																																																																																																																																		
Mar	79.00	79.00	79.00	79.00	79.00																																																																																																																																																																																																																																																																																																																																																																																																																																																																																																																																																		
Apr	79.50	79.50	79.50	79.50	79.50																																																																																																																																																																																																																																																																																																																																																																																																																																																																																																																																																		
May	80.00	80.00	80.00	80.00	80.00																																																																																																																																																																																																																																																																																																																																																																																																																																																																																																																																																		
Jun	80.50	80.50	80.50	80.50	80.50																																																																																																																																																																																																																																																																																																																																																																																																																																																																																																																																																		
Jul	81.00	81.00	81.00	81.00	81.00																																																																																																																																																																																																																																																																																																																																																																																																																																																																																																																																																		
Aug	81.50	81.50	81.50	81.50	81.50																																																																																																																																																																																																																																																																																																																																																																																																																																																																																																																																																		
Sep	82.00	82.00	82.00	82.00	82.00																																																																																																																																																																																																																																																																																																																																																																																																																																																																																																																																																		
Oct	82.50	82.50	82.50	82.50	82.50																																																																																																																																																																																																																																																																																																																																																																																																																																																																																																																																																		
Nov	83.00	83.00	83.00	83.00	83.00																																																																																																																																																																																																																																																																																																																																																																																																																																																																																																																																																		
Dec	83.50	83.50	83.50	83.50	83.50																																																																																																																																																																																																																																																																																																																																																																																																																																																																																																																																																		
Jan	84.00	84.00	84.00	84.00	84.00																																																																																																																																																																																																																																																																																																																																																																																																																																																																																																																																																		
Feb	84.50	84.50	84.50	84.50	84.50																																																																																																																																																																																																																																																																																																																																																																																																																																																																																																																																																		
Mar	85.00	85.00	85.00	85.00	85.00																																																																																																																																																																																																																																																																																																																																																																																																																																																																																																																																																		
Apr	85.50	85.50	85.50	85.50	85.50																																																																																																																																																																																																																																																																																																																																																																																																																																																																																																																																																		
May	86.00	86.00	86.00	86.00	86.00																																																																																																																																																																																																																																																																																																																																																																																																																																																																																																																																																		
Jun	86.50	86.50	86.50	86.50	86.50																																																																																																																																																																																																																																																																																																																																																																																																																																																																																																																																																		
Jul	87.00	87.00	87.00	87.00	87.00																																																																																																																																																																																																																																																																																																																																																																																																																																																																																																																																																		
Aug	87.50	87.50	87.50	87.50	87.50																																																																																																																																																																																																																																																																																																																																																																																																																																																																																																																																																		
Sep	88.00	88.00	88.00	88.00	88.00																																																																																																																																																																																																																																																																																																																																																																																																																																																																																																																																																		
Oct	88.50	88.50	88.50	88.50	88.50																																																																																																																																																																																																																																																																																																																																																																																																																																																																																																																																																		
Nov	89.00	89.00	89.00	89.00	89.00																																																																																																																																																																																																																																																																																																																																																																																																																																																																																																																																																		
Dec	89.50	89.50	89.50	89.50	89.50																																																																																																																																																																																																																																																																																																																																																																																																																																																																																																																																																		
Jan	90.00	90.00	90.00	90.00	90.00																																																																																																																																																																																																																																																																																																																																																																																																																																																																																																																																																		
Feb	90.50	90.50	90.50	90.50	90.50																																																																																																																																																																																																																																																																																																																																																																																																																																																																																																																																																		
Mar	91.00	91.00	91.00	91.00	91.00																																																																																																																																																																																																																																																																																																																																																																																																																																																																																																																																																		
Apr	91.50	91.50	91.50	91.50	91.50																																																																																																																																																																																																																																																																																																																																																																																																																																																																																																																																																		
May	92.00	92.00	92.00	92.00	92.00																																																																																																																																																																																																																																																																																																																																																																																																																																																																																																																																																		
Jun	92.50	92.50	92.50	92.50	92.50																																																																																																																																																																																																																																																																																																																																																																																																																																																																																																																																																		
Jul	93.00	93.00	93.00	93.00	93.00																																																																																																																																																																																																																																																																																																																																																																																																																																																																																																																																																		
Aug	93.50	93.50	93.50	93.50	93.50																																																																																																																																																																																																																																																																																																																																																																																																																																																																																																																																																		
Sep	94.00	94.00	94.00	94.00	94.00																																																																																																																																																																																																																																																																																																																																																																																																																																																																																																																																																		
Oct	94.50	94.50	94.50	94.50	94.50																																																																																																																																																																																																																																																																																																																																																																																																																																																																																																																																																		
Nov	95.00	95.00	95.00	95.00	95.00																																																																																																																																																																																																																																																																																																																																																																																																																																																																																																																																																		
Dec	95.50	95.50	95.50	95.50	95.50																																																																																																																																																																																																																																																																																																																																																																																																																																																																																																																																																		
Jan	96.00	96.00	96.00	96.00	96.00																																																																																																																																																																																																																																																																																																																																																																																																																																																																																																																																																		
Feb	96.50	96.50	96.50	96.50	96.50																																																																																																																																																																																																																																																																																																																																																																																																																																																																																																																																																		
Mar	97.00	97.00	97.00	97.00	97.00																																																																																																																																																																																																																																																																																																																																																																																																																																																																																																																																																		
Apr	97.50	97.50	97.50	97.50	97.50																																																																																																																																																																																																																																																																																																																																																																																																																																																																																																																																																		
May	98.00	98.00	98.00	98.00	98.00																																																																																																																																																																																																																																																																																																																																																																																																																																																																																																																																																		
Jun	98.50	98.50	98.50	98.50	98.50																																																																																																																																																																																																																																																																																																																																																																																																																																																																																																																																																		
Jul	99.00	99.00	99.00	99.00	99.00																																																																																																																																																																																																																																																																																																																																																																																																																																																																																																																																																		
Aug	99.50	99.50	99.50	99.50	99.50																																																																																																																																																																																																																																																																																																																																																																																																																																																																																																																																																		
Sep	100.00	100.00	100.00	100.00	100.00																																																																																																																																																																																																																																																																																																																																																																																																																																																																																																																																																		
Oct	100.50	100.50	100.50	100.50	100.50																																																																																																																																																																																																																																																																																																																																																																																																																																																																																																																																																		
Nov	101.00	101.00	101.00	101.00	101.00																																																																																																																																																																																																																																																																																																																																																																																																																																																																																																																																																		
Dec	101.50	101.50	101.50	101.50	101.50																																																																																																																																																																																																																																																																																																																																																																																																																																																																																																																																																		
Jan	102.00	102.00	102.00	102.00	102.00																																																																																																																																																																																																																																																																																																																																																																																																																																																																																																																																																		
Feb	102.50	102.50	102.50	102.50	102.50																																																																																																																																																																																																																																																																																																																																																																																																																																																																																																																																																		
Mar	103.00	103.00	103.00	103.00	103.00																																																																																																																																																																																																																																																																																																																																																																																																																																																																																																																																																		
Apr	103.50	103.50	103.50	103.50	103.50																																																																																																																																																																																																																																																																																																																																																																																																																																																																																																																																																		
May	104.00	104.00	104.00	104.00	104.00																																																																																																																																																																																																																																																																																																																																																																																																																																																																																																																																																		
Jun	104.50	104.50	104.50	104.50	104.50																																																																																																																																																																																																																																																																																																																																																																																																																																																																																																																																																		
Jul	105.00	105.00	105.00	105.00	105.00																																																																																																																																																																																																																																																																																																																																																																																																																																																																																																																																																		
Aug	105.50	105.50	105.50	105.50	105.50																																																																																																																																																																																																																																																																																																																																																																																																																																																																																																																																																		
Sep	106.00	106.00	106.00	106.00	106.00																																																																																																																																																																																																																																																																																																																																																																																																																																																																																																																																																		
Oct	106.50	106.50	106.50	106.50	106.50																																																																																																																																																																																																																																																																																																																																																																																																																																																																																																																																																		
Nov	107.00	107.00	107.00	107.00	107.00																																																																																																																																																																																																																																																																																																																																																																																																																																																																																																																																																		
Dec	107.50	107.50	107.50	107.50	107.50																																																																																																																																																																																																																																																																																																																																																																																																																																																																																																																																																		
Jan	108.00	108.00	108.00	108.00	108.00																																																																																																																																																																																																																																																																																																																																																																																																																																																																																																																																																		
Feb	108.50	108.50	108.50	108.50	108.50																																																																																																																																																																																																																																																																																																																																																																																																																																																																																																																																																		
Mar	109.00	109.00	109.00	109.00	109.00																																																																																																																																																																																																																																																																																																																																																																																																																																																																																																																																																		
Apr	109.50	109.50	109.50	109.50	109.50																																																																																																																																																																																																																																																																																																																																																																																																																																																																																																																																																		
May	110.00	110.00	110.00	110.00	110.00																																																																																																																																																																																																																																																																																																																																																																																																																																																																																																																																																		
Jun	110.50	110.50	110.50	110.50	110.50																																																																																																																																																																																																																																																																																																																																																																																																																																																																																																																																																		
Jul	111.00	111.00	111.00	111.00	111.00																																																																																																																																																																																																																																																																																																																																																																																																																																																																																																																																																		
Aug	111.50	111.50	111.50	111.50	111.50																																																																																																																																																																																																																																																																																																																																																																																																																																																																																																																																																		
Sep	112.00	112.00	112.00	112.00	112.00																																																																																																																																																																																																																																																																																																																																																																																																																																																																																																																																																		
Oct	112.50	112.50	112.50	112.50	112.50																																																																																																																																																																																																																																																																																																																																																																																																																																																																																																																																																		
Nov	113.00	113.00	113.00	113.00	113.00																																																																																																																																																																																																																																																																																																																																																																																																																																																																																																																																																		
Dec	113.50	113.50	113.50	113.50	113.50																																																																																																																																																																																																																																																																																																																																																																																																																																																																																																																																																		
Jan	114.00	114.00	114.00	114.00	114.00																																																																																																																																																																																																																																																																																																																																																																																																																																																																																																																																																		
Feb	114.50	114.50	114.50	114.50	114.50																																																																																																																																																																																																																																																																																																																																																																																																																																																																																																																																																		
Mar	115.00	115.00	115.00	115.00	115.00																																																																																																																																																																																																																																																																																																																																																																																																																																																																																																																																																		
Apr	115.50	115.50	115.50	115.50	115.50																																																																																																																																																																																																																																																																																																																																																																																																																																																																																																																																																		
May	116.00	116.00	116.00	116.00	116.00																																																																																																																																																																																																																																																																																																																																																																																																																																																																																																																																																		
Jun	116.50	116.50	116.50	116.50	116.50																																																																																																																																																																																																																																																																																																																																																																																																																																																																																																																																																		
Jul	117.00	117.00	117.00	117.00	117.00																																																																																																																																																																																																																																																																																																																																																																																																																																																																																																																																																		
Aug	117.50	117.50	117.50	117.50	117.50																																																																																																																																																																																																																																																																																																																																																																																																																																																																																																																																																		
Sep	118.00	118.00	118.00	118.00	118.00																																																																																																																																																																																																																																																																																																																																																																																																																																																																																																																																																		
Oct	118.50	118.50	118.50	118.50	118.50																																																																																																																																																																																																																																																																																																																																																																																																																																																																																																																																																		
Nov	119.00	119.00	119.00	119.00	119.00																																																																																																																																																																																																																																																																																																																																																																																																																																																																																																																																																		
Dec	119.50	119.50	119.50	119.50	119.50																																																																																																																																																																																																																																																																																																																																																																																																																																																																																																																																																		
Jan	120.00	120.00	120.00	120.00	120.00																																																																																																																																																																																																																																																																																																																																																																																																																																																																																																																																																		
Feb	120.50	120.50	120.50	120.50	120.50																																																																																																																																																																																																																																																																																																																																																																																																																																																																																																																																																		
Mar</																																																																																																																																																																																																																																																																																																																																																																																																																																																																																																																																																							

# PROFESSIONAL BUSINESSES & SERVICE DIRECTORY

 **Consumers'**  
**Fuel CO-OP ASSOCIATION**

- Fuel & Farm Supplies
- Gasoline & Diesel


116 New York Street  
364-1146

COMPUTERS MADE EASY  
COMPUTERS - SOFTWARE  
SUPPLIES - SERVICE

 **FOSTER ELECTRONICS**


SUGARLAND MALL • MIKE FOSTER • 364-4882

## Business Of The Week

LANCE MARTIN  M.D. FRANKS  
(806) 364-9192  
Home Phone

**L&M MANUFACTURING**  
All Steel Storage/Welding & Repair

Rt. 4 Box 42A Hereford, Texas 79045 Phone (806) 364-4223  
West Deere Road

 **Myotherapy Clinic**

335 N. Mules - Suite B  
Hereford, TX 79045  
(806) 364-8899

6:00 p.m. - 10:00 p.m. M-F  
9:00 a.m. - 3:00 p.m. Sat.

Relaxation - Stress Relief  
Sports Massage - Accupressure  
M.V.A. - Shiatsu

Daniel Lemus, R.M.T.

• Cedar & Shake  
• Composition  
• Modified Bitumen

Commercial & Residential  
Roofing

• Tile  
• Slate  
• Built-up

 **Paul Blake**  
ROOFING  
400 Hereford Hwy.  
Canyon, Texas 79015

**PAUL BLAKE**  
(806) 655-3094  
Mobile 679-7571 • Toll Free 1-800-244-3940

 **Ink Spot Printing Co.**  
COMMERCIAL PRINTING  
(806) 364-0432

MARY STUBBLEFIELD

340 N. 25 Mile Ave.  
Hereford, Texas 79045

**C & W**  
**EQUIPMENT COMPANY**

SPECIALIZING IN USED TRACTORS & FARM EQUIPMENT  
We Do Appraisals and Complete buyouts

**364-2021**

AFTER HOURS CALL... JOE WARD 289-5394 OR CHRIS CABBINESS 488-2700  
MOBILE 344-4020 MOBILE 344-2392

 **TRANE** IT'S HARD TO STOP A TRANE 

COMMERCIAL REFRIGERATION  
HEATING & AIR CONDITIONING

**R & R REFRIGERATION**  
364-0788

127 N. Main - Hereford, Tx 79045

ROBERT RHOTON  
40 Years Service  
364-4714

- State Lic. No.  
TACLA004746C