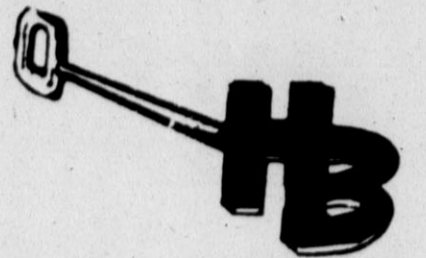


Tuesday
April 14, 1987

★ Hustlin' Hereford,
home of Betty Henson

The HEREFORD BRAND



86th Year, No. 200, Deaf Smith County, Hereford, Tx.

12 Pages

25 Cents



Museum Attracts All Ages

Kyle Artho was among the estimated 400 people who attended the 20th anniversary open house of the Deaf Smith County Museum Sunday afternoon. Kyle, 4-year-old-son of Mr. and Mrs. Dennis Artho, was

attracted to the Abe Martin Circus display, one of the new features at the museum. The historical society provided refreshments and music for the special event.

County commissioners to finish long agenda today

County commissioners opened their regular meeting at 10 a.m. Monday facing a 24-item agenda. County Judge Tom Simons recessed the court at 3 p.m. to allow the commissioners to attend a WDIC meeting and a meeting in Canyon concerning the possible placement of the supercollider in the area.

Commissioners reconvened at 10 a.m. today to finish business.

On Monday, commissioners tentatively accepted a bid from West Texas Rural Telephone to purchase telephones for the courthouse and outlying offices on a lease purchase basis. A firm contract will be made upon reassessment of actual needs in regard to specific equipment. It is expected that the lease-purchase agreement will generate considerable savings for the county.

County Clerk David Ruland reported that election expenditures for the county tax issue were calculated to be \$2,508.62. Not all of the figures are in yet for Ruland to make a final assessment of election costs.

The commissioners responded favorably to an appeal from JoAnn Dwyer concerning the placement of a Domestic Violence Outreach office in Hereford. The commissioners designated an ordinance in favor of the program and offered office space on the third floor of the Courthouse to

temporarily house the program.

Commissioners also heard a report from Rob Hager of the Driskill House, located in Tulia. Hager reported on the number of Deaf Smith County residents in the past who have used the facility and requested the court to make allowances in the budget for some form of reimbursement to the facility. The commissioners decided to take no action on the matter at this time since many of the residents are placed in the facility on a voluntary basis and are therefore responsible for their own bills.

In other business, Commissioners granted Ignacio Hernandez, representing Kids, Inc., permission to erect a donated sign at the baseball park entrance.

A contract for elevator maintenance was eliminated because county personnel are capable of performing the service.

Stella DeLeon of the Panhandle Community Services explained their job training services which would subsidize half of the salary of one of their clients.

The newly established library in Vega won the bid for purchase of used library equipment.

David Colwell offered the winning bid to purchase an old truck from Precinct 4.

Acceptance of fuel bids was tabled pending more information from the bidders.

Beverly Harder of the County Extension Service received permission to use funds allocated for the hiring of a part-time employee for summer programs.

A community development contract was amended to reflect the paving of two streets in the labor camp area.

Colleen Duffy of the Juvenile Probation Office received approval to hire a part-time assistant to be paid by Oldham County.

Plans were made to provide county vehicles to transport commodities from storage in Amarillo to the county for distribution.

Commissioners discussed the consideration of amending the Interlocal Government Agreement to add the High Plains Underground Water District to place a representative on the Waste Deposit Impact Committee.

Commissioner Rose moved the Water District be allowed a non-voting seat on the basis of their non-involvement during the formation of the committee and since the district is not confined entirely to residents of Deaf Smith County. After debate the motion died for lack of a second.

Commissioners tabled the matter until today when they expect to hear from Phillip Niedzielski-Eichner, Executive Director of the WDIC.

Shultz invites Soviet leader to U.S. summit

MOSCOW (AP) — Secretary of State George P. Shultz today renewed the invitation for Soviet leader Mikhail Gorbachev to go to Washington for a superpower summit, but the Kremlin leader said "generally without reason I do not go anywhere, particularly to America."

At the start of a meeting with Gorbachev in an ornate hall at the Kremlin, Shultz delivered a letter from President Reagan containing the invitation to Washington.

"You're welcome to come," Shultz said. "I have a letter from the president and it says so."

Reagan and Gorbachev have held two summit meetings — in Geneva in November 1985 and in Iceland last October. They agreed informally in Geneva that Gorbachev would visit Washington to see the president last year. Reagan then would have gone to Moscow this year.

Gorbachev has not acted on the U.S. invitation, which Reagan renewed in the letter. Howard H. Baker Jr., the president's chief of staff, said Monday in California that he would not be surprised to see a decision on a superpower summit emerge from Shultz' three-day visit to Moscow.

As Gorbachev and Shultz shook hands, posing for photographs, a reporter asked the Soviet leader if he would be going to Washington this year.

"That's precisely what we are going to discuss," Gorbachev said. "We must continue the discussion and then answer your question."

The Communist Party general secretary added, speaking in Russian: "I think I have to be hopeful, and it just cannot be that I would avoid America in my travels. But generally without reason I do not go

anywhere, particularly to America. This cannot be just a stroll."

The Soviet leader, who is 56, said that when he nears retirement "then I may travel just for pleasure. But now I need business."

Motioning to Shultz, who stood at his side during the picture-taking, Gorbachev said: "The secretary of state keeps silent."

Shultz, as if on cue, said "You're welcome to come" and pulled Reagan's letter from his pocket. "I have a letter from the president that says so."

Gorbachev remarked with a smile: "So, I was able to achieve it."

Shultz met Premier Nikolai Ryzhkov this morning and had a working lunch at the U.S. Embassy. At the same time, arms control experts from both sides met to work on a possible agreement on removing medium-range missiles from Europe.

The secretary of state also arranged to meet Foreign Minister Eduard Shevardnadze today, their fourth

meeting in two days. Shultz arrived Monday.

Shultz met for more than seven hours Monday with Shevardnadze, and a U.S. official said alleged KGB bugging of the U.S. Embassy was the first item of discussion.

Foreign Ministry spokesman Genady Gerasimov said today Shultz and Shevardnadze spent most of their time discussing security issues.

He told reporters at a government briefing that the "most promising direction" in the talks was the area of medium-range missiles, but he did not elaborate.

The two sides have a tentative understanding to remove hundreds of their rockets from Europe, but negotiations are stalled over how to verify their removal and what to do about 130 Soviet, shorter-range missiles.

Gerasimov said Shultz and Shevardnadze set up working groups to "discuss concrete problems and fix the stands of the sides" before the two met again.

House okays bill for budget execution

AUSTIN (AP) — It's not the typical birthday present for a 70-year-old, but Gov. Bill Clements says it was just what he wanted.

The House on Monday — Clements' birthday — voted preliminary approval for a "budget execution" bill setting up a system for emergency budget action when the Legislature is not in session.

The plan that was advanced to a final House vote is not the precise

one Clements wanted, but he said he was pleased.

"The best birthday present I could have," he called it.

Clements and some lawmakers have complained that the state's hands are tied when budget problems crop up when the Legislature is out of town. Under the plan tentatively approved 76-68 by the House, the governor could submit a proposed solution to the Legislative Budget Board, which is made up of 10 lawmakers.

The board could accept, reject or modify the governor's plan. The governor could then veto whatever the board came up with, and then call lawmakers into special session.

"Budget execution authority will greatly assist our efforts to resolve cash flow problems," Clements said.

Final House approval would send the bill to the Senate, where a similar plan failed to win approval earlier this year.

"I am confident the Senate will do what is right for Texas and will do what the House has done," Clements said.

House Appropriations Chairman Jim Rudder, who won House approval for his version of budget execution, disagreed.

The initial version of the House bill, sponsored by Rep. Charles Evans, R-Hurst, would have set up a new six-member board, including the governor, to handle budget emergencies when lawmakers are out of town.

Kansan wins bee, Deyke places 13th

Andy Evans, a 14-year-old from Plains, Kan., repeated as champion of the Regional Spelling Bee at West Texas State University Saturday and will be going to the National Bee in Washington, D.C., for the second year in a row.

Runner-up was Jennifer Schmitt, 13, of Gage, Okla. Leasha Deyke, 13, an eighth-grader at La Plata, represented Hereford as the Deaf Smith County champion. She placed 13th out of the 45. Greg Coplen, junior bee champion here, also received special recognition at the regional event.

Evans won the event by correctly spelling "rebote", and then "pageanteer", an actor who performs in a pageant. Miss Schmitt

missed the spelling of "rebote", the rear wall of a jai alai court.

Forty-five youngsters from the area—including the Texas and Oklahoma panhandles, south Kansas and eastern New Mexico—competed in the 39th annual bee. The regional bee is sponsored by the Amarillo Globe-News and WTSU. The newspaper funds the trip to Washington for the winner and one parent.

Ryan Heise, 12, of Guymon, Okla., won third place; Jeffrey Snodgrass, 13, of Perryton was fourth; Kim Coleman, 12, of Vica, Okla., finished fifth; Jennifer Wilhelm, 12, of Dalhart was sixth, and Denea Hanes, 13, of Nazareth was seventh.

Surveys, monitoring part of NWPO ammunition

The Texas Nuclear Waste Programs Office plans to fight the nuclear waste repository with more socio-economic surveys and monitoring of geological exploration, but also is watching litigation on the Department of Energy's procedural problems, according to spokesmen from that office who were in Hereford Monday for an informational meeting.

Staffers of the office in Austin gave updates on the status of the state stance at a public meeting sponsored by POWER of Hereford.

Steve Frishman, director of the NWPO, said part of the survey research would include a study of world agricultural market impacts that the Chernobyl, USSR, nuclear accident a year ago caused. Frishman said that the Chernobyl area was agriculturally productive and the study could provide insight to the potential of contamination, real or imagined, from this agricultural market which he described as "delicate" because of its specialized production.

Gary Keith, the Texas Department of Agriculture survey specialist said the first three surveys done showed

that Panhandle residents were not in favor of a repository. Like the Chernobyl study, surveys will be used to indicate what residents think the effects from a nuclear waste dump

will have on their lives. Keith said that the surveys indicate that opposition to the dump grows as more information about it is learned. Socio-economist James Jarrett

will be in charge of detailed interviews, lasting about a half-hour, to be conducted in the next four months by workers from several Texas colleges. He said that after baseline information is collected, an assessment will be made of what people think the impacts of a waste dump will be. Interviews will begin in late May and a final report published in August.

Also, a market basket survey of prices will be conducted in June to determine if an influx of Department of Energy personnel will create inflation exceeding the national rate.

Results of the surveys will be used in the state's protest and for determining Payment Equal to Taxes (PETT) should any entity qualify. Frishman said he will be working with the local Waste Deposit Impact Committee to work out estimates. But, he noted that the county may be the only entity eligible.

Litigation remains the major key to stopping site characterization and the repository and its web lays over procedure and geo-technical questions.

Frishman said that the DOE is in-

terested in over 40 lawsuits over the repository.

The slow-moving cases are basically questioning whether DOE has made its decisions on technical or political motives, Frishman said.

He said another point of contention is that administrative amendments have been made in the procedure of the Nuclear Waste Policy Act which need to be made congressionally. Changes such as the Monitored Retrieval System proposal, cancelling the second site search and altering the deadlines were called by the Secretary of Energy and are contradictory to what the act states.

Frishman also questions the use of contractors related to the nuclear industry doing work on characteriza-

tion because each will want to prove its site as "best" in hopes of obtaining the contract for construction.

Geologist Susan Zimmermann, from the NWPO, says the DOE somewhat contradicts itself by wanting "permanent" storage that also is retrievable.

She has questions about the movement of salt, called creep, that is caused by change of temperature of pressure. She said the DOE predicted a 3-inch creep in shafts at the Waste Isolation Pilot Project in Carlsbad, N.M. Zimmermann found during a recent trip to the WIPP that 14 inches movement has been recorded in 3 1/2 years. DOE shows the Deaf Smith County salt bed has a higher creep rate.



STEVE FRISHMAN...
...giving NWPO update.

Weather

SATURDAY HIGH: 84
SUNDAY A.M. LOW: 34 SUNDAY HIGH: 78
MOISTURE: .03 of an inch at KPAN.
MONDAY A.M. LOW: 36 MONDAY HIGH: 81
MOISTURE: .01 of an inch at KPAN.
TUESDAY A.M. LOW: 36
OUTLOOK: Fair tonight and not as cold. Low in mid 30s. Wind northwest 10 to 20 mph. Wednesday, sunny and warmer. Highs near 80.

News Roundup

Local FFA places in contest

Sixteen students from the Hereford Future Farmers of America chapter participated Saturday in judging contests at Texas Tech University.

The Horse Judging team, which consisted of Steve Richardson, Alison Lookingbill, Jill Johnson, and Casey Jones, placed second in district.

The Meats team also narrowly placed second, losing the district crown to Friona by a score of 1,604 to 1,616. Kristi Powell, Cami Struve, Chris Connally, and Dale West were on the team.

The Dairy Products team, made up of Kristi Wells, Kelly Wells, Wisti Mars, and Cindy Meiwes, finished first in the Littlefield District.

The Dairy Cattle team won district, and also placed sixth in the panhandle area. In addition, Shayne Felhauer received a ribbon as 17th high contestant among over 250 entrants. Other members of the Dairy Cattle team were Toby Hill, Toby Fulton, and Jeremy Myers. The team was one place from advancing to state competition.

The chapter advisors, Mr. Bill Binder and Mr. Kevin Kelley, were the team coaches.



Brand Staffers Honored

Mauri Montgomery, advertising director, and Sandy Pankey, lifestyles editor, were honored by the Panhandle Press Association Saturday. Montgomery was elected vice president of the PPA, and Pankey received a third-place plaque for feature writing. Pankey's winning entry was a first person feature on dealing with cancer.

State

House backs door-breaking bill

AUSTIN (AP) — A bill that has won tentative House approval would place tighter restrictions on when police could break down a door to make an arrest.

Texas law enforcement officials now can use such entry at any house in order to make a felony arrest. But Rep. Robert Earley's bill says police could only break down doors if an arrest warrant had been issued for the suspect and if the home is the suspect's residence.

The measure by the Portland Democrat was advanced on a non-record vote Monday, and faces another House vote that could send it to the Senate.

Preliminary House approval also was given Monday to a bill by Rep. Sam Johnson, R-Plano, that would allow crime victims to testify at parole hearings for the criminals that victimized them. The right to testify also would cover relatives of deceased crime victims.

Rep. M.A. Taylor, R-Waco, won tentative approval for a proposal that would, in effect, end mandatory retirement for judges.

Boulter heads Kemp campaign in Texas

DALLAS (AP) — Republican presidential hopeful Jack Kemp said he plans to campaign heavily in Texas to counter the home-state strength of Vice President George Bush.

"I think Texas — where it is Vice President Bush's home state — there's going to be a lot of support for Jack Kemp," said the congressman from New York State Monday. "I'm going to be in Texas a lot."

"I have never felt uncomfortable in playing in someone else's ball park," Kemp told a group of reporters. "The rules are the same."

Kemp, a former pro football quarterback, said that by the time next year's Super Tuesday presidential primary rolls around on March 8, "I think it could very well be different in Texas."

Kemp, 51, who announced his candidacy April 6, was in Dallas as part of an 18-state tour to garner support for his campaign and to introduce U.S. Rep. Beau Boulter, R-Amarillo, as his state campaign chairman. Boulter also sits on Kemp's national steering committee.

National

Cargo plane crashes

KANSAS CITY, Mo. (AP) — A cargo plane crashed in light fog Monday night in a field near Kansas City International Airport, killing three people aboard, authorities said.

The Boeing 707 crashed as it was preparing to land at the airport en route from Wichita, Kan., said Ron Cop, regional duty officer of the Federal Aviation Administration.

The bodies of three crew members were recovered, said Harold Knabe, a Kansas City Fire Department spokesman. He said authorities heard that a passenger may have been on the plane and were searching for a fourth body.

The crash at about 10 p.m. occurred just southeast of the airport, about 20 miles north of downtown. Visibility at the time was about one-half mile.

Judge halts Hinckley hearing

WASHINGTON (AP) — Courtroom revelations that presidential assailant John W. Hinckley Jr. exchanged letters with serial killer Theodore Bundy have interrupted a hearing on his bid for an Easter pass from a mental hospital.

A psychiatrist testified Monday that Hinckley showed a lapse of judgment by writing Bundy, who is awaiting execution in Florida for three 1978 murders.

Hinckley, 30, recently wrote Bundy a letter "expressing his sorrow, as I understand it, his feelings of the awful position that Bundy must be in," Dr. Glenn H. Miller told U.S. District Judge Barrington Parker. The hearing will continue Wednesday.

Miller also testified that Hinckley once requested the address of mass killer Charles Manson and he received a letter from Manson follower Lynette "Squeaky" Fromme, imprisoned for trying to kill President Ford in 1975.

The surprise testimony brought to a sudden halt the hearing on Hinckley's request for a 12-hour pass from St. Elizabeths Hospital, where he was sent for shooting President Reagan.

Parker abruptly called attorneys to a conference at the bench.

Hart to campaign in Amarillo

DENVER (AP) — Gary Hart is leveling his fire at the policies and people of the Reagan administration as he begins his bid for the White House, with only a nod toward fellow Democrats also seeking the party's presidential nomination.

Hart formally entered the race Monday, with a pair of announcement speeches in Denver, his hometown.

First amid the snows and red cliffs of the Rocky Mountains and then at a downtown rally, the former Colorado senator talked of the idealism he hopes to spark during the campaign.

"Let us go forward from this day committed to restore this land to all of its people, to restore a sense of genuine true patriotism to America. And if we do, we will have done the greatest thing for this country any of us could ever do," Hart told the rally. "March on!"

Hart said he was running for "one single reason, and that is because I love my country."

Today, he was starting his first official campaign swing with stops in Amarillo, Texas, and Des Moines, Iowa.

Hart, 50, is the third candidate to join the race officially, but he is way ahead of all the other Democratic hopefuls in the early polls. That is quite a contrast to his 1984 campaign, when he barely registered in the polls but almost won the nomination.

International

Soviet nuke plant may have leaked

BONN, West Germany (AP) — A Soviet nuclear power plant accident is the most likely cause of abnormally high radioactivity detected recently in West Germany and Sweden, West German officials said.

"The experts are all saying it was almost certainly a nuclear power accident," Heinz-Joerg Haury, a spokesman for the government-financed Institute for Radioactivity and Environmental Research in Munich, said today.

Detlef Diehl, a spokesman for the Federal Environment Ministry, confirmed late Monday a report in the West Berlin alternative newspaper TAZ that West Germany and Sweden measured increased radiation from March 9 to March 15.

Diehl said investigators believe the increased radiation probably came from a power plant accident in the central Soviet Union, but that there was a slight possibility it resulted from an underground nuclear weapons test.

City police busy during weekend

Hereford city police were kept busy during the weekend and on Monday. They reported five minor accidents with no injuries and a total of 32 citations were issued during that time.

Police also responded to one fire call on Saturday in the alley between Stanton and Ave. G in the 600 block where a dumpster was on fire.

On Saturday police also responded to a variety of calls including a suspicious person at 16th and Irving, punctured tires on the 400 block of

Late tax filer may get returns by July 4th

WASHINGTON (AP) — If you've waited until this close to the deadline to file your federal tax return, you may get your refund just in time for the Fourth of July.

With the midnight Wednesday deadline approaching, the Internal Revenue Service reports its 10 service centers are operating full time processing tax returns. Backlogs of unprocessed returns are relatively low and "we expect no problems in dealing with the last-minute filers," IRS spokesman Larry Batdorf said Monday.

But because of the crush — the IRS expects 23 million returns will be filed between last Friday and the deadline — you can no longer count on getting a refund in four or five weeks. Now, says Batdorf, it may take as long as 10 weeks.

More than 58 million couples and individuals had filed their returns through April 3, the last date for which figures are available. That is a bit below last year's pace, and tax experts lay part of the blame to confusion about the tax law enacted last year.

"People have been bombarded about changes in the tax law from way back when they were just proposals," said Joan Stolpen, a tax adviser with Merrill Lynch Inc. in Princeton, N.J.

Ave. H, theft of a pit bull on the 900 block of North Miles, theft of beer and charcoal from Save 'N Gain, a dog bite on the 600 block of Union, a family dispute on the 400 block of Ave. D, theft of curtains from an apartment on Sycamore Lane, and two family disturbance calls.

On Saturday police answered criminal mischief calls at Westgate Nursing Home and on the 200 block of North Miles where car windows had been broken. No value has been placed on criminal mischief which was reported at the Municipal Golf Course.

Harrassment calls were reported on Vera Cruz, S. Julian and W. 15th streets on Saturday.

Criminal mischief cases continued on Sunday with car windows broken at Whiteface Ford, Stagner-Orsborn, and plate glass broken on the 200 block of West Park.

Sunday's calls also included assault on the 500 block of Mable, theft of jewelry was reported on the 700 block of Ave. H, public intoxication on the 600 block of N. Schley, burglary of a residence in which a stereo and television were taken, aggravated assault on the 600 block of N. Main in which charges were filed by a stabbing victim, and assault charges were filed on the 400 block of N. Main.

Possible shots were reported at Grand and Ave. J. over the weekend. Two arrests were made for public intoxication and one arrest was made for DWI, striking a parked vehicle and leaving the scene of an accident.

Other arrests over the weekend involved offenses concerning liability insurance and false identification.

Hereford police made three arrests on Monday, one for DWI, one for public intoxication and one for

reckless driving, contest for speed, running a stop sign, expired driver's license, violation of restriction code on driver's license and no liability insurance.

Offenses reported for Monday include theft of a clarinet from Hereford High School and harrassing phone calls on the 900 block of Brevard. A 16-year-old female reported as a runaway from a residence in the 900 block of 13th has not been located.

A window was reported broken at Northwest Elementary. Cal's One Hour Martinizing, Webster's Carpet and Midtown Beverage located BB holes in their windows.

Early this morning police responded to another reported broken vehicle window on the 300 block of Ave. D. Also this morning a 22 year-old woman was arrested for public intoxication at Third and Jowell.

Obituaries

CLEATUS SAVAGE

April 13, 1987

Cleatus Savage, 58, of Hereford, died Monday afternoon after a lengthy illness.

Services are pending with Rix Funeral Directors of Hereford.

Mr. Savage was born November 4, 1928, in Childress County. He moved to Hereford in 1975 from Plainview and resided at 104 Ave. I in Hereford at the time of his death. He was a retired restaurant owner and operator of Savage Hickory Pit Barbecue in Hereford.

He married Helen Gregg September 28, 1947, in Plainview. He was a member of the Church of Christ.

He is survived by his wife, Helen, of the home; two daughters, Vinita Wright and Seliece Hamilton, both of Hereford; two sons, Aron Savage of the home and Lanny Savage of Plainview; 11 grandchildren; his parents, Mr. and Mrs. L.E. Savage of Muleshoe; one brother, Freddie Savage of Hereford; and one sister, Naomi Hayes of Fort Smith, Ark.

The family will be at 104 Ave. I.

MILDRED ELLIOTT

1900-1987

Mildred Griffith Elliott, 86, of 420 Ranger Drive, died Saturday morning after a brief illness.

Services were held at 2 p.m. Monday in the First Methodist Church with the Rev. Steve McElroy, pastor, officiating. He was assisted by the Rev. Wallace Kirby, chaplain of King's Manor and Westgate Nursing Home. Burial was in West Park Cemetery by Gililand-Watson Funeral Home.

Miss Elliott was born in Durango, Mexico, in 1900. She lived in Mexico during her early years where her parents were missionaries. She later lived in Austin and Alpine before moving to Hereford in 1962. She was active in the First United Methodist Church, Lone Star Study Club and Daughters of the American Revolution.

She is survived by three sisters, Margaret Ann Durham of Hereford; Katherine Rice of Virginia and Helen McLarty of Eustia, Texas. She has 13 nieces and nephews and several great-nieces and nephews.

GLADYS EAVES

April 10, 1987

Gladys Martin Eaves, 77, of Clovis, N.M. died Friday. She had been the owner of Martin's Ready-to-Wear Dress Shop in Hereford and Gladys' Dress Shop in Clovis.

Services were held at 11 a.m. Monday in Steed-Todd Chapel with the Rev. David Snyman, pastor of Trinity United Methodist Church of Clovis, officiating. Burial was in Rest Lawn Cemetery of Hereford.

Mrs. Eaves, born at Sulphur Springs, had been a Clovis resident since 1965. She was a member of Trinity United Methodist Church and the Order of Eastern Star. She was preceded in death by her first husband, Archibald Grady Martin in 1964. She was married to Harold in 1976 at Albuquerque, N.M.

Survivors include her husband; two sons, Archie Martin of Fort Wayne, Ind., and Leon Martin of Camarillo, Calif.; two daughters, Anna Martin of Albuquerque, and Linda Caster Todd of Levelland; eight grandchildren; and seven great-grandchildren.

School board meets today

Hereford Schools trustees meet at 6 p.m. today in the administration building for a regular business meeting.

The Hereford Brand

THE HEREFORD BRAND (USPS 242-000) is published daily except Mondays, Saturdays, July 4, Thanksgiving Day, Christmas Day and New Year's Day, by the Hereford Brand, Inc., 313 N. Lee, Hereford, Tx. 79045. Second class postage paid at the post office in Hereford, Tx. POSTMASTER: Send address changes to the Hereford Brand P.O. Box 673, Hereford, Tx. 79045.

SUBSCRIPTION RATES: Home delivery by carrier in Hereford, \$4.25 month tax included; by mail in Hereford or adjoining counties, \$45.70 a year tax included; mail to other areas, \$47.75 a year tax included.

THE BRAND is a member of The Associated Press, which is exclusively entitled to us for republication of all news and dispatches in this newspaper and also local news published herein. All rights reserved for republication of special dispatches.

THE BRAND was established as a weekly in February, 1881, converted to a semi-weekly in 1948, in five times a week on July 4, 1978.

O.G. Nieman Publisher
Jeri Bhrw Managing Editor
Mauri Montgomery Advertising Mgr.
Charlene Brownlow Circulation Mgr.



Old Tyme Music At Museum

The Hereford Bluegrass and Old Tyme Music Group provided entertainment at the 20th anniversary open house of the Deaf Smith County Museum Sunday. County Commissioner Austin Rose

welcomed visitors and historical society board members hosted the birthday party. An estimated 400 people attended the special party.

Lifestyles

Ann Landers

DEAR ANN LANDERS: Can Vitamin C be effective in the treatment of AIDS? I received a letter yesterday that read as follows:

"If you are worried about the spreading of the AIDS epidemic I have some important news for you." That was the opening sentence of a fund-raising letter sent out by the Lanus Pauling Institute of Science and Medicine in Palo Alto, Calif.

As you probably know, Ann, Lanus Pauling is a two-time Nobel Prize winner. He said, "You can kill the AIDS virus with Vitamin C in a test tube."

I have the feeling that this might lead to the cure the whole world has been praying for. Doesn't it sound like wonderful news?—J.B. in Boise

DEAR J.B.: Not really. A few years ago I read Dr. Pauling's statements about cancer and Vitamin C. No authority with whom I discussed that subject was impressed with Dr. Pauling's theory.

Dr. Victor Herbert, a nutrition expert at the Veterans Administration Medical Center in the Bronx, commented on Dr. Pauling's statement that the AIDS virus could be killed with Vitamin C in a test tube. He said, "You can kill the AIDS virus by urinating in the test tube, too. If you add large amounts of anything to the test tube you will kill the virus." In fact, the AIDS virus is so fragile it dies almost the moment it hits the air, which is why the disease can't be spread by casual contact.

In my opinion, scientists worldwide must pool their findings. Also, it is imperative that we come up with heftier federal funding for AIDS research. This means Congress is the designated hitter. Costly? You bet, but the alternative is unthinkable.

DEAR ANN LANDERS: I have read your column for years and used to think sometimes you made up letters. Now and then one would be so implausible that I was suspicious. Now, something has happened in our own family that has made me a true believer. I will never doubt you again. Please help us if you can.

Dad died three years ago. He left

Mother, my two brothers and me well fixed. A year ago, Mother (now 71) fell madly in love with "John," who is 10 years her junior. Everything was wonderful, except that John is married. Mother knew it but was sure he would get a divorce. He says he is crazy about Mother and we believe him but it turns out that John's two daughters have him tied up financially and his wife would be left with very little. So, "Joanne" (John's wife) agreed to a divorce provided that Mother gave her all her jewelry.

Two months ago Mother handed over approximately \$100,000 worth of pearls, diamonds and sapphires. Last week Joanne announced that she has changed her mind about the divorce but she refuses to return Mother's jewelry. She figures she is entitled to it because of the way she was treated.

John took Mother out last night, says he is still in love with her and wants to continue the relationship but says he can't force Joanne to return the jewelry nor can he force her to keep her word.

We believe Mother should see a lawyer but she says it is too humiliating. She doesn't want anyone to know how foolish she was. Sounds like a soap opera, but every word is true. What should be done?—Outer Slabovia, USA

DEAR OUT: Obviously your mother was foolish to hand over all that jewelry with nothing in writing and no legal counsel. The fact that she is still gaga over John complicates matters.

Take it from me, unless your mother comes to her senses and agrees to dump the wimp and see a lawyer, she will regret it.

Ann Landers' booklet, "Sex and the Teenager," explains every aspect of sexual behavior—where to draw the line, how to say no, the various methods of contraception, the dangers of VD, the symptoms and where to get help. For a copy, send \$2 and a long, self-addressed, stamped envelope (39 cents postage) to Ann Landers, P.O. Box 11562, Chicago, Ill. 60611-0562



Internship Completed

Former Hereford resident, George Arroyos, at left, recently completed a week-long Texas Senate internship offered through the office of Sen. Bill Sims at right. Arroyos is a senior journalism major at Angelo State University and is the son of Jose and Ophelia Arroyos of 409 Ave. D.

Former resident completes internship

Former Hereford High School graduate, George Arroyos, recently completed a Texas Senate internship at the state Capitol in Austin.

Arroyos is currently a senior Journalism Major at Angelo State University. He traveled to Austin during his spring break and successfully completed the week long internship offered through the office of Sen. Bill Sims, D-San Angelo.

According to Arroyos the internship duties included auditing committee hearings in the House and Senate as well as observing the Senate floor while in session. He worked as a staff member in Sims' Capitol office in order to gain a

stronger insight of the state legislative process.

Arroyos is the son of Jose and Ophelia Arroyos of 409 Ave. D in Hereford. He is a 1982 graduate of Hereford High School and is currently employed by the State Department of Highways and Public Transportation in San Angelo.

In his final year at Angelo State University, Arroyos is a member of the Society of Professional Journalists and serves on the school newspaper as circulation manager. He plans to pursue a career in public relations for the state upon graduation.

Easter sunrise service to be hosted by Bippus Club

The Bippus Extension Homemakers Club met recently in the home of Mrs. C.F. (Flora) Homfeld in northwest Deaf Smith County.

Roll call was answered with "my car license number."

President Mariellen Homfeld presided over the meeting. During the business portion of the meeting, it was decided to have the windows and facings at the Bippus Community house repaired and painted.

Plans were made to have the annual Easter Sunrise service and breakfast at the Bippus Community House beginning at 6:45 a.m. Sunday. Guests are invited to attend this service which has been held for more than 15 years. Juice, eggs, sausage, or bacon should be brought for each family.

Kate Bradley reported on the District I TEHA meeting held in Stratford earlier this month.

Farm/Ranch Insurance
JERRY SHIPMAN, CLU
 801 North Main Street
 Off.: 364-3161

County Extension agent Beverly Harder gave a program featuring various kinds of flour, such as oat, barley, millet, soy, etc. She then gave a demonstration on making creative breads using a blender. Members then were treated to a sample of the cinnamon fan rolls.

Members present were Homfeld, Becky Mays and daughter, La Fonda, Juanita Perrin, Kate Bradley, and Homfeld.

Visitor was Mrs. Carl Mendenhall from the Birdwell Ranch.

Plans for the May meeting will be announced at a later date.

Charlie's Tire & Service Center
Special
 Oil Change-Grease Job
 Oil & Filters Included **\$15.95**
Quality Tires-Quality Service
 Tractor On Farm Truck On Road
 Passenger On Road
 Computer Spin Balancing
 Front End Alignment
 Grease Jobs Bearing Pack Shocks
 Oil Change Brake Repair
 501 West 1st 364-5033

Officers elected in local sorority chapter

The Alpha Iota Mu Chapter of Beta Sigma Phi Sorority met recently in the Reddy Room with Beckie Fry serving as hostess and Ruby Sanders serving as co-hostess.

Cathy Bunch, guest speaker, presented a program on "Exercise for Your Health."

During the business meeting, President Ruby Lee reminded members of the children's Easter egg hunt to be held last Sunday.

Rituals will be held April 23 at 7 p.m. in the Community Center. A dinner, catered by members Fry and Carol Kelley on May 2, will feature a social for members and husbands.

A Silent Auction and Salad Supper will be held May 11 in the Community Center with the other two Beta Sigma Phi chapters.

Vice-president Fry had each committee chairman discuss the purpose of their committee to guests who were present.

Thank yous were expressed to secret sisters from Wanda Huseman, Jackie Fangman, and Janice Betzen. Thank yous were also extended by Fry to the membership committee, and Ruby Lee for food, cards, and

gifts while her daughter was in the hospital.

Elections were held and the new officers for the 1987-88 club year are: president, Jackie Fangman; vice-president, Mary Jane Anvik; recording secretary, Dona Hendrickson; corresponding secretary, Janice Betzen; treasurer, Kathie Kerr; and extension officer, Fry.

City council representatives are Fangman, Hendrickson, Huseman, Dee Ann Matthews, and Glenda Jesko, alternate.

Marge Bell was elected chapter advisor for the upcoming year.

The next meeting is set for May 7 with Nancy George, hostess, and Marge Bell, co-hostess.

Guests present were Glenna Caloway, Christi Smith, Patricia Sarchet, and Paula Clark of Friona.

Members present included Holly Bixler, Elizabeth Jesko, Lisa Rollins, Gay Maclasky, Rhonda Nicklaus, Bell, Fangman, Fry, George, Hendrickson, Glenda Jesko, Kelley, Lee, Sanders, Kerr, Matthews, Betzen, Huseman, Anvik, and Connie Matthews, advisor.

Hospital Notes

PATIENTS IN HOSPITAL

Joyce Beavers, Helen Bishop, Marcelino Bernal, William Bryant, Louella Cowsert, Annie Dobbins,

Fern Dow

Laureno Jimenez, Lucille Kemp, Will Kindred, Eune Martin, W.A. Murphy, A.D. Nieman, Claudia Palacios, Grl Palacios, Harold Presley, Raymond Smith, Jeff Zimmerman

Cosmetology exam slated

LEVELLAND — A pre-entrance exam for the cosmetology program at South Plains College will be given Wednesday.

Exam time is 9 a.m. in SPC's Student Assistance Center, located on the third floor of the library. Fee is \$15.

Persons who successfully complete the one-year program will be eligible to take the State Board Examination necessary for licensure by the Texas Cosmetology Commission.

Additional pre-entrance exams in cosmetology will be given April 22, April 29, May 6 and May 13.

For more information, contact SPC's counseling office of cosmetology program at 894-9611.

New Arrivals

Mr. and Mrs. Gerald Jesko are the parents of a boy, Christopher Paul born April 10, 1987.

Dr. Milton Adams Optometrist

335 Miles
 Phone 364-2255
 Office Hours:
 Monday - Friday
 8:30-12:00 1:00-5:00

DR. GOTT

Keep boils from spreading

By Peter H. Gott, M.D.

DEAR DR. GOTT — My husband gets boils a lot. They leave scars as big as a quarter. I have had two boils and my older daughter has had one, but our 6-year-old has never had them. Why do they occur? Are they contagious?

DEAR READER — Common skin boils are the result of infection with staph germs. They can leave scars and, like any infection, are contagious. Boils occur for many reasons, including a susceptibility that some people may inherit, the presence of diabetes or an immune deficiency, or unusually germ-laden skin.

Your husband should be checked by a doctor to see if he has a treatable cause for his tendency to skin infections. Your family may have fewer problems if you use a bath soap that contains an anti-bacterial compound. Your pharmacist can advise you.

DEAR DR. GOTT — I have blood blisters in my mouth. My platelet count is 35,000 and my semen is red. This really takes the starch out of me. I've had every test you can imagine and they all come out normal. I'd appreciate any information you could provide.

DEAR READER — Your platelet count is low. These tiny blood cells are necessary for proper blood coagulation. With too few platelets, bleeding can occur into the skin, intestinal tract or reproductive system.

You need a full examination by a special doctor (a hematologist) to determine why your blood cells are defi-

cient. Once the cause has been discovered, you can be treated to correct the abnormality.

DEAR DR. GOTT — Several years ago a medical column carried a recipe for a mixture to bleach age spots. My pharmacist says he will make it up (I have a prescription for it), but he doesn't know the ingredients. Can you help?

DEAR READER — I'm not sure I can. If you have a prescription for it, it must list either the name of the product or its ingredients.

In the past few years, most doctors have chosen to prescribe by a drug's generic title or brand name. However, older physicians (and pharmacists) can remember when doctors listed, and pharmacists combined, the specific portions of a medication. Nowadays, medicines are more complicated and commercial drug companies have taken the responsibility of mixing and marketing the portions, which doctors then order by name.

I am unaware of any current medicine that, when applied to the skin, bleaches the pigmented areas that come with age. If you have a prescription for the ingredients, a compounding pharmacist can make up the final product. If you have the name of the substance, the pharmacist can order it if it is still being manufactured.

Jishes ... Bridal Registry

♥ Sheryl Simpson
 Thomas Jeffries

Stacy Schroeder
 Kevin Hamby

Cay Zetsche
 Trace Taylor

Vicki Marasco
 Randy McNeese

Andra Dorman
 Kenneth Schlabs

Leann Bain
 Gary Gatten

Dallas Ann Phillips
 Carl Paetzold

Mary Koozer
 Bobby Low

Jan Pickens
 Vernon Carroll

Royse Anne Taylor
 Jeffrey Lee Donaway

Michelle Clarke Hall
 John Hall

♥ Karen Kay Wagner
 Mitchell Lee Clark

♥ Bridal Shower This Week

The Mall

Phone Orders Welcome
 We Deliver

364-7122



SPONSOR OF THE WEEK

FLORIST

FLOWERS
 Park Avenue Florist

364-4042

315 Park Ave

After Hours Call
 276-5639 or 364-4088

FEATURED ON YOUR
 WHITE & GREEN PHONE
 BOOK COVER!

A.O. THOMPSON ABSTRACT COMPANY
 Margaret Schroeter, Owner
 Abstracts Title Insurance Escrow
 P.O. Box 73 242 E. 3rd Phone 534-6641
 Across from Courthouse

BATTELLE JOB OPENINGS

The Battelle Project Management Division, a prime contractor for the U.S. Department of Energy, has immediate openings for the following positions:

Senior Design Licensing Advisor. ONWI Licensing Department. Typically requires B.S. or M.S. in engineering or physical science, proven oral and written communication skills, and minimum of 10 years' relevant work experience, including at least 5 years' experience in licensing, safety analysis, or design engineering for nuclear facilities (e.g., fuel fabrication, power generation, or repository projects); working knowledge of federal nuclear regulations and nuclear industry codes and standards; previous NRC-interaction experience as well as proven ability to manage multi-discipline activities to successful completion, technical management experience on NRC-regulated projects highly desirable. This position will be located in Hereford, Texas. (BPMD 287-121) (524)

Senior Test Engineer. ONWI Engineering Department. Typically requires M.S./Ph.D. in materials, applied mechanics, geotechnical engineering, or related discipline; 5 years' experience in design and/or analysis of nuclear waste repositories; excellent verbal and written communication skills. Familiarity with analysis, testing, and evaluation of salt, cementitious, and/or earthen materials highly desirable. This position will be located in Hereford, Texas. (BPMD 287-123) (276)

Battelle offers a comprehensive benefits package and salaries commensurate with your background. Qualified applicants may apply in person for these positions at the following locations:

Texas Employment Commission Offices
 1206 West 7th Avenue 700 Twenty-Five Mile Avenue
 Amarillo, Texas 79101 Hereford, Texas 79045



Office of Nuclear Waste Isolation
 Interstate 40 and State Route 385
 Vega, TX 79092

* Applications will be accepted between 9:00 and 11:00 a.m. M-F at the Vega Office only, or submit a resume to the Vega Office

At this time, applications are being accepted for these positions only. Subsequent positions will be advertised as they become available.

An Equal Opportunity/Affirmative Action Employer

Hereford goes undefeated in first half of district season

Whitefaces fight off Dumas Demons, 7-6

By GARY CHRISTENSEN
Sports Editor

The Hereford Whitefaces survived a week of close district baseball games by edging the Dumas Demons 7-6 Saturday in Hereford.

Hereford, which beat Lubbock Estacado 4-3 on Tuesday, went undefeated in seven games in the first half of the District 1-4A schedule. Overall, the Herd is 14-3.

Today is an open day for all district baseball teams. On Saturday, Hereford hosts last-place Borger at 1 p.m.

Hereford moved out to a 3-0 lead over Dumas in the first inning Saturday, but Dumas came back to tie the game at 3-3 in the second inning and then took a 4-3 lead over the Whitefaces in the top of the third inning.

With two outs in the first inning, Hereford's Robbie Collier doubled. After Kyle Streun was hit by a pitch, James Hernandez singled to drive in Collier for the first run of the game.

Hernandez went to second base when the ball was thrown by Dumas to home plate. That put runners at second base and third base, with Keith Anderson coming to bat.

Anderson stroked a two-run single to increase Hereford's lead to 3-0.

Rodney McCracken hit the ball between the catcher and pitcher. Those Dumas players were slow in communicating with each other to field the ball, and McCracken reached first base safely for an infield single.

Bobby Medina walked to load the bases, but the Whitefaces failed to get any more baserunners across the

plate in the inning.

Dumas tied up the game 3-3 in the top of the second inning. A walk, a groundout, an RBI single, a Hereford error, a wild pitch, two more walks, an RBI infield single, and a sacrifice fly resulted in the three Dumas runs.

The Demons then gained a 4-3 lead in the top of the third inning with an RBI single.

The Whitefaces then gained the lead back in the bottom of the third. McCracken walked and stole second base, Medina walked, and Maes walked, loading the bases.

Keith Herrera put the Herd back on top with a two-run single, driving home McCracken, and Bill Ruckman, who was a courtesy runner for pitcher Medina.

Herrera stole second base, and Michael Pibbs walked, loading the bases once again. Maes then scored on a wild pitch to give Hereford a 6-4 lead.

Dumas had two runners on base on errors in the fourth inning, but did not score.

In the fifth inning, a Dumas player singled and went to second base on a wild pitch. The next Dumas batter hit the ball between Hereford pitcher Medina and catcher Todd Shire.

Medina fielded the ball and threw

to first base, but the throw hit the Dumas player heading to first base for an error.

The other Dumas baserunner attempted to score on the error, but first baseman Kyle Streun retrieved the ball and threw to Shire, who tagged out the Dumas runner.

A single gave Dumas runners at first and third, and a Hereford error allowed Dumas to score a run. Hereford ended the inning by successfully turning a double play.

In the HHS fifth inning, Medina doubled deep into right field, missing a home run by a few feet. Courtesy runner Ruckman later reached third base, but was left stranded there.

The Whitefaces scored what proved to be an extremely important run in the sixth inning. Collier reached base on a walk, and Hernandez singled, advancing Collier to third base.

Anderson, the designated hitter for the Whitefaces who would later see some action as a relief pitcher, singled to drive in Collier. That gave Hereford a 7-5 lead.

In the top of the seventh, Medina struck out the first Dumas batter but walked the next two.

At that point, Anderson was brought in to pitch. Anderson struck out the first batter he faced, but gave up an RBI double that put Dumas within one run, 7-6.

Dumas' No. 1 pitcher, Bryan Long, who relieved the starting pitcher in the second inning, was the next batter. Anderson struck out Long to end the game, and save a victory for Medina.

Medina, undefeated in six decisions, struck out nine, walked four and gave up five hits in his six and one-third innings pitched. It was the first save of the season for Anderson, who is 6-1 for the year as a starting pitcher.

"This league is as even as any league I've ever seen," Hereford Coach T.R. Sartor said. "You just don't get to relax."

"Against Estacado, we had to fight for our lives every time we stepped

on the field.

"We had some key hits and key plays against Dumas—Herrera's hit, Anderson's hit, and McCracken stopping that ball in the seventh inning," Sartor was referring to the double hit by Dumas in the final inning. "If Rodney didn't stop that ball, it would have been a triple," Sartor said.

"It was a pretty well played high school baseball game by both teams. There were some errors, but it was a well played game," Sartor adds.

Hereford had eight hits in the

game. The loss dropped Dumas to 4-3 in the district. The Demons are in third place in the district, two games behind second place Canyon which is 6-1.

Canyon defeated Levelland 13-5 on Saturday. Hereford's next opponent, Borger, won its first district game Saturday by outscoring Lubbock Estacado 10-1. Other district action, on Friday, saw Lubbock Dunbar beat Pampa 12-5.

Dumas	0	3	1	0	1	0	1-6
Hereford	3	0	3	0	0	1	x-7



Tip Of The Helmet

Bobby Medina of the Hereford Whitefaces appears to be tipping his helmet to the fans after hitting a double deep into right field in the fifth inning of Saturday's District 1-4A against Dumas. Actually, Medina was calling time out to exchange helmets with a teammate whose turn was coming up to bat. Medina, with last-inning relief help from Keith Anderson, recorded his sixth pitching victory of the season against no defeats when the Whitefaces beat Dumas 7-6. (Brand photo by Gary Christensen)

Herd junior varsity wins doubleheader

Hereford High School won both games of a junior varsity baseball doubleheader at Pampa Saturday, winning game one 5-4 in eight innings, and winning game two 15-4 in a game that ended after five innings because of the 10-run rule.

Brad Pittman drove in nine runs with four doubles in the second game. Kyle Andrews batted in the game-winning run in the second game with a double.

The doubleheader sweep gives the Hereford junior varsity team a 9-1 season record. Hereford plays at home Friday against Plainview at 4:30 p.m.

Hereford held a 4-0 lead after four innings in the first game before Pampa tied it up in the fifth inning. Both teams went scoreless in the sixth and seventh innings, sending the game into extra innings.

Clint Cotten doubled in the top of the eighth inning for Hereford, and scored the winning run on Andrews' double.

Hereford took a 1-0 lead in the first inning. Jeff Farr and Jason Scott both singled, and Edward Martinez hit an RBI groundout to score Farr.

In the fourth inning, Martinez was the first baserunner for Hereford, getting one with a walk. After Fidel Ceballos singled, Pampa committed a pair of errors.

Andrews then walked and stole second base, and Joe Lopez doubled. Martinez, Ceballos, and Andrews each scored runs to make Hereford's lead 4-0.

Pampa used three singles, a double, and three walks to tie up the game in the fifth inning, 4-4.

Ceballos pitched the first four innings for Hereford, striking out three Pampa batters, walking two, and giving up four hits. Cotten pitched the other four innings, allowing seven hits, striking out two batters

and walking five.

Brad Pittman provided the biggest offensive power for Hereford in game two with his four doubles and nine runs batted in.

Pittman hit a two-run double in the first inning, after teammates Shane Kapka and Derrell Page both singled.

Andrews and Nick Kendall began the second inning for Hereford by reaching the basepaths on walks. Jared Victor hit a two-run double to make Hereford's lead 4-0.

Raymond Romo and Cotten both walked to load the bases. Page then hit a three-run double, and scored on Pittman's second double of the game. Hereford held an 8-0 lead when the inning ended.

Pampa scored four runs in the bottom of the third inning, on two singles, two Hereford errors, and two walks.

Pittman hit his third double of the game in the fourth inning, driving in Kapka and Page who both had walked.

Andrews and Kendall both walked to load the bases. Pittman and Andrews both scored when Victor hit a sacrifice fly, increasing the HHS lead to 12-4.

In the fifth inning, Farr and Todd Collier both singled, Pittman drove them in with a double, and Andrews hit an RBI single.

Romo pitched the first four innings for Hereford, striking out five Pampa batters, walking three and allowing four hits. Jason Scott pitched in the fifth inning, striking out one and walking two.

Game one	
Hereford	1 0 0 3 0 0 0 1-5
Pampa	0 0 0 0 4 0 0 0-4
Game two	
Hereford	2 0 0 4 2-15
Pampa	0 0 4 0 0-4

Baseball poll

LONGVIEW, Texas (AP) — Here is the Texas Association of Baseball Coaches-Longview News-Journal high school baseball poll for the week of April 13:

- | | |
|----------------------------------|---------------------------|
| Class 5A | Class 4A |
| 1. Sharpstown (18-0-1). | 1. Brenham (16-1). |
| 2. Abilene Cooper (18-2). | 2. Waco Midway (16-1). |
| 3. Benmont Westbrook (18-1). | 3. Whitehouse (16-0). |
| 4. Deer Park (16-2). | 4. Fredericksburg (15-1). |
| 5. Lewisville (16-2). | 5. Hereford (14-3). |
| 6. San Antonio MacArthur (13-1). | 6. Canyon (14-4). |
| 7. Victoria Stroman (18-2). | 7. Uvalde (14-3). |
| 8. San Antonio Holmes (15-4). | 8. Wharton (14-5). |
| 9. El Paso Eastwood (15-2-1). | 9. Channelview (12-2). |
| 10. Lubbock Monterrey (16-3). | 10. Athens (12-2). |
| Class 3A | Class 2A |
| 1. Medina Valley (16-1). | 1. Boling (6-4). |
| 2. Sweeny (9-3). | 2. Nocona (12-2). |
| 3. Hooks (16-1). | 3. Hooks Bowie (12-1). |
| 4. Wylie (12-2). | 4. Cayuga (11-1). |
| 5. Buna (13-3). | 5. Lorena (9-2). |
| 6. Waco Connally (14-2). | 6. Three Rivers (10-3). |
| 7. East Chambers (10-3-1). | 7. Harmony (14-2). |
| 8. Hondo (15-2). | 8. Henrietta (8-2). |
| 9. Poteet (13-3). | 9. Orange Grove (6-2). |
| 10. Freer (12-3). | 10. China Springs (9-2). |
| Class 1A | |
| 1. Burton (11-2). | |
| 2. Bryson (7-4). | |
| 3. Chester (8-1). | |
| 4. Comby (6-2). | |
| 5. Gunter (5-2). | |
| 6. Range (5-2). | |
| 7. La Pryor (5-6-1). | |
| 8. D'Hamis (5-1). | |
| 9. Merit Blaine (7-4-9). | |
| 10. Maude (3-3). | |

Adult soccer meeting today

A adult soccer league organizational meeting is scheduled tonight at the Hereford and Vicinity YMCA.

The meeting will be held at 7 p.m. at the YMCA building on Fifteenth Street. YMCA program director Jerry Brock said the league will be a co-ed league, for ages 18 and older.

Business to be discussed at the meeting will be game days, length of the league season, playoffs, and league awards.

For more information on the organizational meeting, contact the YMCA at 364-6990.

1-4A standings

Team	District	Overall
HEREFORD	7-0	14-3
Canyon	6-1	15-4
Dumas	4-3	6-7
Pampa	3-4	7-7
Levelland	2-4-1	4-10-1
Lubbock Estacado	2-4-1	7-11-1
Lubbock Dunbar	2-5	9-10
Borger	1-6	7-8

Friday, April 10: Lubbock Dunbar 12, Pampa 5.
Saturday, April 11: Hereford 7, Dumas 6; Canyon 13, Levelland 5; Borger 10, Lubbock Estacado 1.

HHS varsity boys 5th in Plainview meet

Hereford High School's varsity boys' track team placed fifth in the Plainview Invitational last Saturday, and the HHS junior varsity boys placed second in their division.

The Hereford varsity team totaled 62 points, and the junior varsity team had 87 points.

Jimmie Hazzard and Tim Long were event winners in varsity competition. Hazzard won the 400-meter dash in 50.3 seconds, and Long won the discus with a throw of 142 feet, six inches.

Hazzard also placed second in the long jump with a leap of 21 feet, three and one-fourth inches. Vincent Brown finished second in the 100-meter dash in 11.2 seconds.

Brooke Perkins placed third in the 200-meter dash with a time of 22.8 seconds.

Hereford had three winning efforts in junior varsity competition, by Benny Carrasco, Fidencio Cantu, and Karl Schumacher.

Carrasco won the 3,200-meter run in a time of 10:48.7. Cantu was first in the 400-meter dash in 53.9 seconds, and Schumacher won the shot put with a distance of 45 feet, eight and one-half inches.

Chris Bullard placed second in the high jump, with a best effort of five feet, nine inches.

Hereford's junior varsity 1,600-meter relay team of Fidencio Cantu, Frankie Abalos, Ricky Montelongo, and Benny Carrasco placed second with a time of 3:41.9.

Third place finishes by the junior varsity were these: Ishmael Castillo, 3,200-meter run, 10:53.8; and Kevin Paetzold, discus, 125 feet, 10 inches.

Hereford Coach Ron Young said: "We were real proud of the way our boys competed. We had some improvement in several events. The boys seem to be peaking at just the right time."

"Our junior varsity once again did a tremendous job, placing second against all 5A schools."

"Our district meet will be this Saturday at Canyon. The coaches would like to sincerely thank all of our track people for their efforts this year."

Here are the fourth, fifth and sixth place finishes by Hereford track team members in the Plainview meet:

VARSITY

400-METER RELAY: 4. Hereford (Brooke Perkins, Vincent Brown, Marcus Brown, Jimmie Hazzard), 44.5.

100-METER DASH: 6. Kelvin Brown, 11.4.

300-METER INTERMEDIATE HURDLES: 5. Pat Mercer, 43.2.

200-METER DASH: 6. Vincent Brown, 22.9.

1,600-METER RELAY: 4. Hereford (Brooke Perkins, Pat Mercer, Marcus Brown, Jimmie Hazzard), 3:29.8.

SHOT PUT: 4. Westley Brown, 47-10 1/2.

LONG JUMP: 5. Marcus Brown, 20-1/2.

JUNIOR VARSITY

800-METER RUN: 4. Jimmy Leinen, 2:08.3.

400-METER DASH: 5. John Tobin, 55.7.

300-METER INTERMEDIATE HURDLES: 6. Chris Bullard, 45.8.

1,000-METER RUN: 4. Benny Carrasco, 5:02.2.

5. Jimmy Leinen, 5:06.9.

LONG JUMP: 4. Chris Bullard, 19-4 1/2.

DISCUS: 4. Joe Medrano, 121-1.

Hereford A's place 2nd in tournament

A men's softball team from Hereford, the Hereford A's, placed second in the annual Amarillo Pre-Season Softball Tournament on Saturday and Sunday.

The Hereford A's won their first three tournament games — 19-3 over Amarillo Hose Supply, 13-4 over St. Mary's Blue of Amarillo, and 14-3 over the Amarillo Angels.

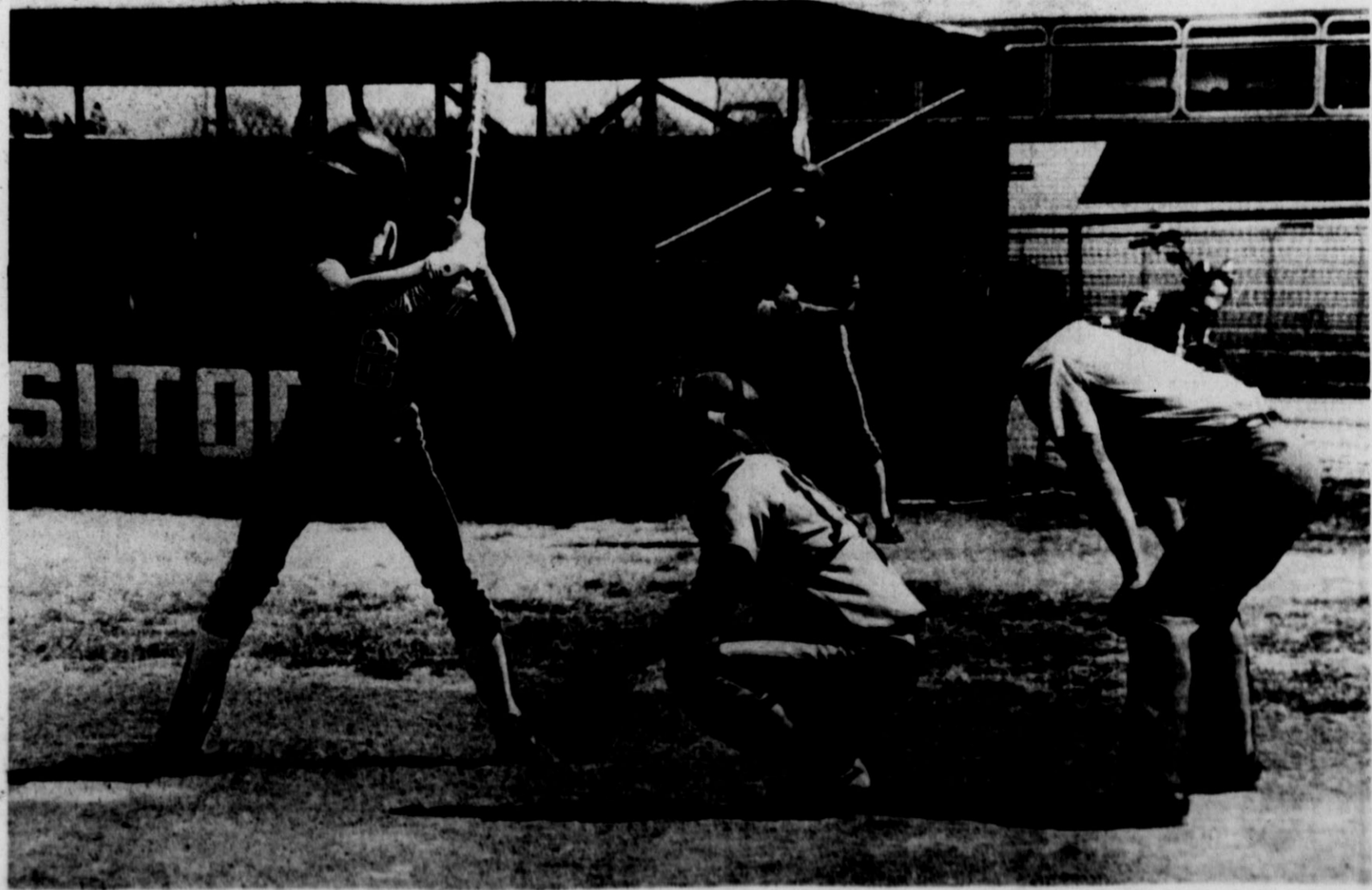
In their fourth game, the A's lost to American Equipment of Lubbock, 10-8. The Hereford A's then won all their games in the loser's bracket to earn a spot in the tournament championship.

Those loser's bracket victories were: 19-5 over C.R. Masonry of

Amarillo; 16-12 over the Amarillo Angels; and 24-4 over the Amarillo Merchants.

The A's went up against American Equipment of Lubbock again in the championship game, losing the contest and finishing in second place.

Members of the Hereford A's softball team are: Coach Rick Castaneda, Jesse Castaneda, Ruben Vargas, Roy Martinez, Ray Martinez, Ernie Suarez, Audie Mancillas, Raymond Alaniz, Richard Rodriguez, Felix Mungia, Joe Nino, Richard Moya, and Jerry Smith. The team plans to compete in several more tournaments during the 1987 season.



Whiteface Catcher Ready For The Pitch

Todd Shire of the Hereford Whiteface varsity baseball team is pictured here performing his duties as the Herd catcher, during the sixth inning of a District 1-4A game in Hereford Saturday. The Whitefaces scored a

7-6 victory over Dumas to stay undefeated at 7-0 in the district, one game ahead of second place Canyon. Dumas, the third place team in the district, fell to 4-3. (Brand photo by Gary Christensen)

Golf tournament held in Hereford

Manning, Zimmerman win 2-man scramble

The team of Ed Manning and Ben Zimmerman won the Hereford Two-Man Scramble Sunday at Pitman Municipal Golf Course.

Manning and Zimmerman had a tournament two-round score of 129, one stroke better than two other

teams — Mark Gray and Mike Gray, and James Bischof and Scott Smith.

The first round of the tournament was played on Saturday, April 4. The second round of the tournament was played Sunday after it was postponed from April 5.

Winners of the first flight were Bunky Preston and Johnny Smith with a two-round score of 134. In the second flight, Gene Klein and Rick McAlpine placed first with a score of 139.

Raymond Boyton and Bret Jordan won the third flight with a score of 140.

Bartlett and Robert Treadwell in the playoff.

Each of the playoffs, sudden death, were on the first hole with a par.

Here are the tournament scores for each flight:

HHS girls place eight times in track meet

Hereford High School had eight placings in the South Plains Invitational girls' track meet in Levelland last Saturday.

Two HHS girls, Theresa Brown and Lynn Hanyen, each achieved their best times of the season in some sprint events.

No team scores were kept in Saturday's meet.

The top placings for Hereford were second place finishes by Nancy Garza in the 1,600-meter run, and by the 800-meter relay team and 1,600-meter relay team. Garza's time in the 1,600-meter run was 6:03.7.

The team of Hanyen, JoAnn Tohm, Theresa Brown, and Michelle Mason placed second in the 800-meter relay with a time of 1:50.67.

Hanyen, Tohm, Mason, and Garza ran the 1,600-meter relay in 4:25.3 for their second place effort.

Brown ran the 100-meter dash in 12.9 seconds, her best time of the season, placing fifth. Hanyen ran her best time of the year in the 200-meter dash, 26.5 seconds, placing fifth.

"We have improved this year and could qualify some girls from the district meet this Saturday to the regional meet," Hereford Coach Martha Emerson said.

The District 1-4A meet will be held in Canyon Saturday.

"This is an extremely tough district this year, and the district meet will certainly be a good one to watch," Coach Emerson continues.

"Pampa, Borger, Levelland, Estacado and Canyon have some very talented athletes.

"Hereford girls need experience to go with desire and we need much more depth. Probably only 10 of 12 girls will compete at the district meet this week — only one senior, Michelle Mason," Emerson adds.

Other placings for Hereford at the Levelland meet were: Brown, fourth in shot put, 33 feet, six and one-half inches; Alina Benitez, fourth in 800-meter run, 2:38.4; and Brown, Benitez, Robin Jones, and Belinda Britten, fourth in 400-meter relay, 55.1 seconds.

In the fourth flight, Dwayne Cassels and Ken Hagar won a playoff after finishing in a first place tie with Warr Hall and Mike Silor. Each team had tournament scores of 144.

There was a playoff for first place also in the fifth flight. Jerry Hoover and David Gardy tied with M.D. Franks and Tommy Weaver, both teams shooting two-round scores of 149, and Hoover and Gardy won the playoff.

The sixth flight also ended in a tie, with the score at 152. David Pietsch and Jeff Vandermark defeated Rick

THIRD FLIGHT

1. Raymond Boyton & Bret Jordan 72-65-140
2. Emory Brownlow & Paul Hubbard 74-67-141
3. Bob Baker & Ron Weishaar 73-69-142
4. Max Goforth & Miles Goforth 73-69-142
5. Kent Clements & Don Marrs 72-71-143
6. Mike Maynard & Mark Tucker 72-72-144
7. Norm Andress & Mike McCormick 72-72-144
8. Dave Sell & Mike Sell 73-72-145
9. Charles Skinner & Scot Skinner 73-72-145
10. Mark Noble & Wendell Smith 73-73-146
11. George Ochs & Jim Land 73-75-148
12. Jason Grimsley & Fred Cooks 73-77-150
13. Scott Perry & Marvin Frye 72-88-160

FOURTH FLIGHT

1. Dwayne Cassels & Ken Hagar 74-76-144
2. Warr Hall & Mike Silor 76-68-144
3. Bill Mays & Wayne Taylor 76-72-148
4. Dick Sims & Jim Childers 76-73-149
5. Steve Stevens & Jerry Stevens 75-74-149
6. Chip Gusman & Gary McCallough 76-74-150
7. Bill Popham & Mike Dunivan 74-76-150
8. Larry Sowers & David Ashby 76-75-151
9. Bill Hall & Pat McKean 75-77-152

FIFTH FLIGHT

1. Jerry Hoover & David Gardy 78-71-149
2. M.D. Franks & Tommy Weaver 77-73-150
3. Kyle Sosebee & Danny Haynes 77-73-150
4. Scott Holbert & Kyle Mines 77-74-151
5. Danny Cypert & Truitt Gobin 78-74-152
6. Paul Carr & Eddie McDonald 78-74-152
7. Floyd Neill & Terry Hoffman 77-77-154
8. Robert Aguirre & Jesse Hernandez 78-76-154
9. Brett Bryant & Steve Williams 78-77-155
10. Mike Dees & Kevin Klemm 77-80-157

SIXTH FLIGHT

1. David Pietsch & Jeff Vandermark 79-73-152
2. Rick Bartlett & Robert Treadwell 79-73-152
3. Lou Hurst & Rick Crawford 79-74-153
4. Duane Albracht & Gary Kriegerhauser 81-74-155
5. Robert Barnes & Mark Allen 79-77-156
6. Monty Smith & Jerry Baker 79-78-157
7. Mike Rosier & Bill Hambright 80-80-160
8. Max Moss & Owen Seamonds 82-80-162
9. N.D. Franks & Mel Holube 82-80-162
10. Colby Kriegerhauser & Scott Carr 84-78-163
11. Scot Russell & George Jones 83-82-165
12. Lance Birtwell & John Birtwell 85-81-168

Stanton 9th boys are 3rd in Borger meet

Stanton Junior High School's ninth grade boys' track team totaled 101 points to place third in the Borger meet last Saturday.

In other divisions, Stanton's eighth grade boys placed fourth with 58 and one half team points, and the Stanton seventh grade boys placed sixth with 38 team points.

Stanton's boys' teams do not have a meet on their scheduled this Saturday. The district junior high school track meet is scheduled on Saturday, April 25 in Hereford.

First place finishers for Stanton in the ninth grade division were George Madrigal in the 400-meter dash, Benny Gonzales in the shot put, and the 400-meter relay team of Gonzales, Ron Hathaway, Carlos Ramirez, and Madrigal.

In the eighth grade division, Stanton's 800-meter relay team of Larry

Brown, Jose Nava, Jesus Gonzales, and Carlos Carbajal were winners. Nava won the shot put and Brown won the 200-meter dash.

Here are all of Stanton's placings in the divisions of the Borger meet.

NINTH GRADE

400-METER RELAY: 1. Stanton (Benny Gonzales, Ron Hathaway, Carlos Ramirez, George Madrigal), 52.3

400-METER DASH: 1. George Madrigal, 51.5

SHOT PUT: 1. Benny Gonzales, 41-4; 4. Ron Hathaway, 34.2

1,600-METER RELAY: 3. Stanton (George Madrigal, Fred Melindrez, Jason Laeb, Richard Lucio), 3:41.7

DISCUS: 1. Bubba Long, 98-5

800-METER RUN: 2. Fred Melindrez, 2:15.2

100-METER DASH: 2. Ron Hathaway, 11.8

800-METER RELAY: 3. Stanton (Benny Gonzales, Zane Watts, Fred Melindrez, Freddie Martinez), 1:44.0

300-METER LOW HURDLES: 2. Jason Laeb, 44.7

200-METER DASH: 3. Carlos Ramirez, 24.2

EIGHTH GRADE

SHOT PUT: 1. Jose Nava, 41-11.5

800-METER RELAY: 1. Stanton (Larry Brown, Jose Nava, Jesus Gonzales, Carlos Carbajal), 1:42.6

200-METER DASH: 1. Larry Brown, 1:00.0

1,600-METER RELAY: 3. Stanton (Shea Brannon, Jesus Gonzales, Carlos Carbajal, Michael King), 3:55.6

POLE VAULT: 4. Chad Brummett, 8-6

400-METER DASH: 5. Shea Brannon, 1:00.0

400-METER RELAY: 5. Stanton (Carlos Carbajal, Jose Nava, Jesus Gonzales, Larry Brown), 52.4

SEVENTH GRADE

400-METER DASH: 3. Joe Rojas, 59.3

1,600-METER RELAY: 3. Stanton (Joe Lucio, Jose Gutierrez, Edward Tijerina, Joe Rojas), 4:20.2

800-METER RELAY: 5. Stanton (Santos Rincom, John McBride, Jose Gutierrez, Joe Lucio), 1:54.0

400-METER RELAY: 3. Stanton (Santos Rincom, Jose Gutierrez, Edward Tijerina, John McBride), 52.02

'Y' 30-and-over basketball league standings

Team	W-L
American Fructose	2-0
Hereford Scours	1-1
Royce's Texaco	1-1
S.O.F.T.	0-2

SCORES

Sunday, April 12: American Fructose 35, Royce's Texaco 27; Hereford Scours 29, S.O.F.T. 18.

BOXSCORES

AMERICAN FRUCTOSE: Danny Ebeling 9 3-3 21; Andy Mays 2 1-2 5; Charlie McClain 2 1-2 5; Bob Moore 2 0-4 4; Zac McWethy 0 0-2 0. Totals: 15 5-9 35.

ROYCE'S TEXACO: Floyd Brown 2 5-7 9; Al High 1 4-5 6; Matt Garth 2 1-2 5; Larry Ritter 1 0-4 2; Bobby Moore 0 1-2 1; Royce Sealander 1 0-4 2; Kenny Altman 0 1-2 1. Totals: 8 11-18 27.

Halftime score: American Fructose 17, Royce's Texaco 8; final score: American Fructose 35, Royce's Texaco 27.

HEREFORD SCOURS: Barry Roberts 3 2-2 8; Steve Nieman 2 3-4 7; Carey Black 2 1-2 5; Larry McNutt 2 0-4 4; George Bullard 1 1-1 3; Temple Abney 1 0-1 2. Totals: 11 7-13 29.

S.O.F.T.: Ron Young 2 2-2 6; Dave Hopper 1 2-3 4; Mike Page 2 0-2 4; Rick McCracken 0 2-4 2; Mike Bowles 1 0-4 2. Totals: 6 6-13 18.

Halftime score: Hereford Scours 18, S.O.F.T. 6; final score: Hereford Scours 29, S.O.F.T. 18.

HHS girls' golfers place 3rd in tourney

The varsity girls' golf team of Hereford High School placed third in the Amarillo Relays tournament last week with a two-round score of 779.

Hereford's Amy Coneway shot a round of 87 on Friday and a 94 on Saturday for a total of 181, sixth place in the tournament.

Amarillo High won the tournament with a tournament score of 692, and Plainview was second with a score of 705.

Tournament scores for the other HHS golfers, and their individual placings, were: Suzanne Hardage, 190, 10th; Kathy Neill, 203, 16th; Brenda Martinez, 206, 17th; and Suzie Carnahan, 222, 21st.

The next action for the Hereford girls' golf team will be the District 1-4A round at Pampa on Friday. The district round at Borger is scheduled for Saturday.

Here are the round scores and overall scores for Hereford in-

dividual golfers in the Amarillo Relays tournament, and also all team scores:

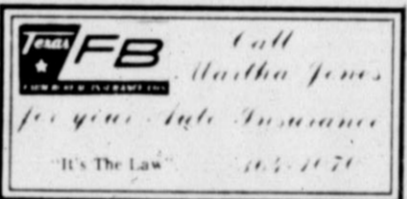
HEREFORD INDIVIDUALS

Amy Coneway	87-94-181
Suzanne Hardage	106-96-196
Kathy Neill	111-92-203
Brenda Martinez	104-102-206
Suzie Carnahan	116-112-222

TEAM SCORES

1. Amarillo High	349-343-692
2. Plainview	352-353-705
3. Hereford	401-378-779
4. Pampa	392-403-795
5. Borger	398-401-799
6. Lubbock Coronado	403-411-814

NOTE: The top six teams in Friday's round qualified for Saturday's round. Other team scores Friday were: Lubbock High, 421; Palo Duro, 461; Tascosa, 478; Lubbock Monterey, 485; Caprock, 492; and Dumas, 493.



Steel Siding Steel Overhang Storm Windows

Free Estimates

Richards Siding Company

"Your Home-Town Siding Company"

Alside

Leon Richards-Owner, 364-6000

FRIGIKING COOLERS

THE BEST COOLERS YOU CAN BUY.

THE BEST PRICES YOU'LL EVER SEE.

VASEK Service & Equipment, Inc.

East Hwy. 60 TACLA 001473 364-3867

Happy Birthday Helen E.

NEVER BEFORE, NEVER AGAIN SALE!

Limited Time Offer!

We've recently purchased over 400 pair, top quality brand name shoes! These are not factory defects!

Sample of Savings

125.00 To 100.00 -On Sale For 47.00 9.95
 99.00 To 80.00 -On Sale For 37.00 9.95
 79.00 To 58.00 -On Sale For 27.00 9.95
 57.00 & Under -On Sale For 19.95 9.95

Famous Name Brands Including:

Evan-Picone Polly B
 Ann Klein Etienne Aigner
 Yves Saint Laurent Liz Claiborne

In Many Styles & Colors

Other Brands of Shoes Offered — Taha, Bandouno, Jo Renee, Vivo

All Ladies Spring & Summer Clothes 20% off

Terms: Cash All Sales Final

KING'S MANOR METHODIST HOME, INC.

"Registration is now open for the third Nurse Aide Training Course, plus CPR and First Aid certification courses, at:

400 Ranger Drive Hereford, Texas

Please come by the office to enroll, pick up a schedule and pay the \$35.00 fee which will cover the expense of the course.

Classes Begin: Monday, April 20 at 7:00 P.M. and run until May 9.

Call 364-0661 for further information.

Rachel Henslee Personnel Director

BOOTS & SADDLE WESTERN WEAR

364-5332 513 N. 25 Mile Ave.

In District 1-4A season standings

Hereford boys' golfers stay second

Hereford High School's varsity boys' golf team remained in second place in the District 1-4A standings, moving just one stroke closer to first place Canyon and gaining a pair of strokes on third place Borger.

As a team, Hereford shot rounds of 312 on Friday at Hunsley Hills Golf Course in Canyon, and 313 on Saturday at North Plains Country Club in Dumas.

This week, the final district rounds are scheduled - Friday at Pampa and Saturday at Borger.

Hereford's overall score for five district rounds is 1,588. Canyon is first with a score of 1,574, and Borger is third at 1,599. Pampa stands in fourth place with an overall total of 1,601.

Competing for the Hereford "A" team last week were Arthur Valdez, Craig Rogers, Bobby Baker, Jason Bullard, and Johnny Urias.

At Canyon, Valdez was the second place medalist with a 73. The other Hereford "A" team scores were: Rogers, 77; Baker and Bullard, both 81; and Urias, 88.

In the Dumas round, Baker, Urias, and Bullard all shot rounds of 78. Valdez shot a 79, and Rogers shot an 80.

The Hereford "B" team shot a 346 at Canyon and a 349 at Dumas. The team's five-round score is 1,804, eighth place among 13 "A" and "B" teams in the district.

The "B" team's individual scores in the Canyon round were: Kelby Hagar and Kent Walterscheid, both 84; Brent Cumpton, 85; and Todd Schroeder, 93.

At Dumas, the "B" team individual scores were: Walterscheid, 83; Hagar, 85; Kevin Crume, 89; Cumpton, 91; and Schroeder, 92.

For the season, Hereford has three golfers in the top 10 in the district. Valdez is tied for third place with Jimmy Dawson of Canyon with five-round scores of 390.

Also in the top 10 are Baker at 396 and Rogers at 400.

Bullard, Urias, and Hagar are among the top 25 in the district. Bullard has a five-round score of 490, Urias' total is 412, and Hagar's total is 413.

Cumpton and Schroeder are the only other Hereford High School golfers

who have competed in every district round. Cumpton's overall score is 456, and Schroeder's is 488.

Here are the scores for last week's rounds, and the season scores. The first score is the Canyon round, the second score is the Dumas round, and the last score is the season total:

HEREFORD "A" TEAM	HEREFORD "B" TEAM
Arthur Valdez 73-79-390	Kelby Hagar 84-85-413
Bobby Baker 81-78-396	
Craig Rogers 77-80-400	
Jason Bullard 81-78-409	
Johnny Urias 88-78-412	

Brent Cumpton 85-91-456
Todd Schroeder 93-92-488
Others: Kent Walterscheid, 84 at Canyon and 83 at Dumas; Kevin Crume, 89 at Dumas.

DISTRICT TEAM SCORES

1. Canyon "A" 311-315-1,574
2. Hereford "A" 311-313-1,588
3. Borger "A" 314-313-1,599
4. Pampa "A" 322-301-1,601
5. Borger "B" 337-325-1,695
6. Levelland "A" 339-319-1,710
7. Pampa "B" 345-331-1,713
8. Hereford "B" 346-349-1,804
9. Canyon "B" 364-360-1,811
10. Levelland "B" 403-385-1,835
11. Frenship "A" 407-381-1,949
12. Dumas "A" 349-341-1,976
13. Dumas "B" 443-414-2,435

Stanton 8th girls place 3rd

The eighth grade girls' track team of Stanton Junior High School placed third in the Pampa meet last Saturday.

In other divisions, Stanton placed fifth in ninth grade competition and sixth in seventh grade competition.

Stanton did not win any events in the eighth grade division, but did have three second place finishes - Doenna Torres in both the 800-meter run and 1,600-meter run, and the team of Torres, Cindy Kuper, Lisa Zepeda, and Michelle Hamby in the 1,600-meter relay.

Event winners for the Stanton ninth grade team were Brianna Townsend in both the 800-meter run and 1,600-meter run, Sally Garza in the 3,200-meter run, and the team of Marisa Arriaga, Zarqua Shahnaz, Daphne Roddy, and Chandra Brown in the 400-meter relay.

For the Stanton seventh grade team, Melissa Barba won the 400-meter dash and Lori Suarez won the 800-meter run.

The Stanton girls' teams will com-

pete in the Hereford meet Friday. The meet starts at 4 p.m. at Whiteface Stadium.

Here are all of Stanton's placings in the Pampa meet:

NINTH GRADE

100-METER DASH: 3. Zarqua Shahnaz, 13.60.
800-METER RUN: 1. Brianna Townsend, 2:34.67; 4. Tammie Pacheco, 2:49.13; 6. Sally Garza, 2:54.27.
200-METER DASH: 2. Marisa Arriaga, 29.74.
3,200-METER RUN: 1. Sally Garza, 14:24.68; 6. Aracelia Nava, 15:23.04.
400-METER RELAY: 1. Stanton (Marisa Arriaga, Zarqua Shahnaz, Daphne Roddy, Chandra Brown), 53.01.
1,600-METER RUN: 1. Brianna Townsend, 5:52.12.
1,600-METER RELAY: 4. Stanton (Sally Garza, Chandra Brown, Tammie Pacheco, Brianna Townsend), 4:42.28.
DISCUS: 6. Tammie Pacheco, 76.4.

EIGHTH

100-METER DASH: 3. Stephanie Fox, 13.81.
400-METER DASH: 5. Juanita Lucio, 70.43; 6. Laura Villarreal, 78.57.

200-METER DASH: 6. Stephanie Fox, 31.02.
400-METER RELAY: 4. Stanton (Sonia Olvera, Jackie Bosssett, Laura Villarreal, Cindy Kuper), 57.43.
800-METER RUN: 2. Doenna Torres, 2:40.57; 3. Lisa Zepeda, 2:42.03.
800-METER RELAY: 3. Stanton (Sonia Olvera, Laura Villarreal, Stephanie Fox, Cindy Kuper), 1:59.66.
1,600-METER RUN: 2. Doenna Torres, 5:57.72.
1,600-METER RELAY: 2. Stanton (Doenna Torres, Cindy Kuper, Lisa Zepeda, Michelle Hamby), 4:44.32.
HIGH JUMP: 5. Michelle Hamby.
LONG JUMP: 3. Cindy Kuper.
TRIPLE JUMP: 2. Cindy Kuper.

SEVENTH GRADE

100-METER DASH: 6. Minerva Salazar, 14.11.
400-METER DASH: 1. Melissa Barba, 67.94.
200-METER DASH: 5. Rachel Alaniz, 30.06.
400-METER RELAY: 6. Stanton (Minerva Salazar, Rachel Alaniz, Mitzi Villarreal, Vanessa Torres), 59.34.
800-METER RUN: 1. Lori Suarez, 2:44.03.
800-METER RELAY: 3. Stanton (Minerva Salazar, Rachel Alaniz, Mitzi Villarreal, Melissa Barba), 2:01.98.
DISCUS: 6. Roxann Torres.

Major league standings

By The Associated Press
AMERICAN LEAGUE

East Division				West Division			
W.	L.	Pct.	GB	W.	L.	Pct.	GB
Milwaukee	7	0	1.000	St. Louis	4	2	.667
Baltimore	5	2	.714	New York	3	2	.600
Detroit	4	2	.667	Chicago	3	3	.500
New York	4	3	.571	Pittsburgh	2	4	.333
Toronto	3	3	.500	Philadelphia	1	5	.167
Boston	2	4	.333	Montreal	0	5	.000
Cleveland	1	6	.143				

NATIONAL LEAGUE

East Division				West Division			
W.	L.	Pct.	GB	W.	L.	Pct.	GB
St. Louis	4	2	.667	Houston	6	1	.857
New York	3	2	.600	Cincinnati	5	1	.833
Chicago	3	3	.500	San Francisco	6	2	.750
Pittsburgh	2	4	.333	Atlanta	4	2	.667
Philadelphia	1	5	.167	Los Angeles	3	5	.375
Montreal	0	5	.000	San Diego	1	6	.143

Monday's Games

New York 11, Cleveland 3
Texas at Boston, ppd., rain
Milwaukee 6, Baltimore 3
Oakland 6, Minnesota 3
California 5, Seattle 3, 10 innings
Only games scheduled

Tuesday's Games

Texas (Correa 0-0) at Boston (Nipper 0-0)
Cleveland (P. Niekro 1-0) at New York (John 0-0), (n)
Milwaukee (Clardi 0-0) at Baltimore (Dixon 1-0), (n)
Chicago (Bannister 0-1) at Toronto (Johnson 0-1), (n)
Detroit (Petry 0-0) at Kansas City (Gubicza 0-1), (n)
Minnesota (Portugal 0-0) at Oakland (Codiroli 0-0), (n)
California (Sutton 0-1) at Seattle (Bankhead 1-0), (n)

Wednesday's Games

Texas at Boston
Minnesota at Oakland
California at Seattle
Cleveland at New York, (n)
Milwaukee at Baltimore, (n)
Chicago at Toronto, (n)
Detroit at Kansas City, (n)

Monday's Games

St. Louis 8, Pittsburgh 4
Cincinnati 7, Atlanta 2
Chicago 5, Philadelphia 2
San Francisco 13, San Diego 6
Los Angeles 4, Houston 2
Only games scheduled

Tuesday's Games

New York (Darling 0-0) at Philadelphia (Ruffin 0-0), (n)
Cincinnati (Power 0-0) at Atlanta (Palmer 0-1), (n)
Montreal (Tibbs 0-1) at St. Louis (Mathews 0-0), (n)
San Francisco (Davis 1-0) at San Diego (Wojna 0-0), (n)
Houston (Darwin 1-0) at Los Angeles (Weich 0-1), (n)
Only games scheduled

Wednesday's Games

Pittsburgh at Chicago
New York at Philadelphia, (n)
Cincinnati at Atlanta, (n)
Houston at Los Angeles, (n)
San Francisco at San Diego, (n)

Y.M.C.A. volleyball league standings

HIGH SCHOOL BOYS' LEAGUE

S.S.W.	2-0
Terminators	1-0
Seniors '87	0-1
P.A.R.T.	0-1
Smashers	0-1

SCORES

Monday, April 13: Terminators def. Seniors "87," 15-7, 4-15, 11-1; S.S.W. def. P.A.R.T., 15-5, 15-1; S.S.W. def. Smashers, 15-10, 15-8.

La Plata boys compete in Borger track meet

La Plata Junior High School's boys tracksters competed in the Borger meet last Saturday, with the eighth grade team placing fifth, the ninth grade team placing sixth, and the seventh grade team placing seventh.

The final meet for the La Plata teams is the district junior high school meet, scheduled in Hereford on Saturday, April 25.

Top placings for La Plata in the Borger meet were a pair of second place finishes by the eighth grade team.

The eighth grade 1,600-meter relay team of Steve Vasquez, Emmanuel Cepeda, Ricky Lopez, and Chuck Allemand placed second. Cody Page placed second in the shot put.

Here are all of La Plata's placings in the Borger meet divisions:

NINTH GRADE

800-METER RELAY: 6. La Plata (Kyle Vanlandingham, Steven Tucker, Charles Romero, John Baxter).
100-METER DASH: 5. Jim Hillwig, 25.3.
400-METER RELAY: 5. La Plata (Jim Hillwig, Victor Avila, Serapio Cabazuela, Keith Kelso).
1,600-METER RELAY: 6. La Plata (Jim Hillwig, Victor Avila, Serapio Cabazuela, Keith Kelso), 3:58.

EIGHTH GRADE

400-METER DASH: 4. Steve Vasquez, 57.3.
800-METER RELAY: 5. La Plata (Steve Vasquez, Emmanuel Cepeda, Cody Page, Oscar Garcia), 1:59.
300-METER HURDLES: 5. Chuck Allemand, 47.5.
200-METER DASH: 4. Emmanuel Cepeda, 25.3; 6. Mark Daniel, 26.7.
1,600-METER RELAY: 2. La Plata (Steve Vasquez, Emmanuel Cepeda, Ricky Lopez, Chuck Allemand), 3:52.4.
SHOT PUT: 2. Cody Page, 41-11 1/4.
DISCUS: 6. Cody Page.

SEVENTH GRADE

800-METER RELAY: 4. La Plata (Temple Abney, Will Jones, Kevin Kelso, Pete Garza).

Astros suffer first loss of 1987 season

By The Associated Press

A few days ago, Mark Cresse, the Los Angeles Dodgers' bullpen coach had some instructional advice for rookie Tracy Woodson.

"Two days ago I hit a ball off the wall in left-center field, and Mark told me, 'When you hit your first home run, hit the ball into the bullpen so I can get it back for you,'" Woodson said.

The rookie followed instructions Monday night and deposited the first pitch he ever saw from future Hall of Famer Nolan Ryan into the Los Angeles bullpen in left-field.

Woodson's homer led the Dodgers to a 4-2 victory over the Houston Astros, extending a Los Angeles winning streak to three games and making the Astros losers for the first time this year.

Woodson, 6-foot-3, 216 pounds, has been filling in at third base for Bill Madlock while the four-time National League batting champion recovers from arthroscopic surgery on his right shoulder.

"Right now I've got two or three weeks while Madlock's out, but if I keep hitting the ball, maybe they'll find somewhere to play me," said Woodson, who led the Dodgers with a .364 spring batting average but has collected only five hits in his first 21 big-league at-bats. "I want that position when he retires, so I have to do what I can right now."

Right-hander Brian Holton, another Los Angeles rookie, equalled his longest career outing with five innings of four-hit ball for his fourth victory in 18 career starts.

The right-hander allowed four hits, including a pair of singles by Billy Hatcher that extended Hatcher's hitting streak to seven games. The only run off him came on Phil Garner's two-out, solo homer in the ninth. "My curve wasn't as sharp as I

would have liked," Holton said after evening his career record to 4-4 with his first decision in three relief appearances this season. "But I put my fastball where I wanted to."

Holton had entered the game after starter Rick Honeycutt was forced to leave with a pulled muscle in his right side.

"It hurts to breathe," said Honeycutt, who tried to keep pitching after injuring himself at the plate in the second inning. "It happened on the second swing. I didn't feel it at first, but the more I sat between innings, the stiffer it got. By the fourth inning, I tried to compensate, but the pitches were not that good. And it wasn't worth trying to continue."

Ryan, 1-1, allowed three runs and four hits over six innings, striking out nine and walking five.

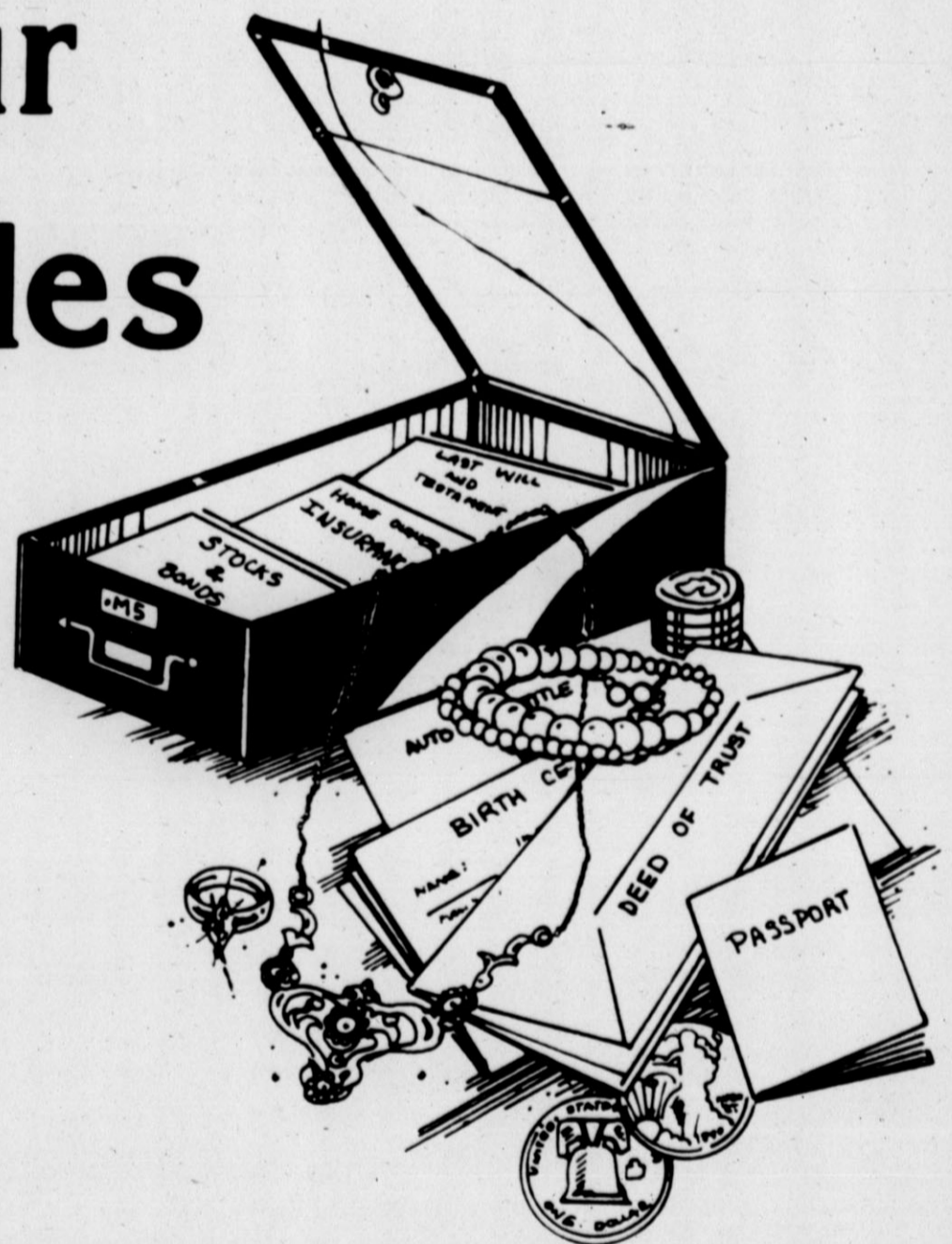
Pedro Guerrero's fifth-inning sacrifice fly made it 3-1, after rookie Mike Ramsey walked with one out and advanced to third on Ken Landreaux's single to right field. The Dodgers added a run in the seventh on Steve Sax's leadoff triple to center against reliever Dave Meads and a one-out sacrifice fly by pinch-hitter Reggie Williams.

The Astros got their first run when Bert Pena was hit by a pitch and eventually scored on Bill Doran's two-out single in the third inning.

SMALL BUT SMART
ATLANTA (AP) — Coach Mike Fratello of the Atlanta Hawks is 5-7 and when he is in a circle of his players he's hard to find. But he gets respect from his players.

"Mike illustrates toughness and yet he makes us feel like a family," guard Glenn Rivers said. "I haven't had a relationship with a coach like Mike since I was in high school. Mike may never have played in the NBA but he knows it better than most of the players in the league."

For Protection Of Your Valuables



You'll Like Our Attitude

With a safe deposit box you'll have the satisfaction and peace of mind of knowing your valuables are safe from fire, theft or other harm.

It costs just pennies a day, but worth every bit. Come see us. YOU'LL LIKE OUR ATTITUDE.



The First National Bank of Hereford
P.O. Box 593
Hereford, Texas 79045
(806) 364-2435

Member FDIC

Several reach 'A' division quarterfinals

HHS netters play in Amarillo tourney

Two Hereford High School doubles teams and one singles player advanced to the quarterfinals before losing in the Amarillo Relays tournament last Friday and Saturday.

Lana Kosub reached the quarterfinals of the girls' singles competition.

The Hereford doubles teams that reached the quarterfinals were Brad Allred and Jason Bodner in boys' doubles, and Misty Stokes and Bridget Baker in girls' doubles.

All those athletes competed in the "A" divisions of the tournament.

His impact, history in baseball

A look at Jackie Robinson

By JOHN NELSON
AP Sports Writer

NEW YORK (AP) — In the spring of 1947, the Brooklyn Dodgers traveled to Chicago overnight by train to play the Cubs in their first meeting of the season.

It was to be a special game, one in a series of firsts. Jackie Robinson, a college-educated black man, was in a Dodgers uniform, playing baseball and changing the face of America.

Robinson already had become the first black man to play in the major leagues, starting at first base for the Dodgers at Ebbets Field on April 15, 1947 — 40 years ago Wednesday.

When the doors were closed at Wrigley Field, there were more than 47,000 in a ballpark meant to hold about 38,000.

"The place was packed," Cubs outfielder Phil Cavarretta recalled, "and in those days, you know — I don't mean to be degrading — but black people very seldom came out to our games. This particular day, when Jackie was there with the Dodgers, the place was packed, and over half of them were black people."

This was a special day for black Americans in Chicago, just as there were special days for blacks throughout the country during Robinson's first tour of the National League in 1947. Only later would all of America fully realize how special those days were.

"They cheered for this man like he was the late Babe Ruth," Cavarretta said. "When he came to bat, fielded a grounder or stole a base, there was thunder in the stands."

Jack Roosevelt Robinson, the grandson of slaves, was born in Cairo, Ga., on Jan. 31, 1919, the fifth and last child of Mallie and Jerry

In the girls "B" singles division, Hereford's Tiffany LeGate reached the championship match, losing to Jamie Alford of Lubbock Coronado at that match.

The boys' "B" doubles team of Steven Hope and Brian Thomas reached the quarterfinals, and Rick Alley made it to the quarterfinals in the boys' "B" singles competition.

The "B" divisions were for athletes from all high school classifications.

This Friday and Saturday,

Hereford High School is the host school for the District 1-4A tournament. The spring district tournament is for berths in singles and doubles in the regional tournament.

Here are the match scores for all Hereford tennis team members in the Amarillo Relays tournament (Hereford competed in the divisions for class 4A and 5A schools):

BOYS' "A" SINGLES
FIRST ROUND: Wright, Carlsbad, N.M., def. Chris Johnson, Hereford, 6-0, 6-1; Damon, Lubbock Monterey, def. Kevin Hansen, Hereford, 7-6, 6-4, 6-4.

GIRLS' "A" SINGLES
FIRST ROUND: Thompson, Pampa, def. Vicki Veigel, Hereford, 6-0, 6-3; Lana Kosub, Hereford, def. Gies, Dumas, 6-0, 6-4.

SECOND ROUND: Lana Kosub, Hereford, def. Padgett, Lubbock Monterey, 6-3, 4-6, 6-1.

QUARTERFINALS: Hand, Amarillo High, def. Lana Kosub, Hereford, 4-6, 6-3, 6-2.

BOYS' "A" DOUBLES
FIRST ROUND: Foster & Brewer, Canyon, def. Nathan Flood & Conrad Rodriguez, Hereford, 6-4, 6-2; Brad Allred & Jason Bodner, Hereford, def. Roark & McKee, Levelland, 5-7, 6-4, 6-4.

SECOND ROUND: Brad Allred & Jason Bodner, Hereford, def. Solis & Nunez, Caprock, 5-7, 6-4, 6-4.

QUARTERFINALS: Bennett & Brown, Lubbock Coronado, def. Brad Allred & Jason Bodner, Hereford, 6-2, 6-2.

GIRLS' "A" DOUBLES
FIRST ROUND: Dana Zinsler & Lori Reinauer, Hereford, def. Cates & Byrd, Pampa, 6-4, 6-0; Misty Stokes & Bridget Baker, Hereford, def. Banks & Craig, Tascosa, 7-6, 6-3.

SECOND ROUND: Meza & Hernandez, Lubbock Estacado, def. Dana Zinsler & Lori Reinauer, Hereford, 7-6, 6-3; Misty Stokes & Bridget Baker, Hereford, def. Kirby & Bryant, Lubbock Monterey, 7-6, 6-3.

QUARTERFINALS: Garcia & Aragon, Carlsbad, N.M., def. Misty Stokes & Bridget Baker, Hereford, 5-7, 6-4, 6-4.

BOYS' "B" SINGLES
FIRST ROUND: Matt Copien, Hereford, def. Saucido, Tascosa, 6-1, 6-0.

SECOND ROUND: Neugebauer, Lubbock Coronado, def. Matt Keenan, Hereford, 6-1, 6-1; Mankins, Frenship, def. Justin Flood, Hereford, 6-6, 6-0, 7-6; Garrido, Caprock, def. Shea Gear, Hereford, 6-1, 6-4; Matt Copien, Hereford, def. Connell, Carlsbad, N.M., 6-3, 6-3; Rick Alley, Hereford, def. Gonzales, Lubbock Dunbar, 6-1, 6-0.

THIRD ROUND: Moore, Lubbock Coronado, def. Matt Copien, Hereford, 6-3, 3-6, 6-4; Rick Alley, Hereford, def. Patie, Tascosa, 6-1, 3-6, 6-1.

QUARTERFINALS: Black, Odessa Permian, def. Rick Alley, Hereford, 6-1, 6-2.

GIRLS' "B" SINGLES
FIRST ROUND: Jenni Perales, Hereford, def. Villarreal, Lubbock Dunbar, 6-0, 6-0.

SECOND ROUND: Ronda Fuston, Hereford, def. Skidmore, Carlsbad, N.M., 6-1, 6-0; Wendy Connally, Hereford, def. Tang, Palo Duro, 6-0, 6-4; Alisa Hoischer, Hereford, def. Parkway, Tascosa, 6-2, 6-1; Jenni Perales, Hereford, def. Quzada, Levelland, 6-3, 6-2; Tiffany LeGate, Hereford, def. Madrid, Lubbock Estacado, 6-2, 6-2; Peeli, Lubbock Monterey, def. Julie Allison, Hereford, 6-1, 6-3.

THIRD ROUND: Alford, Lubbock Coronado, def. Ronad Fuston, Hereford, 6-1, 6-4; Wendy Connally, Hereford, def. Simpson, Levelland, 6-1, 6-1; Kleinmeir, Lubbock High, def. Alisa Hoischer, Hereford, 6-2, 6-1; Hill, Tascosa, def. Jenni Perales, Hereford, 6-0, 6-2; Tiffany LeGate, Hereford, def. Schiermeyer, Lubbock High, 6-0, 6-2.

QUARTERFINALS: Alford, Lubbock Coronado, def. Wendy Connally, Hereford, 6-0, 6-1; Tiffany LeGate, Hereford, def. Hill, Tascosa, 6-2, 5-7, 6-3.

SEMIFINALS: Tiffany LeGate, Hereford, def. Douglas, Lubbock Estacado, 6-0, 6-1.

FINALS: Alford, Lubbock Coronado, def. Tiffany LeGate, Hereford, 6-4, 6-3.

BOYS' "B" DOUBLES
SECOND ROUND: Steven Hope & Brian Thomas, Hereford, def. Martin & Stollings, Odessa Permian, 6-1, 6-3.

QUARTERFINALS: Dunn & Woodcock, Lubbock Monterey, def. Steven Hope & Brian Thomas, Hereford, 6-2, 6-4.

GIRLS' "B" DOUBLES
FIRST ROUND: Stacy Bromliow & Leslie Conkright, Hereford, def. Giles & Jackson, Caprock, 6-2, 6-0.

SECOND ROUND: Rainey & Townsend, Lubbock Coronado, def. Stacy Bromliow & Leslie Conkright, Hereford, 6-1, 6-1.

Robinson, a plantation worker. Jerry Robinson left home for good when Jackie was 6 months old, and Mallie took the family west to Pasadena, Calif., the next year.

They moved into an all-white section of northwest Pasadena, living in a two-story house on 121 Pepper St. It was there that Robinson first heard the word "nigger," and it was there that he learned how to fight back within the context of the games he would play later at UCLA and in major league baseball.

"Jackie was emotionally volatile," said Rachel Robinson, who married Jackie on Feb. 10, 1946 and was with him when he died on Oct. 24, 1972 of complications from a lifelong fight with diabetes.

"He was always ready to take action. Maybe volatile isn't the right word, but he had a strong emotional reaction to things. He could fight back very easily, as he did at UCLA. He knew all the techniques for fighting back within the structure of the sport he was playing."

"Early in his career, the major stress he was under in baseball was not to react."

Robinson's days at UCLA, where he was a standout football player and track star, and the time he spent barnstorming with a racially mixed baseball team were two things in Robinson's past said to have intrigued Dodgers' General Manager Branch Rickey.

Already a pioneer in the areas of minor leagues and talent scouting, Rickey was ready to blaze another trail. He wanted to get a black man into baseball, and as World War II began to work its changes on the world, he felt the time was right.

"At the end of the 1945 season, Mr. Rickey called Jackie over,"

remembered Roy Campanella, who would join Robinson in the majors in 1948 and catch for the Dodgers for 10 years.

Rickey met with Robinson in his Manhattan offices for three hours, calling him every name that his strict Methodist upbringing would allow. It was a test, and Robinson passed.

Robinson would play one year for the Dodgers' International League team at Montreal before joining the Dodgers in 1947.

"All of us who played with or against him are so respectful of him," said Hall of Famer Monte Irvin, who broke into the majors in 1949 with the Dodgers' crosstown rival New York Giants. "We knew what he had to go through. A lot of us experienced the same things."

"They called us nigger. 'You're not gonna make it,' they said. 'Coon, shine,' they called us. Anything derogatory," Irvin recalled.

While Robinson was the trailblazer, the experiences of other early black ballplayers closely paralleled those of Robinson.

"You knew you had to go play someplace," Campanella said. "You'd be there on time, play, shower up and then go find a black hotel. You couldn't stay with the team. You did what you had to do."

In many ways, the Dodgers protected Robinson, especially in spring training. Instead of touring the South, as so many teams did, the Dodgers spent spring in Cuba and Panama, then came north.

"When we were with the Giants," Irvin said, "we went all down through Texas, Alabama, Louisiana. And Jackie hadn't been down there, so we felt the brunt of all that bigotry and hatred. Even though it was a few years later, they hadn't seen a black out there playing with the rest of the guys."

Irvin said black ballplayers learned during their Negro League days that if you couldn't cope with the bigotry of the South, "they'd leave you at home. You'd better stay here 'til we come back," they'd say. "You better stay at home. If you don't want to say yassuh and nosuh, if you don't want them to short-change you or call you all sorts of names — if you can't take that, then you'd better get out of baseball."

Through all the slurs, the insults and the degradation, Robinson persisted. He was baseball's first Rookie of the Year. He led the National League with a .342 batting average and 37 stolen bases in 1949. He ended his career in 1956 with a .311 lifetime batting average. He was the first black man to be inducted into the Hall of Fame, in 1962, and he helped change America.

"The significance of Jackie's entry into the major leagues, the fundamentals of the breakthrough, was that America was alerted to the reality of institutionalized racism," Rachel Robinson said. "We knew it was there — and the color line with it — but I think a lot of people — and good people, too — were not tuned in to it."

La Plata girls run in Pampa meet

The La Plata Junior High School girls' track teams competed in the Pampa meet last Saturday, with the seventh grade team placing fourth, and the eighth and ninth grade teams both placing sixth in their divisions.

This Friday, the Hereford junior high school girls' track meet is scheduled at Whiteface Stadium, beginning at 4 p.m.

Team point totals for La Plata in the Pampa meet were: seventh grade, 85 points; eighth grade, 32 points; and ninth grade, 68 points.

La Plata girls who won events were ninth grader Libby Kosub and seventh grader Shantel Cornelius. Kosub won the ninth grade 100-meter hurdles, and Cornelius was first in the seventh grade shot put and discus.

Placing second in individual events for La Plata were: Jill West, ninth grade 1,600-meter run; Kosub, ninth grade long jump; Angie Boggs, seventh grade 100-meter hurdles; Denis Davila, seventh grade 800-meter run; and Angela Phibbs, seventh grade 100-meter dash.

The La Plata ninth grade 400-meter relay team of Kosub, Renee Sublett, Cande Robbins, and West placed second.

Here are La Plata's third through sixth place finishes in the Pampa meet:

- NINTH GRADE**
800-METER RELAY: 5. La Plata (Cande Robbins, Poppy Richardson, Nikki Self, Renee Sublett).
1,600-METER RELAY: 5. La Plata (Libby Kosub, Poppy Richardson, Nikki Self, Jill West).
1,000-METER RUN: 5. Crystal Sims.
100-METER DASH: 5. Renee Sublett.

- HIGH JUMP:** 3. Poppy Richardson.
LONG JUMP: 4. Jill West.
SHOT PUT: 6. Jessica Dearing.
TRIPLE JUMP: 3. Libby Kosub.
3,200-METER RUN: 3. Stacy White.
DISCUS: 4. Jessica Dearing.

- EIGHTH GRADE**
400-METER RELAY: 3. La Plata (Camille Betzen, Terri Debord, Jaymie Moore, Brenna Reinauer).
100-METER HURDLES: 4. Amber Brooks.
800-METER RELAY: 4. La Plata (Lydia Flores, Traci Brush, Camille Betzen, Jaymie Moore).

- 1,600-METER RELAY:** 5. La Plata (Cynthia Martinez, Terri Debord, Traci Brush, Brenna Reinauer).
SHOT PUT: 5. Cindy Bell.

- LONG JUMP:** 3. Camille Betzen.
SEVENTH GRADE
HIGH JUMP: 6. Lindsey Radford.
1,600-METER RELAY: 5. La Plata (Hope Flores, Denise Davila, Angie Boggs, Brek Binder).

- 400-METER DASH:** 3. Hope Flores.
LONG JUMP: 3. Hope Flores, 4. Jennifer Hicks.
HIGH JUMP: 3. Sarita Romero.
400-METER RELAY: 4. La Plata (Denise Davila, Angela Phibbs, Christie Burkhardt, Shanda Smith).

- TRIPLE JUMP:** 6. Lindsey Radford.
SHOT PUT: 6. Christie Burkhardt.
400-METER RELAY: 5. La Plata (Angela Phibbs, Christie Burkhardt, Hope Flores, Denise Davila).



**=Happy Birthday=
=Mr. President=
from the A.A.P.**

IBM-XT
20 MEG Hard Disk
640K Monochrome
Lease/Purchase Plan
\$99.00/month
VAI.COM Computer Center
6605 E. 40 West Amarillo, Texas
(806) 355-3316

NBA standings

By The Associated Press
EASTERN CONFERENCE

Atlantic Division		W	L	Pct.	GB
y-Boston		36	23	.709	—
x-Philadelphia		44	35	.557	12
x-Washington		40	39	.506	16
New Jersey		24	54	.308	31½
New York		24	55	.304	32

Central Division		W	L	Pct.	GB
y-Atlanta		55	24	.696	—
x-Detroit		50	29	.633	5
x-Milwaukee		48	32	.600	7½
x-Chicago		40	40	.500	15½
x-Indiana		39	40	.494	16
Cleveland		29	50	.367	26

WESTERN CONFERENCE		W	L	Pct.	GB
Midwest Division					
y-Dallas		53	26	.671	—
x-Utah		44	35	.557	9
x-Houston		41	38	.519	12
Denver		35	44	.443	18
Sacramento		28	51	.354	25
San Antonio		26	53	.329	27

Pacific Division		W	L	Pct.	GB
y-L.A. Lakers		64	15	.810	—
x-Portland		47	31	.603	16½
x-Golden State		39	39	.500	24½
x-Seattle		36	42	.462	27½
Phoenix		23	46	.331	31
L.A. Clippers		12	66	.154	51½

Monday's Games	
Philadelphia 113, Washington 105	
Atlanta 102, Indiana 101	
Detroit 120, New York 100	
Chicago 114, Milwaukee 107	
Sacramento 123, San Antonio 118	

TOO MUCH TELEVISION

MISSION, Kan. (AP) — The football television blitz on New Year's Day and the next night has been blamed on deregulation by the commissioner of the Big Ten, Wayne Duke.

Duke's conference had five games all told in the various bowl games at the season's end, two on Jan. 1. There were five games on New Year's Day plus the Fiesta Bowl on the night of Jan. 2, which saw Penn State win the 1986 national title with a 14-10 decision over Miami of Florida.

"The NCAA is not allowed to restrict the amount of football on television and the result is overload," Duke commented.

Tell your C.R.P. Cover
\$7.95 per acre

Green Bugs \$2.91 per acre **Glean** \$14.20 per ounce **16 oz. Roundup** \$9.20 per acre

1½ lbs. Atrazine \$4.26 per acre

Crop Clinic Spraying Service
995-4713

YORK IS THE ONE

YORK

There is a NEW area dealer for YORK products

There is a new authorized York dealer in your area who can help you select the systems you need for farm or commercial use. Only your authorized York dealer can provide you with quality York products including:

- Farm Bins
- Commercial Tanks
- Hopper Tanks
- Elevator Legs
- Handling Equipment
- Aeration Systems
- Machinery, Grain Storage and Livestock Buildings

York dealers are trained professionals in servicing your farm and commercial grain storage, drying and handling systems; farm buildings and hopper tank needs. For quality York products and service after the sale see:

YORK

LIVING ALONE?

You may want to PRE-PLAN your funeral for these reasons --

- ECONOMY
- PEACE OF MIND
- PERSONAL CHOICES

Call us -- your Pre-Need Specialists

Rix
Funeral Directors
of Hereford
364-6533
105 GREENWOOD

COMPUTER Software

Application Class

Starts April 20, 1987
Ends June 1, 1987
Class Hours: 7 - 10 p.m.

Includes Basic Programming, Word Processor, Data Base, Spread Sheet & Graphics

Registration Limited to 1st 14 paid Fee \$40

Additional Information or to Register Contact
Tommy Haney 364-5112

Good guys win for a change

NEW YORK (AP) — "Escape from Sobibor" is a Holocaust movie with a difference. The good guys win. In 1943, the Nazi death camp Sobibor in eastern Poland was the scene of a successful prisoner revolt. Half of the camp's 600 inmates escaped.

The three-hour movie, based on the book by Richard Rashke, airs Sunday on CBS. It stars Alan Arkin, Joanna Pacula, Rutger Hauer and Hartmut Becker.

A recent screening at a New York theater was attended by many of the survivors of Sobibor as well as the cast of the movie.

Hauer, the big, blond, Dutch actor known in the United States mainly for macho villain roles in "Nighthawks," "Blade Runner" and "The Hitcher," plays a captured Russian soldier who helps plot the escape.

At the end of the screening, Hauer sobbed.

The movie, filmed in Yugoslavia, opens with shots of the deceptively lovely surroundings, and a train arriving with Jews who still believe

they are going to a work camp. Prisoners who work in the camp are stationed alongside the track to help the newcomers, knowing they have been brought to Sobibor for extermination.

A couple of the prisoners manage to whisper to the new ones, "Volunteer!" The ones who understand and step forward, whether qualified or not, when the Nazi commander asks for tailors or seamstresses. The rest are marched off to the "showers."

Reginald Rose wrote the excellent teleplay. Jack Gold, whose television credits include "The Naked Civil Servant" and the film "Aces High," did a superb job of directing.

"Sobibor" is vivid without being graphic. The horror of the gas chamber is conveyed in one scene — a child panics and runs screaming from the line of naked women. A Nazi guard lets loose his German shepherd. The reaction is seen on another youngster's face.

The apparent futility of escape is established in another wrenching scene. Thirteen people who were

caught are lined up in front of the assembled prisoners to be shot.

But the Nazi sergeant Wagner (Becker) adds an evil twist. He commands each of the 13 to pick one prisoner to die with him. They refuse. So Wagner tells them if they do not choose, 50 prisoners will die.

With no other choice, they walk into the crowd and select death partners. No one protests. The remaining prisoners are forced to watch the shootings.

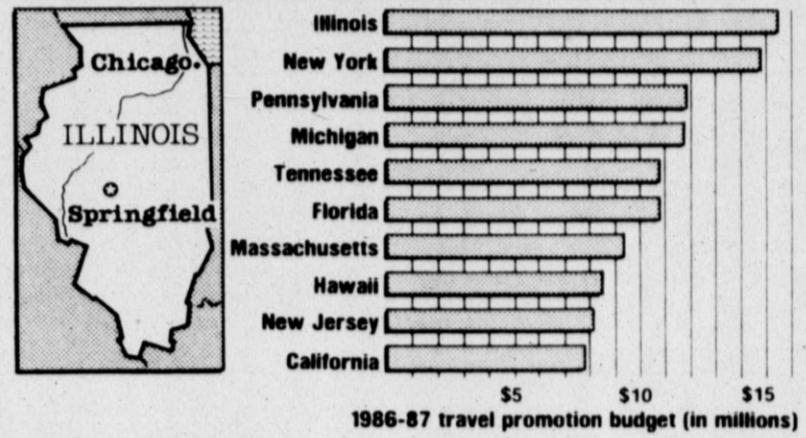
Arkin and cohorts rack their brains to think of a way out. When the captured Russians arrive, Arkin teams up with the lieutenant, Sasha (Hauer).

In order to avoid reprisals against those who remain behind, all the prisoners must be included in the escape. The plan? To leave by the front gate.

Arkin said the escape scene was filmed by eight cameras to avoid retakes and give the actors a sense of reality. He said one of the survivors of the real Sobibor was present for the filming.

Hearty Welcomes

They spend the most to lure tourists



Source: Travel Industry Association of America NEA GRAPHIC

Hoping to cash in on tourism, the U.S. states now spend an average of nearly \$4.7 million a year each to promote and advertise themselves. Tops among the 50 states is Illinois, with a travel promotion budget of \$15.5 million.



The first passenger railroad in America was the Baltimore & Ohio, with track laid in 1828.

In China it was believed drinking wine made from aster flowers would encourage longevity.

Workshop conducted recently

Northwest Primary School PTA, in conjunction with the Deaf Smith County Chapter of Red Cross, conducted a CPR workshop for parents at their April meeting in the school cafeteria.

The people who attended learned how to perform the Heimlich Maneuver on choking victims, and CPR on each other and on the Rescue Annie mannequin.

The PTA and the Red Cross believe the lessons learned will benefit those in attendance should the need arise.

PICASSO'S SKETCHBOOKS

MINNEAPOLIS (AP) — "Je Suis Le Cahier: The Sketchbooks of Picasso" will be on view at the Walker Art Center April 25-June 14.

More than 200 images from 43 sketchbooks dating from approximately 1900 to 1965 will be on view.

The center says the exhibition offers a "more intimate opportunity to see evidence of the highly personal method by which Picasso originated and developed his great range of themes."

The works range from delicate line drawings and washes to richly modeled pastel and crayon sketches.

COMICS



STEVE CANYON by Milton Caniff



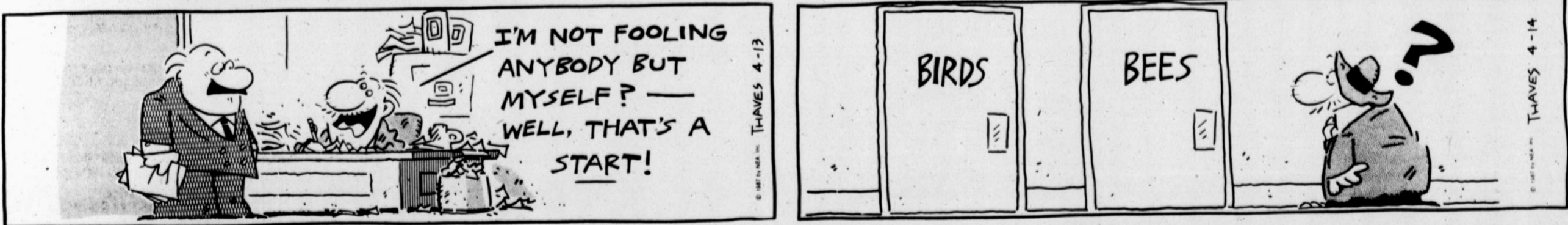
EK & MEK by Howie Schneider



THE BORN LOSER by Art Sansom



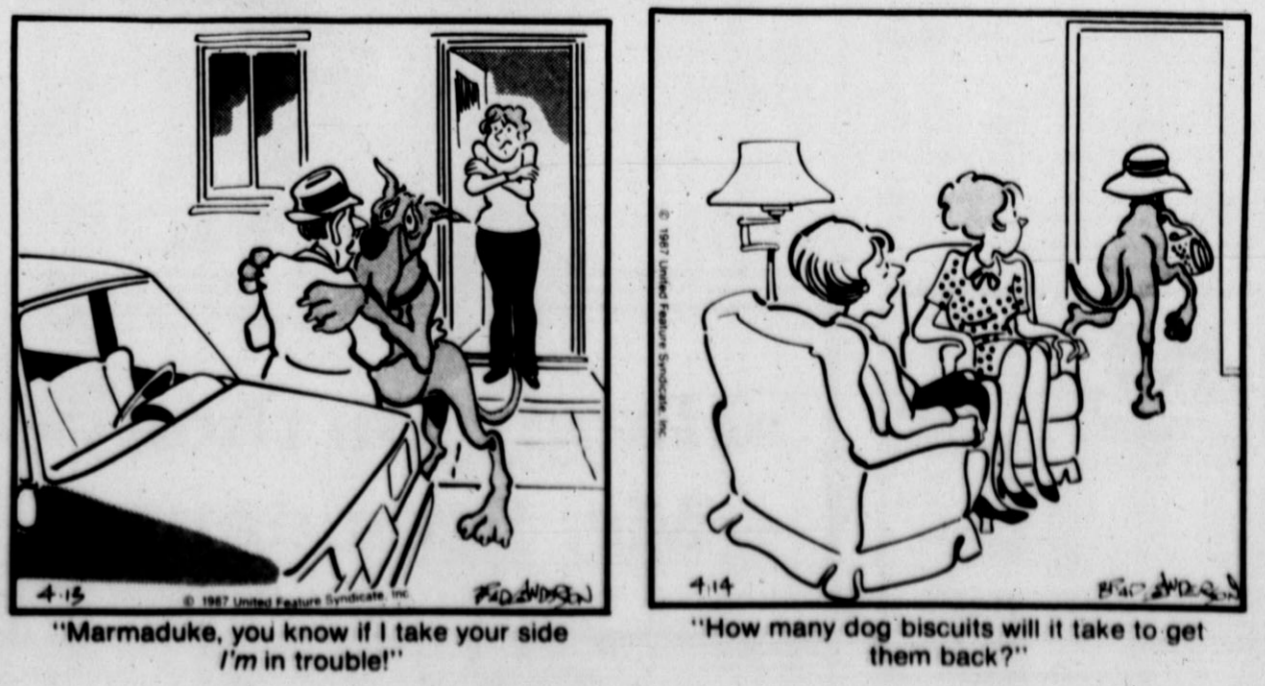
FRANK AND ERNEST by Bob Thaves



ALLY OOP by Dave Graue



Marmaduke by Brad Anderson



Television Schedule

DAYTIME

MORNING

- 5:00 **Success-N-Life**
- 5:00 **CNN Headline News**
- 5:00 **Beverly Hills**
- 5:00 **Archie Bunker's Place**
- 5:00 **Keys to Success**
- 5:00 **Cartoons**
- 5:00 **Getting Fit with Denise Austin**
- 5:00 **Club 700**
- 5:00 **Curious George**
- 5:00 **Make a Million**
- 5:00 **Mr. Martin**
- 5:00 **Second Hundred Years**
- 5:00 **Cocoon**
- 5:00 **Breadwinner**
- 5:00 **Seabert**
- 5:15 **Before Hours**
- 5:30 **Ag Day**
- 5:30 **Tom and Jerry**
- 5:30 **Marilyn Hickey**
- 5:30 **Faith 20**
- 5:30 **Nation's Business Today**
- 5:30 **Jimmy Swaggart**
- 5:30 **Dennis the Menace**
- 5:30 **That Girl**
- 5:30 **Make a Million**
- 5:30 **Keys to Success**
- 5:30 **MOVIE: Taps**
- 5:30 **MOVIE: A Woman Called Golda**
- 5:30 **MOVIE: Bill Cosby Himself**
- 5:30 **Don't Touch**
- 5:30 **Survival Series: Sharks**
- 5:30 **Workin' for Peanuts**
- 5:35 **Montana Territory**

- 6:00 **Jimmy Swaggart**
- 6:00 **ABC World News This Morning**
- 6:00 **Jim and Tammy**
- 6:00 **Muppets**
- 6:00 **CBS Morning News**
- 6:00 **Noticiero UNIVISION**
- 6:00 **Cartoon Express**
- 6:00 **It Can't Happen to Me**
- 6:00 **The Red Balloon**
- 6:30 **SuperBook**
- 6:30 **NBC News at Sunrise**
- 6:30 **News**
- 6:30 **Ag Report**
- 6:30 **Nation's Business Today**
- 6:30 **Mundo Latino**
- 6:30 **Mr. Wizard's World**
- 6:30 **He Man**
- 6:30 **Fraggle Rock**
- 7:00 **Flying House**
- 7:00 **Good Morning America**
- 7:00 **Lester Surrall**
- 7:00 **Bozo**
- 7:00 **CBS Morning News**
- 7:00 **Little Prince**
- 7:00 **Transformers**
- 7:00 **One Night Stand: A Keyboard Event**
- 7:00 **The Wildlife**
- 7:00 **Celebration of Caring**
- 7:00 **A Portrait of Gisele**
- 7:00 **The Hemingway Play**
- 7:00 **MOVIE: Kam**
- 7:00 **MOVIE: The Master of Ballantree**

- 7:05 **Dream of Jeannie**
- 7:30 **Gentle Ben**
- 7:30 **Farm and Weather**
- 7:30 **Prophecy Marches On**
- 7:30 **Shoich Christian Retreat**
- 7:30 **Household Salvation**
- 7:30 **Richard Roberts**
- 7:30 **Morning Program**
- 7:30 **SportsCenter**
- 7:30 **Today's Special**
- 7:30 **Denno's Menace**
- 7:30 **MOVIE: Bronco Billy**
- 7:30 **MOVIE: Lone Wolf McQuade**
- 7:35 **Bewitched**
- 8:00 **Father Knows Best**
- 8:00 **Sesame Street**
- 8:00 **In the Upper Room**
- 8:00 **Major League Women's Volleyball**
- 8:00 **MOVIE: Seven Minutes in Heaven**
- 8:00 **MOVIE: Time Bandits**
- 8:00 **MOVIE: Adolf Hitler: Portrait of a Tyrant**
- 9:05 **Ballad of Josie**
- 9:05 **Francis Joins the WACS**
- 9:05 **The Naked City**
- 9:30 **Blockbusters**
- 9:30 **New Card Sharks**
- 9:30 **College Cheerleading**
- 9:30 **Anything a Money**
- 9:30 **MOVIE: The Longshot**
- 9:30 **MOVIE: Enemy Mine**
- 9:30 **MOVIE: Seven Minutes in Heaven**
- 10:00 **Wheel of Fortune**
- 10:00 **Captain Kangaroo**
- 10:00 **Value Television**
- 10:00 **Jim and Tammy**
- 10:00 **Beverly Hillsbillies**
- 10:00 **Price is Right**
- 10:00 **Golf Connection**
- 10:00 **World Cup Skiing**
- 10:00 **NBA Today**
- 10:00 **THI Auto Racing**
- 10:00 **Tu o Nadie**
- 10:00 **FR) Tome**
- 10:00 **MOVIE: Shannon**
- 10:00 **THI Griff**
- 10:00 **THI Stone**
- 10:00 **MOVIE: Africa**
- 10:30 **Bachelor Father**
- 10:30 **American Baby**
- 10:30 **WE) Cry African Children**
- 10:30 **THI Victory**
- 10:30 **Scrabble**
- 10:30 **MOVIE: Shape Up**
- 10:30 **MOVIE: Made in Texas**
- 10:30 **Old Couple**
- 10:30 **City Assets: Richmond**
- 10:30 **MOVIE: Mr. Love**
- 10:30 **MOVIE: Cinema Workshop**
- 10:30 **MOVIE: Not Necessarily the News**
- 10:35 **TH) Surrender Dear**
- 11:00 **Here Come the Brides**
- 11:00 **Super Password**
- 11:00 **FR) Bodywatch**
- 11:00 **MOVIE: Best of Theatre**
- 11:00 **MOVIE: Mest of Educational Computing**
- 11:00 **WE) in the Face of Terrorism**
- 11:00 **TH) Frugal Gourmet**
- 11:00 **All My Children**
- 11:00 **Camp Meeting USA**
- 11:00 **Hogan's Heroes**
- 11:00 **Young and the Restless**
- 11:00 **Aerobics**
- 11:00 **El Mundo del Espectaculo**
- 11:00 **FR) Fixed Bayonets**
- 11:00 **MOVIE: Revolution**
- 11:00 **TH) The Alligator People**
- 11:00 **WE) Vampire Men of the Lost Planet**
- 11:00 **TH) The Crawling Eye**
- 11:00 **FR) The Emperor Jones**
- 11:00 **MOVIE: The Prowl**
- 11:00 **TH) Time After Time**
- 11:00 **WE) The Silent Twins**
- 11:00 **TH) St. Martin's Lane**
- 11:00 **MOVIE: Tranchcoat**
- 11:00 **MOVIE: All the King's Men**
- 11:00 **MOVIE: Smooth Talk**
- 11:00 **MOVIE: Ghostbusters**
- 11:00 **MOVIE: Back to the Future**

- 8:05 **Down to Earth**
- 8:30 **Hazel**
- 8:30 **Daily Restoration**
- 8:30 **Heathcliff**
- 8:30 **Jimmy Swaggart**
- 8:30 **MOVIE: On the Waterfront**
- 8:30 **MOVIE: Squizzy Taylor**
- 8:35 **FR) Come September**
- 8:35 **MOVIE: I Love Lucy**
- 9:00 **Sale of the Century**
- 9:00 **Mister Rogers' Neighborhood**
- 9:00 **Hour Magazine**
- 9:00 **Richard Roberts**
- 9:00 **Ask Dr. Ruth**
- 9:00 **TU) Bodybuilding**
- 9:00 **Gong Show**
- 9:00 **FR) The Borgias**
- 9:00 **MOVIE: Celebration of Caring**
- 9:00 **MOVIE: A Portrait of Gisele**
- 9:00 **THE Hemingway Play**
- 9:00 **Indigo**
- 9:00 **MOVIE: Alfie**
- 9:00 **MOVIE: Spies Like Us**
- 9:00 **MOVIE: Gotchal**
- 9:00 **MOVIE: Seven Minutes in Heaven**
- 9:00 **MOVIE: Time Bandits**
- 9:00 **MOVIE: Adolf Hitler: Portrait of a Tyrant**
- 9:05 **Ballad of Josie**
- 9:05 **Francis Joins the WACS**
- 9:05 **The Naked City**
- 9:30 **Blockbusters**
- 9:30 **New Card Sharks**
- 9:30 **College Cheerleading**
- 9:30 **Anything a Money**
- 9:30 **MOVIE: The Longshot**
- 9:30 **MOVIE: Enemy Mine**
- 9:30 **MOVIE: Seven Minutes in Heaven**
- 10:00 **Wheel of Fortune**
- 10:00 **Captain Kangaroo**
- 10:00 **Value Television**
- 10:00 **Jim and Tammy**
- 10:00 **Beverly Hillsbillies**
- 10:00 **Price is Right**
- 10:00 **Golf Connection**
- 10:00 **World Cup Skiing**
- 10:00 **NBA Today**
- 10:00 **THI Auto Racing**
- 10:00 **Tu o Nadie**
- 10:00 **FR) Tome**
- 10:00 **MOVIE: Shannon**
- 10:00 **THI Griff**
- 10:00 **THI Stone**
- 10:00 **MOVIE: Africa**
- 10:30 **Bachelor Father**
- 10:30 **American Baby**
- 10:30 **WE) Cry African Children**
- 10:30 **THI Victory**
- 10:30 **Scrabble**
- 10:30 **MOVIE: Shape Up**
- 10:30 **MOVIE: Made in Texas**
- 10:30 **Old Couple**
- 10:30 **City Assets: Richmond**
- 10:30 **MOVIE: Mr. Love**
- 10:30 **MOVIE: Cinema Workshop**
- 10:30 **MOVIE: Not Necessarily the News**
- 10:35 **TH) Surrender Dear**
- 11:00 **Here Come the Brides**
- 11:00 **Super Password**
- 11:00 **FR) Bodywatch**
- 11:00 **MOVIE: Best of Theatre**
- 11:00 **MOVIE: Mest of Educational Computing**
- 11:00 **WE) in the Face of Terrorism**
- 11:00 **TH) Frugal Gourmet**
- 11:00 **All My Children**
- 11:00 **Camp Meeting USA**
- 11:00 **Hogan's Heroes**
- 11:00 **Young and the Restless**
- 11:00 **Aerobics**
- 11:00 **El Mundo del Espectaculo**
- 11:00 **FR) Fixed Bayonets**
- 11:00 **MOVIE: Revolution**
- 11:00 **TH) The Alligator People**
- 11:00 **WE) Vampire Men of the Lost Planet**
- 11:00 **TH) The Crawling Eye**
- 11:00 **FR) The Emperor Jones**
- 11:00 **MOVIE: The Prowl**
- 11:00 **TH) Time After Time**
- 11:00 **WE) The Silent Twins**
- 11:00 **TH) St. Martin's Lane**
- 11:00 **MOVIE: Tranchcoat**
- 11:00 **MOVIE: All the King's Men**
- 11:00 **MOVIE: Smooth Talk**
- 11:00 **MOVIE: Ghostbusters**
- 11:00 **MOVIE: Back to the Future**

- 8:30 **MOVIE: The Night the Lights Went Out in Georgia**
- 8:30 **MOVIE: Brewster's Millions**
- 8:30 **MOVIE: Savage Harvest**
- 11:05 **Perry Mason**
- 11:30 **News**
- 11:30 **FR) Cinema Showcase**
- 11:30 **TU) Made in Texas**
- 11:30 **TH) Nova**
- 11:30 **Twilight Zone**
- 11:30 **Getting Fit with Denise Austin**
- 11:30 **Cicatrice del Alma**
- 11:30 **MOVIE: Joey**
- 12:00 **Farmer's Daughter**
- 12:00 **Days of Our Lives**
- 12:00 **FR) Sneak Previews**
- 12:00 **MOVIE: Maturity**
- 12:00 **TU) Nature**
- 12:00 **MOVIE: Money Makers**
- 12:00 **News**
- 12:00 **MOVIE: NHL Hockey**
- 12:00 **MOVIE: College Baseball**
- 12:00 **MOVIE: Major League Women's Volleyball**
- 12:00 **Mujer Comrade**
- 12:00 **Success-N-Life**
- 12:00 **MOVIE: Cocoon**
- 12:05 **FR) Flame of Calcutta**
- 12:05 **MOVIE: Beyond Mombasa**
- 12:05 **TU) My Six Convicts**
- 12:05 **MOVIE: Desert Fury**
- 12:05 **TH) Port Afrique**
- 12:30 **Patty Duke**
- 12:30 **FR) Spotlight**
- 12:30 **MOVIE: Frontline**
- 12:30 **WE) Joy of Painting**
- 12:30 **MOVIE: American Interests**
- 12:30 **True Confessions**
- 12:30 **MOVIE: Lundstroms**
- 12:30 **TU) King is Coming**
- 12:30 **WE) God's News Behind the News**
- 12:30 **TH) Introduction to Life**
- 12:30 **MOVIE: Bold and the Beautiful**
- 12:30 **TU) Candid Camera**
- 12:30 **FR) American Dream**
- 12:30 **MOVIE: The Great Gatsby**
- 12:30 **MOVIE: Mad Max Beyond Thunderdome**
- 12:30 **MOVIE: A Matter of Life and Death**
- 1:00 **Doris Day**
- 1:00 **Another World**
- 1:00 **MOVIE: MacNeil, Lehrer NewsHour**
- 1:00 **One Life to Live**
- 1:00 **Success in Life**
- 1:00 **MOVIE: Dick Van Dyke**
- 1:00 **WE) Major League Baseball**
- 1:00 **As the World Turns**
- 1:00 **La Hora del Gato**
- 1:00 **Today's Special**
- 1:00 **Love Me, Love Me Not**
- 1:00 **FR) New Gadget**
- 1:00 **MOVIE: One Big Family**
- 1:00 **TU) Mama's Family**
- 1:00 **WE) It's a Living**
- 1:00 **TH) Charles in Charge**
- 1:00 **MOVIE: American Dream**
- 1:00 **MOVIE: Revolution**
- 1:00 **MOVIE: Time Bandits**
- 1:00 **MOVIE: Secrets of a Mother and Daughter**
- 1:00 **MOVIE: Yentl**
- 1:00 **MOVIE: The Money Pit**
- 1:30 **Bill Cosby**
- 1:30 **MOVIE: Wonderful World of Art**
- 1:30 **MOVIE: Andy Griffith**
- 1:30 **TH) Speedworld**
- 1:30 **Little Prince**
- 1:30 **Liar's Club**
- 1:30 **Bodywatch**
- 1:30 **MOVIE: Alfie**
- 1:35 **FR) Woman Watch**
- 2:00 **Flying Nun**
- 2:00 **MOVIE: This Old House**
- 2:00 **MOVIE: Lap Quilting**
- 2:00 **TU) Adam Smith's Money World**
- 2:00 **WE) Painting with Pittard**
- 2:00 **TH) Painting with Elke Sommer**
- 2:00 **General Hospital**
- 2:00 **FR) Ever Increasing Faith**
- 2:00 **MOVIE: LESEA Alive**
- 2:00 **TU) Jerry Bernard**
- 2:00 **WE) Westbrook Hospital**
- 2:00 **TU) Mike Adams**
- 2:00 **MOVIE: Leave It to Beaver**
- 2:00 **Guiding Light**
- 2:00 **Video Exits**
- 2:00 **FR) Mysterious Cities of Gold**
- 2:00 **MOVIE: Spartacus and the Future**

- 2:05 **Yam and Jerry**
- 2:30 **Eddie's Father**
- 2:30 **Search Tonight**
- 2:30 **TH) This is the Life**
- 2:30 **MOVIE: Bugs Bunny**
- 2:30 **Turkey Television**
- 2:30 **Bullseye**
- 2:30 **Brady Bunch**
- 2:30 **Rising Damp**
- 2:30 **MOVIE: Ride, Vagabond Maturity**
- 2:30 **TU) Nature**
- 2:30 **MOVIE: Money Makers**
- 2:30 **News**
- 2:30 **MOVIE: NHL Hockey**
- 2:30 **MOVIE: College Baseball**
- 2:30 **MOVIE: Major League Women's Volleyball**
- 2:30 **Mujer Comrade**
- 2:30 **Success-N-Life**
- 2:30 **MOVIE: Cocoon**
- 2:30 **FR) Flame of Calcutta**
- 2:30 **MOVIE: Beyond Mombasa**
- 2:30 **TU) My Six Convicts**
- 2:30 **MOVIE: Desert Fury**
- 2:30 **TH) Port Afrique**
- 2:30 **Patty Duke**
- 2:30 **FR) Spotlight**
- 2:30 **MOVIE: Frontline**
- 2:30 **WE) Joy of Painting**
- 2:30 **MOVIE: American Interests**
- 2:30 **True Confessions**
- 2:30 **MOVIE: Lundstroms**
- 2:30 **TU) King is Coming**
- 2:30 **WE) God's News Behind the News**
- 2:30 **TH) Introduction to Life**
- 2:30 **MOVIE: Bold and the Beautiful**
- 2:30 **TU) Candid Camera**
- 2:30 **FR) American Dream**
- 2:30 **MOVIE: The Great Gatsby**
- 2:30 **MOVIE: Mad Max Beyond Thunderdome**
- 2:30 **MOVIE: A Matter of Life and Death**
- 2:30 **Doris Day**
- 2:30 **Another World**
- 2:30 **MOVIE: MacNeil, Lehrer NewsHour**
- 2:30 **One Life to Live**
- 2:30 **Success in Life**
- 2:30 **MOVIE: Dick Van Dyke**
- 2:30 **WE) Major League Baseball**
- 2:30 **As the World Turns**
- 2:30 **La Hora del Gato**
- 2:30 **Today's Special**
- 2:30 **Love Me, Love Me Not**
- 2:30 **FR) New Gadget**
- 2:30 **MOVIE: One Big Family**
- 2:30 **TU) Mama's Family**
- 2:30 **WE) It's a Living**
- 2:30 **TH) Charles in Charge**
- 2:30 **MOVIE: American Dream**
- 2:30 **MOVIE: Revolution**
- 2:30 **MOVIE: Time Bandits**
- 2:30 **MOVIE: Secrets of a Mother and Daughter**
- 2:30 **MOVIE: Yentl**
- 2:30 **MOVIE: The Money Pit**
- 2:30 **Bill Cosby**
- 2:30 **MOVIE: Wonderful World of Art**
- 2:30 **MOVIE: Andy Griffith**
- 2:30 **TH) Speedworld**
- 2:30 **Little Prince**
- 2:30 **Liar's Club**
- 2:30 **Bodywatch**
- 2:30 **MOVIE: Alfie**
- 2:30 **FR) Woman Watch**
- 2:30 **Flying Nun**
- 2:30 **MOVIE: This Old House**
- 2:30 **MOVIE: Lap Quilting**
- 2:30 **TU) Adam Smith's Money World**
- 2:30 **WE) Painting with Pittard**
- 2:30 **TH) Painting with Elke Sommer**
- 2:30 **General Hospital**
- 2:30 **FR) Ever Increasing Faith**
- 2:30 **MOVIE: LESEA Alive**
- 2:30 **TU) Jerry Bernard**
- 2:30 **WE) Westbrook Hospital**
- 2:30 **TU) Mike Adams**
- 2:30 **MOVIE: Leave It to Beaver**
- 2:30 **Guiding Light**
- 2:30 **Video Exits**
- 2:30 **FR) Mysterious Cities of Gold**
- 2:30 **MOVIE: Spartacus and the Future**
- 2:30 **Green Acres**
- 2:30 **Magnum, P.I.**
- 2:30 **Square One TV**
- 2:30 **FR) Rocky Road**
- 2:30 **MOVIE: Newsworld Game**
- 2:30 **198 Huntley Street**
- 2:30 **MOVIE: G.I. Joe**
- 2:30 **Diverse Court**
- 2:30 **FR) Speedworld**
- 2:30 **WE) Australian Rules Football**
- 2:30 **TH) Mark Spain's Salt Water Journal**
- 2:30 **La Dama de Rosa**
- 2:30 **Dennis the Menace**
- 2:30 **MOVIE: Let's Make a Deal**
- 2:30 **Thundercats**
- 2:30 **MOVIE: The Sterile Cuckoo**
- 2:30 **MOVIE: Mest of Educational Computing**
- 2:30 **MOVIE: Survival Series: Sharks**
- 2:30 **MOVIE: Breadwinner**
- 2:30 **MOVIE: Gilligan's Island**
- 2:30 **Riflemen**
- 2:30 **3-2-1 Contact**
- 2:30 **FR) Safe at Home**
- 2:30 **Million Dollar Chance**
- 2:30 **Transformers**
- 2:30 **Superior Court**
- 2:30 **TH) Scholastic Sports America**
- 2:30 **TU) Tom Mann Outdoors**
- 2:30 **Double Dare**
- 2:30 **MOVIE: The Dance Party USA**
- 2:30 **G.I. Joe**
- 2:30 **MOVIE: Just One of the Guys**
- 2:30 **MOVIE: Cross Creek**
- 2:30 **MOVIE: Major League Baseball**
- 2:30 **MOVIE: Leave It to Beaver**
- 2:30 **Big Valley**
- 2:30 **M*A*S*H**
- 2:30 **Captain Kangaroo**
- 2:30 **FR) Beverly Hillsbillies**
- 2:30 **Jeopardy!**
- 2:30 **FR) Red of God**
- 2:30 **MOVIE: Prophecy Bigest**
- 2:30 **TU) Paul One**
- 2:30 **WE) Something New**
- 2:30 **TH) God's News Behind the News**
- 2:30 **Facts of Life**
- 2:30 **People's Court**
- 2:30 **Speedworld**
- 2:30 **SEU**
- 2:30 **Montana**
- 2:30 **Carlson Express**
- 2:30 **American Dream**
- 2:30 **MOVIE: The Bride**
- 2:30 **MOVIE: Taps**
- 2:30 **MOVIE: 11th Victim**
- 2:30 **MOVIE: Running Brave**
- 2:30 **MOVIE: Turk 182**
- 2:30 **TU) Leave It to Beaver**
- 2:30 **WE) Beverly Hillsbillies**
- 2:30 **WBC Nightly News**
- 2:30 **FR) Andy Grooms**
- 2:30 **ABC News**
- 2:30 **Lester Surrall**
- 2:30 **WSPN in Christian**
- 2:30 **CBS News**
- 2:30 **FR) Pasting**
- 2:30 **MOVIE: Action Outdoors with Julius Stone**
- 2:30 **TU) NBA Today**
- 2:30 **WE) Inside the PGA Tour**
- 2:30 **TH) Winner's Circle**
- 2:30 **Noticiero UNIVISION**
- 2:30 **Wish Reels: Video to Go**
- 2:30 **Alfie**
- 2:30 **MOVIE: Head Stage**
- 2:30 **TU) Down to Earth**
- 2:30 **WE) Andy Grooms**

TUESDAY

- 6:00 **Hardcastle and McCormick**
- 6:00 **News**
- 6:00 **MacNeil, Lehrer NewsHour**
- 6:00 **Jim and Tammy**
- 6:00 **Barney Miller**
- 6:00 **SportsCenter**
- 6:00 **Cuna de Lobos Gonzalo Vega Diana Bracho**
- 6:00 **Can't on TV**
- 6:00 **Airwolf**
- 6:00 **Too Close for Comfort**
- 6:00 **Oppenheimer Sam Waterston**
- 6:00 **CR) Crazy About the Movies: Ingrid 1986 NR**
- 6:05 **Sanford and Son**
- 6:30 **Hollywood Squares**
- 6:30 **Wheel of Fortune**
- 6:30 **Jeffersons**
- 6:30 **Dating Game**
- 6:30 **NHL Hockey**
- 6:30 **Dangerhouse**
- 6:30 **Gimme a Break!**
- 6:35 **Major League Baseball**
- 7:00 **Young Rebels**
- 7:00 **Matlock**
- 7:00 **Nova 1986**
- 7:00 **Who's the Boss?**
- 7:00 **Camp Meeting USA**
- 7:00 **MOVIE: Moses, Part 1**
- 7:00 **Spies**
- 7:00 **El Precio de la Fama Otelia Medina Hector Bonilla**
- 7:00 **Donna Reed**
- 7:00 **Riptide**
- 7:00 **MOVIE: Miracle of the Heart: A Boy's Own Story**
- 7:00 **Golden Age of Television NH**
- 7:00 **MOVIE: A Woman Called Golda**
- 7:00 **MOVIE: Gotchal**
- 7:30 **Growing Pains**
- 7:30 **La Gloria y el Infierno Otelia Medina Hector Bonilla**
- 7:30 **Mr. Ed**
- 8:00 **700 Club**
- 8:00 **MOVIE: NBC Movie of the Week Jesus of Nazareth, Part 3**
- 8:00 **Frontline 1987**
- 8:00 **Moonlighting**

- MOVIE: CBS Tuesday Movie Seduced ** An ambitious politician gets involved with the wife of a wealthy industrialist who turns up murdered, leaving him to track down the killer himself. Gregory Harrison, Cybill Shepherd (1985) NR
- MOVIE: Esa Muchacha de Ojos Cafe
- MOVIE: My Three Sons
- MOVIE: Tuesday Night Fights
- MOVIE: Classic And Concert Luciano Pavarotti James Kiril Le Kanawa
- Zola Levitt
- Ann Sothorn
- World Without Walls: An African Memoir (1986)
- Max Headroom
- Jim and Tammy
- News
- Esta Noche se Improvisa
- Spy
- Fall Guy
- MOVIE: Hitchhiker: Made for Each Other Bud Cort, Jonelle Allen (1987) NR Profanity, Nudity, Adult Situation
- MOVIE: The Plunderers ** Four young saddle tramps, intent on terrorizing a Western town, are eventually stopped by a Civil War veteran. Jeff Chandler, John Saxon (1960) NR
- Celebrity Chefs
- 1987 College Basketball Special
- Noticiero UNIVISION
- MOVIE: Angel ** Straight A student by day, streetwalker by night, 15 year old Angel's secret life pays tuition, but also makes her a target for a homicidal psycho. Cliff Gorman, Susan Tyrrell (1984) R Profanity, Nudity, Violence, Adult Themes
- Hardcastle and McCormick
- News
- In Recital
- King is Coming
- Honeymooners
- Inside the PGA Tour
- Por Amor
- Route 66
- Alfred Hitchcock
- Late Show starring Joan Rivers
- Directors on Directing

- Tonight Show
- Nightly Business Report
- Benon
- Hour of Delirance
- Magnum, P.I.
- Love Connection
- SportsCenter
- MOVIE: Smooth Talk ** A sultry teenager is wildly excited when a 30 year old man persists at attempting to seduce her. Treat Williams, Laura Dern (1985) PG13 Profanity, Adult Situation
- Burns and Allen
- Sign Off
- Soap
- CBS Late Night T.J. Hooker
- SportsLook
- Yolanda Lujan Veronica Castro, Victor Laplace
- Donna Reed
- Dragnet
- Taxi
- Golden Age of Television NR
- MOVIE: Houdini ** The famed escape artist became a world hero during the 1920s. Tony Curtis, Janet Leigh (1953) NR
- MOVIE: Howling II A psychotic tries to track down a sinister cult of werewolves before their beautiful, but deadly leader orders them to kill again. Christopher Lee, Cybil Danning, R Profanity, Nudity, Violence
- Best of Groucho
- Late Night with David Letterman
- Nightline
- Westbrook Hospital
- MOVIE: WGN Presents Horizons West ** After two brothers return from the Civil War, one becomes a lawyer, the other follows a life of crime. Robert Ryan, Julia Adams (1952) NR

WANT ADS DO IT ALL! BUY - SELL RENT - TRADE

THE HEREFORD BRAND
SINCE 1901
WANT ADS DO IT ALL!
YOU WANT IT YOU GOT IT
CLASSIFIED
364-2030
ADDRESS: 313 N. LEE

CLASSIFIED ADS
Classified advertising rates are based on cents a word for first insertion (\$2.80 minimum), and 10 cents for second publication and thereafter. Rates below are based on consecutive issues, no copy change, straight word ads.

TIMES	RATE	MIN.
1 day per word	14	2.80
2 days per word	24	4.80
3 days per word	34	6.80
4 days per word	44	8.80
5th day FREE		

Ten days (2 free) is \$15.80 minimum; 15 days (3 free) is \$23.80 minimum; one month is \$31.80 minimum.

CLASSIFIED DISPLAY
Classified display rates apply to all other ads not set in solid-word lines—those with captions, bold or larger type, special paragraphing, all capital letters. Rates are \$3.95 per column inch; \$3.25 an inch for additional insertions.

LEGALS
Ad rates for legal notices are 14 cents per word first insertion, 10 cents per word for additional insertions.

ERRORS
Every effort is made to avoid errors in word ads and legal notices. Advertisers should call attention to any errors immediately after the first insertion. We will not be responsible for more than one incorrect insertion. In case of errors by the publishers, an additional insertion will be published.

1. Articles for Sale

Alligator men's shoes, brown, genuine skins, size 11 1/2 loafers. Never been worn; received for Christmas but too small. Regularly priced at \$600 to \$700 but asking only \$225. Call 364-6957 or 364-2030. 1-tfc

Kings Manor Methodist Home Child Care Center now has openings for pre-school children in full-time care. We offer an excellent program and a qualified, caring staff. Hot meals and nutritious snacks are provided. Call 364-0661 or come by 400 Ranger for more information. 1-138-tfc

Noah's Ark all breed pet grooming. 364-8311. 241 North Main. 1-143-tfc

Shaklee, vitamins, cleaning products, cosmetics. Clyde & Lee Cave, 107 Avenue C. 364-1073. 1-100-tfc

Men and boys hair cuts \$5.00 Call Minnie at Billie's Beauty Shop, 364-6441. 1-183-tfc

Must sell - new set 400 total watt speakers (21x15 1/2x29 1/2) Call 364-1854. 1-196-tfc

For sale - Nintendo family game set plus six cartridges. Less than three months old. 364-6927. 1-196-5p

For sale: Nice, used divan. Can be used in living room or den. Price \$150. Call Carlos Anderson, home 364-3378; business 364-5182. 1-196-tfc

CAR IN SHOP?
FRIENDS GOING TOGETHER!
We now rent Aerostar Vans, Pickups, Cars.
Daily, weekly and monthly rentals available.



WHITEFACE
FORD LINCOLN MERCURY
Phone 364-2722

Wallpaper Selection Wallpaper Savings Wallpaper Service

CABOCHON
127 N. Main
364-4700
Monday & Friday
11 a.m. - 5:30 p.m.
& by appointment
1-194-20c

For Sale: Two beautiful formals just in time for the prom. Like new call 364-0893. 1-200-5p

Moved to an apt. - For Sale - upright freezer, refrigerator, washer & dryer. Can be seen at 625 Star - Call 364-7277. 1-200-3p

Poodle puppies for sale. 364-5191 days; 364-0984 nights. 1-200-tfc

For sale: Secretarial desk, 2 desks with credenzas, May be seen at 242 East 3rd Street No. 9. Call 364-8686. 1-180-tfc

For Sale: 350 Honda Dirt Bike. Runs great. Only \$350. After 5:00 p.m. and weekends 364-2924. 1-194-tfc

Forever blinds 50% of Levolor products, 30% off Nanik Wood-Mini, & Verticle & Optix Blinds. 364-7960 for appointment. 1-198-tfc

Beauty equipment. 2 Altec speakers, 4 mikes, 2 mike stands, dining room suite, 5 chairs. German Shepherd. Free poodle. Call 364-1431. 1-198-5p

Sears 19 cu. ft. harvest gold refrigerator. Kenmore washer, both in good condition. 364-8370. 1-199-tfc

Blue Heeler pups \$100. Call 276-5343. 1-199-5c

Arena lights. Best offer. 276-5389; 276-5343. 1-199-5c

2. Farm Equipment

6020 gallon capacity trailer tank. 4 compartments. Excellent rubber. \$3,000. Call First National Fuel, 806-364-6030. 2-147-tfc

Good used structural pipe 2 1/2" 50 cents. 2 3/4" 60 Cents. Call Bernie, 806-794-4299 after 6 p.m. 2-189-tfc

New 5 ft. shredder \$450. Used 6 ft. shredder \$250. Call 364-7700 noon or night. 2-192-tfc

J.D. tractor 520 in good condition \$1150. Also 560 Int. tractor with cotton stripper, only 100 hours after overhaul, \$1750. Call 276-5339. 2-193-tfc

Shop made float. JD 100 beet thinner. Call 364-8604 or 384-3085. 2-195-20p

2-200 gallon side mount spray tanks. Complete with spray. Boom & Hydraulic pump. 600.00. 276-5389, 276-5343. 2-199-10c

Used center pivots available center pivot repairs & welding Experience & insured G-M Sprinkler Erectors. 364-5093. 2-199-6n

3. Cars for Sale

1975 Olds 98 Loaded. Real good. 289-5500 or 289-5896. 3-132-tfc

For Sale: 1982 Ford Pickup F150-XLS. Long wide bed, air, electric windows and door locks, dual tanks, tool boxes, Michelin tires. 364-1317 after 6 p.m. 3-191-tfc

1979 T-Bird. Sony AM-FM cassette. 75,000 miles. Good condition, new battery. Fully electric. See to appreciate. 364-2845. 3-194-10p

1976 Chrysler Cordoba; also 1980 Buick Somerset Regal. Call 364-1281; 364-6462 after 5 p.m. 3-198-5p

1979 Chevy Pickup, LWB, 350 8 cylinder, very good condition; new tires \$3,000 firm. Call David Armor 364-3203. 3-198-8c

'82 Ford LTD. 64,000 miles. Excellent condition. \$2790. '79 Olds Starfire. Black with red interior. Good condition. \$1060. 364-4368; 364-2986. 3-198-8c

KIT 'N' CARLYLE ©by Larry Wright



1981 Chev. One ton, 10' bed. 20,000 actual miles. Call 364-0353 from 8-6; 364-4142 after 6 p.m. 3-199-tfc

'76 GMC 1/2 ton Pickup, 2 wheel drive, 350 engine, automatic trans. \$1000. 289-5568. 3-199-5p

1982 Ford Mustang Runs good. A Jet Sound AM-FM stereo Cassette system. New tires. Low price. Call 364-0893 or come by 435 Centre. 3-200-5p

Is it true you can buy jeeps for \$44 through the U.S. government? Get the facts today! Call 1-312-742-1142 Ext. 9098. 3-200-1p

MILBURN MOTOR COMPANY
We pay cash for Used Cars
136 Sampson
Phone 364-0077 3-tfc

NEED TO RENT A CAR??
We have rent cars available at WHITEFACE FORD LINCOLN MERCURY, INC. 200 West 1st. Phone 364-2727. 3-250-tfc

NEW & USED CARS
Now for sale at STAGNER-ORSBORN BUICK-PONTIAC-GMC 1st & Miles 3-8-tfc

RV's for Sale

1978 25 ft. Holiday Rambler Travel Trailer. Air conditioned. 25 ft. roll-out awning and equalizer hitch. 364-0353 from 8-6; 364-4142 after 6 p.m. 3A-195-tfc

1972 Champion 24 ft. Class A motorhome, dash & roof air, 4 KW Onan generator, roll out awning, michelin tires, good condition. \$6,500.00. 364-2520. 3A-198-tfc

21 ft. travel trailer. \$2500.00. 364-8379. 3A-198-10p

4. Real Estate for Sale

Money paid for houses, notes, mortgages. Call 364-2660. 4-97-tfc

309 Sunset, Hereford. 4 bedrooms, 2 baths brick home. 2812 sq. ft. Priced for quick sale. John Bingham Land Company, Friona, Call 247-3909. 4-253-12c

For sale by owner, large 3 bedroom, 2 bath country home on 12 acres with hwy frontage, 4 miles from Hereford city limits. House has over 2200 sqft. additional 1000 sqft building also included in price. Price reduced. 578-4565. 4-66-tfc

For sale or rent: extra nice house. Assumable loan. Possible trade. 123 Centre. Call 364-6164. 4-187-tfc

Great value, good starter home. 3 bd, 1 bth, possible owner financing. \$29,000 HCR Real Estate, 364-4670. 4-183-tfc

By Owner-Unique 3-2-2, 1720 sq. home-fireplace-gas range and water heater-Kitchen Aide dishwasher-gas a/c and heat-4 ceiling fans, miniblinds-attic exhaust, fan-storage building-nice yard and more. Shown by appointment. Call 364-8077. 4-185-20p

Family oriented house - beautiful kitchen & craft room for mom, workshop area for dad and a basement for the kids. Four BRs & 2 1/2 baths finish off this ensemble. Call Don Tardy Co., Realtors, 364-4561 or 1-800-251-HOME Ext. 364. 4-198-5c

Want to buy CRP land. Will pay cash. A.C. Bub Smith, 806-355-9291. 4-199-10p

Must sell - 3 bedroom, 2 bath brick, garage, 1700 sq. ft. nice backyard. 224 Elm. For appointment only 364-1496. 4-192-20c

Owner-reat 2 bdrm brick, corner lot. 1 1/2 bath. Garage, shop bldg. Fenced Backyard. See to appreciate. 364-3776 appointment. 4-195-tfc

6 acres for sale with 3 bedroom house and basement in good condition. Will sell with or without house. Call 276-5339. 4-199-tfc

4 bedroom, 2 bath, full brick, \$2,500 down and owner financing. HCR Real Estate, 364-4670. 4-173-tfc

For Sale Or Lease Nice 3 bedroom, Family home, new carpet, paint. Very landscaped yard, lots of extras good "starter" home. We have outgrown. Call 364-7125 for information or appointment. 4-174-tfc

SEE THE SUNDAY BRAND REAL ESTATE PAGES FOR MORE DETAILED LISTINGS

INCOME TAX REFUND SPECIAL
Close out on all 1986 Tiffanys double wide and single wide. ONLY five left.
Call A-1 Mobile Homes, 806-376-5363 4A-195-18c

EXCELLENT MOVE-IN CONDITION
Northwest Hereford
3-2-2, large isolated MB, All custom made window treatments. Mature landscaping-fruit trees and garden space. Large outside storage By owner-realtor 364-1354. 4-188-20c

For sale or lease. 1,218 sq. ft. brick home. 3 bedroom, 1 1/2 baths, laundry room, nice large rooms, well arranged. Newly painted, carpeted, papered, very clean. Nice family or starter home priced \$37,000 negotiable on closing costs, assumable loan. Lots of extras including landscaping, mini-blinds, dishwasher. Call 364-7125 evenings for an appointment to see. 4-178-tfc

Mobile Homes
Abandoned home. Take up payments. 806-381-1352, call collect. 4A-113-tfc

1&2Bd Mobile homes for sale 1-3 thousand dollars. no down pmt. owner will carry. Payments less than rent. Call 364-2660. 4A-189-20c

Special of the month - 1987 2 bedroom mobile home. Beautiful front kitchen with bay window. Free washer and dryer. Cash price \$16,600. Financing available. Must ask for Rhonda, 806-376-5363. 4A-194-18c

Assume loan on large selection of repossessed homes. For more information call Frank, 806-376-4612. 4A-194-18c

Double wide-single wide-trades-repossessed homes. Guaranteed financing, lowest terms available. For information must ask for DeRay 806-376-5363. 4A-197-16c

Buying a mobile home? For honest, experienced help in getting the very best deal, please ask for Walt at 806-376-4694. 4A-197-10c

Credit problems? Down payment problems? For sincere help, call 806-381-1352. Call collect. 4A-198-tfc

Double wide repo. Low down payment. Easy qualifications. Call A-1 Mobile Homes, 806-376-5363. 4A-198-10c

\$99 total down payment. 120 months at 10% APR at \$223.00 per month. Free delivery. Call Art at 806-376-5364. 4A-198-10c

2-2 bedroom mobile homes. Unfurnished, both in good condition. Call after 8 p.m. 364-4285. 4A-199-3p

5. Homes for Rent

Unfurnished apartment. Nice, large 2 bedroom apartments. 1 1/2 baths. Refrigerated air, renter pays only electric bills. We pay cable TV, gas, water, trash \$275.00 per month. \$100.00 deposit. 364-8421. 364-4637 5-129-tfc

Nice two bedroom apartment. Unfurnished. Rent starts at \$210. Deposit \$170. No pets allowed. Call Griffin Real Estate at 364-1251. Equal Housing Opportunity. 5-203-tfc

Saratoga Gardens, Friona low rent for needy families. Carpet, laundry facilities. Rent starts \$265, bills paid. Collect 247-3666. 5-87-tfc

1,2,3 and 4 bedroom apartments available. Low income housing. stove and refrigerator furnished. Blue Water Garden Apts. Bills paid. Call 364-6661. 5-68-tfc

Have vacancy in convenient apartment. Furnished. Carpeted. Wall heaters. Bills paid. For couple or single adult. No children, no pets. Deposit. \$175 per month. 364-3566 of-ice. 5-135-tfc

Three bedroom house. \$350 per month; plus \$100 deposit. Good payment record required. Call Glen Phibbs, Lone Star Agency 364-0555. 5-163-tfc

2 bedroom unfurnished duplex. Ref. stove, hookup for washer and dryer. No pets. 364-7393. 5-181-tfc

2 bedroom unfurnished house. Plumbed for washer and dryer. Clean. 413 Barrett. 5-198-5p

3 BR-new paint in & out - will qualify Comm. Action - Deposit \$150.00. Call 364-4629-leave message. 5-196-5p

Nice 3 bedroom unfurnished house on Avenue B. \$300 per month plus deposit. Call Mark Armor, 364-3203. 5-200-tfc

House for rent at 238 Avenue E. \$250 monthly; \$100 deposit. Two bedrooms. Call 364-8303 days; 364-6147 nights. 5-200-tfc

Need extra storage space? Rent a mini storage, 2 sizes available 334-4370. 5-53-tfc

2 bedroom duplex available immediately. Northwest, West Central and LaPlata School Districts. Call Don Tardy Company Realtors. 364-4561. 5-65-tfc

2 bedroom furnished or unfurnished apartment. Stove and refrigerator. Fenced patio area. Laundry room facilities. Water and cable furnished. 364-4370. 5-145-tfc

2 bedroom unfurnished apartment. Freshly painted. Stove and refrigerator. Carpet. Water furnished. 364-4370. 5-166-tfc

2 bedroom apartment at 510 Knight. Call 364-2170. 5-179-tfc

Bachelor apartment at 136 Sampson. All bills paid. Call 364-0077. 5-185-tfc

Sycamore Lane Apts. Nice 2 bedrooms two blocks from new shopping center. Fresh paint, fireplace, kitchen appliances, fully carpeted. Gas and water paid. \$250 or \$285 month plus deposit. 12th month free with year's lease. Call 364-4901. 5-185-4tfc

Apartments: one bedroom, furniture included if needed. Cable included in rent \$225.00. One bedroom, kitchen furniture included if needed. Cable included in rent. \$240. Call 364-8007. 5-197-5p

One bedroom furnished house. 364-0025. 5-198-tfc

Real nice one bedroom furnished mobile home. \$235 per month; \$75 deposit. Bills paid. No pets. Call 364-4694. 5-199-tfc

3 bedroom, a bath brick, one car garage. Call Roy, evenings, 364-8415; days 1-647-5103. 5-199-tfc

2 bedroom house trailer with appliances and drapes. 2 miles north of town. Couple with one or two children. 364-6133 or 364-7786. 5-199-5p

Self-lock storage. 364-8448. 5-95-tfc

One bedroom apartment at 508 Knight. Available March 1. Call 364-2170 evenings. 5-163-tfc

Clean, one bedroom apartment. \$185 per month plus electricity, and deposit. For single or couple. 372-9993. 5-180-tfc

1,2 and 3 bedroom apartments. Starting at \$185 per month, bills paid. Call Kirk or Clark Andrews. 364-3803 or 276-5604. 5-188-tfc

3 bedroom, 2 bath, unfurnished at 226 Avenue H. \$325 month; \$150 deposit. Call 364-6489. 5-191-tfc

3 bedroom brick house at 102 Northwest Drive. Fenced backyard, attached garage, washer/dryer hookup. \$400 per month. Air conditioned, has central heat. Call 364-7525. 5-194-tfc

Redecorated two bedroom house. Plumbed for washer/dryer. Stove and refrigerator furnished. Quiet location. Couple or with one small child. References required. Inquire 310 West 6th St. after 5:30 p.m. 5-195-tfc

610 Union, 2 bdrm., \$200 per mo. plus bills, 810 S. Texas, 2 bdrm. \$150 per mo., 115 Campbell, 1 bdrm. \$220 mo. bills paid. 364-3566 days 364-1534 nights.

MOBILE HOME PARK
Also warehouse bldg. on rail spur, dock high, 9,000 sq. ft. Also store front bldg. 419-B Main St. Doug Bartlett, 364-1463; home 364-3937. 5-178-tfc

Put Yourself in the Marketplace, in the Classifieds.

ELDORADO APTS.
1-2 bedrooms
Furnished, unfurnished.
Conveniently located to shopping center.
364-4332 or 364-2926 5-9-20p

CAR IN SHOP? FRIENDS GOING TOGETHER?
We now rent Aerostar Vans, Pickups, Cars. Daily, weekly and monthly rentals available.
WHITEFACE
Phone 364-2727 1-52-tfc

EXECUTIVE APARTMENTS
505 So 25 Mile Avenue.
One and 3 bedroom apartments available now. Fully carpeted, draped, refrigerator, range, disposal, dishwasher. Furnished. Nice large apts. \$200 deposit. Call 364-8500. 5-15-tfc

Nice Carpet. New Paint. 2 bedroom apt. Stove & refrigerator. Call 364-4370 5-199-3c

Offices for Rent
Two small offices with reception rooms located on Hwy 385. Rent \$100 per month. You pay bills. 364-5191. 5A-182-tfc

Business Opportunities
Laundry for sale. Call 364-7350. 7-183-tfc

Situations Wanted
I will do tree removal. Call Bill Devers for free estimates. 364-4053 after 5 p.m. Sitwa

High school student looking for a summer job. Bookkeeping, word processing, typing and computer knowledge. Well groomed and responsible. References. Call 276-5357. Sit-192-10c

Need houses to clean. \$25.00-\$30.00-\$35.00. Go by size of house or by the hour. \$5.00 an hour. Also would like to take care of elderly lady in her home. By the day or hour. Do cleaning, shopping, washing & cook. Phone 364-8470. Sit-200-6p

Help Wanted
WANT A NEW SPRING WARDROBE? You can earn great \$\$\$ selling Avon. Call now 364-0899 8-195-20p

2 hair dressers. May pick up applications at the Reflection Beauty Salon, 128 E. 5th St. Apply in person. 8-194-10c

Experienced machinist. Call 364-0353 from 8-6; after 6 call 364-4142. 8-196-5c

Truckdriver: Position open immediately. Must be 25 years or older. Have good driving record and references. Call 364-0123. * 900-5p

Child Care
Kings Manor Methodist Child Care Center, state licensed, caring staff, drop-ins welcome, Monday-Saturday 6am-12 midnight, 400 Ranger Dr. 364-0661, Martha Rickman, Director. 9-142-tfc

Exp. sitter has openings. Low daily rates. Call 364-3946. 9-194-5p

HEREFORD DAY CARE
(State Licensed)
Excellent program by trained staff.
Children 0-12 years.
215 Norton 248 E. 16th
364-3151 364-5062
9-202-tfc

Announcements
Need help? Operation Good Shepherd. 364-0382. People helping people. 10-237-10c

Drinking a problem? 24 hour hotline. 364-2141 Alcoholic Anonymous. Every Tuesday through Saturday, 8:00 p.m. Sunday 11:00 a.m. at 406 West 4th. 10-105-tfc

Personals
Problem Pregnancy Center, 505 East Park Avenue, 364-2027. Free pregnancy tests. Confidential. After hours hot line 364-7626, ask for "Janie." 364-208-tfc

Business Service
Whiteface Roofing. Composition specialists, new roofs and re-roofing. Free estimates. Call P.E. Buck, 364-6715. 11-200-10p

Will pick up junk cars free. We buy scrap iron and metal, aluminum cans. 364-3350. 11-196-tfc

Custom plowing, large acres. Discing and chisel or sweeps. Call Marvin Welty, 364-8255 nights. 11-195-20p

Offering the following services: Roto tilling and leveling, cleaning and mowing vacant business and residential lots. Carpenter work. Bill McDowell, 364-8447 after 5 p.m. 11-21-tfc

Insulated doors and windows, window screens-screen doors, awnings-carports, patio covers, repair service. Stan Fry Aluminum Products. Call shop 364-0404; home 364-1196, 715 New York St. 11-134-tfc

Handy Man Construction. New homes, additions, patios, carports, total in-home remodeling, kitchens, baths, interior and exterior painting. References. Free estimates. Harlan Armstrong, 364-5925. 11-151-tfc

Hauling dirt, sand gravel, trash, yardwork, tilling, leveling. Build flower beds, tree planting, trimming. Call 364-0553 or 364-1123. 11-160-10p

Now taking yards to be mowed, weed whipped and edging. Call Martin Urbanczyk, 364-0220. 11-171-tfc

We do quality yard work - mowing, edging, etc. Great price. Call 364-2154. 11-192-20c

Exterior/Interior painting and carpentry. Remodeling. Residential or commercial. References. L and L Sorensen. 364-7347. 11-195-tfc

Urbanczyk Lawn Care. Thatching, aerating, mowing, shrub pruning. Call Connie or Chad at 364-5351. 11-191-20p

Mowing, edging and fertilizing yards. Experienced. References furnished. Chris Connolly, 364-0764. 11-198-20p

Custom blade plowing, large acres, 289-5588; 289-5568. 11-199-20p

Steve's Paint and Body Shop. Pay no deductables on insurance claims. Auto paint jobs \$350 and up. Certified. 258-7744 after 6:00. Weekends. 11-199-20c

The Pet Stop where tender loving care is given with every dog and cat grooming, now offering pet sitting and dog obedience classes. Call Cary or Leslie 364-0466. 11-199-5c

SCHUMACHER'S
Professional Lawn Sprinkler Systems Installation & Repairs
State License No. 824
Bonded-Insured
Free estimates
Ph. 364-4677
evenings or mornings. 11-170-20c

KELLEY ELECTRIC
Virgil Kelley
Residential-Commercial
All bids & wiring
Competitive
Ph. 364-1345
Nights 364-1523
or 364-5929
P.O. BOX 30
11-15-tfc

INSURANCE INVESTMENTS
Call Steve Nieman, CLU
or
B.J. GILLILAND
Gilliland-Nieman and Associates, Inc.
205 E. Park Ave.
364-2666 11-161-tfc

Livestock

PIK's Weigel
GRAIN CO.
Route 1
806-578-4239
Competitive Bids Daily
Immediate Payment
Contact Us
Find The Highest Bidder 76-40c

Custom grass seeding. Experienced. 40 ft. coverage, volume price, will travel 100 mile radius of Hereford. Coleman Land and Cattle, 364-6164. 12-167-tfc

Mare for sale. Would make a good feed lot horse. Call Ben Fought 364-0346. 12-197-5p

Lost & Found
Found, at football stadium woman's high school class ring. Call and identify. 364-0616. 13-198-3p

Legal Notices

LEGAL NOTICE ORDINANCE NO. 1193
AN ORDINANCE OF THE CITY OF HEREFORD, TEXAS, AMENDING ORDINANCE NO. 1193 TO ADD "C-3" TO SECTION XXII - SIDE-YARD REGULATIONS (2) AND ALSO TO ADD TO SECTION IX - REGULATIONS FOR "C-1" DISTRICTS (18) STORE OR SHOP FOR THE CONDUCT OF A RETAIL BUSINESS INCLUDING THE SALE OF BEER AND WINE. ALL OTHER PROVISIONS OF THE ORDINANCE REMAIN THE SAME.
ABOVE AMENDMENTS TO ORDINANCE NO. 1193 WERE PASSED, APPROVED AND ADOPTED BY THE CITY COMMISSION OF THE CITY OF HEREFORD, TEXAS, THIS 6TH DAY OF APRIL, 1987.
/s/ WESLEY S. FISHER
MAYOR 199-2c

Notice is hereby given in accordance with Section 11.39 of the Alcoholic Beverage Code, SOUTH FORK, an unincorporated association of Persons, is applying for a Private Club Registration Permit with the place of business to be located at 705 Bradley Street in Deaf Smith County, Texas, which is .8 of a mile West of U.S. Highway 385 and .1 of a mile South of Bradley Street in Deaf Smith County, Texas. The officers are as follows: ROY L. STOWERS, President; CLYDE BRUMMETT, Vice President; MIKEL JARRETT, Secretary; and BILLY BATES, Treasurer. 199-2c

NOTICE TO BIDDERS
The City of Hereford, Texas, will receive sealed bids in the office of the City Manager until 2:00 P.M., April 28, 1987, for one 1987-model suburban for the Hereford Volunteer Fire Department.
The right is reserved to reject any and all bids and to waive any informality in bids received.
Specifications and additional information may be picked up in the City Manager's Office, City Hall, 224 N. Lee.
CITY OF HEREFORD, TEXAS
By: Wesley S. Fisher, Mayor
Tu-200-2c

NOTICE TO BIDDERS
The City of Hereford, Texas, will receive sealed bids in the office of the City Manager until 2:00 P.M., April 28, 1987, for the aerial application of ULV Malathion for mosquito control for the 1987 season.
The right is reserved to reject any and all bids and to waive any informality in bids received.
Specifications and additional information may be picked up in the City Manager's Office, City Hall, 224 N. Lee.
CITY OF HEREFORD, TEXAS
By: Wesley S. Fisher, Mayor
Tu-200-2c

THE HEREFORD BRAND
WANT ADS DO IT ALL!
YOU WANT IT YOU GOT IT
CLASSIFIED
364-2030

The Newspaper BIBLE

GOD GIVE US FEARLESS PREACHERS
King Herod soon heard about Jesus, for his miracles were talked about everywhere. The king thought Jesus was John the Baptist come back to life again.
For Herod had sent soldiers to arrest and imprison John because he kept saying it was wrong for the king to marry Herodias, his brother Philip's wife. Herodias wanted John killed in revenge, but without Herod's approval she was powerless. And Herod respected John, knowing that he was a good and holy man, and so he kept him under his protection. Herod was disturbed whenever he talked with John, but even so he liked to listen to him.
Herodias' chance finally came. It was Herod's birthday and he gave a stag party for his palace eunuchs, army officers, and the leading citizens of Galilee. Then Herodias' daughter came in and danced before them and greatly pleased them all.
"Ask me for anything you like," the king vowed, "even half of my kingdom and I will give it to you."
She went out and consulted her mother, who told her, "Ask for John the Baptist's head."
So she hurried back to the king and told him, "I want the head of John the Baptist—right now—on a tray!"
Then the king was sorry, but he was embarrassed to break his oath in front of his guests. So he sent one of his bodyguards to the prison to cut off John's head and bring it to him. The soldier killed John in the prison, and brought back his head on a tray, and gave it to the girl and she took it to her mother. (Mark 6:14, 17-28)

CLASSIFIEDS

CATTLEMEN'S GRAIN, INC.
Agri-Science Center Building
1500 W. Park Ave.
Hereford, Texas 79045
806-364-7744
We Purchase Generic Certificates
Please Call Us. (806)364-7744
12-128-2c

Mr. Farmer -
For The Highest Price, Check With Me
For A Bid On Your
Generic Certificates.
Bids Vary Each Day.
Wilbur Gibson 200 South 25 Mile Ave 806-364-0441
Night 364-2225

Schlabs Hysinger
1500 West Park Ave.
COMMODITY SERVICES
Richard Schlabs Steve Hysinger Brenda Yosten
Phone 364-1286 Each Trading Day After 5:30 P.M.
for Recorded Commodity Update.
NOTE: The Recorded Commodity Update Phone Number has been changed to 364-1286.

CATTLE FUTURES	GRAIN FUTURES	METAL FUTURES																																																																																																																																																																																																																																																																																																																																																																																																																																																																																																																																																																																																																																																																																																							
<p>CATTLE FEEDER (CME) 40,000 lbs. cents per lb.</p> <table border="1"> <tr><td>Apr</td><td>50.45</td><td>50.45</td><td>50.45</td><td>50.45</td><td>50.45</td></tr> <tr><td>May</td><td>49.40</td><td>49.40</td><td>49.40</td><td>49.40</td><td>49.40</td></tr> <tr><td>Jun</td><td>48.35</td><td>48.35</td><td>48.35</td><td>48.35</td><td>48.35</td></tr> <tr><td>Jul</td><td>47.30</td><td>47.30</td><td>47.30</td><td>47.30</td><td>47.30</td></tr> <tr><td>Aug</td><td>46.25</td><td>46.25</td><td>46.25</td><td>46.25</td><td>46.25</td></tr> <tr><td>Sep</td><td>45.20</td><td>45.20</td><td>45.20</td><td>45.20</td><td>45.20</td></tr> <tr><td>Oct</td><td>44.15</td><td>44.15</td><td>44.15</td><td>44.15</td><td>44.15</td></tr> <tr><td>Nov</td><td>43.10</td><td>43.10</td><td>43.10</td><td>43.10</td><td>43.10</td></tr> <tr><td>Dec</td><td>42.05</td><td>42.05</td><td>42.05</td><td>42.05</td><td>42.05</td></tr> <tr><td>Jan</td><td>41.00</td><td>41.00</td><td>41.00</td><td>41.00</td><td>41.00</td></tr> <tr><td>Feb</td><td>40.00</td><td>40.00</td><td>40.00</td><td>40.00</td><td>40.00</td></tr> <tr><td>Mar</td><td>39.00</td><td>39.00</td><td>39.00</td><td>39.00</td><td>39.00</td></tr> <tr><td>Apr</td><td>38.00</td><td>38.00</td><td>38.00</td><td>38.00</td><td>38.00</td></tr> <tr><td>May</td><td>37.00</td><td>37.00</td><td>37.00</td><td>37.00</td><td>37.00</td></tr> <tr><td>Jun</td><td>36.00</td><td>36.00</td><td>36.00</td><td>36.00</td><td>36.00</td></tr> <tr><td>Jul</td><td>35.00</td><td>35.00</td><td>35.00</td><td>35.00</td><td>35.00</td></tr> <tr><td>Aug</td><td>34.00</td><td>34.00</td><td>34.00</td><td>34.00</td><td>34.00</td></tr> <tr><td>Sep</td><td>33.00</td><td>33.00</td><td>33.00</td><td>33.00</td><td>33.00</td></tr> <tr><td>Oct</td><td>32.00</td><td>32.00</td><td>32.00</td><td>32.00</td><td>32.00</td></tr> <tr><td>Nov</td><td>31.00</td><td>31.00</td><td>31.00</td><td>31.00</td><td>31.00</td></tr> <tr><td>Dec</td><td>30.00</td><td>30.00</td><td>30.00</td><td>30.00</td><td>30.00</td></tr> <tr><td>Jan</td><td>29.00</td><td>29.00</td><td>29.00</td><td>29.00</td><td>29.00</td></tr> <tr><td>Feb</td><td>28.00</td><td>28.00</td><td>28.00</td><td>28.00</td><td>28.00</td></tr> <tr><td>Mar</td><td>27.00</td><td>27.00</td><td>27.00</td><td>27.00</td><td>27.00</td></tr> <tr><td>Apr</td><td>26.00</td><td>26.00</td><td>26.00</td><td>26.00</td><td>26.00</td></tr> <tr><td>May</td><td>25.00</td><td>25.00</td><td>25.00</td><td>25.00</td><td>25.00</td></tr> <tr><td>Jun</td><td>24.00</td><td>24.00</td><td>24.00</td><td>24.00</td><td>24.00</td></tr> <tr><td>Jul</td><td>23.00</td><td>23.00</td><td>23.00</td><td>23.00</td><td>23.00</td></tr> <tr><td>Aug</td><td>22.00</td><td>22.00</td><td>22.00</td><td>22.00</td><td>22.00</td></tr> <tr><td>Sep</td><td>21.00</td><td>21.00</td><td>21.00</td><td>21.00</td><td>21.00</td></tr> <tr><td>Oct</td><td>20.00</td><td>20.00</td><td>20.00</td><td>20.00</td><td>20.00</td></tr> <tr><td>Nov</td><td>19.00</td><td>19.00</td><td>19.00</td><td>19.00</td><td>19.00</td></tr> <tr><td>Dec</td><td>18.00</td><td>18.00</td><td>18.00</td><td>18.00</td><td>18.00</td></tr> <tr><td>Jan</td><td>17.00</td><td>17.00</td><td>17.00</td><td>17.00</td><td>17.00</td></tr> <tr><td>Feb</td><td>16.00</td><td>16.00</td><td>16.00</td><td>16.00</td><td>16.00</td></tr> <tr><td>Mar</td><td>15.00</td><td>15.00</td><td>15.00</td><td>15.00</td><td>15.00</td></tr> <tr><td>Apr</td><td>14.00</td><td>14.00</td><td>14.00</td><td>14.00</td><td>14.00</td></tr> <tr><td>May</td><td>13.00</td><td>13.00</td><td>13.00</td><td>13.00</td><td>13.00</td></tr> <tr><td>Jun</td><td>12.00</td><td>12.00</td><td>12.00</td><td>12.00</td><td>12.00</td></tr> <tr><td>Jul</td><td>11.00</td><td>11.00</td><td>11.00</td><td>11.00</td><td>11.00</td></tr> <tr><td>Aug</td><td>10.00</td><td>10.00</td><td>10.00</td><td>10.00</td><td>10.00</td></tr> <tr><td>Sep</td><td>9.00</td><td>9.00</td><td>9.00</td><td>9.00</td><td>9.00</td></tr> <tr><td>Oct</td><td>8.00</td><td>8.00</td><td>8.00</td><td>8.00</td><td>8.00</td></tr> <tr><td>Nov</td><td>7.00</td><td>7.00</td><td>7.00</td><td>7.00</td><td>7.00</td></tr> <tr><td>Dec</td><td>6.00</td><td>6.00</td><td>6.00</td><td>6.00</td><td>6.00</td></tr> <tr><td>Jan</td><td>5.00</td><td>5.00</td><td>5.00</td><td>5.00</td><td>5.00</td></tr> <tr><td>Feb</td><td>4.00</td><td>4.00</td><td>4.00</td><td>4.00</td><td>4.00</td></tr> <tr><td>Mar</td><td>3.00</td><td>3.00</td><td>3.00</td><td>3.00</td><td>3.00</td></tr> <tr><td>Apr</td><td>2.00</td><td>2.00</td><td>2.00</td><td>2.00</td><td>2.00</td></tr> <tr><td>May</td><td>1.00</td><td>1.00</td><td>1.00</td><td>1.00</td><td>1.00</td></tr> <tr><td>Jun</td><td>0.00</td><td>0.00</td><td>0.00</td><td>0.00</td><td>0.00</td></tr> </table>	Apr	50.45	50.45	50.45	50.45	50.45	May	49.40	49.40	49.40	49.40	49.40	Jun	48.35	48.35	48.35	48.35	48.35	Jul	47.30	47.30	47.30	47.30	47.30	Aug	46.25	46.25	46.25	46.25	46.25	Sep	45.20	45.20	45.20	45.20	45.20	Oct	44.15	44.15	44.15	44.15	44.15	Nov	43.10	43.10	43.10	43.10	43.10	Dec	42.05	42.05	42.05	42.05	42.05	Jan	41.00	41.00	41.00	41.00	41.00	Feb	40.00	40.00	40.00	40.00	40.00	Mar	39.00	39.00	39.00	39.00	39.00	Apr	38.00	38.00	38.00	38.00	38.00	May	37.00	37.00	37.00	37.00	37.00	Jun	36.00	36.00	36.00	36.00	36.00	Jul	35.00	35.00	35.00	35.00	35.00	Aug	34.00	34.00	34.00	34.00	34.00	Sep	33.00	33.00	33.00	33.00	33.00	Oct	32.00	32.00	32.00	32.00	32.00	Nov	31.00	31.00	31.00	31.00	31.00	Dec	30.00	30.00	30.00	30.00	30.00	Jan	29.00	29.00	29.00	29.00	29.00	Feb	28.00	28.00	28.00	28.00	28.00	Mar	27.00	27.00	27.00	27.00	27.00	Apr	26.00	26.00	26.00	26.00	26.00	May	25.00	25.00	25.00	25.00	25.00	Jun	24.00	24.00	24.00	24.00	24.00	Jul	23.00	23.00	23.00	23.00	23.00	Aug	22.00	22.00	22.00	22.00	22.00	Sep	21.00	21.00	21.00	21.00	21.00	Oct	20.00	20.00	20.00	20.00	20.00	Nov	19.00	19.00	19.00	19.00	19.00	Dec	18.00	18.00	18.00	18.00	18.00	Jan	17.00	17.00	17.00	17.00	17.00	Feb	16.00	16.00	16.00	16.00	16.00	Mar	15.00	15.00	15.00	15.00	15.00	Apr	14.00	14.00	14.00	14.00	14.00	May	13.00	13.00	13.00	13.00	13.00	Jun	12.00	12.00	12.00	12.00	12.00	Jul	11.00	11.00	11.00	11.00	11.00	Aug	10.00	10.00	10.00	10.00	10.00	Sep	9.00	9.00	9.00	9.00	9.00	Oct	8.00	8.00	8.00	8.00	8.00	Nov	7.00	7.00	7.00	7.00	7.00	Dec	6.00	6.00	6.00	6.00	6.00	Jan	5.00	5.00	5.00	5.00	5.00	Feb	4.00	4.00	4.00	4.00	4.00	Mar	3.00	3.00	3.00	3.00	3.00	Apr	2.00	2.00	2.00	2.00	2.00	May	1.00	1.00	1.00	1.00	1.00	Jun	0.00	0.00	0.00	0.00	0.00	<p>CORN (CBT) 5,000 bu. cents per bu.</p> <table border="1"> <tr><td>Apr</td><td>1.00</td><td>1.00</td><td>1.00</td><td>1.00</td><td>1.00</td></tr> <tr><td>May</td><td>1.00</td><td>1.00</td><td>1.00</td><td>1.00</td><td>1.00</td></tr> <tr><td>Jun</td><td>1.00</td><td>1.00</td><td>1.00</td><td>1.00</td><td>1.00</td></tr> <tr><td>Jul</td><td>1.00</td><td>1.00</td><td>1.00</td><td>1.00</td><td>1.00</td></tr> <tr><td>Aug</td><td>1.00</td><td>1.00</td><td>1.00</td><td>1.00</td><td>1.00</td></tr> <tr><td>Sep</td><td>1.00</td><td>1.00</td><td>1.00</td><td>1.00</td><td>1.00</td></tr> <tr><td>Oct</td><td>1.00</td><td>1.00</td><td>1.00</td><td>1.00</td><td>1.00</td></tr> <tr><td>Nov</td><td>1.00</td><td>1.00</td><td>1.00</td><td>1.00</td><td>1.00</td></tr> <tr><td>Dec</td><td>1.00</td><td>1.00</td><td>1.00</td><td>1.00</td><td>1.00</td></tr> <tr><td>Jan</td><td>1.00</td><td>1.00</td><td>1.00</td><td>1.00</td><td>1.00</td></tr> <tr><td>Feb</td><td>1.00</td><td>1.00</td><td>1.00</td><td>1.00</td><td>1.00</td></tr> <tr><td>Mar</td><td>1.00</td><td>1.00</td><td>1.00</td><td>1.00</td><td>1.00</td></tr> <tr><td>Apr</td><td>1.00</td><td>1.00</td><td>1.00</td><td>1.00</td><td>1.00</td></tr> <tr><td>May</td><td>1.00</td><td>1.00</td><td>1.00</td><td>1.00</td><td>1.00</td></tr> <tr><td>Jun</td><td>1.00</td><td>1.00</td><td>1.00</td><td>1.00</td><td>1.00</td></tr> <tr><td>Jul</td><td>1.00</td><td>1.00</td><td>1.00</td><td>1.00</td><td>1.00</td></tr> <tr><td>Aug</td><td>1.00</td><td>1.00</td><td>1.00</td><td>1.00</td><td>1.00</td></tr> <tr><td>Sep</td><td>1.00</td><td>1.00</td><td>1.00</td><td>1.00</td><td>1.00</td></tr> <tr><td>Oct</td><td>1.00</td><td>1.00</td><td>1.00</td><td>1.00</td><td>1.00</td></tr> <tr><td>Nov</td><td>1.00</td><td>1.00</td><td>1.00</td><td>1.00</td><td>1.00</td></tr> <tr><td>Dec</td><td>1.00</td><td>1.00</td><td>1.00</td><td>1.00</td><td>1.00</td></tr> <tr><td>Jan</td><td>1.00</td><td>1.00</td><td>1.00</td><td>1.00</td><td>1.00</td></tr> <tr><td>Feb</td><td>1.00</td><td>1.00</td><td>1.00</td><td>1.00</td><td>1.00</td></tr> <tr><td>Mar</td><td>1.00</td><td>1.00</td><td>1.00</td><td>1.00</td><td>1.00</td></tr> <tr><td>Apr</td><td>1.00</td><td>1.00</td><td>1.00</td><td>1.00</td><td>1.00</td></tr> <tr><td>May</td><td>1.00</td><td>1.00</td><td>1.00</td><td>1.00</td><td>1.00</td></tr> <tr><td>Jun</td><td>1.00</td><td>1.00</td><td>1.00</td><td>1.00</td><td>1.00</td></tr> <tr><td>Jul</td><td>1.00</td><td>1.00</td><td>1.00</td><td>1.00</td><td>1.00</td></tr> <tr><td>Aug</td><td>1.00</td><td>1.00</td><td>1.00</td><td>1.00</td><td>1.00</td></tr> <tr><td>Sep</td><td>1.00</td><td>1.00</td><td>1.00</td><td>1.00</td><td>1.00</td></tr> <tr><td>Oct</td><td>1.00</td><td>1.00</td><td>1.00</td><td>1.00</td><td>1.00</td></tr> <tr><td>Nov</td><td>1.00</td><td>1.00</td><td>1.00</td><td>1.00</td><td>1.00</td></tr> <tr><td>Dec</td><td>1.00</td><td>1.00</td><td>1.00</td><td>1.00</td><td>1.00</td></tr> <tr><td>Jan</td><td>1.00</td><td>1.00</td><td>1.00</td><td>1.00</td><td>1.00</td></tr> <tr><td>Feb</td><td>1.00</td><td>1.00</td><td>1.00</td><td>1.00</td><td>1.00</td></tr> <tr><td>Mar</td><td>1.00</td><td>1.00</td><td>1.00</td><td>1.00</td><td>1.00</td></tr> <tr><td>Apr</td><td>1.00</td><td>1.00</td><td>1.00</td><td>1.00</td><td>1.00</td></tr> <tr><td>May</td><td>1.00</td><td>1.00</td><td>1.00</td><td>1.00</td><td>1.00</td></tr> <tr><td>Jun</td><td>1.00</td><td>1.00</td><td>1.00</td><td>1.00</td><td>1.00</td></tr> <tr><td>Jul</td><td>1.00</td><td>1.00</td><td>1.00</td><td>1.00</td><td>1.00</td></tr> <tr><td>Aug</td><td>1.00</td><td>1.00</td><td>1.00</td><td>1.00</td><td>1.00</td></tr> <tr><td>Sep</td><td>1.00</td><td>1.00</td><td>1.00</td><td>1.00</td><td>1.00</td></tr> <tr><td>Oct</td><td>1.00</td><td>1.00</td><td>1.00</td><td>1.00</td><td>1.00</td></tr> <tr><td>Nov</td><td>1.00</td><td>1.00</td><td>1.00</td><td>1.00</td><td>1.00</td></tr> <tr><td>Dec</td><td>1.00</td><td>1.00</td><td>1.00</td><td>1.00</td><td>1.00</td></tr> <tr><td>Jan</td><td>1.00</td><td>1.00</td><td>1.00</td><td>1.00</td><td>1.00</td></tr> <tr><td>Feb</td><td>1.00</td><td>1.00</td><td>1.00</td><td>1.00</td><td>1.00</td></tr> <tr><td>Mar</td><td>1.00</td><td>1.00</td><td>1.00</td><td>1.00</td><td>1.00</td></tr> <tr><td>Apr</td><td>1.00</td><td>1.00</td><td>1.00</td><td>1.00</td><td>1.00</td></tr> <tr><td>May</td><td>1.00</td><td>1.00</td><td>1.00</td><td>1.00</td><td>1.00</td></tr> <tr><td>Jun</td><td>1.00</td><td>1.00</td><td>1.00</td><td>1.00</td><td>1.00</td></tr> <tr><td>Jul</td><td>1.00</td><td>1.00</td><td>1.00</td><td>1.00</td><td>1.00</td></tr> <tr><td>Aug</td><td>1.00</td><td>1.00</td><td>1.00</td><td>1.00</td><td>1.00</td></tr> <tr><td>Sep</td><td>1.00</td><td>1.00</td><td>1.00</td><td>1.00</td><td>1.00</td></tr> <tr><td>Oct</td><td>1.00</td><td>1.00</td><td>1.00</td><td>1.00</td><td>1.00</td></tr> <tr><td>Nov</td><td>1.00</td><td>1.00</td><td>1.00</td><td>1.00</td><td>1.00</td></tr> <tr><td>Dec</td><td>1.00</td><td>1.00</td><td>1.00</td><td>1.00</td><td>1.00</td></tr> <tr><td>Jan</td><td>1.00</td><td>1.00</td><td>1.00</td><td>1.00</td><td>1.00</td></tr> <tr><td>Feb</td><td>1.00</td><td>1.00</td><td>1.00</td><td>1.00</td><td>1.00</td></tr> <tr><td>Mar</td><td>1.00</td><td>1.00</td><td>1.00</td><td>1.00</td><td>1.00</td></tr> <tr><td>Apr</td><td>1.00</td><td>1.00</td><td>1.00</td><td>1.00</td><td>1.00</td></tr> <tr><td>May</td><td>1.00</td><td>1.00</td><td>1.00</td><td>1.00</td><td>1.00</td></tr> <tr><td>Jun</td><td>1.0</td></tr></table>	Apr	1.00	1.00	1.00	1.00	1.00	May	1.00	1.00	1.00	1.00	1.00	Jun	1.00	1.00	1.00	1.00	1.00	Jul	1.00	1.00	1.00	1.00	1.00	Aug	1.00	1.00	1.00	1.00	1.00	Sep	1.00	1.00	1.00	1.00	1.00	Oct	1.00	1.00	1.00	1.00	1.00	Nov	1.00	1.00	1.00	1.00	1.00	Dec	1.00	1.00	1.00	1.00	1.00	Jan	1.00	1.00	1.00	1.00	1.00	Feb	1.00	1.00	1.00	1.00	1.00	Mar	1.00	1.00	1.00	1.00	1.00	Apr	1.00	1.00	1.00	1.00	1.00	May	1.00	1.00	1.00	1.00	1.00	Jun	1.00	1.00	1.00	1.00	1.00	Jul	1.00	1.00	1.00	1.00	1.00	Aug	1.00	1.00	1.00	1.00	1.00	Sep	1.00	1.00	1.00	1.00	1.00	Oct	1.00	1.00	1.00	1.00	1.00	Nov	1.00	1.00	1.00	1.00	1.00	Dec	1.00	1.00	1.00	1.00	1.00	Jan	1.00	1.00	1.00	1.00	1.00	Feb	1.00	1.00	1.00	1.00	1.00	Mar	1.00	1.00	1.00	1.00	1.00	Apr	1.00	1.00	1.00	1.00	1.00	May	1.00	1.00	1.00	1.00	1.00	Jun	1.00	1.00	1.00	1.00	1.00	Jul	1.00	1.00	1.00	1.00	1.00	Aug	1.00	1.00	1.00	1.00	1.00	Sep	1.00	1.00	1.00	1.00	1.00	Oct	1.00	1.00	1.00	1.00	1.00	Nov	1.00	1.00	1.00	1.00	1.00	Dec	1.00	1.00	1.00	1.00	1.00	Jan	1.00	1.00	1.00	1.00	1.00	Feb	1.00	1.00	1.00	1.00	1.00	Mar	1.00	1.00	1.00	1.00	1.00	Apr	1.00	1.00	1.00	1.00	1.00	May	1.00	1.00	1.00	1.00	1.00	Jun	1.00	1.00	1.00	1.00	1.00	Jul	1.00	1.00	1.00	1.00	1.00	Aug	1.00	1.00	1.00	1.00	1.00	Sep	1.00	1.00	1.00	1.00	1.00	Oct	1.00	1.00	1.00	1.00	1.00	Nov	1.00	1.00	1.00	1.00	1.00	Dec	1.00	1.00	1.00	1.00	1.00	Jan	1.00	1.00	1.00	1.00	1.00	Feb	1.00	1.00	1.00	1.00	1.00	Mar	1.00	1.00	1.00	1.00	1.00	Apr	1.00	1.00	1.00	1.00	1.00	May	1.00	1.00	1.00	1.00	1.00	Jun	1.00	1.00	1.00	1.00	1.00	Jul	1.00	1.00	1.00	1.00	1.00	Aug	1.00	1.00	1.00	1.00	1.00	Sep	1.00	1.00	1.00	1.00	1.00	Oct	1.00	1.00	1.00	1.00	1.00	Nov	1.00	1.00	1.00	1.00	1.00	Dec	1.00	1.00	1.00	1.00	1.00	Jan	1.00	1.00	1.00	1.00	1.00	Feb	1.00	1.00	1.00	1.00	1.00	Mar	1.00	1.00	1.00	1.00	1.00	Apr	1.00	1.00	1.00	1.00	1.00	May	1.00	1.00	1.00	1.00	1.00	Jun	1.0
Apr	50.45	50.45	50.45	50.45	50.45																																																																																																																																																																																																																																																																																																																																																																																																																																																																																																																																																																																																																																																																																																				
May	49.40	49.40	49.40	49.40	49.40																																																																																																																																																																																																																																																																																																																																																																																																																																																																																																																																																																																																																																																																																																				
Jun	48.35	48.35	48.35	48.35	48.35																																																																																																																																																																																																																																																																																																																																																																																																																																																																																																																																																																																																																																																																																																				
Jul	47.30	47.30	47.30	47.30	47.30																																																																																																																																																																																																																																																																																																																																																																																																																																																																																																																																																																																																																																																																																																				
Aug	46.25	46.25	46.25	46.25	46.25																																																																																																																																																																																																																																																																																																																																																																																																																																																																																																																																																																																																																																																																																																				
Sep	45.20	45.20	45.20	45.20	45.20																																																																																																																																																																																																																																																																																																																																																																																																																																																																																																																																																																																																																																																																																																				
Oct	44.15	44.15	44.15	44.15	44.15																																																																																																																																																																																																																																																																																																																																																																																																																																																																																																																																																																																																																																																																																																				
Nov	43.10	43.10	43.10	43.10	43.10																																																																																																																																																																																																																																																																																																																																																																																																																																																																																																																																																																																																																																																																																																				
Dec	42.05	42.05	42.05	42.05	42.05																																																																																																																																																																																																																																																																																																																																																																																																																																																																																																																																																																																																																																																																																																				
Jan	41.00	41.00	41.00	41.00	41.00																																																																																																																																																																																																																																																																																																																																																																																																																																																																																																																																																																																																																																																																																																				
Feb	40.00	40.00	40.00	40.00	40.00																																																																																																																																																																																																																																																																																																																																																																																																																																																																																																																																																																																																																																																																																																				
Mar	39.00	39.00	39.00	39.00	39.00																																																																																																																																																																																																																																																																																																																																																																																																																																																																																																																																																																																																																																																																																																				
Apr	38.00	38.00	38.00	38.00	38.00																																																																																																																																																																																																																																																																																																																																																																																																																																																																																																																																																																																																																																																																																																				
May	37.00	37.00	37.00	37.00	37.00																																																																																																																																																																																																																																																																																																																																																																																																																																																																																																																																																																																																																																																																																																				
Jun	36.00	36.00	36.00	36.00	36.00																																																																																																																																																																																																																																																																																																																																																																																																																																																																																																																																																																																																																																																																																																				
Jul	35.00	35.00	35.00	35.00	35.00																																																																																																																																																																																																																																																																																																																																																																																																																																																																																																																																																																																																																																																																																																				
Aug	34.00	34.00	34.00	34.00	34.00																																																																																																																																																																																																																																																																																																																																																																																																																																																																																																																																																																																																																																																																																																				
Sep	33.00	33.00	33.00	33.00	33.00																																																																																																																																																																																																																																																																																																																																																																																																																																																																																																																																																																																																																																																																																																				
Oct	32.00	32.00	32.00	32.00	32.00																																																																																																																																																																																																																																																																																																																																																																																																																																																																																																																																																																																																																																																																																																				
Nov	31.00	31.00	31.00	31.00	31.00																																																																																																																																																																																																																																																																																																																																																																																																																																																																																																																																																																																																																																																																																																				
Dec	30.00	30.00	30.00	30.00	30.00																																																																																																																																																																																																																																																																																																																																																																																																																																																																																																																																																																																																																																																																																																				
Jan	29.00	29.00	29.00	29.00	29.00																																																																																																																																																																																																																																																																																																																																																																																																																																																																																																																																																																																																																																																																																																				
Feb	28.00	28.00	28.00	28.00	28.00																																																																																																																																																																																																																																																																																																																																																																																																																																																																																																																																																																																																																																																																																																				
Mar	27.00	27.00	27.00	27.00	27.00																																																																																																																																																																																																																																																																																																																																																																																																																																																																																																																																																																																																																																																																																																				
Apr	26.00	26.00	26.00	26.00	26.00																																																																																																																																																																																																																																																																																																																																																																																																																																																																																																																																																																																																																																																																																																				
May	25.00	25.00	25.00	25.00	25.00																																																																																																																																																																																																																																																																																																																																																																																																																																																																																																																																																																																																																																																																																																				
Jun	24.00	24.00	24.00	24.00	24.00																																																																																																																																																																																																																																																																																																																																																																																																																																																																																																																																																																																																																																																																																																				
Jul	23.00	23.00	23.00	23.00	23.00																																																																																																																																																																																																																																																																																																																																																																																																																																																																																																																																																																																																																																																																																																				
Aug	22.00	22.00	22.00	22.00	22.00																																																																																																																																																																																																																																																																																																																																																																																																																																																																																																																																																																																																																																																																																																				
Sep	21.00	21.00	21.00	21.00	21.00																																																																																																																																																																																																																																																																																																																																																																																																																																																																																																																																																																																																																																																																																																				
Oct	20.00	20.00	20.00	20.00	20.00																																																																																																																																																																																																																																																																																																																																																																																																																																																																																																																																																																																																																																																																																																				
Nov	19.00	19.00	19.00	19.00	19.00																																																																																																																																																																																																																																																																																																																																																																																																																																																																																																																																																																																																																																																																																																				
Dec	18.00	18.00	18.00	18.00	18.00																																																																																																																																																																																																																																																																																																																																																																																																																																																																																																																																																																																																																																																																																																				
Jan	17.00	17.00	17.00	17.00	17.00																																																																																																																																																																																																																																																																																																																																																																																																																																																																																																																																																																																																																																																																																																				
Feb	16.00	16.00	16.00	16.00	16.00																																																																																																																																																																																																																																																																																																																																																																																																																																																																																																																																																																																																																																																																																																				
Mar	15.00	15.00	15.00	15.00	15.00																																																																																																																																																																																																																																																																																																																																																																																																																																																																																																																																																																																																																																																																																																				
Apr	14.00	14.00	14.00	14.00	14.00																																																																																																																																																																																																																																																																																																																																																																																																																																																																																																																																																																																																																																																																																																				
May	13.00	13.00	13.00	13.00	13.00																																																																																																																																																																																																																																																																																																																																																																																																																																																																																																																																																																																																																																																																																																				
Jun	12.00	12.00	12.00	12.00	12.00																																																																																																																																																																																																																																																																																																																																																																																																																																																																																																																																																																																																																																																																																																				
Jul	11.00	11.00	11.00	11.00	11.00																																																																																																																																																																																																																																																																																																																																																																																																																																																																																																																																																																																																																																																																																																				
Aug	10.00	10.00	10.00	10.00	10.00																																																																																																																																																																																																																																																																																																																																																																																																																																																																																																																																																																																																																																																																																																				
Sep	9.00	9.00	9.00	9.00	9.00																																																																																																																																																																																																																																																																																																																																																																																																																																																																																																																																																																																																																																																																																																				
Oct	8.00	8.00	8.00	8.00	8.00																																																																																																																																																																																																																																																																																																																																																																																																																																																																																																																																																																																																																																																																																																				
Nov	7.00	7.00	7.00	7.00	7.00																																																																																																																																																																																																																																																																																																																																																																																																																																																																																																																																																																																																																																																																																																				
Dec	6.00	6.00	6.00	6.00	6.00																																																																																																																																																																																																																																																																																																																																																																																																																																																																																																																																																																																																																																																																																																				
Jan	5.00	5.00	5.00	5.00	5.00																																																																																																																																																																																																																																																																																																																																																																																																																																																																																																																																																																																																																																																																																																				
Feb	4.00	4.00	4.00	4.00	4.00																																																																																																																																																																																																																																																																																																																																																																																																																																																																																																																																																																																																																																																																																																				
Mar	3.00	3.00	3.00	3.00	3.00																																																																																																																																																																																																																																																																																																																																																																																																																																																																																																																																																																																																																																																																																																				
Apr	2.00	2.00	2.00	2.00	2.00																																																																																																																																																																																																																																																																																																																																																																																																																																																																																																																																																																																																																																																																																																				
May	1.00	1.00	1.00	1.00	1.00																																																																																																																																																																																																																																																																																																																																																																																																																																																																																																																																																																																																																																																																																																				
Jun	0.00	0.00	0.00	0.00	0.00																																																																																																																																																																																																																																																																																																																																																																																																																																																																																																																																																																																																																																																																																																				
Apr	1.00	1.00	1.00	1.00	1.00																																																																																																																																																																																																																																																																																																																																																																																																																																																																																																																																																																																																																																																																																																				
May	1.00	1.00	1.00	1.00	1.00																																																																																																																																																																																																																																																																																																																																																																																																																																																																																																																																																																																																																																																																																																				
Jun	1.00	1.00	1.00	1.00	1.00																																																																																																																																																																																																																																																																																																																																																																																																																																																																																																																																																																																																																																																																																																				
Jul	1.00	1.00	1.00	1.00	1.00																																																																																																																																																																																																																																																																																																																																																																																																																																																																																																																																																																																																																																																																																																				
Aug	1.00	1.00	1.00	1.00	1.00																																																																																																																																																																																																																																																																																																																																																																																																																																																																																																																																																																																																																																																																																																				
Sep	1.00	1.00	1.00	1.00	1.00																																																																																																																																																																																																																																																																																																																																																																																																																																																																																																																																																																																																																																																																																																				
Oct	1.00	1.00	1.00	1.00	1.00																																																																																																																																																																																																																																																																																																																																																																																																																																																																																																																																																																																																																																																																																																				
Nov	1.00	1.00	1.00	1.00	1.00																																																																																																																																																																																																																																																																																																																																																																																																																																																																																																																																																																																																																																																																																																				
Dec	1.00	1.00	1.00	1.00	1.00																																																																																																																																																																																																																																																																																																																																																																																																																																																																																																																																																																																																																																																																																																				
Jan	1.00	1.00	1.00	1.00	1.00																																																																																																																																																																																																																																																																																																																																																																																																																																																																																																																																																																																																																																																																																																				
Feb	1.00	1.00	1.00	1.00	1.00																																																																																																																																																																																																																																																																																																																																																																																																																																																																																																																																																																																																																																																																																																				
Mar	1.00	1.00	1.00	1.00	1.00																																																																																																																																																																																																																																																																																																																																																																																																																																																																																																																																																																																																																																																																																																				
Apr	1.00	1.00	1.00	1.00	1.00																																																																																																																																																																																																																																																																																																																																																																																																																																																																																																																																																																																																																																																																																																				
May	1.00	1.00	1.00	1.00	1.00																																																																																																																																																																																																																																																																																																																																																																																																																																																																																																																																																																																																																																																																																																				
Jun	1.00	1.00	1.00	1.00	1.00																																																																																																																																																																																																																																																																																																																																																																																																																																																																																																																																																																																																																																																																																																				
Jul	1.00	1.00	1.00	1.00	1.00																																																																																																																																																																																																																																																																																																																																																																																																																																																																																																																																																																																																																																																																																																				
Aug	1.00	1.00	1.00	1.00	1.00																																																																																																																																																																																																																																																																																																																																																																																																																																																																																																																																																																																																																																																																																																				
Sep	1.00	1.00	1.00	1.00	1.00																																																																																																																																																																																																																																																																																																																																																																																																																																																																																																																																																																																																																																																																																																				
Oct	1.00	1.00	1.00	1.00	1.00																																																																																																																																																																																																																																																																																																																																																																																																																																																																																																																																																																																																																																																																																																				
Nov	1.00	1.00	1.00	1.00	1.00																																																																																																																																																																																																																																																																																																																																																																																																																																																																																																																																																																																																																																																																																																				
Dec	1.00	1.00	1.00	1.00	1.00																																																																																																																																																																																																																																																																																																																																																																																																																																																																																																																																																																																																																																																																																																				
Jan	1.00	1.00	1.00	1.00	1.00																																																																																																																																																																																																																																																																																																																																																																																																																																																																																																																																																																																																																																																																																																				
Feb	1.00	1.00	1.00	1.00	1.00																																																																																																																																																																																																																																																																																																																																																																																																																																																																																																																																																																																																																																																																																																				
Mar	1.00	1.00	1.00	1.00	1.00																																																																																																																																																																																																																																																																																																																																																																																																																																																																																																																																																																																																																																																																																																				
Apr	1.00	1.00	1.00	1.00	1.00																																																																																																																																																																																																																																																																																																																																																																																																																																																																																																																																																																																																																																																																																																				
May	1.00	1.00	1.00	1.00	1.00																																																																																																																																																																																																																																																																																																																																																																																																																																																																																																																																																																																																																																																																																																				
Jun	1.00	1.00	1.00	1.00	1.00																																																																																																																																																																																																																																																																																																																																																																																																																																																																																																																																																																																																																																																																																																				
Jul	1.00	1.00	1.00	1.00	1.00																																																																																																																																																																																																																																																																																																																																																																																																																																																																																																																																																																																																																																																																																																				
Aug	1.00	1.00	1.00	1.00	1.00																																																																																																																																																																																																																																																																																																																																																																																																																																																																																																																																																																																																																																																																																																				
Sep	1.00	1.00	1.00	1.00	1.00																																																																																																																																																																																																																																																																																																																																																																																																																																																																																																																																																																																																																																																																																																				
Oct	1.00	1.00	1.00	1.00	1.00																																																																																																																																																																																																																																																																																																																																																																																																																																																																																																																																																																																																																																																																																																				
Nov	1.00	1.00	1.00	1.00	1.00																																																																																																																																																																																																																																																																																																																																																																																																																																																																																																																																																																																																																																																																																																				
Dec	1.00	1.00	1.00	1.00	1.00																																																																																																																																																																																																																																																																																																																																																																																																																																																																																																																																																																																																																																																																																																				
Jan	1.00	1.00	1.00	1.00	1.00																																																																																																																																																																																																																																																																																																																																																																																																																																																																																																																																																																																																																																																																																																				
Feb	1.00	1.00	1.00	1.00	1.00																																																																																																																																																																																																																																																																																																																																																																																																																																																																																																																																																																																																																																																																																																				
Mar	1.00	1.00	1.00	1.00	1.00																																																																																																																																																																																																																																																																																																																																																																																																																																																																																																																																																																																																																																																																																																				
Apr	1.00	1.00	1.00	1.00	1.00																																																																																																																																																																																																																																																																																																																																																																																																																																																																																																																																																																																																																																																																																																				
May	1.00	1.00	1.00	1.00	1.00																																																																																																																																																																																																																																																																																																																																																																																																																																																																																																																																																																																																																																																																																																				
Jun	1.00	1.00	1.00	1.00	1.00																																																																																																																																																																																																																																																																																																																																																																																																																																																																																																																																																																																																																																																																																																				
Jul	1.00	1.00	1.00	1.00	1.00																																																																																																																																																																																																																																																																																																																																																																																																																																																																																																																																																																																																																																																																																																				
Aug	1.00	1.00	1.00	1.00	1.00																																																																																																																																																																																																																																																																																																																																																																																																																																																																																																																																																																																																																																																																																																				
Sep	1.00	1.00	1.00	1.00	1.00																																																																																																																																																																																																																																																																																																																																																																																																																																																																																																																																																																																																																																																																																																				
Oct	1.00	1.00	1.00	1.00	1.00																																																																																																																																																																																																																																																																																																																																																																																																																																																																																																																																																																																																																																																																																																				
Nov	1.00	1.00	1.00	1.00	1.00																																																																																																																																																																																																																																																																																																																																																																																																																																																																																																																																																																																																																																																																																																				
Dec	1.00	1.00	1.00	1.00	1.00																																																																																																																																																																																																																																																																																																																																																																																																																																																																																																																																																																																																																																																																																																				
Jan	1.00	1.00	1.00	1.00	1.00																																																																																																																																																																																																																																																																																																																																																																																																																																																																																																																																																																																																																																																																																																				
Feb	1.00	1.00	1.00	1.00	1.00																																																																																																																																																																																																																																																																																																																																																																																																																																																																																																																																																																																																																																																																																																				
Mar	1.00	1.00	1.00	1.00	1.00																																																																																																																																																																																																																																																																																																																																																																																																																																																																																																																																																																																																																																																																																																				
Apr	1.00	1.00	1.00	1.00	1.00																																																																																																																																																																																																																																																																																																																																																																																																																																																																																																																																																																																																																																																																																																				
May	1.00	1.00	1.00	1.00	1.00																																																																																																																																																																																																																																																																																																																																																																																																																																																																																																																																																																																																																																																																																																				
Jun	1.00	1.00	1.00	1.00	1.00																																																																																																																																																																																																																																																																																																																																																																																																																																																																																																																																																																																																																																																																																																				
Jul	1.00	1.00	1.00	1.00	1.00																																																																																																																																																																																																																																																																																																																																																																																																																																																																																																																																																																																																																																																																																																				
Aug	1.00	1.00	1.00	1.00	1.00																																																																																																																																																																																																																																																																																																																																																																																																																																																																																																																																																																																																																																																																																																				
Sep	1.00	1.00	1.00	1.00	1.00																																																																																																																																																																																																																																																																																																																																																																																																																																																																																																																																																																																																																																																																																																				
Oct	1.00	1.00	1.00	1.00	1.00																																																																																																																																																																																																																																																																																																																																																																																																																																																																																																																																																																																																																																																																																																				
Nov	1.00	1.00	1.00	1.00	1.00																																																																																																																																																																																																																																																																																																																																																																																																																																																																																																																																																																																																																																																																																																				
Dec	1.00	1.00	1.00	1.00	1.00																																																																																																																																																																																																																																																																																																																																																																																																																																																																																																																																																																																																																																																																																																				
Jan	1.00	1.00	1.00	1.00	1.00																																																																																																																																																																																																																																																																																																																																																																																																																																																																																																																																																																																																																																																																																																				
Feb	1.00	1.00	1.00	1.00	1.00																																																																																																																																																																																																																																																																																																																																																																																																																																																																																																																																																																																																																																																																																																				
Mar	1.00	1.00	1.00	1.00	1.00																																																																																																																																																																																																																																																																																																																																																																																																																																																																																																																																																																																																																																																																																																				
Apr	1.00	1.00	1.00	1.00	1.00																																																																																																																																																																																																																																																																																																																																																																																																																																																																																																																																																																																																																																																																																																				
May	1.00	1.00	1.00	1.00	1.00																																																																																																																																																																																																																																																																																																																																																																																																																																																																																																																																																																																																																																																																																																				
Jun	1.0																																																																																																																																																																																																																																																																																																																																																																																																																																																																																																																																																																																																																																																																																																								

Local chapter elects officers, makes plans

The Xi Epsilon Alpha Chapter of Beta Sigma Phi Sorority met recently at the Barn House.

After a tour and history of the house by Mrs. Vel Simpson, members honored Susan and

Stephanie Shaw with a baby shower. Hostesses were members of the social committee. Special guest for the occasion was former member Janis White.

Thanks were expressed to secret

sisters by Connie Matthews, Charla Edwards, and Susan Shaw.

An Easter egg hunt was held Saturday afternoon for the children of all members at Debe Graves' home.

Beta Sigma Phi rituals will be held at 7 p.m. April 23 with Xi Epsilon Alpha serving as hostesses for the Community Center event. Members who will be taking the Exemplar Ritual are Teresa Peiffer, Holly Bixler, Ruby Sanders, and Marge Bell.

It was announced that one craft item per person should be taken to the BSP City Council Annual Auction set for May 11.

The Founders Day Banquet for Beta Sigma Phi chapters in Hereford will be held April 30 at 7 p.m. in the Community Center. All members should have \$6.75 paid by April 27 if they plan to attend.

Officers for 1987-88 are: president, Connie Matthews; vice-president, Peggy Hyer; recording secretary, Melinda White; corresponding secretary, Mary Brinkman; and treasurer, Debe Graves.

In attendance were White, Edwards, Sharon Bodner, Shaw, Peiffer, Hyer, Brinkman, Matthews, Graves, and Janis White.

Military Muster

Roxane E. Torre, daughter of James Gamez of 441 Ave. C, Hereford, has been promoted in the U.S. Air Force to the rank of senior airman.

Torres is an administration specialist at Carswell Air Force

Base, Texas, with the 7th Combat Support Group.

Her husband, Richard, is the son of Janie Torres of 220 Carnahan, San Antonio.

She is a 1983 graduate of Hereford High School.



According to old Irish belief, if you must circle something, you should do it east to west. Going west to east was believed bad luck.

Service of Tenebrae to be held

The community is invited to the First Presbyterian Church Thursday at 7 p.m. for a Maundy Thursday service of the Lord's Supper in conjunction with the office of Tenebrae.

Tenebrae means "darkness" or

"shadows." It is a service that commemorates the betrayal and denial of Christ by His followers unto His death. The service marks the beginning of the darkness before the dawn of Easter.

TUESDAY Shopper's Guide

A page filled with outstanding bargains and services!

Look What's Blooming Now at Johnson's Vega Greenhouse
Vega, Tx. 267-2244

We now have Bedding Plants Ready to go in the ground Also Geraniums & Flowering Baskets

Check with us for all your House Plant and Gardening needs!

Full line of Lawn & Garden Supplies.

MICHELIN BECAUSE SO MUCH IS THERE, ON YOUR TIRES

PRICED RIGHT!

Quality Tires—Quality Service
Charlie's Tire
501 West 1st 364-5033

Come See Us For All Your Gardening Needs!

- Trees • Shrubs • Roses
- Bedding Plants
- Hanging Baskets •

First National Nursery
Holly Sugar Rd. 364-6030

HEREFORD DIESEL & EQUIPMENT SERVICE INC.

24 Hour Heavy Truck Towing & Lo-Boy Hauling

364-2600
North Progressive Rd

Winter Weather and Unseen Potholes Get the Best of Your Vehicle's Alignment?

Our computerized wheel alignment system offers the ultimate in precision operation. It relates all four wheels to a common centerline to insure precise alignment and a perfectly centered steering wheel.

Crofford Automotive
364-7650 600 N. 25 Mile

HEREFORD Parts & Supply Inc.

364-3522

AUTO PARTS STORES

"Serving Hereford Since 1945"

AUTOMOTIVE & FARM PARTS & SUPPLIES
Wholesale & Retail

702 W. 1st Street
(Just off 385 on West Hwy. 60)

You'll Like Our Attitude

The First National Bank of Hereford

P.O. Box 593
Hereford, Texas 79045
806-364-2435

Get Peace Of Mind... With an ITI Security System

W. T. Services Phone Store

902 N. Lee 364-5616

YOUR Independent Insurance AGENT
SERVES YOU FIRST

THE MORE-THAN-ONE-COMPANY INSURANCE AGENT

PLAINS Insurance Agency

205 E. Park 364-2232

AQUA CHEM

AQUA CHEM MAKES IT EASY!

See us for all your Spa & Hot Tub Chemicals

HEREFORD

UNITOR

1301 E. Park Ave. SUPPLY, INC. 364-0517

Brandon & Clark
515 East First St 364-5470

Speedaire Portable Air Compressor

4 H.P. - 12 Gal. Gas

\$447²⁷

Fit for hard work & hardworking feet.

No job is too tough for this rugged safety boot featuring Red Wing's exclusive SuperSole.

Red Wings
ANTHONY'S