

SPORTS

Herd pulls out 5-4 thriller over Frenship--Page 4

HUSTLE

Agriculture makes the world go 'round for Oglesby--Page 6

INSIDE

Roundup...2
Lifestyle...3
Sports...4
Hustle...6
Comics-TV...8
Classifieds...10
Crossword...10

©Copyright 1990, The Hereford Brand, Inc.

WEDNESDAY, May 2, 1990

Sample ballots for Saturday's election on Page Two today!

The Hereford Brand

Hustin' Hereford, home of Kim Hollingsworth

89th Year, No. 214, Deaf Smith County, Hereford, Tx.

12 Pages

25 Cents

Deposits up at 3 institutions

Deposits in Hereford's two banks totalled \$136.9 million at the close of business March 31, 1990, according to statements published by the financial institutions. This was up about \$2.8 million over the same time a year ago.

Loans amounted to \$69.7 million, which was up about \$3 million over the first quarter of 1989. The first-quarter statements were published recently in **The Brand**.

First National Bank showed deposits of \$73,791,000 and loans of \$37,456,000 at the end of March. This compares to totals a year ago of \$73,490,000 and \$34,445,000.

Hereford State Bank listed deposits at \$63,108,000 and loans of \$32,234,000 on March 31. These totals compare to \$60,519,000 and \$32,180 a year ago.

A request for figures at Hereford Texas Federal Credit Union showed deposits of \$23,298,000 and loans of \$14,368,000 on March 31, 1990. Statements were not provided by the other two financial institutions here.

With the HTFCU totals, the three institutions have \$160.2 million in deposits and loans totaling about \$84 million.

Reuterskiold sentenced in assault

Michael Kenneth Reuterskiold Jr., 21, of Hereford, was convicted of aggravated sexual assault of a child in the 222nd District Court on Tuesday.

Reuterskiold was sentenced to 25 years in prison and fined \$5,000 by a jury after he pled guilty to the charge.

The offense was committed Nov. 15, 1988 and the case was filed Sept. 1, 1989.

The offense came to light after Reuterskiold told someone else, who reported it to authorities. When confronted by authorities, Reuterskiold confessed to the offense.

Germany's agree on finances

EAST BERLIN (AP) - The two German states agreed on a plan today for merging their economies, settling basic differences over how the nations should assess the costs of unification, officials said.

The tentative agreement sets the stage for a full merger of the economies of the two nations on July 2.

The nations have been negotiating for weeks over how West Germany can absorb the decimated East German economy without threatening the strength of the powerful West German mark.

Officials in Bonn and East Berlin said the nations agreed to exchange East German marks for West German marks at a 1-1 rate for most savings accounts of 4,000 marks (\$2,300) and lower.

Accounts above that would be exchanged at a 2-1 rate. However, the 1-1 rate would apply to accounts of up to 6,000 marks (\$3,530) for East Germans aged 60 and older, and up to 2,000 marks (\$1,180) for savings accounts of East Germans aged 14 and younger.

Wages and salaries for all East Germans would be exchanged at a 1-1 rate.



Topping the state

Hereford High School's student council won sweepstakes honors at the 54th annual Texas Association of Student council convention in Austin last weekend. The HHS council was honored for being an Outstanding Student Council and for its alcohol, drug, energy and safety projects. The HHS group was one of just 56 schools of the 1,320 in the state to earn sweepstakes. Pictured (clockwise, from bottom right) are Nikki Hutson, Cara Printz, Richard Perez, Jeri Ann Parker, Javier Gutierrez, Trisha Teel and Susan Emmons. Not pictured, but also attending the convention, were Matt Parker, Vaavia Rudd and Lindsay Radford.

US wants all hostages free

WASHINGTON (AP) - All American hostages must be freed before the United States can move beyond the "small gestures" of thanks already given to Iran, President Bush's spokesman says.

To a suggestion from an Iranian newspaper that the next move should come from the United States, White House spokesman Marlin Fitzwater said Tuesday, "The ball has always been in their court, and will be as long as there are hostages yet to be released."

Fitzwater refused to disclose the oral message that freed hostage Robert Polhill brought to Bush in a private meeting Monday.

But a senior administration official indicated it hewed closely to what the world has heard in the past from the kidnapers.

"We haven't seen any indication of a change in the positions that these groups have taken in the past," said the official, who spoke on condition of anonymity.

The kidnapers repeatedly have demanded the release of Sheik Abdul Karim Obeid, a Shiite Muslim cleric seized by Israel in South Lebanon last July 28, as well as Shiite prisoners held in Kuwait and Israel.

There were hints in both Jerusalem and Washington that a release of Arab prisoners held by Israel could be part of an arrangement to encourage the freeing of Western hostages in Lebanon.

Bush said Monday he had "certainly no objection" to such a release. Israeli officials, speaking privately Tuesday in Jerusalem, said it appeared he was making an indirect appeal for such action.

Any deal would have to include the return of three Israelis captured in south Lebanon, the Israeli officials said. In the past, Israel has traded hundreds of Arab prisoners for a handful of Israelis.

Avi Pazner, a spokesman for Prime Minister Yitzhak Shamir, said Israel had received no U.S. request for a prisoner release, and he responded "certainly not" when asked if he viewed Bush's remarks as a press tactic.

The White House said the president was not pressuring Israel. "We don't tell other countries what to do," said Fitzwater. But he repeated, "Our policy is that all hostages should be released."

Legislators back at work after reprieve

AUSTIN (AP) - Texas lawmakers return today for their third try at reforming the public education finance system, after a state judge gave them another month to devise a plan to spend more money to poor schools.

But if the Legislature and Gov. Bill Clements can't enact a reform plan this time, State District Judge Scott McCown said Tuesday, one will be developed for them by a special master.

By extending the Texas Supreme Court's Tuesday deadline for school finance reform to June 1, McCown allowed a \$500 million state aid payment to be made in May and ensured schools stay open through this school year.

"The judge has acted responsibly and has taken into account the fact that the Legislature is working in good faith to resolve this critical issue of education reform," said Clements. The governor has been deadlocked with lawmakers over his no-new-taxes pledge in the reform effort.

McCown told Attorney General Jim Mattox, who defended the state, there will be no further deadline extensions. The Supreme Court ruled 9-0 last year in favor of property-poor school districts that challenged the current \$13.5 billion a year system as unfair.

"The present scheme of public school finance is a great wrong... The poor have waited for too long," McCown said.

State Education Commissioner William Kirby said the ruling means school doors won't close.

"It makes it absolutely clear that we can finish the school year. It also gives the Legislature and the governor one last opportunity to get together and to come (up) with a plan," Kirby said.

However, Kirby said he feared that another legislative failure would lead to a court-written "Robin Hood" plan to take money from wealthy districts and give it to poor schools.

"I don't think the court has the ability to put additional revenue into the system," Kirby said. "There's no question that we're looking at Robin Hood - you're really talking about taking from the rich, giving to the poor."

Lawmakers and Clements failed in their second try to overhaul the current finance system.

When the Legislature's second, 30-day special session on education ended Tuesday, Clements immediately called another session to convene at 2 p.m. today.

The Democratic-controlled Legislature approved a \$555 million reform plan in the second session. To pay for it, they proposed \$114 million in budget cuts and raising the state sales tax from 6 cents to 6 1/2 cents on the dollar.

But Clements, a Republican, Tuesday vetoed the tax increase. He said money should be taken from other state programs to fund school finance reform.

Since the state failed to enact a new school finance system, McCown could have stopped state payments to schools on Tuesday.

Instead, he set the new reform deadline.

McCown also issued a complex series of instructions - in case Clements and lawmakers fail for a third time to act - that would guarantee that a new system of school finance is operating by Sept. 1.

Those instructions included: - Appointment by the judge of a special master who will begin work this month on a finance plan of his own.

- A requirement that the judge OK any state spending for schools after June 1 if no reform plan has been approved by Clements and the Legislature.

- A June 25 judicial review of either the state's plan or the special master's plan.

After McCown's ruling, Clements said he was more confident than ever that budget cuts - not a tax increase - will be used to pay for the final plan written by lawmakers.



Dedication ceremony held

In conjunction with Earth Day and Texas Arbor Day, a special tree dedication ceremony was held Friday afternoon in Mothers Park. Members of the Pioneer Study Club and Bud to Blossom Garden Club sponsored the event. Among those participating in the program were, from left, Cathy Revell, Judy and Jonny Cloud and Bill Devers. Following the ceremony, refreshments were served at the Hereford Garden Center and a tour of the grounds was conducted by members of the clubs.

M
A
Y
0
2
9
0

Lifestyles



SETH SAWYER, AMY HOLIFIELD

Nuptials planned

Amy Holifield of Irran, Texas and Seth Sawyer of Stratford have set May 5 as their wedding date. The couple plans to exchange nuptials in Fifth and Grape Street Church of Christ in Abilene at 6 p.m.

The bride-elect is the daughter of Mr. and Mrs. Ridgely Holifield of Irran. The prospective bridegroom is the son of former Hereford residents, Mr. and Mrs. Layton Sawyer of Stratford. He is the grandson of Gene and Mildred Guinn of Hereford.

Miss Holifield is a sophomore at

Abilene Christian College and will be graduating this semester with a degree in elementary education.

Sawyer is a 1985 graduate of Stratford High School. He graduated from Abilene Christian College with a degree in animal science.

Students receive degrees

More than 1,300 students at Texas Tech University received degrees in the fall 1989 commencement exercises.

Degree recipients from Hereford included Darla Lee Alford, Douglas Lee Evans and Noel Paul Gonzalez.

Manitoba became a Canadian province in 1870.

Hoelscher hostess at club meeting

The Golden Spread Aggie Mother's Club met Monday, April 30, in the home of President Diane Hoelscher, 103 Pecan.

Following the call to order by Hoelscher, Secretary Jane Coplen read the minutes of the previous meeting and the treasurer's report was given by Joy Bunch.

The recent district meeting of the Federation of Texas A&M Mother's Club that was held at the E.B. Black House March 31, was discussed and

appreciation was extended to everyone that helped to make the event a success. A report was also given on Parent's Weekend at Texas A&M held April 7-8.

The Scholarship Selection Committee reported that five high school graduating seniors from Dimmitt and Hereford had applied for the annual scholarship and interviews had been held this past week.

Announcements were made

concerning the upcoming end-of-school party. An ice cream social will be held at the home of Bill and Mary Lyles, 132 Nueces, from 3-5 p.m. Sunday, May 20. The TAMU Class of 1990 will be recognized as well as the scholarship recipient for 1990-91.

The members were reminded of the district meeting of the Federation of Texas A&M Mother's Club to be held Sept. 8 in Amarillo.

The following members were in attendance: Hoelscher, Coplen, Bunch, Shirley Wilson, Margaret Ann Durham, Mary Lou Schmucker, Adelle Clements and Terri Johnson.

Florence Nightingale, the English founder of modern nursing, was born in 1820 in Florence, Italy.

Dr. Milton Adams
Optometrist
335 Miles
Phone 364-2255
Office Hours:
Monday - Friday
8:30-12:00 1:00-5:00

Little Miss Pageant May 19

Entry forms for the Little Miss Hereford Pageant are available at the Deaf Smith County Chamber of Commerce office, 701 N. Main St.

The pageant, which is planned for May 19 in the Hereford High School auditorium, is being co-chaired by Karen Keeling and Jackie Murphey. The deadline to sign up for the pageant is 5 p.m. Monday, May 14.

The annual pageant is sponsored by the Chamber of Commerce Women's Division.

King George VI was crowned at Westminster Abbey in London on May 12, 1937, as was his consort, Queen Elizabeth. George succeeded his brother, Edward VIII, who had abdicated the previous December.

Let's Beautify Hereford!
VOTE FOR RON WEISHAAR
CITY COMMISSIONER

VOTE FOR Proposition 1
in the Hereford City Election, May 5th
A VOTE TO PROMOTE GROWTH IN THE HEREFORD ECONOMY.
(P4. Pol. Adv. by Committee for Proposition 1, James McDowell, Treasurer, Box 192, Hereford)

MONEY SAVING COUPONS

the Sunflower Group • 10895 Lowell, Overland Park, Kansas 66210

INTRODUCING Maxwell House RICH FRENCH ROAST INSTANT COFFEE

Coffee drinkers have said our Rich French Roast ground coffee is rich, full-flavored and delightfully smooth. Now you can savor this experience without brewing a pot. Introducing NEW Maxwell House® Rich French Roast Instant Coffee. Available in regular and naturally decaffeinated.

"We can't give you France, but we'll give you the flavor."

MANUFACTURER'S COUPON EXPIRES 7/31/90

SAVE 75¢
ON ANY JAR OF MAXWELL HOUSE® RICH FRENCH ROAST INSTANT COFFEE

This coupon good only on purchases of product indicated. Any other use constitutes fraud. COUPON NOT TRANSFERABLE. LIMIT—ONE COUPON PER PURCHASE. To the retailer: GFC will reimburse you for the face value of this coupon plus 5¢ if submitted in compliance with GFC Redemption Policy C-1 incorporated herein by reference. Valid only if redeemed by retail distributors of our merchandise or anyone specifically authorized by GFC. Cash value 1/10¢. Mail to: General Foods Corporation, P.O. Box 103, Kansas City, MO 64108. GENERAL FOODS CORPORATION

5 43000 35075 6

SAY "NO" TO MORE TAXES VOTE NO TO PROPOSITION 1

ON MONDAY FEBRUARY 19TH, your city commissioners voted to call an election for May 5th for us Tax Payers to decide whether a half-cent (1/2) sales tax should be added to our already high taxes of 7 1/2%. This tax raise is to be used ONLY for funding the "Economic Development"

This group has already spent thousands of dollars with no results-but they want us to give \$300,000, and more for them to spend as they have in the past. Let's be realistic - quit trying to compete with Amarillo and Plainview. Let our chamber industrial committee get back to work and get some results.

If the state imposes a 1/2% sales tax for education and this 1/2% for the "Fund" is voted in - we will be paying 8 1/2% in sales taxes!!

You, as a registered voter must get out and vote against this tax raise on May 5th. If you don't vote then this group will probably push the tax raise on us.

JOIN US AS WE VOICE OUR MUTUAL CONCERNS ABOUT WHAT WE FEEL IS A TOTALLY UNWARRANTED TAX INCREASE.

- | | | |
|---|---|--|
| <ul style="list-style-type: none"> Charlie's Tire Ramirez & Sons C & L Machine George Warner Seed Co. Inc. Kemp Supply Griffin & Brand Inc. A To Z Tire Horizon Seeds, Inc. Jimmy Christie Seed Co. Cardinal House of Kawasaki Barrick Furniture & Appliance Co. | <ul style="list-style-type: none"> C.C. Mercantile, Inc. Plains Motel Mariscal Body & Paint Harold's Body Shop, Inc. Pickup Corner C & L Auto Parts Electrical Specialist Big T Pump Company, Inc. Allied Millwrights, Inc. Panhandle Milling Company | <ul style="list-style-type: none"> Rivera Produce, Inc. Savino's Texaco First National Fuel & Nursery Arrowhead Mills., Inc. Kelley Electric, Inc. Gutierrez Kerr McGee Service Station Hereford Janitor Supply, Inc. BJM Sales & Service, Inc. Automotive Polishing Systems Collier's Tire & Service Center |
|---|---|--|

Committee Against Proposition 1
Loren Barrick, Treasurer, P.O. Box 741 Hereford, Tx.

ONCE A YEAR SALE!
MAY 3 - MAY 13, 1990

1 Pr. Regular Price	Multiple Sale Price/Pair
\$4.75	6/\$22.80
\$5.75	6/\$27.60
2 Pr. Pk.	
\$4.50	6/\$10.80

Come in and see our assortment of legwear from one of the most famous names in fashion.

211 N. Main 364-0522

Oglesby deals big red farm machines all over Panhandle

Cecil Oglesby family has been in Case International business here since 1961

By ORVILLE HOWARD
Special Feature Writer

As agriculture goes, so goes the nation—as agriculture goes, so goes the community of Hereford.

This is the opinion of Cecil Oglesby of Hereford who is one of the largest Case International dealers in Texas.

"As long as I've been doing business, it has been a proven fact that when agriculture is going good, the nation is going good," said Oglesby who has spent a lifetime living mighty close to the soil. "The same also applies to Hereford...when the cattlemen and farmers make good, you'll see the businesses in downtown Hereford doing alright."

Oglesby doesn't waste words when it comes to conversations on the economic impact of agriculture—"The only true money comes from the Earth. You go down here and borrow \$100,000 from your banker, you've got to pay it back, but you go out here and raise a crop, you don't have to pay the Lord back...He's given it to you."

"So, agriculture money is really true money...money that you can spend that has been created now."

Oglesby also referred to such natural resources as mining and fishing as being true money sources, but noted that agriculture is one of the rare natural resources on Earth that can be replenished from season to season, providing someone is there to work the soil—the turnrow farmers.

And when it came to environmental issues, Oglesby was quick to proclaim the farmers and ranchers as the greatest environmentalists in America—"The farmers and ranchers can't make it unless they take good care of the land. There may have been a time a half century ago or so when we didn't understand the true meaning of soil conservation, but it's a different story today. Most of our modern-day farmers not only understand and practice excellent soil conservation, but are also top-notch businessmen—farming business is now big business."

Oglesby is a living testimonial to man and the plow, born and reared on a Deaf Smith County farm with a 40-year career in the farm implement business.

"You hear them talk about Earth Day as being something new—this plan was set out back in the beginning for man to be the keeper of the Earth...it's not new, just some of the folks are just now finding out about it," said Oglesby. "Go out and talk



Della DeHart, secretary

HUSTLE HEREFORD

to some of our farmers, they can tell you all about the real Earth Day."

The Hereford businessman went a step further to show where even industrialized areas of the nation are also hinged to the natural resources of the Earth—coal, petroleum, forestry products, electrical generating plants and all production of food and fiber.

"We're no longer an isolated community or an isolated nation," said Oglesby. "Hereford is dependent on the international market just as the large cities of America," Oglesby added. "Whether we like it or not, Hereford is an international city...the old days of isolation are gone forever." And as a timely example of Oglesby's economic philosophy, a drought in South America last week pushed soybeans to the limit on the Chicago Board of Trade.

Headquartered on Holly Sugar Road on the west edge of Hereford, Oglesby Equipment Company, Inc., is owned and operated by the Cecil Oglesby family, backstopped with a staff of veteran employees.

Though Oglesby is the ramrod of the family operation, he gives much credit of the business success to his wife, Ella, who is never very far away when the bottom lines are balanced. A son, Larry, is also a principal figure at the Oglesby business at Hereford, while a second son, Ray, operates the Case International dealership in Dumas. The Oglesby family also own a third Case International dealership in Oldham County, the Vega Implement Co., which is managed by Travis Lanier.

Farmers across the Panhandle who own the big red equipment testify to the vast equipment and parts inventory carried by the Oglesbys. The Oglesby parts department alone with inventory at more than \$500,000 during the summer-fall heavy farming season, with last year's gross sales running at more than \$2 million.

"Business is good," said Oglesby, as he flipped through a stack of desk notes. "And a lot of it is due to the good prices we've had in the cattle business. A lot of folks around here perhaps don't realize just what the cattle feeding business means to Hereford. The good cattle prices we've experienced during the past few years have really been a blessing to the entire community."

Oglesby seldom mentions his fine line of farming equipment during casual conversations, but elects instead to talk about the people of Hereford—"This town was built by active people, people who were not afraid to take a chance on positive projections. I think the 1990s looks good...not lucrative, mind you, but good. And even this will depend on how our younger leaders handle things. Just as in

farming, business gets back only what you put into it."

He pointed out that in this age of super-sonic communications high moral standards are more important than ever before—"Who we are and what we do now reflects farther than ever before."

The Hereford implement dealer, who turned 70 last January, loves to reflect on the days when horse-drawn farming implements were the name of the game. A collection of paintings depicting antique machinery line his office walls which are almost in the shadows of giant threshers costing more than \$100,000 apiece.

A son of H.J. "Curly" and Myrtle Oglesby, Cecil Oglesby was reared on a Deaf Smith County farm in the northeastern part of the county near Wildorado. His father is deceased but his mother resides at Westgate in Hereford. She will be 96 in December.

Oglesby was born in his maternal grandparents home, Mr. and Mrs. Rufas Burns who was one of the pioneers that broke out the Panhandle sod with steam-powered tractors. Both, the Oglesbys and Burns families came to the Texas Panhandle shortly after the turn of the century, with the Burns coming by the way of Oklahoma and the Oglesbys migrating direct to Texas from Kentucky. His grandfather Oglesby built a two-story farm home where the Robbins family now live 6 miles south of Hereford.

Curly Oglesby, Cecil's father, built the home where the Ralph Rice family now lives south of Wildorado near the Palo Duro Baptist church.

"We only owned a half section back then but we farmed three sections," Oglesby said, in recalling his childhood days on the Deaf Smith County farm. "Then in the late 1920s, we bought another section of land out northwest of Hereford about 13 miles."

But then came the Great Depression of the 1930s, and as many other Panhandle farmers, the Oglesbys lost their land to hard times and the tax man. Oglesby graduated from Wildorado High School in 1938 at the tail-end of the Panhandle duststorms, but they were still fresh on his mind—cropless seasons and blacked-out sunrises. Thus, to escape dried out farmsteads and city soup lines, Oglesby enrolled at the old Amarillo Business College to get a degree in bookkeeping and accounting. Two years later, with a business degree in hand, he joined the American National Bank of Amarillo in its finance department in 1940, the same year he and Ella were married.

Higher wages attracted young Oglesby from the bank to the American Smelting and Refining Co. in Amarillo where he went to

work in the accounting department. But this job was short-lived—World War II called him into action in 1942 when he enlisted in the U.S. Air Force. And before the year was out, Oglesby was flying missions over war-torn Europe as a flight engineer in a C-47.

The main missions of Oglesby's flight crew were to drop paratroopers behind enemy lines and then pick up the wounded for transfer back to Allied hospitals.

"We started out in Africa, made the Sicily invasion then flew on up into England and made the big invasions across the Channel and across the Rhine," recalled Oglesby. "We were directly involved in all of the major battles in Europe and North Africa...didn't miss any of them."

Oglesby's war memoirs could fill volumes, but he boiled it down to a couple of sentences:

"I flew more than 1500 hours in more than three years of combat flying and never got a scratch but had a lot of close calls." However, his face reflected a solemn note when he recalled when he returned from a 30-day furlough only to find that his plane had been shot down the very day he returned—and not a crew survivor.

When Oglesby returned home from war in 1945, he went to work immediately as a block man for International Harvester Co. of Amarillo. Then, in 1951, Uncle Sam called again and Oglesby quit his job with International Harvester in preparation for a tour of duty in the Korean Conflict. However, for some unknown reason, Uncle Sam changed his mind and cancelled combat military plans for Oglesby who was still in the Air Force Reserves.

Having already resigned from his position with the Amarillo company, Oglesby elected to go into an International Harvester dealership partnership in 1952 in Dimmitt with Charlie and Jim Hays.

"Charlie was the principal owner at that time so he sold me one-third interest in the Dimmitt company," said Oglesby. "That was really my main stepping stone at getting started in the farm implement business...Charlie Hays was really a great person, he not only helped me a lot but also helped a lot of other people along the way—Charlie Hays was a man who would give you a chance but then you had to help yourself."

In 1961, Oglesby and the Hays brother bought the Hereford International Harvester dealership and Oglesby moved to Hereford to take over management of the new business venture. A short time later, in the fall of 1961, the Dimmitt partnership built a new building south of town on U.S. 385 to expand operations.

The original International Harvester dealership in Hereford began with Prentice Rosson in 1928 at 4th and Sampson. Later, A.C. "Charlie" Hays joined him in the Hereford dealership and the business became known as Rosson and Hays.

According to available records, when A.C. Hays went into service during World War II, the business was sold to a Mr. Calhoun, who later sold it to Wayne and Rayland Evans. They in turn sold the Inter-



Cecil Oglesby and wife, Ella

national dealership to a Herman Neff who sold the business to the Hays/Oglesby partnership in 1961.

In 1969, Hays and Oglesby dissolved partnership in the Hereford operation and in 1974 Oglesby built his present dealership on South Kingwood just off Holly Sugar Road. The 5-acre implement site is located on the corner of a 60-acre tract owned by the Oglesbys on the west edge of Hereford.

In 1974, the same year Oglesby built the new building on Kingwood, the International Harvester dealership in Dumas became available, and Oglesby added the Moore County operation to the family holdings in Hereford.

"My son, Ray, was going to college at West Texas State where he would attend school at night and work the Dumas store during the day," recalled Oglesby.

In order for an assured management in Moore County, Oglesby not only put a son in Dumas but also sent a veteran employee, Marvin Harris, to Dumas to head up the sales end of the business. He also sent his Hereford shop foreman to Dumas to help out the maintenance end of the business.

"I sent three key people from the Hereford operation to Dumas," said Oglesby, as he recalled the family business expansion in 1974. "It was a real challenge to maintain both stores at a high level of service...it took a lot of money and a lot of hard work but it finally began paying off—I used to drive to Dumas two or three times a week during those first years." He sold the Dumas dealership to his son, Ray, in 1981.

However, while the Dumas operation was still in its formative

years (new building and new location), Oglesby bought the International Harvester dealership in Vega in 1976, and his first major move was to build a new building on the west edge of Vega just as he had in Hereford and Dumas. Travis Lanier is now head of operations at Vega which serves the big Canadian River territory sandwiched between Deaf Smith County on the south and Moore County on the North Plains.

Oglesby noted that perhaps one of the biggest single factors affecting the farming industry during the past 50 years was the move from gasoline-powered tractors and equipment to diesel-powered units: "Once they got into diesel-powered units, they were able to move into much greater horsepower than under the gasoline systems...the

perfections of diesel engines on tractors was definitely a giant step in modern-day agriculture."

Then came conveniences at the turnrow—cabs, air-conditioning, wireless communications in radio and telephone, fluid shifts and controls, with the latest innovations being high-tech computerized control systems on the big red rigs—digital readouts on about everything from field speed to the spacing of seed.

Oglesby says his Panhandle customers seem to prefer the top of the line of Case International combines—the 1600 series axial-flow units which can be decked out in 15 to 30-foot headers. The Hereford dealer noted that even in this age of air-conditioned farming, the land can be tilled better for less than with the old horse-drawn implements when hay was the fuel

(See HUSTLE, Page 7)



Larry Oglesby and Arnold Powell, sales manager



Aerial view of Oglesby Equipment on Kingwood and Holly Road



Ben Plummer, parts manager; H.S. Fuller, assistant parts manager; Roy Blevins, shop foreman

Insurance answers

Take time to shop carefully for long-term care insurance

By the year 2000, an estimated 133,000 Texans will be in private nursing homes at a cost of more than \$4 billion a year. Services provided outside those facilities will add another \$5 billion.

If you or your parents live long enough, you may bear some of this cost. If you are considering long-term care insurance, the State Board of Insurance offers the following hints:

- **BE AWARE THAT MEDICARE DOES NOT PAY FOR MOST NURSING HOME CONFINEMENTS.** To qualify you must receive skilled care on a daily basis in a Medicare-certified facility. Medicare does not pay for custodial care.
- **CUSTODIAL CARE, NOT SKILLED CARE, IS WHAT MOST PEOPLE NEED.** Custodial care, also referred to as personal care, helps a person meet basic needs of daily living, such as walking, bathing, dressing, eating, and taking medication. Find out if the policy you are considering provides adequately for custodial care.
- **COVERAGE FOR HOME CARE IS VERY LIMITED UNDER MEDICARE AND MANY LONG-TERM CARE POLICIES.** Check carefully the

policy's provision for home care. Some policies cover home care both in your own home and in other adult care facilities.

□ **INFLATION PROTECTION IS IMPORTANT.** Currently, most long-term care insurance pays a specific dollar amount per day. If you do not need long-term care for a number of years after buying the policy, the limits in the policy may be much too low to cover rapidly rising costs. Some policies now provide inflation protection for additional premium.

□ **PREMIUMS ARE LOWER IF YOU BUY AT AN EARLIER AGE.** Premiums are based on your age at the time you buy the policy and continue to be based on that age. If you wait until you need care, you may not be able to afford the insurance.

□ **MINIMUM STANDARDS WILL SOON TAKE EFFECT.** The State Board of Insurance has adopted minimum standards for long-term care insurance policies. The rules will apply to all long-term care policies or contracts issued after June 1, 1990, or issued for delivery after that date. They will not apply to policies already in force.

□ **COMPARISON SHOPPING IS HIGHLY RECOM-**

MENDED. The State Board of Insurance is currently updating a guide to provide shopping tips and a comparison of the long-term care policies sold in Texas. To be placed on a mailing list to receive a copy when it is published later this year, write to: Information Services (Mail Code 000-3), State Board of Insurance, 1110 San Jacinto, Austin, Texas 78701-1998.

□ **GROUP LONG-TERM CARE INSURANCE IS AN OPTION.** Since group insurance can be less expensive, you may want to check on this possibility through employer or association groups to which you belong.

□ **WHEN POLICY LANGUAGE IS CONFUSING, CALL 1-800-252-3439 FOR HELP.** This is the toll-free number of the Senior Concerns and Issues Unit at the State Board of Insurance. Help also is available through your Area Agency on Aging or local office of the Texas Agricultural Extension Service.

□ **BE A WISE SHOPPER.**

1. Do not buy more policies than you need.
2. Check for pre-existing condition exclusions and waiting periods.

3. Be careful about replacing existing coverage.
4. Check for listing of maximum benefits.
5. Beware of solicitation materials which give the false appearance that they are from a government source.
6. Take your time when considering and purchasing insurance.
7. Beware of scare tactics.
8. Do not withhold medical information on the application for insurance.
9. Get a written outline of coverage.
10. Ask to see the agent's license.

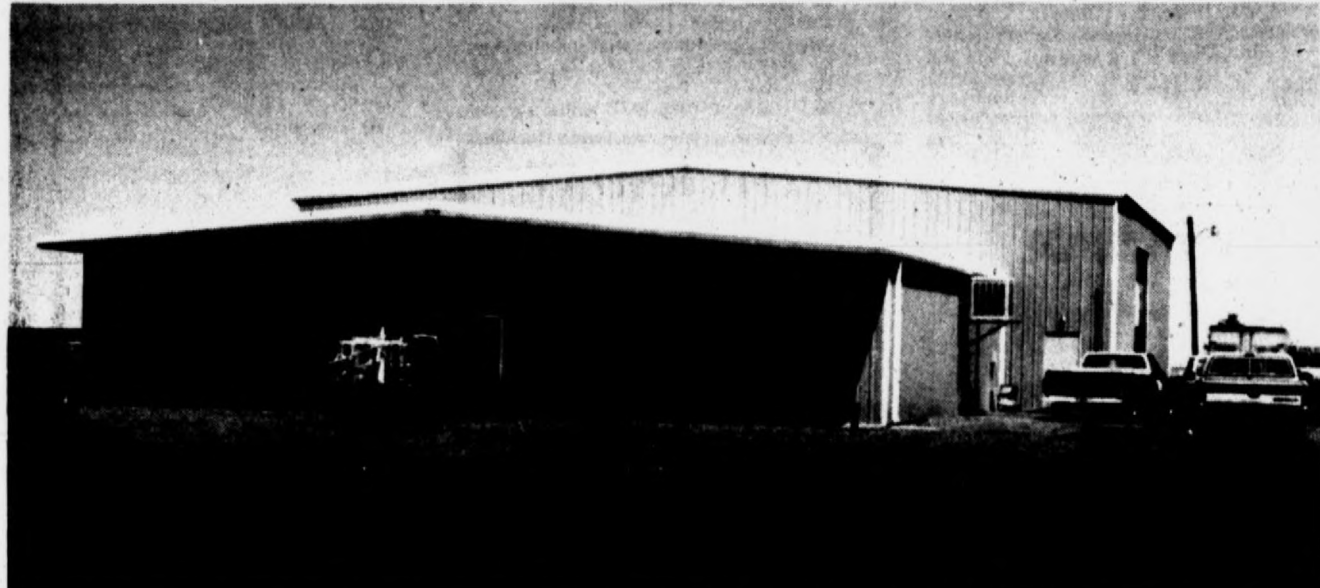
(This column is distributed by the State Board of Insurance as a service to Texas consumers. For further information call 1-800-252-3439.)

Business Briefs

Gibson's Discount Center manager Chris Castillo of Hereford and assistant manager Fred Rodriguez participated last week in the Chaffin, Inc., fall and winter trade show in Dodge City, Kan.

The local managers joined Gibson's Discount Center representatives, and those from other stores serviced by Chaffin, Inc., in the two-day show where 363 manufacturing companies displayed goods. Approximately 160 Chaffin buyers, store managers, franchise owners and department managers from Texas, Oklahoma, Kansas, Nebraska, Colorado, Montana, South Dakota and Guam selected merchandise for their stores.

Chaffin, Inc., which owns franchise rights for all Gibson's Discount Centers, also operates 32 corporately-owned stores in addition to the Chaffin Distribution Center in Dodge City. In addition to the trade show, the representatives also took part in merchandising seminars and banquets during their week in Dodge City.



Front view of Vega Equipment and Supply

HUSTLE HEREFORD

(Continued from Page 6)

and a double-tree was the drawbar.

The Magnum line, the first all-new tractors from Case IH, is pacing the industry this season as the bright red machines hit the market with an 18-speed, full powershift transmission and its exclusive "hitch command" only a fingertip away. And its "Intelligence Cente II" is the latest in high-tech digital instrumentation, having three readouts at one time from the computerized control system.

In addition to parts for the Case International machines, the spacious showroom at the Hereford dealership is lined with necessities of the turnrows, from all sorts of lubricants to the small stuff of bolts, nuts, washers and hitch pins. A wide variety of garden and lawn tractors are also part of the business which caters to the city cousins of the country folks.

As result of a company merger some five years ago between J.I. Case and International Harvester, the dealership now goes under the title of Case International, servicing both, the former lines of Case and International Harvester farm implements along with the new models developed under the merged program. Other than in the tractor makeup, some of the greatest sophistication of Case International has been applied to the planters which are capable of exact seed spacing while metering out the

correct amount of fertilizer, herbicide and pesticide all in a single run.

Oglesby speaks of his employees on a first-name basis, showing where each has contributed to the success of the business. Arnold Powell has been a major force in sales for the past 13 years and Ben Plummer has been in the Oglesby parts department for the past 36 years. H.S. Fuller has been in the parts department for 17 years, while Ray Henderson has held a position in the service department for 27 years. Della DeHart has headed up the computerized accounting for nine years and Shop foreman Roy Blevins has been with Oglesby for the past 11 years.

Having a staff of 16 in the Hereford dealership alone, Oglesby's annual payroll will generally hit around \$500,000 or better. The Hereford operation also includes field servicing crews who handle



Travis Lanier, Vega manager

emergency repair calls almost around the clock during the heavy farming seasons.

Oglesby has the oldest International dealership in this part of the Southwest, and perhaps the state. Prior to its closing, the International dealership at Boise City, Okla., held the title of Southwest seniority, but its demise left Hereford as the oldest. At one point in time, there was an International dealership at Wildorado, 40 miles Northeast of Hereford, which has dwindled to little more than an Interstate tourist stop, service stations and cafes with some on-farm fuel delivery service.

In earlier times, when International dealerships also included pickups and trucks, Oglesby recalled how trucks were shipped by rail boxcar without the cabs assembled—"We had to mount the cabs on the trucks after we got them unloaded out of the boxcars."

The Oglesbys also have a daughter, Becky Richards of Amarillo. They are active in work of the First Baptist Church of Hereford where he serves as a deacon. He is also a long-time member of the Golden K Kiwanis Club of Hereford and is quite active in the Gideons. He is president of the Hereford Cemetery Association and is on the board of directors of the Hereford Senior Citizens Association.

Oglesby believes that the future—the 1990s—will belong to those who have the greatest vision and follow through with work:

"I believe that our younger set are going to have to work harder than those of us who came before because the competition is getting greater...I believe those with the greater visions and the greater moral standards will be the ones who survive the decade ahead."



Hereford Lions Club

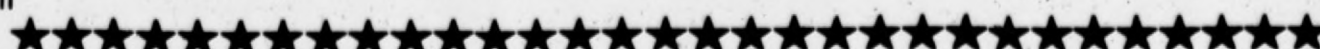
Mexican Stack Supper

Thursday, May 3, 1990 — 5:00-7:30 p.m.

High School Cafeteria

\$4.00 per person

ALL PROCEEDS TO SUPPORT LOCAL CHARITIES



No. 0000

CITY OF HEREFORD, TEXAS
CITY OFFICERS' ELECTION
ELECCION DE OFICIALES DE LA CIUDAD
CIUDAD DE HEREFORD, TEXAS
May 5, 1990 (5 de Mayo de 1990)

**SAMPLE BALLOT FOR PLACE 1
BOLETA DE MUESTRA POR LUGAR 1**

INSTRUCTION NOTE: (NOTA DE INSTRUCCION:) Vote for the candidate of your choice in each race by placing an "X" in the square beside the candidate's name. (Vote por el candidato de su preferencia para cada candidatura marcando con una "X" el cuadro al lado del nombre del candidato.)

FOR COMMISSIONER AT-LARGE, PLACES 5 and 6 (Vote for one or two)
POR COMISIONADO EN GENERAL, LUGAR 5 y 6 (Vote por uno o dos)

RON WEISHAAR
 EMORY BROWNLOW
 PAUL HAMILTON
 TERRY D. LANGEHENNIG

SPECIAL ELECTION (ELECCION ESPECIAL)
CITY OF HEREFORD SALES TAX PROPOSITION
(PROPUESTA DE IMPUESTOS SOBRE VENTAS DE LA CIUDAD DE HEREFORD)

INSTRUCTION NOTE: (NOTA DE INSTRUCCION:) Place an "X" in the square indicating the way you wish to vote. (Marque con una "X" el cuadro al lado de la frase que indica la manera en que quiere usted votar.)

PROPOSITION NO. 1
(PROPUESTA NUM. 1)

"The adoption of an additional one-half of one percent (1/2%) local sales and use tax within the City to be used to provide funds for industrial development." ("La adopcion de una adicional mitad de uno por ciento (1/2%) local ventas y usar el impuesto dentro la ciudad para ser usado para proveer fondos para industrial desenvolvimiento.")

FOR (A FAVOR DE)
 AGAINST (ENCONTRA DE)

**Cast your vote for Hereford's
future growth and VOTE YES
on Proposition 1.**

Pd. Pol Adv., by Committee for Proposition 1, James McDowell,
Treasurer, Box 192, Hereford, Tx.

VOTE FOR PROPOSITION 1

A VOTE FOR PROPOSITION 1 IN THE CITY ELECTION MAY 5 IS A VOTE FOR:

- A one-half percent city sales tax with revenue to be used for economic development
- Promoting expansion of existing business and industry
- Establishing a loan pool for small businesses
- Providing venture capital for business start-ups
- Helping create more jobs and broadening the tax base
- Providing incentives for employers to move to Hereford
- Creating a management board of the five best-qualified citizens, appointed by the City Commission which is elected and responsible to the voters
- Giving Hereford a competitive position with towns of comparable size who are actively pursuing new jobs

**VOTE FOR A WELL-CONCEIVED PLAN THAT WILL GIVE US THE OPPORTUNITY TO MOVE FORWARD!
VOTE FOR PROPOSITION 1 IN THE MAY 5TH CITY ELECTION.**

(Pd. Pol. Adv. by Committee for Proposition 1, James McDowell, treasurer, Box 192, Hereford, Tx.)



Annual celebration discussed

The Mid-Plains Pioneer Day officers and steering committees met recently at K-Bob's to discuss plans for the annual Mid-Plains Pioneer Day celebration planned May 26 at the Bull Barn.

All area residents are invited for a day of reminiscing and visiting and to honor area pioneers.

Reunions for Hereford High School graduating classes of 1935 and 1940 are being planned.

Those attending the celebration are asked to bring a vegetable, salad, and dessert dish, enough for their party.

How much garbage do you generate in your lifetime? Approximately 600 times your adult weight. The average family produces about 100 pounds of trash per week.



The largest fish ever caught by rod and reel was a white shark that weighed over 2,500 pounds!

VOTE ★ VOTE ★ VOTE



I will be a voice of the people, for quality health care, not just a yes sir - no sir person. I will listen to the concerns of the people! We, as a community, need to remember that Deaf Smith General Hospital is a vital part of our community, "people helping people".

- LIFETIME - resident of Deaf Smith County
- WIFE - of Tom Fellhauer
- MOTHER - of three children
- DAUGHTER - Kenneth & Dolores Christie

VOTE FOR VALERIE CHRISTIE FELLHAUER

TO

DEAF SMITH GENERAL HOSPITAL BOARD

absentee voting...April 16 - May 1... County Courthouse.

Pd. Pol. Adv. by Committee to elect Valerie Christie Fellhauer for DSGH board member

Observance set Friday

The public is invited to the May Fellowship Day observance Friday in the Antonian Room at St. Anthony's Catholic Church. The event, sponsored by members of Church Women United, will begin with a covered dish luncheon at 11:45 a.m. followed by a worship service. A nursery will be provided. A special invitation is extended to all community pastors. The theme of this year's observance is "Justice With All Your Mite" which focuses on the increased poverty in America and the connection of personal faith with economic realities. Among those participating in the service are, from left, Judy Cloud and Cathy Revell representing St. Anthony's Catholic Church.



Reunion held

A family reunion was recently held for Raul and Alma Lopez of Hereford. Among family members attending were, standing from left, Mrs. Ernestine Ramirez, Emma Guevara, and Mrs. Ester Coca. Seated from left, are Hope Trevino, Raul Lopez, and Rosa Jaques.

Family reunion held

A family reunion was recently held for Raul and Alma Lopez of 610 Blevins.

Sisters attending the event were Rosa L. Jacques of Ballinger, Esperanza Trevino of San Diego, Calif., Esther Coca of Weston, Colo., Ernestine Ramirez of Inglewood, Calif., and Emma Guevara of Hereford.

Children attending from Amarillo included two daughters and families: Nancy and Manuel Pacheco, and Elsa and Abraham Vallejo; a son, Raul Lopez Jr. and his wife, Connie, and their son, Edward.

Nephew Rudy Jacques of San Antonio and niece Cynthia Trevino of Montclair, N.J. were also in attendance.



A New Yorker named Walter Hunt is responsible for the invention of the safety pin. He received the patent in 1849 and sold those rights for \$100.

NARFE to meet Thursday

Charles Hood of Amarillo, district representative of the National Association of Retired Federal Employees, will speak at the NARFE meeting at 1 p.m. Thursday in the Hereford Senior Citizen Center.

Want New Leadership?

VOTE FOR RON WEISHAAR

CITY COMMISSIONER

137 Ave. 100, Hereford, Texas 79329
City Commissioner At-Large, James M. Shaver
Treasurer, 139 Texas Ave., Hereford, TX

VOTE FOR Proposition 1

in the Hereford City Election, May 5th

A VOTE TO PROMOTE GROWTH IN THE HEREFORD ECONOMY.

(Pd. Pol. Adv. by Committee for Proposition 1, James McDowell, treasurer, Box 191, Hereford)



I am Nancy Hill, candidate for Deaf Smith County Hospital Board and I would appreciate your support during the May 5th election! I give you my pledge to serve in this position to the best of my ability and to represent the citizens of Deaf Smith County!

Pd. Pol. Adv. Nancy Hill, Route 3 Box 208

Charlie's Tire & Service Center
Now providing you with **HUNTER**
Total 4-Wheel Alignment
Quality Tire-Quality Service
Tractor-On Farm-Truck-On Road-Passenger-On Road-Shocks-Computer Spin Balancing-Grease Jobs-Front End Alignment-Bearing Pack-Oil Change-Brake Repair
501 West 1st 364-5033

Bet on a good horse...



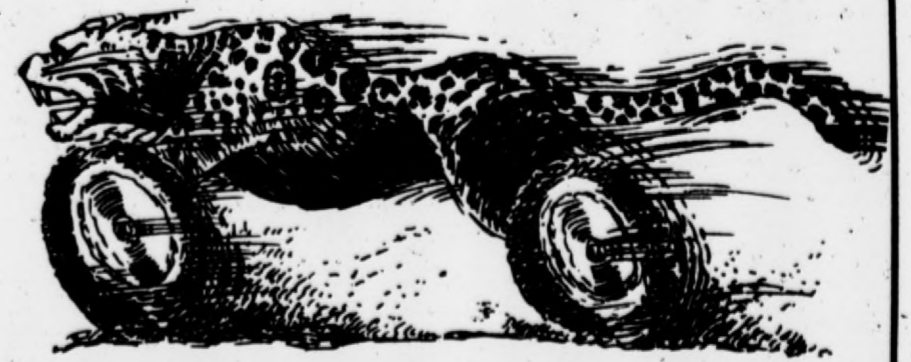
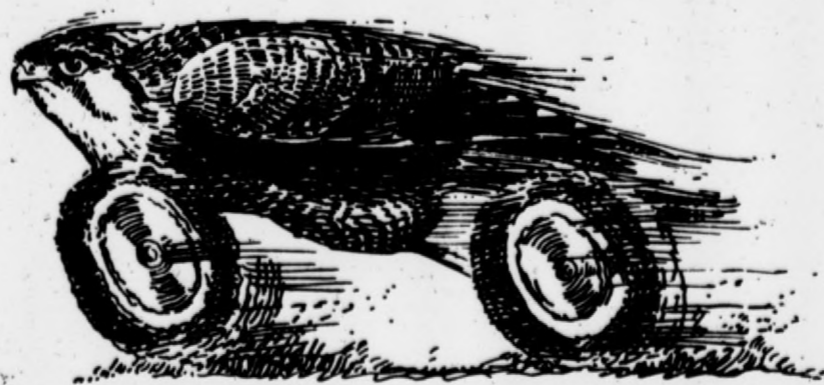
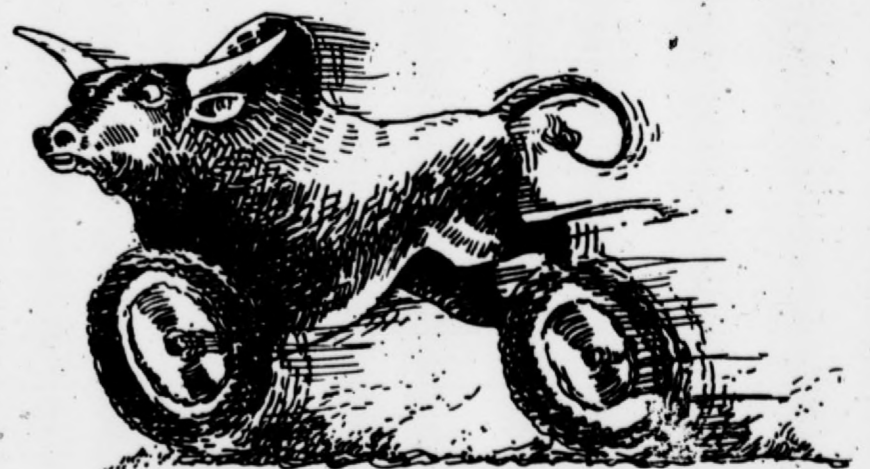
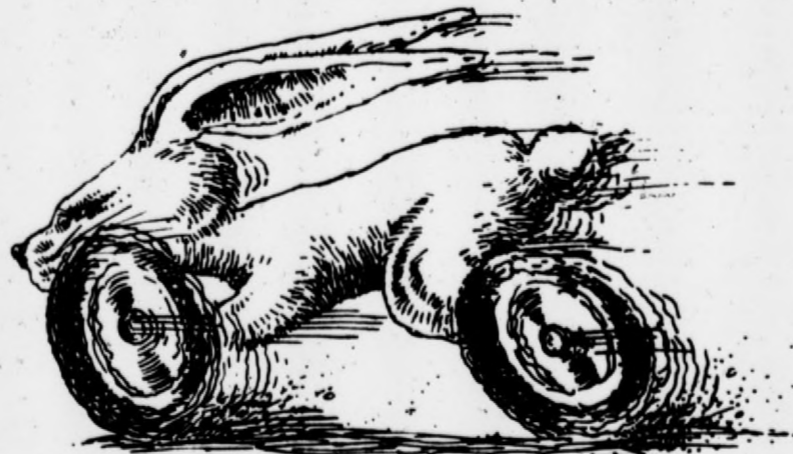
VOTE

EMORY BROWNLOW

Commissioner-At-Large

Pd. Pol. Adv. by Fred & Josie Rivera to elect Emory Brownlow Commissioner-At-Large

ANIMAL LOANS.



Whether you're interested in a Rabbit or a Jaguar or anything in between, see us before you buy a new or used car.

We also lend money for boats,

campers, vacations, home improvements or just about anything else. So no matter what it is you need money for, come see us for the financing.

Hereford STATE BANK

MEMBER FDIC · 364-3456 · 212 E. 3rd Street

Calendar of Events

THURSDAY

Ladies Golf Association, City Golf Course, 9 a.m.
 Ladies exercise class, First Baptist Church Family Life Center, 7:30 p.m.
 Immunizations against childhood diseases, Texas Department of Health office, 914 E. Park, 9-11:30 a.m. and 1-4 p.m.
 Al-Anon, 406 W. Fourth St., 8 p.m.
 San Jose prayer group, 735 Brevard, 8 p.m.
 Weight Watchers, Community Church, 6:30 p.m.
 Kids Day Out, First United Methodist Church, 9 a.m. until 4 p.m.
 Kiwanis Club, Community Center, noon.
 TOPS Club No. 941, Community Center, 9 a.m.
 Amateur Radio Operators, north biology building of high school, 7:30 p.m.
 Story hour at library, 10 a.m.
 Hereford Toastmasters Club, Ranch House, 6:30 a.m.
 VFW, VFW clubhouse, 8 p.m.
 BPOE Lodge at Elks Hall, 8:30 p.m.
 National Association of Retired Federal Employees, Hereford Senior Citizens Center, 1 p.m.
 Hereford Child Care Providers, 7:30 p.m.
 Camp Fire Leaders Association, Camp Fire Lodge, 7:30 p.m.
 Bud to Blossom Garden Club, 9:30 a.m.
 Elketts, 8 p.m.
 L'Allegre Study Club, 10 a.m.
 Alpha Iota Mu Chapter of Beta Sigma Phi Sorority, 8 p.m.
 North Hereford Extension Homemakers Club, 2:30 p.m.
 Wyche Extension Homemakers Club, 2:30 p.m.
 Bay View Study Club, 2 p.m.
 Merry Mixers Square Dance Club, Community Center, 8 p.m.

FRIDAY

Kiwanis Whiteface Breakfast Club, Caison House, 6:30 a.m.
 Community Duplicate Bridge Club, Community Center, 7:30 p.m.
 Garden Beautiful Club, 9:30 a.m.
 Hereford Senior Citizens governing board 2 p.m. and business meeting 3 p.m. at Senior Citizens Center.
 Patriarchs Militant and Ladies Auxiliary, IOOF Hall, 8 p.m.

Public invited to meeting

The public is invited to hear Pat Stanton of Shallowater speak at the Hereford Chapter of Flame Fellowship meeting at 7 p.m. Thursday at the Hereford Community Center.
 Stanton has spent 11 years ministering through the organization of the Rays of Hope Ministry. She was on radio and television and she speaks to churches and conventions.
 Stanton and her husband, Jay, are involved in the ministry of their local church. Their three daughters and son-in-law are also involved in ministry and foreign missions work.

Three million cars are abandoned in the U.S. every year.
 Keep tires properly inflated: it extends tire life and saves gas.

SATURDAY

Open house for all teens, noon to 6 p.m. on Saturdays and 2-5 p.m. Sundays at First Church of the Nazarene.
 AA, 406 W. Fourth St., 8 p.m. on Saturdays and 11 a.m. on Sundays.
MONDAY
 AA meets Monday through Friday, 406 W. Fourth St., noon, 5:30 p.m. and 8 p.m. For more information call 364-9620.
 Spanish speaking AA meetings each Monday, 406 W. Fourth St., 8 p.m.
 Ladies exercise class, First Baptist Church Family Life Center, 7:30 p.m.
 Odd Fellows Lodge, IOOF Hall, 7:30 p.m.
 TOPS Chapter No. 1011, Community Center, 5:30-6:30 p.m.
 Rotary Club, Community Center, noon.
 Planned Parenthood Clinic, open Monday through Friday, 711 25 Mile Ave., 8:30 a.m. to 4:30 p.m.
 Civil Air Patrol-U.S. Air Force Auxiliary, Community Center, 7 p.m.
 Dawn Lions Club, Dawn Community Center, 7 p.m.
 Ladies Christian Endeavors, 7 p.m. in members' homes.
 Hospital Auxiliary, hospital board room, 11:45 a.m.
 Delta Xi Chapter of Delta Kappa Gamma Society for Women Educators, Community Center, 7 p.m.
 Women's American G.I. Forum, Community Center, 6 p.m.
 Order of Rainbow for Girls, Masonic Temple, 7:15 p.m.
 VFW Auxiliary, VFW clubhouse, 6:30 p.m.
 Deaf Smith County Historical Museum; Regular museum hours Monday through Saturday 10 a.m. to 5 p.m. and Sunday by appointment only.

TUESDAY

TOPS Chapter No. 576, Community Center, 9 a.m.
 Kids Day Out, First United Methodist Church, 9 a.m. until 4 p.m.
 St. Thomas 12-step recovery program, public invited, 7:30-8:30 p.m. For more information call the church office at 364-0146.
 Ladies Golf Association Play Day, City Golf Course, 5:45 p.m.
 Hereford Rebekah Lodge No. 228, IOOF Hall, 7:30 p.m.
 Problem Pregnancy Center, 505 E. Park Ave., open Tuesday through Friday. Free and confidential pregnancy testing. Call 364-2027 or 364-7626 for appointment.
 Free women's exercise class, aerobics and floorwork, Community

Church, 7:30 p.m.

Free blood pressure screening, Tuesday through Friday, South Plains Health Providers Clinic, 603 Park Ave., 8:30 a.m. until, 5 p.m.
 Hereford AMBUCS Club, Ranch House, noon.
 Social Security representative at courthouse, 9:15 a.m. to 11:30 a.m.
 Kiwanis Club of Hereford-Golden K, Senior Citizens Center, noon.
 Lone Star Study Club, 2:30 p.m.
 Order of Eastern Star, Masonic Temple, 8 p.m.
 Westway Extension Homemakers Club, 7 p.m.
 Pioneer Study Club, 10:30 a.m. for business meeting and luncheon follows.
 Pilot Club, Community Center, 7 a.m.
 Parents Against Chemical Abuse,

Community Center, 7:30 p.m.

WEDNESDAY

Noon Lions Club, Community Center, noon.
 Young at heart program, YMCA, 9 a.m. until noon.
 Play school day nursery, 201 Country Club Drive, 9 a.m. to 4 p.m. Call 364-0040 for reservations.
 Al-Anon, 406 W. Fourth St., 5 p.m.
 Bippus Extension Homemakers Club, 2 p.m.
 United Methodist Women of First United Methodist Church, in Ward Parlor, 9:30 a.m.
 Credit Women International, Ranch House, noon.
 Cultural Extension Homemakers Club, 2 p.m.

A.O. THOMPSON ABSTRACT COMPANY
 Margaret Schroeter, Owner
 Abstracts Title Insurance Escrow
 P.O. Box 73 242 E. 3rd Phone 364-6641
 Across from Courthouse

VOTE
NO TO MORE BUREAUCRACY
TO MORE TAXES
TO PROPOSITION 1
 Pd. Pol. Ad. by Billy Hutson

20% TO 25% OFF



25% OFF
 ALL MISSES' WORTHINGTON® SEPARATES
 Sale 20.99 Reg. \$28. Rayon shell.
 Sale 26.99 Reg. \$36. Coordinating skirt.
 Sale prices effective through Sat., May 12th.

25% OFF
 ALL JUNIOR TANKS, TEES AND SHORTS
 Sale 7.50 Reg. \$10. Cotton/spandex tank.
 Sale 11.25 Reg. \$15. Supplex® nylon shorts.
 Sale prices effective through Sat., May 10th.

NOW 19.99-29.99
 YOUNG MEN'S LEVI'S®
 Get into your favorite Levi's® stonewashed, whitewashed and prewashed jeans, all in pure cotton denim. Young men's sizes.

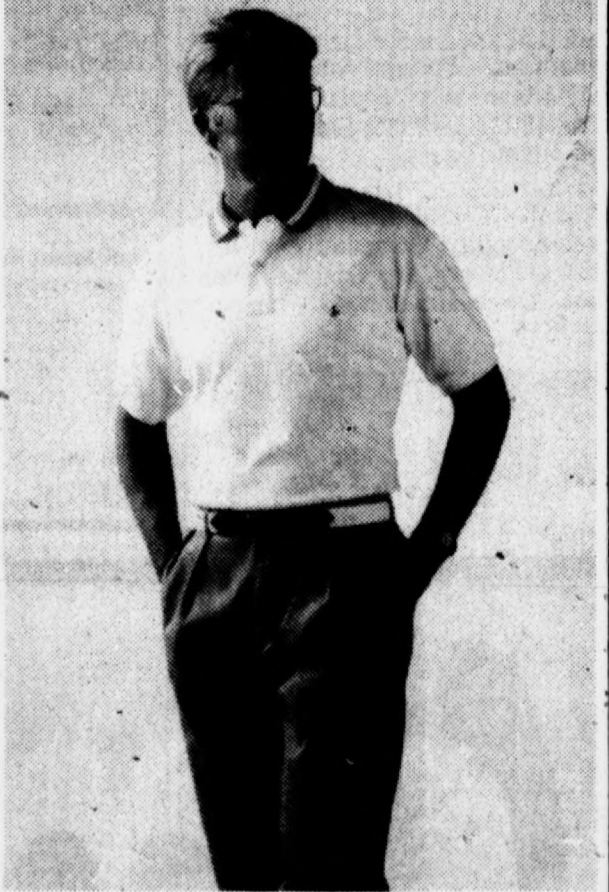
25% OFF
 ALL WOMEN'S SLEEPWEAR AND ROBES
 The gift that every Mother hopes to get!
 Save on her favorite styles and fabrics.

25% OFF
 ALL WOMEN'S HANDBAGS
 Great gifts for Mother's Day, at a price you can get your hands on. Choose from leather, vinyl and fabric styles.

20% OFF
 MEN'S TOWNCRAFT® UNDERWEAR
 Fortrel® polyester/combined cotton quality.
 Sale 8.40 Reg. 10.50 pkg. of 3 T-shirts.
 Sale 6.40 Reg. 8.00 pkg. of 3 briefs.

SALE 12.99
 One Rack Women's Size Sportswear

20% OFF
 Ladies' Reebok® and Nike® Athletic shoes.



SALE 12.99
 Select Group Worthington® Separates

Clearance 1/2 OFF
 Select Group Ladies' Jewelry

SALE 17.99
 Girl's Fancy Dresses
 Orig. \$52 Size 4 to 12

SALE 11.99 EACH
 TOWNCRAFT® DRESS SHIRTS
 Reg. \$16 & \$18. At this price, you'll want both styles! Polyester/cotton broadcloth dress shirts in solids and fancy stripes.

SALE 5.99
 One Rack Girl's Sportswear
 Long sleeve tops, casual slacks. Not all sizes.

SALE 14.99
 Men's Wrangler® 13MWZ™ Jeans
 Not all sizes available.

25% OFF
 MEN'S HUNT CLUB® SPORTSWEAR
 Casual and sophisticated cotton classics.
 Sale 19.50 Reg. \$24. Tipped knit shirt.
 Sale 20.25 Reg. \$27. The Fox® belted cotton/polyester slacks.

PROFESSIONAL PRE-NEED PLANNING

GUARD AGAINST:
 Placing unnecessary burdens on your family
 overspending in hour of need
 inflationary funeral costs

CALL US! 364-6533

Qix FUNERAL DIRECTORS OF HEREFORD
 105 GREENWOOD

NEW Yogurt Lovers **YOGURT**

Choose from a variety of flavors and toppings to custom design a delicious afternoon treat!

TROY'S SWEET SHOP
 1003 E. Park

Regular prices appearing in this ad are offering prices only. Sales may or may not have been made at regular prices. Sale prices on regular priced merchandise shown effective through Saturday, May 5th, unless otherwise noted. Percentages off represent savings on regular prices or original prices, as shown. Intermediate markdowns may have been taken on original prices. Reductions on original priced merchandise effective until stock is depleted.

You're looking smarter than ever at **JCPenney**

Open Daily 9:30 to 7:00
 Sun. 1:00 to 5:00

Sugarland Mall

© 1990, JCPenney Company, Inc.