

United Fund Needs 10,000 More Dollars To Reach Goal

Serving
the
Magic Triangle

The Hereford Brand

20 Pages
...
Price 10¢

64th YEAR — NO. 42

HEREFORD, TEXAS, 79045, THURSDAY, OCTOBER 21, 1965

PUBLISHED EVERY THURSDAY

Homecoming '65 Begins Today

Activities Honor HHS Ex-Students

A bonfire tonight marks the beginning of Homecoming 1965 at Hereford High School as students honor ex-students in events which also include a barbecue, parade, queen coronation, and gridiron clash.

Termed one of the most elaborate Homecoming celebrations in the history of Hereford High School, this year's edition gets under way at 7:30 p.m. tonight with a bonfire.

On tap for Friday are the annual Coronation Pep Rally when one of six pretty candidates will receive the Homecoming Queen crown—plus a colorful parade through downtown Hereford.

These events will be climaxed Friday night when the Hereford Whitefaces enter into the district race with a 7:30 p.m. encounter with the Canyon Eagles in Whiteface Stadium.

EX-STUDENTS of Hereford High School will be honored guests at all events included on the busy agenda for Homecoming '65.

Schedule for Homecoming activities is as follows:
THURSDAY
7:30 p.m. — Bonfire on vacant field northwest of Whiteface Stadium.

FRIDAY
2:30 p.m. — Coronation Pep Rally in Hereford High School Auditorium.

3 p.m. — Homecoming Parade through downtown Hereford.

5 p.m. — Homecoming Barbecue in the Hereford High School Cafeteria honoring Ex-Students. Serving will continue from 5 p.m. until 7:15 p.m.

7:30 — Hereford Whitefaces vs. Canyon Eagles in Whiteface Stadium.

Tonight's bonfire gets underway at 7:30 p.m. near the football stadium, with ex-students invited to participate in the rousing pep rally.

The Homecoming Queen will be crowned at the Coronation Pep Rally in the high school auditorium, beginning at 2:30 p.m. Friday.

EXES ARE invited to be on See **HOMECOMING** Page 2



HEREFORD HOMECOMING BEAUTIES—A part of the homecoming festivities this weekend will include the crowning of the queen Friday afternoon at the high school auditorium at a pep rally at 2:30 p.m. Six girls were elected by the football squads to be queen candidates and attendants.

The queen will be selected from the junior and senior candidates. Above are Debbie Walden, freshman; Janice Elliot, junior; Debbie Ogan, sophomore; Charlotte Hill, junior; and Penni Jones, senior. Not pictured is Gayle Newell a senior. (Staff Photo by David Butler)

Banks Post New Mark In Deposits

Total resources for Hereford's two banks reached another all-time high in condition reports posted last week as combined resources totalled more than \$28 million.

The figure marks an all-time high for resources of the two Hereford banks, rising some \$4 million over figures of a year ago.

Combined resources of both banks totalled \$28,375,774.38 as of the close of business on Oct. 13.

This amount, although definitely a new record for the banks, was no surprise, bank officials said.

"General good conditions throughout the economy of the area" were credited for the increase, as stated Henry Sears, president of the First National Bank.

"It's just part of Hereford's normal growth," commented Russell Carver, president of Hereford State Bank.

Officials also pointed to better-than-usual summer harvests as accounting for the increase.

Total resources for the First National Bank are listed at \$20,024,688.01 and for Hereford State Bank, \$8,351,106.37.

It was pointed out that resources usually reach their peak in early January, but the Oct. 13 call surpassed all previous bank call reports in the city.

City Conducts Brief Session

City commissioners — in a meeting which lasted just half an hour — approved the plat for the Stark subdivision in north Hereford Monday night.

The approval was the only action taken in a meeting which also saw commissioners discuss a proposal from the chamber of commerce that the city handle erection of Christmas decorations.

The commission took no action on the proposal, pending a study of costs of the project.

Chamber Board Sets Friday Noon Meet

Members of the Board of Directors of the Deaf Smith County Chamber of Commerce will meet in regular session at noon Friday in the Jim Hill Hotel to discuss a number of topics.

Heading the agenda is a discussion of future plans for the Golden Spread Western Junior Livestock Show.

Also included are reports on the American Chamber of Commerce Executives convention held last week in Houston, where local chamber manager Bill Thompon accepted the ACCE publicity award presented to the local chamber.

The board will also consider extending honorary life memberships to three retired chamber members of long standing.

UF Drive Reaches 2/3 Goal

Deaf Smith County's 1965 United Fund Drive passed the two-thirds mark on its drive to reach a \$30,160 goal Wednesday morning as contributions totalled \$21,500.

Drive workers — encouraged by participation thus far in the drive — are scheduled to meet Friday to make plans for the remainder of the drive, which is scheduled to end Oct. 31.

Clint Formby, president of the UF, said Wednesday that the board meeting would be an "important one" in determining final efforts for the UF.

"WE THINK the people of

Deaf Smith County are going to put the United Fund up to its goal this year . . . but it's going to take the cooperation and backing of everyone involved to do it," Formby said.

With the drive focused this year on employe participation, many persons in rural areas have not been contacted, it was pointed out.

THESE persons may make donations to the United Fund at the Hereford Post Office or at the KPAN radio studios.

Formby said that workers would continue all-out efforts until Oct. 31, when the drive is slated to officially close.

DONATIONS benefit nine agencies — including four youth organizations which have a combined membership of some 2,500 county youngsters.

Friday's board meeting will be held at the Hereford State Bank. Drive chairman Ed Skypala will head the program, along with Formby.

Students Name Officers For CROP Drive

Organizational plans for the annual Christian Rural Overseas Program (CROP) are now underway in both Stanton Junior High School and Hereford High School, according to Hugh Clearman, CROP chairman.

The annual event will take place Saturday, Oct. 30, with students from both schools making a door-to-door canvas of the town to solicit money for the program.

MONEY collected in the campaign will be used to buy food for underprivileged peoples overseas.

Hereford was rated number four in the state last year in collections. This included cities as large as Houston and Dallas.

OFFICERS for the high school CROP committee were elected Wednesday afternoon. They were Jana Cole, president; Jo Francis, secretary.

See **STUDENTS** Page 2

UF 100% Contributors

- Cowser & Bybee Law Office
- Leon Bell
- Denton Park Construction
- Kester's Jewelry
- Hereford Hardware
- Morton's Food Products
- Pitman Grain Co.
- Brown, Graham & Glover, Accountants

Employed Shows Marked Increase

Texas Employment Commission's local office reported a marked increase in job placements within the county and a corresponding drop in unemployment here during the month of September.

Office manager J. W. Bradley reported that placements for all types of workers in the county was up over last year.

The local office reported 203 individual placements for a total of 1,521 workers during September, 1965 as compared to 193 placements in September, 1964 for agricultural workers.

Non-agriculture workers placements increased from 110 in September 1964, to 202 for the same month this year.

Unemployment in the county was described as being "way down", with less than 40 persons currently seeking unemployment compensation.

The TEC's statewide report showed similar increases in job placements throughout the state and a significant decrease in claims for unemployment insurance.

Spokesmen at the local office said the increase was due "to a greater abundance of jobs of varying types, particularly in construction and farm crews."

Wet weather here created the need for more farm workers.

United Nations Work Featured

In observance of the 20th anniversary of the founding of the United Nations, a film depicting its work throughout the world will be shown at the Sunday evening service in First Methodist Church.

The public is invited to the showing. The full-length color film is titled "Power Among Men" and its theme is the work done by UN agencies to aid peoples of the world.



HARVEST DELAYED—Heavy rains—which dumped more than an inch of water on downtown Hereford in 15 minutes Sunday afternoon—delayed harvest in many portions of the county. But crops harvested earlier in the year have already helped to swell deposits in the two Hereford banks to all-time highs. (Photo by Wain Miller)

INVOLVE CARS, TRUCKS

Three Receive Injuries In Highway Smash-Ups

Three persons were injured in two separate truck-car collisions near Hereford this week as the wrecks continued on highways near the city.

The mishaps, which were similar in nature, occurred Sunday night and Wednesday morning.

A Hereford Latin American man was injured in a car-truck smashup on U. S. Hwy. 60 southwest of the city about 10 p.m. Sunday.

AND a Littlefield couple sustained injuries when their auto slammed into the side of a semi-truck Wednesday morning on U. S. Hwy. 385, just north of the city limits.

Taken to Deaf Smith County Hospital following the Wednesday morning mishap was Mr. and Mrs. Grover Durham of Littlefield.

Durham, a Lamb county farmer, was treated for slight injuries. His wife, Mrs. Ada Durham, remained in the hospital Wednesday night for treatment of lacerations and possible head injuries.

THEY WERE injured when the 1962 model sedan they were driving hit the side of a truck as it attempted to turn from the highway into a private drive-

way. Driver of the truck — which was loaded with bulk cement — was Malcolm Warren Maxey of Amarillo, an employee of Chemical Express Co. of Dallas, owner of the truck.

Investigating highway patrolman said the crash occurred as the truck turned left off the

highway into the path of the southbound Durham auto.

OFFICERS said citations were pending against Maxey, who was not injured in the mishap, although the truck received considerable damage.

The auto was damaged extensively.

See **THREE** Page 2



ESCAPE SERIOUS INJURY—Eulalio Ramirez Garcia escaped serious injury Sunday evening when his 1965 model station wagon was hit broadside by a truck driven by J.D. Callahan or Hogarville, Ark. The truck jack-knifed and

came to a halt on the muddy shoulder of the road when Callahan attempted to avoid hitting Garcia's vehicle. Investigating officers estimated the station wagon as a total loss. (Staff Photo)

Beatle Ban?

A Hereford soldier received notice Wednesday to appear for a general inspection of his National Guard unit.

Included was the statement: "Personnel must have a fresh haircut. (Not Beatle)

DSC Electric Coop Officials Attend Meeting

Three members of the Deaf Smith County Electric Cooperative and their wives attended the Region X meeting of the National Rural Electric Cooperative Association in Santa Fe, N. M., this week.

They were among the more than 400 rural electric members attending the meeting from the Region X states of New Mexico, Arizona, and Texas.

Those attending from the Deaf Smith County Electric Cooperative were: Mr. and Mrs. Noel Gollehon of Dimmitt and Mr. and Mrs. Raymond Higginbotham of Hereford. Gollehon and Higginbotham serve as directors on the cooperative board. Manager for the Cooperative, Leo Forrest and Mrs. Forrest of Hereford and Ernest Langley, cooperative attorney, also attended.

Forrest served as a panel member on a panel discussing the irrigation research project now being conducted in West Texas and sponsored by the electric cooperatives in this area. Some of the topics discussed during the three-day meeting

were future financing for rural electric systems, exporting the rural electric pattern to foreign countries, and the woman's place in community activities.

Prominent figures addressing the meeting included Jerry L. Anderson, executive assistant to the general manager of the National Rural Electric Cooperative Association, Washington, D. C., and Norman M. Clapp, education administration, Governor Jack Campbell of New Mexico gave the welcoming address.

Nearly a half-million rural electric consumers were represented at the meeting by members of the 104 electric systems serving the three Region X states.

Pupils To Give Skits For Club

Sixth grade pupils at Northwest School will present three skits on a Litterbug program for Hereford Garden Club at 1:45 p. m. Friday in the school auditorium. Mrs. M.T. Rutter is program leader.

After this program, club members will go to the Flame Room for a discussion of iris culture by Mr. A.O. Thompson and judging of line arrangements. Meses. Sam Morgan and R.W. Mitchell will be hosts.

Guest Gives Program In Simms Club

A guest who has previously visited Simms Study Craft Club, Mrs. John Allen O Hammond, Okla., presented the program at a meeting Wednesday afternoon in the home of Mrs. M.A. Ferguson.

The wife of a custom combine operator, she has been in the community while her husband was at work there in wheat harvest, and has been a club guest. She was invited to the meeting this week to demonstrate her hobby, making dolls which serve as decorative pillows.

Plans for a Thanksgiving luncheon Nov. 17 were made in the business session with Mrs. J.M. Boothe presiding. Members were named to committees to prepare for the holiday event.

Mrs. Harry Alban of Long Beach, Calif., who is living on the Alban farm in Simms Community during the maize harvest, was a guest. Other members present were Meses. Elynn Young, Austin Rose, Julian Perrin, Edwin Morrison, Robert Lloyd, Allen Ehresman, Leland Burns, an James Bullard.

Calendar Of Events

THURSDAY
Farm and Ranch Club luncheon in Mrs. Phillip Miller's home, 12:30

L'Allegre Study Club, Mrs. Dennis Lomas, Hostess 2:30 p.m.
Bay View Study Club Mrs. Dexter Lillie hostess 3 p.m.
Hereford Duplicate Bridge Club, Community Center 7:30 p.m.

North Hereford Home Demonstration Club home of Mrs. Paul Hoff.

Hereford Study Club, Mrs. Labry Ballard, hostess, 8 p.m.
Antonian Circle at St. Anthony's School Auditorium 8:30 p.m.

Red Cross Gray Ladies luncheon at Caison House, 12 noon.

FRIDAY
Hereford Garden Club at Northwest School, 1:45 p.m.

SUNDAY
Kappa Iota Chapter, Beta Sigma Phi, preferential breakfast at Caison House, 7 a.m.

MONDAY
Music Study Club at home of Mrs. H. K. Fox, 2:30 p.m.
Home Demonstration Council County Courtroom, 2:30 p.m.
El Llano Study Club at Mrs. Labry Ballard's home, 8 p.m.

TUESDAY
Pioneer Study Club luncheon at Caison House, noon.
Lone Star Study Club at home of Mrs. J.J. Durham, 3:30 p.m.
Sunshine Club at home of Mrs. Edith Sheppard, 402 Roosevelt.

North Hereford Home Demonstration Club in Flame Room.
Young Mothers Club, Halloween party for children at Community Center, 6 p.m.

Hereford Art Guild, Art Room of Community Center, 7:30 p.m.
Organizational meeting for local professional nurses, Flame Room, 7:30 p.m.

Veleda Study Club at Mrs. Gid Brown's home, 8 p.m.

Kappa Iota Unit Fills Two Offices

Office vacancies in Kappa Iota Chapter of Beta Sigma Phi were filled with the election Tuesday evening of Mrs. Bobby Duncan as representative to the City BSP Council and also to serve as reporter-photographer.

Plans for the preferential breakfast to honor chapter pledges at 7 a.m. Sunday in the Caison House were made in the business period, and reports from the area convention here last weekend were heard.

A letter from the Children's Medical Center in Dallas, which is aided in a state Beta Sigma Phi project, was read. Mrs. Harold Kidé presided for business.

Program topics were Giving and Receiving Friendship, discussed by Mrs. Joe Neely, and Interpretations of Love, by Mrs. Duncan.

Mrs. Bobby Shelton and Mrs. Duncan were hostesses. Other members present included Meses Arliss Edwards, Pat Ferguson, C.D. Fitzgerald Jr., Jerry Fowler, Melvin Fowler, John Gilliland, Dean Hacker, Dave Heck, Wendall Maloney, Ronnie Osborn, Pat Parker, Jack Straw and Mike Wilson.

Students ...

(Continued From Page 1)
ces Deavenport, vice president; Jean Roberson, secretary-treasurer; Sharon Garrison and Jane Messick, map chairmen; Margaret Adams, publicity chairman and Beverly Lemons, foods chairman.

Officers for junior high will be elected today in a meeting of home room representatives. Clearman explained the purpose of CROP to students at junior high school Wednesday and how students could participate in the program.

EQUITY THEATER CLIMBS

NEW YORK (AP) — Long showcase for young talent, Equity Theater is aiming now at higher standards and status. "What I'm proposing is a top drawer professional producing organization," says Shepard Traube, recently appointed executive director.

The enterprise is financed by Actors Equity Association and was set up in 1943. During the fall-winter season; 10 productions are slated for limited engagements. In addition to young performers, established players will be given opportunity for off-beat roles.

Johnny Sellers led the Atlantic City jockeys in winners in 1961 and again last year.

Homecoming ...

(Continued From Page 1)
hand for the ceremony and pep rally.

Candidates for the honor are Charlotte Hill and Janice Elliot, juniors; and Gayle Newell and Penni Jones, seniors.

Attendees to the queen are Debra Walden, freshman, and Debbie Ogan, sophomore.

ROYALTY was selected by members of the football teams Monday afternoon.

Immediately following the pep rally, students will form a parade at high school and march across town on Park Avenue, then south on Main St. to Second St.

NINE COLORFUL floats featuring various high school organizations as well as the queen's float will be included in the parade.

Attendees to the queen are crowned queen will lead the parade, riding on a float constructed by members of the student council.

ALSO appearing in the parade will be the Hereford High School Marching Band, the Stanton Junior High School Band, and the Canyon High School Band.

Trophies will be presented by the school to the organizations entering the three most beautiful floats in the parade.

A BARBECUE honoring ex-students will begin at 5 p.m. Friday in the high school cafeteria.

Sponsored by the senior class, the barbecue will feature barbecued beef and fish filets with the trimmings. Tickets are available from any member of the senior class or at the door.

Activities will begin at Whiteface Stadium at 7:30 p.m. when the Hereford Whitefaces kick off their conference schedule against the Canyon Eagles.

HEREFORD will be going into the game with a 4-1 record for the season and Canyon possesses a 3-2 record. (See stories in Section 2)

During the halftime intermission the new queen will be presented to fans and the top three parade floats will also be shown to grid spectators.

Coach Jack Meredith said he expects Canyon to be one of the rougher conference teams. He said the Eagles have been improving steadily through the season and will be at full strength Friday night.

Three ...

(Continued From Page 1)
In the Sunday night mishap, a semi-truck van hit the side of an auto which apparently made a U-turn into the path of the truck.

Eulalio Ramirez Garcia, 19, was slightly injured when the 1956 model station wagon he was driving was involved in the mishap with the truck.

THE ACCIDENT occurred some two miles southwest of Hereford on U. S. Hwy. 60.

Driver of the truck was J.D. Callahan of Hagarville, Ark. He told highway patrolman that the Garcia vehicle pulled off the road in front of the truck, then swung back onto the highway in an apparent attempt to make a U-turn.

Callahan managed to only "graze" the station wagon, but the truck jack-knifed in the attempt and received some \$500 damage as a result. The station wagon was destroyed.

The Hereford Brand

Member National Editorial Assn.

Member Associated Press

Hereford, Deaf Smith County, Texas, 79045

Published Every Thursday at 130 W. Fourth

Entered as second-class matter at the Post Office in Hereford, Texas under the act of March 30, 1879. Second-class postage paid at Hereford, Texas. Any erroneous reflection upon the character, standing or reputation of any person, firm or corporation, which may appear in the columns of this paper, will be gladly corrected upon due notice of same being given to the editor personally at the office. Subscription Rates: Zone 1, \$2.50 per year; Zone 2 and above, \$3.50 per year. With the Sunday Brand, both papers, Zone 1, \$4.95 per year; Zone 2, \$6.15 per year. Carrier delivery, 90c per month. Single copies, 10c each.

Classified advertising rates: 6c per word first insertion (60c minimum); 4c per word additional insertion.

James M. Gilentine Publisher
Melvin Young General Manager
Robert J. Awtry Mech. Supt.

CIRCULATION
Mail EM 4-2030
Carrier EM 4-1855

Married Men May Be Called For Physicals

Draft-age men who married before August 27 may be called by some Texas draft boards in November to help fill a quota of more than 6,000 men for Colonel Morris S. Schwartz, state Selective Service director, said Friday.

Currently, men in the 19-25 age range who are single and those married on August 27 and since are being tapped, in accordance with an executive order issued by President Johnson in late August.

The Johnson order provided that married men who married before August 27 would not be processed for armed forces service unless single men and men married since August 27 are not sufficient to fill quotas. The order did not pertain to married men with children, who are deferred for dependency if boards are advised of a child or expected child in the family.

THE DECISION to permit the forwarding of men married before August 27, Colonel Schwartz said, was made because some local draft boards may not have enough available men unless the move is authorized.

"If calls are kept at their present level," the state draft director said, "the men who married before August 27 likely will be needed for induction about January. We have to take preparatory steps in view of the expected situation that will face us about the first of the year."

Colonel Schwartz said that he understood from his contacts with other state directors that the move also is being made in other states.

Texas local boards are scheduled to be sent their November induction quotas Friday involving a state call for 1,231 men. This compares with state quotas of 1,504 and 1,459 for October and September, respectively. The November quota of 6,245 men to be examined is also scheduled for mailing Friday.

The November state quota of 1,231 for induction is the Texas share of a national call for 32,450 men, 28,400 for the Army,

Young Farmers Study Futures

Operation of commodity futures markets in the United States was discussed by a guest speaker to the Hereford Chapter, Young Farmers of Texas, at a meeting in the high school agriculture building Tuesday evening.

Alan Roberson of the Amarillo office of Merrill Lynch, Pierce, Fenner and Smith, Inc., was the speaker. Edwin Axe introduced him.

Layton Sawyer, chapter president, was in charge of the meeting which was attended by 21 members and two advisors.

and 4,050 for the Marine Corps. An earlier request by the Navy for 4,000 men was deleted in an amended call on the states. Colonel Schwartz also said his office had received calls for 62 physicians, 15 dentists, and 6 veterinarians, to be supplied in January. Local boards already have been instructed to forward doctors, dentists, and veterinarians for examination preparatory to filling these quotas.

It SAVES Your MONEY!



NEW

Protective Coatings
POLYTHANE

FOR USE ON:

- Porous Surfaces
- Interiors
- Exteriors
- Poured Concrete Surfaces
- Above or Below Grade

PREVENTS:

- Water Seepage
- Masonry Damage
- Peeling and Flaking
- Freeze-Thaw Damage
- Acid & Alkali Erosion
- Chalking
- Spalling

FREE

SAMPLE TEST IT YOURSELF

5 YEAR UNCONDITIONAL GUARANTEE

Also equipped to sand blast masonry, metal, bricks, etc.

CLICK & SON

Sandblasting Co.

1203 E. 1st

Phone EM 4-0795

whale of a service

A LOW COST, NEW CAR LOAN



from the
FIRST NATIONAL BANK
of Hereford

reach...

FOR BROADER KNOWLEDGE through Journalism

No other profession requires such a diversified educational background as Journalism.

For more information see or write:

- ... YOUR LOCAL NEWSPAPER
- ... HIGH SCHOOL COUNSELOR
- ... NEAREST COLLEGE JOURNALISM DEPT.
- ... TEXAS PRESS ASSOCIATION

Texas Press Association

1716 SAN ANTONIO STREET, AUSTIN 1, TEXAS
(This ad prepared by Texas Tech Journalism Department)



PRACTICE FOR CONTEST—Shown above is the Stanton Junior High School Marching Contest to be held Tuesday, Oct. 26, in Canyon. (Staff Photo) Band as it practices for the upcoming University Interscholastic League

Hereford High-Jinks

by Randy Hopson

This is the most exciting week since school started. Each student has some reason for being excited about Homecoming. Things really began to buzz Tuesday as the freshman and sophomore attendants and the candidates for queen were announced.

Freshman attendant will be Debbie Walden and Debbie Ogen will serve as the sophomore attendant.

JUNIOR candidates for Queen are Janis Elliott and Charlie Hill (Charlotte) while Gayle Newell and Penni Jones have been elected as senior candidates. Congratulations girls!

Principal Bill Michael made a few comments on Homecoming. Mainly he urges all of the

student body to attend the pep rally Thursday evening at 7:30. Mr. Micheal feels that this year's Homecoming will be the largest and most successful for Hereford.

IF YOU have the opportunity, drop by the counselor's office and see the new book shelves Mr. Robert Thompson has finally finished. He still has to paint them but none-the-less he is very proud of them. You might comment that you could have done a better job. He has an unusual reaction to such a statement.

Friday is going to be a big day at H.H.S. A roaring pep rally will get under way at 2:30

Friday afternoon to be followed by the parade. And don't forget the Homecoming barbecue and game Friday night. Drop by the cafeteria for a good meal and then head out to the football field for a rousing game against the Canyon Eagles.

Every organization in school has put in a lot of hard work and has high hopes for this year's Homecoming. John Perin, student council president, summed up everyone's feelings when he expressed the opinion that this will be the biggest and best ever. That's what we're all hoping for.

These are the days when birds come back, a very few a bird or two, to take a backward look.

Emily Dickinson
Randy

Texas Tech halfback Johnny Agan lead Albany High School to a state championship in Conference A his junior and senior years, 1960 and 1961. He was twice all-state.

Typewriter Ribbons
THE INK SPOT

Compensation Rates May Go Down In State

Good news is in store for Texas employers if workmen's compensation rates proposed by rate technicians of the State Board of Insurance are adopted. Annual savings of \$4-1/2 million are reflected in the suggested rates.

Board Chairman Wm. Hunter McLean disclosed today that its staff is recommending revised workmen's compensation rates that will result in an average reduction of 2.9 per cent. While rates for some of the 600 classifications will go up and others will go down, the over all effect would be an average decrease. STAFF statistical exhibits and other evidence to be presented at public hearing Oct. 21 by employers, insurers and interested parties will be reviewed by the Board prior to final decision.

"The rating formula that this year produced an indicated decrease of 2.9 per cent is exactly the same formula that last year produced a 2.3 per cent in-

crease. This can only mean," Chairman McLean said, "that the industrial safety record of our state's businesses has improved."

"Workmen's compensation insurance rates reflect industrial safety — or the lack of it. I hope that employers will re-examine their industrial safety programs in order to make these programs efficient, accident preventing operations. By doing this, the employers of our state can bring about a further reduction in workmen's compensation insurance rates."

"IT MUST be noted," Chairman McLean continued, "that slipshod safety practices will inevitably bring about higher workmen's compensation rates. Tomorrow's insurance rates are being made today in plants and factories throughout the state."

In commenting on the dollars and cents value of industrial safety programs, Chairman McLean pointed out that many employers are "experience rated." Under this plan a firm's loss experience is audited at the end of a policy year. Insurance costs are then increased or decreased according to the record disclosed by the audit.

AMONG the many firms pay-

LAE Hears Program On Economics

Influence of the European Common Market on the economic recovery of Western Europe since World War II was defined in a talk by Mrs. A.H. Cook for La Afflatus Estudio Club at a meeting Tuesday afternoon in the home of Mrs. Louise Olson. The program was one in a year's study titled Keeping Up With the World.

Mrs. Cook told how the Common Market was organized with

ing less than manual rates for workmen's compensation insurance because of good accident prevention programs is a newspaper with a 16 per cent credit; a chain of retail stores with a 13 per cent credit; a steel company with a 41 per cent credit, and a chemical company with a credit of 69 per cent.

"Here is absolute proof that industrial safety programs can, and are, saving life and limb as well as substantial sums of money," Chairman McLean concluded.

the aim of breaking down trade barriers for a free exchange of goods, how it operates and the effect it has had on economy of the cooperating nations and of the western world as a whole. An amusing note was added to the program with household hints given in answer to roll call. Some were practical, and

some were even more far-fetched than the most unusual appearing in "Heloise's" column. The hints were given by Mrs. Sam Morgan, Walter Johnson, A.N. Hopson, A.B. Higgins, Emmett Hale, B.A. Reddell, George Suggs, T.W. Riberson, Cook and Olson.

INTERNATIONAL CHILD EVANGELISM FELLOWSHIP

● INTERDENOMINATIONAL ●
Church Doctrine Not Taught

CLASSES BEGIN FRIDAY, OCT. 22nd.

at 812 BLEVINS, Hereford

2:30 to 3:30 Teachers Training Class

3:30 to 4:30 Children's Hour with

- Bible Story given with flannel graph
- Visualized Songs
- Scripture Verses
- Christian Fellowship

All Sunday School Teachers and Other Interested Persons Are Urged to Attend

Prescription for the blues



KORET OF CALIFORNIA coordinates in **BOTANY 100%** wool flannel are classically styled to create a variety of fashion looks with luxurious wool and stretch sweaters and carefree Koratron® shirtmates that never need pressing.

Open until 8 p.m.
THURSDAY
for your

Shopping Convenience

Shopping Is Fun
IN DOWNTOWN
VARIETY PARK

THE *Vogue*

for the lady of fashion

FOR MEN ONLY.....



LADIES! DON'T READ THIS.....

..... unless you're prepared to pamper the man in your life with the exhilarating elegance of our new Jade East line of cosmetics for men. It's the finest money can buy and you'd be surprised at the low, low cost.

玉

after shave
cologne
stick deodorant
bath soap
gift sets

spray talc
shower soap
spray deodorant
suntan lotion

hair cream
shaving cream
spray cologne
hand soap

東 **JADE EAST**

McDOWELL DRUG

336 N. MAIN — EM 4-1313

ANSEL McDOWELL

JIM McDOWELL

Open til 8 p. m.
THURSDAY

for your shopping
convenience

Art Teacher Is Speaker For Chapter

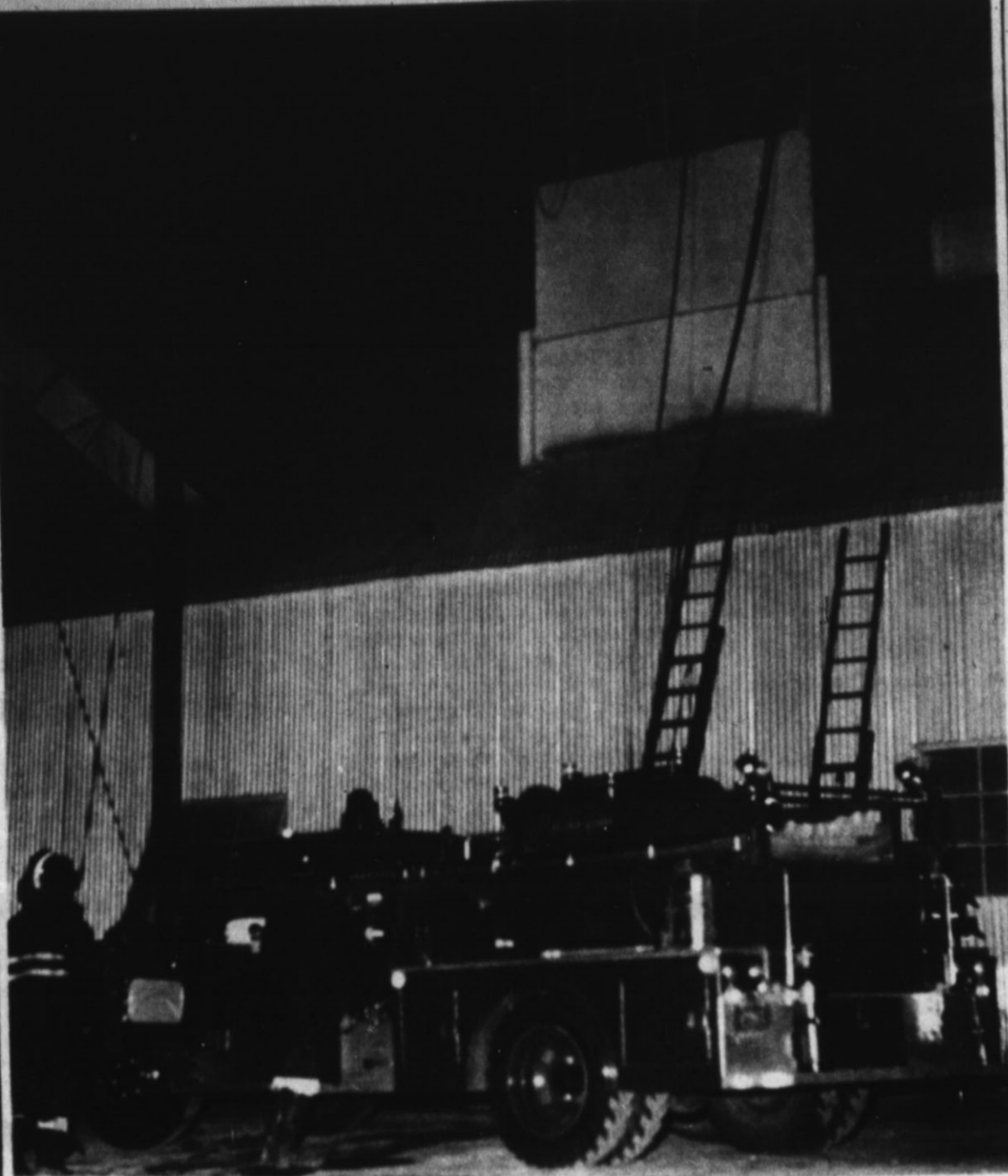
A teacher of painting, Mrs. Eunice Petersen, was guest speaker on the topic, Art and You, for Xi Epsilon Alpha Chapter of Beta Sigma Phi Tuesday evening in the Community Center. She spoke on the development of talent, specifically a talent in art.

Pointers on developing the ability to paint were given by members of the chapter as a means of personal growth.

Reports on the recent area convention at which the chapter was a hostess, were made in the business meeting with Mrs. Howard Gore presiding.

Fall rituals to be held Nov. 2 were discussed, with tentative plans for the annual Valentine Ball.

Refreshments were served by Mrs. Delbert Bainum and Mrs. Gore to Mes. Ann Woodard, Chuck Laing, Jo Miller, Hicks Roberson, John Schneider, Orlene Williams, Larry Summers, Max Stipe, Bill Kendall, Bob Huddleston, Nolan Grady R.J. Cramer, Clete Corliss, Doc Carter, Charlie Bell, Harold Beauchamp, James E. Ballard and Irving Alexander.



FIRE EXTINGUISHED—Quick efforts by members of the Hereford Fire Department and employees at Hereford Feed Yards extinguished what could have been a major blaze in the feed mixing unit at the vast feed yards early Saturday morning. The fire, reported about 5 a.m., was in a mixing bin. Burning feed was unloaded into trucks and hauled away to prevent the fire from spreading. (Staff Photo)

Spend and Enjoyable Evening with KPAN-FM Tunes at Twilight feature:

MONDAY---

- The Three Sons
- Axel Stordahl
- Lawrence Welk
- Melachrino Strings
- Ray Coniff
- Nelson Riddle

TUESDAY---

- Frankie Carle
- Living Strings
- Norman Luboff
- David Carroll
- Henry Mancina
- Huge Montenegro

WEDNESDAY---

- Andre Kostelanetz
- Jan August
- Percy Faith
- Chet Atkins
- Clebenoff Strings

THURSDAY---

- Mantovani
- Morton Gould
- Jan Garber
- Arthur Fiedler
- Frank De Vol
- Harmonica's

6:15-10:00 each evening except Sunday KPAN-FM 106.3mc

Area Churchwomen's Meeting Open To Public

Its programs open to the public with all church women especially invited, the United Council of Churchwomen of the Panhandle-Plains district will hold its 10th annual convention at 10 o'clock in the morning at the Littlefield Community Center, Church vs. World Influence, by the Rev. Charles Meredith, pastor of First Christian Church of Canyon.

Mrs. R.C. Godwin will be vocal soloist for the special musical selection, Love of God, Mrs. Eugene Brink will be song leader with Mrs. Ellis Coombes pianist, Mrs. O.H. Culpepper, president of the Hereford Council, will welcome visitors after a prayer by the Rev. Eugene Brink of the host church.

Mrs. Kenneth Givens of Childress will lead the responsive reading and the Canyon Council will present the topic, Church Woman. The session will end with prayer by Mrs. R.C. Rousey of Plainview.

Preceding the program, coffee will be served during the registration period beginning at 9:30 a.m., by women of Wesley Methodist Church here. Women of First Christian Church will serve a luncheon at noon.

Reports of the district president, Mrs. Charles Wilkinson of Canyon, her officers and committees will be a part of the afternoon business meeting, when new officers will be elected.

Mrs. B.M. Bruckner of Amarillo will give the report on migrant work and Mrs. J.B. McFarland of Amarillo the state assembly report. Councils from Littlefield, Childress, Plainview, Canyon and Amarillo will be represented. Churches included in the Hereford Council are First

Methodist, Presbyterian, St. Thomas Episcopal, Wesley Methodist and First Christian.

Awards Are Given At BSP Meeting

Choosing Borger as the site of the next annual convention, Beta Sigma Phi members of the Hi-Plains area closed their 1965 meeting here Sunday afternoon with a ritual tea in St. Anthony's School, where weekend sessions were held.

Hostesses were members of Xi Epsilon Alpha and Kappa Iota Chapters of Hereford, with Mrs. John Gilliland and Mrs. Irving Alexander as co-chairmen. For next year's meeting, chapters at Fritch and Stinnett will assist the Borger member made at the Sunday luncheon by Mrs. Harold Kids. Kappa Epsilon Chapter of Plainview took first place, Delta Eta of the scrapbooks; Gamma Phi and Xi Epsilon Mu Chapters of Amarillo were first and second on yearbooks with Omega Mu of Plainview third.

In the variety show contest which was a part of the Saturday evening entertainment, Kappa Epsilon won the top award, Xi Gamma Phi Epsilon Beta third.

Xi Gamma Phi of Amarillo second and Phi Epsilon Beta third. Door prizes given by The Vogue, Popular Store, J.C. Penney's, Chateau Inn and McDowell Drug went to Clara Murphy of Dalhart, Betty Breedlove and Lavada McCracken of Tulia, Jeane Barlett, Mrs. A.D. Tun-

YHT Members Have Lesson In Candy Making

Candy making, with emphasis on party bon-bons, were demonstrated to the Hereford Chapter, Young Homemakers of Texas, at a meeting in the high school home economics kitchen Tuesday evening.

Mrs. Joe Bradley, homemaking teacher and chapter sponsor, showed how to make several kinds of fancy candy, using simplified new methods.

Mrs. Clark Andrews, installed at the last chapter meeting as president, conducted the business session when plans were made for fund-raising projects. A bake sale was planned for November to aid the Future Homemakers Association of the high school, and sale of pecans was begun, with all members participating.

Mrs. Jim Stuteville was welcomed as a new member and Mrs. Charles Sawyer of House, N.M. as a guest.

Members present included Mes. Howard Hunter, Jerry Don Glover, Ray Gerk, Larry Dobbs, Kenneth DeHart, David Brumley, Lewis Block, Edwin Axe, James Dobbs, Bud Thomas, Tommy Sparkman and Layton Sawyer.

Lithography — Letter Press Printing THE INK SPOT

still, Ruth Read and Irona Tucker of Amarillo.

Mrs. Ansel McDowell welcomed delegates and visitors from over the Panhandle-Plains area and Mrs. Howard Gore introduced guests including Mrs. Louise Hughes of the International BSP office in Kansas City, principal luncheon speaker.

Legal Notice

THE STATE OF TEXAS

To: Jack Gordon Brackner Defendant, Greeting:

You are hereby commanded to appear by filing a written answer to the Plaintiff's Petition at or before ten o'clock A.M. of the first Monday after the expiration of forty-two days from the date of the issuance of this citation, same being Monday the 29th day of November, 1965, at or before ten o'clock A.M. before the Honorable District Court of Deaf Smith County, Texas, at the Court House of said County in Hereford, Texas.

Said Plaintiff's Petition was filed in said court, on the 27th day of August A. D. 1965, in this cause, number 4993 on the docket of said court, and styled, Charline Everlee Brackner Plaintiff, vs. Jack Gordon Brackner Defendant.

The names of the parties to the cause are as follows: Charline Everlee Brackner is Plaintiff

Jack Gordon Brackner is Defendant.

A brief statement of the nature of this suit is as follows, to-wit:

Being a suit for divorce on the statutory ground of cruel treatment in which the Plaintiff seeks a divorce from Defendant and any and all relief to which she may be entitled as is more fully shown by Plaintiff's Petition on file in this suit.

If this citation is not served within ninety days after the date of its issuance, it shall be returned unserved.

The officer executing this process shall promptly execute the same according to law, and make due return as the law directs.

Issued and given under my hand and the Seal of said Court, at office in Hereford, Texas, this 13th day of October A.D. 1965.

Attest:
Lucille Posey, Clerk
69th Judicial District Court,
Deaf Smith County, Texas.
(SEAL)
By Juanita Owen, Deputy t-41-4c

Look Who's New

Mr. and Mrs. A.D. Hutton are the parents of a son, born Oct. 19. He weighed 8 lbs. 1 oz.

Mr. and Mrs. Carol Lee Elliott are the parents of a daughter, born Oct. 19. She weighed 7 lbs. 12 1/2 ozs.

Mr. and Mrs. Joseph Thomas Lyons are the parents of a son, born Oct. 18. He weighed 5 lbs.

10 1/2 ozs.
Mr. and Mrs. Antulio V. Gomez are the parents of a son, Juan Antulio, born Oct. 18. He weighed 6 lbs. 11 ozs.

Mr. and Mrs. Belizario H. Dominguez Jr. are the parents of a daughter, Blandina, born Oct. 17. She weighed 8 lbs. 13 ozs.

Mr. and Mrs. Carl Ervin Miller are the parents of a son, Danny Leon, born Oct. 17. He weighed 8 lbs.

SELL-A-BRATION

of Ladies Fine Shoes SPECIALLY PRICED FOR THURSDAY SELLING

(One Day Only)

| Group I | Group II |
|-----------------|---------------|
| Flats - Casuals | Style Shoes |
| Val. to 11.95 | Val. to 18.95 |
| \$5.99 | \$7.99 |

Entire Stock Ladies Shoes (All Famous Brands)

| | |
|-----------------|---------|
| Values to 9.95 | \$7.99 |
| Values to 12.95 | \$9.99 |
| Values to 15.95 | \$11.99 |
| Values to 19.95 | \$15.99 |
| Values to 28.95 | \$22.99 |
| Values to 33.95 | \$25.99 |

Gaston's
Thursday Nite Speicals
6 to 8 P. M. Only
Boy's and Young Men's Vest 1/2 Price
1 Group Men's & Young Men's Suits only \$25.00

Gastons
POPULAR STORE

Open to 8 P. M. For Your Shopping Convenience

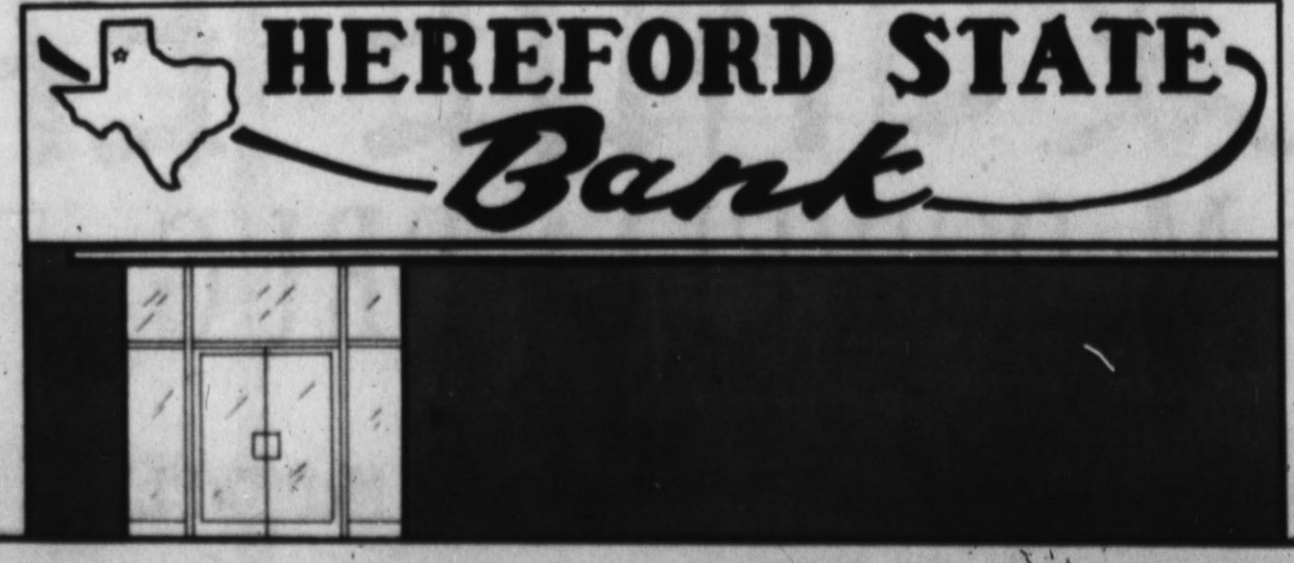
Gastons
Open to 8 p.m. Thursday for your shopping convenience.

Hereford State Bank

Statement of Condition Oct. 13, 1965

| RESOURCES | |
|------------------------------|-----------------------|
| Loans & Discounts | \$4,585,009.93 |
| U. S. Government Securities | 916,181.25 |
| Other Securities | 1,047,766.21 |
| Cash & Due From Banks | 1,733,279.52 |
| Bank Building & Parking Lot | 63,500.00 |
| Furniture & Fixtures | 3,500.00 |
| Other Assets | 1,869.46 |
| | \$8,351,106.37 |
| LIABILITIES | |
| Capital Stock | 150,000.00 |
| Surplus | 250,000.00 |
| Undivided Profits & Reserves | 330,009.35 |
| DEPOSITS | 7,621,097.02 |
| | \$8,351,106.37 |

- OFFICERS**
- H. S. Wilbur Sr., Chairman of the Board
 - Russell E. Carver, President
 - J. A. Hodges, Executive Vice President
 - Dean House, Vice President
 - Cliff Estes, Vice President
 - Wayne Williams, Cashier
 - Nadine Wade, Assistant Cashier
 - Marie Maxwell, Assistant Cashier
- DIRECTORS**
- J. R. Allison
 - O. L. Bybee
 - Russell E. Carver
 - Howard Gault
 - J. T. Gilbreath, Jr.
 - J. A. Hodges
 - W. N. Hodges
 - J. R. Lipscomb
 - R. G. Peeler
 - H. S. Wilbur, Sr.



6th CONTEST WEEK

OFFICIAL ENTRY BLANK TO BE PLAYED OCTOBER 22 & 23

- Rice at Texas
- Texas A&M at Baylor
- Colorado at Nebraska
- California at UCLA
- So. California at Notre Dame
- North Texas St. at Arkansas
- So. Carolina at LSU
- Florida St. at Alabama
- TCU at Clemson
- Georgia at Kentucky

TIE BREAKER
To be used only in determining 1st 2nd & 3rd place winners when required.

New Mexico St. **WTSU**

Texas Tech

SMU

Canyon

Hereford

- Cincinnati at Tusla
- Michigan St. at Purdue
- Okla. St. at Kansas
- Oklahoma at Kansas St.
- Ohio State at Wisconsin
- Michigan at Minnesota
- Navy at Georgia Tech
- Army at Stanford
- Columbia at Rutgers
- Penn. at Princeton

PLEASE PRINT
Name _____
Address _____

Students Read Essays On B&PW Club Program

Two committees in the Business and Professional Women's Club joined to give the program for a meeting in Community Center Monday evening. The Health and Safety Committee presented a group of guests, students from Hereford school who read essays written during Fire Prevention Week observance earlier this month.

Also from that committee, Eunice Petersen spoke of recent advances in medicine and discovery of new drugs. From the Membership Committee, Della Stagner conducted a quiz concerning various phases of B&PW Club membership.

Welcomed as new members were Gwen Leatherman, Byrdie Fellers and Lucille Edwards. Hostesses for the meeting were Avia Northcutt and Bea Barret. Kathleen Baker directed a business period in which members discussed a project to raise funds for the state B&PW Club legislative program which is focused on bills to give women equal rights.

An invitation was read from the Pampa club to a banquet Oct. 26, when Hermione Tabolow ski, state legislative chairman, will speak. Announcement was made that Sunday will be

B&PW Club day at the Texas Fair in Dallas. It will be highlighted by the annual presentation of Miss B&PW of 1965, to be chosen from 15 nominees from over the state.

A former member, Madelyn Kelly, was a guest. Fifteen members were present.

Plans were discussed for the Public Relations Dinner at which the club will entertain presidents of other civic clubs in Hereford and other guests Nov. 1 at the Caison House. Executive committee members will be hostesses.



TEE OFF NEW TERM—Officers elected at a luncheon Tuesday will lead a new year's activities for the Women's Golf Association of John Pitman Municipal Course. Mrs. Joe Easley, second from left, is the president. Standing beside her are Mrs. Joe Butler,

vice president, and Mrs. Howard Godwin, treasurer. Seated, from left, are Mrs. Jim Easley, retiring president who will serve as parliamentarian, and Mrs. Albert Hudson, secretary. Mrs. John McNey, reporter, completes the roster of officers.

Golfers Choose Officers

With Mrs. Joe Easley as president, officers for a new year in the Women's Golf Association of John Pitman Municipal Course were elected Tuesday preceding a luncheon at Hereford Country Club.

Mrs. Joe Butler was named vice president, Mrs. Albert Hudson secretary, Mrs. Howard Godwin treasurer, Mrs. John McNey reporter, and the retiring president, Mrs. Jim Easley, parliamentarian.

The new president announced a called business meeting for next Tuesday to frame plans for the coming year. The association is enrolling new members, and invites all women interested in golf to join this month.

After the morning business hour Tuesday the group had luncheon, then may of the members played a round of golf. Mrs. Joe Easley was hostess chairman.

COWAN JEWELRY

Proudly displays their AWI emblem showing that their store is accredited and recognized by AWI



Certified Master Watchmaker

Genuine watch material plus guaranteed workmanship assures Cowan's customer satisfaction.

Accutron Certified Service

HEREFORD WATCH HOSPITAL

217 MAIN

BAPTIST CHANGE URGED

NASHVILLE (AP)—Traditional Baptist opposition to taking federal aid for its colleges were assailed here by educators inside and outside the denomination.

Harold W. Tribble, president of Wake Forest College, a Baptist institution at Winston-Salem, N.C., told a meeting of Baptist educators: "Baptist need to adjust their thinking to the fact that education is a major part of our national life and that when we render service to the government, it is right and proper to accept compensation."

Office Supplies — Printing THE INK SPOT

Colorado Mines lost all nine football games last season. U.S. exports by air amounted to \$1.8 billion in 1964.

LSU plays 7 of its 10 football games at night this season. A dog of 17 is the equivalent of a human 100 years old.



ENGAGED—Mrs. Karen Kay Waddill, daughter of Mr. and Mrs. Markham D. Waddill of White Deer, formerly of Hereford, will be married Dec. 4 to Larry A. Capranica of Amarillo Air Force Base, son of Mr. and Mrs. Andrew A. Capranica of Peoria, Ill. Miss Waddill, employed at Amarillo National Bank, is a 1964 graduate of White Deer High School. The wedding is planned in First Methodist Church of White Deer.

THURSDAY ONLY

110 Kate Greenaway

New Fall Childrens DRESSES

| Were | Now |
|---------|---------|
| \$13.00 | \$10.00 |
| 12.00 | 8.00 |
| 10.00 | 7.00 |
| 9.00 | 6.00 |
| 8.00 | 5.00 |
| 7.00 | 4.50 |
| 6.00 | 4.00 |
| 5.00 | 3.00 |

Gaston's
POPULAR STORE
OPEN THURSDAY UNTIL 8 P. M.



Coachman Coat: Long wide-wale corduroy coat. Upper lining of pile and lower lining of suede separated by narrow corduroy band \$20.00

White Stag
Coats For All Ages

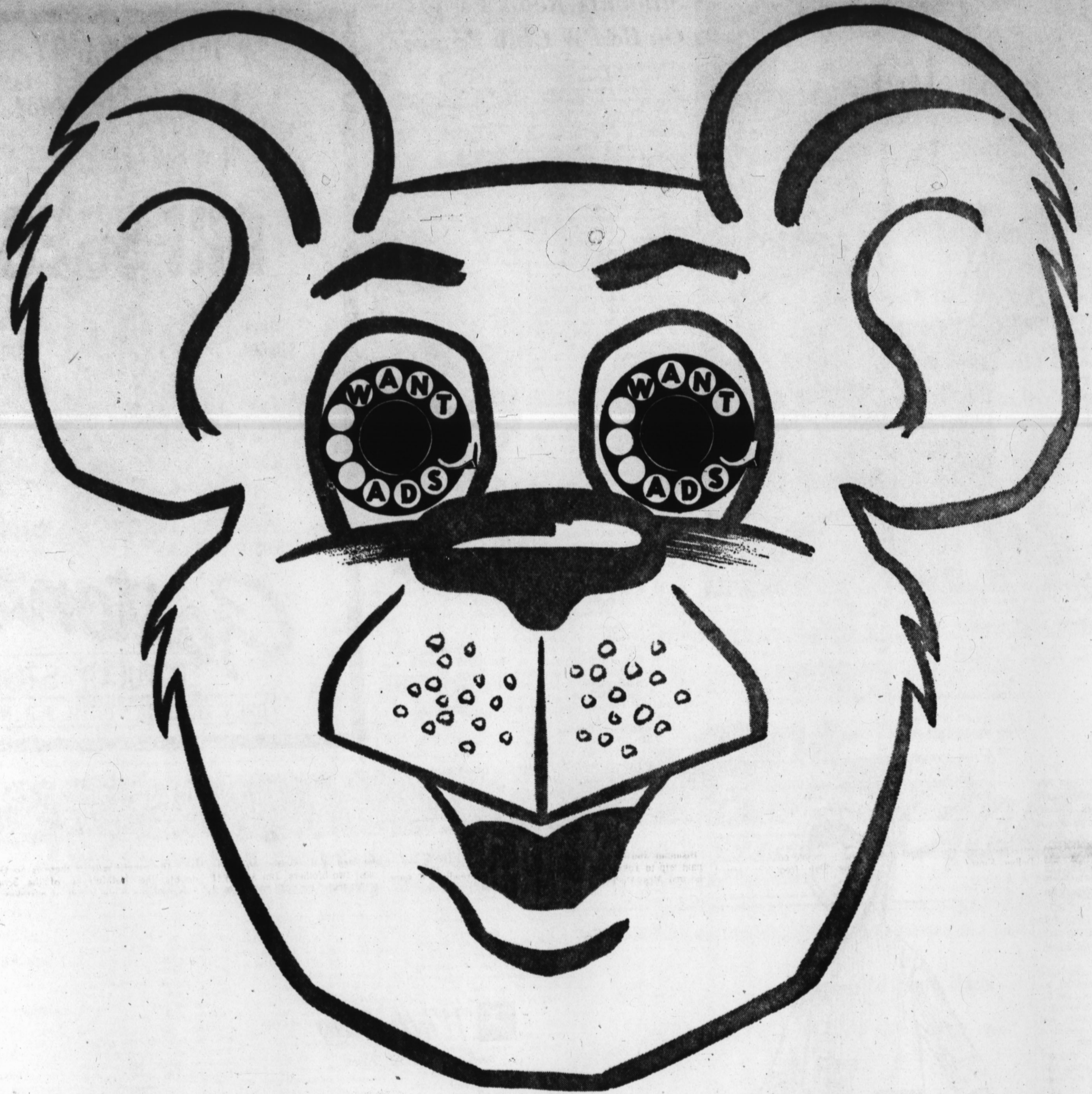


Open Until 8 p.m.
THURSDAY
for your shopping convenience



Storm-Topper Jacket - Reversible plushy pile jacket changes to charming flower print on white background. Drawstring hood. Double pull zipper. \$16.00

Sizes 3 to 14



***You'll find these two
little words bear investigating!***

DON'T JUST SIT THERE GROWLING because you haven't found a renter for that vacancy, the help you want to hire, or a buyer for something you want to sell. There's an easy way to do it that bears investigating. Just grab the phone, dial EM 4-2030, and see for yourself how fast things happen when you place a Want Ad in The Hereford Brand or The Sunday Brand.

THE BARE FACTS are these: (1) For an average of only \$1.00 per insertion you can have a six-line ad—about 20 words—for four times (if you need it that long) in the finest paper in the Magic Triangle. (2) A Brand Want Ad always produces results because readers have all day to react to and respond to your ad.

MAKE TRACKS right away to your telephone and see for yourself what happens when YOU run a Brand Want Ad. Someone is probably HUNTING right now for just what, you have to offer.

JUST DIAL THIS NUMBER

"Find It FAST in Brand Want Ads"

EM4-2030

The Hereford Brand

The Hereford Brand, Hereford Texas, Thursday, Oct. 21, 1965



TWO INJURED SLIGHTLY—Mr. and Mrs. Grover Durham of Littlefield were injured slightly Wednesday when this 1962 model sedan collided with a semi-trailer truck driven by Malcolm Warren Maxey of Amarillo. The accident occurred

north of Hereford. Durham was treated and released from Deaf Smith County Hospital and his wife remained there Wednesday evening. (Staff Photo)



MINOR DAMAGES INCURRED—Minor damages were incurred by this truck Sunday evening when it and a 1956 model stationwagon driven by Eulalio Ramirez Garcia collided two miles west of Hereford on Hwy. 60. The truck

was driven by J.D. Callahan of Hagarville, Ark. Garcia's station wagon was estimated as a total loss by investigating officers. Damage to the truck was estimated at \$500. (Staff Photo) See story on page one.

Fall Bride Is Honoree

A bridal shower recently complimented Mrs. Lynton Allred, who before her marriage Sept. 6 was Miss Joyce West, Mr. and Mrs. Allred are students in Texas Tech, now at home in Lub-

bock. The shower was in Mrs. W.E. Dameron's home. The bride and her mother, Mrs. Clinton West; her husbands mother, Mrs. Jimmie Allred, and Miss Suzanne Langley received guests. Mrs. Jimmie Jones of Lubbock was at the registry. Misses Sharon Hill and Jan Story served refreshments from a table decorated with Autumn Rose carnations and silver candelabra.

Hostesses included Mrs. Paul Harvey, Jack Gilliland, Howard Beasley, Pat Robinson, Barrett Sowell, Clint Formby, Jim Clark, W.S. Dameron, Eugene Sparks, Earnest Roberts, Ansel McDowell, Joe Story, Elmer Kimball, B.F. Cain, Earnest Langley, Clyde Rush, Calvin Edwards, Harley Ward, Cecil Boyer, George Muse, Bert Brown, Ira Scott Otis Lee, Pete Carmichael and Delbert Kinsey.

Read The Classifieds

Spend and Enjoyable Evening with KPAN-FM Tunes at Twilight feature:

MONDAY---

- The Three Sons
- Axel Stordahl
- Lawrence Welk
- Melachrino Strings
- Ray Coniff
- Nelson Riddle

TUESDAY---

- Frankie Carle
- Living Strings
- Norman Luboff
- David Carroll
- Henry Mancina
- Huge Montenegro

WEDNESDAY---

- Andre Kostelanetz
- Jan August
- Percy Faith
- Chet Atkins
- Clebonoff Strings

THURSDAY---

- Mantovani
- Morton Gould
- Jan Garber
- Arthur Fiedler
- Frank De Vol
- Harmonicat's

6:15-10:00 each evening except Sunday KPAN-FM 104.3mc



By MELVIN YOUNG

Science is a wonderful thing. But sometimes we out-smart ourselves.

We recently took the long step backward and purchased a color television set for the family, and being just a little lazy to begin with, decided to get the set with remote control, operated by high frequency sound waves.

While our youngest daughter was busy vacuuming the floor the other day, the television set began to play. She picked up the remote control switch and turned it off, only to have it flip back on just as soon as she started the vacuum cleaner.

Apparently the high frequency sounds coming from the sweeper were activating the set.

And another fellow we know is having trouble with the remote control on his garage door. It seems that every time a low flying jet zooms over the city, his garage door opens.

Progress?

Say. This thing has possibilities. If we could develop the right whistle, we could sit in the easy chair, call the dog, put out the lights, open the door, close the garage and turn off the Beetles all at the same time.

—HB— Mrs. S. N. Twest called Wednesday to let us know about the big homecoming celebration at Bula, which is located between Littlefield and Muleshoe. The event is scheduled for Saturday, October 23.

Mrs. Twest is a 1929 graduate of the school and tells us that her's was one of the first

graduating classes. We understand there are a number of former Bula residents now living in this area.

—HB— O.D. Dishman, owner-manager of Dishman-Hale Chrysler-Plymouth is getting ready for a vacation trip to the Orient.

Dishman won an all expense paid trip to Tokyo, Japan for he and Mrs. Dishman during a recent contest promoted by the Chrysler Imperial sales Department.

The local agency was in the top, 4 in their sales category. The Dishmans will leave Nov. 3 for the trip.

—HB— Duwayne Wallace, son of Mrs. Virginia Wallace has returned to Hereford and is now helping Kenneth Coker at the City Drug Store. Duwayne has been in Dallas for the past 4 years managing a group of drug stores. He is married and has a 2-year-old son named Mike.

—HB— Only 55 shopping days until Christmas!

And speaking of shopping, those folks who are in the market for a new automobile will soon have an opportunity to see all the new cars under one roof.

The Hereford State Bank has again contracted for a giant circus tent, which will be set-up on the parking lot of the bank for their 3rd Annual Automobile Show. The event is scheduled for Saturday and Sunday, November 6 and 7. Participating in the event will be five

local new car dealers and one used car dealer. Commercial units will also be shown; we understand, and perhaps even some boat motors.

The past two events have been quite successful, with as many as 2500 persons registering during the two-day event.

Incidentally, door prizes will also be given away, and there will be plenty of free coffee and donuts.

—HB— When the going gets tough, that's the time for the goer to get rough.

—HB— And apparently, the Texas Aggies are beginning to hit back at all those Aggie jokes. A recent picture in one of the metropolitan papers shows a large billboard type sign which reads: "Tell a Joke About the University of Texas — a public service to the Texas Aggies."

Heck, after reading of some of the events taking place on the Texas campus lately, we sorta thought the whole place was a joke.

—HB— One teacher to another: Not only is he the worst-behaved child in school, but he has a perfect attendance record."

Former Hospital Staff Member Killed In Mishap

Mrs. Ruth K. Service, former Hereford resident, died in Wichita Falls Monday morning after being injured in an automobile accident about a week previously.

She was a licensed vocational nurse, on the staff of Deaf Smith County Hospital from 1946 to her retirement July 12, 1963. Since then she had gone to Iowa Park, near Wichita Falls, and had shared a home with her daughter.

Two sons also survive Mrs. Service. Funeral services were scheduled Tuesday afternoon at Wichita Falls.

Resident Dies During Visit In Kansas Town

Funeral services for Will H. Awtrey, 80, who died Tuesday while on a business trip to Ulyssis, Kans., were conducted Wednesday afternoon at the First Methodist Church by the Rev. Herschel Thurston, pastor, and the Rev. Russell McNally, Friona Methodist pastor.

A former resident of Wheeler County, Mr. Awtrey lived at Muleshoe from 1935 to 1955, when he moved to Hereford. He had gone to Ulysses about a week ago to inspect property he owned in that area.

He is survived by his wife; two sons, Dean Awtrey of Friona and W.H. Awtrey of Ulysses; two brothers, Jim Awtrey of Amarillo and O.J. Awtrey of Melrose, N.M.; and six grandchildren.

Burial in West Park Cemetery was directed by Claborn Funeral Home of Friona. The body lay in state through Wednesday morning at Gilliland Funeral Chapel.

ONE MINUTE, PLEASE

"Think not that I came to send peace on the earth: I came not to send peace, but a sword." Matt. 10:34

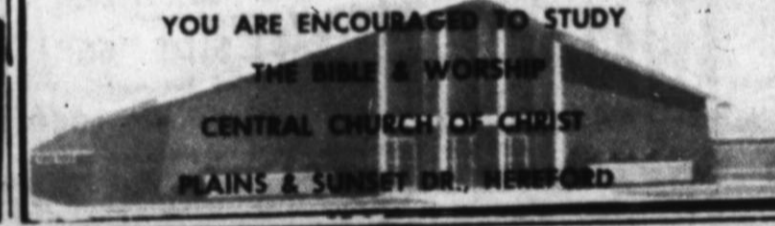
It may surprise you, but it was Jesus Christ the Prince of Peace who made this statement.

The Scriptures teach that the word of God is the sword of the Spirit, (Eph. 6:17). And that the word of God is sharper than any two edged sword, (Heb. 4:12). Now it is the word of God, the sword of the Spirit, which will not allow man to be complacent in his sin. When man hears the Gospels, he either opposes it or yields to its commands and precepts.

The Christians, who believe and obey the word of God, preach this gospel message to the sinful world in obedience to the Great Commission, (Mark 16:15, 16). The sinners of the world oppose the message, and thus, we have the conflict.

The atheist tells us there is no God, the agnostic doubts the truthfulness of the Scriptures the critic tells that the Bible is full of mistakes, the complacent sinner, who loves his evil doing, tells us he is satisfied. These opposing forces destroy peace on earth.

Jesus Christ has promised, however, an inward peace which passes all understanding (Phil. 4:7) to all those who trust Him. You are urged to "Trust and obey, for there is no other way to be happy in Jesus, but to trust and obey."



WE PAID MR. RAY'S BILLS!

Back in 1930, the year S.I.C. started in the consumer finance field, Mr. Ray was a man who was really going places. Then suddenly he found himself pressed with bills. S.I.C. was the answer to his problem. Since 1930, many people have solved many different financial problems through S.I.C. If more money can solve your problems, visit your S.I.C. office. Trained S.I.C. specialists have had a third-of-a-century of experience. Whether it's \$100 or \$5,000, apply for the loan you want... today.

SIC SOUTHWESTERN INVESTMENT COMPANY

35 YEARS

700 South 25-Mile Ave. Hereford, Texas. Phone: Emerson 4-1394

VOTE FOR AMENDMENT 7

- Exempts private charity hospitals doing at least \$1,500,000.00 in free work per year from ad valorem taxes except those paid to the State of Texas.
 - Exempts property only in the home county of hospital.
 - Money saved on taxes must go to charity work in the hospital.
 - Does not exempt state taxes.
 - Helps private hospitals to help Texans.
- Vote For
- Vote Against
- (Pub. Adv. Pd. by Walter G. Sterling, Chairman)

ESPECIALLY FOR BOWLERS... OVER 3,000 PRIZES IN THE

\$175,000

WIN-A-WAY

SWEEPSTAKES

Win a Magic Triangle tour of Europe for two or an expense-paid trip for your bowling team to the Bowling Tournament of your choice in 1966! Or win one of 3,000 AMF ball, bag and shoe sets. There's nothing to buy... it's easy to enter, easy to win. And it's easily the biggest event of its kind in bowling history! Look for full details—as well as name of nearest participating AMF dealer—in the September 24th issue of Life Magazine. You'll find details also in the September issues of Bowling Magazine, Southern Bowler, and Woman Bowler. If you're not a reader of these magazines, visit Sunset Lanes for your Win-a-Way entry blank and rules. Who knows? You may be a winner.

Our Gigantic 25th (Silver) ANNIVERSARY SALE

Is Still IN Progress

With Bargains Galore!

OPEN 'til 8 P.M.

Each Thursday for Your Shopping Convenience

Harman's

We Give S & H Green Stamps

WANT ADS Phone EM 4-2030

FOR SALE Miscellaneous

FOR SALE
Distilled water. Ozarka water. Soft Water Service. Home owned softeners. See, or call, **SOFT WATER SERVICE** Texas. Phone EM 4-3280 216 N 25 Mile Ave., Hereford, B-1-33-tfc

INSULATION
For new and old homes **SHEET METAL NEEDS WALKER SHEET METAL** 305 E. 5th EM 4-0788 B-1-12-tfc

WANTED RESPONSIBLE Party to take over payments on late model Singer sewing machine in Hereford area. Will Zig-Zag, fancy stitches, etc. Five payments at \$4.99 or \$25.00 cash. Write Credit Department, 1114 19th Street, Lubbock, Texas. B-1-36-34-TFC

GENERATORS and starters for cars and trucks. Hereford Wrecking Co. Phone EM 4-0580. T-1-12-18-tfc

NEW MEN'S and boys jackets, \$2.50 and up. Men's insulated underwear, \$5 per suit. Hereford Surplus 1221 E. 1st. B-1-19-16-5c

SAVE \$25 — Kenmore automatic washer — one speed, one cycle — Three water temperatures — lint filter, nothing down. Now \$149.95, Sears, Hereford, EM 4-3854. B-1-21-14-9p

BOYD'S HUMBLE SERVICE
COMPLETE CAR CARE
EM 4-1110
741 W. 1st EM 4-9056

DENTON PARK
Development and Construction
North of Alkman School

Split Levels
A most elegant home-built for family living - 3 large bedrooms - 3 bathrooms. Den with fireplace, living room, dining room, kitchen, patio with built in bar-b-que area. Automatic garage door. 1400 E. 16th. Built with the family in mind this lovely 4 bedroom is a real buy. Featuring cedar paneled den with fireplace, 3 baths, carpeted and all built-in. Come by 1405 E. 16th Street.

Outside Denton Park
Very comfortable all brick 3 bedroom 1 1/2 baths, 1200 sq. ft. of living area. Nice fenced yard, see at 824 Ave. K or call Denton Park office.
3 bedroom priced to sell. Large closets, living room, dining room and kitchen. Laundry area and pantry. 501 Ave. H or call Denton Park office.

TONY RAVIZZA
CUSTOM BUILDER
Office: 16th & Blevins
EM 4-1350

PERSONALIZED SERVICE IN ...

PLANNING DESIGNING FINANCING
GENERAL INSURANCE
HOMES THAT WILL OUTLAST YOUR MORTGAGE
LET US PLAN WITH YOU

ALFALFA HAY. See Charlie Holt, 4 1/2 miles west on Clovis Highway. EM 4-0482 or 289-5599. B-1-14-8-110p

SILVERTONE CONSOLE All Channel 21 inch Color TV. \$429.88. Sears, Hereford, EM 4-3854. B-1-12-35-9p

Hi-Way Auto Sales-Cleanest Cars in Town. B-1-10-15-tfc

HARVEST TIRE SPECIAL
New FIRESTONE truck tires 8.25 x 20 10-Ply Nylon \$42.95, plus tax. Limited quantity. Other bargains. **BEETEX SUPPLY CO.** N. Westway Ph. 289-5313 B-1-39-tfc

FOR SALE
Used Power Poles Lots 1 to 49, \$5.00 each. Lots 50 or more, \$4.00 each. **DEAF SMITH COUNTY ELECTRIC CO-OP, INC.** HIWAY 60 EAST, EM 4-1166 Box 753. B-1-12-tfc

Quilt tops, Stamped cutwork, Cross-stitch table cloths, Needlepoint tapestries, Fairknit knitting yarns.
DAN'S OF CANYON B-1-40-8-c

ONE OF the finer things of life-Blue Lustre Carpet and upholstery cleaner. Rent electric shampooer, \$1 Hereford Hardware. B-1-19-16-2c

NEW FALL COLORS
In all imported and domestic yarns. Christmas gifts, and crew embroidery. Free knitting instructions.
KNIT'N HOUSE 319 N. McKinley B-1-11-tfc

ONE LONG evening gown. Size 14. EM 4-2166. Mrs. Bill Drake. B-1-10-40-6c

FOR SALE Oats. Cleaned and sacked. \$2.50 per sack. Kenneth Harper. EM 4-0916 B-1-12-32-TFC

Baby bed and mattress for sale. Used only when grandchildren visited. Call EM 4-0255. B-1-14-15-tfc

You've Never Seen Such Thorough Service
STOP IN SOON
Phillip "66" Products
EAST SIDE "66"
Rocky Stewart
1303 E. 1st. EM 4-2644

Lee Carter
Jack Kirksey
GENERAL CONTRACTING
Phone EM 4-1732 EM 4-0528

Lions Club meets each
Wednesday, 12 Noon
Hotel Jim Hill

Kiwanis Club Thurs. Noon
100F Hall
207 E. Sixth

Hereford Rotary Club
meets every
Monday at 12:05
FLOYD'S RESTAURANT

STATED MEETINGS
Second Monday
Thurs. 7:30 p.m. PC
Ray Simpson, Jr., Sec.
Troy Stambaugh, W.M.

EXCELLENT KING 3-8 TROMBONE
Would make good horn for high school or junior high student. Luxurious box case. Almost new. Reasonable. Call Larry Fuhrmann, EM 4-2030 or EM 4-0799. B-1-7-tfx

250 tons bales or bundles cane for sale or trade for cattle. Hereford, 276-5272. B-1-14-15-tfc

FOR SALE
HOUSE TRAILER. Five room and bath. 57' x 10'. A-1 condition. Carpeted, air conditioned. Will sell reasonable. Can be seen at **COLE TRAILER PARK**, Space 7. East Austin Road and McKinley Streets. B-1-13-tfc

ONE BUNK bed set, one double bed, Coleman dual wall heater, call EM 4-3261 after 6. B-1-15-42-1c

SALE OR TRADE for anything Stump-tail Chimpanzee. Phone EM 4-4355. B-1-10-42-tfc

2. FOR SALE Farm Equipment

TRUCK TIRE SALE
Close out on quality FIRESTONE tires HD Transport Nylon 10-Ply: 8.25 x 20 \$58.95; 9.00 x 20 \$71.95. Plus tax. Other bargains. **BEETEX SUPPLY CO.** N. Westway Ph. 289-5313 B-2-39-tfc

WE ARE DEALERS for Peerless Grain Rollers and Feeding Equipment **DAVIS IMPLEMENT** 144 W 2nd EM 4-2811 B-2-18-tfc

KENMORE Electric Clothes Dryer: Normal cycle for all fabrics — two temperatures. Nothing down. \$99.95, Sears, Hereford. EM 4-3854. B-2-17-14-9p

FOR SALE
One 40-HP and one 50-HP electric motors with switch boxes. J. B. Culp, Route 1 Hereford, Texas Phone 258-7568. B-2-38-9c

TOP QUALITY
Irrigation Dams as low as \$3.25
DAVIS IMPLEMENT 144 W 2nd EM 4-2811 B-2-18-tfc

REPAIRS REMODELING
Commercial or Residential Repairs, Extra Rooms, All type yard fences, patios.
FREE ESTIMATES
Financing Available
See or Call **HAROLD HALLFORD** 615 Union Phone EM 4-3822

Reliance HOMES
FOXWORTH GALBRAITH
NO DOWN PAYMENT
NO CLOSING COSTS

HEREFORD BAKERY
519 Park Ave. EM 4-0177
HOME OF Deaf Smith County Bread and Pastries

BIG RED BARN
We buy-sell-trade for anything of value
USED FURNITURE
Appliances and Junk
EM 4-3552
West Side of Hereford Highway 60
TAYLOR & SONS
Discount Lumber Co.
CANYON, TEXAS
Phone OL 5-2133 Canyon
Phone DR 2-9031 Amarillo

NEED \$5,000 to \$40,000 worth of equipment? Investigate our leasing plan before you finance any other way. Mark IV Realtors. FM 4-2220. B-2-21-14-tfc

1968 IHC truck. Grain bed, hoist. New engine. Phone 225-4674. Sharp Exchange. B-2-12-36-tfc

MOLINE SWATHER \$500. H. E. Wimberley, Phone 287-3836, Vega, Texas. B-2-10-16-tfc

2 605 MM irrigation Engines natural gas, rebuilt 1 model A 14 ft. Gleaner Baldwin, bargain 1 Tow Row PTO Gehl Frage Chopper, very good buy 1-MF-65 Diesel-matic Massey Ferguson tractor used 272 hours, like new. 3 one way plows, Ark-Valley, JD & Krause Wes Tex-Ex Equip. EM 4-0250 Phillips Amarillo Drake 6-8426 B-2-16-2c

COVERED one-horse tandem trailer. Complete with spare. In extra good condition. Can be seen at Hoot Poarch's. Call EM 4-1356. B-2-20-41-tfc

FOR SALE OR TRADE
1959 Ford Ranchero, real clean, \$450. 1951 Ferguson tractor in good condition with blade and tool bar, \$395. J. C. Reese. Call 258-7278. B-2-42-2c

3. Automobiles FOR SALE

MILBURN MOTOR COMPANY
We Pay Cash For Used Cars
225 N. Sampson
Phone EM 4-0077
B-3-33-TFC

1964 Ford Country sedan station wagon. Nine passenger, lots of room. Hi-Way Auto Sales. 600 West 1st. B-3-17-15-tfc

FOR SALE: 1964 Plymouth Barracuda. 7,000 miles, four speed transmission, etc. \$1,995. Contact Installment Loan Dept., First National Bank, Hereford. B-3-20-14-tfc

SILVERTONE Console Color TV with color guard — The electronic brain that purifies color automatically \$444.88 — Nothing down. Sears, Hereford. EM 4-3854. B-3-20-14-9p

FOR SALE
1960 Chevrolet Truck with Hoist and grain bed. Call SW 5-7717, Lubbock, Texas. B-3-40-4p

1963 Rambler four door station wagon, V-8 automatic, loaded. Save! Hi-Way Auto Sales, 600 West 1st. B-3-16-15-tfc

1965 LEMANS Sport Coupe, white with black vinyl top, air, PS, automatic transmission, black vinyl interior, still in warranty. EM 4-2085. B-3-20-16-tfc

FAULTY BRAKES?
LET ME FIX THEM—
COMPLETE BRAKE SERVICE
Western Alignment & Brake Service
138 N Sampson EM 4-0515

WHY PAY MORE?
GOLD BOND OUTSIDE WHITE HOUSE PAINT
\$7.49 value only gal. **4.95**
\$6.50 value on sale gallon **3.95**
Gold Bond Interior Latex Wall and Ceiling Paint
7.24 value - gallon **3.89**
5.35 value on sale gallon **2.95**
USG Joint system 25lb. sack only **1.79**

Colorado Rod-Weeders PTO or hydraulic drive. Cisco Rod - Weeders with hydraulic drive. Dempster Planters, Cultivators and Rotary Mops. Lilliston Shredders & Blades. See the new M-F Diesel tractors. We have several GOOD used Combines. SEE **LESLEY MOTOR CO.** For the finest in farm machinery. West Hi-way 60 Phone EM 4-1600

GOOD CLEAN '58 Olds — A-1 tires, new sticker, winterized EM 4-2194, 1003 Grand. B-3-12-41-tfc

FOR SALE or trade, equity in 1965 Datsun for pickup. DR 3-4668, Amarillo. B-3-12-16-3p

FOR SALE '64 Chevrolet pickup. C. E. Lelsure. Phone EM 4-2047. B-3-10-10-42-2c

FOR SALE
1963 Thunderbird Like New
Can be seen at Crawford's Gulf Station on East Hwy 60. B-3-10-41-tfc

4. REAL ESTATE For Sale Or Trade

FOR TRADE
3 bedroom, 1 1/2 bath, den, large living room brick home in Littlefield. Will consider trade for house in Hereford. Write Box 673, Hereford, Texas, or call 806-385-3203 in Littlefield, Texas. B-4-15-15c

FOR RENT two offices with reception room. Plenty of parking. Call EM 4-3566, EM 4-3466 or EM 4-1534. B-4-15-40-tfc

FOR LEASE: 200 acres of cultivated land with two 8 inch wells. Call EM 4-4305 or come by 801 S. Texas. B-4-20-42-4p

FARM LAND
1760 acres with approx. 520 acres of grass, balance dry land. Has good allotments and good production history. Land located north of Nazareth. You have to see this to believe it. B-4-15-40-tfc

An ocean of water on this real good 1/4 section north of Westway. Approx. \$15,000 cash down payment. Beautiful half section near Summerfield with 2 wells, high production record, and on pavement. Ideal location. Yes we would trade if for a ranch. B-4-15-40-tfc

400 Acres of the most perfect land you ever saw. 4 wells with approx. 2 1/2 miles of tile. And best of all, approx. \$50,000 cash down. Buying or Selling... refinancing or building... call us. Prudential Farm Loans. Sam Nunnally 601 Main Hereford EM 4-0555 OFFICE NITE & SUNDAY EM 4-2814 B-4-42-tfc

EXTRA NICE 4 BEDROOM, 3 baths, large den-kitchen and dining area combination with fireplace. Large playroom, covered patio, redwood fence. Might take small house as trade-in. Located in Sunset Addition in Hereford. Phone 247-3001, Friona from 8:30 AM to 5:00 PM. B-4-12-tfc

PRUDENTIAL America's Largest Farm Lender! **SAM NUNNALLY** EM 4-0555 EM 4-2814 **LONE STAR AGENCY** B-4-11-10-4p

Ceramic Cabinet Tile
Floor Covering
Free Estimates
C&W Tile & Tops
847 E. 1st St. EM 4-3448 Hereford, Texas

Colorado Rod-Weeders PTO or hydraulic drive. Cisco Rod - Weeders with hydraulic drive. Dempster Planters, Cultivators and Rotary Mops. Lilliston Shredders & Blades. See the new M-F Diesel tractors. We have several GOOD used Combines. SEE **LESLEY MOTOR CO.** For the finest in farm machinery. West Hi-way 60 Phone EM 4-1600

FOR SALE
\$6300—2 Bdrm. with small rental on back of lot. \$7500—2 Bdrm. large rooms. \$8050—2 Bdrm. new payments of \$58 mo. total move in-\$350. \$8800—3 Bdrm. new payment of \$62 mo. total move-in \$350. \$10,850—2 Bdrm. brk. attached gar. paneled kitchen. Carpeted, fenced. \$12,500—3 Bdrm. brk. 1 1/2 bath, carpeted, fenced. Select a choice lot NOW at Buffalo Lake Estates \$950 up. Financed. *** Choice 160 A. on pavement, 2-8" irrig. wells. Perfect land. *** Farm and Home loans Good appraisals. **PETERS REAL ESTATE** Joe Peters EM 4-0038 Elov Valdez EM 4-4375 B-4-16-tfc

North Dallam County, Texas, 2238 acres all heavy sodded grassland, no improvements. Not pastured during 1965. \$223,800. Carries loan \$162,000, payable \$6,000 per year for 27 years. 5% interest. Might take land or interest in land in trade. Walter G. Russell 2100 S. Polk, Amarillo. Phones: Res. DR 6-6462, Off. DR 2-4363. B-4-16-2c

3 BR home near school, completely redone, new carpet, only \$8950. Small down payment. New 3 BR home close to school, priced right, small down payment. **CARTHEL REAL ESTATE** Farms-Ranches-City Property B-4-16-2c

RENTERS WANTED!
Color steel buildings built to your specifications, 2 acre lots, located north of B & B Oliver, Patterson Chemical and Merchants Fast Freight. **SOUTH PARK INDUSTRIAL SUBDIVISION** Sam Nunnally EM 4-0555 — Days Home — EM 4-2814 B-4-1-T-tfc

BY OWNER
EXTRA NICE 4 BEDROOM, 3 baths, large den-kitchen and dining area combination with fireplace. Large playroom, covered patio, redwood fence. Might take small house as trade-in. Located in Sunset Addition in Hereford. Phone 247-3001, Friona from 8:30 AM to 5:00 PM. B-4-12-tfc

CENTRAL Heating and air conditioner system — Includes everything. Save \$185.00. Now only \$764.00 — Installation extra — up to five years to pay. Sears, Hereford, EM 4-3854. B-4-29-14-9p

GLASS IS OUR BUSINESS — Call Us For All Your Glass Needs **HEREFORD GLASS CO.** 1302 Park Ave. INC. EM 4-2652

W. T. CARMICHAEL EM 4-1251
REAL ESTATE
Commercial, Home and Farm Loans
One especially luxurious house for sale.
Homes — Farms — Highway Frontage — Ranches
We Need Your Farm Listings
TROYS CARMICHAEL

In Hereford
E. B. BLACK CO.
FLOOR COVERING SPECIALISTS
• CARPET • LINOLEUM
• CABINET TOPS • 9' & 12' FELT BASE
QUALITY MERCHANDISE
EXPERT WORKMANSHIP
2nd & Main Phone EM 4-0055

LESLEY MOTOR CO.
For the finest in farm machinery. West Hi-way 60 Phone EM 4-1600

THREE bedroom and bath stone veneer home, 123 Star. Lane Star Insurance Agency. Call EM 4-0555. B-4-15-16-4c

FOR SALE: Two bedroom and den near schools and shopping centers. 137 Beach Street. By owner: EM 4-1638. B-4-17-16-4c

3 Bd. Near school, completely redone with new carpet. Price only \$8950. Small down payment. 2 Bd. Brick—\$500 down 177 a. dry land on pavement, good allotments, 64 a. in S.B. GI loan. \$6000 Price \$140 acre. Quarter near Lazbuddle, best of water, 1-8" well—cotton 15, Wheat 24, Milo 112. \$15,000 will handle. \$575 a. 320 a. 1/2 off pavement. 2 good 8" wells on gas. Milo 226, Wheat 68, Cotton 35, Price \$500. 320 a. well improved, clean and almost perfect laying land. Top allotments Price \$475. Several good listings on N. Plains, Spearman, Dumas area. **CARTHEL REAL ESTATE** Farms-Ranches-City Property EM 4-0944 B-4-42-tfc

FOR SALE: TO BE MOVED— Large 2 bedroom house and 2 car garage. House-\$750.00—Garage-\$250.00—You must see to believe. See LARRY M. HOOPER, OL 5-2553, Canyon. B-4-14-tfc

MEAT
Specializing in **CUSTOM SLAUGHTERING** WHOLESALE — RETAIL **HACKER — JESKO** Rt. 3 — Hereford EM 4-3390

OUR SERVICE DEPARTMENT
is equipped and staffed to give you the service you are entitled to.
We Appreciate Your Business
• Buick • Rambler • Johnson Boat Mtrs. **KINSEY - OSBORN** Motors 142 N. Miles EM 4-0990

Enjoy a 3 bedroom brick home with double garage and the atmosphere of country living. This home is fully carpeted. Will trade for house in town. H-304 3 bedroom, 1 1/2 baths, approximately 1800 ft., fireplace, all brick cedar roof and large patio. Large walk-in closets, immediate possession. H-301 Older stucco home near downtown with fenced yard, basement. \$950 total move-in cost, and assume GI, 5 1/4 % loan. H-306 3 bedroom, brick extra large home with lots of built-ins, carpeted and draped. Immediate possession. Enjoy luxury living in Northwest Hereford for only \$32,500. Can be traded for another home. H-316 3 bedroom, brick, with an appraisal of \$17,500. Northwest Hereford. Owner will sacrifice his equity for \$2,000 and assume a \$14,400 loan. Payments are \$132 per month. \$2,000 total move-in, or terms. H-396

RENTAL SERVICE
DEMAND
JUSTICE
HOMES
NOTICE
FHA HOMES
built according to your plans for a total minimum move-in cost of \$200, if you have had 90 days active duty. Main & Hwy. 60

FARMS
3940 acres in New Mexico. This includes deeded acres and leased acres. Watered by springs and tanks, and is an 85 to 100 cow unit. Total price \$50,000 cash. F-288 900 acres in excellent water area with five wells and approximately 775 acres allotments. Reasonably priced with excellent terms to good farmer who demands the very best. F-GI 653-24 1900 acres, 1600 acres cultivated, five wells on natural gas. Will trade for smaller acreage or property that doesn't require management. Owner will finance themselves. F-421

Hereford Insurance Agency
To be sure! Don Baugous — Manager EM 4-0850

By Owner—Northwest Hereford—Three bedroom brick, double garage, 1 1/2 baths, dining room, utility room, carpet, drapes, air conditioned, shrubs and lawn. Will sell with or without furniture. 233 Aspen. For appointment call EM 4-0637. B-4-42-2c

FOR SALE BY OWNER
3 bedroom, brick house, 1 1/2 baths, family room, fenced and patio: One year old. Low equity. Assume present FHA loan. Payments \$115 month. 210 Beach. Phone EM 4-1391 after 5 or weekends or **GEORGE PHILLIPS STAR THEATRE** B-4-42-2c

COMPLETE plumbing shop for sale — Tools, trucks, fittings, etc. 509 Main, Friona. B-4-12-16-2c

RENTAL SERVICE
DEMAND
JUSTICE
HOMES
NOTICE
FHA HOMES
built according to your plans for a total minimum move-in cost of \$200, if you have had 90 days active duty. Main & Hwy. 60

RENTAL SERVICE
DEMAND
JUSTICE
HOMES
NOTICE
FHA HOMES
built according to your plans for a total minimum move-in cost of \$200, if you have had 90 days active duty. Main & Hwy. 60

RENTAL SERVICE
DEMAND
JUSTICE
HOMES
NOTICE
FHA HOMES
built according to your plans for a total minimum move-in cost of \$200, if you have had 90 days active duty. Main & Hwy. 60

RENTAL SERVICE
DEMAND
JUSTICE
HOMES
NOTICE
FHA HOMES
built according to your plans for a total minimum move-in cost of \$200, if you have had 90 days active duty. Main & Hwy. 60

RENTAL SERVICE
DEMAND
JUSTICE
HOMES
NOTICE
FHA HOMES
built according to your plans for a total minimum move-in cost of \$200, if you have had 90 days active duty. Main & Hwy. 60

RENTAL SERVICE
DEMAND
JUSTICE
HOMES
NOTICE
FHA HOMES
built according to your plans for a total minimum move-in cost of \$200, if you have had 90 days active duty. Main & Hwy. 60



Pete Progress

speaking for the Deaf Smith County Chamber of Commerce

By BILL THOMPSON
Chamber Manager

Pete brought in a reprint of an article which we thought would be of great interest because of its relationship to the economy of Hereford. The article was written by James H. Price of the Enid, Oklahoma, Chamber of Commerce and originally appeared in OCCE NEWS, official publication of the Oklahoma Chamber of Commerce Executives Association.

"In any discussion among Chamber of Commerce managers concerning the subject of agriculture, immediately one senses an attitude of — 'a sick industry' — if not sick, certainly one of declining significance. This attitude, of course, stems

from the fact that our farm population is diminishing, thus on the surface creating the impression of a slow movement toward oblivion. Without citing a host of statistics, but rather stating an economic fact, agriculture never occupied a more important place in our total economy than it presently enjoys, and its relevance to our Nation's continued growth as a major power will take on even more status as we progress in the industrial age. In plain language, we are producing more for more people using less people.

"Local Chambers of Commerce must recognize this fact in developing programs of TOTAL DEVELOPMENT, involving all segments of the economy — including agriculture and

if possible, dove-tail these segments into a mutually supporting program. We cannot base our conclusions on population alone, but place rightful emphasis on agriculture's economic relevance.

"MANY local Chambers are operating under the same agricultural programs developed twenty and thirty years ago. Certainly, most phases of these activities are still sound and useful today. But too often we continue year after year with the same promotion type activities, never once realizing that perhaps our total concept is a little shortsighted.

"Why not give careful consideration to what the Chamber is doing and what it should be doing to develop the full impact of agriculture, making it fill its rightful role in the over-all economic picture?"

"IT WOULD be impossible to design a program stereotyped for every community — our friends in Washington are constantly trying, and are yet to be successful. We do have, however, a ready-made apparatus in each city to design programs for tangible assistance to agriculture, agri-business, and the total business community. This

is none other than the often overlooked, local Chamber membership.

"IT NEVER hurts to back off and take a long, critical look at what we are trying to do. Why not consider establishing an AGRICULTURE PROGRAM EVALUATION COMMITTEE to study existing programs, proposed programs, and the total agriculture picture in order to bring the Chamber's activities in this area into the realm of the present and future?"

"Provide this group with necessary background information regarding statistical data and study closely, opportunities leading to the mutual benefit of both business and agriculture. The opinions and ideas from agricultural technicians as well as representative groups within the community should be actively solicited.

"In evaluating an agriculture program, it should be constantly borne in mind that effort and finances expended to promote more production, or more efficient production, oftentimes merely duplicates the activity of existing agencies. We should set our sights on the broad aspect — a balance of production to the

supply and processing enter-mulated.

"BRIEFLY, we can summarize by saying that agriculture as an industry was never more important than it is today. The number of people involved in production continues to decline, but with a corresponding increase among those engaged in so-called agri-business, technical assistance, and research.

Local Chambers should critically examine existing agriculture programs to determine their effectiveness in the sight of the present rapid changes. This will require courage, energy, and vision on the part of Chamber leadership — as it would be expected that a number of cherished institutions could possible fall by the wayside.

"In many ways we have failed to fully capitalize on the advantages of tying together our production resources with the related industries such as processing plants, machinery manufacture, and miscellaneous agricultural supply distribution. Before any effort toward updating local Chamber agricultural effort begins, careful study should be made in order that a practical program can be for-

The Chamber of Commerce is the rightful organization to deal in this activity. The Chamber manager must always remember that his organization represents business—and agriculture is big business. Failure to do so could result in fragmentation of effort when other, less qualified organizations take the lead because of the local Chamber defaulting its responsibility. Never forget, when a vacuum exists, the void is soon filled. The replacing force may not be one that is easy to live with."

While this article was written for Chamber of Commerce executives, it certainly contains some thoughts that the chamber membership in Hereford and Deaf Smith County should be aware of. The Deaf Smith County Chamber of Commerce has assisted agriculture in this area in many ways over the years, in ways that many farmers do not recognize too often. A FORMER Chamber manager was one of the leading forces in the organization of the rural electric cooperative and became its first manager. The Holly refinery, Bravo Smokes, the vegetable proces-

The Hereford Brand, Hereford Texas, Thursday, Oct. 21, 1965

sors, current efforts to secure a meat packing plant and many other market expansion activities have been the direct result of or assisted by Chamber of Commerce activity. The junior livestock show, the T-Bone Club, the Hereford Breeders Association, the quarter horse show all were assisted to varying degrees by the Chamber.

This Chamber, though, does need to re-examine its goals, its projects in relation to the total community needs and the programs that will sustain and build the agricultural economy upon which the community exists.

Trip Described To Progressive Club Members

Activity of Rural Homemakers Day in Amarillo recently was reported to Progressive Home Demonstration Club Tuesday afternoon by Mrs. Taft McGee, who with Mrs. J.D. Gilbert Jr. and Mrs. E. C. Hammett represented the club. They

were among some 400 women from over the Panhandle who attended.

Mrs. McGee told of the luncheon at Amarillo Country Club, the style show and musical program which entertained the visitors, as well as talks they heard.

Mrs. Gilbert, club president, was hostess Tuesday in the Community Room of First National Bank. Members voted to contribute to the United Fund.

Mrs. Alvis Jolly was the speaker on the topic, Recreation in the Home. She emphasized that family good times are possible only when the home atmosphere is right, and that the most necessary ingredient for a pleasant atmosphere is love.

Types of family recreation were discussed, and the speaker displayed several game boards suitable for use by groups of varying ages.

The opening exercise was directed by Mrs. P.L. Carmichael. Others present were Mmes. Floyd McGee and Dale Hallows.

Olivetti-Underwood Adding Machine & Typewriters THE INK SPOT

YOUR ONLY TRUE DISCOUNT STORE

YOUR ONLY TRUE DISCOUNT STORE



GIBSON'S DISCOUNT PHARMACY
QUALITY Robert Miller ECONOMY

YOUR ONLY TRUE DISCOUNT STORE

SOFT COSMETIC PUFFS
by Johnson & Johnson
Bag of 260
\$1.20 Value
GIBSON'S SPECIAL PRICE

43¢

YOUR ONLY TRUE DISCOUNT STORE

LANOLIN PLUS HAIR SPRAY
JUMBO SIZE
99¢ VALUE
GIBSON'S SPECIAL PRICE

57¢

YOUR ONLY TRUE DISCOUNT STORE

NUTRI TONIC SHAMPOO
GIBSON'S SPECIAL PRICE
Reg. VALUE \$1.59
FULL POUND

47¢

YOUR ONLY TRUE DISCOUNT STORE

100% SIZE BUFFERIN
GIBSON'S SPECIAL PRICE

87¢

NEW! Floral Prints BATHROOM & FACIAL TISSUE
YOUR CHOICE • MIX OR MATCH
4 PKGS FOR

79¢

S. T. 37 ANTISEPTIC SOLUTION GARGLE MOUTHWASH
LARGE SIZE
Reg. Retail \$1.35
GIBSON'S SPECIAL PRICE

77¢

it pays to be SURE-
Crest
GIBSON'S SPECIAL PRICE

47¢

DOVE SOAP BEAUTY BAR
2 FOR

43¢

SO SOFT FACE and HAND LOTION
Reg Retail \$1.00 Giant Size
GIBSON'S SPECIAL PRICE

37¢

GOOD AIRE ROOM REFRESHER
79¢ VALUE
AEROSOL CAN
GIBSON'S SPECIAL PRICE

37¢

CAPRI BATH OIL
FRAGRANCES
• PINE • FLORAL • SPICE • NARCISSUS
Reg. \$1.50 Value
GIBSON'S SPECIAL PRICE

87¢

CIGARETTES

FRIDAY AFTERNOON AND SATURDAY ONLY!
Extra Package With Each Carton Of
TAREYTON FILTER HALF and HALF LUCKY STRIKE MONTCLAIR

\$2.99

CARTON & ONE FREE PACKAGE

SAMSONITE Reg. \$58.75 KING SIZE DELUXE FOLDING FURNITURE SET
1-TABLE
4-CHAIRS
GIBSON'S SPECIAL PRICE

\$27.87

MENS BLACK LEATHER WELLINGTON BOOTS
SIZES 6 1/2 to 12
GIBSON'S SPECIAL PRICE

\$9.27

BRUSHED DORM SHIRT
SIZES S. M. L. • ASST. COLORS
GIBSON'S SPECIAL PRICE

\$2.97

GIRLS 2 PEICE SNAP SHIRT SET with MATCHING BLOOMER
SIZES S. M. L. in Blue & Pink
GIBSON'S SPECIAL PRICE

\$1.97

STAINLESS STEEL STEAK KNIFE SET
HOLLOW GROUND
SET OF 6 ONLY

\$1.93

TOASTMASTER 2 SLICE AUTOMATIC TOASTER
REG \$14.95
GIBSON'S SPECIAL PRICE

\$9.87

BOYS BLACK LEATHER WELLINGTON BOOTS
SIZES 3 to 6
PAIR

\$6.73

Seamless NYLONS
Soft, muted, misty sheers to wear all around town from dawn to dusk. Nude heel, demi toe, 16-denier. Try them... and you'll be back for more!
COLORS - TAUPETONE - BEIGETONE
GIBSON'S SPECIAL PRICE

47¢

SHOP HERE FOR ALL YOUR HALLOWEEN NEEDS
• MASKS • NOISE MAKERS • TRICK or TREAT BAGS • DECORATIONS • TREATS • BAG CANDIES • BAG GUM

YOUR ONLY TRUE DISCOUNT STORE

YOUR ONLY TRUE DISCOUNT STORE

YOUR ONLY TRUE DISCOUNT STORE

YOUR ONLY TRUE DISCOUNT STORE

Adrian News

By ANN BEAVERS
Brand Correspondent

Friday afternoon the seventh grade went on their class party to skate, eating and a movie. Mr. Robbins is the class sponsor, Mrs. Joe Brownlee and Mrs. Farris Kromer accompanied the group.

Linda Pinnell was home over the weekend from Abilene College and had a difficult time getting back to Abilene Sunday evening. The plane from Amarillo could not land at Abilene due to the weather, nor at Lubbock, so went on to land at Midland. From there they went to Austin, then Dallas and back to Abilene.

Mr. and Mrs. Alford Jobe and children visited the Lewis Jobe family at Endee Sunday.

Last week there were grass fires on Bridwell Ranch, Ralls Ranch and Donald Pinnell's ranch north of Glenrio. The Adrian Volunteer Fire Dept. was on the job.

Mrs. Imogene Parker is driving a new Rambler car this week.

Charlene Pulliam and Mrs. Billie Morrell visited the J.E. Jones family in Amarillo Saturday.

Mr. and Mrs. D.P. Doherty were Sunday dinner guests of Mr. and Mrs. Albert Glenn in Grand Prairie. Mr. and Mrs. Glenn are former residents of Adrian.

Adrian 4-H cooking group met Wednesday afternoon in the Home Ec room, those attending were Patty Zaring, Jan Cavin, Susan Webb, Betty Whitten, Mary Glass, Scherrie Beavers, Jackie Lovelless, Donna Harwood, Cindy Foster, Robbie Sisk, Kim Garrison, Patty Fortenberry, Cheri Betts, Linda and Nina Engle. Mothers attending were Mrs. Betts, Mrs. Whiten and Mrs. Webb.

Dale Jobe broke his foot Monday afternoon while practicing basketball in the gym.

Mrs. Easter Briggs visited Mr. and Mrs. Jimmy Briggs and children in Lazbuddie last Wednesday and Thursday.

Mr. and Mrs. D.P. Doherty visited in Amarillo last Sunday with Mr. and Mrs. Stanley Sapp and children and helped celebrate Mrs. Sapp's birthday. There was 25 relatives present. Mrs. Sapp is a niece of Mrs. Doherty.

Mr. and Mrs. D.P. Doherty visited relatives in Arlington with Beth and Joy Doherty, and visited other relatives in Cedar Hill, Ft. Worth, Grand Prairie

and Stephenville last week.

Mrs. Sandra Zaring from Irving visited the M.H. Zaring Jr. family over the weekend, Jimmy Zaring is staying here helping cut maize.

Funeral services for Joseph Fortenberry 68, brother of Jack and Hugh Fortenberry of Adrian were conducted Sunday in the First Baptist Church in Lockney.

Mr. Fortenberry, a lifelong resident of Floyd County, was pronounced dead on arrival Friday morning at Lockney General Hospital. He was found about 7:30 a.m. in a field near his farm in the Cedar Hill community. He had apparently suffered a heart attack.

Adrian F. H. A. and the sponsor, Miss Brook York, Mrs. Clara Hale and Jess Fincher left Friday afternoon to spend the weekend in Dallas and attend the Fair. They stayed with Miss York's sister, Mrs. Ronald Lee. They saw the musical, Funny Girl, and Saturday they had a hamburger cookout in the Lee's backyard and a surprise birthday party for Marsha Burns. They returned home Sunday. Those going were Gay Brothers, Karen Rose, Roxann Brownlee, Martha Gruhkey, Joan Lane, Nancy Amason, Gail Gruhkey, Gloria Mix, Rita Speed, Marsha Burns, and Philis Heaton.

Mrs. Horace Betts visited her mother, Mrs. C.E. Gill, in Wichita Falls, and was met there by another sister, Mrs. Fred Reynolds of Tioga. The three went to Columbus, Ga. to visit Mrs. Albert Schlieper and then visited in Denton, with a nephew, Edward Reynolds and family.

Everyone is sure and attend the P.T.O. Volleyball Tournament this weekend in the Adrian Gym.

Adrian Jr. High basketball teams traveled to Bushland Thursday night and played two games, winning both. The girls' score was 38 to 23. High scorer for Adrian was Patty Fortenberry with 13 points; for Bushland, Janice Finchum with 15 points.

Adrian boys scored 44 to Bushland's 34 with Jim Bob Perrin making 11 points, and Dillard making 12 points for Bushland. Thursday the Bushland teams will play in Adrian.

TWO MUSICALS ABOUT WALES

NEW YOUR (AP) — Two musicals with Wales as their locale are on the Broadway agenda.


An adaptation of the stage-screen success, "How Green was My Valley," is slated for January arrival. John Morris has written the music. The book and lyrics are by Morris and Gerald Freedman.

The other project is based on the Alexander Cordell novel, "The Rape of the Fair Country." Jack Holmes has prepared a score, but a librettist is still being sought.

PIGGLY WIGGLY GLASSWARE

EXQUISITE "BOUTONNIERE" PATTERN

BY WORLD-FAMOUS TAYLOR, SMITH AND TAYLOR COMPANY



Here's How Our Plan Works

With each food purchase of \$5.00 you are entitled to buy one of the above pieces... with \$10.00 purchase, two pieces... and so on.

Follow This Weekly Schedule:

| | | |
|-------------|----------------------------------|--------------|
| FIRST WEEK | 12-oz. Water Glass | 29c Value 9c |
| SECOND WEEK | 7-oz. OLD FASHIONED Double Juice | 25c Value 9c |
| THIRD WEEK | 5 1/2-oz. Juice Glass | 19c Value 9c |
| FOURTH WEEK | 16-oz. Iced Tea Glass | 29c Value 9c |

This program will be run 3 times for a total of 12 weeks. Spend \$20.00 per week at PIGGLY WIGGLY get a service for 12 for 48 glasses during the 12 weeks for just \$4.32.

This GLASSWARE offer will enable you to obtain a complete and beautiful table setting as these glasses match the DINNERWARE offer which just ended.

Featured This Week

9c

12-Oz. WATER GLASS WITH EACH \$5.00 PURCHASE

PIGGLY WIGGLY has everything you need for

AFTER the GAME

• SNACKS • PARTIES • BANQUETS •



WRIGHT'S ALL MEAT FRANKS
12-Oz. Pkg. 45c



USDA CHOICE LOIN TIP OR ROUND STEAK **89c** LB.

KRAFT'S CHEESE SPREAD Velveeta 2 For 89c

FRESH-LEAN PORK ROAST **39c** LB.

| | | |
|-----------------------------|--|--|
| SALAD DRESSING | MORTON'S QUART JAR | 29c |
| FLOUR | GLADIOLA ALL-PURPOSE 5-Lb. BAG | 39c |
| PINEAPPLE GEISHA SLICED | 4 NO. 2 CANS | \$1.00 |
| MANDARIN ORANGES GEISHA | 4 FOR | \$1.00 |
| LAY'S TWIN PACK • 59c VALUE | Free "45" Record With Each Purchase | 49c |
| POTATO CHIPS | 3 12-Oz. CANS | \$1.00 |
| APPLE JUICE TREE TOP FROZEN | LARGE ASSORTMENT | 98c |
| IMPORTED BASKETS | HALLOWEEN TRICK OR TREAT CANDY NAPKINS-CUPS-MASKS-BAGS | HALLOWEEN BUCKETS Shines At Night In An Auto Headlight each 19c |

HAT BOX HAIR DRYER

SHETLAND **\$8⁸⁸**

SHETLAND BLENDER 50-Oz. **\$12⁸⁸**

ELECTRIC CAN OPENER

SHETLAND **\$7⁸⁸**



PIGGLY WIGGLY

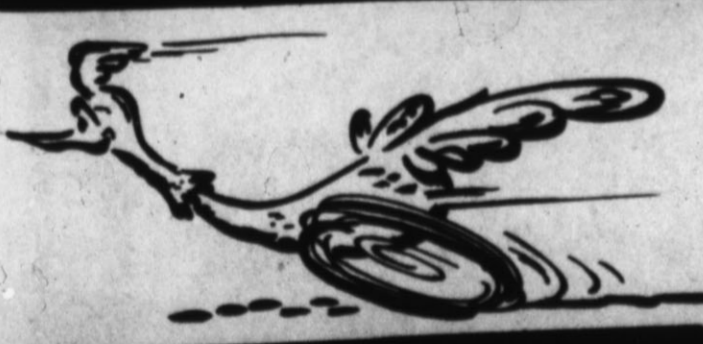
The Original SELF SERVICE

TEXAS RUBY RED GRAPEFRUIT 2-LBS. **25c**

CELERY LB. 15c

TURNIPS CALF. LB. 15c

THE ROAD RUNNER OF THE Plumbing Industry



NOW DEALERS FOR LENNOX HEATING & Air Conditioning

The Greatest Advance in Heating & Cooling in over 30 years...

- ★ COMPLETE COOLING & HEATING SERVICE
- ★ TOP NOTCH PLUMBING
- ★ BOILER PROBLEMS?

"We Specialize in Boiler Repair"

• Installation • Repair • Control

CALL US TODAY

JIM PAVLICEK CO.

FORMERLY HEREFORD PLUMBING

EM 4-1168

SALES SERVICE HEATING REFRIGERATION PLUMBING

Fall food

Copr. G. Doppel 1965

THE UNITED FUND

is everyone's responsibility—
not just the fellow down the
street, across town or in the next
community. It's your responsibility
just like it's your neighbors responsibility
Let's be united - give united



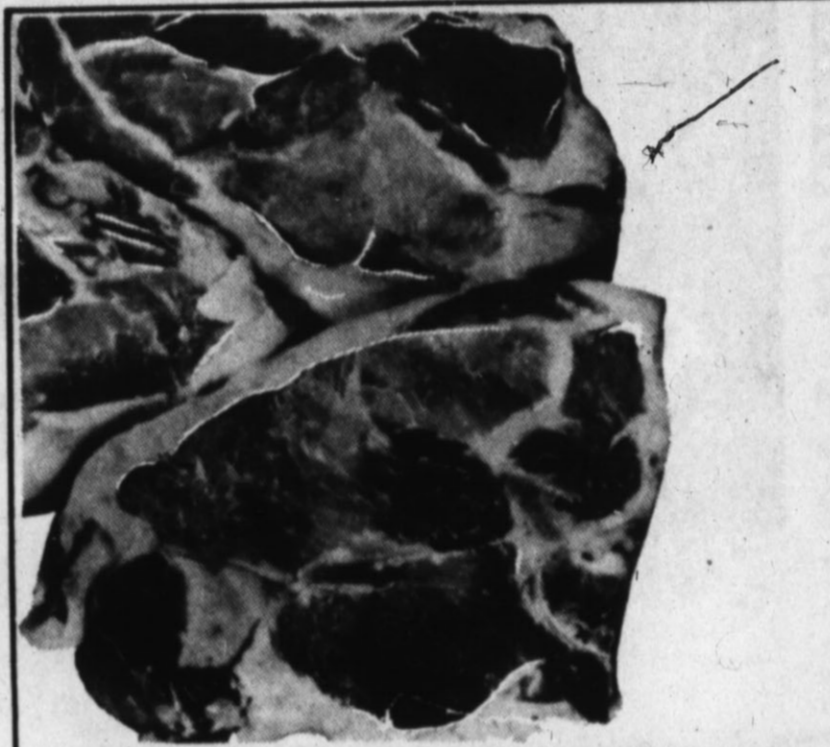
Fiesta

the BEST-a for LESS-ta

There'll be a change in the weather — and you'd better get ready NOW for those hearty Fall appetites by stocking up with COOPER'S BIG BUYS in delicious, nutritious Fall food supplies. Every department is featuring SUPER SPECIALS in SUPER GOOD FOODS to pack your pantry and fill your freezer with the BEST-a for LESS-ta during our great Fall Fiesta.

Borden's ICE CREAM
69¢

Shurfine LAYER CAKE MIX
4 Boxes \$1.00 1/2 GAL...
Round Carton



PORK CHOPS

FIRST CUTS **59¢**
LB.

PECANS

Texas Pride 12-Oz. BAG **69¢**

| | | |
|---------------------------------|----------------|--------|
| Meadowlake MARGARINE | 4 1-lb. Cans | \$1.00 |
| Schillings BLACK PEPPER | 4-Oz. Can | 39¢ |
| Shurfine Frozen BROCCOLI SPEARS | 2 10-Oz. Pkgs. | 39¢ |
| Baker's ANGEL FLAKE COCONUT | 7-Oz. Can | 39¢ |

| | | |
|------------------------|------------------|-----|
| TOP JOB Liquid Cleaner | 28-Oz. Size | 59¢ |
| IVORY LIQUID DETERGENT | 22-Oz. Size | 59¢ |
| DOVE SOAP | 2 Bath Size Bars | 39¢ |

PLEDGE

Furniture Polish 14-Oz. Can **98¢**

PEACHES **19¢** lb.
YELLOW ONIONS **5¢** lb.
TEXAS CARROTS **10¢** Pkg.
POTATOES
RUSSET 20-LB. BAG **79¢**

| | | |
|--------------------------------------|------------|--------|
| Northern 4 Roll Pack BATHROOM TISSUE | 3 For | \$1.00 |
| Crown Prince DOG PATTIES | 18-Oz. Pkg | 29¢ |
| Del Monte PEAS | 4 303 Cans | 89¢ |
| Del Monte TUNA Flat Can | 4 For | \$1.00 |

CENTER CUTS **79¢** LB.
FRESH BACK BONE **59¢** LB.
FRESH-LEAN GROUND BEEF **39¢** LB.

| | | |
|-----------------------------|---------------|------------|
| RANCH STYLE BEANS | 3 300 Cans | 39¢ |
| JIF PEANUT BUTTER | 18-Oz. Jar | 59¢ |
| LIBBY'S SLOPPY JOES | 15-Oz. Can | 59¢ |
| Patio BEEF ENCHILADA DINNER | Frozen 12-Oz. | 49¢ |

Campbell's **MEAT BASE SOUPS** 6 FOR \$1
MIX OR MATCH

100% Mountain Grown FOLGER'S COFFEE **69¢**
1-LB. CAN
Regular or Drip

Bayer ASPIRIN 100's Reg 69¢ **59¢**

REMODELING NOW UNDERWAY IN OUR STORE!
"DOC" and his crew are presently working on the interior of the store so there is dust and wood chips flying—but all isles are open for your shopping.

Shurfresh Milk Has That NATURAL GOODNESS



THIS IS YOUR OPPORTUNITY

TO OWN THIS EXQUISITE PREMIUM QUALITY HEAVY STAINLESS STEEL TABLEWARE FOR.....
ONLY CREME RINSE Reg 99¢ **59¢**
9¢ For Piece
With a \$5.00 Purchase

1st WEEK - TEASPOON
2nd WEEK - BROWNS PAPER
3rd WEEK - BROWNS COFFEE
4th WEEK - ICE TEA SPOON
5th WEEK - SOUP SPOON
6th WEEK - SALAD FORK

THIS OFFER WILL BE REPEATED AT THE END OF THE 6th WEEK.

THIS EXQUISITE PATTERNS IS FLEMISH DESIGN, BEARING THE QUALITY MARK. THIS IS HEAVY, PREMIUM QUALITY, MADE IN SWITZERLAND WITH LAMINATED, CHEAPER GRADES.

COOPER'S

The Hereford Brand, Hereford Texas, Thursday, Oct. 21, 1965

Family Reunion Celebrated At 94th Birthday

The 94th birthday of Mrs. Minnie Williams, which fell on Oct. 14, was observed with a weekend family reunion at the home of her daughter, Mrs. Charles Hood, and Mr. Hood at 305 E. Sixth. Mrs. Williams has made her home with the Hoods the past six years.

She has two other children, Mrs. Mary Walker of Sayre, Okla., and T.B. Williams of Lordsburg, N.M., also twin granddaughters she reared from infancy. Mrs. Kathalee Yocum of Wichita Falls and Mrs. Nathalee Davidson of Bellevue.

In addition, relatives present for the birthday celebration were Mrs. T.B. Williams, J.L. Yocum and Jill, Mr. and Mrs. T.C. Williams of Wichita Falls; Mr. and Mrs. Harold Middleton and Stephen, Oklahoma City; Mrs. Ira Conner, Phoenix, Ariz.; Mrs. George Trammell, Bethany, Okla.; Mrs. W.D. Lakey, Sayre; Mrs. Sallie Brooks, McKinney; Metz and V.A. Williams, Allen; and the Hershel Miller family

of Dawn.

Mrs. Williams was born in Kentucky and came with her parents to Allen, in Collin County, when she was nine years old. The family moved to Clay County in 1887 and the next year Charlie Williams came from Kentucky and they were married Dec. 27, 1888.

After 53 years on a farm near V.hti, they retired to live in Bellevue until his death in 1954. She was a charter member of the Vashli Baptist Church.

She spends much of her time reading her large print New Testament, watching television programs and writing letters to

Home At Play Is Club Topic

Family traditions such as celebration of holidays give children happy memories, Mrs. George Turrentine reminded Westway Home Demonstration Club members as she spoke of recreation in the Home at a recent meeting in Mrs. J.C. Morrison's home. Mrs. Donald Douglas was program chairman.

Routine times such as bedtime and mealtimes can be made especially pleasant occasions, Mrs. Turrentine said. She named as ingredients of a happy home, love, understanding, appreciation, respect, kindness and patience and added that a show house is not a home.

Mrs. Paul Rudd presided for business. Announcement was made that the next meeting will be in her home Oct. 28, when plans will be completed for a club banquet in November. Others present were Meses. Joe Landers, Kenneth Rudd, Bill Drake and Albert Lamb.

VFW Auxiliary Plans Poppy Sale

Annual sale of veteran-made poppies in November was planned at the recent meeting of the Ladies Auxiliary to Veterans of Foreign Wars. Reports were heard from a rummage sale and a party given by the Auxiliary at the Amarillo VA Hospital.

An initiation ceremony was held for a new member, Mrs. Joyce Haug. It was reported that fruit, cake and ice cream were served to 50 veterans at the hospital party and 80 other

bed patients. Meses. Ada Hollabaugh, Alta Davis, Nola Ralston, Karrol Rettman and Orpha Nickerson went in the hostess group.

Mrs. Nickerson discussed the Auxiliary constitution and by-laws as the program. Announcement was made that arrangements for poppy sales will be completed and dates set at the next meeting, Oct. 28.

DIOCESAN CONFERENCE

LONDON (AP) — What is believed to be the first conference between teams of Roman Catholic and Anglican theologians at the diocesan level has just been convened by the bishops of both

Churches in Southwark. The Roman Catholic Archbishop of Southwark (Mgr. Cyril Coundrey) and the Church of England Bishop of Southwark (Dr. Morvyn Stockwood) both addressed the conference, as did Archbishop Ignazio Cardinal, the Apostolic Delegate. Each church sent six delegates to the talks. The Romans were led by Mgr. A. Clark, a former vice-rector of the English College in Rome, and the Anglicans by Dr. John Robinson, suffragan Bishop of Woolwich.

Typewriter Ribbons THE INK SPOT

SAFEWAY 88¢ SALE

Manor House Meat Pies
Chicken, Turkey, Beef or Tuna

PIES
4 8 Oz. Pkgs. **88¢**

Bel-Air Fruit Pies
Apple, Cherry, Peach or Apricot

PIES
2 24 Oz. Pkgs. **88¢**

Highway Whole Kernel
Kounty Kist Whole Kernel

CORN
6 12 Oz. Cans **88¢**

Mountain Pass
Tomato

SAUCE
12 Buffet Cans **88¢**

Delta Bathroom

TISSUE
16 Rolls For **88¢**



Orange Juice Bel-Air Florida 4 6 Oz. Cans **88¢**

Orange Juice Bel-Air Florida 2 12 Oz. Cans **88¢**

Grape Juice Emprss 3c off 3 24 Oz. Cans **88¢**

Hominy Van Camp's White or Golden 8 No. 300 Can **88¢**

Soup Campbell's Tomato 8 No. 1 Cans **88¢**

Dry Milk Lucerne Instant 12 Qt. Pkg. **88¢**

COCKTAIL Town House Fruit 4 No. 303 Cans **88¢**

COFFEE Airway Pre-Ground 2 Lb. Pkg. **\$1.23** (Save 20c on 2 Lb. Pkg.)

LUCERNE MILK
1/2 GAL. HOMO. **51¢**
1 GAL. CTN. **95¢**

NO COUPON ACCUMULATION NEEDED

Potatoes 10 Lb. Bag **49¢**

APPLES Wash State Fancy Rome or Jonathans 7 Lbs For **\$1**

Shop Safeways!

Chili Wolf Plain 15 Oz. Can **49¢**
Chili Wolf With Beans 15 Oz. Can **39¢**
Flour Kitchen Craft 10 Lb. Bag **89¢**
Syrup Pack Train 2 2 Lb. Btl. **88¢**
Syrup Big Shot Flavored 12 Oz. **79¢**

Melorine Joyette 1/2 Gal. Ctn. **39¢**

Margarine Coldbreak Solids 6 Lb. Pkgs. **\$1**

Fresh Eggs Lrg. Breakfast Grade 'A' Doz. **49¢**

Shellie Beans Stokleys Beans 303 Cans **26¢**

Pancake Mix Kitchen Kraft 2 Lb. Box **37¢**

Facial Tissue Truly Fine 5 200 Ct. Boxes **\$1**

NobHill Coffee Pre-Ground Save 10c Lb. Pkg. **64¢**

Dry Milk Carnation Instant 8 Qt. Box **73¢**

Crackers Premium Saltines Lb. Box **35¢**

HAM
Smoked Lean Pinky Sunray Shank Portion Cook, Bake or Fry **49¢** Lb.

Chuck Roast US Choice Blade Cut Lb. **49¢**

Ham Pieces Pinky Ham Built Portion Lb. **53¢**

Sliced Ham Pinky Ham Center Slices Lb. **98¢**

Manor House Grade A 10-14 Lb. Avg. **TURKEY** Plump Tender Young Hens **39¢** Lb.

Safeway's Dependable **Ground Beef** 49c

Beef Liver Young & Tender Lb. **49c**

Perch Fillets Captains Choice Lb. **49c**

Thunder Bolt Chunk Shrimp 51 Oz. Box **\$1.59**

CRISCO Shortening 3 Lb. Can **69¢**

GIGARETTE REG. or KING **\$2.99** Ct.

Duncan Hines Layer **CAKE MIXES** 2 19 Oz. Boxes **75¢**

Maxwell House **COFFEE** 10 Oz. Jar **\$1.49** (20c off)

Facial Tissue **KLEENEX** 200 Ct. Box **23¢**

Fabric Softner **DOWNY** 10c off 33 Oz. Btl. **79¢**

SAFEWAY

Fab Detergent Powdered 10c off Qt. Size **71¢**

Action Bleach Powdered Bleach 8 Oz. Box **43¢**

Ajax Cleanser Powdered Cleaner 14 Oz. Can **17¢**

Ajar Cleaner Floor & Wall 16 Oz. Box **33¢**

Lotion Shampoo Head & Shoulders Lg. Btl. **\$1.95**

Vanilla Extract Adams Pure Lg. Btl. **85¢**

Kleenex Napkins 500 Ct. Box **29¢**

Kaiser Foil 25' Roll **35¢**

Purex Bleach Liquid Bleach 1/2 Gal. Jug **37¢**

Trend Dry Powdered Detergent Giant Size **49¢**

Trend Liquid Detergent 22 Oz. Btl. **49¢**

Macaroni Skinners Quality 10 Oz. Pkg. **19¢**

Safeways Garden Fresh Produce

US No. 1 Russets

Potatoes 10 Lb. Bag **49¢**

Shop Safeways and get Gunn Bros. Stamps!

Onions Spanish 2 Lbs. **15¢**

Pears Bartlett Sweet and Juicy Lb. **39¢**

Celery Pascal Fresh From Calif. Stalk **15¢**

FOR GOD SO LOVED THE WORLD

First Methodist Church

Rev. Herschel L. Thurston
Pastor
501 North Main

Wesley Methodist Church

Rev. Noah Arnpriester, Pastor
410 Irving

Bippus Community Church

Eugene L. Nangle each first and third Sunday and R. D. Evans each second and fourth Sunday.

Church Of Jesus Christ of Latter Day Saints (Mormon)

Country Club Drive

Kingdom Hall Of Jehovah's Witnesses

319 Ave. I

Assembly Of God Church

Rev. V. W. Marcontell, Pastor
Union and Ave. G

Immanuel Lutheran Church

Fred Beversdorf, Pastor
Park Ave. and B Street

The Church Of God In Christ

Rev. Calvin Hodge, Pastor
115 West Norton

Seventh Day Adventist Church

Pastor - Elder J. H. Turner
West Park Addition

Mission De San Jose

Labor Camp

Church Of The Nazarene

Rev. K. Dwight Southworth
Pastor
Fourth and Jackson

Grace Gospel Church

Rev. H. V. Fields, Pastor
Thirteenth and Avenue K

St. Thomas' Episcopal Church

Rev. Joel Treadwell, Vicar
Harrison Highway

St. Anthony's Roman Catholic Church

Father Angelus, Pastor
Harrison Highway at 25 Mile Ave.

First Presbyterian Church

Rev. Russell Wingert, Pastor
610 Lee Street

First Christian Church

Rev. Eugene Brink
Pastor
West Park Avenue

Dawn Baptist Church

Eugene Suttle, Pastor



"FROM HERE"

...it appears our world needs a lot of 'fixin up.' Too often, too many of us do our day-to-day job in a half-hearted way. We lose our perspective... our relationship to the world. We get to feeling our importance. *Right there is our un-doing.* When a man loses humility, he is on the way out. This man, with his wrench, looks at the world from way up. He wonders if he did his best on the foundation underneath him... if the high walls will support the structure he is atop. Both are basic to good building. The church, too, is necessary in the building of character, in the transforming of souls. *It will help us greatly in the training of people to help fix our world.* It will make good stewards of us who will be more anxious to share the fruit of the vine. So let us attend church or Synagogue every week. Let us, in earnest, help this man 'fix up' our world.

© Williams Newspaper Features Syndicate
Box 231 - Fort Worth, Texas

**You In The Church
The Church In You**
— form a combination for good. Every man, woman and child needs the influence of the church. So, come let us go into the house of the Lord. Let us support her program of service to humanity, be a faithful worker and attend services regularly.

These Hereford Business Firms Make This Page Possible in the Interest of a Christian Community. Go to Church Sunday.

HEREFORD INSURANCE AGENCY
323 N. Sampson

E. B. BLACK CO.
Dick Barnard - Jesse Stanford

McRIGHT GARAGE & SUPPLY
Mr. and Mrs. A. N. McRight

FIRST NATIONAL BANK
Virgil Hennen

ROCKWELL BROS. & CO.
D. R. Vandever

BIG T PUMP CO., INC.
Hilrey and Leroy Aven

HEREFORD GRAIN CORP.
Joe Artho, Mgr.

HEREFORD LAUNDRY & DRY CLEANERS
Ernest Kendall

MASTER CLEANERS
Mr. and Mrs. C. D. Fitzgerald

HEREFORD FERTILIZER & INSECTICIDE CO.
Norman Moore

PIGGLY WIGGLY
Mr. and Mrs. Gaylord Newell

DAVIS IMPLEMENT CO.
W. L. Davis, Jr.

HEREFORD OFFICE SUPPLY
Bob Huddleston

CITY DRUG STORE
Mr. and Mrs. Kenneth Coker

WESTERN WHEEL INN
Mr. and Mrs. G. D. Calson

HEREFORD STATE BANK
Russell E. Carver, Pres.

WESTERN WRECKING
Anson A. and June Dearing

CONSUMERS' FUEL ASS'N.

HEREFORD TEXAS FEDERAL CREDIT UNION
Mrs. Dyalitha Benson

ED SKYPALA
Your Borden's Distributor

GILILLAND FUNERAL HOME
Marlin Gililland

PITMAN GRAIN CO.

ROGERS DRUG
Mr. and Mrs. Grady Rogers

GWYNNE OWEN

LOERWALD BROS.
Ed, George, Gene and Harold Loerwald

FARMERS' DRIVE IN
Troy Moore

SUIT'S AUTO SUPPLY

ORSBORN - CHEVROLET OLDSMOBILE
Your Chevrolet-Oldsmobile Dealer

First Baptist Church

Rev. B. L. Davis, Pastor
Fifth and Main Streets

Frio Baptist Church

Frio Community

Avenue Baptist Church

Ronald A. Harpster, Pastor
130' N. 25 Mile Ave.

Mt. Sinai Baptist Church

H. B. Whitten, Pastor
302 Knight Street

Summerfield Baptist Church

Rev. James Arnold, Pastor

Calvary Baptist Church

Rev. Clarence F. Powell
Pastor
205 E. Sixth Street

Westway Baptist Church

Rev. James G. Martin

Temple Baptist Church

Forrest Ave. and Ave. K

Fellowship Baptist Church

Independent & Fundamental
Pastor — Kenneth Irwin
Moreman Dr. and Greenwood

Iglesia Metodista San Pablo

Rev. Gilbert Diaz
Pastor
223 Kibbe Street

Thompson Memorial Mexican Baptist Mission

Herman V. Martinez
Ministro
215 Norton Street

San Antonio A La Iglesia

North 25 Mile Avenue and Highway

Templo el Calvario Asamblea de Dios

Pastor, Martin Musquiz
Calle Ave. H & 13th

La Iglesia De Cristo

Sunset and Plains Ave.

Central Church Of Christ

L. E. Fooks, Minister
148 Sunset Dr.

Park Ave. Church Of Christ

Abel Ortiz, Minister
On Harrison Highway

REP. ROGERS REPORTS

Congressional Recess Gives Time For Review

Congress will be well along toward adjournment as you read this newsletter. The closing days of a session of Congress are always among the most hectic of the year as legislation, often pushed along through committee procedures, comes to the floor in a wrangle of parliamentary decisions and quick votes.

Members who, as I do, advocate an orderly, deliberate consideration of legislative proposals are sometimes dismayed to find many ill-advised measures slipping through to approval.

It is well that adjournment is coming. It is, I feel, important for the country to have a respite from the close attention it had been paying to legislative matters. Certainly the work of Congress is so important every citizen should make it his business to be well informed and to study proposals that are advanced.

But the pause between this First Session of the 89th Congress and the Second Session, beginning in January, will permit American citizens to review what has been done and to give attention to problems facing the country of another type. Primarily I refer to those involved in our international relations. The respite will permit Members of Congress to return to their homes, to be among the people, to review and discuss these very important matters.

It is unlikely that the Founding Fathers anticipated that the Nation's Legislative business would require Congress to be in session almost year 'round. The almost continuous sessions that have become a part of accepted Congressional procedure were really not envisioned as little as 20 years ago.

As I pointed out in another connection recently, the Legislative Reorganization Act of 1946 provided that "except in time of war or during a National emergency proclaimed by the President" the House and Senate are to be adjourned not later than July 31 "unless otherwise provided by Congress."

THE LEGAL situation is that we continue to be in the state of National emergency proclaimed by President Roosevelt on September 8, 1939, and May 27, 1941. Even had the requirements of the law not been met by the continuing force of these edicts, it would have been necessary in most of the years since 1946 to enact measures providing for sessions past July 31.

The business of the country has simply become so complex and the Federal Government's role so strong — that the national legislature must sit in almost continuous session. For all the Members of the House and Senate, the end of the formal meetings in the chambers of the two Houses during adjournment will not end the responsibilities they face. Most will be required to attend to or another as the committees, Committee business of one sort or another of the Congress, prepare legislation for consideration in the Second Session.

ALL WILL find it necessary to "stay on top" of developments affecting the country at home and abroad, because at any moment the President of the United States could order the Congress reconvened to deal with a new crisis or emergency.

When Congress has handled its business in Washington with dispatch, the situation permits the Members to devote the proper amount of time studying problems confronting people in the Districts and States they represent. The Members of the House and Senate thus take up their duties in January again with fresh knowledge of the situation in their home areas and the feelings expressed to them by the citizens with whom they have talked.

NO AMOUNT of "public opinion research," as reflected in printed reports, can take the place of discussions with individual citizens holding informed and clearly thought-out opinions on issues of the day.

This is the great opportunity of adjournment. Although the House and Senate are not called into formal session each day,

Congress remains at work as its members prepare again to reflect as the representatives of the people, the hopes and aspirations of this great Nation's citizens.

WALTER ROGERS
MEMBER OF CONGRESS
18th DISTRICT OF TEXAS



NEWS

Six new members were enrolled and officers were installed at a recent meeting of Ford 4-H Club. Cynthia Hanna took office as president. Joette Hanna vice president, Lisa Williamson secretary and Diana Hickman Council delegate. Members chose the Blue Seal Goal as the year's aim.

Tommy Bezner and Mary Ann Hoffman led songs, Becky Hickman led the opening ritual, Joette Hanna reported on the vegetable fair, Joyce Bezner on county and district council meetings and Tommy Bezner on the Tri-State Fair.

New members are Jeany McKenzie, Judy Marchman, Julie McDermitt, Rhea Ann Wesson, Jim Marsh and Lane Young. Sixteen members were present with Mmes. L.K. Williamson and A.J. Bezner, leaders; Mmes. J. R. Hickman, Joyce Wesson, K. L. McKenzie, Virgil Marsh and Grant Hanna, visitor.

VISITS AUNTS

Mrs. Bryant Caraway of Houston has spent several days in Hereford visiting in the homes of her aunts, Mrs. C. Ora Cockrell and Ms. J.B. France.

Olivetti-Underwood
Adding Machine & Typewriters
THE INK SPOT

FREE-FREE-FREE OVER 5-MILLION (5,000,000) STAMPS

EVERYONE WINS!!

Be a **GRAND PRIZE** winner! IN TAYLOR & SONS GRAND PRIZE GIVEAWAY
get your "NEW ROUND" grand prize punch card TODAY!



Here are the Easy Rules to Help you win many free stamps. Pick up your Free Grand Prize card when shopping Taylor & Sons. When the card is completely punched out with the official punch the Grand Prize seal must be opened by an authorized store employee. You will receive the number of stamps as specified by the prize number on your card.

To be valid the Grand Prize Card must not be tampered with by anyone other than an authorized store employee.

WIN UP TO 25,000 STAMPS ABSOLUTELY FREE

GET YOUR CARD TODAY WHEN SHOPPING TAYLOR & SONS

-EVERY CARD IS A WINNER- GET COMPLETE DETAILS AT TAYLOR & SONS

SPECIALS

GOOD

THURSDAY
FRIDAY
SATURDAY
OCT. 21, 22 & 23



PORK CHOPS

| | | |
|---------------|-----|-----|
| LOIN | LB. | 79¢ |
| CENTER CUT | LB. | 69¢ |
| RIB | LB. | 59¢ |
| CENTER CUT | LB. | 59¢ |
| END CUT | LB. | 59¢ |
| PORK LOIN | LB. | 59¢ |
| HALF or WHOLE | | |

FRESH GROUND CHUCK
LB. 69¢

| | | | | |
|-----------------------------|--|---|--|-----------------------------|
| FOOD KING OLEO 1-Lb. Qt. | SEA STAR FROZEN FISH STICKS 10-Oz. Pkg. | SHURRINE FROZEN ORANGE JUICE 6-Oz. Can | Reg. or King Size COCA COLA Plus Despot | WOLF BRAND CHILI 303 Can |
| 17¢ | 19¢ | 15¢ | 39¢ | 45¢ |

HOT DOGS

SOLD SATURDAY ONLY

each 10¢

| | | | | |
|---------------------|---------------------------------|--------------------------------------|--|---------------------|
| SUGAR 10-Lb. Bag | FLOUR Gladiola 10-Lb. Bag | COFFEE Maryland Club 1-Lb. Can | DONUTS Hold One A treat you will repeat Doz | CRISCO 3-Lb. Can |
| 98¢ | 98¢ | 69¢ | 59¢ | 79¢ |

MELLORINE

SWIFT HONEYCUP

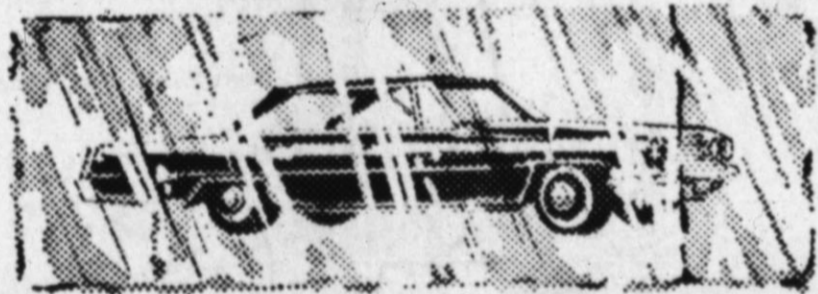
1/2 GALLON

39¢

| | | | | |
|--------------------------|--|-------------------------|--|----------------------|
| KLEENEX 400 Count Box | Campbell's SOUP Meat Variety 6 For \$1 | Miracle Whip Qt. Jar | Cloverlake COTTAGE CHEESE 2-Lb. Cn. | PLEDGE 7-Oz. Size |
| 23¢ | \$1 | 49¢ | 49¢ | 69¢ |

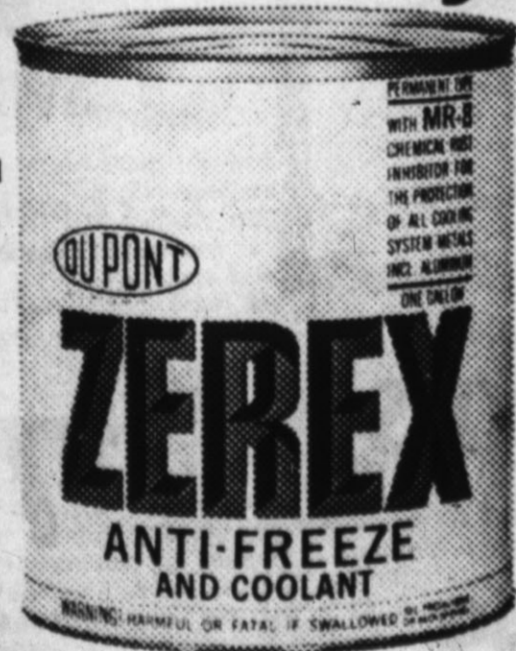
| | | | |
|---------------------------|---------------------------------|----------------------------|---|
| CAMAÿ 2 Bath Size Bars | DASH Home Laundry Size | TIDE King Size | HALLOWEEN CANDY Get yours today while our stock is complete! |
| 35¢ | \$4.79 | \$1.35 | |
| JOY King Size | Ivory Liquid King Size | Ivory Snow Regular Size | FRESH PRODUCE WHITE POTATOES 10-LB BAG |
| 98¢ | 98¢ | 39¢ | 39¢ |
| ZEST 2 Bath Size Bars | CASCADE Large Size | TOP JOB King Size | Double Red Delicious APPLES LB. 15¢ |
| 45¢ | 89¢ | 99¢ | |
| MR. CLEAN Giant Size | OXYDOL 10c off Giant Size | SALVO Jumbo Size | Texas ORANGES and GRAPEFRUIT LB. 12 1/2 |
| 69¢ | 71¢ | \$2.09 | |

INSTALLED FREE



DuPont ZEREX®
Anti-freeze takes the worry out of winter

\$1.39 Gal.



Be Prepared for Cold Weather

THERMOSTATS

each \$1.89

White Auto Stores Inc.
330 N. Main St. Phone EM 4-0574

OPEN TIL 8 P. M. THURSDAYS

TAYLOR & SONS FOODS

YOUR HOME TOWN BOYS

CASH AND SAVE

LOW LOW EVERYDAY SHELF PRICES PLUS S & H GREEN STAMPS



TOP WINNERS—Awards in Bud to Blossom Garden Club's fall flower show last Saturday were topped by those presented this quartet. From left are Mrs. Sam Long, who received the Tri-Color ribbon in flower ar-

rangements; Mrs. W.H. Gentry, sweepstakes winner in the horticultural division; Mrs. B.E. Cooper, who took the Award of Merit in horticulture; Mrs. Bruce Brown, artistic arrangement sweepstakes winner.

Awards Made In Flower Show

Mrs. Sam Long won a Tri-Color Award for artistic arrangement and Mrs. B.E. Cooper the Award of Merit for the best horticultural specimen in Bud to Blossom Club's annual fall flower show Saturday, while sweepstakes prizes went to Mrs. Bruce Brown in arranging and Mrs. W.H. Gentry in horticulture.

The club held its International Flower Garden show in Community Center Saturday afternoon, showing a variety of blooms and floral compositions to the public.

Mrs. Long received her award for best arrangement in the show, on a creation depicting Old Spain, using predominately red flowers. Mrs. Cooper was cited for the branch of berried shrub she entered in the horticultural division.

Mrs. Brown's awards included two first places in arranging,

one for a table arrangement of fresh fruits suggestive of a Hawaiian luau and the other for a miniature beach scene.

First place in the Unlisted Annual classification and second places on two types of chrysanthemums, miniature marigolds and snapdragons won the sweepstakes for Mrs. Gentry in the horticulture division, where few first place awards were made.

Except for Mrs. Cooper, the only other top winner was Mrs. Calvin Edwards, whose giant marigold specimen was judged worthy of first rating. Mrs. Jack Allen took second places for double ruffled petunias, medium dahlias and unlisted annulias.

Mrs. Long received second place for unlisted perennials, a snowball blossom which was a seasonal freak since that shrub is a spring-blooming plant, and also for floribunda roses. Other

rose awards went to Mrs. Frann Battenfield, three second places on hybrid teas.

Second places were also given Mrs. Delmo Williams for red geranium; Mrs. Bruce Brown, potted house plant; Mrs. R.A. Daniel, berried shub.

Blue ribbons were more numerous in the artistic division, with at least one in each class. Allen took second places for with a vegetable arrangement Mrs. Allen placed first with a vegetable arrangement titled Down Mexico Way. Mrs. Edwards with fresh foliage depicting Island Magic, Mrs. Gentry with a Japanese-style arrangement.

An abstract composition suggesting the loneliness of Sahara Dessert won first for Mrs. Al Brown, an Early American bouquet in a kitchen container for Mrs. Battenfield, a miniature less than three inches in size for Mrs. Wayne Newsom and one a trifle larger for Mrs. Daniel.

Serving as judges were Mrs. T.B. Daniels and Mrs. G.T. Holliday of Amarillo and Mrs. John Jacobsen Jr., a member of the Hereford Garden Club. Mrs. Ernest Kendall was show chairman and Mrs. Long is club president.

Show committees were headed by Mrs. Newsom, staging; Mrs. Williams, schedule; Mrs. R.N. Yarbro, entries; Mrs. Bill Nelson, publicity; Mrs. Pat Robinson, judges; Mrs. Cooper, hospitality.

Do you like to sprinkle steak with garlic powder before broiling? Use an eighth teaspoon of the powder for a two-pound steak cut about one inch thick.

Small Talk

By SUE COLEMAN
Women's Editor

It hasn't been so very long since the figure of a uniformed traffic cop on the corner, signaling for drivers to stop and go, was a very civilized sight.

His job was an early loser to automation and we in smaller towns never saw him at all because the red and green lights were in use before our traffic was heavy enough for his services — except sometimes in case of a fire.

DRIVERS TODAY never knew him or have about forgotten him, and don't know how to respond to hand signals for traffic control. Or that was my conclusion Monday afternoon, waiting at a service station for a tire to be changed and watching a policeman on the corner of Park and 25 Mile Avenues, directing the 5 o'clock rush of vehicles.

He was at work because a construction crew and their machines were occupying half of

the intersection at the time, on the resurfacing job that we can now enjoy. And he had his work cut out for him.

Motorists would have been a little leery of the intersection anyway, with workmen rushing about and moving their rollers back and forth, but the traffic cop seemed to baffle them completely although his presence was necessary to prevent bedlam with smashed fenders.

WHEN HE motioned vigorously for them to go through quickly in order to unjam a bottleneck, they slowed the more to study his signals and figure what to do next. When he checked attempted left turns and indicated straight-ahead paths, many stopped completely to glare at him before going ahead.

He kept things moving amazingly well under the circumstances, and never appeared to lose his good humor, and not a fender was bent during my viewing period.

But a youth stopped looking curious and put on a dazed expression at one gesture, when the weary cop momentarily stopped waving his right arm and reached across his chest — to get a pack of cigarettes out of his pocket!

ANOTHER Panhandle sight seeing jaunt took me over to Canadian Sunday, when that city opened its fall foliage tour which is more than worth the drive.

In fact, it offers about a dozen miles of constant splendor in the leaves of huge cottonwoods and willows, some spreading trees that have the look of a variety of elm, fruited and golden-leaved persimmons, grape-vines and scarlet creepers climbing to the tops of many trees, sumac and a white-berried shrub in addition to numerous other plants we couldn't identify by name.

Leaves are still turning, and by this weekend there should be a stronger display of color although it could hardly be more striking than the part-green, part-gold scene that unrolled for

us as we drove very slowly, stopping often to exclaim at another burst of brightness.

WE WERE lucky to make the drive on a morning when clouds scudded across the sky, giving us a play of light that couldn't have been equalled by the most carefully planned stage lighting.

When a spot of sunlight came travelling across the river valley with the effect of a spotlight, picking out here and there a tall tree that had turned entirely yellow, the effect was that of a bottom pushed somewhere to light that tree from the inside.

Sometimes a wider area would be sunny, sometimes the whole valley, and the spectacle was staged with a background of wind-blown, slate blue clouds beyond the beige sand of the river and the dust brown opposite bank. Even without the light effects it was a wonderful show, we discovered driving back.

AT THE END of the drive is Lake Marvin, and it surprised me because it is so unlike the usual West Texas lake, sprivelled out up a river or canyon

with many branches and man winding miles of water. Maybe you know that Lake Marvin is a little gem of a lake, the round in shape and small enough to see across at any point.

A good road circles it, staying close so you can see the water with its fringe of shrubs, with most of the larger trees on the other side so you feel you are in a forest instead of a narrow rim of vegetation. The deer that you can glimpse from the road and the calls of quail and wild turkey that you can hear, help that illusion.

It wouldn't be bad to go over there for a whole day or more, to walk out into the trees, scuffing the dead leaves in front of you, and sit quietly so the deer will come closer, and maybe the birds will come in sight too, and the bright leaves drop briskly or lazily as the breeze decides, and just rest.

Delightful and speedy topping for fresh fruit: a package of cream cheese blended with a half cup of commercial sour cream.

October is ANTHONY MONTH

special month of super values

2.98 - 3.98 Quality
Special October Price

100% WOOLENS AND WOOL BLENDS

56" - 60" WIDE

Pastels, Deep Tones in Flannels, Crepes, Suitings, Diagonal Weaves, and Novelties

2 YDS. 3⁵⁰

All First Quality

Shop Save at Anthony's

This is an Anthony value that's hard to beat. See this fall's seasonable sewable, fashion woollens ready to make into needs for the whole family. Savings are sensational at Anthony's. October is Anthony month.

Thermal Knit SHIRTS and DRAWERS

\$2 each

Thermal knit, keeps cold air out... warm air in. Well made for working comfort and long wear. Slip-over model shirt with rib knit collar, cuffs. All around elastic waist on long leg pants. Sizes S-M-L-XL.

8 Inch Moccasin Toe Style INSULATED BOOTS

Leather lined throughout

12⁹⁹

One of America's finest made boots. Nail-less construction for greater comfort and longer wear. Full cushion insole, oil and acid resistant natural gum 21-iron outsole, rawhide laces. Men's sizes 6 1/2 to 12.

Newest Styles
Newest Colors

MEN'S SWEATERS

- CARDIGANS
- SLIP-OVERS

Values to 12.95
Save Now

\$7.

SIZES S-M-L

Cardigans or slip-over models in Lambs wool and orlon acrylic blends, also 100% Shetland wools. Men's sizes S-M-L. All big values.

OPEN THURSDAY UNTIL **8 P.M.** for Your Shopping Convenience

See The **HEREFORD STATE Bank** FOR **AUTO FINANCING**

Is '66 Ford the quietest car in HEREFORD?

Man, it may be the quietest in the whole ride world!

Test-drive a '66 Ford and discover how quiet a car can be! Nineteen in all to choose from. A hot, new 7-Litre series with big 428-cu. in. V-8 power. New LTD by Ford is the last word in luxury. Ford wagons with the new 2-way Magic Doorgate. Lots of new features and options. See your Ford Dealer.

'66 Ford LTD 4-Door Hardtop

Powered by Ford...presented by your FORD DEALER

STEPHENS-HUDSON MOTOR CO.

Hereford's Friendly Ford & Mercury Dealer

Tot and Miles **EM4-2727**