

**WEATHER**

	Mois.	High	Low
Sunday	T	32	14
Monday	T	32	13
Tuesday	T	24	13
Wednesday	T	28	16
Moisture for March: .12			
Moisture for year: 2.42			
Moisture last year: 21.73			

# The Hereford Brand

14 Pages

Fifty-Nine Years of Service  
SINCE 1901

Published Every Thursday

Our Slogan: "More People — More Farms"

Hereford, Texas, Thursday, March 3, 1960

Price 10c Per Copy

59TH YEAR — NO. 9



**BAND ROYALTY** was announced during the Hereford band Coronation Concert Tuesday evening. Queen Ann McCarver was crowned by King Gene Meacham, after being chosen by secret vote of senior bandmen. The Hereford High band, stage band and Stanton Junior High band presented numbers during the program, which was directed by George Hill. (Staff Photo)

## Hiway 60 Widening In City Seen Delayed By Stalemate

### Start Forecast About November

Scheduled widening of Highway 60 within the Hereford City limits this spring probably will be temporarily postponed due to incomplete negotiations between Texas Highway Department and Santa Fe Railroad officials.

Hereford City Manager Dudley Bayne explained to City Commissioners in a special meeting Monday afternoon that agreement on a point of insurance between the highway department and railroad officials had not been reached through February. Even if negotiations were completed during March, he said,

construction on the project could not begin before June or July.

He explained that the highway department could not advertise for bids until a stipulated amount of insurance was set. Basic reason for avoiding the start of construction in June or July was that hot mix or asphalt topping could not be poured after Oct. 15, a policy of the state highway department.

If construction were started during one of those months, the site would not be ready for paving with hot mix by Oct. 15. Thus, the caliche base would serve as the only surface on the highway until hot mix could be poured next year.

The commissioners agreed that November would be an ideal time to start construction along the site, from U. S. 385 to the east city limits (Benefield's Corner.)

By postponing the starting date, they agreed, transporting of wheat, maize and vegetables to elevators or sheds would not be hindered during spring and summer harvest periods by highway development. Also, by starting work in November. (Continued on Page 2)



A PORTABLE PSYCHOMETER, which operates on the same principle as polygraph or lie detector equipment, was purchased this week by Hereford Police Department. The unit measures electrodermal responses through nickel electrodes connected to the middle fingers of each hand. Total cost of the equipment was only \$330 and it will be used in aiding police in investigating cases, Police Chief Henry Aycock said. (Staff Photo)

### Pulliam Files Just Prior To School Deadline

Denzil Pulliam, a farmer who lives four miles south of Hereford, Monday morning filed his candidacy for election to Hereford Rural High School Board, bringing the total to five candidates seeking three posts.

Pulliam joined incumbent B. F. Cain and O. W. Parris, Lee Kent and Gaylord Newell in filing intention to run for three-year term posts. W. R. Hair and Ralph Hastings, earlier had announced they would not seek re-election to the board.

Deadline for filing was Wednesday this week, and election will be held on April 2.

School tax assessor-collector Fred Baird explained that earlier announcements were that deadline for filing would be March 12, or 20 days prior to the election.

However, he said, the announcement was erroneous — deadline date was Wednesday. (Continued on Page 2)



Bruce E. Fink

### Fink Assigned To Hereford By Water District

Bruce E. Fink this week began his duties as local field representative of High Plains Underground Water Conservation District 1.

A native of Western Kansas, Fink replaces Wayne Wyatt who has resigned to enter private business in Lubbock.

The new representative is a graduate of Kansas State University, Manhattan, Kansas, where he received his B. A. with a major in geology.

He and his wife, Kaylene, have two daughters, Lisa Kay, 2, and Tanni Lynn, four months. They live at 235 Ave. A in Hereford.

Before accepting the water district post, Fink worked in the well logging engineering department, Baroid Division, National Lead Company, with headquarters in Houston.

He has been in the farming and cattle business and is a veteran of service with the U. S. Army.

### Teacher Dinner On Friday Night

Teacher Appreciation Dinner, to be held in the Hereford High School cafeteria Friday night, will be the climaxing event of the annual Public Schools Week here.

The dinner will be held from 7:30 to 9:30 p. m. and will be sponsored by the Hereford High School Parent-Teachers Association.

Entertainment for the evening will include "An Arctic Adventure," a movie filmed in color by Cotton John Smith of Amarillo.

The affair will be a basket dinner, and each family who plans to attend is asked to take enough food for themselves and for a teacher and his or her family.

A meat dish, salad and dessert lunch is suggested. Drinks (Continued on Page 2)

**STARTS APRIL 1**

## Mrs. Shipley Heads Census For Deaf Smith, Parmer

Mrs. Donald Shipley of Hereford this week was named census director for Deaf Smith and Parmer counties. The decadal count will start in two counties on or about April 1.

Announcement of the local appointment was made by Clyde Cook of Borger, director of the

United States Census for the 18th Congressional District.

Complete count of population and other related information is expected to be finished about April 28, Mrs. Shipley said.

Mrs. Shipley is now in the process of selecting 11 enumerators for Deaf Smith County and six for Parmer County.

There will be a preliminary one-day school in Amarillo for county census directors on Monday, March 7. This will be followed by a more detailed four-day school in Amarillo March 14-17.

Mrs. Shipley will conduct training for her county workers on March 28-31.

Postmen will deliver a "short form" to each house in the county, Cook said. In addition, every fourth house will get a longer form, with more questions. These are to be filled out and mailed in to the census office in Amarillo. The short forms will be picked up by the enumerators who will check to see that all the information has been included on the form.

"It is imperative that the head of each household answer all the questions asked," Cook commented. "Results of this census will be used by many groups during the next ten years."

Cook also pointed out that the basic questions are compiled by the U. S. Census Bureau. Other groups submit additional questions which they would like to have asked. These are considered for merit and, if there is sufficient demand for the information, may be included on the census forms.

Mrs. Shipley's appointment was made through the county or party.



Mrs. Donald Shipley

### Langley Heads Camp Fire Girls

Earnest L. Langley was installed as president of the Hereford Camp Fire Council in ceremonies at Shirley School Monday night. He will serve a one-year term.

Also named as officers were Dr. H. A. Cavness, vice president; Mrs. R. L. Fuhrmann, secretary; and Mark Woodall, treasurer.

Outgoing officers include W. L. Davis Jr., president; Mrs. Jack Gilliland, vice president; Mrs. Clyde Cave, secretary; and Walter Seed, treasurer.

In addition to the new officers, board members who will serve three-year terms are Wilbur Gibson, Mrs. Don T. Martin, (Continued on Page 2)

### Saturday Close On City Filing

Two incumbents were the only candidates who had filed for Place 3 and Place 4, Hereford City Commission, at press time Wednesday noon as Saturday deadline approached.

Deadline for filing for the posts is midnight Saturday, March 5. Election will be held in Hereford City Manager's office April 5.

Candidates filing intentions for re-election to the two-year term places last month were Troy Moore to Place 3 and Dr. R. R. Willis to Place 4.

Election day is April 5, from 8 a. m. to 7 p. m. in the City Manager's office. An election judge will be appointed at the next meeting of Hereford City Commission.

Absentee balloting will begin 20 days prior to election day, on March 15, and will continue up to election day.

**FIRST OF A SERIES**

## Beet Sugar Has Colorful History

By H. A. TUCK  
BRAND NEWS EDITOR

A basic chemical formula, C12 H22 O11, has become one of the most important topics of conversation in Hereford for the past month.

high school knows the formula, which is the make-up of sugar. Is there any difference, however, in the beet sugar and cane sugar?

The answer today is in the negative: There is no difference at all between the two products, one from a silvery-white root and the other from a cane reed.

An informal poll in Hereford showed up one thing. Not many folks know much about beet sugar, its properties or how it is processed.

Some housewives said, "I wouldn't use beet sugar for anything but canning." Still others were equally positive when they declared, "Beet sugar is fine for everything except canning."

Many statements were made that might have been valid in past years.

But chemists, housewives and commercial sugar users have finally come to a single conclusion: There is absolutely no difference between beet sugar and cane sugar!

Beet sugar has just begun to be stocked in Hereford stores. Retailers last week reported be-

tween 50 and 70 per cent of all sugar sold in Hereford was beet sugar. And, what is most significant, there have been no complaints about the quality, taste, or color of beet sugar.

Beet sugar as we see it now, in crystal, extra fine and powdered forms, has a long and colorful history.

The secret of extracting sugar crystals from the white sugar beet was unsolved until 1747, when a German Chemist, Andreas Marggraf, obtained crystals from the beet which were identical to those from cane.

Some 40 years later one of his pupils, Franz Karl Achard, demonstrated it was practical to produce beet sugar on a large scale. King Frederick William III of Prussia got interested in "home-produced" sugar and provided funds for the world's first commercial sugar beet factory, built at Cunern, Silesia, in 1802.

But French emperor Napoleon Bonapart gave the industry its first big push. With sugar imports cut off by a British blockade, he decreed in 1811 a widespread planting of sugar beets and erection of beet sugar factories in France.

Attempts to establish the industry in the United States came as early as 1837 in Michigan. (Continued on Page 2)

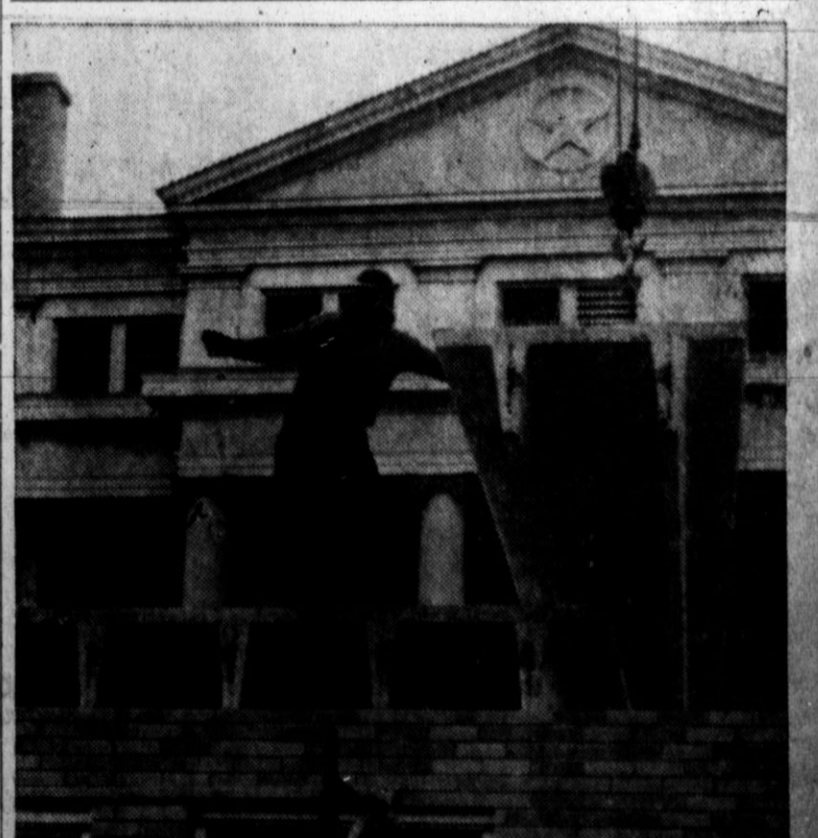
## Around Town

An exceptionally large crowd, considering the weather, turned out Tuesday evening to hear the annual Coronation Concert by the Hereford school bands. And they were well rewarded for their efforts, as the bands performed very well. One thing we noticed, you'd be wise to see that your daughter plays a reed instrument if she wants to be Band Queen. All four of the girls nominated for the honor play reeds, three clarinets, and one saxophone. Director George Hill really had his youngsters ready. If you missed them, they will play a Sunday afternoon concert on May 1.

McMurry College Chanters are scheduled to sing twice in Hereford this week. Thursday, March 3, they will sing at 7:30 p. m. in the First Methodist Church. After spending the night here, they will (Continued on Page 2)



CAMP FIRE COUNCIL officers for the next 12 months were installed Monday night by Mrs. Elmer Patterson, second from left. Officers include, from left: Mrs. R. L. Fuhrmann, secretary; Earnest Langley, president; and Dr. H. A. Cavness, vice president. At right is W. L. Davis Jr., outgoing president. (Staff Photo)



ESCAPE-PROOF will be a feature of the new Deaf Smith County Jail now under construction, as indicated by concrete-coated steel beams placed over cells this week. The huge crane which put the beams in place didn't seem to be under much strain, but sidewalk superintendents agreed that they were "mighty heavy." The courthouse is currently undergoing a complete renovation. (Staff Photo)



**Around...**

(Continued from Page 1)  
perform at the Hereford High auditorium at 9:50 a. m. Friday.

The county now has its official supervisor for the 1960 census and the counting will be conducted next month. Deadline for the Hereford Brand census contest remains March 31. There is \$50 cash for the closest guess on the city population and another \$50 for the closest on the county total. Just write your guesses on a post card, preferably, include your name and address and mail to Hereford Brand, Box 673, Hereford.

The World Day of Prayer observance will be held in Hereford at the First Presbyterian Church at 3 p. m. Friday.

day, March 4. It is sponsored by the United Council of Churchwomen in Hereford. Theme will be "Labourers Together For God." Mrs. Jess Carter will serve as leader.

If you're interested in the sugar beet situation, and everyone seems to be, we suggest you read Rep. Walter Rogers' weekly report which is concerned with the Sugar Act, etc. It's on Page 1, Section 2, of this issue of the Brand.

Teacher Appreciation Dinner is scheduled for 7:30 p. m. Friday at the High School cafeteria. There should be a big crowd on hand for that event.

And it's still not too late to visit in your public school system. Friday will mark the end of the annual Public Schools

Week in Texas. Principals report exceptionally large numbers of visitors for the first three days.

A planning meeting for the Latin - American Fiesta is scheduled to open at 9 a. m. Friday, March 4, in the Chamber of Commerce office.

It might sound outlandish to those of us who have been feeling snowbound lately, but we got a letter this week from a retired gentleman living in St. Petersburg, Florida, who is interesting in coming to live in Hereford because of the climate.

**Langley...**

(Continued from Page 1)

Mrs. J. T. Gilbreath Jr. and Mrs. Ronald Babione, W. L. Davis Jr. and Mrs. Clyde Cave were re-elected to the board for three - year terms.

Returning for two - year terms on the board are Mrs. Jack Gilliland, Mrs. Jimmie Gillentine and Mrs. Urlin Streu. Mrs. Harold Beauchamp, leaders association chairman, will serve for one year.

Members retiring from the board are Richard Barnard, Walter Seed, Mrs. Fred Cunningham, Mrs. W. J. Messick and Mrs. Walter London Jr.

Mrs. Elmer Patterson was installing officer for the brief ceremony. She used the Camp Fire emblem of crossed logs and flames as part of the visual presentation.

**Highway...**

(Continued from Page 1)

ember, the site would be ready for permanent road surfacing early next year. Even if the site were started in June or July, a permanent surface could not be laid until early next year, Bayne said.

Bayne said the postponing of highway widening will not affect installation of water and sewer lines along the development site, from Deaf Smith County Electric Cooperative to the east city limits.

Neither installation job had been started Tuesday, Bayne said. Each job will require about 30 days for completion.

Have you read the classifieds?

**TOP FIVE PLACES**

**Hereford Women Keglers Sweep Tourney, Getting 11 Of First 20**



TOP TEAM in the 23rd Annual Amarillo City Women's Bowling Tournament last weekend was composed of bowlers from Hereford, sponsored by Little's. The team posted a total of 2711. Members include, from left,

Betty Babione, captain, Beulah Cargo, Gayle Galley, Mrs. Arthur Thompson, sponsor, Wilma Hill and Juanita Sims. Teams from Hereford, Canyon and Amarillo were entered. (Staff Photo)

Women's bowling teams from Hereford snowed under their opponents in taking the first five places at the 23rd annual Amarillo City Women's Bowling Tournament.

The meet, which attracted 124 teams from Hereford, Amarillo and Canyon, was held at the Western Bowl on Feb. 20 and 21 and 27 and 28.

Not content with a sweep of the top spots, Hereford women keglers captured 11 of the first 20 places. Fifteen of Hereford's 16 women's league teams entered the tourney.

Little's placed first in the team events, with a score of 2711. Team members include Betty Babione, captain; Wilma Hill, Gayle Galley, Juanita Sims and Beulah Cargo.

In second place with a score of 2660 was Owens Electric. Team members are Betty Kelly, captain, Jo Brock, Helen Owens, Molly Schofield and Revella Skypala.

McDowell Pharmacy team took third place with a 2652 score. Team members include

Martha Sullivan, captain, Janet Maloney, Bobby Kitchens, Lucy Souder and Lynn Heddings.

The Vogue captured fourth place with a score of 2644. Its members are Sandra Nichols, captain, Joan Scott, Bunny Watts, Norma Coffey and Lavone Boyer.

In fifth place was Cream O' Plains with a score of 2639. Included on the team are Betty Kropff, captain, Ernestine English, Alice Lueb, Helen Mitchell and Lois Dodson.

Elizabeth Witherspoon team placed seventh in the meet with a score of 2596. Team members are Lavone Boyer, captain, Luella Dool, Mona Jette, Lois Hollingsworth and Betty Young.

Wheeler Fertilizer placed 11th with a 2552 score. Team members include Adele Hill, captain,

Virginia Wheeler, Marcie Maddox, June Caraway and Peggy Lemons.

Two Hereford teams, Hereford Glass and First National Bank, tied for 12th and 13th with identical 2549 scores. On the Hereford Glass team are Alice Lueb, captain, Helen Mitchell, Lois Dodson, Mary Jean Gore and Geneva Summers. First National Bank bowlers are Margaret Woodall, captain, Idie Gearn, Opal Norton, Ann Line and Mary Stapp.

Allred Oil placed 15th with a score of 2539. On the team are Nan Layman, captain, Patti Amery, Marlene Bowers, Ruby Emmons and Margaret Collins.

Tri - County Farm Supply placed 20th with a score of 2512. Team members are Phyllis Channers, captain, Anna Ed-

**First...**

(Continued from Page 1)

igan and 1838 in Massachusetts. Both tries ended in failure, as did efforts in other states for the next 30 years.

The Mormons even hauled imported machinery across the plains in 1850 by ox team, but the machinery refused to produce sugar crystals.

It wasn't until 1870 that E. H. Dyer finally erected a plant in Alvarado, Calif., and made it the first successful beet sugar plant in the U. S. Dyer's plant became a paying proposition in 1879.

By 1900 there were 30 factories in operation.

Today, sugar beets are grown in 21 states, which are processed in 71 factories and supply about one - fourth of the nation's sugar needs.

(A second article will take up sugar beet production methods, by - products and uses of beet pulp, as well as the economic factors of establishing a sugar beet refinery in Hereford.)

**Everyone Needs a GOOD ROOF over his head**

Ask us for a free roof inspection. No obligation!

An average 5 room home can be re-roofed for as little as **\$9.50** Per Mo.

**NO MONEY DOWN... EASY BUDGET TERMS!**

**Carl McCaslin LUMBER CO.**

A Complete Building Service  
1 Block East of the Courthouse  
Phone the Lumber Number EM 4-3434

You're Invited to . . .

**OPEN HOUSE**

at Hereford's New  
**La Coiffeur**  
BEAUTY SALON  
(Located In The Hotel Jim Hill)

Gayle McNeese Sue George Louise Mathis Mildred Renfro

**SUNDAY, MARCH 5th**  
**3 to 5 P.M.**

Hereford's Newest Beauty Salon, La Coiffeur, will hold open house Sunday, March 5th, 3 to 5 p.m., and you are cordially invited to drop by. We're proud of the facilities at La Coiffeur and want to show them of . . . so be sure to come by Sunday.

**Doctor...**

(Continued from Page 1)  
can priest in two years. His interest prompted the doctor to make a special trip from Washington to Hereford recently to view the work firsthand.

She was greatly impressed with the work being done in the clinic which has cared for the needy over the past seven years.

Dr. Edwards is the mother of six children. She is a lecturer and consultant in the field of medicine and surgery.

**Teacher...**

(Continued from Page 1)  
will be furnished by the P.T.A. A nursery will be provided by the Future Homemakers Association in the homemaking department of the high school.

**Pulliam...**

(Continued from Page 1)  
March 2, or 30 days prior to the election. The mistake was discovered this week.

Polling places on election day will be at Dawn School and at the School Tax Assessor - Collector's office in the high school administration building. Polls will be open from 8 a.m. through 7 p. m.

Mrs. Zelma Axe will be poll judge at the Dawn School, and S. O. Wilson will be judge at the other voting place. The judges will select their own clerks later, Baird said.

Absentee balloting runs from Monday, March 14, to 5 p. m. Tuesday, March 29.

**Grant...**

(Continued from Page 1)  
U. S. Post Office Department. Mrs. Traveek pointed out that the rural station would relieve some of the Hereford Post Office's seasonal burden brought on by influx of migrant laborers in the county.

The Easter post office branch will handle much of the postal matter of a bracero labor camp located in the community. It will also be a convenient accommodation to permanent residents in that area, she said.

The Discount Way

**SAVE - SAVE**

The Discount Way

**FIRST**

**IS QUALITY**

Of Course, when you're buying furniture, your first thought is of QUALITY . . . and, quality is what you get when you select your home furnishings from the wide selection at H & H Discount Furniture Store.

**SECOND**

**IS LOWEST POSSIBLE PRICE!**

Sure . . . not price alone, but quality plus the lowest possible price. And at H & H Discount Furniture Store, we have cut the prices to the bone, while holding the quality up, to assure you of GREATER SAVINGS ON ALL YOUR HOME FURNISHING NEEDS.

**Shop & Save The Discount Way!**

**H & H DISCOUNT FURNITURE STORE**

West of Hereford on U. S. 60

Phone EM 4-3552





# DIAMOND DAYS

at Taylor & Sons



**MA!**  
LOOK!  
Giant Size  
**65c**

**Cleanser** White King 14 Oz. **2 FOR \$27c**

**Catsup** Shurfine 14 Oz. Bot. **6 FOR \$1.00**

Shurfine, Lb. Can, All Grinds  
**Coffee** **59c**

Shurfine, 3 Lb. Can  
**Shortening** **59c**

Soffin  
**Toilet Tissue** 4 ROLLS **25c**

Shurfine, Small No. 2 Can  
**SWEET POTATOES** 4 FOR **\$1.00**

Shurfine, Fresh Shelled 300 Can  
**Blackeyes** 8 FOR **\$1.00**

**FREE DIAMONDS**

1st Prize..... **Diamond** (\$200 Appraisal Value)  
2nd Prize..... **Diamond** (\$100 Appraisal Value)

**Nothing To Buy ...**  
Just Register Each Time You Visit  
Our Store. Need Not Be Present  
To Win. Drawing Sat.  
Mar. 12, 8:00 P.M.



22 Oz. Can  
**Liquid Detergent** **55c**

White King Giant Size  
**Water Softner** **49c**

Roxey Tall Cans  
**Dog Food** 12 FOR **\$1.00**

Shurfine, 300 Can  
**Pork & Beans** 10 FOR **\$1.00**

Shurfine, Cream Style, or Golden, 300 Cans  
**CORN** 7 FOR **\$1.00**

Shurfine, Quart  
**Salad Dressing** **39c**

Soffin's, 400 Count Boxes  
**Facial Tissue** 6 FOR **\$1.00**

Shurfine, 303 Can  
**BEANS & POTATOES** 6 FOR **\$1.00**

Shurfine, 303 Can  
**Spinach** 8 FOR **\$1.00**

**FRYERS**  
Fresh Dressed Grade A Lb.  
**35c**

USDA Good Beef  
**CHUCK ROAST** Lb. **59c**

Wisconsin State Brand  
**LONGHORN CHEESE** Lb. **49c**

Shurfine, 46 Oz. Can  
**TOMATO JUICE** 4 for \$1

Shurfine, Early Harvest, 303 Can  
**PEAS** 6 for \$1

Shurfine, 303 Can  
**FRUIT COCKTAIL** 5 for \$1

**Cheddar Cheese**  
Mohawk Valley Mammoth lb. **59c**

7 1/2 Ozs.  
**KRAFT DINNERS** 2 for 33c

Kraft's Strawberry 20 Oz.  
**PRESERVES** 49c

Shurfine  
**MARGARINE** 6 lbs. \$1

Shurfine, 300 Can, Cut  
**ASPARAGUS** 4 for \$1

Shurfine, 303 Can  
**APPLE SAUCE** 6 for \$1

Shurfine, 2 Lb.  
**CHEESE SPREAD** 69c

Shurfine  
**FLOUR** 10 lb. bag 69c

Shurfine, 24 Oz.  
**GRAPE JUICE** 3 for \$1

Swift's Special Pack  
**ICE CREAM** 5 Pts. \$1

Nestle's 2 3/8 Lbs.  
**QUICK** 89c

Shurfine, 28 Oz.  
**APPLE BUTTER** 4 for \$1

Shurfine, Frozen, 6 Oz.  
**ORANGE JUICE** 7 for \$1

Elmdale  
**BROOMS** each \$1.19

Shurfine, Red Sour Pitted 303 Can  
**CHERRIES** 5 for \$1

Shurfine, Whole Blue Lake, 303 Can  
**GREEN BEANS** 4 for \$1

Shurfine, Chunk Style, Flat Can  
**TUNA** 4 for \$1

**BANANAS**  
Fancy Skirted LBS  
**225c**

Pascal  
**CELERY** 2 Stks 29c

Portales, New Mexico  
**SWEET POTATOES** 2 Lbs. 19c

Shurfine, Manz Stuffed 7 3/4 Oz.  
**OLIVES** 45c

Shurfine Elberta Sliced or Halves 2 1/2 Can  
**PEACHES** 3 for \$1

Shurfine, Solid Pack, 303 Can  
**TOMATOES** 6 for \$1

**TAYLOR & SONS**  
**FOODS**  
LOW, LOW EVERYDAY SHELF PRICES  
PLUS S & H GREEN STAMPS

These Specials Good  
Thur., Fri. & Sat., March  
3, 4 & 5



# EM 4-2030 WANT ADS

**1. FOR SALE Miscellaneous**

**MCCULLOUGH MOTOR COMPANY**  
We: Highway 60  
Phone EM 4-3150

**CHRYSLER IRRIGATION ENGINES**  
Sales & Service  
B-1-49-tfc

**MOVIE CAMERA sets, Eastman Kodaks, Polaroids.** We have a complete selection and will sell you a camera with a small down payment. Inquire at Roger's Drug.  
B-1-26-3-tfc

**HEREFORD GLASS CO.**  
Expert Car Glass Installation  
Table Tops and Window Glass  
Picture Frames  
392 Park Ave. Ph. EM4-2652  
B-1-25-tfc

**BIG RED BARN**  
We buy-sell-trade for anything of value. Used Furniture - appliances and Junk.  
EM 4-3552  
West Edge of Hereford  
Hiway 60  
B-1-1-tfc

**TOP QUALITY irrigation dams** as low as \$3.25. Davis Implement Co. 144 West Second.  
B-1-14-39-tfc

**See HEREFORD GRAIN CORP.** for  
• Lawn Grass Seed  
• Bulk Corn Seed  
• Ground Corn Cobs for Chicken Litter  
• Place your order now for Baby Chicks.  
PHONE EM 4-3755  
B-1-32-tfc

Call **DEARING WRECKING CO.**  
EM 4-3350  
for **USED PARTS FOR CARS & TRUCKS**  
We buy salvage of any kind.  
Scrap Iron  
**DEARING WRECKING CO.**  
West of City  
B-1-31-tfc

FOR GUARANTEED Recapping see Shelton Tire Exchange, 303 East First. Phone EM4-0511.  
T-1-10-25-tfc

**GENERATORS and starters** for cars and trucks. Hereford Wrecking Co. Phone EM 4-0680.  
T-1-12-18-tfc

**ONE 1958** repossessed singer. Blonde console with attachments and button - holer, to reliable person with good credit for balance due at \$11.14 per month or would discount for cash. Write Credit Manager, Box 3541, Amarillo, Texas.  
B-1-30-35-2c

**1960** Repossessed Automatic, sewing needle sewing machine for balance due at \$11.14 per month or would discount for cash. Write Credit Manager, Box 3541, Amarillo, Texas.  
B-1-26-35-2c

FOR SALE My equity in 10 x 45, 1958 Cameo Trailer House. W.R. Duggan. For particulars, Call EM4-0106.  
B-1-17-7-tfc

**SEE US** for garden and flower plants. Bulbs, shrubbery, and plum trees. Pansies ready now. Hereford Floral.  
B-1-17-7-6k

FOR SALE Plastic Supplies, flower molds, wall plaque molds, art supplies of all kinds. Carters paint and Wallpaper. 509 Park Avenue. Phone EM4-2454.  
B-1-22-33-8c

**AMANA FREEZERS** OUT-PERFORM ALL OTHERS New refrigerators from \$150 up. Used refrigerators from \$20 up.  
**WALKER REFRIGERATION**  
305 E. 3rd  
EM 4-0788  
BUY BEET SUGAR  
B-1-8-TFC

**LAMM JEWELRY**  
**CASH DISCOUNT.**  
From 10% to 50% Store-wide  
Many Items less than wholesale cost.  
butova - Elgin - Swiss watches - Garham Sterling.  
Save Now With Cash  
B-1-1-TFC

**ACID DELINTING**  
\$35.00 per ton.  
Fertilized for only 1/2c per pound.  
SEED FOR SALE  
**LICHTE-SULLINS DELINTING Company**  
Littlefield, Texas  
SPADE HWY. TEL. 1094  
B-1-30-11C

**CAN YOU SPARE JUST SIXTY SECONDS?** DIAL EM 4-0230 EACH DAY.  
B-1-28-TFC

**ACID DELINTING**  
\$35.00 per ton.  
Fertilized for only 1/2c per pound.  
SEED FOR SALE  
**LICHTE-SULLINS DELINTING Company**  
Littlefield, Texas  
SPADE HWY. TEL. 1094  
B-1-30-11C

**CHEMICAL CO of TEXAS**  
1 Mile-East on Hwy. 60  
Phone EM 4-3290

**ARC WELDERS TORCHES OXYGEN & ACETYLENE**  
Monthly Terms On New Equipment  
Complete Line Of Welding Supplies & Welding Rods  
Repairs To All Makes of Torches And Regulators  
B-1-4-TFC

**DEMPSTER PLANTERS, LISTERS AND CULTIVATORS**  
Sales and Repair Parts  
B-1-33-TFC

**LESLY MOTOR CO.**  
345 East 1st St.  
Phone EM 4-1600  
B-1-33-TFC

FOR SALE One 80 gallon pressure Pump tank, 1/2 price, Like new. Shorty's Shoe Shop.  
B-1-15-6-tfc

FOR SALE 2 good used 21 inch TV sets. One with new picture tube. Cline's Radio and TV Service, 404 Avenue I, Phone EM4-0893.  
B-1-24-35-2c

**YOU CAN FIND ALMOST ANYTHING at the BIG RED BARN COMPLETE DOMINO PARLOR \$300.00**  
Including the following equipment:  
2 Cigarette & Cigar Wall Cases with Glass Doors  
2 Glass Cigar Counters  
1 Electric Coca Cola Box  
1 Electric Dr. Pepper Box  
12 Domino Tables  
4 chairs to each table  
4 Gas Heaters  
2 Air Conditioners  
1 Metal Safe  
Will Sell All Together or Individually!  
**THE BIG RED BARN**  
West on Highway 60  
B-1-9-1C

FOR SALE - Exceptional value at \$8,800; 180 acres with 8" irrigation well, Crops, vegetables, grain and alfalfa. San Luis Valley, Colorado. Dealer Co-operation, PO Box 1133 Sinton, Texas.  
B-4-27-9-8c

FOR SALE OR TRADE: 640 acres; 75 of wheat; 125 barley; has 5 wells, fair improvements, \$130, an acre. Call AV 9-4582, Elmer Combs.  
B-4-23-35-3c

**IMPROVED 400 acre irrigated farm.** 3-8"; 1-6" wells. 86 ac. cotton, B-plan; 45 acres wheat; 17 acres beets. This place is clean of Johnson Grass. It is the D. R. Carmichael farm. Call EM 4 - 1082.  
B-4-31-19-tfc

FOR SALE Equity in two bedroom home, attached garage. Phone EM4-2062.  
B-4-11-35-3e

FOR SALE Samoyed dog, two years old. Registered AKC. Call EM4-1866.  
B-1-11-35-2p

FRESH EGGS for sale. 515 Ave. K.  
B-1-8-8-3p

**2. FOR SALE Farm Equipment**

**FOR SALE** Lilliston Roto Speed Cutter and Repairs  
**LESLY MOTOR COMPANY**  
345 E. 1st  
Phone EM 4-1600  
B-2-3-tfc

**WE ARE DEALERS** for Peerless Grain Rollers. Priced from \$179 up. Davis Implement Company, 144 W. Second St., Phone EM 4-2811.  
B-2-35-TFC

FOR SALE Model 9N Ford Tractor, MJD Dempster Cultivator, \$315.80 - 1 1/4 inch aluminum irrigation tubes, 35 cents each, 20 - 1 inch tubes, 25 cents each. EM4-0701.  
B-2-25-8-3p

**3. FOR SALE Automobiles**  
We Pay Cash for Used Cars.  
**MILBURN MOTOR COMPANY**  
225 N. Sampson  
Phone EM 4-0077  
B-3-33-TFC

**4. REAL ESTATE For Sale or Trade**  
**IRRIGATED FARMS**  
Nearly perfect quarter section that we must sell. Has 60 acres highly fertilized wheat, real nice improvements, good well, clean land. Owner wants \$16,000 for his equity. \$25 below market and close to Hereford. \$\$\$  
GRASS . . . section between Hereford and Dimmitt with 120 acres in cultivation, 6" well . . . \$160 per acre, 1/3 cash. \$\$\$  
100 acres right outside Hereford with good well and natural gas . . . 1/4 cotton allot. \$225 per acre. \$\$\$  
160 acres adjoining city limits for \$350 per acre with good home, 2 wells, 20 acres B plan cotton, 21 acre wheat allot. \$16,000 down payment. Rented to a vegetable grower. \$\$\$  
Perfect 80A, improved. 1-6" well. 1/2 mile off paving. 12 acres cotton allotment, 17 wheat allotment. Only \$4,000 down, balance good terms. \$\$\$  
Extra nice 3 bedroom brick, double garage, built-in oven and burners, separate utility, 2 nice baths, fully carpeted. Price \$22,700. Has \$16,600 loan at 5 1/4%. Will sell or consider trading for nice home in Amarillo. \$\$\$  
3 bedroom brick, attached single garage, large living room and large kitchen, near schools. Price \$9,000. Will consider selling for \$1,000.00 down, or will sell on GI loan. We have 6 nice homes with 3 bedroom and den. Some bricks, some frames. Most of these have 2 or more baths. Call us for more details or for an appointment to look. These homes are priced from \$16,500 to \$30,000. \$\$\$  
Nice 2 bedroom frame, with attached garage, and utility. Carpet in living room and hall. Price \$10,250. Has a \$7,700 GI loan at 4 1/2%, payable \$63.00 a month, taxes and insurance included. You should see this one. \$\$\$  
1-4 room house and bath, and 1-2 room house and bath. Both are in good condition, located on a 100 X 150 foot lot. These houses will make good rentals. Price \$6,500, by \$1,000 down and \$75 month on balance. \$\$\$  
**WE SPECIALIZE IN SALES AND TRADES. WHY NOT TRADE WHAT YOU HAVE FOR WHAT YOU WANT.** \$\$\$  
**J. H. HAMBY REAL ESTATE**  
1221 Hiway 60  
Office EM 4-1345  
Gerald Hamby Res. EM4-1534  
J. M. Hamby Res. EM4-2553  
B-4-9-TFP

**5. WHY PAY RENT???**  
320 A, 265A good land in cultivation, 2-8" wells, improved. 60A wheat goes, immediate possession. Price \$210 per A. \$27,500 down, balance \$2,000 plus interest per year. \$\$\$  
154A on paving, 1-8" and 1-6" well no natural gas. Some underground tile, improved. 130A of nice land in cultivation. 15A wheat and 15A barley goes. 32A cotton allotment, A plan. Only \$10,000.00 down. balance good terms. \$\$\$  
FOR RENT: Used TV \$5.00 a week includes delivery and service. Streu Hardware.  
B-5-13-23-tfc

FOR RENT: Two bedroom house unfurnished, for white couple only. Call EM4-1458.  
B-5-12-4-tfc

FOR RENT: Vacant March 1st 708 North Miles Avenue. Two bedroom unfurnished duplex, whites only. Inquire at 707 North Miles or Call EM4-3793.  
B-5-23-9-1P

SMALL Unfurnished one bedroom house - fenced yard - attached garage. Whites only EM4-3778.  
B-5-12-35-tfc

FOR RENT: Bedroom with private entrance, bath. Panel heat. Clothes Closet. Has twin beds. Ten dollars per week one person; fifteen per week for two. Call EM4-2495. Mrs. C. R. Smith, 410 Jewell Ave.  
B-5-34-3-2c

SIX Room unfurnished house, vacant March 7th. 545 West Second. Phone EM4-0408, Before 8 or after 5.  
B-5-17-9-tfc

**OFFICE FOR RENT**  
317 Sampson  
**WESSON REAL ESTATE**  
Hereford, Texas  
Office Phone EM 4-1772  
Residence Phone EM 4-2654  
B-5-9-2C

**6. WANTED**  
WANT TO BUY feeder steers and heifers for present and future delivery. J. C. Bellah OLS-2672 Nights, Box 596 Canyon, Texas.  
B-6-21-32-17p

WANTED Sorghum A 1 m m Seed. Top price paid James Reneau; Lela, Texas.  
B-6-11-8-5p

WOULD LIKE to keep books in my home and do extra typing. Call-EM4-0059.  
B-6-14-8-tfc

WANTED Wheat, barley, or dry land maize pasture for cattle. Contact Mrs. O. G. Hill Sr. EM 4 - 0034.  
B-6-17-46-tfc

**BLOT OUT YOUR WORRIES. YOU CAN HEAR A SIXTY SECOND MESSAGE. DIAL EM-4-0230.**  
B-4-28-TFC

**HOMES**  
Real nice 2 BR near Schools, only \$6,500. This is a bargain. \$1,500 down. 00000  
2 BR home on Knight St. price lowered to \$6,500. Owner has \$3,000 equity and will trade for farm machinery or truck. 00000  
2 houses (1 rent house in rear) only \$7,500. Located near School & shopping center. Ideal for couple who would like an income. See us for details. 00000  
2 BR brick on Star St. Has everything. A real honey and priced right. Shown by appointment only. 00000  
If you want near schools, we have one of the best, 3 BRs, 1 1/2 baths, large kitchen, den, carpeted throughout. Central heat, refrig. Air, large two car garage. Must see to appreciate. 00000  
Extra well improved 1/2 Sec. Two strong wells on Nat. Gas. Will sacrifice for \$245 A. 00000  
2570 A. Ranch near Memphis, Tex. 250 Cult. (80 A Cotton) Bal. Grass with live water. Well improved. \$52.50 A. 00000

**7. CLOSE TO HEREFORD!**  
148 acres, South-East 4 miles, 93 acres in cult. & 55 acres in grass (Lake). 16 (A plan) cotton. 25 A. wheat. 8" well (1/2 pipe) MM Motor goes. Nat. Gas. 1,200 Ft. Tile Natural gas. 1,200 ft. tile \$128.50 per acre with only \$7,500 down.  
**GOODMAN-CROCKER**  
Phone WYdown 5-3492  
Tulia, Texas  
B-4-34-4C

**MR. FARMER!**  
Why not trade your farm for a Motel? We specialize in Sales and Trades on Motels, large and small. Some for 29% down. List your farms & property with us. See us! Justice Real Estate. Lucky U Motel.  
B-4-50-TFC

**8. \$\$\$\$\$\$\$\$ ONE MILLION DOLLARS**  
To lend on irrigated land in Deaf Smith, Castro, and Parmer Counties.  
**SAM NUNNALLY**  
EM 4-0555 EM 4-2814  
**LONE STAR AGENCY**  
B-4-1-104P

**9. SITUATIONS WANTED**  
WILL KEEP pre-school children in my home by hour or day. Mrs. Glenn Watts, Phone EM4-2084.  
B-9-16-9-4c

**10. NOTICE**  
**CLINTON**  
Sales & Service  
Complete Service and Repairs on all air cooled Engines & lawn mowers.  
**BLANTON BUTANE, INC.**  
Phone EM 4-0220  
B-10-7-TFC

I WILL NOT be responsible for debts made by anyone but myself. - Leroy Morrison.  
B-10-14-27-3p

**NEW POLAROID CAMERAS** one minute finished pictures. Pay a small down payment and enjoy your camera NOW. Roger's Drug.  
B-10-19-3-tfc

**HOLLINGSWORTH MOTOR SERVICE**  
Magneto's, Starters and Generator Repair. Electric Pressure Pump Motors.  
307 E. Third Ph. EM 4-3545  
B-10-53-TFC

FOR SALE Plastic Supplies, flower molds, wall plaque molds, art supplies of all kinds, Carters Paint and Wallpaper. 509 Park Avenue. Phone EM4-2454.  
B-10-27-33-8c

**See Us For KA MINNEAPOLIS-MOLINE DISC HARROWS**  
13 1/2 Ft. Widths  
**DAVIS IMPLEMENT COMPANY**  
144 W. 2nd Phone EM 4-2811  
B-10-35-TFC

**11. Business Services**  
**A New Service Allied Plastering Co.**  
P. O. Box 480  
304 3rd St., Canyon, Texas, Olive 5-3519  
FREE Estimates from plans or on the job.  
LATH, PLASTER, STUCCO, CUT STONE, CAST STONE, RESIDENTIAL, COMMERCIAL NEW OR OLD PATCHING OR REPAIR.  
**Material and Workman Guaranteed**  
B-11-32-TFC

**OWENS and HOLLINGSWORTH**  
Electric Irrigation Motors - Controls. Service-Sales-Repairs  
307 E. Third - Hereford, Texas  
Ph. EM 4-3545 or EM 4-3572  
B-11-53-TFC

FOR YOUR KIRBY Vacuum Service and repairs call EM 4-1594.  
B-11-9-33-6p

**FOR GENERAL BUILDING AND REPAIRS SEE US**  
We do all types of work Building & Remodeling Storm Cellars  
Roofing Electrical  
Stucco Dashing  
Interior Decorating Outside Painting  
Perfataping Textoning  
**DURWARD HAMBY**  
Ph. EM4-3685 611 Blevins  
B-11-49-tfc

**WATER WELLS DRILLED** deeper. Windmill work. Pressure systems repaired. J. E. Turner, Phone EM4-2194.  
B-11-13-35-13P

IT IS NEW. IT IS INTERESTING. DIAL EM 4-0230 EACH DAY. INVITE A FRIEND TO DO LIKEWISE.  
B-11-28-TFC

**PORTABLE DISC ROLLING.** Scalloped or plain. Jacobsen Brothers. Phone EM4-1543.  
B-11-10-23-tfc

**INCOME TAX SERVICE.** B. Lee Cocanogher, 108 West 8th. B-11-9-28

**PORTABLE DISC ROLLING.** Call EM 4-1842. Ralph Paul.  
B-11-9-35-tfc

**ROBINSON CONSTRUCTION CO.**  
John P. Robinson  
Phone EM 4-1178  
703 E. Fourth Street  
\*Dirt Moving \*Caliche Work \*Farm Leveling \*Terracing, etc.  
B-11-31-TFC

**FREE REMOVAL** of dead stock call EM 4-0264 Hereford or DR 2-3655 collect. Amarillo Rendering Co.  
T-11-14-23-tfc

**Member-Texas Press Association**  
**Member National Editorial Assn.**  
**Member Associated Press**

**Our Slogan: "More People—More Farms"**  
**H. A. TUCK** News Editor

**JAMES M. GILLETTE** Publisher

**9. Situations Wanted**  
WILL KEEP pre-school children in my home by hour or day. Mrs. Glenn Watts, Phone EM4-2084.  
B-9-16-9-4c

**10. NOTICE**  
**CLINTON**  
Sales & Service  
Complete Service and Repairs on all air cooled Engines & lawn mowers.  
**BLANTON BUTANE, INC.**  
Phone EM 4-0220  
B-10-7-TFC

I WILL NOT be responsible for debts made by anyone but myself. - Leroy Morrison.  
B-10-14-27-3p

**NEW POLAROID CAMERAS** one minute finished pictures. Pay a small down payment and enjoy your camera NOW. Roger's Drug.  
B-10-19-3-tfc

**HOLLINGSWORTH MOTOR SERVICE**  
Magneto's, Starters and Generator Repair. Electric Pressure Pump Motors.  
307 E. Third Ph. EM 4-3545  
B-10-53-TFC

FOR SALE Plastic Supplies, flower molds, wall plaque molds, art supplies of all kinds, Carters Paint and Wallpaper. 509 Park Avenue. Phone EM4-2454.  
B-10-27-33-8c

**See Us For KA MINNEAPOLIS-MOLINE DISC HARROWS**  
13 1/2 Ft. Widths  
**DAVIS IMPLEMENT COMPANY**  
144 W. 2nd Phone EM 4-2811  
B-10-35-TFC

**11. Business Services**  
**A New Service Allied Plastering Co.**  
P. O. Box 480  
304 3rd St., Canyon, Texas, Olive 5-3519  
FREE Estimates from plans or on the job.  
LATH, PLASTER, STUCCO, CUT STONE, CAST STONE, RESIDENTIAL, COMMERCIAL NEW OR OLD PATCHING OR REPAIR.  
**Material and Workman Guaranteed**  
B-11-32-TFC

**OWENS and HOLLINGSWORTH**  
Electric Irrigation Motors - Controls. Service-Sales-Repairs  
307 E. Third - Hereford, Texas  
Ph. EM 4-3545 or EM 4-3572  
B-11-53-TFC

FOR YOUR KIRBY Vacuum Service and repairs call EM 4-1594.  
B-11-9-33-6p

**FOR GENERAL BUILDING AND REPAIRS SEE US**  
We do all types of work Building & Remodeling Storm Cellars  
Roofing Electrical  
Stucco Dashing  
Interior Decorating Outside Painting  
Perfataping Textoning  
**DURWARD HAMBY**  
Ph. EM4-3685 611 Blevins  
B-11-49-tfc

**WATER WELLS DRILLED** deeper. Windmill work. Pressure systems repaired. J. E. Turner, Phone EM4-2194.  
B-11-13-35-13P

IT IS NEW. IT IS INTERESTING. DIAL EM 4-0230 EACH DAY. INVITE A FRIEND TO DO LIKEWISE.  
B-11-28-TFC

**PORTABLE DISC ROLLING.** Scalloped or plain. Jacobsen Brothers. Phone EM4-1543.  
B-11-10-23-tfc

**INCOME TAX SERVICE.** B. Lee Cocanogher, 108 West 8th. B-11-9-28

**PORTABLE DISC ROLLING.** Call EM 4-1842. Ralph Paul.  
B-11-9-35-tfc

**ROBINSON CONSTRUCTION CO.**  
John P. Robinson  
Phone EM 4-1178  
703 E. Fourth Street  
\*Dirt Moving \*Caliche Work \*Farm Leveling \*Terracing, etc.  
B-11-31-TFC

**FREE REMOVAL** of dead stock call EM 4-0264 Hereford or DR 2-3655 collect. Amarillo Rendering Co.  
T-11-14-23-tfc

**Member-Texas Press Association**  
**Member National Editorial Assn.**  
**Member Associated Press**

**Our Slogan: "More People—More Farms"**  
**H. A. TUCK** News Editor

**JAMES M. GILLETTE** Publisher

**9. Situations Wanted**  
WILL KEEP pre-school children in my home by hour or day. Mrs. Glenn Watts, Phone EM4-2084.  
B-9-16-9-4c

**10. NOTICE**  
**CLINTON**  
Sales & Service  
Complete Service and Repairs on all air cooled Engines & lawn mowers.  
**BLANTON BUTANE, INC.**  
Phone EM 4-0220  
B-10-7-TFC

I WILL NOT be responsible for debts made by anyone but myself. - Leroy Morrison.  
B-10-14-27-3p

**NEW POLAROID CAMERAS** one minute finished pictures. Pay a small down payment and enjoy your camera NOW. Roger's Drug.  
B-10-19-3-tfc

**HOLLINGSWORTH MOTOR SERVICE**  
Magneto's, Starters and Generator Repair. Electric Pressure Pump Motors.  
307 E. Third Ph. EM 4-3545  
B-10-53-TFC

FOR SALE Plastic Supplies, flower molds, wall plaque molds, art supplies of all kinds, Carters Paint and Wallpaper. 509 Park Avenue. Phone EM4-2454.  
B-10-27-33-8c

**See Us For KA MINNEAPOLIS-MOLINE DISC HARROWS**  
13 1/2 Ft. Widths  
**DAVIS IMPLEMENT COMPANY**  
144 W. 2nd Phone EM 4-2811  
B-10-35-TFC

**11. Business Services**  
**A New Service Allied Plastering Co.**  
P. O. Box 480  
304 3rd St., Canyon, Texas, Olive 5-3519  
FREE Estimates from plans or on the job.  
LATH, PLASTER, STUCCO, CUT STONE, CAST STONE, RESIDENTIAL, COMMERCIAL NEW OR OLD PATCHING OR REPAIR.  
**Material and Workman Guaranteed**  
B-11-32-TFC

**OWENS and HOLLINGSWORTH**  
Electric Irrigation Motors - Controls. Service-Sales-Repairs  
307 E. Third - Hereford, Texas  
Ph. EM 4-3545 or EM 4-3572  
B-11-53-TFC

FOR YOUR KIRBY Vacuum Service and repairs call EM 4-1594.  
B-11-9-33-6p

**FOR GENERAL BUILDING AND REPAIRS SEE US**  
We do all types of work Building & Remodeling Storm Cellars  
Roofing Electrical  
Stucco Dashing  
Interior Decorating Outside Painting  
Perfataping Textoning  
**DURWARD HAMBY**  
Ph. EM4-3685 611 Blevins  
B-11-49-tfc



Peggy Allen  
... lady wrestler

**Lions Announce Wrestling Card**  
The ugliest woman in the world will be featured on the Lions Club wrestling card in Deaf Smith County Bull Barn

**Political Calendar**  
FOR Representative 96th Legislative District:  
JESSE M. OSBORN  
Tax Assessor-Collector:  
D. H. ALEXANDER  
HARRY McCAULEY  
LANELLE MOBLEY MILLER  
WALLACE SHELTON  
County Sheriff:  
L. R. CHERRYHOMES  
LOWELL SHARP  
County Attorney:  
J. EDWARD LINE  
Commissioner, Precinct 11:  
W. H. ANDREWS  
C. C. BOWMAN  
WILLIAM S. DAMERON  
E. W. DOOL  
A. N. HOPSON  
CHAS. SOWELL  
Commissioners, Precinct 31:  
J. T. GUINN  
BURNIE NORTHCUTT  
69th District Attorney:  
WILLIAM HUNTER  
SAMUEL H. WILDS  
th Legislative District  
BILL SHELBY

**Hereford Rotary Club**  
meets every Monday at 12:05 Hotel Jim Mill

**Kiwanis Club**  
Thurs. Noon  
100F Hall  
207 E. Sixth

**OPTIMIST CLUB**  
Meets Tuesday Noon in the 100F Hall

**Lions Club**  
meets each Wednesday, 12 noon Hotel Jim Mill

Swine Enteritis - Swine Pneumonia - Calf Scours

**Combat these diseases quickly with the NEW AUREOMYCIN®**  
Chlortetracycline  
**SOLUBLE**  
in the milk or drinking water

Mix the recommended amount of highly palatable AUREOMYCIN Soluble in milk, milk replacer or water. It dissolves quickly, completely! Give it as an aid in the prevention of enteritis in pigs - and "scouring" in calves. Use it to treat these diseases and pneumonia in pigs. AUREOMYCIN Soluble is easy to mix. Easy to regulate dosage. Keep a supply on hand!

**CHECK-R-MIX**  
**PACKARD**  
Milling Co.

**The Hereford Brand**  
Published Every Thursday at 336 Main St.



# Hospital Notes

**Patients In Hospital**  
Mrs. M. H. Wiseman, 213 Kibbe; Mrs. Arnold Betzen, Rt. 4; Mrs. Earline Ross, Box 112; Mrs. George Olson, Rt. 3; William Murphy, Vega; Ann Shep-

pard, 110 Ave D; Ralph Urteaga, Gen. Del.; Phillip Miller, Rt. 4; Mrs. Orby Hensley, Amarillo; Mildred L. Ramey, 300 Ave. B; Bartley Dowell, 131 Ave. A; Joe A. Madina, Box 293; M. E. Day, Jim Hill Hotel.

**Patients Dismissed**  
Will Norman, Glenn P. Boardman, Floyd Paul Stambough, Mrs. H. M. Thomas, Morris W. Blankenship, Harold Dwight Dal-

Louisa Rameriz, Phillip Craig Sorley, Rodolfo Briviesca, Edgar Benton Berryman, Mary Mutter, Richard Lucero, 2-28.  
Roy Lee Conard, Mrs. Jack Ward, Bart Wesley West, 2-29.  
Sandy Odell White, Mrs. Darrell Blanton, 3-1.

## Look Who's New!

Mr. and Mrs. Halanio Garcia are the parents of a boy born Wednesday, March 2, at 6:09 a. m., and weighing seven pounds and eight and one-half ounces.



### By JIMMIE GILLENTE

Once upon a time there was considerable argument in these parts as to whether the automobile would replace the horse. Miles Roberson was one of the boys who believed the horse would always have his place and, so far as I am concerned, Miles wins the argument, hands down. He was showing me an article in the February issue, Western Livestock, where Edd Thomas sold a quarter horse (Hug Bars) for \$42,000.

The most interesting thing about this sale, though, is the fact that Edd Thomas is a former local resident. He is the son of Zerrell Thomas and a brother of Wayne Thomas. The Thomas family lived out in the "Boxcar" country and the boys attended school at Adrian. Edd now lives at Lamar, Colo., and breeds some of the finest quarter horses in that section. Western Livestock says that the recent sale is one of the four highest on record. Local horse fanciers can point with pride to another local breeder, O. G. Hill Jr., who has established a tremendous record with his famous "Show Down".

Back to the old argument, how many cars have you seen sell for \$42,000? Without extras? The horses may have automatic shift and two-tone finish, but when you throw in heater, radio, extra tire, seat covers, bumpers and steering apparatus, you get the figure right on up there; probably pretty close to \$43,000. I still think Miles wins.

Jim Roberts says you just can't win sometimes. He threw a big round - the - clock sale and stayed open 24 hours on Leap Year Day, including a free breakfast Monday morning. However, he forgot to exclude barbers and those boys in the shop next door grazed through his generosity all day. Jim sent Abe Martin and Charley Morris a bill for \$5.60. Charley tells me

that they are going to pay him the \$5. part - with a check they are holding. The check is signed "Fidel Castro", and was returned a couple of months back with a stamp which read, "No Account".

R. J. Cramer seldom talks about his exploits, and not too many people realize that he is one of the best shotgun marksmen in the country. Among his other accomplishments is the Panhandle Championship for trap - shooting in 1954. The national association keeps a record of all official shooting and Mr. Cramer has an average of around 96 - out - of - 100 birds for the past 30 years. During this time he has exploded something like 175,000 clay pigeons, and has killed more quail than you could probably crowd into an ordinary railroad freight car.

Back when Mr. Cramer started competition shooting, you could buy a case of shells for \$16.75. Similar shells now cost \$44.80 a case. The shooting meets operate sort of like rodeos, however, and he always managed to finish in the money to the point that he figured more than broke even - after deducting travel costs, lodging, food and ammunition. In addition, he has boxes of medals and awards and enjoyed a lot of wonderful trips all over the country, including several national meets, where he more than held his own. More than once he has smashed 200 "birds" without a single miss.

A lot of people are beginning to crack under all of this moisture and cold weather. Folks out in these parts just aren't conditioned for it. This is especially true when it comes to youngsters who have been reared in this section. Jackie Allmon was pleading with me this week to please predict some "sunshine and sandstorms". He wants them as soon as possible but - like I said last November and December - we are due for some more sleet, rain and snow in March. Some pretty days will creep in before the tornado whistles start blowing, but they won't be the rule. Meanwhile, if your overcoat smells like mothballs, it is your own fault.

Slim Wester is making weather predictions these days. "I predict a scorcher by the end of the week," declared Slim Tuesday. "It may even get up to 18 degrees!"

The lowest blow of all came this week when Chamber of Commerce Manager Bill Thompson sneaked out and bought a snow shovel. He is doing his best to keep it quiet, even to the point of coming down early and using it before other folks get stirring, but the fact remains: "Our C. of C. does own a snow shovel!" Texas may not ever be as big as Alaska, but if this weather con-

tinues, we are going to be just as cold.

Frank Bezner, a dyed in the wool Rotarian, went to Truth Or Consequences, N. M., with Lion Earl Springer. Frank has been keeping up his Rotary attendance religiously, but Springer wanted to play golf and Frank, a non-golfer, felt obligated to help him find an opponent. He spent all morning hunting a victim, missed his Rotary make-up, and finally took Earl out to the golf course around 2:30 p. m. in hopes of finding a stray golfer. He did, too. The fellow was president of the Truth Or Consequences Rotary Club and, when he spotted the two Hereford men, said: "Gosh, I'm glad to find someone to go around with. I asked everyone at Rotary Club, but they were all tied up for the afternoon."

Other places do seem as over-organized as Hereford. Some Braag reader in Littlefield mailed me a clipping from the Sulphur Springs Echo in Hopkins County. The item says the same people are expected to attend four to five meetings a day in that area. No one, so far, seems to have come up with a good solution. Personally, I figure that Americans just plain like to go to meetings.

## Program Given By Rotary Anns

The Rotary Anns, wives of Hereford Rotary Club members, presented the program at the noon meeting of Rotarians Monday in the ballroom of the Jim Hill Hotel. Mrs. Ronald Babione was program speaker. Ruby Carmichael led singing, and Eddie Gallagher played selections on the piano.

## Services Set For Hereford Woman

Funeral services were pending Wednesday for Mrs. Nannie Turner, 89, of Star Route in Hereford. The services will be held in Portales, N. M. Mrs. Turner died in Deaf Smith County Hospital Tuesday at 10:30 p. m. She was born in Springfield, Mo., Dec. 17, 1870, and had been residing with her son, Fred Turner, of Hereford. Three children preceded her in death. Survivors, other than her son, include two brothers, W. T. Cordill of San Gabriel, Calif., and Eli Cordill of Merkel; 11 grandchildren, several great-grandchildren and two great-grandchildren. Arrangements in Hereford were under direction of Marcum - Scott Funeral Home, DOWNTOWN PROGRESS. ST. LOUIS (AP) - An historic old house, once the home of the son of Gen. William Clark of the Lewis and Clark expedition, is another victim of overcrowding. The mansion, called "Minoma," is to be torn down to make room for a housing development. A tower on the old mansion was used as a lookout post for Indians. Jefferson Clark, son of Gen. Clark, lived for many years in the mansion. The American Bowling Congress has 3,250,000 male members.

## Courthouse Records

**Vehicle License**  
Burke Inman, 1946 Platform, 1948 Hobbs, 1948 Trailer; 1946 Trailer, 1956 Platform, 1952 Platform, 1952 Hobbs; Larry Kaul, 1957 Chevrolet Pk. up; V.E. Dodson, 1955 Tr. House; Jack Weaver, 1944 Platform; Reinauer Bros., 1960 Imperial; Jerry Carr, 1951 Plymouth; H. D. Gholson, 1954 Buick.

**Warranty Deeds**  
C. H. Lavall Ludwig Kovacs; S. 8.71 ft. of E 100 ft. of Lot 4, Blk. 3, Womble Add.

**Deeds Of Trust**  
Edwin Morrison, et ux, to Hal Weatherford; E½ and NW¼ of

Sec. 24. Manuel Celaya, et ux, to Hereford Texas Federal Credit Union; Lot 15, Blk. 5. **Marriage License**  
Paul Sone Rogers and Mrs. Willie Lucille Ownby, 2-29.

**CARD OF THANKS**  
We wish to express our sincere appreciation for all the kindness and sympathy extended by our friends and neighbors since the death of our baby. — Mr. and Mrs. Richard Fortenberry and family

A total of 750 horses figured in the purse distribution during the 1959 Monmouth Park meeting at Oceanport, N. J.

## BETTER-BRAKES...BUICK '60



## BRAKES HATE HEAT!

Buick's fin-cooled Aluminum Drums get rid of heat quicker so you're safer!

Brakes generate their own worst enemy—terrible heat. Excessive heat is bad because it may cause brakes to lose part of their effectiveness. So the faster you can dissipate it, the better off you are. Buick gets rid of heat faster by using fin-cooled brake drums. On the front wheels, where most of the braking is done, the drums are aluminum. They cost more to make but they shrug off heat much faster than drums made of ordinary

metal. Buick is the only American car that makes them standard, at no extra cost, because you will be safer with them.

Best time to buy a Buick '60 is now because you will get top dollar on your old car and have a wide selection of colors and body styles from which to choose. You can own a quality Buick for less than you might think, and your Buick Dealer can arrange terms to suit your budget.

TAKE A TURN IN A TURBINE DRIVE BUICK '60  
**OSBORN BUICK CO.**

142 N. Miles Hereford EM 4-0990

# SPECIAL

Stock Up Now!

# 0-20-0

DRY FERTILIZER

\$ 37<sup>00</sup> TON

IN TRUCK LOAD LOTS!

# WHEELER FERTILIZER

Phone EM 4-2866

cover...  
**UGLY CRACKS**  
with Beautiful  
**CEILING TILE**  
THE IDEAL CEILING TREATMENT

Beautiful... Easy-To-Appl  
Here is the ideal way to beautify and improve problem ceilings. Anyone handy with tools can easily install ceiling tile. It's economical tool 15c Sq. Ft.

TILE TO SUIT ANY DECORATING SCHEME

**Carl McCaslin LUMBER CO.**  
A Complete Building Service  
1 Block East of the Courthouse  
Phone the Lumber Number EM 4-3434

## DINE OUT OFTEN

at the

# HOTEL JIM HILL

## COFFEE SHOP

### Menu For Sunday, March 6

Choice of  
Cream of Chicken Soup or Chilled Tomato Juice

Choice of  
Lettuce & Tomato, Cottage Cheese with Pear, Tossed Green or Hawaiian Jello Salad.

**GRILLED STEAK DINNER**  
With Onion Ring ..... \$1.75

**ROAST PRIME RIB**  
Of Choice Beef, Au Jus ..... \$1.75

**VIRGINIA BAKED HAM**  
Pineapple Sauce ..... \$1.50

**BAKED TURKEY AND DRESSING**  
Giblet Gravy ..... \$1.35

**½ PAN FRIED SPRING CHICKEN**  
Toast & Honey ..... \$1.25

**OVEN BAKED HALIBUT STEAK**  
Lemon Butter ..... \$1.25

**FRENCH FRIED JUMBO SHRIMP**  
Cocktail Sauce ..... \$1.15

Choice of  
Snowflake Potatoes or Candied Yams

Choice of  
Green Beans, Whole Kernel Corn or Buttered Cauliflower

Choice of  
Strawberry Shortcake with Whipped Cream, Chocolate Nut Sundae, Pecan Pie, Ice Cream, Sherbet.

**CHILD'S PLATE** ..... 50c

Served with Salad, Potatoes, Vegetable and Snowman.

2 Drum Sticks, Cream Gravy  
Jumbo Shrimp Cocktail Sauce  
Chuck Wagon Steak, Country Gravy

We Have Discontinued the Smorgasbord formerly served every Sunday afternoon.

Complete Merchant's Lunch  
During Weekdays

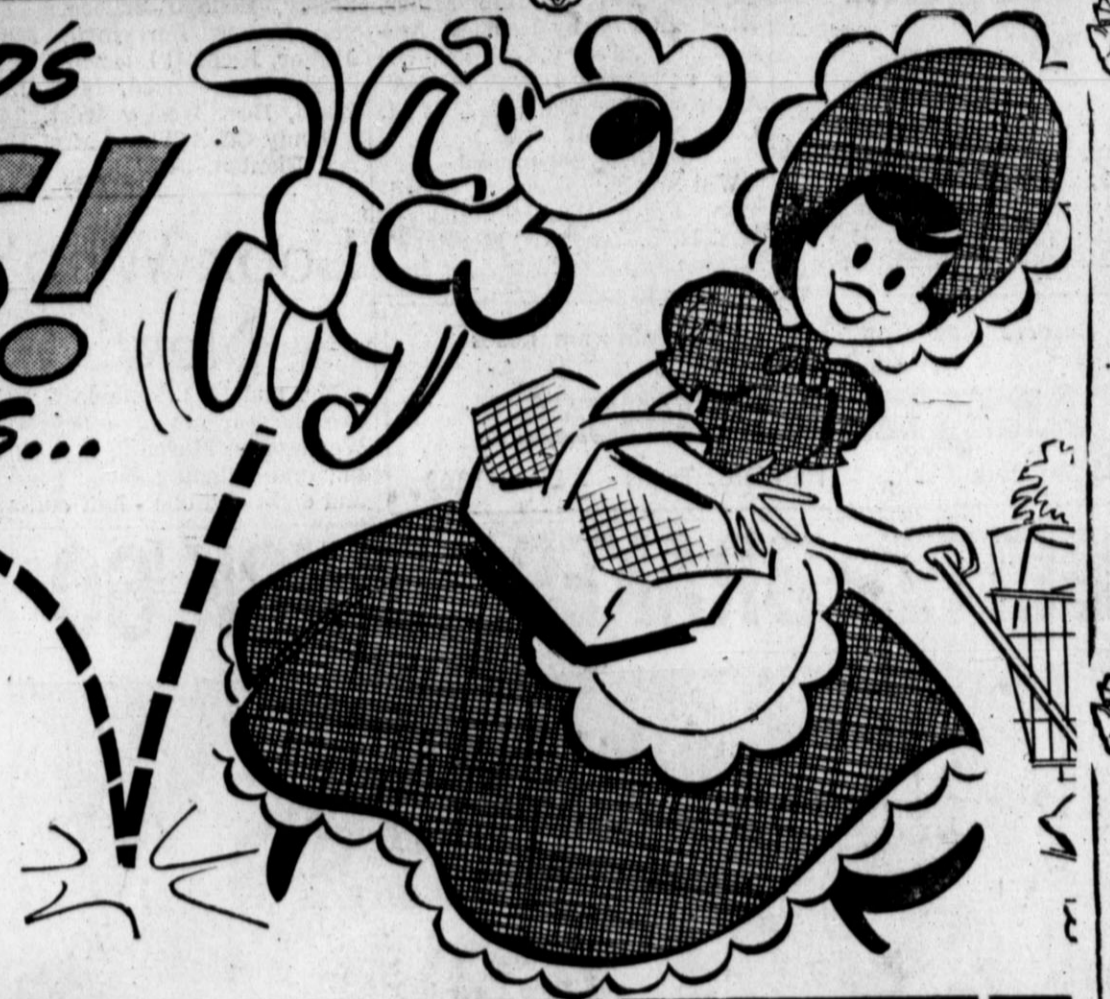
# HOTEL JIM HILL

Coffee Shop



PIGGLY WIGGLY PIGGLY WIGGLY PIGGLY WIGGLY PIGGLY WIGGLY PIGGLY WIGGLY

DON'T MISS SHURFINE YOUNG MOTHER HUBBARD'S  
**LEAP YEAR SPECIALS!**  
 WON'T BE ANYTHING LIKE IT 4 YEARS...



Now at

PIGGLY WIGGLY

**"LIVE FREE for a MONTH"**

Piggy Wiggly's Prize Drawing!

A Month's Free Living . . . and Piggy Wiggly picks up the tab! Nothing to buy, no "slogans" or limericks, no coupons or package tops . . . just visit PIGGLY WIGGLY, drop your name in the box and YOU may be the winner. Register as often as you like — every time you visit PIGGLY WIGGLY your chances increase.

- \$125 for Food from Piggy Wiggly
- \$85 for Rent and Mortgage Payment
- \$75 For Car Payment
- \$25 For Gas And Oil
- \$15 for Family Dry Cleaning and Laundry
- \$10 for Telephone
- \$10 for Baby Sitter
- \$10 for Movies and other entertainment
- \$10 for Gas and Electricity
- \$5 for Water

DRAWING WILL BE HELD SATURDAY, MARCH 26th!

Sale Ends March 5th

**COFFEE**

Folger's Instant 30c Off 10 Oz. Jar **\$1.29**

**EGGS**

B. F. Cain Medium Grade A

3 DOZ. **\$1**

**CHILI**

Wolf Brand No. 2 Can

**59c**

**BABY FOOD**

Gerber's Strained Fruits And Vegetables

12 FOR **\$1.00**

**ORANGE JUICE**

Shurfine Frozen 6 Oz. Cans

7 FOR **\$1.00**

**TOILET TISSUE**

Soffin

4 ROLLS **25c**

**TOMATO JUICE**

Shurfine 46 Oz. Cans

4 FOR **\$1.00**

**FLOUR**

Shurfine 25 Lb. Print Bag

**\$1.59**

**TUNA**

Shurfine Chunk Style

4 FOR **\$1.00**

**MILK**

Shurfine Tall Cans

8 FOR **\$1.00**

**WESSON OIL**

QUART BOTTLE **49c**

**PARKAY**

KRAFTS MARGARINE 2 lbs. **49c**

**TREND**

POWDER DETERGENT GIANT SIZE **49c**

**LIQUID TREND**

GIANT SIZE **49c**

**Oranges** Sunkist **6 FOR \$2.29**

**Sweet Potatoes** Portales Lb. **10c**

**Squash** Yellow St. Neck **2 LBS \$3.50**

**Lemons** Sunkist Good For Colds or Flu Doz. **35c**

**COFFEE** Shurfine Reg. or Drip Lb. Can **59c**

the **FINEST MEATS** at PIGGLY WIGGLY

**BACON** Cudahy Nutwood **2 LBS \$2.89**

**Lunch Meat** Armour's Spiced Lb. **49c**

**Chopped Ham** Armour's Lb. **59c**

**Sliced Ham** Lean No Waste Lb. **89c**

**BISCUITS** Shurfresh Easy Open **12 FOR \$1.00**

- Shurfine, 3 Lb. Can **SHORTENING** 59c
- Shurfine, 10 Lb. Paper Bag **FLOUR** 69c
- Shurfine, Bartlett Halves, No. 303 Can **PEARS** 4 for \$1
- Shurfine, All Green Cut, No. 300 Can **ASPARAGUS** 4 for \$1
- Shurfine, Whole Blue Lake, No. 303 Cans **GREEN BEANS** 4 for \$1
- Shurfine, Small Whole, No. 2 Cans **SWEET POTATOES** 4 for \$1
- Shurfine, 28 Oz. Jar **APPLE BUTTER** 4 for \$1
- Shurfine, Elbertas, No. 2 1/2 Cans **PEACHES** 3 for \$1
- Shurfine, Red, Sour Pitted, No. 303 Cans **CHERRIES** 5 for \$1
- Shurfine, No. 303 Cans **FRUIT COCKTAIL** 5 for \$1
- Shurfresh, Lb. Cartons **MARGARINE** 6 for \$1

- Elmdale **BROOMS** each \$1.19
- Shurfine, No. 303 Cans **APPLE SAUCE** 6 for \$1
- Shurfine, Early Harvest, No. 303 Cans **PEAS** 6 for \$1
- Shurfine, 14 Oz. Jars **CATSUP** 6 for \$1
- Shurfine, Solid Pack, No. 303 Cans **TOMATOES** 6 for \$1
- Shurfine, No. 303 Cans **BEANS & POTATOES** 6 for \$1
- Soffin, 400 Count **FACIAL TISSUE** 6 for \$1
- Shurfine, 12 Oz. Jars Strawberry **PRESERVES** 3 for \$1
- Shurfine, 18 Oz. Jar **PEANUT BUTTER** 49c
- Shurfine Whole Kernel or Cream Style No. 303 Cans **CORN** 7 for \$1

- Shurfine, 24 Oz. Jar **GRAPE JUICE** 3 for \$1
- Shurfine, No. 303 Cans **SPINACH** 8 for \$1
- Roxey, Tall Cans **DOG FOOD** 12 for \$1
- Shurfine, Stuffed Manz. Thrown **OLIVES** 45c
- Liquid Detergent, 22 Oz. **ENERGY** 39c
- Shurfresh, 2 Lbs. **CHEESE SPREAD** 69c
- Shurfine, No. 300 Cans **PORK & BEANS** 10 for \$1
- Shurfine, Fresh Shelled No. 300 Cans **BLACKEYES** 8 for \$1
- Shurfine, 24 Oz. Jars **WAFFLE SYRUP** 2 for 69c
- Shurfine, Quart **SALAD DRESSING** 39c
- Powder Detergent, Giant Box **ENERGY** 49c

You Save More At Your

**PIGGLY WIGGLY**

STORE

Plus Valuable S & H Green Stamps

PIGGLY WIGGLY PIGGLY WIGGLY PIGGLY WIGGLY PIGGLY WIGGLY PIGGLY WIGGLY





OFFICERS ELECTED Sunday for the newly-formed Cornhuskers' Club in Hereford include, from left: Don Baugous, vice president; Rosalee Saul, secretary-treasurer; and Grant Hanna, president. There were 53 present for the luncheon meeting, held in the First National Bank community room. (Staff Photo)

REP. WALTER ROGERS WRITES:

# Sugar Act Should Be Hot Issue

To the people of the 18th District:

The question of whether or not the Sugar Act should be renewed for one year may turn out to be one of the hottest issues during this session of Congress, the reason being that Cuba furnishes about one-third of the sugar used in this country. In round figures, Cuba last year furnished 3,215,457 short

tons (raw value) of the United States consumption of 9,400,000 tons. In fact, we buy more sugar from Cuba than from any other source, including all the sugar produced in this country. The final adjusted quotas for 1959 were as follows:

Domestic Beet	2,267,665
(short tons, raw value)	
Mainland Cane	697,783
Hawaii	977,970
Puerto Rico	969,875
Virgin Islands	12,405
Philippines	980,000
Cuba	3,215,457
Full Duty	278,845
Total	9,400,000

Hawaii, Puerto Rico and the Virgin Islands, because of droughts or other causes, were unable to meet their original quotas by almost 390,000 tons. This deficit was divided up between the domestic beet growers and the mainland cane growers and Cuba.

The domestic beet growers got 224,185 tons, mainland cane growers got 68,984 tons, and Cuba got 95,802 tons.

It will be noted in the table above that Cuba is being permitted to provide approximately 250,000 short tons more than the domestic beet growers and the mainland cane growers thrown together are allowed to produce. In fact, this country, together with Hawaii, Puerto Rico and the Virgin Islands, which are all a part of this country, produce less than 55 per cent of our sugar needs.

One of the reasons argued in support of this law is that sugar can be purchased from Cu-

ba at a much lower price than it can be produced in this country, even though a premium above the world price is being

## Meet Your... Neighbors

Hereford, Texas, Thursday, March 3, 1960 Section Two

C of C SCOUT

### 'Deaf' Smith Says

(Editor's Note: In his weekly letters to Sam, "Deaf" Smith will tell all he hears in connection with Chamber of Commerce activity. And what he doesn't hear, C of C manager Bill Thompson will supply additional information. Speak up, Sam; what's that you say? You want to know how the Chamber of Commerce helps country folks?)

Sam, a lot of people have asked that question. The farmers have their Farm Bureau and the Farmers Union and they are doing a real good job promoting the farmers' interest in state and national farm legislation. Various government agencies provide professional help to the farmer.

The Chamber of Commerce right now is working full time on a project which helps the whole

area, but most particularly the farmer. I mentioned the sugar beet project last week in my report and that is still the big effort in my county. If the efforts of the sugar beet growers association and the Chamber of Commerce are successful there will be available a good cash crop for the farmer with an assured market.

The livestock men will benefit by providing a good, cheap feed for fattening cattle on the pulp left after processing, and the business men will have a year around payroll. It's the missing piece in the jig-saw puzzle for my county, Sam, and everyone is working together on it. Four different committees of the Chamber of Commerce are working on the project; the Legislative Committee, under Dr. Hap Cavness, the Agriculture Committee, under Luther Lesly; the Livestock Committee, under Jack Renfro and Dr. Barnett; and the Industrial Committee under Jimmie Gillentine.

What's that you say, Sam? Good people that mumble! You say you heard that there was going to be a feeding clinic and you want to be there? Sam, that clinic ain't for human feeding; that is, not directly, anyway. But a lot of ranchers will be eatin' better if they can develop better markets for heavy heifers and prime lambs. And that is just what this here feeding clinic is for.

Dr. Barnett's Commercial Livestock Committee is bringing in a group of real experts on Friday, March 11th, to help ranchers with feeding problems and to possibly establish a market here. The meeting is to be held in the Hotel Jim Hill.

So you see, Sam, a great deal of the effort of the Chamber of Commerce is going towards helping the farmers and ranchers in my county.

Yours truly, Erastus

paid to Cuba. In any event, the program definitely cuts down the number of acres of sugar beets and cane which can be grown in this country.

And it might be pointed out that it is generally accepted without question that this country could produce its sugar needs domestically without too much effort. In view of this situation and the feeling generally that the present government of Cuba has been hostile to this country and overly friendly to the USSR, there is a great deal of sentiment for a re-appraisal by this country of the entire sugar situation, especially the preferred treatment which has been accorded Cuba. There are several schools of thought, one being that the Congress should immediately act to withdraw any further grant of quotas or preferred treatment to Cuba.

Another is that the quota being enjoyed by Cuba at the present time should be measurably reduced and spread among other sugar producing countries. Still another is that the quota now held by Cuba should be measurably reduced and that portion given to mainland beet and cane growers.

There is still another to the effect that the matter should remain static, and that any and all increases in sugar demands of this country should be filled by increased acreage allotments to mainland beet and cane growers. Some argue that to take the entire quota away from Cuba or even to measurably reduce it would be playing into the hands of the Reds.

They feel that the Castro government would merely say to the world that the United States was punishing it for no good reason. Others feel that unless something is done to cut off or reduce the Cuban quota in the face of Cuba's recent actions which, taken at a minimum, have been definitely not friendly, this country could justifiably be accused of being soft.

Regardless of the school of thought to which anyone might subscribe, I think it could be unanimously agreed in this country that it is not to the best interest of this country to permit a Red-controlled government to be established practically at our front door, and certainly it is not to the best interests of this country to help finance the setting up of such a Red-controlled government, if that is what is happening. And many think just that.

Whatever happens, every consideration possible should be given to increasing the production by mainland producers.

Only 25 students at Gallaudet (Continued on Page 2)

### Ex-Nebraskans Organize Club

Former Nebraskans now living in this area gathered Sunday at the Friendship Room of First National Bank of Hereford to form the Cornhusker's Club.

A total of 14 families gathered for the initial meeting. Five other families eligible for membership were unable to attend.

Grant Hanna was elected president of the group and Don Baugous was named vice president. Other officers elected included Rosalee Saul, secretary-treasurer, and Mrs. Merlin Kaul and Mrs. Alva Neal, Publicity and entertainment committee.

The afternoon was spent in organization and relating experiences in Nebraska and the families' reasons for moving to Texas.

A picnic, to be held about the middle of August, was planned, and all former Nebraskans now living in the Texas Panhandle will be invited. Mrs. Jim Higgins was named as the former Nebraskan who has spent the longest time as a resident of Hereford.

Others in attendance were Mr. and Mrs. Alva Neal, Cindy, Candice, Mike and Sherry; Mr. and Mrs. Grant Hanna, Joette and Cindy; Mr. and Mrs. Merlin Kaul and Larry; Mr. and Mrs. Andy Batterman, Sandra, Linda and James;

Mr. and Mrs. Ralph McCullough and their guests, Mr. and Mrs. James Killian and Julia Ann of Lubbock; Mr. and Mrs. Edgar Roe, Joyce and Jeanette; Mrs. Rosalee Saul, Sam, David, Tommy and Brenda; Mr. and Mrs. Elmer Carlson; Mr. and Mrs. Lawrence Carlson, Jo Anne and Ray; Mr. and Mrs. Don Baugous, Allen Ray, David and Craig; Mr. and Mrs. J. C. McCracken; and Mr. and Mrs. John Albracht.

### Announce Goal of Social Security

Hal Geldon, manager of the Amarillo Department of Health, Education and Welfare, announced recently that one of the goals of the Social Security Administration is to pay benefits as promptly as possible to those local persons entitled to payments.

To do this, Geldon said, a person interested in claiming benefits should notify the Amarillo Social Security Office by letter approximately two months before retirement. This action will give the Amarillo Office and the person claiming benefits time to get the information and evidence together to establish his rights to the payment before the time his first check is due.

Generally, evidence will be required to prove the age of the retired person and the age of his wife. This may be a birth certificate established shortly after birth or other record of age that is old and reliable. Also, evidence of the worker's earnings for 1959 is necessary. This may be a copy of the income tax return for self-employed persons or the W-2 forms for wage earners.

Geldon again stressed that for prompt payment of the first social security check, "inquire before you retire" by writing the Amarillo Social Security Office.

Nine men have been named by Governor Daniel to the new, enlarged Texas Industrial Commission. He also gave them as their 1960 assignment the gaining of 254 new industries for Texas. (Continued on Page 2)

### AUSTIN HIGHLIGHTS

## Texans Worry: Will There Be Ample Water In 2010?

By VERN SANFORD AUSTIN. — We may have a muddy spring this year . . . but will there be enough water for Texans in 2010?

This is not a fantastic question, but one that Texas state and local officials, engineers and water planners are grappling with now. Out of their efforts come these items of news and views:

1. Gov. Price Daniel told a farm convention in Austin that Texas has made great progress in statewide water management in the past three years. But, he said, "much more remains to be done."

Water planning and development, said the governor, is essential to the state's growth and prosperity in the years ahead. 2. A series of three meetings will be held during March along the Colorado River and its tributaries to discuss water needs of those areas for the next 50 years.

Meetings will be held in conjunction with the U. S. Commission studying Texas' major river basins. They will be in Wharton March 8; Big Spring, March 15; and Austin, March 17. Colorado River Industrial Development Association (CRIDA) will sponsor the Austin and Wharton meetings, and the West Texas Chamber of Commerce the Big Spring Meeting.

3. State Board of Water Engineers called for a "time out" until March 8 on the longest-ever-water hearing. An issue in the hearings which began Nov. 2 is whether the Trinity River Authority and City of Houston shall be granted permits to build two downstream reservoirs on the Trinity.

Water Board, apparently getting short on patience, advised opponents to get together and solve their problems cooperatively. Hearing has been given to long, bitter arguments and

frequent flare-ups among participants.

San Jacinto River Authority has been chief objector to granting of the permits. SJRA contends that Houston will shortly need more water for domestic use but that Trinity water, because it contains sewage from Dallas and Fort Worth, is not suitable. San Jacinto officials say Houston should work with SJRA to meet the city's domestic water needs.

In the far-ranging testimony, water engineers discussed the probably water needs of Houston, Dallas and Fort Worth in 2010, and the possibility that Texas might be subjected before 2010 to a drought worse than that of 1950-57.

4. Texas is losing the battle for industry because of inadequate water supply, the director of UT's Balcones Research Center told an Austin meeting. "Central Texas is in good shape," said Dr. J. Neils Thompson, "but the rest of the state is in sorry shape."

Texas has an average annual rainfall of 27 inches compared to an average of 30 inches for the U. S. as a whole, said Dr. Walter Moore, also a UT engineer. But he said Texas has a special problem — an evaporation rate 50 to 100 per cent higher than for the U. S. as a whole.

Texas had an "almost sensational" 28 per cent drop in traffic deaths in the first seven weeks of the year, Governor Daniel announced. This is the period since the new Safe Driving Auto Insurance Plan went into effect.

There were 69 fewer deaths during the first seven weeks of this year than during the same period in 1959. Drop was from 243 deaths in 1959 to 174 this year.

Board of Insurance Chairman Penn J. Jackson said he felt the new insurance rates, which are higher for careless drivers, were due at least a portion of the credit for the improved safety record.

Conclusive evidence, both the governor and insurance board chairman agreed, would have to await more time and statistics.

Nine men have been named by Governor Daniel to the new, enlarged Texas Industrial Commission. He also gave them as their 1960 assignment the gaining of 254 new industries for Texas. (Continued on page 2)

## OFF THE Shelf

By H. A. TUCK The Tumbled House by Winston Graham is the unusual story of a family's destruction. Plot of the novel revolves around the Marlowe family.

Included in the family are Don, an eminent young conductor; his beautiful wife, Joanna, an actress of some distinction; and his sister Bessie, a lovely airline stewardess.

The story takes place in England, but has none of the strange spelling and little of the over-long trivia which seem to typify English stories. In fact, it was written and published in the United States.

But, getting back to the story, Don is the son of a recently-dead attorney who had retired and written a fabulously successful book.

Imagine the shock that an anonymous newspaper columnist created when he accused the late Sir John Marlowe of resigning his post just one step ahead of being disbarred because of misconduct. The column also declared that Sir John had been having love affairs with some of his feminine clients and that he had stolen much of the material included in his book. (Continued on page 2)

## Selective Service Board Lists Reclassifications

The local Selective Service Board has listed reclassifications for the release of Jan. 13 to Feb. 17. Reclassified as 1A are James Durbin, Cecil Stehr, Raymond Allen, Gordon Tharisch, Kenneth Gallman, George Keller, Billy Baker, Joe Alderete, Jerry Belknap, Harden Frye, Donnie Skelton, Lonnie Skelton, Bobby Lesly, Gerald Hamby;

Jessie Bolinger, John Hammet, Crus Rodriguez, Delbert White, James Boone, Wilburn Axe, Jan Wallace, Elmer Hershey, Wylie Ward, Howard Schulte, Gordon Wright, Larry Kaul, Josef Grotgeut, Raymond Childers and Thomas Money.

Reclassified as 111A are Carl Patterson, Sammy Berryman, Donald Bradley, Johnny Winkler, Eddie Morton, Lester Mingus, Farrell Davenport, J. Robert Bradley, Joseph Collins, Billy Roberts, Royal McMahan, Jose Dias, D. Callerman, Julian Tijerina and Jesus Fuentes.

Those listed reclassified as 1VA are Gordon Shaffer, Jerry Newton, Cloyd Sisson, Ralph Morrison, Leon Smith Jr., Fred Welch, Don Callerman, Kenneth Flack, William Allen, Jerry Vandivar, Robert Daulk, James Ketchersid, Charles Miller, Dale Webb and Jimmy Feitman.

Listed reclassified as 1C Enlisted are Stanley Varner, Iverson Leake, Tirso Cuellar, Ralph White, Jimmy Chesher, Thomas Holster, Buford Crosthwait, Robert Lamm, James Lady, Robert Powell, and Charles Sanders.

Phillip Crume, James Thompson and Neal Collins are listed reclassified as 11A.

Reclassified as 1C Inducted are Thurman Clay, Hugh Creiner, Donald Moore and Joe Nelson.

James Harriman, Harley Davis, Clyde Renner and Larry Hungate are listed reclassified as 1D.

Those reclassified as 1V C is Isaisa Herrada, Lawrence White and Marlin Smithson are reclassified as 1S (c).

Jacinto officials say Houston should work with SJRA to meet the city's domestic water needs.

In the far-ranging testimony, water engineers discussed the probably water needs of Houston, Dallas and Fort Worth in 2010, and the possibility that Texas might be subjected before 2010 to a drought worse than that of 1950-57.

Texas has an average annual rainfall of 27 inches compared to an average of 30 inches for the U. S. as a whole, said Dr. Walter Moore, also a UT engineer. But he said Texas has a special problem — an evaporation rate 50 to 100 per cent higher than for the U. S. as a whole.

Texas had an "almost sensational" 28 per cent drop in traffic deaths in the first seven weeks of the year, Governor Daniel announced. This is the period since the new Safe Driving Auto Insurance Plan went into effect.

There were 69 fewer deaths during the first seven weeks of this year than during the same period in 1959. Drop was from 243 deaths in 1959 to 174 this year.

Board of Insurance Chairman Penn J. Jackson said he felt the new insurance rates, which are higher for careless drivers, were due at least a portion of the credit for the improved safety record.

Conclusive evidence, both the governor and insurance board chairman agreed, would have to await more time and statistics.

Nine men have been named by Governor Daniel to the new, enlarged Texas Industrial Commission. He also gave them as their 1960 assignment the gaining of 254 new industries for Texas. (Continued on Page 2)

Phillip Crume, James Thompson and Neal Collins are listed reclassified as 11A.

Reclassified as 1C Inducted are Thurman Clay, Hugh Creiner, Donald Moore and Joe Nelson.

James Harriman, Harley Davis, Clyde Renner and Larry Hungate are listed reclassified as 1D.

Those reclassified as 1V C is Isaisa Herrada, Lawrence White and Marlin Smithson are reclassified as 1S (c).

## Five Months Remain In Applying For GI Loan

About five months remain in which World War II veterans may apply for GI home, farm or business loan, Sumner G. Waiter, Administrator of Veterans Affairs, reminded veterans recently.

Under present law, July 25, 1960, is the cut-off date for World War II veteran participation in the post-war program that has seen more than five million World War II veterans take advantage of the GI Bill loan provisions since June 22, 1944.

Veterans who submit their applications on or before the deadline of July 25, 1960, will be allowed an additional year, or until July 25, 1961, in which to have the loan processed and actually closed.

Whittier pointed out that these dates do not apply to Korean conflict veterans who have until Jan. 31, 1965, to make GI loan application.

World War II veterans who also served during the Korean conflict period are considered Korean conflict veterans for the purpose of GI loans.

Veterans in rural areas and in small cities and towns where guaranteed loans are not generally available are eligible for VA direct home and farmhouse loans. The direct loan program for both World War II and Korean conflict veterans is due to expire on July-15, 1960.

Since the GI loan program was launched in June 1944, and up through December, 1959, a total of 5,125,000 loans have been guaranteed or made to World War II veterans for a total of \$40.8 billion.

Approximately one-third of the eligible World War II veterans and one-eighth of the Korean conflict veterans have taken advantage of the loan program to date.

Reviewing the tremendous scope of the GI loan program as used by both World War II and Korean conflict veterans combined, Mr. Whittier said that it was the equal of financing

one out of every 10 dwelling units in the United States, including apartments and single-family rural properties.

Nearly one out of every four mortgaged single-family dwelling units in the United States has a VA-guaranteed mortgage, Whittier said.



Prince Zogi . . . star of production Zogi Revue Is Scheduled Here

The Zogi Revue, a variety show sponsored by the Hereford High School Band, will be staged in the high school auditorium here March 10. It was announced this week by band director George Hill. The show will begin at 8 p. m.

The show features Prince Zogi, a magician. It will include novelty acts, music, dancing, comedy and feats of magic. Scenes included in the production include such acts as the Hindu Sack Mystery, the Silver Sphere which floats in the air, the London Ghost Cabinet and a European Flower Garden spectacular.

### EASTER NEWS

## Community Club Holds Meeting

By MRS. VIOLET BARTON The Easter Club met in the home of Mrs. John Key recently despite the snow and cold.

Enough members were not present for a business meeting. Mrs. Key served coffee and doughnuts to the following: Mesdames W. A. Epperson, Leo Hall and Ronnie, W. O. Markley, C. N. Land and Sherry Barton.

The next meeting of the Easter club will be at 2 p. m. in the home of Mrs. C. N. Land. Mr. and Mrs. Leo Hall, Ramona, Reba and Ronnie were in Wellington recently visiting relatives.

## McMurry Choir Here On Friday

The Chanters, a choir from McMurry College in Abilene, will present a musical program in the Hereford High School auditorium at 9:50 a. m. Friday.

The musical group began its spring tour Feb. 28 through wide sections of the Panhandle and West Texas, and the Hereford stop will conclude the tour. Directed by Dr. Richard C. von Ende, the Chanters, a mixed-voice choral group, travel extensively each semester in presenting their colorful musical program.

Organized the year McMurry College first opened its doors — 1923 — the Chanters are especially adept at providing spiritual, secular and religious music.

In addition to their fall and spring semester tours, the Chanters often appear locally before civic, service and church congregations, plus performing in churches and high schools in the immediate Abilene vicinity.

Mrs. T. Fox and Susan spent Sunday with her parents, Mr. and Mrs. John W. Key and Richard Price.

Visitors in the William Moss home the past week were her mother, Mrs. Mitchell of Memphis, and her aunt from Houston.

Mr. and Mrs. W. A. Epperson visited Sunday with Mr. and Mrs. Elmer Cook and Mr. and Mrs. Garland Jackson in Hereford.

Mr. and Mrs. W. O. Markley visited Mr. and Mrs. Glen LaPlant and Mr. and Mrs. Pat Bradford in Hereford Wednesday afternoon.

Mr. and Mrs. W. O. Markley and children and Mr. and Mrs. Murray Hall and children spent Sunday with the H. O. Markleys.

Mrs. Leo Hall, Ramona, Reba and Ronald visited Sunday afternoon in the Sam Scarborough home.

C. N. Land was in Amarillo on business last Friday.

Visitors in the Melvin Barton home to see Shelly Barton this week were Mr. and Mrs. B. McCool of Earch, Mr. and Mrs. Harvey Hickman of Earth, Mrs. W. O. Markley and Mrs. W. A. Epperson of Easter community.

## Hershey Named On Honor List

Homer H. Hershey of Hereford, a student at Texas A. and M. College, majoring in Petroleum Engineering, has been designated a Distinguished Student for the fall semester, 1959.

A Distinguished Student must have registered for 15 or more hours and established a grade point ratio of 2.25 or better and had no grade below that of "C."

THE CHANTERS, a choir from McMurry College in Abilene, will appear in Hereford High School auditorium Friday morning. Directed by Dr. Richard C. von Ende, the Chanters, a mixed-voice choral group, travel extensively each semester in presenting their colorful musical program. They will appear here to climax their annual spring tour of West Texas and Panhandle towns and cities.





**Austin...**

(Continued from Page 1)  
one for each county.  
Members of the old three-member Industrial Commission were appointed to the new board. They are E. B. Germany, Dallas; Houston Harte, San Angelo; and Chester C. Wine, Laredo.  
New members are Robert F. Haynsworth, El Paso; Ray H. Horton, Houston; Morris Higley, Childress; Richard H. LeTourneau, Longview; James A. Redmond, Beaumont; and Al H. Chesser, Austin.  
A House of Representatives committee looking for ways to save tax money quizzed spokesmen of the Game and Fish Commission on its fish and

quail restocking programs. Committee members questioned whether the Commission should give out free young fish raised in the state hatcheries. They go to farmers and others to stock tanks.  
A Commission official said the little fish cost the state about 1.5 cents each to raise.  
Legislators also considered at length the Commission's quail hatching operation near Tyler. Quail, it was brought out, cost about 69 cents each to raise, and sold to landowners for game restocking at 50 cents apiece.  
State Health Department predicts a rise in the number of polio cases in the spring months ahead.  
Most of the victims, said the Department, will be among

**Rep. Walter**

(Continued from Page 1)  
College, world's only college for the deaf, made the Dean's List  
those who have not taken advantage of polio shots.  
Last year's record shows that three out of four polio victims had not had all the recommended series.  
Texas had 526 cases of polio last year, approximately 13 percent of the 3,984 cases recorded in 1952 before Salk vaccine.  
A Health Department official deplored parents who, "in the face of almost daily urgings, ignore the chance of giving their youngsters an infinitely better chance to escape polio."

**Off The...**

(Continued from page 1)  
Don eventually discovers that  
enjoying free concerts given by the National Symphony Orchestra, under the direction of Howard Mitchell. This series is made possible by Mr. Merriweather Post and the National Symphony. It will be conducted for five weeks from April 21st through May 23rd. Any of you desiring to attend these concerts or any of them, please let me know and we will arrange to get your free tickets.

WALTER ROGERS  
Member of Congress  
18th District of Texas

one of his best friends, Roger Shorn, was the anonymous columnist. He sets out to dispense the allegations and ruin Shorn. But he fails to discover that his wife was also Shorn's mistress.  
"Suave Roger Shorn counters with a law suit. And the plot is further complicated when Shorn's son, Michael, falls in love with Bennie.  
Unwilling to live on the income from a very minor job, Michael starts flirting with the law as minor crimes bolster his income.  
A court trial, a headlong flight from the law and an unexpected death provide the climactic action for **The Tumbled House**.  
The book is available at the Deaf Smith County Library.

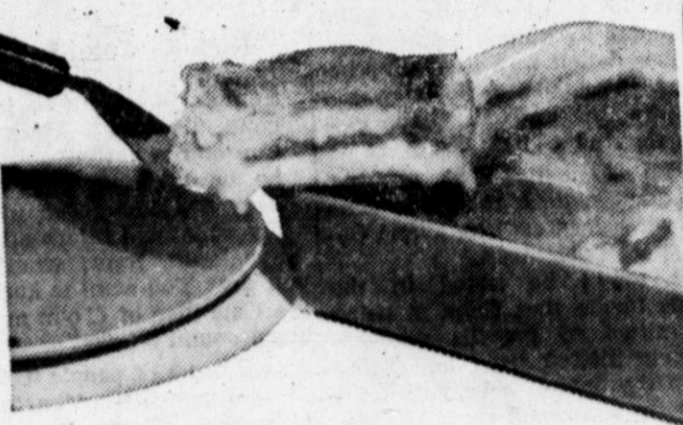
**NINETY-FOUR THOUSAND SMITHS** — The Department of Public Safety in Austin is being swamped by request for copies of drivers accident records. Here pretty Mrs. Barbara Jones looks for the record of a driver named Smith. She is surrounded by files containing the records of 94,000 Smiths among Texas' 4,357,000 licensed drivers. Since the Texas Safe Driving Plan went into effect, request for such record checks have soared from 4,000 a month to that many in a single day. Anyone can obtain a copy of his record by writing the department, a fee of fifty cents is charged. (AP Photo)

**Legal Notice**

Notice is here given that a School Trustee Election will be held on Saturday, April 2, 1960, within the Hereford Rural High School District, for the purpose of electing three District School Trustees for a term of three years each. The voting places will be in the School Tax Office in Hereford and in the Dawn School House at Dawn. Polls will open at 8:00 a. m. and close at 7:00 p. m. Absentee balloting runs from Monday, March 14th to 5:00 p. m. March 29th.  
W. R. Hair, President, Board of Trustees, Hereford Rural High School District.  
T-9-1c  
Vermont was an independent republic for 14 years until 1791.  
Rome was founded in 754 B.C.

**WATCH DOG**  
DEFIANCE, Ohio — Nobody gets in Rudy Camp's car when his 2-year-old terrier Ike is inside. Nobody.  
Camp learned this painfully while the car-dog inside was on a service station hoist. The keys were inside and Camp couldn't get in the locked car. When he tried to pry open the ventilator window, his dog snarled.  
Camp finally had to call for his wife, who brought a spare set of keys.  
**PEST CHECK**  
SACRAMENTO, Calif. — Inspectors checked 327,479 vehicles for agricultural pests at California border stations in one month. They intercepted 12 types of insect pests unknown in California.  
Have you read the classifieds?

**MEATLESS MAIN DISH WITH PROTEIN PLUS...**



**TUNA FRENCH CHEESE-BAKE!**

**YOU'LL NEED:**  
8 slices white bread  
7-oz. can tuna, drained and flaked  
4 slices process American cheese, 2x4-1/2-inch thick  
1 Tablespoon soft butter or margarine  
3/4 cup PET Instant (in dry form)  
1/2 teaspoon dry mustard  
1/4 teaspoon salt  
Few grains paprika  
1 1/2 cups water  
2 eggs, slightly beaten  
Trim crusts from bread. Put 4 slices in bottom of greased 8-in. square baking pan. Arrange tuna on bread. Cover with cheese slices. Top with rest of bread. Spread butter over top of bread. Mix in 1-qt. bowl the PET Instant, dry mustard, salt and paprika. Stir in gradually water and eggs. Pour mixture over bread. Let stand about 15 to 20 min. Bake in 350 oven (moderate) for 50 min., or until golden brown. Serve at once. Makes 4 servings.

**BREAD** 1 lb. Loaf 21c  
**AMERICAN CHEESE** 8 Oz. 29c  
**TUNA** Hi-Note, 6 Oz. 19c  
**PET INSTANT** 34c  
NONFAT DRY MILK

La-Choy  
Cooked - Ready to Serve

**RICE**  
No. 303 Cans  
**2 FOR 39c**

**FINEST QUALITY MEATS**

**LOIN STEAK** USDA Good Beef Lb 79c  
**Ham Shanks** For Boiling Lb. 19c  
**BACON** Armour's Columbia 2 LB. BAG 59c  
**HAM** Cured Tendered End Slices Lb. 39c

**FLUFFO** 3<sup>LC</sup> 63<sup>BN</sup>c

Gerbers Vegetable Juices  
**BABY FOOD** 3<sup>CANS</sup> 25c

**SPINACH** Wapco Quality Plus No. 303 Cans 4<sup>F</sup> 49<sup>OR</sup>c

Our Value — No. 2 1/2 Can  
**APRICOTS** 25c

**GARDEN FRESH VEGETABLES**

U.S. No. 1 Red **POTATOES** 10<sup>LB. BAG</sup> 49c  
Fresh Fancy **RADISHES** 2<sup>8 Oz. Pkgs.</sup> 19c  
Fresh Pascal **CELERY** lb. 10c  
Portales Golden **YAMS** lb. 10c  
California Sunkist **ORANGES** 2 lbs. for 29c

**DOG FOOD** Gaines Prepared 4<sup>TALL CANS</sup> 49c  
**HOMINY** Steeles White NO. 2 1/2 CAN 15c  
**BLEACH** Fleecy White Quart 17c  
**RICE** White Swan Fancy Long Grain 12 Oz. Pkg. 2<sup>F</sup> 29<sup>OR</sup>c  
**CORN** Concho No. 303 Can 15c  
**Red Plum Jam** Bama 20 Oz. Glass 29c

Lilly **FLOUR** 25 Lb. Print Bag \$1.55  
Our Value — Powdered **DETERGENT** Giant Size 59c  
Libby's Frozen 10 Oz. Pkg. **Blackeyed Peas** 24c  
Libby's Frozen 10 Oz. Pkg. **Brussel Sprouts** 29c

**Wrestling**

**SATURDAY, MARCH 6**  
8:30 P. M.

**Mighty Ortega**  
Vs.  
**Strangler Stan**

**Dick Hutton**  
Vs.  
**Alex Perez**

Plus  
Lady Angel  
Vs.  
Peggy Allen

Sponsored by Hereford Lions Club at the  
**BULL BARN**  
Ringside \$1.50 Gen. Adm. \$1.00 Kids 50c

**Hunter's Food Store**

Double Pride Stamps Every Wednesday With \$2.50 Cash Purchase

Prices Good March 3 - 4 - 5 & 6th Phone EM 4-0350 219 Sampson St.



### Heard Speaks At Simms Party

ADRIAN - George Heard of Hereford, who recently returned from Iraq after 26 months as an employee of the Government Oil Refinery Administration, brought the program to the Simms Community family party Saturday night at the club house.

The films and accompanying explanation made it one of the most outstanding programs of the year.

The speaker dressed several of the local men in different native costumes, which was of special interest to the audience. The models were Glenn Hetzler, J. V. Perrin and Claud Bogle.

"The language became a real difficulty," Heard said. "And we were never able to master it: Even though the Arabic language is centuries old, there is no carry-over to other languages as is true in most other foreign tongues."

"English is spoken most everywhere to a degree," he went on, "and many signs appear in both languages."

Films taken of the city of Baghdad and surrounding cities gave the group a small view of the old country and proved interesting discussions for nearly two hours. Heard was accompanied by his wife and youngest daughter, Leslie.

Attending were Messrs. and Mesdames C. F. Homfeld, Jack Fortenberry and Christine, J. V. Perrin, Glenn Hetzler, Claud Bogle, Thurman Davis and boys, Don Kirby, Kay, Dianne and Larry, R. L. Pinnell and Linda, Jay Crofford and Dean of Hereford, Mrs. Elmer Carlsson and Leslie of Hereford and Mrs. Lena Gudgeon.

### Hold Meeting Of Westway HD Club

The Westway Home Demonstration club met recently in the Westway Community House. Mrs. J. H. Walker was hostess. The meeting was opened by Mrs. J. C. Morrison, presiding officer, with club members repeating together the Club Collect.

Roll call was answered with "An indication of good health," "One of my rules for keeping healthy," and "The whole grain product we like best."

The program was presented by Mrs. Bess Werner. She pointed out to the group several ideas. She said in part, "Wheat products are a necessity for good health, as they contain B1, Iron, Riboflavin, Niacin, Phosphorus, Calcium and other vitamins essential to good health. One serving daily should be given to each member of the family."

"Bread is needed in the daily diet and is not so fattening as most people think. One slice of whole wheat bread contains only 60 calories and a slice of white bread has only 75 calories. It is the spread that is fattening."

"Toasting bread does not change the caloric content as it only removes the moisture."

Mrs. Joe Landers demonstrated muffins made from a meal. Whole wheat is also good when served with cream and sugar as a cereal.

### NO DEFENSE

VINELAND, N. J. (AP) - A disorderly conduct charge lodged against Jose Antonio Montes, 26, was dismissed after his wife told the judge she wished to drop it. "I love him," said the woman in asking the judge to dismiss her complaint that Montes had hit her over the head with a bottle of detergent.

### TAKES A DIVE

ST. LOUIS (AP) - Mrs. Alfrida Vickers drove by a barricade by mistake and got herself into a real hole. Her car skidded into a 15-foot construction excavation, landing upside down.

She was only slightly injured, but found she was unable to climb the steep sides of the muddy hole. It was an hour later before a passerby heard her cries for help and summoned aid.

### RIDE AND READ

TRENTON, N. J. (AP) - Five mornings a week a Pennsylvania Railroad commuter train en route to New York stops here and picks up two young women who have an unusual pastime—they publish the train's own newspaper.

The two—Cathy Woolston, 23, and Susan Wilson, 24—publish the "Secaucus Stopover," which is read by several hundred commuters.

The 2-year-old paper started as an April fool's joke and has been going regularly since.

Susan says they keep the paper just "for the fun of it" while Cathy feels the paper helps commuters get acquainted.

In their last games, Chicago White Sox pitchers turned in 22 complete games.

Ladies...here's a catch you can brag about!



## PAN-READY RAINBOW

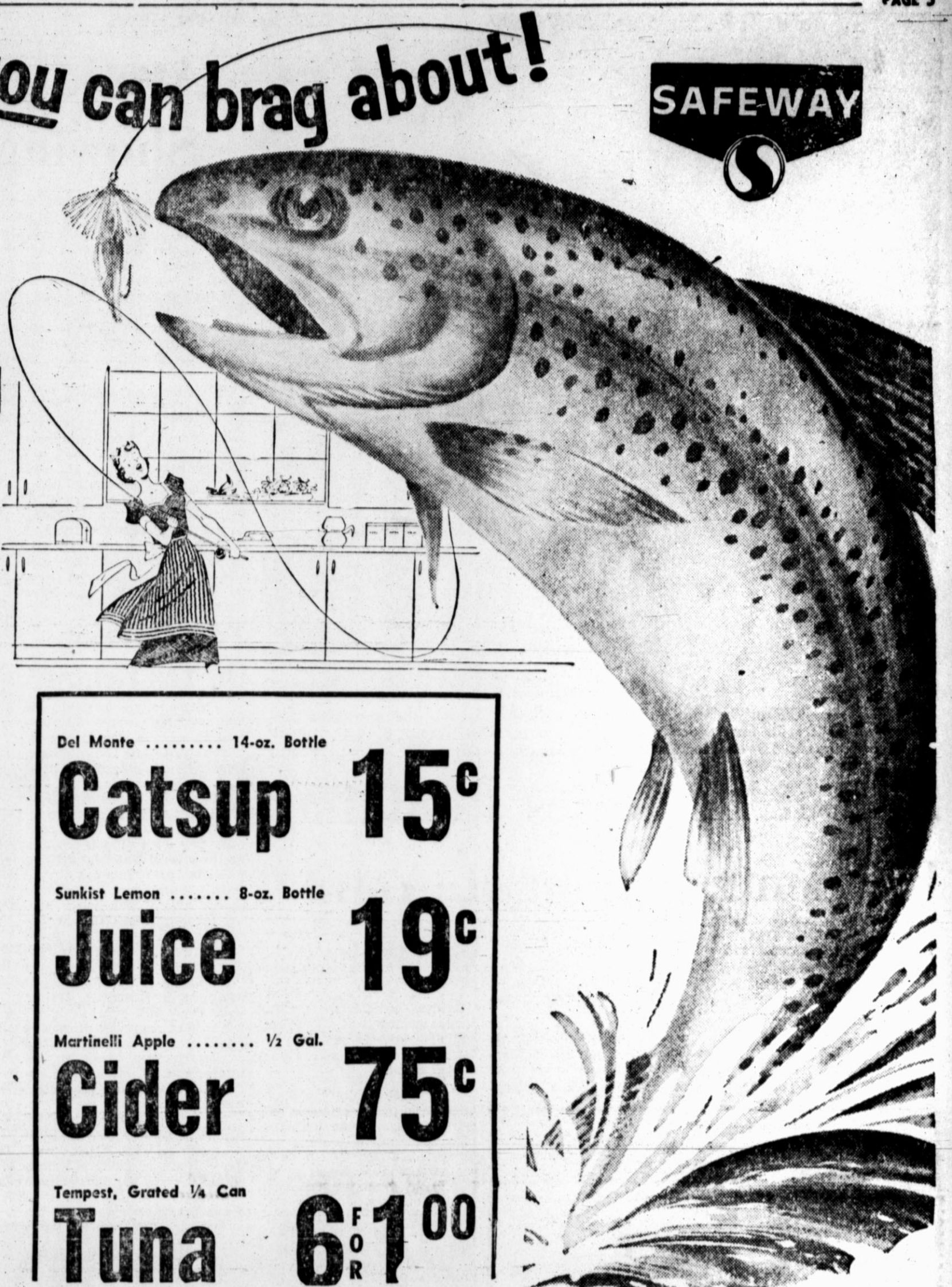
CAPTAIN'S CHOICE FROZEN

# Trout

TO PAN FRY

Dip trout in seasoned flour, then in beaten egg, then in more seasoned flour, crumbs or corn meal. Put in pan containing 1/4 inch hot fat or oil. Cook over medium—high heat, turning to brown evenly, until golden brown and fish flakes easily (4 to 8 minutes on each side).

10 oz. Pkg. **39<sup>c</sup>**



**BACON** Virginia Reel, Thick Sliced Double Cure **LB. Pkg. 59<sup>c</sup>**

**Stewing Hens** 2 1/2-3 Lb. Average **Lb. 23<sup>c</sup>**

**Chuck Roast** Lb. 55<sup>c</sup> **Liver** Lb. 19<sup>c</sup>

**Pork Roast** Lb. 39<sup>c</sup> **Cheese** 8-oz. Pkg. 33<sup>c</sup>

Many new items are arriving daily at Safeway's Produce Departments. Your next shopping day be sure to shop Safeway.

**Sunkist Lemons** California Add Flavor To Salads, Fish or Meats **Lb. 12 1/2<sup>c</sup>**

**LETTUCE** California Ice Berg Large Firm Heads **LB. 19<sup>c</sup>**

**POTATOES** Colorado Red McClures, US No. 1 10 Lbs 59<sup>c</sup> **CAULIFLOWER** California Snowball variety Serve with Cheese Sauce Lb. 19<sup>c</sup>

**Bel-Air FROZEN FOOD PREMIUM QUALITY**

<b>Raspberries</b> Bel Air Premium Quality 10-oz. Pkg. <b>3<sup>F</sup> 89<sup>R</sup> 9<sup>C</sup></b>	<b>Peaches</b> Bel Air Premium Quality 12-oz. Pkg. <b>4<sup>F</sup> 89<sup>R</sup> 9<sup>C</sup></b>	<b>Strawberries</b> Bel Air Premium Quality 10-oz. Pkg. <b>4<sup>F</sup> 89<sup>R</sup> 9<sup>C</sup></b>
---	---	--

**DOUBLE STAMPS** GUNN BROS. EVERY WED. WITH \$2.50 PURCHASE OR MORE



Del Monte ..... 14-oz. Bottle **Catsup 15<sup>c</sup>**

Sunkist Lemon ..... 8-oz. Bottle **Juice 19<sup>c</sup>**

Martinelli Apple ..... 1/2 Gal. **Cider 75<sup>c</sup>**

Tempest, Grated 1/4 Can **Tuna 6<sup>F</sup> 1<sup>O</sup> 00<sup>R</sup>**

PRICES IN THIS AD GOOD THURS., FRI. AND SAT., MARCH 3-5

**Preserves** Empress, Apricot Pineapple, Boysenberry, Peach Pineapple, Plum, Orange Marmalade, Mix or Match Em 8-oz Jar **4<sup>F</sup> 1<sup>O</sup> 00<sup>R</sup>**

**Cottage Cheese** Lucerne, Large or Small Curd 2 Lb. Ctn. **49<sup>c</sup>**

**Apricots** Whole Sundown, Unpeeled No. 2 1/2 Can **5<sup>F</sup> 1<sup>O</sup> 00<sup>R</sup>**

**Mayonnaise** Garden Club ..... Quart Jar **49<sup>c</sup>**

**Butter** Shady Lane, Fresh Creamery Lb. Carton **65<sup>c</sup>**

**Green Beans** Town House, Fancy Cut No. 303 Can **5<sup>F</sup> 1<sup>O</sup> 00<sup>R</sup>**

**Sour Kraut** Rotel No. 303 Can **8<sup>F</sup> 1<sup>O</sup> 00<sup>R</sup>**

**Potatoes** Del Monte, New Whole Irish No. 303 Can **6<sup>F</sup> 1<sup>O</sup> 00<sup>R</sup>**

**Sweet Potatoes** Town House No. 3 Sqt. Can **4<sup>F</sup> 1<sup>O</sup> 00<sup>R</sup>**

**Asparagus** Green Giant No. 303 Can **4<sup>F</sup> 1<sup>O</sup> 00<sup>R</sup>**

**Prune Juice** Town House 24-oz. Bottle **3<sup>F</sup> 1<sup>O</sup> 00<sup>R</sup>**

**Orange Juice** Town House, Florida 46-oz. Can **3<sup>F</sup> 1<sup>O</sup> 00<sup>R</sup>**

**Dog Food** Pooch, Reg. or Liver Tall Cans **12<sup>F</sup> 1<sup>O</sup> 00<sup>R</sup>**

**Beans** Libby's Dark Brown No. 2 Can **5<sup>F</sup> 1<sup>O</sup> 00<sup>R</sup>**

**Sliced Pineapple** Lalant 4 1/4 Can **5<sup>F</sup> 1<sup>O</sup> 00<sup>R</sup>**

**Mandarin Oranges** Town House 11-oz. Can **4<sup>F</sup> 1<sup>O</sup> 00<sup>R</sup>**

**Blackberries** Walco No. 303 Can **5<sup>F</sup> 1<sup>O</sup> 00<sup>R</sup>**

**Coffee** Edwards All Grinds Lb. Can **69<sup>c</sup>**

DETERGENT **Breeze** Giant Box ..... **81<sup>c</sup>**

TOILET SOAP **Lux** Reg. Bar . . . 3 for 31c Bath Bar . . . 2 for 29c

DETERGENT **Rinso** Giant Box ..... **79<sup>c</sup>**

TOILET SOAP **Life Bouy** Bath Bar . . . 2 for 29c Reg. Bar . . . 3 for 31c

LIQUID DETERGENT **Lux** 11c off deal 32-oz. can . . . **87<sup>c</sup>**

CONDENSED **All** 24-oz. Box ..... **41<sup>c</sup>**

WE RESERVE THE RIGHT TO LIMIT QUANTITIES



DAWN NEWS

# 'Arctic Adventure' Film Showing Attended By 82

By MRS. CARL WIMBERLEY  
There were 82 persons on hand to see the film, "Arctic Adventure," at the Dawn School Friday evening, J. W. Thomas of Hereford provided the projector and showed the film. The showing was sponsored by the members of the Dawn Home Demonstration Club, which also provided refreshments for the meeting.

Guests from out of town were Mr. and Mrs. W. J. Stewart, Mr. and Mrs. J. W. Thomas, and sons and Mrs. Zora Tyler of Hereford, Mr. and Mrs. Richard Golden and family, Mr. and Mrs. H. D. Fowler and sons, Mr. and Mrs. Griffith, Mrs. Vinita McLain, Kathryn McLain of the Daniel Community and Darlene Moore of Stratford. Others present were Mr. and Mrs. Rea Cox, Mr. and Mrs. R. T. Stewart, Mr. and Mrs.

Reece Stewart, Mr. and Mrs. H. S. Fuller, Mr. and Mrs. Muri Little, Mr. and Mrs. R. L. Johnson, Mr. and Mrs. Richard Hagar, Mr. and Mrs. Hershel Miller Jr., Mr. and Mrs. L. W. Toolley and their families, Mr. and Mrs. H. V. McCabe, Mrs. Jim McCabe, Mr. and Mrs. G. B. Hagar, Mr. and Mrs. R. A. Frye, Mrs. J. B. Caraway and children, Mrs. Manuel Beavers, Mrs. Carl Wimberley, Mrs. H. H. Miller and sons, Melvin May and sons, Ted Richardson and children, Mrs. Emily Nelson, Dorothea Stewart, Robert Galley, Joe Don Koenigseder and Budie Stewart.

Bitter, cold weather has prevailed for the past week, but only a small amount of snow has fallen, although it has snowed some almost every day.

Mrs. Jack Ward Sr. is a patient at the Deaf Smith County Hospital in Hereford. She had surgery there last week.

The Dawn Music Club will meet March 8 in the home of Mrs. Ray Polan.

Mrs. Walter Lemons is a member of a bowling team from Hereford which took part in a tournament in Amarillo recently. The team placed fifth.

Mrs. H. H. Miller was elected chairman of the Gray Ladies, an auxiliary of the Red Cross, at the formal organization of the group recently at a luncheon in Hereford.

The Gray Ladies is a service organization, working with shut-ins, running errands, teaching art classes, doing stenographic work and other needed services.

Mr. and Mrs. George Wilson, Miss Alleen, Wilson and Mrs. Kate Wilson of Belton arrived Friday to visit in the home of Mr. and Mrs. H. S. Fuller.

All except Mrs. Kate Wilson returned home Sunday. She is staying for an extended visit.

Mr. and Mrs. R. L. Johnson visited Friday in the home of Mr. and Mrs. J. C. Poe in Amarillo.

On Saturday the Johnson family visited in the home of his parents, Mr. and Mrs. J. A. Johnson, at Muleshoe.

The Dawn Home Demonstration Club will meet Friday afternoon, March 4, in the home of Mrs. R. T. Stewart. Mrs. Argen Draper will be present.

Pat Miller left Thursday for Anaheim, Calif., where he plans to spend about two weeks.

Mr. and Mrs. Baker Womble of Hereford called Thursday afternoon in the home of Mr. and Mrs. H. H. Miller.

Recent visitors in the Miller home were her father, Gus Olsen, of Shattuck, Okla., and the Rev. and Mrs. Daniel Schorlener and daughter, Mary of Amarillo.

Mr. and Mrs. Robert Strain entertained with a "42" party Saturday evening at their home.

Guests were Mr. and Mrs. Clarence Betzen, Mr. and Mrs. W. H. Gentry, Mr. and Mrs. Allen Gentry, Mr. and Mrs. Melvin May and Mr. and Mrs. Ted Richardson.

Mr. and Mrs. H. C. Dow of Dumas visited in Dawn Sunday in the home of Mr. and Mrs. Ted Richardson.

Revival services began Sunday at the Dawn Baptist Church. Special guests at the Sunday evening services were the members of the girls' trio from the

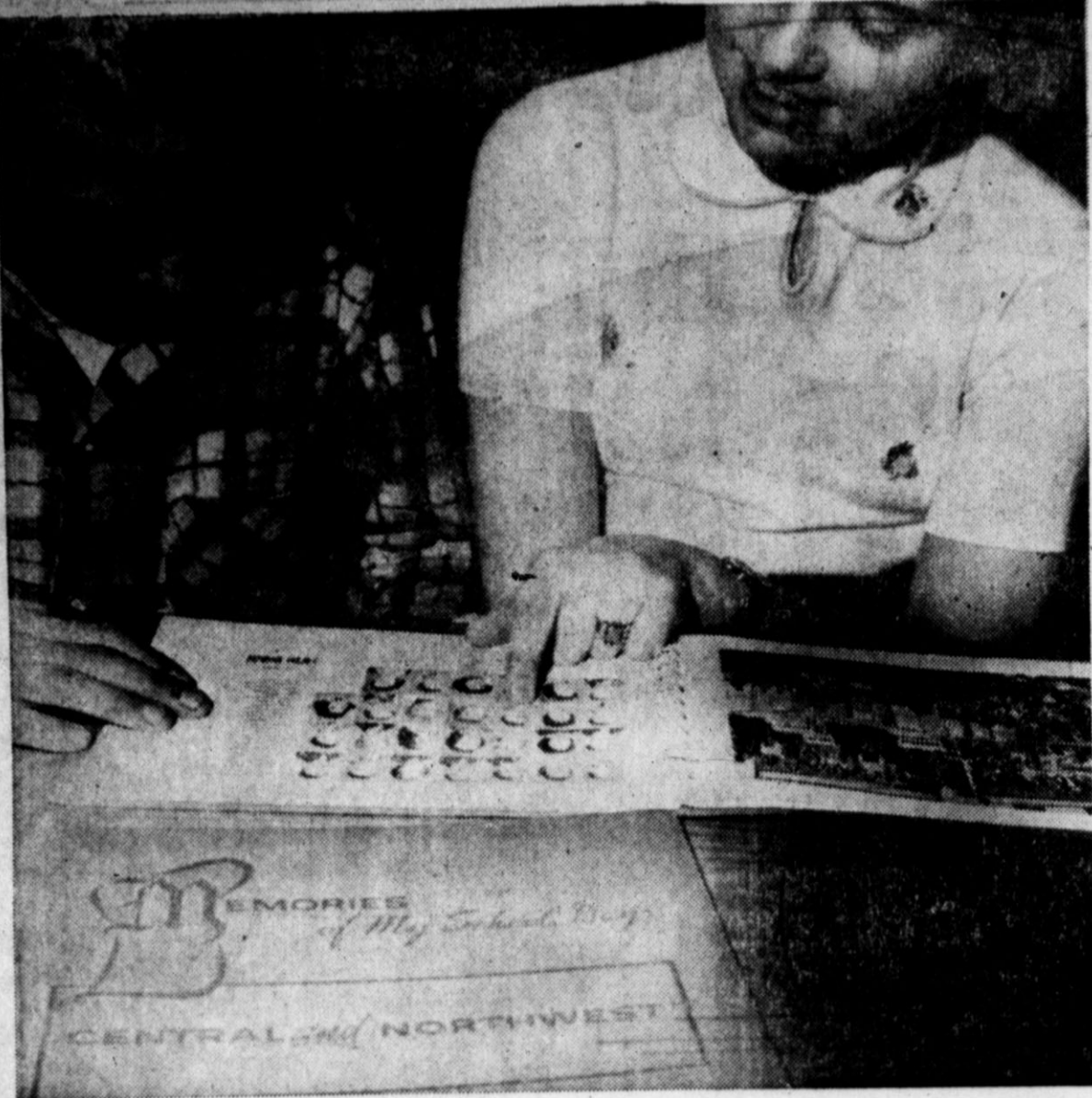
Baptist Student Union at West Texas State College. The girls, Darla Galloway, Glenda Green and Joy Gray, were accompanied by Carol Hoover.

Mr. and Mrs. Tony Hoffman and family of Hereford were dinner guests Sunday in the home of Mr. and Mrs. Clarence Betzen.

Audni Miller visited Wednesday until Saturday of last week in the home of Mr. and Mrs. Gayle Neal in Hereford.

Mr. and Mrs. W. H. Gentry recently purchased the farm on which they live. It was bought from John Mayo, who for a number of years has lived at La Jolla Cal. There are 640 acres on the farm.

HOME LOANS  
FARM LOANS  
**JOHN McLEAN**  
Ph. EM 4-0544  
129 W. 3rd



STUDENTS ARE PROUD of their grade school at Northwest School. The yearbooks provide a complete record of the students' activities at Central Elementary School and its first year grade school days. (Staff Photo)

## School Memories Contained In Central School Annual

By RUBY BREWTON  
BRAND STAFF REPORTER

Grade school provides some of the most memorable days in a person's life -- and students at Central Elementary School decided to record these happy events in a yearbook back in 1956.

The idea proved popular to

both the students, faculty and parents. The students still publish a yearbook annually, a yearbook which is on the same level as that of any high school or college in Texas.

In the school year of 1956-57, after several parents had expressed a desire for a complete record of their children through-

out grade school, principal, L. C. Thomas and his faculty decided to do something about the parents' requests.

So the idea of a grade school annual materialized. If colleges and high schools have a yearbook, so can a grade school, they decided.

Using "school day" pictures, taken by a photo service in Amarillo, they sent the individual pictures, along with group pictures taken by the Amarillo company and members of the faculty, to a printing company.

The pictures were sent in December and the publishing company returned the complete yearbook in February. The book is entitled "Memories of My School Days."

The first, third and fourth issues of the annual were dedicated to an individual or group. The first year's dedication was to B. H. Baldwin, former teacher at Central School, and to Miss Mary Bradley, who still teaches there.

The yearbook was dedicated to children and parents the third year. This year's dedication went to the cafeteria workers.

The 1959 - 60 annual combines Central and Northwest Elementary Schools. Northwest is administered through Central School.

"We, the faculty and myself, think the yearbook is a good thing for Central and Northwest," Thomas stated. "It creates school spirit and cooperation, which is a strong point between the faculty and principal."

When asked if the yearbooks were going to be continued in the future, Thomas replied, "We would like to continue the policy of yearbooks. If enough interest is shown by parents that it can make its own way without assistance from other sources, we will continue to have it."

The yearbook has proved worthwhile to all concerned. For the children, it provides happy memories to enjoy in later days; for the teachers, a file of the students they have taught through the years; and for parents, a complete record of their children's growth.

Jockey Robert Louis Stevenson won both divisions of the Pimlico Breeders' Stakes in 1953 with Big Night and Ladd.

Have you read the classifieds?

For Guaranteed RADIO AND TELEVISION SERVICE Call

DOBBS RADIO And TELEVISION  
Phone EM 4-0592  
504 West Third  
Call Day or Night

### Type Or Print On Tax Return

Failure to type or print your income tax return for 1959 could cost you a lot of money.

This word came recently from Hubert B. Hamill, of Internal Revenue Service, Amarillo. "Right here in this area, hundreds of taxpayers had to be located last year so Uncle Sam could pay them refunds amounting to several thousand dollars. This business happens every year," Hamill says, "because people either don't write legibly, or they move to new addresses and neglect to leave forwarding addresses with their postmasters."

Hamill said that Revenue is using more electronic devices than ever this year to speed work, but hurriedly scrawled numbers such as 1 and 7 and carelessly closed loops in letters e, l and f, often short circuit the entire IRS production line.

"So type or print your return and notify your postmaster of your new address if you should move. These simple precautions will save everybody lots of time and money," Hamill said.

### Messenger HD Club Has Meet

The Messenger Home Demonstration club met Friday afternoon in the home of Mrs. Floyd Brown. The program was landscaping, "Home Grounds," given by Mrs. Brown.

She presented an instructive program on arrangement of trees, shrubs and flowers and the interest and beauty to be obtained from careful planning; also the different varieties adapted to this locality.

Mrs. N. A. Brown gave the council report. The members voted to do some work in the Garcia Community building. Mrs. Bertram Jack won the recreation prize, Mrs. S. N. Thweatt, the floating prize.

Refreshments were served to the following: Mesdames J. E. Rouse, N. A. Brown, S. N. Thweatt, Jack Buse, Ernest Brown, Eldred Brown, Bertram Jack, E. M. Jack and the hostess, Mr. Brown.

### FOG BOGS CEREMONY

FAIRMONT, Minn. (AP) — Everyone cooperated except the weather for the inauguration of airline service to Fairmont.

The mayor, a band and a good turnout of townspeople were on hand for the inaugural landing by North Central Airlines. The band played and the mayor cut a ceremonial ribbon as an unseen plane droned past overhead.

The airport was covered with a soupy fog and the airliner had to pass it by.

### FALSE ALARM

TOLEDO, Ohio (AP) — Fourth grade teacher Mary Wright got sly smirks from her pupils after mysterious fumes caused the evacuation of 1,500 children. The fumes came from an overhead pan in which she was boiling water to clean art equipment.

Vulcan was the Roman god of fire.



Holds your eye like it holds the road!

Have you felt, all along, a keen respect for the Wide-Track Pontiac's clean-cut beauty? World fashion authorities agree! The International Fashion Council has just presented its 1960 Award for Outstanding Design to Pontiac! Shouldn't one of these eye-catching, road-holding cars belong to you?



The International Fashion Council, leading fashion authority representing 31 nations, recently presented this Award for Outstanding Design to the 1960 Pontiac.

Pontiac—The Only Car With Wide-Track Wheels

SEE YOUR LOCAL AUTHORIZED PONTIAC DEALER...WHO ALSO SELLS GOODWILL USED CARS WITH MORE BARGAIN MILES PER DOLLAR

# CAMPBELL PONTIAC

815 E. Hwy. 60

EM 4-2283

**Marcum - Scott**  
Funeral Home  
(Formerly Kreig-Marcum)  
PHONE EM 4-3800

EXPERIENCE

UNDERSTANDING

FRIENDLINESS

TRUST



**IT'S LEAP YEAR... WON'T BE ANOTHER LIKE IT 4 YEARS!**

**Shurfine YOUNG MOTHER HUBBARD Sale**

**ENDS MARCH 5th**

Shurfine, R. S. P. No. 303 Can <b>CHERRIES</b> 5 FOR \$1.00	Shurfine 3 Lb. Can <b>SHORTENING</b> 59c	Shurfresh Lb. Ctn. <b>MARGARINE</b> 6 FOR \$1
---	--	---

Shurfine, 28 Oz. Jar <b>BUTTER</b> 4 for \$1	Shurfine, 14 Oz. <b>CATSUP</b> 6 for \$1	Shurfine, No. 300, BLACKEYE <b>PEAS</b> 8 for \$1	Shurfine, 25 Lb. Bag <b>FLOUR</b> \$1.59	Shurfine Whole, No. 303 GREEN <b>BEANS</b> 4 for \$1	Shurfine, No. 303 <b>Sweet Peas</b> 6 for \$1
Shurfine No. 303 Can <b>POTATOES</b> 6 for \$1	Shurfresh, 2 Lb. Box <b>Cheese Spread</b> 69c	Shurfine, WK or CS No. 303 GOLDEN <b>CORN</b> 7 for \$1	Shurfine, No. 303 FRUIT <b>COCKTAIL</b> 5 for \$1	Shurfine, No. 300 <b>Pork &amp; Beans</b> 10 / \$1	Shurfine <b>TUNA</b> 4 for \$1
Elmdale <b>BROOMS</b> ea. \$1.19	Shurfine, Reg. or Drip <b>COFFEE</b> Lb. 59c	Shurfine, No. 303 <b>Apple Sauce</b> 6 for \$1	Shurfine, 24 Oz. Bottle <b>GRAPE JUICE</b> 3 for \$1	Shurfine, 46 Oz. Can <b>Tomato Juice</b> 4 for \$1	Shurfine, No. 303 HALVES <b>PEAR</b> 4 for \$1

Glacier Club <b>ICE CREAM</b> Half Gallon 59c	Simple Simon Apple, Cherry, Peach, 8 Inch <b>FROZEN PIES</b> 3 FOR \$1.00
---	---

Shurfine, No. 300, Green Cut <b>ASPARAGUS</b> 4 / \$1	Shurfine, Tall Can, EVAP. <b>MILK</b> 8 for \$1	Shurfine, 10 Lb. Paper Bag <b>FLOUR</b> 69c	Energy Powder, Giant Box <b>DETERGENT</b> 49c	Shurfine, No. 303 Can <b>TOMATOES</b> 6 for \$1	Shurfine, 24 Oz. WAFFLE <b>SYRUP</b> 2 for 69c
Shurfine Manz Thr Sif 7 1/4 Oz. Jar <b>OLIVES</b> 45c	Roxy, Tall Can <b>Dog Food</b> 12 for \$1	Shurfine, 6 Oz. Frozen <b>Orange Juice</b> 7 for \$1	Shurfine 18 Oz. Jar <b>Peanut Butter</b> 49c	Shurfine 12 Oz. Jar STRAWBERRY <b>PRESERVES</b> 3 for \$1	Shurfine, Quart Jar <b>Salad Dressing</b> 39c
Liquid 22 Oz. ENERGY <b>DETERGENT</b> 39c	Soflin, 400 Count <b>Facial Tissue</b> 6 for \$1	Shurfine, No. 2 1/2, ELBERTA <b>PEACHES</b> 3 for \$1	Shurfine, No. 303 Can <b>SPINACH</b> 8 for \$1	Soflin, 4 Roll Pack <b>Toilet Tissue</b> 25c	Shurfine, No. 2 Can SWEET <b>POTATOES</b> 4 for \$1

<b>Quality MEATS</b>	Assorted Flavors <b>JELLO</b> 12 FOR \$1	Karo, Red Label, Pt. Jar <b>SYRUP</b> 25c	<b>Farm Fresh PRODUCE</b>
USDA Good Chuck <b>ROAST</b> lb 53c	Alcoa Reg. 25' Roll <b>ALUM. FOIL</b> 29c	Tendercrust Vanilla Reg. 39c Bag <b>WAFERS</b> 29c	Virginia Red York <b>APPLES</b> LBS 25c
USDA Good Club <b>STEAK</b> lb 85c	Duncan Hines <b>CAKE MIX</b> 3 FOR \$1	Vel <b>BEAUTY BAR</b> 17c	Sunkist <b>LEMONS</b> Doz. 29c
<b>SHORT RIBS</b> lb 29c	Old Spice Spray Reg. \$1.09 <b>DEODORANT</b> 89c	Plastic Strips, Reg. 49c <b>BAND-AIDS</b> 29c	Make A Salad <b>ENDIVE</b> Bunch 19c
Longhorn <b>Bacon</b> 2 LB. PKG. 89c			Small Cherry <b>TOMATOES</b> Pt. Basket 29c

**FREE** Register Each Time You Visit Our Store Nothing To Buy

**DRAWING MARCH 5th - Register Now!**  
Last Week To Register  
**HELLCAT GO-KART**  
Sold at Del's Service Station  
Retail Price \$199.50  
With Clinton 2 1/2 HP Engine

**STORE HOURS**  
Monday 8 to 7  
Tuesday 8 to 7  
Wed. 8 to 8  
Thurs. 8 to 7  
Friday 8 to 7  
Saturday 8 to 9

**COOPER'S**



# LET YOUR LIGHT SO SHINE BEFORE MEN

**MAGNOLIA PETROLEUM CO.**  
Cliff Kerr and Wayne Lehrer

**HEREFORD CREAMERY**  
Mr. and Mrs. Elton Malone

**FARM & HOME SUPPLY**  
W. A. DeBusk

**FIRST NATIONAL BANK**  
Virgil Hennen

**HUNTER'S FOOD MARKET**  
Mr. and Mrs. Russell Hunter

**JOHN McLEAN INS. AGENCY**  
John McLean

**PLAINS FERTILIZER CO.**  
Glen O. Edwards

**MASTER CLEANERS**  
Mr. and Mrs. C. D. Fitzgerald

**B. F. GOODRICH**  
Don Little

**HEREFORD FERTILIZER & INSECTICIDE CO.**  
Norman Moore

**ROCKWELL BROS. & CO.**  
D. R. Vandever

**HEREFORD HARDWARE**  
Mr. and Mrs. Don Zimmerman

**BLANTON BUTANE, INC.**  
Darrell Blanton

**BUY-RITE FURNITURE**  
J. H. Fish

**HEREFORD GRAIN CORP.**  
Curtis O. Roach, Mgr.

**ORSBORN-NORWOOD CHEV.-OLDS**  
Your Chevrolet-Oldsmobile Dealer

**JIM HILL HOTEL**  
Mr. and Mrs. Dick Ross

**CLOWE & COWAN INC.**  
The Best - Pomona Pumps



## NO MALICE

No American who ever lived had a greater grasp of the true meaning of Freedom than Abe Lincoln, the kindly and rugged-featured man who described this nation as having been "conceived in liberty, and dedicated to the proposition that all men are created equal."

But Abraham Lincoln knew that Liberty could not be won and maintained by men alone. He acknowledged Divine power. The Great Emancipator made that clear in all his classic utterances. The closing lines of the Gettysburg Address is our best example: "...that this nation, under God, shall have a new birth of freedom... and that government of the people, for the people, shall not perish from the earth..." that is Americanism.

**ELIZABETH WITHERSPOON INSURANCE**  
148 N. Main St.

**GILLILLAND FUNERAL HOME**  
- Martin Gilliland

**SUIT'S AUTO SUPPLY**

**E. B. BLACK CO.**  
Dick Barnard - Jesse Stanford

**PIGGLY WIGGLY**  
Mr. and Mrs. Gaylord Newell

**ROGERS DRUG**  
Mr. and Mrs. Grady Rogers

**BIG T PUMP CO., INC.**  
Hilrey and Leray Aven

**PITMAN SERVICE STATION**  
Odice and Ed Bull's

**SHELTON TIRE EXCHANGE**  
W. O. and Bessie Shelton

**HEREFORD IMPLEMENT CO.**  
Herman Neff

**LOERWALD BROS.**  
Ed, George, Gene and Harold Loerwald

**FARMER'S DRIVE IN**  
Troy Moore

**HEREFORD STATE BANK**  
Russell E. Carver, Pres.

**DEARING WRECKING CO.**  
Anson A. and June Dearing

**McRIGHT GARAGE & SUPPLY**  
Mr. and Mrs. A. N. McRight

**CONSUMER'S FUEL ASS'N.**  
Louie LeGrand

**PITMAN GRAIN CO.**  
Mr. and Mrs. J. A. Pitman

**DAVIS IMPLEMENT CO.**  
W. L. Davis, Jr.

**ASSOCIATED GROWERS OF HEREFORD**

**HEREFORD LAUNDRY & DRY CLEANERS**  
Ernest Kendall

Visit Church Sunday and Take a Friend Along. This Is the Best Way To Prepare for Next Week.

**St. Thomas Episcopal**  
Harrison Highway  
Rev. Joel C. Treadwell, Vicar  
Vicarage, 418 Star Street  
Sunday: Holy Communion, 8 a. m.; Church School, 9:45 a. m.; Morning Prayer and Sermon, 11 a. m.; Holy Communion the first Sunday of each month at 11 a. m.  
Wednesday: Holy Communion, 10 a. m.  
Women's Division is held the second Monday of each month at 3 p. m. in homes.  
Adult Bible Study is held the fourth Monday of each month at 7:30 p. m. in member's home.  
The Bishop's Committee meets the first Monday of each month at 7:30 p. m. in the Mission Hall.

**Asemblea de Dios Templo el Calvario**  
Pastor Fidel Alcalá  
Bien venidos. Cuidados en la Calle 128 E. 5th.  
Los servicios durante la semana y el Domingo.  
Como siguen: 8 de la noche Martes, Jueves, Sabado y Domingo.  
Domingo, 10 de la mañana, escuela dominical, a las 11:30 p. m.

**Wesley Methodist**  
430 Irving  
L. V. Smith, Pastor  
Sunday: Church School, 9:45; Vance Crume, Superintendent. Morning worship, 11 a. m. Methodist Youth Fellowship, 6:30. Evening worship, 7:30 p. m. "See You In Church Sunday."

**Park Ave. Church of Christ**  
On Harrison Highway  
Worship services 10:30 a. m. Sunday; mid-week services 8 p. m. Wednesday.

**First Presbyterian**  
618 Lee Street  
Rev. Russell Wiegert, Pastor  
Sunday School is held each Sunday at 9:45 a. m. followed by worship service at 11 a. m. Morning Devotional 9 a. m. Tuesday.  
Choir Rehearsal, 8 p. m. Wednesday. Prayer meeting Friday at 7:30 p. m.

**First Christian**  
West Park Ave.  
Rev. Gilbert Davis Jr.  
Sunday School is held at 9:30 a. m. Worship service will begin at 10:50 a. m.

Chi-Rho and CYF meets at 8 p. m. Sundays and vesper services are at 7 p. m.  
Functional Department's first Wednesday at 8 p. m.  
General Church Board, second Wednesday at 8 p. m.  
Choir rehearsal meets each Wednesday at 8 p. m.  
Groups one and two meet on the a. m. on the second Tuesday.  
Young Matrons meet on the second Wednesday at 9:30 a. m.  
Friendly visitation on Monday, Tuesday, Wednesday, Thursday.

**Jehovah's Witnesses**  
North Ave. E., Converted Residence  
Wednesday at 8 p. m. there will be the Congregation Bible Study.  
Friday at 7:30 p. m. is the Service Meeting Ministry School.

**Avenue Baptist Church**  
128 N. 25-Mile Avenue  
Rev. G. H. Hall, Supply Pastor  
Sunday School is held at 9:45 a. m. Worship Service at 11 a. m., Training Union at 6 p. m. and Evening Worship Services at 8 p. m.

**First Baptist**  
Fifth and Main  
Dr. Howard E. Scott, Pastor  
Glendon Sanders, Music-Educator  
Sunday: Sunday School, 9:45 a. m.; Morning Worship, 10:55 a. m.; Services broadcast over Radio Station KPAN; Training Union, 6:45 p. m.; Evening Worship, 8 p. m.  
Monday: Truett Brotherhood fourth Tuesdays, 8 p. m.  
Wednesday: WMS Circles Tuesday: Graded Chorus, 4:30 p. m. YWA meets on second and breakfast, 6:30 a. m. meetings and visitation, 9:30 a. m.; WMS Monthly Luncheon noon; Junior Royal Ambassadors, 6:30 p. m.; Girls Auxiliary and Sunbeams, 7 p. m.; Superintendents' Cabinet, 7 p. m.; Teachers' and Officers' Meeting, 7:15 p. m.; Mid-week Prayer Service, Church Conference, Wednesday following first Sunday in each month, 9 p. m.; Choir Rehearsal, 8:45 p. m.  
Note: All evening services 30 minutes earlier, October through March.

**United Pentecostal**  
Myrtle and Nevins  
Sunday school, 10 a. m., Morning worship, 11 a. m.

Evangelistic, 7:45 p. m.  
Wednesday night is prayer service.  
**A LA IGLESIA PARROQUIAL**  
North 25 Mile Avenue y Harrison Highway  
Horas De Misas En Los Domingos: 6:30 a. m.; 8 a. m.; 10 a. m.; 8 p. m.  
Durante La Semana: 6:30 a. m. y 7:30 a. m.  
**A LA MISSION DE SAN JOSE**  
Labor Camp  
Horas De Misas Los Domingos: 8 a. m. y 10 a. m.

**Church of Jesus Christ of Latter Day Saints**  
(Mormon)  
EM 4 - 2888  
Leo D. Page, branch president.  
The Mormon Church meets in the Seventh - Day - Adventist Church. Sunday School services are at 10 a. m.

**Temple Baptist Church**  
Forrest St. and Ave. E.  
Rev. Robert Lacombe, Pastor  
Sunday School begins at 9:45 a. m. and Training Union is in the evening at 6:30 p. m. Wor-

ship services are at 10:50 a. m. and 7:30 p. m.  
Wednesday prayer service will be held at 8 p. m.  
The teachers and officers meeting will begin at 7:30 p. m. Wednesday.  
Mid-week prayer services are on Wednesday at 7:30 p. m. At 8:15 p. m. there will be choir practice.

**Church of The Nazarene**  
Fourth and Jackson  
Rev. Frank Elliott, Pastor  
EM 4-1881  
Sunday School is held at 10 a. m.; Worship Service at 11 a. m.; Evening Worship Service at 7:30 p. m.  
Prayer meeting Wednesday will begin at 7:30 p. m.

**Assembly of God**  
Union & Ave. G.  
Rev. V. W. Marcontell, Pastor  
Sunday School is held at 9:45 a. m. Morning worship service convenes at 11 a. m.  
C. A. service begins at 7 p. m.; Junior C. A.'s meet at 7 p. m., and worship service begins at 8 p. m. each Sunday evening.  
Prayer meeting and Bible Study will be held Wednesday at 8 p. m.

(Continued on page 7)



WESTWAY NEWS

Several From Community Attend 42 Tournament

By MRS. HAROLD RUDD
Fair crowds attended the forty-two tournament held at Westway on Thursday, Friday and Saturday nights. On Thursday night G. C. Merritt won high prize, and W. W. Thomas won low. Friday night Mrs. H. E. Owens won high and G. C. Merritt won low. Mr. and Mrs. J. C. Morrison won the high and low prizes on Saturday night and the grand prizes were presented to Mrs. R. L. Wilson for the ladies and to Ralph Mitchell as the highest scoring man for the three nights.

Hold Meeting Of Wyche HD Club

The Wyche Home Demonstration club met recently in the home of Mrs. C. E. Damron. Mrs. Norman Hodges brought the program on landscaping and presented layout diagrams for a house and shrubbery. She said, in part, "Landscaping is for comfort, convenience and beauty. Well landscaped homes look like the trees and shrubbery grew there in a natural state. Your yard should be divided into three parts: public approach, service area and in a private relaxation area."

Church

(Continued from page 4)
A La Inglezia Parroquial De San Antonio
North 25 Mile Avenue y Highway
Vd. Es Catolico? Pues, Tienen La Obligacion De Asistir A La Santa Misa Todos Los Domingos!

Mr. and Mrs. George Turrentine, Mrs. Andrew Kershen, Father Aloysius, Mrs. Mark Koenig and Mrs. Ed Loerwald were in Plainview Thursday. Father and the ladies attended a Council of Catholic Women Board meeting while there.

Mrs. Howard Walker was hostess for the meeting of the Westway Home Demonstration Club meeting at the Community House Thursday afternoon. Mrs. Joe Landers and Mrs. Bess Werner presented the program on Wheat products. Thirteen members were present.

Mr. and Mrs. Norman Hodges of Hereford visited with Mr. and Mrs. W. W. Thomas last Sunday. Mrs. Joe Reinauer and Bob attended the PTA meeting at the Junior High last Monday.

Joe Reinauer Jr., was home from Oklahoma State University at Stillwater last weekend. Linda Ann Thomas, daughter of Mr. and Mrs. W. W. Thomas was on the honor roll for the fall semester at Abilene Christian College. Linda is a freshman there.

Church of God

11 and 13th Street
Rev. Clarke E. Goodman, Pastor
Sunday School will begin at 10 a.m. Worship service is at 11 a.m. Sunday evening worship begins at 7:30 p.m.

A La Mision De San Jose

LABOR CAMP
Horas De Misas En Los Domingos: 8 a.m. y 10 a.m.
El Domingo Es El Dia Del Señor. Tiene Que Adorable. No Misa: El Sacrificio De Calvario Hay Mejor Modo Que La Santa Continuada.

St. Anthony's

Farrison Highway at 25 Mile Ave.
Father Aloysius Craven, Pastor
Sunday Masses are at 6:30 a.m. and 10 a.m. Sunday Evening services are at 7:30 p.m. Daily Mass is at 7 a.m. and 8:15 a.m. Confessions are Saturday afternoon from 4 p.m. to 5 p.m. and 8 p.m. to 9 p.m. Thursday Holy Hour is from 4 to 9 p.m.

Thompson Memorial Mexican Baptist Mission

Norton and Texas
Rev. Ernest E. Atkinson, Pastor
Sunday, Sunday School, 10 a.m.; Morning Worship, 11 a.m.; Training Union, 7 p.m.; Evening Worship, 8 p.m.
Wednesday, Bible Study and Prayer, 7:45 p.m.
"La Iglesia que presenta el Mensaje del Cristo Vivo"

Central Church of Christ

Sunset Drive and Plains Ave.
Ernest Highers, Minister
Bible School is held each Sunday at 9:30 a.m., with the morning worship at 10:25 a.m. The young people meet Sunday evening at 7:10 p.m. with worship service beginning at 8 p.m. Wednesday prayer services are held at 7:30 p.m.

Grace Gospel Church

Thirteenth and Avenue K
Rev. H. V. Fields, Pastor
Sunday School is at 9:45 a.m. and worship services convene at 11 a.m. Bible Study is held each Sunday at 7 p.m. and preaching service at 8 p.m. Wednesday prayer meeting is held at 8 p.m.

The Flamingo, annual 3-year-old thoroughbred classic at Hialeah, has been run on an off track only once. That happened in the inaugural race in 1926 at Tampa, Fla.

NOW... SAFE DRIVING SAVES MONEY...



as well as YOUR LIFE!



Take a fresh look at your driving habits! Under the provisions of the Texas Safe Driving Insurance Plan, a clean record would entitle you to a discount of 20%... or a possible penalty increase of 100% for a bad record. It's your money, but with a little caution you'll save your money as well as your life!

Get the plan in detail from John McLean Agency Phone EM 4-0544



Church of God

11 and 13th Street
Rev. Clarke E. Goodman, Pastor
Sunday School will begin at 10 a.m. Worship service is at 11 a.m. Sunday evening worship begins at 7:30 p.m.

First Methodist

5th and Main
Rev. H. L. Thurston, Pastor
Thursday, March 3: McMurry Chanters, McMurry College, Abilene, 7:30 p.m.
Friday, March 4: World Day of Prayer Observance, 3 p.m., First Presbyterian Church.

Immanuel Lutheran

Park Avenue at E Street
Rev. Andrew Szegedi, Pastor
Phone EM 4-1668 and EM 4-1667
Worship Services each Sunday at 11 a.m.
Sunday School and Bible Classes at 10 a.m.
"Call to Worship" each Sunday over Radio Station K-PAN, 860 KC., at 9:15 a.m. "The Lutheran Hour" each Sunday over same station at 1:15 p.m.
"His Life" over Station KVII, Channel 7, Amarillo, each Sunday at 8:30 a.m.
Senior Instruction Class each Friday at 4 p.m.
Junior Instruction Class each Saturday at 9 a.m.
Adult Instruction Class each Tuesday at 7:30 p.m.
The Choir meets each Wednesday at 7:30 p.m.
Young People's group meets on the first and third Sunday of each month at 7:30 p.m.
The Couples Club meets on the third Thursday of each month at 7:30 p.m.
The Men's Club meets on the second Friday of each month at 7:30 p.m.
The Ladies Aid meets on the third Wednesday of each month at 7:30 p.m.
Glen Osborn, Treasurer
P. O. Box 351
Hereford, Texas
Lenten Services each Wednesday at 7:45 p.m.
The Walther League meets on the First and Third Sunday of each month at 7:30 p.m. Social on Friday, March 4, at 7 p.m. Walter and Leon Vogler, hosts.

Topic For Sunday, March 6:

"The Cry of Wounded Love."
Text: Matt. 11:20-24. Topic for the second Lenten Service Mar. 9: "The Savior Mocked and Reviled. Matt. 27:39-44.
Lest We Forget: The regard and care of the soul, our Savior says, is the one thing needful; other things may be good and useful, but this is necessary. It cannot be dispensed with for a single day, nor can anything be tolerated that interferes with it.

Seventh Day Adventist

Chira and Lawton
J. D. Sammons, Pastor
A most cordial welcome to you.

Song Service at 9:30 a.m.

Saturday; Sabbath School, 9:45 a.m. Saturday; Worship Service, 11 a.m.
Subject for Lesson Study Sabbath March 5: "The Manner of Christ's Coming." Matt. 26:29. Study Helps: "Early Writings", pages 285-289; "The Desire of Ages," page 832; "The Great Controversy", pages 315, 625; "The Seventh - Day Adventist Bible Commentary"; on lesson scriptures; Lesson Help in "Review and Herald" of Feb. 18. Lesson Outline: 1. He will come literally 2. He will come visibly 3. He will come in demonstration of Power 4. He will minister to our physical needs.

Note: Jesus is to return to his followers in a literal, visible, audible manner, in such a manner that every inhabitant of the earth will know it is He.
The MV society from the Amarillo Seventh - Day Adventist Church will have charge of the Sabbath School and Church Services, also an MV meeting Sunday at 3 p. m.

Dr. Milton C. Adams

OPTOMETRIST
Office Hours
8:30 5:00
335 Miles Avenue
Phone EM 4-2255
Hereford, Texas

Advertisement for Ramblers American cars featuring 'FREE 1960 AUTOMOTIVE X-RAY' and 'OSBORN MOTOR CO.' Includes images of car brochures and a car.

Large advertisement for Blanton Butane fertilizer with large numbers 1, 2, and 3, and the text 'IT'S SPRINGTIME... And time to Start thinking about getting your land ready for planting...'.

Advertisement for Gladiola Flour for Minneapolis, Kansas, featuring a cartoon character and the text 'If we made Gladiola Flour for Minneapolis, Kans... the quality wouldn't matter so much... but we make it for you'.



# Several Residents Attend Farmers Union Meeting

By MRS. T. L. COLLINS  
Several from the Walcott community attended a Farmer's Union meeting Tuesday night in the new Community Center in Hereford. A program and barbecue were enjoyed by all present.

Those attending were Mr. and Mrs. Glenn Burrus, Kathryn and Elizabeth; Mr. and Mrs. Herschel Burrus, Mr. and Mrs. Dan Guseman, G. V. Hall, Jim Monroe, Mr. and Mrs. Elmo Hall, Kerry and Scott; Mr. and Mrs. Melvin Henderson, Keith, Ronnie, Billy and Sid; Mr. and Mrs. N. E. Tyler, Nancy, Kelly and Jerry.

Mrs. J. E. Rouse and Mrs. Obed Caraway and children visited in the Bertram Jack home on Monday afternoon.

Monday night Mrs. J. E. Rouse and Veri Miller accompanied the Bertram Jacks to the 4-H Stunt Night program at Aikman School in Hereford.

Mr. and Mrs. Don Kirby and

children, Mr. and Mrs. Elton Wyly and family visited in the Bertram Jack home Tuesday afternoon and evening. Kay Kirby remained to spend the night with Marla Jack.

Several Walcott children missed school last week because of colds and the flu. These include George, Willie, Regina and Roy Lee Steward, Thomas and Robert Davis, Adair and Denise Melton, Larry Minks, Carolyn and Wendell Webb, Vicki Burns, Galen Jack, Jerry Tyler, Charlene Weaver, Earl Brown, Lupe and Autro Lopez, Daany Hall, and John Avera. Rayford Wilkerson also missed school because of a cold.

The Political Rally and Pie Supper scheduled for Friday night Feb. 26 at Walcott School was postponed due to cold, uncertain weather. A later date will be announced.

Mr. and Mrs. Thomas L. Collins ate dinner with Mrs. J. F.

Ward in Hereford on Saturday. They visited in the home of Mr. and Mrs. Travis Alston at Westway, Bootleg Corner, and Mr. and Mrs. S. N. Thweatt before coming home.

Mr. and Mrs. Charles Pierce and Chuck of Canyon visited in the home of Mr. and Mrs. T. L. Collins briefly on Sunday afternoon then observed the Walcott School building.

The new home of Mr. and Mrs. Bob Wyly and family near Friona is being completed on the inside now. To them the progress has been slow because of weather.

Mr. and Mrs. Joe Monroe of Clovis, N. M. came Saturday and stayed until Sunday visiting with Mr. and Mrs. Buel Monroe, Kathy and Jimmy, Mr. and Mrs. Darrell Fulger and baby Mickey.

Mr. and Mrs. G. W. Downing went to Canyon on Saturday and visited with their parents, Mr. and Mrs. C. N. Cosby and Layne and Mr. and Mrs. Bill Downing.

Mr. and Mrs. Russell Patterson and children of Farwell visited in the home of Mr. and Mrs. Bertram Jack on Friday night.

Galen and Kent Jack have been ill with flu and croup for the past several days.

Mr. and Mrs. Elton Wyly and children, Wileta, Clyde and Paul went to Lubbock on Friday afternoon to visit her mother, Mrs. Stella Copeland, and sister, Mrs. Velta Yarborough and friends. They came home Saturday afternoon.

W. A. Kirby and Marlin from Alamogordo, N. M. came last week to visit with Mr. and Mrs. Don Kirby and children.

Mr. and Mrs. Joe Rader spent



MARY JOE CLEARMAN shows her mother, second-graders' parents to visit at their children's school during Public Schools week, Feb. 28 through March 4. (Staff Photo)

the week end in Hereford at the home of their daughter, Mr. and Mrs. Marvin Payne and family.

Mr. and Mrs. Bertram Jack, Dianne and Marla attended church in San Jon, N. M. Sunday. A basket lunch was served in the Community Center there and visiting followed.

Mr. and Mrs. Alvin Wilkerson and family had Sunday guests in their home - Mr. and Mrs. Gene Marshall and children from Simms, and Mr. and Mrs. Dave Bently, Elaine and Danny from Friona.

Mr. and Mrs. Charles Stout, Paula, Tony and Dana Joe, friends from Amarillo, visited in the home of Mr. and Mrs. T. L. White and children, who live on the Frank Ford place.

Mr. and Mrs. Charles Wright of Hereford have a new baby son - Jimmy Charles, born Feb. 27 in the Deaf Smith County Hospital in Hereford. Mrs. Wright is the sister of Mrs. E. B. White who lives with her family at Bootleg Corner.

Governor Price Daniels has proclaimed this week, Feb. 28 through March 4, as Public Schools Week. Principal of Walcott School, T. L. Collins, and teachers are inviting parents to visit their public

## FRIO NEWS

### Area Home Makers Group Has Meeting

By MRS. OWEN ANDREWS

Frio Home Makers Club met recently in the home of Mrs. Earnest Harder. The program was a discussion, by Mrs. Owen Andrews, on the subject "Tranquilizers and Vitamins". The next meeting will be on March 10 (which is change from the regular meeting date). It will be in the home of Mrs. Fred Axe, who will give a talk and demonstration with her own yard on planning year around landscaping arrangement.

Those present for the last meeting were Mesdames Annie

school in action this week. Some of the child's work will be shown as compared with others in the class.

Walcott School will close their fourth six-week period on March 4 with 33 days of school. Report cards will be out next week.

District Nine of Texas State Teacher's Association will hold its annual meeting in Amarillo on Friday, March 11, for all teachers of this district. This will include Walcott teachers. Pupils will have a vacation that day.

Springer, T. L. Sparkman, Jr., Owen Andrews, Carlton Dobbins, Frank Robbins, Glen Andrews, James Dobbis, Earl Harkins, Harlan Barber, Edgar Vinson, E. F. Vogler, and the hostess.

A "42" party is being planned for Friday night at the Community building. Inclement weather has caused the postponement of the last one, but if the weather is at all fit, plans are to have this week's party. Newcomers in the community and other guests are especially invited. Apples and cookies are to be brought by ladies of the community.

Mr. and Mrs. D. C. Miller and Carl went to Houston during the week end to visit the mother of D. C. Miller. She has been ill with a heart condition.

Mr. and Mrs. George Zetsche and Ann spent the last of the week visiting parents of George, Mr. and Mrs. J. B. Zetsche at Bowie.

E. B. Berryman was able to return home from the Hereford hospital on Sunday. He is continuing to improve.

Mrs. David Vandell was among those who were ill during the week end.

Mr. and Mrs. O. W. Parris and Walker, Mr. and Mrs. Lloyd Shultz and Joe were among those who went to Houston during the week end to take show calves.

## How Can I?

By ANNE ASHLEY

Q. How can I clean some velvet coat collars?

A. By using hot water and ammonia, and sponging lightly. When this dries, sponge with alcohol.

Q. How can I remove the printing from some flour and sugar sacks?

A. Rinse the sacks in cold water for several hours. Change the water again, then boil the sacks in a solution of washing soda, using four tablespoons of soda to two gallons of water. Change the water frequently, rinse in warm water, and bleach in the sun.

Q. How can I prevent the annoyance of discolored skin caused by my costume jewelry and bracelets?

A. By simple coating the guilty surfaces of your jewelry with some colorless fingernail polish.

Q. How can I remedy some laundry which I have inadvertently given an overdose of bluing?

A. Wet the stained portions with some alcohol, then launder the whole thing over again.

Q. How can I clean brocade?

A. My advice to you is to leave this in the hands of a dry-cleaning expert. You can press brocade, however, by placing the material right side down on the ironing board and covering it with a piece of thin white

cloth or tissue paper. Do not dampen. Press with a warm, never a hot, iron.

Q. What is a good emergency "saw" for angel food cake, which will avoid its mashing or crumbling?

A. A spool of No. 50 thread provides a good tool for this. Use the thread as your saw. If you wish to make layers, circle the white - cloud confection with the thread and pull.

Q. Is there any way I can add luster to my linoleum without waxing it?

A. One easy way is to add a little sour milk to your-rinse water when you are washing your floor.

Syracuse's most decisive victory over Holy Cross came by 49-9 in 1955. This year Syracuse won by 42-6. This series began in 1955.

Have you read the classifieds?

**A. O. THOMPSON ABSTRACT CO.**  
Complete Tract Index of all land and town lots in Deaf Smith County.  
Managen  
Mr. & Mrs. A. J. Schroeter  
126 East Third  
Box 73  
Phone EM 4-1504

**WE SELL and INSTALL**

- Carpet
- Felt Base Linoleum
- Cabi-Tops
- Inlaid Linoleum
- Tile of all Classes

**E. B. Black Co.**  
Factory Trained Mechanics  
Since 1901

See The Dinah Shore Chevy Show, in color Sundays, NBC-TV - The Pat Boone Chevy Showroom weekly, ABC-TV.

## HOW MUCH IS A 10-YEAR EDGE IN A COMPACT CAR DESIGN WORTH?

YOU DECIDE HOW MUCH MORE CORVAIR GIVES YOU IN COMFORT, CONVENIENCE AND CONTROLLABILITY... WITH THESE EXCLUSIVE FEATURES. THEY DON'T COST ONE PENNY EXTRA!



**REAR ENGINE TRACTION**—You climb right out of snow, sand and mud where other compact cars bog down.



**AIR COOLING**—You never have to buy antifreeze—or repair a radiator. And air can't boil over, ever.



**PRACTICALLY FLAT FLOOR**—Here's a bonus in extra foot room—more than you'll find in many big cars.



**FOLD-DOWN REAR SEAT**—One quick flip and you increase cargo space to 28.9 cubic feet. And it's standard equipment!



**BALANCED BRAKING**—The quicker the stop, the more equal is the weight distribution on each wheel. Another great advantage of rear-engine design.



**FOUR-WHEEL INDEPENDENT SUSPENSION**—Each wheel "walks" independently over bumps... and how that smooths the ride!

**corvaire** BY CHEVROLET



Corvaire 700 4-Door Sedan

Drive it—it's fun-tastic! See your local authorized Chevrolet dealer for fast delivery, favorable deals.

**ORSBORN - NORWOOD CHEVROLET**

2nd at Schley

Hereford

EM 4-2160

**WE'RE PARTICULAR ABOUT YOUR CAR!**

**For Expert CAR WASH And LUBRICATION**

Visit **Hale's Gulf Service**  
Corner Park & Hiway 385  
**GOOD GULF PRODUCTS**

**1,000,000 SOUND WAVES PER SECOND**



We use the McKenna Ultrasonic watch cleaner. One million vibrations of sound per second removes even microscopic particles of dirt and old oil actually from within the blind holes and crevices of the watch.

Let us show you this new Ultrasonic watch cleaner and explain its operation.

**Kenneth (Doc) Cowan**  
Hereford's Sick Watch Hospital  
Phone EM 4-3821  
**COWAN JEWELRY**

**STAR FRIDAY And SATURDAY THUNDERING SAGA OF THE RAIDER ARMY THAT PLUNDERED A GREAT STATE!**

These are the heroes and hellions, the desperate men and women who called themselves **JAYHAWKERS!**

**THE Jayhawkers**  
VISTAVISION\* TECHNICOLOR®  
JEFF CHANDLER • FESS PARKER • NICOLE MAUREY

Darcy of Darcy's Raiders  
Bleeker of Bleeker's Raiders  
Jeanne Dubois

**SUNDAY MONDAY TUESDAY**

Region-Wide PREMIERE in the Southwest

**SLASH**  
THIS LADY OF THE NIGHT HAS TAKEN HER LAST WALK!

**JACK THE RIPPER**  
The most diabolical murderer in all the annals of crime! He baffled the Great Scotland Yard!  
THE FILE ON JACK THE RIPPER HAS NEVER CLOSED.

starring LEE PATTERSON • EDIE BYRNE • BETTY McDOUGALL • EVAN SOLO • Screenplay by JIMMY HANSTON